

Data Path : Z:\voasrv\HPCHEM1\MSVOA_X\Data\VX091522\
 Data File : VX031364.D
 Acq On : 15 Sep 2022 19:19
 Operator : JC/MD
 Sample : N4492-20RE
 Misc : 5.0mL/MSVOA_X/WATER
 ALS Vial : 15 Sample Multiplier: 1

Instrument :
 MSVOA_X
 ClientSampleId :
 BR-02-133-143-090122RE

Integration Parameters: RTEINT.P

Integrator: RTE
 Smoothing : ON Filtering: 5
 Sampling : 1 Min Area: 3 % of largest Peak
 Start Thrs: 0.2 Max Peaks: 100
 Stop Thrs : 0 Peak Location: TOP

If leading or trailing edge < 100 prefer < Baseline drop else tangent >
 Peak separation: 5

Method : Z:\voasrv\HPCHEM1\MSVOA_X\Method\82X091422W.M
 Title : SW846 8260

Signal : TIC: VX031364.D\data.ms

peak #	R.T. min	first scan	max scan	last scan	PK TY	peak height	corr. area	corr. % max.	% of total
1	1.288	25	33	36	rBV6	3751	10168	1.34%	0.291%
2	1.587	73	82	83	rBV6	7422	16124	2.13%	0.461%
3	2.947	296	305	315	rBV	21875	49851	6.58%	1.425%
4	4.574	562	572	586	rBV2	10223	36609	4.83%	1.046%
5	5.385	694	705	722	rBV2	96470	279844	36.92%	7.999%
6	5.556	722	733	745	rBV	102849	288443	38.05%	8.245%
7	5.958	788	799	815	rBV	113558	294589	38.86%	8.420%
8	6.763	920	931	941	rBV	162546	386577	51.00%	11.050%
9	8.653	1234	1241	1249	rBV	482179	758042	100.00%	21.667%
10	10.055	1465	1471	1483	rBV	342248	459119	60.57%	13.123%
11	11.079	1634	1639	1649	rBV	378000	488231	64.41%	13.955%
12	12.024	1788	1794	1801	rBV	336433	411614	54.30%	11.765%
13	12.219	1820	1826	1833	rBV2	10471	19328	2.55%	0.552%

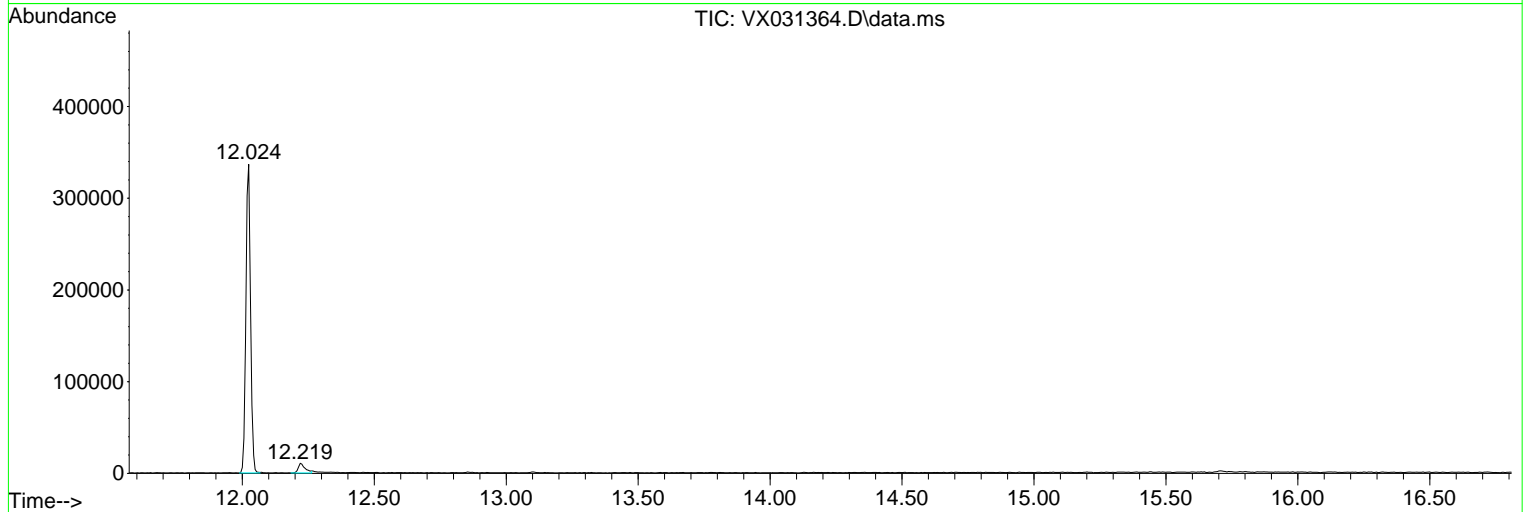
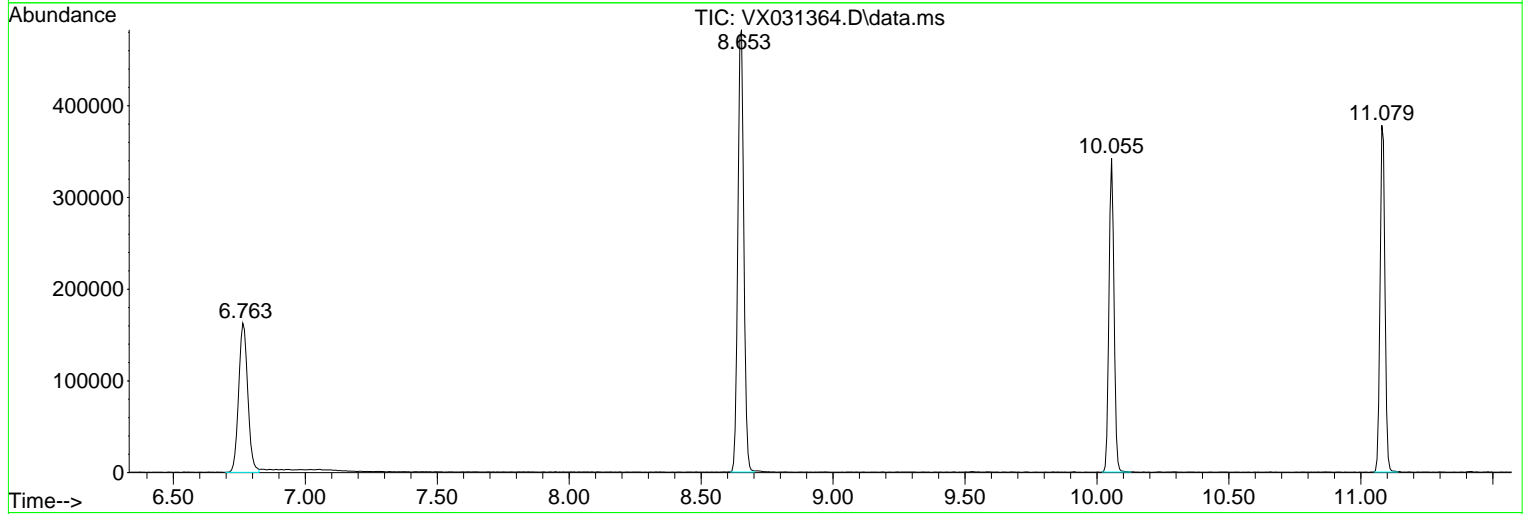
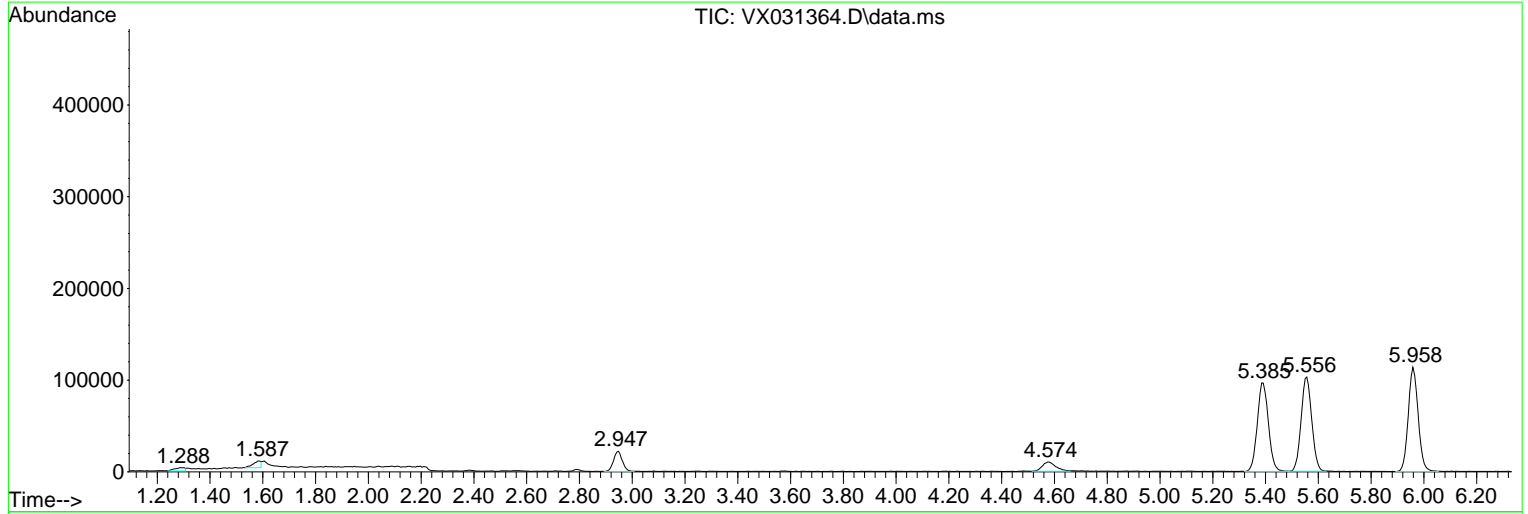
Sum of corrected areas: 3498539

Data Path : Z:\voasrv\HPCHEM1\MSVOA_X\Data\VX091522\
 Data File : VX031364.D
 Acq On : 15 Sep 2022 19:19
 Operator : JC/MD
 Sample : N4492-20RE
 Misc : 5.0mL/MSVOA_X/WATER
 ALS Vial : 15 Sample Multiplier: 1

Instrument :
 MSVOA_X
ClientSampleId :
 BR-02-133-143-090122RE

Quant Method : Z:\voasrv\HPCHEM1\MSVOA_X\Method\82X091422W.M
 Quant Title : SW846 8260

TIC Library : C:\Database\NIST20.L
 TIC Integration Parameters: LSCINT.P



Library Search Compound Report

Data Path : Z:\voasrv\HPCHEM1\MSVOA_X\Data\VX091522\
Data File : VX031364.D
Acq On : 15 Sep 2022 19:19
Operator : JC/MD
Sample : N4492-20RE
Misc : 5.0mL/MSVOA_X/WATER
ALS Vial : 15 Sample Multiplier: 1

Instrument :
MSVOA_X
ClientSampleId :
BR-02-133-143-090122RE

Quant Method : Z:\voasrv\HPCHEM1\MSVOA_X\Method\82X091422W.M
Quant Title : SW846 8260

TIC Library : C:\Database\NIST20.L
TIC Integration Parameters: LSCINT.P

No Library Search Compounds Detected

Data Path : Z:\voasrv\HPCHEM1\MSVOA_X\Data\VX091522\
Data File : VX031364.D
Acq On : 15 Sep 2022 19:19
Operator : JC/MD
Sample : N4492-20RE
Misc : 5.0mL/MSVOA_X/WATER
ALS Vial : 15 Sample Multiplier: 1

Instrument :
MSVOA_X
ClientSampleId :
BR-02-133-143-090122RE

Quant Method : Z:\voasrv\HPCHEM1\MSVOA_X\Method\82X091422W.M
Quant Title : SW846 8260

TIC Library : C:\Database\NIST20.L
TIC Integration Parameters: LSCINT.P

TIC Top Hit name	RT	EstConc	Units	Response	--Internal Standard--			
					#	RT	Resp	Conc
