

Data Path : Z:\voasrv\HPCHEM1\MSVOA_X\Data\VX091621\
 Data File : VX024293.D
 Acq On : 16 Sep 2021 17:16
 Operator : JC/MD
 Sample : M3774-01
 Misc : 5.0mL/MSVOA_X/WATER
 ALS Vial : 20 Sample Multiplier: 1

Instrument :
 MSVOA_X
 ClientSampleId :
 SW-RR-02-(1.0)

Quant Time: Sep 17 04:41:51 2021
 Quant Method : Z:\voasrv\HPCHEM1\MSVOA_X\Method\82X091421W.M
 Quant Title : SW846 8260
 QLast Update : Tue Sep 14 12:18:04 2021
 Response via : Initial Calibration

Compound	R.T.	QIon	Response	Conc	Units	Dev(Min)

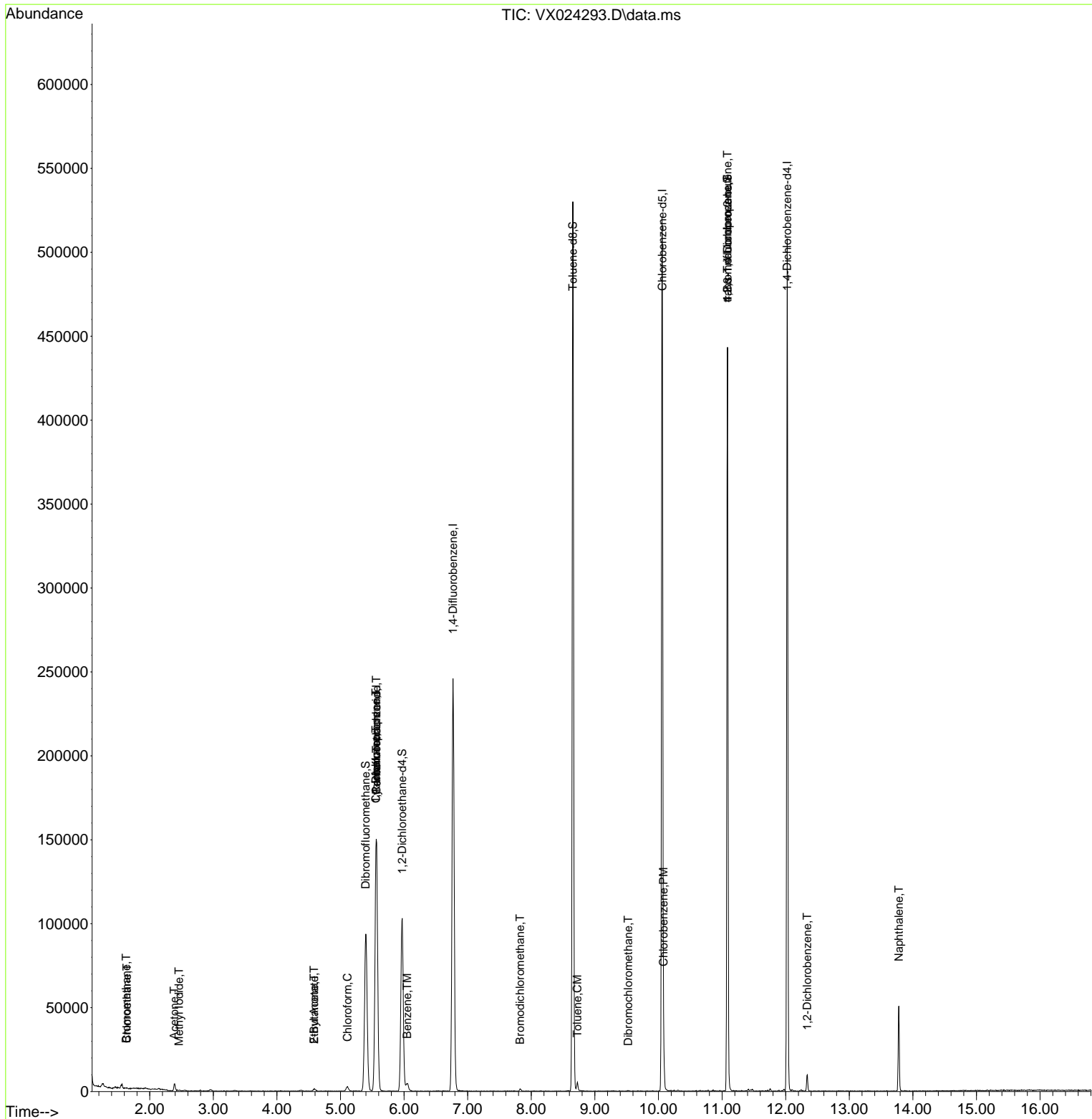
Internal Standards						
1) Pentafluorobenzene	5.562	168	142736	50.000	ug/l	0.00
34) 1,4-Difluorobenzene	6.769	114	247584	50.000	ug/l	0.00
63) Chlorobenzene-d5	10.061	117	237653	50.000	ug/l	0.00
72) 1,4-Dichlorobenzene-d4	12.024	152	104404	50.000	ug/l	0.00
System Monitoring Compounds						
33) 1,2-Dichloroethane-d4	5.970	65	106069	52.113	ug/l	0.00
Spiked Amount	50.000	Range 78 - 117	Recovery	=	104.220%	
35) Dibromofluoromethane	5.397	113	80996	48.781	ug/l	0.00
Spiked Amount	50.000	Range 75 - 124	Recovery	=	97.560%	
50) Toluene-d8	8.653	98	304411	50.326	ug/l	0.00
Spiked Amount	50.000	Range 92 - 112	Recovery	=	100.660%	
62) 4-Bromofluorobenzene	11.085	95	114236	48.529	ug/l	0.00
Spiked Amount	50.000	Range 83 - 123	Recovery	=	97.060%	
Target Compounds						
						Qvalue
5) Bromomethane	1.630	94	410	0.483	ug/l #	77
6) Chloroethane	1.642	64	136	2.115	ug/l #	43
10) Methyl Iodide	2.459	142	557	0.287	ug/l #	78
11) Tert butyl alcohol	2.953	59	630	Below Cal	#	73
16) Acetone	2.386	43	4565	5.260	ug/l	91
25) 2-Butanone	4.587	43	646	0.505	ug/l #	45
30) Chloroform	5.111	83	3352	1.143	ug/l	91
31) Cyclohexane	5.556	56	3185	1.338	ug/l #	31
36) 1,1-Dichloropropene	5.556	75	11254	4.944	ug/l #	49
37) Ethyl Acetate	4.587	43	646	0.244	ug/l #	68
38) Carbon Tetrachloride	5.562	117	15285	5.966	ug/l #	16
40) Benzene	6.050	78	5220	0.800	ug/l #	81
47) Bromodichloromethane	7.824	83	1143	0.487	ug/l #	76
52) Toluene	8.726	92	1654	0.387	ug/l	97
60) Dibromochloromethane	9.525	129	274	1.854	ug/l	100
65) Chlorobenzene	10.079	112	8264	1.690	ug/l	98
76) 1,2,3-Trichloropropane	11.085	75	60870	25.355	ug/l #	39
81) trans-1,4-Dichloro-2-b...	11.085	75	60870	74.570	ug/l #	12
91) 1,2-Dichlorobenzene	12.341	146	2890	0.842	ug/l	92
95) Naphthalene	13.780	128	30790	5.307	ug/l	100

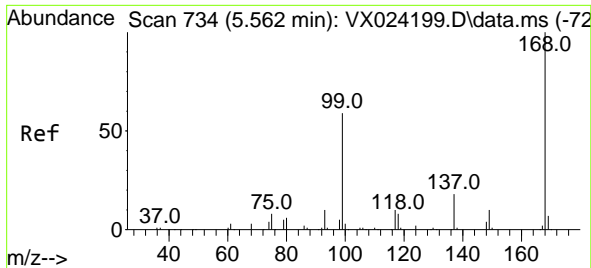
(#) = qualifier out of range (m) = manual integration (+) = signals summed

Data Path : Z:\voasrv\HPCHEM1\MSVOA_X\Data\VX091621\
 Data File : VX024293.D
 Acq On : 16 Sep 2021 17:16
 Operator : JC/MD
 Sample : M3774-01
 Misc : 5.0mL/MSVOA_X/WATER
 ALS Vial : 20 Sample Multiplier: 1

Instrument :
 MSVOA_X
 Client Sampled :
 SW-RR-02-(1.0)

Quant Time: Sep 17 04:41:51 2021
 Quant Method : Z:\voasrv\HPCHEM1\MSVOA_X\Method\82X091421W.M
 Quant Title : SW846 8260
 QLast Update : Tue Sep 14 12:18:04 2021
 Response via : Initial Calibration

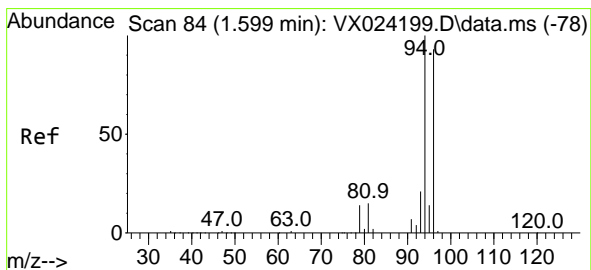
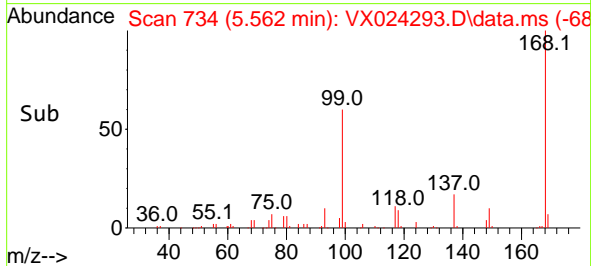
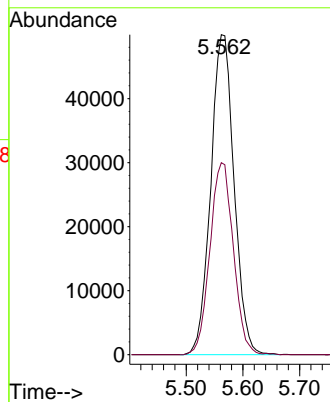
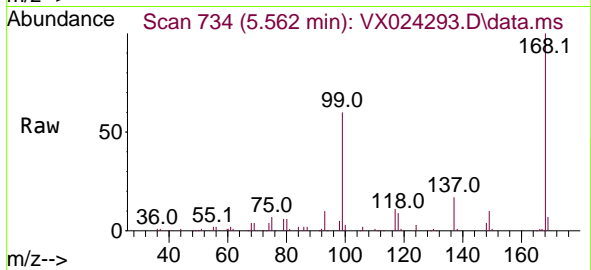




#1
 Pentafluorobenzene
 Concen: 50.000 ug/l
 RT: 5.562 min Scan# 734
 Delta R.T. -0.000 min
 Lab File: VX024293.D
 Acq: 16 Sep 2021 17:16

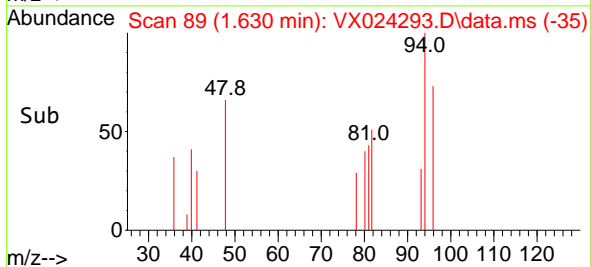
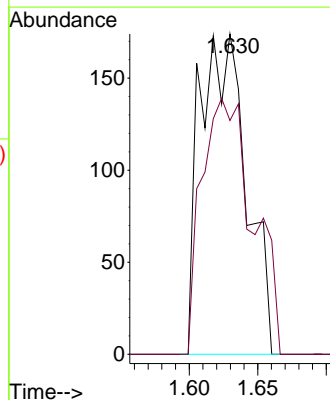
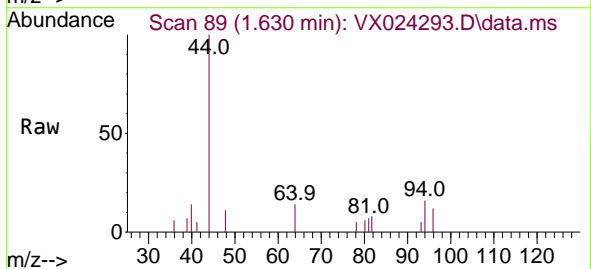
Instrument :
 MSVOA_X
 ClientSampleId :
 SW-RR-02-(1.0)

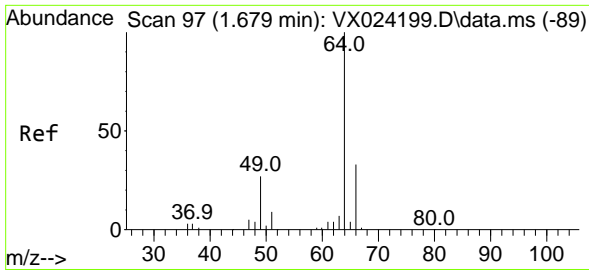
Tgt Ion:168 Resp: 142736
 Ion Ratio Lower Upper
 168 100
 99 60.0 45.8 68.6



#5
 Bromomethane
 Concen: 0.483 ug/l
 RT: 1.630 min Scan# 89
 Delta R.T. 0.031 min
 Lab File: VX024293.D
 Acq: 16 Sep 2021 17:16

Tgt Ion: 94 Resp: 410
 Ion Ratio Lower Upper
 94 100
 96 73.0 76.4 114.6#

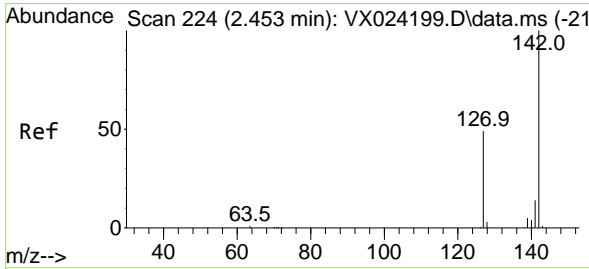
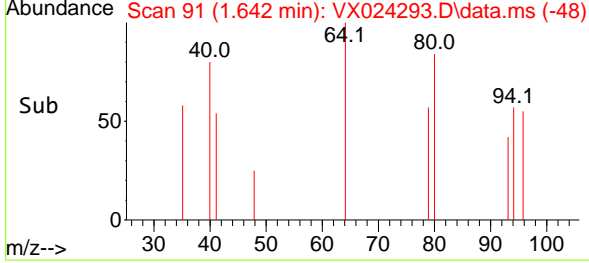
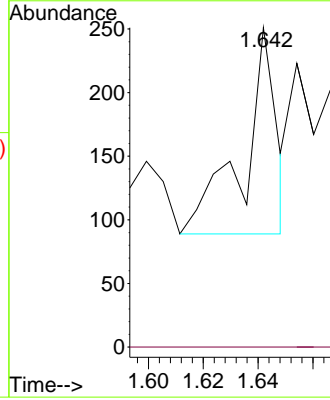
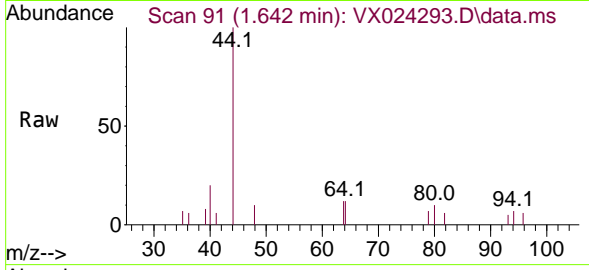




#6
 Chloroethane
 Concen: 2.115 ug/l
 RT: 1.642 min Scan# 91
 Delta R.T. -0.037 min
 Lab File: VX024293.D
 Acq: 16 Sep 2021 17:16

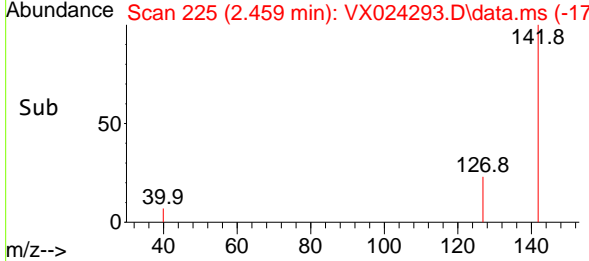
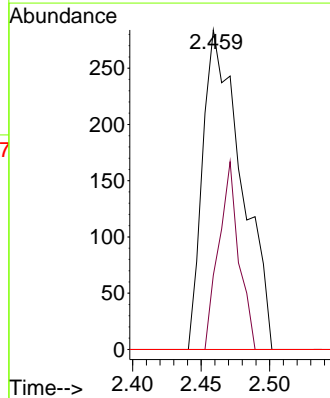
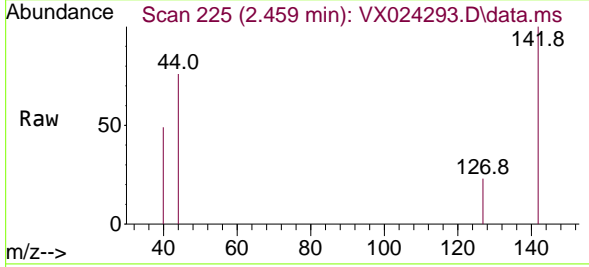
Instrument :
 MSVOA_X
 ClientSampled :
 SW-RR-02-(1.0)

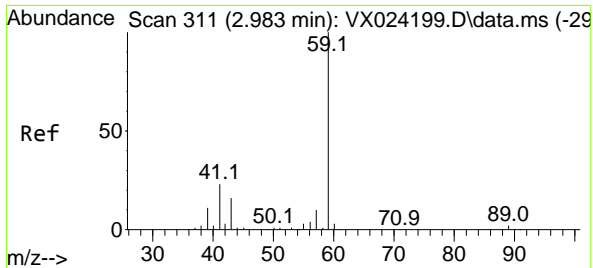
Tgt Ion: 64 Resp: 136
 Ion Ratio Lower Upper
 64 100
 66 0.0 25.4 38.0#



#10
 Methyl Iodide
 Concen: 0.287 ug/l
 RT: 2.459 min Scan# 225
 Delta R.T. 0.006 min
 Lab File: VX024293.D
 Acq: 16 Sep 2021 17:16

Tgt Ion:142 Resp: 557
 Ion Ratio Lower Upper
 142 100
 127 30.7 33.3 49.9#
 141 0.0 11.4 17.0#

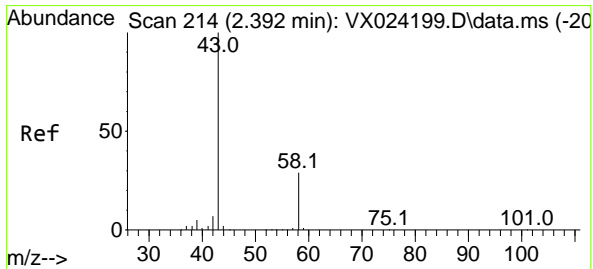
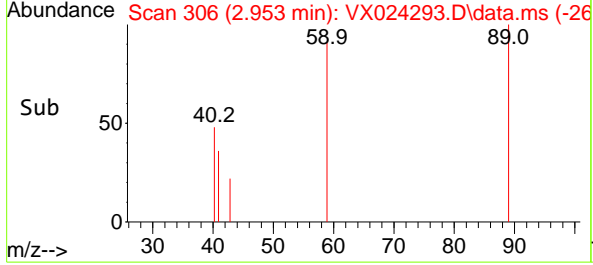
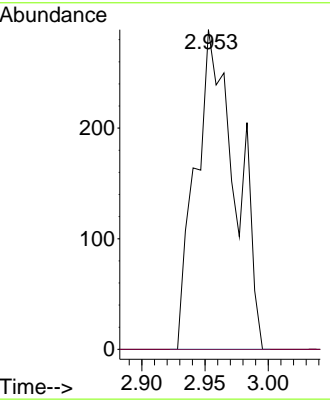
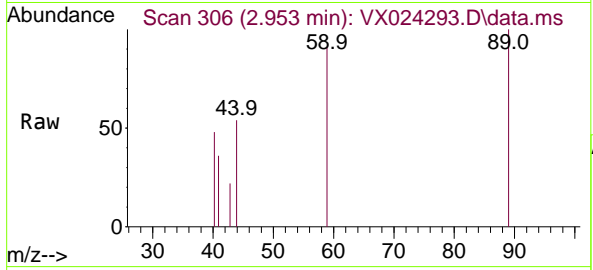




#11
 Tert butyl alcohol
 Concen: Below Cal
 RT: 2.953 min Scan# 306
 Delta R.T. -0.030 min
 Lab File: VX024293.D
 Acq: 16 Sep 2021 17:16

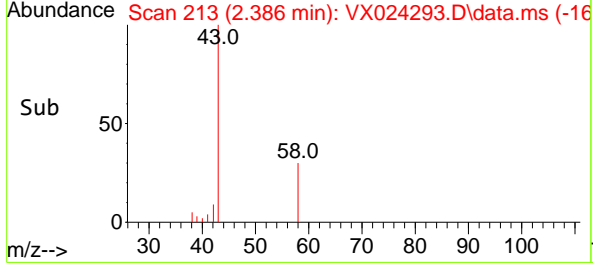
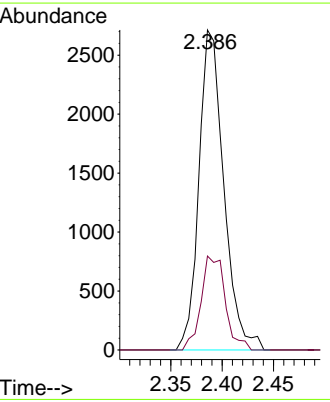
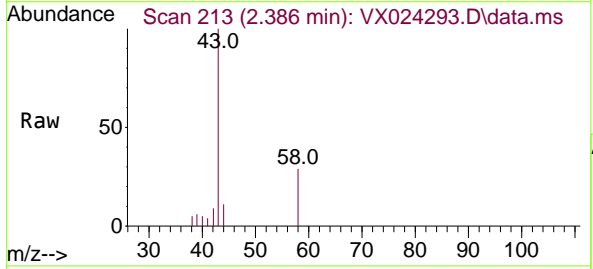
Instrument : MSVOA_X
 ClientSampled : SW-RR-02-(1.0)

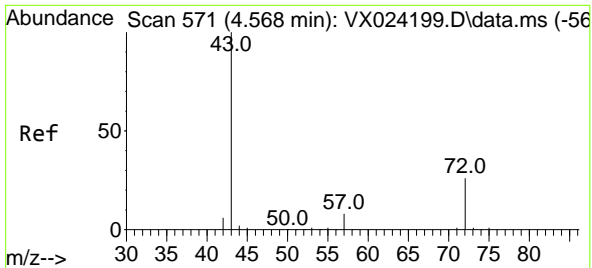
Tgt Ion: 59 Resp: 630
 Ion Ratio Lower Upper
 59 100
 57 0.0 7.8 11.8#



#16
 Acetone
 Concen: 5.260 ug/l
 RT: 2.386 min Scan# 213
 Delta R.T. -0.006 min
 Lab File: VX024293.D
 Acq: 16 Sep 2021 17:16

Tgt Ion: 43 Resp: 4565
 Ion Ratio Lower Upper
 43 100
 58 29.4 27.8 41.8

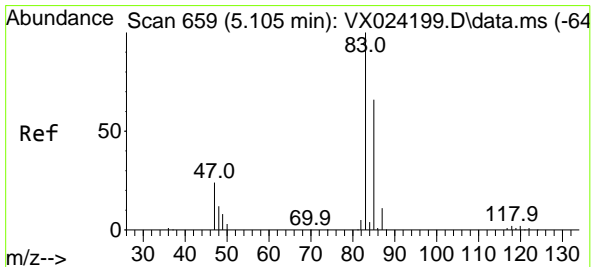
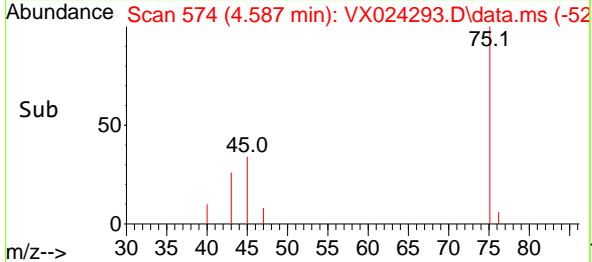
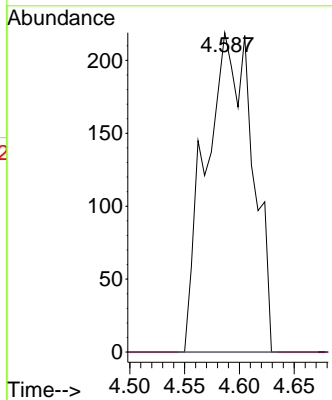
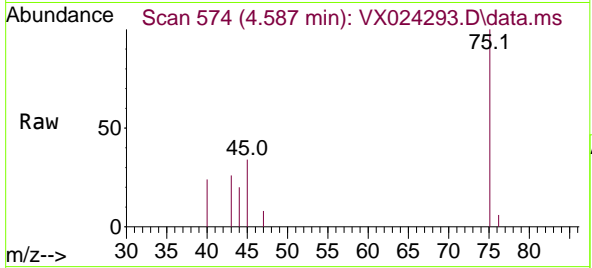




#25
 2-Butanone
 Concen: 0.505 ug/l
 RT: 4.587 min Scan# 574
 Delta R.T. 0.019 min
 Lab File: VX024293.D
 Acq: 16 Sep 2021 17:16

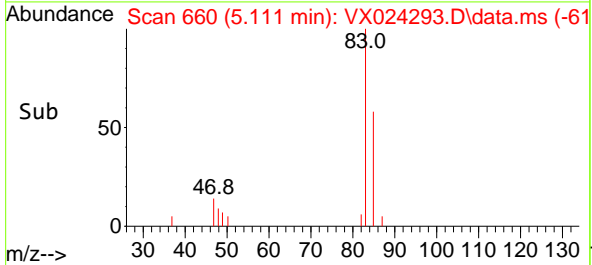
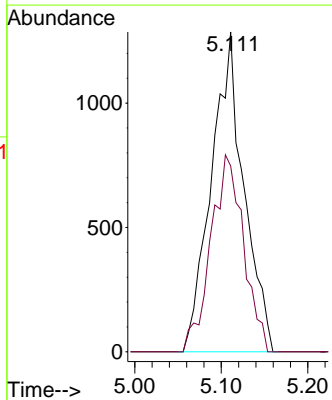
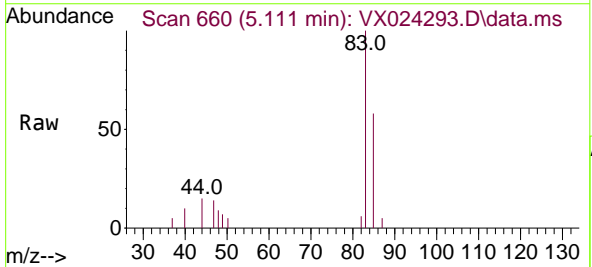
Instrument :
 MSVOA_X
 ClientSampled :
 SW-RR-02-(1.0)

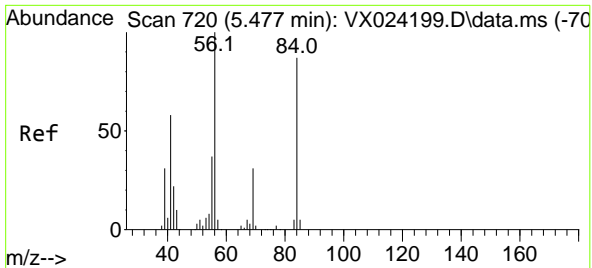
Tgt Ion: 43 Resp: 646
 Ion Ratio Lower Upper
 43 100
 72 0.0 23.7 35.5#



#30
 Chloroform
 Concen: 1.143 ug/l
 RT: 5.111 min Scan# 660
 Delta R.T. 0.006 min
 Lab File: VX024293.D
 Acq: 16 Sep 2021 17:16

Tgt Ion: 83 Resp: 3352
 Ion Ratio Lower Upper
 83 100
 85 58.1 52.0 78.0



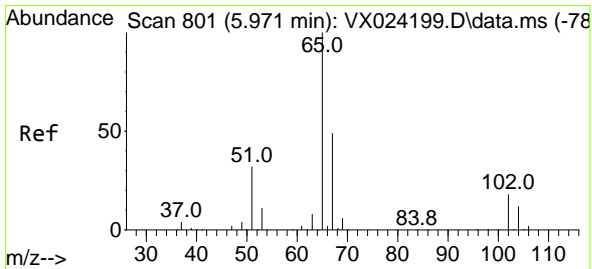
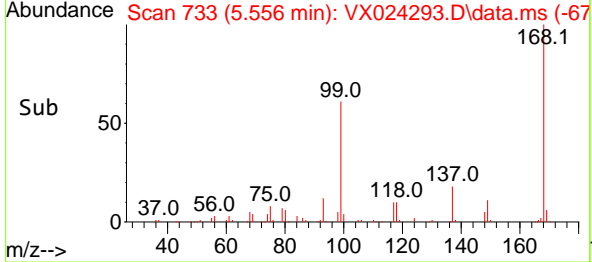
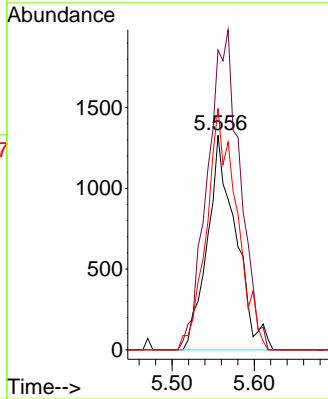
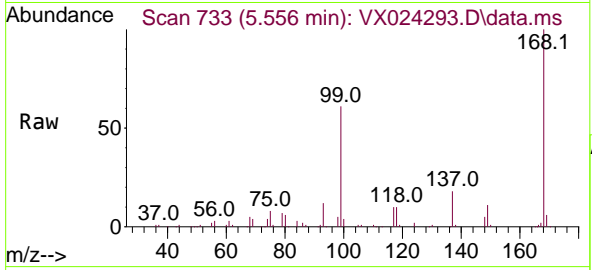


#31
 Cyclohexane
 Concen: 1.338 ug/l
 RT: 5.556 min Scan# 733
 Delta R.T. 0.079 min
 Lab File: VX024293.D
 Acq: 16 Sep 2021 17:16

Instrument :
 MSVOA_X
 ClientSampled :
 SW-RR-02-(1.0)

Tgt Ion: 56 Resp: 3185

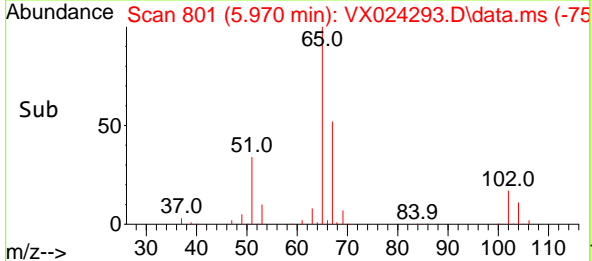
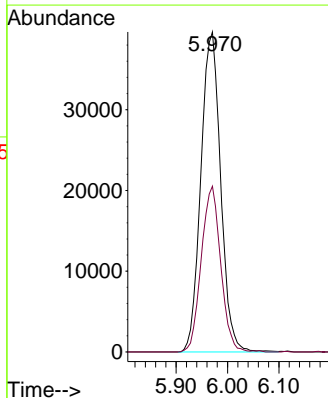
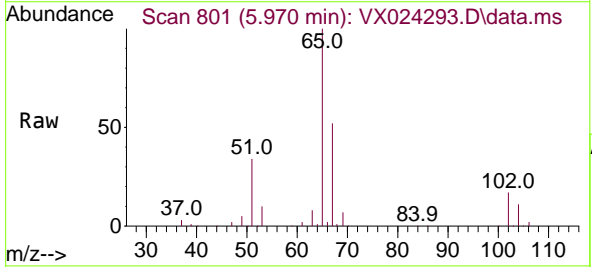
Ion	Ratio	Lower	Upper
56	100		
69	139.7	25.3	37.9#
84	112.5	71.4	107.0#

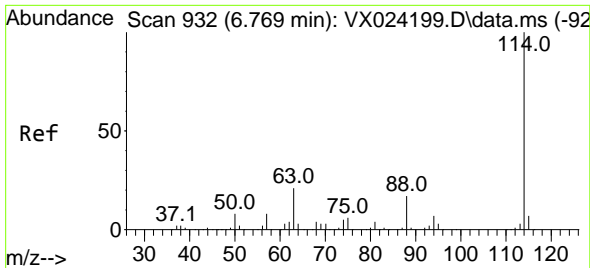


#33
 1,2-Dichloroethane-d4
 Concen: 52.113 ug/l
 RT: 5.970 min Scan# 801
 Delta R.T. -0.001 min
 Lab File: VX024293.D
 Acq: 16 Sep 2021 17:16

Tgt Ion: 65 Resp: 106069

Ion	Ratio	Lower	Upper
65	100		
67	50.7	0.0	105.4

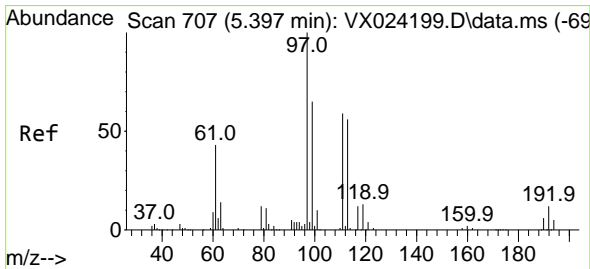
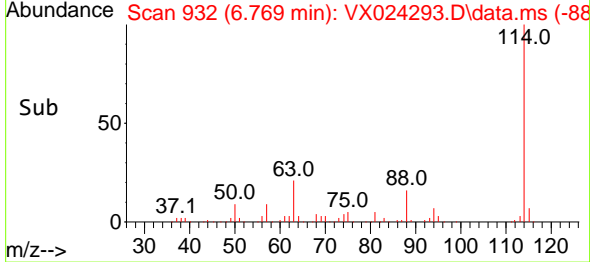
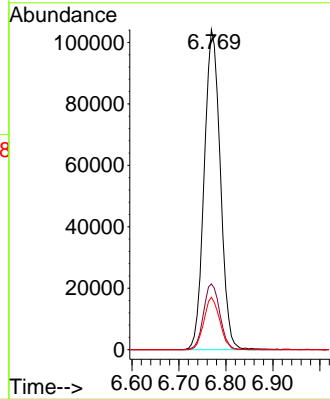
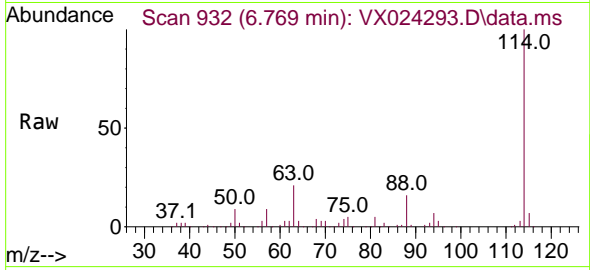




#34
 1,4-Difluorobenzene
 Concen: 50.000 ug/l
 RT: 6.769 min Scan# 932
 Delta R.T. 0.000 min
 Lab File: VX024293.D
 Acq: 16 Sep 2021 17:16

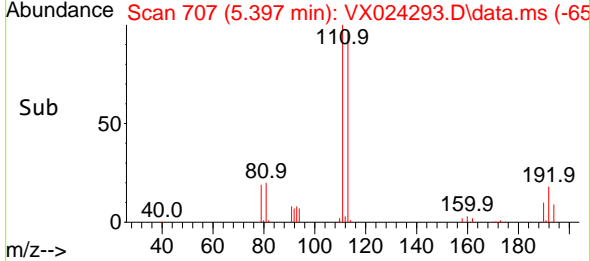
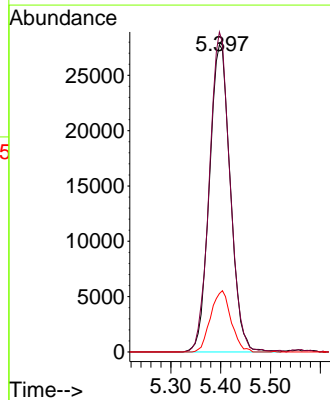
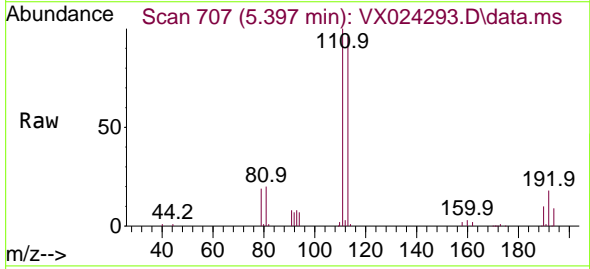
Instrument :
 MSVOA_X
 ClientSampled :
 SW-RR-02-(1.0)

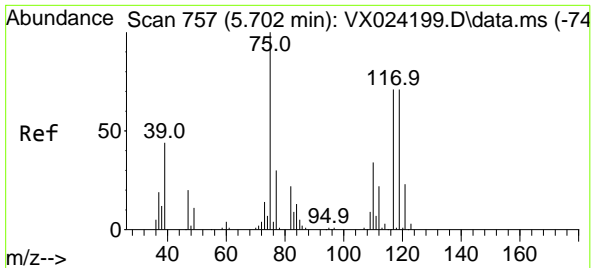
Tgt Ion	Resp	Lower	Upper
114	100		
63	20.5	0.0	40.8
88	16.4	0.0	32.8



#35
 Dibromofluoromethane
 Concen: 48.781 ug/l
 RT: 5.397 min Scan# 707
 Delta R.T. 0.000 min
 Lab File: VX024293.D
 Acq: 16 Sep 2021 17:16

Tgt Ion	Resp	Lower	Upper
113	100		
111	102.2	81.9	122.9
192	19.4	16.7	25.1

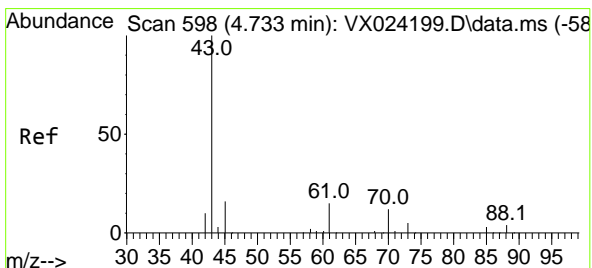
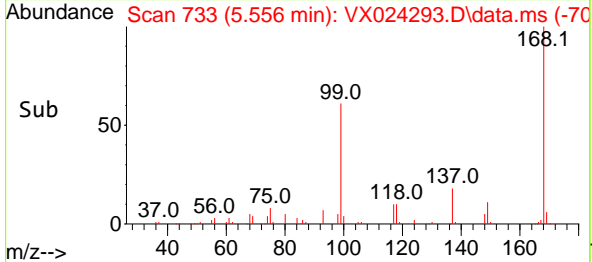
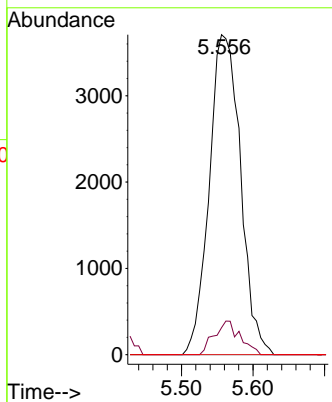
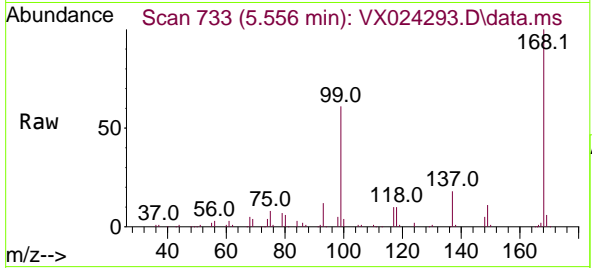




#36
 1,1-Dichloropropene
 Concen: 4.944 ug/l
 RT: 5.556 min Scan# 733
 Delta R.T. -0.146 min
 Lab File: VX024293.D
 Acq: 16 Sep 2021 17:16

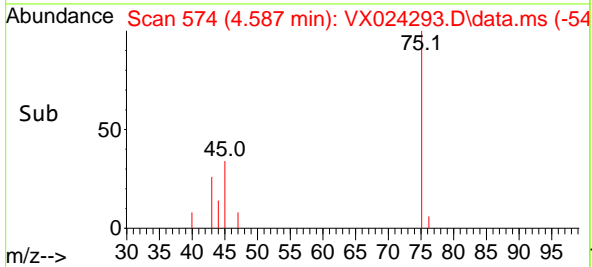
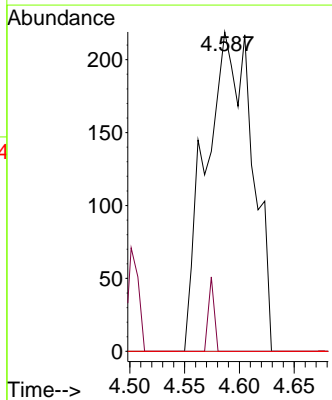
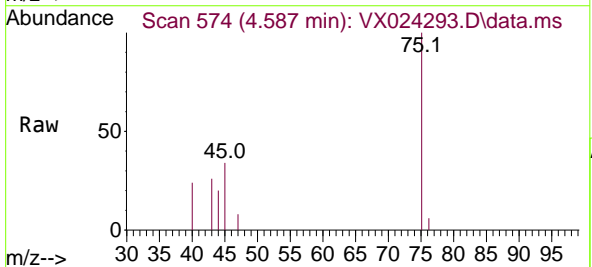
Instrument :
 MSVOA_X
Client Sampled :
 SW-RR-02-(1.0)

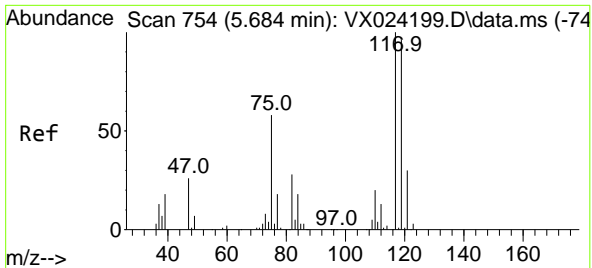
Tgt Ion	Resp	Lower	Upper
75	11254		
75	100		
110	8.7	18.1	54.4#
77	0.0	25.3	37.9#



#37
 Ethyl Acetate
 Concen: 0.244 ug/l
 RT: 4.587 min Scan# 574
 Delta R.T. -0.146 min
 Lab File: VX024293.D
 Acq: 16 Sep 2021 17:16

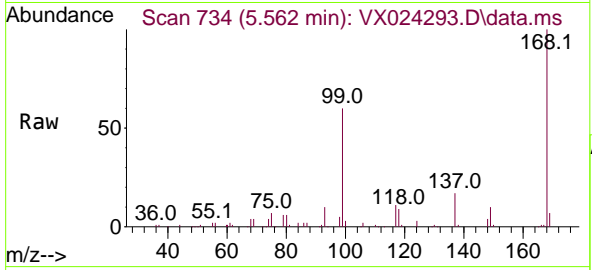
Tgt Ion	Resp	Lower	Upper
43	646		
43	100		
61	2.9	12.8	19.2#
70	0.0	10.5	15.7#



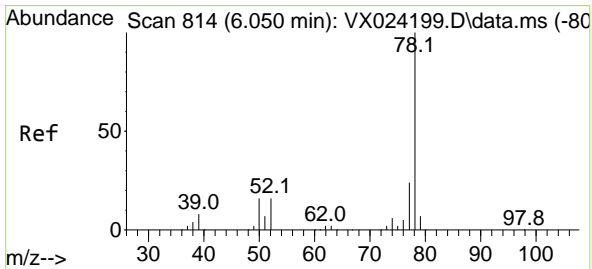
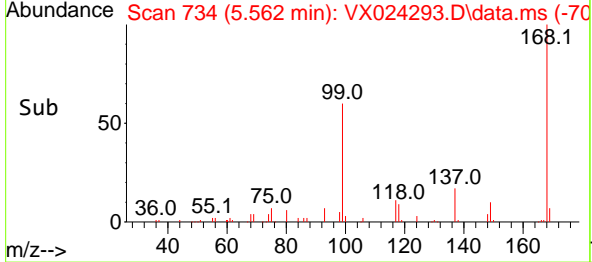
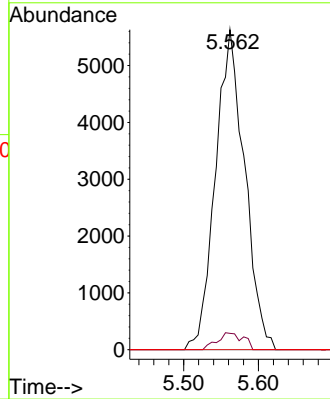


#38
 Carbon Tetrachloride
 Concen: 5.966 ug/l
 RT: 5.562 min Scan# 734
 Delta R.T. -0.122 min
 Lab File: VX024293.D
 Acq: 16 Sep 2021 17:16

Instrument :
 MSVOA_X
 ClientSampled :
 SW-RR-02-(1.0)

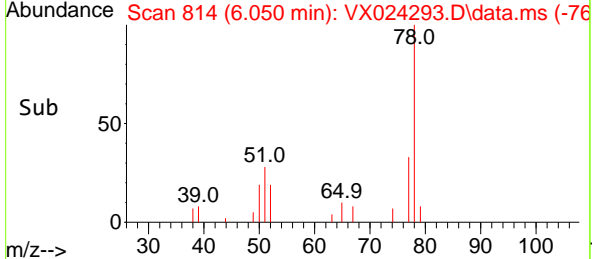
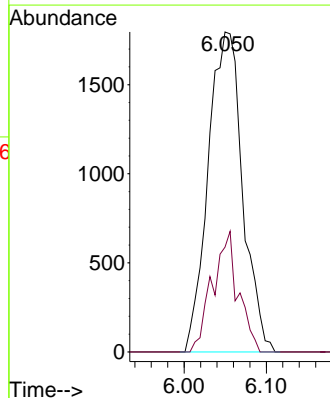
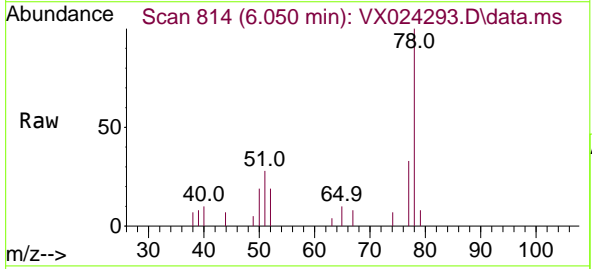


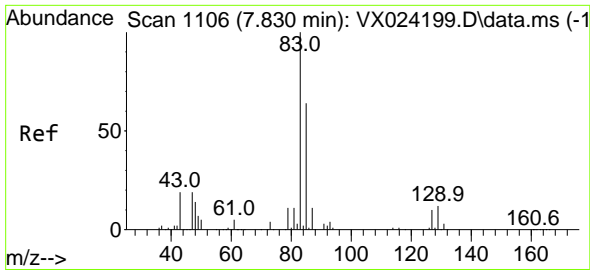
Tgt Ion:117 Resp: 15285
 Ion Ratio Lower Upper
 117 100
 119 5.1 76.2 114.2#
 121 0.0 24.8 37.2#



#40
 Benzene
 Concen: 0.800 ug/l
 RT: 6.050 min Scan# 814
 Delta R.T. -0.000 min
 Lab File: VX024293.D
 Acq: 16 Sep 2021 17:16

Tgt Ion: 78 Resp: 5220
 Ion Ratio Lower Upper
 78 100
 77 32.7 18.9 28.3#

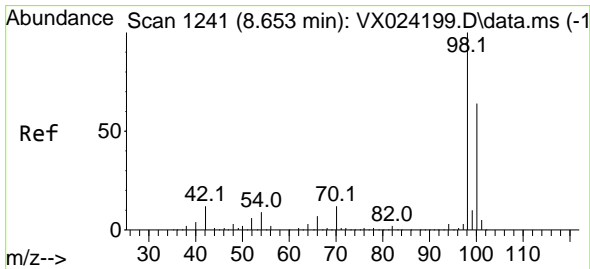
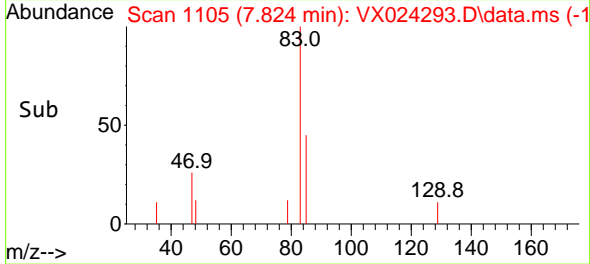
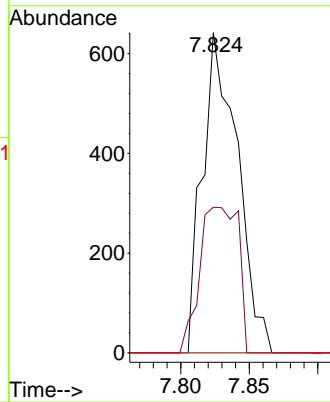
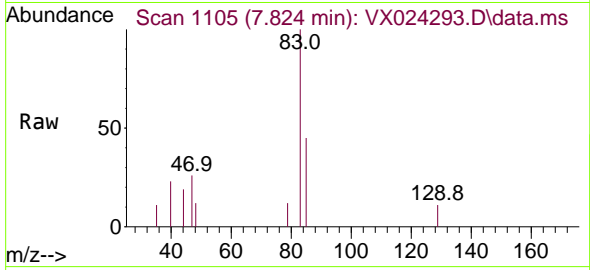




#47
 Bromodichloromethane
 Concen: 0.487 ug/l
 RT: 7.824 min Scan# 1105
 Delta R.T. -0.006 min
 Lab File: VX024293.D
 Acq: 16 Sep 2021 17:16

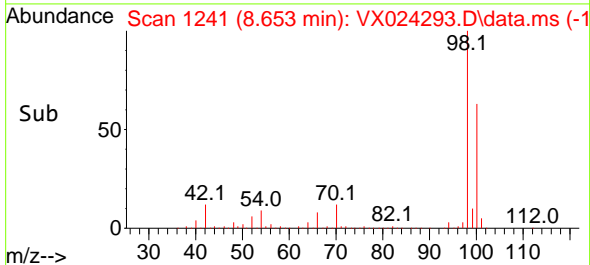
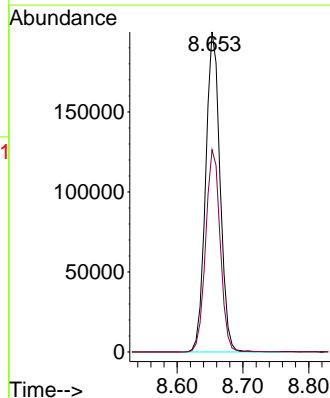
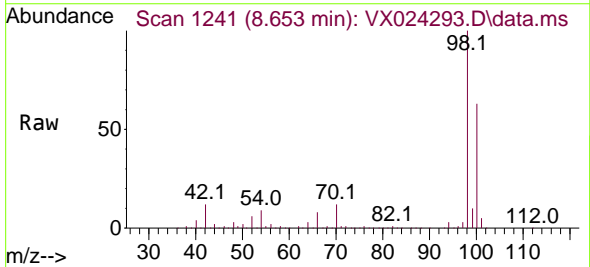
Instrument :
 MSVOA_X
ClientSampled :
 SW-RR-02-(1.0)

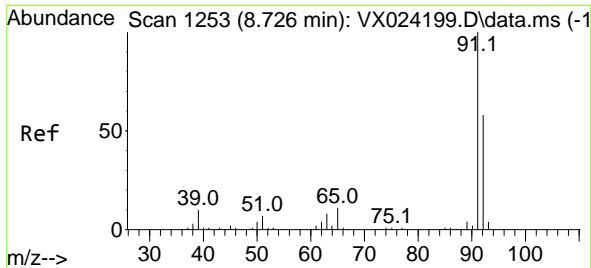
Tgt Ion	Resp	Lower	Upper
83	1143		
85	45.5	51.4	77.0#
127	0.0	6.8	10.2#



#50
 Toluene-d8
 Concen: 50.326 ug/l
 RT: 8.653 min Scan# 1241
 Delta R.T. -0.000 min
 Lab File: VX024293.D
 Acq: 16 Sep 2021 17:16

Tgt Ion	Resp	Lower	Upper
98	304411		
100	63.7	51.9	77.9

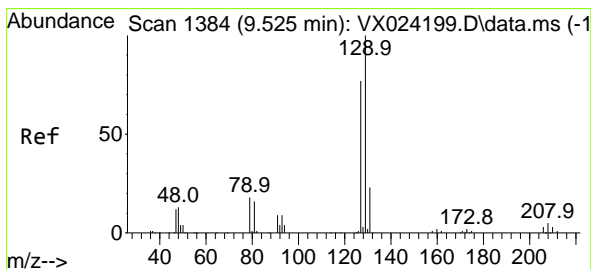
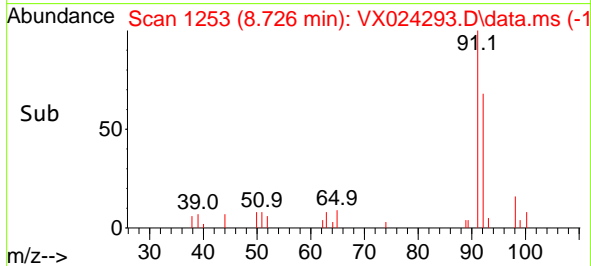
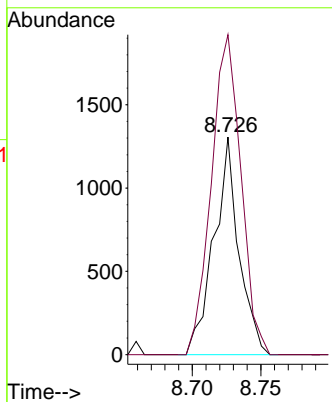
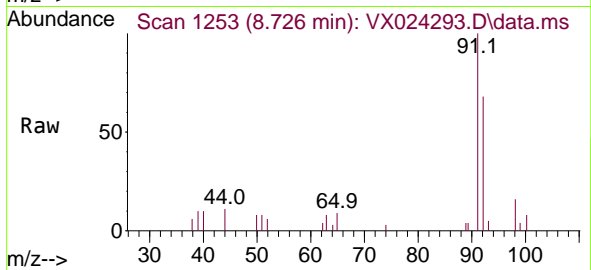




#52
 Toluene
 Concen: 0.387 ug/l
 RT: 8.726 min Scan# 1253
 Delta R.T. 0.000 min
 Lab File: VX024293.D
 Acq: 16 Sep 2021 17:16

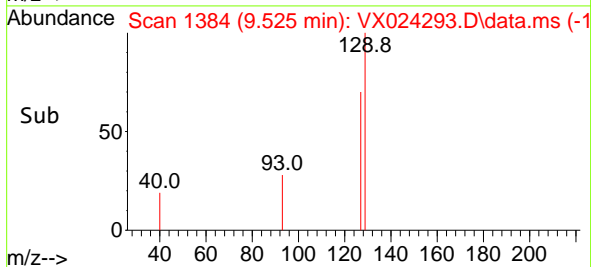
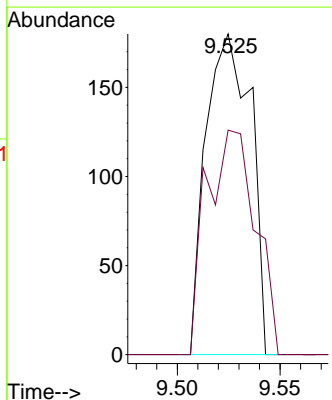
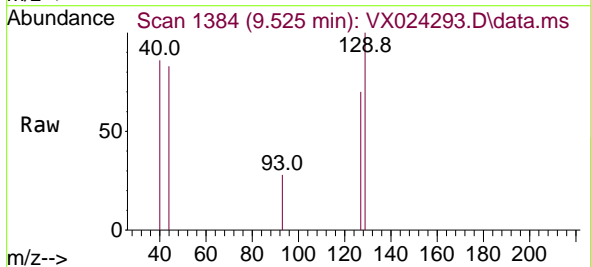
Instrument :
 MSVOA_X
 ClientSampled :
 SW-RR-02-(1.0)

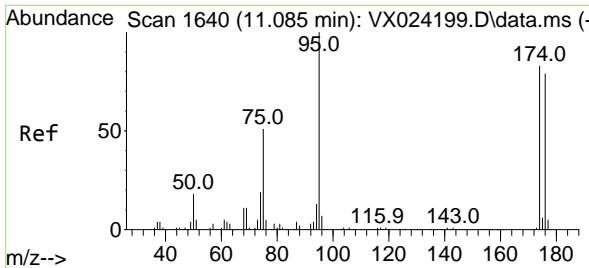
Tgt Ion: 92 Resp: 1654
 Ion Ratio Lower Upper
 92 100
 91 175.0 137.1 205.7



#60
 Dibromochloromethane
 Concen: 1.854 ug/l
 RT: 9.525 min Scan# 1384
 Delta R.T. -0.000 min
 Lab File: VX024293.D
 Acq: 16 Sep 2021 17:16

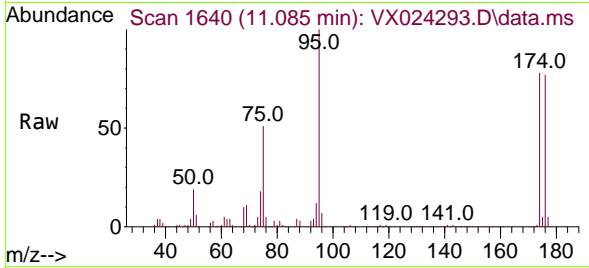
Tgt Ion: 129 Resp: 274
 Ion Ratio Lower Upper
 129 100
 127 76.6 38.4 115.2



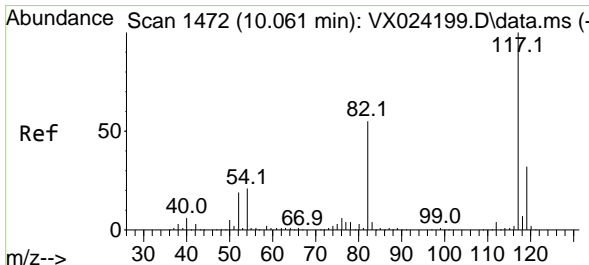
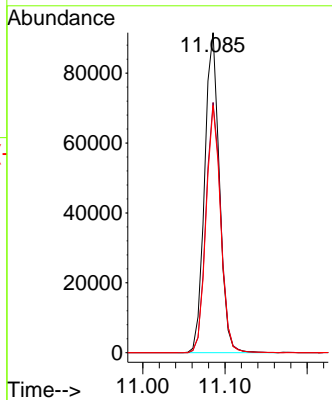
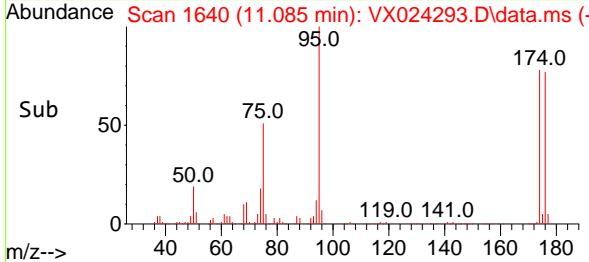


#62
 4-Bromofluorobenzene
 Concen: 48.529 ug/l
 RT: 11.085 min Scan# 1640
 Delta R.T. 0.000 min
 Lab File: VX024293.D
 Acq: 16 Sep 2021 17:16

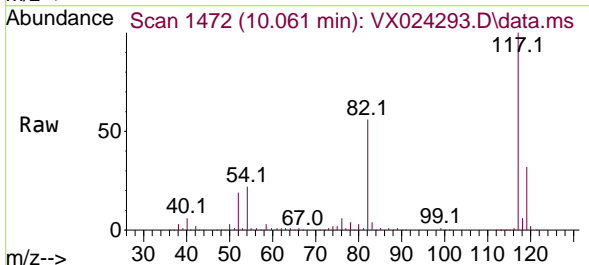
Instrument :
 MSVOA_X
 ClientSampled :
 SW-RR-02-(1.0)



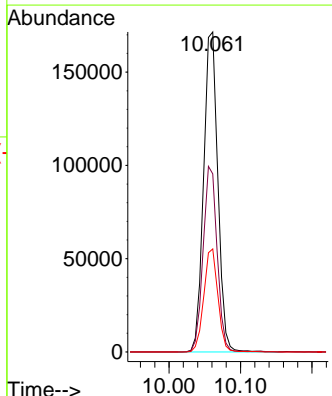
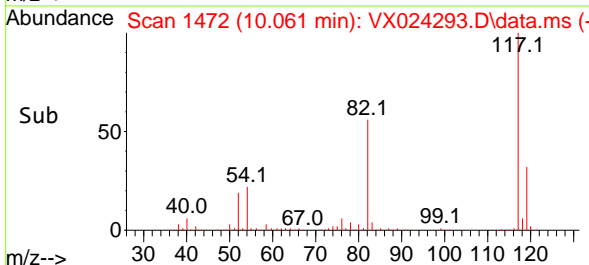
Tgt Ion: 95 Resp: 114236
 Ion Ratio Lower Upper
 95 100
 174 78.4 0.0 154.6
 176 76.2 0.0 155.8

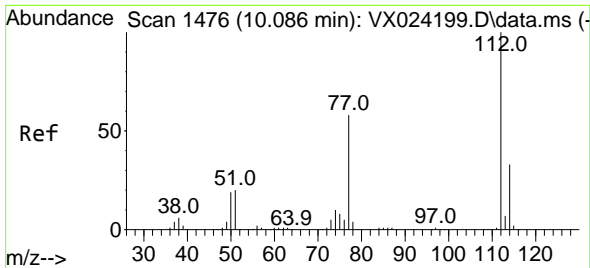


#63
 Chlorobenzene-d5
 Concen: 50.000 ug/l
 RT: 10.061 min Scan# 1472
 Delta R.T. 0.000 min
 Lab File: VX024293.D
 Acq: 16 Sep 2021 17:16



Tgt Ion: 117 Resp: 237653
 Ion Ratio Lower Upper
 117 100
 82 55.7 47.4 71.2
 119 32.2 26.6 39.8

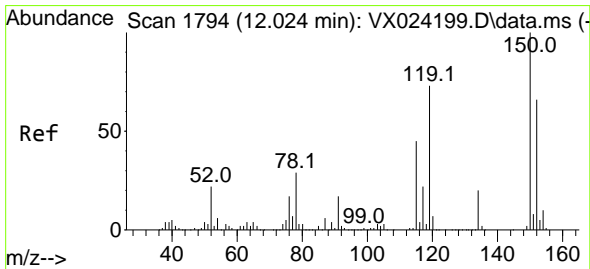
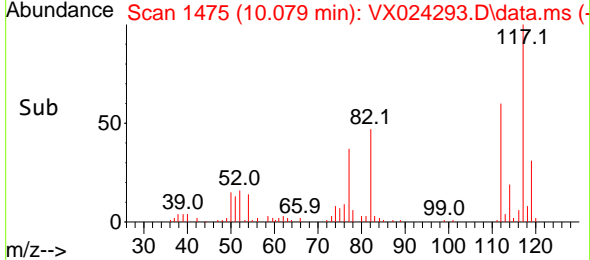
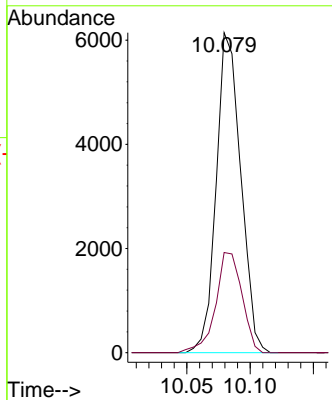
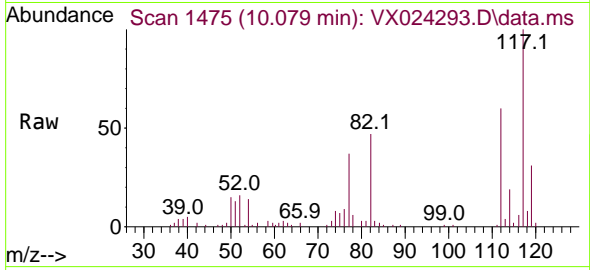




#65
 Chlorobenzene
 Concen: 1.690 ug/l
 RT: 10.079 min Scan# 1475
 Delta R.T. -0.007 min
 Lab File: VX024293.D
 Acq: 16 Sep 2021 17:16

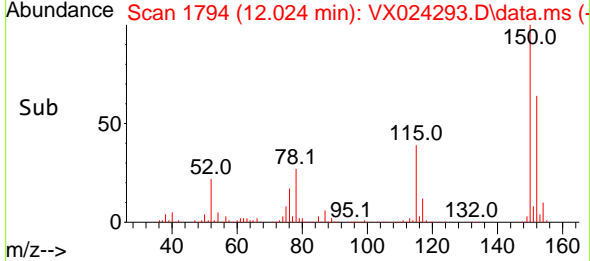
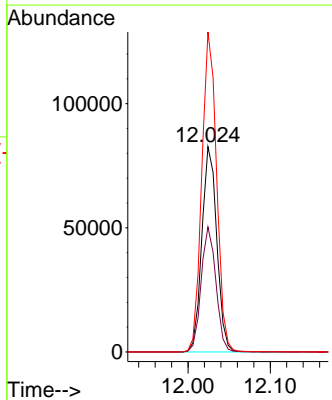
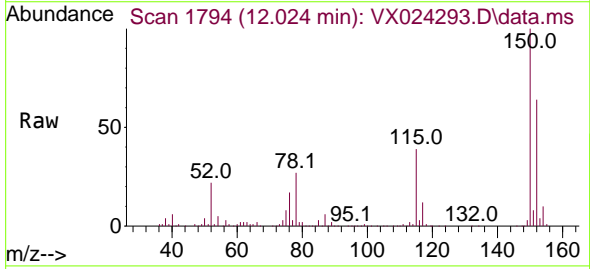
Instrument :
 MSVOA_X
ClientSampled :
 SW-RR-02-(1.0)

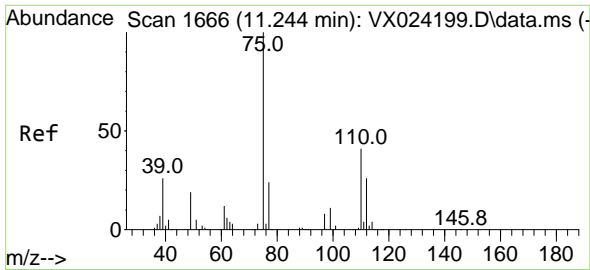
Tgt Ion	Resp	Lower	Upper
112	100		
114	31.3	25.8	38.6



#72
 1,4-Dichlorobenzene-d4
 Concen: 50.000 ug/l
 RT: 12.024 min Scan# 1794
 Delta R.T. 0.000 min
 Lab File: VX024293.D
 Acq: 16 Sep 2021 17:16

Tgt Ion	Resp	Lower	Upper
152	100		
115	60.1	41.1	123.3
150	154.6	0.0	349.0

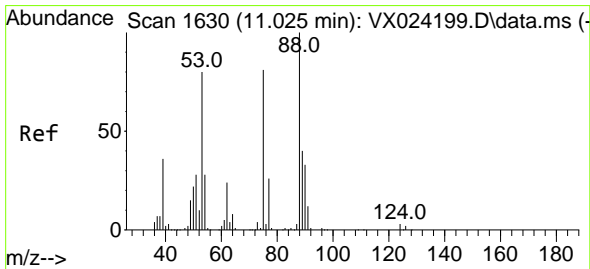
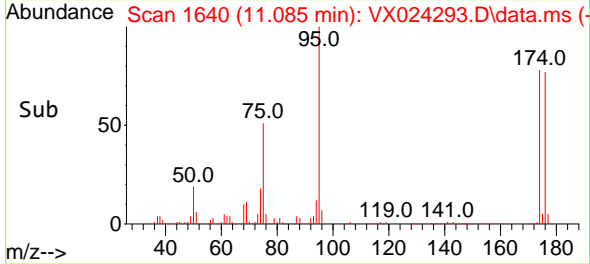
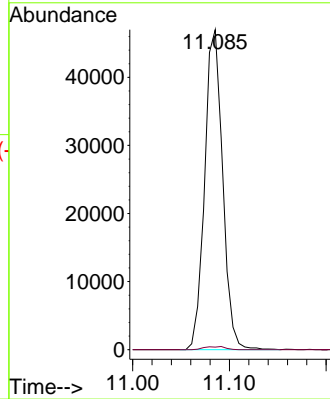
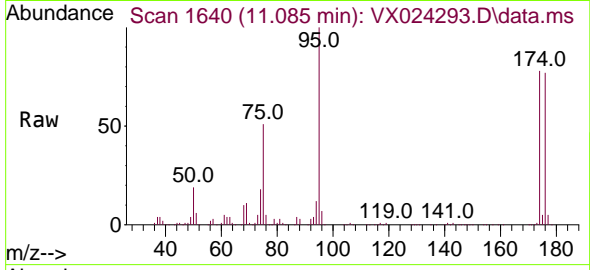




#76
 1,2,3-Trichloropropane
 Concen: 25.355 ug/l
 RT: 11.085 min Scan# 1640
 Delta R.T. -0.159 min
 Lab File: VX024293.D
 Acq: 16 Sep 2021 17:16

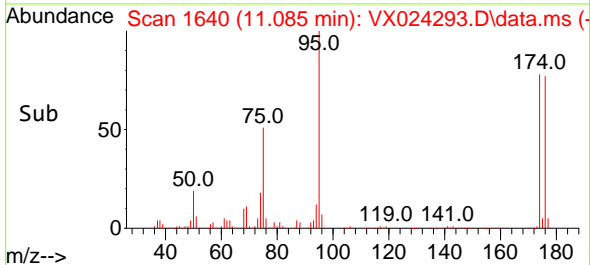
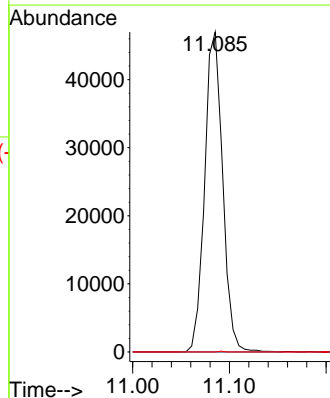
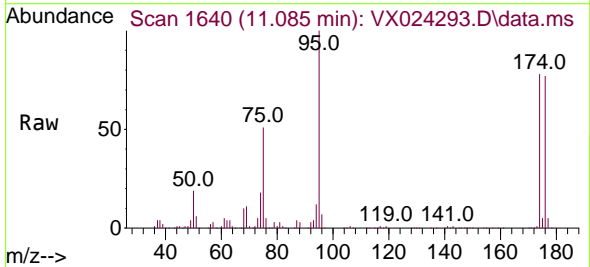
Instrument :
 MSVOA_X
 ClientSampled :
 SW-RR-02-(1.0)

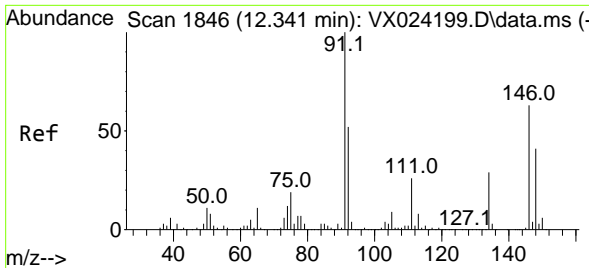
Tgt Ion: 75 Resp: 60870
 Ion Ratio Lower Upper
 75 100
 77 1.2 19.1 57.5#



#81
 trans-1,4-Dichloro-2-butene
 Concen: 74.570 ug/l
 RT: 11.085 min Scan# 1640
 Delta R.T. 0.060 min
 Lab File: VX024293.D
 Acq: 16 Sep 2021 17:16

Tgt Ion: 75 Resp: 60870
 Ion Ratio Lower Upper
 75 100
 53 0.0 74.5 111.7#
 89 0.1 37.9 56.9#

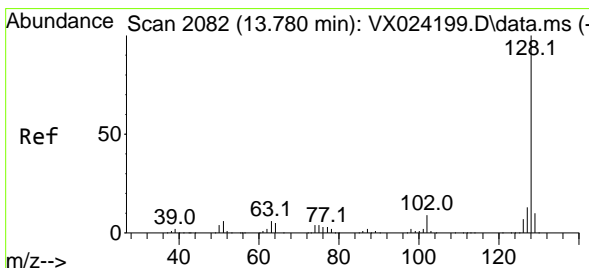
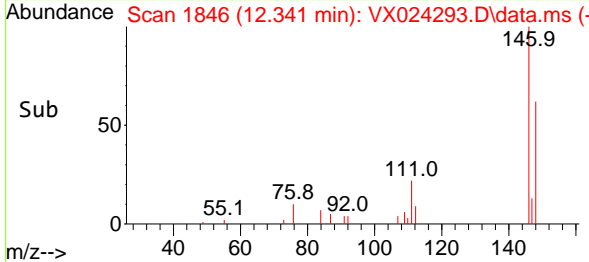
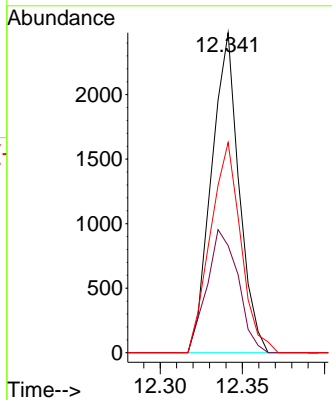
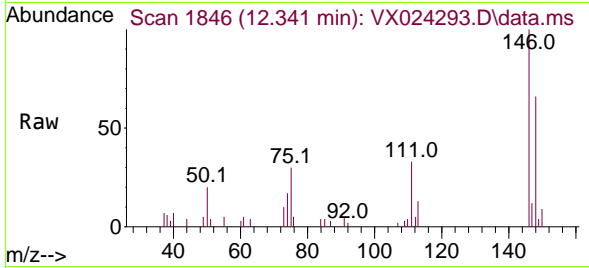




#91
 1,2-Dichlorobenzene
 Concen: 0.842 ug/l
 RT: 12.341 min Scan# 1846
 Delta R.T. 0.000 min
 Lab File: VX024293.D
 Acq: 16 Sep 2021 17:16

Instrument :
 MSVOA_X
 ClientSampled :
 SW-RR-02-(1.0)

Tgt Ion	Resp	Lower	Upper
146	2890		
111	43.4	20.8	62.2
148	72.6	31.9	95.5



#95
 Naphthalene
 Concen: 5.307 ug/l
 RT: 13.780 min Scan# 2082
 Delta R.T. 0.000 min
 Lab File: VX024293.D
 Acq: 16 Sep 2021 17:16

Tgt Ion	Resp	Lower	Upper
128	30790		
127	12.9	10.3	15.5
129	11.1	8.8	13.2

