

Data Path : Z:\voasrv\HPCHEM1\MSVOA_X\Data\VX091622\
 Data File : VX031424.D
 Acq On : 16 Sep 2022 20:42
 Operator : JC/MD
 Sample : N4645-06
 Misc : 5.0mL/MSVOA_X/WATER
 ALS Vial : 27 Sample Multiplier: 1

Instrument :
 MSVOA_X
 ClientSampleId :
 TOLL-MW-07

Quant Time: Sep 17 02:09:16 2022
 Quant Method : Z:\voasrv\HPCHEM1\MSVOA_X\Method\82X091422W.M
 Quant Title : SW846 8260
 QLast Update : Thu Sep 15 01:50:07 2022
 Response via : Initial Calibration

Compound	R.T.	QIon	Response	Conc	Units	Dev(Min)

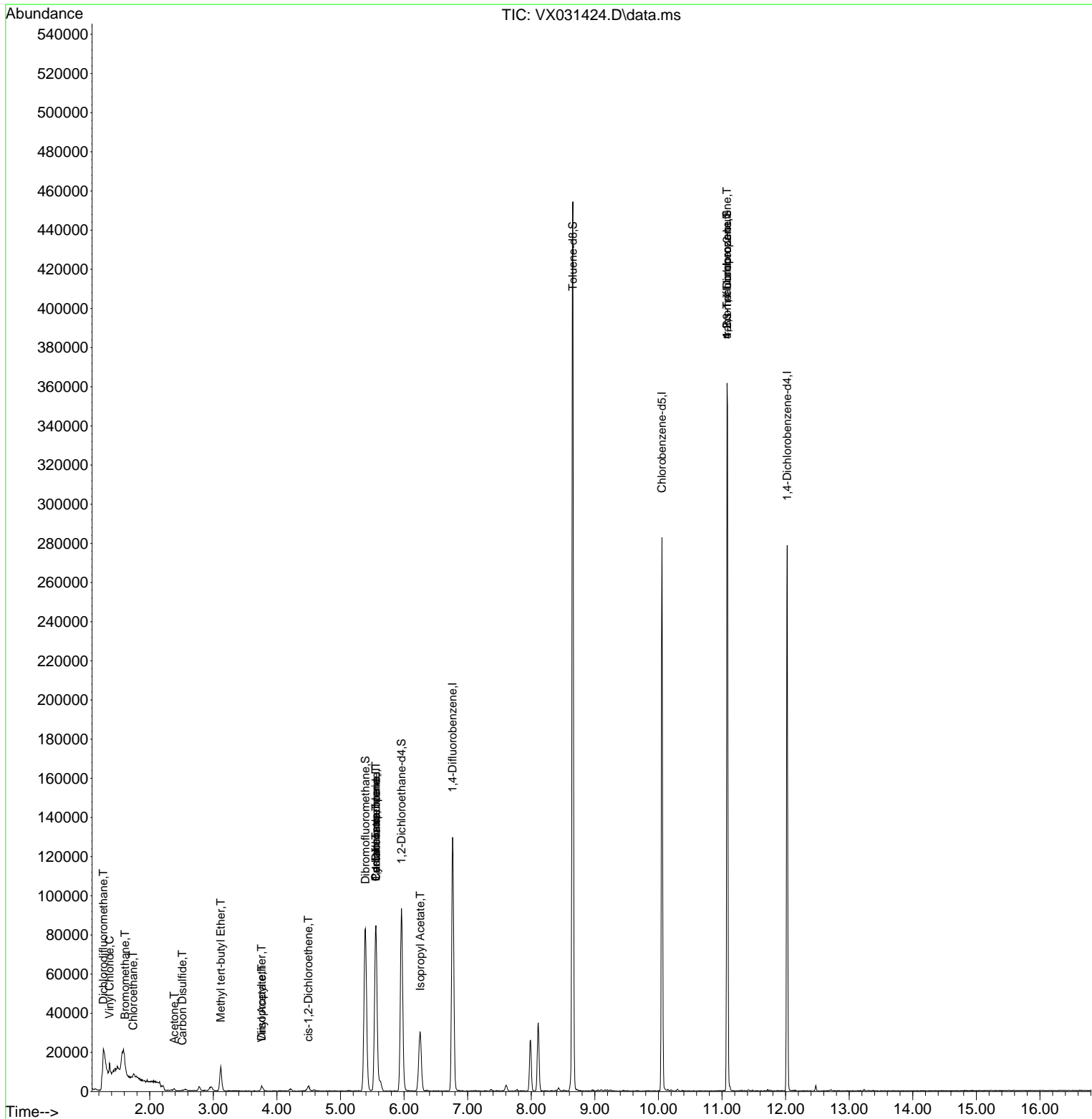
Internal Standards						
1) Pentafluorobenzene	5.556	168	81358	50.000	ug/l	0.00
34) 1,4-Difluorobenzene	6.763	114	131685	50.000	ug/l	0.00
63) Chlorobenzene-d5	10.055	117	119075	50.000	ug/l	0.00
72) 1,4-Dichlorobenzene-d4	12.024	152	54175	50.000	ug/l	0.00
System Monitoring Compounds						
33) 1,2-Dichloroethane-d4	5.958	65	81566	40.845	ug/l	0.00
Spiked Amount	50.000	Range	74 - 125	Recovery	=	81.700%
35) Dibromofluoromethane	5.391	113	68720	48.548	ug/l	0.00
Spiked Amount	50.000	Range	75 - 124	Recovery	=	97.100%
50) Toluene-d8	8.653	98	260040	48.973	ug/l	0.00
Spiked Amount	50.000	Range	86 - 113	Recovery	=	97.940%
62) 4-Bromofluorobenzene	11.079	95	84060	43.232	ug/l	0.00
Spiked Amount	50.000	Range	83 - 123	Recovery	=	86.460%
Target Compounds						
						Qvalue
2) Dichlorodifluoromethane	1.270	85	350	0.398	ug/l	94
3) Chloromethane	1.276	50	749	Below Cal	#	41
4) Vinyl Chloride	1.368	62	1078	0.758	ug/l #	55
5) Bromomethane	1.612	94	495	0.464	ug/l #	69
6) Chloroethane	1.740	64	1153	1.043	ug/l #	45
11) Tert butyl alcohol	2.977	59	2782	Below Cal		95
16) Acetone	2.386	43	1544	1.811	ug/l	99
17) Carbon Disulfide	2.514	76	540	1.075	ug/l #	75
19) Methyl tert-butyl Ether	3.117	73	12900	2.452	ug/l	94
20) Methylene Chloride	2.782	84	97	Below Cal	#	4
21) trans-1,2-Dichloroethene	3.081	96	23	Below Cal	#	1
22) Diisopropyl ether	3.757	45	2369	0.451	ug/l #	82
23) Vinyl Acetate	3.764	43	1428	0.327	ug/l #	71
27) cis-1,2-Dichloroethene	4.495	96	1636	0.978	ug/l	75
31) Cyclohexane	5.556	56	2123	0.990	ug/l #	60
36) 1,1-Dichloropropene	5.556	75	6164	3.181	ug/l #	51
38) Carbon Tetrachloride	5.556	117	7865	3.735	ug/l #	17
43) Isopropyl Acetate	6.257	43	7259	1.670	ug/l #	61
76) 1,2,3-Trichloropropane	11.079	75	48123	35.249	ug/l #	37
81) trans-1,4-Dichloro-2-b...	11.079	75	48123	97.536	ug/l #	11

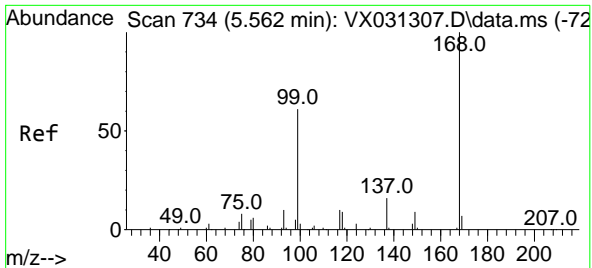
(#) = qualifier out of range (m) = manual integration (+) = signals summed

Data Path : Z:\voasrv\HPCHEM1\MSVOA_X\Data\VX091622\
 Data File : VX031424.D
 Acq On : 16 Sep 2022 20:42
 Operator : JC/MD
 Sample : N4645-06
 Misc : 5.0mL/MSVOA_X/WATER
 ALS Vial : 27 Sample Multiplier: 1

Instrument :
 MSVOA_X
 ClientSampleId :
 TOLL-MW-07

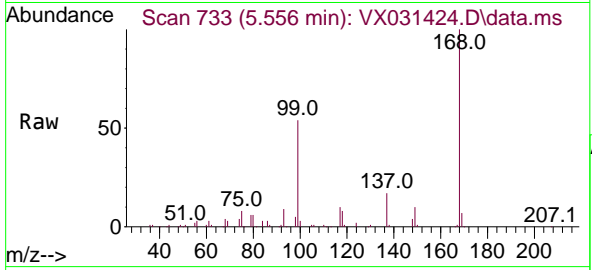
Quant Time: Sep 17 02:09:16 2022
 Quant Method : Z:\voasrv\HPCHEM1\MSVOA_X\Method\82X091422W.M
 Quant Title : SW846 8260
 QLast Update : Thu Sep 15 01:50:07 2022
 Response via : Initial Calibration



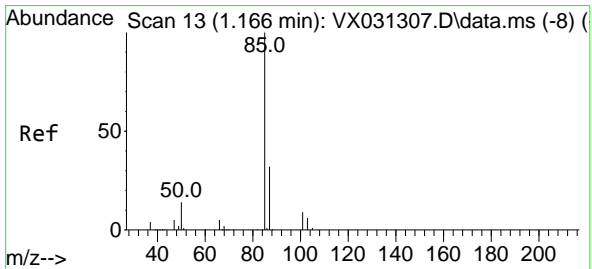
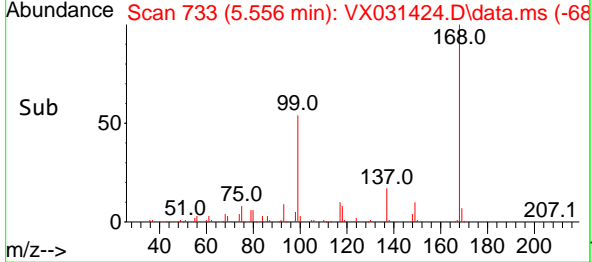
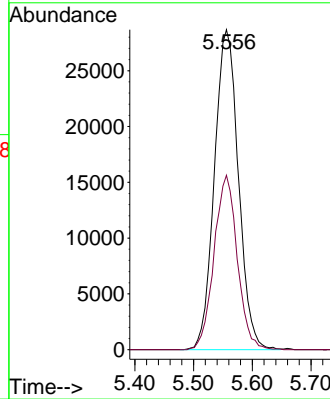


#1
 Pentafluorobenzene
 Concen: 50.000 ug/l
 RT: 5.556 min Scan# 71
 Delta R.T. -0.006 min
 Lab File: VX031424.D
 Acq: 16 Sep 2022 20:42

Instrument : MSVOA_X
 ClientSampleId : TOLL-MW-07

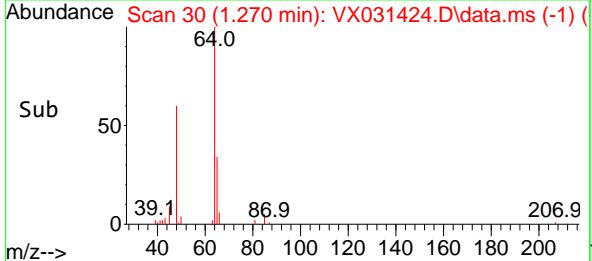
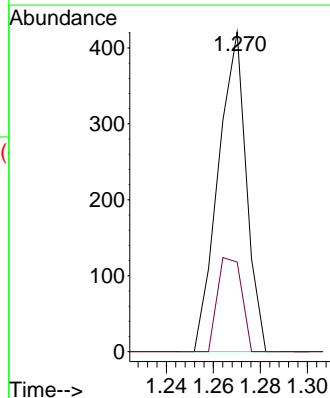
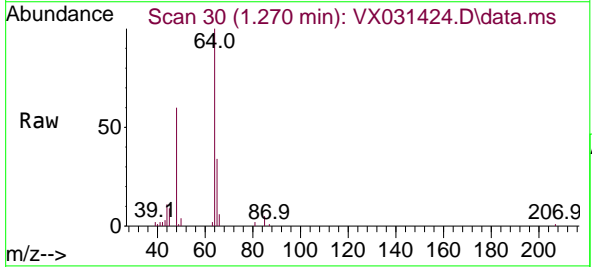


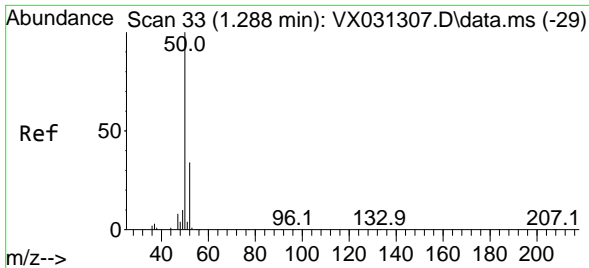
Tgt Ion:168 Resp: 81358
 Ion Ratio Lower Upper
 168 100
 99 54.5 48.8 73.2



#2
 Dichlorodifluoromethane
 Concen: 0.398 ug/l
 RT: 1.270 min Scan# 30
 Delta R.T. 0.104 min
 Lab File: VX031424.D
 Acq: 16 Sep 2022 20:42

Tgt Ion: 85 Resp: 350
 Ion Ratio Lower Upper
 85 100
 87 28.0 15.8 47.4

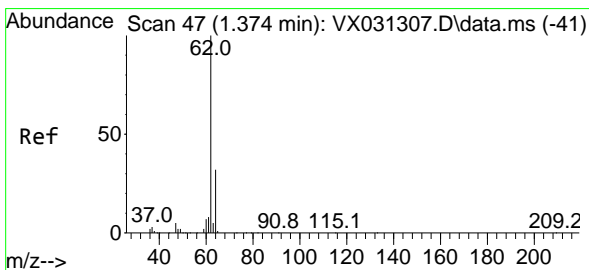
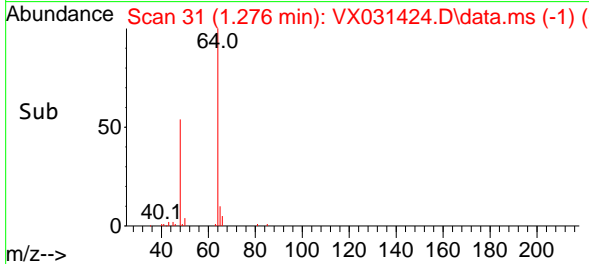
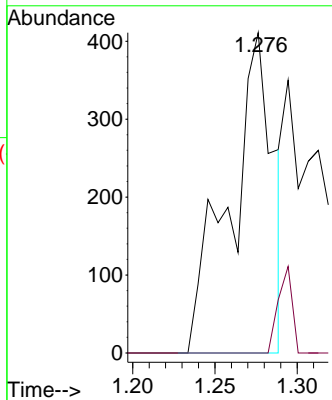
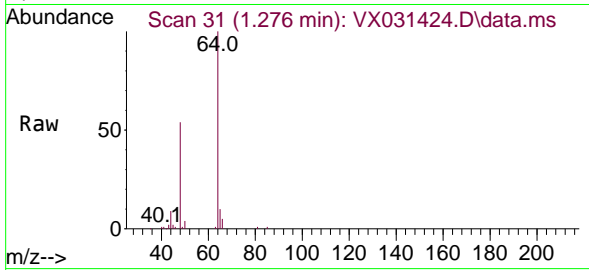




#3
 Chloromethane
 Concen: Below Cal
 RT: 1.276 min Scan# 31
 Delta R.T. -0.012 min
 Lab File: VX031424.D
 Acq: 16 Sep 2022 20:42

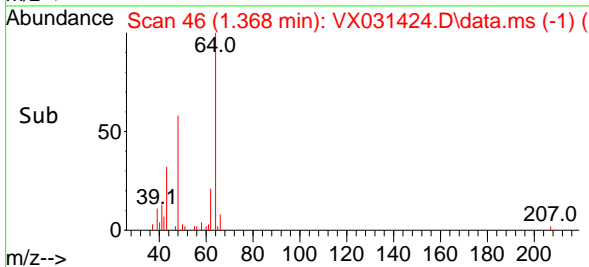
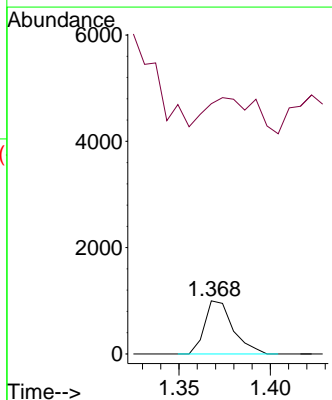
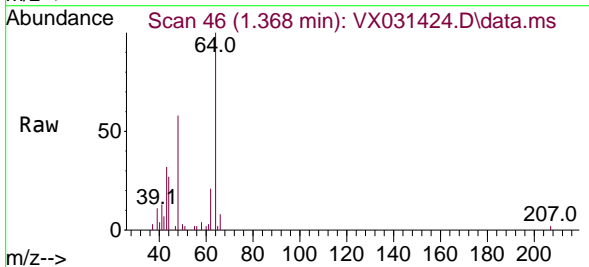
Instrument : MSVOA_X
 ClientSampleId : TOLL-MW-07

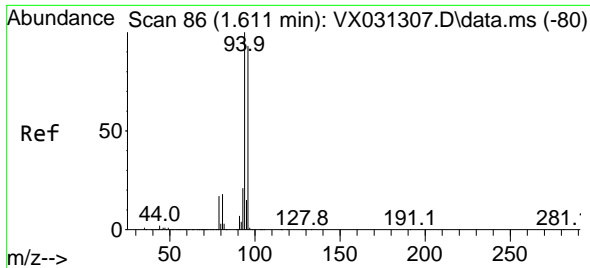
Tgt Ion: 50 Resp: 749
 Ion Ratio Lower Upper
 50 100
 52 0.0 26.9 40.3#



#4
 Vinyl Chloride
 Concen: 0.758 ug/l
 RT: 1.368 min Scan# 46
 Delta R.T. -0.006 min
 Lab File: VX031424.D
 Acq: 16 Sep 2022 20:42

Tgt Ion: 62 Resp: 1078
 Ion Ratio Lower Upper
 62 100
 64 56.5 25.3 37.9#

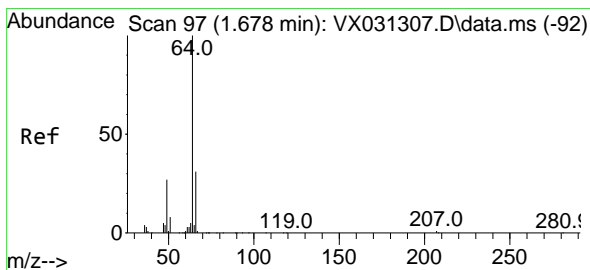
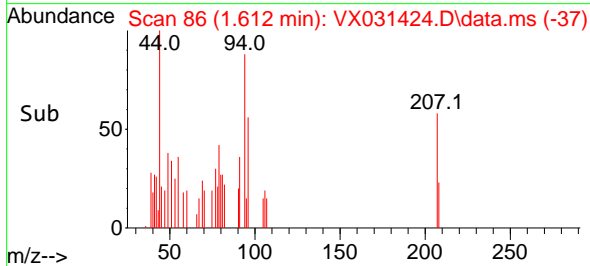
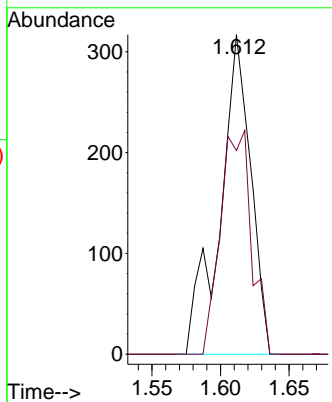
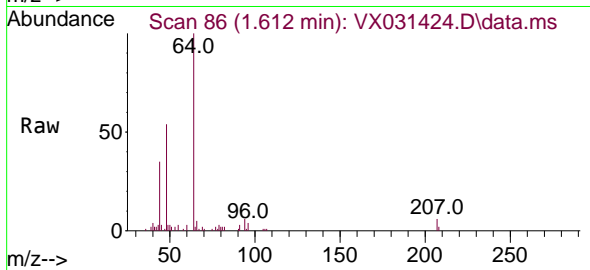




#5
 Bromomethane
 Concen: 0.464 ug/l
 RT: 1.612 min Scan# 80
 Delta R.T. 0.000 min
 Lab File: VX031424.D
 Acq: 16 Sep 2022 20:42

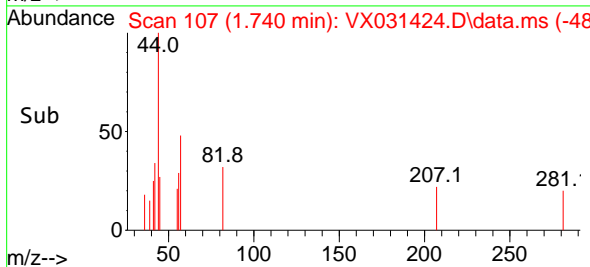
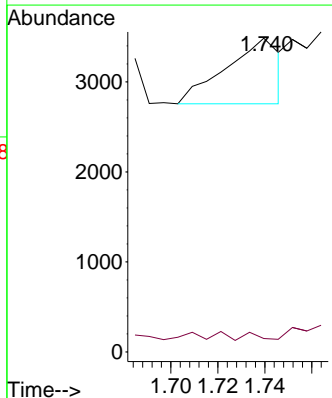
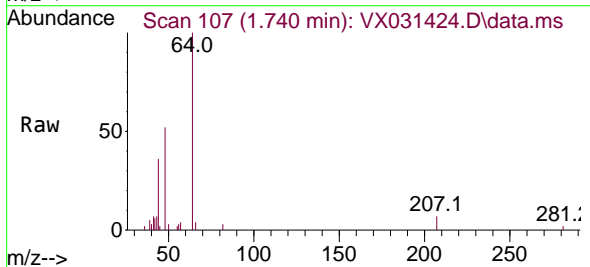
Instrument :
 MSVOA_X
 ClientSampleId :
 TOLL-MW-07

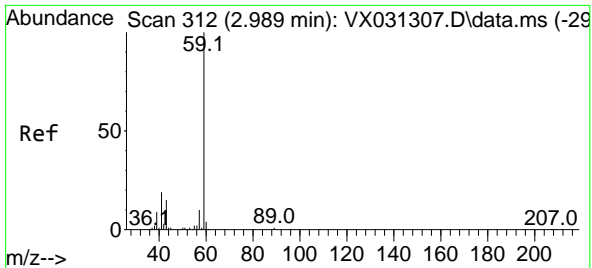
Tgt Ion: 94 Resp: 495
 Ion Ratio Lower Upper
 94 100
 96 63.7 74.4 111.6#



#6
 Chloroethane
 Concen: 1.043 ug/l
 RT: 1.740 min Scan# 107
 Delta R.T. 0.062 min
 Lab File: VX031424.D
 Acq: 16 Sep 2022 20:42

Tgt Ion: 64 Resp: 1153
 Ion Ratio Lower Upper
 64 100
 66 1.1 25.0 37.4#

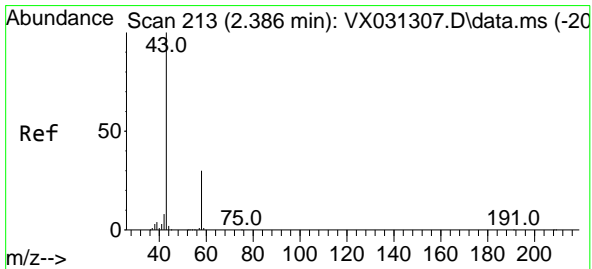
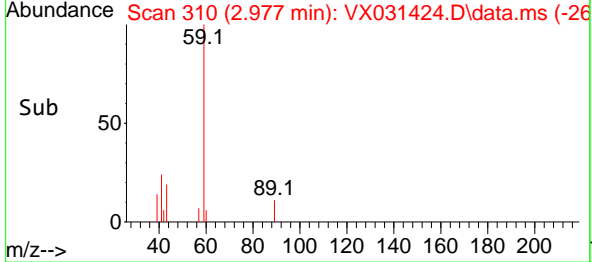
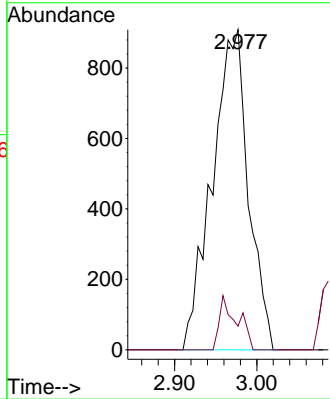
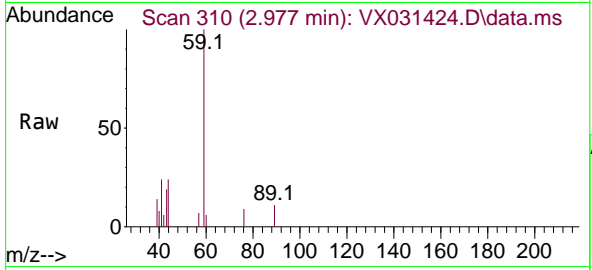




#11
 Tert butyl alcohol
 Concen: Below Cal
 RT: 2.977 min Scan# 31
 Delta R.T. -0.012 min
 Lab File: VX031424.D
 Acq: 16 Sep 2022 20:42

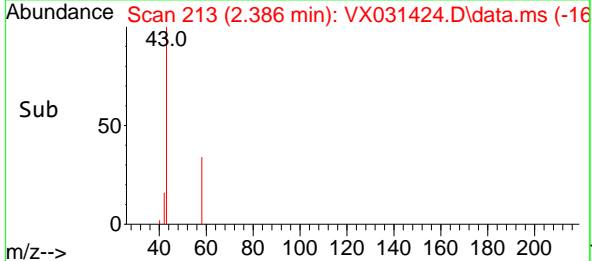
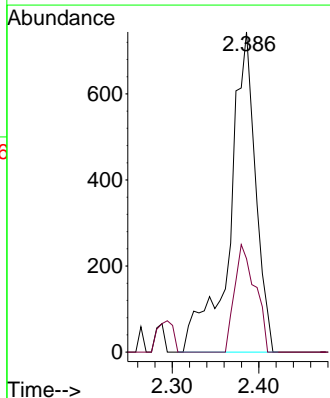
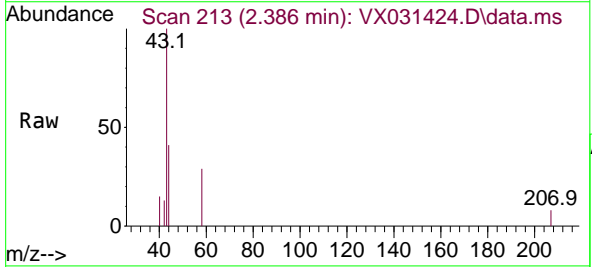
Instrument : MSVOA_X
 ClientSampleId : TOLL-MW-07

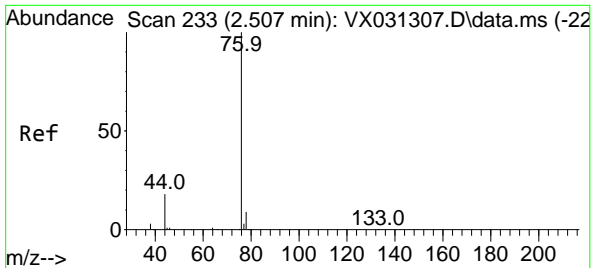
Tgt Ion: 59 Resp: 2782
 Ion Ratio Lower Upper
 59 100
 57 8.2 8.2 12.2



#16
 Acetone
 Concen: 1.811 ug/l
 RT: 2.386 min Scan# 213
 Delta R.T. 0.000 min
 Lab File: VX031424.D
 Acq: 16 Sep 2022 20:42

Tgt Ion: 43 Resp: 1544
 Ion Ratio Lower Upper
 43 100
 58 29.2 23.8 35.8

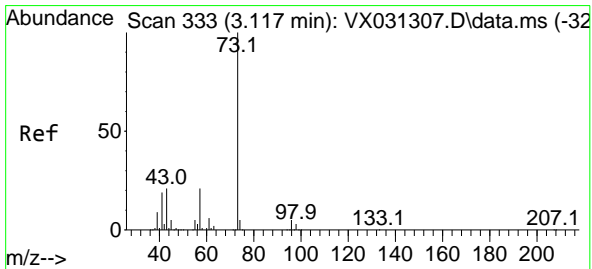
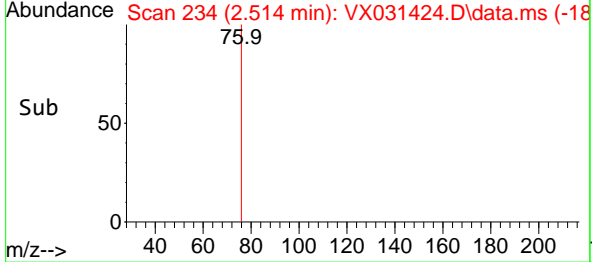
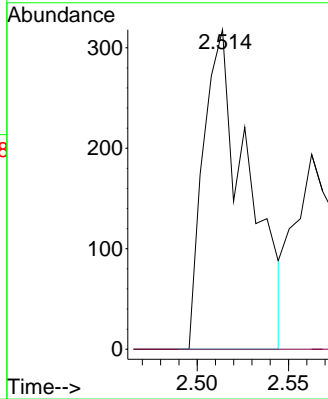
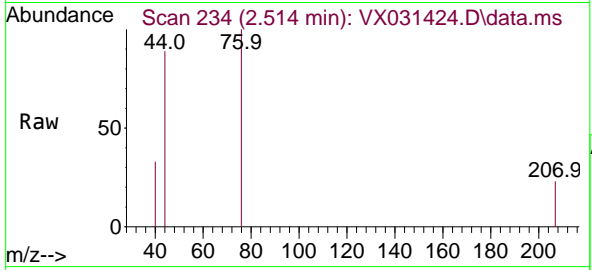




#17
 Carbon Disulfide
 Concen: 1.075 ug/l
 RT: 2.514 min Scan# 21
 Delta R.T. 0.007 min
 Lab File: VX031424.D
 Acq: 16 Sep 2022 20:42

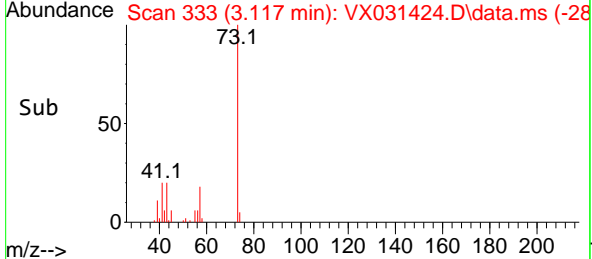
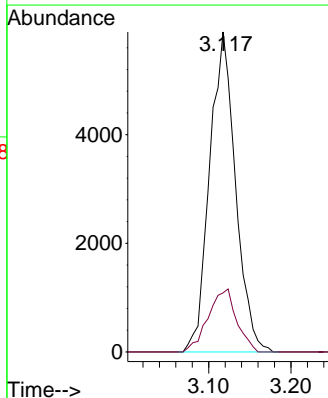
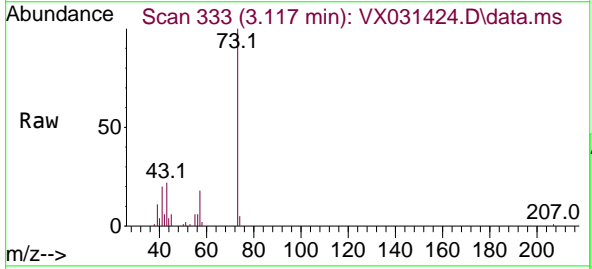
Instrument : MSVOA_X
 ClientSampleId : TOLL-MW-07

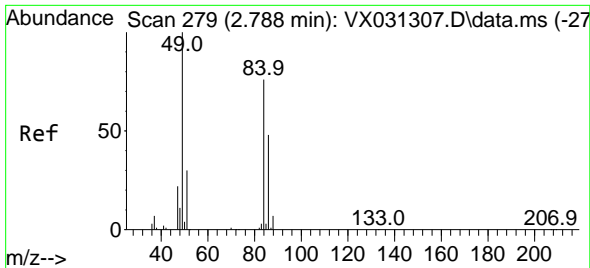
Tgt Ion: 76 Resp: 540
 Ion Ratio Lower Upper
 76 100
 78 0.0 7.2 10.8#



#19
 Methyl tert-butyl Ether
 Concen: 2.452 ug/l
 RT: 3.117 min Scan# 333
 Delta R.T. 0.000 min
 Lab File: VX031424.D
 Acq: 16 Sep 2022 20:42

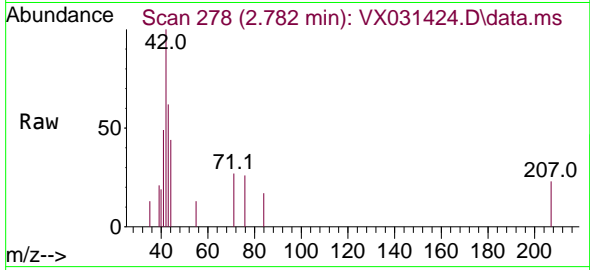
Tgt Ion: 73 Resp: 12900
 Ion Ratio Lower Upper
 73 100
 57 18.5 17.2 25.8





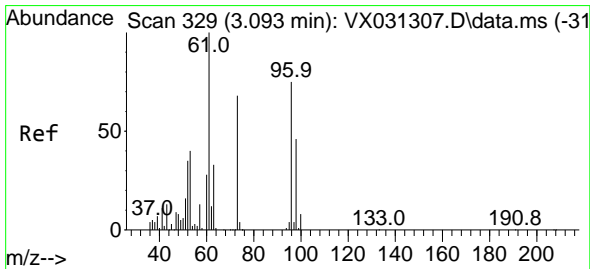
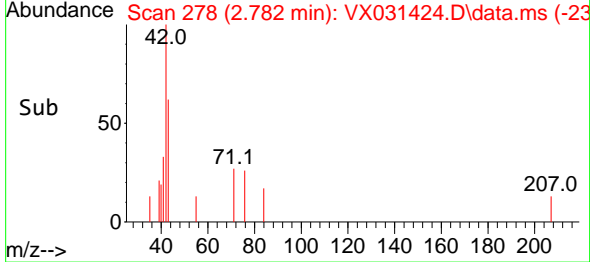
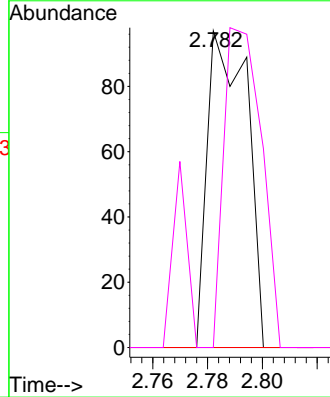
#20
 Methylene Chloride
 Concen: Below Cal
 RT: 2.782 min Scan# 21
 Delta R.T. -0.006 min
 Lab File: VX031424.D
 Acq: 16 Sep 2022 20:42

Instrument : MSVOA_X
 ClientSampleId : TOLL-MW-07



Tgt Ion: 84 Resp: 97

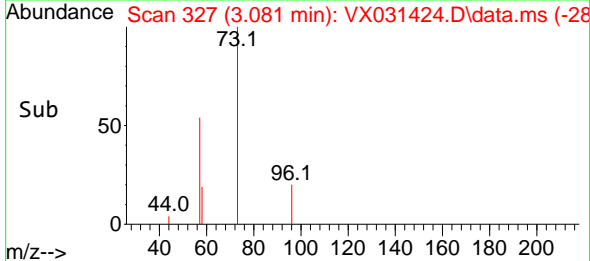
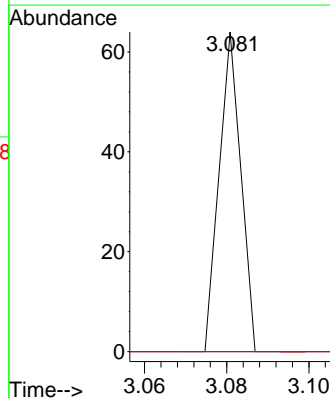
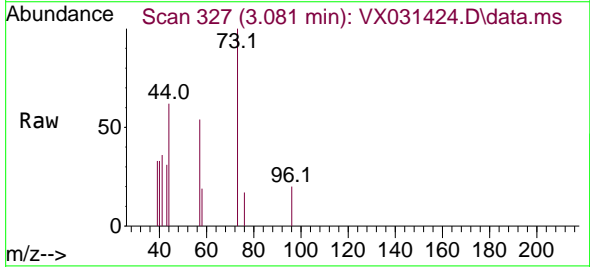
Ion	Ratio	Lower	Upper
84	100		
49	0.0	105.9	158.9#
51	0.0	32.2	48.2#
86	0.0	50.8	76.2#

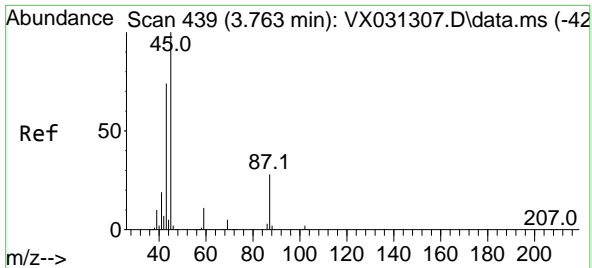


#21
 trans-1,2-Dichloroethene
 Concen: Below Cal
 RT: 3.081 min Scan# 327
 Delta R.T. -0.012 min
 Lab File: VX031424.D
 Acq: 16 Sep 2022 20:42

Tgt Ion: 96 Resp: 23

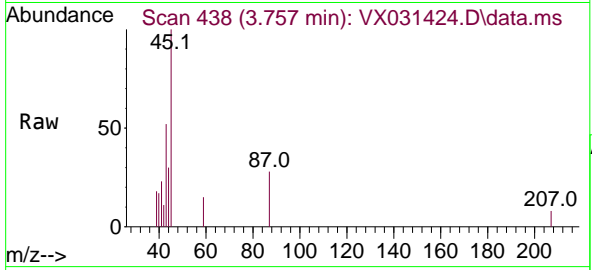
Ion	Ratio	Lower	Upper
96	100		
61	0.0	106.7	160.1#
98	0.0	48.7	73.1#





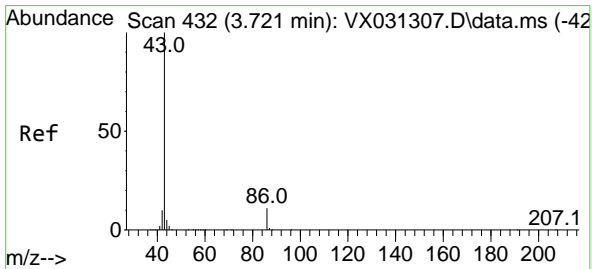
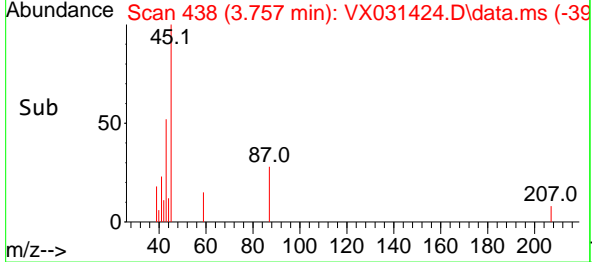
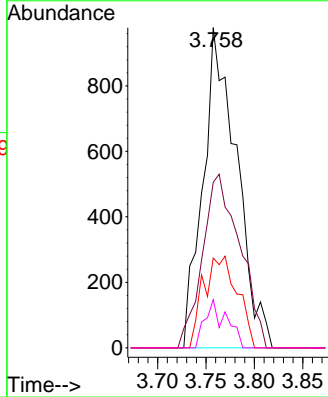
#22
 Diisopropyl ether
 Concen: 0.451 ug/l
 RT: 3.757 min Scan# 41
 Delta R.T. -0.006 min
 Lab File: VX031424.D
 Acq: 16 Sep 2022 20:42

Instrument : MSVOA_X
 ClientSampleId : TOLL-MW-07



Tgt Ion: 45 Resp: 2369

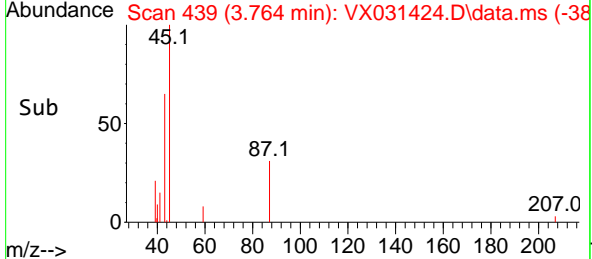
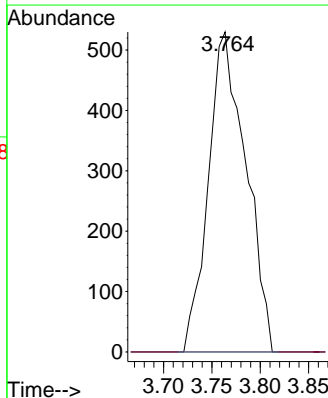
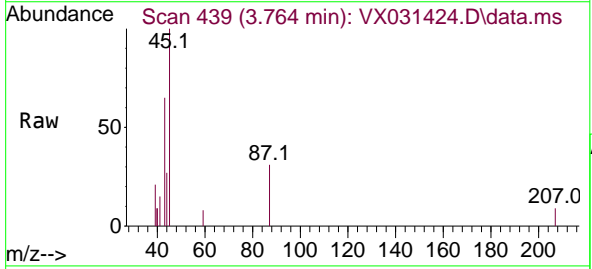
Ion	Ratio	Lower	Upper
45	100		
43	51.7	59.0	88.6#
87	28.0	22.6	33.8
59	15.0	8.8	13.2#

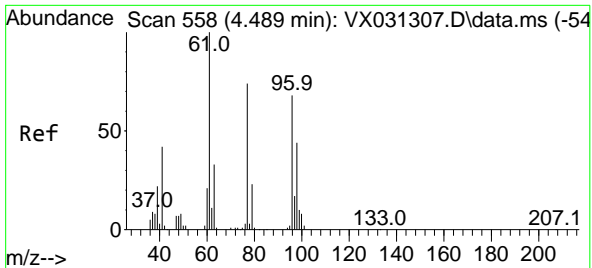


#23
 Vinyl Acetate
 Concen: 0.327 ug/l
 RT: 3.764 min Scan# 439
 Delta R.T. 0.043 min
 Lab File: VX031424.D
 Acq: 16 Sep 2022 20:42

Tgt Ion: 43 Resp: 1428

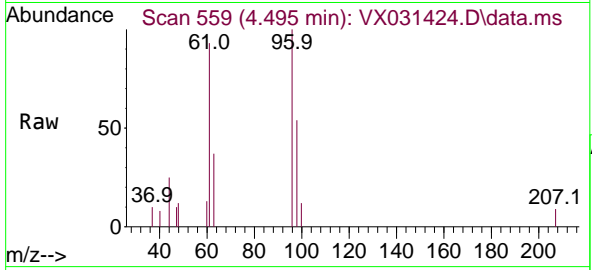
Ion	Ratio	Lower	Upper
43	100		
86	0.0	8.7	13.1#





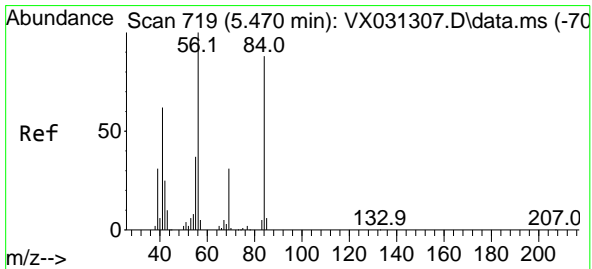
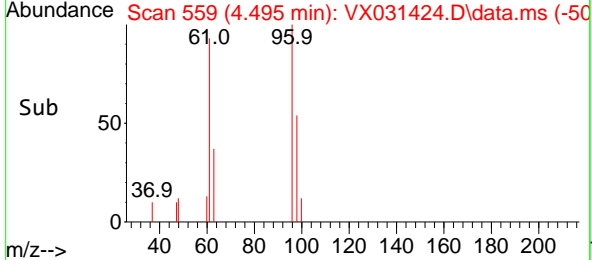
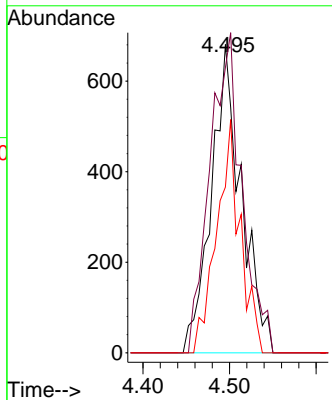
#27
 cis-1,2-Dichloroethene
 Concen: 0.978 ug/l
 RT: 4.495 min Scan# 511
 Delta R.T. 0.006 min
 Lab File: VX031424.D
 Acq: 16 Sep 2022 20:42

Instrument : MSVOA_X
 ClientSampleId : TOLL-MW-07



Tgt Ion: 96 Resp: 1636

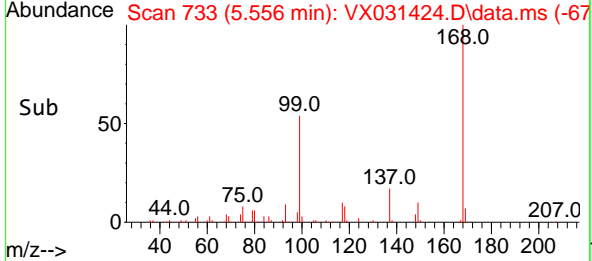
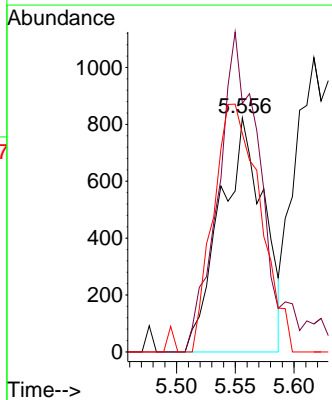
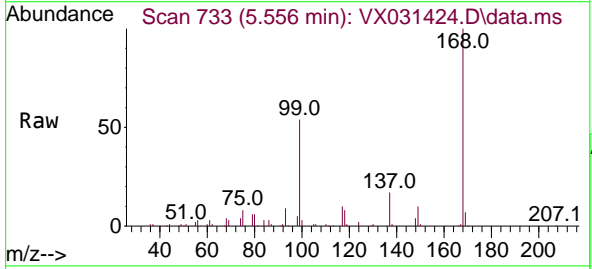
Ion	Ratio	Lower	Upper
96	100		
61	110.9	0.0	305.2
98	59.4	0.0	128.4

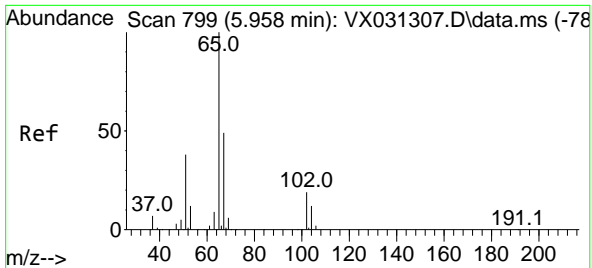


#31
 Cyclohexane
 Concen: 0.990 ug/l
 RT: 5.556 min Scan# 733
 Delta R.T. 0.086 min
 Lab File: VX031424.D
 Acq: 16 Sep 2022 20:42

Tgt Ion: 56 Resp: 2123

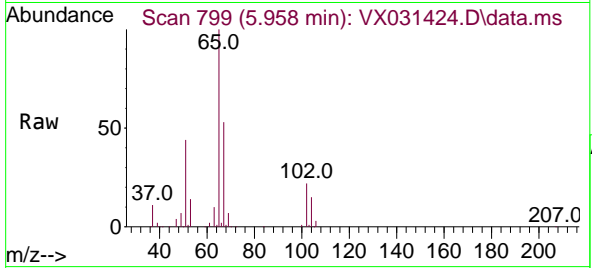
Ion	Ratio	Lower	Upper
56	100		
69	106.2	25.1	37.7#
84	93.3	70.2	105.4



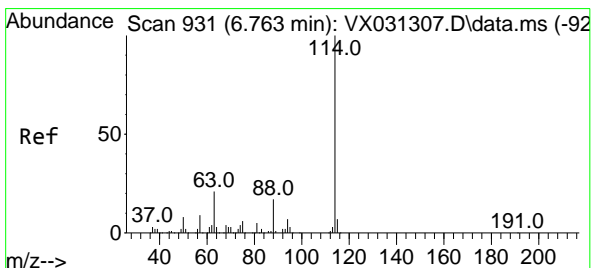
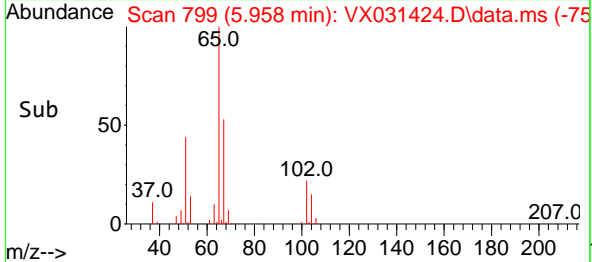
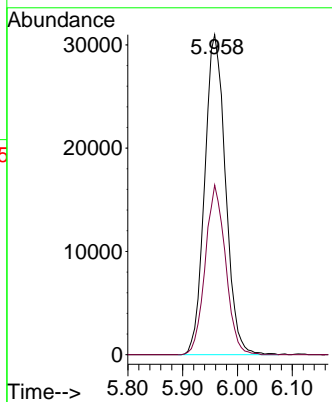


#33
 1,2-Dichloroethane-d4
 Concen: 40.845 ug/l
 RT: 5.958 min Scan# 799
 Delta R.T. 0.000 min
 Lab File: VX031424.D
 Acq: 16 Sep 2022 20:42

Instrument : MSVOA_X
 ClientSampleId : TOLL-MW-07

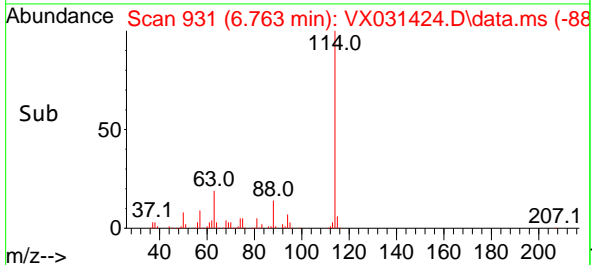
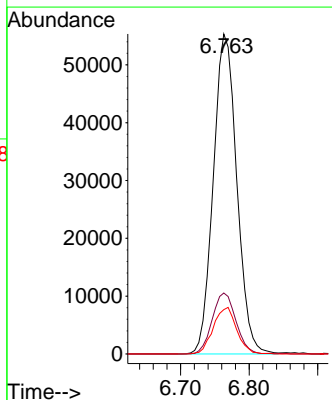
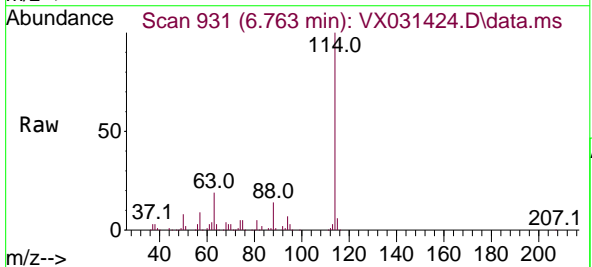


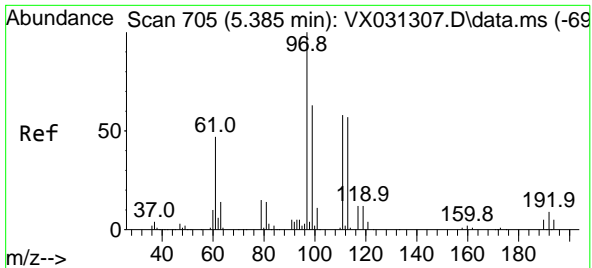
Tgt Ion: 65 Resp: 81566
 Ion Ratio Lower Upper
 65 100
 67 51.7 0.0 102.4



#34
 1,4-Difluorobenzene
 Concen: 50.000 ug/l
 RT: 6.763 min Scan# 931
 Delta R.T. 0.000 min
 Lab File: VX031424.D
 Acq: 16 Sep 2022 20:42

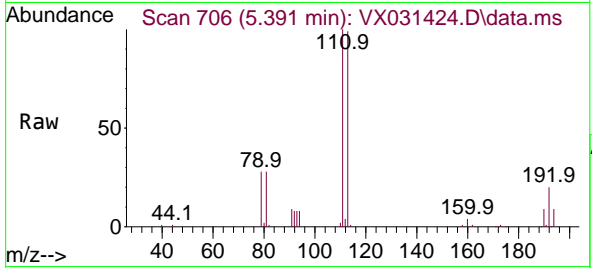
Tgt Ion: 114 Resp: 131685
 Ion Ratio Lower Upper
 114 100
 63 19.0 0.0 42.6
 88 13.9 0.0 33.0



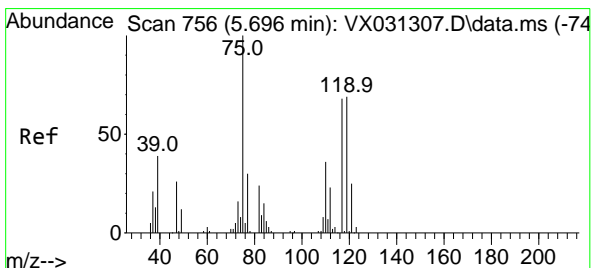
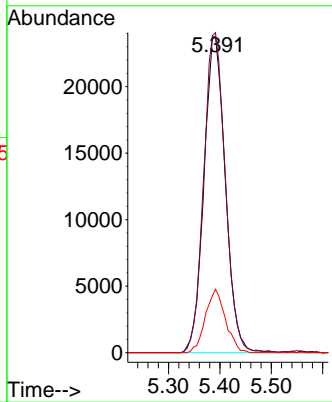
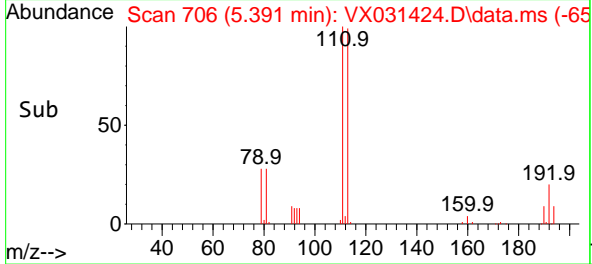


#35
 Dibromofluoromethane
 Concen: 48.548 ug/l
 RT: 5.391 min Scan# 706
 Delta R.T. 0.006 min
 Lab File: VX031424.D
 Acq: 16 Sep 2022 20:42

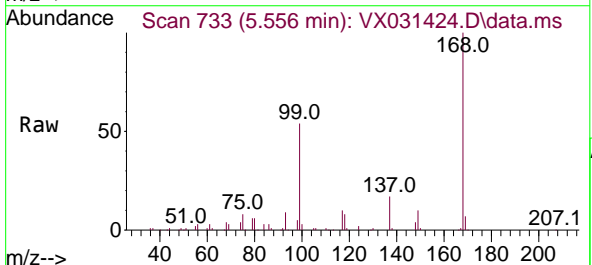
Instrument : MSVOA_X
 ClientSampleId : TOLL-MW-07



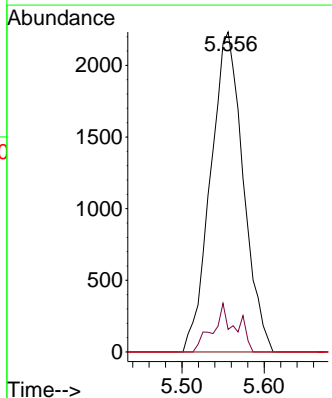
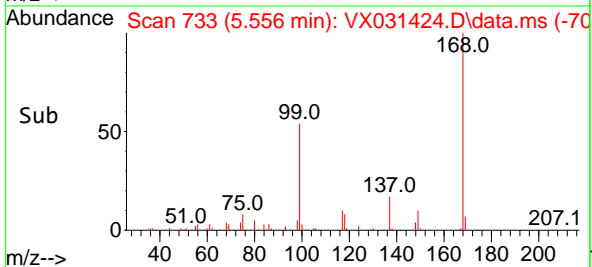
Tgt Ion: 113 Resp: 68720
 Ion Ratio Lower Upper
 113 100
 111 101.8 82.4 123.6
 192 18.8 14.1 21.1

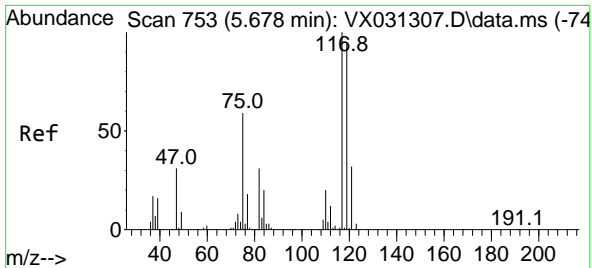


#36
 1,1-Dichloropropene
 Concen: 3.181 ug/l
 RT: 5.556 min Scan# 733
 Delta R.T. -0.140 min
 Lab File: VX031424.D
 Acq: 16 Sep 2022 20:42



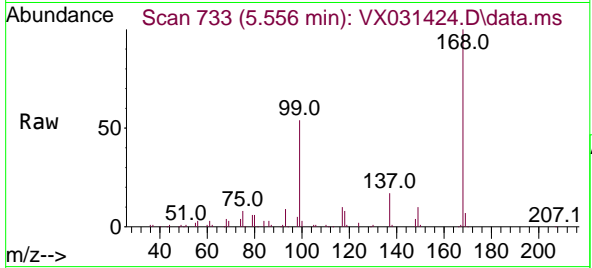
Tgt Ion: 75 Resp: 6164
 Ion Ratio Lower Upper
 75 100
 110 10.6 17.5 52.5#
 77 0.0 24.9 37.3#





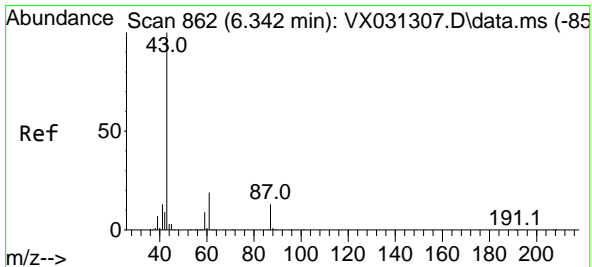
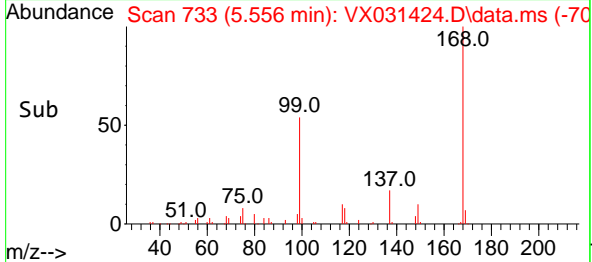
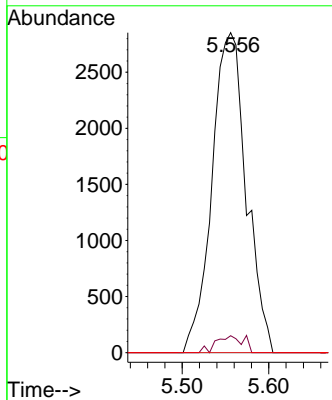
#38
 Carbon Tetrachloride
 Concen: 3.735 ug/l
 RT: 5.556 min Scan# 711
 Delta R.T. -0.122 min
 Lab File: VX031424.D
 Acq: 16 Sep 2022 20:42

Instrument : MSVOA_X
 ClientSampleId : TOLL-MW-07



Tgt Ion: 117 Resp: 7865

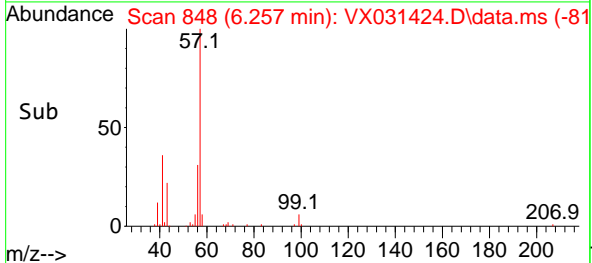
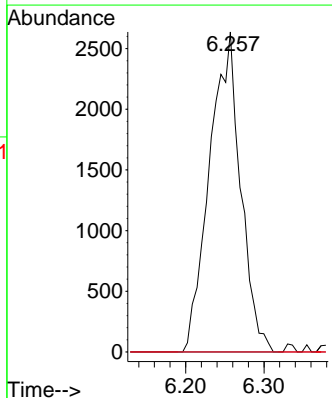
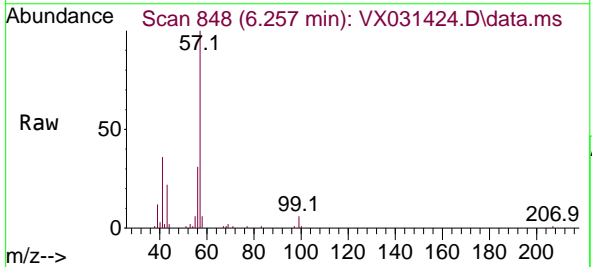
Ion	Ratio	Lower	Upper
117	100		
119	5.3	74.6	112.0#
121	0.0	25.3	37.9#

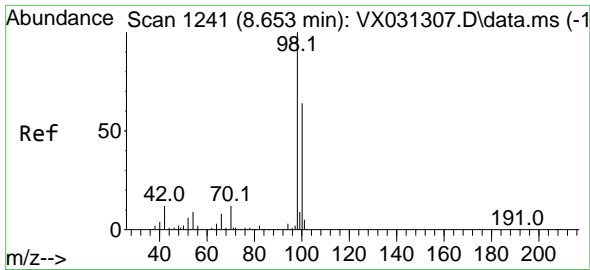


#43
 Isopropyl Acetate
 Concen: 1.670 ug/l
 RT: 6.257 min Scan# 848
 Delta R.T. -0.085 min
 Lab File: VX031424.D
 Acq: 16 Sep 2022 20:42

Tgt Ion: 43 Resp: 7259

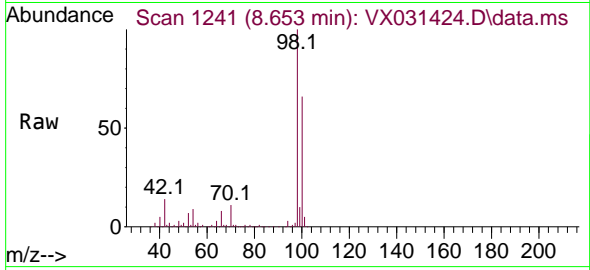
Ion	Ratio	Lower	Upper
43	100		
61	0.0	15.3	22.9#
87	0.0	10.6	15.8#



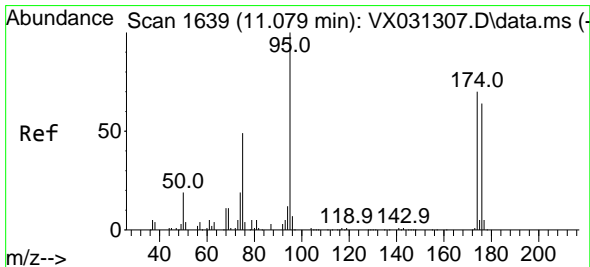
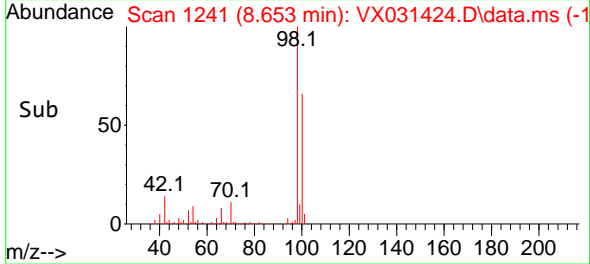
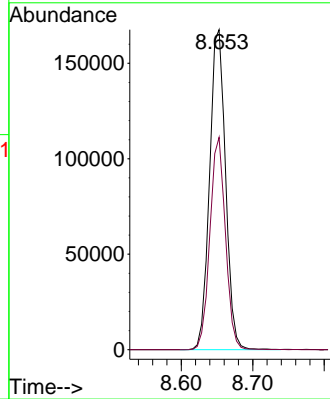


#50
 Toluene-d8
 Concen: 48.973 ug/l
 RT: 8.653 min Scan# 1241
 Delta R.T. 0.000 min
 Lab File: VX031424.D
 Acq: 16 Sep 2022 20:42

Instrument : MSVOA_X
 ClientSampleId : TOLL-MW-07

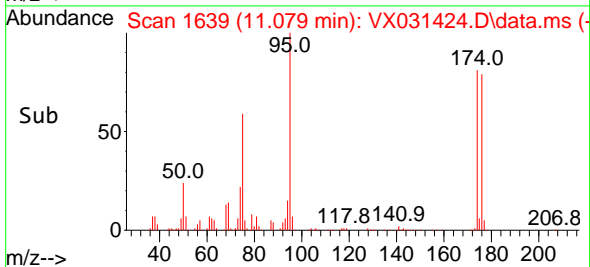
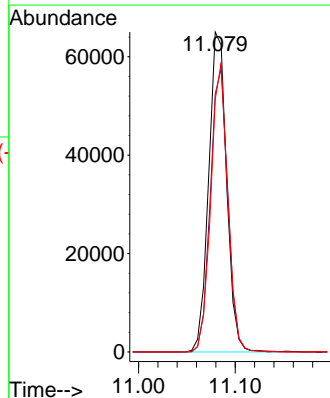
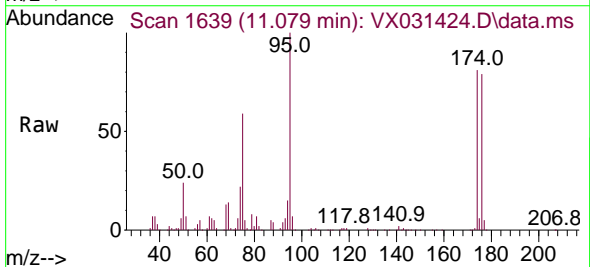


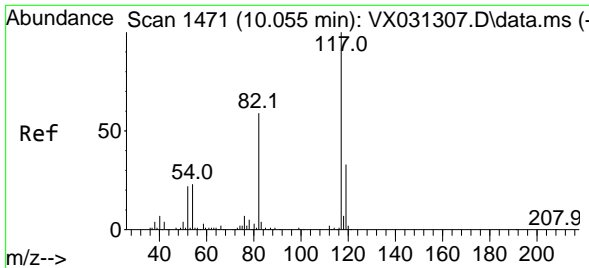
Tgt Ion: 98 Resp: 260040
 Ion Ratio Lower Upper
 98 100
 100 64.5 52.5 78.7



#62
 4-Bromofluorobenzene
 Concen: 43.232 ug/l
 RT: 11.079 min Scan# 1639
 Delta R.T. 0.000 min
 Lab File: VX031424.D
 Acq: 16 Sep 2022 20:42

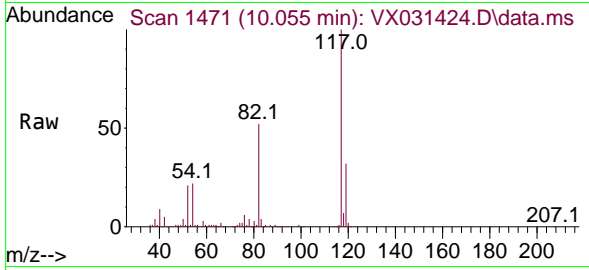
Tgt Ion: 95 Resp: 84060
 Ion Ratio Lower Upper
 95 100
 174 86.7 0.0 153.2
 176 84.9 0.0 144.0





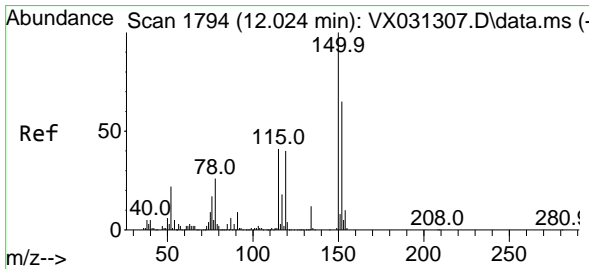
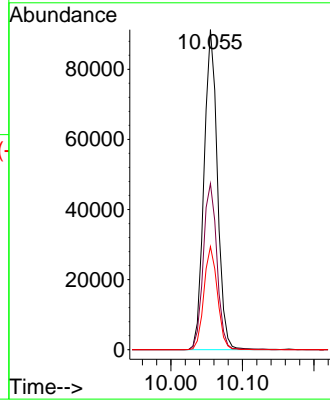
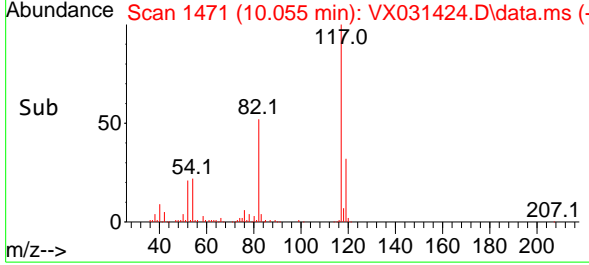
#63
 Chlorobenzene-d5
 Concen: 50.000 ug/l
 RT: 10.055 min Scan# 1471
 Delta R.T. 0.000 min
 Lab File: VX031424.D
 Acq: 16 Sep 2022 20:42

Instrument : MSVOA_X
 ClientSampleId : TOLL-MW-07

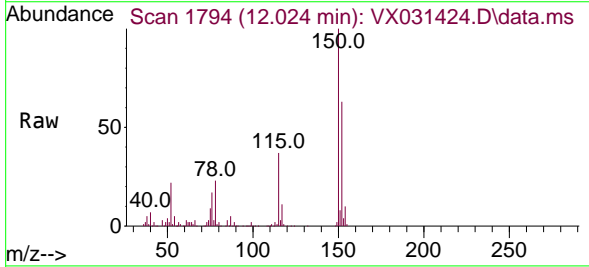


Tgt Ion:117 Resp: 119075

Ion	Ratio	Lower	Upper
117	100		
82	51.9	46.8	70.2
119	32.2	26.4	39.6

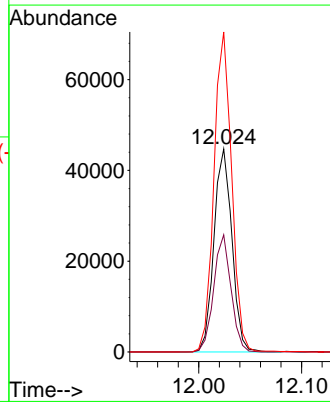
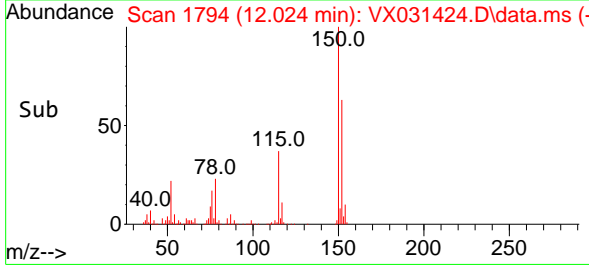


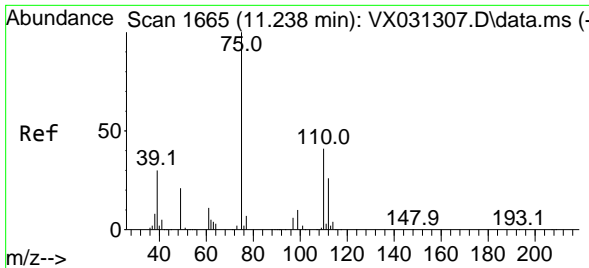
#72
 1,4-Dichlorobenzene-d4
 Concen: 50.000 ug/l
 RT: 12.024 min Scan# 1794
 Delta R.T. 0.000 min
 Lab File: VX031424.D
 Acq: 16 Sep 2022 20:42



Tgt Ion:152 Resp: 54175

Ion	Ratio	Lower	Upper
152	100		
115	55.7	43.4	130.1
150	155.4	0.0	346.8

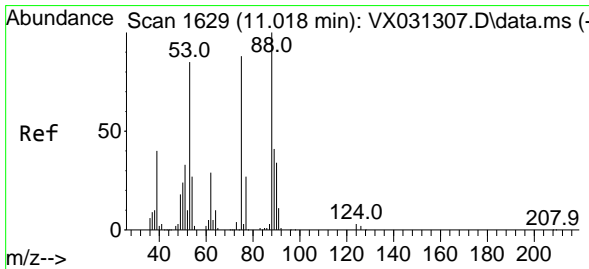
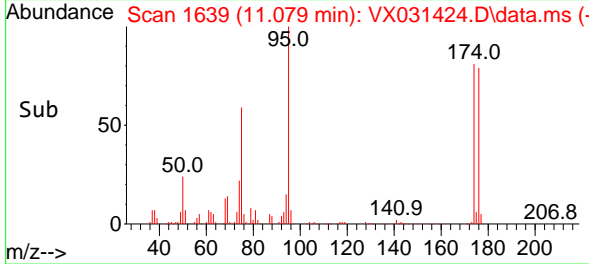
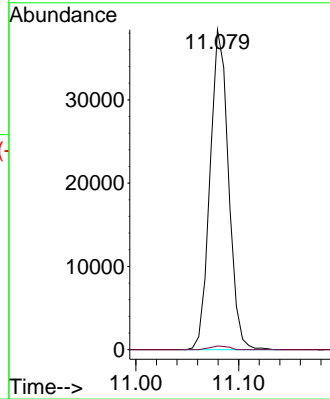
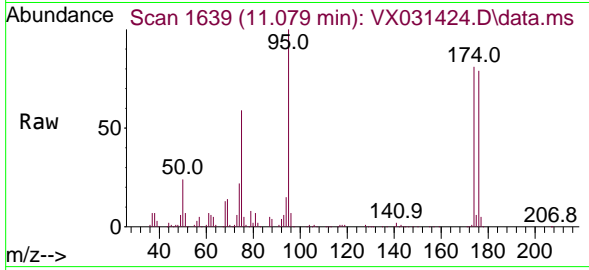




#76
 1,2,3-Trichloropropane
 Concen: 35.249 ug/l
 RT: 11.079 min Scan# 1639
 Delta R.T. -0.158 min
 Lab File: VX031424.D
 Acq: 16 Sep 2022 20:42

Instrument : MSVOA_X
 ClientSampleId : TOLL-MW-07

Tgt Ion: 75 Resp: 48123
 Ion Ratio Lower Upper
 75 100
 77 1.2 20.3 60.9#



#81
 trans-1,4-Dichloro-2-butene
 Concen: 97.536 ug/l
 RT: 11.079 min Scan# 1639
 Delta R.T. 0.061 min
 Lab File: VX031424.D
 Acq: 16 Sep 2022 20:42

Tgt Ion: 75 Resp: 48123
 Ion Ratio Lower Upper
 75 100
 53 0.0 77.6 116.4#
 89 0.0 37.4 56.0#

