

Data Path : Z:\VOASRV\HPCHEM1\MSVOA X\DATA\VOX091718\
 Data File : VX004643.D
 Acq On : 18 Sep 2018 02:12
 Operator : JC/MD
 Sample : J4936-30
 Misc : 5.0mL/MSVOA X/WATER
 ALS Vial : 24 Sample Multiplier: 1

Instrument :
 MSVOA_X
 ClientSampled :

Quant Time: Sep 18 02:36:31 2018
 Quant Method : Z:\VOASRV\HPCHEM1\MSVOA_X\METHOD\82X091118W.M
 Quant Title : SW846 8260
 QLast Update : Wed Sep 12 02:17:23 2018
 Response via : Initial Calibration

Internal Standards	R.T.	QIon	Response	Conc	Units	Dev(Min)
1) Pentafluorobenzene	5.67	168	208789	50.00	ug/l	0.00
34) 1,4-Difluorobenzene	6.87	114	319541	50.00	ug/l	0.00
63) Chlorobenzene-d5	10.12	117	294473	50.00	ug/l	0.00
72) 1,4-Dichlorobenzene-d4	12.08	152	187796	50.00	ug/l	0.00

System Monitoring Compounds

33) 1,2-Dichloroethane-d4	6.07	65	145429	54.02	ug/l	0.00
Spiked Amount	50.000		Recovery	=	108.04%	
35) Dibromofluoromethane	5.50	113	139970	47.87	ug/l	0.00
Spiked Amount	50.000		Recovery	=	95.74%	
50) Toluene-d8	8.72	98	426989	43.54	ug/l	0.00
Spiked Amount	50.000		Recovery	=	87.08%	
62) 4-Bromofluorobenzene	11.14	95	147047	42.01	ug/l	0.00
Spiked Amount	50.000		Recovery	=	84.02%	

Target Compounds

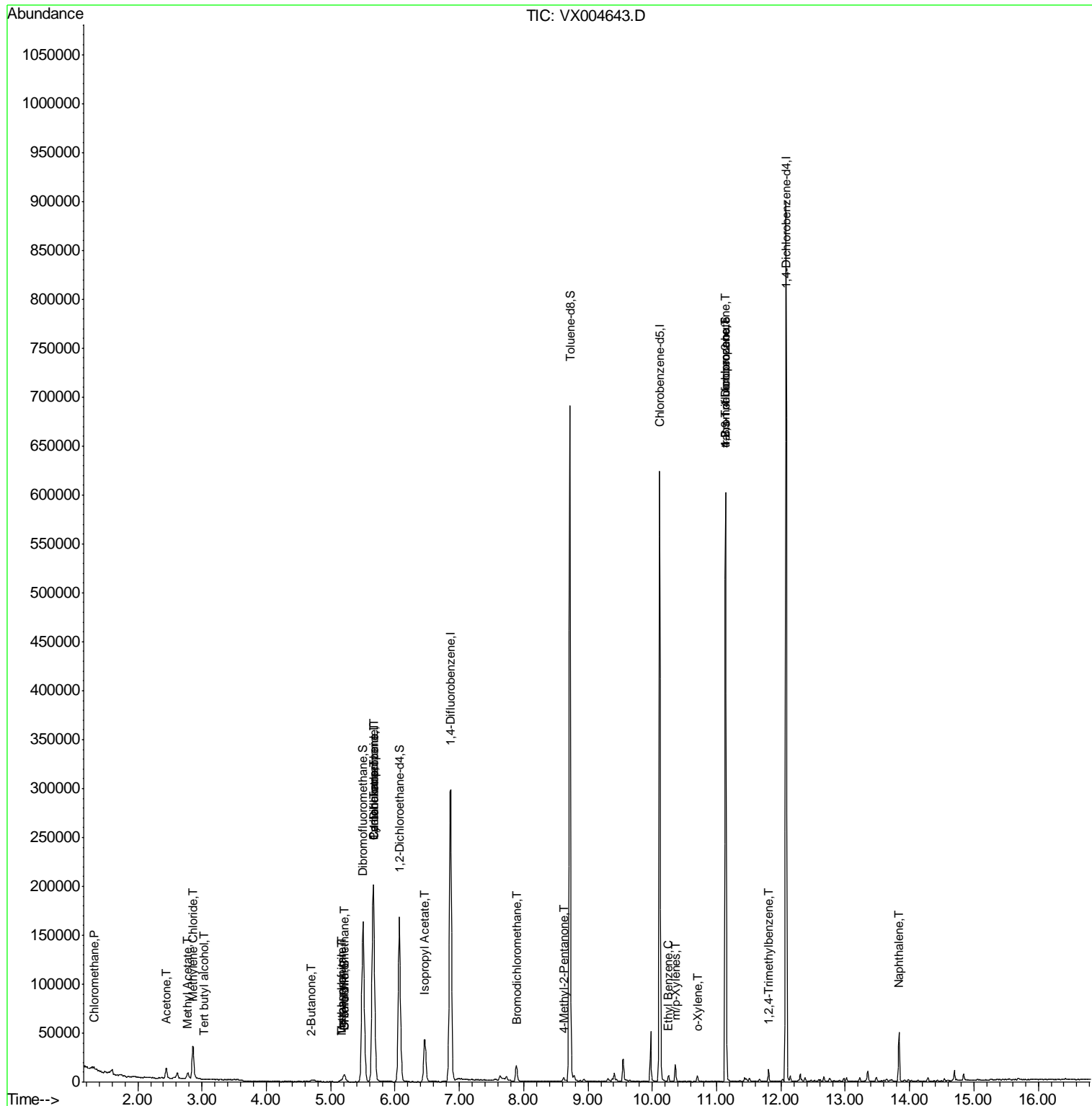
						Qvalue
3) Chloromethane	1.32	50	560	0.21	ug/l	94
5) Bromomethane	1.64	94	176	Below	Cal	# 77
11) Tert butyl alcohol	3.02	59	221	0.34	ug/l	# 72
16) Acetone	2.44	43	10669	8.12	ug/l	100
18) Methyl Acetate	2.78	43	7713	2.09	ug/l	97
20) Methylene Chloride	2.85	84	16371	6.07	ug/l	99
25) 2-Butanone	4.71	43	3201	1.53	ug/l	# 88
28) Bromochloromethane	5.21	49	658	0.32	ug/l	# 9
29) Tetrahydrofuran	5.16	42	1425	1.13	ug/l	# 85
30) Chloroform	5.21	83	8441	1.90	ug/l	91
31) Cyclohexane	5.67	56	3433	0.88	ug/l	# 1
36) 1,1-Dichloropropene	5.66	75	13615	3.51	ug/l	# 50
38) Carbon Tetrachloride	5.67	117	19553	5.16	ug/l	# 15
41) Methacrylonitrile	5.17	41	968	0.40	ug/l	# 37
43) Isopropyl Acetate	6.46	43	55591	9.49	ug/l	99
47) Bromodichloromethane	7.90	83	1880	0.57	ug/l	99
51) 4-Methyl-2-Pentanone	8.62	43	1109	0.27	ug/l	# 34
67) Ethyl Benzene	10.26	91	3543	0.30	ug/l	96
68) m/p-Xylenes	10.36	106	4085	0.89	ug/l	100
69) o-Xylene	10.70	106	1192	0.27	ug/l	87
76) 1,2,3-Trichloropropane	11.14	75	70706	18.71	ug/l	# 37
81) trans-1,4-Dichloro-2-buten	11.14	75	70706	59.65	ug/l	# 10
84) 1,2,4-Trimethylbenzene	11.81	105	5341	0.50	ug/l	97
95) Naphthalene	13.83	128	32241	2.51	ug/l	99

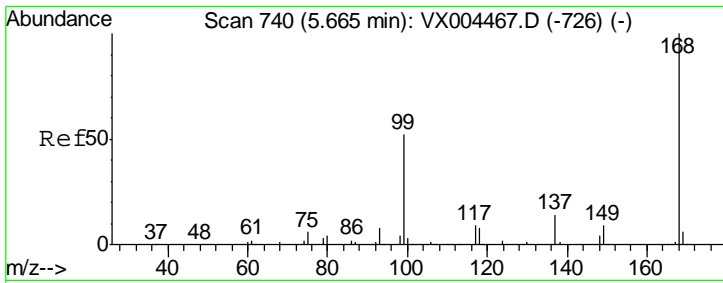
(#) = qualifier out of range (m) = manual integration (+) = signals summed

Data Path : Z:\VOASRV\HPCHEM1\MSVOA X\DATA\VX091718\
 Data File : VX004643.D
 Acq On : 18 Sep 2018 02:12
 Operator : JC/MD
 Sample : J4936-30
 Misc : 5.0mL/MSVOA X/WATER
 ALS Vial : 24 Sample Multiplier: 1

Instrument :
 MSVOA_X
 Client Sampled :

Quant Time: Sep 18 02:36:31 2018
 Quant Method : Z:\VOASRV\HPCHEM1\MSVOA_X\METHOD\82X091118W.M
 Quant Title : SW846 8260
 QLast Update : Wed Sep 12 02:17:23 2018
 Response via : Initial Calibration

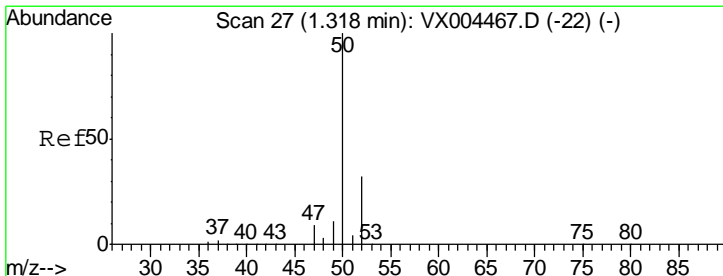
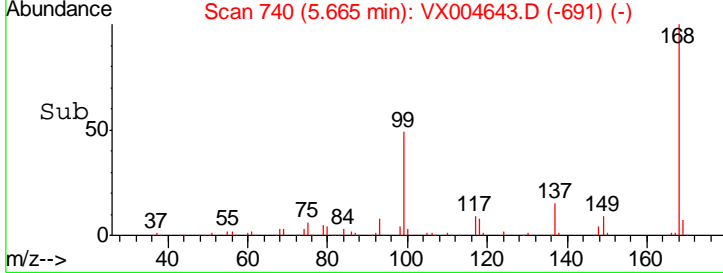
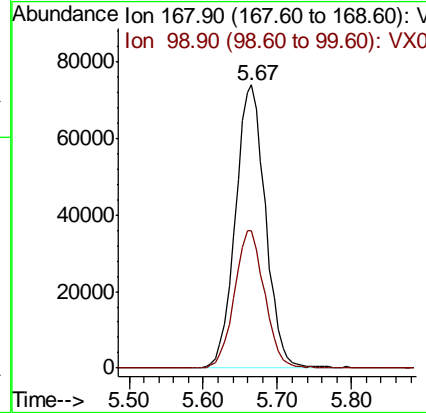
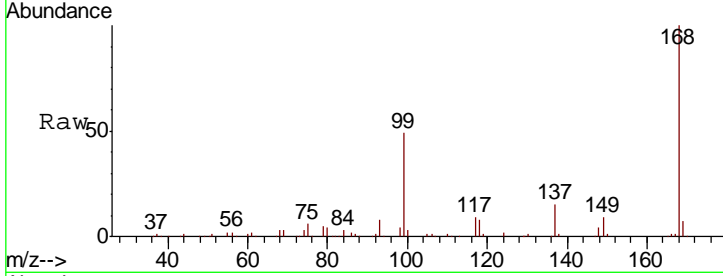




#1
 Pentafluorobenzene
 Concen: 50.00 ug/l
 RT: 5.67 min Scan# 740
 Delta R.T. 0.00 min
 Lab File: VX004643.D
 Acq: 18 Sep 2018 02:12

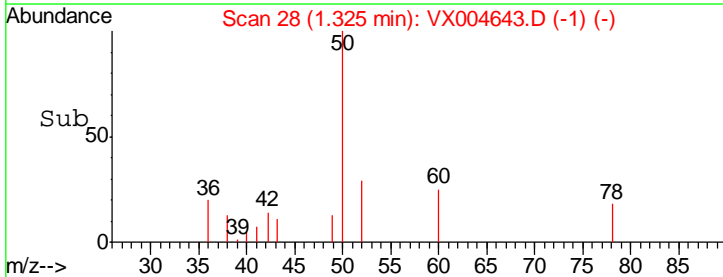
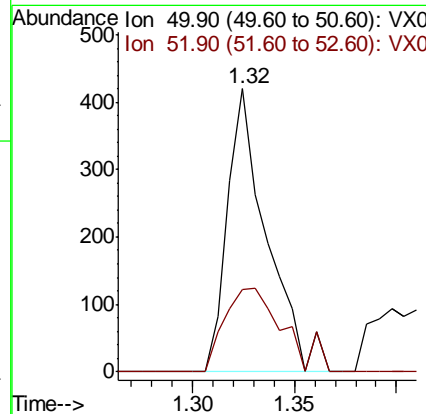
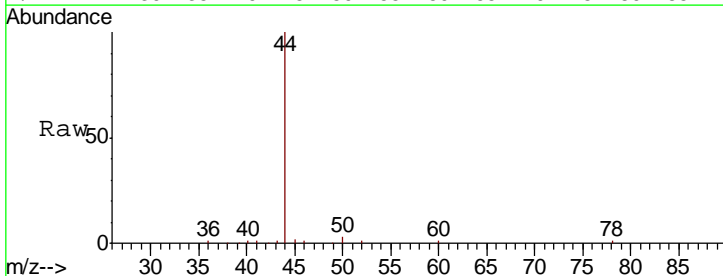
Instrument :
 MSVOA_X
 ClientSampled :

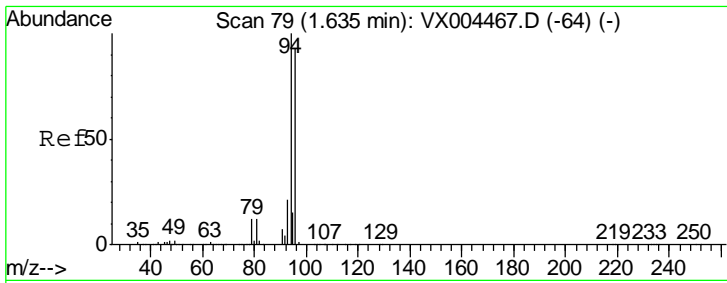
Tgt Ion	Resp	Lower	Upper
168	100		
99	48.7	39.9	59.9



#3
 Chloromethane
 Concen: 0.21 ug/l
 RT: 1.32 min Scan# 28
 Delta R.T. 0.01 min
 Lab File: VX004643.D
 Acq: 18 Sep 2018 02:12

Tgt Ion	Resp	Lower	Upper
50	100		
52	29.0	26.2	39.2

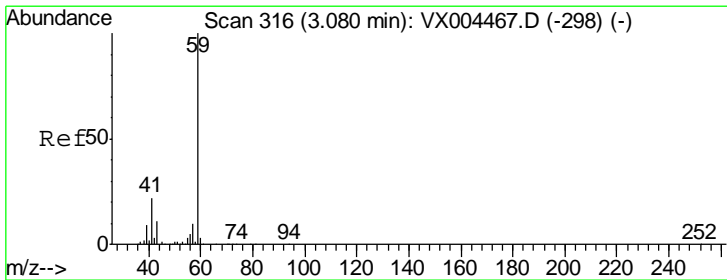
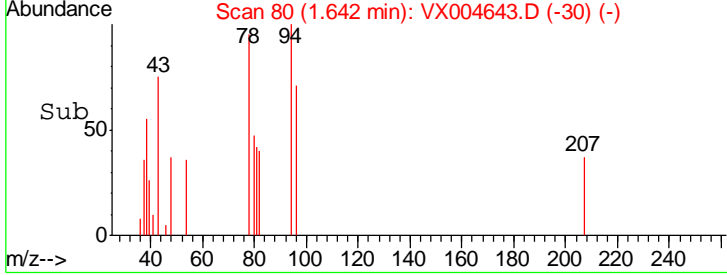
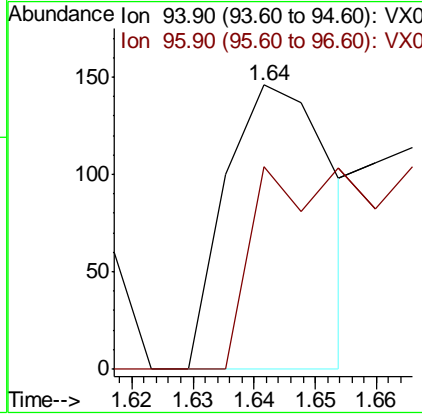
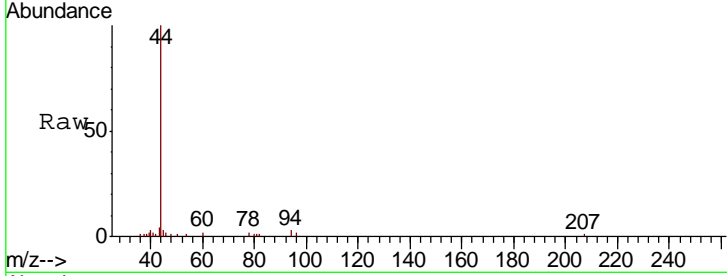




#5
 Bromomethane
 Concen: Below Cal
 RT: 1.64 min Scan# 80
 Delta R.T. 0.01 min
 Lab File: VX004643.D
 Acq: 18 Sep 2018 02:12

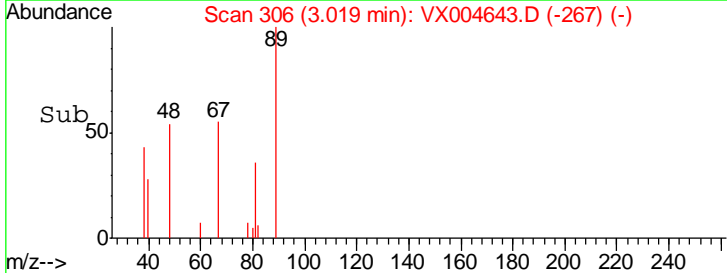
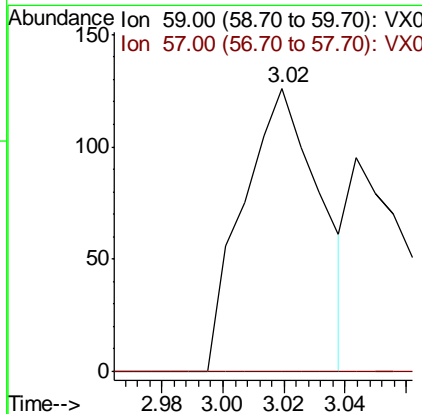
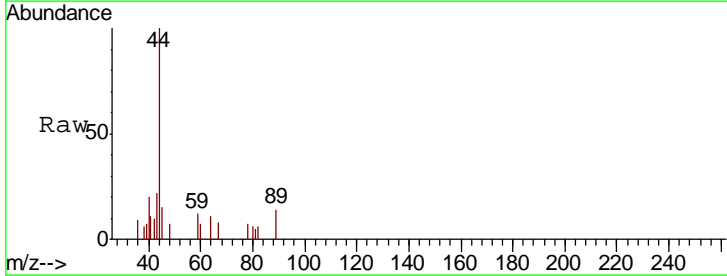
Instrument :
 MSVOA_X
 ClientSampled :

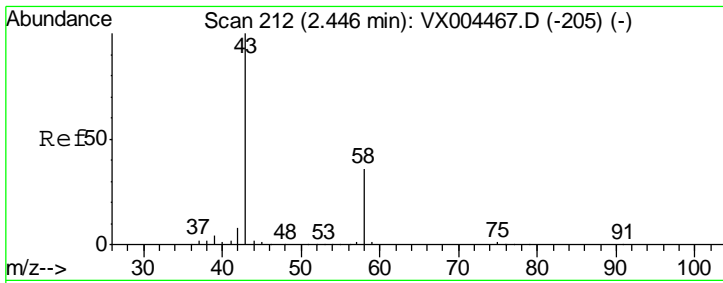
Tgt Ion: 94 Resp: 176
 Ion Ratio Lower Upper
 94 100
 96 71.2 74.5 111.7#



#11
 Tert butyl alcohol
 Concen: 0.34 ug/l
 RT: 3.02 min Scan# 306
 Delta R.T. -0.06 min
 Lab File: VX004643.D
 Acq: 18 Sep 2018 02:12

Tgt Ion: 59 Resp: 221
 Ion Ratio Lower Upper
 59 100
 57 0.0 8.2 12.4#

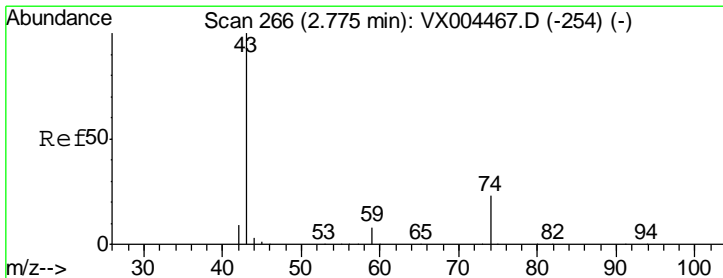
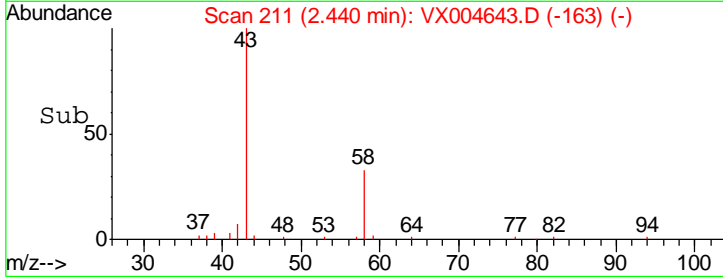
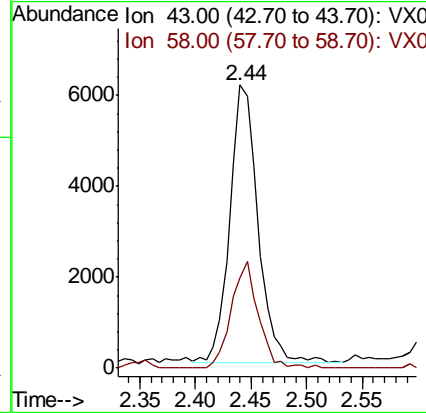
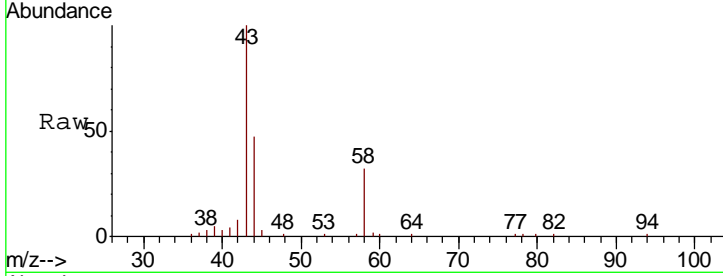




#16
 Acetone
 Concen: 8.12 ug/l
 RT: 2.44 min Scan# 211
 Delta R.T. -0.01 min
 Lab File: VX004643.D
 Acq: 18 Sep 2018 02:12

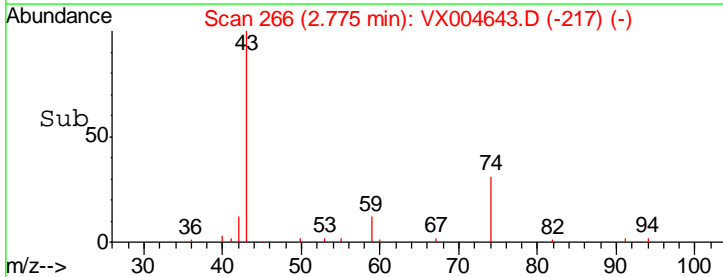
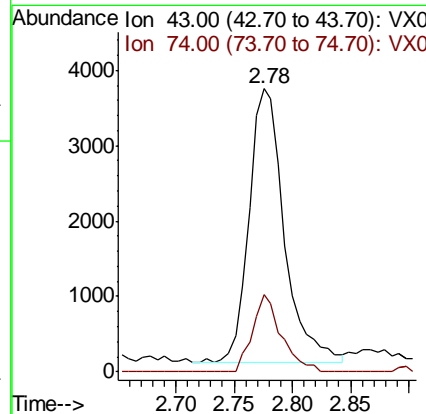
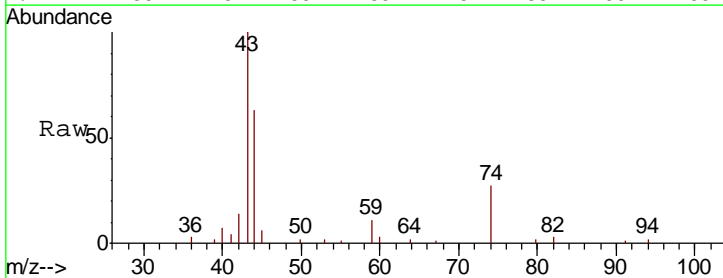
Instrument :
 MSVOA_X
 ClientSampled :

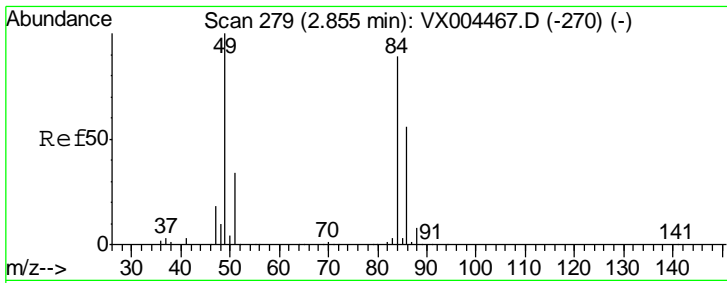
Tgt Ion	Resp	Lower	Upper
43	10669		
58	32.5	26.2	39.4



#18
 Methyl Acetate
 Concen: 2.09 ug/l
 RT: 2.78 min Scan# 266
 Delta R.T. 0.00 min
 Lab File: VX004643.D
 Acq: 18 Sep 2018 02:12

Tgt Ion	Resp	Lower	Upper
43	7713		
74	22.9	19.4	29.2

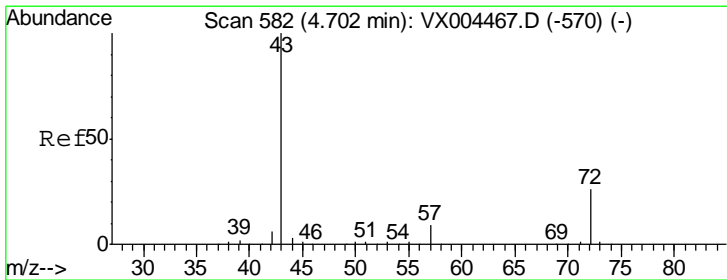
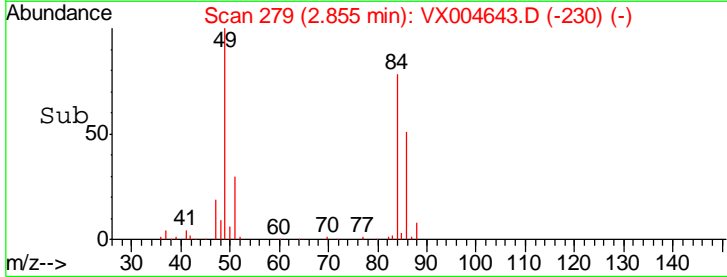
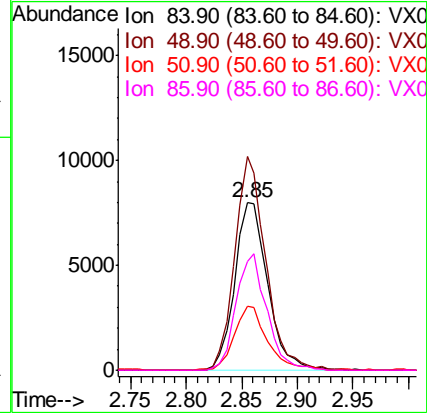
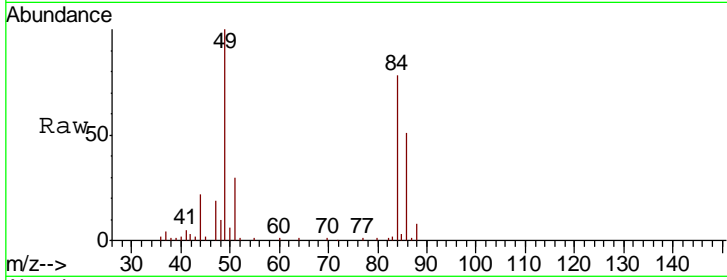




#20
 Methylene Chloride
 Concen: 6.07 ug/l
 RT: 2.85 min Scan# 279
 Delta R.T. 0.00 min
 Lab File: VX004643.D
 Acq: 18 Sep 2018 02:12

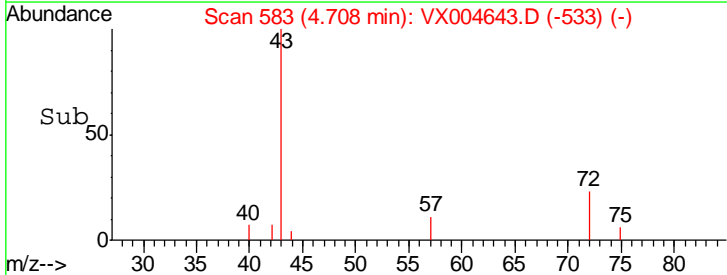
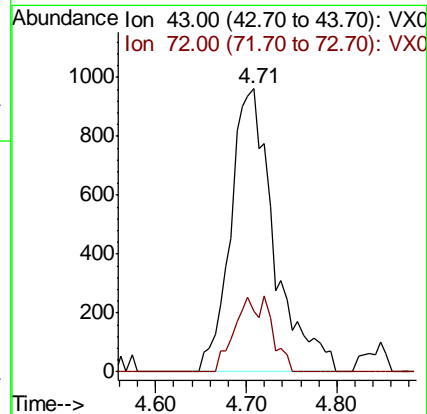
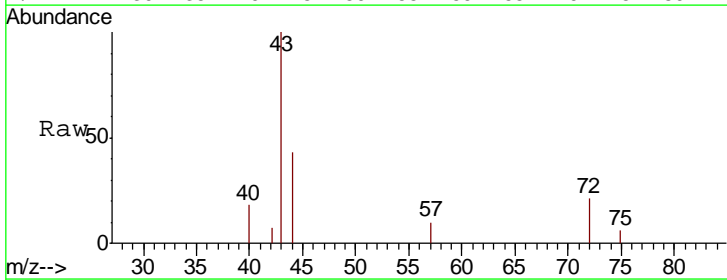
Instrument : MSVOA_X
 ClientSampled :

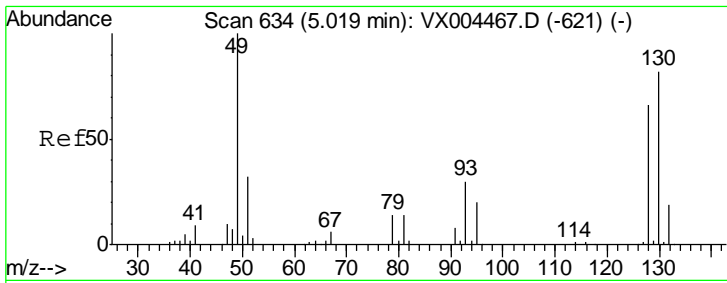
Tgt Ion	Resp	Lower	Upper
84	16371		
84	100		
49	127.6	101.2	151.8
51	37.9	29.5	44.3
86	65.0	52.3	78.5



#25
 2-Butanone
 Concen: 1.53 ug/l
 RT: 4.71 min Scan# 583
 Delta R.T. 0.01 min
 Lab File: VX004643.D
 Acq: 18 Sep 2018 02:12

Tgt Ion	Resp	Lower	Upper
43	3201		
43	100		
72	21.3	22.0	33.0#

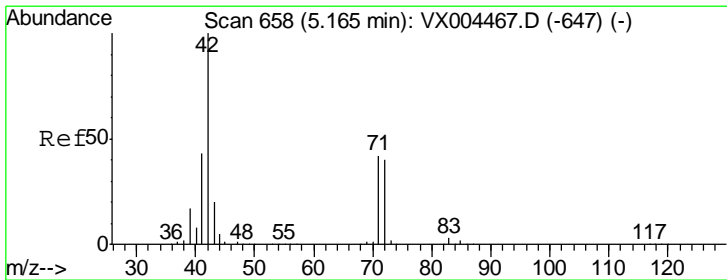
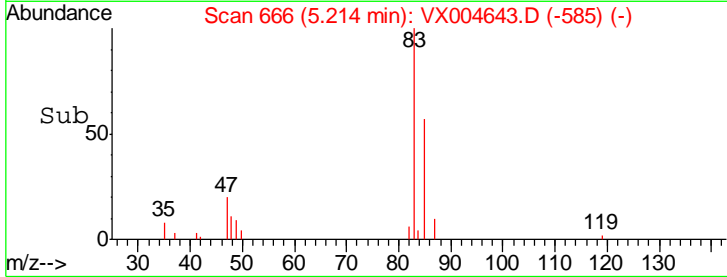
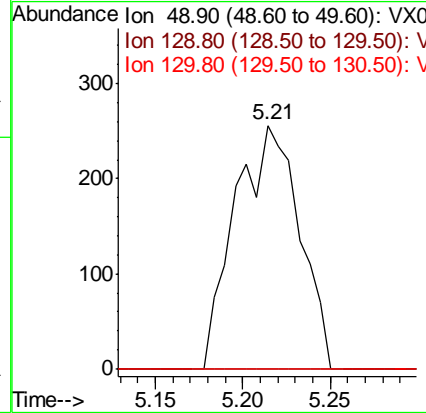
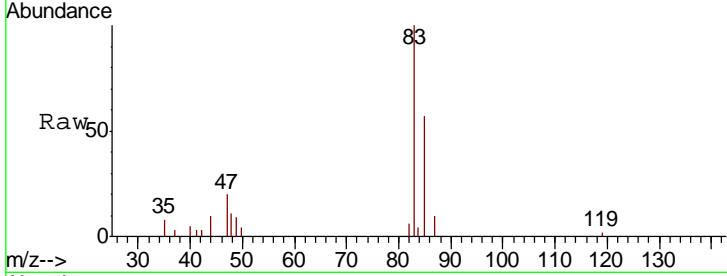




#28
 Bromochloromethane
 Concen: 0.32 ug/l
 RT: 5.21 min Scan# 666
 Delta R.T. 0.20 min
 Lab File: VX004643.D
 Acq: 18 Sep 2018 02:12

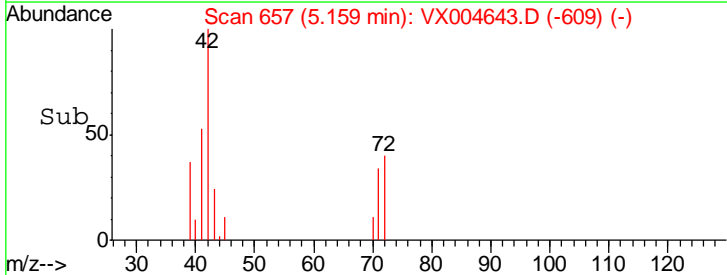
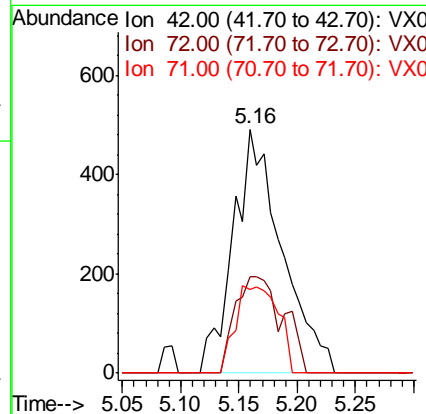
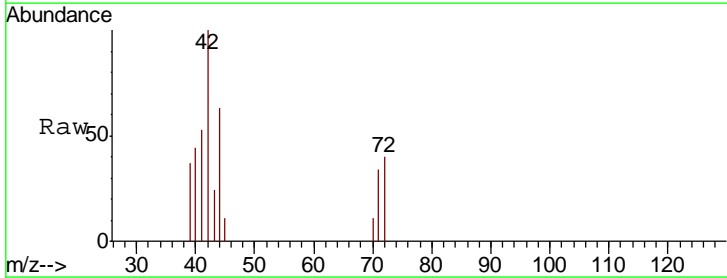
Instrument : MSVOA_X
 ClientSampled :

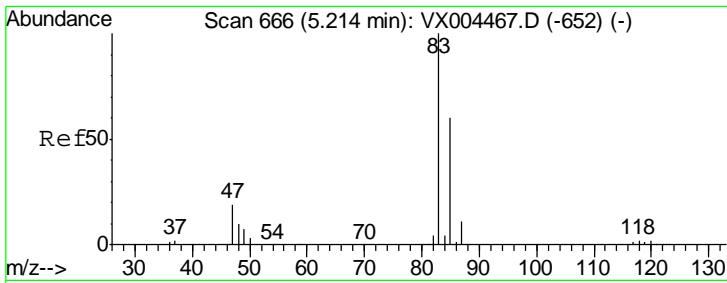
Tgt Ion	Resp	Lower	Upper
49	100		
129	0.0	0.0	4.2
130	0.0	67.5	101.3#



#29
 Tetrahydrofuran
 Concen: 1.13 ug/l
 RT: 5.16 min Scan# 657
 Delta R.T. -0.01 min
 Lab File: VX004643.D
 Acq: 18 Sep 2018 02:12

Tgt Ion	Resp	Lower	Upper
42	100		
72	38.7	37.4	56.0
71	31.4	34.5	51.7#

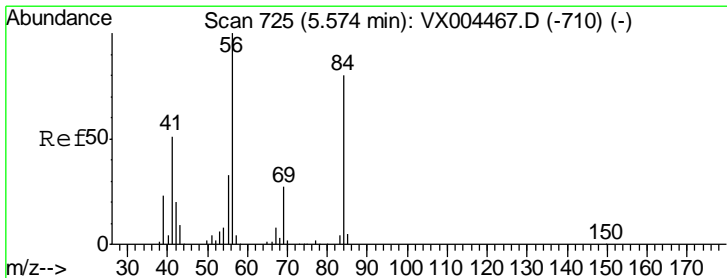
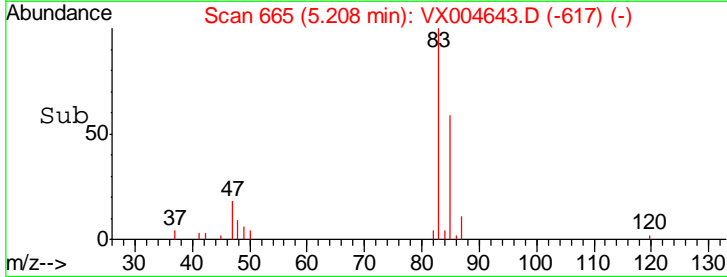
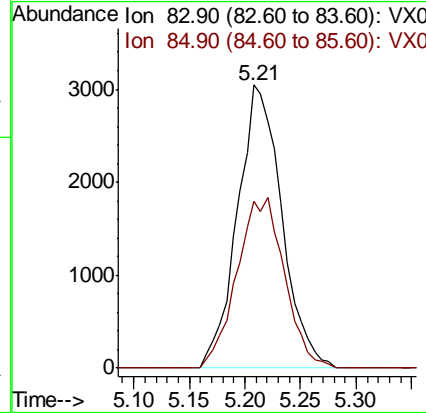
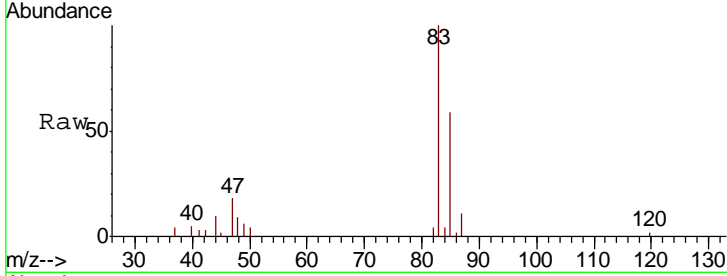




#30
 Chloroform
 Concen: 1.90 ug/l
 RT: 5.21 min Scan# 665
 Delta R.T. -0.01 min
 Lab File: VX004643.D
 Acq: 18 Sep 2018 02:12

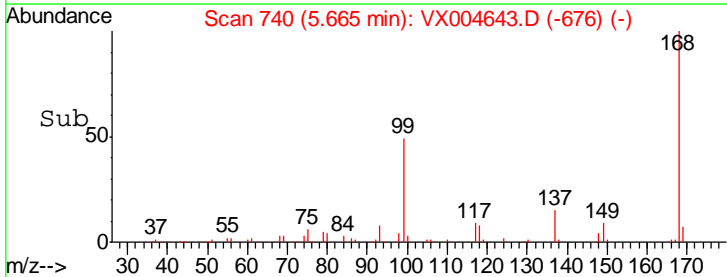
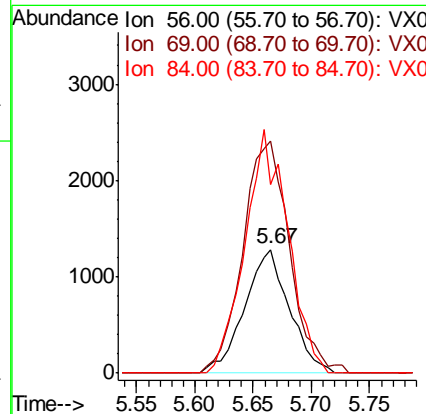
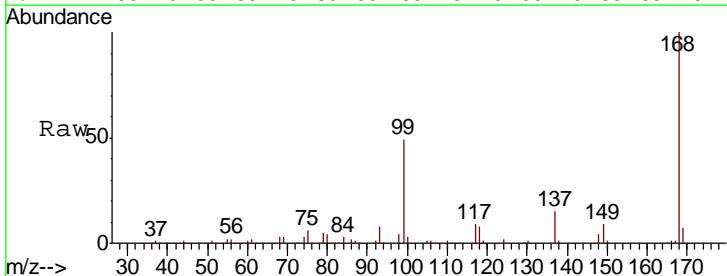
Instrument :
 MSVOA_X
 ClientSampled :

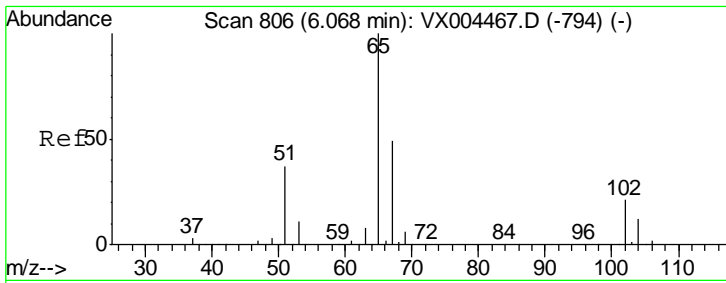
Tgt Ion	Resp	Lower	Upper
83	100		
85	58.8	52.6	79.0



#31
 Cyclohexane
 Concen: 0.88 ug/l
 RT: 5.67 min Scan# 740
 Delta R.T. 0.09 min
 Lab File: VX004643.D
 Acq: 18 Sep 2018 02:12

Tgt Ion	Resp	Lower	Upper
56	100		
69	187.9	25.4	38.2#
84	153.0	71.4	107.2#

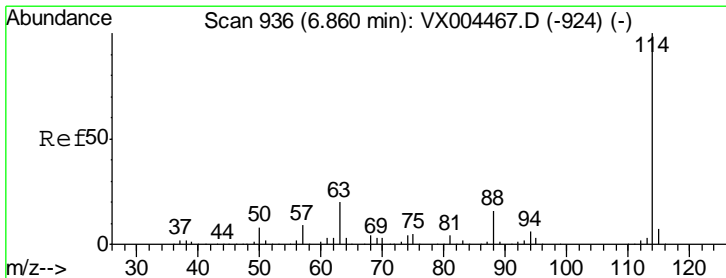
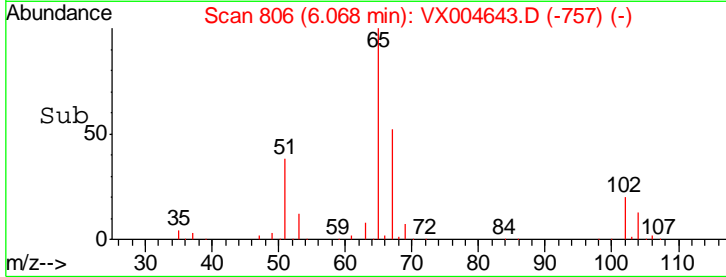
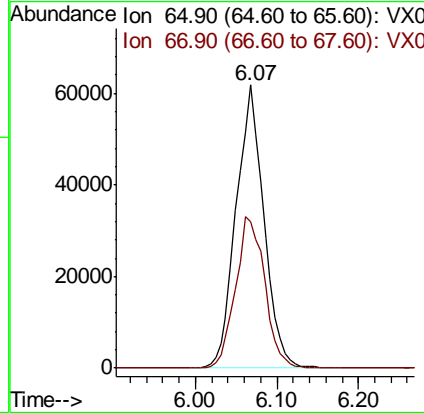
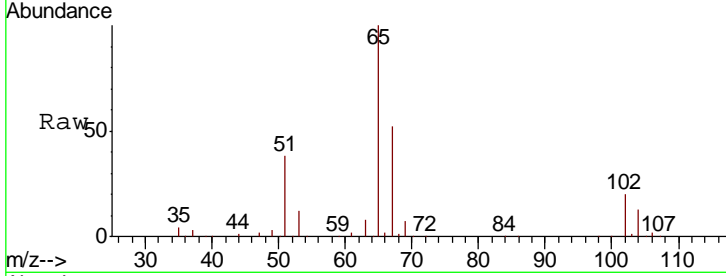




#33
 1,2-Dichloroethane-d4
 Concen: 54.02 ug/l
 RT: 6.07 min Scan# 806
 Delta R.T. 0.00 min
 Lab File: VX004643.D
 Acq: 18 Sep 2018 02:12

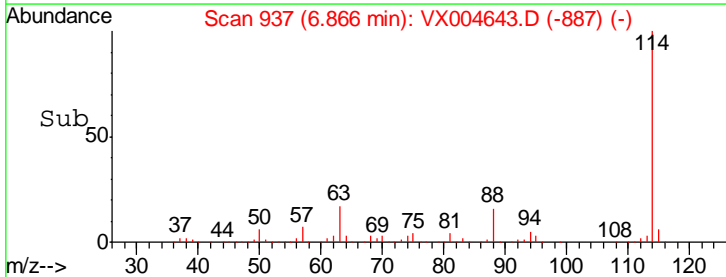
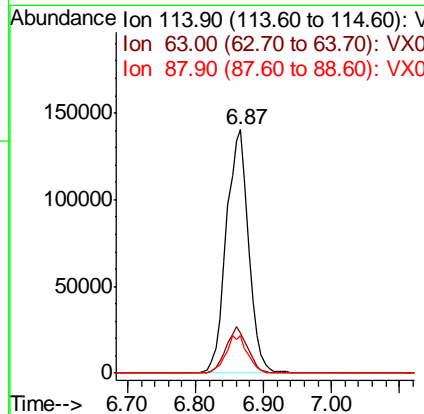
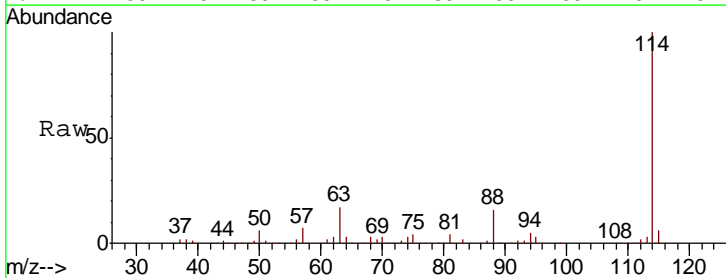
Instrument :
 MSVOA_X
 ClientSampled :

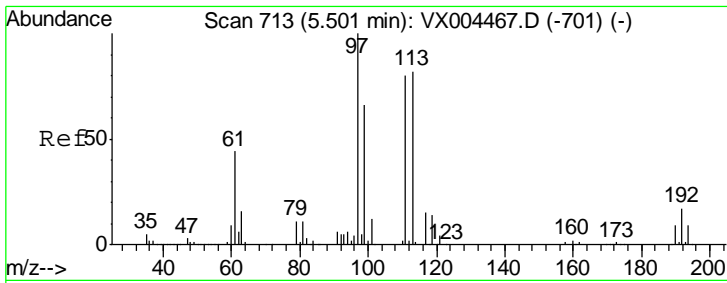
Tgt Ion	Resp	Lower	Upper
65	145429		
67	56.2	0.0	106.8



#34
 1,4-Difluorobenzene
 Concen: 50.00 ug/l
 RT: 6.87 min Scan# 937
 Delta R.T. 0.01 min
 Lab File: VX004643.D
 Acq: 18 Sep 2018 02:12

Tgt Ion	Resp	Lower	Upper
114	319541		
63	16.5	0.0	39.0
88	15.7	0.0	30.4

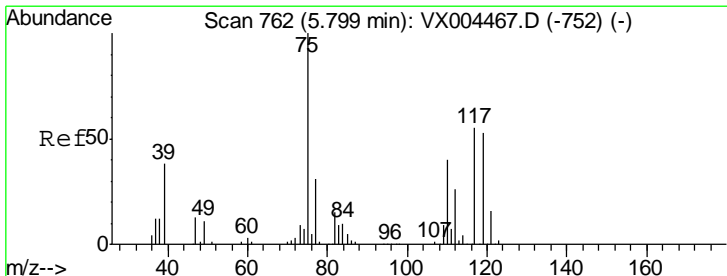
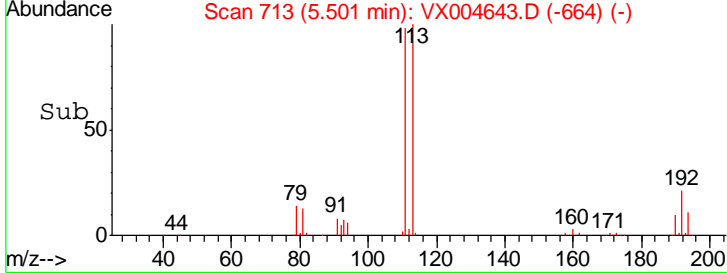
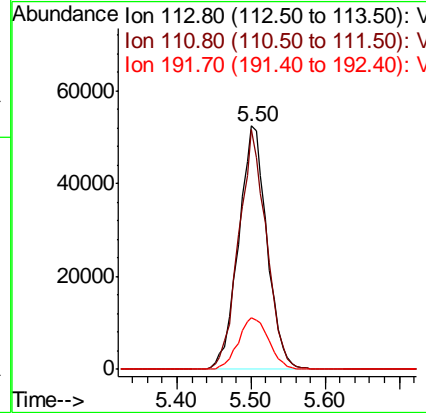
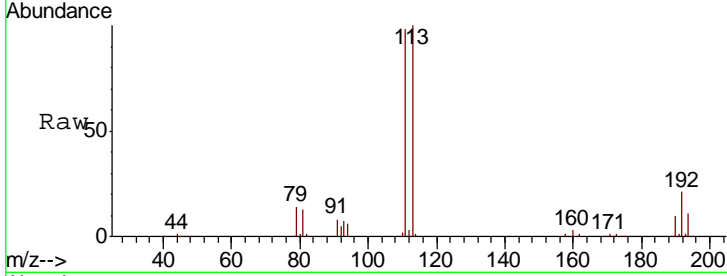




#35
 Dibromofluoromethane
 Concen: 47.87 ug/l
 RT: 5.50 min Scan# 713
 Delta R.T. 0.00 min
 Lab File: VX004643.D
 Acq: 18 Sep 2018 02:12

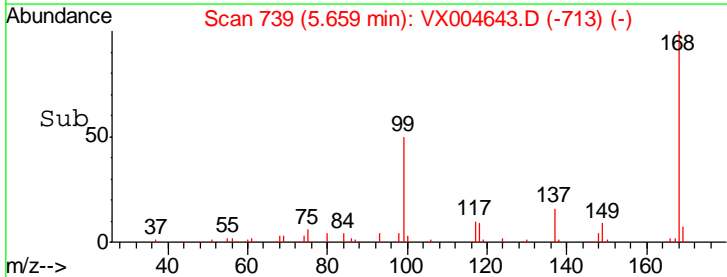
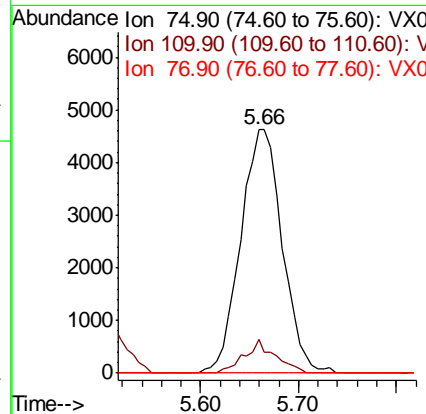
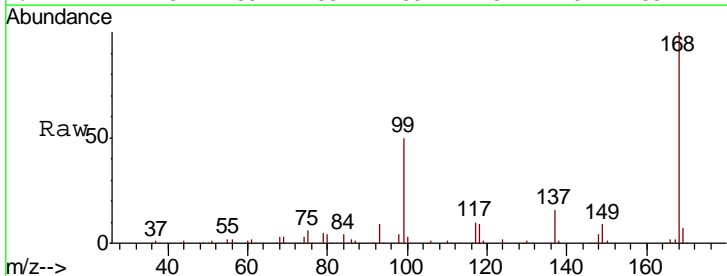
Instrument :
 MSVOA_X
 ClientSampled :

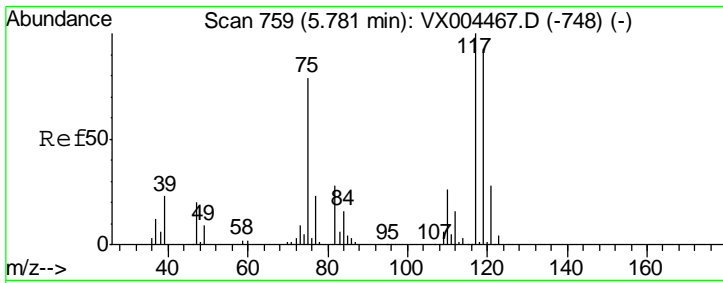
Tgt Ion	Resp	Lower	Upper
113	139970		
111	96.3	82.4	123.6
192	23.0	19.4	29.2



#36
 1,1-Dichloropropene
 Concen: 3.51 ug/l
 RT: 5.66 min Scan# 739
 Delta R.T. -0.14 min
 Lab File: VX004643.D
 Acq: 18 Sep 2018 02:12

Tgt Ion	Resp	Lower	Upper
75	13615		
110	10.1	18.0	54.0#
77	0.0	24.6	36.8#

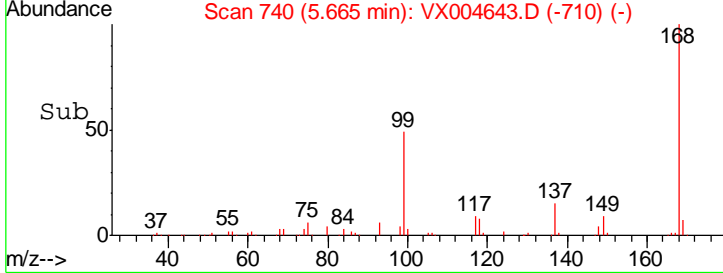
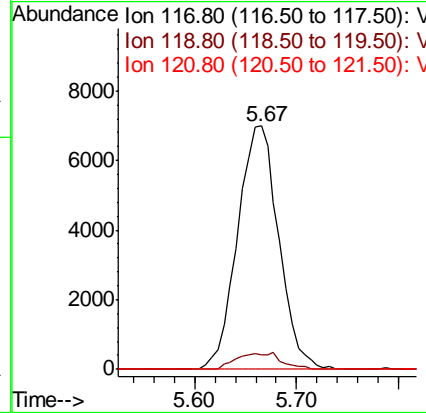
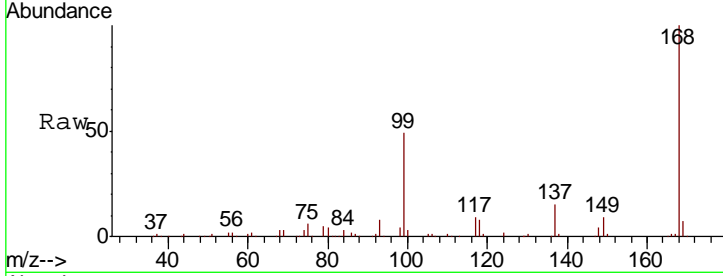




#38
 Carbon Tetrachloride
 Concen: 5.16 ug/l
 RT: 5.67 min Scan# 740
 Delta R.T. -0.12 min
 Lab File: VX004643.D
 Acq: 18 Sep 2018 02:12

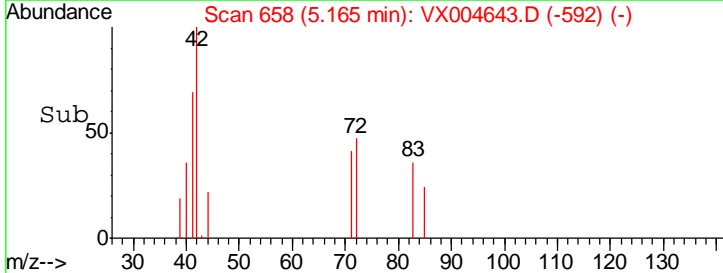
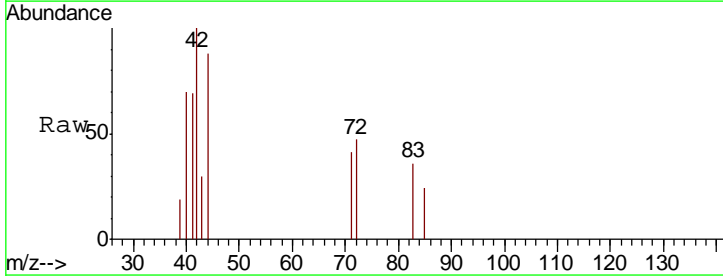
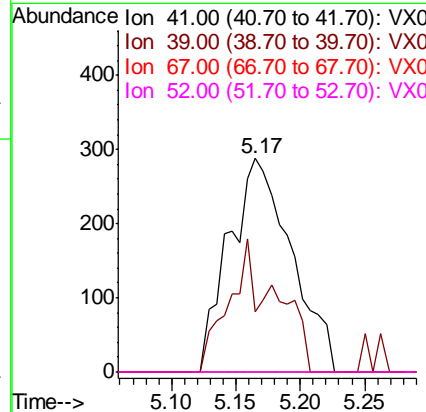
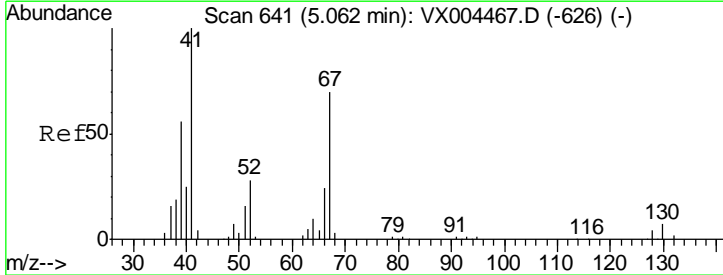
Instrument :
 MSVOA_X
 ClientSampled :

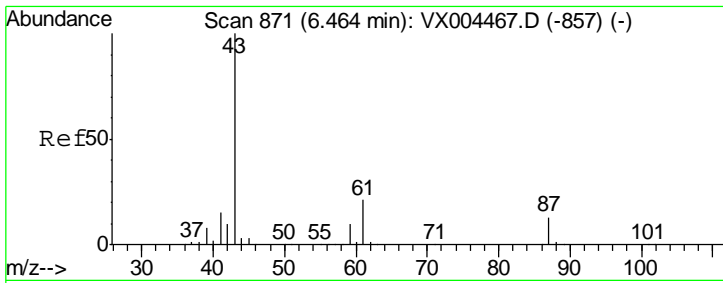
Tgt Ion	Resp	Lower	Upper
117	19553		
117	100		
119	5.8	78.8	118.2#
121	0.0	24.9	37.3#



#41
 Methacrylonitrile
 Concen: 0.40 ug/l
 RT: 5.17 min Scan# 658
 Delta R.T. 0.10 min
 Lab File: VX004643.D
 Acq: 18 Sep 2018 02:12

Tgt Ion	Resp	Lower	Upper
41	968		
41	100		
39	28.9	42.4	63.6#
67	0.0	59.2	88.8#
52	0.0	23.0	34.4#

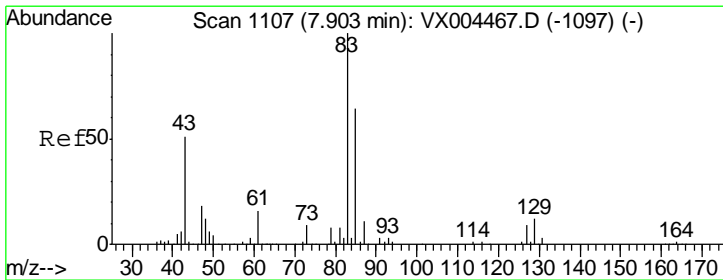
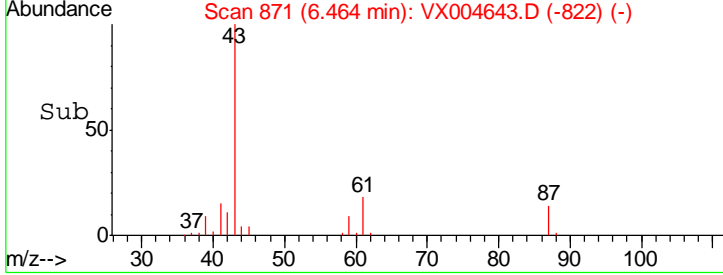
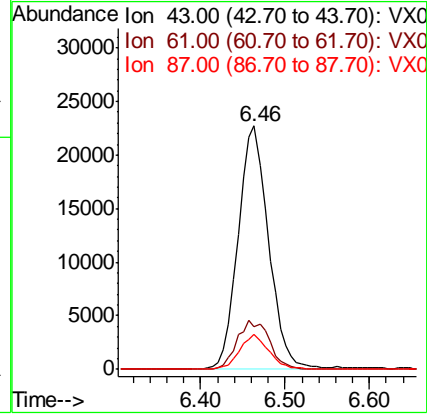
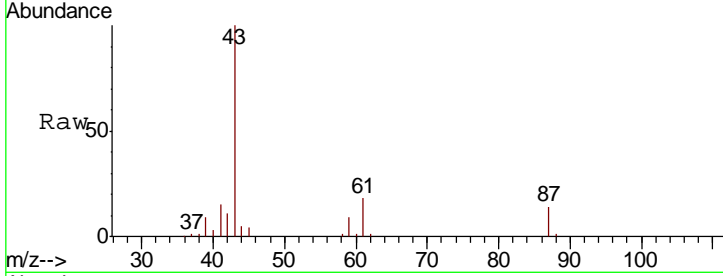




#43
 Isopropyl Acetate
 Concen: 9.49 ug/l
 RT: 6.46 min Scan# 871
 Delta R.T. 0.00 min
 Lab File: VX004643.D
 Acq: 18 Sep 2018 02:12

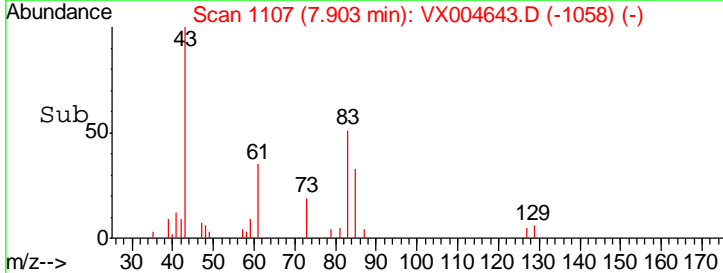
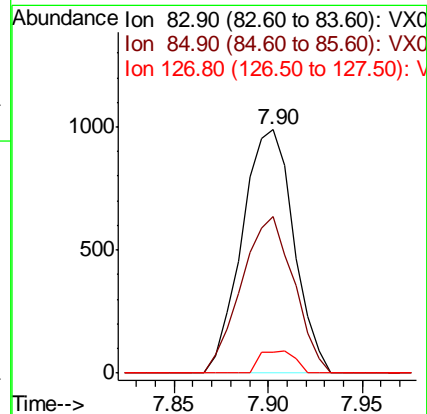
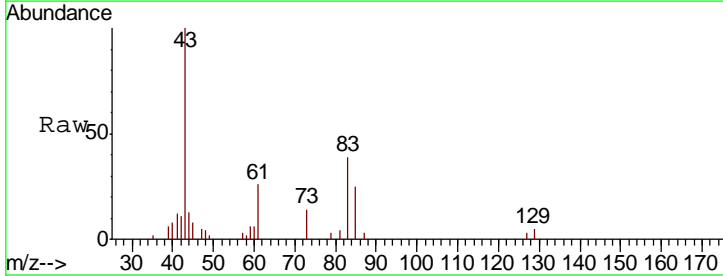
Instrument :
 MSVOA_X
 ClientSampled :

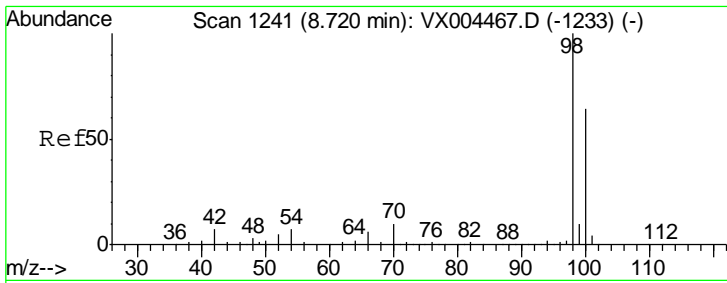
Tgt Ion	Resp	Lower	Upper
43	100		
61	21.2	17.0	25.4
87	13.5	11.4	17.2



#47
 Bromodichloromethane
 Concen: 0.57 ug/l
 RT: 7.90 min Scan# 1107
 Delta R.T. 0.00 min
 Lab File: VX004643.D
 Acq: 18 Sep 2018 02:12

Tgt Ion	Resp	Lower	Upper
83	100		
85	64.4	50.9	76.3
127	8.8	7.3	10.9

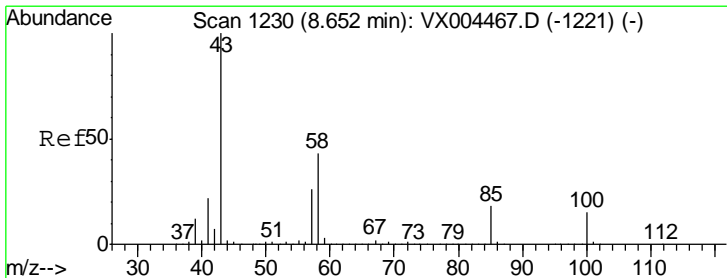
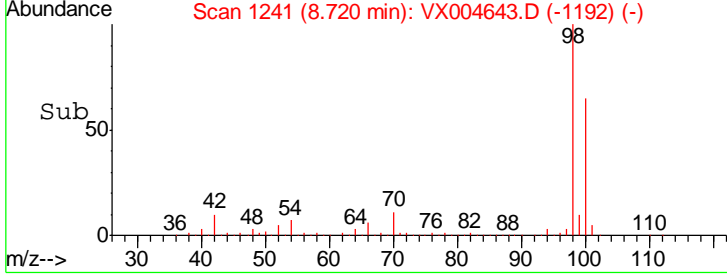
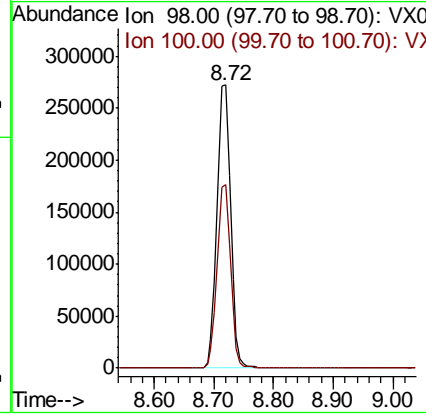
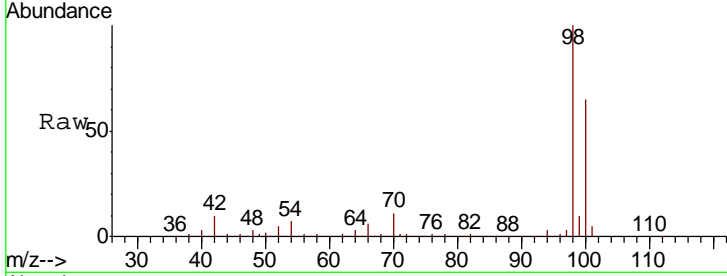




#50
 Toluene-d8
 Concen: 43.54 ug/l
 RT: 8.72 min Scan# 1241
 Delta R.T. 0.00 min
 Lab File: VX004643.D
 Acq: 18 Sep 2018 02:12

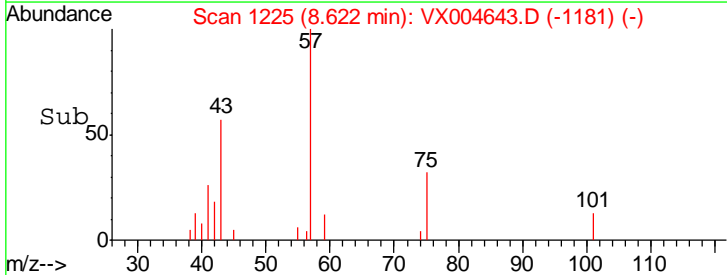
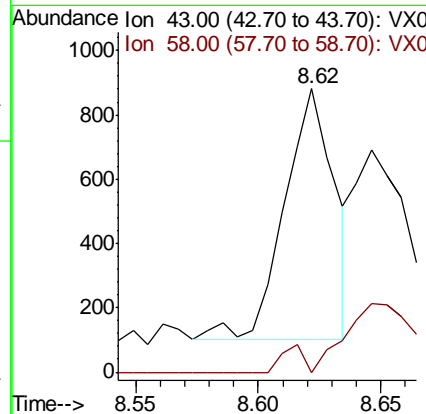
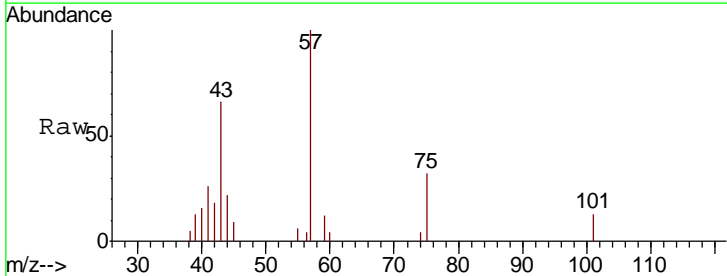
Instrument : MSVOA_X
 ClientSampled :

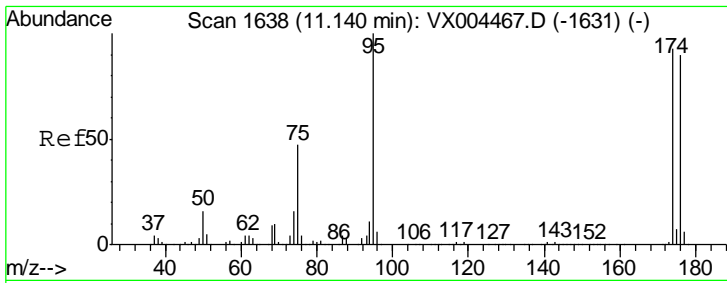
Tot Ion: 98 Resp: 426989
 Ion Ratio Lower Upper
 98 100
 100 64.1 52.9 79.3



#51
 4-Methyl-2-Pentanone
 Concen: 0.27 ug/l
 RT: 8.62 min Scan# 1225
 Delta R.T. -0.03 min
 Lab File: VX004643.D
 Acq: 18 Sep 2018 02:12

Tgt Ion: 43 Resp: 1109
 Ion Ratio Lower Upper
 43 100
 58 0.0 33.1 49.7#

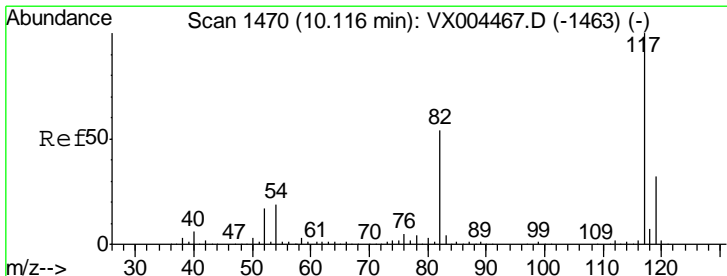
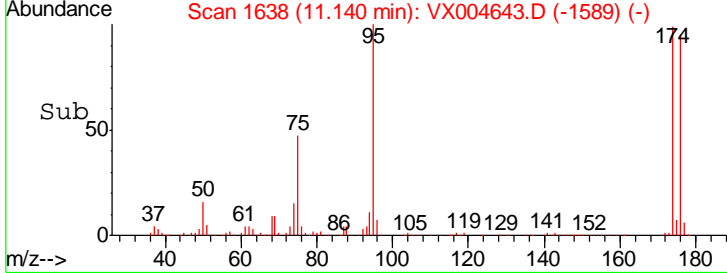
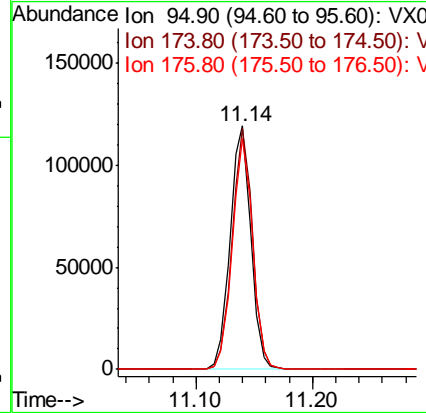
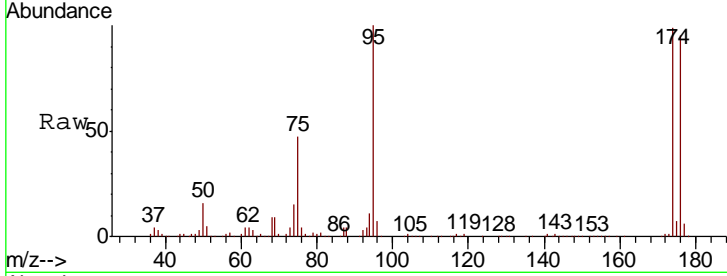




#62
 4-Bromofluorobenzene
 Concen: 42.01 ug/l
 RT: 11.14 min Scan# 1638
 Delta R.T. 0.00 min
 Lab File: VX004643.D
 Acq: 18 Sep 2018 02:12

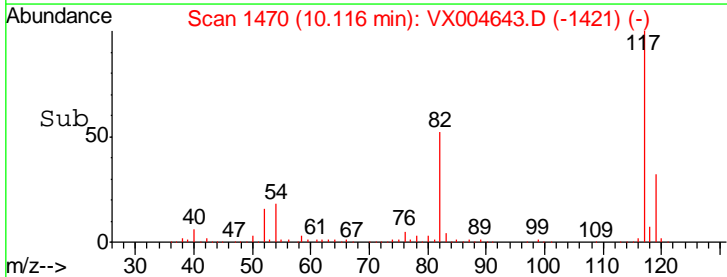
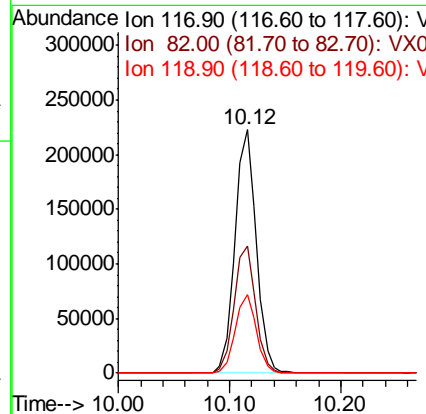
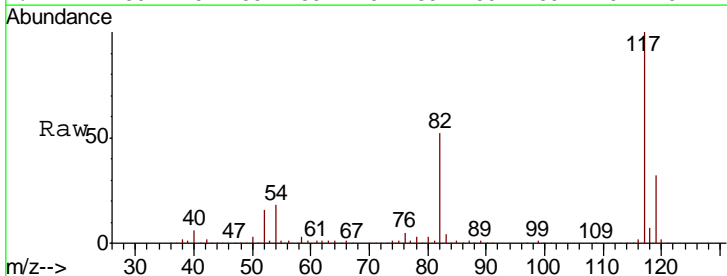
Instrument :
 MSVOA_X
 ClientSampled :

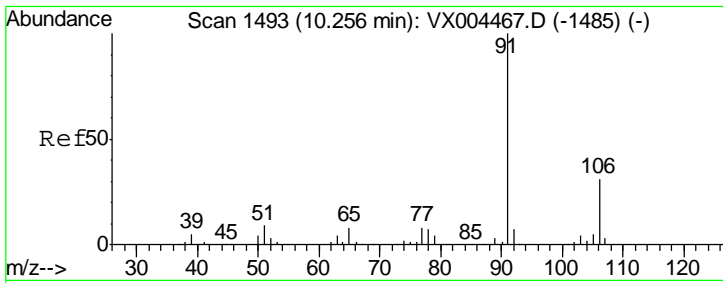
Tgt Ion	Resp	Lower	Upper
95	147047		
174	98.1	0.0	185.2
176	93.8	0.0	178.6



#63
 Chlorobenzene-d5
 Concen: 50.00 ug/l
 RT: 10.12 min Scan# 1470
 Delta R.T. 0.00 min
 Lab File: VX004643.D
 Acq: 18 Sep 2018 02:12

Tgt Ion	Resp	Lower	Upper
117	294473		
82	52.2	47.8	71.6
119	32.4	29.3	43.9

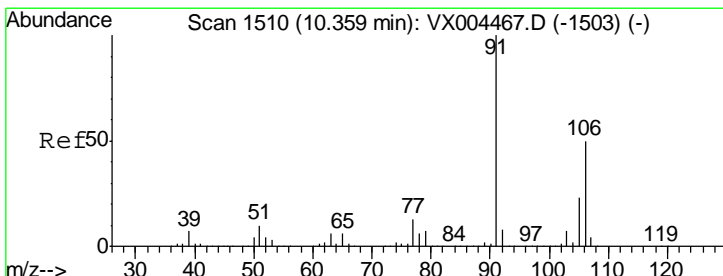
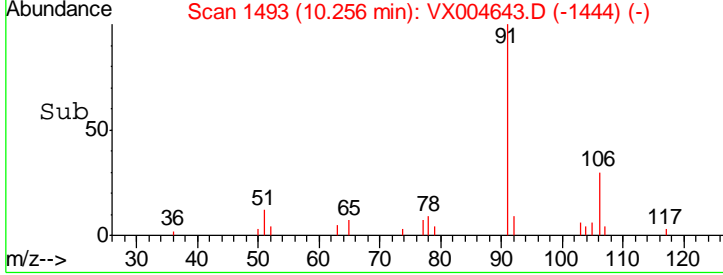
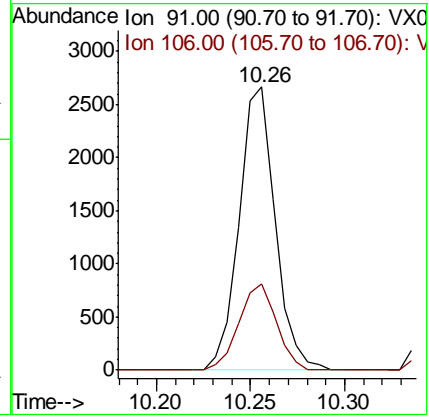
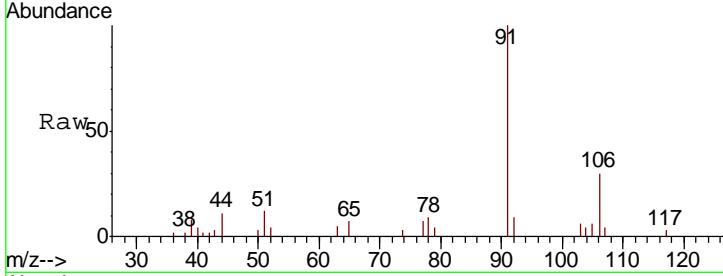




#67
 Ethyl Benzene
 Concen: 0.30 ug/l
 RT: 10.26 min Scan# 1493
 Delta R.T. 0.00 min
 Lab File: VX004643.D
 Acq: 18 Sep 2018 02:12

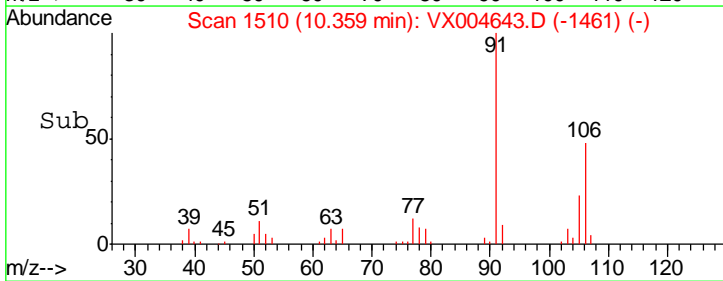
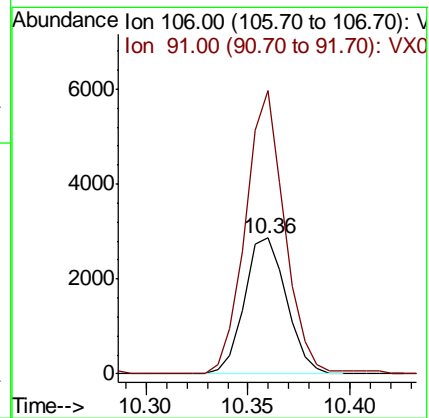
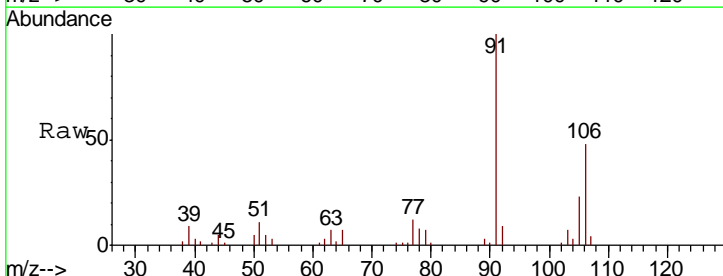
Instrument : MSVOA_X
 ClientSampled :

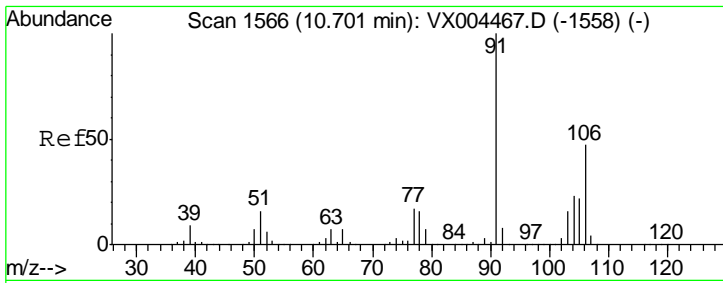
Tgt Ion	Resp	Lower	Upper
91	100		
106	30.4	25.9	38.9



#68
 m/p-Xylenes
 Concen: 0.89 ug/l
 RT: 10.36 min Scan# 1510
 Delta R.T. 0.00 min
 Lab File: VX004643.D
 Acq: 18 Sep 2018 02:12

Tgt Ion	Resp	Lower	Upper
106	100		
91	196.1	157.1	235.7

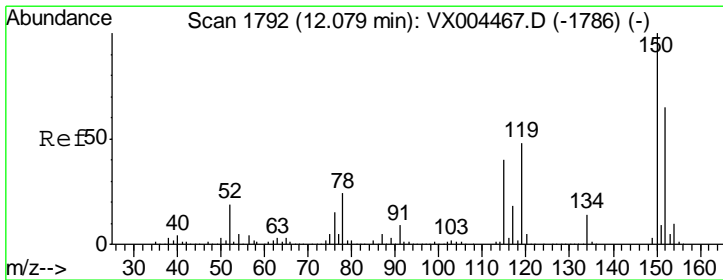
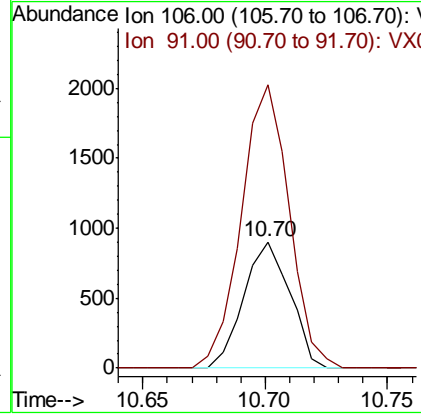
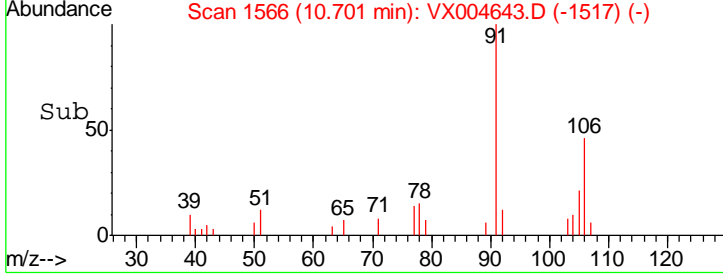
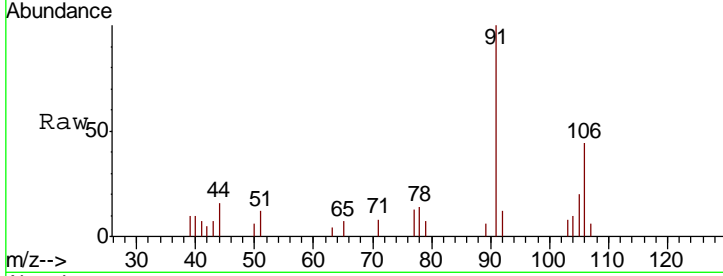




#69
 o-Xylene
 Concen: 0.27 ug/l
 RT: 10.70 min Scan# 1566
 Delta R.T. 0.00 min
 Lab File: VX004643.D
 Acq: 18 Sep 2018 02:12

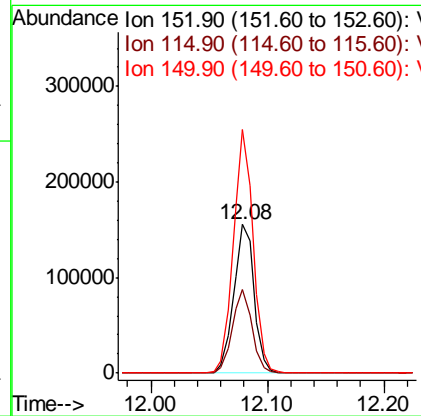
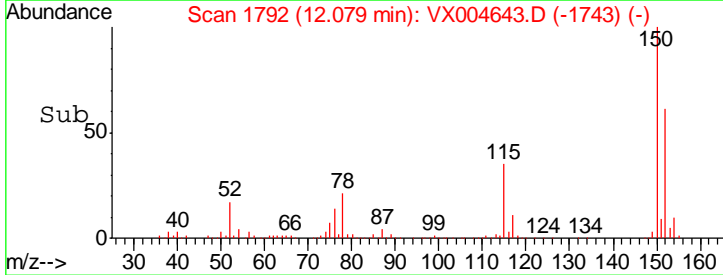
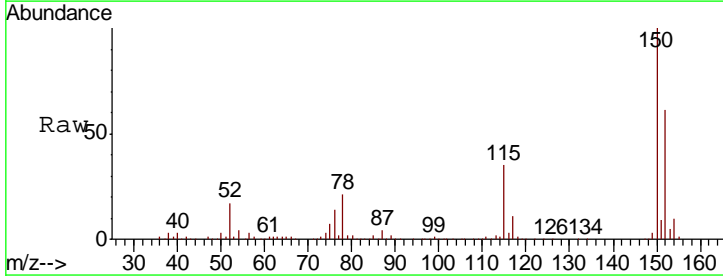
Instrument : MSVOA_X
 ClientSampled :

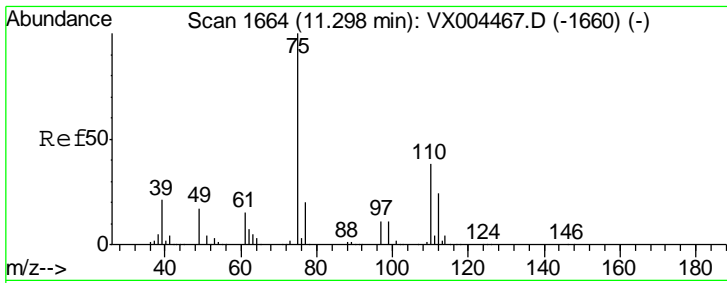
Tgt Ion: 106 Resp: 1192
 Ion Ratio Lower Upper
 106 100
 91 231.1 105.1 315.1



#72
 1,4-Dichlorobenzene-d4
 Concen: 50.00 ug/l
 RT: 12.08 min Scan# 1792
 Delta R.T. 0.00 min
 Lab File: VX004643.D
 Acq: 18 Sep 2018 02:12

Tgt Ion: 152 Resp: 187796
 Ion Ratio Lower Upper
 152 100
 115 54.6 39.0 117.0
 150 159.0 0.0 351.0

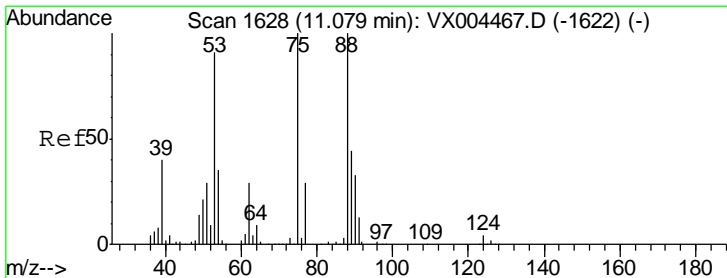
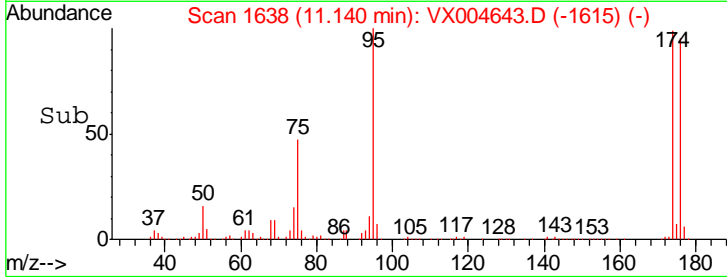
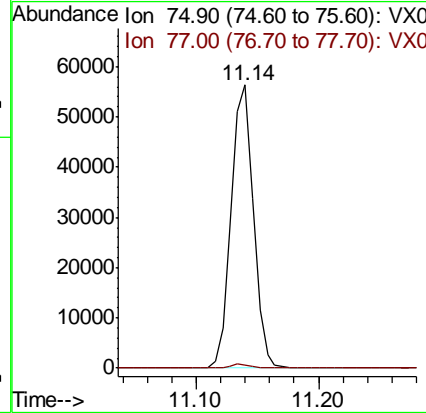
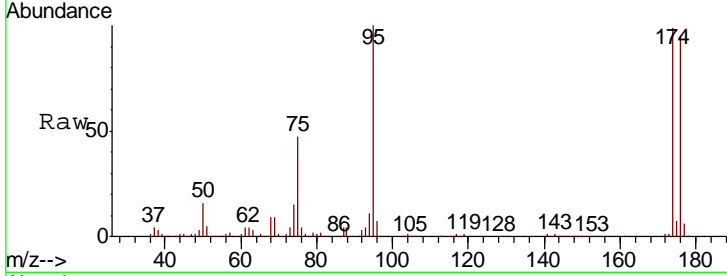




#76
 1,2,3-Trichloropropane
 Concen: 18.71 ug/l
 RT: 11.14 min Scan# 1638
 Delta R.T. -0.16 min
 Lab File: VX004643.D
 Acq: 18 Sep 2018 02:12

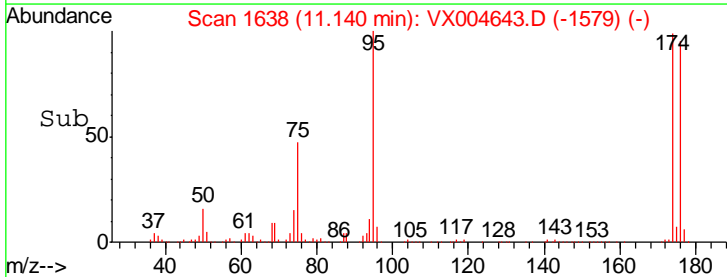
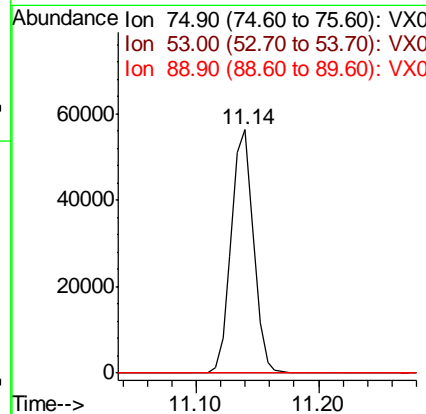
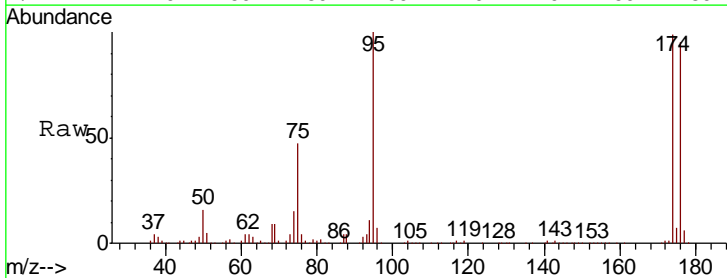
Instrument : MSVOA_X
 ClientSampled :

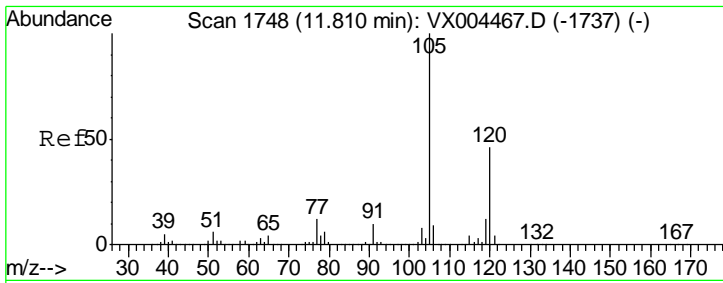
Tgt Ion	Resp	Lower	Upper
75	100		
77	1.3	20.2	60.6#



#81
 trans-1,4-Dichloro-2-butene
 Concen: 59.65 ug/l
 RT: 11.14 min Scan# 1638
 Delta R.T. 0.06 min
 Lab File: VX004643.D
 Acq: 18 Sep 2018 02:12

Tgt Ion	Resp	Lower	Upper
75	100		
53	0.2	80.1	120.1#
89	0.0	37.2	55.8#

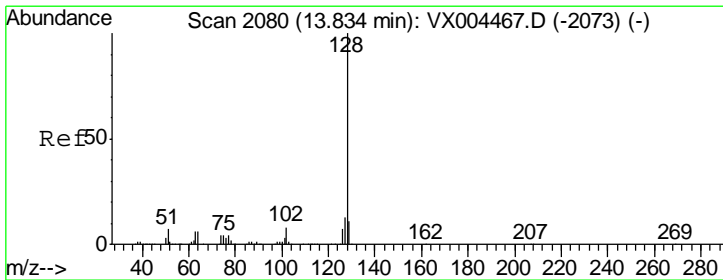
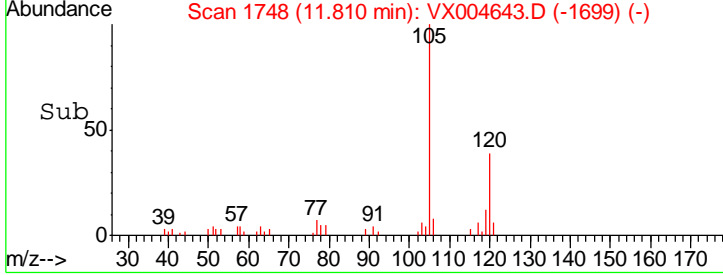
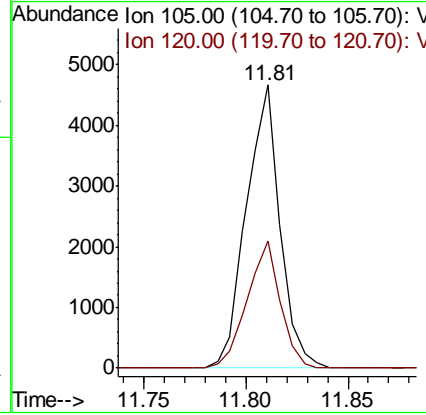
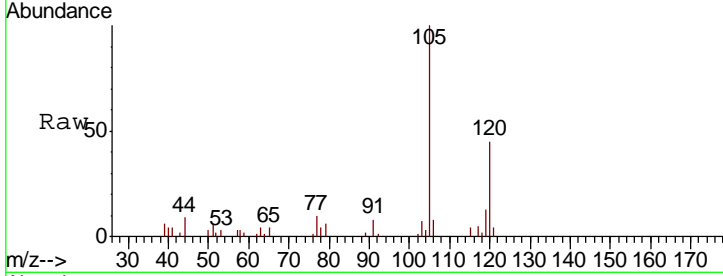




#84
 1,2,4-Trimethylbenzene
 Concen: 0.50 ug/l
 RT: 11.81 min Scan# 1748
 Delta R.T. 0.00 min
 Lab File: VX004643.D
 Acq: 18 Sep 2018 02:12

Instrument : MSVOA_X
 ClientSampled :

Tgt Ion	Resp	Lower	Upper
105	100		
120	44.4	23.2	69.6



#95
 Naphthalene
 Concen: 2.51 ug/l
 RT: 13.83 min Scan# 2080
 Delta R.T. 0.00 min
 Lab File: VX004643.D
 Acq: 18 Sep 2018 02:12

Tgt Ion	Resp	Lower	Upper
128	100		
127	13.0	10.2	15.2
129	11.5	8.6	12.8

