

Data File : VX012457.D
 Acq On : 18 Sep 2019 01:21
 Operator : JC/SP
 Sample : K4858-17
 Misc : 5.0mL/MSVOA_X/WATER
 ALS Vial : 31 Sample Multiplier: 1

Instrument :
 MSVOA_X
 ClientSampleId :
 RE131D2-20190910

Quant Time: Sep 18 03:32:18 2019
 Quant Method : Z:\VOASRV\HPCHEM1\MSVOA_X\METHOD\82X091719W.M
 Quant Title : SW846 8260
 QLast Update : Tue Sep 17 15:27:10 2019
 Response via : Initial Calibration

Internal Standards	R.T.	QIon	Response	Conc	Units	Dev(Min)
1) Pentafluorobenzene	5.65	168	153201	50.00	ug/l	0.00
34) 1,4-Difluorobenzene	6.86	114	250755	50.00	ug/l	0.00
63) Chlorobenzene-d5	10.11	117	218870	50.00	ug/l	0.00
72) 1,4-Dichlorobenzene-d4	12.07	152	97711	50.00	ug/l	0.00

System Monitoring Compounds

33) 1,2-Dichloroethane-d4	6.05	65	107577	48.99	ug/l	0.00
Spiked Amount	50.000		Recovery	=	97.98%	
35) Dibromofluoromethane	5.49	113	77011	50.74	ug/l	0.00
Spiked Amount	50.000		Recovery	=	101.48%	
50) Toluene-d8	8.71	98	294944	52.50	ug/l	0.00
Spiked Amount	50.000		Recovery	=	105.00%	
62) 4-Bromofluorobenzene	11.14	95	113855	48.81	ug/l	0.00
Spiked Amount	50.000		Recovery	=	97.62%	

Target Compounds

	R.T.	QIon	Response	Conc	Units	Qvalue
2) Dichlorodifluoromethane	1.19	85	999	1.361	ug/l #	61
3) Chloromethane	1.32	50	535	0.635	ug/l #	86
4) Vinyl Chloride	1.39	62	213	0.234	ug/l #	74
5) Bromomethane	1.63	94	124	0.347	ug/l #	4
6) Chloroethane	1.66	64	238	0.334	ug/l #	51
7) Trichlorofluoromethane	1.93	101	529	0.317	ug/l	91
8) Diethyl Ether	2.17	74	208	0.276	ug/l	90
9) 1,1,2-Trichlorotrifluoroet	2.37	101	359725	297.934	ug/l	99
10) Methyl Iodide	2.61	142	40	4.477	ug/l #	35
11) Tert butyl alcohol	3.03	59	1654	Below Cal		99
12) 1,1-Dichloroethene	2.37	96	4278	4.442	ug/l	78
13) Acrolein	2.27	56	309	Below Cal	#	46
16) Acetone	2.43	43	4441	Below Cal		99
17) Carbon Disulfide	2.56	76	211	1.956	ug/l #	75
20) Methylene Chloride	2.86	84	507	0.382	ug/l #	73
21) trans-1,2-Dichloroethene	3.15	96	372	0.372	ug/l #	70
22) Diisopropyl ether	3.85	45	1487	0.283	ug/l #	74
24) 1,1-Dichloroethane	3.69	63	1430	0.569	ug/l #	75
25) 2-Butanone	4.67	43	460	0.302	ug/l	95
27) cis-1,2-Dichloroethene	4.59	96	12823	8.582	ug/l	86
29) Tetrahydrofuran	5.11	42	270	0.321	ug/l #	49
30) Chloroform	5.21	83	1548	0.537	ug/l #	67
32) 1,1,1-Trichloroethane	5.48	97	1086	0.450	ug/l #	49
36) 1,1-Dichloropropene	5.65	75	13311	8.734	ug/l #	54
38) Carbon Tetrachloride	5.78	117	663	0.350	ug/l #	79
39) Methylcyclohexane	7.20	83	2591	1.749	ug/l #	1
42) 1,2-Dichloroethane	6.19	62	1438	0.640	ug/l	79
44) Trichloroethene	7.21	130	223748	175.517	ug/l	98
49) 1,4-Dioxane	7.73	88	1989	41.292	ug/l	97
55) 1,1,2-Trichloroethane	9.22	97	364	0.226	ug/l #	47
60) Dibromochloromethane	9.33	129	22909	13.980	ug/l #	11
64) Tetrachloroethene	9.33	164	22670	22.603	ug/l	99
71) Bromoform	11.12	173	199	3.015	ug/l #	29
76) 1,2,3-Trichloropropane	11.14	75	59135	26.347	ug/l #	38

Data Path : Z:\VOASRV\HPCHEM1\MSVOA_X\DATA\VX091719\
Quantitation Report (Not Reviewed)

Data File : VX012457.D
Acq On : 18 Sep 2019 01:21
Operator : JC/SP
Sample : K4858-17
Misc : 5.0mL/MSVOA_X/WATER
ALS Vial : 31 Sample Multiplier: 1

Instrument :
MSVOA_X
ClientSampleId :
RE131D2-20190910

Quant Time: Sep 18 03:32:18 2019
Quant Method : Z:\VOASRV\HPCHEM1\MSVOA_X\METHOD\82X091719W.M
Quant Title : SW846 8260
QLast Update : Tue Sep 17 15:27:10 2019
Response via : Initial Calibration

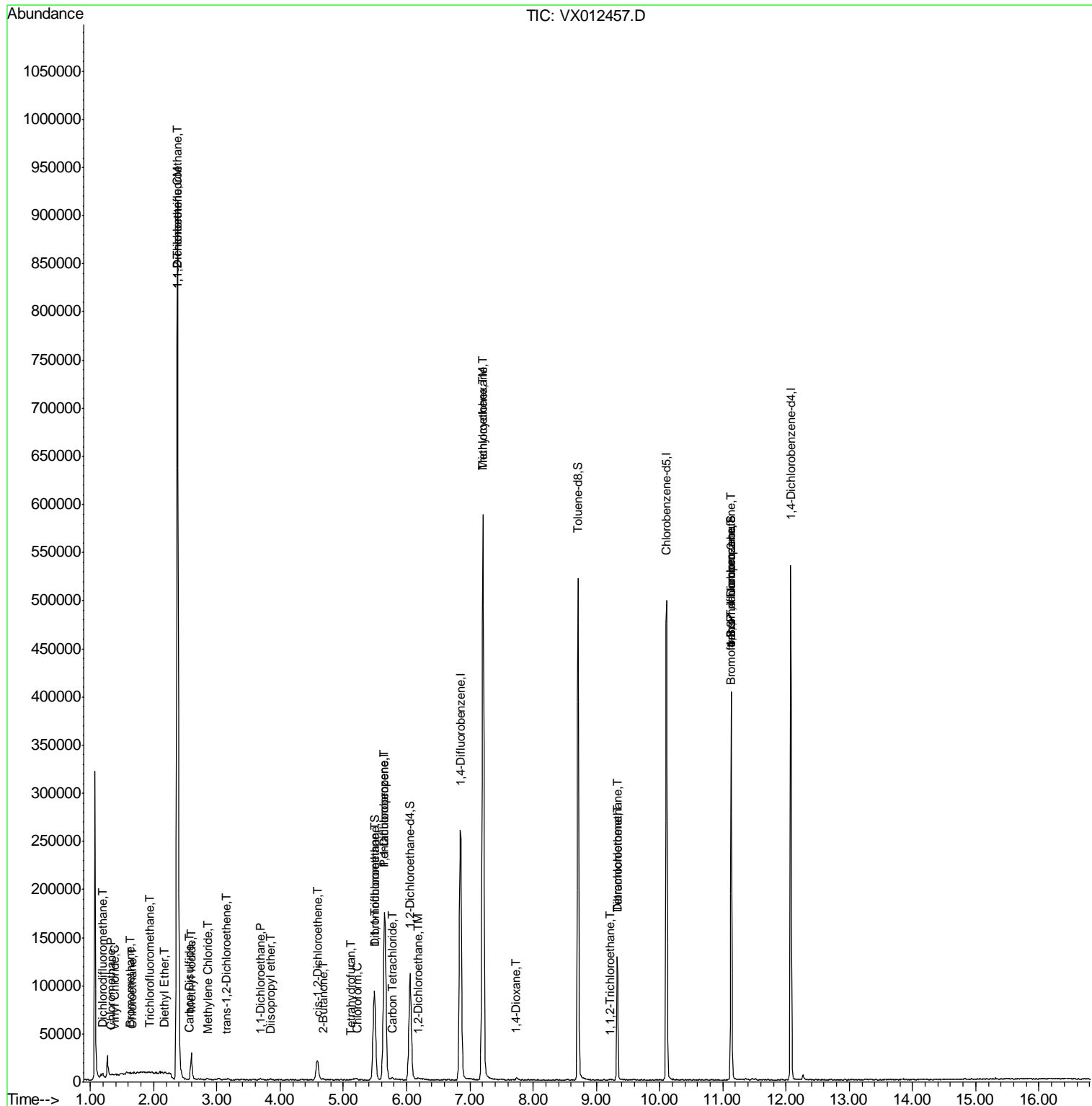
Internal Standards	R.T.	QIon	Response	Conc	Units	Dev(Min)
81) trans-1,4-Dichloro-2-buten	11.14	75	59135	70.949	ug/l #	8

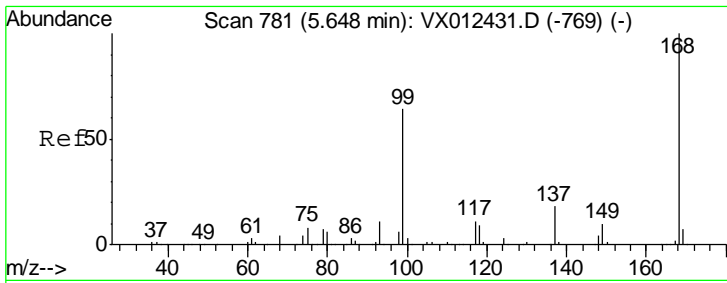
(#) = qualifier out of range (m) = manual integration (+) = signals summed

Data File : VX012457.D
Acq On : 18 Sep 2019 01:21
Operator : JC/SP
Sample : K4858-17
Misc : 5.0mL/MSVOA_X/WATER
ALS Vial : 31 Sample Multiplier: 1

Instrument :
MSVOA_X
ClientSampleId :
RE131D2-20190910

Quant Time: Sep 18 03:32:18 2019
Quant Method : Z:\VOASRV\HPCHEM1\MSVOA_X\METHOD\82X091719W.M
Quant Title : SW846 8260
QLast Update : Tue Sep 17 15:27:10 2019
Response via : Initial Calibration

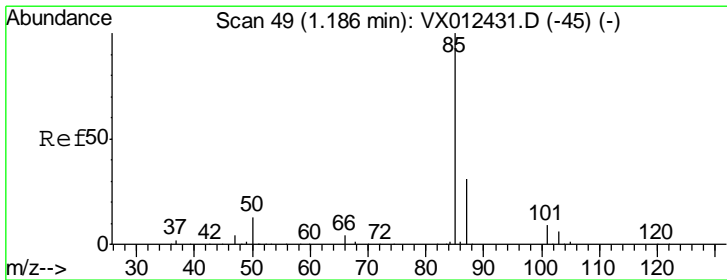
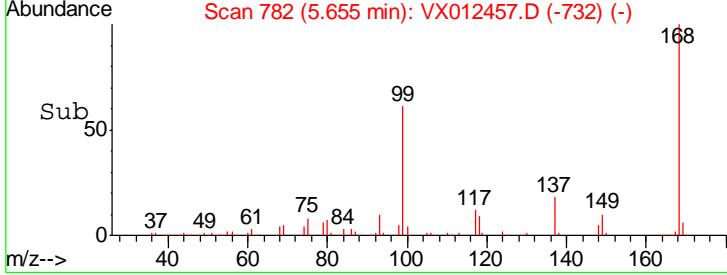
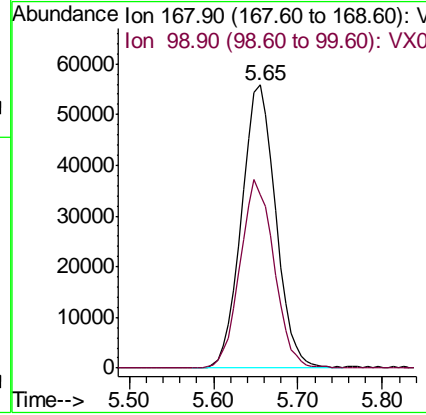
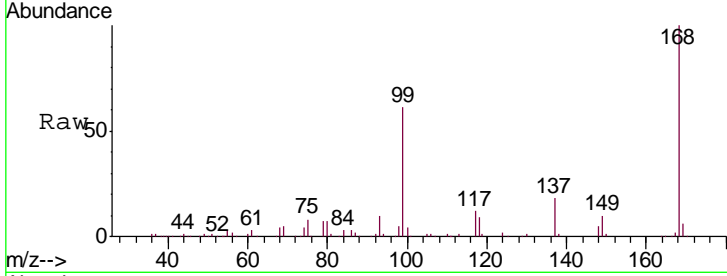




#1
 Pentafluorobenzene
 Concen: 50.000 ug/l
 RT: 5.65 min Scan# 782
 Delta R.T. 0.01 min
 Lab File: VX012457.D
 Acq: 18 Sep 2019 01:21

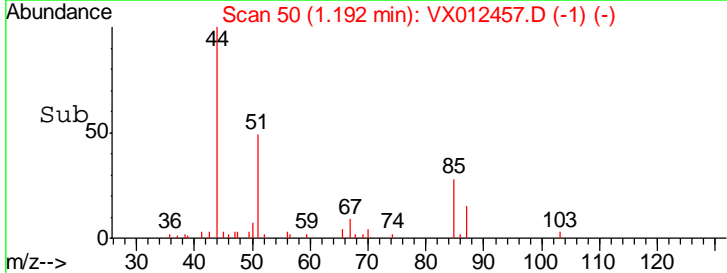
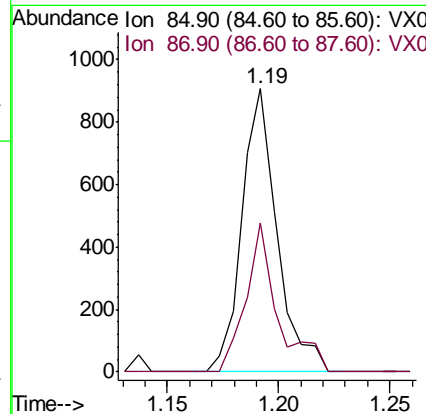
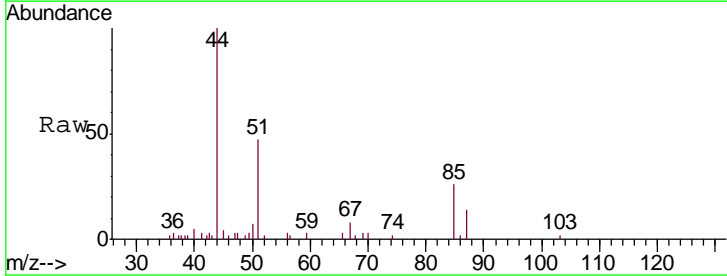
Instrument : MSVOA_X
 ClientSampleId : RE131D2-20190910

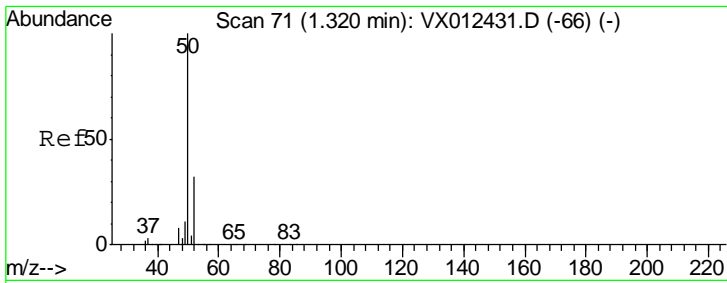
Tgt Ion: 168 Resp: 153201
 Ion Ratio Lower Upper
 168 100
 99 61.2 51.4 77.2



#2
 Dichlorodifluoromethane
 Concen: 1.361 ug/l
 RT: 1.19 min Scan# 50
 Delta R.T. 0.01 min
 Lab File: VX012457.D
 Acq: 18 Sep 2019 01:21

Tgt Ion: 85 Resp: 999
 Ion Ratio Lower Upper
 85 100
 87 52.5 15.6 46.8#

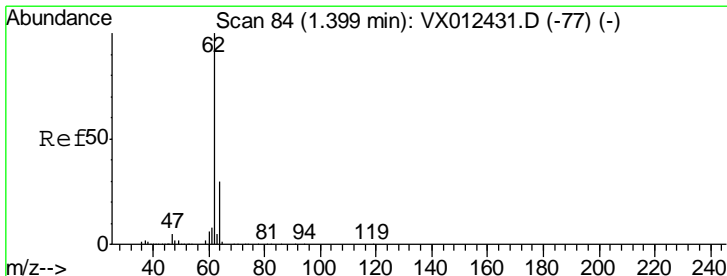
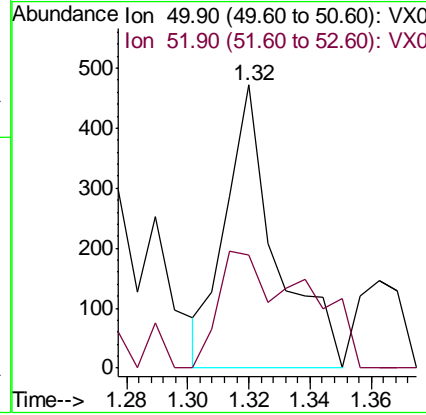
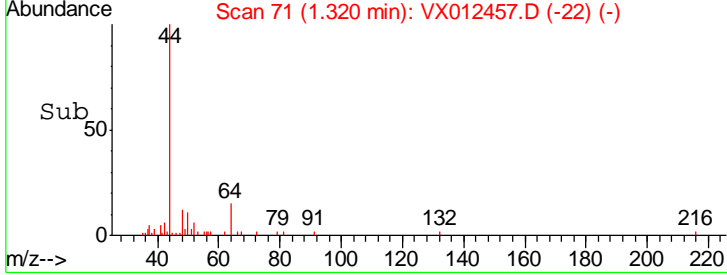
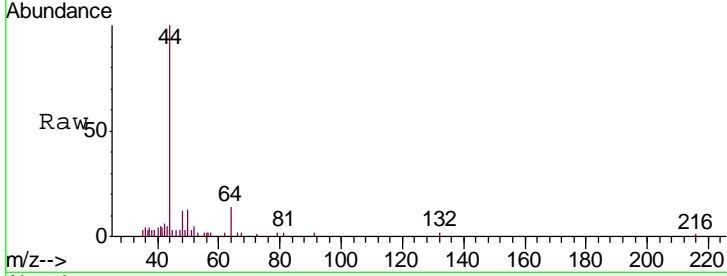




#3
 Chloromethane
 Concen: 0.635 ug/l
 RT: 1.32 min Scan# 71
 Delta R.T. 0.00 min
 Lab File: VX012457.D
 Acq: 18 Sep 2019 01:21

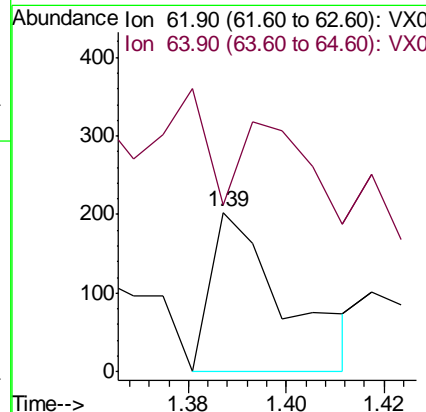
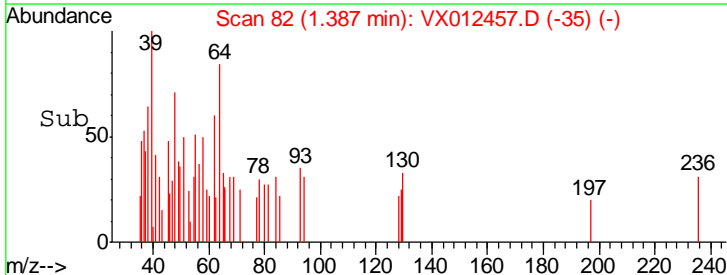
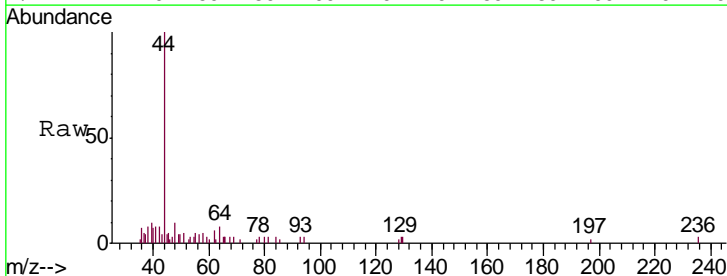
Instrument : MSVOA_X
 ClientSampled : RE131D2-20190910

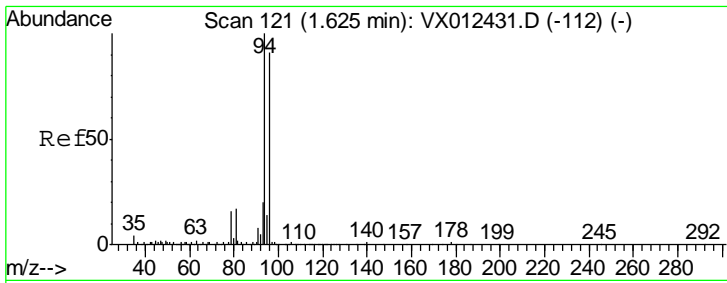
Tgt Ion: 50 Resp: 535
 Ion Ratio Lower Upper
 50 100
 52 40.0 25.7 38.5#



#4
 Vinyl Chloride
 Concen: 0.234 ug/l
 RT: 1.39 min Scan# 82
 Delta R.T. -0.01 min
 Lab File: VX012457.D
 Acq: 18 Sep 2019 01:21

Tgt Ion: 62 Resp: 213
 Ion Ratio Lower Upper
 62 100
 64 15.9 24.2 36.2#

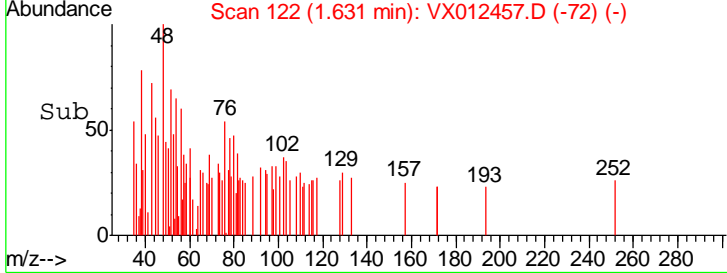
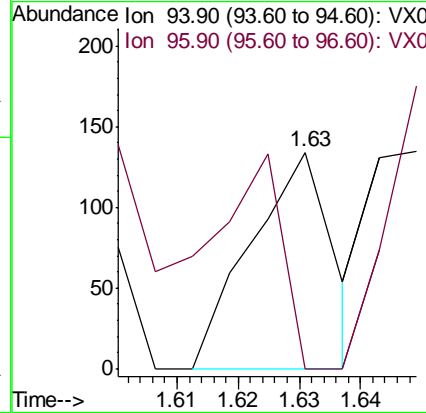
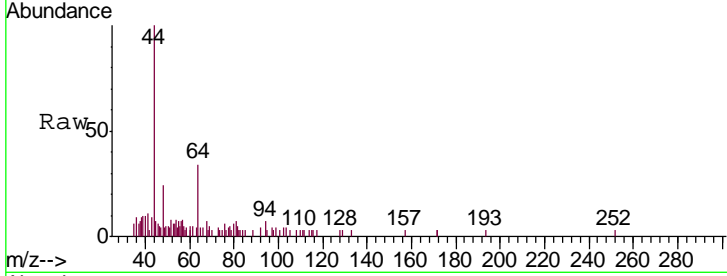




#5
 Bromomethane
 Concen: 0.347 ug/l
 RT: 1.63 min Scan# 122
 Delta R.T. 0.01 min
 Lab File: VX012457.D
 Acq: 18 Sep 2019 01:21

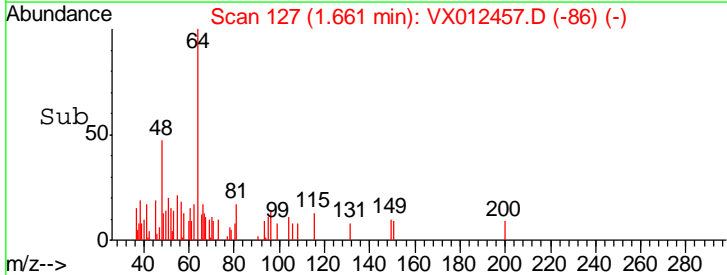
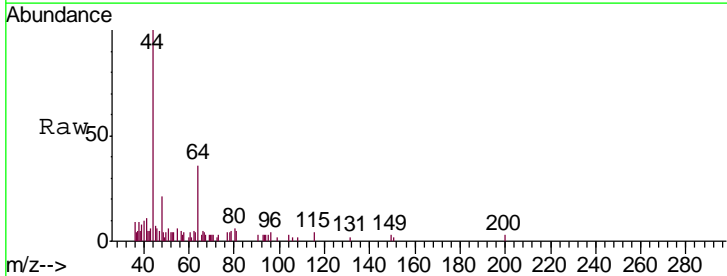
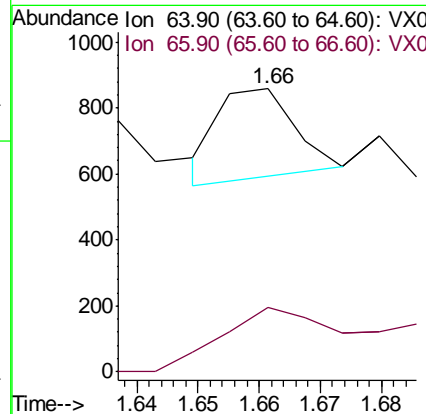
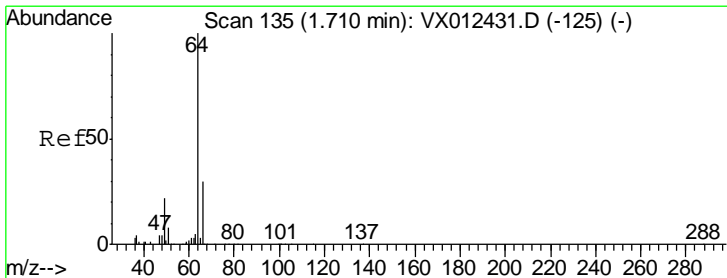
Instrument : MSVOA_X
 ClientSampleId : RE131D2-20190910

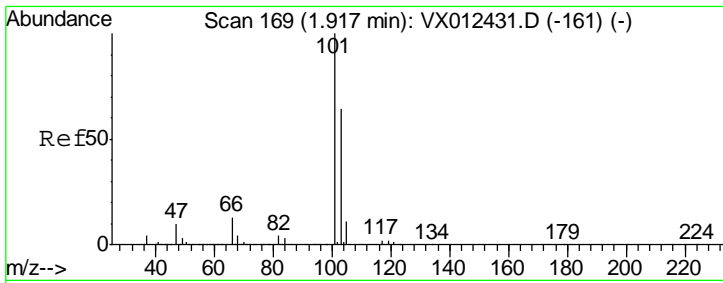
Tgt Ion: 94 Resp: 124
 Ion Ratio Lower Upper
 94 100
 96 0.0 72.8 109.2#



#6
 Chloroethane
 Concen: 0.334 ug/l
 RT: 1.66 min Scan# 127
 Delta R.T. -0.05 min
 Lab File: VX012457.D
 Acq: 18 Sep 2019 01:21

Tgt Ion: 64 Resp: 238
 Ion Ratio Lower Upper
 64 100
 66 56.5 24.0 36.0#

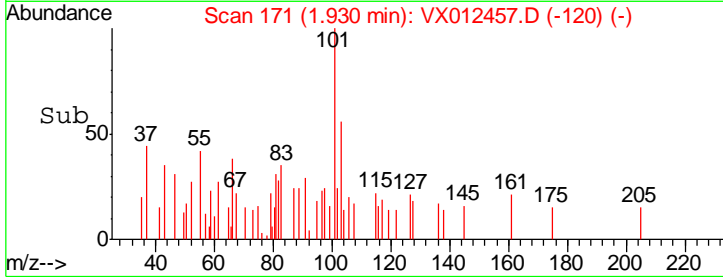
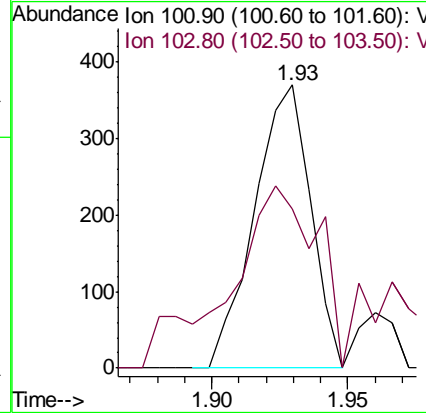
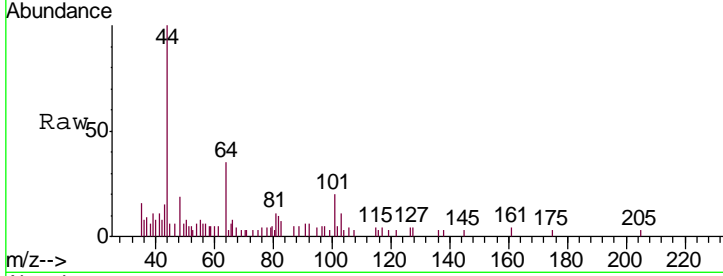




#7
 Trichlorofluoromethane
 Concen: 0.317 ug/l
 RT: 1.93 min Scan# 171
 Delta R.T. 0.01 min
 Lab File: VX012457.D
 Acq: 18 Sep 2019 01:21

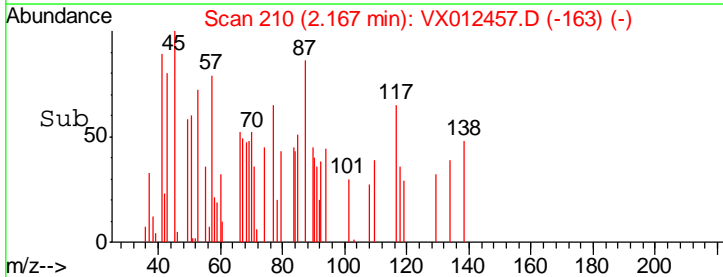
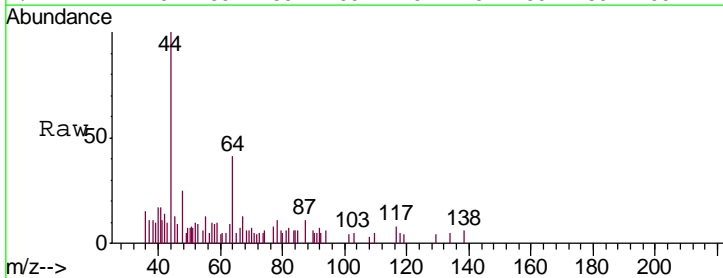
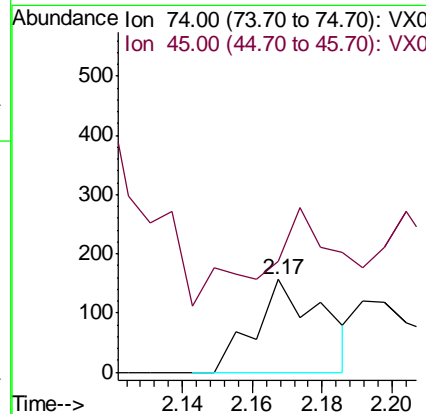
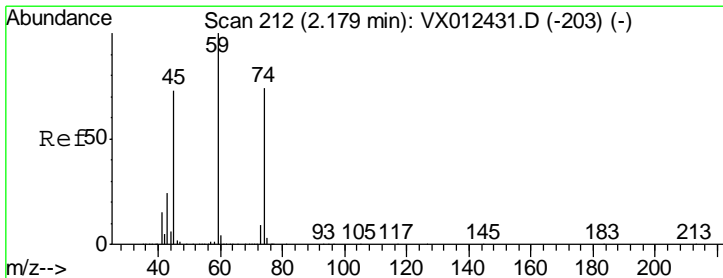
Instrument :
 MSVOA_X
 ClientSampled :
 RE131D2-20190910

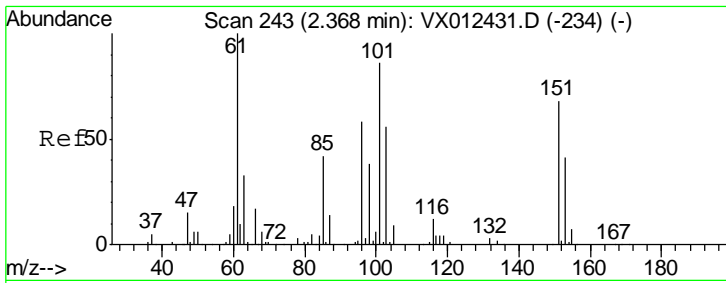
Tgt Ion: 101 Resp: 529
 Ion Ratio Lower Upper
 101 100
 103 56.5 51.0 76.4



#8
 Diethyl Ether
 Concen: 0.276 ug/l
 RT: 2.17 min Scan# 210
 Delta R.T. -0.01 min
 Lab File: VX012457.D
 Acq: 18 Sep 2019 01:21

Tgt Ion: 74 Resp: 208
 Ion Ratio Lower Upper
 74 100
 45 89.9 49.9 149.7

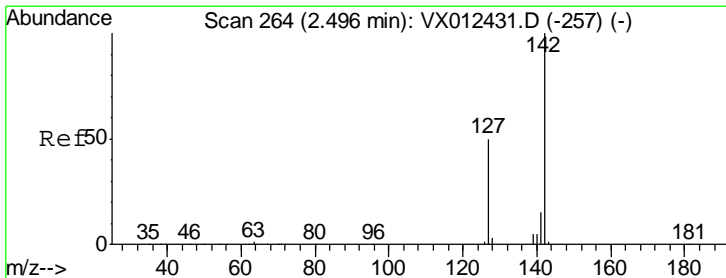
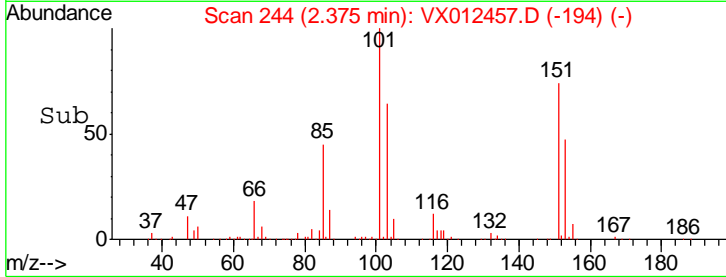
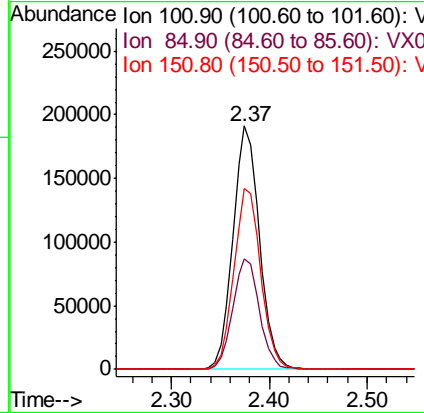
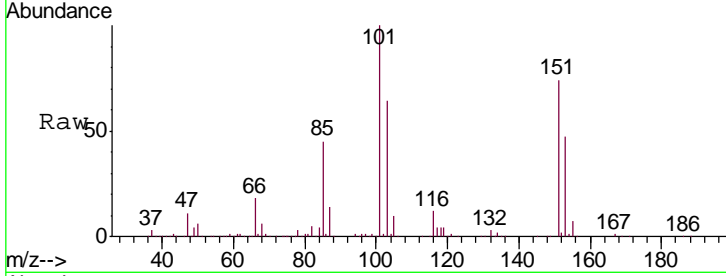




#9
 1,1,2-Trichlorotrifluoroethane
 Concen: 297.934 ug/l
 RT: 2.37 min Scan# 244
 Delta R.T. 0.01 min
 Lab File: VX012457.D
 Acq: 18 Sep 2019 01:21

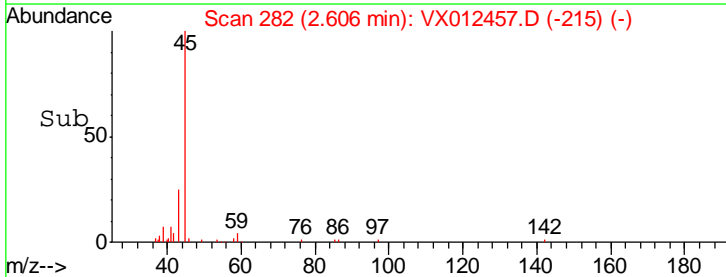
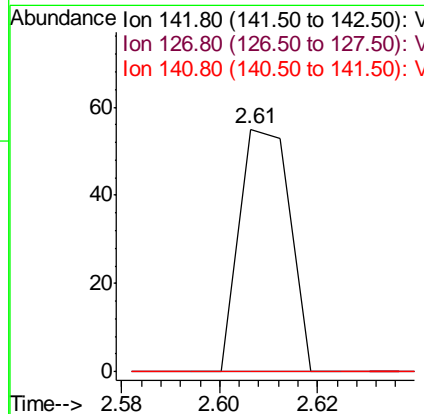
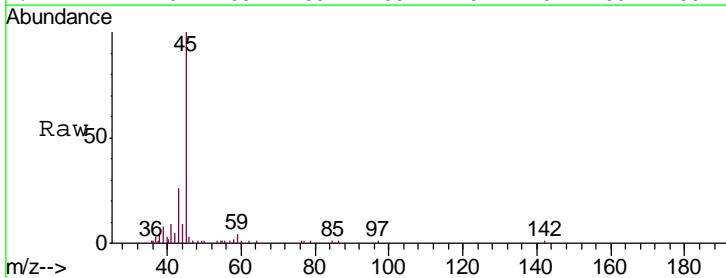
Instrument : MSVOA_X
 ClientSampled : RE131D2-20190910

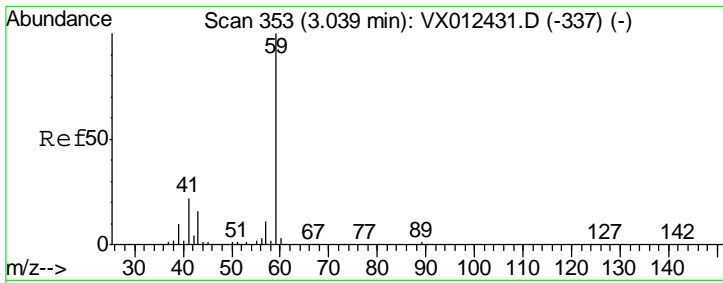
Tgt Ion	Resp	Lower	Upper
101	100		
85	45.5	37.3	55.9
151	75.2	61.0	91.4



#10
 Methyl Iodide
 Concen: 4.477 ug/l
 RT: 2.61 min Scan# 282
 Delta R.T. 0.11 min
 Lab File: VX012457.D
 Acq: 18 Sep 2019 01:21

Tgt Ion	Resp	Lower	Upper
142	100		
127	0.0	40.8	61.2#
141	0.0	12.1	18.1#

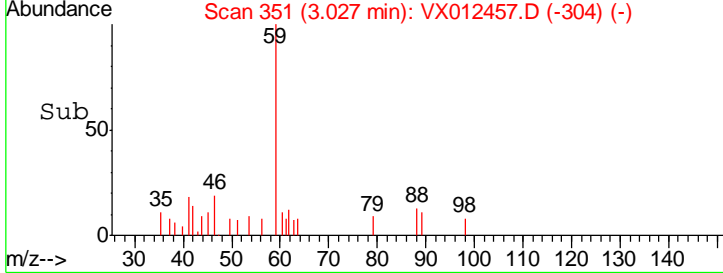
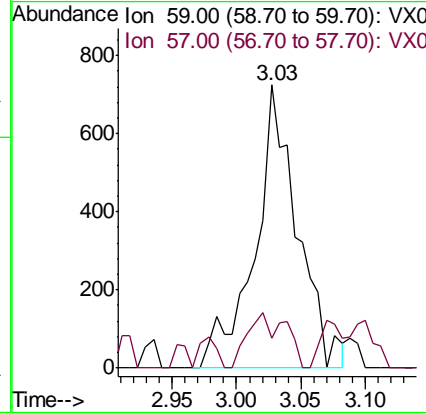
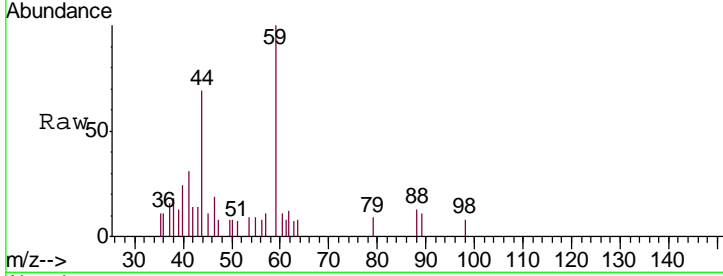




#11
 Tert butyl alcohol
 Concen: Below Cal
 RT: 3.03 min Scan# 351
 Delta R.T. -0.01 min
 Lab File: VX012457.D
 Acq: 18 Sep 2019 01:21

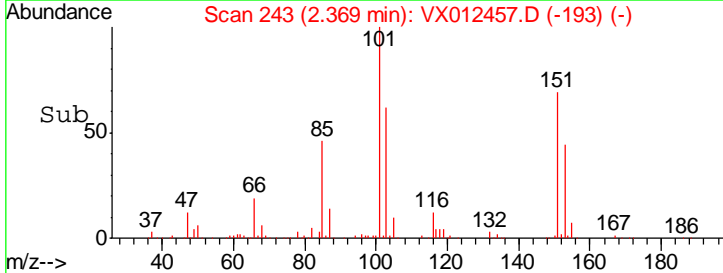
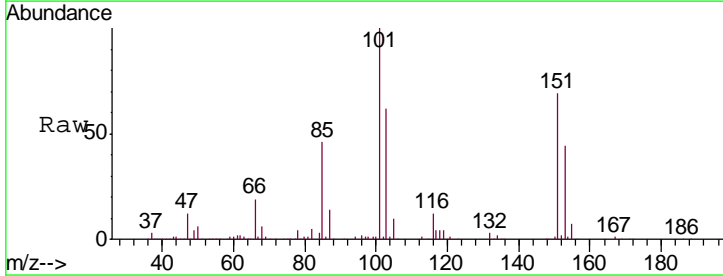
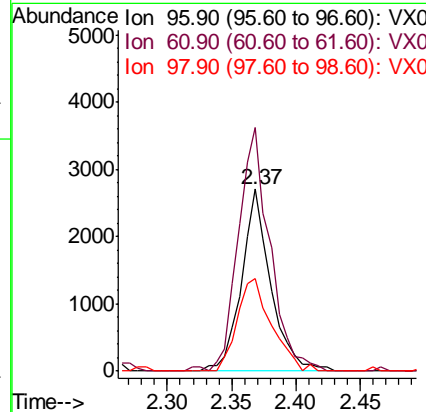
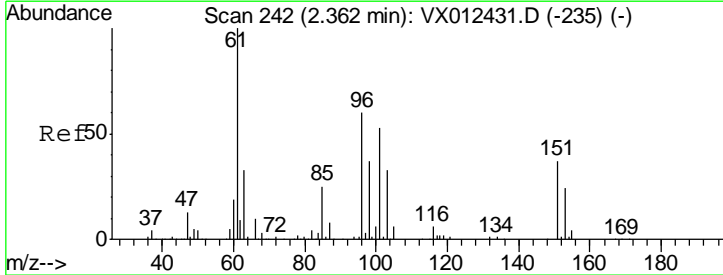
Instrument : MSVOA_X
 ClientSampleId : RE131D2-20190910

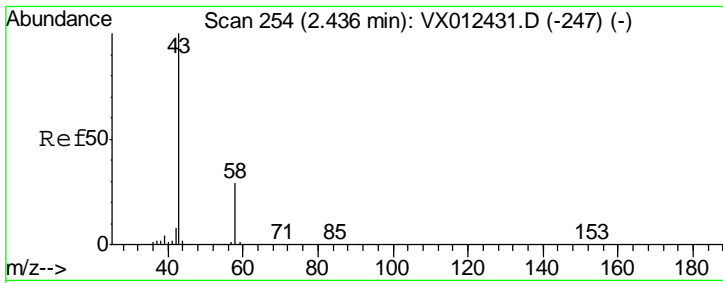
Tgt Ion	Resp	Lower	Upper
59	1654		
57	10.6	8.3	12.5



#12
 1,1-Dichloroethene
 Concen: 4.442 ug/l
 RT: 2.37 min Scan# 243
 Delta R.T. 0.01 min
 Lab File: VX012457.D
 Acq: 18 Sep 2019 01:21

Tgt Ion	Resp	Lower	Upper
96	4278		
61	134.1	133.8	200.6
98	51.0	49.9	74.9

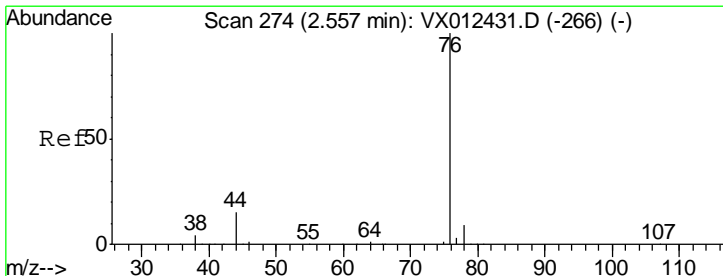
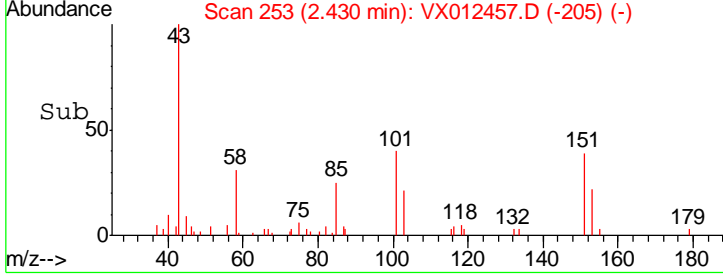
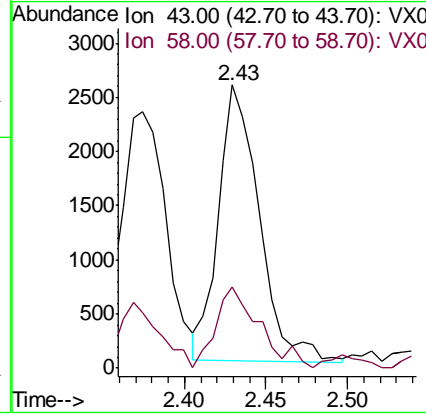
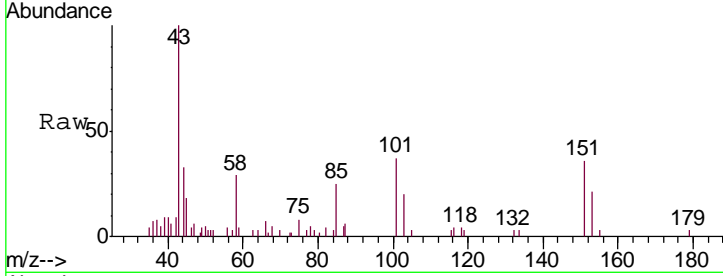




#16
 Acetone
 Concen: Below Cal
 RT: 2.43 min Scan# 253
 Delta R.T. -0.01 min
 Lab File: VX012457.D
 Acq: 18 Sep 2019 01:21

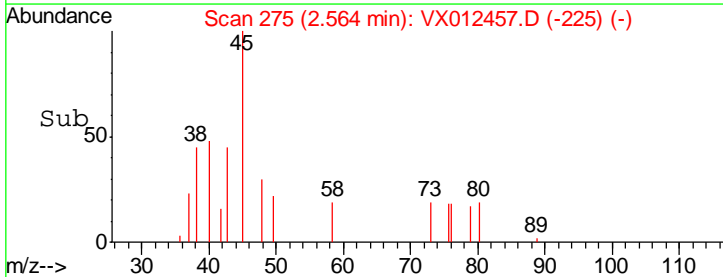
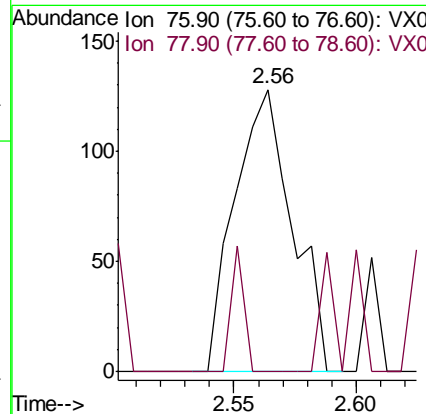
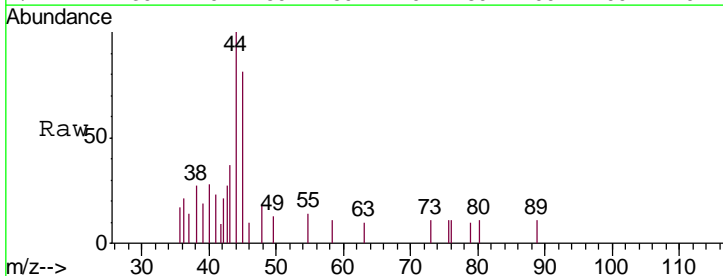
Instrument : MSVOA_X
 ClientSampleID : RE131D2-20190910

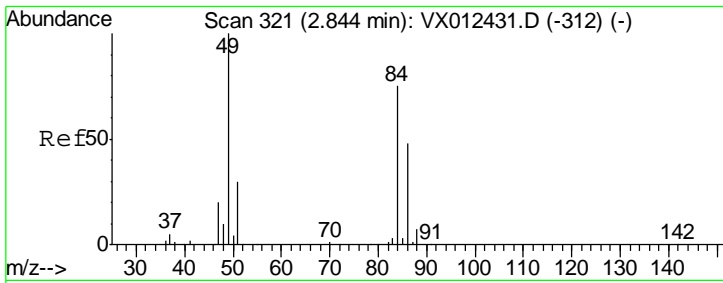
Tgt Ion	Resp	Lower	Upper
43	100		
58	29.8	23.3	34.9



#17
 Carbon Disulfide
 Concen: 1.956 ug/l
 RT: 2.56 min Scan# 275
 Delta R.T. 0.01 min
 Lab File: VX012457.D
 Acq: 18 Sep 2019 01:21

Tgt Ion	Resp	Lower	Upper
76	100		
78	0.0	7.3	10.9#

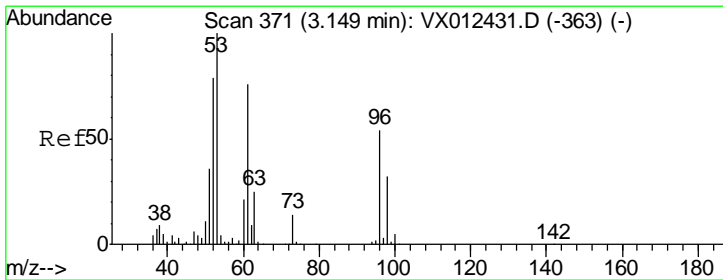
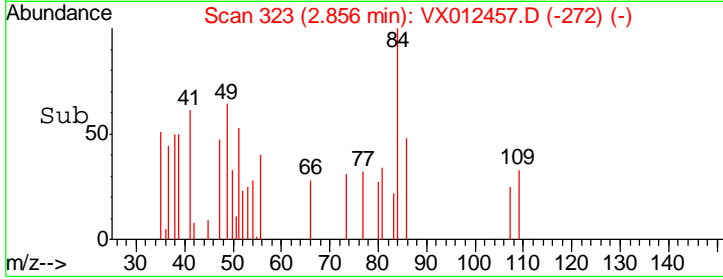
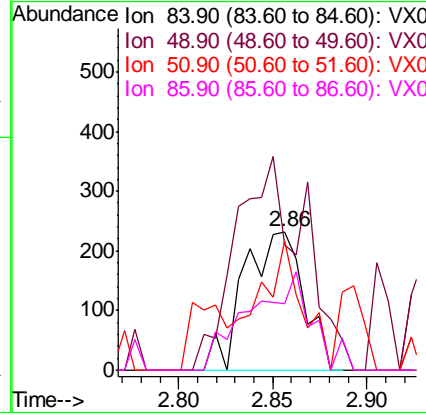
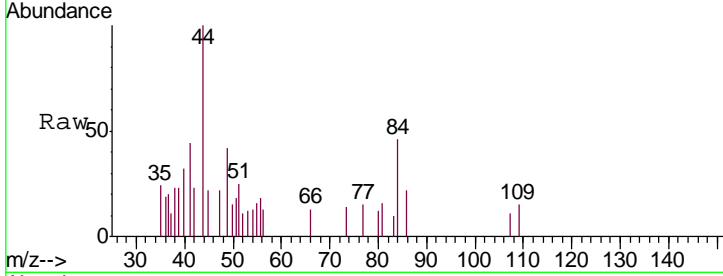




#20
 Methylene Chloride
 Concen: 0.382 ug/l
 RT: 2.86 min Scan# 323
 Delta R.T. 0.01 min
 Lab File: VX012457.D
 Acq: 18 Sep 2019 01:21

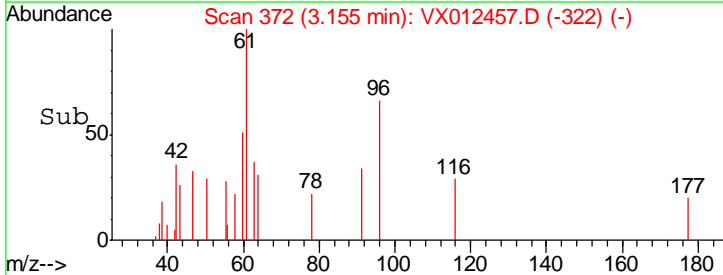
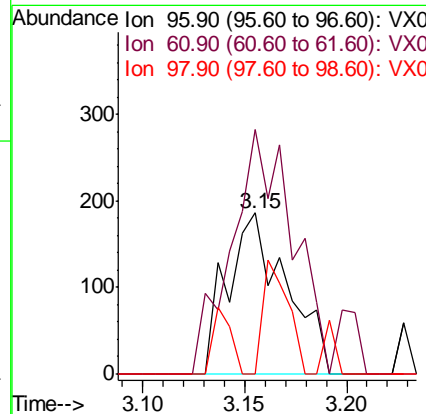
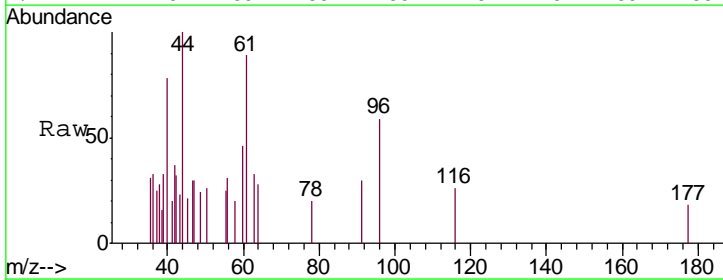
Instrument : MSVOA_X
 ClientSampleId : RE131D2-20190910

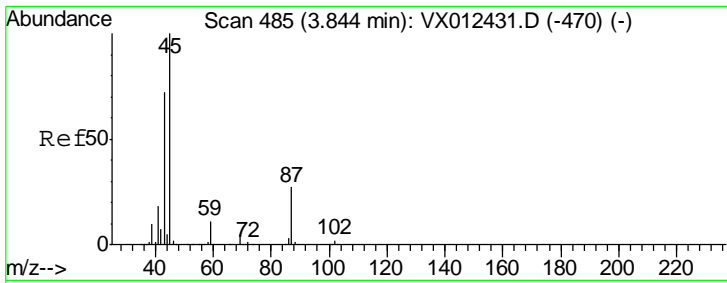
Tgt Ion	Resp	Lower	Upper
84	100		
49	90.9	106.8	160.2#
51	44.0	32.3	48.5
86	48.3	51.3	76.9#



#21
 trans-1,2-Dichloroethene
 Concen: 0.372 ug/l
 RT: 3.15 min Scan# 372
 Delta R.T. 0.01 min
 Lab File: VX012457.D
 Acq: 18 Sep 2019 01:21

Tgt Ion	Resp	Lower	Upper
96	100		
61	151.6	112.0	168.0
98	0.0	47.8	71.8#

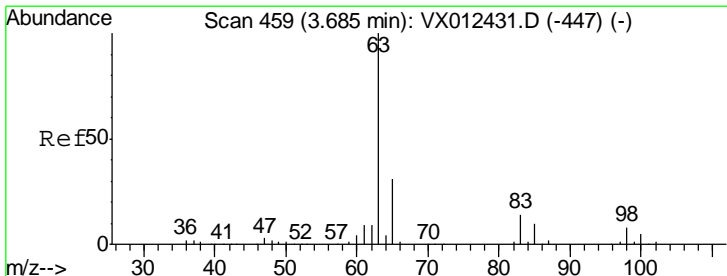
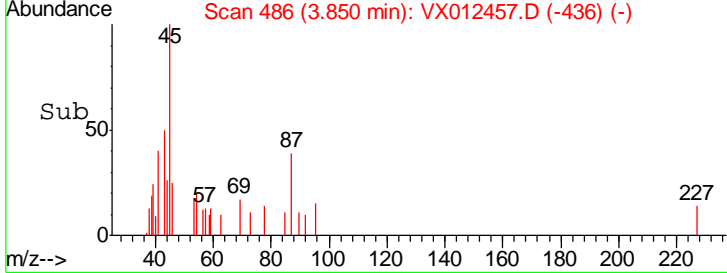
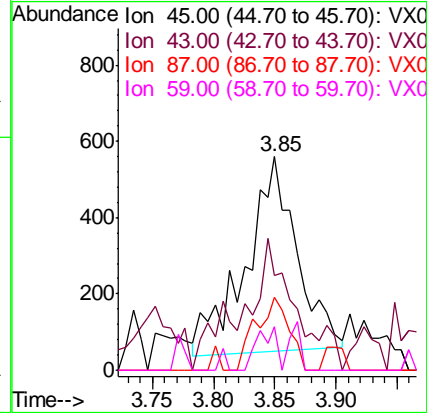
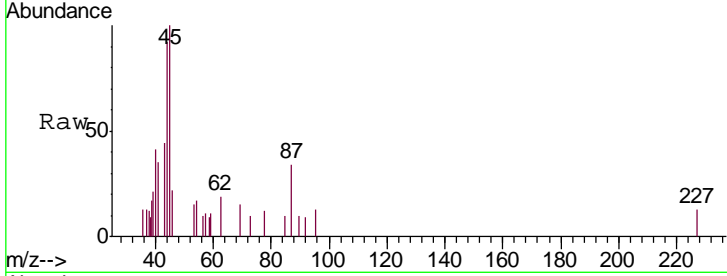




#22
 Diisopropyl ether
 Concen: 0.283 ug/l
 RT: 3.85 min Scan# 486
 Delta R.T. 0.01 min
 Lab File: VX012457.D
 Acq: 18 Sep 2019 01:21

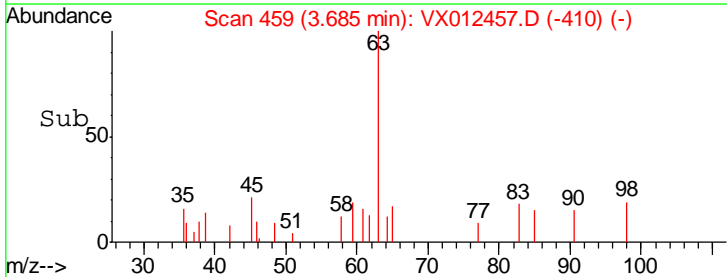
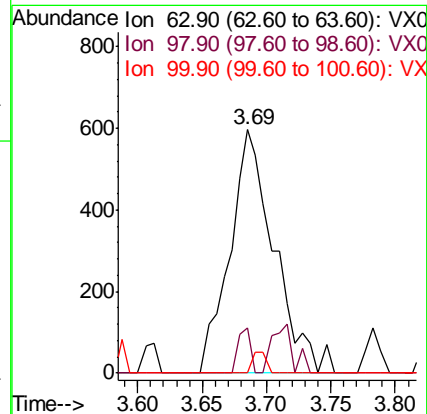
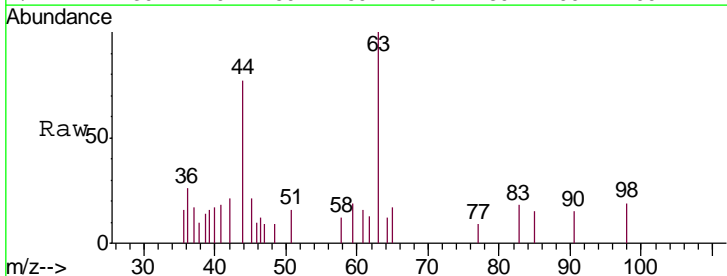
Instrument : MSVOA_X
 ClientSampleId : RE131D2-20190910

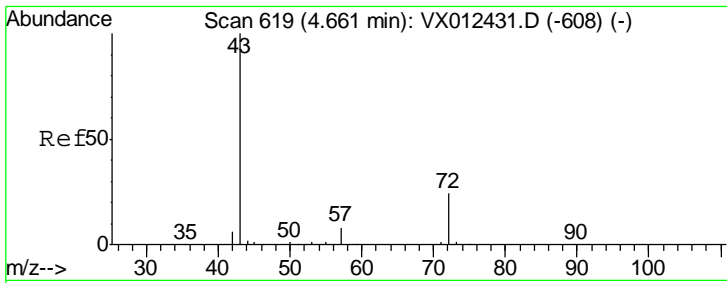
Tgt Ion	Resp	Lower	Upper
45	1487		
43	50.4	57.8	86.8#
87	38.8	21.3	31.9#
59	23.5	8.5	12.7#



#24
 1,1-Dichloroethane
 Concen: 0.569 ug/l
 RT: 3.69 min Scan# 459
 Delta R.T. 0.00 min
 Lab File: VX012457.D
 Acq: 18 Sep 2019 01:21

Tgt Ion	Resp	Lower	Upper
63	1430		
98	18.8	3.9	11.7#
100	0.0	2.3	6.9#

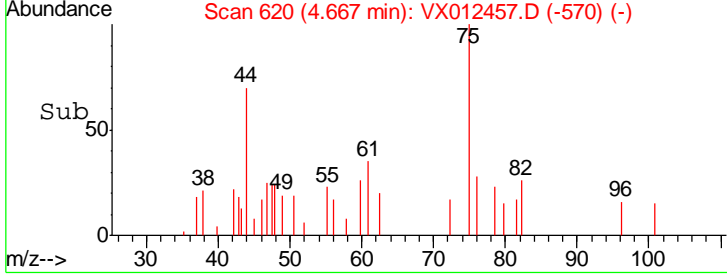
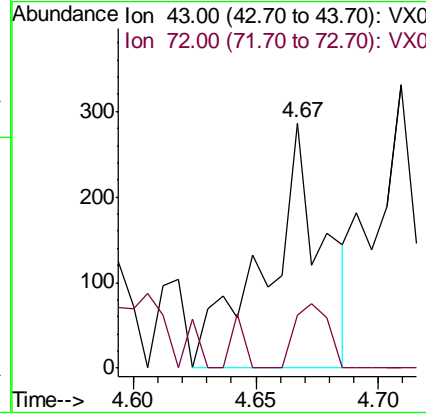
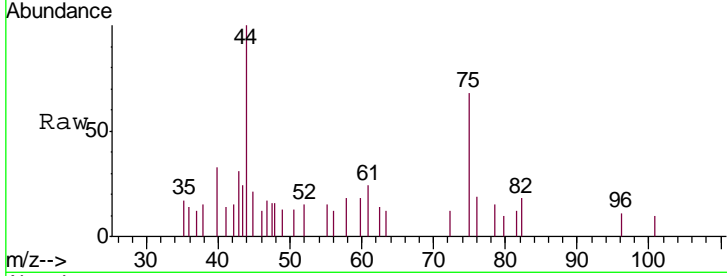




#25
 2-Butanone
 Concen: 0.302 ug/l
 RT: 4.67 min Scan# 620
 Delta R.T. 0.01 min
 Lab File: VX012457.D
 Acq: 18 Sep 2019 01:21

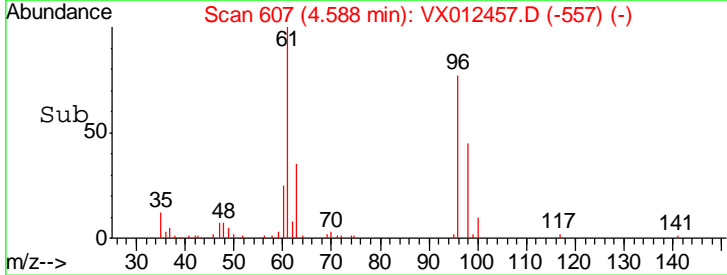
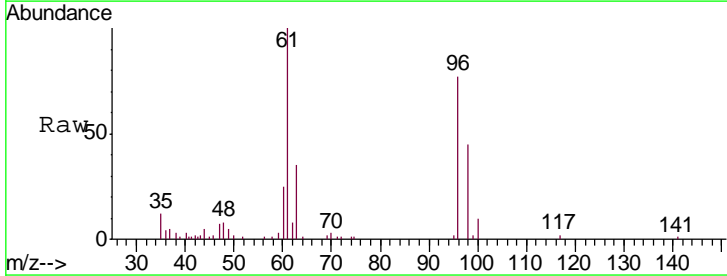
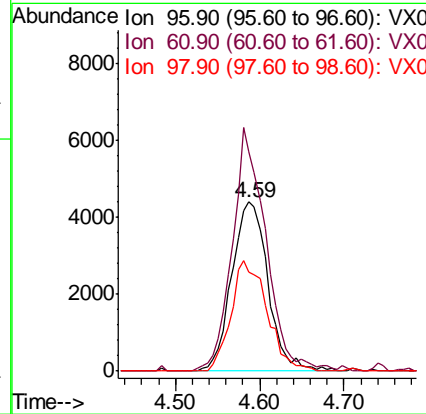
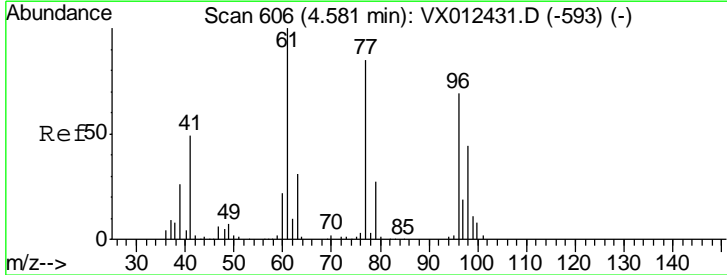
Instrument : MSVOA_X
 ClientSampled : RE131D2-20190910

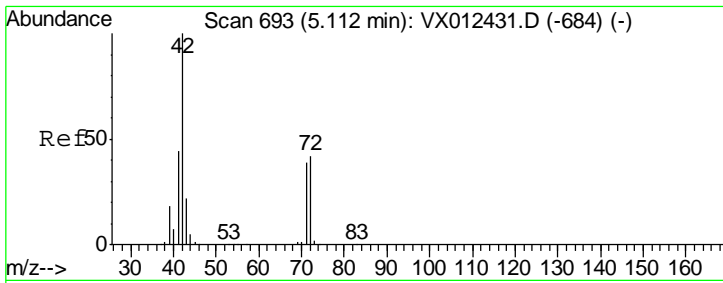
Tgt Ion	Resp	Lower	Upper
43	100		
72	21.6	19.2	28.8



#27
 cis-1,2-Dichloroethene
 Concen: 8.582 ug/l
 RT: 4.59 min Scan# 607
 Delta R.T. 0.01 min
 Lab File: VX012457.D
 Acq: 18 Sep 2019 01:21

Tgt Ion	Resp	Lower	Upper
96	100		
61	133.7	0.0	319.4
98	64.9	0.0	130.6

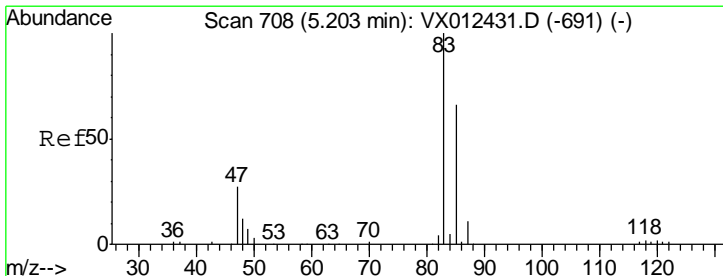
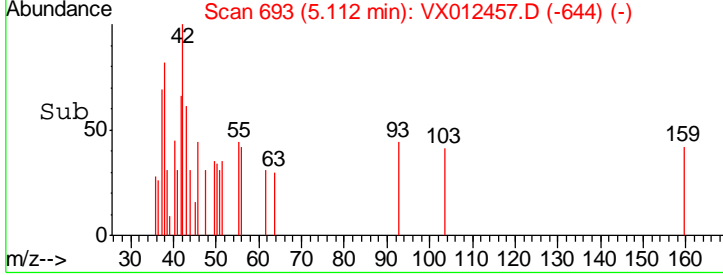
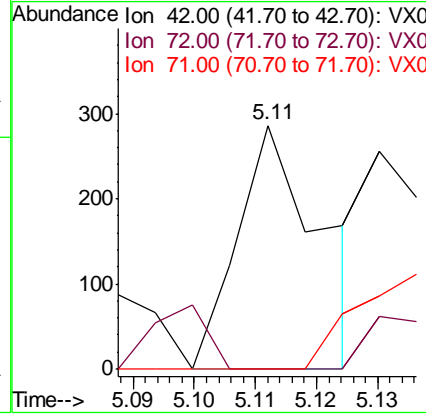
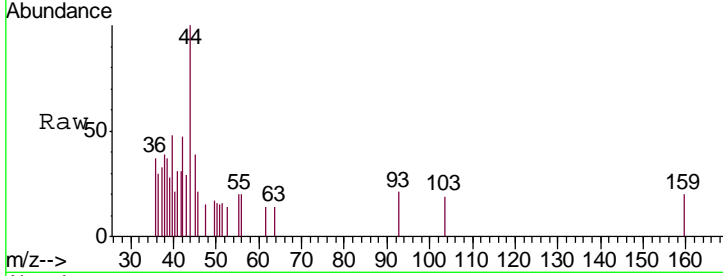




#29
 Tetrahydrofuran
 Concen: 0.321 ug/l
 RT: 5.11 min Scan# 693
 Delta R.T. 0.00 min
 Lab File: VX012457.D
 Acq: 18 Sep 2019 01:21

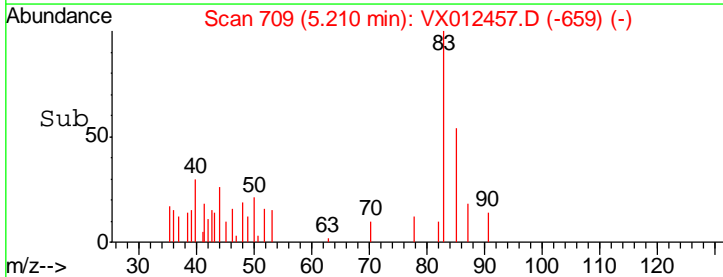
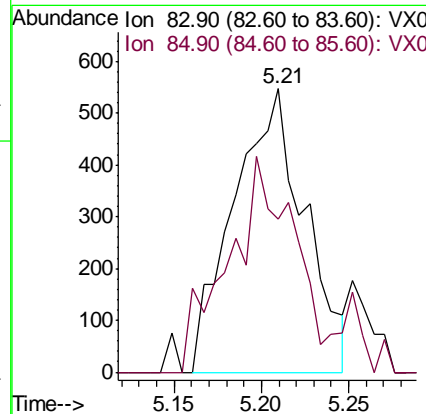
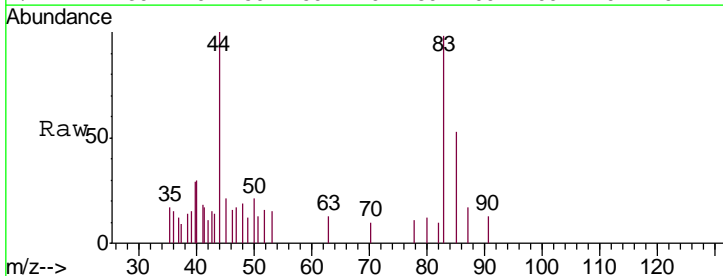
Instrument : MSVOA_X
 ClientSampleID : RE131D2-20190910

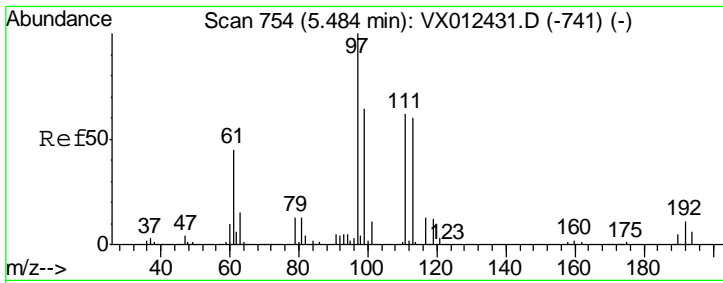
Tgt Ion	Resp	Lower	Upper
42	100		
72	17.8	34.0	51.0#
71	0.0	31.5	47.3#



#30
 Chloroform
 Concen: 0.537 ug/l
 RT: 5.21 min Scan# 709
 Delta R.T. 0.01 min
 Lab File: VX012457.D
 Acq: 18 Sep 2019 01:21

Tgt Ion	Resp	Lower	Upper
83	100		
85	40.2	53.0	79.4#

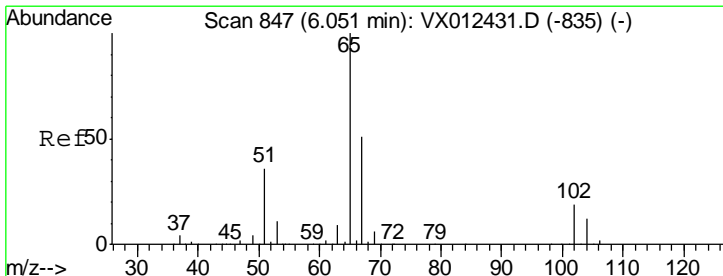
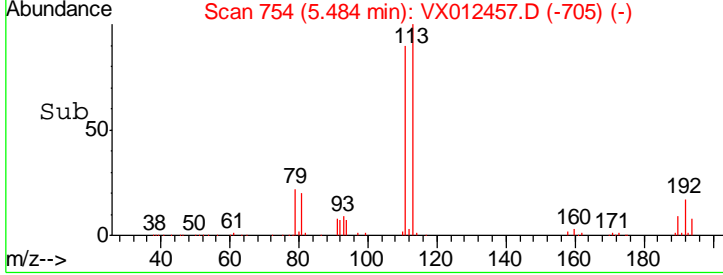
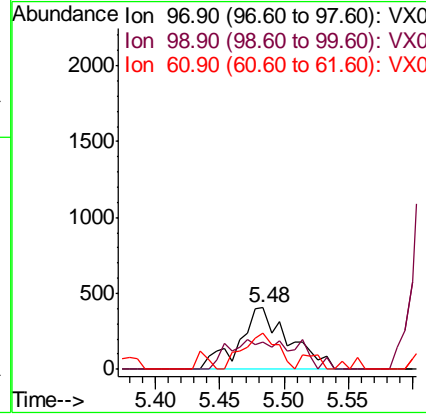
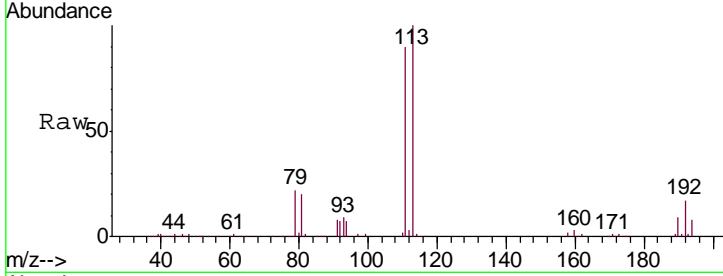




#32
 1,1,1-Trichloroethane
 Concen: 0.450 ug/l
 RT: 5.48 min Scan# 754
 Delta R.T. 0.00 min
 Lab File: VX012457.D
 Acq: 18 Sep 2019 01:21

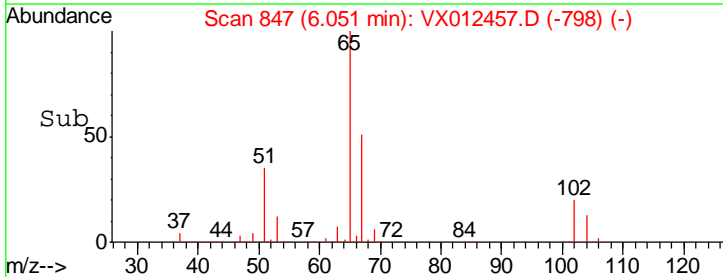
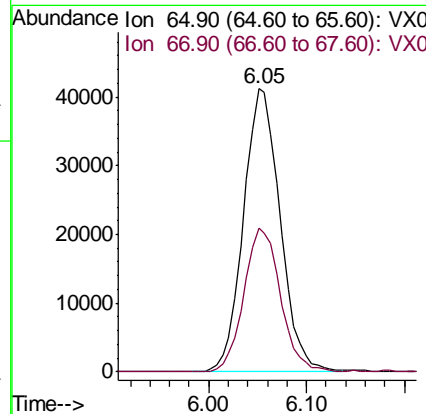
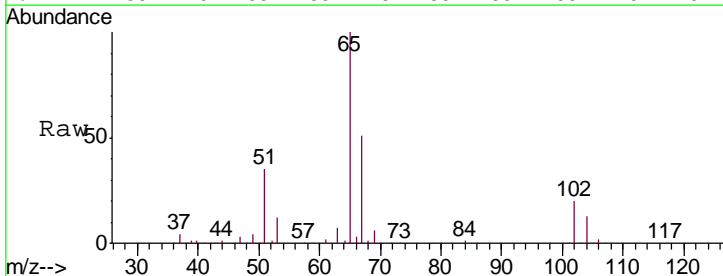
Instrument : MSVOA_X
 ClientSampled : RE131D2-20190910

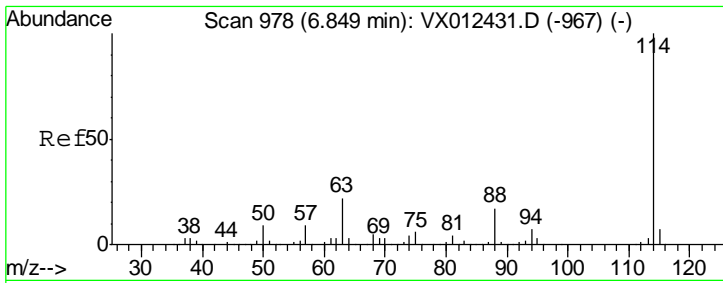
Tgt Ion	Resp	Lower	Upper
97	1086		
99	0.0	51.3	76.9#
61	40.7	36.1	54.1



#33
 1,2-Dichloroethane-d4
 Concen: 48.995 ug/l
 RT: 6.05 min Scan# 847
 Delta R.T. 0.00 min
 Lab File: VX012457.D
 Acq: 18 Sep 2019 01:21

Tgt Ion	Resp	Lower	Upper
65	107577		
67	50.7	0.0	101.2

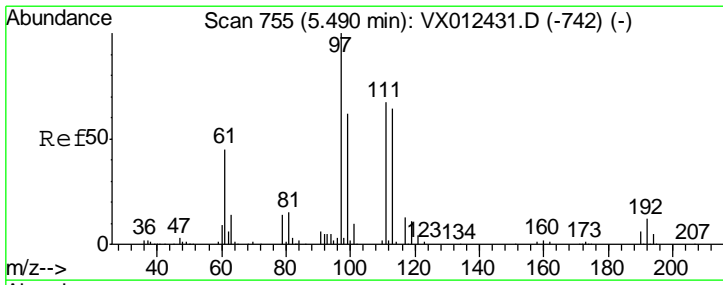
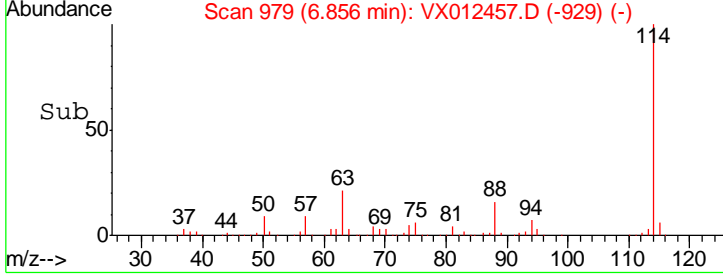
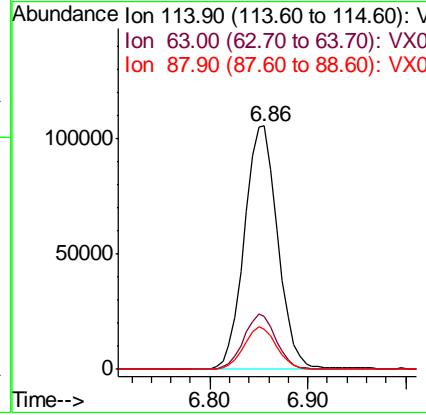
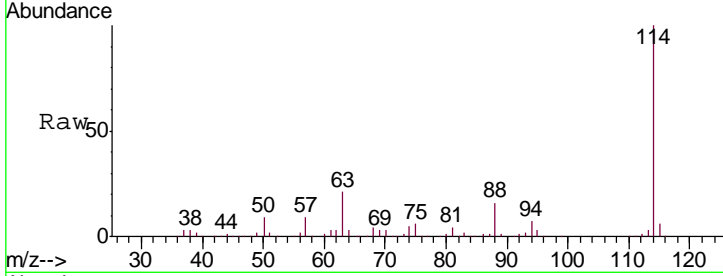




#34
 1,4-Difluorobenzene
 Concen: 50.000 ug/l
 RT: 6.86 min Scan# 979
 Delta R.T. 0.01 min
 Lab File: VX012457.D
 Acq: 18 Sep 2019 01:21

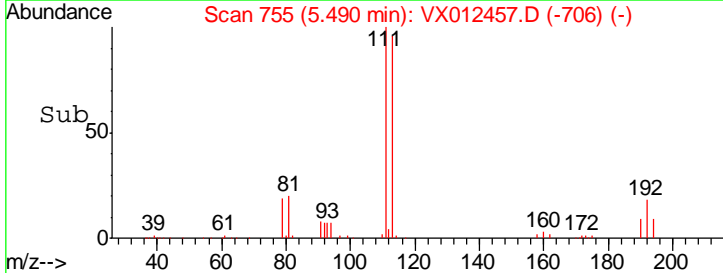
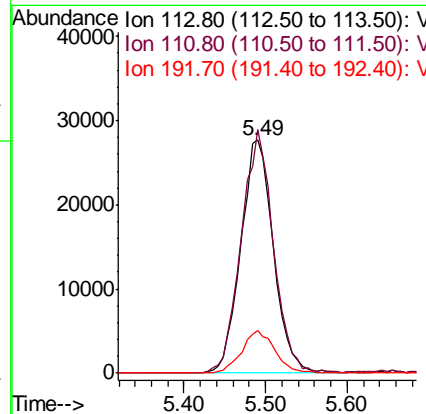
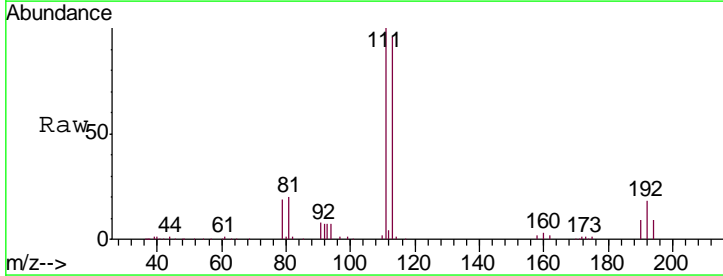
Instrument : MSVOA_X
 ClientSampled : RE131D2-20190910

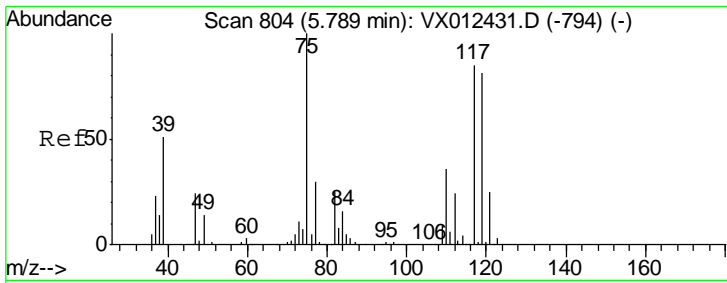
Tgt Ion	Resp	Lower	Upper
114	100		
63	21.5	0.0	43.2
88	16.5	0.0	33.2



#35
 Dibromofluoromethane
 Concen: 50.741 ug/l
 RT: 5.49 min Scan# 755
 Delta R.T. 0.00 min
 Lab File: VX012457.D
 Acq: 18 Sep 2019 01:21

Tgt Ion	Resp	Lower	Upper
113	100		
111	102.8	83.4	125.2
192	18.4	14.4	21.6

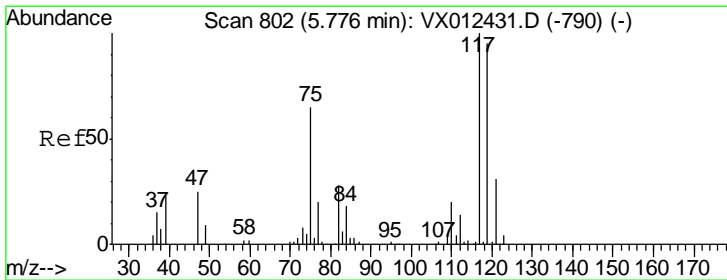
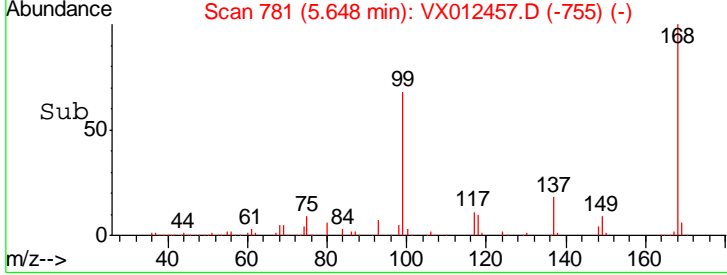
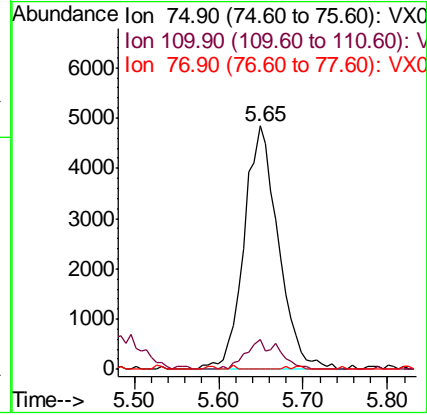
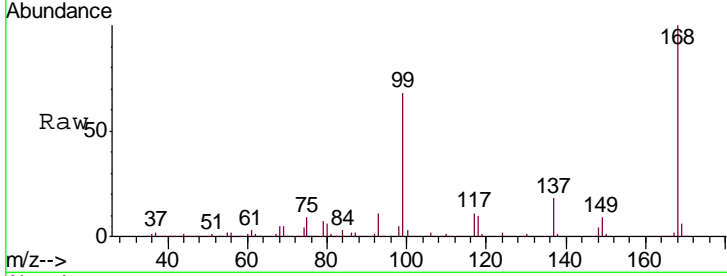




#36
 1,1-Dichloropropene
 Concen: 8.734 ug/l
 RT: 5.65 min Scan# 781
 Delta R.T. -0.14 min
 Lab File: VX012457.D
 Acq: 18 Sep 2019 01:21

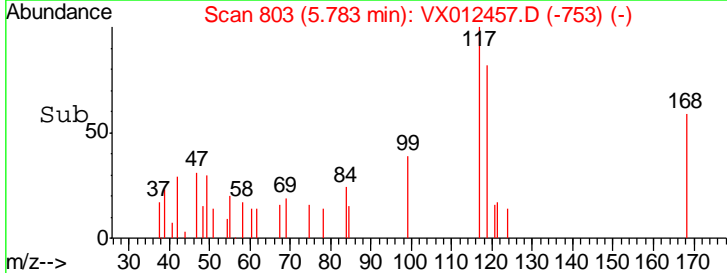
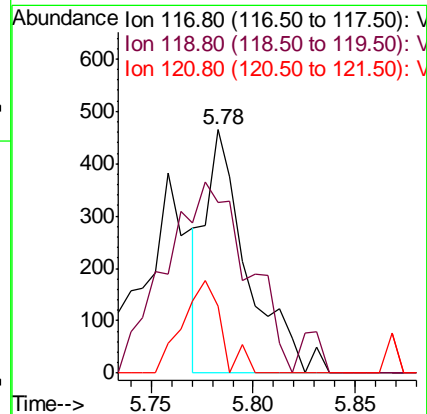
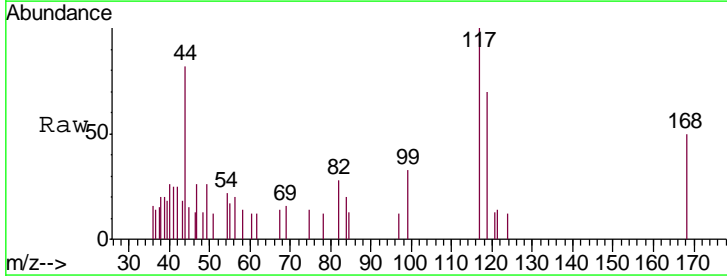
Instrument : MSVOA_X
 ClientSampled : RE131D2-20190910

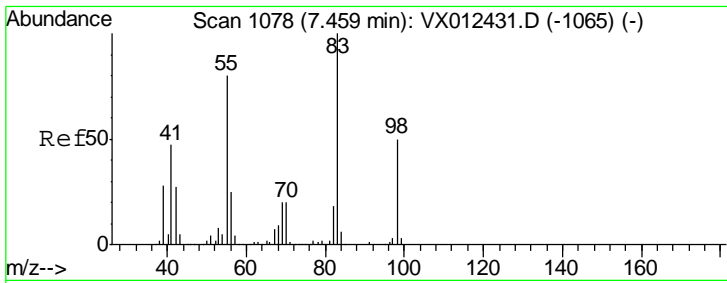
Tgt Ion	Resp	Lower	Upper
75	13311		
110	11.7	16.7	50.0#
77	0.0	24.2	36.2#



#38
 Carbon Tetrachloride
 Concen: 0.350 ug/l
 RT: 5.78 min Scan# 803
 Delta R.T. 0.01 min
 Lab File: VX012457.D
 Acq: 18 Sep 2019 01:21

Tgt Ion	Resp	Lower	Upper
117	663		
119	69.9	75.7	113.5#
121	27.5	24.2	36.4

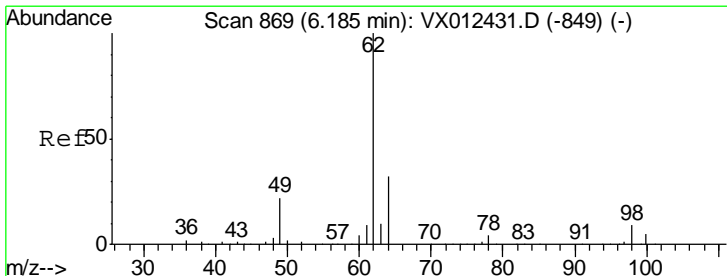
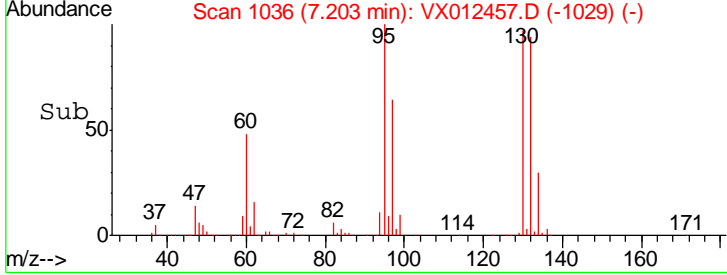
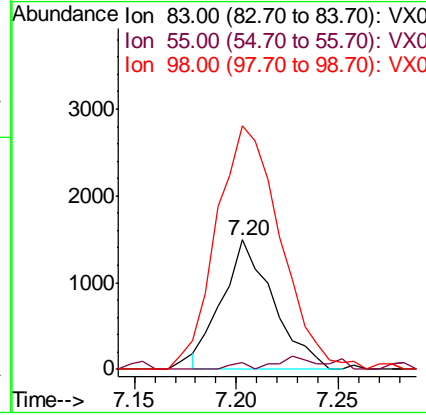
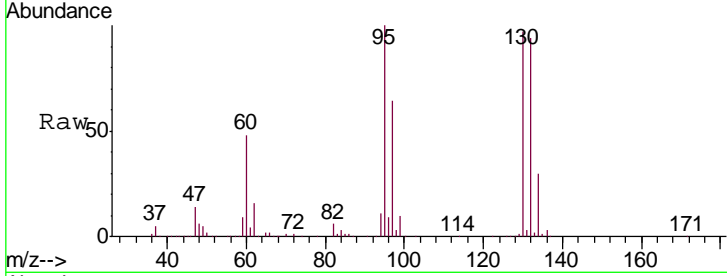




#39
 Methylcyclohexane
 Concen: 1.749 ug/l
 RT: 7.20 min Scan# 1036
 Delta R.T. -0.26 min
 Lab File: VX012457.D
 Acq: 18 Sep 2019 01:21

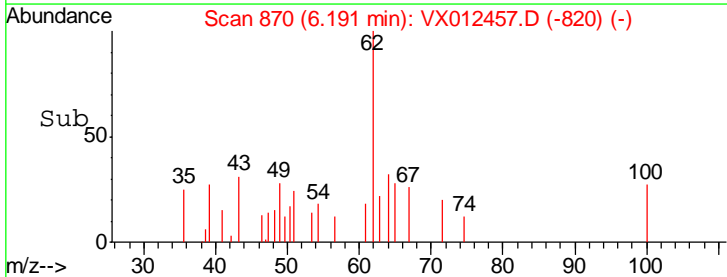
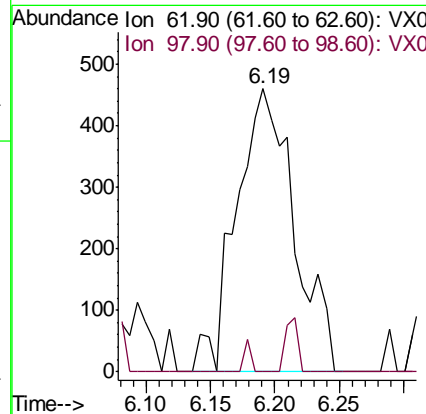
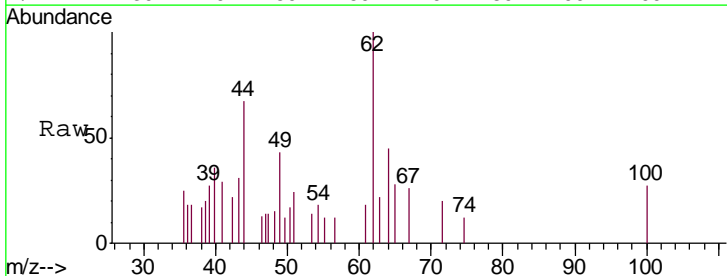
Instrument : MSVOA_X
 ClientSampled : RE131D2-20190910

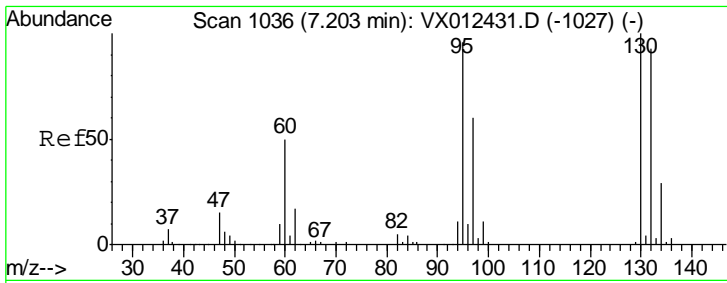
Tgt Ion	Resp	Lower	Upper
83	100		
55	5.4	64.4	96.6#
98	183.0	40.1	60.1#



#42
 1,2-Dichloroethane
 Concen: 0.640 ug/l
 RT: 6.19 min Scan# 870
 Delta R.T. 0.01 min
 Lab File: VX012457.D
 Acq: 18 Sep 2019 01:21

Tgt Ion	Resp	Lower	Upper
62	100		
98	1.3	0.0	17.8





#44

Trichloroethene

Concen: 175.517 ug/l

RT: 7.21 min Scan# 1037

Delta R.T. 0.01 min

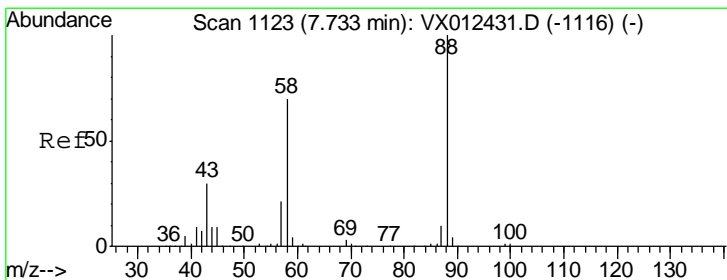
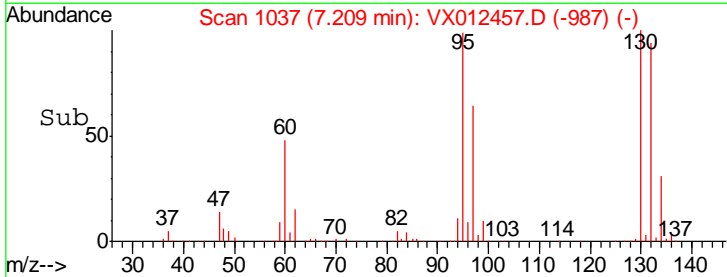
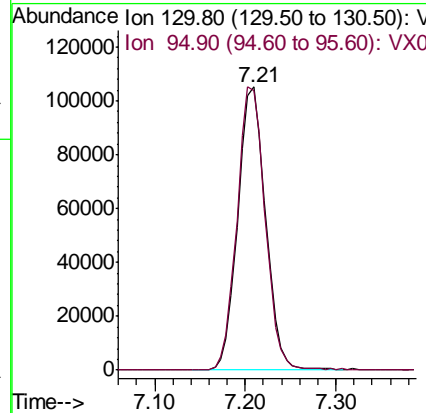
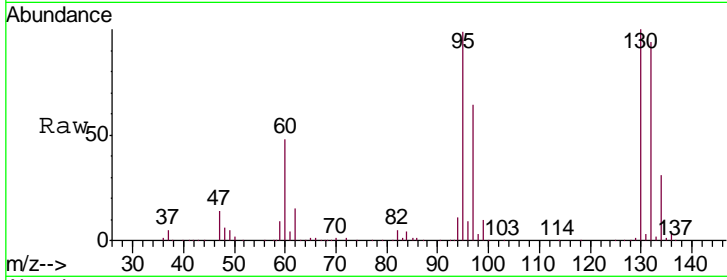
Lab File: VX012457.D

Acq: 18 Sep 2019 01:21

Instrument :
MSVOA_X
ClientSampleId :
RE131D2-20190910

Tgt Ion: 130 Resp: 223748

Ion	Ratio	Lower	Upper
130	100		
95	98.6	0.0	193.0



#49

1,4-Dioxane

Concen: 41.292 ug/l

RT: 7.73 min Scan# 1122

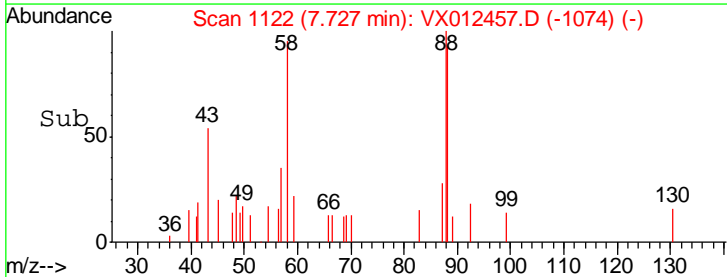
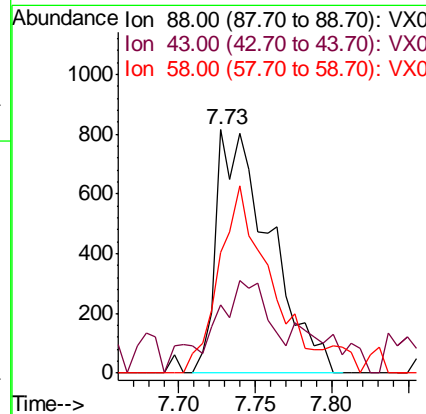
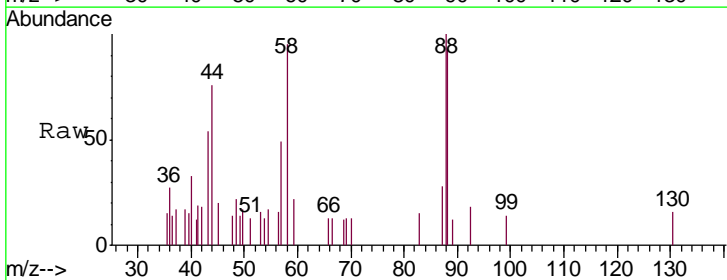
Delta R.T. -0.01 min

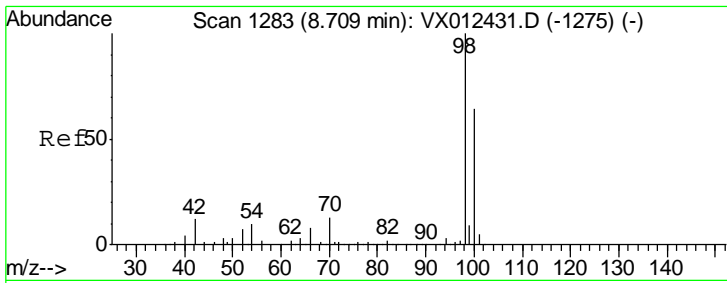
Lab File: VX012457.D

Acq: 18 Sep 2019 01:21

Tgt Ion: 88 Resp: 1989

Ion	Ratio	Lower	Upper
88	100		
43	40.8	29.4	44.0
58	73.1	57.5	86.3

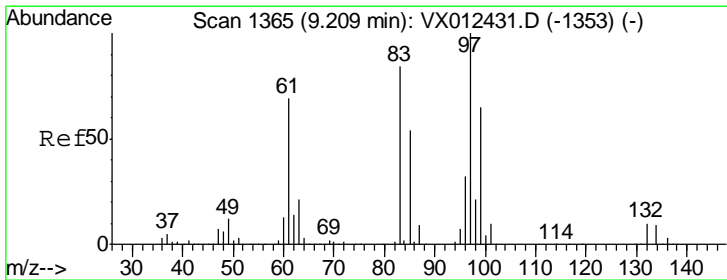
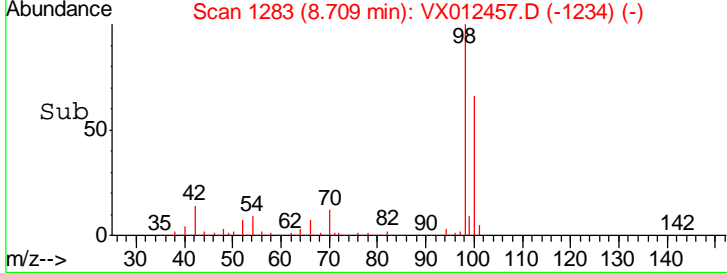
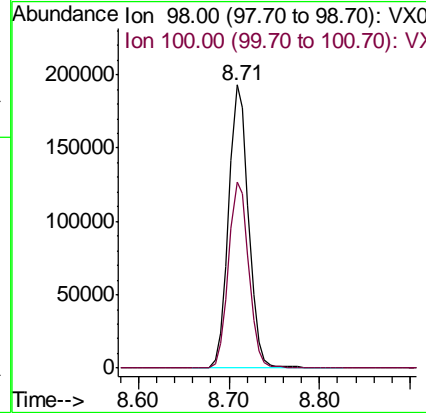
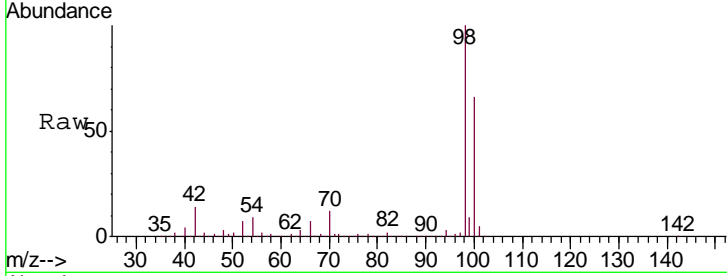




#50
 Toluene-d8
 Concen: 52.502 ug/l
 RT: 8.71 min Scan# 1283
 Delta R.T. 0.00 min
 Lab File: VX012457.D
 Acq: 18 Sep 2019 01:21

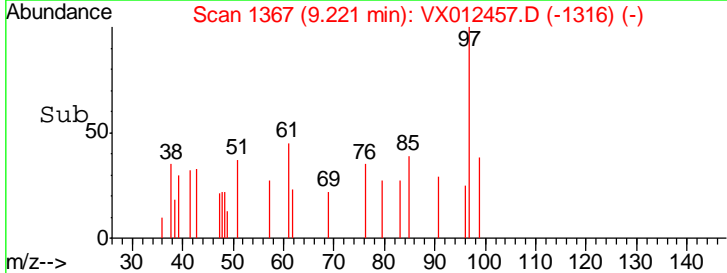
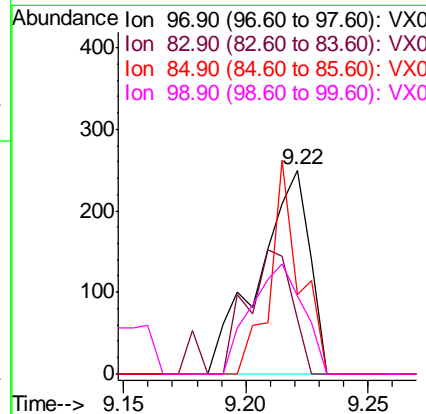
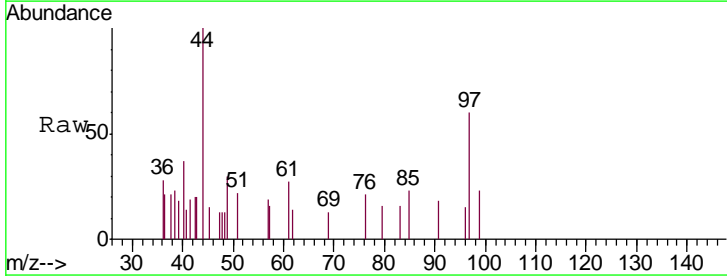
Instrument :
 MSVOA_X
 ClientSampled :
 RE131D2-20190910

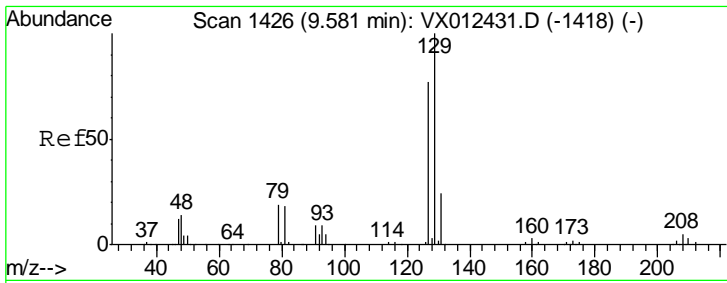
Tgt Ion: 98 Resp: 294944
 Ion Ratio Lower Upper
 98 100
 100 66.9 53.4 80.2



#55
 1,1,2-Trichloroethane
 Concen: 0.226 ug/l
 RT: 9.22 min Scan# 1367
 Delta R.T. 0.01 min
 Lab File: VX012457.D
 Acq: 18 Sep 2019 01:21

Tgt Ion: 97 Resp: 364
 Ion Ratio Lower Upper
 97 100
 83 5.2 67.4 101.2#
 85 38.8 43.5 65.3#
 99 38.4 51.8 77.8#

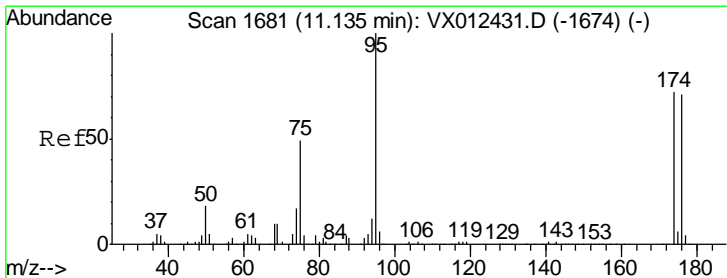
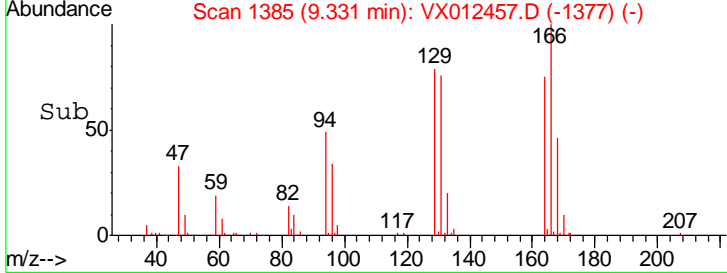
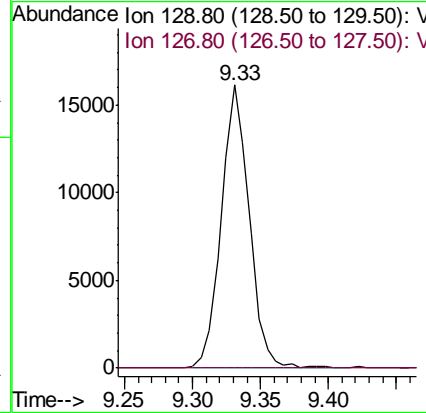
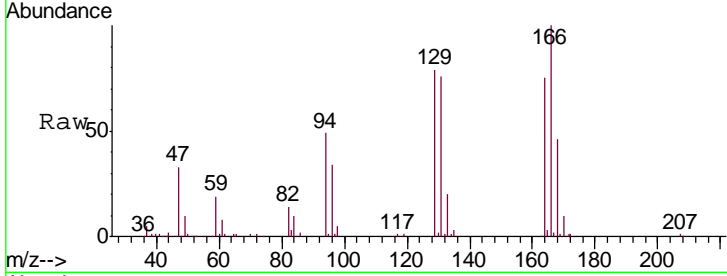




#60
 Dibromochloromethane
 Concen: 13.980 ug/l
 RT: 9.33 min Scan# 1385
 Delta R.T. -0.25 min
 Lab File: VX012457.D
 Acq: 18 Sep 2019 01:21

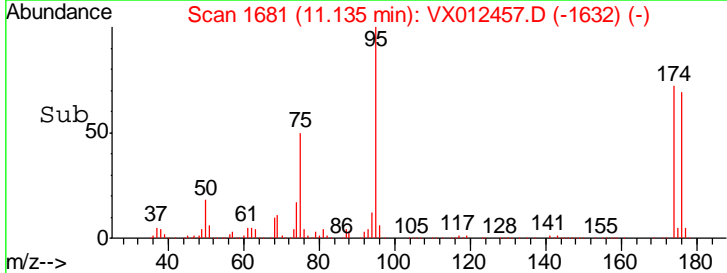
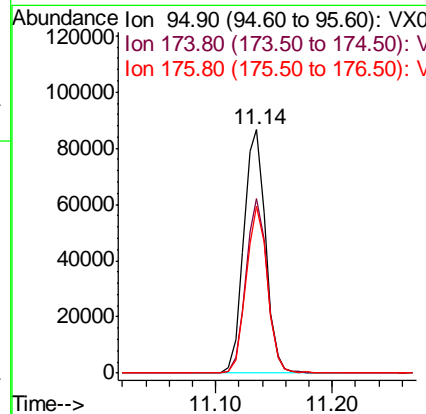
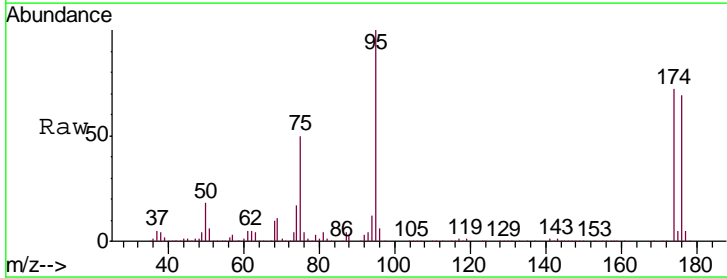
Instrument :
 MSVOA_X
 ClientSampleId :
 RE131D2-20190910

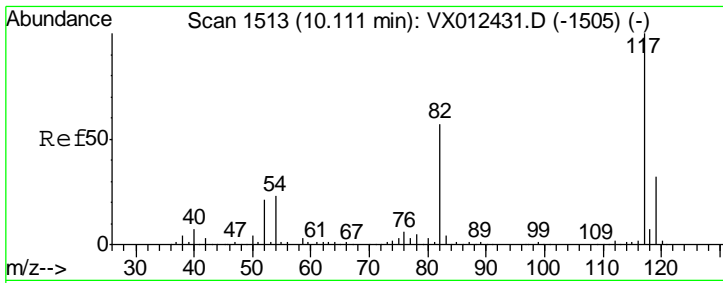
Tgt Ion: 129 Resp: 22909
 Ion Ratio Lower Upper
 129 100
 127 0.0 38.9 116.6#



#62
 4-Bromofluorobenzene
 Concen: 48.812 ug/l
 RT: 11.14 min Scan# 1681
 Delta R.T. 0.00 min
 Lab File: VX012457.D
 Acq: 18 Sep 2019 01:21

Tgt Ion: 95 Resp: 113855
 Ion Ratio Lower Upper
 95 100
 174 70.0 0.0 140.0
 176 67.0 0.0 135.4

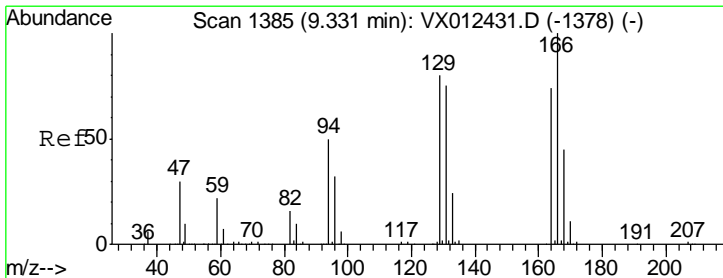
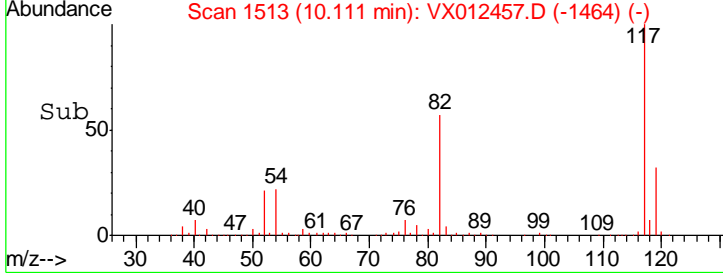
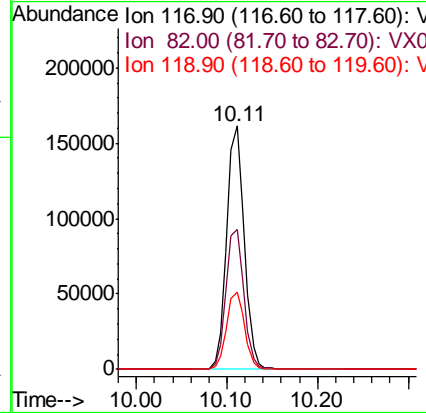
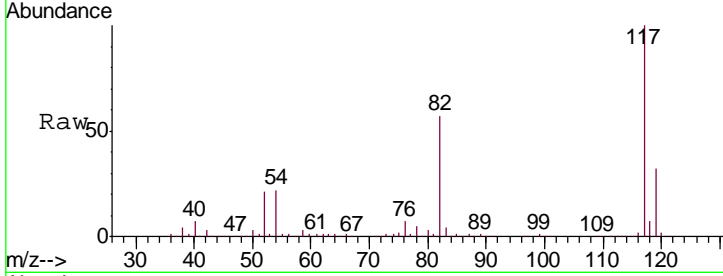




#63
 Chlorobenzene-d5
 Concen: 50.000 ug/l
 RT: 10.11 min Scan# 1513
 Delta R.T. 0.00 min
 Lab File: VX012457.D
 Acq: 18 Sep 2019 01:21

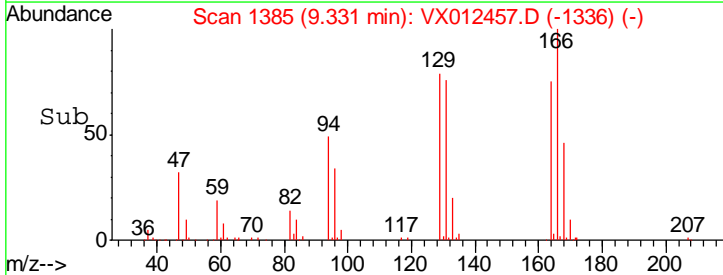
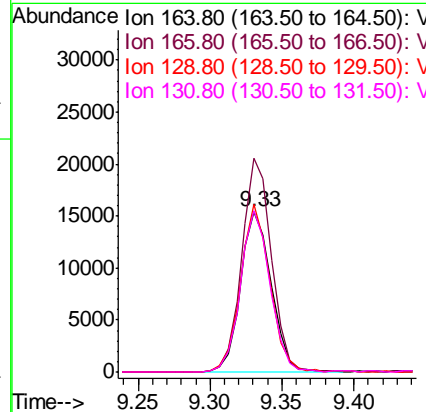
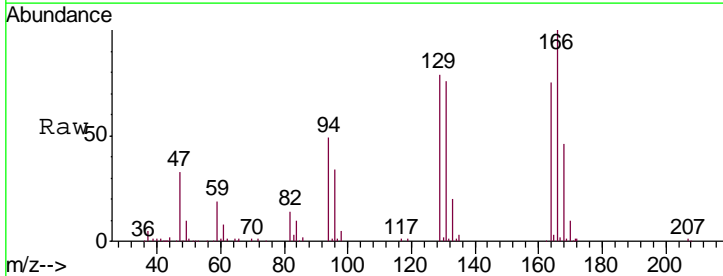
Instrument : MSVOA_X
 ClientSampled : RE131D2-20190910

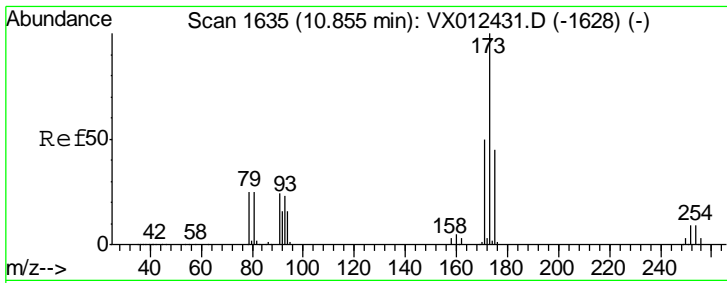
Tgt Ion	Resp	Lower	Upper
117	218870		
82	57.3	45.9	68.9
119	31.6	25.3	37.9



#64
 Tetrachloroethene
 Concen: 22.603 ug/l
 RT: 9.33 min Scan# 1385
 Delta R.T. 0.00 min
 Lab File: VX012457.D
 Acq: 18 Sep 2019 01:21

Tgt Ion	Resp	Lower	Upper
164	22670		
166	133.2	107.8	161.6
129	104.7	86.2	129.2
131	100.7	80.4	120.6

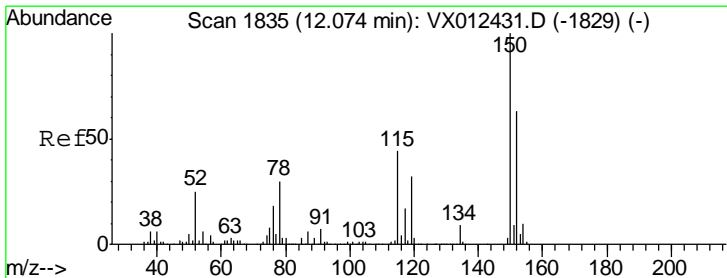
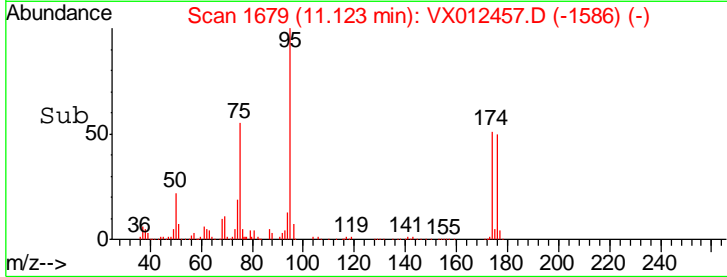
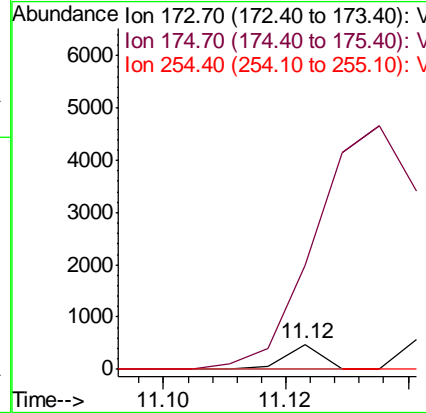
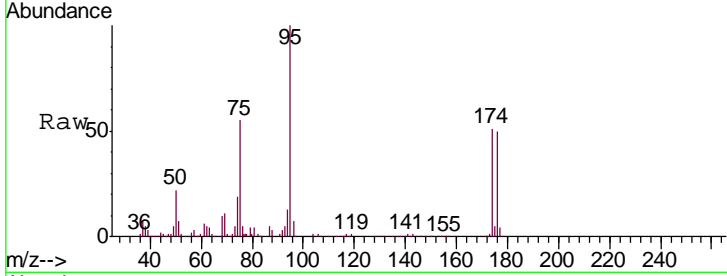




#71
 Bromoform
 Concen: 3.015 ug/l
 RT: 11.12 min Scan# 1679
 Delta R.T. 0.27 min
 Lab File: VX012457.D
 Acq: 18 Sep 2019 01:21

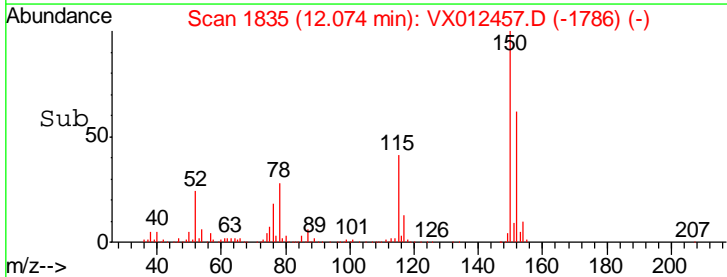
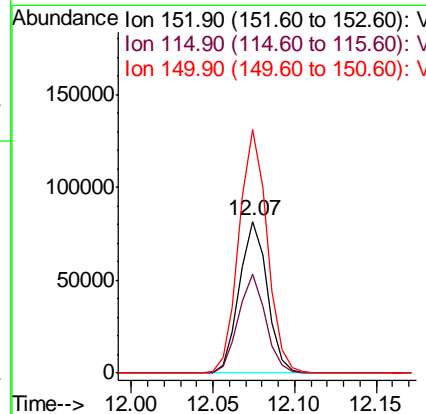
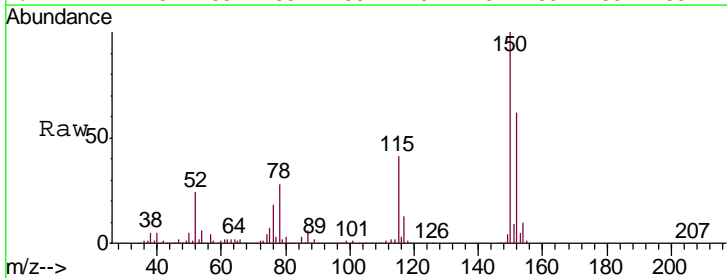
Instrument : MSVOA_X
 ClientSampled : RE131D2-20190910

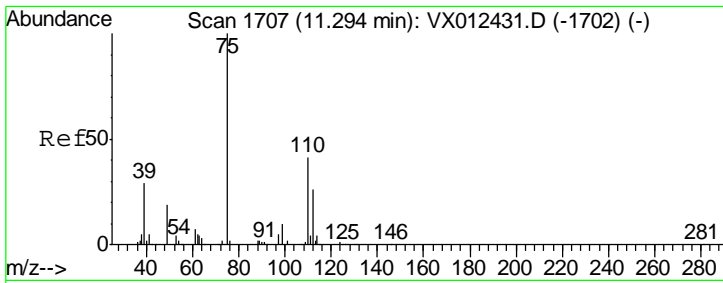
Tgt Ion	Resp	Lower	Upper
173	100		
175	0.0	23.7	71.1#
254	0.0	0.1	0.1#



#72
 1,4-Dichlorobenzene-d4
 Concen: 50.000 ug/l
 RT: 12.07 min Scan# 1835
 Delta R.T. 0.00 min
 Lab File: VX012457.D
 Acq: 18 Sep 2019 01:21

Tgt Ion	Resp	Lower	Upper
152	100		
115	64.0	44.1	132.3
150	161.7	0.0	343.8

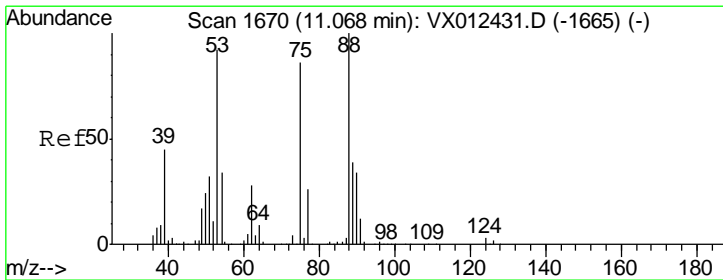
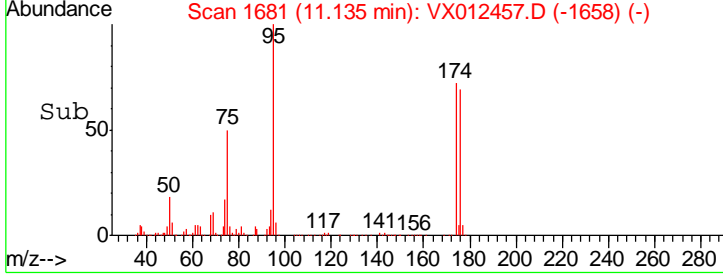
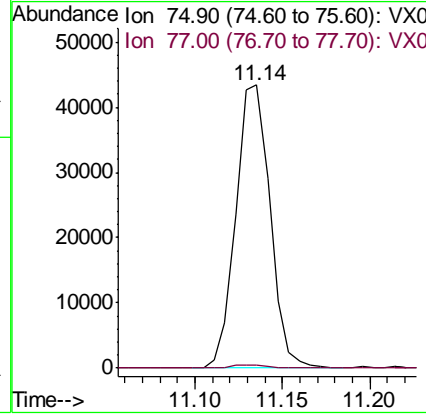
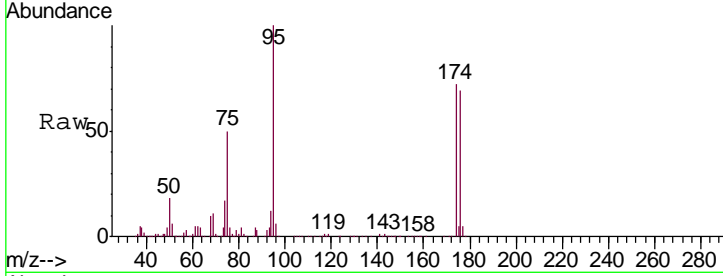




#76
 1,2,3-Trichloropropane
 Concen: 26.347 ug/l
 RT: 11.14 min Scan# 1681
 Delta R.T. -0.16 min
 Lab File: VX012457.D
 Acq: 18 Sep 2019 01:21

Instrument :
 MSVOA_X
ClientSampleId :
 RE131D2-20190910

Tgt Ion	Resp	Lower	Upper
75	100		
77	1.5	19.7	59.0#



#81
 trans-1,4-Dichloro-2-butene
 Concen: 70.949 ug/l
 RT: 11.14 min Scan# 1681
 Delta R.T. 0.07 min
 Lab File: VX012457.D
 Acq: 18 Sep 2019 01:21

Tgt Ion	Resp	Lower	Upper
75	100		
53	0.1	83.6	125.4#
89	0.0	36.3	54.5#

