

Data Path : Z:\voasrv\HPCHEM1\MSVOA X\Data\VX091719\  
 Data File : VX012446.D  
 Acq On : 17 Sep 2019 21:03  
 Operator : JC/SP  
 Sample : K4858-21  
 Misc : 5.0mL/MSVOA X/WATER  
 ALS Vial : 20 Sample Multiplier: 1

Instrument :  
 MSVOA\_X  
 ClientSampleId :  
 RE135D3-20190910

Integration Parameters: RTEINT.P

Integrator: RTE  
 Smoothing : ON Filtering: 5  
 Sampling : 1 Min Area: 3 % of largest Peak  
 Start Thrs: 0.2 Max Peaks: 100  
 Stop Thrs : 0 Peak Location: TOP

If leading or trailing edge < 100 prefer < Baseline drop else tangent >  
 Peak separation: 5

Method : Z:\VOASRV\HPCHEM1\MSVOA\_X\METHOD\82X091719W.M  
 Title : SW846 8260

Signal : TIC

peak #	R.T. min	first scan	max scan	last scan	PK TY	peak height	corr. area	corr. % max.	% of total
1	1.070	26	30	41	rVV	240573	295866	36.81%	5.708%
2	1.265	58	62	68	rBV	95622	117891	14.67%	2.274%
3	1.582	109	114	118	rBV7	4883	8711	1.08%	0.168%
4	2.375	238	244	250	rBV3	29039	55714	6.93%	1.075%
5	2.436	250	254	259	rVB	5311	8415	1.05%	0.162%
6	2.594	273	280	287	rBV	41473	74694	9.29%	1.441%
7	4.588	596	607	614	rBV	14167	40924	5.09%	0.790%
8	5.490	743	755	769	rBV	93924	268373	33.39%	5.178%
9	5.655	769	782	794	rVV	178529	503031	62.58%	9.705%
10	6.051	837	847	863	rBV	108985	295733	36.79%	5.706%
11	6.850	969	978	995	rBV	260500	615202	76.54%	11.869%
12	7.203	1025	1036	1046	rBV	76610	171171	21.30%	3.302%
13	7.508	1079	1086	1101	rVB2	19804	44501	5.54%	0.859%
14	8.709	1274	1283	1299	rBV	508764	803758	100.00%	15.507%
15	9.331	1379	1385	1395	rBV	166441	242380	30.16%	4.676%
16	10.111	1506	1513	1526	rBV	472768	655797	81.59%	12.652%
17	11.135	1675	1681	1691	rBV	361350	467981	58.22%	9.029%
18	12.074	1829	1835	1843	rVB	411479	513121	63.84%	9.900%

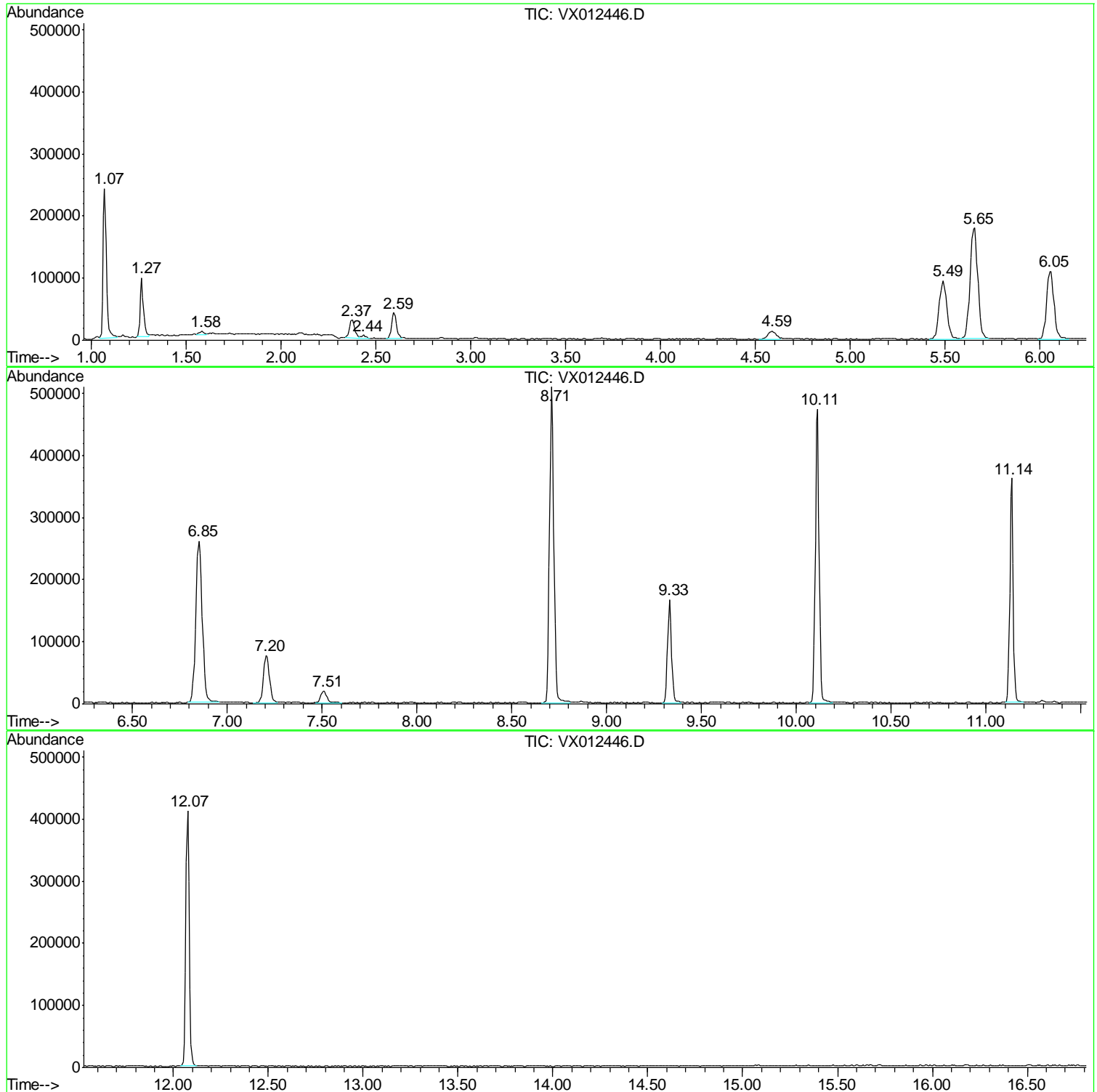
Sum of corrected areas: 5183263

Data Path : Z:\voasrv\HPCHEM1\MSVOA X\Data\VX091719\  
Data File : VX012446.D  
Acq On : 17 Sep 2019 21:03  
Operator : JC/SP  
Sample : K4858-21  
Misc : 5.0mL/MSVOA X/WATER  
ALS Vial : 20 Sample Multiplier: 1

Instrument :  
MSVOA\_X  
ClientSampled :  
RE135D3-20190910

Quant Method : Z:\VOASRV\HPCHEM1\MSVOA\_X\METHOD\82X091719W.M  
Quant Title : SW846 8260

TIC Library : C:\DATABASE\NIST11.L  
TIC Integration Parameters: LSCINT.P



Data Path : Z:\voasrv\HPCHEM1\MSVOA\_X\Data\VX091719\  
Data File : VX012446.D  
Acq On : 17 Sep 2019 21:03  
Operator : JC/SP  
Sample : K4858-21  
Misc : 5.0mL/MSVOA\_X/WATER  
ALS Vial : 20 Sample Multiplier: 1

Instrument :  
MSVOA\_X  
ClientSampleId :  
RE135D3-20190910

Quant Method : Z:\VOASRV\HPCHEM1\MSVOA\_X\METHOD\82X091719W.M  
Quant Title : SW846 8260

TIC Library : C:\DATABASE\NIST11.L  
TIC Integration Parameters: LSCINT.P

No Library Search Compounds Detected

\*\*\*\*\*

Data Path : Z:\voasrv\HPCHEM1\MSVOA\_X\Data\VX091719\  
Data File : VX012446.D  
Acq On : 17 Sep 2019 21:03  
Operator : JC/SP  
Sample : K4858-21  
Misc : 5.0mL/MSVOA\_X/WATER  
ALS Vial : 20 Sample Multiplier: 1

Instrument :  
MSVOA\_X  
ClientSampleId :  
RE135D3-20190910

Quant Method : Z:\VOASRV\HPCHEM1\MSVOA\_X\METHOD\82X091719W.M  
Quant Title : SW846 8260

TIC Library : C:\DATABASE\NIST11.L  
TIC Integration Parameters: LSCINT.P

TIC Top Hit name	RT	EstConc	Units	Response	--Internal Standard--			
					#	RT	Resp	Conc

---