

Data Path : Z:\voasrv\HPCHEM1\MSVOA\_X\Data\VX091721\  
 Data File : VX024315.D  
 Acq On : 17 Sep 2021 17:32  
 Operator : JC/MD  
 Sample : M3782-03  
 Misc : 5.0mL/MSVOA\_X/WATER  
 ALS Vial : 16 Sample Multiplier: 1

Instrument :  
 MSVOA\_X  
 ClientSampleId :  
 RE132D2-20210914

Quant Time: Sep 20 01:59:06 2021  
 Quant Method : Z:\voasrv\HPCHEM1\MSVOA\_X\Method\82X091421W.M  
 Quant Title : SW846 8260  
 QLast Update : Tue Sep 14 12:18:04 2021  
 Response via : Initial Calibration

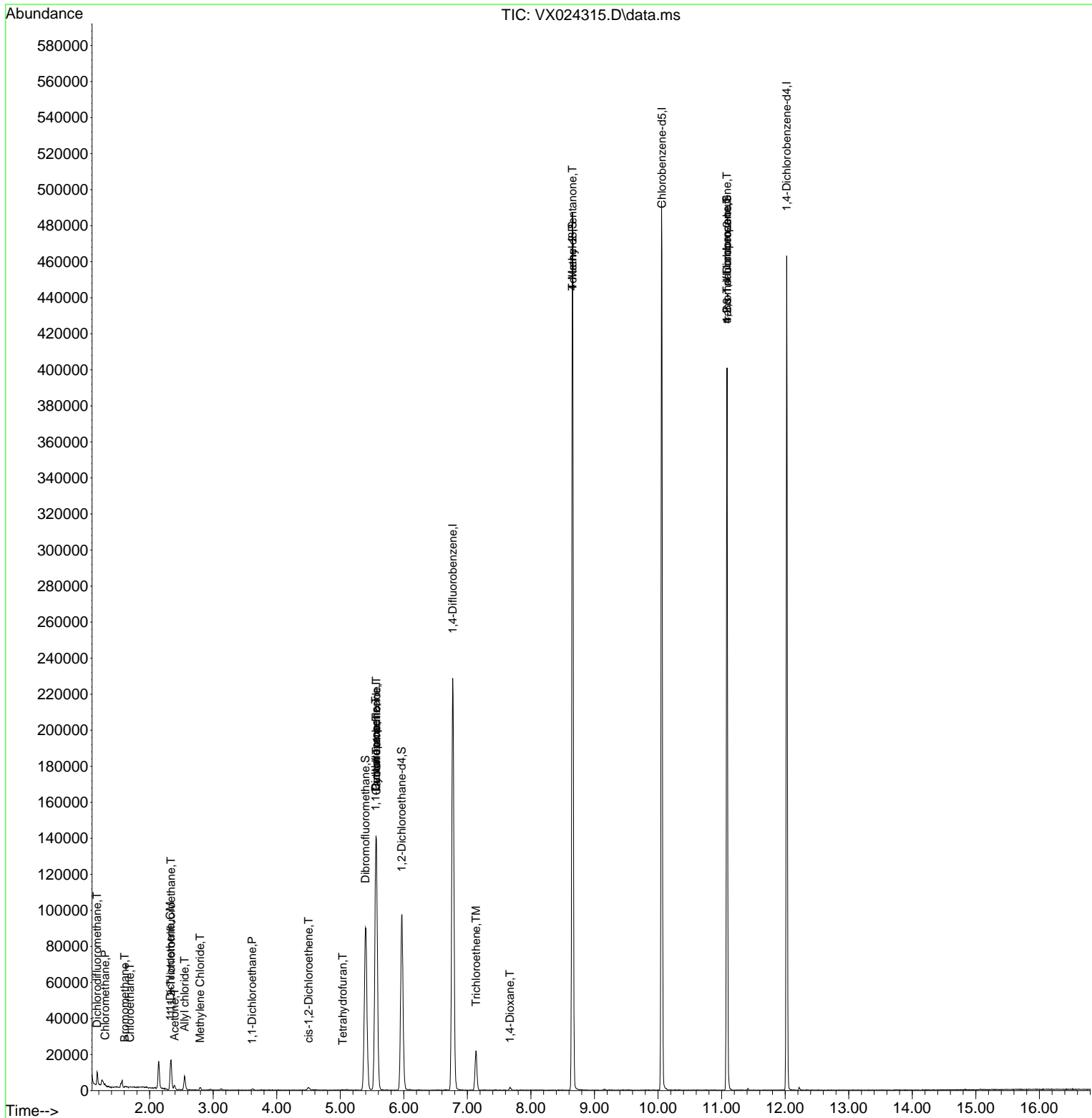
Compound	R.T.	QIon	Response	Conc	Units	Dev(Min)
-----						
Internal Standards						
1) Pentafluorobenzene	5.562	168	131407	50.000	ug/l	0.00
34) 1,4-Difluorobenzene	6.769	114	228526	50.000	ug/l	0.00
63) Chlorobenzene-d5	10.061	117	219757	50.000	ug/l	0.00
72) 1,4-Dichlorobenzene-d4	12.024	152	89934	50.000	ug/l	0.00
System Monitoring Compounds						
33) 1,2-Dichloroethane-d4	5.964	65	98344	52.483	ug/l	0.00
Spiked Amount	50.000	Range 78 - 117	Recovery	=	104.960%	
35) Dibromofluoromethane	5.397	113	77172	50.354	ug/l	0.00
Spiked Amount	50.000	Range 75 - 124	Recovery	=	100.700%	
50) Toluene-d8	8.653	98	283990	50.865	ug/l	0.00
Spiked Amount	50.000	Range 92 - 112	Recovery	=	101.740%	
62) 4-Bromofluorobenzene	11.085	95	101024	46.495	ug/l	0.00
Spiked Amount	50.000	Range 83 - 123	Recovery	=	93.000%	
Target Compounds						
						Qvalue
2) Dichlorodifluoromethane	1.172	85	2819	2.232	ug/l	92
3) Chloromethane	1.300	50	514	0.390	ug/l	89
5) Bromomethane	1.605	94	505	0.646	ug/l #	56
6) Chloroethane	1.691	64	122	2.112	ug/l #	43
9) 1,1,2-Trichlorotrifluo...	2.337	101	5981	4.623	ug/l	93
11) Tert butyl alcohol	2.959	59	314	Below Cal	#	73
12) 1,1-Dichloroethene	2.325	96	489	0.404	ug/l #	65
14) Allyl chloride	2.550	41	804	0.365	ug/l #	60
16) Acetone	2.392	43	2416	3.024	ug/l #	79
20) Methylene Chloride	2.794	84	675	0.440	ug/l #	71
24) 1,1-Dichloroethane	3.611	63	846	0.333	ug/l #	81
27) cis-1,2-Dichloroethene	4.501	96	988	0.645	ug/l	92
29) Tetrahydrofuran	5.038	42	241	0.327	ug/l #	35
31) Cyclohexane	5.562	56	2884	1.316	ug/l #	1
36) 1,1-Dichloropropene	5.556	75	10644	5.066	ug/l #	50
38) Carbon Tetrachloride	5.568	117	14288	6.042	ug/l #	14
44) Trichloroethene	7.135	130	8484	5.011	ug/l	96
49) 1,4-Dioxane	7.671	88	950	23.333	ug/l #	86
51) 4-Methyl-2-Pentanone	8.653	43	1290	0.519	ug/l #	1
76) 1,2,3-Trichloropropane	11.085	75	53329	25.788	ug/l #	39
81) trans-1,4-Dichloro-2-b...	11.085	75	53329	75.844	ug/l #	12

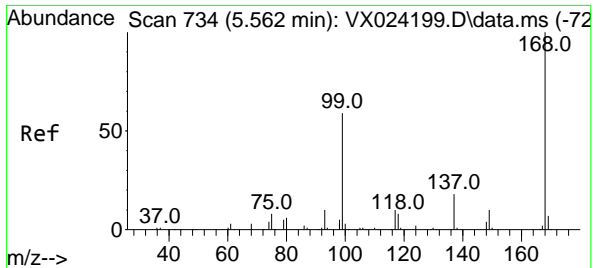
(#) = qualifier out of range (m) = manual integration (+) = signals summed

Data Path : Z:\voasrv\HPCHEM1\MSVOA\_X\Data\VX091721\  
 Data File : VX024315.D  
 Acq On : 17 Sep 2021 17:32  
 Operator : JC/MD  
 Sample : M3782-03  
 Misc : 5.0mL/MSVOA\_X/WATER  
 ALS Vial : 16 Sample Multiplier: 1

Instrument :  
 MSVOA\_X  
 ClientSampleId :  
 RE132D2-20210914

Quant Time: Sep 20 01:59:06 2021  
 Quant Method : Z:\voasrv\HPCHEM1\MSVOA\_X\Method\82X091421W.M  
 Quant Title : SW846 8260  
 QLast Update : Tue Sep 14 12:18:04 2021  
 Response via : Initial Calibration

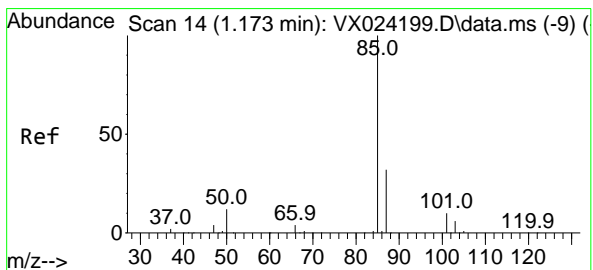
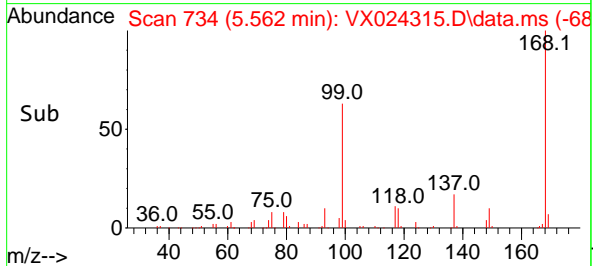
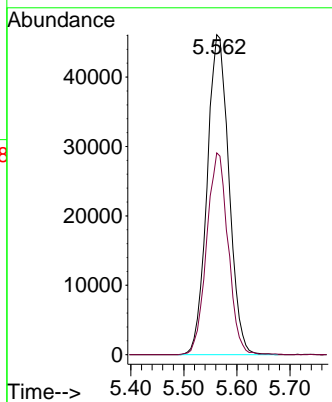
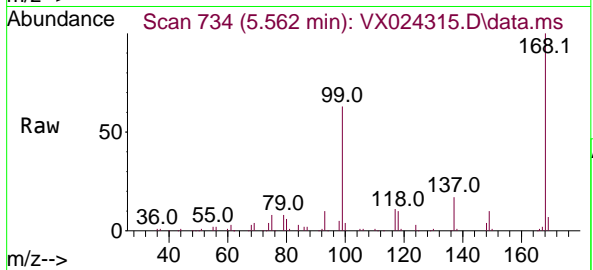




#1  
 Pentafluorobenzene  
 Concen: 50.000 ug/l  
 RT: 5.562 min Scan# 734  
 Delta R.T. -0.000 min  
 Lab File: VX024315.D  
 Acq: 17 Sep 2021 17:32

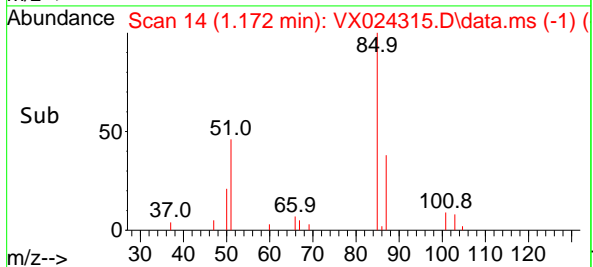
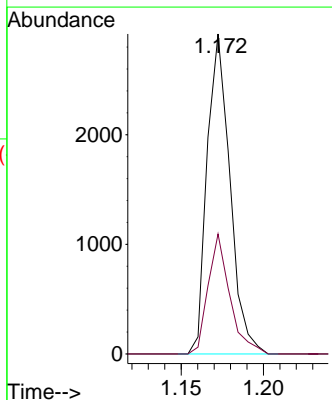
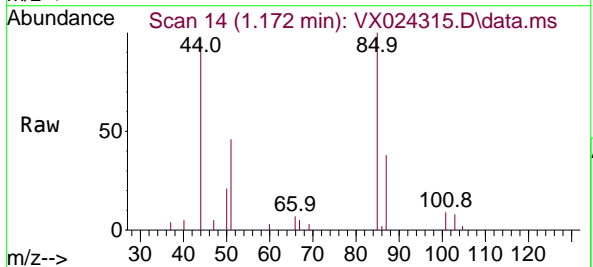
Instrument :  
 MSVOA\_X  
 ClientSampled :  
 RE132D2-20210914

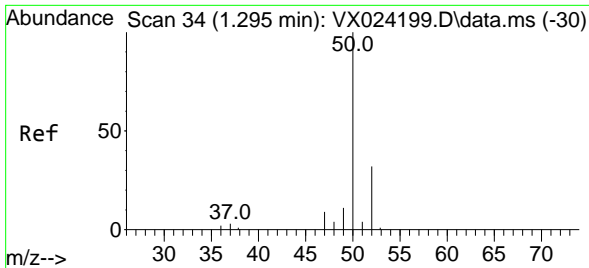
Tgt Ion:168 Resp: 131407  
 Ion Ratio Lower Upper  
 168 100  
 99 63.0 45.8 68.6



#2  
 Dichlorodifluoromethane  
 Concen: 2.232 ug/l  
 RT: 1.172 min Scan# 14  
 Delta R.T. -0.001 min  
 Lab File: VX024315.D  
 Acq: 17 Sep 2021 17:32

Tgt Ion: 85 Resp: 2819  
 Ion Ratio Lower Upper  
 85 100  
 87 37.5 16.4 49.2

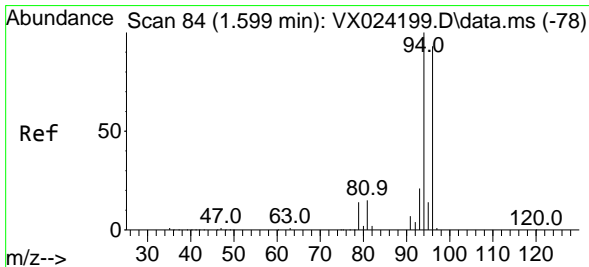
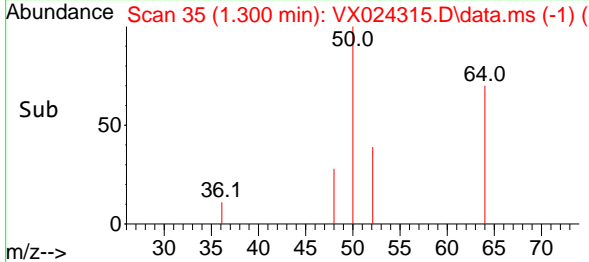
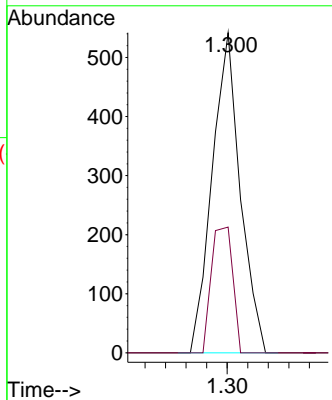
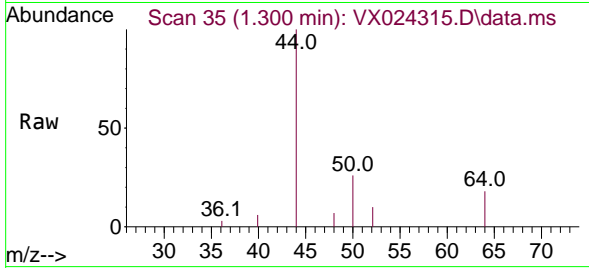




#3  
 Chloromethane  
 Concen: 0.390 ug/l  
 RT: 1.300 min Scan# 35  
 Delta R.T. 0.005 min  
 Lab File: VX024315.D  
 Acq: 17 Sep 2021 17:32

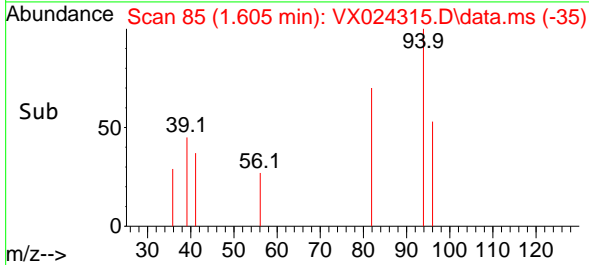
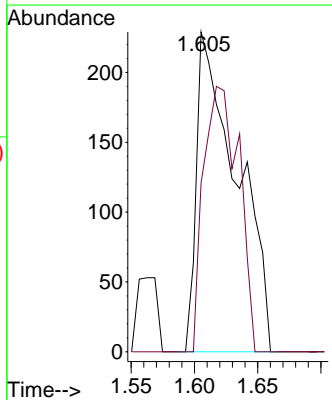
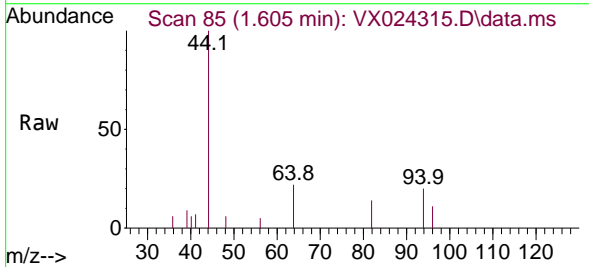
Instrument :  
 MSVOA\_X  
 ClientSampleId :  
 RE132D2-20210914

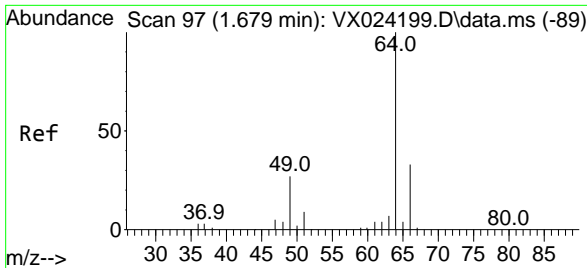
Tgt Ion: 50 Resp: 514  
 Ion Ratio Lower Upper  
 50 100  
 52 39.3 26.4 39.6



#5  
 Bromomethane  
 Concen: 0.646 ug/l  
 RT: 1.605 min Scan# 85  
 Delta R.T. 0.006 min  
 Lab File: VX024315.D  
 Acq: 17 Sep 2021 17:32

Tgt Ion: 94 Resp: 505  
 Ion Ratio Lower Upper  
 94 100  
 96 52.8 76.4 114.6#

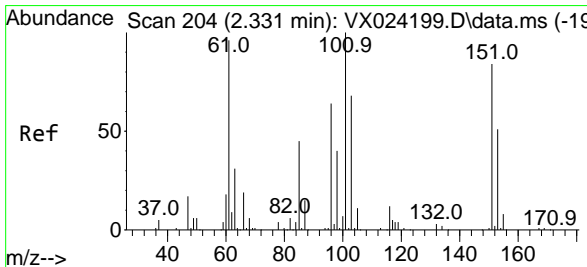
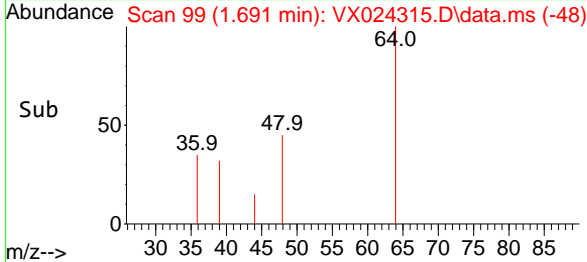
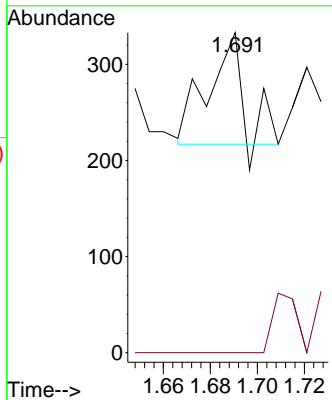
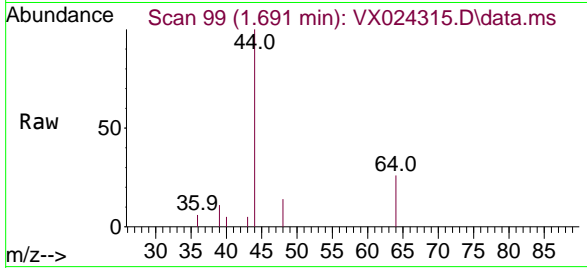




#6  
 Chloroethane  
 Concen: 2.112 ug/l  
 RT: 1.691 min Scan# 99  
 Delta R.T. 0.012 min  
 Lab File: VX024315.D  
 Acq: 17 Sep 2021 17:32

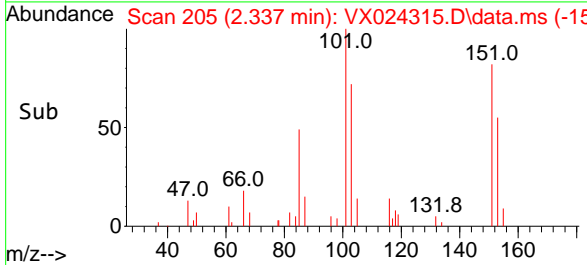
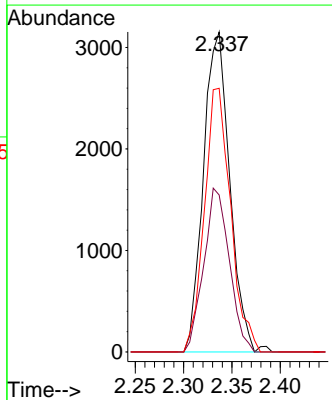
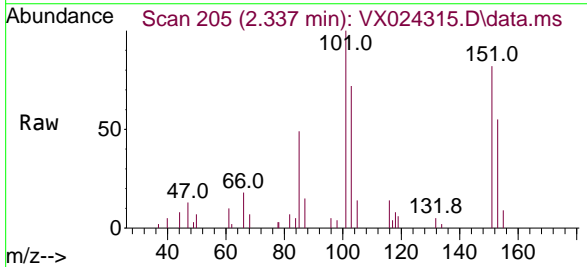
Instrument :  
 MSVOA\_X  
 ClientSampled :  
 RE132D2-20210914

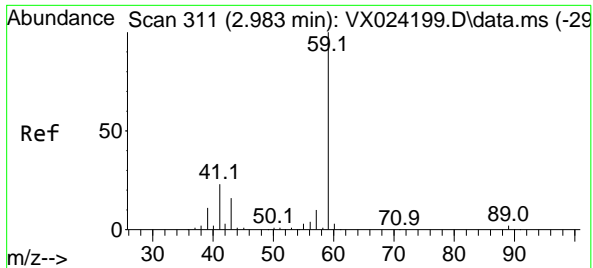
Tgt Ion: 64 Resp: 122  
 Ion Ratio Lower Upper  
 64 100  
 66 0.0 25.4 38.0#



#9  
 1,1,2-Trichlorotrifluoroethane  
 Concen: 4.623 ug/l  
 RT: 2.337 min Scan# 205  
 Delta R.T. 0.006 min  
 Lab File: VX024315.D  
 Acq: 17 Sep 2021 17:32

Tgt Ion:101 Resp: 5981  
 Ion Ratio Lower Upper  
 101 100  
 85 49.6 34.9 52.3  
 151 82.1 61.4 92.2

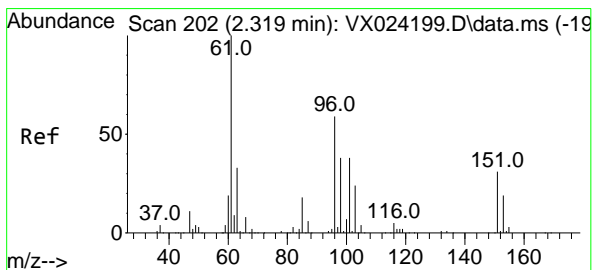
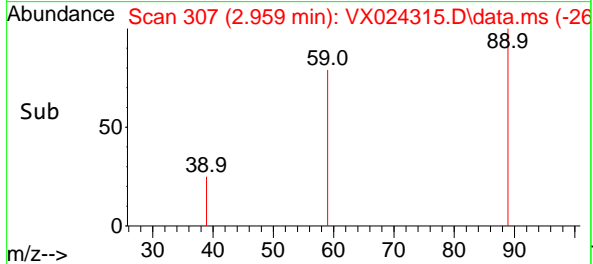
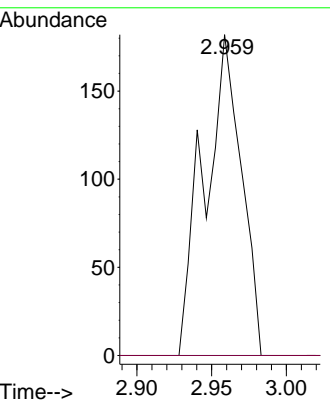
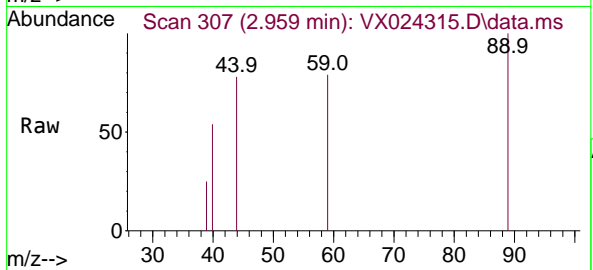




#11  
 Tert butyl alcohol  
 Concen: Below Cal  
 RT: 2.959 min Scan# 307  
 Delta R.T. -0.024 min  
 Lab File: VX024315.D  
 Acq: 17 Sep 2021 17:32

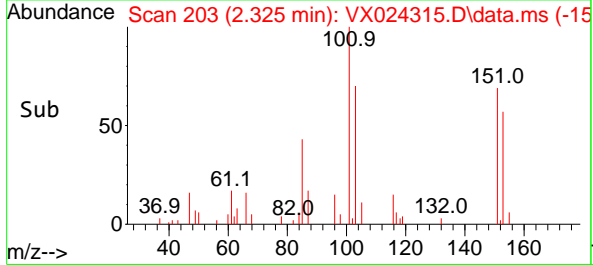
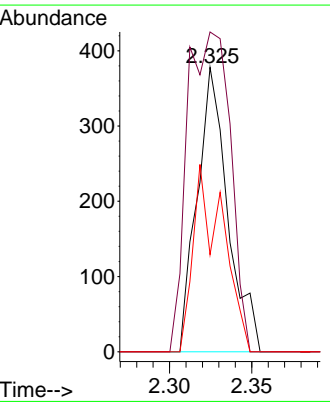
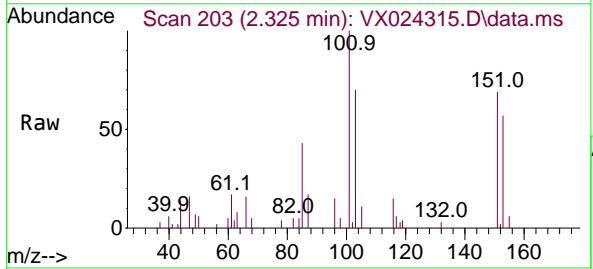
Instrument : MSVOA\_X  
 ClientSampleId : RE132D2-20210914

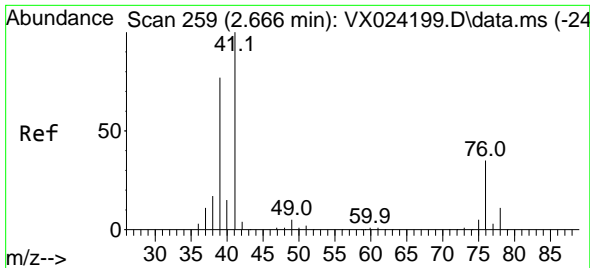
Tgt Ion: 59 Resp: 314  
 Ion Ratio Lower Upper  
 59 100  
 57 0.0 7.8 11.8#



#12  
 1,1-Dichloroethene  
 Concen: 0.404 ug/l  
 RT: 2.325 min Scan# 203  
 Delta R.T. 0.006 min  
 Lab File: VX024315.D  
 Acq: 17 Sep 2021 17:32

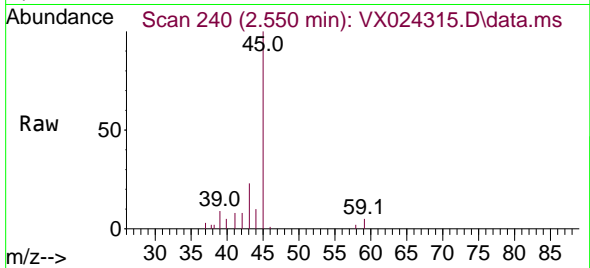
Tgt Ion: 96 Resp: 489  
 Ion Ratio Lower Upper  
 96 100  
 61 112.4 124.6 187.0#  
 98 34.1 50.6 76.0#



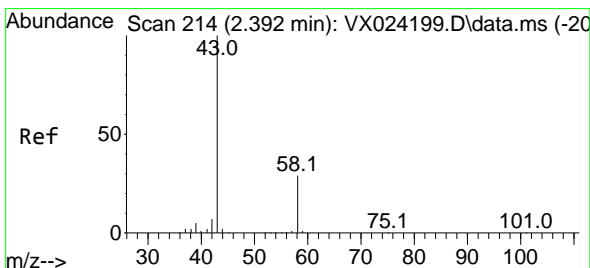
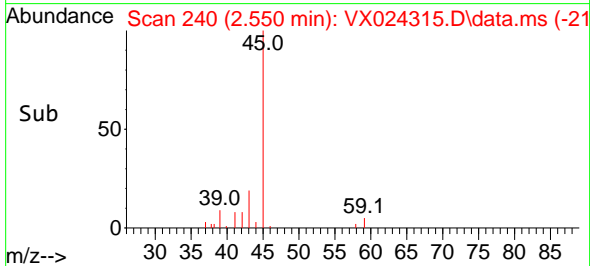
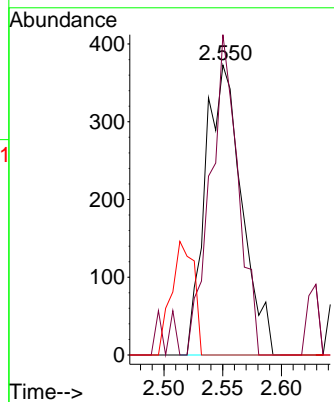


#14  
 Allyl chloride  
 Concen: 0.365 ug/l  
 RT: 2.550 min Scan# 240  
 Delta R.T. -0.116 min  
 Lab File: VX024315.D  
 Acq: 17 Sep 2021 17:32

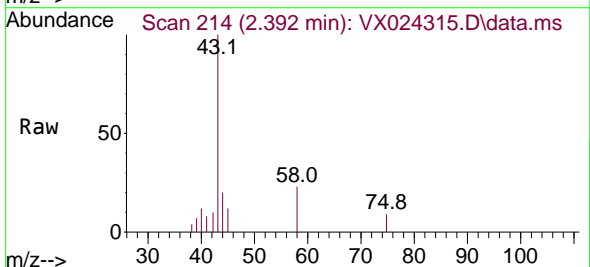
Instrument :  
 MSVOA\_X  
 ClientSampled :  
 RE132D2-20210914



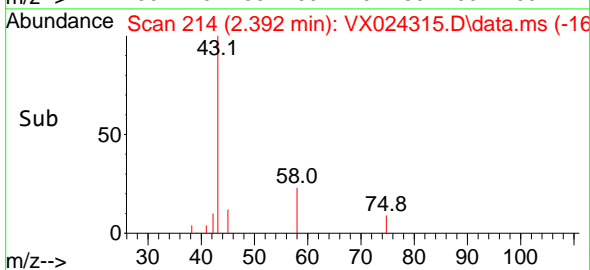
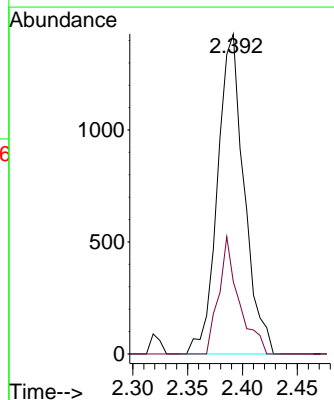
Tgt Ion	Resp	Lower	Upper
41	100		
39	84.7	51.6	77.4#
76	0.0	30.5	45.7#

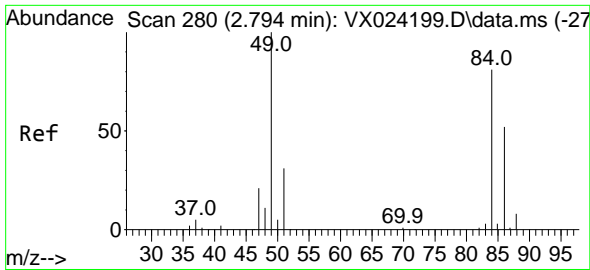


#16  
 Acetone  
 Concen: 3.024 ug/l  
 RT: 2.392 min Scan# 214  
 Delta R.T. -0.000 min  
 Lab File: VX024315.D  
 Acq: 17 Sep 2021 17:32



Tgt Ion	Resp	Lower	Upper
43	100		
58	22.5	27.8	41.8#



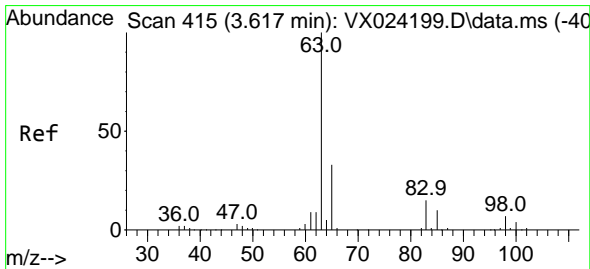
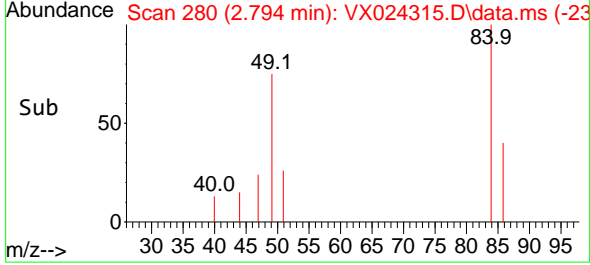
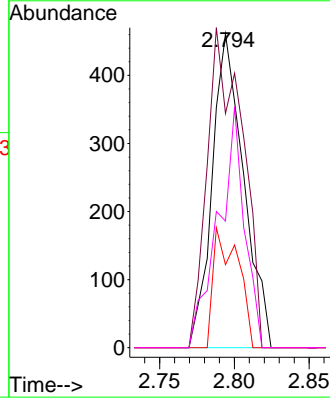
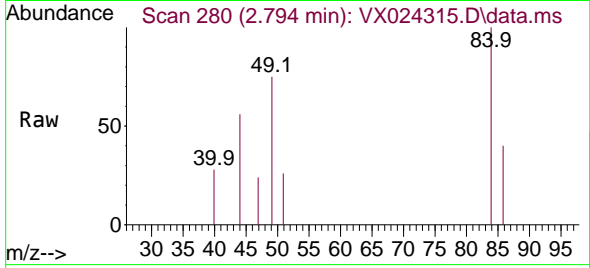


#20  
 Methylene Chloride  
 Concen: 0.440 ug/l  
 RT: 2.794 min Scan# 280  
 Delta R.T. 0.000 min  
 Lab File: VX024315.D  
 Acq: 17 Sep 2021 17:32

Instrument :  
 MSVOA\_X  
 ClientSampleID :  
 RE132D2-20210914

Tgt Ion: 84 Resp: 675

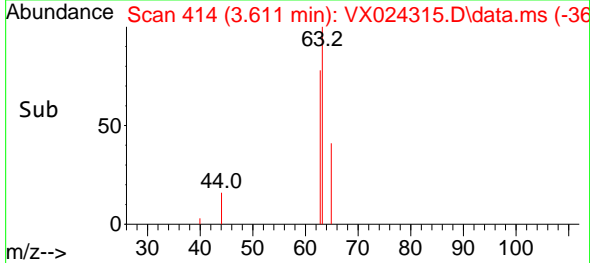
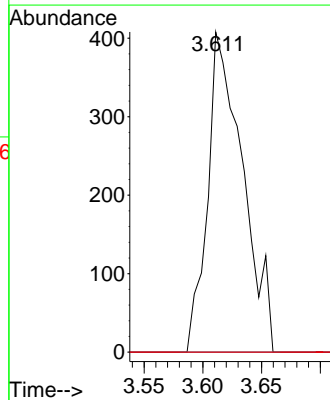
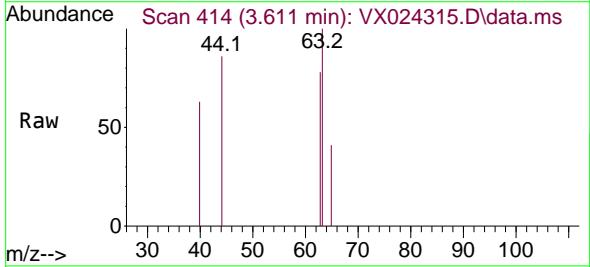
Ion	Ratio	Lower	Upper
84	100		
49	74.6	88.6	132.8#
51	26.5	27.0	40.6#
86	40.3	50.3	75.5#



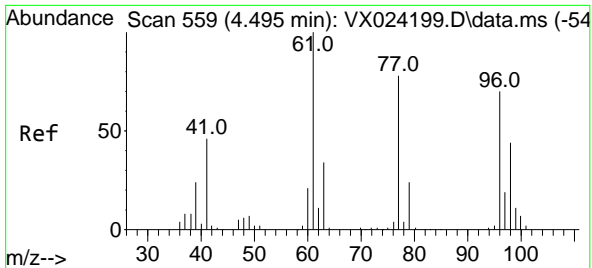
#24  
 1,1-Dichloroethane  
 Concen: 0.333 ug/l  
 RT: 3.611 min Scan# 414  
 Delta R.T. -0.006 min  
 Lab File: VX024315.D  
 Acq: 17 Sep 2021 17:32

Tgt Ion: 63 Resp: 846

Ion	Ratio	Lower	Upper
63	100		
98	0.0	3.8	11.2#
100	0.0	2.5	7.5#





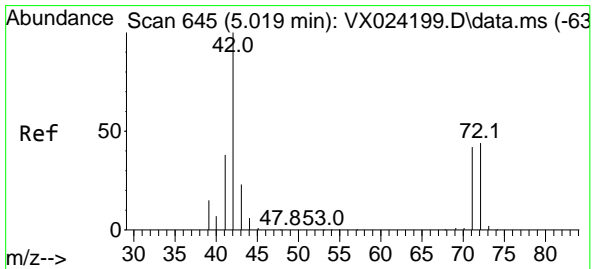
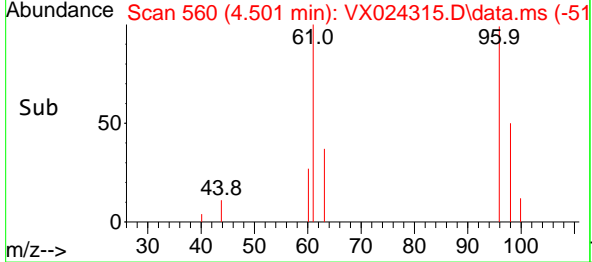
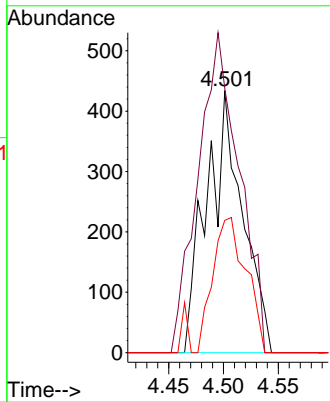
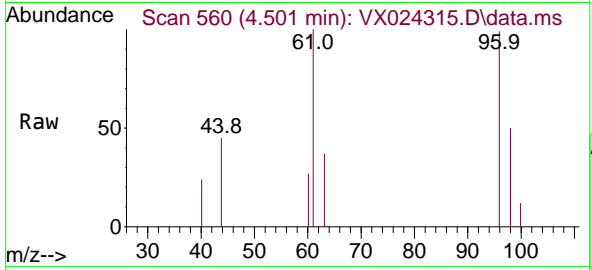


#27  
 cis-1,2-Dichloroethene  
 Concen: 0.645 ug/l  
 RT: 4.501 min Scan# 560  
 Delta R.T. 0.006 min  
 Lab File: VX024315.D  
 Acq: 17 Sep 2021 17:32

Instrument : MSVOA\_X  
 ClientSampled : RE132D2-20210914

Tgt Ion: 96 Resp: 988

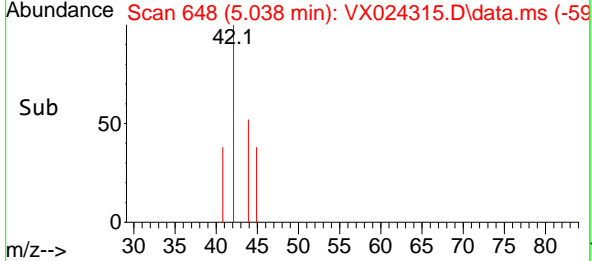
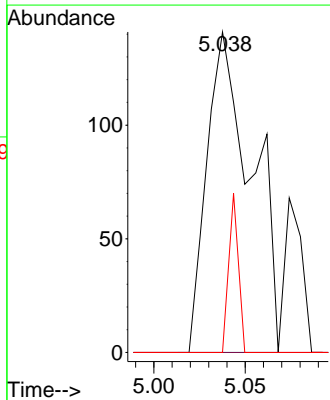
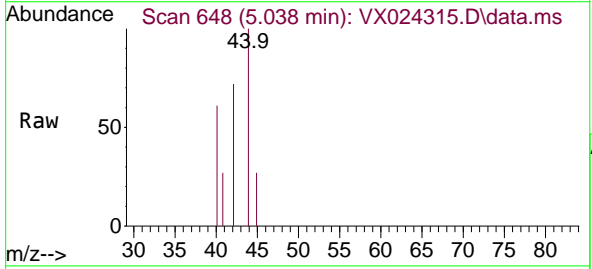
Ion	Ratio	Lower	Upper
96	100		
61	140.2	0.0	285.6
98	48.0	0.0	129.6

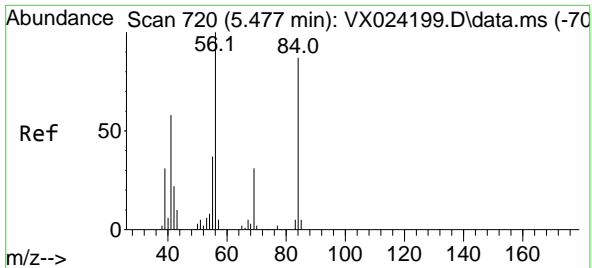


#29  
 Tetrahydrofuran  
 Concen: 0.327 ug/l  
 RT: 5.038 min Scan# 648  
 Delta R.T. 0.019 min  
 Lab File: VX024315.D  
 Acq: 17 Sep 2021 17:32

Tgt Ion: 42 Resp: 241

Ion	Ratio	Lower	Upper
42	100		
72	0.0	41.7	62.5#
71	10.8	38.4	57.6#



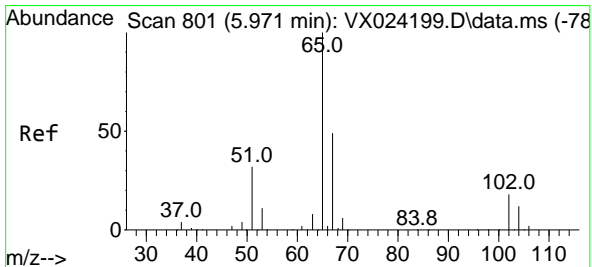
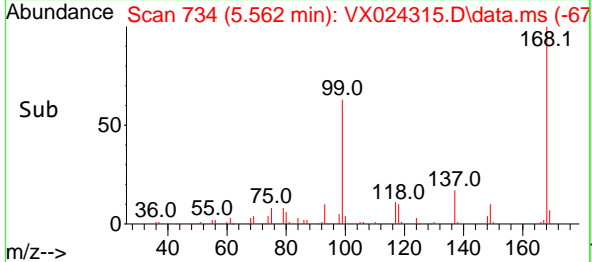
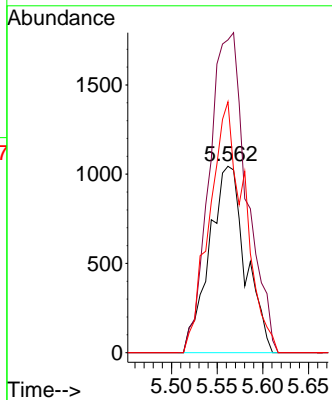
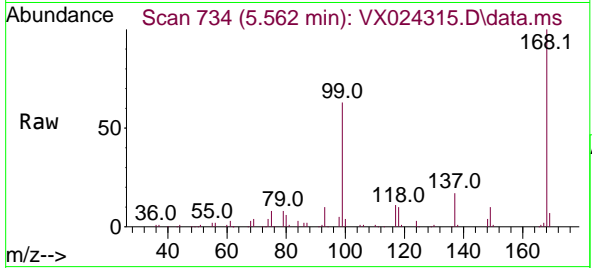


#31  
 Cyclohexane  
 Concen: 1.316 ug/l  
 RT: 5.562 min Scan# 734  
 Delta R.T. 0.085 min  
 Lab File: VX024315.D  
 Acq: 17 Sep 2021 17:32

**Instrument :**  
 MSVOA\_X  
**ClientSampled :**  
 RE132D2-20210914

Tgt Ion: 56 Resp: 2884

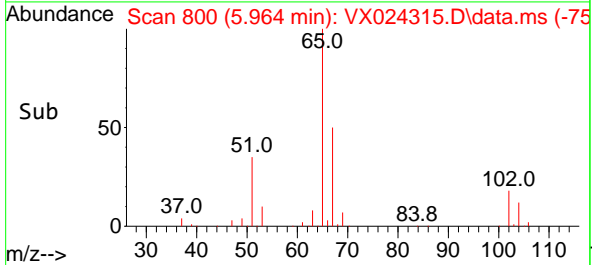
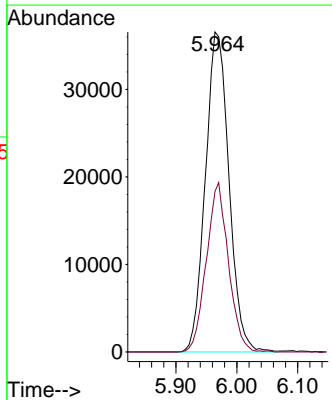
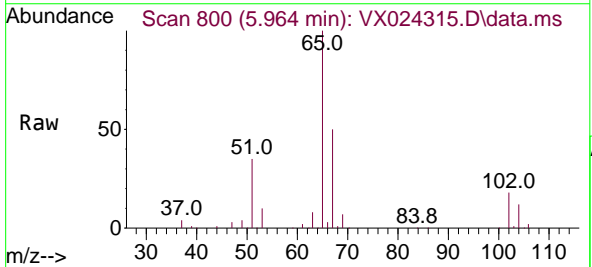
Ion	Ratio	Lower	Upper
56	100		
69	167.9	25.3	37.9#
84	134.7	71.4	107.0#

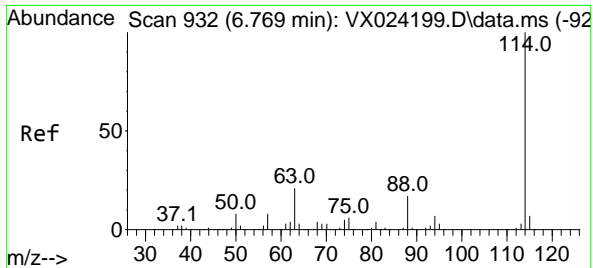


#33  
 1,2-Dichloroethane-d4  
 Concen: 52.483 ug/l  
 RT: 5.964 min Scan# 800  
 Delta R.T. -0.007 min  
 Lab File: VX024315.D  
 Acq: 17 Sep 2021 17:32

Tgt Ion: 65 Resp: 98344

Ion	Ratio	Lower	Upper
65	100		
67	49.6	0.0	105.4

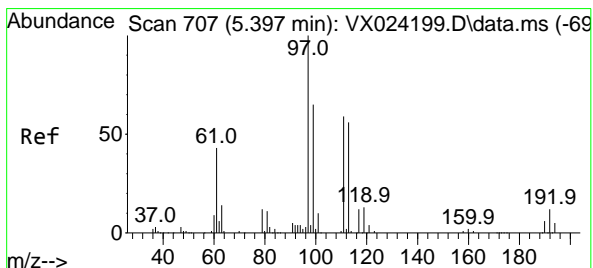
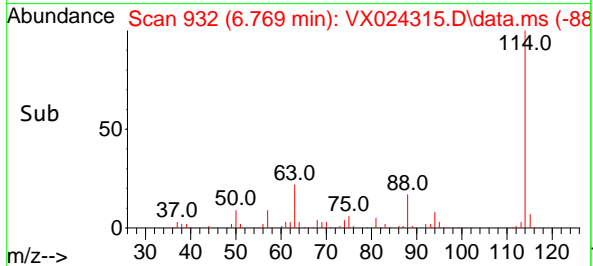
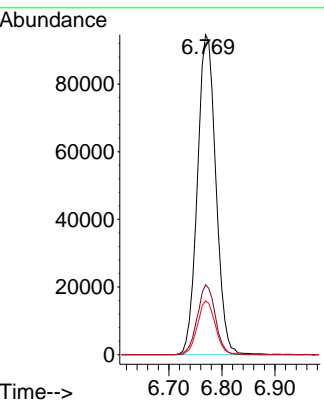
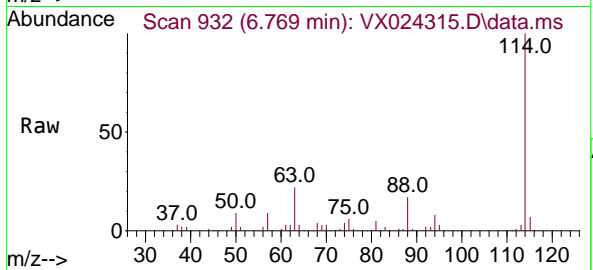




#34  
 1,4-Difluorobenzene  
 Concen: 50.000 ug/l  
 RT: 6.769 min Scan# 932  
 Delta R.T. -0.000 min  
 Lab File: VX024315.D  
 Acq: 17 Sep 2021 17:32

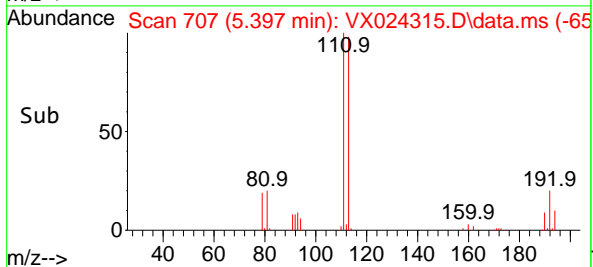
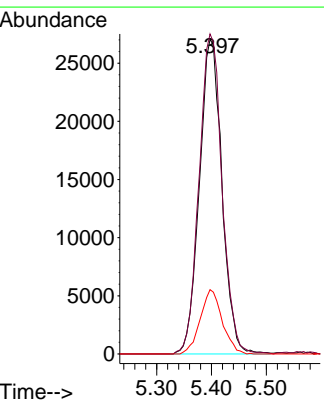
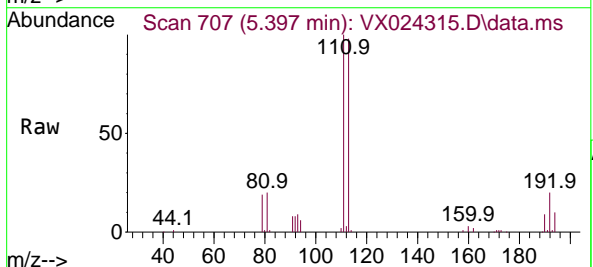
Instrument : MSVOA\_X  
 ClientSampleId : RE132D2-20210914

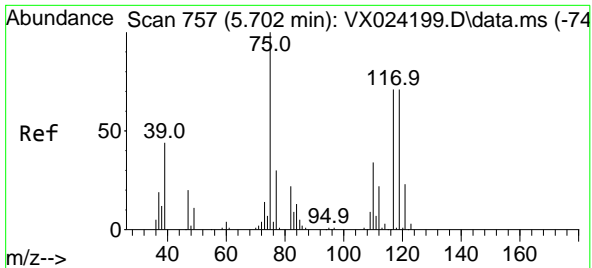
Tgt Ion	Resp	Lower	Upper
114	100		
63	21.9	0.0	40.8
88	16.8	0.0	32.8



#35  
 Dibromofluoromethane  
 Concen: 50.354 ug/l  
 RT: 5.397 min Scan# 707  
 Delta R.T. 0.000 min  
 Lab File: VX024315.D  
 Acq: 17 Sep 2021 17:32

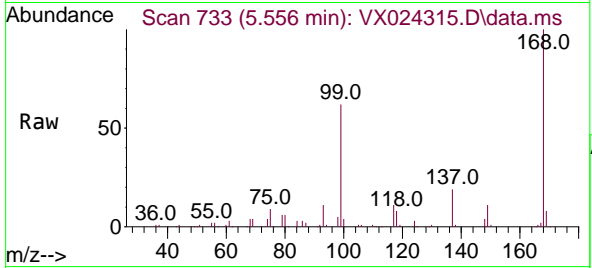
Tgt Ion	Resp	Lower	Upper
113	100		
111	103.6	81.9	122.9
192	19.9	16.7	25.1



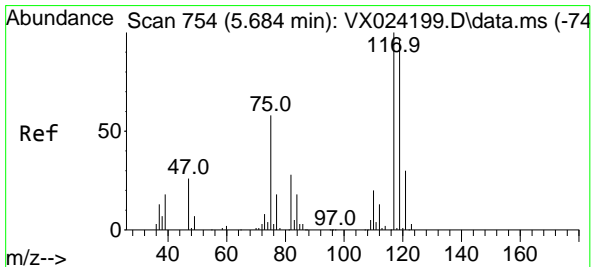
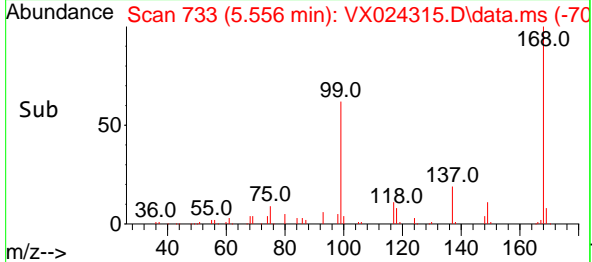
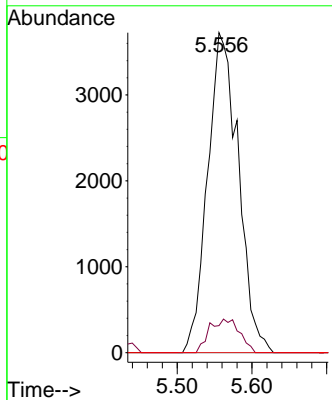


#36  
 1,1-Dichloropropene  
 Concen: 5.066 ug/l  
 RT: 5.556 min Scan# 733  
 Delta R.T. -0.146 min  
 Lab File: VX024315.D  
 Acq: 17 Sep 2021 17:32

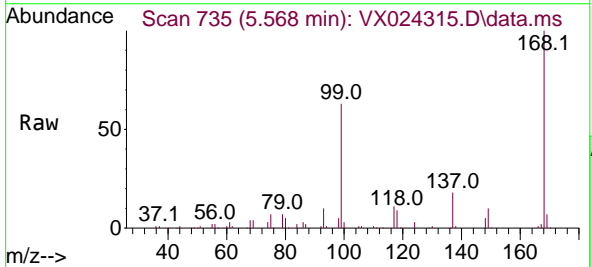
Instrument :  
 MSVOA\_X  
 ClientSampleId :  
 RE132D2-20210914



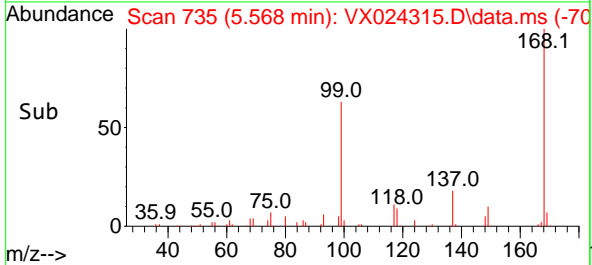
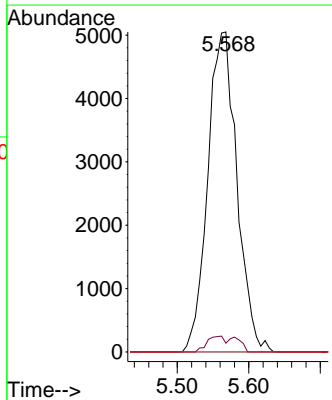
Tgt Ion: 75 Resp: 10644  
 Ion Ratio Lower Upper  
 75 100  
 110 10.3 18.1 54.4#  
 77 0.0 25.3 37.9#

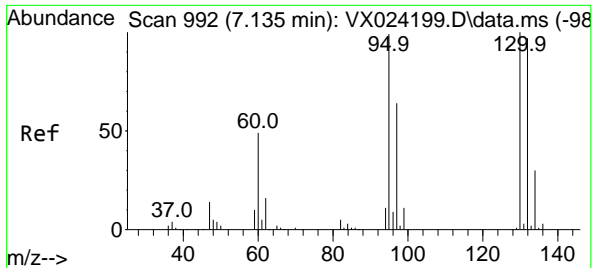


#38  
 Carbon Tetrachloride  
 Concen: 6.042 ug/l  
 RT: 5.568 min Scan# 735  
 Delta R.T. -0.116 min  
 Lab File: VX024315.D  
 Acq: 17 Sep 2021 17:32



Tgt Ion: 117 Resp: 14288  
 Ion Ratio Lower Upper  
 117 100  
 119 2.8 76.2 114.2#  
 121 0.0 24.8 37.2#

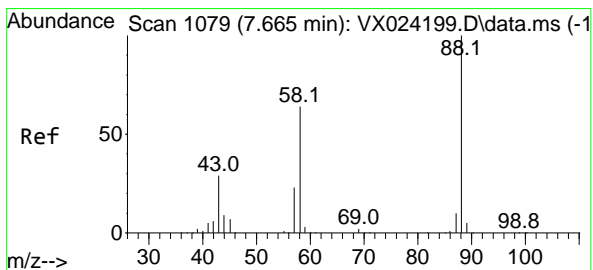
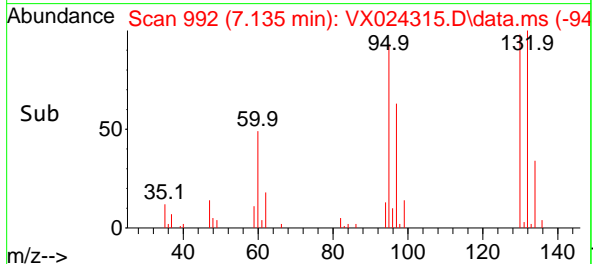
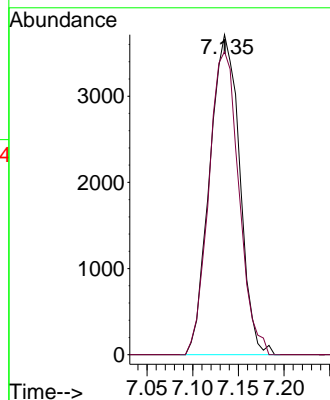
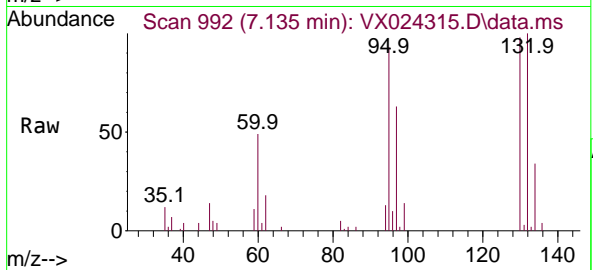




#44  
 Trichloroethene  
 Concen: 5.011 ug/l  
 RT: 7.135 min Scan# 992  
 Delta R.T. -0.000 min  
 Lab File: VX024315.D  
 Acq: 17 Sep 2021 17:32

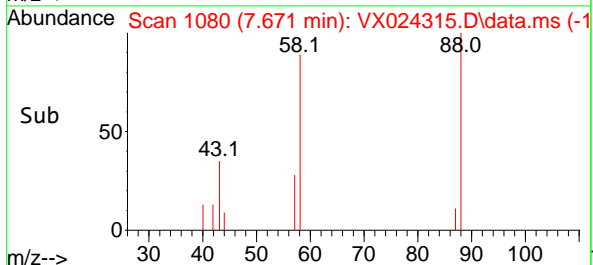
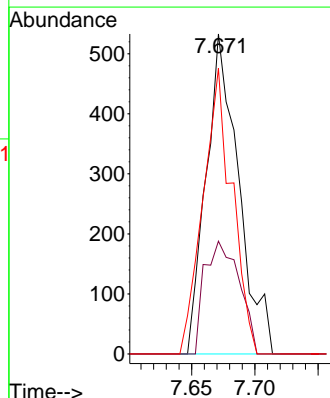
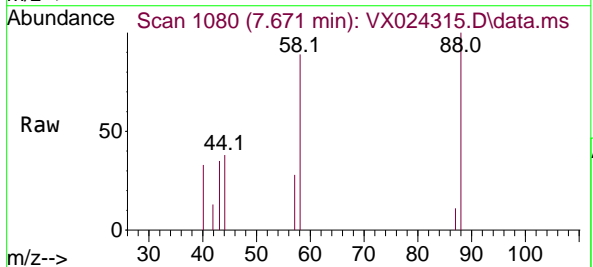
Instrument :  
 MSVOA\_X  
 ClientSampleId :  
 RE132D2-20210914

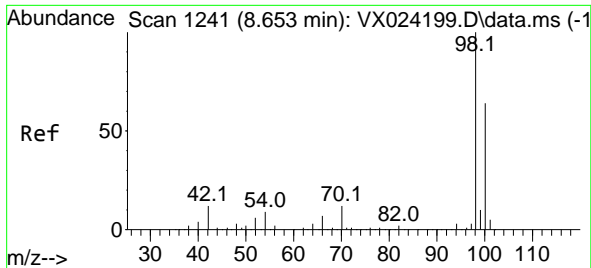
Tgt Ion:130 Resp: 8484  
 Ion Ratio Lower Upper  
 130 100  
 95 94.7 0.0 198.0



#49  
 1,4-Dioxane  
 Concen: 23.333 ug/l  
 RT: 7.671 min Scan# 1080  
 Delta R.T. 0.006 min  
 Lab File: VX024315.D  
 Acq: 17 Sep 2021 17:32

Tgt Ion: 88 Resp: 950  
 Ion Ratio Lower Upper  
 88 100  
 43 37.7 23.2 34.8#  
 58 79.8 55.0 82.4

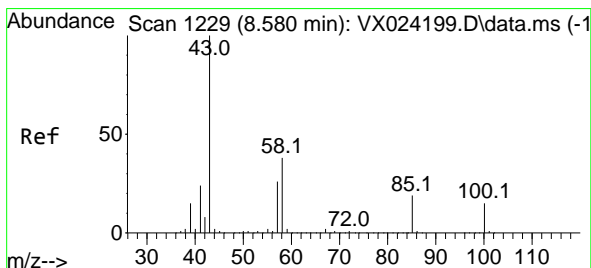
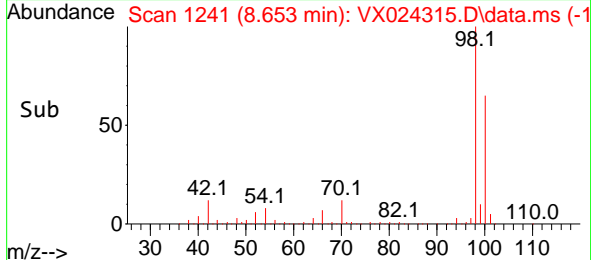
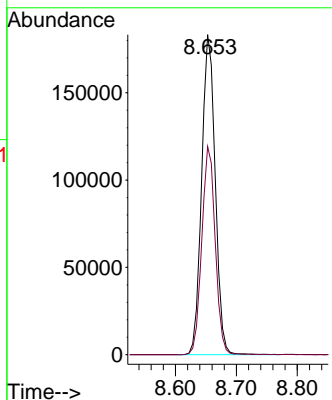
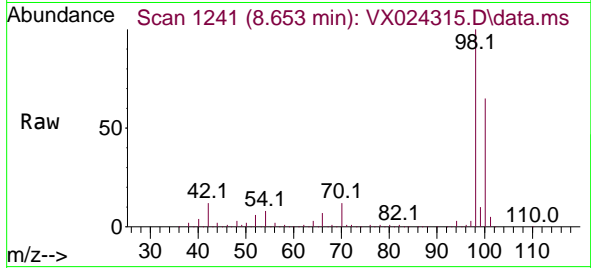




#50  
 Toluene-d8  
 Concen: 50.865 ug/l  
 RT: 8.653 min Scan# 1241  
 Delta R.T. -0.000 min  
 Lab File: VX024315.D  
 Acq: 17 Sep 2021 17:32

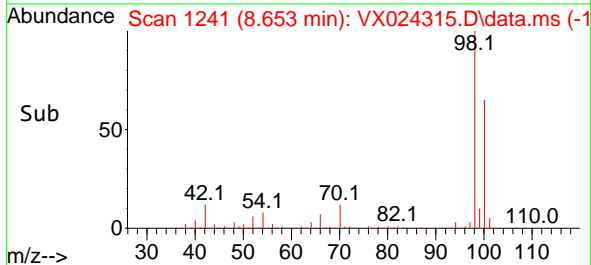
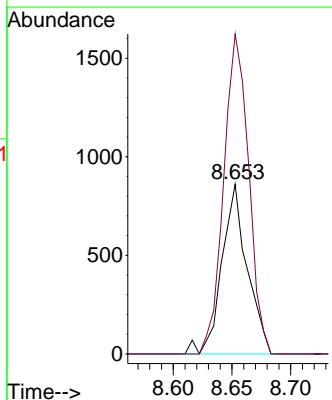
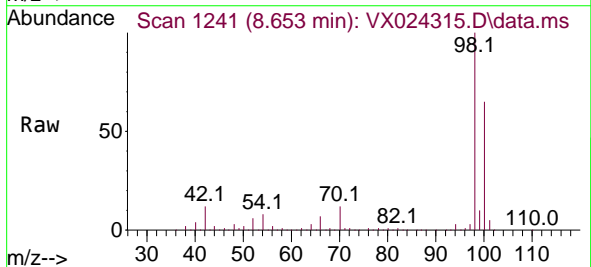
Instrument :  
 MSVOA\_X  
 ClientSampled :  
 RE132D2-20210914

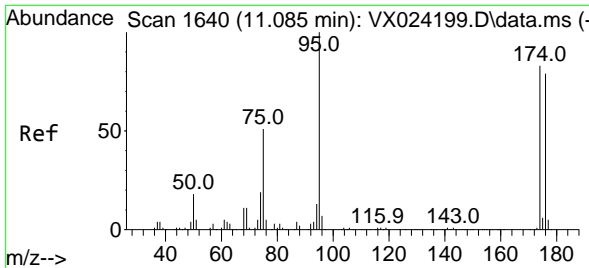
Tgt Ion: 98 Resp: 283990  
 Ion Ratio Lower Upper  
 98 100  
 100 64.3 51.9 77.9



#51  
 4-Methyl-2-Pentanone  
 Concen: 0.519 ug/l  
 RT: 8.653 min Scan# 1241  
 Delta R.T. 0.073 min  
 Lab File: VX024315.D  
 Acq: 17 Sep 2021 17:32

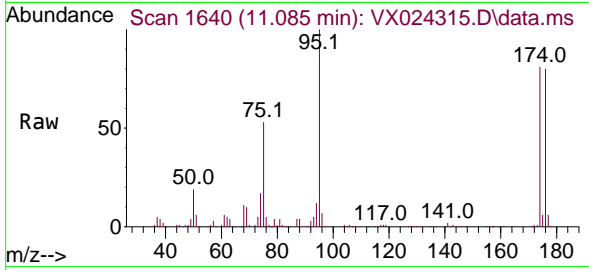
Tgt Ion: 43 Resp: 1290  
 Ion Ratio Lower Upper  
 43 100  
 58 185.7 35.4 53.0#



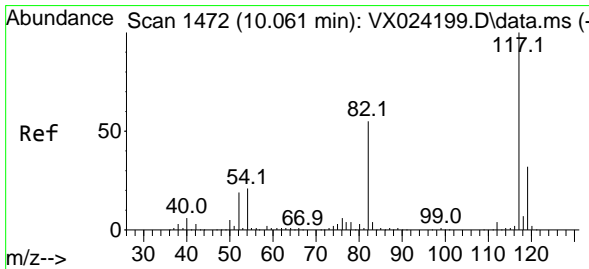
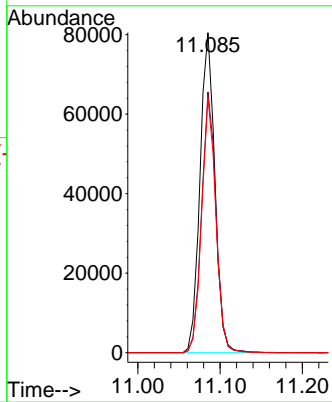
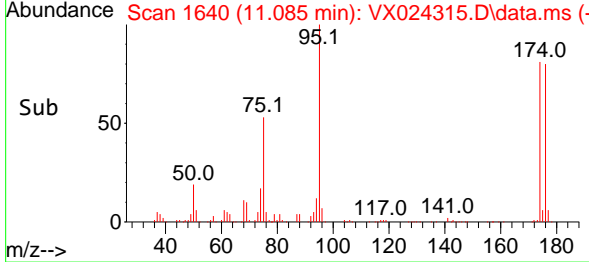


#62  
 4-Bromofluorobenzene  
 Concen: 46.495 ug/l  
 RT: 11.085 min Scan# 1640  
 Delta R.T. 0.000 min  
 Lab File: VX024315.D  
 Acq: 17 Sep 2021 17:32

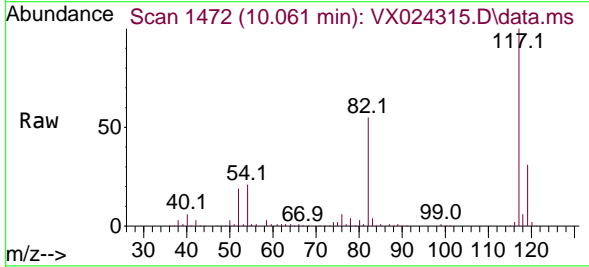
Instrument : MSVOA\_X  
 ClientSampleId : RE132D2-20210914



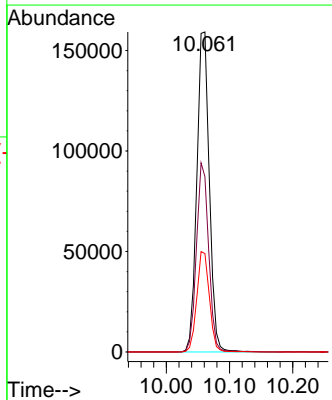
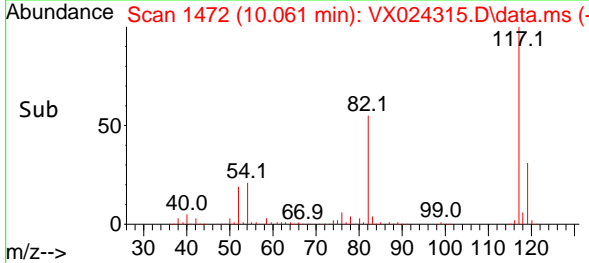
Tgt Ion: 95 Resp: 101024  
 Ion Ratio Lower Upper  
 95 100  
 174 79.0 0.0 154.6  
 176 76.1 0.0 155.8

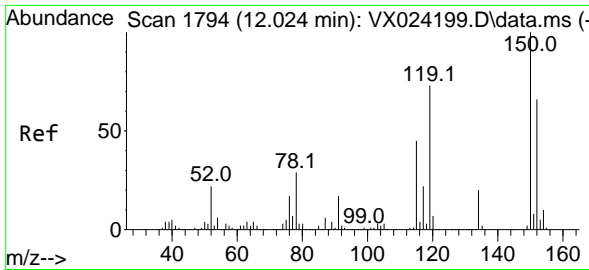


#63  
 Chlorobenzene-d5  
 Concen: 50.000 ug/l  
 RT: 10.061 min Scan# 1472  
 Delta R.T. 0.000 min  
 Lab File: VX024315.D  
 Acq: 17 Sep 2021 17:32



Tgt Ion: 117 Resp: 219757  
 Ion Ratio Lower Upper  
 117 100  
 82 54.8 47.4 71.2  
 119 30.7 26.6 39.8



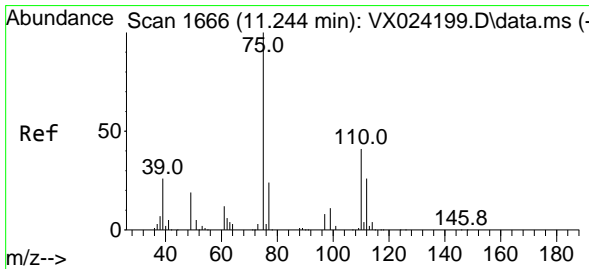
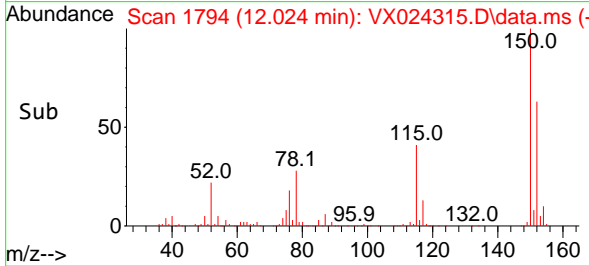
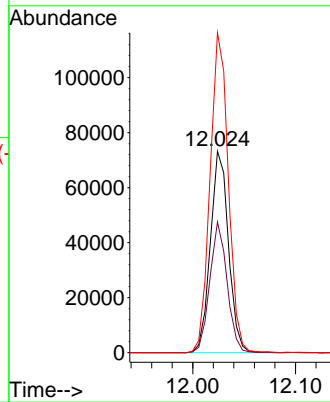
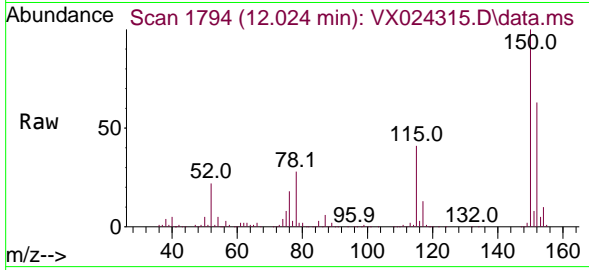


#72  
 1,4-Dichlorobenzene-d4  
 Concen: 50.000 ug/l  
 RT: 12.024 min Scan# 1794  
 Delta R.T. 0.000 min  
 Lab File: VX024315.D  
 Acq: 17 Sep 2021 17:32

Instrument :  
 MSVOA\_X  
 ClientSampled :  
 RE132D2-20210914

Tgt Ion:152 Resp: 89934

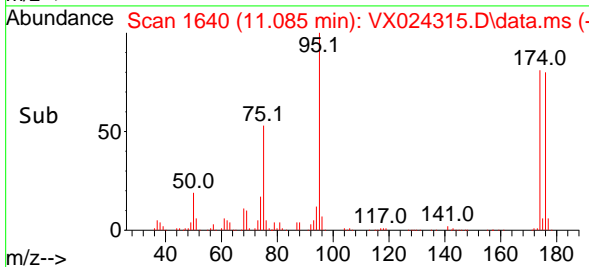
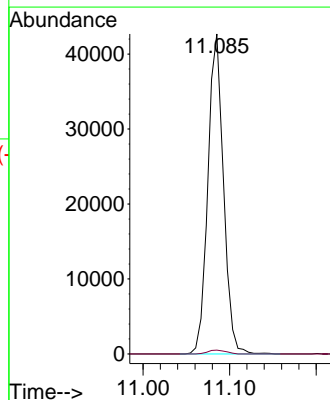
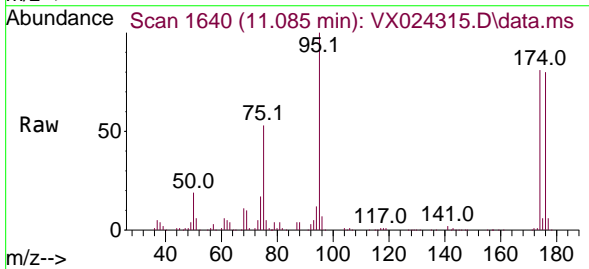
Ion	Ratio	Lower	Upper
152	100		
115	61.9	41.1	123.3
150	159.7	0.0	349.0



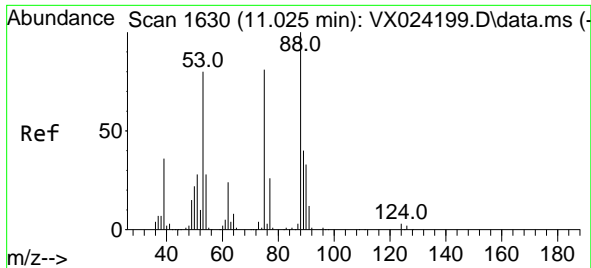
#76  
 1,2,3-Trichloropropane  
 Concen: 25.788 ug/l  
 RT: 11.085 min Scan# 1640  
 Delta R.T. -0.159 min  
 Lab File: VX024315.D  
 Acq: 17 Sep 2021 17:32

Tgt Ion: 75 Resp: 53329

Ion	Ratio	Lower	Upper
75	100		
77	1.4	19.1	57.5#

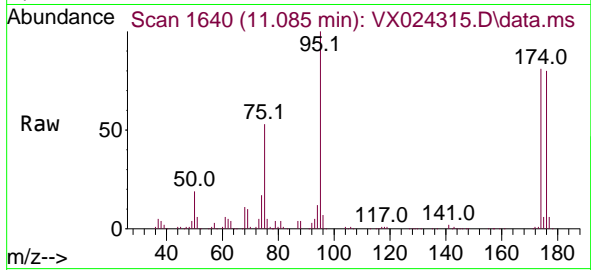






#81  
 trans-1,4-Dichloro-2-butene  
 Concen: 75.844 ug/l  
 RT: 11.085 min Scan# 1640  
 Delta R.T. 0.060 min  
 Lab File: VX024315.D  
 Acq: 17 Sep 2021 17:32

Instrument :  
 MSVOA\_X  
 ClientSampleId :  
 RE132D2-20210914



Tgt Ion: 75 Resp: 53329

Ion	Ratio	Lower	Upper
75	100		
53	0.0	74.5	111.7#
89	0.0	37.9	56.9#

