

Data Path : Z:\voasrv\HPCHEM1\MSVOA_X\Data\VX091721\
 Data File : VX024308.D
 Acq On : 17 Sep 2021 14:47
 Operator : JC/MD
 Sample : M3791-03
 Misc : 5.0mL/MSVOA_X/WATER
 ALS Vial : 9 Sample Multiplier: 1

Instrument :
 MSVOA_X
 ClientSampleId :
 SW-CB-02-(0.3)

Quant Time: Sep 17 15:33:06 2021
 Quant Method : Z:\voasrv\HPCHEM1\MSVOA_X\Method\82X091421W.M
 Quant Title : SW846 8260
 QLast Update : Tue Sep 14 12:18:04 2021
 Response via : Initial Calibration

Compound	R.T.	QIon	Response	Conc	Units	Dev(Min)

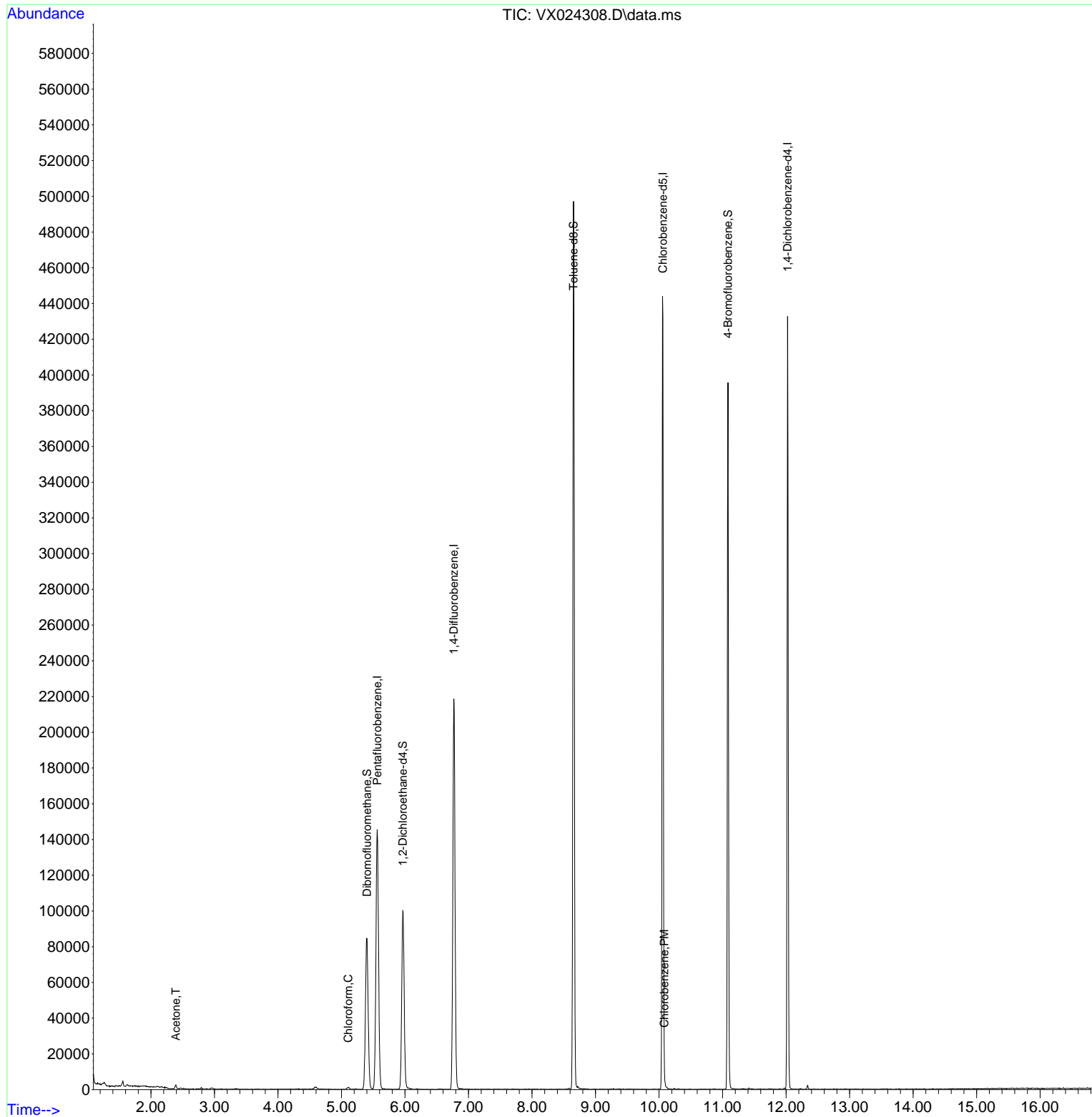
Internal Standards						
1) Pentafluorobenzene	5.562	168	134428	50.000	ug/l	0.00
34) 1,4-Difluorobenzene	6.769	114	217154	50.000	ug/l	0.00
63) Chlorobenzene-d5	10.061	117	198610	50.000	ug/l	0.00
72) 1,4-Dichlorobenzene-d4	12.024	152	86809	50.000	ug/l	0.00
System Monitoring Compounds						
33) 1,2-Dichloroethane-d4	5.964	65	103014	53.740	ug/l	0.00
Spiked Amount	50.000	Range	78 - 117	Recovery	=	107.480%
35) Dibromofluoromethane	5.403	113	73458	50.441	ug/l	0.00
Spiked Amount	50.000	Range	75 - 124	Recovery	=	100.880%
50) Toluene-d8	8.653	98	292008	55.040	ug/l	0.00
Spiked Amount	50.000	Range	92 - 112	Recovery	=	110.080%
62) 4-Bromofluorobenzene	11.085	95	101641	49.229	ug/l	0.00
Spiked Amount	50.000	Range	83 - 123	Recovery	=	98.460%
Target Compounds						
					Qvalue	
16) Acetone	2.392	43	2312	2.829	ug/l #	79
30) Chloroform	5.105	83	1360	0.493	ug/l #	79
65) Chlorobenzene	10.085	112	952	0.233	ug/l #	86

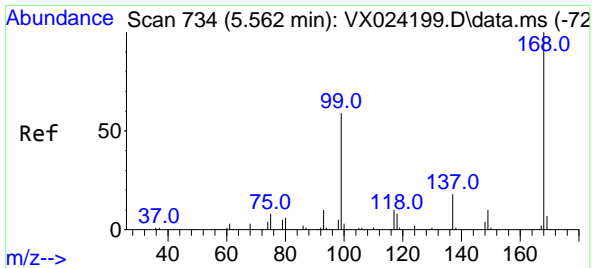
(#) = qualifier out of range (m) = manual integration (+) = signals summed

Data Path : Z:\voasrv\HPCHEM1\MSVOA_X\Data\VX091721\
 Data File : VX024308.D
 Acq On : 17 Sep 2021 14:47
 Operator : JC/MD
 Sample : M3791-03
 Misc : 5.0mL/MSVOA_X/WATER
 ALS Vial : 9 Sample Multiplier: 1

Instrument :
 MSVOA_X
 ClientSampleId :
 SW-CB-02-(0.3)

Quant Time: Sep 17 15:33:06 2021
 Quant Method : Z:\voasrv\HPCHEM1\MSVOA_X\Method\82X091421W.M
 Quant Title : SW846 8260
 QLast Update : Tue Sep 14 12:18:04 2021
 Response via : Initial Calibration

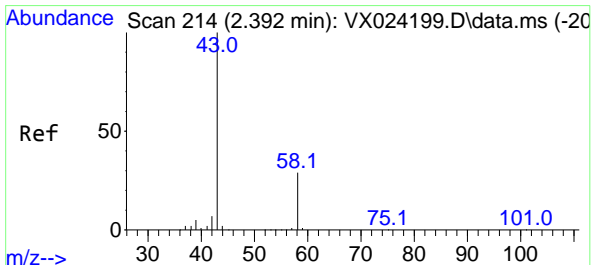
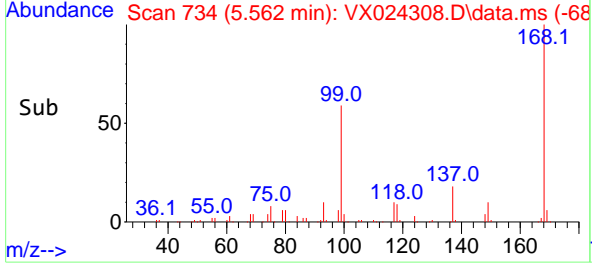
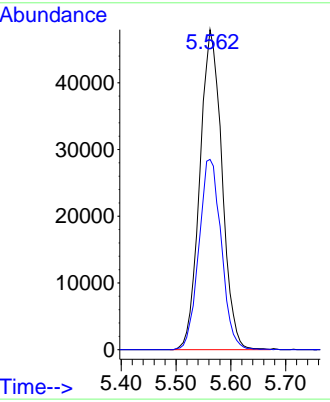
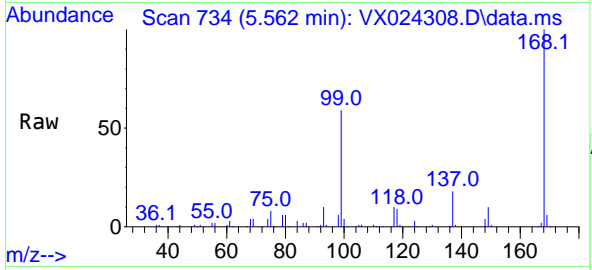




#1
 Pentafluorobenzene
 Concen: 50.000 ug/l
 RT: 5.562 min Scan# 734
 Delta R.T. -0.000 min
 Lab File: VX024308.D
 Acq: 17 Sep 2021 14:47

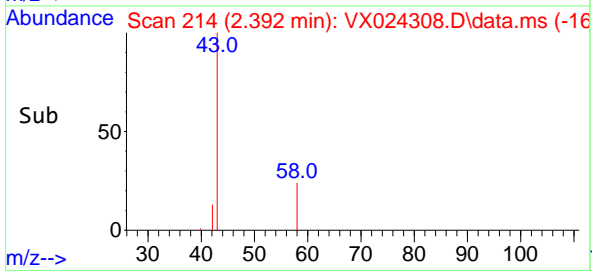
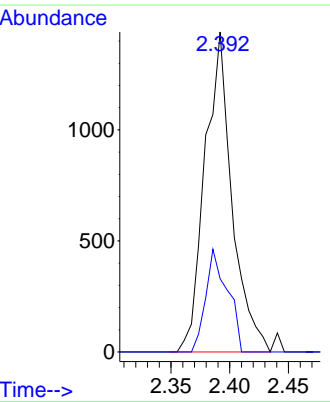
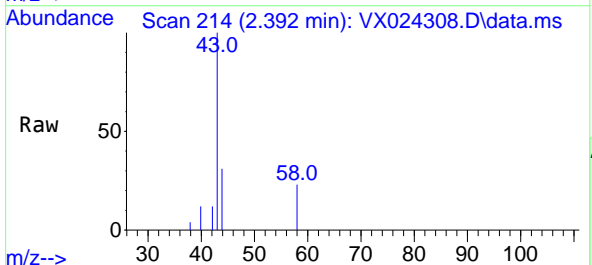
Instrument :
 MSVOA_X
 ClientSampled :
 SW-CB-02-(0.3)

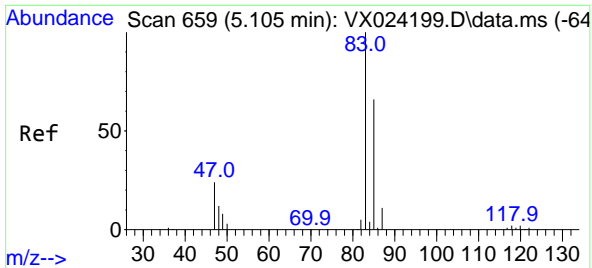
Tgt Ion:168 Resp: 134428
 Ion Ratio Lower Upper
 168 100
 99 59.5 45.8 68.6



#16
 Acetone
 Concen: 2.829 ug/l
 RT: 2.392 min Scan# 214
 Delta R.T. -0.000 min
 Lab File: VX024308.D
 Acq: 17 Sep 2021 14:47

Tgt Ion: 43 Resp: 2312
 Ion Ratio Lower Upper
 43 100
 58 22.9 27.8 41.8#

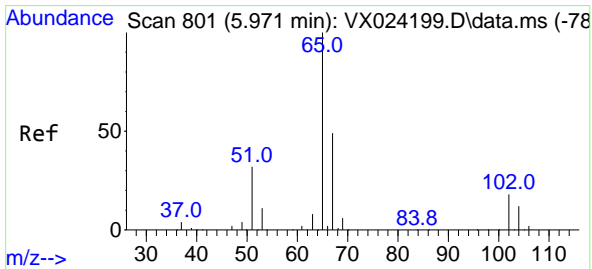
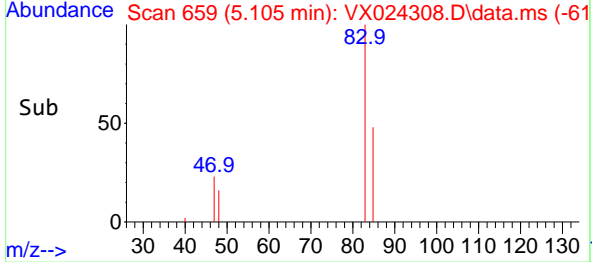
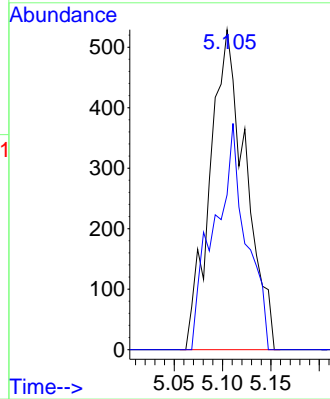
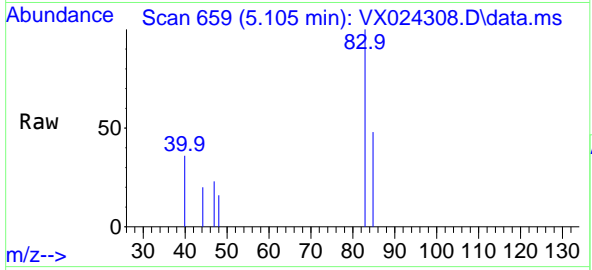




#30
 Chloroform
 Concen: 0.493 ug/l
 RT: 5.105 min Scan# 659
 Delta R.T. -0.000 min
 Lab File: VX024308.D
 Acq: 17 Sep 2021 14:47

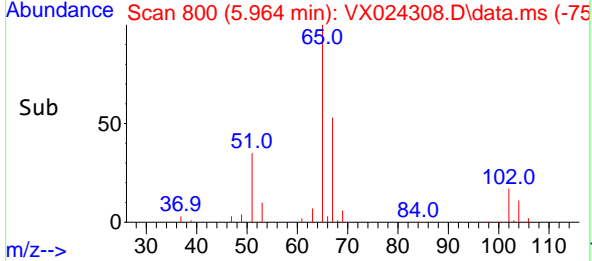
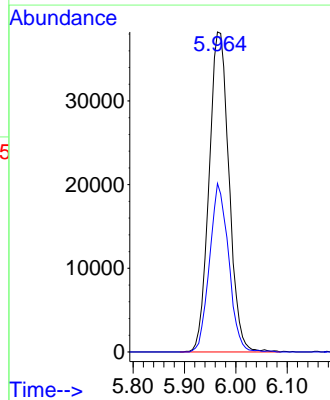
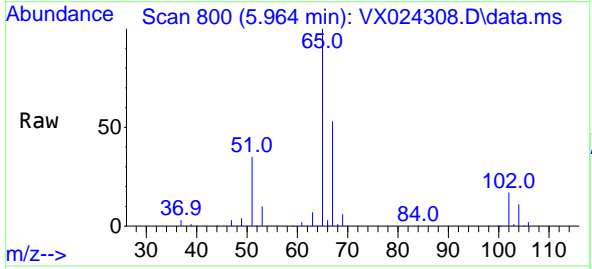
Instrument :
 MSVOA_X
 ClientSampled :
 SW-CB-02-(0.3)

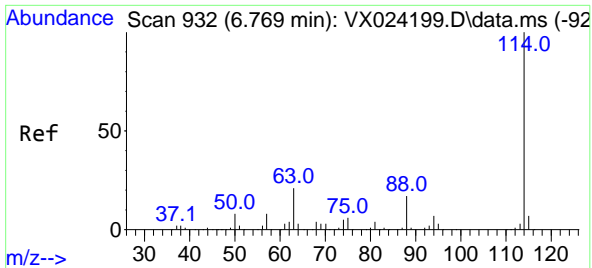
Tgt Ion: 83 Resp: 1360
 Ion Ratio Lower Upper
 83 100
 85 48.4 52.0 78.0#



#33
 1,2-Dichloroethane-d4
 Concen: 53.740 ug/l
 RT: 5.964 min Scan# 800
 Delta R.T. -0.007 min
 Lab File: VX024308.D
 Acq: 17 Sep 2021 14:47

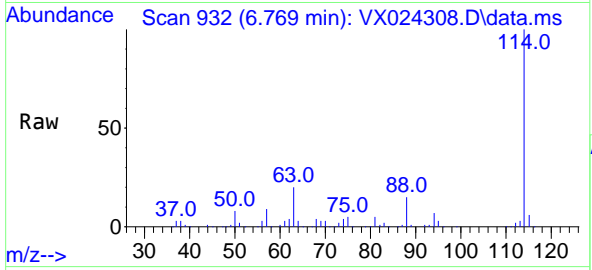
Tgt Ion: 65 Resp: 103014
 Ion Ratio Lower Upper
 65 100
 67 50.3 0.0 105.4





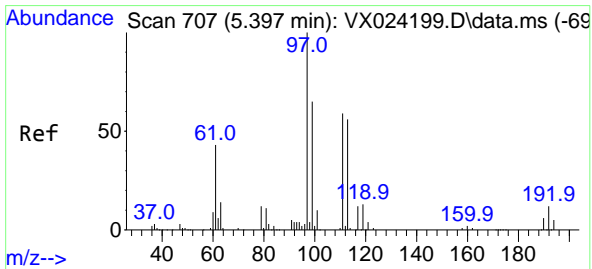
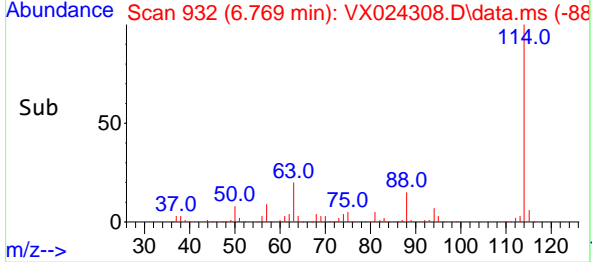
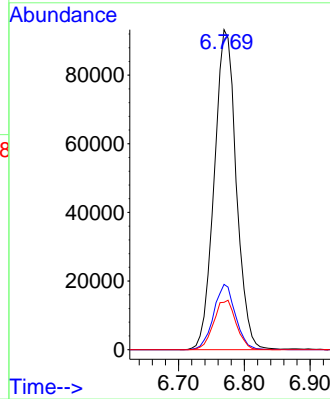
#34
 1,4-Difluorobenzene
 Concen: 50.000 ug/l
 RT: 6.769 min Scan# 932
 Delta R.T. 0.000 min
 Lab File: VX024308.D
 Acq: 17 Sep 2021 14:47

Instrument :
 MSVOA_X
ClientSampled :
 SW-CB-02-(0.3)

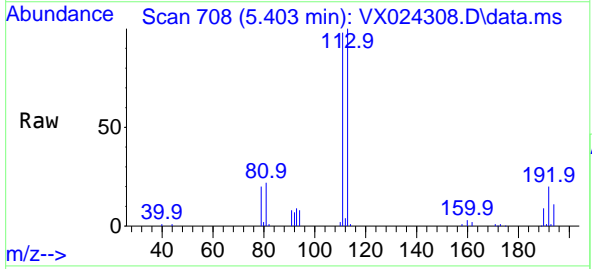


Tgt Ion:114 Resp: 217154

Ion	Ratio	Lower	Upper
114	100		
63	20.4	0.0	40.8
88	14.8	0.0	32.8

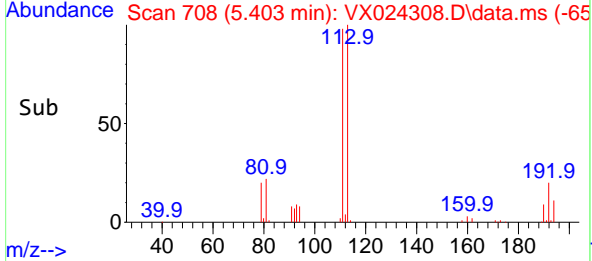
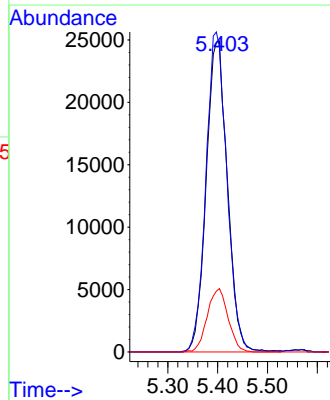


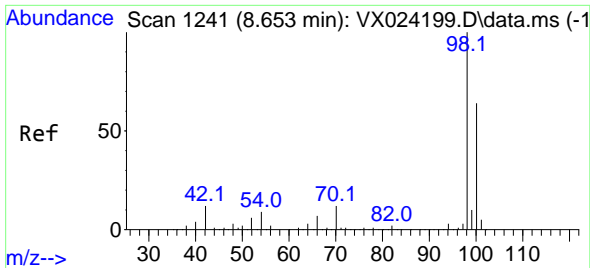
#35
 Dibromofluoromethane
 Concen: 50.441 ug/l
 RT: 5.403 min Scan# 708
 Delta R.T. 0.006 min
 Lab File: VX024308.D
 Acq: 17 Sep 2021 14:47



Tgt Ion:113 Resp: 73458

Ion	Ratio	Lower	Upper
113	100		
111	101.8	81.9	122.9
192	20.1	16.7	25.1

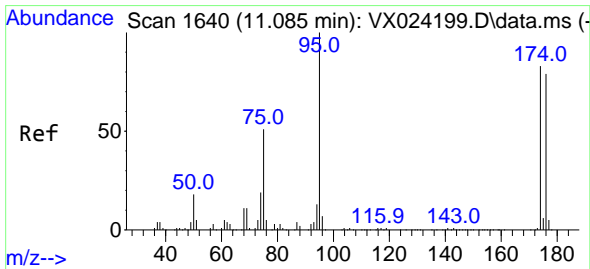
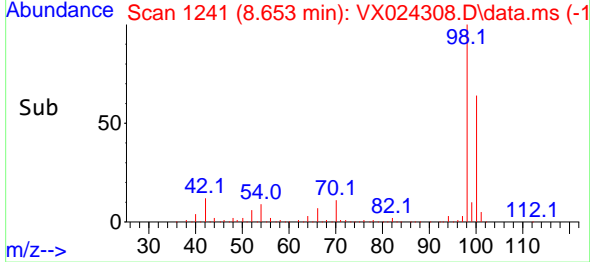
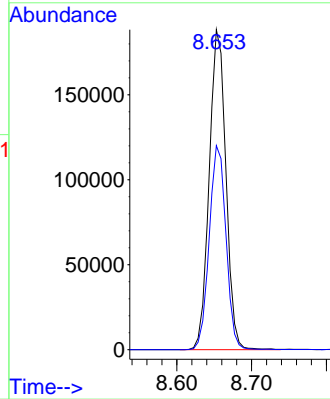
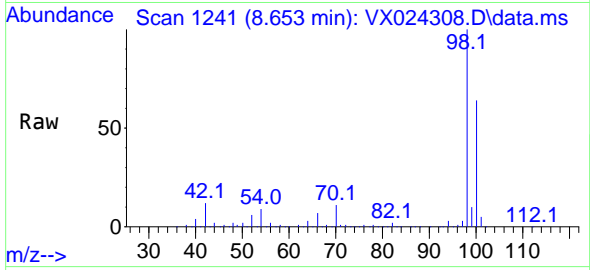




#50
 Toluene-d8
 Concen: 55.040 ug/l
 RT: 8.653 min Scan# 1241
 Delta R.T. -0.000 min
 Lab File: VX024308.D
 Acq: 17 Sep 2021 14:47

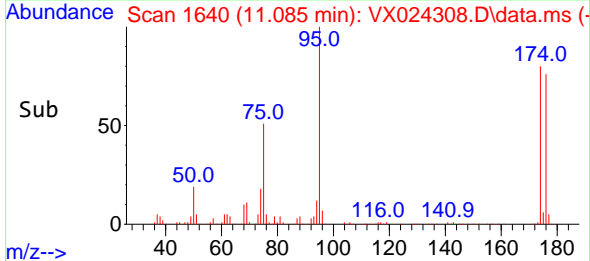
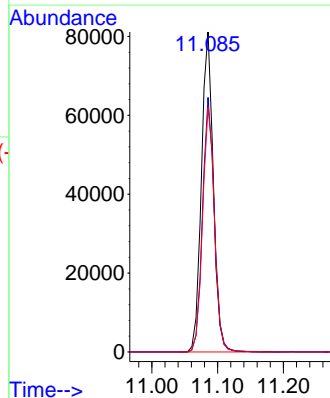
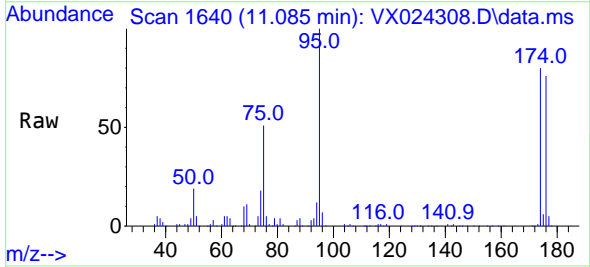
Instrument :
 MSVOA_X
ClientSampled :
 SW-CB-02-(0.3)

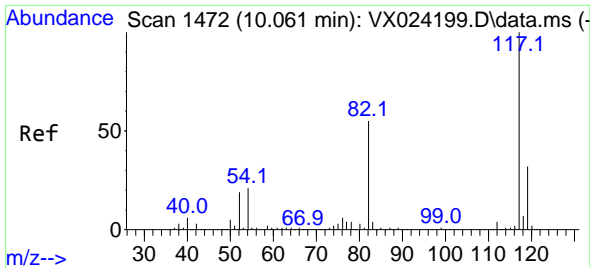
Tgt Ion: 98 Resp: 292008
 Ion Ratio Lower Upper
 98 100
 100 64.1 51.9 77.9



#62
 4-Bromofluorobenzene
 Concen: 49.229 ug/l
 RT: 11.085 min Scan# 1640
 Delta R.T. 0.000 min
 Lab File: VX024308.D
 Acq: 17 Sep 2021 14:47

Tgt Ion: 95 Resp: 101641
 Ion Ratio Lower Upper
 95 100
 174 78.9 0.0 154.6
 176 76.7 0.0 155.8



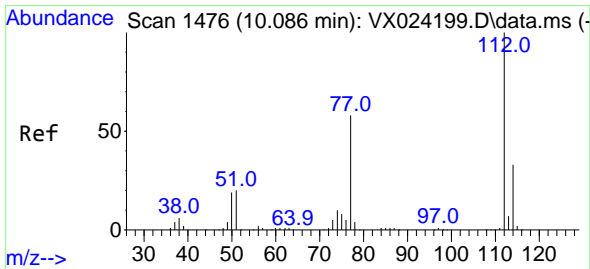
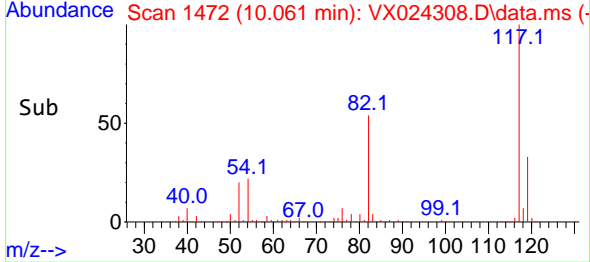
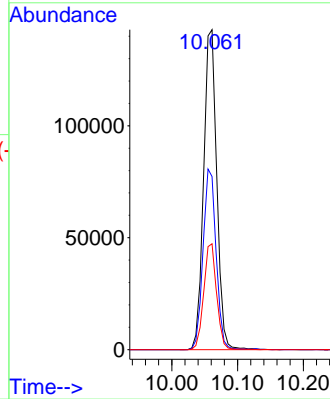
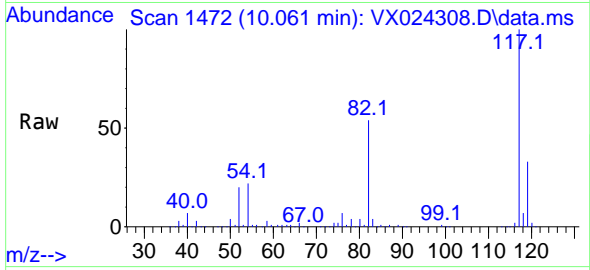


#63
 Chlorobenzene-d5
 Concen: 50.000 ug/l
 RT: 10.061 min Scan# 1472
 Delta R.T. 0.000 min
 Lab File: VX024308.D
 Acq: 17 Sep 2021 14:47

Instrument :
 MSVOA_X
 ClientSampled :
 SW-CB-02-(0.3)

Tgt Ion:117 Resp: 198610

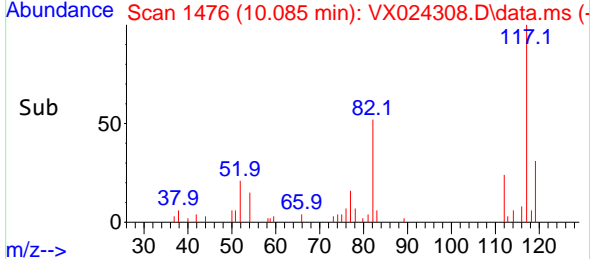
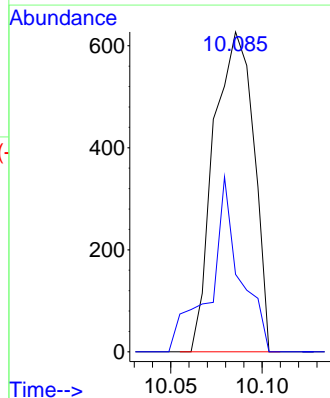
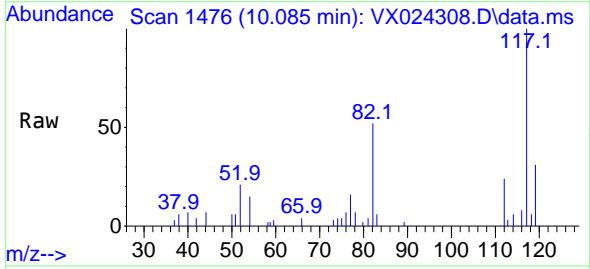
Ion	Ratio	Lower	Upper
117	100		
82	54.1	47.4	71.2
119	33.1	26.6	39.8

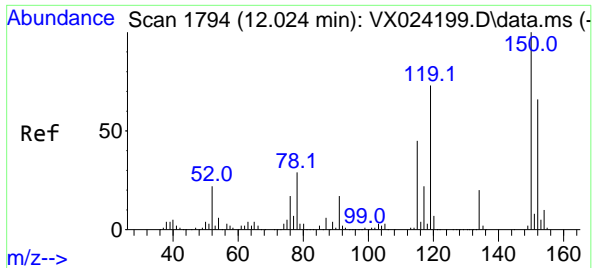


#65
 Chlorobenzene
 Concen: 0.233 ug/l
 RT: 10.085 min Scan# 1476
 Delta R.T. -0.001 min
 Lab File: VX024308.D
 Acq: 17 Sep 2021 14:47

Tgt Ion:112 Resp: 952

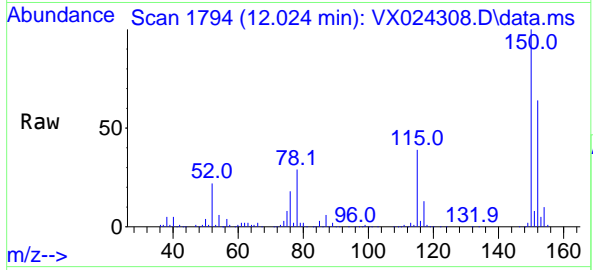
Ion	Ratio	Lower	Upper
112	100		
114	24.2	25.8	38.6#





#72
 1,4-Dichlorobenzene-d4
 Concen: 50.000 ug/l
 RT: 12.024 min Scan# 1794
 Delta R.T. 0.000 min
 Lab File: VX024308.D
 Acq: 17 Sep 2021 14:47

Instrument :
 MSVOA_X
ClientSampled :
 SW-CB-02-(0.3)



Tgt Ion:152 Resp: 86809

Ion	Ratio	Lower	Upper
152	100		
115	60.9	41.1	123.3
150	158.5	0.0	349.0

