

Data Path : Z:\VOASRV\HPCHEM1\MSVOA X\DATA\VX091818\
 Data File : VX004690.D
 Acq On : 19 Sep 2018 06:29
 Operator : JC/MD
 Sample : J4952-03
 Misc : 5.0mL/MSVOA X/WATER
 ALS Vial : 49 Sample Multiplier: 1

Instrument :
 MSVOA_X
 ClientSampleId :
 2015-161-20-RB36584RT-RB47184R

Integration Parameters: RTEINT.P

Integrator: RTE
 Smoothing : ON
 Sampling : 1
 Start Thrs: 0.2
 Stop Thrs : 0

Filtering: 5
 Min Area: 3 % of largest Peak
 Max Peaks: 100
 Peak Location: TOP

If leading or trailing edge < 100 prefer < Baseline drop else tangent >
 Peak separation: 5

Method : Z:\VOASRV\HPCHEM1\MSVOA_X\METHOD\82X091118W.M
 Title : SW846 8260

Signal : TIC

peak #	R.T. min	first scan	max scan	last scan	PK TY	peak height	corr. area	corr. % max.	% of total
1	2.446	206	212	219	rBV	35261	59569	3.83%	0.323%
2	2.861	273	280	288	rBV2	22791	57569	3.70%	0.312%
3	3.519	380	388	398	rVB3	8253	18734	1.20%	0.102%
4	4.397	520	532	544	rVB3	23912	72964	4.69%	0.396%
5	5.220	650	667	674	rBV2	13361	45682	2.93%	0.248%
6	5.306	674	681	695	rVB3	5484	15919	1.02%	0.086%
7	5.501	701	713	721	rBV2	168474	474807	30.50%	2.577%
8	5.574	721	725	731	rVV3	35507	99680	6.40%	0.541%
9	5.659	731	739	766	rVB	242271	680226	43.69%	3.692%
10	5.933	772	784	795	rVB6	7828	27452	1.76%	0.149%
11	6.068	795	806	826	rVB3	163433	433225	27.83%	2.351%
12	6.263	826	838	848	rBV8	7973	34637	2.22%	0.188%
13	6.354	848	853	861	rVB3	6954	17392	1.12%	0.094%
14	6.458	861	870	883	rBV2	141091	357163	22.94%	1.938%
15	6.860	926	936	947	rBV	323114	792964	50.93%	4.303%
16	7.464	1024	1035	1045	rVB	101186	240265	15.43%	1.304%
17	7.732	1074	1079	1085	rVB2	15859	26611	1.71%	0.144%
18	7.884	1092	1104	1113	rBV	170884	311248	19.99%	1.689%
19	8.025	1122	1127	1134	rVB3	8806	16855	1.08%	0.091%
20	8.214	1146	1158	1162	rBV	14315	26651	1.71%	0.145%
21	8.573	1209	1217	1222	rBV	24406	42261	2.71%	0.229%
22	8.665	1227	1232	1235	rVV3	20979	38557	2.48%	0.209%
23	8.713	1235	1240	1249	rVB	744924	1186394	76.21%	6.439%
24	8.835	1256	1260	1265	rBV	10172	16380	1.05%	0.089%
25	8.915	1269	1273	1280	rVB5	7580	15998	1.03%	0.087%
26	9.037	1288	1293	1299	rBV3	23014	39393	2.53%	0.214%
27	9.165	1305	1314	1319	rBV4	16930	29074	1.87%	0.158%
28	9.219	1319	1323	1329	rBV	14469	21999	1.41%	0.119%
29	9.408	1350	1354	1358	rVB	19014	22277	1.43%	0.121%
30	9.549	1370	1377	1385	rVV	103869	162229	10.42%	0.880%
31	9.622	1385	1389	1395	rVV2	32548	74702	4.80%	0.405%
32	9.677	1395	1398	1402	rVB2	16694	26132	1.68%	0.142%
33	9.975	1442	1447	1454	rBV	111772	149178	9.58%	0.810%
34	10.116	1464	1470	1475	rBV	659799	893035	57.36%	4.847%

Data Path : Z:\VOASRV\HPCHEM1\MSVOA X\DATA\VX091818\
 Data File : VX004690.D
 Acq On : 19 Sep 2018 06:29
 Operator : JC/MD
 Sample : J4952-03
 Misc : 5.0mL/MSVOA X/WATER
 ALS Vial : 49 Sample Multiplier: 1

Instrument :
 MSVOA_X
 ClientSampleId :
 2015-161-20-RB36584RT-RB47184R

Integration Parameters: RTEINT.P

Integrator: RTE
 Smoothing : ON Filtering: 5
 Sampling : 1 Min Area: 3 % of largest Peak
 Start Thrs: 0.2 Max Peaks: 100
 Stop Thrs : 0 Peak Location: TOP

If leading or trailing edge < 100 prefer < Baseline drop else tangent >
 Peak separation: 5

Method : Z:\VOASRV\HPCHEM1\MSVOA_X\METHOD\82X091118W.M
 Title : SW846 8260

35	10.183	1478	1481	1485	rVV	18653	31904	2.05%	0.173%
36	10.250	1488	1492	1500	rVV	46692	67179	4.32%	0.365%
37	10.360	1500	1510	1516	rVB3	31411	62848	4.04%	0.341%
38	10.512	1529	1535	1543	rBV3	7350	15612	1.00%	0.085%
39	10.646	1548	1557	1563	rBV5	9129	26082	1.68%	0.142%
40	10.835	1578	1588	1596	rBV2	19733	37844	2.43%	0.205%
41	10.914	1596	1601	1608	rVB3	10725	20915	1.34%	0.114%
42	11.018	1613	1618	1626	rBV	125038	162526	10.44%	0.882%
43	11.140	1632	1638	1643	rBV	681579	840931	54.02%	4.564%
44	11.183	1643	1645	1651	rVB2	14039	17835	1.15%	0.097%
45	11.359	1666	1674	1682	rBV	154395	187929	12.07%	1.020%
46	11.457	1682	1690	1694	rVV	45689	69907	4.49%	0.379%
47	11.506	1694	1698	1706	rVB	55397	67681	4.35%	0.367%
48	11.670	1720	1725	1734	rVB	115044	145520	9.35%	0.790%
49	11.804	1744	1747	1753	rVB	58299	73554	4.72%	0.399%
50	11.920	1760	1766	1768	rBV	26930	40291	2.59%	0.219%
51	11.945	1768	1770	1777	rVB	61511	72417	4.65%	0.393%
52	12.024	1777	1783	1786	rBV	29077	38943	2.50%	0.211%
53	12.079	1786	1792	1798	rVB	974779	1251312	80.38%	6.791%
54	12.146	1798	1803	1807	rVB	99577	121208	7.79%	0.658%
55	12.231	1813	1817	1821	rVB	36367	43281	2.78%	0.235%
56	12.298	1821	1828	1836	rBV	473740	629417	40.43%	3.416%
57	12.371	1836	1840	1848	rVB3	147977	242401	15.57%	1.316%
58	12.463	1850	1855	1860	rVB2	73746	95743	6.15%	0.520%
59	12.518	1860	1864	1868	rBV	73605	90742	5.83%	0.492%
60	12.585	1871	1875	1882	rBV	53734	82439	5.30%	0.447%
61	12.670	1882	1889	1892	rBV	410684	482516	30.99%	2.619%
62	12.701	1892	1894	1899	rVB	105557	119122	7.65%	0.646%
63	12.755	1899	1903	1911	rBV2	477646	746912	47.98%	4.054%
64	12.853	1915	1919	1922	rBV2	34429	39941	2.57%	0.217%
65	12.896	1922	1926	1932	rVB2	66678	104400	6.71%	0.567%
66	12.981	1932	1940	1943	rBV	235747	326172	20.95%	1.770%
67	13.024	1943	1947	1952	rVB2	77695	107401	6.90%	0.583%
68	13.091	1952	1958	1962	rBV4	64752	134812	8.66%	0.732%
69	13.152	1965	1968	1972	rVB	34375	34085	2.19%	0.185%
70	13.194	1972	1975	1977	rBV2	58702	69435	4.46%	0.377%
71	13.225	1977	1980	1984	rVB	211584	239143	15.36%	1.298%

Data Path : Z:\VOASRV\HPCHEM1\MSVOA X\DATA\VX091818\
 Data File : VX004690.D
 Acq On : 19 Sep 2018 06:29
 Operator : JC/MD
 Sample : J4952-03
 Misc : 5.0mL/MSVOA X/WATER
 ALS Vial : 49 Sample Multiplier: 1

Instrument :
 MSVOA_X
 ClientSampleId :
 2015-161-20-RB36584RT-RB47184R

Integration Parameters: RTEINT.P
 Integrator: RTE
 Smoothing : ON Filtering: 5
 Sampling : 1 Min Area: 3 % of largest Peak
 Start Thrs: 0.2 Max Peaks: 100
 Stop Thrs : 0 Peak Location: TOP

If leading or trailing edge < 100 prefer < Baseline drop else tangent >
 Peak separation: 5

Method : Z:\VOASRV\HPCHEM1\MSVOA_X\METHOD\82X091118W.M
 Title : SW846 8260

72	13.310	1990	1994	1996	rBV2	50684	73492	4.72%	0.399%
73	13.347	1996	2000	2006	rVV2	1126120	1556840	100.00%	8.449%
74	13.402	2006	2009	2011	rVV4	46498	66183	4.25%	0.359%
75	13.426	2011	2013	2016	rVV	37148	42244	2.71%	0.229%
76	13.481	2018	2022	2028	rVB	151766	201314	12.93%	1.093%
77	13.560	2028	2035	2038	rBV2	53562	84355	5.42%	0.458%
78	13.603	2038	2042	2045	rVV	158037	217723	13.98%	1.182%
79	13.639	2045	2048	2053	rVV3	147223	250550	16.09%	1.360%
80	13.700	2053	2058	2059	rVV2	103118	151376	9.72%	0.822%
81	13.719	2059	2061	2068	rVB2	200392	289778	18.61%	1.573%
82	13.835	2072	2080	2088	rVB2	193707	343018	22.03%	1.862%
83	13.914	2088	2093	2097	rVB4	21114	31006	1.99%	0.168%
84	13.987	2097	2105	2109	rBV2	64695	109517	7.03%	0.594%
85	14.030	2109	2112	2116	rBV2	46397	54047	3.47%	0.293%
86	14.133	2124	2129	2132	rBV	51149	65053	4.18%	0.353%
87	14.273	2147	2152	2162	rBV2	72167	140050	9.00%	0.760%
88	14.383	2166	2170	2174	rVV	25360	39872	2.56%	0.216%
89	14.432	2174	2178	2182	rVB	47890	59487	3.82%	0.323%
90	14.542	2190	2196	2201	rBV2	41567	59288	3.81%	0.322%
91	14.700	2209	2222	2226	rBV	398091	532737	34.22%	2.891%
92	14.840	2240	2245	2255	rBV	270498	349636	22.46%	1.897%
93	15.249	2308	2312	2319	rVB4	7053	16315	1.05%	0.089%
94	15.444	2339	2344	2347	rBV2	13251	19406	1.25%	0.105%
95	15.554	2356	2362	2367	rBV	31026	48630	3.12%	0.264%
96	15.688	2377	2384	2388	rBV	46542	77701	4.99%	0.422%
97	15.724	2388	2390	2399	rVB	31184	45623	2.93%	0.248%
98	15.919	2412	2422	2432	rVB3	11636	33458	2.15%	0.182%

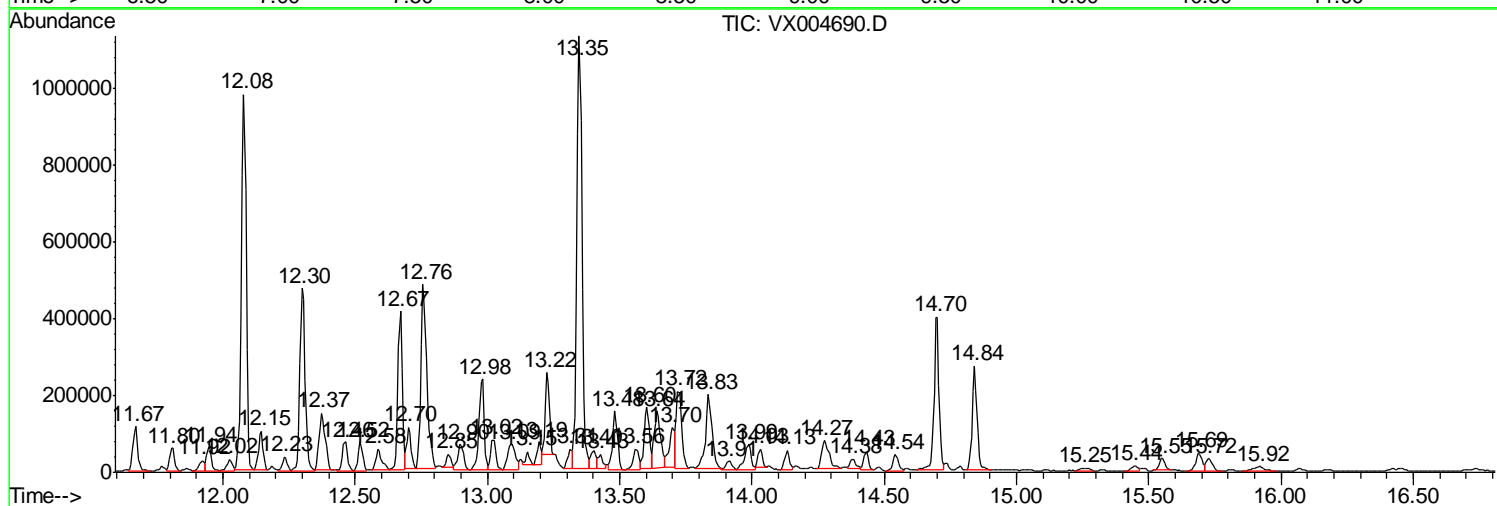
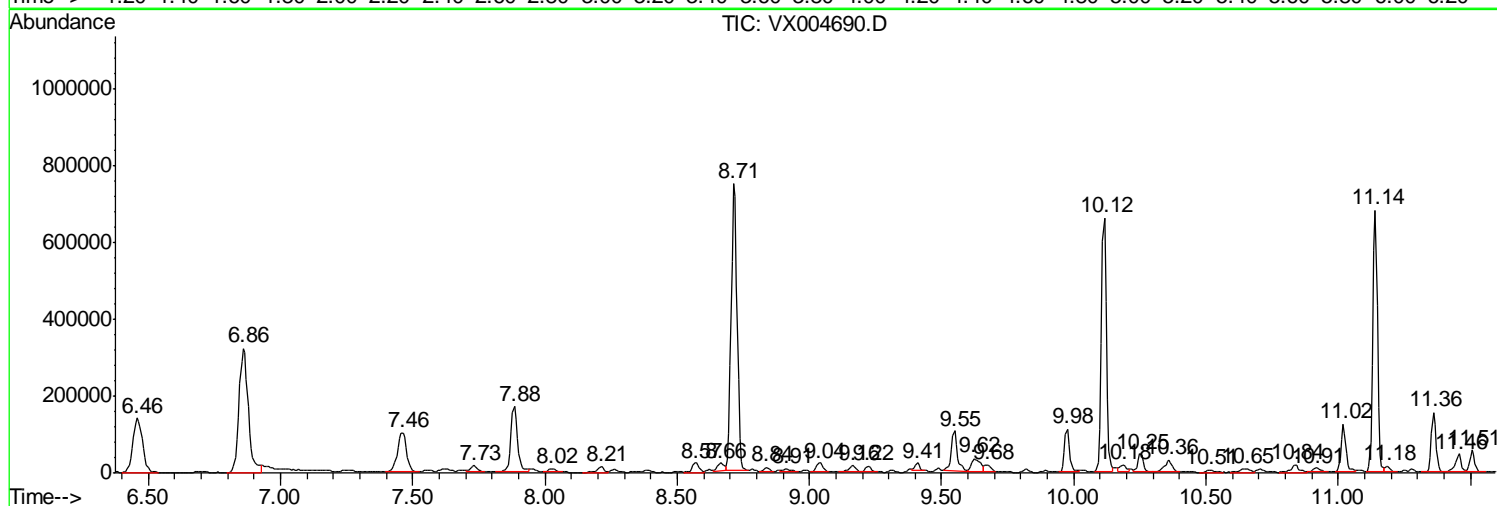
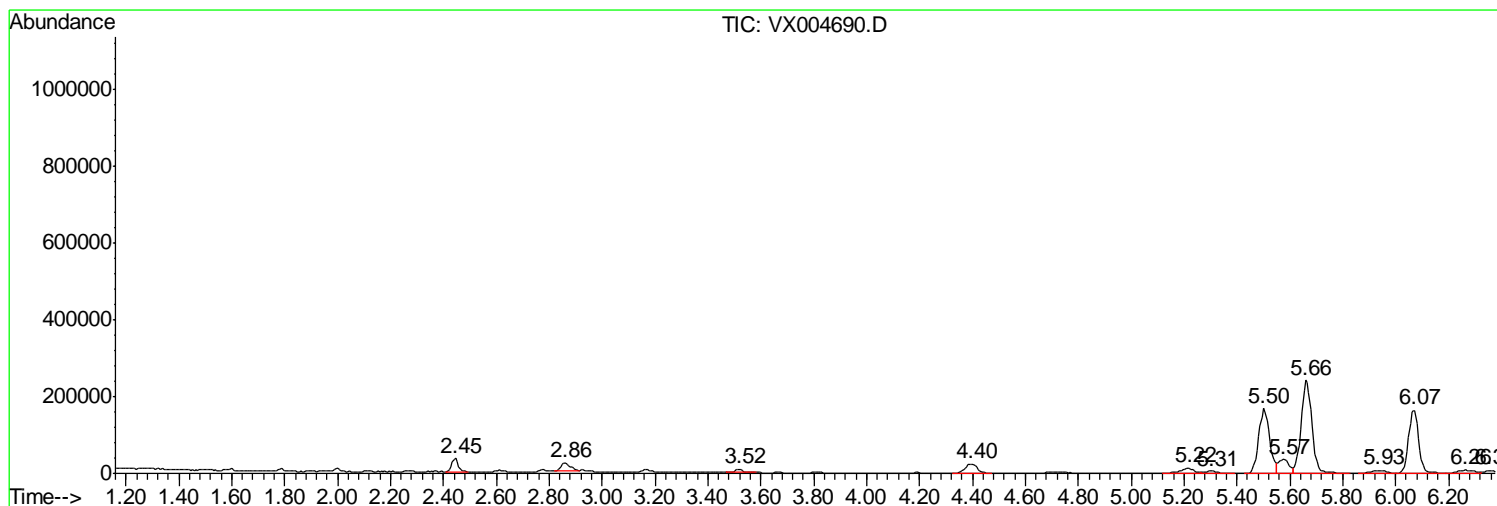
Sum of corrected areas: 18426321

Data Path : Z:\VOASRV\HPCHEM1\MSVOA X\DATA\VX091818\
 Data File : VX004690.D
 Acq On : 19 Sep 2018 06:29
 Operator : JC/MD
 Sample : J4952-03
 Misc : 5.0mL/MSVOA X/WATER
 ALS Vial : 49 Sample Multiplier: 1

Instrument :
 MSVOA_X
ClientSampled :
 2015-161-20-RB36584RT-RB47184R

Quant Method : Z:\VOASRV\HPCHEM1\MSVOA_X\METHOD\82X091118W.M
 Quant Title : SW846 8260

TIC Library : C:\DATABASE\NIST11.L
 TIC Integration Parameters: LSCINT.P



Data Path : Z:\VOASRV\HPCHEM1\MSVOA X\DATA\VX091818\
 Data File : VX004690.D
 Acq On : 19 Sep 2018 06:29
 Operator : JC/MD
 Sample : J4952-03
 Misc : 5.0mL/MSVOA X/WATER
 ALS Vial : 49 Sample Multiplier: 1

Instrument :
 MSVOA_X
 ClientSampleID :
 2015-161-20-RB36584RT-RB47184R

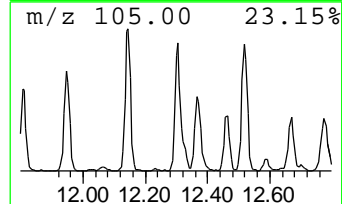
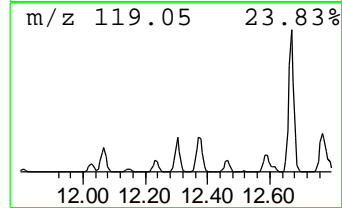
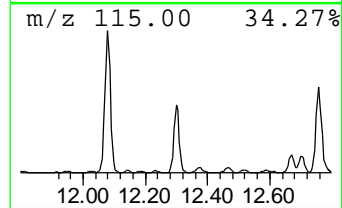
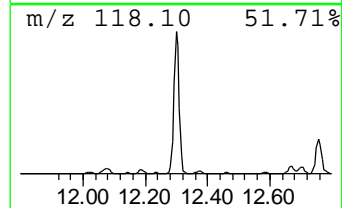
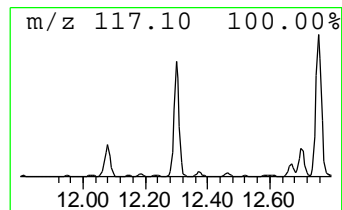
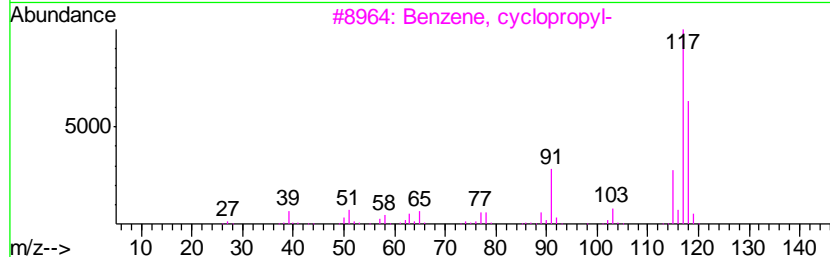
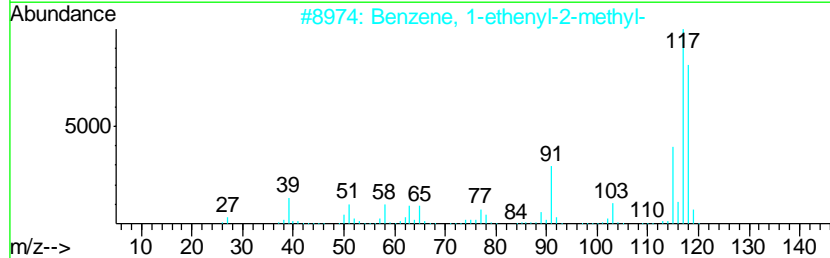
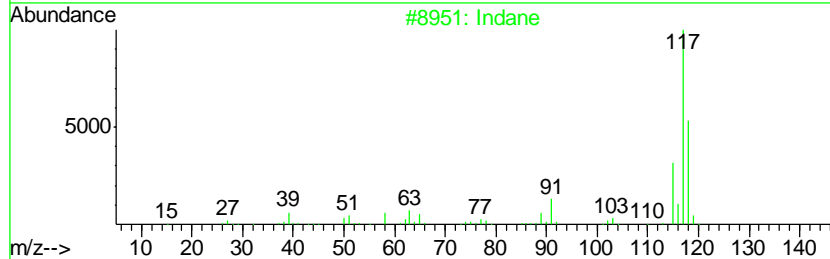
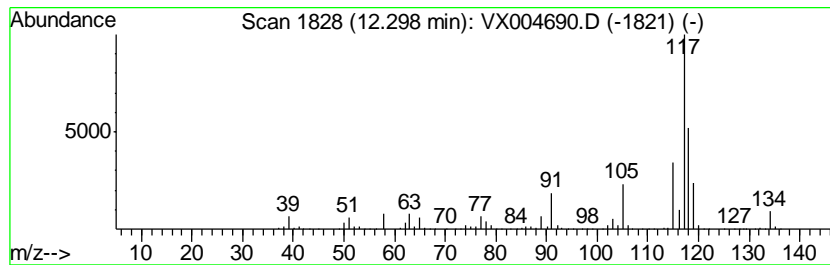
Quant Method : Z:\VOASRV\HPCHEM1\MSVOA_X\METHOD\82X091118W.M
 Quant Title : SW846 8260

TIC Library : C:\DATABASE\NIST11.L
 TIC Integration Parameters: LSCINT.P

 Peak Number 1 Indane Concentration Rank 3

R.T.	EstConc	Area	Relative to ISTD	R.T.
12.30	25.15 ug/l	629417	1,4-Dichlorobenzene-d4	12.08

Hit#	of	Tentative ID	MW	MolForm	CAS#	Qual
1	5	Indane	118	C9H10	000496-11-7	92
2		Benzene, 1-ethenyl-2-methyl-	118	C9H10	000611-15-4	86
3		Benzene, cyclopropyl-	118	C9H10	000873-49-4	70
4		Benzene, 2-propenyl-	118	C9H10	000300-57-2	70
5		Benzene, 1-propenyl-	118	C9H10	000637-50-3	50



Data Path : Z:\VOASRV\HPCHEM1\MSVOA X\DATA\VX091818\
 Data File : VX004690.D
 Acq On : 19 Sep 2018 06:29
 Operator : JC/MD
 Sample : J4952-03
 Misc : 5.0mL/MSVOA X/WATER
 ALS Vial : 49 Sample Multiplier: 1

Instrument :
 MSVOA_X
 ClientSampled :
 2015-161-20-RB36584RT-RB47184R

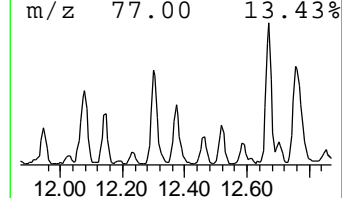
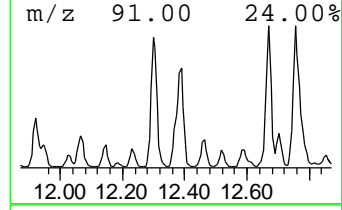
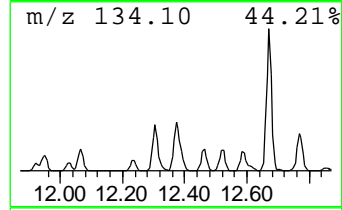
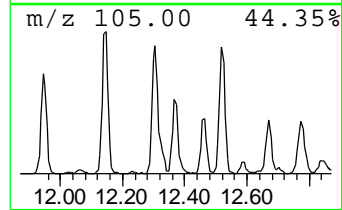
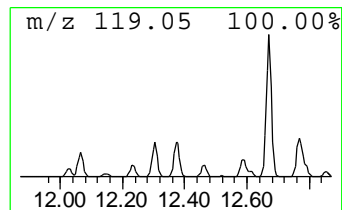
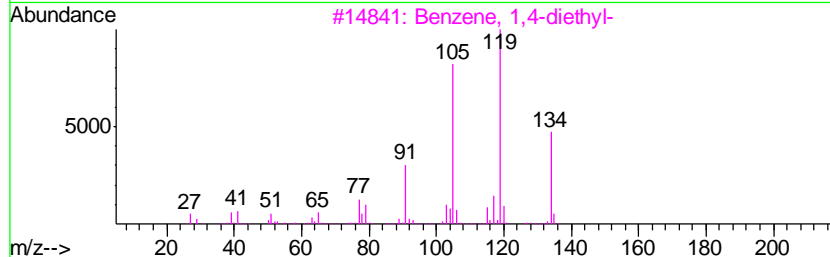
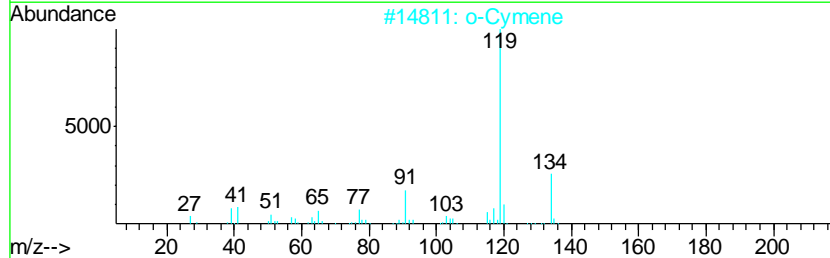
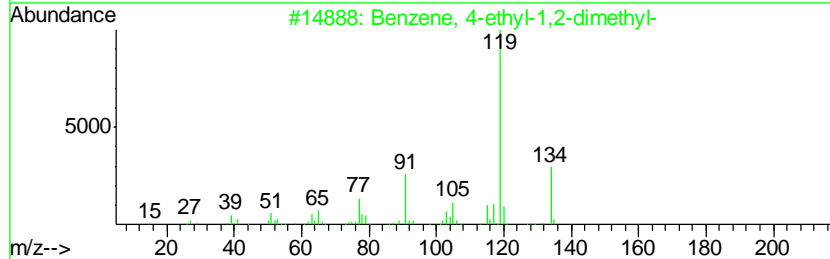
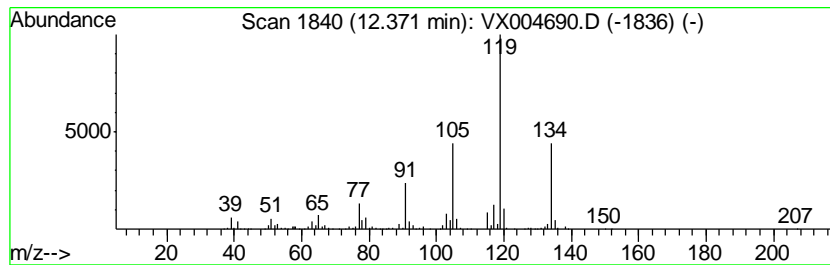
Quant Method : Z:\VOASRV\HPCHEM1\MSVOA_X\METHOD\82X091118W.M
 Quant Title : SW846 8260

TIC Library : C:\DATABASE\NIST11.L
 TIC Integration Parameters: LSCINT.P

 Peak Number 2 Benzene, 4-ethyl-1,2-dimethyl- Concentration Rank 10

R.T.	EstConc	Area	Relative to ISTD	R.T.
12.37	9.69 ug/l	242401	1,4-Dichlorobenzene-d4	12.08

Hit#	of	Tentative ID	MW	MolForm	CAS#	Qual
1	5	Benzene, 4-ethyl-1,2-dimethyl-	134	C10H14	000934-80-5	94
2		o-Cymene	134	C10H14	000527-84-4	93
3		Benzene, 1,4-diethyl-	134	C10H14	000105-05-5	91
4		Benzene, 1,2,3,4-tetramethyl-	134	C10H14	000488-23-3	91
5		Benzene, 1,2,3,5-tetramethyl-	134	C10H14	000527-53-7	91



Data Path : Z:\VOASRV\HPCHEM1\MSVOA X\DATA\VX091818\
 Data File : VX004690.D
 Acq On : 19 Sep 2018 06:29
 Operator : JC/MD
 Sample : J4952-03
 Misc : 5.0mL/MSVOA X/WATER
 ALS Vial : 49 Sample Multiplier: 1

Instrument :
 MSVOA_X
 ClientSampled :
 2015-161-20-RB36584RT-RB47184R

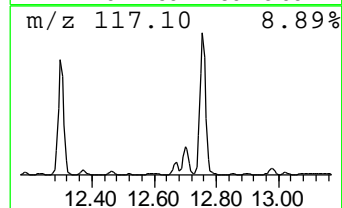
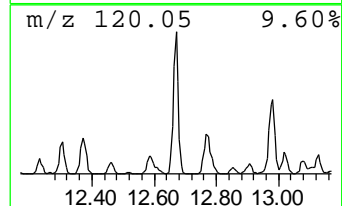
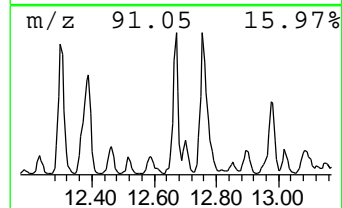
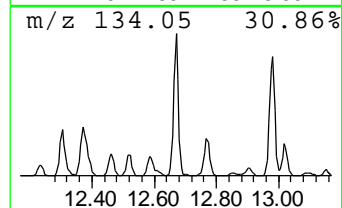
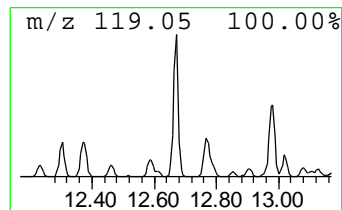
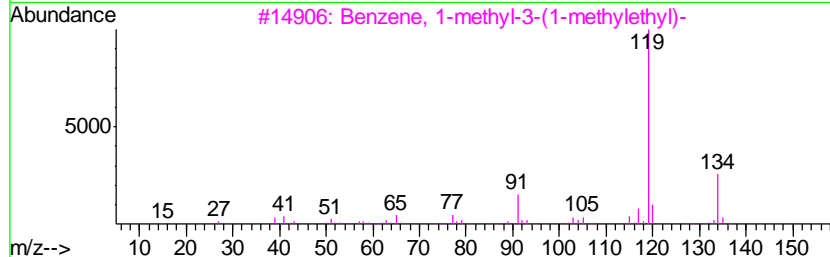
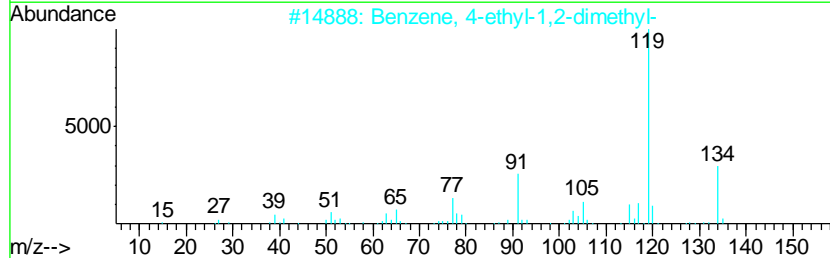
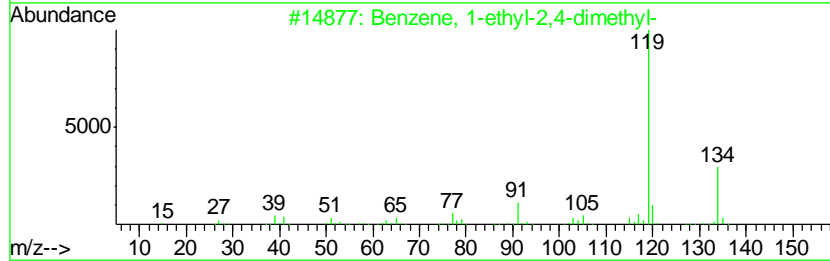
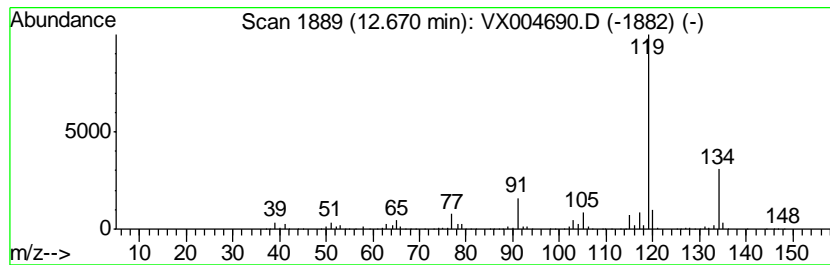
Quant Method : Z:\VOASRV\HPCHEM1\MSVOA_X\METHOD\82X091118W.M
 Quant Title : SW846 8260

TIC Library : C:\DATABASE\NIST11.L
 TIC Integration Parameters: LSCINT.P

 Peak Number 3 Benzene, 1-ethyl-2,4-dimethyl- Concentration Rank 5

R.T.	EstConc	Area	Relative to ISTD	R.T.
12.67	19.28 ug/l	482516	1,4-Dichlorobenzene-d4	12.08

Hit#	of	Tentative ID	MW	MolForm	CAS#	Qual
1	5	Benzene, 1-ethyl-2,4-dimethyl-	134	C10H14	000874-41-9	97
2		Benzene, 4-ethyl-1,2-dimethyl-	134	C10H14	000934-80-5	96
3		Benzene, 1-methyl-3-(1-methyleth...	134	C10H14	000535-77-3	95
4		o-Cymene	134	C10H14	000527-84-4	95
5		Benzene, 2-ethyl-1,3-dimethyl-	134	C10H14	002870-04-4	95



Data Path : Z:\VOASRV\HPCHEM1\MSVOA X\DATA\VX091818\
 Data File : VX004690.D
 Acq On : 19 Sep 2018 06:29
 Operator : JC/MD
 Sample : J4952-03
 Misc : 5.0mL/MSVOA X/WATER
 ALS Vial : 49 Sample Multiplier: 1

Instrument :
 MSVOA_X
 ClientSampled :
 2015-161-20-RB36584RT-RB47184R

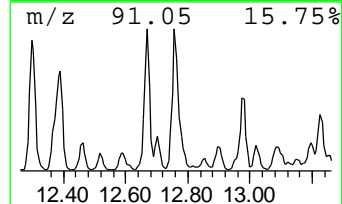
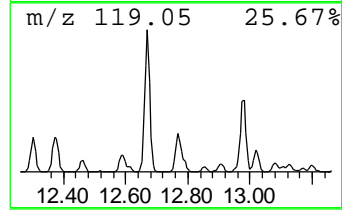
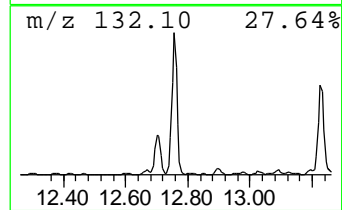
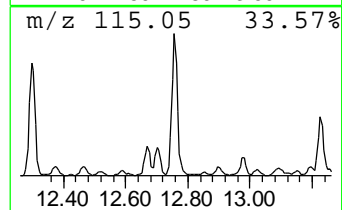
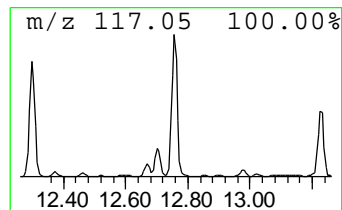
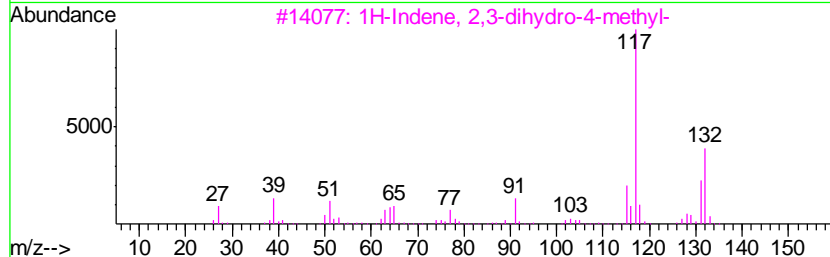
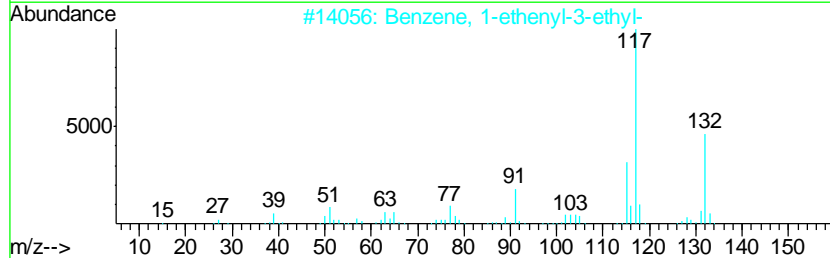
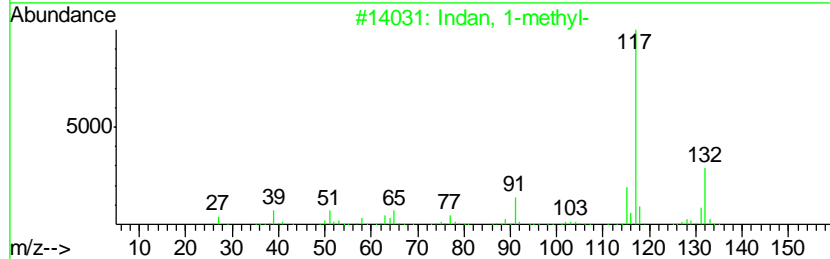
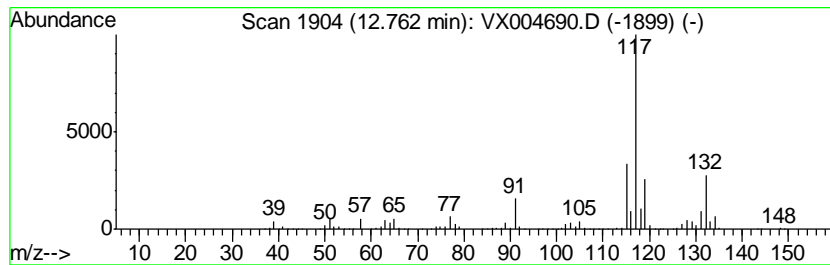
Quant Method : Z:\VOASRV\HPCHEM1\MSVOA_X\METHOD\82X091118W.M
 Quant Title : SW846 8260

TIC Library : C:\DATABASE\NIST11.L
 TIC Integration Parameters: LSCINT.P

 Peak Number 4 Indan, 1-methyl- Concentration Rank 2

R.T.	EstConc	Area	Relative to ISTD	R.T.
12.76	29.85 ug/l	746912	1,4-Dichlorobenzene-d4	12.08

Hit#	of	Tentative ID	MW	MolForm	CAS#	Qual
1	5	Indan, 1-methyl-	132	C10H12	000767-58-8	91
2		Benzene, 1-ethenyl-3-ethyl-	132	C10H12	007525-62-4	87
3		1H-Indene, 2,3-dihydro-4-methyl-	132	C10H12	000824-22-6	86
4		Benzene, (1-methyl-1-propenyl)-,...	132	C10H12	000768-00-3	83
5		1-Phenyl-1-butene	132	C10H12	000824-90-8	83



Data Path : Z:\VOASRV\HPCHEM1\MSVOA X\DATA\VX091818\
 Data File : VX004690.D
 Acq On : 19 Sep 2018 06:29
 Operator : JC/MD
 Sample : J4952-03
 Misc : 5.0mL/MSVOA X/WATER
 ALS Vial : 49 Sample Multiplier: 1

Instrument :
 MSVOA_X
 ClientSampled :
 2015-161-20-RB36584RT-RB47184R

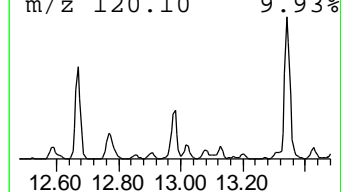
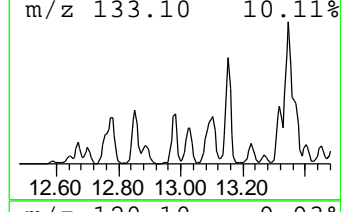
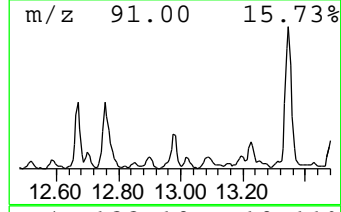
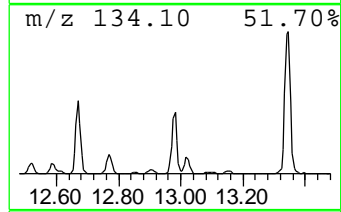
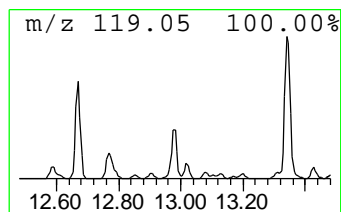
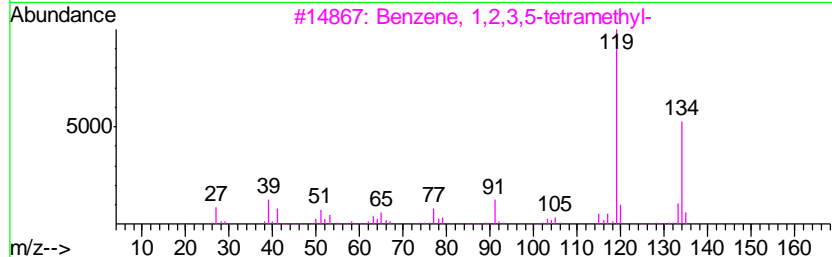
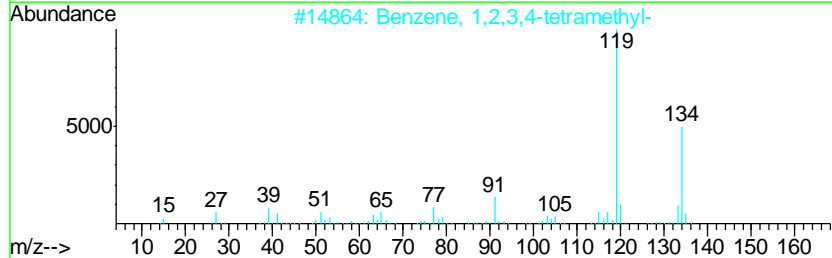
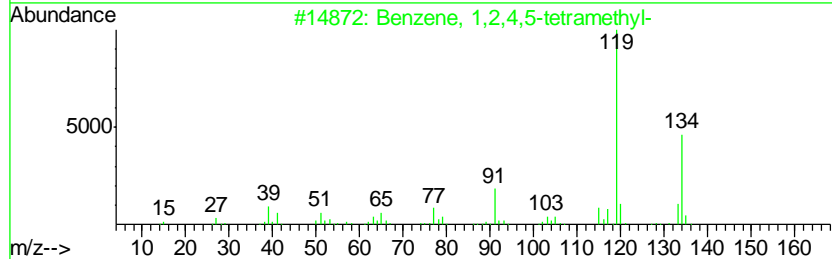
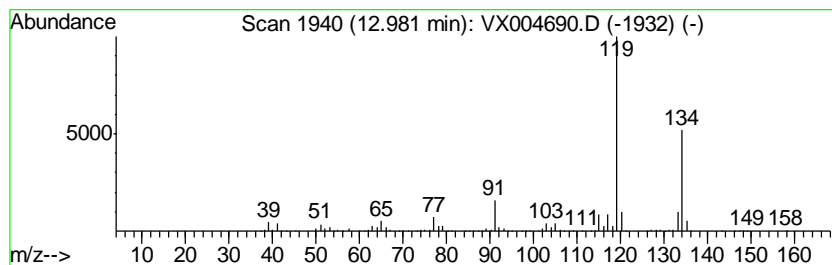
Quant Method : Z:\VOASRV\HPCHEM1\MSVOA_X\METHOD\82X091118W.M
 Quant Title : SW846 8260

TIC Library : C:\DATABASE\NIST11.L
 TIC Integration Parameters: LSCINT.P

 Peak Number 5 Benzene, 1,2,4,5-tetramethyl- Concentration Rank 7

R.T.	EstConc	Area	Relative to ISTD	R.T.
12.98	13.03 ug/l	326172	1,4-Dichlorobenzene-d4	12.08

Hit#	of	Tentative ID	MW	MolForm	CAS#	Qual
1	5	Benzene, 1,2,4,5-tetramethyl-	134	C10H14	000095-93-2	97
2		Benzene, 1,2,3,4-tetramethyl-	134	C10H14	000488-23-3	97
3		Benzene, 1,2,3,5-tetramethyl-	134	C10H14	000527-53-7	97
4		Benzene, 1-ethyl-3,5-dimethyl-	134	C10H14	000934-74-7	94
5		Benzene, 2-ethyl-1,3-dimethyl-	134	C10H14	002870-04-4	94



Data Path : Z:\VOASRV\HPCHEM1\MSVOA X\DATA\VX091818\
 Data File : VX004690.D
 Acq On : 19 Sep 2018 06:29
 Operator : JC/MD
 Sample : J4952-03
 Misc : 5.0mL/MSVOA X/WATER
 ALS Vial : 49 Sample Multiplier: 1

Instrument :
 MSVOA_X
 ClientSampleID :
 2015-161-20-RB36584RT-RB47184R

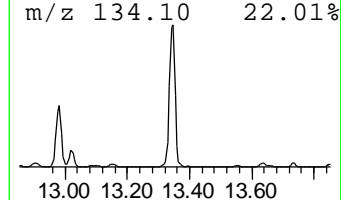
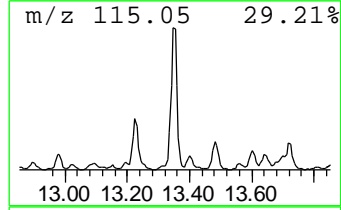
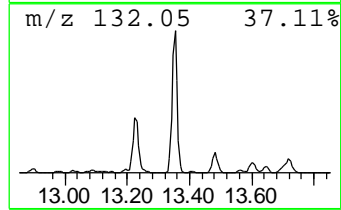
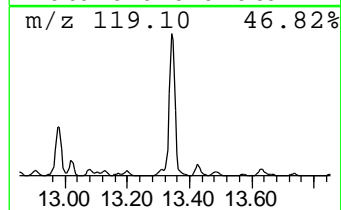
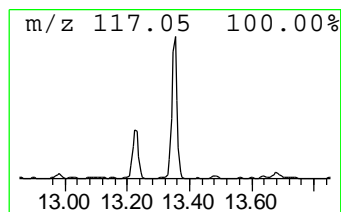
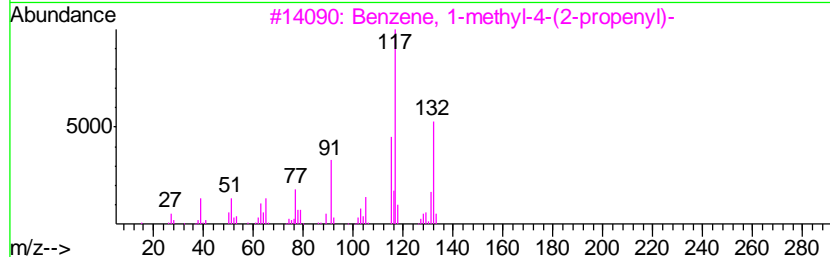
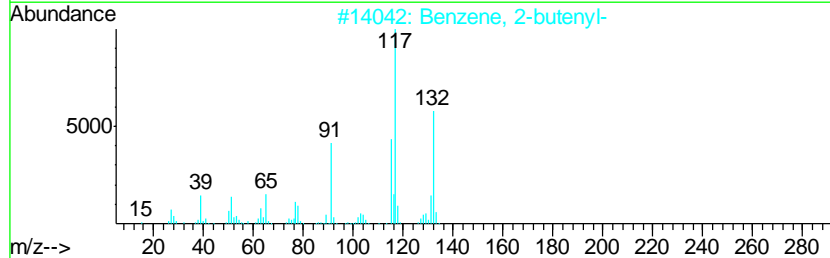
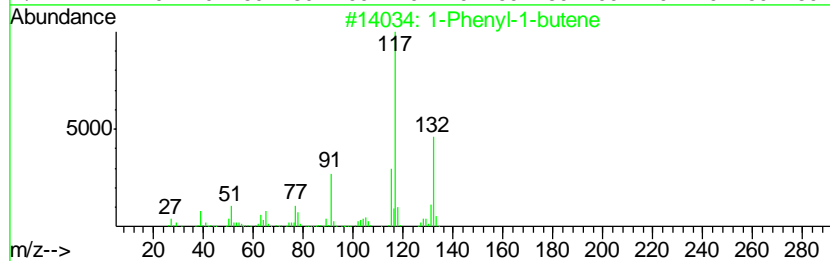
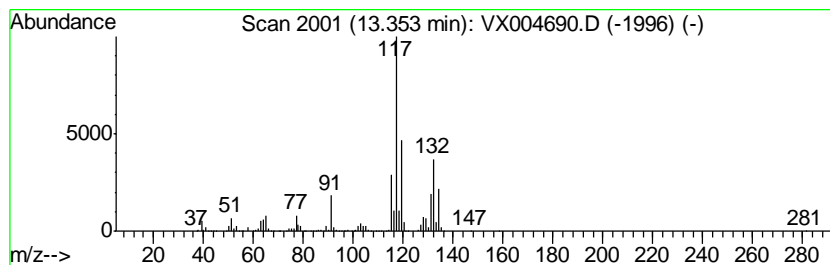
Quant Method : Z:\VOASRV\HPCHEM1\MSVOA_X\METHOD\82X091118W.M
 Quant Title : SW846 8260

TIC Library : C:\DATABASE\NIST11.L
 TIC Integration Parameters: LSCINT.P

 Peak Number 6 1-Phenyl-1-butene Concentration Rank 1

R.T.	EstConc	Area	Relative to ISTD	R.T.
13.35	62.21 ug/l	1556840	1,4-Dichlorobenzene-d4	12.08

Hit#	of	Tentative ID	MW	MolForm	CAS#	Qual
1	5	1-Phenyl-1-butene	132	C10H12	000824-90-8	87
2		Benzene, 2-butenyl-	132	C10H12	001560-06-1	70
3		Benzene, 1-methyl-4-(2-propenyl)-	132	C10H12	003333-13-9	55
4		Benzene, 1-methyl-2-(2-propenyl)-	132	C10H12	001587-04-8	55
5		3-Phenylbut-1-ene	132	C10H12	000934-10-1	55



Data Path : Z:\VOASRV\HPCHEM1\MSVOA X\DATA\VX091818\
 Data File : VX004690.D
 Acq On : 19 Sep 2018 06:29
 Operator : JC/MD
 Sample : J4952-03
 Misc : 5.0mL/MSVOA X/WATER
 ALS Vial : 49 Sample Multiplier: 1

Instrument :
 MSVOA_X
 ClientSampleId :
 2015-161-20-RB36584RT-RB47184R

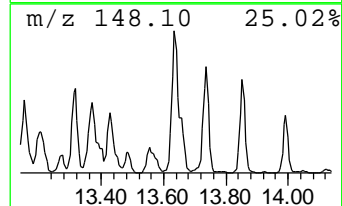
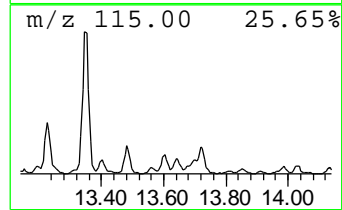
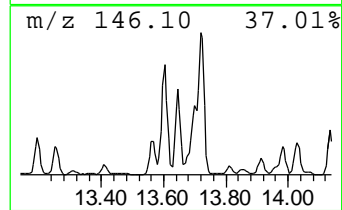
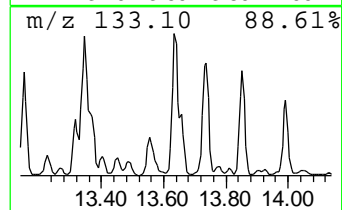
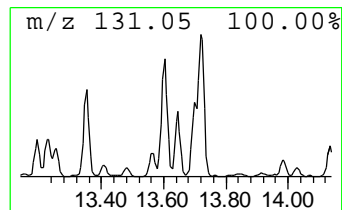
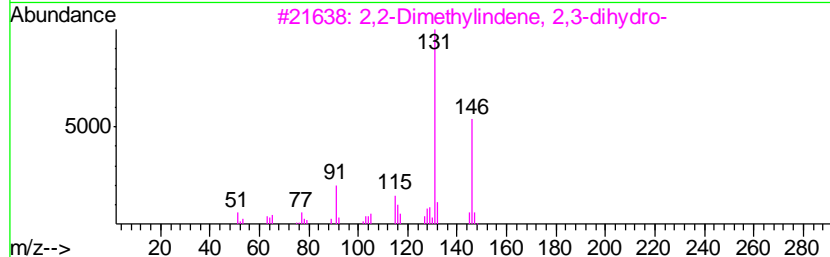
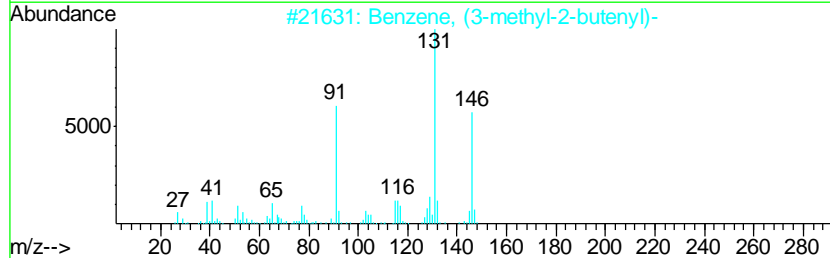
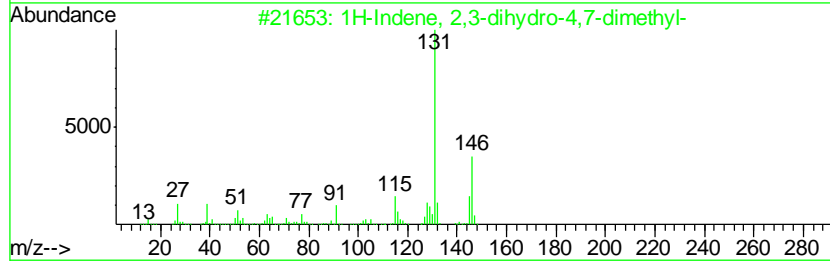
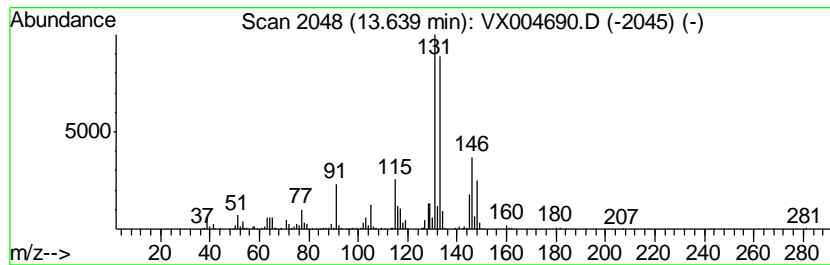
Quant Method : Z:\VOASRV\HPCHEM1\MSVOA_X\METHOD\82X091118W.M
 Quant Title : SW846 8260

TIC Library : C:\DATABASE\NIST11.L
 TIC Integration Parameters: LSCINT.P

 Peak Number 7 1H-Indene, 2,3-dihydro-4,7-... Concentration Rank 9

R.T.	EstConc	Area	Relative to ISTD	R.T.
13.64	10.01 ug/l	250550	1,4-Dichlorobenzene-d4	12.08

Hit#	of	Tentative ID	MW	MolForm	CAS#	Qual
1	5	1H-Indene, 2,3-dihydro-4,7-dimet...	146	C11H14	006682-71-9	89
2		Benzene, (3-methyl-2-butenyl)-	146	C11H14	004489-84-3	87
3		2,2-Dimethylindene, 2,3-dihydro-	146	C11H14	020836-11-7	70
4		Benzene, (1-methyl-1-butenyl)-	146	C11H14	053172-84-2	70
5		Benzene, 1-methyl-4-(1-methyl-2-...	146	C11H14	097664-18-1	55



Data Path : Z:\VOASRV\HPCHEM1\MSVOA X\DATA\VX091818\
 Data File : VX004690.D
 Acq On : 19 Sep 2018 06:29
 Operator : JC/MD
 Sample : J4952-03
 Misc : 5.0mL/MSVOA X/WATER
 ALS Vial : 49 Sample Multiplier: 1

Instrument :
 MSVOA_X
 ClientSampleId :
 2015-161-20-RB36584RT-RB47184R

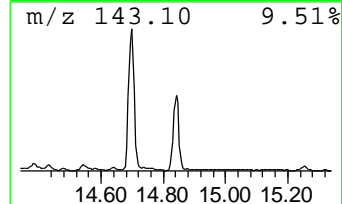
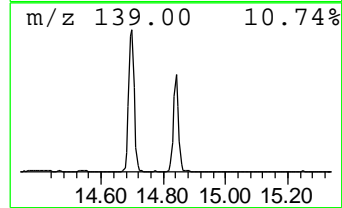
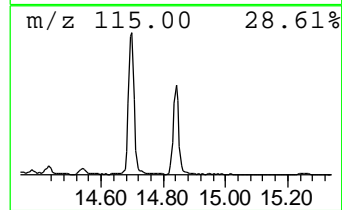
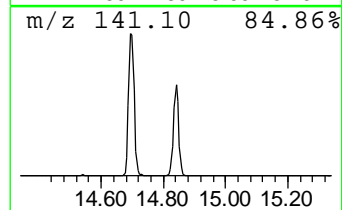
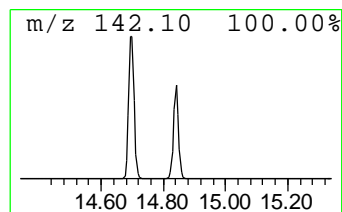
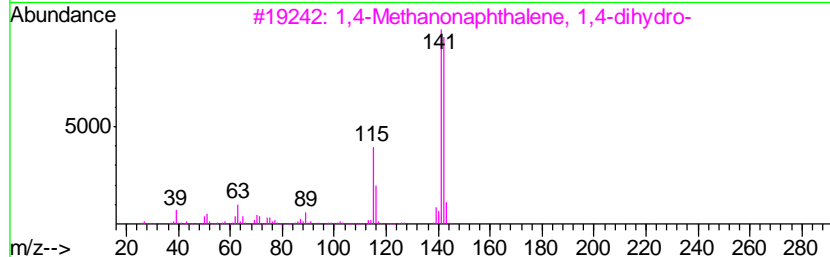
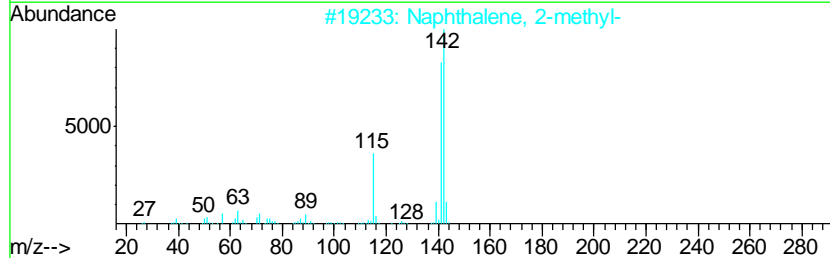
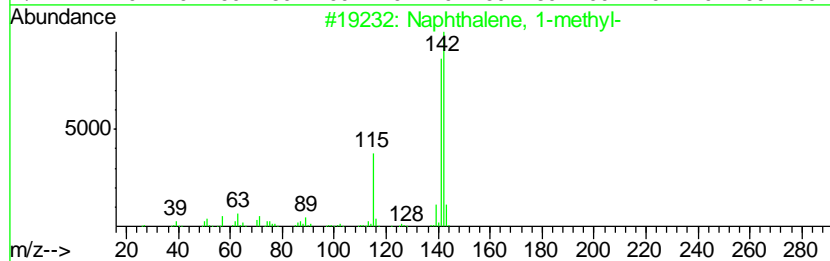
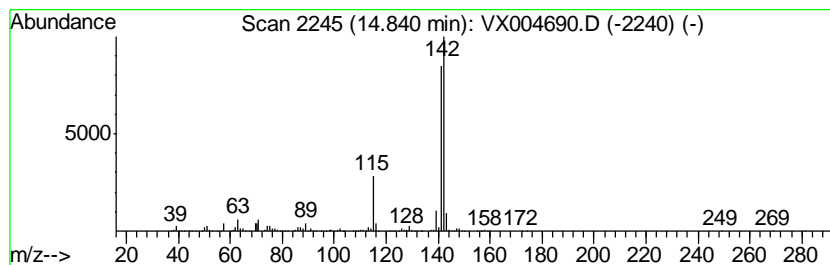
Quant Method : Z:\VOASRV\HPCHEM1\MSVOA_X\METHOD\82X091118W.M
 Quant Title : SW846 8260

TIC Library : C:\DATABASE\NIST11.L
 TIC Integration Parameters: LSCINT.P

 Peak Number 10 Naphthalene, 1-methyl- Concentration Rank 6

R.T.	EstConc	Area	Relative to ISTD	R.T.
14.84	13.97 ug/l	349636	1,4-Dichlorobenzene-d4	12.08

Hit#	of	Tentative ID	MW	MolForm	CAS#	Qual
1	5	Naphthalene, 1-methyl-	142	C11H10	000090-12-0	96
2		Naphthalene, 2-methyl-	142	C11H10	000091-57-6	96
3		1,4-Methanonaphthalene, 1,4-dihy...	142	C11H10	004453-90-1	91
4		Benzocycloheptatriene	142	C11H10	000264-09-5	91
5		Bicyclo[4.4.1]undeca-1,3,5,7,9-p...	142	C11H10	002443-46-1	59



Data Path : Z:\VOASRV\HPCHEM1\MSVOA_X\DATA\VX091818\
 Data File : VX004690.D
 Acq On : 19 Sep 2018 06:29
 Operator : JC/MD
 Sample : J4952-03
 Misc : 5.0mL/MSVOA_X/WATER
 ALS Vial : 49 Sample Multiplier: 1

Instrument :
 MSVOA_X
 ClientSampleId :
 2015-161-20-RB36584RT-RB47184R

Quant Method : Z:\VOASRV\HPCHEM1\MSVOA_X\METHOD\82X091118W.M
 Quant Title : SW846 8260

TIC Library : C:\DATABASE\NIST11.L
 TIC Integration Parameters: LSCINT.P

TIC Top Hit name	RT	EstConc	Units	Response	--Internal Standard--			
					#	RT	Resp	Conc
Indane	12.30	25.1	ug/l	629417	4	12.08	1251310	50.0
Benzene, 4-ethyl-...	12.37	9.7	ug/l	242401	4	12.08	1251310	50.0
Benzene, 1-ethyl-...	12.67	19.3	ug/l	482516	4	12.08	1251310	50.0
Indan, 1-methyl-	12.76	29.9	ug/l	746912	4	12.08	1251310	50.0
Benzene, 1,2,4,5-...	12.98	13.0	ug/l	326172	4	12.08	1251310	50.0
1-Phenyl-1-butene	13.35	62.2	ug/l	1556840	4	12.08	1251310	50.0
1H-Indene, 2,3-di...	13.64	10.0	ug/l	250550	4	12.08	1251310	50.0
Naphthalene, 1-me...	14.84	14.0	ug/l	349636	4	12.08	1251310	50.0