

Data Path : Z:\VOASRV\HPCHEM1\MSVOA X\DATA\VX091818\
 Data File : VX004691.D
 Acq On : 19 Sep 2018 06:56
 Operator : JC/MD
 Sample : J4941-03
 Misc : 5.0mL/MSVOA X/WATER
 ALS Vial : 50 Sample Multiplier: 1

Instrument :
 MSVOA_X
 ClientSampled :
 RB47199RT

Integration Parameters: RTEINT.P

Integrator: RTE
 Smoothing : ON Filtering: 5
 Sampling : 1 Min Area: 3 % of largest Peak
 Start Thrs: 0.2 Max Peaks: 100
 Stop Thrs : 0 Peak Location: TOP

If leading or trailing edge < 100 prefer < Baseline drop else tangent >
 Peak separation: 5

Method : Z:\VOASRV\HPCHEM1\MSVOA_X\METHOD\82X091118W.M
 Title : SW846 8260

Signal : TIC

peak #	R.T. min	first scan	max scan	last scan	PK TY	peak height	corr. area	corr. % max.	% of total
1	2.446	206	212	221	rBV	42775	70376	5.08%	0.764%
2	2.611	235	239	247	rVB	7855	14316	1.03%	0.155%
3	2.855	273	279	294	rVB	75849	157158	11.34%	1.706%
4	4.696	574	581	600	rVB3	5099	16085	1.16%	0.175%
5	5.214	648	666	677	rBV2	10126	35131	2.53%	0.381%
6	5.501	702	713	726	rBV2	163917	463862	33.47%	5.036%
7	5.665	728	740	761	rVB	231275	656633	47.38%	7.128%
8	6.067	795	806	821	rBV2	161961	425409	30.69%	4.618%
9	6.464	861	871	885	rBV	85698	225768	16.29%	2.451%
10	6.860	926	936	950	rBV2	328968	794484	57.32%	8.625%
11	7.616	1055	1060	1067	rBV	11165	22986	1.66%	0.250%
12	7.884	1098	1104	1115	rBV	64078	113178	8.17%	1.229%
13	8.713	1234	1240	1249	rBV	739189	1161155	83.78%	12.605%
14	9.408	1350	1354	1358	rVB	18239	20748	1.50%	0.225%
15	9.549	1371	1377	1381	rBV	53908	74494	5.37%	0.809%
16	9.975	1441	1447	1458	rBV	97830	126014	9.09%	1.368%
17	10.116	1463	1470	1482	rVV	657231	886242	63.94%	9.621%
18	11.140	1632	1638	1653	rVB	648647	801098	57.80%	8.696%
19	12.079	1786	1792	1799	rBV	940848	1133806	81.81%	12.308%
20	12.298	1820	1828	1836	rVB	24986	37502	2.71%	0.407%
21	12.469	1851	1856	1861	rBV	14793	19342	1.40%	0.210%
22	12.670	1885	1889	1892	rBV	12765	14305	1.03%	0.155%
23	12.755	1899	1903	1909	rBV3	9491	15247	1.10%	0.166%
24	13.347	1990	2000	2005	rBV2	36001	55848	4.03%	0.606%
25	13.481	2018	2022	2030	rVB	15944	20591	1.49%	0.224%
26	13.719	2053	2061	2067	rVB3	7482	17935	1.29%	0.195%
27	13.834	2071	2080	2087	rBV	1186038	1385972	100.00%	15.046%
28	13.926	2089	2095	2101	rVB2	16489	27245	1.97%	0.296%
29	14.286	2148	2154	2162	rVB3	15370	28615	2.06%	0.311%
30	14.542	2191	2196	2200	rBV2	12673	17151	1.24%	0.186%
31	14.700	2211	2222	2232	rBV	88666	126330	9.11%	1.371%
32	14.840	2240	2245	2250	rBV	86253	104826	7.56%	1.138%
33	15.273	2308	2316	2321	rBV2	8755	16050	1.16%	0.174%
34	15.547	2356	2361	2366	rBV	13364	21247	1.53%	0.231%

Data Path : Z:\VOASRV\HPCHEM1\MSVOA X\DATA\VX091818\
Data File : VX004691.D
Acq On : 19 Sep 2018 06:56
Operator : JC/MD
Sample : J4941-03
Misc : 5.0mL/MSVOA X/WATER
ALS Vial : 50 Sample Multiplier: 1

Instrument :
MSVOA_X
ClientSampleId :
RB47199RT

Integration Parameters: RTEINT.P
Integrator: RTE
Smoothing : ON Filtering: 5
Sampling : 1 Min Area: 3 % of largest Peak
Start Thrs: 0.2 Max Peaks: 100
Stop Thrs : 0 Peak Location: TOP

If leading or trailing edge < 100 prefer < Baseline drop else tangent >
Peak separation: 5

Method : Z:\VOASRV\HPCHEM1\MSVOA_X\METHOD\82X091118W.M
Title : SW846 8260

35	15.688	2379	2384	2388	rBV	19414	30953	2.23%	0.336%
36	15.724	2388	2390	2395	rVB	11399	15073	1.09%	0.164%
37	15.919	2413	2422	2431	rVB3	5738	15539	1.12%	0.169%
38	16.419	2497	2504	2515	rBV2	17900	43074	3.11%	0.468%

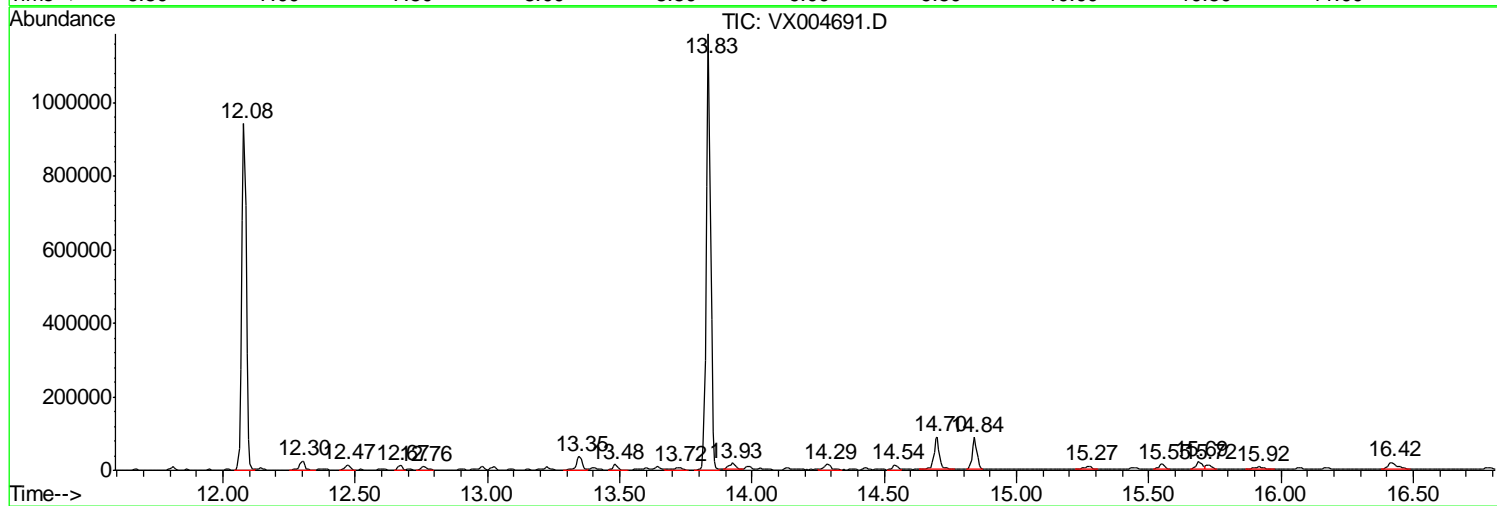
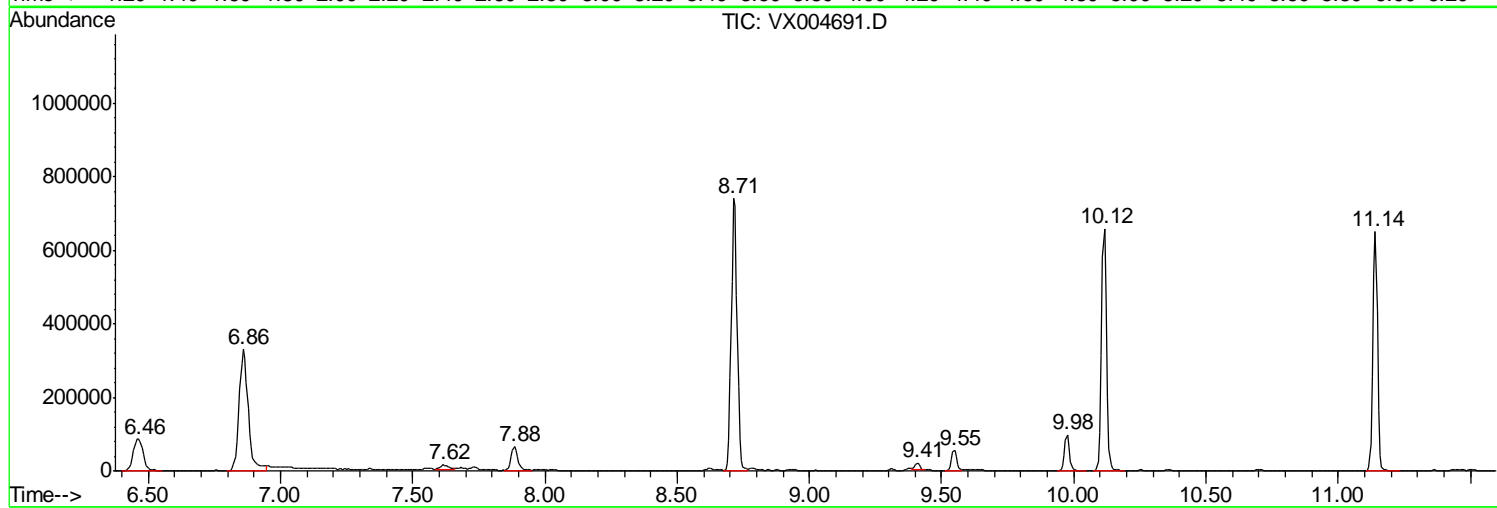
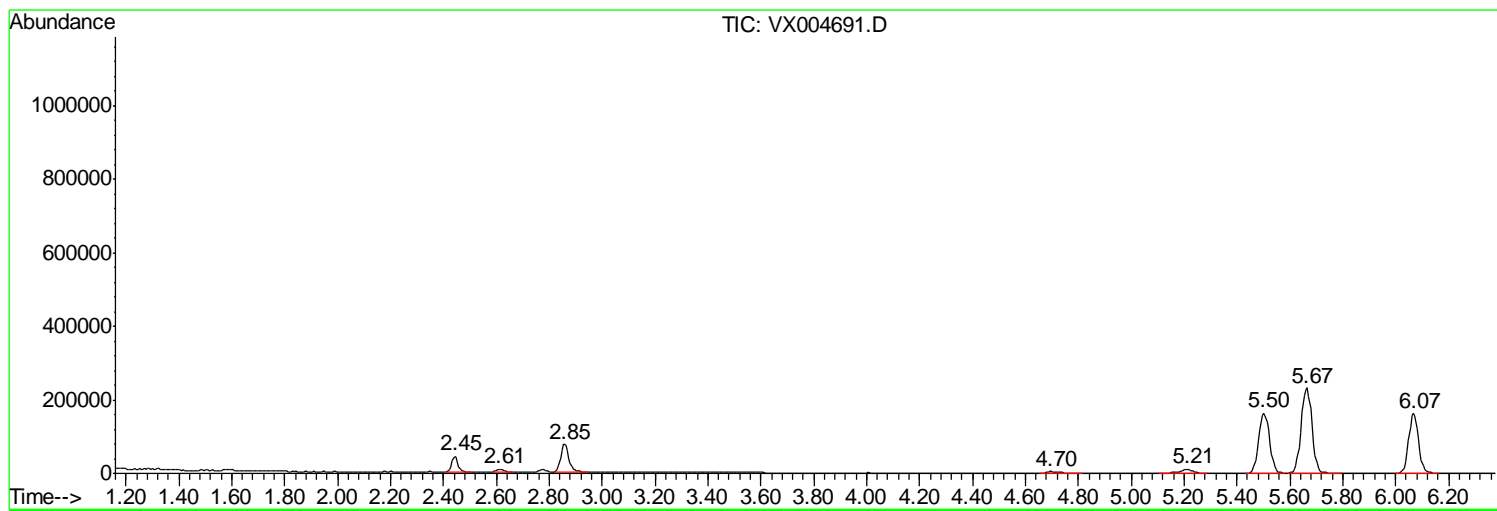
Sum of corrected areas: 9211788

Data Path : Z:\VOASRV\HPCHEM1\MSVOA X\DATA\VX091818\
 Data File : VX004691.D
 Acq On : 19 Sep 2018 06:56
 Operator : JC/MD
 Sample : J4941-03
 Misc : 5.0mL/MSVOA X/WATER
 ALS Vial : 50 Sample Multiplier: 1

Instrument :
 MSVOA_X
 ClientSampleId :
 RB47199RT

Quant Method : Z:\VOASRV\HPCHEM1\MSVOA_X\METHOD\82X091118W.M
 Quant Title : SW846 8260

TIC Library : C:\DATABASE\NIST11.L
 TIC Integration Parameters: LSCINT.P



Data Path : Z:\VOASRV\HPCHEM1\MSVOA X\DATA\VX091818\
 Data File : VX004691.D
 Acq On : 19 Sep 2018 06:56
 Operator : JC/MD
 Sample : J4941-03
 Misc : 5.0mL/MSVOA X/WATER
 ALS Vial : 50 Sample Multiplier: 1

Instrument :
 MSVOA_X
 ClientSampleID :
 RB47199RT

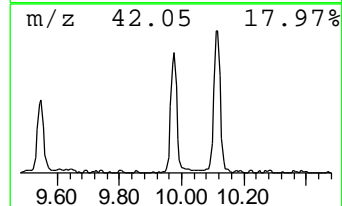
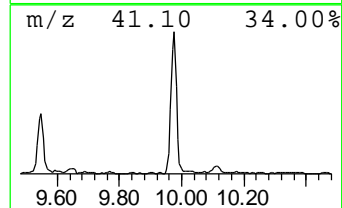
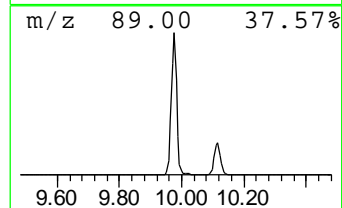
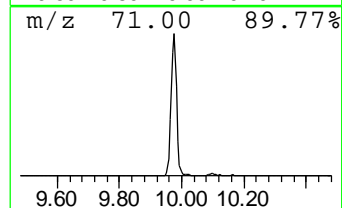
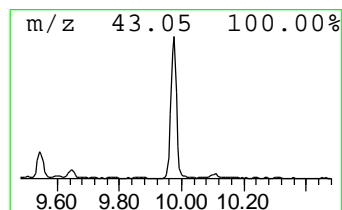
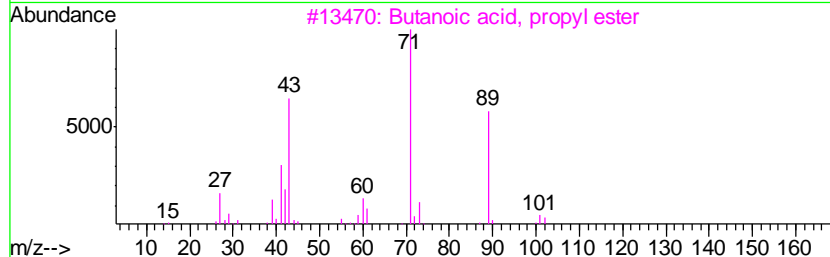
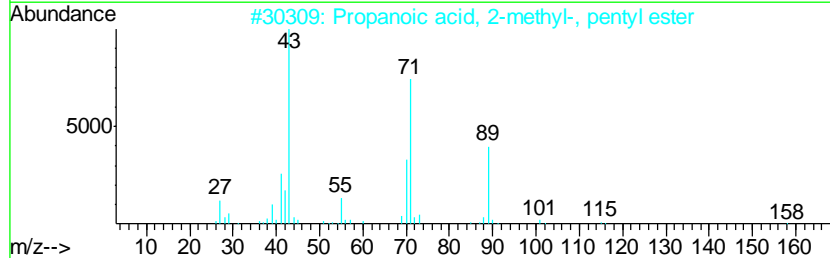
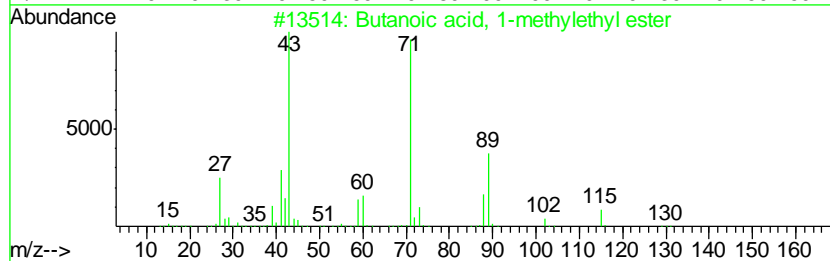
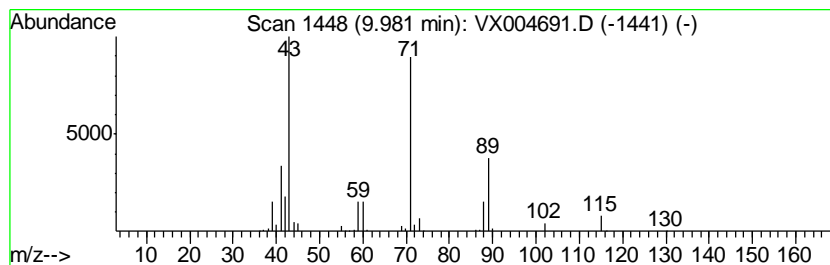
Quant Method : Z:\VOASRV\HPCHEM1\MSVOA_X\METHOD\82X091118W.M
 Quant Title : SW846 8260

TIC Library : C:\DATABASE\NIST11.L
 TIC Integration Parameters: LSCINT.P

 Peak Number 1 Butanoic acid, 1-methylethy... Concentration Rank 1

R.T.	EstConc	Area	Relative to ISTD	R.T.
9.98	7.11 ug/l	126014	Chlorobenzene-d5	10.12

Hit#	of	Tentative ID	MW	MolForm	CAS#	Qual
1	5	Butanoic acid, 1-methylethyl ester	130	C7H14O2	000638-11-9	91
2		Propanoic acid, 2-methyl-, penty...	158	C9H18O2	002445-72-9	64
3		Butanoic acid, propyl ester	130	C7H14O2	000105-66-8	59
4		Propanoic acid, 2-methyl-, 1-met...	130	C7H14O2	000617-50-5	56
5		Butanoic acid, pentyl ester	158	C9H18O2	000540-18-1	45



Data Path : Z:\VOASRV\HPCHEM1\MSVOA X\DATA\VX091818\
 Data File : VX004691.D
 Acq On : 19 Sep 2018 06:56
 Operator : JC/MD
 Sample : J4941-03
 Misc : 5.0mL/MSVOA X/WATER
 ALS Vial : 50 Sample Multiplier: 1

Instrument :
 MSVOA_X
 ClientSampleID :
 RB47199RT

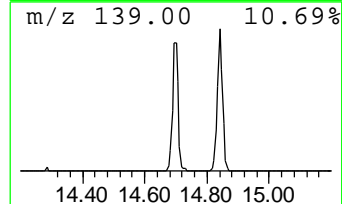
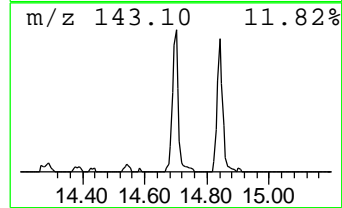
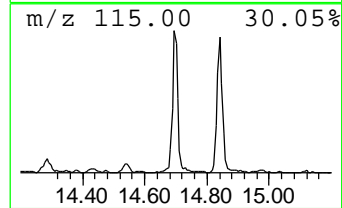
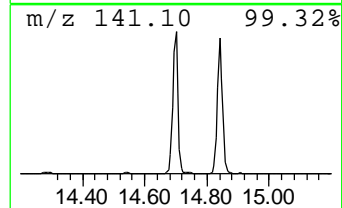
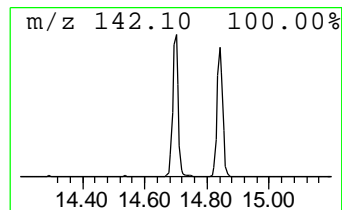
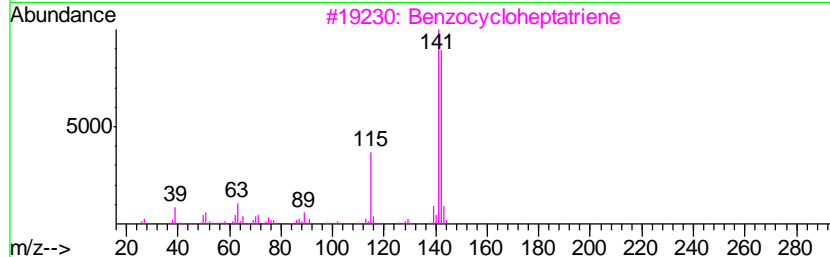
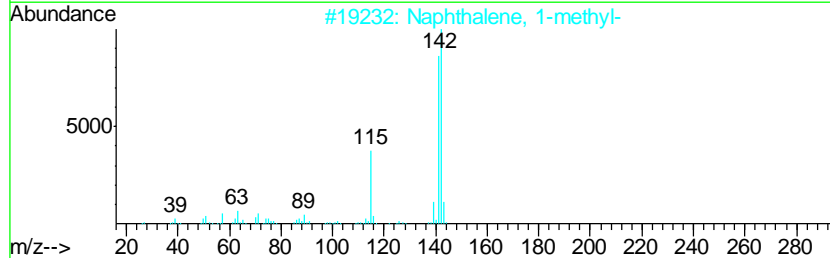
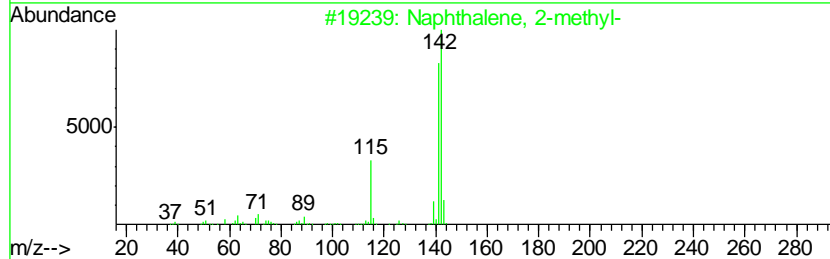
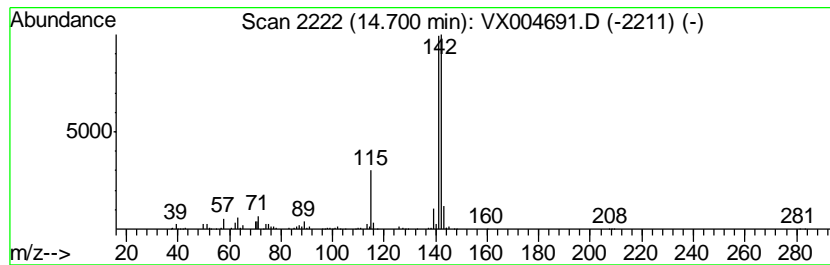
Quant Method : Z:\VOASRV\HPCHEM1\MSVOA_X\METHOD\82X091118W.M
 Quant Title : SW846 8260

TIC Library : C:\DATABASE\NIST11.L
 TIC Integration Parameters: LSCINT.P

 Peak Number 2 Naphthalene, 2-methyl- Concentration Rank 2

R.T.	EstConc	Area	Relative to ISTD	R.T.
14.70	5.57 ug/l	126330	1,4-Dichlorobenzene-d4	12.08

Hit#	of	Tentative ID	MW	MolForm	CAS#	Qual
1	5	Naphthalene, 2-methyl-	142	C11H10	000091-57-6	96
2		Naphthalene, 1-methyl-	142	C11H10	000090-12-0	96
3		Benzocycloheptatriene	142	C11H10	000264-09-5	91
4		1,4-Methanonaphthalene, 1,4-dihy...	142	C11H10	004453-90-1	91
5		Bicyclo[4.4.1]undeca-1,3,5,7,9-p...	142	C11H10	002443-46-1	86



Data Path : Z:\VOASRV\HPCHEM1\MSVOA_X\DATA\VX091818\
Data File : VX004691.D
Acq On : 19 Sep 2018 06:56
Operator : JC/MD
Sample : J4941-03
Misc : 5.0mL/MSVOA_X/WATER
ALS Vial : 50 Sample Multiplier: 1

Instrument :
MSVOA_X
ClientSampleId :
RB47199RT

Quant Method : Z:\VOASRV\HPCHEM1\MSVOA_X\METHOD\82X091118W.M
Quant Title : SW846 8260

TIC Library : C:\DATABASE\NIST11.L
TIC Integration Parameters: LSCINT.P

TIC Top Hit name	RT	EstConc	Units	Response	--Internal Standard--			
					#	RT	Resp	Conc
Butanoic acid, 1-...	9.98	7.1	ug/l	126014	3	10.12	886242	50.0
Naphthalene, 2-me...	14.70	5.6	ug/l	126330	4	12.08	1133810	50.0