

Data Path : Z:\voasrv\HPCHEM1\MSVOA_X\Data\VX091823\
 Data File : VX037767.D
 Acq On : 18 Sep 2023 10:34
 Operator : JC/MD
 Sample : VX0918MBL01
 Misc : 5.00g/10mL/100uL/5.00mL/MSVOA_X/MEOH
 ALS Vial : 3 Sample Multiplier: 1

Instrument :
 MSVOA_X
 ClientSampleId :
 VX0918MBL01

Integration Parameters: RTEINT.P

Integrator: RTE
 Smoothing : ON Filtering: 5
 Sampling : 1 Min Area: 3 % of largest Peak
 Start Thrs: 0.2 Max Peaks: 100
 Stop Thrs : 0 Peak Location: TOP

If leading or trailing edge < 100 prefer < Baseline drop else tangent >
 Peak separation: 5

Method : Z:\voasrv\HPCHEM1\MSVOA_X\Method\82X091523W.M
 Title : SW846 8260

Signal : TIC: VX037767.D\data.ms

peak #	R.T. min	first scan	max scan	last scan	PK TY	peak height	corr. area	corr. % max.	% of total
1	1.563	68	78	81	rBV6	16732	51275	4.50%	0.849%
2	2.947	297	305	313	rBV	6012	15365	1.35%	0.254%
3	4.586	561	574	594	rBV2	12441	46544	4.09%	0.771%
4	5.385	693	705	721	rBV	129592	385354	33.82%	6.381%
5	5.550	721	732	749	rVB	231193	663402	58.23%	10.986%
6	5.952	787	798	818	rBV	138768	375337	32.94%	6.216%
7	6.757	920	930	951	rBV	351916	843762	74.06%	13.973%
8	8.647	1233	1240	1258	rBV	728310	1139305	100.00%	18.867%
9	10.055	1465	1471	1480	rBV	714897	964143	84.63%	15.966%
10	11.079	1634	1639	1654	rBV	562090	717207	62.95%	11.877%
11	12.024	1788	1794	1802	rBV	647643	836943	73.46%	13.860%

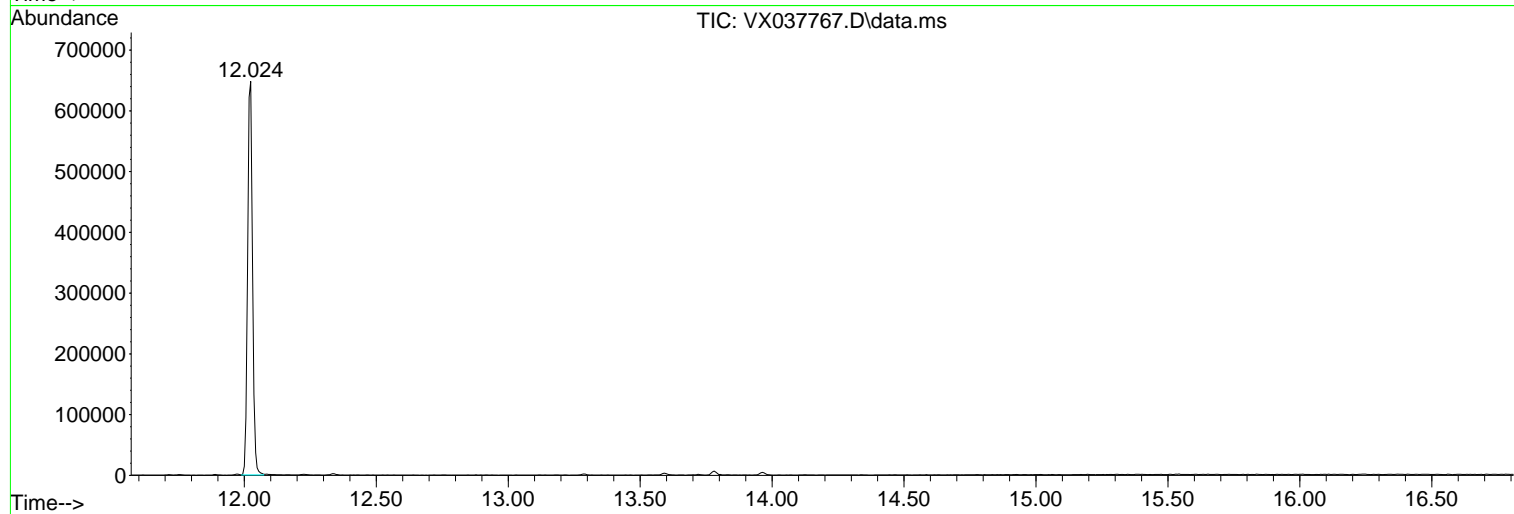
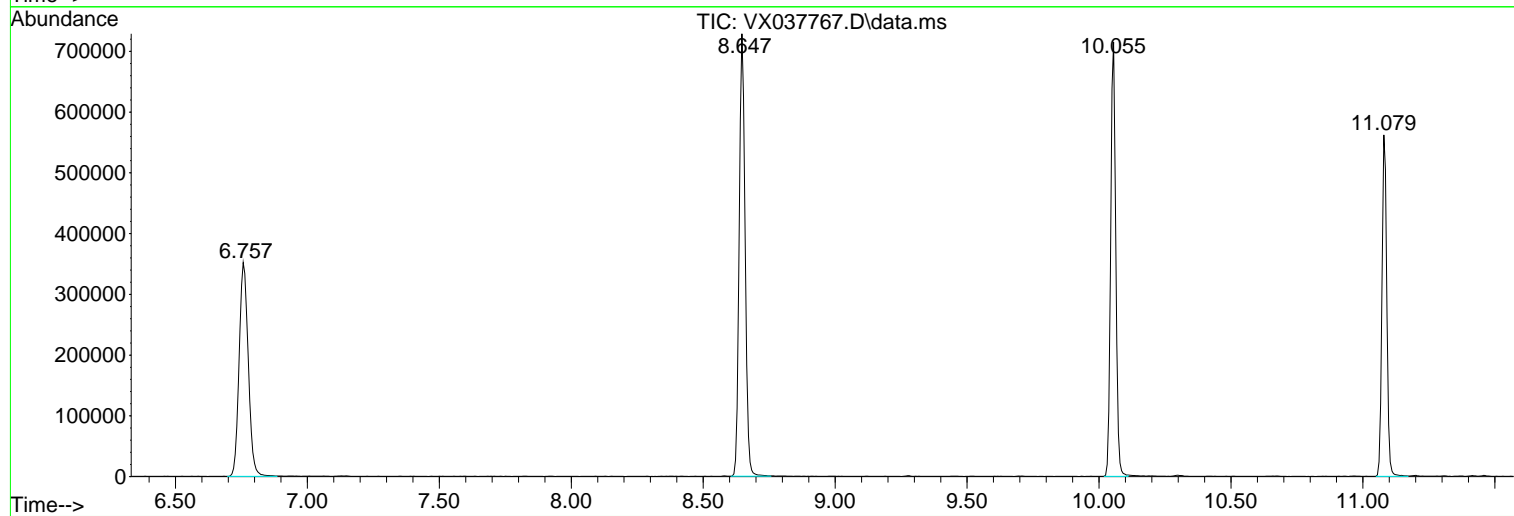
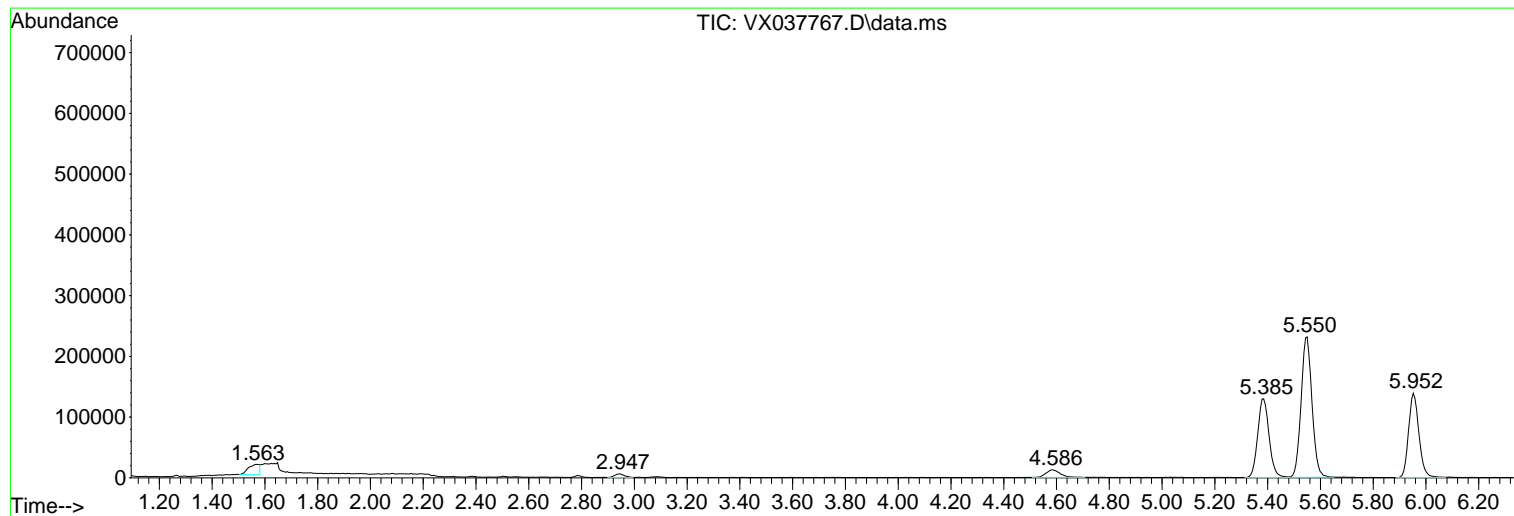
Sum of corrected areas: 6038637

Data Path : Z:\voasrv\HPCHEM1\MSVOA_X\Data\VX091823\
Data File : VX037767.D
Acq On : 18 Sep 2023 10:34
Operator : JC/MD
Sample : VX0918MBL01
Misc : 5.00g/10mL/100uL/5.00mL/MSVOA_X/MEOH
ALS Vial : 3 Sample Multiplier: 1

Instrument :
MSVOA_X
ClientSampleId :
VX0918MBL01

Quant Method : Z:\voasrv\HPCHEM1\MSVOA_X\Method\82X091523W.M
Quant Title : SW846 8260

TIC Library : C:\Database\NIST20.L
TIC Integration Parameters: LSCINT.P



Data Path : Z:\voasrv\HPCHEM1\MSVOA_X\Data\VX091823\
Data File : VX037767.D
Acq On : 18 Sep 2023 10:34
Operator : JC/MD
Sample : VX0918MBL01
Misc : 5.00g/10mL/100uL/5.00mL/MSVOA_X/MEOH
ALS Vial : 3 Sample Multiplier: 1

Instrument :
MSVOA_X
ClientSampleId :
VX0918MBL01

Quant Method : Z:\voasrv\HPCHEM1\MSVOA_X\Method\82X091523W.M
Quant Title : SW846 8260

TIC Library : C:\Database\NIST20.L
TIC Integration Parameters: LSCINT.P

No Library Search Compounds Detected

Data Path : Z:\voasrv\HPCHEM1\MSVOA_X\Data\VX091823\
Data File : VX037767.D
Acq On : 18 Sep 2023 10:34
Operator : JC/MD
Sample : VX0918MBL01
Misc : 5.00g/10mL/100uL/5.00mL/MSVOA_X/MEOH
ALS Vial : 3 Sample Multiplier: 1

Instrument :
MSVOA_X
ClientSampleId :
VX0918MBL01

Quant Method : Z:\voasrv\HPCHEM1\MSVOA_X\Method\82X091523W.M
Quant Title : SW846 8260

TIC Library : C:\Database\NIST20.L
TIC Integration Parameters: LSCINT.P

TIC Top Hit name	RT	EstConc	Units	Response	--Internal Standard--		
					#	RT	Resp Conc
