

Data Path : Z:\VOASRV\HPCHEM1\MSVOA X\DATA\VX091918\
 Data File : VX004716.D
 Acq On : 19 Sep 2018 19:53
 Operator : JC/MD
 Sample : J4916-04
 Misc : 5.0mL/MSVOA X/WATER
 ALS Vial : 23 Sample Multiplier: 1

Instrument :
 MSVOA_X
 ClientSampleId :
 FC-MW10I-20180911

Quant Time: Sep 20 03:51:46 2018
 Quant Method : Z:\VOASRV\HPCHEM1\MSVOA_X\METHOD\82X091118W.M
 Quant Title : SW846 8260
 QLast Update : Wed Sep 12 02:17:23 2018
 Response via : Initial Calibration

Internal Standards	R.T.	QIon	Response	Conc	Units	Dev(Min)
1) Pentafluorobenzene	5.67	168	205284	50.00	ug/l	0.00
34) 1,4-Difluorobenzene	6.87	114	311927	50.00	ug/l	0.00
63) Chlorobenzene-d5	10.12	117	288678	50.00	ug/l	0.00
72) 1,4-Dichlorobenzene-d4	12.08	152	161967	50.00	ug/l	0.00

System Monitoring Compounds

33) 1,2-Dichloroethane-d4	6.07	65	123502	46.66	ug/l	0.00
Spiked Amount	50.000		Recovery	=	93.32%	
35) Dibromofluoromethane	5.51	113	122675	42.98	ug/l	0.00
Spiked Amount	50.000		Recovery	=	85.96%	
50) Toluene-d8	8.71	98	425214	44.42	ug/l	0.00
Spiked Amount	50.000		Recovery	=	88.84%	
62) 4-Bromofluorobenzene	11.14	95	149413	43.73	ug/l	0.00
Spiked Amount	50.000		Recovery	=	87.46%	

Target Compounds

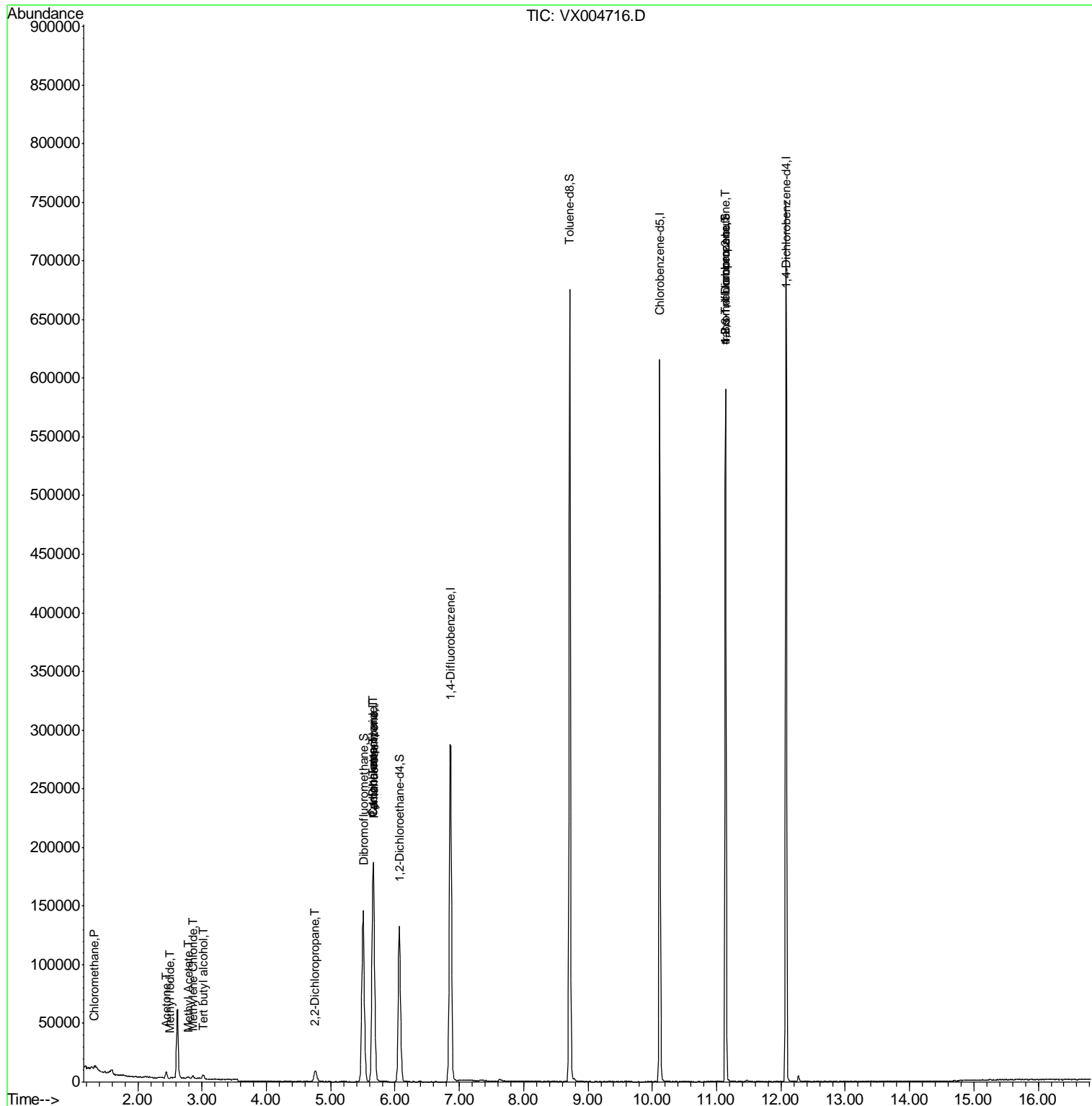
						Qvalue
3) Chloromethane	1.32	50	699	0.26	ug/l #	81
5) Bromomethane	1.65	94	338	Below	Cal #	78
10) Methyl Iodide	2.51	142	143	4.30	ug/l #	60
11) Tert butyl alcohol	3.02	59	2326	3.68	ug/l #	72
16) Acetone	2.45	43	5475	4.24	ug/l #	86
18) Methyl Acetate	2.78	43	918	0.25	ug/l	93
20) Methylene Chloride	2.85	84	870	0.33	ug/l	87
26) 2,2-Dichloropropane	4.76	77	808	0.26	ug/l #	52
31) Cyclohexane	5.65	56	3092	0.81	ug/l #	1
36) 1,1-Dichloropropene	5.66	75	12736	3.36	ug/l #	49
38) Carbon Tetrachloride	5.67	117	17524	4.74	ug/l #	13
76) 1,2,3-Trichloropropane	11.14	75	69017	21.18	ug/l #	37
81) trans-1,4-Dichloro-2-buten	11.14	75	69017	67.51	ug/l #	10

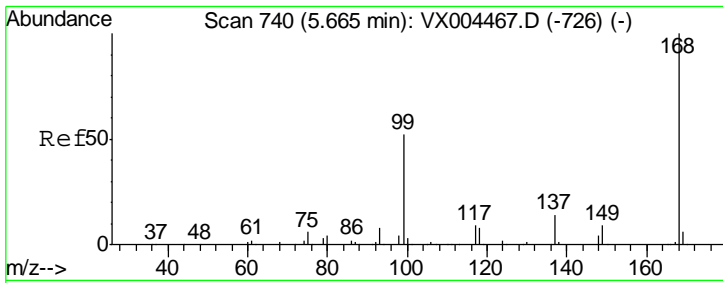
(#) = qualifier out of range (m) = manual integration (+) = signals summed

Data Path : Z:\VOASRV\HPCHEM1\MSVOA X\DATA\VX091918\
 Data File : VX004716.D
 Acq On : 19 Sep 2018 19:53
 Operator : JC/MD
 Sample : J4916-04
 Misc : 5.0mL/MSVOA X/WATER
 ALS Vial : 23 Sample Multiplier: 1

Instrument :
 MSVOA_X
Client Sampled :
 FC-MW10I-20180911

Quant Time: Sep 20 03:51:46 2018
 Quant Method : Z:\VOASRV\HPCHEM1\MSVOA_X\METHOD\82X091118W.M
 Quant Title : SW846 8260
 QLast Update : Wed Sep 12 02:17:23 2018
 Response via : Initial Calibration

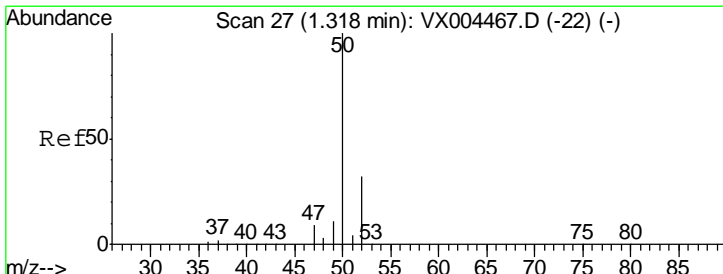
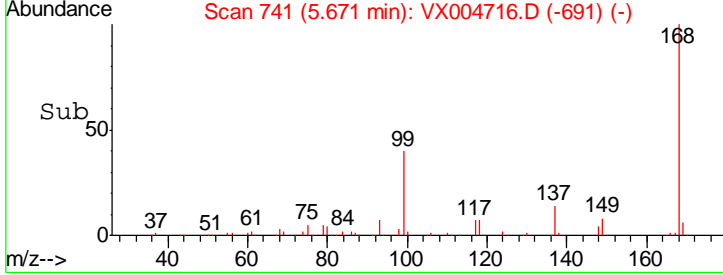
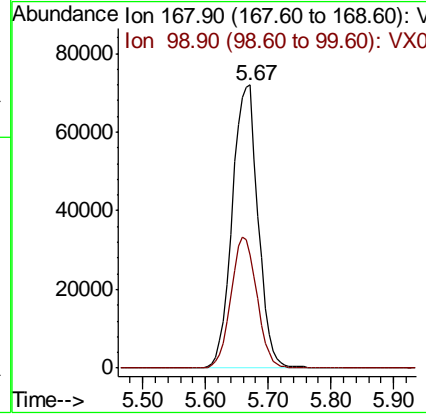
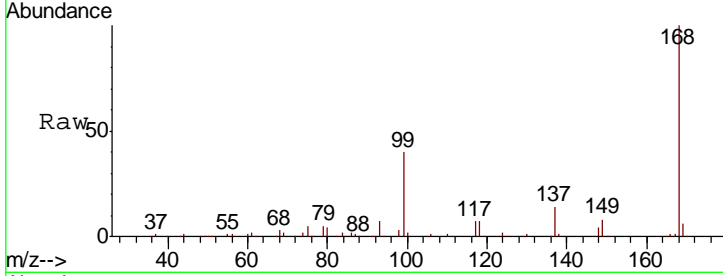




#1
 Pentafluorobenzene
 Concen: 50.00 ug/l
 RT: 5.67 min Scan# 741
 Delta R.T. 0.01 min
 Lab File: VX004716.D
 Acq: 19 Sep 2018 19:53

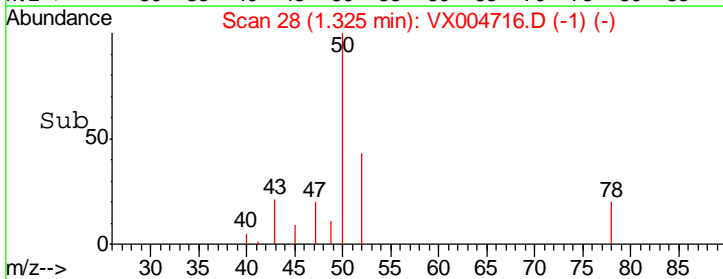
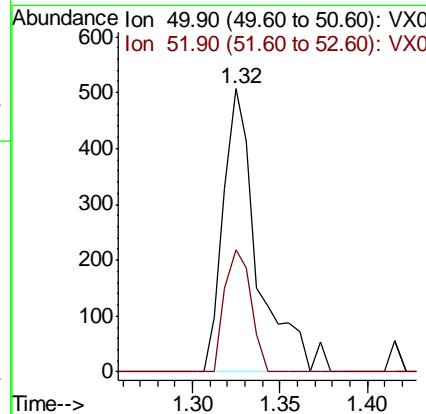
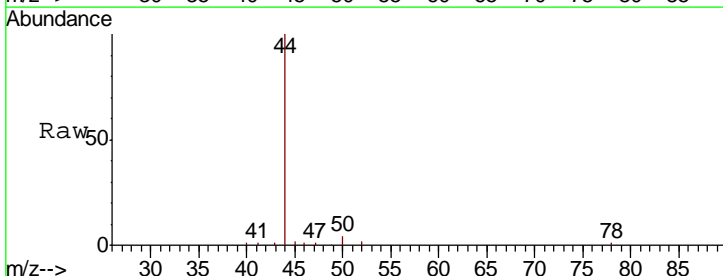
Instrument : MSVOA_X
 ClientSampleId : FC-MW10I-20180911

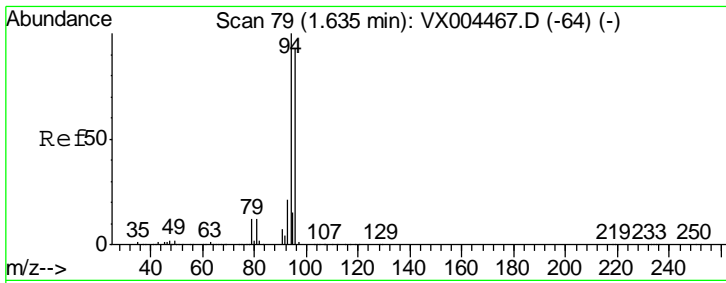
Tgt Ion	Resp	Lower	Upper
168	100		
99	40.2	39.9	59.9



#3
 Chloromethane
 Concen: 0.26 ug/l
 RT: 1.32 min Scan# 28
 Delta R.T. 0.01 min
 Lab File: VX004716.D
 Acq: 19 Sep 2018 19:53

Tgt Ion	Resp	Lower	Upper
50	100		
52	43.2	26.2	39.2

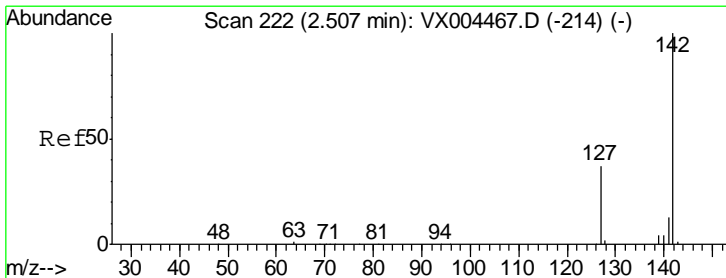
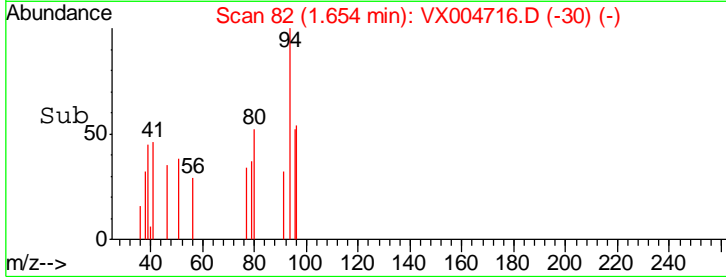
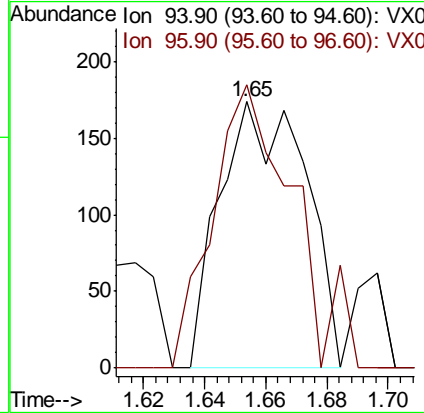
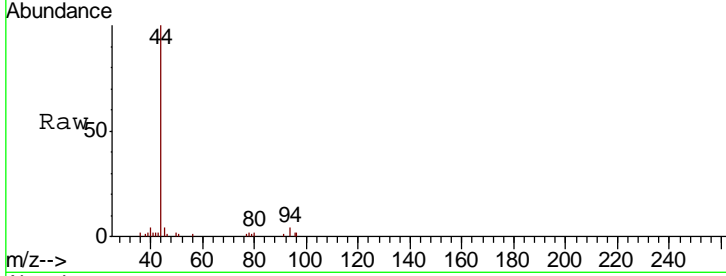




#5
 Bromomethane
 Concen: Below Cal
 RT: 1.65 min Scan# 82
 Delta R.T. 0.02 min
 Lab File: VX004716.D
 Acq: 19 Sep 2018 19:53

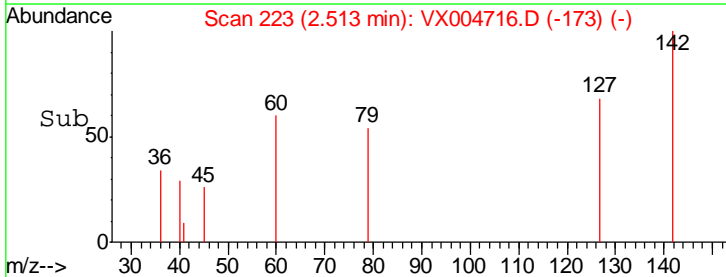
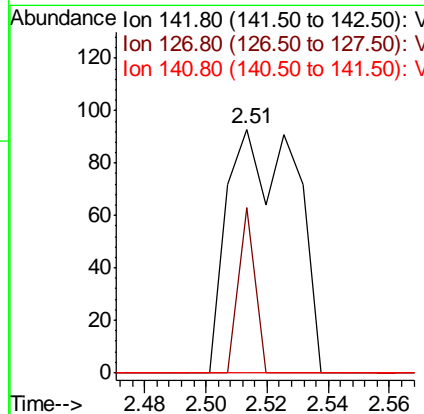
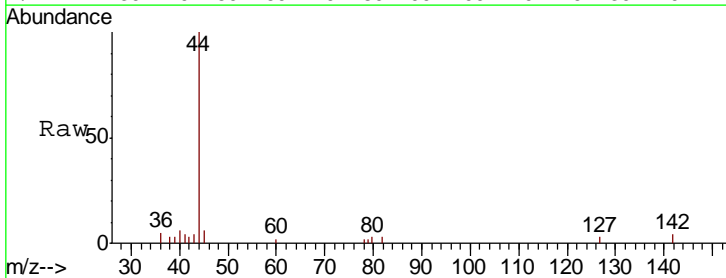
Instrument : MSVOA_X
 ClientSampled : FC-MW10I-20180911

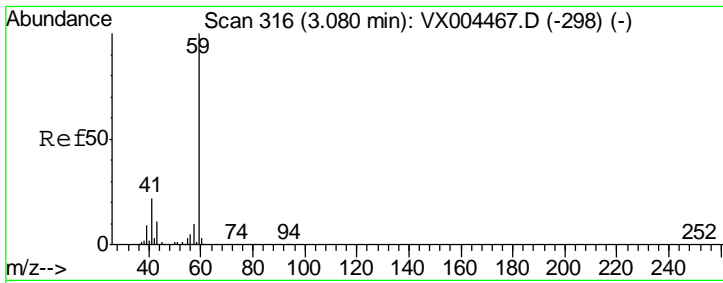
Tgt Ion: 94 Resp: 338
 Ion Ratio Lower Upper
 94 100
 96 72.4 74.5 111.7#



#10
 Methyl Iodide
 Concen: 4.30 ug/l
 RT: 2.51 min Scan# 223
 Delta R.T. 0.01 min
 Lab File: VX004716.D
 Acq: 19 Sep 2018 19:53

Tgt Ion: 142 Resp: 143
 Ion Ratio Lower Upper
 142 100
 127 16.1 33.8 50.6#
 141 0.0 11.4 17.0#

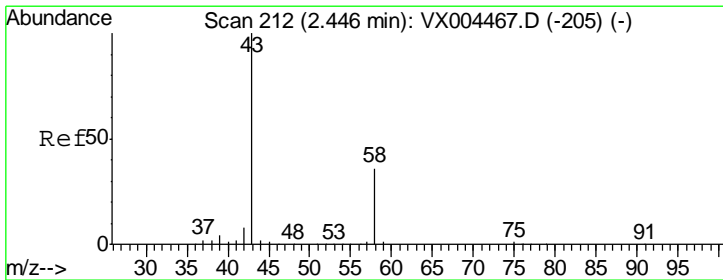
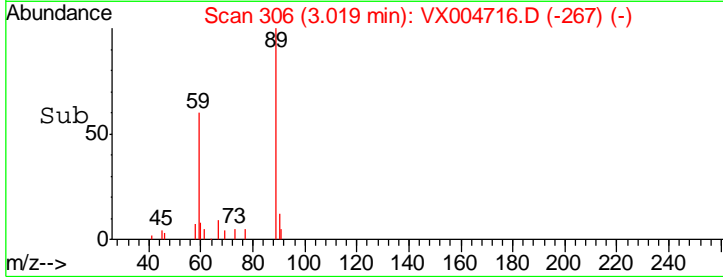
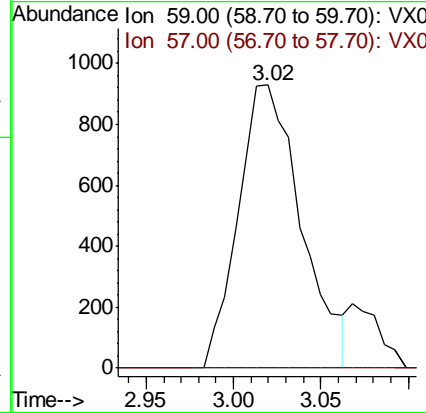
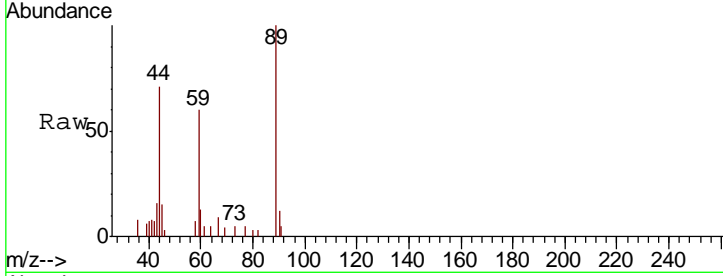




#11
 Tert butyl alcohol
 Concen: 3.68 ug/l
 RT: 3.02 min Scan# 306
 Delta R.T. -0.06 min
 Lab File: VX004716.D
 Acq: 19 Sep 2018 19:53

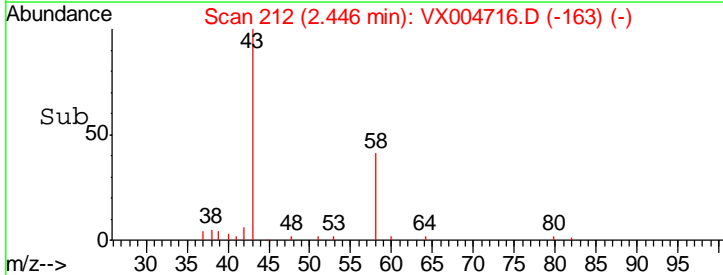
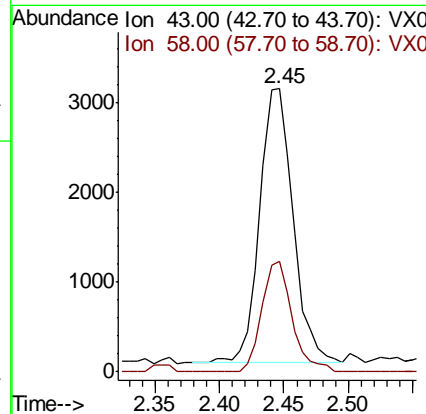
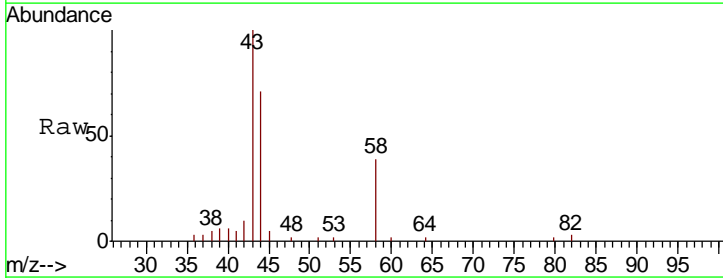
Instrument :
 MSVOA_X
 ClientSampleId :
 FC-MW10I-20180911

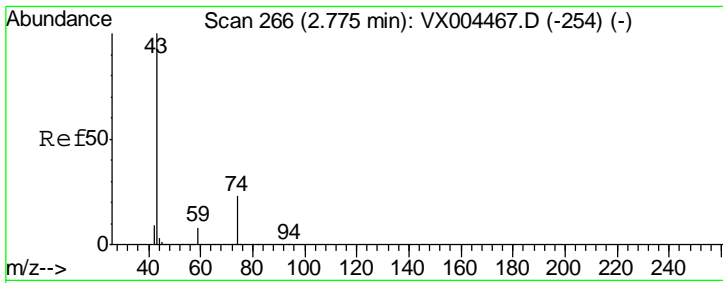
Tgt Ion: 59 Resp: 2326
 Ion Ratio Lower Upper
 59 100
 57 0.0 8.2 12.4#



#16
 Acetone
 Concen: 4.24 ug/l
 RT: 2.45 min Scan# 212
 Delta R.T. 0.00 min
 Lab File: VX004716.D
 Acq: 19 Sep 2018 19:53

Tgt Ion: 43 Resp: 5475
 Ion Ratio Lower Upper
 43 100
 58 40.5 26.2 39.4#

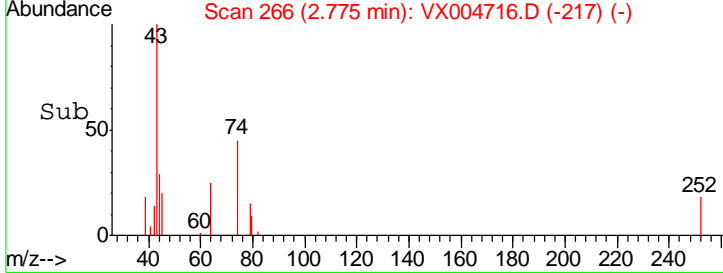
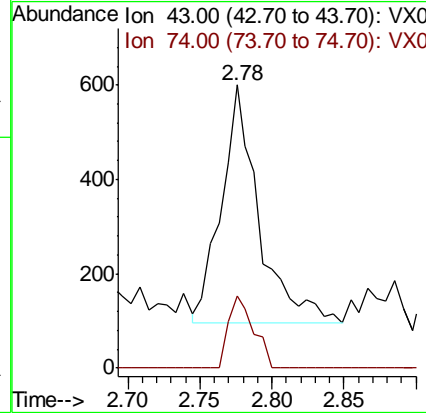
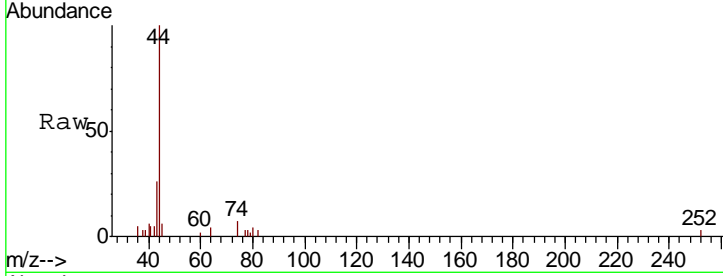




#18
 Methyl Acetate
 Concen: 0.25 ug/l
 RT: 2.78 min Scan# 266
 Delta R.T. 0.00 min
 Lab File: VX004716.D
 Acq: 19 Sep 2018 19:53

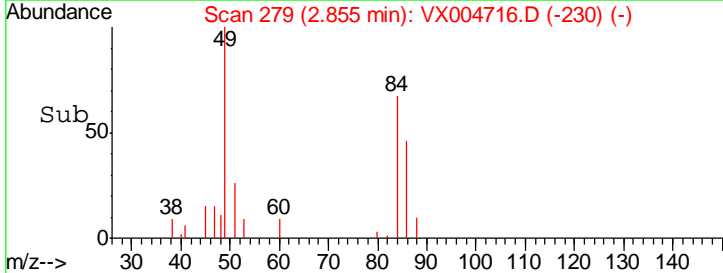
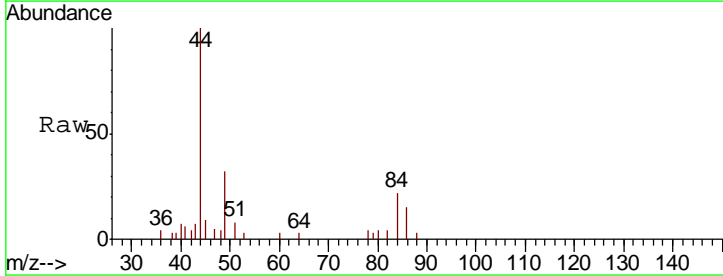
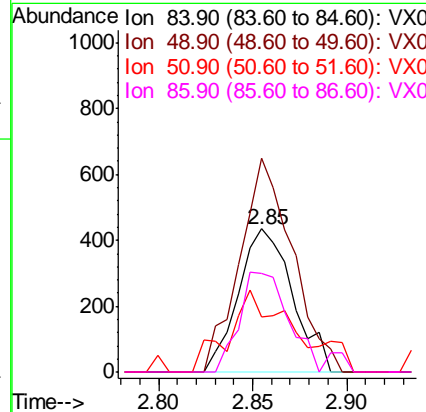
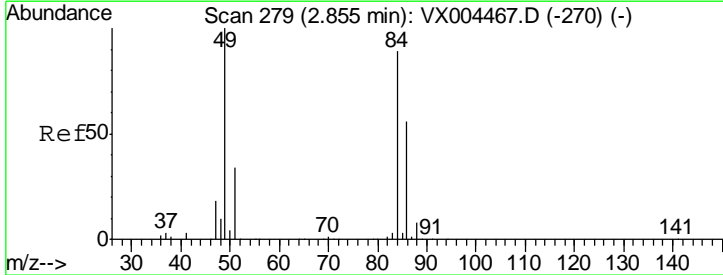
Instrument :
 MSVOA_X
ClientSampled :
 FC-MW10I-20180911

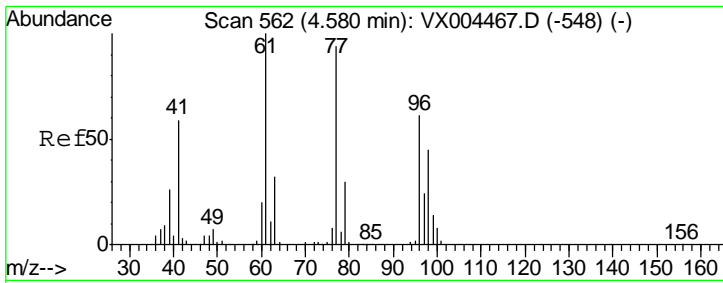
Tgt Ion	Resp	Lower	Upper
43	918		
43	100		
74	20.6	19.4	29.2



#20
 Methylene Chloride
 Concen: 0.33 ug/l
 RT: 2.85 min Scan# 279
 Delta R.T. 0.00 min
 Lab File: VX004716.D
 Acq: 19 Sep 2018 19:53

Tgt Ion	Resp	Lower	Upper
84	870		
84	100		
49	149.5	101.2	151.8
51	38.5	29.5	44.3
86	69.1	52.3	78.5

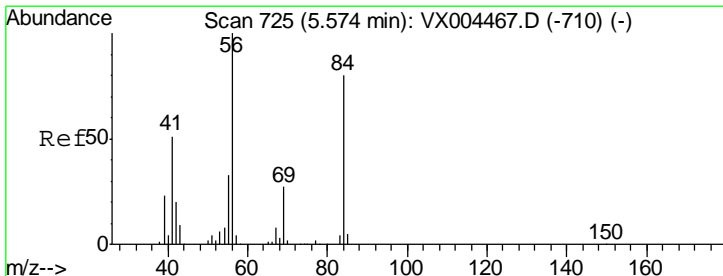
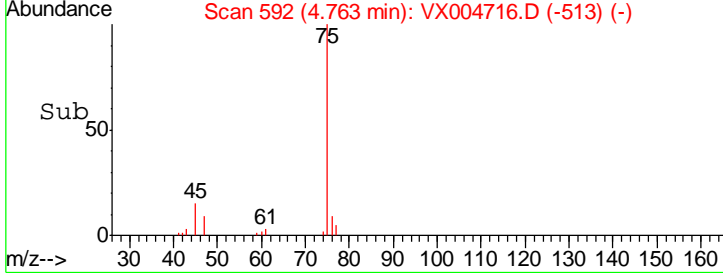
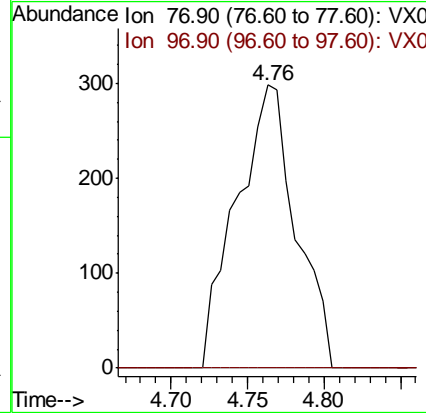
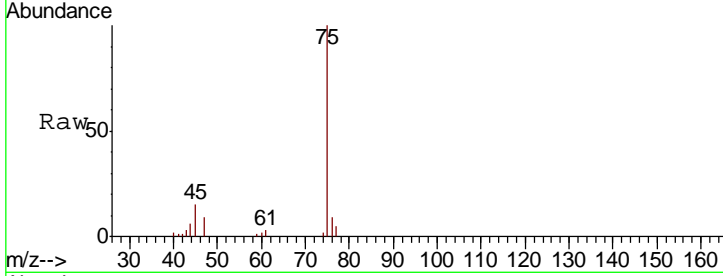




#26
 2,2-Dichloropropane
 Concen: 0.26 ug/l
 RT: 4.76 min Scan# 592
 Delta R.T. 0.18 min
 Lab File: VX004716.D
 Acq: 19 Sep 2018 19:53

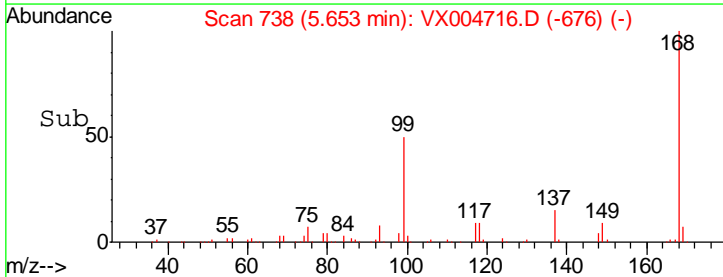
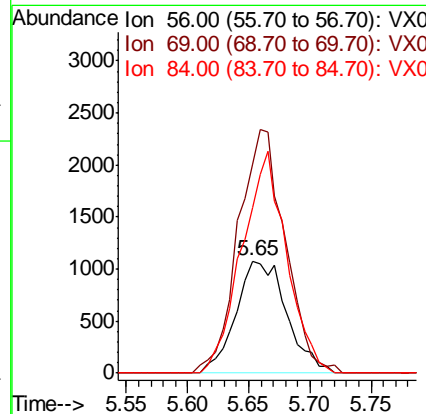
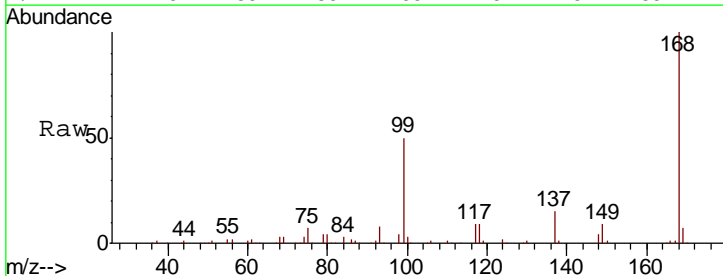
Instrument :
 MSVOA_X
 ClientSampled :
 FC-MW10I-20180911

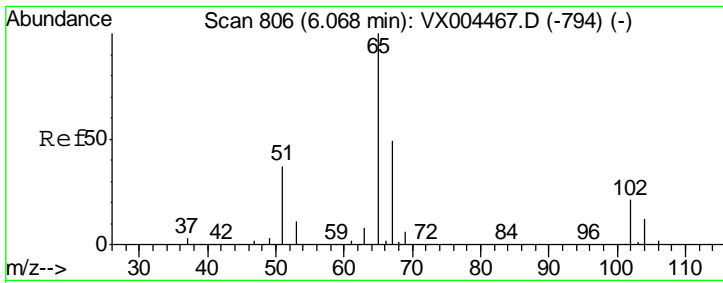
Tgt Ion: 77 Resp: 808
 Ion Ratio Lower Upper
 77 100
 97 0.0 11.7 35.0#



#31
 Cyclohexane
 Concen: 0.81 ug/l
 RT: 5.65 min Scan# 738
 Delta R.T. 0.08 min
 Lab File: VX004716.D
 Acq: 19 Sep 2018 19:53

Tgt Ion: 56 Resp: 3092
 Ion Ratio Lower Upper
 56 100
 69 186.9 25.4 38.2#
 84 148.2 71.4 107.2#



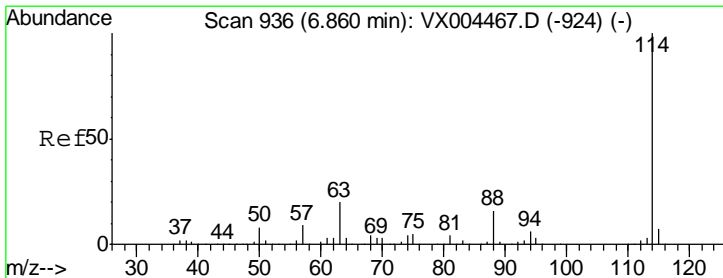
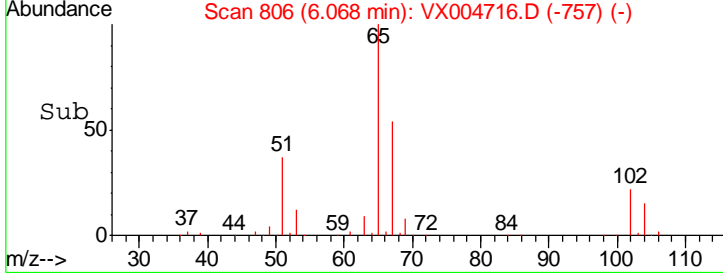
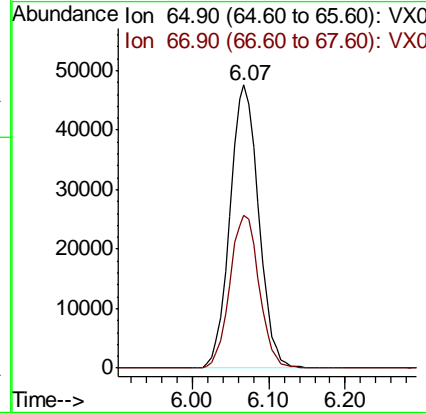
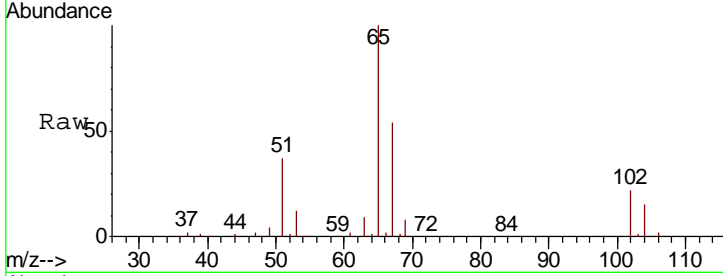


#33
 1,2-Dichloroethane-d4
 Concen: 46.66 ug/l
 RT: 6.07 min Scan# 806
 Delta R.T. 0.00 min
 Lab File: VX004716.D
 Acq: 19 Sep 2018 19:53

Instrument :
 MSVOA_X
 ClientSampled :
 FC-MW10I-20180911

Tgt Ion: 65 Resp: 123502

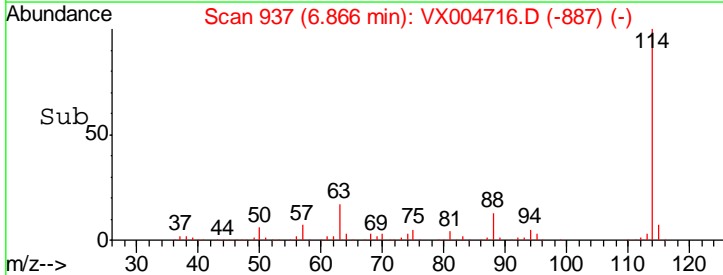
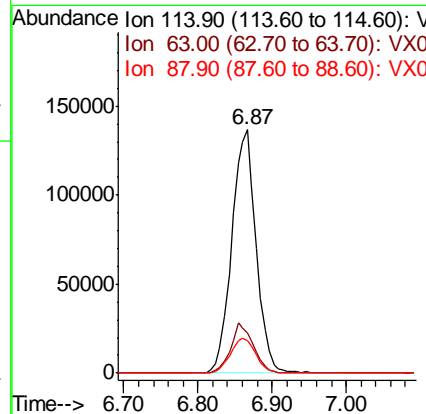
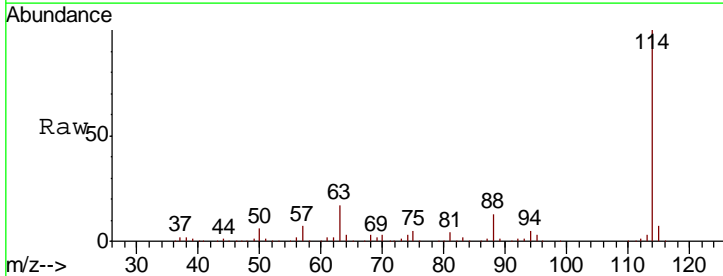
Ion	Ratio	Lower	Upper
65	100		
67	54.9	0.0	106.8

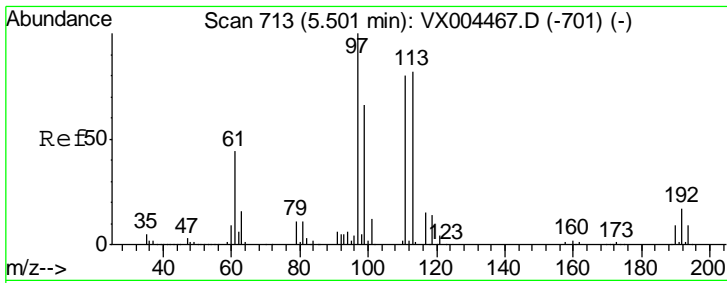


#34
 1,4-Difluorobenzene
 Concen: 50.00 ug/l
 RT: 6.87 min Scan# 937
 Delta R.T. 0.01 min
 Lab File: VX004716.D
 Acq: 19 Sep 2018 19:53

Tgt Ion: 114 Resp: 311927

Ion	Ratio	Lower	Upper
114	100		
63	16.5	0.0	39.0
88	13.4	0.0	30.4

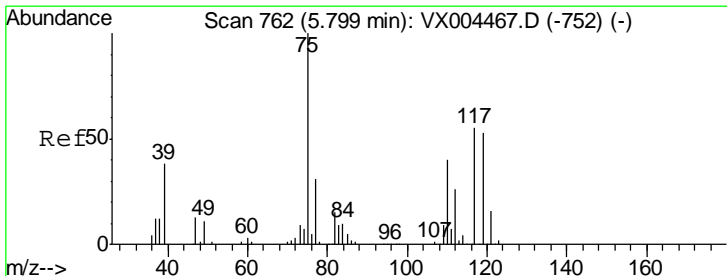
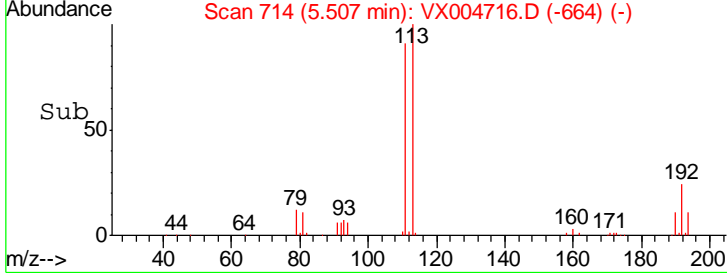
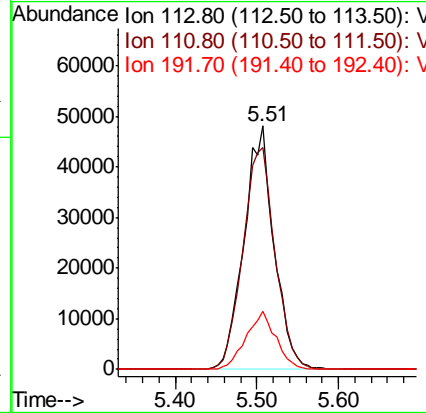
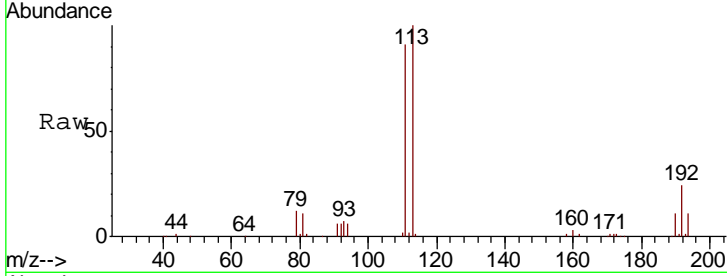




#35
 Dibromofluoromethane
 Concen: 42.98 ug/l
 RT: 5.51 min Scan# 714
 Delta R.T. 0.01 min
 Lab File: VX004716.D
 Acq: 19 Sep 2018 19:53

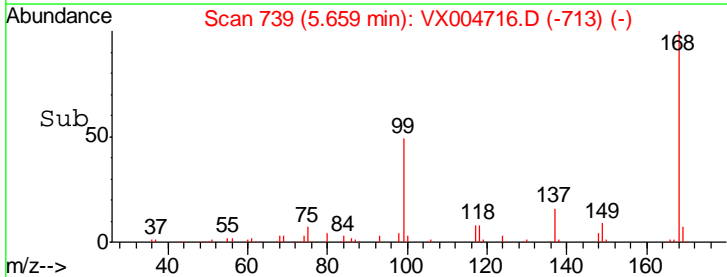
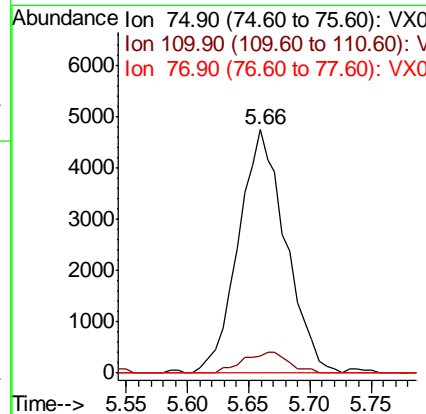
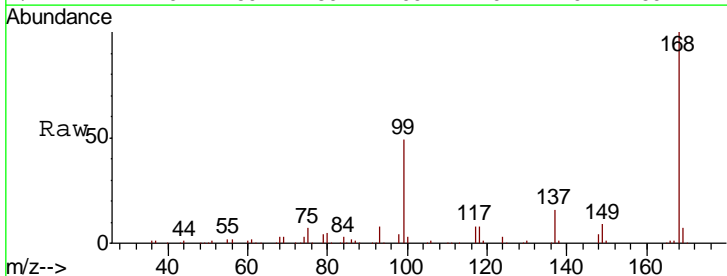
Instrument : MSVOA_X
 ClientSampled : FC-MW10I-20180911

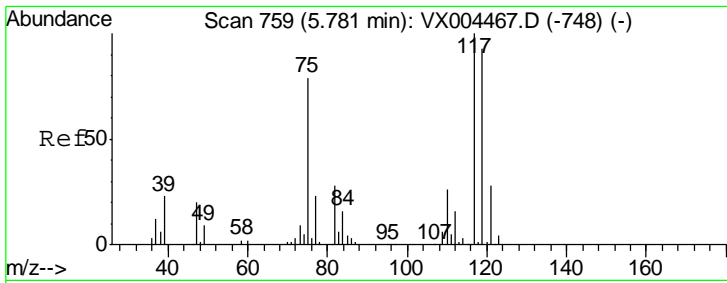
Tgt Ion	Resp	Lower	Upper
113	100		
111	98.0	82.4	123.6
192	23.8	19.4	29.2



#36
 1,1-Dichloropropene
 Concen: 3.36 ug/l
 RT: 5.66 min Scan# 739
 Delta R.T. -0.14 min
 Lab File: VX004716.D
 Acq: 19 Sep 2018 19:53

Tgt Ion	Resp	Lower	Upper
75	100		
110	8.5	18.0	54.0#
77	0.0	24.6	36.8#

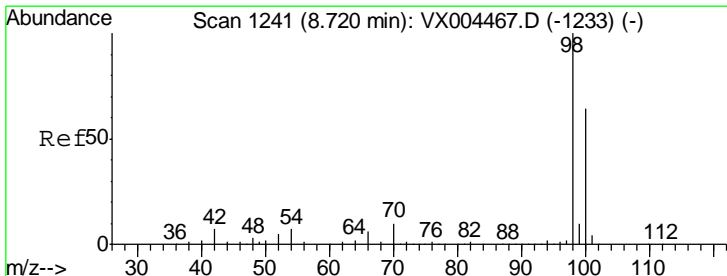
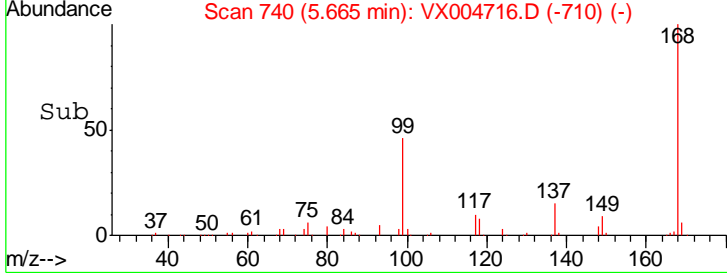
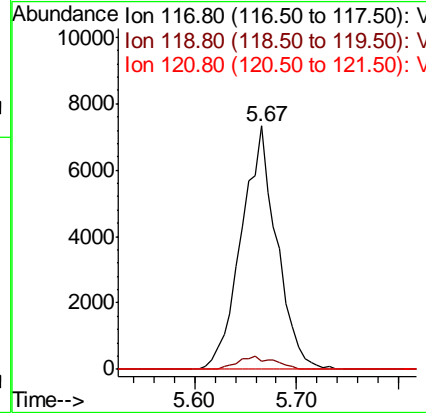
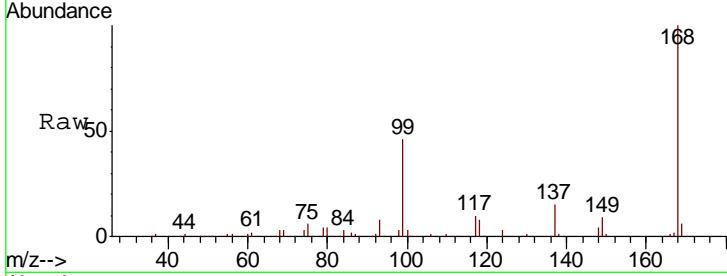




#38
 Carbon Tetrachloride
 Concen: 4.74 ug/l
 RT: 5.67 min Scan# 740
 Delta R.T. -0.12 min
 Lab File: VX004716.D
 Acq: 19 Sep 2018 19:53

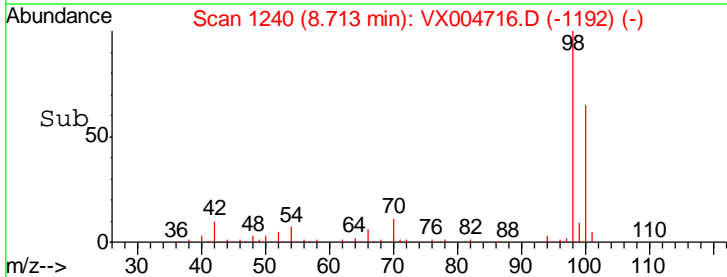
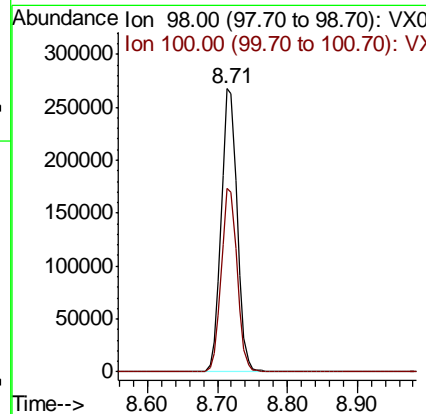
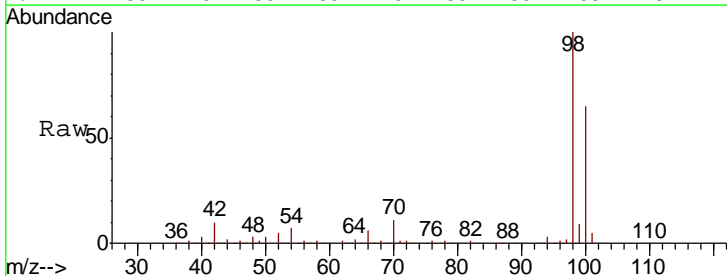
Instrument :
 MSVOA_X
 ClientSampled :
 FC-MW10I-20180911

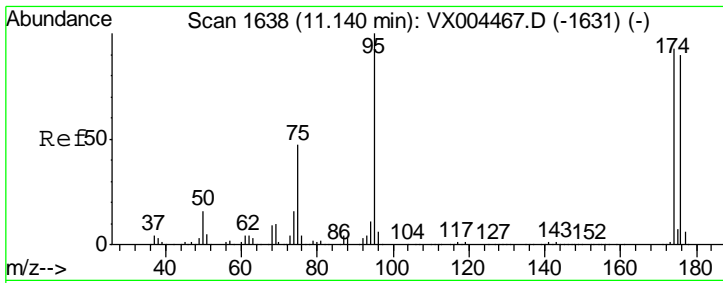
Tgt Ion	Resp	Lower	Upper
117	17524		
117	100		
119	3.3	78.8	118.2#
121	0.0	24.9	37.3#



#50
 Toluene-d8
 Concen: 44.42 ug/l
 RT: 8.71 min Scan# 1240
 Delta R.T. -0.01 min
 Lab File: VX004716.D
 Acq: 19 Sep 2018 19:53

Tgt Ion	Resp	Lower	Upper
98	425214		
98	100		
100	64.5	52.9	79.3

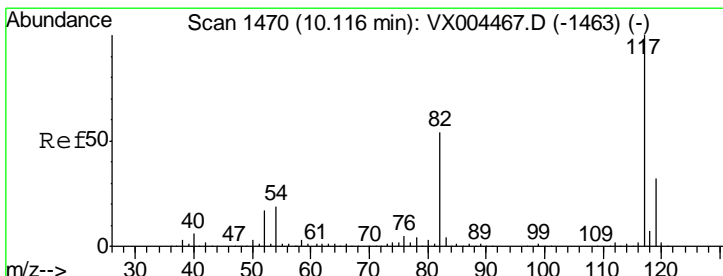
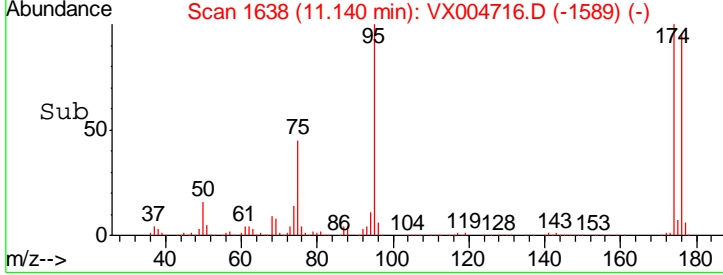
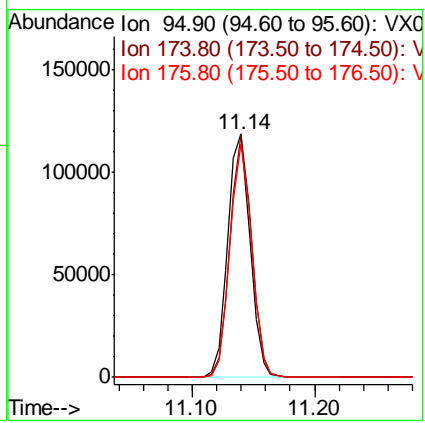
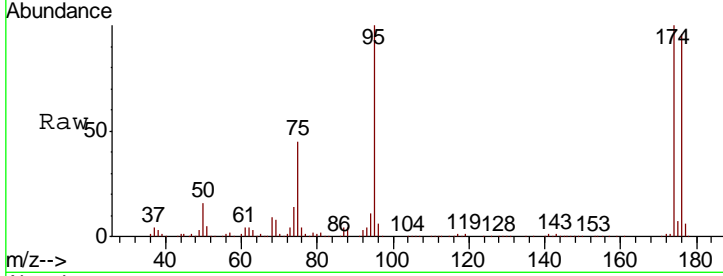




#62
 4-Bromofluorobenzene
 Concen: 43.73 ug/l
 RT: 11.14 min Scan# 1638
 Delta R.T. 0.00 min
 Lab File: VX004716.D
 Acq: 19 Sep 2018 19:53

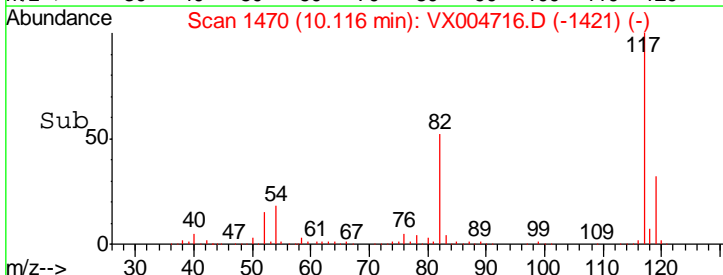
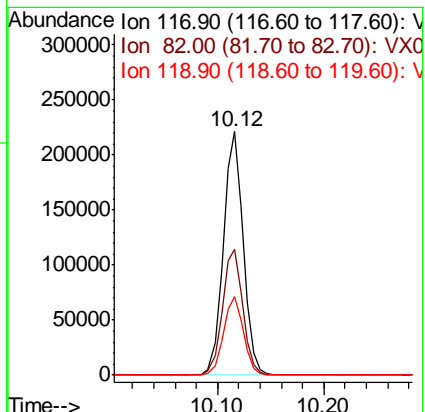
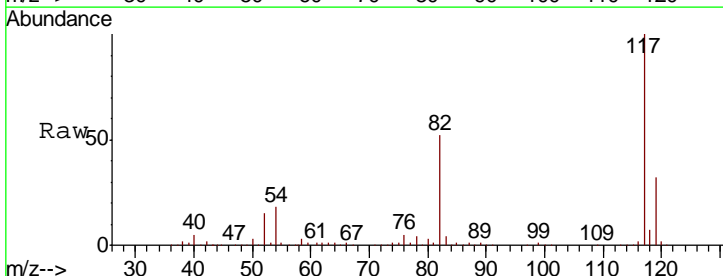
Instrument : MSVOA_X
 ClientSampled : FC-MW10I-20180911

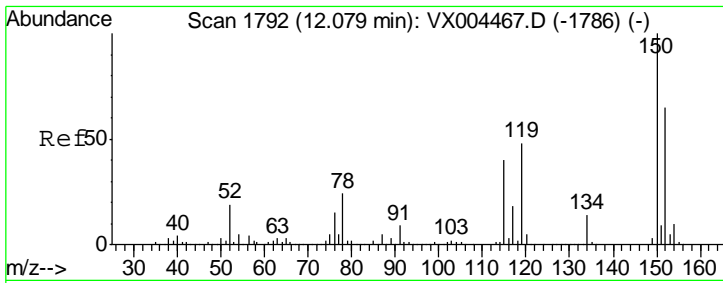
Tgt Ion	Resp	Lower	Upper
95	149413		
174	96.1	0.0	185.2
176	92.7	0.0	178.6



#63
 Chlorobenzene-d5
 Concen: 50.00 ug/l
 RT: 10.12 min Scan# 1470
 Delta R.T. 0.00 min
 Lab File: VX004716.D
 Acq: 19 Sep 2018 19:53

Tgt Ion	Resp	Lower	Upper
117	288678		
82	51.7	47.8	71.6
119	32.3	29.3	43.9

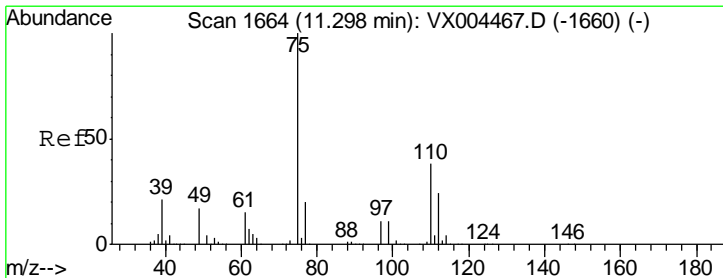
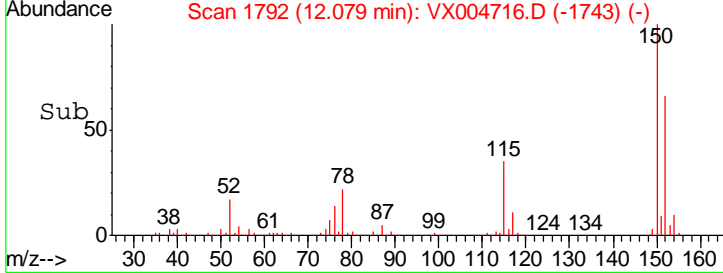
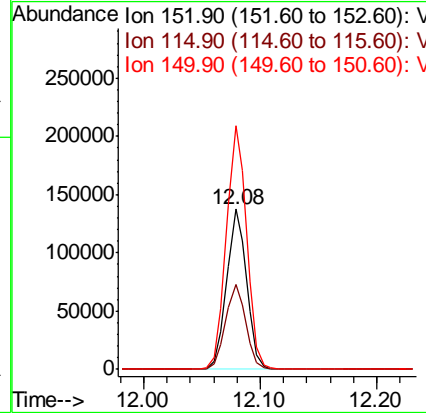
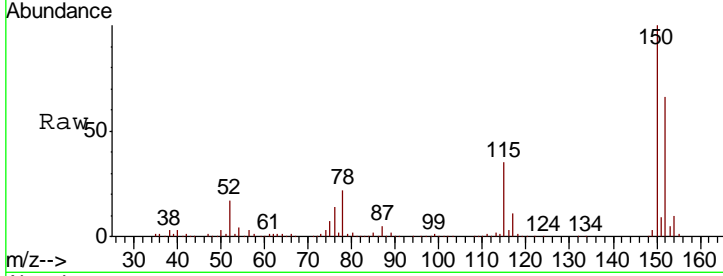




#72
 1,4-Dichlorobenzene-d4
 Concen: 50.00 ug/l
 RT: 12.08 min Scan# 1792
 Delta R.T. 0.00 min
 Lab File: VX004716.D
 Acq: 19 Sep 2018 19:53

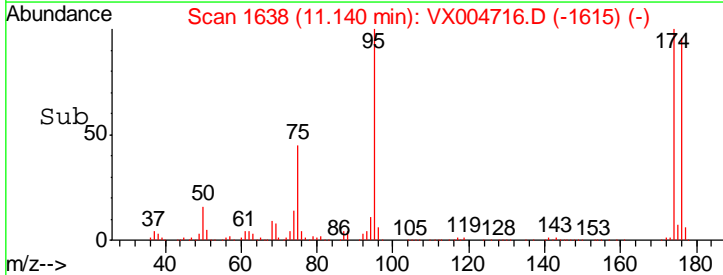
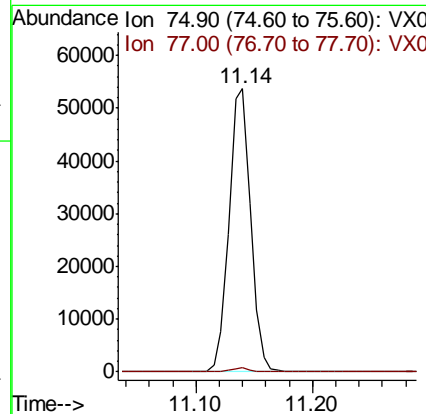
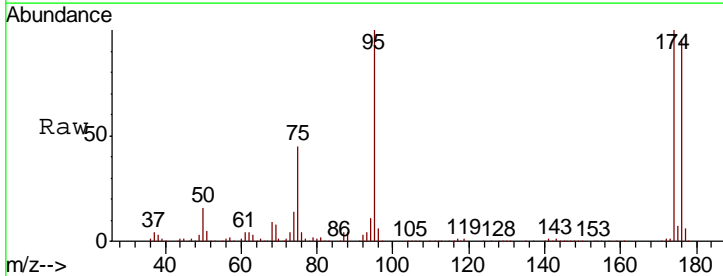
Instrument : MSVOA_X
 ClientSampled : FC-MW10I-20180911

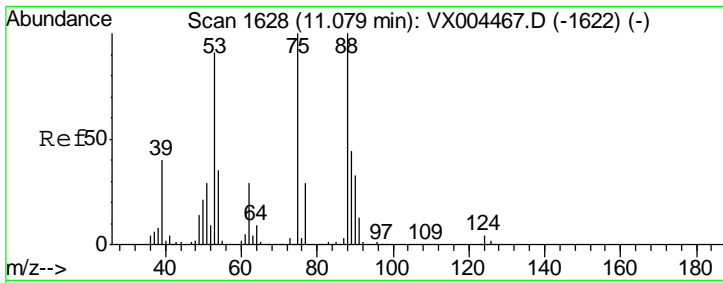
Tgt Ion	Resp	Lower	Upper
152	100		
115	53.5	39.0	117.0
150	154.7	0.0	351.0



#76
 1,2,3-Trichloropropane
 Concen: 21.18 ug/l
 RT: 11.14 min Scan# 1638
 Delta R.T. -0.16 min
 Lab File: VX004716.D
 Acq: 19 Sep 2018 19:53

Tgt Ion	Resp	Lower	Upper
75	100		
77	1.4	20.2	60.6

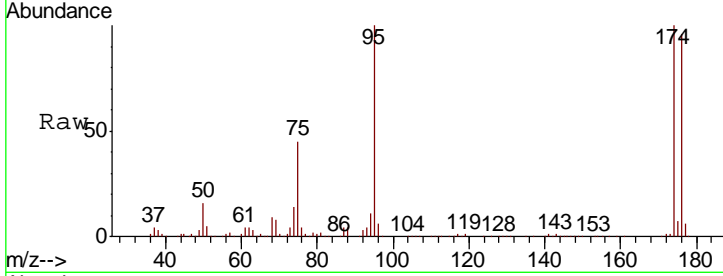




#81
 trans-1,4-Dichloro-2-butene
 Concen: 67.51 ug/l
 RT: 11.14 min Scan# 1638
 Delta R.T. 0.06 min
 Lab File: VX004716.D
 Acq: 19 Sep 2018 19:53

Instrument :
 MSVOA_X
 ClientSampled :
 FC-MW10I-20180911

Tot Ion	Resp	Lower	Upper
75	69017		
53	0.1	80.1	120.1#
89	0.0	37.2	55.8#



Abundance Ion 74.90 (74.60 to 75.60): VX0
 Ion 53.00 (52.70 to 53.70): VX0
 Ion 88.90 (88.60 to 89.60): VX0

