

Data Path : Z:\voasrv\HPCHEM1\MSVOA_X\Data\VX092021\
 Data File : VX024376.D
 Acq On : 21 Sep 2021 02:40
 Operator : JC/MD
 Sample : M3782-18DL 5X
 Misc : 5.0mL/MSVOA_X/WATER
 ALS Vial : 37 Sample Multiplier: 1

Instrument :
 MSVOA_X
 ClientSampleId :
 RE131D1-20210915DL

Quant Time: Sep 21 08:46:11 2021
 Quant Method : Z:\voasrv\HPCHEM1\MSVOA_X\Method\82X091421W.M
 Quant Title : SW846 8260
 QLast Update : Tue Sep 14 12:18:04 2021
 Response via : Initial Calibration

Compound	R.T.	QIon	Response	Conc	Units	Dev(Min)

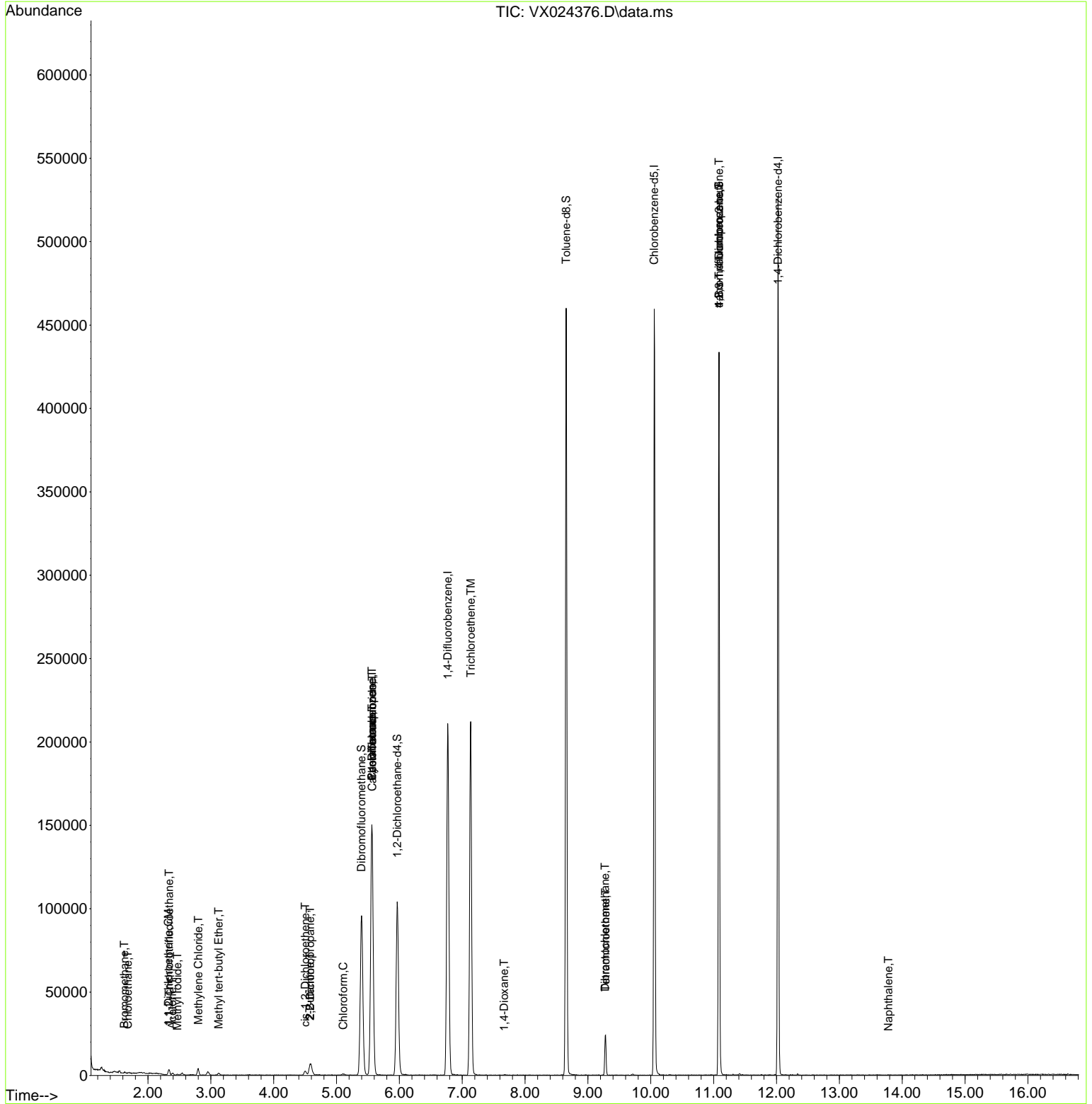
Internal Standards						
1) Pentafluorobenzene	5.562	168	140603	50.000	ug/l	0.00
34) 1,4-Difluorobenzene	6.769	114	210151	50.000	ug/l	0.00
63) Chlorobenzene-d5	10.055	117	201236	50.000	ug/l	0.00
72) 1,4-Dichlorobenzene-d4	12.024	152	105262	50.000	ug/l	0.00
System Monitoring Compounds						
33) 1,2-Dichloroethane-d4	5.964	65	104848	52.294	ug/l	0.00
Spiked Amount	50.000	Range 78 - 117	Recovery	=	104.580%	
35) Dibromofluoromethane	5.397	113	83222	59.049	ug/l	0.00
Spiked Amount	50.000	Range 75 - 124	Recovery	=	118.100%	
50) Toluene-d8	8.653	98	257656	50.184	ug/l	0.00
Spiked Amount	50.000	Range 92 - 112	Recovery	=	100.360%	
62) 4-Bromofluorobenzene	11.085	95	114946	57.528	ug/l	0.00
Spiked Amount	50.000	Range 83 - 123	Recovery	=	115.060%	
Target Compounds						
						Qvalue
5) Bromomethane	1.624	94	423	0.506	ug/l #	64
6) Chloroethane	1.679	64	125	2.107	ug/l #	43
9) 1,1,2-Trichlorotrifluo...	2.337	101	1098	0.793	ug/l #	86
10) Methyl Iodide	2.465	142	432	0.226	ug/l #	85
11) Tert butyl alcohol	2.971	59	1351	Below Cal	#	73
12) 1,1-Dichloroethene	2.325	96	329	0.254	ug/l #	88
16) Acetone	2.386	43	1005	1.176	ug/l	99
19) Methyl tert-butyl Ether	3.123	73	1135	0.238	ug/l	97
20) Methylene Chloride	2.800	84	1708	1.040	ug/l #	88
25) 2-Butanone	4.574	43	488	0.388	ug/l #	45
26) 2,2-Dichloropropane	4.580	77	592	0.249	ug/l #	52
27) cis-1,2-Dichloroethene	4.501	96	1711	1.044	ug/l	84
30) Chloroform	5.105	83	1044	0.362	ug/l #	75
31) Cyclohexane	5.562	56	2761	1.177	ug/l #	1
36) 1,1-Dichloropropene	5.562	75	11441	5.921	ug/l #	49
38) Carbon Tetrachloride	5.568	117	14704	6.761	ug/l #	17
44) Trichloroethene	7.135	130	78984	50.728	ug/l	96
49) 1,4-Dioxane	7.665	88	225	6.009	ug/l	91
60) Dibromochloromethane	9.275	129	4519	4.213	ug/l #	11
64) Tetrachloroethene	9.281	164	4593	2.946	ug/l	97
76) 1,2,3-Trichloropropane	11.085	75	58146	24.023	ug/l #	38
81) trans-1,4-Dichloro-2-b...	11.085	75	58146	70.653	ug/l #	12
95) Naphthalene	13.780	128	209	1.314	ug/l #	69

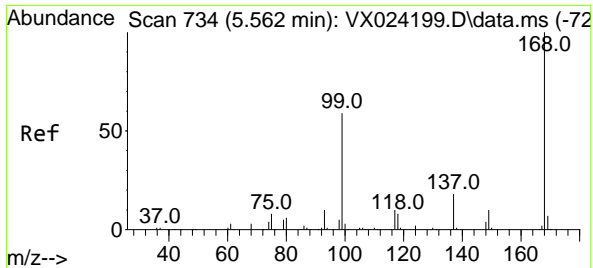
(#) = qualifier out of range (m) = manual integration (+) = signals summed

Data Path : Z:\voasrv\HPCHEM1\MSVOA_X\Data\VX092021\
 Data File : VX024376.D
 Acq On : 21 Sep 2021 02:40
 Operator : JC/MD
 Sample : M3782-18DL 5X
 Misc : 5.0mL/MSVOA_X/WATER
 ALS Vial : 37 Sample Multiplier: 1

Instrument :
 MSVOA_X
 Client Sample ID :
 RE131D1-20210915DL

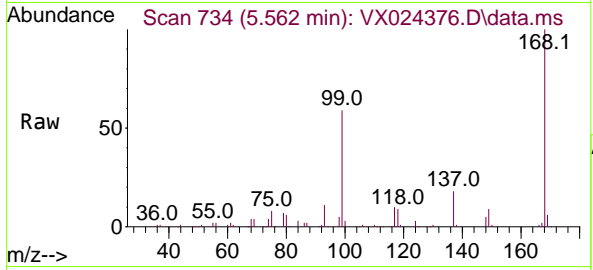
Quant Time: Sep 21 08:46:11 2021
 Quant Method : Z:\voasrv\HPCHEM1\MSVOA_X\Method\82X091421W.M
 Quant Title : SW846 8260
 QLast Update : Tue Sep 14 12:18:04 2021
 Response via : Initial Calibration



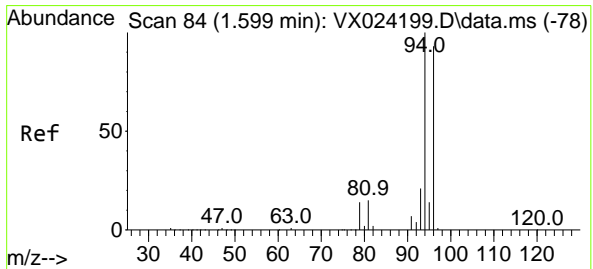
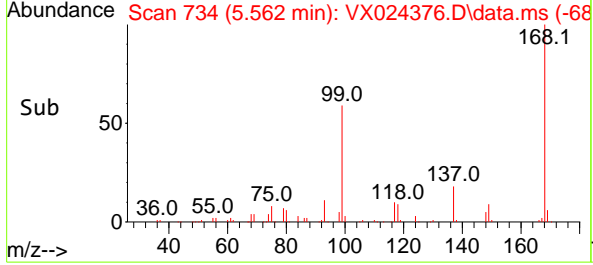
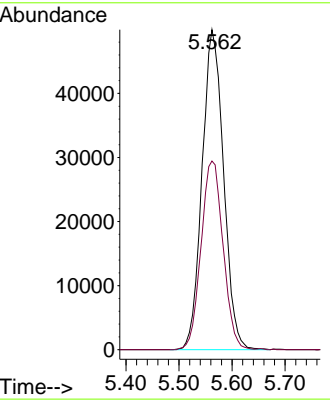


#1
 Pentafluorobenzene
 Concen: 50.000 ug/l
 RT: 5.562 min Scan# 734
 Delta R.T. 0.000 min
 Lab File: VX024376.D
 Acq: 21 Sep 2021 02:40

Instrument : MSVOA_X
 ClientSampleID : RE131D1-20210915DL

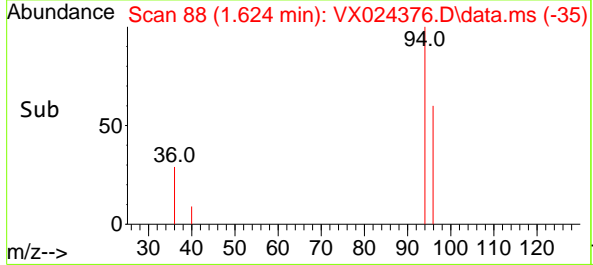
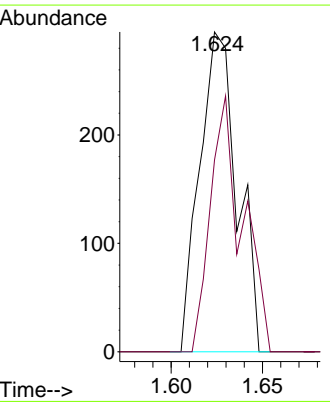
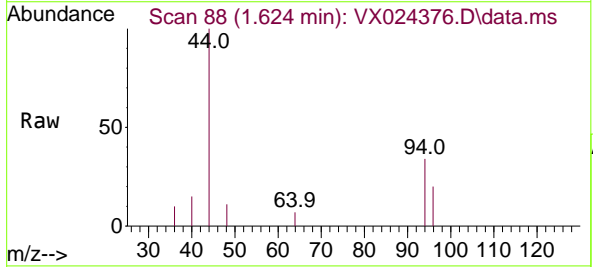


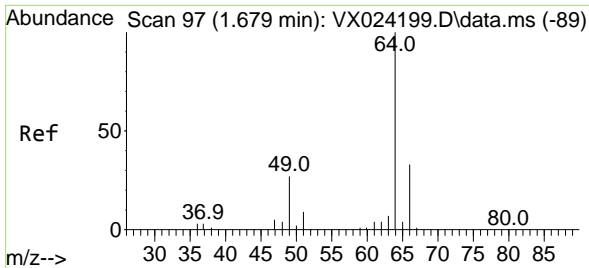
Tgt Ion:168 Resp: 140603
 Ion Ratio Lower Upper
 168 100
 99 58.9 45.8 68.6



#5
 Bromomethane
 Concen: 0.506 ug/l
 RT: 1.624 min Scan# 88
 Delta R.T. 0.025 min
 Lab File: VX024376.D
 Acq: 21 Sep 2021 02:40

Tgt Ion: 94 Resp: 423
 Ion Ratio Lower Upper
 94 100
 96 60.0 76.4 114.6#

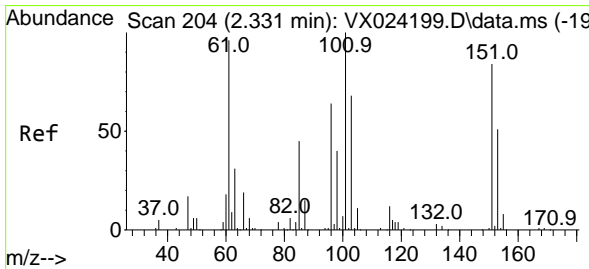
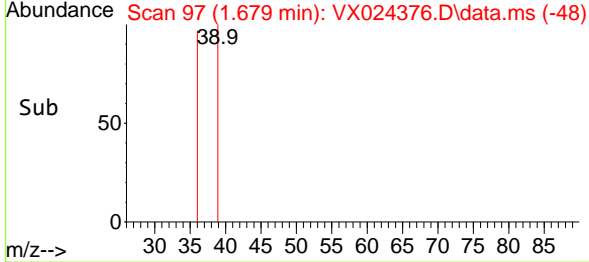
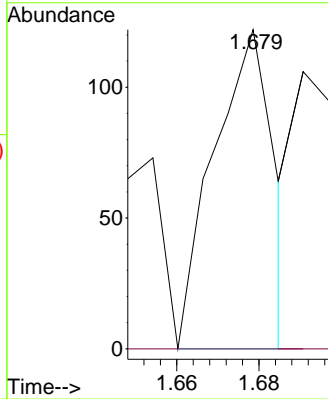
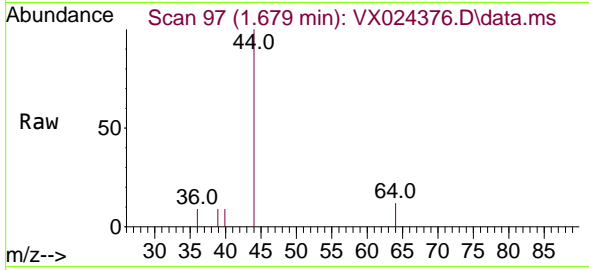




#6
 Chloroethane
 Concen: 2.107 ug/l
 RT: 1.679 min Scan# 97
 Delta R.T. -0.000 min
 Lab File: VX024376.D
 Acq: 21 Sep 2021 02:40

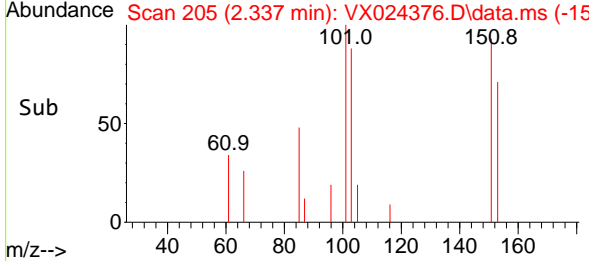
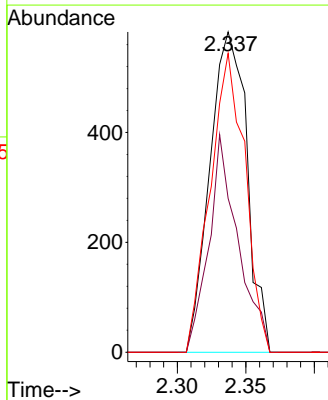
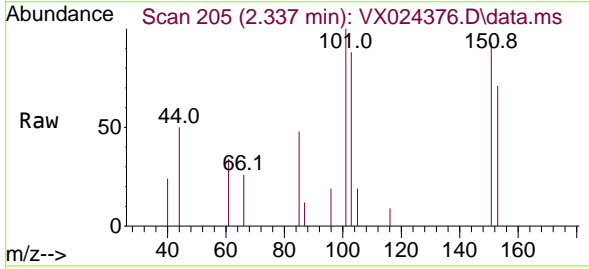
Instrument :
 MSVOA_X
ClientSampleID :
 RE131D1-20210915DL

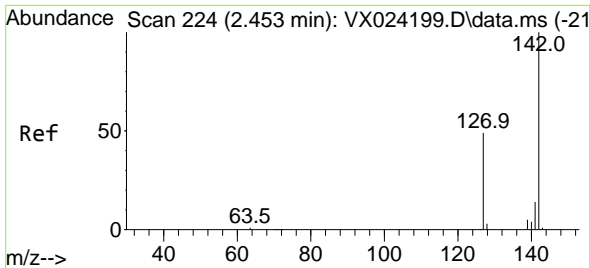
Tgt Ion: 64 Resp: 125
 Ion Ratio Lower Upper
 64 100
 66 0.0 25.4 38.0#



#9
 1,1,2-Trichlorotrifluoroethane
 Concen: 0.793 ug/l
 RT: 2.337 min Scan# 205
 Delta R.T. 0.006 min
 Lab File: VX024376.D
 Acq: 21 Sep 2021 02:40

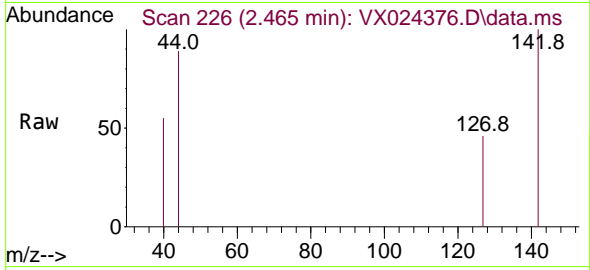
Tgt Ion:101 Resp: 1098
 Ion Ratio Lower Upper
 101 100
 85 53.6 34.9 52.3#
 151 87.5 61.4 92.2





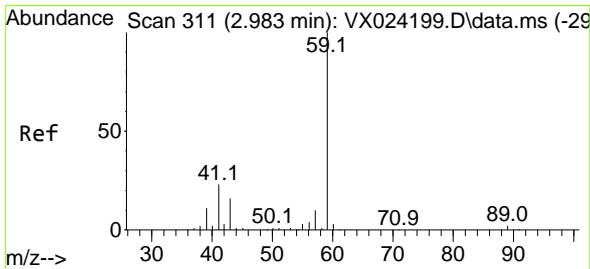
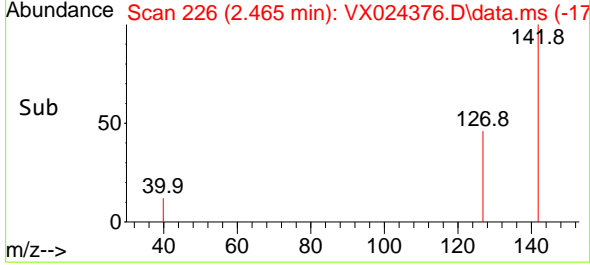
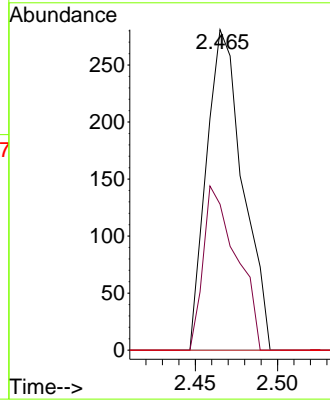
#10
Methyl Iodide
Concen: 0.226 ug/l
RT: 2.465 min Scan# 226
Delta R.T. 0.012 min
Lab File: VX024376.D
Acq: 21 Sep 2021 02:40

Instrument : MSVOA_X
ClientSampleID : RE131D1-20210915DL



Tgt Ion: 142 Resp: 432

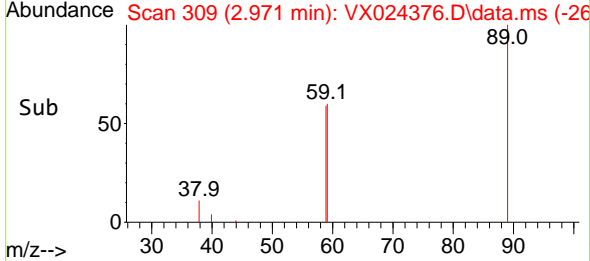
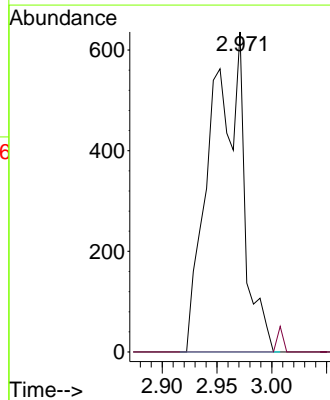
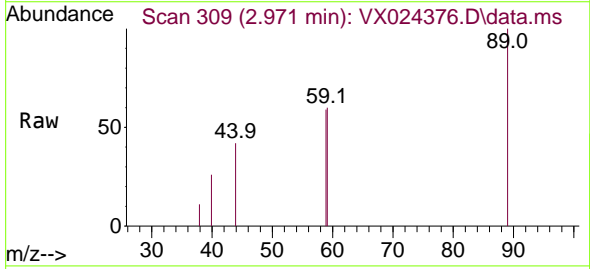
Ion	Ratio	Lower	Upper
142	100		
127	47.0	33.3	49.9
141	0.0	11.4	17.0#

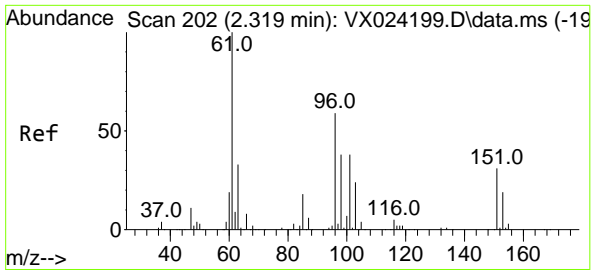


#11
Tert butyl alcohol
Concen: Below Cal
RT: 2.971 min Scan# 309
Delta R.T. -0.012 min
Lab File: VX024376.D
Acq: 21 Sep 2021 02:40

Tgt Ion: 59 Resp: 1351

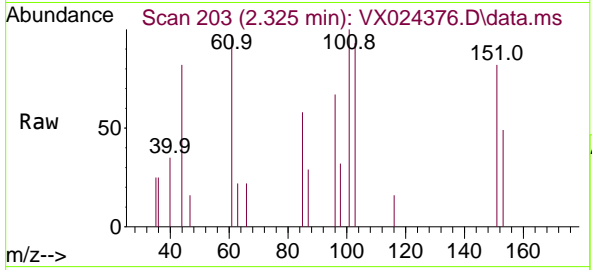
Ion	Ratio	Lower	Upper
59	100		
57	0.0	7.8	11.8#



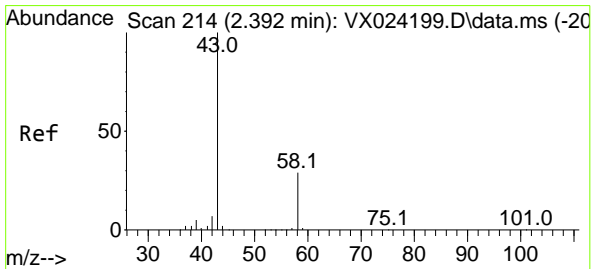
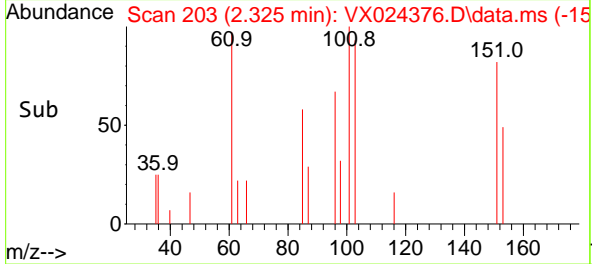
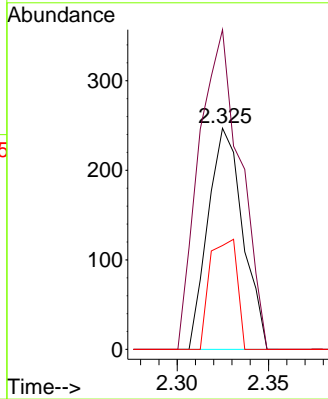


#12
 1,1-Dichloroethene
 Concen: 0.254 ug/l
 RT: 2.325 min Scan# 203
 Delta R.T. 0.006 min
 Lab File: VX024376.D
 Acq: 21 Sep 2021 02:40

Instrument : MSVOA_X
 ClientSampleID : RE131D1-20210915DL

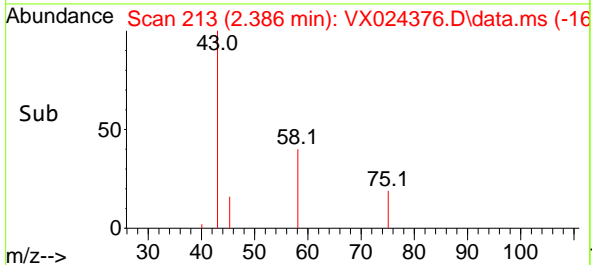
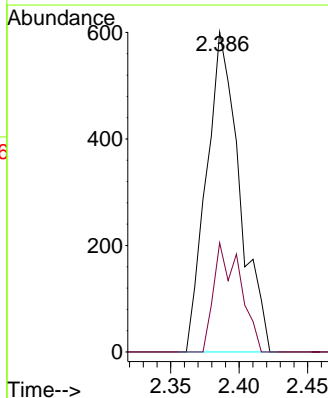
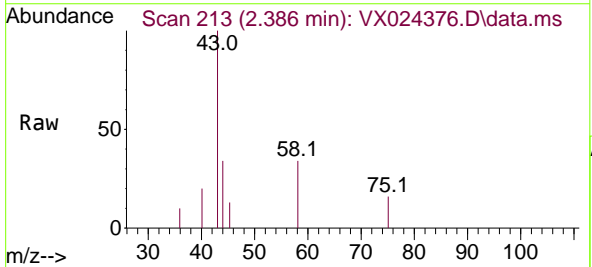


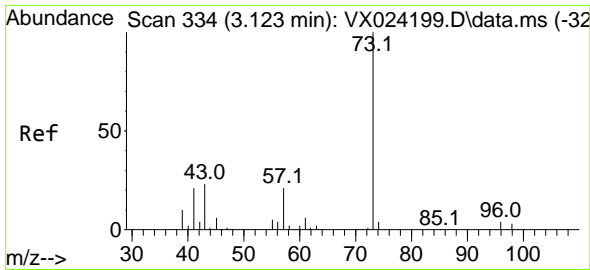
Tgt Ion: 96 Resp: 329
 Ion Ratio Lower Upper
 96 100
 61 144.5 124.6 187.0
 98 47.0 50.6 76.0#



#16
 Acetone
 Concen: 1.176 ug/l
 RT: 2.386 min Scan# 213
 Delta R.T. -0.006 min
 Lab File: VX024376.D
 Acq: 21 Sep 2021 02:40

Tgt Ion: 43 Resp: 1005
 Ion Ratio Lower Upper
 43 100
 58 34.1 27.8 41.8

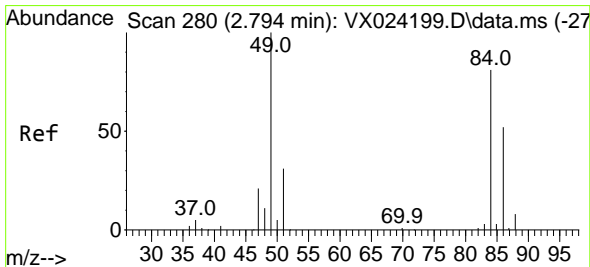
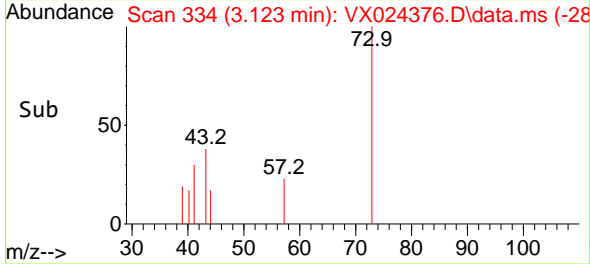
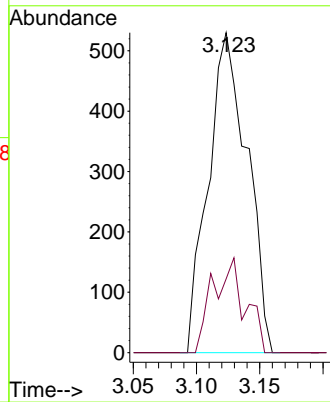
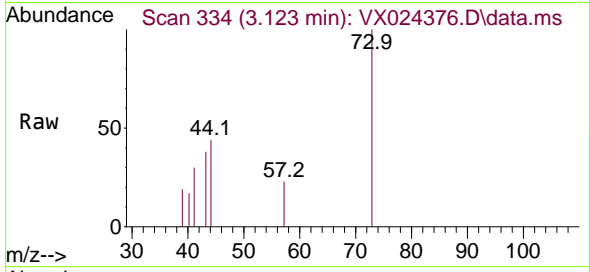




#19
 Methyl tert-butyl Ether
 Concen: 0.238 ug/l
 RT: 3.123 min Scan# 334
 Delta R.T. 0.000 min
 Lab File: VX024376.D
 Acq: 21 Sep 2021 02:40

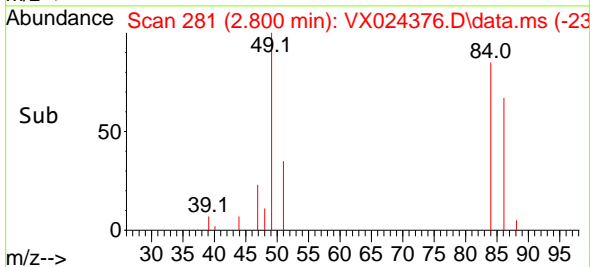
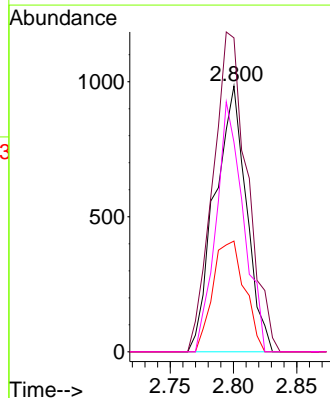
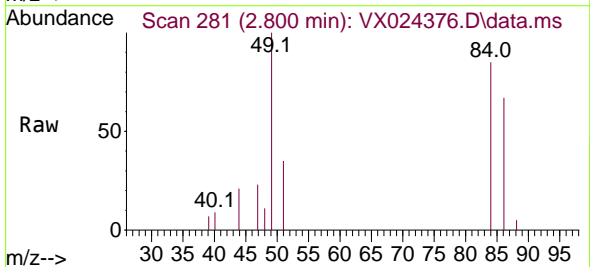
Instrument :
 MSVOA_X
 ClientSampleID :
 RE131D1-20210915DL

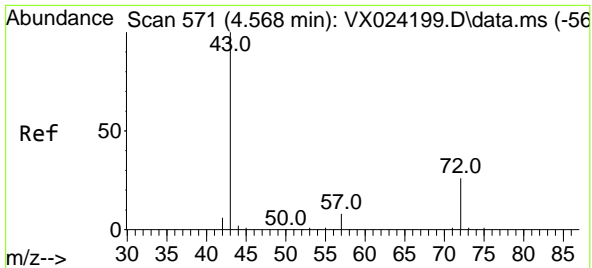
Tgt Ion: 73 Resp: 1135
 Ion Ratio Lower Upper
 73 100
 57 23.0 17.1 25.7



#20
 Methylene Chloride
 Concen: 1.040 ug/l
 RT: 2.800 min Scan# 281
 Delta R.T. 0.006 min
 Lab File: VX024376.D
 Acq: 21 Sep 2021 02:40

Tgt Ion: 84 Resp: 1708
 Ion Ratio Lower Upper
 84 100
 49 118.1 88.6 132.8
 51 41.7 27.0 40.6#
 86 78.9 50.3 75.5#

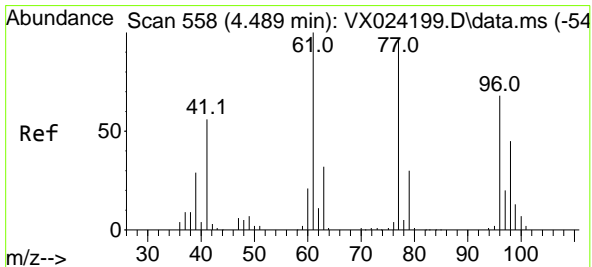
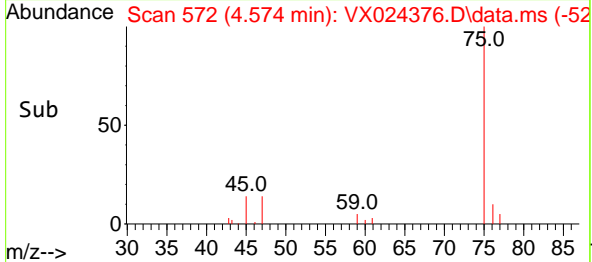
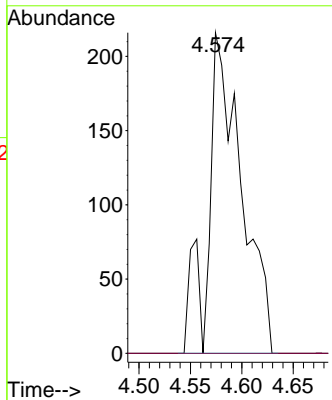
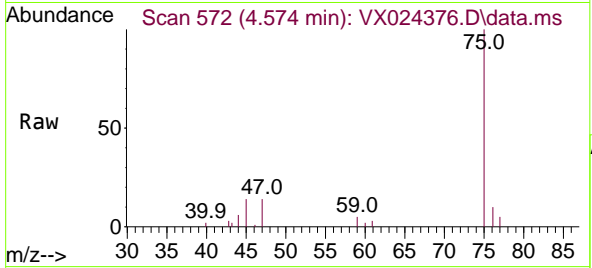




#25
 2-Butanone
 Concen: 0.388 ug/l
 RT: 4.574 min Scan# 572
 Delta R.T. 0.006 min
 Lab File: VX024376.D
 Acq: 21 Sep 2021 02:40

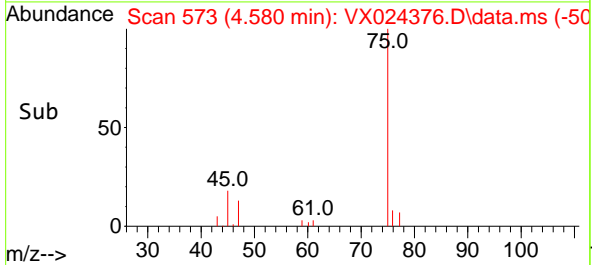
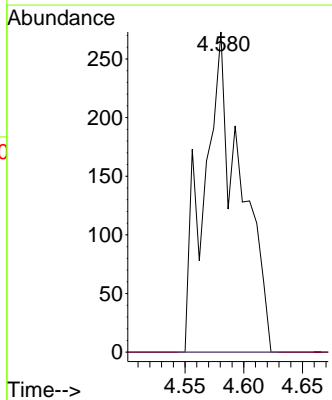
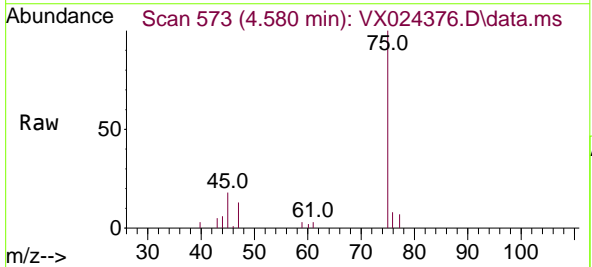
Instrument :
 MSVOA_X
 ClientSampled :
 RE131D1-20210915DL

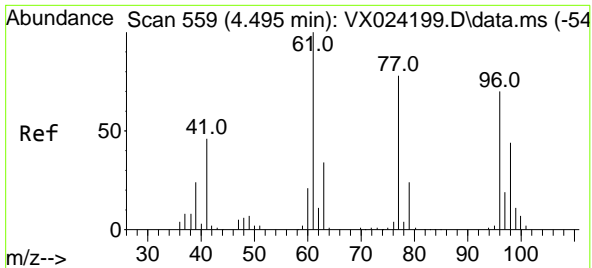
Tgt Ion: 43 Resp: 488
 Ion Ratio Lower Upper
 43 100
 72 0.0 23.7 35.5#



#26
 2,2-Dichloropropane
 Concen: 0.249 ug/l
 RT: 4.580 min Scan# 573
 Delta R.T. 0.091 min
 Lab File: VX024376.D
 Acq: 21 Sep 2021 02:40

Tgt Ion: 77 Resp: 592
 Ion Ratio Lower Upper
 77 100
 97 0.0 11.7 35.1#

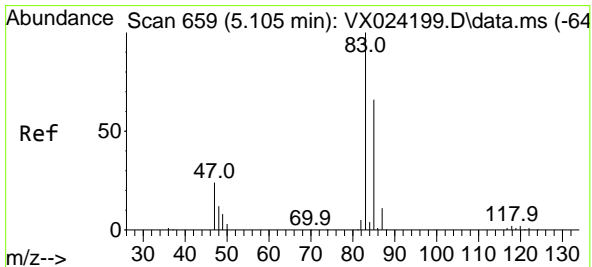
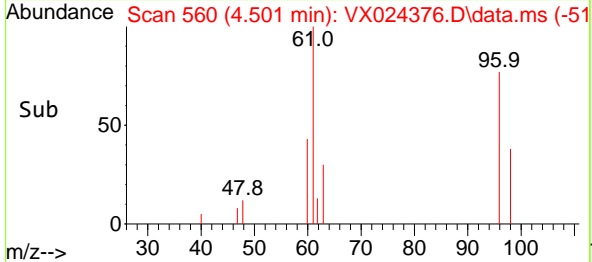
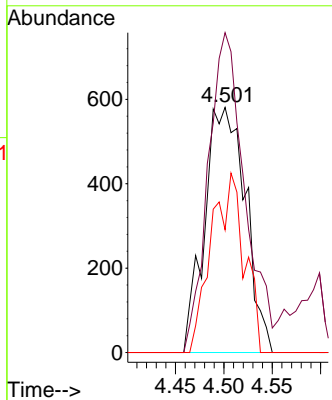
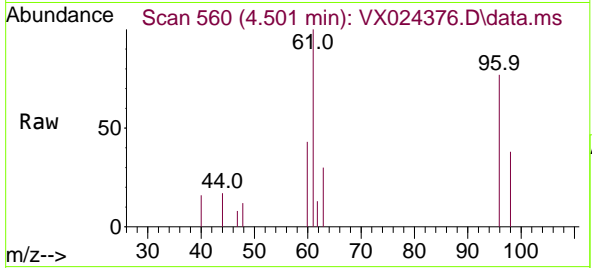




#27
 cis-1,2-Dichloroethene
 Concen: 1.044 ug/l
 RT: 4.501 min Scan# 560
 Delta R.T. 0.006 min
 Lab File: VX024376.D
 Acq: 21 Sep 2021 02:40

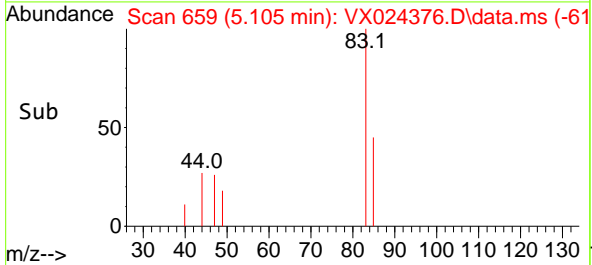
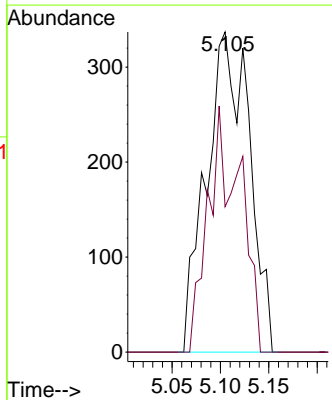
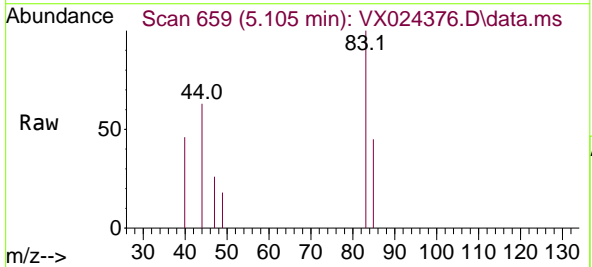
Instrument :
 MSVOA_X
ClientSampled :
 RE131D1-20210915DL

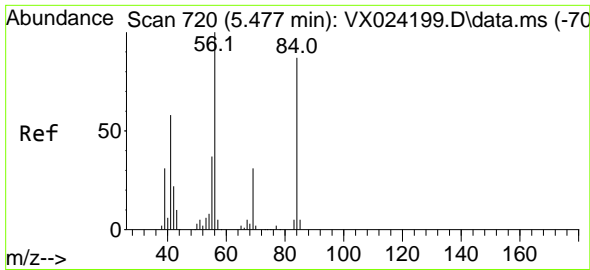
Tgt Ion	Resp	Lower	Upper
96	1711		
61	117.9	0.0	285.6
98	59.1	0.0	129.6



#30
 Chloroform
 Concen: 0.362 ug/l
 RT: 5.105 min Scan# 659
 Delta R.T. -0.000 min
 Lab File: VX024376.D
 Acq: 21 Sep 2021 02:40

Tgt Ion	Resp	Lower	Upper
83	1044		
85	45.4	52.0	78.0#

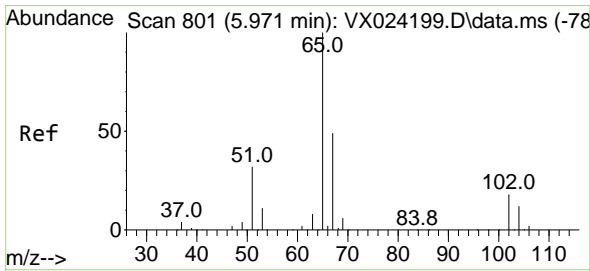
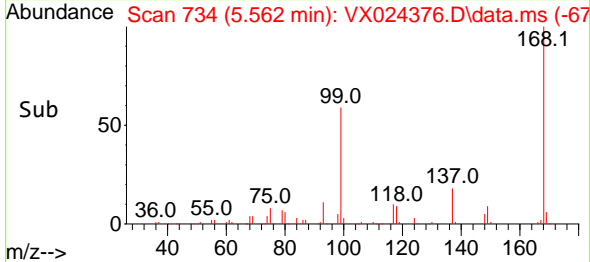
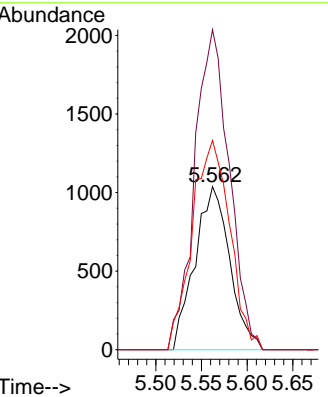
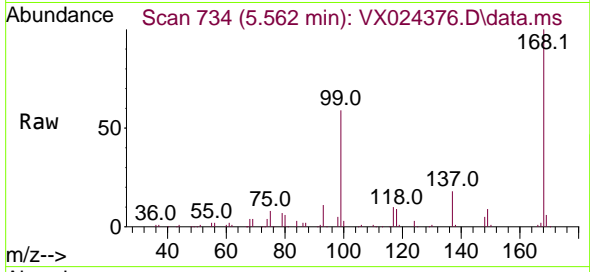




#31
 Cyclohexane
 Concen: 1.177 ug/l
 RT: 5.562 min Scan# 734
 Delta R.T. 0.085 min
 Lab File: VX024376.D
 Acq: 21 Sep 2021 02:40

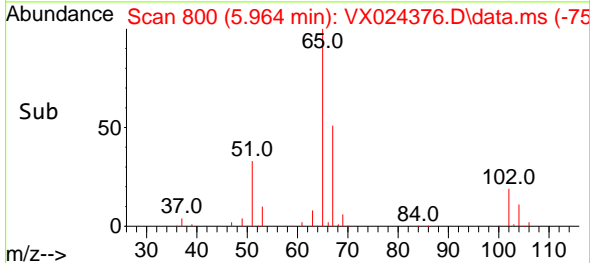
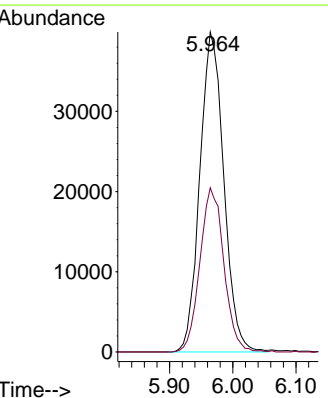
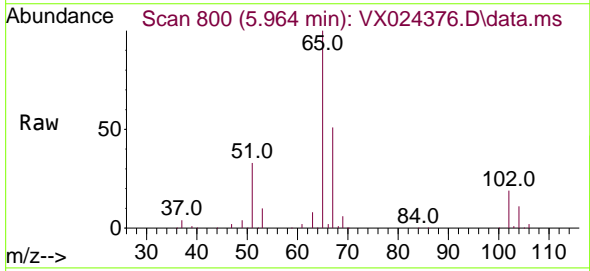
Instrument :
 MSVOA_X
ClientSampled :
 RE131D1-20210915DL

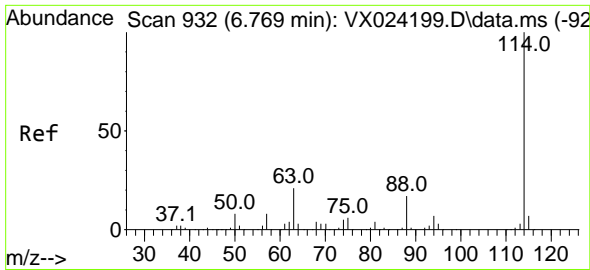
Tgt Ion	Resp	Lower	Upper
56	2761		
69	196.2	25.3	37.9#
84	128.3	71.4	107.0#



#33
 1,2-Dichloroethane-d4
 Concen: 52.294 ug/l
 RT: 5.964 min Scan# 800
 Delta R.T. -0.007 min
 Lab File: VX024376.D
 Acq: 21 Sep 2021 02:40

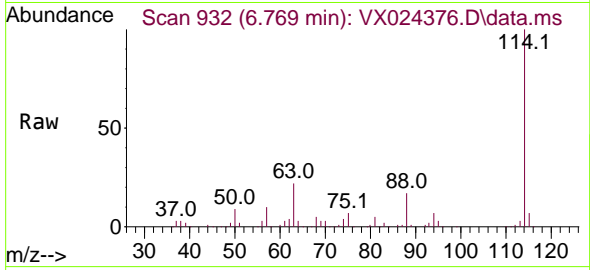
Tgt Ion	Resp	Lower	Upper
65	104848		
67	51.3	0.0	105.4





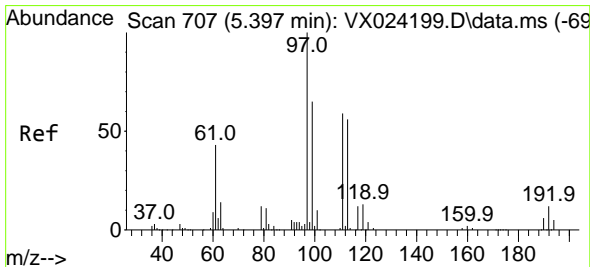
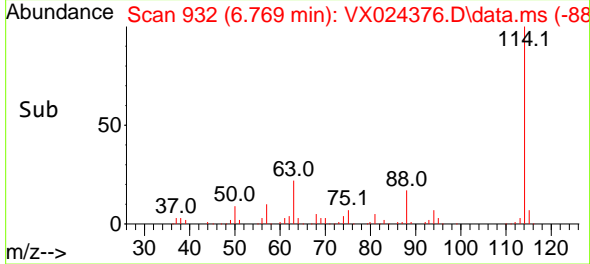
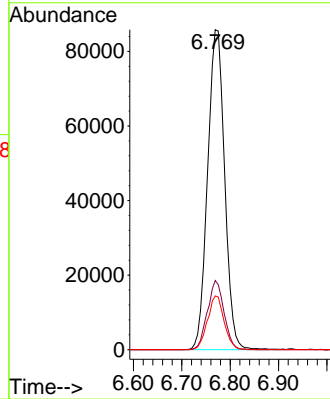
#34
 1,4-Difluorobenzene
 Concen: 50.000 ug/l
 RT: 6.769 min Scan# 932
 Delta R.T. 0.000 min
 Lab File: VX024376.D
 Acq: 21 Sep 2021 02:40

Instrument :
 MSVOA_X
 ClientSampleID :
 RE131D1-20210915DL

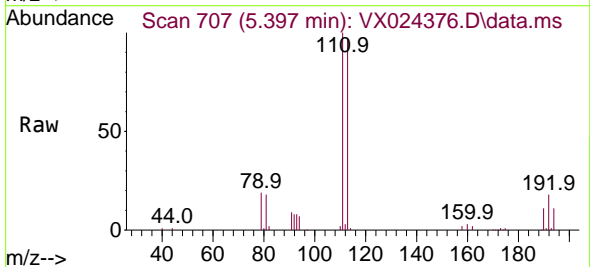


Tgt Ion:114 Resp: 210151

Ion	Ratio	Lower	Upper
114	100		
63	21.6	0.0	40.8
88	16.8	0.0	32.8

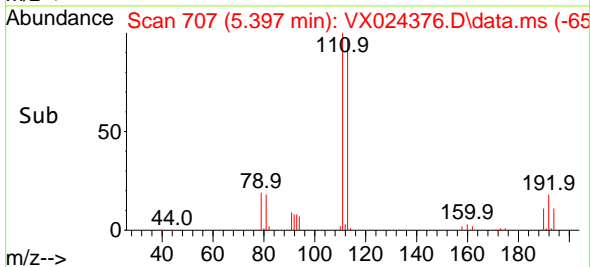
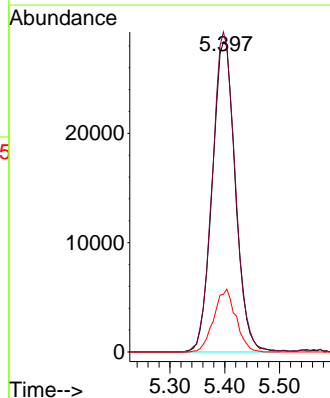


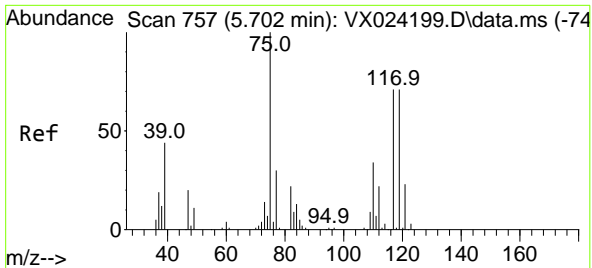
#35
 Dibromofluoromethane
 Concen: 59.049 ug/l
 RT: 5.397 min Scan# 707
 Delta R.T. 0.000 min
 Lab File: VX024376.D
 Acq: 21 Sep 2021 02:40



Tgt Ion:113 Resp: 83222

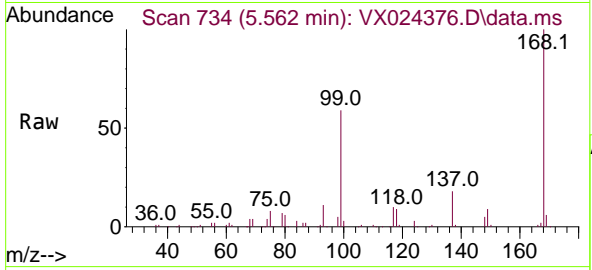
Ion	Ratio	Lower	Upper
113	100		
111	101.8	81.9	122.9
192	19.3	16.7	25.1



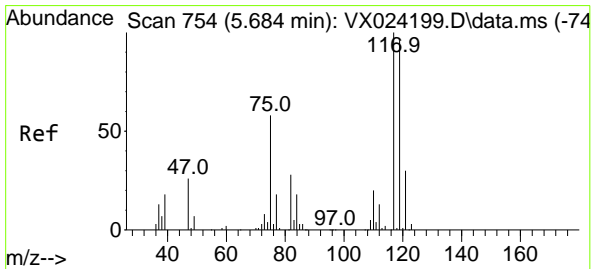
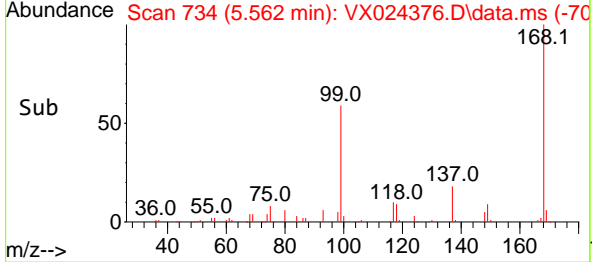
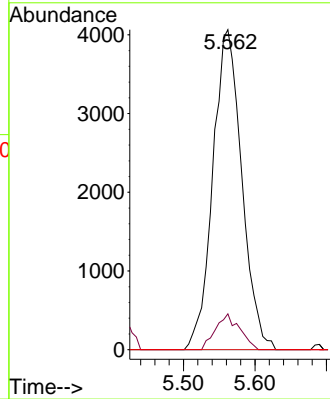


#36
 1,1-Dichloropropene
 Concen: 5.921 ug/l
 RT: 5.562 min Scan# 734
 Delta R.T. -0.140 min
 Lab File: VX024376.D
 Acq: 21 Sep 2021 02:40

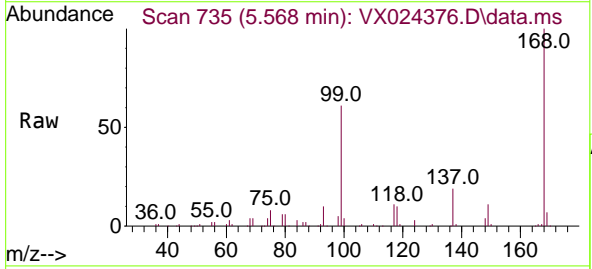
Instrument : MSVOA_X
 ClientSampled : RE131D1-20210915DL



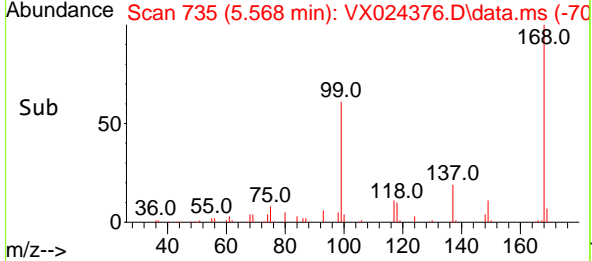
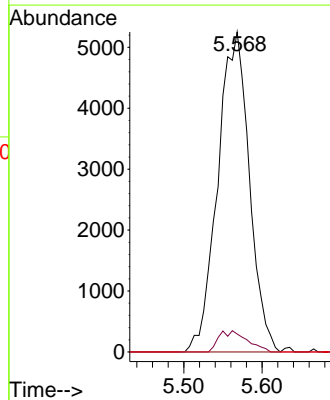
Tgt Ion: 75 Resp: 11441
 Ion Ratio Lower Upper
 75 100
 110 9.3 18.1 54.4#
 77 0.0 25.3 37.9#

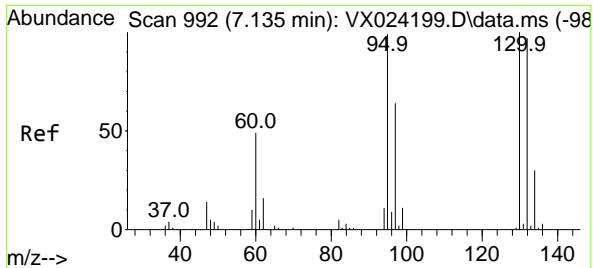


#38
 Carbon Tetrachloride
 Concen: 6.761 ug/l
 RT: 5.568 min Scan# 735
 Delta R.T. -0.116 min
 Lab File: VX024376.D
 Acq: 21 Sep 2021 02:40



Tgt Ion: 117 Resp: 14704
 Ion Ratio Lower Upper
 117 100
 119 5.6 76.2 114.2#
 121 0.0 24.8 37.2#

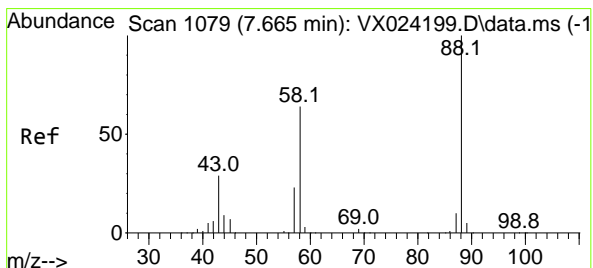
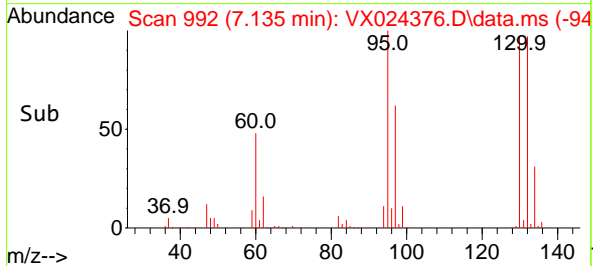
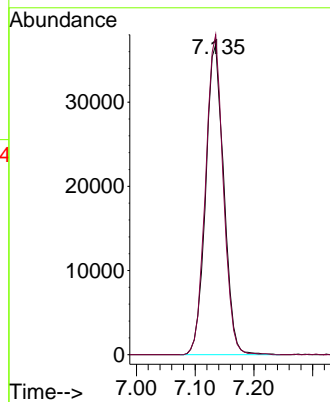
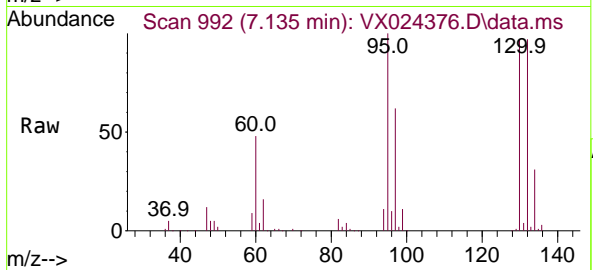




#44
 Trichloroethene
 Concen: 50.728 ug/l
 RT: 7.135 min Scan# 992
 Delta R.T. -0.000 min
 Lab File: VX024376.D
 Acq: 21 Sep 2021 02:40

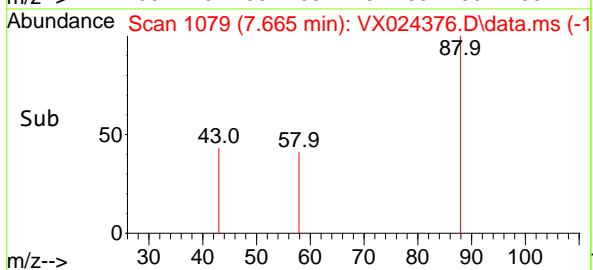
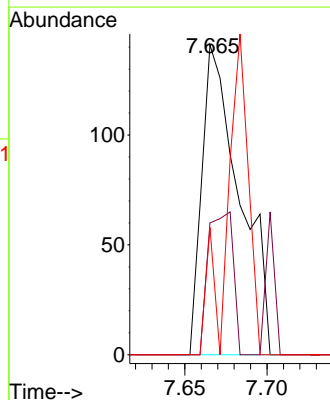
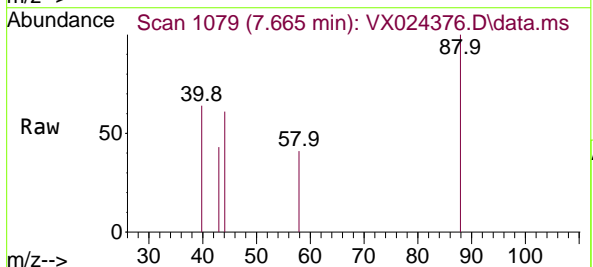
Instrument : MSVOA_X
 ClientSampled : RE131D1-20210915DL

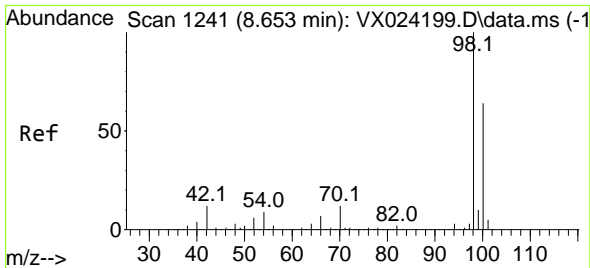
Tgt Ion:130 Resp: 78984
 Ion Ratio Lower Upper
 130 100
 95 103.2 0.0 198.0



#49
 1,4-Dioxane
 Concen: 6.009 ug/l
 RT: 7.665 min Scan# 1079
 Delta R.T. 0.000 min
 Lab File: VX024376.D
 Acq: 21 Sep 2021 02:40

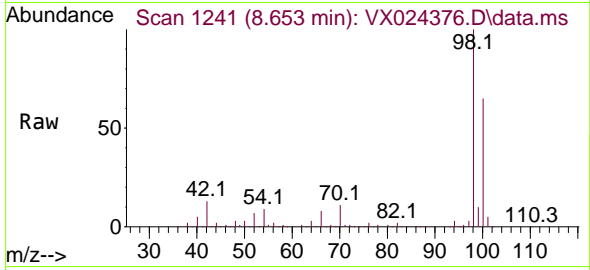
Tgt Ion: 88 Resp: 225
 Ion Ratio Lower Upper
 88 100
 43 30.2 23.2 34.8
 58 59.1 55.0 82.4



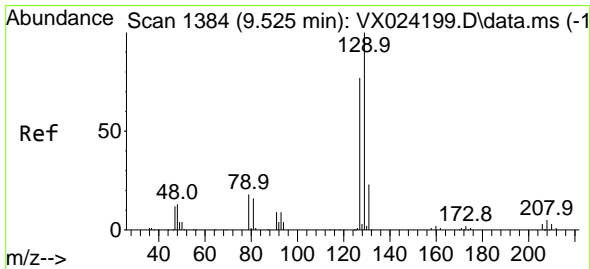
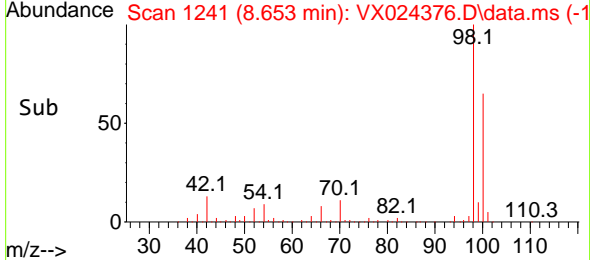
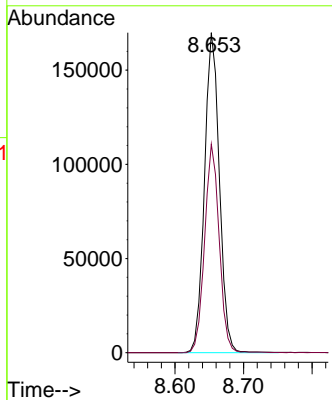


#50
 Toluene-d8
 Concen: 50.184 ug/l
 RT: 8.653 min Scan# 1241
 Delta R.T. -0.000 min
 Lab File: VX024376.D
 Acq: 21 Sep 2021 02:40

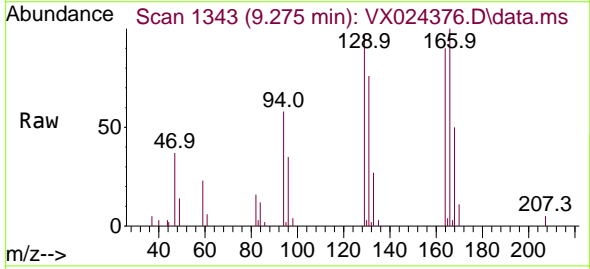
Instrument :
 MSVOA_X
ClientSampled :
 RE131D1-20210915DL



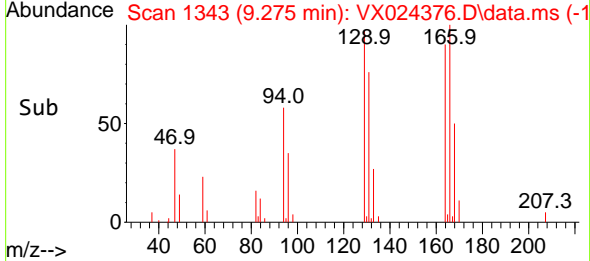
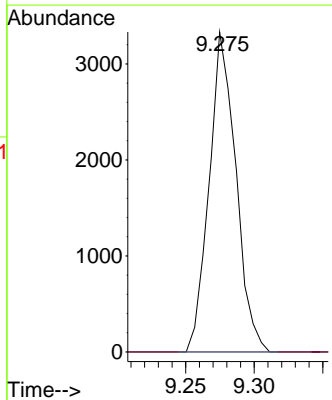
Tgt Ion: 98 Resp: 257656
 Ion Ratio Lower Upper
 98 100
 100 63.7 51.9 77.9

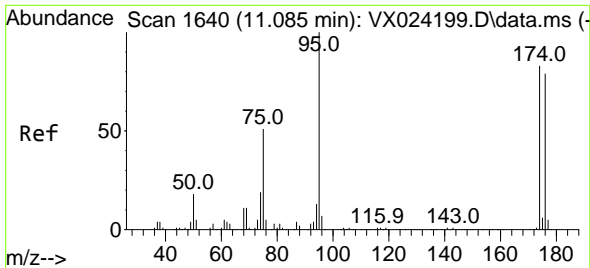


#60
 Dibromochloromethane
 Concen: 4.213 ug/l
 RT: 9.275 min Scan# 1343
 Delta R.T. -0.250 min
 Lab File: VX024376.D
 Acq: 21 Sep 2021 02:40



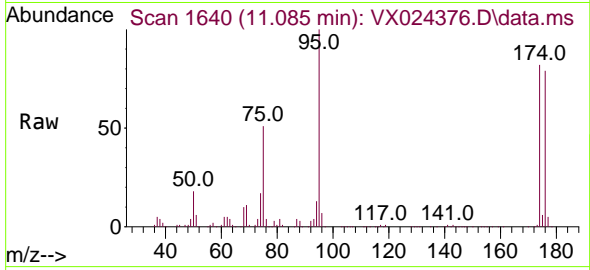
Tgt Ion: 129 Resp: 4519
 Ion Ratio Lower Upper
 129 100
 127 0.0 38.4 115.2#





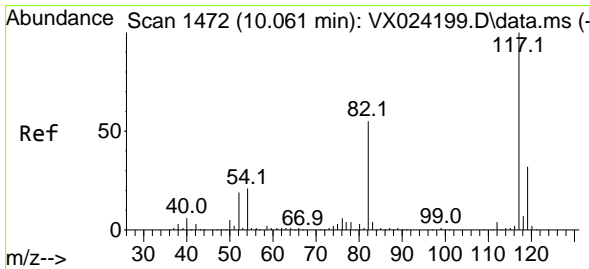
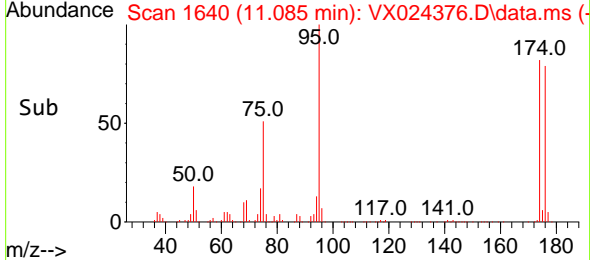
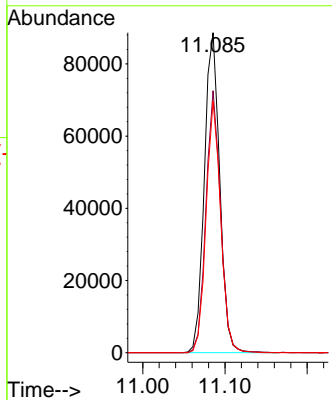
#62
 4-Bromofluorobenzene
 Concen: 57.528 ug/l
 RT: 11.085 min Scan# 1640
 Delta R.T. 0.000 min
 Lab File: VX024376.D
 Acq: 21 Sep 2021 02:40

Instrument : MSVOA_X
 ClientSampleID : RE131D1-20210915DL

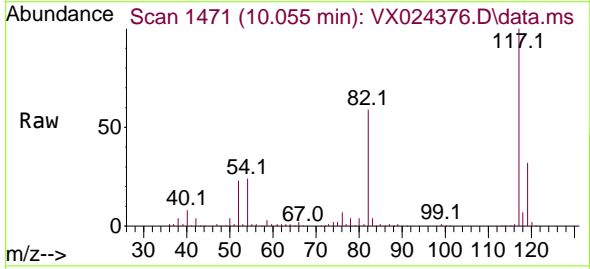


Tgt Ion: 95 Resp: 114946

Ion	Ratio	Lower	Upper
95	100		
174	78.5	0.0	154.6
176	74.5	0.0	155.8

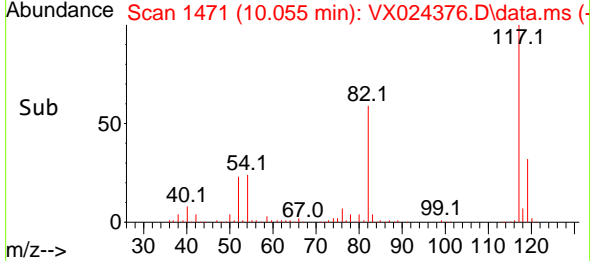
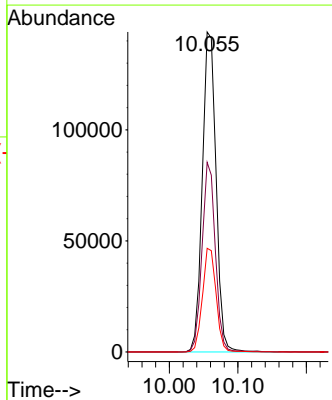


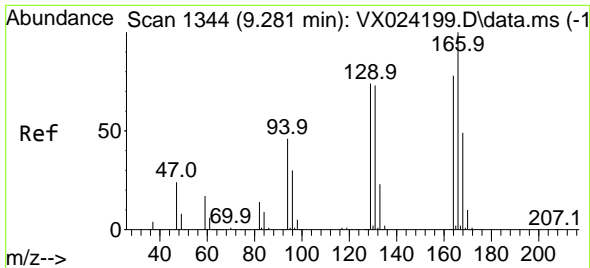
#63
 Chlorobenzene-d5
 Concen: 50.000 ug/l
 RT: 10.055 min Scan# 1471
 Delta R.T. -0.006 min
 Lab File: VX024376.D
 Acq: 21 Sep 2021 02:40



Tgt Ion: 117 Resp: 201236

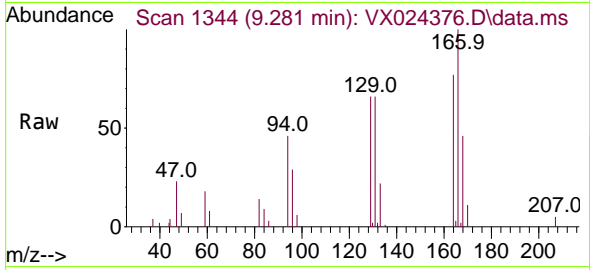
Ion	Ratio	Lower	Upper
117	100		
82	59.2	47.4	71.2
119	32.4	26.6	39.8





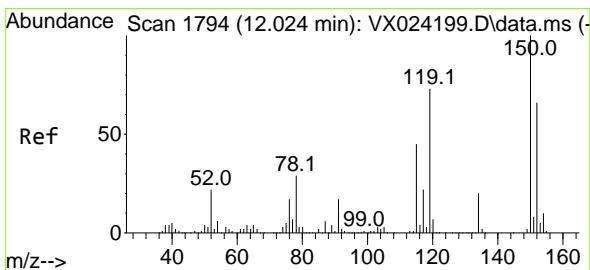
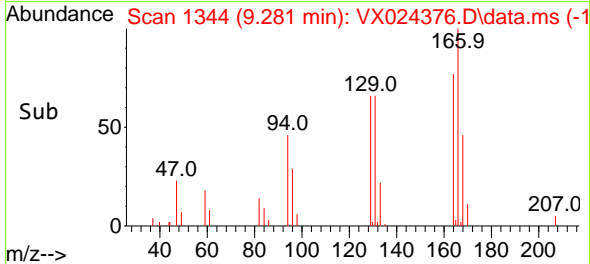
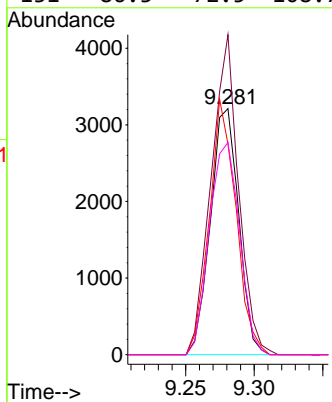
#64
 Tetrachloroethene
 Concen: 2.946 ug/l
 RT: 9.281 min Scan# 1344
 Delta R.T. -0.000 min
 Lab File: VX024376.D
 Acq: 21 Sep 2021 02:40

Instrument : MSVOA_X
 ClientSampleID : RE131D1-20210915DL

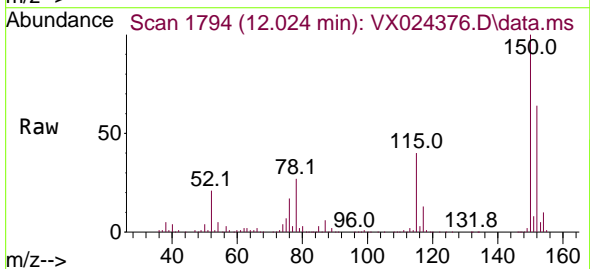


Tgt Ion:164 Resp: 4593

Ion	Ratio	Lower	Upper
164	100		
166	130.0	103.4	155.2
129	85.6	70.8	106.2
131	86.3	72.5	108.7

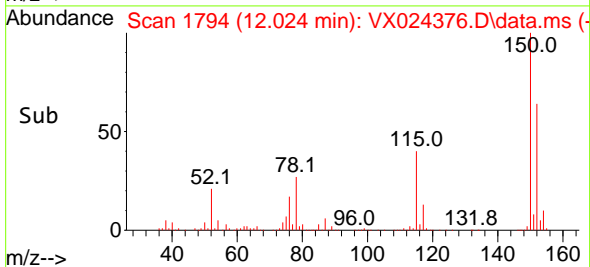
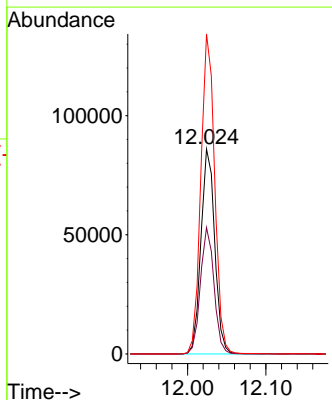


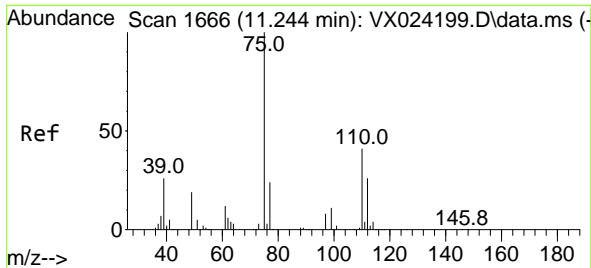
#72
 1,4-Dichlorobenzene-d4
 Concen: 50.000 ug/l
 RT: 12.024 min Scan# 1794
 Delta R.T. 0.000 min
 Lab File: VX024376.D
 Acq: 21 Sep 2021 02:40



Tgt Ion:152 Resp: 105262

Ion	Ratio	Lower	Upper
152	100		
115	60.7	41.1	123.3
150	156.2	0.0	349.0

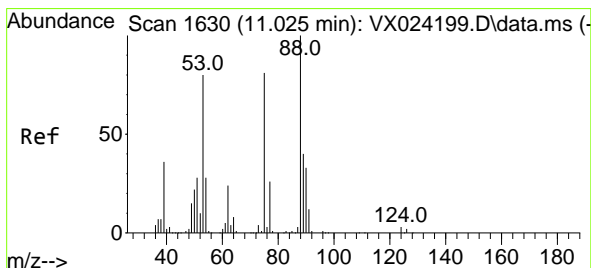
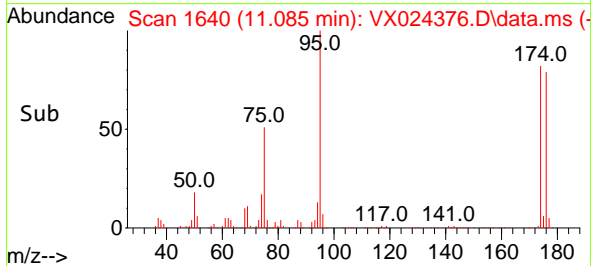
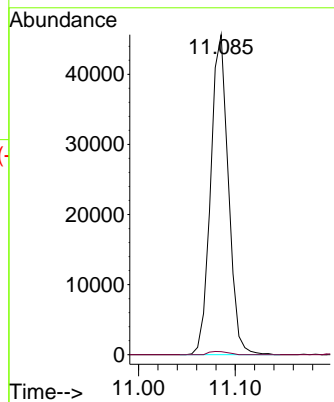
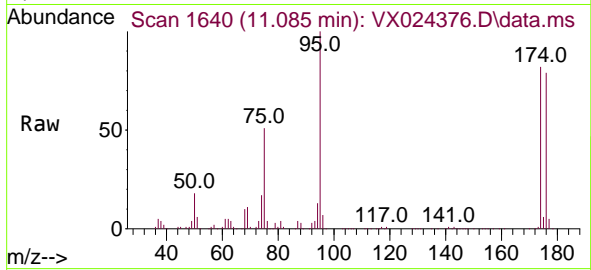




#76
 1,2,3-Trichloropropane
 Concen: 24.023 ug/l
 RT: 11.085 min Scan# 1640
 Delta R.T. -0.159 min
 Lab File: VX024376.D
 Acq: 21 Sep 2021 02:40

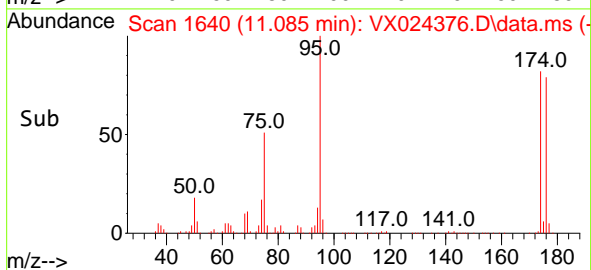
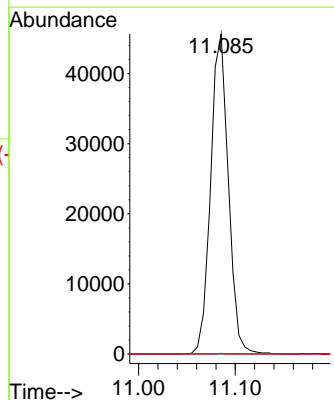
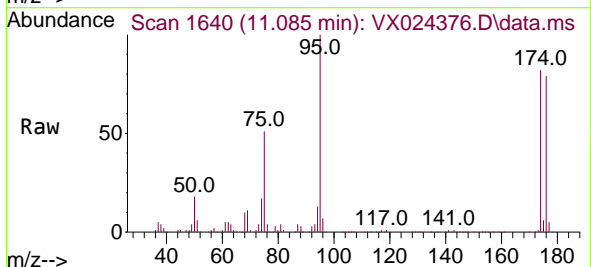
Instrument :
 MSVOA_X
ClientSampled :
 RE131D1-20210915DL

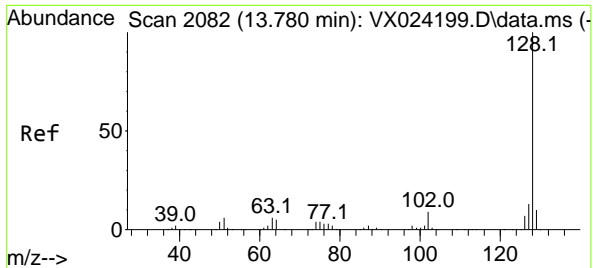
Tgt Ion: 75 Resp: 58146
 Ion Ratio Lower Upper
 75 100
 77 1.1 19.1 57.5#



#81
 trans-1,4-Dichloro-2-butene
 Concen: 70.653 ug/l
 RT: 11.085 min Scan# 1640
 Delta R.T. 0.060 min
 Lab File: VX024376.D
 Acq: 21 Sep 2021 02:40

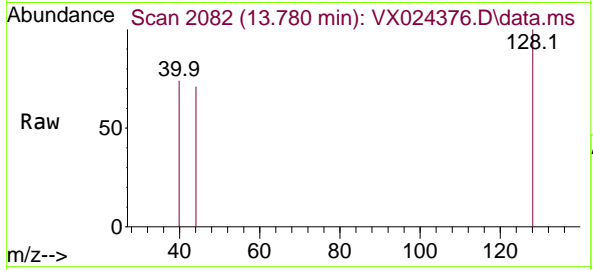
Tgt Ion: 75 Resp: 58146
 Ion Ratio Lower Upper
 75 100
 53 0.0 74.5 111.7#
 89 0.1 37.9 56.9#





#95
 Naphthalene
 Concen: 1.314 ug/l
 RT: 13.780 min Scan# 2082
 Delta R.T. 0.000 min
 Lab File: VX024376.D
 Acq: 21 Sep 2021 02:40

Instrument :
 MSVOA_X
ClientSampled :
 RE131D1-20210915DL



Tgt Ion:128 Resp: 209

Ion	Ratio	Lower	Upper
128	100		
127	0.0	10.3	15.5#
129	0.0	8.8	13.2#

