

Data Path : Z:\voasrv\HPCHEM1\MSVOA\_X\Data\VX092122\  
 Data File : VX031511.D  
 Acq On : 21 Sep 2022 09:37  
 Operator : JC/MD  
 Sample : VX0921MBL01  
 Misc : 5.00g/10mL/100uL/5.00mL/MSVOA\_X/MEOH  
 ALS Vial : 3 Sample Multiplier: 1

**Instrument :**  
 MSVOA\_X  
**ClientSampleId :**  
 VX0921MBL01

Quant Time: Sep 22 01:10:44 2022  
 Quant Method : Z:\voasrv\HPCHEM1\MSVOA\_X\Method\82X091922W.M  
 Quant Title : SW846 8260  
 QLast Update : Tue Sep 20 09:45:29 2022  
 Response via : Initial Calibration

Compound	R.T.	QIon	Response	Conc	Units	Dev(Min)
Internal Standards						
1) Pentafluorobenzene	5.544	168	54060	50.000	ug/l	#-0.01
34) 1,4-Difluorobenzene	6.757	114	84749	50.000	ug/l	0.00
63) Chlorobenzene-d5	10.055	117	88879	50.000	ug/l	0.00
72) 1,4-Dichlorobenzene-d4	12.024	152	56610	50.000	ug/l	0.00
System Monitoring Compounds						
33) 1,2-Dichloroethane-d4	5.952	65	53204	53.643	ug/l	0.00
Spiked Amount	50.000	Range	74 - 125	Recovery	=	107.280%
35) Dibromofluoromethane	5.379	113	44199	50.464	ug/l	-0.01
Spiked Amount	50.000	Range	75 - 124	Recovery	=	100.920%
50) Toluene-d8	8.647	98	162219	48.044	ug/l	0.00
Spiked Amount	50.000	Range	86 - 113	Recovery	=	96.080%
62) 4-Bromofluorobenzene	11.079	95	50814	44.429	ug/l	0.00
Spiked Amount	50.000	Range	83 - 123	Recovery	=	88.860%

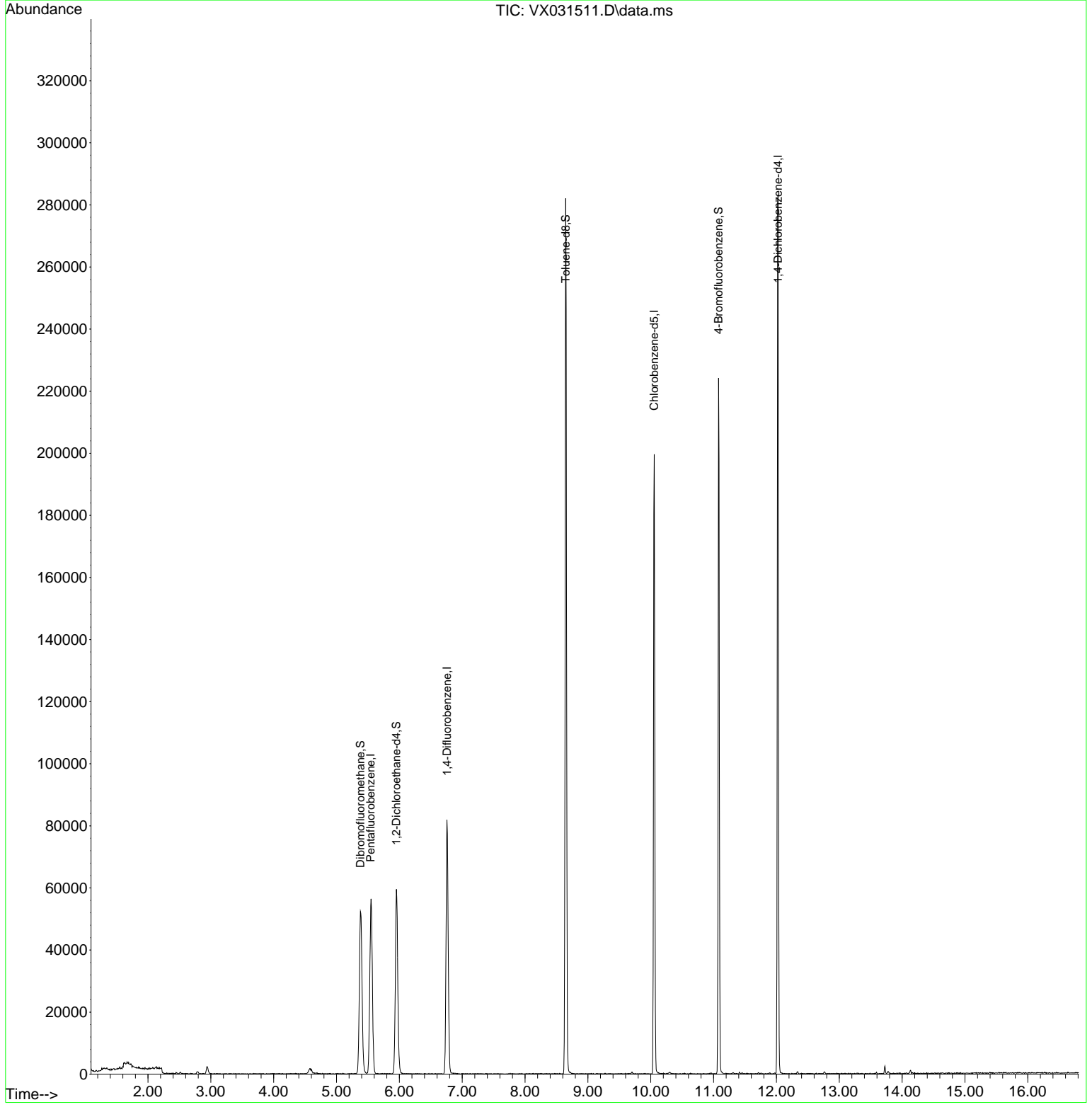
Target Compounds Qvalue

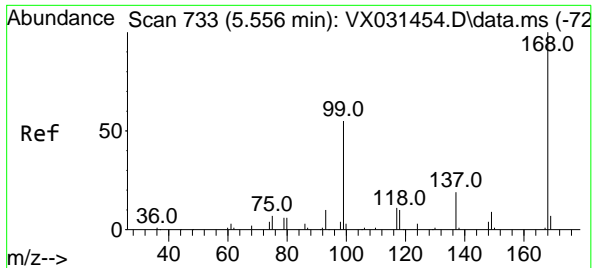
(#) = qualifier out of range (m) = manual integration (+) = signals summed

Data Path : Z:\voasrv\HPCHEM1\MSVOA\_X\Data\VX092122\  
 Data File : VX031511.D  
 Acq On : 21 Sep 2022 09:37  
 Operator : JC/MD  
 Sample : VX0921MBL01  
 Misc : 5.00g/10mL/100uL/5.00mL/MSVOA\_X/MEOH  
 ALS Vial : 3 Sample Multiplier: 1

Instrument :  
 MSVOA\_X  
 ClientSampleId :  
 VX0921MBL01

Quant Time: Sep 22 01:10:44 2022  
 Quant Method : Z:\voasrv\HPCHEM1\MSVOA\_X\Method\82X091922W.M  
 Quant Title : SW846 8260  
 QLast Update : Tue Sep 20 09:45:29 2022  
 Response via : Initial Calibration

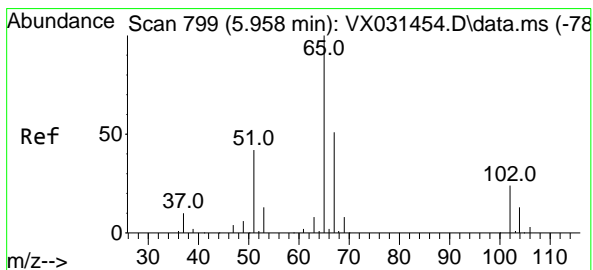
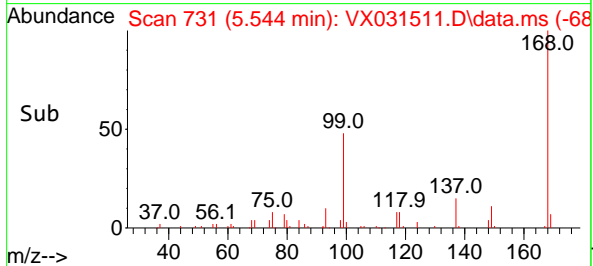
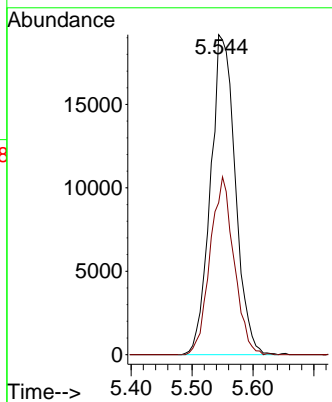
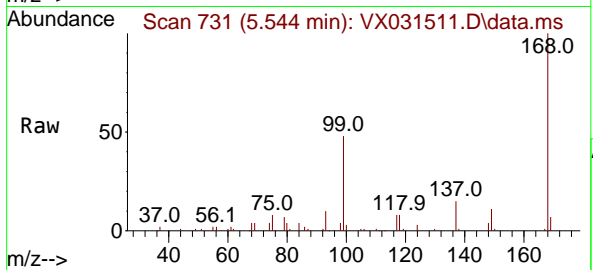




#1  
 Pentafluorobenzene  
 Concen: 50.000 ug/l  
 RT: 5.544 min Scan# 71  
 Delta R.T. -0.012 min  
 Lab File: VX031511.D  
 Acq: 21 Sep 2022 09:37

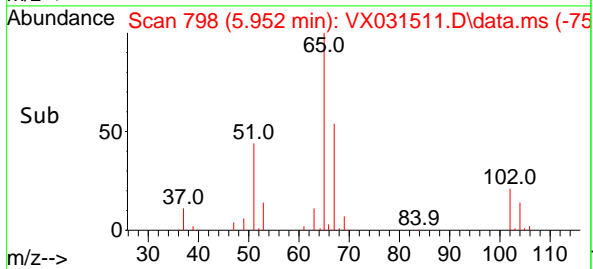
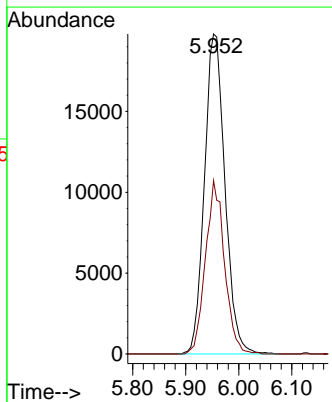
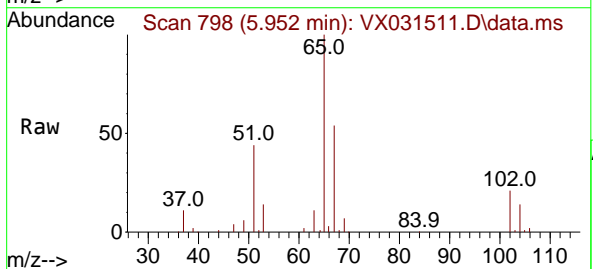
Instrument : MSVOA\_X  
 ClientSampleId : VX0921MBL01

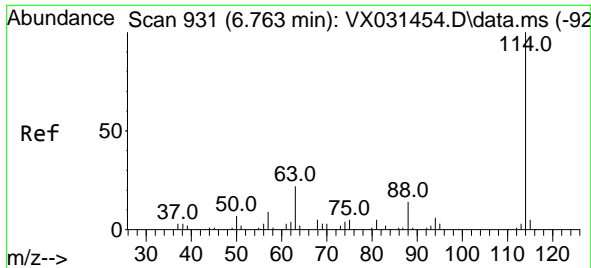
Tgt Ion:168 Resp: 54060  
 Ion Ratio Lower Upper  
 168 100  
 99 47.5 48.8 73.2#



#33  
 1,2-Dichloroethane-d4  
 Concen: 53.643 ug/l  
 RT: 5.952 min Scan# 798  
 Delta R.T. -0.006 min  
 Lab File: VX031511.D  
 Acq: 21 Sep 2022 09:37

Tgt Ion: 65 Resp: 53204  
 Ion Ratio Lower Upper  
 65 100  
 67 50.4 0.0 102.4

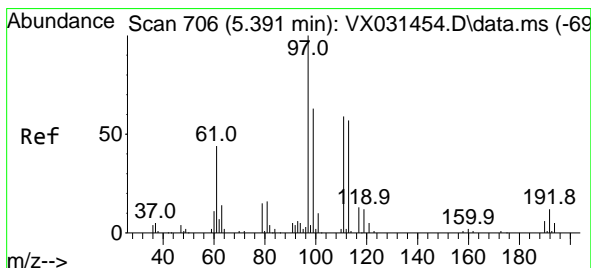
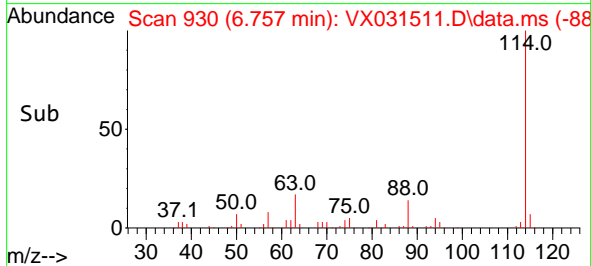
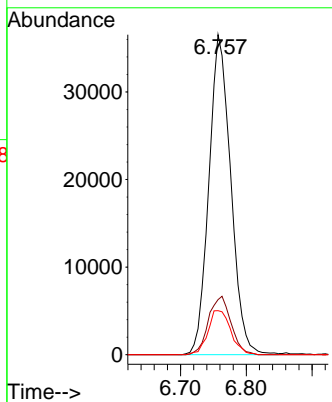
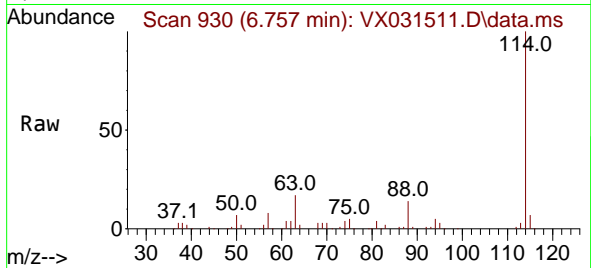




#34  
 1,4-Difluorobenzene  
 Concen: 50.000 ug/l  
 RT: 6.757 min Scan# 91  
 Delta R.T. -0.006 min  
 Lab File: VX031511.D  
 Acq: 21 Sep 2022 09:37

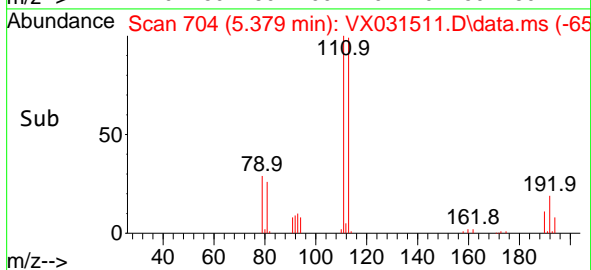
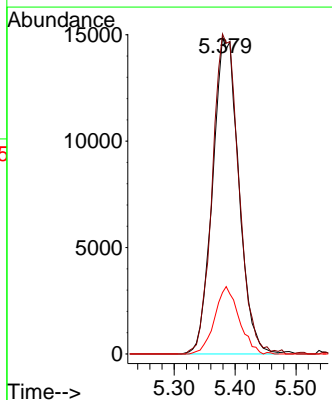
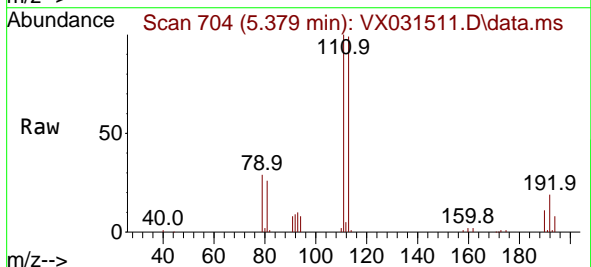
Instrument :  
 MSVOA\_X  
 ClientSampleId :  
 VX0921MBL01

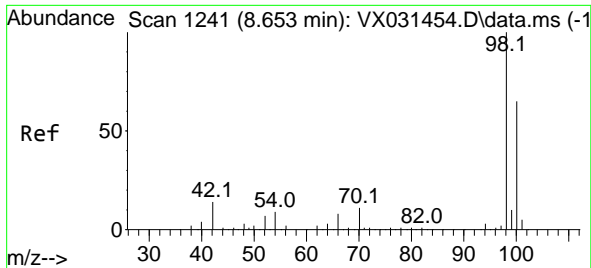
Tgt Ion	Resp	Lower	Upper
114	84749		
63	17.2	0.0	42.6
88	13.8	0.0	33.0



#35  
 Dibromofluoromethane  
 Concen: 50.464 ug/l  
 RT: 5.379 min Scan# 704  
 Delta R.T. -0.012 min  
 Lab File: VX031511.D  
 Acq: 21 Sep 2022 09:37

Tgt Ion	Resp	Lower	Upper
113	44199		
113	100		
111	102.3	82.4	123.6
192	19.9	14.1	21.1





#50  
 Toluene-d8  
 Concen: 48.044 ug/l  
 RT: 8.647 min Scan# 11  
 Delta R.T. -0.006 min  
 Lab File: VX031511.D  
 Acq: 21 Sep 2022 09:37

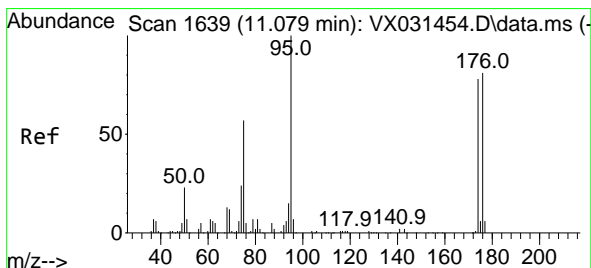
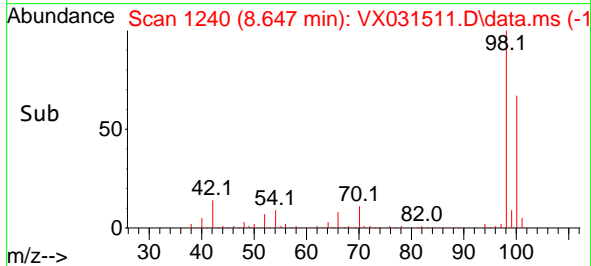
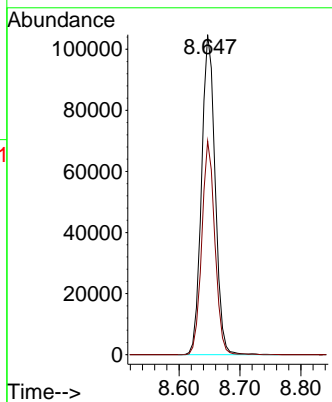
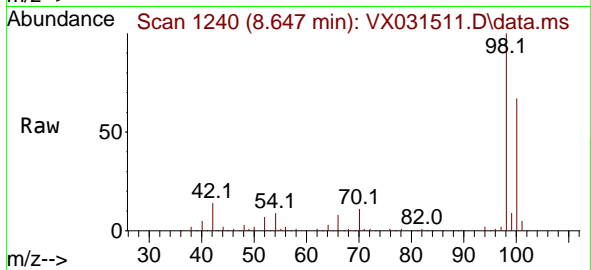
Instrument :

MSVOA\_X

ClientSampleId :

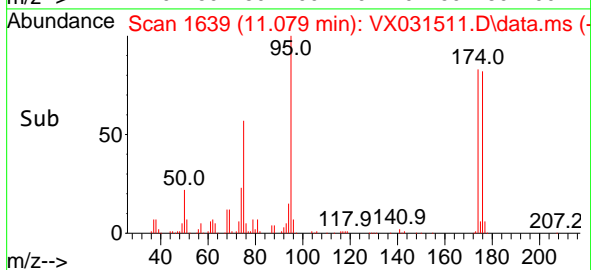
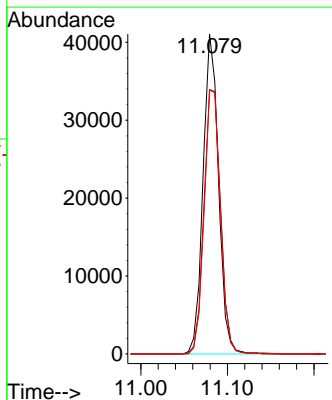
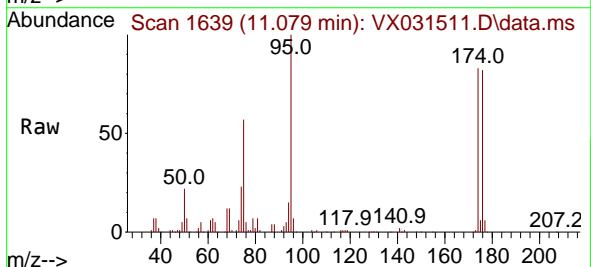
VX0921MBL01

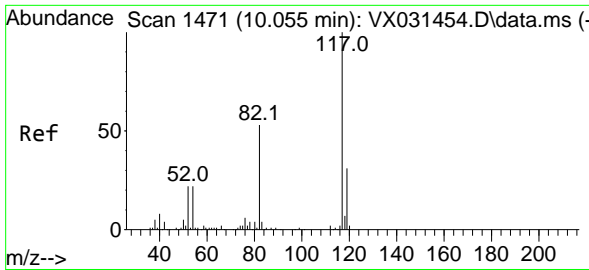
Tgt Ion: 98 Resp: 162219  
 Ion Ratio Lower Upper  
 98 100  
 100 64.4 52.5 78.7



#62  
 4-Bromofluorobenzene  
 Concen: 44.429 ug/l  
 RT: 11.079 min Scan# 1639  
 Delta R.T. 0.000 min  
 Lab File: VX031511.D  
 Acq: 21 Sep 2022 09:37

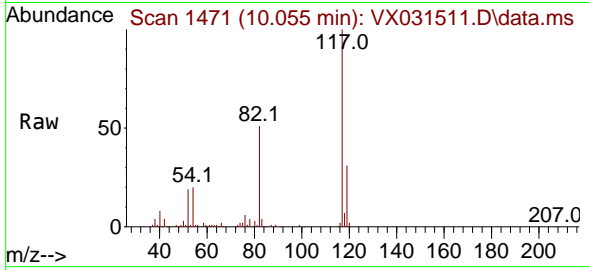
Tgt Ion: 95 Resp: 50814  
 Ion Ratio Lower Upper  
 95 100  
 174 89.3 0.0 153.2  
 176 86.9 0.0 144.0





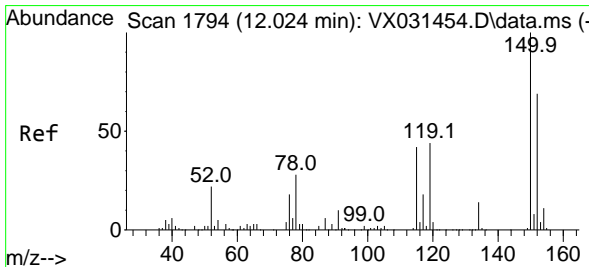
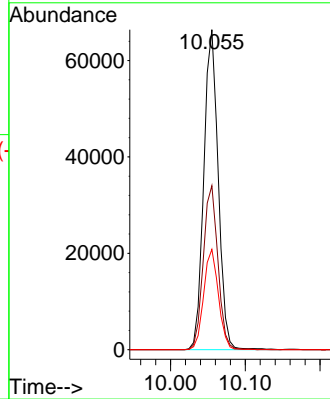
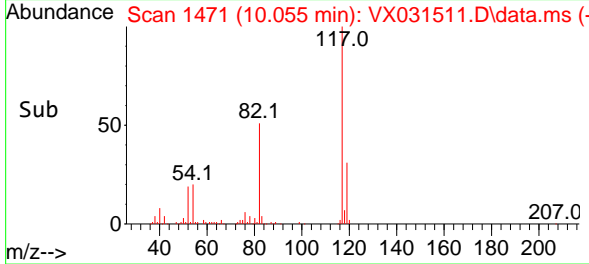
#63  
 Chlorobenzene-d5  
 Concen: 50.000 ug/l  
 RT: 10.055 min Scan# 1471  
 Delta R.T. 0.000 min  
 Lab File: VX031511.D  
 Acq: 21 Sep 2022 09:37

Instrument : MSVOA\_X  
 ClientSampleId : VX0921MBL01

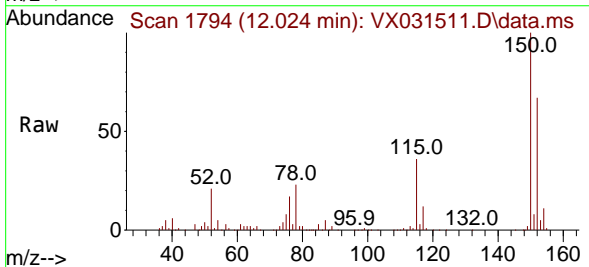


Tgt Ion:117 Resp: 88879

Ion	Ratio	Lower	Upper
117	100		
82	51.3	46.8	70.2
119	31.3	26.4	39.6



#72  
 1,4-Dichlorobenzene-d4  
 Concen: 50.000 ug/l  
 RT: 12.024 min Scan# 1794  
 Delta R.T. 0.000 min  
 Lab File: VX031511.D  
 Acq: 21 Sep 2022 09:37



Tgt Ion:152 Resp: 56610

Ion	Ratio	Lower	Upper
152	100		
115	57.4	43.4	130.1
150	157.6	0.0	346.8

