

Data Path : Z:\voasrv\HPCHEM1\MSVOA_X\Data\VX092122\
 Data File : VX031533.D
 Acq On : 21 Sep 2022 18:37
 Operator : JC/MD
 Sample : N4614-04
 Misc : 5.0mL/MSVOA_X/WATER
 ALS Vial : 25 Sample Multiplier: 1

Instrument :
 MSVOA_X
 ClientSampleId :
 MW-3RRA

Integration Parameters: RTEINT.P

Integrator: RTE
 Smoothing : ON Filtering: 5
 Sampling : 1 Min Area: 3 % of largest Peak
 Start Thrs: 0.2 Max Peaks: 100
 Stop Thrs : 0 Peak Location: TOP

If leading or trailing edge < 100 prefer < Baseline drop else tangent >
 Peak separation: 5

Method : Z:\voasrv\HPCHEM1\MSVOA_X\Method\82X091922W.M
 Title : SW846 8260

Signal : TIC: VX031533.D\data.ms

peak #	R.T. min	first scan	max scan	last scan	PK TY	peak height	corr. area	corr. % max.	% of total
1	4.489	546	558	571	rBV	167940	455096	11.86%	5.976%
2	5.385	694	705	722	rBV2	86067	250579	6.53%	3.291%
3	5.556	722	733	748	rVB	78017	223796	5.83%	2.939%
4	5.958	789	799	810	rBV	95337	246976	6.44%	3.243%
5	6.763	922	931	941	rBV	124355	291263	7.59%	3.825%
6	7.129	981	991	1003	rBV	184177	394511	10.28%	5.181%
7	8.653	1234	1241	1250	rBV	464902	732863	19.10%	9.624%
8	9.275	1336	1343	1360	rBV	2818412	3836830	100.00%	50.386%
9	10.055	1465	1471	1482	rBV	276153	357807	9.33%	4.699%
10	11.079	1634	1639	1648	rBV	376829	487445	12.70%	6.401%
11	12.024	1788	1794	1801	rBV	277652	337633	8.80%	4.434%

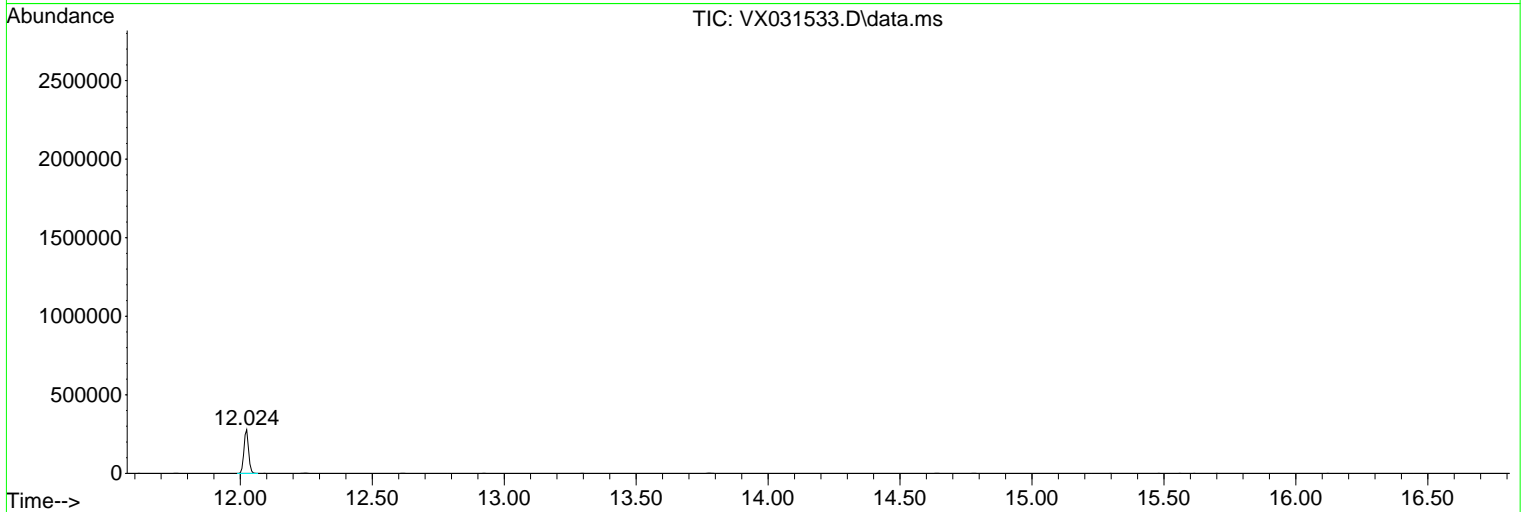
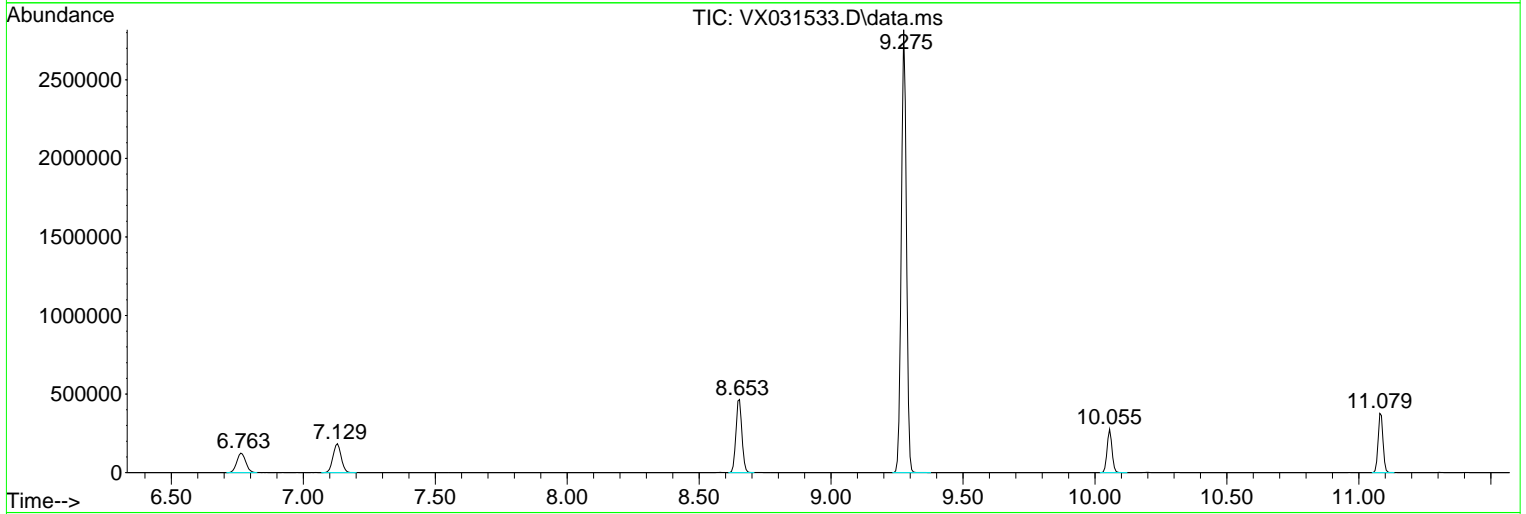
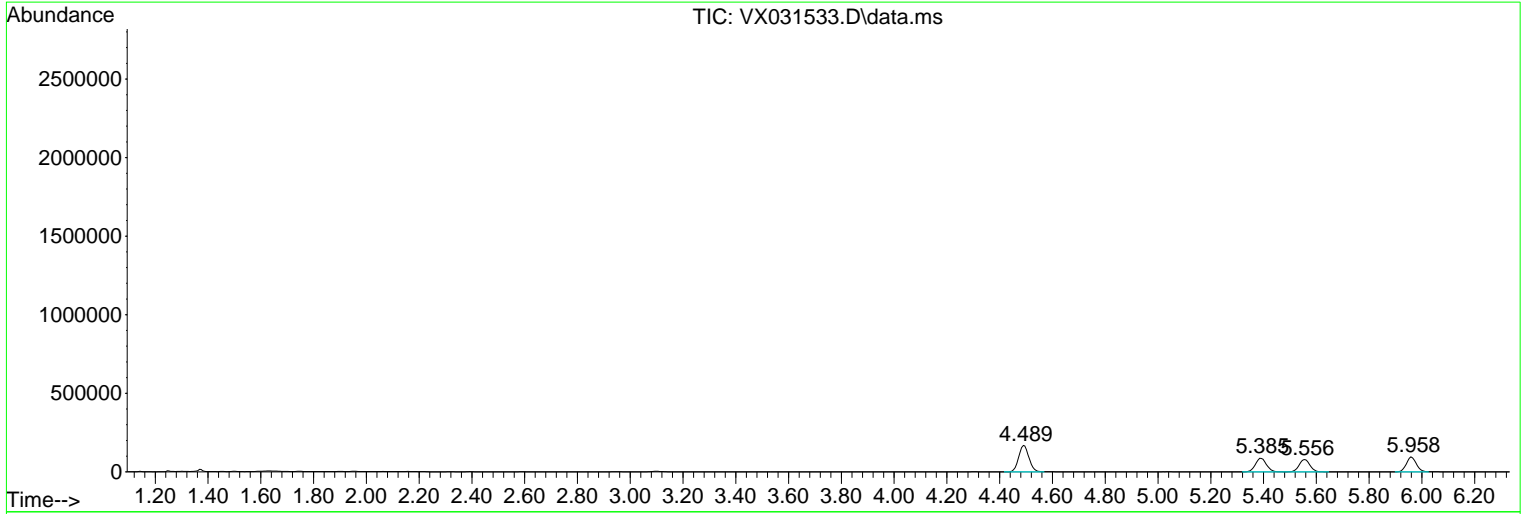
Sum of corrected areas: 7614799

Data Path : Z:\voasrv\HPCHEM1\MSVOA_X\Data\VX092122\
 Data File : VX031533.D
 Acq On : 21 Sep 2022 18:37
 Operator : JC/MD
 Sample : N4614-04
 Misc : 5.0mL/MSVOA_X/WATER
 ALS Vial : 25 Sample Multiplier: 1

Instrument :
 MSVOA_X
 ClientSampleId :
 MW-3RRA

Quant Method : Z:\voasrv\HPCHEM1\MSVOA_X\Method\82X091922W.M
 Quant Title : SW846 8260

TIC Library : C:\Database\NIST20.L
 TIC Integration Parameters: LSCINT.P



Library Search Compound Report

Data Path : Z:\voasrv\HPCHEM1\MSVOA_X\Data\VX092122\
Data File : VX031533.D
Acq On : 21 Sep 2022 18:37
Operator : JC/MD
Sample : N4614-04
Misc : 5.0mL/MSVOA_X/WATER
ALS Vial : 25 Sample Multiplier: 1

Instrument :
MSVOA_X
ClientSampleId :
MW-3RRA

Quant Method : Z:\voasrv\HPCHEM1\MSVOA_X\Method\82X091922W.M
Quant Title : SW846 8260

TIC Library : C:\Database\NIST20.L
TIC Integration Parameters: LSCINT.P

No Library Search Compounds Detected

Data Path : Z:\voasrv\HPCHEM1\MSVOA_X\Data\VX092122\
Data File : VX031533.D
Acq On : 21 Sep 2022 18:37
Operator : JC/MD
Sample : N4614-04
Misc : 5.0mL/MSVOA_X/WATER
ALS Vial : 25 Sample Multiplier: 1

Instrument :
MSVOA_X
ClientSampleId :
MW-3RRA

Quant Method : Z:\voasrv\HPCHEM1\MSVOA_X\Method\82X091922W.M
Quant Title : SW846 8260

TIC Library : C:\Database\NIST20.L
TIC Integration Parameters: LSCINT.P

TIC Top Hit name	RT	EstConc	Units	Response	--Internal Standard--		
					#	RT	Resp Conc
