

Data Path : Z:\voasrv\HPCHEM1\MSVOA_X\Data\VX092123\
 Data File : VX037848.D
 Acq On : 21 Sep 2023 12:31
 Operator : JC/MD
 Sample : 04554-01
 Misc : 5.0mL/MSVOA_X/WATER
 ALS Vial : 9 Sample Multiplier: 1

Instrument :
 MSVOA_X
 ClientSampleId :

Quant Time: Sep 22 04:41:50 2023
 Quant Method : Z:\voasrv\HPCHEM1\MSVOA_X\Method\82X091523W.M
 Quant Title : SW846 8260
 QLast Update : Sat Sep 16 04:55:44 2023
 Response via : Initial Calibration

Compound	R.T.	QIon	Response	Conc	Units	Dev(Min)
Internal Standards						
1) Pentafluorobenzene	5.550	168	242400	50.000	ug/l	# 0.00
34) 1,4-Difluorobenzene	6.763	114	398886	50.000	ug/l	0.00
63) Chlorobenzene-d5	10.055	117	383703	50.000	ug/l	0.00
72) 1,4-Dichlorobenzene-d4	12.024	152	200759	50.000	ug/l	0.00
System Monitoring Compounds						
33) 1,2-Dichloroethane-d4	5.952	65	146527	46.009	ug/l	0.00
Spiked Amount	50.000	Range	78 - 117	Recovery	=	92.020%
35) Dibromofluoromethane	5.391	113	124596	46.683	ug/l	0.00
Spiked Amount	50.000	Range	75 - 124	Recovery	=	93.360%
50) Toluene-d8	8.647	98	483779	48.783	ug/l	0.00
Spiked Amount	50.000	Range	92 - 112	Recovery	=	97.560%
62) 4-Bromofluorobenzene	11.079	95	184071	51.080	ug/l	0.00
Spiked Amount	50.000	Range	83 - 123	Recovery	=	102.160%
Target Compounds						
						Qvalue
4) Vinyl Chloride	1.374	62	1478	0.493	ug/l	99
8) Diethyl Ether	2.136	74	5239	2.805	ug/l	85
11) Tert butyl alcohol	2.946	59	2900454	4242.896	ug/l	# 91
13) Acrolein	2.233	56	283	0.419	ug/l	87
14) Allyl chloride	2.636	41	18612	4.725	ug/l	# 24
15) Acrylonitrile	2.946	53	28541	18.778	ug/l	# 20
16) Acetone	2.373	43	30523	19.923	ug/l	# 89
17) Carbon Disulfide	2.514	76	2303	0.388	ug/l	97
18) Methyl Acetate	2.946	43	395745	71.605	ug/l	# 53
19) Methyl tert-butyl Ether	3.111	73	14531	1.670	ug/l	93
25) 2-Butanone	4.568	43	111283	51.472	ug/l	# 82
26) 2,2-Dichloropropane	4.568	77	164472	41.403	ug/l	# 54
27) cis-1,2-Dichloroethene	4.495	96	1437	0.446	ug/l	# 14
28) Bromochloromethane	4.989	49	1396	0.609	ug/l	# 16
29) Tetrahydrofuran	5.001	42	639060	475.207	ug/l	89
31) Cyclohexane	5.550	56	5100	1.248	ug/l	# 1
36) 1,1-Dichloropropene	5.550	75	19069	5.187	ug/l	# 51
37) Ethyl Acetate	4.672	43	7939	1.964	ug/l	# 69
38) Carbon Tetrachloride	5.550	117	23343	6.068	ug/l	# 15
40) Benzene	6.043	78	42463	3.756	ug/l	98
41) Methacrylonitrile	5.001	41	368288	178.699	ug/l	# 49
42) 1,2-Dichloroethane	6.098	62	1427	0.349	ug/l	# 77
43) Isopropyl Acetate	6.348	43	2987	0.462	ug/l	# 72
49) 1,4-Dioxane	7.665	88	6791	83.841	ug/l	# 94
51) 4-Methyl-2-Pentanone	8.574	43	7400	1.805	ug/l	91
52) Toluene	8.720	92	21722	2.981	ug/l	93
55) 1,1,2-Trichloroethane	9.073	97	1173	0.382	ug/l	# 28
59) 2-Hexanone	9.238	43	11020	3.452	ug/l	84
65) Chlorobenzene	10.079	112	7574	0.915	ug/l	# 84
67) Ethyl Benzene	10.195	91	32763	2.283	ug/l	99
68) m/p-Xylenes	10.299	106	46655	8.414	ug/l	98
69) o-Xylene	10.640	106	31390	5.645	ug/l	99
70) Styrene	10.652	104	4698	0.526	ug/l	# 3
73) Isopropylbenzene	10.963	105	8910	0.605	ug/l	98
74) N-amyl acetate	10.890	43	5680	0.952	ug/l	# 48
76) 1,2,3-Trichloropropane	11.079	75	93075	20.045	ug/l	# 39

Data Path : Z:\voasrv\HPCHEM1\MSVOA_X\Data\VX092123\
 Data File : VX037848.D
 Acq On : 21 Sep 2023 12:31
 Operator : JC/MD
 Sample : 04554-01
 Misc : 5.0mL/MSVOA_X/WATER
 ALS Vial : 9 Sample Multiplier: 1

Instrument :
 MSVOA_X
 ClientSampleId :

Quant Time: Sep 22 04:41:50 2023
 Quant Method : Z:\voasrv\HPCHEM1\MSVOA_X\Method\82X091523W.M
 Quant Title : SW846 8260
 QLast Update : Sat Sep 16 04:55:44 2023
 Response via : Initial Calibration

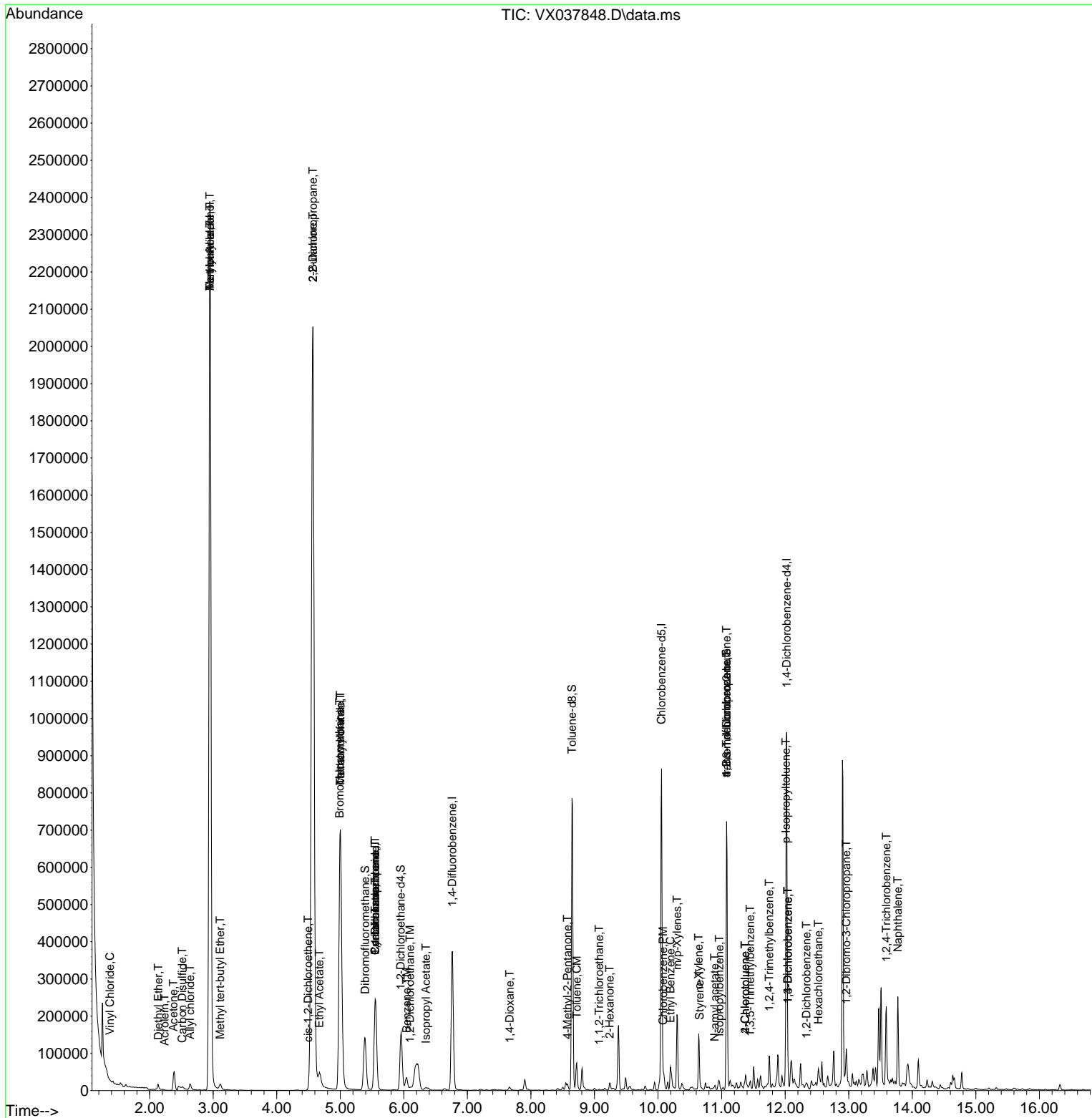
Compound	R.T.	QIon	Response	Conc	Units	Dev(Min)
79) 2-Chlorotoluene	11.372	91	4273	0.417	ug/l	75
80) 1,3,5-Trimethylbenzene	11.451	105	8914	0.717	ug/l	98
81) trans-1,4-Dichloro-2-b...	11.079	75	93075	64.211	ug/l #	5
82) 4-Chlorotoluene	11.372	91	4273	0.370	ug/l	81
84) 1,2,4-Trimethylbenzene	11.750	105	37057	2.994	ug/l	93
86) p-Isopropyltoluene	12.012	119	9366	0.737	ug/l	83
87) 1,3-Dichlorobenzene	12.042	146	22182	3.264	ug/l	94
88) 1,4-Dichlorobenzene	12.042	146	22182	3.190	ug/l	94
90) Hexachloroethane	12.524	117	892	0.414	ug/l #	17
91) 1,2-Dichlorobenzene	12.335	146	1706	0.246	ug/l	84
92) 1,2-Dibromo-3-Chloropr...	12.963	75	361	0.350	ug/l #	9
93) 1,2,4-Trichlorobenzene	13.591	180	1043	0.255	ug/l	89
95) Naphthalene	13.774	128	127023	9.190	ug/l	99

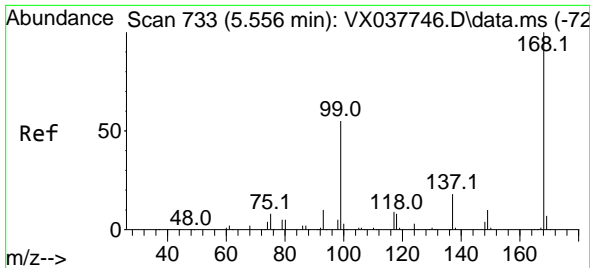
(#) = qualifier out of range (m) = manual integration (+) = signals summed

Data Path : Z:\voasrv\HPCHEM1\MSVOA_X\Data\VX092123\
 Data File : VX037848.D
 Acq On : 21 Sep 2023 12:31
 Operator : JC/MD
 Sample : 04554-01
 Misc : 5.0mL/MSVOA_X/WATER
 ALS Vial : 9 Sample Multiplier: 1

Instrument :
 MSVOA_X
 ClientSampleId :

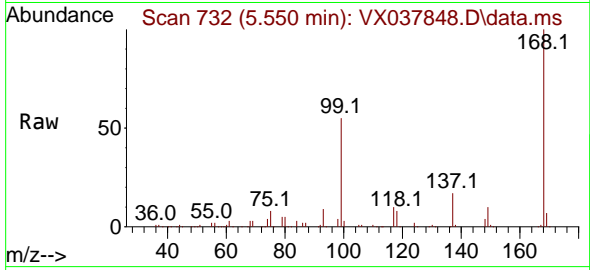
Quant Time: Sep 22 04:41:50 2023
 Quant Method : Z:\voasrv\HPCHEM1\MSVOA_X\Method\82X091523W.M
 Quant Title : SW846 8260
 QLast Update : Sat Sep 16 04:55:44 2023
 Response via : Initial Calibration



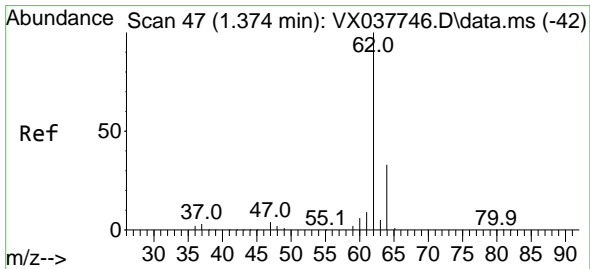
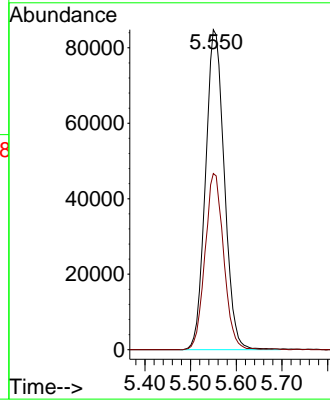
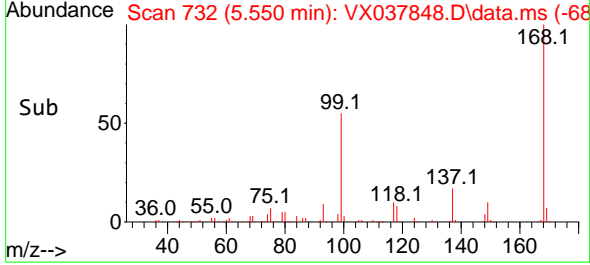


#1
 Pentafluorobenzene
 Concen: 50.000 ug/l
 RT: 5.550 min Scan# 70
 Delta R.T. -0.000 min
 Lab File: VX037848.D
 Acq: 21 Sep 2023 12:31

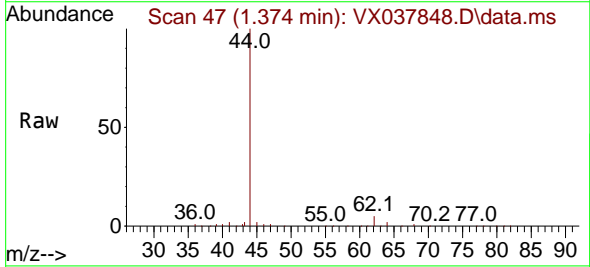
Instrument :
 MSVOA_X
 ClientSampleId :



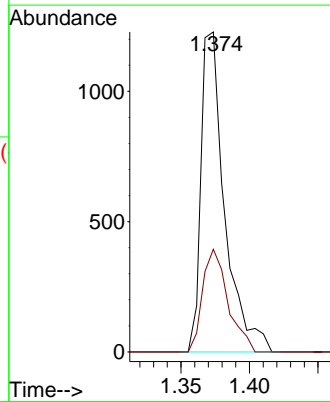
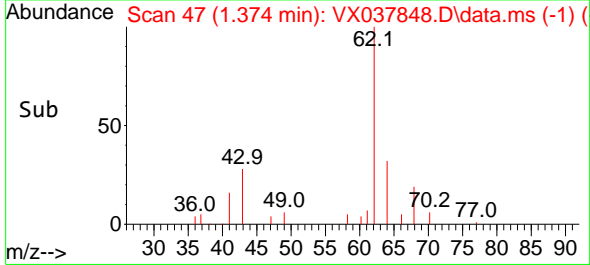
Tgt Ion:168 Resp: 242400
 Ion Ratio Lower Upper
 168 100
 99 55.1 56.6 85.0#

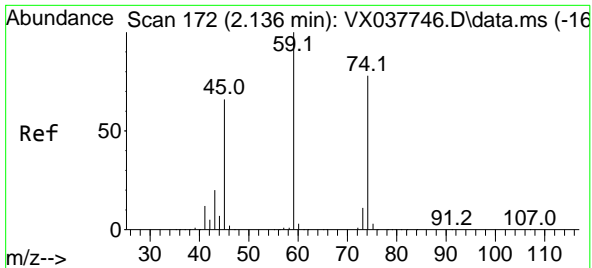


#4
 Vinyl Chloride
 Concen: 0.493 ug/l
 RT: 1.374 min Scan# 47
 Delta R.T. -0.000 min
 Lab File: VX037848.D
 Acq: 21 Sep 2023 12:31



Tgt Ion: 62 Resp: 1478
 Ion Ratio Lower Upper
 62 100
 64 32.1 25.4 38.0

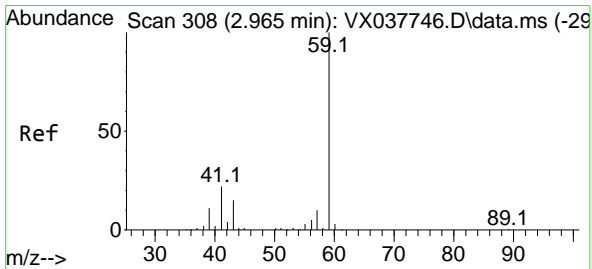
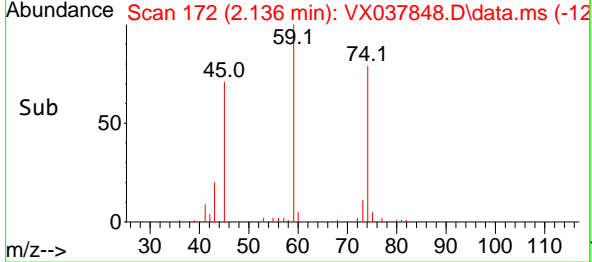
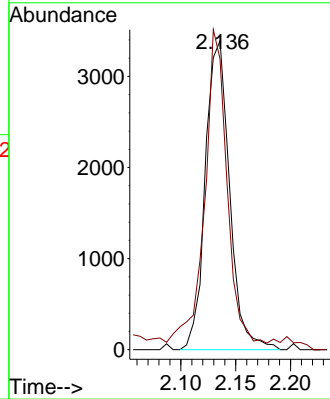
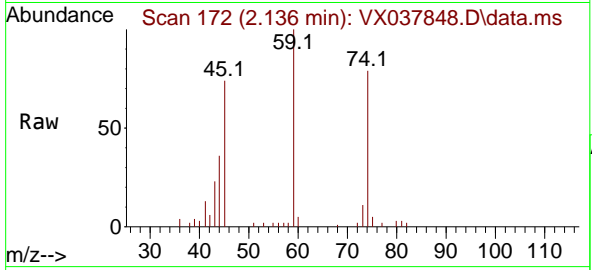




#8
 Diethyl Ether
 Concen: 2.805 ug/l
 RT: 2.136 min Scan# 11
 Delta R.T. 0.006 min
 Lab File: VX037848.D
 Acq: 21 Sep 2023 12:31

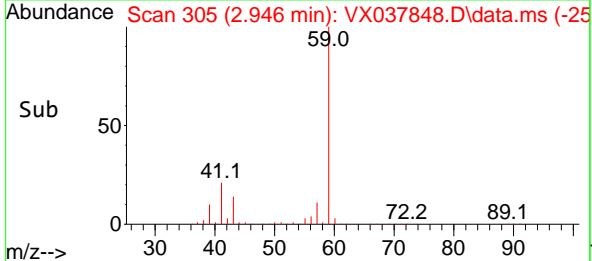
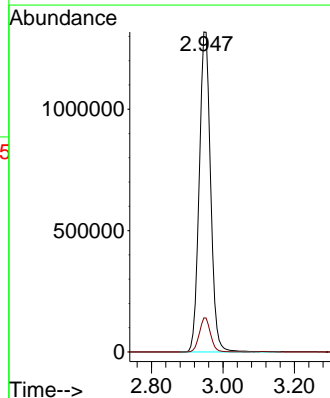
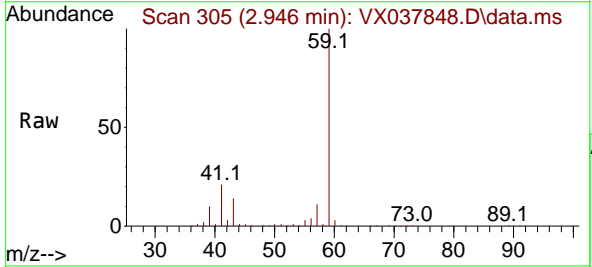
Instrument :
 MSVOA_X
 ClientSampleId :

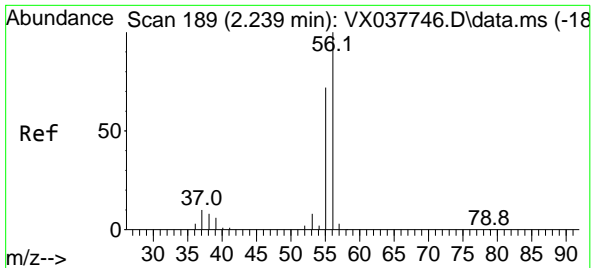
Tgt Ion: 74 Resp: 5239
 Ion Ratio Lower Upper
 74 100
 45 91.1 53.3 159.8



#11
 Tert butyl alcohol
 Concen: 4242.896 ug/l
 RT: 2.946 min Scan# 305
 Delta R.T. -0.018 min
 Lab File: VX037848.D
 Acq: 21 Sep 2023 12:31

Tgt Ion: 59 Resp: 2900454
 Ion Ratio Lower Upper
 59 100
 57 10.5 6.0 9.0#

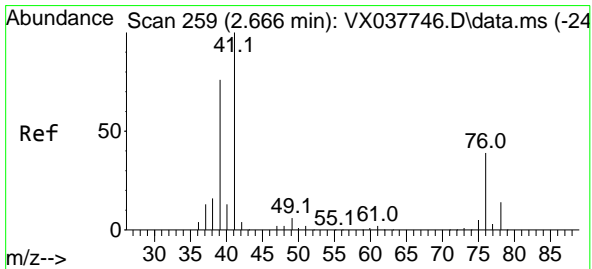
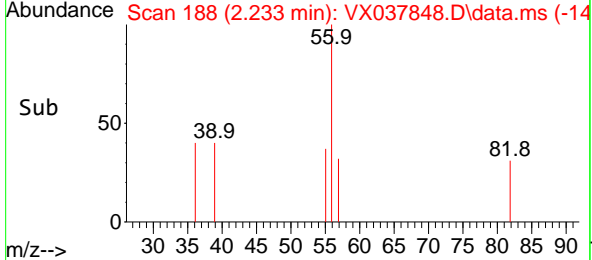
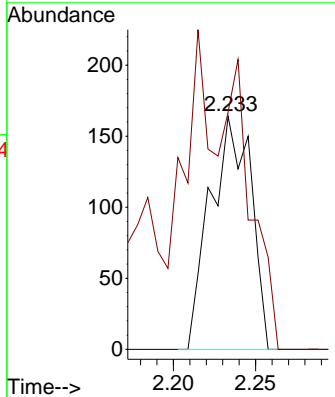
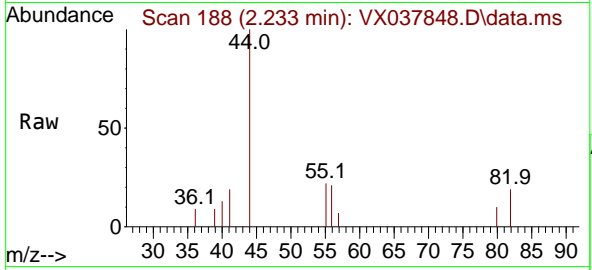




#13
 Acrolein
 Concen: 0.419 ug/l
 RT: 2.233 min Scan# 118
 Delta R.T. -0.006 min
 Lab File: VX037848.D
 Acq: 21 Sep 2023 12:31

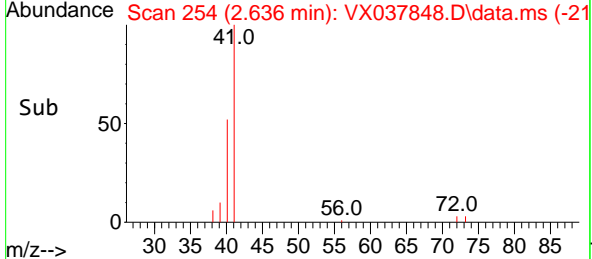
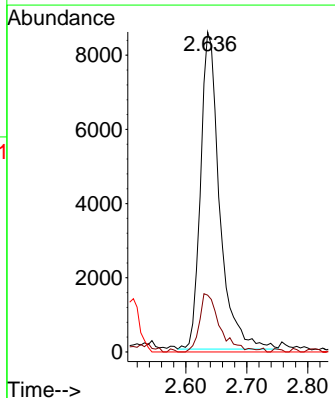
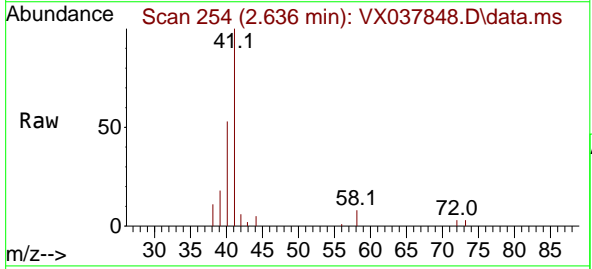
Instrument : MSVOA_X
 ClientSampleId :

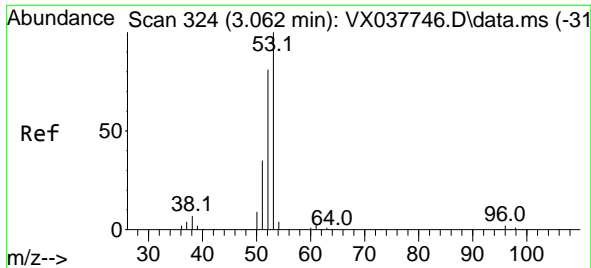
Tgt Ion: 56 Resp: 283
 Ion Ratio Lower Upper
 56 100
 55 60.8 57.1 85.7



#14
 Allyl chloride
 Concen: 4.725 ug/l
 RT: 2.636 min Scan# 254
 Delta R.T. -0.031 min
 Lab File: VX037848.D
 Acq: 21 Sep 2023 12:31

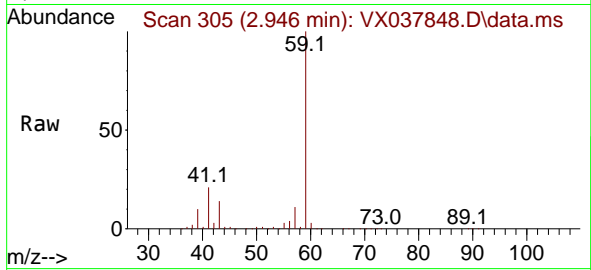
Tgt Ion: 41 Resp: 18612
 Ion Ratio Lower Upper
 41 100
 39 0.0 55.8 83.6#
 76 0.0 24.3 36.5#



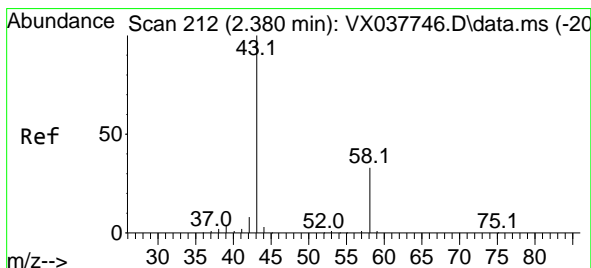
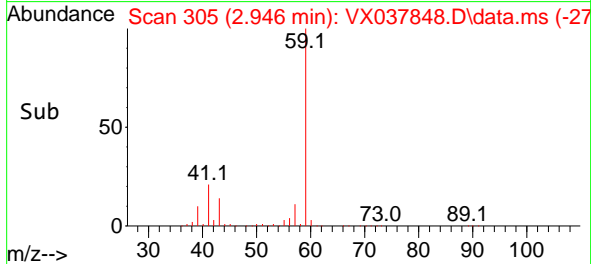
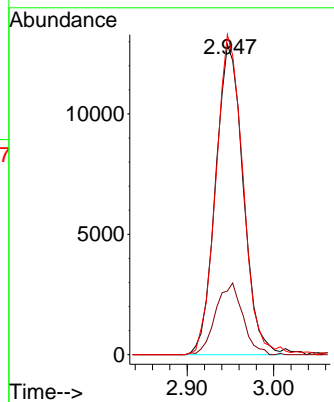


#15
 Acrylonitrile
 Concen: 18.778 ug/l
 RT: 2.946 min Scan# 305
 Delta R.T. -0.122 min
 Lab File: VX037848.D
 Acq: 21 Sep 2023 12:31

Instrument : MSVOA_X
 ClientSampleId :

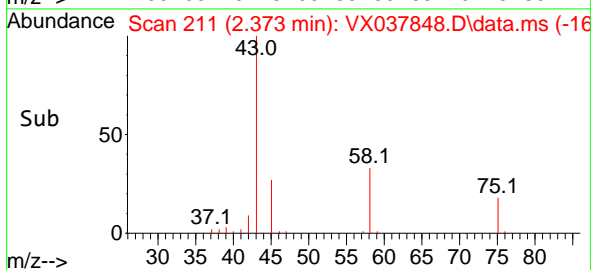
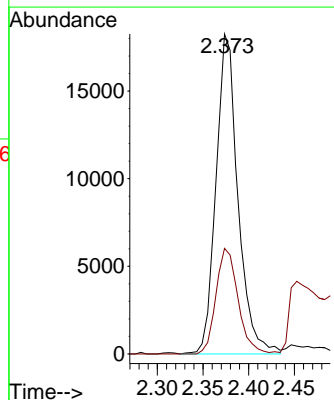
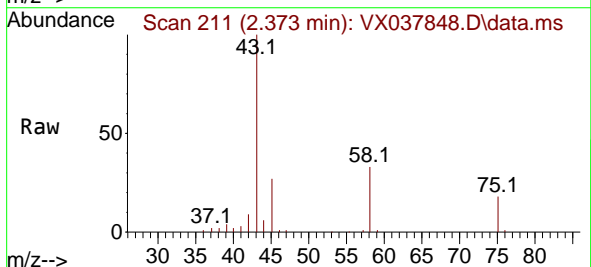


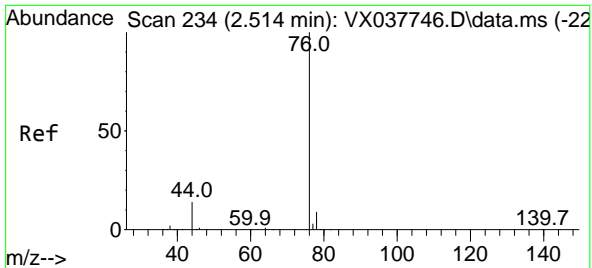
Tgt Ion: 53 Resp: 28541
 Ion Ratio Lower Upper
 53 100
 52 22.7 66.0 99.0#
 51 101.9 29.8 44.6#



#16
 Acetone
 Concen: 19.923 ug/l
 RT: 2.373 min Scan# 211
 Delta R.T. -0.006 min
 Lab File: VX037848.D
 Acq: 21 Sep 2023 12:31

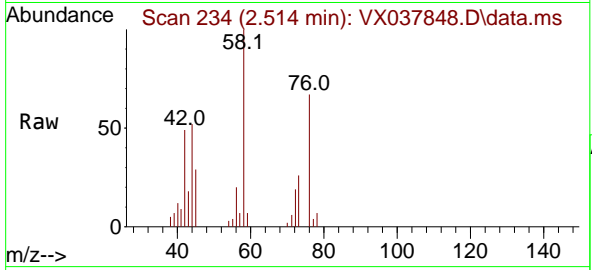
Tgt Ion: 43 Resp: 30523
 Ion Ratio Lower Upper
 43 100
 58 33.0 21.9 32.9#



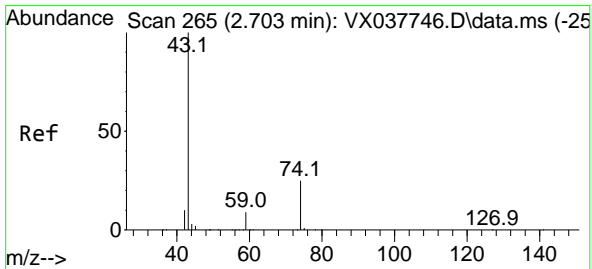
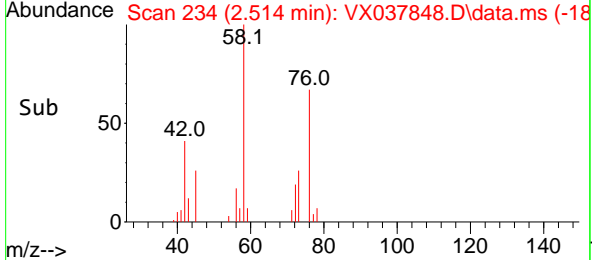
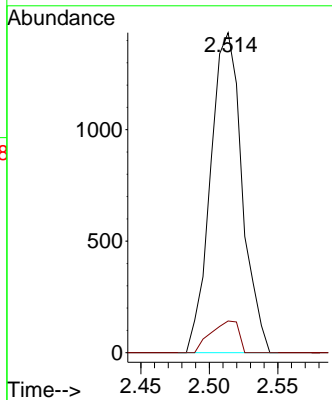


#17
 Carbon Disulfide
 Concen: 0.388 ug/l
 RT: 2.514 min Scan# 21
 Delta R.T. -0.000 min
 Lab File: VX037848.D
 Acq: 21 Sep 2023 12:31

Instrument : MSVOA_X
 Client Sampled :

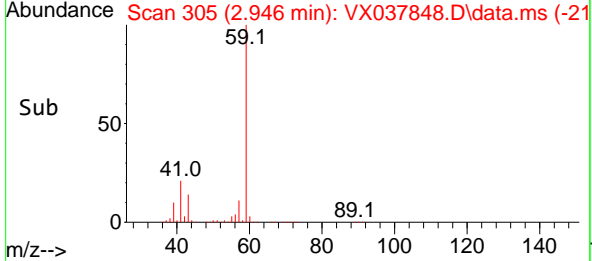
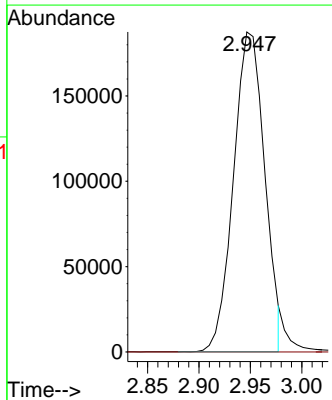
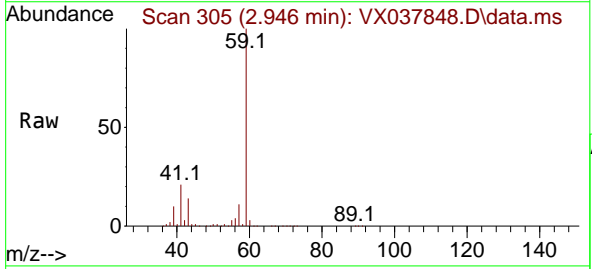


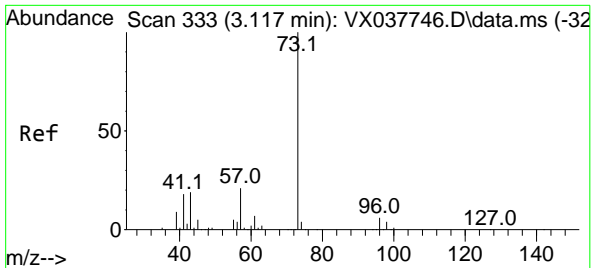
Tgt Ion: 76 Resp: 2303
 Ion Ratio Lower Upper
 76 100
 78 9.9 7.0 10.6



#18
 Methyl Acetate
 Concen: 71.605 ug/l
 RT: 2.946 min Scan# 305
 Delta R.T. 0.244 min
 Lab File: VX037848.D
 Acq: 21 Sep 2023 12:31

Tgt Ion: 43 Resp: 395745
 Ion Ratio Lower Upper
 43 100
 74 0.0 17.8 26.8#

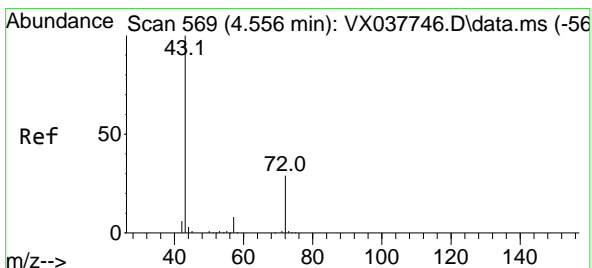
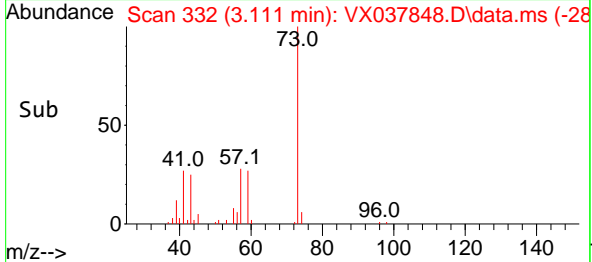
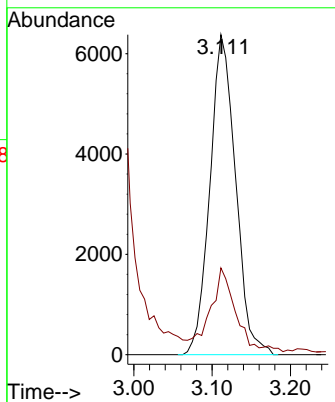
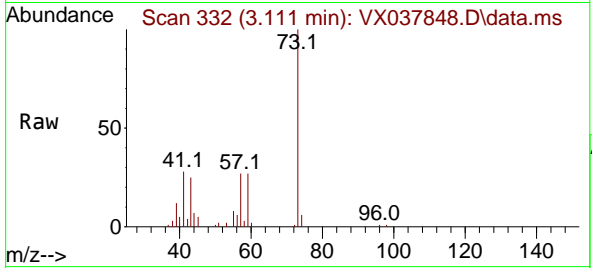




#19
 Methyl tert-butyl Ether
 Concen: 1.670 ug/l
 RT: 3.111 min Scan# 311
 Delta R.T. -0.012 min
 Lab File: VX037848.D
 Acq: 21 Sep 2023 12:31

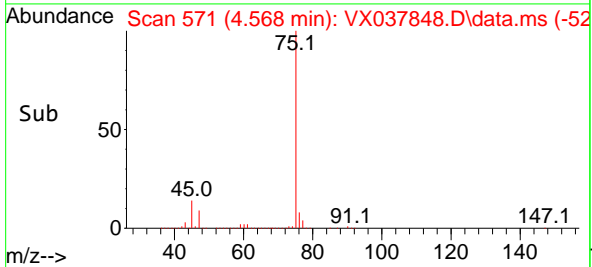
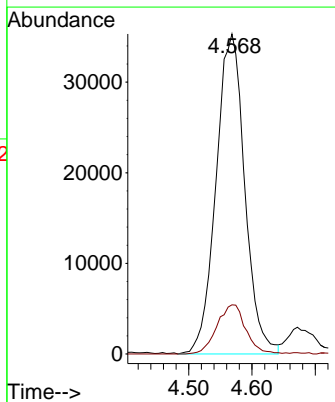
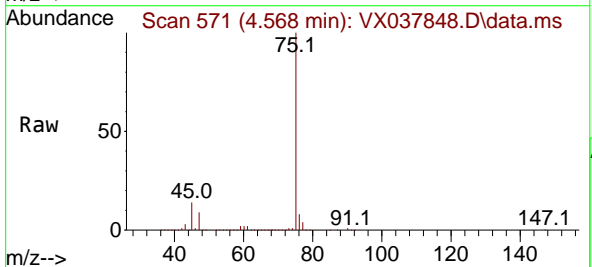
Instrument : MSVOA_X
 ClientSampleId :

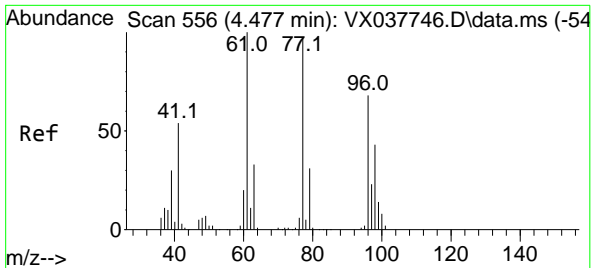
Tgt Ion: 73 Resp: 14531
 Ion Ratio Lower Upper
 73 100
 57 25.1 17.3 25.9



#25
 2-Butanone
 Concen: 51.472 ug/l
 RT: 4.568 min Scan# 571
 Delta R.T. -0.000 min
 Lab File: VX037848.D
 Acq: 21 Sep 2023 12:31

Tgt Ion: 43 Resp: 111283
 Ion Ratio Lower Upper
 43 100
 72 15.4 19.4 29.2#

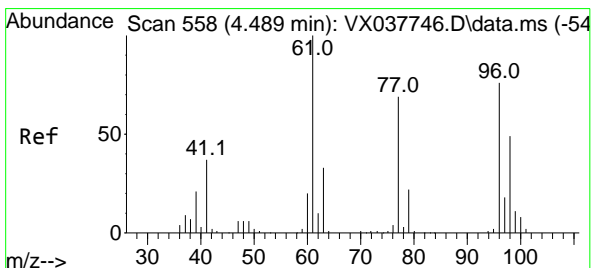
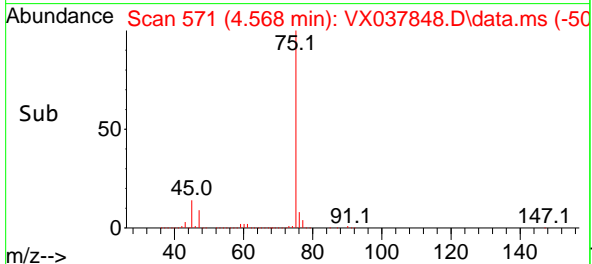
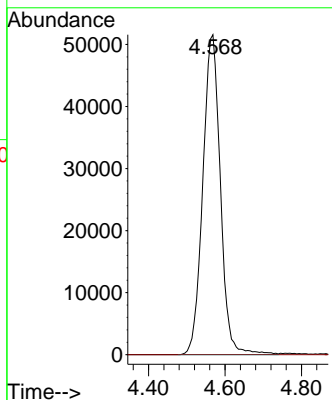
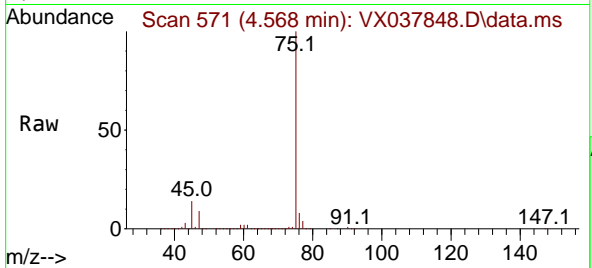




#26
 2,2-Dichloropropane
 Concen: 41.403 ug/l
 RT: 4.568 min Scan# 51
 Delta R.T. 0.091 min
 Lab File: VX037848.D
 Acq: 21 Sep 2023 12:31

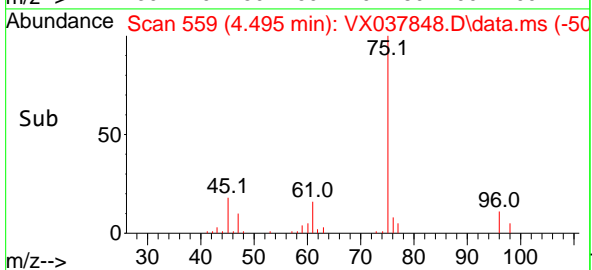
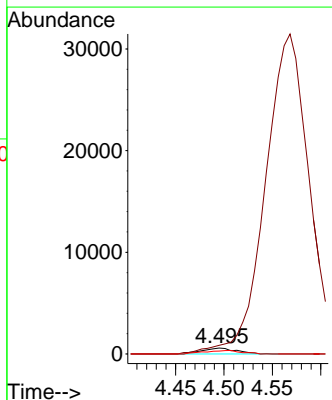
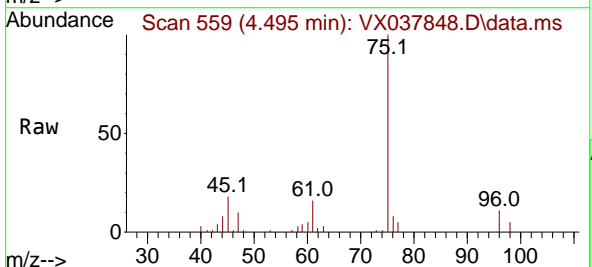
Instrument :
 MSVOA_X
 ClientSampleId :

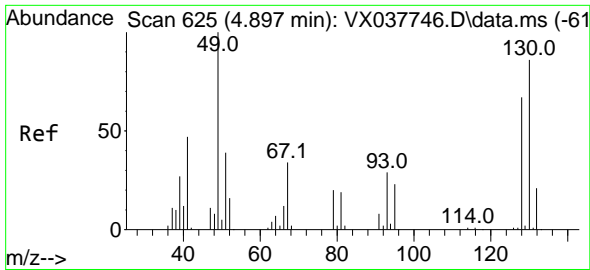
Tgt Ion: 77 Resp: 164472
 Ion Ratio Lower Upper
 77 100
 97 0.0 10.8 32.3#



#27
 cis-1,2-Dichloroethene
 Concen: 0.446 ug/l
 RT: 4.495 min Scan# 559
 Delta R.T. 0.006 min
 Lab File: VX037848.D
 Acq: 21 Sep 2023 12:31

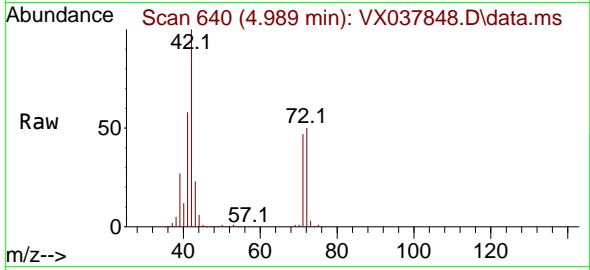
Tgt Ion: 96 Resp: 1437
 Ion Ratio Lower Upper
 96 100
 61 0.0 0.0 312.2
 98 62.1 0.0 129.0



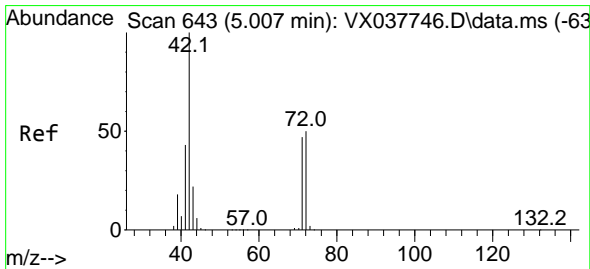
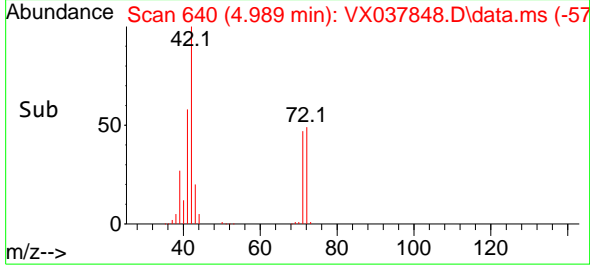
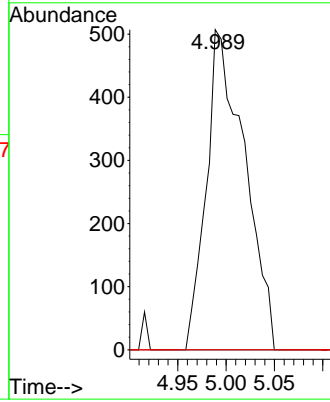


#28
 Bromochloromethane
 Concen: 0.609 ug/l
 RT: 4.989 min Scan# 641
 Delta R.T. 0.085 min
 Lab File: VX037848.D
 Acq: 21 Sep 2023 12:31

Instrument :
 MSVOA_X
 ClientSampleId :

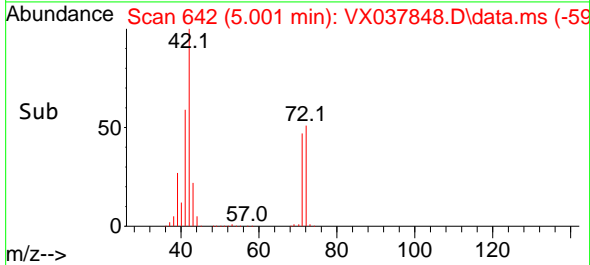
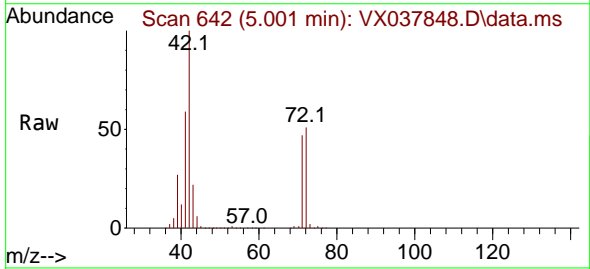
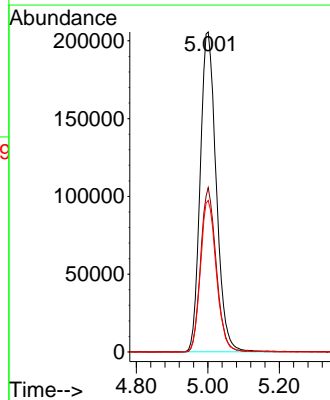


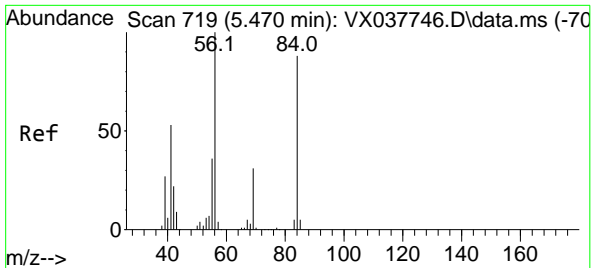
Tgt Ion: 49 Resp: 1396
 Ion Ratio Lower Upper
 49 100
 129 0.0 0.0 3.8
 130 0.0 57.5 86.3#



#29
 Tetrahydrofuran
 Concen: 475.207 ug/l
 RT: 5.001 min Scan# 642
 Delta R.T. -0.012 min
 Lab File: VX037848.D
 Acq: 21 Sep 2023 12:31

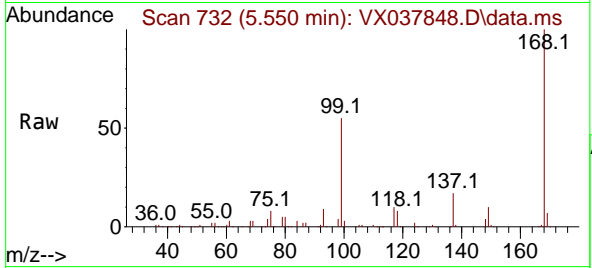
Tgt Ion: 42 Resp: 639060
 Ion Ratio Lower Upper
 42 100
 72 49.9 34.2 51.4
 71 46.9 32.2 48.2



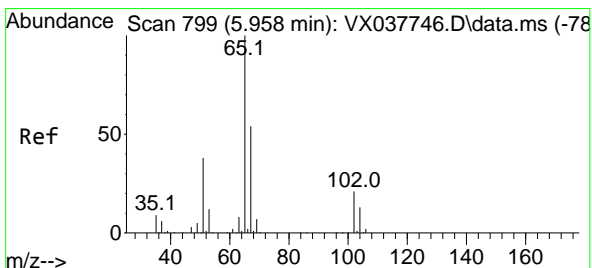
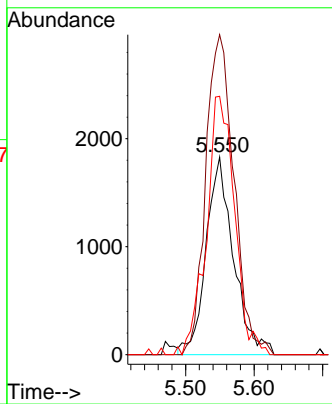
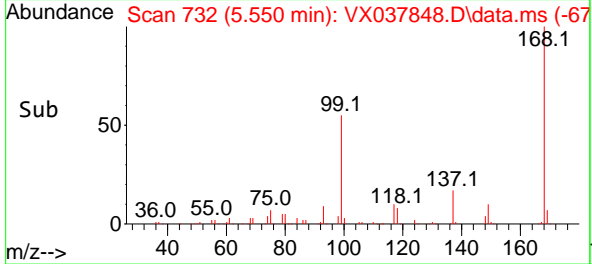


#31
 Cyclohexane
 Concen: 1.248 ug/l
 RT: 5.550 min Scan# 719
 Delta R.T. 0.079 min
 Lab File: VX037848.D
 Acq: 21 Sep 2023 12:31

Instrument :
 MSVOA_X
 ClientSampleId :

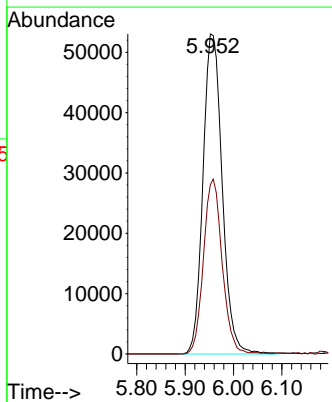
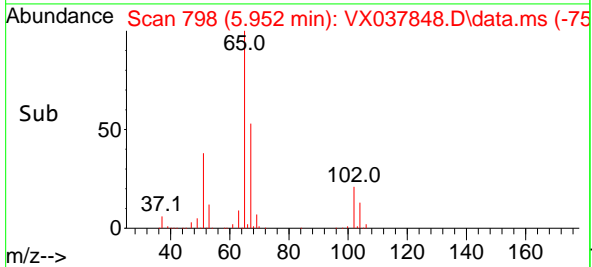
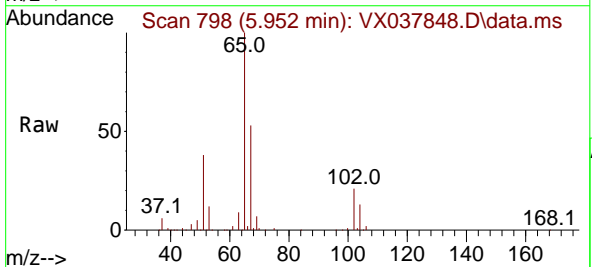


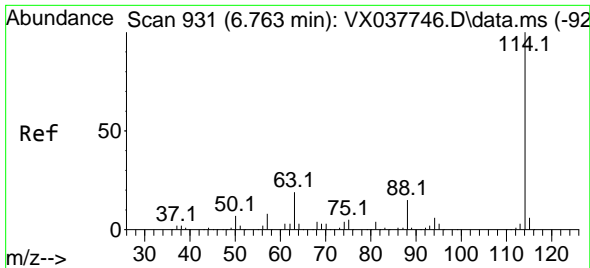
Tgt Ion: 56 Resp: 5100
 Ion Ratio Lower Upper
 56 100
 69 161.9 23.4 35.2#
 84 130.7 65.9 98.9#



#33
 1,2-Dichloroethane-d4
 Concen: 46.009 ug/l
 RT: 5.952 min Scan# 798
 Delta R.T. -0.006 min
 Lab File: VX037848.D
 Acq: 21 Sep 2023 12:31

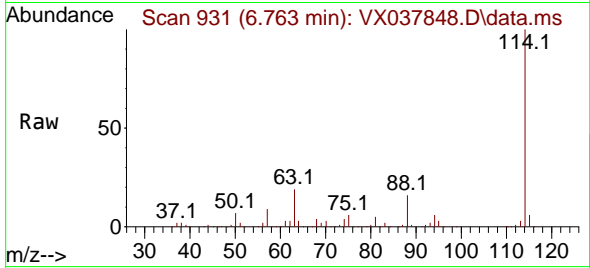
Tgt Ion: 65 Resp: 146527
 Ion Ratio Lower Upper
 65 100
 67 53.2 0.0 100.2



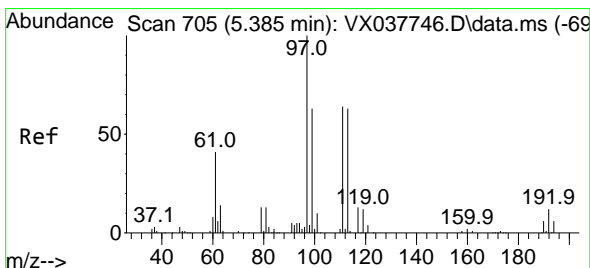
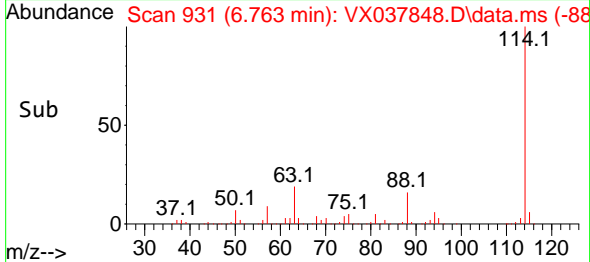
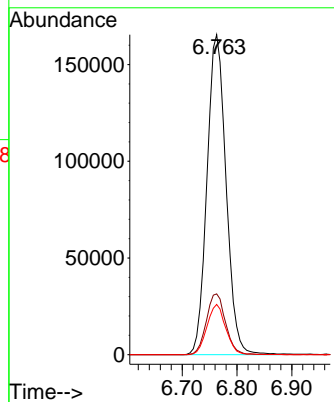


#34
 1,4-Difluorobenzene
 Concen: 50.000 ug/l
 RT: 6.763 min Scan# 91
 Delta R.T. -0.000 min
 Lab File: VX037848.D
 Acq: 21 Sep 2023 12:31

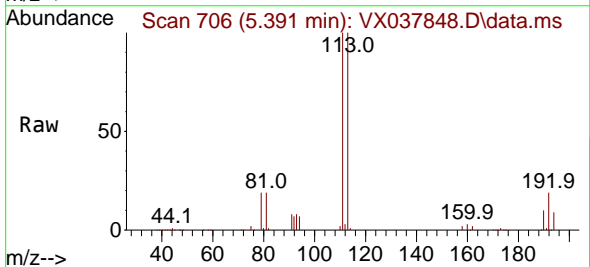
Instrument :
 MSVOA_X
 ClientSampleId :



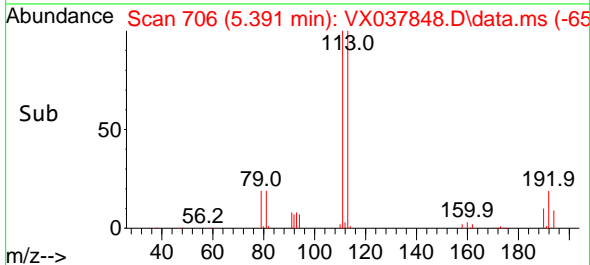
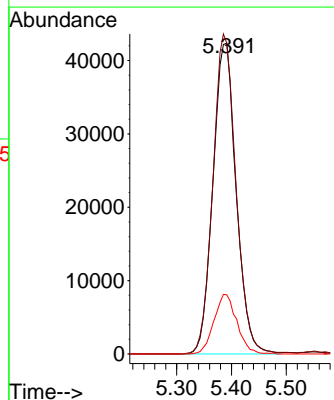
Tgt Ion:114 Resp: 398886
 Ion Ratio Lower Upper
 114 100
 63 19.0 0.0 45.0
 88 15.7 0.0 36.6

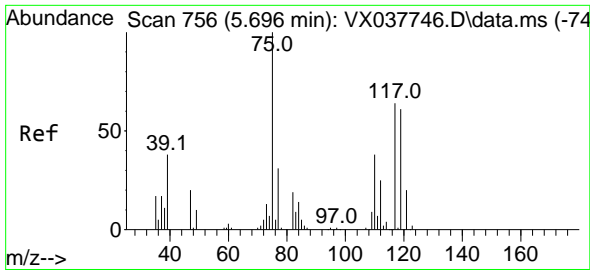


#35
 Dibromofluoromethane
 Concen: 46.683 ug/l
 RT: 5.391 min Scan# 706
 Delta R.T. 0.006 min
 Lab File: VX037848.D
 Acq: 21 Sep 2023 12:31



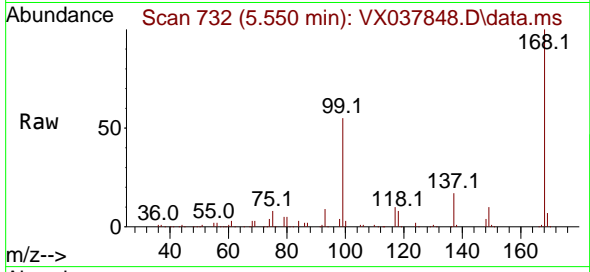
Tgt Ion:113 Resp: 124596
 Ion Ratio Lower Upper
 113 100
 111 102.8 82.9 124.3
 192 18.9 13.3 19.9



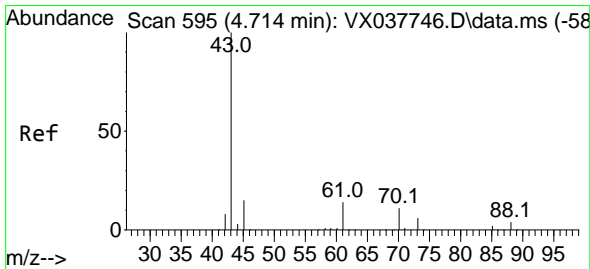
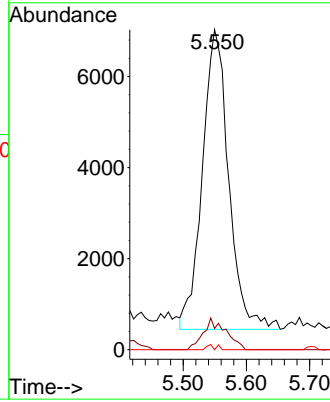
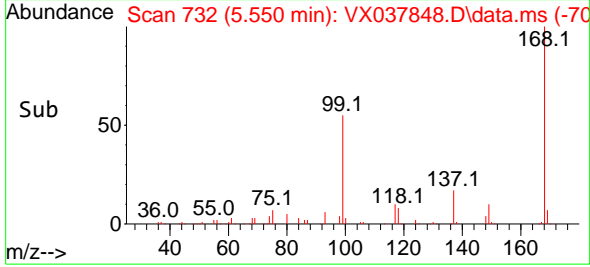


#36
 1,1-Dichloropropene
 Concen: 5.187 ug/l
 RT: 5.550 min Scan# 71
 Delta R.T. -0.146 min
 Lab File: VX037848.D
 Acq: 21 Sep 2023 12:31

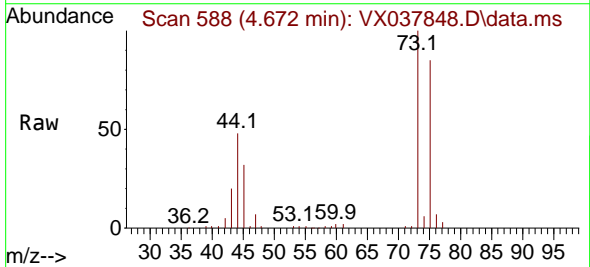
Instrument :
 MSVOA_X
 ClientSampleId :



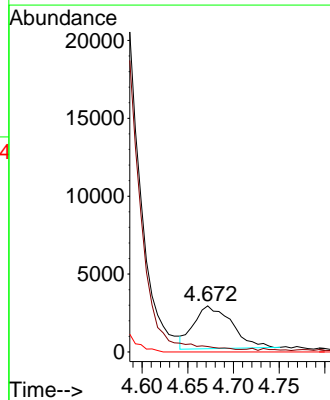
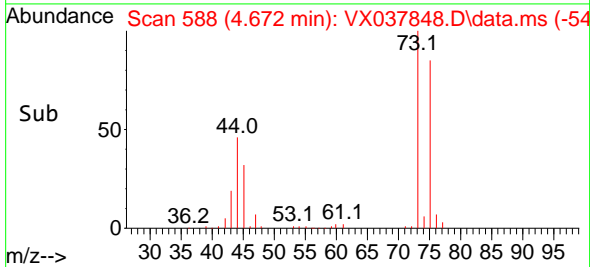
Tgt Ion: 75 Resp: 19069
 Ion Ratio Lower Upper
 75 100
 110 9.0 17.0 50.9#
 77 0.6 24.7 37.1#

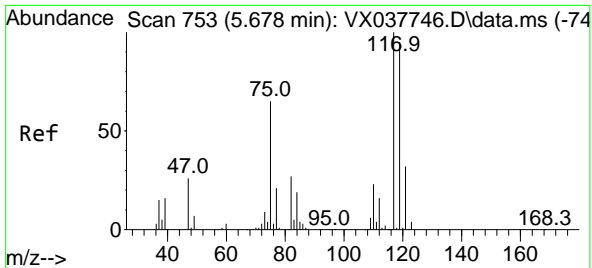


#37
 Ethyl Acetate
 Concen: 1.964 ug/l
 RT: 4.672 min Scan# 588
 Delta R.T. -0.061 min
 Lab File: VX037848.D
 Acq: 21 Sep 2023 12:31



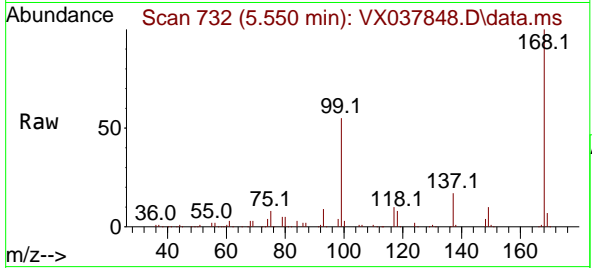
Tgt Ion: 43 Resp: 7939
 Ion Ratio Lower Upper
 43 100
 61 0.0 10.6 16.0#
 70 0.0 8.3 12.5#



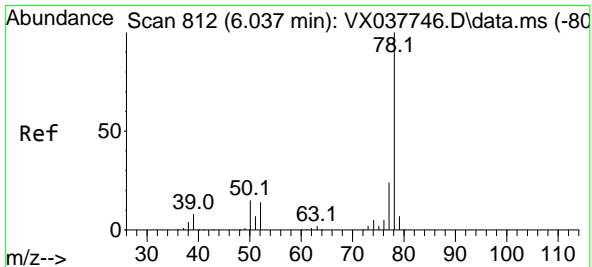
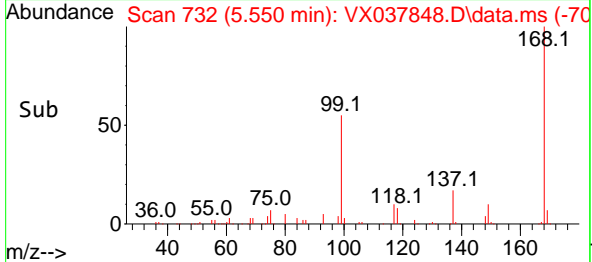
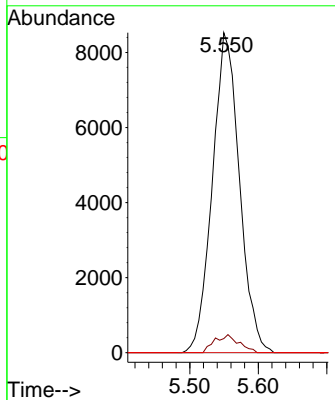


#38
 Carbon Tetrachloride
 Concen: 6.068 ug/l
 RT: 5.550 min Scan# 71
 Delta R.T. -0.128 min
 Lab File: VX037848.D
 Acq: 21 Sep 2023 12:31

Instrument :
 MSVOA_X
 ClientSampleId :

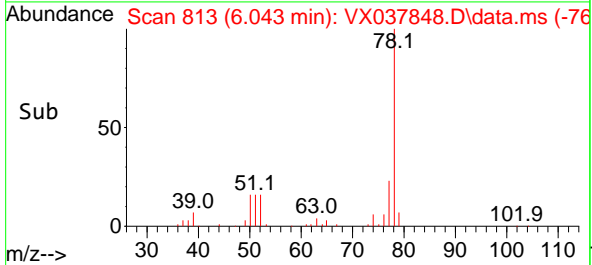
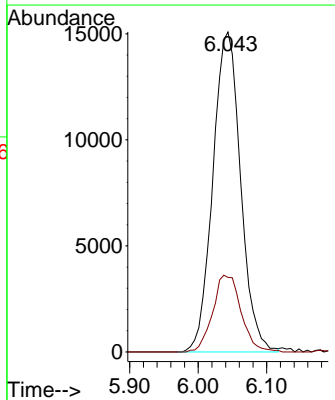
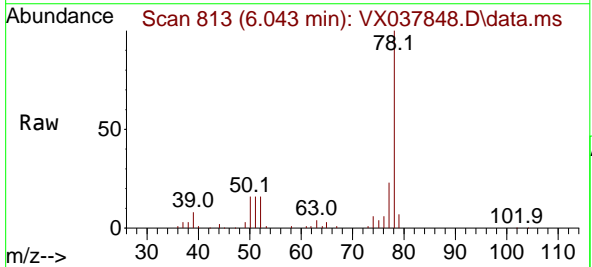


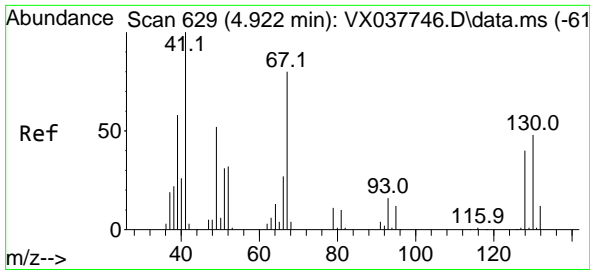
Tgt Ion:117 Resp: 23343
 Ion Ratio Lower Upper
 117 100
 119 4.4 78.2 117.2#
 121 0.0 24.4 36.6#



#40
 Benzene
 Concen: 3.756 ug/l
 RT: 6.043 min Scan# 813
 Delta R.T. -0.000 min
 Lab File: VX037848.D
 Acq: 21 Sep 2023 12:31

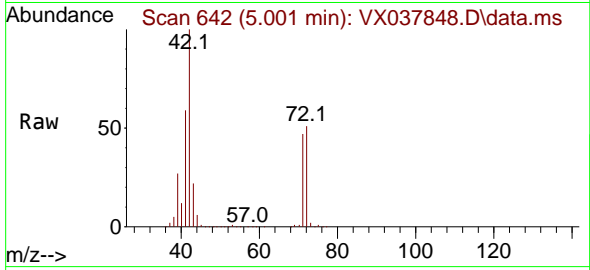
Tgt Ion: 78 Resp: 42463
 Ion Ratio Lower Upper
 78 100
 77 23.3 19.3 28.9



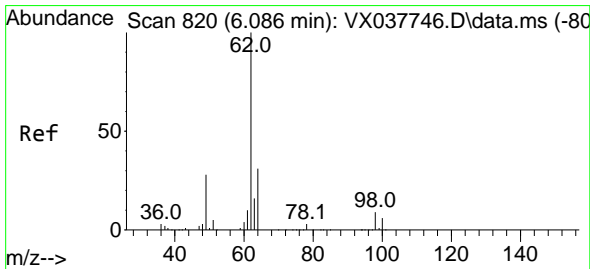
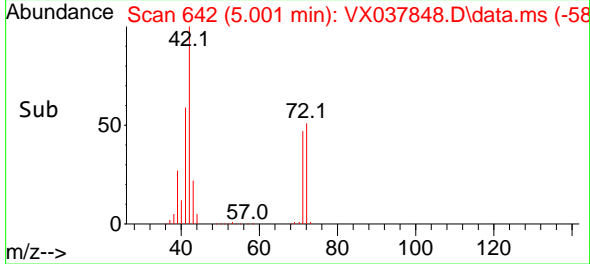
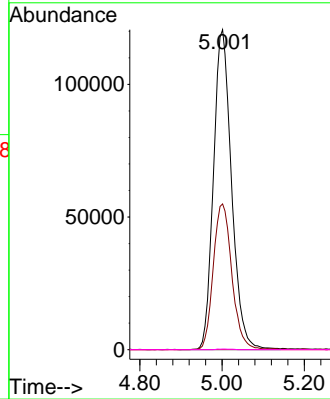


#41
 Methacrylonitrile
 Concen: 178.699 ug/l
 RT: 5.001 min Scan# 642
 Delta R.T. 0.055 min
 Lab File: VX037848.D
 Acq: 21 Sep 2023 12:31

Instrument :
 MSVOA_X
 ClientSampleId :

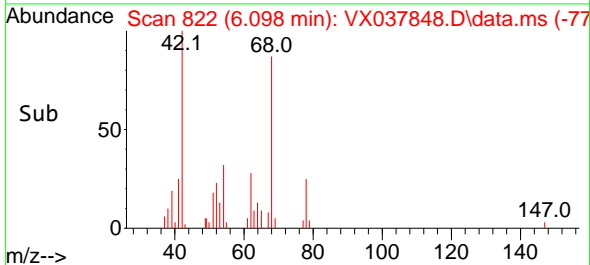
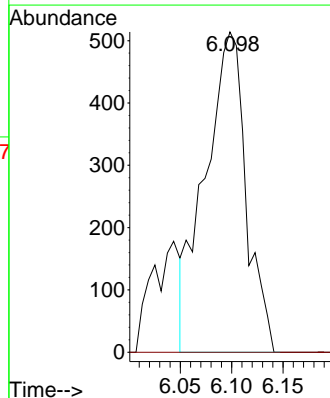
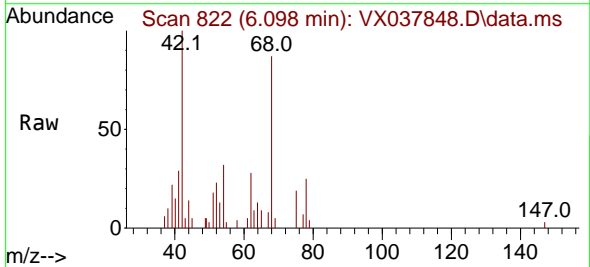


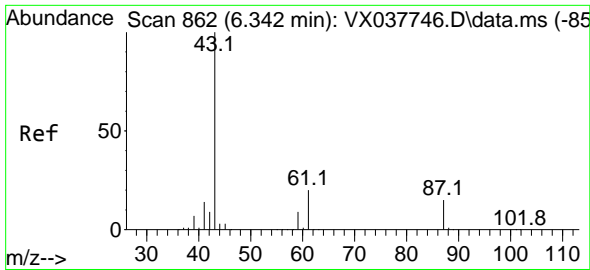
Tgt Ion: 41 Resp: 368288
 Ion Ratio Lower Upper
 41 100
 39 46.8 45.2 67.8
 67 0.0 52.6 78.8#
 52 0.2 22.7 34.1#



#42
 1,2-Dichloroethane
 Concen: 0.349 ug/l
 RT: 6.098 min Scan# 822
 Delta R.T. -0.000 min
 Lab File: VX037848.D
 Acq: 21 Sep 2023 12:31

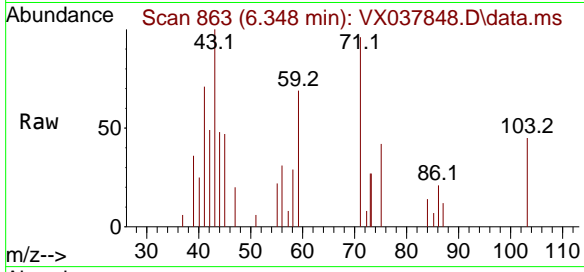
Tgt Ion: 62 Resp: 1427
 Ion Ratio Lower Upper
 62 100
 98 0.0 0.0 16.0



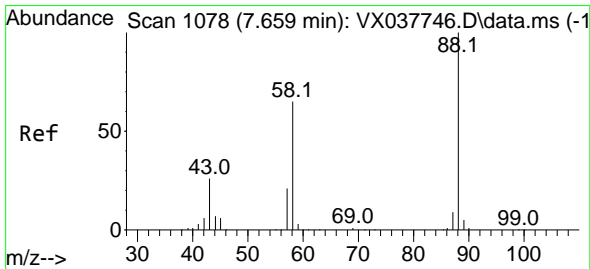
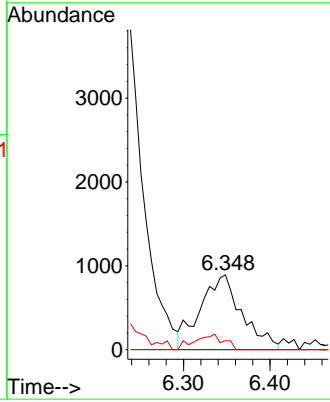
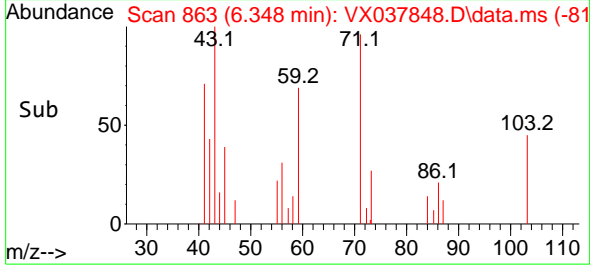


#43
 Isopropyl Acetate
 Concen: 0.462 ug/l
 RT: 6.348 min Scan# 80
 Delta R.T. 0.006 min
 Lab File: VX037848.D
 Acq: 21 Sep 2023 12:31

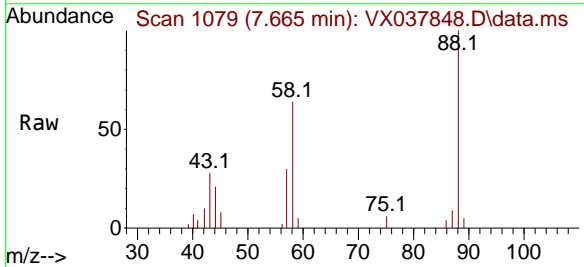
Instrument :
 MSVOA_X
 ClientSampleId :



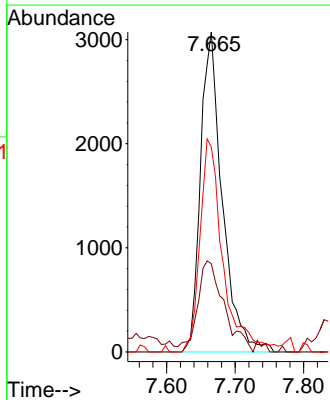
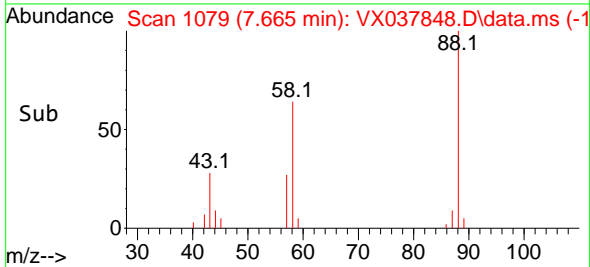
Tgt Ion: 43 Resp: 2987
 Ion Ratio Lower Upper
 43 100
 61 0.0 15.2 22.8#
 87 14.3 9.8 14.6

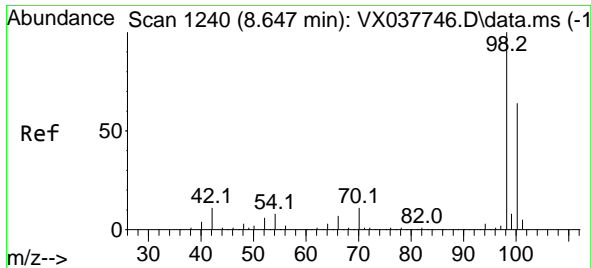


#49
 1,4-Dioxane
 Concen: 83.841 ug/l
 RT: 7.665 min Scan# 1079
 Delta R.T. -0.006 min
 Lab File: VX037848.D
 Acq: 21 Sep 2023 12:31



Tgt Ion: 88 Resp: 6791
 Ion Ratio Lower Upper
 88 100
 43 34.7 0.0 0.0#
 58 69.9 60.1 90.1

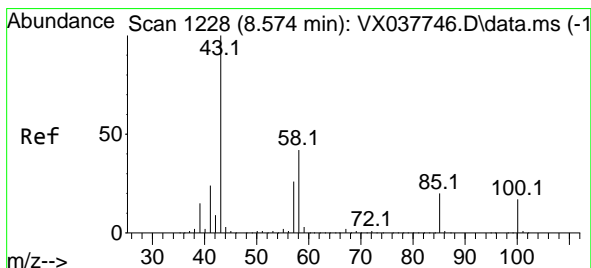
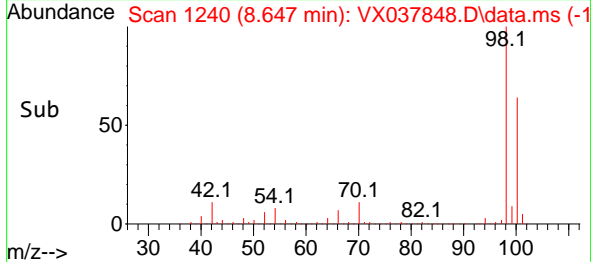
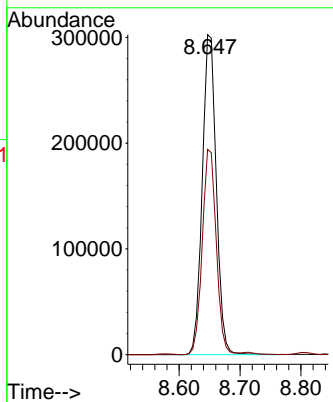
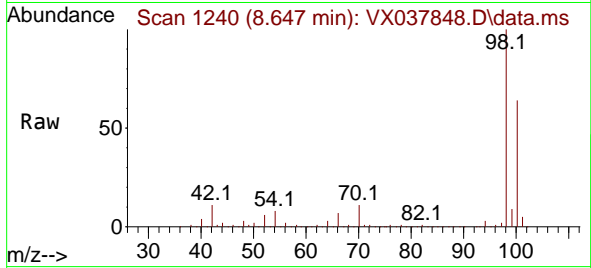




#50
 Toluene-d8
 Concen: 48.783 ug/l
 RT: 8.647 min Scan# 11
 Delta R.T. 0.000 min
 Lab File: VX037848.D
 Acq: 21 Sep 2023 12:31

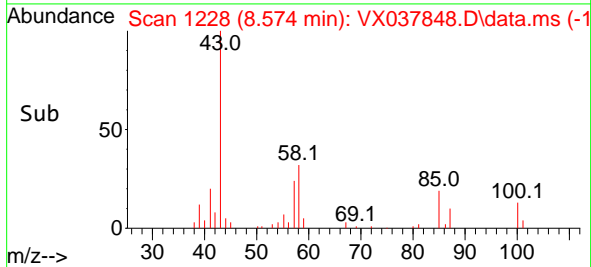
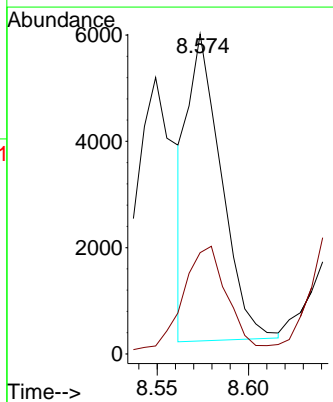
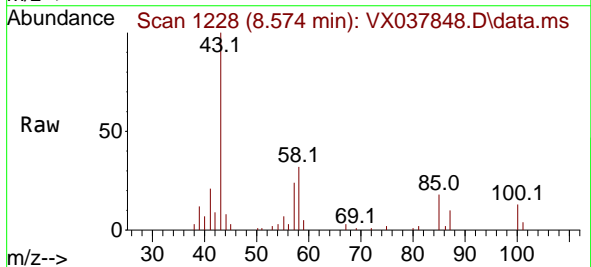
Instrument :
 MSVOA_X
 ClientSampleId :

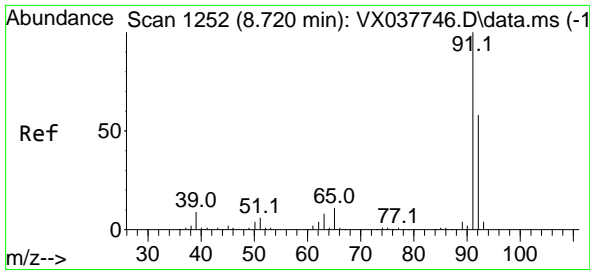
Tgt Ion: 98 Resp: 483779
 Ion Ratio Lower Upper
 98 100
 100 64.1 53.1 79.7



#51
 4-Methyl-2-Pentanone
 Concen: 1.805 ug/l
 RT: 8.574 min Scan# 1228
 Delta R.T. -0.000 min
 Lab File: VX037848.D
 Acq: 21 Sep 2023 12:31

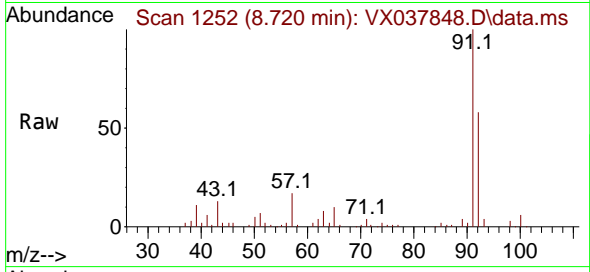
Tgt Ion: 43 Resp: 7400
 Ion Ratio Lower Upper
 43 100
 58 43.2 30.4 45.6



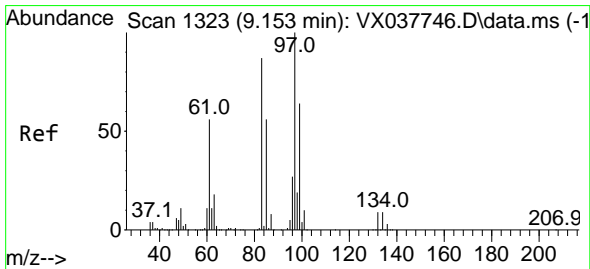
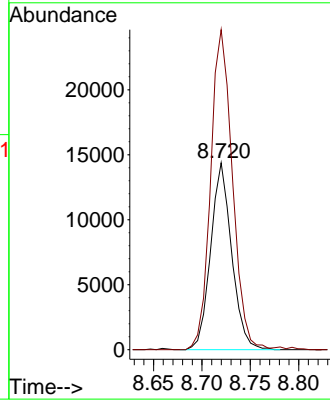
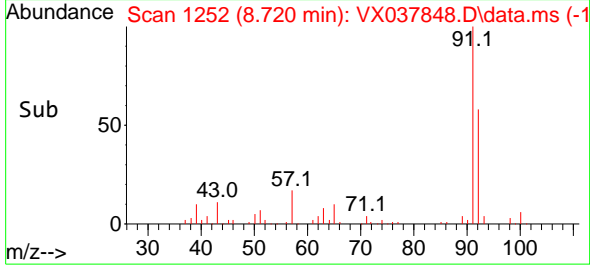


#52
 Toluene
 Concen: 2.981 ug/l
 RT: 8.720 min Scan# 1110
 Delta R.T. -0.000 min
 Lab File: VX037848.D
 Acq: 21 Sep 2023 12:31

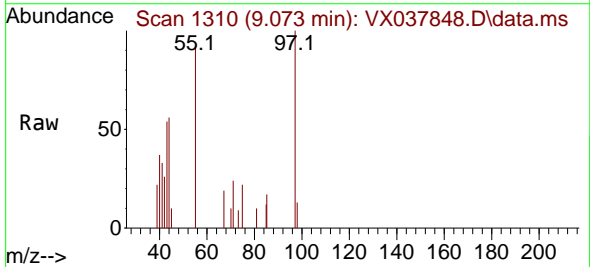
Instrument : MSVOA_X
 ClientSampleId :



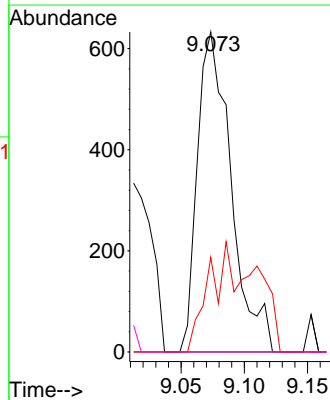
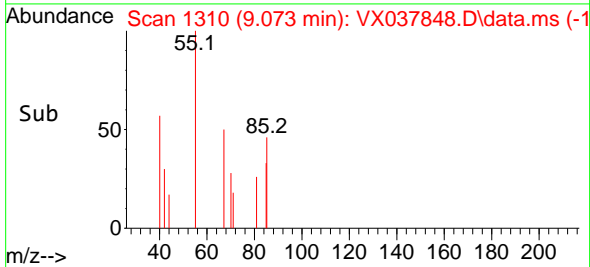
Tgt Ion: 92 Resp: 21722
 Ion Ratio Lower Upper
 92 100
 91 177.6 134.2 201.2

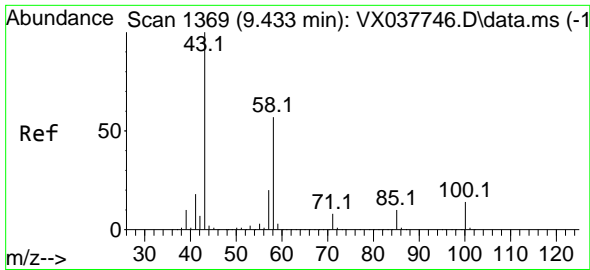


#55
 1,1,2-Trichloroethane
 Concen: 0.382 ug/l
 RT: 9.073 min Scan# 1310
 Delta R.T. -0.079 min
 Lab File: VX037848.D
 Acq: 21 Sep 2023 12:31



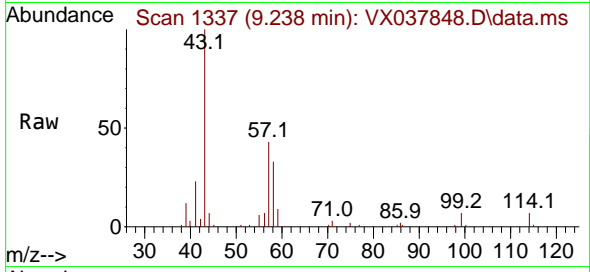
Tgt Ion: 97 Resp: 1173
 Ion Ratio Lower Upper
 97 100
 83 0.0 65.8 98.8#
 85 29.5 41.6 62.4#
 99 0.0 47.8 71.8#



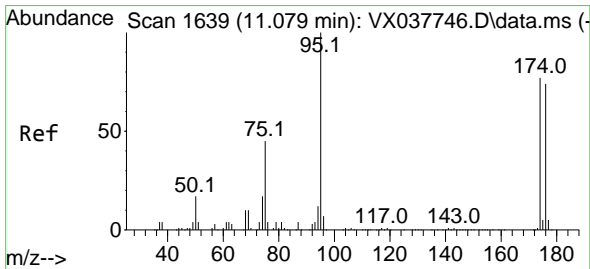
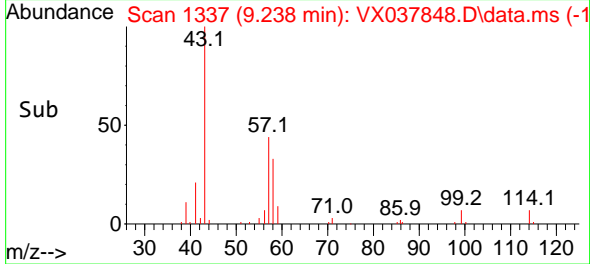
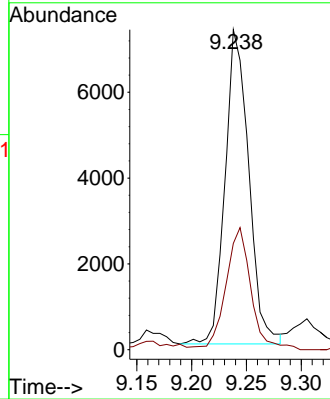


#59
 2-Hexanone
 Concen: 3.452 ug/l
 RT: 9.238 min Scan# 11
 Delta R.T. -0.195 min
 Lab File: VX037848.D
 Acq: 21 Sep 2023 12:31

Instrument :
 MSVOA_X
 ClientSampleId :

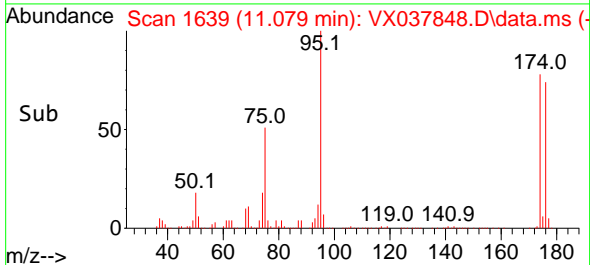
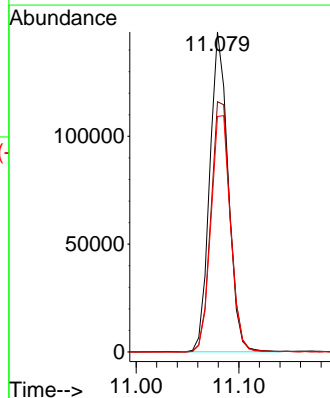
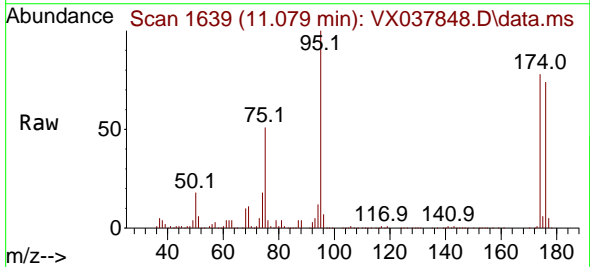


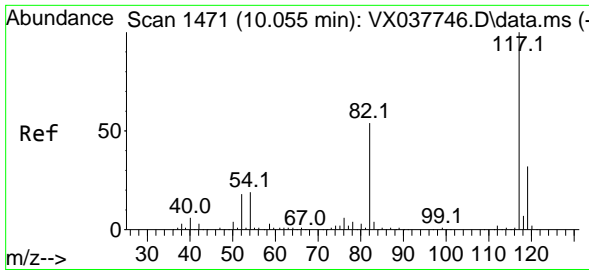
Tgt Ion: 43 Resp: 11020
 Ion Ratio Lower Upper
 43 100
 58 41.0 26.2 78.5



#62
 4-Bromofluorobenzene
 Concen: 51.080 ug/l
 RT: 11.079 min Scan# 1639
 Delta R.T. 0.000 min
 Lab File: VX037848.D
 Acq: 21 Sep 2023 12:31

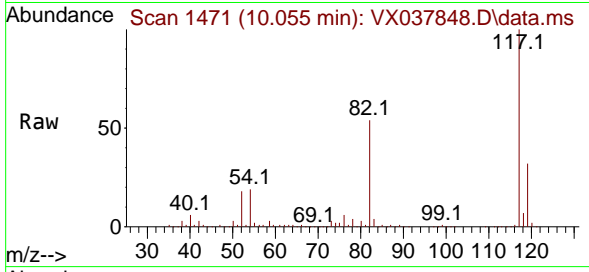
Tgt Ion: 95 Resp: 184071
 Ion Ratio Lower Upper
 95 100
 174 83.2 0.0 135.6
 176 78.9 0.0 131.0



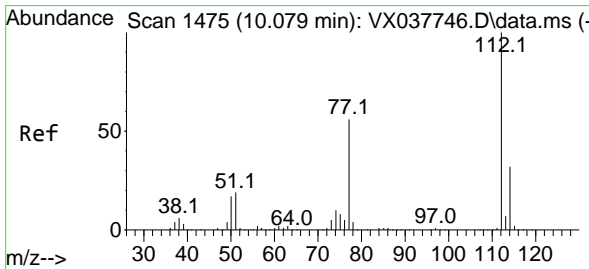
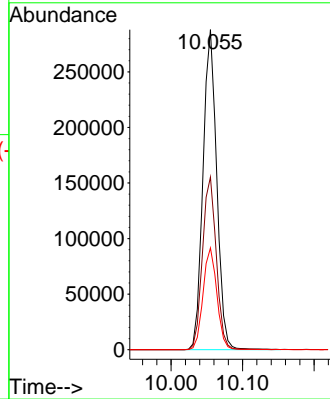
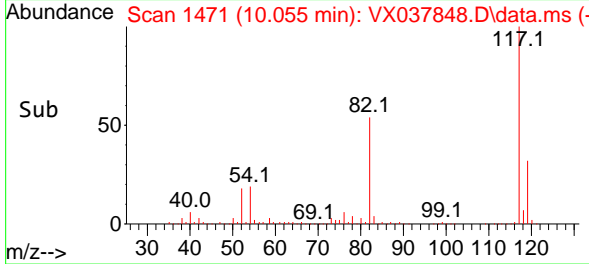


#63
 Chlorobenzene-d5
 Concen: 50.000 ug/l
 RT: 10.055 min Scan# 1471
 Delta R.T. -0.000 min
 Lab File: VX037848.D
 Acq: 21 Sep 2023 12:31

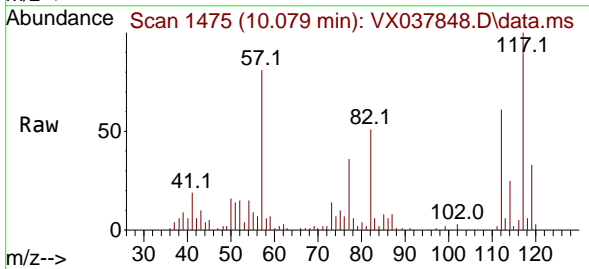
Instrument : MSVOA_X
 ClientSampleId :



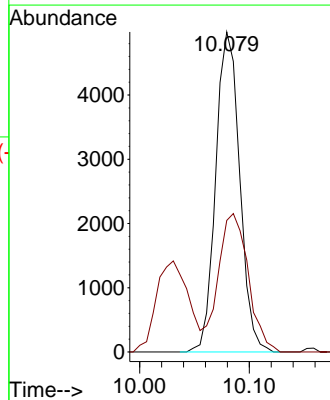
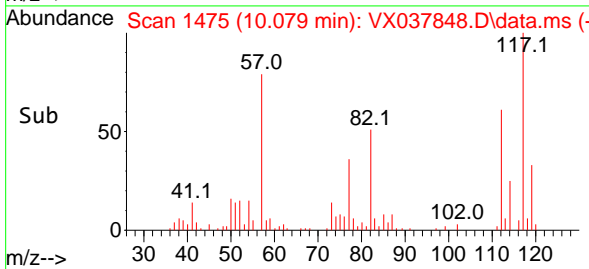
Tgt Ion:117 Resp: 383703
 Ion Ratio Lower Upper
 117 100
 82 53.9 46.2 69.4
 119 31.8 25.5 38.3

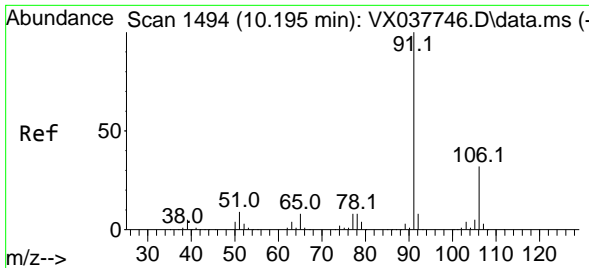


#65
 Chlorobenzene
 Concen: 0.915 ug/l
 RT: 10.079 min Scan# 1475
 Delta R.T. -0.000 min
 Lab File: VX037848.D
 Acq: 21 Sep 2023 12:31



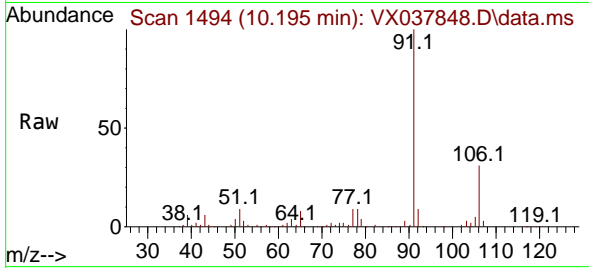
Tgt Ion:112 Resp: 7574
 Ion Ratio Lower Upper
 112 100
 114 41.1 25.7 38.5#



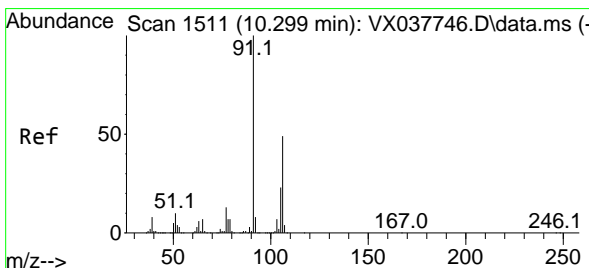
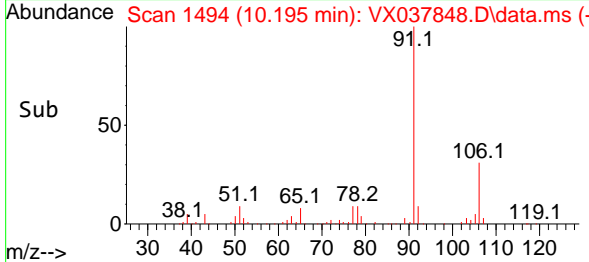
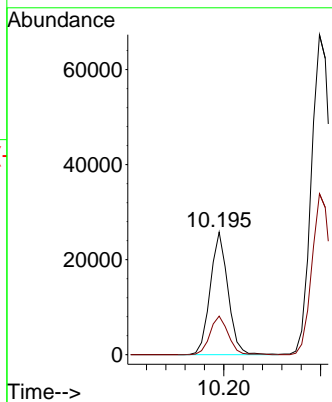


#67
 Ethyl Benzene
 Concen: 2.283 ug/l
 RT: 10.195 min Scan# 1494
 Delta R.T. -0.000 min
 Lab File: VX037848.D
 Acq: 21 Sep 2023 12:31

Instrument : MSVOA_X
 ClientSampleId :

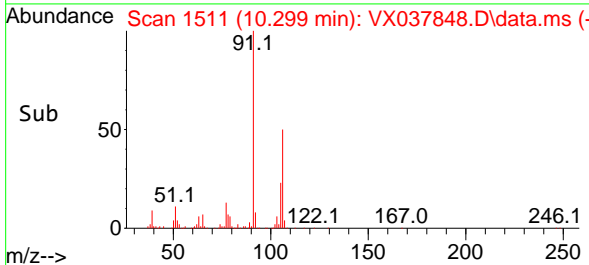
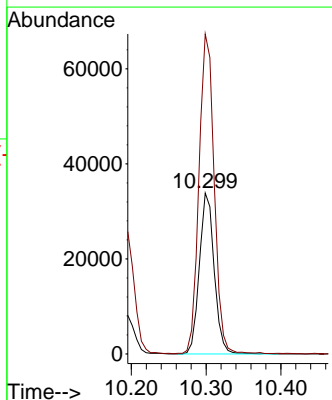
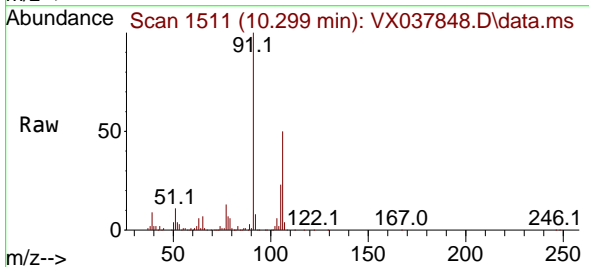


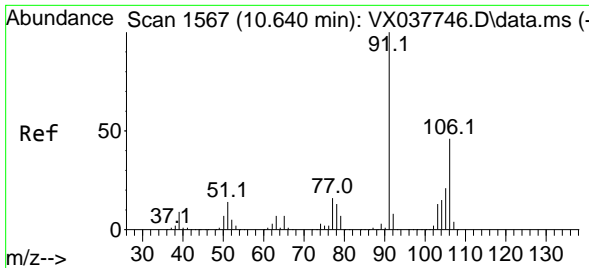
Tgt Ion: 91 Resp: 32763
 Ion Ratio Lower Upper
 91 100
 106 31.5 24.9 37.3



#68
 m/p-Xylenes
 Concen: 8.414 ug/l
 RT: 10.299 min Scan# 1511
 Delta R.T. -0.006 min
 Lab File: VX037848.D
 Acq: 21 Sep 2023 12:31

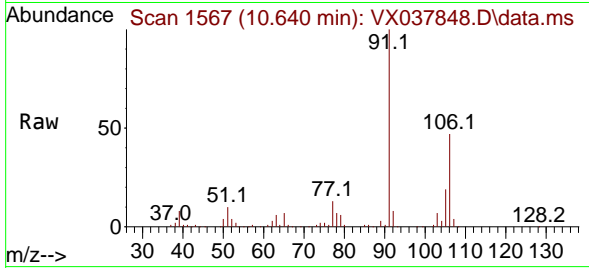
Tgt Ion: 106 Resp: 46655
 Ion Ratio Lower Upper
 106 100
 91 203.5 165.5 248.3



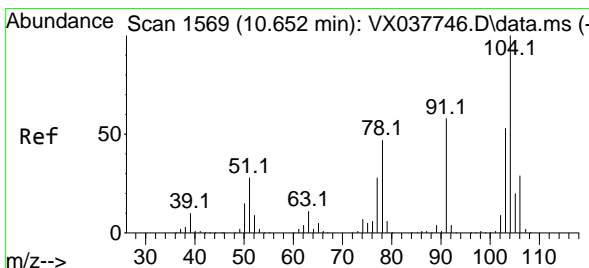
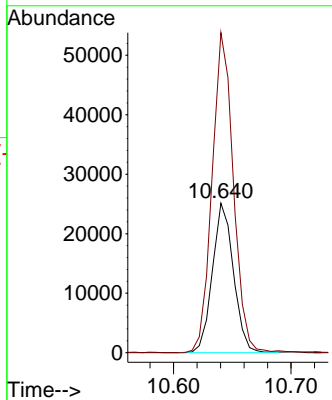
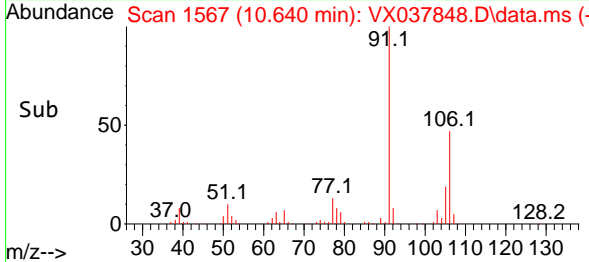


#69
 o-Xylene
 Concen: 5.645 ug/l
 RT: 10.640 min Scan# 1567
 Delta R.T. -0.006 min
 Lab File: VX037848.D
 Acq: 21 Sep 2023 12:31

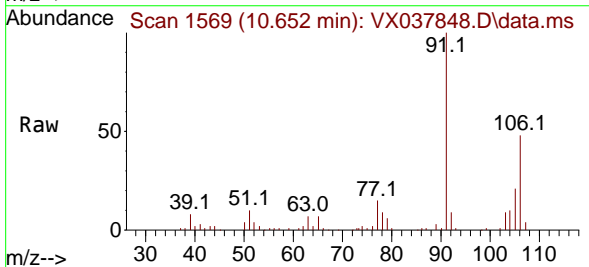
Instrument : MSVOA_X
 ClientSampleId :



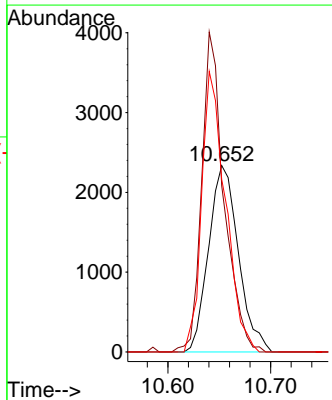
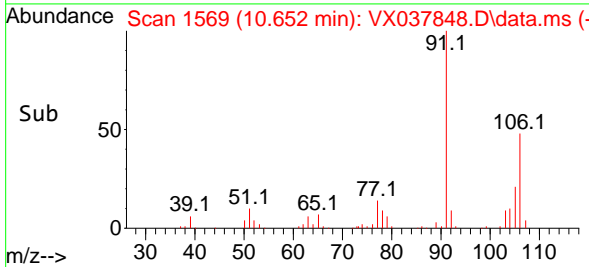
Tgt Ion:106 Resp: 31390
 Ion Ratio Lower Upper
 106 100
 91 217.1 108.9 326.8

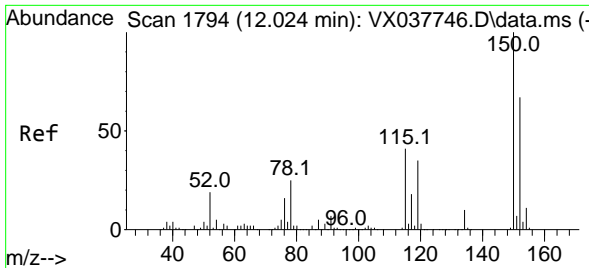


#70
 Styrene
 Concen: 0.526 ug/l
 RT: 10.652 min Scan# 1569
 Delta R.T. -0.006 min
 Lab File: VX037848.D
 Acq: 21 Sep 2023 12:31



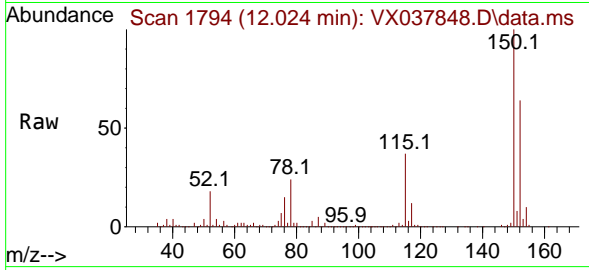
Tgt Ion:104 Resp: 4698
 Ion Ratio Lower Upper
 104 100
 78 128.7 43.6 65.4#
 103 120.6 43.6 65.4#



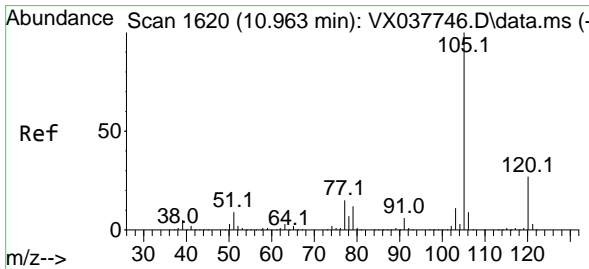
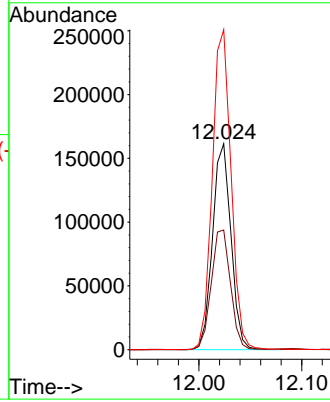
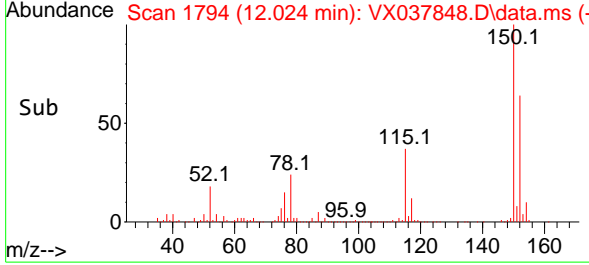


#72
 1,4-Dichlorobenzene-d4
 Concen: 50.000 ug/l
 RT: 12.024 min Scan# 11
 Delta R.T. -0.000 min
 Lab File: VX037848.D
 Acq: 21 Sep 2023 12:31

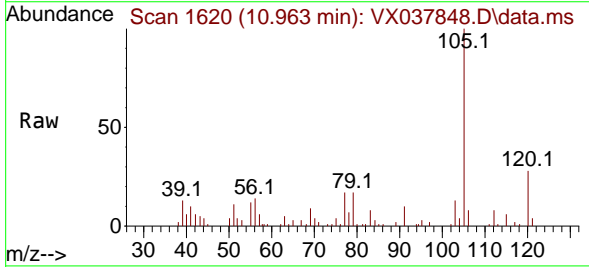
Instrument :
 MSVOA_X
 ClientSampleId :



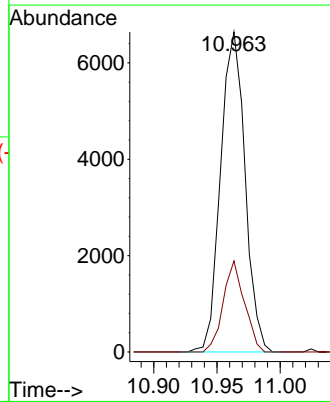
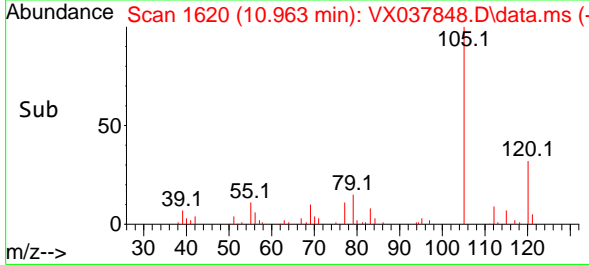
Tgt Ion:152 Resp: 200759
 Ion Ratio Lower Upper
 152 100
 115 60.5 43.3 129.9
 150 158.1 0.0 345.0

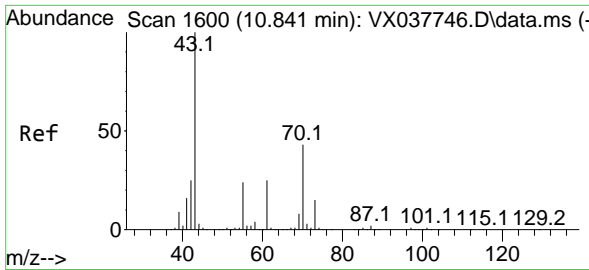


#73
 Isopropylbenzene
 Concen: 0.605 ug/l
 RT: 10.963 min Scan# 1620
 Delta R.T. -0.000 min
 Lab File: VX037848.D
 Acq: 21 Sep 2023 12:31



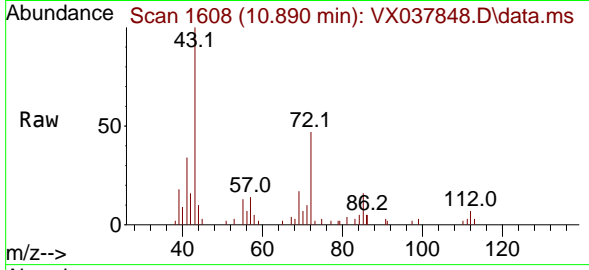
Tgt Ion:105 Resp: 8910
 Ion Ratio Lower Upper
 105 100
 120 24.7 12.9 38.6





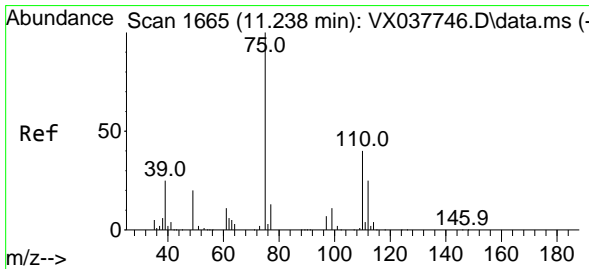
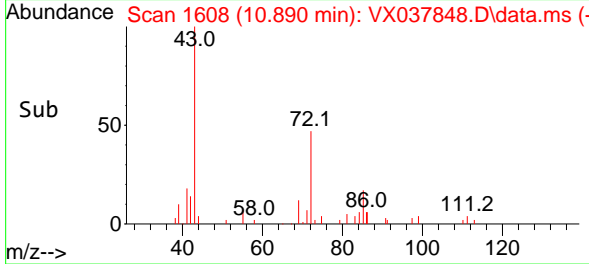
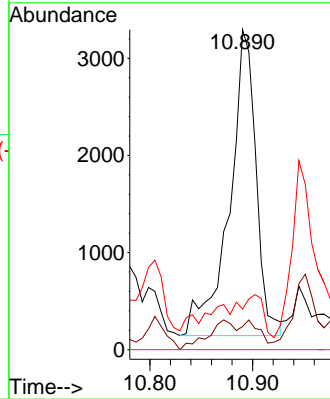
#74
 N-amy1 acetate
 Concen: 0.952 ug/l
 RT: 10.890 min Scan# 1608
 Delta R.T. 0.043 min
 Lab File: VX037848.D
 Acq: 21 Sep 2023 12:31

Instrument : MSVOA_X
 ClientSampleId :



Tgt Ion: 43 Resp: 5680

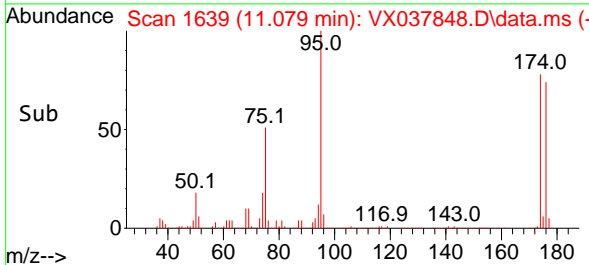
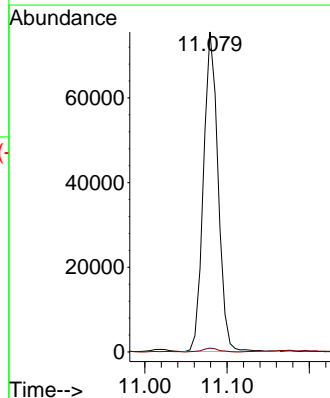
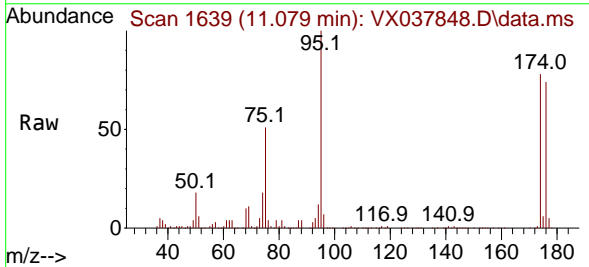
Ion	Ratio	Lower	Upper
43	100		
70	0.0	32.9	49.3#
55	8.4	19.3	28.9#
61	0.0	18.8	28.2#

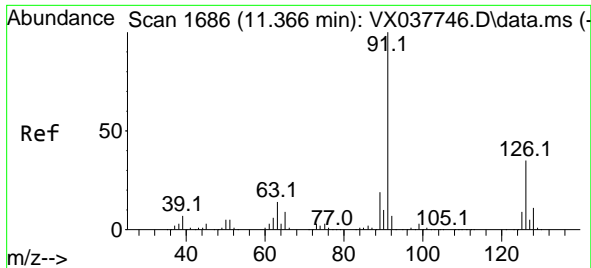


#76
 1,2,3-Trichloropropane
 Concen: 20.045 ug/l
 RT: 11.079 min Scan# 1639
 Delta R.T. -0.159 min
 Lab File: VX037848.D
 Acq: 21 Sep 2023 12:31

Tgt Ion: 75 Resp: 93075

Ion	Ratio	Lower	Upper
75	100		
77	1.4	19.1	57.5#

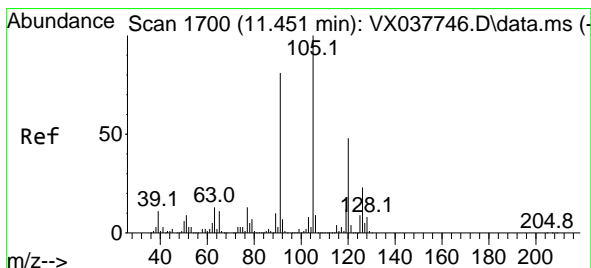
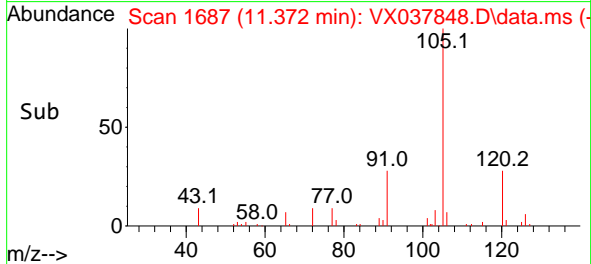
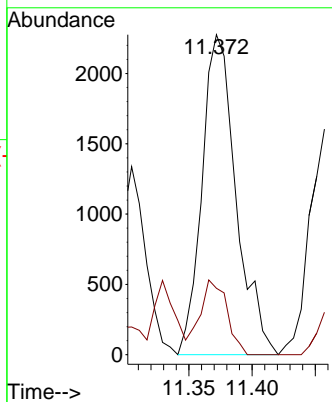
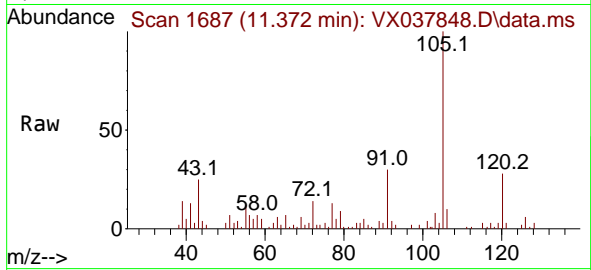




#79
 2-Chlorotoluene
 Concen: 0.417 ug/l
 RT: 11.372 min Scan# 1
 Delta R.T. 0.006 min
 Lab File: VX037848.D
 Acq: 21 Sep 2023 12:31

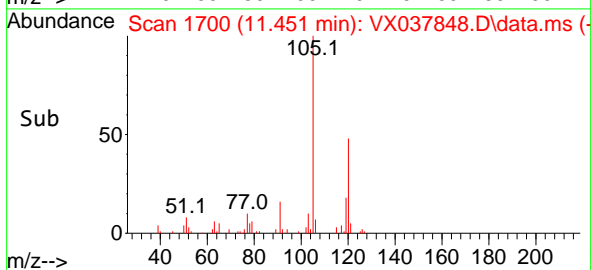
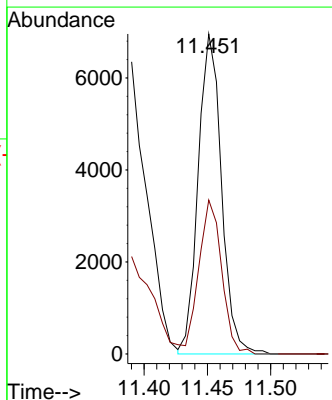
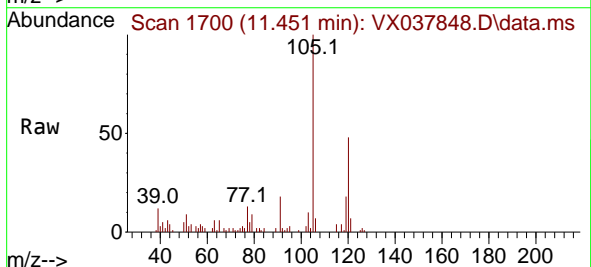
Instrument :
 MSVOA_X
 ClientSampleId :

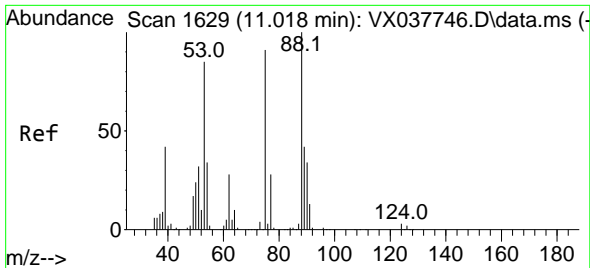
Tgt Ion: 91 Resp: 4273
 Ion Ratio Lower Upper
 91 100
 126 18.4 16.3 48.8



#80
 1,3,5-Trimethylbenzene
 Concen: 0.717 ug/l
 RT: 11.451 min Scan# 1700
 Delta R.T. -0.000 min
 Lab File: VX037848.D
 Acq: 21 Sep 2023 12:31

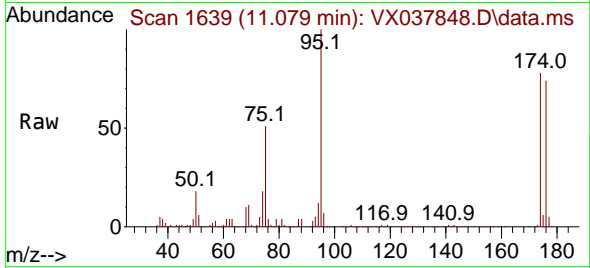
Tgt Ion: 105 Resp: 8914
 Ion Ratio Lower Upper
 105 100
 120 46.8 24.1 72.3



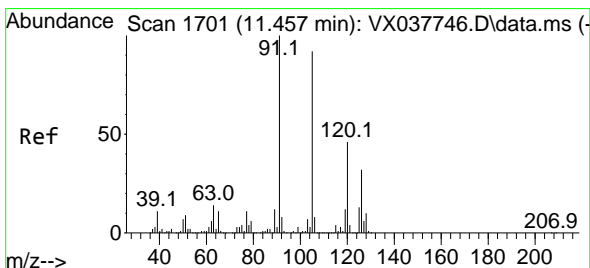
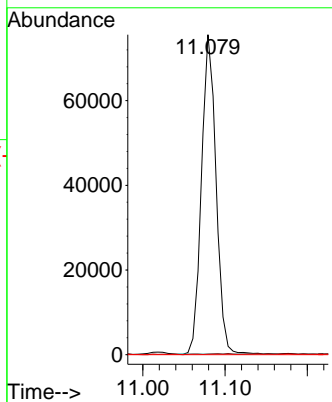
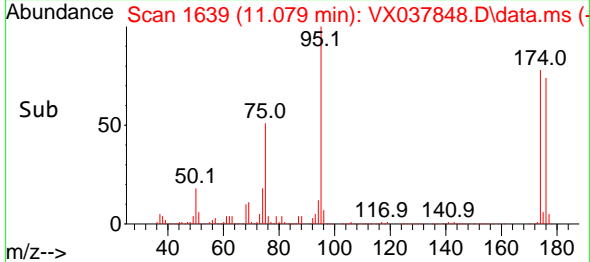


#81
 trans-1,4-Dichloro-2-butene
 Concen: 64.211 ug/l
 RT: 11.079 min Scan# 1687
 Delta R.T. 0.061 min
 Lab File: VX037848.D
 Acq: 21 Sep 2023 12:31

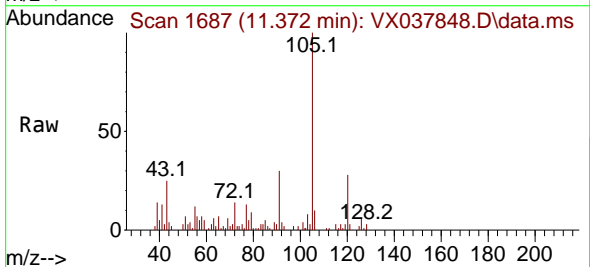
Instrument : MSVOA_X
 ClientSampleId :



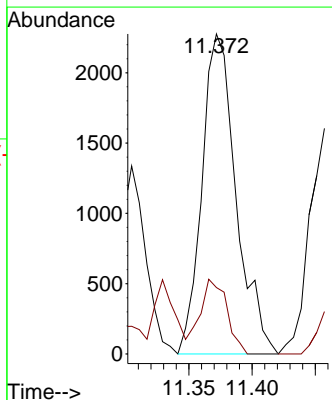
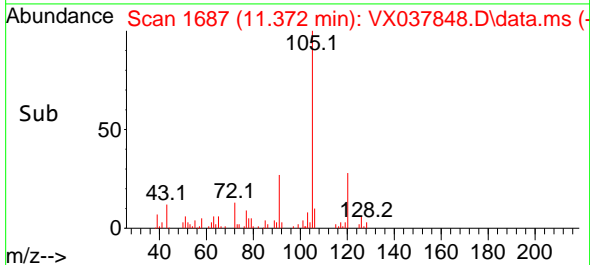
Tgt Ion: 75 Resp: 93075
 Ion Ratio Lower Upper
 75 100
 53 0.2 90.5 135.7#
 89 0.0 36.9 55.3#

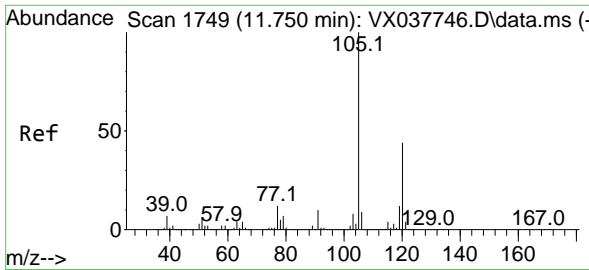


#82
 4-Chlorotoluene
 Concen: 0.370 ug/l
 RT: 11.372 min Scan# 1687
 Delta R.T. -0.086 min
 Lab File: VX037848.D
 Acq: 21 Sep 2023 12:31



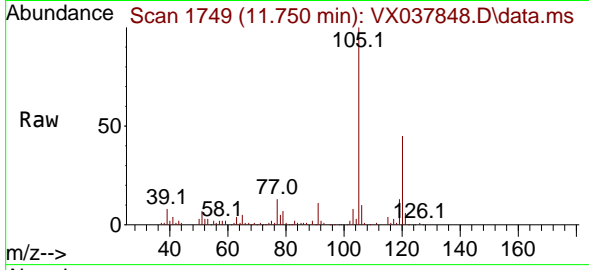
Tgt Ion: 91 Resp: 4273
 Ion Ratio Lower Upper
 91 100
 126 18.4 14.2 42.6



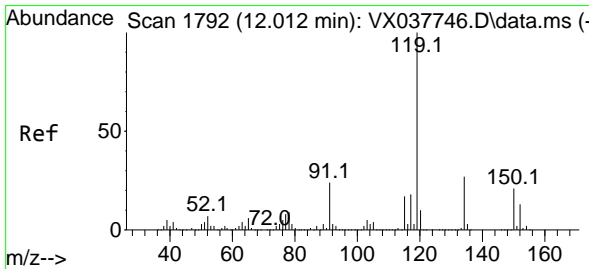
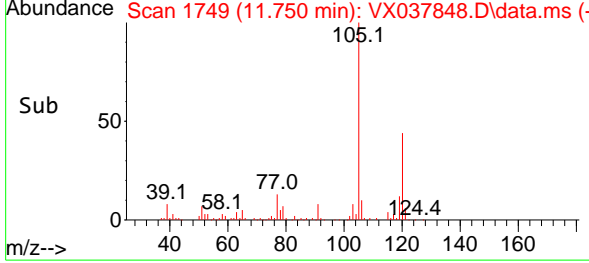
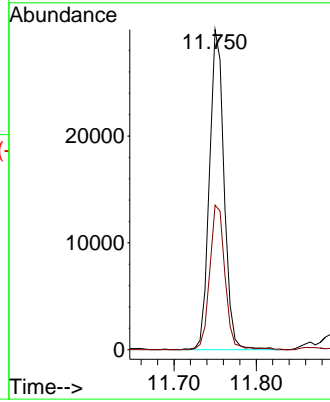


#84
 1,2,4-Trimethylbenzene
 Concen: 2.994 ug/l
 RT: 11.750 min Scan# 1749
 Delta R.T. -0.006 min
 Lab File: VX037848.D
 Acq: 21 Sep 2023 12:31

Instrument : MSVOA_X
 ClientSampleId :

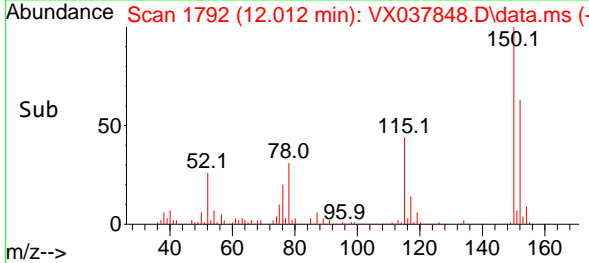
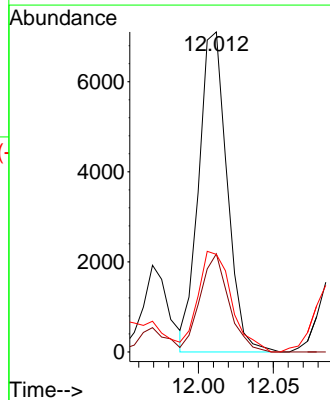
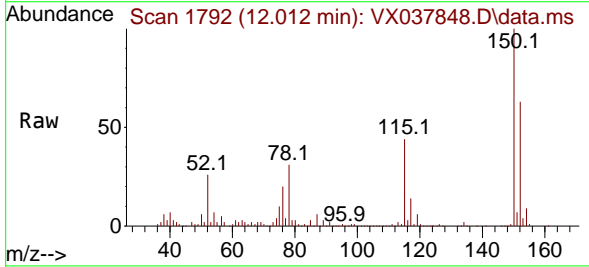


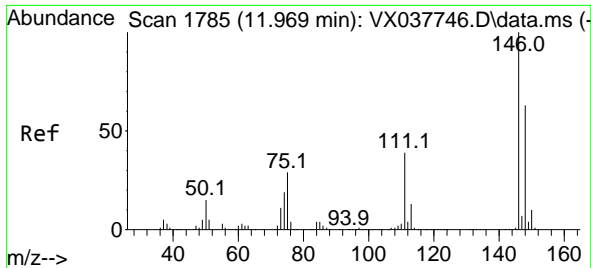
Tgt Ion:105 Resp: 37057
 Ion Ratio Lower Upper
 105 100
 120 47.1 21.2 63.6



#86
 p-Isopropyltoluene
 Concen: 0.737 ug/l
 RT: 12.012 min Scan# 1792
 Delta R.T. -0.000 min
 Lab File: VX037848.D
 Acq: 21 Sep 2023 12:31

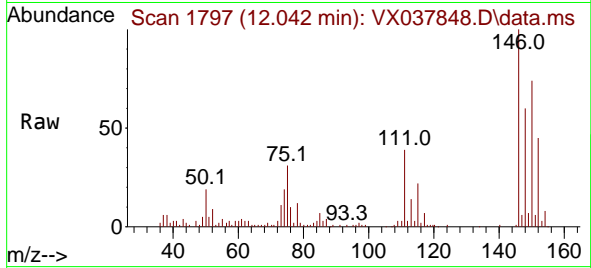
Tgt Ion:119 Resp: 9366
 Ion Ratio Lower Upper
 119 100
 134 31.2 12.8 38.3
 91 37.3 13.1 39.3



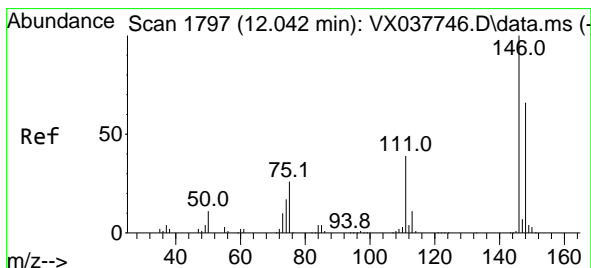
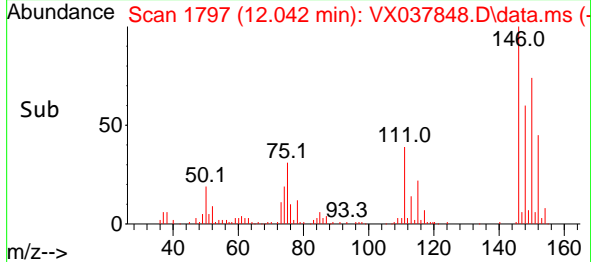
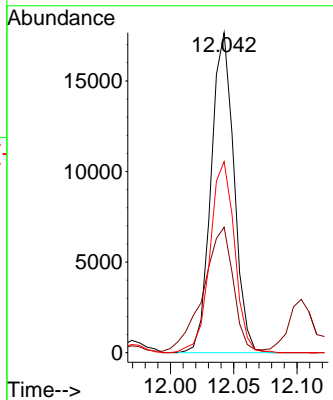


#87
 1,3-Dichlorobenzene
 Concen: 3.264 ug/l
 RT: 12.042 min Scan# 1797
 Delta R.T. 0.073 min
 Lab File: VX037848.D
 Acq: 21 Sep 2023 12:31

Instrument : MSVOA_X
 ClientSampleId :

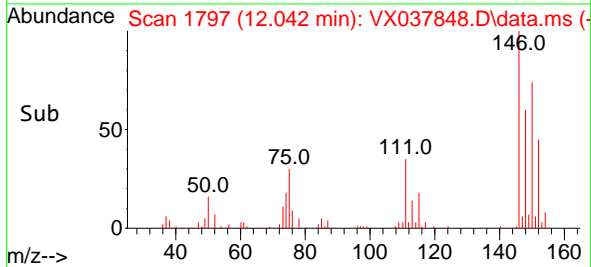
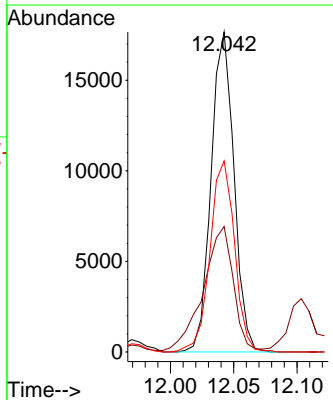
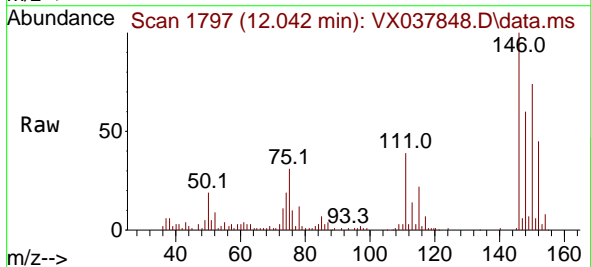


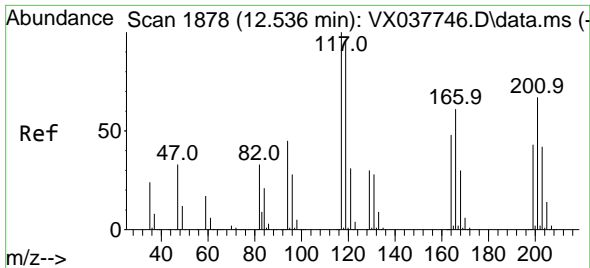
Tgt Ion:146 Resp: 22182
 Ion Ratio Lower Upper
 146 100
 111 52.1 22.1 66.1
 148 64.2 31.8 95.3



#88
 1,4-Dichlorobenzene
 Concen: 3.190 ug/l
 RT: 12.042 min Scan# 1797
 Delta R.T. -0.000 min
 Lab File: VX037848.D
 Acq: 21 Sep 2023 12:31

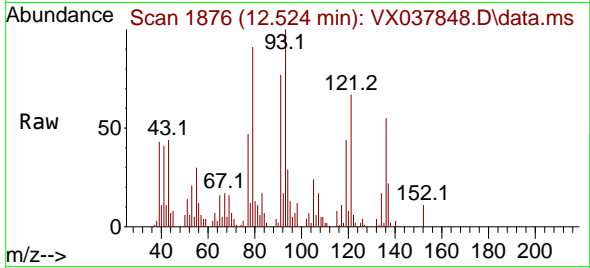
Tgt Ion:146 Resp: 22182
 Ion Ratio Lower Upper
 146 100
 111 52.1 21.3 63.7
 148 64.2 31.8 95.4



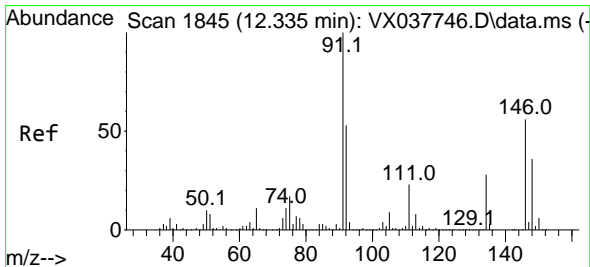
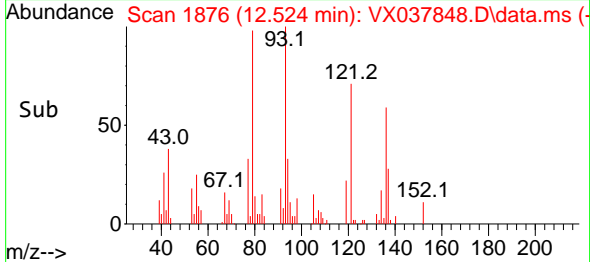
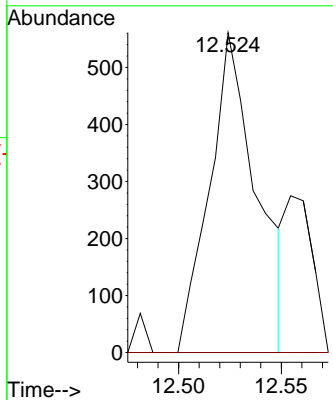


#90
 Hexachloroethane
 Concen: 0.414 ug/l
 RT: 12.524 min Scan# 1876
 Delta R.T. -0.012 min
 Lab File: VX037848.D
 Acq: 21 Sep 2023 12:31

Instrument : MSVOA_X
 ClientSampleId :

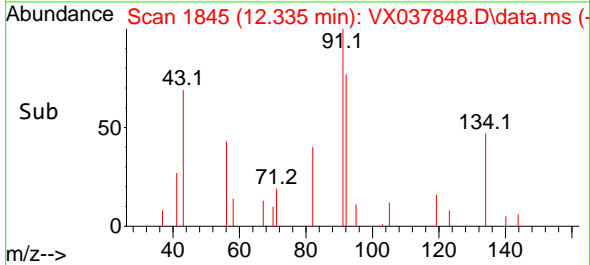
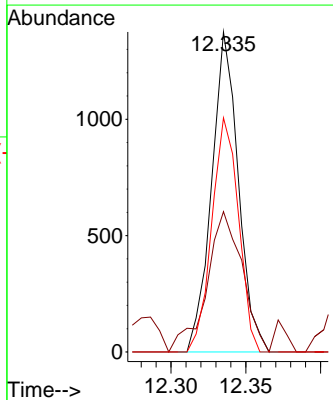
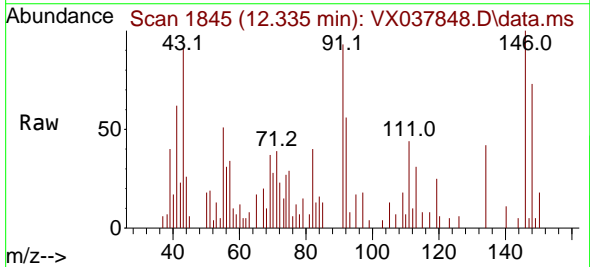


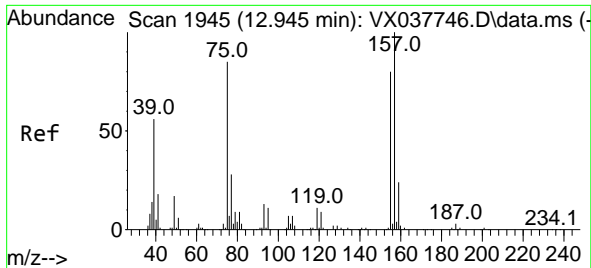
Tgt Ion:117 Resp: 892
 Ion Ratio Lower Upper
 117 100
 201 0.0 32.9 98.6#



#91
 1,2-Dichlorobenzene
 Concen: 0.246 ug/l
 RT: 12.335 min Scan# 1845
 Delta R.T. -0.000 min
 Lab File: VX037848.D
 Acq: 21 Sep 2023 12:31

Tgt Ion:146 Resp: 1706
 Ion Ratio Lower Upper
 146 100
 111 58.2 22.4 67.0
 148 73.1 31.6 95.0

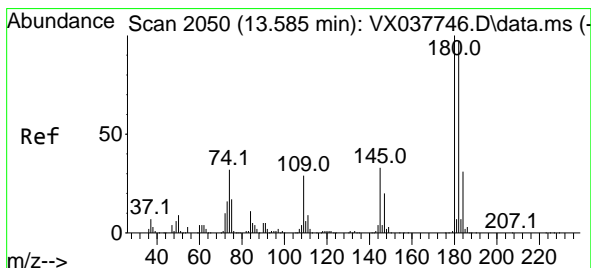
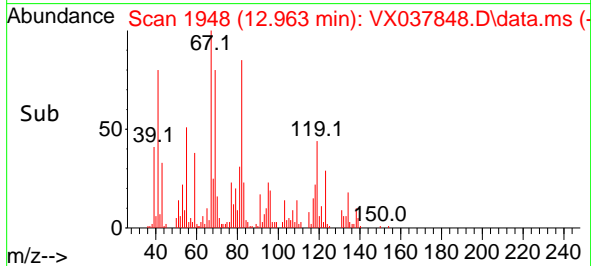
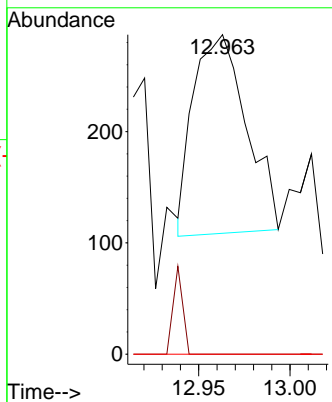
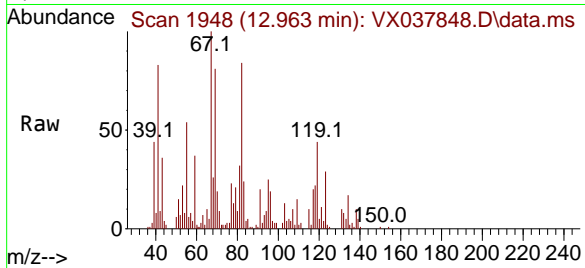




#92
 1,2-Dibromo-3-Chloropropane
 Concen: 0.350 ug/l
 RT: 12.963 min Scan# 1948
 Delta R.T. 0.024 min
 Lab File: VX037848.D
 Acq: 21 Sep 2023 12:31

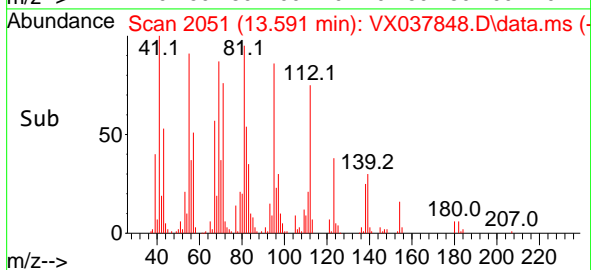
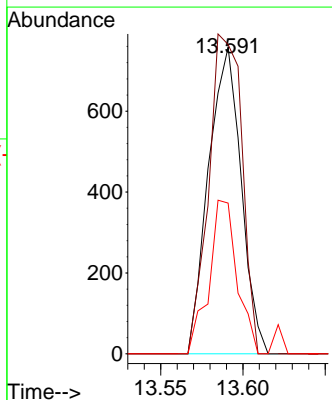
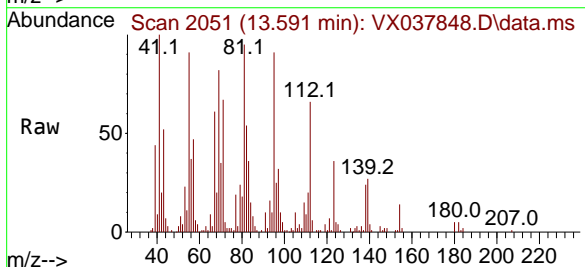
Instrument : MSVOA_X
 ClientSampleId :

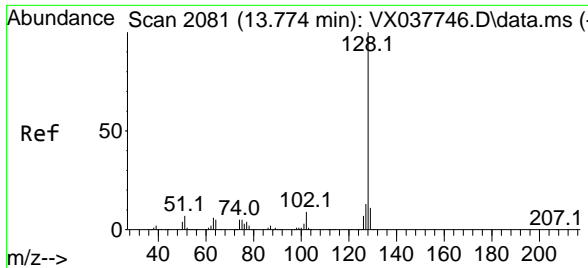
Tgt Ion	Resp	Lower	Upper
75	100		
155	0.0	36.1	108.5#
157	0.0	44.9	134.7#



#93
 1,2,4-Trichlorobenzene
 Concen: 0.255 ug/l
 RT: 13.591 min Scan# 2051
 Delta R.T. -0.000 min
 Lab File: VX037848.D
 Acq: 21 Sep 2023 12:31

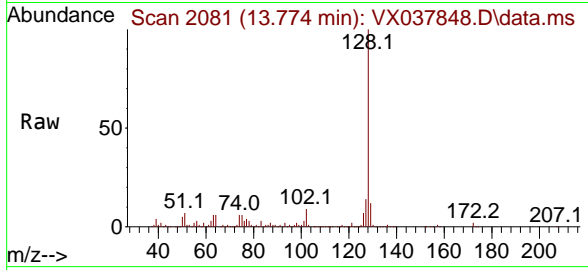
Tgt Ion	Resp	Lower	Upper
180	100		
182	106.4	48.3	144.8
145	43.1	18.0	54.0





#95
 Naphthalene
 Concen: 9.190 ug/l
 RT: 13.774 min Scan# 20
 Delta R.T. -0.006 min
 Lab File: VX037848.D
 Acq: 21 Sep 2023 12:31

Instrument : MSVOA_X
 ClientSampleId :



Tgt Ion:128 Resp: 127023

Ion	Ratio	Lower	Upper
128	100		
127	13.1	10.3	15.5
129	11.3	8.8	13.2

