

Data Path : Z:\voasrv\HPCHEM1\MSVOA_X\Data\VX092123\
 Data File : VX037848.D
 Acq On : 21 Sep 2023 12:31
 Operator : JC/MD
 Sample : 04554-01
 Misc : 5.0mL/MSVOA_X/WATER
 ALS Vial : 9 Sample Multiplier: 1

Instrument :
 MSVOA_X
 ClientSampleId :
 230920054-02-VOA

Integration Parameters: RTEINT.P

Integrator: RTE
 Smoothing : ON
 Sampling : 1
 Start Thrs : 0.2
 Stop Thrs : 0

Filtering: 5
 Min Area: 3 % of largest Peak
 Max Peaks: 100
 Peak Location: TOP

If leading or trailing edge < 100 prefer < Baseline drop else tangent >
 Peak separation: 5

Method : Z:\voasrv\HPCHEM1\MSVOA_X\Method\82X091523W.M
 Title : SW846 8260

Signal : TIC: VX037848.D\data.ms

| peak # | R.T. min | first scan | max scan | last scan | PK TY | peak height | corr. area | corr. % max. | % of total |
|--------|----------|------------|----------|-----------|-------|-------------|------------|--------------|------------|
| 1 | 1.258 | 25 | 28 | 52 | rVB | 212893 | 457065 | 7.00% | 1.673% |
| 2 | 2.386 | 206 | 213 | 221 | rBV2 | 50280 | 103659 | 1.59% | 0.380% |
| 3 | 2.947 | 294 | 305 | 325 | rBV | 2388063 | 5253713 | 80.50% | 19.236% |
| 4 | 4.568 | 552 | 571 | 584 | rBV | 2052145 | 6526299 | 100.00% | 23.895% |
| 5 | 5.001 | 629 | 642 | 665 | rBV | 697031 | 2144260 | 32.86% | 7.851% |
| 6 | 5.385 | 695 | 705 | 721 | rBV | 139893 | 411728 | 6.31% | 1.507% |
| 7 | 5.550 | 721 | 732 | 750 | rVB | 244166 | 697905 | 10.69% | 2.555% |
| 8 | 5.958 | 789 | 799 | 807 | rBV | 155607 | 410599 | 6.29% | 1.503% |
| 9 | 6.043 | 807 | 813 | 819 | rVB | 27538 | 69497 | 1.06% | 0.254% |
| 10 | 6.208 | 826 | 840 | 855 | rVB3 | 69229 | 361500 | 5.54% | 1.324% |
| 11 | 6.763 | 921 | 931 | 946 | rBV | 373085 | 899459 | 13.78% | 3.293% |
| 12 | 8.647 | 1233 | 1240 | 1247 | rBV | 782314 | 1249128 | 19.14% | 4.574% |
| 13 | 8.720 | 1247 | 1252 | 1261 | rVV2 | 71510 | 125022 | 1.92% | 0.458% |
| 14 | 8.805 | 1261 | 1266 | 1278 | rVB | 58172 | 101887 | 1.56% | 0.373% |
| 15 | 9.378 | 1352 | 1360 | 1367 | rBV | 173216 | 263698 | 4.04% | 0.966% |
| 16 | 10.055 | 1460 | 1471 | 1483 | rBV | 863014 | 1287517 | 19.73% | 4.714% |
| 17 | 10.195 | 1490 | 1494 | 1506 | rBV2 | 58672 | 121348 | 1.86% | 0.444% |
| 18 | 10.299 | 1506 | 1511 | 1518 | rVV | 200974 | 294240 | 4.51% | 1.077% |
| 19 | 10.640 | 1562 | 1567 | 1579 | rVB | 148871 | 200355 | 3.07% | 0.734% |
| 20 | 11.079 | 1633 | 1639 | 1645 | rBV | 720315 | 932330 | 14.29% | 3.414% |
| 21 | 11.378 | 1682 | 1688 | 1695 | rVV3 | 34495 | 67796 | 1.04% | 0.248% |
| 22 | 11.506 | 1704 | 1709 | 1715 | rBV | 58351 | 74217 | 1.14% | 0.272% |
| 23 | 11.750 | 1745 | 1749 | 1754 | rVB | 85167 | 104803 | 1.61% | 0.384% |
| 24 | 11.884 | 1763 | 1771 | 1778 | rBV4 | 86375 | 139932 | 2.14% | 0.512% |
| 25 | 12.024 | 1787 | 1794 | 1801 | rVB | 952790 | 1336521 | 20.48% | 4.894% |
| 26 | 12.097 | 1801 | 1806 | 1810 | rBV2 | 69864 | 132253 | 2.03% | 0.484% |
| 27 | 12.244 | 1824 | 1830 | 1834 | rBV | 65161 | 90654 | 1.39% | 0.332% |
| 28 | 12.524 | 1872 | 1876 | 1882 | rBV5 | 44480 | 82025 | 1.26% | 0.300% |
| 29 | 12.579 | 1882 | 1885 | 1888 | rVB | 62333 | 66870 | 1.02% | 0.245% |
| 30 | 12.762 | 1908 | 1915 | 1920 | rVB2 | 92425 | 143840 | 2.20% | 0.527% |
| 31 | 12.902 | 1927 | 1938 | 1943 | rBV | 878375 | 1191210 | 18.25% | 4.361% |
| 32 | 12.963 | 1944 | 1948 | 1958 | rVB3 | 99677 | 165268 | 2.53% | 0.605% |
| 33 | 13.225 | 1985 | 1991 | 1995 | rVB5 | 31513 | 70242 | 1.08% | 0.257% |
| 34 | 13.286 | 1995 | 2001 | 2006 | rVB4 | 43932 | 69667 | 1.07% | 0.255% |
| 35 | 13.384 | 2006 | 2017 | 2020 | rBV | 48114 | 88522 | 1.36% | 0.324% |
| 36 | 13.475 | 2027 | 2032 | 2035 | rBV2 | 206543 | 318685 | 4.88% | 1.167% |

Data Path : Z:\voasrv\HPCHEM1\MSVOA_X\Data\VX092123\
Data File : VX037848.D
Acq On : 21 Sep 2023 12:31
Operator : JC/MD
Sample : 04554-01
Misc : 5.0mL/MSVOA_X/WATER
ALS Vial : 9 Sample Multiplier: 1

Instrument :
MSVOA_X
ClientSampleId :
230920054-02-VOA

Integration Parameters: RTEINT.P
Integrator: RTE
Smoothing : ON Filtering: 5
Sampling : 1 Min Area: 3 % of largest Peak
Start Thrs: 0.2 Max Peaks: 100
Stop Thrs : 0 Peak Location: TOP

If leading or trailing edge < 100 prefer < Baseline drop else tangent >
Peak separation: 5

Method : Z:\voasrv\HPCHEM1\MSVOA_X\Method\82X091523W.M
Title : SW846 8260

| | | | | | | | | | |
|----|--------|------|------|------|------|--------|--------|-------|--------|
| 37 | 13.512 | 2035 | 2038 | 2045 | rVB | 260912 | 332500 | 5.09% | 1.217% |
| 38 | 13.591 | 2045 | 2051 | 2060 | rBV2 | 209873 | 316261 | 4.85% | 1.158% |
| 39 | 13.774 | 2076 | 2081 | 2089 | rVB | 240624 | 316572 | 4.85% | 1.159% |
| 40 | 13.932 | 2101 | 2107 | 2119 | rVB4 | 62345 | 173240 | 2.65% | 0.634% |
| 41 | 14.097 | 2127 | 2134 | 2140 | rBV2 | 75094 | 119746 | 1.83% | 0.438% |

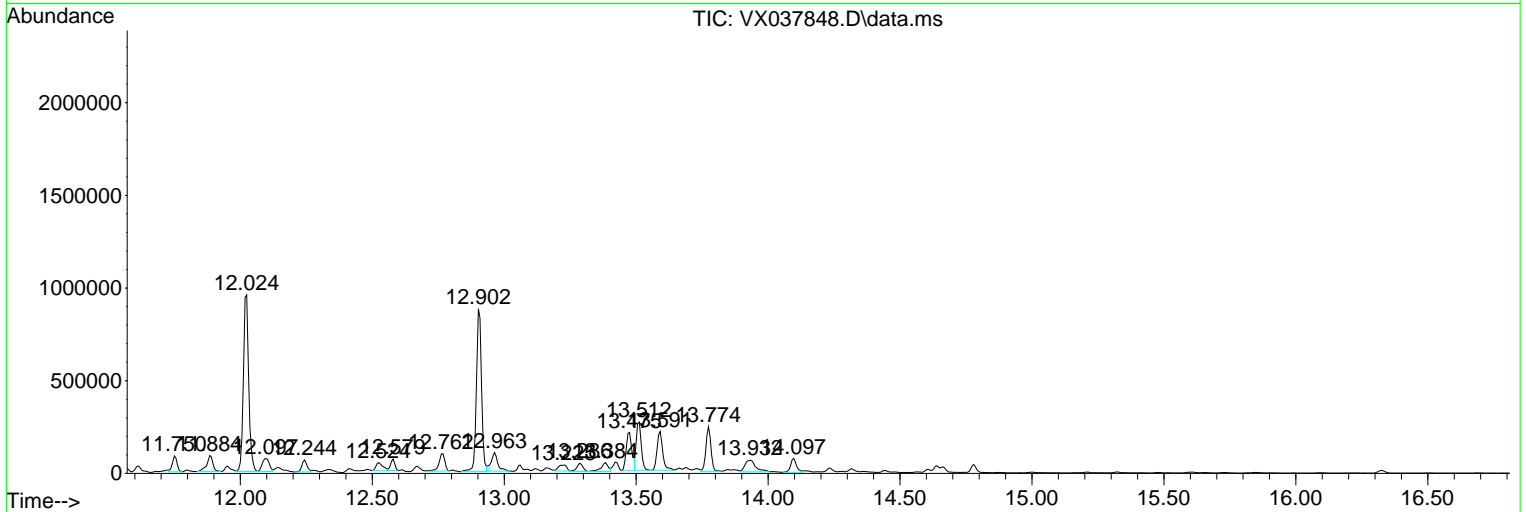
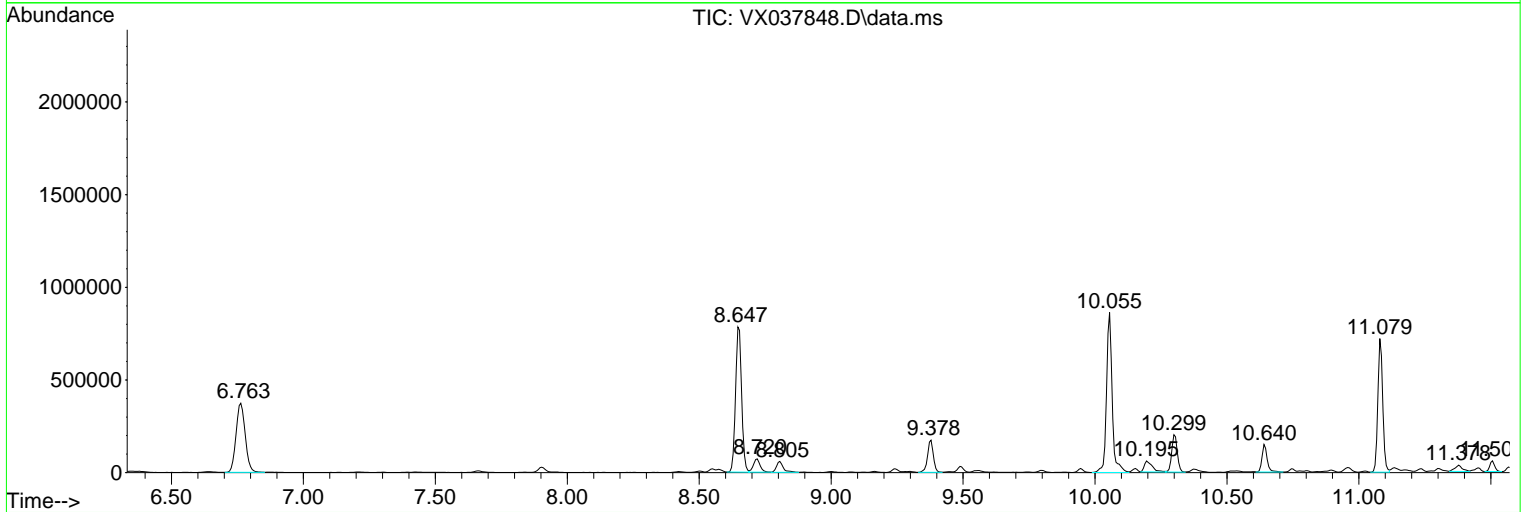
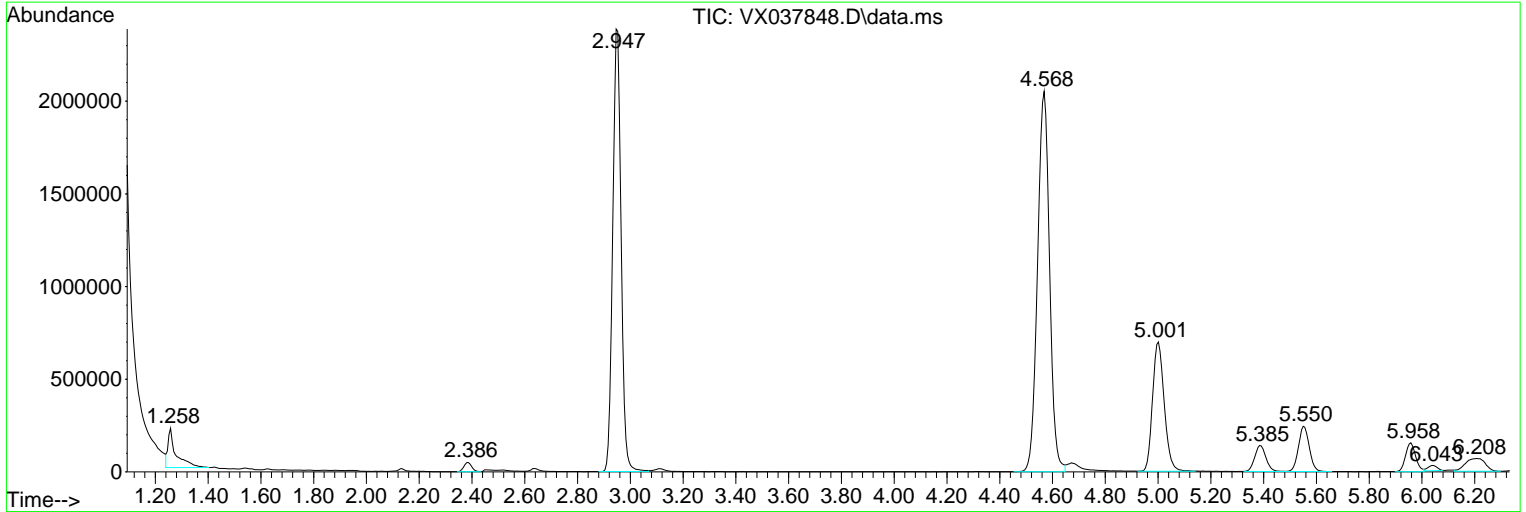
Sum of corrected areas: 27312033

Data Path : Z:\voasrv\HPCHEM1\MSVOA_X\Data\VX092123\
 Data File : VX037848.D
 Acq On : 21 Sep 2023 12:31
 Operator : JC/MD
 Sample : 04554-01
 Misc : 5.0mL/MSVOA_X/WATER
 ALS Vial : 9 Sample Multiplier: 1

Instrument :
 MSVOA_X
 ClientSampleId :
 230920054-02-VOA

Quant Method : Z:\voasrv\HPCHEM1\MSVOA_X\Method\82X091523W.M
 Quant Title : SW846 8260

TIC Library : C:\Database\NIST20.L
 TIC Integration Parameters: LSCINT.P



Data Path : Z:\voasrv\HPCHEM1\MSVOA_X\Data\VX092123\
 Data File : VX037848.D
 Acq On : 21 Sep 2023 12:31
 Operator : JC/MD
 Sample : 04554-01
 Misc : 5.0mL/MSVOA_X/WATER
 ALS Vial : 9 Sample Multiplier: 1

Instrument :
 MSVOA_X
 ClientSampleId :
 230920054-02-VOA

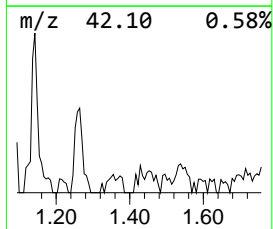
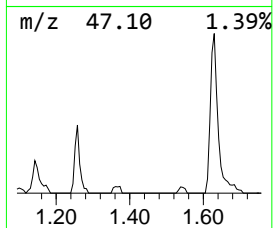
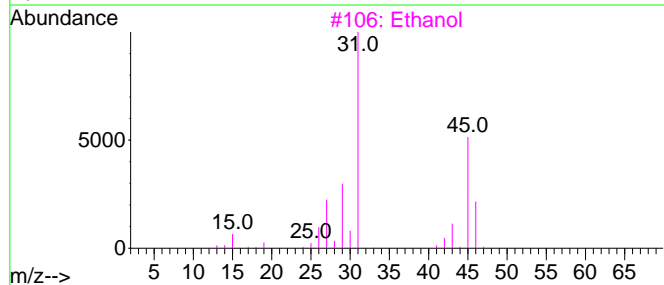
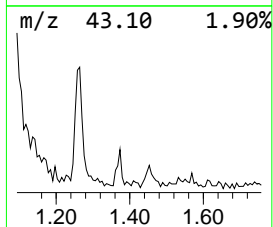
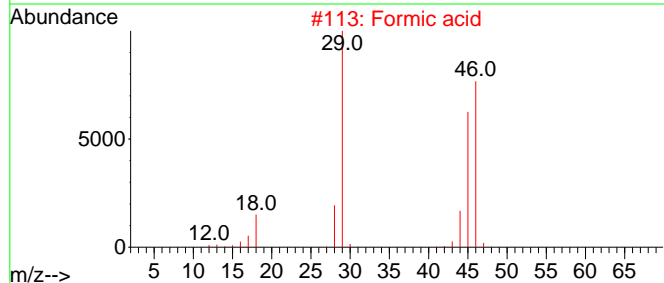
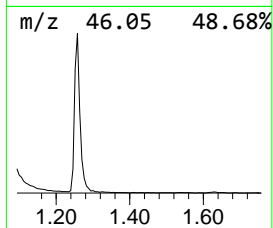
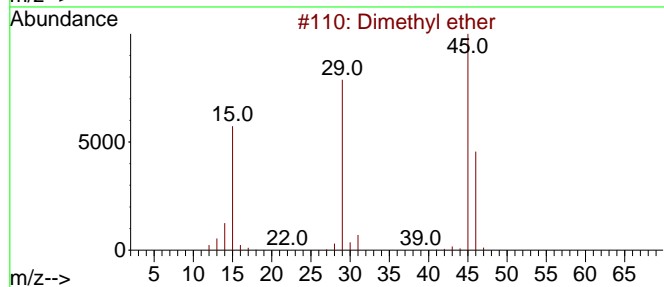
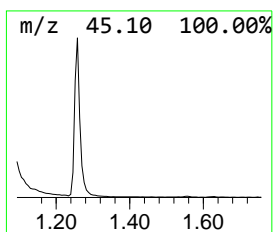
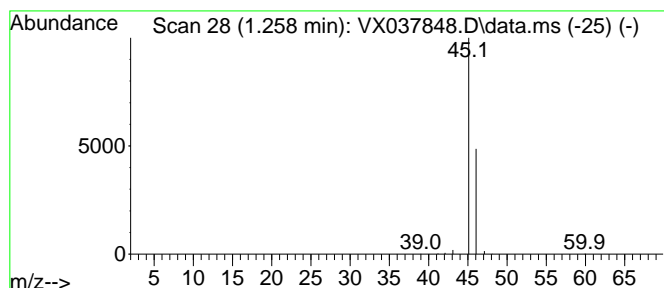
Quant Method : Z:\voasrv\HPCHEM1\MSVOA_X\Method\82X091523W.M
 Quant Title : SW846 8260

TIC Library : C:\Database\NIST20.L
 TIC Integration Parameters: LSCINT.P

 Peak Number 1 Dimethyl ether Concentration Rank 2

| R.T. | EstConc | Area | Relative to ISTD | R.T. |
|-------|------------|--------|--------------------|-------|
| 1.258 | 32.75 ug/l | 457065 | Pentafluorobenzene | 5.550 |

| Hit# | of 5 | Tentative ID | MW | MolForm | CAS# | Qual |
|------|------|-------------------|----|---------|-------------|------|
| 1 | | Dimethyl ether | 46 | C2H6O | 000115-10-6 | 74 |
| 2 | | Formic acid | 46 | CH2O2 | 000064-18-6 | 7 |
| 3 | | Ethanol | 46 | C2H6O | 000064-17-5 | 7 |
| 4 | | Oxalic acid | 90 | C2H2O4 | 000144-62-7 | 4 |
| 5 | | Methane, nitroso- | 45 | CH3NO | 000865-40-7 | 3 |



Data Path : Z:\voasrv\HPCHEM1\MSVOA_X\Data\VX092123\
 Data File : VX037848.D
 Acq On : 21 Sep 2023 12:31
 Operator : JC/MD
 Sample : 04554-01
 Misc : 5.0mL/MSVOA_X/WATER
 ALS Vial : 9 Sample Multiplier: 1

Instrument :
 MSVOA_X
 ClientSampleId :
 230920054-02-VOA

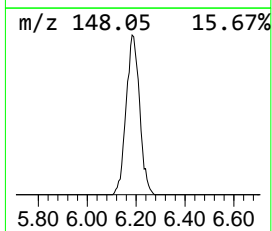
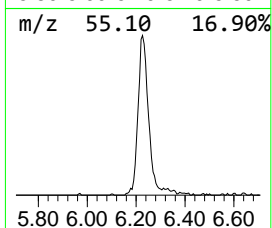
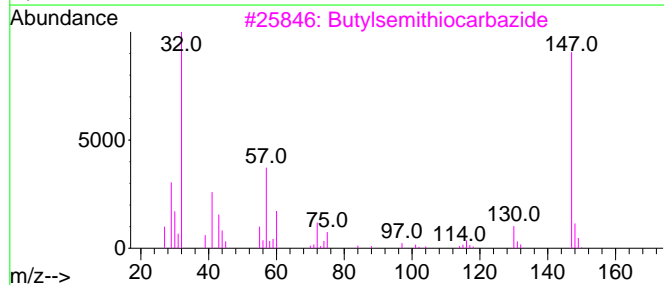
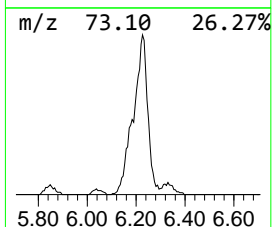
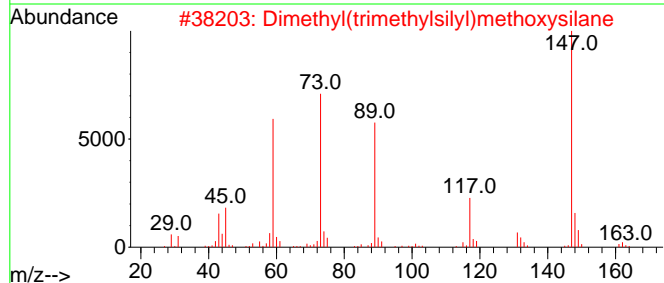
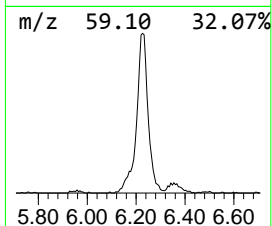
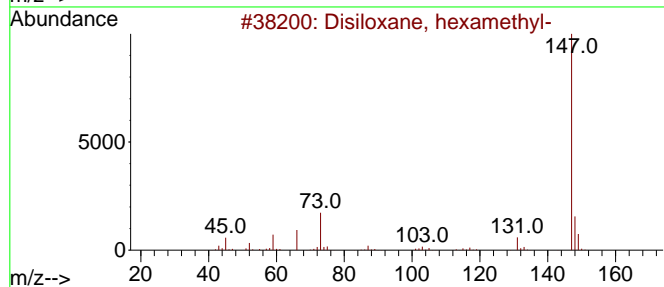
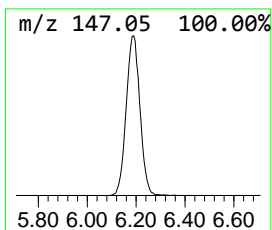
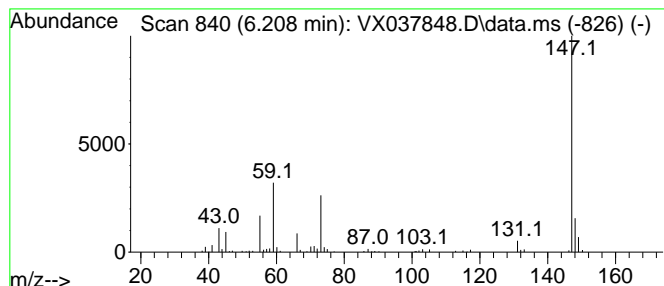
Quant Method : Z:\voasrv\HPCHEM1\MSVOA_X\Method\82X091523W.M
 Quant Title : SW846 8260

TIC Library : C:\Database\NIST20.L
 TIC Integration Parameters: LSCINT.P

 Peak Number 2 Disiloxane, hexamethyl- Concentration Rank 3

| R.T. | EstConc | Area | Relative to ISTD | R.T. |
|-------|------------|--------|---------------------|-------|
| 6.208 | 20.10 ug/l | 361500 | 1,4-Difluorobenzene | 6.763 |

| Hit# | of | 5 | Tentative ID | MW | MolForm | CAS# | Qual |
|------|----|---|-------------------------------------|-----|--------------|--------------|------|
| 1 | | | Disiloxane, hexamethyl- | 162 | C6H18OSi2 | 000107-46-0 | 64 |
| 2 | | | Dimethyl(trimethylsilyl)methoxys... | 162 | C6H18OSi2 | 018107-29-4 | 56 |
| 3 | | | Butylsemithiocarbazide | 147 | C5H13N3S | 006610-31-7 | 47 |
| 4 | | | Benzohydroxamic acid, 2TMS deriv... | 281 | C13H23NO2Si2 | 1000378-21-8 | 39 |
| 5 | | | 1-Pentamethyldisilyloxy-10-undecene | 300 | C16H36OSi2 | 1010216-85-2 | 38 |



Data Path : Z:\voasrv\HPCHEM1\MSVOA_X\Data\VX092123\
 Data File : VX037848.D
 Acq On : 21 Sep 2023 12:31
 Operator : JC/MD
 Sample : 04554-01
 Misc : 5.0mL/MSVOA_X/WATER
 ALS Vial : 9 Sample Multiplier: 1

Instrument :
 MSVOA_X
 ClientSampleId :
 230920054-02-VOA

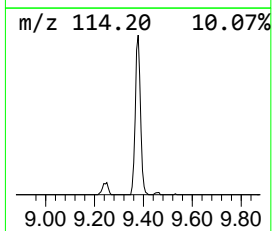
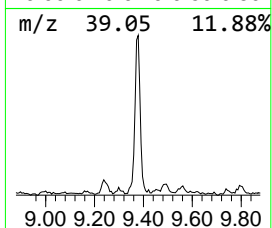
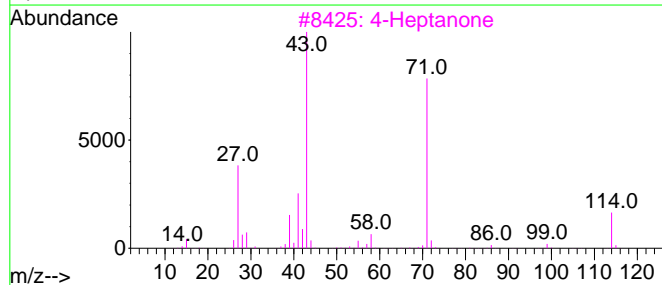
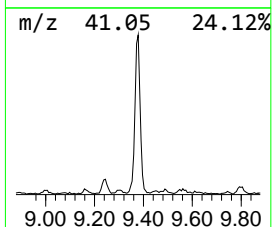
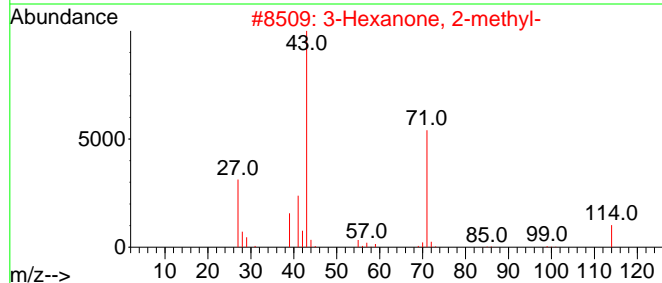
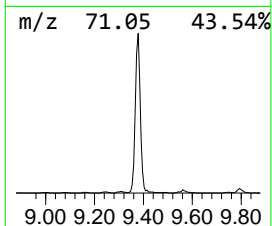
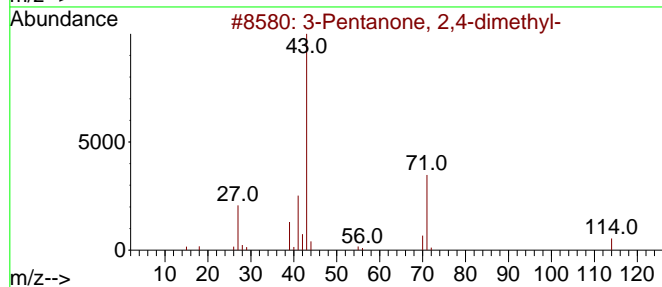
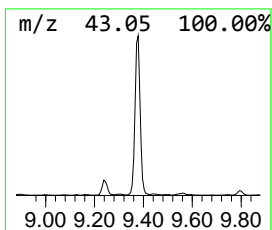
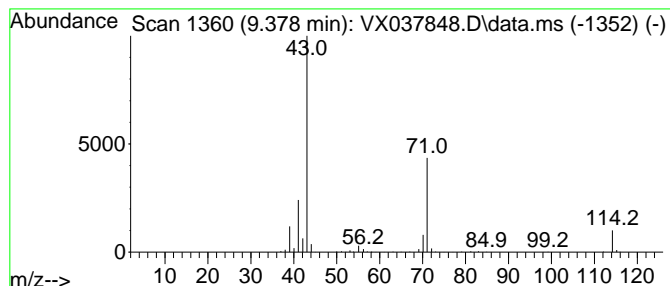
Quant Method : Z:\voasrv\HPCHEM1\MSVOA_X\Method\82X091523W.M
 Quant Title : SW846 8260

TIC Library : C:\Database\NIST20.L
 TIC Integration Parameters: LSCINT.P

 Peak Number 3 3-Pentanone, 2,4-dimethyl- Concentration Rank 7

| R.T. | EstConc | Area | Relative to ISTD | R.T. |
|-------|------------|--------|------------------|--------|
| 9.378 | 10.24 ug/l | 263698 | Chlorobenzene-d5 | 10.055 |

| Hit# | of | 5 | Tentative ID | MW | MolForm | CAS# | Qual |
|------|----|---|----------------------------|-----|---------|-------------|------|
| 1 | | | 3-Pentanone, 2,4-dimethyl- | 114 | C7H14O | 000565-80-0 | 90 |
| 2 | | | 3-Hexanone, 2-methyl- | 114 | C7H14O | 007379-12-6 | 86 |
| 3 | | | 4-Heptanone | 114 | C7H14O | 000123-19-3 | 59 |
| 4 | | | 2,3-Hexanedione | 114 | C6H10O2 | 003848-24-6 | 50 |
| 5 | | | Pyrrrolidine | 71 | C4H9N | 000123-75-1 | 42 |



Data Path : Z:\voasrv\HPCHEM1\MSVOA_X\Data\VX092123\
 Data File : VX037848.D
 Acq On : 21 Sep 2023 12:31
 Operator : JC/MD
 Sample : 04554-01
 Misc : 5.0mL/MSVOA_X/WATER
 ALS Vial : 9 Sample Multiplier: 1

Instrument :
 MSVOA_X
 ClientSampleId :
 230920054-02-VOA

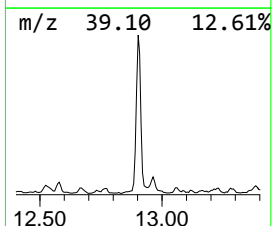
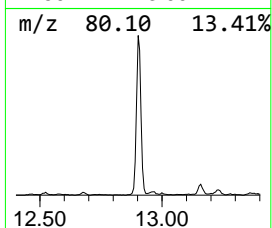
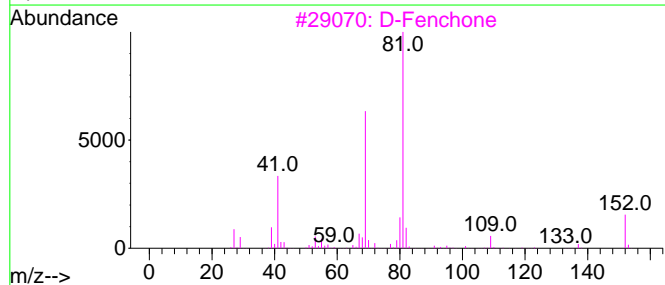
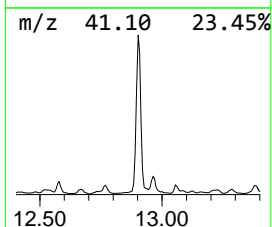
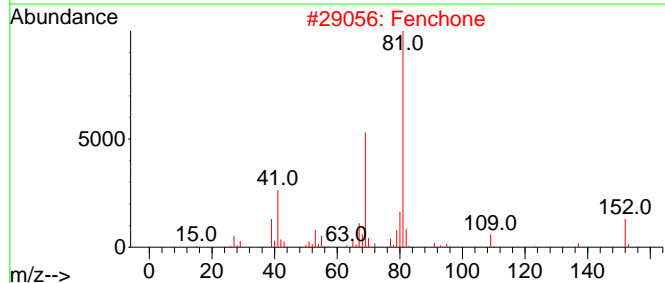
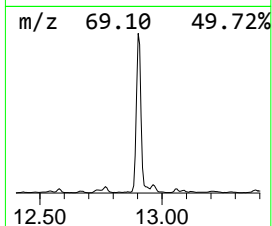
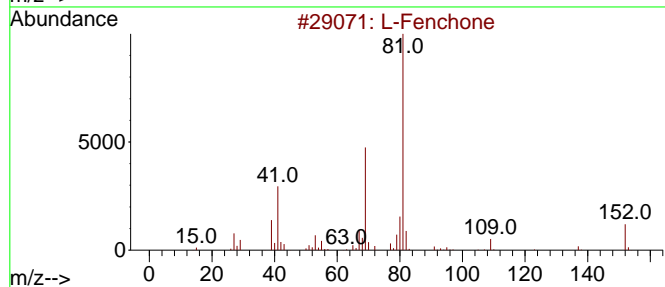
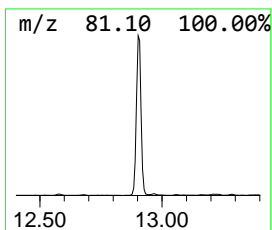
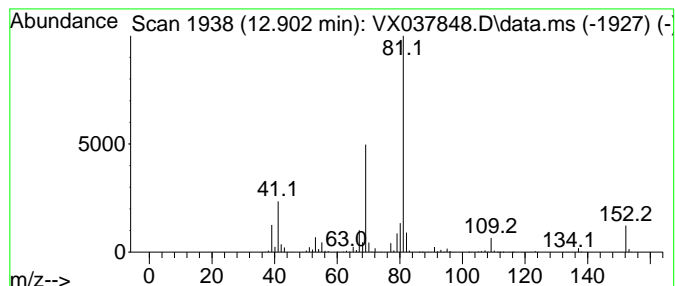
Quant Method : Z:\voasrv\HPCHEM1\MSVOA_X\Method\82X091523W.M
 Quant Title : SW846 8260

TIC Library : C:\Database\NIST20.L
 TIC Integration Parameters: LSCINT.P

 Peak Number 5 L-Fenchone Concentration Rank 1

| R.T. | EstConc | Area | Relative to ISTD | R.T. |
|--------|------------|---------|------------------------|--------|
| 12.902 | 44.56 ug/l | 1191210 | 1,4-Dichlorobenzene-d4 | 12.024 |

| Hit# | of | 5 | Tentative ID | MW | MolForm | CAS# | Qual |
|------|----|---|-------------------------------------|-----|---------|-------------|------|
| 1 | | | L-Fenchone | 152 | C10H16O | 007787-20-4 | 95 |
| 2 | | | Fenchone | 152 | C10H16O | 001195-79-5 | 95 |
| 3 | | | D-Fenchone | 152 | C10H16O | 004695-62-9 | 94 |
| 4 | | | Cyclohexanone, 5-methyl-2-(1-met... | 152 | C10H16O | 000529-00-0 | 45 |
| 5 | | | 2-Cyclopentene-1-carboxylic acid... | 140 | C8H12O2 | 068317-73-7 | 42 |



Data Path : Z:\voasrv\HPCHEM1\MSVOA_X\Data\VX092123\
 Data File : VX037848.D
 Acq On : 21 Sep 2023 12:31
 Operator : JC/MD
 Sample : 04554-01
 Misc : 5.0mL/MSVOA_X/WATER
 ALS Vial : 9 Sample Multiplier: 1

Instrument :
 MSVOA_X
 ClientSampleId :
 230920054-02-VOA

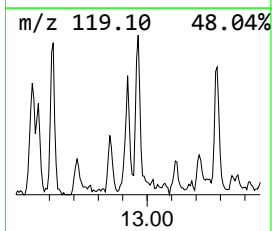
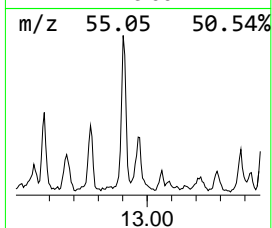
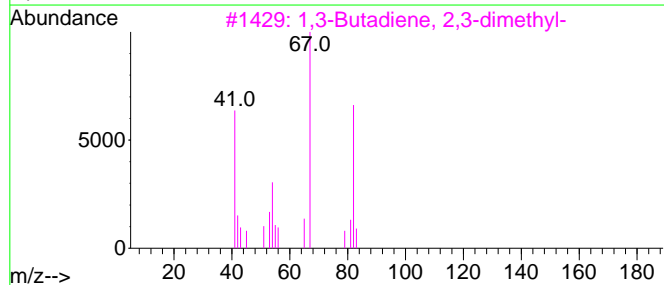
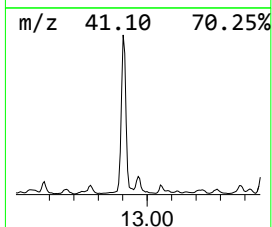
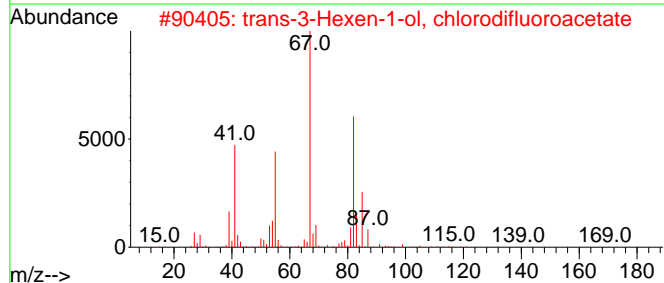
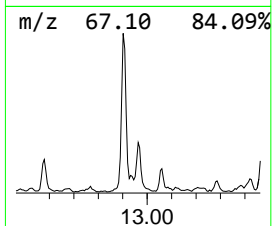
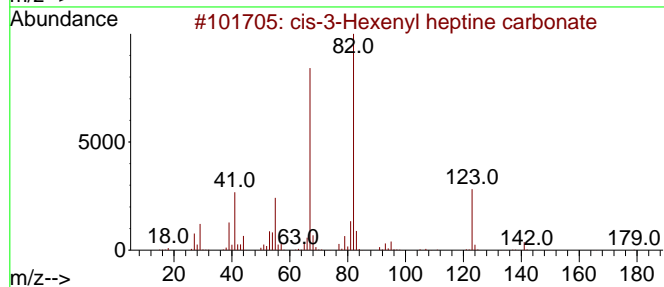
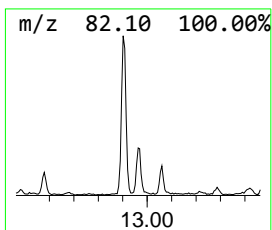
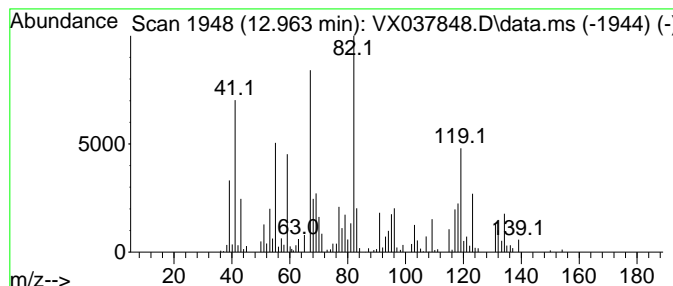
Quant Method : Z:\voasrv\HPCHEM1\MSVOA_X\Method\82X091523W.M
 Quant Title : SW846 8260

TIC Library : C:\Database\NIST20.L
 TIC Integration Parameters: LSCINT.P

 Peak Number 6 unknown12.963 Concentration Rank 9

| R.T. | EstConc | Area | Relative to ISTD | R.T. |
|--------|-----------|--------|------------------------|--------|
| 12.963 | 6.18 ug/l | 165268 | 1,4-Dichlorobenzene-d4 | 12.024 |

| Hit# | of 5 | Tentative ID | MW | MolForm | CAS# | Qual |
|------|------|-------------------------------------|-----|-------------|--------------|------|
| 1 | | cis-3-Hexenyl heptine carbonate | 222 | C14H22O2 | 068698-58-8 | 38 |
| 2 | | trans-3-Hexen-1-ol, chlorodifluo... | 212 | C8H11ClF2O2 | 1000447-24-0 | 35 |
| 3 | | 1,3-Butadiene, 2,3-dimethyl- | 82 | C6H10 | 000513-81-5 | 35 |
| 4 | | (E)-Hex-3-en-1-yl propyl carbonate | 186 | C10H18O3 | 1000372-83-0 | 35 |
| 5 | | 1,5-Cyclooctadiene, 1,2-dimethyl- | 136 | C10H16 | 006588-51-8 | 35 |



Data Path : Z:\voasrv\HPCHEM1\MSVOA_X\Data\VX092123\
 Data File : VX037848.D
 Acq On : 21 Sep 2023 12:31
 Operator : JC/MD
 Sample : 04554-01
 Misc : 5.0mL/MSVOA_X/WATER
 ALS Vial : 9 Sample Multiplier: 1

Instrument :
 MSVOA_X
 ClientSampleId :
 230920054-02-VOA

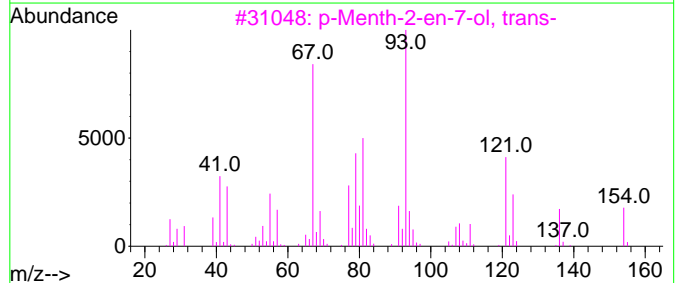
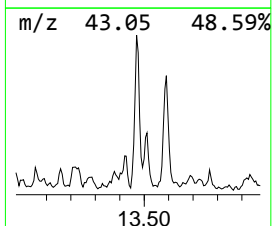
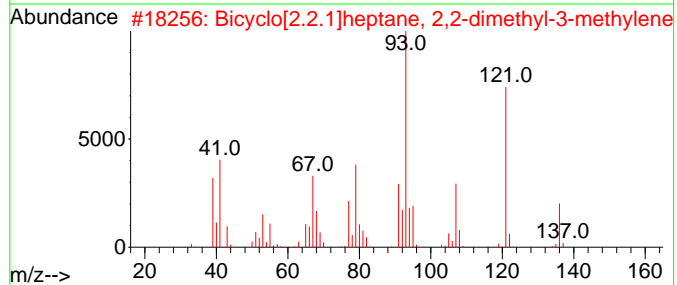
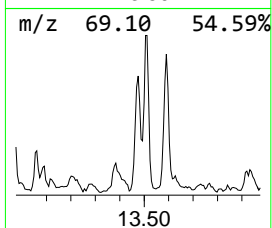
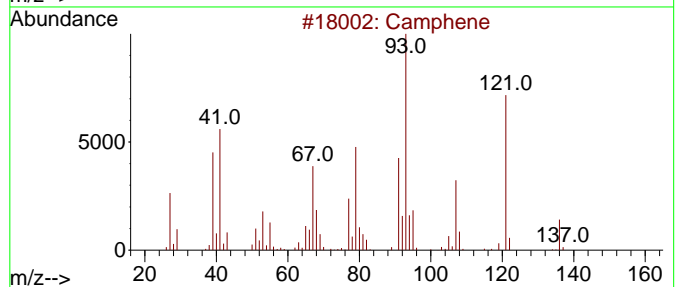
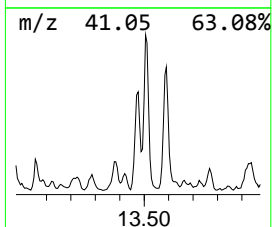
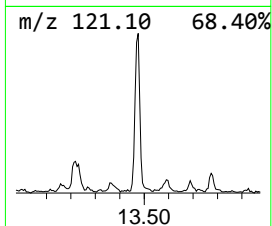
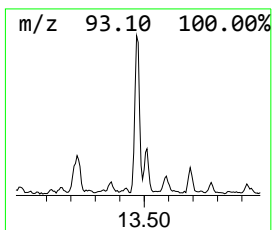
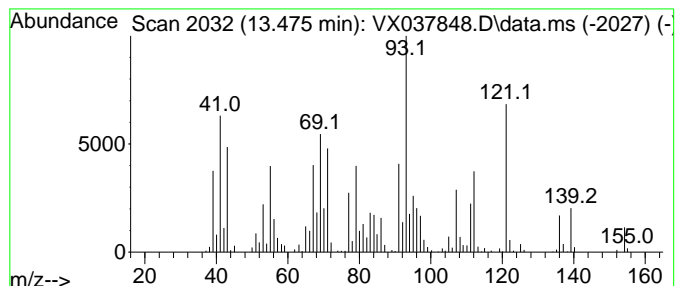
Quant Method : Z:\voasrv\HPCHEM1\MSVOA_X\Method\82X091523W.M
 Quant Title : SW846 8260

TIC Library : C:\Database\NIST20.L
 TIC Integration Parameters: LSCINT.P

 Peak Number 7 Camphene Concentration Rank 5

| R.T. | EstConc | Area | Relative to ISTD | R.T. |
|--------|------------|--------|------------------------|--------|
| 13.475 | 11.92 ug/l | 318685 | 1,4-Dichlorobenzene-d4 | 12.024 |

| Hit# | of | Tentative ID | MW | MolForm | CAS# | Qual |
|------|----|-------------------------------------|-----|---------|-------------|------|
| 1 | 5 | Camphene | 136 | C10H16 | 000079-92-5 | 95 |
| 2 | | Bicyclo[2.2.1]heptane, 2,2-dimet... | 136 | C10H16 | 005794-04-7 | 91 |
| 3 | | p-Menth-2-en-7-ol, trans- | 154 | C10H18O | 019898-87-4 | 49 |
| 4 | | 5-Caranol, (1S,3R,5S,6R)-(-)- | 154 | C10H18O | 006909-21-3 | 45 |
| 5 | | Cyclohexene, 3-methyl-6-(1-methy... | 136 | C10H16 | 000586-63-0 | 41 |



Data Path : Z:\voasrv\HPCHEM1\MSVOA_X\Data\VX092123\
 Data File : VX037848.D
 Acq On : 21 Sep 2023 12:31
 Operator : JC/MD
 Sample : 04554-01
 Misc : 5.0mL/MSVOA_X/WATER
 ALS Vial : 9 Sample Multiplier: 1

Instrument :
 MSVOA_X
 ClientSampleId :
 230920054-02-VOA

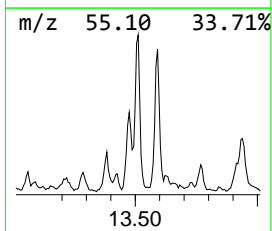
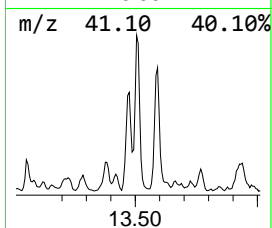
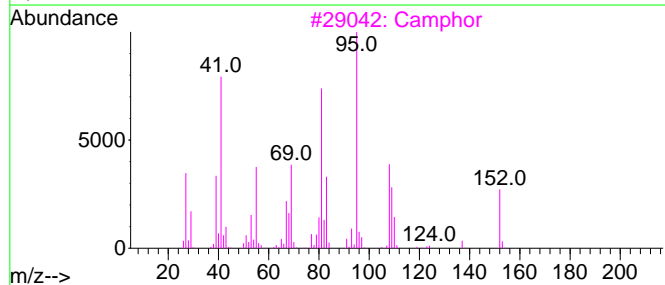
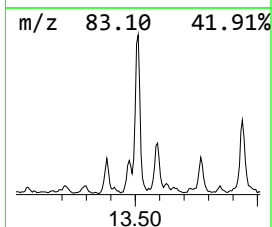
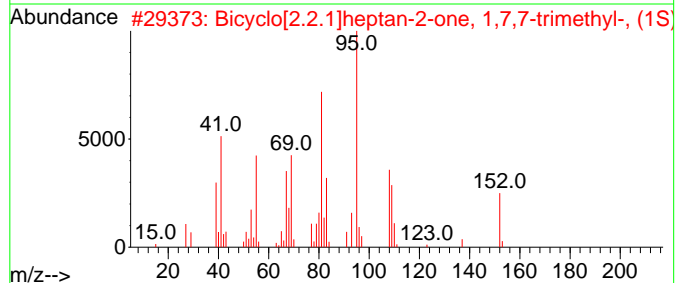
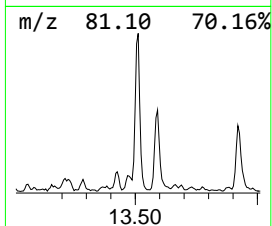
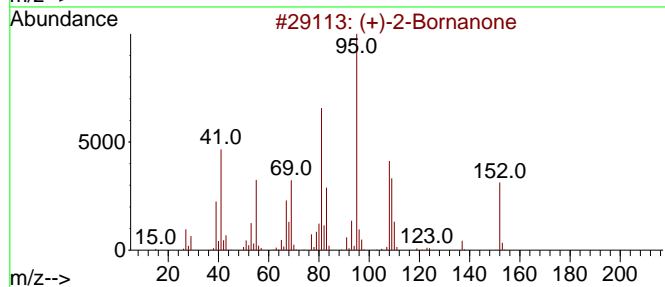
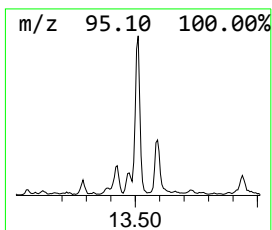
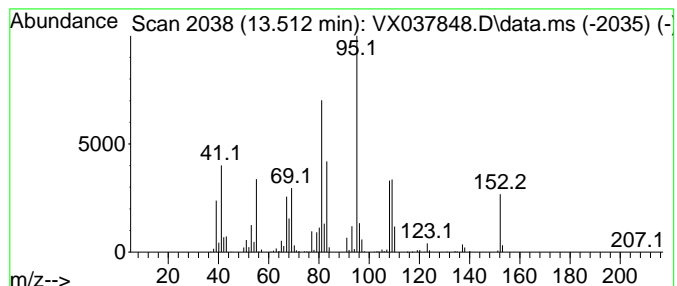
Quant Method : Z:\voasrv\HPCHEM1\MSVOA_X\Method\82X091523W.M
 Quant Title : SW846 8260

TIC Library : C:\Database\NIST20.L
 TIC Integration Parameters: LSCINT.P

 Peak Number 8 (+)-2-Bornanone Concentration Rank 4

| R.T. | EstConc | Area | Relative to ISTD | R.T. |
|--------|------------|--------|------------------------|--------|
| 13.512 | 12.44 ug/l | 332500 | 1,4-Dichlorobenzene-d4 | 12.024 |

| Hit# | of 5 | Tentative ID | MW | MolForm | CAS# | Qual |
|------|------|-------------------------------------|-----|---------|--------------|------|
| 1 | | (+)-2-Bornanone | 152 | C10H16O | 000464-49-3 | 97 |
| 2 | | Bicyclo[2.2.1]heptan-2-one, 1,7,... | 152 | C10H16O | 000464-48-2 | 95 |
| 3 | | Camphor | 152 | C10H16O | 000076-22-2 | 94 |
| 4 | | 2-Butanone, 4-(5-methyl-2-furanyl)- | 152 | C9H12O2 | 013679-56-6 | 43 |
| 5 | | Bicyclo[3.1.0]hexane, 1,5-dimethyl- | 110 | C8H14 | 1010142-17-5 | 43 |



Data Path : Z:\voasrv\HPCHEM1\MSVOA_X\Data\VX092123\
 Data File : VX037848.D
 Acq On : 21 Sep 2023 12:31
 Operator : JC/MD
 Sample : 04554-01
 Misc : 5.0mL/MSVOA_X/WATER
 ALS Vial : 9 Sample Multiplier: 1

Instrument :
 MSVOA_X
 ClientSampleId :
 230920054-02-VOA

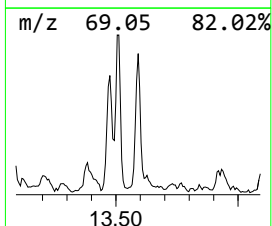
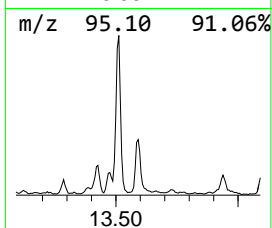
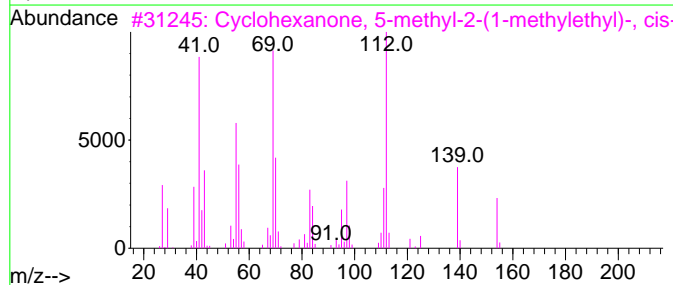
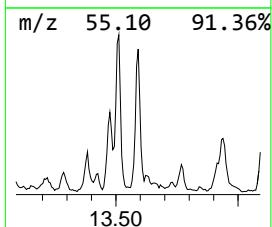
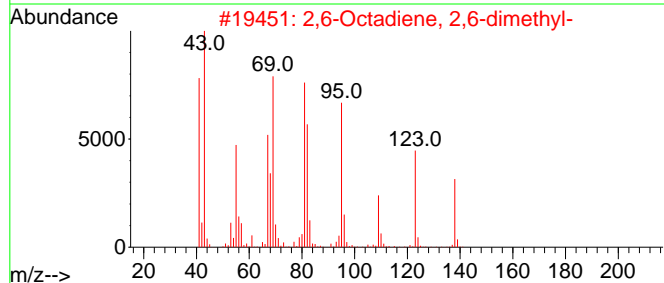
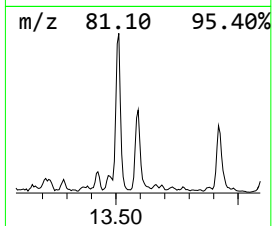
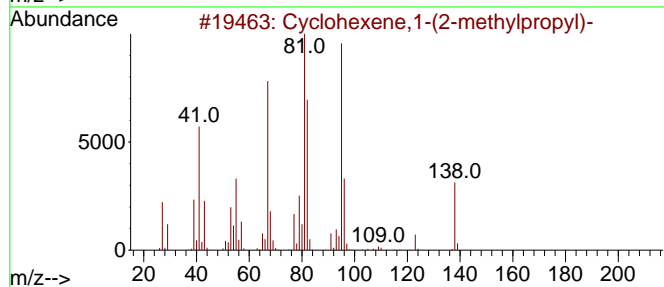
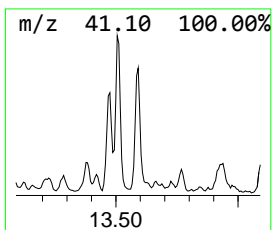
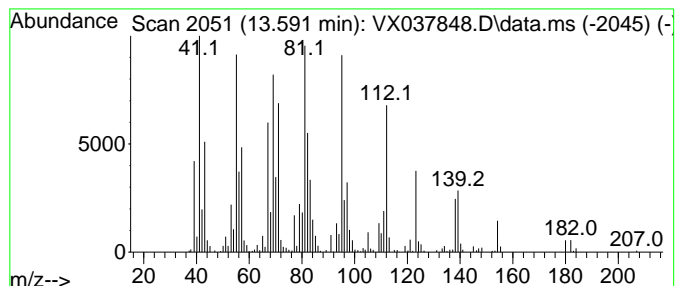
Quant Method : Z:\voasrv\HPCHEM1\MSVOA_X\Method\82X091523W.M
 Quant Title : SW846 8260

TIC Library : C:\Database\NIST20.L
 TIC Integration Parameters: LSCINT.P

 Peak Number 9 Cyclohexene,1-(2-methylprop... Concentration Rank 6

| R.T. | EstConc | Area | Relative to ISTD | R.T. |
|--------|------------|--------|------------------------|--------|
| 13.591 | 11.83 ug/l | 316261 | 1,4-Dichlorobenzene-d4 | 12.024 |

| Hit# | of 5 | Tentative ID | MW | MolForm | CAS# | Qual |
|------|------|-------------------------------------|-----|---------|-------------|------|
| 1 | | Cyclohexene,1-(2-methylpropyl)- | 138 | C10H18 | 003983-03-7 | 95 |
| 2 | | 2,6-Octadiene, 2,6-dimethyl- | 138 | C10H18 | 002792-39-4 | 90 |
| 3 | | Cyclohexanone, 5-methyl-2-(1-met... | 154 | C10H18O | 000491-07-6 | 80 |
| 4 | | Cyclohexanone, 5-methyl-2-(1-met... | 154 | C10H18O | 010458-14-7 | 74 |
| 5 | | Cyclohexanone, 5-methyl-2-(1-met... | 154 | C10H18O | 000089-80-5 | 70 |



Data Path : Z:\voasrv\HPCHEM1\MSVOA_X\Data\VX092123\
 Data File : VX037848.D
 Acq On : 21 Sep 2023 12:31
 Operator : JC/MD
 Sample : 04554-01
 Misc : 5.0mL/MSVOA_X/WATER
 ALS Vial : 9 Sample Multiplier: 1

Instrument :
 MSVOA_X
 ClientSampleId :
 230920054-02-VOA

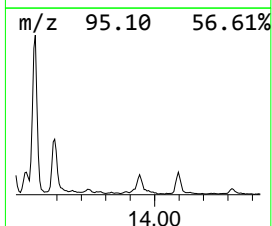
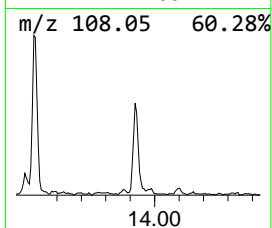
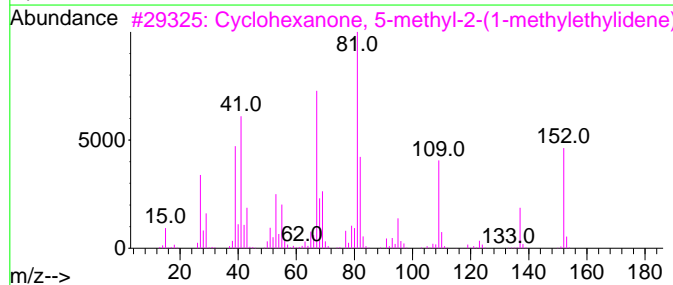
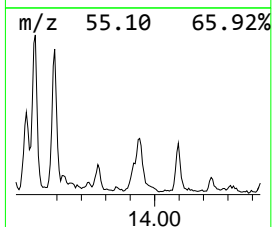
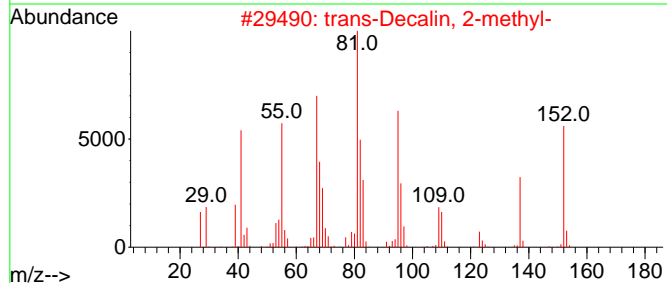
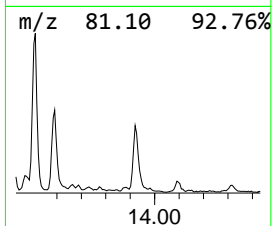
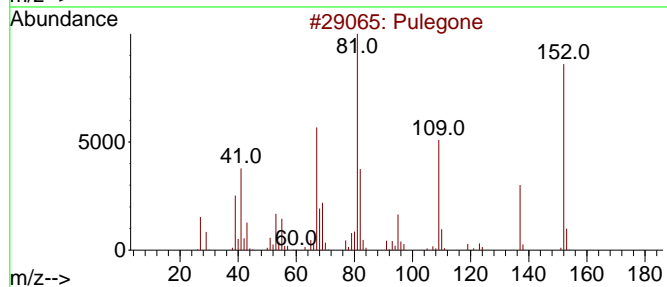
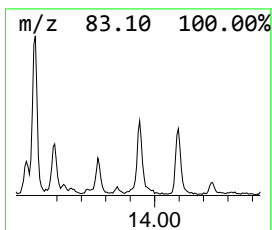
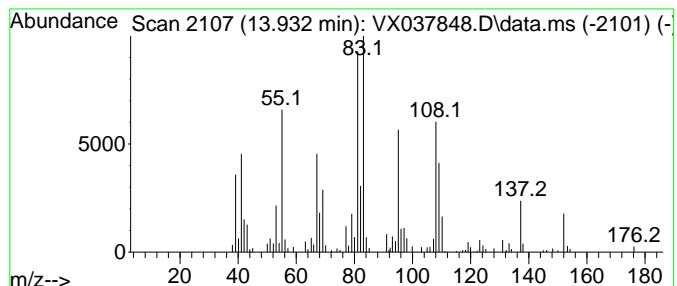
Quant Method : Z:\voasrv\HPCHEM1\MSVOA_X\Method\82X091523W.M
 Quant Title : SW846 8260

TIC Library : C:\Database\NIST20.L
 TIC Integration Parameters: LSCINT.P

 Peak Number 10 unknown13.932 Concentration Rank 8

| R.T. | EstConc | Area | Relative to ISTD | R.T. |
|--------|-----------|--------|------------------------|--------|
| 13.932 | 6.48 ug/l | 173240 | 1,4-Dichlorobenzene-d4 | 12.024 |

| Hit# | of 5 | Tentative ID | MW | MolForm | CAS# | Qual |
|------|------|-------------------------------------|-----|---------|--------------|------|
| 1 | | Pulegone | 152 | C10H16O | 000089-82-7 | 49 |
| 2 | | trans-Decalin, 2-methyl- | 152 | C11H20 | 1000152-47-3 | 46 |
| 3 | | Cyclohexanone, 5-methyl-2-(1-met... | 152 | C10H16O | 015932-80-6 | 43 |
| 4 | | trans-4a-Methyl-decahydronaphtha... | 152 | C11H20 | 002547-27-5 | 42 |
| 5 | | Cyclohexene, 1-pentyl- | 152 | C11H20 | 015232-85-6 | 41 |



Data Path : Z:\voasrv\HPCHEM1\MSVOA_X\Data\VX092123\
 Data File : VX037848.D
 Acq On : 21 Sep 2023 12:31
 Operator : JC/MD
 Sample : 04554-01
 Misc : 5.0mL/MSVOA_X/WATER
 ALS Vial : 9 Sample Multiplier: 1

Instrument :
 MSVOA_X
 ClientSampleId :
 230920054-02-VOA

Quant Method : Z:\voasrv\HPCHEM1\MSVOA_X\Method\82X091523W.M
 Quant Title : SW846 8260

TIC Library : C:\Database\NIST20.L
 TIC Integration Parameters: LSCINT.P

| TIC Top Hit name | RT | EstConc | Units | Response | --Internal Standard-- | | | |
|--------------------|--------|---------|-------|----------|-----------------------|--------|---------|------|
| | | | | | # | RT | Resp | Conc |
| Dimethyl ether | 1.258 | 32.8 | ug/l | 457065 | 1 | 5.550 | 697905 | 50.0 |
| Disiloxane, hex... | 6.208 | 20.1 | ug/l | 361500 | 2 | 6.763 | 899459 | 50.0 |
| 3-Pentanone, 2,... | 9.378 | 10.2 | ug/l | 263698 | 3 | 10.055 | 1287520 | 50.0 |
| L-Fenchone | 12.902 | 44.6 | ug/l | 1191210 | 4 | 12.024 | 1336520 | 50.0 |
| unknown12.963 | 12.963 | 6.2 | ug/l | 165268 | 4 | 12.024 | 1336520 | 50.0 |
| Camphene | 13.475 | 11.9 | ug/l | 318685 | 4 | 12.024 | 1336520 | 50.0 |
| (+)-2-Bornanone | 13.512 | 12.4 | ug/l | 332500 | 4 | 12.024 | 1336520 | 50.0 |
| Cyclohexene,1-(... | 13.591 | 11.8 | ug/l | 316261 | 4 | 12.024 | 1336520 | 50.0 |
| unknown13.932 | 13.932 | 6.5 | ug/l | 173240 | 4 | 12.024 | 1336520 | 50.0 |