

Data Path : Z:\VOASRV\HPCHEM1\MSVOA X\DATA\VX092220\
 Data File : VX018529.D
 Acq On : 22 Sep 2020 19:06
 Operator : JC/SP
 Sample : VSTD00563
 Misc : 25.0mL/MSVOA X/WATER
 ALS Vial : 5 Sample Multiplier: 1

Instrument :
 MSVOA_X
 ClientSampleId :
 VSTD005303

Quant Time: Sep 23 03:51:16 2020
 Quant Method : Z:\VOASRV\HPCHEM1\MSVOA_X\METHOD\SFAMXTR092220WMA.M
 Quant Title : TRACE VOA SFAM1.0
 QLast Update : Wed Sep 23 03:43:27 2020
 Response via : Initial Calibration

Internal Standards	R.T.	QIon	Response	Conc	Units	Dev(Min)
1) 1,4-Difluorobenzene	6.83	114	292618	5.00	ug/L	0.00
28) Chlorobenzene-d5	10.10	117	276880	5.00	ug/L	0.00
58) 1,4-Dichlorobenzene-d4	12.06	152	143114	5.00	ug/L	0.00

System Monitoring Compounds

4) Vinyl Chloride-d3	1.39	65	78076	6.63	ug/L	0.00
7) Chloroethane-d5	1.70	69	62839	6.87	ug/L	0.00
11) 1,1-Dichloroethene-d2	2.34	63	173861	7.54	ug/L	0.00
20) 2-Butanone-d5	4.56	46	191438	74.95	ug/L	0.00
24) Chloroform-d	5.15	84	170495	6.13	ug/L	0.00
26) 1,2-Dichloroethane-d4	6.03	65	91403	5.49	ug/L	0.00
32) Benzene-d6	6.05	84	319628	4.62	ug/L	0.00
36) 1,2-Dichloropropane-d6	7.37	67	96211	4.86	ug/L	0.00
41) Toluene-d8	8.70	98	311392	4.65	ug/L	0.00
43) trans-1,3-Dichloropropene-	8.99	79	41897	4.95	ug/L	0.00
46) 2-Hexanone-d5	9.43	63	157600	53.59	ug/L	0.00
56) 1,1,2,2-Tetrachloroethane-	11.23	84	73731	5.01	ug/L	0.00
66) 1,2-Dichlorobenzene-d4	12.36	152	111855	4.53	ug/L	0.00

Target Compounds

						Qvalue
2) Dichlorodifluoromethane	1.18	85	88194	3.371	ug/L	100
3) Chloromethane	1.31	50	74915	5.917	ug/L	100
5) Vinyl chloride	1.39	62	76933	5.858	ug/L	100
6) Bromomethane	1.64	94	45780	5.842	ug/L	100
8) Chloroethane	1.72	64	44841	6.345	ug/L	100
9) Trichlorofluoromethane	1.92	101	131239	5.131	ug/L	100
10) 1,1,2-Trichloro-1,2,2-trif	2.37	101	74174	6.423	ug/L	100
12) 1,1-Dichloroethene	2.36	96	70117	6.689	ug/L	100
13) Acetone	2.47	43	103773	69.970	ug/L	100
14) Carbon disulfide	2.55	76	214081	4.155	ug/L	100
15) Methyl Acetate	2.76	43	30468	5.892	ug/L	100
16) Methylene chloride	2.84	84	75280	3.872	ug/L	100
17) Methyl tert-butyl Ether	3.17	73	153333	3.938	ug/L	100
18) trans-1,2-Dichloroethene	3.14	96	69335	3.701	ug/L	100
19) 1,1-Dichloroethane	3.67	63	122349	3.955	ug/L	100
21) 2-Butanone	4.67	43	165664	65.187	ug/L	100
22) cis-1,2-Dichloroethene	4.57	96	70163	3.550	ug/L	100
23) Bromochloromethane	4.98	128	33717	4.020	ug/L	100
25) Chloroform	5.18	83	138860	3.265	ug/L	100
27) 1,2-Dichloroethane	6.17	62	86929	4.570	ug/L	100
29) 1,1,1-Trichloroethane	5.46	97	127523	3.955	ug/L	100
30) Cyclohexane	5.55	56	105919	3.597	ug/L	100
31) Carbon tetrachloride	5.75	117	116202	4.144	ug/L	100
33) Benzene	6.12	78	270448	3.757	ug/L	100
34) Trichloroethene	7.19	95	75284	3.669	ug/L	100
35) Methylcyclohexane	7.44	83	105958	3.182	ug/L	100
37) 1,2-Dichloropropane	7.49	63	66357	3.892	ug/L	100
38) Bromodichloromethane	7.87	83	96136	3.975	ug/L	100
39) cis-1,3-Dichloropropene	8.42	75	98439	3.704	ug/L	100
40) 4-Methyl-2-pentanone	8.62	43	405934	48.038	ug/L	100

Data Path : Z:\VOASRV\HPCHEM1\MSVOA X\DATA\VX092220\
 Data File : VX018529.D
 Acq On : 22 Sep 2020 19:06
 Operator : JC/SP
 Sample : VSTD00563
 Misc : 25.0mL/MSVOA X/WATER
 ALS Vial : 5 Sample Multiplier: 1

Instrument :
 MSVOA_X
 ClientSampleId :
 VSTD005303

Quant Time: Sep 23 03:51:16 2020
 Quant Method : Z:\VOASRV\HPCHEM1\MSVOA_X\METHOD\SFAMXTR092220WMA.M
 Quant Title : TRACE VOA SFAM1.0
 QLast Update : Wed Sep 23 03:43:27 2020
 Response via : Initial Calibration

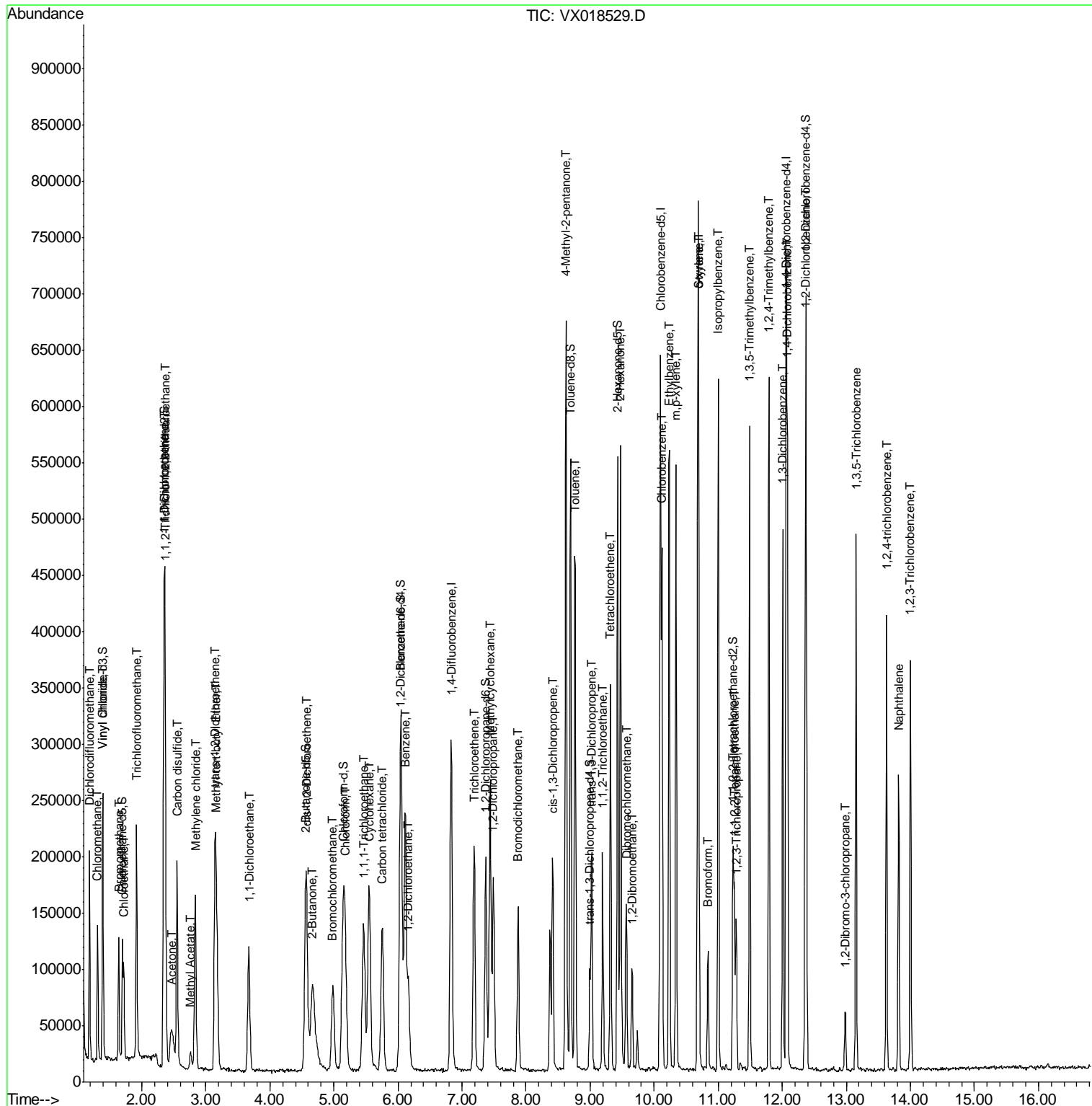
Internal Standards	R.T.	QIon	Response	Conc	Units	Dev(Min)
42) Toluene	8.77	91	289082	3.692	ug/L	100
44) trans-1,3-Dichloropropene	9.02	75	90404	4.162	ug/L	100
45) 1,1,2-Trichloroethane	9.20	97	49647	3.925	ug/L	100
47) Tetrachloroethene	9.32	164	62764	3.856	ug/L	100
48) 2-Hexanone	9.48	43	297212	48.608	ug/L	100
49) Dibromochloromethane	9.57	129	66907	4.082	ug/L	100
50) 1,2-Dibromoethane	9.65	107	48544	4.008	ug/L	100
51) Chlorobenzene	10.12	112	191857	3.688	ug/L	100
52) Ethylbenzene	10.24	91	312716	3.524	ug/L	100
53) m,p-xylene	10.34	106	122311	3.597	ug/L	100
54) o-xylene	10.68	106	114150	3.505	ug/L	100
55) Styrene	10.70	104	196558	3.641	ug/L	100
57) 1,1,2,2-Tetrachloroethane	11.25	83	56768	3.963	ug/L	100
59) Bromoform	10.84	173	37455	4.273	ug/L	100
60) Isopropylbenzene	11.00	105	312951	3.423	ug/L	100
61) 1,2,3-Trichloropropane	11.28	75	43391	4.040	ug/L	100
62) 1,3,5-Trimethylbenzene	11.49	105	251493	3.319	ug/L	100
63) 1,2,4-Trimethylbenzene	11.79	105	257250	3.447	ug/L	100
64) 1,3-Dichlorobenzene	12.01	146	155643	3.580	ug/L	100
65) 1,4-Dichlorobenzene	12.08	146	153252	3.603	ug/L	100
67) 1,2-Dichlorobenzene	12.38	146	142862	3.720	ug/L	100
68) 1,2-Dibromo-3-chloropropan	12.99	75	11297	4.348	ug/L	100
69) 1,3,5-Trichlorobenzene	13.15	180	111055	3.489	ug/L	100
70) 1,2,4-trichlorobenzene	13.63	180	92110	3.474	ug/L	100
71) Naphthalene	13.82	128	155452	3.458	ug/L	100
72) 1,2,3-Trichlorobenzene	14.01	180	85297	3.648	ug/L	100

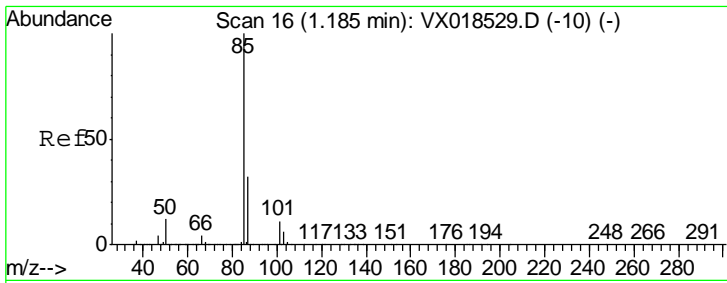
(#) = qualifier out of range (m) = manual integration (+) = signals summed

Data Path : Z:\VOASRV\HPCHEM1\MSVOA X\DATA\VX092220\
 Data File : VX018529.D
 Acq On : 22 Sep 2020 19:06
 Operator : JC/SP
 Sample : VSTD00563
 Misc : 25.0mL/MSVOA X/WATER
 ALS Vial : 5 Sample Multiplier: 1

Instrument :
 MSVOA_X
 Client Sampled :
 VSTD005303

Quant Time: Sep 23 03:51:16 2020
 Quant Method : Z:\VOASRV\HPCHEM1\MSVOA_X\METHOD\SFAMXTR092220WMA.M
 Quant Title : TRACE VOA SFAM1.0
 QLast Update : Wed Sep 23 03:43:27 2020
 Response via : Initial Calibration

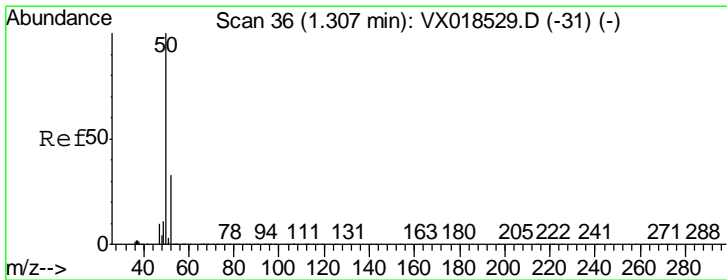
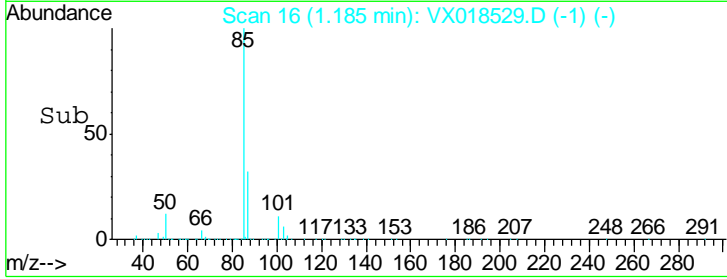
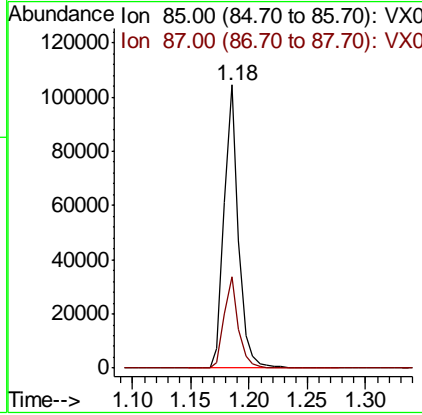
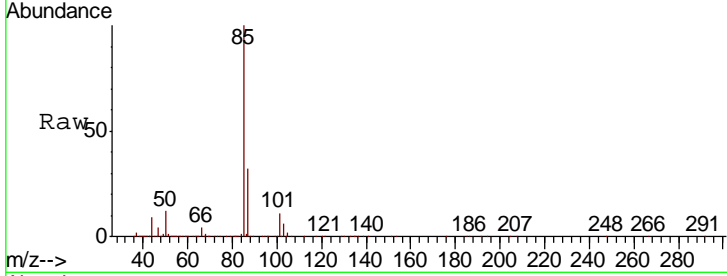




#2
 Dichlorodifluoromethane
 Concen: 3.371 ug/L
 RT: 1.18 min Scan# 16
 Delta R.T. 0.00 min
 Lab File: VX018529.D
 Acq: 22 Sep 2020 19:06

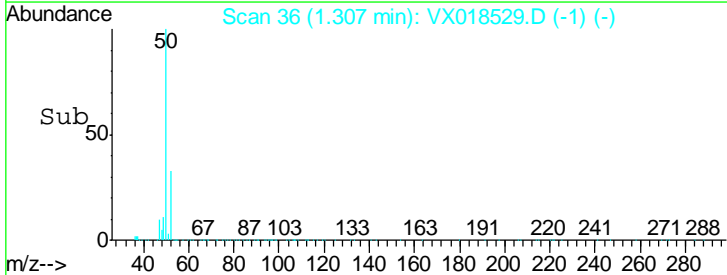
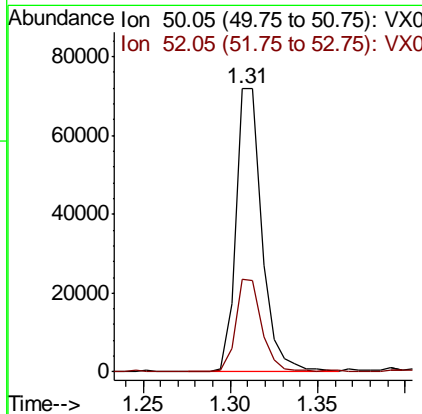
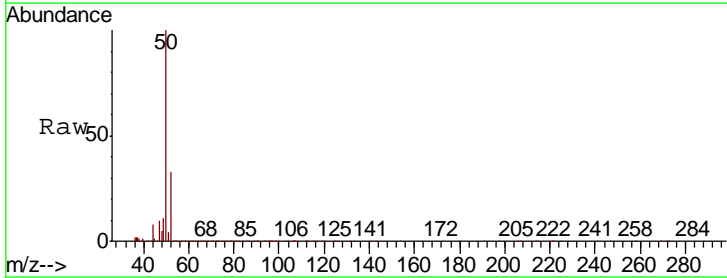
Instrument :
 MSVOA_X
 ClientSampleId :
 VSTD005303

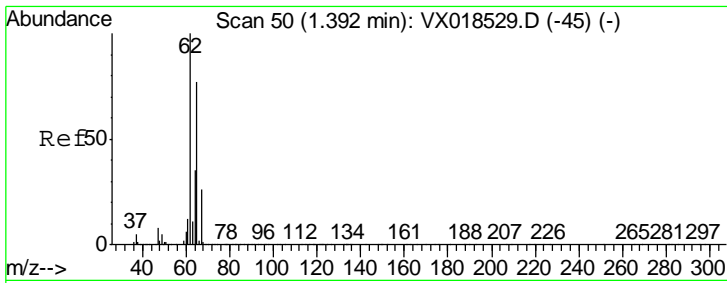
Tgt Ion: 85 Resp: 88194
 Ion Ratio Lower Upper
 85 100
 87 32.3 25.8 38.8



#3
 Chloromethane
 Concen: 5.917 ug/L
 RT: 1.31 min Scan# 36
 Delta R.T. 0.00 min
 Lab File: VX018529.D
 Acq: 22 Sep 2020 19:06

Tgt Ion: 50 Resp: 74915
 Ion Ratio Lower Upper
 50 100
 52 33.0 23.1 42.9

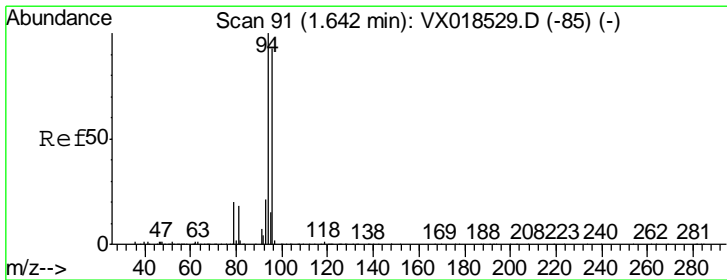
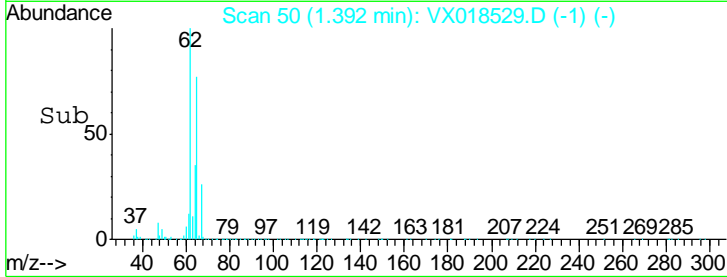
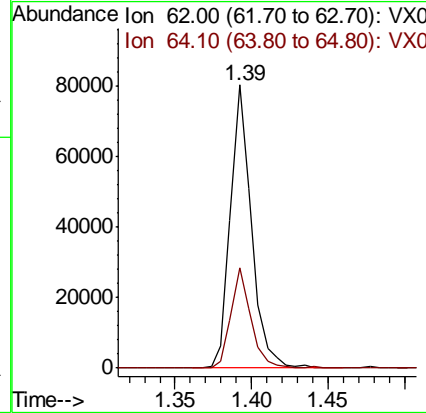
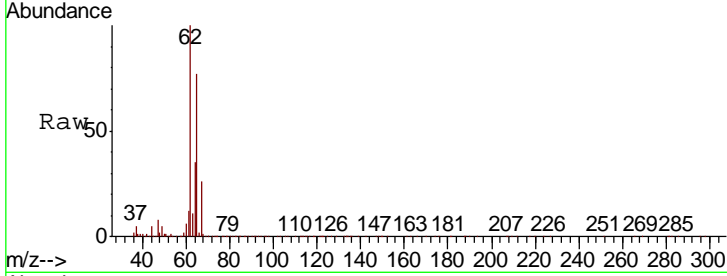




#5
 Vinyl chloride
 Concen: 5.858 ug/L
 RT: 1.39 min Scan# 50
 Delta R.T. 0.00 min
 Lab File: VX018529.D
 Acq: 22 Sep 2020 19:06

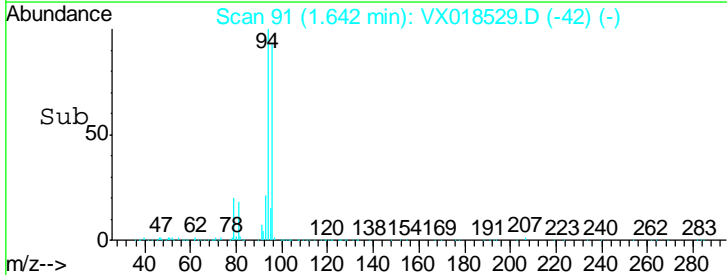
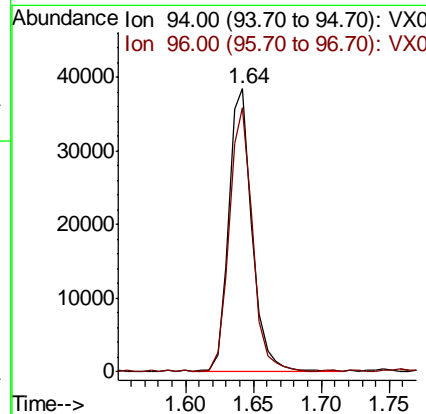
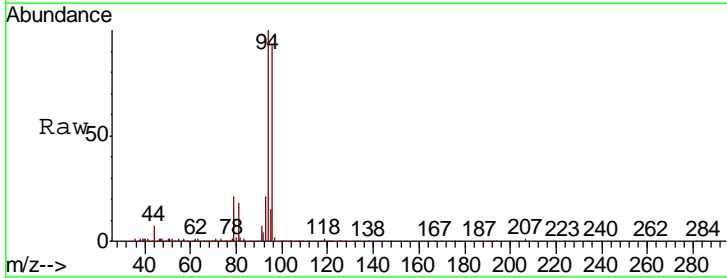
Instrument :
 MSVOA_X
ClientSampled :
 VSTD005303

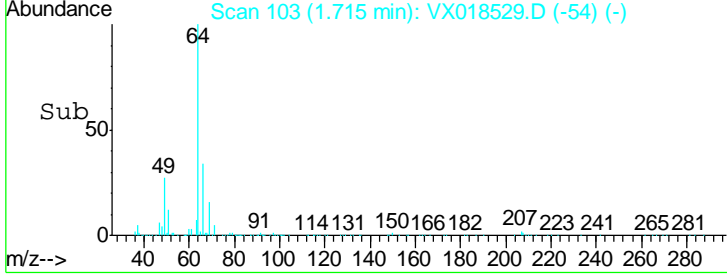
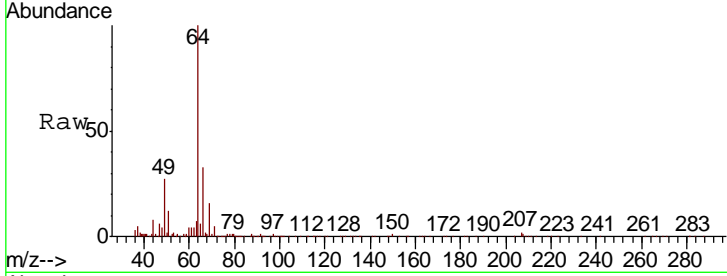
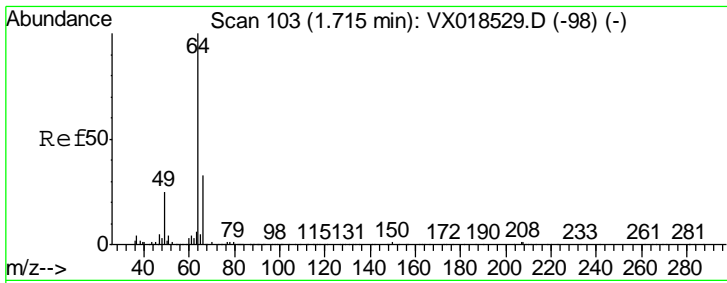
Tgt Ion	Resp	Lower	Upper
62	100		
64	35.4	24.8	46.0



#6
 Bromomethane
 Concen: 5.842 ug/L
 RT: 1.64 min Scan# 91
 Delta R.T. 0.00 min
 Lab File: VX018529.D
 Acq: 22 Sep 2020 19:06

Tgt Ion	Resp	Lower	Upper
94	100		
96	93.2	65.2	121.2

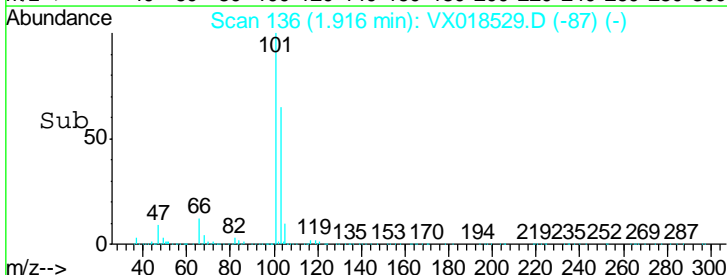
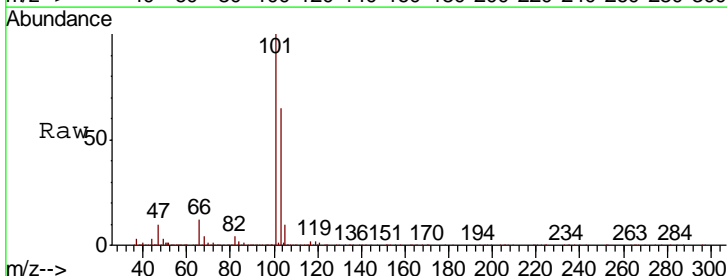
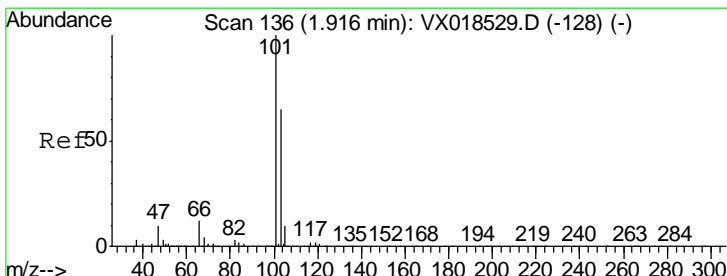
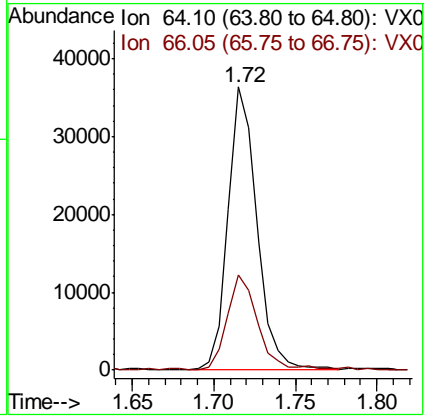




#8
 Chloroethane
 Concen: 6.345 ug/L
 RT: 1.72 min Scan# 103
 Delta R.T. 0.00 min
 Lab File: VX018529.D
 Acq: 22 Sep 2020 19:06

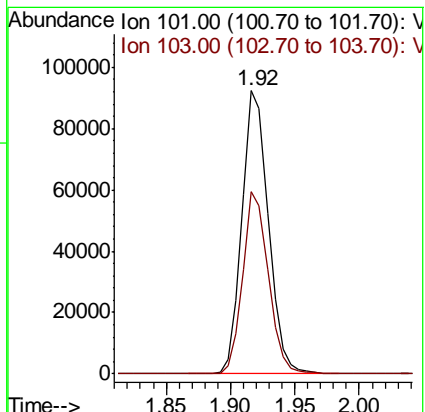
Instrument :
 MSVOA_X
 ClientSampled :
 VSTD005303

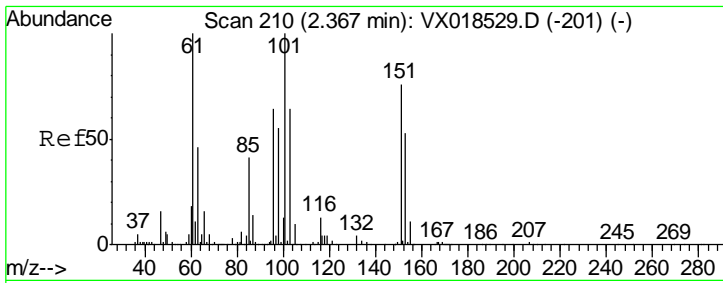
Tgt Ion	Resp	Lower	Upper
64	44841		
66	33.4	23.4	43.4



#9
 Trichlorofluoromethane
 Concen: 5.131 ug/L
 RT: 1.92 min Scan# 136
 Delta R.T. 0.00 min
 Lab File: VX018529.D
 Acq: 22 Sep 2020 19:06

Tgt Ion	Resp	Lower	Upper
101	131239		
103	62.7	50.2	75.2

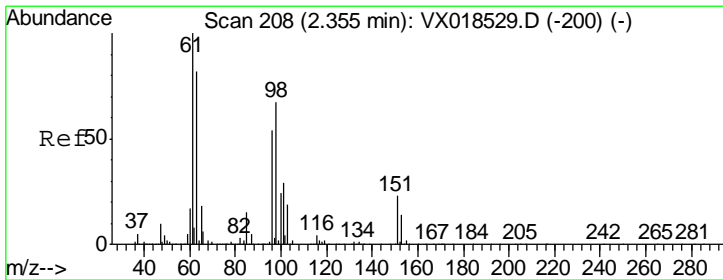
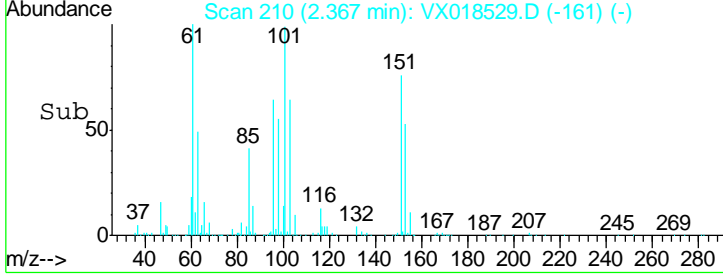
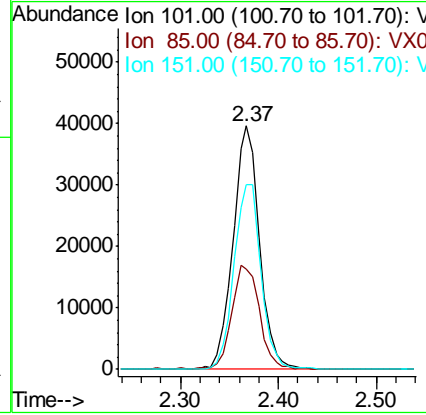
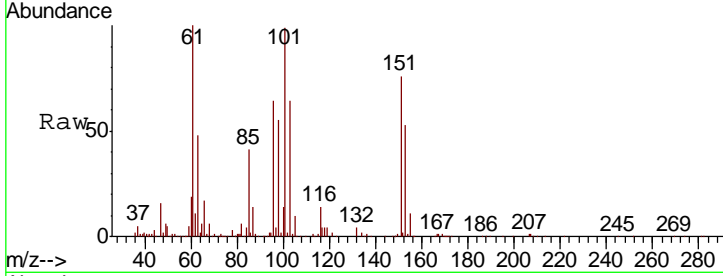




#10
 1,1,2-Trichloro-1,2,2-trifluoroethane
 Concen: 6.423 ug/L
 RT: 2.37 min Scan# 210
 Delta R.T. 0.00 min
 Lab File: VX018529.D
 Acq: 22 Sep 2020 19:06

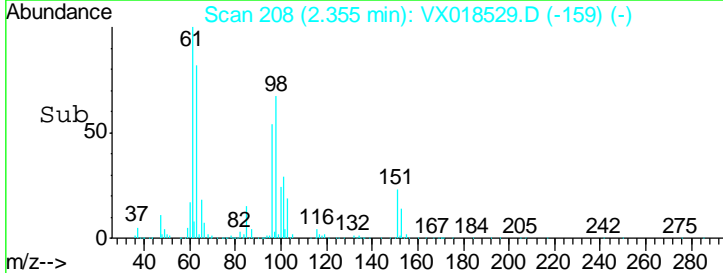
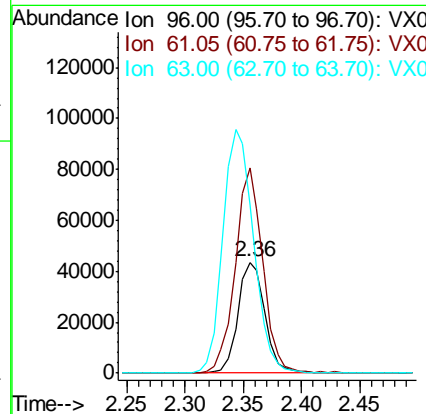
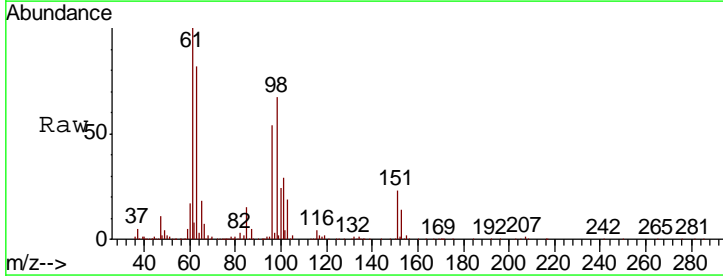
Instrument :
 MSVOA_X
ClientSampled :
 VSTD005303

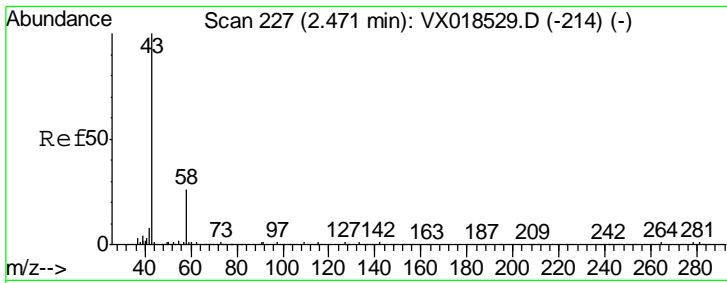
Tgt Ion	Resp	Lower	Upper
101	74174		
101	100		
85	44.9	35.9	53.9
151	78.0	62.4	93.6



#12
 1,1-Dichloroethene
 Concen: 6.689 ug/L
 RT: 2.36 min Scan# 208
 Delta R.T. 0.00 min
 Lab File: VX018529.D
 Acq: 22 Sep 2020 19:06

Tgt Ion	Resp	Lower	Upper
96	70117		
96	100		
61	184.1	128.9	239.3
63	150.9	105.6	196.2

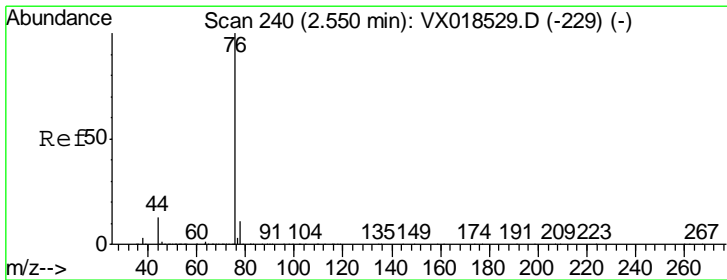
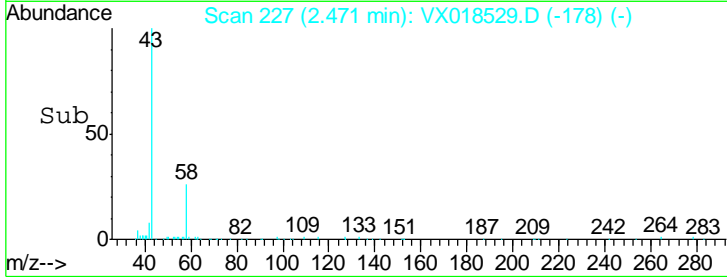
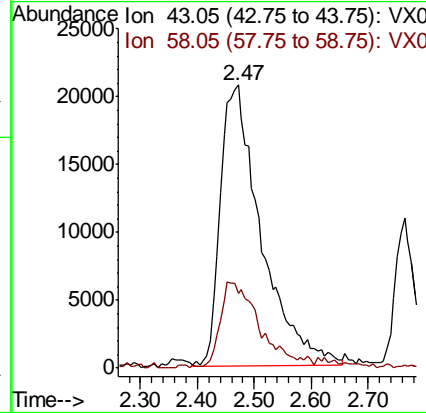
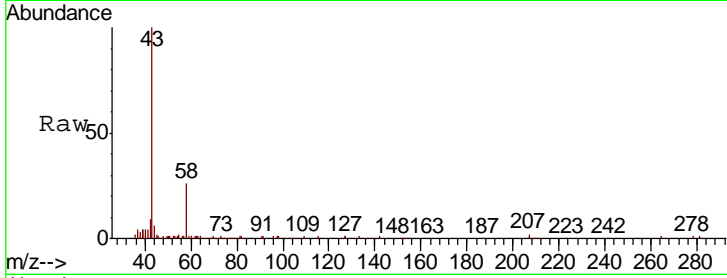




#13
 Acetone
 Concen: 69.970 ug/L
 RT: 2.47 min Scan# 227
 Delta R.T. 0.00 min
 Lab File: VX018529.D
 Acq: 22 Sep 2020 19:06

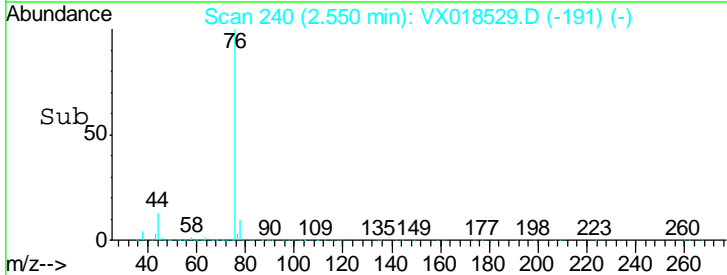
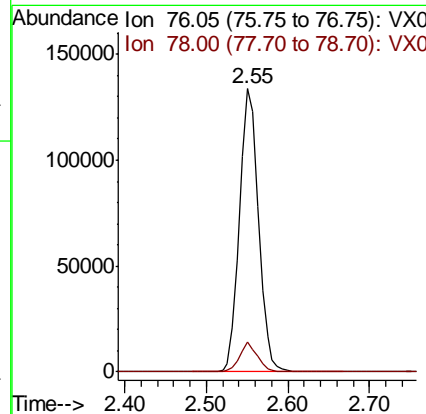
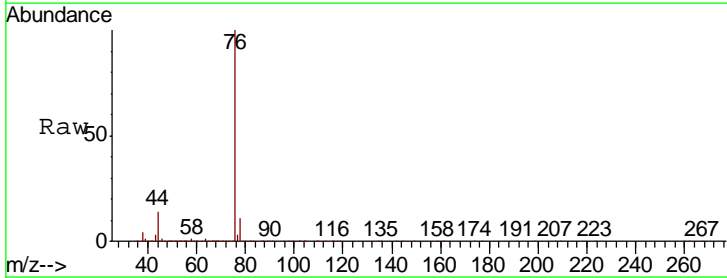
Instrument : MSVOA_X
 ClientSampleId : VSTD005303

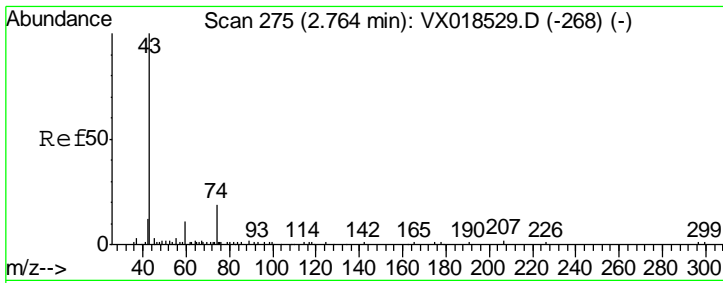
Tgt Ion	Resp	Lower	Upper
43	103773		
58	29.0	0.0	58.0



#14
 Carbon disulfide
 Concen: 4.155 ug/L
 RT: 2.55 min Scan# 240
 Delta R.T. 0.00 min
 Lab File: VX018529.D
 Acq: 22 Sep 2020 19:06

Tgt Ion	Resp	Lower	Upper
76	214081		
78	10.6	8.5	12.7

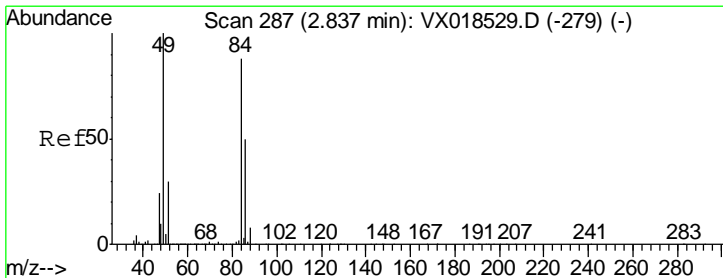
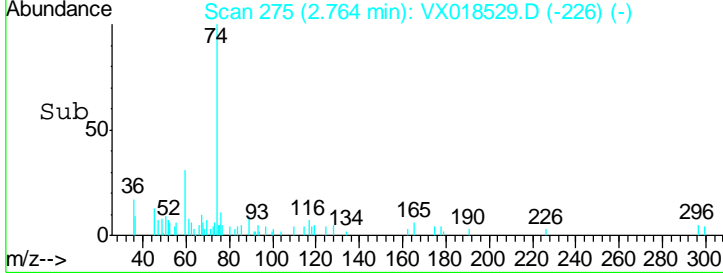
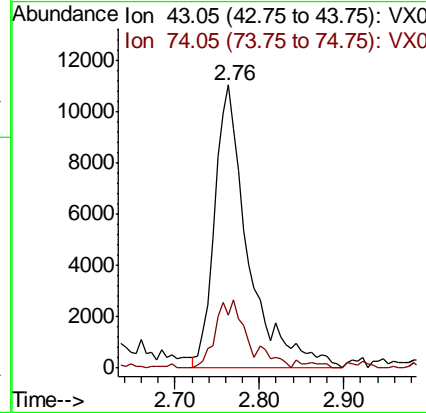
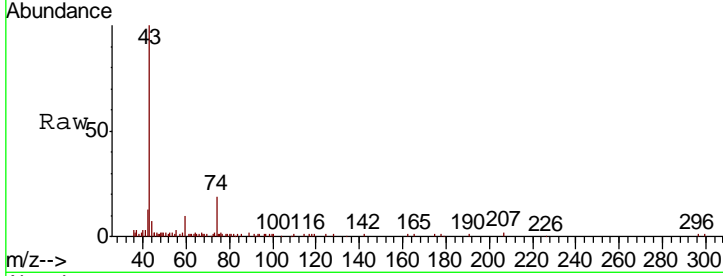




#15
Methyl Acetate
Concen: 5.892 ug/L
RT: 2.76 min Scan# 275
Delta R.T. 0.00 min
Lab File: VX018529.D
Acq: 22 Sep 2020 19:06

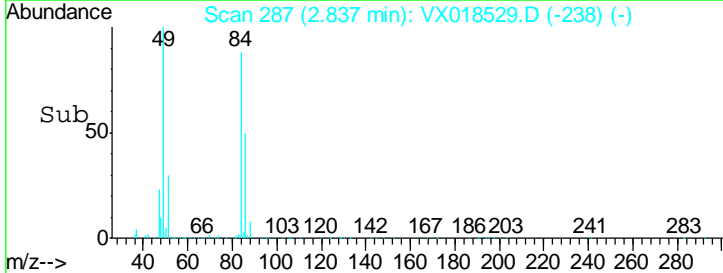
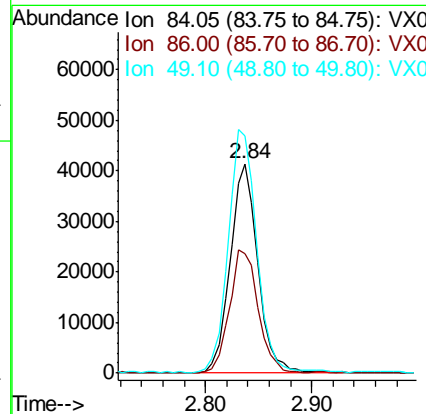
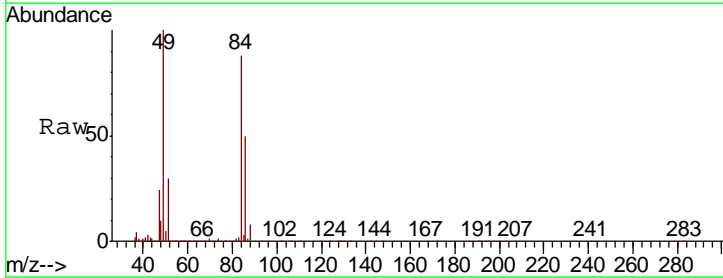
Instrument : MSVOA_X
ClientSampled : VSTD005303

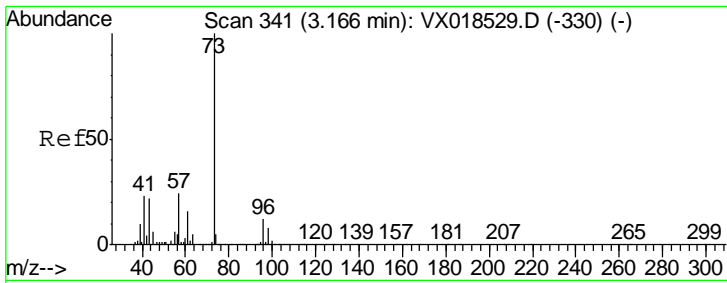
Tgt Ion	Resp	Lower	Upper
43	30468		
74	19.7	15.8	23.6



#16
Methylene chloride
Concen: 3.872 ug/L
RT: 2.84 min Scan# 287
Delta R.T. 0.00 min
Lab File: VX018529.D
Acq: 22 Sep 2020 19:06

Tgt Ion	Resp	Lower	Upper
84	75280		
86	56.9	39.8	74.0
49	113.5	79.5	147.6

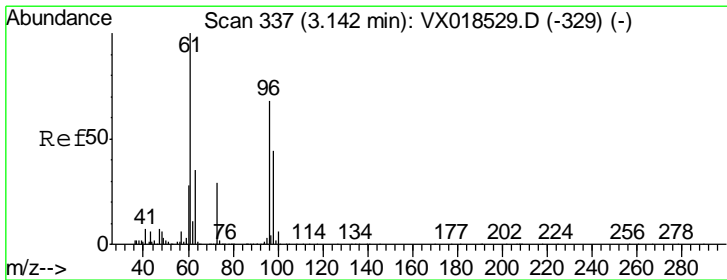
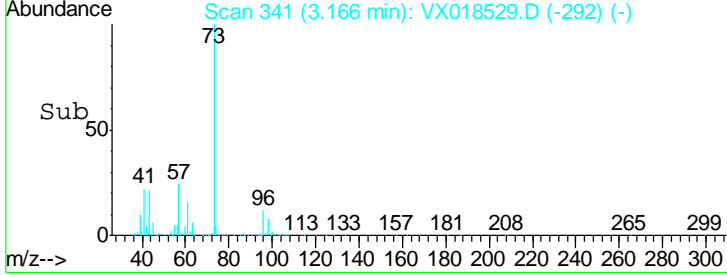
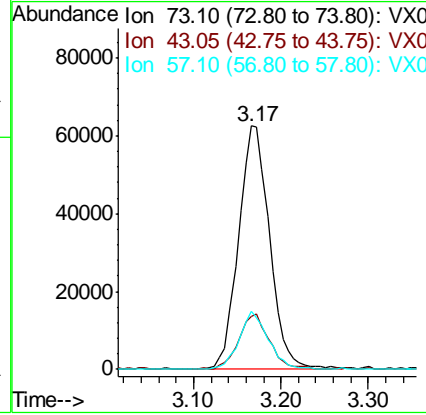
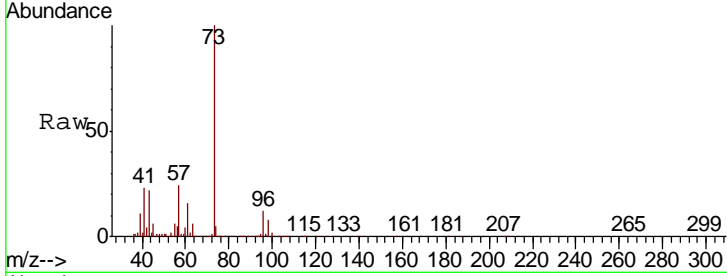




#17
 Methyl tert-butyl Ether
 Concen: 3.938 ug/L
 RT: 3.17 min Scan# 341
 Delta R.T. 0.00 min
 Lab File: VX018529.D
 Acq: 22 Sep 2020 19:06

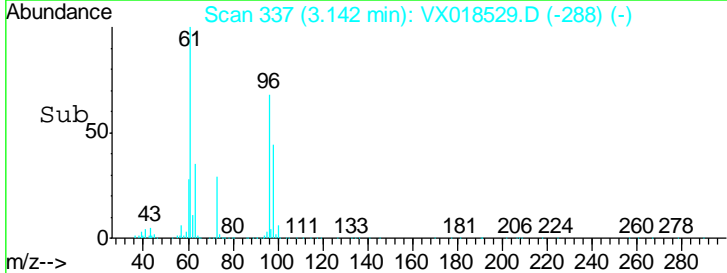
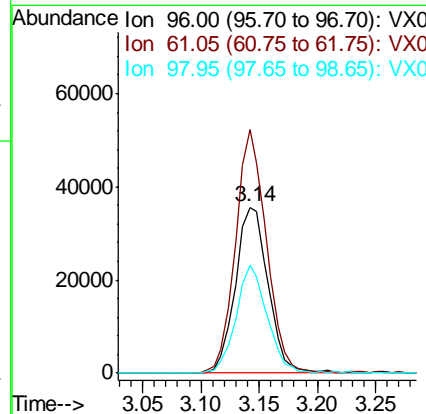
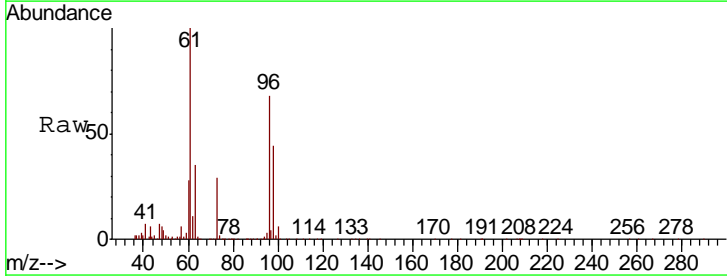
Instrument :
 MSVOA_X
ClientSampled :
 VSTD005303

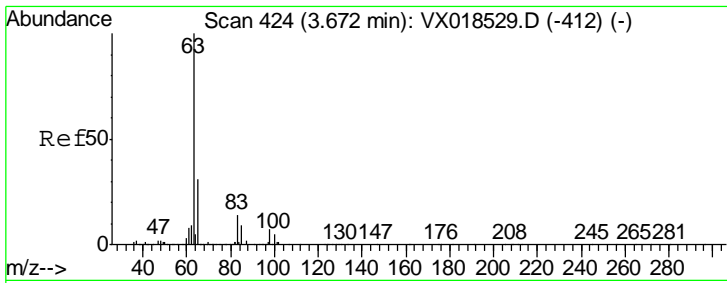
Tgt Ion	Resp	Lower	Upper
73	153333		
43	22.9	18.3	27.5
57	22.5	18.0	27.0



#18
 trans-1,2-Dichloroethene
 Concen: 3.701 ug/L
 RT: 3.14 min Scan# 337
 Delta R.T. 0.00 min
 Lab File: VX018529.D
 Acq: 22 Sep 2020 19:06

Tgt Ion	Resp	Lower	Upper
96	69335		
61	146.6	102.6	190.6
98	64.6	45.2	84.0

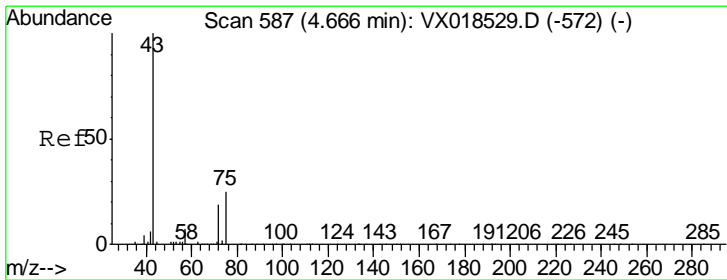
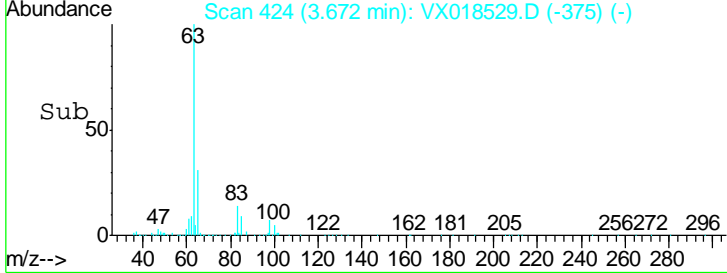
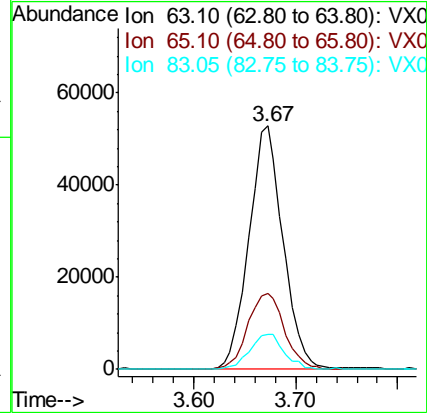
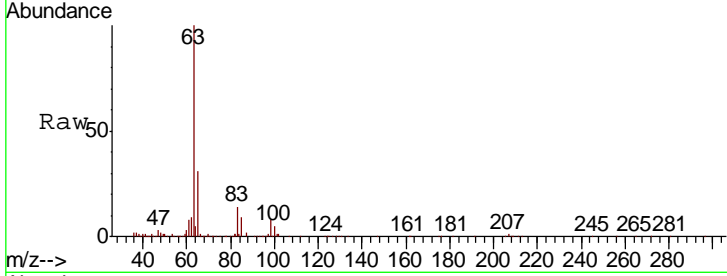




#19
 1,1-Dichloroethane
 Concen: 3.955 ug/L
 RT: 3.67 min Scan# 424
 Delta R.T. 0.00 min
 Lab File: VX018529.D
 Acq: 22 Sep 2020 19:06

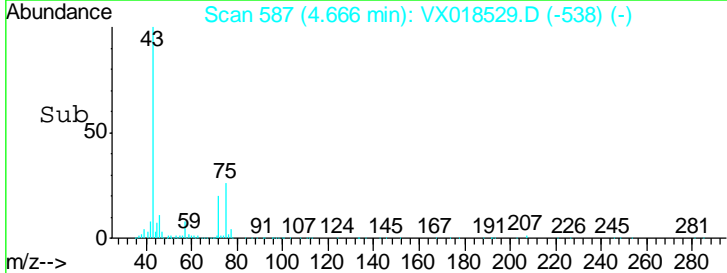
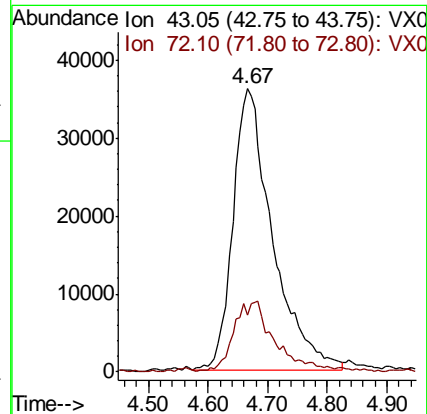
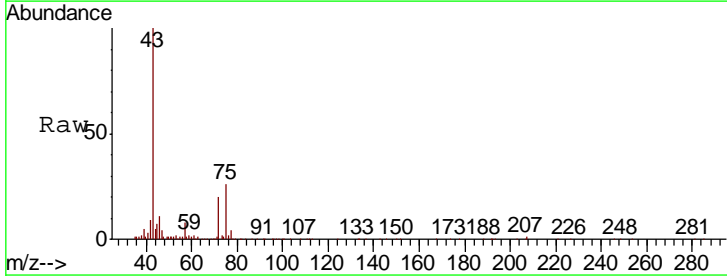
Instrument :
 MSVOA_X
ClientSampled :
 VSTD005303

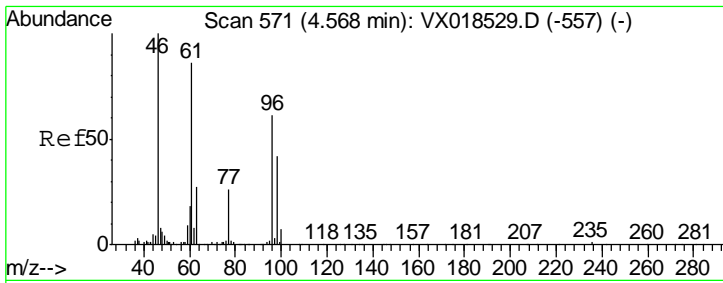
Tgt Ion	Resp	Lower	Upper
63	122349		
65	31.0	21.7	40.3
83	14.3	10.0	18.6



#21
 2-Butanone
 Concen: 65.187 ug/L
 RT: 4.67 min Scan# 587
 Delta R.T. 0.00 min
 Lab File: VX018529.D
 Acq: 22 Sep 2020 19:06

Tgt Ion	Resp	Lower	Upper
43	165664		
72	25.9	13.0	38.9

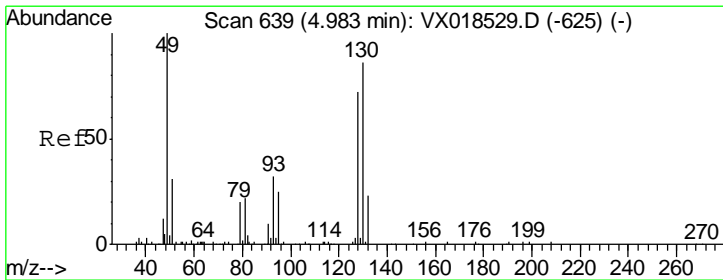
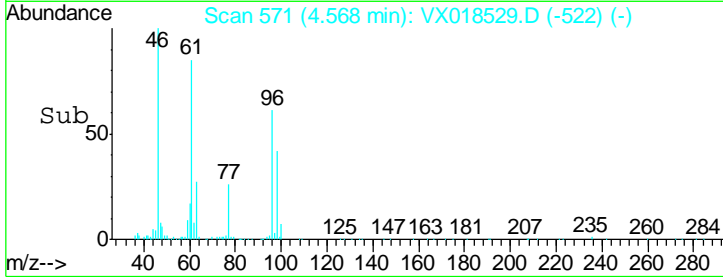
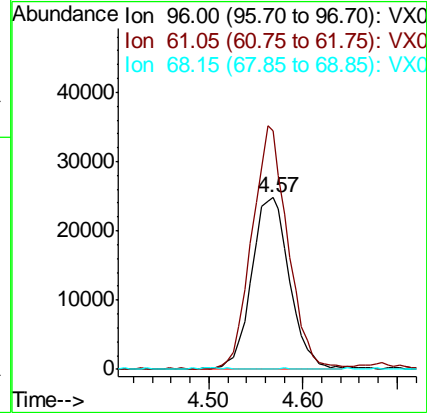
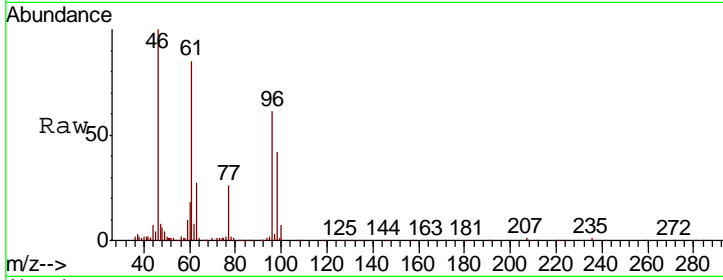




#22
 cis-1,2-Dichloroethene
 Concen: 3.550 ug/L
 RT: 4.57 min Scan# 571
 Delta R.T. 0.00 min
 Lab File: VX018529.D
 Acq: 22 Sep 2020 19:06

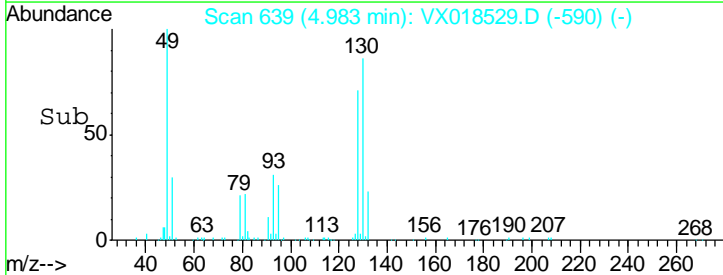
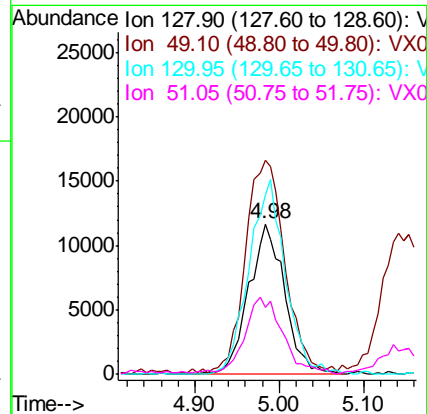
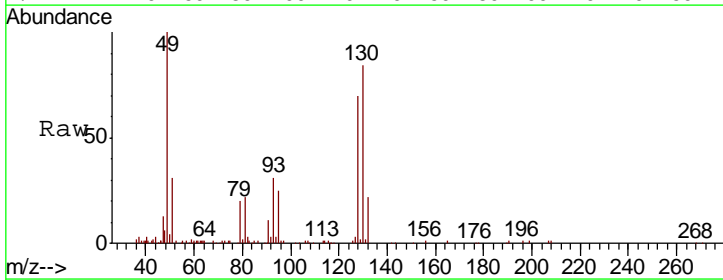
Instrument :
 MSVOA_X
 ClientSampled :
 VSTD005303

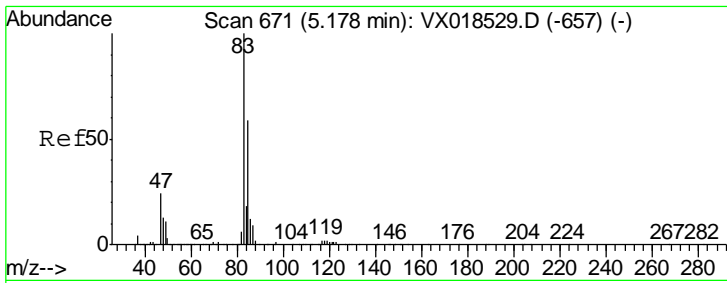
Tgt Ion	Resp	Lower	Upper
96	70163		
61	139.3	97.5	181.1
68	0.0	0.0	0.0



#23
 Bromochloromethane
 Concen: 4.020 ug/L
 RT: 4.98 min Scan# 639
 Delta R.T. 0.00 min
 Lab File: VX018529.D
 Acq: 22 Sep 2020 19:06

Tgt Ion	Resp	Lower	Upper
128	33717		
128	100		
49	142.3	99.6	185.0
130	119.4	83.6	155.2
51	44.0	35.2	52.8

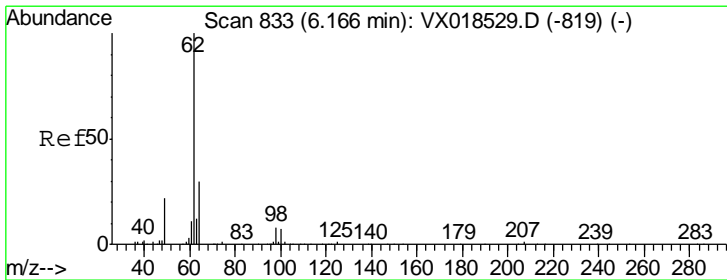
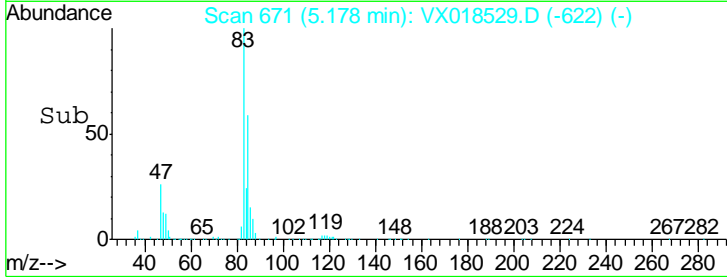
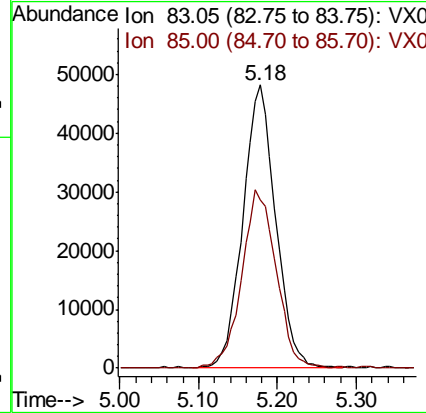
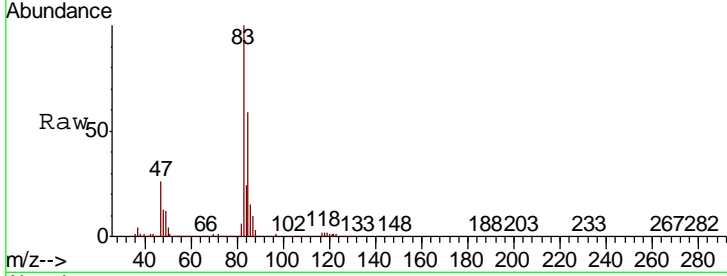




#25
 Chloroform
 Concen: 3.265 ug/L
 RT: 5.18 min Scan# 671
 Delta R.T. 0.00 min
 Lab File: VX018529.D
 Acq: 22 Sep 2020 19:06

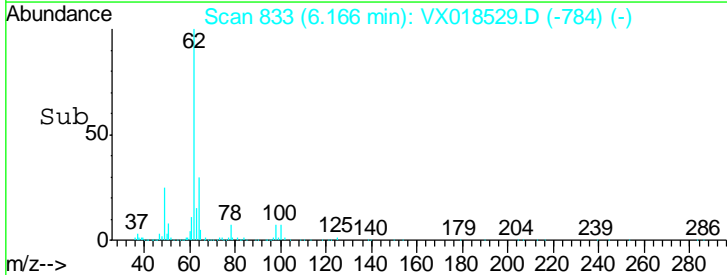
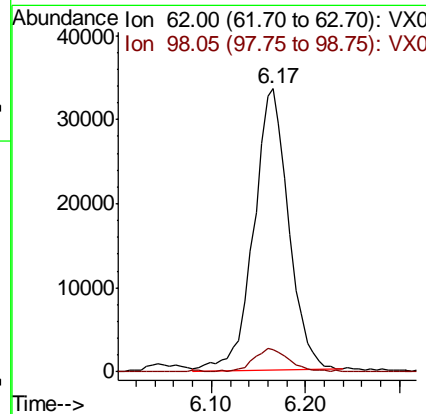
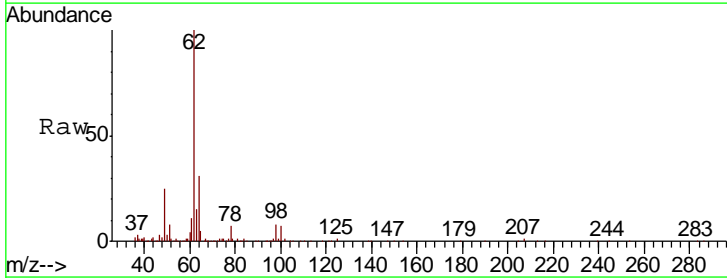
Instrument :
 MSVOA_X
ClientSampled :
 VSTD005303

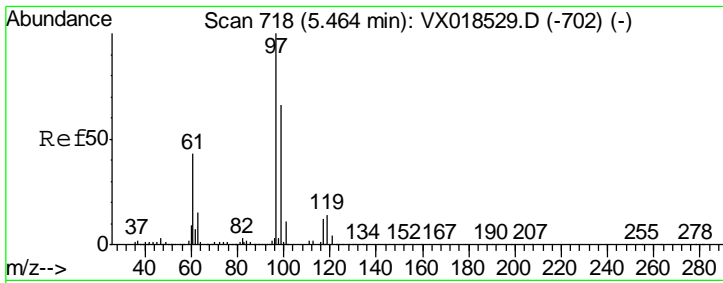
Tgt Ion	Resp	Lower	Upper
83	138860		
85	59.5	41.6	77.3



#27
 1,2-Dichloroethane
 Concen: 4.570 ug/L
 RT: 6.17 min Scan# 833
 Delta R.T. 0.00 min
 Lab File: VX018529.D
 Acq: 22 Sep 2020 19:06

Tgt Ion	Resp	Lower	Upper
62	86929		
98	7.8	6.2	9.4

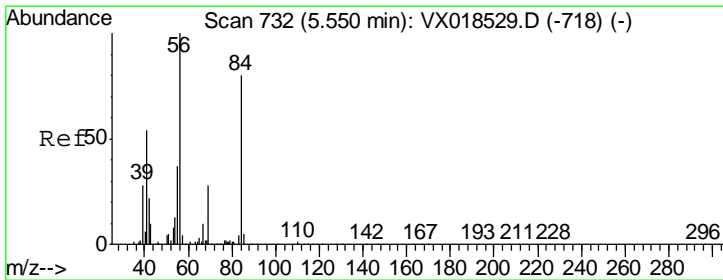
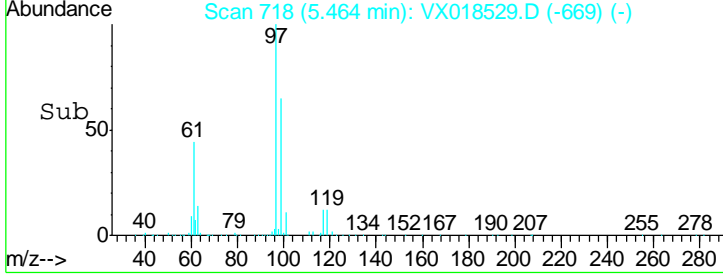
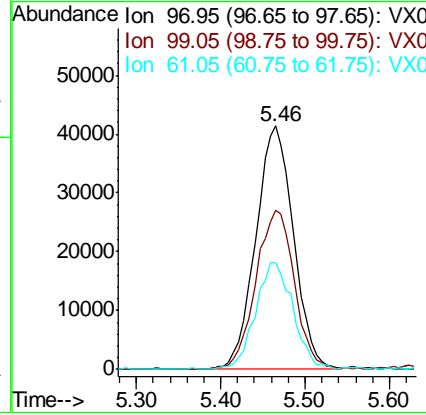
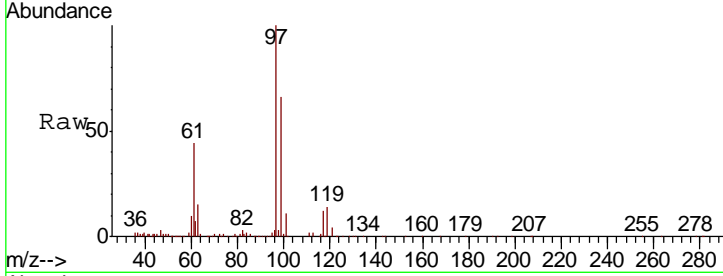




#29
 1,1,1-Trichloroethane
 Concen: 3.955 ug/L
 RT: 5.46 min Scan# 718
 Delta R.T. 0.00 min
 Lab File: VX018529.D
 Acq: 22 Sep 2020 19:06

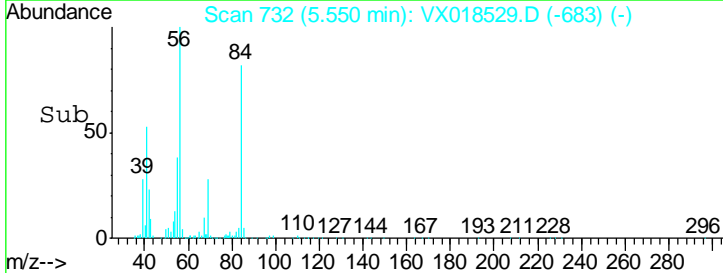
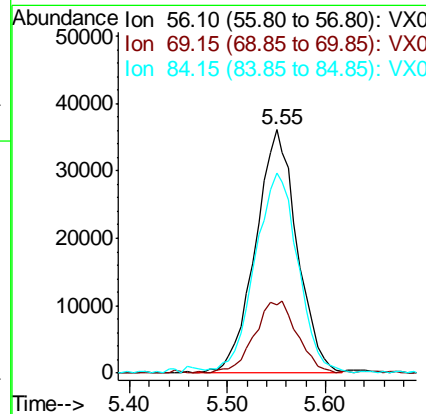
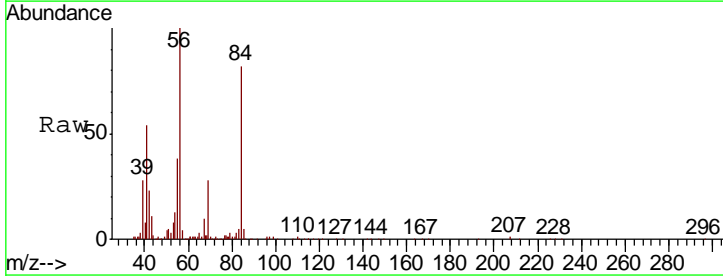
Instrument :
 MSVOA_X
ClientSampled :
 VSTD005303

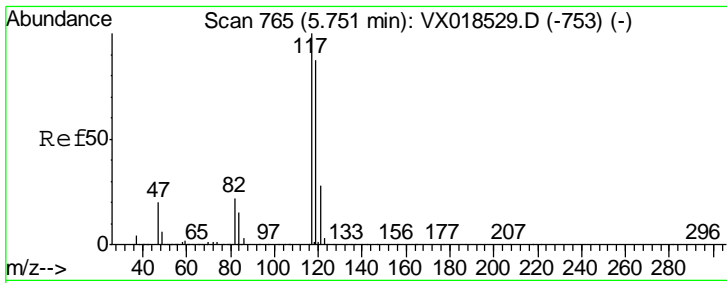
Tgt Ion	Resp	Lower	Upper
97	127523		
99	67.0	53.6	80.4
61	43.5	34.8	52.2



#30
 Cyclohexane
 Concen: 3.597 ug/L
 RT: 5.55 min Scan# 732
 Delta R.T. 0.00 min
 Lab File: VX018529.D
 Acq: 22 Sep 2020 19:06

Tgt Ion	Resp	Lower	Upper
56	105919		
69	30.9	24.7	37.1
84	85.8	68.6	103.0

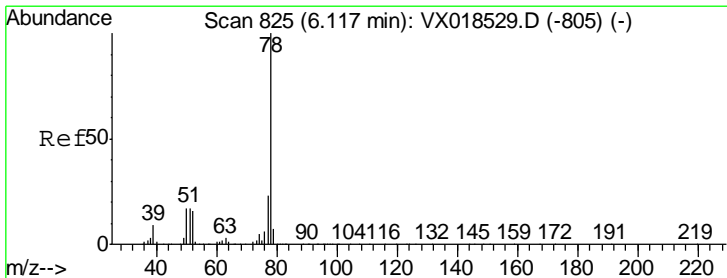
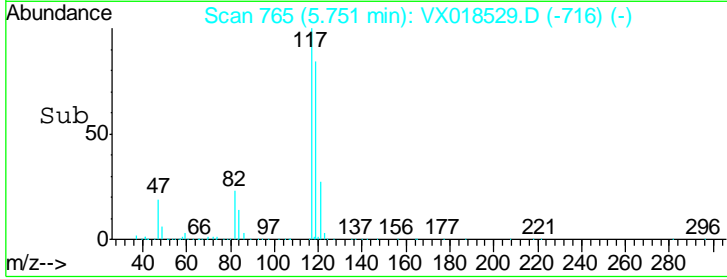
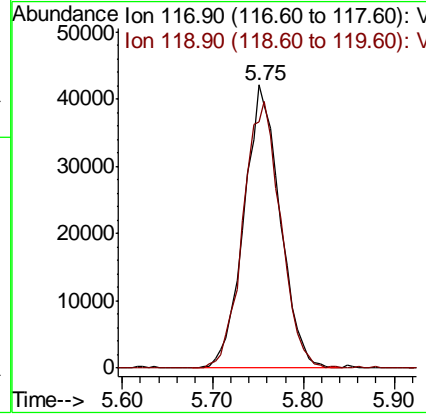
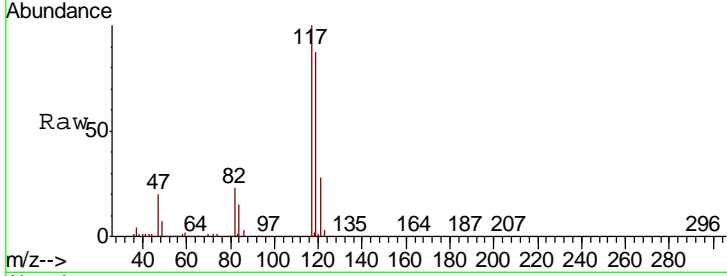




#31
 Carbon tetrachloride
 Concen: 4.144 ug/L
 RT: 5.75 min Scan# 765
 Delta R.T. 0.00 min
 Lab File: VX018529.D
 Acq: 22 Sep 2020 19:06

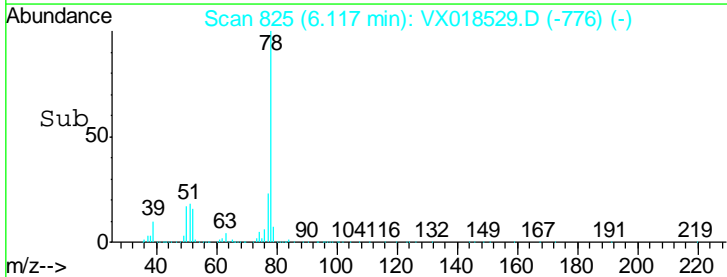
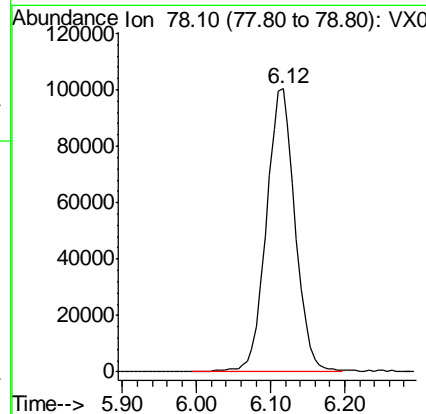
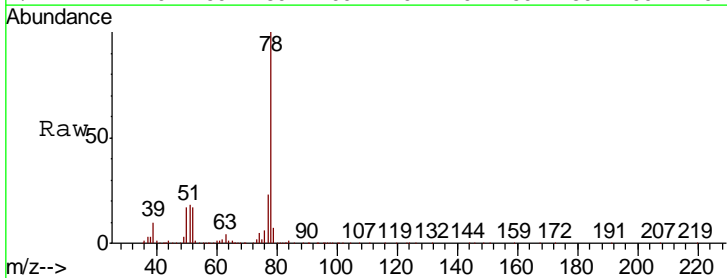
Instrument :
 MSVOA_X
ClientSampled :
 VSTD005303

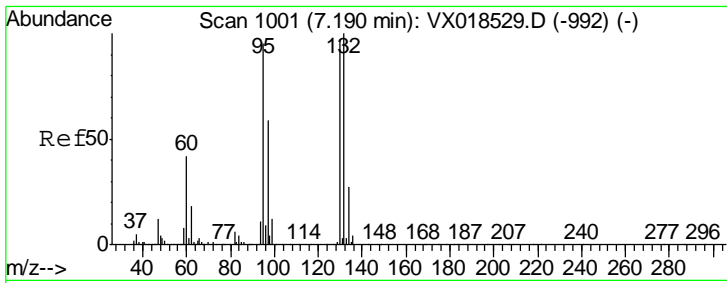
Tgt Ion: 117 Resp: 116202
 Ion Ratio Lower Upper
 117 100
 119 97.9 78.3 117.5



#33
 Benzene
 Concen: 3.757 ug/L
 RT: 6.12 min Scan# 825
 Delta R.T. 0.00 min
 Lab File: VX018529.D
 Acq: 22 Sep 2020 19:06

Tgt Ion: 78 Resp: 270448



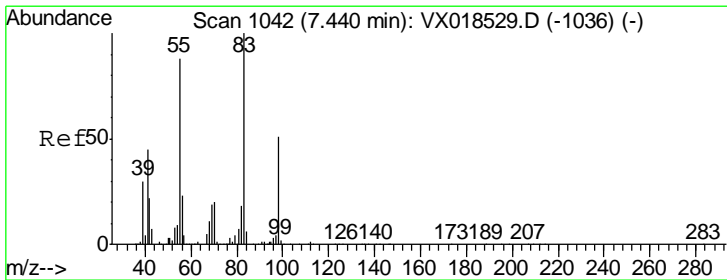
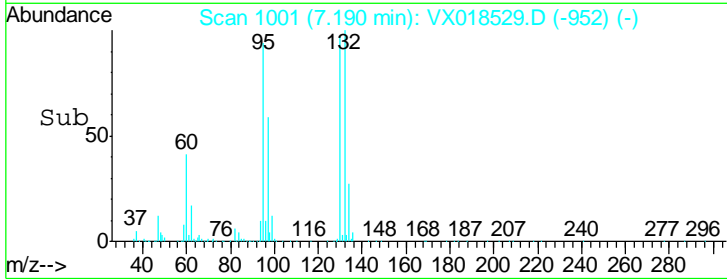
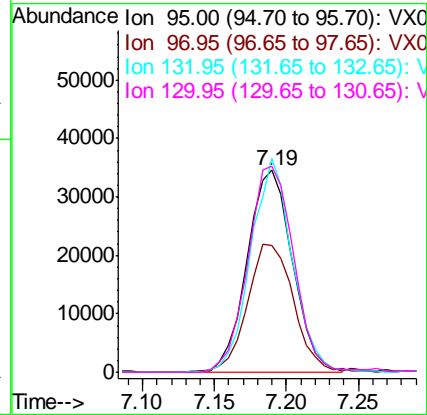
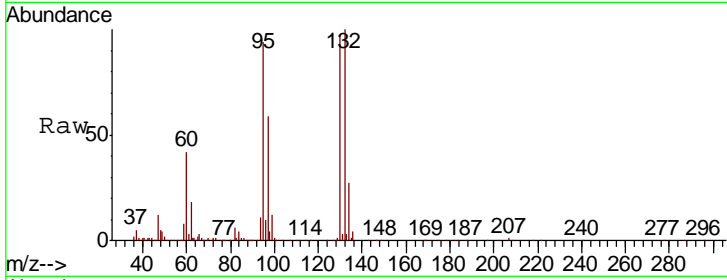


#34
 Trichloroethene
 Concen: 3.669 ug/L
 RT: 7.19 min Scan# 1001
 Delta R.T. 0.00 min
 Lab File: VX018529.D
 Acq: 22 Sep 2020 19:06

Instrument :
 MSVOA_X
 ClientSampled :
 VSTD005303

Tgt Ion: 95 Resp: 75284

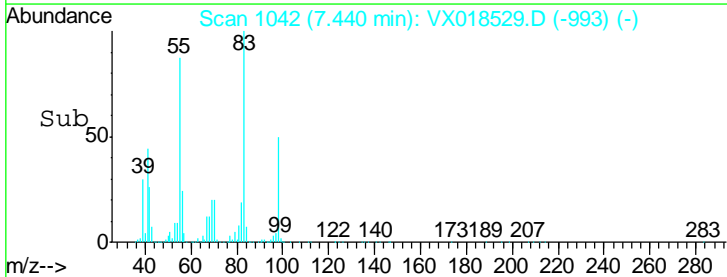
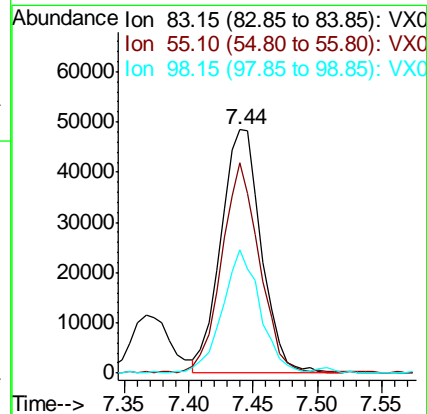
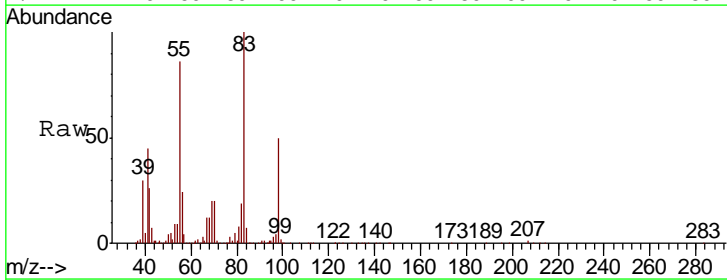
Ion	Ratio	Lower	Upper
95	100		
97	62.9	44.0	81.8
132	105.9	74.1	137.7
130	102.4	71.7	133.1

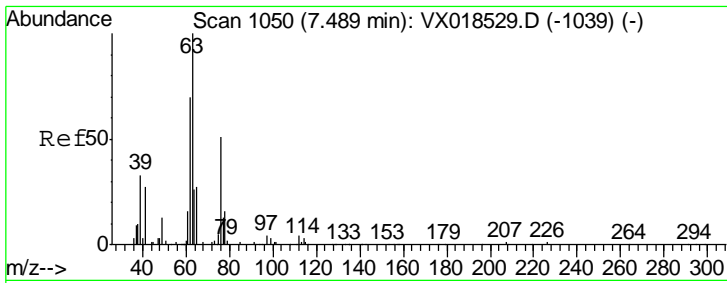


#35
 Methylcyclohexane
 Concen: 3.182 ug/L
 RT: 7.44 min Scan# 1042
 Delta R.T. 0.00 min
 Lab File: VX018529.D
 Acq: 22 Sep 2020 19:06

Tgt Ion: 83 Resp: 105958

Ion	Ratio	Lower	Upper
83	100		
55	82.1	65.7	98.5
98	47.3	37.8	56.8

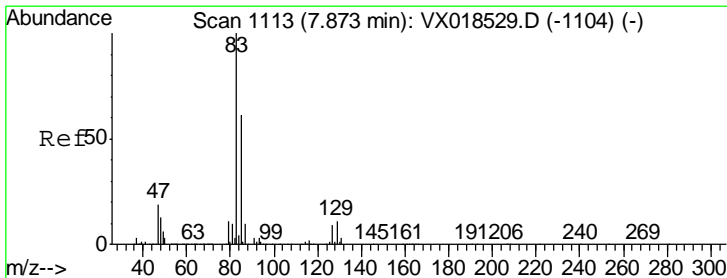
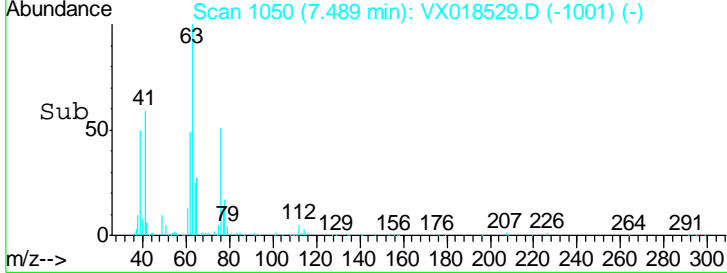
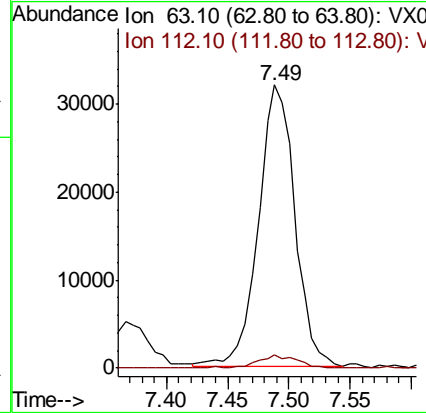
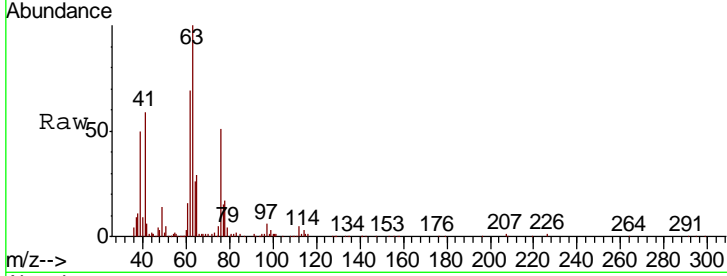




#37
 1,2-Dichloropropane
 Concen: 3.892 ug/L
 RT: 7.49 min Scan# 1050
 Delta R.T. 0.00 min
 Lab File: VX018529.D
 Acq: 22 Sep 2020 19:06

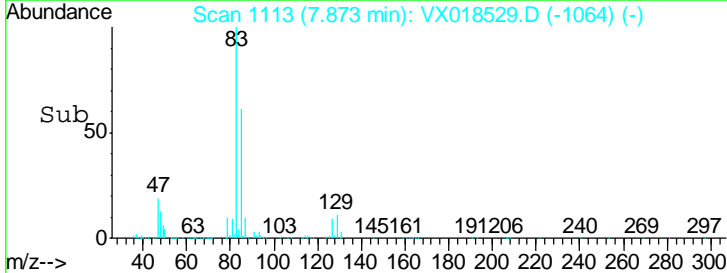
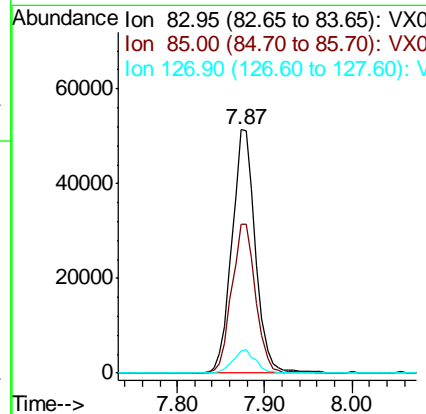
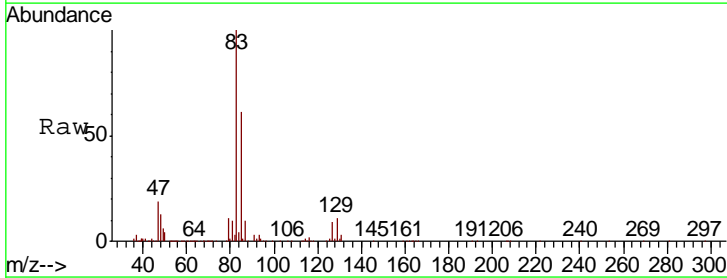
Instrument : MSVOA_X
 ClientSampled : VSTD005303

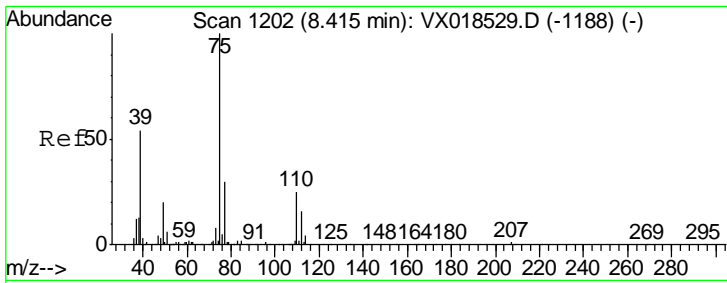
Tgt Ion	Resp	Lower	Upper
63	100		
112	5.1	4.1	6.1



#38
 Bromodichloromethane
 Concen: 3.975 ug/L
 RT: 7.87 min Scan# 1113
 Delta R.T. 0.00 min
 Lab File: VX018529.D
 Acq: 22 Sep 2020 19:06

Tgt Ion	Resp	Lower	Upper
83	100		
85	61.3	42.9	79.7
127	9.0	7.2	10.8

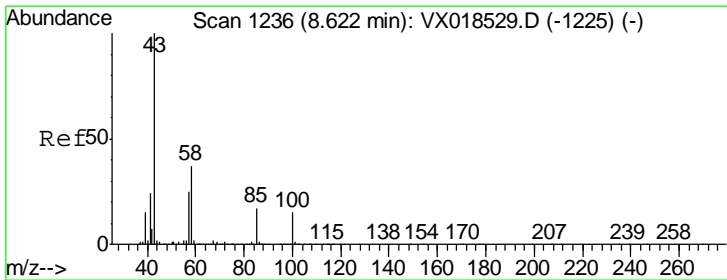
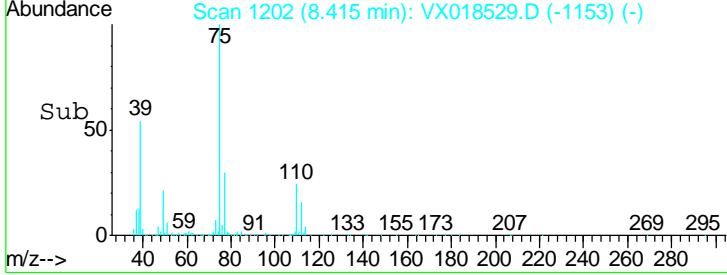
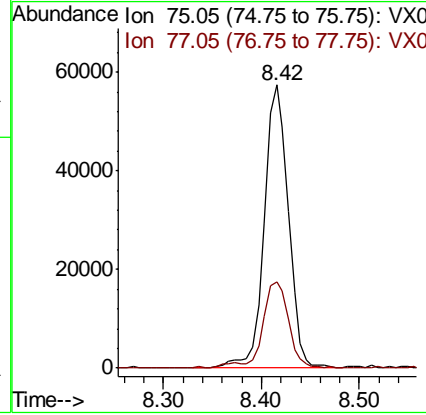
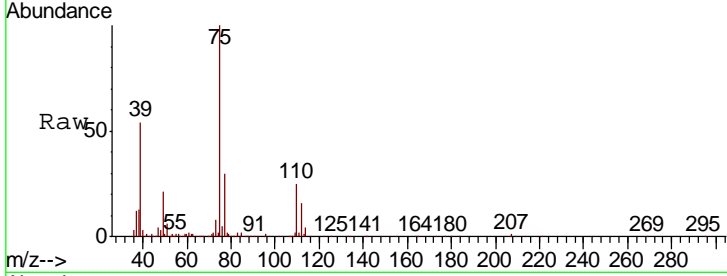




#39
 cis-1,3-Dichloropropene
 Concen: 3.704 ug/L
 RT: 8.42 min Scan# 1202
 Delta R.T. 0.00 min
 Lab File: VX018529.D
 Acq: 22 Sep 2020 19:06

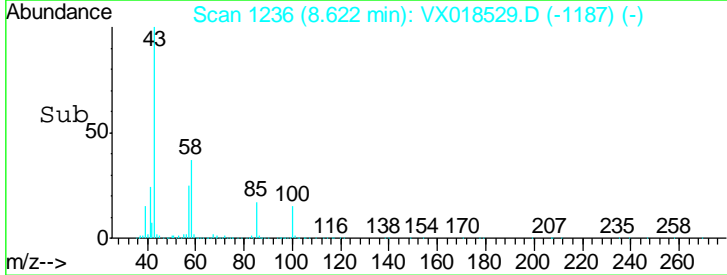
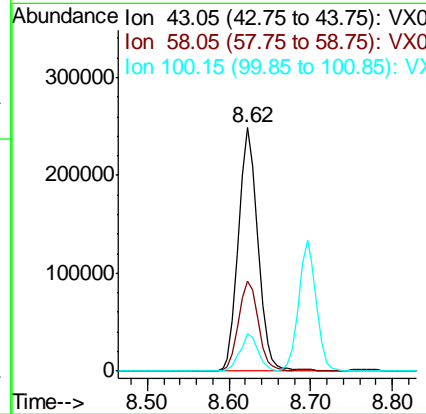
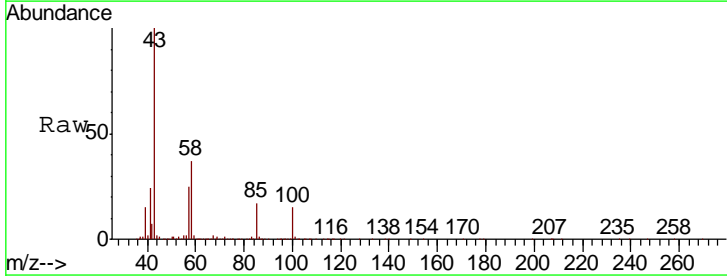
Instrument :
 MSVOA_X
 ClientSampled :
 VSTD005303

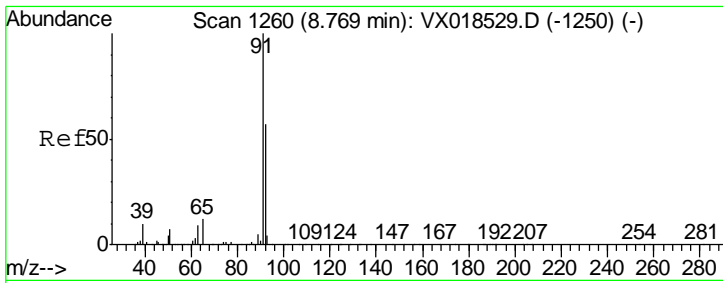
Tgt Ion	Resp	Lower	Upper
75	98439		
77	30.3	21.2	39.4



#40
 4-Methyl-2-pentanone
 Concen: 48.038 ug/L
 RT: 8.62 min Scan# 1236
 Delta R.T. 0.00 min
 Lab File: VX018529.D
 Acq: 22 Sep 2020 19:06

Tgt Ion	Resp	Lower	Upper
43	405934		
58	37.3	29.8	44.8
100	14.4	11.5	17.3

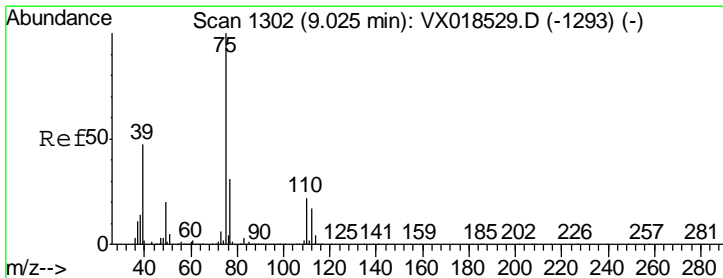
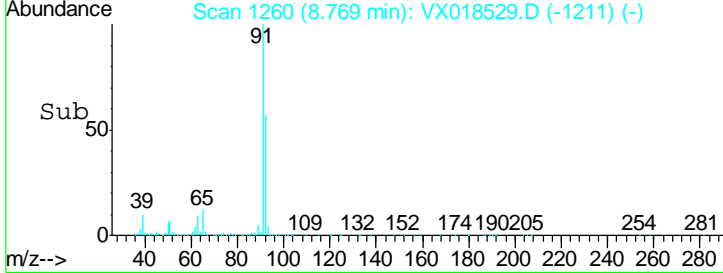
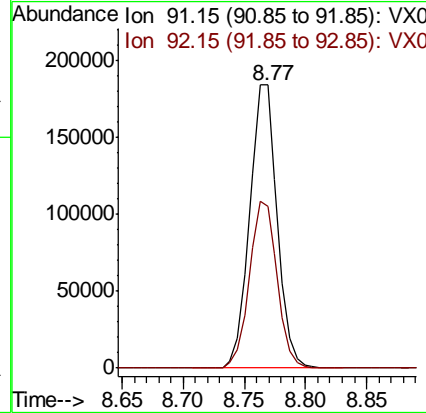
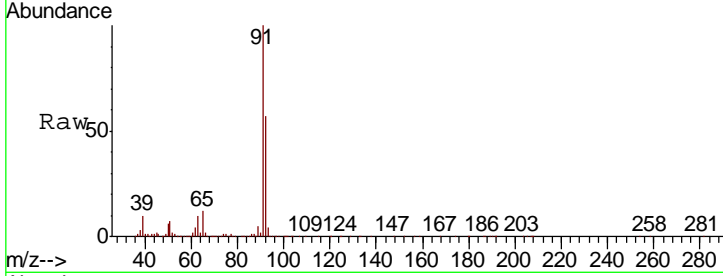




#42
 Toluene
 Concen: 3.692 ug/L
 RT: 8.77 min Scan# 1260
 Delta R.T. 0.00 min
 Lab File: VX018529.D
 Acq: 22 Sep 2020 19:06

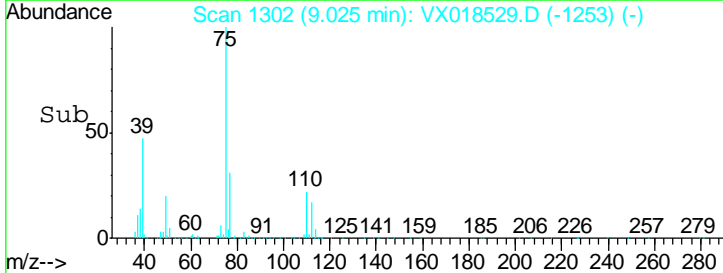
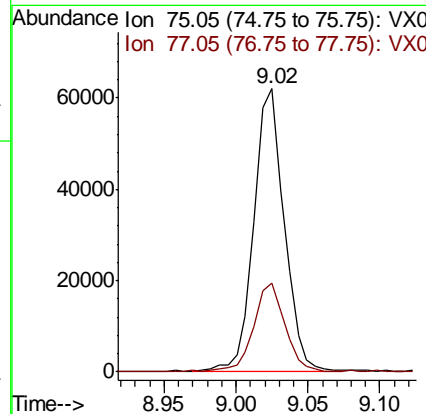
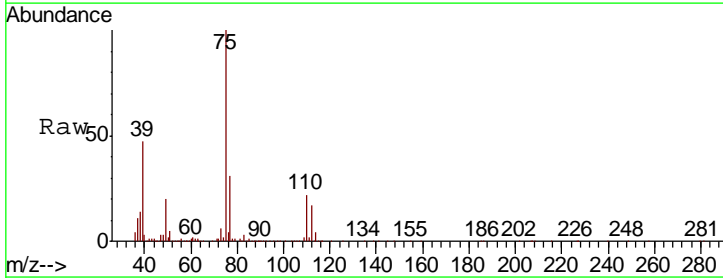
Instrument : MSVOA_X
 ClientSampled : VX018529.D
 VSTD005303

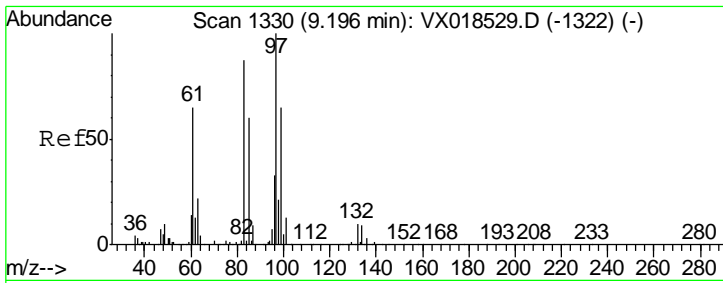
Tgt Ion	Resp	Lower	Upper
91	289082		
92	57.0	39.9	74.1



#44
 trans-1,3-Dichloropropene
 Concen: 4.162 ug/L
 RT: 9.02 min Scan# 1302
 Delta R.T. 0.00 min
 Lab File: VX018529.D
 Acq: 22 Sep 2020 19:06

Tgt Ion	Resp	Lower	Upper
75	90404		
77	31.5	22.0	41.0

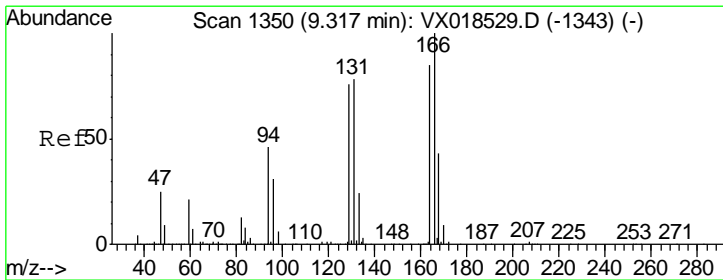
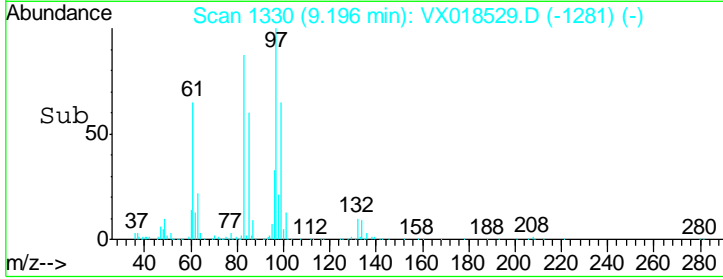
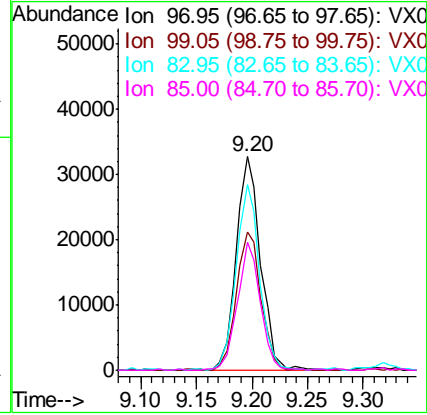
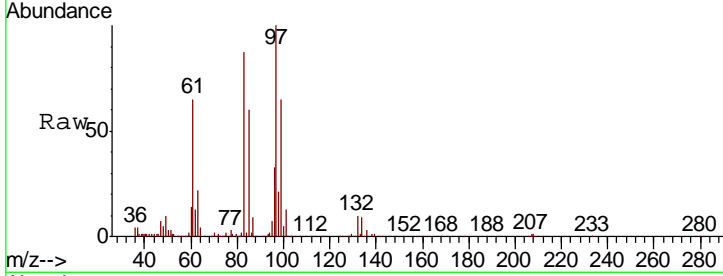




#45
 1,1,2-Trichloroethane
 Concen: 3.925 ug/L
 RT: 9.20 min Scan# 1330
 Delta R.T. 0.00 min
 Lab File: VX018529.D
 Acq: 22 Sep 2020 19:06

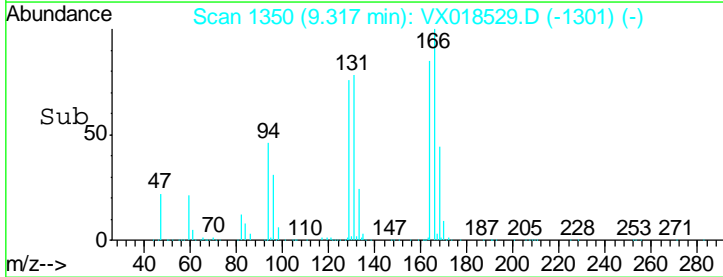
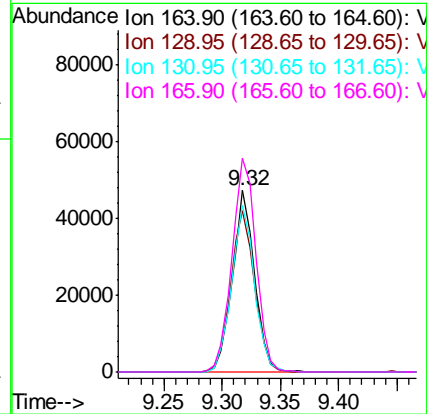
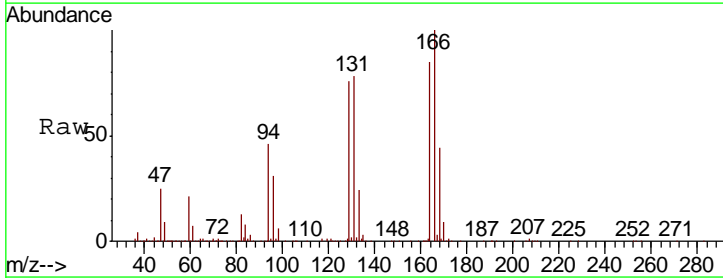
Instrument :
 MSVOA_X
 ClientSampled :
 VSTD005303

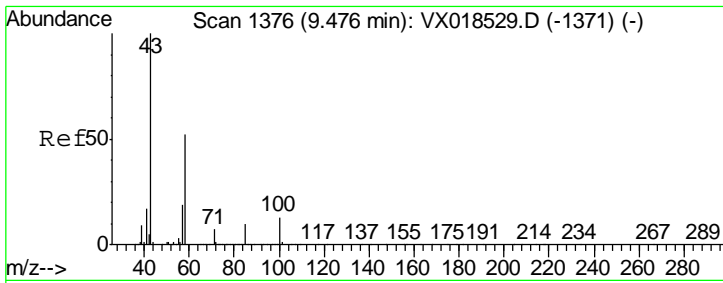
Tgt Ion	Resp	Lower	Upper
97	100		
99	64.6	45.2	84.0
83	87.0	60.9	113.1
85	59.8	41.9	77.7



#47
 Tetrachloroethene
 Concen: 3.856 ug/L
 RT: 9.32 min Scan# 1350
 Delta R.T. 0.00 min
 Lab File: VX018529.D
 Acq: 22 Sep 2020 19:06

Tgt Ion	Resp	Lower	Upper
164	100		
129	89.0	62.3	115.7
131	92.1	64.5	119.7
166	117.8	82.5	153.1

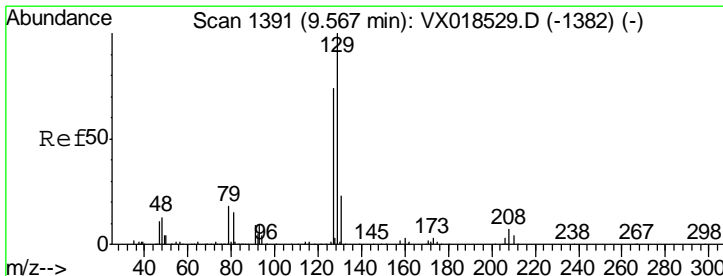
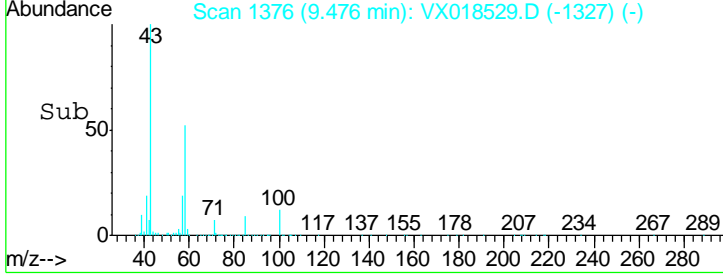
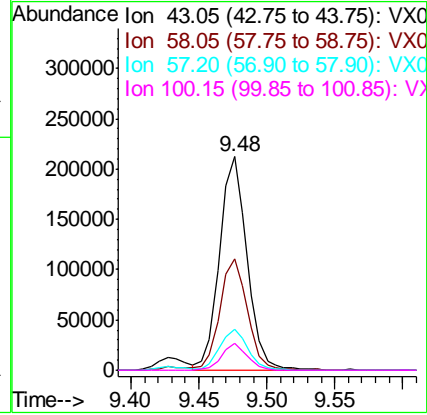
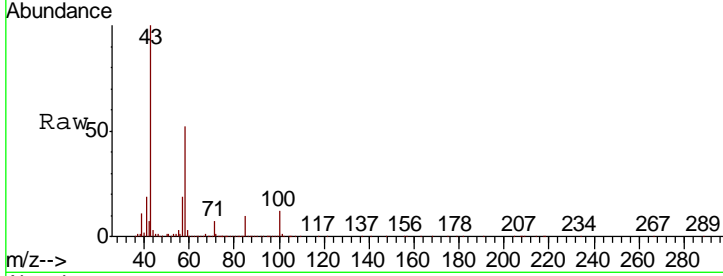




#48
 2-Hexanone
 Concen: 48.608 ug/L
 RT: 9.48 min Scan# 1376
 Delta R.T. 0.00 min
 Lab File: VX018529.D
 Acq: 22 Sep 2020 19:06

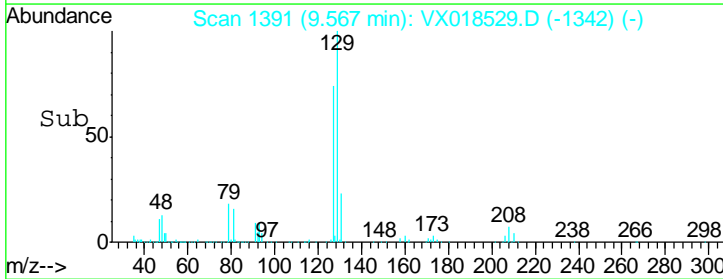
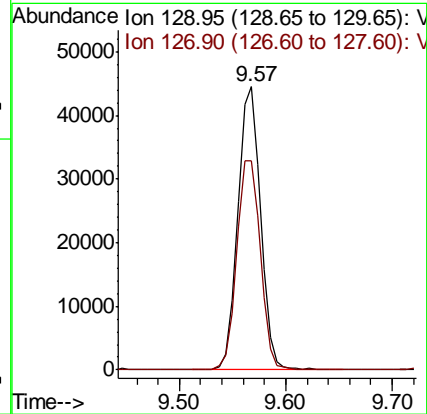
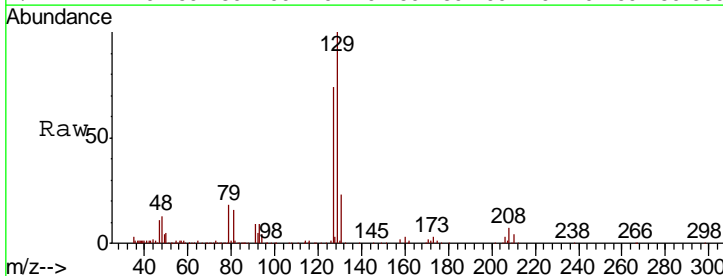
Instrument : MSVOA_X
 ClientSampled : VSTD005303

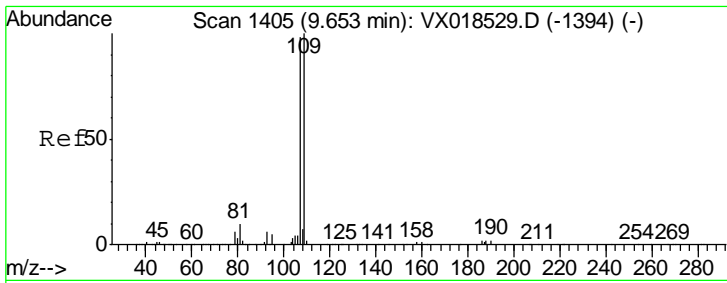
Tgt Ion	Resp	Lower	Upper
43	297212		
58	51.9	41.5	62.3
57	19.2	15.4	23.0
100	11.7	9.4	14.0



#49
 Dibromochloromethane
 Concen: 4.082 ug/L
 RT: 9.57 min Scan# 1391
 Delta R.T. 0.00 min
 Lab File: VX018529.D
 Acq: 22 Sep 2020 19:06

Tgt Ion	Resp	Lower	Upper
129	66907		
127	73.7	51.6	95.8

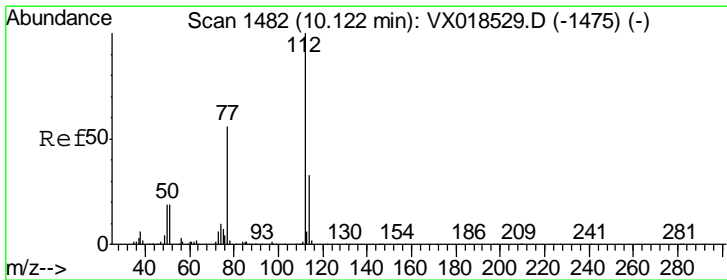
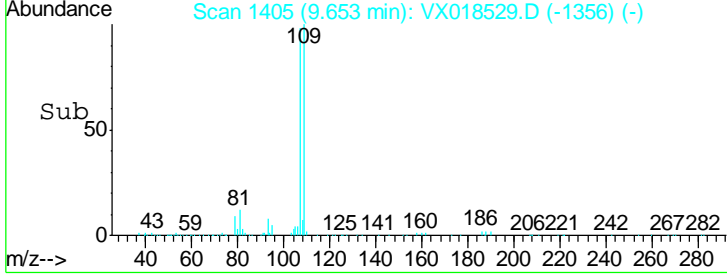
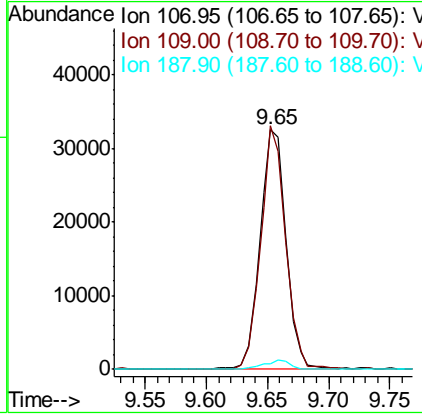
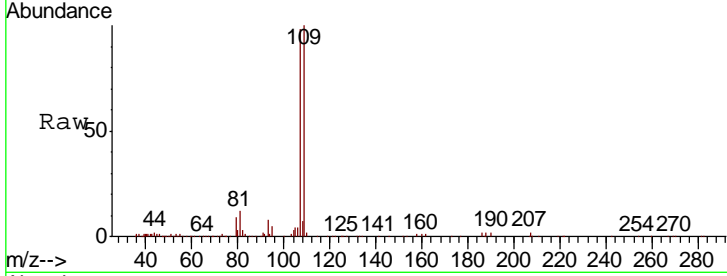




#50
 1,2-Dibromoethane
 Concen: 4.008 ug/L
 RT: 9.65 min Scan# 1405
 Delta R.T. 0.00 min
 Lab File: VX018529.D
 Acq: 22 Sep 2020 19:06

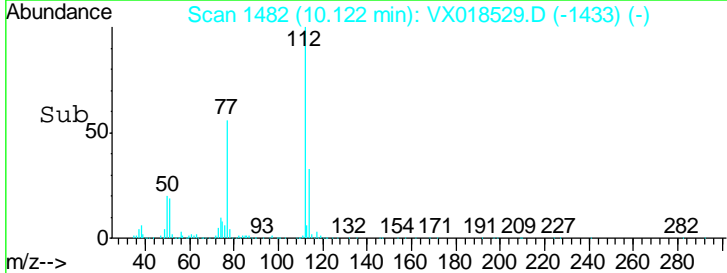
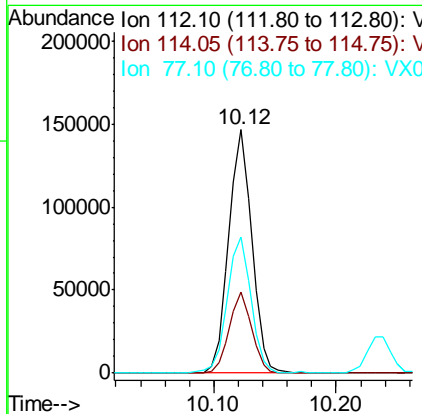
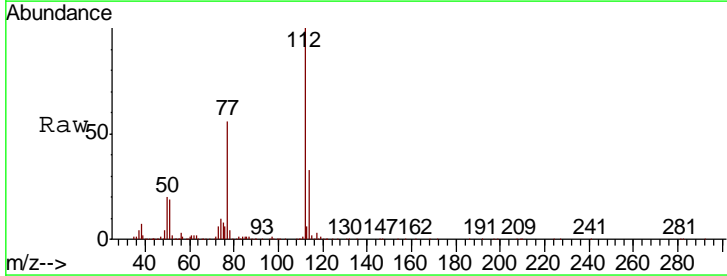
Instrument : MSVOA_X
 ClientSampled : VSTD005303

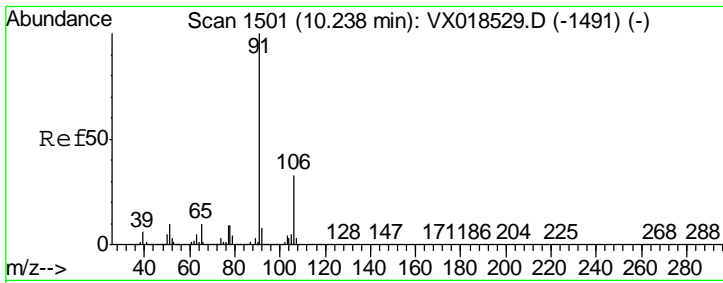
Tgt Ion	Resp	Lower	Upper
107	48544		
109	101.7	71.2	132.2
188	2.4	1.9	2.9



#51
 Chlorobenzene
 Concen: 3.688 ug/L
 RT: 10.12 min Scan# 1482
 Delta R.T. 0.00 min
 Lab File: VX018529.D
 Acq: 22 Sep 2020 19:06

Tgt Ion	Resp	Lower	Upper
112	191857		
114	33.0	23.1	42.9
77	56.1	44.9	67.3

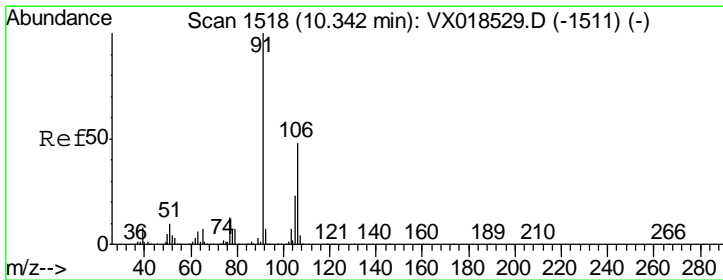
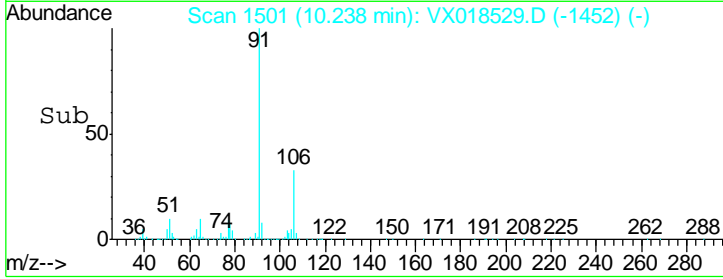
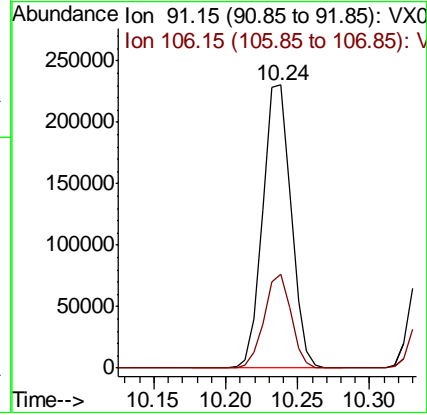
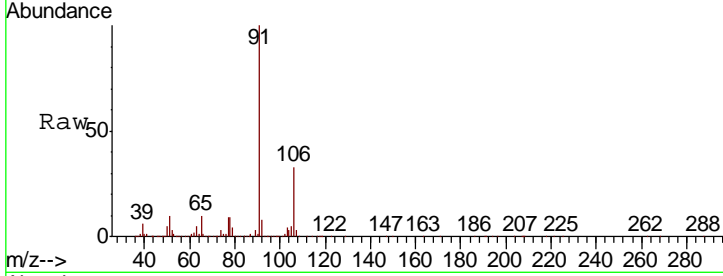




#52
Ethylbenzene
Concen: 3.524 ug/L
RT: 10.24 min Scan# 1501
Delta R.T. 0.00 min
Lab File: VX018529.D
Acq: 22 Sep 2020 19:06

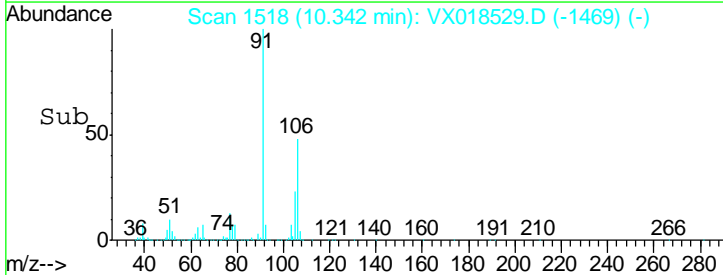
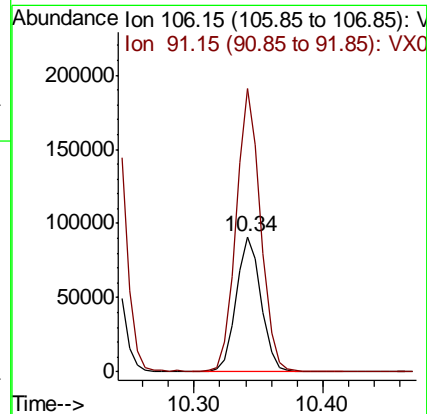
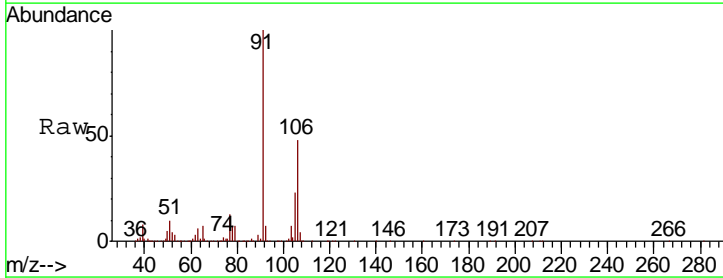
Instrument :
MSVOA_X
ClientSampled :
VSTD005303

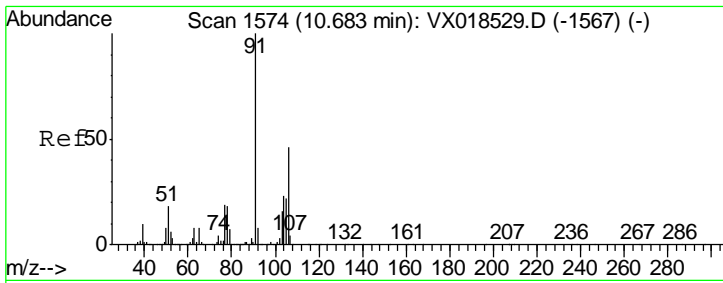
Tgt Ion: 91 Resp: 312716
Ion Ratio Lower Upper
91 100
106 33.3 23.3 43.3



#53
m,p-xylene
Concen: 3.597 ug/L
RT: 10.34 min Scan# 1518
Delta R.T. 0.00 min
Lab File: VX018529.D
Acq: 22 Sep 2020 19:06

Tgt Ion: 106 Resp: 122311
Ion Ratio Lower Upper
106 100
91 209.7 146.8 272.6

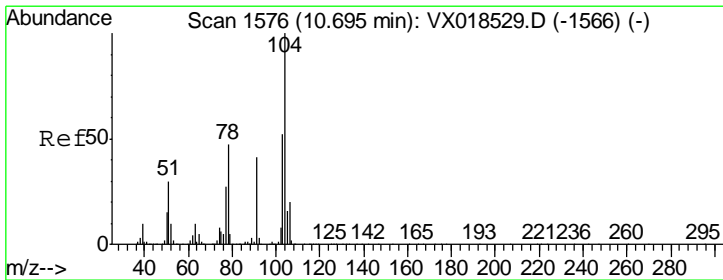
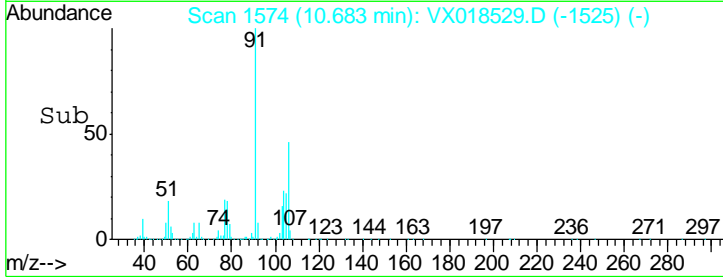
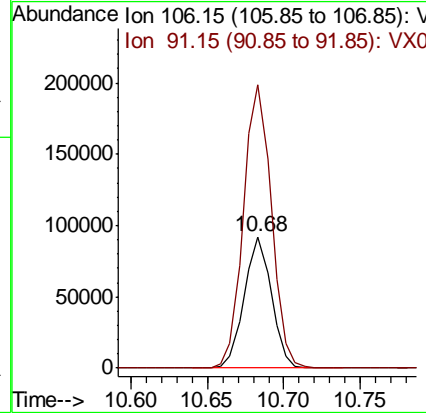
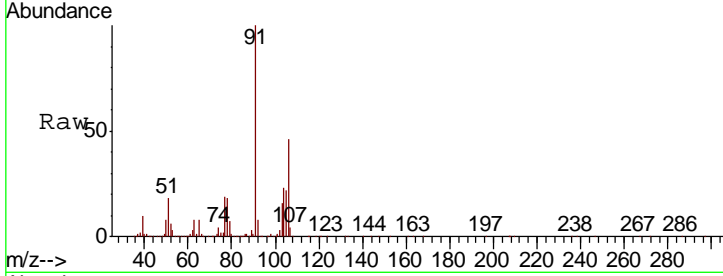




#54
 o-xylene
 Concen: 3.505 ug/L
 RT: 10.68 min Scan# 1574
 Delta R.T. 0.00 min
 Lab File: VX018529.D
 Acq: 22 Sep 2020 19:06

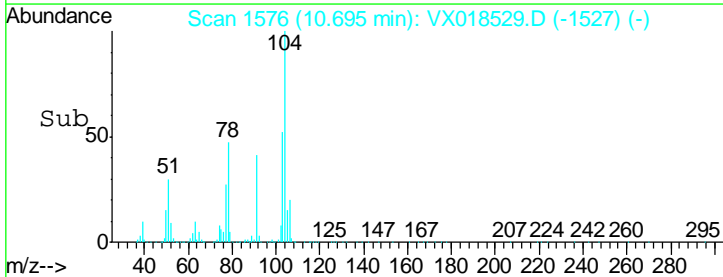
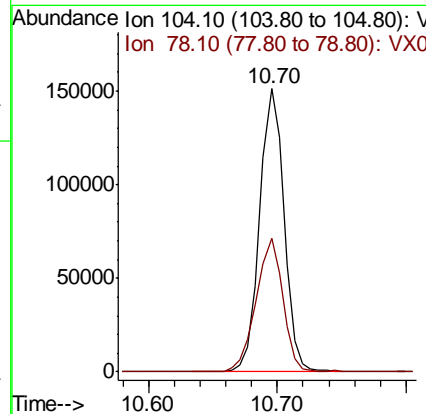
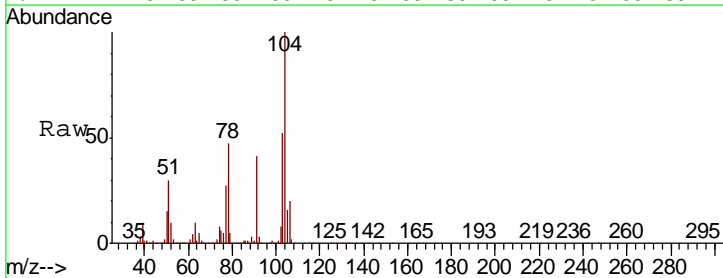
Instrument : MSVOA_X
 ClientSampled : VSTD005303

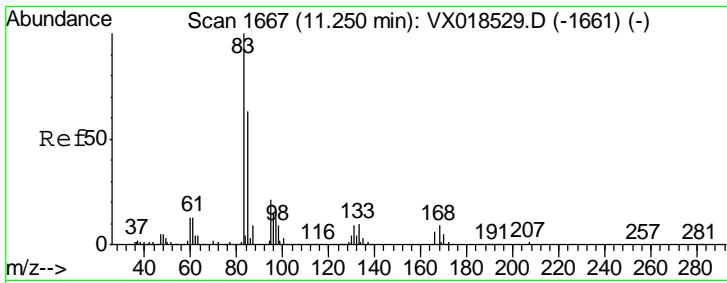
Tgt Ion	Resp	Lower	Upper
106	114150		
91	215.6	150.9	280.3



#55
 Styrene
 Concen: 3.641 ug/L
 RT: 10.70 min Scan# 1576
 Delta R.T. 0.00 min
 Lab File: VX018529.D
 Acq: 22 Sep 2020 19:06

Tgt Ion	Resp	Lower	Upper
104	196558		
78	47.1	33.0	61.2

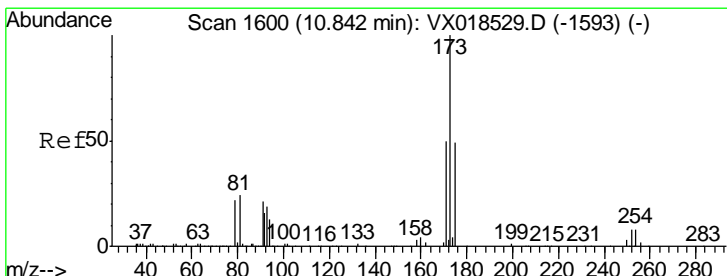
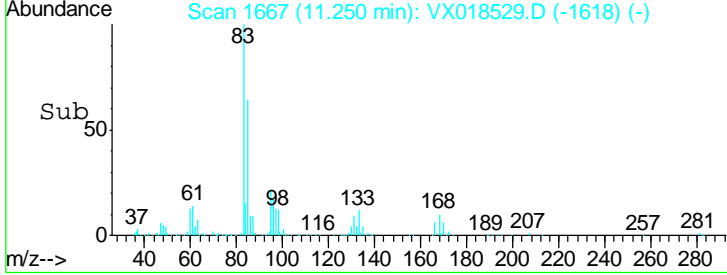
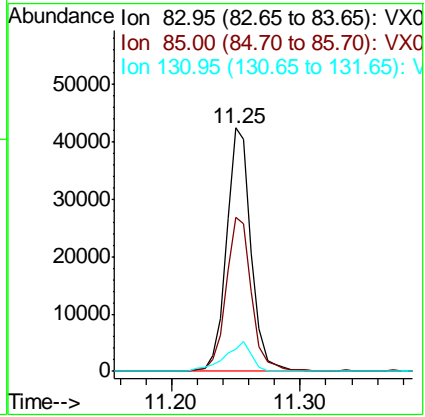
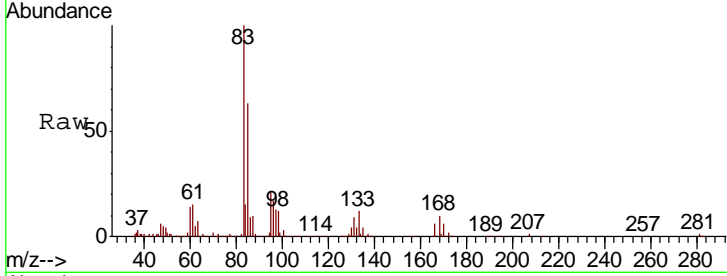




#57
 1,1,2,2-Tetrachloroethane
 Concen: 3.963 ug/L
 RT: 11.25 min Scan# 1667
 Delta R.T. 0.00 min
 Lab File: VX018529.D
 Acq: 22 Sep 2020 19:06

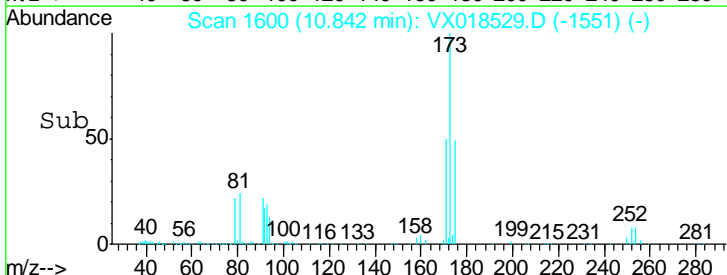
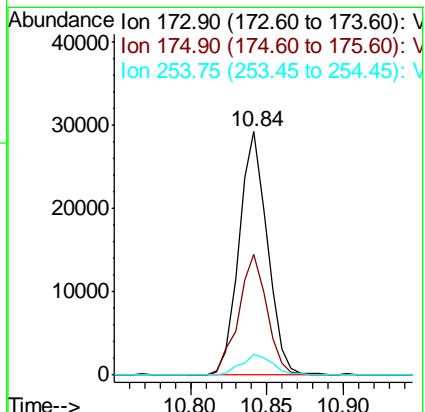
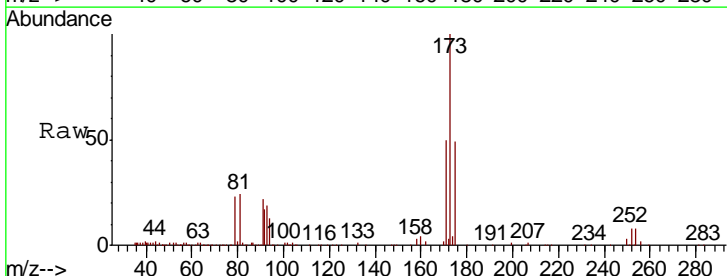
Instrument : MSVOA_X
 ClientSampled : VSTD005303

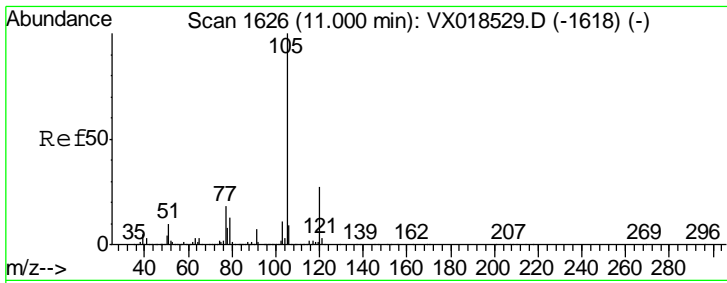
Tgt Ion	Resp	Lower	Upper
83	100		
85	63.4	44.4	82.4
131	9.2	7.4	11.0



#59
 Bromoform
 Concen: 4.273 ug/L
 RT: 10.84 min Scan# 1600
 Delta R.T. 0.00 min
 Lab File: VX018529.D
 Acq: 22 Sep 2020 19:06

Tgt Ion	Resp	Lower	Upper
173	100		
175	49.8	39.8	59.8
254	9.4	7.5	11.3

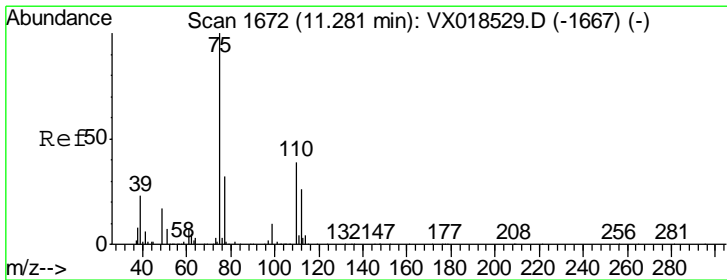
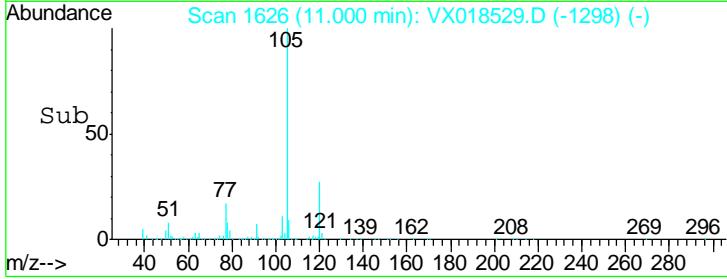
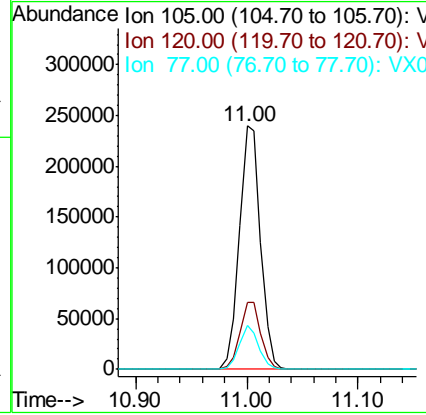
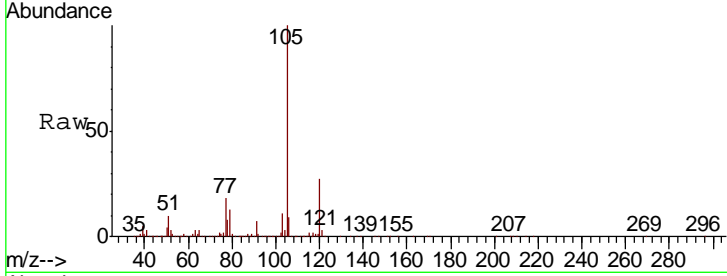




#60
 Isopropylbenzene
 Concen: 3.423 ug/L
 RT: 11.00 min Scan# 1626
 Delta R.T. 0.00 min
 Lab File: VX018529.D
 Acq: 22 Sep 2020 19:06

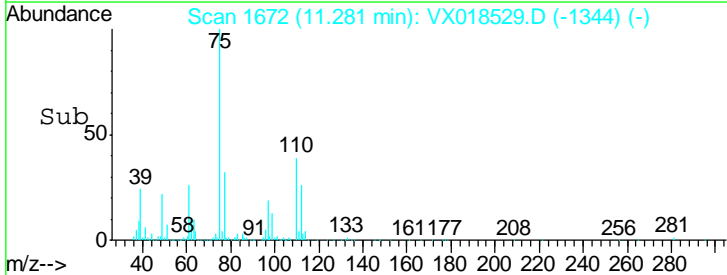
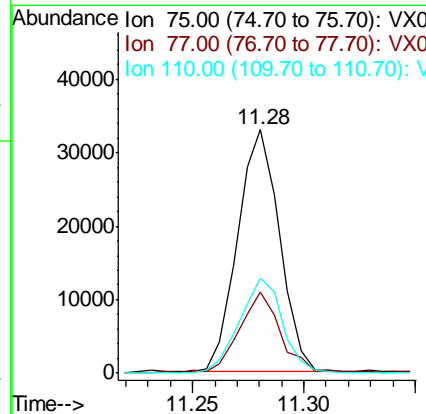
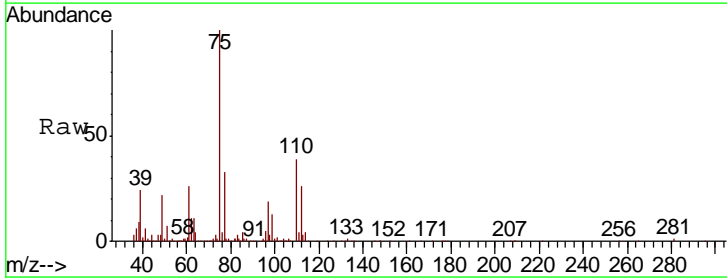
Instrument :
 MSVOA_X
 ClientSampled :
 VSTD005303

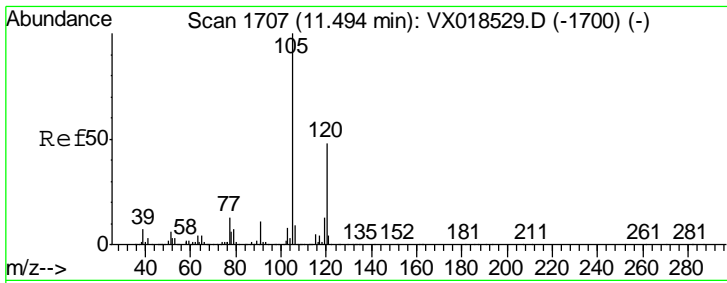
Tgt Ion	Resp	Lower	Upper
105	312951		
120	27.3	21.8	32.8
77	16.4	13.1	19.7



#61
 1,2,3-Trichloropropane
 Concen: 4.040 ug/L
 RT: 11.28 min Scan# 1672
 Delta R.T. 0.00 min
 Lab File: VX018529.D
 Acq: 22 Sep 2020 19:06

Tgt Ion	Resp	Lower	Upper
75	43391		
77	33.9	27.1	40.7
110	40.5	32.4	48.6

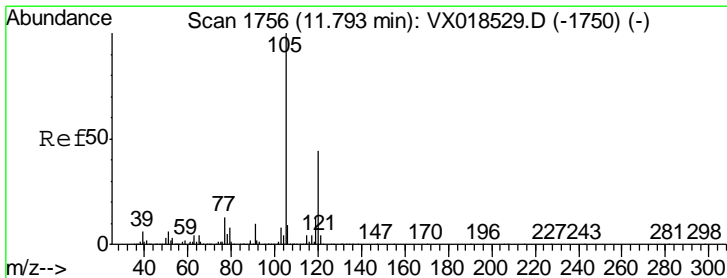
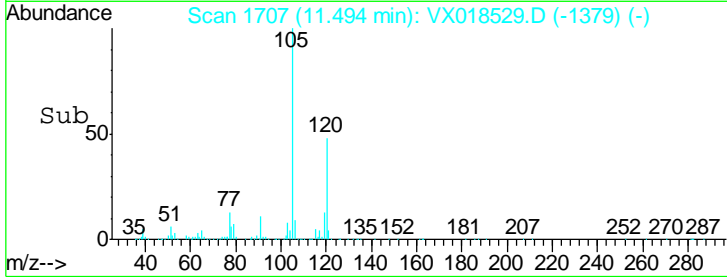
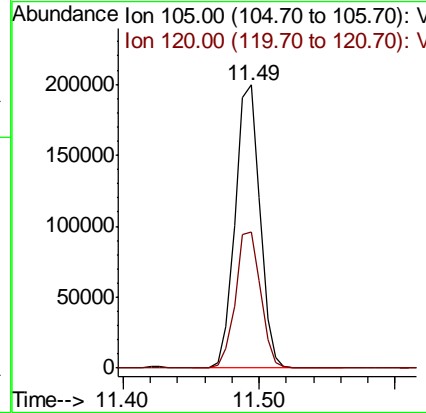
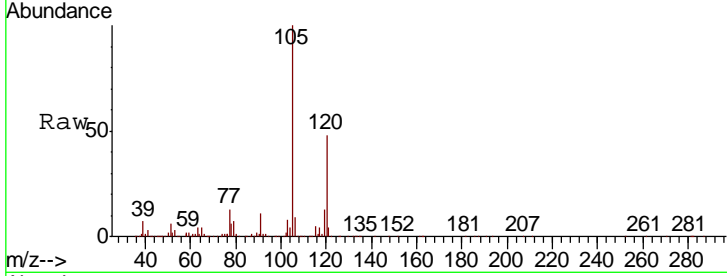




#62
 1,3,5-Trimethylbenzene
 Concen: 3.319 ug/L
 RT: 11.49 min Scan# 1707
 Delta R.T. 0.00 min
 Lab File: VX018529.D
 Acq: 22 Sep 2020 19:06

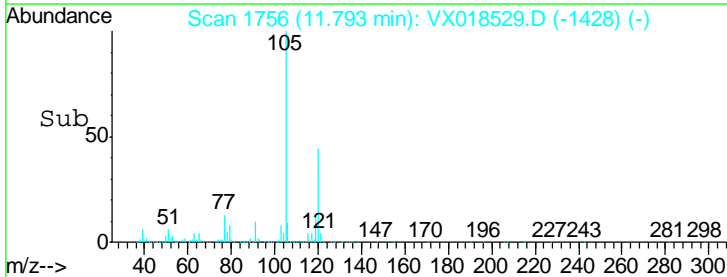
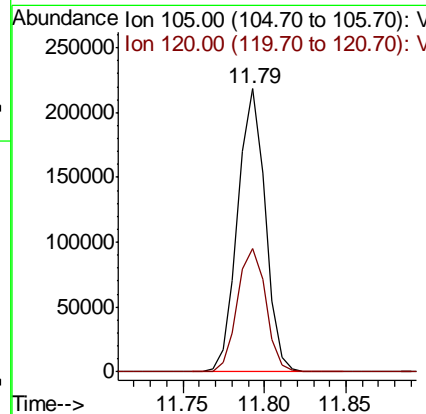
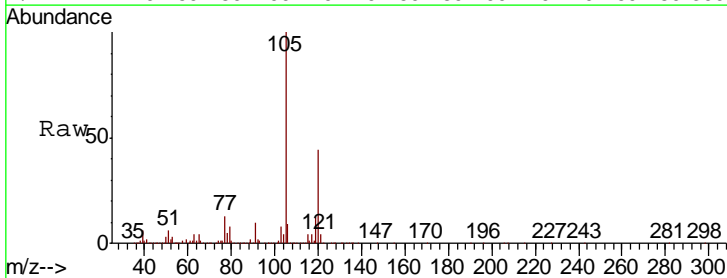
Instrument :
 MSVOA_X
 ClientSampled :
 VSTD005303

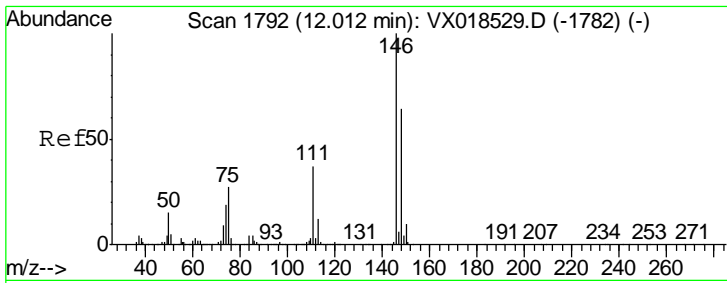
Tgt Ion	Resp	Lower	Upper
105	100		
120	49.1	39.3	58.9



#63
 1,2,4-Trimethylbenzene
 Concen: 3.447 ug/L
 RT: 11.79 min Scan# 1756
 Delta R.T. 0.00 min
 Lab File: VX018529.D
 Acq: 22 Sep 2020 19:06

Tgt Ion	Resp	Lower	Upper
105	100		
120	45.2	36.2	54.2

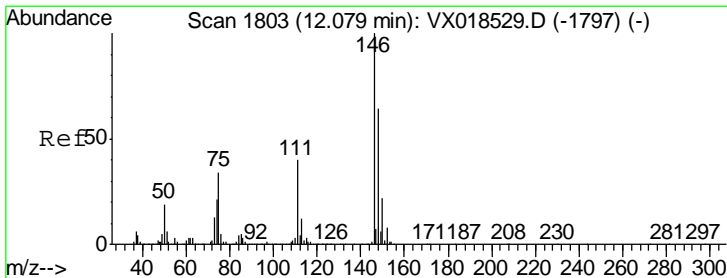
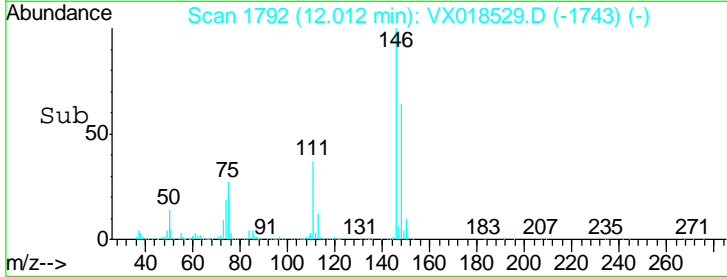
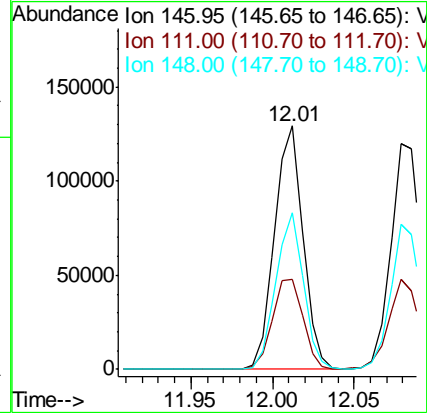
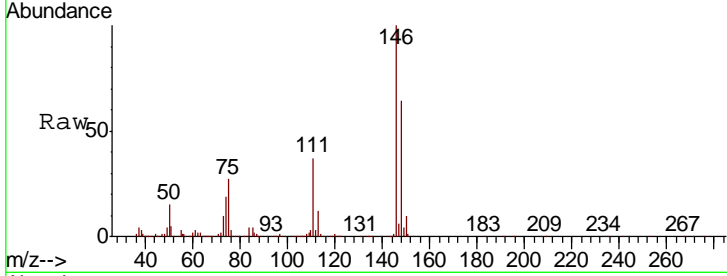




#64
 1,3-Dichlorobenzene
 Concen: 3.580 ug/L
 RT: 12.01 min Scan# 1792
 Delta R.T. 0.00 min
 Lab File: VX018529.D
 Acq: 22 Sep 2020 19:06

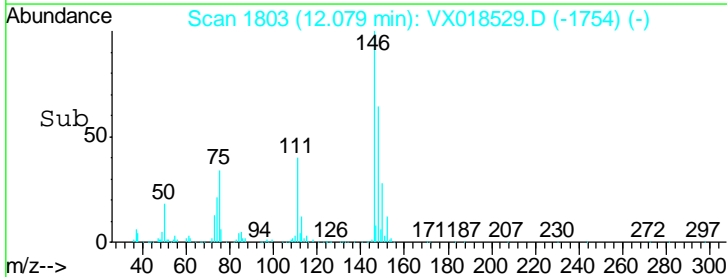
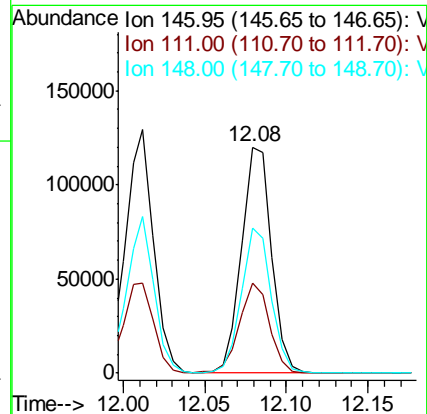
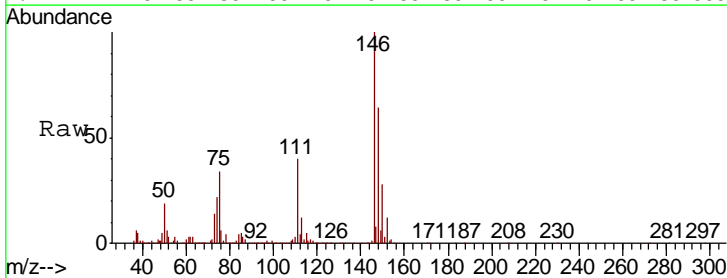
Instrument :
 MSVOA_X
 ClientSampled :
 VSTD005303

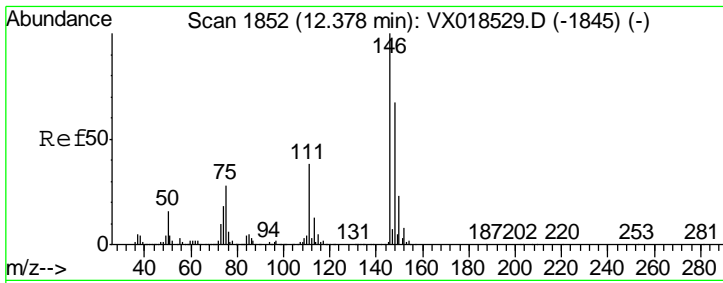
Tgt Ion	Resp	Lower	Upper
146	155643		
111	36.7	25.7	47.7
148	64.1	44.9	83.3



#65
 1,4-Dichlorobenzene
 Concen: 3.603 ug/L
 RT: 12.08 min Scan# 1803
 Delta R.T. 0.00 min
 Lab File: VX018529.D
 Acq: 22 Sep 2020 19:06

Tgt Ion	Resp	Lower	Upper
146	153252		
111	39.9	27.9	51.9
148	64.3	45.0	83.6

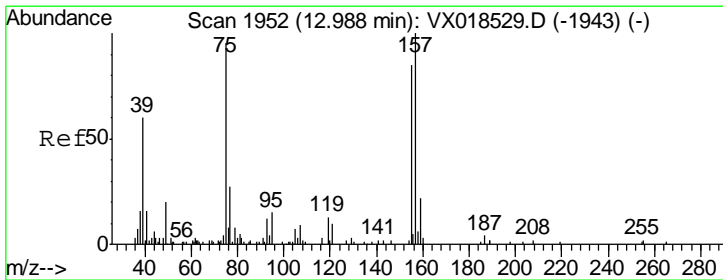
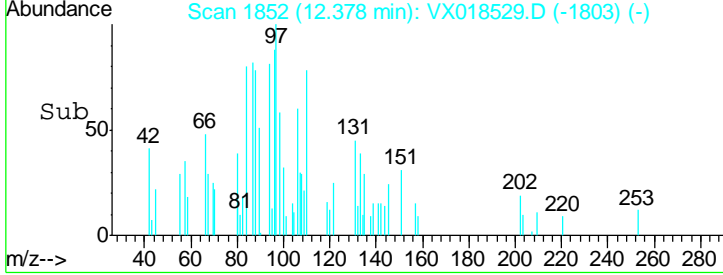
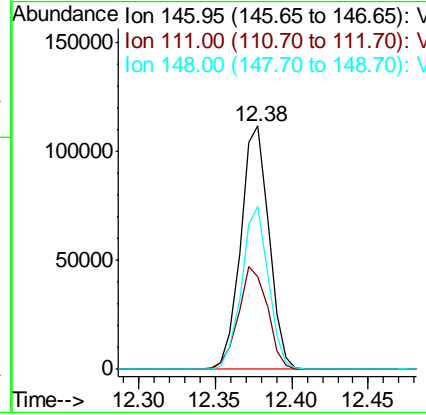
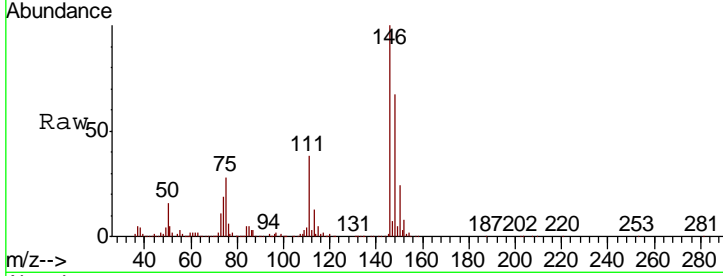




#67
 1,2-Dichlorobenzene
 Concen: 3.720 ug/L
 RT: 12.38 min Scan# 1852
 Delta R.T. 0.00 min
 Lab File: VX018529.D
 Acq: 22 Sep 2020 19:06

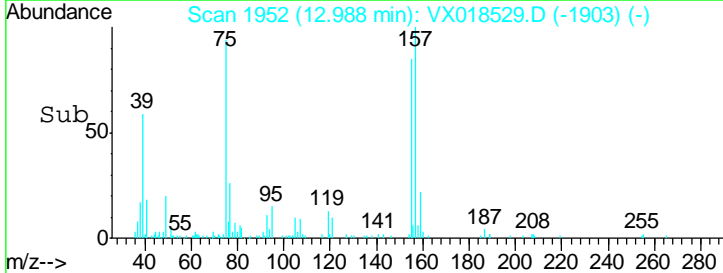
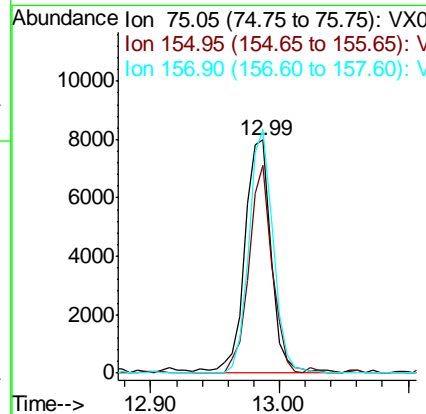
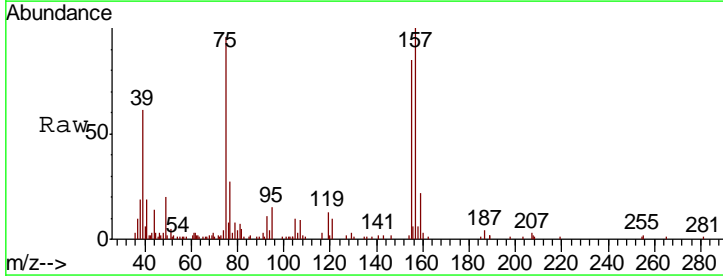
Instrument : MSVOA_X
 ClientSampled : VSTD005303

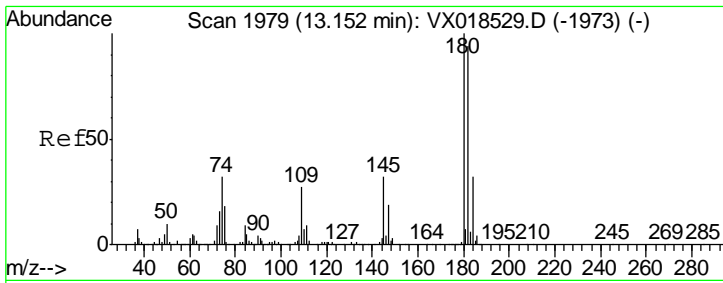
Tgt Ion	Resp	Lower	Upper
146	142862		
111	38.2	30.6	45.8
148	66.9	53.5	80.3



#68
 1,2-Dibromo-3-chloropropane
 Concen: 4.348 ug/L
 RT: 12.99 min Scan# 1952
 Delta R.T. 0.00 min
 Lab File: VX018529.D
 Acq: 22 Sep 2020 19:06

Tgt Ion	Resp	Lower	Upper
75	11297		
155	88.9	71.1	106.7
157	104.4	83.5	125.3

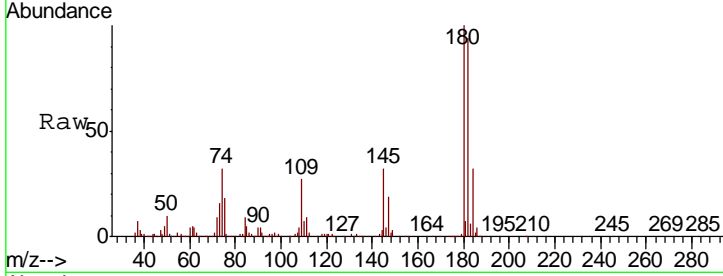




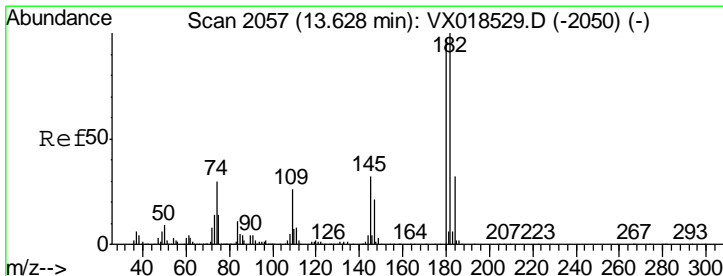
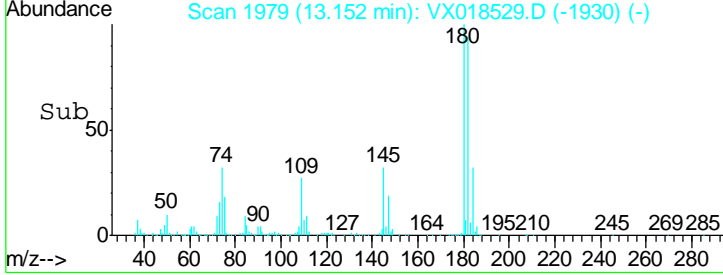
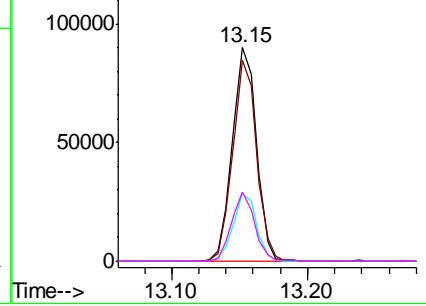
#69
 1,3,5-Trichlorobenzene
 Concen: 3.489 ug/L
 RT: 13.15 min Scan# 1979
 Delta R.T. 0.00 min
 Lab File: VX018529.D
 Acq: 22 Sep 2020 19:06

Instrument :
 MSVOA_X
 ClientSampled :
 VSTD005303

Tgt Ion	Resp	Lower	Upper
180	111055		
182	92.9	74.3	111.5
184	30.8	24.6	37.0
145	30.8	24.6	37.0

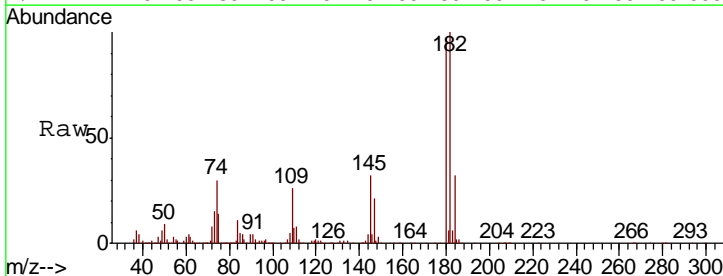


Abundance Ion 180.00 (179.70 to 180.70): V
 Ion 182.00 (181.70 to 182.70): V
 Ion 184.00 (183.70 to 184.70): V
 Ion 145.00 (144.70 to 145.70): V

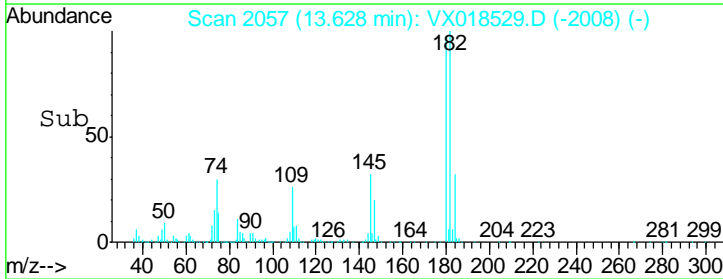
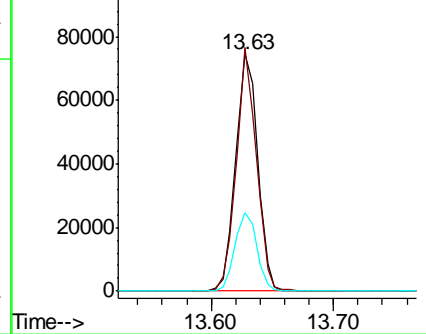


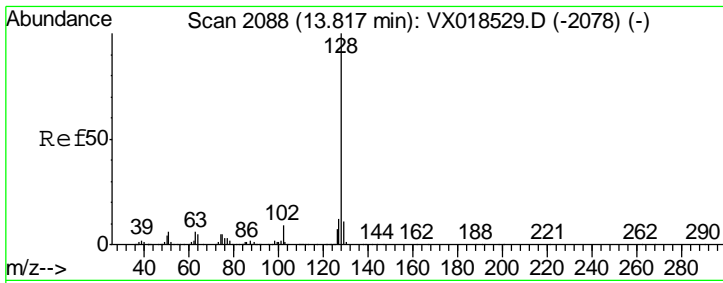
#70
 1,2,4-trichlorobenzene
 Concen: 3.474 ug/L
 RT: 13.63 min Scan# 2057
 Delta R.T. 0.00 min
 Lab File: VX018529.D
 Acq: 22 Sep 2020 19:06

Tgt Ion	Resp	Lower	Upper
180	92110		
182	93.4	74.7	112.1
145	33.2	26.6	39.8



Abundance Ion 179.90 (179.60 to 180.60): V
 Ion 182.00 (181.70 to 182.70): V
 Ion 144.95 (144.65 to 145.65): V

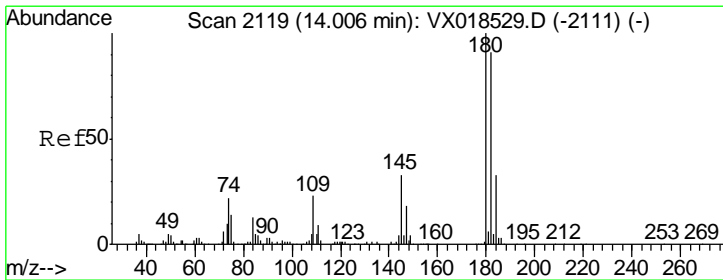
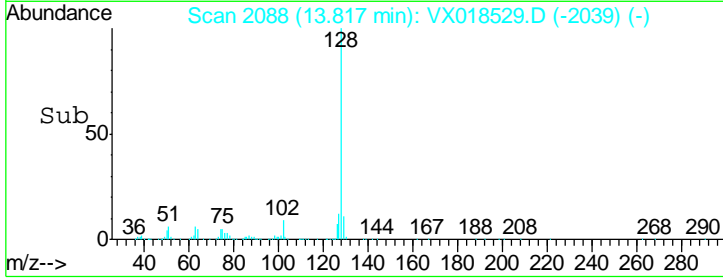
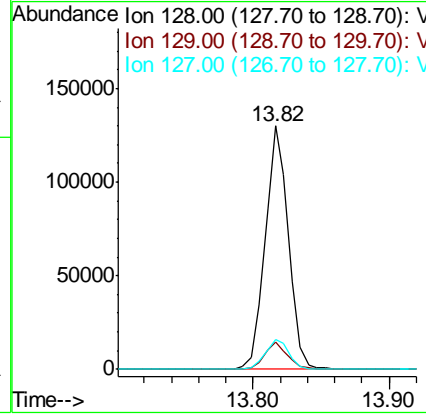
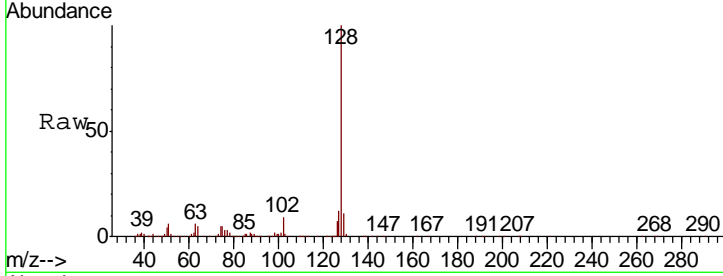




#71
 Naphthalene
 Concen: 3.458 ug/L
 RT: 13.82 min Scan# 2088
 Delta R.T. 0.00 min
 Lab File: VX018529.D
 Acq: 22 Sep 2020 19:06

Instrument :
 MSVOA_X
 ClientSampled :
 VSTD005303

Tgt Ion	Resp	Lower	Upper
128	155452		
129	11.1	8.9	13.3
127	12.6	10.1	15.1



#72
 1,2,3-Trichlorobenzene
 Concen: 3.648 ug/L
 RT: 14.01 min Scan# 2119
 Delta R.T. 0.00 min
 Lab File: VX018529.D
 Acq: 22 Sep 2020 19:06

Tgt Ion	Resp	Lower	Upper
180	85297		
182	96.1	76.9	115.3
145	34.5	27.6	41.4

