

Data Path : Z:\voasrv\HPCHEM1\MSVOA\_X\Data\VX092225\  
 Data File : VX047690.D  
 Acq On : 22 Sep 2025 10:07  
 Operator : JC/MD  
 Sample : VX0922MBL01  
 Misc : 5.00g/10mL/100uL/5.00mL/MSVOA\_X/MEOH  
 ALS Vial : 3 Sample Multiplier: 1

Instrument :  
 MSVOA\_X  
 ClientSampleId :  
 VX0922MBL01

Quant Time: Sep 23 01:28:15 2025  
 Quant Method : Z:\voasrv\HPCHEM1\MSVOA\_X\Method\82X091625W.M  
 Quant Title : SW846 8260  
 QLast Update : Wed Sep 17 06:39:58 2025  
 Response via : Initial Calibration

Compound	R.T.	QIon	Response	Conc	Units	Dev(Min)
Internal Standards						
1) Pentafluorobenzene	5.531	168	154872	50.000	ug/l	-0.01
34) 1,4-Difluorobenzene	6.738	114	315318	50.000	ug/l	0.00
63) Chlorobenzene-d5	10.037	117	307830	50.000	ug/l	0.00
72) 1,4-Dichlorobenzene-d4	12.006	152	154629	50.000	ug/l	0.00
System Monitoring Compounds						
33) 1,2-Dichloroethane-d4	5.934	65	119548	48.495	ug/l	0.00
Spiked Amount	50.000	Range 78 - 117	Recovery	=	96.980%	
35) Dibromofluoromethane	5.367	113	100406	47.480	ug/l	0.00
Spiked Amount	50.000	Range 75 - 124	Recovery	=	94.960%	
50) Toluene-d8	8.628	98	356478	48.717	ug/l	0.00
Spiked Amount	50.000	Range 92 - 112	Recovery	=	97.440%	
62) 4-Bromofluorobenzene	11.061	95	149177	53.718	ug/l	0.00
Spiked Amount	50.000	Range 83 - 123	Recovery	=	107.440%	
Target Compounds						
						Qvalue
5) Bromomethane	1.624	94	410	0.313	ug/l	87
10) Methyl Iodide	2.465	142	995	0.356	ug/l #	91
11) Tert butyl alcohol	2.940	59	85	0.310	ug/l #	72
13) Acrolein	2.233	56	228	0.901	ug/l #	19
15) Acrylonitrile	3.068	53	303	0.298	ug/l #	17
16) Acetone	2.380	43	1010	0.942	ug/l #	87
17) Carbon Disulfide	2.514	76	2743	0.545	ug/l	99
20) Methylene Chloride	2.788	84	477	0.210	ug/l #	62
21) trans-1,2-Dichloroethene	3.099	96	447	0.226	ug/l #	52
25) 2-Butanone	4.544	43	323	0.242	ug/l #	50
36) 1,1-Dichloropropene	5.537	75	12982	4.201	ug/l #	49
38) Carbon Tetrachloride	5.537	117	16866	5.024	ug/l #	17
39) Methylcyclohexane	7.366	83	912	0.260	ug/l #	87
44) Trichloroethene	7.104	130	465	0.205	ug/l	49
49) 1,4-Dioxane	7.671	88	19	0.696	ug/l #	1
51) 4-Methyl-2-Pentanone	8.567	43	780	0.259	ug/l	99
58) 2-Chloroethyl Vinyl ether	8.238	63	138	7.975	ug/l #	47
59) 2-Hexanone	9.421	43	547	0.253	ug/l	97
68) m/p-Xylenes	10.287	106	914	0.204	ug/l	83
76) 1,2,3-Trichloropropane	11.061	75	77122	24.634	ug/l #	39
81) trans-1,4-Dichloro-2-b...	11.061	75	77122	62.819	ug/l #	8
83) tert-Butylbenzene	11.695	119	2032	0.206	ug/l	80
85) sec-Butylbenzene	11.872	105	4421	0.376	ug/l	95
86) p-Isopropyltoluene	11.994	119	3998	0.402	ug/l	90
87) 1,3-Dichlorobenzene	11.951	146	1139	0.212	ug/l	97
88) 1,4-Dichlorobenzene	11.951	146	1139	0.206	ug/l	98
89) n-Butylbenzene	12.317	91	5307	0.577	ug/l	99
90) Hexachloroethane	12.524	117	600	0.344	ug/l	88
92) 1,2-Dibromo-3-Chloropr...	12.932	75	150	0.208	ug/l #	26
93) 1,2,4-Trichlorobenzene	13.573	180	2525	0.758	ug/l	88
94) Hexachlorobutadiene	13.707	225	2505	2.215	ug/l	97
95) Naphthalene	13.762	128	6540	0.645	ug/l #	94
96) 1,2,3-Trichlorobenzene	13.945	180	2936	0.948	ug/l	94

(#) = qualifier out of range (m) = manual integration (+) = signals summed

**Instrument :**

MSVOA\_X

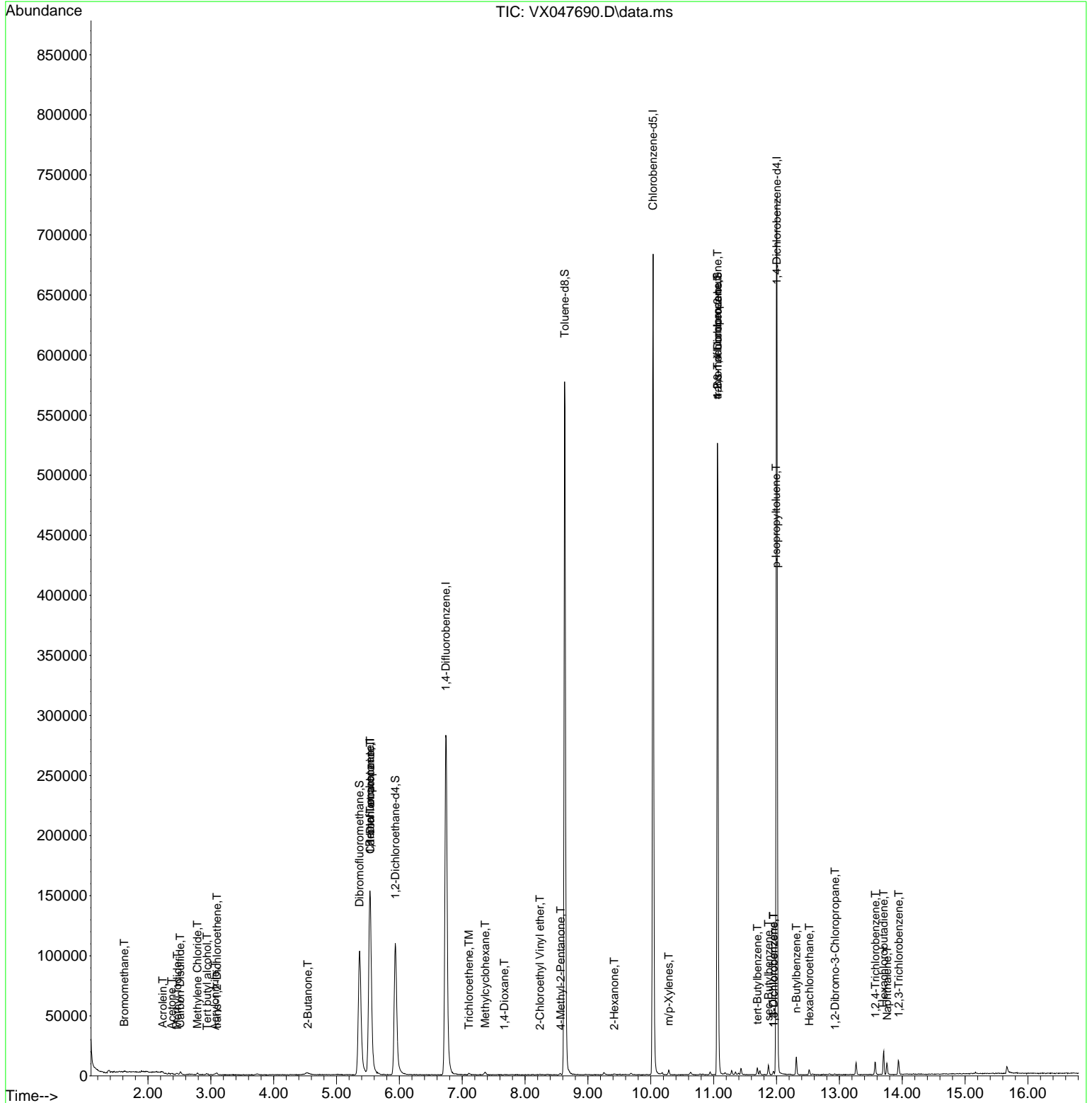
**ClientSampleId :**

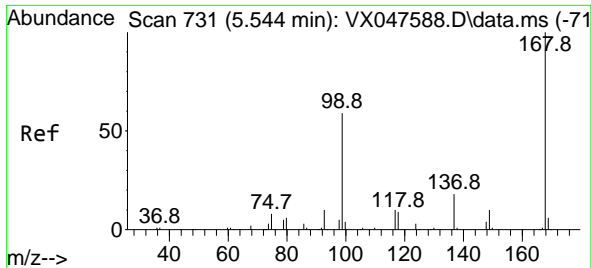
VX0922MBL01

Data Path : Z:\voasrv\HPCHEM1\MSVOA\_X\Data\VX092225\  
 Data File : VX047690.D  
 Acq On : 22 Sep 2025 10:07  
 Operator : JC/MD  
 Sample : VX0922MBL01  
 Misc : 5.00g/10mL/100uL/5.00mL/MSVOA\_X/MEOH  
 ALS Vial : 3 Sample Multiplier: 1

Instrument :  
 MSVOA\_X  
 ClientSampleId :  
 VX0922MBL01

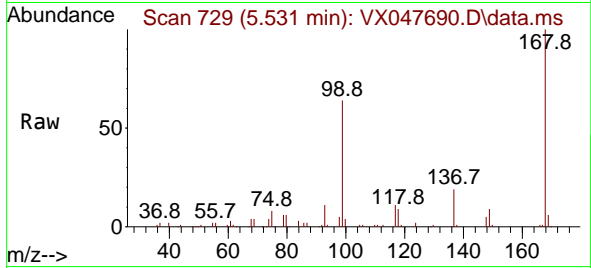
Quant Time: Sep 23 01:28:15 2025  
 Quant Method : Z:\voasrv\HPCHEM1\MSVOA\_X\Method\82X091625W.M  
 Quant Title : SW846 8260  
 QLast Update : Wed Sep 17 06:39:58 2025  
 Response via : Initial Calibration



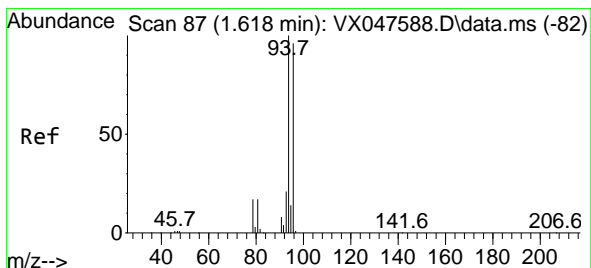
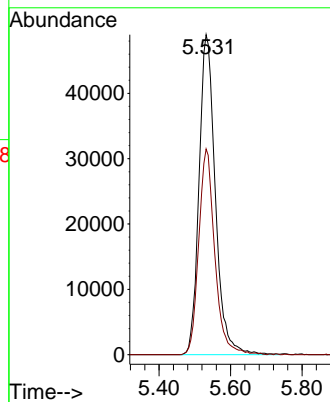
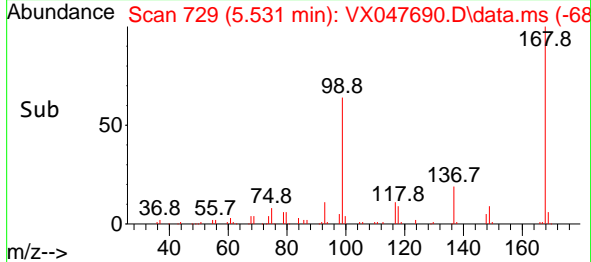


#1  
 Pentafluorobenzene  
 Concen: 50.000 ug/l  
 RT: 5.531 min Scan# 71  
 Delta R.T. -0.013 min  
 Lab File: VX047690.D  
 Acq: 22 Sep 2025 10:07

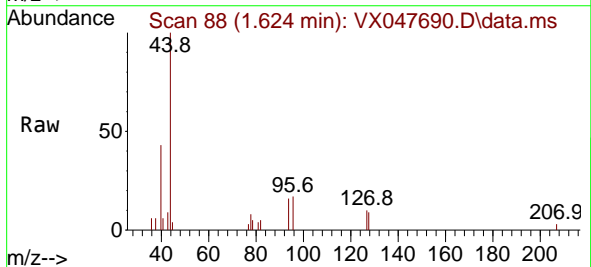
Instrument :  
 MSVOA\_X  
 ClientSampleId :  
 VX0922MBL01



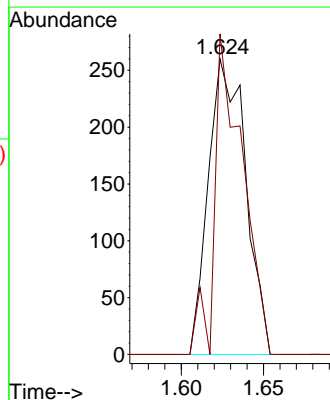
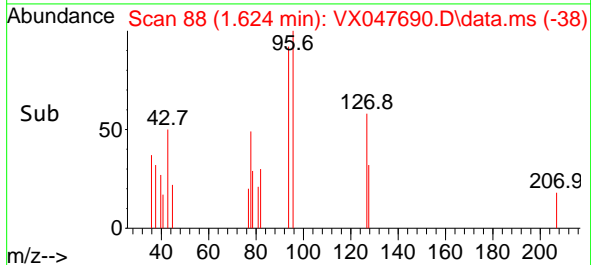
Tgt Ion:168 Resp: 154872  
 Ion Ratio Lower Upper  
 168 100  
 99 64.3 48.8 73.2

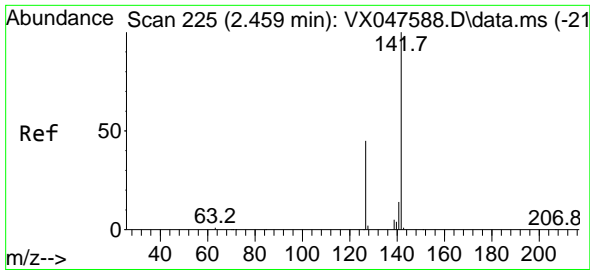


#5  
 Bromomethane  
 Concen: 0.313 ug/l  
 RT: 1.624 min Scan# 88  
 Delta R.T. 0.006 min  
 Lab File: VX047690.D  
 Acq: 22 Sep 2025 10:07



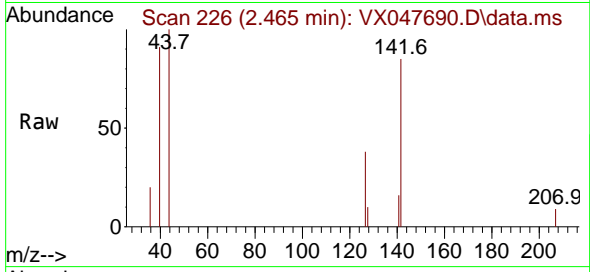
Tgt Ion: 94 Resp: 410  
 Ion Ratio Lower Upper  
 94 100  
 96 108.5 76.6 115.0



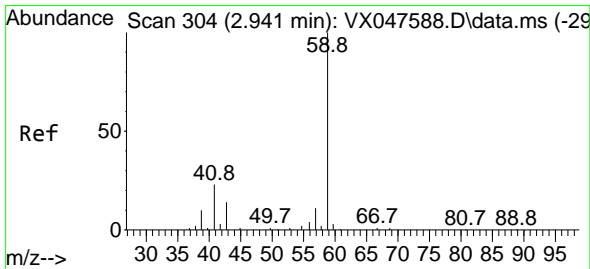
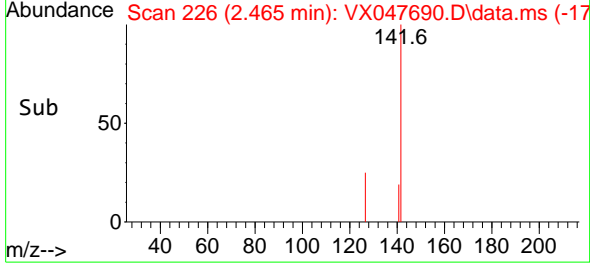
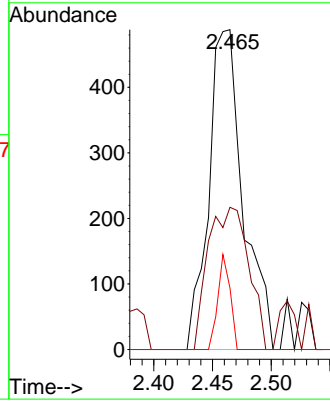


#10  
Methyl Iodide  
Concen: 0.356 ug/l  
RT: 2.465 min Scan# 21  
Delta R.T. 0.006 min  
Lab File: VX047690.D  
Acq: 22 Sep 2025 10:07

Instrument :  
MSVOA\_X  
ClientSampleId :  
VX0922MBL01

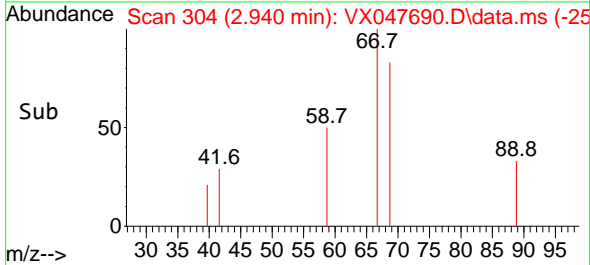
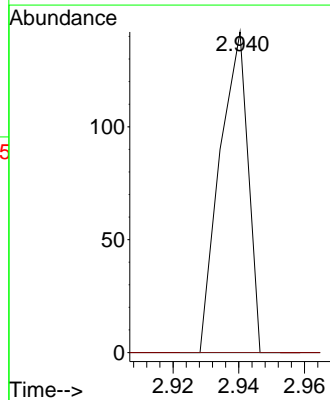
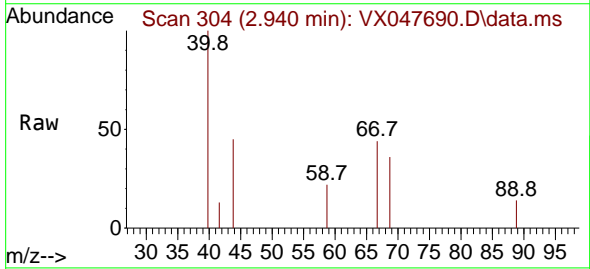


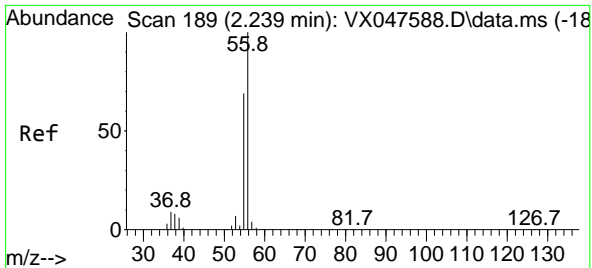
Tgt Ion:142 Resp: 995  
Ion Ratio Lower Upper  
142 100  
127 52.4 37.2 55.8  
141 10.7 11.4 17.0#



#11  
Tert butyl alcohol  
Concen: 0.310 ug/l  
RT: 2.940 min Scan# 304  
Delta R.T. -0.000 min  
Lab File: VX047690.D  
Acq: 22 Sep 2025 10:07

Tgt Ion: 59 Resp: 85  
Ion Ratio Lower Upper  
59 100  
57 0.0 8.3 12.5#

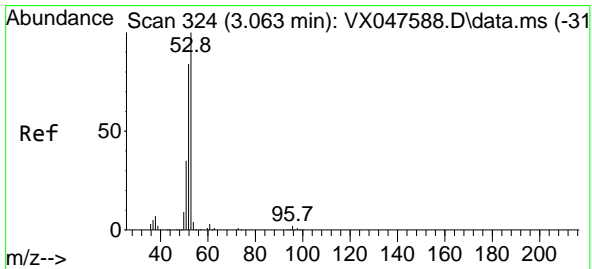
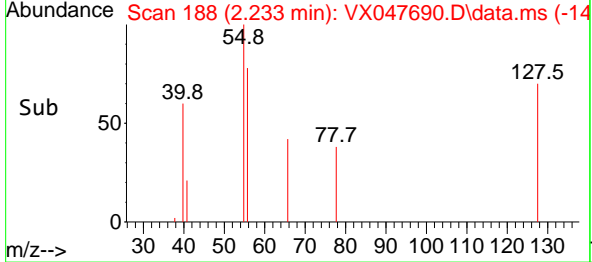
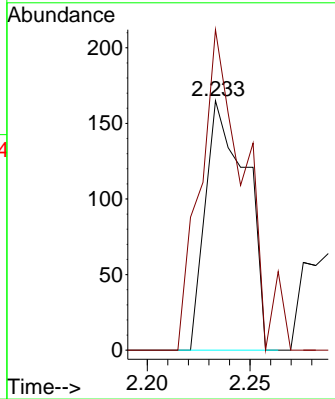
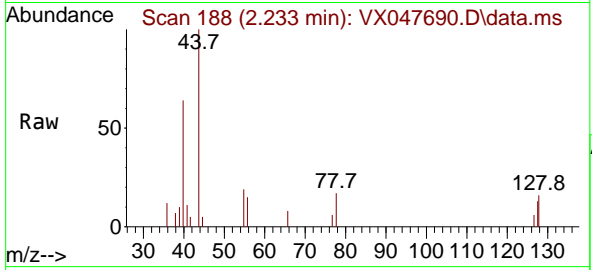




#13  
 Acrolein  
 Concen: 0.901 ug/l  
 RT: 2.233 min Scan# 11  
 Delta R.T. -0.006 min  
 Lab File: VX047690.D  
 Acq: 22 Sep 2025 10:07

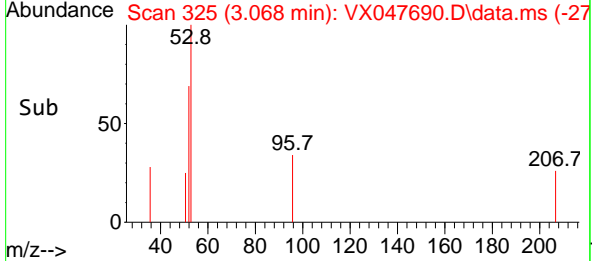
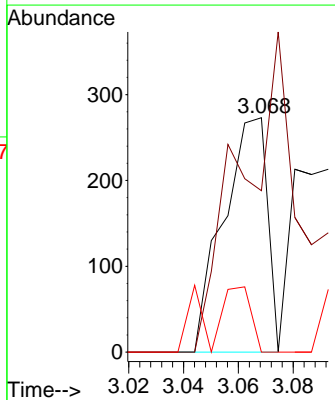
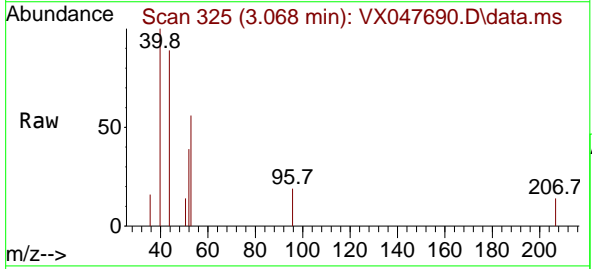
Instrument : MSVOA\_X  
 ClientSampleId : VX0922MBL01

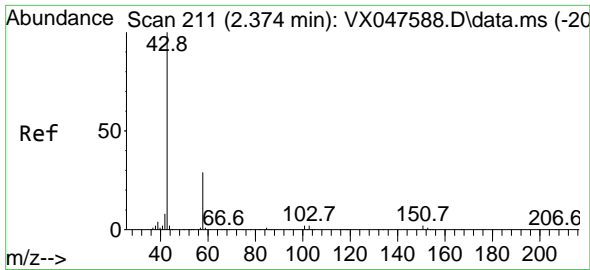
Tgt Ion	Resp	Lower	Upper
56	100		
55	139.0	57.2	85.8#



#15  
 Acrylonitrile  
 Concen: 0.298 ug/l  
 RT: 3.068 min Scan# 325  
 Delta R.T. 0.006 min  
 Lab File: VX047690.D  
 Acq: 22 Sep 2025 10:07

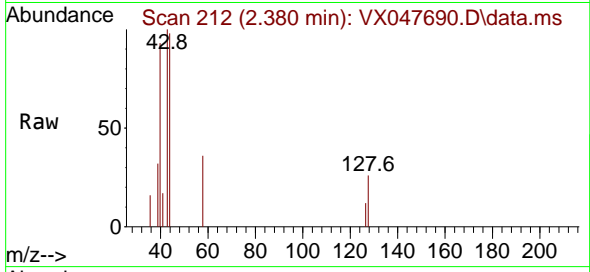
Tgt Ion	Resp	Lower	Upper
53	100		
52	0.0	66.4	99.6#
51	0.0	29.5	44.3#



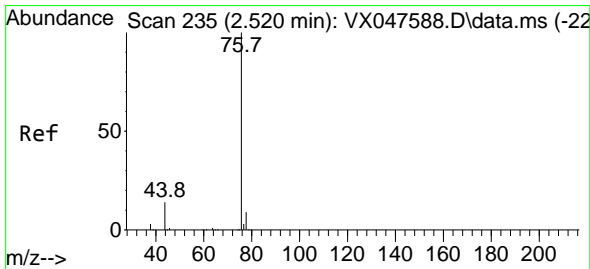
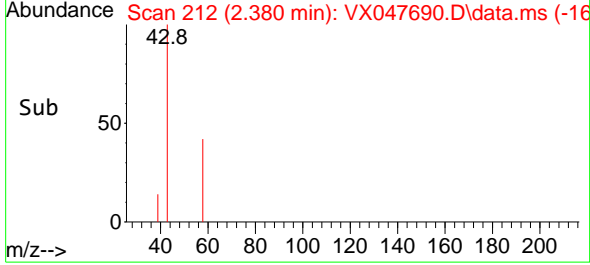
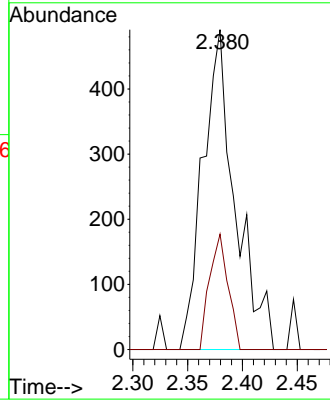


#16  
 Acetone  
 Concen: 0.942 ug/l  
 RT: 2.380 min Scan# 211  
 Delta R.T. 0.006 min  
 Lab File: VX047690.D  
 Acq: 22 Sep 2025 10:07

Instrument :  
 MSVOA\_X  
 ClientSampleId :  
 VX0922MBL01

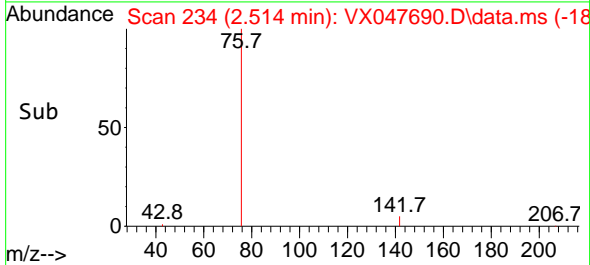
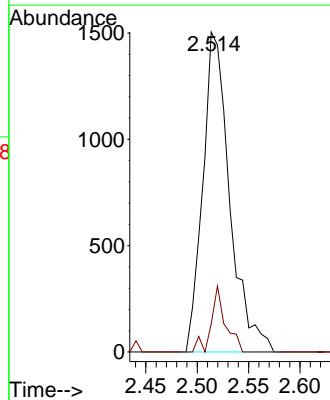
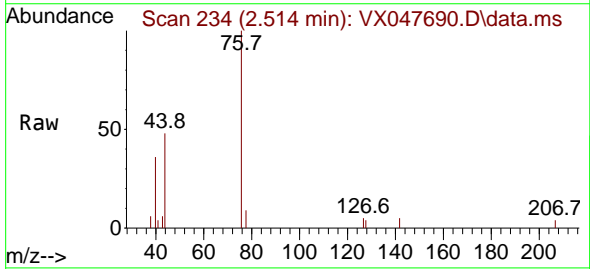


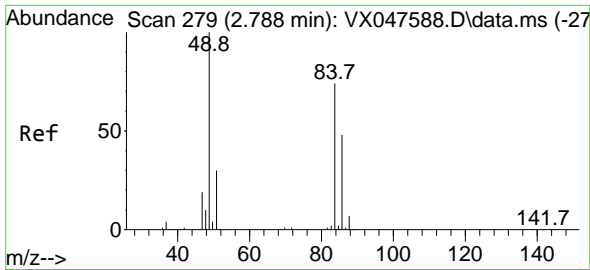
Tgt Ion: 43 Resp: 1010  
 Ion Ratio Lower Upper  
 43 100  
 58 36.0 23.4 35.0#



#17  
 Carbon Disulfide  
 Concen: 0.545 ug/l  
 RT: 2.514 min Scan# 234  
 Delta R.T. -0.006 min  
 Lab File: VX047690.D  
 Acq: 22 Sep 2025 10:07

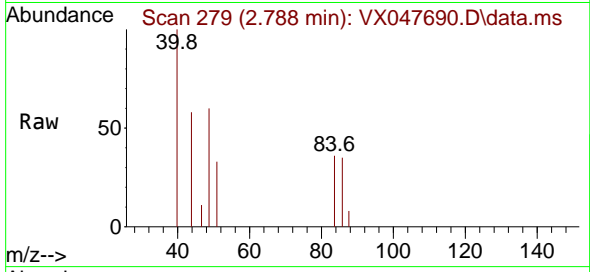
Tgt Ion: 76 Resp: 2743  
 Ion Ratio Lower Upper  
 76 100  
 78 8.8 6.8 10.2





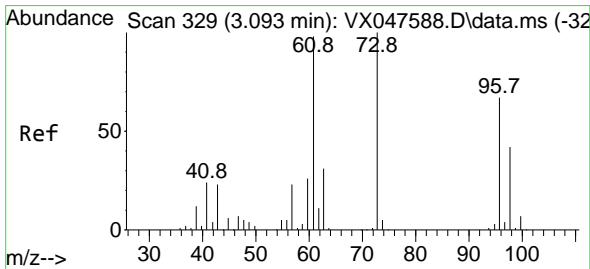
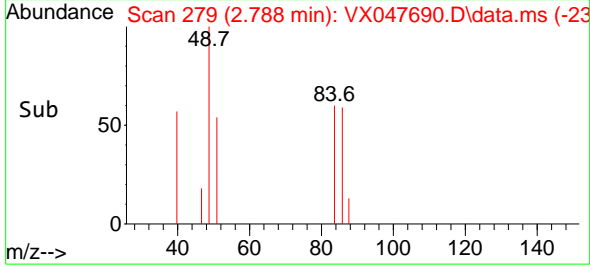
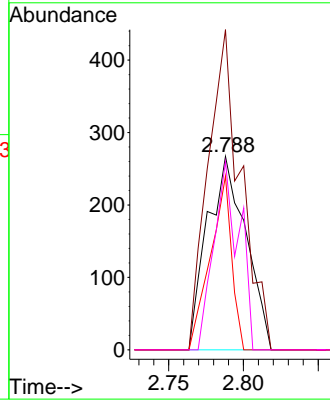
#20  
 Methylene Chloride  
 Concen: 0.210 ug/l  
 RT: 2.788 min Scan# 21  
 Delta R.T. -0.000 min  
 Lab File: VX047690.D  
 Acq: 22 Sep 2025 10:07

Instrument :  
 MSVOA\_X  
 ClientSampleId :  
 VX0922MBL01



Tgt Ion: 84 Resp: 477

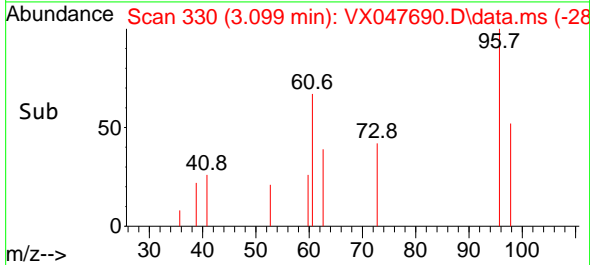
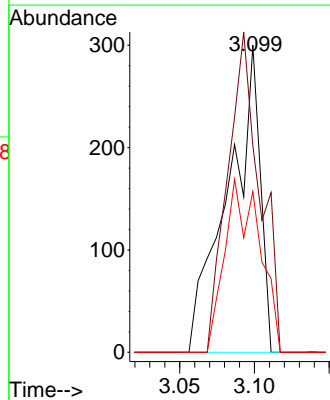
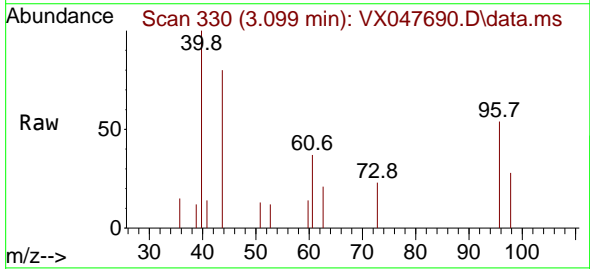
Ion	Ratio	Lower	Upper
84	100		
49	165.5	108.6	162.8#
51	89.9	32.6	48.8#
86	97.4	52.0	78.0#



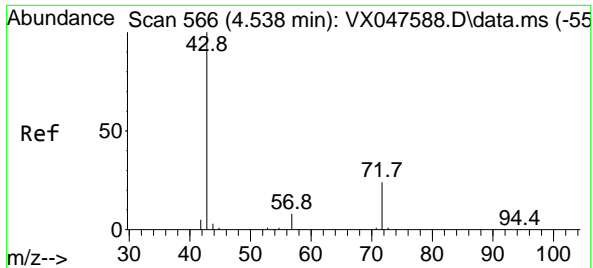
#21  
 trans-1,2-Dichloroethene  
 Concen: 0.226 ug/l  
 RT: 3.099 min Scan# 330  
 Delta R.T. 0.006 min  
 Lab File: VX047690.D  
 Acq: 22 Sep 2025 10:07

Tgt Ion: 96 Resp: 447

Ion	Ratio	Lower	Upper
96	100		
61	67.3	116.2	174.2#
98	52.3	49.3	73.9



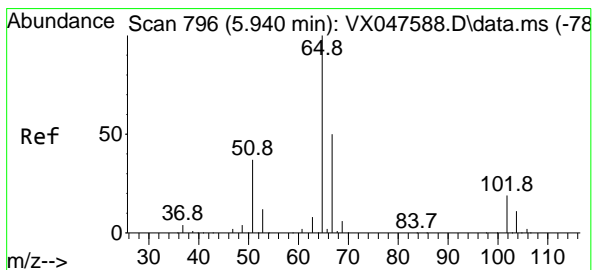
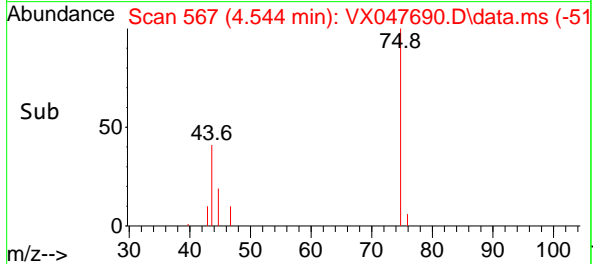
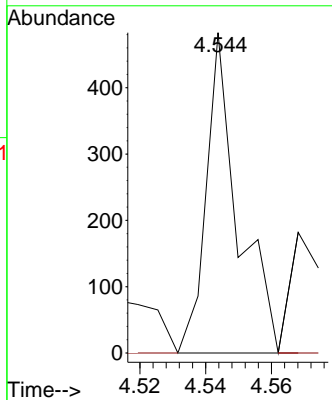
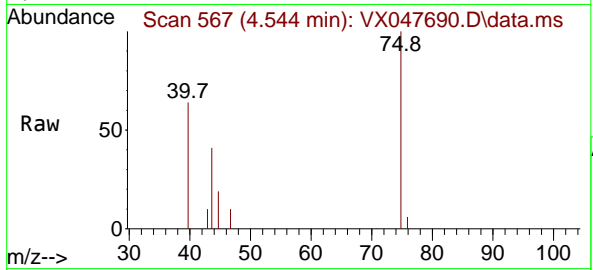




#25  
 2-Butanone  
 Concen: 0.242 ug/l  
 RT: 4.544 min Scan# 50  
 Delta R.T. 0.006 min  
 Lab File: VX047690.D  
 Acq: 22 Sep 2025 10:07

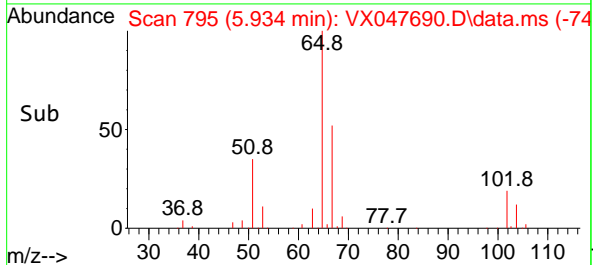
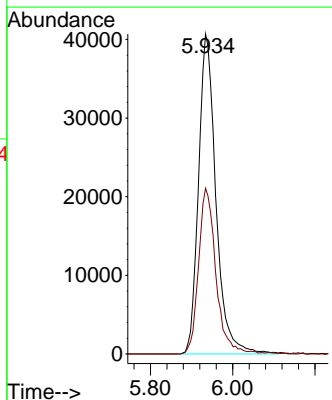
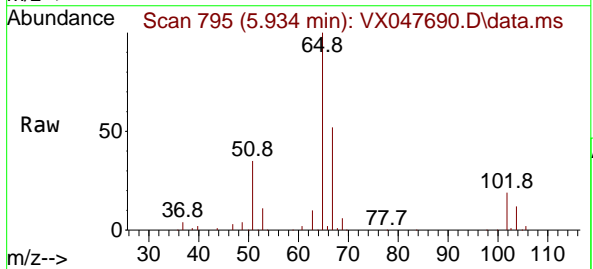
Instrument :  
 MSVOA\_X  
 ClientSampleId :  
 VX0922MBL01

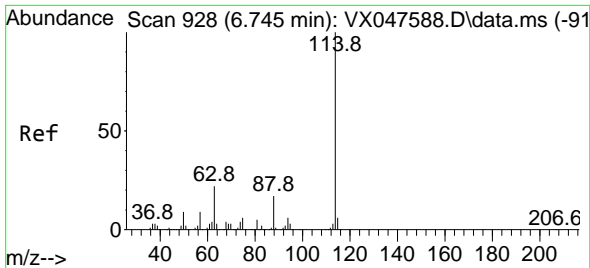
Tgt Ion: 43 Resp: 323  
 Ion Ratio Lower Upper  
 43 100  
 72 0.0 20.1 30.1#



#33  
 1,2-Dichloroethane-d4  
 Concen: 48.495 ug/l  
 RT: 5.934 min Scan# 795  
 Delta R.T. -0.006 min  
 Lab File: VX047690.D  
 Acq: 22 Sep 2025 10:07

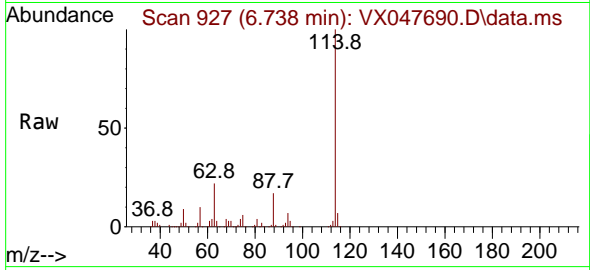
Tgt Ion: 65 Resp: 119548  
 Ion Ratio Lower Upper  
 65 100  
 67 51.6 0.0 103.0



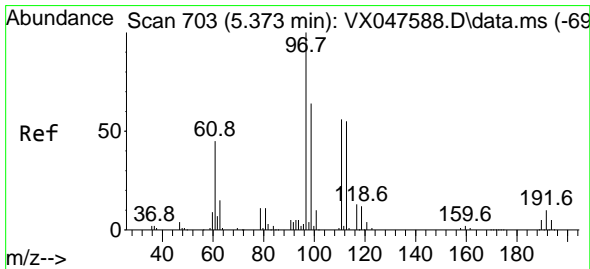
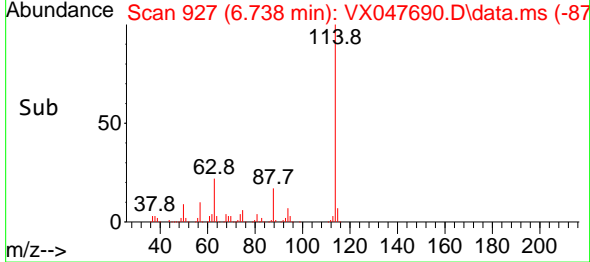
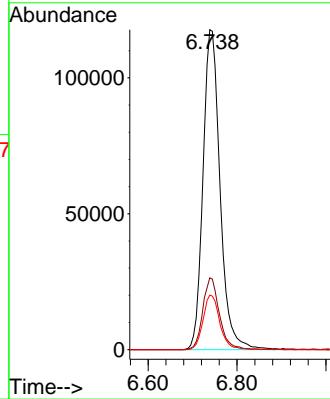


#34  
 1,4-Difluorobenzene  
 Concen: 50.000 ug/l  
 RT: 6.738 min Scan# 91  
 Delta R.T. -0.006 min  
 Lab File: VX047690.D  
 Acq: 22 Sep 2025 10:07

Instrument :  
 MSVOA\_X  
 ClientSampleId :  
 VX0922MBL01

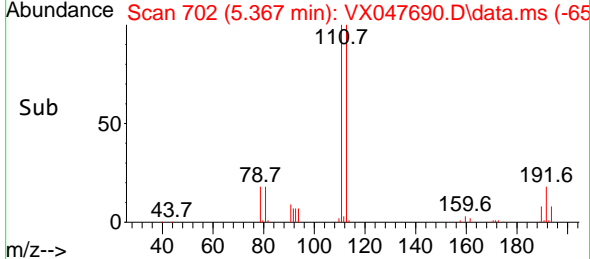
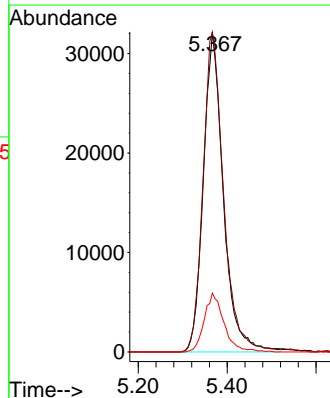
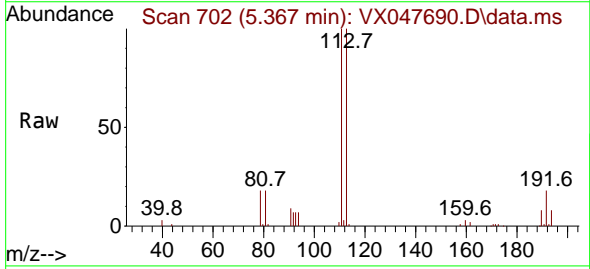


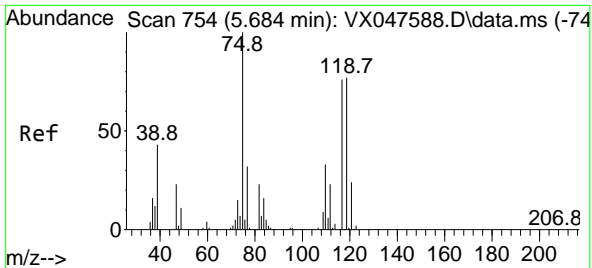
Tgt Ion:114 Resp: 315318  
 Ion Ratio Lower Upper  
 114 100  
 63 22.5 0.0 44.0  
 88 17.0 0.0 34.2



#35  
 Dibromofluoromethane  
 Concen: 47.480 ug/l  
 RT: 5.367 min Scan# 702  
 Delta R.T. -0.006 min  
 Lab File: VX047690.D  
 Acq: 22 Sep 2025 10:07

Tgt Ion:113 Resp: 100406  
 Ion Ratio Lower Upper  
 113 100  
 111 104.0 80.9 121.3  
 192 18.2 14.2 21.4

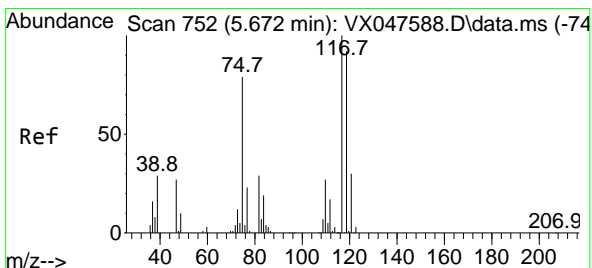
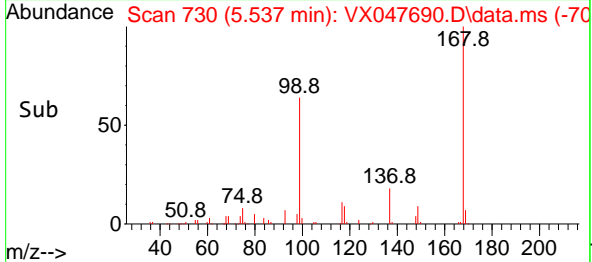
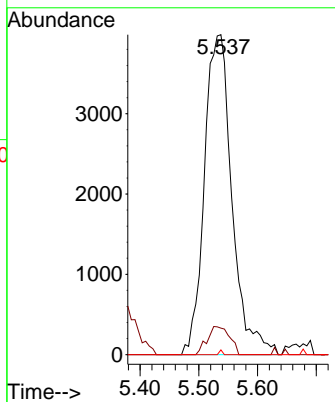
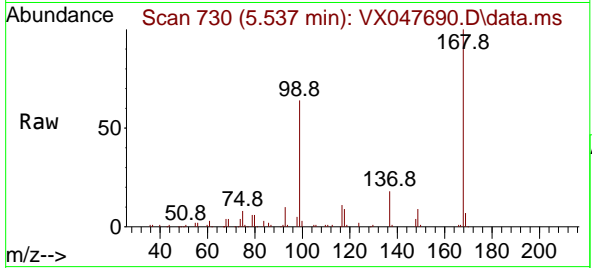




#36  
 1,1-Dichloropropene  
 Concen: 4.201 ug/l  
 RT: 5.537 min Scan# 710  
 Delta R.T. -0.147 min  
 Lab File: VX047690.D  
 Acq: 22 Sep 2025 10:07

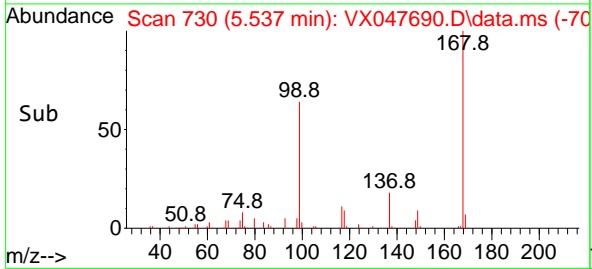
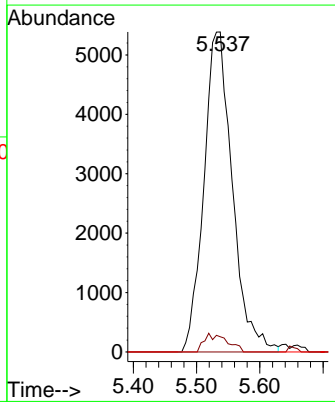
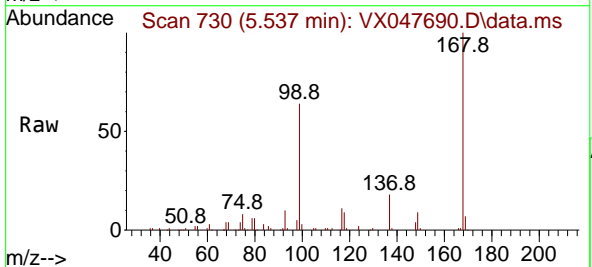
Instrument : MSVOA\_X  
 ClientSampleId : VX0922MBL01

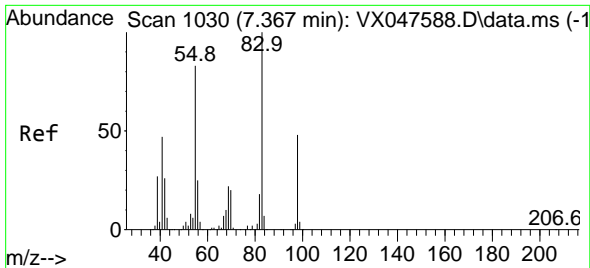
Tgt Ion	Resp	Lower	Upper
75	12982		
75	100		
110	7.1	16.7	50.1#
77	0.2	24.3	36.5#



#38  
 Carbon Tetrachloride  
 Concen: 5.024 ug/l  
 RT: 5.537 min Scan# 730  
 Delta R.T. -0.134 min  
 Lab File: VX047690.D  
 Acq: 22 Sep 2025 10:07

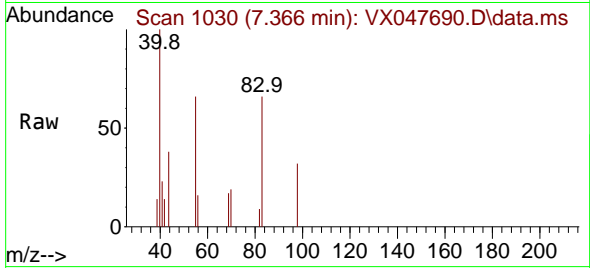
Tgt Ion	Resp	Lower	Upper
117	16866		
117	100		
119	4.7	73.4	110.2#
121	0.0	23.8	35.6#



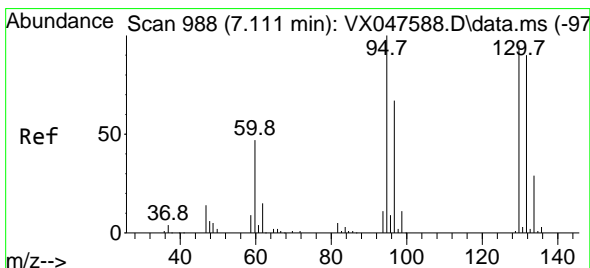
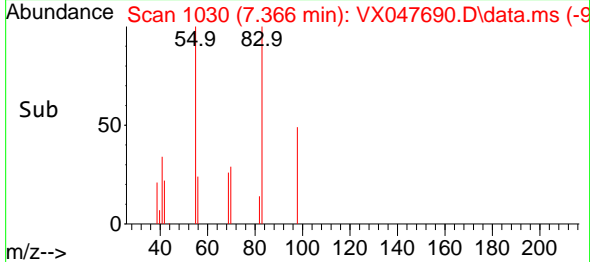
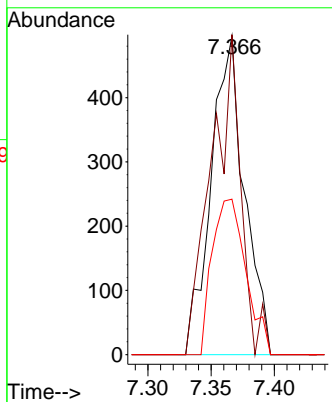


#39  
 Methylcyclohexane  
 Concen: 0.260 ug/l  
 RT: 7.366 min Scan# 1030  
 Delta R.T. -0.000 min  
 Lab File: VX047690.D  
 Acq: 22 Sep 2025 10:07

Instrument : MSVOA\_X  
 ClientSampleId : VX0922MBL01

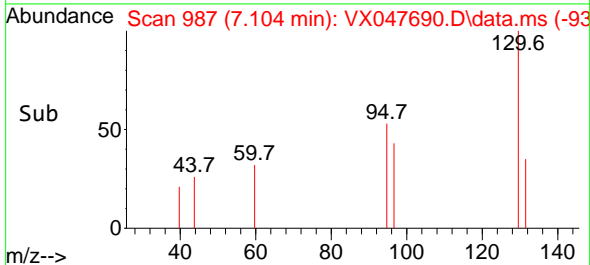
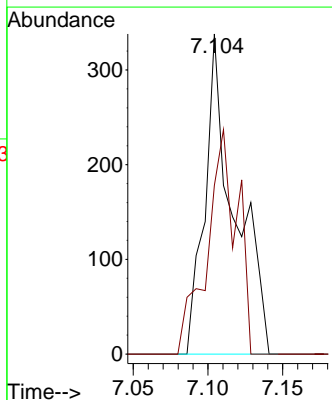
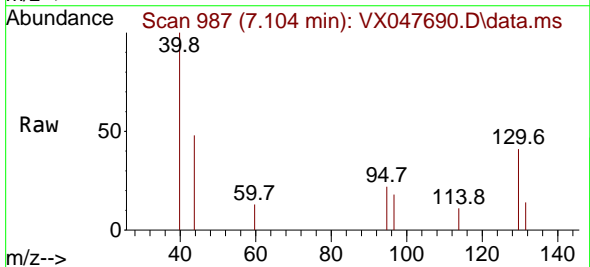


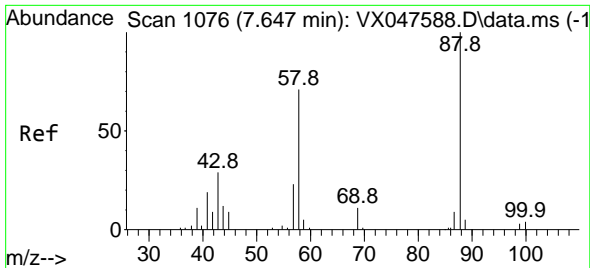
Tgt Ion: 83 Resp: 912  
 Ion Ratio Lower Upper  
 83 100  
 55 100.4 66.4 99.6#  
 98 48.8 38.1 57.1



#44  
 Trichloroethene  
 Concen: 0.205 ug/l  
 RT: 7.104 min Scan# 987  
 Delta R.T. -0.006 min  
 Lab File: VX047690.D  
 Acq: 22 Sep 2025 10:07

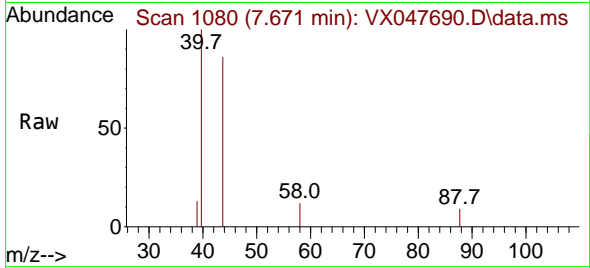
Tgt Ion:130 Resp: 465  
 Ion Ratio Lower Upper  
 130 100  
 95 52.7 0.0 210.8





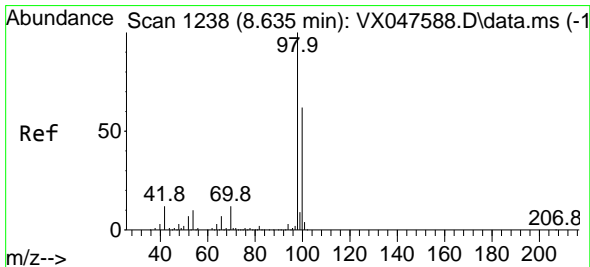
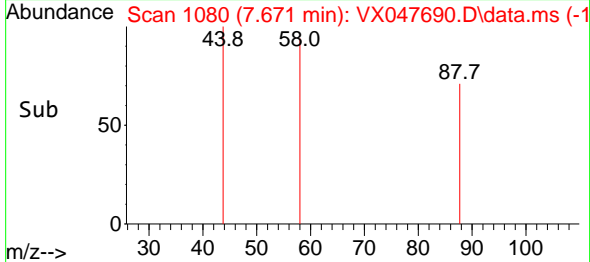
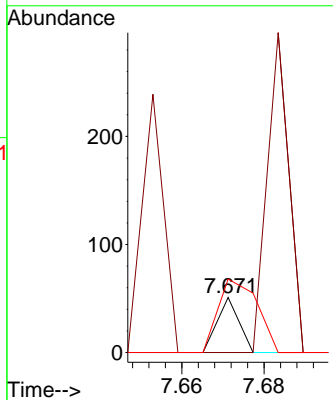
#49  
 1,4-Dioxane  
 Concen: 0.696 ug/l  
 RT: 7.671 min Scan# 1076  
 Delta R.T. 0.024 min  
 Lab File: VX047690.D  
 Acq: 22 Sep 2025 10:07

Instrument : MSVOA\_X  
 ClientSampleId : VX0922MBL01



Tgt Ion: 88 Resp: 19

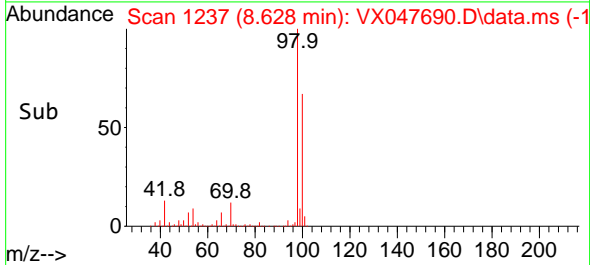
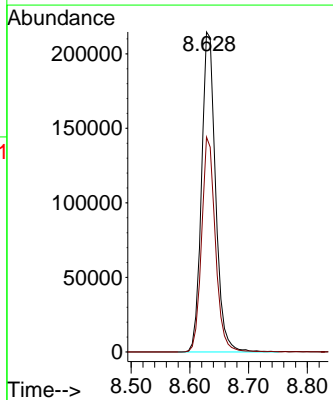
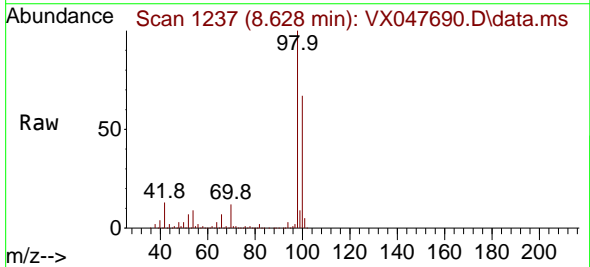
Ion	Ratio	Lower	Upper
88	100		
43	568.4	30.2	45.2#
58	236.8	59.5	89.3#

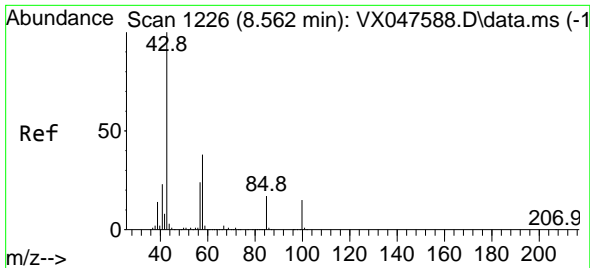


#50  
 Toluene-d8  
 Concen: 48.717 ug/l  
 RT: 8.628 min Scan# 1237  
 Delta R.T. -0.006 min  
 Lab File: VX047690.D  
 Acq: 22 Sep 2025 10:07

Tgt Ion: 98 Resp: 356478

Ion	Ratio	Lower	Upper
98	100		
100	66.1	53.0	79.4

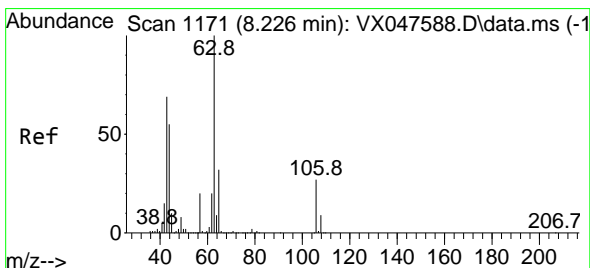
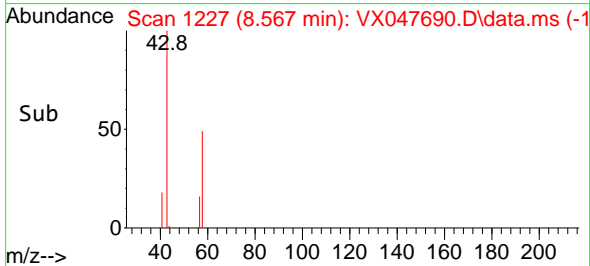
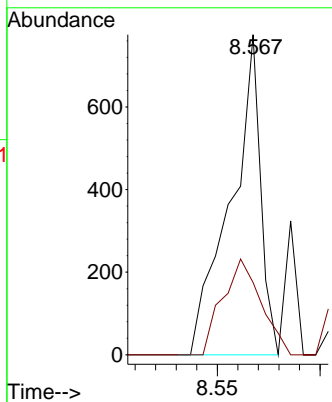
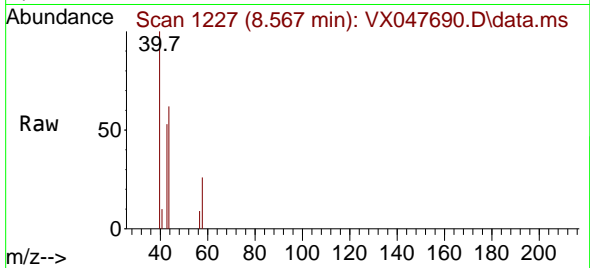




#51  
 4-Methyl-2-Pentanone  
 Concen: 0.259 ug/l  
 RT: 8.567 min Scan# 1173  
 Delta R.T. 0.006 min  
 Lab File: VX047690.D  
 Acq: 22 Sep 2025 10:07

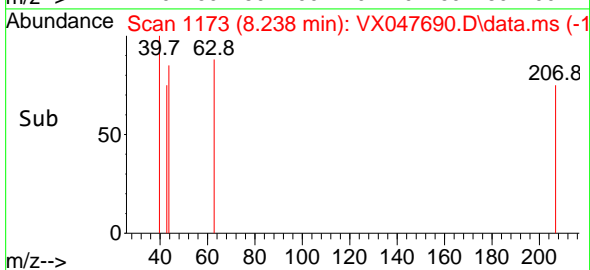
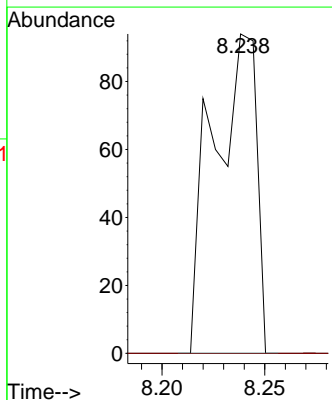
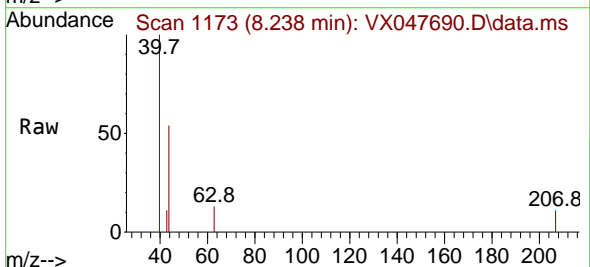
Instrument : MSVOA\_X  
 ClientSampleId : VX0922MBL01

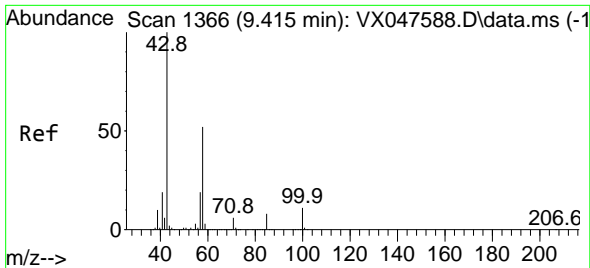
Tgt Ion: 43 Resp: 780  
 Ion Ratio Lower Upper  
 43 100  
 58 38.7 30.3 45.5



#58  
 2-Chloroethyl Vinyl ether  
 Concen: 7.975 ug/l  
 RT: 8.238 min Scan# 1173  
 Delta R.T. 0.012 min  
 Lab File: VX047690.D  
 Acq: 22 Sep 2025 10:07

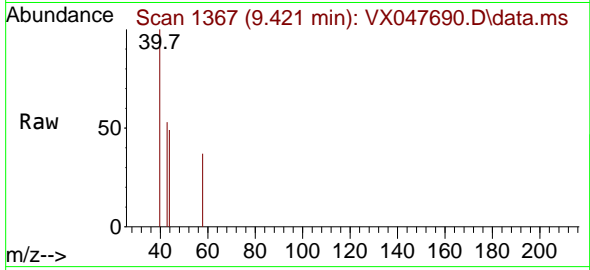
Tgt Ion: 63 Resp: 138  
 Ion Ratio Lower Upper  
 63 100  
 106 0.0 21.9 32.9#



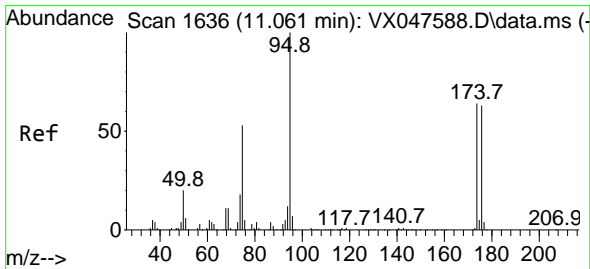
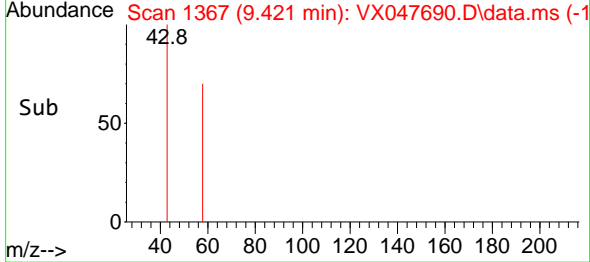
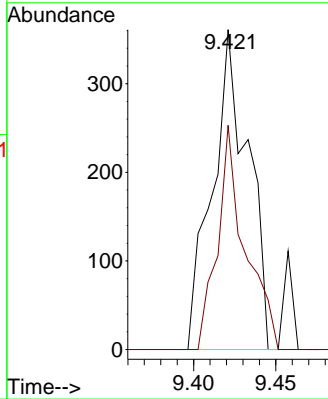


#59  
 2-Hexanone  
 Concen: 0.253 ug/l  
 RT: 9.421 min Scan# 11  
 Delta R.T. 0.006 min  
 Lab File: VX047690.D  
 Acq: 22 Sep 2025 10:07

Instrument :  
 MSVOA\_X  
 ClientSampleId :  
 VX0922MBL01

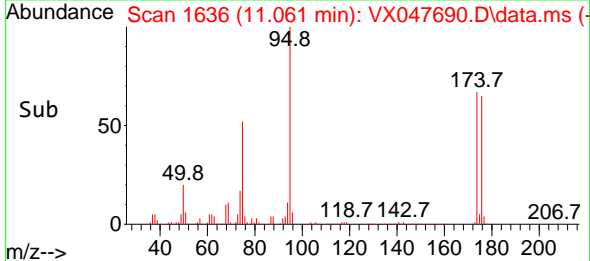
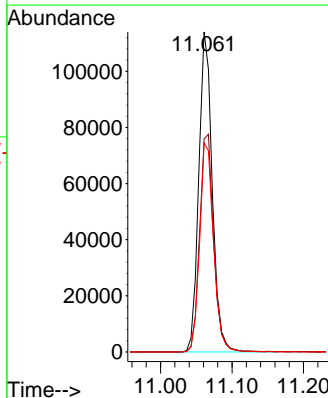
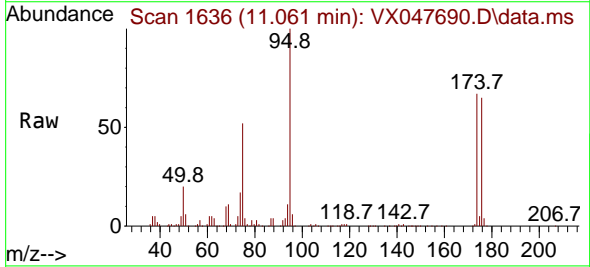


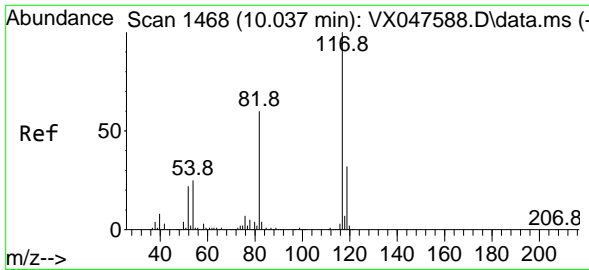
Tgt Ion: 43 Resp: 547  
 Ion Ratio Lower Upper  
 43 100  
 58 53.9 26.1 78.2



#62  
 4-Bromofluorobenzene  
 Concen: 53.718 ug/l  
 RT: 11.061 min Scan# 1636  
 Delta R.T. -0.000 min  
 Lab File: VX047690.D  
 Acq: 22 Sep 2025 10:07

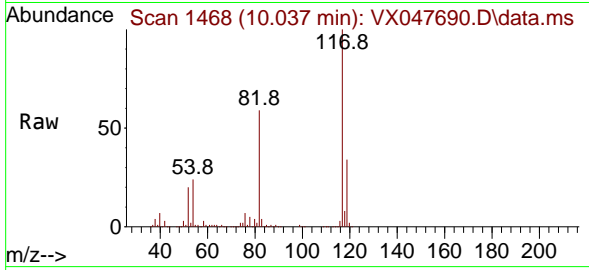
Tgt Ion: 95 Resp: 149177  
 Ion Ratio Lower Upper  
 95 100  
 174 70.9 0.0 141.6  
 176 67.3 0.0 138.4



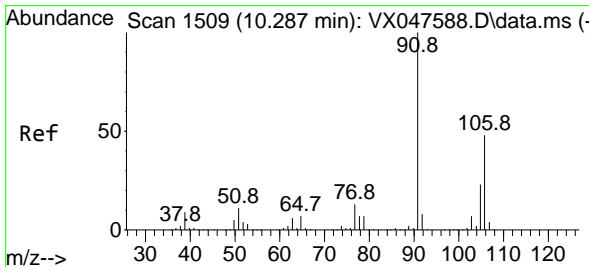
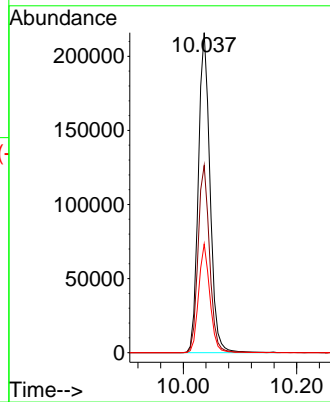
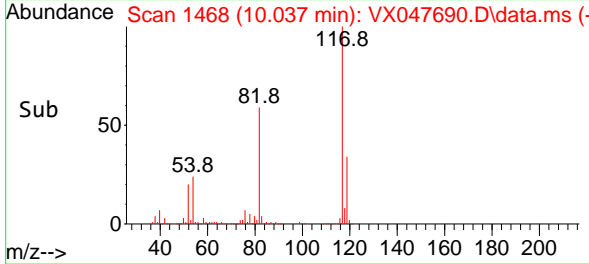


#63  
 Chlorobenzene-d5  
 Concen: 50.000 ug/l  
 RT: 10.037 min Scan# 14  
 Delta R.T. -0.000 min  
 Lab File: VX047690.D  
 Acq: 22 Sep 2025 10:07

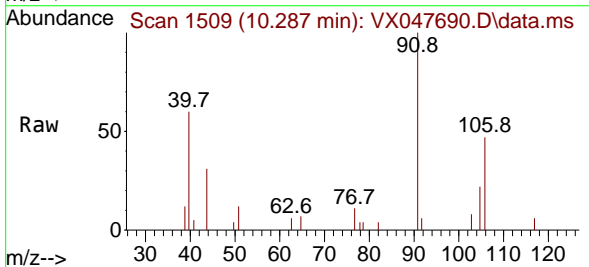
Instrument :  
 MSVOA\_X  
 ClientSampleId :  
 VX0922MBL01



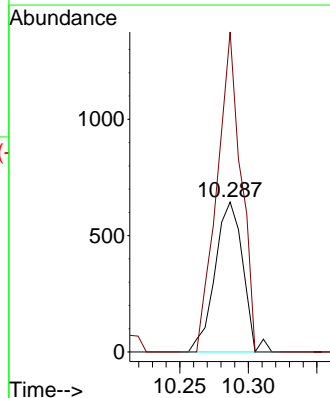
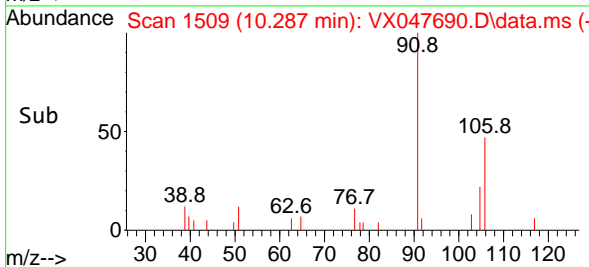
Tgt Ion:117 Resp: 307830  
 Ion Ratio Lower Upper  
 117 100  
 82 58.5 47.8 71.6  
 119 33.9 25.2 37.8



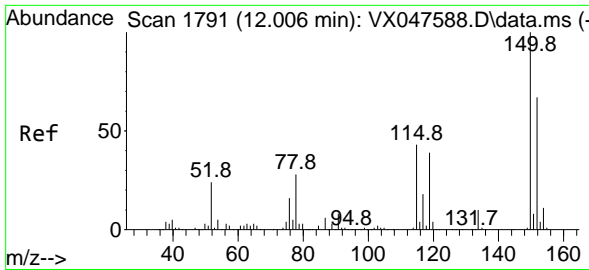
#68  
 m/p-Xylenes  
 Concen: 0.204 ug/l  
 RT: 10.287 min Scan# 1509  
 Delta R.T. -0.000 min  
 Lab File: VX047690.D  
 Acq: 22 Sep 2025 10:07



Tgt Ion:106 Resp: 914  
 Ion Ratio Lower Upper  
 106 100  
 91 183.2 167.8 251.8

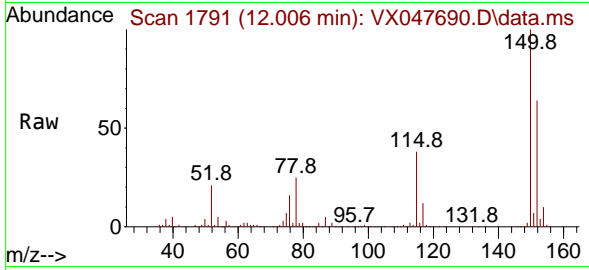




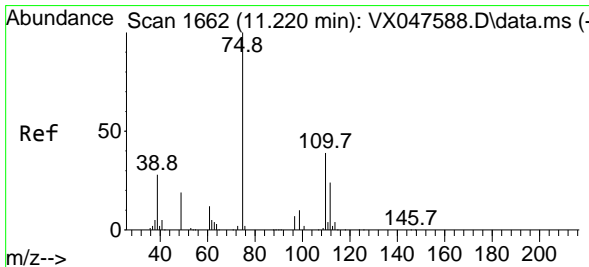
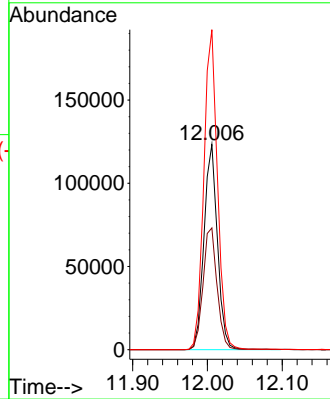
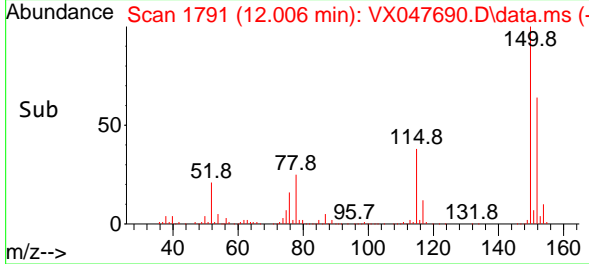


#72  
 1,4-Dichlorobenzene-d4  
 Concen: 50.000 ug/l  
 RT: 12.006 min Scan# 11  
 Delta R.T. -0.000 min  
 Lab File: VX047690.D  
 Acq: 22 Sep 2025 10:07

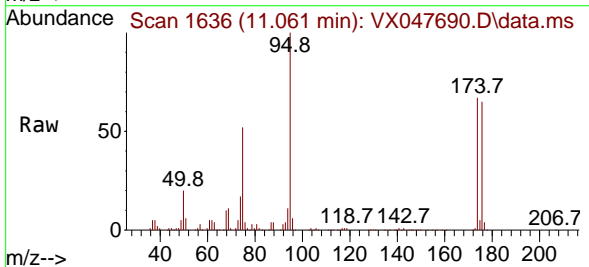
Instrument :  
 MSVOA\_X  
 ClientSampleId :  
 VX0922MBL01



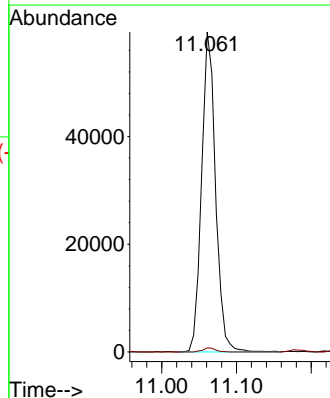
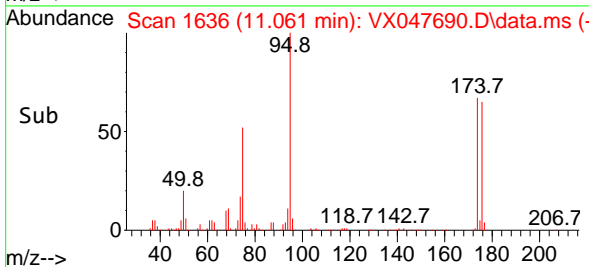
Tgt Ion:152 Resp: 154629  
 Ion Ratio Lower Upper  
 152 100  
 115 62.0 44.9 134.5  
 150 157.6 0.0 352.0

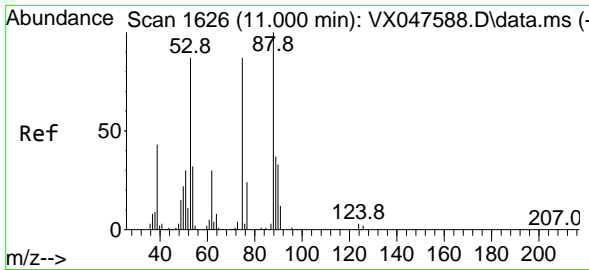


#76  
 1,2,3-Trichloropropane  
 Concen: 24.634 ug/l  
 RT: 11.061 min Scan# 1636  
 Delta R.T. -0.159 min  
 Lab File: VX047690.D  
 Acq: 22 Sep 2025 10:07



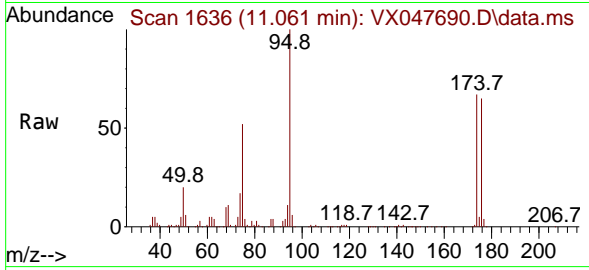
Tgt Ion: 75 Resp: 77122  
 Ion Ratio Lower Upper  
 75 100  
 77 1.1 18.8 56.4#



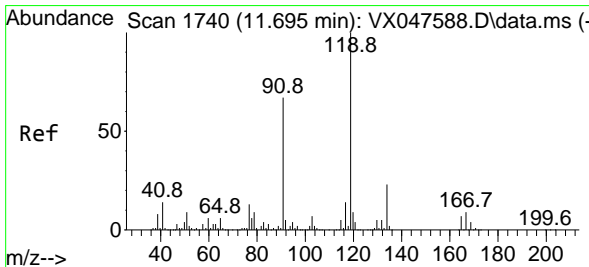
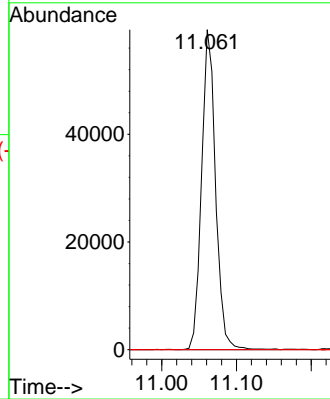
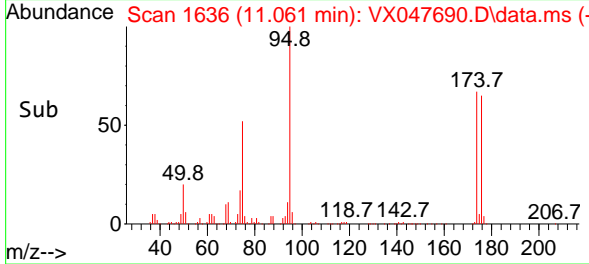


#81  
 trans-1,4-Dichloro-2-butene  
 Concen: 62.819 ug/l  
 RT: 11.061 min Scan# 1106  
 Delta R.T. 0.061 min  
 Lab File: VX047690.D  
 Acq: 22 Sep 2025 10:07

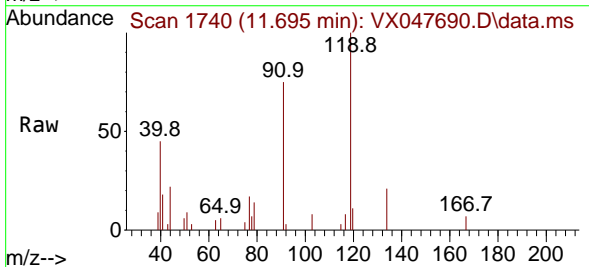
Instrument : MSVOA\_X  
 ClientSampleId : VX0922MBL01



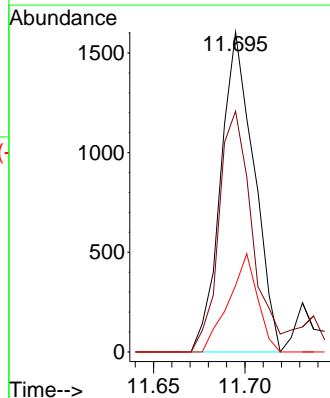
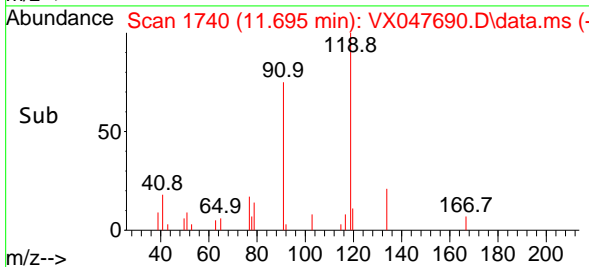
Tgt Ion: 75 Resp: 77122  
 Ion Ratio Lower Upper  
 75 100  
 53 0.0 83.4 125.2#  
 89 0.0 36.3 54.5#

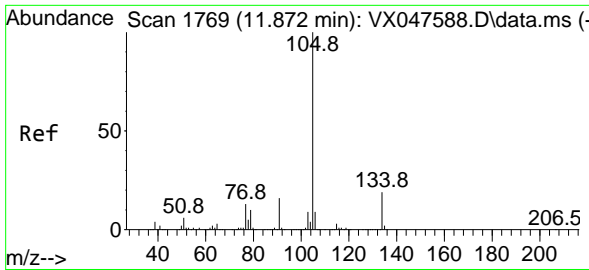


#83  
 tert-Butylbenzene  
 Concen: 0.206 ug/l  
 RT: 11.695 min Scan# 1740  
 Delta R.T. -0.000 min  
 Lab File: VX047690.D  
 Acq: 22 Sep 2025 10:07



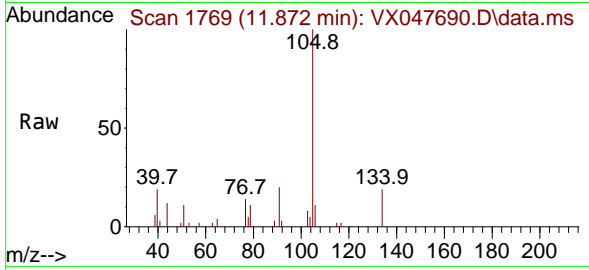
Tgt Ion: 119 Resp: 2032  
 Ion Ratio Lower Upper  
 119 100  
 91 77.0 29.6 88.8  
 134 26.6 11.0 33.0



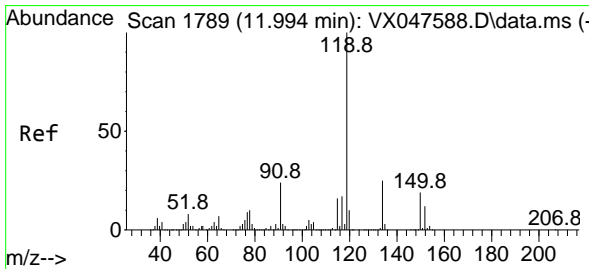
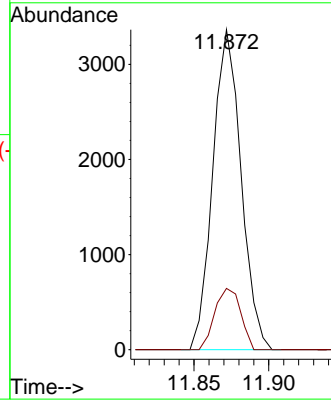
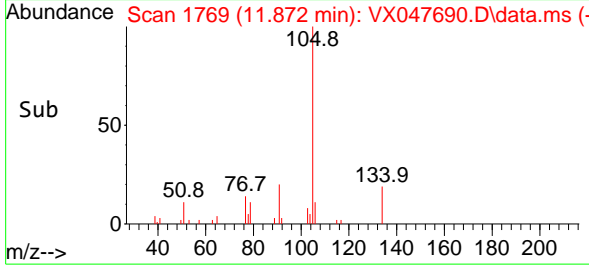


#85  
 sec-Butylbenzene  
 Concen: 0.376 ug/l  
 RT: 11.872 min Scan# 1769  
 Delta R.T. -0.000 min  
 Lab File: VX047690.D  
 Acq: 22 Sep 2025 10:07

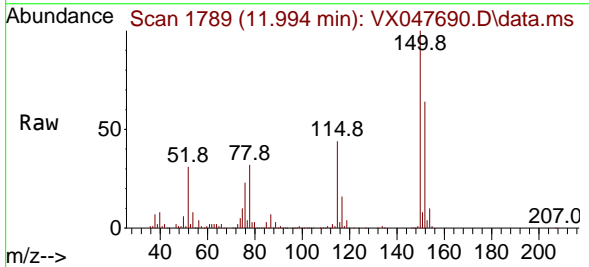
Instrument : MSVOA\_X  
 ClientSampleId : VX0922MBL01



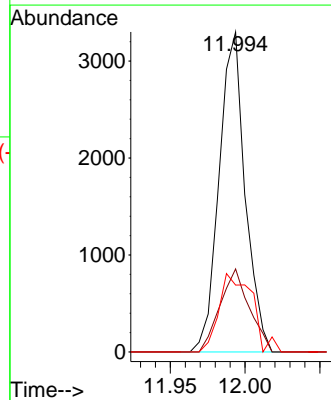
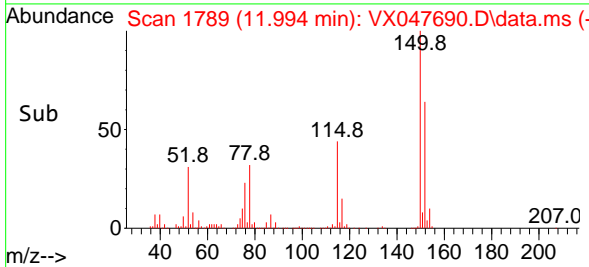
Tgt Ion:105 Resp: 4421  
 Ion Ratio Lower Upper  
 105 100  
 134 17.5 9.8 29.5

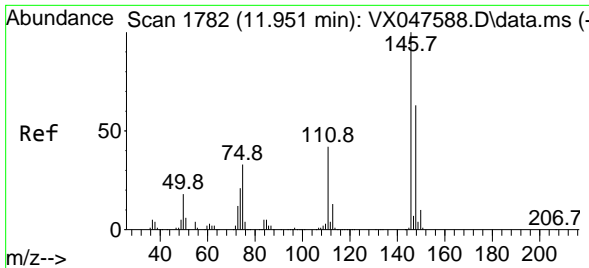


#86  
 p-Isopropyltoluene  
 Concen: 0.402 ug/l  
 RT: 11.994 min Scan# 1789  
 Delta R.T. -0.000 min  
 Lab File: VX047690.D  
 Acq: 22 Sep 2025 10:07



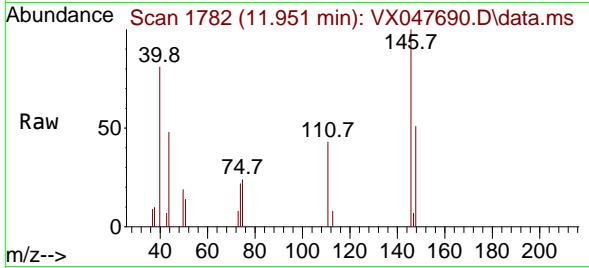
Tgt Ion:119 Resp: 3998  
 Ion Ratio Lower Upper  
 119 100  
 134 29.2 12.6 37.8  
 91 31.1 12.6 37.6





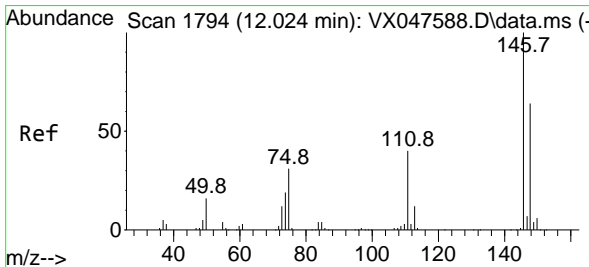
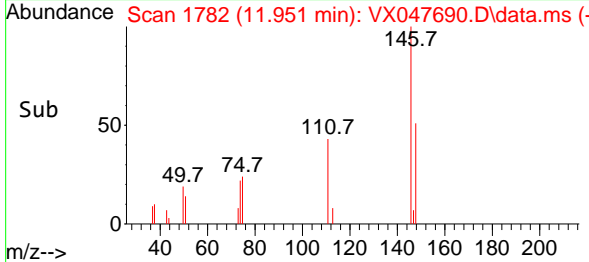
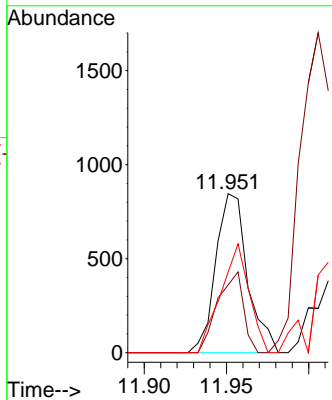
#87  
 1,3-Dichlorobenzene  
 Concen: 0.212 ug/l  
 RT: 11.951 min Scan# 1782  
 Delta R.T. -0.000 min  
 Lab File: VX047690.D  
 Acq: 22 Sep 2025 10:07

Instrument : MSVOA\_X  
 ClientSampleId : VX0922MBL01



Tgt Ion:146 Resp: 1139

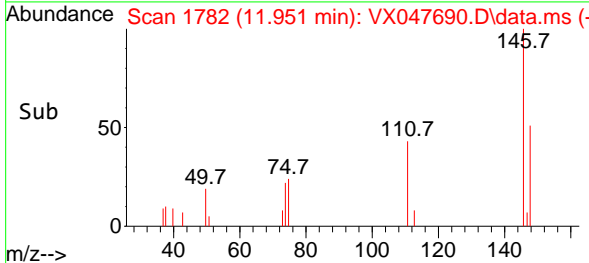
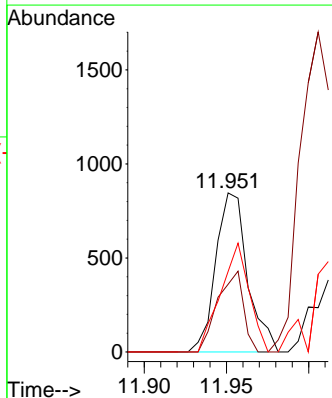
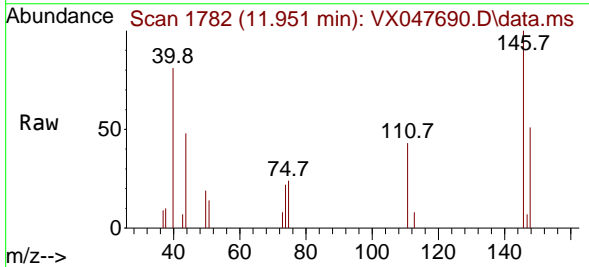
Ion	Ratio	Lower	Upper
146	100		
111	41.3	21.5	64.5
148	61.4	32.0	96.0

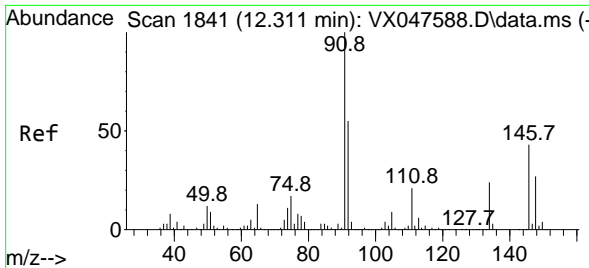


#88  
 1,4-Dichlorobenzene  
 Concen: 0.206 ug/l  
 RT: 11.951 min Scan# 1782  
 Delta R.T. -0.073 min  
 Lab File: VX047690.D  
 Acq: 22 Sep 2025 10:07

Tgt Ion:146 Resp: 1139

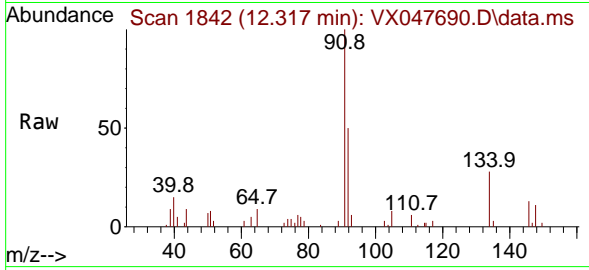
Ion	Ratio	Lower	Upper
146	100		
111	41.3	20.8	62.4
148	61.4	31.7	95.1





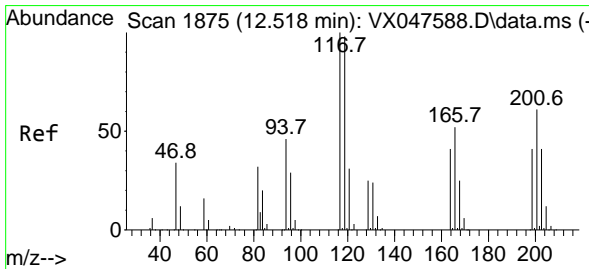
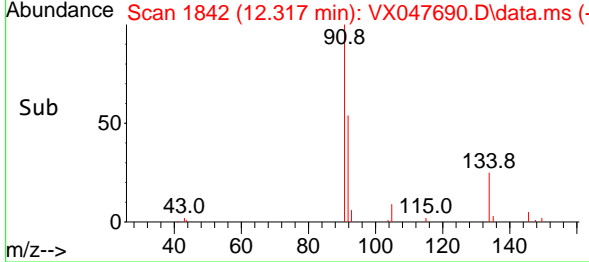
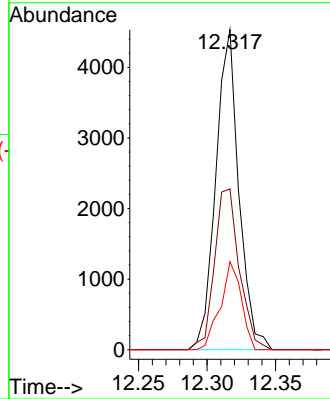
#89  
 n-Butylbenzene  
 Concen: 0.577 ug/l  
 RT: 12.317 min Scan# 1842  
 Delta R.T. 0.006 min  
 Lab File: VX047690.D  
 Acq: 22 Sep 2025 10:07

Instrument : MSVOA\_X  
 ClientSampleId : VX0922MBL01



Tgt Ion: 91 Resp: 5307

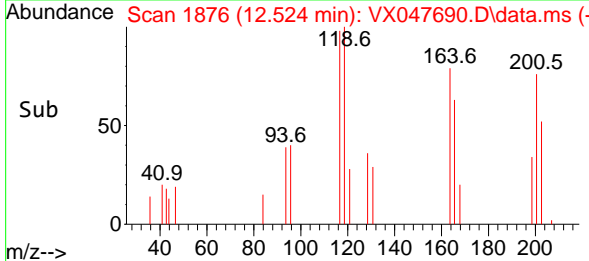
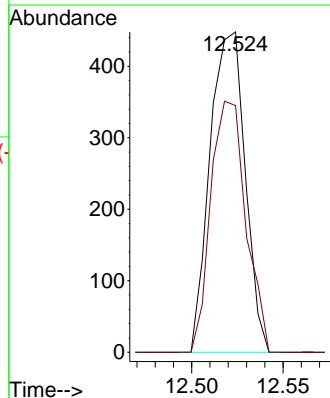
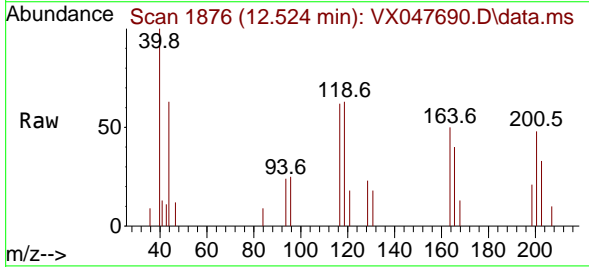
Ion	Ratio	Lower	Upper
91	100		
92	54.2	27.6	82.7
134	24.9	12.6	37.8

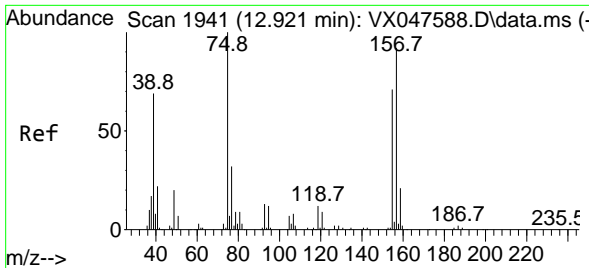


#90  
 Hexachloroethane  
 Concen: 0.344 ug/l  
 RT: 12.524 min Scan# 1876  
 Delta R.T. 0.006 min  
 Lab File: VX047690.D  
 Acq: 22 Sep 2025 10:07

Tgt Ion: 117 Resp: 600

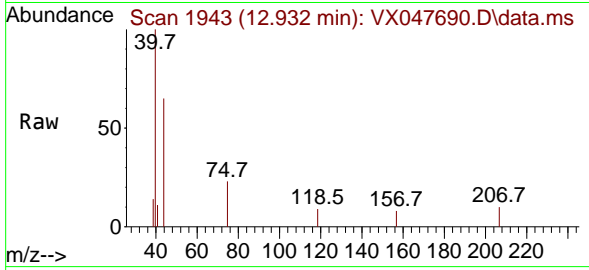
Ion	Ratio	Lower	Upper
117	100		
201	78.3	34.2	102.5



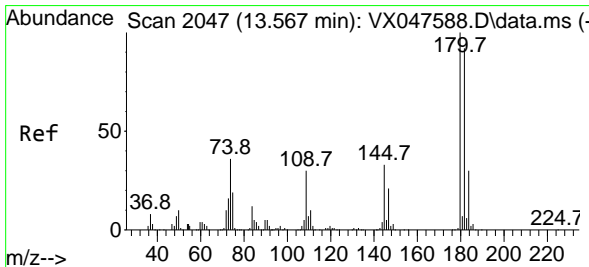
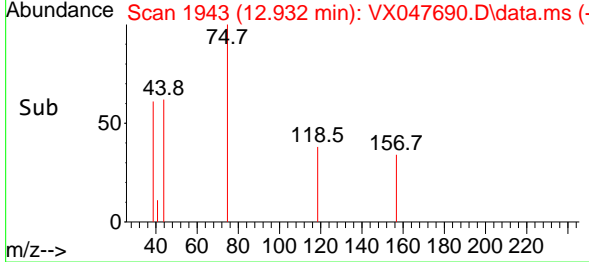
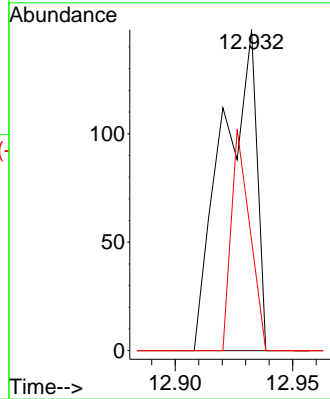


#92  
 1,2-Dibromo-3-Chloropropane  
 Concen: 0.208 ug/l  
 RT: 12.932 min Scan# 1943  
 Delta R.T. 0.012 min  
 Lab File: VX047690.D  
 Acq: 22 Sep 2025 10:07

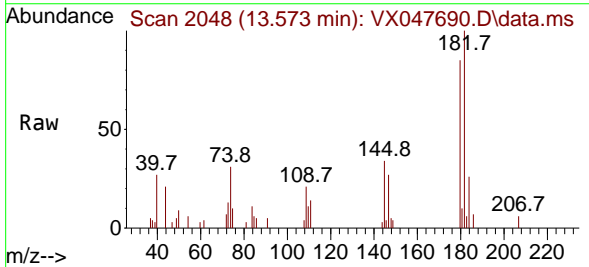
Instrument : MSVOA\_X  
 ClientSampleId : VX0922MBL01



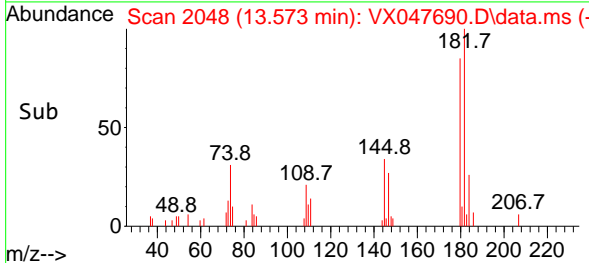
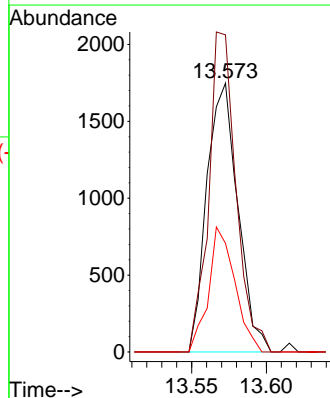
Tgt Ion: 75 Resp: 150  
 Ion Ratio Lower Upper  
 75 100  
 155 0.0 37.7 113.1#  
 157 37.3 49.8 149.4#

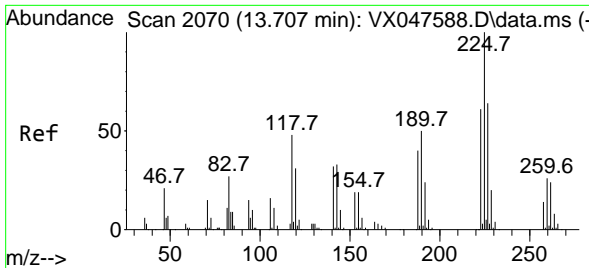


#93  
 1,2,4-Trichlorobenzene  
 Concen: 0.758 ug/l  
 RT: 13.573 min Scan# 2048  
 Delta R.T. 0.006 min  
 Lab File: VX047690.D  
 Acq: 22 Sep 2025 10:07



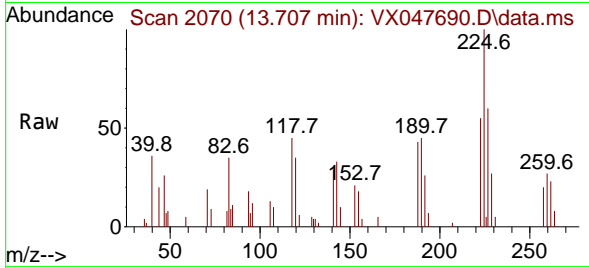
Tgt Ion: 180 Resp: 2525  
 Ion Ratio Lower Upper  
 180 100  
 182 104.8 46.6 139.8  
 145 39.6 16.4 49.1





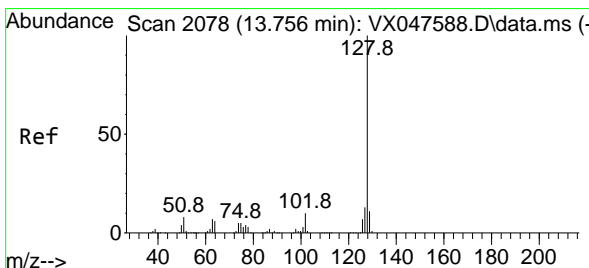
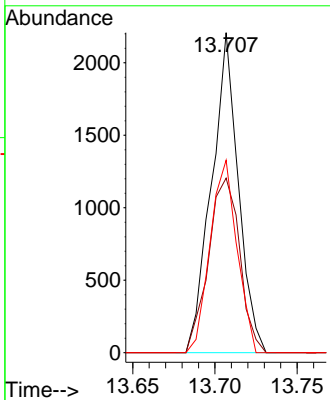
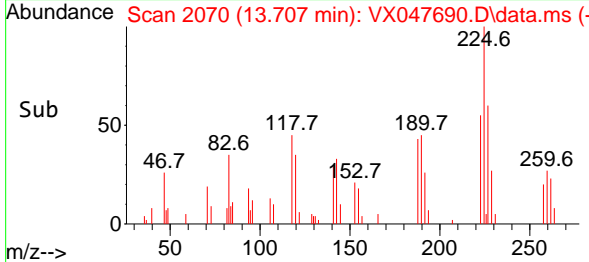
#94  
 Hexachlorobutadiene  
 Concen: 2.215 ug/l  
 RT: 13.707 min Scan# 2070  
 Delta R.T. -0.000 min  
 Lab File: VX047690.D  
 Acq: 22 Sep 2025 10:07

Instrument : MSVOA\_X  
 ClientSampleId : VX0922MBL01

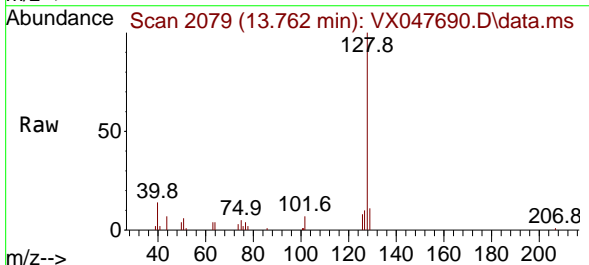


Tgt Ion: 225 Resp: 2505

Ion	Ratio	Lower	Upper
225	100		
223	63.7	31.7	95.1
227	60.3	32.0	96.0

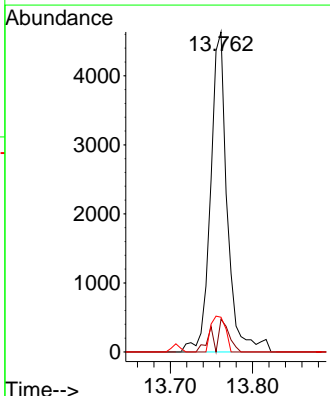
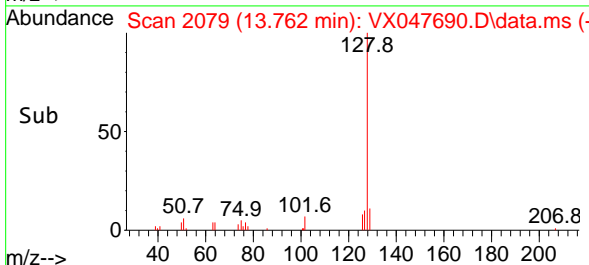


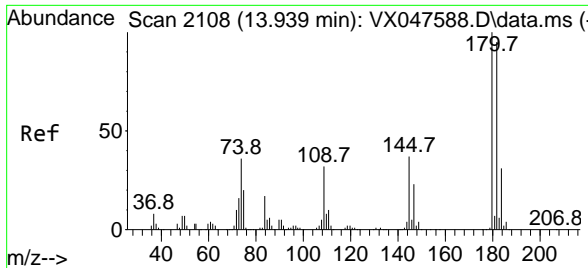
#95  
 Naphthalene  
 Concen: 0.645 ug/l  
 RT: 13.762 min Scan# 2079  
 Delta R.T. 0.006 min  
 Lab File: VX047690.D  
 Acq: 22 Sep 2025 10:07



Tgt Ion: 128 Resp: 6540

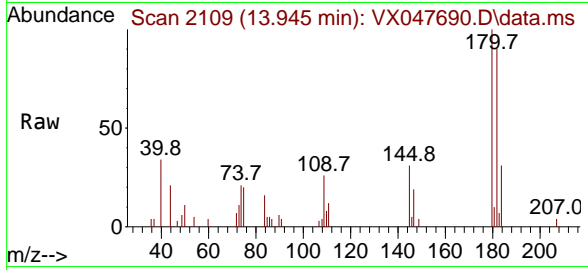
Ion	Ratio	Lower	Upper
128	100		
127	9.3	10.2	15.2#
129	9.8	8.8	13.2





#96  
 1,2,3-Trichlorobenzene  
 Concen: 0.948 ug/l  
 RT: 13.945 min Scan# 21  
 Delta R.T. 0.006 min  
 Lab File: VX047690.D  
 Acq: 22 Sep 2025 10:07

Instrument : MSVOA\_X  
 ClientSampleId : VX0922MBL01



Tgt Ion:180 Resp: 2936

Ion	Ratio	Lower	Upper
180	100		
182	100.2	47.6	142.8
145	31.7	17.9	53.7

