

Data Path : Z:\voasrv\HPCHEM1\MSVOA_X\Data\VX092225\
 Data File : VX047691.D
 Acq On : 22 Sep 2025 10:27
 Operator : JC/MD
 Sample : VX0922WBL01
 Misc : 5.0mL/MSVOA_X/WATER
 ALS Vial : 4 Sample Multiplier: 1

Instrument :
 MSVOA_X
 ClientSampleId :
 VX0922WBL01

Quant Time: Sep 23 01:28:52 2025
 Quant Method : Z:\voasrv\HPCHEM1\MSVOA_X\Method\82X091625W.M
 Quant Title : SW846 8260
 QLast Update : Wed Sep 17 06:39:58 2025
 Response via : Initial Calibration

Compound	R.T.	QIon	Response	Conc	Units	Dev(Min)

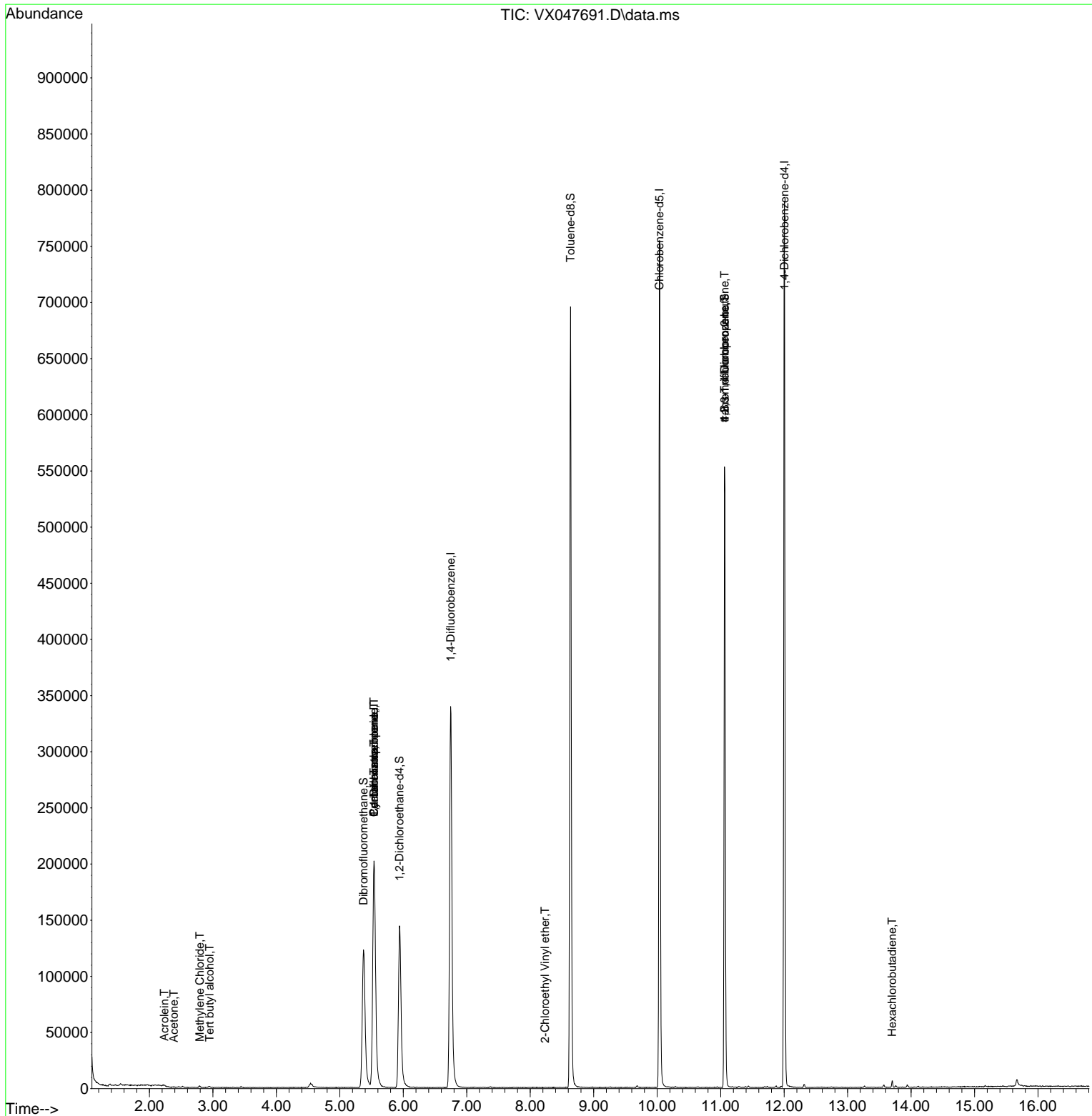
Internal Standards						
1) Pentafluorobenzene	5.538	168	207294	50.000	ug/l	0.00
34) 1,4-Difluorobenzene	6.745	114	374581	50.000	ug/l	0.00
63) Chlorobenzene-d5	10.037	117	340485	50.000	ug/l	0.00
72) 1,4-Dichlorobenzene-d4	12.006	152	164144	50.000	ug/l	0.00
System Monitoring Compounds						
33) 1,2-Dichloroethane-d4	5.940	65	155785	47.213	ug/l	0.00
Spiked Amount	50.000	Range	78 - 117	Recovery	=	94.420%
35) Dibromofluoromethane	5.373	113	120877	48.117	ug/l	0.00
Spiked Amount	50.000	Range	75 - 124	Recovery	=	96.240%
50) Toluene-d8	8.635	98	428049	49.243	ug/l	0.00
Spiked Amount	50.000	Range	92 - 112	Recovery	=	98.480%
62) 4-Bromofluorobenzene	11.061	95	163241	49.482	ug/l	0.00
Spiked Amount	50.000	Range	83 - 123	Recovery	=	98.960%
Target Compounds						
					Qvalue	
11) Tert butyl alcohol	2.947	59	304	0.827	ug/l #	72
13) Acrolein	2.233	56	106	0.313	ug/l #	78
16) Acetone	2.386	43	501	0.349	ug/l #	59
20) Methylene Chloride	2.794	84	623	0.205	ug/l #	66
31) Cyclohexane	5.538	56	4641	1.064	ug/l #	1
36) 1,1-Dichloropropene	5.538	75	17747	4.835	ug/l #	51
38) Carbon Tetrachloride	5.538	117	22157	5.555	ug/l #	18
58) 2-Chloroethyl Vinyl ether	8.232	63	49	7.917	ug/l #	47
76) 1,2,3-Trichloropropane	11.061	75	83845	25.229	ug/l #	39
81) trans-1,4-Dichloro-2-b...	11.061	75	83845	64.337	ug/l #	8
94) Hexachlorobutadiene	13.701	225	845	0.704	ug/l	99

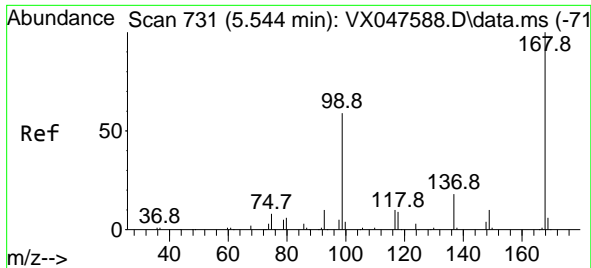
(#) = qualifier out of range (m) = manual integration (+) = signals summed

Data Path : Z:\voasrv\HPCHEM1\MSVOA_X\Data\VX092225\
 Data File : VX047691.D
 Acq On : 22 Sep 2025 10:27
 Operator : JC/MD
 Sample : VX0922WBL01
 Misc : 5.0mL/MSVOA_X/WATER
 ALS Vial : 4 Sample Multiplier: 1

Instrument :
 MSVOA_X
 ClientSampleId :
 VX0922WBL01

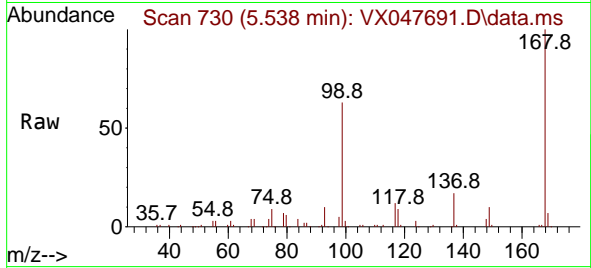
Quant Time: Sep 23 01:28:52 2025
 Quant Method : Z:\voasrv\HPCHEM1\MSVOA_X\Method\82X091625W.M
 Quant Title : SW846 8260
 QLast Update : Wed Sep 17 06:39:58 2025
 Response via : Initial Calibration



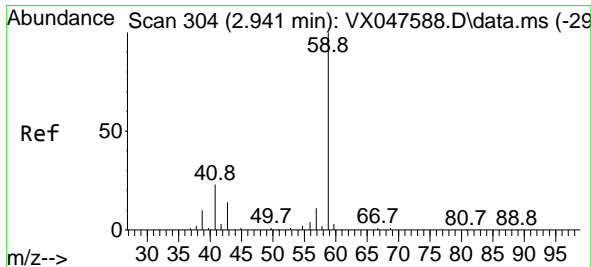
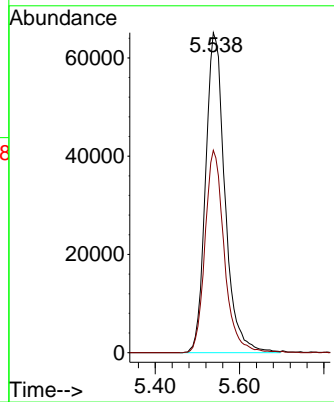
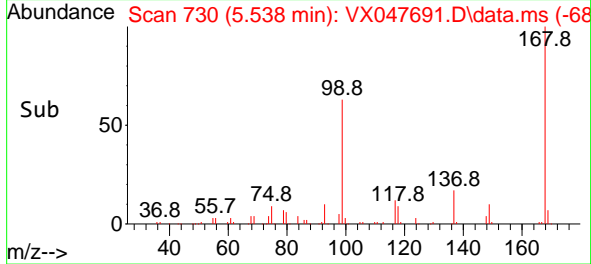


#1
 Pentafluorobenzene
 Concen: 50.000 ug/l
 RT: 5.538 min Scan# 71
 Delta R.T. -0.006 min
 Lab File: VX047691.D
 Acq: 22 Sep 2025 10:27

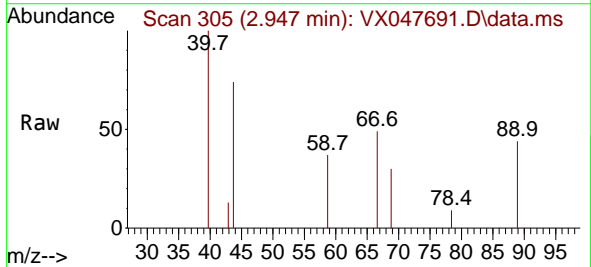
Instrument :
 MSVOA_X
 ClientSampleId :
 VX0922WBL01



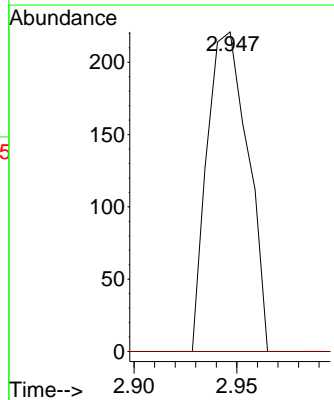
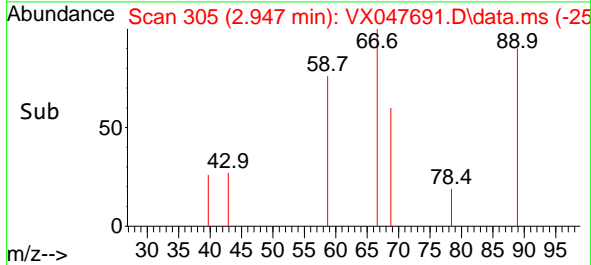
Tgt Ion:168 Resp: 207294
 Ion Ratio Lower Upper
 168 100
 99 63.2 48.8 73.2

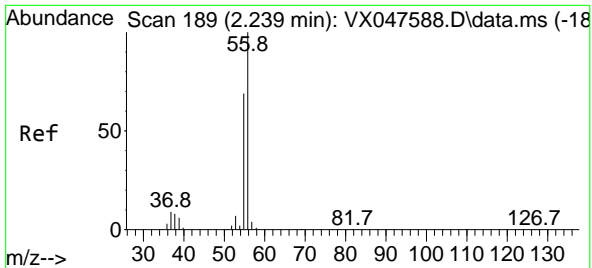


#11
 Tert butyl alcohol
 Concen: 0.827 ug/l
 RT: 2.947 min Scan# 305
 Delta R.T. 0.006 min
 Lab File: VX047691.D
 Acq: 22 Sep 2025 10:27



Tgt Ion: 59 Resp: 304
 Ion Ratio Lower Upper
 59 100
 57 0.0 8.3 12.5#

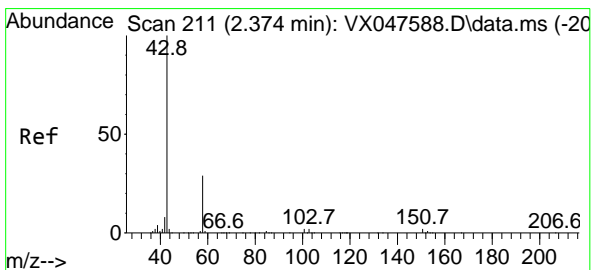
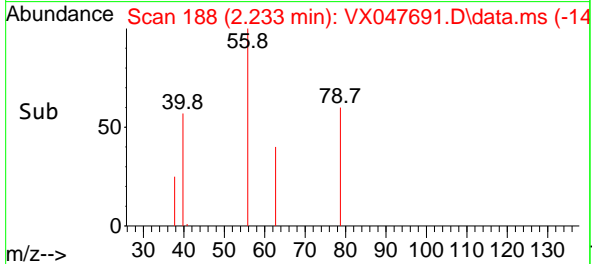
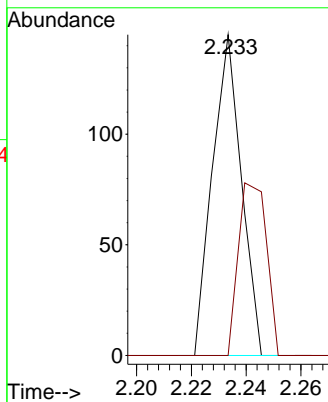
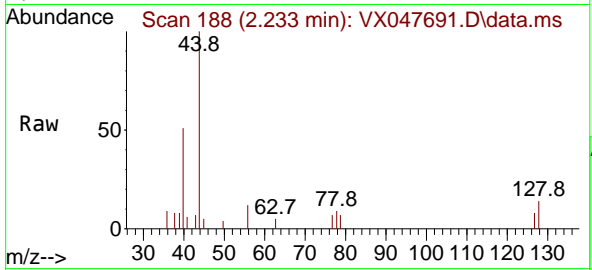




#13
 Acrolein
 Concen: 0.313 ug/l
 RT: 2.233 min Scan# 11
 Delta R.T. -0.006 min
 Lab File: VX047691.D
 Acq: 22 Sep 2025 10:27

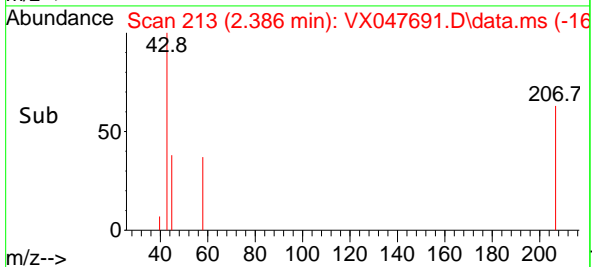
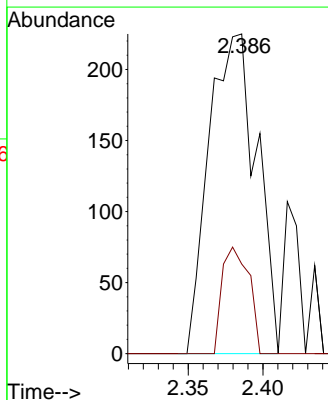
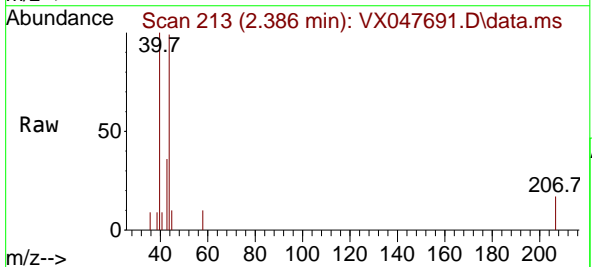
Instrument : MSVOA_X
 ClientSampleId : VX0922WBL01

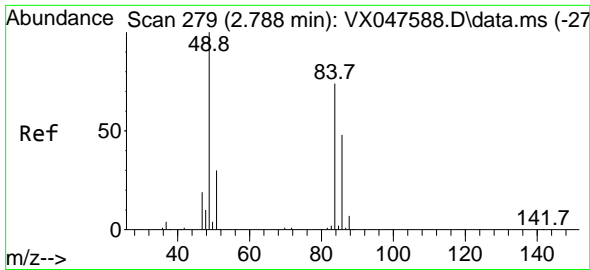
Tgt Ion: 56 Resp: 106
 Ion Ratio Lower Upper
 56 100
 55 52.8 57.2 85.8#



#16
 Acetone
 Concen: 0.349 ug/l
 RT: 2.386 min Scan# 213
 Delta R.T. 0.012 min
 Lab File: VX047691.D
 Acq: 22 Sep 2025 10:27

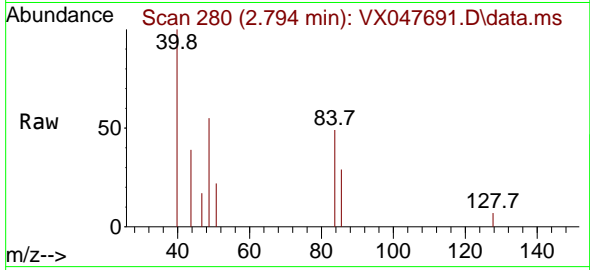
Tgt Ion: 43 Resp: 501
 Ion Ratio Lower Upper
 43 100
 58 7.5 23.4 35.0#



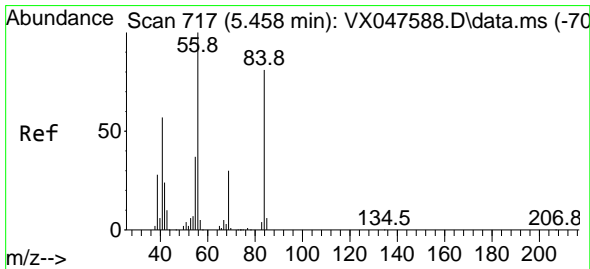
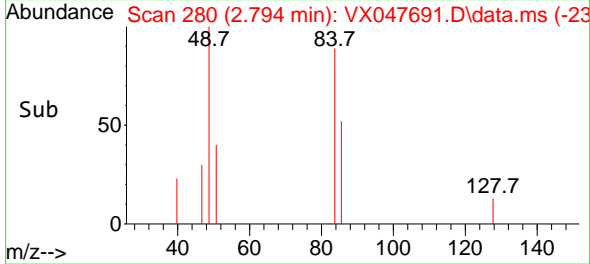
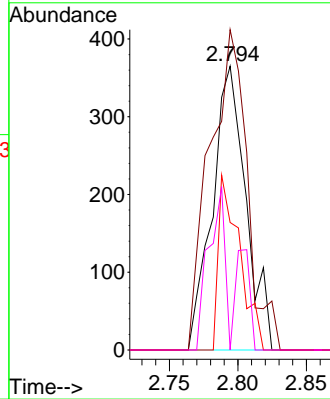


#20
 Methylene Chloride
 Concen: 0.205 ug/l
 RT: 2.794 min Scan# 21
 Delta R.T. 0.006 min
 Lab File: VX047691.D
 Acq: 22 Sep 2025 10:27

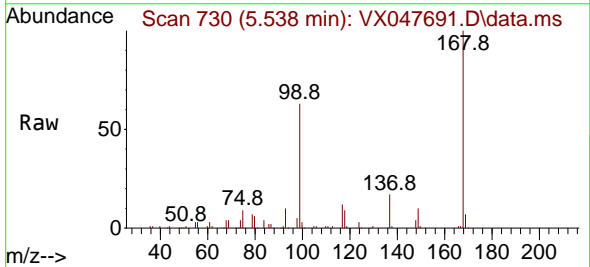
Instrument :
 MSVOA_X
 ClientSampleId :
 VX0922WBL01



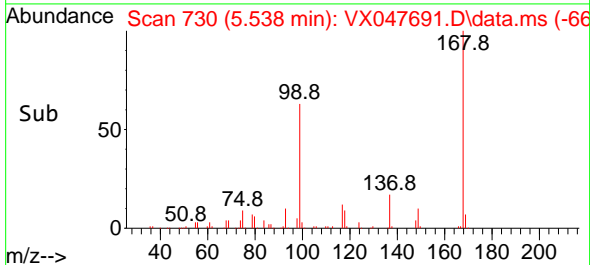
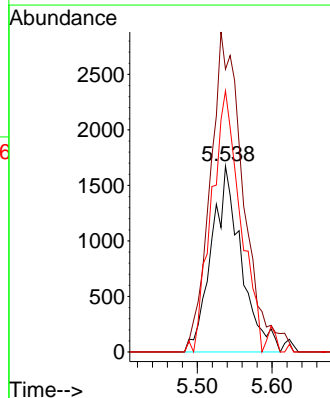
Tgt Ion: 84 Resp: 623
 Ion Ratio Lower Upper
 84 100
 49 112.9 108.6 162.8
 51 44.9 32.6 48.8
 86 0.0 52.0 78.0#

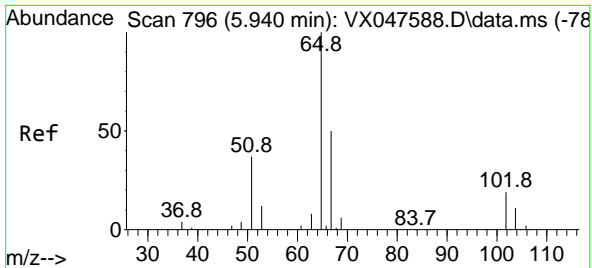


#31
 Cyclohexane
 Concen: 1.064 ug/l
 RT: 5.538 min Scan# 730
 Delta R.T. 0.079 min
 Lab File: VX047691.D
 Acq: 22 Sep 2025 10:27



Tgt Ion: 56 Resp: 4641
 Ion Ratio Lower Upper
 56 100
 69 152.2 23.8 35.8#
 84 140.5 64.6 97.0#





#33
 1,2-Dichloroethane-d4
 Concen: 47.213 ug/l
 RT: 5.940 min Scan# 796
 Delta R.T. -0.000 min
 Lab File: VX047691.D
 Acq: 22 Sep 2025 10:27

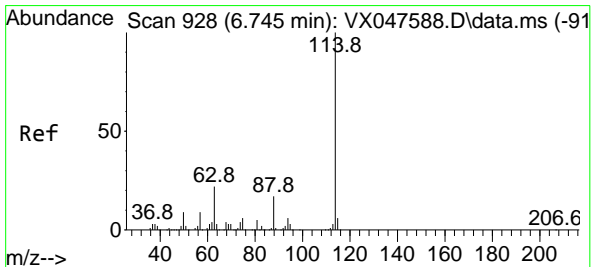
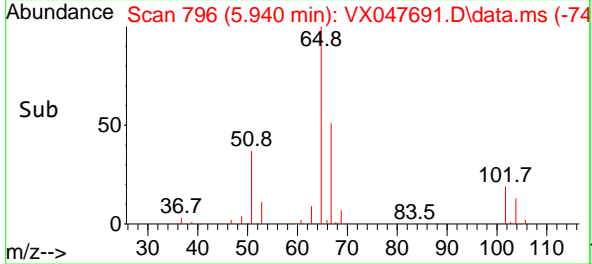
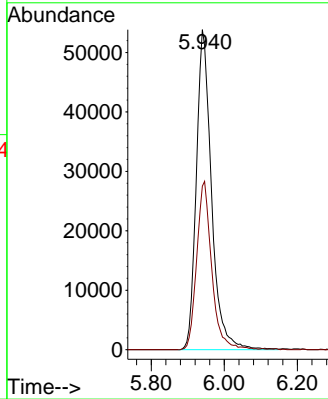
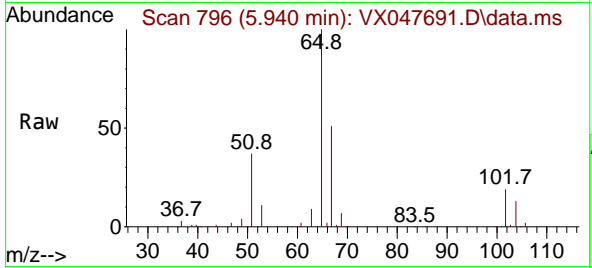
Instrument :

MSVOA_X

ClientSampleId :

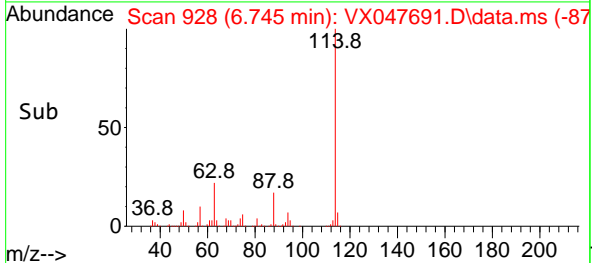
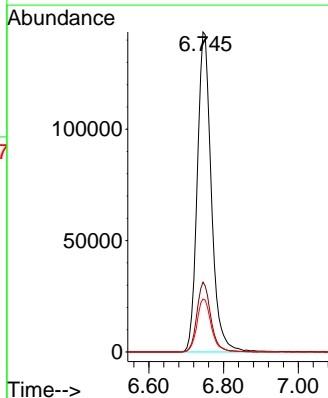
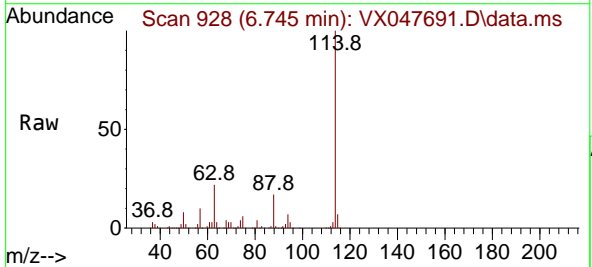
VX0922WBL01

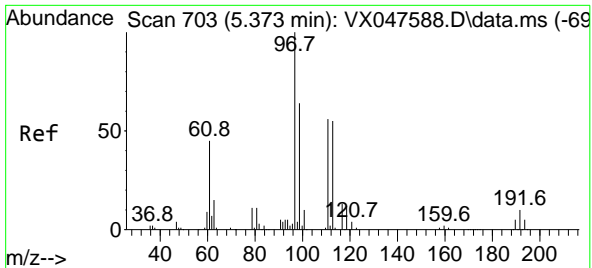
Tgt Ion: 65 Resp: 155785
 Ion Ratio Lower Upper
 65 100
 67 52.0 0.0 103.0



#34
 1,4-Difluorobenzene
 Concen: 50.000 ug/l
 RT: 6.745 min Scan# 928
 Delta R.T. -0.000 min
 Lab File: VX047691.D
 Acq: 22 Sep 2025 10:27

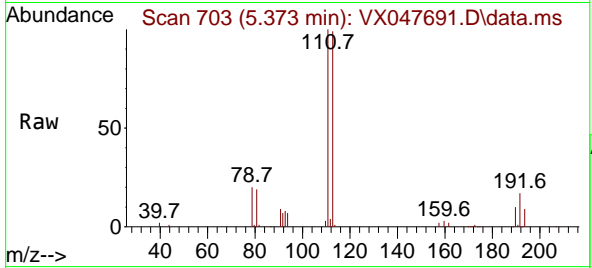
Tgt Ion: 114 Resp: 374581
 Ion Ratio Lower Upper
 114 100
 63 21.8 0.0 44.0
 88 16.6 0.0 34.2



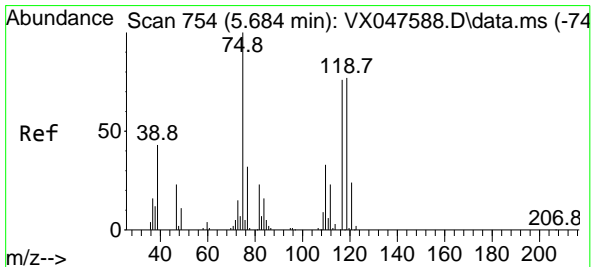
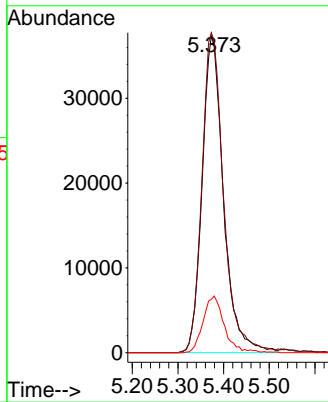
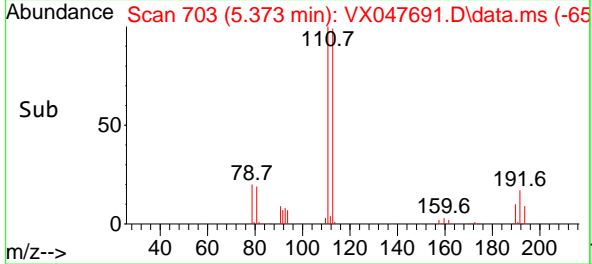


#35
 Dibromofluoromethane
 Concen: 48.117 ug/l
 RT: 5.373 min Scan# 70
 Delta R.T. -0.000 min
 Lab File: VX047691.D
 Acq: 22 Sep 2025 10:27

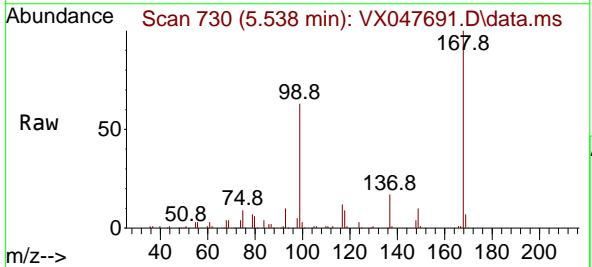
Instrument :
 MSVOA_X
 ClientSampleId :
 VX0922WBL01



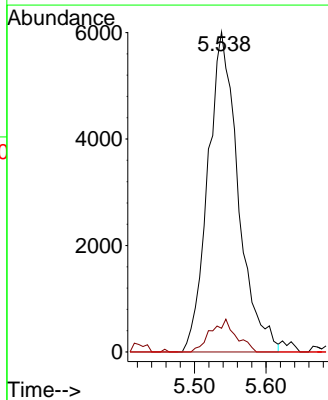
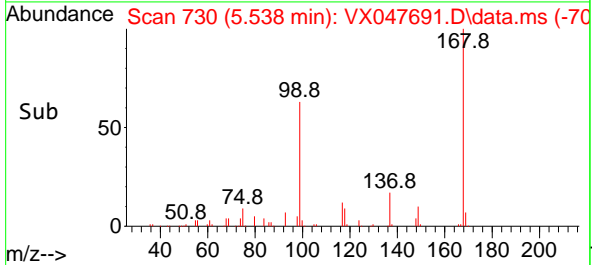
Tgt Ion:113 Resp: 120877
 Ion Ratio Lower Upper
 113 100
 111 102.5 80.9 121.3
 192 17.7 14.2 21.4

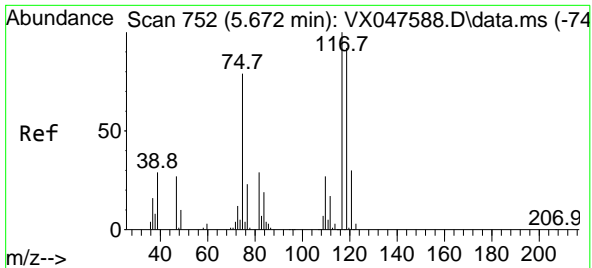


#36
 1,1-Dichloropropene
 Concen: 4.835 ug/l
 RT: 5.538 min Scan# 730
 Delta R.T. -0.146 min
 Lab File: VX047691.D
 Acq: 22 Sep 2025 10:27



Tgt Ion: 75 Resp: 17747
 Ion Ratio Lower Upper
 75 100
 110 8.5 16.7 50.1#
 77 0.0 24.3 36.5#

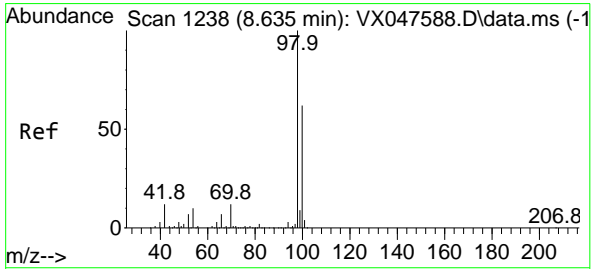
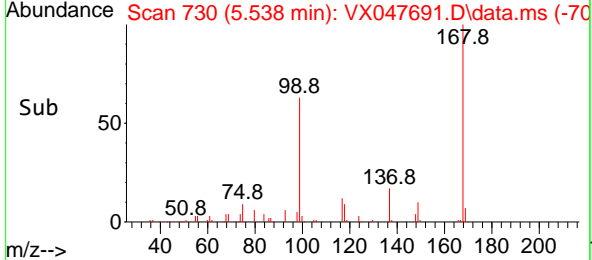
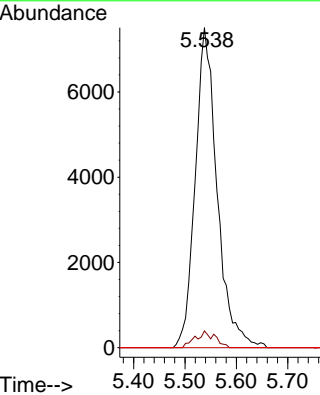
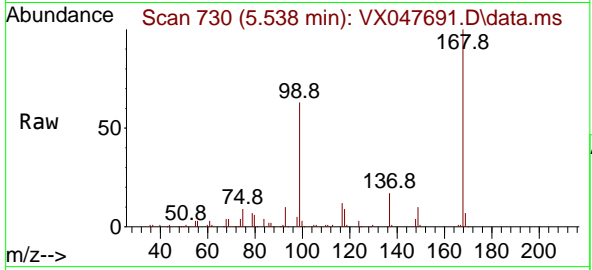




#38
 Carbon Tetrachloride
 Concen: 5.555 ug/l
 RT: 5.538 min Scan# 71
 Delta R.T. -0.134 min
 Lab File: VX047691.D
 Acq: 22 Sep 2025 10:27

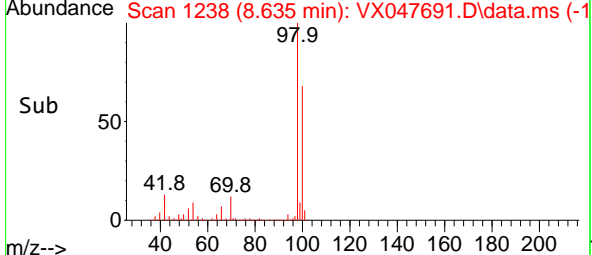
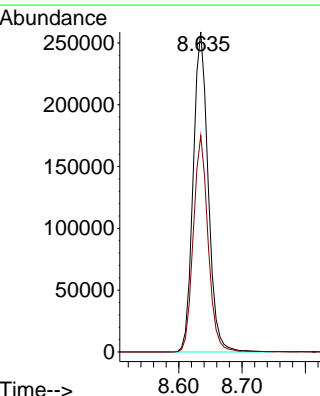
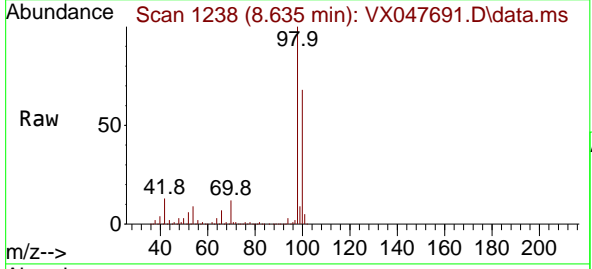
Instrument : MSVOA_X
 ClientSampleId : VX0922WBL01

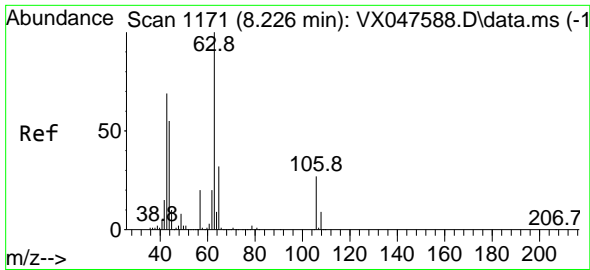
Tgt Ion	Resp	Lower	Upper
117	22157		
119	5.3	73.4	110.2#
121	0.0	23.8	35.6#



#50
 Toluene-d8
 Concen: 49.243 ug/l
 RT: 8.635 min Scan# 1238
 Delta R.T. -0.000 min
 Lab File: VX047691.D
 Acq: 22 Sep 2025 10:27

Tgt Ion	Resp	Lower	Upper
98	428049		
100	66.5	53.0	79.4

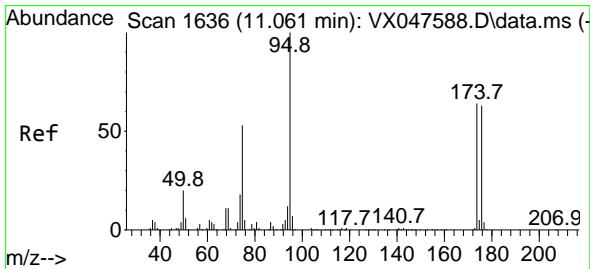
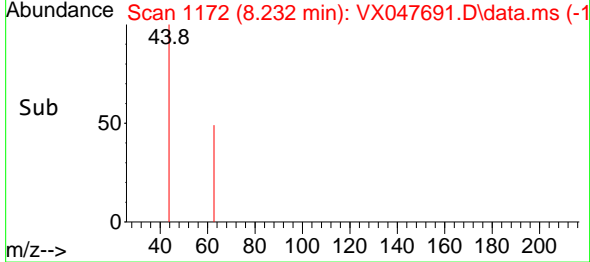
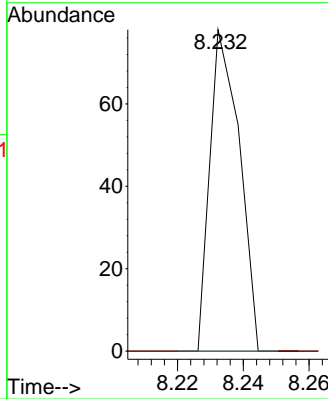
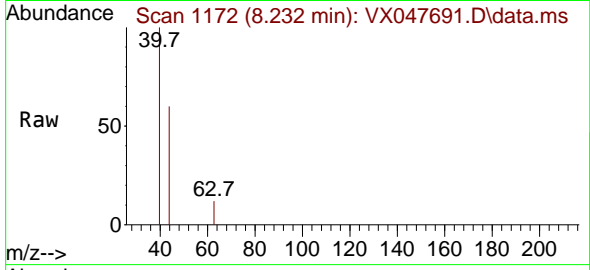




#58
 2-Chloroethyl Vinyl ether
 Concen: 7.917 ug/l
 RT: 8.232 min Scan# 1171
 Delta R.T. 0.006 min
 Lab File: VX047691.D
 Acq: 22 Sep 2025 10:27

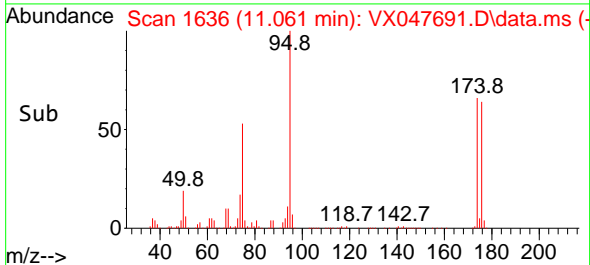
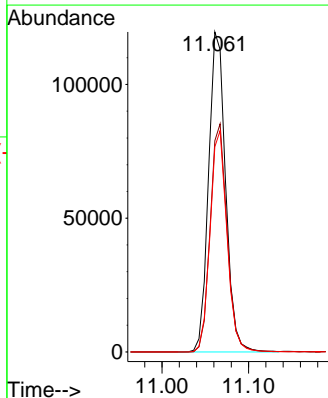
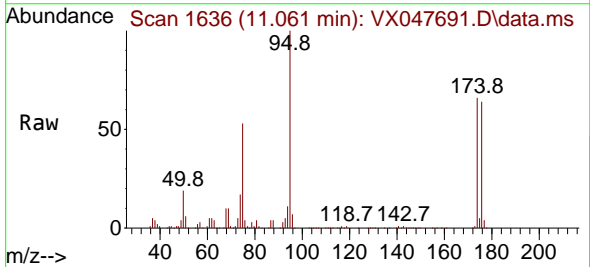
Instrument : MSVOA_X
 ClientSampleId : VX0922WBL01

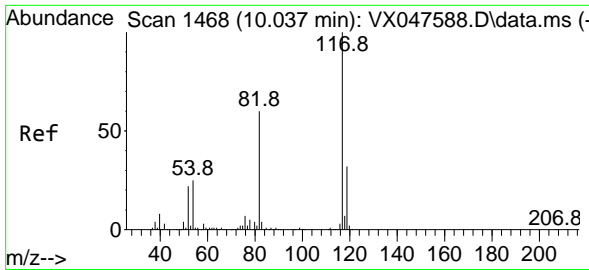
Tgt Ion: 63 Resp: 49
 Ion Ratio Lower Upper
 63 100
 106 0.0 21.9 32.9#



#62
 4-Bromofluorobenzene
 Concen: 49.482 ug/l
 RT: 11.061 min Scan# 1636
 Delta R.T. -0.000 min
 Lab File: VX047691.D
 Acq: 22 Sep 2025 10:27

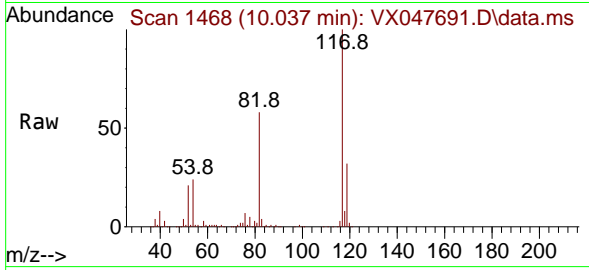
Tgt Ion: 95 Resp: 163241
 Ion Ratio Lower Upper
 95 100
 174 70.9 0.0 141.6
 176 68.8 0.0 138.4



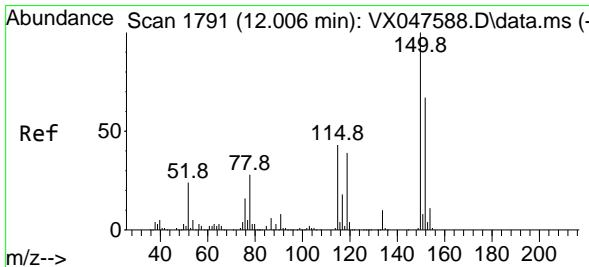
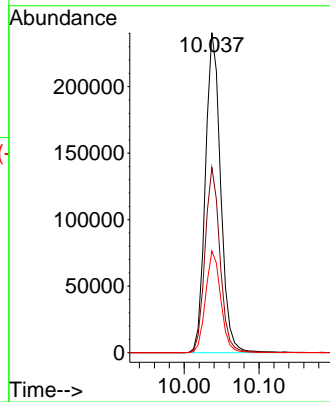
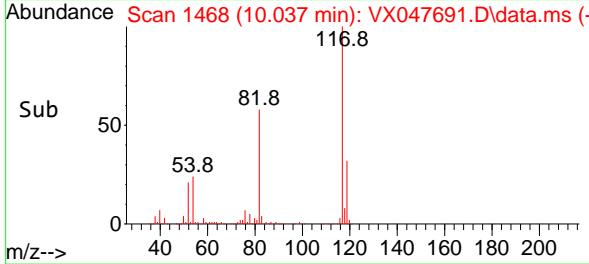


#63
 Chlorobenzene-d5
 Concen: 50.000 ug/l
 RT: 10.037 min Scan# 14
 Delta R.T. -0.000 min
 Lab File: VX047691.D
 Acq: 22 Sep 2025 10:27

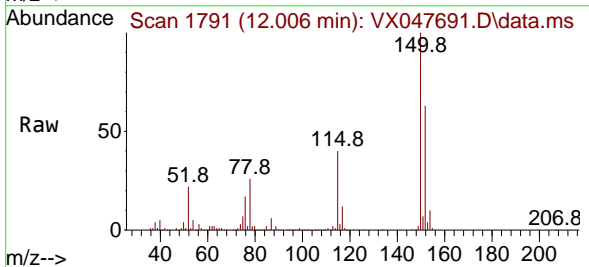
Instrument :
 MSVOA_X
 ClientSampleId :
 VX0922WBL01



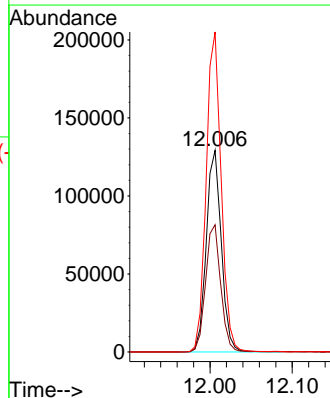
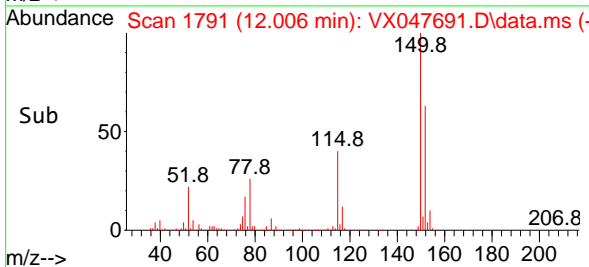
Tgt Ion:117 Resp: 340485
 Ion Ratio Lower Upper
 117 100
 82 57.9 47.8 71.6
 119 31.8 25.2 37.8

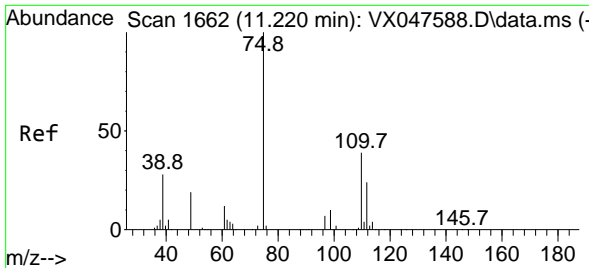


#72
 1,4-Dichlorobenzene-d4
 Concen: 50.000 ug/l
 RT: 12.006 min Scan# 1791
 Delta R.T. -0.000 min
 Lab File: VX047691.D
 Acq: 22 Sep 2025 10:27



Tgt Ion:152 Resp: 164144
 Ion Ratio Lower Upper
 152 100
 115 63.6 44.9 134.5
 150 158.1 0.0 352.0

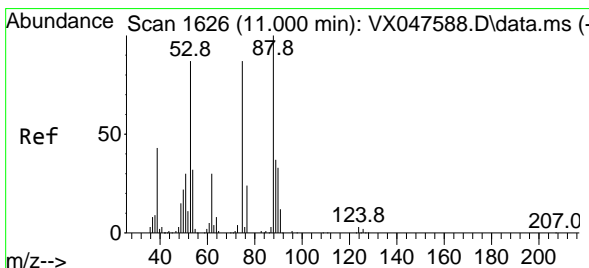
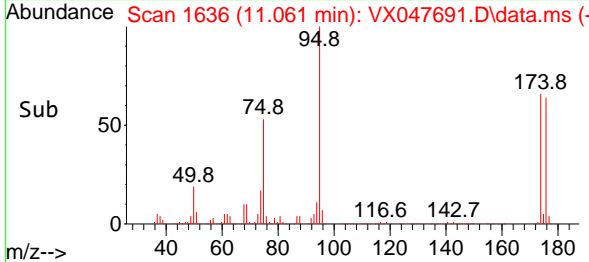
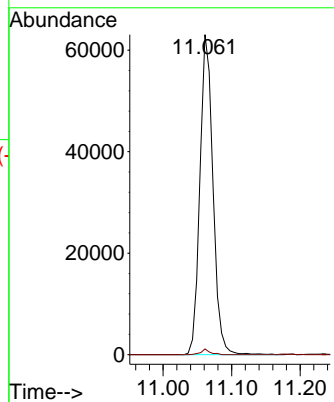
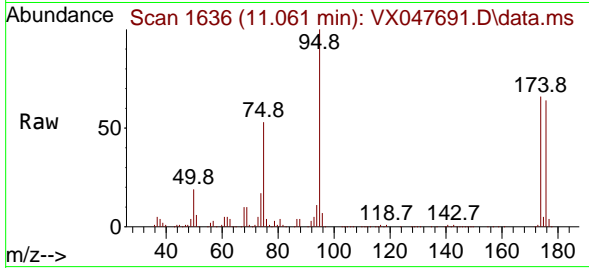




#76
 1,2,3-Trichloropropane
 Concen: 25.229 ug/l
 RT: 11.061 min Scan# 1636
 Delta R.T. -0.159 min
 Lab File: VX047691.D
 Acq: 22 Sep 2025 10:27

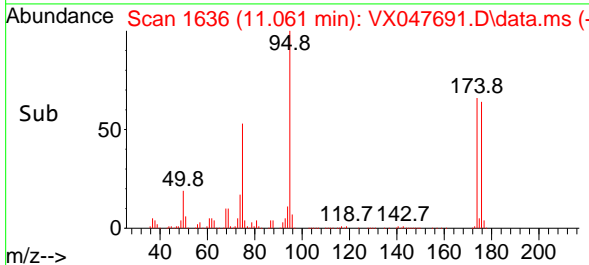
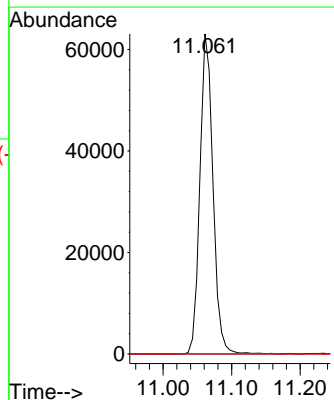
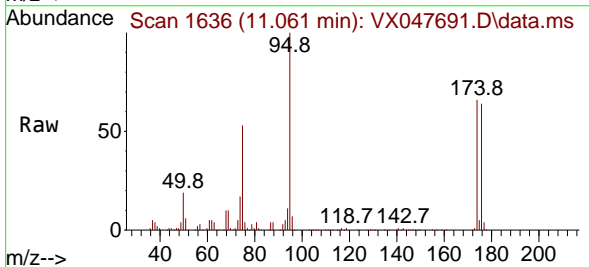
Instrument :
 MSVOA_X
 ClientSampleId :
 VX0922WBL01

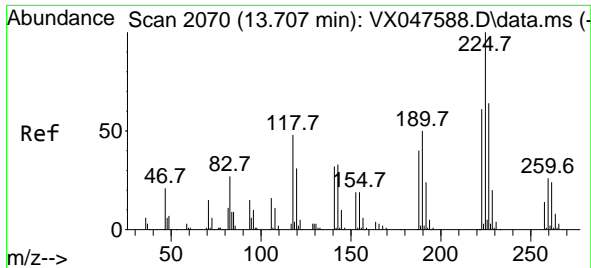
Tgt Ion: 75 Resp: 83845
 Ion Ratio Lower Upper
 75 100
 77 1.2 18.8 56.4#



#81
 trans-1,4-Dichloro-2-butene
 Concen: 64.337 ug/l
 RT: 11.061 min Scan# 1636
 Delta R.T. 0.061 min
 Lab File: VX047691.D
 Acq: 22 Sep 2025 10:27

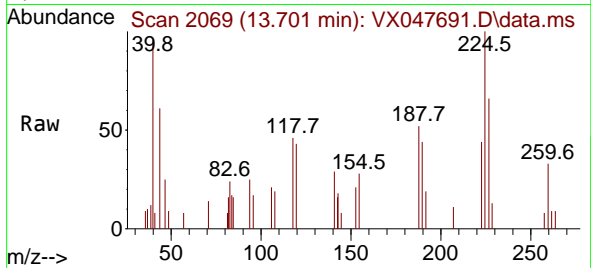
Tgt Ion: 75 Resp: 83845
 Ion Ratio Lower Upper
 75 100
 53 0.0 83.4 125.2#
 89 0.0 36.3 54.5#





#94
 Hexachlorobutadiene
 Concen: 0.704 ug/l
 RT: 13.701 min Scan# 20
 Delta R.T. -0.006 min
 Lab File: VX047691.D
 Acq: 22 Sep 2025 10:27

Instrument :
 MSVOA_X
 ClientSampleId :
 VX0922W/BL01



Tgt Ion: 225 Resp: 845

Ion	Ratio	Lower	Upper
225	100		
223	62.1	31.7	95.1
227	63.7	32.0	96.0

