

Data Path : Z:\voasrv\HPCHEM1\MSVOA\_X\Data\VX092225\  
 Data File : VX047693.D  
 Acq On : 22 Sep 2025 11:21  
 Operator : JC/MD  
 Sample : Q3097-08DL 5X  
 Misc : 5.0mL/MSVOA\_X/WATER  
 ALS Vial : 6 Sample Multiplier: 1

Instrument :  
 MSVOA\_X  
 ClientSampleId :  
 RE125D2-20250911DL

Quant Time: Sep 23 01:30:16 2025  
 Quant Method : Z:\voasrv\HPCHEM1\MSVOA\_X\Method\82X091625W.M  
 Quant Title : SW846 8260  
 QLast Update : Wed Sep 17 06:39:58 2025  
 Response via : Initial Calibration

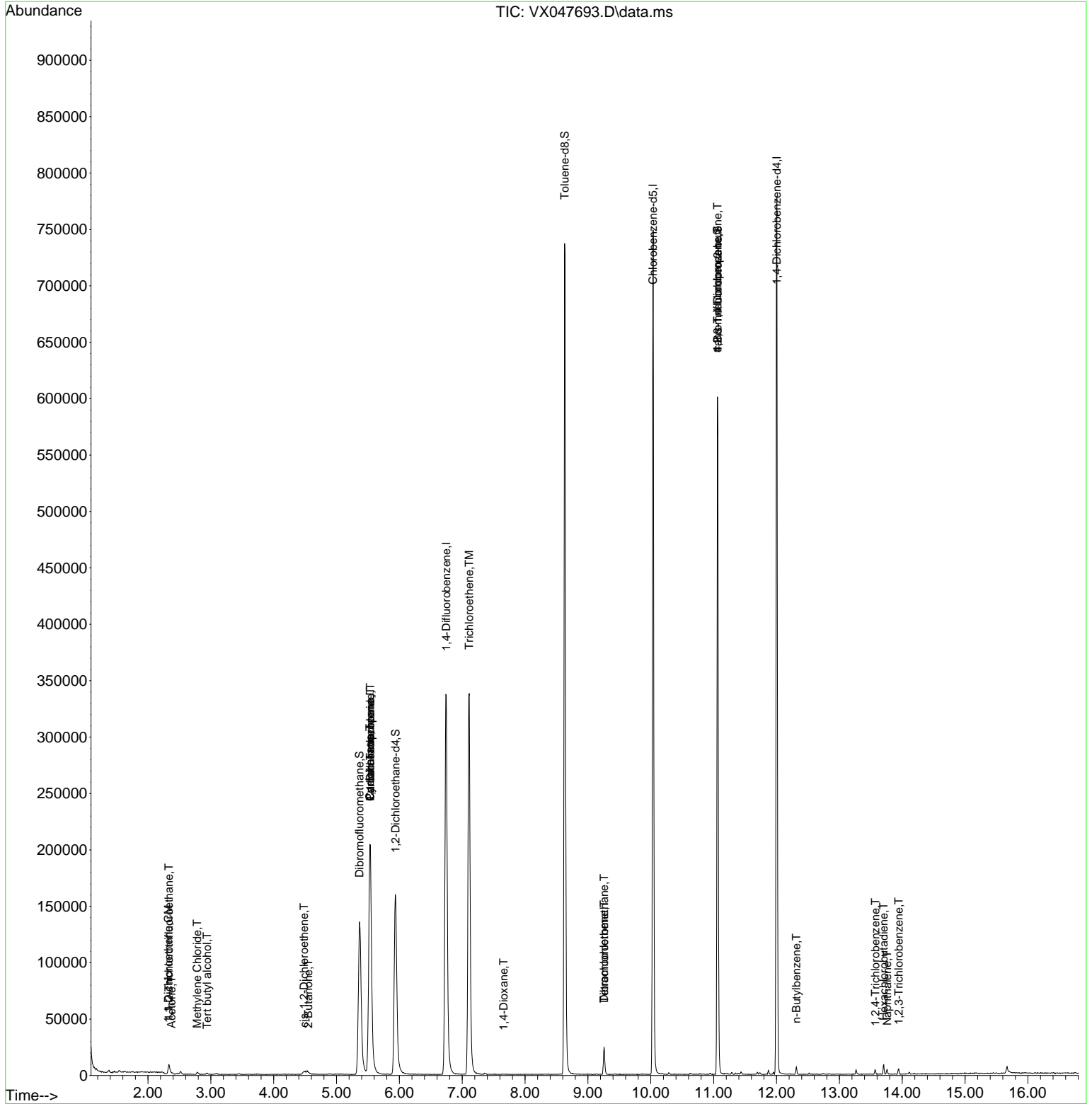
Compound	R.T.	QIon	Response	Conc Units	Dev(Min)
Internal Standards					
1) Pentafluorobenzene	5.538	168	210054	50.000 ug/l	0.00
34) 1,4-Difluorobenzene	6.745	114	374235	50.000 ug/l	0.00
63) Chlorobenzene-d5	10.037	117	336300	50.000 ug/l	0.00
72) 1,4-Dichlorobenzene-d4	12.006	152	163574	50.000 ug/l	0.00
System Monitoring Compounds					
33) 1,2-Dichloroethane-d4	5.940	65	174560	52.208 ug/l	0.00
Spiked Amount	50.000	Range 78 - 117	Recovery	= 104.420%	
35) Dibromofluoromethane	5.367	113	131212	52.279 ug/l	0.00
Spiked Amount	50.000	Range 75 - 124	Recovery	= 104.560%	
50) Toluene-d8	8.629	98	457155	52.640 ug/l	0.00
Spiked Amount	50.000	Range 92 - 112	Recovery	= 105.280%	
62) 4-Bromofluorobenzene	11.061	95	174373	52.906 ug/l	0.00
Spiked Amount	50.000	Range 83 - 123	Recovery	= 105.820%	
Target Compounds					
					Qvalue
9) 1,1,2-Trichlorotrifluo...	2.331	101	3008	1.238 ug/l	95
11) Tert butyl alcohol	2.941	59	263	0.706 ug/l #	72
12) 1,1-Dichloroethene	2.325	96	1080	0.433 ug/l	87
16) Acetone	2.374	43	926	0.637 ug/l #	77
20) Methylene Chloride	2.782	84	935	0.304 ug/l	83
25) 2-Butanone	4.550	43	401	0.221 ug/l #	50
27) cis-1,2-Dichloroethene	4.483	96	1841	0.559 ug/l	95
31) Cyclohexane	5.532	56	4734	1.071 ug/l #	1
36) 1,1-Dichloropropene	5.538	75	17646	4.812 ug/l #	50
38) Carbon Tetrachloride	5.538	117	22048	5.533 ug/l #	18
44) Trichloroethene	7.110	130	144794	53.767 ug/l	95
49) 1,4-Dioxane	7.659	88	36	1.110 ug/l #	1
60) Dibromochloromethane	9.256	129	4569	1.499 ug/l #	11
64) Tetrachloroethene	9.256	164	4669	2.130 ug/l	97
76) 1,2,3-Trichloropropane	11.061	75	90944	27.460 ug/l #	40
81) trans-1,4-Dichloro-2-b...	11.061	75	90944	70.027 ug/l #	8
89) n-Butylbenzene	12.317	91	2606	0.268 ug/l	95
93) 1,2,4-Trichlorobenzene	13.573	180	1011	0.287 ug/l	81
94) Hexachlorobutadiene	13.707	225	1179	0.985 ug/l	96
95) Naphthalene	13.762	128	2923	0.273 ug/l	96
96) 1,2,3-Trichlorobenzene	13.945	180	1316	0.402 ug/l	92

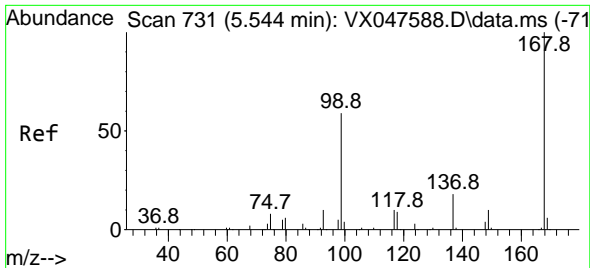
(#) = qualifier out of range (m) = manual integration (+) = signals summed

Data Path : Z:\voasrv\HPCHEM1\MSVOA\_X\Data\VX092225\  
 Data File : VX047693.D  
 Acq On : 22 Sep 2025 11:21  
 Operator : JC/MD  
 Sample : Q3097-08DL 5X  
 Misc : 5.0mL/MSVOA\_X/WATER  
 ALS Vial : 6 Sample Multiplier: 1

Instrument :  
 MSVOA\_X  
 ClientSampleId :  
 RE125D2-20250911DL

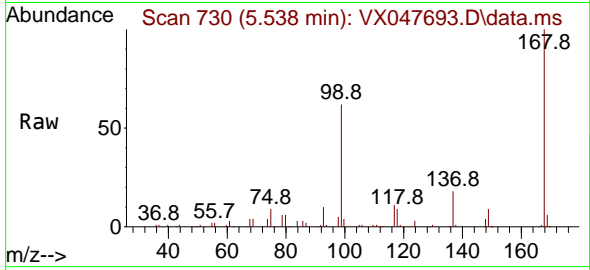
Quant Time: Sep 23 01:30:16 2025  
 Quant Method : Z:\voasrv\HPCHEM1\MSVOA\_X\Method\82X091625W.M  
 Quant Title : SW846 8260  
 QLast Update : Wed Sep 17 06:39:58 2025  
 Response via : Initial Calibration



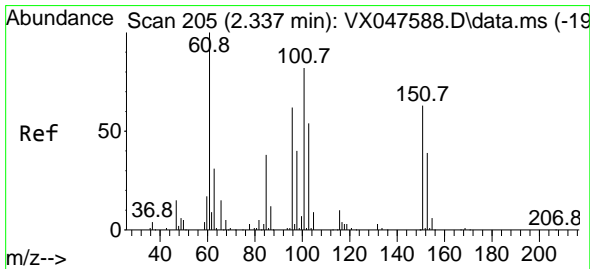
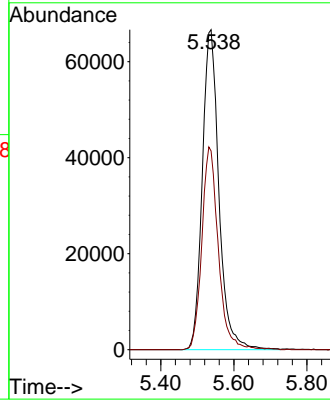
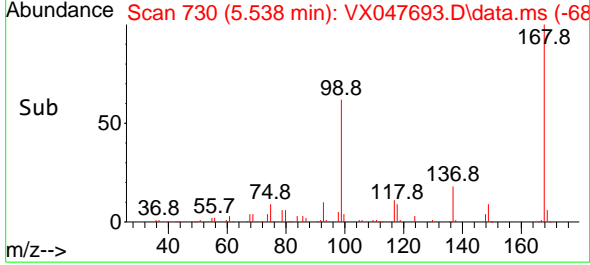


#1  
 Pentafluorobenzene  
 Concen: 50.000 ug/l  
 RT: 5.538 min Scan# 71  
 Delta R.T. -0.006 min  
 Lab File: VX047693.D  
 Acq: 22 Sep 2025 11:21

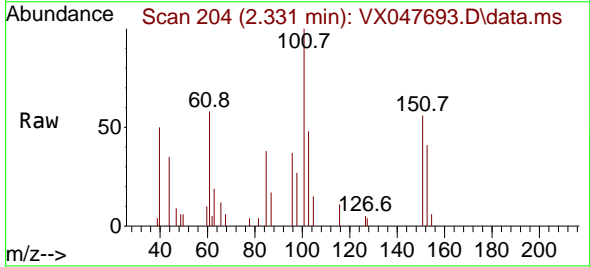
Instrument : MSVOA\_X  
 ClientSampleId : RE125D2-20250911DL



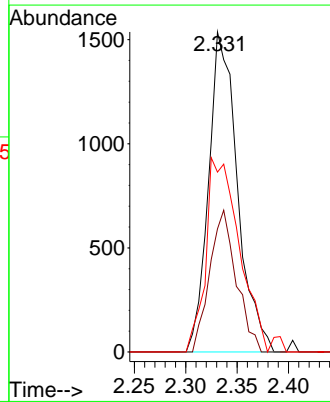
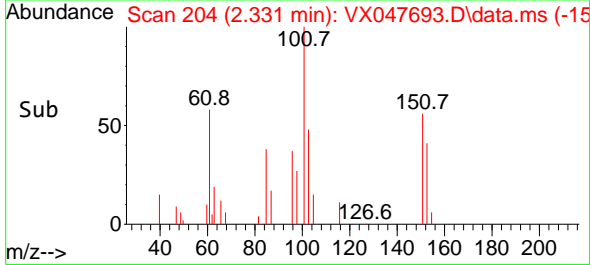
Tgt Ion:168 Resp: 210054  
 Ion Ratio Lower Upper  
 168 100  
 99 62.1 48.8 73.2

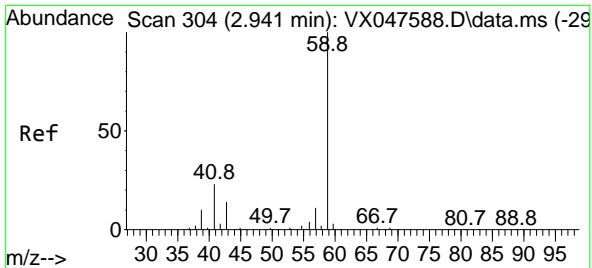


#9  
 1,1,2-Trichlorotrifluoroethane  
 Concen: 1.238 ug/l  
 RT: 2.331 min Scan# 204  
 Delta R.T. -0.006 min  
 Lab File: VX047693.D  
 Acq: 22 Sep 2025 11:21



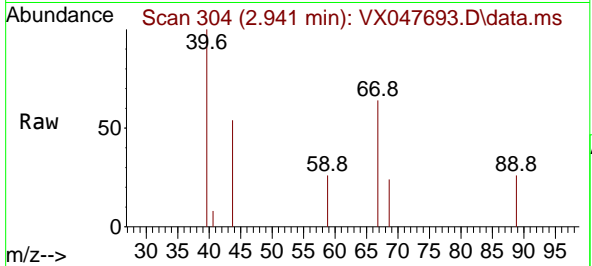
Tgt Ion:101 Resp: 3008  
 Ion Ratio Lower Upper  
 101 100  
 85 40.9 35.5 53.3  
 151 70.0 59.4 89.0



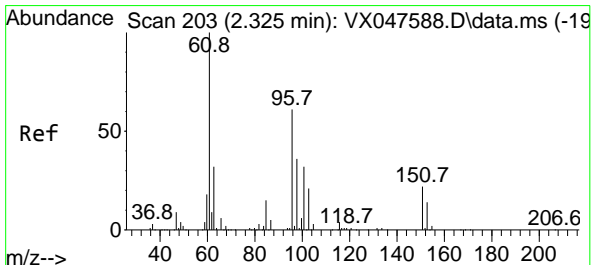
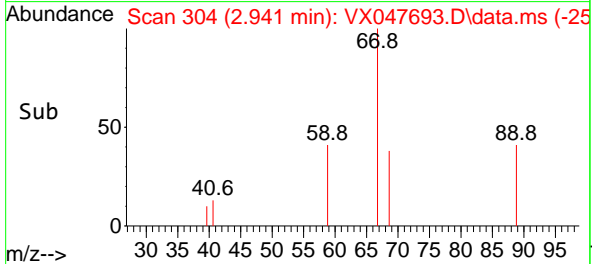
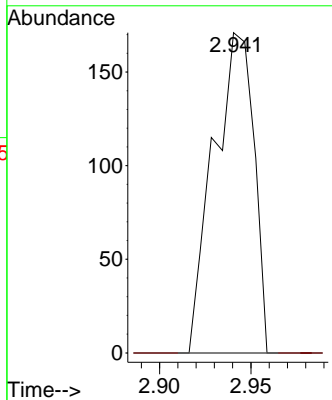


#11  
 Tert butyl alcohol  
 Concen: 0.706 ug/l  
 RT: 2.941 min Scan# 304  
 Delta R.T. -0.000 min  
 Lab File: VX047693.D  
 Acq: 22 Sep 2025 11:21

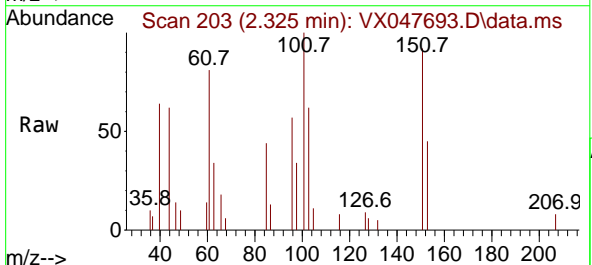
Instrument : MSVOA\_X  
 ClientSampleId : RE125D2-20250911DL



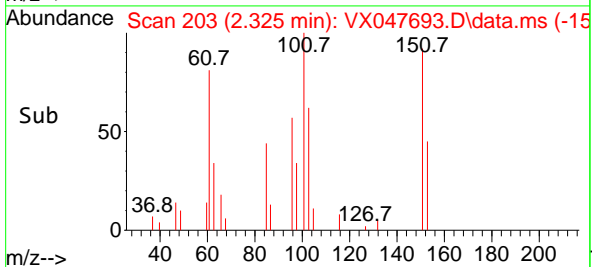
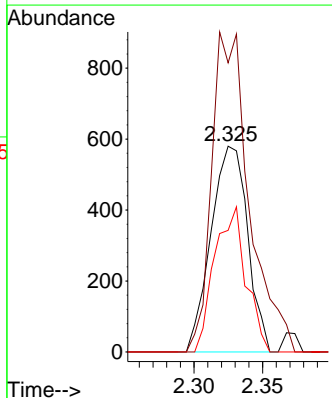
Tgt Ion: 59 Resp: 263  
 Ion Ratio Lower Upper  
 59 100  
 57 0.0 8.3 12.5#

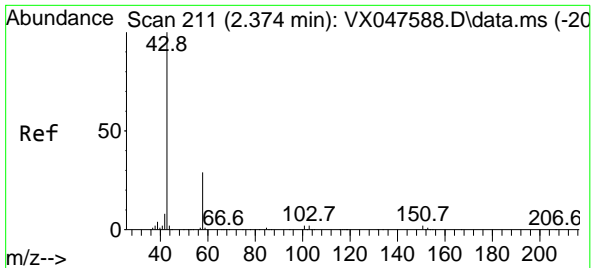


#12  
 1,1-Dichloroethene  
 Concen: 0.433 ug/l  
 RT: 2.325 min Scan# 203  
 Delta R.T. -0.000 min  
 Lab File: VX047693.D  
 Acq: 22 Sep 2025 11:21



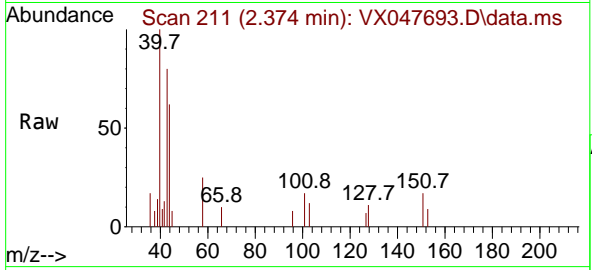
Tgt Ion: 96 Resp: 1080  
 Ion Ratio Lower Upper  
 96 100  
 61 140.5 131.0 196.6  
 98 59.1 47.7 71.5



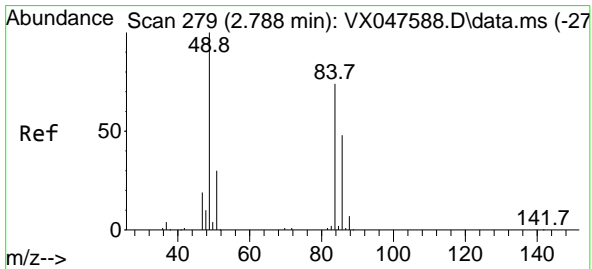
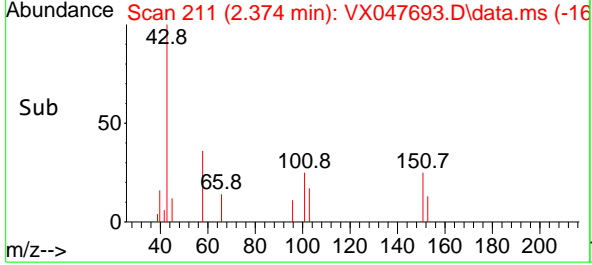
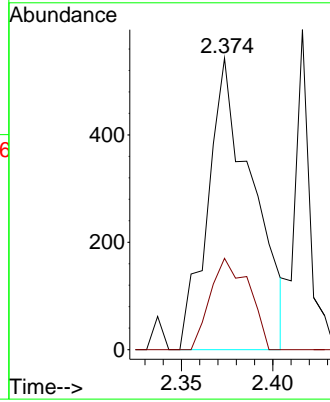


#16  
 Acetone  
 Concen: 0.637 ug/l  
 RT: 2.374 min Scan# 211  
 Delta R.T. -0.000 min  
 Lab File: VX047693.D  
 Acq: 22 Sep 2025 11:21

Instrument : MSVOA\_X  
 ClientSampleId : RE125D2-20250911DL

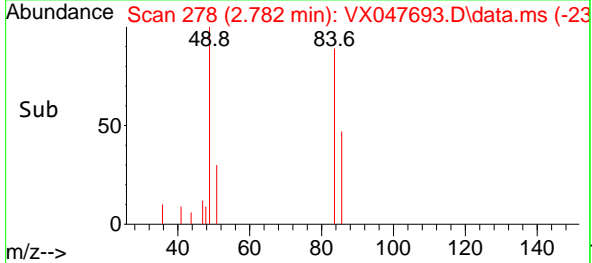
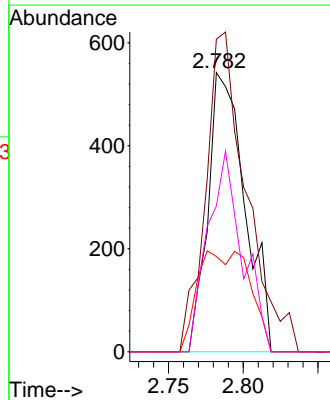
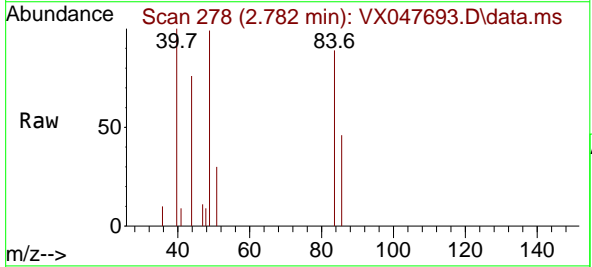


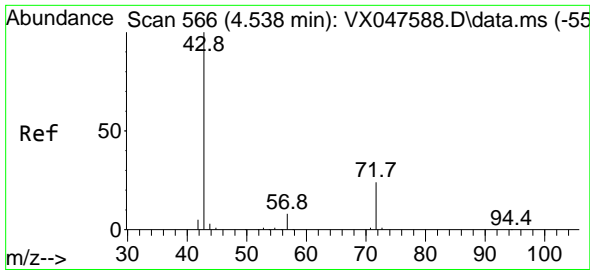
Tgt Ion: 43 Resp: 926  
 Ion Ratio Lower Upper  
 43 100  
 58 41.6 23.4 35.0#



#20  
 Methylene Chloride  
 Concen: 0.304 ug/l  
 RT: 2.782 min Scan# 278  
 Delta R.T. -0.006 min  
 Lab File: VX047693.D  
 Acq: 22 Sep 2025 11:21

Tgt Ion: 84 Resp: 935  
 Ion Ratio Lower Upper  
 84 100  
 49 112.0 108.6 162.8  
 51 34.1 32.6 48.8  
 86 52.2 52.0 78.0

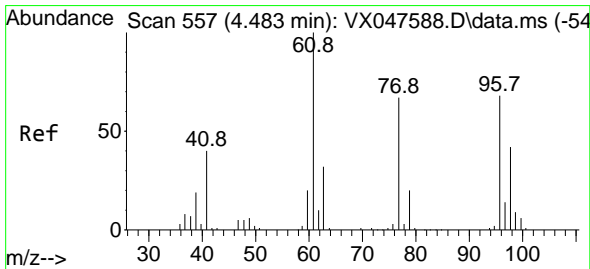
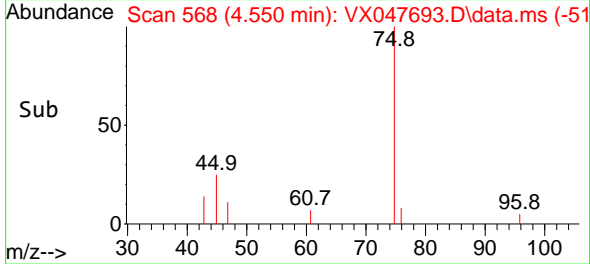
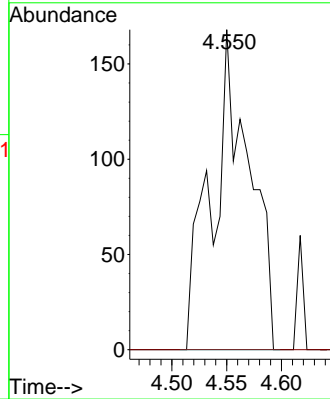
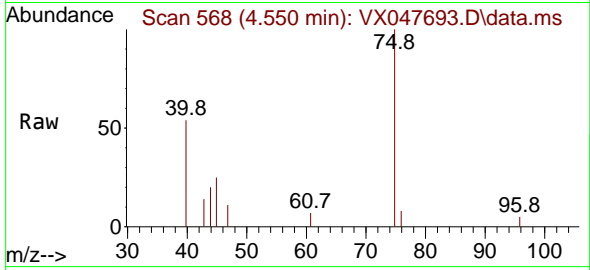




#25  
 2-Butanone  
 Concen: 0.221 ug/l  
 RT: 4.550 min Scan# 568  
 Delta R.T. 0.012 min  
 Lab File: VX047693.D  
 Acq: 22 Sep 2025 11:21

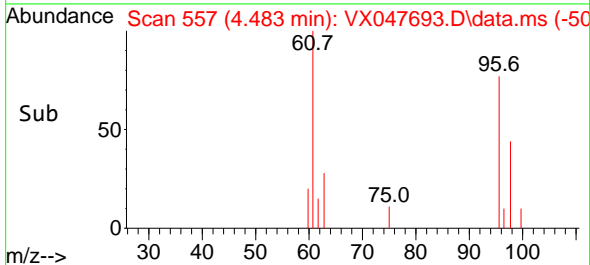
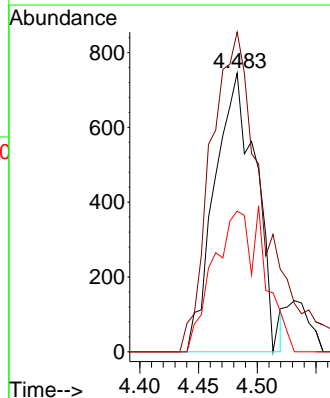
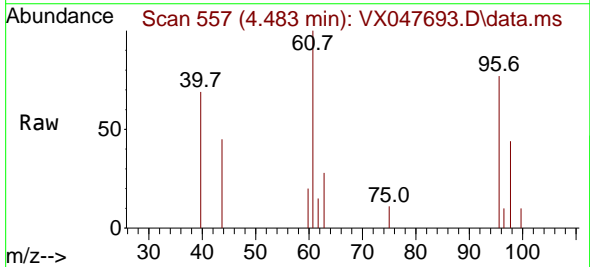
Instrument : MSVOA\_X  
 ClientSampleId : RE125D2-20250911DL

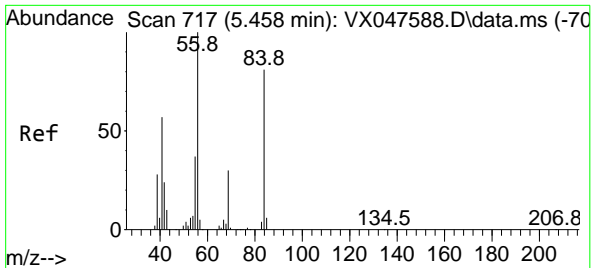
Tgt Ion: 43 Resp: 401  
 Ion Ratio Lower Upper  
 43 100  
 72 0.0 20.1 30.1#



#27  
 cis-1,2-Dichloroethene  
 Concen: 0.559 ug/l  
 RT: 4.483 min Scan# 557  
 Delta R.T. -0.000 min  
 Lab File: VX047693.D  
 Acq: 22 Sep 2025 11:21

Tgt Ion: 96 Resp: 1841  
 Ion Ratio Lower Upper  
 96 100  
 61 144.7 0.0 303.2  
 98 61.3 0.0 127.8



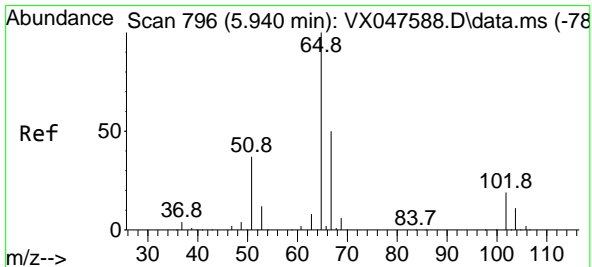
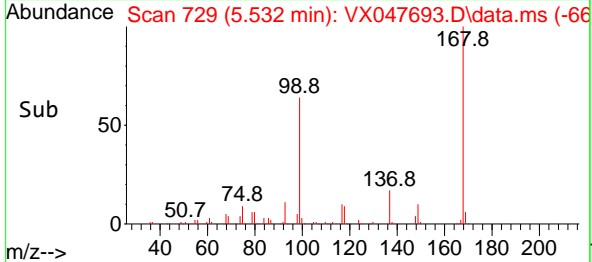
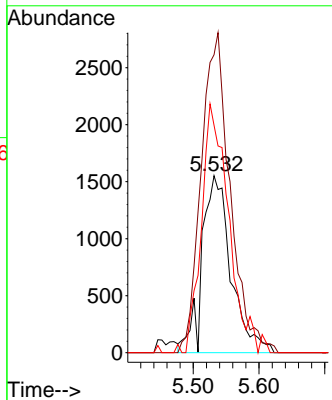
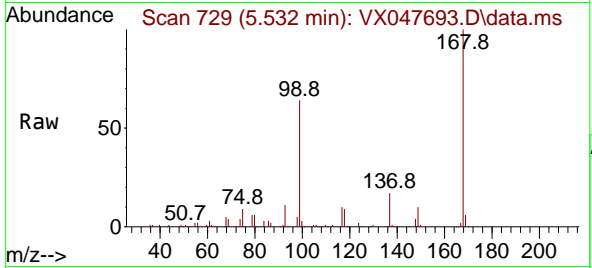


#31  
 Cyclohexane  
 Concen: 1.071 ug/l  
 RT: 5.532 min Scan# 717  
 Delta R.T. 0.073 min  
 Lab File: VX047693.D  
 Acq: 22 Sep 2025 11:21

Instrument : MSVOA\_X  
 ClientSampleId : RE125D2-20250911DL

Tgt Ion: 56 Resp: 4734

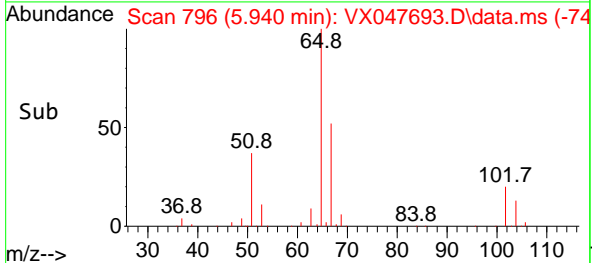
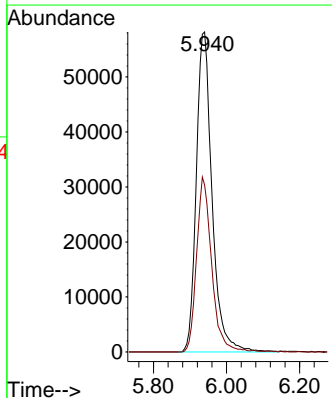
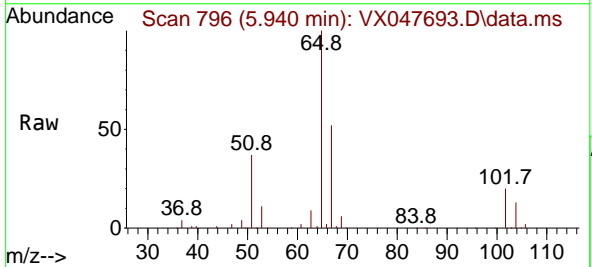
Ion	Ratio	Lower	Upper
56	100		
69	168.3	23.8	35.8#
84	128.4	64.6	97.0#

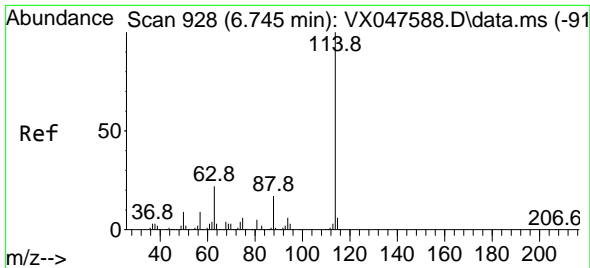


#33  
 1,2-Dichloroethane-d4  
 Concen: 52.208 ug/l  
 RT: 5.940 min Scan# 796  
 Delta R.T. -0.000 min  
 Lab File: VX047693.D  
 Acq: 22 Sep 2025 11:21

Tgt Ion: 65 Resp: 174560

Ion	Ratio	Lower	Upper
65	100		
67	52.2	0.0	103.0

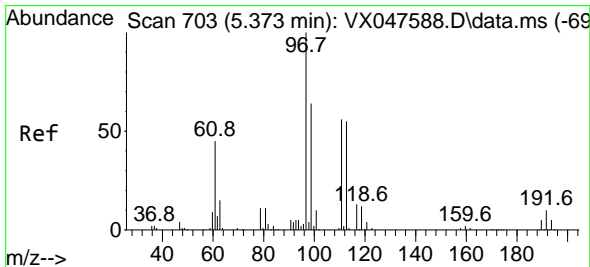
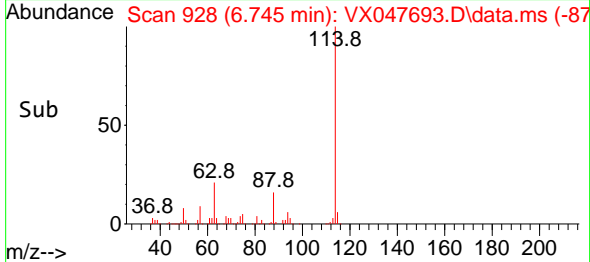
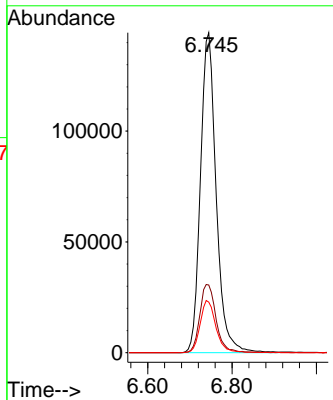
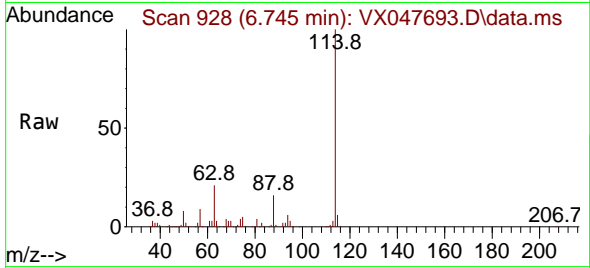




#34  
 1,4-Difluorobenzene  
 Concen: 50.000 ug/l  
 RT: 6.745 min Scan# 91  
 Delta R.T. -0.000 min  
 Lab File: VX047693.D  
 Acq: 22 Sep 2025 11:21

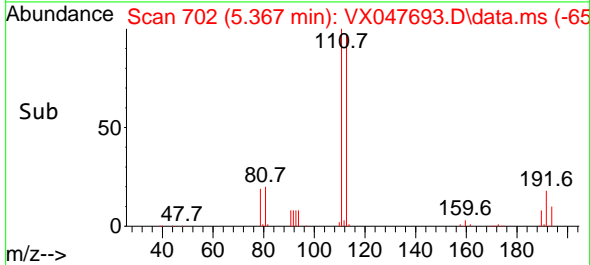
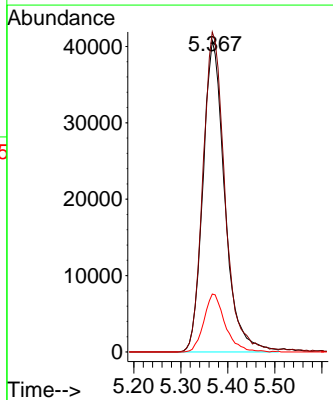
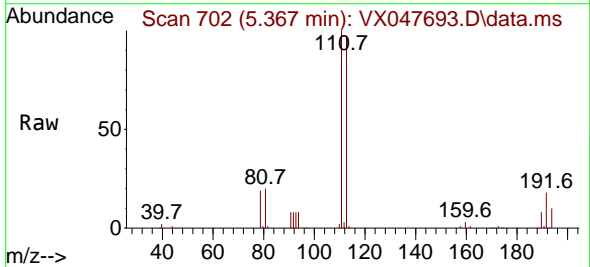
Instrument : MSVOA\_X  
 ClientSampleId : RE125D2-20250911DL

Tgt Ion	Resp	Lower	Upper
114	374235		
114	100		
63	21.1	0.0	44.0
88	15.8	0.0	34.2

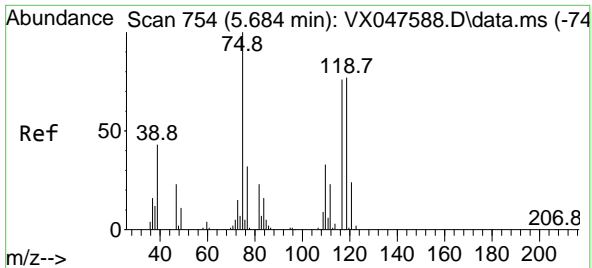


#35  
 Dibromofluoromethane  
 Concen: 52.279 ug/l  
 RT: 5.367 min Scan# 702  
 Delta R.T. -0.006 min  
 Lab File: VX047693.D  
 Acq: 22 Sep 2025 11:21

Tgt Ion	Resp	Lower	Upper
113	131212		
113	100		
111	104.0	80.9	121.3
192	18.1	14.2	21.4



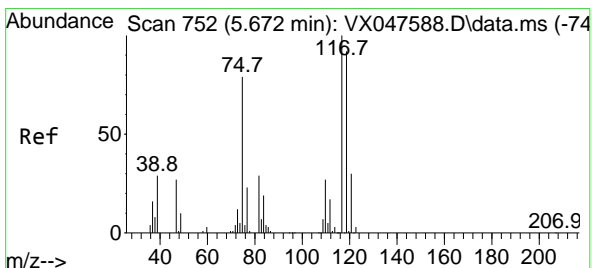
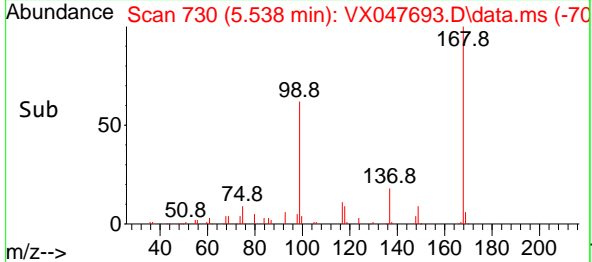
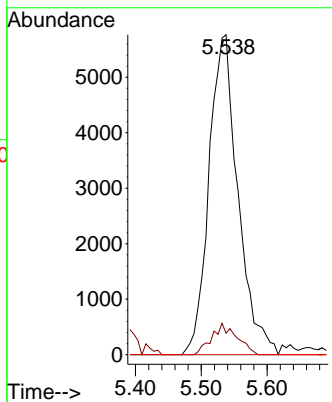
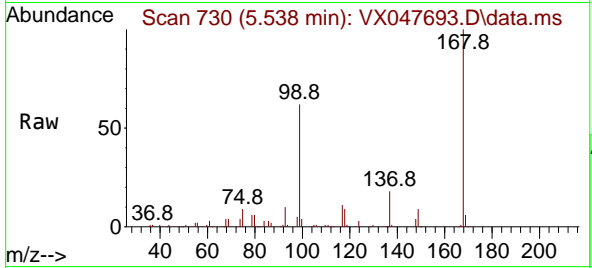




#36  
 1,1-Dichloropropene  
 Concen: 4.812 ug/l  
 RT: 5.538 min Scan# 710  
 Delta R.T. -0.146 min  
 Lab File: VX047693.D  
 Acq: 22 Sep 2025 11:21

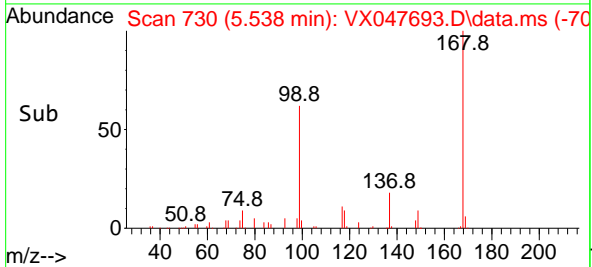
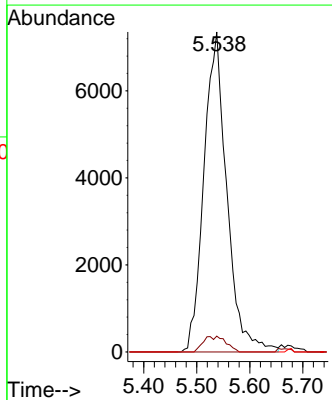
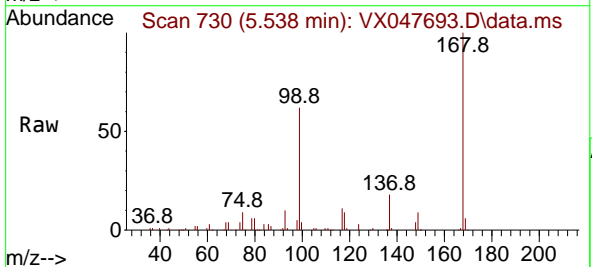
Instrument : MSVOA\_X  
 ClientSampleId : RE125D2-20250911DL

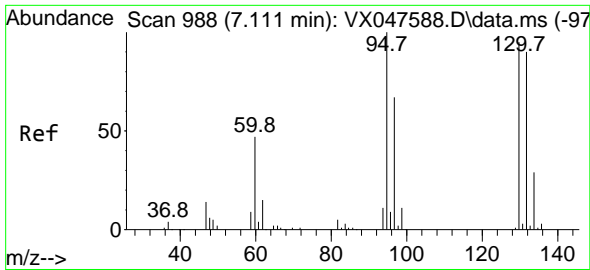
Tgt Ion	Resp	Lower	Upper
75	17646		
75	100		
110	8.5	16.7	50.1#
77	0.0	24.3	36.5#



#38  
 Carbon Tetrachloride  
 Concen: 5.533 ug/l  
 RT: 5.538 min Scan# 730  
 Delta R.T. -0.134 min  
 Lab File: VX047693.D  
 Acq: 22 Sep 2025 11:21

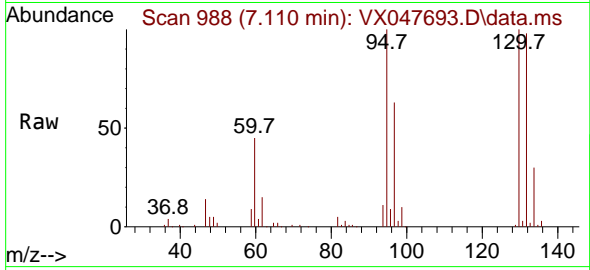
Tgt Ion	Resp	Lower	Upper
117	22048		
117	100		
119	4.9	73.4	110.2#
121	0.0	23.8	35.6#



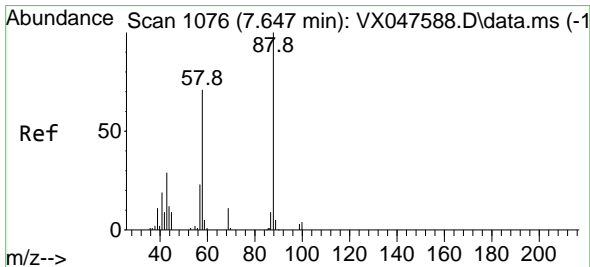
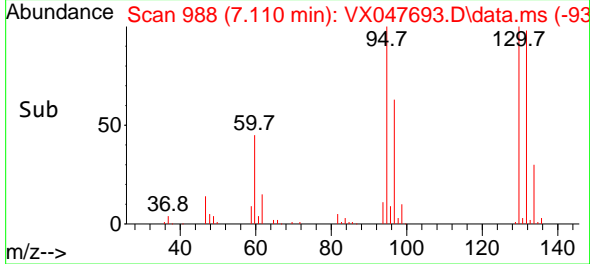
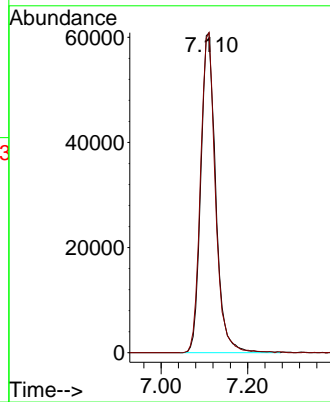


#44  
 Trichloroethene  
 Concen: 53.767 ug/l  
 RT: 7.110 min Scan# 91  
 Delta R.T. -0.000 min  
 Lab File: VX047693.D  
 Acq: 22 Sep 2025 11:21

Instrument : MSVOA\_X  
 ClientSampleId : RE125D2-20250911DL

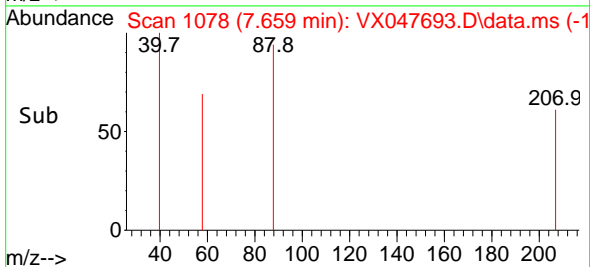
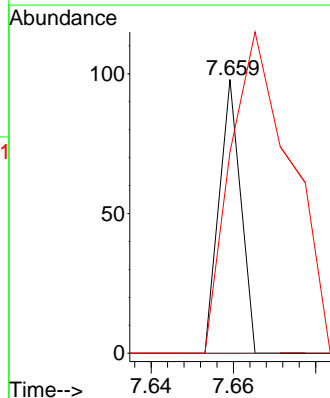
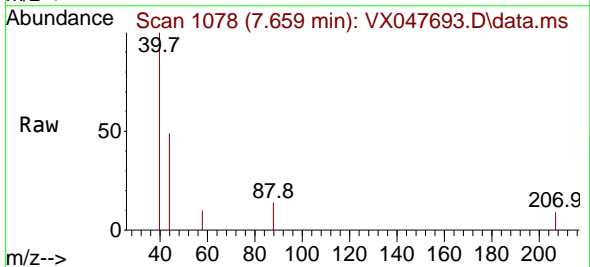


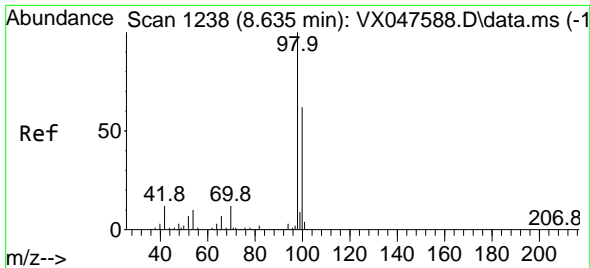
Tgt Ion:130 Resp: 144794  
 Ion Ratio Lower Upper  
 130 100  
 95 100.1 0.0 210.8



#49  
 1,4-Dioxane  
 Concen: 1.110 ug/l  
 RT: 7.659 min Scan# 1078  
 Delta R.T. 0.012 min  
 Lab File: VX047693.D  
 Acq: 22 Sep 2025 11:21

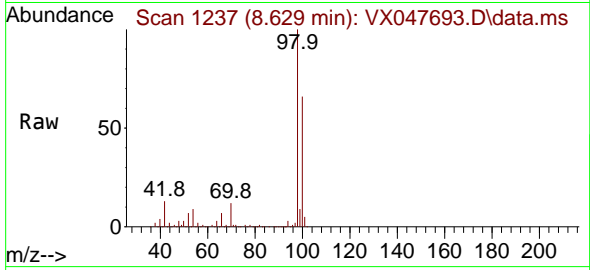
Tgt Ion: 88 Resp: 36  
 Ion Ratio Lower Upper  
 88 100  
 43 0.0 30.2 45.2#  
 58 327.8 59.5 89.3#



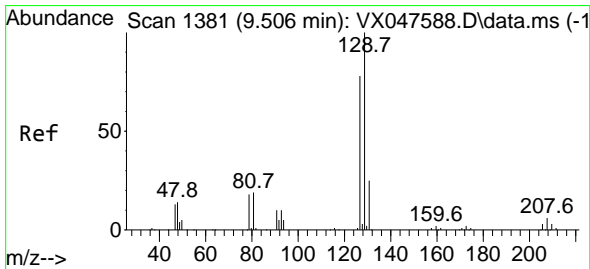
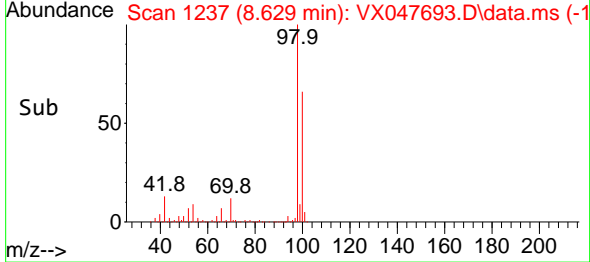
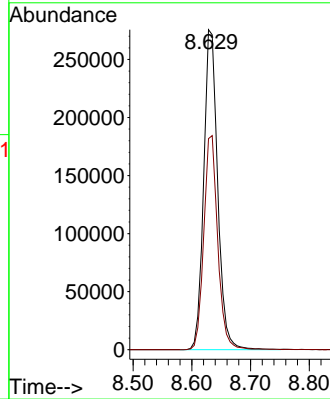


#50  
 Toluene-d8  
 Concen: 52.640 ug/l  
 RT: 8.629 min Scan# 11  
 Delta R.T. -0.006 min  
 Lab File: VX047693.D  
 Acq: 22 Sep 2025 11:21

Instrument : MSVOA\_X  
 ClientSampleId : RE125D2-20250911DL

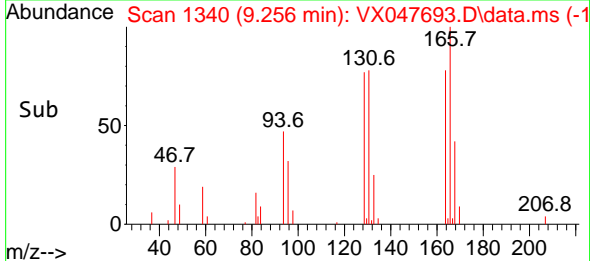
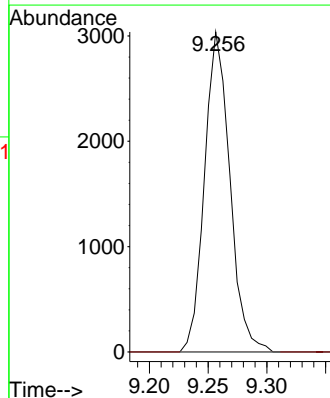
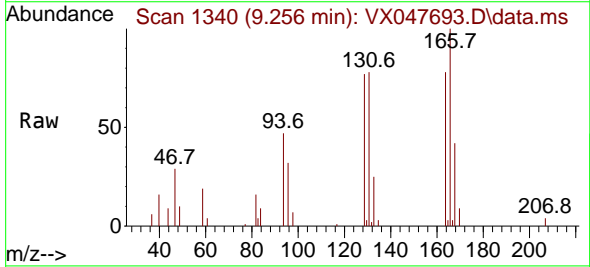


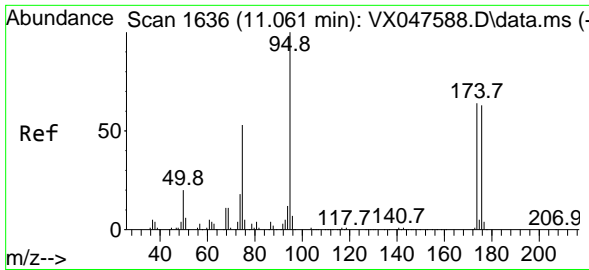
Tgt Ion: 98 Resp: 457155  
 Ion Ratio Lower Upper  
 98 100  
 100 66.8 53.0 79.4



#60  
 Dibromochloromethane  
 Concen: 1.499 ug/l  
 RT: 9.256 min Scan# 1340  
 Delta R.T. -0.250 min  
 Lab File: VX047693.D  
 Acq: 22 Sep 2025 11:21

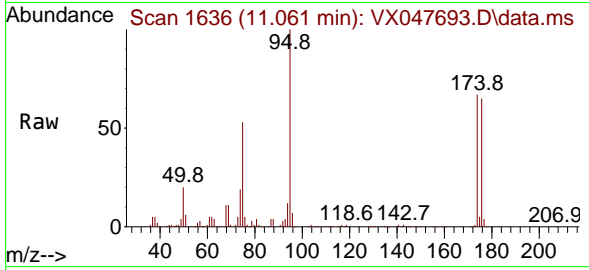
Tgt Ion: 129 Resp: 4569  
 Ion Ratio Lower Upper  
 129 100  
 127 0.0 38.4 115.2#



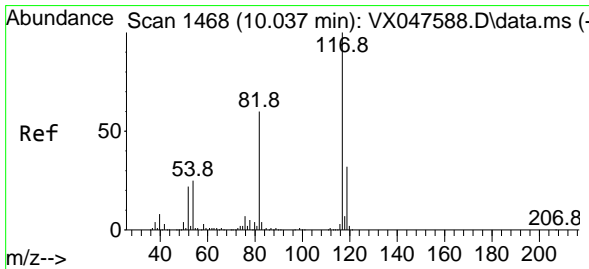
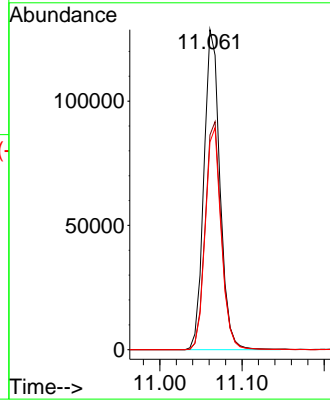
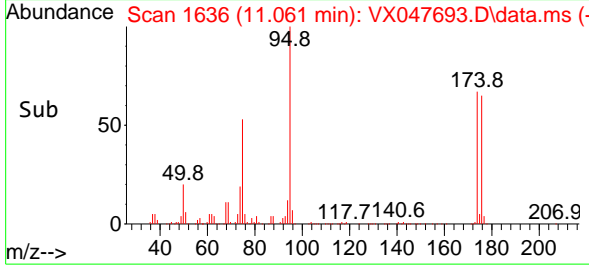


#62  
 4-Bromofluorobenzene  
 Concen: 52.906 ug/l  
 RT: 11.061 min Scan# 1636  
 Delta R.T. -0.000 min  
 Lab File: VX047693.D  
 Acq: 22 Sep 2025 11:21

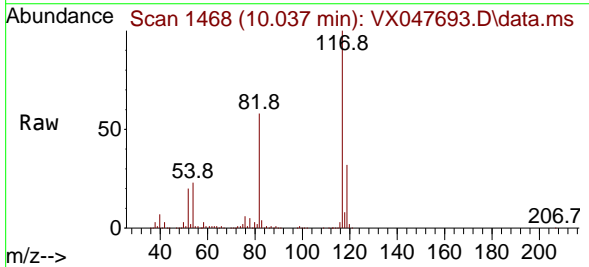
Instrument : MSVOA\_X  
 ClientSampleId : RE125D2-20250911DL



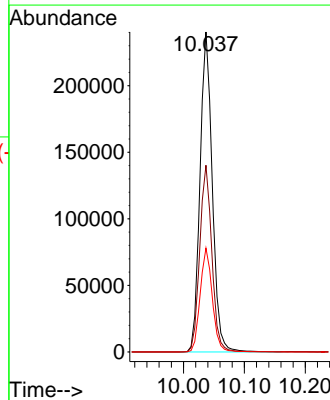
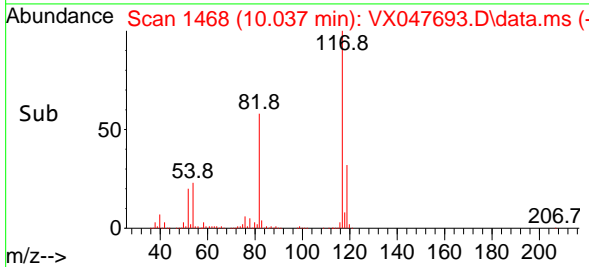
Tgt Ion: 95 Resp: 174373  
 Ion Ratio Lower Upper  
 95 100  
 174 72.0 0.0 141.6  
 176 69.2 0.0 138.4

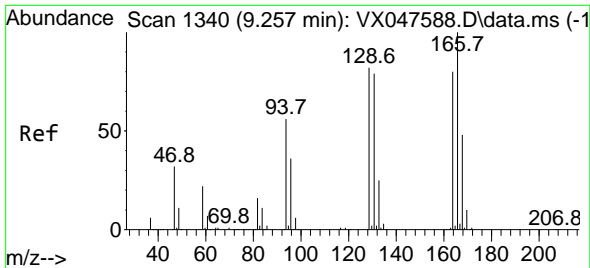


#63  
 Chlorobenzene-d5  
 Concen: 50.000 ug/l  
 RT: 10.037 min Scan# 1468  
 Delta R.T. -0.000 min  
 Lab File: VX047693.D  
 Acq: 22 Sep 2025 11:21



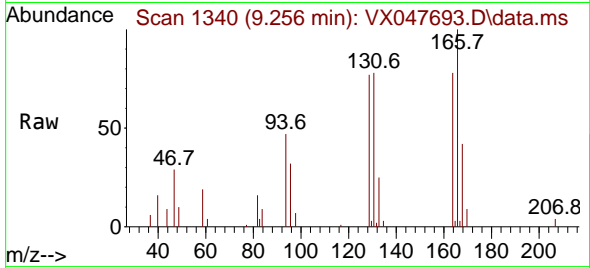
Tgt Ion: 117 Resp: 336300  
 Ion Ratio Lower Upper  
 117 100  
 82 58.4 47.8 71.6  
 119 32.5 25.2 37.8





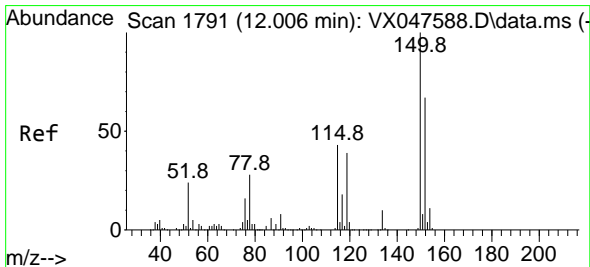
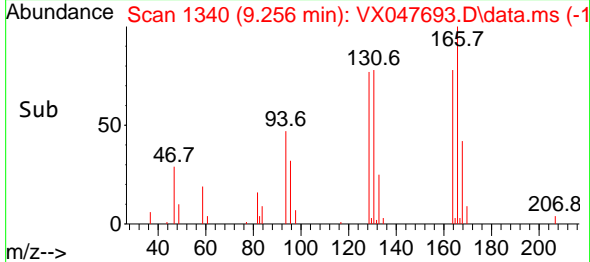
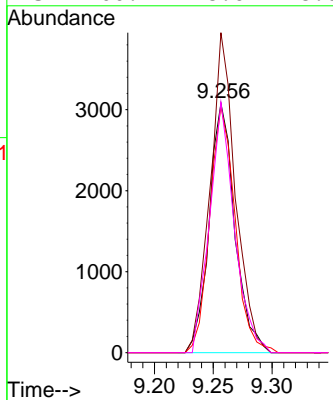
#64  
 Tetrachloroethene  
 Concen: 2.130 ug/l  
 RT: 9.256 min Scan# 111  
 Delta R.T. -0.000 min  
 Lab File: VX047693.D  
 Acq: 22 Sep 2025 11:21

Instrument : MSVOA\_X  
 ClientSampleId : RE125D2-20250911DL



Tgt Ion:164 Resp: 4669

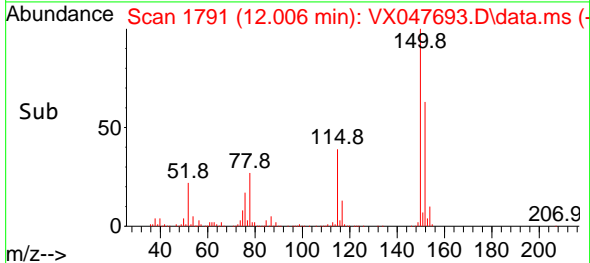
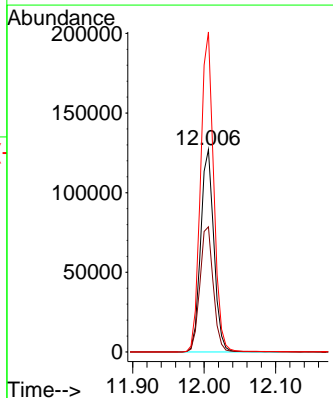
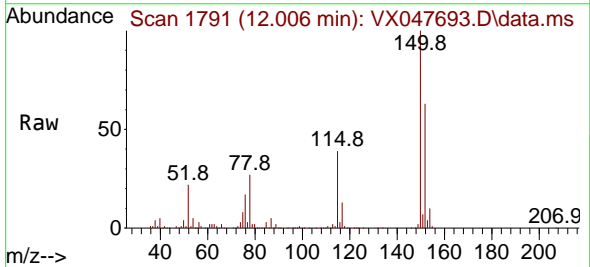
Ion	Ratio	Lower	Upper
164	100		
166	128.3	100.2	150.2
129	98.6	81.8	122.6
131	100.4	78.6	118.0

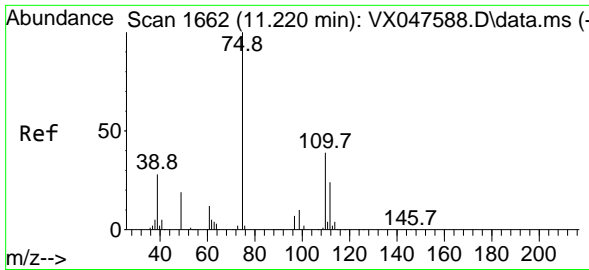


#72  
 1,4-Dichlorobenzene-d4  
 Concen: 50.000 ug/l  
 RT: 12.006 min Scan# 1791  
 Delta R.T. -0.000 min  
 Lab File: VX047693.D  
 Acq: 22 Sep 2025 11:21

Tgt Ion:152 Resp: 163574

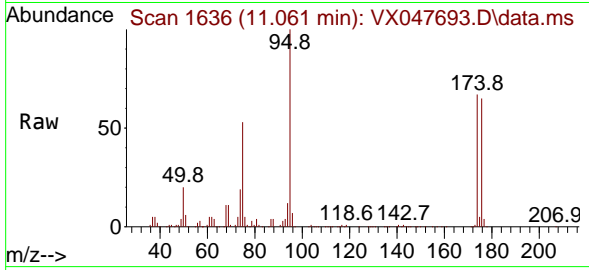
Ion	Ratio	Lower	Upper
152	100		
115	62.8	44.9	134.5
150	157.0	0.0	352.0



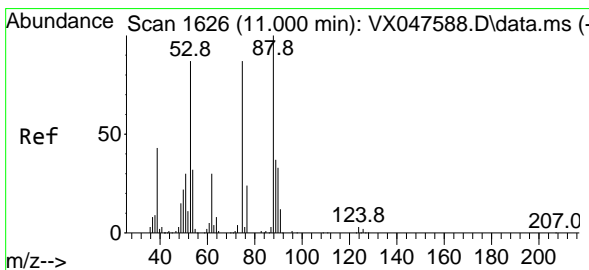
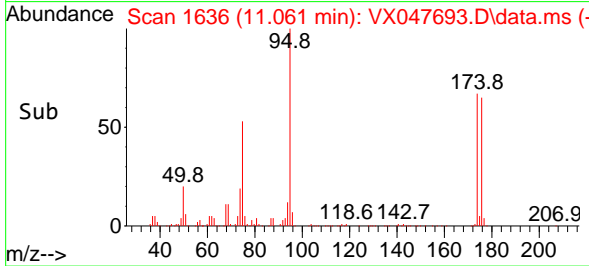
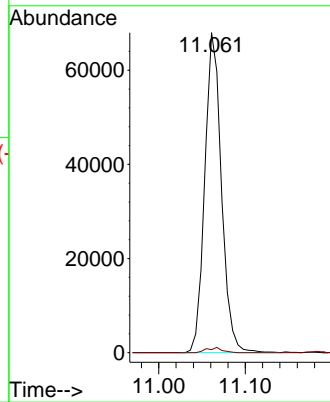


#76  
 1,2,3-Trichloropropane  
 Concen: 27.460 ug/l  
 RT: 11.061 min Scan# 1636  
 Delta R.T. -0.159 min  
 Lab File: VX047693.D  
 Acq: 22 Sep 2025 11:21

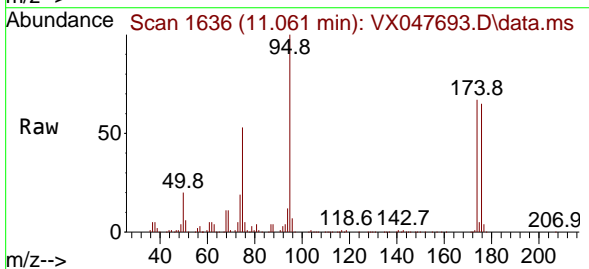
Instrument : MSVOA\_X  
 ClientSampleId : RE125D2-20250911DL



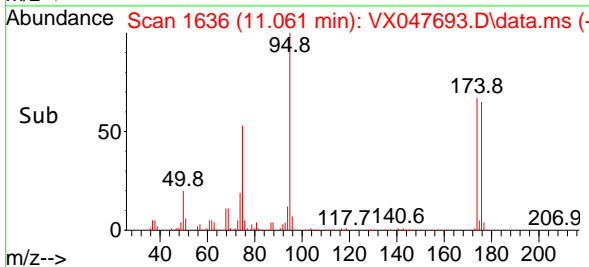
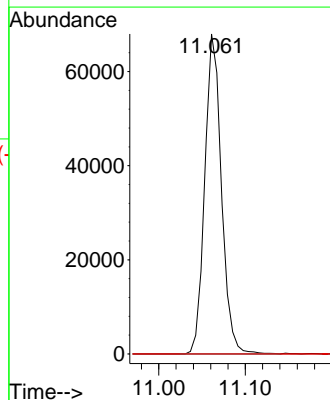
Tgt Ion: 75 Resp: 90944  
 Ion Ratio Lower Upper  
 75 100  
 77 1.5 18.8 56.4#

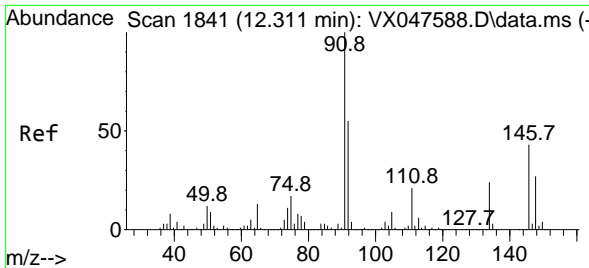


#81  
 trans-1,4-Dichloro-2-butene  
 Concen: 70.027 ug/l  
 RT: 11.061 min Scan# 1636  
 Delta R.T. 0.061 min  
 Lab File: VX047693.D  
 Acq: 22 Sep 2025 11:21



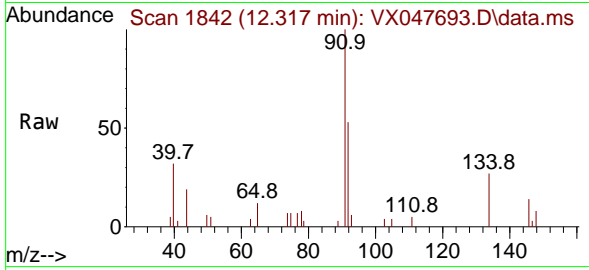
Tgt Ion: 75 Resp: 90944  
 Ion Ratio Lower Upper  
 75 100  
 53 0.0 83.4 125.2#  
 89 0.0 36.3 54.5#





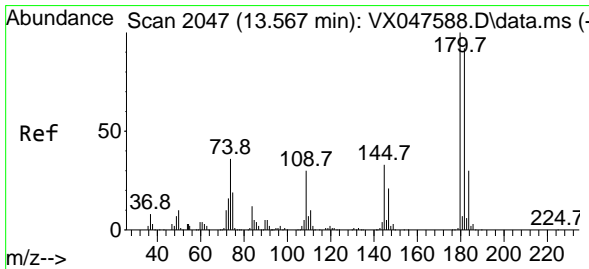
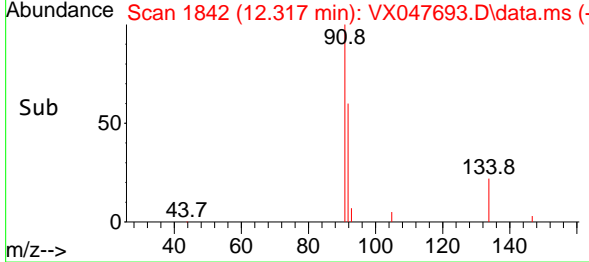
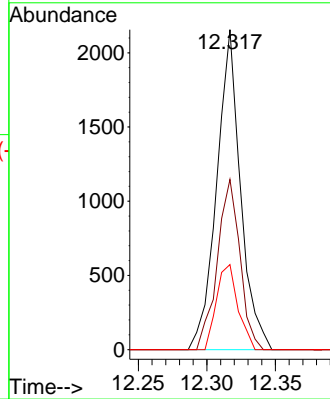
#89  
 n-Butylbenzene  
 Concen: 0.268 ug/l  
 RT: 12.317 min Scan# 1842  
 Delta R.T. 0.006 min  
 Lab File: VX047693.D  
 Acq: 22 Sep 2025 11:21

Instrument : MSVOA\_X  
 ClientSampleId : RE125D2-20250911DL



Tgt Ion: 91 Resp: 2606

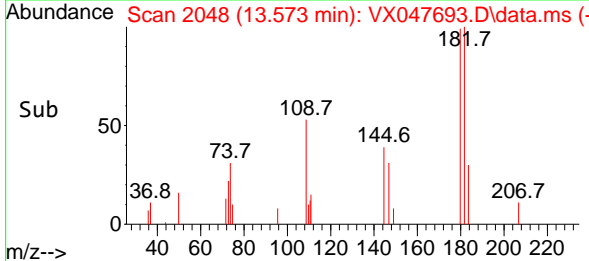
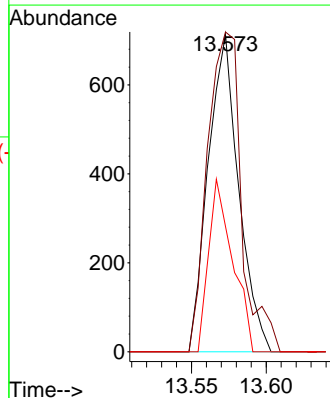
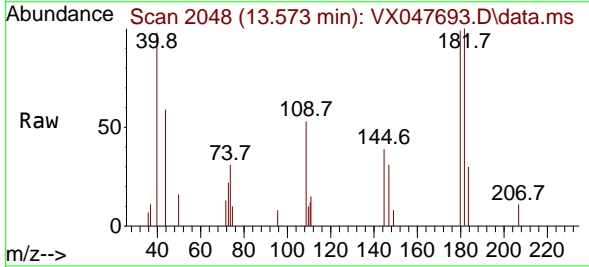
Ion	Ratio	Lower	Upper
91	100		
92	50.5	27.6	82.7
134	23.9	12.6	37.8

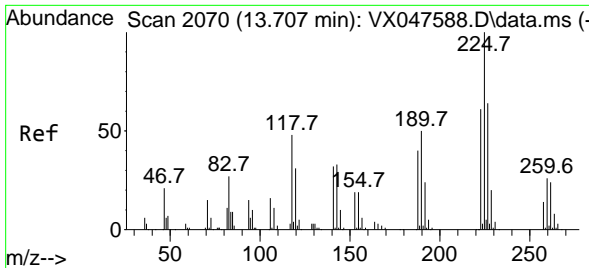


#93  
 1,2,4-Trichlorobenzene  
 Concen: 0.287 ug/l  
 RT: 13.573 min Scan# 2048  
 Delta R.T. 0.006 min  
 Lab File: VX047693.D  
 Acq: 22 Sep 2025 11:21

Tgt Ion: 180 Resp: 1011

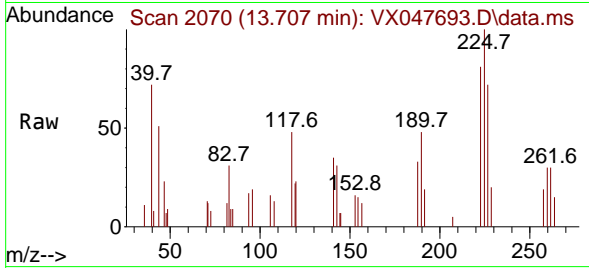
Ion	Ratio	Lower	Upper
180	100		
182	111.9	46.6	139.8
145	42.8	16.4	49.1





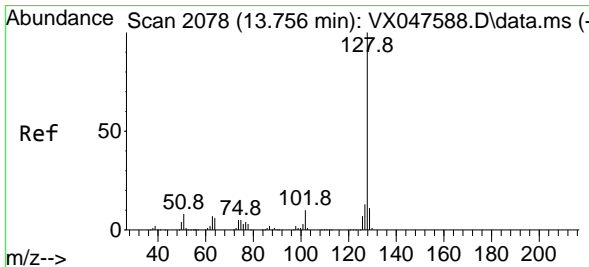
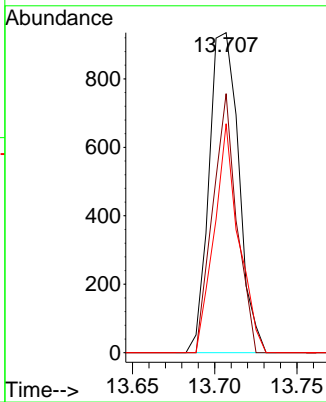
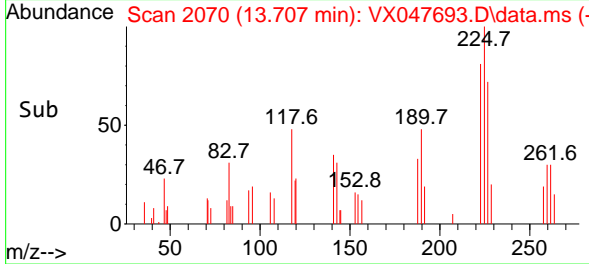
#94  
 Hexachlorobutadiene  
 Concen: 0.985 ug/l  
 RT: 13.707 min Scan# 2070  
 Delta R.T. -0.000 min  
 Lab File: VX047693.D  
 Acq: 22 Sep 2025 11:21

Instrument : MSVOA\_X  
 ClientSampleId : RE125D2-20250911DL

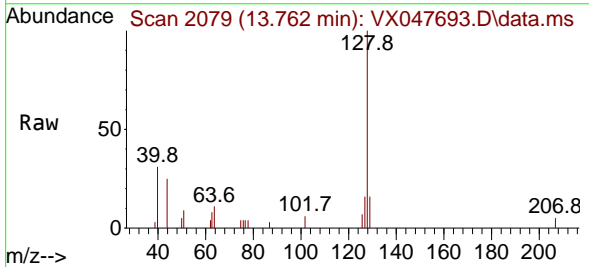


Tgt Ion:225 Resp: 1179

Ion	Ratio	Lower	Upper
225	100		
223	65.2	31.7	95.1
227	58.9	32.0	96.0

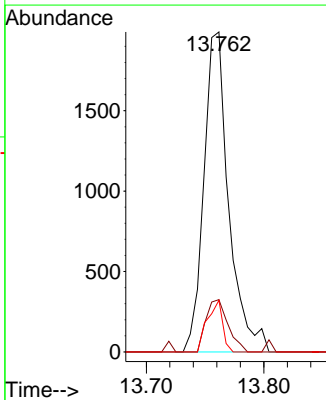
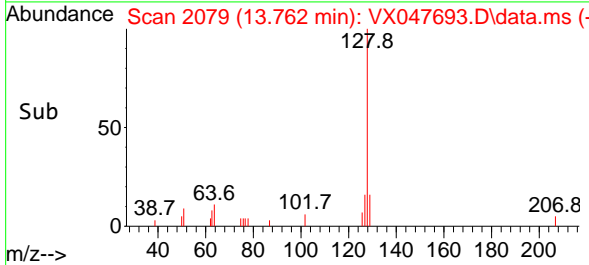


#95  
 Naphthalene  
 Concen: 0.273 ug/l  
 RT: 13.762 min Scan# 2079  
 Delta R.T. 0.006 min  
 Lab File: VX047693.D  
 Acq: 22 Sep 2025 11:21

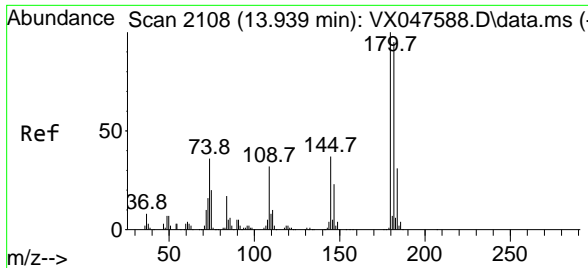


Tgt Ion:128 Resp: 2923

Ion	Ratio	Lower	Upper
128	100		
127	14.4	10.2	15.2
129	9.9	8.8	13.2







#96  
 1,2,3-Trichlorobenzene  
 Concen: 0.402 ug/l  
 RT: 13.945 min Scan# 2109  
 Delta R.T. 0.006 min  
 Lab File: VX047693.D  
 Acq: 22 Sep 2025 11:21

Instrument : MSVOA\_X  
 ClientSampleId : RE125D2-20250911DL

Tgt Ion	Resp	Ion Ratio	Lower	Upper
180	1316	100		
182		86.8	47.6	142.8
145		31.4	17.9	53.7

