

Data Path : Z:\voasrv\HPCHEM1\MSVOA_X\Data\VX092225\
 Data File : VX047695.D
 Acq On : 22 Sep 2025 12:03
 Operator : JC/MD
 Sample : Q3097-07DL 20X
 Misc : 5.0mL/MSVOA_X/WATER
 ALS Vial : 8 Sample Multiplier: 1

Instrument :
 MSVOA_X
 ClientSampleId :
 RE108D2-20250911DL

Quant Time: Sep 23 01:31:50 2025
 Quant Method : Z:\voasrv\HPCHEM1\MSVOA_X\Method\82X091625W.M
 Quant Title : SW846 8260
 QLast Update : Wed Sep 17 06:39:58 2025
 Response via : Initial Calibration

Compound	R.T.	QIon	Response	Conc	Units	Dev(Min)

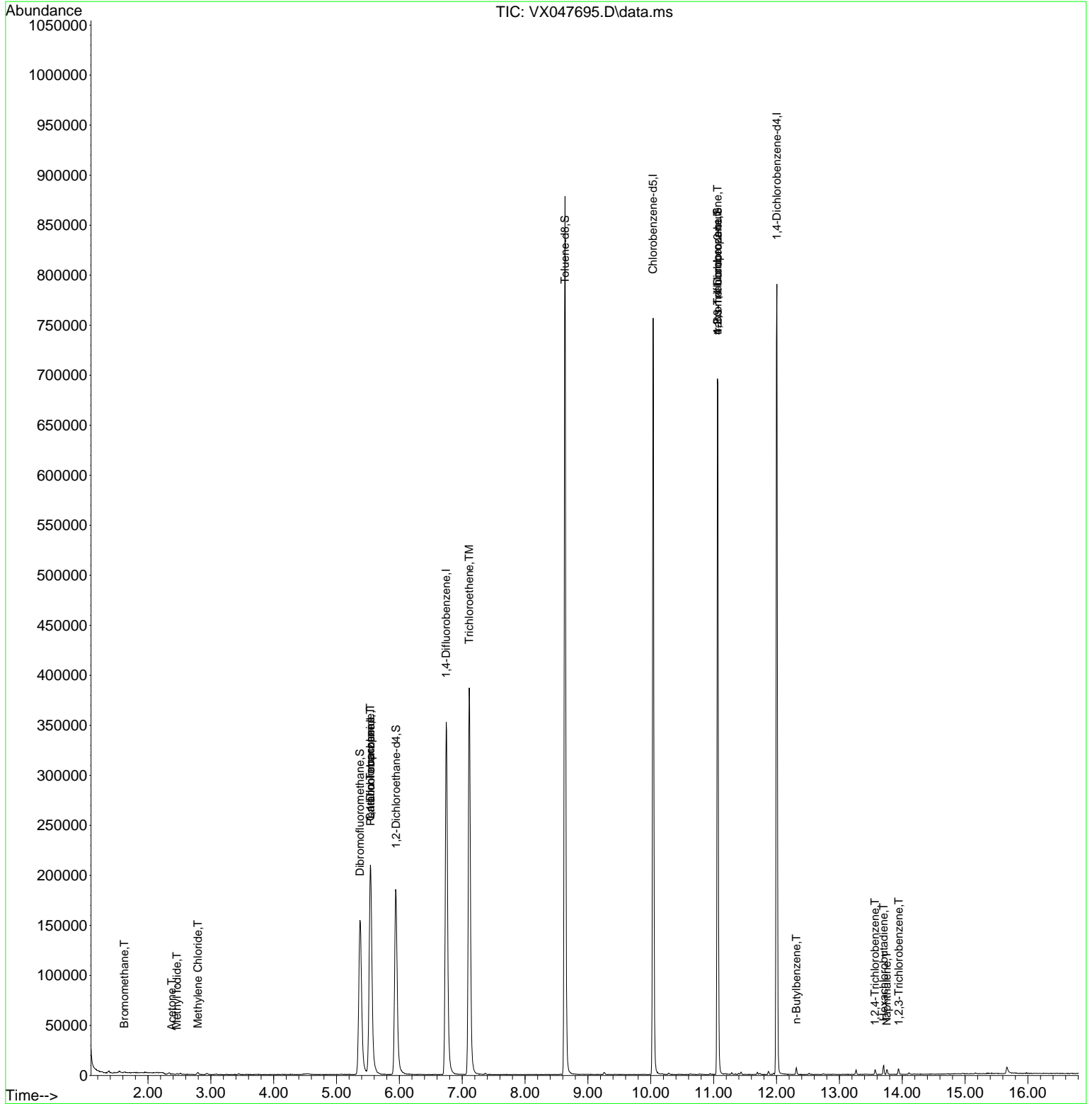
Internal Standards						
1) Pentafluorobenzene	5.544	168	212599	50.000	ug/l	0.00
34) 1,4-Difluorobenzene	6.745	114	386271	50.000	ug/l	0.00
63) Chlorobenzene-d5	10.037	117	344934	50.000	ug/l	0.00
72) 1,4-Dichlorobenzene-d4	12.006	152	168884	50.000	ug/l	0.00
System Monitoring Compounds						
33) 1,2-Dichloroethane-d4	5.946	65	201290	59.482	ug/l	0.00
Spiked Amount	50.000	Range 78 - 117	Recovery	=	118.960%#	
35) Dibromofluoromethane	5.373	113	152379	58.821	ug/l	0.00
Spiked Amount	50.000	Range 75 - 124	Recovery	=	117.640%	
50) Toluene-d8	8.635	98	531722	59.319	ug/l	0.00
Spiked Amount	50.000	Range 92 - 112	Recovery	=	118.640%#	
62) 4-Bromofluorobenzene	11.061	95	200520	58.943	ug/l	0.00
Spiked Amount	50.000	Range 83 - 123	Recovery	=	117.880%	
Target Compounds						
						Qvalue
5) Bromomethane	1.624	94	396	0.220	ug/l	97
10) Methyl Iodide	2.459	142	892	0.233	ug/l #	80
16) Acetone	2.380	43	1065	0.724	ug/l #	45
20) Methylene Chloride	2.794	84	989	0.318	ug/l	92
36) 1,1-Dichloropropene	5.538	75	17821	4.708	ug/l #	51
38) Carbon Tetrachloride	5.538	117	22608	5.497	ug/l #	17
44) Trichloroethene	7.110	130	164128	59.047	ug/l	97
76) 1,2,3-Trichloropropane	11.061	75	104620	30.596	ug/l #	39
81) trans-1,4-Dichloro-2-b...	11.061	75	104620	78.025	ug/l #	8
89) n-Butylbenzene	12.317	91	2441	0.243	ug/l	96
93) 1,2,4-Trichlorobenzene	13.567	180	1214	0.334	ug/l	96
94) Hexachlorobutadiene	13.707	225	1199	0.971	ug/l	98
95) Naphthalene	13.756	128	3351	0.303	ug/l	98
96) 1,2,3-Trichlorobenzene	13.945	180	1510	0.446	ug/l	96

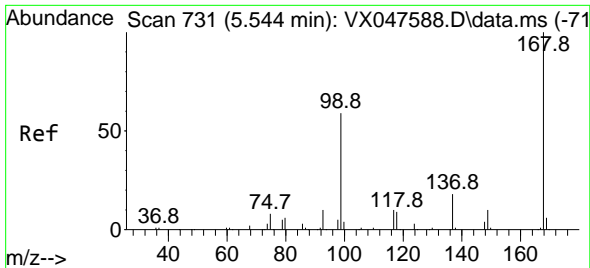
(#) = qualifier out of range (m) = manual integration (+) = signals summed

Data Path : Z:\voasrv\HPCHEM1\MSVOA_X\Data\VX092225\
 Data File : VX047695.D
 Acq On : 22 Sep 2025 12:03
 Operator : JC/MD
 Sample : Q3097-07DL 20X
 Misc : 5.0mL/MSVOA_X/WATER
 ALS Vial : 8 Sample Multiplier: 1

Instrument :
 MSVOA_X
 ClientSampleId :
 RE108D2-20250911DL

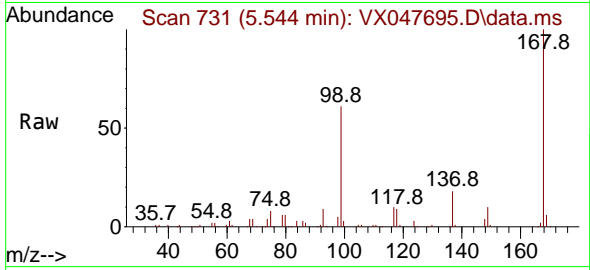
Quant Time: Sep 23 01:31:50 2025
 Quant Method : Z:\voasrv\HPCHEM1\MSVOA_X\Method\82X091625W.M
 Quant Title : SW846 8260
 QLast Update : Wed Sep 17 06:39:58 2025
 Response via : Initial Calibration



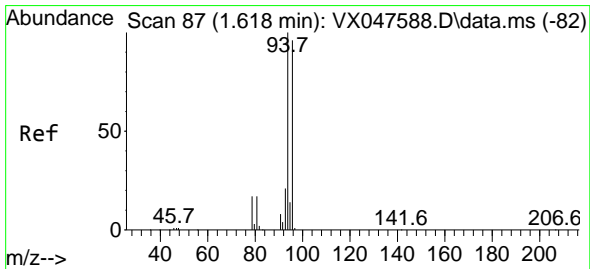
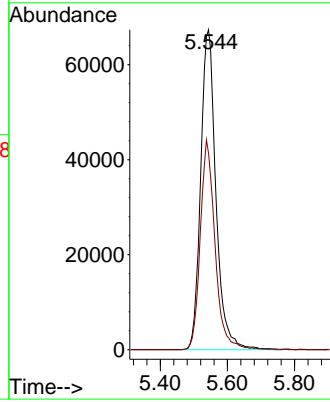
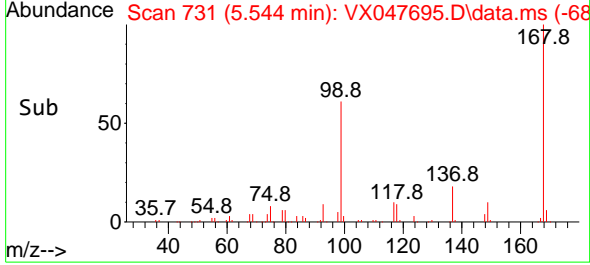


#1
 Pentafluorobenzene
 Concen: 50.000 ug/l
 RT: 5.544 min Scan# 71
 Delta R.T. -0.000 min
 Lab File: VX047695.D
 Acq: 22 Sep 2025 12:03

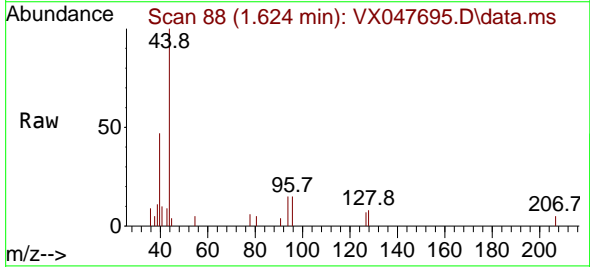
Instrument : MSVOA_X
 ClientSampleId : RE108D2-20250911DL



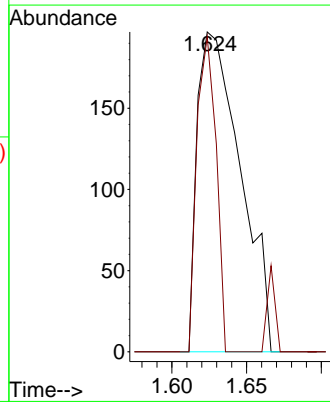
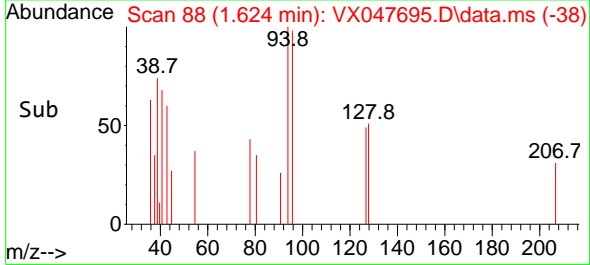
Tgt Ion:168 Resp: 212599
 Ion Ratio Lower Upper
 168 100
 99 61.4 48.8 73.2

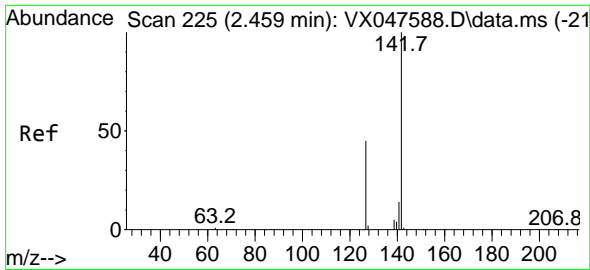


#5
 Bromomethane
 Concen: 0.220 ug/l
 RT: 1.624 min Scan# 88
 Delta R.T. 0.006 min
 Lab File: VX047695.D
 Acq: 22 Sep 2025 12:03



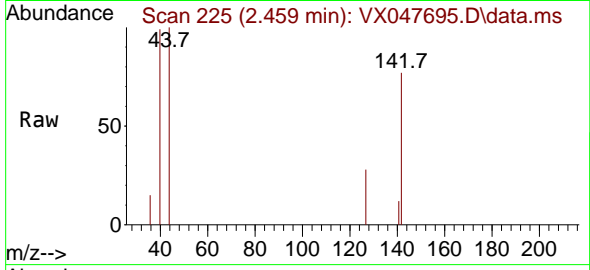
Tgt Ion: 94 Resp: 396
 Ion Ratio Lower Upper
 94 100
 96 98.5 76.6 115.0



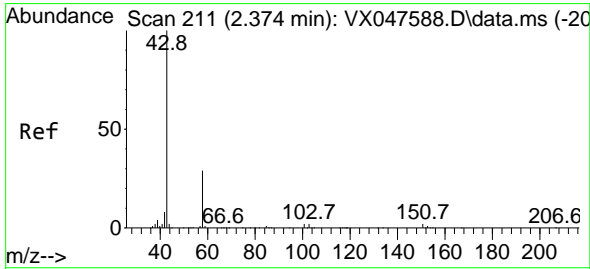
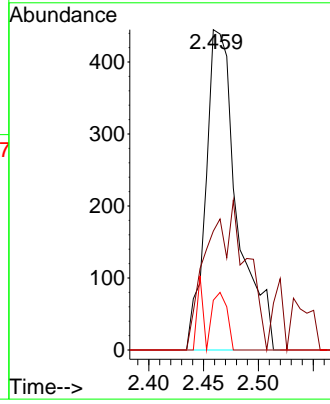
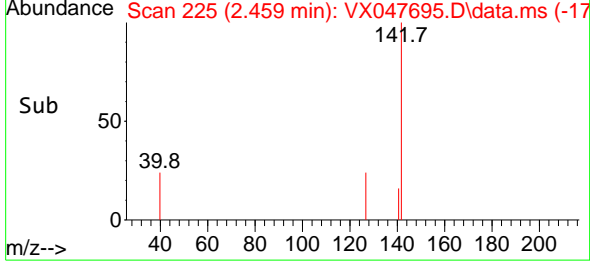


#10
Methyl Iodide
Concen: 0.233 ug/l
RT: 2.459 min Scan# 211
Delta R.T. -0.000 min
Lab File: VX047695.D
Acq: 22 Sep 2025 12:03

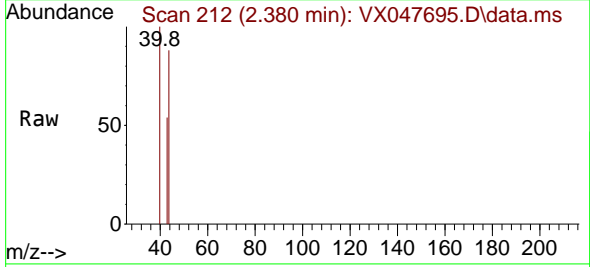
Instrument : MSVOA_X
ClientSampleId : RE108D2-20250911DL



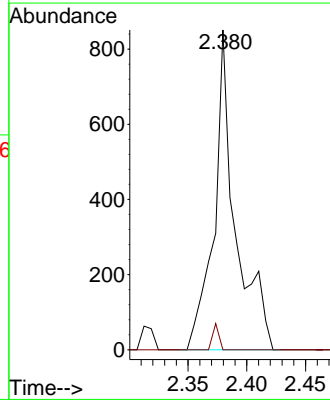
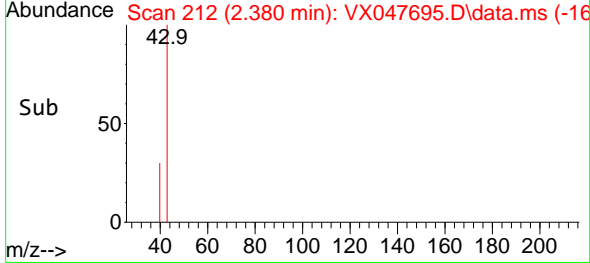
Tgt Ion:142 Resp: 892
Ion Ratio Lower Upper
142 100
127 32.1 37.2 55.8#
141 8.5 11.4 17.0#

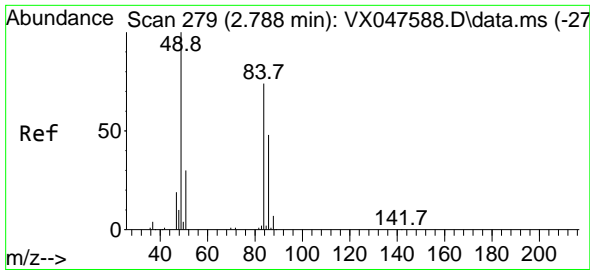


#16
Acetone
Concen: 0.724 ug/l
RT: 2.380 min Scan# 212
Delta R.T. 0.006 min
Lab File: VX047695.D
Acq: 22 Sep 2025 12:03



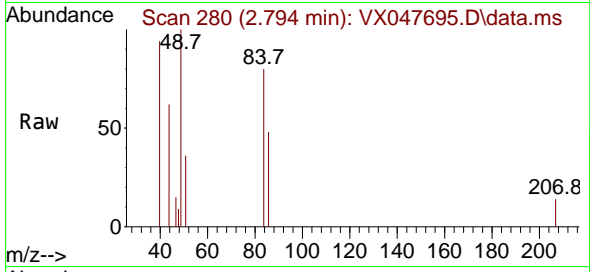
Tgt Ion: 43 Resp: 1065
Ion Ratio Lower Upper
43 100
58 0.0 23.4 35.0#





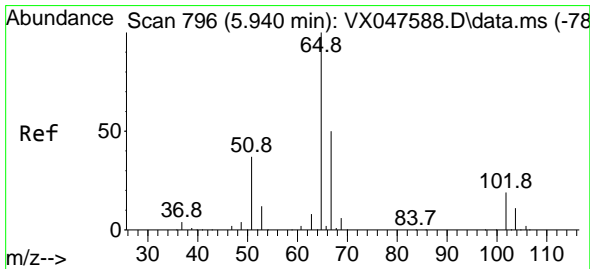
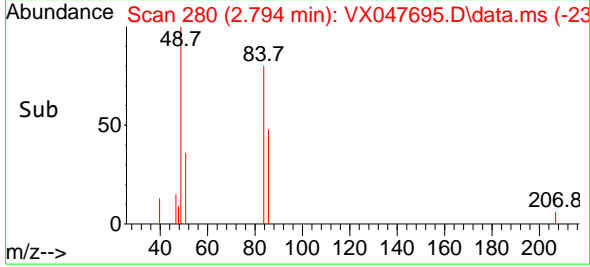
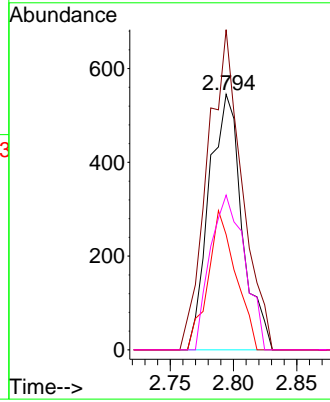
#20
 Methylene Chloride
 Concen: 0.318 ug/l
 RT: 2.794 min Scan# 21
 Delta R.T. 0.006 min
 Lab File: VX047695.D
 Acq: 22 Sep 2025 12:03

Instrument :
 MSVOA_X
 ClientSampleId :
 RE108D2-20250911DL



Tgt Ion: 84 Resp: 989

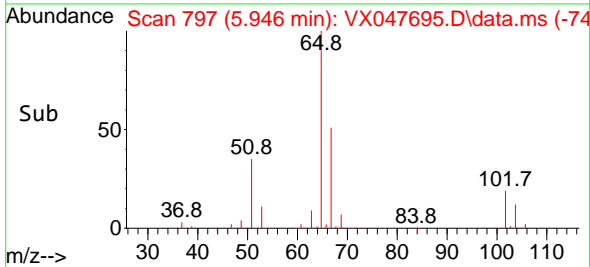
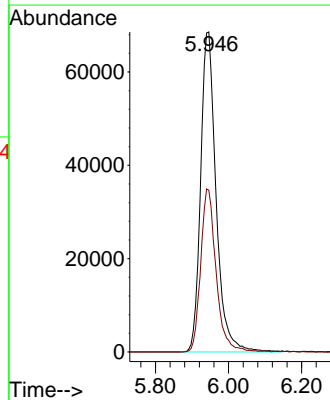
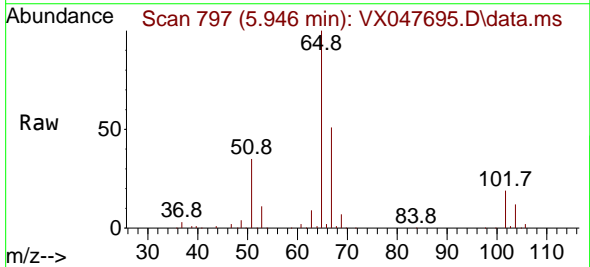
Ion	Ratio	Lower	Upper
84	100		
49	125.3	108.6	162.8
51	45.1	32.6	48.8
86	60.6	52.0	78.0

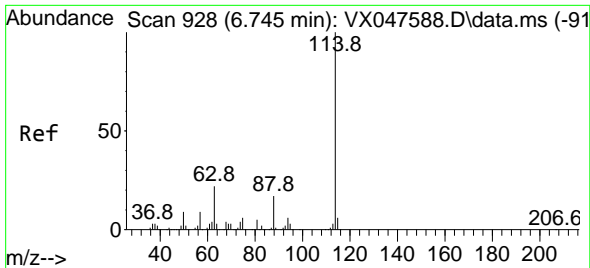


#33
 1,2-Dichloroethane-d4
 Concen: 59.482 ug/l
 RT: 5.946 min Scan# 797
 Delta R.T. 0.006 min
 Lab File: VX047695.D
 Acq: 22 Sep 2025 12:03

Tgt Ion: 65 Resp: 201290

Ion	Ratio	Lower	Upper
65	100		
67	50.7	0.0	103.0



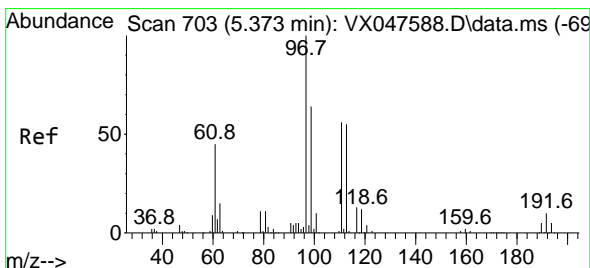
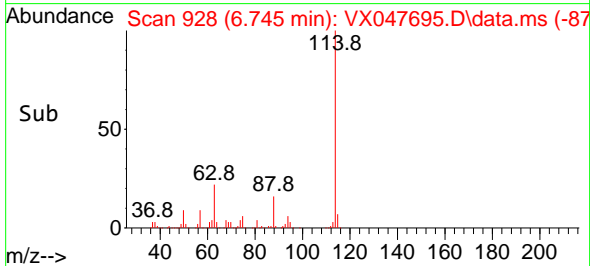
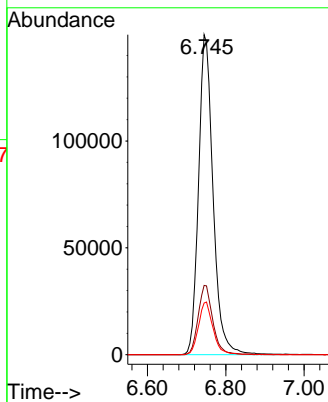
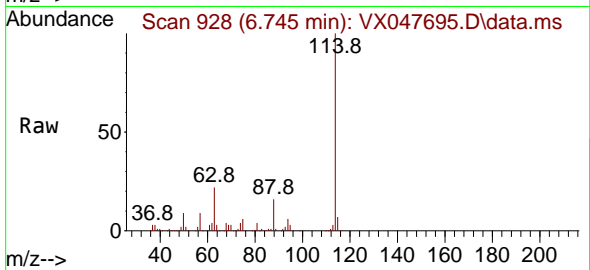


#34
 1,4-Difluorobenzene
 Concen: 50.000 ug/l
 RT: 6.745 min Scan# 91
 Delta R.T. -0.000 min
 Lab File: VX047695.D
 Acq: 22 Sep 2025 12:03

Instrument : MSVOA_X
 ClientSampleId : RE108D2-20250911DL

Tgt Ion:114 Resp: 386271

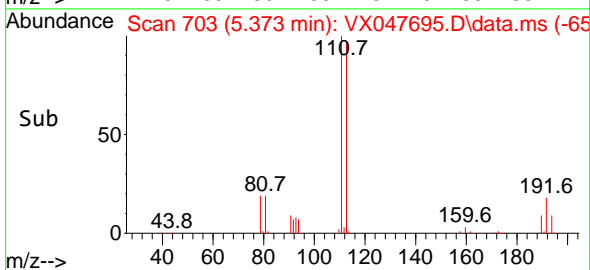
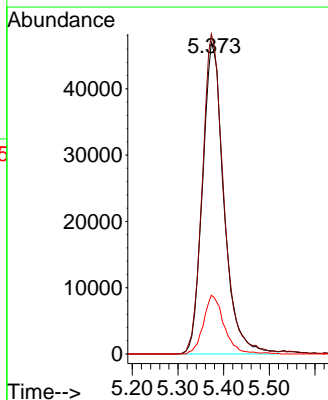
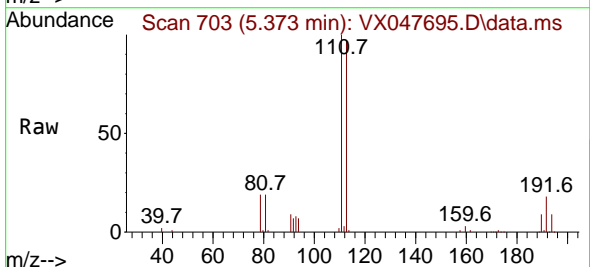
Ion	Ratio	Lower	Upper
114	100		
63	21.7	0.0	44.0
88	16.2	0.0	34.2

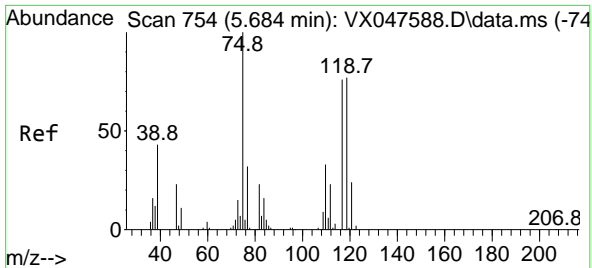


#35
 Dibromofluoromethane
 Concen: 58.821 ug/l
 RT: 5.373 min Scan# 703
 Delta R.T. -0.000 min
 Lab File: VX047695.D
 Acq: 22 Sep 2025 12:03

Tgt Ion:113 Resp: 152379

Ion	Ratio	Lower	Upper
113	100		
111	102.8	80.9	121.3
192	18.2	14.2	21.4

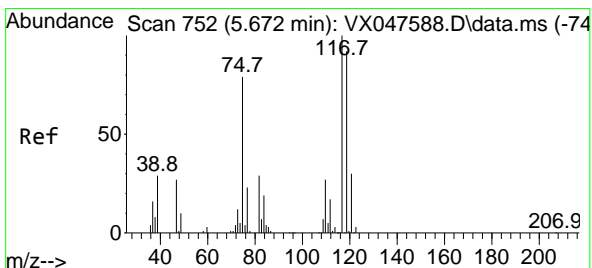
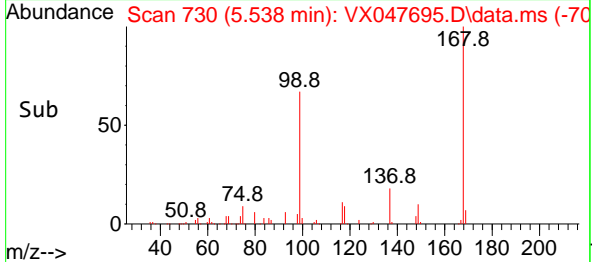
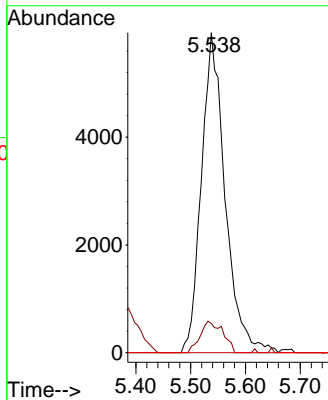
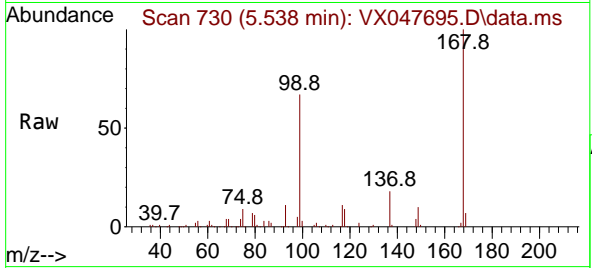




#36
 1,1-Dichloropropene
 Concen: 4.708 ug/l
 RT: 5.538 min Scan# 710
 Delta R.T. -0.146 min
 Lab File: VX047695.D
 Acq: 22 Sep 2025 12:03

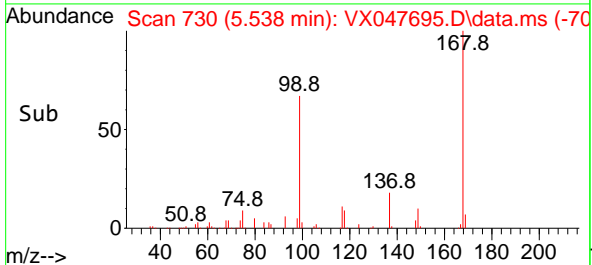
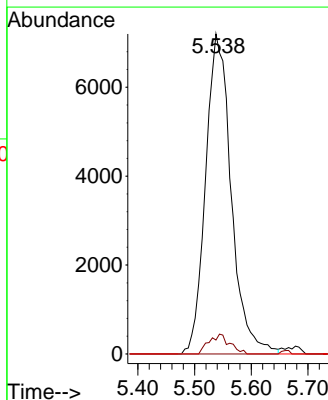
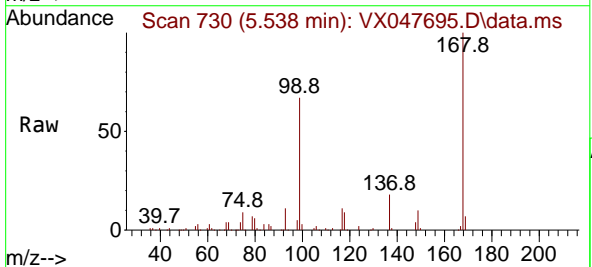
Instrument : MSVOA_X
 ClientSampleId : RE108D2-20250911DL

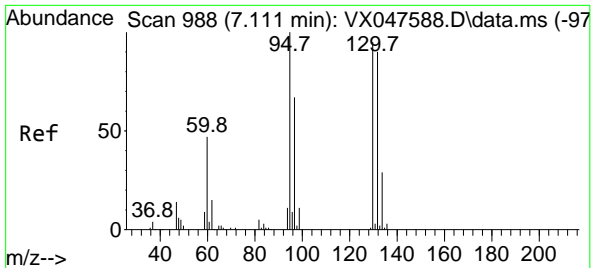
Tgt Ion	Resp	Lower	Upper
75	17821		
75	100		
110	9.4	16.7	50.1#
77	0.0	24.3	36.5#



#38
 Carbon Tetrachloride
 Concen: 5.497 ug/l
 RT: 5.538 min Scan# 730
 Delta R.T. -0.134 min
 Lab File: VX047695.D
 Acq: 22 Sep 2025 12:03

Tgt Ion	Resp	Lower	Upper
117	22608		
117	100		
119	4.3	73.4	110.2#
121	0.0	23.8	35.6#

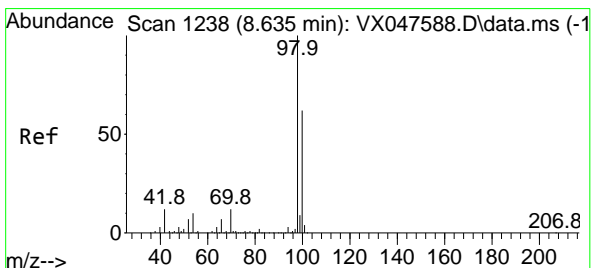
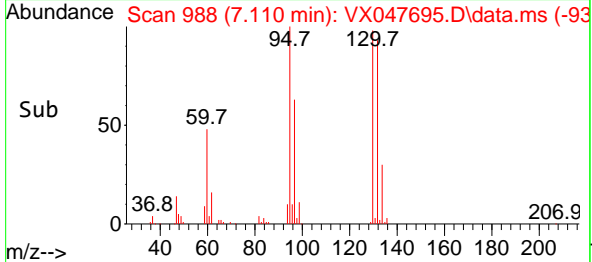
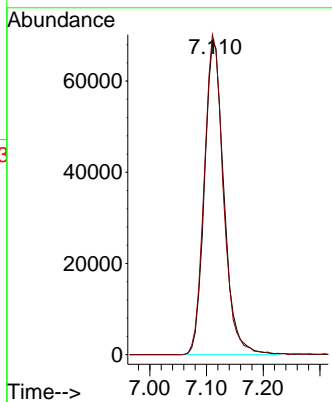
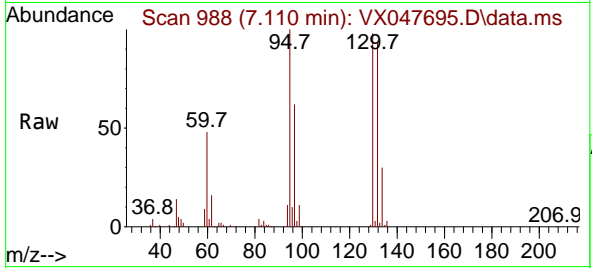




#44
 Trichloroethene
 Concen: 59.047 ug/l
 RT: 7.110 min Scan# 91
 Delta R.T. -0.000 min
 Lab File: VX047695.D
 Acq: 22 Sep 2025 12:03

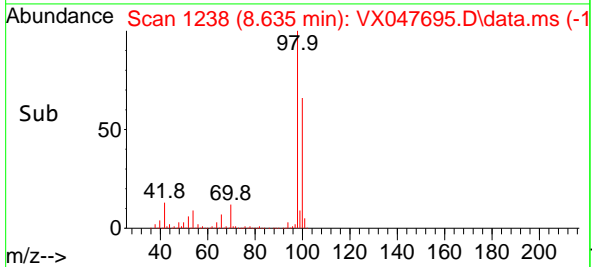
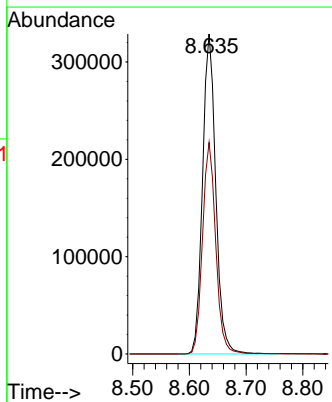
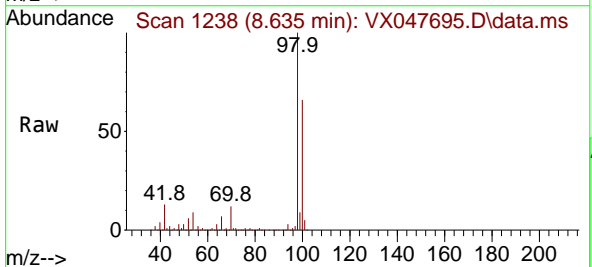
Instrument : MSVOA_X
 ClientSampleId : RE108D2-20250911DL

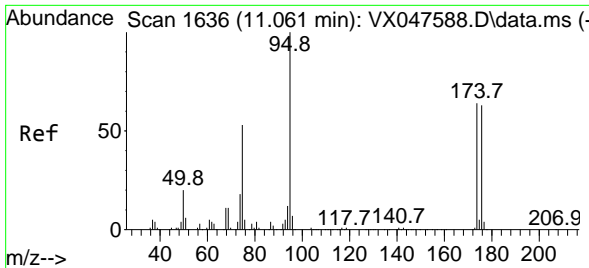
Tgt Ion:130 Resp: 164128
 Ion Ratio Lower Upper
 130 100
 95 102.1 0.0 210.8



#50
 Toluene-d8
 Concen: 59.319 ug/l
 RT: 8.635 min Scan# 1238
 Delta R.T. -0.000 min
 Lab File: VX047695.D
 Acq: 22 Sep 2025 12:03

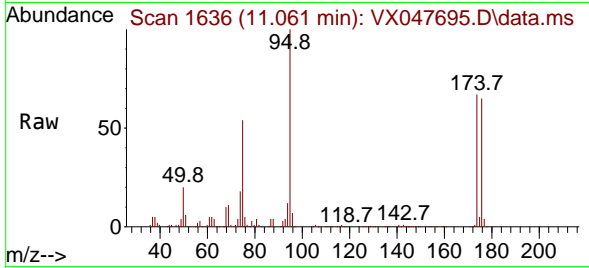
Tgt Ion: 98 Resp: 531722
 Ion Ratio Lower Upper
 98 100
 100 66.0 53.0 79.4





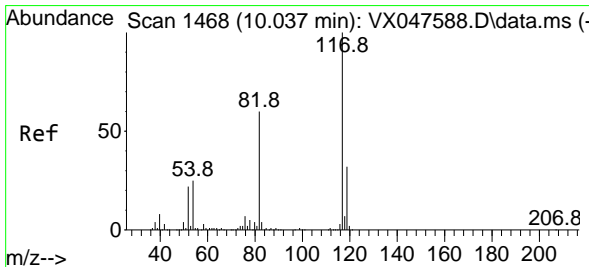
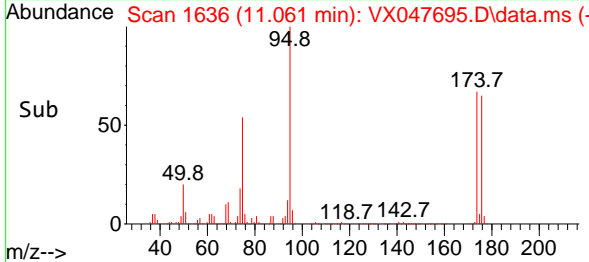
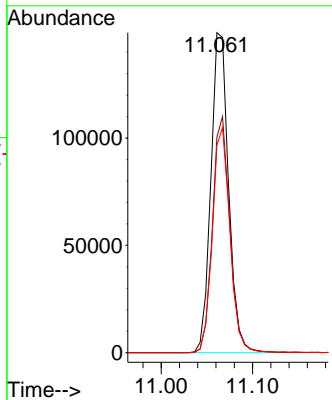
#62
 4-Bromofluorobenzene
 Concen: 58.943 ug/l
 RT: 11.061 min Scan# 11
 Delta R.T. -0.000 min
 Lab File: VX047695.D
 Acq: 22 Sep 2025 12:03

Instrument : MSVOA_X
 ClientSampleId : RE108D2-20250911DL



Tgt Ion: 95 Resp: 200520

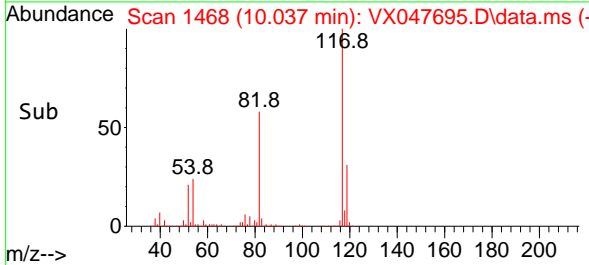
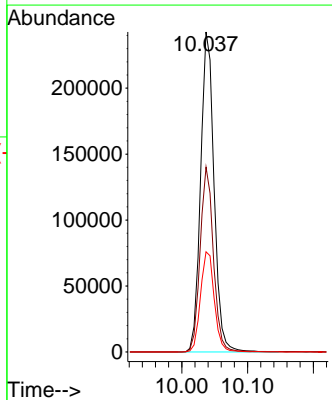
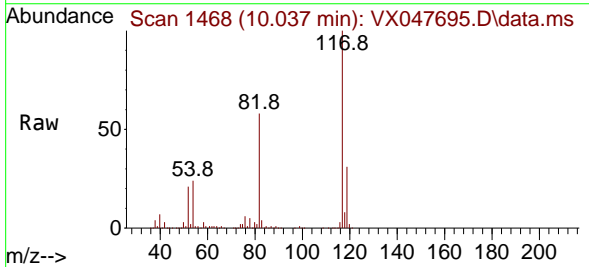
Ion	Ratio	Lower	Upper
95	100		
174	72.4	0.0	141.6
176	69.9	0.0	138.4

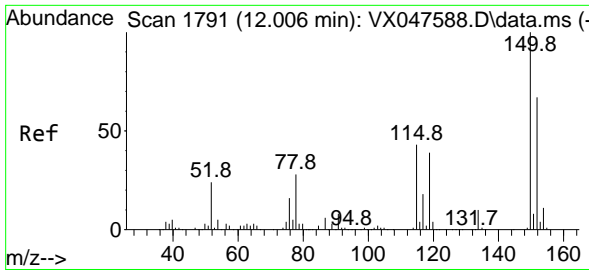


#63
 Chlorobenzene-d5
 Concen: 50.000 ug/l
 RT: 10.037 min Scan# 1468
 Delta R.T. -0.000 min
 Lab File: VX047695.D
 Acq: 22 Sep 2025 12:03

Tgt Ion: 117 Resp: 344934

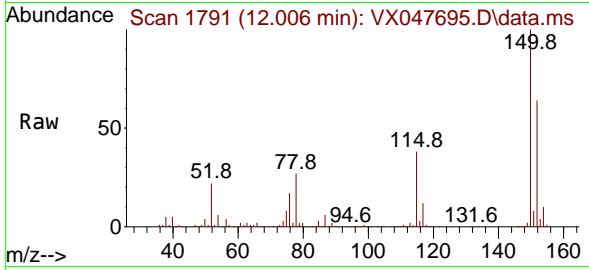
Ion	Ratio	Lower	Upper
117	100		
82	57.8	47.8	71.6
119	31.3	25.2	37.8



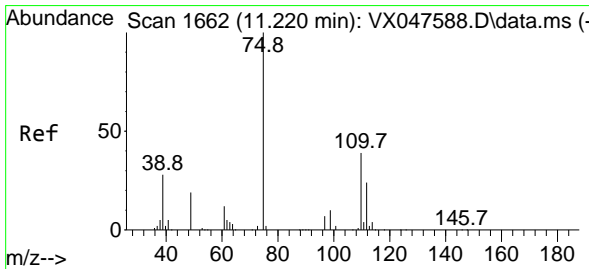
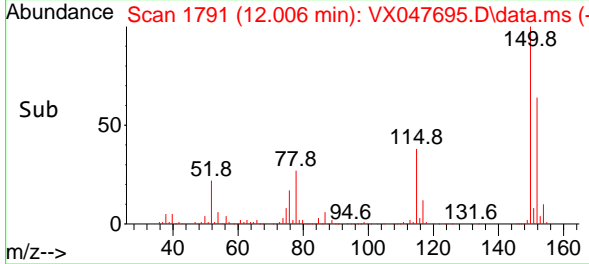
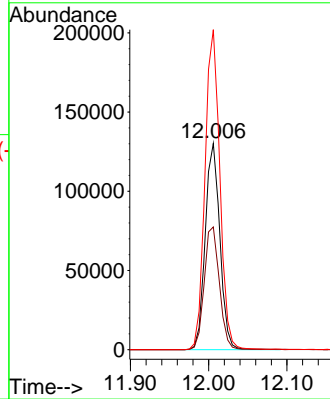


#72
 1,4-Dichlorobenzene-d4
 Concen: 50.000 ug/l
 RT: 12.006 min Scan# 1
 Delta R.T. -0.000 min
 Lab File: VX047695.D
 Acq: 22 Sep 2025 12:03

Instrument :
 MSVOA_X
 ClientSampleId :
 RE108D2-20250911DL

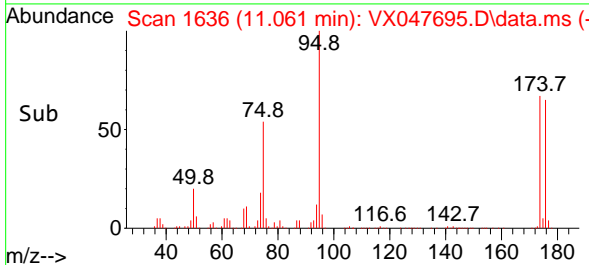
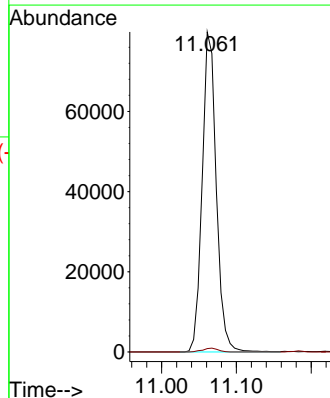
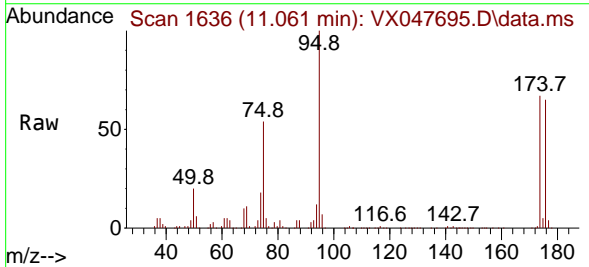


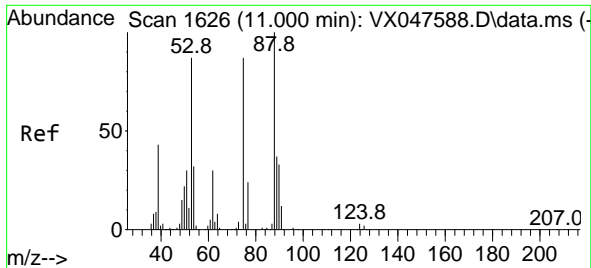
Tgt Ion:152 Resp: 168884
 Ion Ratio Lower Upper
 152 100
 115 61.6 44.9 134.5
 150 157.0 0.0 352.0



#76
 1,2,3-Trichloropropane
 Concen: 30.596 ug/l
 RT: 11.061 min Scan# 1636
 Delta R.T. -0.159 min
 Lab File: VX047695.D
 Acq: 22 Sep 2025 12:03

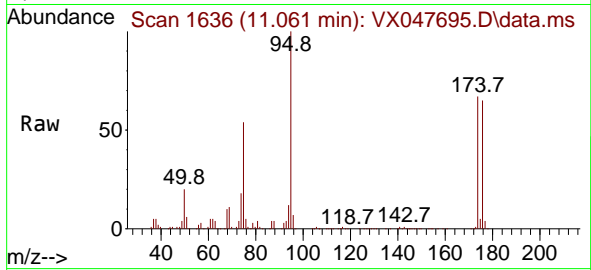
Tgt Ion: 75 Resp: 104620
 Ion Ratio Lower Upper
 75 100
 77 1.3 18.8 56.4#



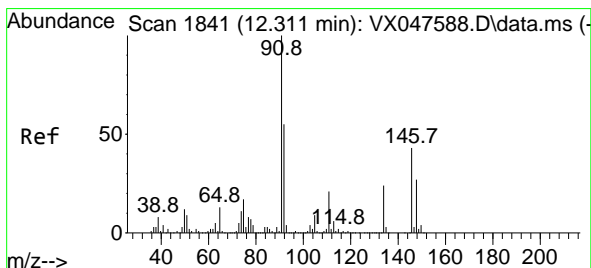
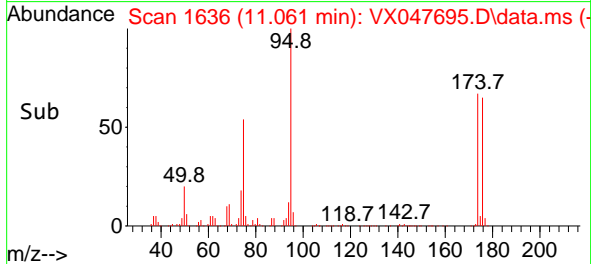
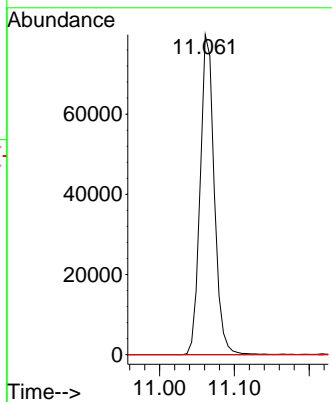


#81
 trans-1,4-Dichloro-2-butene
 Concen: 78.025 ug/l
 RT: 11.061 min Scan# 1106
 Delta R.T. 0.061 min
 Lab File: VX047695.D
 Acq: 22 Sep 2025 12:03

Instrument : MSVOA_X
 ClientSampleId : RE108D2-20250911DL

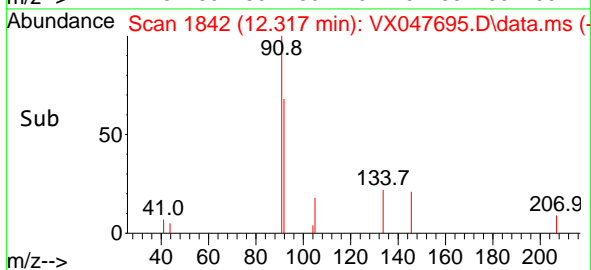
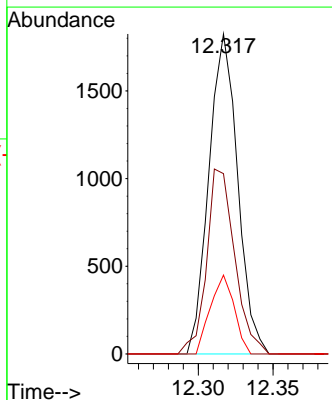
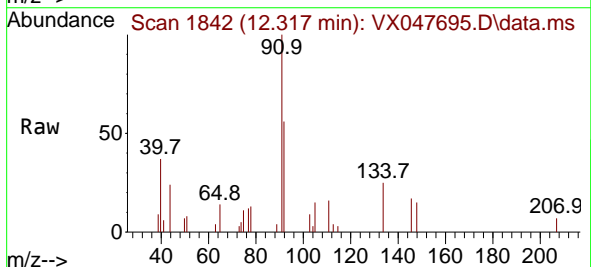


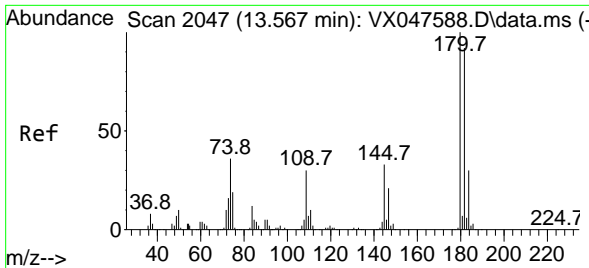
Tgt Ion: 75 Resp: 104620
 Ion Ratio Lower Upper
 75 100
 53 0.0 83.4 125.2#
 89 0.0 36.3 54.5#



#89
 n-Butylbenzene
 Concen: 0.243 ug/l
 RT: 12.317 min Scan# 1842
 Delta R.T. 0.006 min
 Lab File: VX047695.D
 Acq: 22 Sep 2025 12:03

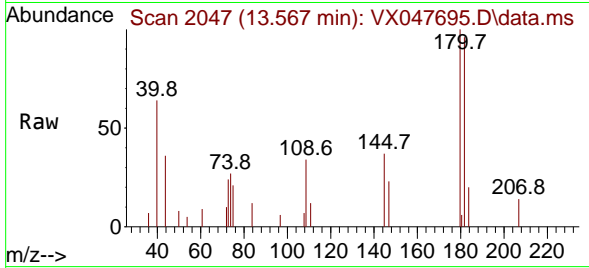
Tgt Ion: 91 Resp: 2441
 Ion Ratio Lower Upper
 91 100
 92 56.5 27.6 82.7
 134 20.4 12.6 37.8



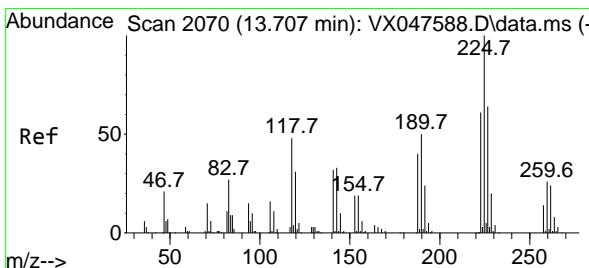
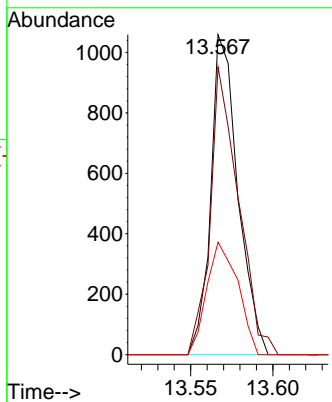
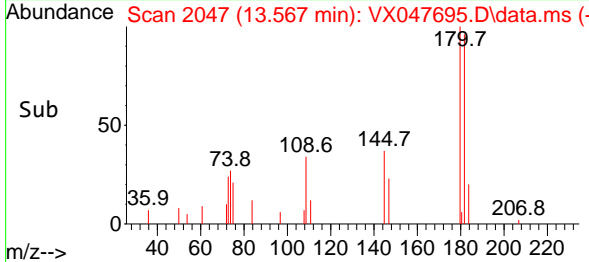


#93
 1,2,4-Trichlorobenzene
 Concen: 0.334 ug/l
 RT: 13.567 min Scan# 2047
 Delta R.T. -0.000 min
 Lab File: VX047695.D
 Acq: 22 Sep 2025 12:03

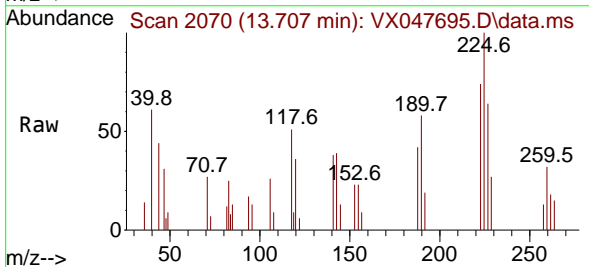
Instrument : MSVOA_X
 ClientSampleId : RE108D2-20250911DL



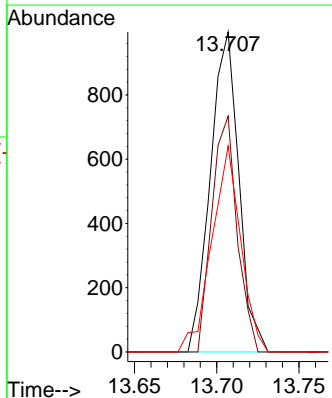
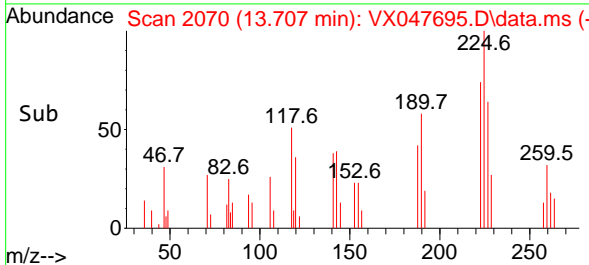
Tgt Ion:180 Resp: 1214
 Ion Ratio Lower Upper
 180 100
 182 93.7 46.6 139.8
 145 40.3 16.4 49.1

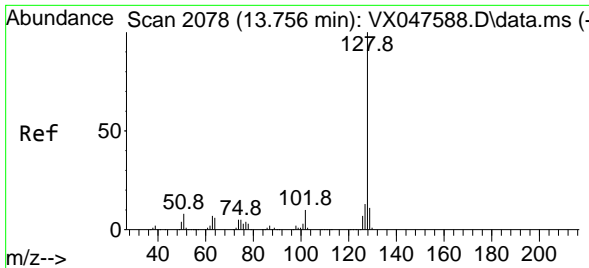


#94
 Hexachlorobutadiene
 Concen: 0.971 ug/l
 RT: 13.707 min Scan# 2070
 Delta R.T. -0.000 min
 Lab File: VX047695.D
 Acq: 22 Sep 2025 12:03



Tgt Ion:225 Resp: 1199
 Ion Ratio Lower Upper
 225 100
 223 65.3 31.7 95.1
 227 65.5 32.0 96.0

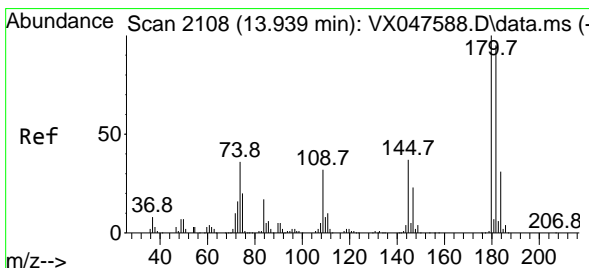
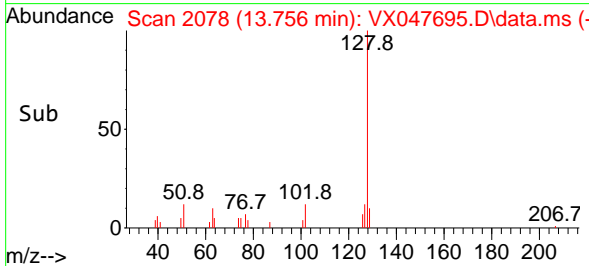
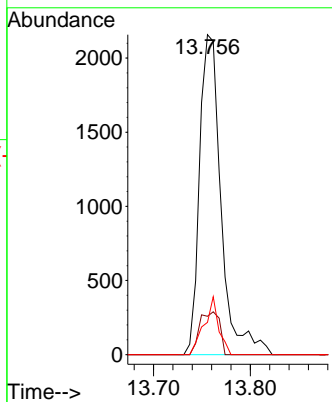
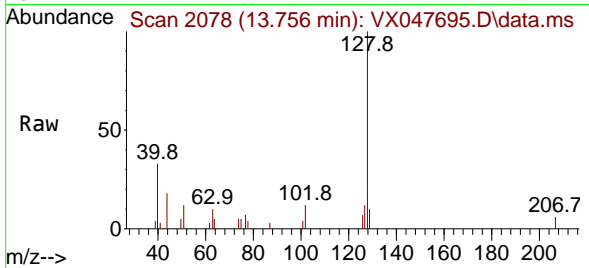




#95
 Naphthalene
 Concen: 0.303 ug/l
 RT: 13.756 min Scan# 2078
 Delta R.T. -0.000 min
 Lab File: VX047695.D
 Acq: 22 Sep 2025 12:03

Instrument : MSVOA_X
 ClientSampleId : RE108D2-20250911DL

Tgt Ion	Resp	Lower	Upper
128	100		
127	12.4	10.2	15.2
129	12.1	8.8	13.2



#96
 1,2,3-Trichlorobenzene
 Concen: 0.446 ug/l
 RT: 13.945 min Scan# 2109
 Delta R.T. 0.006 min
 Lab File: VX047695.D
 Acq: 22 Sep 2025 12:03

Tgt Ion	Resp	Lower	Upper
180	100		
182	91.9	47.6	142.8
145	32.9	17.9	53.7

