

Data Path : Z:\voasrv\HPCHEM1\MSVOA_X\Data\VX092225\
 Data File : VX047697.D
 Acq On : 22 Sep 2025 12:44
 Operator : JC/MD
 Sample : Q3097-09RE
 Misc : 5.0mL/MSVOA_X/WATER
 ALS Vial : 10 Sample Multiplier: 1

Instrument :
 MSVOA_X
 ClientSampleId :
 RE108D1-20250911

Quant Time: Sep 23 01:32:42 2025
 Quant Method : Z:\voasrv\HPCHEM1\MSVOA_X\Method\82X091625W.M
 Quant Title : SW846 8260
 QLast Update : Wed Sep 17 06:39:58 2025
 Response via : Initial Calibration

Compound	R.T.	QIon	Response	Conc	Units	Dev(Min)

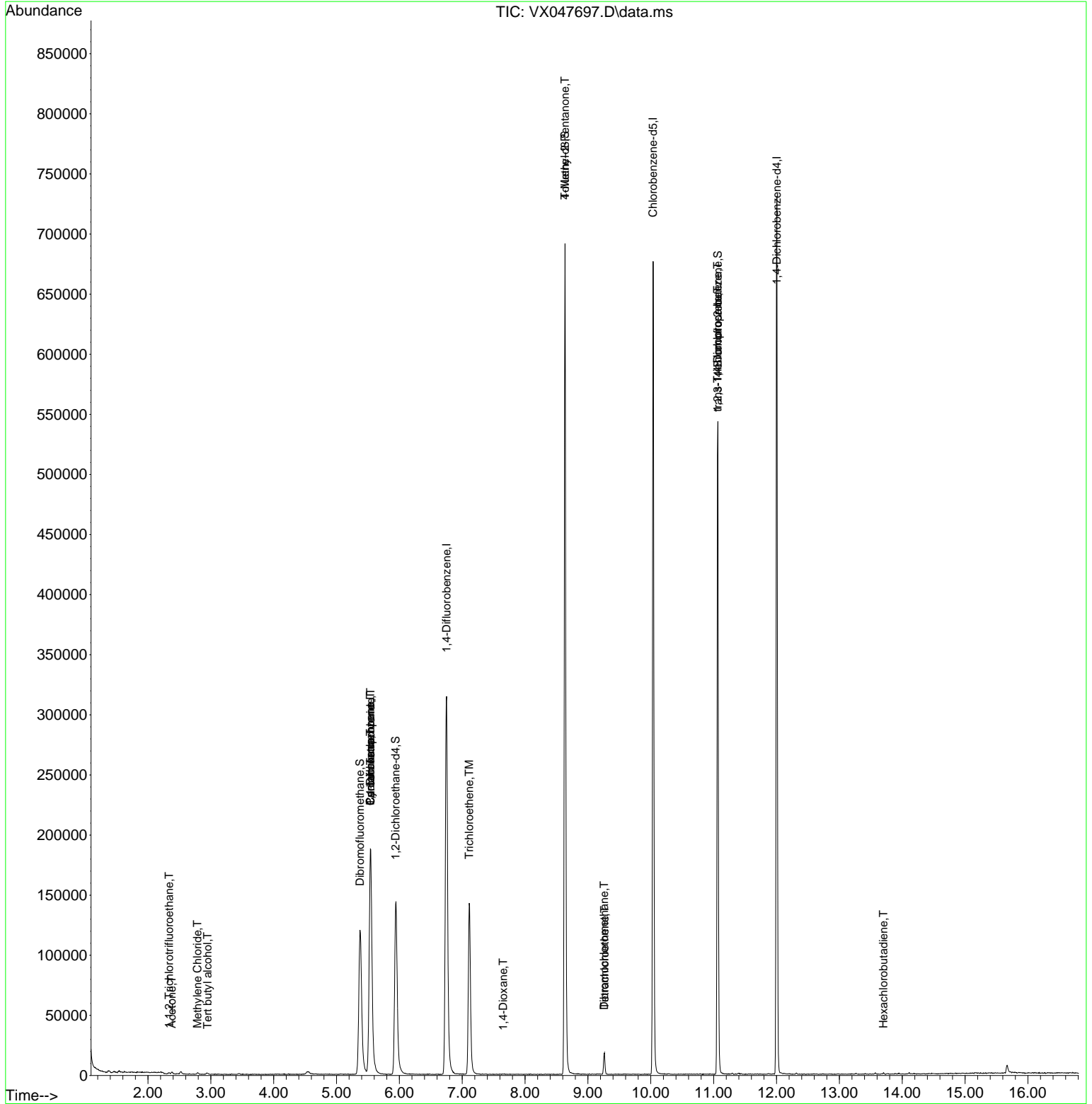
Internal Standards						
1) Pentafluorobenzene	5.538	168	188813	50.000	ug/l	0.00
34) 1,4-Difluorobenzene	6.751	114	347701	50.000	ug/l	0.00
63) Chlorobenzene-d5	10.037	117	313912	50.000	ug/l	0.00
72) 1,4-Dichlorobenzene-d4	12.006	152	152363	50.000	ug/l	0.00
System Monitoring Compounds						
33) 1,2-Dichloroethane-d4	5.940	65	156802	52.173	ug/l	0.00
Spiked Amount	50.000	Range 78 - 117	Recovery	=	104.340%	
35) Dibromofluoromethane	5.373	113	118807	50.949	ug/l	0.00
Spiked Amount	50.000	Range 75 - 124	Recovery	=	101.900%	
50) Toluene-d8	8.635	98	415067	51.441	ug/l	0.00
Spiked Amount	50.000	Range 92 - 112	Recovery	=	102.880%	
62) 4-Bromofluorobenzene	11.067	95	157359	51.387	ug/l	0.00
Spiked Amount	50.000	Range 83 - 123	Recovery	=	102.780%	
Target Compounds						
						Qvalue
9) 1,1,2-Trichlorotrifluo...	2.337	101	672	0.308	ug/l #	81
11) Tert butyl alcohol	2.947	59	171	0.511	ug/l #	72
16) Acetone	2.380	43	1765	1.351	ug/l #	82
20) Methylene Chloride	2.788	84	665	0.240	ug/l	88
31) Cyclohexane	5.538	56	4046	1.019	ug/l #	30
36) 1,1-Dichloropropene	5.538	75	16372	4.805	ug/l #	46
38) Carbon Tetrachloride	5.544	117	20318	5.488	ug/l #	17
44) Trichloroethene	7.110	130	60076	24.011	ug/l	95
49) 1,4-Dioxane	7.653	88	249	8.267	ug/l #	65
51) 4-Methyl-2-Pentanone	8.635	43	2185	0.659	ug/l #	1
60) Dibromochloromethane	9.256	129	3438	1.214	ug/l #	11
64) Tetrachloroethene	9.262	164	3707	1.811	ug/l	91
76) 1,2,3-Trichloropropane	11.061	75	82789	26.837	ug/l #	40
81) trans-1,4-Dichloro-2-b...	11.061	75	82789	68.438	ug/l #	8
94) Hexachlorobutadiene	13.701	225	234	0.210	ug/l	73

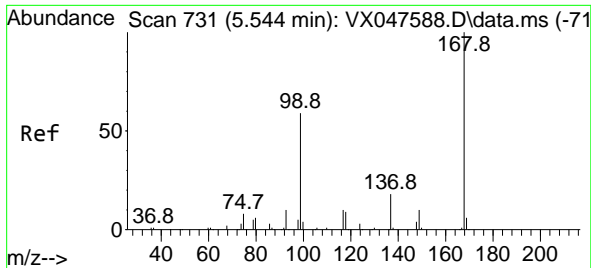
(#) = qualifier out of range (m) = manual integration (+) = signals summed

Data Path : Z:\voasrv\HPCHEM1\MSVOA_X\Data\VX092225\
 Data File : VX047697.D
 Acq On : 22 Sep 2025 12:44
 Operator : JC/MD
 Sample : Q3097-09RE
 Misc : 5.0mL/MSVOA_X/WATER
 ALS Vial : 10 Sample Multiplier: 1

Instrument :
 MSVOA_X
ClientSampleId :
 RE108D1-20250911

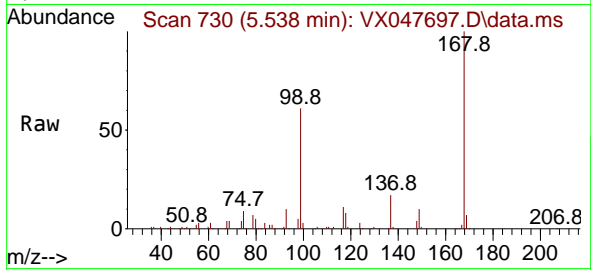
Quant Time: Sep 23 01:32:42 2025
 Quant Method : Z:\voasrv\HPCHEM1\MSVOA_X\Method\82X091625W.M
 Quant Title : SW846 8260
 QLast Update : Wed Sep 17 06:39:58 2025
 Response via : Initial Calibration



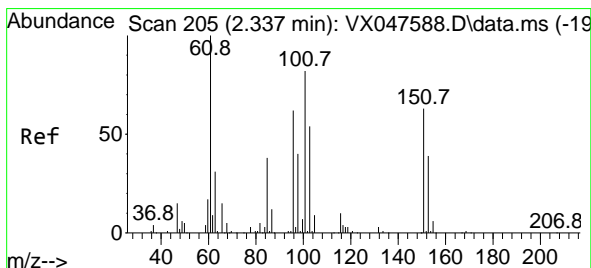
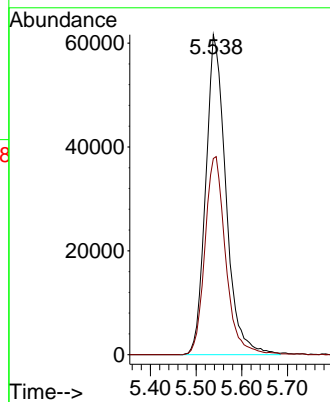
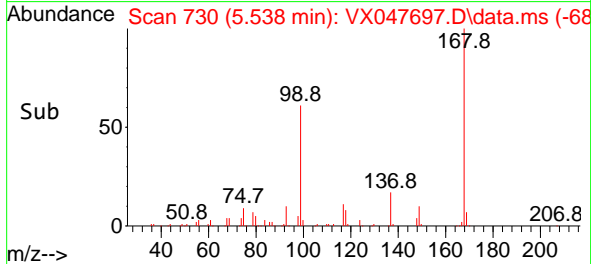


#1
 Pentafluorobenzene
 Concen: 50.000 ug/l
 RT: 5.538 min Scan# 71
 Delta R.T. -0.006 min
 Lab File: VX047697.D
 Acq: 22 Sep 2025 12:44

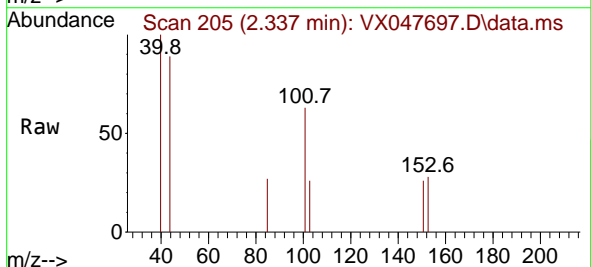
Instrument :
 MSVOA_X
 ClientSampleId :
 RE108D1-20250911



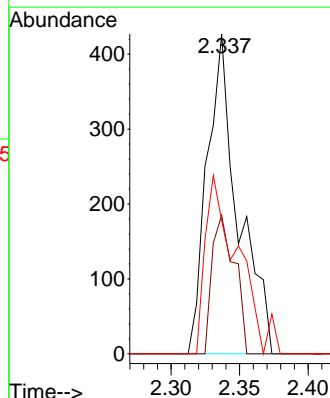
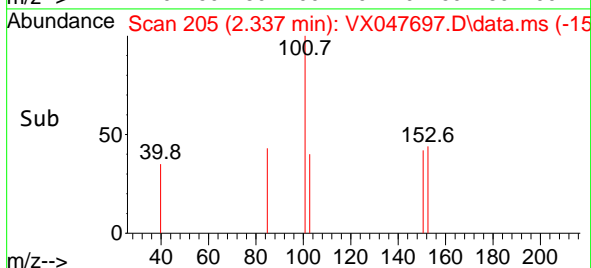
Tgt Ion:168 Resp: 188813
 Ion Ratio Lower Upper
 168 100
 99 61.3 48.8 73.2

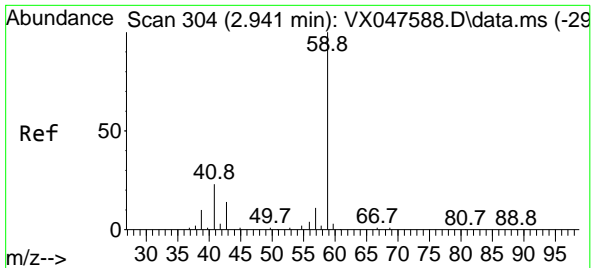


#9
 1,1,2-Trichlorotrifluoroethane
 Concen: 0.308 ug/l
 RT: 2.337 min Scan# 205
 Delta R.T. -0.000 min
 Lab File: VX047697.D
 Acq: 22 Sep 2025 12:44



Tgt Ion:101 Resp: 672
 Ion Ratio Lower Upper
 101 100
 85 31.4 35.5 53.3#
 151 58.6 59.4 89.0#

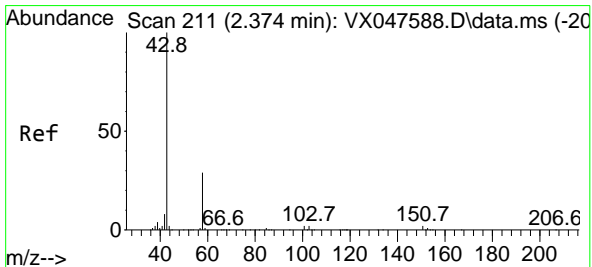
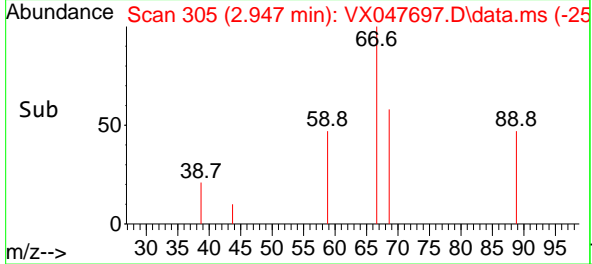
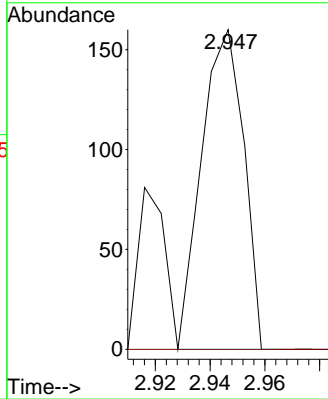
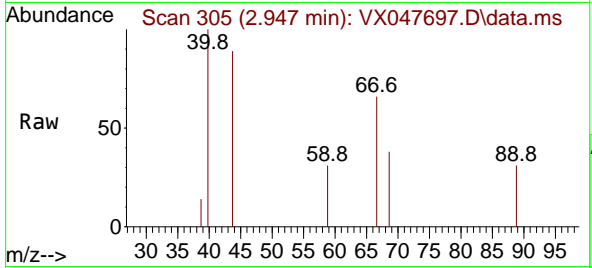




#11
 Tert butyl alcohol
 Concen: 0.511 ug/l
 RT: 2.947 min Scan# 30
 Delta R.T. 0.006 min
 Lab File: VX047697.D
 Acq: 22 Sep 2025 12:44

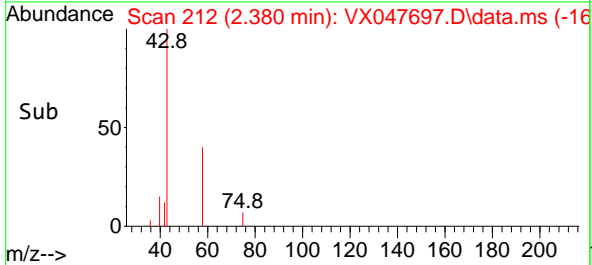
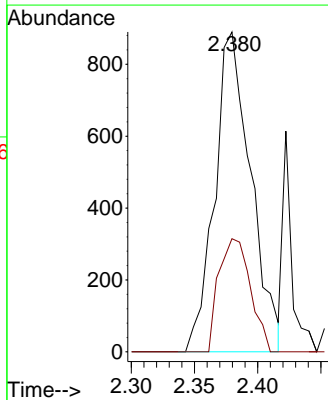
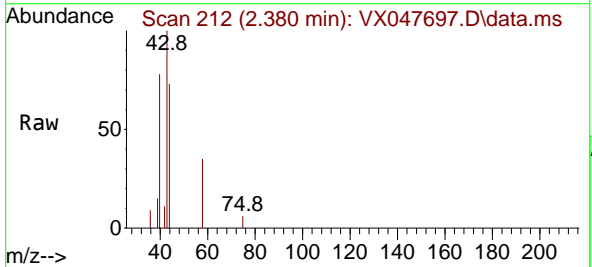
Instrument : MSVOA_X
 ClientSampleId : RE108D1-20250911

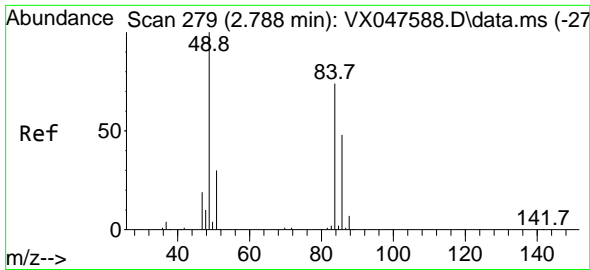
Tgt Ion: 59 Resp: 171
 Ion Ratio Lower Upper
 59 100
 57 0.0 8.3 12.5#



#16
 Acetone
 Concen: 1.351 ug/l
 RT: 2.380 min Scan# 212
 Delta R.T. 0.006 min
 Lab File: VX047697.D
 Acq: 22 Sep 2025 12:44

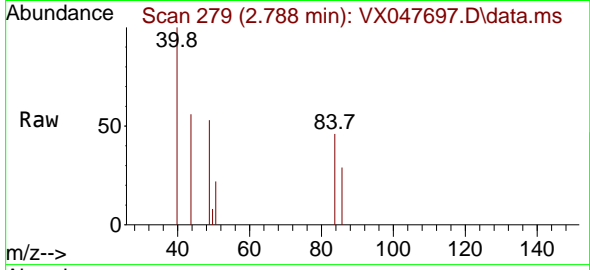
Tgt Ion: 43 Resp: 1765
 Ion Ratio Lower Upper
 43 100
 58 38.9 23.4 35.0#





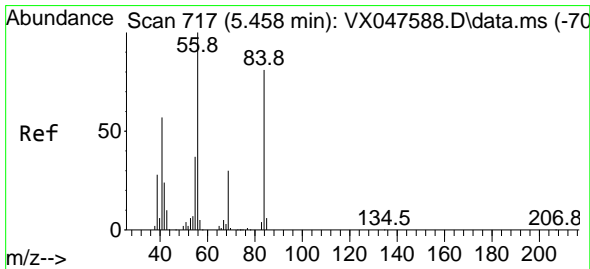
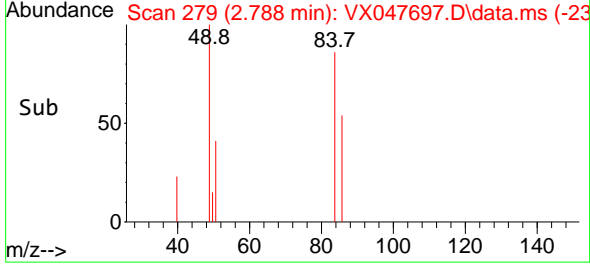
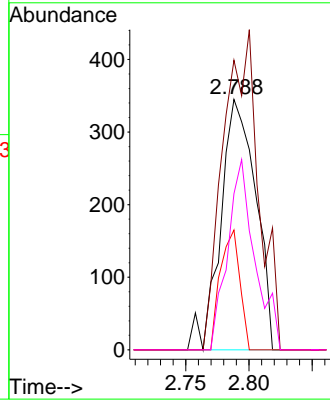
#20
 Methylene Chloride
 Concen: 0.240 ug/l
 RT: 2.788 min Scan# 21
 Delta R.T. -0.000 min
 Lab File: VX047697.D
 Acq: 22 Sep 2025 12:44

Instrument :
 MSVOA_X
 ClientSampleId :
 RE108D1-20250911

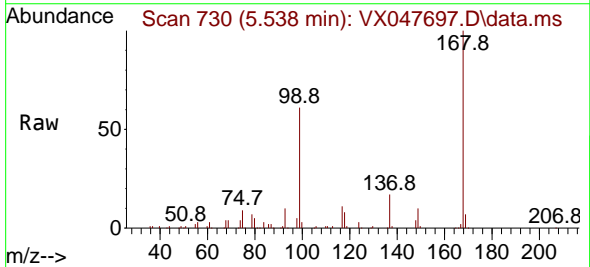


Tgt Ion: 84 Resp: 665

Ion	Ratio	Lower	Upper
84	100		
49	115.7	108.6	162.8
51	47.8	32.6	48.8
86	62.3	52.0	78.0

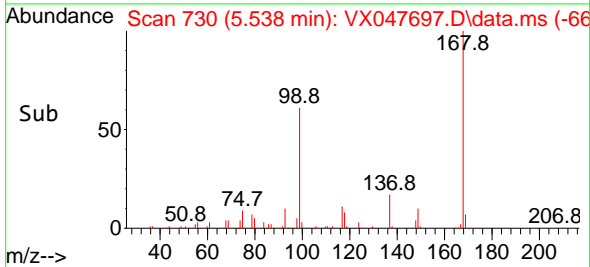
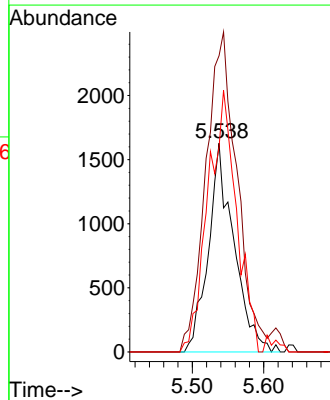


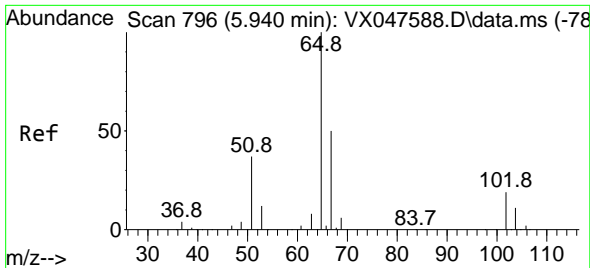
#31
 Cyclohexane
 Concen: 1.019 ug/l
 RT: 5.538 min Scan# 730
 Delta R.T. 0.079 min
 Lab File: VX047697.D
 Acq: 22 Sep 2025 12:44



Tgt Ion: 56 Resp: 4046

Ion	Ratio	Lower	Upper
56	100		
69	141.9	23.8	35.8#
84	98.2	64.6	97.0#

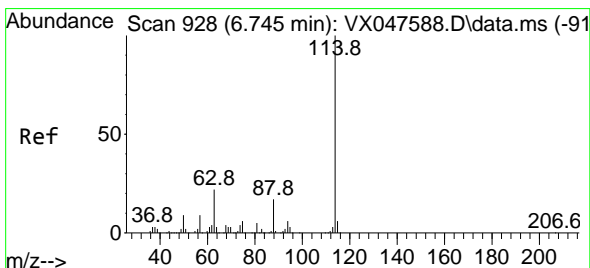
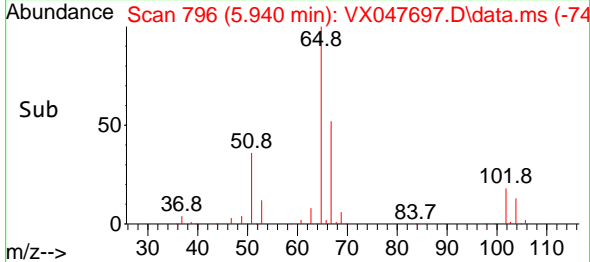
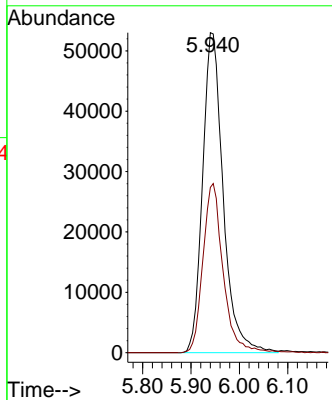
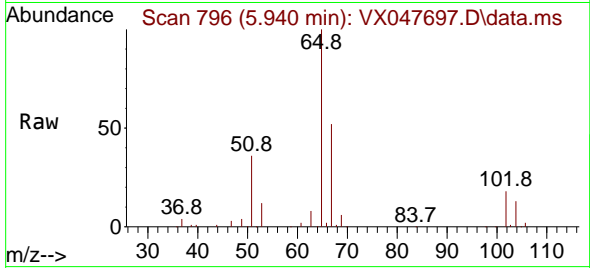




#33
 1,2-Dichloroethane-d4
 Concen: 52.173 ug/l
 RT: 5.940 min Scan# 796
 Delta R.T. -0.000 min
 Lab File: VX047697.D
 Acq: 22 Sep 2025 12:44

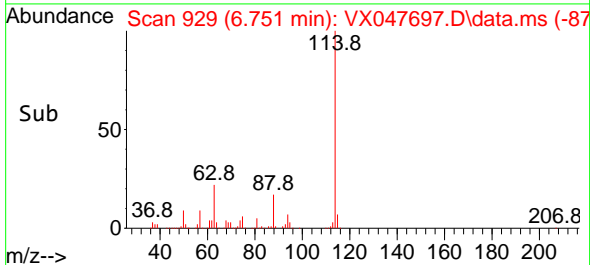
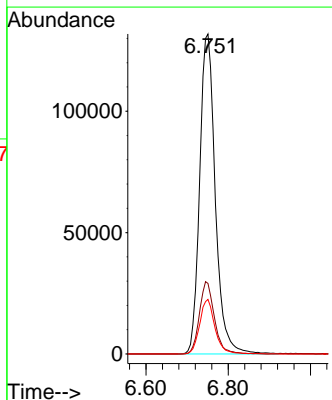
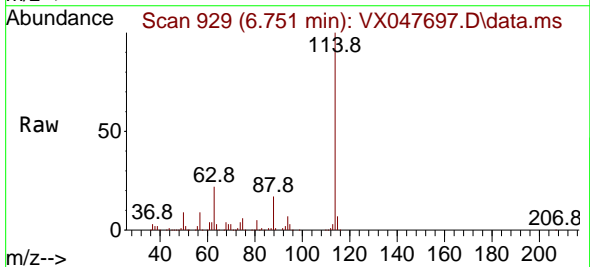
Instrument : MSVOA_X
 ClientSampleId : RE108D1-20250911

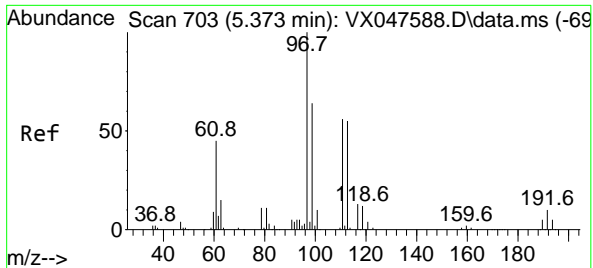
Tgt Ion: 65 Resp: 156802
 Ion Ratio Lower Upper
 65 100
 67 51.9 0.0 103.0



#34
 1,4-Difluorobenzene
 Concen: 50.000 ug/l
 RT: 6.751 min Scan# 929
 Delta R.T. 0.006 min
 Lab File: VX047697.D
 Acq: 22 Sep 2025 12:44

Tgt Ion:114 Resp: 347701
 Ion Ratio Lower Upper
 114 100
 63 22.0 0.0 44.0
 88 17.1 0.0 34.2

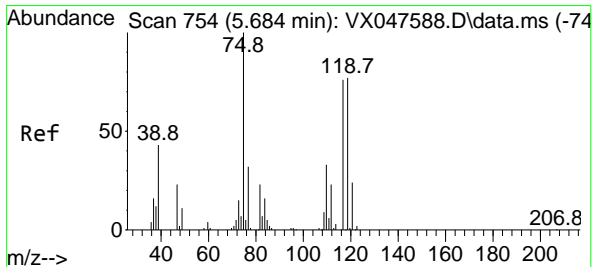
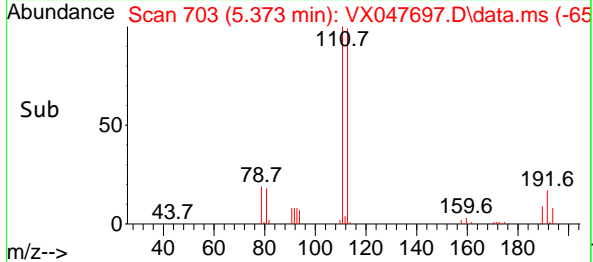
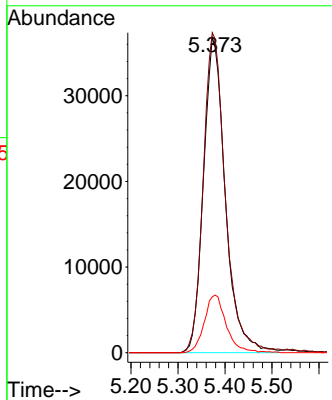
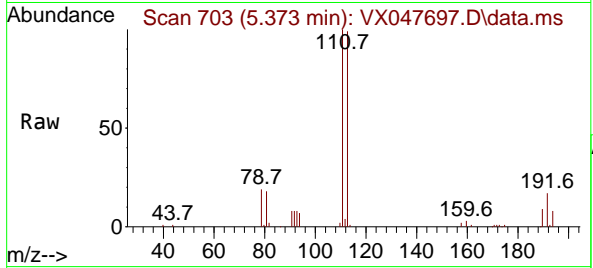




#35
 Dibromofluoromethane
 Concen: 50.949 ug/l
 RT: 5.373 min Scan# 70
 Delta R.T. -0.000 min
 Lab File: VX047697.D
 Acq: 22 Sep 2025 12:44

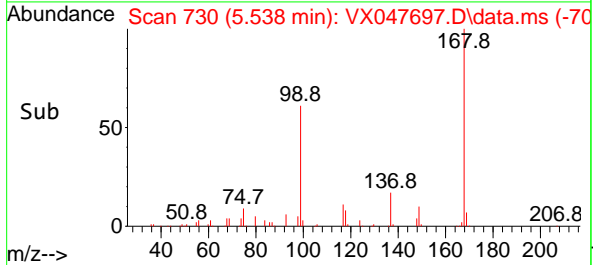
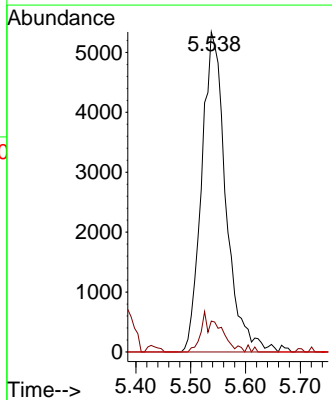
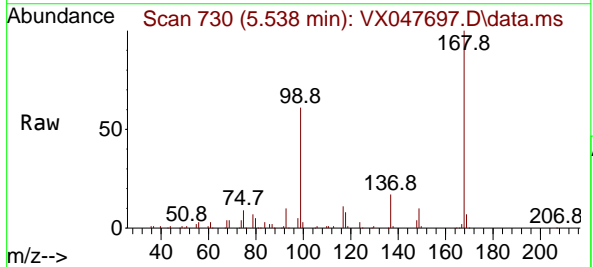
Instrument : MSVOA_X
 ClientSampleId : RE108D1-20250911

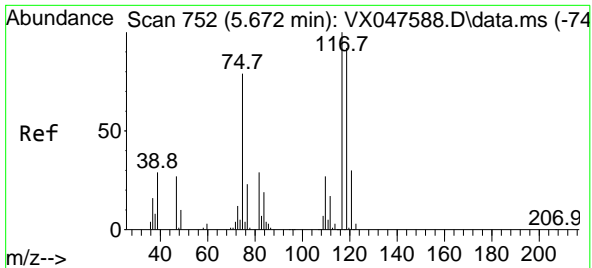
Tgt Ion	Resp	Lower	Upper
113	118807		
111	102.0	80.9	121.3
192	18.4	14.2	21.4



#36
 1,1-Dichloropropene
 Concen: 4.805 ug/l
 RT: 5.538 min Scan# 730
 Delta R.T. -0.146 min
 Lab File: VX047697.D
 Acq: 22 Sep 2025 12:44

Tgt Ion	Resp	Lower	Upper
75	16372		
75	100		
110	3.7	16.7	50.1#
77	0.0	24.3	36.5#



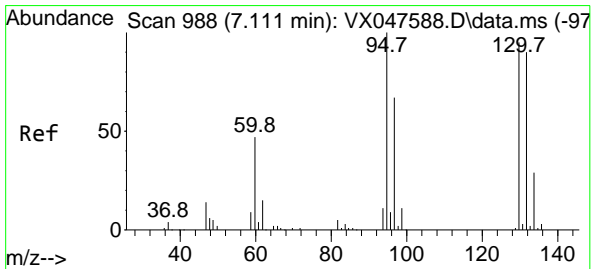
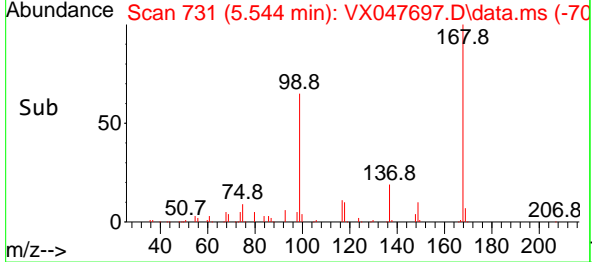
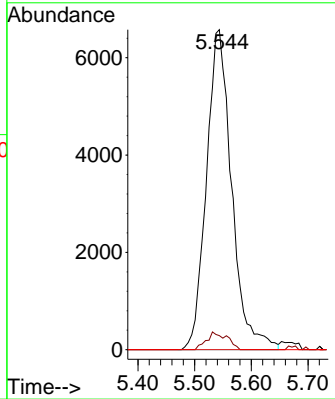
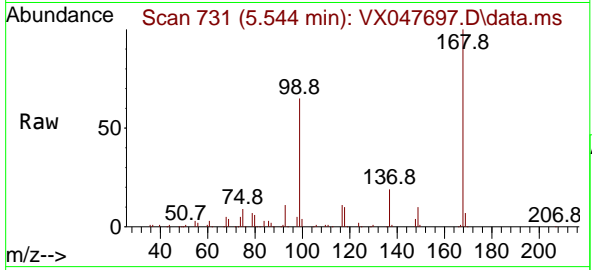


#38
 Carbon Tetrachloride
 Concen: 5.488 ug/l
 RT: 5.544 min Scan# 711
 Delta R.T. -0.128 min
 Lab File: VX047697.D
 Acq: 22 Sep 2025 12:44

Instrument : MSVOA_X
 ClientSampleId : RE108D1-20250911

Tgt Ion:117 Resp: 20318

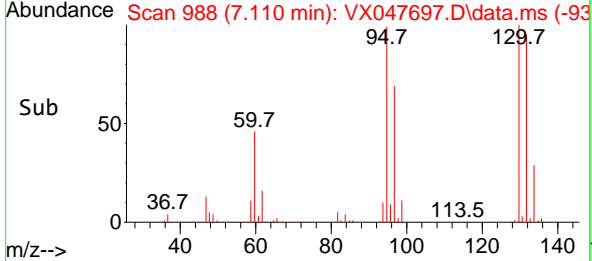
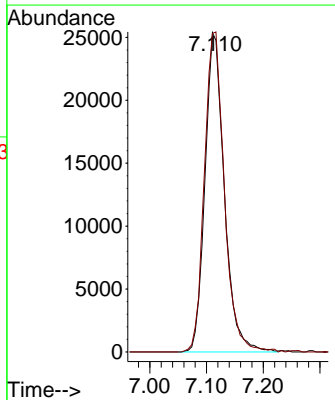
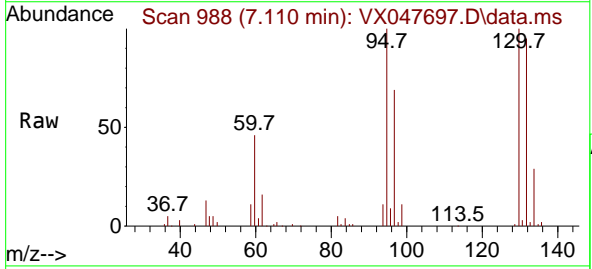
Ion	Ratio	Lower	Upper
117	100		
119	4.4	73.4	110.2#
121	0.0	23.8	35.6#

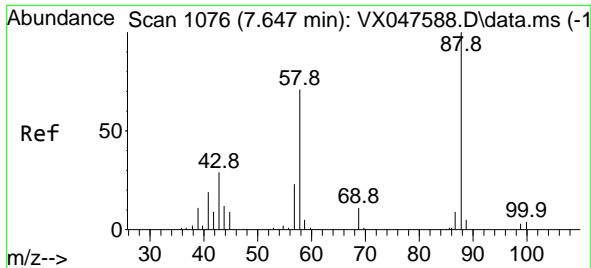


#44
 Trichloroethene
 Concen: 24.011 ug/l
 RT: 7.110 min Scan# 988
 Delta R.T. -0.000 min
 Lab File: VX047697.D
 Acq: 22 Sep 2025 12:44

Tgt Ion:130 Resp: 60076

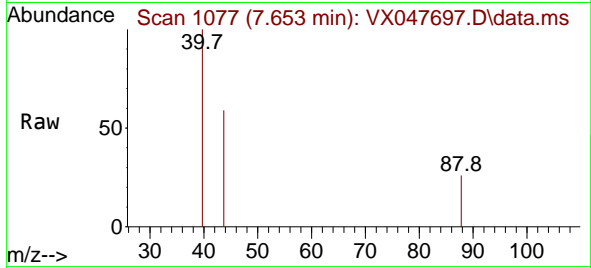
Ion	Ratio	Lower	Upper
130	100		
95	99.7	0.0	210.8



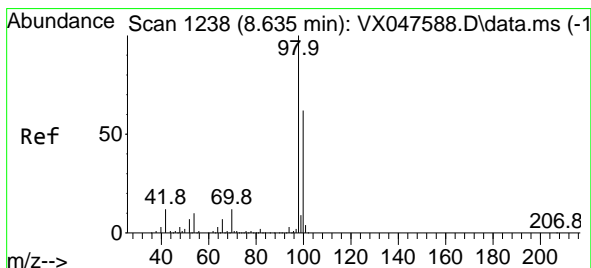
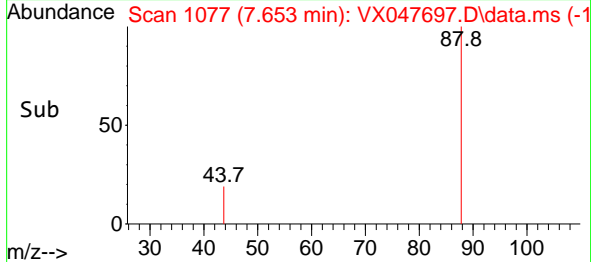
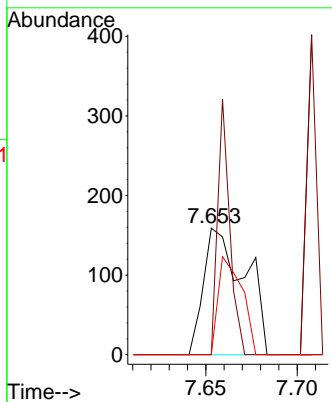


#49
 1,4-Dioxane
 Concen: 8.267 ug/l
 RT: 7.653 min Scan# 1077
 Delta R.T. 0.006 min
 Lab File: VX047697.D
 Acq: 22 Sep 2025 12:44

Instrument : MSVOA_X
 ClientSampleId : RE108D1-20250911

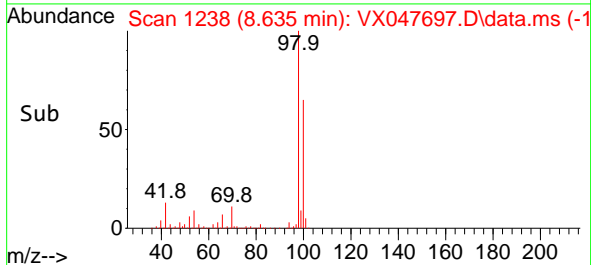
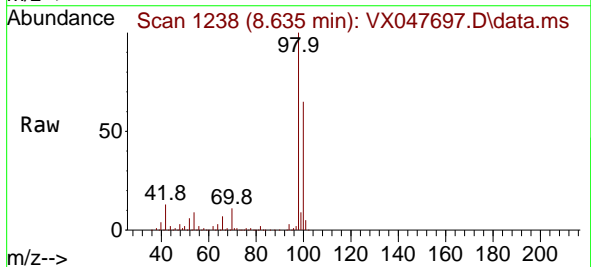
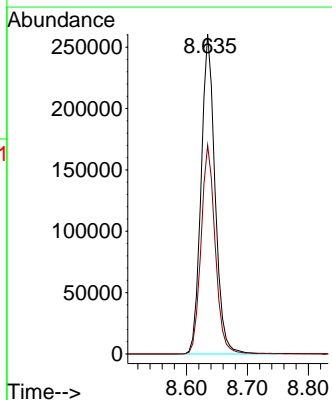


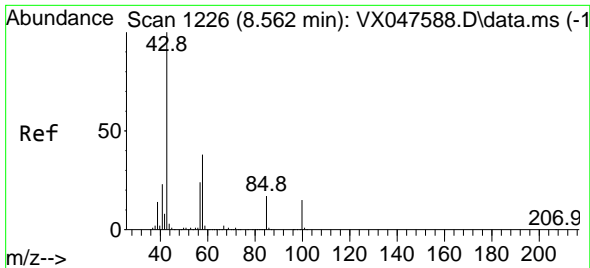
Tgt Ion: 88 Resp: 249
 Ion Ratio Lower Upper
 88 100
 43 59.0 30.2 45.2#
 58 44.6 59.5 89.3#



#50
 Toluene-d8
 Concen: 51.441 ug/l
 RT: 8.635 min Scan# 1238
 Delta R.T. -0.000 min
 Lab File: VX047697.D
 Acq: 22 Sep 2025 12:44

Tgt Ion: 98 Resp: 415067
 Ion Ratio Lower Upper
 98 100
 100 66.0 53.0 79.4

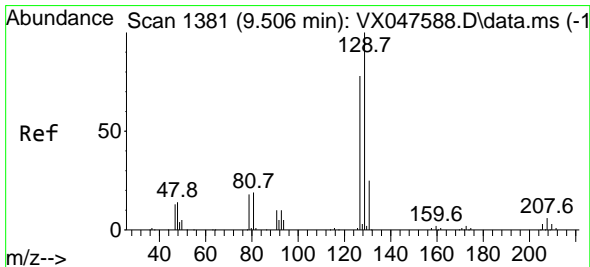
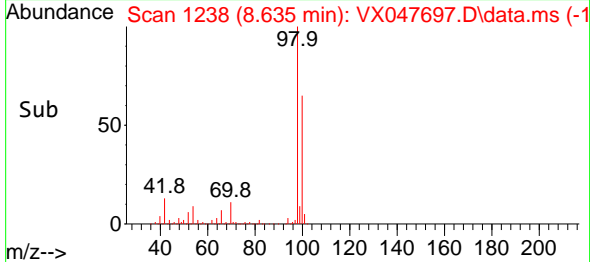
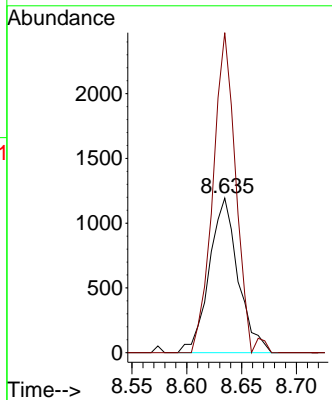
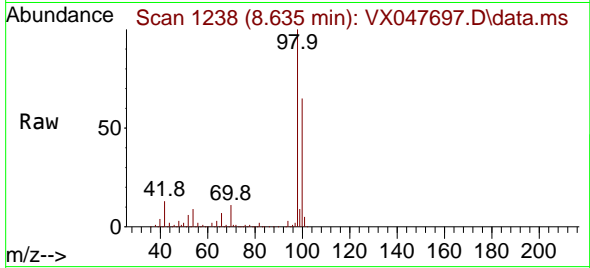




#51
 4-Methyl-2-Pentanone
 Concen: 0.659 ug/l
 RT: 8.635 min Scan# 11
 Delta R.T. 0.073 min
 Lab File: VX047697.D
 Acq: 22 Sep 2025 12:44

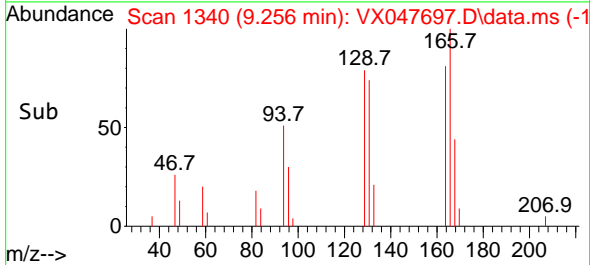
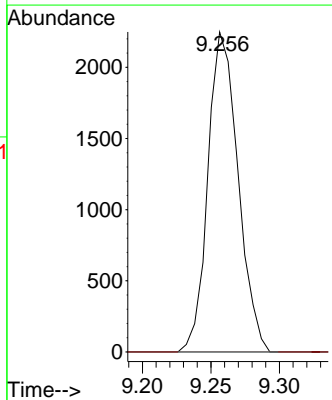
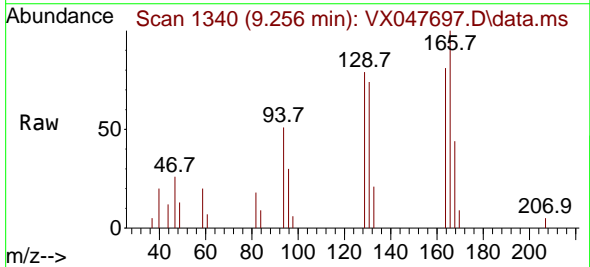
Instrument :
 MSVOA_X
 ClientSampleId :
 RE108D1-20250911

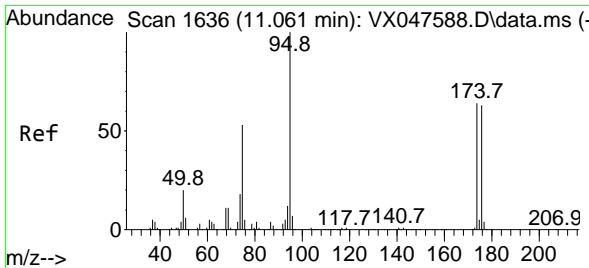
Tgt Ion: 43 Resp: 2185
 Ion Ratio Lower Upper
 43 100
 58 165.2 30.3 45.5#



#60
 Dibromochloromethane
 Concen: 1.214 ug/l
 RT: 9.256 min Scan# 1340
 Delta R.T. -0.250 min
 Lab File: VX047697.D
 Acq: 22 Sep 2025 12:44

Tgt Ion:129 Resp: 3438
 Ion Ratio Lower Upper
 129 100
 127 0.0 38.4 115.2#



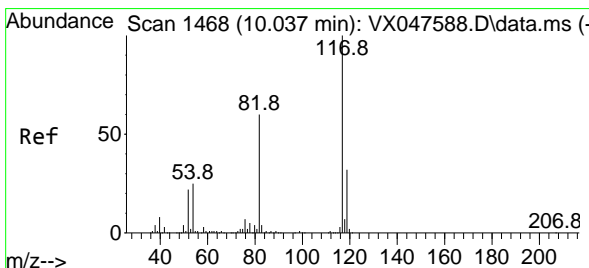
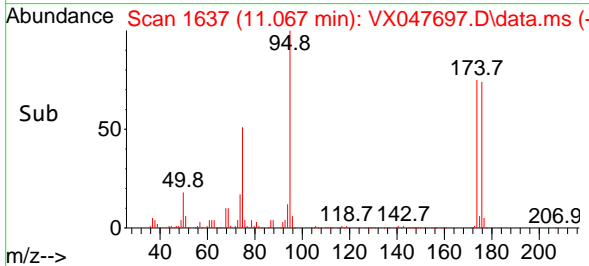
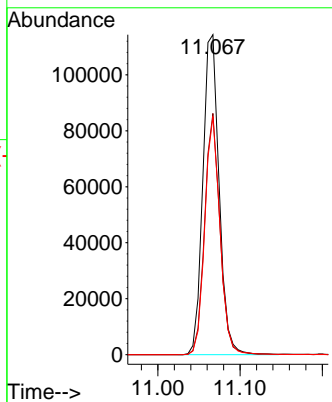
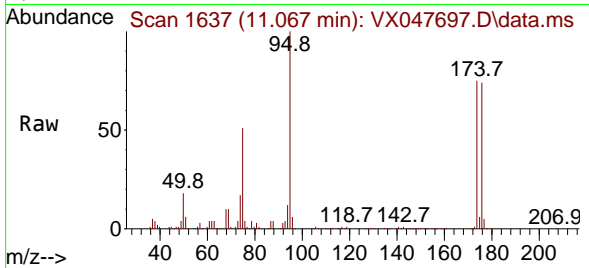


#62
 4-Bromofluorobenzene
 Concen: 51.387 ug/l
 RT: 11.067 min Scan# 11
 Delta R.T. 0.006 min
 Lab File: VX047697.D
 Acq: 22 Sep 2025 12:44

Instrument :
 MSVOA_X
 ClientSampleId :
 RE108D1-20250911

Tgt Ion: 95 Resp: 157359

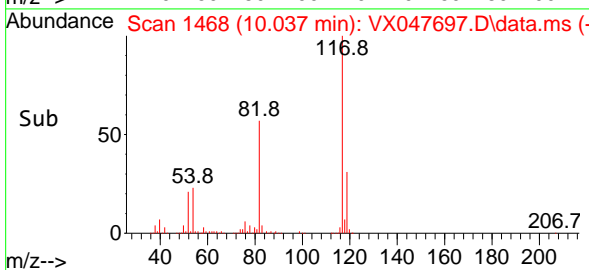
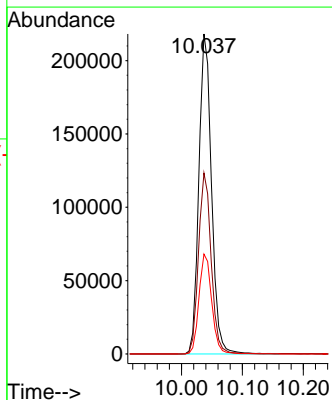
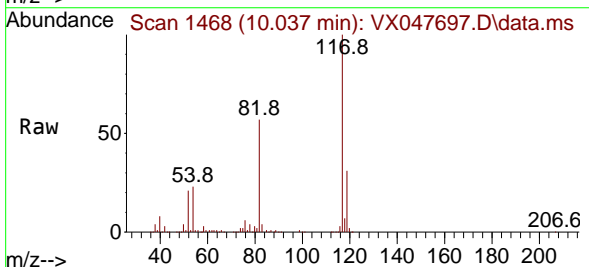
Ion	Ratio	Lower	Upper
95	100		
174	70.8	0.0	141.6
176	69.6	0.0	138.4

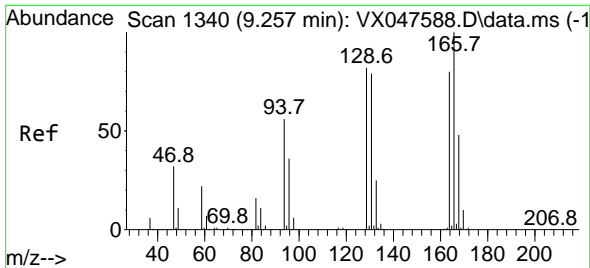


#63
 Chlorobenzene-d5
 Concen: 50.000 ug/l
 RT: 10.037 min Scan# 1468
 Delta R.T. -0.000 min
 Lab File: VX047697.D
 Acq: 22 Sep 2025 12:44

Tgt Ion: 117 Resp: 313912

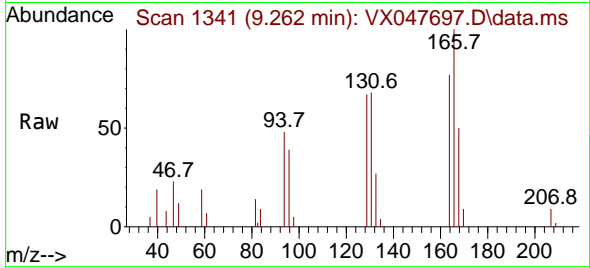
Ion	Ratio	Lower	Upper
117	100		
82	56.6	47.8	71.6
119	31.2	25.2	37.8



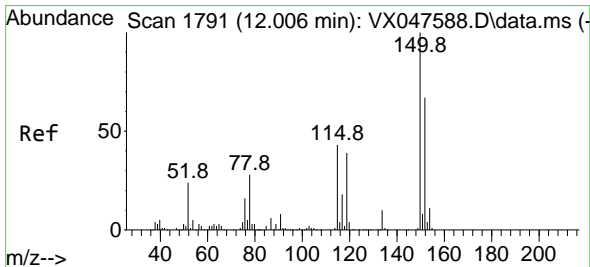
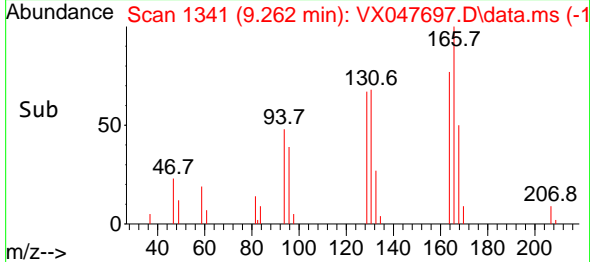
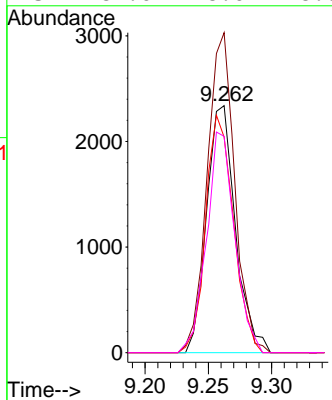


#64
 Tetrachloroethene
 Concen: 1.811 ug/l
 RT: 9.262 min Scan# 11
 Delta R.T. 0.006 min
 Lab File: VX047697.D
 Acq: 22 Sep 2025 12:44

Instrument :
 MSVOA_X
 ClientSampleId :
 RE108D1-20250911

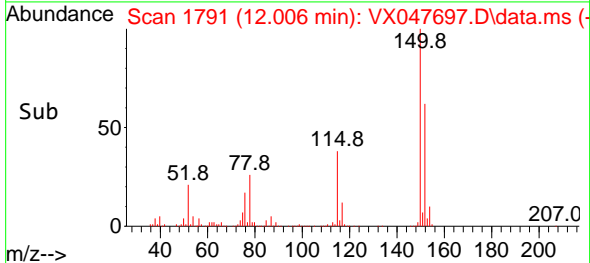
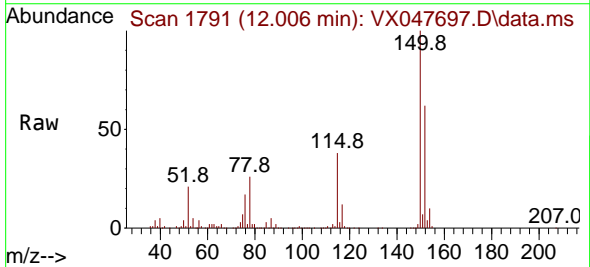
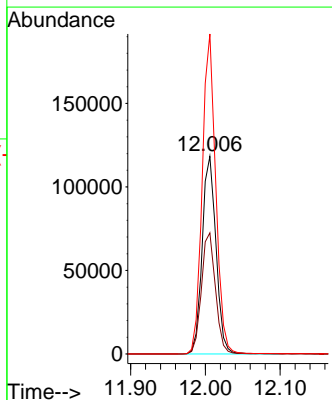


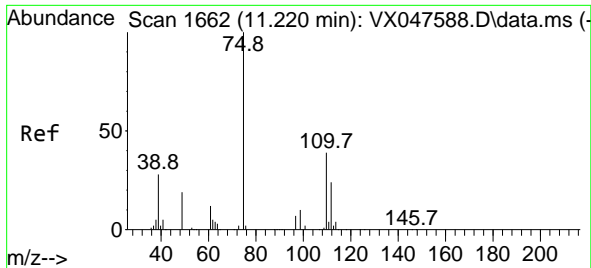
Tgt Ion:164 Resp: 3707
 Ion Ratio Lower Upper
 164 100
 166 129.5 100.2 150.2
 129 87.2 81.8 122.6
 131 87.6 78.6 118.0



#72
 1,4-Dichlorobenzene-d4
 Concen: 50.000 ug/l
 RT: 12.006 min Scan# 1791
 Delta R.T. -0.000 min
 Lab File: VX047697.D
 Acq: 22 Sep 2025 12:44

Tgt Ion:152 Resp: 152363
 Ion Ratio Lower Upper
 152 100
 115 62.2 44.9 134.5
 150 157.8 0.0 352.0

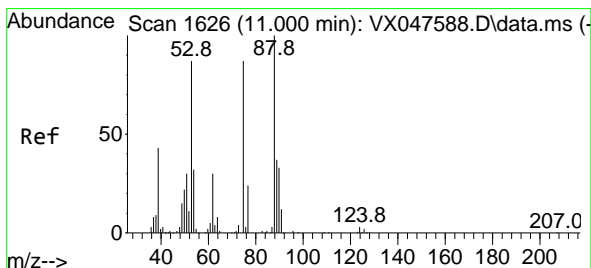
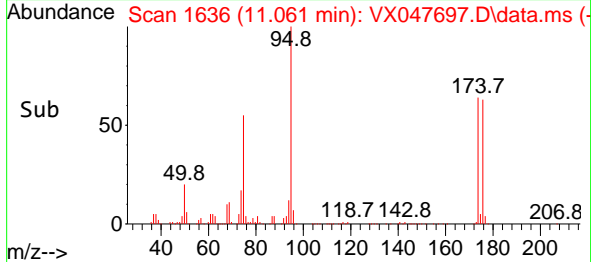
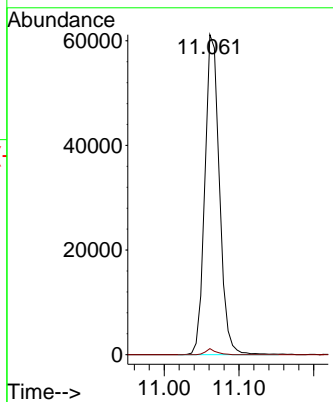
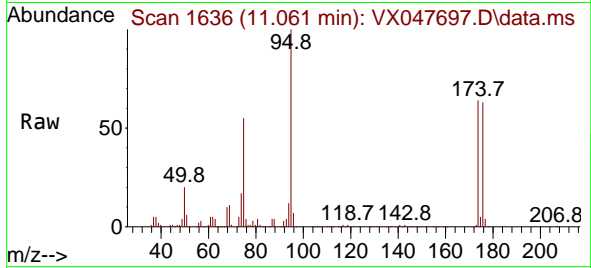




#76
 1,2,3-Trichloropropane
 Concen: 26.837 ug/l
 RT: 11.061 min Scan# 1636
 Delta R.T. -0.159 min
 Lab File: VX047697.D
 Acq: 22 Sep 2025 12:44

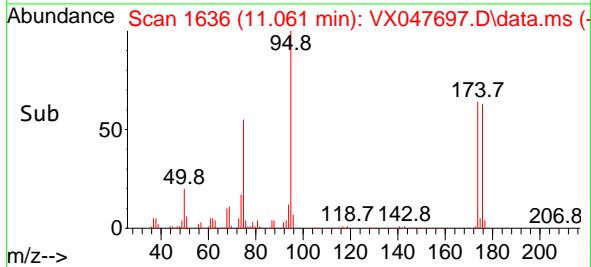
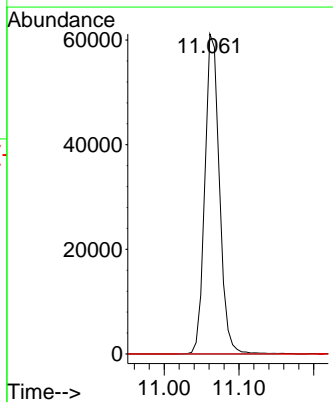
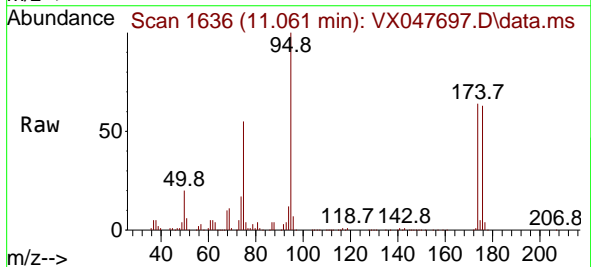
Instrument : MSVOA_X
 ClientSampleId : RE108D1-20250911

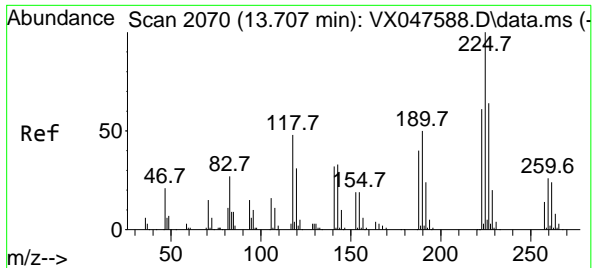
Tgt Ion: 75 Resp: 82789
 Ion Ratio Lower Upper
 75 100
 77 1.3 18.8 56.4#



#81
 trans-1,4-Dichloro-2-butene
 Concen: 68.438 ug/l
 RT: 11.061 min Scan# 1636
 Delta R.T. 0.061 min
 Lab File: VX047697.D
 Acq: 22 Sep 2025 12:44

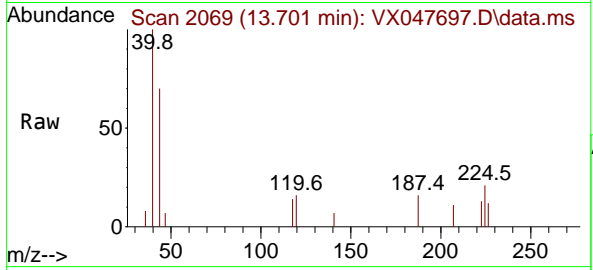
Tgt Ion: 75 Resp: 82789
 Ion Ratio Lower Upper
 75 100
 53 0.0 83.4 125.2#
 89 0.0 36.3 54.5#





#94
 Hexachlorobutadiene
 Concen: 0.210 ug/l
 RT: 13.701 min Scan# 2070
 Delta R.T. -0.006 min
 Lab File: VX047697.D
 Acq: 22 Sep 2025 12:44

Instrument : MSVOA_X
 ClientSampleId : RE108D1-20250911



Tgt Ion: 225 Resp: 234

Ion	Ratio	Lower	Upper
225	100		
223	45.3	31.7	95.1
227	39.7	32.0	96.0

