

Data Path : Z:\voasrv\HPCHEM1\MSVOA\_X\Data\VX092225\  
 Data File : VX047698.D  
 Acq On : 22 Sep 2025 13:05  
 Operator : JC/MD  
 Sample : Q3097-10RE  
 Misc : 5.0mL/MSVOA\_X/WATER  
 ALS Vial : 11 Sample Multiplier: 1

Instrument :  
 MSVOA\_X  
 ClientSampleId :  
 RE120D3-20250911

Quant Time: Sep 23 01:33:08 2025  
 Quant Method : Z:\voasrv\HPCHEM1\MSVOA\_X\Method\82X091625W.M  
 Quant Title : SW846 8260  
 QLast Update : Wed Sep 17 06:39:58 2025  
 Response via : Initial Calibration

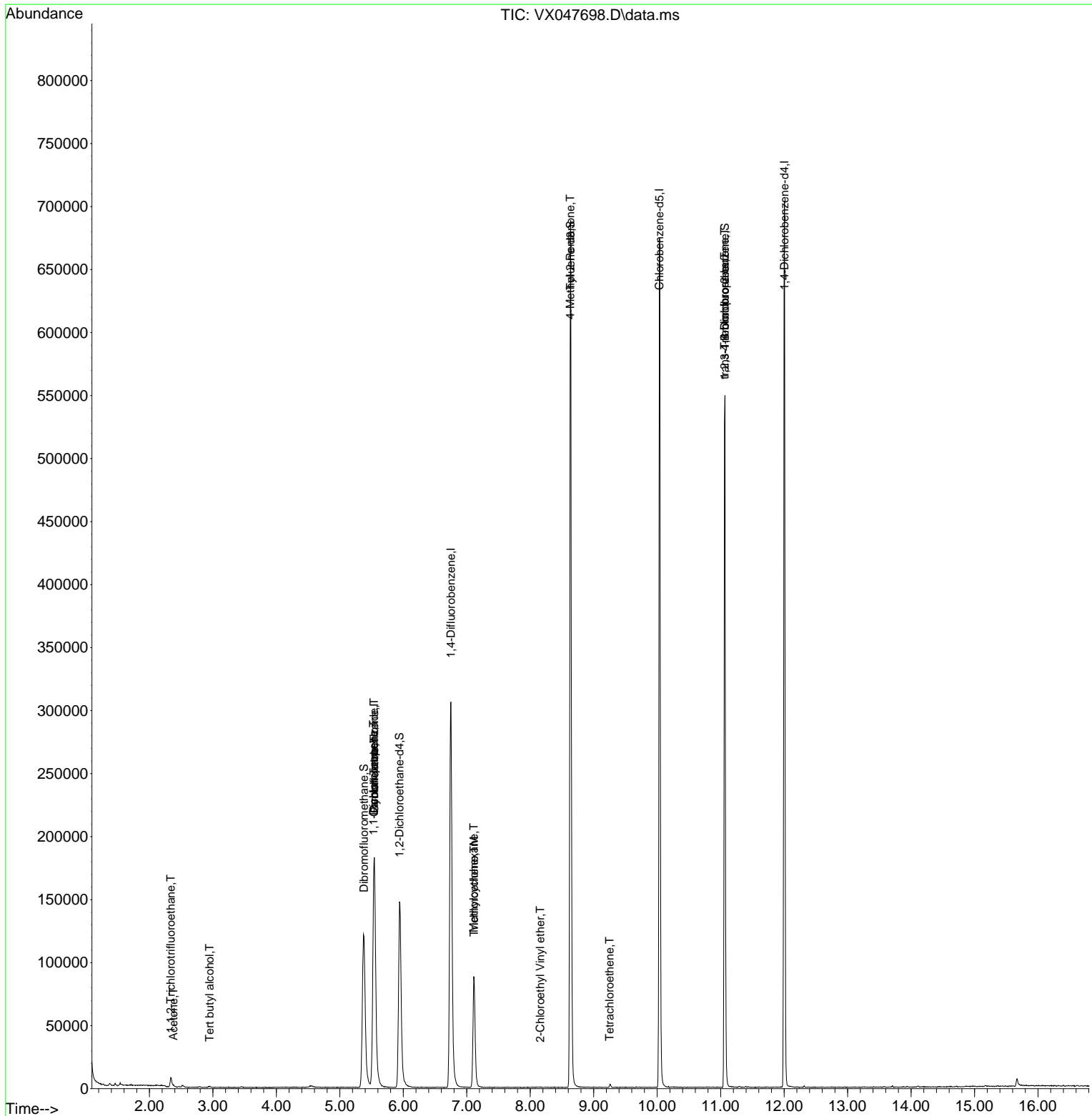
Compound	R.T.	QIon	Response	Conc	Units	Dev(Min)
-----						
Internal Standards						
1) Pentafluorobenzene	5.544	168	186167	50.000	ug/l	0.00
34) 1,4-Difluorobenzene	6.751	114	335374	50.000	ug/l	0.00
63) Chlorobenzene-d5	10.037	117	304338	50.000	ug/l	0.00
72) 1,4-Dichlorobenzene-d4	12.006	152	149631	50.000	ug/l	0.00
System Monitoring Compounds						
33) 1,2-Dichloroethane-d4	5.940	65	159085	53.685	ug/l	0.00
Spiked Amount	50.000	Range 78 - 117	Recovery	=	107.360%	
35) Dibromofluoromethane	5.379	113	121680	54.099	ug/l	0.00
Spiked Amount	50.000	Range 75 - 124	Recovery	=	108.200%	
50) Toluene-d8	8.635	98	417141	53.599	ug/l	0.00
Spiked Amount	50.000	Range 92 - 112	Recovery	=	107.200%	
62) 4-Bromofluorobenzene	11.067	95	159713	54.073	ug/l	0.00
Spiked Amount	50.000	Range 83 - 123	Recovery	=	108.140%	
Target Compounds						
						Qvalue
9) 1,1,2-Trichlorotrifluo...	2.337	101	3532	1.640	ug/l	97
11) Tert butyl alcohol	2.947	59	80	0.242	ug/l #	72
16) Acetone	2.380	43	2081	1.615	ug/l #	74
31) Cyclohexane	5.544	56	4005	1.023	ug/l #	1
36) 1,1-Dichloropropene	5.532	75	15857	4.825	ug/l #	50
38) Carbon Tetrachloride	5.538	117	19877	5.566	ug/l #	17
39) Methylcyclohexane	7.111	83	900	0.241	ug/l #	1
44) Trichloroethene	7.117	130	36442	15.100	ug/l	93
51) 4-Methyl-2-Pentanone	8.629	43	1904	0.595	ug/l #	1
58) 2-Chloroethyl Vinyl ether	8.159	63	222	8.018	ug/l #	47
64) Tetrachloroethene	9.250	164	541	0.273	ug/l #	50
76) 1,2,3-Trichloropropane	11.061	75	81528	26.911	ug/l #	39
81) trans-1,4-Dichloro-2-b...	11.061	75	81528	68.626	ug/l #	8
-----						

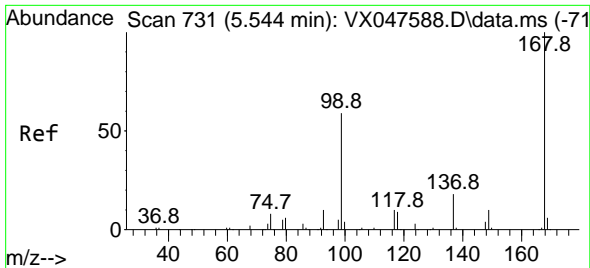
(#) = qualifier out of range (m) = manual integration (+) = signals summed

Data Path : Z:\voasrv\HPCHEM1\MSVOA\_X\Data\VX092225\  
 Data File : VX047698.D  
 Acq On : 22 Sep 2025 13:05  
 Operator : JC/MD  
 Sample : Q3097-10RE  
 Misc : 5.0mL/MSVOA\_X/WATER  
 ALS Vial : 11 Sample Multiplier: 1

Instrument :  
 MSVOA\_X  
 ClientSampleId :  
 RE120D3-20250911

Quant Time: Sep 23 01:33:08 2025  
 Quant Method : Z:\voasrv\HPCHEM1\MSVOA\_X\Method\82X091625W.M  
 Quant Title : SW846 8260  
 QLast Update : Wed Sep 17 06:39:58 2025  
 Response via : Initial Calibration

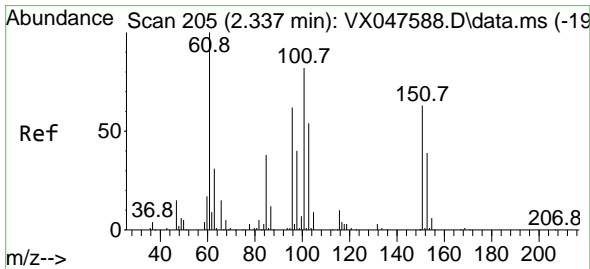
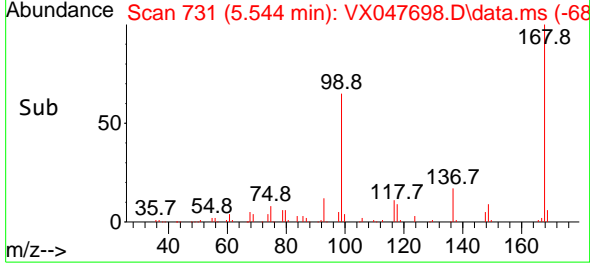
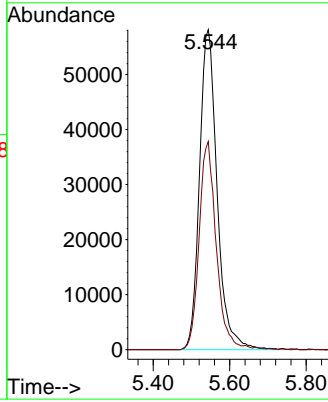
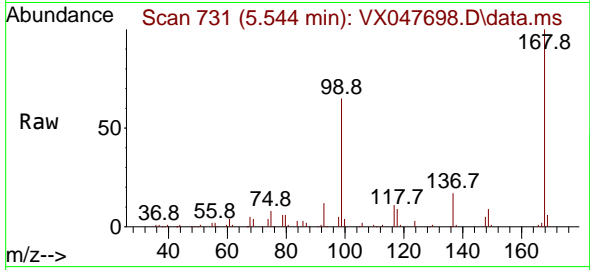




#1  
 Pentafluorobenzene  
 Concen: 50.000 ug/l  
 RT: 5.544 min Scan# 71  
 Delta R.T. -0.000 min  
 Lab File: VX047698.D  
 Acq: 22 Sep 2025 13:05

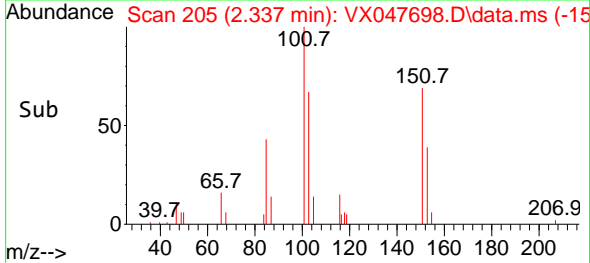
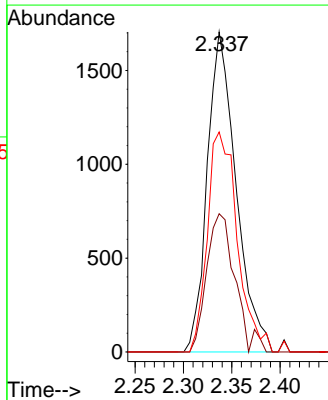
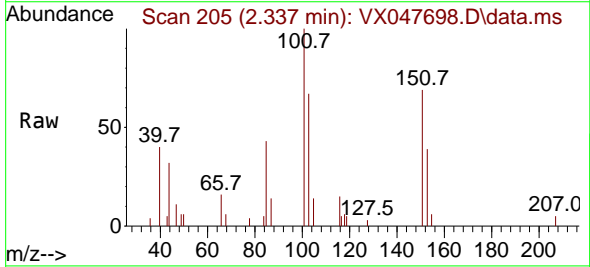
Instrument : MSVOA\_X  
 ClientSampleId : RE120D3-20250911

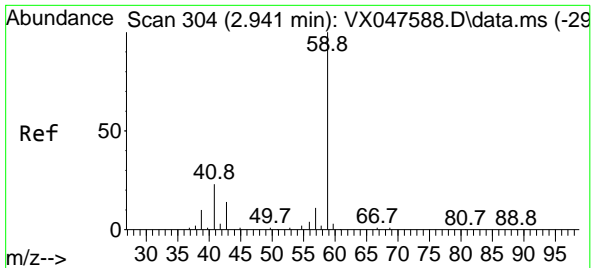
Tgt Ion:168 Resp: 186167  
 Ion Ratio Lower Upper  
 168 100  
 99 65.1 48.8 73.2



#9  
 1,1,2-Trichlorotrifluoroethane  
 Concen: 1.640 ug/l  
 RT: 2.337 min Scan# 205  
 Delta R.T. -0.000 min  
 Lab File: VX047698.D  
 Acq: 22 Sep 2025 13:05

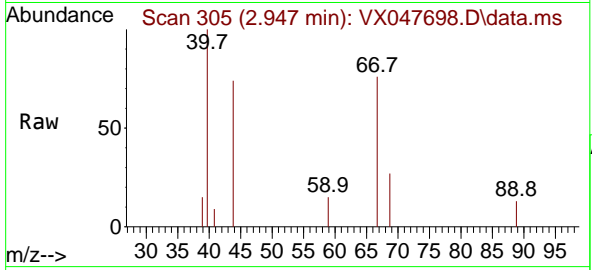
Tgt Ion:101 Resp: 3532  
 Ion Ratio Lower Upper  
 101 100  
 85 42.5 35.5 53.3  
 151 71.3 59.4 89.0



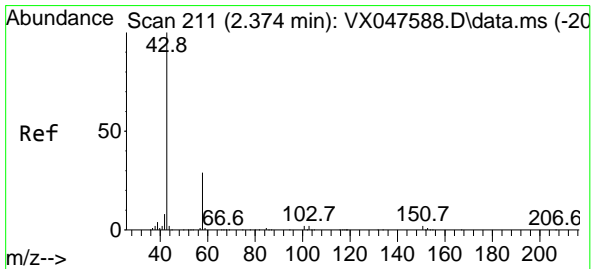
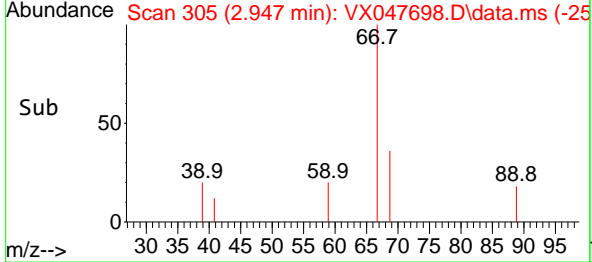
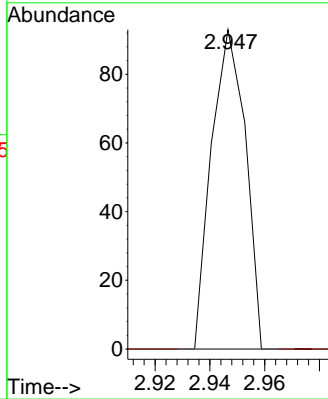


#11  
 Tert butyl alcohol  
 Concen: 0.242 ug/l  
 RT: 2.947 min Scan# 30  
 Delta R.T. 0.006 min  
 Lab File: VX047698.D  
 Acq: 22 Sep 2025 13:05

Instrument : MSVOA\_X  
 ClientSampleId : RE120D3-20250911

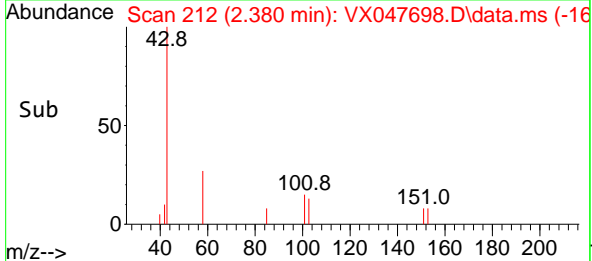
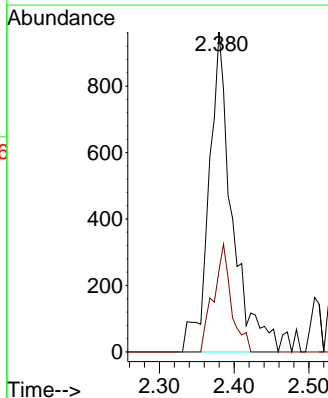
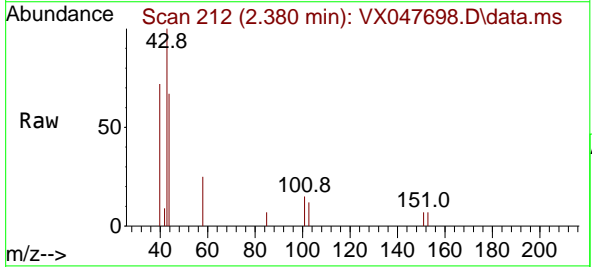


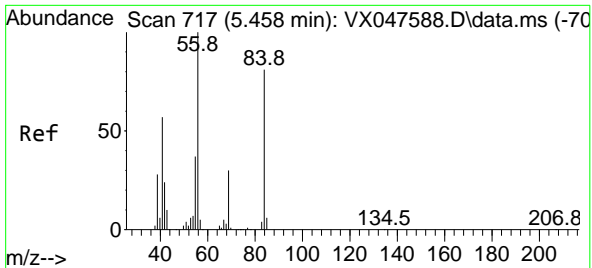
Tgt Ion: 59 Resp: 80  
 Ion Ratio Lower Upper  
 59 100  
 57 0.0 8.3 12.5#



#16  
 Acetone  
 Concen: 1.615 ug/l  
 RT: 2.380 min Scan# 212  
 Delta R.T. 0.006 min  
 Lab File: VX047698.D  
 Acq: 22 Sep 2025 13:05

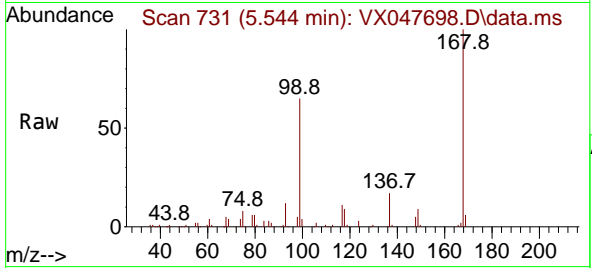
Tgt Ion: 43 Resp: 2081  
 Ion Ratio Lower Upper  
 43 100  
 58 15.2 23.4 35.0#





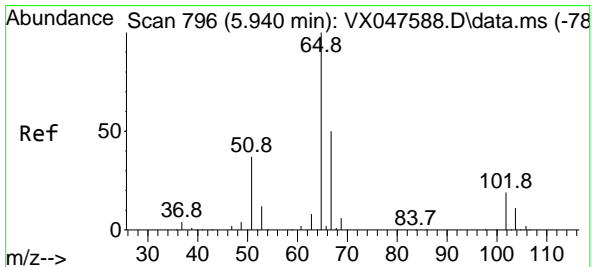
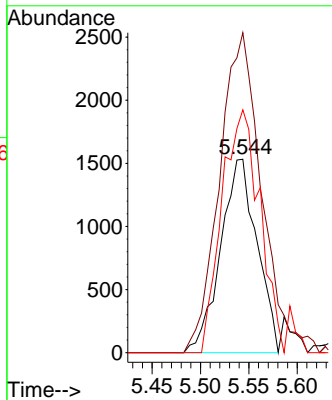
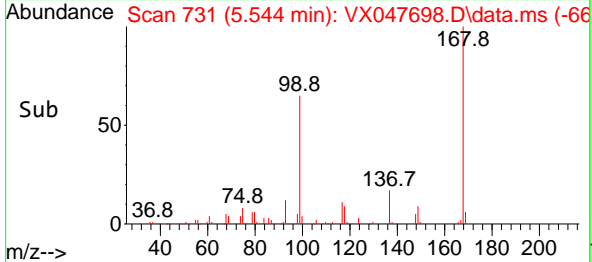
#31  
 Cyclohexane  
 Concen: 1.023 ug/l  
 RT: 5.544 min Scan# 717  
 Delta R.T. 0.085 min  
 Lab File: VX047698.D  
 Acq: 22 Sep 2025 13:05

Instrument : MSVOA\_X  
 ClientSampleId : RE120D3-20250911

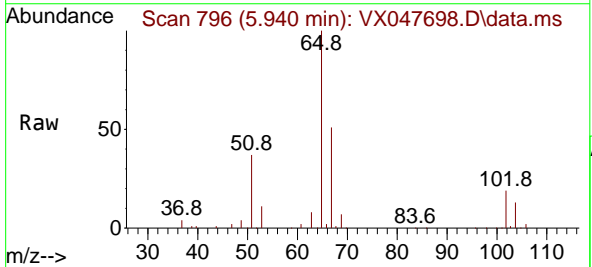


Tgt Ion: 56 Resp: 4005

Ion	Ratio	Lower	Upper
56	100		
69	165.5	23.8	35.8#
84	125.6	64.6	97.0#

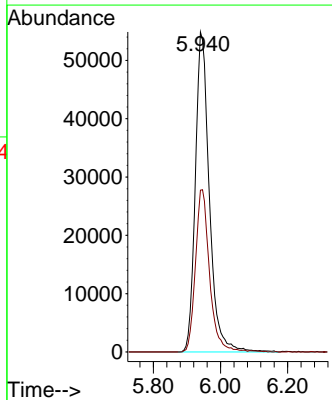
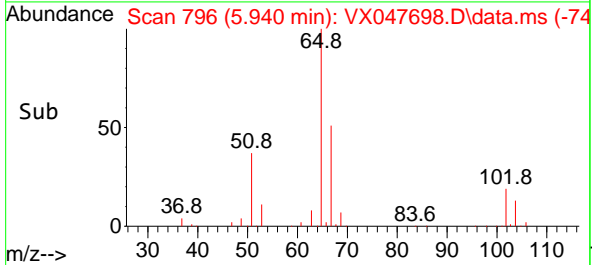


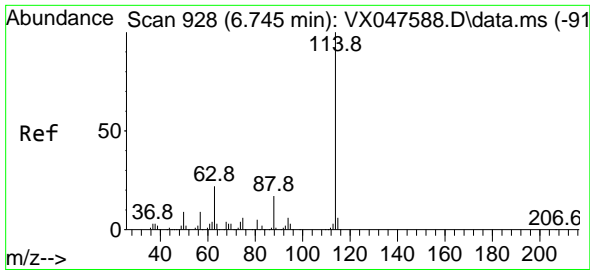
#33  
 1,2-Dichloroethane-d4  
 Concen: 53.685 ug/l  
 RT: 5.940 min Scan# 796  
 Delta R.T. -0.000 min  
 Lab File: VX047698.D  
 Acq: 22 Sep 2025 13:05



Tgt Ion: 65 Resp: 159085

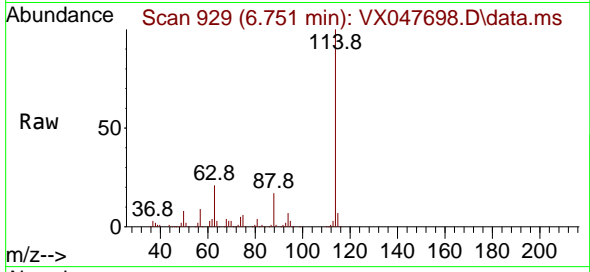
Ion	Ratio	Lower	Upper
65	100		
67	51.0	0.0	103.0



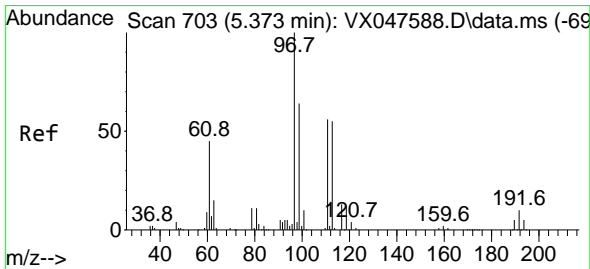
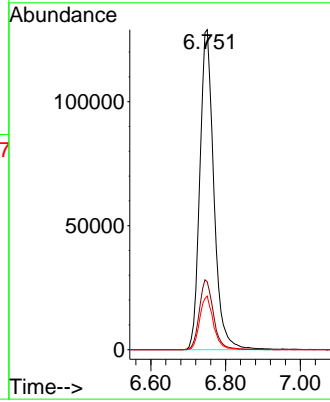


#34  
 1,4-Difluorobenzene  
 Concen: 50.000 ug/l  
 RT: 6.751 min Scan# 91  
 Delta R.T. 0.006 min  
 Lab File: VX047698.D  
 Acq: 22 Sep 2025 13:05

Instrument :  
 MSVOA\_X  
 ClientSampleId :  
 RE120D3-20250911

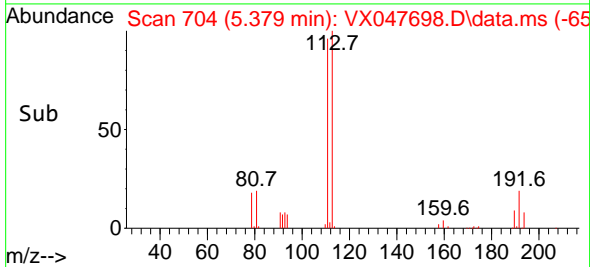
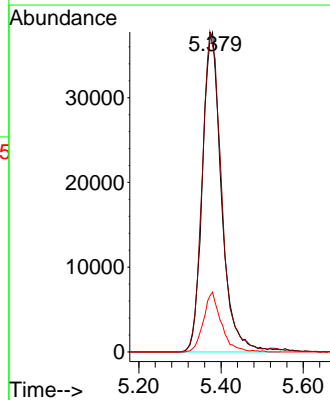
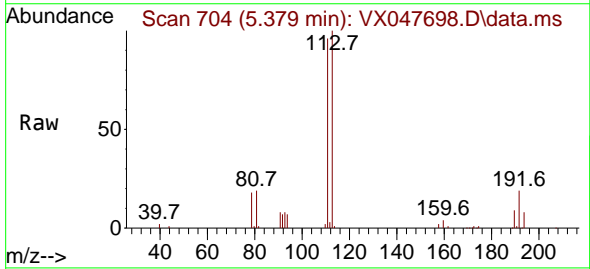


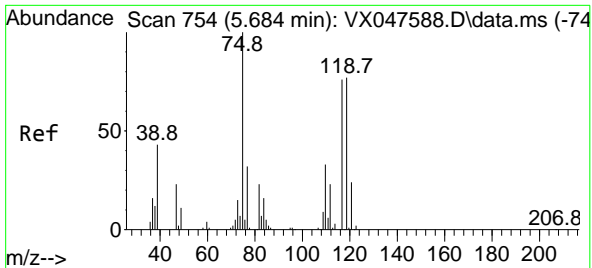
Tgt Ion:114 Resp: 335374  
 Ion Ratio Lower Upper  
 114 100  
 63 21.2 0.0 44.0  
 88 16.7 0.0 34.2



#35  
 Dibromofluoromethane  
 Concen: 54.099 ug/l  
 RT: 5.379 min Scan# 704  
 Delta R.T. 0.006 min  
 Lab File: VX047698.D  
 Acq: 22 Sep 2025 13:05

Tgt Ion:113 Resp: 121680  
 Ion Ratio Lower Upper  
 113 100  
 111 101.5 80.9 121.3  
 192 17.3 14.2 21.4

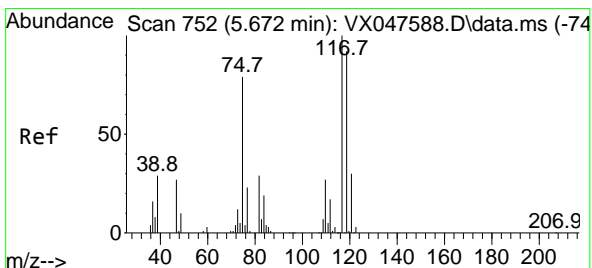
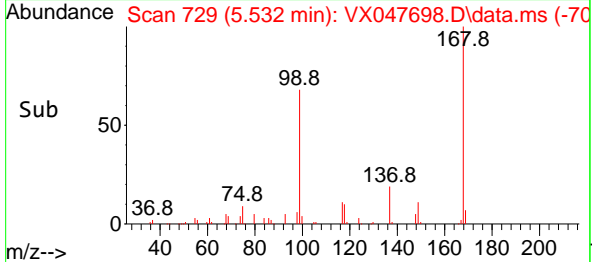
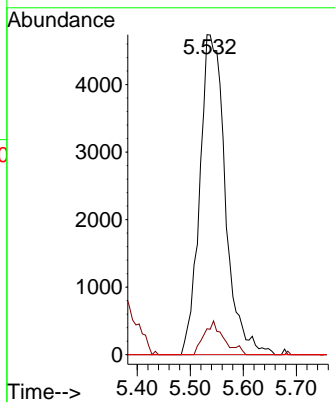
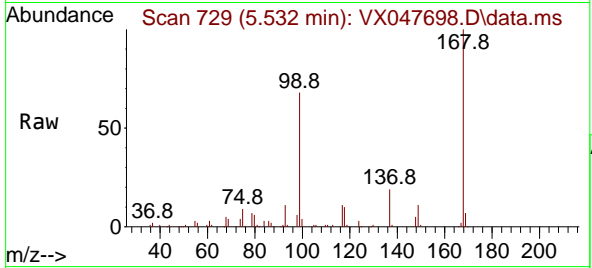




#36  
 1,1-Dichloropropene  
 Concen: 4.825 ug/l  
 RT: 5.532 min Scan# 710  
 Delta R.T. -0.152 min  
 Lab File: VX047698.D  
 Acq: 22 Sep 2025 13:05

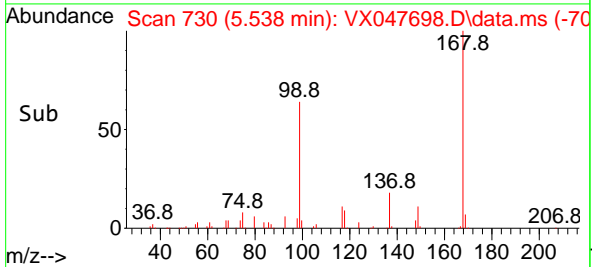
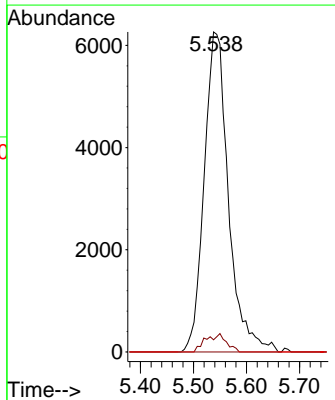
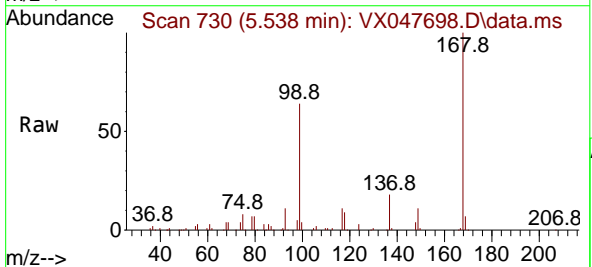
Instrument : MSVOA\_X  
 ClientSampleId : RE120D3-20250911

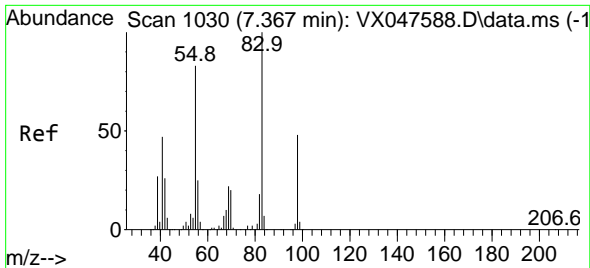
Tgt Ion	Resp	Lower	Upper
75	15857		
75	100		
110	8.1	16.7	50.1#
77	0.0	24.3	36.5#



#38  
 Carbon Tetrachloride  
 Concen: 5.566 ug/l  
 RT: 5.538 min Scan# 730  
 Delta R.T. -0.134 min  
 Lab File: VX047698.D  
 Acq: 22 Sep 2025 13:05

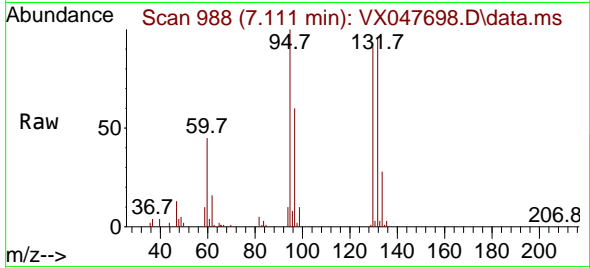
Tgt Ion	Resp	Lower	Upper
117	19877		
117	100		
119	3.8	73.4	110.2#
121	0.0	23.8	35.6#



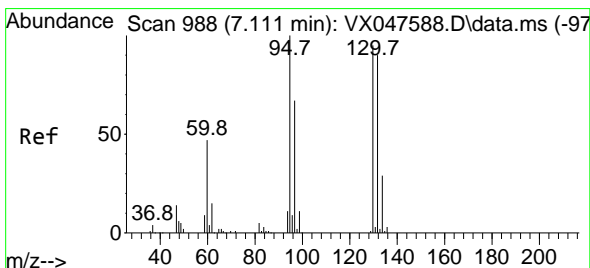
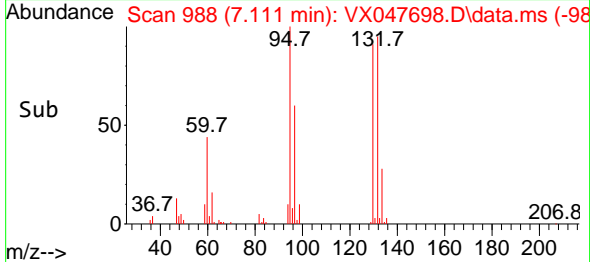
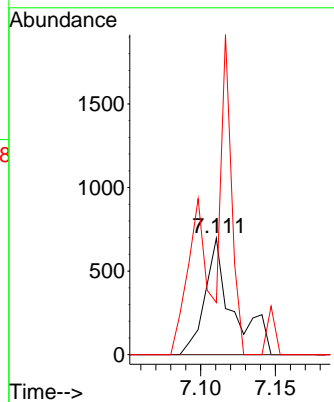


#39  
 Methylcyclohexane  
 Concen: 0.241 ug/l  
 RT: 7.111 min Scan# 91  
 Delta R.T. -0.256 min  
 Lab File: VX047698.D  
 Acq: 22 Sep 2025 13:05

Instrument :  
 MSVOA\_X  
 ClientSampleId :  
 RE120D3-20250911

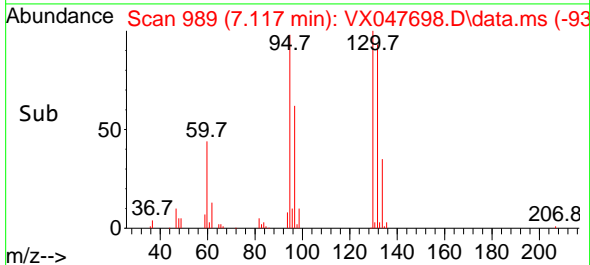
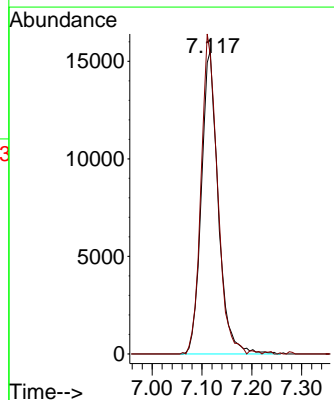
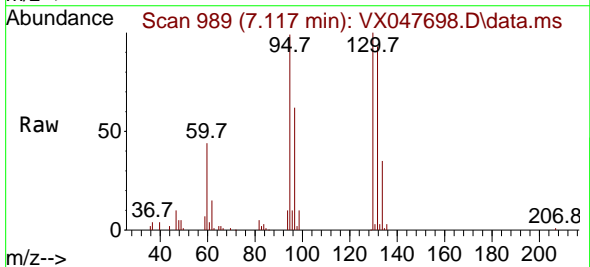


Tgt Ion: 83 Resp: 900  
 Ion Ratio Lower Upper  
 83 100  
 55 0.0 66.4 99.6#  
 98 291.0 38.1 57.1#

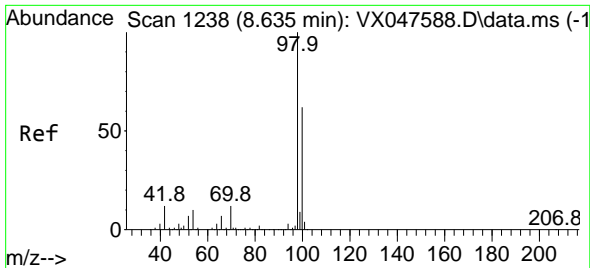


#44  
 Trichloroethene  
 Concen: 15.100 ug/l  
 RT: 7.117 min Scan# 989  
 Delta R.T. 0.006 min  
 Lab File: VX047698.D  
 Acq: 22 Sep 2025 13:05

Tgt Ion:130 Resp: 36442  
 Ion Ratio Lower Upper  
 130 100  
 95 98.5 0.0 210.8

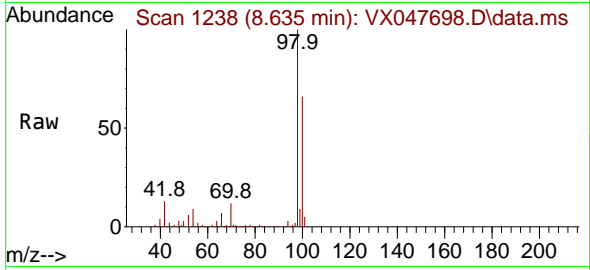




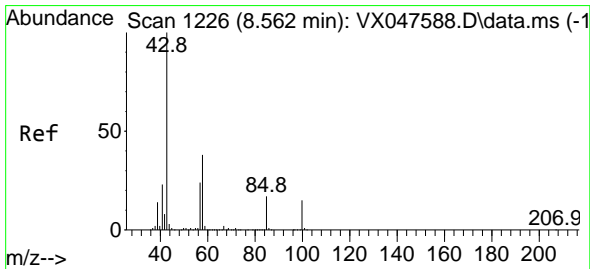
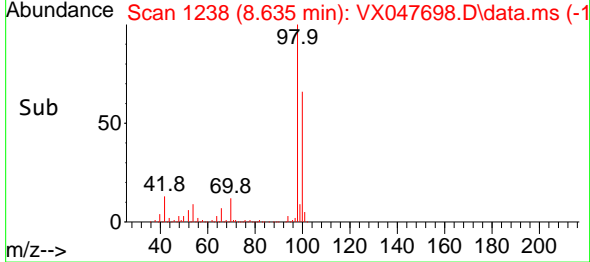
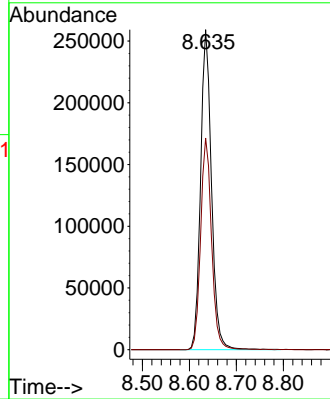


#50  
 Toluene-d8  
 Concen: 53.599 ug/l  
 RT: 8.635 min Scan# 11  
 Delta R.T. -0.000 min  
 Lab File: VX047698.D  
 Acq: 22 Sep 2025 13:05

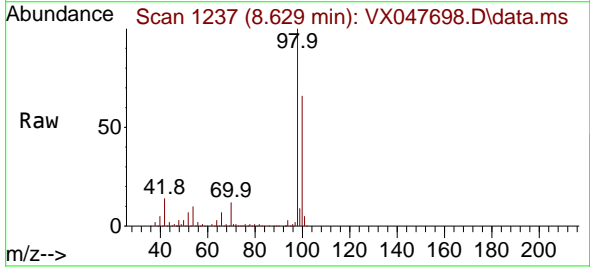
Instrument :  
 MSVOA\_X  
 ClientSampleId :  
 RE120D3-20250911



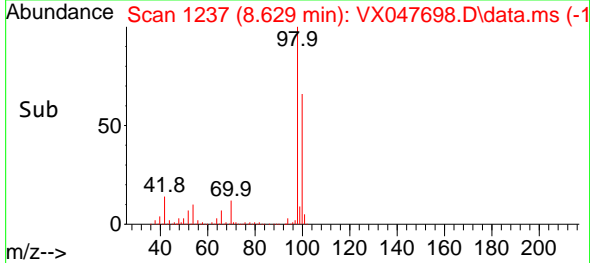
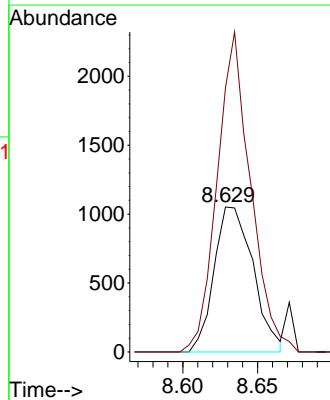
Tgt Ion: 98 Resp: 417141  
 Ion Ratio Lower Upper  
 98 100  
 100 66.7 53.0 79.4

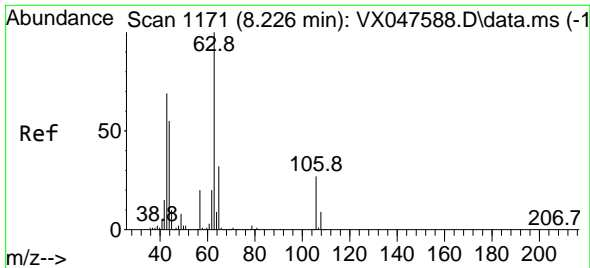


#51  
 4-Methyl-2-Pentanone  
 Concen: 0.595 ug/l  
 RT: 8.629 min Scan# 1237  
 Delta R.T. 0.067 min  
 Lab File: VX047698.D  
 Acq: 22 Sep 2025 13:05



Tgt Ion: 43 Resp: 1904  
 Ion Ratio Lower Upper  
 43 100  
 58 189.7 30.3 45.5#

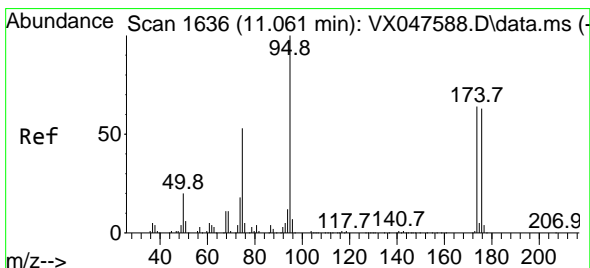
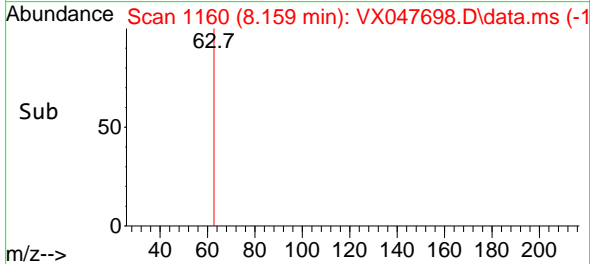
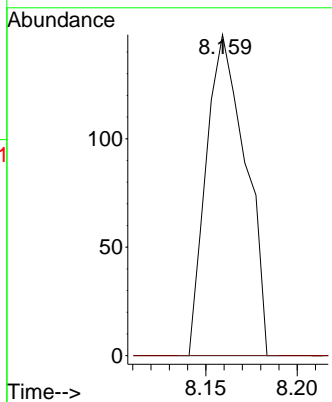
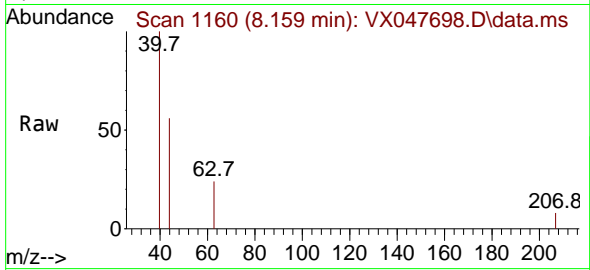




#58  
 2-Chloroethyl Vinyl ether  
 Concen: 8.018 ug/l  
 RT: 8.159 min Scan# 1160  
 Delta R.T. -0.067 min  
 Lab File: VX047698.D  
 Acq: 22 Sep 2025 13:05

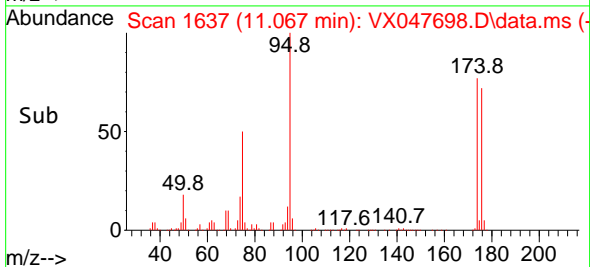
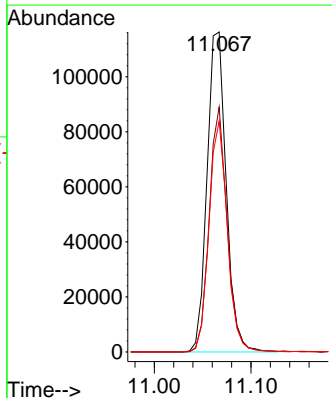
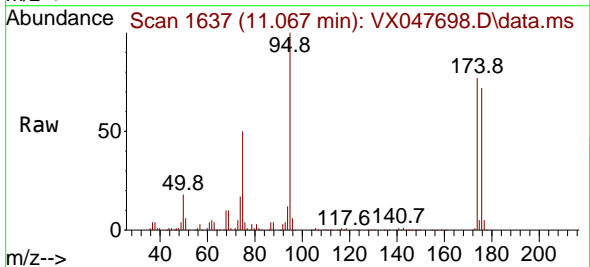
Instrument : MSVOA\_X  
 ClientSampleId : RE120D3-20250911

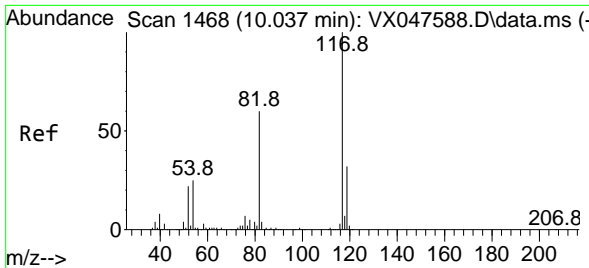
Tgt Ion: 63 Resp: 222  
 Ion Ratio Lower Upper  
 63 100  
 106 0.0 21.9 32.9#



#62  
 4-Bromofluorobenzene  
 Concen: 54.073 ug/l  
 RT: 11.067 min Scan# 1637  
 Delta R.T. 0.006 min  
 Lab File: VX047698.D  
 Acq: 22 Sep 2025 13:05

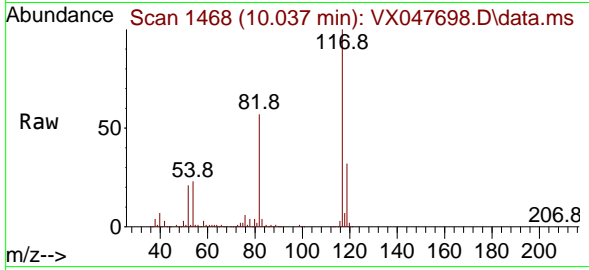
Tgt Ion: 95 Resp: 159713  
 Ion Ratio Lower Upper  
 95 100  
 174 71.9 0.0 141.6  
 176 69.1 0.0 138.4





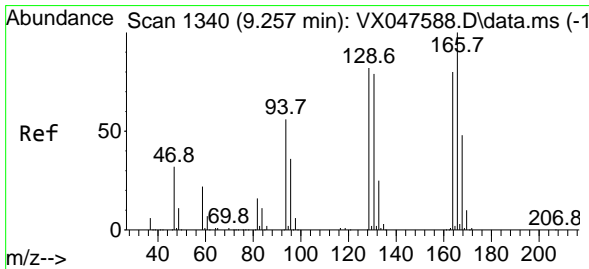
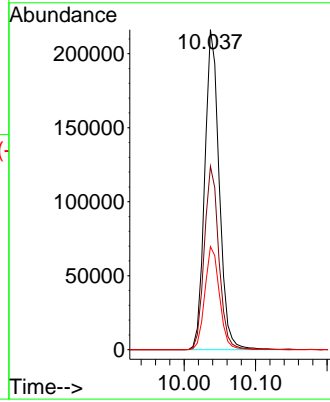
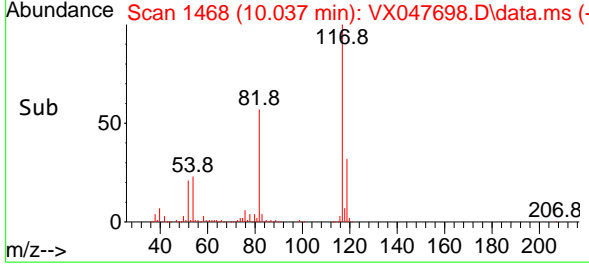
#63  
 Chlorobenzene-d5  
 Concen: 50.000 ug/l  
 RT: 10.037 min Scan# 1468  
 Delta R.T. -0.000 min  
 Lab File: VX047698.D  
 Acq: 22 Sep 2025 13:05

Instrument : MSVOA\_X  
 ClientSampleId : RE120D3-20250911

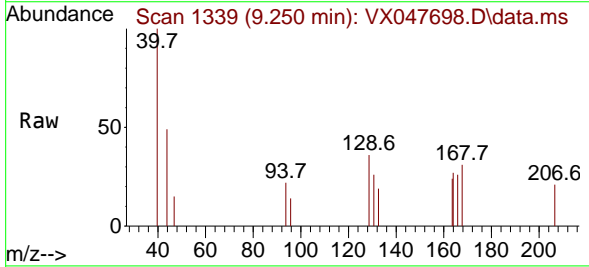


Tgt Ion:117 Resp: 304338

Ion	Ratio	Lower	Upper
117	100		
82	57.3	47.8	71.6
119	32.2	25.2	37.8

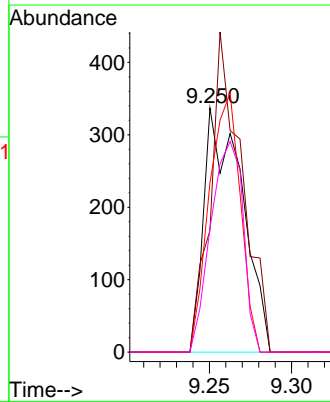
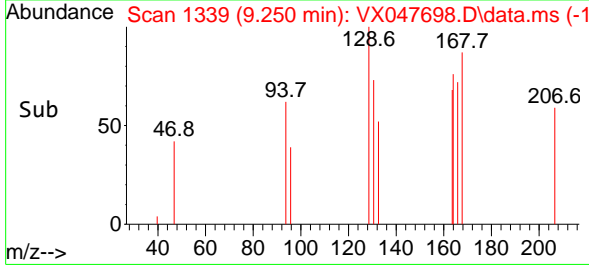


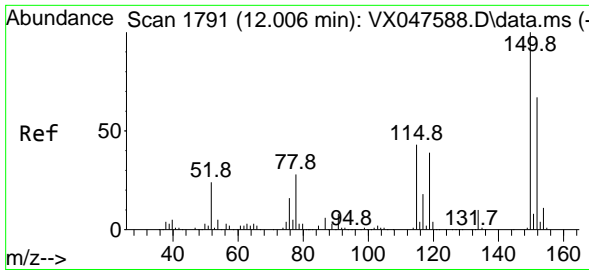
#64  
 Tetrachloroethene  
 Concen: 0.273 ug/l  
 RT: 9.250 min Scan# 1339  
 Delta R.T. -0.006 min  
 Lab File: VX047698.D  
 Acq: 22 Sep 2025 13:05



Tgt Ion:164 Resp: 541

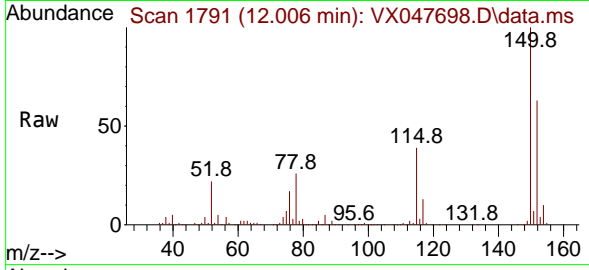
Ion	Ratio	Lower	Upper
164	100		
166	49.9	100.2	150.2#
129	69.4	81.8	122.6#
131	50.7	78.6	118.0#



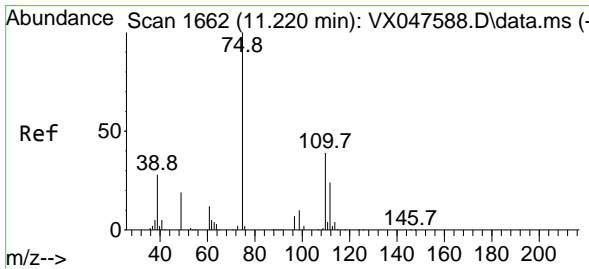
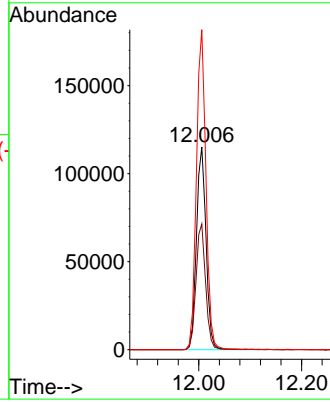
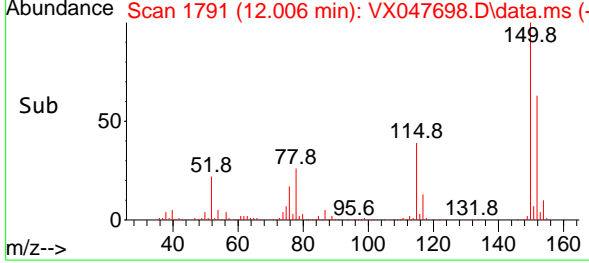


#72  
 1,4-Dichlorobenzene-d4  
 Concen: 50.000 ug/l  
 RT: 12.006 min Scan# 11  
 Delta R.T. -0.000 min  
 Lab File: VX047698.D  
 Acq: 22 Sep 2025 13:05

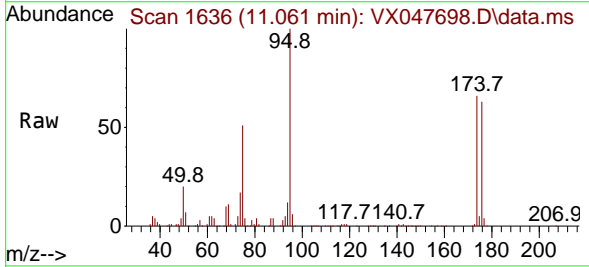
Instrument :  
 MSVOA\_X  
 ClientSampleId :  
 RE120D3-20250911



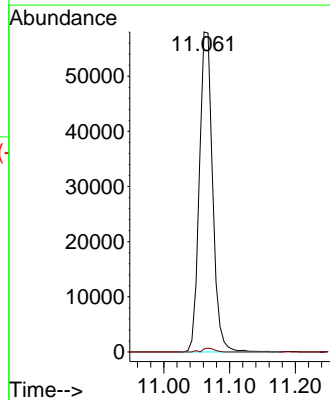
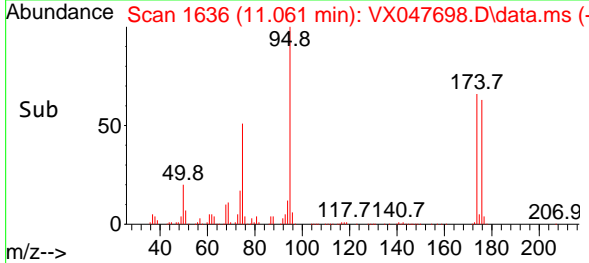
Tgt Ion:152 Resp: 149631  
 Ion Ratio Lower Upper  
 152 100  
 115 62.3 44.9 134.5  
 150 156.4 0.0 352.0

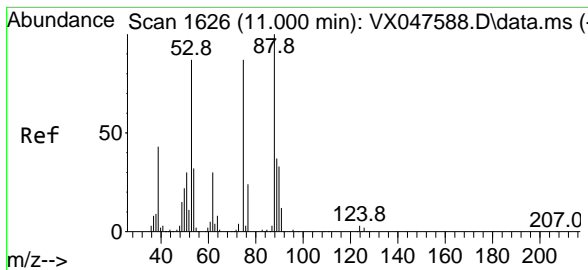


#76  
 1,2,3-Trichloropropane  
 Concen: 26.911 ug/l  
 RT: 11.061 min Scan# 1636  
 Delta R.T. -0.159 min  
 Lab File: VX047698.D  
 Acq: 22 Sep 2025 13:05



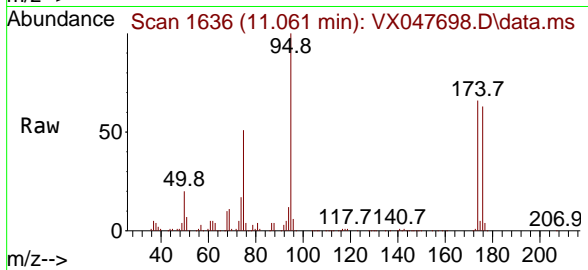
Tgt Ion: 75 Resp: 81528  
 Ion Ratio Lower Upper  
 75 100  
 77 1.1 18.8 56.4#





#81  
 trans-1,4-Dichloro-2-butene  
 Concen: 68.626 ug/l  
 RT: 11.061 min Scan# 1  
 Delta R.T. 0.061 min  
 Lab File: VX047698.D  
 Acq: 22 Sep 2025 13:05

Instrument :  
 MSVOA\_X  
 ClientSampleId :  
 RE120D3-20250911



Tgt Ion: 75 Resp: 81528  
 Ion Ratio Lower Upper  
 75 100  
 53 0.0 83.4 125.2#  
 89 0.0 36.3 54.5#

