

Data Path : Z:\voasrv\HPCHEM1\MSVOA\_X\Data\VX092225\  
 Data File : VX047700.D  
 Acq On : 22 Sep 2025 13:46  
 Operator : JC/MD  
 Sample : PB169755TB  
 Misc : 5.0mL/MSVOA\_X/WATER  
 ALS Vial : 13 Sample Multiplier: 1

Instrument :  
 MSVOA\_X  
 ClientSampleId :  
 PB169755TB

Quant Time: Sep 23 01:33:58 2025  
 Quant Method : Z:\voasrv\HPCHEM1\MSVOA\_X\Method\82X091625W.M  
 Quant Title : SW846 8260  
 QLast Update : Wed Sep 17 06:39:58 2025  
 Response via : Initial Calibration

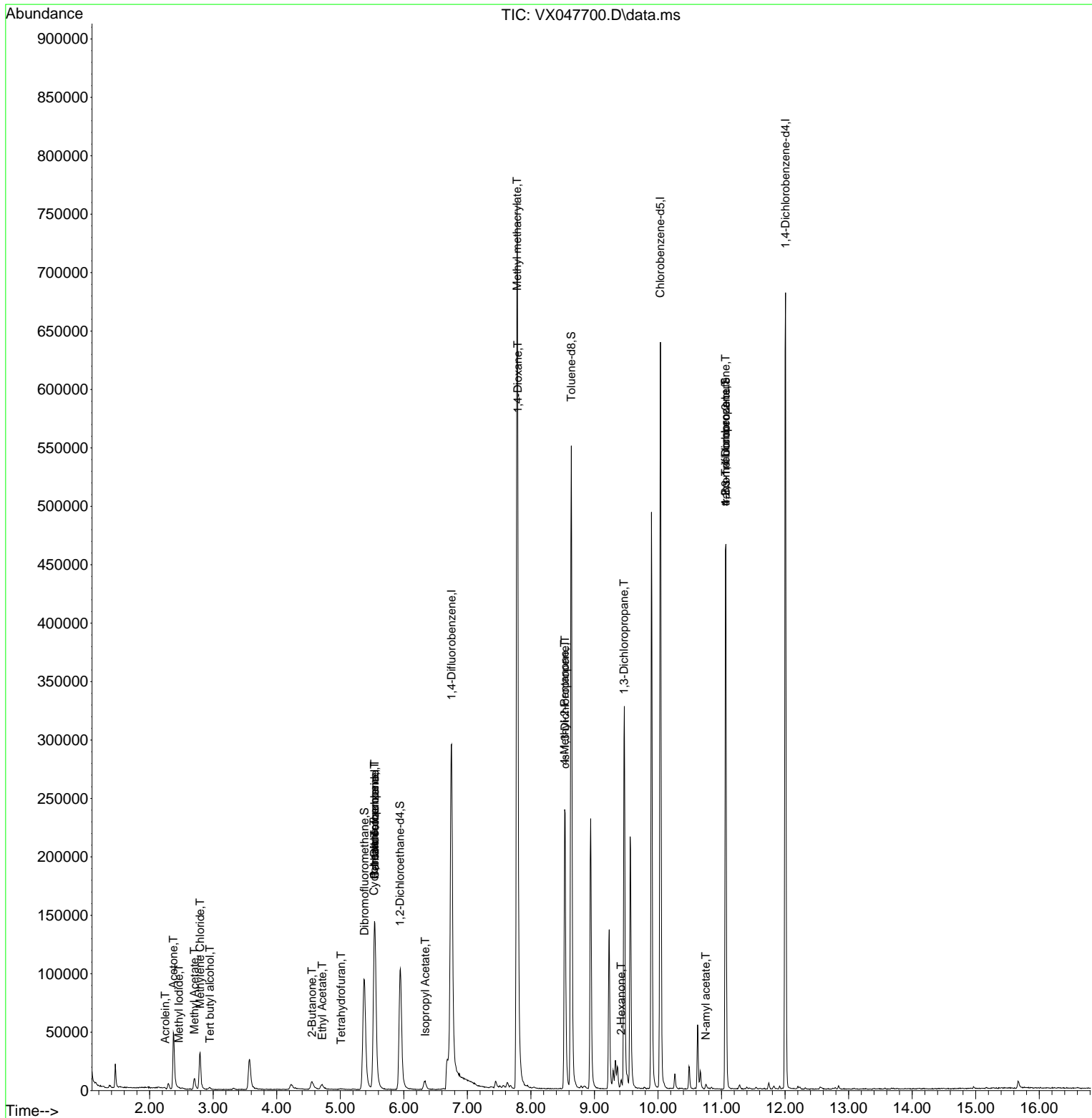
Compound	R.T.	QIon	Response	Conc	Units	Dev(Min)
Internal Standards						
1) Pentafluorobenzene	5.544	168	146155	50.000	ug/l	0.00
34) 1,4-Difluorobenzene	6.751	114	299797	50.000	ug/l	0.00
63) Chlorobenzene-d5	10.037	117	289183	50.000	ug/l	0.00
72) 1,4-Dichlorobenzene-d4	12.006	152	140425	50.000	ug/l	0.00
System Monitoring Compounds						
33) 1,2-Dichloroethane-d4	5.940	65	113788	48.911	ug/l	0.00
Spiked Amount	50.000	Range 78 - 117	Recovery	=	97.820%	
35) Dibromofluoromethane	5.379	113	93805	46.655	ug/l	0.00
Spiked Amount	50.000	Range 75 - 124	Recovery	=	93.320%	
50) Toluene-d8	8.635	98	329401	47.348	ug/l	0.00
Spiked Amount	50.000	Range 92 - 112	Recovery	=	94.700%	
62) 4-Bromofluorobenzene	11.061	95	136757	51.795	ug/l	0.00
Spiked Amount	50.000	Range 83 - 123	Recovery	=	103.600%	
Target Compounds						
						Qvalue
10) Methyl Iodide	2.459	142	591	0.224	ug/l #	67
11) Tert butyl alcohol	2.947	59	1495	5.770	ug/l #	84
13) Acrolein	2.246	56	134	0.561	ug/l #	34
16) Acetone	2.374	43	61775	61.071	ug/l	95
18) Methyl Acetate	2.703	43	14294	6.350	ug/l	99
20) Methylene Chloride	2.794	84	15436	7.209	ug/l	95
25) 2-Butanone	4.556	43	14590	11.563	ug/l	100
29) Tetrahydrofuran	5.013	42	474	0.624	ug/l #	46
31) Cyclohexane	5.532	56	3260	1.060	ug/l #	22
36) 1,1-Dichloropropene	5.538	75	12043	4.099	ug/l #	52
37) Ethyl Acetate	4.715	43	9754	3.101	ug/l #	93
38) Carbon Tetrachloride	5.544	117	15644	4.901	ug/l #	18
43) Isopropyl Acetate	6.336	43	11158	2.163	ug/l	99
48) Methyl methacrylate	7.781	41	73862	28.742	ug/l #	46
49) 1,4-Dioxane	7.793	88	74	2.849	ug/l #	1
51) 4-Methyl-2-Pentanone	8.531	43	93846	32.808	ug/l #	50
54) cis-1,3-Dichloropropene	8.537	75	42622	11.394	ug/l #	58
57) 1,3-Dichloropropane	9.464	76	3062	0.841	ug/l #	42
59) 2-Hexanone	9.421	43	4717	2.296	ug/l	89
74) N-amyl acetate	10.750	43	2826	0.580	ug/l #	49
76) 1,2,3-Trichloropropane	11.061	75	69682	24.509	ug/l #	40
81) trans-1,4-Dichloro-2-b...	11.061	75	69682	62.500	ug/l #	8

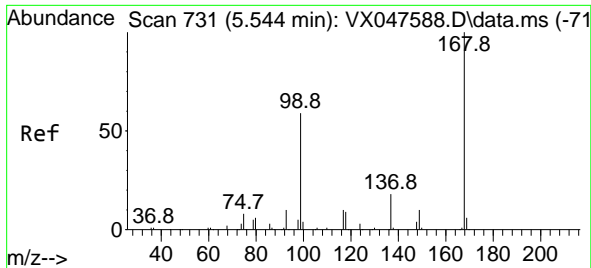
(#) = qualifier out of range (m) = manual integration (+) = signals summed

Data Path : Z:\voasrv\HPCHEM1\MSVOA\_X\Data\VX092225\  
 Data File : VX047700.D  
 Acq On : 22 Sep 2025 13:46  
 Operator : JC/MD  
 Sample : PB169755TB  
 Misc : 5.0mL/MSVOA\_X/WATER  
 ALS Vial : 13 Sample Multiplier: 1

Instrument :  
 MSVOA\_X  
 ClientSampleId :  
 PB169755TB

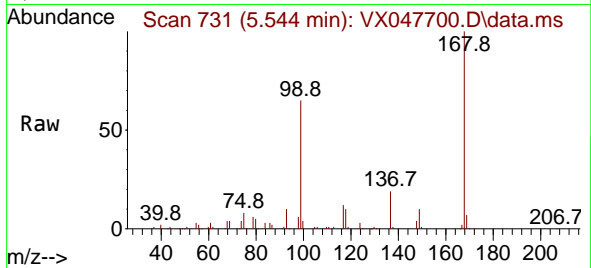
Quant Time: Sep 23 01:33:58 2025  
 Quant Method : Z:\voasrv\HPCHEM1\MSVOA\_X\Method\82X091625W.M  
 Quant Title : SW846 8260  
 QLast Update : Wed Sep 17 06:39:58 2025  
 Response via : Initial Calibration



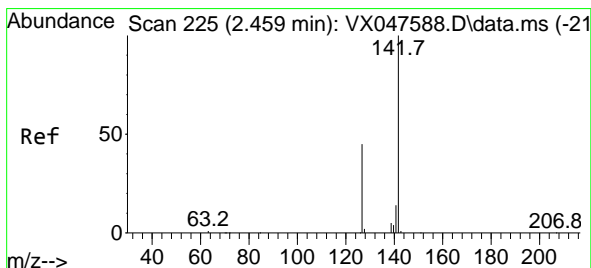
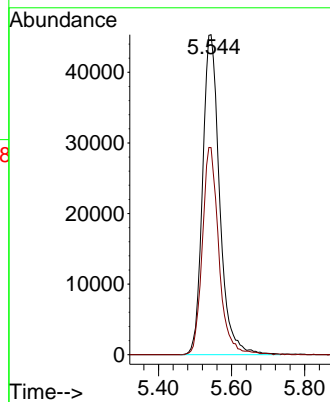
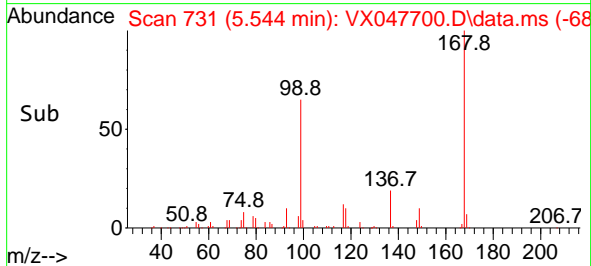


#1  
 Pentafluorobenzene  
 Concen: 50.000 ug/l  
 RT: 5.544 min Scan# 71  
 Delta R.T. -0.000 min  
 Lab File: VX047700.D  
 Acq: 22 Sep 2025 13:46

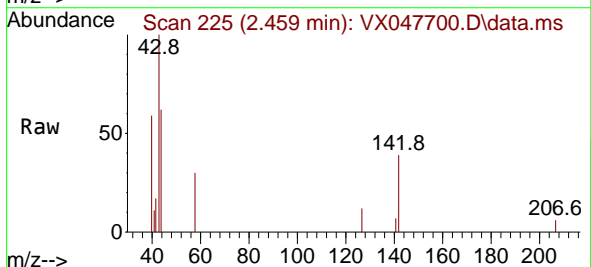
Instrument :  
 MSVOA\_X  
 ClientSampleId :  
 PB169755TB



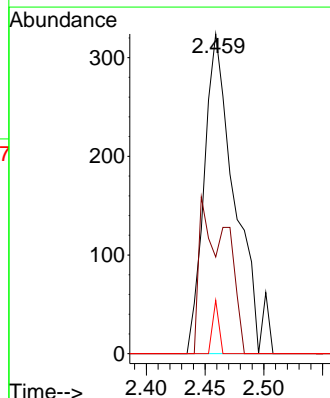
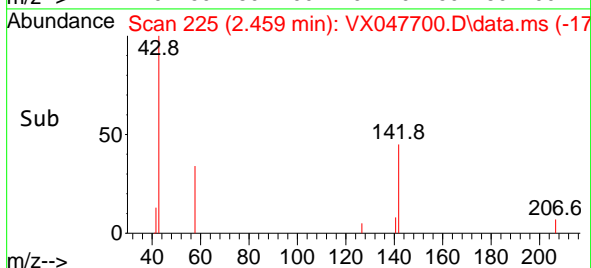
Tgt Ion:168 Resp: 146155  
 Ion Ratio Lower Upper  
 168 100  
 99 64.7 48.8 73.2

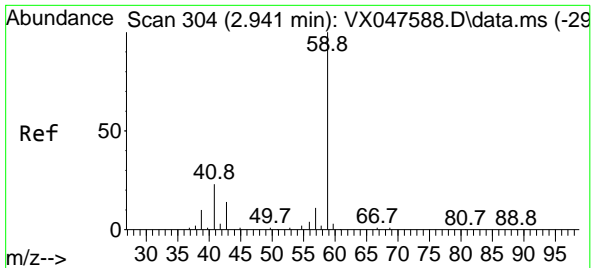


#10  
 Methyl Iodide  
 Concen: 0.224 ug/l  
 RT: 2.459 min Scan# 225  
 Delta R.T. 0.000 min  
 Lab File: VX047700.D  
 Acq: 22 Sep 2025 13:46



Tgt Ion:142 Resp: 591  
 Ion Ratio Lower Upper  
 142 100  
 127 23.2 37.2 55.8#  
 141 3.4 11.4 17.0#

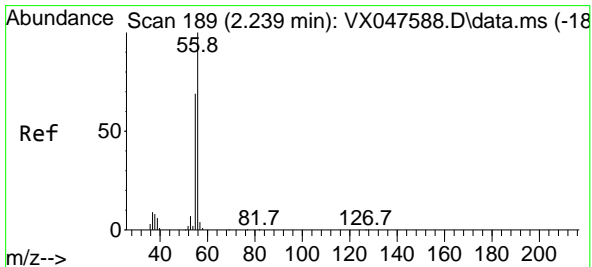
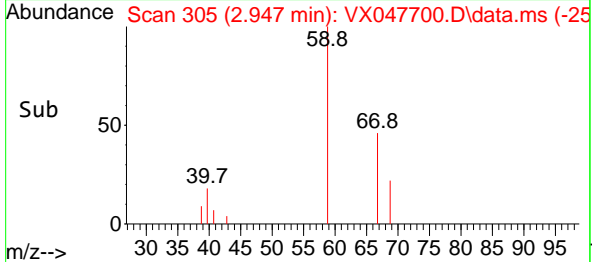
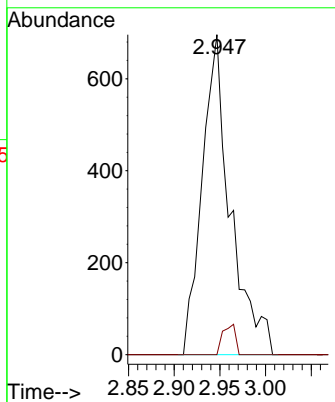
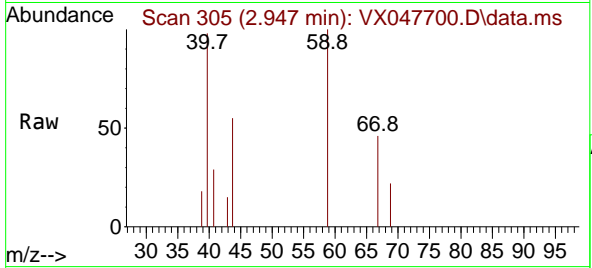




#11  
 Tert butyl alcohol  
 Concen: 5.770 ug/l  
 RT: 2.947 min Scan# 30  
 Delta R.T. 0.006 min  
 Lab File: VX047700.D  
 Acq: 22 Sep 2025 13:46

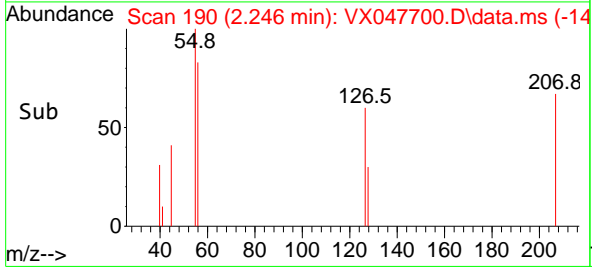
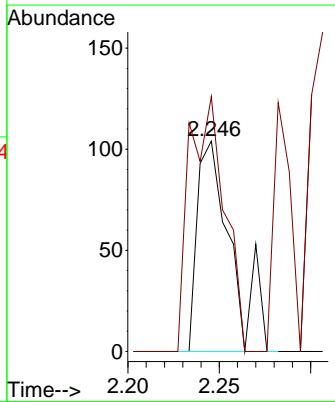
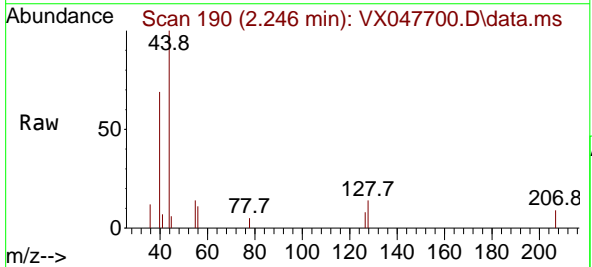
Instrument : MSVOA\_X  
 ClientSampleId : PB169755TB

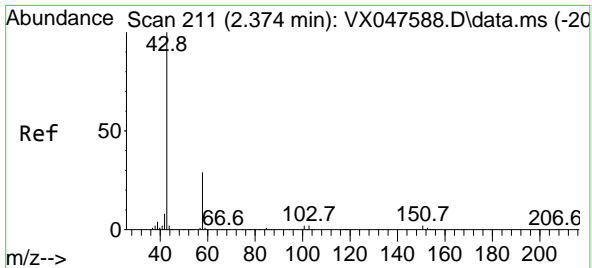
Tgt Ion: 59 Resp: 1495  
 Ion Ratio Lower Upper  
 59 100  
 57 4.3 8.3 12.5#



#13  
 Acrolein  
 Concen: 0.561 ug/l  
 RT: 2.246 min Scan# 190  
 Delta R.T. 0.006 min  
 Lab File: VX047700.D  
 Acq: 22 Sep 2025 13:46

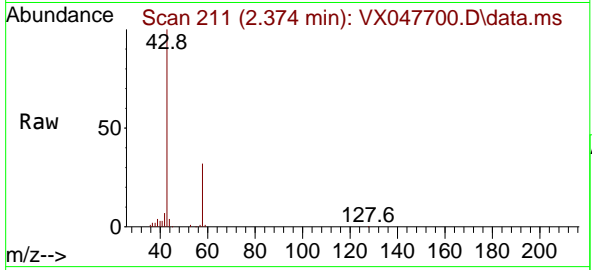
Tgt Ion: 56 Resp: 134  
 Ion Ratio Lower Upper  
 56 100  
 55 126.1 57.2 85.8#



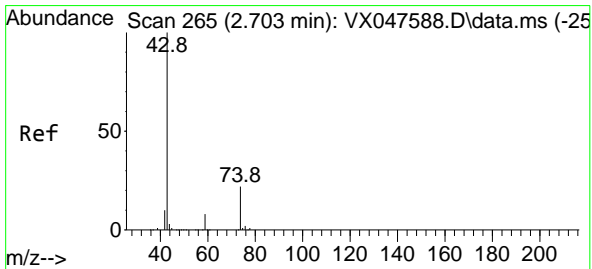
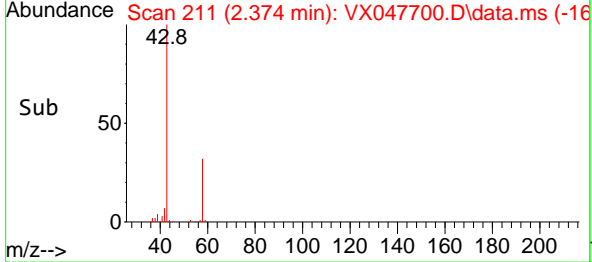
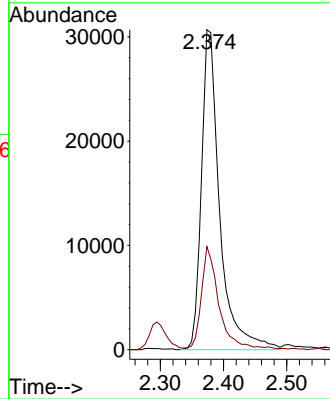


#16  
 Acetone  
 Concen: 61.071 ug/l  
 RT: 2.374 min Scan# 211  
 Delta R.T. 0.000 min  
 Lab File: VX047700.D  
 Acq: 22 Sep 2025 13:46

Instrument : MSVOA\_X  
 ClientSampleId : PB169755TB

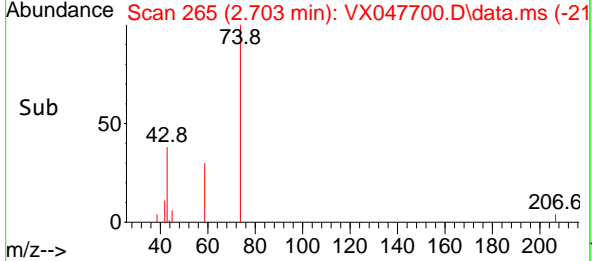
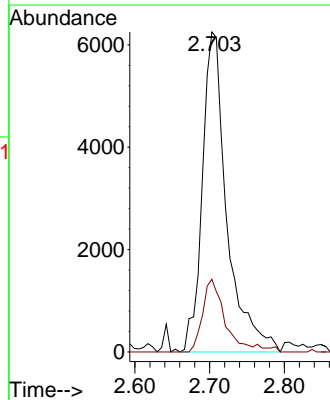
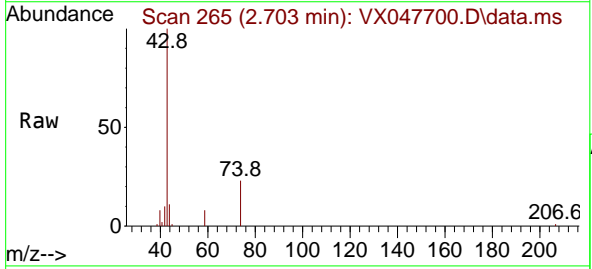


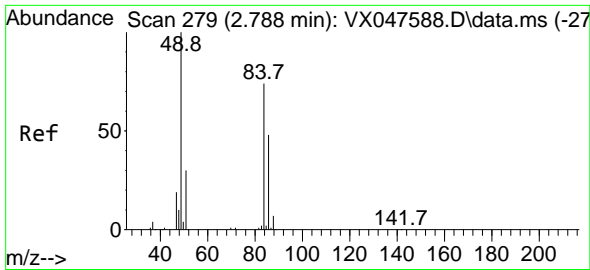
Tgt Ion: 43 Resp: 61775  
 Ion Ratio Lower Upper  
 43 100  
 58 32.1 23.4 35.0



#18  
 Methyl Acetate  
 Concen: 6.350 ug/l  
 RT: 2.703 min Scan# 265  
 Delta R.T. 0.000 min  
 Lab File: VX047700.D  
 Acq: 22 Sep 2025 13:46

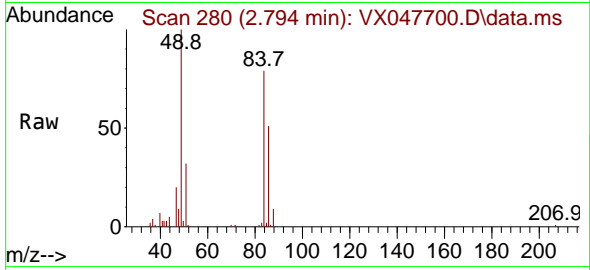
Tgt Ion: 43 Resp: 14294  
 Ion Ratio Lower Upper  
 43 100  
 74 21.3 17.4 26.2



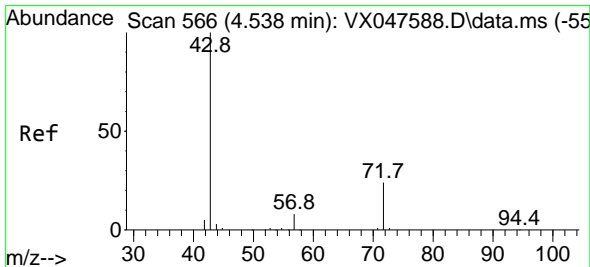
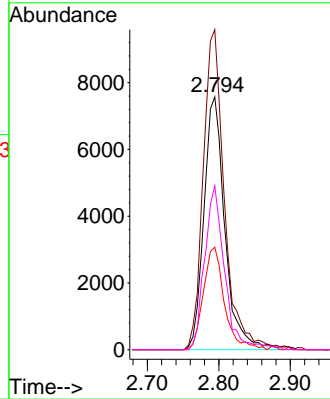
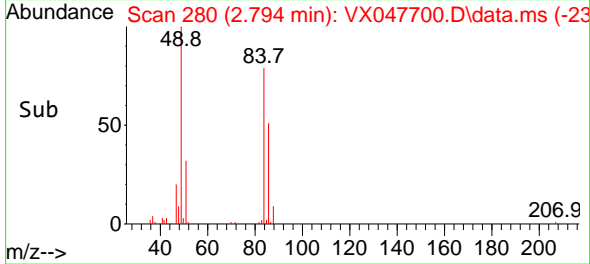


#20  
 Methylene Chloride  
 Concen: 7.209 ug/l  
 RT: 2.794 min Scan# 21  
 Delta R.T. 0.006 min  
 Lab File: VX047700.D  
 Acq: 22 Sep 2025 13:46

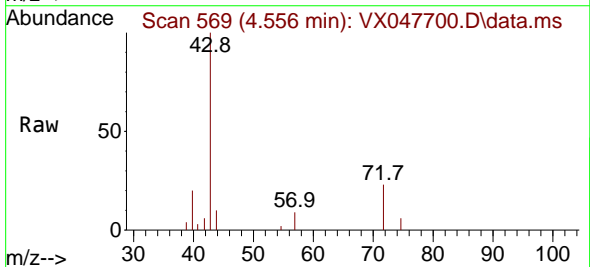
Instrument :  
 MSVOA\_X  
 ClientSampleId :  
 PB169755TB



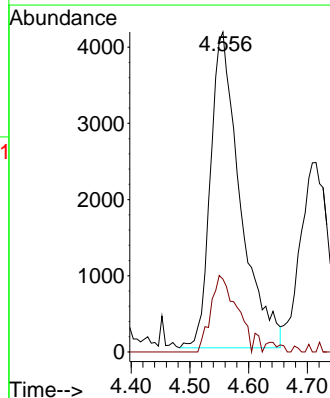
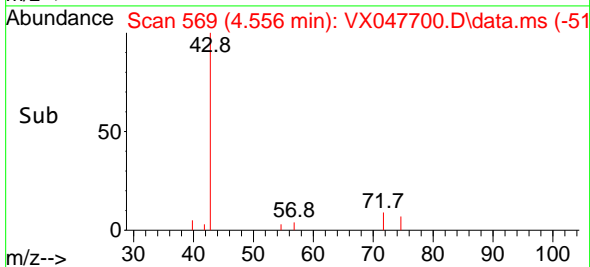
Tgt Ion: 84 Resp: 15436  
 Ion Ratio Lower Upper  
 84 100  
 49 126.5 108.6 162.8  
 51 40.5 32.6 48.8  
 86 65.9 52.0 78.0

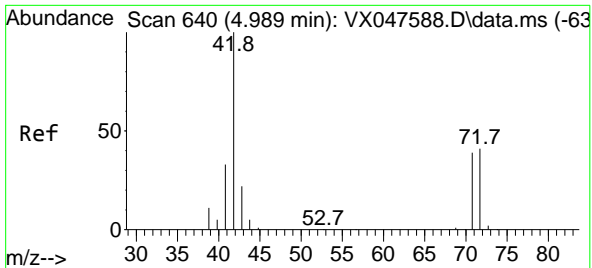


#25  
 2-Butanone  
 Concen: 11.563 ug/l  
 RT: 4.556 min Scan# 569  
 Delta R.T. 0.018 min  
 Lab File: VX047700.D  
 Acq: 22 Sep 2025 13:46



Tgt Ion: 43 Resp: 14590  
 Ion Ratio Lower Upper  
 43 100  
 72 25.3 20.1 30.1

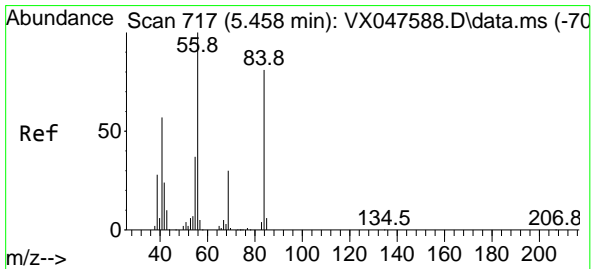
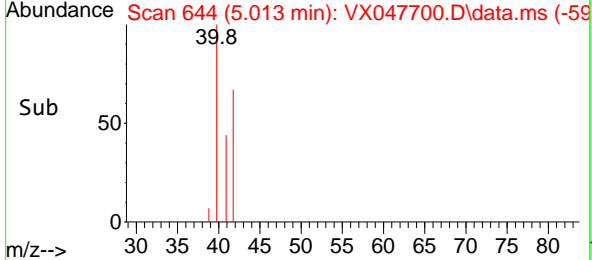
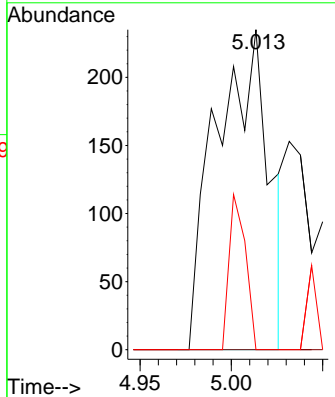
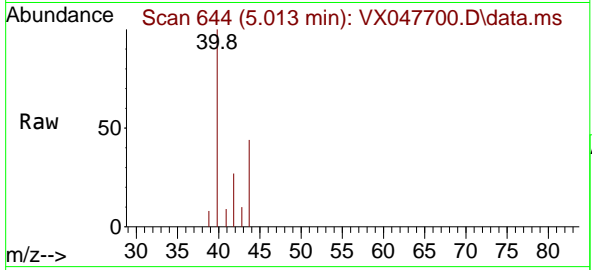




#29  
 Tetrahydrofuran  
 Concen: 0.624 ug/l  
 RT: 5.013 min Scan# 64  
 Delta R.T. 0.024 min  
 Lab File: VX047700.D  
 Acq: 22 Sep 2025 13:46

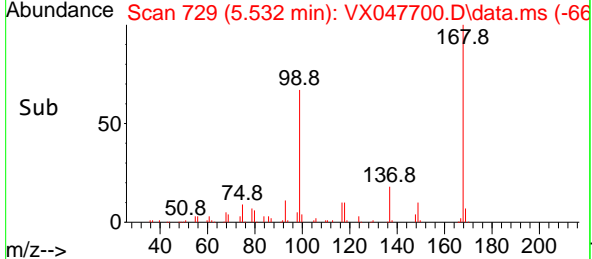
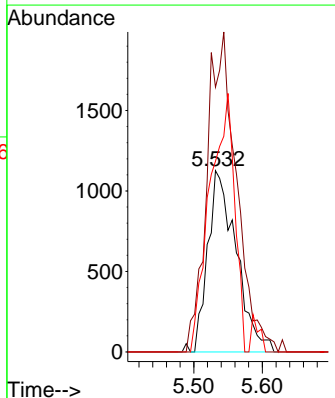
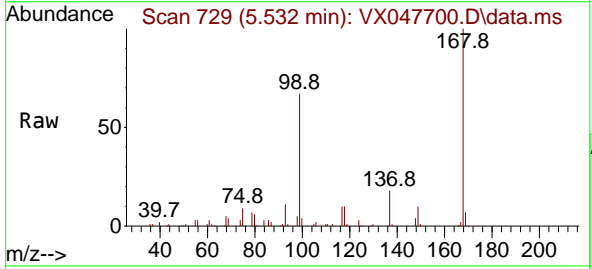
Instrument : MSVOA\_X  
 ClientSampleId : PB169755TB

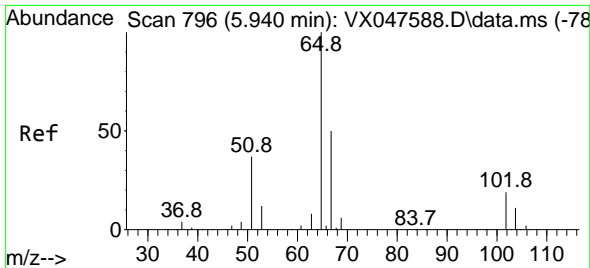
Tgt Ion	Resp	Lower	Upper
42	100		
72	0.0	34.2	51.2#
71	15.0	31.9	47.9#



#31  
 Cyclohexane  
 Concen: 1.060 ug/l  
 RT: 5.532 min Scan# 729  
 Delta R.T. 0.073 min  
 Lab File: VX047700.D  
 Acq: 22 Sep 2025 13:46

Tgt Ion	Resp	Lower	Upper
56	100		
69	146.1	23.8	35.8#
84	105.2	64.6	97.0#





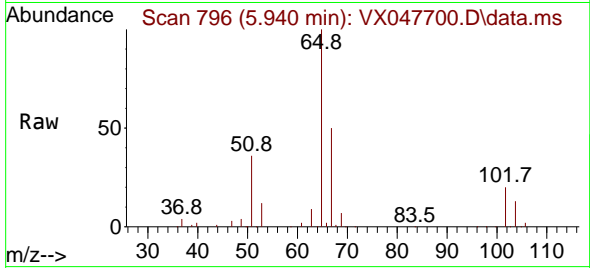
#33  
 1,2-Dichloroethane-d4  
 Concen: 48.911 ug/l  
 RT: 5.940 min Scan# 796  
 Delta R.T. 0.000 min  
 Lab File: VX047700.D  
 Acq: 22 Sep 2025 13:46

Instrument :

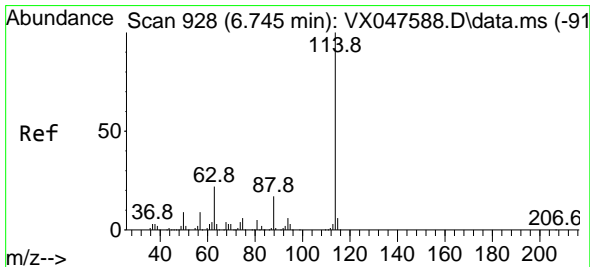
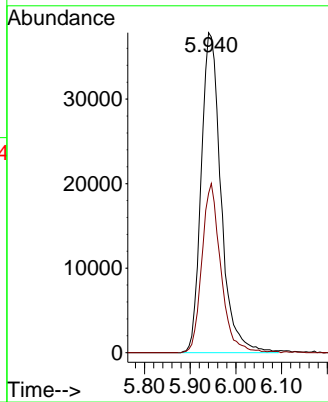
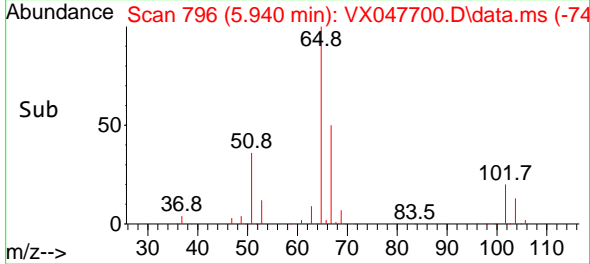
MSVOA\_X

ClientSampleId :

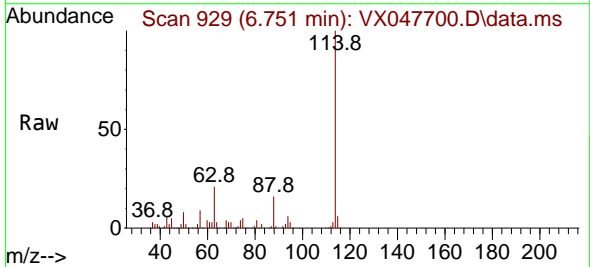
PB169755TB



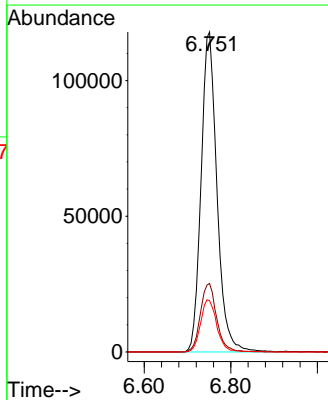
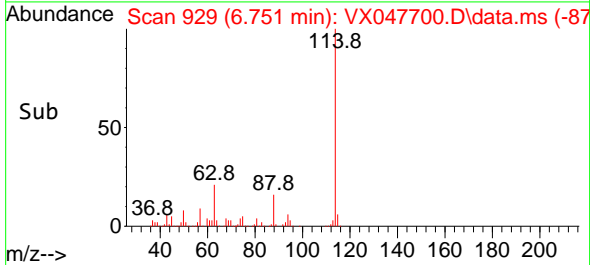
Tgt Ion: 65 Resp: 113788  
 Ion Ratio Lower Upper  
 65 100  
 67 50.5 0.0 103.0



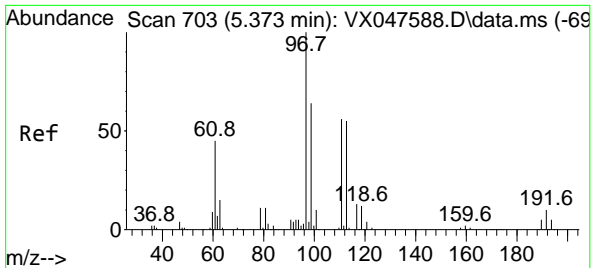
#34  
 1,4-Difluorobenzene  
 Concen: 50.000 ug/l  
 RT: 6.751 min Scan# 929  
 Delta R.T. 0.006 min  
 Lab File: VX047700.D  
 Acq: 22 Sep 2025 13:46



Tgt Ion: 114 Resp: 299797  
 Ion Ratio Lower Upper  
 114 100  
 63 21.4 0.0 44.0  
 88 16.1 0.0 34.2



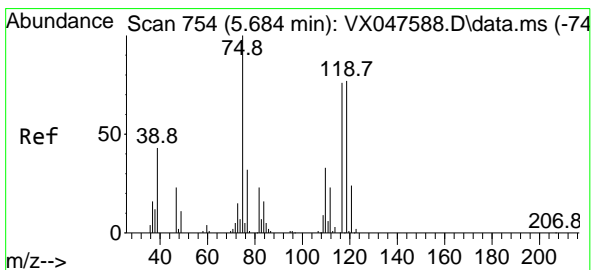
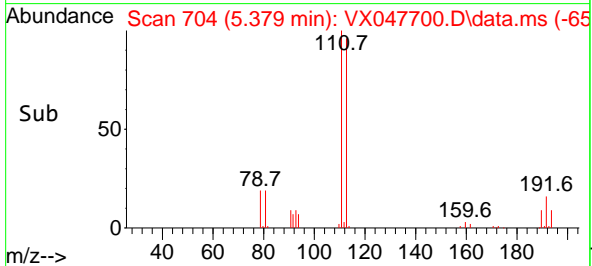
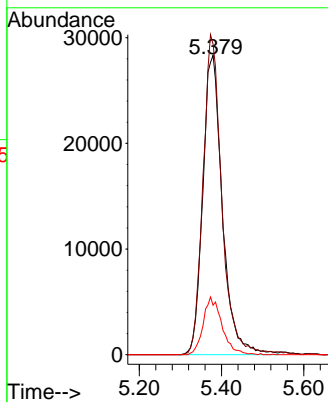
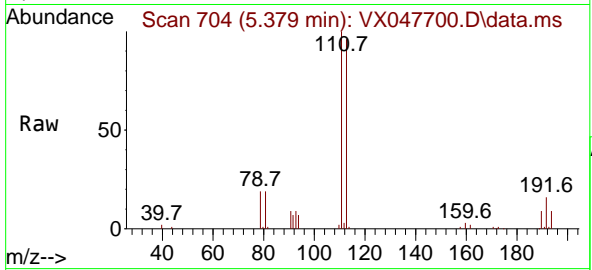




#35  
 Dibromofluoromethane  
 Concen: 46.655 ug/l  
 RT: 5.379 min Scan# 703  
 Delta R.T. 0.006 min  
 Lab File: VX047700.D  
 Acq: 22 Sep 2025 13:46

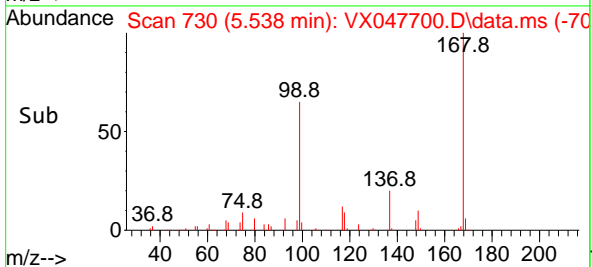
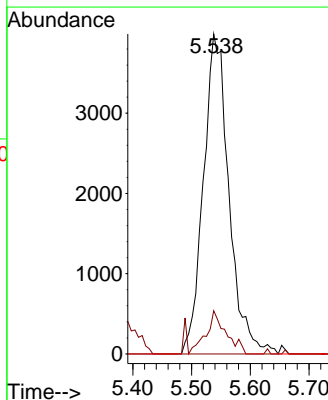
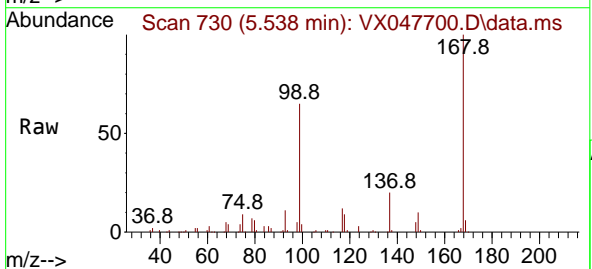
Instrument : MSVOA\_X  
 ClientSampleId : PB169755TB

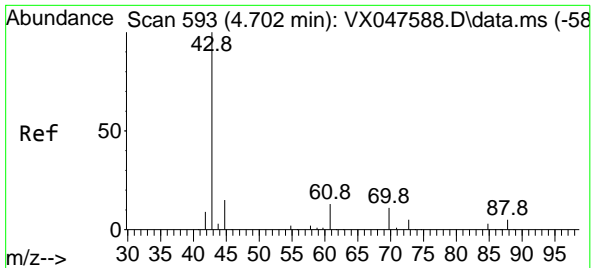
Tgt Ion	Resp	Lower	Upper
113	93805		
113	100		
111	102.3	80.9	121.3
192	18.4	14.2	21.4



#36  
 1,1-Dichloropropene  
 Concen: 4.099 ug/l  
 RT: 5.538 min Scan# 730  
 Delta R.T. -0.146 min  
 Lab File: VX047700.D  
 Acq: 22 Sep 2025 13:46

Tgt Ion	Resp	Lower	Upper
75	12043		
75	100		
110	10.3	16.7	50.1#
77	0.0	24.3	36.5#





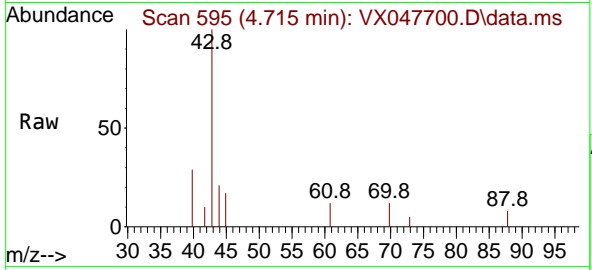
#37  
 Ethyl Acetate  
 Concen: 3.101 ug/l  
 RT: 4.715 min Scan# 595  
 Delta R.T. 0.012 min  
 Lab File: VX047700.D  
 Acq: 22 Sep 2025 13:46

Instrument :

MSVOA\_X

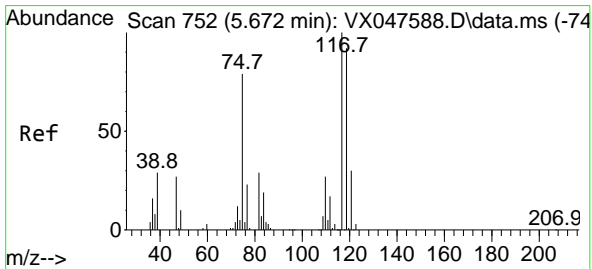
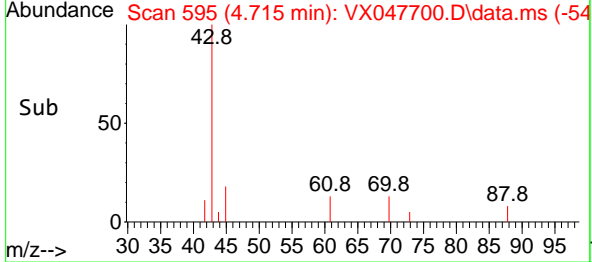
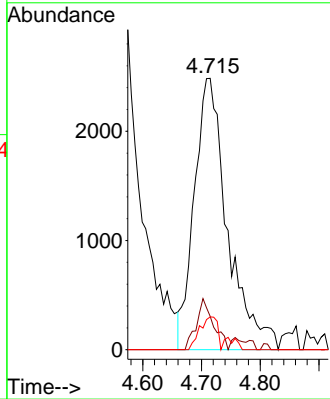
ClientSampleId :

PB169755TB

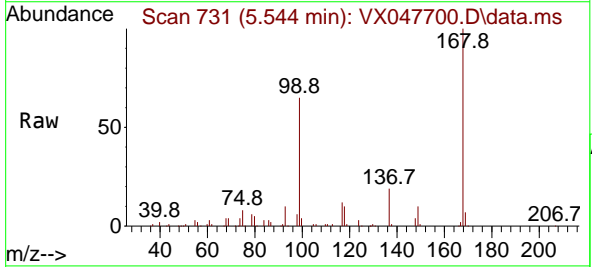


Tgt Ion: 43 Resp: 9754

Ion	Ratio	Lower	Upper
43	100		
61	9.7	9.8	14.8#
70	6.8	7.9	11.9#

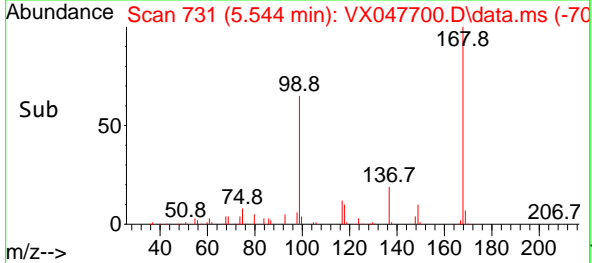
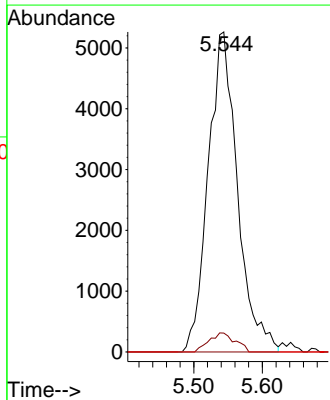


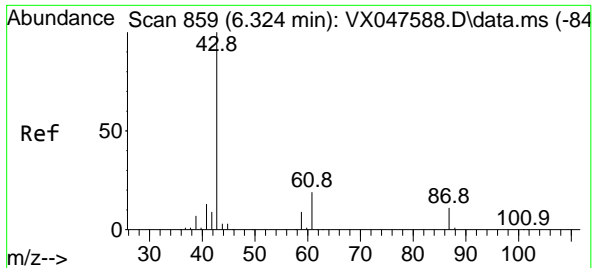
#38  
 Carbon Tetrachloride  
 Concen: 4.901 ug/l  
 RT: 5.544 min Scan# 731  
 Delta R.T. -0.128 min  
 Lab File: VX047700.D  
 Acq: 22 Sep 2025 13:46



Tgt Ion: 117 Resp: 15644

Ion	Ratio	Lower	Upper
117	100		
119	5.9	73.4	110.2#
121	0.0	23.8	35.6#

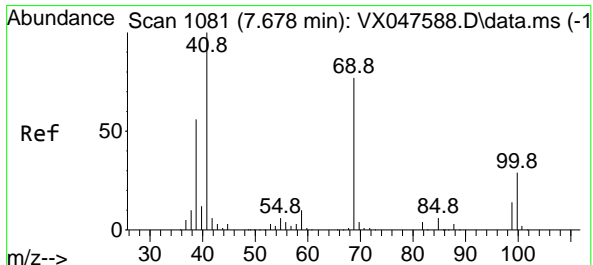
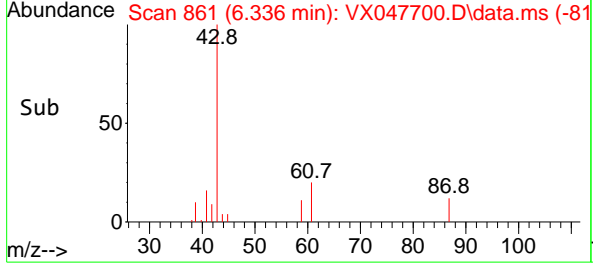
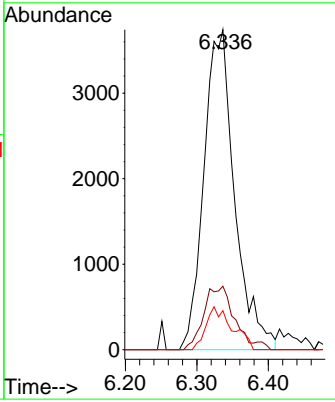
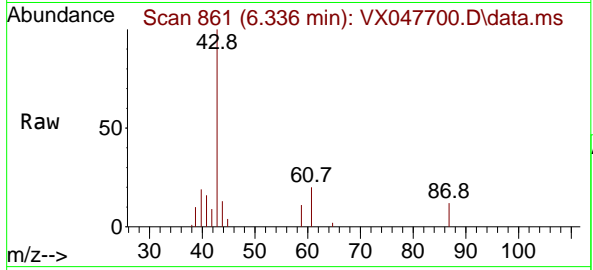




#43  
 Isopropyl Acetate  
 Concen: 2.163 ug/l  
 RT: 6.336 min Scan# 80  
 Delta R.T. 0.012 min  
 Lab File: VX047700.D  
 Acq: 22 Sep 2025 13:46

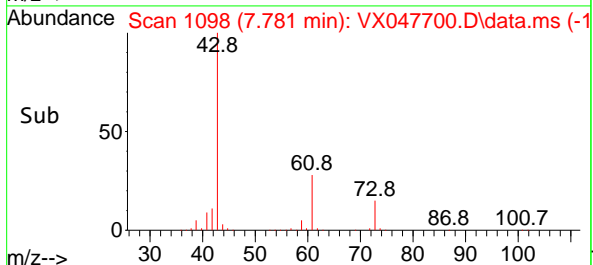
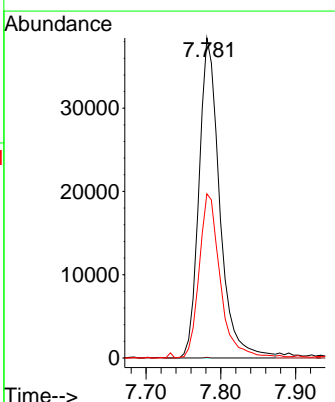
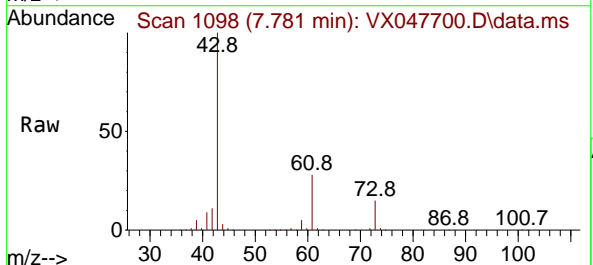
Instrument : MSVOA\_X  
 ClientSampleId : PB169755TB

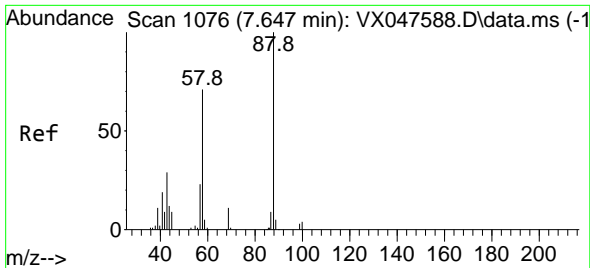
Tgt Ion	Resp	Lower	Upper
43	11158		
61	19.3	15.2	22.8
87	11.5	9.6	14.4



#48  
 Methyl methacrylate  
 Concen: 28.742 ug/l  
 RT: 7.781 min Scan# 1098  
 Delta R.T. 0.104 min  
 Lab File: VX047700.D  
 Acq: 22 Sep 2025 13:46

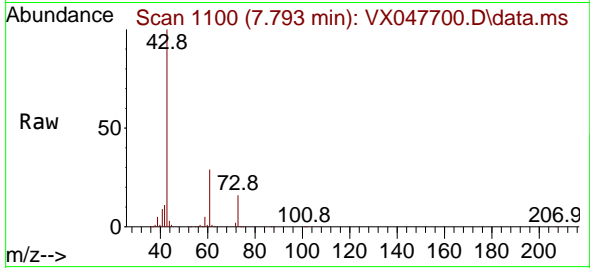
Tgt Ion	Resp	Lower	Upper
41	73862		
69	0.0	61.4	92.2#
39	52.5	45.8	68.6



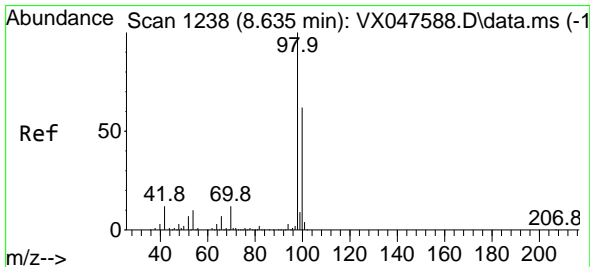
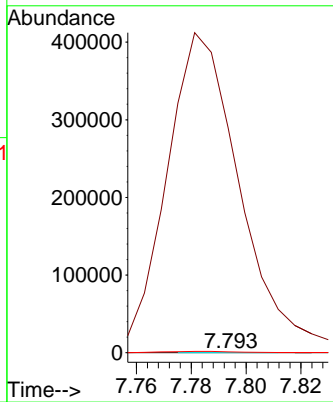
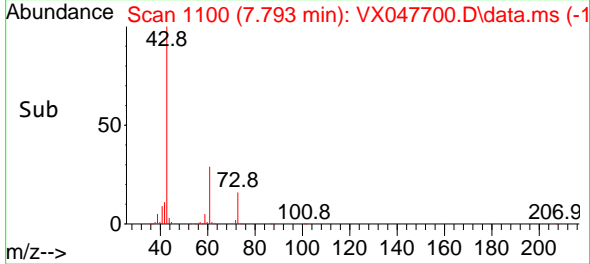


#49  
 1,4-Dioxane  
 Concen: 2.849 ug/l  
 RT: 7.793 min Scan# 1100  
 Delta R.T. 0.146 min  
 Lab File: VX047700.D  
 Acq: 22 Sep 2025 13:46

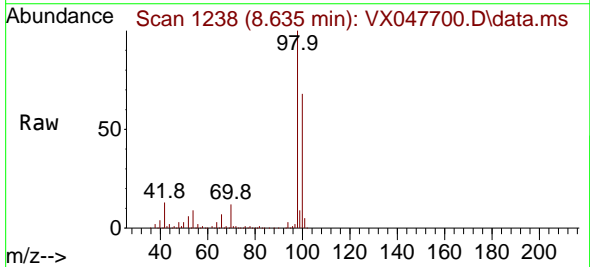
Instrument : MSVOA\_X  
 ClientSampleId : PB169755TB



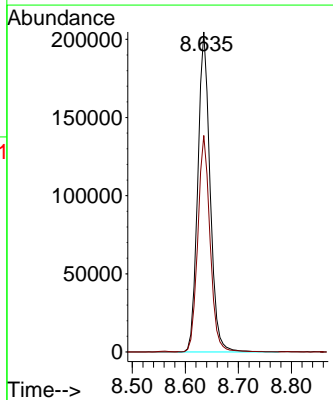
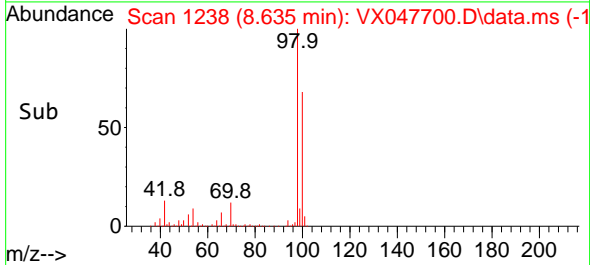
Tgt Ion: 88 Resp: 74  
 Ion Ratio Lower Upper  
 88 100  
 43 1069927.0 30.2 45.2#  
 58 4504.1 59.5 89.3#

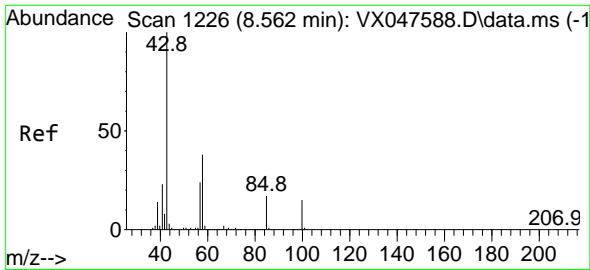


#50  
 Toluene-d8  
 Concen: 47.348 ug/l  
 RT: 8.635 min Scan# 1238  
 Delta R.T. 0.000 min  
 Lab File: VX047700.D  
 Acq: 22 Sep 2025 13:46



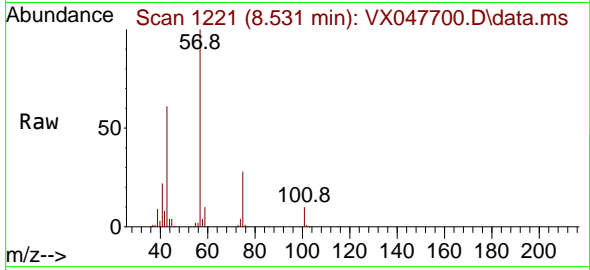
Tgt Ion: 98 Resp: 329401  
 Ion Ratio Lower Upper  
 98 100  
 100 67.3 53.0 79.4



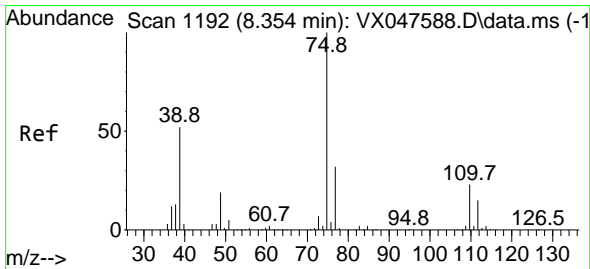
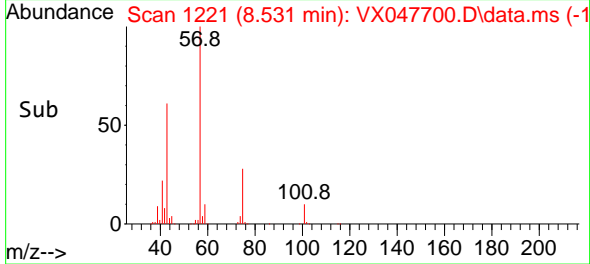
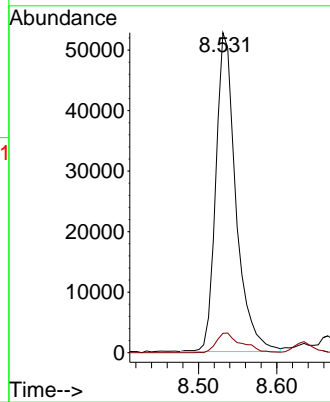


#51  
 4-Methyl-2-Pentanone  
 Concen: 32.808 ug/l  
 RT: 8.531 min Scan# 11  
 Delta R.T. -0.030 min  
 Lab File: VX047700.D  
 Acq: 22 Sep 2025 13:46

Instrument : MSVOA\_X  
 ClientSampleId : PB169755TB

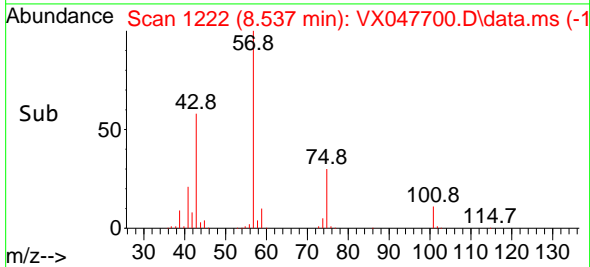
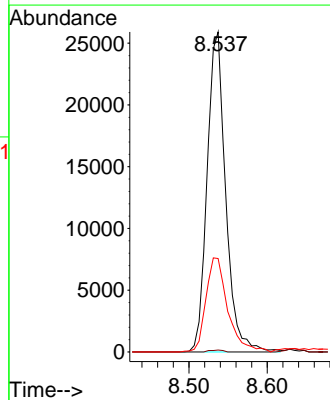
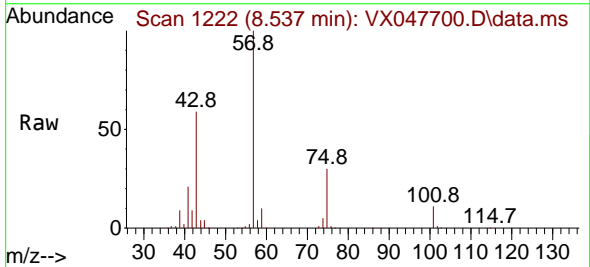


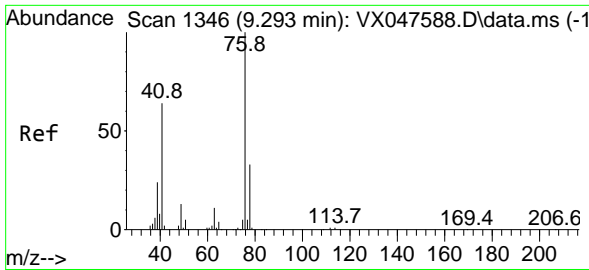
Tgt Ion: 43 Resp: 93846  
 Ion Ratio Lower Upper  
 43 100  
 58 7.8 30.3 45.5#



#54  
 cis-1,3-Dichloropropene  
 Concen: 11.394 ug/l  
 RT: 8.537 min Scan# 1222  
 Delta R.T. 0.183 min  
 Lab File: VX047700.D  
 Acq: 22 Sep 2025 13:46

Tgt Ion: 75 Resp: 42622  
 Ion Ratio Lower Upper  
 75 100  
 77 0.6 25.8 38.6#  
 39 28.4 41.4 62.2#

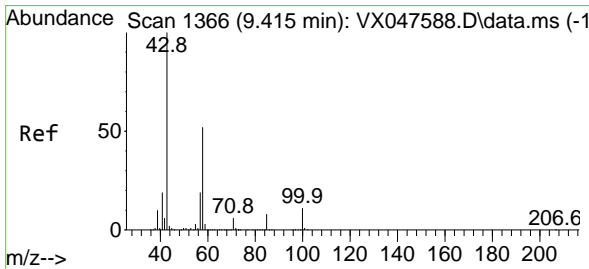
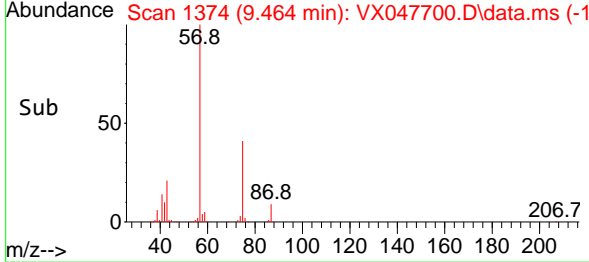
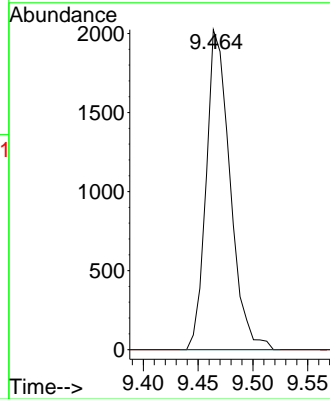
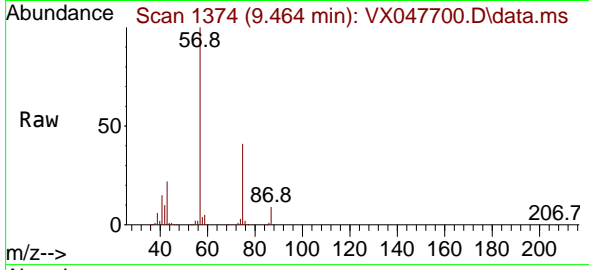




#57  
 1,3-Dichloropropane  
 Concen: 0.841 ug/l  
 RT: 9.464 min Scan# 11  
 Delta R.T. 0.171 min  
 Lab File: VX047700.D  
 Acq: 22 Sep 2025 13:46

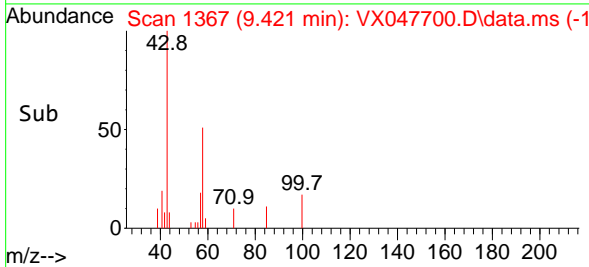
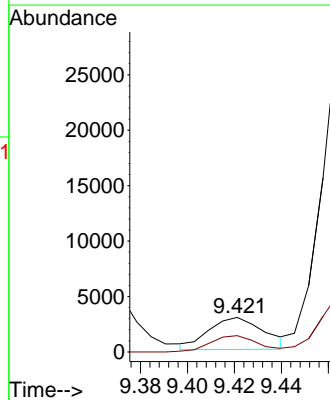
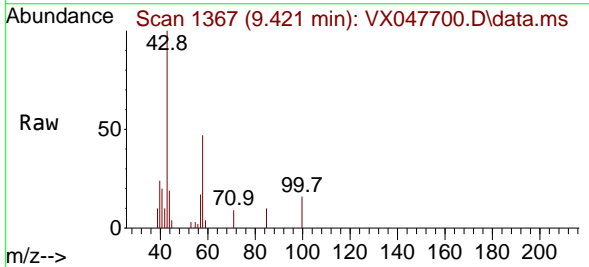
Instrument :  
 MSVOA\_X  
 ClientSampleId :  
 PB169755TB

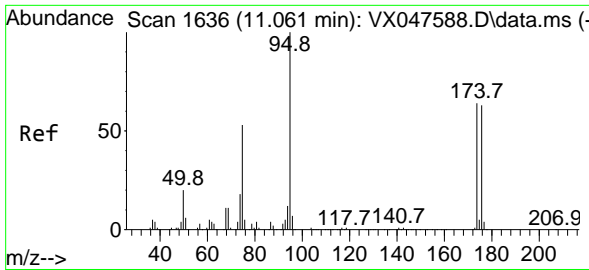
Tgt Ion: 76 Resp: 3062  
 Ion Ratio Lower Upper  
 76 100  
 78 0.0 26.2 39.4#



#59  
 2-Hexanone  
 Concen: 2.296 ug/l  
 RT: 9.421 min Scan# 1367  
 Delta R.T. 0.006 min  
 Lab File: VX047700.D  
 Acq: 22 Sep 2025 13:46

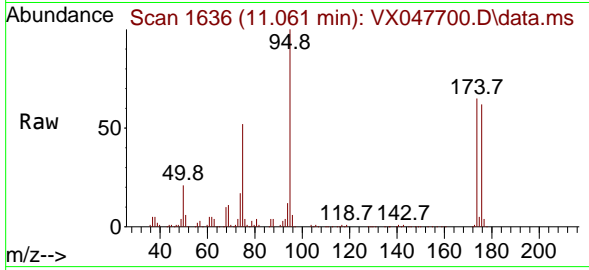
Tgt Ion: 43 Resp: 4717  
 Ion Ratio Lower Upper  
 43 100  
 58 44.3 26.1 78.2



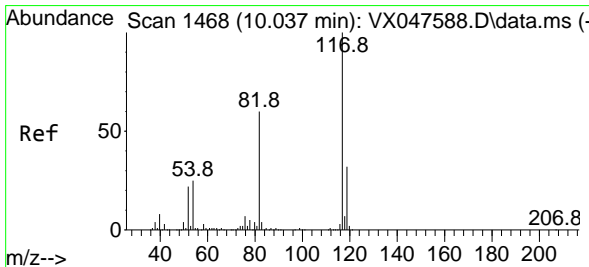
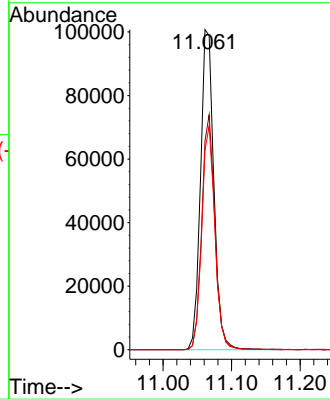
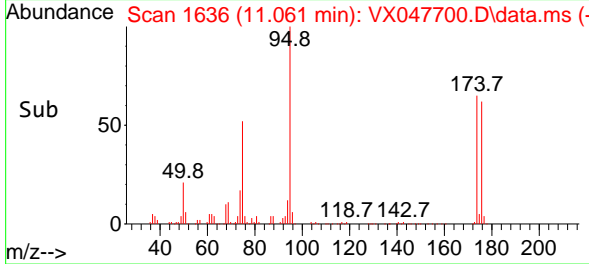


#62  
 4-Bromofluorobenzene  
 Concen: 51.795 ug/l  
 RT: 11.061 min Scan# 1  
 Delta R.T. 0.000 min  
 Lab File: VX047700.D  
 Acq: 22 Sep 2025 13:46

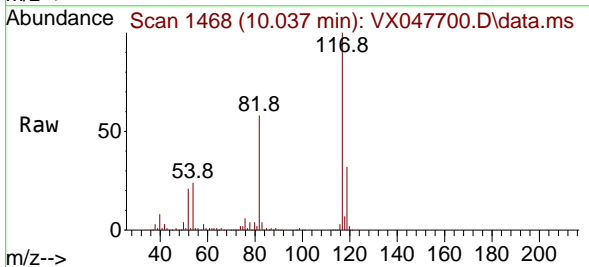
Instrument :  
 MSVOA\_X  
 ClientSampleId :  
 PB169755TB



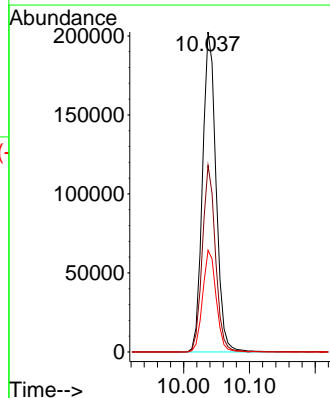
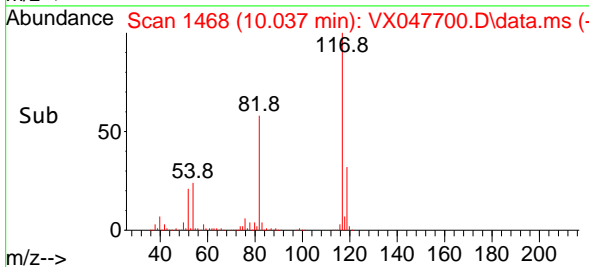
Tgt Ion: 95 Resp: 136757  
 Ion Ratio Lower Upper  
 95 100  
 174 71.8 0.0 141.6  
 176 68.6 0.0 138.4

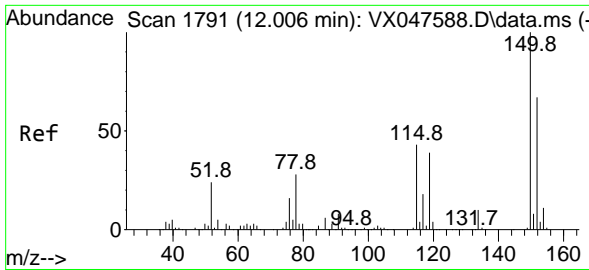


#63  
 Chlorobenzene-d5  
 Concen: 50.000 ug/l  
 RT: 10.037 min Scan# 1468  
 Delta R.T. 0.000 min  
 Lab File: VX047700.D  
 Acq: 22 Sep 2025 13:46



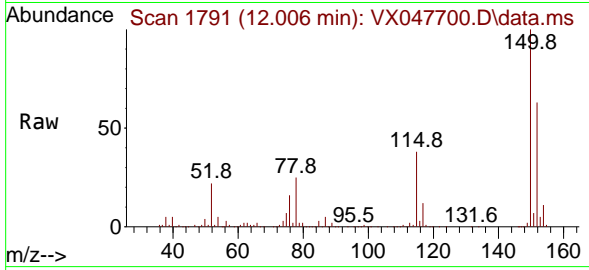
Tgt Ion: 117 Resp: 289183  
 Ion Ratio Lower Upper  
 117 100  
 82 58.3 47.8 71.6  
 119 31.8 25.2 37.8



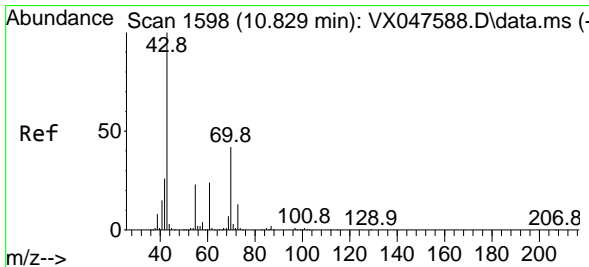
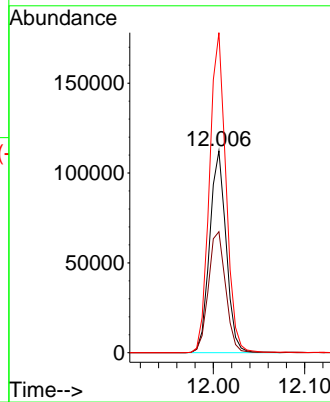
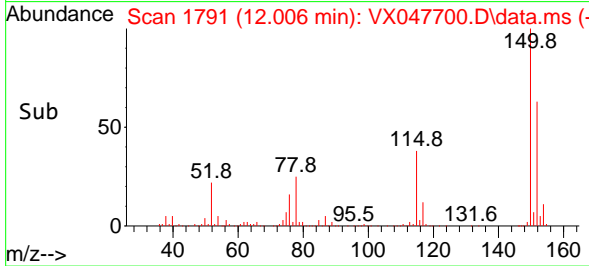


#72  
 1,4-Dichlorobenzene-d4  
 Concen: 50.000 ug/l  
 RT: 12.006 min Scan# 11  
 Delta R.T. 0.000 min  
 Lab File: VX047700.D  
 Acq: 22 Sep 2025 13:46

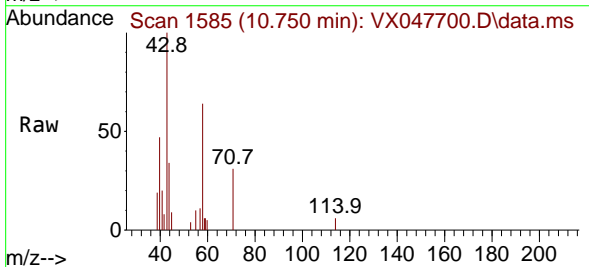
Instrument :  
 MSVOA\_X  
 ClientSampleId :  
 PB169755TB



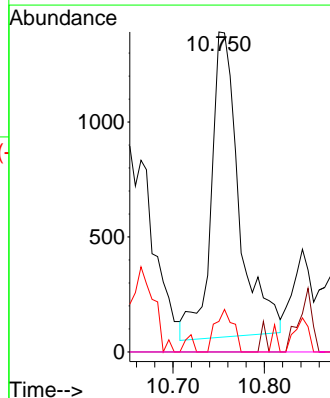
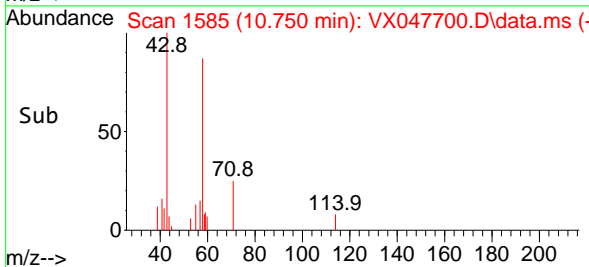
Tgt Ion:152 Resp: 140425  
 Ion Ratio Lower Upper  
 152 100  
 115 62.9 44.9 134.5  
 150 158.3 0.0 352.0



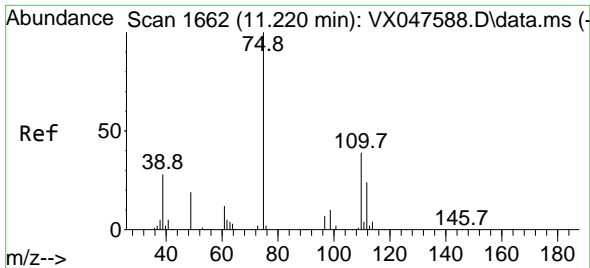
#74  
 N-amy1 acetate  
 Concen: 0.580 ug/l  
 RT: 10.750 min Scan# 1585  
 Delta R.T. -0.079 min  
 Lab File: VX047700.D  
 Acq: 22 Sep 2025 13:46



Tgt Ion: 43 Resp: 2826  
 Ion Ratio Lower Upper  
 43 100  
 70 0.0 32.0 48.0#  
 55 8.9 18.9 28.3#  
 61 0.0 18.8 28.2#



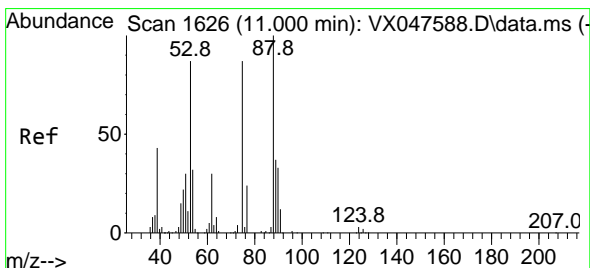
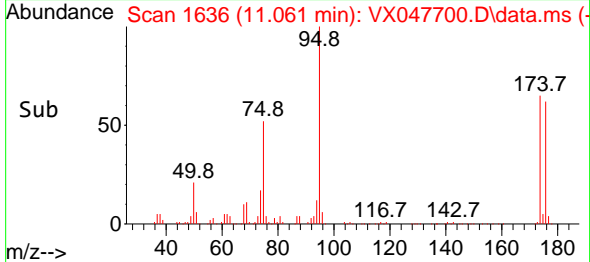
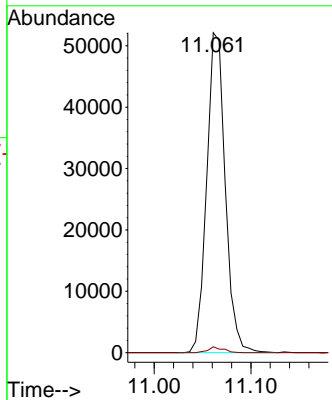
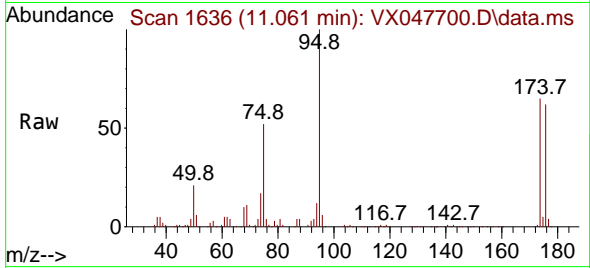




#76  
 1,2,3-Trichloropropane  
 Concen: 24.509 ug/l  
 RT: 11.061 min Scan# 1636  
 Delta R.T. -0.158 min  
 Lab File: VX047700.D  
 Acq: 22 Sep 2025 13:46

Instrument : MSVOA\_X  
 ClientSampleId : PB169755TB

Tgt Ion: 75 Resp: 69682  
 Ion Ratio Lower Upper  
 75 100  
 77 1.5 18.8 56.4#



#81  
 trans-1,4-Dichloro-2-butene  
 Concen: 62.500 ug/l  
 RT: 11.061 min Scan# 1636  
 Delta R.T. 0.061 min  
 Lab File: VX047700.D  
 Acq: 22 Sep 2025 13:46

Tgt Ion: 75 Resp: 69682  
 Ion Ratio Lower Upper  
 75 100  
 53 0.0 83.4 125.2#  
 89 0.0 36.3 54.5#

