

Data Path : Z:\voasrv\HPCHEM1\MSVOA_X\Data\VX092225\
 Data File : VX047701.D
 Acq On : 22 Sep 2025 14:07
 Operator : JC/MD
 Sample : Q3133-02
 Misc : 5.0mL/MSVOA_X/WATER
 ALS Vial : 14 Sample Multiplier: 1

Instrument :
 MSVOA_X
 ClientSampleId :
 VNJ-238

Quant Time: Sep 23 01:34:30 2025
 Quant Method : Z:\voasrv\HPCHEM1\MSVOA_X\Method\82X091625W.M
 Quant Title : SW846 8260
 QLast Update : Wed Sep 17 06:39:58 2025
 Response via : Initial Calibration

Compound	R.T.	QIon	Response	Conc	Units	Dev(Min)

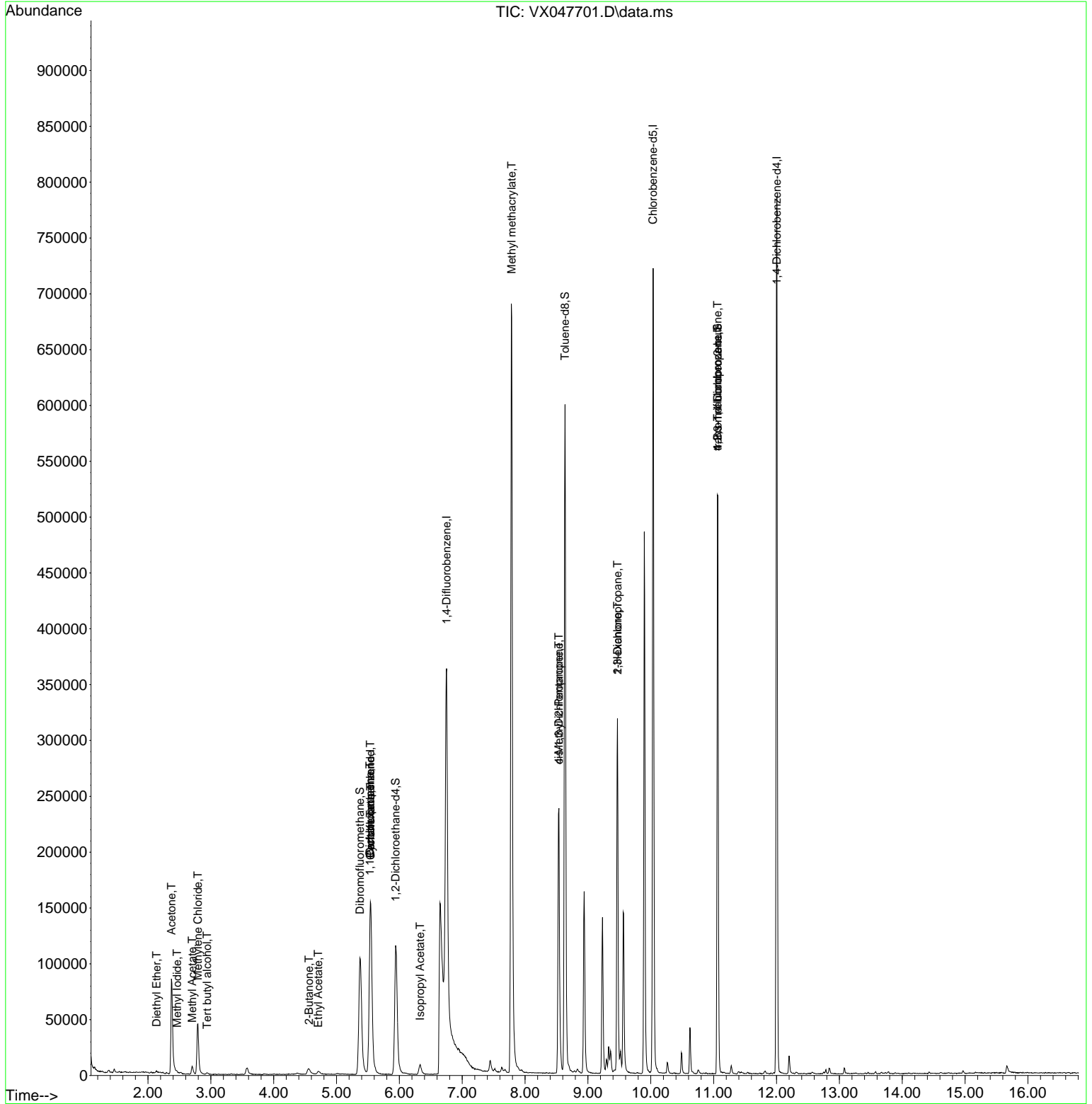
Internal Standards						
1) Pentafluorobenzene	5.538	168	158169	50.000	ug/l	0.00
34) 1,4-Difluorobenzene	6.751	114	331918	50.000	ug/l	0.00
63) Chlorobenzene-d5	10.037	117	321971	50.000	ug/l	0.00
72) 1,4-Dichlorobenzene-d4	12.006	152	163047	50.000	ug/l	0.00
System Monitoring Compounds						
33) 1,2-Dichloroethane-d4	5.940	65	125373	49.798	ug/l	0.00
Spiked Amount	50.000	Range 78 - 117	Recovery	=	99.600%	
35) Dibromofluoromethane	5.373	113	103473	46.483	ug/l	0.00
Spiked Amount	50.000	Range 75 - 124	Recovery	=	92.960%	
50) Toluene-d8	8.635	98	362643	47.081	ug/l	0.00
Spiked Amount	50.000	Range 92 - 112	Recovery	=	94.160%	
62) 4-Bromofluorobenzene	11.061	95	153483	52.505	ug/l	0.00
Spiked Amount	50.000	Range 83 - 123	Recovery	=	105.000%	
Target Compounds						
						Qvalue
8) Diethyl Ether	2.136	74	496	0.388	ug/l #	16
10) Methyl Iodide	2.465	142	679	0.238	ug/l #	87
11) Tert butyl alcohol	2.940	59	991	3.534	ug/l #	72
16) Acetone	2.374	43	111873	102.197	ug/l	98
18) Methyl Acetate	2.703	43	10092	4.142	ug/l	99
20) Methylene Chloride	2.794	84	22622	9.763	ug/l	93
25) 2-Butanone	4.562	43	11611	8.503	ug/l #	84
31) Cyclohexane	5.544	56	3468	1.042	ug/l #	1
36) 1,1-Dichloropropene	5.531	75	12877	3.959	ug/l #	49
37) Ethyl Acetate	4.708	43	5542	1.591	ug/l #	90
38) Carbon Tetrachloride	5.538	117	17011	4.813	ug/l #	18
43) Isopropyl Acetate	6.330	43	13477	2.359	ug/l	99
48) Methyl methacrylate	7.787	41	66751	23.461	ug/l #	46
51) 4-Methyl-2-Pentanone	8.537	43	95016	30.002	ug/l #	52
54) cis-1,3-Dichloropropene	8.537	75	41444	10.007	ug/l #	59
57) 1,3-Dichloropropane	9.470	76	2695	0.668	ug/l #	42
59) 2-Hexanone	9.470	43	38421	16.892	ug/l #	56
76) 1,2,3-Trichloropropane	11.061	75	80444	24.368	ug/l #	38
81) trans-1,4-Dichloro-2-b...	11.061	75	80444	62.142	ug/l #	8

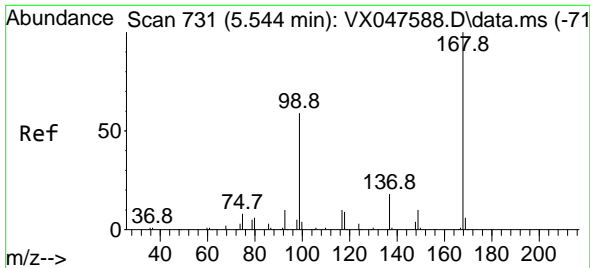
(#) = qualifier out of range (m) = manual integration (+) = signals summed

Data Path : Z:\voasrv\HPCHEM1\MSVOA_X\Data\VX092225\
 Data File : VX047701.D
 Acq On : 22 Sep 2025 14:07
 Operator : JC/MD
 Sample : Q3133-02
 Misc : 5.0mL/MSVOA_X/WATER
 ALS Vial : 14 Sample Multiplier: 1

Instrument :
 MSVOA_X
 ClientSampleId :
 VNJ-238

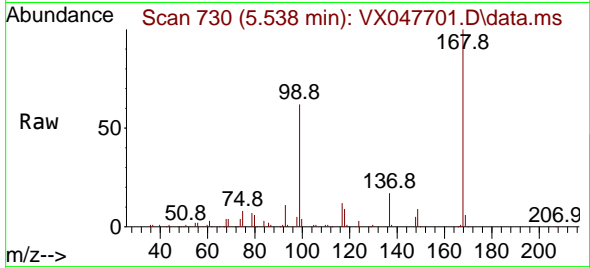
Quant Time: Sep 23 01:34:30 2025
 Quant Method : Z:\voasrv\HPCHEM1\MSVOA_X\Method\82X091625W.M
 Quant Title : SW846 8260
 QLast Update : Wed Sep 17 06:39:58 2025
 Response via : Initial Calibration



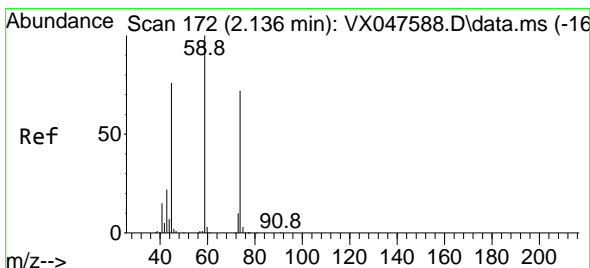
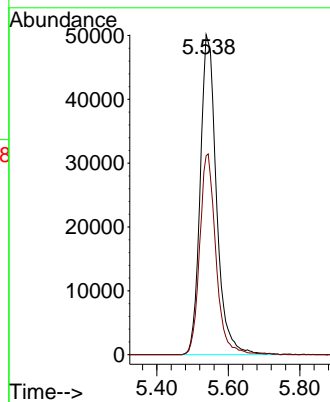
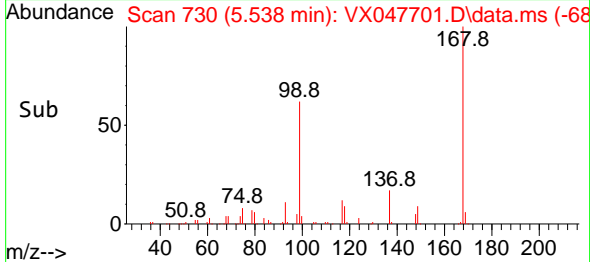


#1
 Pentafluorobenzene
 Concen: 50.000 ug/l
 RT: 5.538 min Scan# 71
 Delta R.T. -0.006 min
 Lab File: VX047701.D
 Acq: 22 Sep 2025 14:07

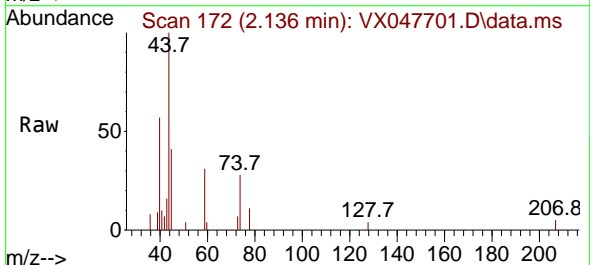
Instrument :
 MSVOA_X
 ClientSampleId :
 VNJ-238



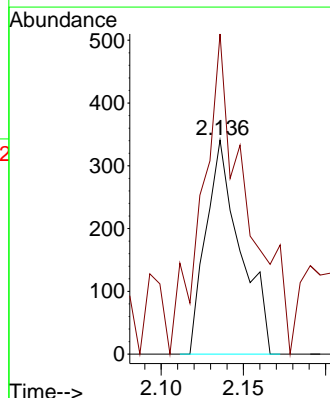
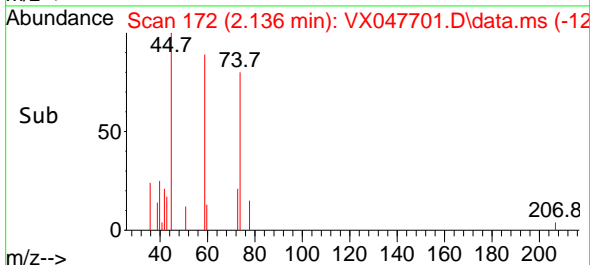
Tgt Ion:168 Resp: 158169
 Ion Ratio Lower Upper
 168 100
 99 62.1 48.8 73.2

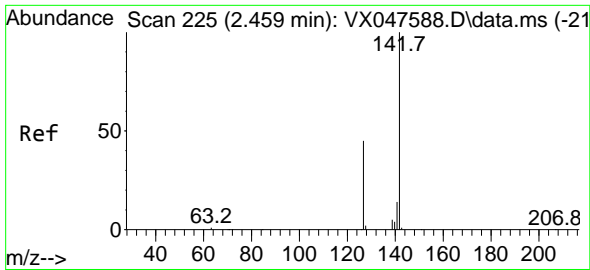


#8
 Diethyl Ether
 Concen: 0.388 ug/l
 RT: 2.136 min Scan# 172
 Delta R.T. -0.000 min
 Lab File: VX047701.D
 Acq: 22 Sep 2025 14:07



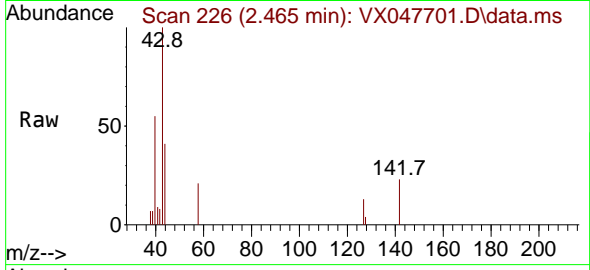
Tgt Ion: 74 Resp: 496
 Ion Ratio Lower Upper
 74 100
 45 190.3 52.3 156.8#



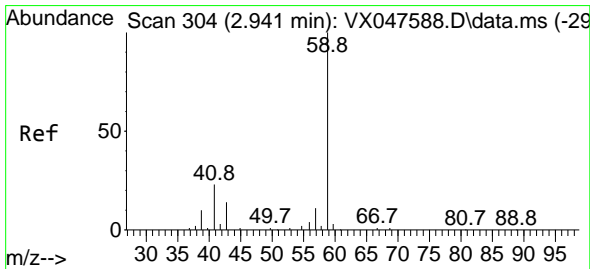
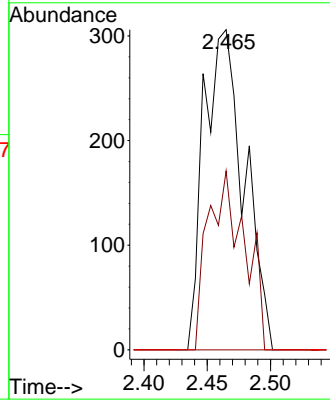
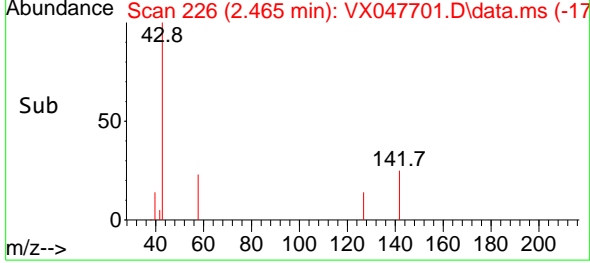


#10
Methyl Iodide
Concen: 0.238 ug/l
RT: 2.465 min Scan# 21
Delta R.T. 0.006 min
Lab File: VX047701.D
Acq: 22 Sep 2025 14:07

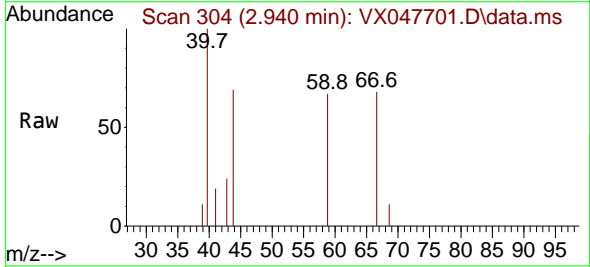
Instrument :
MSVOA_X
ClientSampleId :
VNJ-238



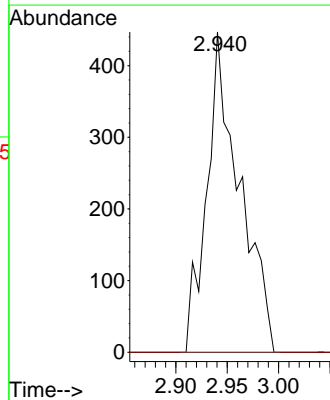
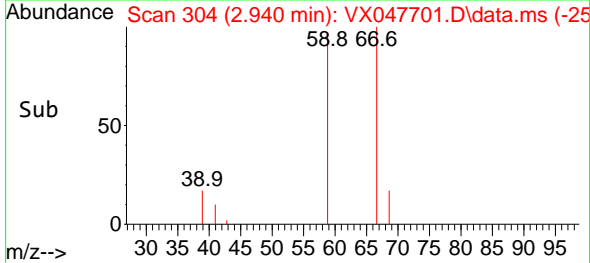
Tgt Ion:142 Resp: 679
Ion Ratio Lower Upper
142 100
127 50.7 37.2 55.8
141 0.0 11.4 17.0#

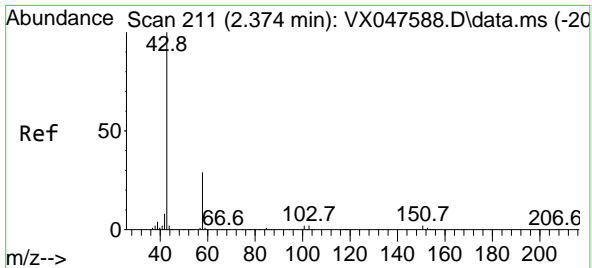


#11
Tert butyl alcohol
Concen: 3.534 ug/l
RT: 2.940 min Scan# 304
Delta R.T. -0.000 min
Lab File: VX047701.D
Acq: 22 Sep 2025 14:07



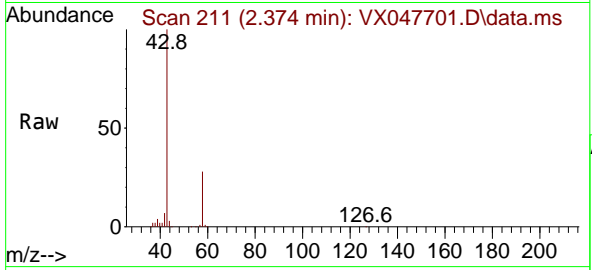
Tgt Ion: 59 Resp: 991
Ion Ratio Lower Upper
59 100
57 0.0 8.3 12.5#



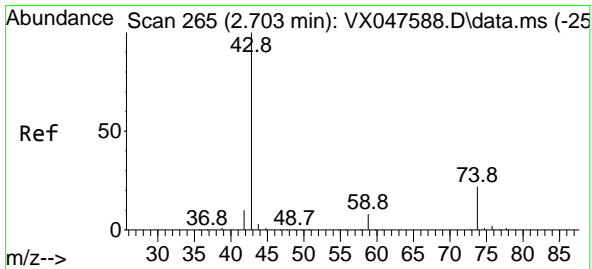
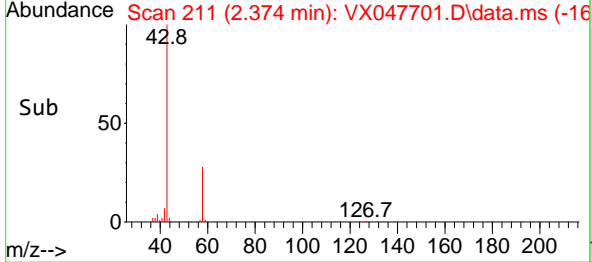
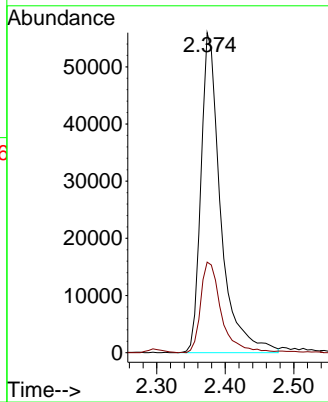


#16
 Acetone
 Concen: 102.197 ug/l
 RT: 2.374 min Scan# 211
 Delta R.T. -0.000 min
 Lab File: VX047701.D
 Acq: 22 Sep 2025 14:07

Instrument :
 MSVOA_X
 ClientSampleId :
 VNJ-238

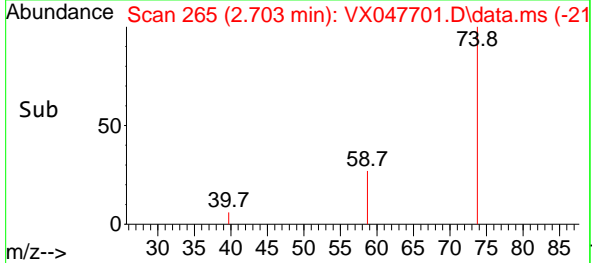
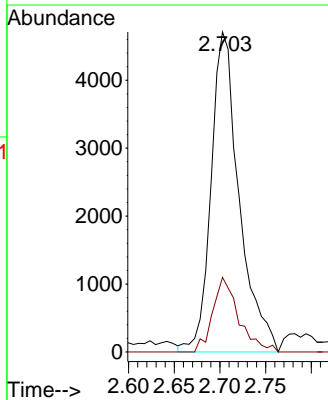
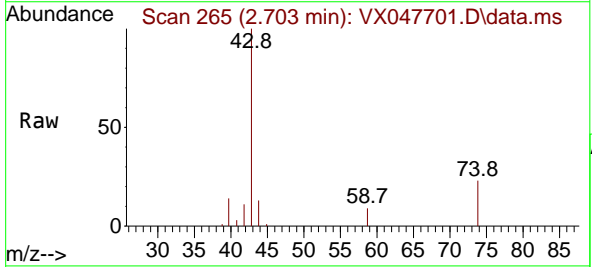


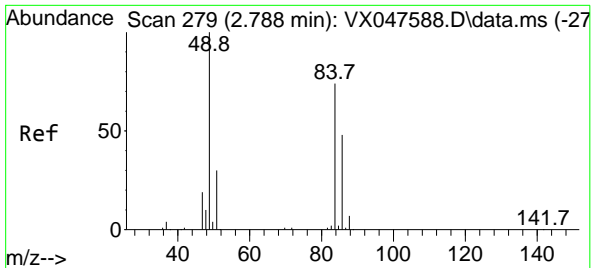
Tgt Ion: 43 Resp: 111873
 Ion Ratio Lower Upper
 43 100
 58 28.3 23.4 35.0



#18
 Methyl Acetate
 Concen: 4.142 ug/l
 RT: 2.703 min Scan# 265
 Delta R.T. -0.000 min
 Lab File: VX047701.D
 Acq: 22 Sep 2025 14:07

Tgt Ion: 43 Resp: 10092
 Ion Ratio Lower Upper
 43 100
 74 21.5 17.4 26.2

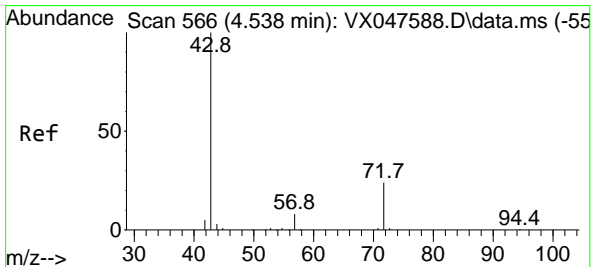
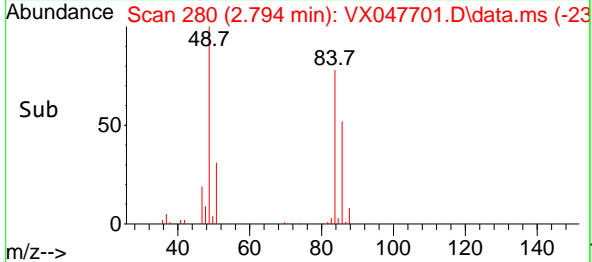
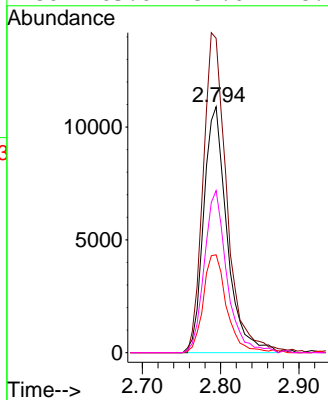
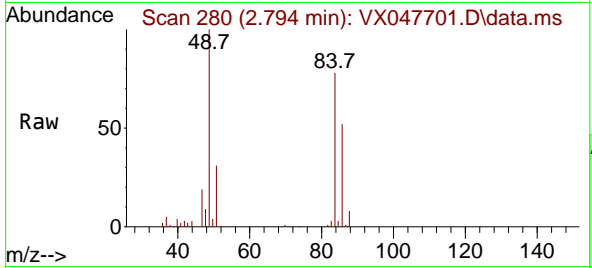




#20
 Methylene Chloride
 Concen: 9.763 ug/l
 RT: 2.794 min Scan# 21
 Delta R.T. 0.006 min
 Lab File: VX047701.D
 Acq: 22 Sep 2025 14:07

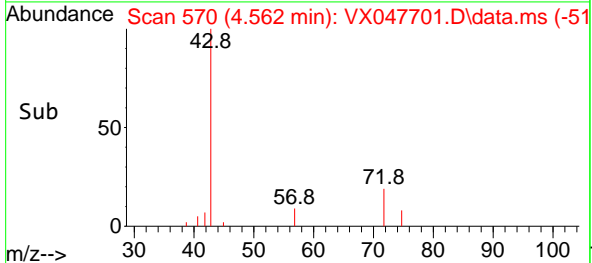
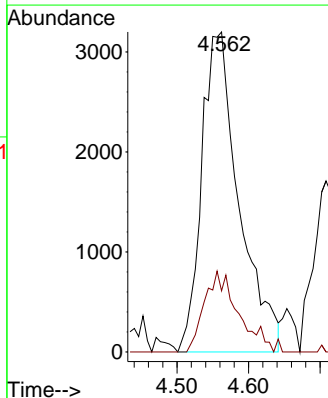
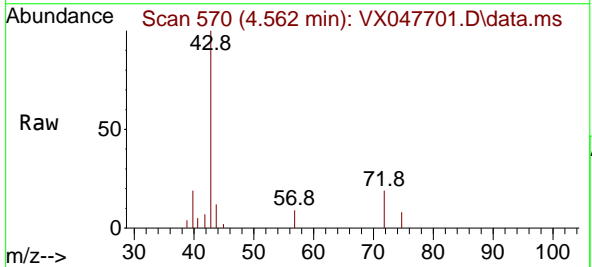
Instrument : MSVOA_X
 ClientSampleId : VNJ-238

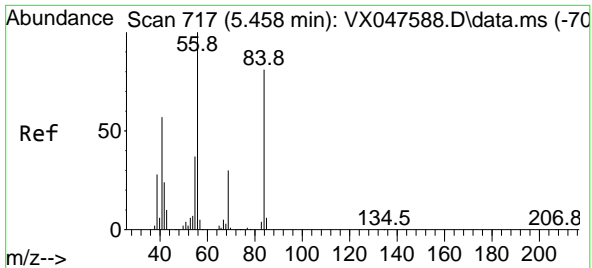
Tgt Ion	Resp	Lower	Upper
84	100		
49	123.4	108.6	162.8
51	38.4	32.6	48.8
86	63.6	52.0	78.0



#25
 2-Butanone
 Concen: 8.503 ug/l
 RT: 4.562 min Scan# 570
 Delta R.T. 0.024 min
 Lab File: VX047701.D
 Acq: 22 Sep 2025 14:07

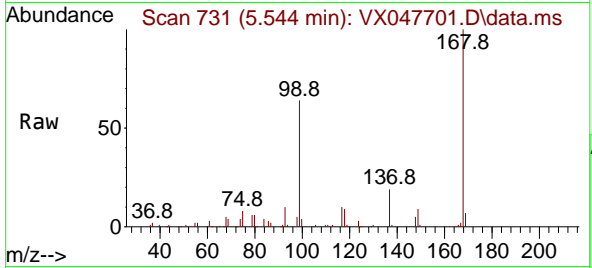
Tgt Ion	Resp	Lower	Upper
43	100		
72	17.0	20.1	30.1



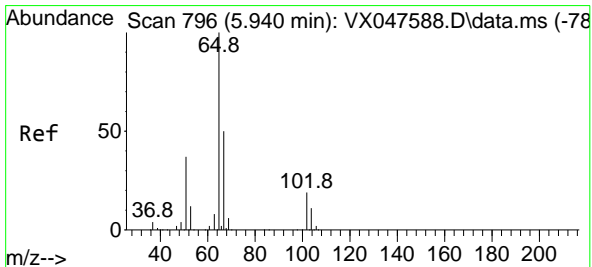
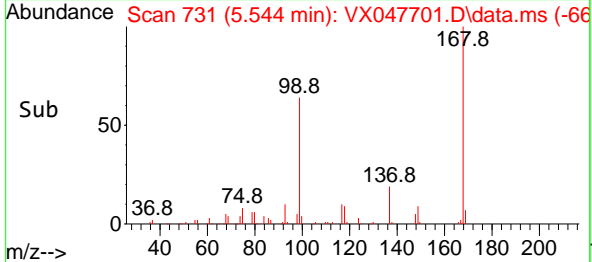
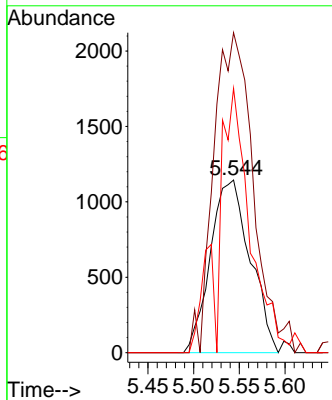


#31
 Cyclohexane
 Concen: 1.042 ug/l
 RT: 5.544 min Scan# 717
 Delta R.T. 0.085 min
 Lab File: VX047701.D
 Acq: 22 Sep 2025 14:07

Instrument : MSVOA_X
 ClientSampleId : VNJ-238

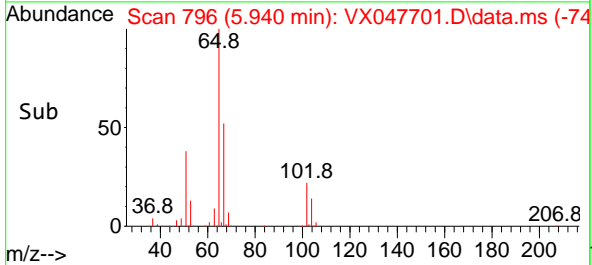
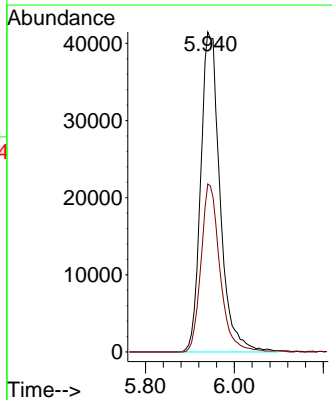
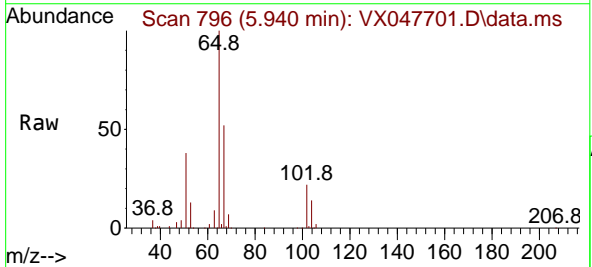


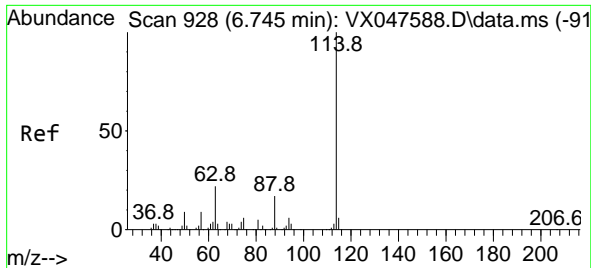
Tgt Ion: 56 Resp: 3468
 Ion Ratio Lower Upper
 56 100
 69 185.3 23.8 35.8#
 84 153.1 64.6 97.0#



#33
 1,2-Dichloroethane-d4
 Concen: 49.798 ug/l
 RT: 5.940 min Scan# 796
 Delta R.T. -0.000 min
 Lab File: VX047701.D
 Acq: 22 Sep 2025 14:07

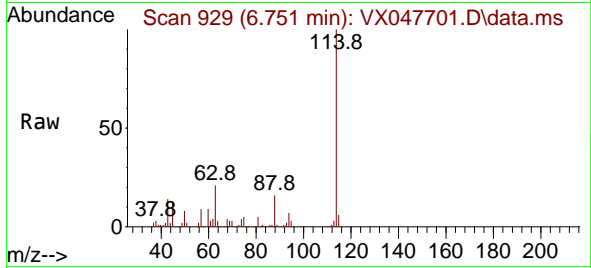
Tgt Ion: 65 Resp: 125373
 Ion Ratio Lower Upper
 65 100
 67 51.4 0.0 103.0



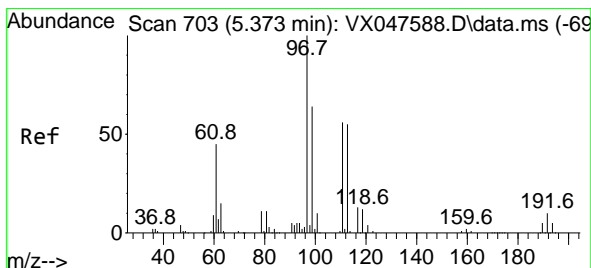
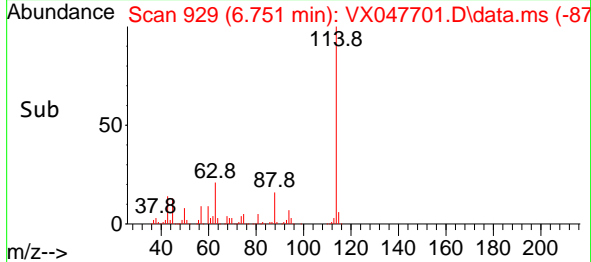
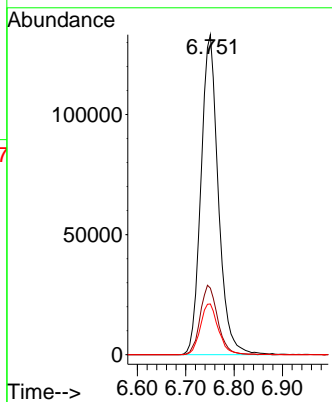


#34
 1,4-Difluorobenzene
 Concen: 50.000 ug/l
 RT: 6.751 min Scan# 91
 Delta R.T. 0.006 min
 Lab File: VX047701.D
 Acq: 22 Sep 2025 14:07

Instrument :
 MSVOA_X
 ClientSampleId :
 VNJ-238

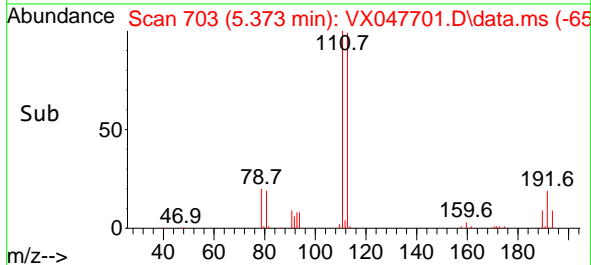
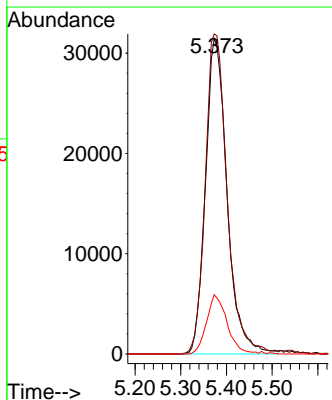
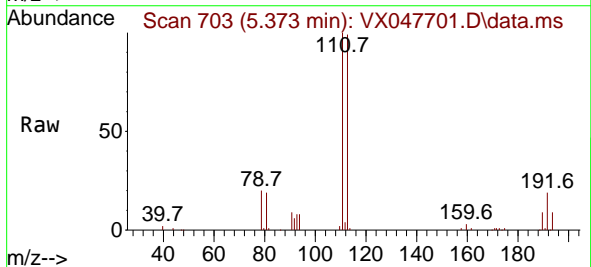


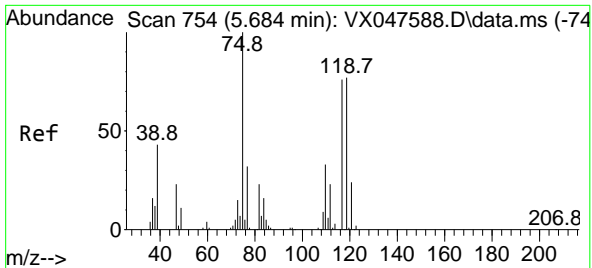
Tgt Ion:114 Resp: 331918
 Ion Ratio Lower Upper
 114 100
 63 20.8 0.0 44.0
 88 15.8 0.0 34.2



#35
 Dibromofluoromethane
 Concen: 46.483 ug/l
 RT: 5.373 min Scan# 703
 Delta R.T. -0.000 min
 Lab File: VX047701.D
 Acq: 22 Sep 2025 14:07

Tgt Ion:113 Resp: 103473
 Ion Ratio Lower Upper
 113 100
 111 102.3 80.9 121.3
 192 17.8 14.2 21.4

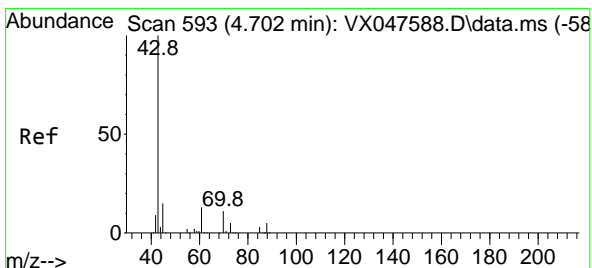
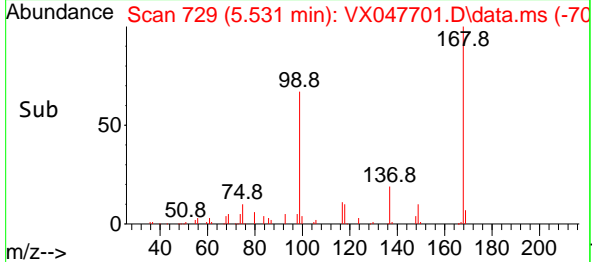
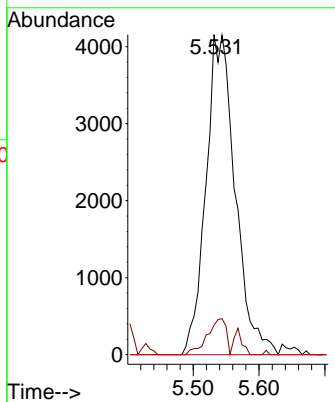
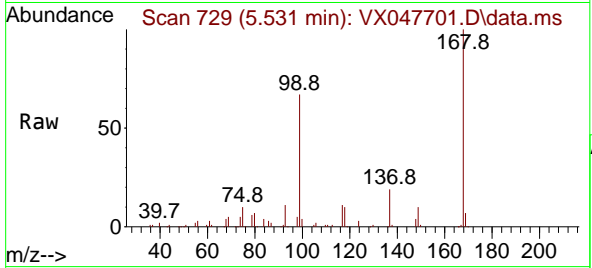




#36
 1,1-Dichloropropene
 Concen: 3.959 ug/l
 RT: 5.531 min Scan# 71
 Delta R.T. -0.153 min
 Lab File: VX047701.D
 Acq: 22 Sep 2025 14:07

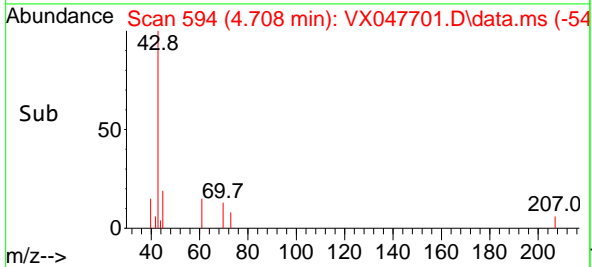
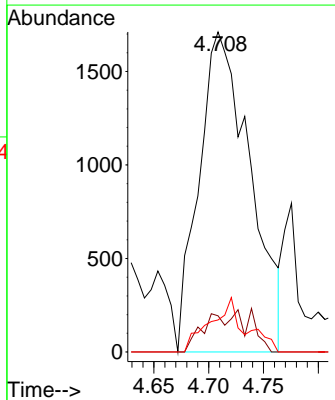
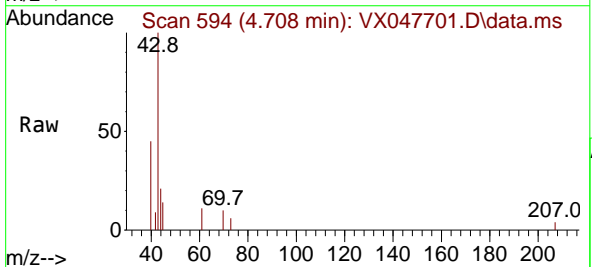
Instrument : MSVOA_X
 ClientSampleId : VNJ-238

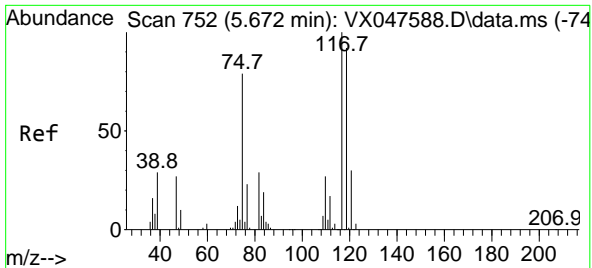
Tgt Ion	Resp	Lower	Upper
75	12877		
75	100		
110	7.2	16.7	50.1#
77	0.0	24.3	36.5#



#37
 Ethyl Acetate
 Concen: 1.591 ug/l
 RT: 4.708 min Scan# 594
 Delta R.T. 0.006 min
 Lab File: VX047701.D
 Acq: 22 Sep 2025 14:07

Tgt Ion	Resp	Lower	Upper
43	5542		
43	100		
61	5.6	9.8	14.8#
70	9.2	7.9	11.9

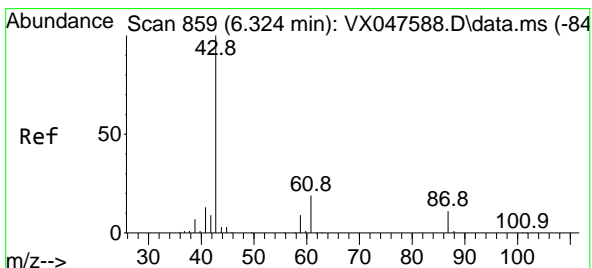
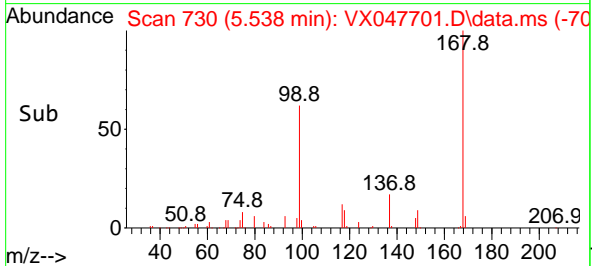
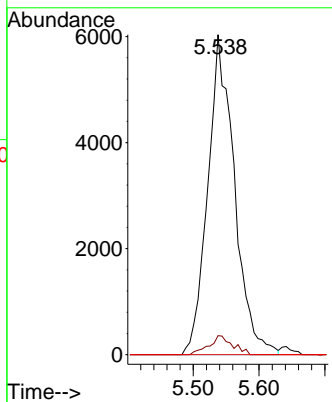
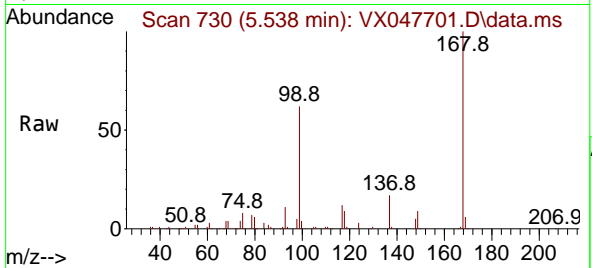




#38
 Carbon Tetrachloride
 Concen: 4.813 ug/l
 RT: 5.538 min Scan# 71
 Delta R.T. -0.134 min
 Lab File: VX047701.D
 Acq: 22 Sep 2025 14:07

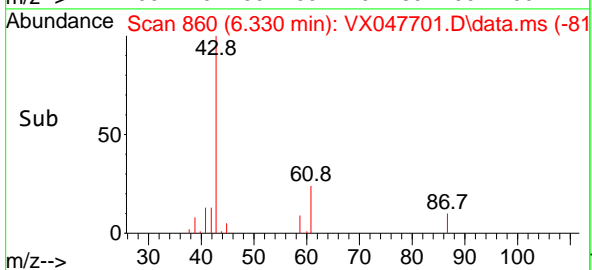
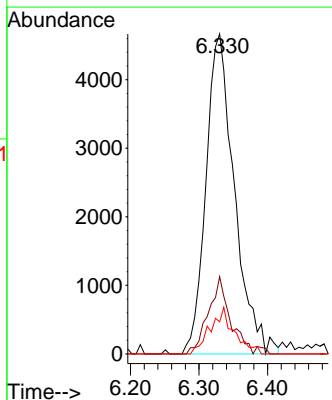
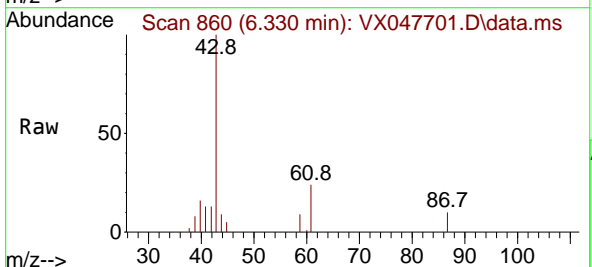
Instrument : MSVOA_X
 ClientSampleId : VNJ-238

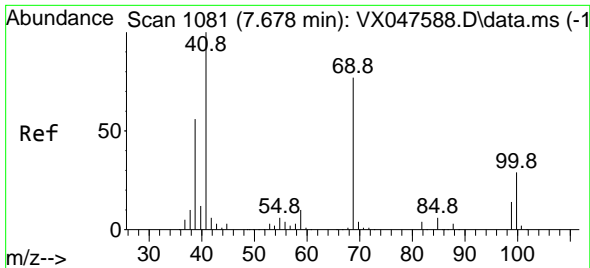
Tgt Ion	Resp	Lower	Upper
117	17011		
119	5.9	73.4	110.2#
121	0.0	23.8	35.6#



#43
 Isopropyl Acetate
 Concen: 2.359 ug/l
 RT: 6.330 min Scan# 860
 Delta R.T. 0.006 min
 Lab File: VX047701.D
 Acq: 22 Sep 2025 14:07

Tgt Ion	Resp	Lower	Upper
43	13477		
61	18.5	15.2	22.8
87	12.1	9.6	14.4



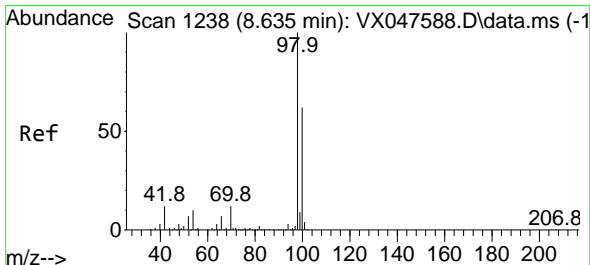
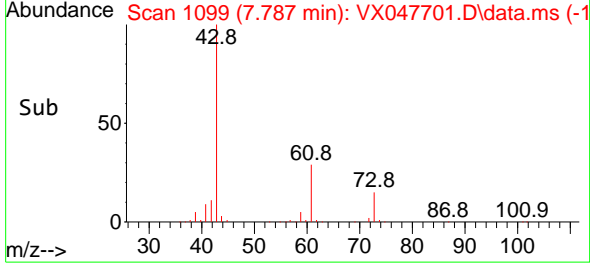
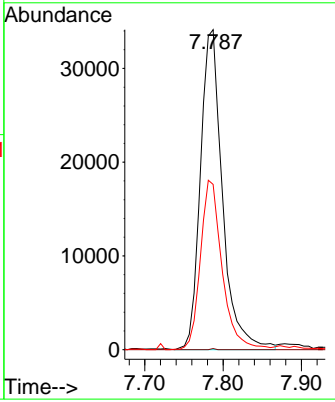
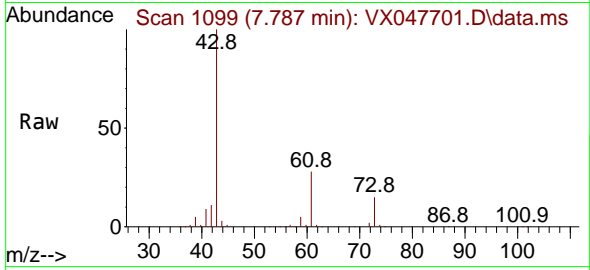


#48
 Methyl methacrylate
 Concen: 23.461 ug/l
 RT: 7.787 min Scan# 1099
 Delta R.T. 0.110 min
 Lab File: VX047701.D
 Acq: 22 Sep 2025 14:07

Instrument : MSVOA_X
 ClientSampleId : VNJ-238

Tgt Ion: 41 Resp: 66751

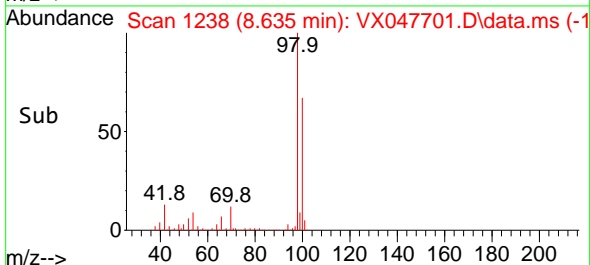
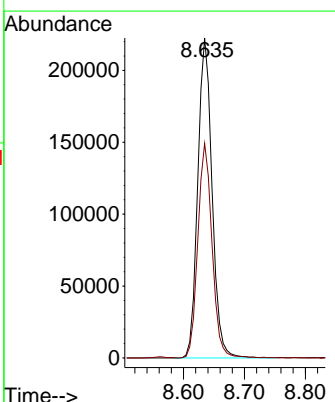
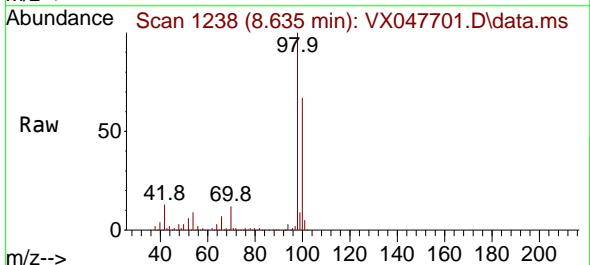
Ion	Ratio	Lower	Upper
41	100		
69	0.1	61.4	92.2#
39	52.2	45.8	68.6

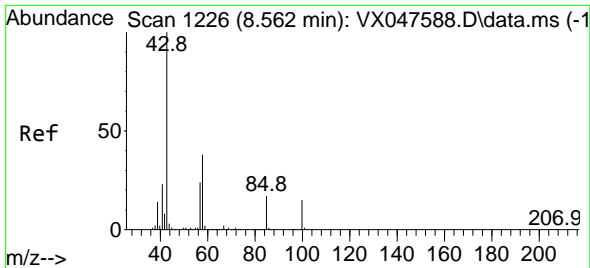


#50
 Toluene-d8
 Concen: 47.081 ug/l
 RT: 8.635 min Scan# 1238
 Delta R.T. -0.000 min
 Lab File: VX047701.D
 Acq: 22 Sep 2025 14:07

Tgt Ion: 98 Resp: 362643

Ion	Ratio	Lower	Upper
98	100		
100	66.9	53.0	79.4

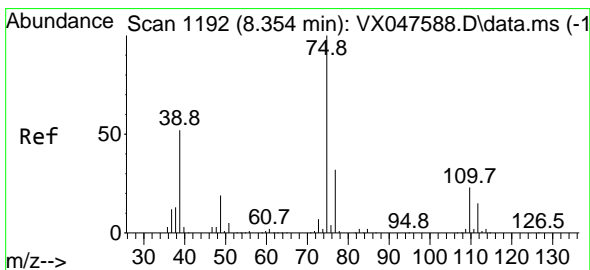
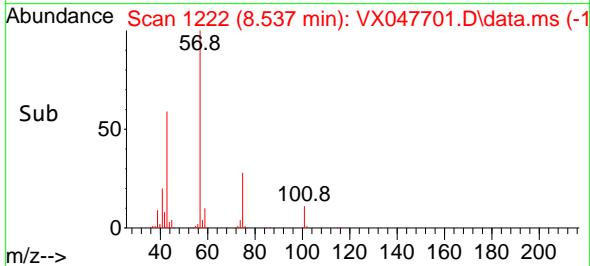
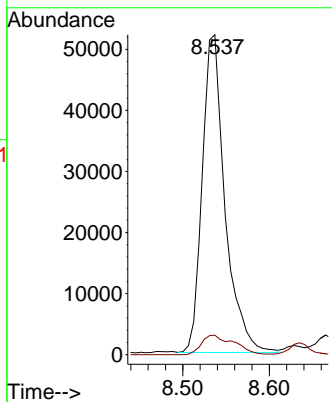
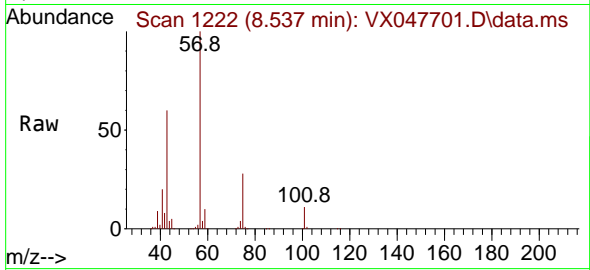




#51
 4-Methyl-2-Pentanone
 Concen: 30.002 ug/l
 RT: 8.537 min Scan# 1222
 Delta R.T. -0.024 min
 Lab File: VX047701.D
 Acq: 22 Sep 2025 14:07

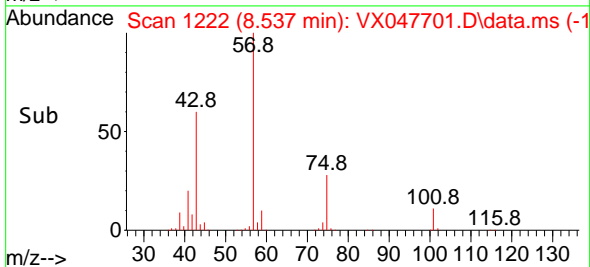
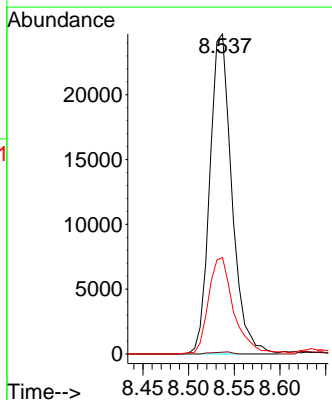
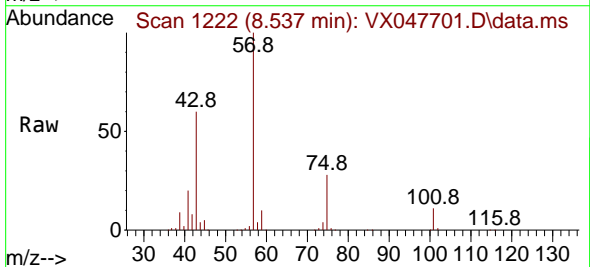
Instrument : MSVOA_X
 ClientSampleId : VNJ-238

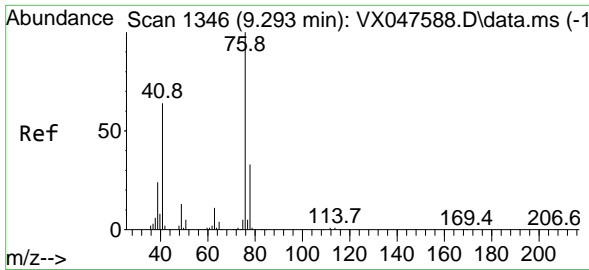
Tgt Ion: 43 Resp: 95016
 Ion Ratio Lower Upper
 43 100
 58 8.8 30.3 45.5#



#54
 cis-1,3-Dichloropropene
 Concen: 10.007 ug/l
 RT: 8.537 min Scan# 1222
 Delta R.T. 0.183 min
 Lab File: VX047701.D
 Acq: 22 Sep 2025 14:07

Tgt Ion: 75 Resp: 41444
 Ion Ratio Lower Upper
 75 100
 77 0.6 25.8 38.6#
 39 29.5 41.4 62.2#

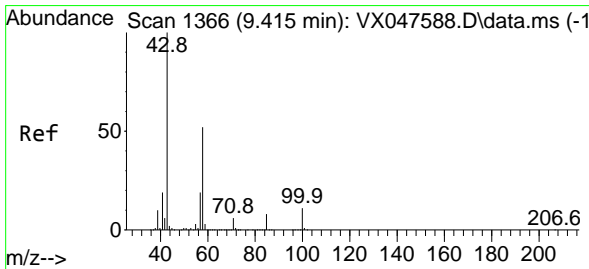
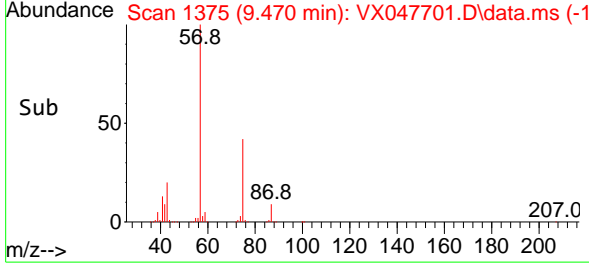
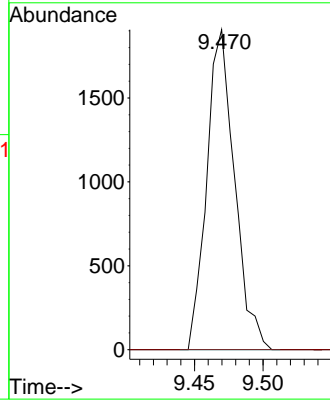
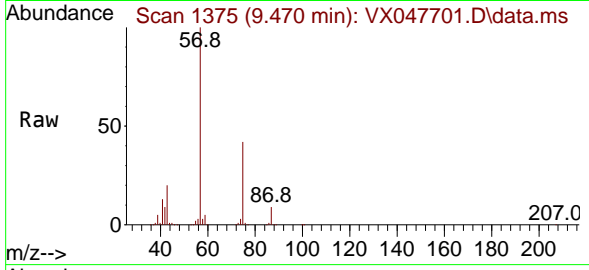




#57
 1,3-Dichloropropane
 Concen: 0.668 ug/l
 RT: 9.470 min Scan# 1375
 Delta R.T. 0.177 min
 Lab File: VX047701.D
 Acq: 22 Sep 2025 14:07

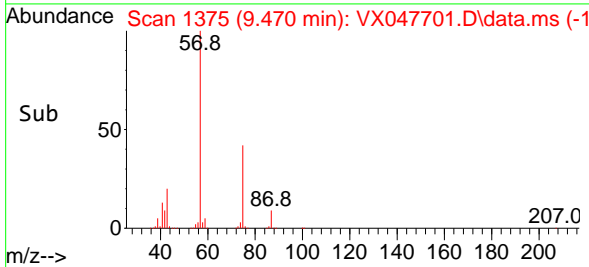
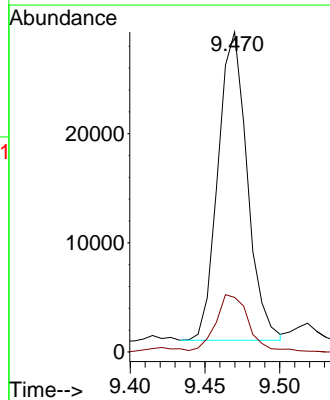
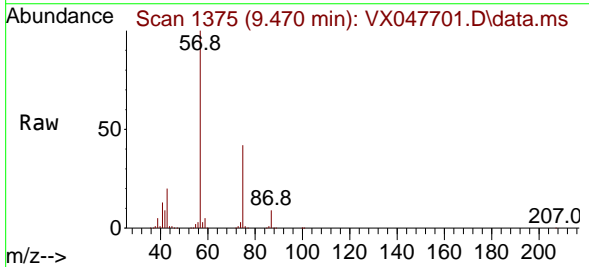
Instrument : MSVOA_X
 ClientSampleId : VNJ-238

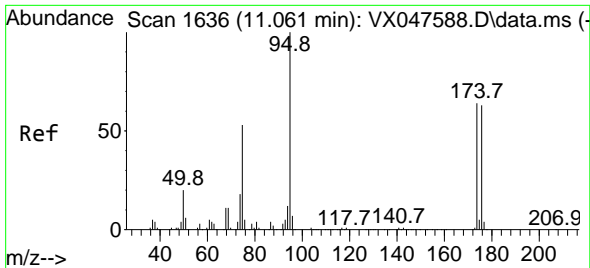
Tgt Ion: 76 Resp: 2695
 Ion Ratio Lower Upper
 76 100
 78 0.0 26.2 39.4#



#59
 2-Hexanone
 Concen: 16.892 ug/l
 RT: 9.470 min Scan# 1375
 Delta R.T. 0.055 min
 Lab File: VX047701.D
 Acq: 22 Sep 2025 14:07

Tgt Ion: 43 Resp: 38421
 Ion Ratio Lower Upper
 43 100
 58 21.1 26.1 78.2#

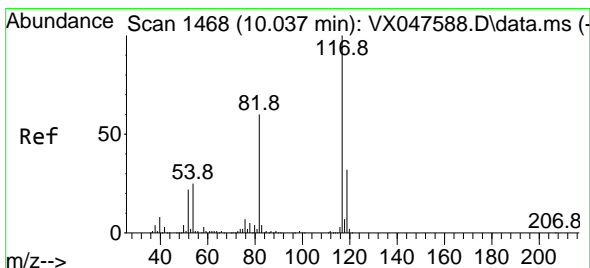
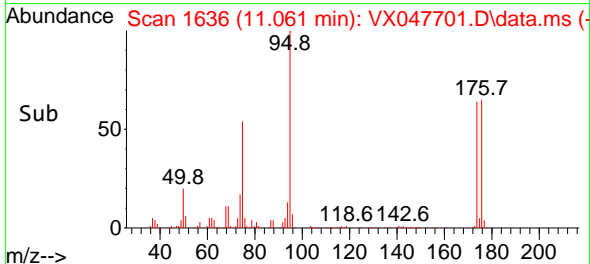
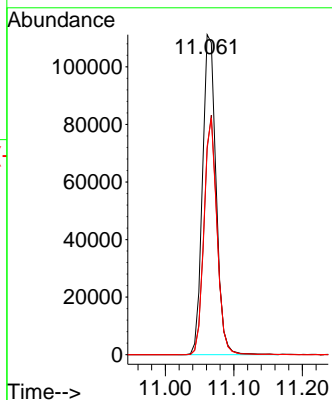
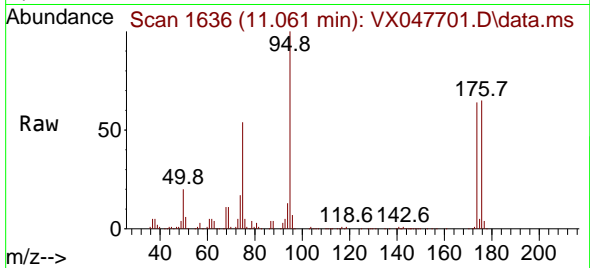




#62
 4-Bromofluorobenzene
 Concen: 52.505 ug/l
 RT: 11.061 min Scan# 1636
 Delta R.T. -0.000 min
 Lab File: VX047701.D
 Acq: 22 Sep 2025 14:07

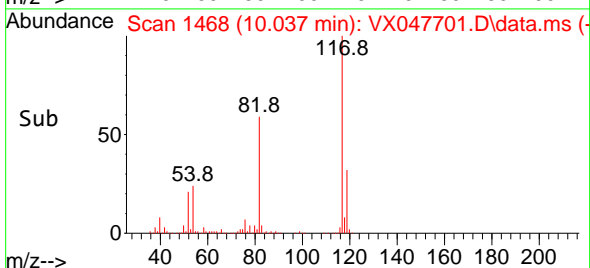
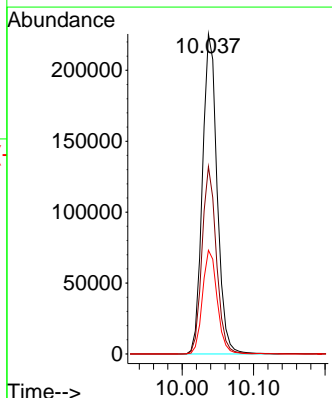
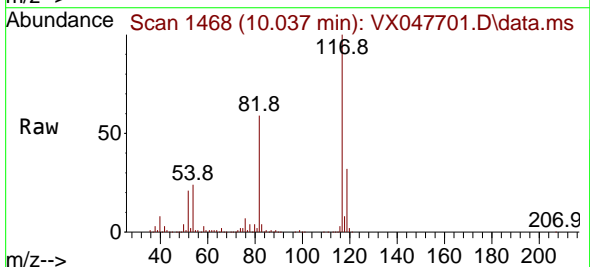
Instrument : MSVOA_X
 ClientSampleId : VNJ-238

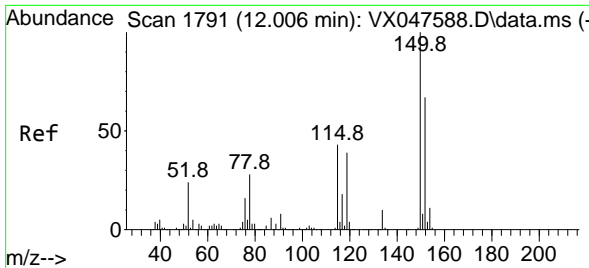
Tgt Ion: 95 Resp: 153483
 Ion Ratio Lower Upper
 95 100
 174 71.1 0.0 141.6
 176 70.9 0.0 138.4



#63
 Chlorobenzene-d5
 Concen: 50.000 ug/l
 RT: 10.037 min Scan# 1468
 Delta R.T. -0.000 min
 Lab File: VX047701.D
 Acq: 22 Sep 2025 14:07

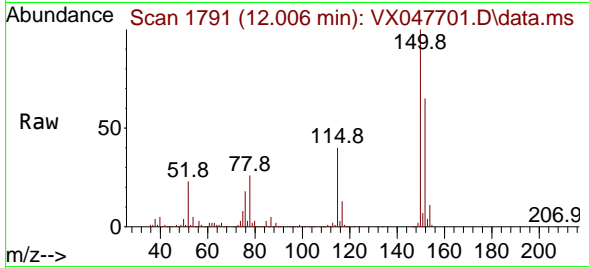
Tgt Ion: 117 Resp: 321971
 Ion Ratio Lower Upper
 117 100
 82 58.6 47.8 71.6
 119 32.4 25.2 37.8



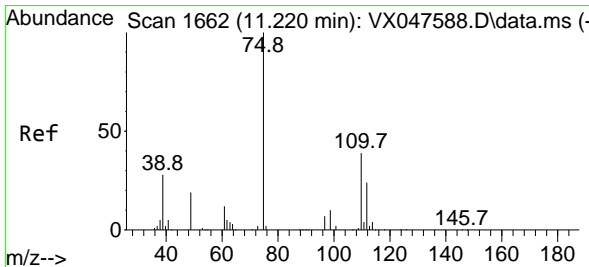
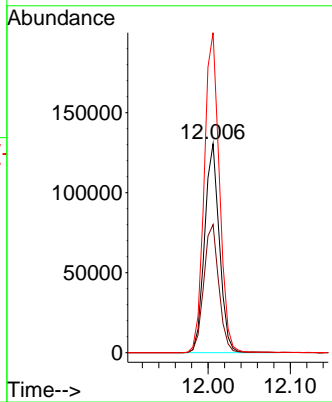
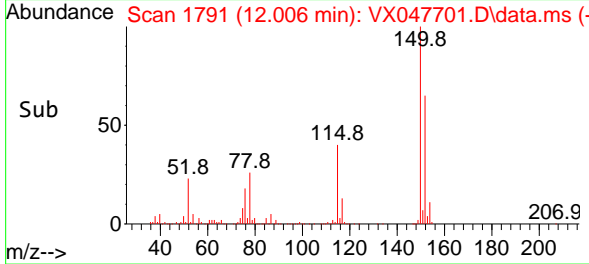


#72
 1,4-Dichlorobenzene-d4
 Concen: 50.000 ug/l
 RT: 12.006 min Scan# 11
 Delta R.T. -0.000 min
 Lab File: VX047701.D
 Acq: 22 Sep 2025 14:07

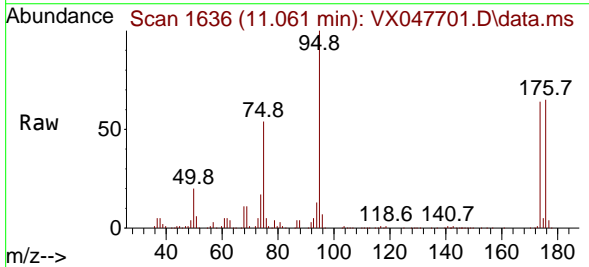
Instrument :
 MSVOA_X
 ClientSampleId :
 VNJ-238



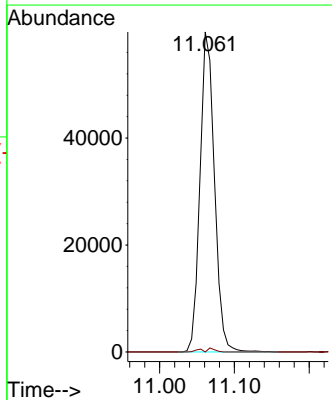
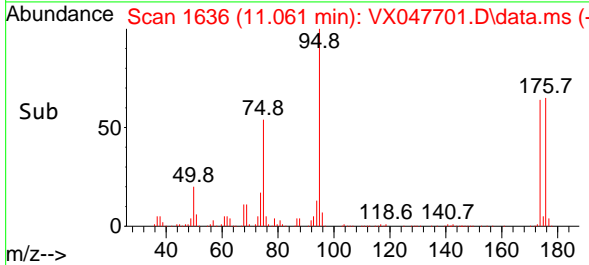
Tgt Ion:152 Resp: 163047
 Ion Ratio Lower Upper
 152 100
 115 62.5 44.9 134.5
 150 157.1 0.0 352.0

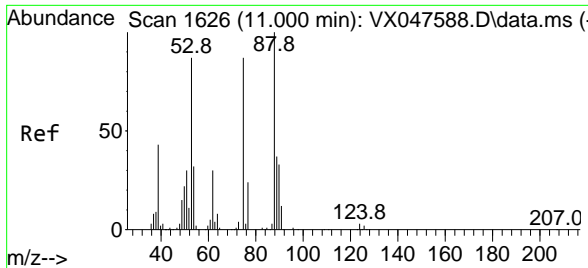


#76
 1,2,3-Trichloropropane
 Concen: 24.368 ug/l
 RT: 11.061 min Scan# 1636
 Delta R.T. -0.159 min
 Lab File: VX047701.D
 Acq: 22 Sep 2025 14:07



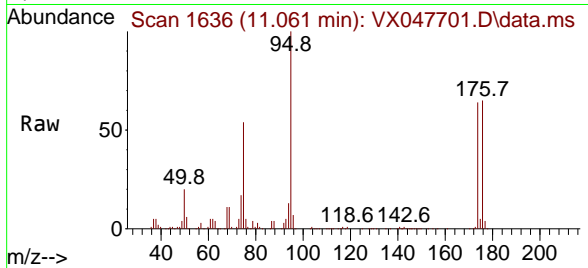
Tgt Ion: 75 Resp: 80444
 Ion Ratio Lower Upper
 75 100
 77 0.4 18.8 56.4#





#81
 trans-1,4-Dichloro-2-butene
 Concen: 62.142 ug/l
 RT: 11.061 min Scan# 10
 Delta R.T. 0.061 min
 Lab File: VX047701.D
 Acq: 22 Sep 2025 14:07

Instrument :
 MSVOA_X
 ClientSampleId :
 VNJ-238



Tgt Ion: 75 Resp: 80444
 Ion Ratio Lower Upper
 75 100
 53 0.0 83.4 125.2#
 89 0.0 36.3 54.5#

