

Data Path : Z:\voasrv\HPCHEM1\MSVOA\_X\Data\VX092225\  
 Data File : VX047702.D  
 Acq On : 22 Sep 2025 14:28  
 Operator : JC/MD  
 Sample : Q3133-04  
 Misc : 5.0mL/MSVOA\_X/WATER  
 ALS Vial : 15 Sample Multiplier: 1

Instrument :  
 MSVOA\_X  
 ClientSampleId :  
 VNJ-222

Quant Time: Sep 23 01:34:59 2025  
 Quant Method : Z:\voasrv\HPCHEM1\MSVOA\_X\Method\82X091625W.M  
 Quant Title : SW846 8260  
 QLast Update : Wed Sep 17 06:39:58 2025  
 Response via : Initial Calibration

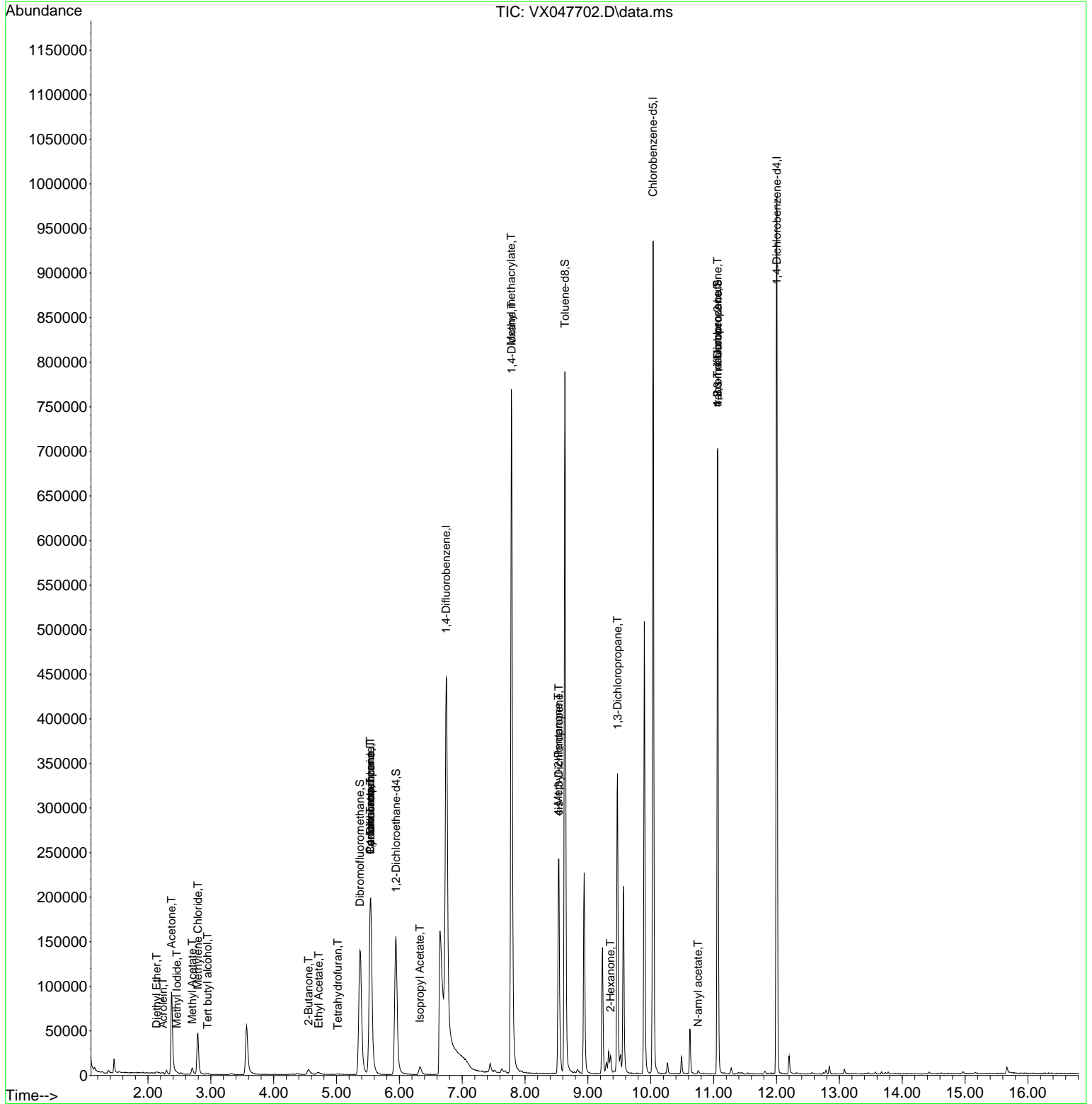
Compound	R.T.	QIon	Response	Conc	Units	Dev(Min)
-----						
Internal Standards						
1) Pentafluorobenzene	5.544	168	203047	50.000	ug/l	0.00
34) 1,4-Difluorobenzene	6.745	114	421156	50.000	ug/l	0.00
63) Chlorobenzene-d5	10.037	117	410121	50.000	ug/l	0.00
72) 1,4-Dichlorobenzene-d4	12.006	152	203992	50.000	ug/l	0.00
System Monitoring Compounds						
33) 1,2-Dichloroethane-d4	5.946	65	165596	51.236	ug/l	0.00
Spiked Amount	50.000	Range 78 - 117	Recovery	=	102.480%	
35) Dibromofluoromethane	5.373	113	137068	48.528	ug/l	0.00
Spiked Amount	50.000	Range 75 - 124	Recovery	=	97.060%	
50) Toluene-d8	8.635	98	476410	48.746	ug/l	0.00
Spiked Amount	50.000	Range 92 - 112	Recovery	=	97.500%	
62) 4-Bromofluorobenzene	11.061	95	201420	54.303	ug/l	0.00
Spiked Amount	50.000	Range 83 - 123	Recovery	=	108.600%	
Target Compounds						
						Qvalue
8) Diethyl Ether	2.136	74	508	0.309	ug/l #	15
10) Methyl Iodide	2.459	142	734	0.200	ug/l #	87
11) Tert butyl alcohol	2.947	59	945	2.625	ug/l #	78
13) Acrolein	2.239	56	325	0.980	ug/l	98
16) Acetone	2.374	43	121916	86.756	ug/l	99
18) Methyl Acetate	2.703	43	10419	3.331	ug/l	94
20) Methylene Chloride	2.794	84	24034	8.080	ug/l	90
25) 2-Butanone	4.556	43	11531	6.578	ug/l	100
29) Tetrahydrofuran	5.019	42	557	0.528	ug/l #	62
31) Cyclohexane	5.538	56	4470	1.047	ug/l #	4
36) 1,1-Dichloropropene	5.538	75	16798	4.070	ug/l #	52
37) Ethyl Acetate	4.715	43	4555	1.031	ug/l	98
38) Carbon Tetrachloride	5.538	117	21055	4.695	ug/l #	17
43) Isopropyl Acetate	6.324	43	13325	1.839	ug/l	97
48) Methyl methacrylate	7.781	41	74660	20.681	ug/l #	46
49) 1,4-Dioxane	7.787	88	72	1.973	ug/l #	1
51) 4-Methyl-2-Pentanone	8.531	43	96261	23.955	ug/l #	52
54) cis-1,3-Dichloropropene	8.537	75	41626	7.921	ug/l #	58
57) 1,3-Dichloropropane	9.470	76	2945	0.576	ug/l #	42
59) 2-Hexanone	9.360	43	12424	4.305	ug/l #	26
74) N-amyl acetate	10.750	43	2358	0.333	ug/l #	52
76) 1,2,3-Trichloropropane	11.061	75	103432	25.043	ug/l #	40
81) trans-1,4-Dichloro-2-b...	11.061	75	103432	63.863	ug/l #	8

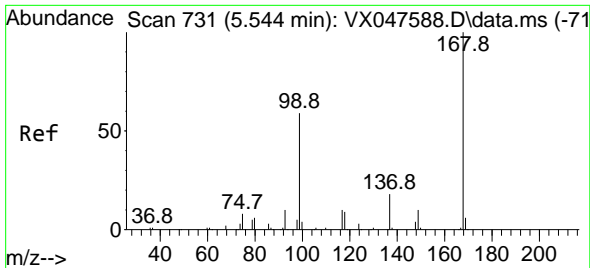
(#) = qualifier out of range (m) = manual integration (+) = signals summed

Data Path : Z:\voasrv\HPCHEM1\MSVOA\_X\Data\VX092225\  
 Data File : VX047702.D  
 Acq On : 22 Sep 2025 14:28  
 Operator : JC/MD  
 Sample : Q3133-04  
 Misc : 5.0mL/MSVOA\_X/WATER  
 ALS Vial : 15 Sample Multiplier: 1

Instrument :  
 MSVOA\_X  
 ClientSampleId :  
 VNJ-222

Quant Time: Sep 23 01:34:59 2025  
 Quant Method : Z:\voasrv\HPCHEM1\MSVOA\_X\Method\82X091625W.M  
 Quant Title : SW846 8260  
 QLast Update : Wed Sep 17 06:39:58 2025  
 Response via : Initial Calibration

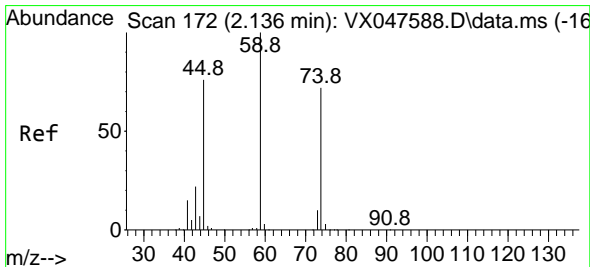
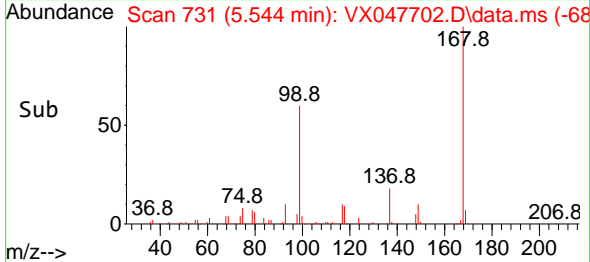
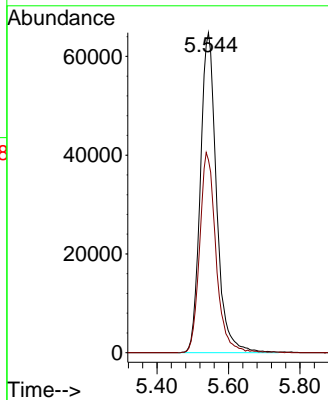
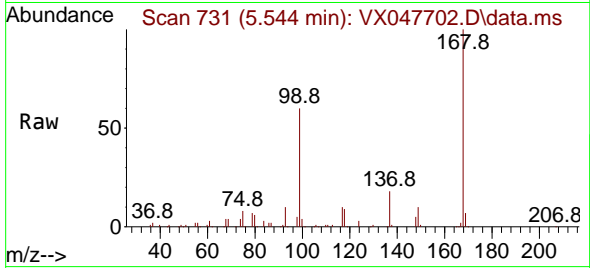




#1  
 Pentafluorobenzene  
 Concen: 50.000 ug/l  
 RT: 5.544 min Scan# 71  
 Delta R.T. -0.000 min  
 Lab File: VX047702.D  
 Acq: 22 Sep 2025 14:28

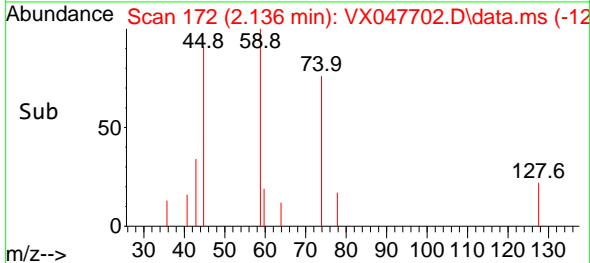
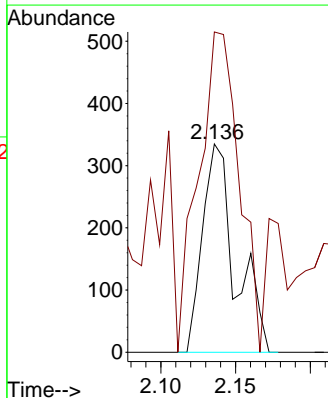
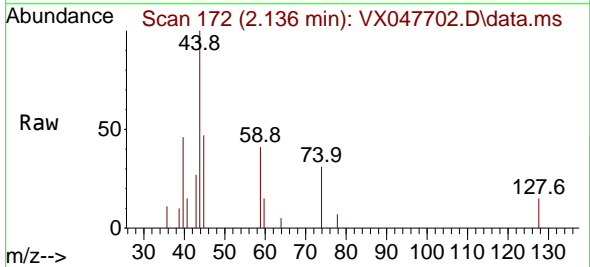
Instrument :  
 MSVOA\_X  
 ClientSampleId :  
 VNJ-222

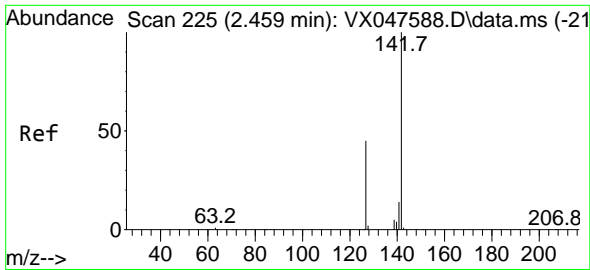
Tgt Ion:168 Resp: 203047  
 Ion Ratio Lower Upper  
 168 100  
 99 60.3 48.8 73.2



#8  
 Diethyl Ether  
 Concen: 0.309 ug/l  
 RT: 2.136 min Scan# 172  
 Delta R.T. -0.000 min  
 Lab File: VX047702.D  
 Acq: 22 Sep 2025 14:28

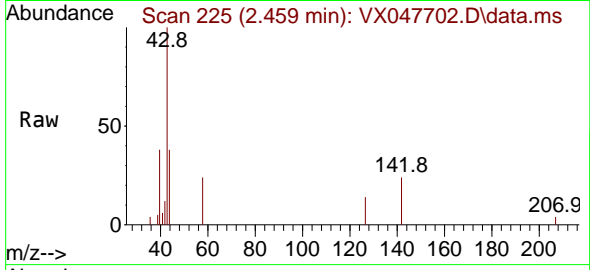
Tgt Ion: 74 Resp: 508  
 Ion Ratio Lower Upper  
 74 100  
 45 191.7 52.3 156.8#





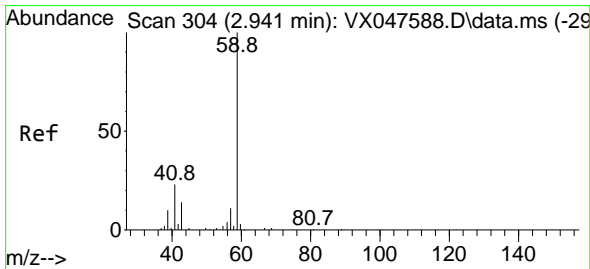
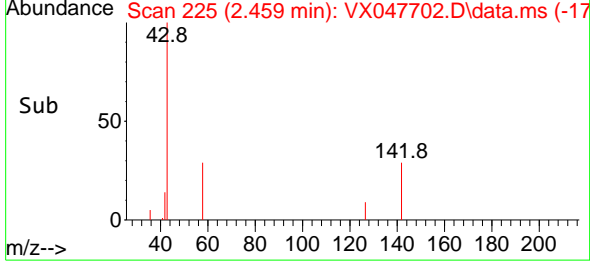
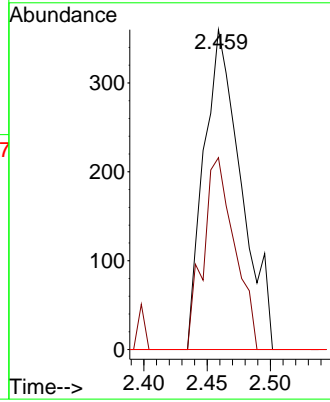
#10  
Methyl Iodide  
Concen: 0.200 ug/l  
RT: 2.459 min Scan# 21  
Delta R.T. -0.000 min  
Lab File: VX047702.D  
Acq: 22 Sep 2025 14:28

Instrument : MSVOA\_X  
ClientSampleId : VNJ-222



Tgt Ion: 142 Resp: 734

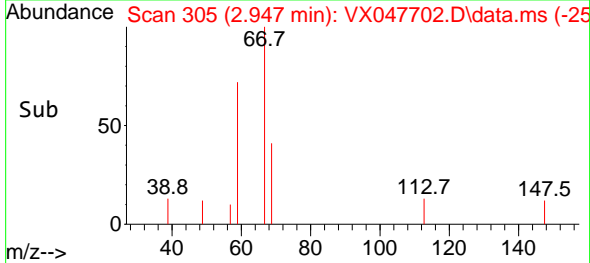
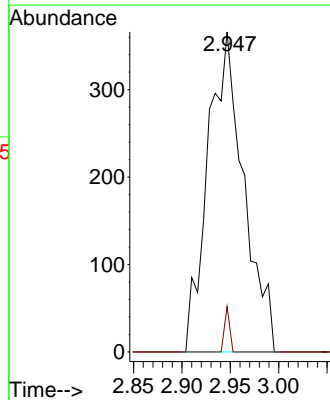
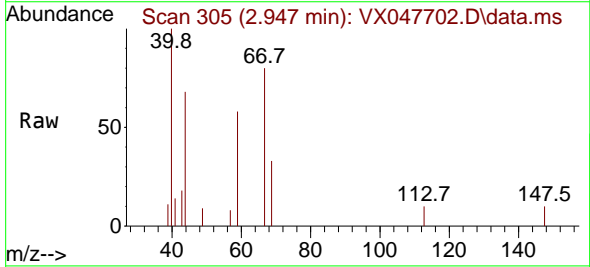
Ion	Ratio	Lower	Upper
142	100		
127	51.0	37.2	55.8
141	0.0	11.4	17.0#

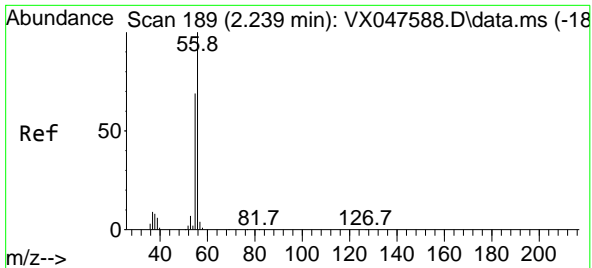


#11  
Tert butyl alcohol  
Concen: 2.625 ug/l  
RT: 2.947 min Scan# 305  
Delta R.T. 0.006 min  
Lab File: VX047702.D  
Acq: 22 Sep 2025 14:28

Tgt Ion: 59 Resp: 945

Ion	Ratio	Lower	Upper
59	100		
57	2.0	8.3	12.5#

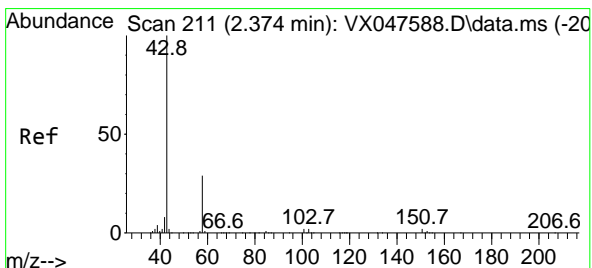
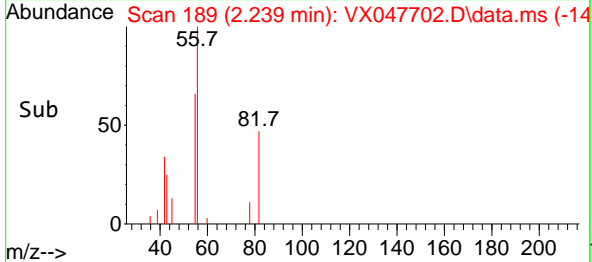
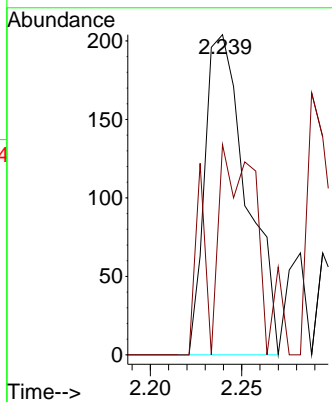
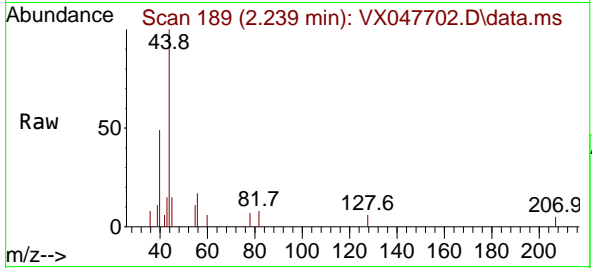




#13  
 Acrolein  
 Concen: 0.980 ug/l  
 RT: 2.239 min Scan# 11  
 Delta R.T. -0.000 min  
 Lab File: VX047702.D  
 Acq: 22 Sep 2025 14:28

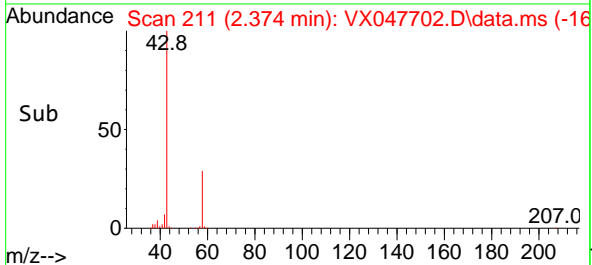
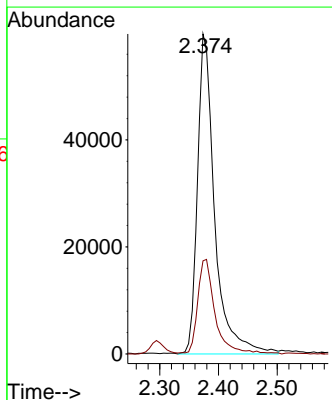
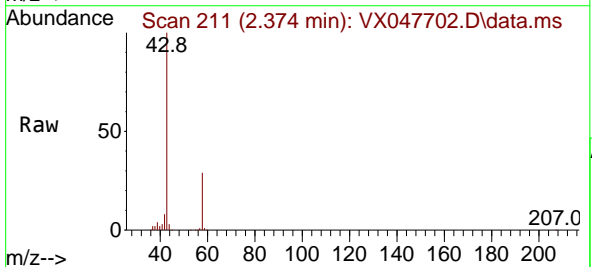
Instrument :  
 MSVOA\_X  
 ClientSampleId :  
 VNJ-222

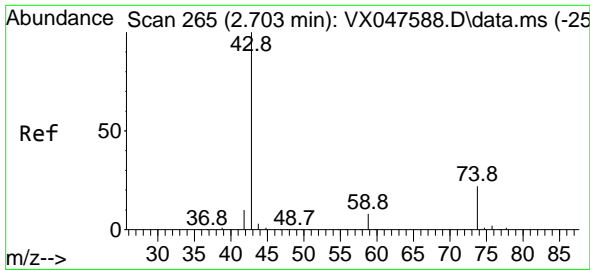
Tgt Ion: 56 Resp: 325  
 Ion Ratio Lower Upper  
 56 100  
 55 73.2 57.2 85.8



#16  
 Acetone  
 Concen: 86.756 ug/l  
 RT: 2.374 min Scan# 211  
 Delta R.T. -0.000 min  
 Lab File: VX047702.D  
 Acq: 22 Sep 2025 14:28

Tgt Ion: 43 Resp: 121916  
 Ion Ratio Lower Upper  
 43 100  
 58 30.0 23.4 35.0

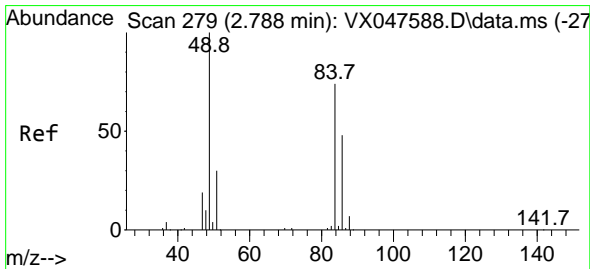
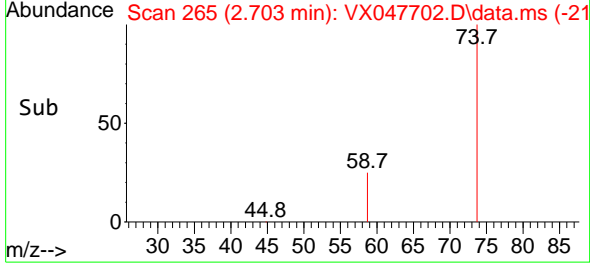
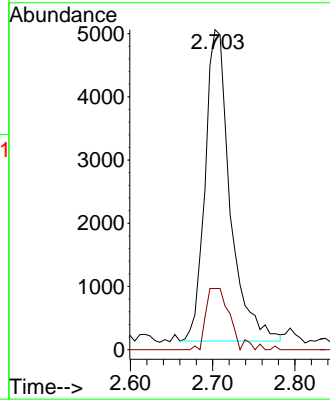
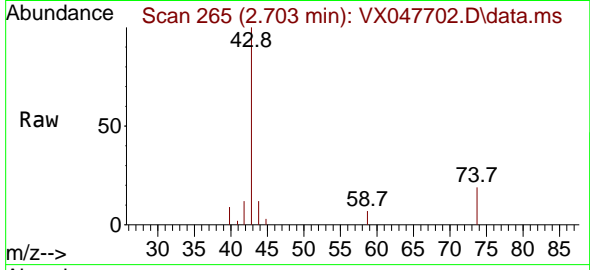




#18  
Methyl Acetate  
Concen: 3.331 ug/l  
RT: 2.703 min Scan# 20  
Delta R.T. -0.000 min  
Lab File: VX047702.D  
Acq: 22 Sep 2025 14:28

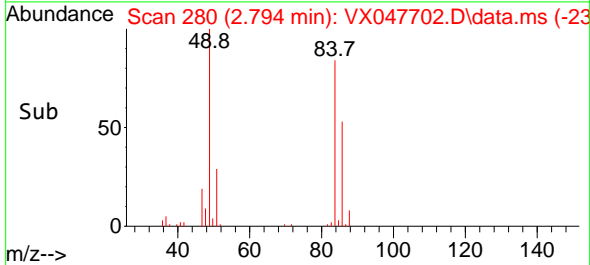
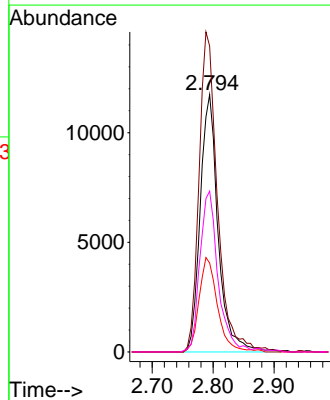
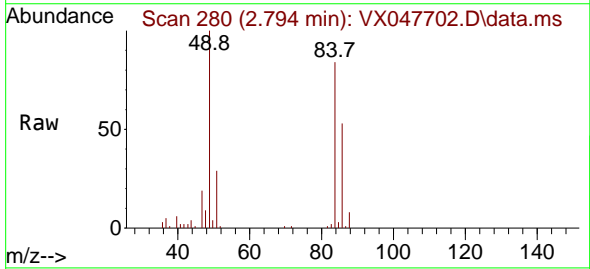
Instrument : MSVOA\_X  
ClientSampleId : VNJ-222

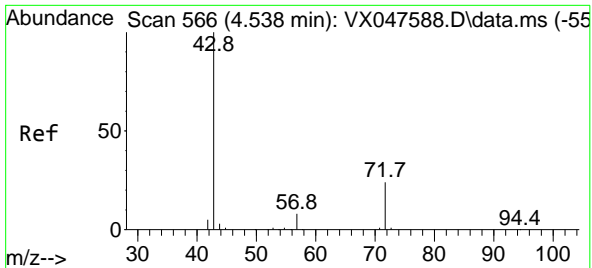
Tgt Ion: 43 Resp: 10419  
Ion Ratio Lower Upper  
43 100  
74 18.9 17.4 26.2



#20  
Methylene Chloride  
Concen: 8.080 ug/l  
RT: 2.794 min Scan# 280  
Delta R.T. 0.006 min  
Lab File: VX047702.D  
Acq: 22 Sep 2025 14:28

Tgt Ion: 84 Resp: 24034  
Ion Ratio Lower Upper  
84 100  
49 118.9 108.6 162.8  
51 34.6 32.6 48.8  
86 62.5 52.0 78.0

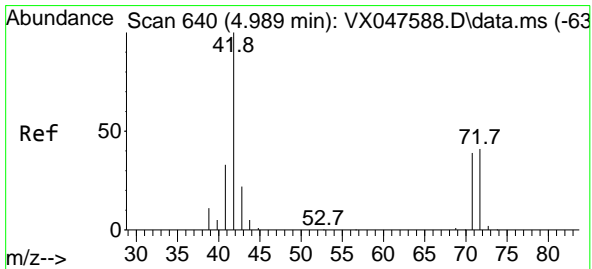
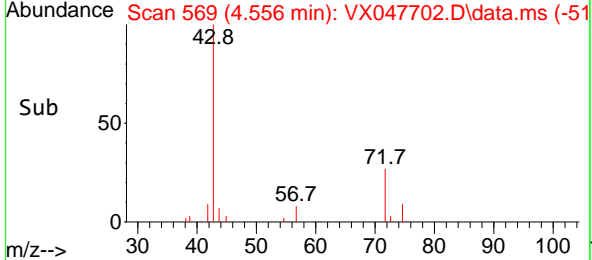
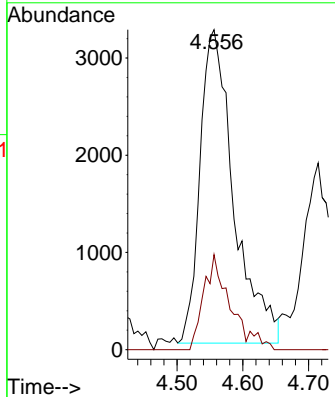
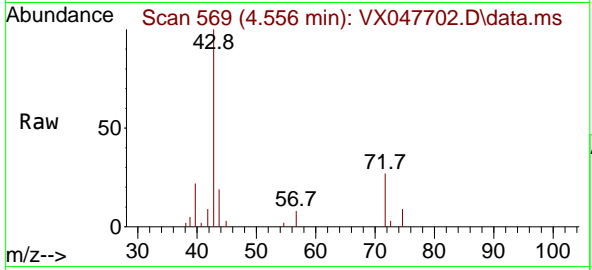




#25  
 2-Butanone  
 Concen: 6.578 ug/l  
 RT: 4.556 min Scan# 50  
 Delta R.T. 0.018 min  
 Lab File: VX047702.D  
 Acq: 22 Sep 2025 14:28

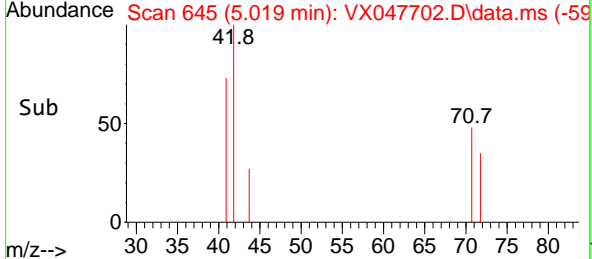
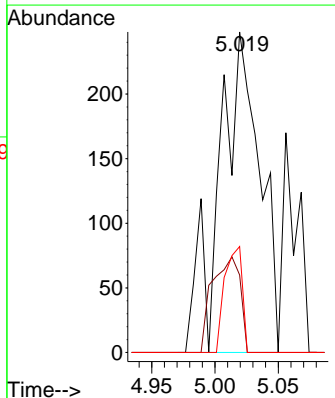
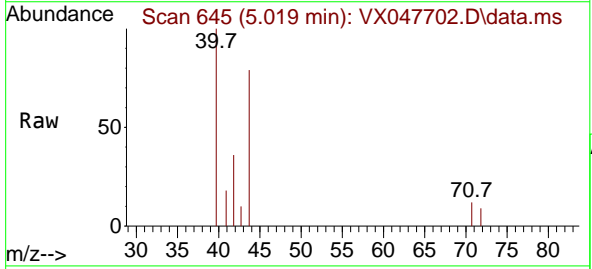
Instrument : MSVOA\_X  
 ClientSampleId : VNJ-222

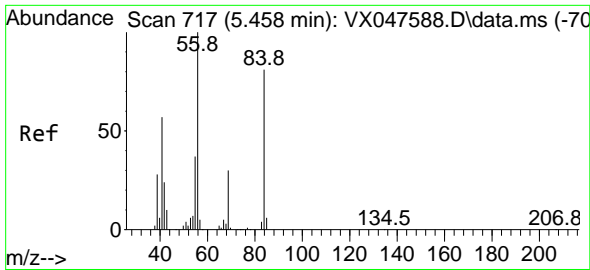
Tgt Ion: 43 Resp: 11531  
 Ion Ratio Lower Upper  
 43 100  
 72 25.3 20.1 30.1



#29  
 Tetrahydrofuran  
 Concen: 0.528 ug/l  
 RT: 5.019 min Scan# 645  
 Delta R.T. 0.030 min  
 Lab File: VX047702.D  
 Acq: 22 Sep 2025 14:28

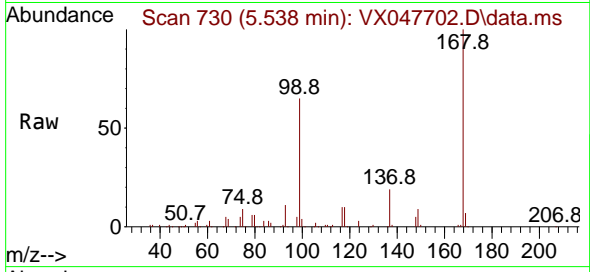
Tgt Ion: 42 Resp: 557  
 Ion Ratio Lower Upper  
 42 100  
 72 20.3 34.2 51.2#  
 71 14.2 31.9 47.9#



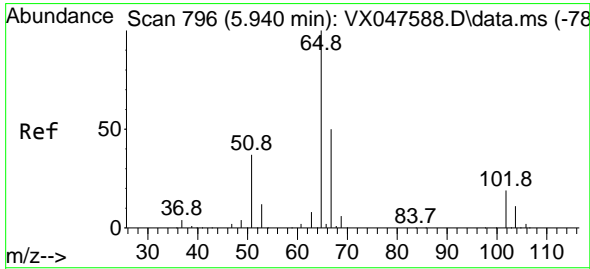
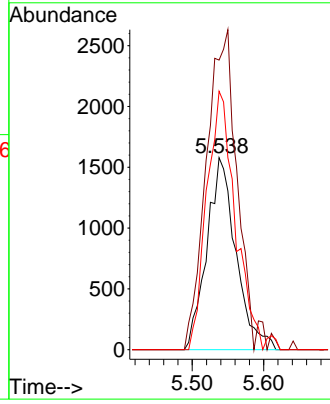
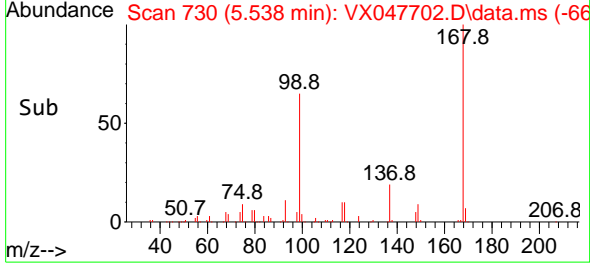


#31  
 Cyclohexane  
 Concen: 1.047 ug/l  
 RT: 5.538 min Scan# 717  
 Delta R.T. 0.079 min  
 Lab File: VX047702.D  
 Acq: 22 Sep 2025 14:28

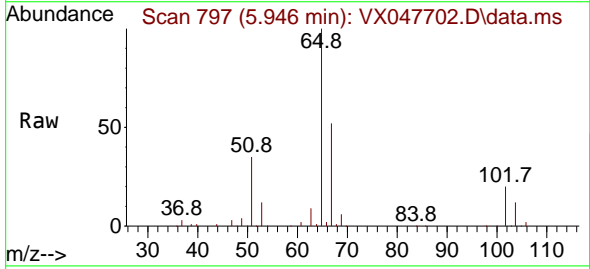
Instrument :  
 MSVOA\_X  
 ClientSampleId :  
 VNJ-222



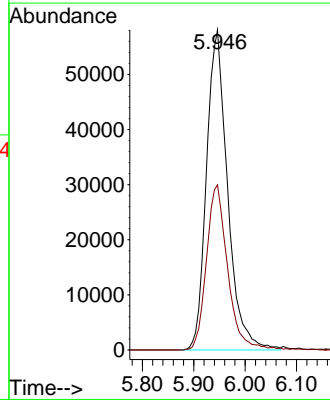
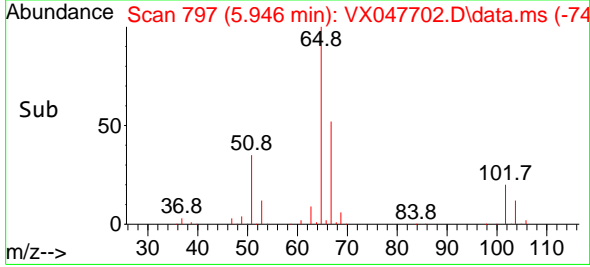
Tgt Ion: 56 Resp: 4470  
 Ion Ratio Lower Upper  
 56 100  
 69 143.7 23.8 35.8#  
 84 128.2 64.6 97.0#



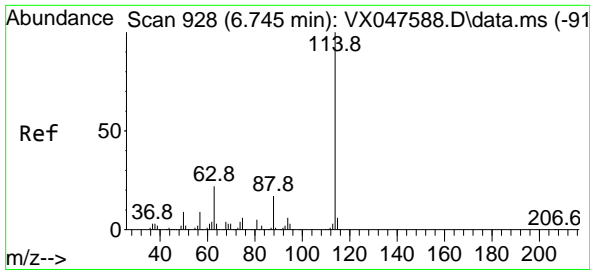
#33  
 1,2-Dichloroethane-d4  
 Concen: 51.236 ug/l  
 RT: 5.946 min Scan# 797  
 Delta R.T. 0.006 min  
 Lab File: VX047702.D  
 Acq: 22 Sep 2025 14:28



Tgt Ion: 65 Resp: 165596  
 Ion Ratio Lower Upper  
 65 100  
 67 51.7 0.0 103.0

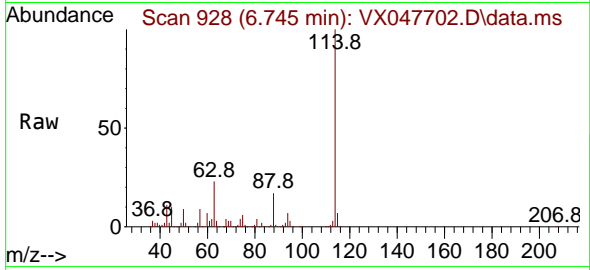




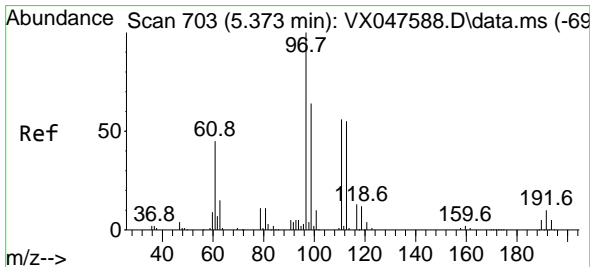
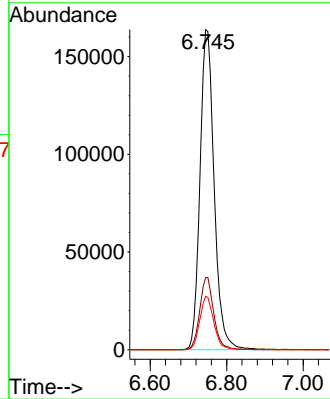
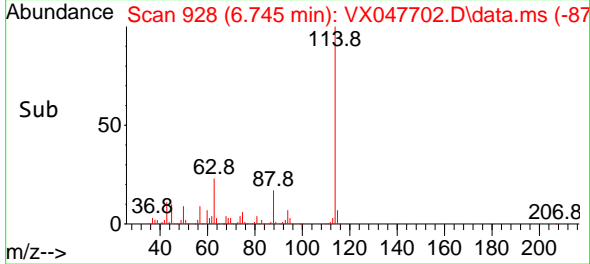


#34  
 1,4-Difluorobenzene  
 Concen: 50.000 ug/l  
 RT: 6.745 min Scan# 91  
 Delta R.T. -0.000 min  
 Lab File: VX047702.D  
 Acq: 22 Sep 2025 14:28

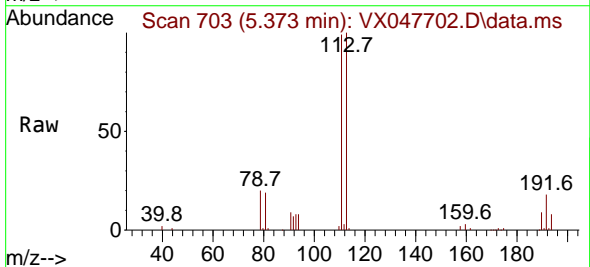
Instrument :  
 MSVOA\_X  
 ClientSampleId :  
 VNJ-222



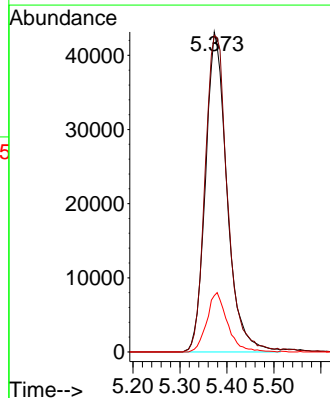
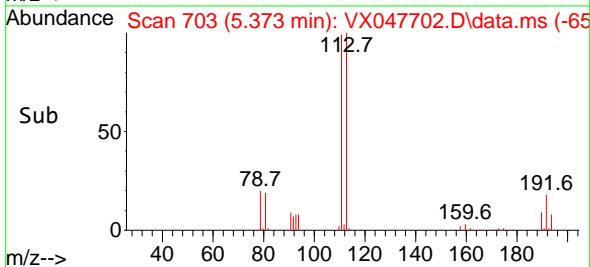
Tgt Ion:114 Resp: 421156  
 Ion Ratio Lower Upper  
 114 100  
 63 22.6 0.0 44.0  
 88 16.6 0.0 34.2

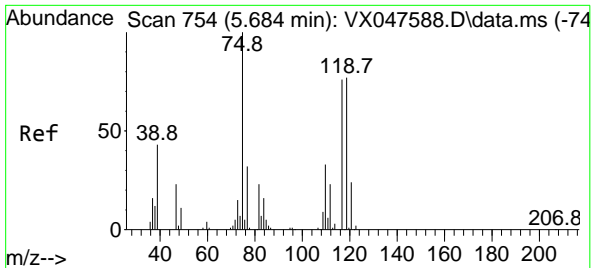


#35  
 Dibromofluoromethane  
 Concen: 48.528 ug/l  
 RT: 5.373 min Scan# 703  
 Delta R.T. -0.000 min  
 Lab File: VX047702.D  
 Acq: 22 Sep 2025 14:28



Tgt Ion:113 Resp: 137068  
 Ion Ratio Lower Upper  
 113 100  
 111 102.5 80.9 121.3  
 192 17.8 14.2 21.4



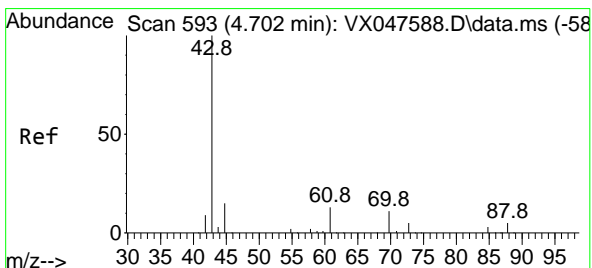
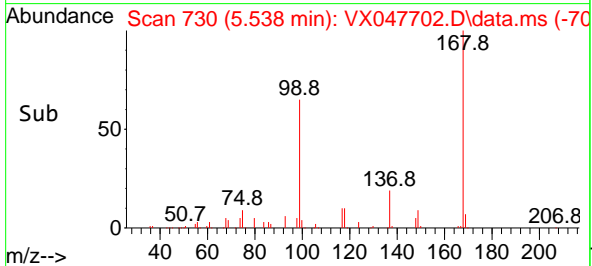
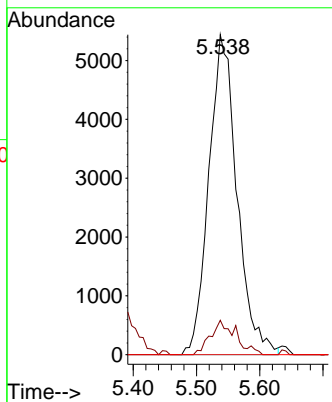
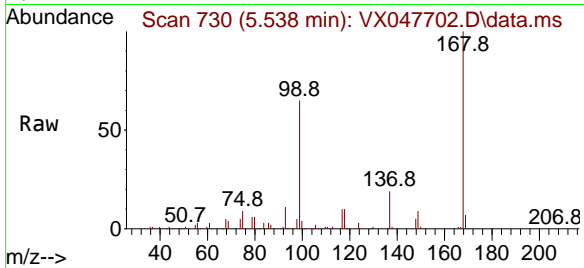


#36  
 1,1-Dichloropropene  
 Concen: 4.070 ug/l  
 RT: 5.538 min Scan# 71  
 Delta R.T. -0.146 min  
 Lab File: VX047702.D  
 Acq: 22 Sep 2025 14:28

Instrument : MSVOA\_X  
 ClientSampleId : VNJ-222

Tgt Ion: 75 Resp: 16798

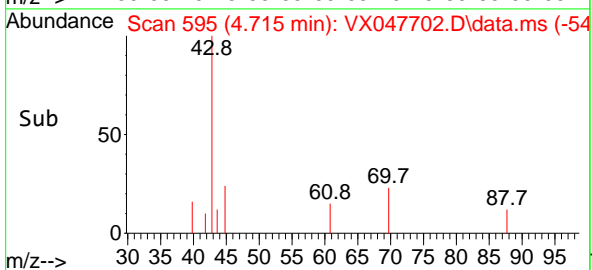
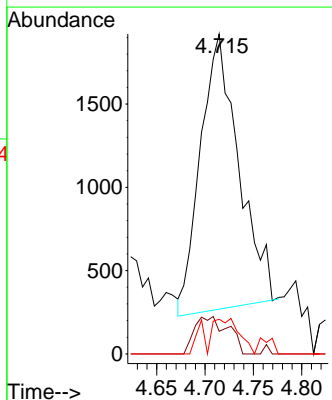
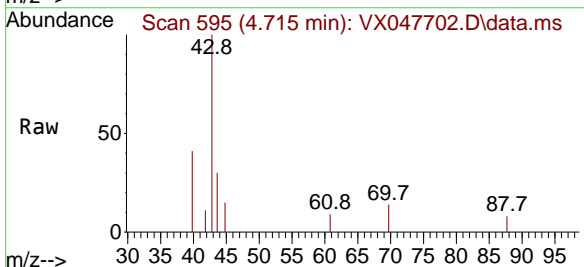
Ion	Ratio	Lower	Upper
75	100		
110	9.7	16.7	50.1#
77	0.0	24.3	36.5#

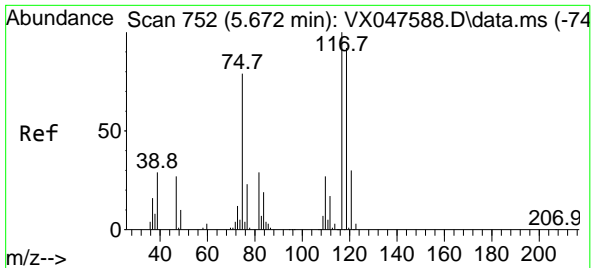


#37  
 Ethyl Acetate  
 Concen: 1.031 ug/l  
 RT: 4.715 min Scan# 595  
 Delta R.T. 0.012 min  
 Lab File: VX047702.D  
 Acq: 22 Sep 2025 14:28

Tgt Ion: 43 Resp: 4555

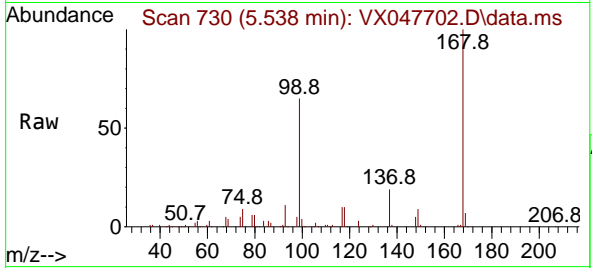
Ion	Ratio	Lower	Upper
43	100		
61	11.8	9.8	14.8
70	8.9	7.9	11.9





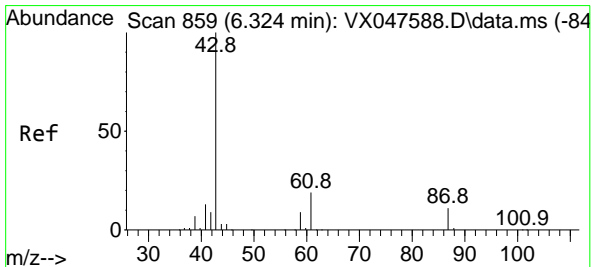
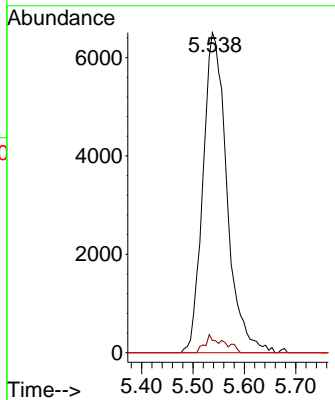
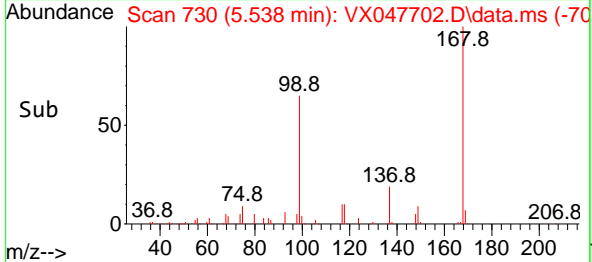
#38  
 Carbon Tetrachloride  
 Concen: 4.695 ug/l  
 RT: 5.538 min Scan# 711  
 Delta R.T. -0.134 min  
 Lab File: VX047702.D  
 Acq: 22 Sep 2025 14:28

Instrument : MSVOA\_X  
 ClientSampleId : VNJ-222

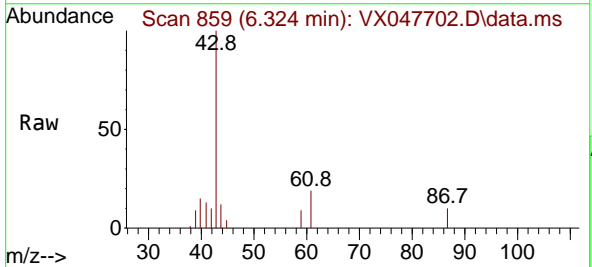


Tgt Ion: 117 Resp: 21055

Ion	Ratio	Lower	Upper
117	100		
119	3.8	73.4	110.2#
121	0.0	23.8	35.6#

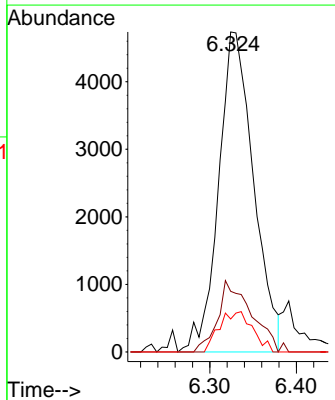
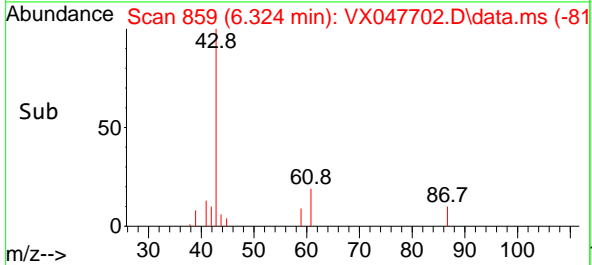


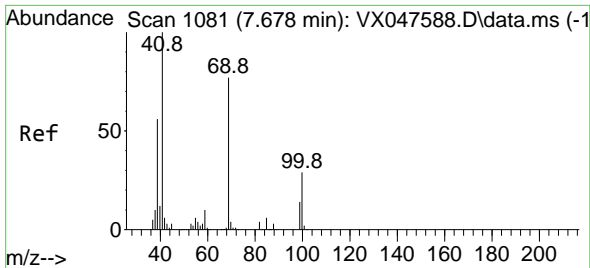
#43  
 Isopropyl Acetate  
 Concen: 1.839 ug/l  
 RT: 6.324 min Scan# 859  
 Delta R.T. -0.000 min  
 Lab File: VX047702.D  
 Acq: 22 Sep 2025 14:28



Tgt Ion: 43 Resp: 13325

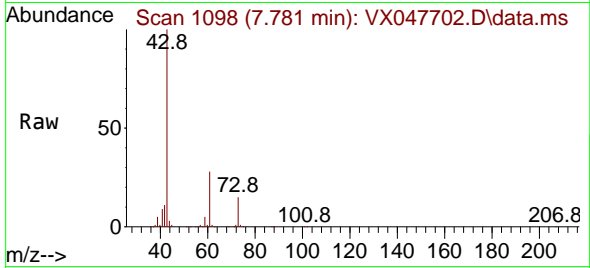
Ion	Ratio	Lower	Upper
43	100		
61	21.5	15.2	22.8
87	12.0	9.6	14.4



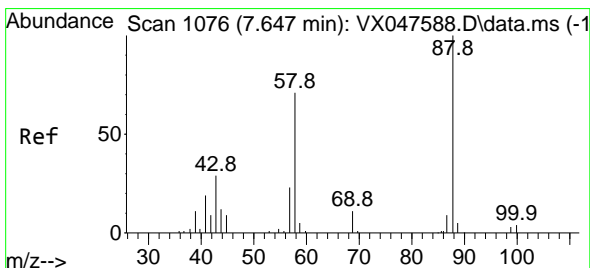
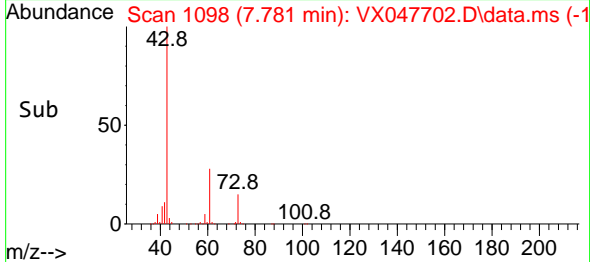
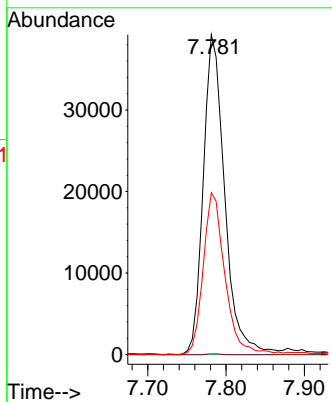


#48  
 Methyl methacrylate  
 Concen: 20.681 ug/l  
 RT: 7.781 min Scan# 1098  
 Delta R.T. 0.104 min  
 Lab File: VX047702.D  
 Acq: 22 Sep 2025 14:28

Instrument : MSVOA\_X  
 ClientSampleId : VNJ-222

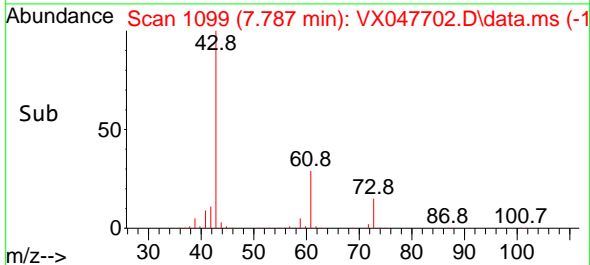
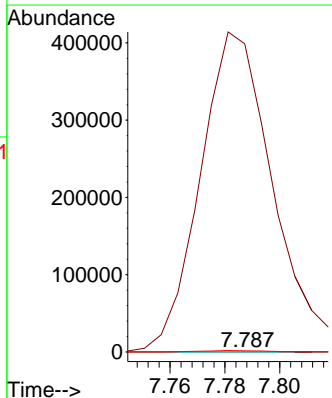
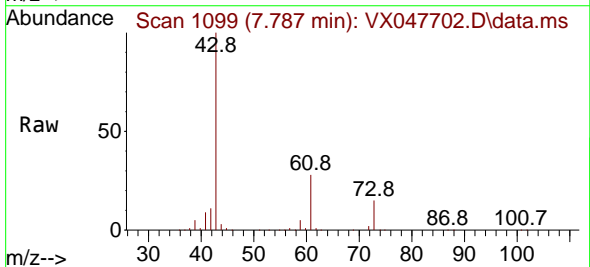


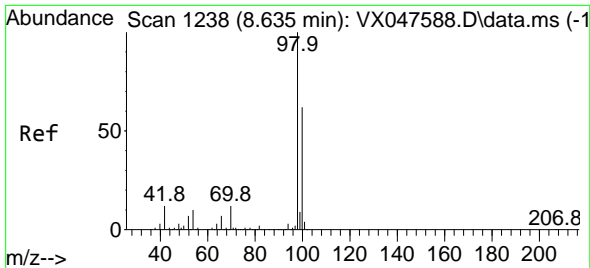
Tgt Ion: 41 Resp: 74660  
 Ion Ratio Lower Upper  
 41 100  
 69 0.2 61.4 92.2#  
 39 51.4 45.8 68.6



#49  
 1,4-Dioxane  
 Concen: 1.973 ug/l  
 RT: 7.787 min Scan# 1099  
 Delta R.T. 0.140 min  
 Lab File: VX047702.D  
 Acq: 22 Sep 2025 14:28

Tgt Ion: 88 Resp: 72  
 Ion Ratio Lower Upper  
 88 100  
 43 1096173.6 30.2 45.2#  
 58 4550.0 59.5 89.3#

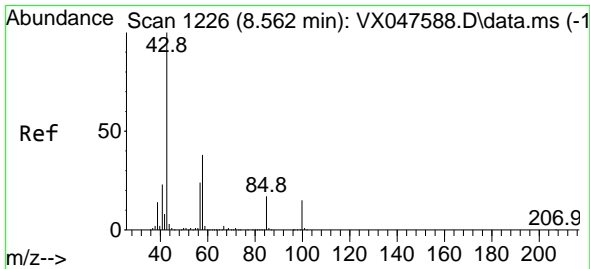
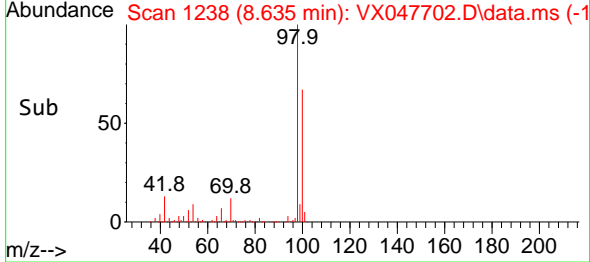
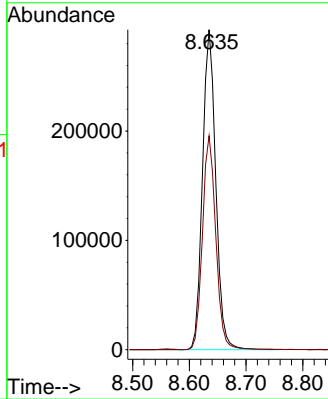
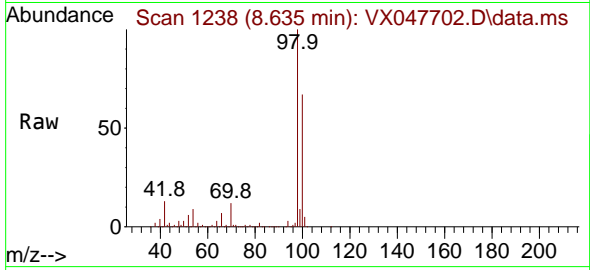




#50  
 Toluene-d8  
 Concen: 48.746 ug/l  
 RT: 8.635 min Scan# 11  
 Delta R.T. -0.000 min  
 Lab File: VX047702.D  
 Acq: 22 Sep 2025 14:28

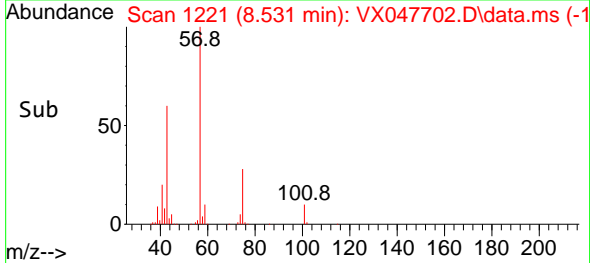
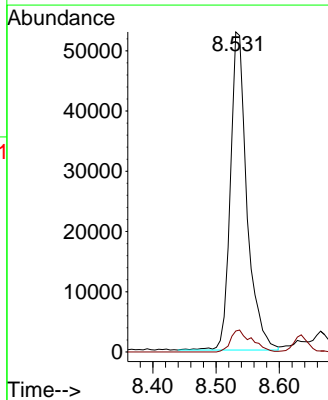
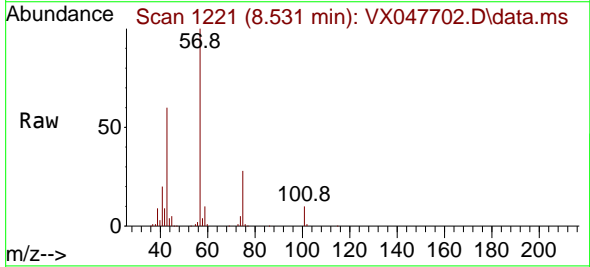
Instrument :  
 MSVOA\_X  
 ClientSampleId :  
 VNJ-222

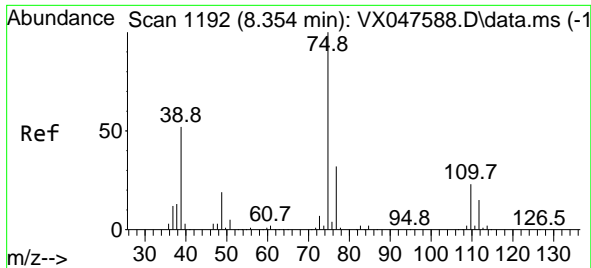
Tgt Ion: 98 Resp: 476410  
 Ion Ratio Lower Upper  
 98 100  
 100 67.0 53.0 79.4



#51  
 4-Methyl-2-Pentanone  
 Concen: 23.955 ug/l  
 RT: 8.531 min Scan# 1221  
 Delta R.T. -0.031 min  
 Lab File: VX047702.D  
 Acq: 22 Sep 2025 14:28

Tgt Ion: 43 Resp: 96261  
 Ion Ratio Lower Upper  
 43 100  
 58 8.8 30.3 45.5#

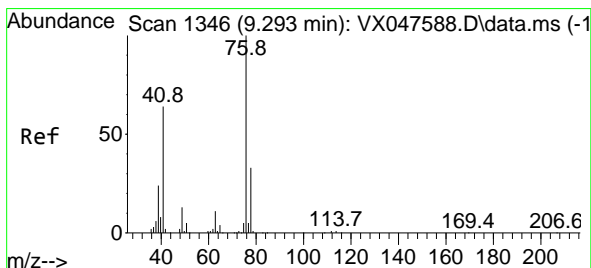
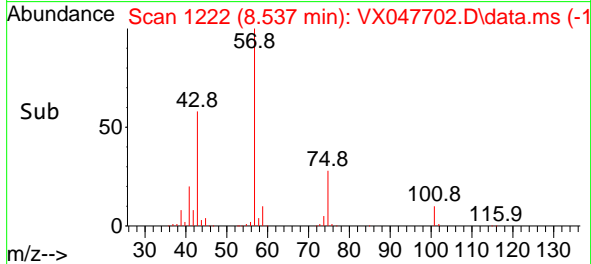
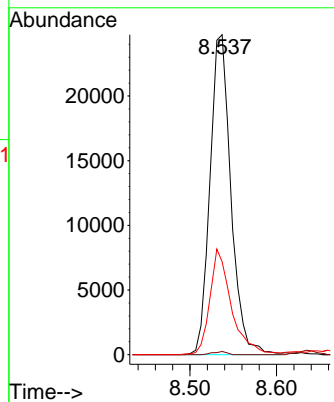
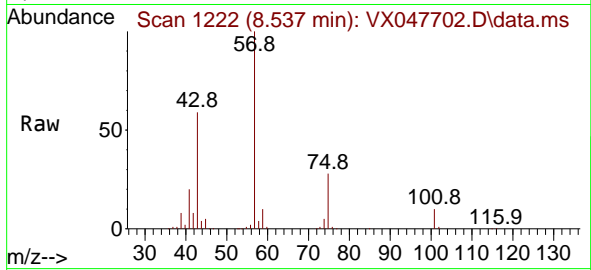




#54  
 cis-1,3-Dichloropropene  
 Concen: 7.921 ug/l  
 RT: 8.537 min Scan# 1192  
 Delta R.T. 0.183 min  
 Lab File: VX047702.D  
 Acq: 22 Sep 2025 14:28

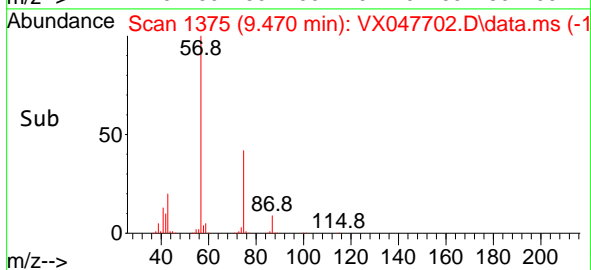
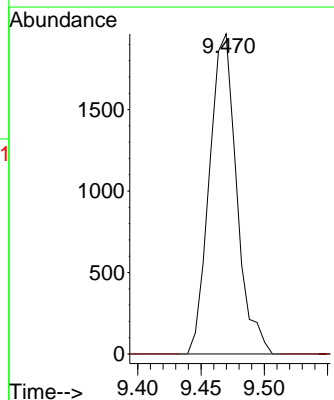
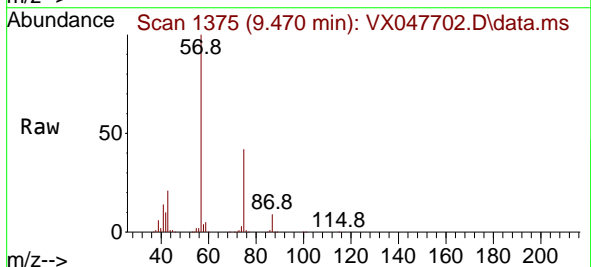
Instrument : MSVOA\_X  
 ClientSampleId : VNJ-222

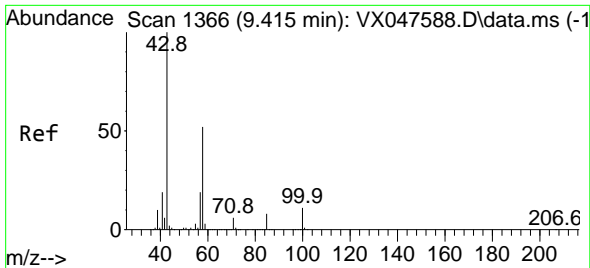
Tgt Ion: 75 Resp: 41626  
 Ion Ratio Lower Upper  
 75 100  
 77 1.0 25.8 38.6#  
 39 28.5 41.4 62.2#



#57  
 1,3-Dichloropropane  
 Concen: 0.576 ug/l  
 RT: 9.470 min Scan# 1375  
 Delta R.T. 0.177 min  
 Lab File: VX047702.D  
 Acq: 22 Sep 2025 14:28

Tgt Ion: 76 Resp: 2945  
 Ion Ratio Lower Upper  
 76 100  
 78 0.0 26.2 39.4#

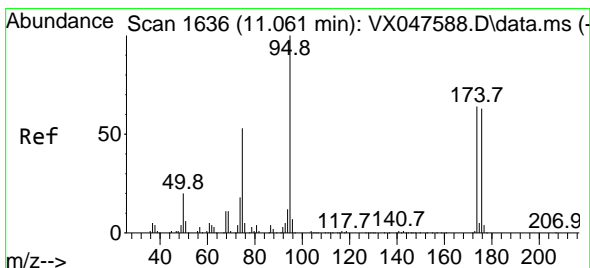
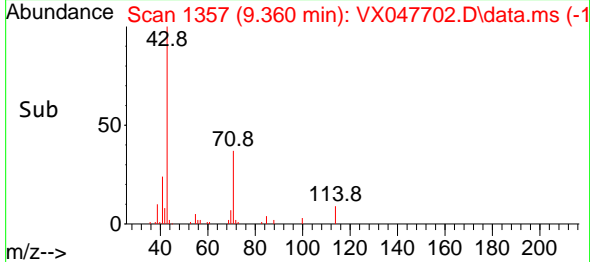
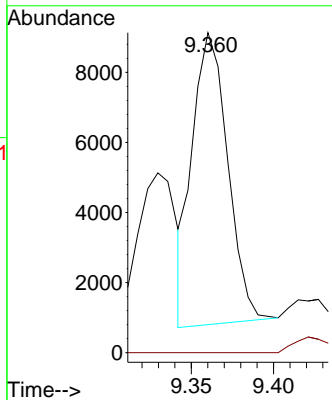
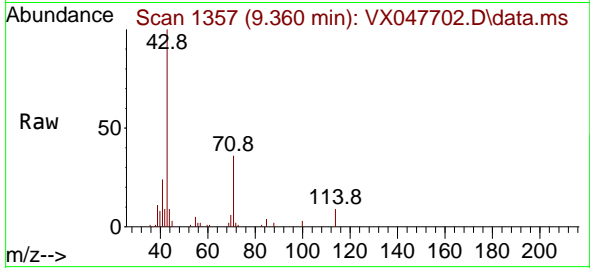




#59  
 2-Hexanone  
 Concen: 4.305 ug/l  
 RT: 9.360 min Scan# 11  
 Delta R.T. -0.055 min  
 Lab File: VX047702.D  
 Acq: 22 Sep 2025 14:28

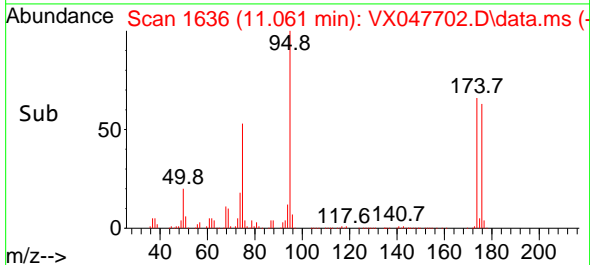
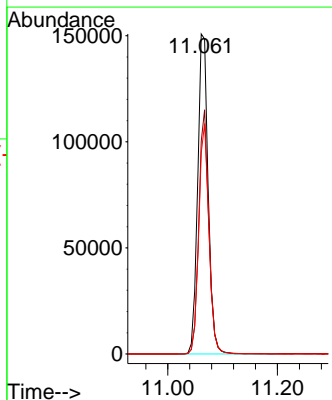
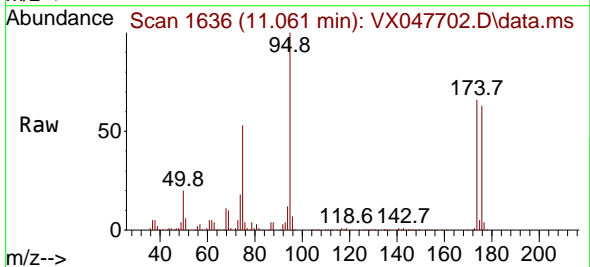
Instrument :  
 MSVOA\_X  
 ClientSampleId :  
 VNJ-222

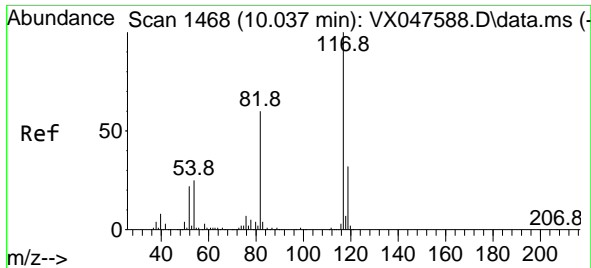
Tgt Ion: 43 Resp: 12424  
 Ion Ratio Lower Upper  
 43 100  
 58 0.0 26.1 78.2#



#62  
 4-Bromofluorobenzene  
 Concen: 54.303 ug/l  
 RT: 11.061 min Scan# 1636  
 Delta R.T. -0.000 min  
 Lab File: VX047702.D  
 Acq: 22 Sep 2025 14:28

Tgt Ion: 95 Resp: 201420  
 Ion Ratio Lower Upper  
 95 100  
 174 72.1 0.0 141.6  
 176 69.7 0.0 138.4



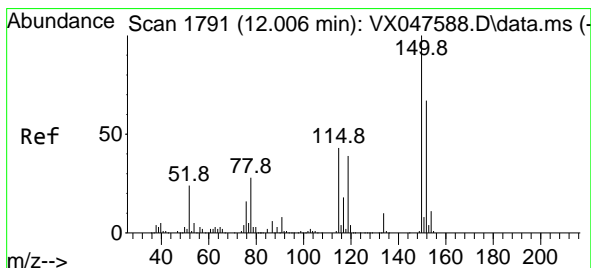
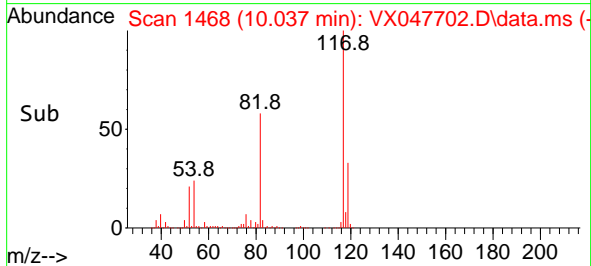
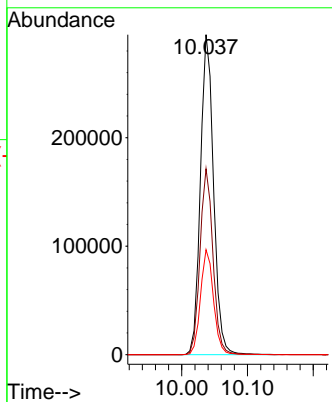
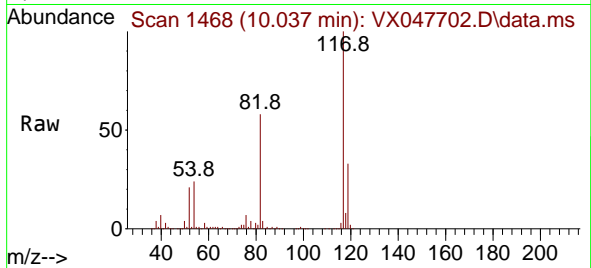


#63  
 Chlorobenzene-d5  
 Concen: 50.000 ug/l  
 RT: 10.037 min Scan# 1468  
 Delta R.T. -0.000 min  
 Lab File: VX047702.D  
 Acq: 22 Sep 2025 14:28

Instrument : MSVOA\_X  
 ClientSampleId : VNJ-222

Tgt Ion:117 Resp: 410121

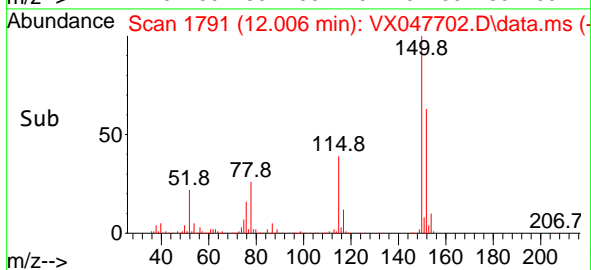
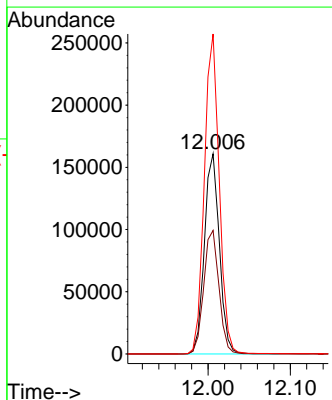
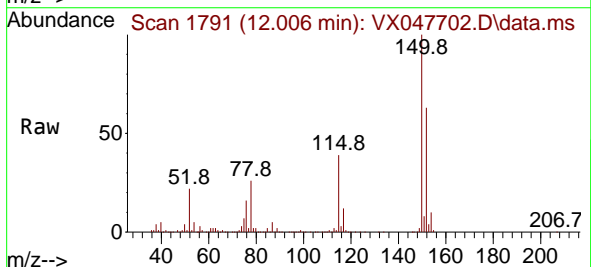
Ion	Ratio	Lower	Upper
117	100		
82	58.1	47.8	71.6
119	32.8	25.2	37.8



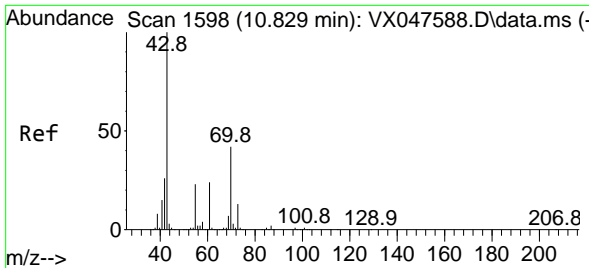
#72  
 1,4-Dichlorobenzene-d4  
 Concen: 50.000 ug/l  
 RT: 12.006 min Scan# 1791  
 Delta R.T. -0.000 min  
 Lab File: VX047702.D  
 Acq: 22 Sep 2025 14:28

Tgt Ion:152 Resp: 203992

Ion	Ratio	Lower	Upper
152	100		
115	63.0	44.9	134.5
150	158.7	0.0	352.0

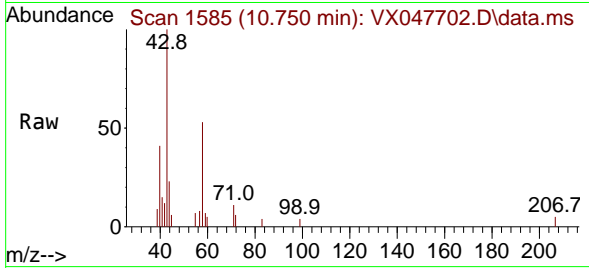






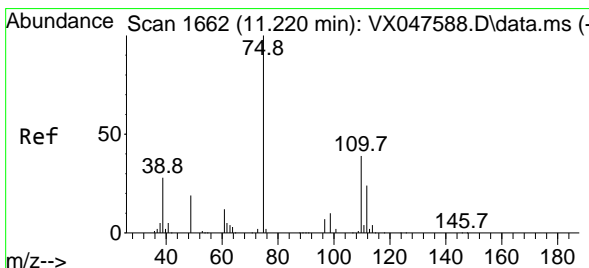
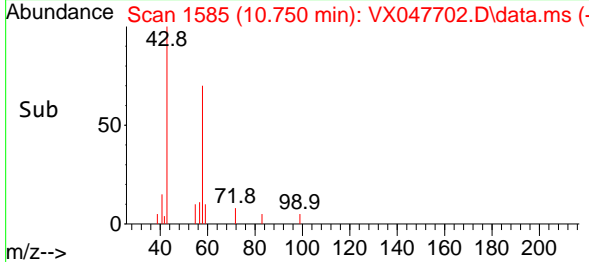
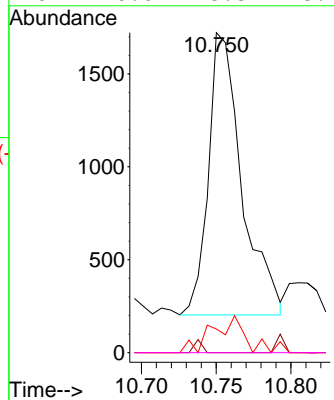
#74  
 N-amy1 acetate  
 Concen: 0.333 ug/l  
 RT: 10.750 min Scan# 11  
 Delta R.T. -0.079 min  
 Lab File: VX047702.D  
 Acq: 22 Sep 2025 14:28

Instrument :  
 MSVOA\_X  
 ClientSampleId :  
 VNJ-222



Tgt Ion: 43 Resp: 2358

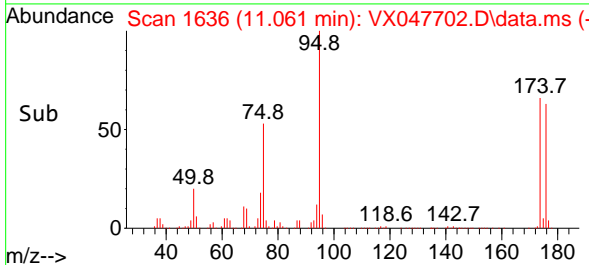
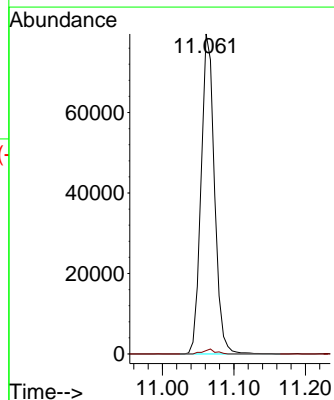
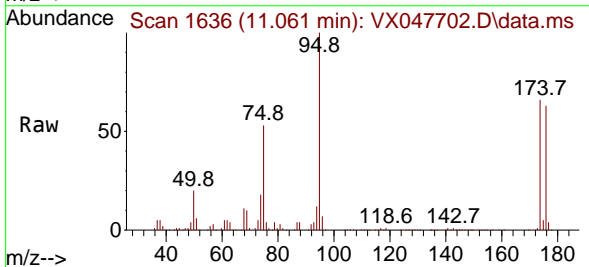
Ion	Ratio	Lower	Upper
43	100		
70	0.0	32.0	48.0#
55	13.6	18.9	28.3#
61	0.0	18.8	28.2#

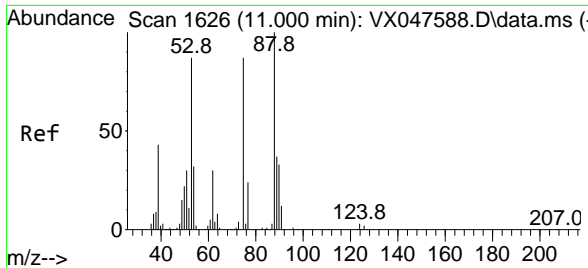


#76  
 1,2,3-Trichloropropane  
 Concen: 25.043 ug/l  
 RT: 11.061 min Scan# 1636  
 Delta R.T. -0.159 min  
 Lab File: VX047702.D  
 Acq: 22 Sep 2025 14:28

Tgt Ion: 75 Resp: 103432

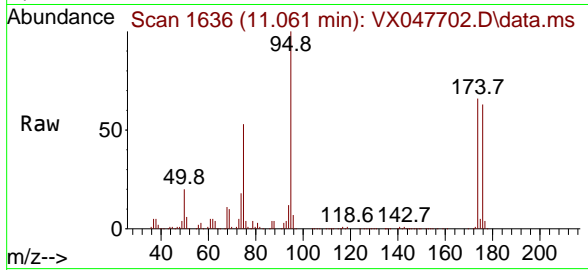
Ion	Ratio	Lower	Upper
75	100		
77	1.4	18.8	56.4#





#81  
 trans-1,4-Dichloro-2-butene  
 Concen: 63.863 ug/l  
 RT: 11.061 min Scan# 1  
 Delta R.T. 0.061 min  
 Lab File: VX047702.D  
 Acq: 22 Sep 2025 14:28

Instrument :  
 MSVOA\_X  
 ClientSampleId :  
 VNJ-222



Tgt Ion: 75 Resp: 103432  
 Ion Ratio Lower Upper  
 75 100  
 53 0.0 83.4 125.2#  
 89 0.0 36.3 54.5#

