

Data Path : Z:\voasrv\HPCHEM1\MSVOA_X\Data\VX092225\
 Data File : VX047703.D
 Acq On : 22 Sep 2025 14:48
 Operator : JC/MD
 Sample : Q3133-06
 Misc : 5.0mL/MSVOA_X/WATER
 ALS Vial : 16 Sample Multiplier: 1

Instrument :
 MSVOA_X
 ClientSampleId :
 361

Quant Time: Sep 23 01:35:29 2025
 Quant Method : Z:\voasrv\HPCHEM1\MSVOA_X\Method\82X091625W.M
 Quant Title : SW846 8260
 QLast Update : Wed Sep 17 06:39:58 2025
 Response via : Initial Calibration

Compound	R.T.	QIon	Response	Conc	Units	Dev(Min)

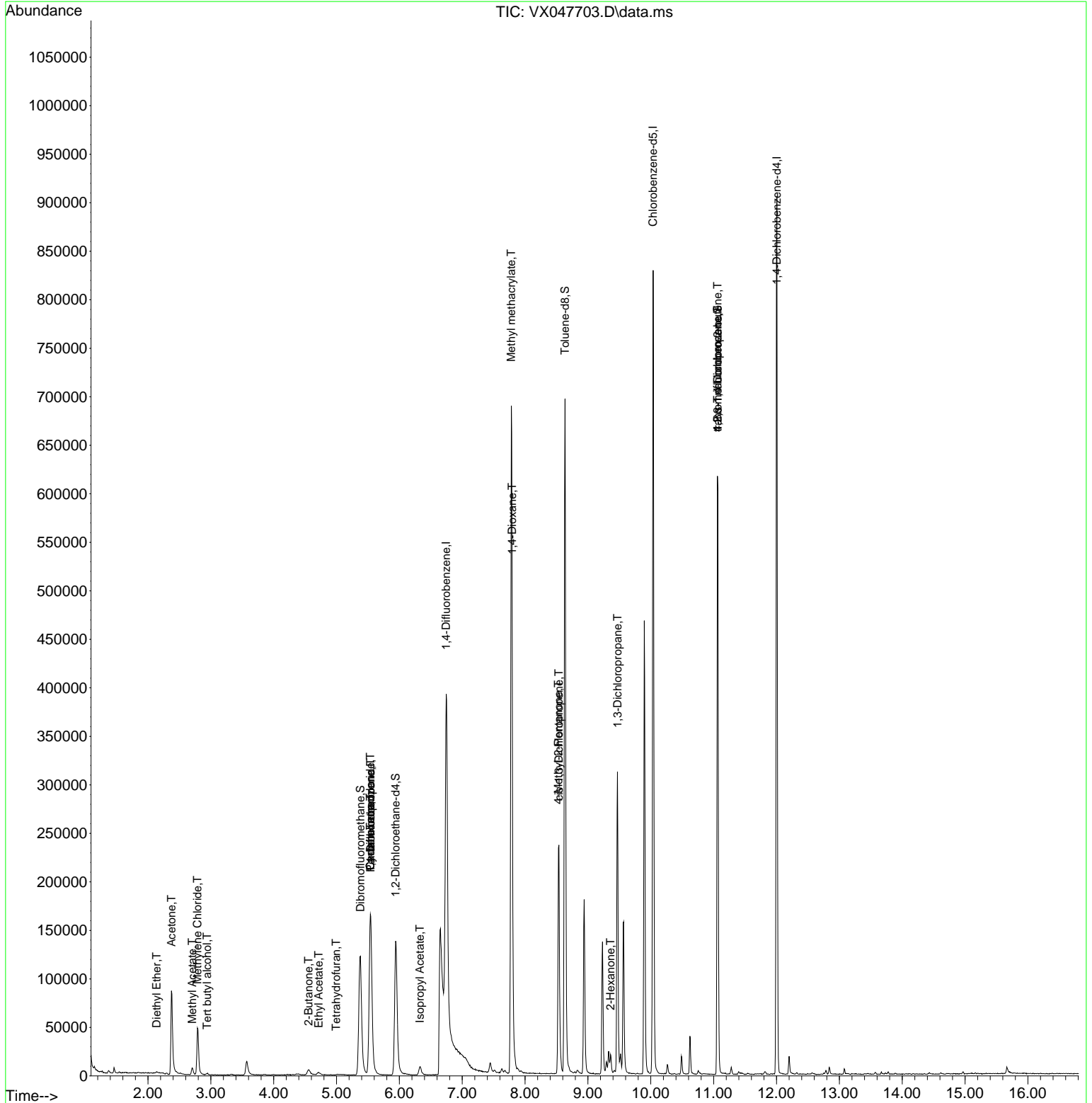
Internal Standards						
1) Pentafluorobenzene	5.544	168	168908	50.000	ug/l	0.00
34) 1,4-Difluorobenzene	6.745	114	366094	50.000	ug/l	0.00
63) Chlorobenzene-d5	10.037	117	361779	50.000	ug/l	0.00
72) 1,4-Dichlorobenzene-d4	12.006	152	183624	50.000	ug/l	0.00
System Monitoring Compounds						
33) 1,2-Dichloroethane-d4	5.940	65	148331	55.171	ug/l	0.00
Spiked Amount	50.000	Range 78 - 117	Recovery	=	110.340%	
35) Dibromofluoromethane	5.379	113	120708	49.164	ug/l	0.00
Spiked Amount	50.000	Range 75 - 124	Recovery	=	98.320%	
50) Toluene-d8	8.635	98	412932	48.606	ug/l	0.00
Spiked Amount	50.000	Range 92 - 112	Recovery	=	97.220%	
62) 4-Bromofluorobenzene	11.061	95	179190	55.576	ug/l	0.00
Spiked Amount	50.000	Range 83 - 123	Recovery	=	111.160%	
Target Compounds						
						Qvalue
8) Diethyl Ether	2.136	74	475	0.348	ug/l #	1
11) Tert butyl alcohol	2.940	59	943	3.149	ug/l #	72
16) Acetone	2.373	43	114794	98.198	ug/l	99
18) Methyl Acetate	2.703	43	10453	4.018	ug/l	96
20) Methylene Chloride	2.788	84	23447	9.476	ug/l	94
25) 2-Butanone	4.556	43	10523	7.216	ug/l	94
29) Tetrahydrofuran	4.995	42	216	0.246	ug/l #	50
31) Cyclohexane	5.538	56	3865	1.088	ug/l #	1
36) 1,1-Dichloropropene	5.544	75	14370	4.005	ug/l #	51
37) Ethyl Acetate	4.715	43	6596	1.717	ug/l #	84
38) Carbon Tetrachloride	5.538	117	18239	4.679	ug/l #	19
43) Isopropyl Acetate	6.324	43	13361	2.121	ug/l	99
48) Methyl methacrylate	7.781	41	65665	20.925	ug/l #	47
49) 1,4-Dioxane	7.793	88	51	1.608	ug/l #	1
51) 4-Methyl-2-Pentanone	8.531	43	93026	26.632	ug/l #	52
54) cis-1,3-Dichloropropene	8.537	75	39679	8.686	ug/l #	59
57) 1,3-Dichloropropane	9.470	76	2670	0.600	ug/l #	43
59) 2-Hexanone	9.360	43	12803	5.103	ug/l #	26
76) 1,2,3-Trichloropropane	11.061	75	92274	24.819	ug/l #	40
81) trans-1,4-Dichloro-2-b...	11.061	75	92274	63.293	ug/l #	8

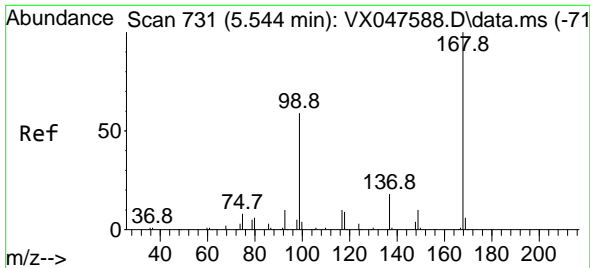
(#) = qualifier out of range (m) = manual integration (+) = signals summed

Data Path : Z:\voasrv\HPCHEM1\MSVOA_X\Data\VX092225\
 Data File : VX047703.D
 Acq On : 22 Sep 2025 14:48
 Operator : JC/MD
 Sample : Q3133-06
 Misc : 5.0mL/MSVOA_X/WATER
 ALS Vial : 16 Sample Multiplier: 1

Instrument :
 MSVOA_X
 ClientSampleId :
 361

Quant Time: Sep 23 01:35:29 2025
 Quant Method : Z:\voasrv\HPCHEM1\MSVOA_X\Method\82X091625W.M
 Quant Title : SW846 8260
 QLast Update : Wed Sep 17 06:39:58 2025
 Response via : Initial Calibration

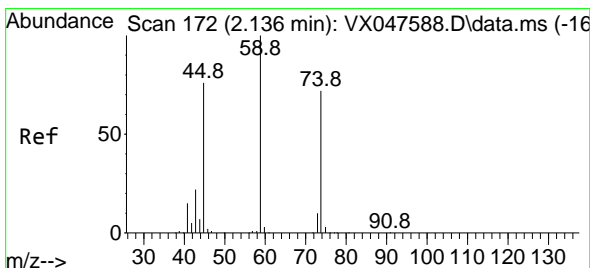
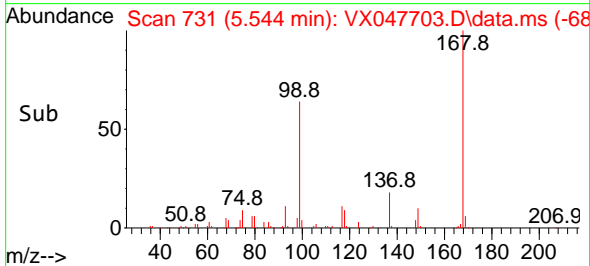
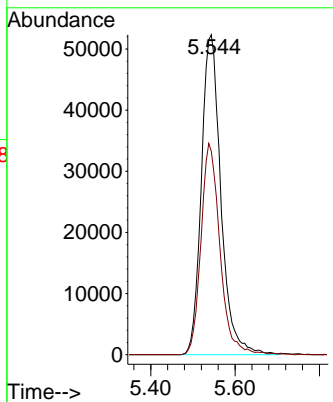
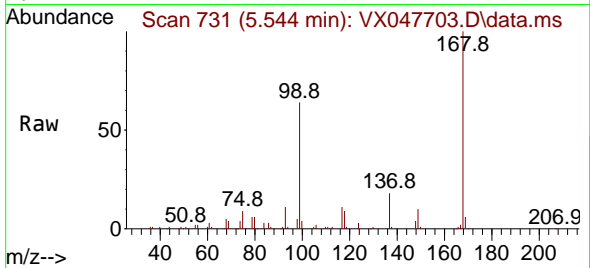




#1
 Pentafluorobenzene
 Concen: 50.000 ug/l
 RT: 5.544 min Scan# 71
 Delta R.T. -0.000 min
 Lab File: VX047703.D
 Acq: 22 Sep 2025 14:48

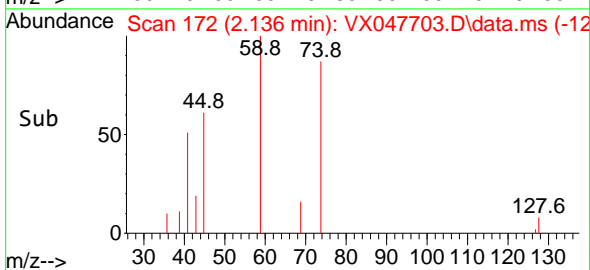
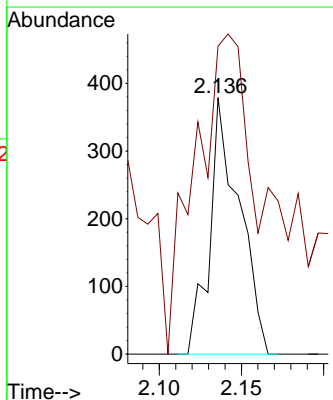
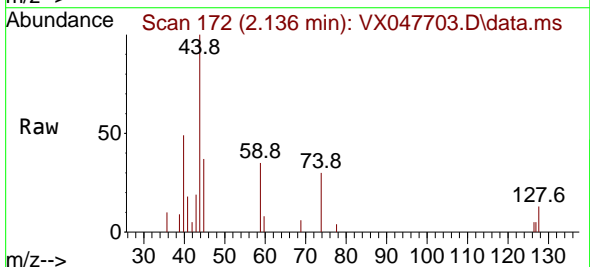
Instrument :
 MSVOA_X
 ClientSampleId :
 361

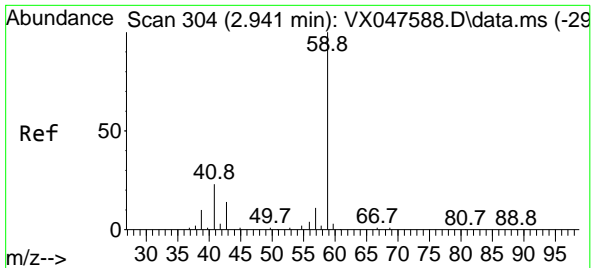
Tgt Ion:168 Resp: 168908
 Ion Ratio Lower Upper
 168 100
 99 63.5 48.8 73.2



#8
 Diethyl Ether
 Concen: 0.348 ug/l
 RT: 2.136 min Scan# 172
 Delta R.T. -0.000 min
 Lab File: VX047703.D
 Acq: 22 Sep 2025 14:48

Tgt Ion: 74 Resp: 475
 Ion Ratio Lower Upper
 74 100
 45 300.2 52.3 156.8#

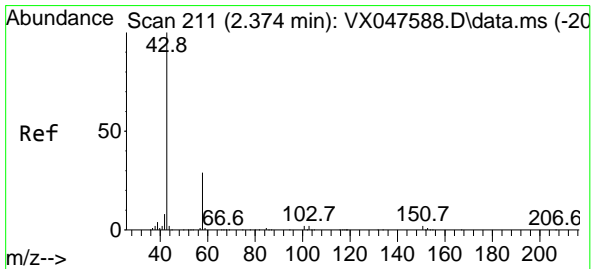
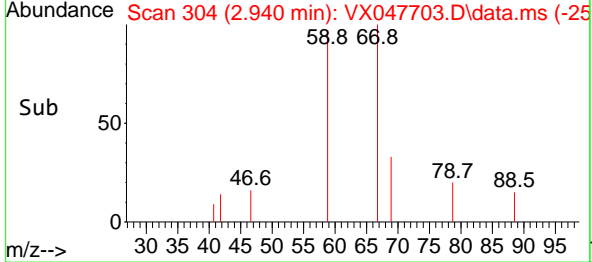
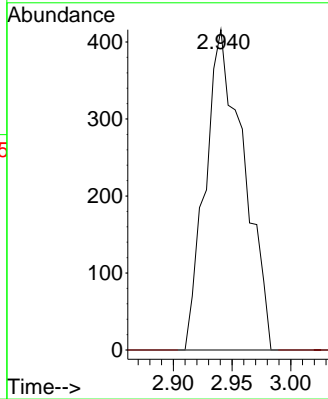
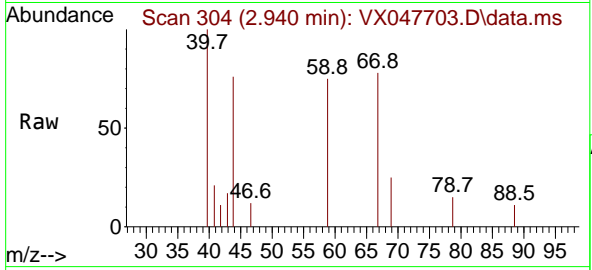




#11
 Tert butyl alcohol
 Concen: 3.149 ug/l
 RT: 2.940 min Scan# 304
 Delta R.T. -0.000 min
 Lab File: VX047703.D
 Acq: 22 Sep 2025 14:48

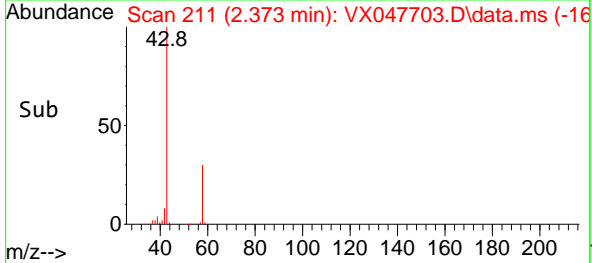
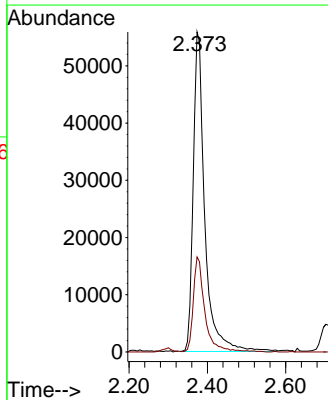
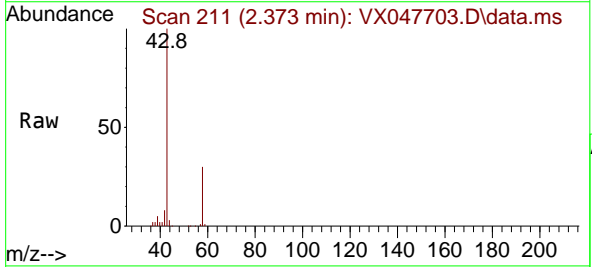
Instrument : MSVOA_X
 ClientSampleId : 361

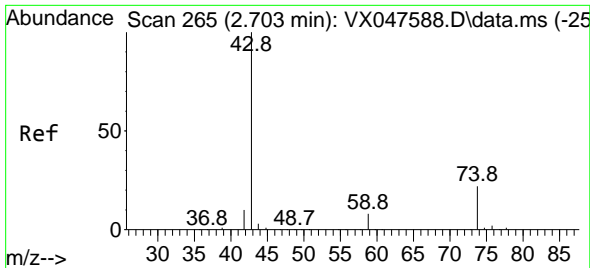
Tgt Ion: 59 Resp: 943
 Ion Ratio Lower Upper
 59 100
 57 0.0 8.3 12.5#



#16
 Acetone
 Concen: 98.198 ug/l
 RT: 2.373 min Scan# 211
 Delta R.T. -0.000 min
 Lab File: VX047703.D
 Acq: 22 Sep 2025 14:48

Tgt Ion: 43 Resp: 114794
 Ion Ratio Lower Upper
 43 100
 58 29.8 23.4 35.0

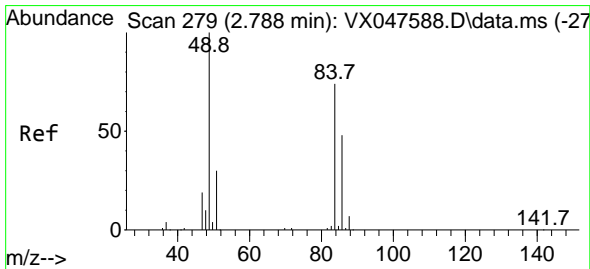
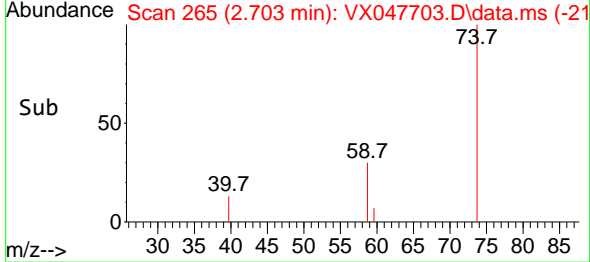
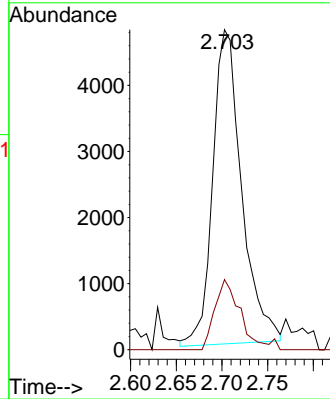
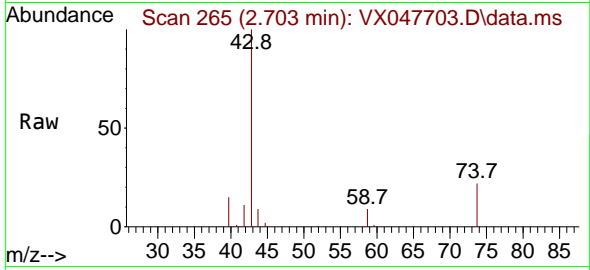




#18
 Methyl Acetate
 Concen: 4.018 ug/l
 RT: 2.703 min Scan# 20
 Delta R.T. -0.000 min
 Lab File: VX047703.D
 Acq: 22 Sep 2025 14:48

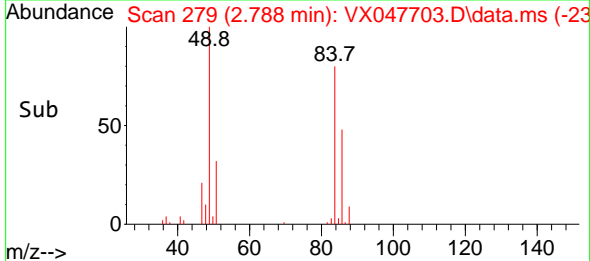
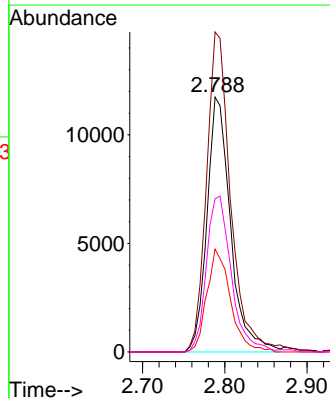
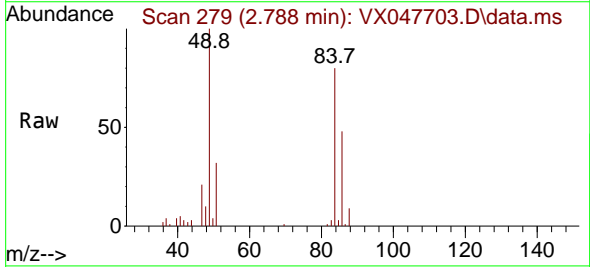
Instrument : MSVOA_X
 ClientSampleId : 361

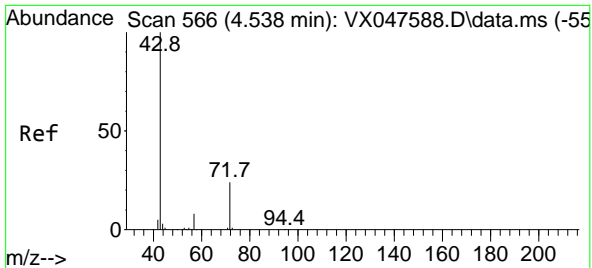
Tgt Ion: 43 Resp: 10453
 Ion Ratio Lower Upper
 43 100
 74 20.0 17.4 26.2



#20
 Methylene Chloride
 Concen: 9.476 ug/l
 RT: 2.788 min Scan# 279
 Delta R.T. -0.000 min
 Lab File: VX047703.D
 Acq: 22 Sep 2025 14:48

Tgt Ion: 84 Resp: 23447
 Ion Ratio Lower Upper
 84 100
 49 125.6 108.6 162.8
 51 40.4 32.6 48.8
 86 61.0 52.0 78.0

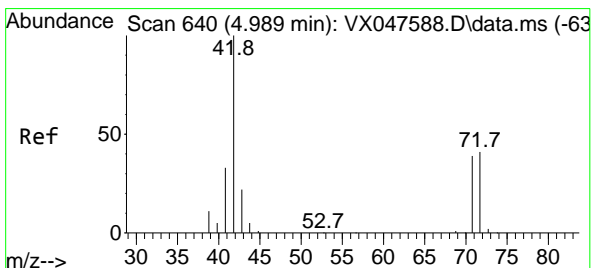
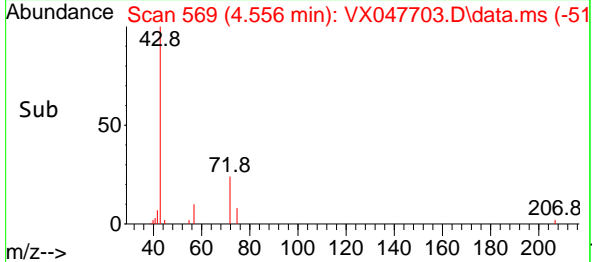
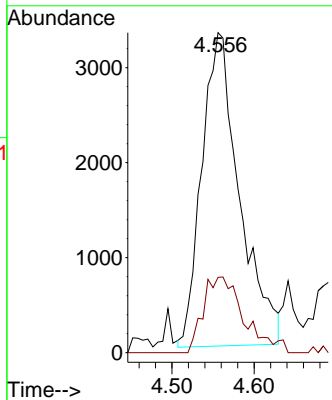
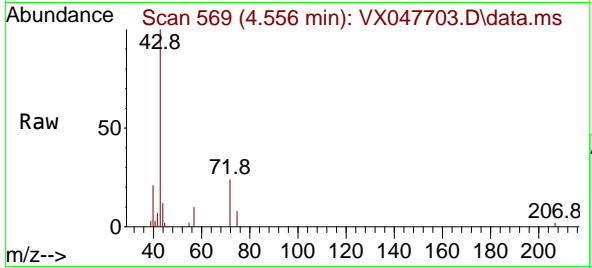




#25
 2-Butanone
 Concen: 7.216 ug/l
 RT: 4.556 min Scan# 50
 Delta R.T. 0.018 min
 Lab File: VX047703.D
 Acq: 22 Sep 2025 14:48

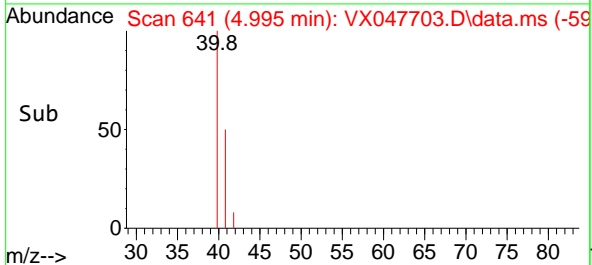
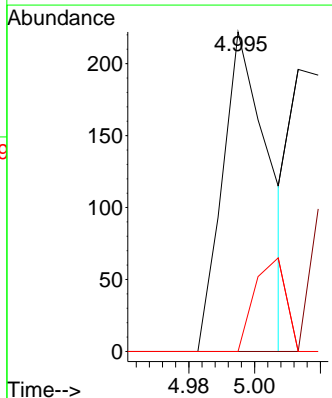
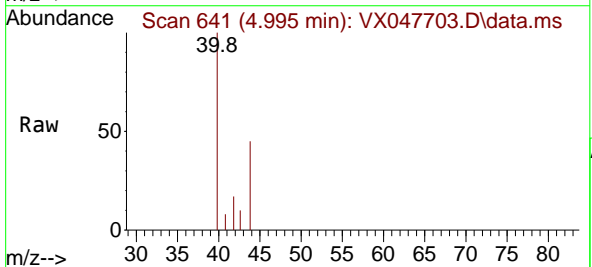
Instrument : MSVOA_X
 ClientSampleId : 361

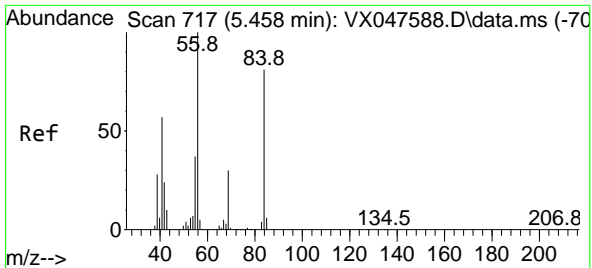
Tgt Ion: 43 Resp: 10523
 Ion Ratio Lower Upper
 43 100
 72 28.3 20.1 30.1



#29
 Tetrahydrofuran
 Concen: 0.246 ug/l
 RT: 4.995 min Scan# 641
 Delta R.T. 0.006 min
 Lab File: VX047703.D
 Acq: 22 Sep 2025 14:48

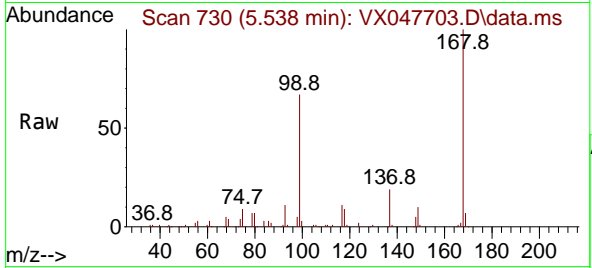
Tgt Ion: 42 Resp: 216
 Ion Ratio Lower Upper
 42 100
 72 0.0 34.2 51.2#
 71 19.9 31.9 47.9#



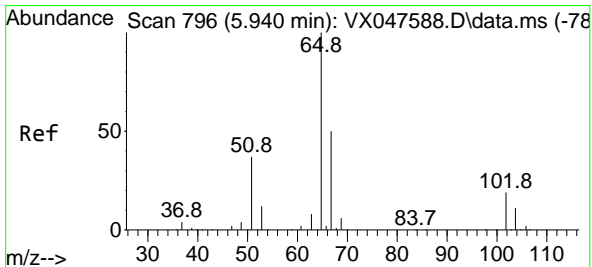
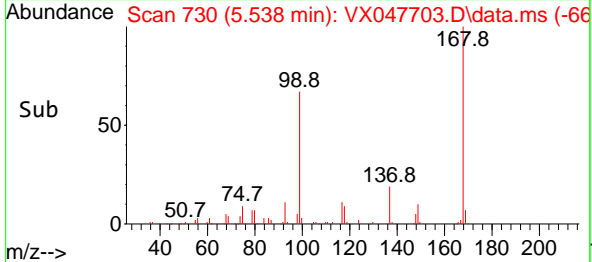
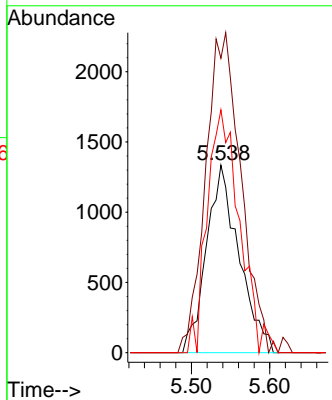


#31
 Cyclohexane
 Concen: 1.088 ug/l
 RT: 5.538 min Scan# 717
 Delta R.T. 0.079 min
 Lab File: VX047703.D
 Acq: 22 Sep 2025 14:48

Instrument : MSVOA_X
 ClientSampleId : 361

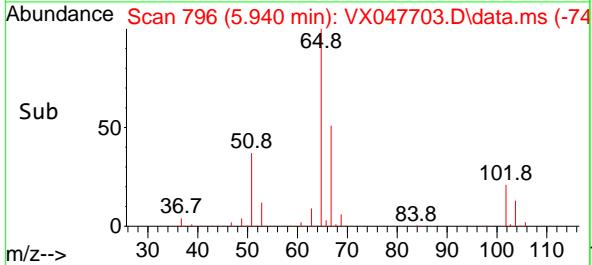
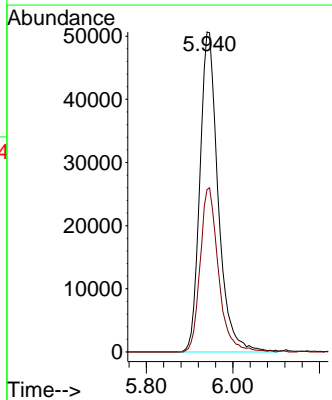
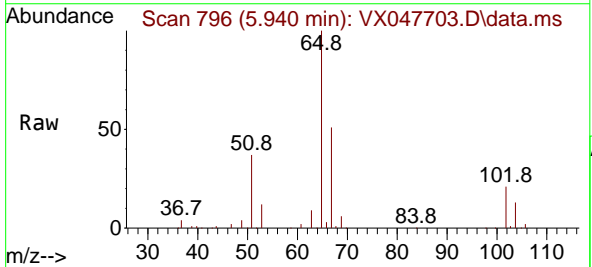


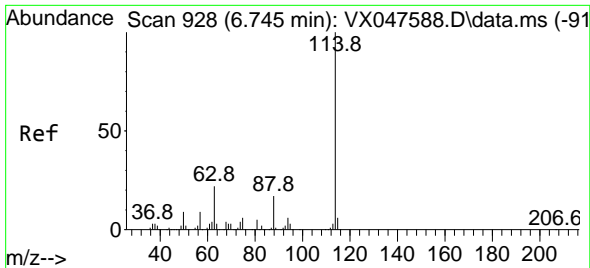
Tgt Ion	Resp	Ion Ratio	Lower	Upper
56	3865	100		
69	157.0	23.8	35.8#	
84	129.5	64.6	97.0#	



#33
 1,2-Dichloroethane-d4
 Concen: 55.171 ug/l
 RT: 5.940 min Scan# 796
 Delta R.T. -0.000 min
 Lab File: VX047703.D
 Acq: 22 Sep 2025 14:48

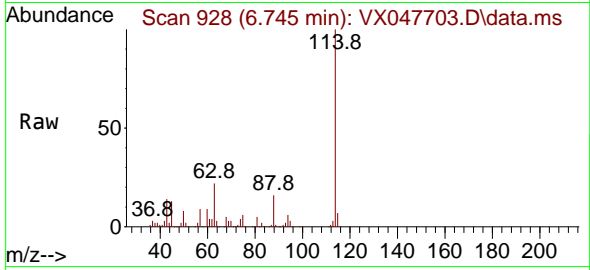
Tgt Ion	Resp	Ion Ratio	Lower	Upper
65	148331	100		
67	51.4	0.0	103.0	



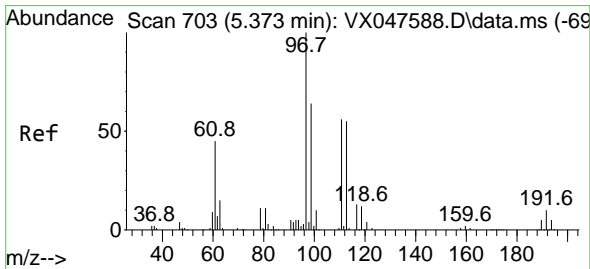
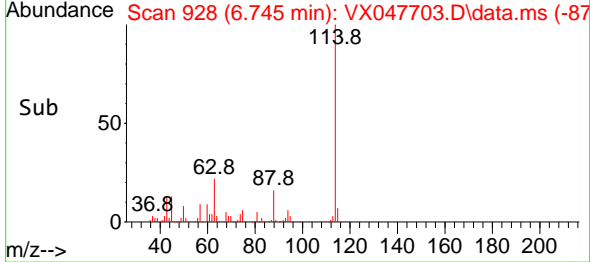
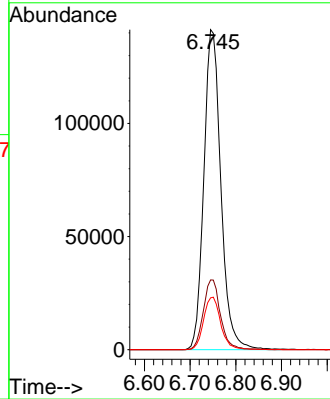


#34
 1,4-Difluorobenzene
 Concen: 50.000 ug/l
 RT: 6.745 min Scan# 91
 Delta R.T. -0.000 min
 Lab File: VX047703.D
 Acq: 22 Sep 2025 14:48

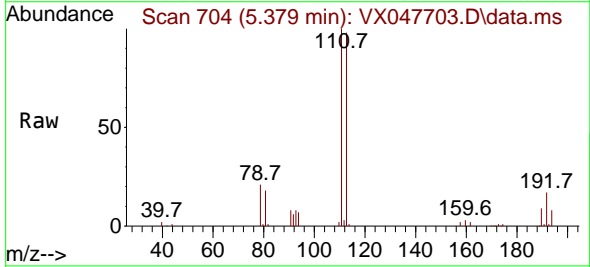
Instrument : MSVOA_X
 ClientSampleId : 361



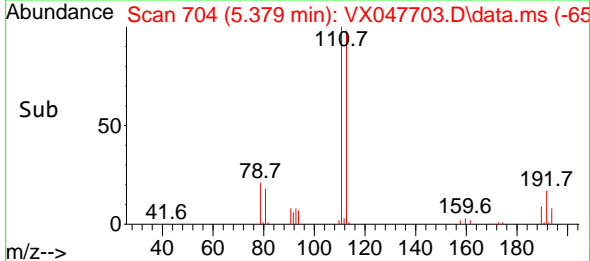
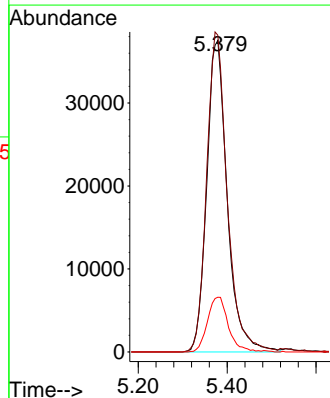
Tgt Ion:114 Resp: 366094
 Ion Ratio Lower Upper
 114 100
 63 21.8 0.0 44.0
 88 16.2 0.0 34.2

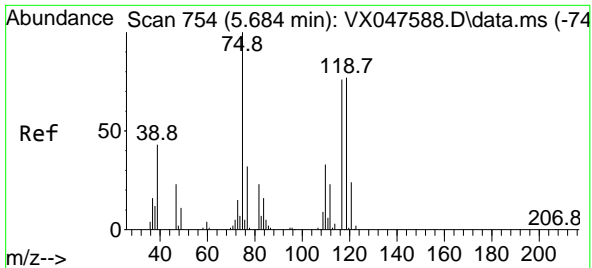


#35
 Dibromofluoromethane
 Concen: 49.164 ug/l
 RT: 5.379 min Scan# 704
 Delta R.T. 0.006 min
 Lab File: VX047703.D
 Acq: 22 Sep 2025 14:48



Tgt Ion:113 Resp: 120708
 Ion Ratio Lower Upper
 113 100
 111 102.5 80.9 121.3
 192 17.8 14.2 21.4

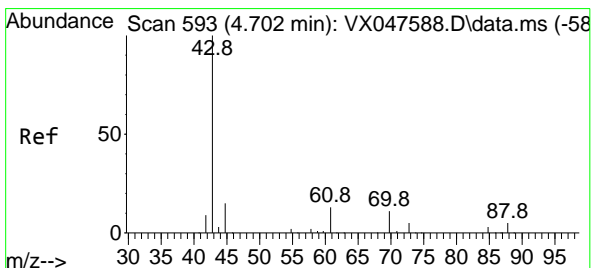
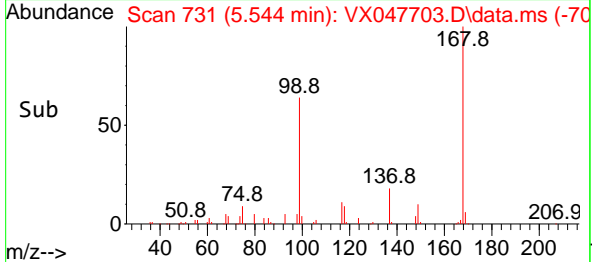
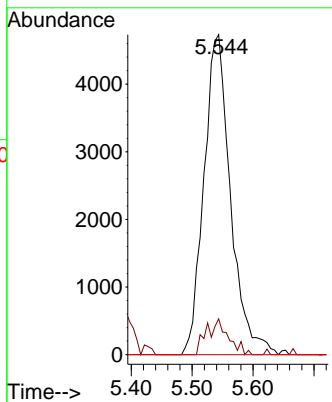
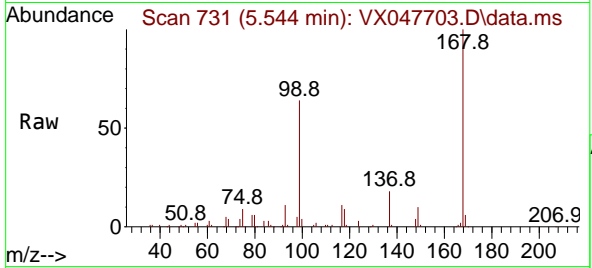




#36
 1,1-Dichloropropene
 Concen: 4.005 ug/l
 RT: 5.544 min Scan# 71
 Delta R.T. -0.140 min
 Lab File: VX047703.D
 Acq: 22 Sep 2025 14:48

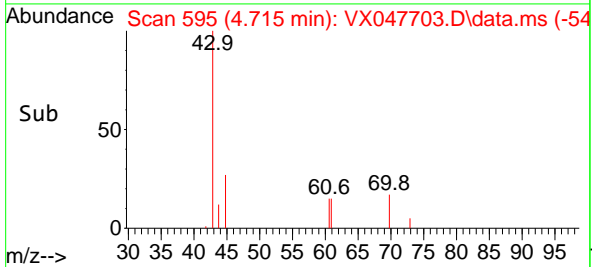
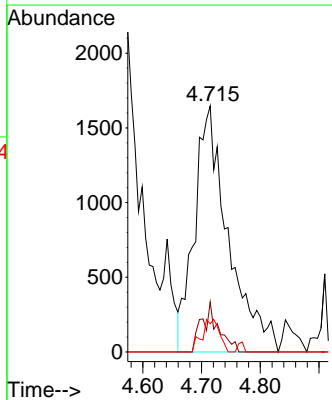
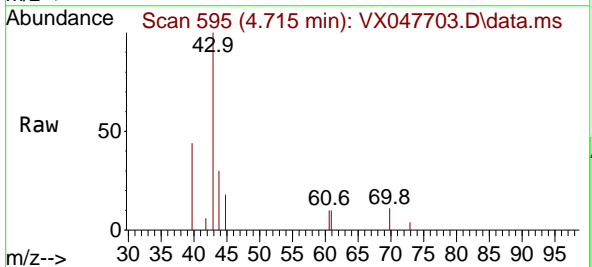
Instrument : MSVOA_X
 ClientSampleId : 361

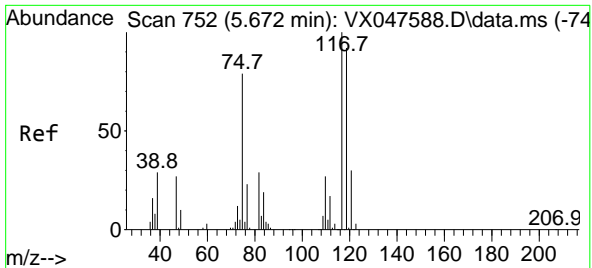
Tgt Ion	Resp	Lower	Upper
75	14370		
75	100		
110	9.1	16.7	50.1#
77	0.0	24.3	36.5#



#37
 Ethyl Acetate
 Concen: 1.717 ug/l
 RT: 4.715 min Scan# 595
 Delta R.T. 0.012 min
 Lab File: VX047703.D
 Acq: 22 Sep 2025 14:48

Tgt Ion	Resp	Lower	Upper
43	6596		
43	100		
61	4.0	9.8	14.8#
70	6.8	7.9	11.9#



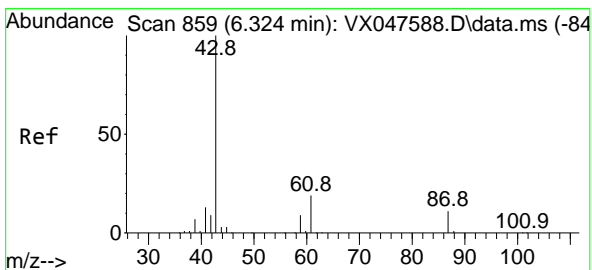
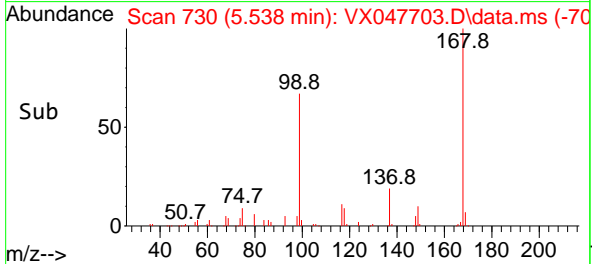
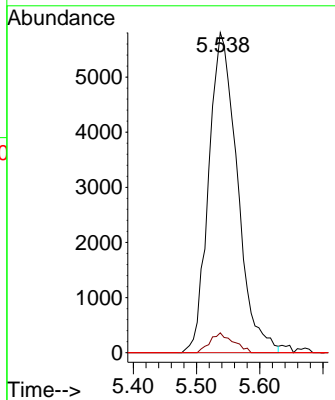
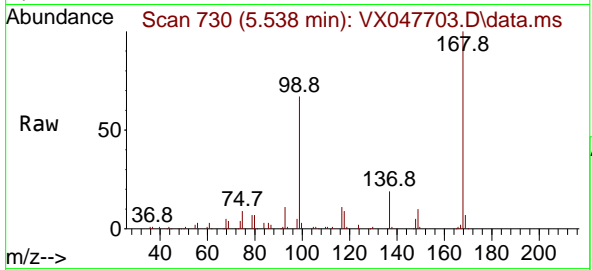


#38
 Carbon Tetrachloride
 Concen: 4.679 ug/l
 RT: 5.538 min Scan# 711
 Delta R.T. -0.134 min
 Lab File: VX047703.D
 Acq: 22 Sep 2025 14:48

Instrument : MSVOA_X
 ClientSampleId : 361

Tgt Ion: 117 Resp: 18239

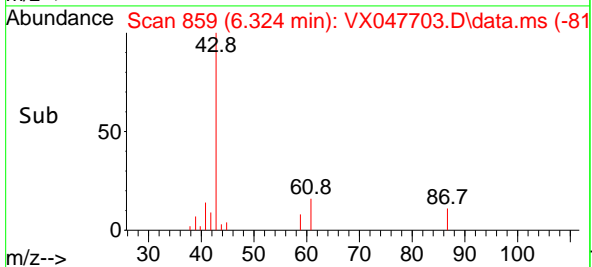
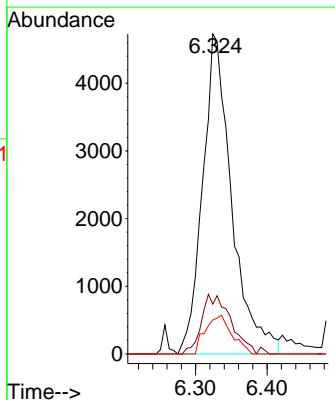
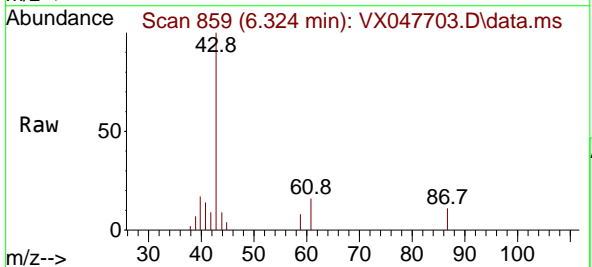
Ion	Ratio	Lower	Upper
117	100		
119	6.2	73.4	110.2#
121	0.0	23.8	35.6#

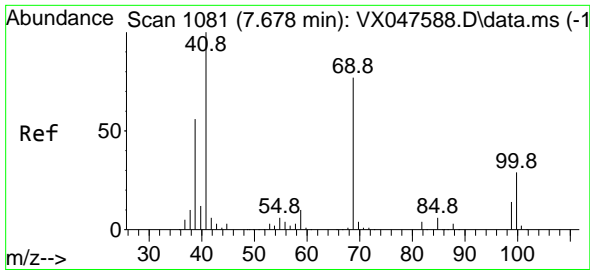


#43
 Isopropyl Acetate
 Concen: 2.121 ug/l
 RT: 6.324 min Scan# 859
 Delta R.T. -0.000 min
 Lab File: VX047703.D
 Acq: 22 Sep 2025 14:48

Tgt Ion: 43 Resp: 13361

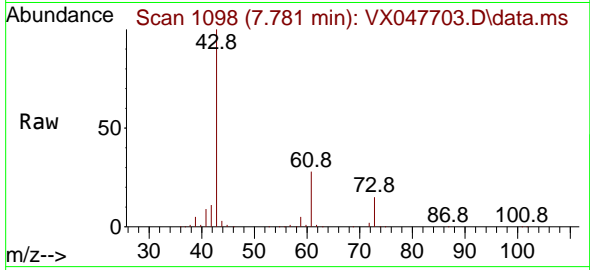
Ion	Ratio	Lower	Upper
43	100		
61	18.8	15.2	22.8
87	10.9	9.6	14.4



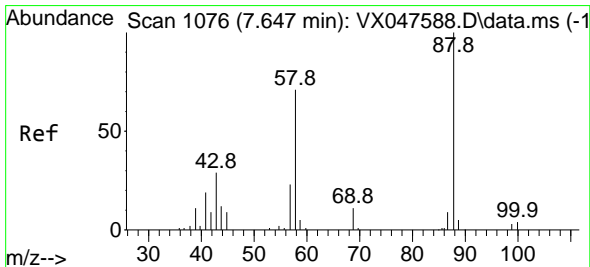
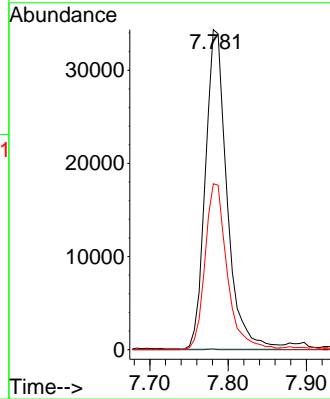
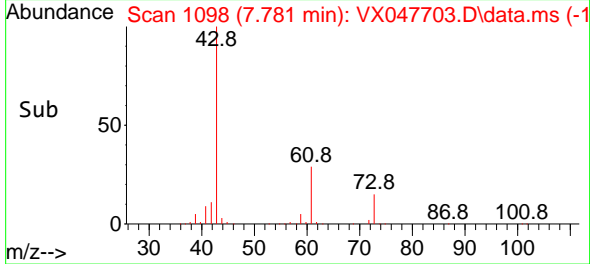


#48
 Methyl methacrylate
 Concen: 20.925 ug/l
 RT: 7.781 min Scan# 1100
 Delta R.T. 0.104 min
 Lab File: VX047703.D
 Acq: 22 Sep 2025 14:48

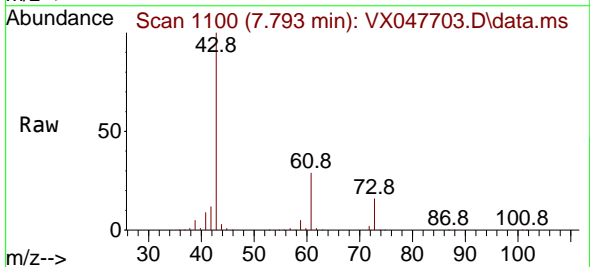
Instrument : MSVOA_X
 ClientSampleId : 361



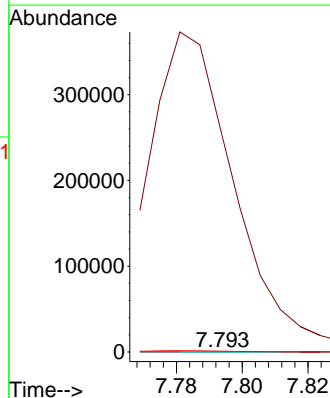
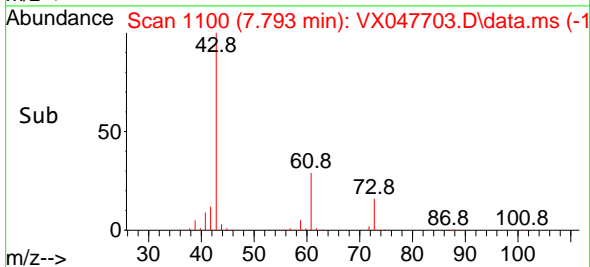
Tgt Ion: 41 Resp: 65665
 Ion Ratio Lower Upper
 41 100
 69 0.1 61.4 92.2#
 39 53.2 45.8 68.6

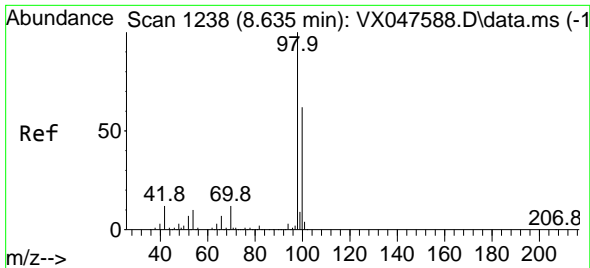


#49
 1,4-Dioxane
 Concen: 1.608 ug/l
 RT: 7.793 min Scan# 1100
 Delta R.T. 0.146 min
 Lab File: VX047703.D
 Acq: 22 Sep 2025 14:48



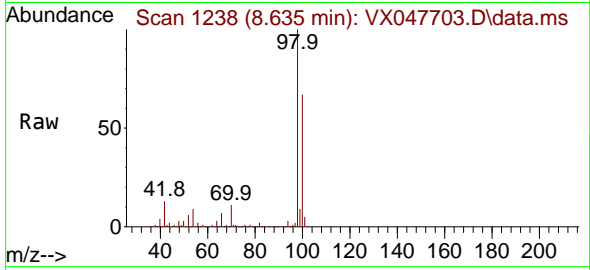
Tgt Ion: 88 Resp: 51
 Ion Ratio Lower Upper
 88 100
 43 1403907.8 30.2 45.2#
 58 5874.5 59.5 89.3#



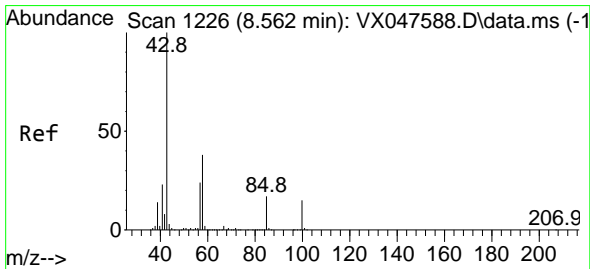
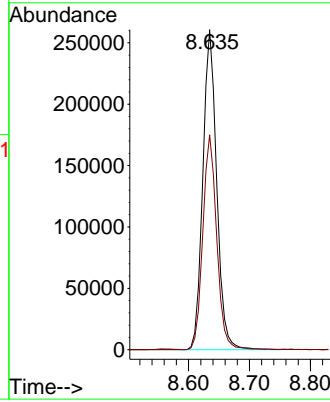
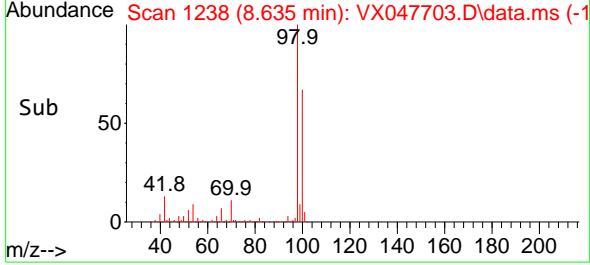


#50
 Toluene-d8
 Concen: 48.606 ug/l
 RT: 8.635 min Scan# 11
 Delta R.T. -0.000 min
 Lab File: VX047703.D
 Acq: 22 Sep 2025 14:48

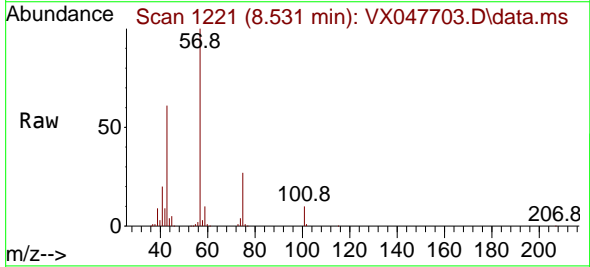
Instrument :
 MSVOA_X
 ClientSampleId :
 361



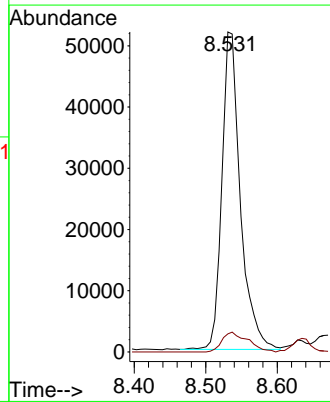
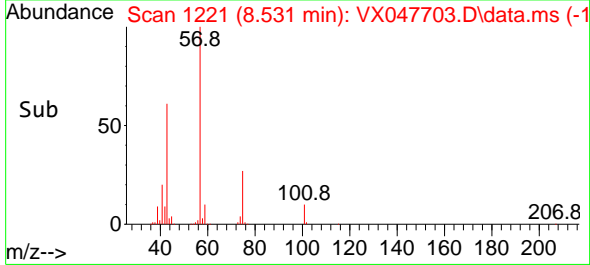
Tgt Ion: 98 Resp: 412932
 Ion Ratio Lower Upper
 98 100
 100 67.0 53.0 79.4

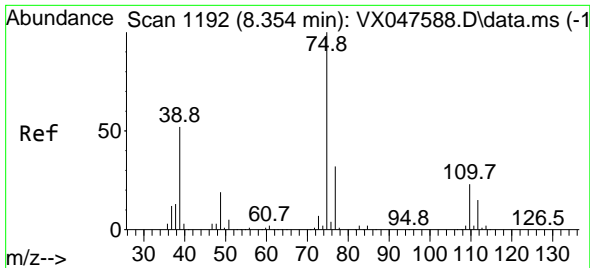


#51
 4-Methyl-2-Pentanone
 Concen: 26.632 ug/l
 RT: 8.531 min Scan# 1221
 Delta R.T. -0.031 min
 Lab File: VX047703.D
 Acq: 22 Sep 2025 14:48



Tgt Ion: 43 Resp: 93026
 Ion Ratio Lower Upper
 43 100
 58 8.8 30.3 45.5#

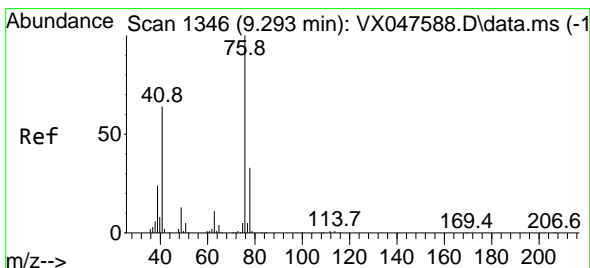
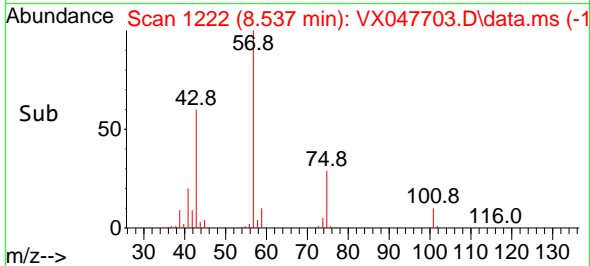
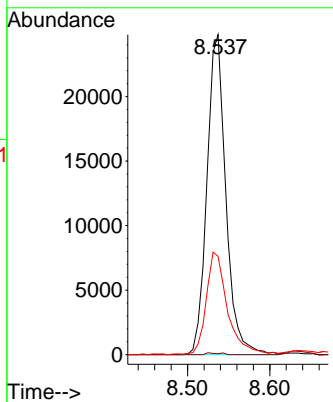
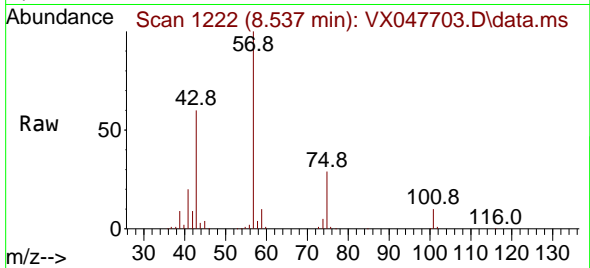




#54
 cis-1,3-Dichloropropene
 Concen: 8.686 ug/l
 RT: 8.537 min Scan# 1192
 Delta R.T. 0.183 min
 Lab File: VX047703.D
 Acq: 22 Sep 2025 14:48

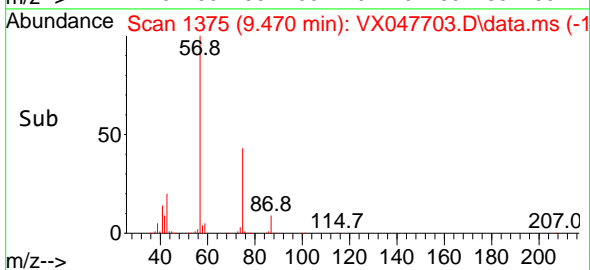
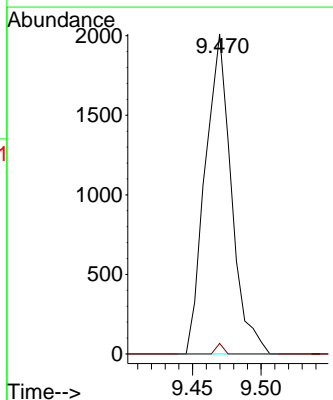
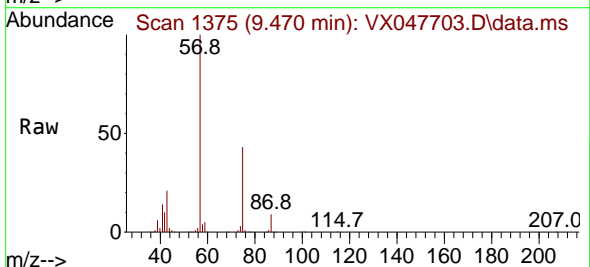
Instrument : MSVOA_X
 ClientSampleId : 361

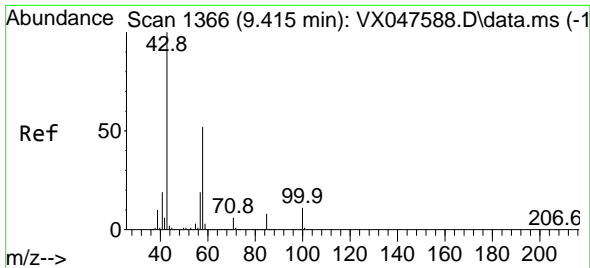
Tgt Ion	Resp	Lower	Upper
75	39679		
75	100		
77	0.3	25.8	38.6#
39	30.3	41.4	62.2#



#57
 1,3-Dichloropropane
 Concen: 0.600 ug/l
 RT: 9.470 min Scan# 1375
 Delta R.T. 0.177 min
 Lab File: VX047703.D
 Acq: 22 Sep 2025 14:48

Tgt Ion	Resp	Lower	Upper
76	2670		
76	100		
78	0.9	26.2	39.4#

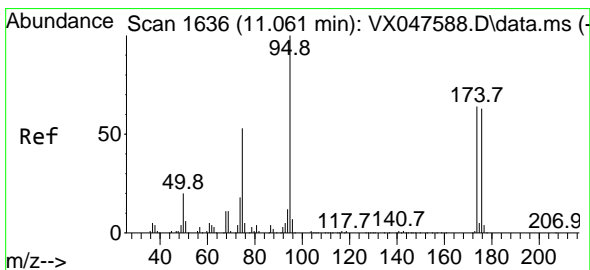
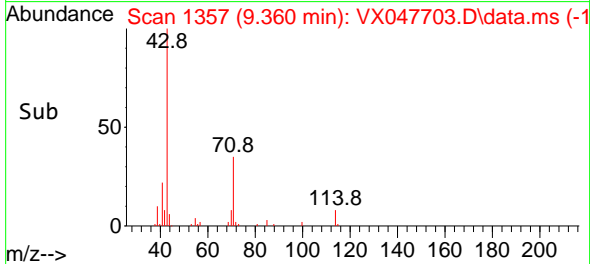
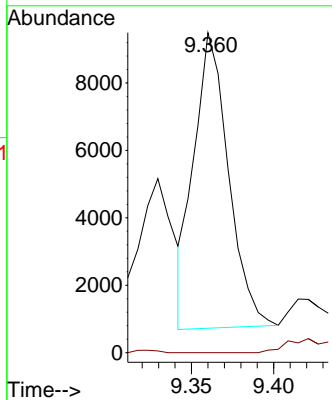
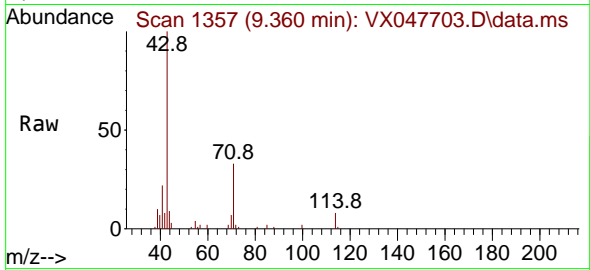




#59
 2-Hexanone
 Concen: 5.103 ug/l
 RT: 9.360 min Scan# 11
 Delta R.T. -0.055 min
 Lab File: VX047703.D
 Acq: 22 Sep 2025 14:48

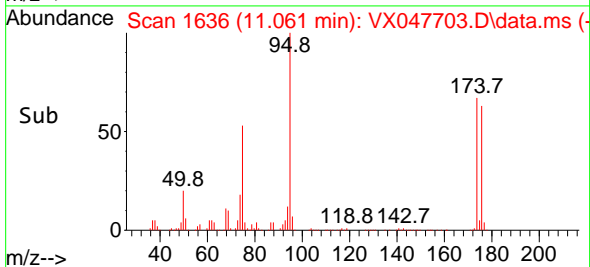
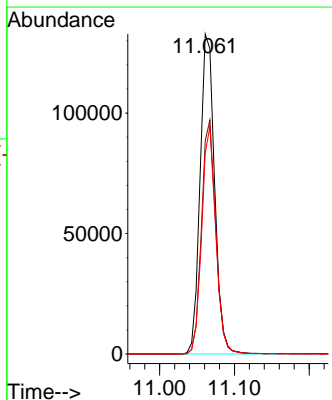
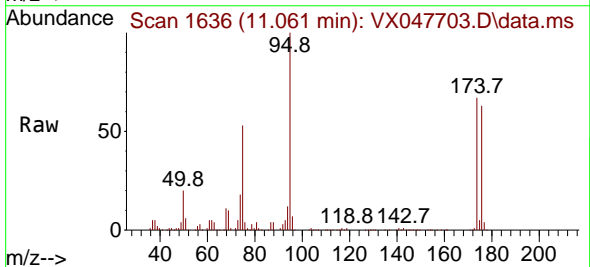
Instrument :
 MSVOA_X
 ClientSampleId :
 361

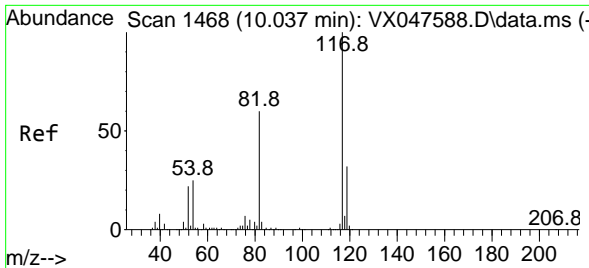
Tgt Ion: 43 Resp: 12803
 Ion Ratio Lower Upper
 43 100
 58 0.0 26.1 78.2#



#62
 4-Bromofluorobenzene
 Concen: 55.576 ug/l
 RT: 11.061 min Scan# 1636
 Delta R.T. -0.000 min
 Lab File: VX047703.D
 Acq: 22 Sep 2025 14:48

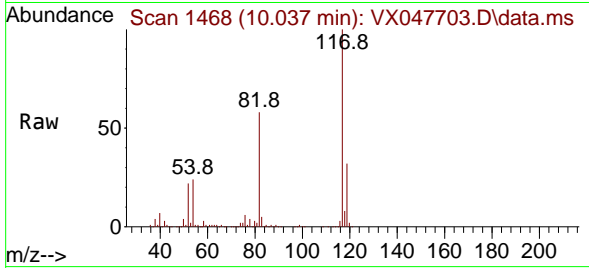
Tgt Ion: 95 Resp: 179190
 Ion Ratio Lower Upper
 95 100
 174 72.0 0.0 141.6
 176 68.6 0.0 138.4





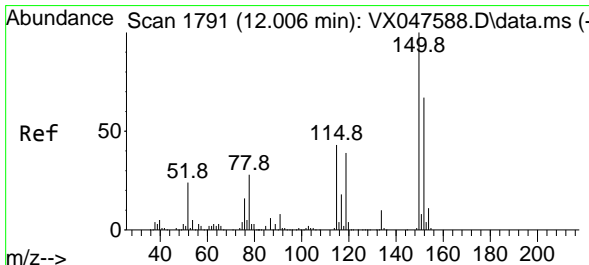
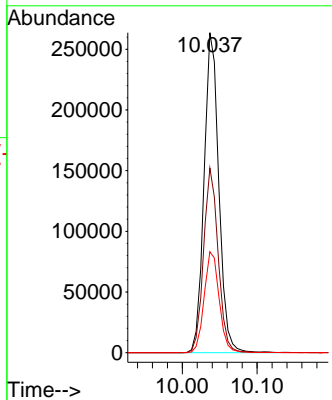
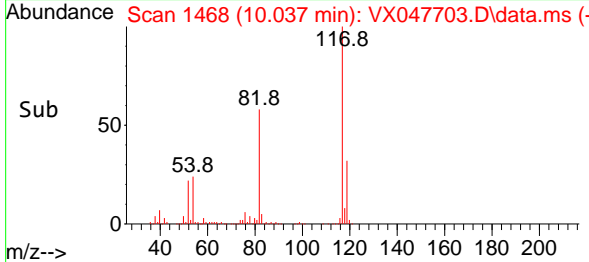
#63
 Chlorobenzene-d5
 Concen: 50.000 ug/l
 RT: 10.037 min Scan# 1468
 Delta R.T. -0.000 min
 Lab File: VX047703.D
 Acq: 22 Sep 2025 14:48

Instrument : MSVOA_X
 ClientSampleId : 361

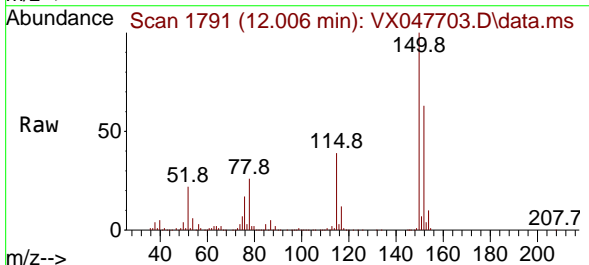


Tgt Ion:117 Resp: 361779

Ion	Ratio	Lower	Upper
117	100		
82	57.7	47.8	71.6
119	31.5	25.2	37.8

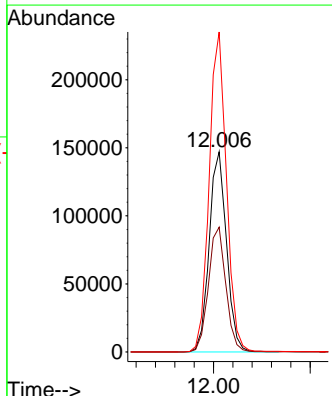
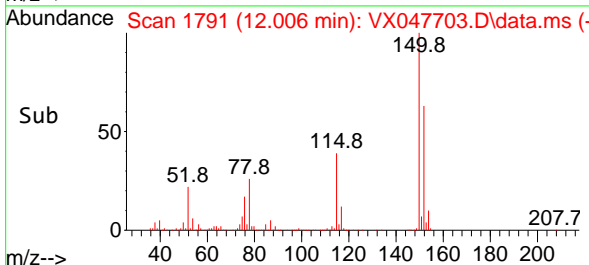


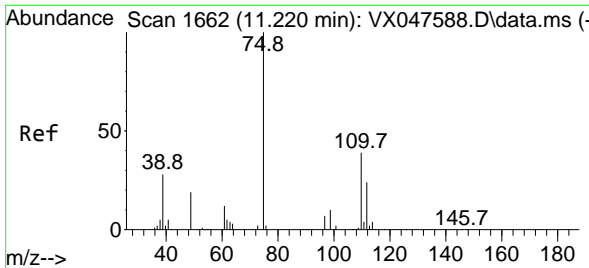
#72
 1,4-Dichlorobenzene-d4
 Concen: 50.000 ug/l
 RT: 12.006 min Scan# 1791
 Delta R.T. -0.000 min
 Lab File: VX047703.D
 Acq: 22 Sep 2025 14:48



Tgt Ion:152 Resp: 183624

Ion	Ratio	Lower	Upper
152	100		
115	62.8	44.9	134.5
150	159.3	0.0	352.0

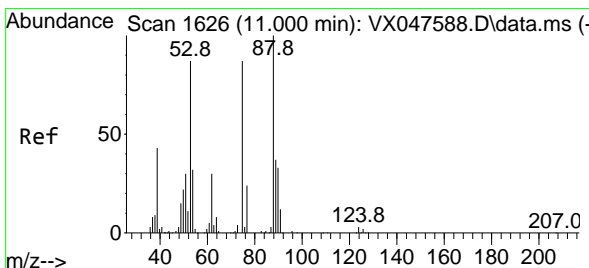
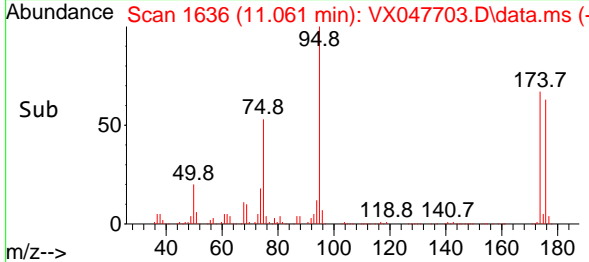
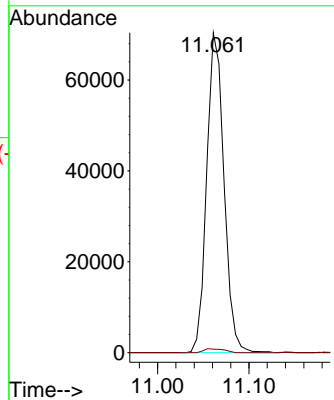
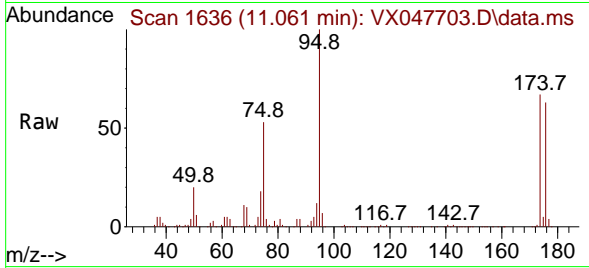




#76
 1,2,3-Trichloropropane
 Concen: 24.819 ug/l
 RT: 11.061 min Scan# 1636
 Delta R.T. -0.159 min
 Lab File: VX047703.D
 Acq: 22 Sep 2025 14:48

Instrument : MSVOA_X
 ClientSampleId : 361

Tgt Ion: 75 Resp: 92274
 Ion Ratio Lower Upper
 75 100
 77 1.4 18.8 56.4#



#81
 trans-1,4-Dichloro-2-butene
 Concen: 63.293 ug/l
 RT: 11.061 min Scan# 1636
 Delta R.T. 0.061 min
 Lab File: VX047703.D
 Acq: 22 Sep 2025 14:48

Tgt Ion: 75 Resp: 92274
 Ion Ratio Lower Upper
 75 100
 53 0.0 83.4 125.2#
 89 0.0 36.3 54.5#

