

Data Path : Z:\voasrv\HPCHEM1\MSVOA_X\Data\VX092225\
 Data File : VX047705.D
 Acq On : 22 Sep 2025 15:30
 Operator : JC/MD
 Sample : Q3153-04
 Misc : 5.0mL/MSVOA_X/WATER
 ALS Vial : 18 Sample Multiplier: 1

Instrument :
 MSVOA_X
 ClientSampleId :
 OR-500-COMP-39

Quant Time: Sep 23 01:36:24 2025
 Quant Method : Z:\voasrv\HPCHEM1\MSVOA_X\Method\82X091625W.M
 Quant Title : SW846 8260
 QLast Update : Wed Sep 17 06:39:58 2025
 Response via : Initial Calibration

Compound	R.T.	QIon	Response	Conc	Units	Dev(Min)

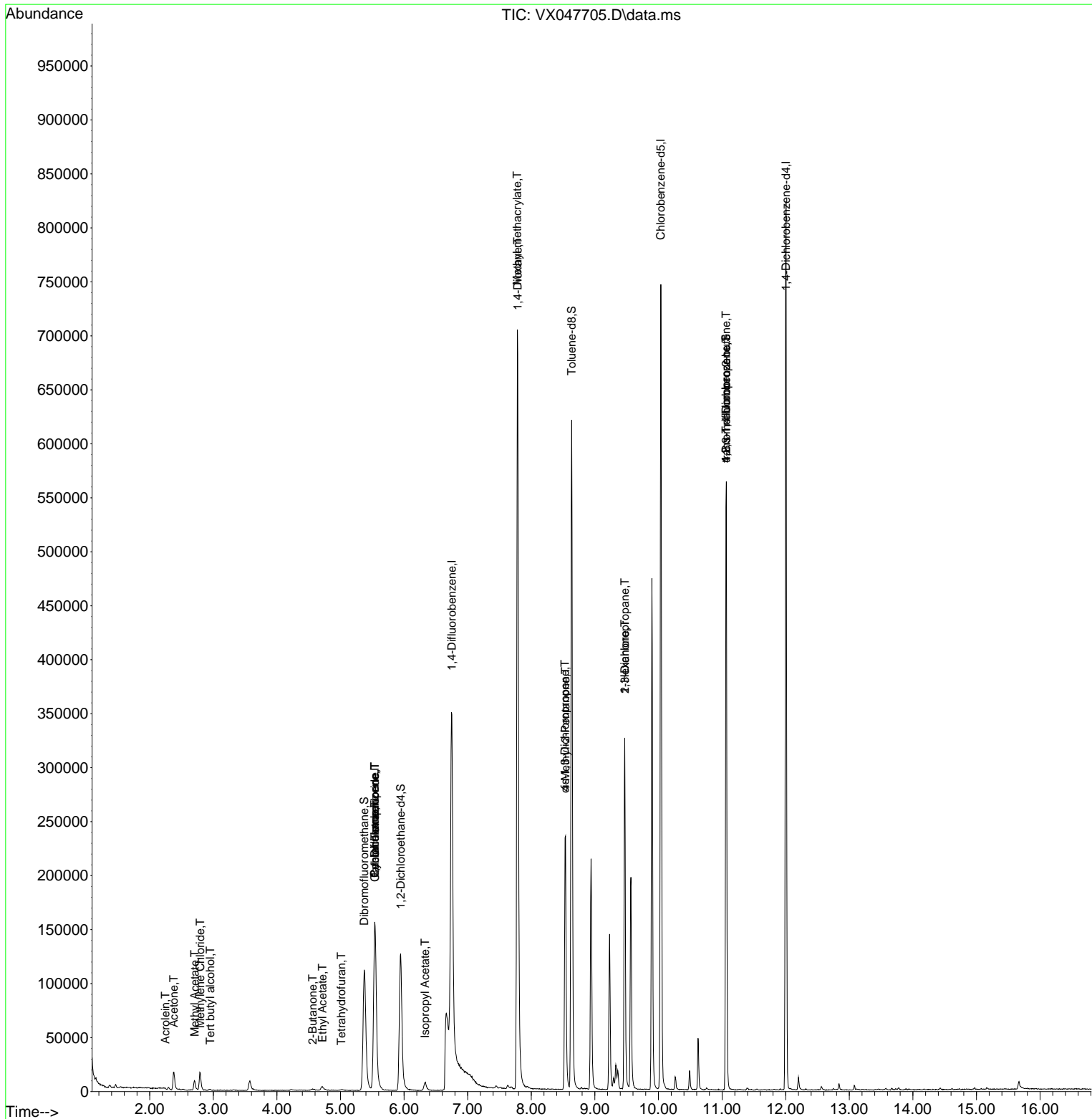
Internal Standards						
1) Pentafluorobenzene	5.538	168	156783	50.000	ug/l	0.00
34) 1,4-Difluorobenzene	6.751	114	334346	50.000	ug/l	0.00
63) Chlorobenzene-d5	10.037	117	332372	50.000	ug/l	0.00
72) 1,4-Dichlorobenzene-d4	12.006	152	170238	50.000	ug/l	0.00
System Monitoring Compounds						
33) 1,2-Dichloroethane-d4	5.946	65	136878	54.848	ug/l	0.00
Spiked Amount	50.000	Range	78 - 117	Recovery	=	109.700%
35) Dibromofluoromethane	5.373	113	109545	48.854	ug/l	0.00
Spiked Amount	50.000	Range	75 - 124	Recovery	=	97.700%
50) Toluene-d8	8.635	98	374013	48.205	ug/l	0.00
Spiked Amount	50.000	Range	92 - 112	Recovery	=	96.400%
62) 4-Bromofluorobenzene	11.061	95	163123	55.397	ug/l	0.00
Spiked Amount	50.000	Range	83 - 123	Recovery	=	110.800%
Target Compounds						
						Qvalue
11) Tert butyl alcohol	2.953	59	311	1.119	ug/l #	72
13) Acrolein	2.245	56	94	0.367	ug/l #	48
16) Acetone	2.380	43	23221	21.400	ug/l	99
18) Methyl Acetate	2.709	43	12932	5.355	ug/l	100
20) Methylene Chloride	2.794	84	8202	3.571	ug/l	94
25) 2-Butanone	4.562	43	2368	1.750	ug/l #	79
29) Tetrahydrofuran	5.013	42	497	0.610	ug/l #	68
31) Cyclohexane	5.538	56	3665	1.111	ug/l #	1
36) 1,1-Dichloropropene	5.538	75	13215	4.033	ug/l #	51
37) Ethyl Acetate	4.715	43	6948	1.980	ug/l #	89
38) Carbon Tetrachloride	5.544	117	16569	4.654	ug/l #	18
43) Isopropyl Acetate	6.330	43	11701	2.034	ug/l	94
48) Methyl methacrylate	7.781	41	68643	23.951	ug/l #	46
49) 1,4-Dioxane	7.787	88	51	1.761	ug/l #	1
51) 4-Methyl-2-Pentanone	8.537	43	89589	28.083	ug/l #	49
54) cis-1,3-Dichloropropene	8.531	75	40894	9.802	ug/l #	59
57) 1,3-Dichloropropane	9.470	76	2867	0.706	ug/l #	42
59) 2-Hexanone	9.470	43	41153	17.962	ug/l #	54
76) 1,2,3-Trichloropropane	11.061	75	84008	24.373	ug/l #	40
81) trans-1,4-Dichloro-2-b...	11.061	75	84008	62.154	ug/l #	8

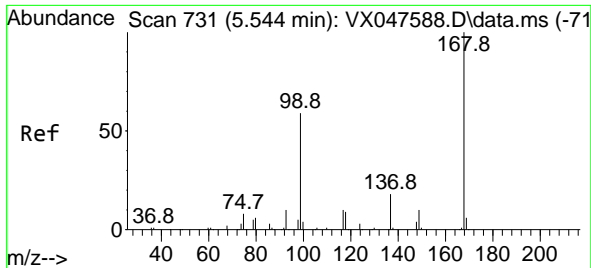
(#) = qualifier out of range (m) = manual integration (+) = signals summed

Data Path : Z:\voasrv\HPCHEM1\MSVOA_X\Data\VX092225\
 Data File : VX047705.D
 Acq On : 22 Sep 2025 15:30
 Operator : JC/MD
 Sample : Q3153-04
 Misc : 5.0mL/MSVOA_X/WATER
 ALS Vial : 18 Sample Multiplier: 1

Instrument :
 MSVOA_X
 ClientSampleId :
 OR-500-COMP-39

Quant Time: Sep 23 01:36:24 2025
 Quant Method : Z:\voasrv\HPCHEM1\MSVOA_X\Method\82X091625W.M
 Quant Title : SW846 8260
 QLast Update : Wed Sep 17 06:39:58 2025
 Response via : Initial Calibration

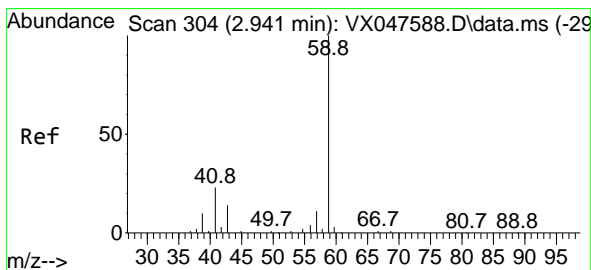
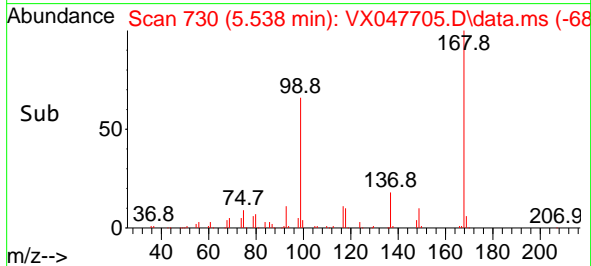
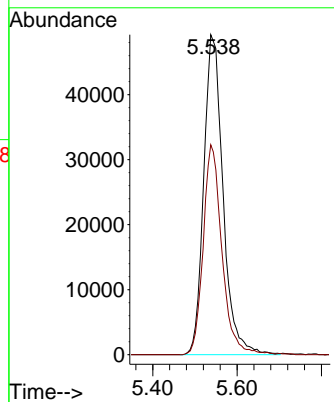
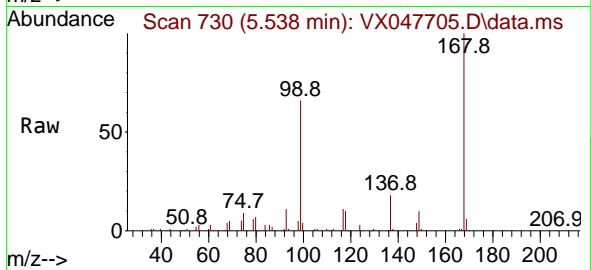




#1
 Pentafluorobenzene
 Concen: 50.000 ug/l
 RT: 5.538 min Scan# 71
 Delta R.T. -0.006 min
 Lab File: VX047705.D
 Acq: 22 Sep 2025 15:30

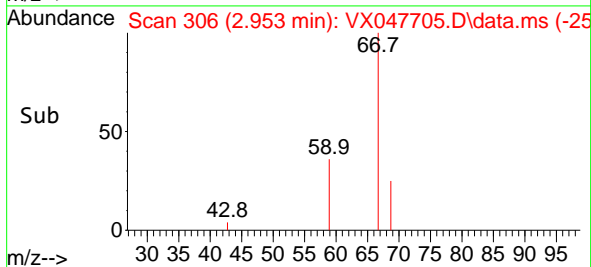
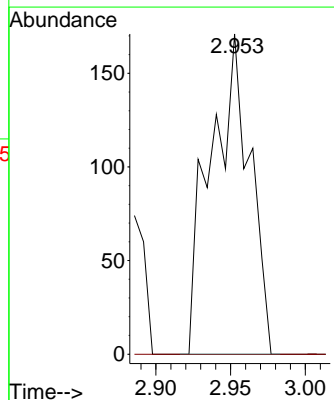
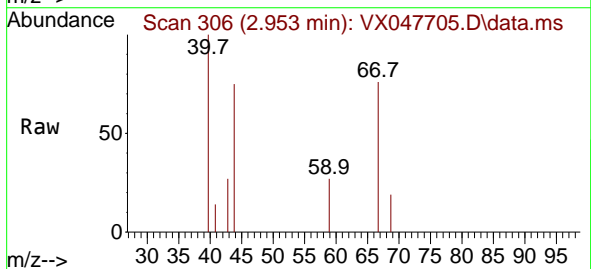
Instrument :
 MSVOA_X
 ClientSampleId :
 OR-500-COMP-39

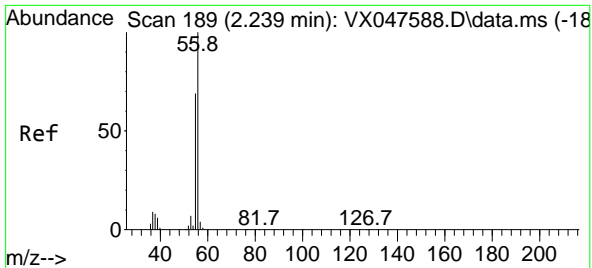
Tgt Ion:168 Resp: 156783
 Ion Ratio Lower Upper
 168 100
 99 65.6 48.8 73.2



#11
 Tert butyl alcohol
 Concen: 1.119 ug/l
 RT: 2.953 min Scan# 306
 Delta R.T. 0.012 min
 Lab File: VX047705.D
 Acq: 22 Sep 2025 15:30

Tgt Ion: 59 Resp: 311
 Ion Ratio Lower Upper
 59 100
 57 0.0 8.3 12.5#

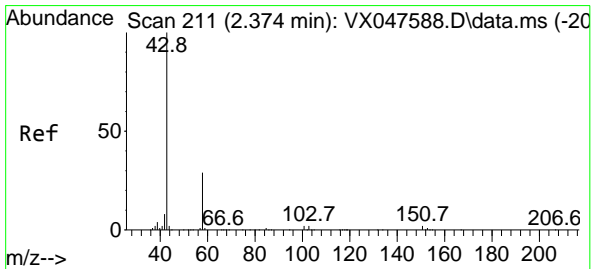
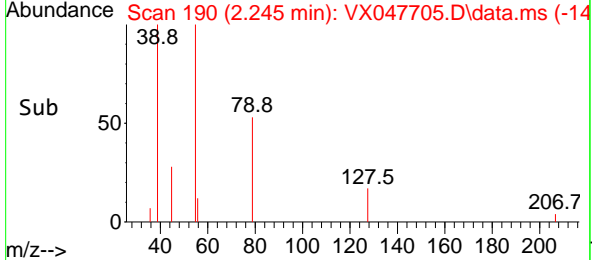
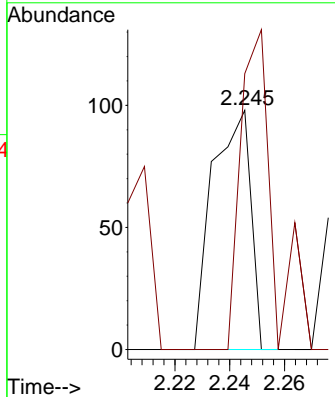
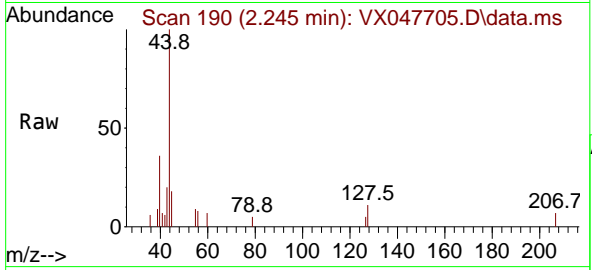




#13
 Acrolein
 Concen: 0.367 ug/l
 RT: 2.245 min Scan# 190
 Delta R.T. 0.006 min
 Lab File: VX047705.D
 Acq: 22 Sep 2025 15:30

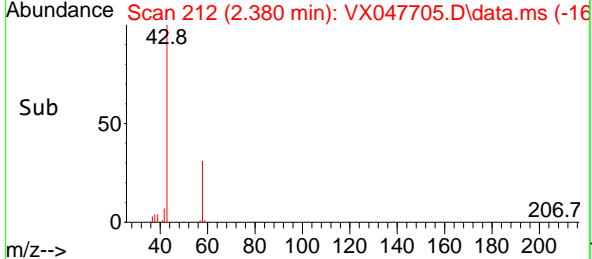
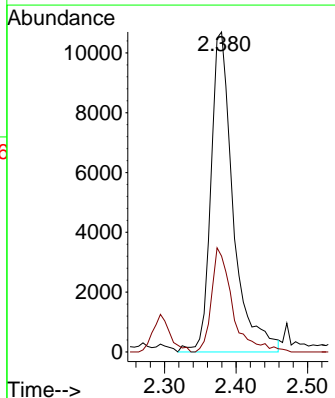
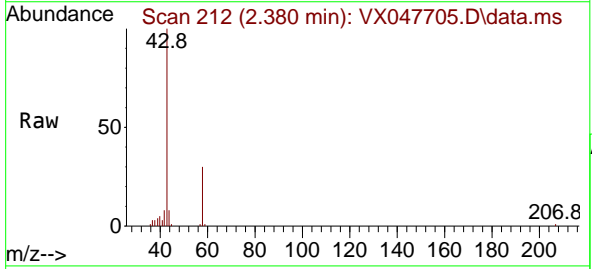
Instrument : MSVOA_X
 ClientSampleId : OR-500-COMP-39

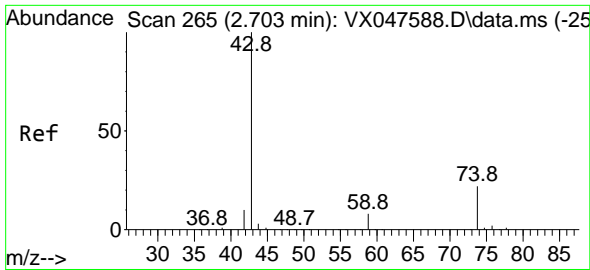
Tgt Ion: 56 Resp: 94
 Ion Ratio Lower Upper
 56 100
 55 114.9 57.2 85.8#



#16
 Acetone
 Concen: 21.400 ug/l
 RT: 2.380 min Scan# 212
 Delta R.T. 0.006 min
 Lab File: VX047705.D
 Acq: 22 Sep 2025 15:30

Tgt Ion: 43 Resp: 23221
 Ion Ratio Lower Upper
 43 100
 58 28.7 23.4 35.0

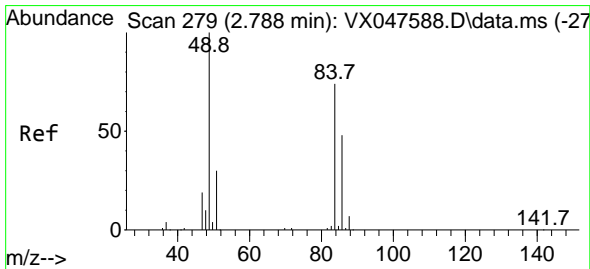
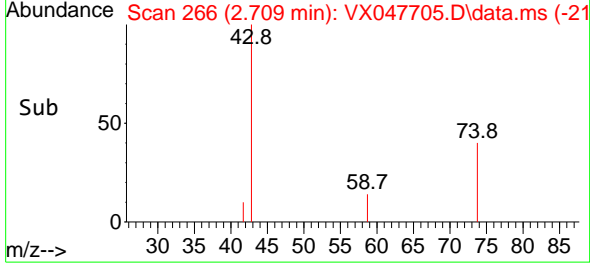
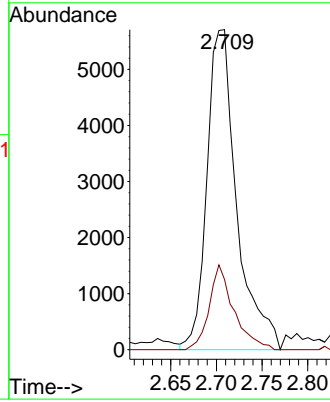
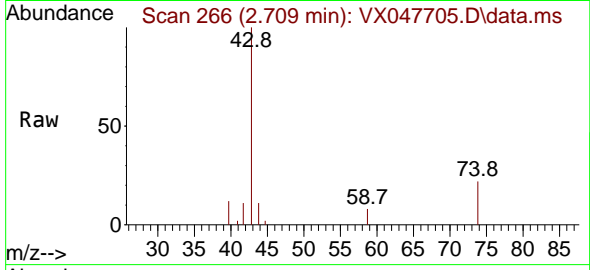




#18
Methyl Acetate
Concen: 5.355 ug/l
RT: 2.709 min Scan# 20
Delta R.T. 0.006 min
Lab File: VX047705.D
Acq: 22 Sep 2025 15:30

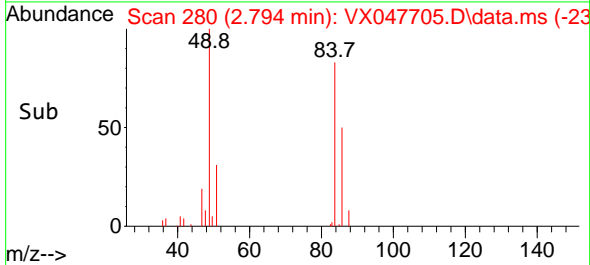
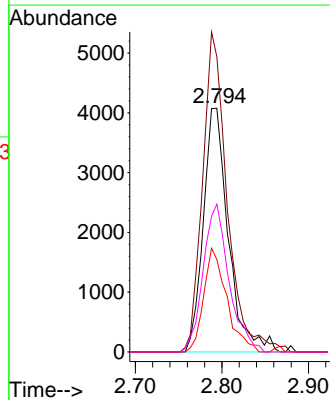
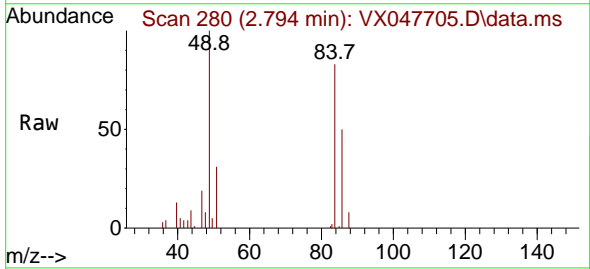
Instrument :
MSVOA_X
ClientSampleId :
OR-500-COMP-39

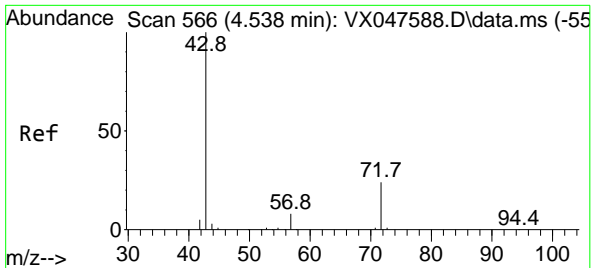
Tgt Ion: 43 Resp: 12932
Ion Ratio Lower Upper
43 100
74 22.0 17.4 26.2



#20
Methylene Chloride
Concen: 3.571 ug/l
RT: 2.794 min Scan# 280
Delta R.T. 0.006 min
Lab File: VX047705.D
Acq: 22 Sep 2025 15:30

Tgt Ion: 84 Resp: 8202
Ion Ratio Lower Upper
84 100
49 127.7 108.6 162.8
51 38.0 32.6 48.8
86 60.7 52.0 78.0

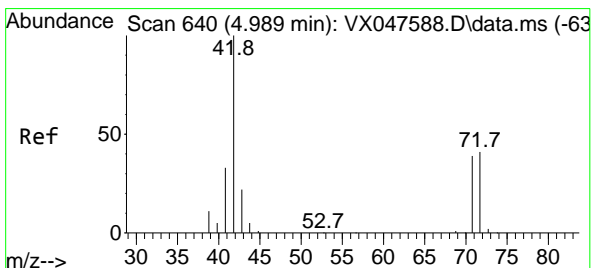
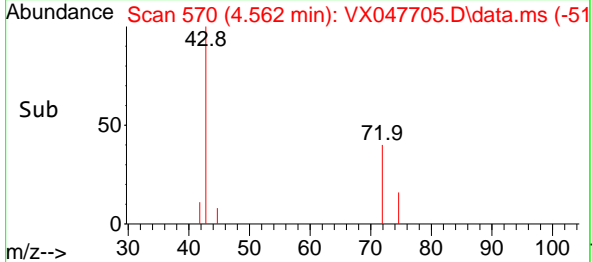
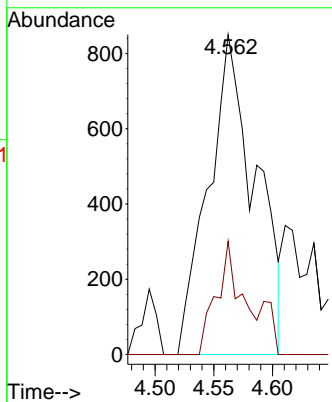
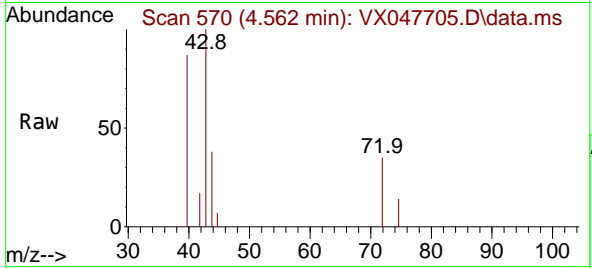




#25
 2-Butanone
 Concen: 1.750 ug/l
 RT: 4.562 min Scan# 51
 Delta R.T. 0.024 min
 Lab File: VX047705.D
 Acq: 22 Sep 2025 15:30

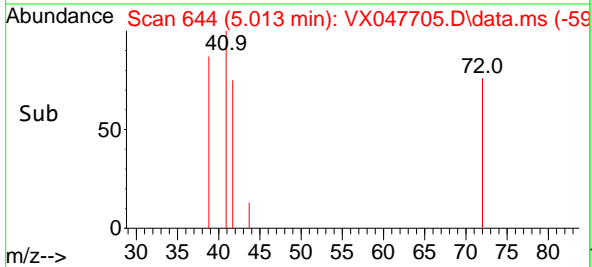
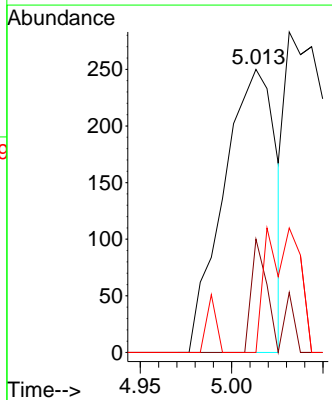
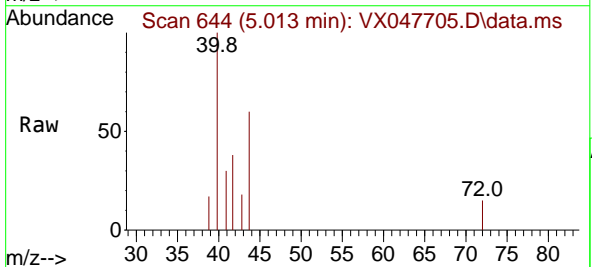
Instrument : MSVOA_X
 ClientSampleId : OR-500-COMP-39

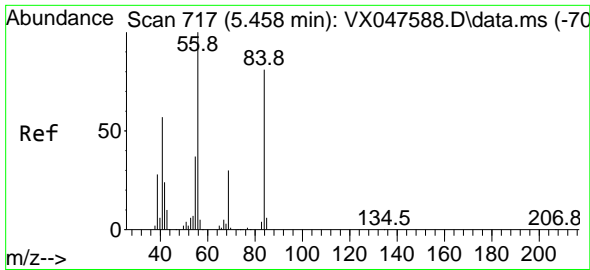
Tgt Ion: 43 Resp: 2368
 Ion Ratio Lower Upper
 43 100
 72 35.4 20.1 30.1#



#29
 Tetrahydrofuran
 Concen: 0.610 ug/l
 RT: 5.013 min Scan# 644
 Delta R.T. 0.024 min
 Lab File: VX047705.D
 Acq: 22 Sep 2025 15:30

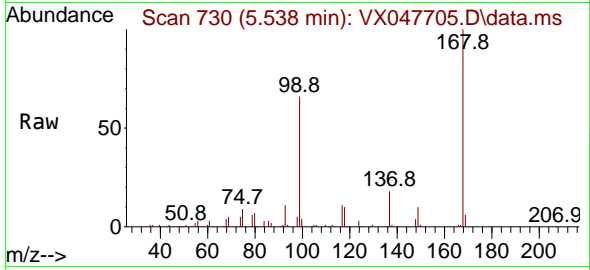
Tgt Ion: 42 Resp: 497
 Ion Ratio Lower Upper
 42 100
 72 15.7 34.2 51.2#
 71 27.4 31.9 47.9#



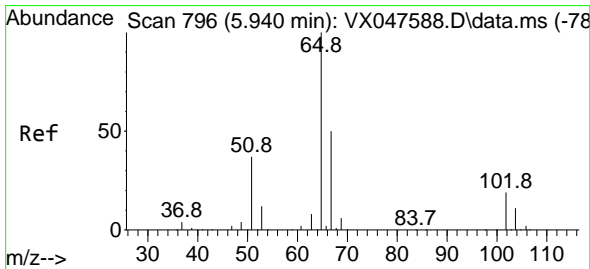
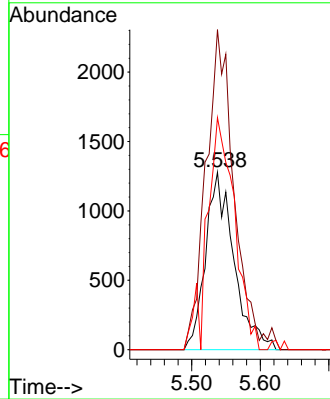
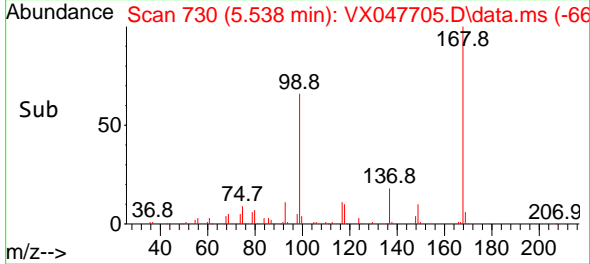


#31
 Cyclohexane
 Concen: 1.111 ug/l
 RT: 5.538 min Scan# 717
 Delta R.T. 0.079 min
 Lab File: VX047705.D
 Acq: 22 Sep 2025 15:30

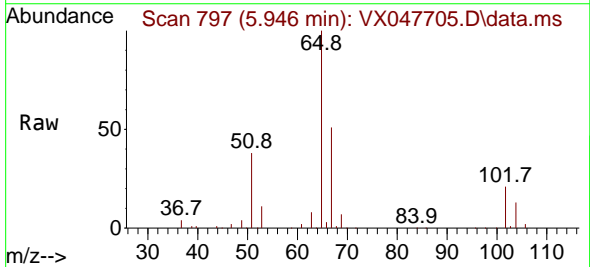
Instrument : MSVOA_X
 ClientSampleId : OR-500-COMP-39



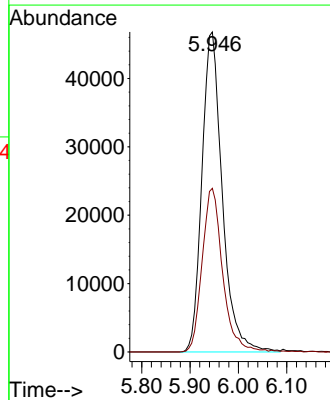
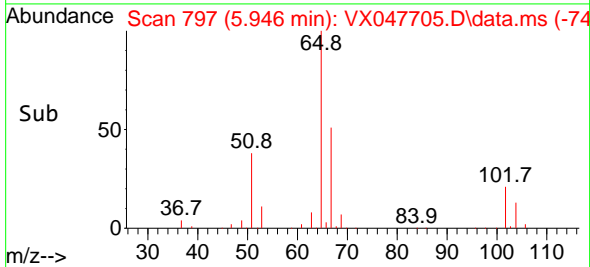
Tgt Ion: 56 Resp: 3665
 Ion Ratio Lower Upper
 56 100
 69 180.3 23.8 35.8#
 84 130.7 64.6 97.0#

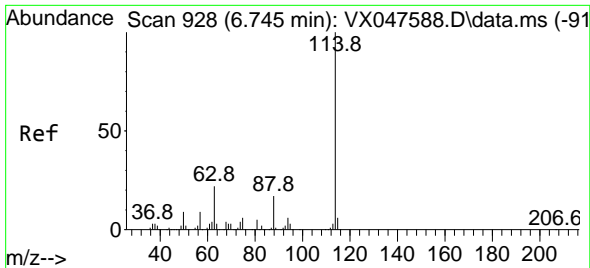


#33
 1,2-Dichloroethane-d4
 Concen: 54.848 ug/l
 RT: 5.946 min Scan# 797
 Delta R.T. 0.006 min
 Lab File: VX047705.D
 Acq: 22 Sep 2025 15:30



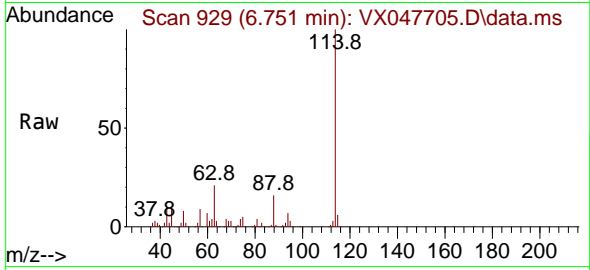
Tgt Ion: 65 Resp: 136878
 Ion Ratio Lower Upper
 65 100
 67 51.7 0.0 103.0



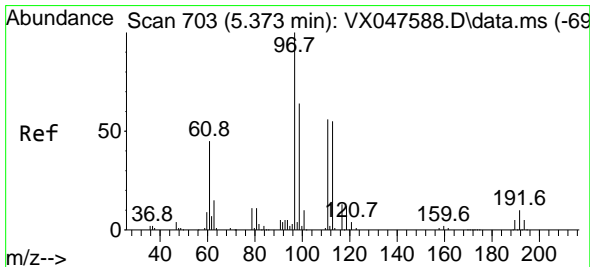
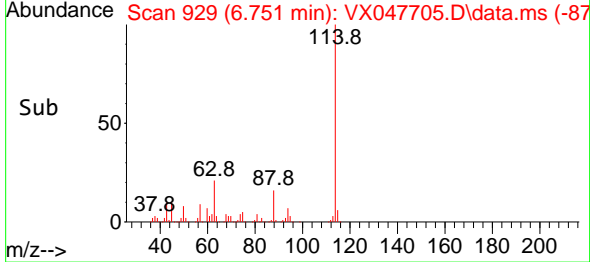
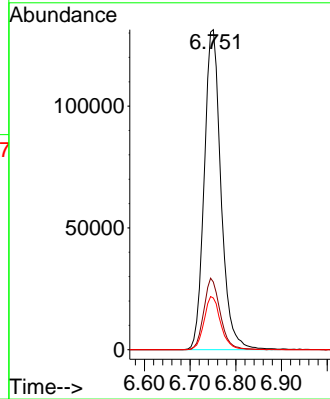


#34
 1,4-Difluorobenzene
 Concen: 50.000 ug/l
 RT: 6.751 min Scan# 91
 Delta R.T. 0.006 min
 Lab File: VX047705.D
 Acq: 22 Sep 2025 15:30

Instrument :
 MSVOA_X
 ClientSampleId :
 OR-500-COMP-39

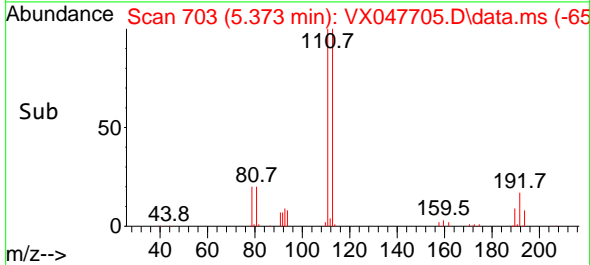
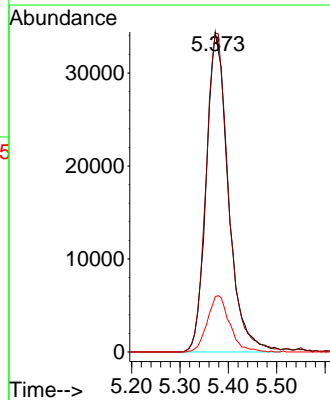
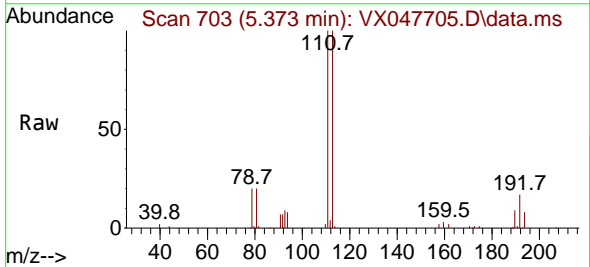


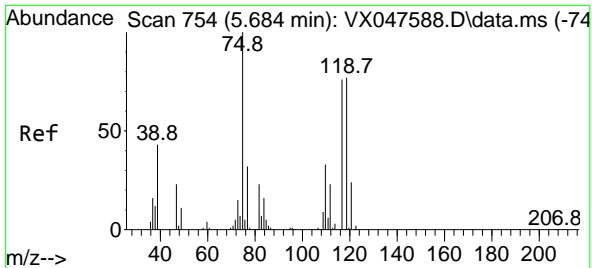
Tgt Ion:114 Resp: 334346
 Ion Ratio Lower Upper
 114 100
 63 24.0 0.0 44.0
 88 16.2 0.0 34.2



#35
 Dibromofluoromethane
 Concen: 48.854 ug/l
 RT: 5.373 min Scan# 703
 Delta R.T. -0.000 min
 Lab File: VX047705.D
 Acq: 22 Sep 2025 15:30

Tgt Ion:113 Resp: 109545
 Ion Ratio Lower Upper
 113 100
 111 101.4 80.9 121.3
 192 17.7 14.2 21.4



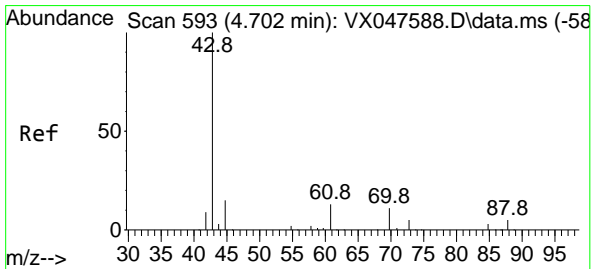
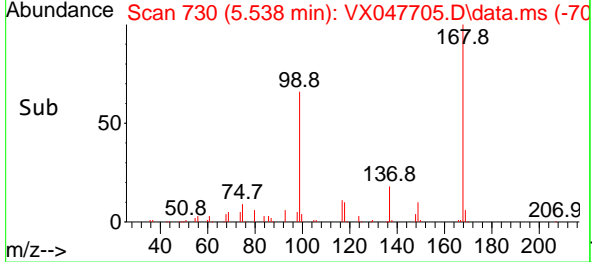
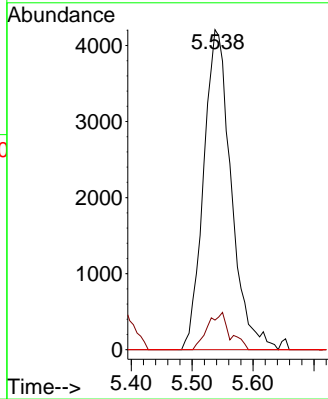
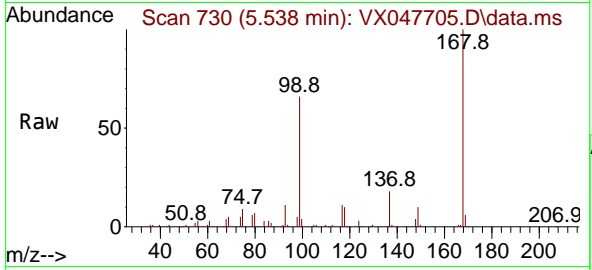


#36
 1,1-Dichloropropene
 Concen: 4.033 ug/l
 RT: 5.538 min Scan# 71
 Delta R.T. -0.146 min
 Lab File: VX047705.D
 Acq: 22 Sep 2025 15:30

Instrument : MSVOA_X
 ClientSampleId : OR-500-COMP-39

Tgt Ion: 75 Resp: 13215

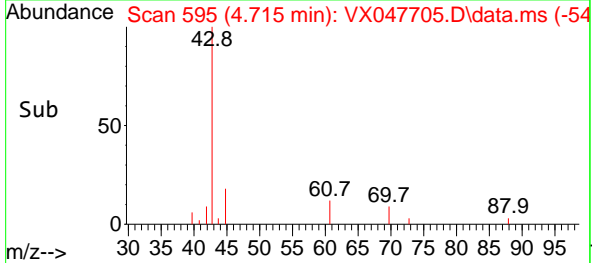
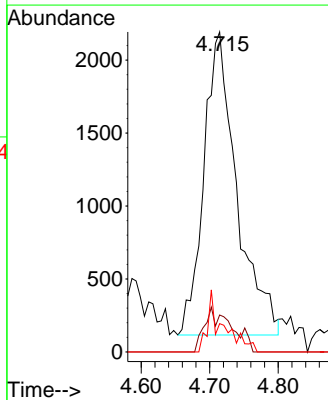
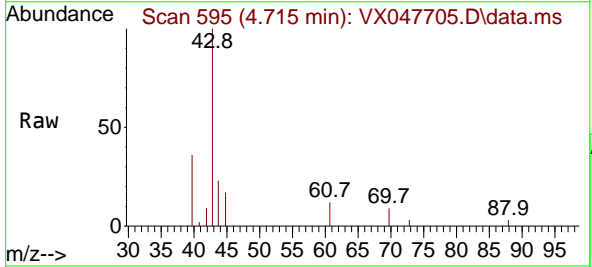
Ion	Ratio	Lower	Upper
75	100		
110	9.5	16.7	50.1#
77	0.0	24.3	36.5#

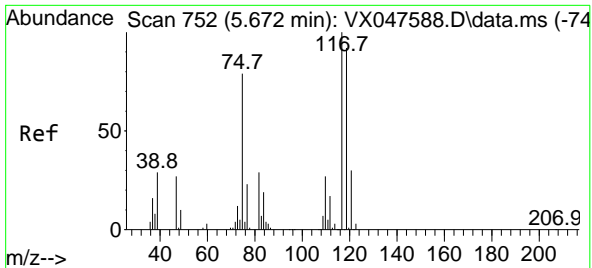


#37
 Ethyl Acetate
 Concen: 1.980 ug/l
 RT: 4.715 min Scan# 595
 Delta R.T. 0.012 min
 Lab File: VX047705.D
 Acq: 22 Sep 2025 15:30

Tgt Ion: 43 Resp: 6948

Ion	Ratio	Lower	Upper
43	100		
61	5.1	9.8	14.8#
70	9.5	7.9	11.9



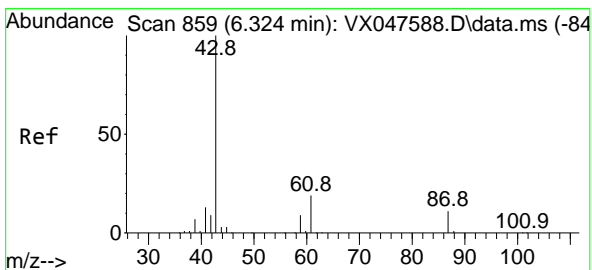
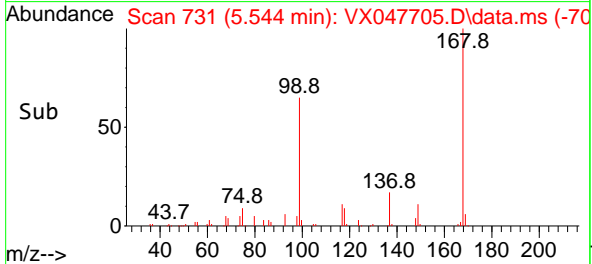
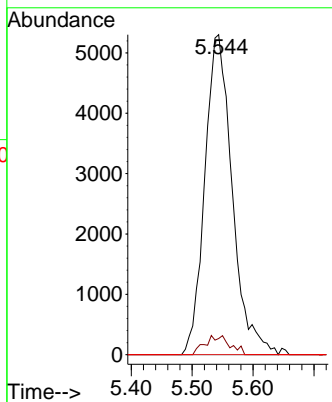
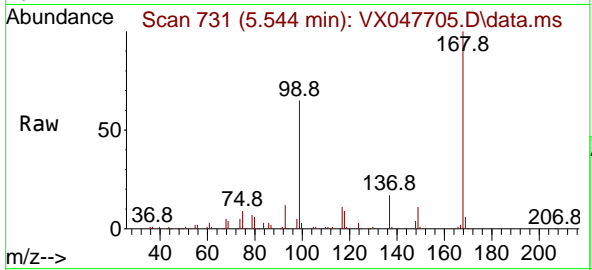


#38
 Carbon Tetrachloride
 Concen: 4.654 ug/l
 RT: 5.544 min Scan# 71
 Delta R.T. -0.128 min
 Lab File: VX047705.D
 Acq: 22 Sep 2025 15:30

Instrument :
 MSVOA_X
 ClientSampleId :
 OR-500-COMP-39

Tgt Ion:117 Resp: 16569

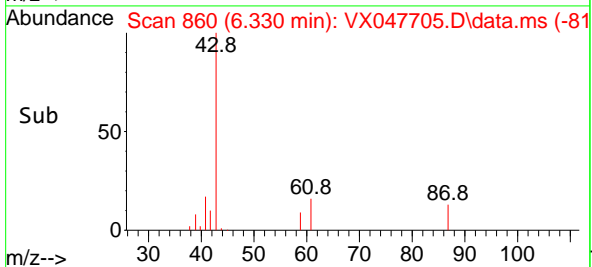
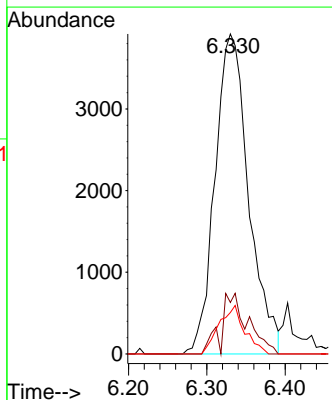
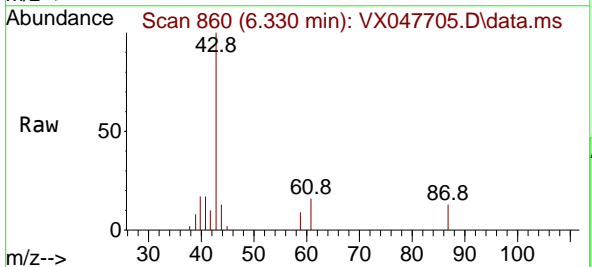
Ion	Ratio	Lower	Upper
117	100		
119	5.1	73.4	110.2#
121	0.0	23.8	35.6#

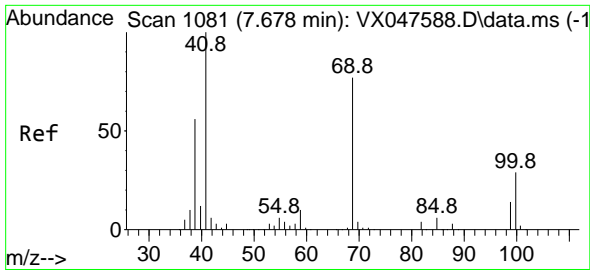


#43
 Isopropyl Acetate
 Concen: 2.034 ug/l
 RT: 6.330 min Scan# 860
 Delta R.T. 0.006 min
 Lab File: VX047705.D
 Acq: 22 Sep 2025 15:30

Tgt Ion: 43 Resp: 11701

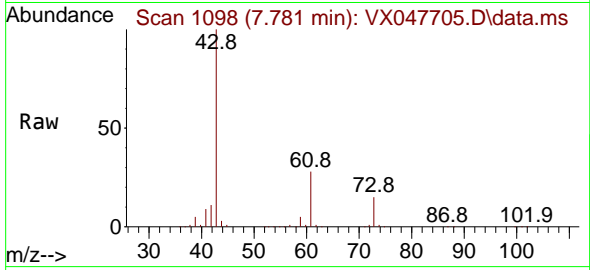
Ion	Ratio	Lower	Upper
43	100		
61	15.3	15.2	22.8
87	11.5	9.6	14.4



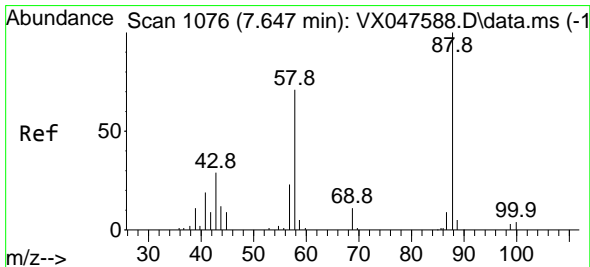
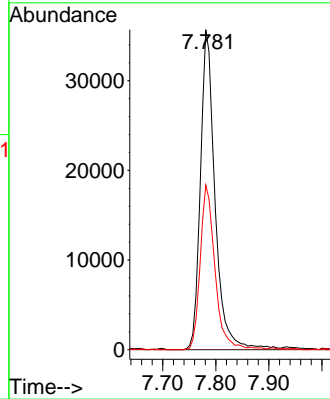
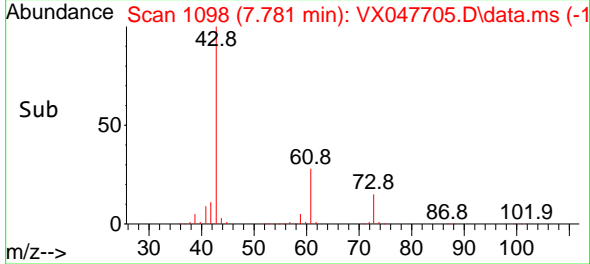


#48
 Methyl methacrylate
 Concen: 23.951 ug/l
 RT: 7.781 min Scan# 1098
 Delta R.T. 0.104 min
 Lab File: VX047705.D
 Acq: 22 Sep 2025 15:30

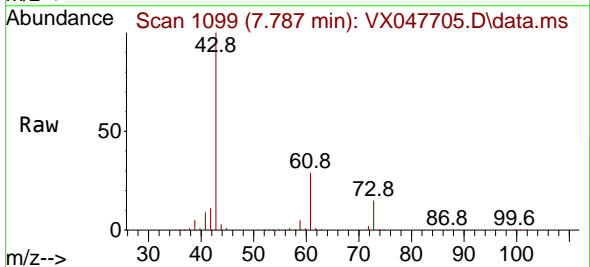
Instrument : MSVOA_X
 ClientSampleId : OR-500-COMP-39



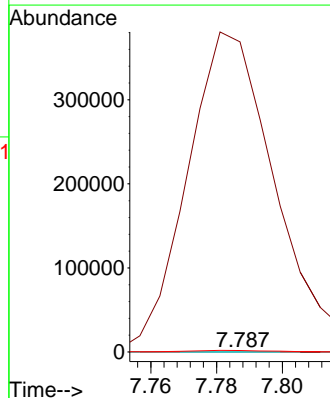
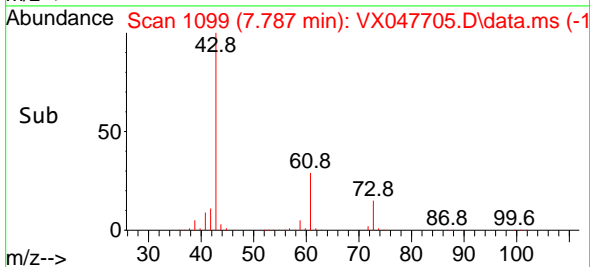
Tgt Ion: 41 Resp: 68643
 Ion Ratio Lower Upper
 41 100
 69 0.0 61.4 92.2#
 39 52.1 45.8 68.6

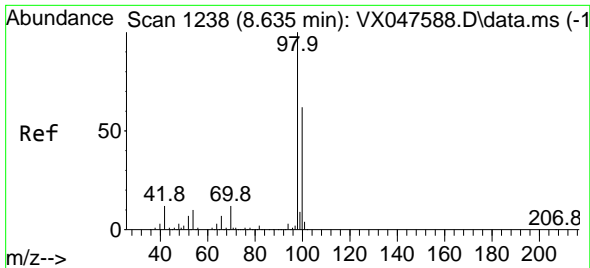


#49
 1,4-Dioxane
 Concen: 1.761 ug/l
 RT: 7.787 min Scan# 1099
 Delta R.T. 0.140 min
 Lab File: VX047705.D
 Acq: 22 Sep 2025 15:30



Tgt Ion: 88 Resp: 51
 Ion Ratio Lower Upper
 88 100
 43 1436382.4 30.2 45.2#
 58 6731.4 59.5 89.3#

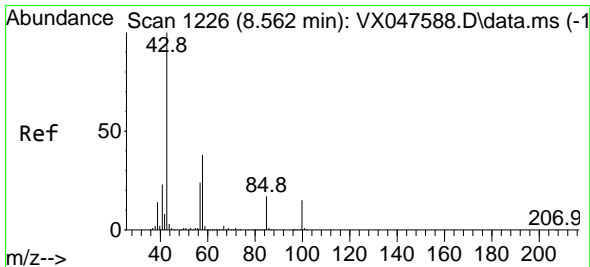
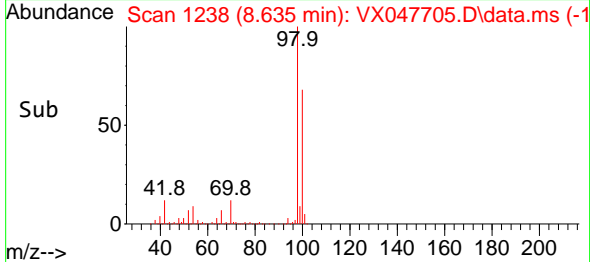
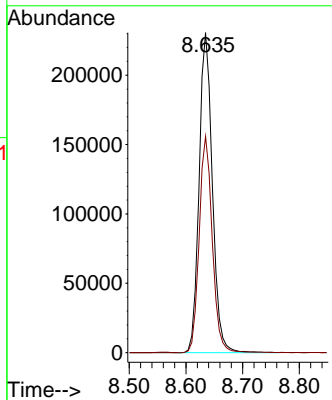
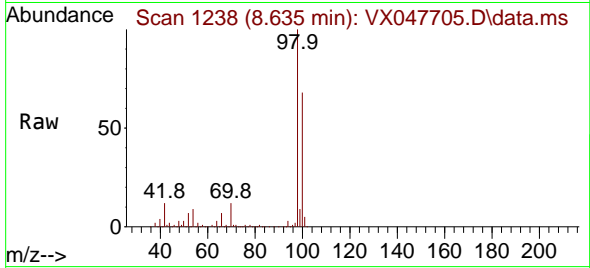




#50
 Toluene-d8
 Concen: 48.205 ug/l
 RT: 8.635 min Scan# 11
 Delta R.T. -0.000 min
 Lab File: VX047705.D
 Acq: 22 Sep 2025 15:30

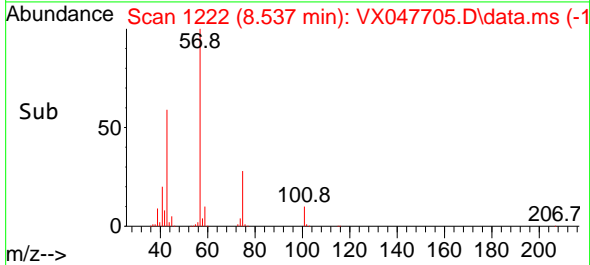
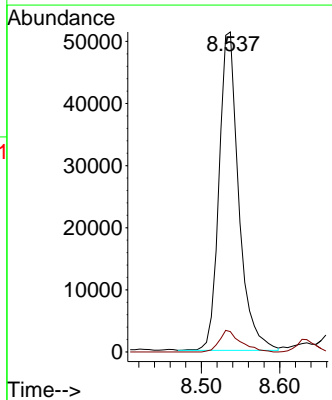
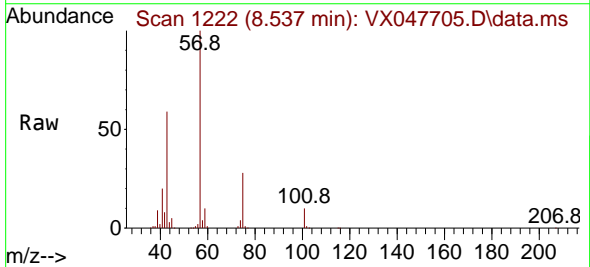
Instrument : MSVOA_X
 ClientSampleId : OR-500-COMP-39

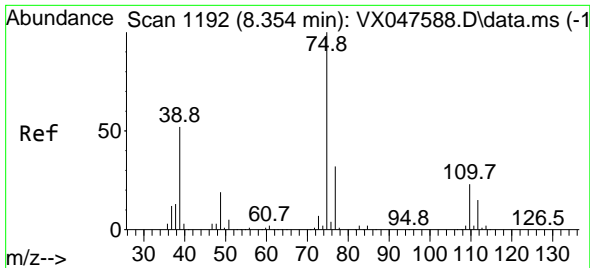
Tgt Ion: 98 Resp: 374013
 Ion Ratio Lower Upper
 98 100
 100 66.9 53.0 79.4



#51
 4-Methyl-2-Pentanone
 Concen: 28.083 ug/l
 RT: 8.537 min Scan# 1222
 Delta R.T. -0.025 min
 Lab File: VX047705.D
 Acq: 22 Sep 2025 15:30

Tgt Ion: 43 Resp: 89589
 Ion Ratio Lower Upper
 43 100
 58 7.4 30.3 45.5#

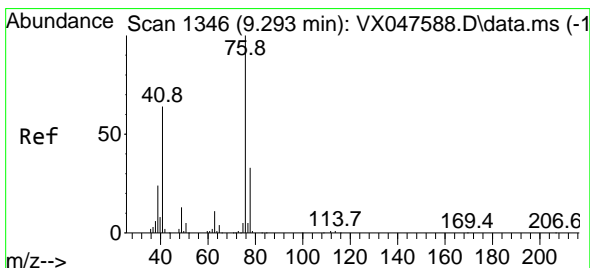
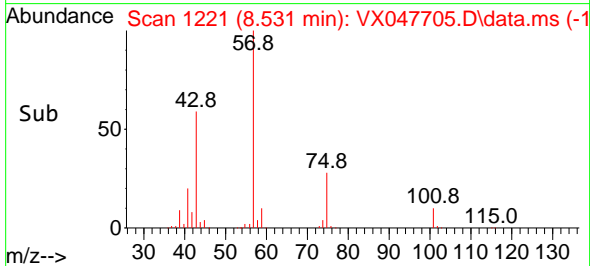
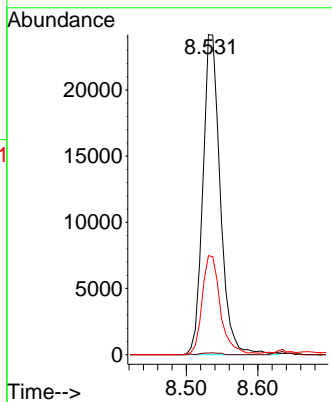
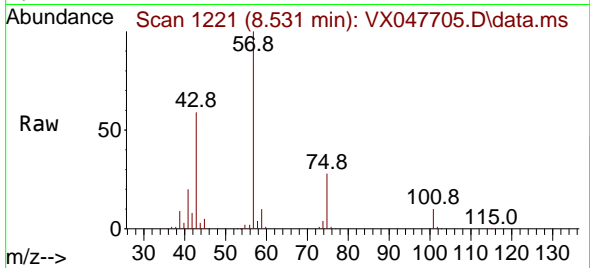




#54
 cis-1,3-Dichloropropene
 Concen: 9.802 ug/l
 RT: 8.531 min Scan# 1192
 Delta R.T. 0.177 min
 Lab File: VX047705.D
 Acq: 22 Sep 2025 15:30

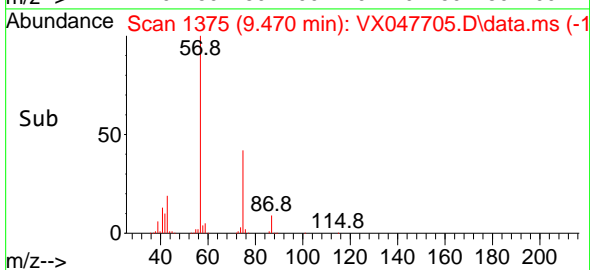
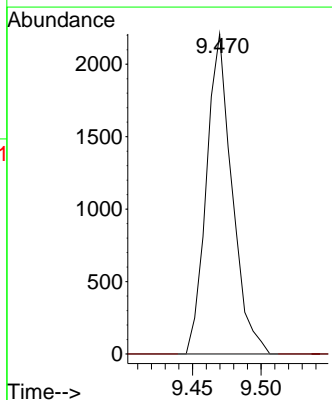
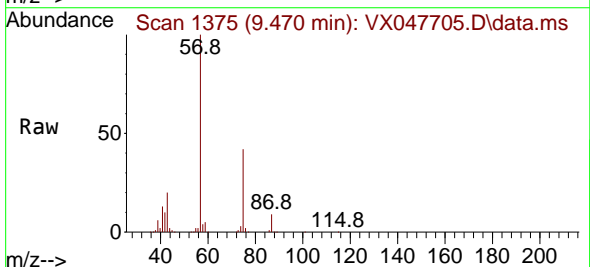
Instrument : MSVOA_X
 ClientSampleId : OR-500-COMP-39

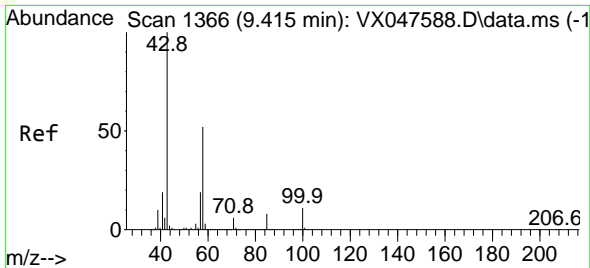
Tgt Ion	Resp	Lower	Upper
75	40894		
75	100		
77	0.5	25.8	38.6#
39	29.7	41.4	62.2#



#57
 1,3-Dichloropropane
 Concen: 0.706 ug/l
 RT: 9.470 min Scan# 1375
 Delta R.T. 0.177 min
 Lab File: VX047705.D
 Acq: 22 Sep 2025 15:30

Tgt Ion	Resp	Lower	Upper
76	2867		
76	100		
78	0.0	26.2	39.4#

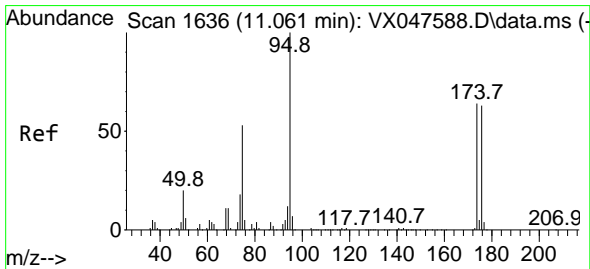
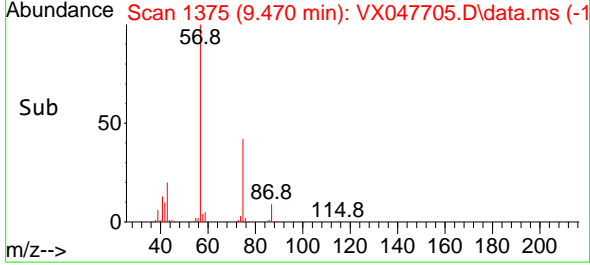
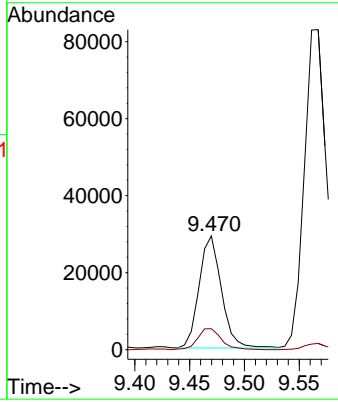
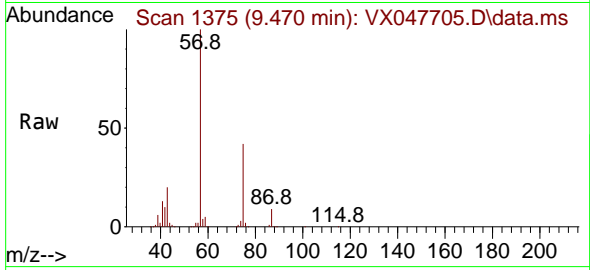




#59
 2-Hexanone
 Concen: 17.962 ug/l
 RT: 9.470 min Scan# 11
 Delta R.T. 0.055 min
 Lab File: VX047705.D
 Acq: 22 Sep 2025 15:30

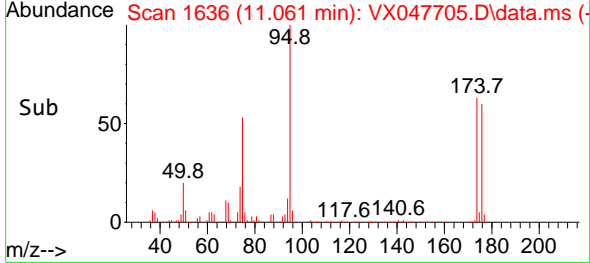
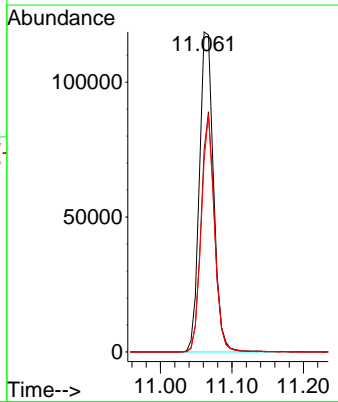
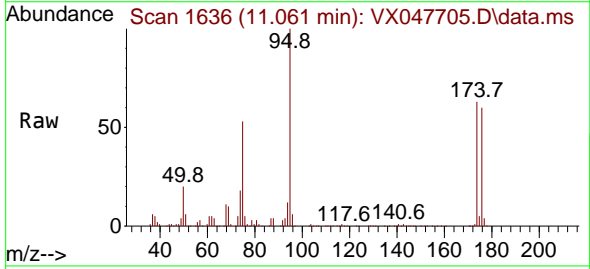
Instrument : MSVOA_X
 ClientSampleId : OR-500-COMP-39

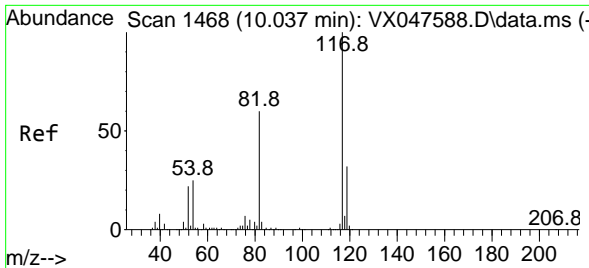
Tgt Ion: 43 Resp: 41153
 Ion Ratio Lower Upper
 43 100
 58 19.8 26.1 78.2#



#62
 4-Bromofluorobenzene
 Concen: 55.397 ug/l
 RT: 11.061 min Scan# 1636
 Delta R.T. -0.000 min
 Lab File: VX047705.D
 Acq: 22 Sep 2025 15:30

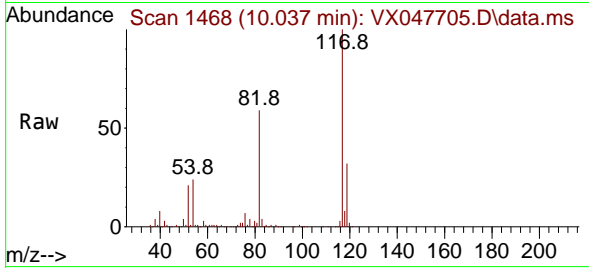
Tgt Ion: 95 Resp: 163123
 Ion Ratio Lower Upper
 95 100
 174 70.7 0.0 141.6
 176 68.9 0.0 138.4





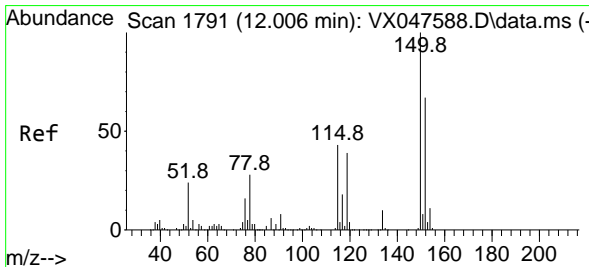
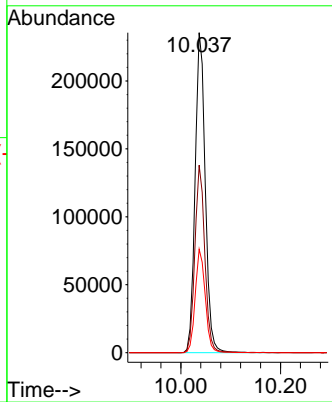
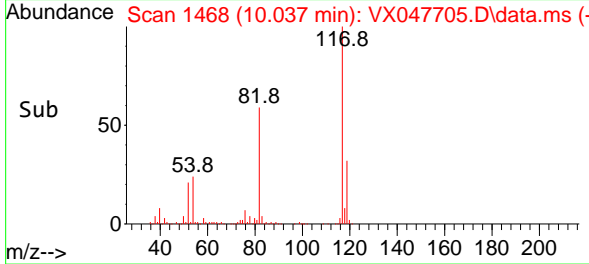
#63
 Chlorobenzene-d5
 Concen: 50.000 ug/l
 RT: 10.037 min Scan# 1468
 Delta R.T. -0.000 min
 Lab File: VX047705.D
 Acq: 22 Sep 2025 15:30

Instrument : MSVOA_X
 ClientSampleId : OR-500-COMP-39

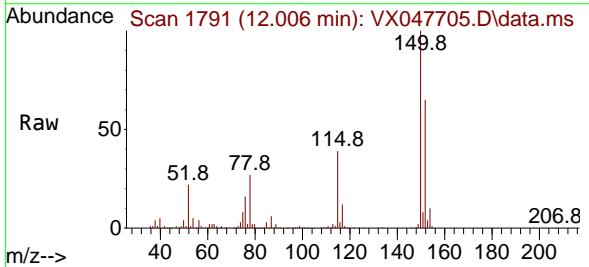


Tgt Ion:117 Resp: 332372

Ion	Ratio	Lower	Upper
117	100		
82	58.6	47.8	71.6
119	32.4	25.2	37.8

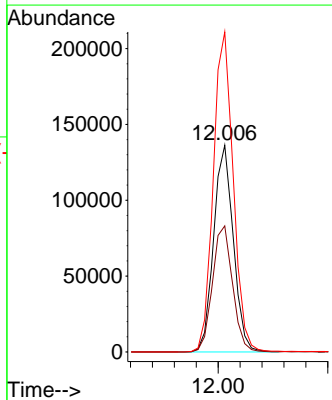
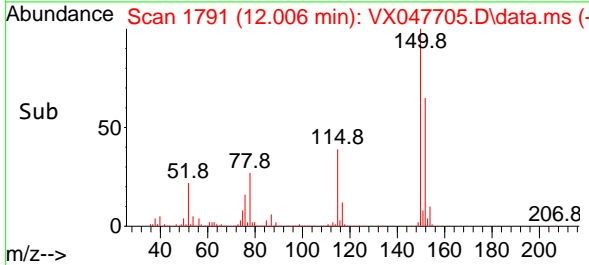


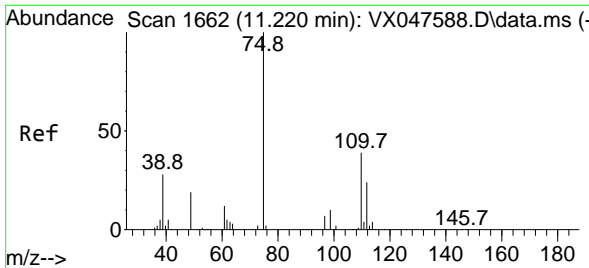
#72
 1,4-Dichlorobenzene-d4
 Concen: 50.000 ug/l
 RT: 12.006 min Scan# 1791
 Delta R.T. -0.000 min
 Lab File: VX047705.D
 Acq: 22 Sep 2025 15:30



Tgt Ion:152 Resp: 170238

Ion	Ratio	Lower	Upper
152	100		
115	62.3	44.9	134.5
150	156.6	0.0	352.0

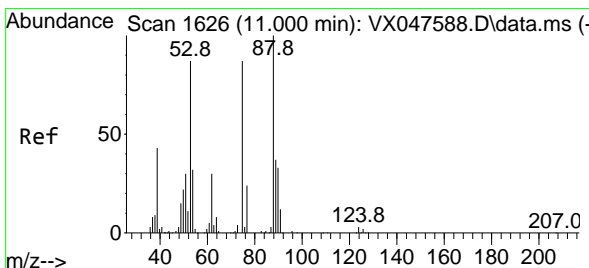
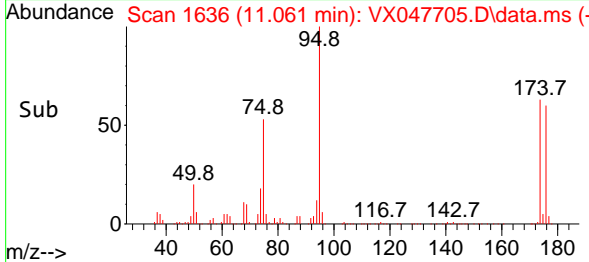
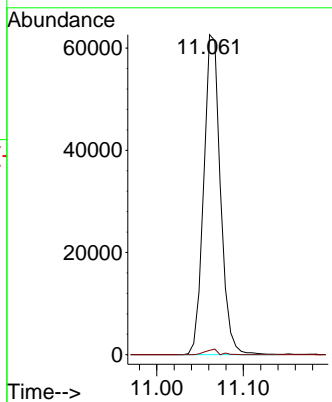
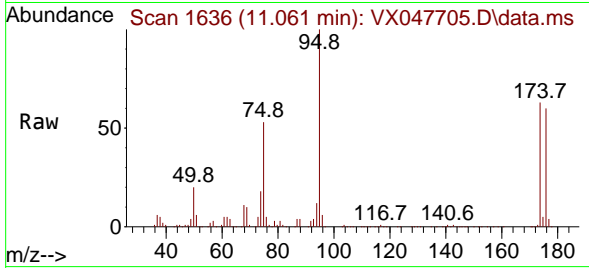




#76
 1,2,3-Trichloropropane
 Concen: 24.373 ug/l
 RT: 11.061 min Scan# 1636
 Delta R.T. -0.159 min
 Lab File: VX047705.D
 Acq: 22 Sep 2025 15:30

Instrument : MSVOA_X
 ClientSampleId : OR-500-COMP-39

Tgt Ion: 75 Resp: 84008
 Ion Ratio Lower Upper
 75 100
 77 1.3 18.8 56.4#



#81
 trans-1,4-Dichloro-2-butene
 Concen: 62.154 ug/l
 RT: 11.061 min Scan# 1636
 Delta R.T. 0.061 min
 Lab File: VX047705.D
 Acq: 22 Sep 2025 15:30

Tgt Ion: 75 Resp: 84008
 Ion Ratio Lower Upper
 75 100
 53 0.0 83.4 125.2#
 89 0.0 36.3 54.5#

