

Data Path : Z:\voasrv\HPCHEM1\MSVOA\_X\Data\VX092225\  
 Data File : VX047706.D  
 Acq On : 22 Sep 2025 15:51  
 Operator : JC/MD  
 Sample : Q3153-08  
 Misc : 5.0mL/MSVOA\_X/WATER  
 ALS Vial : 19 Sample Multiplier: 1

Instrument :  
 MSVOA\_X  
 ClientSampleId :  
 OR-500-COMP-40

Quant Time: Sep 23 01:36:53 2025  
 Quant Method : Z:\voasrv\HPCHEM1\MSVOA\_X\Method\82X091625W.M  
 Quant Title : SW846 8260  
 QLast Update : Wed Sep 17 06:39:58 2025  
 Response via : Initial Calibration

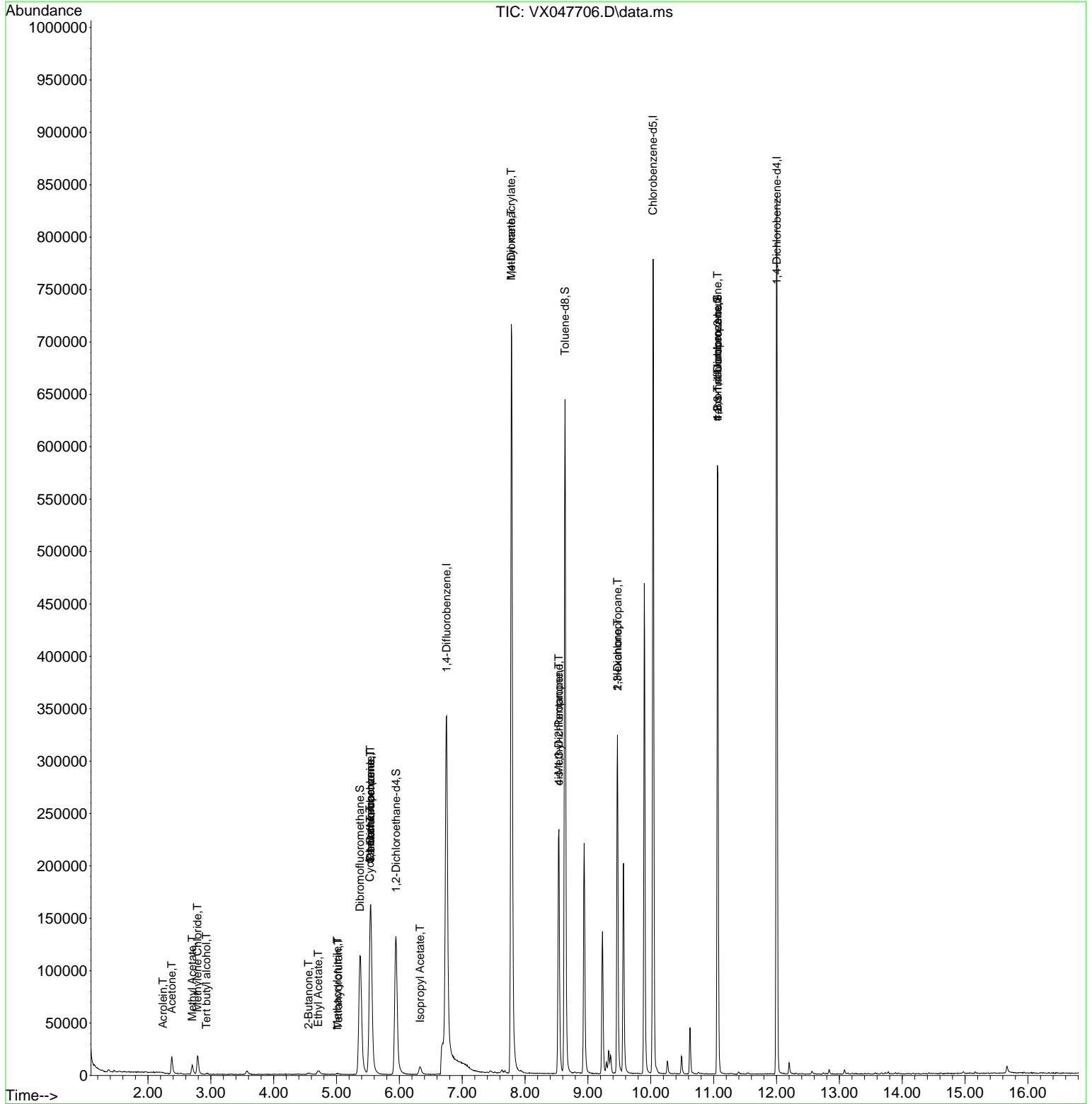
Compound	R.T.	QIon	Response	Conc	Units	Dev(Min)
-----						
Internal Standards						
1) Pentafluorobenzene	5.544	168	163072	50.000	ug/l	0.00
34) 1,4-Difluorobenzene	6.751	114	345511	50.000	ug/l	0.00
63) Chlorobenzene-d5	10.037	117	347216	50.000	ug/l	0.00
72) 1,4-Dichlorobenzene-d4	12.006	152	178408	50.000	ug/l	0.00
System Monitoring Compounds						
33) 1,2-Dichloroethane-d4	5.946	65	140179	54.004	ug/l	0.00
Spiked Amount	50.000	Range 78 - 117	Recovery	=	108.000%	
35) Dibromofluoromethane	5.373	113	112312	48.469	ug/l	0.00
Spiked Amount	50.000	Range 75 - 124	Recovery	=	96.940%	
50) Toluene-d8	8.635	98	385363	48.063	ug/l	0.00
Spiked Amount	50.000	Range 92 - 112	Recovery	=	96.120%	
62) 4-Bromofluorobenzene	11.061	95	168071	55.233	ug/l	0.00
Spiked Amount	50.000	Range 83 - 123	Recovery	=	110.460%	
Target Compounds						
						Qvalue
11) Tert butyl alcohol	2.928	59	114	0.394	ug/l #	72
13) Acrolein	2.239	56	63	0.236	ug/l #	50
16) Acetone	2.380	43	20951	18.563	ug/l	97
18) Methyl Acetate	2.703	43	12576	5.007	ug/l	99
20) Methylene Chloride	2.788	84	8563	3.584	ug/l	97
25) 2-Butanone	4.556	43	2255	1.602	ug/l #	85
29) Tetrahydrofuran	5.025	42	967	1.142	ug/l #	49
31) Cyclohexane	5.531	56	3786	1.104	ug/l #	11
36) 1,1-Dichloropropene	5.538	75	13413	3.961	ug/l #	52
37) Ethyl Acetate	4.708	43	8176	2.255	ug/l #	87
38) Carbon Tetrachloride	5.538	117	18196	4.946	ug/l #	18
41) Methacrylonitrile	5.013	41	575	0.307	ug/l #	37
43) Isopropyl Acetate	6.330	43	11716	1.970	ug/l	98
48) Methyl methacrylate	7.781	41	71061	23.993	ug/l #	46
49) 1,4-Dioxane	7.781	88	68	2.272	ug/l #	1
51) 4-Methyl-2-Pentanone	8.537	43	89246	27.072	ug/l #	49
54) cis-1,3-Dichloropropene	8.537	75	40382	9.367	ug/l #	59
57) 1,3-Dichloropropane	9.470	76	2959	0.705	ug/l #	42
59) 2-Hexanone	9.470	43	40827	17.244	ug/l #	55
76) 1,2,3-Trichloropropane	11.061	75	86190	23.861	ug/l #	40
81) trans-1,4-Dichloro-2-b...	11.061	75	86190	60.848	ug/l #	8

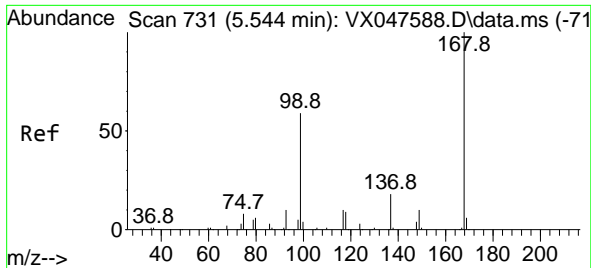
(#) = qualifier out of range (m) = manual integration (+) = signals summed

Data Path : Z:\voasrv\HPCHEM1\MSVOA\_X\Data\VX092225\  
 Data File : VX047706.D  
 Acq On : 22 Sep 2025 15:51  
 Operator : JC/MD  
 Sample : Q3153-08  
 Misc : 5.0mL/MSVOA\_X/WATER  
 ALS Vial : 19 Sample Multiplier: 1

Instrument :  
 MSVOA\_X  
 ClientSampleId :  
 OR-500-COMP-40

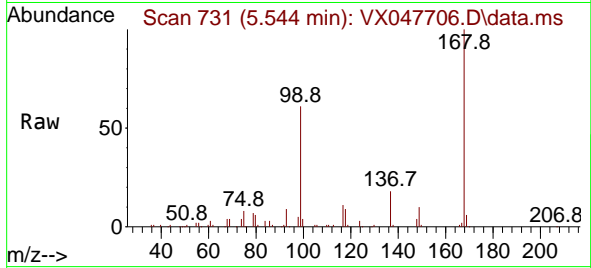
Quant Time: Sep 23 01:36:53 2025  
 Quant Method : Z:\voasrv\HPCHEM1\MSVOA\_X\Method\82X091625W.M  
 Quant Title : SW846 8260  
 QLast Update : Wed Sep 17 06:39:58 2025  
 Response via : Initial Calibration



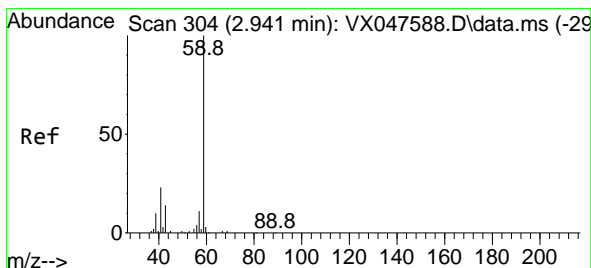
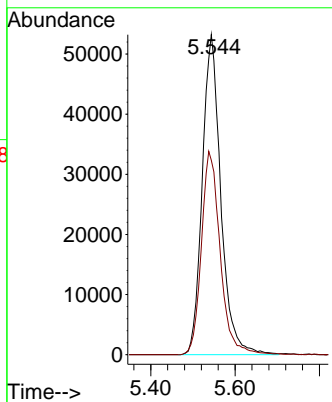
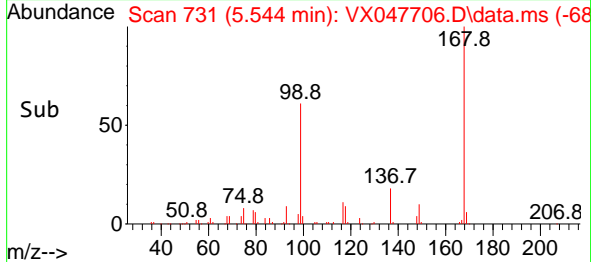


#1  
 Pentafluorobenzene  
 Concen: 50.000 ug/l  
 RT: 5.544 min Scan# 71  
 Delta R.T. -0.000 min  
 Lab File: VX047706.D  
 Acq: 22 Sep 2025 15:51

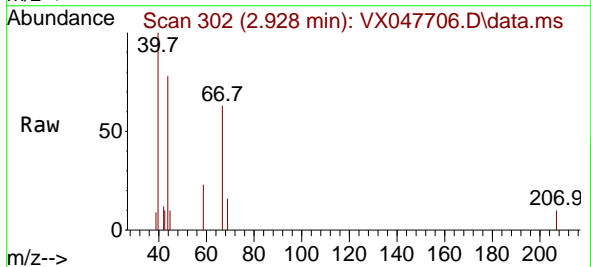
Instrument : MSVOA\_X  
 ClientSampleId : OR-500-COMP-40



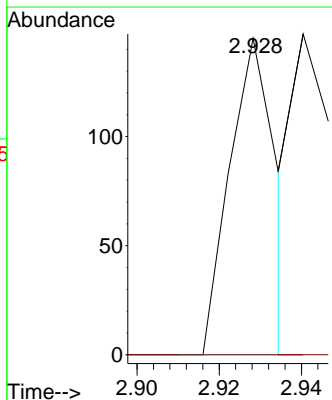
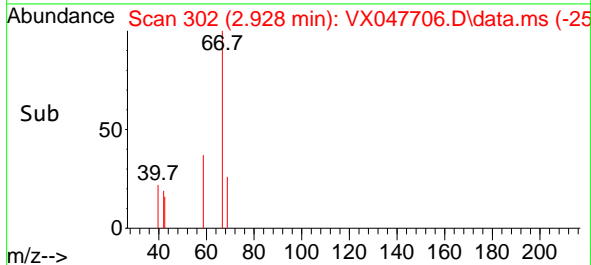
Tgt Ion:168 Resp: 163072  
 Ion Ratio Lower Upper  
 168 100  
 99 60.8 48.8 73.2

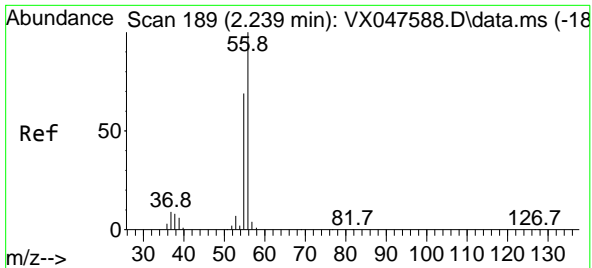


#11  
 Tert butyl alcohol  
 Concen: 0.394 ug/l  
 RT: 2.928 min Scan# 302  
 Delta R.T. -0.012 min  
 Lab File: VX047706.D  
 Acq: 22 Sep 2025 15:51



Tgt Ion: 59 Resp: 114  
 Ion Ratio Lower Upper  
 59 100  
 57 0.0 8.3 12.5#

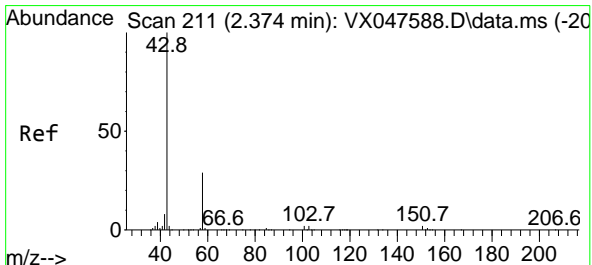
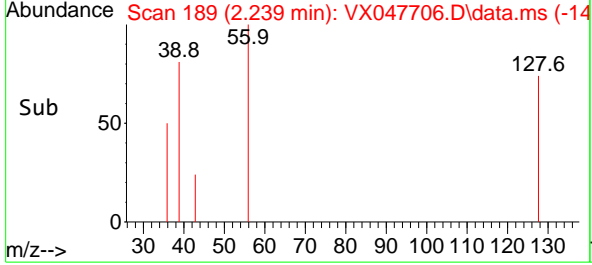
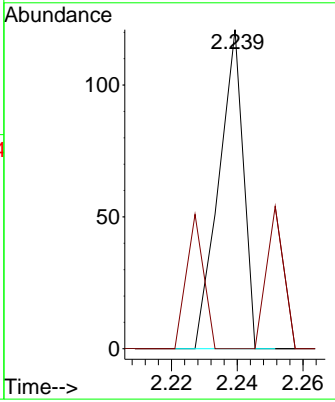
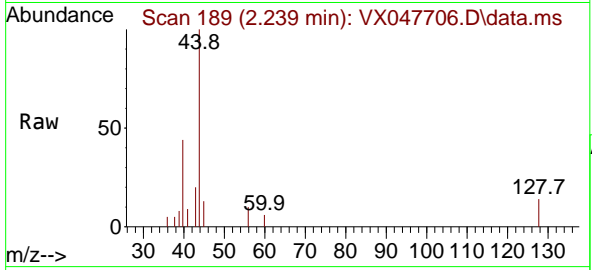




#13  
 Acrolein  
 Concen: 0.236 ug/l  
 RT: 2.239 min Scan# 11  
 Delta R.T. -0.000 min  
 Lab File: VX047706.D  
 Acq: 22 Sep 2025 15:51

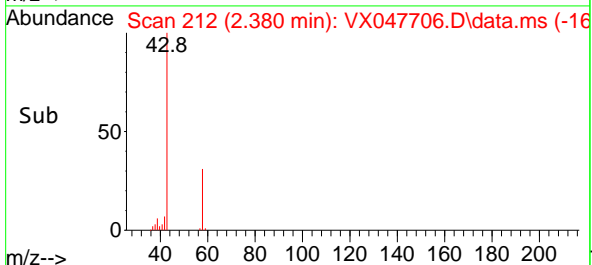
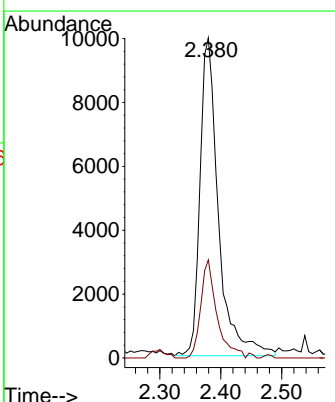
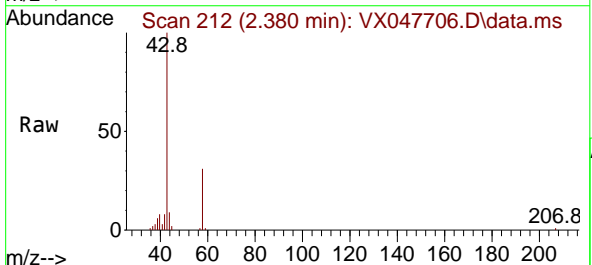
Instrument : MSVOA\_X  
 ClientSampleId : OR-500-COMP-40

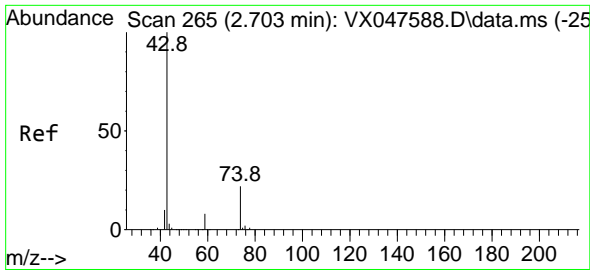
Tgt Ion: 56 Resp: 63  
 Ion Ratio Lower Upper  
 56 100  
 55 30.2 57.2 85.8#



#16  
 Acetone  
 Concen: 18.563 ug/l  
 RT: 2.380 min Scan# 212  
 Delta R.T. 0.006 min  
 Lab File: VX047706.D  
 Acq: 22 Sep 2025 15:51

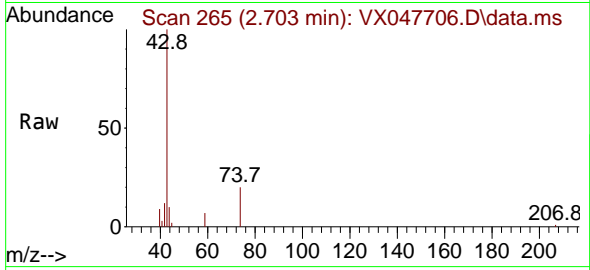
Tgt Ion: 43 Resp: 20951  
 Ion Ratio Lower Upper  
 43 100  
 58 30.9 23.4 35.0



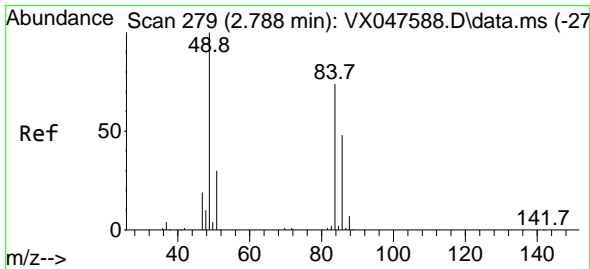
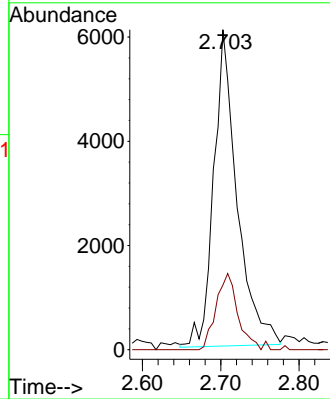
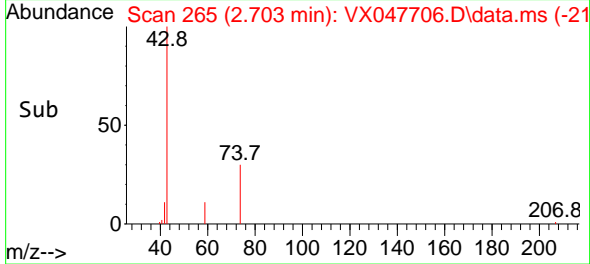


#18  
 Methyl Acetate  
 Concen: 5.007 ug/l  
 RT: 2.703 min Scan# 20  
 Delta R.T. -0.000 min  
 Lab File: VX047706.D  
 Acq: 22 Sep 2025 15:51

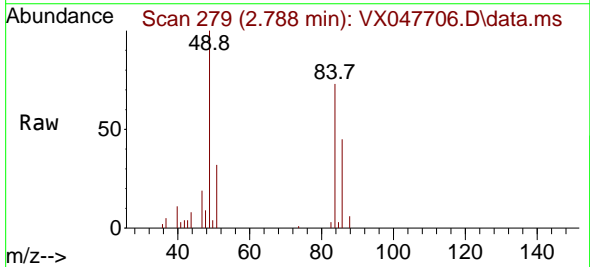
Instrument : MSVOA\_X  
 ClientSampleId : OR-500-COMP-40



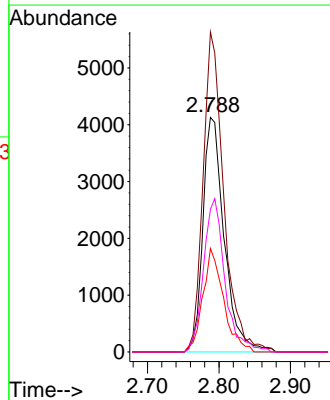
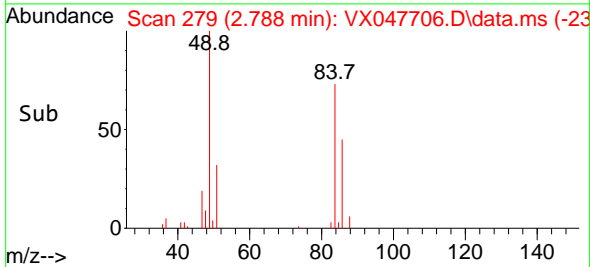
Tgt Ion: 43 Resp: 12576  
 Ion Ratio Lower Upper  
 43 100  
 74 22.3 17.4 26.2

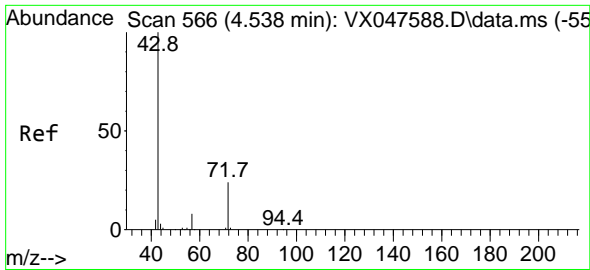


#20  
 Methylene Chloride  
 Concen: 3.584 ug/l  
 RT: 2.788 min Scan# 279  
 Delta R.T. -0.000 min  
 Lab File: VX047706.D  
 Acq: 22 Sep 2025 15:51



Tgt Ion: 84 Resp: 8563  
 Ion Ratio Lower Upper  
 84 100  
 49 136.4 108.6 162.8  
 51 44.1 32.6 48.8  
 86 60.9 52.0 78.0

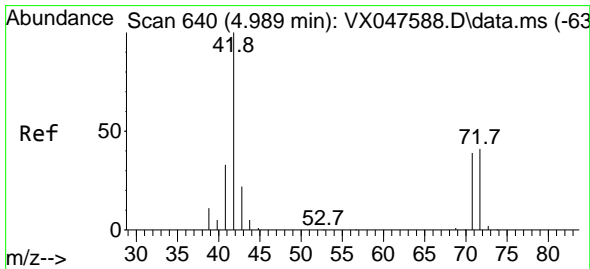
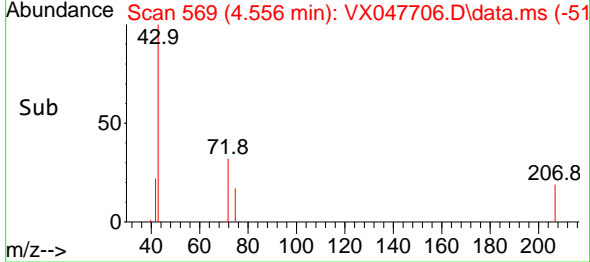
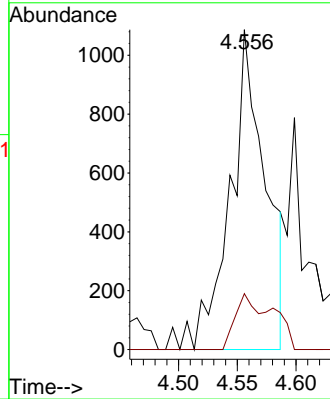
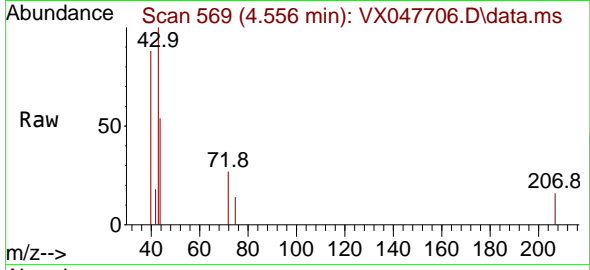




#25  
 2-Butanone  
 Concen: 1.602 ug/l  
 RT: 4.556 min Scan# 50  
 Delta R.T. 0.018 min  
 Lab File: VX047706.D  
 Acq: 22 Sep 2025 15:51

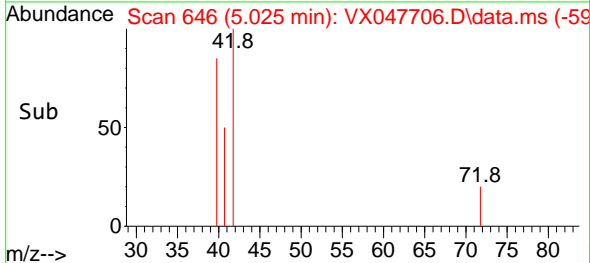
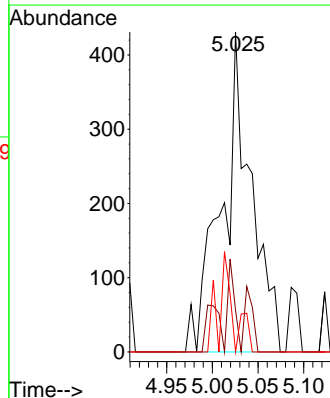
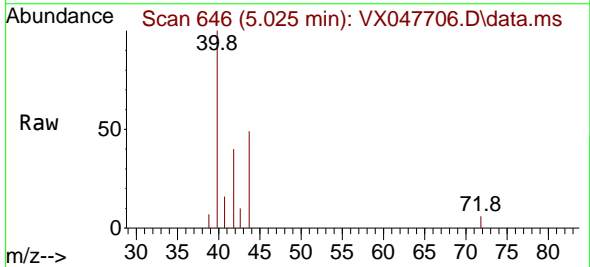
Instrument :  
 MSVOA\_X  
 ClientSampleId :  
 OR-500-COMP-40

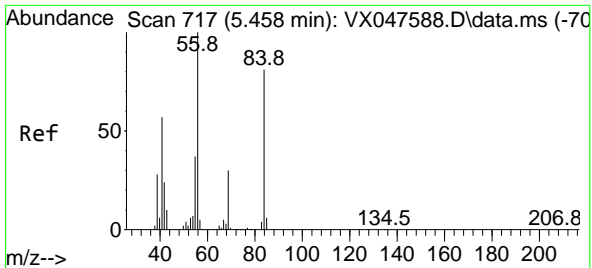
Tgt Ion: 43 Resp: 2255  
 Ion Ratio Lower Upper  
 43 100  
 72 17.5 20.1 30.1#



#29  
 Tetrahydrofuran  
 Concen: 1.142 ug/l  
 RT: 5.025 min Scan# 646  
 Delta R.T. 0.036 min  
 Lab File: VX047706.D  
 Acq: 22 Sep 2025 15:51

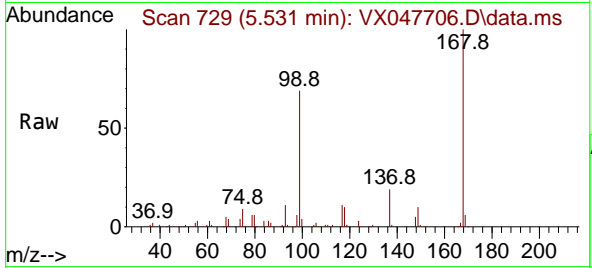
Tgt Ion: 42 Resp: 967  
 Ion Ratio Lower Upper  
 42 100  
 72 6.8 34.2 51.2#  
 71 11.7 31.9 47.9#



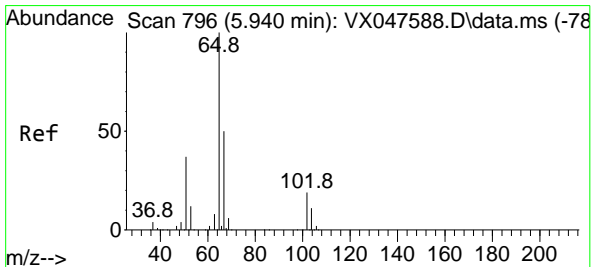
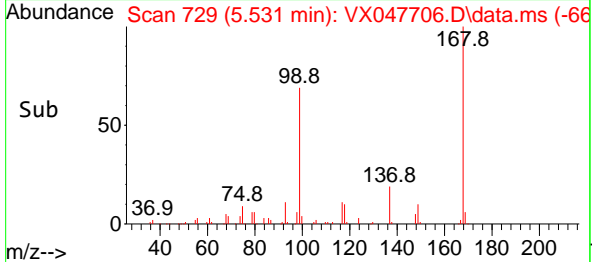
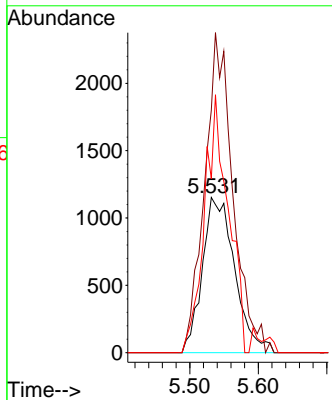


#31  
 Cyclohexane  
 Concen: 1.104 ug/l  
 RT: 5.531 min Scan# 717  
 Delta R.T. 0.073 min  
 Lab File: VX047706.D  
 Acq: 22 Sep 2025 15:51

Instrument : MSVOA\_X  
 ClientSampleId : OR-500-COMP-40

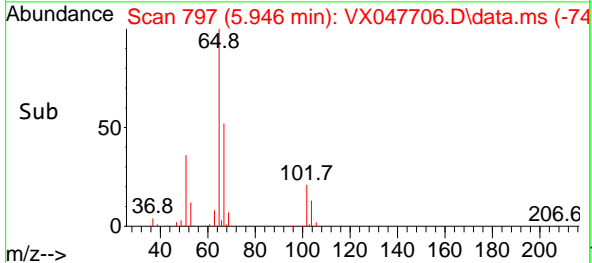
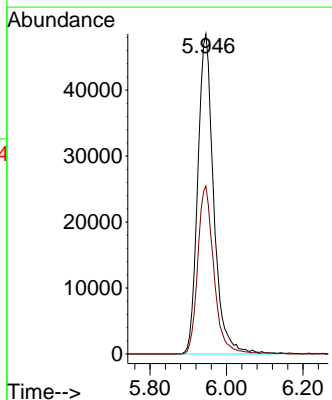
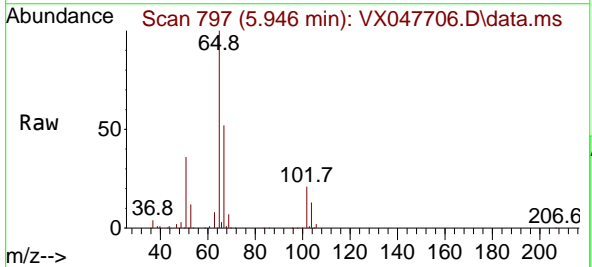


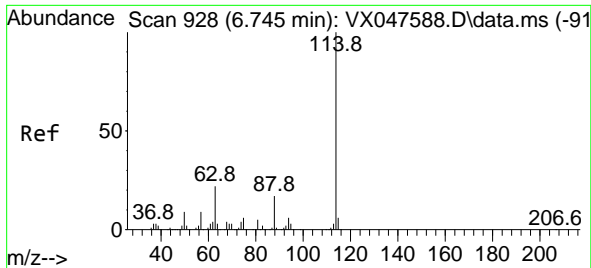
Tgt Ion	Resp	Lower	Upper
56	3786		
56	100		
69	156.3	23.8	35.8#
84	112.2	64.6	97.0#



#33  
 1,2-Dichloroethane-d4  
 Concen: 54.004 ug/l  
 RT: 5.946 min Scan# 797  
 Delta R.T. 0.006 min  
 Lab File: VX047706.D  
 Acq: 22 Sep 2025 15:51

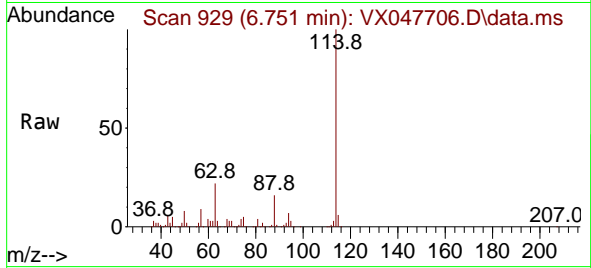
Tgt Ion	Resp	Lower	Upper
65	140179		
65	100		
67	52.8	0.0	103.0



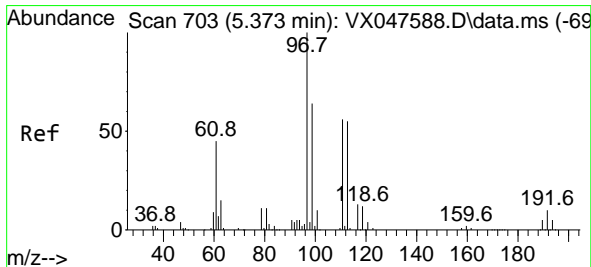
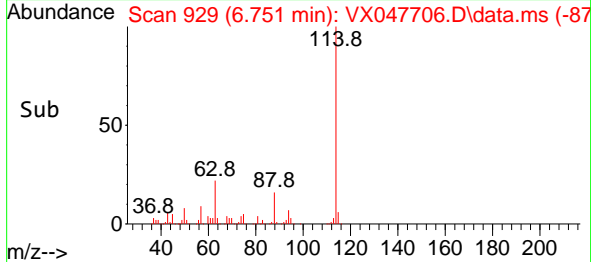
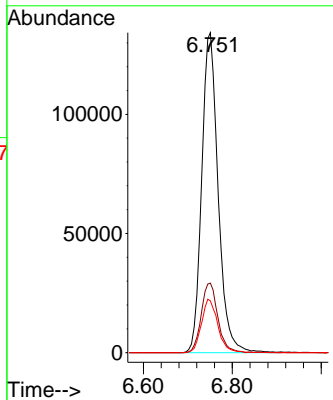


#34  
 1,4-Difluorobenzene  
 Concen: 50.000 ug/l  
 RT: 6.751 min Scan# 910  
 Delta R.T. 0.006 min  
 Lab File: VX047706.D  
 Acq: 22 Sep 2025 15:51

Instrument : MSVOA\_X  
 ClientSampleId : OR-500-COMP-40

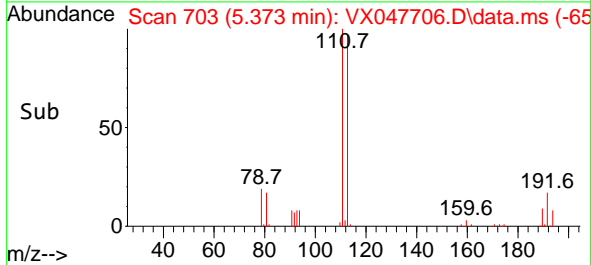
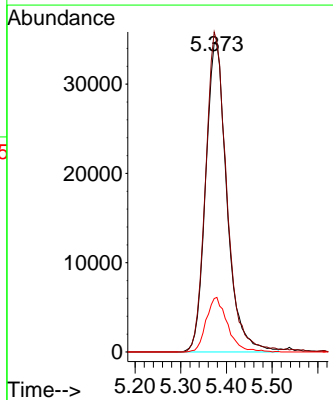
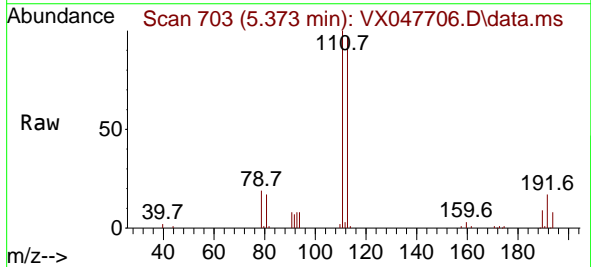


Tgt Ion:114 Resp: 345511  
 Ion Ratio Lower Upper  
 114 100  
 63 21.8 0.0 44.0  
 88 16.2 0.0 34.2

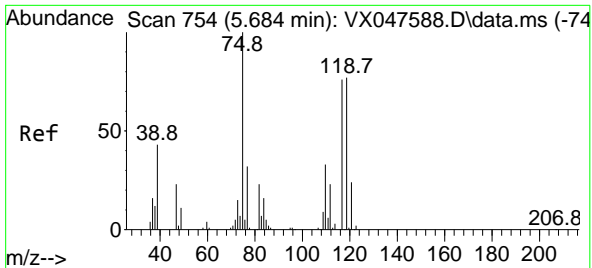


#35  
 Dibromofluoromethane  
 Concen: 48.469 ug/l  
 RT: 5.373 min Scan# 703  
 Delta R.T. -0.000 min  
 Lab File: VX047706.D  
 Acq: 22 Sep 2025 15:51

Tgt Ion:113 Resp: 112312  
 Ion Ratio Lower Upper  
 113 100  
 111 102.6 80.9 121.3  
 192 17.7 14.2 21.4

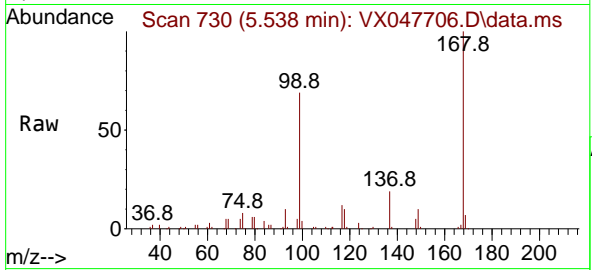




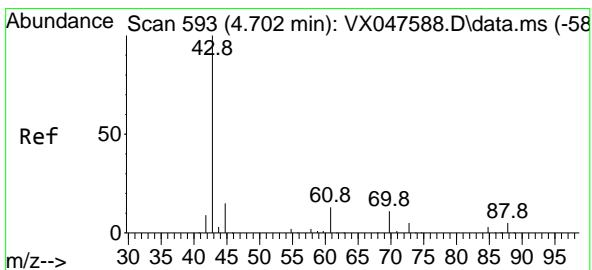
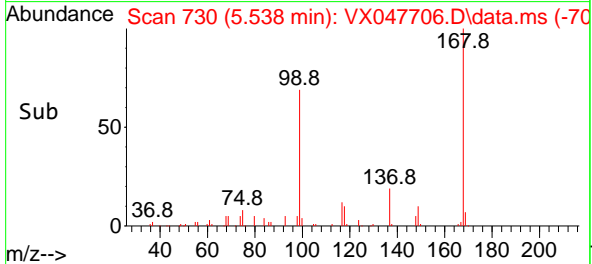
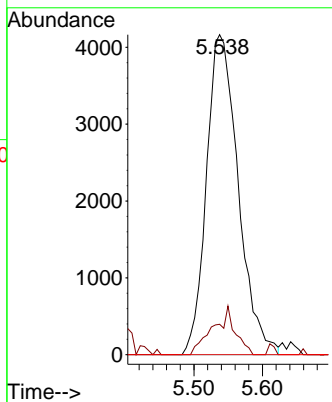


#36  
 1,1-Dichloropropene  
 Concen: 3.961 ug/l  
 RT: 5.538 min Scan# 71  
 Delta R.T. -0.146 min  
 Lab File: VX047706.D  
 Acq: 22 Sep 2025 15:51

Instrument :  
 MSVOA\_X  
 ClientSampleId :  
 OR-500-COMP-40

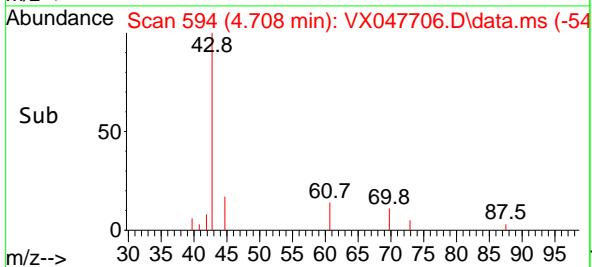
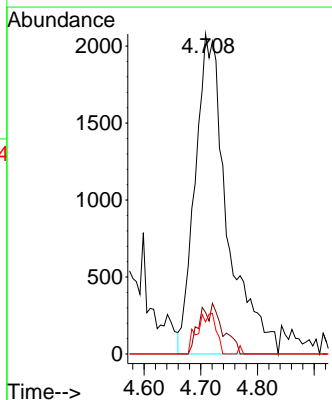
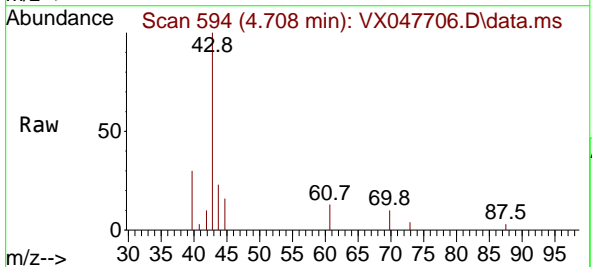


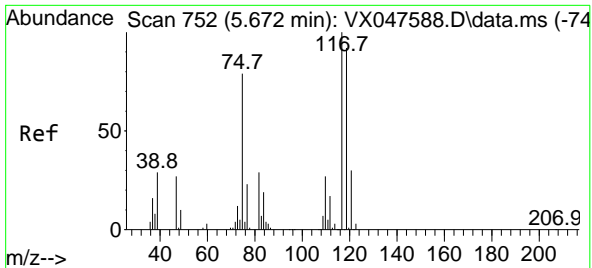
Tgt Ion: 75 Resp: 13413  
 Ion Ratio Lower Upper  
 75 100  
 110 10.6 16.7 50.1#  
 77 0.0 24.3 36.5#



#37  
 Ethyl Acetate  
 Concen: 2.255 ug/l  
 RT: 4.708 min Scan# 594  
 Delta R.T. 0.006 min  
 Lab File: VX047706.D  
 Acq: 22 Sep 2025 15:51

Tgt Ion: 43 Resp: 8176  
 Ion Ratio Lower Upper  
 43 100  
 61 5.3 9.8 14.8#  
 70 7.4 7.9 11.9#



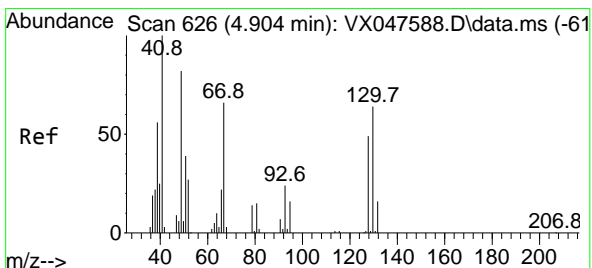
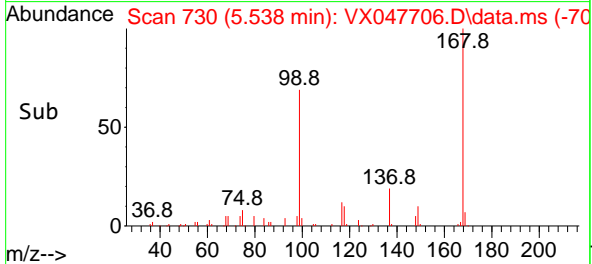
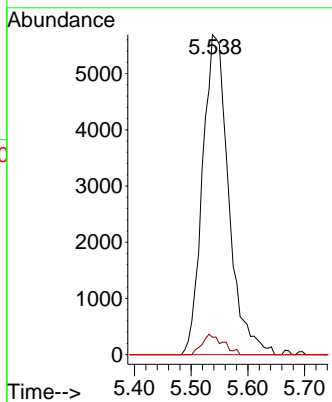
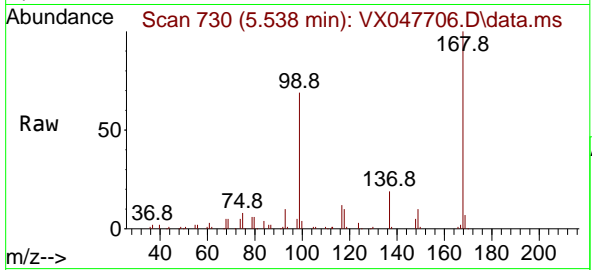


#38  
 Carbon Tetrachloride  
 Concen: 4.946 ug/l  
 RT: 5.538 min Scan# 711  
 Delta R.T. -0.134 min  
 Lab File: VX047706.D  
 Acq: 22 Sep 2025 15:51

Instrument : MSVOA\_X  
 ClientSampleId : OR-500-COMP-40

Tgt Ion: 117 Resp: 18196

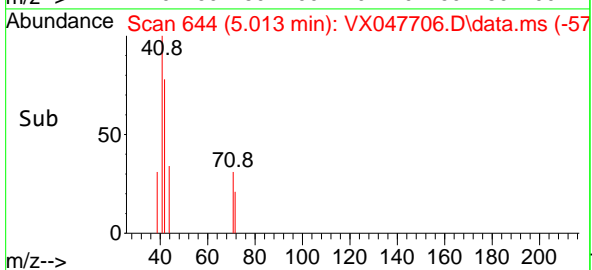
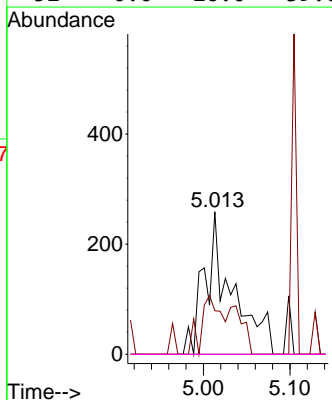
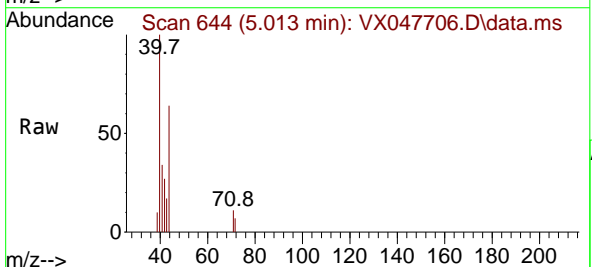
Ion	Ratio	Lower	Upper
117	100		
119	5.4	73.4	110.2#
121	0.0	23.8	35.6#

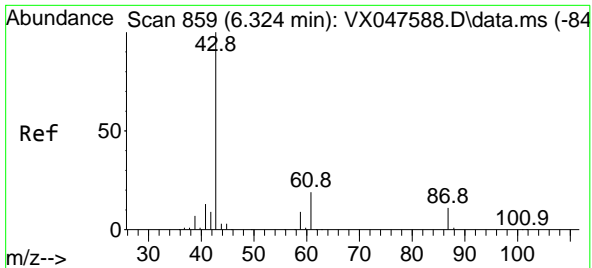


#41  
 Methacrylonitrile  
 Concen: 0.307 ug/l  
 RT: 5.013 min Scan# 644  
 Delta R.T. 0.110 min  
 Lab File: VX047706.D  
 Acq: 22 Sep 2025 15:51

Tgt Ion: 41 Resp: 575

Ion	Ratio	Lower	Upper
41	100		
39	30.3	43.3	64.9#
67	0.0	58.6	87.8#
52	0.0	26.0	39.0#

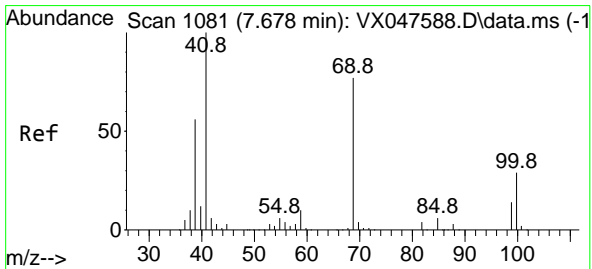
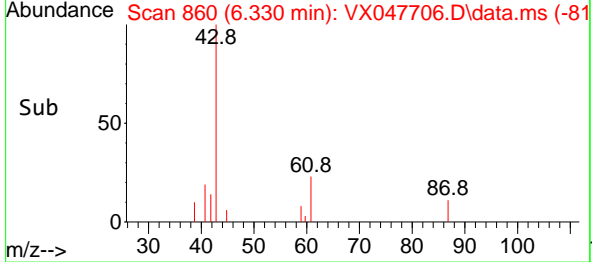
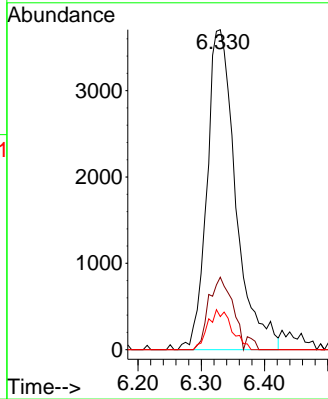
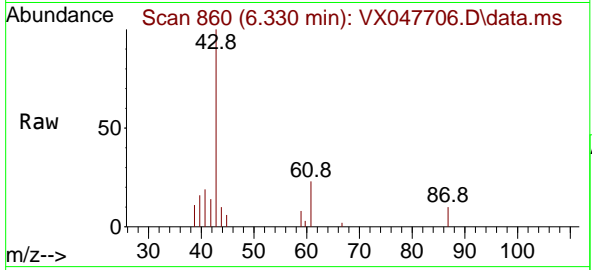




#43  
 Isopropyl Acetate  
 Concen: 1.970 ug/l  
 RT: 6.330 min Scan# 80  
 Delta R.T. 0.006 min  
 Lab File: VX047706.D  
 Acq: 22 Sep 2025 15:51

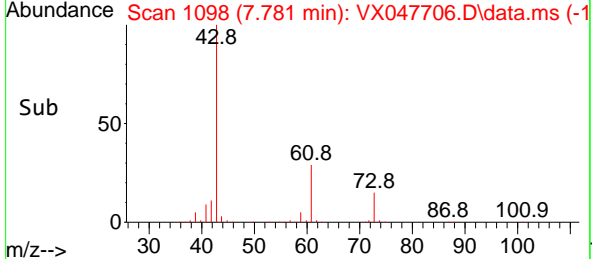
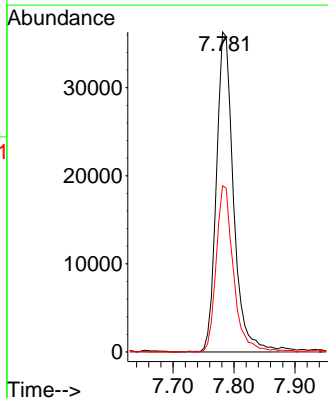
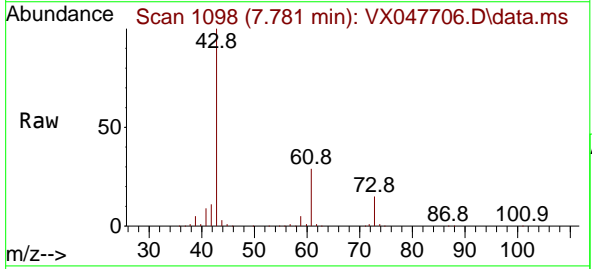
Instrument :  
 MSVOA\_X  
 ClientSampleId :  
 OR-500-COMP-40

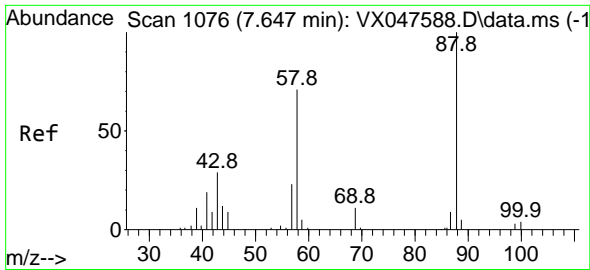
Tgt Ion	Resp	Lower	Upper
43	11716		
61	18.6	15.2	22.8
87	10.4	9.6	14.4



#48  
 Methyl methacrylate  
 Concen: 23.993 ug/l  
 RT: 7.781 min Scan# 1098  
 Delta R.T. 0.103 min  
 Lab File: VX047706.D  
 Acq: 22 Sep 2025 15:51

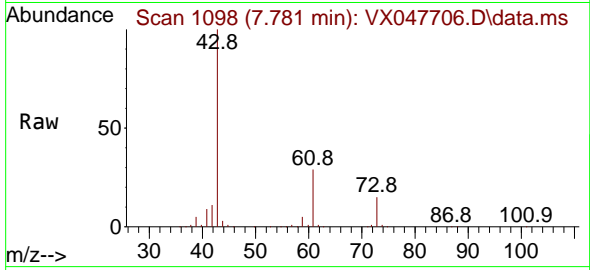
Tgt Ion	Resp	Lower	Upper
41	71061		
69	0.0	61.4	92.2#
39	52.6	45.8	68.6



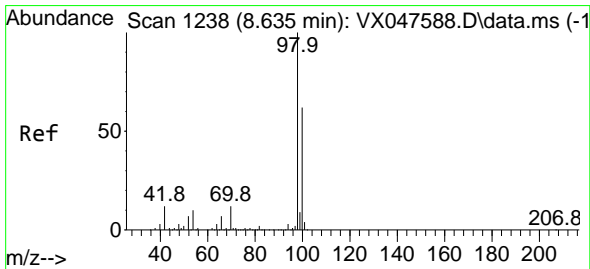
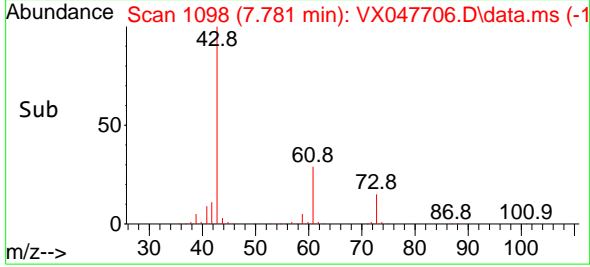
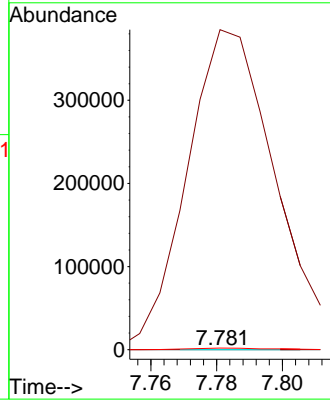


#49  
 1,4-Dioxane  
 Concen: 2.272 ug/l  
 RT: 7.781 min Scan# 1098  
 Delta R.T. 0.134 min  
 Lab File: VX047706.D  
 Acq: 22 Sep 2025 15:51

Instrument : MSVOA\_X  
 ClientSampleId : OR-500-COMP-40

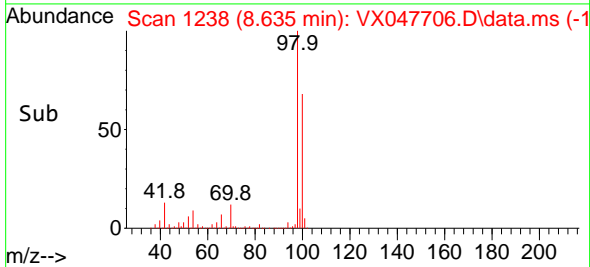
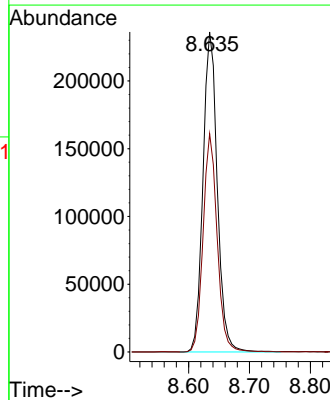
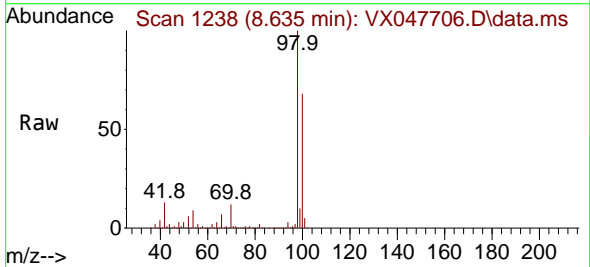


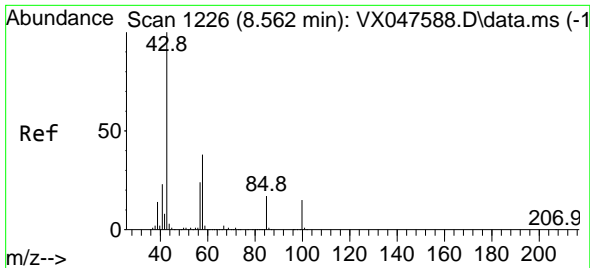
Tgt Ion: 88 Resp: 68  
 Ion Ratio Lower Upper  
 88 100  
 43 1110532.4 30.2 45.2#  
 58 5079.4 59.5 89.3#



#50  
 Toluene-d8  
 Concen: 48.063 ug/l  
 RT: 8.635 min Scan# 1238  
 Delta R.T. -0.000 min  
 Lab File: VX047706.D  
 Acq: 22 Sep 2025 15:51

Tgt Ion: 98 Resp: 385363  
 Ion Ratio Lower Upper  
 98 100  
 100 66.9 53.0 79.4

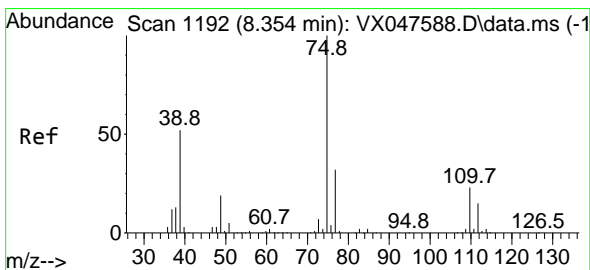
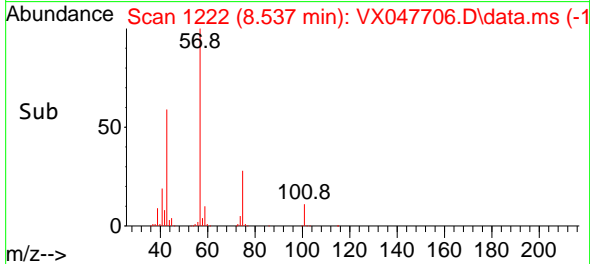
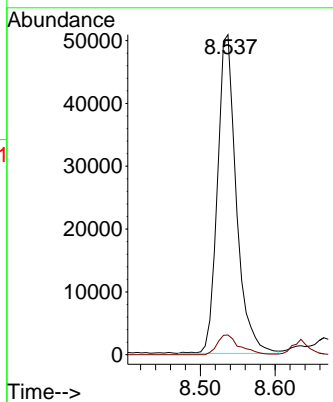
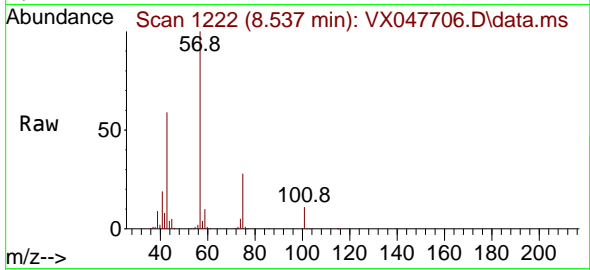




#51  
 4-Methyl-2-Pentanone  
 Concen: 27.072 ug/l  
 RT: 8.537 min Scan# 1122  
 Delta R.T. -0.025 min  
 Lab File: VX047706.D  
 Acq: 22 Sep 2025 15:51

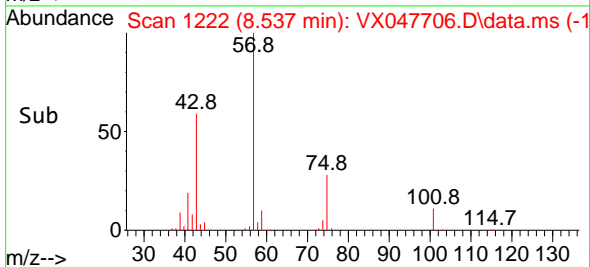
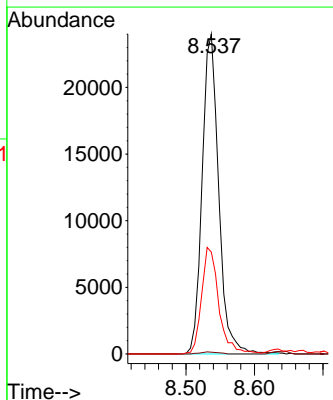
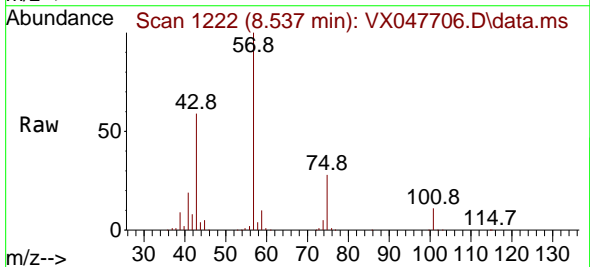
Instrument : MSVOA\_X  
 ClientSampleId : OR-500-COMP-40

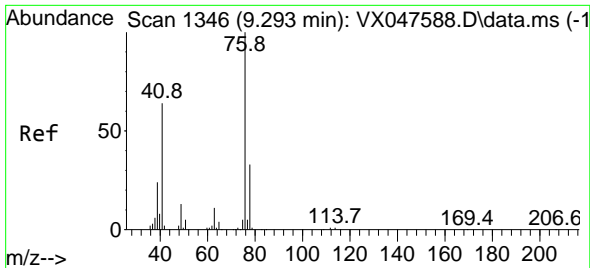
Tgt Ion: 43 Resp: 89246  
 Ion Ratio Lower Upper  
 43 100  
 58 7.3 30.3 45.5#



#54  
 cis-1,3-Dichloropropene  
 Concen: 9.367 ug/l  
 RT: 8.537 min Scan# 1222  
 Delta R.T. 0.183 min  
 Lab File: VX047706.D  
 Acq: 22 Sep 2025 15:51

Tgt Ion: 75 Resp: 40382  
 Ion Ratio Lower Upper  
 75 100  
 77 0.5 25.8 38.6#  
 39 30.3 41.4 62.2#

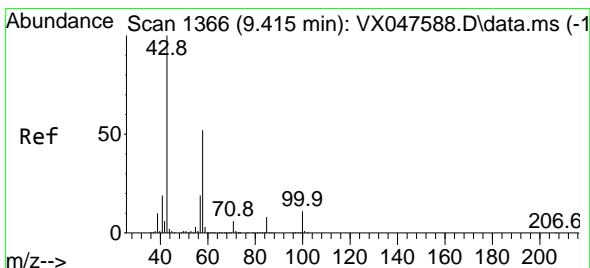
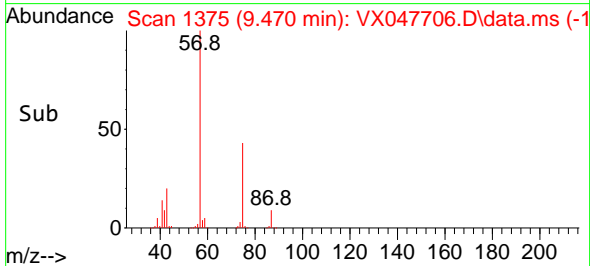
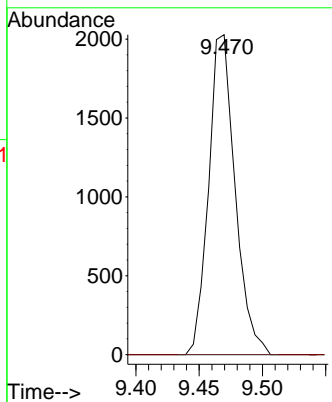
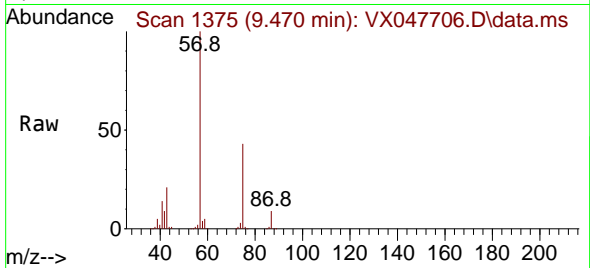




#57  
 1,3-Dichloropropane  
 Concen: 0.705 ug/l  
 RT: 9.470 min Scan# 1375  
 Delta R.T. 0.177 min  
 Lab File: VX047706.D  
 Acq: 22 Sep 2025 15:51

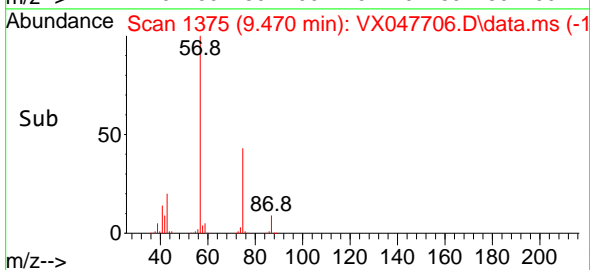
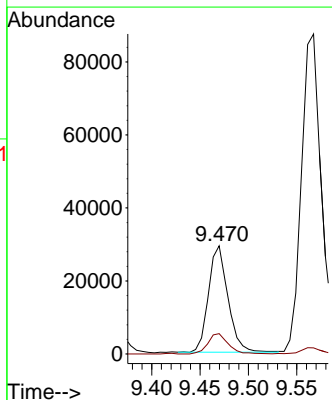
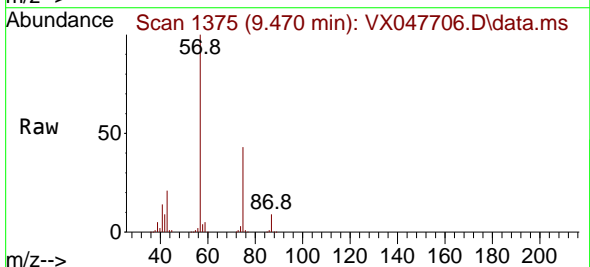
Instrument : MSVOA\_X  
 ClientSampleId : OR-500-COMP-40

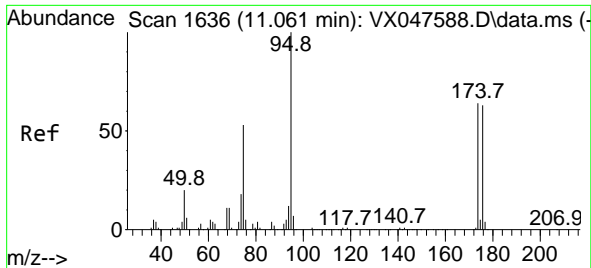
Tgt Ion: 76 Resp: 2959  
 Ion Ratio Lower Upper  
 76 100  
 78 0.0 26.2 39.4#



#59  
 2-Hexanone  
 Concen: 17.244 ug/l  
 RT: 9.470 min Scan# 1375  
 Delta R.T. 0.055 min  
 Lab File: VX047706.D  
 Acq: 22 Sep 2025 15:51

Tgt Ion: 43 Resp: 40827  
 Ion Ratio Lower Upper  
 43 100  
 58 20.1 26.1 78.2#



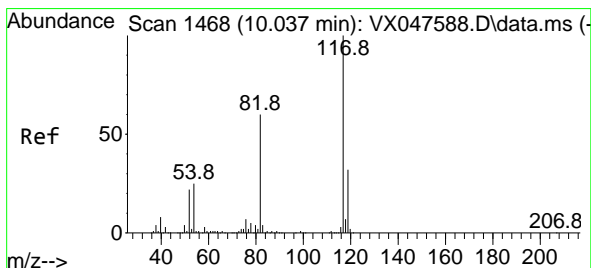
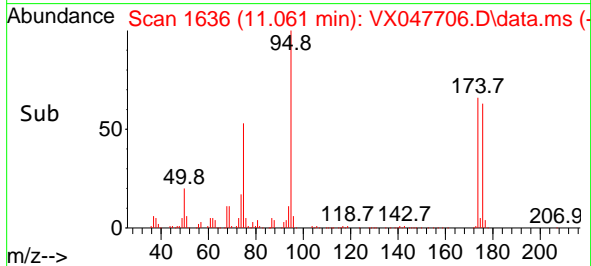
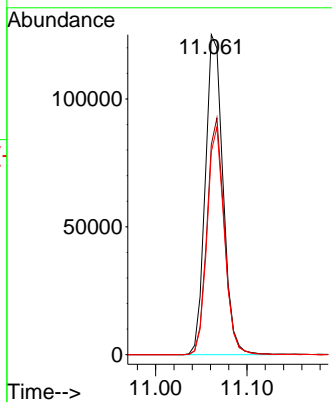
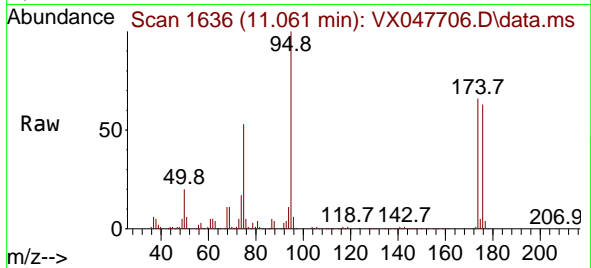


#62  
 4-Bromofluorobenzene  
 Concen: 55.233 ug/l  
 RT: 11.061 min Scan# 11  
 Delta R.T. -0.000 min  
 Lab File: VX047706.D  
 Acq: 22 Sep 2025 15:51

Instrument :  
 MSVOA\_X  
 ClientSampleId :  
 OR-500-COMP-40

Tgt Ion: 95 Resp: 168071

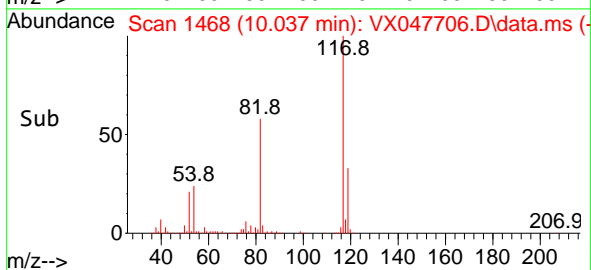
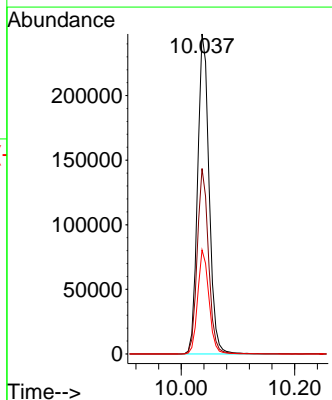
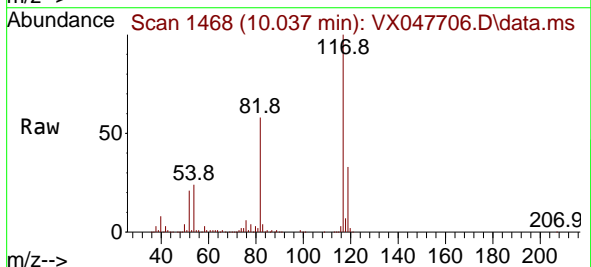
Ion	Ratio	Lower	Upper
95	100		
174	72.2	0.0	141.6
176	69.2	0.0	138.4

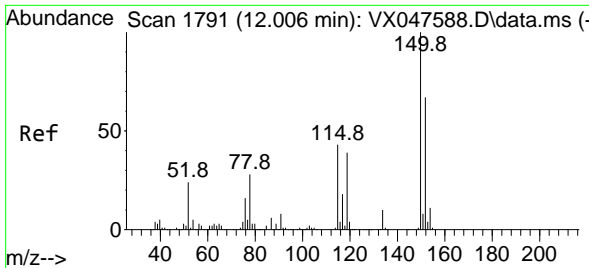


#63  
 Chlorobenzene-d5  
 Concen: 50.000 ug/l  
 RT: 10.037 min Scan# 1468  
 Delta R.T. -0.000 min  
 Lab File: VX047706.D  
 Acq: 22 Sep 2025 15:51

Tgt Ion: 117 Resp: 347216

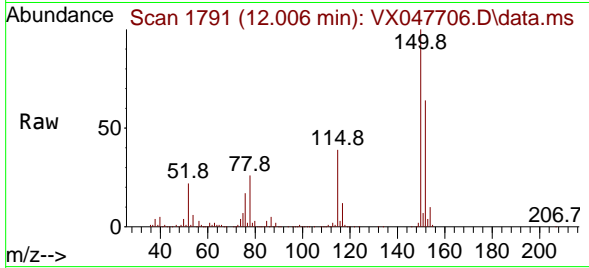
Ion	Ratio	Lower	Upper
117	100		
82	57.9	47.8	71.6
119	32.5	25.2	37.8



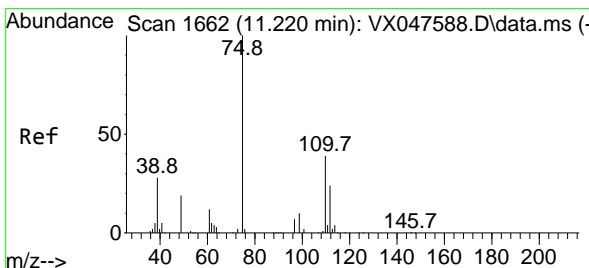
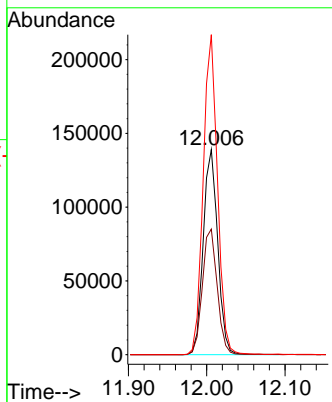
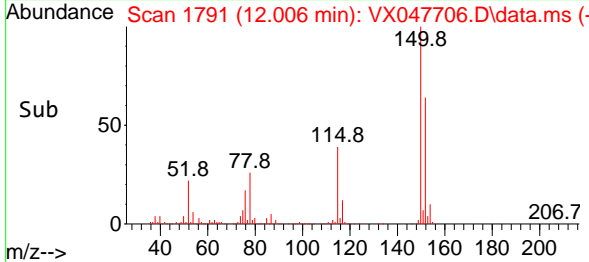


#72  
 1,4-Dichlorobenzene-d4  
 Concen: 50.000 ug/l  
 RT: 12.006 min Scan# 11  
 Delta R.T. -0.000 min  
 Lab File: VX047706.D  
 Acq: 22 Sep 2025 15:51

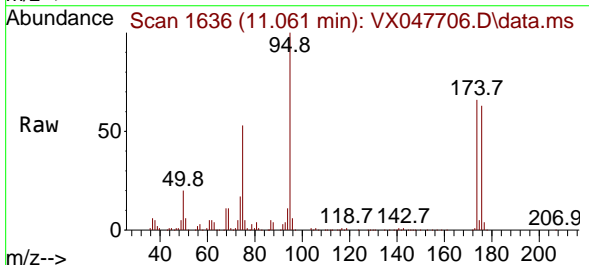
Instrument : MSVOA\_X  
 ClientSampleId : OR-500-COMP-40



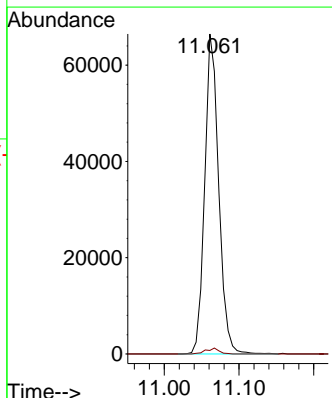
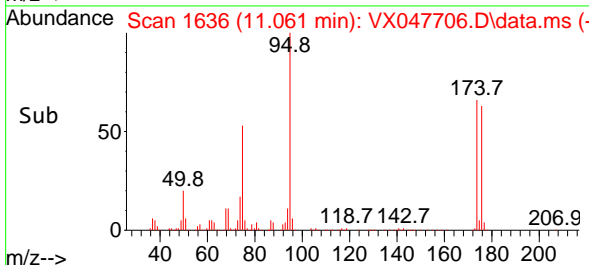
Tgt Ion:152 Resp: 178408  
 Ion Ratio Lower Upper  
 152 100  
 115 62.7 44.9 134.5  
 150 153.8 0.0 352.0



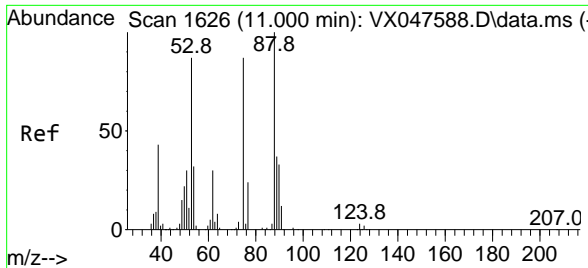
#76  
 1,2,3-Trichloropropane  
 Concen: 23.861 ug/l  
 RT: 11.061 min Scan# 1636  
 Delta R.T. -0.159 min  
 Lab File: VX047706.D  
 Acq: 22 Sep 2025 15:51



Tgt Ion: 75 Resp: 86190  
 Ion Ratio Lower Upper  
 75 100  
 77 1.7 18.8 56.4#

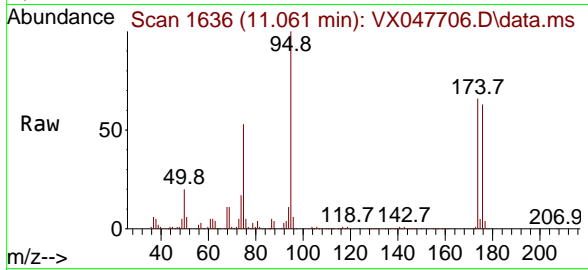






#81  
 trans-1,4-Dichloro-2-butene  
 Concen: 60.848 ug/l  
 RT: 11.061 min Scan# 1  
 Delta R.T. 0.061 min  
 Lab File: VX047706.D  
 Acq: 22 Sep 2025 15:51

Instrument :  
 MSVOA\_X  
 ClientSampleId :  
 OR-500-COMP-40



Tgt Ion: 75 Resp: 86190  
 Ion Ratio Lower Upper  
 75 100  
 53 0.0 83.4 125.2#  
 89 0.0 36.3 54.5#

