

Data Path : Z:\voasrv\HPCHEM1\MSVOA_X\Data\VX092225\
 Data File : VX047707.D
 Acq On : 22 Sep 2025 16:11
 Operator : JC/MD
 Sample : Q3157-02
 Misc : 5.0mL/MSVOA_X/WATER
 ALS Vial : 20 Sample Multiplier: 1

Instrument :
 MSVOA_X
 ClientSampleId :
 20-DEAD-1

Quant Time: Sep 23 01:37:18 2025
 Quant Method : Z:\voasrv\HPCHEM1\MSVOA_X\Method\82X091625W.M
 Quant Title : SW846 8260
 QLast Update : Wed Sep 17 06:39:58 2025
 Response via : Initial Calibration

Compound	R.T.	QIon	Response	Conc	Units	Dev(Min)

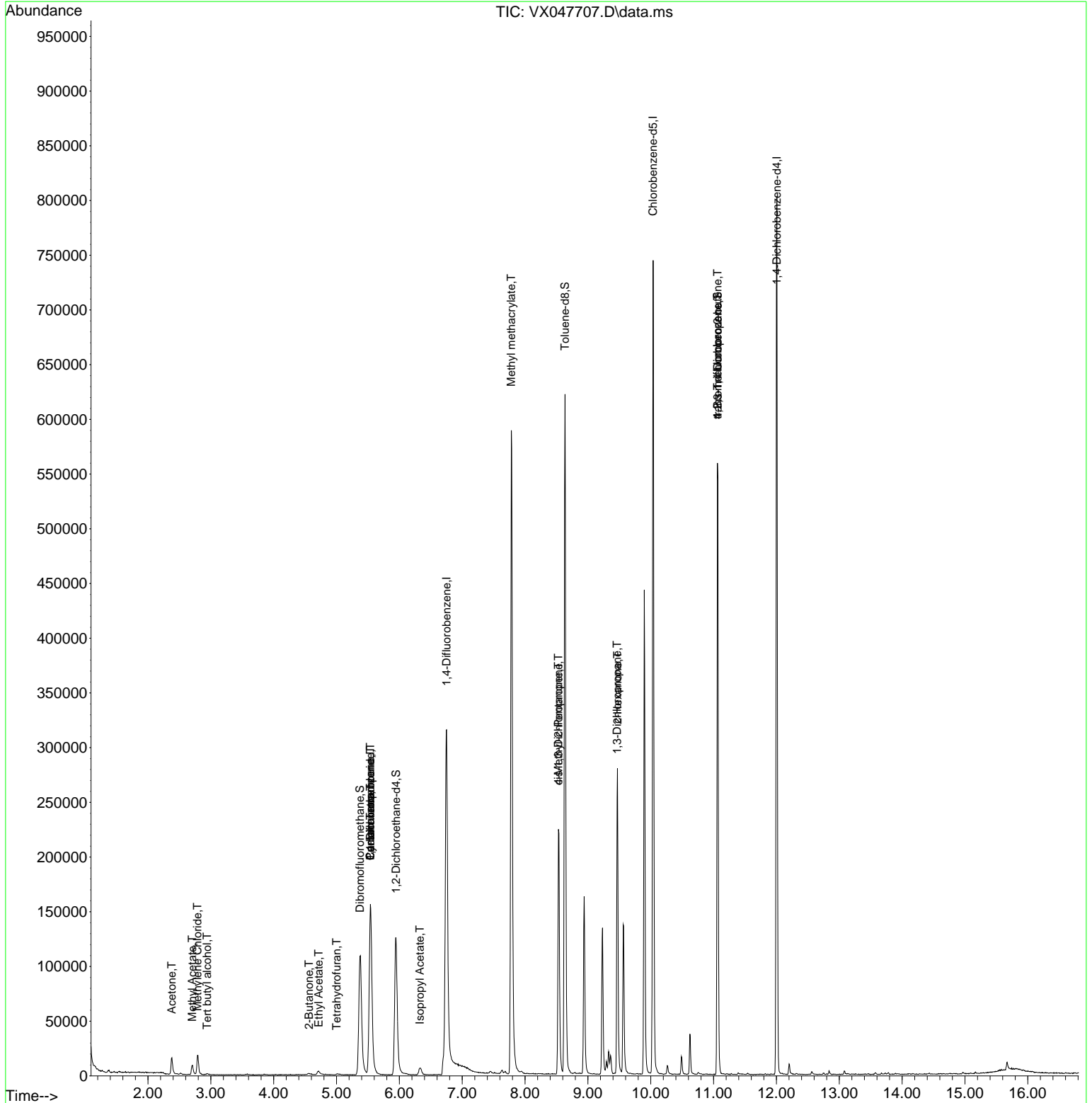
Internal Standards						
1) Pentafluorobenzene	5.538	168	155439	50.000	ug/l	0.00
34) 1,4-Difluorobenzene	6.751	114	330407	50.000	ug/l	0.00
63) Chlorobenzene-d5	10.037	117	332863	50.000	ug/l	0.00
72) 1,4-Dichlorobenzene-d4	12.006	152	169366	50.000	ug/l	0.00
System Monitoring Compounds						
33) 1,2-Dichloroethane-d4	5.946	65	136766	55.277	ug/l	0.00
Spiked Amount	50.000	Range 78 - 117	Recovery	=	110.560%	
35) Dibromofluoromethane	5.373	113	107924	48.705	ug/l	0.00
Spiked Amount	50.000	Range 75 - 124	Recovery	=	97.400%	
50) Toluene-d8	8.635	98	373596	48.725	ug/l	0.00
Spiked Amount	50.000	Range 92 - 112	Recovery	=	97.460%	
62) 4-Bromofluorobenzene	11.061	95	159844	54.931	ug/l	0.00
Spiked Amount	50.000	Range 83 - 123	Recovery	=	109.860%	
Target Compounds						
						Qvalue
11) Tert butyl alcohol	2.941	59	378	1.372	ug/l #	72
16) Acetone	2.380	43	19689	18.302	ug/l	97
18) Methyl Acetate	2.703	43	13838	5.780	ug/l	94
20) Methylene Chloride	2.788	84	8618	3.785	ug/l	91
25) 2-Butanone	4.562	43	3043	2.268	ug/l #	70
29) Tetrahydrofuran	5.001	42	207	0.256	ug/l #	34
31) Cyclohexane	5.538	56	3389	1.037	ug/l #	14
36) 1,1-Dichloropropene	5.538	75	13322	4.114	ug/l #	50
37) Ethyl Acetate	4.715	43	6354	1.833	ug/l	98
38) Carbon Tetrachloride	5.538	117	16250	4.619	ug/l #	17
43) Isopropyl Acetate	6.324	43	11374	2.000	ug/l	95
48) Methyl methacrylate	7.781	41	58406	20.622	ug/l #	46
51) 4-Methyl-2-Pentanone	8.531	43	85133	27.005	ug/l #	50
54) cis-1,3-Dichloropropene	8.531	75	38694	9.386	ug/l #	59
57) 1,3-Dichloropropane	9.464	76	2691	0.671	ug/l #	42
59) 2-Hexanone	9.470	43	35401	15.635	ug/l #	54
76) 1,2,3-Trichloropropane	11.061	75	83652	24.394	ug/l #	39
81) trans-1,4-Dichloro-2-b...	11.061	75	83652	62.209	ug/l #	8

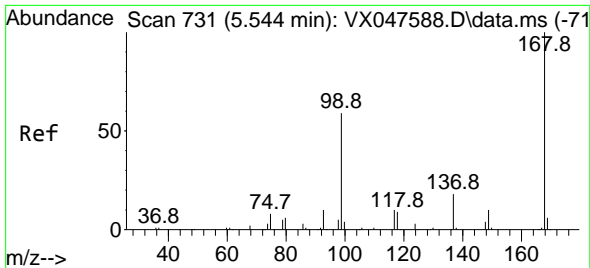
(#) = qualifier out of range (m) = manual integration (+) = signals summed

Data Path : Z:\voasrv\HPCHEM1\MSVOA_X\Data\VX092225\
 Data File : VX047707.D
 Acq On : 22 Sep 2025 16:11
 Operator : JC/MD
 Sample : Q3157-02
 Misc : 5.0mL/MSVOA_X/WATER
 ALS Vial : 20 Sample Multiplier: 1

Instrument :
 MSVOA_X
ClientSampleId :
 20-DEAD-1

Quant Time: Sep 23 01:37:18 2025
 Quant Method : Z:\voasrv\HPCHEM1\MSVOA_X\Method\82X091625W.M
 Quant Title : SW846 8260
 QLast Update : Wed Sep 17 06:39:58 2025
 Response via : Initial Calibration

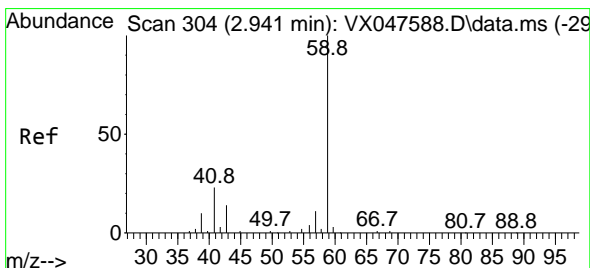
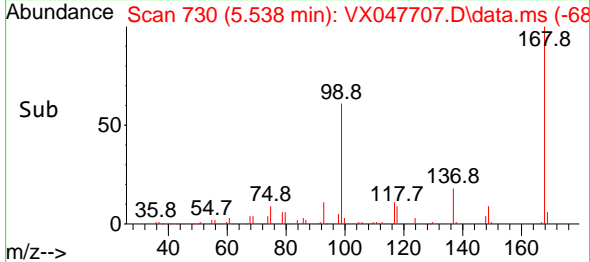
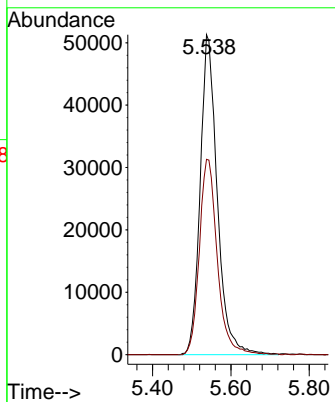
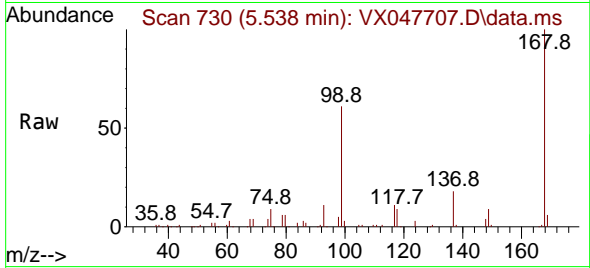




#1
 Pentafluorobenzene
 Concen: 50.000 ug/l
 RT: 5.538 min Scan# 71
 Delta R.T. -0.006 min
 Lab File: VX047707.D
 Acq: 22 Sep 2025 16:11

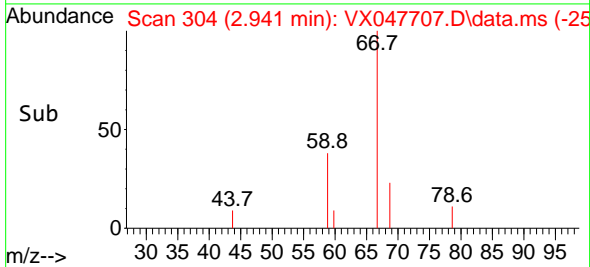
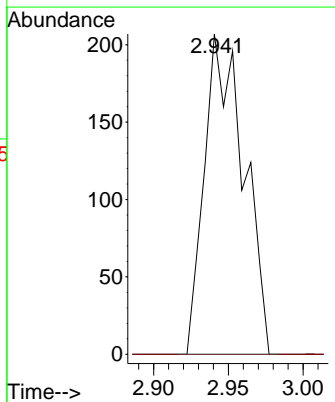
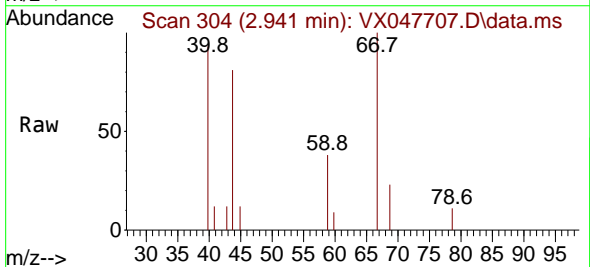
Instrument : MSVOA_X
 Client Sample Id : 20-DEAD-1

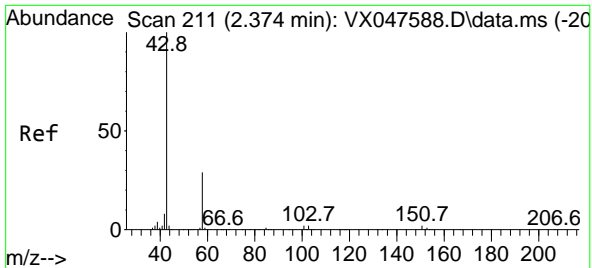
Tgt Ion:168 Resp: 155439
 Ion Ratio Lower Upper
 168 100
 99 61.0 48.8 73.2



#11
 Tert butyl alcohol
 Concen: 1.372 ug/l
 RT: 2.941 min Scan# 304
 Delta R.T. 0.000 min
 Lab File: VX047707.D
 Acq: 22 Sep 2025 16:11

Tgt Ion: 59 Resp: 378
 Ion Ratio Lower Upper
 59 100
 57 0.0 8.3 12.5#

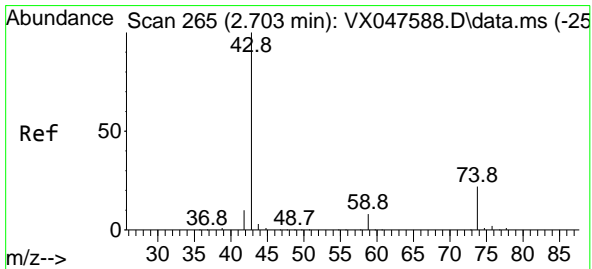
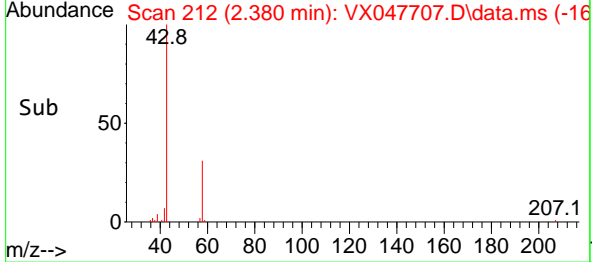
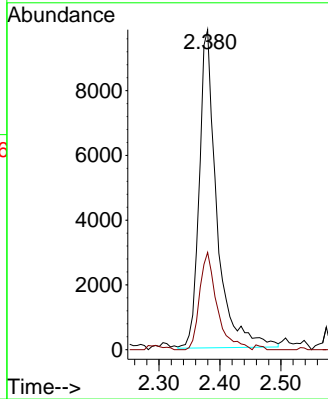
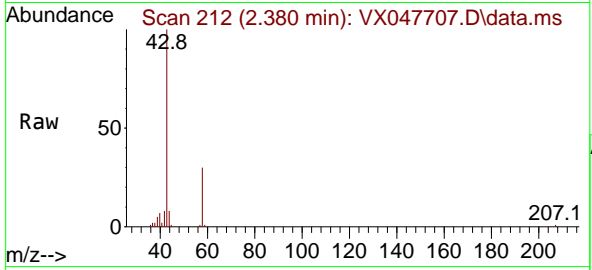




#16
 Acetone
 Concen: 18.302 ug/l
 RT: 2.380 min Scan# 211
 Delta R.T. 0.006 min
 Lab File: VX047707.D
 Acq: 22 Sep 2025 16:11

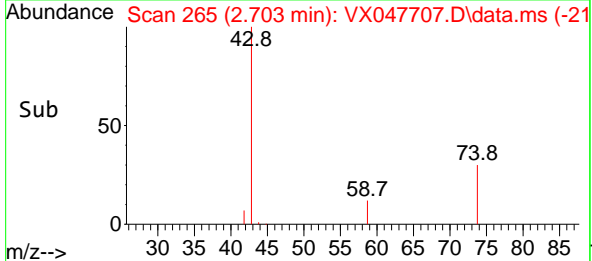
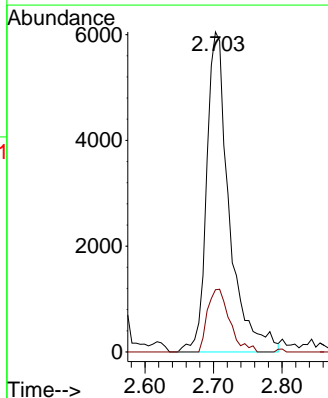
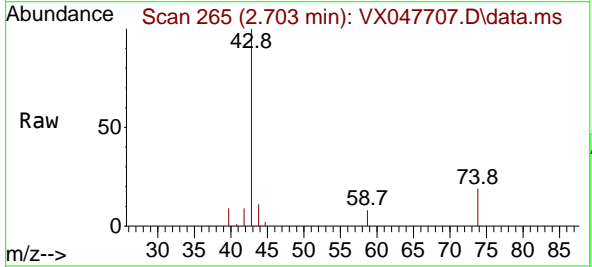
Instrument :
 MSVOA_X
 ClientSampleId :
 20-DEAD-1

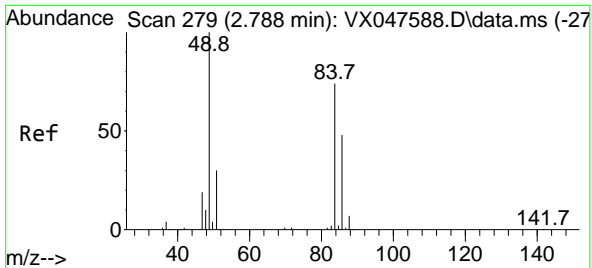
Tgt Ion: 43 Resp: 19689
 Ion Ratio Lower Upper
 43 100
 58 30.6 23.4 35.0



#18
 Methyl Acetate
 Concen: 5.780 ug/l
 RT: 2.703 min Scan# 265
 Delta R.T. 0.000 min
 Lab File: VX047707.D
 Acq: 22 Sep 2025 16:11

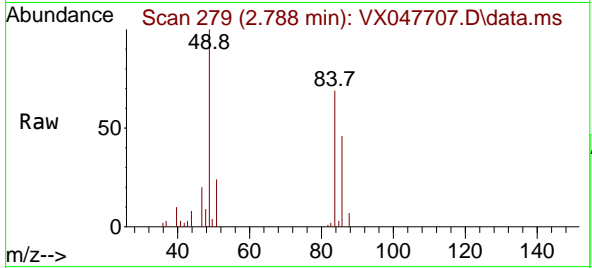
Tgt Ion: 43 Resp: 13838
 Ion Ratio Lower Upper
 43 100
 74 19.1 17.4 26.2



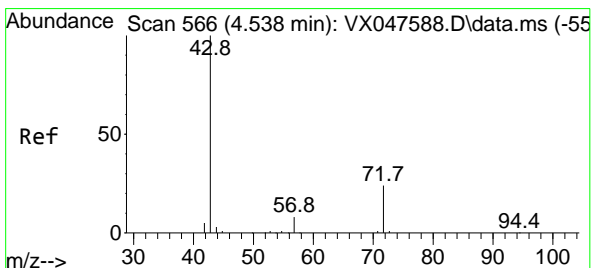
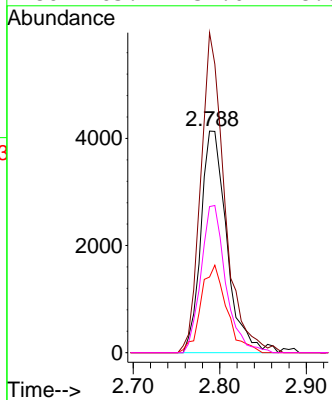
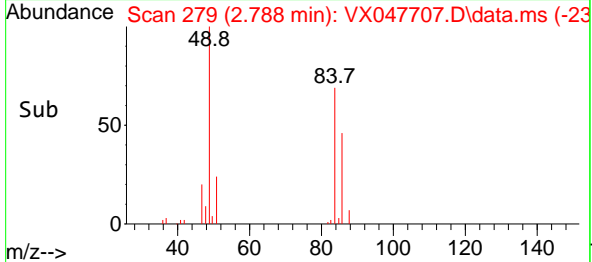


#20
 Methylene Chloride
 Concen: 3.785 ug/l
 RT: 2.788 min Scan# 21
 Delta R.T. 0.000 min
 Lab File: VX047707.D
 Acq: 22 Sep 2025 16:11

Instrument :
 MSVOA_X
 ClientSampleId :
 20-DEAD-1

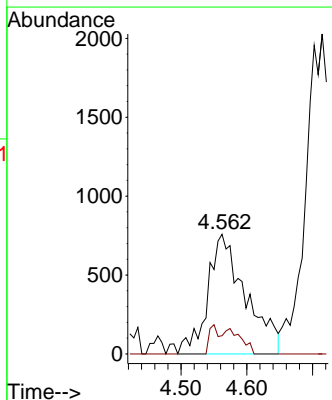
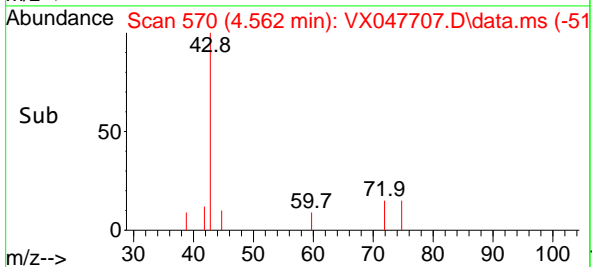
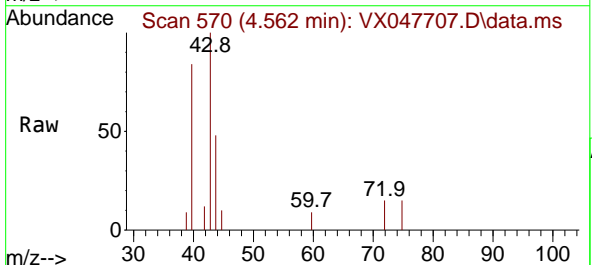


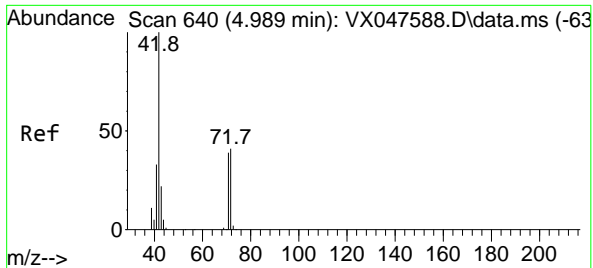
Tgt Ion: 84 Resp: 8618
 Ion Ratio Lower Upper
 84 100
 49 150.5 108.6 162.8
 51 34.2 32.6 48.8
 86 65.9 52.0 78.0



#25
 2-Butanone
 Concen: 2.268 ug/l
 RT: 4.562 min Scan# 570
 Delta R.T. 0.024 min
 Lab File: VX047707.D
 Acq: 22 Sep 2025 16:11

Tgt Ion: 43 Resp: 3043
 Ion Ratio Lower Upper
 43 100
 72 10.3 20.1 30.1#



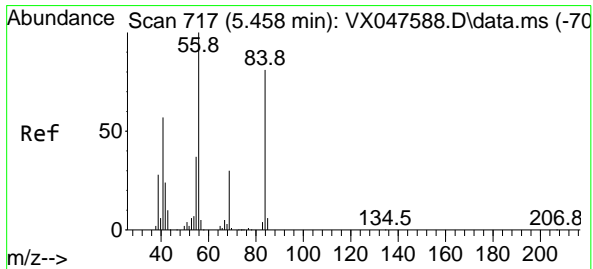
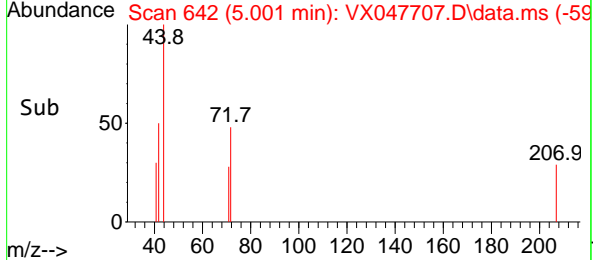
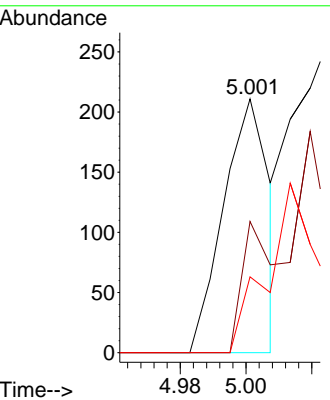
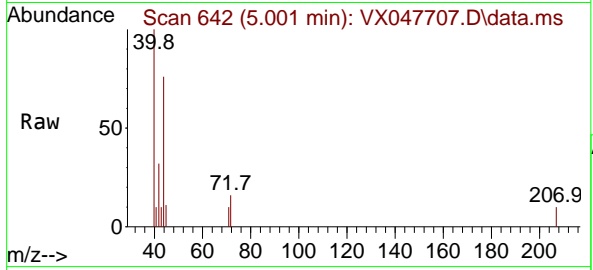


#29
 Tetrahydrofuran
 Concen: 0.256 ug/l
 RT: 5.001 min Scan# 640
 Delta R.T. 0.012 min
 Lab File: VX047707.D
 Acq: 22 Sep 2025 16:11

Instrument : MSVOA_X
 ClientSampleId : 20-DEAD-1

Tgt Ion: 42 Resp: 207

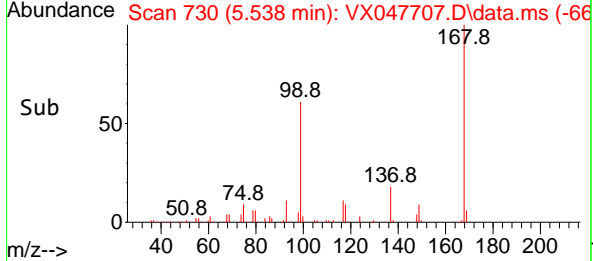
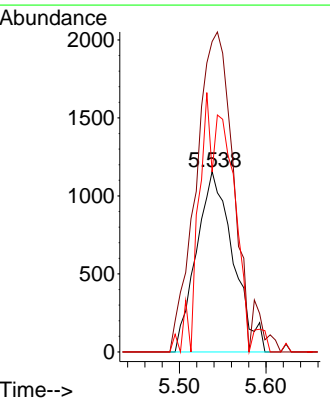
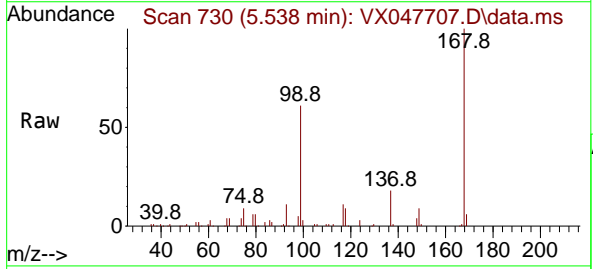
Ion	Ratio	Lower	Upper
42	100		
72	0.0	34.2	51.2#
71	0.0	31.9	47.9#

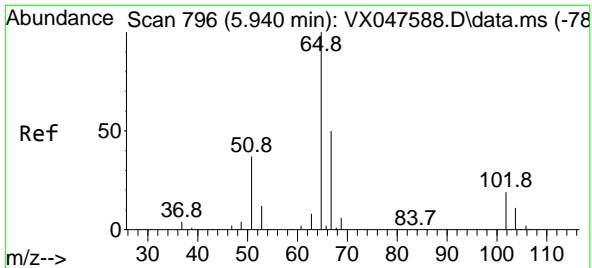


#31
 Cyclohexane
 Concen: 1.037 ug/l
 RT: 5.538 min Scan# 730
 Delta R.T. 0.079 min
 Lab File: VX047707.D
 Acq: 22 Sep 2025 16:11

Tgt Ion: 56 Resp: 3389

Ion	Ratio	Lower	Upper
56	100		
69	171.9	23.8	35.8#
84	99.7	64.6	97.0#

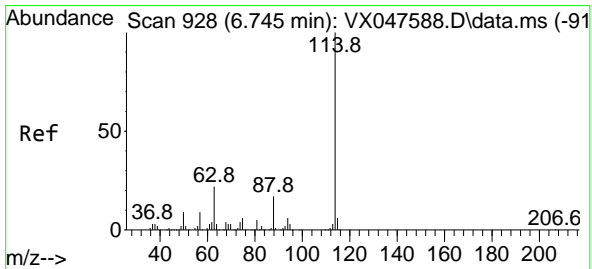
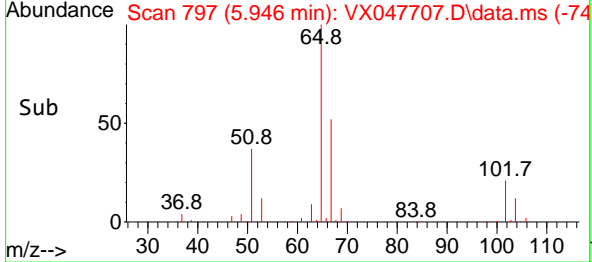
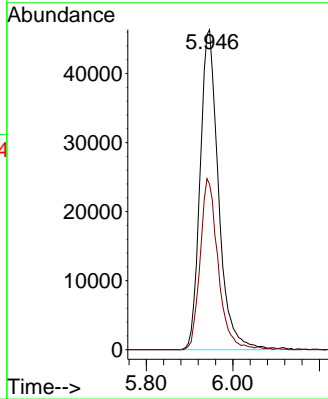
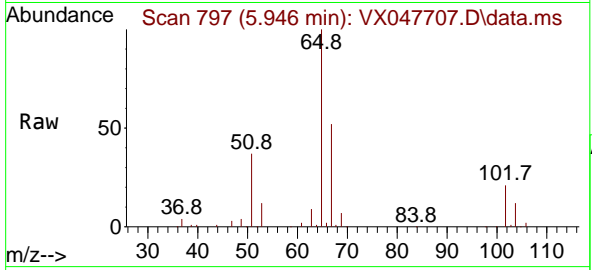




#33
 1,2-Dichloroethane-d4
 Concen: 55.277 ug/l
 RT: 5.946 min Scan# 796
 Delta R.T. 0.006 min
 Lab File: VX047707.D
 Acq: 22 Sep 2025 16:11

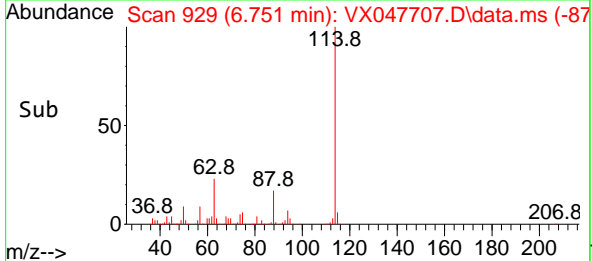
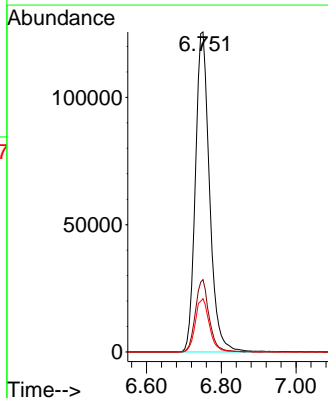
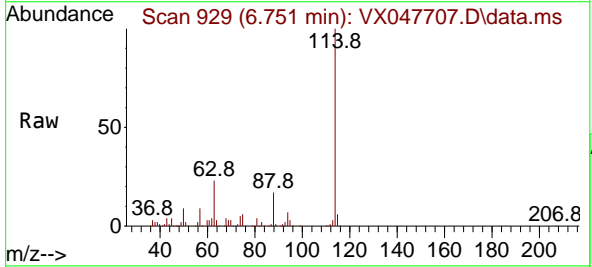
Instrument : MSVOA_X
 ClientSampleId : 20-DEAD-1

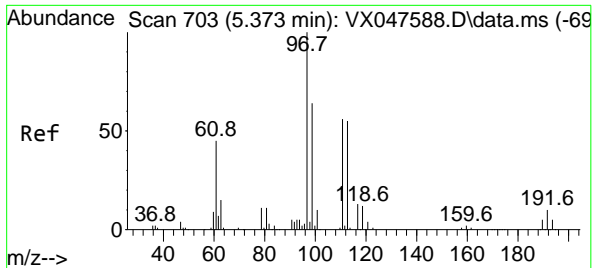
Tgt Ion: 65 Resp: 136766
 Ion Ratio Lower Upper
 65 100
 67 51.9 0.0 103.0



#34
 1,4-Difluorobenzene
 Concen: 50.000 ug/l
 RT: 6.751 min Scan# 929
 Delta R.T. 0.006 min
 Lab File: VX047707.D
 Acq: 22 Sep 2025 16:11

Tgt Ion: 114 Resp: 330407
 Ion Ratio Lower Upper
 114 100
 63 22.6 0.0 44.0
 88 16.7 0.0 34.2



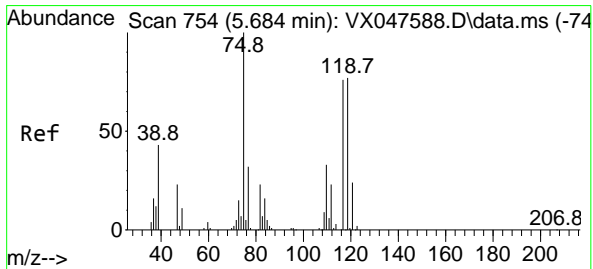
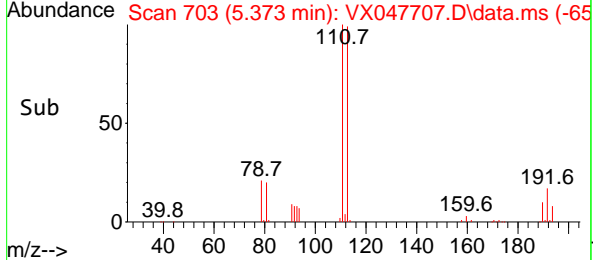
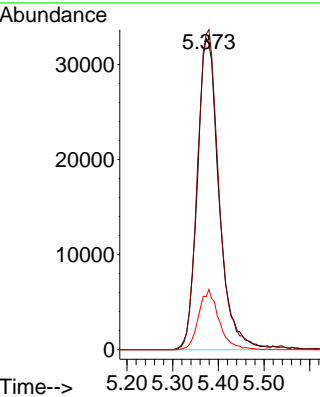
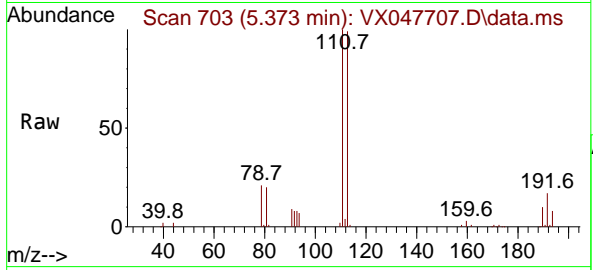


#35
 Dibromofluoromethane
 Concen: 48.705 ug/l
 RT: 5.373 min Scan# 703
 Delta R.T. 0.000 min
 Lab File: VX047707.D
 Acq: 22 Sep 2025 16:11

Instrument : MSVOA_X
 ClientSampleId : 20-DEAD-1

Tgt Ion: 113 Resp: 107924

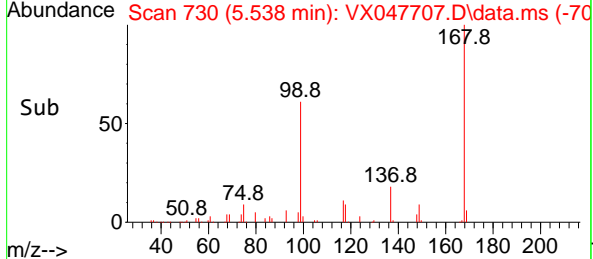
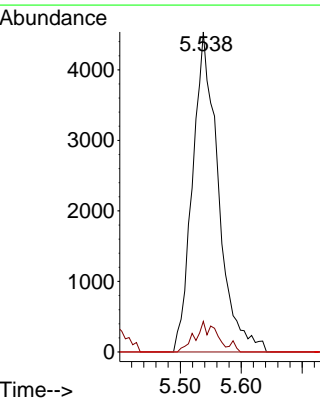
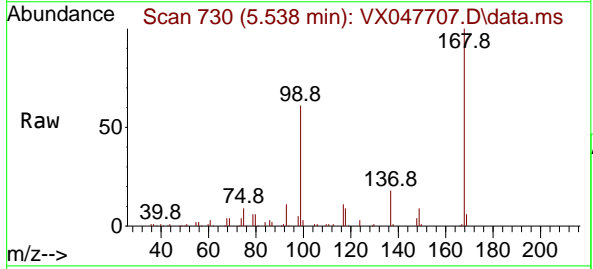
Ion	Ratio	Lower	Upper
113	100		
111	102.6	80.9	121.3
192	18.1	14.2	21.4

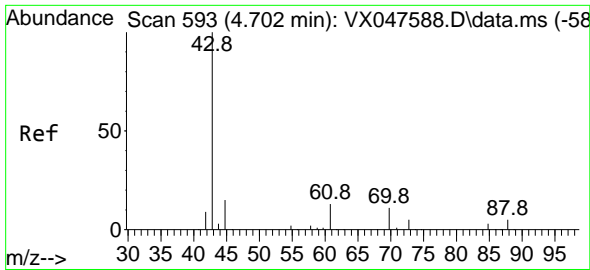


#36
 1,1-Dichloropropene
 Concen: 4.114 ug/l
 RT: 5.538 min Scan# 730
 Delta R.T. -0.146 min
 Lab File: VX047707.D
 Acq: 22 Sep 2025 16:11

Tgt Ion: 75 Resp: 13322

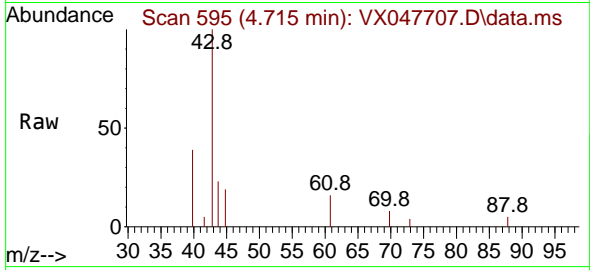
Ion	Ratio	Lower	Upper
75	100		
110	7.6	16.7	50.1#
77	0.0	24.3	36.5#





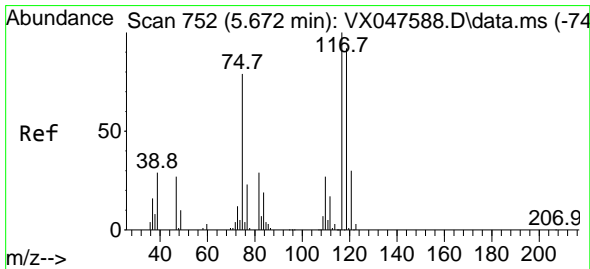
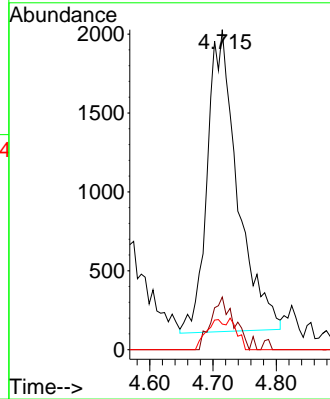
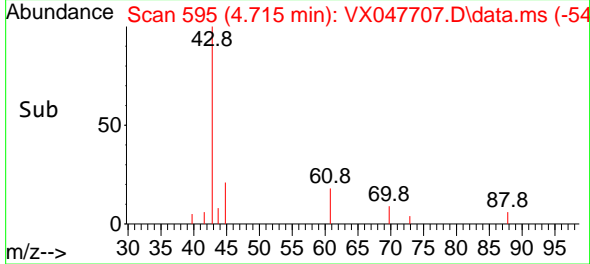
#37
 Ethyl Acetate
 Concen: 1.833 ug/l
 RT: 4.715 min Scan# 593
 Delta R.T. 0.012 min
 Lab File: VX047707.D
 Acq: 22 Sep 2025 16:11

Instrument : MSVOA_X
 ClientSampleId : 20-DEAD-1

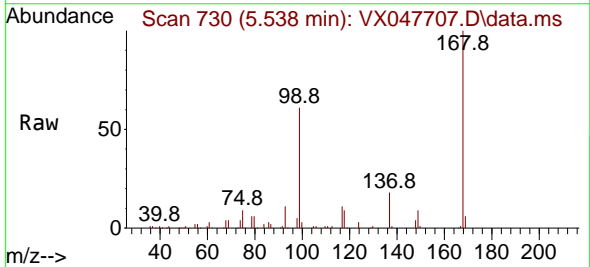


Tgt Ion: 43 Resp: 6354

Ion	Ratio	Lower	Upper
43	100		
61	13.1	9.8	14.8
70	9.5	7.9	11.9

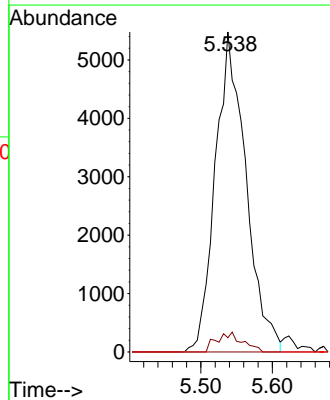
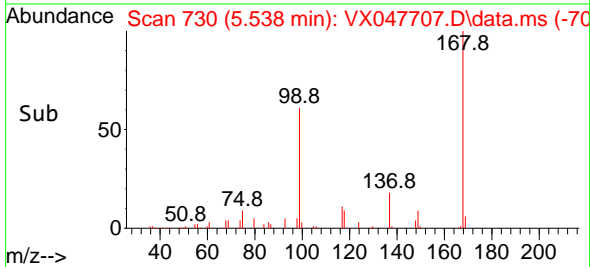


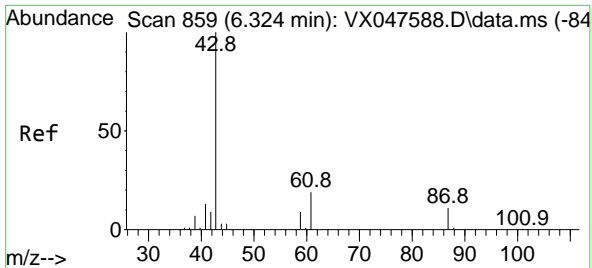
#38
 Carbon Tetrachloride
 Concen: 4.619 ug/l
 RT: 5.538 min Scan# 730
 Delta R.T. -0.134 min
 Lab File: VX047707.D
 Acq: 22 Sep 2025 16:11



Tgt Ion: 117 Resp: 16250

Ion	Ratio	Lower	Upper
117	100		
119	4.5	73.4	110.2#
121	0.0	23.8	35.6#



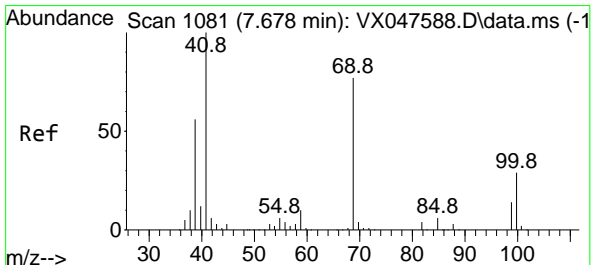
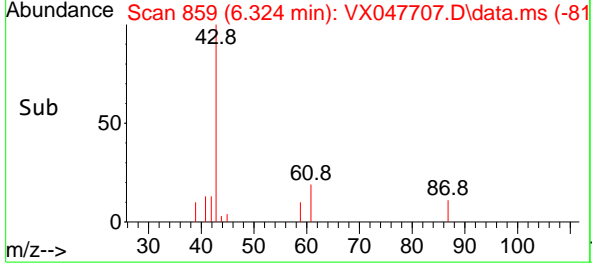
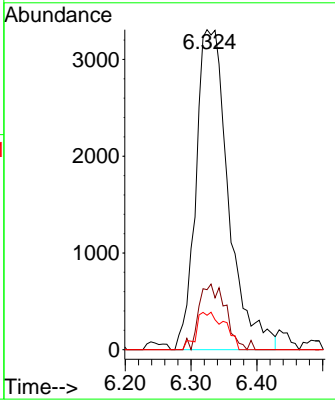
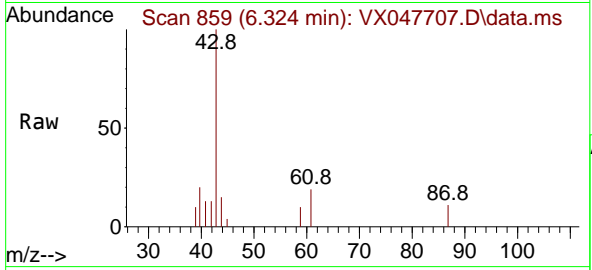


#43
 Isopropyl Acetate
 Concen: 2.000 ug/l
 RT: 6.324 min Scan# 81
 Delta R.T. 0.000 min
 Lab File: VX047707.D
 Acq: 22 Sep 2025 16:11

Instrument : MSVOA_X
 ClientSampleId : 20-DEAD-1

Tgt Ion: 43 Resp: 11374

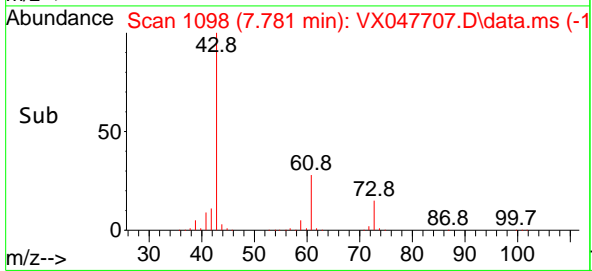
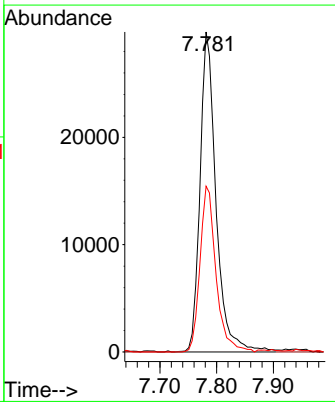
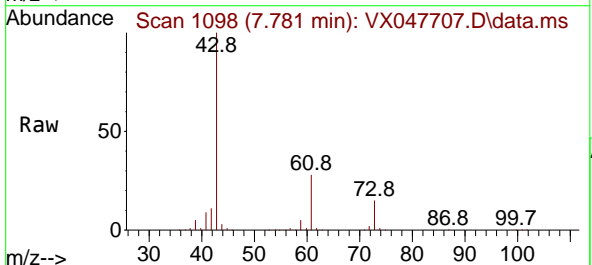
Ion	Ratio	Lower	Upper
43	100		
61	16.7	15.2	22.8
87	10.2	9.6	14.4

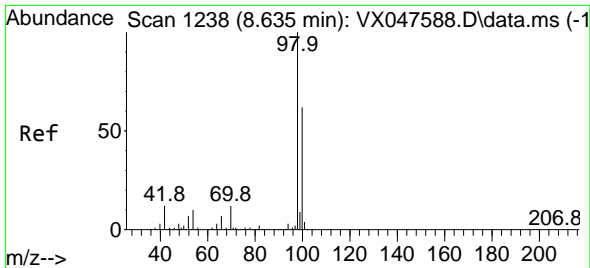


#48
 Methyl methacrylate
 Concen: 20.622 ug/l
 RT: 7.781 min Scan# 1098
 Delta R.T. 0.104 min
 Lab File: VX047707.D
 Acq: 22 Sep 2025 16:11

Tgt Ion: 41 Resp: 58406

Ion	Ratio	Lower	Upper
41	100		
69	0.0	61.4	92.2#
39	51.9	45.8	68.6

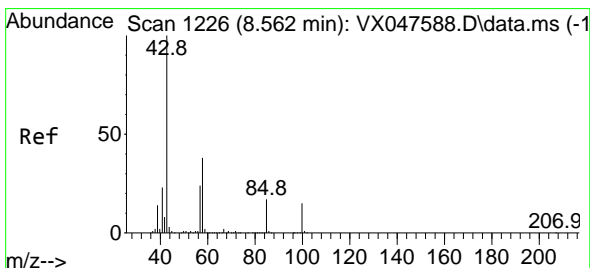
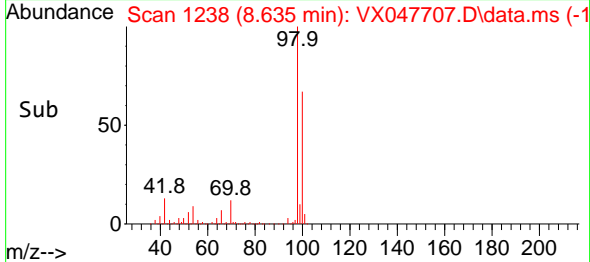
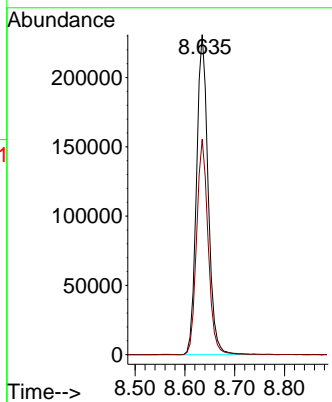
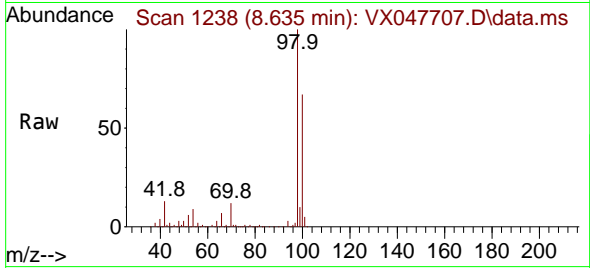




#50
 Toluene-d8
 Concen: 48.725 ug/l
 RT: 8.635 min Scan# 11
 Delta R.T. 0.000 min
 Lab File: VX047707.D
 Acq: 22 Sep 2025 16:11

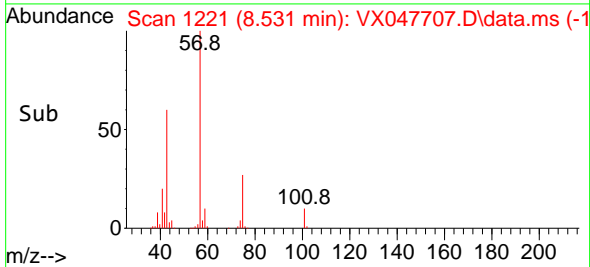
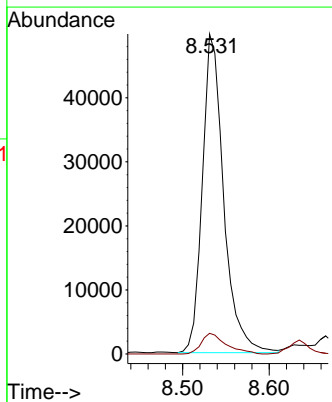
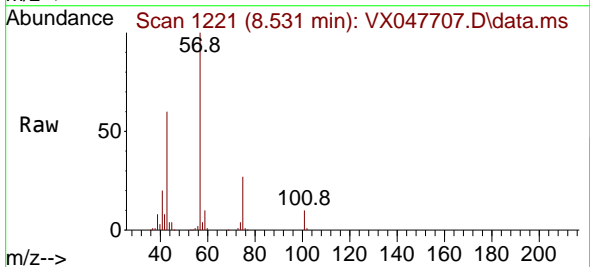
Instrument :
 MSVOA_X
 ClientSampleId :
 20-DEAD-1

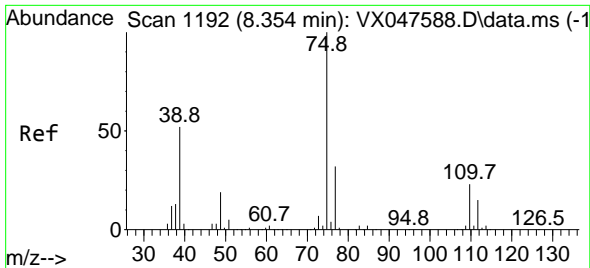
Tgt Ion: 98 Resp: 373596
 Ion Ratio Lower Upper
 98 100
 100 66.8 53.0 79.4



#51
 4-Methyl-2-Pentanone
 Concen: 27.005 ug/l
 RT: 8.531 min Scan# 1221
 Delta R.T. -0.030 min
 Lab File: VX047707.D
 Acq: 22 Sep 2025 16:11

Tgt Ion: 43 Resp: 85133
 Ion Ratio Lower Upper
 43 100
 58 7.5 30.3 45.5#

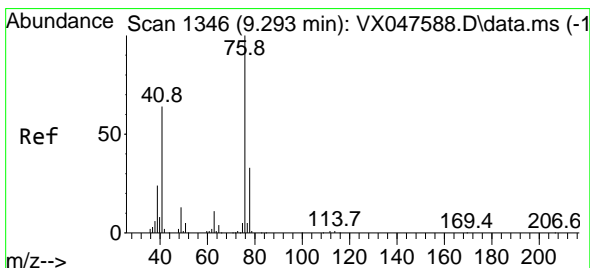
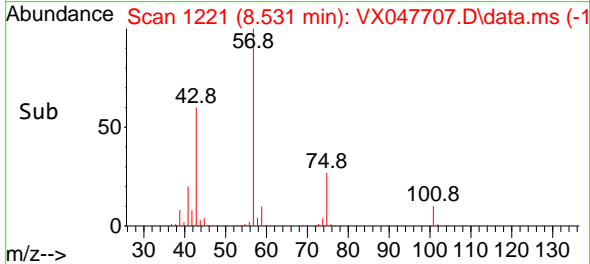
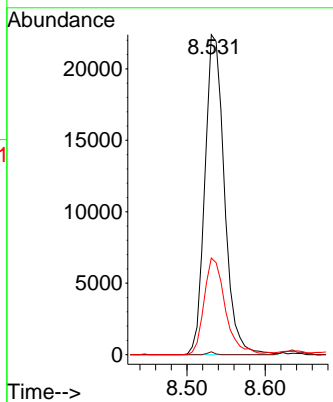
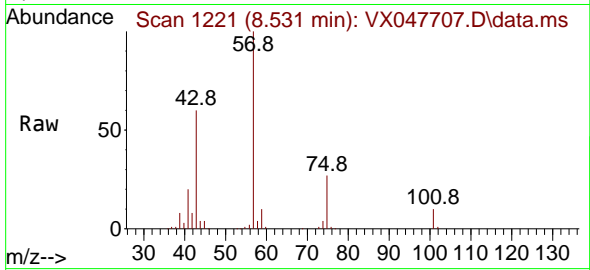




#54
 cis-1,3-Dichloropropene
 Concen: 9.386 ug/l
 RT: 8.531 min Scan# 1192
 Delta R.T. 0.177 min
 Lab File: VX047707.D
 Acq: 22 Sep 2025 16:11

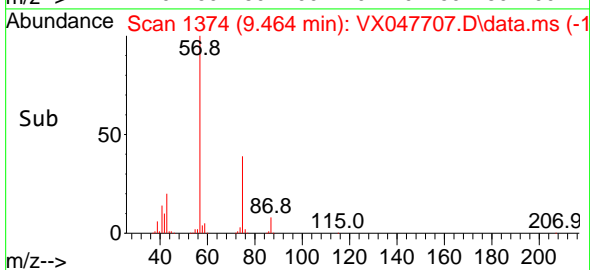
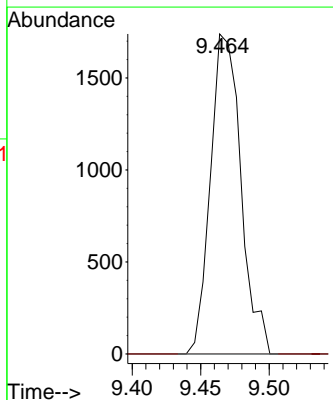
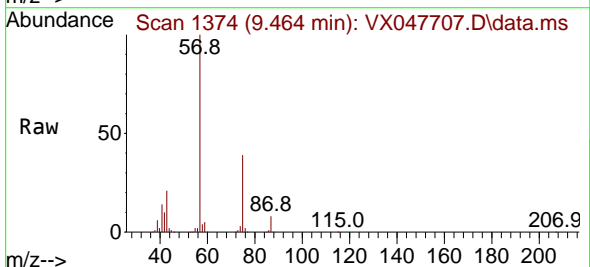
Instrument : MSVOA_X
 ClientSampleId : 20-DEAD-1

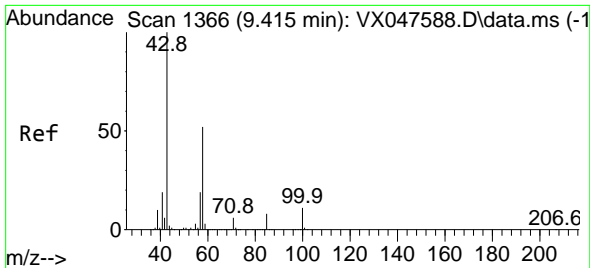
Tgt Ion	Resp	Lower	Upper
75	38694		
75	100		
77	0.9	25.8	38.6#
39	29.4	41.4	62.2#



#57
 1,3-Dichloropropane
 Concen: 0.671 ug/l
 RT: 9.464 min Scan# 1374
 Delta R.T. 0.171 min
 Lab File: VX047707.D
 Acq: 22 Sep 2025 16:11

Tgt Ion	Resp	Lower	Upper
76	2691		
76	100		
78	0.0	26.2	39.4#

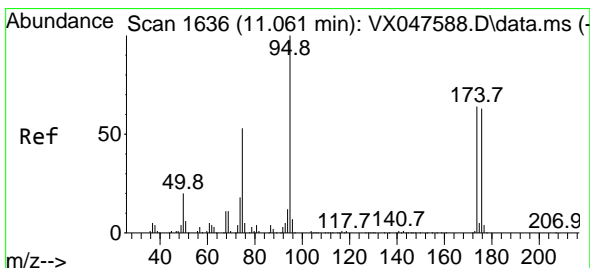
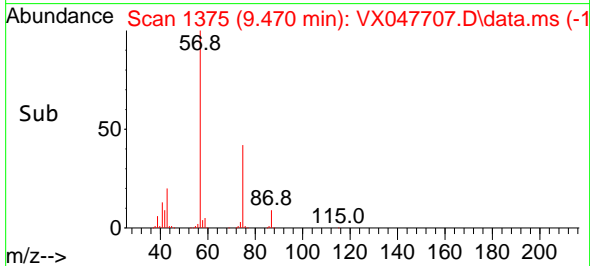
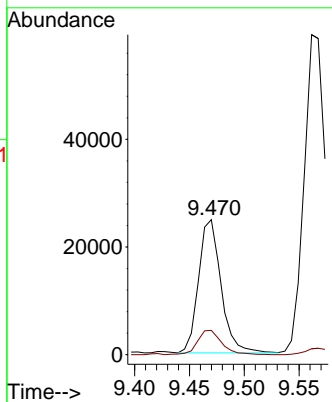
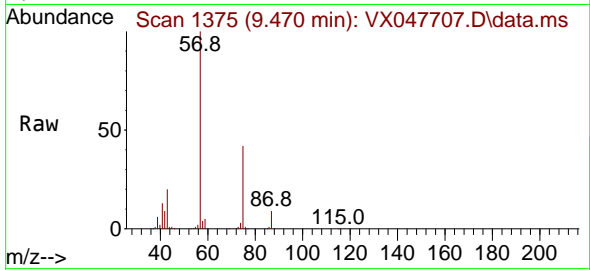




#59
 2-Hexanone
 Concen: 15.635 ug/l
 RT: 9.470 min Scan# 11
 Delta R.T. 0.055 min
 Lab File: VX047707.D
 Acq: 22 Sep 2025 16:11

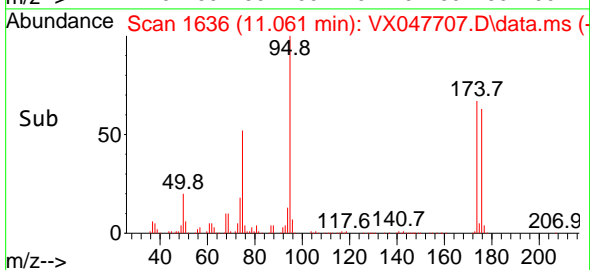
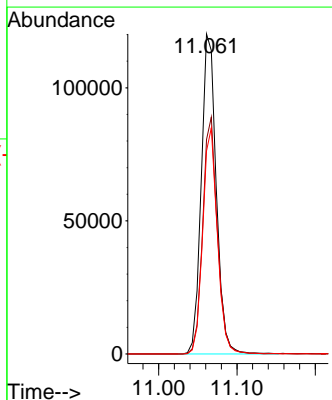
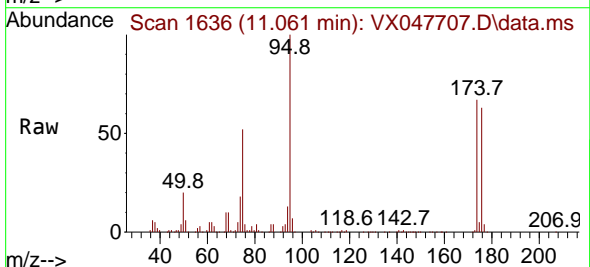
Instrument :
 MSVOA_X
 ClientSampleId :
 20-DEAD-1

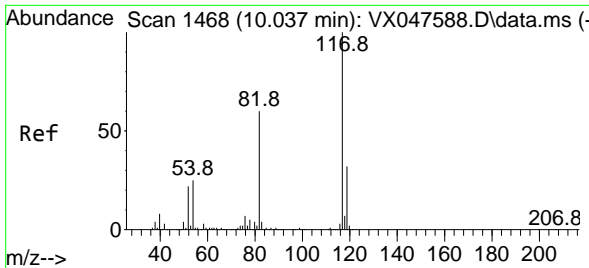
Tgt Ion: 43 Resp: 35401
 Ion Ratio Lower Upper
 43 100
 58 19.7 26.1 78.2#



#62
 4-Bromofluorobenzene
 Concen: 54.931 ug/l
 RT: 11.061 min Scan# 1636
 Delta R.T. 0.000 min
 Lab File: VX047707.D
 Acq: 22 Sep 2025 16:11

Tgt Ion: 95 Resp: 159844
 Ion Ratio Lower Upper
 95 100
 174 72.2 0.0 141.6
 176 68.8 0.0 138.4



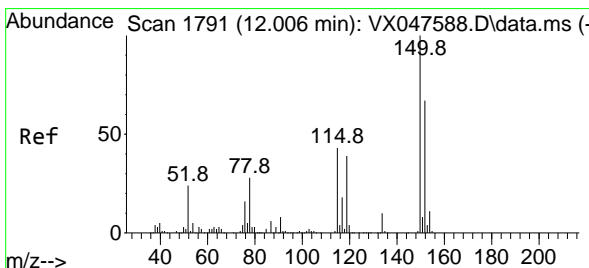
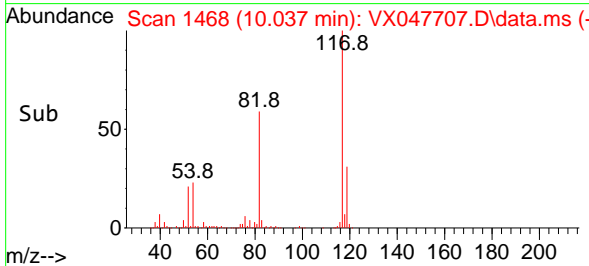
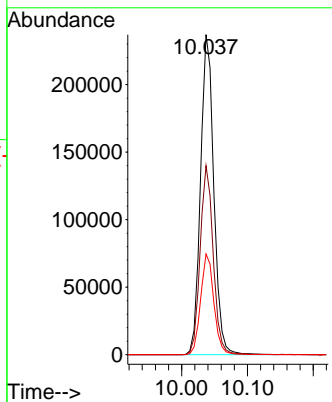
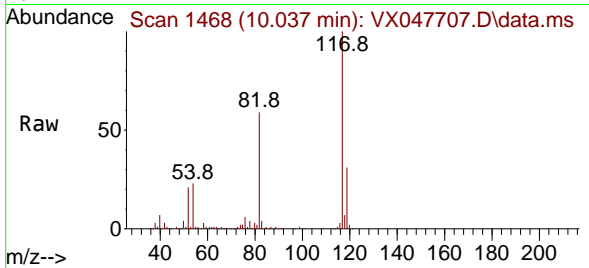


#63
 Chlorobenzene-d5
 Concen: 50.000 ug/l
 RT: 10.037 min Scan# 1468
 Delta R.T. 0.000 min
 Lab File: VX047707.D
 Acq: 22 Sep 2025 16:11

Instrument : MSVOA_X
 ClientSampleId : 20-DEAD-1

Tgt Ion:117 Resp: 332863

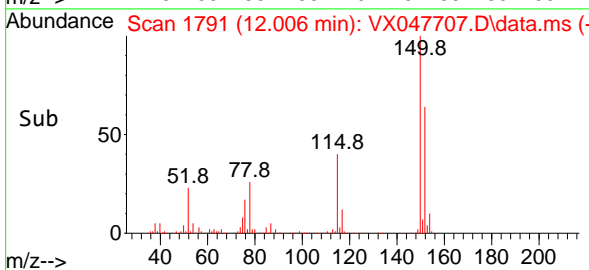
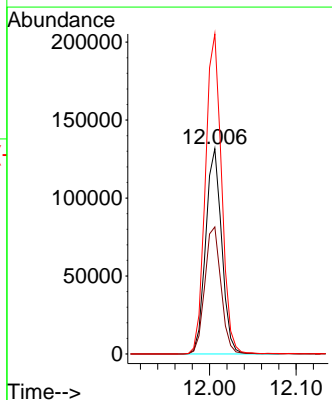
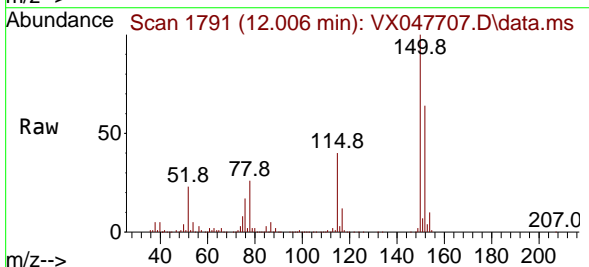
Ion	Ratio	Lower	Upper
117	100		
82	59.1	47.8	71.6
119	31.4	25.2	37.8

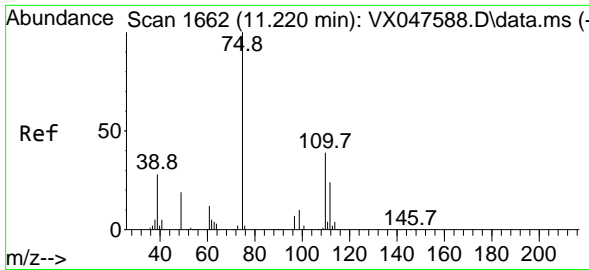


#72
 1,4-Dichlorobenzene-d4
 Concen: 50.000 ug/l
 RT: 12.006 min Scan# 1791
 Delta R.T. 0.000 min
 Lab File: VX047707.D
 Acq: 22 Sep 2025 16:11

Tgt Ion:152 Resp: 169366

Ion	Ratio	Lower	Upper
152	100		
115	62.9	44.9	134.5
150	156.8	0.0	352.0

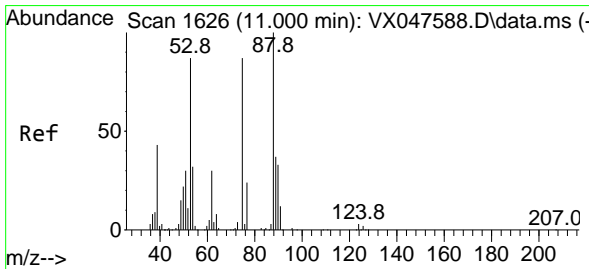
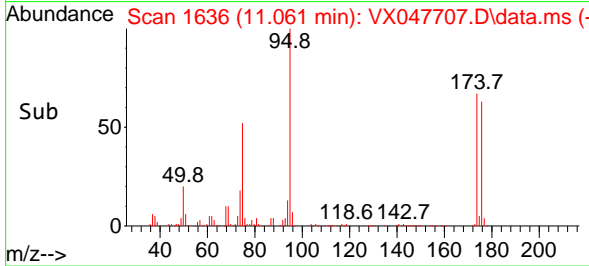
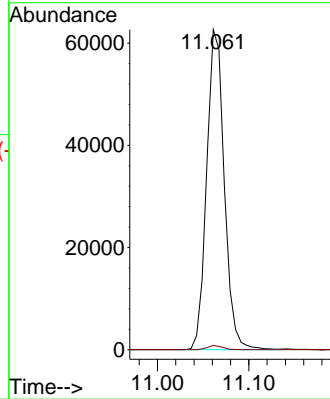
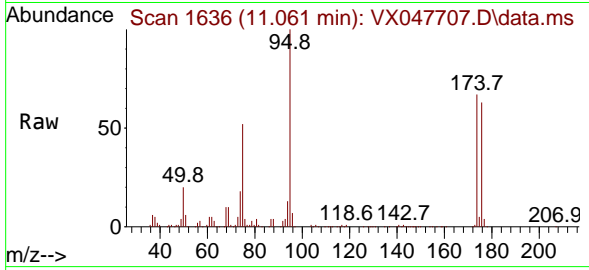




#76
 1,2,3-Trichloropropane
 Concen: 24.394 ug/l
 RT: 11.061 min Scan# 1636
 Delta R.T. -0.158 min
 Lab File: VX047707.D
 Acq: 22 Sep 2025 16:11

Instrument : MSVOA_X
 ClientSampleId : 20-DEAD-1

Tgt Ion: 75 Resp: 83652
 Ion Ratio Lower Upper
 75 100
 77 1.1 18.8 56.4#



#81
 trans-1,4-Dichloro-2-butene
 Concen: 62.209 ug/l
 RT: 11.061 min Scan# 1636
 Delta R.T. 0.061 min
 Lab File: VX047707.D
 Acq: 22 Sep 2025 16:11

Tgt Ion: 75 Resp: 83652
 Ion Ratio Lower Upper
 75 100
 53 0.0 83.4 125.2#
 89 0.0 36.3 54.5#

