

Data Path : Z:\voasrv\HPCHEM1\MSVOA_X\Data\VX092225\
 Data File : VX047708.D
 Acq On : 22 Sep 2025 16:32
 Operator : JC/MD
 Sample : Q3136-01
 Misc : 5.0mL/MSVOA_X/WATER
 ALS Vial : 21 Sample Multiplier: 1

Instrument :
 MSVOA_X
 ClientSampleId :
 34922

Quant Time: Sep 23 01:37:43 2025
 Quant Method : Z:\voasrv\HPCHEM1\MSVOA_X\Method\82X091625W.M
 Quant Title : SW846 8260
 QLast Update : Wed Sep 17 06:39:58 2025
 Response via : Initial Calibration

Compound	R.T.	QIon	Response	Conc	Units	Dev(Min)
Internal Standards						
1) Pentafluorobenzene	5.544	168	151429	50.000	ug/l	0.00
34) 1,4-Difluorobenzene	6.751	114	315549	50.000	ug/l	0.00
63) Chlorobenzene-d5	10.037	117	315662	50.000	ug/l	0.00
72) 1,4-Dichlorobenzene-d4	12.006	152	164905	50.000	ug/l	0.00
System Monitoring Compounds						
33) 1,2-Dichloroethane-d4	5.940	65	129583	53.761	ug/l	0.00
Spiked Amount	50.000	Range 78 - 117	Recovery	=	107.520%	
35) Dibromofluoromethane	5.379	113	106125	50.148	ug/l	0.00
Spiked Amount	50.000	Range 75 - 124	Recovery	=	100.300%	
50) Toluene-d8	8.634	98	360536	49.236	ug/l	0.00
Spiked Amount	50.000	Range 92 - 112	Recovery	=	98.480%	
62) 4-Bromofluorobenzene	11.061	95	156623	56.358	ug/l	0.00
Spiked Amount	50.000	Range 83 - 123	Recovery	=	112.720%	
Target Compounds						
						Qvalue
11) Tert butyl alcohol	2.940	59	6974	25.979	ug/l	99
13) Acrolein	2.233	56	557	2.252	ug/l #	51
15) Acrylonitrile	3.075	53	333	0.335	ug/l #	17
16) Acetone	2.373	43	81585	77.846	ug/l	99
17) Carbon Disulfide	2.520	76	8326	1.690	ug/l	96
18) Methyl Acetate	2.703	43	12396	5.315	ug/l	97
20) Methylene Chloride	2.794	84	26606	11.993	ug/l	92
25) 2-Butanone	4.556	43	24150	18.473	ug/l	99
29) Tetrahydrofuran	5.007	42	3638	4.626	ug/l #	88
31) Cyclohexane	5.464	56	1408	0.442	ug/l #	79
36) 1,1-Dichloropropene	5.550	75	13093	4.234	ug/l #	51
37) Ethyl Acetate	4.708	43	7898	2.385	ug/l #	92
38) Carbon Tetrachloride	5.537	117	15920	4.738	ug/l #	19
39) Methylcyclohexane	7.366	83	800	0.228	ug/l	98
40) Benzene	6.031	78	500484	53.287	ug/l	100
41) Methacrylonitrile	5.001	41	2018	1.181	ug/l #	42
42) 1,2-Dichloroethane	6.031	62	4505	1.261	ug/l #	76
43) Isopropyl Acetate	6.324	43	11726	2.159	ug/l	97
48) Methyl methacrylate	7.781	41	59122	21.858	ug/l #	47
49) 1,4-Dioxane	7.659	88	142	5.195	ug/l #	21
51) 4-Methyl-2-Pentanone	8.537	43	82375	27.360	ug/l #	37
52) Toluene	8.702	92	281852	48.708	ug/l	99
54) cis-1,3-Dichloropropene	8.537	75	29752	7.556	ug/l #	62
55) 1,1,2-Trichloroethane	9.006	97	1003	0.450	ug/l #	15
58) 2-Chloroethyl Vinyl ether	8.397	63	25	7.907	ug/l #	47
59) 2-Hexanone	9.421	43	4339	2.007	ug/l	92
67) Ethyl Benzene	10.177	91	39618	3.202	ug/l	100
68) m/p-Xylenes	10.287	106	82042	17.814	ug/l	99
69) o-Xylene	10.628	106	61296	13.760	ug/l	98
70) Styrene	10.640	104	20321	2.603	ug/l #	60
74) N-amyl acetate	10.841	43	1857	0.325	ug/l #	1
76) 1,2,3-Trichloropropane	11.061	75	82014	24.564	ug/l #	39
78) n-propylbenzene	11.286	91	3501	0.236	ug/l	93
79) 2-Chlorotoluene	11.366	91	2275	0.251	ug/l #	42
80) 1,3,5-Trimethylbenzene	11.433	105	16648	1.616	ug/l	97
81) trans-1,4-Dichloro-2-b...	11.061	75	82014	62.641	ug/l #	8

Data Path : Z:\voasrv\HPCHEM1\MSVOA_X\Data\VX092225\
 Data File : VX047708.D
 Acq On : 22 Sep 2025 16:32
 Operator : JC/MD
 Sample : Q3136-01
 Misc : 5.0mL/MSVOA_X/WATER
 ALS Vial : 21 Sample Multiplier: 1

Instrument :
 MSVOA_X
 ClientSampleId :
 34922

Quant Time: Sep 23 01:37:43 2025
 Quant Method : Z:\voasrv\HPCHEM1\MSVOA_X\Method\82X091625W.M
 Quant Title : SW846 8260
 QLast Update : Wed Sep 17 06:39:58 2025
 Response via : Initial Calibration

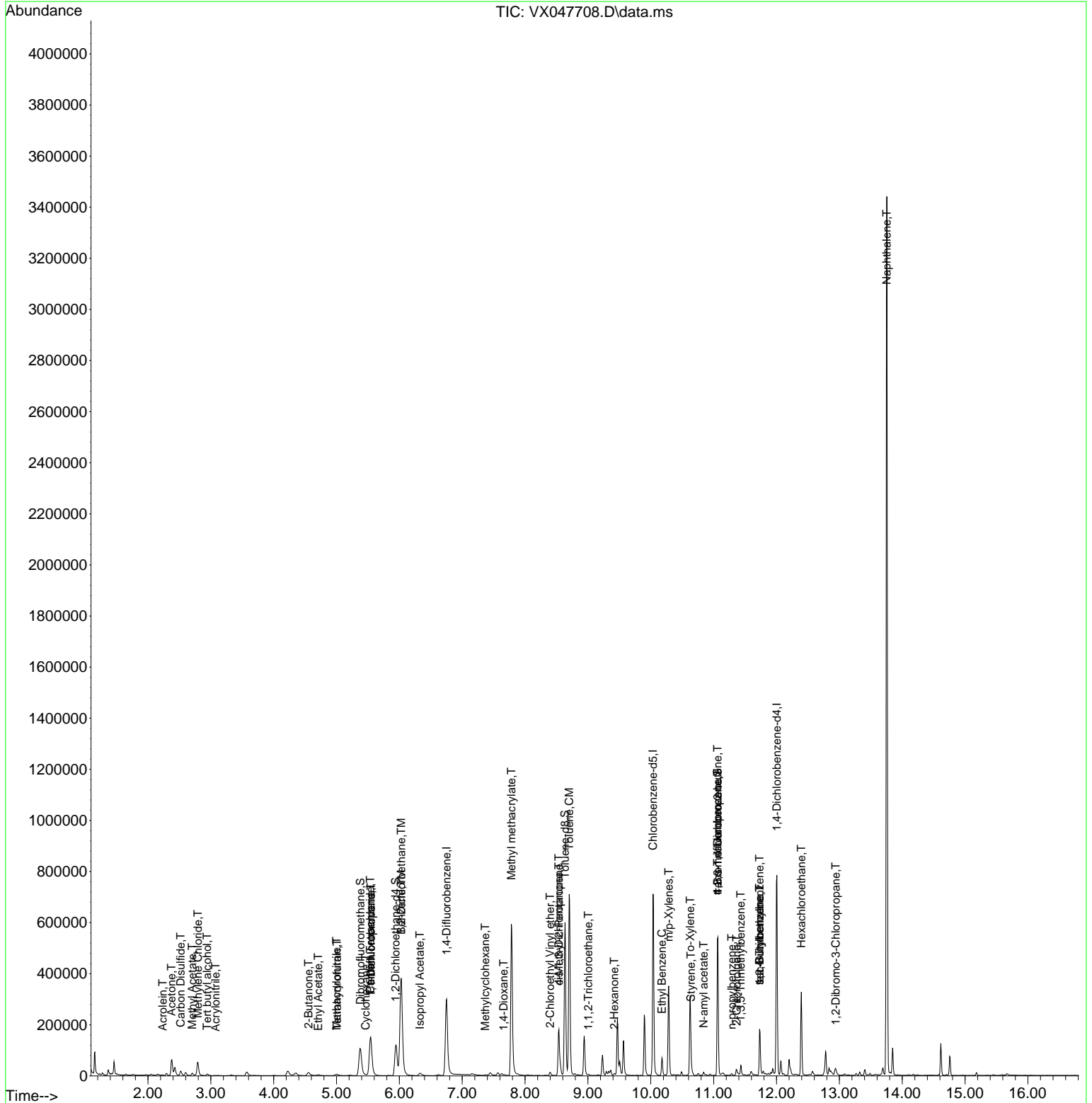
Compound	R.T.	QIon	Response	Conc	Units	Dev(Min)
83) tert-Butylbenzene	11.731	119	4515	0.428	ug/l #	60
84) 1,2,4-Trimethylbenzene	11.731	105	66781	6.395	ug/l	71
85) sec-Butylbenzene	11.731	105	66781	5.332	ug/l #	57
90) Hexachloroethane	12.396	117	12526	6.729	ug/l #	16
92) 1,2-Dibromo-3-Chloropr...	12.945	75	437	0.569	ug/l #	5
95) Naphthalene	13.756	128	1997437	184.716	ug/l	100

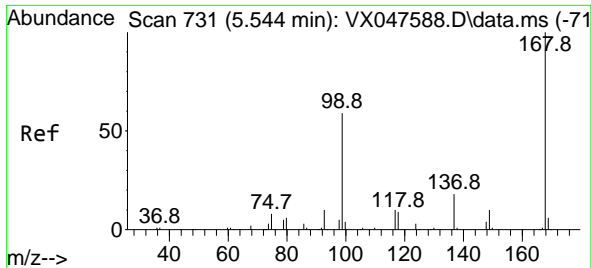
(#) = qualifier out of range (m) = manual integration (+) = signals summed

Data Path : Z:\voasrv\HPCHEM1\MSVOA_X\Data\VX092225\
 Data File : VX047708.D
 Acq On : 22 Sep 2025 16:32
 Operator : JC/MD
 Sample : Q3136-01
 Misc : 5.0mL/MSVOA_X/WATER
 ALS Vial : 21 Sample Multiplier: 1

Instrument :
 MSVOA_X
 ClientSampleId :
 34922

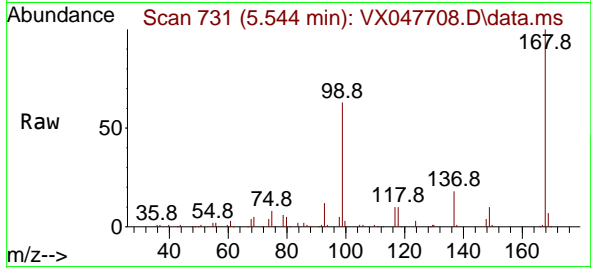
Quant Time: Sep 23 01:37:43 2025
 Quant Method : Z:\voasrv\HPCHEM1\MSVOA_X\Method\82X091625W.M
 Quant Title : SW846 8260
 QLast Update : Wed Sep 17 06:39:58 2025
 Response via : Initial Calibration



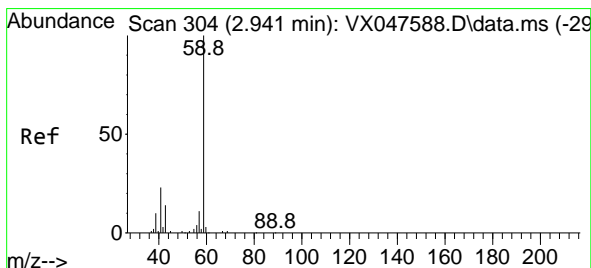
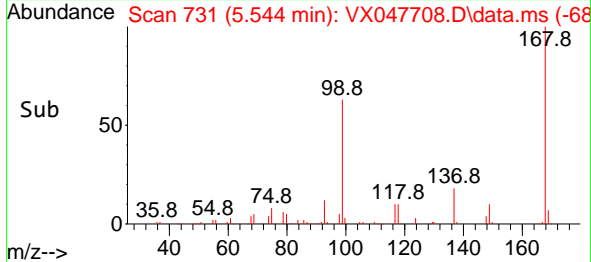
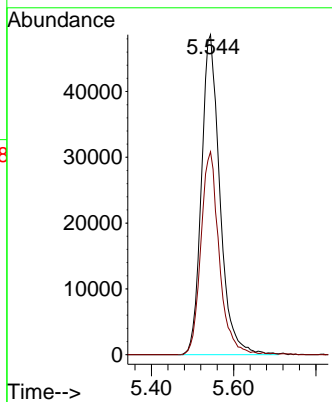


#1
 Pentafluorobenzene
 Concen: 50.000 ug/l
 RT: 5.544 min Scan# 71
 Delta R.T. -0.000 min
 Lab File: VX047708.D
 Acq: 22 Sep 2025 16:32

Instrument :
 MSVOA_X
 ClientSampleId :
 34922

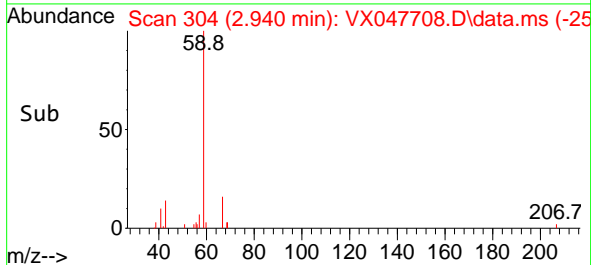
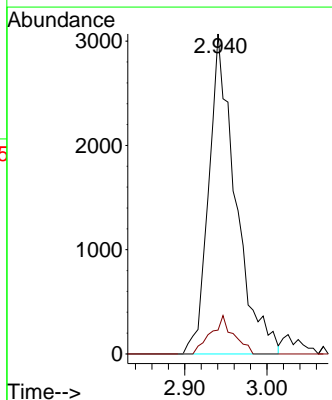
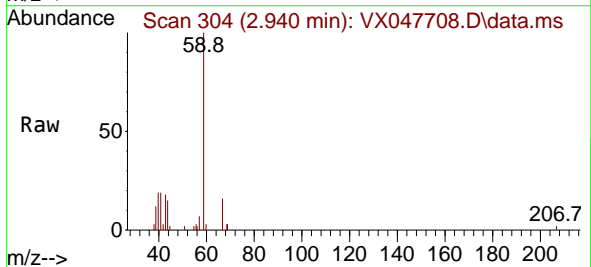


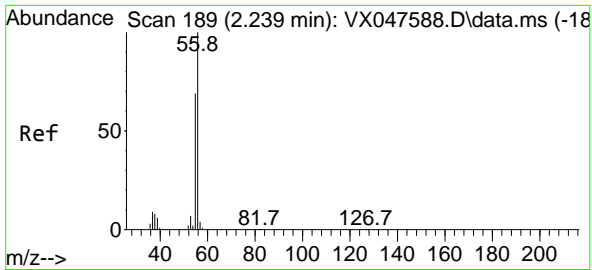
Tgt Ion:168 Resp: 151429
 Ion Ratio Lower Upper
 168 100
 99 63.4 48.8 73.2



#11
 Tert butyl alcohol
 Concen: 25.979 ug/l
 RT: 2.940 min Scan# 304
 Delta R.T. -0.000 min
 Lab File: VX047708.D
 Acq: 22 Sep 2025 16:32

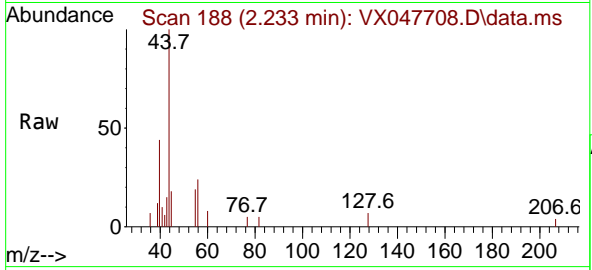
Tgt Ion: 59 Resp: 6974
 Ion Ratio Lower Upper
 59 100
 57 10.0 8.3 12.5



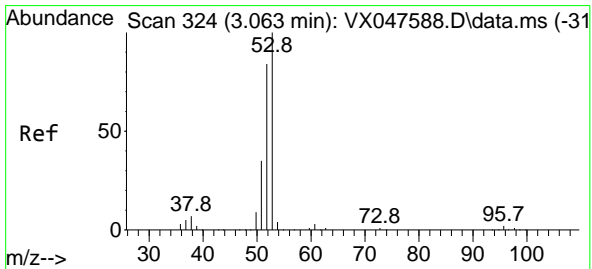
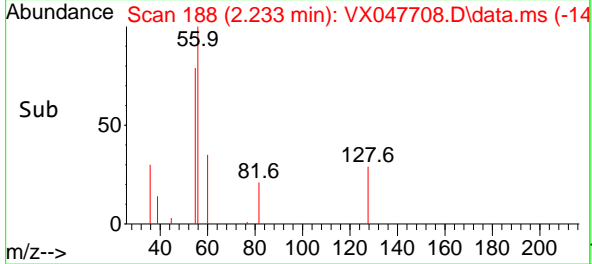
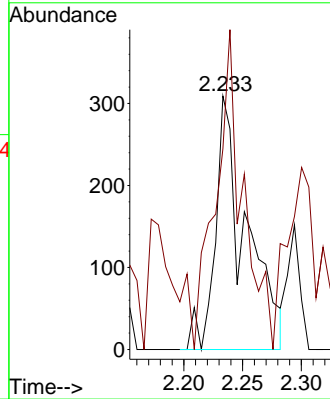


#13
 Acrolein
 Concen: 2.252 ug/l
 RT: 2.233 min Scan# 11
 Delta R.T. -0.006 min
 Lab File: VX047708.D
 Acq: 22 Sep 2025 16:32

Instrument : MSVOA_X
 ClientSampleId : 34922

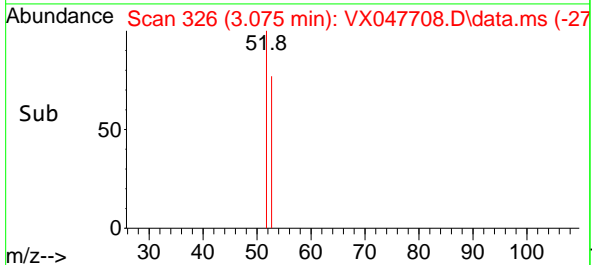
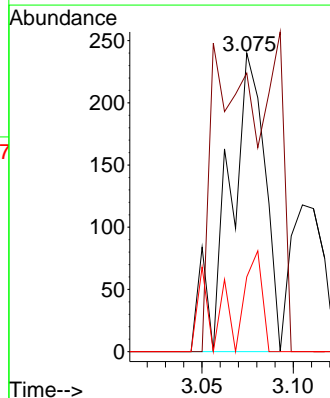
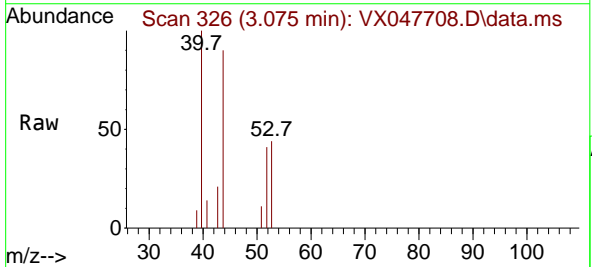


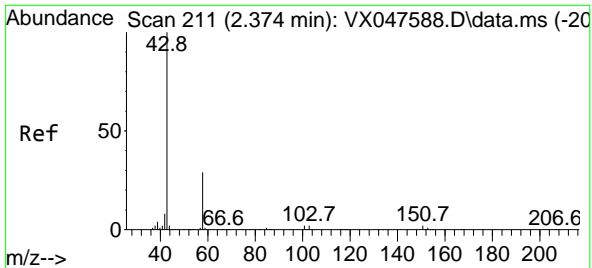
Tgt Ion: 56 Resp: 557
 Ion Ratio Lower Upper
 56 100
 55 112.0 57.2 85.8#



#15
 Acrylonitrile
 Concen: 0.335 ug/l
 RT: 3.075 min Scan# 326
 Delta R.T. 0.012 min
 Lab File: VX047708.D
 Acq: 22 Sep 2025 16:32

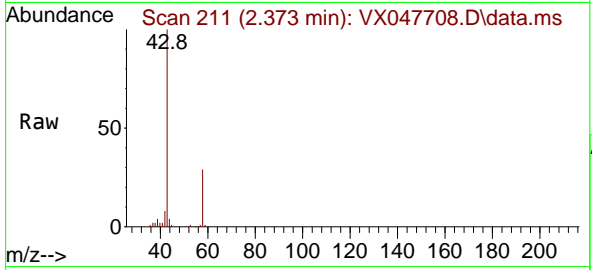
Tgt Ion: 53 Resp: 333
 Ion Ratio Lower Upper
 53 100
 52 0.0 66.4 99.6#
 51 0.0 29.5 44.3#



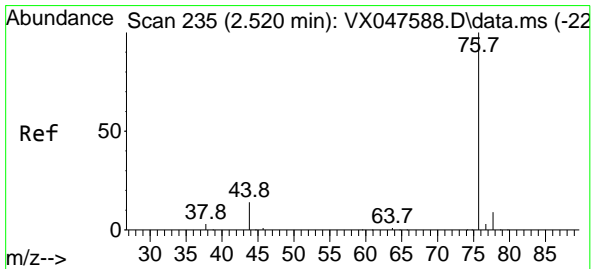
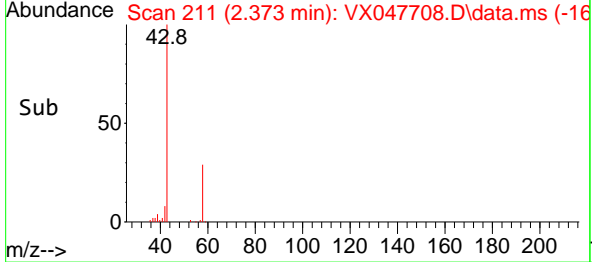
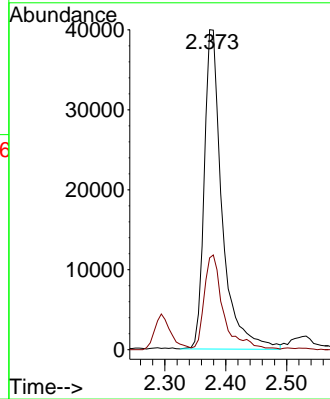


#16
 Acetone
 Concen: 77.846 ug/l
 RT: 2.373 min Scan# 211
 Delta R.T. -0.000 min
 Lab File: VX047708.D
 Acq: 22 Sep 2025 16:32

Instrument : MSVOA_X
 ClientSampleId : 34922

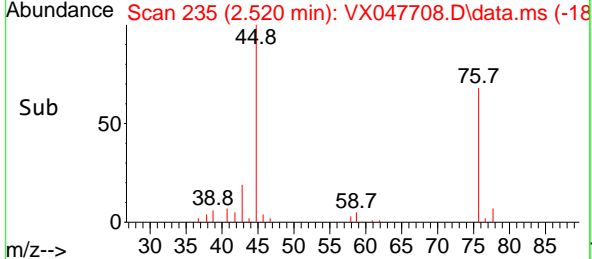
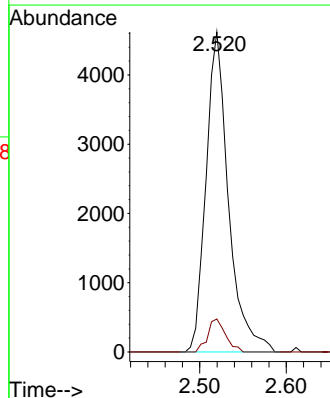
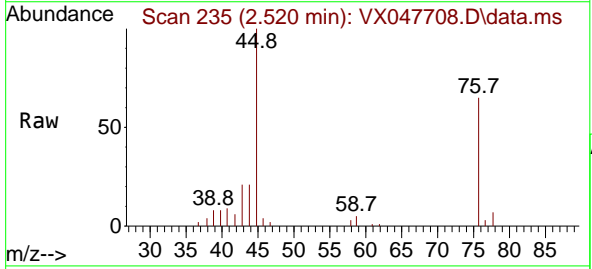


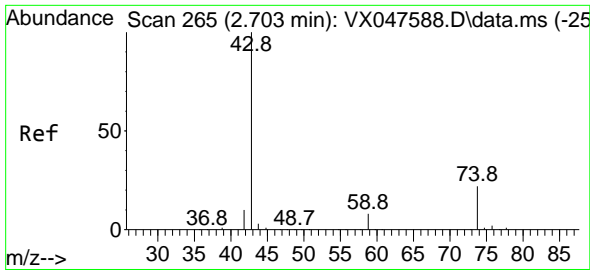
Tgt Ion: 43 Resp: 81585
 Ion Ratio Lower Upper
 43 100
 58 28.6 23.4 35.0



#17
 Carbon Disulfide
 Concen: 1.690 ug/l
 RT: 2.520 min Scan# 235
 Delta R.T. -0.000 min
 Lab File: VX047708.D
 Acq: 22 Sep 2025 16:32

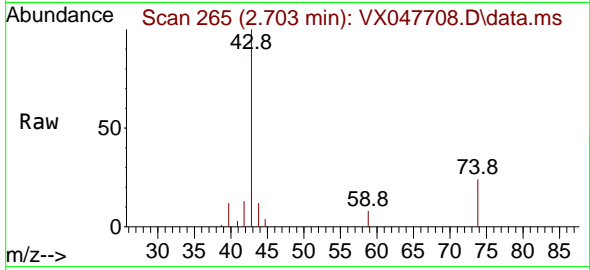
Tgt Ion: 76 Resp: 8326
 Ion Ratio Lower Upper
 76 100
 78 9.9 6.8 10.2



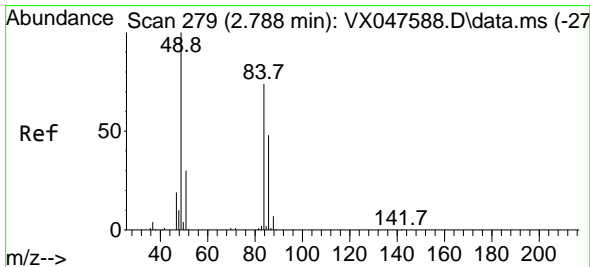
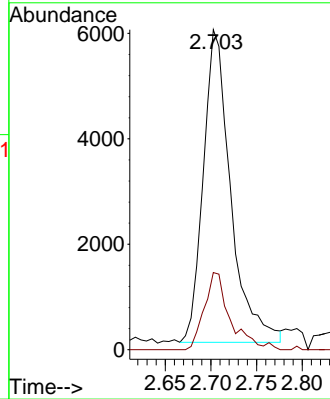
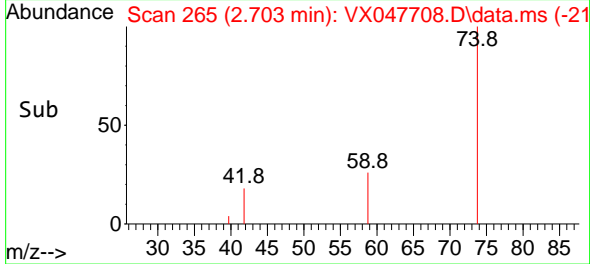


#18
 Methyl Acetate
 Concen: 5.315 ug/l
 RT: 2.703 min Scan# 20
 Delta R.T. -0.000 min
 Lab File: VX047708.D
 Acq: 22 Sep 2025 16:32

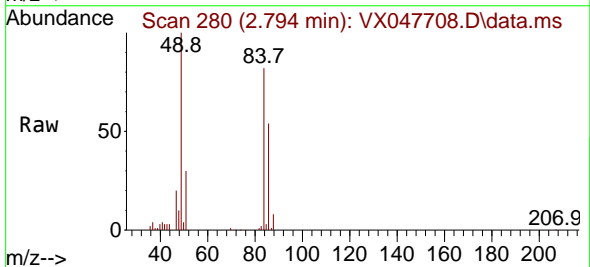
Instrument : MSVOA_X
 ClientSampleId : 34922



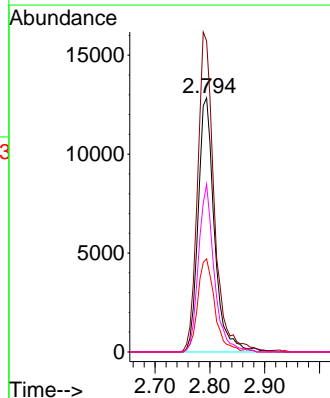
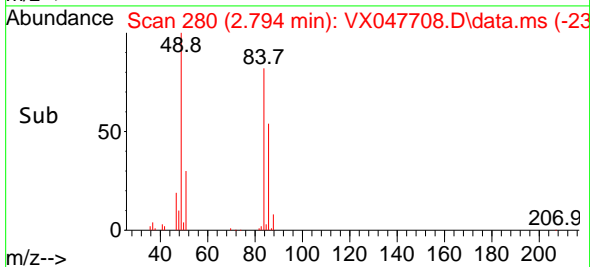
Tgt Ion: 43 Resp: 12396
 Ion Ratio Lower Upper
 43 100
 74 23.3 17.4 26.2

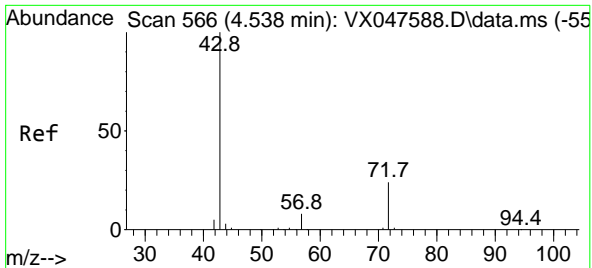


#20
 Methylene Chloride
 Concen: 11.993 ug/l
 RT: 2.794 min Scan# 280
 Delta R.T. 0.006 min
 Lab File: VX047708.D
 Acq: 22 Sep 2025 16:32



Tgt Ion: 84 Resp: 26606
 Ion Ratio Lower Upper
 84 100
 49 122.4 108.6 162.8
 51 36.7 32.6 48.8
 86 66.0 52.0 78.0

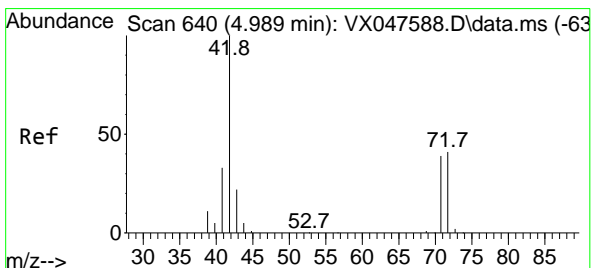
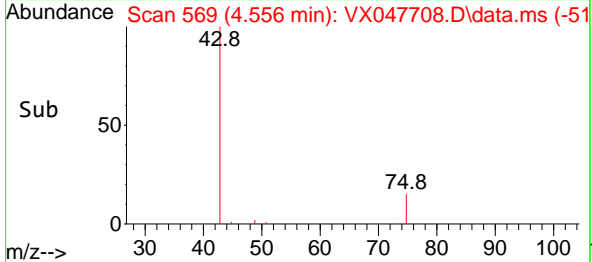
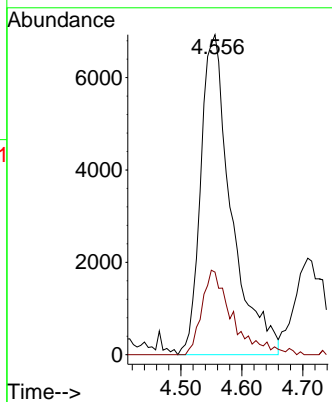
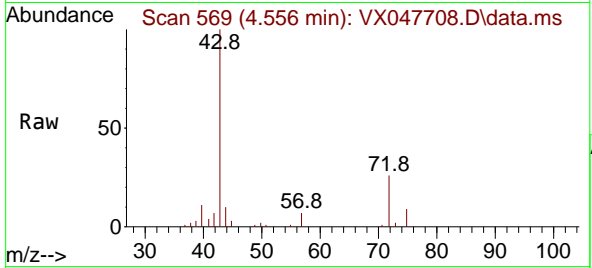




#25
 2-Butanone
 Concen: 18.473 ug/l
 RT: 4.556 min Scan# 50
 Delta R.T. 0.018 min
 Lab File: VX047708.D
 Acq: 22 Sep 2025 16:32

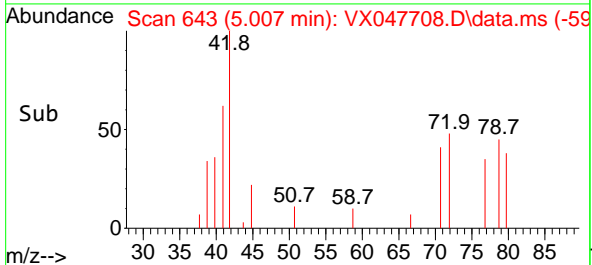
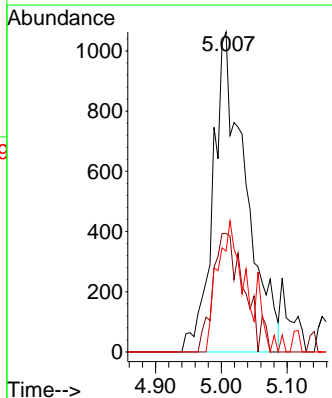
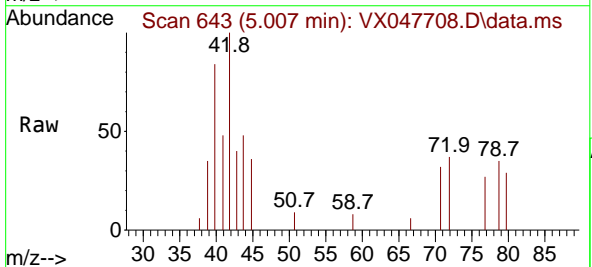
Instrument :
 MSVOA_X
 ClientSampleId :
 34922

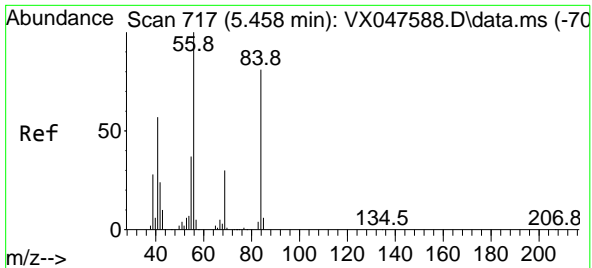
Tgt Ion: 43 Resp: 24150
 Ion Ratio Lower Upper
 43 100
 72 25.8 20.1 30.1



#29
 Tetrahydrofuran
 Concen: 4.626 ug/l
 RT: 5.007 min Scan# 643
 Delta R.T. 0.018 min
 Lab File: VX047708.D
 Acq: 22 Sep 2025 16:32

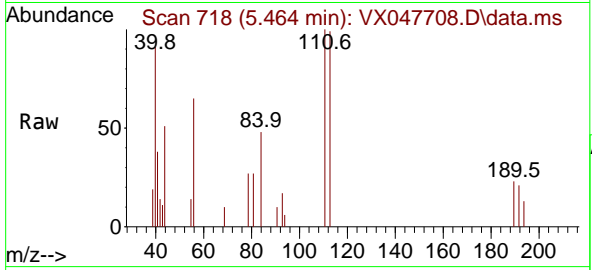
Tgt Ion: 42 Resp: 3638
 Ion Ratio Lower Upper
 42 100
 72 35.9 34.2 51.2
 71 31.5 31.9 47.9#





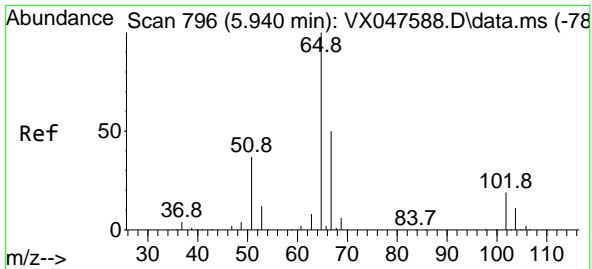
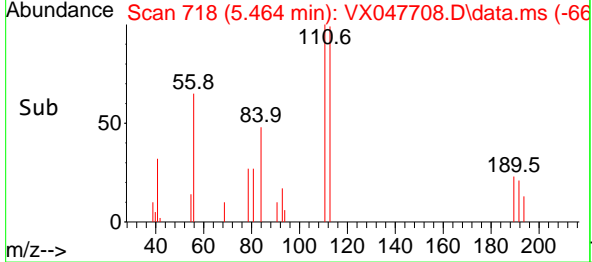
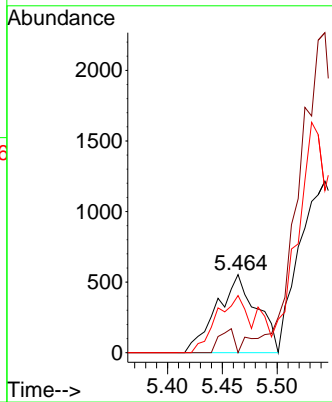
#31
 Cyclohexane
 Concen: 0.442 ug/l
 RT: 5.464 min Scan# 718
 Delta R.T. 0.006 min
 Lab File: VX047708.D
 Acq: 22 Sep 2025 16:32

Instrument : MSVOA_X
 ClientSampleId : 34922



Tgt Ion: 56 Resp: 1408

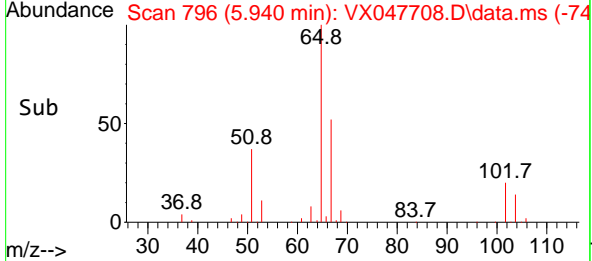
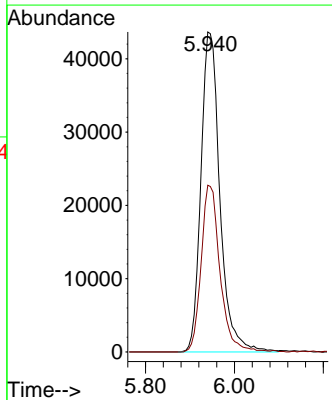
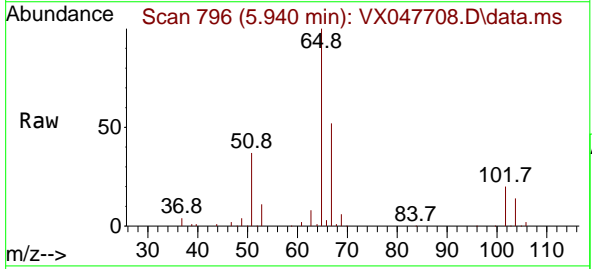
Ion	Ratio	Lower	Upper
56	100		
69	0.0	23.8	35.8#
84	73.2	64.6	97.0

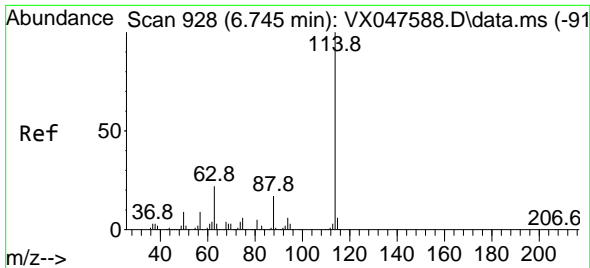


#33
 1,2-Dichloroethane-d4
 Concen: 53.761 ug/l
 RT: 5.940 min Scan# 796
 Delta R.T. -0.000 min
 Lab File: VX047708.D
 Acq: 22 Sep 2025 16:32

Tgt Ion: 65 Resp: 129583

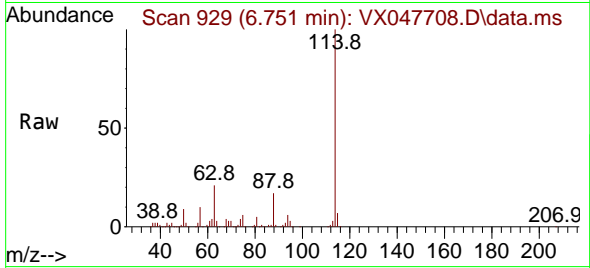
Ion	Ratio	Lower	Upper
65	100		
67	51.8	0.0	103.0



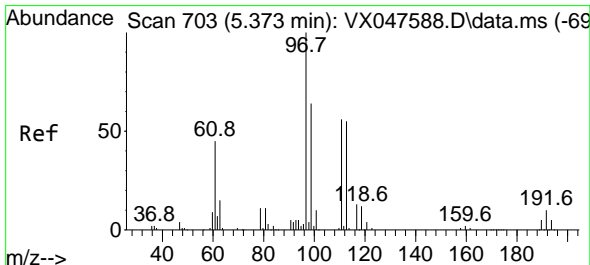
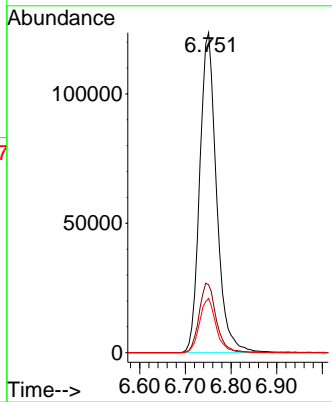
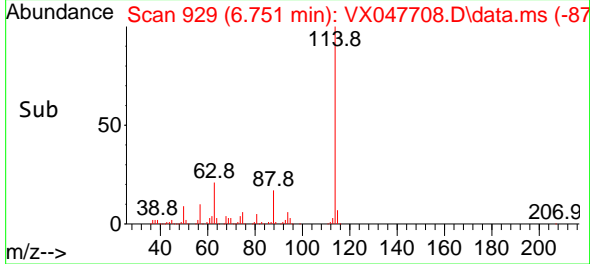


#34
 1,4-Difluorobenzene
 Concen: 50.000 ug/l
 RT: 6.751 min Scan# 91
 Delta R.T. 0.006 min
 Lab File: VX047708.D
 Acq: 22 Sep 2025 16:32

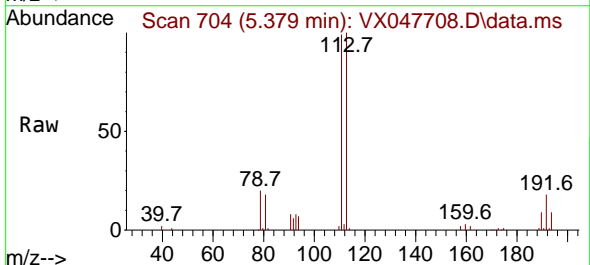
Instrument :
 MSVOA_X
 ClientSampleId :
 34922



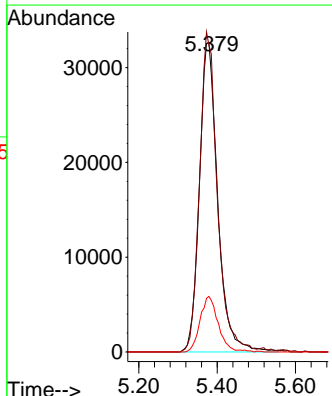
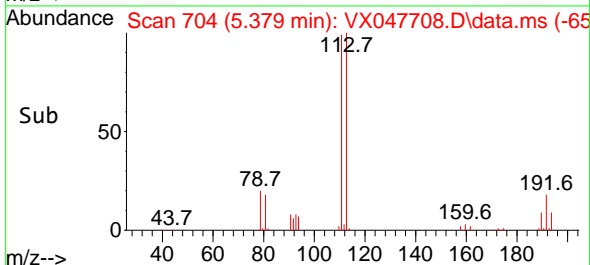
Tgt Ion:114 Resp: 315549
 Ion Ratio Lower Upper
 114 100
 63 21.2 0.0 44.0
 88 17.0 0.0 34.2

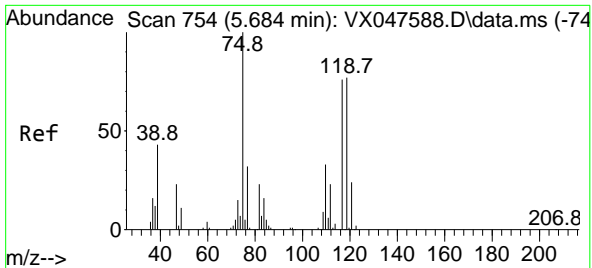


#35
 Dibromofluoromethane
 Concen: 50.148 ug/l
 RT: 5.379 min Scan# 704
 Delta R.T. 0.006 min
 Lab File: VX047708.D
 Acq: 22 Sep 2025 16:32



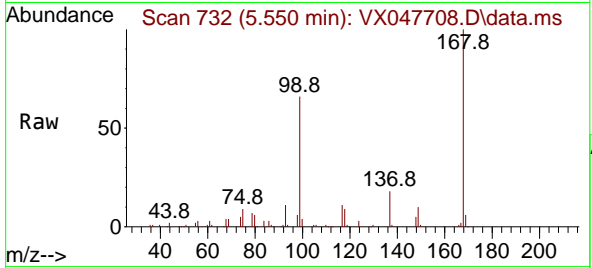
Tgt Ion:113 Resp: 106125
 Ion Ratio Lower Upper
 113 100
 111 100.1 80.9 121.3
 192 17.8 14.2 21.4



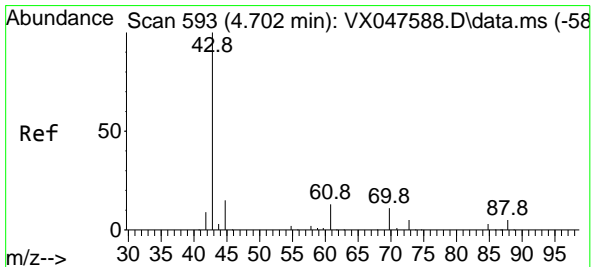
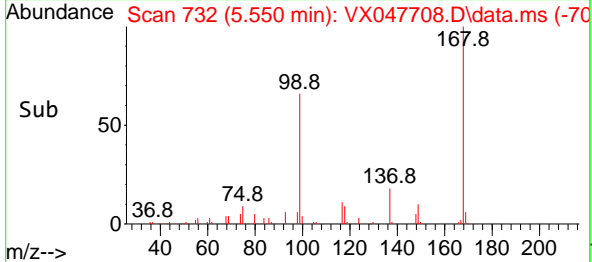
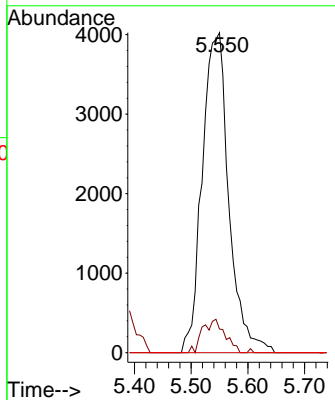


#36
 1,1-Dichloropropene
 Concen: 4.234 ug/l
 RT: 5.550 min Scan# 71
 Delta R.T. -0.134 min
 Lab File: VX047708.D
 Acq: 22 Sep 2025 16:32

Instrument :
 MSVOA_X
 ClientSampleId :
 34922

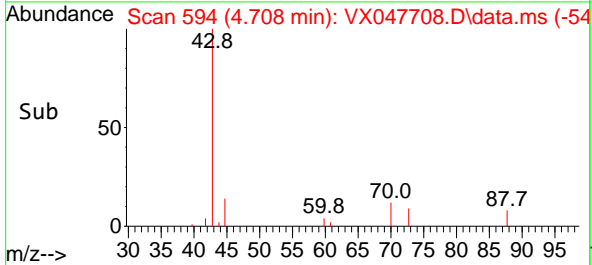
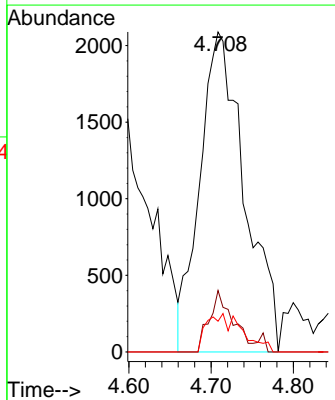
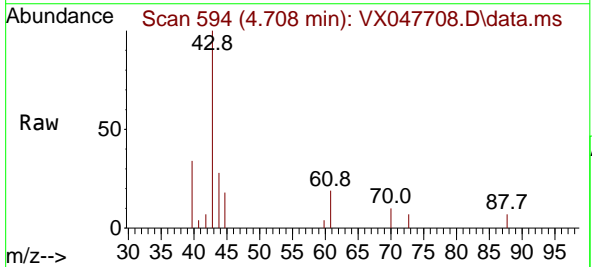


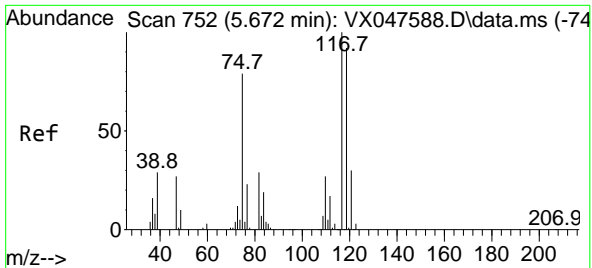
Tgt Ion: 75 Resp: 13093
 Ion Ratio Lower Upper
 75 100
 110 8.8 16.7 50.1#
 77 0.0 24.3 36.5#



#37
 Ethyl Acetate
 Concen: 2.385 ug/l
 RT: 4.708 min Scan# 594
 Delta R.T. 0.006 min
 Lab File: VX047708.D
 Acq: 22 Sep 2025 16:32

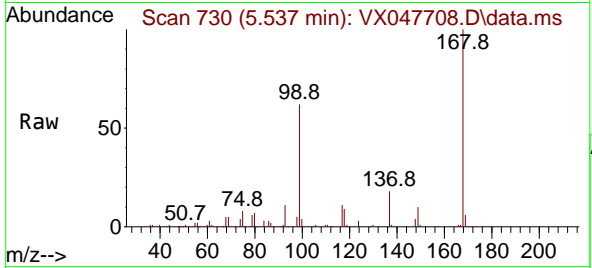
Tgt Ion: 43 Resp: 7898
 Ion Ratio Lower Upper
 43 100
 61 10.2 9.8 14.8
 70 5.5 7.9 11.9#





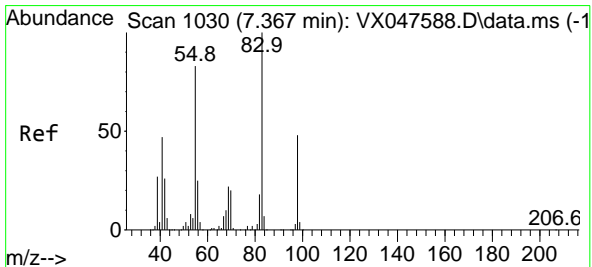
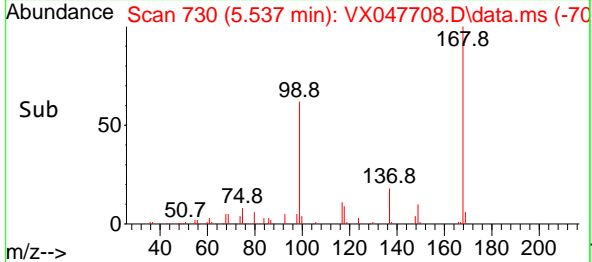
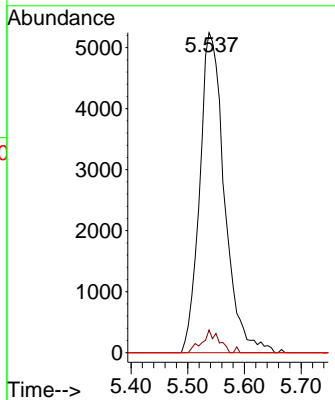
#38
 Carbon Tetrachloride
 Concen: 4.738 ug/l
 RT: 5.537 min Scan# 71
 Delta R.T. -0.134 min
 Lab File: VX047708.D
 Acq: 22 Sep 2025 16:32

Instrument : MSVOA_X
 ClientSampleId : 34922



Tgt Ion: 117 Resp: 15920

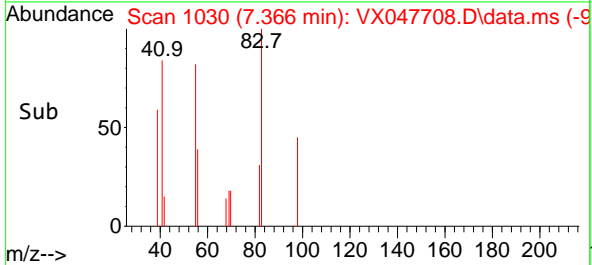
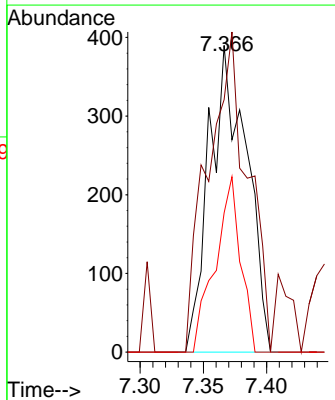
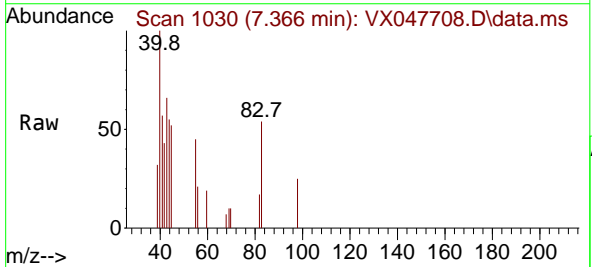
Ion	Ratio	Lower	Upper
117	100		
119	7.1	73.4	110.2#
121	0.0	23.8	35.6#

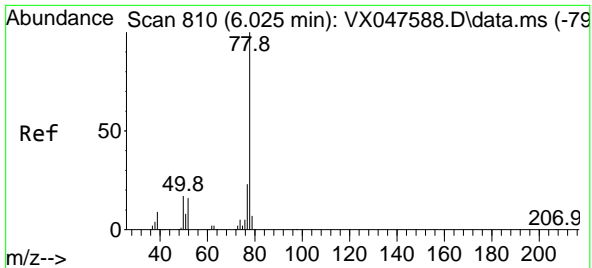


#39
 Methylcyclohexane
 Concen: 0.228 ug/l
 RT: 7.366 min Scan# 1030
 Delta R.T. -0.000 min
 Lab File: VX047708.D
 Acq: 22 Sep 2025 16:32

Tgt Ion: 83 Resp: 800

Ion	Ratio	Lower	Upper
83	100		
55	82.3	66.4	99.6
98	45.4	38.1	57.1

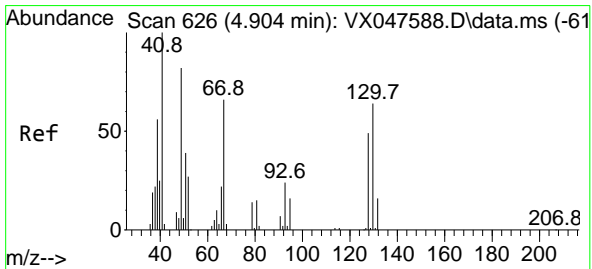
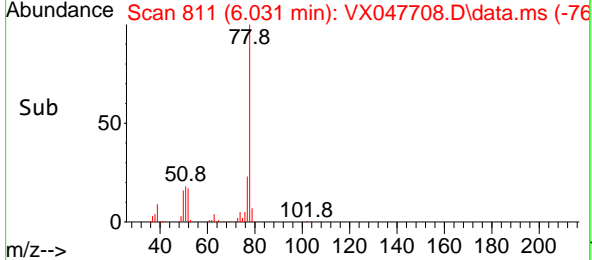
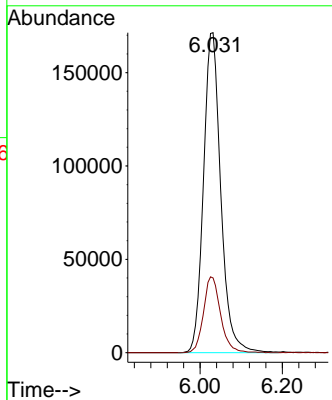
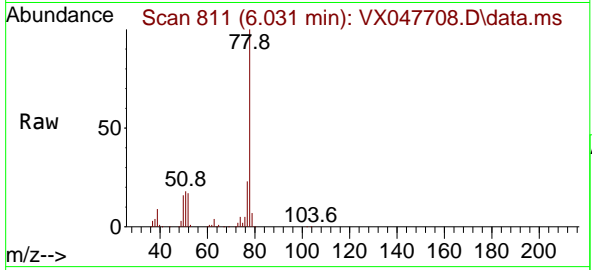




#40
Benzene
Concen: 53.287 ug/l
RT: 6.031 min Scan# 811
Delta R.T. 0.006 min
Lab File: VX047708.D
Acq: 22 Sep 2025 16:32

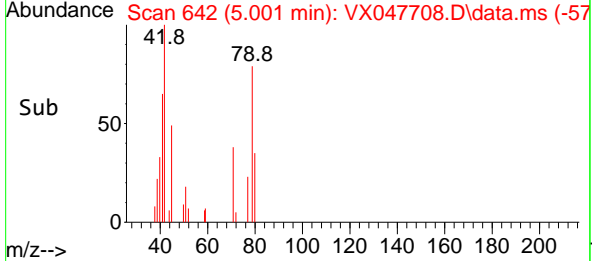
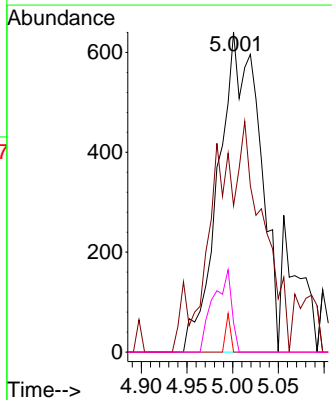
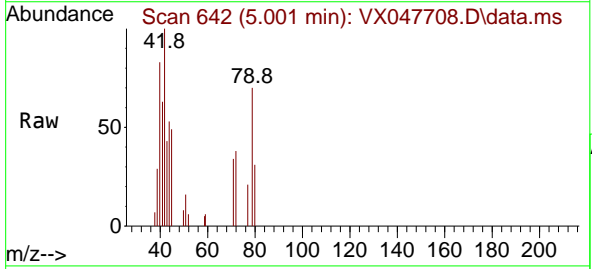
Instrument : MSVOA_X
ClientSampleId : 34922

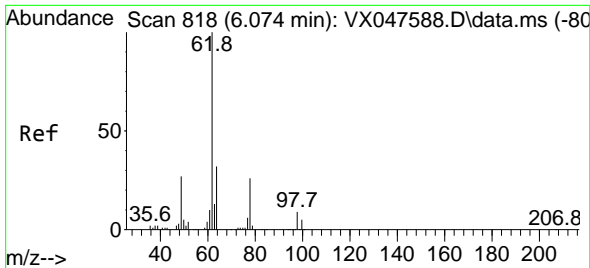
Tgt Ion: 78 Resp: 500484
Ion Ratio Lower Upper
78 100
77 23.4 18.8 28.2



#41
Methacrylonitrile
Concen: 1.181 ug/l
RT: 5.001 min Scan# 642
Delta R.T. 0.097 min
Lab File: VX047708.D
Acq: 22 Sep 2025 16:32

Tgt Ion: 41 Resp: 2018
Ion Ratio Lower Upper
41 100
39 29.6 43.3 64.9#
67 1.4 58.6 87.8#
52 11.4 26.0 39.0#

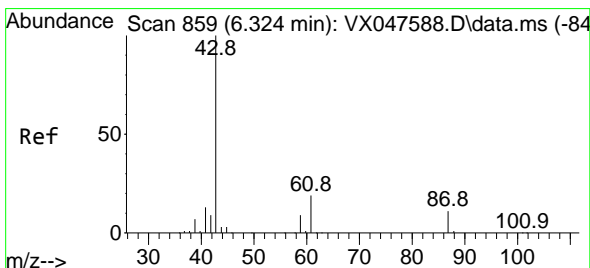
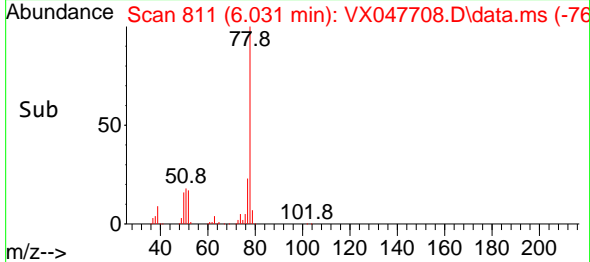
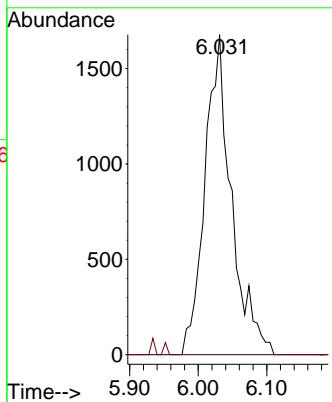
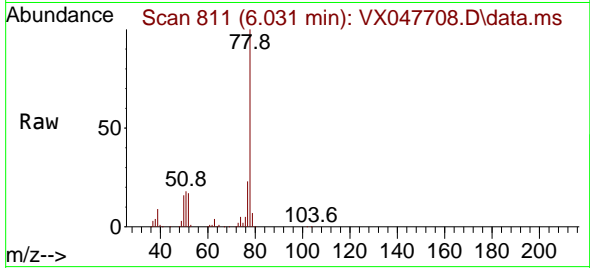




#42
 1,2-Dichloroethane
 Concen: 1.261 ug/l
 RT: 6.031 min Scan# 811
 Delta R.T. -0.043 min
 Lab File: VX047708.D
 Acq: 22 Sep 2025 16:32

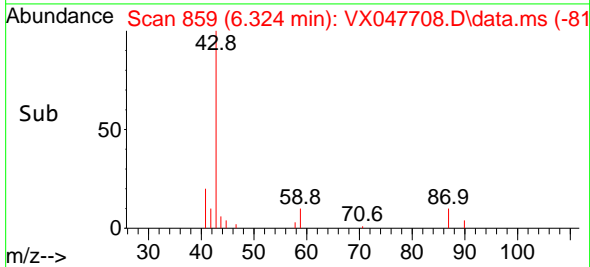
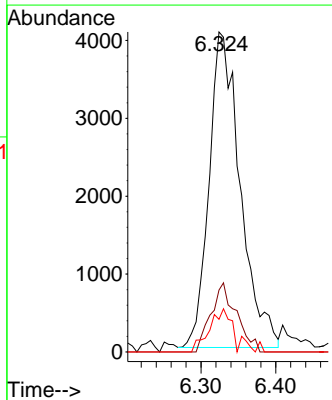
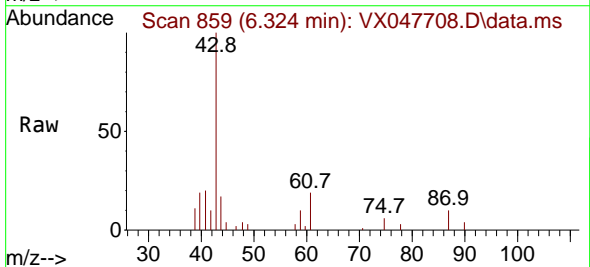
Instrument : MSVOA_X
 ClientSampleId : 34922

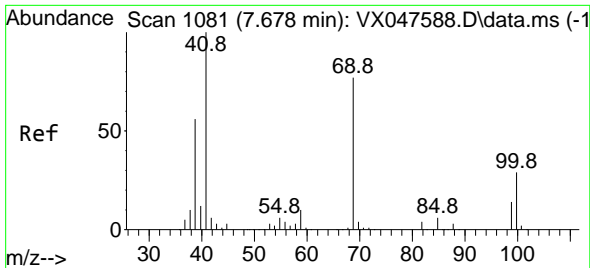
Tgt Ion: 62 Resp: 4505
 Ion Ratio Lower Upper
 62 100
 98 0.0 0.0 17.0



#43
 Isopropyl Acetate
 Concen: 2.159 ug/l
 RT: 6.324 min Scan# 859
 Delta R.T. -0.000 min
 Lab File: VX047708.D
 Acq: 22 Sep 2025 16:32

Tgt Ion: 43 Resp: 11726
 Ion Ratio Lower Upper
 43 100
 61 18.0 15.2 22.8
 87 10.7 9.6 14.4



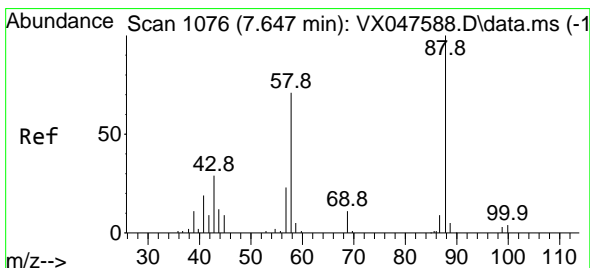
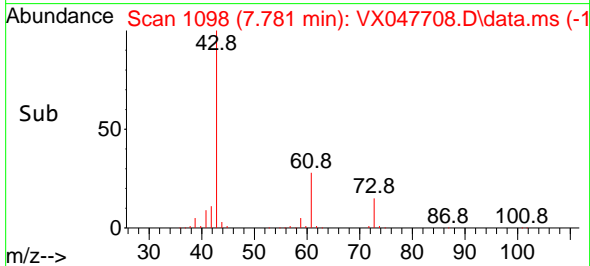
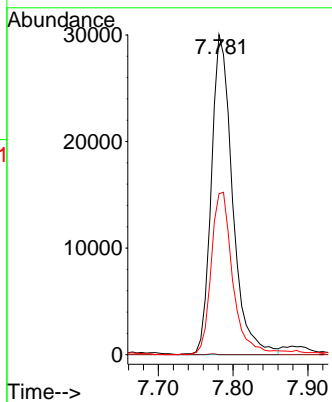
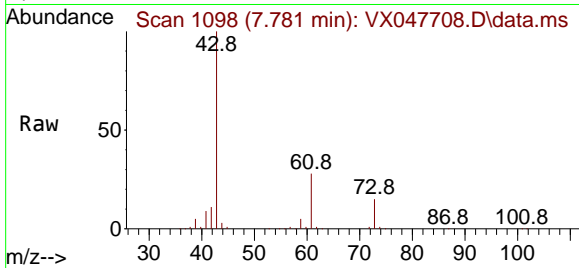


#48
 Methyl methacrylate
 Concen: 21.858 ug/l
 RT: 7.781 min Scan# 1098
 Delta R.T. 0.103 min
 Lab File: VX047708.D
 Acq: 22 Sep 2025 16:32

Instrument : MSVOA_X
 ClientSampleId : 34922

Tgt Ion: 41 Resp: 59122

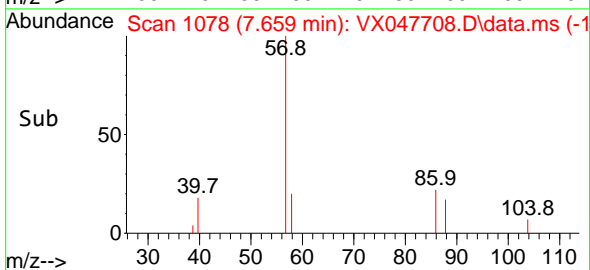
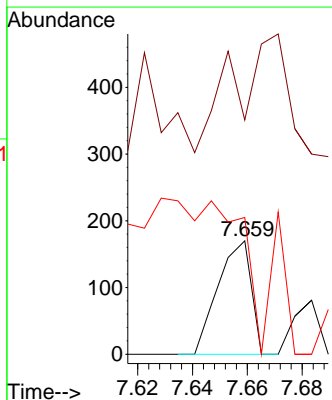
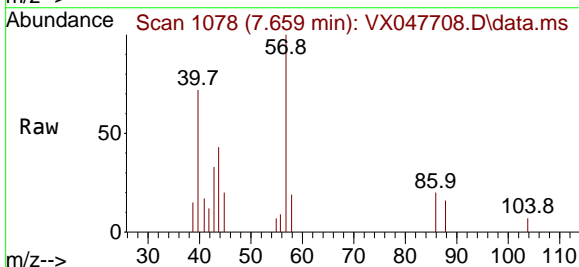
Ion	Ratio	Lower	Upper
41	100		
69	0.1	61.4	92.2#
39	53.3	45.8	68.6

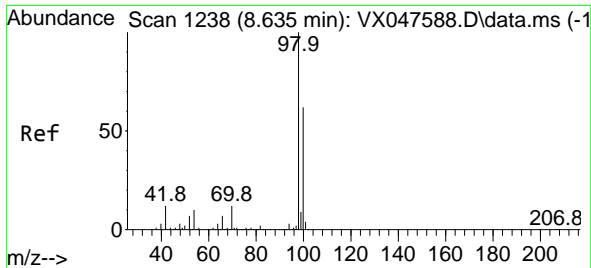


#49
 1,4-Dioxane
 Concen: 5.195 ug/l
 RT: 7.659 min Scan# 1078
 Delta R.T. 0.012 min
 Lab File: VX047708.D
 Acq: 22 Sep 2025 16:32

Tgt Ion: 88 Resp: 142

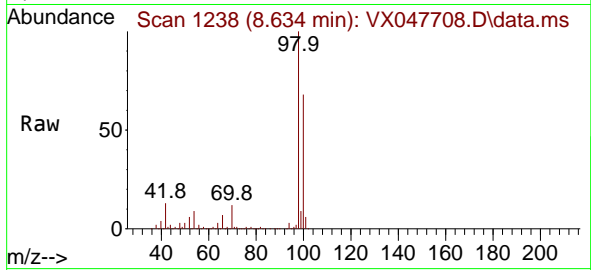
Ion	Ratio	Lower	Upper
88	100		
43	0.0	30.2	45.2#
58	0.0	59.5	89.3#



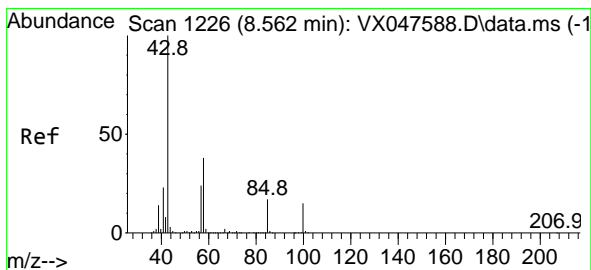
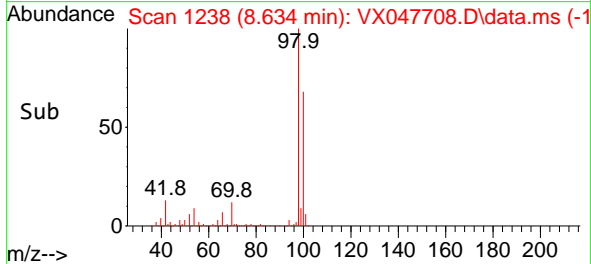
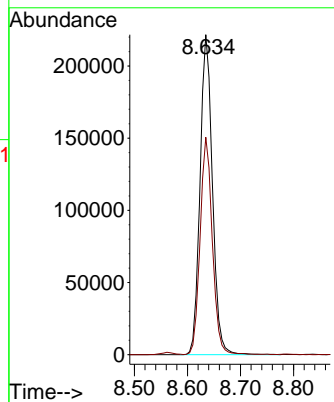


#50
 Toluene-d8
 Concen: 49.236 ug/l
 RT: 8.634 min Scan# 11
 Delta R.T. -0.000 min
 Lab File: VX047708.D
 Acq: 22 Sep 2025 16:32

Instrument :
 MSVOA_X
 ClientSampleId :
 34922

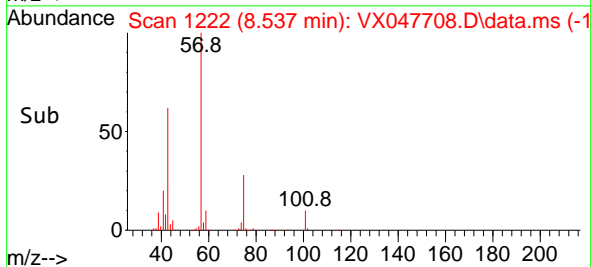
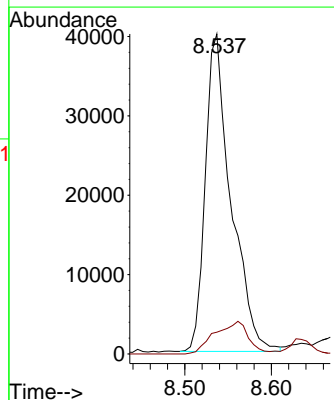
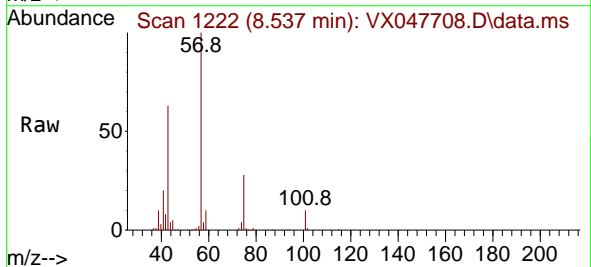


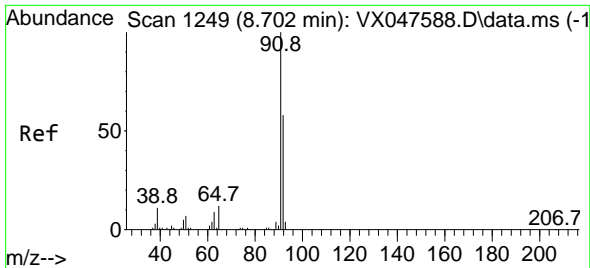
Tgt Ion: 98 Resp: 360536
 Ion Ratio Lower Upper
 98 100
 100 66.8 53.0 79.4



#51
 4-Methyl-2-Pentanone
 Concen: 27.360 ug/l
 RT: 8.537 min Scan# 1222
 Delta R.T. -0.025 min
 Lab File: VX047708.D
 Acq: 22 Sep 2025 16:32

Tgt Ion: 43 Resp: 82375
 Ion Ratio Lower Upper
 43 100
 58 0.0 30.3 45.5#

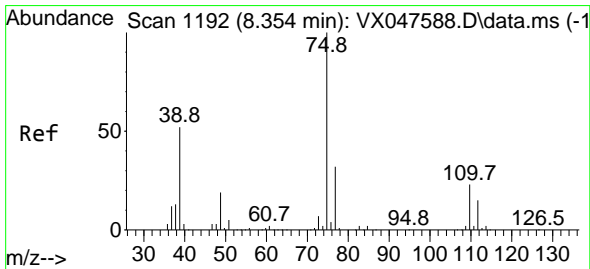
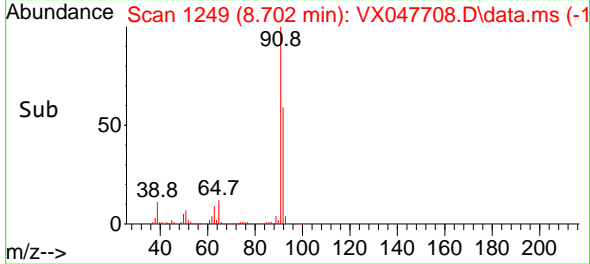
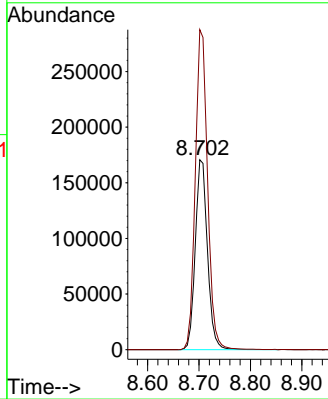
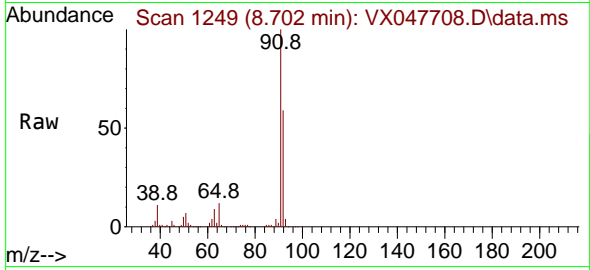




#52
 Toluene
 Concen: 48.708 ug/l
 RT: 8.702 min Scan# 11
 Delta R.T. -0.000 min
 Lab File: VX047708.D
 Acq: 22 Sep 2025 16:32

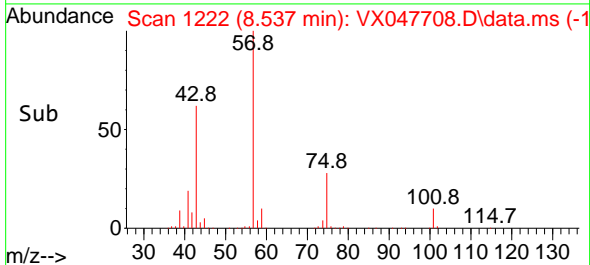
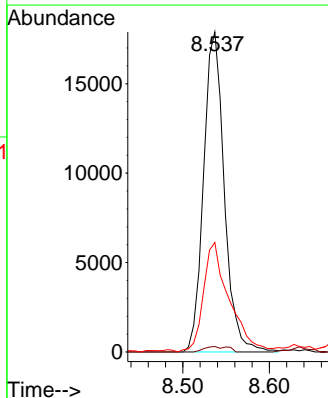
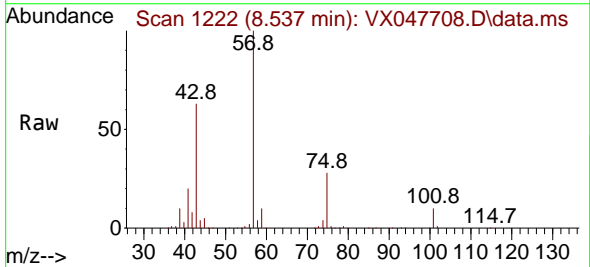
Instrument :
 MSVOA_X
 ClientSampleId :
 34922

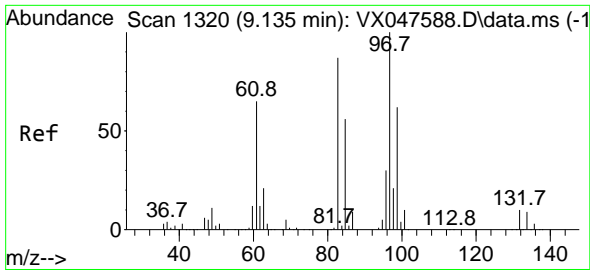
Tgt Ion: 92 Resp: 281852
 Ion Ratio Lower Upper
 92 100
 91 169.5 137.1 205.7



#54
 cis-1,3-Dichloropropene
 Concen: 7.556 ug/l
 RT: 8.537 min Scan# 1222
 Delta R.T. 0.183 min
 Lab File: VX047708.D
 Acq: 22 Sep 2025 16:32

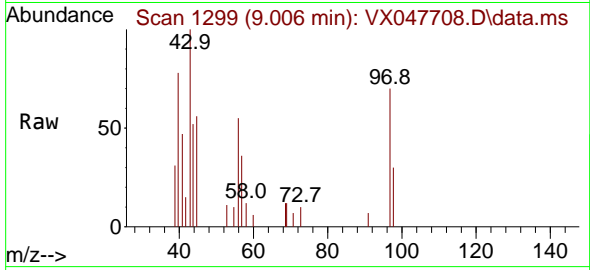
Tgt Ion: 75 Resp: 29752
 Ion Ratio Lower Upper
 75 100
 77 1.7 25.8 38.6#
 39 32.9 41.4 62.2#





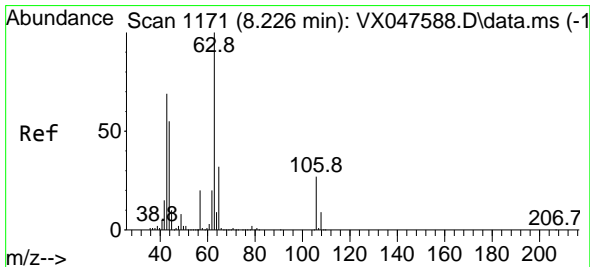
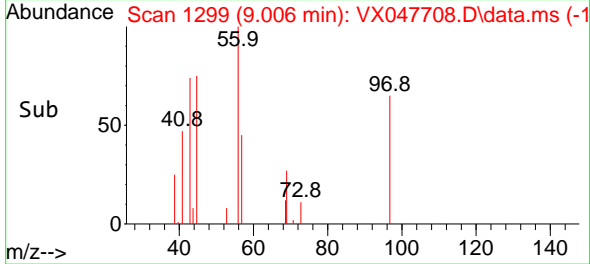
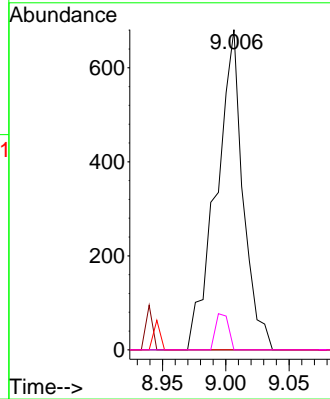
#55
 1,1,2-Trichloroethane
 Concen: 0.450 ug/l
 RT: 9.006 min Scan# 1199
 Delta R.T. -0.128 min
 Lab File: VX047708.D
 Acq: 22 Sep 2025 16:32

Instrument : MSVOA_X
 ClientSampleId : 34922



Tgt Ion: 97 Resp: 1003

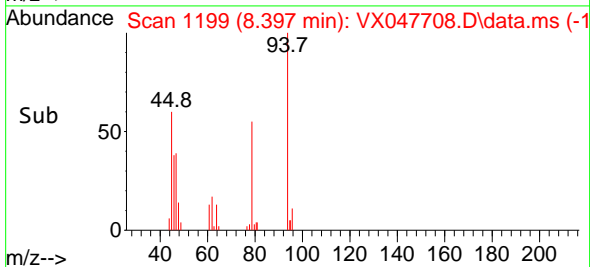
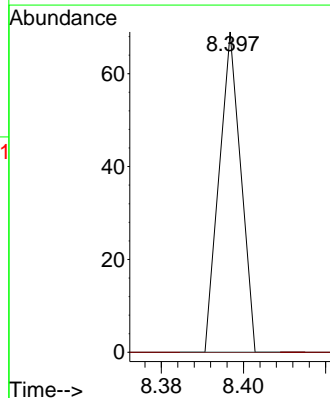
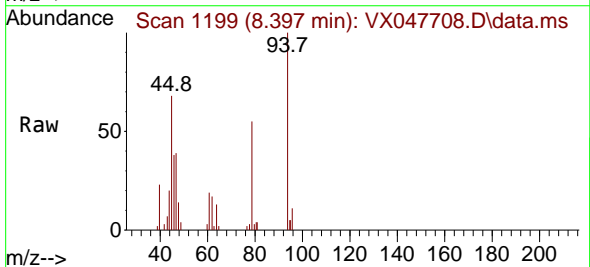
Ion	Ratio	Lower	Upper
97	100		
83	0.0	69.6	104.4#
85	0.0	45.0	67.6#
99	0.0	49.6	74.4#

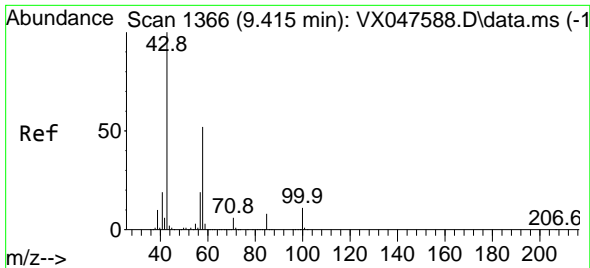


#58
 2-Chloroethyl Vinyl ether
 Concen: 7.907 ug/l
 RT: 8.397 min Scan# 1199
 Delta R.T. 0.171 min
 Lab File: VX047708.D
 Acq: 22 Sep 2025 16:32

Tgt Ion: 63 Resp: 25

Ion	Ratio	Lower	Upper
63	100		
106	0.0	21.9	32.9#

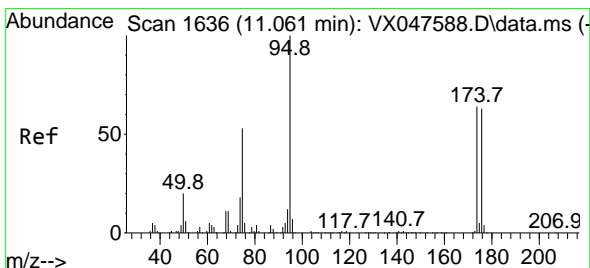
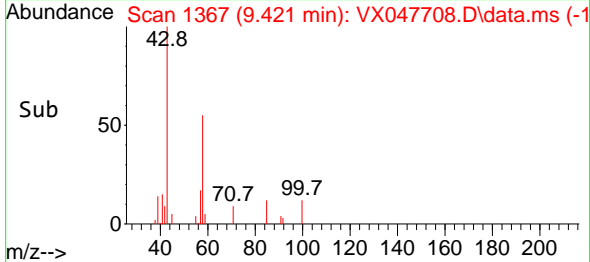
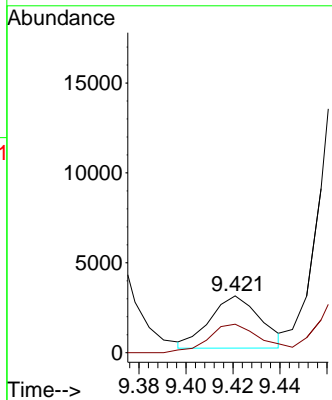
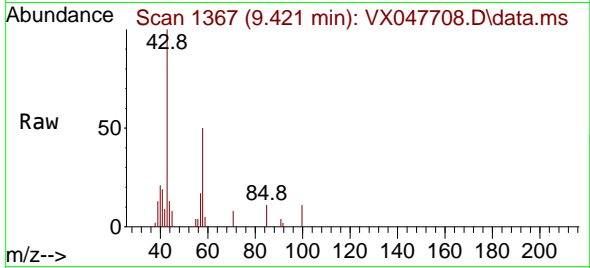




#59
 2-Hexanone
 Concen: 2.007 ug/l
 RT: 9.421 min Scan# 11
 Delta R.T. 0.006 min
 Lab File: VX047708.D
 Acq: 22 Sep 2025 16:32

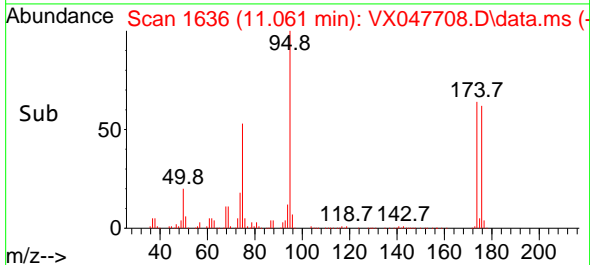
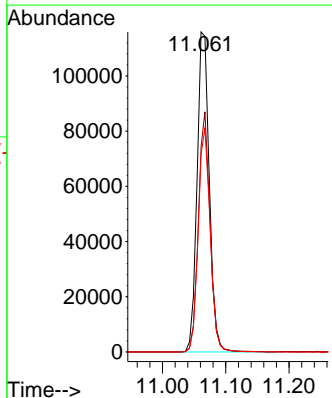
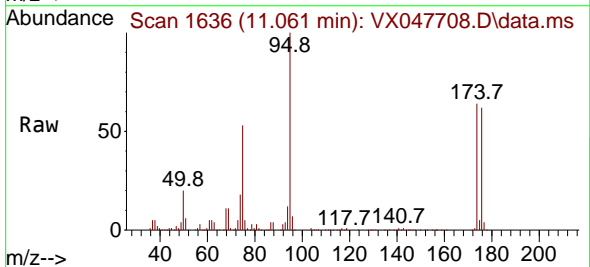
Instrument :
 MSVOA_X
 ClientSampleId :
 34922

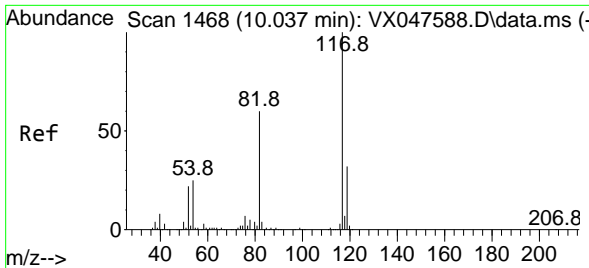
Tgt Ion: 43 Resp: 4339
 Ion Ratio Lower Upper
 43 100
 58 57.5 26.1 78.2



#62
 4-Bromofluorobenzene
 Concen: 56.358 ug/l
 RT: 11.061 min Scan# 1636
 Delta R.T. -0.000 min
 Lab File: VX047708.D
 Acq: 22 Sep 2025 16:32

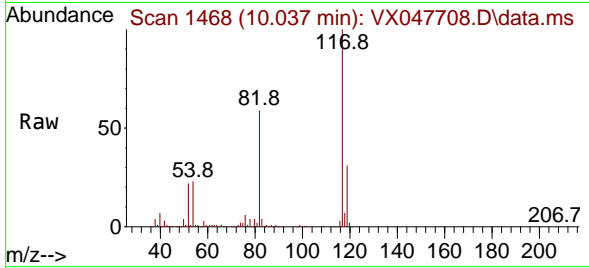
Tgt Ion: 95 Resp: 156623
 Ion Ratio Lower Upper
 95 100
 174 71.2 0.0 141.6
 176 68.3 0.0 138.4





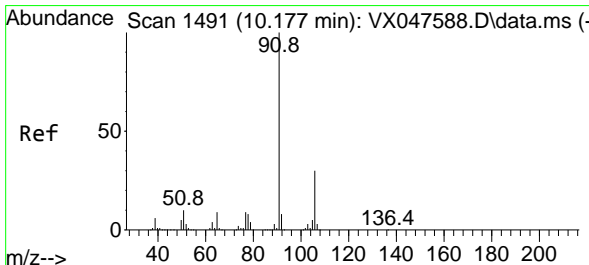
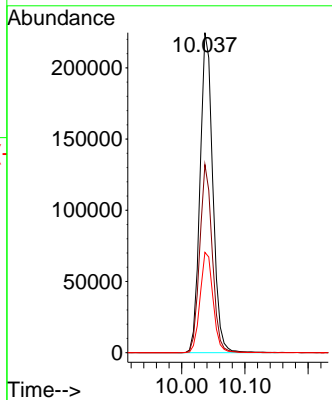
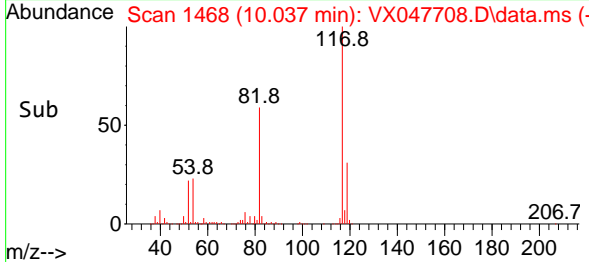
#63
 Chlorobenzene-d5
 Concen: 50.000 ug/l
 RT: 10.037 min Scan# 1468
 Delta R.T. -0.000 min
 Lab File: VX047708.D
 Acq: 22 Sep 2025 16:32

Instrument : MSVOA_X
 ClientSampleId : 34922

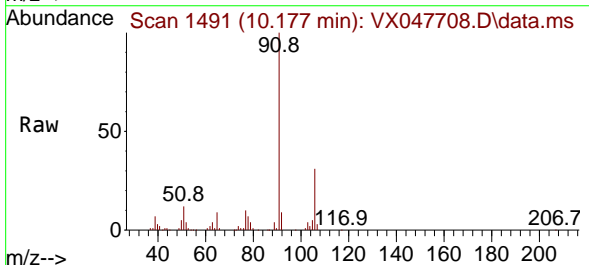


Tgt Ion: 117 Resp: 315662

Ion	Ratio	Lower	Upper
117	100		
82	58.8	47.8	71.6
119	31.4	25.2	37.8

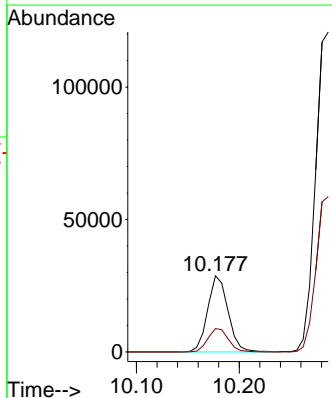
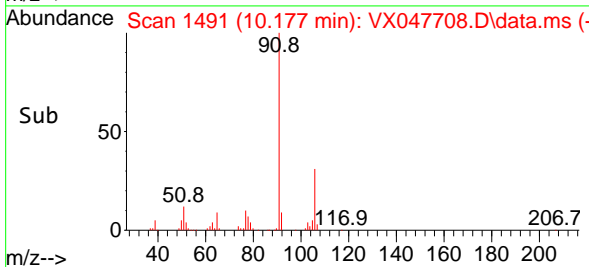


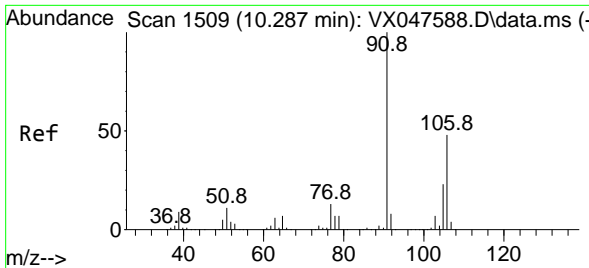
#67
 Ethyl Benzene
 Concen: 3.202 ug/l
 RT: 10.177 min Scan# 1491
 Delta R.T. -0.000 min
 Lab File: VX047708.D
 Acq: 22 Sep 2025 16:32



Tgt Ion: 91 Resp: 39618

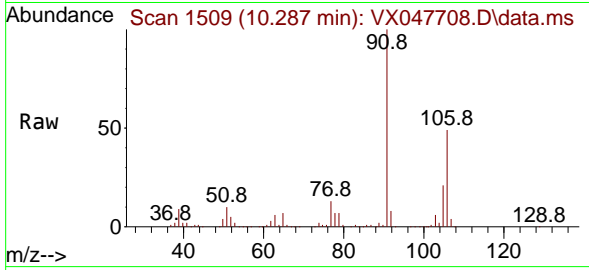
Ion	Ratio	Lower	Upper
91	100		
106	30.6	24.3	36.5



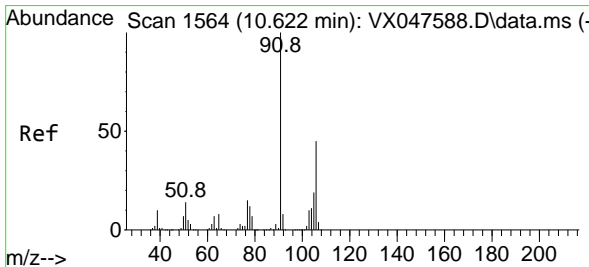
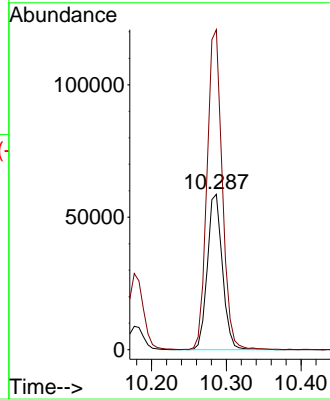
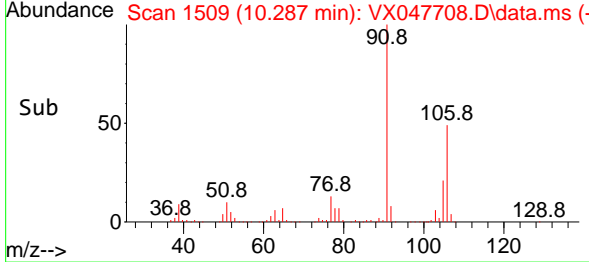


#68
 m/p-Xylenes
 Concen: 17.814 ug/l
 RT: 10.287 min Scan# 1509
 Delta R.T. -0.000 min
 Lab File: VX047708.D
 Acq: 22 Sep 2025 16:32

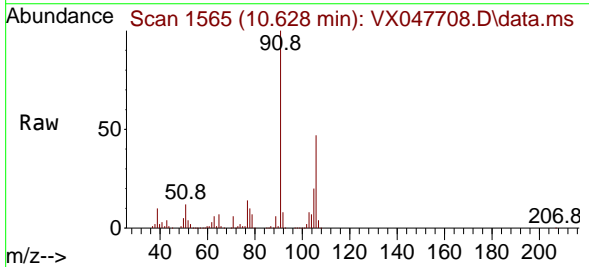
Instrument : MSVOA_X
 ClientSampleId : 34922



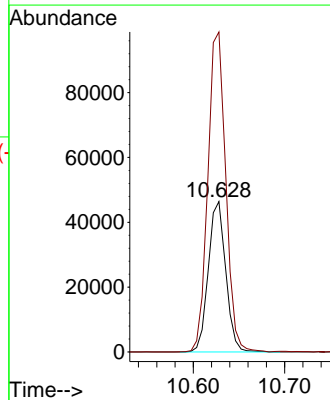
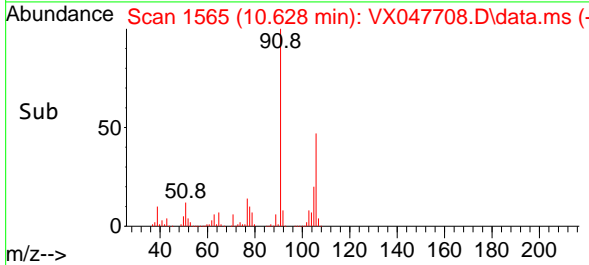
Tgt Ion:106 Resp: 82042
 Ion Ratio Lower Upper
 106 100
 91 208.5 167.8 251.8

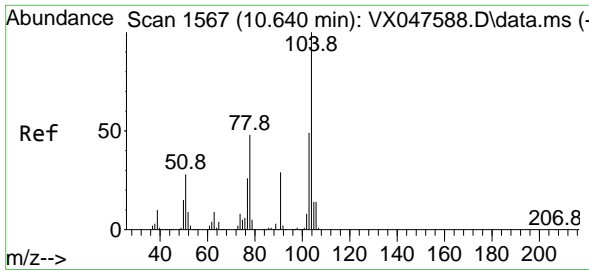


#69
 o-Xylene
 Concen: 13.760 ug/l
 RT: 10.628 min Scan# 1565
 Delta R.T. 0.006 min
 Lab File: VX047708.D
 Acq: 22 Sep 2025 16:32



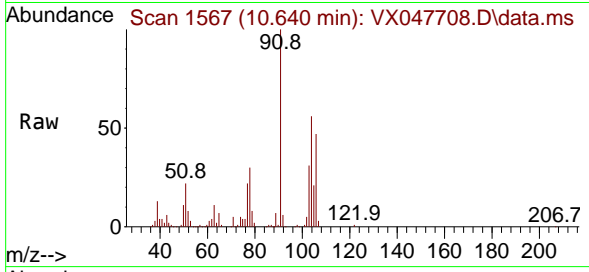
Tgt Ion:106 Resp: 61296
 Ion Ratio Lower Upper
 106 100
 91 218.9 111.1 333.4



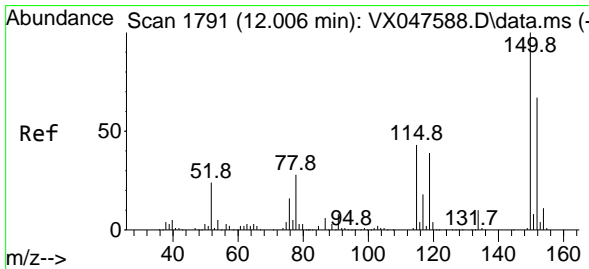
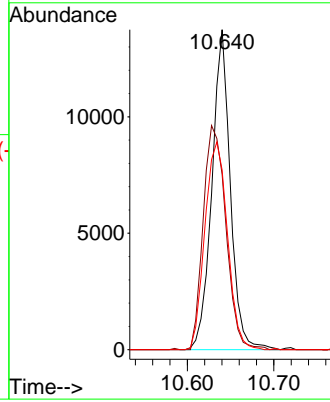
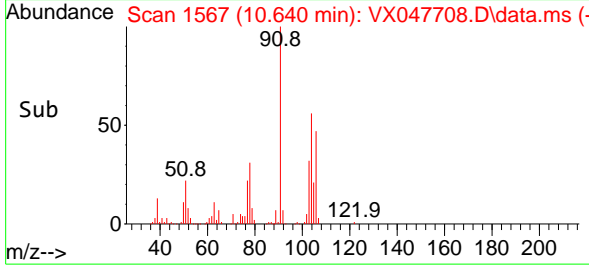


#70
 Styrene
 Concen: 2.603 ug/l
 RT: 10.640 min Scan# 11
 Delta R.T. -0.000 min
 Lab File: VX047708.D
 Acq: 22 Sep 2025 16:32

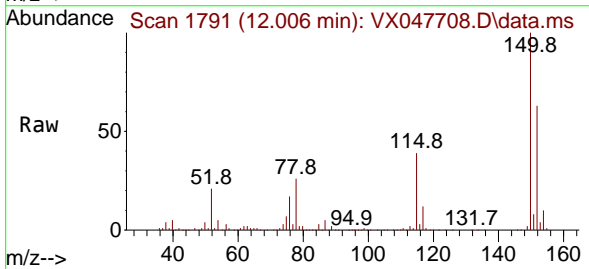
Instrument :
 MSVOA_X
 ClientSampleId :
 34922



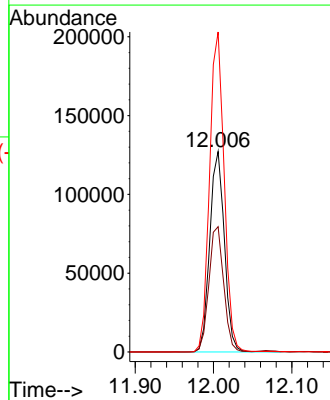
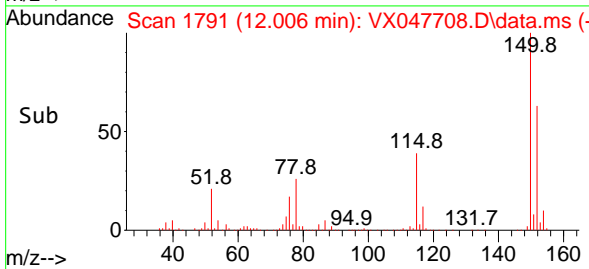
Tgt Ion:104 Resp: 20321
 Ion Ratio Lower Upper
 104 100
 78 86.1 43.1 64.7#
 103 79.5 43.1 64.7#

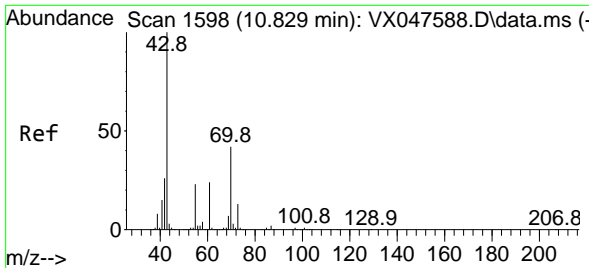


#72
 1,4-Dichlorobenzene-d4
 Concen: 50.000 ug/l
 RT: 12.006 min Scan# 1791
 Delta R.T. -0.000 min
 Lab File: VX047708.D
 Acq: 22 Sep 2025 16:32



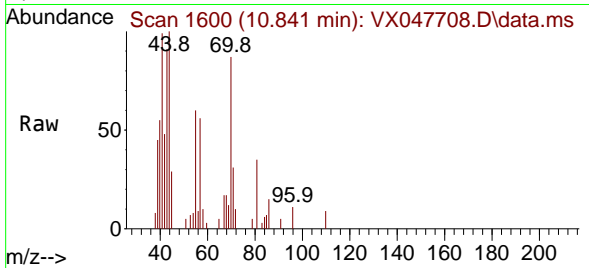
Tgt Ion:152 Resp: 164905
 Ion Ratio Lower Upper
 152 100
 115 63.2 44.9 134.5
 150 159.4 0.0 352.0





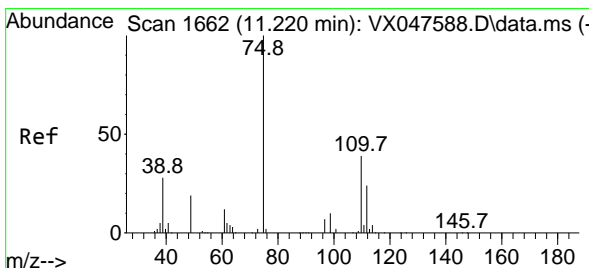
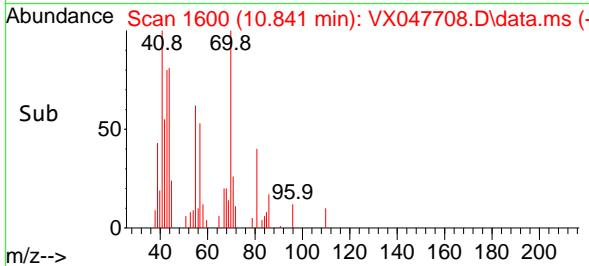
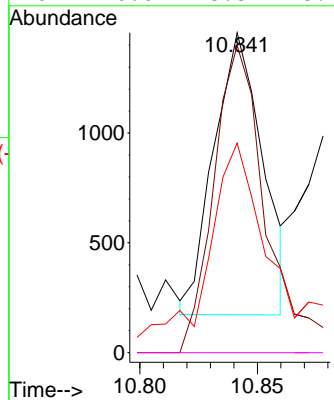
#74
 N-amy1 acetate
 Concen: 0.325 ug/l
 RT: 10.841 min Scan# 1
 Delta R.T. 0.012 min
 Lab File: VX047708.D
 Acq: 22 Sep 2025 16:32

Instrument :
 MSVOA_X
 ClientSampleId :
 34922



Tgt Ion: 43 Resp: 1857

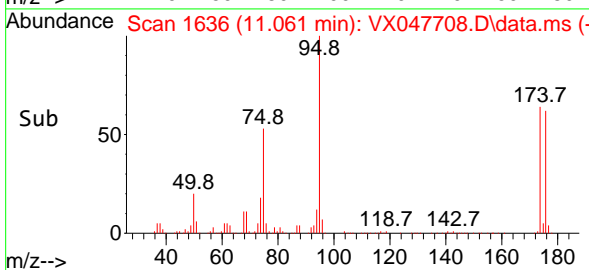
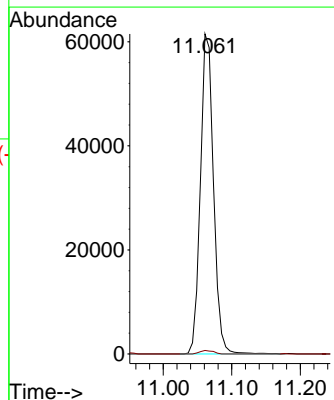
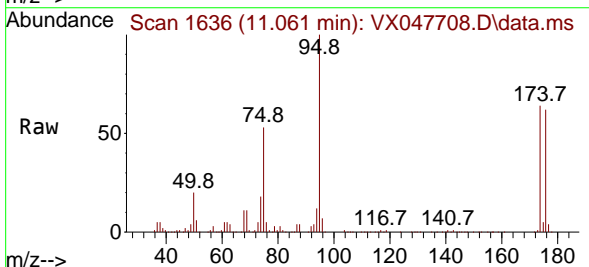
Ion	Ratio	Lower	Upper
43	100		
70	120.9	32.0	48.0#
55	100.6	18.9	28.3#
61	0.0	18.8	28.2#

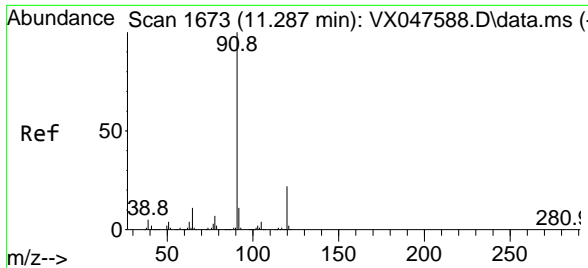


#76
 1,2,3-Trichloropropane
 Concen: 24.564 ug/l
 RT: 11.061 min Scan# 1636
 Delta R.T. -0.159 min
 Lab File: VX047708.D
 Acq: 22 Sep 2025 16:32

Tgt Ion: 75 Resp: 82014

Ion	Ratio	Lower	Upper
75	100		
77	1.1	18.8	56.4#

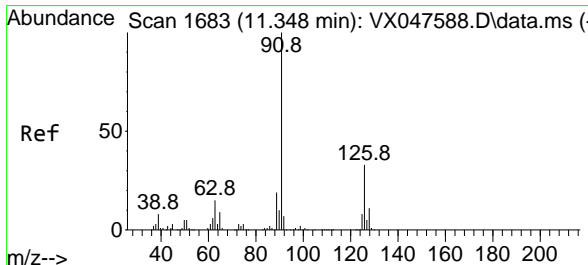
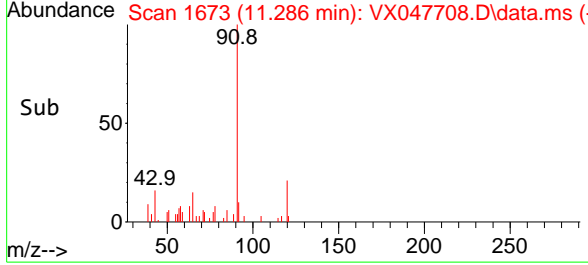
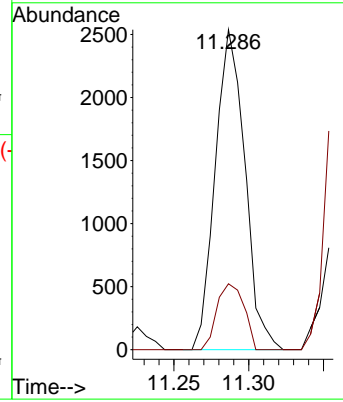
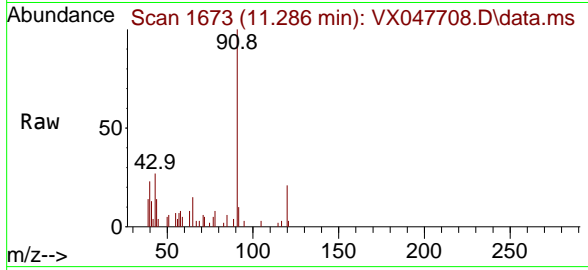




#78
 n-propylbenzene
 Concen: 0.236 ug/l
 RT: 11.286 min Scan# 1673
 Delta R.T. -0.000 min
 Lab File: VX047708.D
 Acq: 22 Sep 2025 16:32

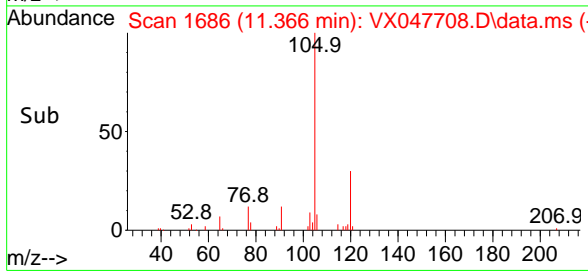
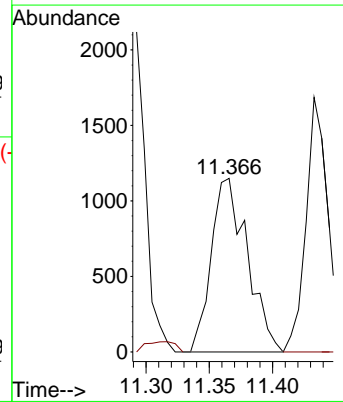
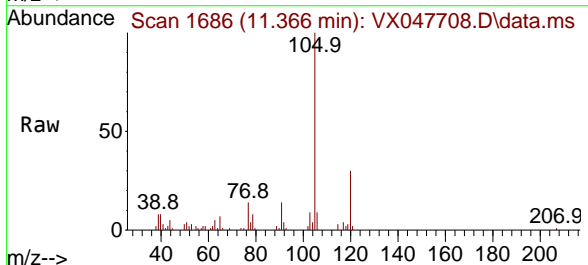
Instrument : MSVOA_X
 ClientSampleId : 34922

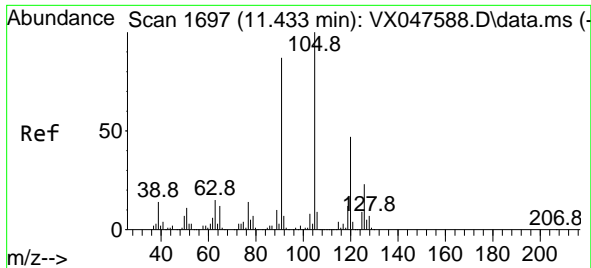
Tgt Ion: 91 Resp: 3501
 Ion Ratio Lower Upper
 91 100
 120 18.9 11.1 33.1



#79
 2-Chlorotoluene
 Concen: 0.251 ug/l
 RT: 11.366 min Scan# 1686
 Delta R.T. 0.018 min
 Lab File: VX047708.D
 Acq: 22 Sep 2025 16:32

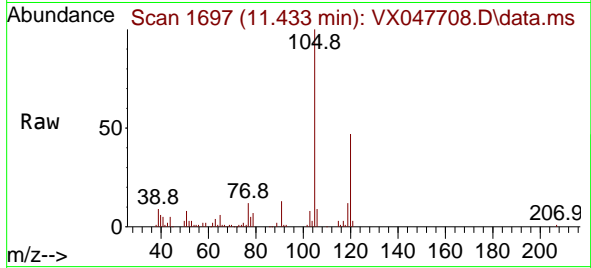
Tgt Ion: 91 Resp: 2275
 Ion Ratio Lower Upper
 91 100
 126 0.0 16.1 48.3#



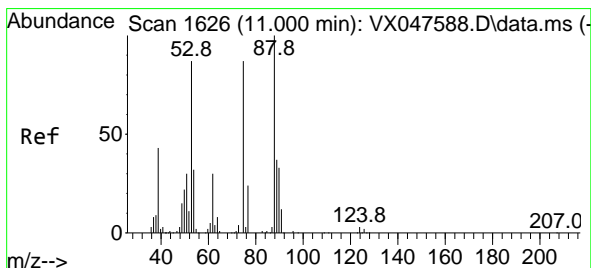
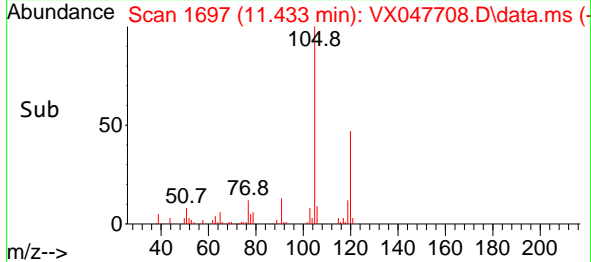
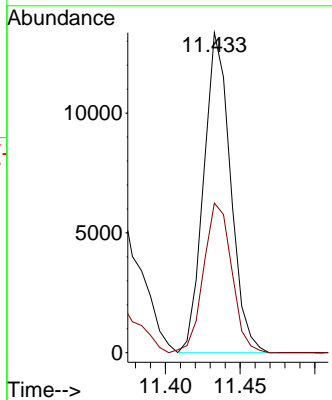


#80
 1,3,5-Trimethylbenzene
 Concen: 1.616 ug/l
 RT: 11.433 min Scan# 11
 Delta R.T. -0.000 min
 Lab File: VX047708.D
 Acq: 22 Sep 2025 16:32

Instrument :
 MSVOA_X
 ClientSampleId :
 34922

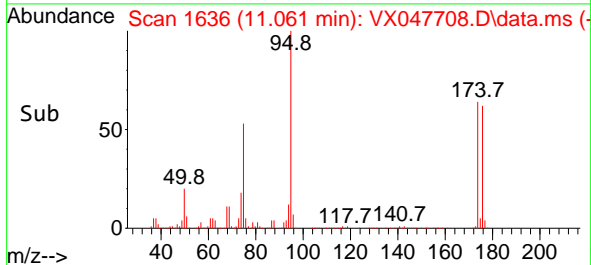
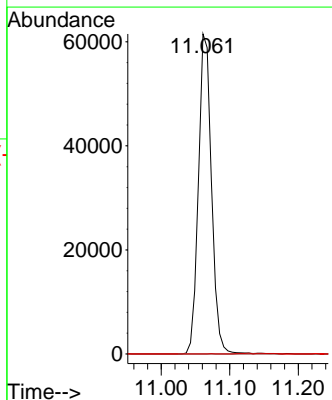
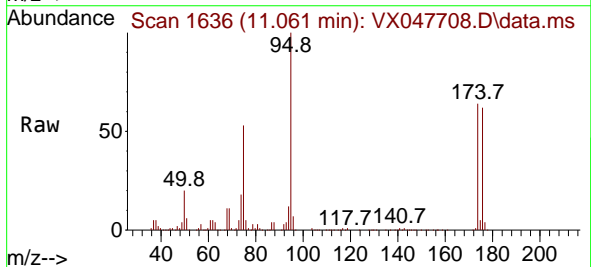


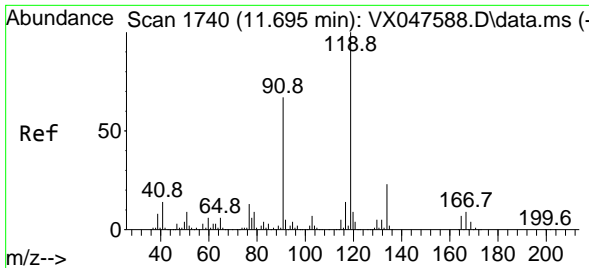
Tgt Ion:105 Resp: 16648
 Ion Ratio Lower Upper
 105 100
 120 49.0 23.6 70.8



#81
 trans-1,4-Dichloro-2-butene
 Concen: 62.641 ug/l
 RT: 11.061 min Scan# 1636
 Delta R.T. 0.061 min
 Lab File: VX047708.D
 Acq: 22 Sep 2025 16:32

Tgt Ion: 75 Resp: 82014
 Ion Ratio Lower Upper
 75 100
 53 0.0 83.4 125.2#
 89 0.0 36.3 54.5#



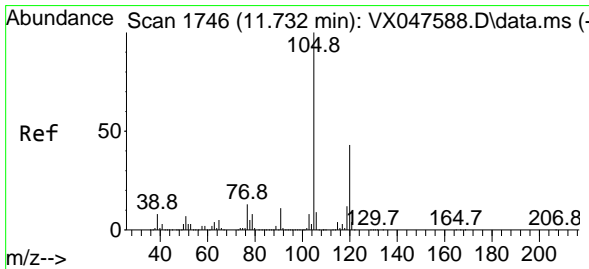
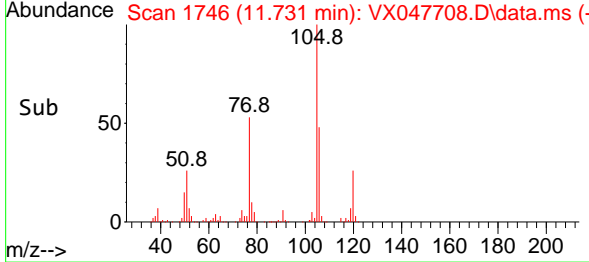
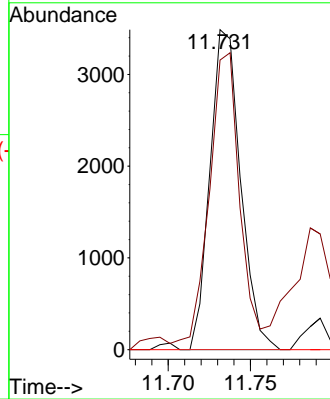
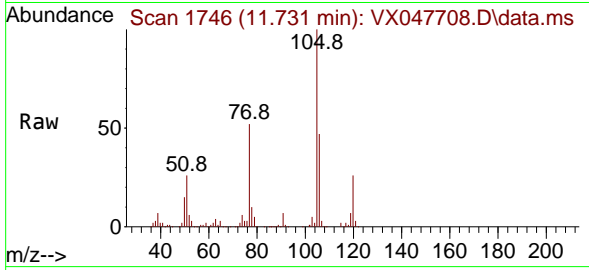


#83
 tert-Butylbenzene
 Concen: 0.428 ug/l
 RT: 11.731 min Scan# 1746
 Delta R.T. 0.036 min
 Lab File: VX047708.D
 Acq: 22 Sep 2025 16:32

Instrument : MSVOA_X
 ClientSampleId : 34922

Tgt Ion:119 Resp: 4515

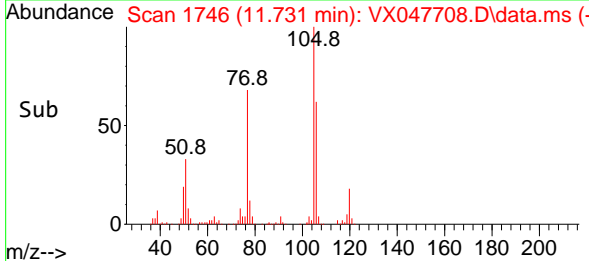
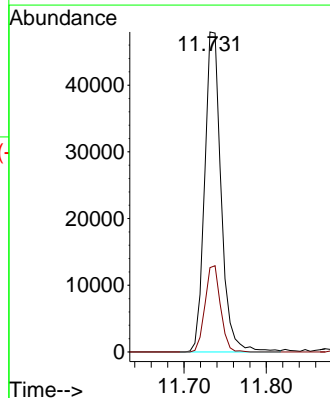
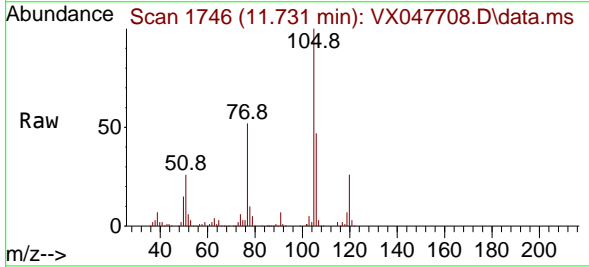
Ion	Ratio	Lower	Upper
119	100		
91	88.0	29.6	88.8
134	0.0	11.0	33.0#

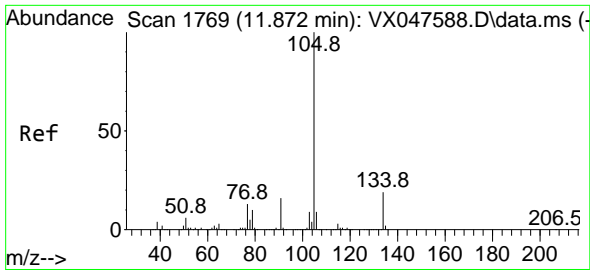


#84
 1,2,4-Trimethylbenzene
 Concen: 6.395 ug/l
 RT: 11.731 min Scan# 1746
 Delta R.T. -0.000 min
 Lab File: VX047708.D
 Acq: 22 Sep 2025 16:32

Tgt Ion:105 Resp: 66781

Ion	Ratio	Lower	Upper
105	100		
120	25.3	22.1	66.1

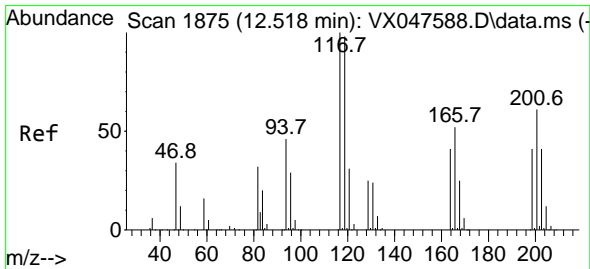
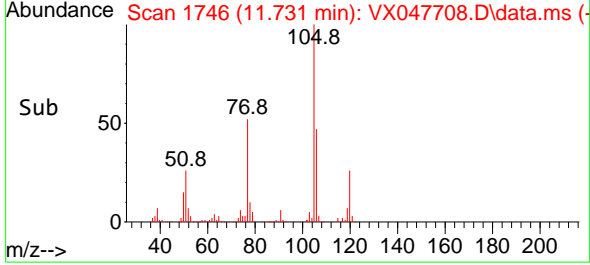
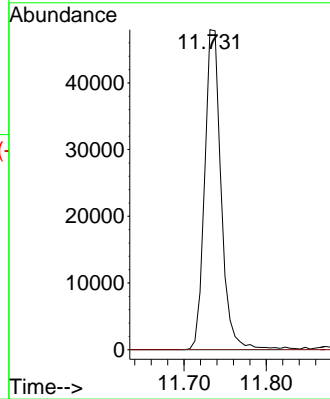
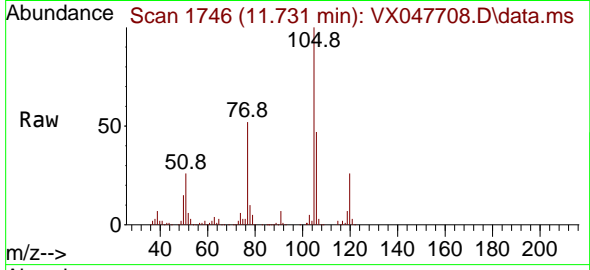




#85
 sec-Butylbenzene
 Concen: 5.332 ug/l
 RT: 11.731 min Scan# 1746
 Delta R.T. -0.140 min
 Lab File: VX047708.D
 Acq: 22 Sep 2025 16:32

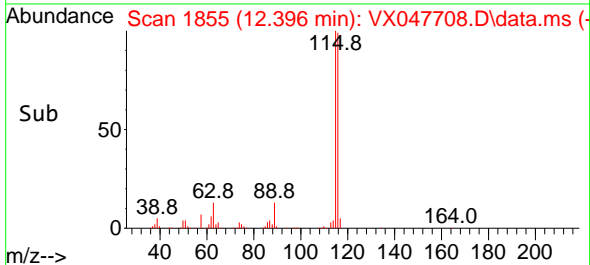
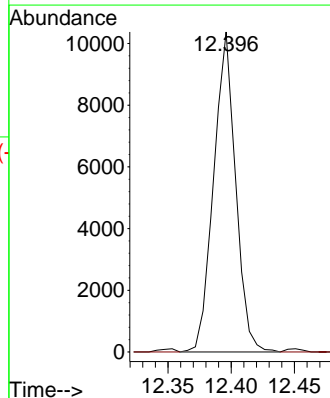
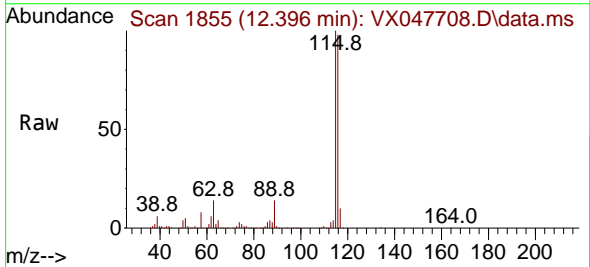
Instrument : MSVOA_X
 ClientSampleId : 34922

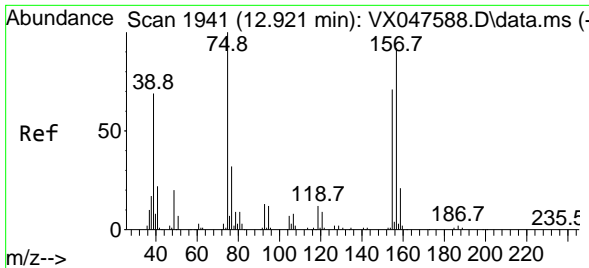
Tgt Ion:105 Resp: 66781
 Ion Ratio Lower Upper
 105 100
 134 0.0 9.8 29.5#



#90
 Hexachloroethane
 Concen: 6.729 ug/l
 RT: 12.396 min Scan# 1855
 Delta R.T. -0.122 min
 Lab File: VX047708.D
 Acq: 22 Sep 2025 16:32

Tgt Ion:117 Resp: 12526
 Ion Ratio Lower Upper
 117 100
 201 0.0 34.2 102.5#



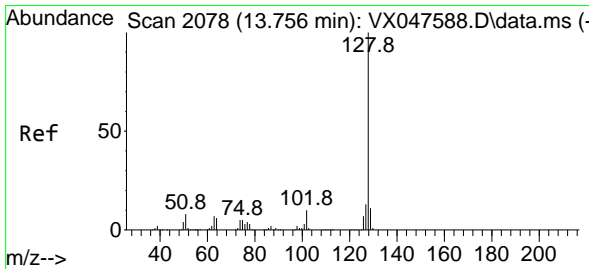
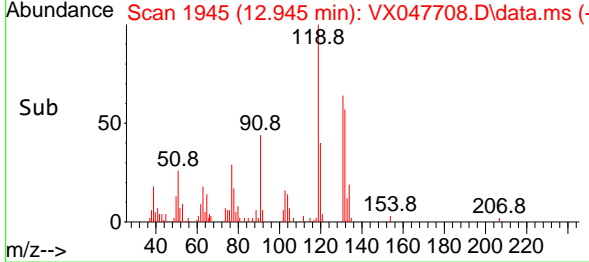
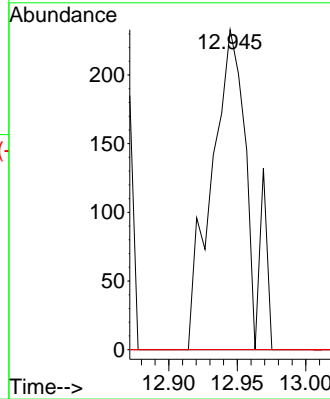
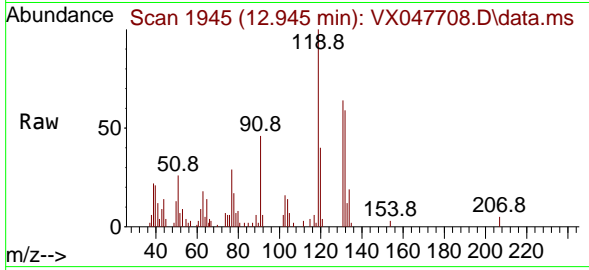


#92
 1,2-Dibromo-3-Chloropropane
 Concen: 0.569 ug/l
 RT: 12.945 min Scan# 1945
 Delta R.T. 0.024 min
 Lab File: VX047708.D
 Acq: 22 Sep 2025 16:32

Instrument : MSVOA_X
 ClientSampleId : 34922

Tgt Ion: 75 Resp: 437

Ion	Ratio	Lower	Upper
75	100		
155	0.0	37.7	113.1#
157	0.0	49.8	149.4#



#95
 Naphthalene
 Concen: 184.716 ug/l
 RT: 13.756 min Scan# 2078
 Delta R.T. -0.000 min
 Lab File: VX047708.D
 Acq: 22 Sep 2025 16:32

Tgt Ion: 128 Resp: 1997437

Ion	Ratio	Lower	Upper
128	100		
127	12.8	10.2	15.2
129	11.1	8.8	13.2

