

Data Path : Z:\voasrv\HPCHEM1\MSVOA_X\Data\VX092225\
 Data File : VX047709.D
 Acq On : 22 Sep 2025 16:53
 Operator : JC/MD
 Sample : Q3136-02
 Misc : 5.0mL/MSVOA_X/WATER
 ALS Vial : 22 Sample Multiplier: 1

Instrument :
 MSVOA_X
 ClientSampleId :
 34923

Quant Time: Sep 23 01:38:22 2025
 Quant Method : Z:\voasrv\HPCHEM1\MSVOA_X\Method\82X091625W.M
 Quant Title : SW846 8260
 QLast Update : Wed Sep 17 06:39:58 2025
 Response via : Initial Calibration

Compound	R.T.	QIon	Response	Conc	Units	Dev(Min)
Internal Standards						
1) Pentafluorobenzene	5.543	168	134100	50.000	ug/l	0.00
34) 1,4-Difluorobenzene	6.751	114	278097	50.000	ug/l	0.00
63) Chlorobenzene-d5	10.037	117	274230	50.000	ug/l	0.00
72) 1,4-Dichlorobenzene-d4	12.006	152	139025	50.000	ug/l	0.00
System Monitoring Compounds						
33) 1,2-Dichloroethane-d4	5.946	65	107143	50.195	ug/l	0.00
Spiked Amount	50.000	Range 78 - 117	Recovery	=	100.400%	
35) Dibromofluoromethane	5.373	113	88284	47.335	ug/l	0.00
Spiked Amount	50.000	Range 75 - 124	Recovery	=	94.680%	
50) Toluene-d8	8.634	98	314777	48.776	ug/l	0.00
Spiked Amount	50.000	Range 92 - 112	Recovery	=	97.560%	
62) 4-Bromofluorobenzene	11.067	95	133291	54.422	ug/l	0.00
Spiked Amount	50.000	Range 83 - 123	Recovery	=	108.840%	
Target Compounds						
						Qvalue
11) Tert butyl alcohol	2.946	59	2611	10.983	ug/l #	92
13) Acrolein	2.239	56	692	3.159	ug/l #	73
15) Acrylonitrile	3.074	53	207	0.235	ug/l #	55
16) Acetone	2.373	43	32367	34.874	ug/l	94
17) Carbon Disulfide	2.520	76	3351	0.768	ug/l	98
18) Methyl Acetate	2.703	43	13380	6.478	ug/l	98
20) Methylene Chloride	2.794	84	31700	16.136	ug/l	93
25) 2-Butanone	4.556	43	6917	5.975	ug/l	99
29) Tetrahydrofuran	5.025	42	1232	1.769	ug/l #	39
36) 1,1-Dichloropropene	5.543	75	11332	4.158	ug/l #	50
37) Ethyl Acetate	4.714	43	7086	2.428	ug/l	98
38) Carbon Tetrachloride	5.537	117	14535	4.909	ug/l #	17
40) Benzene	6.031	78	180506	21.807	ug/l	98
41) Methacrylonitrile	5.007	41	816	0.542	ug/l #	44
42) 1,2-Dichloroethane	6.019	62	789	0.251	ug/l #	76
43) Isopropyl Acetate	6.336	43	12199	2.549	ug/l	97
48) Methyl methacrylate	7.781	41	66643	27.956	ug/l #	46
49) 1,4-Dioxane	7.787	88	44	1.826	ug/l #	1
51) 4-Methyl-2-Pentanone	8.537	43	85412	32.189	ug/l #	51
52) Toluene	8.701	92	138433	27.145	ug/l	97
54) cis-1,3-Dichloropropene	8.537	75	36740	10.588	ug/l #	58
55) 1,1,2-Trichloroethane	9.000	97	437	0.222	ug/l #	15
57) 1,3-Dichloropropane	9.470	76	2411	0.714	ug/l #	42
59) 2-Hexanone	9.470	43	37045	19.439	ug/l #	56
67) Ethyl Benzene	10.177	91	24907	2.317	ug/l	98
68) m/p-Xylenes	10.287	106	43184	10.793	ug/l	98
69) o-Xylene	10.628	106	25319	6.543	ug/l	100
70) Styrene	10.640	104	12285	1.812	ug/l #	75
76) 1,2,3-Trichloropropane	11.061	75	68737	24.420	ug/l #	40
78) n-propylbenzene	11.286	91	2520	0.202	ug/l	93
79) 2-Chlorotoluene	11.360	91	1562	0.204	ug/l #	42
80) 1,3,5-Trimethylbenzene	11.433	105	7969	0.918	ug/l	94
81) trans-1,4-Dichloro-2-b...	11.061	75	68737	62.274	ug/l #	8
84) 1,2,4-Trimethylbenzene	11.738	105	26109	2.966	ug/l	78
85) sec-Butylbenzene	11.738	105	26109	2.473	ug/l #	57
95) Naphthalene	13.755	128	706231	77.468	ug/l	100

Data Path : Z:\voasrv\HPCHEM1\MSVOA_X\Data\VX092225\
Data File : VX047709.D
Acq On : 22 Sep 2025 16:53
Operator : JC/MD
Sample : Q3136-02
Misc : 5.0mL/MSVOA_X/WATER
ALS Vial : 22 Sample Multiplier: 1

Instrument :
MSVOA_X
ClientSampleId :
34923

Quant Time: Sep 23 01:38:22 2025
Quant Method : Z:\voasrv\HPCHEM1\MSVOA_X\Method\82X091625W.M
Quant Title : SW846 8260
QLast Update : Wed Sep 17 06:39:58 2025
Response via : Initial Calibration

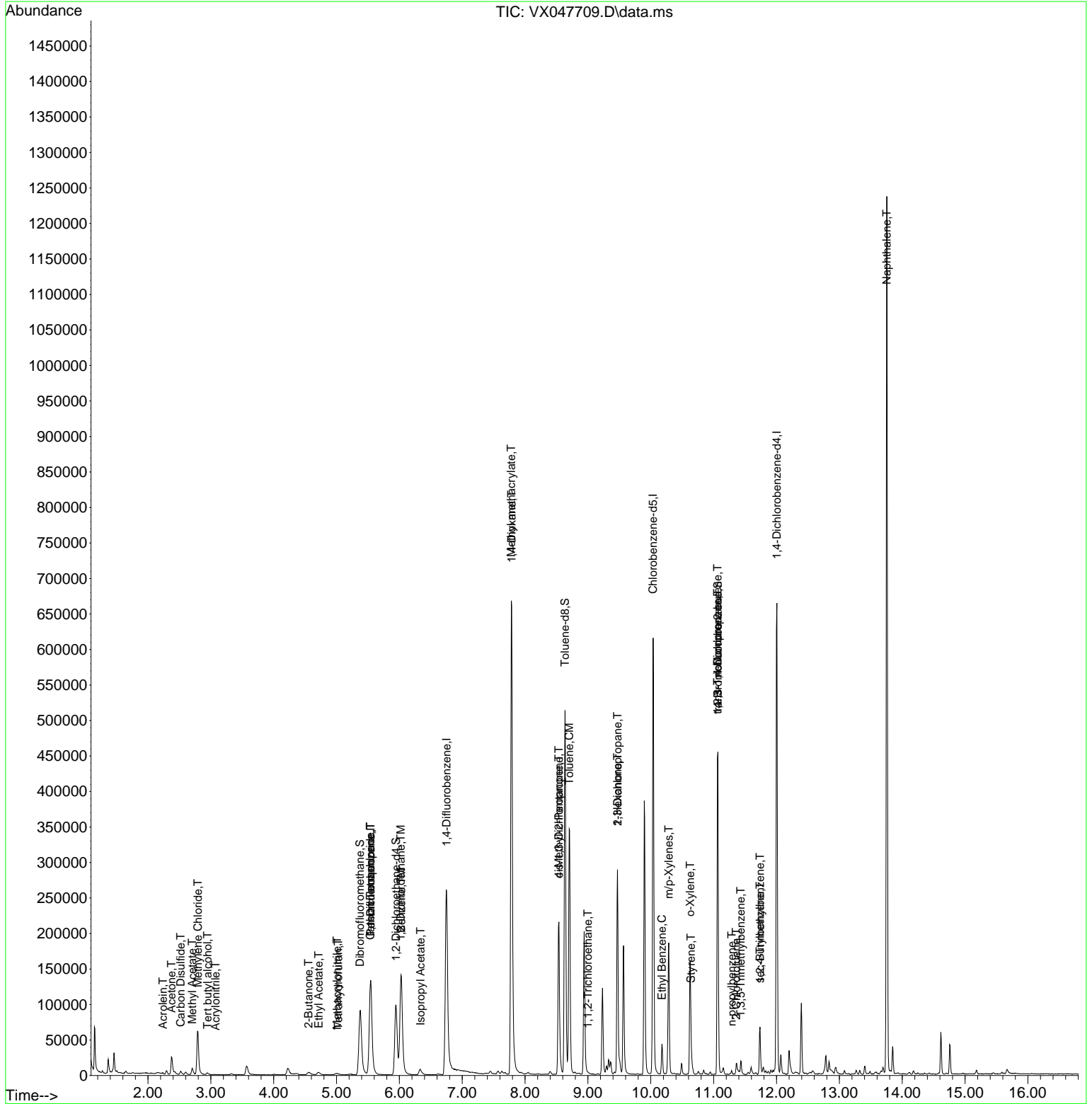
Compound	R.T.	QIon	Response	Conc	Units	Dev(Min)
----------	------	------	----------	------	-------	----------

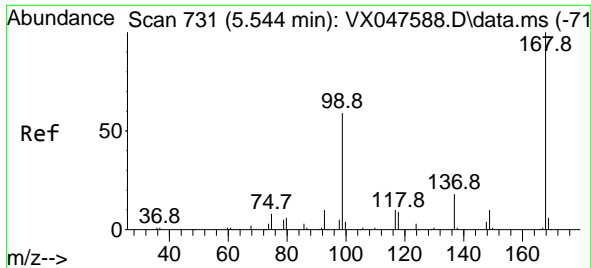
(#) = qualifier out of range (m) = manual integration (+) = signals summed

Data Path : Z:\voasrv\HPCHEM1\MSVOA_X\Data\VX092225\
 Data File : VX047709.D
 Acq On : 22 Sep 2025 16:53
 Operator : JC/MD
 Sample : Q3136-02
 Misc : 5.0mL/MSVOA_X/WATER
 ALS Vial : 22 Sample Multiplier: 1

Instrument :
 MSVOA_X
 ClientSampleId :
 34923

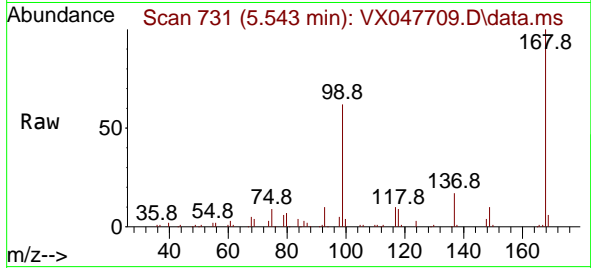
Quant Time: Sep 23 01:38:22 2025
 Quant Method : Z:\voasrv\HPCHEM1\MSVOA_X\Method\82X091625W.M
 Quant Title : SW846 8260
 QLast Update : Wed Sep 17 06:39:58 2025
 Response via : Initial Calibration



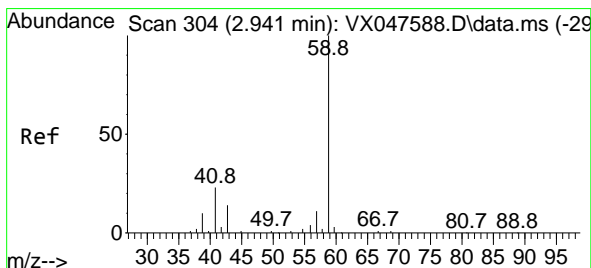
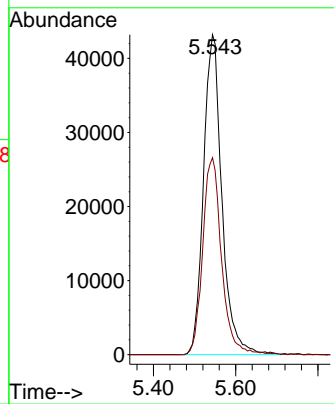
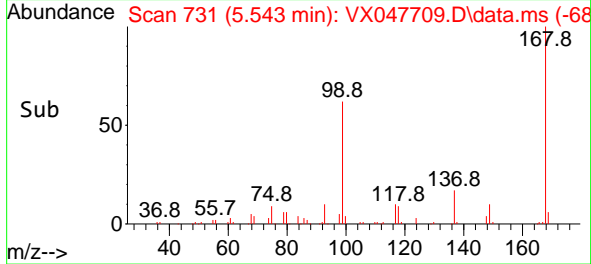


#1
 Pentafluorobenzene
 Concen: 50.000 ug/l
 RT: 5.543 min Scan# 71
 Delta R.T. -0.000 min
 Lab File: VX047709.D
 Acq: 22 Sep 2025 16:53

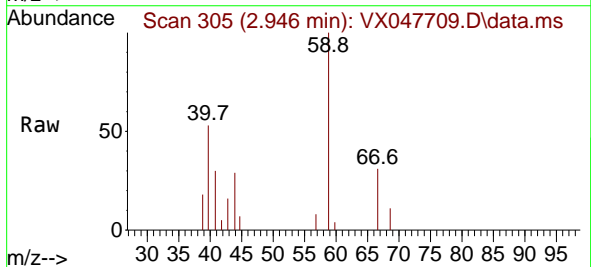
Instrument :
 MSVOA_X
 ClientSampleId :
 34923



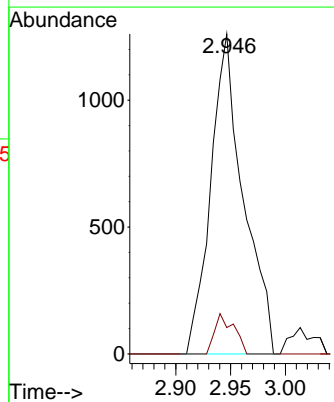
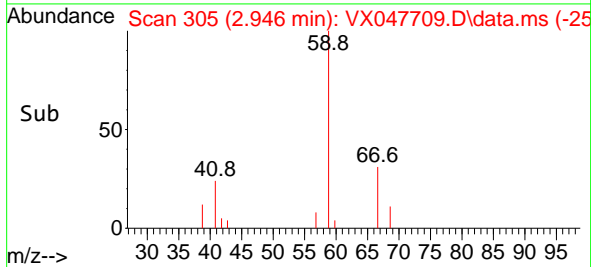
Tgt Ion:168 Resp: 134100
 Ion Ratio Lower Upper
 168 100
 99 61.6 48.8 73.2

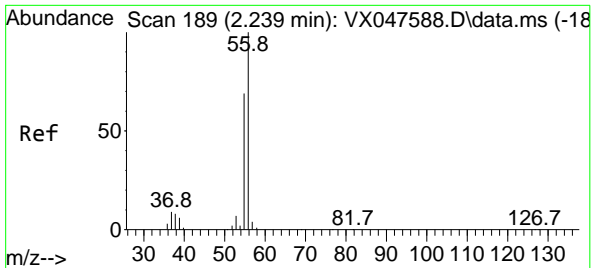


#11
 Tert butyl alcohol
 Concen: 10.983 ug/l
 RT: 2.946 min Scan# 305
 Delta R.T. 0.006 min
 Lab File: VX047709.D
 Acq: 22 Sep 2025 16:53



Tgt Ion: 59 Resp: 2611
 Ion Ratio Lower Upper
 59 100
 57 7.4 8.3 12.5#

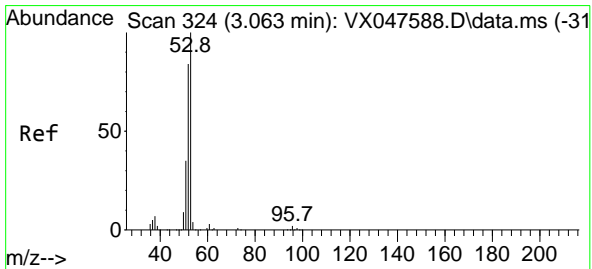
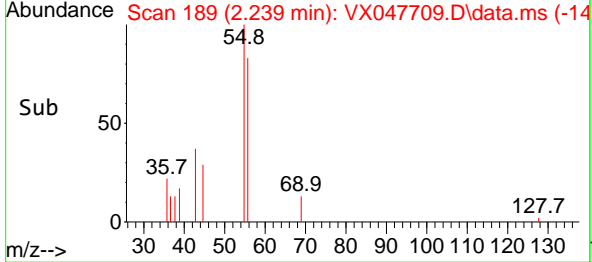
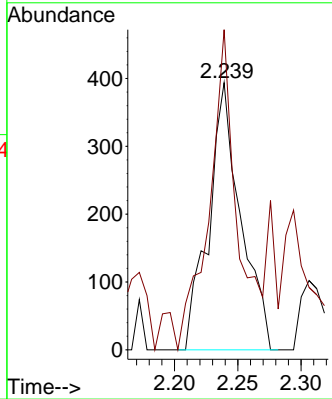
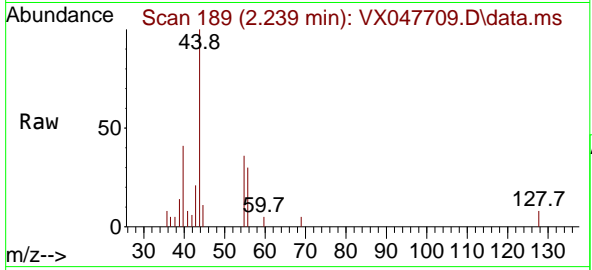




#13
 Acrolein
 Concen: 3.159 ug/l
 RT: 2.239 min Scan# 11
 Delta R.T. -0.000 min
 Lab File: VX047709.D
 Acq: 22 Sep 2025 16:53

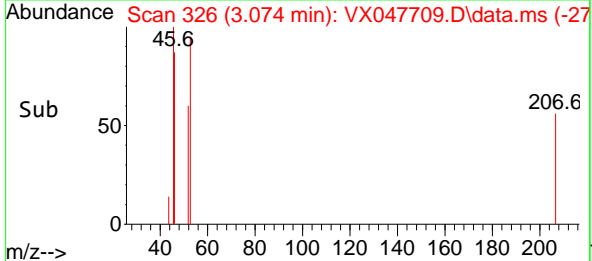
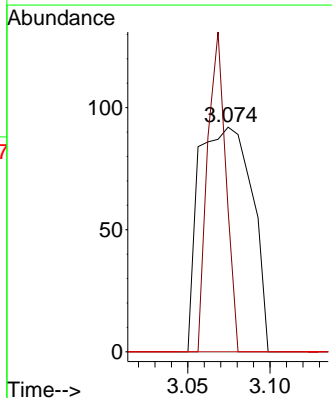
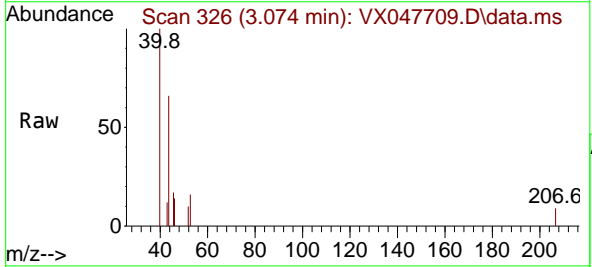
Instrument : MSVOA_X
 ClientSampleId : 34923

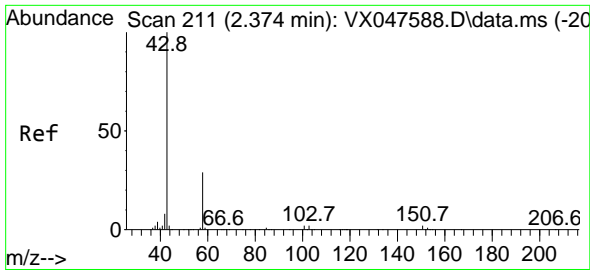
Tgt Ion: 56 Resp: 692
 Ion Ratio Lower Upper
 56 100
 55 94.1 57.2 85.8#



#15
 Acrylonitrile
 Concen: 0.235 ug/l
 RT: 3.074 min Scan# 326
 Delta R.T. 0.012 min
 Lab File: VX047709.D
 Acq: 22 Sep 2025 16:53

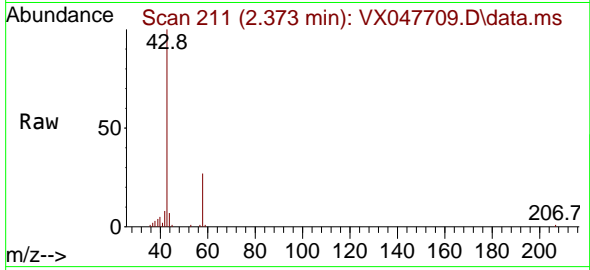
Tgt Ion: 53 Resp: 207
 Ion Ratio Lower Upper
 53 100
 52 48.8 66.4 99.6#
 51 0.0 29.5 44.3#



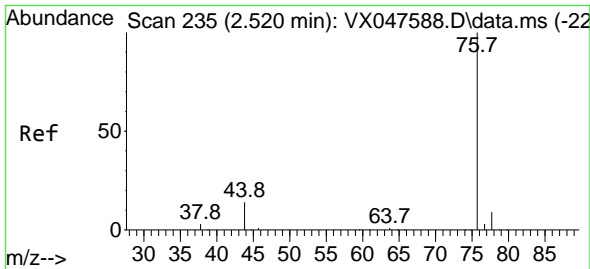
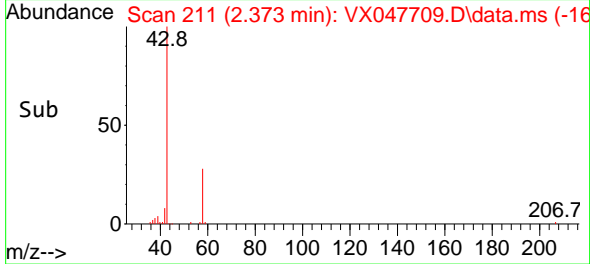
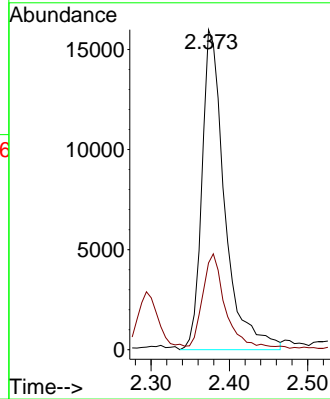


#16
 Acetone
 Concen: 34.874 ug/l
 RT: 2.373 min Scan# 211
 Delta R.T. -0.000 min
 Lab File: VX047709.D
 Acq: 22 Sep 2025 16:53

Instrument :
 MSVOA_X
 ClientSampleId :
 34923

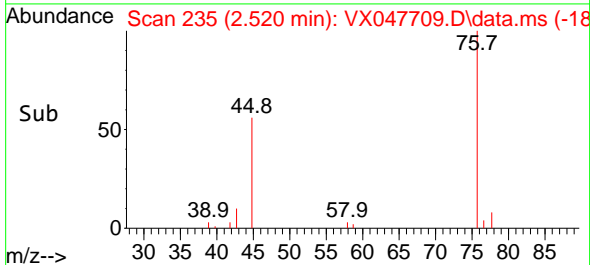
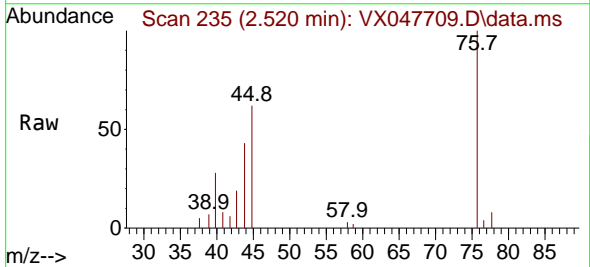
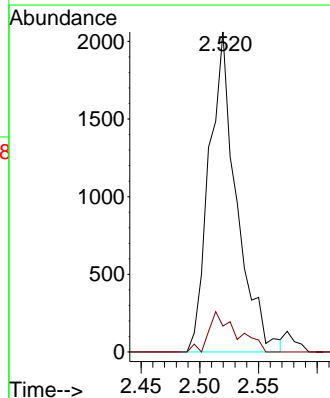


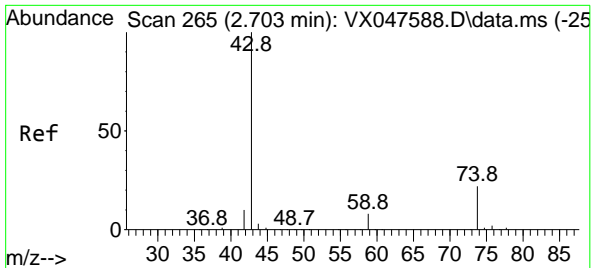
Tgt Ion: 43 Resp: 32367
 Ion Ratio Lower Upper
 43 100
 58 26.0 23.4 35.0



#17
 Carbon Disulfide
 Concen: 0.768 ug/l
 RT: 2.520 min Scan# 235
 Delta R.T. -0.000 min
 Lab File: VX047709.D
 Acq: 22 Sep 2025 16:53

Tgt Ion: 76 Resp: 3351
 Ion Ratio Lower Upper
 76 100
 78 7.8 6.8 10.2



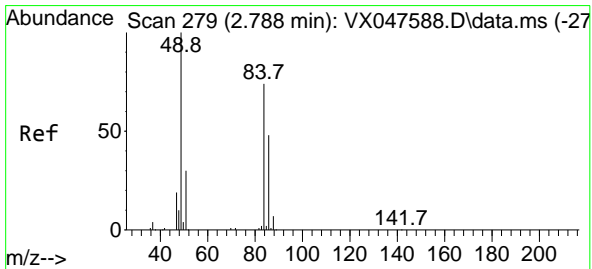
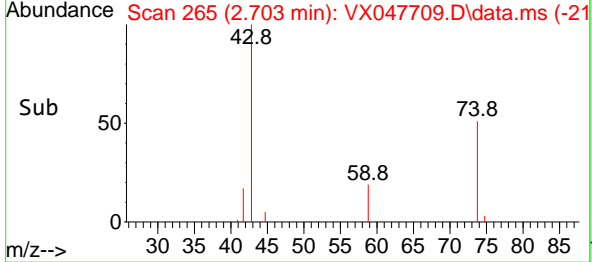
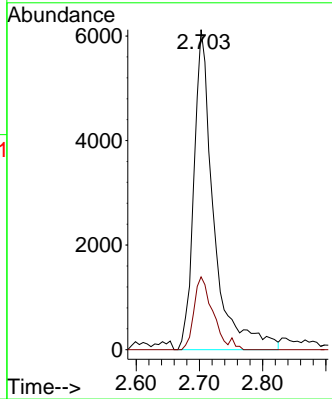
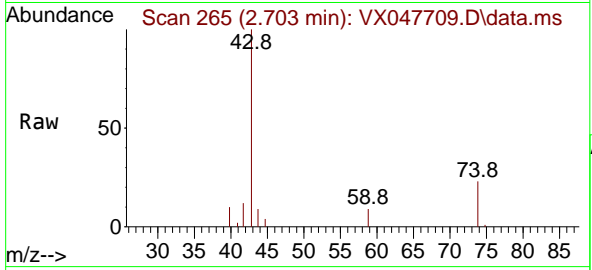


#18
 Methyl Acetate
 Concen: 6.478 ug/l
 RT: 2.703 min Scan# 20
 Delta R.T. -0.000 min
 Lab File: VX047709.D
 Acq: 22 Sep 2025 16:53

Instrument : MSVOA_X
 ClientSampleId : 34923

Tgt Ion: 43 Resp: 13380

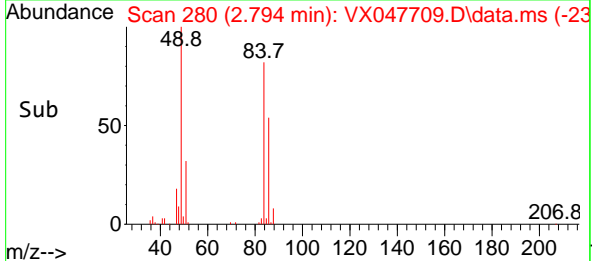
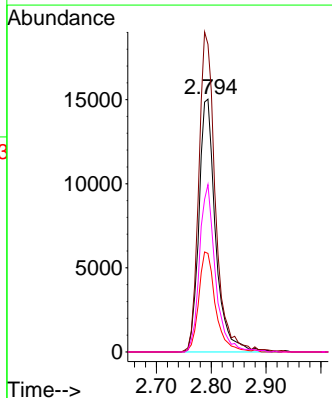
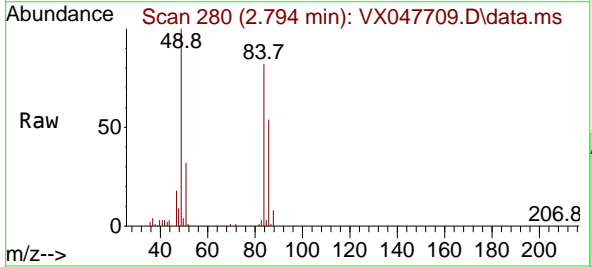
Ion	Ratio	Lower	Upper
43	100		
74	20.9	17.4	26.2

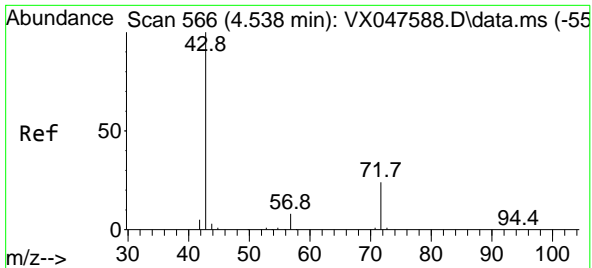


#20
 Methylene Chloride
 Concen: 16.136 ug/l
 RT: 2.794 min Scan# 280
 Delta R.T. 0.006 min
 Lab File: VX047709.D
 Acq: 22 Sep 2025 16:53

Tgt Ion: 84 Resp: 31700

Ion	Ratio	Lower	Upper
84	100		
49	121.7	108.6	162.8
51	39.0	32.6	48.8
86	66.2	52.0	78.0

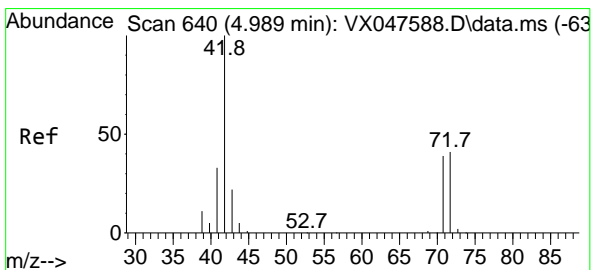
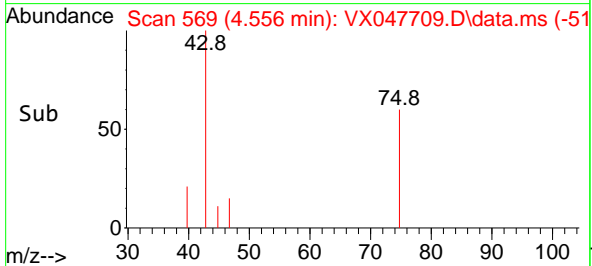
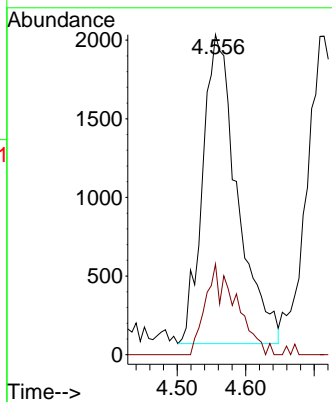
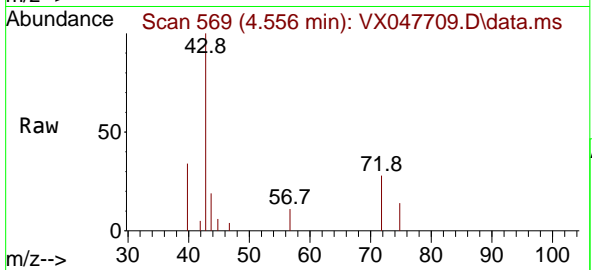




#25
 2-Butanone
 Concen: 5.975 ug/l
 RT: 4.556 min Scan# 50
 Delta R.T. 0.018 min
 Lab File: VX047709.D
 Acq: 22 Sep 2025 16:53

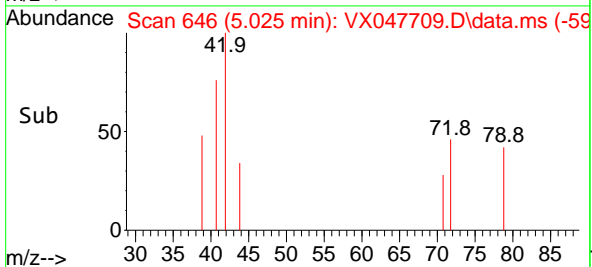
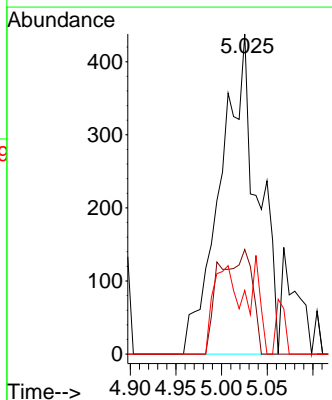
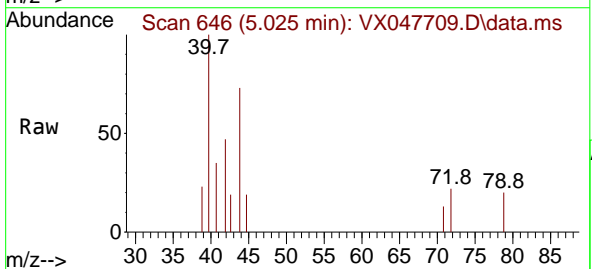
Instrument :
 MSVOA_X
 ClientSampleId :
 34923

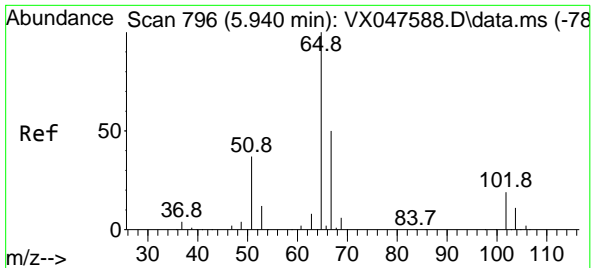
Tgt Ion: 43 Resp: 6917
 Ion Ratio Lower Upper
 43 100
 72 25.6 20.1 30.1



#29
 Tetrahydrofuran
 Concen: 1.769 ug/l
 RT: 5.025 min Scan# 646
 Delta R.T. 0.036 min
 Lab File: VX047709.D
 Acq: 22 Sep 2025 16:53

Tgt Ion: 42 Resp: 1232
 Ion Ratio Lower Upper
 42 100
 72 0.0 34.2 51.2#
 71 5.8 31.9 47.9#

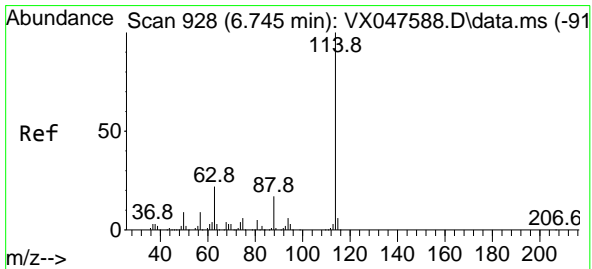
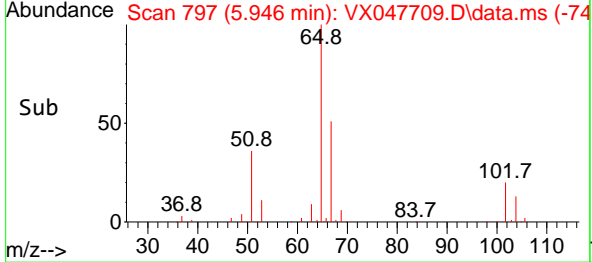
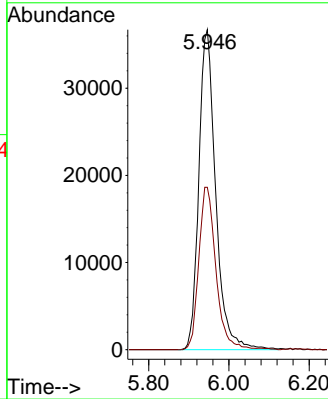
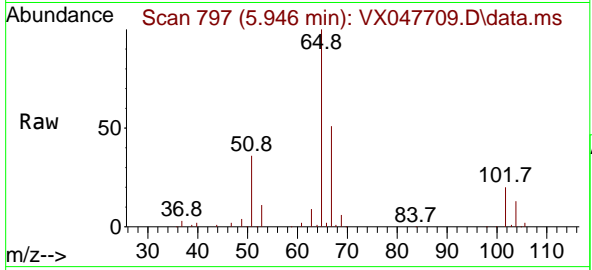




#33
 1,2-Dichloroethane-d4
 Concen: 50.195 ug/l
 RT: 5.946 min Scan# 796
 Delta R.T. 0.006 min
 Lab File: VX047709.D
 Acq: 22 Sep 2025 16:53

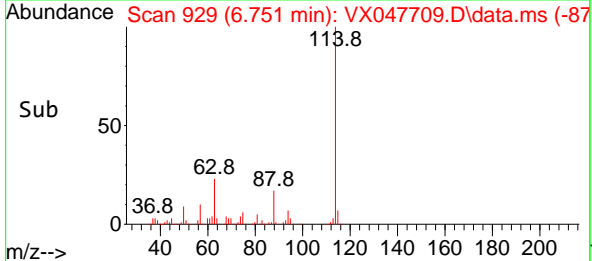
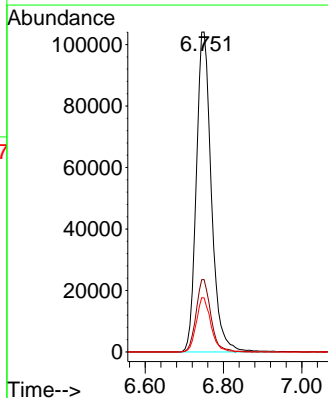
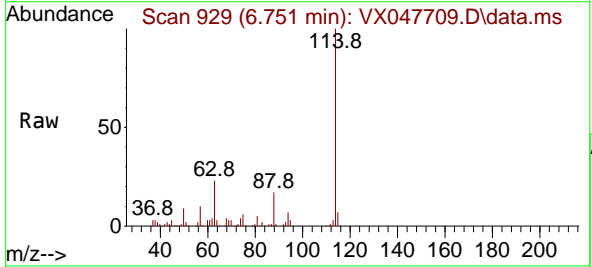
Instrument : MSVOA_X
 ClientSampleId : 34923

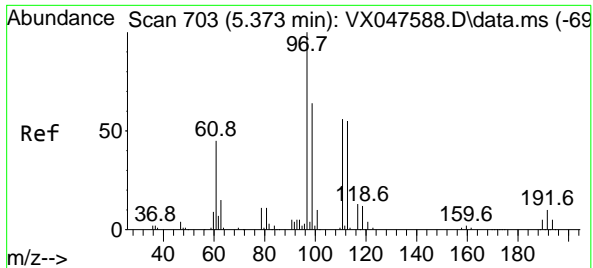
Tgt Ion: 65 Resp: 107143
 Ion Ratio Lower Upper
 65 100
 67 51.4 0.0 103.0



#34
 1,4-Difluorobenzene
 Concen: 50.000 ug/l
 RT: 6.751 min Scan# 929
 Delta R.T. 0.006 min
 Lab File: VX047709.D
 Acq: 22 Sep 2025 16:53

Tgt Ion: 114 Resp: 278097
 Ion Ratio Lower Upper
 114 100
 63 22.6 0.0 44.0
 88 16.9 0.0 34.2

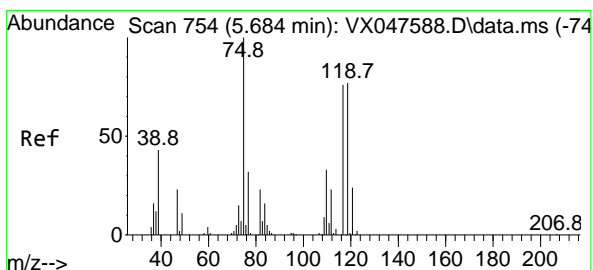
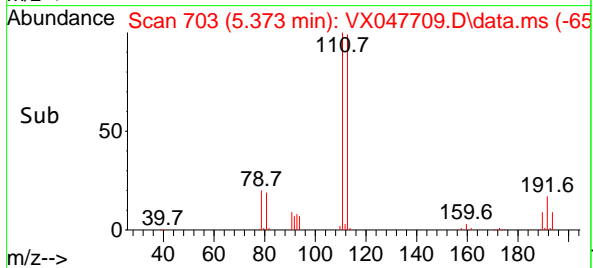
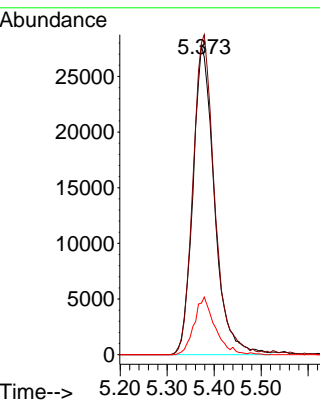
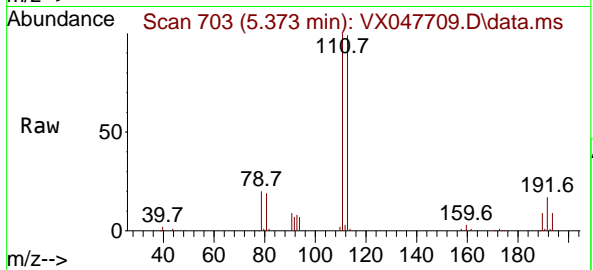




#35
 Dibromofluoromethane
 Concen: 47.335 ug/l
 RT: 5.373 min Scan# 703
 Delta R.T. -0.000 min
 Lab File: VX047709.D
 Acq: 22 Sep 2025 16:53

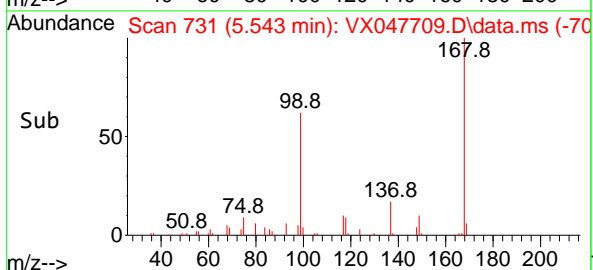
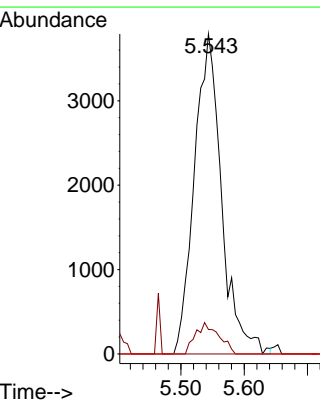
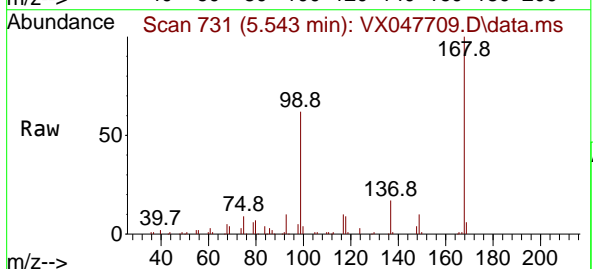
Instrument : MSVOA_X
 ClientSampleId : 34923

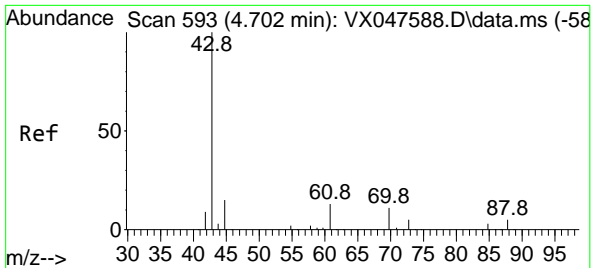
Tgt Ion	Resp	Lower	Upper
113	100		
111	103.4	80.9	121.3
192	18.0	14.2	21.4



#36
 1,1-Dichloropropene
 Concen: 4.158 ug/l
 RT: 5.543 min Scan# 731
 Delta R.T. -0.141 min
 Lab File: VX047709.D
 Acq: 22 Sep 2025 16:53

Tgt Ion	Resp	Lower	Upper
75	100		
110	8.4	16.7	50.1#
77	0.0	24.3	36.5#

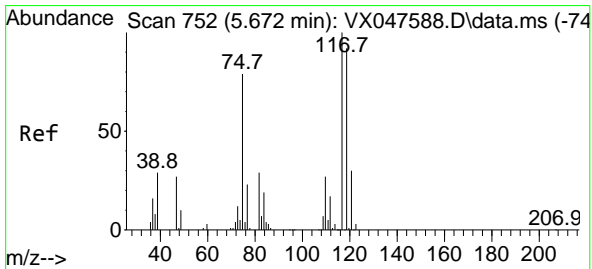
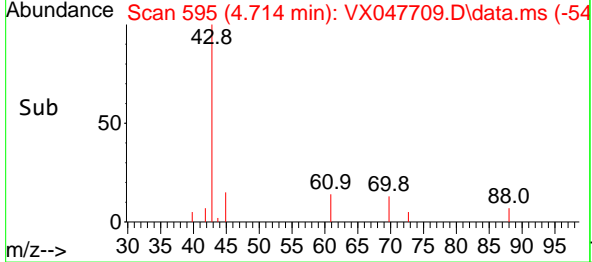
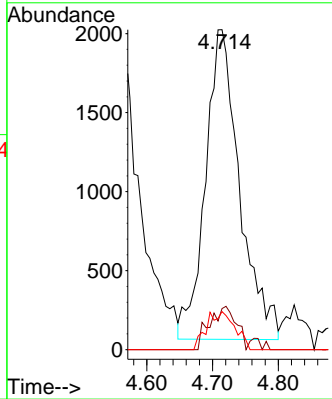
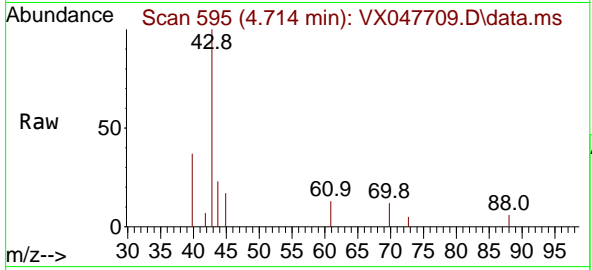




#37
 Ethyl Acetate
 Concen: 2.428 ug/l
 RT: 4.714 min Scan# 593
 Delta R.T. 0.012 min
 Lab File: VX047709.D
 Acq: 22 Sep 2025 16:53

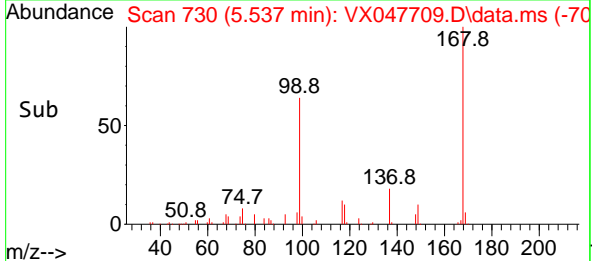
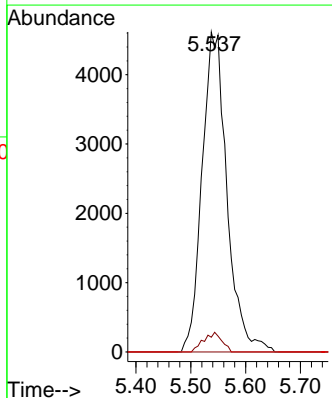
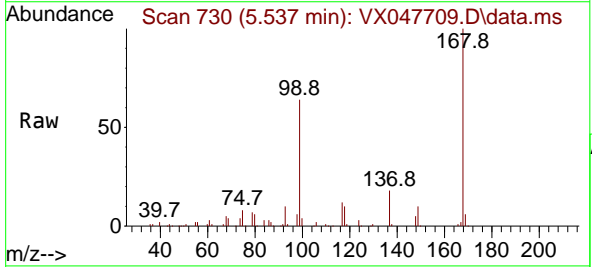
Instrument : MSVOA_X
 ClientSampleId : 34923

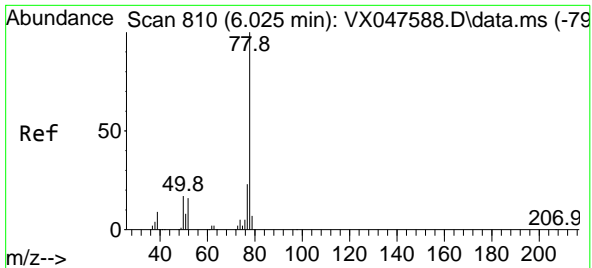
Tgt Ion	Resp	Lower	Upper
43	7086		
61	10.9	9.8	14.8
70	10.1	7.9	11.9



#38
 Carbon Tetrachloride
 Concen: 4.909 ug/l
 RT: 5.537 min Scan# 730
 Delta R.T. -0.134 min
 Lab File: VX047709.D
 Acq: 22 Sep 2025 16:53

Tgt Ion	Resp	Lower	Upper
117	14535		
119	4.6	73.4	110.2#
121	0.0	23.8	35.6#

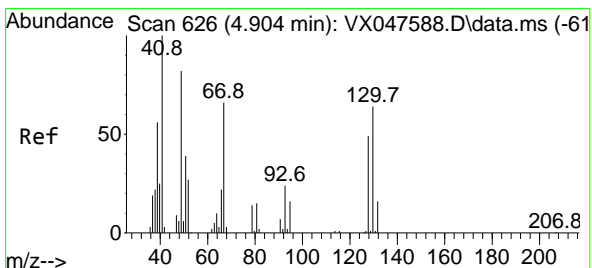
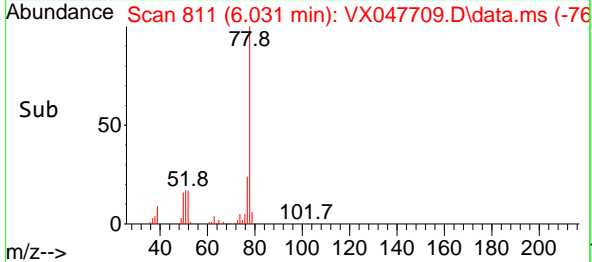
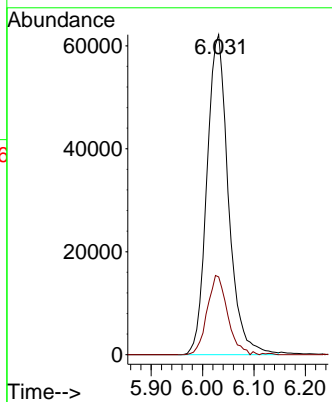
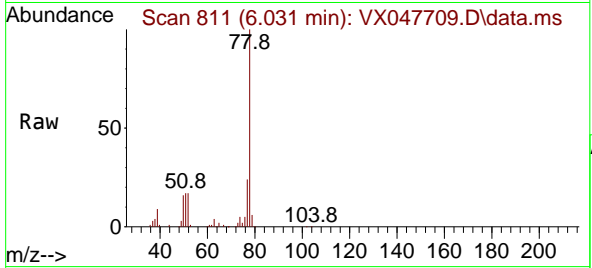




#40
Benzene
Concen: 21.807 ug/l
RT: 6.031 min Scan# 811
Delta R.T. 0.006 min
Lab File: VX047709.D
Acq: 22 Sep 2025 16:53

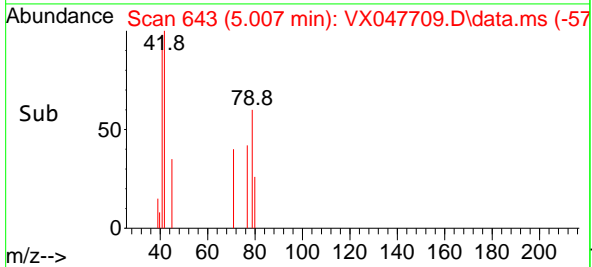
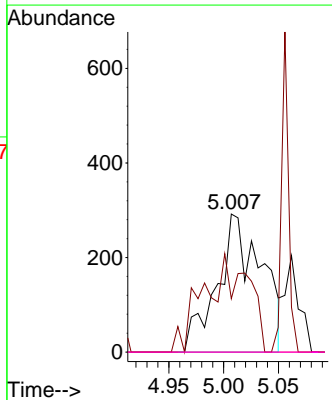
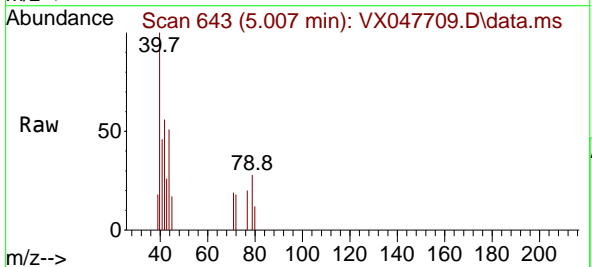
Instrument : MSVOA_X
ClientSampleId : 34923

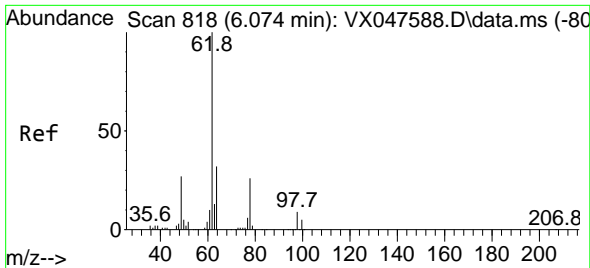
Tgt Ion: 78 Resp: 180506
Ion Ratio Lower Upper
78 100
77 24.3 18.8 28.2



#41
Methacrylonitrile
Concen: 0.542 ug/l
RT: 5.007 min Scan# 643
Delta R.T. 0.103 min
Lab File: VX047709.D
Acq: 22 Sep 2025 16:53

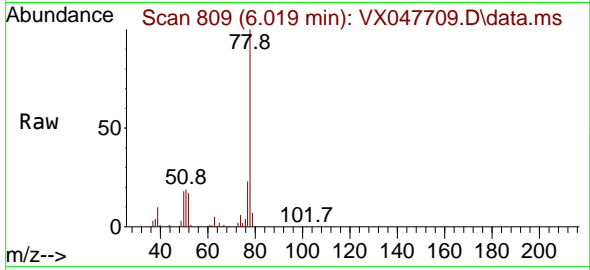
Tgt Ion: 41 Resp: 816
Ion Ratio Lower Upper
41 100
39 44.5 43.3 64.9
67 0.0 58.6 87.8#
52 0.0 26.0 39.0#



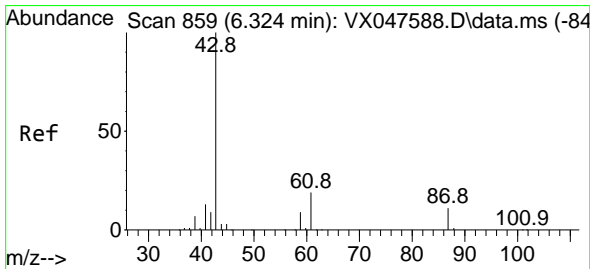
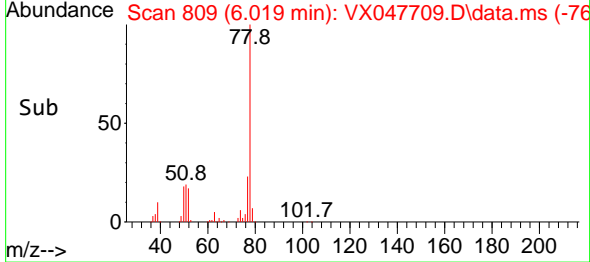
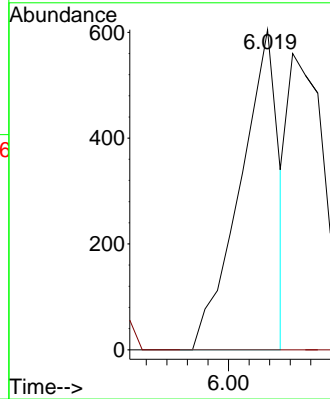


#42
 1,2-Dichloroethane
 Concen: 0.251 ug/l
 RT: 6.019 min Scan# 809
 Delta R.T. -0.055 min
 Lab File: VX047709.D
 Acq: 22 Sep 2025 16:53

Instrument : MSVOA_X
 ClientSampleId : 34923

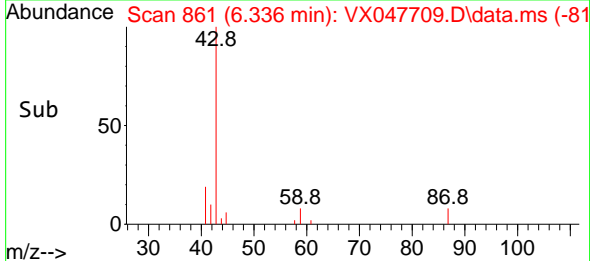
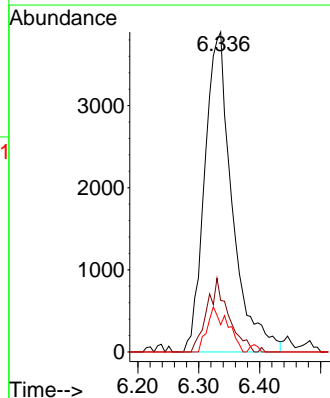
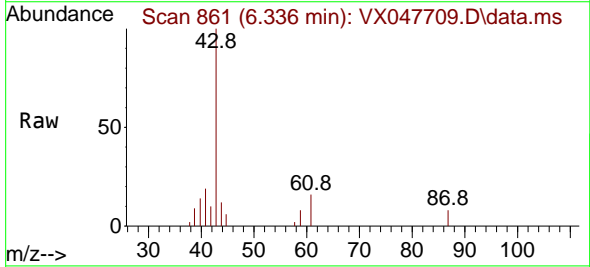


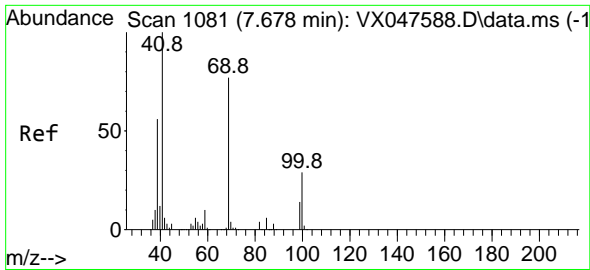
Tgt Ion: 62 Resp: 789
 Ion Ratio Lower Upper
 62 100
 98 0.0 0.0 17.0



#43
 Isopropyl Acetate
 Concen: 2.549 ug/l
 RT: 6.336 min Scan# 861
 Delta R.T. 0.012 min
 Lab File: VX047709.D
 Acq: 22 Sep 2025 16:53

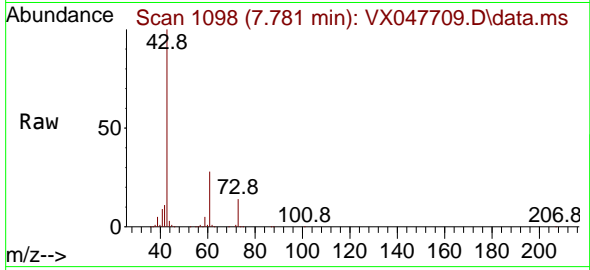
Tgt Ion: 43 Resp: 12199
 Ion Ratio Lower Upper
 43 100
 61 18.1 15.2 22.8
 87 10.3 9.6 14.4



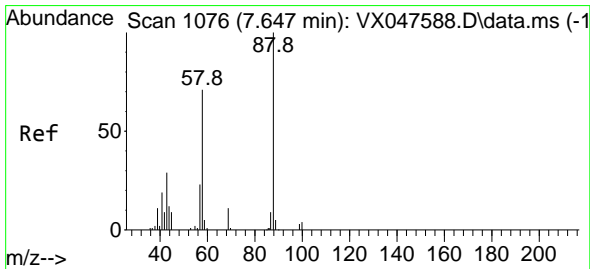
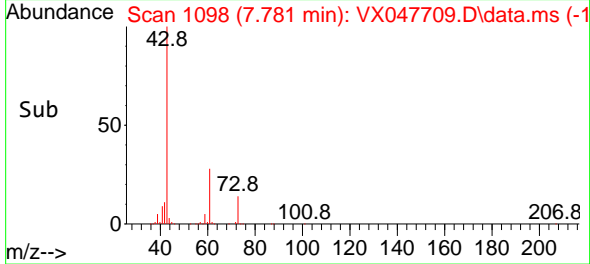
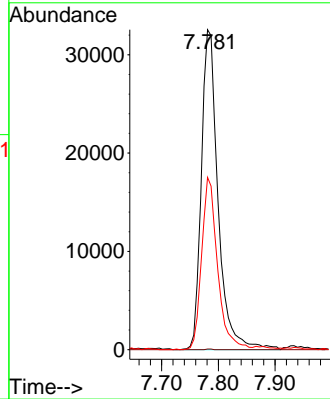


#48
 Methyl methacrylate
 Concen: 27.956 ug/l
 RT: 7.781 min Scan# 1098
 Delta R.T. 0.103 min
 Lab File: VX047709.D
 Acq: 22 Sep 2025 16:53

Instrument : MSVOA_X
 ClientSampleId : 34923

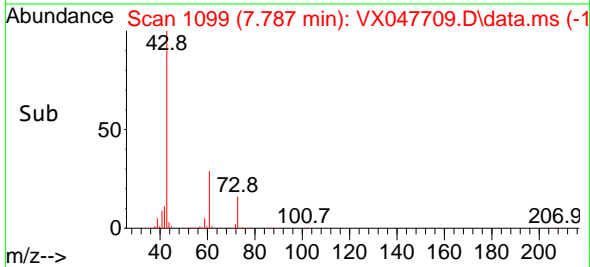
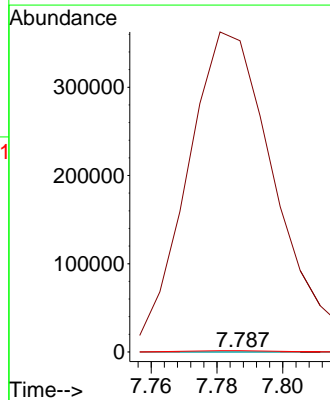
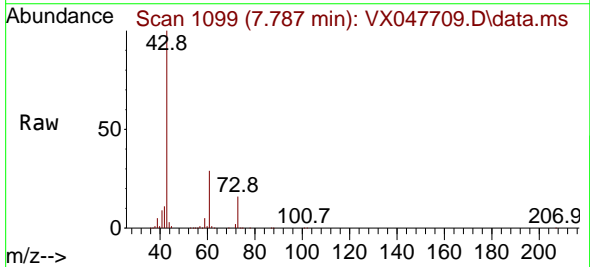


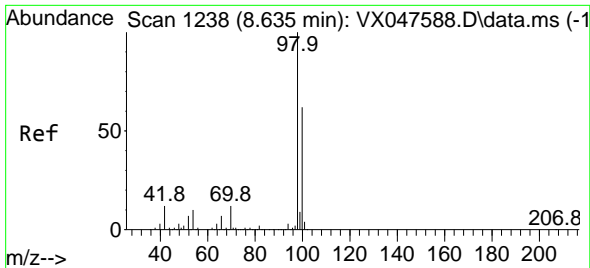
Tgt Ion: 41 Resp: 66643
 Ion Ratio Lower Upper
 41 100
 69 0.1 61.4 92.2#
 39 51.4 45.8 68.6



#49
 1,4-Dioxane
 Concen: 1.826 ug/l
 RT: 7.787 min Scan# 1099
 Delta R.T. 0.140 min
 Lab File: VX047709.D
 Acq: 22 Sep 2025 16:53

Tgt Ion: 88 Resp: 44
 Ion Ratio Lower Upper
 88 100
 43 1614538.6 30.2 45.2#
 58 7068.2 59.5 89.3#

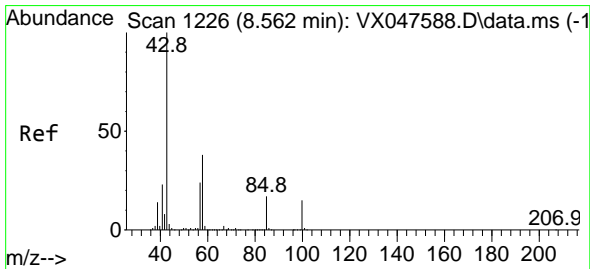
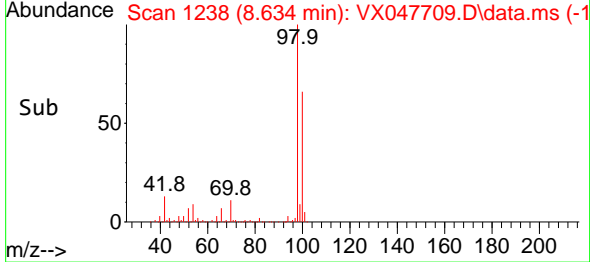
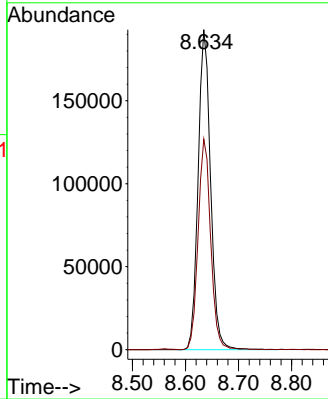
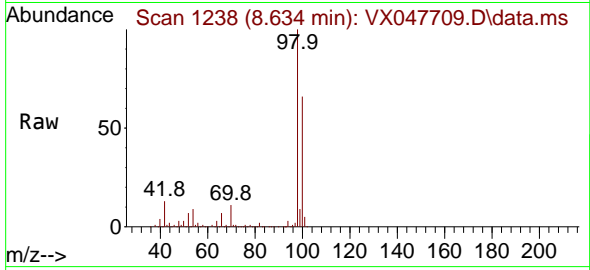




#50
 Toluene-d8
 Concen: 48.776 ug/l
 RT: 8.634 min Scan# 11
 Delta R.T. -0.000 min
 Lab File: VX047709.D
 Acq: 22 Sep 2025 16:53

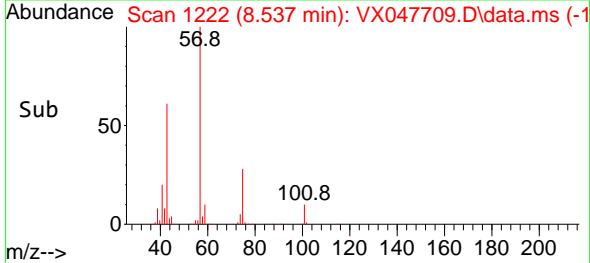
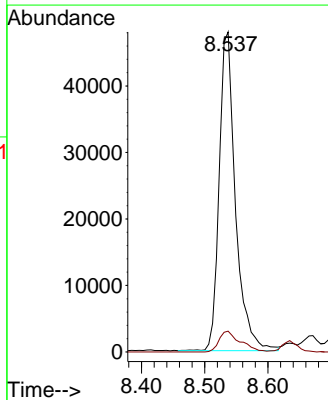
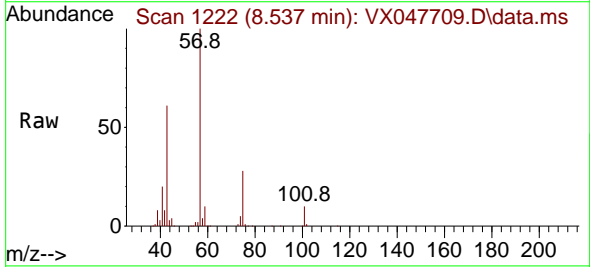
Instrument : MSVOA_X
 ClientSampleId : 34923

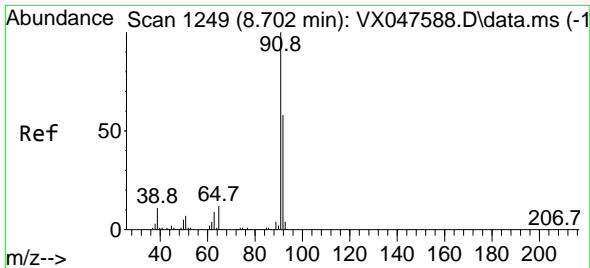
Tgt Ion: 98 Resp: 314777
 Ion Ratio Lower Upper
 98 100
 100 66.6 53.0 79.4



#51
 4-Methyl-2-Pentanone
 Concen: 32.189 ug/l
 RT: 8.537 min Scan# 1222
 Delta R.T. -0.025 min
 Lab File: VX047709.D
 Acq: 22 Sep 2025 16:53

Tgt Ion: 43 Resp: 85412
 Ion Ratio Lower Upper
 43 100
 58 8.5 30.3 45.5#

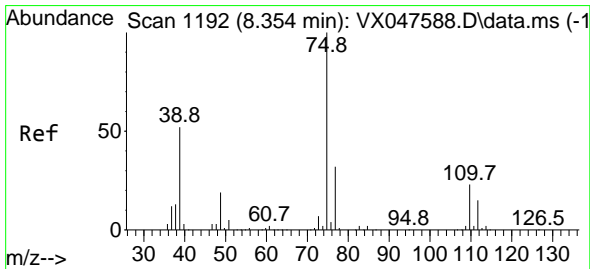
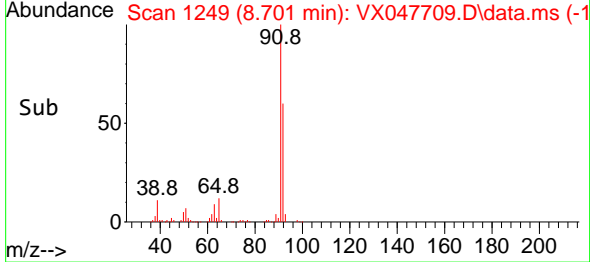
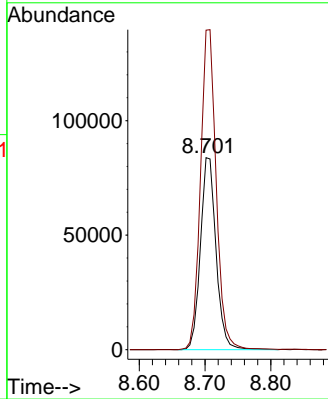
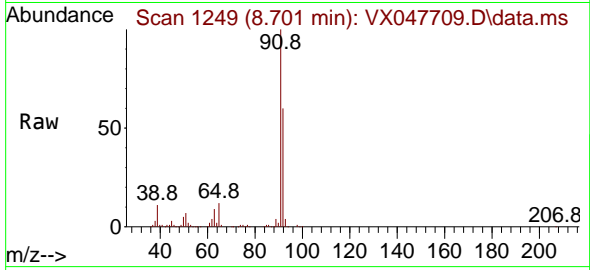




#52
 Toluene
 Concen: 27.145 ug/l
 RT: 8.701 min Scan# 11
 Delta R.T. -0.000 min
 Lab File: VX047709.D
 Acq: 22 Sep 2025 16:53

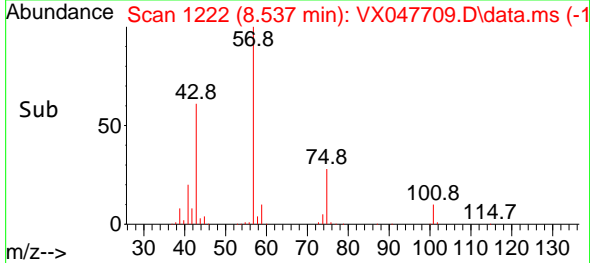
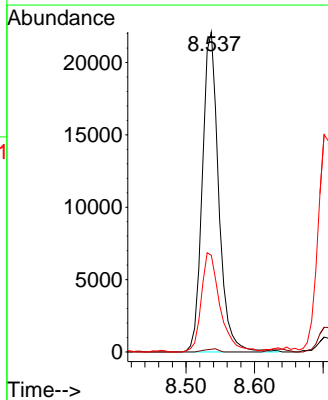
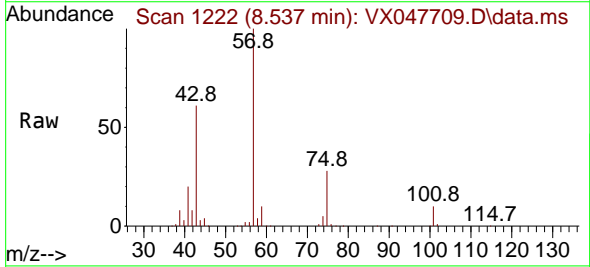
Instrument : MSVOA_X
 ClientSampleId : 34923

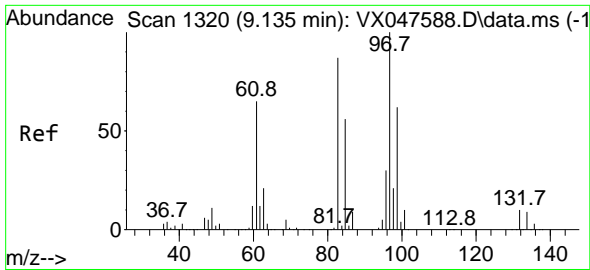
Tgt Ion: 92 Resp: 138433
 Ion Ratio Lower Upper
 92 100
 91 167.9 137.1 205.7



#54
 cis-1,3-Dichloropropene
 Concen: 10.588 ug/l
 RT: 8.537 min Scan# 1222
 Delta R.T. 0.183 min
 Lab File: VX047709.D
 Acq: 22 Sep 2025 16:53

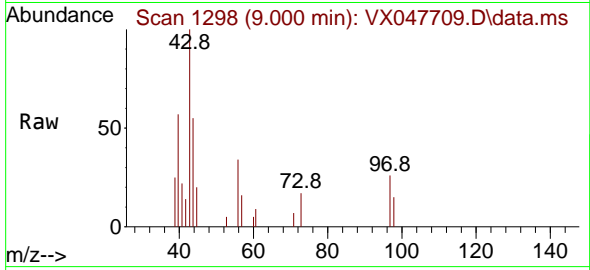
Tgt Ion: 75 Resp: 36740
 Ion Ratio Lower Upper
 75 100
 77 0.9 25.8 38.6#
 39 28.9 41.4 62.2#





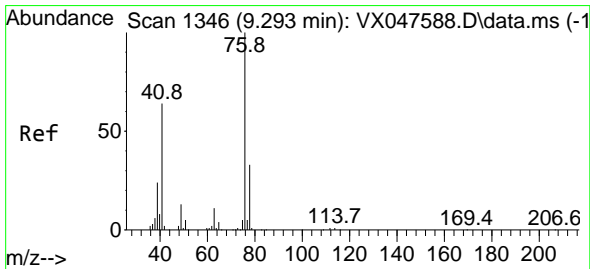
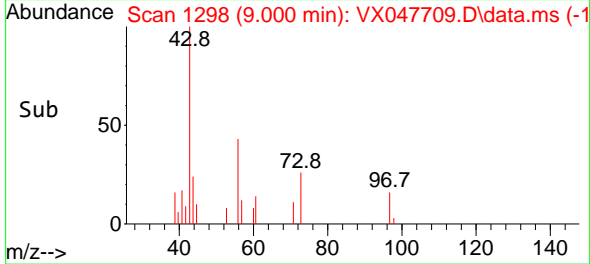
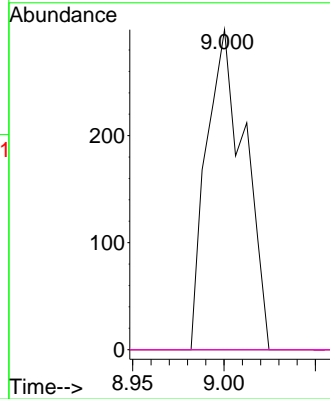
#55
 1,1,2-Trichloroethane
 Concen: 0.222 ug/l
 RT: 9.000 min Scan# 111
 Delta R.T. -0.134 min
 Lab File: VX047709.D
 Acq: 22 Sep 2025 16:53

Instrument : MSVOA_X
 ClientSampleId : 34923



Tgt Ion: 97 Resp: 437

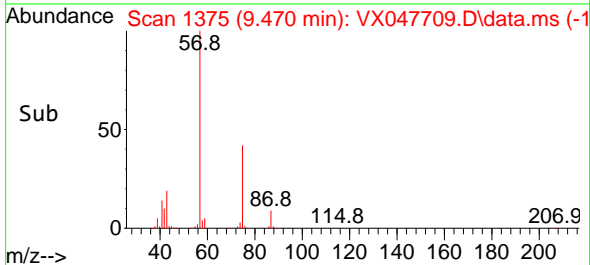
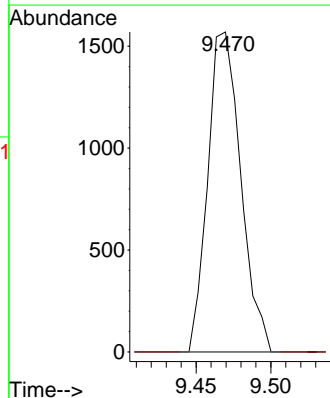
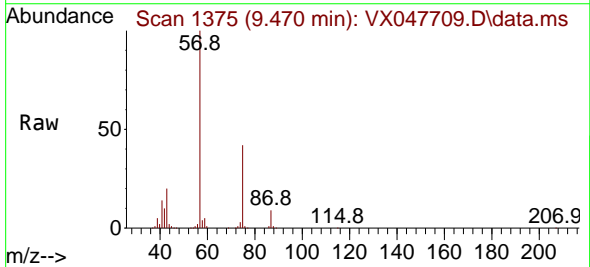
Ion	Ratio	Lower	Upper
97	100		
83	0.0	69.6	104.4#
85	0.0	45.0	67.6#
99	0.0	49.6	74.4#

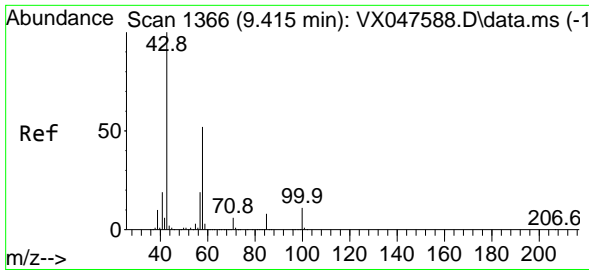


#57
 1,3-Dichloropropane
 Concen: 0.714 ug/l
 RT: 9.470 min Scan# 1375
 Delta R.T. 0.177 min
 Lab File: VX047709.D
 Acq: 22 Sep 2025 16:53

Tgt Ion: 76 Resp: 2411

Ion	Ratio	Lower	Upper
76	100		
78	0.0	26.2	39.4#

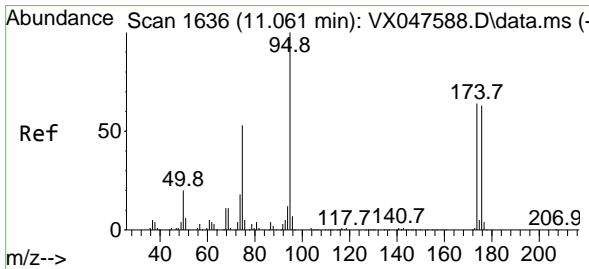
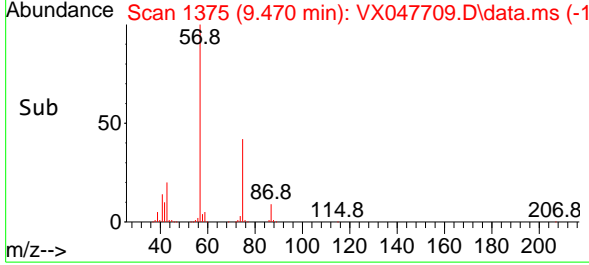
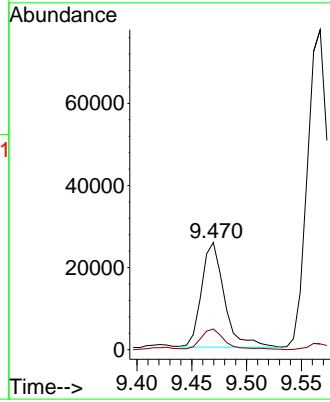
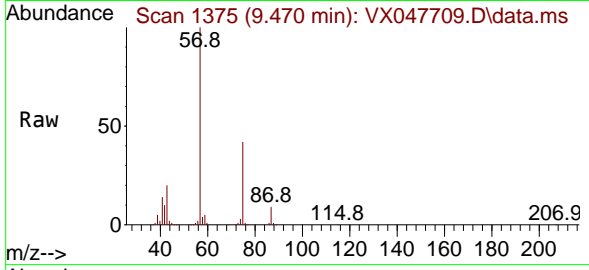




#59
 2-Hexanone
 Concen: 19.439 ug/l
 RT: 9.470 min Scan# 11
 Delta R.T. 0.055 min
 Lab File: VX047709.D
 Acq: 22 Sep 2025 16:53

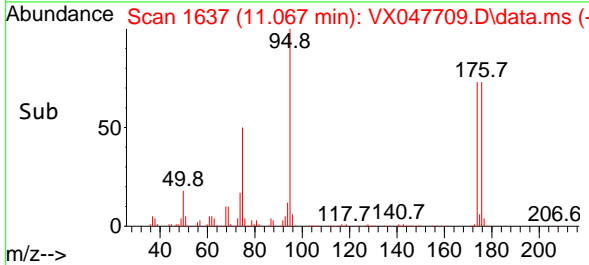
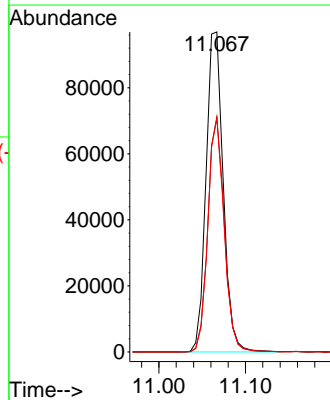
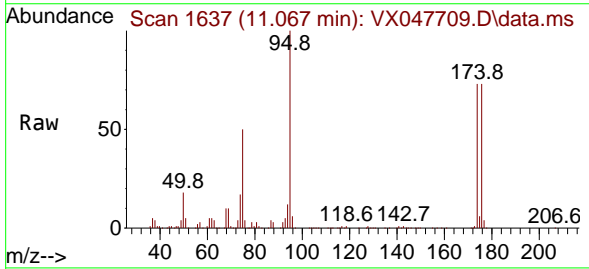
Instrument : MSVOA_X
 ClientSampleId : 34923

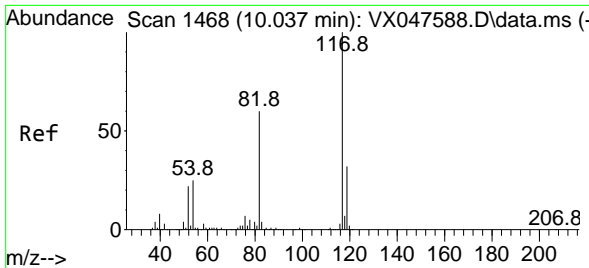
Tgt Ion: 43 Resp: 37045
 Ion Ratio Lower Upper
 43 100
 58 20.8 26.1 78.2#



#62
 4-Bromofluorobenzene
 Concen: 54.422 ug/l
 RT: 11.067 min Scan# 1637
 Delta R.T. 0.006 min
 Lab File: VX047709.D
 Acq: 22 Sep 2025 16:53

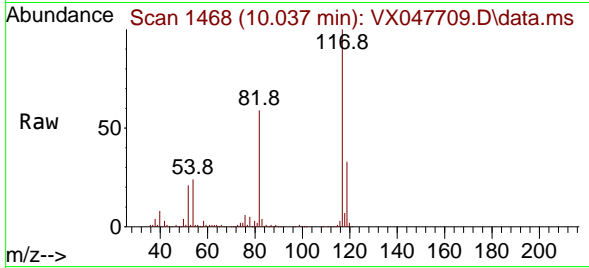
Tgt Ion: 95 Resp: 133291
 Ion Ratio Lower Upper
 95 100
 174 70.8 0.0 141.6
 176 69.2 0.0 138.4





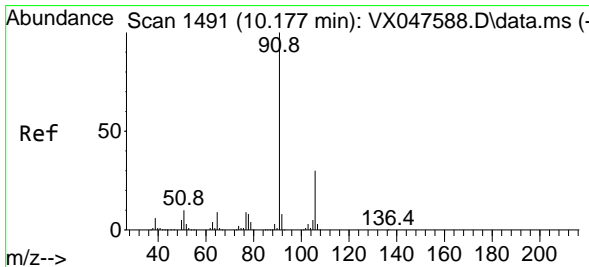
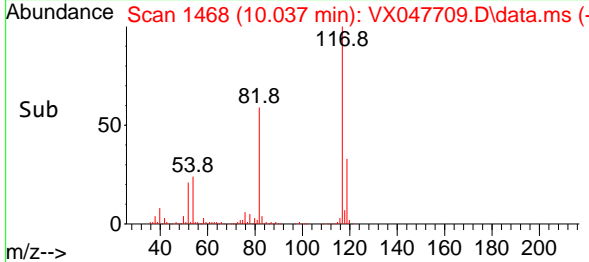
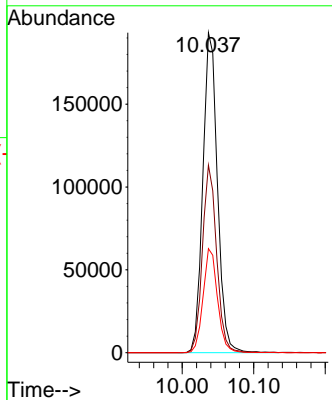
#63
 Chlorobenzene-d5
 Concen: 50.000 ug/l
 RT: 10.037 min Scan# 1468
 Delta R.T. -0.000 min
 Lab File: VX047709.D
 Acq: 22 Sep 2025 16:53

Instrument : MSVOA_X
 ClientSampleId : 34923



Tgt Ion:117 Resp: 274230

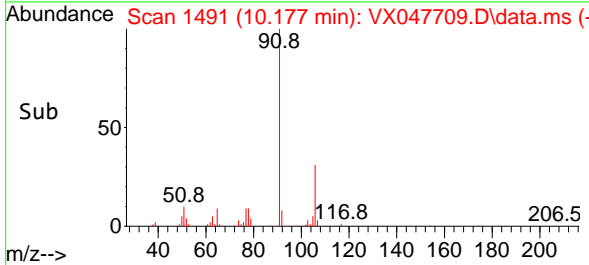
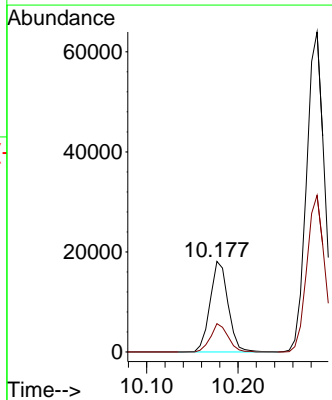
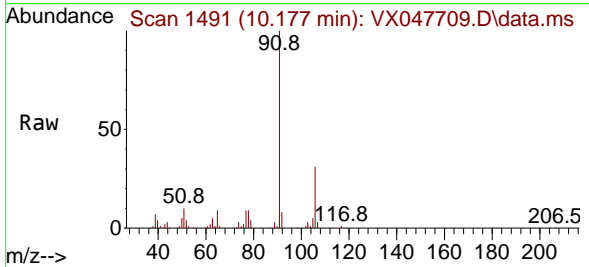
Ion	Ratio	Lower	Upper
117	100		
82	58.6	47.8	71.6
119	32.5	25.2	37.8

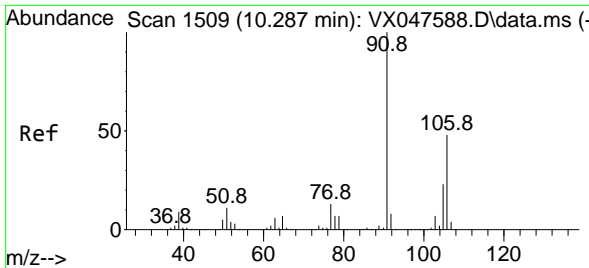


#67
 Ethyl Benzene
 Concen: 2.317 ug/l
 RT: 10.177 min Scan# 1491
 Delta R.T. -0.000 min
 Lab File: VX047709.D
 Acq: 22 Sep 2025 16:53

Tgt Ion: 91 Resp: 24907

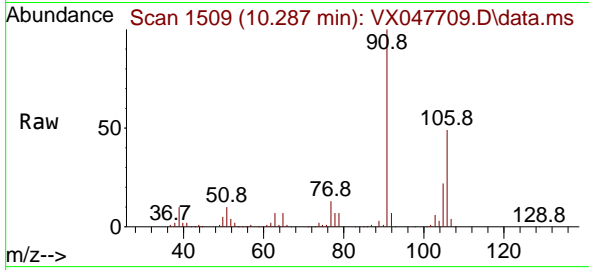
Ion	Ratio	Lower	Upper
91	100		
106	31.4	24.3	36.5



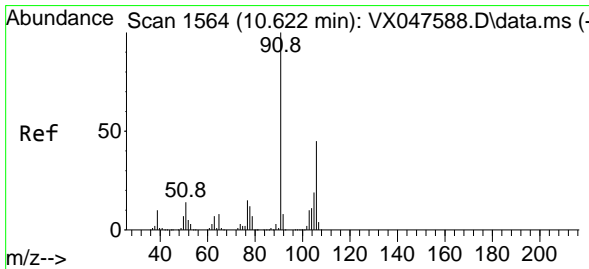
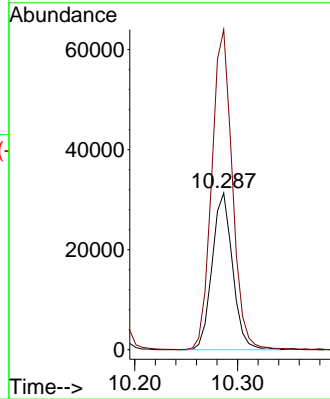
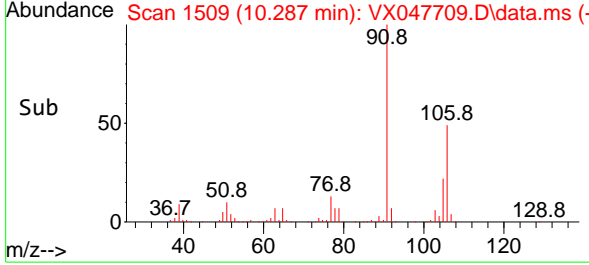


#68
 m/p-Xylenes
 Concen: 10.793 ug/l
 RT: 10.287 min Scan# 11
 Delta R.T. -0.000 min
 Lab File: VX047709.D
 Acq: 22 Sep 2025 16:53

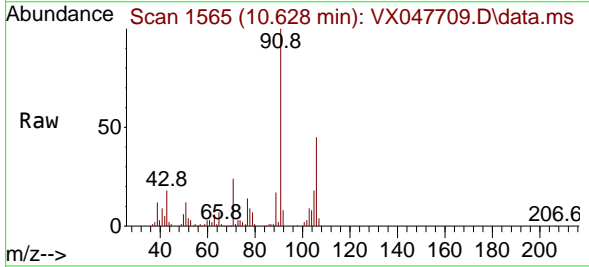
Instrument :
 MSVOA_X
 ClientSampleId :
 34923



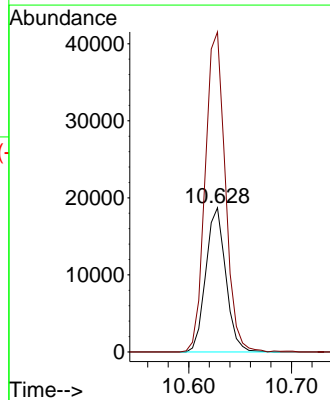
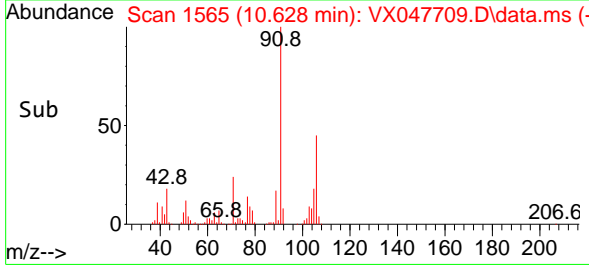
Tgt Ion:106 Resp: 43184
 Ion Ratio Lower Upper
 106 100
 91 206.4 167.8 251.8

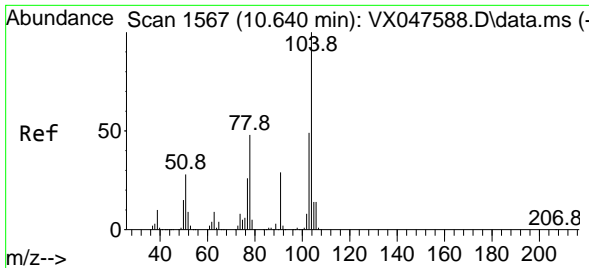


#69
 o-Xylene
 Concen: 6.543 ug/l
 RT: 10.628 min Scan# 1565
 Delta R.T. 0.006 min
 Lab File: VX047709.D
 Acq: 22 Sep 2025 16:53



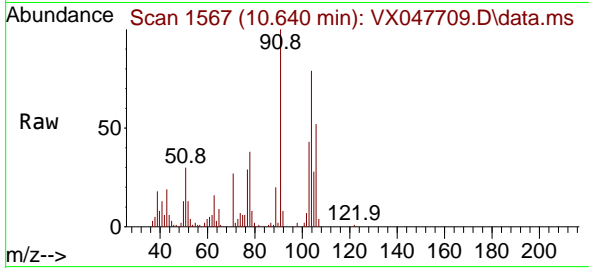
Tgt Ion:106 Resp: 25319
 Ion Ratio Lower Upper
 106 100
 91 222.9 111.1 333.4



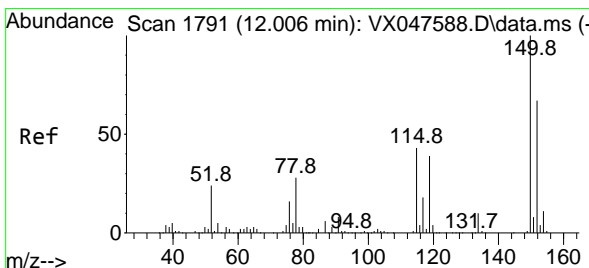
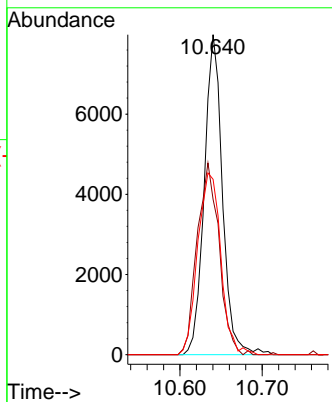
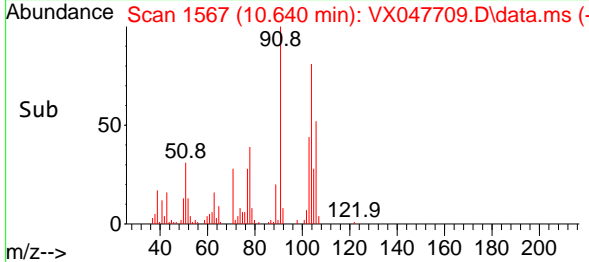


#70
 Styrene
 Concen: 1.812 ug/l
 RT: 10.640 min Scan# 11
 Delta R.T. -0.000 min
 Lab File: VX047709.D
 Acq: 22 Sep 2025 16:53

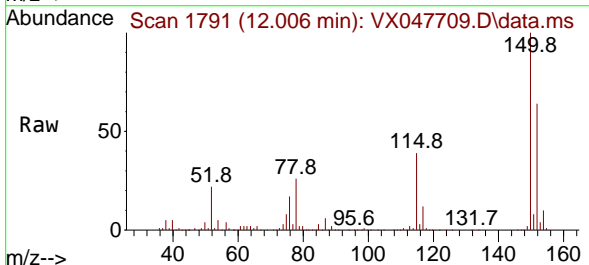
Instrument : MSVOA_X
 ClientSampleId : 34923



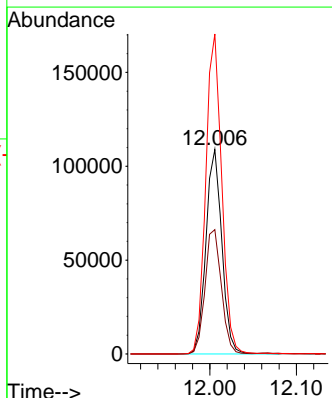
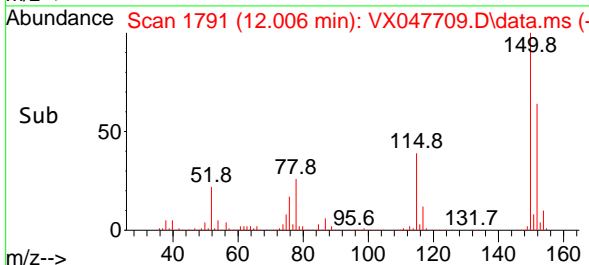
Tgt Ion:104 Resp: 12285
 Ion Ratio Lower Upper
 104 100
 78 72.1 43.1 64.7#
 103 72.1 43.1 64.7#

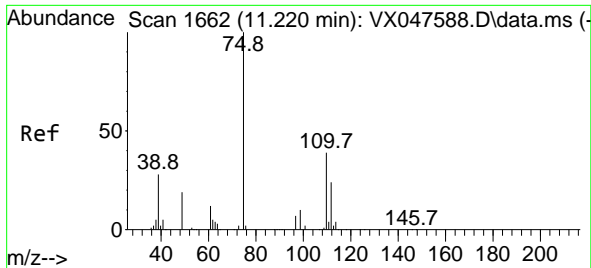


#72
 1,4-Dichlorobenzene-d4
 Concen: 50.000 ug/l
 RT: 12.006 min Scan# 1791
 Delta R.T. -0.000 min
 Lab File: VX047709.D
 Acq: 22 Sep 2025 16:53



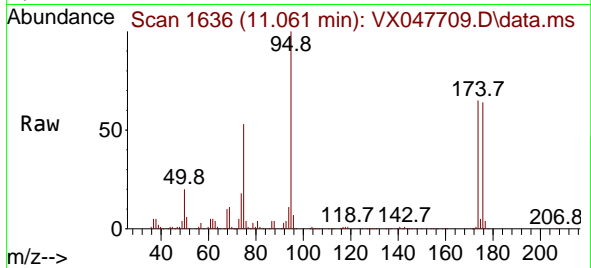
Tgt Ion:152 Resp: 139025
 Ion Ratio Lower Upper
 152 100
 115 62.6 44.9 134.5
 150 156.8 0.0 352.0



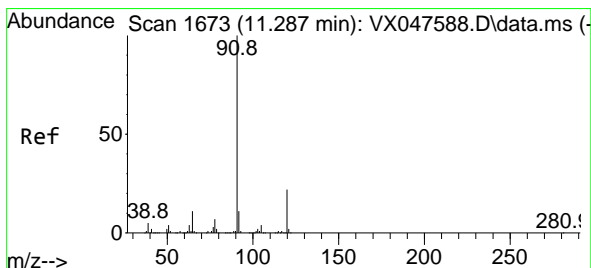
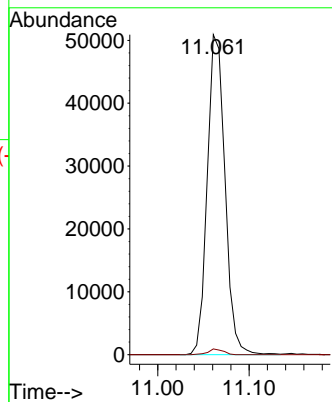
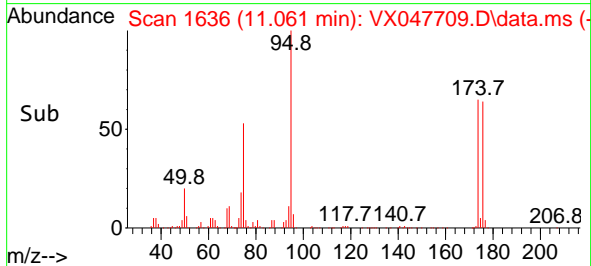


#76
 1,2,3-Trichloropropane
 Concen: 24.420 ug/l
 RT: 11.061 min Scan# 1636
 Delta R.T. -0.159 min
 Lab File: VX047709.D
 Acq: 22 Sep 2025 16:53

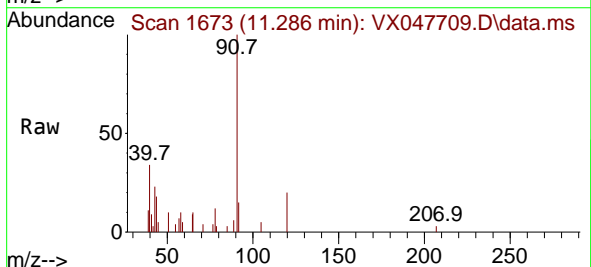
Instrument : MSVOA_X
 ClientSampleId : 34923



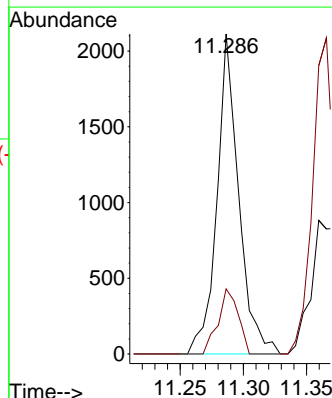
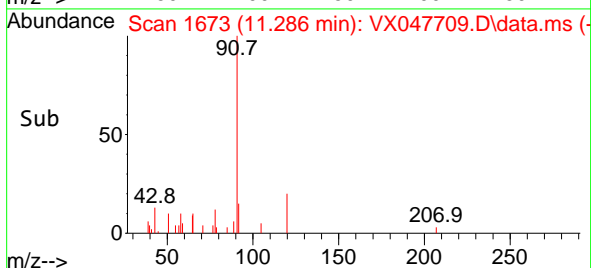
Tgt Ion: 75 Resp: 68737
 Ion Ratio Lower Upper
 75 100
 77 1.5 18.8 56.4#

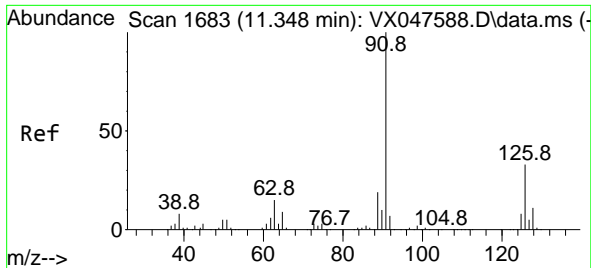


#78
 n-propylbenzene
 Concen: 0.202 ug/l
 RT: 11.286 min Scan# 1673
 Delta R.T. -0.000 min
 Lab File: VX047709.D
 Acq: 22 Sep 2025 16:53



Tgt Ion: 91 Resp: 2520
 Ion Ratio Lower Upper
 91 100
 120 18.7 11.1 33.1

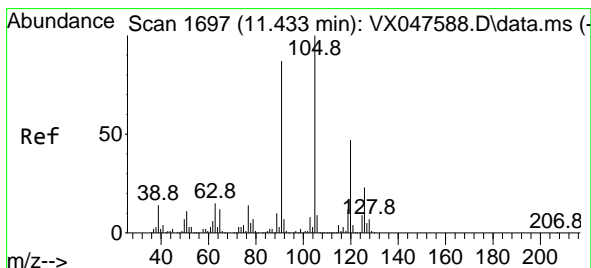
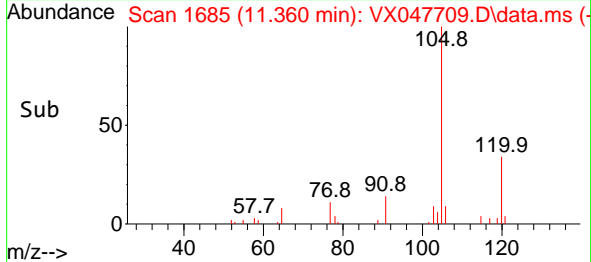
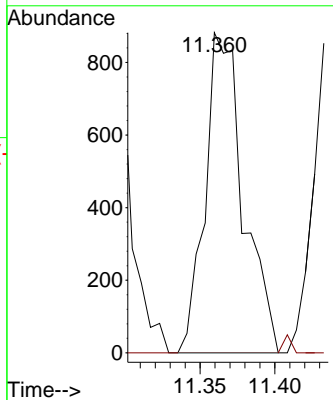
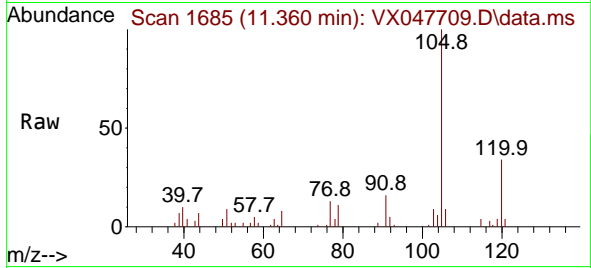




#79
 2-Chlorotoluene
 Concen: 0.204 ug/l
 RT: 11.360 min Scan# 11
 Delta R.T. 0.012 min
 Lab File: VX047709.D
 Acq: 22 Sep 2025 16:53

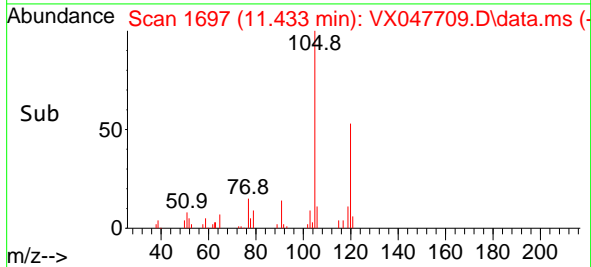
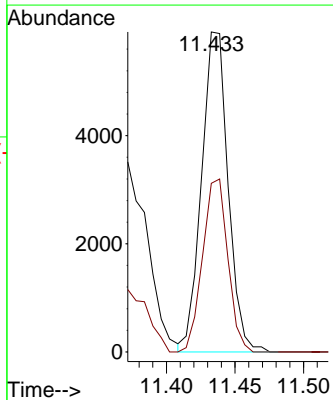
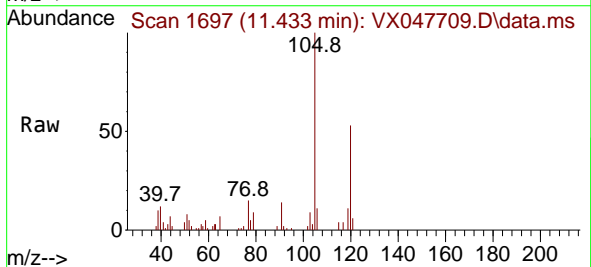
Instrument :
 MSVOA_X
 ClientSampleId :
 34923

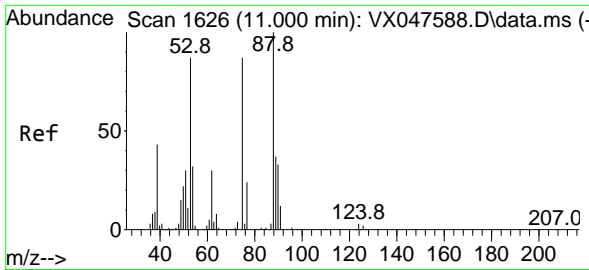
Tgt Ion: 91 Resp: 1562
 Ion Ratio Lower Upper
 91 100
 126 0.0 16.1 48.3#



#80
 1,3,5-Trimethylbenzene
 Concen: 0.918 ug/l
 RT: 11.433 min Scan# 1697
 Delta R.T. -0.000 min
 Lab File: VX047709.D
 Acq: 22 Sep 2025 16:53

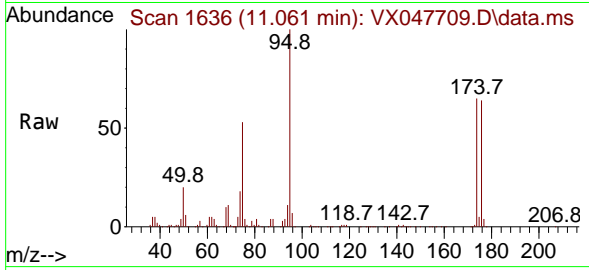
Tgt Ion: 105 Resp: 7969
 Ion Ratio Lower Upper
 105 100
 120 51.4 23.6 70.8



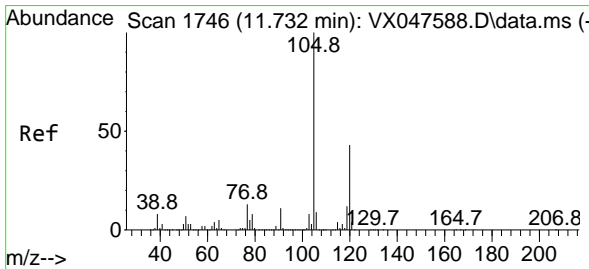
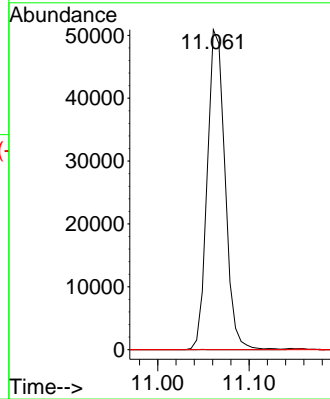
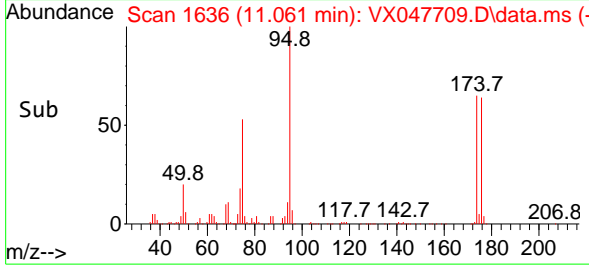


#81
 trans-1,4-Dichloro-2-butene
 Concen: 62.274 ug/l
 RT: 11.061 min Scan# 1100
 Delta R.T. 0.061 min
 Lab File: VX047709.D
 Acq: 22 Sep 2025 16:53

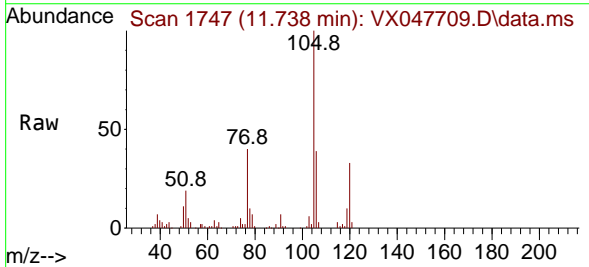
Instrument : MSVOA_X
 ClientSampleId : 34923



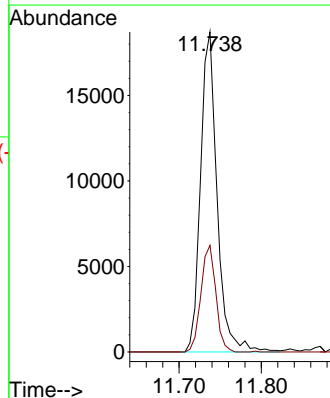
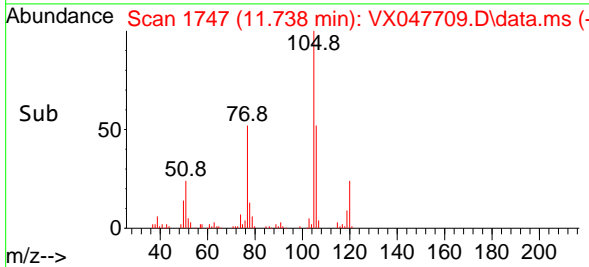
Tgt Ion: 75 Resp: 68737
 Ion Ratio Lower Upper
 75 100
 53 0.0 83.4 125.2#
 89 0.0 36.3 54.5#

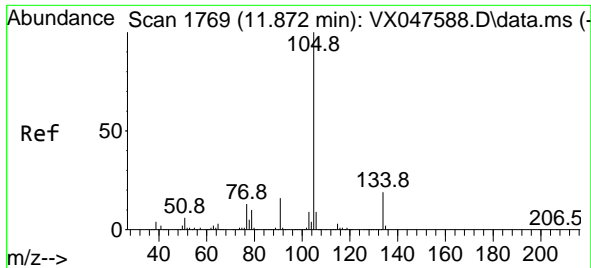


#84
 1,2,4-Trimethylbenzene
 Concen: 2.966 ug/l
 RT: 11.738 min Scan# 1747
 Delta R.T. 0.006 min
 Lab File: VX047709.D
 Acq: 22 Sep 2025 16:53



Tgt Ion: 105 Resp: 26109
 Ion Ratio Lower Upper
 105 100
 120 30.0 22.1 66.1

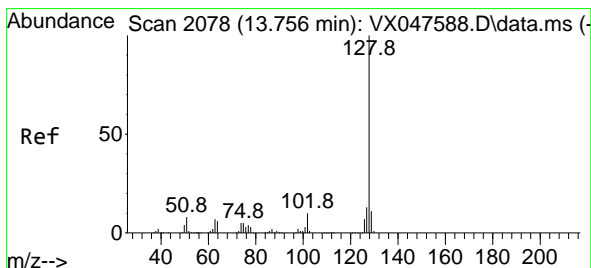
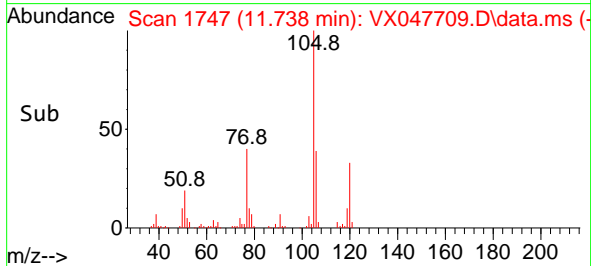
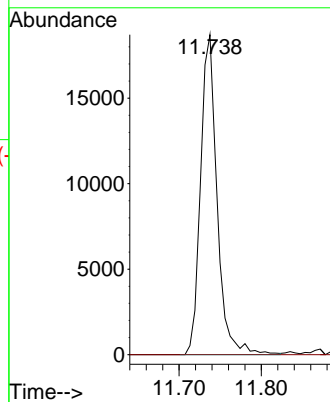
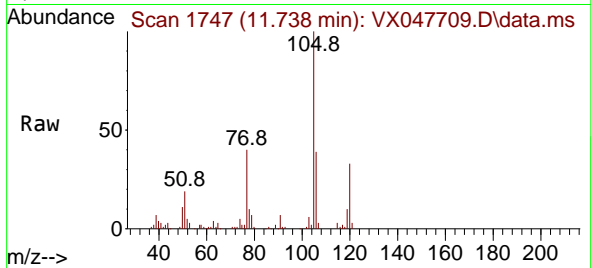




#85
 sec-Butylbenzene
 Concen: 2.473 ug/l
 RT: 11.738 min Scan# 11
 Delta R.T. -0.134 min
 Lab File: VX047709.D
 Acq: 22 Sep 2025 16:53

Instrument :
 MSVOA_X
 ClientSampleId :
 34923

Tgt Ion:105 Resp: 26109
 Ion Ratio Lower Upper
 105 100
 134 0.0 9.8 29.5#



#95
 Naphthalene
 Concen: 77.468 ug/l
 RT: 13.755 min Scan# 2078
 Delta R.T. -0.000 min
 Lab File: VX047709.D
 Acq: 22 Sep 2025 16:53

Tgt Ion:128 Resp: 706231
 Ion Ratio Lower Upper
 128 100
 127 12.9 10.2 15.2
 129 11.1 8.8 13.2

