

Data Path : Z:\VOASRV\HPCHEM1\MSVOA X\DATA\VX092319\
 Data File : VX012610.D
 Acq On : 23 Sep 2019 17:30
 Operator : JC/SP
 Sample : K4930-04RE
 Misc : 5.0mL/MSVOA X/WATER
 ALS Vial : 18 Sample Multiplier: 1

Instrument :
 MSVOA_X
 ClientSampleId :
 KY038PS038-190916RE

Integration Parameters: RTEINT.P

Integrator: RTE
 Smoothing : ON Filtering: 5
 Sampling : 1 Min Area: 3 % of largest Peak
 Start Thrs: 0.2 Max Peaks: 100
 Stop Thrs : 0 Peak Location: TOP

If leading or trailing edge < 100 prefer < Baseline drop else tangent >
 Peak separation: 5

Method : Z:\VOASRV\HPCHEM1\MSVOA_X\METHOD\82X092319W.M
 Title : SW846 8260

Signal : TIC

peak #	R.T. min	first scan	max scan	last scan	PK TY	peak height	corr. area	corr. % max.	% of total
1	1.070	26	30	43	rBV	764156	920551	98.39%	16.209%
2	1.265	58	62	69	rBV	27790	33845	3.62%	0.596%
3	2.594	276	280	290	rVB	6184	12534	1.34%	0.221%
4	4.588	597	607	618	rBV	17388	47331	5.06%	0.833%
5	5.490	744	755	767	rBV	104457	295761	31.61%	5.208%
6	5.649	771	781	796	rVB	198026	554581	59.27%	9.765%
7	6.057	837	848	863	rBV	125546	335461	35.85%	5.907%
8	6.850	966	978	996	rBV	291641	708600	75.73%	12.477%
9	8.709	1275	1283	1301	rBV	587330	935641	100.00%	16.474%
10	10.111	1507	1513	1523	rBV	544157	757052	80.91%	13.330%
11	11.135	1675	1681	1690	rBV	400585	512245	54.75%	9.019%
12	12.074	1830	1835	1846	rVB	472102	565756	60.47%	9.962%

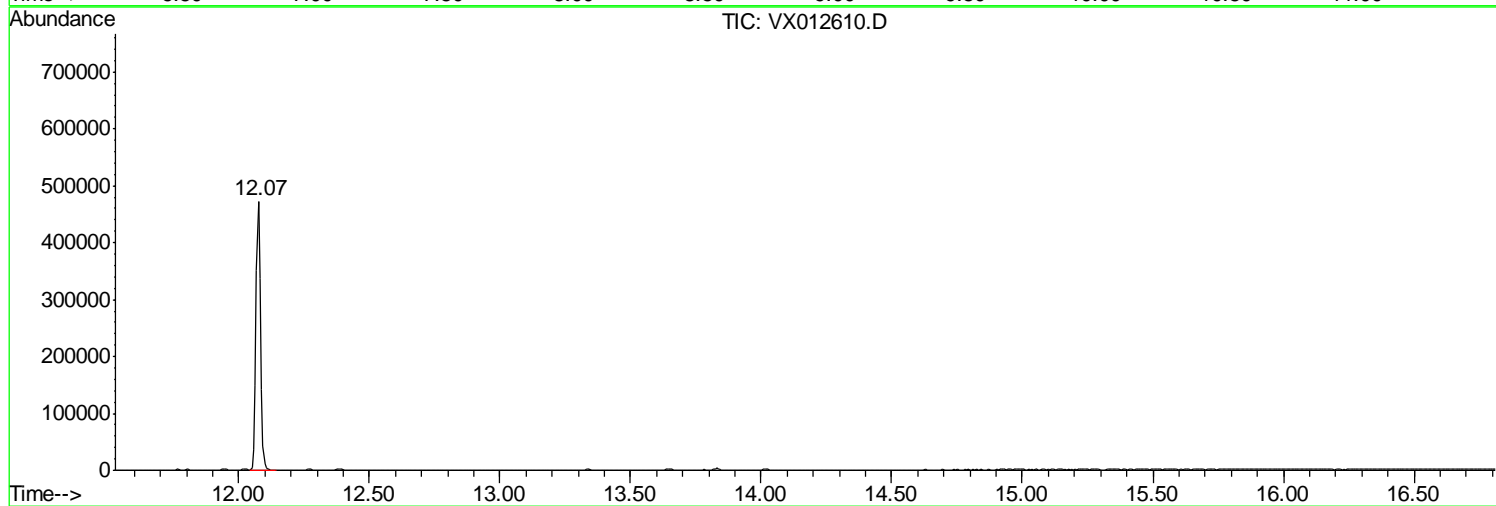
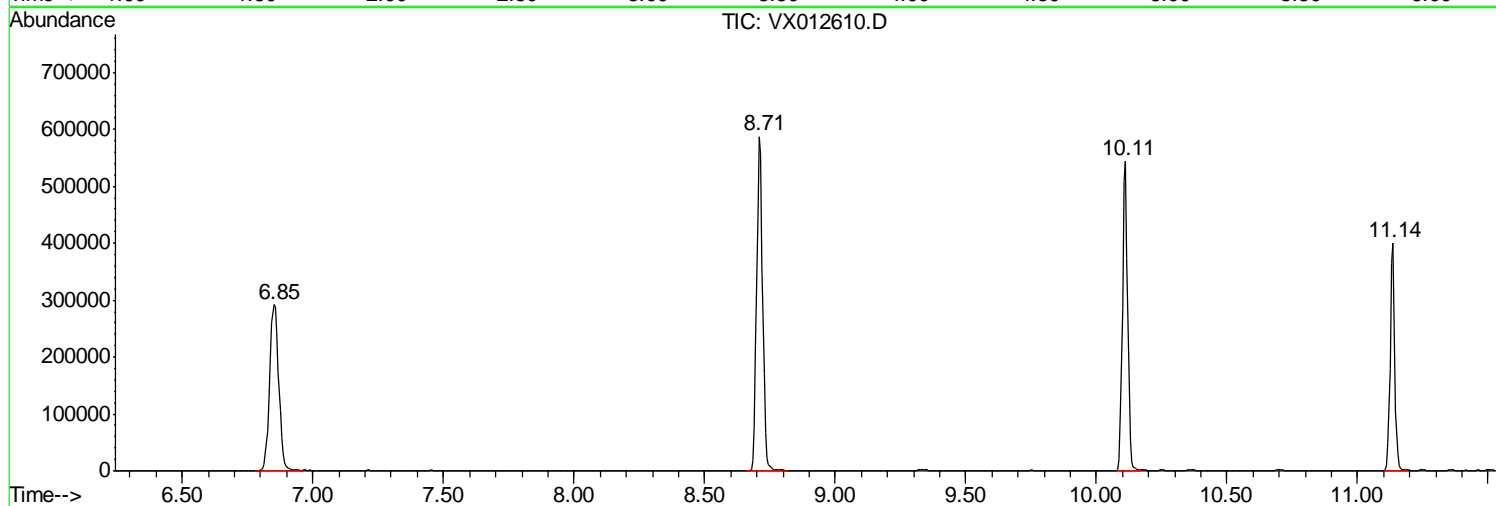
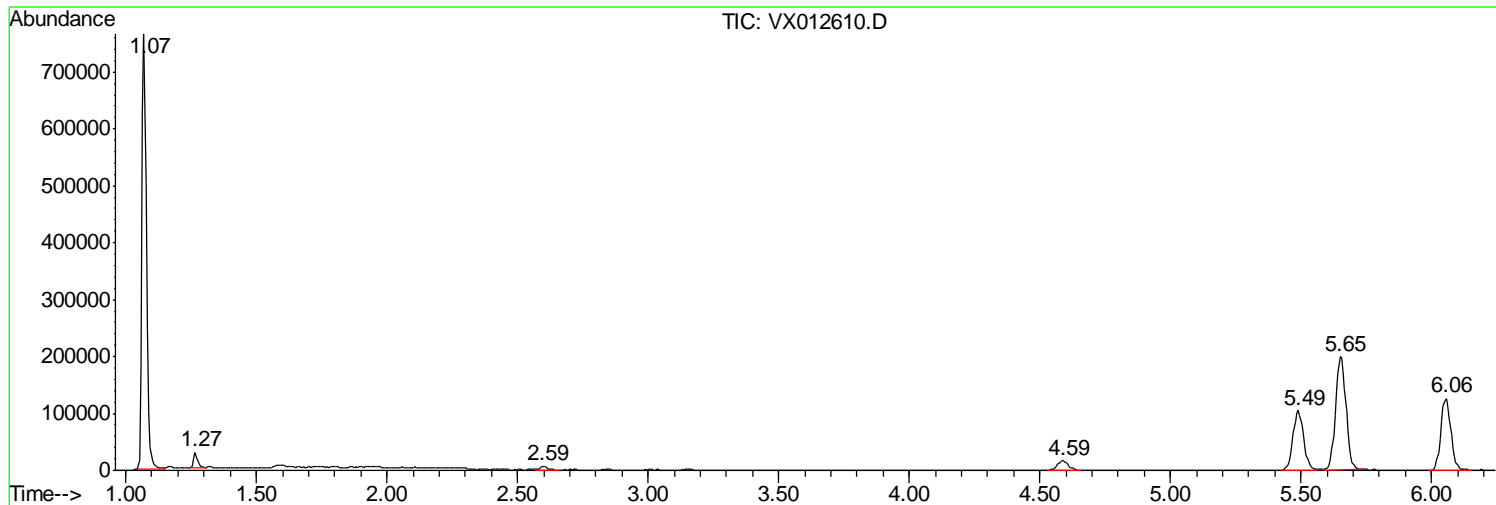
Sum of corrected areas: 5679358

Data Path : Z:\VOASRV\HPCHEM1\MSVOA X\DATA\VX092319\
Data File : VX012610.D
Acq On : 23 Sep 2019 17:30
Operator : JC/SP
Sample : K4930-04RE
Misc : 5.0mL/MSVOA X/WATER
ALS Vial : 18 Sample Multiplier: 1

Instrument :
MSVOA_X
ClientSampled :
KY038PS038-190916RE

Quant Method : Z:\VOASRV\HPCHEM1\MSVOA_X\METHOD\82X092319W.M
Quant Title : SW846 8260

TIC Library : C:\DATABASE\NIST11.L
TIC Integration Parameters: LSCINT.P



Data Path : Z:\VOASRV\HPCHEM1\MSVOA_X\DATA\VX092319\
Data File : VX012610.D
Acq On : 23 Sep 2019 17:30
Operator : JC/SP
Sample : K4930-04RE
Misc : 5.0mL/MSVOA_X/WATER
ALS Vial : 18 Sample Multiplier: 1

Instrument :
MSVOA_X
ClientSampleId :
KY038PS038-190916RE

Quant Method : Z:\VOASRV\HPCHEM1\MSVOA_X\METHOD\82X092319W.M
Quant Title : SW846 8260

TIC Library : C:\DATABASE\NIST11.L
TIC Integration Parameters: LSCINT.P

No Library Search Compounds Detected

Data Path : Z:\VOASRV\HPCHEM1\MSVOA_X\DATA\VX092319\
Data File : VX012610.D
Acq On : 23 Sep 2019 17:30
Operator : JC/SP
Sample : K4930-04RE
Misc : 5.0mL/MSVOA_X/WATER
ALS Vial : 18 Sample Multiplier: 1

Instrument :
MSVOA_X
ClientSampleId :
KY038PS038-190916RE

Quant Method : Z:\VOASRV\HPCHEM1\MSVOA_X\METHOD\82X092319W.M
Quant Title : SW846 8260

TIC Library : C:\DATABASE\NIST11.L
TIC Integration Parameters: LSCINT.P

TIC Top Hit name	RT	EstConc	Units	Response	--Internal Standard--			
					#	RT	Resp	Conc
