

Data Path : Z:\VOASRV\HPCHEM1\MSVOA X\DATA\VX092320\  
 Data File : VX018545.D  
 Acq On : 23 Sep 2020 19:30  
 Operator : JC/SP  
 Sample : L4120-09  
 Misc : 5.0mL/MSVOA X/WATER  
 ALS Vial : 7 Sample Multiplier: 1

Instrument :  
 MSVOA\_X  
 Client Sampled :  
 TB-9-23-2020

Quant Time: Sep 24 00:38:05 2020  
 Quant Method : Z:\VOASRV\HPCHEM1\MSVOA\_X\METHOD\82X091720W.M  
 Quant Title : SW846 8260  
 QLast Update : Thu Sep 17 12:17:36 2020  
 Response via : Initial Calibration

Internal Standards	R.T.	QIon	Response	Conc	Units	Dev(Min)
1) Pentafluorobenzene	5.64	168	463776	50.00	ug/l	0.00
34) 1,4-Difluorobenzene	6.83	114	747431	50.00	ug/l	0.00
63) Chlorobenzene-d5	10.10	117	711980	50.00	ug/l	0.00
72) 1,4-Dichlorobenzene-d4	12.06	152	360117	50.00	ug/l	0.00

## System Monitoring Compounds

33) 1,2-Dichloroethane-d4	6.03	65	317661	48.42	ug/l	0.00
Spiked Amount	50.000		Recovery	=	96.84%	
35) Dibromofluoromethane	5.46	113	255356	49.42	ug/l	0.00
Spiked Amount	50.000		Recovery	=	98.84%	
50) Toluene-d8	8.70	98	905516	48.23	ug/l	0.00
Spiked Amount	50.000		Recovery	=	96.46%	
62) 4-Bromofluorobenzene	11.12	95	335622	44.94	ug/l	0.00
Spiked Amount	50.000		Recovery	=	89.88%	

## Target Compounds

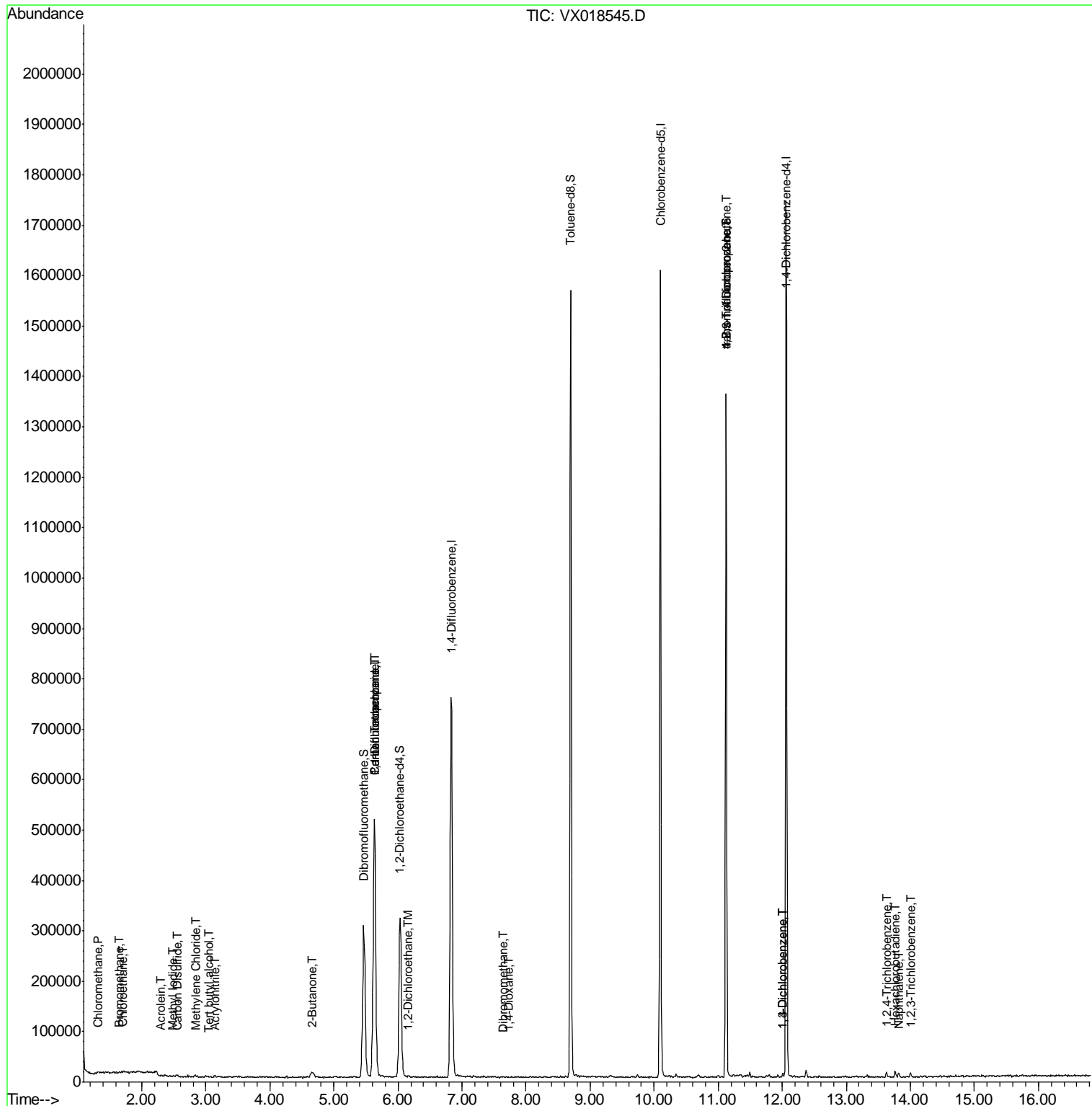
						Qvalue
3) Chloromethane	1.31	50	1169	0.227	ug/l	97
5) Bromomethane	1.65	94	848	0.254	ug/l #	51
6) Chloroethane	1.70	64	707	0.227	ug/l #	42
10) Methyl Iodide	2.50	142	1480	5.156	ug/l #	82
11) Tert butyl alcohol	3.05	59	313	0.274	ug/l #	1
13) Acrolein	2.30	56	184	0.255	ug/l #	1
15) Acrylonitrile	3.14	53	1467	0.539	ug/l	93
17) Carbon Disulfide	2.56	76	3876	0.289	ug/l #	85
20) Methylene Chloride	2.84	84	1878	0.339	ug/l #	85
25) 2-Butanone	4.65	43	889	0.228	ug/l #	51
36) 1,1-Dichloropropene	5.63	75	37329	5.146	ug/l #	52
38) Carbon Tetrachloride	5.63	117	48574	6.046	ug/l #	19
42) 1,2-Dichloroethane	6.16	62	1661	0.205	ug/l	89
46) Dibromomethane	7.64	93	829	0.211	ug/l #	53
49) 1,4-Dioxane	7.73	88	72	0.696	ug/l #	1
76) 1,2,3-Trichloropropane	11.12	75	173861	22.974	ug/l #	35
81) trans-1,4-Dichloro-2-buten	11.12	75	173861	58.871	ug/l #	12
87) 1,3-Dichlorobenzene	12.01	146	2798	0.234	ug/l	89
88) 1,4-Dichlorobenzene	12.01	146	2798	0.231	ug/l	86
93) 1,2,4-Trichlorobenzene	13.63	180	2395	0.308	ug/l	94
94) Hexachlorobutadiene	13.77	225	1672	0.513	ug/l	94
95) Naphthalene	13.82	128	5056	0.215	ug/l #	89
96) 1,2,3-Trichlorobenzene	14.01	180	2380	0.320	ug/l	91

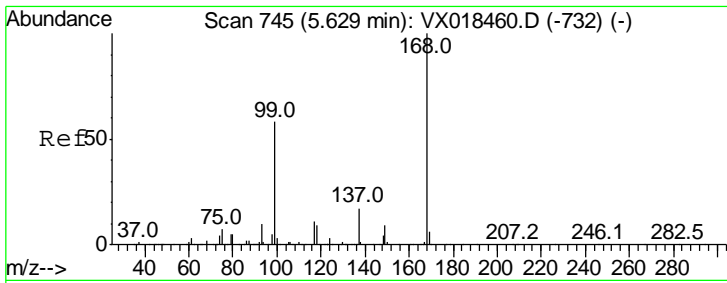
(#) = qualifier out of range (m) = manual integration (+) = signals summed

Data Path : Z:\VOASRV\HPCHEM1\MSVOA X\DATA\VX092320\  
 Data File : VX018545.D  
 Acq On : 23 Sep 2020 19:30  
 Operator : JC/SP  
 Sample : L4120-09  
 Misc : 5.0mL/MSVOA X/WATER  
 ALS Vial : 7 Sample Multiplier: 1

Instrument :  
 MSVOA\_X  
 Client Sampled :  
 TB-9-23-2020

Quant Time: Sep 24 00:38:05 2020  
 Quant Method : Z:\VOASRV\HPCHEM1\MSVOA\_X\METHOD\82X091720W.M  
 Quant Title : SW846 8260  
 QLast Update : Thu Sep 17 12:17:36 2020  
 Response via : Initial Calibration

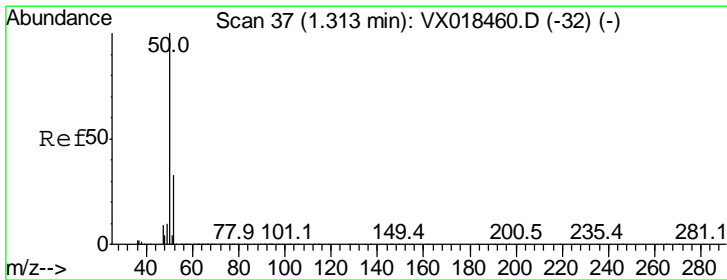
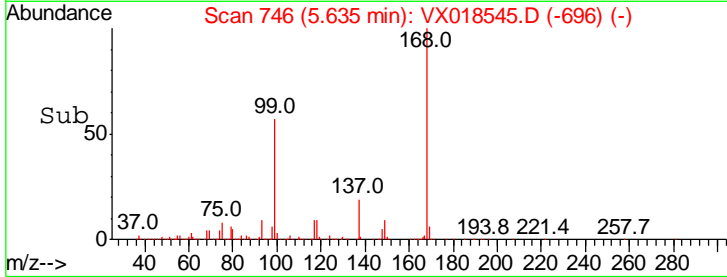
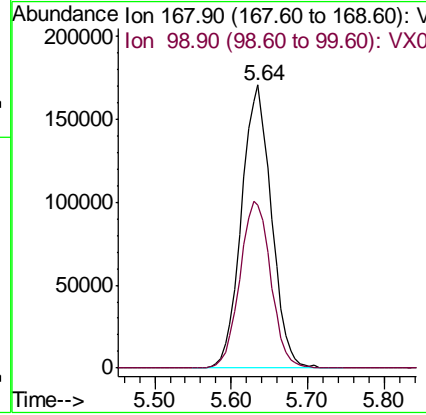
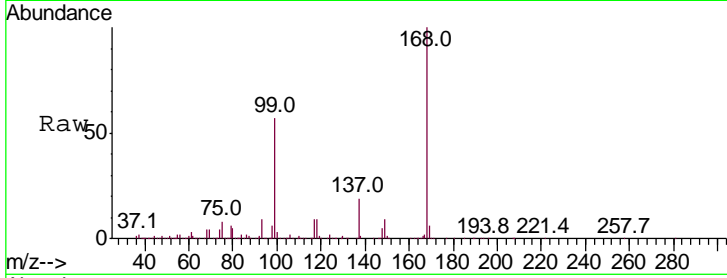




#1  
 Pentafluorobenzene  
 Concen: 50.000 ug/l  
 RT: 5.64 min Scan# 746  
 Delta R.T. 0.01 min  
 Lab File: VX018545.D  
 Acq: 23 Sep 2020 19:30

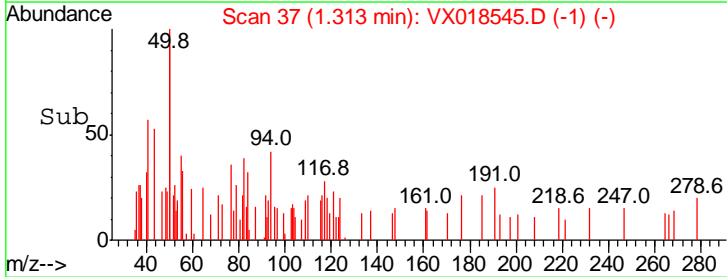
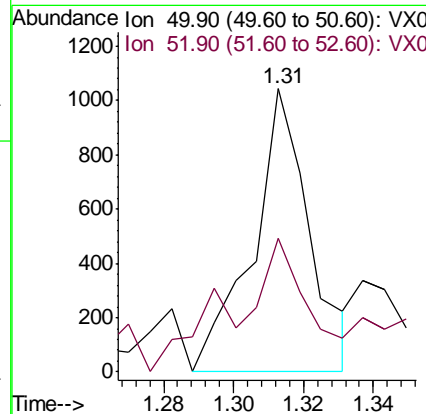
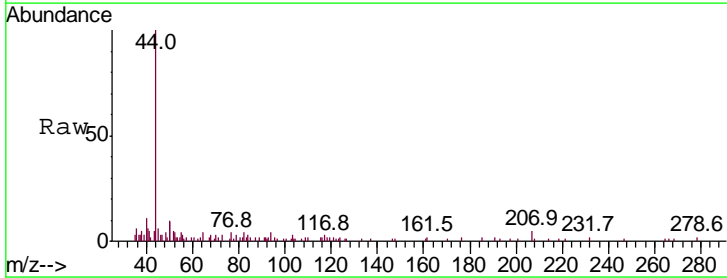
Instrument :  
 MSVOA\_X  
 ClientSampled :  
 TB-9-23-2020

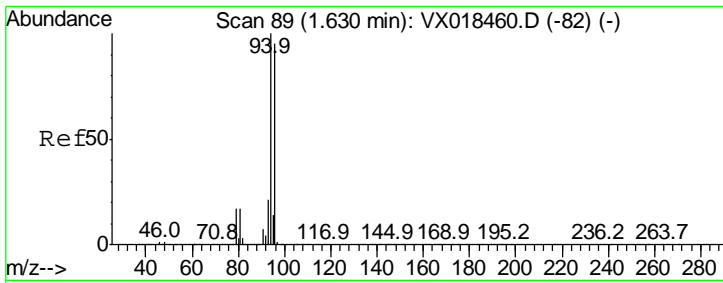
Tgt Ion: 168 Resp: 463776  
 Ion Ratio Lower Upper  
 168 100  
 99 57.5 46.5 69.7



#3  
 Chloromethane  
 Concen: 0.227 ug/l  
 RT: 1.31 min Scan# 37  
 Delta R.T. -0.00 min  
 Lab File: VX018545.D  
 Acq: 23 Sep 2020 19:30

Tgt Ion: 50 Resp: 1169  
 Ion Ratio Lower Upper  
 50 100  
 52 35.2 26.6 40.0

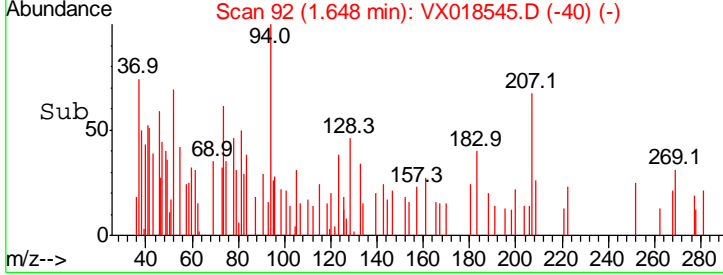
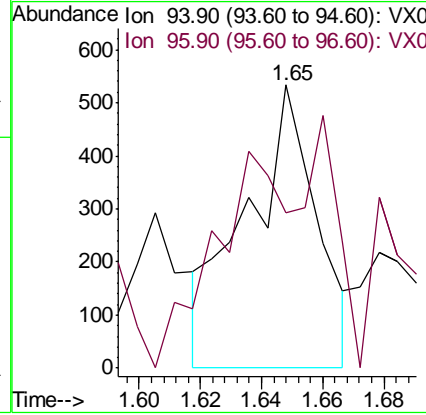
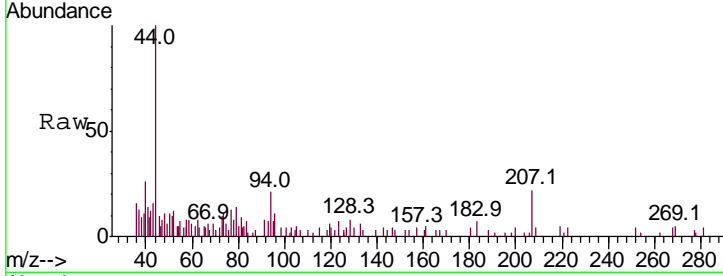




#5  
 Bromomethane  
 Concen: 0.254 ug/l  
 RT: 1.65 min Scan# 92  
 Delta R.T. 0.02 min  
 Lab File: VX018545.D  
 Acq: 23 Sep 2020 19:30

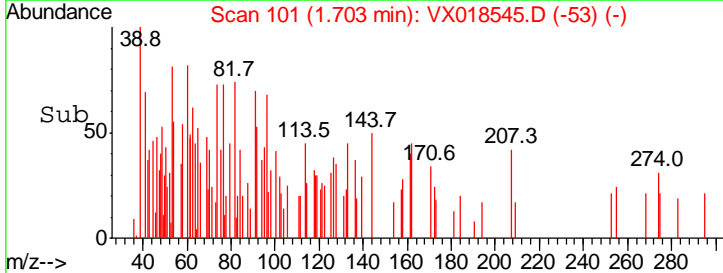
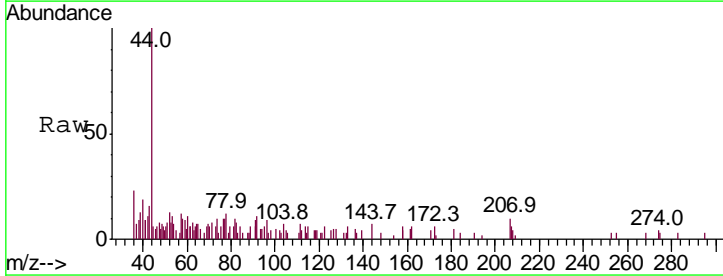
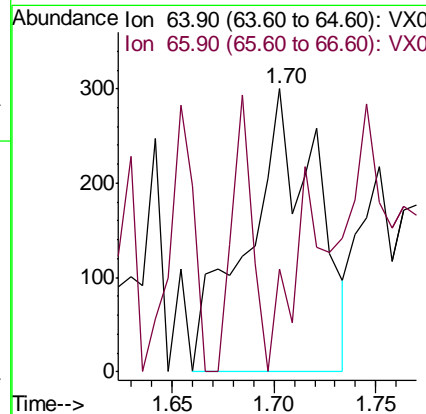
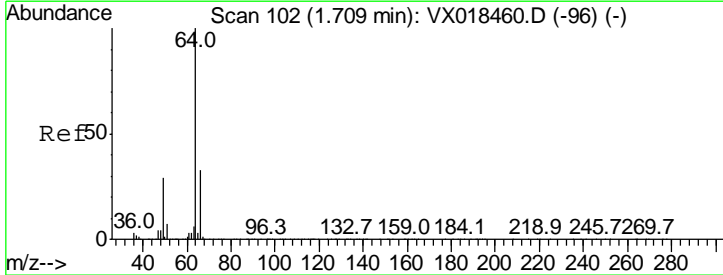
Instrument :  
 MSVOA\_X  
 ClientSampled :  
 TB-9-23-2020

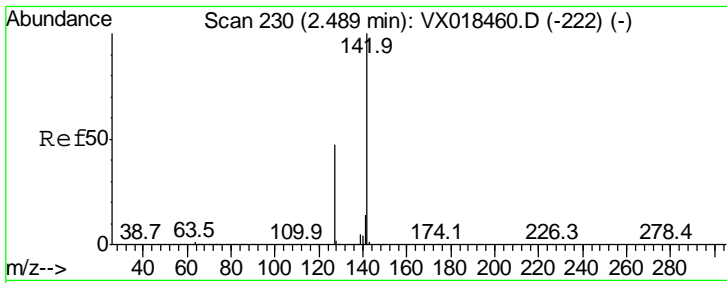
Tgt Ion: 94 Resp: 848  
 Ion Ratio Lower Upper  
 94 100  
 96 46.9 75.5 113.3#



#6  
 Chloroethane  
 Concen: 0.227 ug/l  
 RT: 1.70 min Scan# 101  
 Delta R.T. -0.01 min  
 Lab File: VX018545.D  
 Acq: 23 Sep 2020 19:30

Tgt Ion: 64 Resp: 707  
 Ion Ratio Lower Upper  
 64 100  
 66 0.0 26.2 39.4#

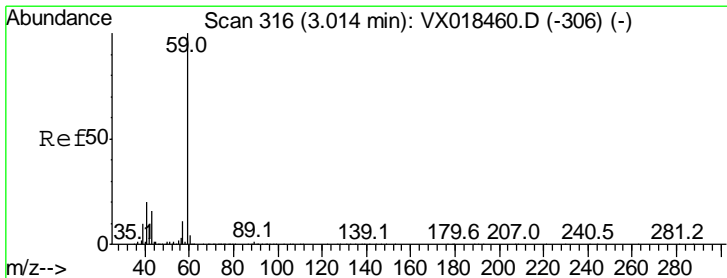
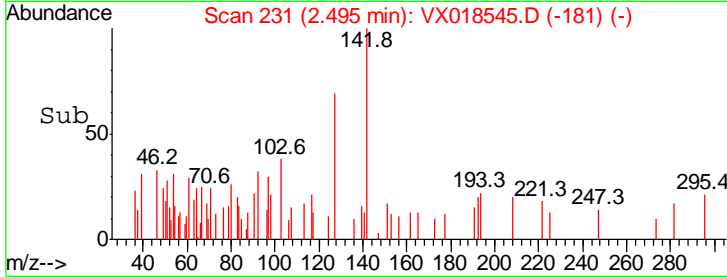
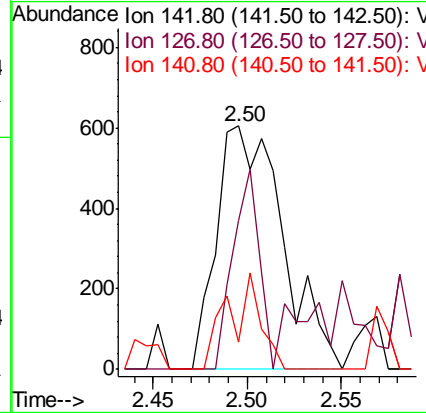
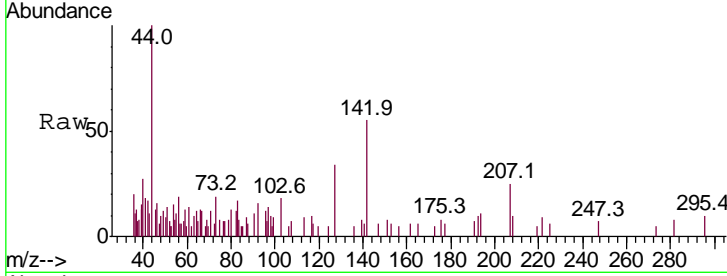




#10  
 Methyl Iodide  
 Concen: 5.156 ug/l  
 RT: 2.50 min Scan# 231  
 Delta R.T. 0.01 min  
 Lab File: VX018545.D  
 Acq: 23 Sep 2020 19:30

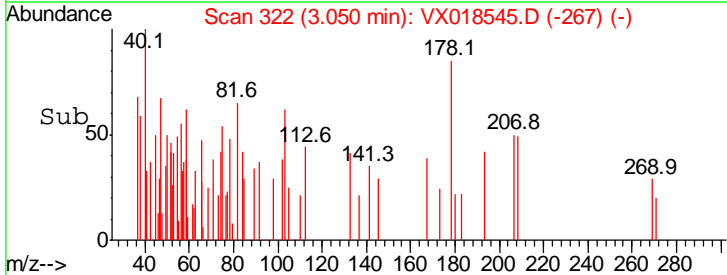
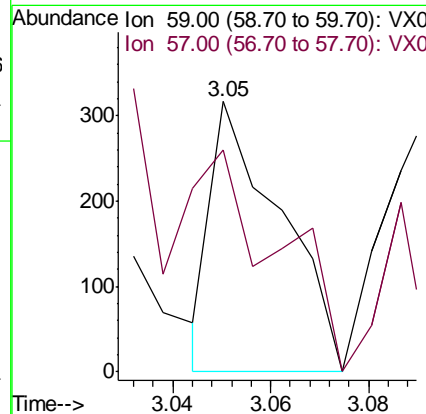
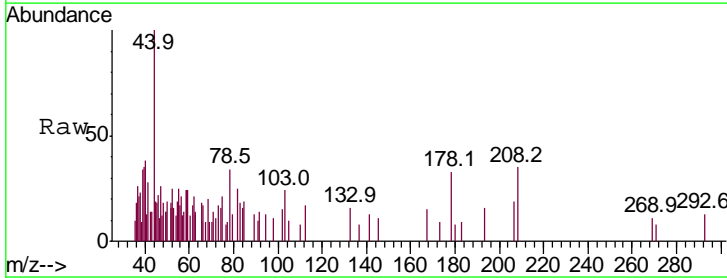
Instrument :  
 MSVOA\_X  
 ClientSampled :  
 TB-9-23-2020

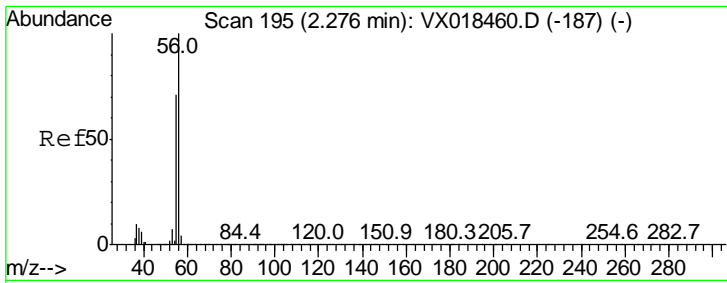
Tgt Ion	Ratio	Lower	Upper
142	100		
127	32.5	36.0	54.0#
141	9.3	11.9	17.9#



#11  
 Tert butyl alcohol  
 Concen: 0.274 ug/l  
 RT: 3.05 min Scan# 322  
 Delta R.T. 0.04 min  
 Lab File: VX018545.D  
 Acq: 23 Sep 2020 19:30

Tgt Ion	Ratio	Lower	Upper
59	100		
57	131.9	8.2	12.4#

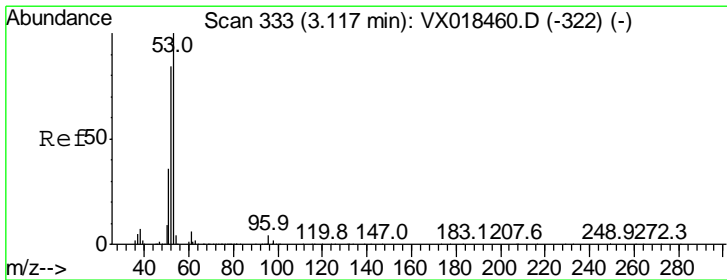
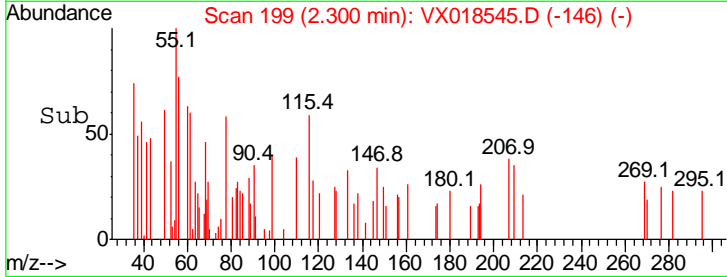
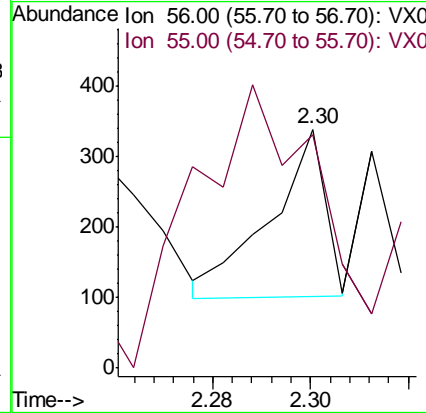
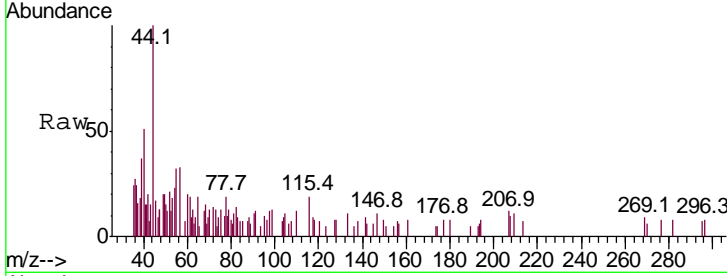




#13  
 Acrolein  
 Concen: 0.255 ug/l  
 RT: 2.30 min Scan# 199  
 Delta R.T. 0.02 min  
 Lab File: VX018545.D  
 Acq: 23 Sep 2020 19:30

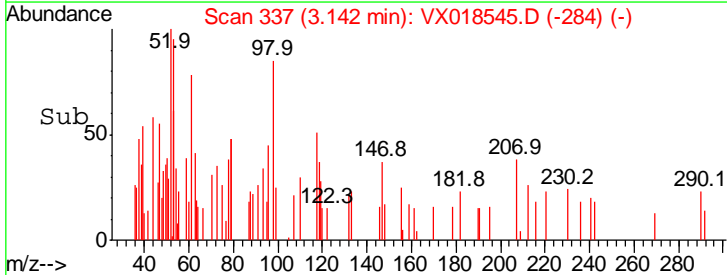
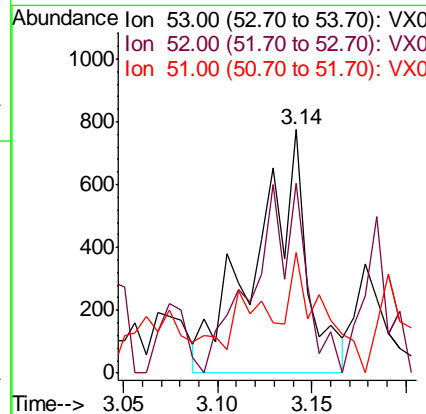
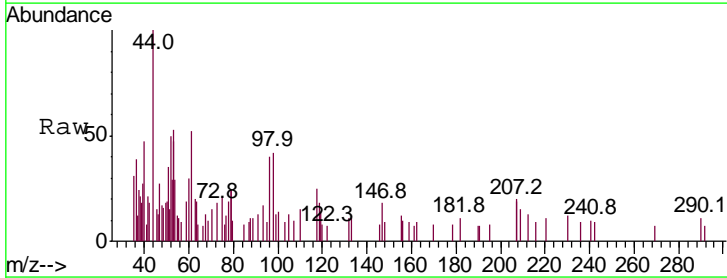
Instrument :  
 MSVOA\_X  
 ClientSampled :  
 TB-9-23-2020

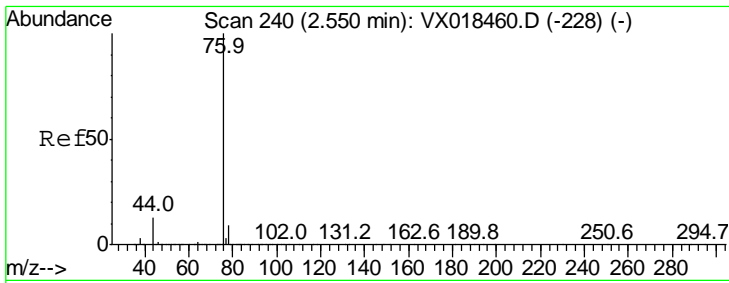
Tgt Ion: 56 Resp: 184  
 Ion Ratio Lower Upper  
 56 100  
 55 390.2 58.2 87.4#



#15  
 Acrylonitrile  
 Concen: 0.539 ug/l  
 RT: 3.14 min Scan# 337  
 Delta R.T. 0.02 min  
 Lab File: VX018545.D  
 Acq: 23 Sep 2020 19:30

Tgt Ion: 53 Resp: 1467  
 Ion Ratio Lower Upper  
 53 100  
 52 77.5 65.8 98.8  
 51 29.9 29.2 43.8

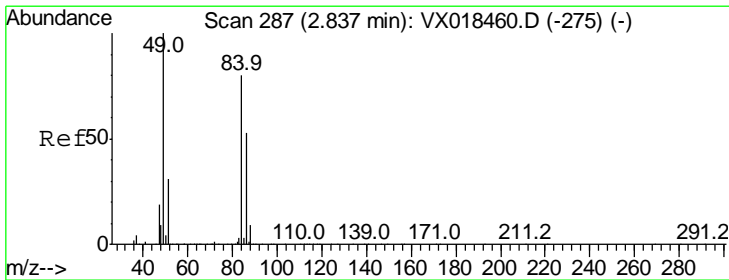
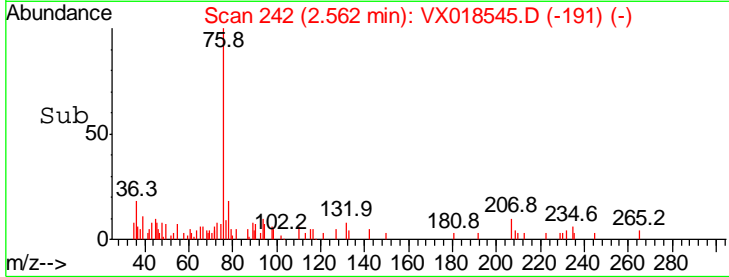
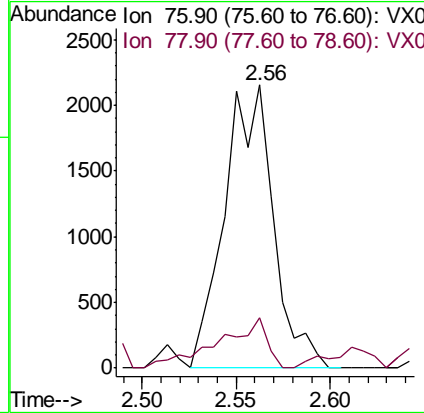
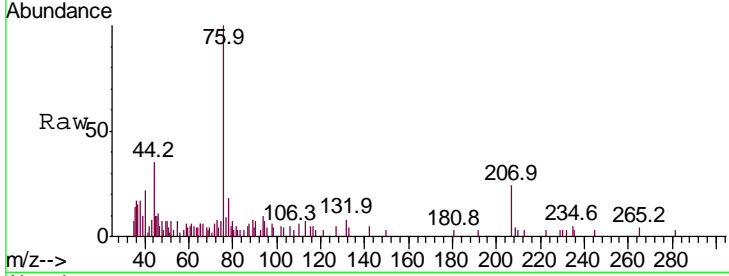




#17  
 Carbon Disulfide  
 Concen: 0.289 ug/l  
 RT: 2.56 min Scan# 242  
 Delta R.T. 0.01 min  
 Lab File: VX018545.D  
 Acq: 23 Sep 2020 19:30

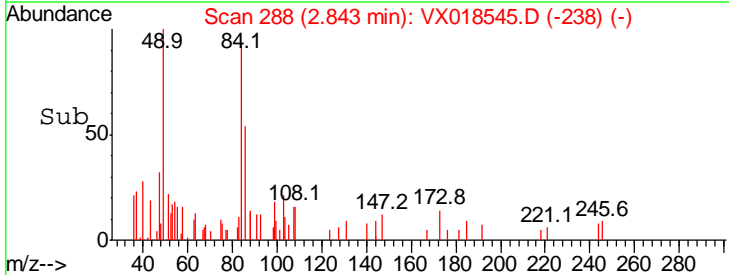
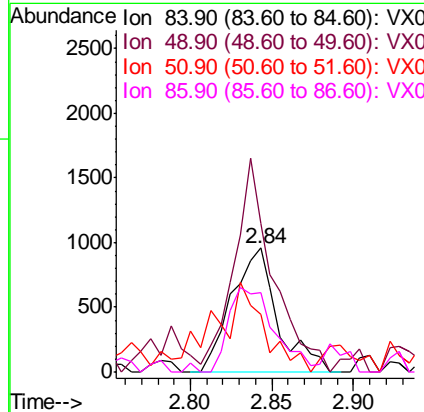
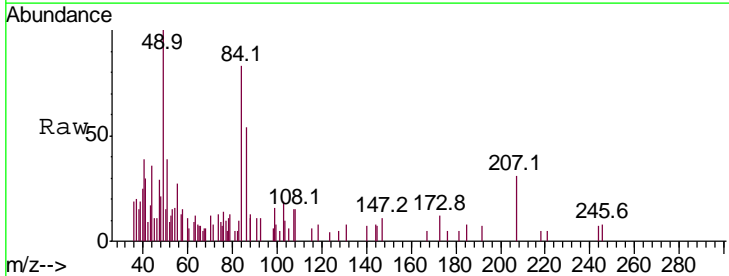
Instrument :  
 MSVOA\_X  
 ClientSampled :  
 TB-9-23-2020

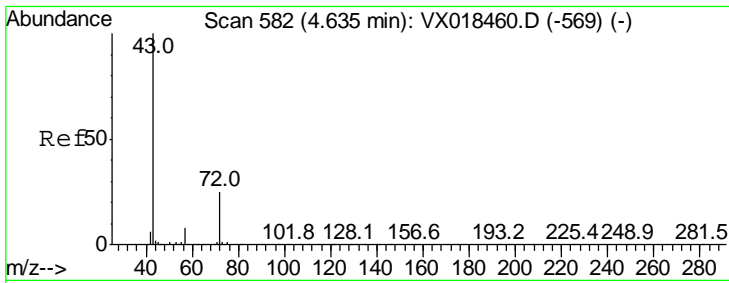
Tgt Ion	Ratio	Lower	Upper
76	100		
78	13.9	7.0	10.4#



#20  
 Methylene Chloride  
 Concen: 0.339 ug/l  
 RT: 2.84 min Scan# 288  
 Delta R.T. 0.01 min  
 Lab File: VX018545.D  
 Acq: 23 Sep 2020 19:30

Tgt Ion	Ratio	Lower	Upper
84	100		
49	109.1	100.6	151.0
51	24.6	30.9	46.3#
86	57.3	53.5	80.3

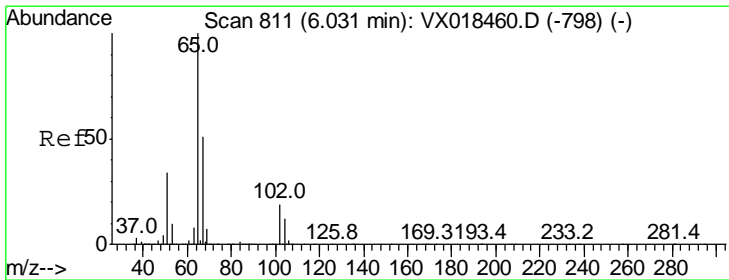
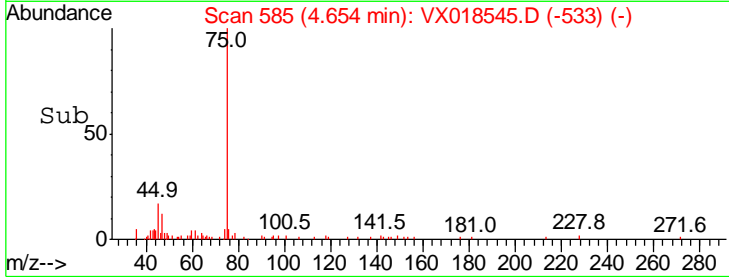
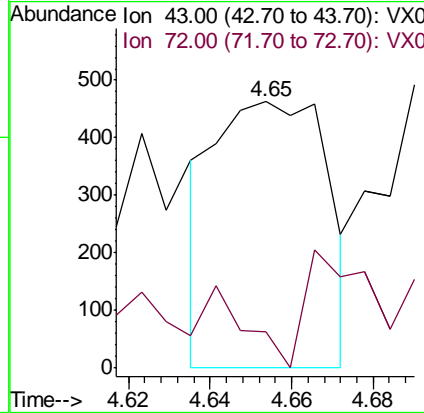
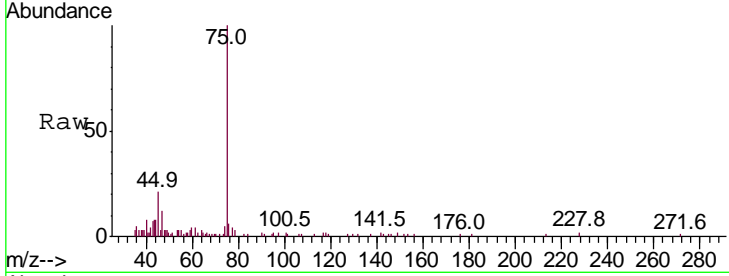




#25  
 2-Butanone  
 Concen: 0.228 ug/l  
 RT: 4.65 min Scan# 585  
 Delta R.T. 0.02 min  
 Lab File: VX018545.D  
 Acq: 23 Sep 2020 19:30

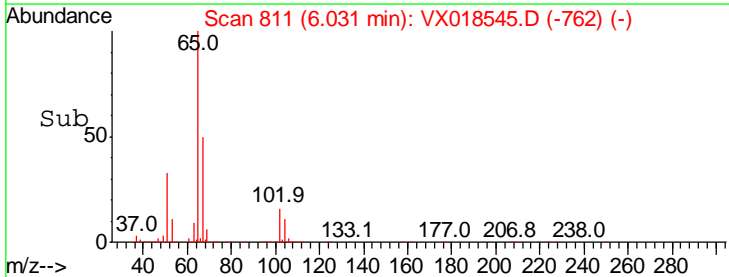
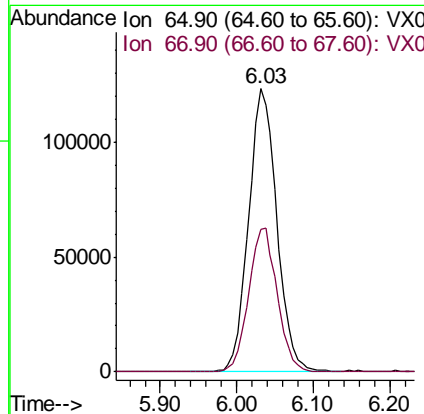
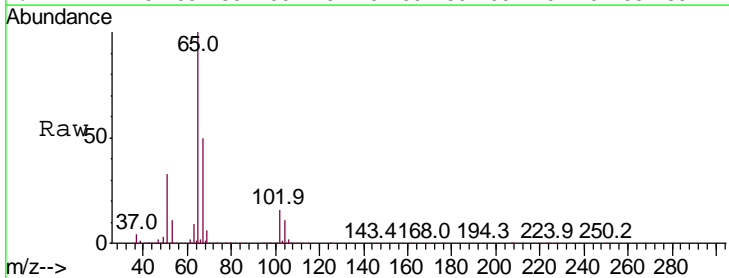
Instrument :  
 MSVOA\_X  
 ClientSampled :  
 TB-9-23-2020

Tgt Ion: 43 Resp: 889  
 Ion Ratio Lower Upper  
 43 100  
 72 0.8 20.2 30.4#

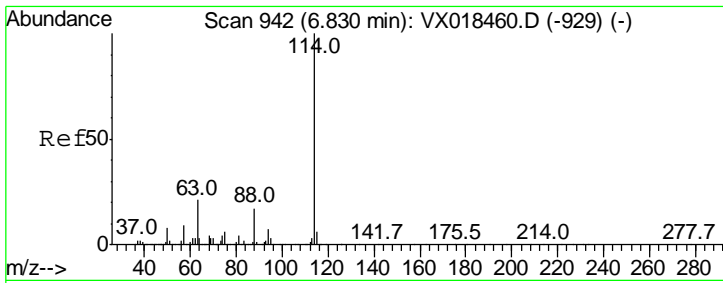


#33  
 1,2-Dichloroethane-d4  
 Concen: 48.418 ug/l  
 RT: 6.03 min Scan# 811  
 Delta R.T. -0.00 min  
 Lab File: VX018545.D  
 Acq: 23 Sep 2020 19:30

Tgt Ion: 65 Resp: 317661  
 Ion Ratio Lower Upper  
 65 100  
 67 51.2 0.0 105.6



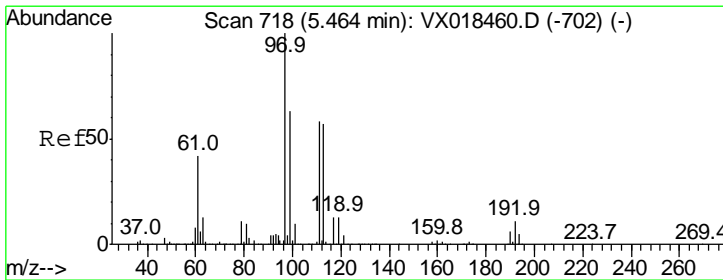
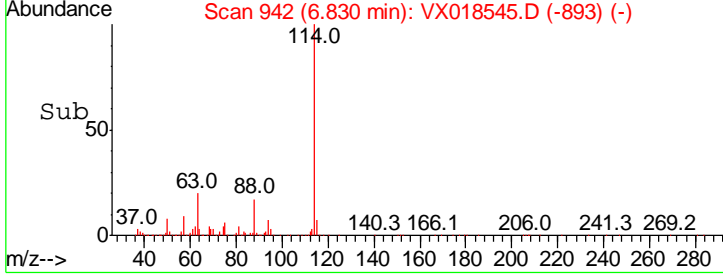
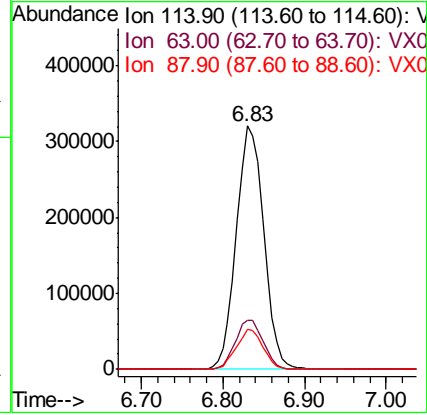
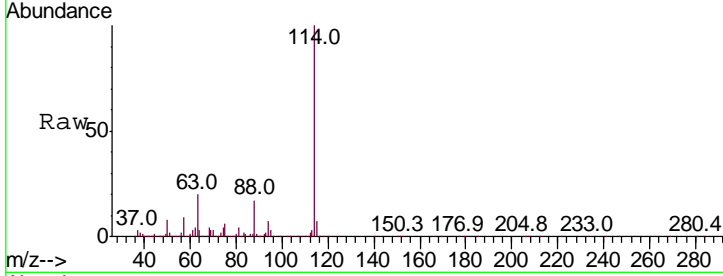




#34  
 1,4-Difluorobenzene  
 Concen: 50.000 ug/l  
 RT: 6.83 min Scan# 942  
 Delta R.T. -0.00 min  
 Lab File: VX018545.D  
 Acq: 23 Sep 2020 19:30

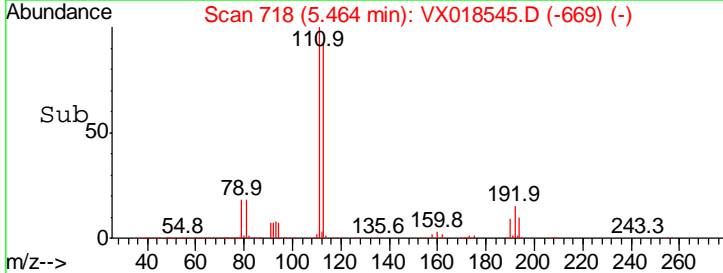
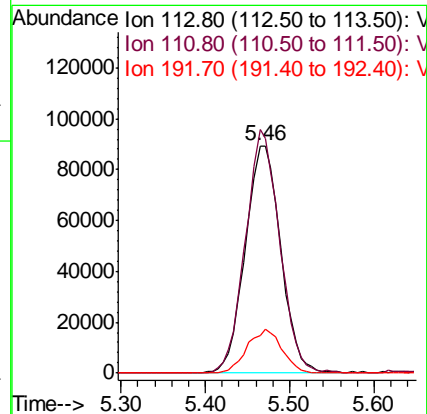
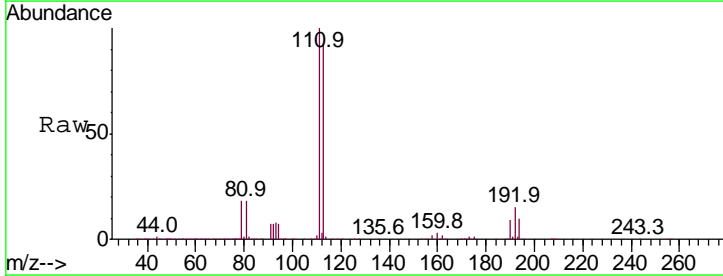
Instrument :  
 MSVOA\_X  
 ClientSampled :  
 TB-9-23-2020

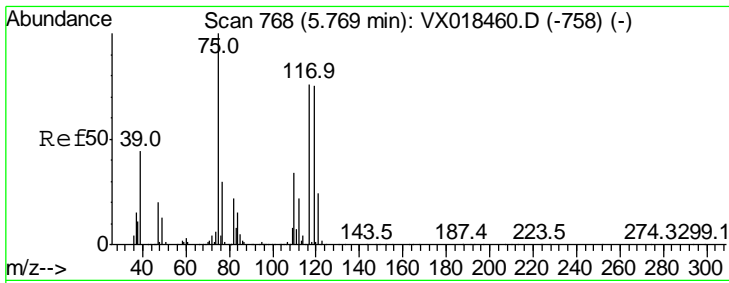
Tgt Ion	Resp	Lower	Upper
114	100		
63	20.0	0.0	42.8
88	16.6	0.0	33.6



#35  
 Dibromofluoromethane  
 Concen: 49.420 ug/l  
 RT: 5.46 min Scan# 718  
 Delta R.T. -0.00 min  
 Lab File: VX018545.D  
 Acq: 23 Sep 2020 19:30

Tgt Ion	Resp	Lower	Upper
113	100		
111	102.9	81.4	122.2
192	19.1	16.6	24.8

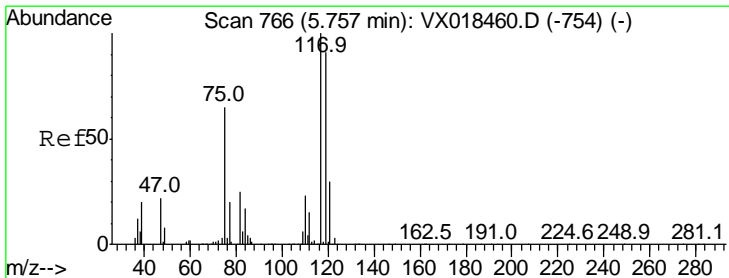
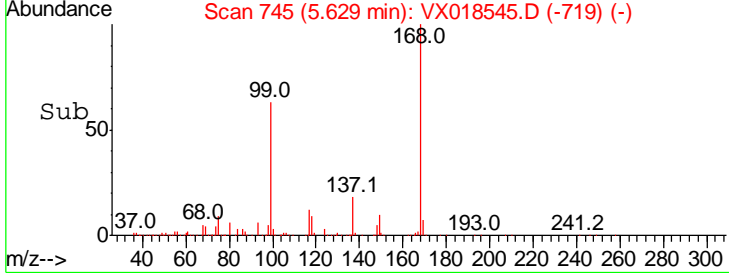
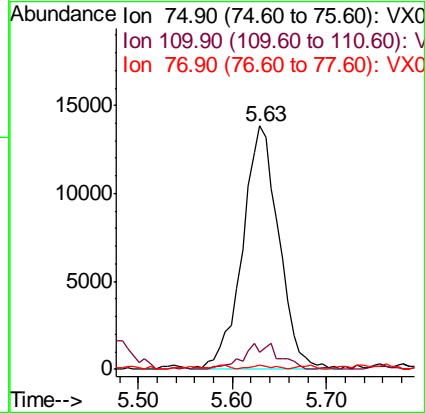
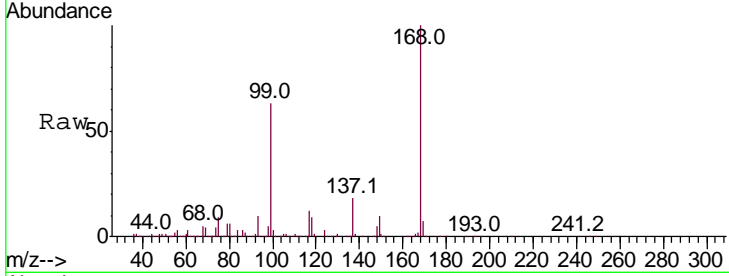




#36  
 1,1-Dichloropropene  
 Concen: 5.146 ug/l  
 RT: 5.63 min Scan# 745  
 Delta R.T. -0.14 min  
 Lab File: VX018545.D  
 Acq: 23 Sep 2020 19:30

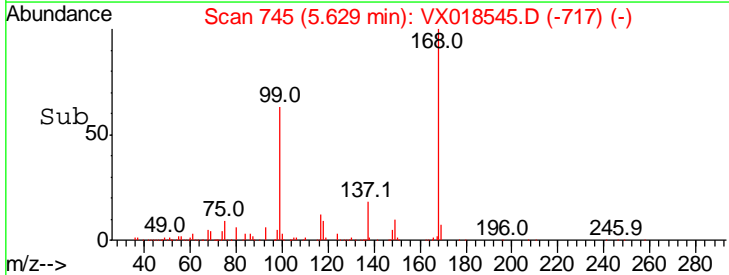
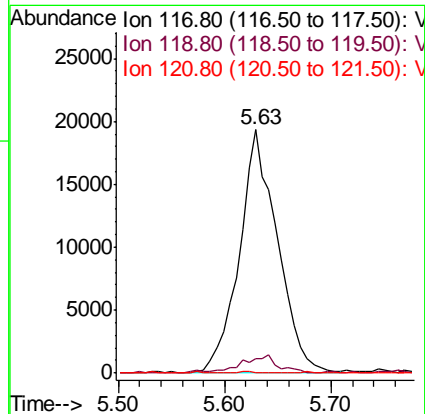
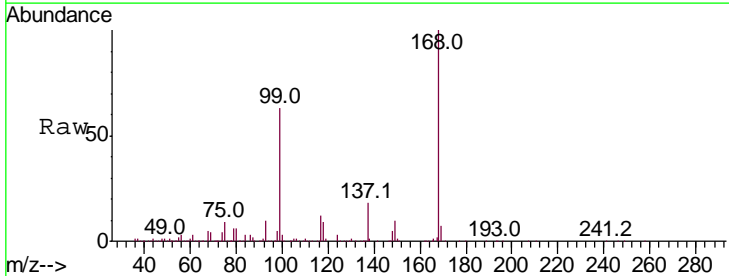
Instrument : MSVOA\_X  
 ClientSampled : TB-9-23-2020

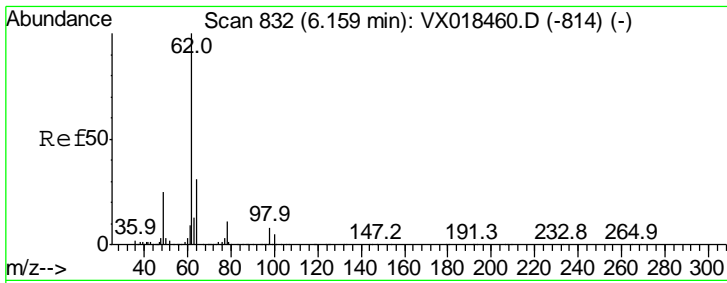
Tgt Ion	Resp	Lower	Upper
75	100		
110	10.6	17.6	52.8#
77	1.2	25.0	37.6#



#38  
 Carbon Tetrachloride  
 Concen: 6.046 ug/l  
 RT: 5.63 min Scan# 745  
 Delta R.T. -0.13 min  
 Lab File: VX018545.D  
 Acq: 23 Sep 2020 19:30

Tgt Ion	Resp	Lower	Upper
117	100		
119	6.2	72.3	108.5#
121	0.0	23.8	35.8#

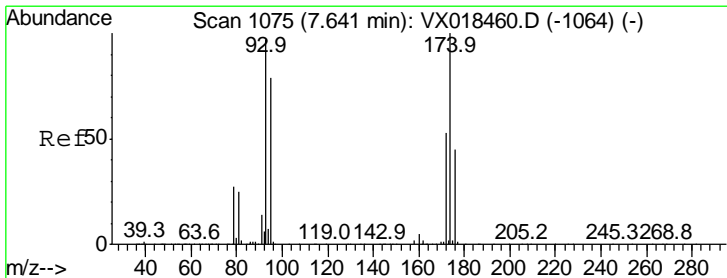
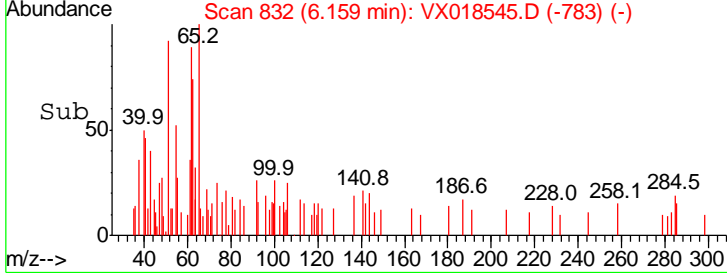
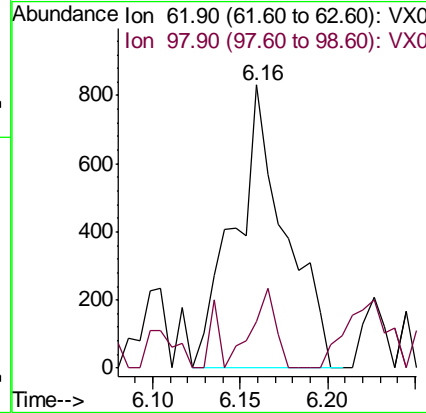
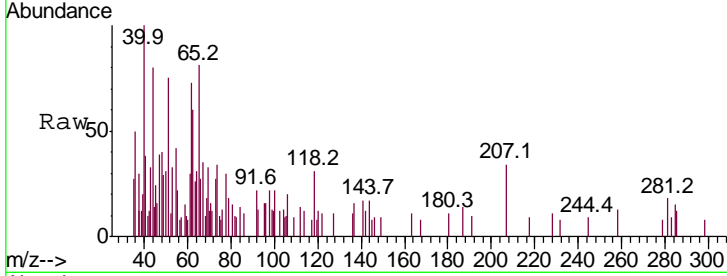




#42  
 1,2-Dichloroethane  
 Concen: 0.205 ug/l  
 RT: 6.16 min Scan# 832  
 Delta R.T. -0.00 min  
 Lab File: VX018545.D  
 Acq: 23 Sep 2020 19:30

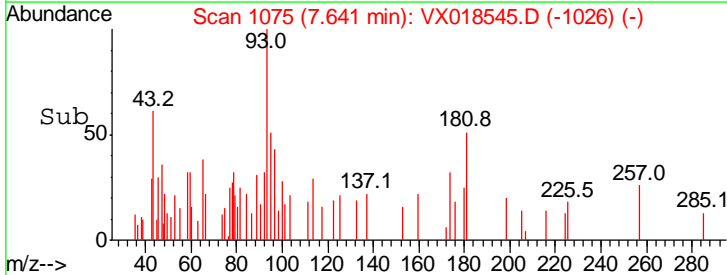
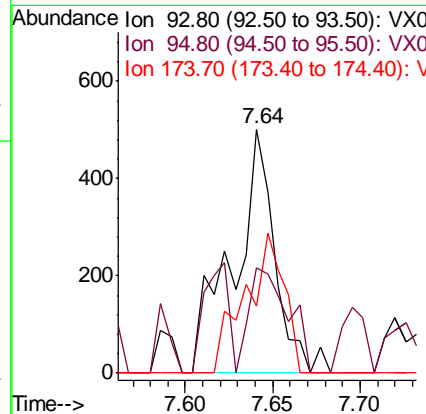
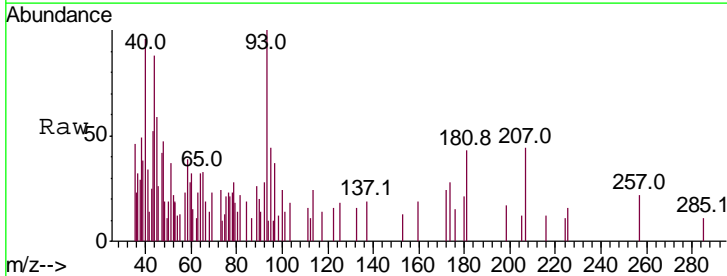
Instrument :  
 MSVOA\_X  
 ClientSampleId :  
 TB-9-23-2020

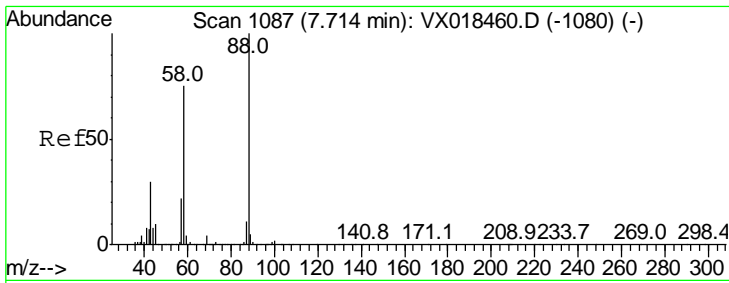
Tgt Ion	Resp	Lower	Upper
62	100		
98	12.1	0.0	16.6



#46  
 Dibromomethane  
 Concen: 0.211 ug/l  
 RT: 7.64 min Scan# 1075  
 Delta R.T. -0.00 min  
 Lab File: VX018545.D  
 Acq: 23 Sep 2020 19:30

Tgt Ion	Resp	Lower	Upper
93	100		
95	40.9	65.0	97.4#
174	53.7	82.0	123.0#

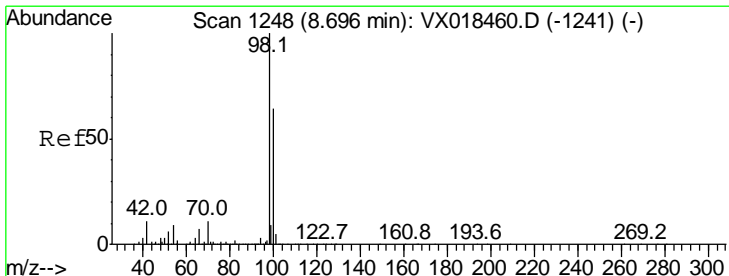
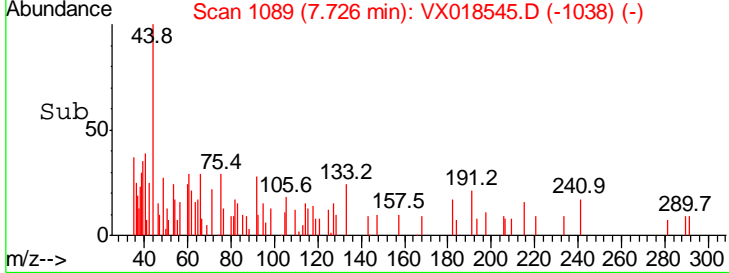
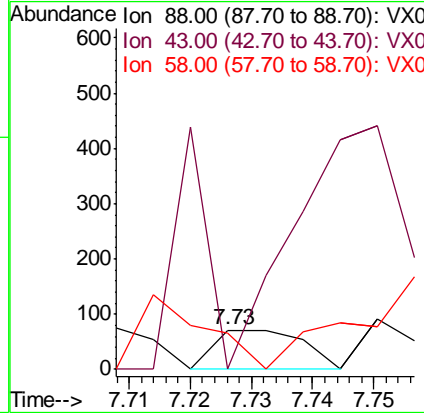
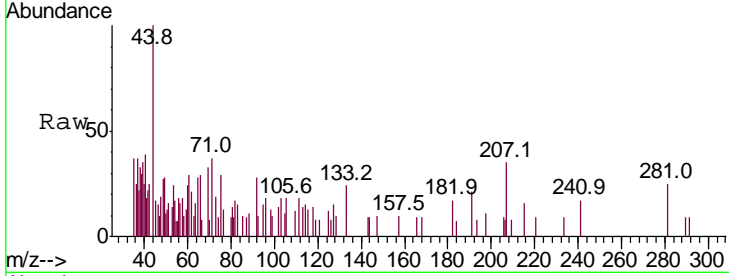




#49  
 1,4-Dioxane  
 Concen: 0.696 ug/l  
 RT: 7.73 min Scan# 1089  
 Delta R.T. 0.01 min  
 Lab File: VX018545.D  
 Acq: 23 Sep 2020 19:30

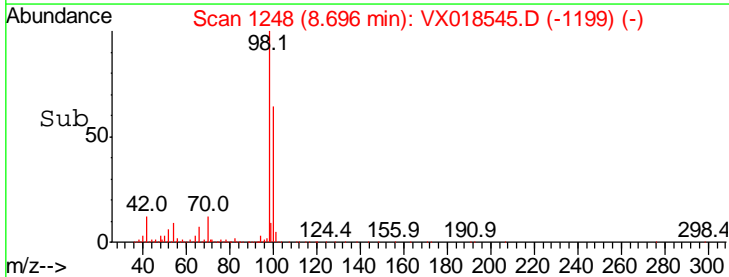
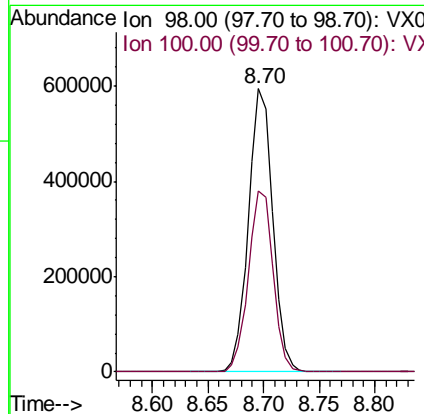
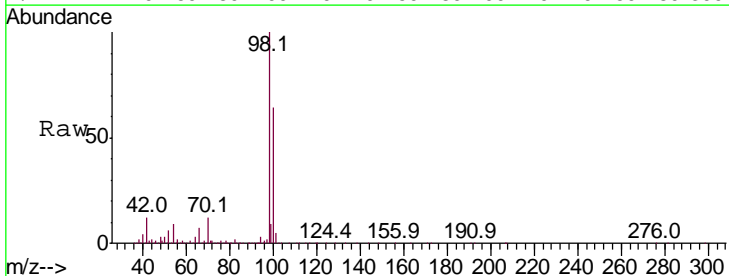
Instrument : MSVOA\_X  
 ClientSampleId : TB-9-23-2020

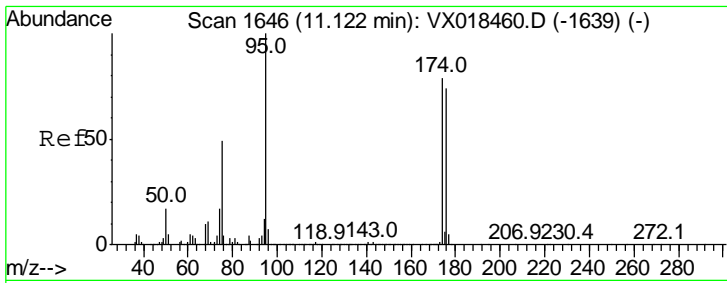
Tgt Ion	Resp	Lower	Upper
88	100		
43	223.6	29.9	44.9#
58	143.1	59.0	88.6#



#50  
 Toluene-d8  
 Concen: 48.233 ug/l  
 RT: 8.70 min Scan# 1248  
 Delta R.T. -0.00 min  
 Lab File: VX018545.D  
 Acq: 23 Sep 2020 19:30

Tgt Ion	Resp	Lower	Upper
98	100		
100	64.9	51.7	77.5

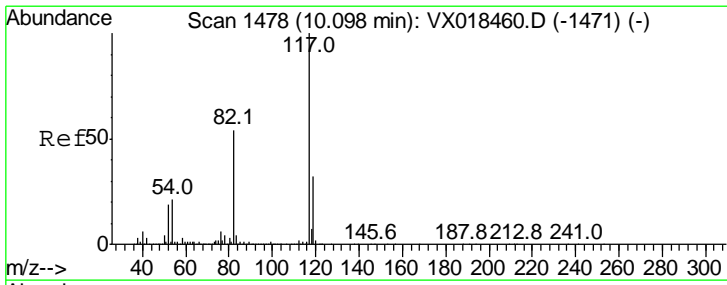
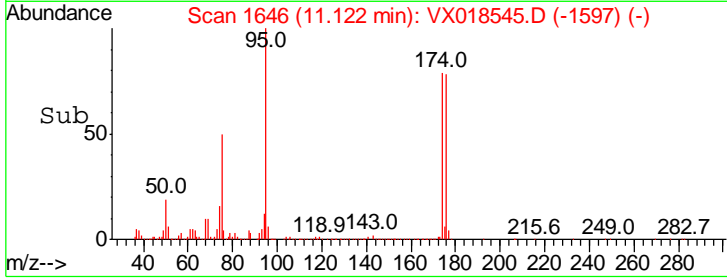
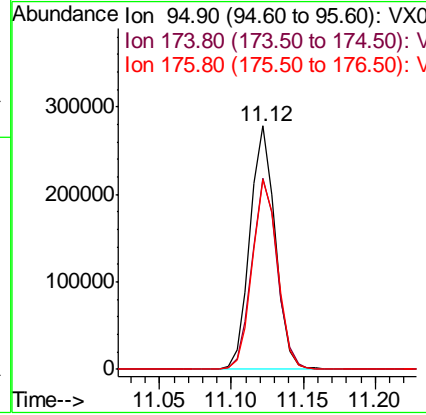
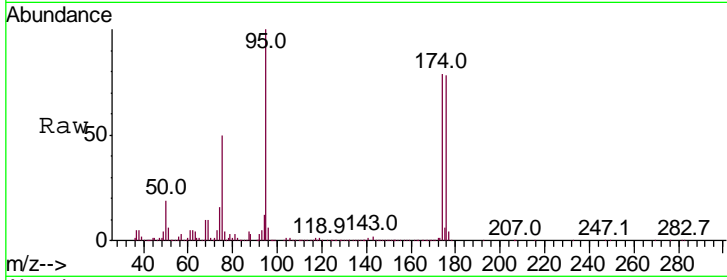




#62  
 4-Bromofluorobenzene  
 Concen: 44.943 ug/l  
 RT: 11.12 min Scan# 1646  
 Delta R.T. -0.00 min  
 Lab File: VX018545.D  
 Acq: 23 Sep 2020 19:30

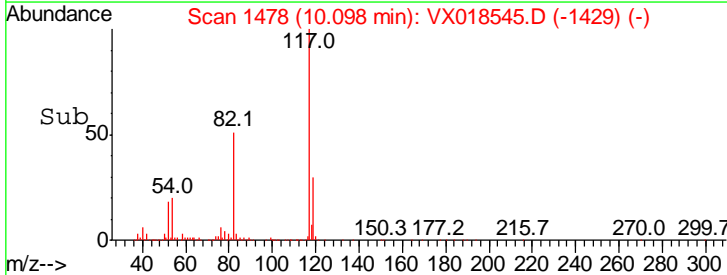
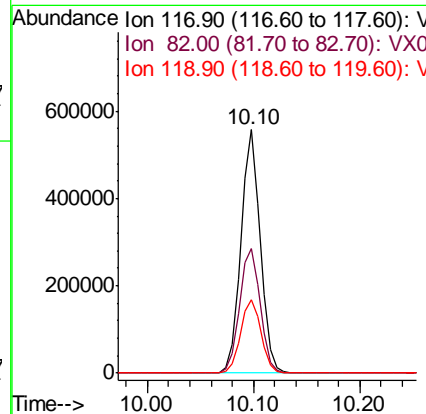
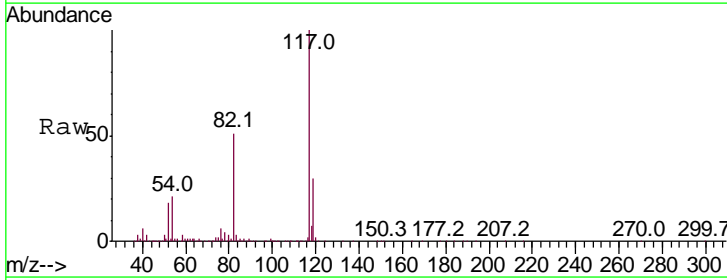
Instrument : MSVOA\_X  
 ClientSampled : TB-9-23-2020

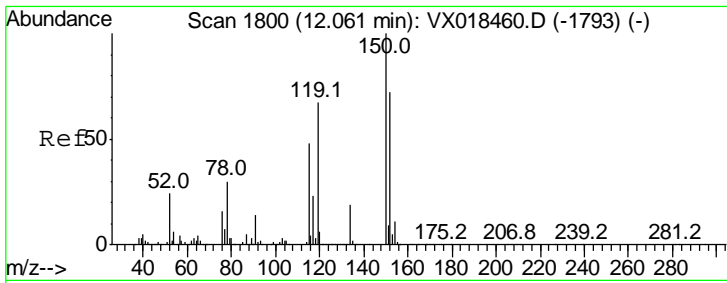
Tgt Ion	Resp	Lower	Upper
95	100		
174	78.7	0.0	161.4
176	77.8	0.0	151.4



#63  
 Chlorobenzene-d5  
 Concen: 50.000 ug/l  
 RT: 10.10 min Scan# 1478  
 Delta R.T. -0.00 min  
 Lab File: VX018545.D  
 Acq: 23 Sep 2020 19:30

Tgt Ion	Resp	Lower	Upper
117	100		
82	51.3	43.3	64.9
119	29.9	25.9	38.9

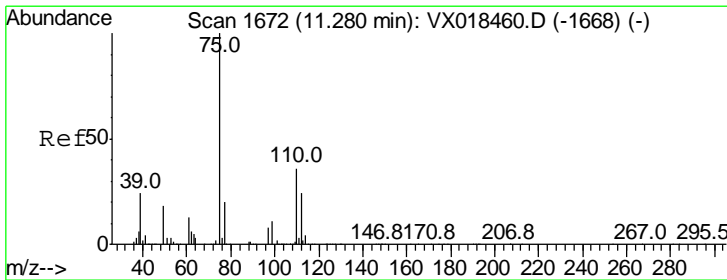
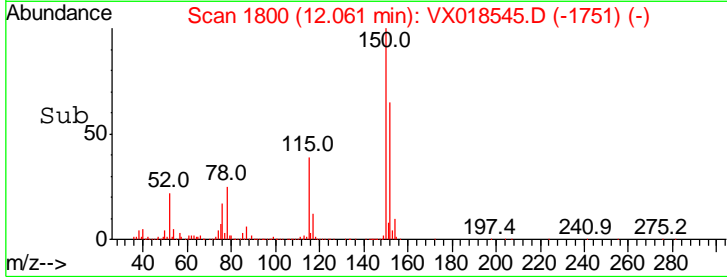
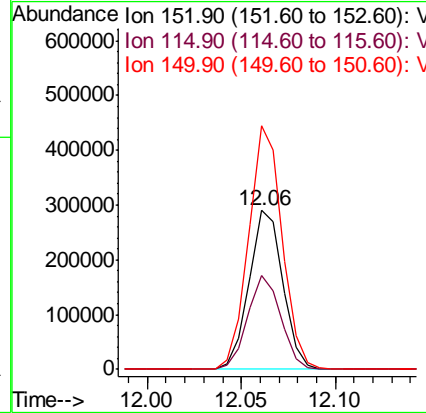
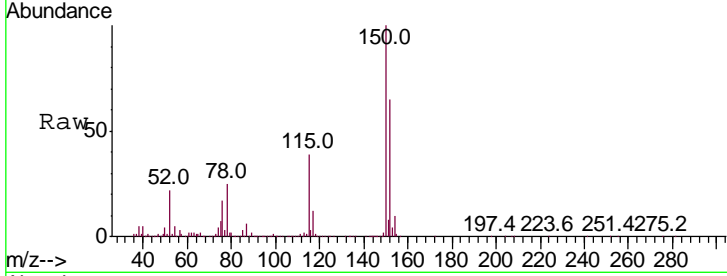




#72  
 1,4-Dichlorobenzene-d4  
 Concen: 50.000 ug/l  
 RT: 12.06 min Scan# 1800  
 Delta R.T. -0.00 min  
 Lab File: VX018545.D  
 Acq: 23 Sep 2020 19:30

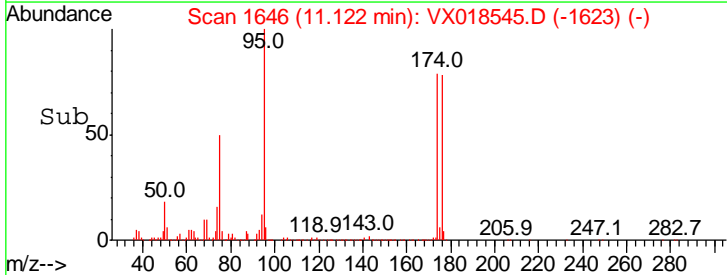
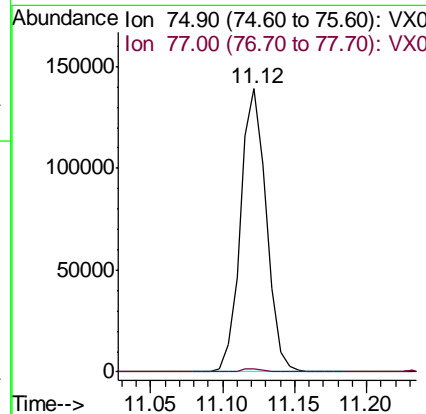
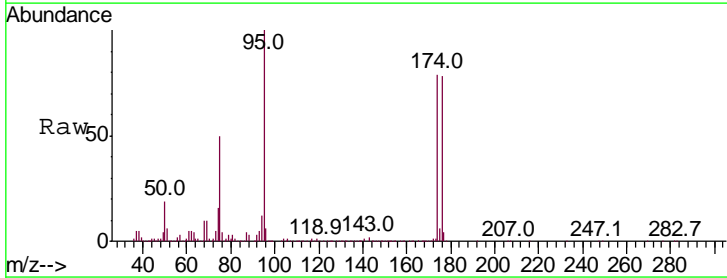
Instrument :  
 MSVOA\_X  
 ClientSampled :  
 TB-9-23-2020

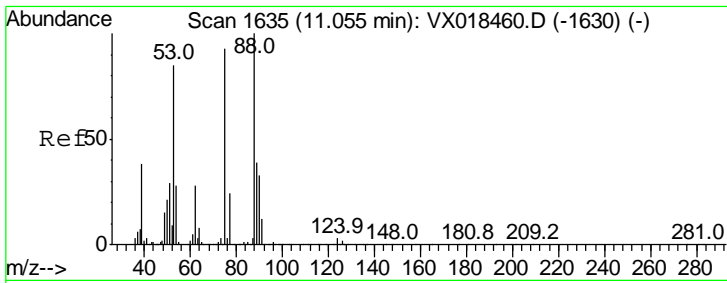
Tgt Ion	Resp	Lower	Upper
152	100		
115	58.2	41.8	125.4
150	152.1	0.0	342.4



#76  
 1,2,3-Trichloropropane  
 Concen: 22.974 ug/l  
 RT: 11.12 min Scan# 1646  
 Delta R.T. -0.16 min  
 Lab File: VX018545.D  
 Acq: 23 Sep 2020 19:30

Tgt Ion	Resp	Lower	Upper
75	100		
77	1.0	20.9	62.7#

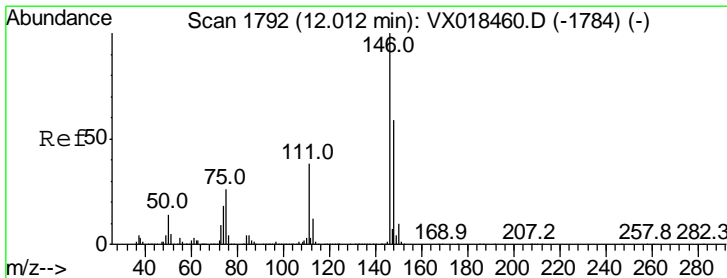
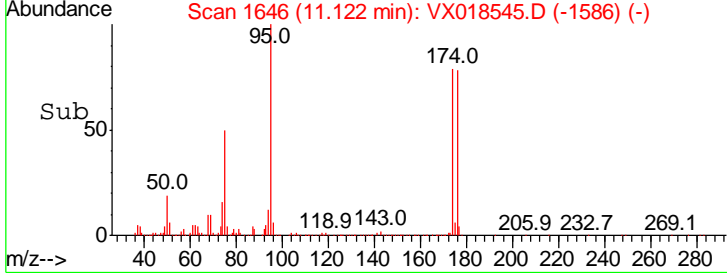
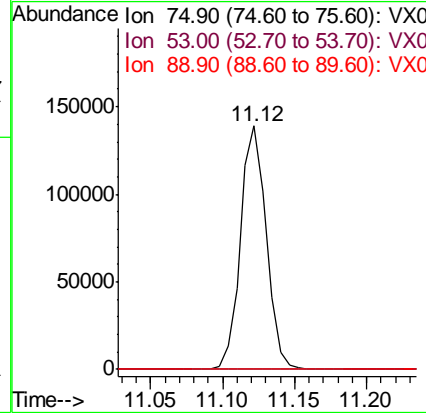
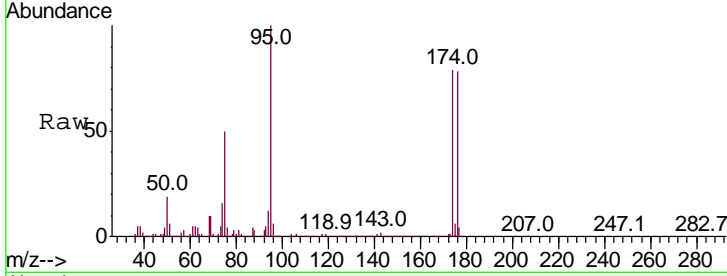




#81  
 trans-1,4-Dichloro-2-butene  
 Concen: 58.871 ug/l  
 RT: 11.12 min Scan# 1646  
 Delta R.T. 0.07 min  
 Lab File: VX018545.D  
 Acq: 23 Sep 2020 19:30

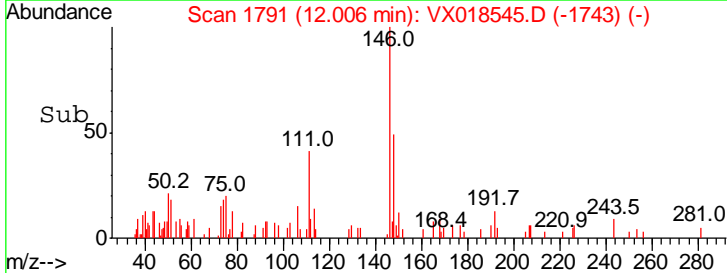
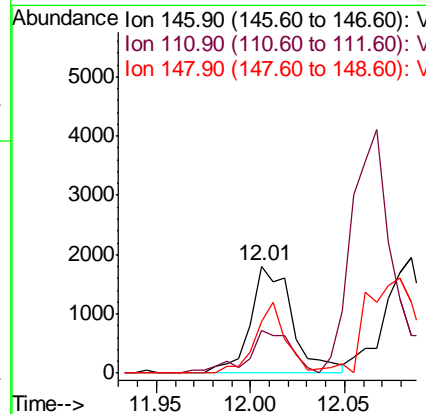
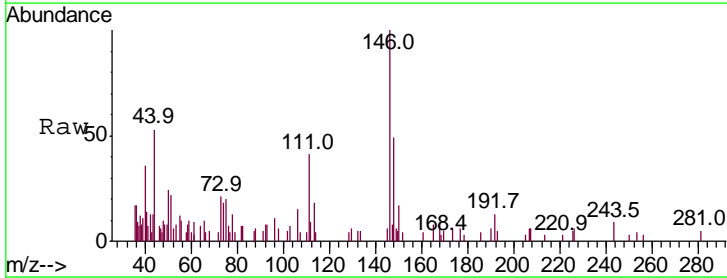
Instrument :  
 MSVOA\_X  
 ClientSampled :  
 TB-9-23-2020

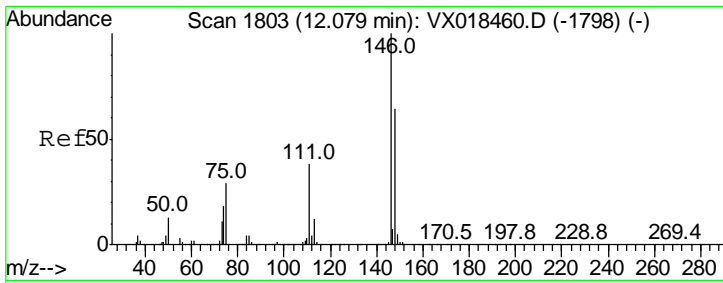
Tgt Ion	Resp	Lower	Upper
75	173861		
Ion Ratio			
75	100		
53	0.1	74.6	111.8#
89	0.1	36.2	54.4#



#87  
 1,3-Dichlorobenzene  
 Concen: 0.234 ug/l  
 RT: 12.01 min Scan# 1791  
 Delta R.T. -0.01 min  
 Lab File: VX018545.D  
 Acq: 23 Sep 2020 19:30

Tgt Ion	Resp	Lower	Upper
146	2798		
Ion Ratio			
146	100		
111	41.4	20.4	61.2
148	48.2	31.1	93.2

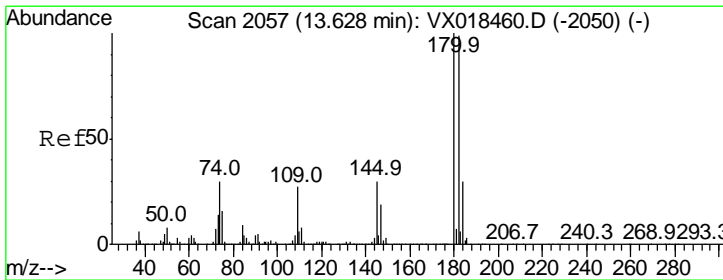
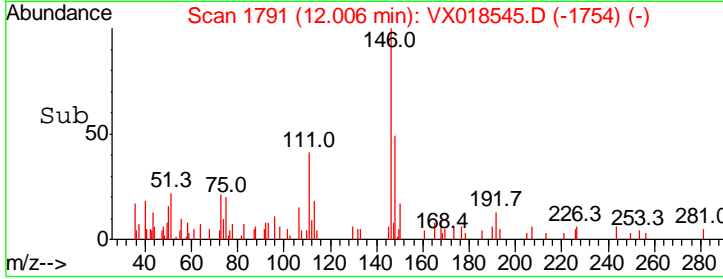
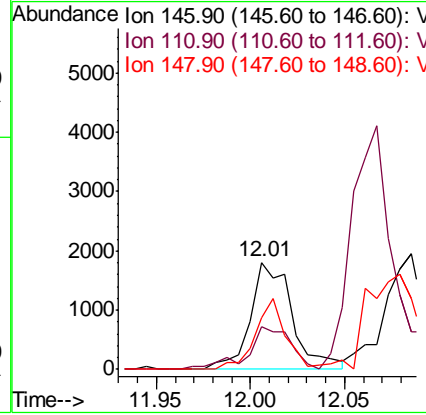
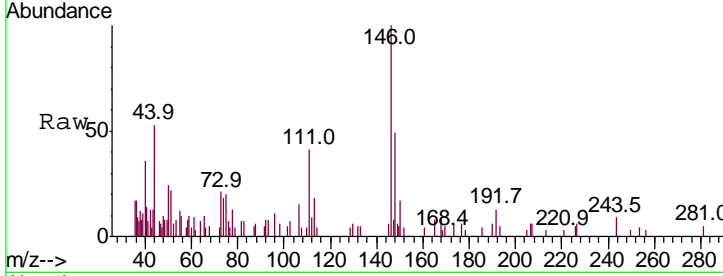




#88  
 1,4-Dichlorobenzene  
 Concen: 0.231 ug/l  
 RT: 12.01 min Scan# 1791  
 Delta R.T. -0.07 min  
 Lab File: VX018545.D  
 Acq: 23 Sep 2020 19:30

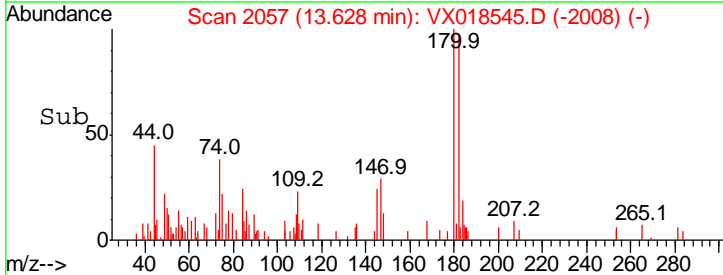
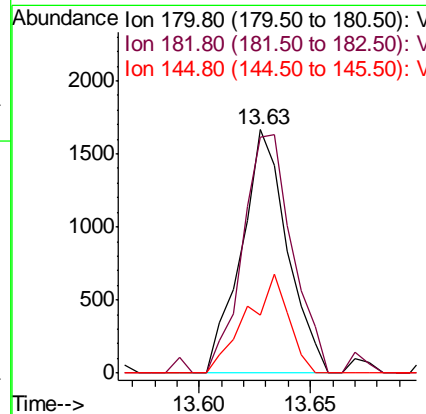
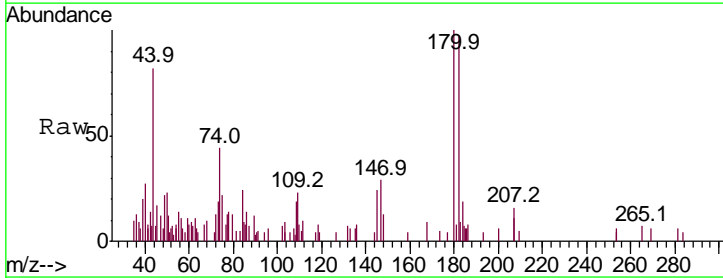
Instrument :  
 MSVOA\_X  
 ClientSampled :  
 TB-9-23-2020

Tgt Ion	Resp	Lower	Upper
146	100		
111	41.4	19.4	58.4
148	48.2	31.8	95.4

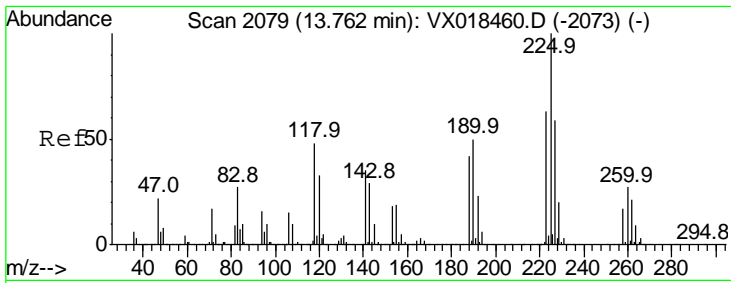


#93  
 1,2,4-Trichlorobenzene  
 Concen: 0.308 ug/l  
 RT: 13.63 min Scan# 2057  
 Delta R.T. 0.00 min  
 Lab File: VX018545.D  
 Acq: 23 Sep 2020 19:30

Tgt Ion	Resp	Lower	Upper
180	100		
182	105.6	50.2	150.6
145	37.2	15.7	47.1



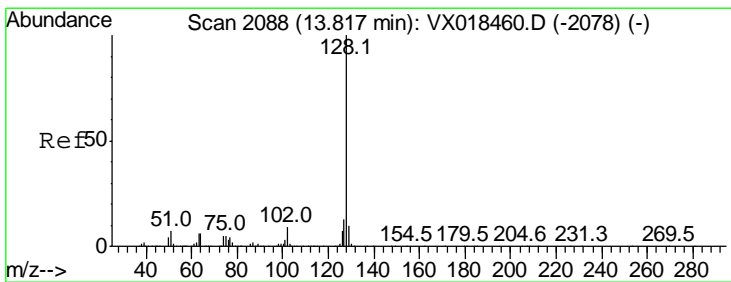
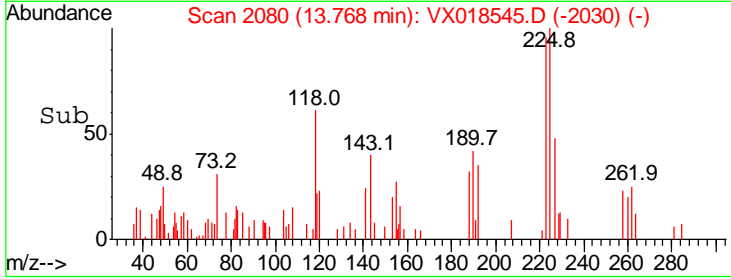
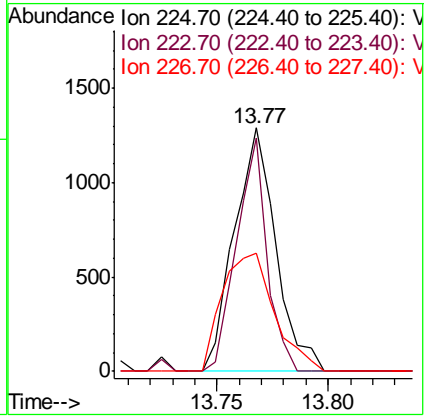
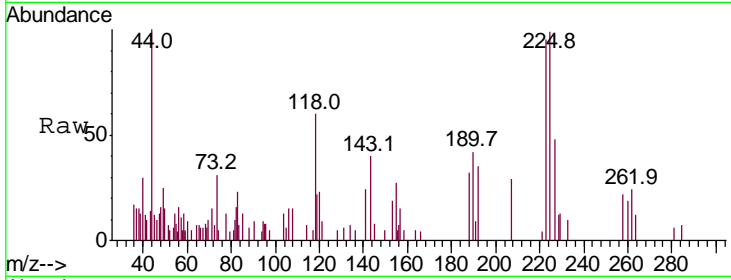




#94  
 Hexachlorobutadiene  
 Concen: 0.513 ug/l  
 RT: 13.77 min Scan# 2080  
 Delta R.T. 0.01 min  
 Lab File: VX018545.D  
 Acq: 23 Sep 2020 19:30

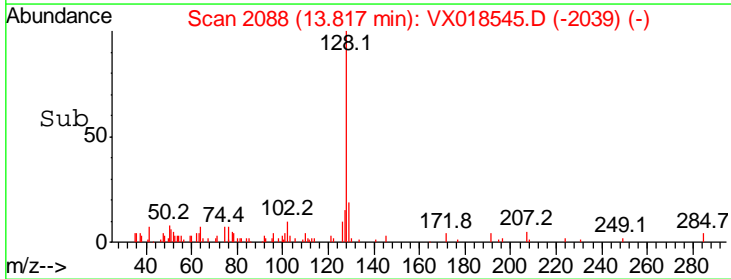
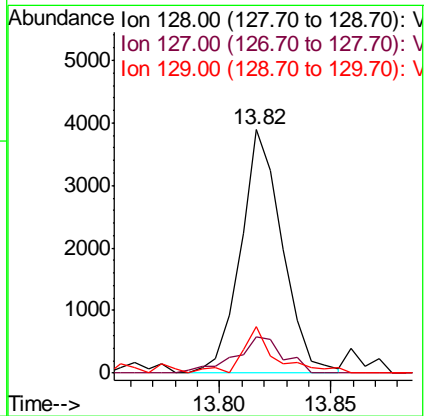
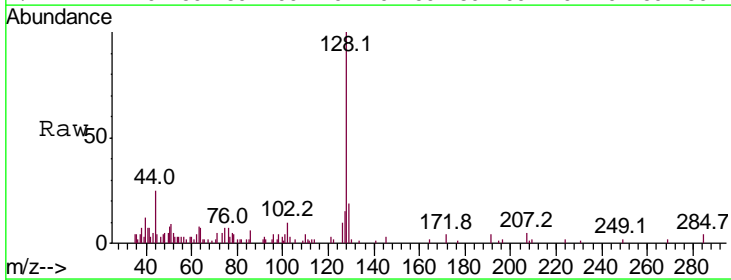
Instrument : MSVOA\_X  
 ClientSampled : TB-9-23-2020

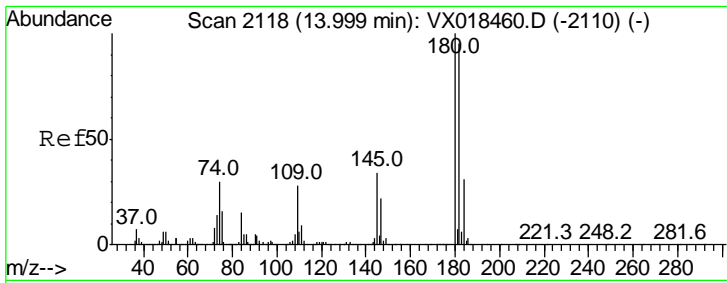
Tgt Ion	Resp	Lower	Upper
225	100		
223	70.3	32.0	96.2
227	60.9	31.7	95.1



#95  
 Naphthalene  
 Concen: 0.215 ug/l  
 RT: 13.82 min Scan# 2088  
 Delta R.T. -0.00 min  
 Lab File: VX018545.D  
 Acq: 23 Sep 2020 19:30

Tgt Ion	Resp	Lower	Upper
128	100		
127	17.3	10.3	15.5#
129	15.3	8.7	13.1#





#96  
 1,2,3-Trichlorobenzene  
 Concen: 0.320 ug/l  
 RT: 14.01 min Scan# 2120  
 Delta R.T. 0.01 min  
 Lab File: VX018545.D  
 Acq: 23 Sep 2020 19:30

Instrument :  
 MSVOA\_X  
 ClientSampled :  
 TB-9-23-2020

Tot Ion	Ratio	Lower	Upper
180	100		
182	85.9	47.1	141.3
145	38.4	16.8	50.4

