

Data Path : Z:\voasrv\HPCHEM1\MSVOA_X\Data\VX092321\
 Data File : VX024475.D
 Acq On : 24 Sep 2021 02:17
 Operator : JC/MD
 Sample : VX0923WBL02
 Misc : 5.0mL/MSVOA_X/WATER
 ALS Vial : 30 Sample Multiplier: 1

Instrument :
 MSVOA_X
 ClientSampleId :
 VX0923WBL02

Quant Time: Sep 24 07:42:25 2021
 Quant Method : Z:\voasrv\HPCHEM1\MSVOA_X\Method\82X092321W.M
 Quant Title : SW846 8260
 QLast Update : Thu Sep 23 18:24:34 2021
 Response via : Initial Calibration

Compound	R.T.	QIon	Response	Conc	Units	Dev(Min)

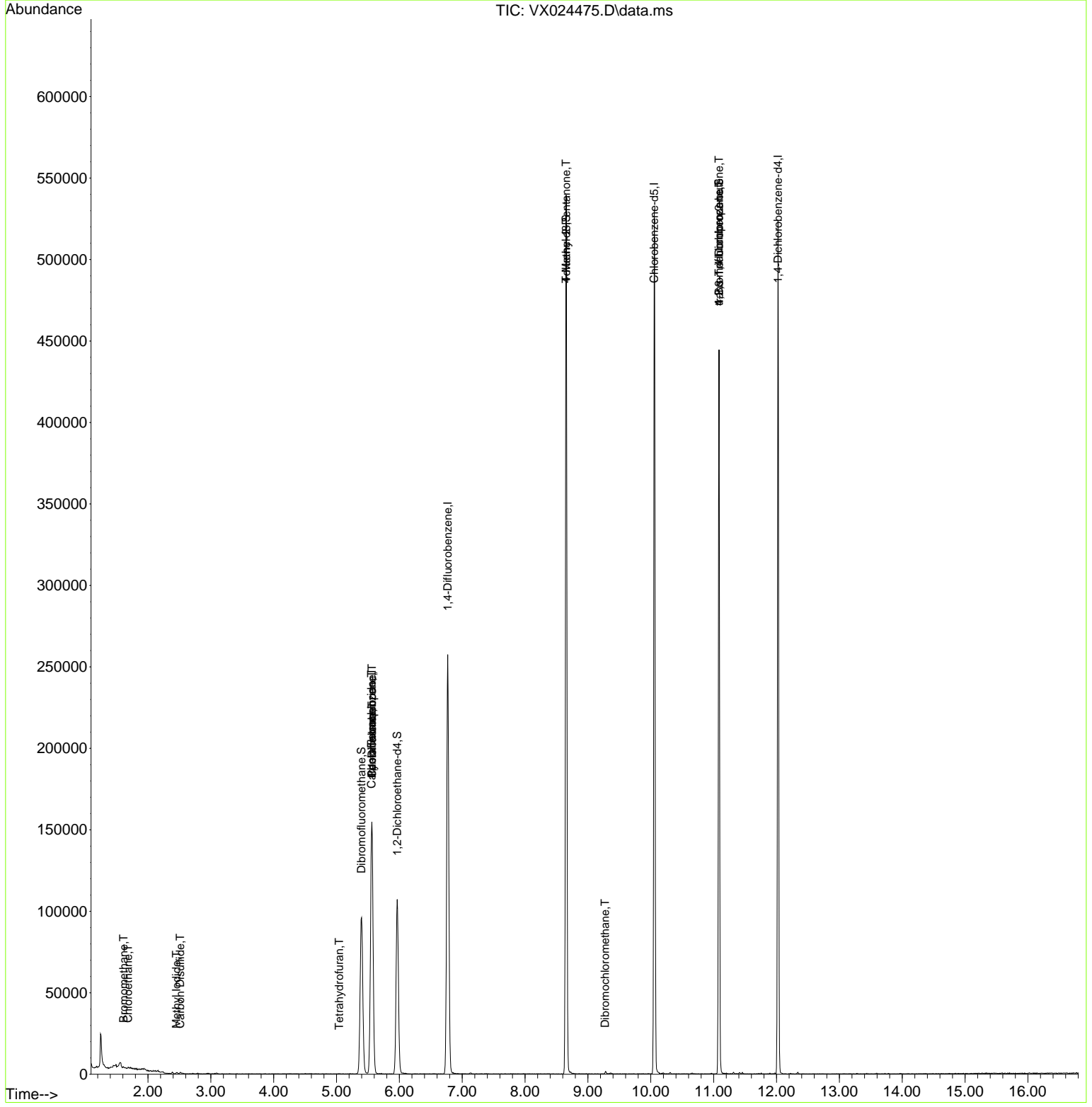
Internal Standards						
1) Pentafluorobenzene	5.562	168	146995	50.000	ug/l	0.00
34) 1,4-Difluorobenzene	6.769	114	258765	50.000	ug/l	0.00
63) Chlorobenzene-d5	10.055	117	246429	50.000	ug/l	0.00
72) 1,4-Dichlorobenzene-d4	12.024	152	108129	50.000	ug/l	0.00
System Monitoring Compounds						
33) 1,2-Dichloroethane-d4	5.964	65	106790	51.547	ug/l	0.00
Spiked Amount	50.000	Range 78 - 117	Recovery	=	103.100%	
35) Dibromofluoromethane	5.397	113	86618	50.387	ug/l	0.00
Spiked Amount	50.000	Range 75 - 124	Recovery	=	100.780%	
50) Toluene-d8	8.653	98	315202	49.819	ug/l	0.00
Spiked Amount	50.000	Range 92 - 112	Recovery	=	99.640%	
62) 4-Bromofluorobenzene	11.085	95	115496	46.428	ug/l	0.00
Spiked Amount	50.000	Range 83 - 123	Recovery	=	92.860%	
Target Compounds						
						Qvalue
5) Bromomethane	1.611	94	266	0.271	ug/l	96
6) Chloroethane	1.684	64	439	0.708	ug/l	89
10) Methyl Iodide	2.453	142	717	0.353	ug/l #	86
11) Tert butyl alcohol	2.965	59	361	Below Cal	#	73
16) Acetone	2.398	43	932	Below Cal	#	54
17) Carbon Disulfide	2.514	76	1003	0.515	ug/l #	75
20) Methylene Chloride	2.794	84	183	Below Cal	#	82
29) Tetrahydrofuran	5.044	42	191	0.210	ug/l #	27
31) Cyclohexane	5.562	56	2792	1.125	ug/l #	15
36) 1,1-Dichloropropene	5.562	75	11048	4.454	ug/l #	49
38) Carbon Tetrachloride	5.556	117	15143	5.608	ug/l #	18
51) 4-Methyl-2-Pentanone	8.653	43	1335	0.429	ug/l #	1
60) Dibromochloromethane	9.275	129	114	1.239	ug/l #	11
76) 1,2,3-Trichloropropane	11.085	75	58753	23.927	ug/l #	38
81) trans-1,4-Dichloro-2-b...	11.085	75	58753	65.330	ug/l #	12

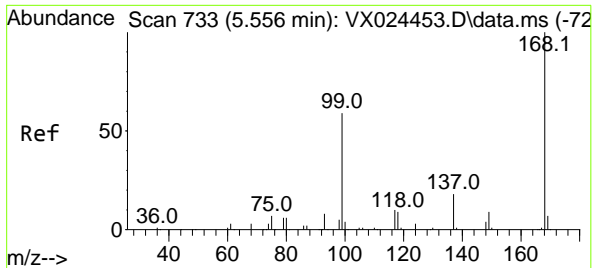
(#) = qualifier out of range (m) = manual integration (+) = signals summed

Data Path : Z:\voasrv\HPCHEM1\MSVOA_X\Data\VX092321\
 Data File : VX024475.D
 Acq On : 24 Sep 2021 02:17
 Operator : JC/MD
 Sample : VX0923WBL02
 Misc : 5.0mL/MSVOA_X/WATER
 ALS Vial : 30 Sample Multiplier: 1

Instrument :
 MSVOA_X
Client Sampled :
 VX0923WBL02

Quant Time: Sep 24 07:42:25 2021
 Quant Method : Z:\voasrv\HPCHEM1\MSVOA_X\Method\82X092321W.M
 Quant Title : SW846 8260
 QLast Update : Thu Sep 23 18:24:34 2021
 Response via : Initial Calibration

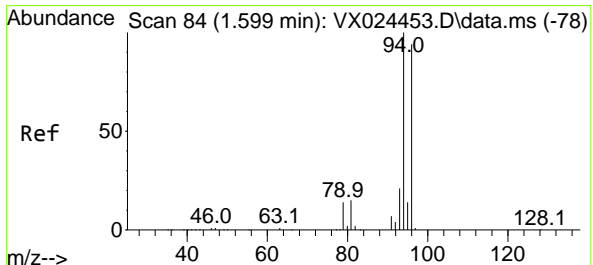
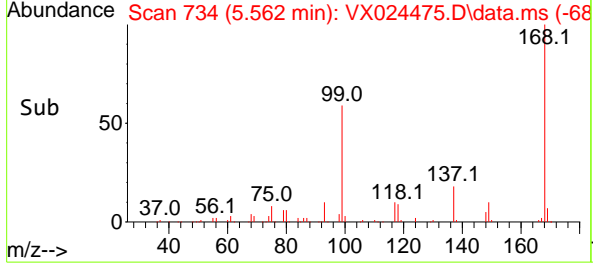
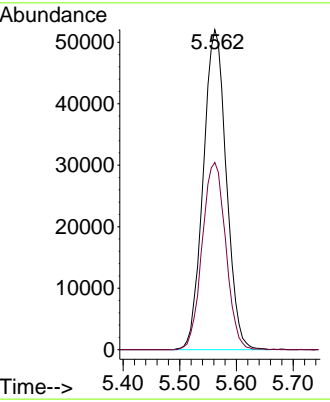
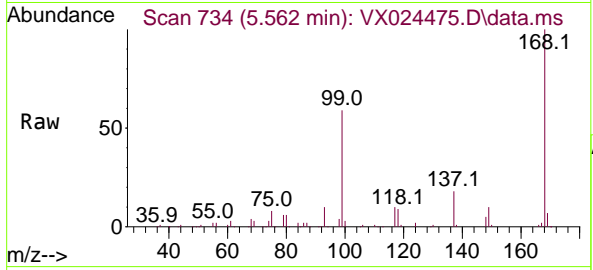




#1
 Pentafluorobenzene
 Concen: 50.000 ug/l
 RT: 5.562 min Scan# 734
 Delta R.T. 0.006 min
 Lab File: VX024475.D
 Acq: 24 Sep 2021 02:17

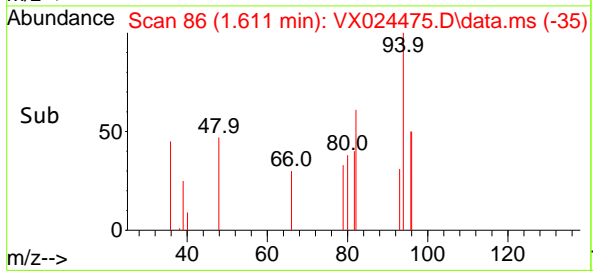
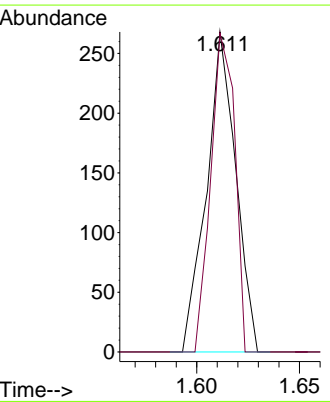
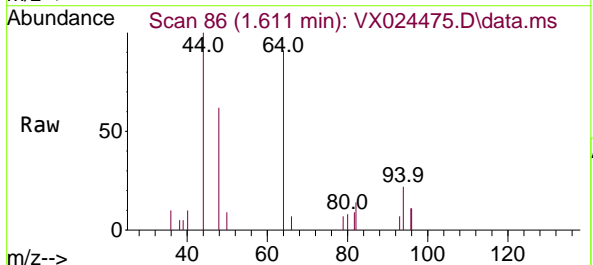
Instrument :
 MSVOA_X
 ClientSampleId :
 VX0923WBL02

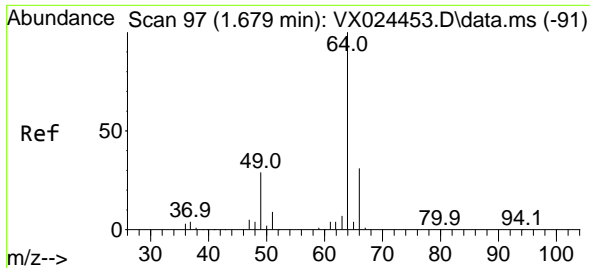
Tgt Ion:168 Resp: 146995
 Ion Ratio Lower Upper
 168 100
 99 58.5 45.8 68.6



#5
 Bromomethane
 Concen: 0.271 ug/l
 RT: 1.611 min Scan# 86
 Delta R.T. 0.012 min
 Lab File: VX024475.D
 Acq: 24 Sep 2021 02:17

Tgt Ion: 94 Resp: 266
 Ion Ratio Lower Upper
 94 100
 96 99.6 76.4 114.6

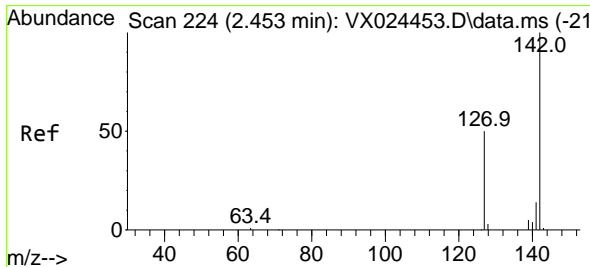
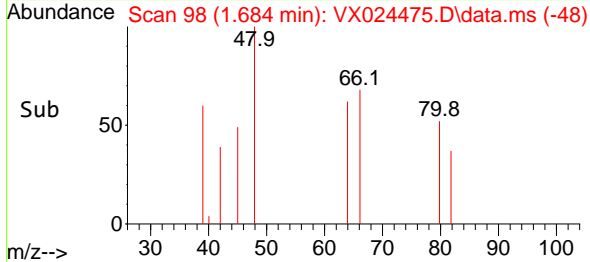
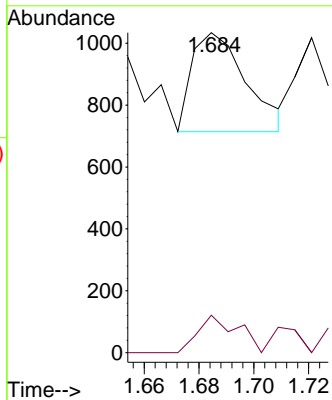
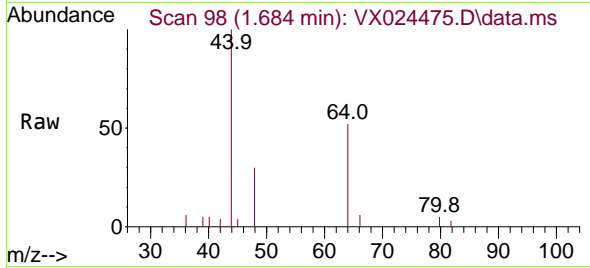




#6
 Chloroethane
 Concen: 0.708 ug/l
 RT: 1.684 min Scan# 98
 Delta R.T. 0.005 min
 Lab File: VX024475.D
 Acq: 24 Sep 2021 02:17

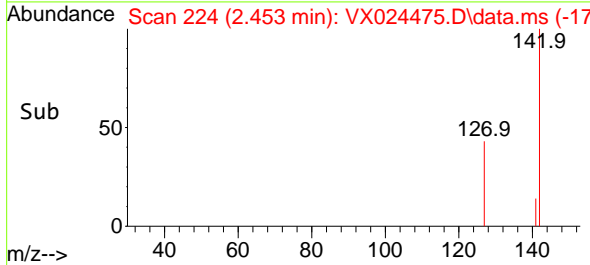
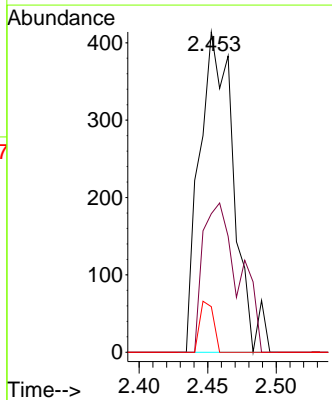
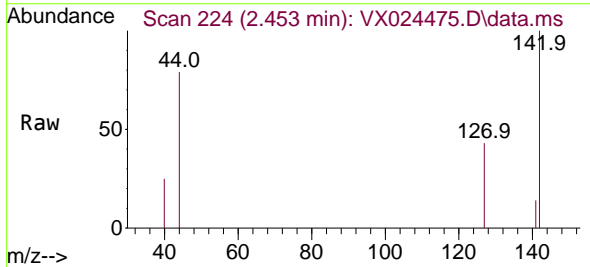
Instrument :
 MSVOA_X
ClientSampled :
 VX0923WBL02

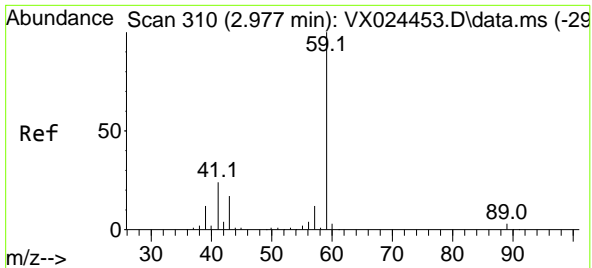
Tgt Ion: 64 Resp: 439
 Ion Ratio Lower Upper
 64 100
 66 37.8 25.4 38.0



#10
 Methyl Iodide
 Concen: 0.353 ug/l
 RT: 2.453 min Scan# 224
 Delta R.T. -0.000 min
 Lab File: VX024475.D
 Acq: 24 Sep 2021 02:17

Tgt Ion:142 Resp: 717
 Ion Ratio Lower Upper
 142 100
 127 49.0 33.3 49.9
 141 6.4 11.4 17.0#

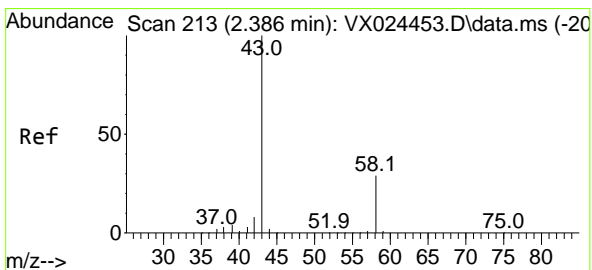
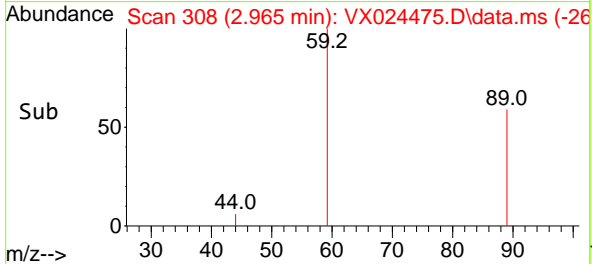
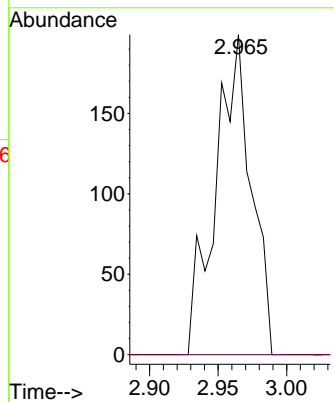
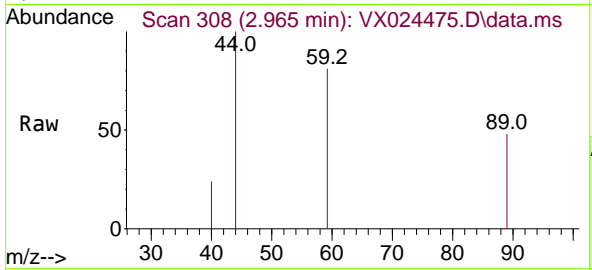




#11
 Tert butyl alcohol
 Concen: Below Cal
 RT: 2.965 min Scan# 308
 Delta R.T. -0.012 min
 Lab File: VX024475.D
 Acq: 24 Sep 2021 02:17

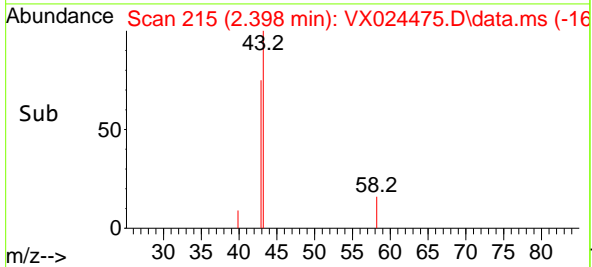
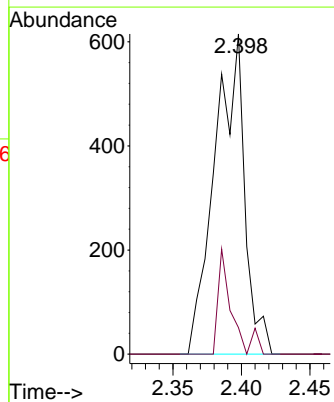
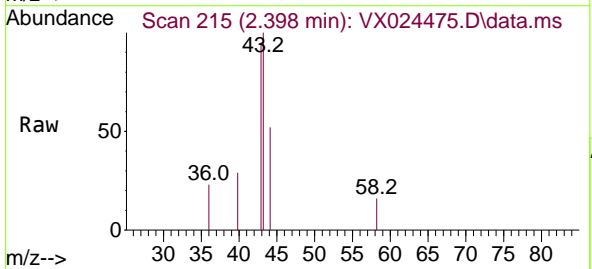
Instrument :
 MSVOA_X
 ClientSampled :
 VX0923WBL02

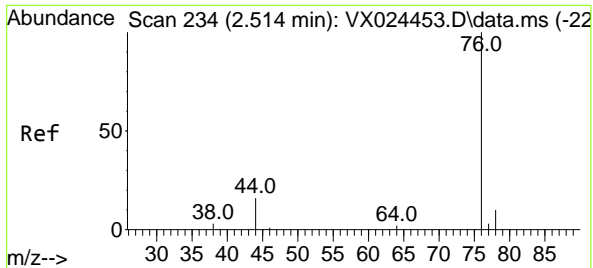
Tgt Ion: 59 Resp: 361
 Ion Ratio Lower Upper
 59 100
 57 0.0 7.8 11.8#



#16
 Acetone
 Concen: Below Cal
 RT: 2.398 min Scan# 215
 Delta R.T. 0.012 min
 Lab File: VX024475.D
 Acq: 24 Sep 2021 02:17

Tgt Ion: 43 Resp: 932
 Ion Ratio Lower Upper
 43 100
 58 8.3 27.8 41.8#



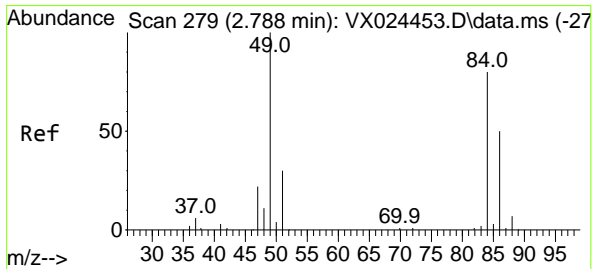
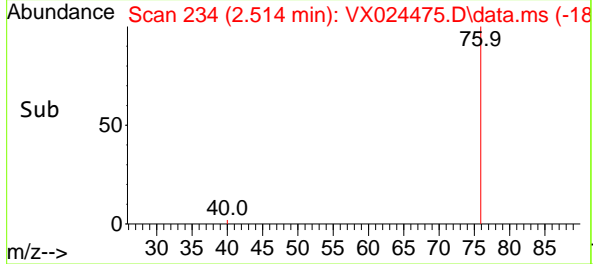
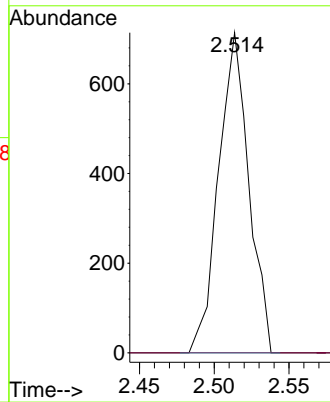
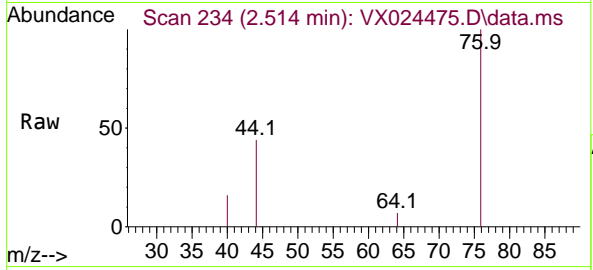


#17
 Carbon Disulfide
 Concen: 0.515 ug/l
 RT: 2.514 min Scan# 234
 Delta R.T. -0.000 min
 Lab File: VX024475.D
 Acq: 24 Sep 2021 02:17

Instrument :
 MSVOA_X
 ClientSampleId :
 VX0923WBL02

Tgt Ion: 76 Resp: 1003

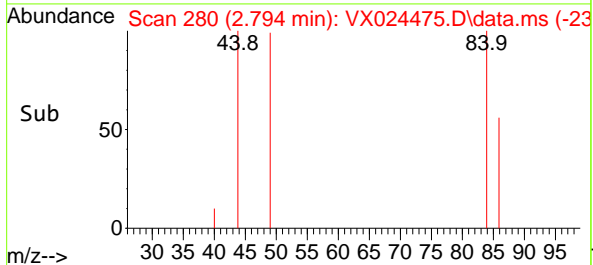
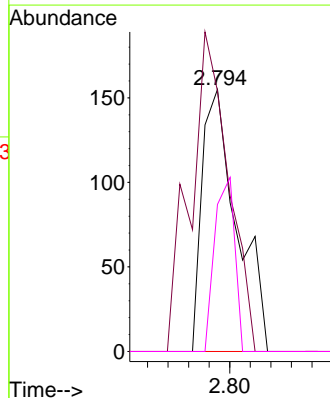
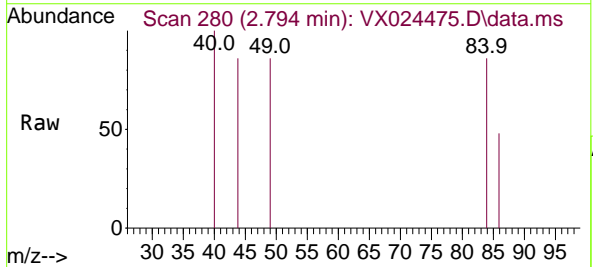
Ion	Ratio	Lower	Upper
76	100		
78	0.0	7.2	10.8#

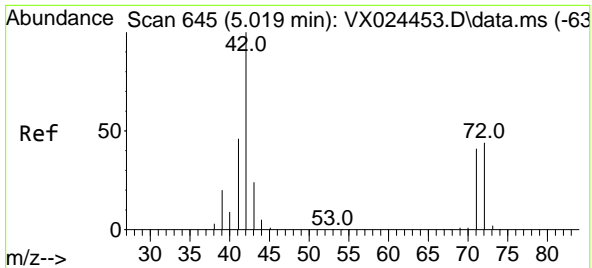


#20
 Methylene Chloride
 Concen: Below Cal
 RT: 2.794 min Scan# 280
 Delta R.T. 0.006 min
 Lab File: VX024475.D
 Acq: 24 Sep 2021 02:17

Tgt Ion: 84 Resp: 183

Ion	Ratio	Lower	Upper
84	100		
49	99.4	88.6	132.8
51	0.0	27.0	40.6#
86	56.1	50.3	75.5



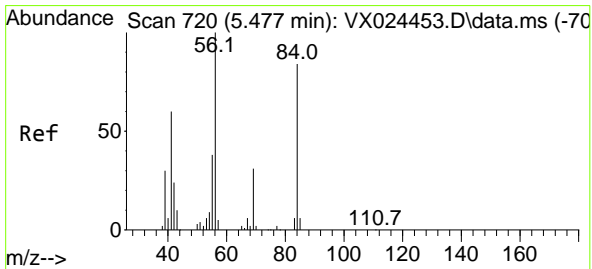
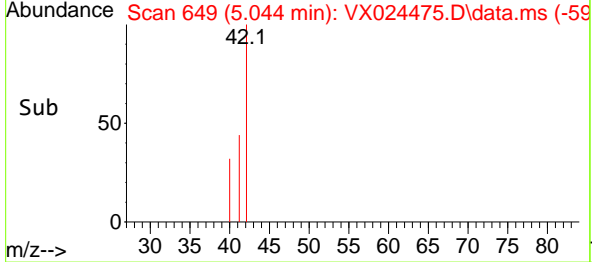
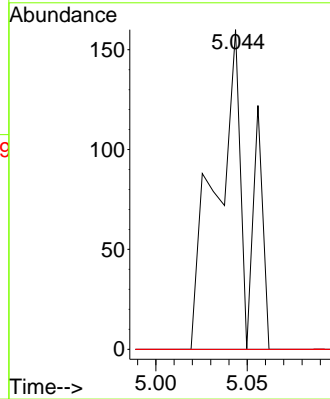
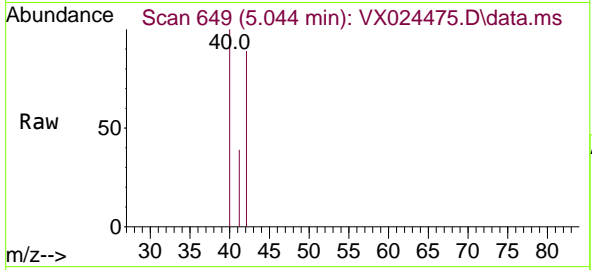


#29
 Tetrahydrofuran
 Concen: 0.210 ug/l
 RT: 5.044 min Scan# 649
 Delta R.T. 0.025 min
 Lab File: VX024475.D
 Acq: 24 Sep 2021 02:17

Instrument :
 MSVOA_X
 ClientSampleId :
 VX0923WBL02

Tgt Ion: 42 Resp: 191

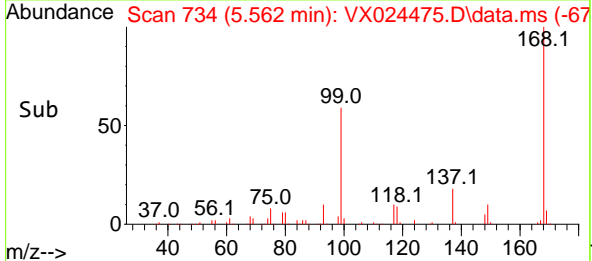
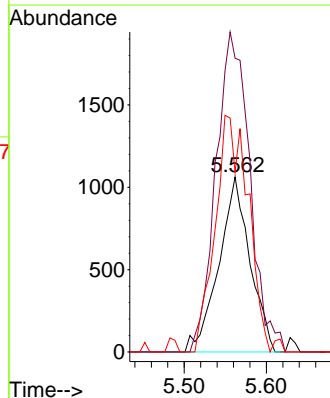
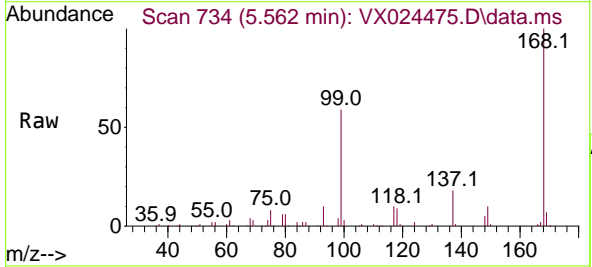
Ion	Ratio	Lower	Upper
42	100		
72	0.0	41.7	62.5#
71	0.0	38.4	57.6#

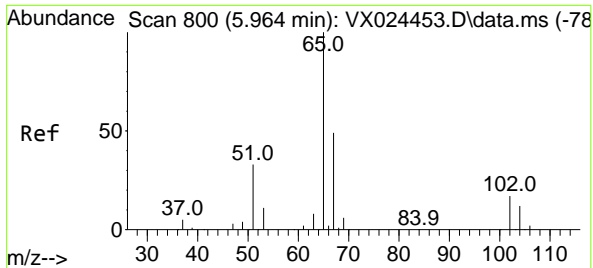


#31
 Cyclohexane
 Concen: 1.125 ug/l
 RT: 5.562 min Scan# 734
 Delta R.T. 0.085 min
 Lab File: VX024475.D
 Acq: 24 Sep 2021 02:17

Tgt Ion: 56 Resp: 2792

Ion	Ratio	Lower	Upper
56	100		
69	167.8	25.3	37.9#
84	115.9	71.4	107.0#

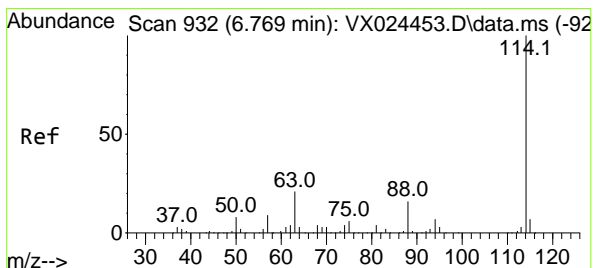
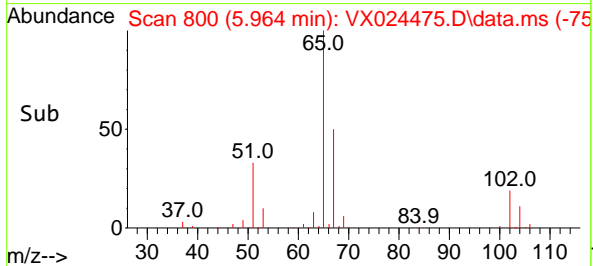
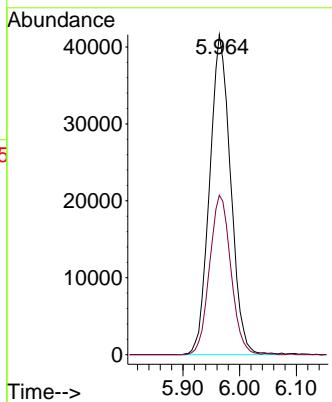
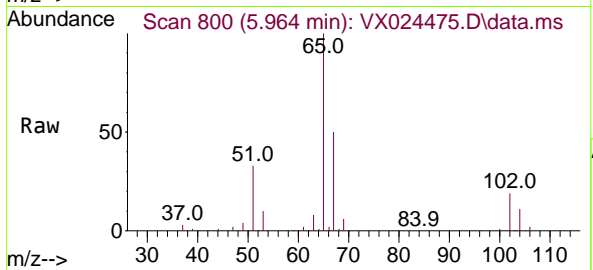




#33
 1,2-Dichloroethane-d4
 Concen: 51.547 ug/l
 RT: 5.964 min Scan# 800
 Delta R.T. 0.000 min
 Lab File: VX024475.D
 Acq: 24 Sep 2021 02:17

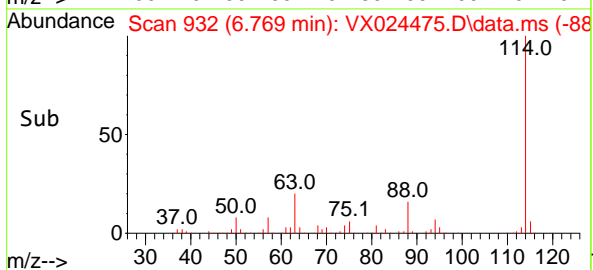
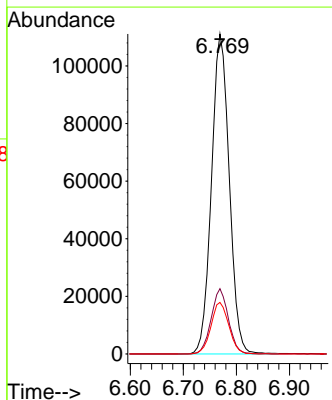
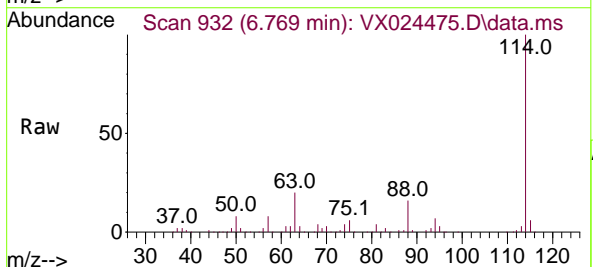
Instrument :
 MSVOA_X
 ClientSampled :
 VX0923WBL02

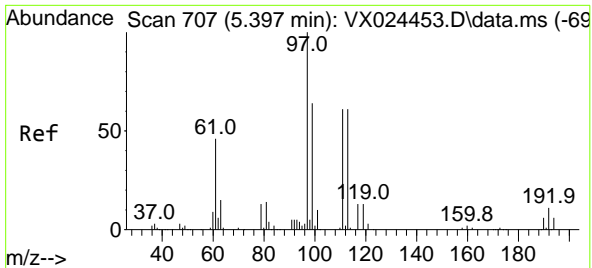
Tgt Ion: 65 Resp: 106790
 Ion Ratio Lower Upper
 65 100
 67 50.5 0.0 105.4



#34
 1,4-Difluorobenzene
 Concen: 50.000 ug/l
 RT: 6.769 min Scan# 932
 Delta R.T. -0.000 min
 Lab File: VX024475.D
 Acq: 24 Sep 2021 02:17

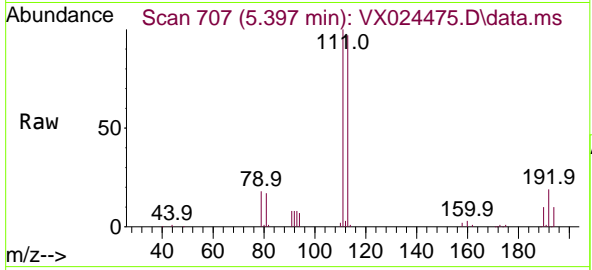
Tgt Ion: 114 Resp: 258765
 Ion Ratio Lower Upper
 114 100
 63 20.4 0.0 40.8
 88 16.1 0.0 32.8



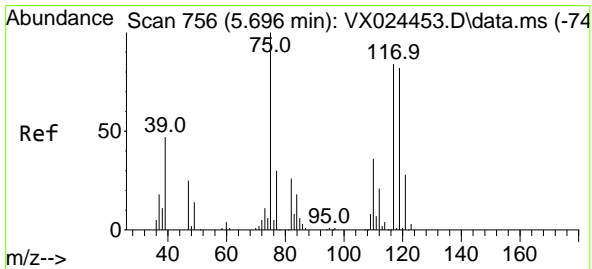
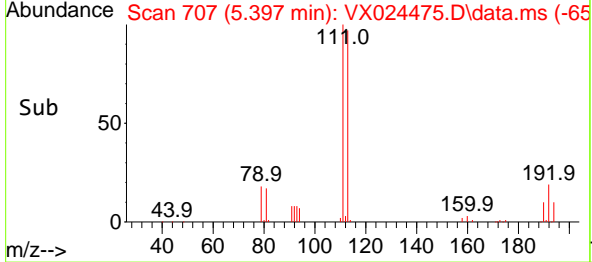
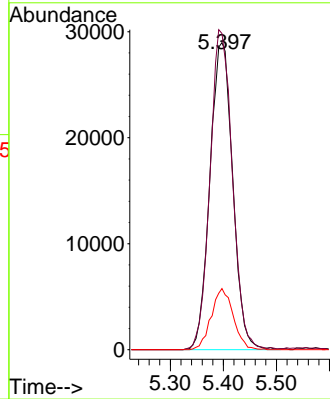


#35
 Dibromofluoromethane
 Concen: 50.387 ug/l
 RT: 5.397 min Scan# 707
 Delta R.T. 0.000 min
 Lab File: VX024475.D
 Acq: 24 Sep 2021 02:17

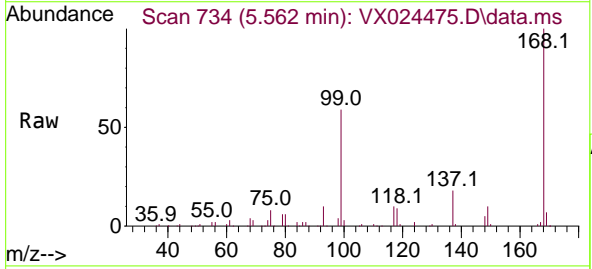
Instrument :
 MSVOA_X
 ClientSampleId :
 VX0923WBL02



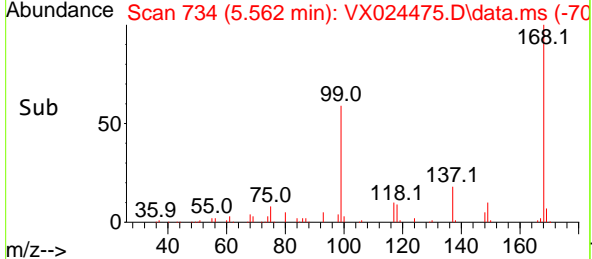
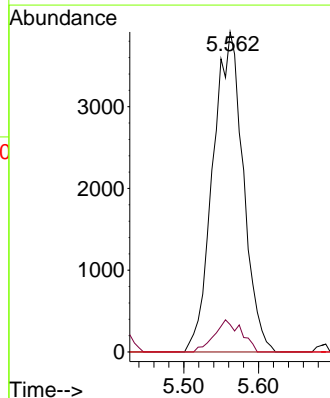
Tgt Ion:113 Resp: 86618
 Ion Ratio Lower Upper
 113 100
 111 101.9 81.9 122.9
 192 19.2 16.7 25.1

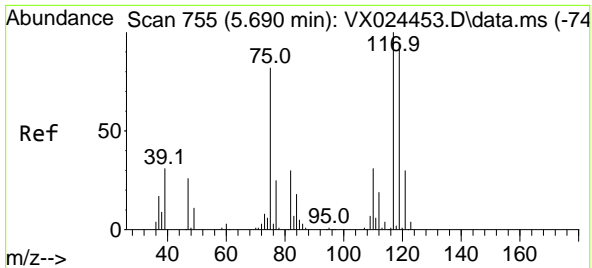


#36
 1,1-Dichloropropene
 Concen: 4.454 ug/l
 RT: 5.562 min Scan# 734
 Delta R.T. -0.134 min
 Lab File: VX024475.D
 Acq: 24 Sep 2021 02:17



Tgt Ion: 75 Resp: 11048
 Ion Ratio Lower Upper
 75 100
 110 9.0 18.1 54.4#
 77 0.0 25.3 37.9#

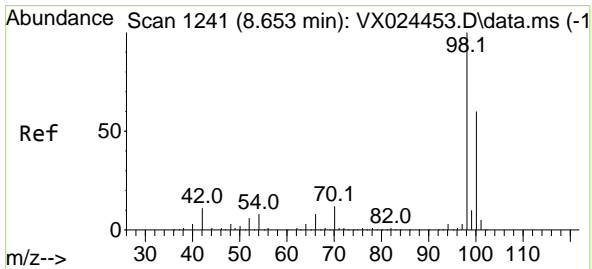
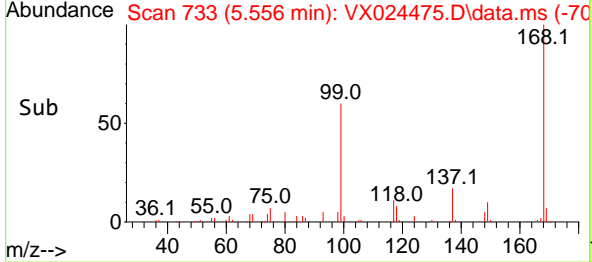
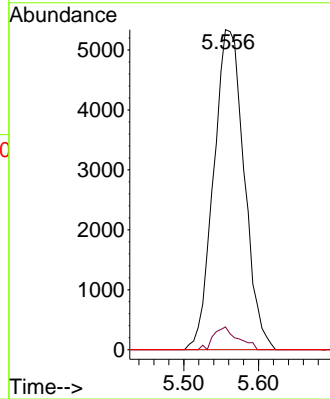
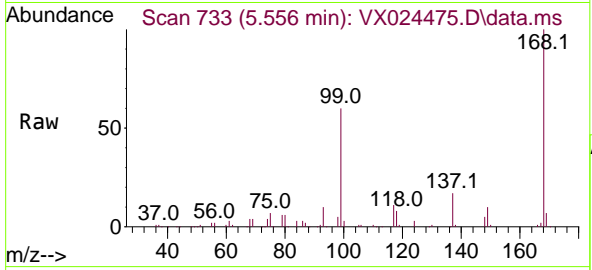




#38
 Carbon Tetrachloride
 Concen: 5.608 ug/l
 RT: 5.556 min Scan# 733
 Delta R.T. -0.134 min
 Lab File: VX024475.D
 Acq: 24 Sep 2021 02:17

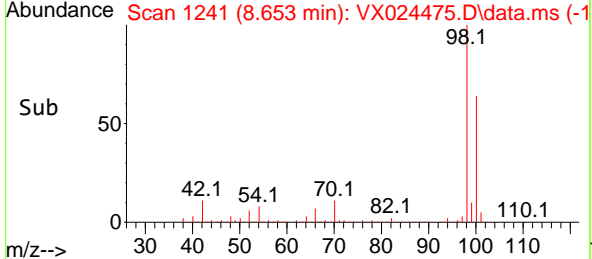
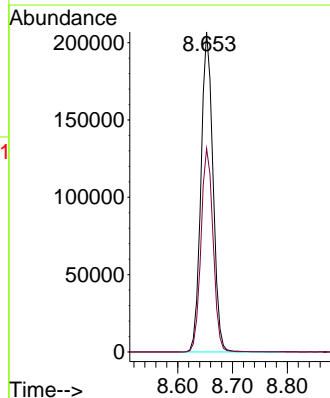
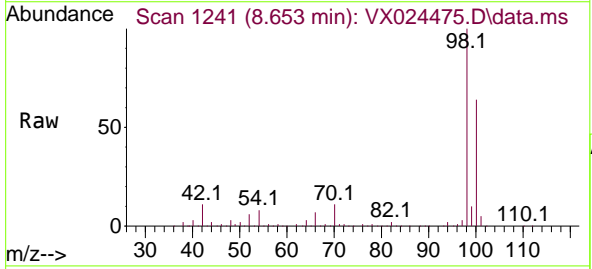
Instrument :
 MSVOA_X
 ClientSampled :
 VX0923WBL02

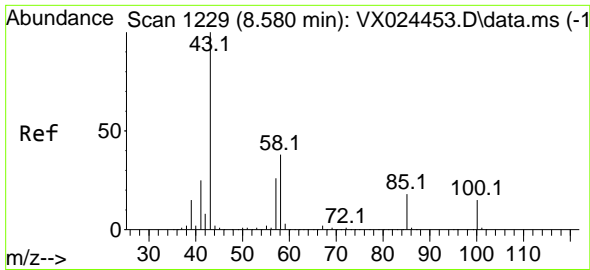
Tgt Ion:117 Resp: 15143
 Ion Ratio Lower Upper
 117 100
 119 7.1 76.2 114.2#
 121 0.0 24.8 37.2#



#50
 Toluene-d8
 Concen: 49.819 ug/l
 RT: 8.653 min Scan# 1241
 Delta R.T. -0.000 min
 Lab File: VX024475.D
 Acq: 24 Sep 2021 02:17

Tgt Ion: 98 Resp: 315202
 Ion Ratio Lower Upper
 98 100
 100 64.0 51.9 77.9

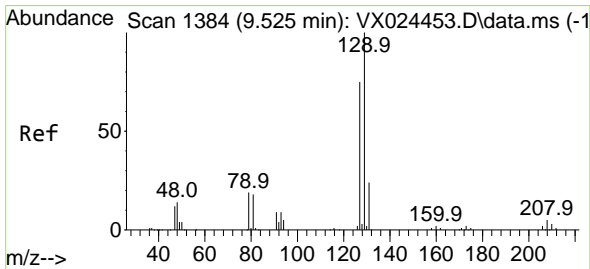
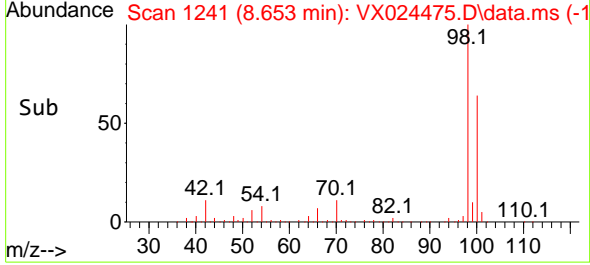
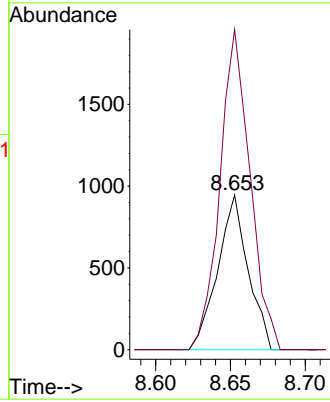
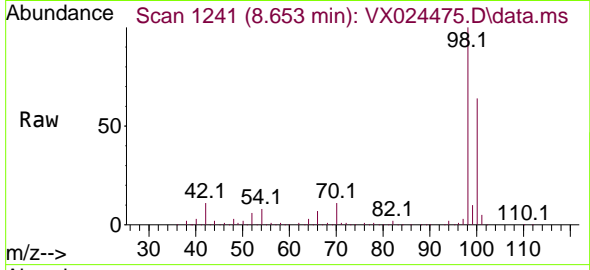




#51
 4-Methyl-2-Pentanone
 Concen: 0.429 ug/l
 RT: 8.653 min Scan# 1241
 Delta R.T. 0.073 min
 Lab File: VX024475.D
 Acq: 24 Sep 2021 02:17

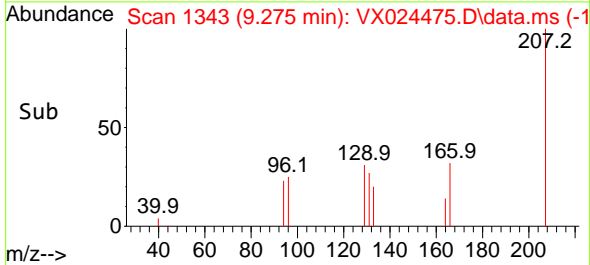
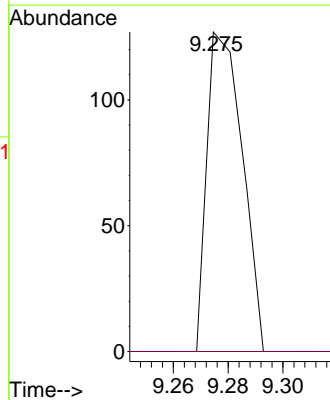
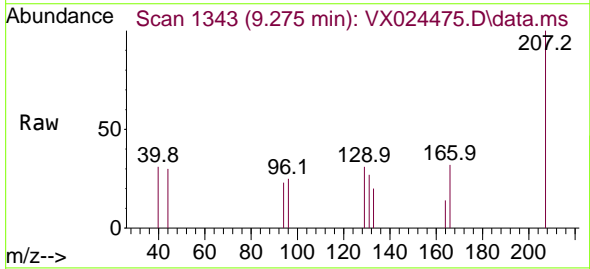
Instrument :
 MSVOA_X
 ClientSampleId :
 VX0923WBL02

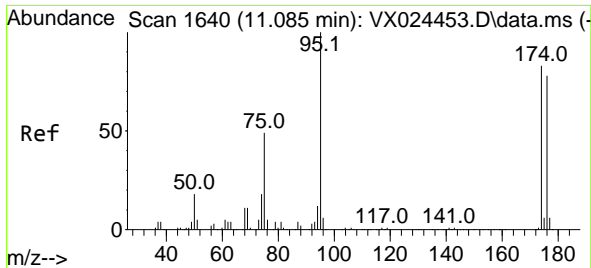
Tgt Ion: 43 Resp: 1335
 Ion Ratio Lower Upper
 43 100
 58 205.6 35.4 53.0#



#60
 Dibromochloromethane
 Concen: 1.239 ug/l
 RT: 9.275 min Scan# 1343
 Delta R.T. -0.250 min
 Lab File: VX024475.D
 Acq: 24 Sep 2021 02:17

Tgt Ion: 129 Resp: 114
 Ion Ratio Lower Upper
 129 100
 127 0.0 38.4 115.2#

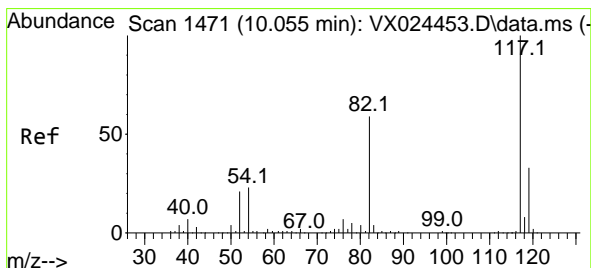
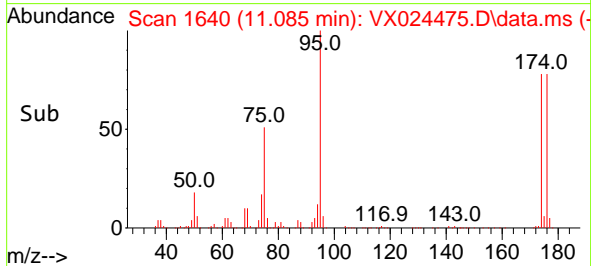
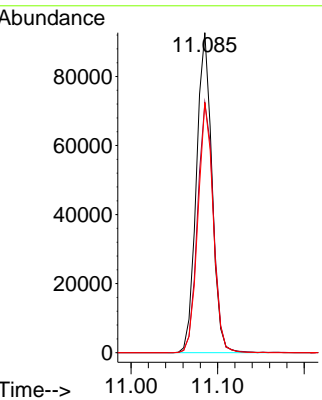
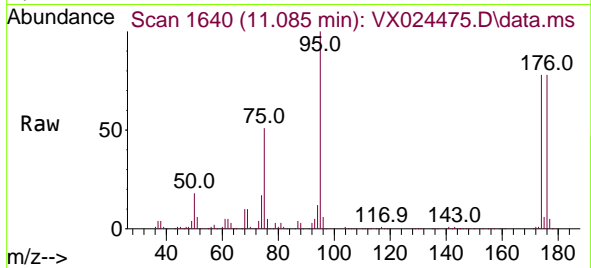




#62
 4-Bromofluorobenzene
 Concen: 46.428 ug/l
 RT: 11.085 min Scan# 1640
 Delta R.T. 0.000 min
 Lab File: VX024475.D
 Acq: 24 Sep 2021 02:17

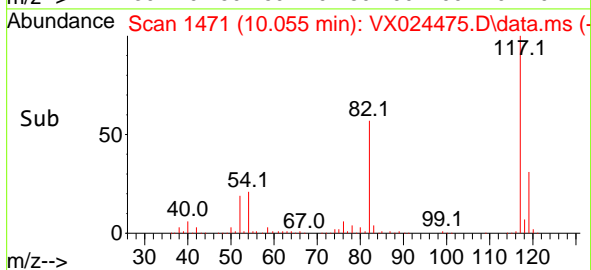
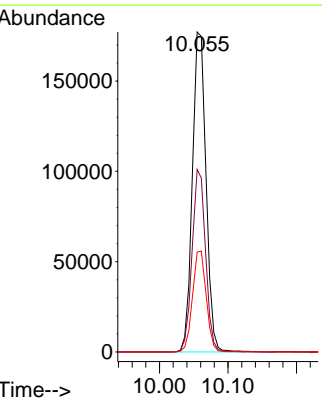
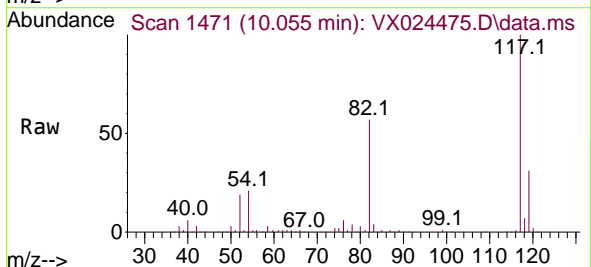
Instrument :
 MSVOA_X
 ClientSampled :
 VX0923WBL02

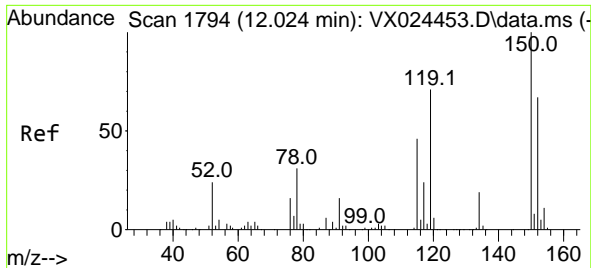
Tgt Ion	Resp	Lower	Upper
95	115496		
174	79.8	0.0	154.6
176	76.6	0.0	155.8



#63
 Chlorobenzene-d5
 Concen: 50.000 ug/l
 RT: 10.055 min Scan# 1471
 Delta R.T. -0.000 min
 Lab File: VX024475.D
 Acq: 24 Sep 2021 02:17

Tgt Ion	Resp	Lower	Upper
117	246429		
82	57.0	47.4	71.2
119	31.2	26.6	39.8

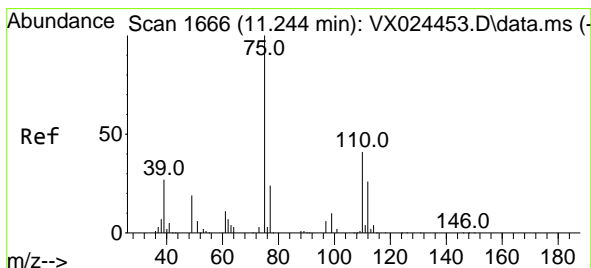
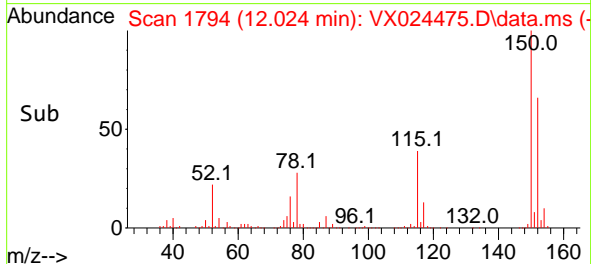
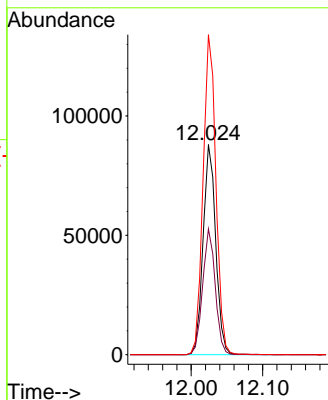
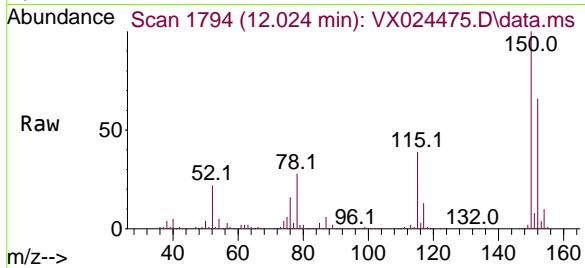




#72
 1,4-Dichlorobenzene-d4
 Concen: 50.000 ug/l
 RT: 12.024 min Scan# 1794
 Delta R.T. 0.000 min
 Lab File: VX024475.D
 Acq: 24 Sep 2021 02:17

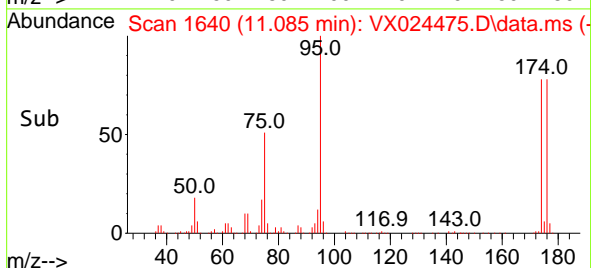
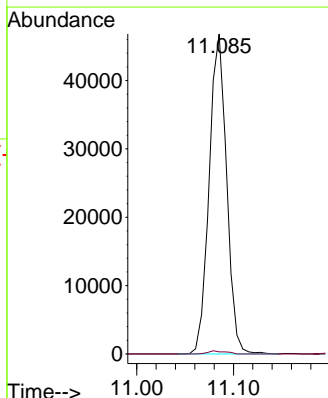
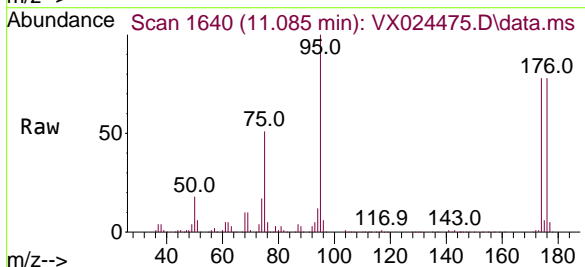
Instrument :
 MSVOA_X
 ClientSampled :
 VX0923WBL02

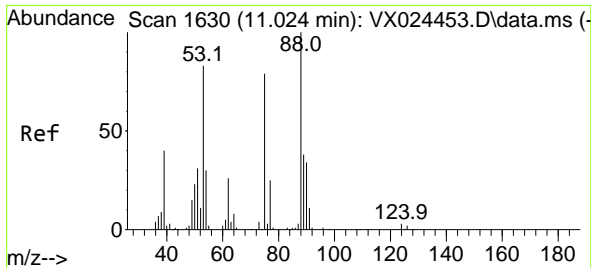
Tgt Ion	Resp	Lower	Upper
152	108129		
152	100		
115	59.6	41.1	123.3
150	154.6	0.0	349.0



#76
 1,2,3-Trichloropropane
 Concen: 23.927 ug/l
 RT: 11.085 min Scan# 1640
 Delta R.T. -0.159 min
 Lab File: VX024475.D
 Acq: 24 Sep 2021 02:17

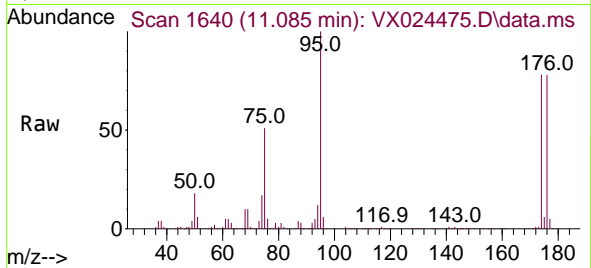
Tgt Ion	Resp	Lower	Upper
75	58753		
75	100		
77	1.0	19.1	57.5#





#81
 trans-1,4-Dichloro-2-butene
 Concen: 65.330 ug/l
 RT: 11.085 min Scan# 1640
 Delta R.T. 0.061 min
 Lab File: VX024475.D
 Acq: 24 Sep 2021 02:17

Instrument :
 MSVOA_X
 ClientSampled :
 VX0923WBL02



Tgt Ion: 75 Resp: 58753

Ion	Ratio	Lower	Upper
75	100		
53	0.0	74.5	111.7#
89	0.0	37.9	56.9#

