

Data Path : Z:\voasrv\HPCHEM1\MSVOA\_X\Data\VX092321\  
 Data File : VX024483.D  
 Acq On : 24 Sep 2021 05:25  
 Operator : JC/MD  
 Sample : M3829-20  
 Misc : 5.0mL/MSVOA\_X/WATER  
 ALS Vial : 38 Sample Multiplier: 1

Instrument :  
 MSVOA\_X  
 ClientSampleId :  
 MW203D2-20210918

Integration Parameters: RTEINT.P  
 Integrator: RTE  
 Smoothing : ON Filtering: 5  
 Sampling : 1 Min Area: 3 % of largest Peak  
 Start Thrs: 0.2 Max Peaks: 100  
 Stop Thrs : 0 Peak Location: TOP

If leading or trailing edge < 100 prefer < Baseline drop else tangent >  
 Peak separation: 5

Method : Z:\voasrv\HPCHEM1\MSVOA\_X\Method\82X092321W.M  
 Title : SW846 8260

Signal : TIC: VX024483.D\data.ms

peak #	R.T. min	first scan	max scan	last scan	PK TY	peak height	corr. area	corr. % max.	% of total
1	1.246	22	26	40	rVB2	16470	32462	4.43%	0.804%
2	2.544	232	239	248	rBV	6645	11816	1.61%	0.293%
3	3.617	407	415	424	rVB2	7755	17767	2.43%	0.440%
4	5.397	692	707	721	rBV	98525	275568	37.62%	6.828%
5	5.562	723	734	747	rVB	137178	379388	51.79%	9.400%
6	5.964	791	800	814	rBV	101710	263829	36.02%	6.537%
7	6.769	922	932	944	rBV	235344	560918	76.58%	13.898%
8	8.653	1234	1241	1251	rBV	474262	732505	100.00%	18.150%
9	10.055	1464	1471	1485	rBV	476525	644707	88.01%	15.974%
10	11.085	1634	1640	1651	rBV	427068	525594	71.75%	13.023%
11	12.024	1789	1794	1803	rBV	478487	591331	80.73%	14.652%

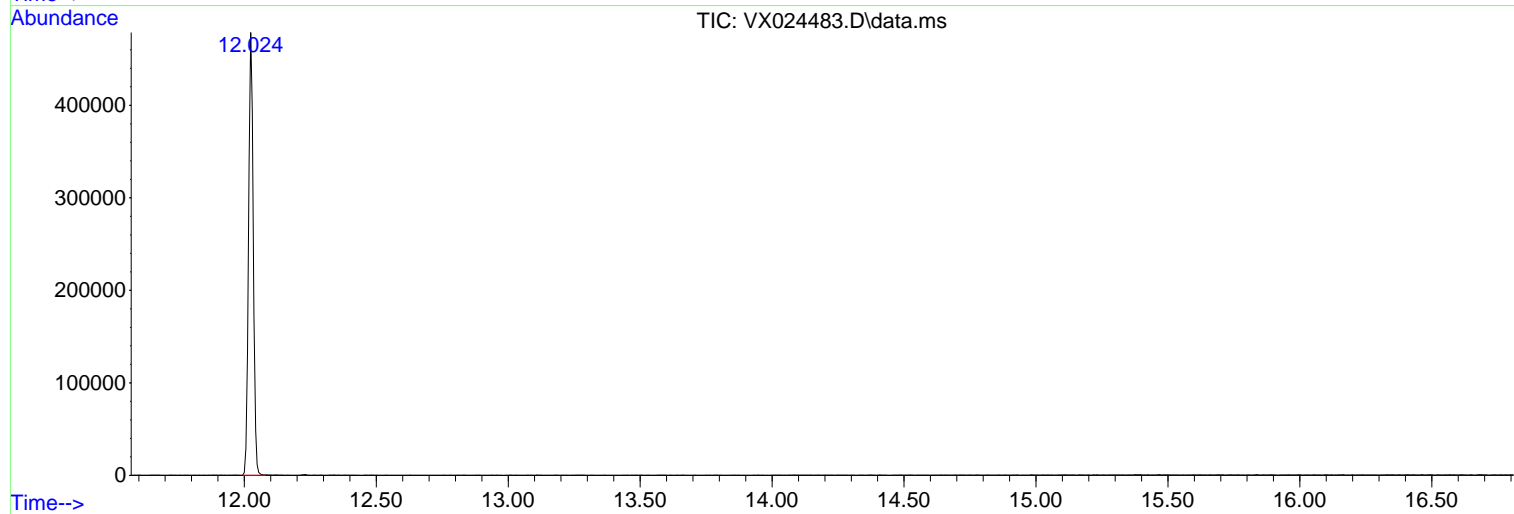
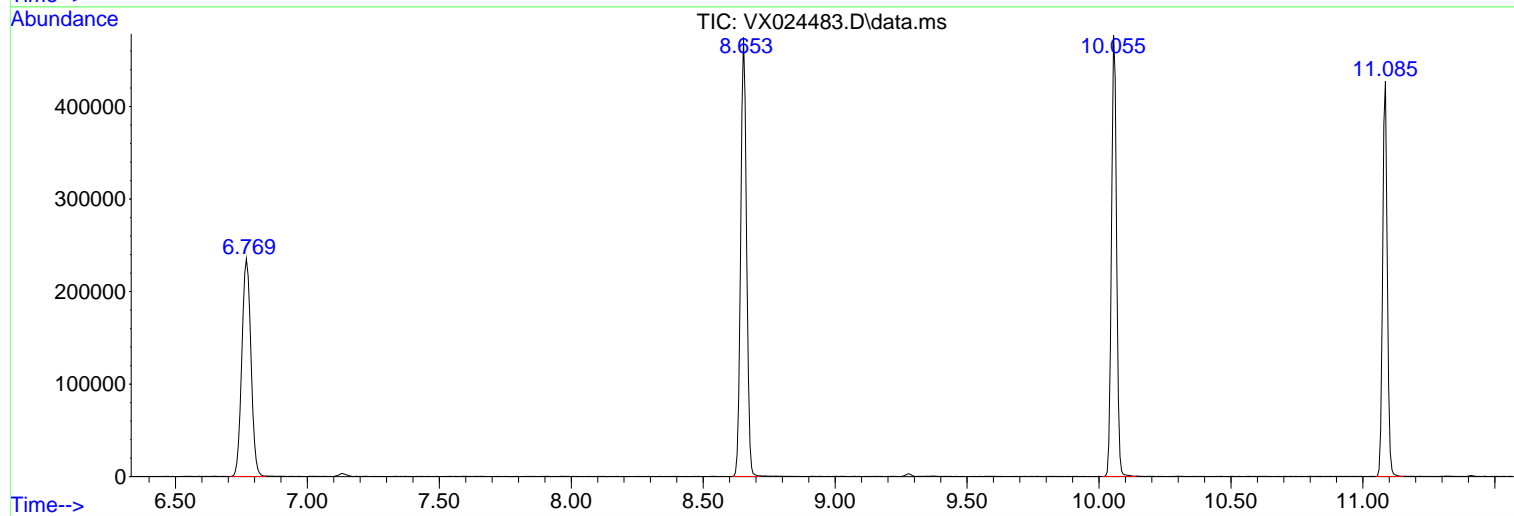
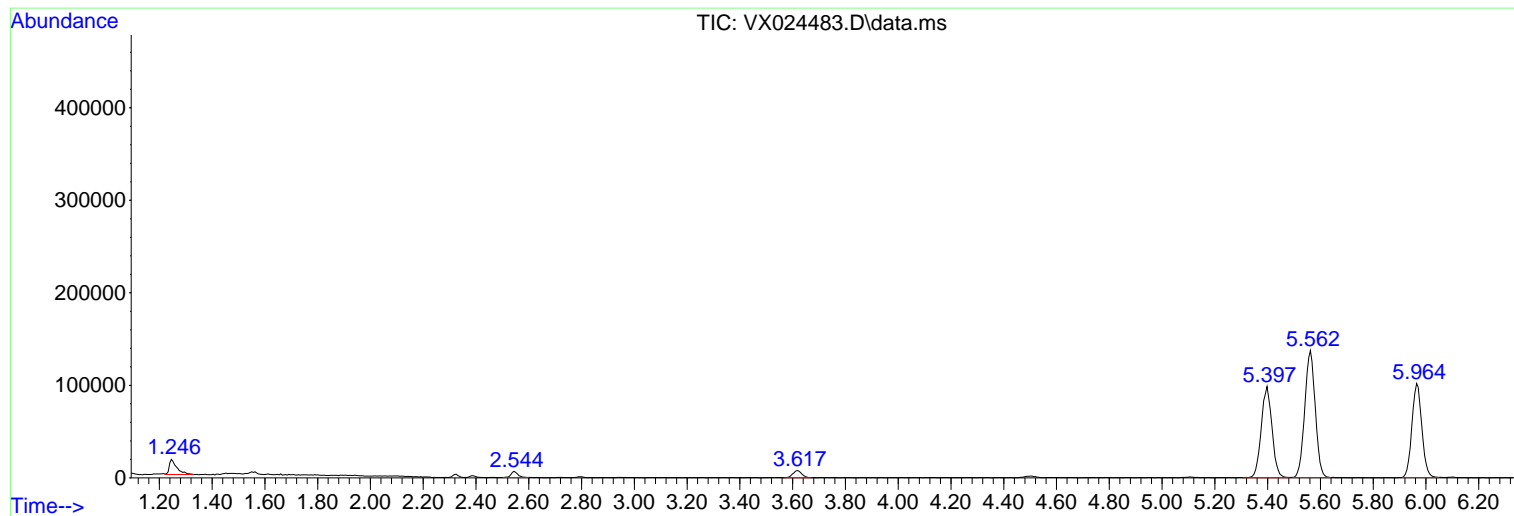
Sum of corrected areas: 4035885

Data Path : Z:\voasrv\HPCHEM1\MSVOA\_X\Data\VX092321\  
Data File : VX024483.D  
Acq On : 24 Sep 2021 05:25  
Operator : JC/MD  
Sample : M3829-20  
Misc : 5.0mL/MSVOA\_X/WATER  
ALS Vial : 38 Sample Multiplier: 1

Instrument :  
MSVOA\_X  
ClientSampleId :  
MW203D2-20210918

Quant Method : Z:\voasrv\HPCHEM1\MSVOA\_X\Method\82X092321W.M  
Quant Title : SW846 8260

TIC Library : C:\Database\NIST20.L  
TIC Integration Parameters: LSCINT.P



Library Search Compound Report

Data Path : Z:\voasrv\HPCHEM1\MSVOA\_X\Data\VX092321\  
Data File : VX024483.D  
Acq On : 24 Sep 2021 05:25  
Operator : JC/MD  
Sample : M3829-20  
Misc : 5.0mL/MSVOA\_X/WATER  
ALS Vial : 38 Sample Multiplier: 1

Instrument :  
MSVOA\_X  
ClientSampleId :  
MW203D2-20210918

Quant Method : Z:\voasrv\HPCHEM1\MSVOA\_X\Method\82X092321W.M  
Quant Title : SW846 8260

TIC Library : C:\Database\NIST20.L  
TIC Integration Parameters: LSCINT.P

No Library Search Compounds Detected

\*\*\*\*\*

Data Path : Z:\voasrv\HPCHEM1\MSVOA\_X\Data\VX092321\  
Data File : VX024483.D  
Acq On : 24 Sep 2021 05:25  
Operator : JC/MD  
Sample : M3829-20  
Misc : 5.0mL/MSVOA\_X/WATER  
ALS Vial : 38 Sample Multiplier: 1

Instrument :  
MSVOA\_X  
ClientSampleId :  
MW203D2-20210918

Quant Method : Z:\voasrv\HPCHEM1\MSVOA\_X\Method\82X092321W.M  
Quant Title : SW846 8260

TIC Library : C:\Database\NIST0.L  
TIC Integration Parameters: LSCINT.P

TIC Top Hit name	RT	EstConc	Units	Response	--Internal Standard--		
					#	RT	Resp Conc

---