

Data Path : Z:\voasrv\HPCHEM1\MSVOA_X\Data\VX092325\
 Data File : VX047720.D
 Acq On : 23 Sep 2025 09:31
 Operator : JC/MD
 Sample : VX0923MBL01
 Misc : 5.00g/10mL/100ul/5.00mL/MSVOA_X/MEOH
 ALS Vial : 3 Sample Multiplier: 1

Instrument :
 MSVOA_X
 ClientSampleId :
 VX0923MBL01

Quant Time: Sep 24 01:26:06 2025
 Quant Method : Z:\voasrv\HPCHEM1\MSVOA_X\Method\82X091625W.M
 Quant Title : SW846 8260
 QLast Update : Wed Sep 17 06:39:58 2025
 Response via : Initial Calibration

Compound	R.T.	QIon	Response	Conc	Units	Dev(Min)
Internal Standards						
1) Pentafluorobenzene	5.531	168	133610	50.000	ug/l	-0.01
34) 1,4-Difluorobenzene	6.739	114	270295	50.000	ug/l	0.00
63) Chlorobenzene-d5	10.037	117	268498	50.000	ug/l	0.00
72) 1,4-Dichlorobenzene-d4	12.006	152	132272	50.000	ug/l	0.00
System Monitoring Compounds						
33) 1,2-Dichloroethane-d4	5.934	65	99871	46.960	ug/l	0.00
Spiked Amount	50.000	Range	78 - 117	Recovery	=	93.920%
35) Dibromofluoromethane	5.367	113	84052	46.367	ug/l	0.00
Spiked Amount	50.000	Range	75 - 124	Recovery	=	92.740%
50) Toluene-d8	8.628	98	302488	48.225	ug/l	0.00
Spiked Amount	50.000	Range	92 - 112	Recovery	=	96.440%
62) 4-Bromofluorobenzene	11.061	95	127309	53.480	ug/l	0.00
Spiked Amount	50.000	Range	83 - 123	Recovery	=	106.960%
Target Compounds						
						Qvalue
3) Chloromethane	1.301	50	455	0.250	ug/l #	87
5) Bromomethane	1.636	94	642	0.569	ug/l #	69
10) Methyl Iodide	2.459	142	1284	0.533	ug/l #	69
13) Acrolein	2.239	56	203	0.930	ug/l #	78
15) Acrylonitrile	3.062	53	896	1.021	ug/l #	66
16) Acetone	2.373	43	1115	1.206	ug/l	95
17) Carbon Disulfide	2.514	76	3255	0.749	ug/l	95
18) Methyl Acetate	2.691	43	610	0.296	ug/l #	54
20) Methylene Chloride	2.794	84	885	0.452	ug/l #	85
21) trans-1,2-Dichloroethene	3.087	96	549	0.321	ug/l #	66
23) Vinyl Acetate	3.709	43	2162	0.426	ug/l #	73
29) Tetrahydrofuran	5.001	42	176	0.254	ug/l #	46
36) 1,1-Dichloropropene	5.531	75	11346	4.283	ug/l #	47
38) Carbon Tetrachloride	5.531	117	14164	4.921	ug/l #	16
39) Methylcyclohexane	7.366	83	1318	0.438	ug/l #	86
44) Trichloroethene	7.110	130	430	0.221	ug/l	79
51) 4-Methyl-2-Pentanone	8.561	43	1289	0.500	ug/l #	63
58) 2-Chloroethyl Vinyl ether	8.238	63	419	8.186	ug/l #	61
59) 2-Hexanone	9.427	43	790	0.427	ug/l	89
64) Tetrachloroethene	9.256	164	531	0.303	ug/l #	69
68) m/p-Xylenes	10.287	106	1268	0.324	ug/l	97
76) 1,2,3-Trichloropropane	11.061	75	65545	24.474	ug/l #	39
78) n-propylbenzene	11.287	91	3712	0.312	ug/l	92
79) 2-Chlorotoluene	11.354	91	1508	0.207	ug/l	84
80) 1,3,5-Trimethylbenzene	11.433	105	2130	0.258	ug/l	92
81) trans-1,4-Dichloro-2-b...	11.061	75	65545	62.413	ug/l #	8
82) 4-Chlorotoluene	11.439	91	2206	0.257	ug/l	100
83) tert-Butylbenzene	11.695	119	2623	0.310	ug/l	96
84) 1,2,4-Trimethylbenzene	11.738	105	2203	0.263	ug/l	99
85) sec-Butylbenzene	11.872	105	5585	0.556	ug/l	95
86) p-Isopropyltoluene	11.994	119	4838	0.569	ug/l	89
87) 1,3-Dichlorobenzene	11.957	146	1769	0.385	ug/l	92
88) 1,4-Dichlorobenzene	11.957	146	1769	0.375	ug/l	93
89) n-Butylbenzene	12.317	91	6825	0.867	ug/l	100
90) Hexachloroethane	12.524	117	689	0.461	ug/l	100
91) 1,2-Dichlorobenzene	12.317	146	1270	0.290	ug/l	96

Data Path : Z:\voasrv\HPCHEM1\MSVOA_X\Data\VX092325\
Data File : VX047720.D
Acq On : 23 Sep 2025 09:31
Operator : JC/MD
Sample : VX0923MBL01
Misc : 5.00g/10mL/100ul/5.00mL/MSVOA_X/MEOH
ALS Vial : 3 Sample Multiplier: 1

Instrument :
MSVOA_X
ClientSampleId :
VX0923MBL01

Quant Time: Sep 24 01:26:06 2025
Quant Method : Z:\voasrv\HPCHEM1\MSVOA_X\Method\82X091625W.M
Quant Title : SW846 8260
QLast Update : Wed Sep 17 06:39:58 2025
Response via : Initial Calibration

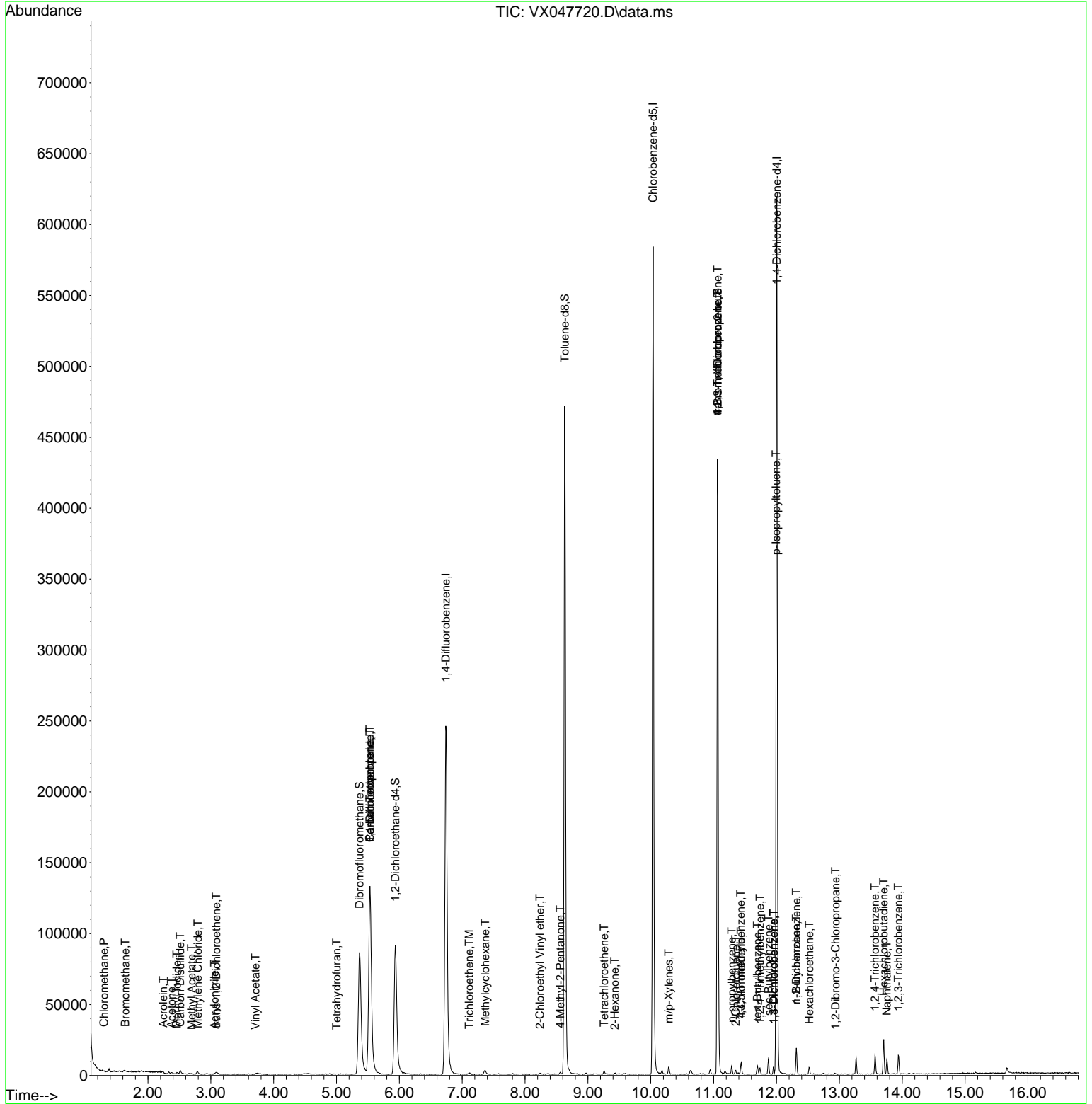
Compound	R.T.	QIon	Response	Conc	Units	Dev(Min)
92) 1,2-Dibromo-3-Chloropr...	12.939	75	139	0.226	ug/l #	54
93) 1,2,4-Trichlorobenzene	13.567	180	3305	1.160	ug/l	95
94) Hexachlorobutadiene	13.707	225	3042	3.144	ug/l	90
95) Naphthalene	13.756	128	6700	0.772	ug/l	97
96) 1,2,3-Trichlorobenzene	13.938	180	3307	1.248	ug/l	99

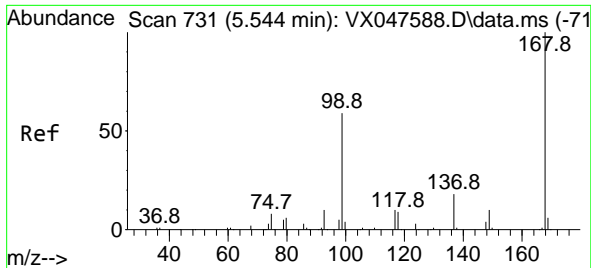
(#) = qualifier out of range (m) = manual integration (+) = signals summed

Data Path : Z:\voasrv\HPCHEM1\MSVOA_X\Data\VX092325\
 Data File : VX047720.D
 Acq On : 23 Sep 2025 09:31
 Operator : JC/MD
 Sample : VX0923MBL01
 Misc : 5.00g/10mL/100ul/5.00mL/MSVOA_X/MEOH
 ALS Vial : 3 Sample Multiplier: 1

Instrument :
 MSVOA_X
ClientSampleId :
 VX0923MBL01

Quant Time: Sep 24 01:26:06 2025
 Quant Method : Z:\voasrv\HPCHEM1\MSVOA_X\Method\82X091625W.M
 Quant Title : SW846 8260
 QLast Update : Wed Sep 17 06:39:58 2025
 Response via : Initial Calibration

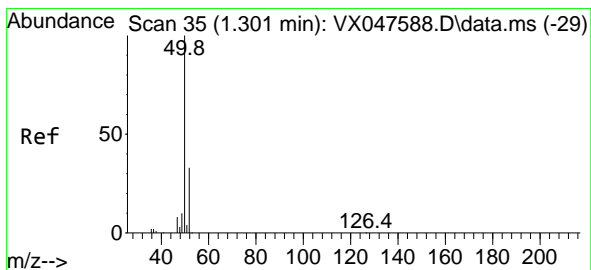
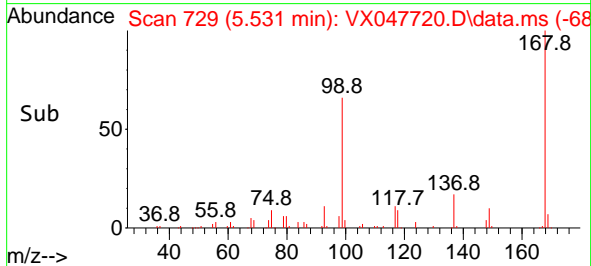
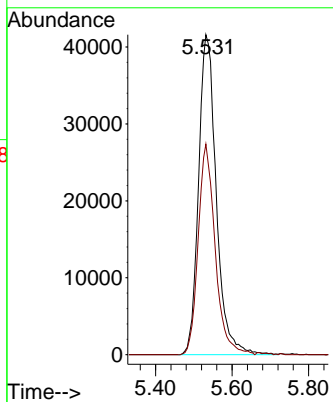
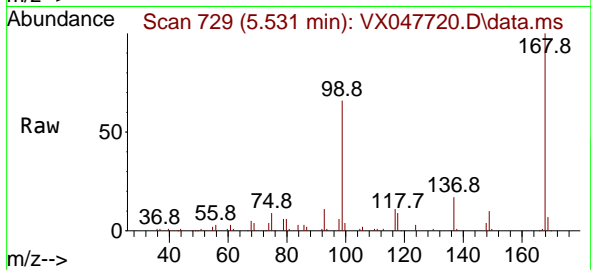




#1
 Pentafluorobenzene
 Concen: 50.000 ug/l
 RT: 5.531 min Scan# 71
 Delta R.T. -0.013 min
 Lab File: VX047720.D
 Acq: 23 Sep 2025 09:31

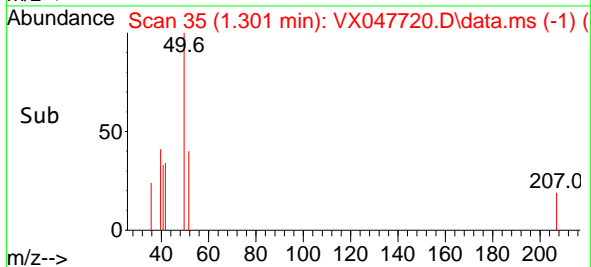
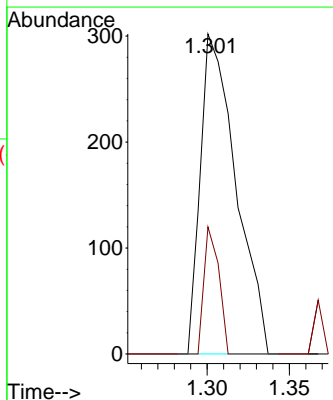
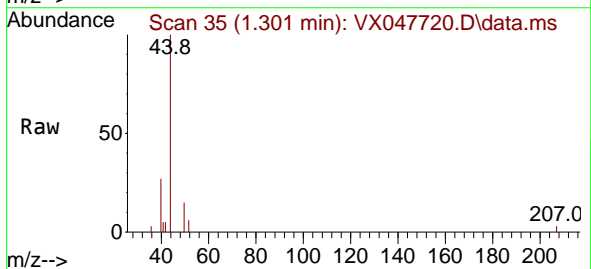
Instrument :
 MSVOA_X
 ClientSampleId :
 VX0923MBL01

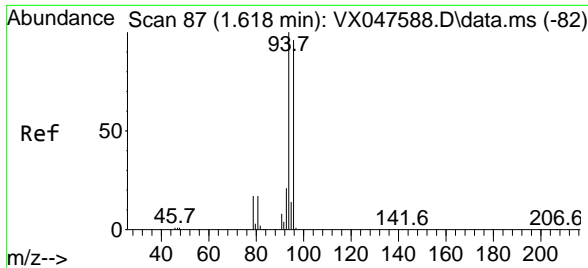
Tgt Ion:168 Resp: 133610
 Ion Ratio Lower Upper
 168 100
 99 65.8 48.8 73.2



#3
 Chloromethane
 Concen: 0.250 ug/l
 RT: 1.301 min Scan# 35
 Delta R.T. -0.000 min
 Lab File: VX047720.D
 Acq: 23 Sep 2025 09:31

Tgt Ion: 50 Resp: 455
 Ion Ratio Lower Upper
 50 100
 52 39.7 26.1 39.1#

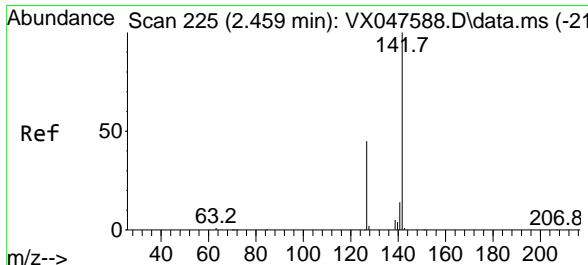
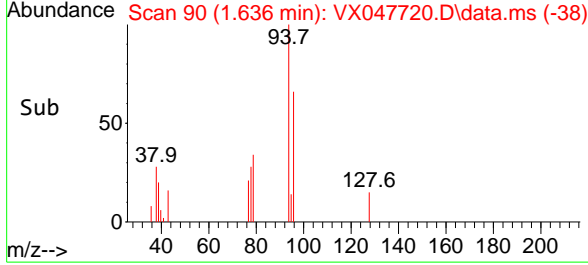
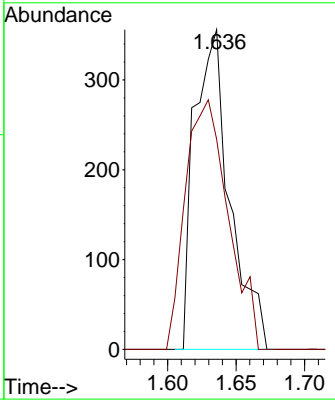
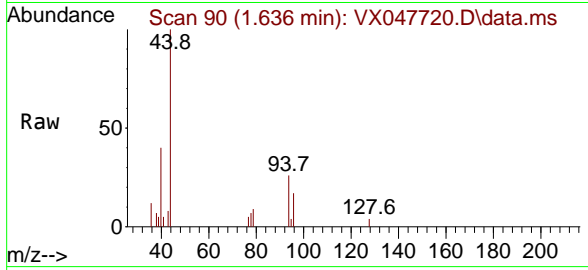




#5
 Bromomethane
 Concen: 0.569 ug/l
 RT: 1.636 min Scan# 90
 Delta R.T. 0.018 min
 Lab File: VX047720.D
 Acq: 23 Sep 2025 09:31

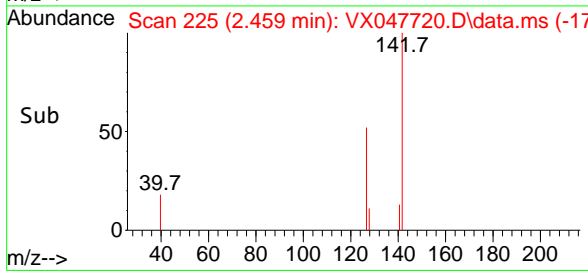
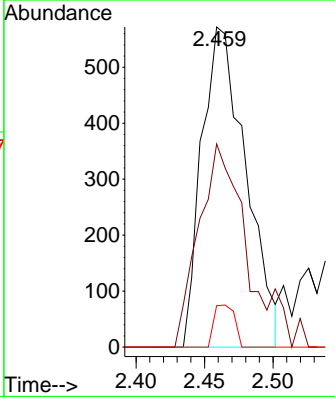
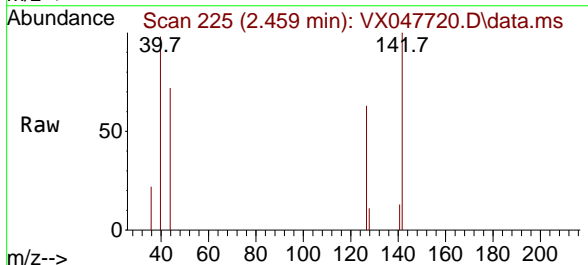
Instrument : MSVOA_X
 Client SampleId : VX0923MBL01

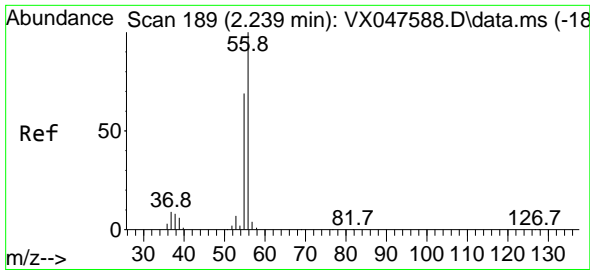
Tgt Ion: 94 Resp: 642
 Ion Ratio Lower Upper
 94 100
 96 65.7 76.6 115.0#



#10
 Methyl Iodide
 Concen: 0.533 ug/l
 RT: 2.459 min Scan# 225
 Delta R.T. -0.000 min
 Lab File: VX047720.D
 Acq: 23 Sep 2025 09:31

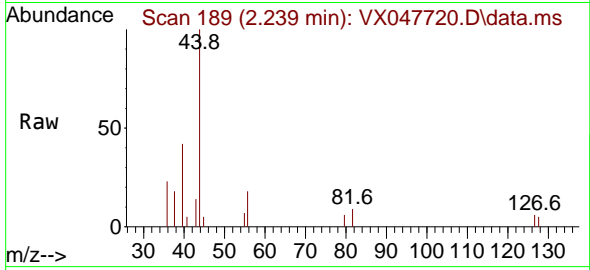
Tgt Ion: 142 Resp: 1284
 Ion Ratio Lower Upper
 142 100
 127 69.8 37.2 55.8#
 141 6.1 11.4 17.0#



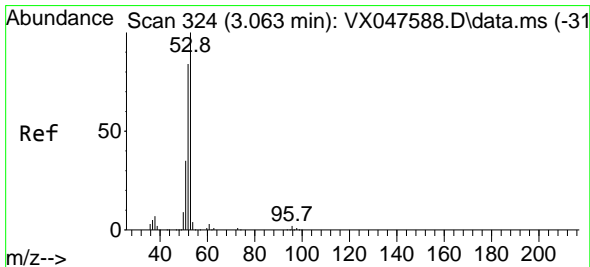
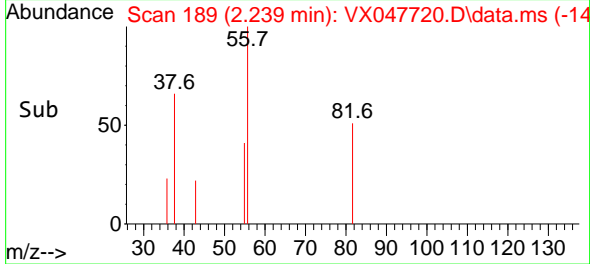
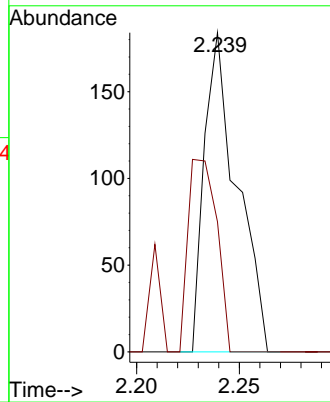


#13
 Acrolein
 Concen: 0.930 ug/l
 RT: 2.239 min Scan# 189
 Delta R.T. -0.000 min
 Lab File: VX047720.D
 Acq: 23 Sep 2025 09:31

Instrument : MSVOA_X
 ClientSampleId : VX0923MBL01

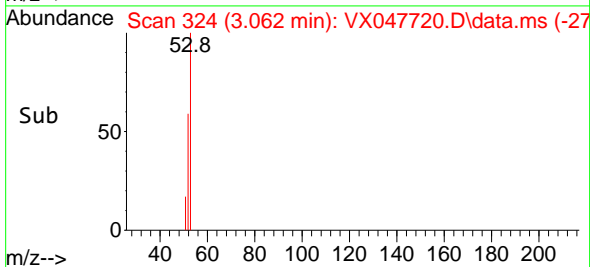
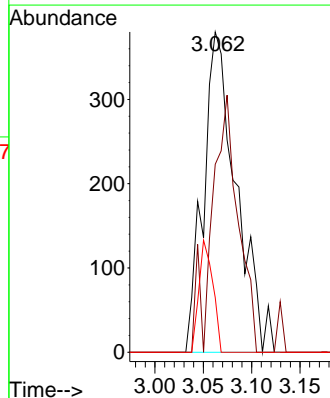
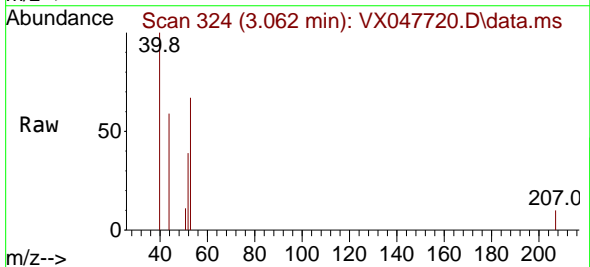


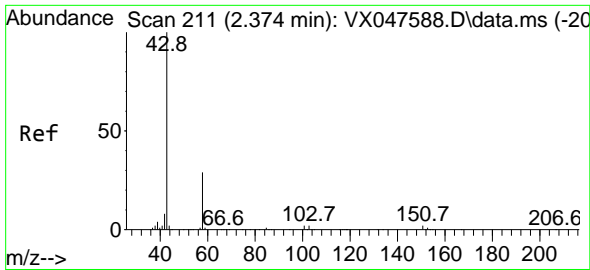
Tgt Ion: 56 Resp: 203
 Ion Ratio Lower Upper
 56 100
 55 53.2 57.2 85.8#



#15
 Acrylonitrile
 Concen: 1.021 ug/l
 RT: 3.062 min Scan# 324
 Delta R.T. -0.000 min
 Lab File: VX047720.D
 Acq: 23 Sep 2025 09:31

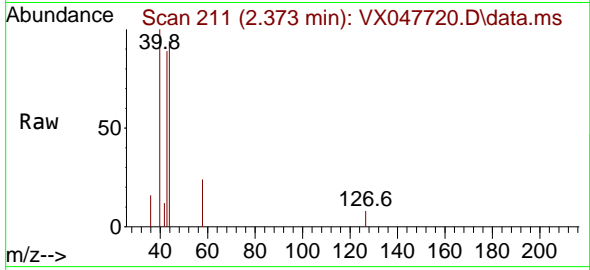
Tgt Ion: 53 Resp: 896
 Ion Ratio Lower Upper
 53 100
 52 64.2 66.4 99.6#
 51 0.0 29.5 44.3#



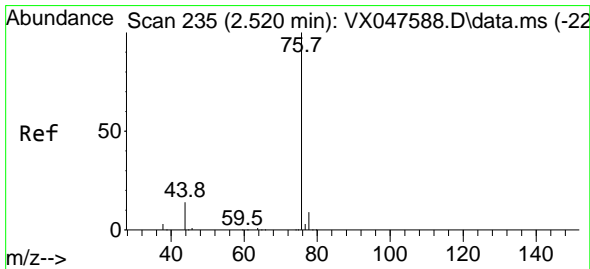
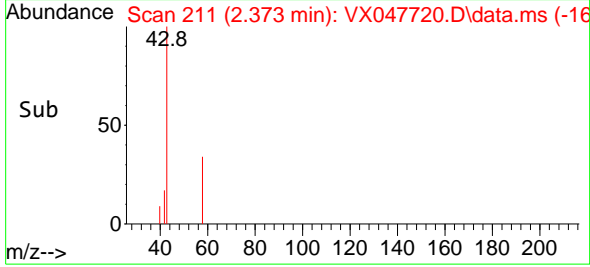
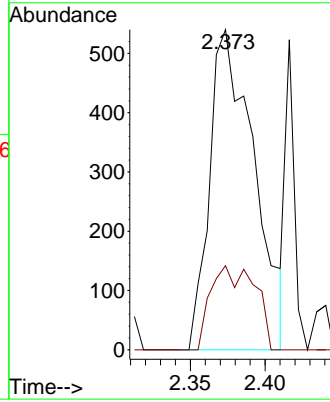


#16
 Acetone
 Concen: 1.206 ug/l
 RT: 2.373 min Scan# 211
 Delta R.T. -0.000 min
 Lab File: VX047720.D
 Acq: 23 Sep 2025 09:31

Instrument : MSVOA_X
 ClientSampleId : VX0923MBL01

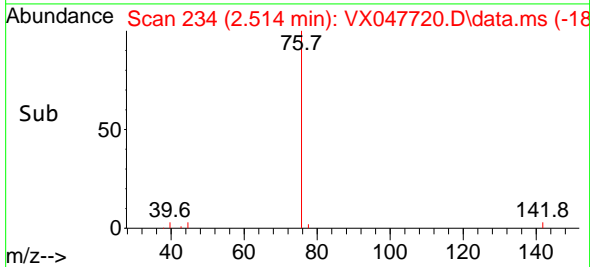
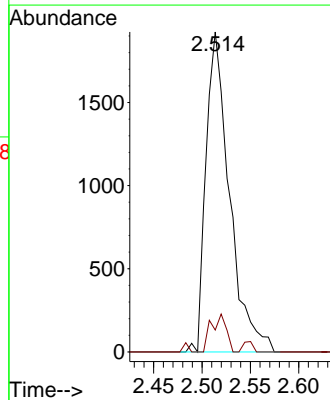
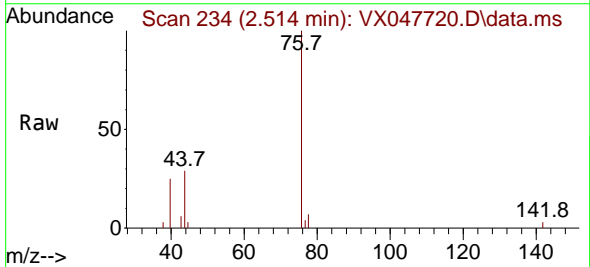


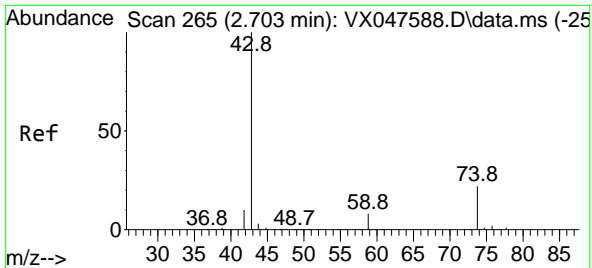
Tgt Ion: 43 Resp: 1115
 Ion Ratio Lower Upper
 43 100
 58 26.3 23.4 35.0



#17
 Carbon Disulfide
 Concen: 0.749 ug/l
 RT: 2.514 min Scan# 234
 Delta R.T. -0.006 min
 Lab File: VX047720.D
 Acq: 23 Sep 2025 09:31

Tgt Ion: 76 Resp: 3255
 Ion Ratio Lower Upper
 76 100
 78 6.9 6.8 10.2



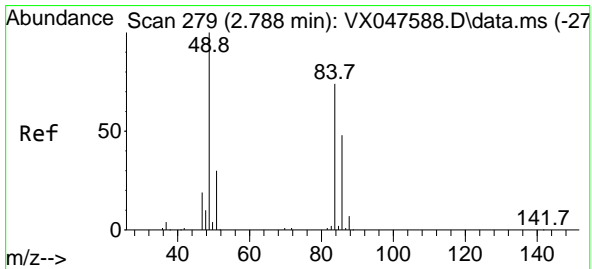
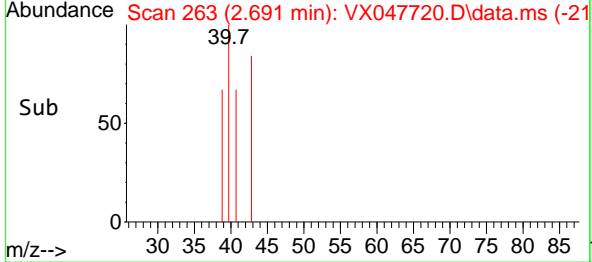
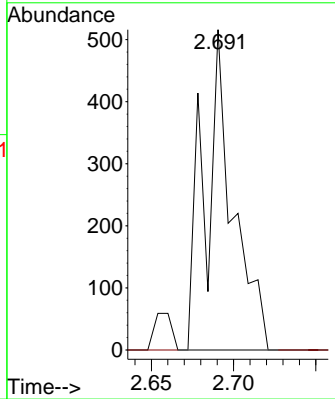
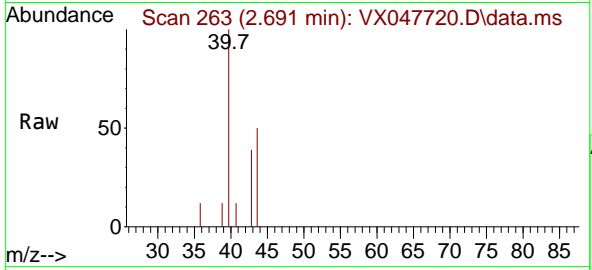


#18
 Methyl Acetate
 Concen: 0.296 ug/l
 RT: 2.691 min Scan# 20
 Delta R.T. -0.012 min
 Lab File: VX047720.D
 Acq: 23 Sep 2025 09:31

Instrument : MSVOA_X
 ClientSampleId : VX0923MBL01

Tgt Ion: 43 Resp: 610

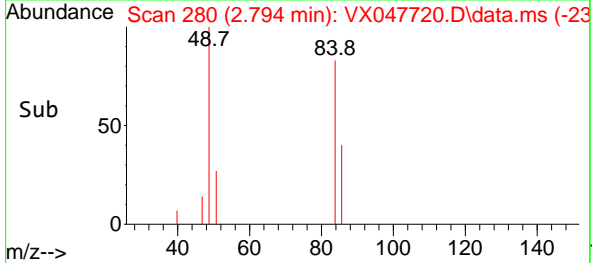
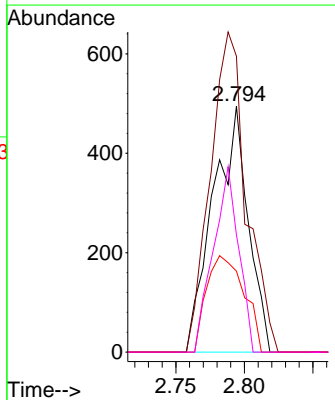
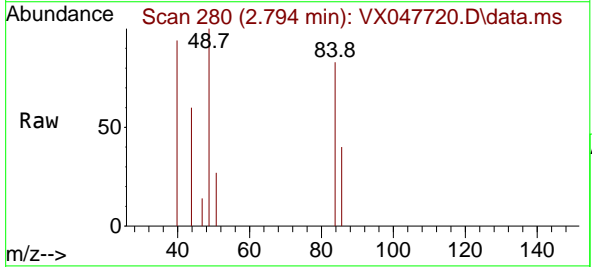
Ion	Ratio	Lower	Upper
43	100		
74	0.0	17.4	26.2#

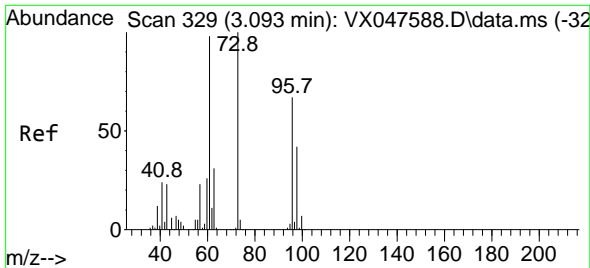


#20
 Methylene Chloride
 Concen: 0.452 ug/l
 RT: 2.794 min Scan# 280
 Delta R.T. 0.006 min
 Lab File: VX047720.D
 Acq: 23 Sep 2025 09:31

Tgt Ion: 84 Resp: 885

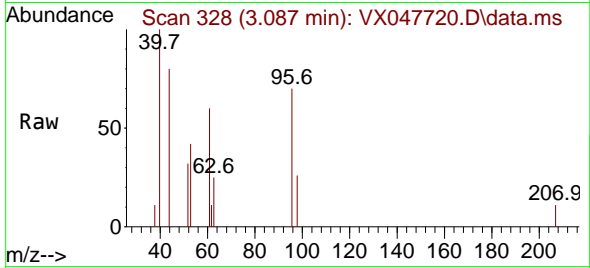
Ion	Ratio	Lower	Upper
84	100		
49	120.2	108.6	162.8
51	32.9	32.6	48.8
86	47.7	52.0	78.0#



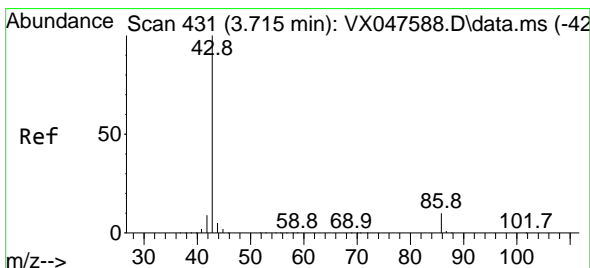
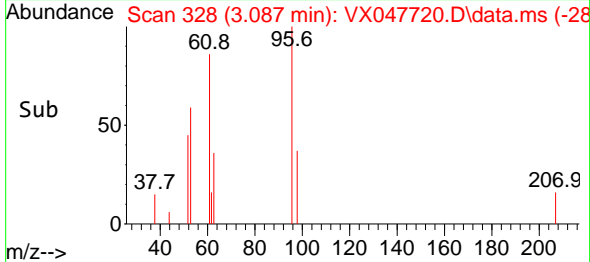
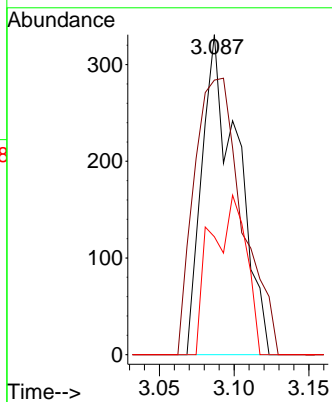


#21
 trans-1,2-Dichloroethene
 Concen: 0.321 ug/l
 RT: 3.087 min Scan# 31
 Delta R.T. -0.006 min
 Lab File: VX047720.D
 Acq: 23 Sep 2025 09:31

Instrument :
 MSVOA_X
 ClientSampleId :
 VX0923MBL01

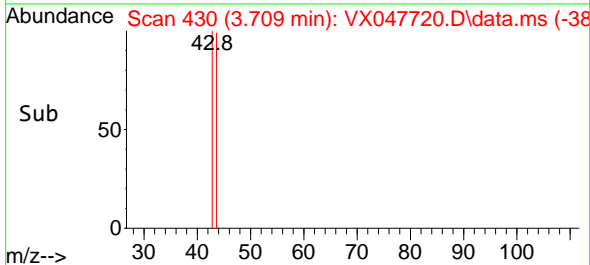
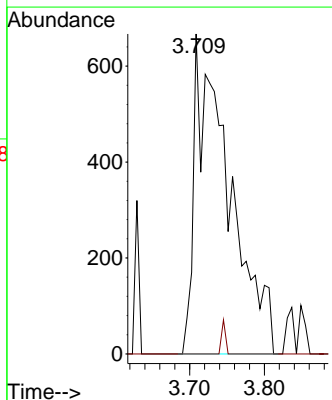
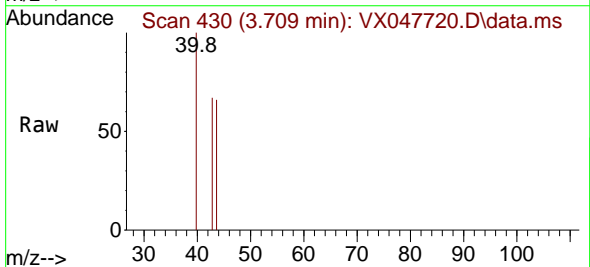


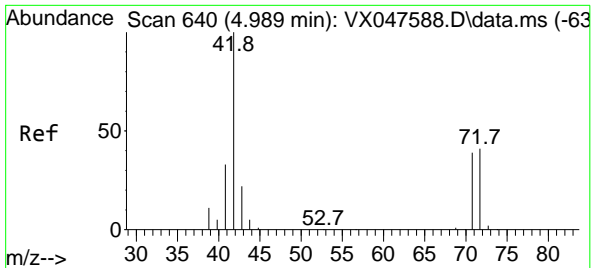
Tgt Ion: 96 Resp: 549
 Ion Ratio Lower Upper
 96 100
 61 101.5 116.2 174.2#
 98 36.9 49.3 73.9#



#23
 Vinyl Acetate
 Concen: 0.426 ug/l
 RT: 3.709 min Scan# 430
 Delta R.T. -0.006 min
 Lab File: VX047720.D
 Acq: 23 Sep 2025 09:31

Tgt Ion: 43 Resp: 2162
 Ion Ratio Lower Upper
 43 100
 86 0.0 7.8 11.8#

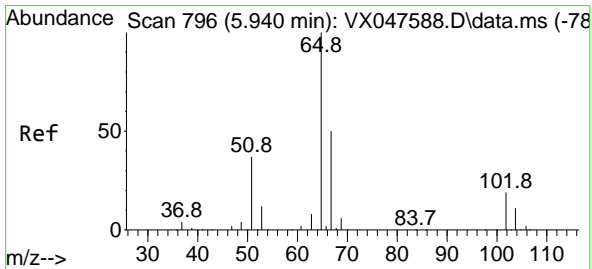
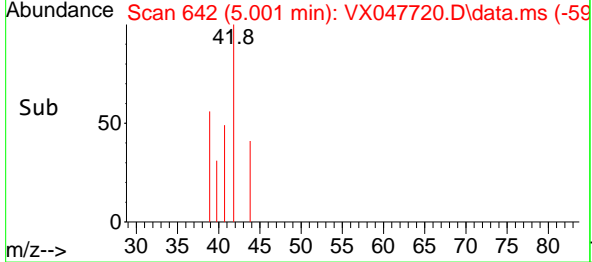
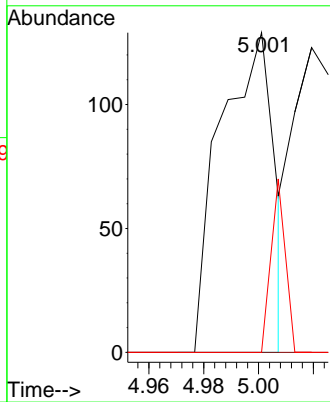
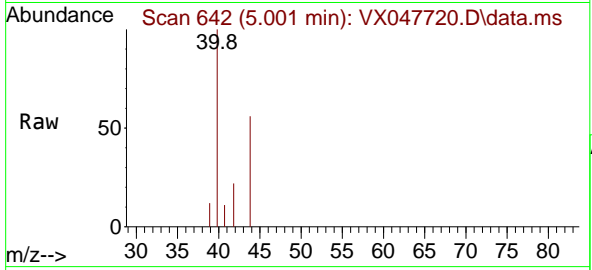




#29
 Tetrahydrofuran
 Concen: 0.254 ug/l
 RT: 5.001 min Scan# 642
 Delta R.T. 0.012 min
 Lab File: VX047720.D
 Acq: 23 Sep 2025 09:31

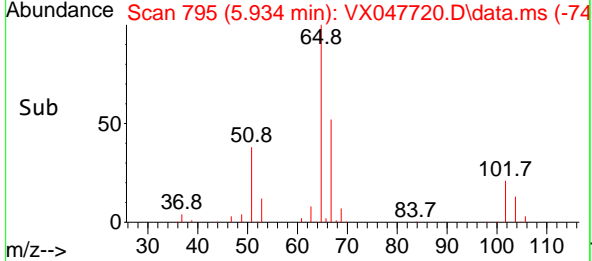
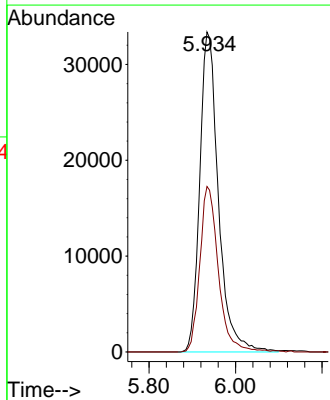
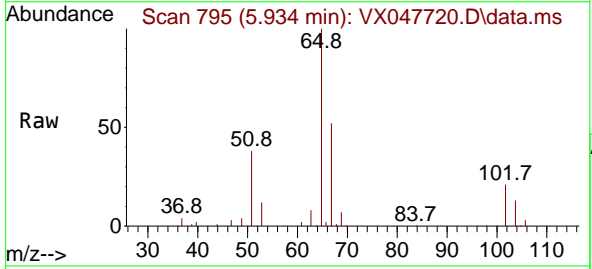
Instrument : MSVOA_X
 ClientSampleId : VX0923MBL01

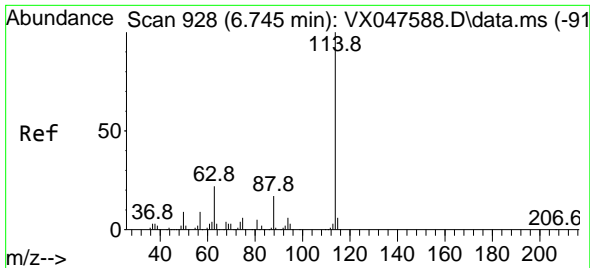
Tgt Ion	Resp	Lower	Upper
42	100		
72	0.0	34.2	51.2#
71	14.8	31.9	47.9#



#33
 1,2-Dichloroethane-d4
 Concen: 46.960 ug/l
 RT: 5.934 min Scan# 795
 Delta R.T. -0.006 min
 Lab File: VX047720.D
 Acq: 23 Sep 2025 09:31

Tgt Ion	Resp	Lower	Upper
65	100		
67	51.4	0.0	103.0



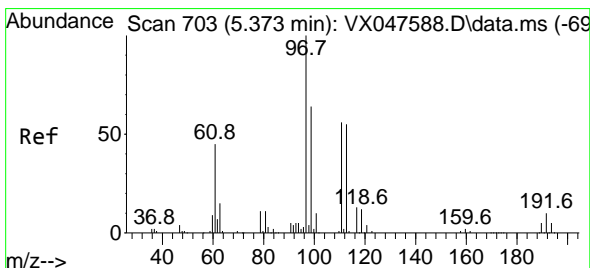
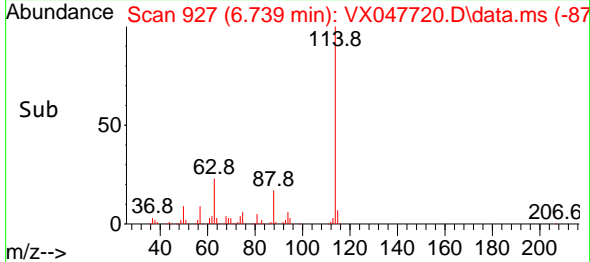
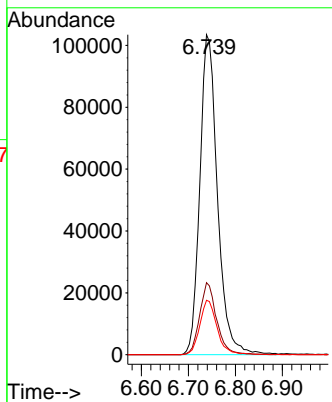
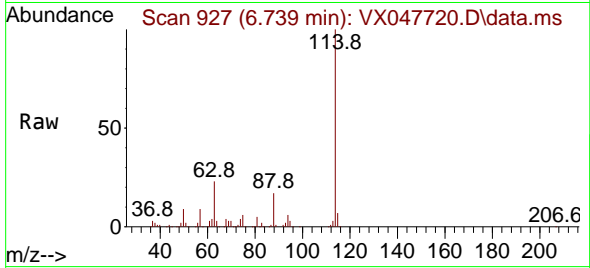


#34
 1,4-Difluorobenzene
 Concen: 50.000 ug/l
 RT: 6.739 min Scan# 91
 Delta R.T. -0.006 min
 Lab File: VX047720.D
 Acq: 23 Sep 2025 09:31

Instrument : MSVOA_X
 ClientSampleId : VX0923MBL01

Tgt Ion:114 Resp: 270295

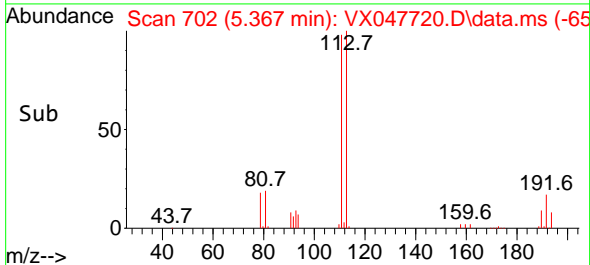
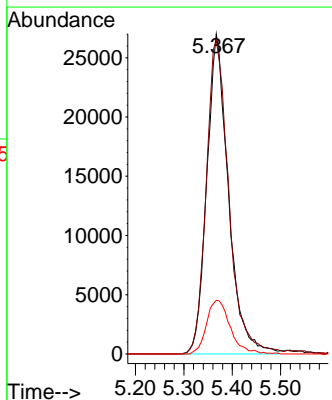
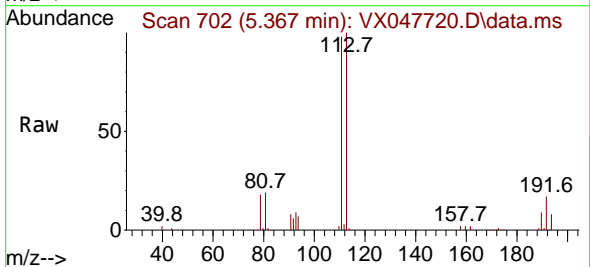
Ion	Ratio	Lower	Upper
114	100		
63	22.5	0.0	44.0
88	17.0	0.0	34.2

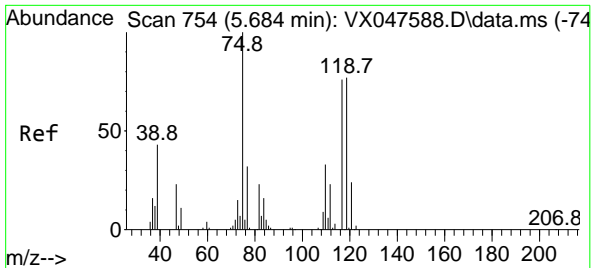


#35
 Dibromofluoromethane
 Concen: 46.367 ug/l
 RT: 5.367 min Scan# 702
 Delta R.T. -0.006 min
 Lab File: VX047720.D
 Acq: 23 Sep 2025 09:31

Tgt Ion:113 Resp: 84052

Ion	Ratio	Lower	Upper
113	100		
111	102.5	80.9	121.3
192	18.4	14.2	21.4

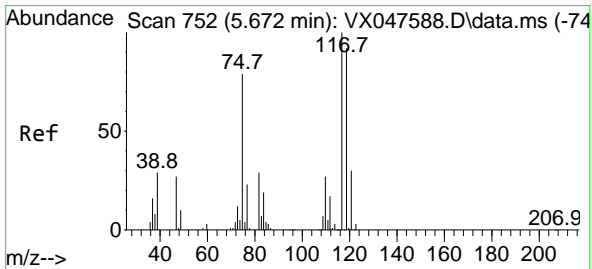
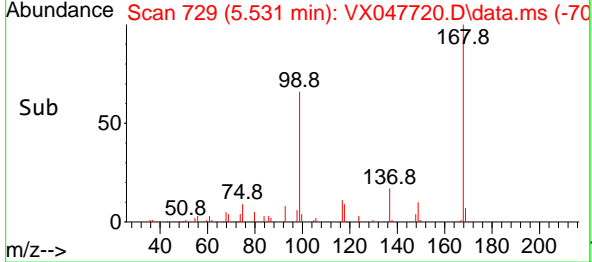
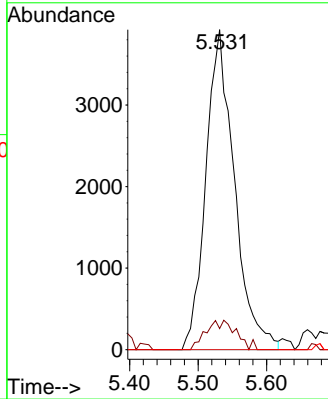
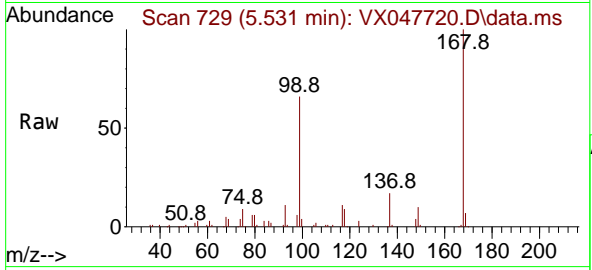




#36
 1,1-Dichloropropene
 Concen: 4.283 ug/l
 RT: 5.531 min Scan# 729
 Delta R.T. -0.153 min
 Lab File: VX047720.D
 Acq: 23 Sep 2025 09:31

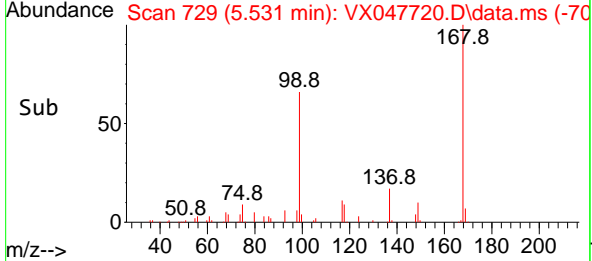
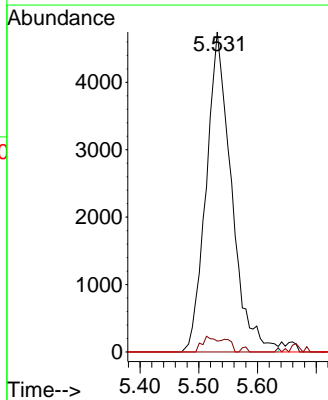
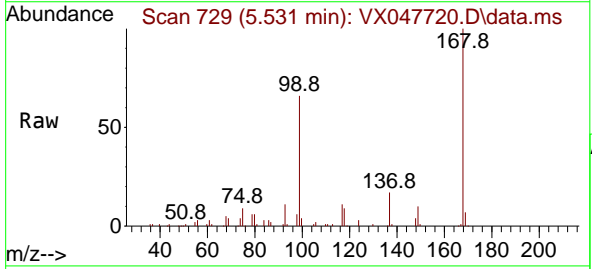
Instrument : MSVOA_X
 ClientSampleId : VX0923MBL01

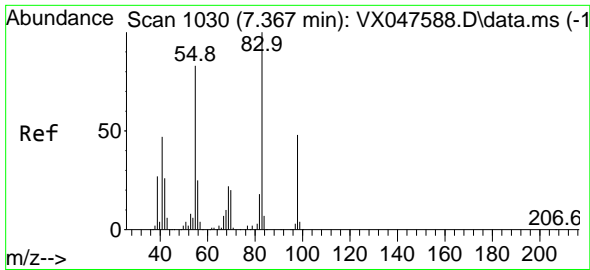
Tgt Ion	Resp	Lower	Upper
75	11346		
75	100		
110	4.9	16.7	50.1#
77	0.0	24.3	36.5#



#38
 Carbon Tetrachloride
 Concen: 4.921 ug/l
 RT: 5.531 min Scan# 729
 Delta R.T. -0.140 min
 Lab File: VX047720.D
 Acq: 23 Sep 2025 09:31

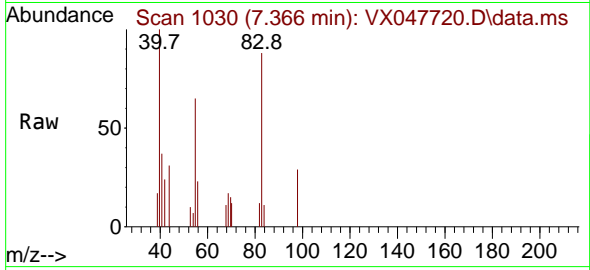
Tgt Ion	Resp	Lower	Upper
117	14164		
117	100		
119	3.4	73.4	110.2#
121	0.0	23.8	35.6#



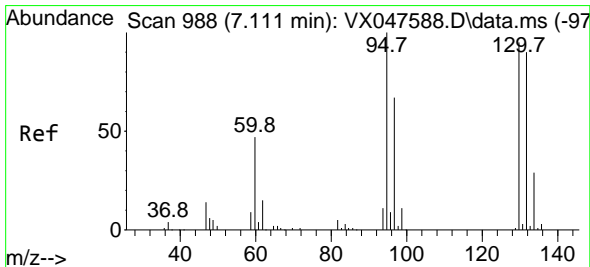
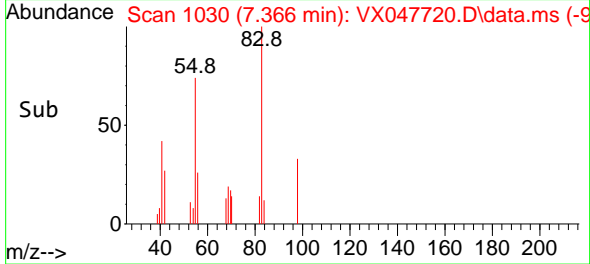
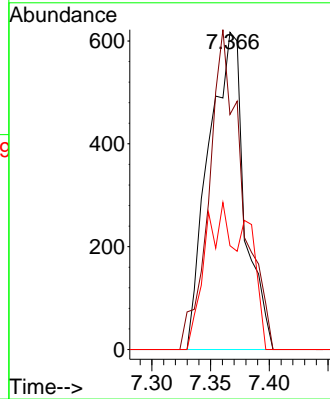


#39
 Methylcyclohexane
 Concen: 0.438 ug/l
 RT: 7.366 min Scan# 1030
 Delta R.T. -0.000 min
 Lab File: VX047720.D
 Acq: 23 Sep 2025 09:31

Instrument : MSVOA_X
 ClientSampleId : VX0923MBL01

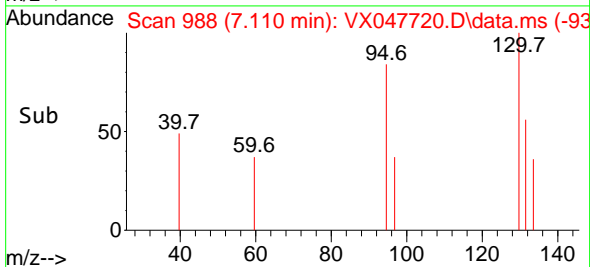
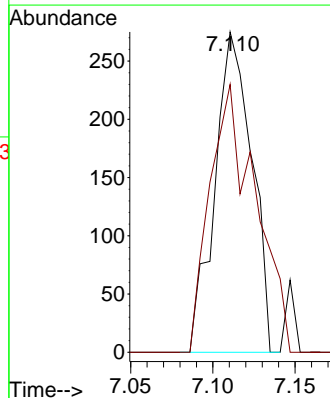
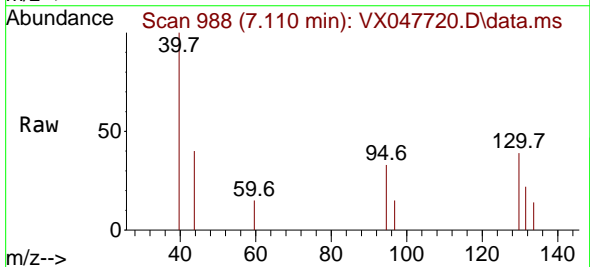


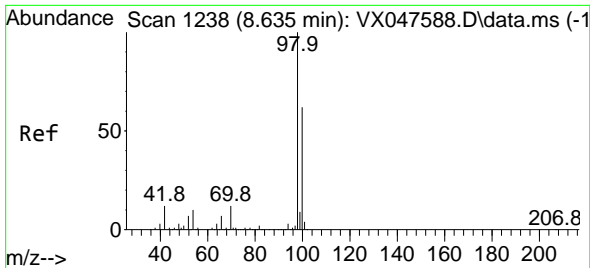
Tgt Ion: 83 Resp: 1318
 Ion Ratio Lower Upper
 83 100
 55 74.1 66.4 99.6
 98 32.7 38.1 57.1#



#44
 Trichloroethene
 Concen: 0.221 ug/l
 RT: 7.110 min Scan# 988
 Delta R.T. -0.000 min
 Lab File: VX047720.D
 Acq: 23 Sep 2025 09:31

Tgt Ion:130 Resp: 430
 Ion Ratio Lower Upper
 130 100
 95 83.6 0.0 210.8

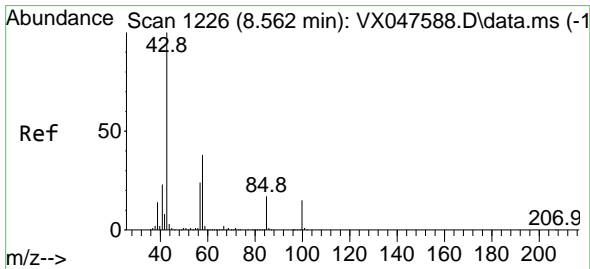
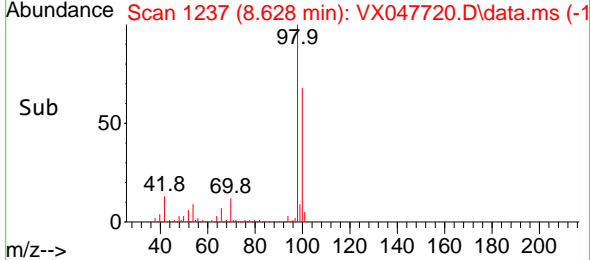
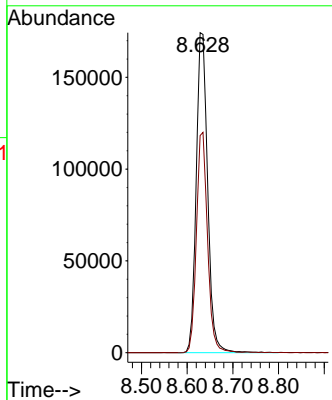
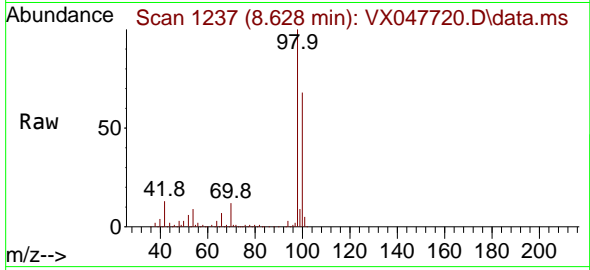




#50
 Toluene-d8
 Concen: 48.225 ug/l
 RT: 8.628 min Scan# 11
 Delta R.T. -0.006 min
 Lab File: VX047720.D
 Acq: 23 Sep 2025 09:31

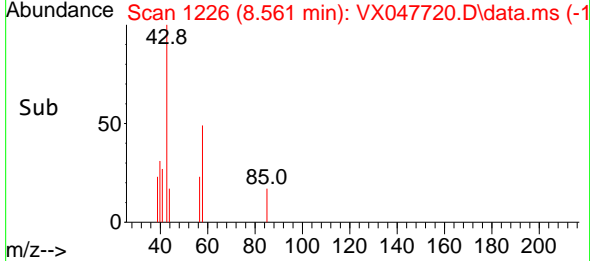
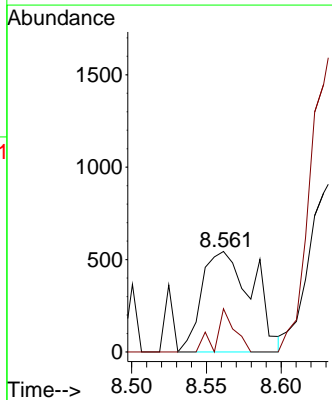
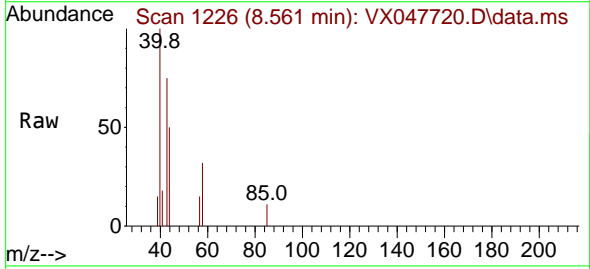
Instrument : MSVOA_X
 ClientSampleId : VX0923MBL01

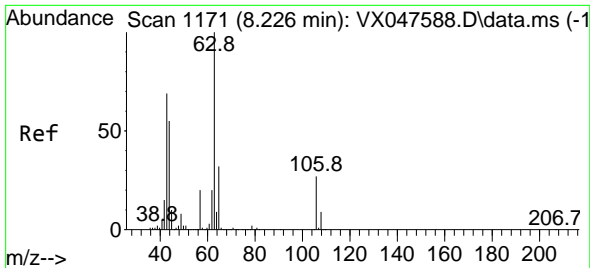
Tgt Ion: 98 Resp: 302488
 Ion Ratio Lower Upper
 98 100
 100 67.0 53.0 79.4



#51
 4-Methyl-2-Pentanone
 Concen: 0.500 ug/l
 RT: 8.561 min Scan# 1226
 Delta R.T. -0.000 min
 Lab File: VX047720.D
 Acq: 23 Sep 2025 09:31

Tgt Ion: 43 Resp: 1289
 Ion Ratio Lower Upper
 43 100
 58 15.7 30.3 45.5#

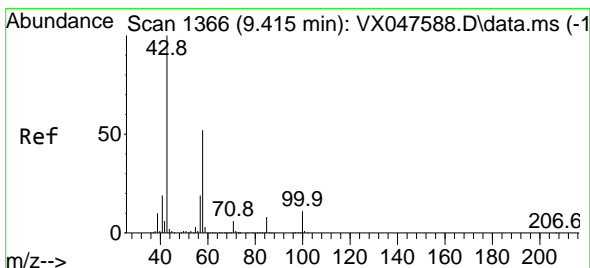
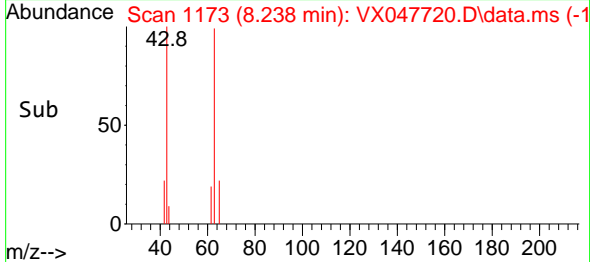
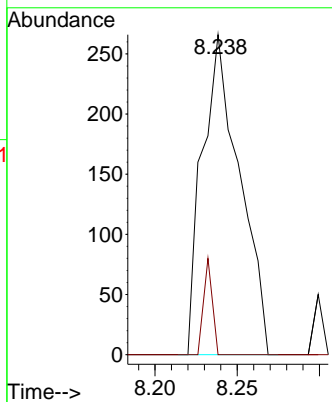
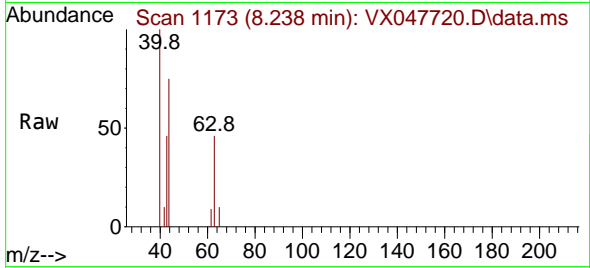




#58
 2-Chloroethyl Vinyl ether
 Concen: 8.186 ug/l
 RT: 8.238 min Scan# 1173
 Delta R.T. 0.012 min
 Lab File: VX047720.D
 Acq: 23 Sep 2025 09:31

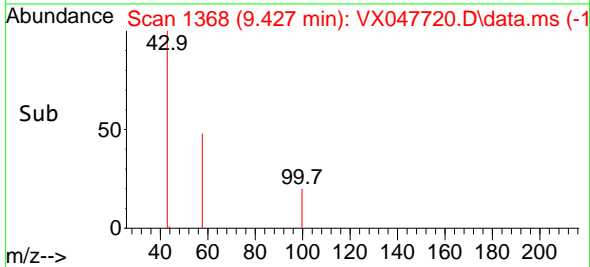
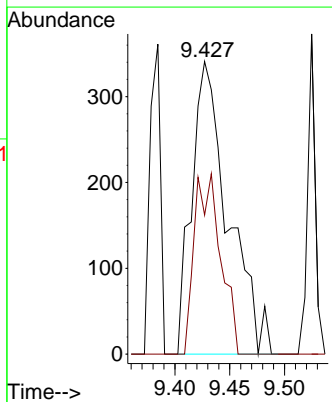
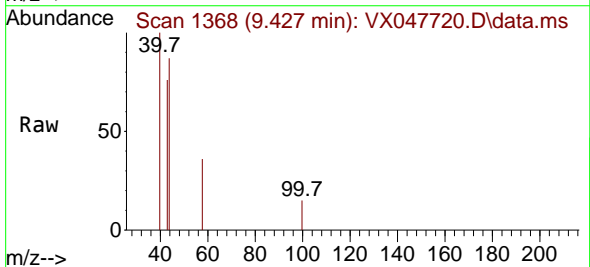
Instrument : MSVOA_X
 ClientSampleId : VX0923MBL01

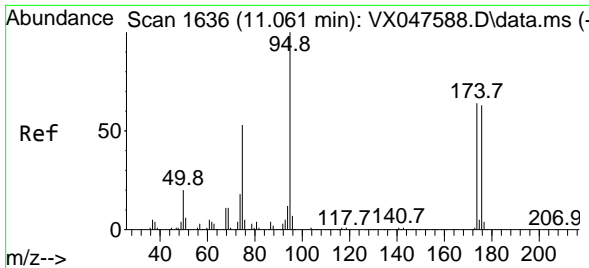
Tgt Ion: 63 Resp: 419
 Ion Ratio Lower Upper
 63 100
 106 6.9 21.9 32.9#



#59
 2-Hexanone
 Concen: 0.427 ug/l
 RT: 9.427 min Scan# 1368
 Delta R.T. 0.012 min
 Lab File: VX047720.D
 Acq: 23 Sep 2025 09:31

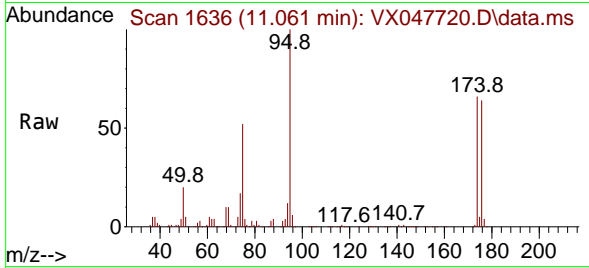
Tgt Ion: 43 Resp: 790
 Ion Ratio Lower Upper
 43 100
 58 44.3 26.1 78.2



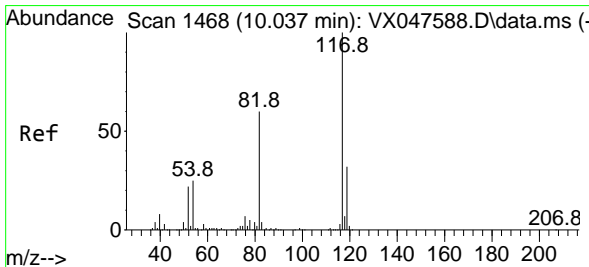
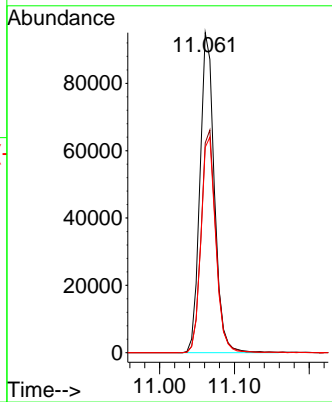
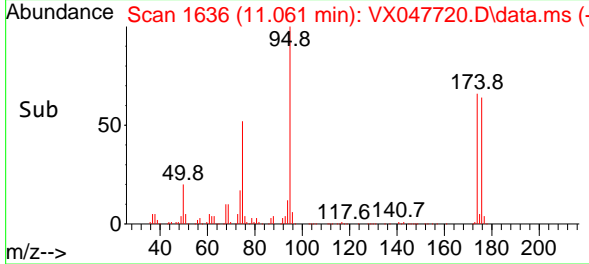


#62
 4-Bromofluorobenzene
 Concen: 53.480 ug/l
 RT: 11.061 min Scan# 11
 Delta R.T. -0.000 min
 Lab File: VX047720.D
 Acq: 23 Sep 2025 09:31

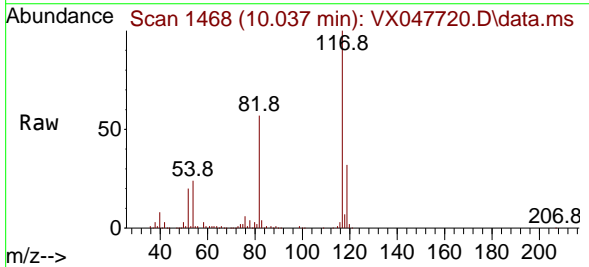
Instrument :
 MSVOA_X
 ClientSampleId :
 VX0923MBL01



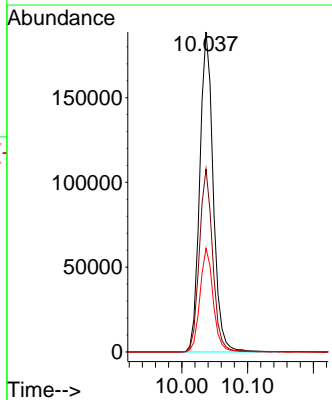
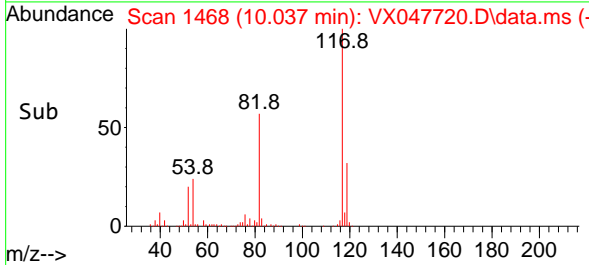
Tgt Ion: 95 Resp: 127309
 Ion Ratio Lower Upper
 95 100
 174 71.4 0.0 141.6
 176 69.0 0.0 138.4

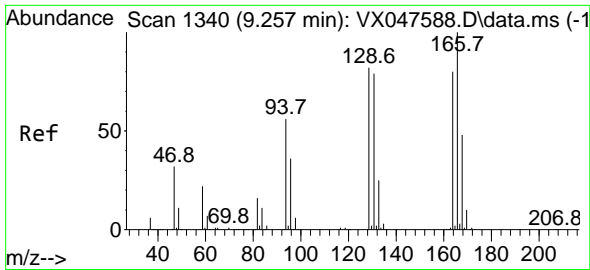


#63
 Chlorobenzene-d5
 Concen: 50.000 ug/l
 RT: 10.037 min Scan# 1468
 Delta R.T. -0.000 min
 Lab File: VX047720.D
 Acq: 23 Sep 2025 09:31



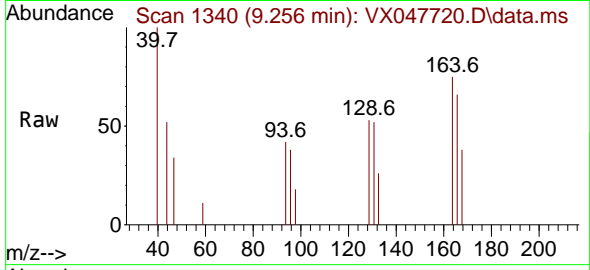
Tgt Ion: 117 Resp: 268498
 Ion Ratio Lower Upper
 117 100
 82 57.2 47.8 71.6
 119 32.4 25.2 37.8



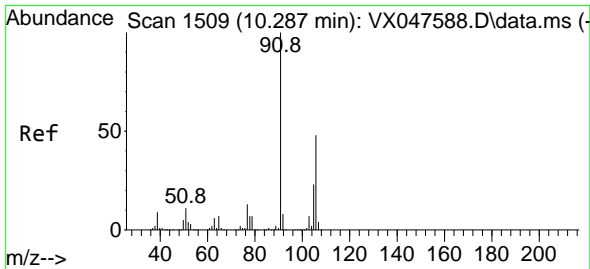
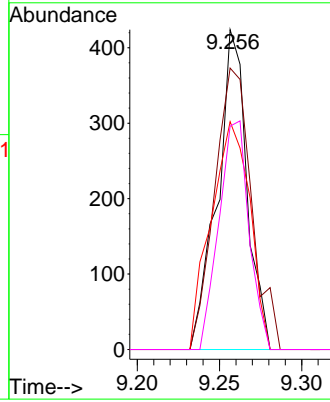
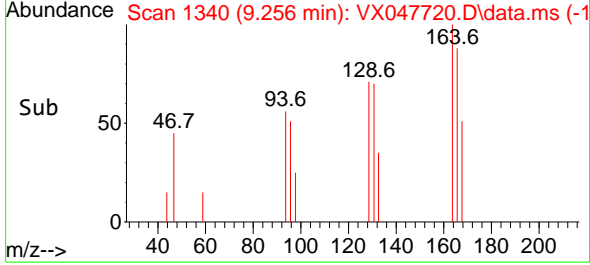


#64
 Tetrachloroethene
 Concen: 0.303 ug/l
 RT: 9.256 min Scan# 111
 Delta R.T. -0.000 min
 Lab File: VX047720.D
 Acq: 23 Sep 2025 09:31

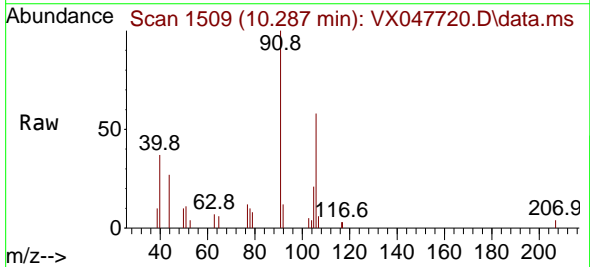
Instrument : MSVOA_X
 ClientSampleId : VX0923MBL01



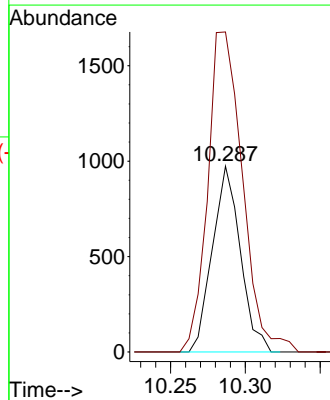
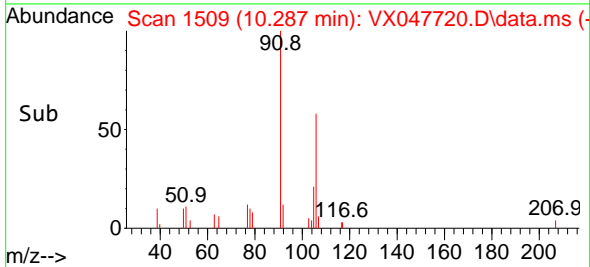
Tgt Ion:164 Resp: 531
 Ion Ratio Lower Upper
 164 100
 166 88.0 100.2 150.2#
 129 71.2 81.8 122.6#
 131 69.8 78.6 118.0#

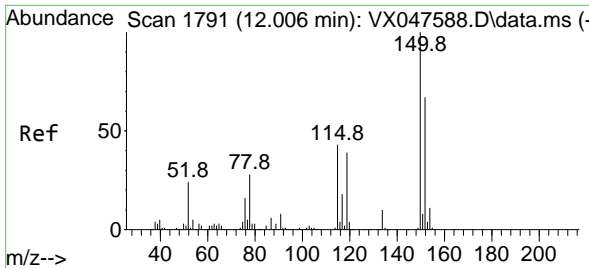


#68
 m/p-Xylenes
 Concen: 0.324 ug/l
 RT: 10.287 min Scan# 1509
 Delta R.T. -0.000 min
 Lab File: VX047720.D
 Acq: 23 Sep 2025 09:31



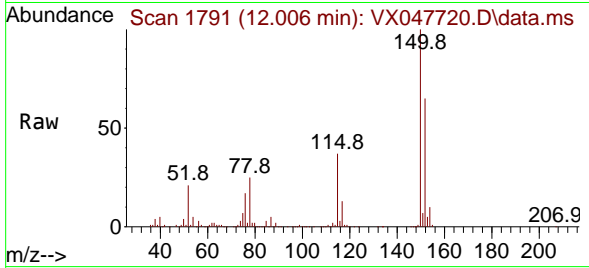
Tgt Ion:106 Resp: 1268
 Ion Ratio Lower Upper
 106 100
 91 213.8 167.8 251.8



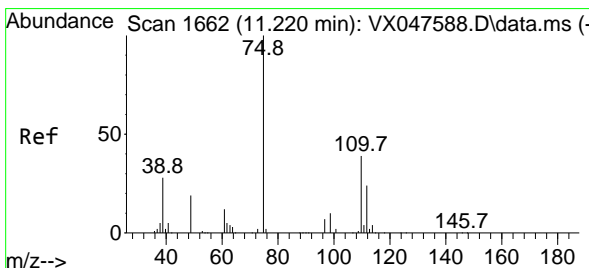
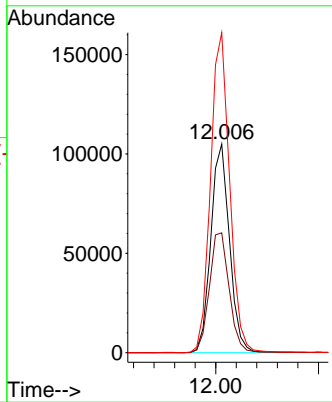
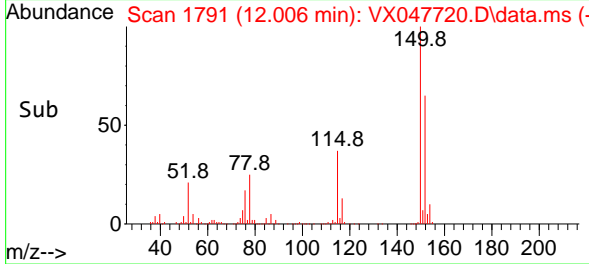


#72
 1,4-Dichlorobenzene-d4
 Concen: 50.000 ug/l
 RT: 12.006 min Scan# 11
 Delta R.T. -0.000 min
 Lab File: VX047720.D
 Acq: 23 Sep 2025 09:31

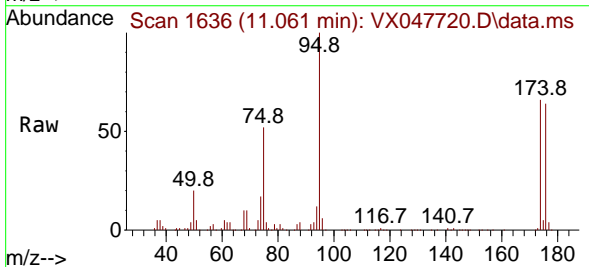
Instrument :
 MSVOA_X
 ClientSampleId :
 VX0923MBL01



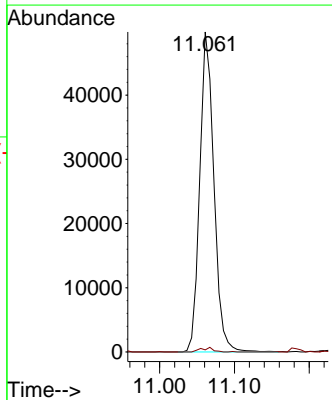
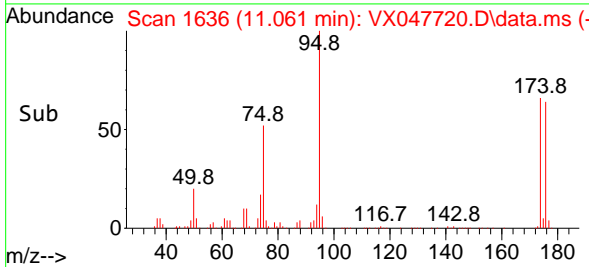
Tgt Ion:152 Resp: 132272
 Ion Ratio Lower Upper
 152 100
 115 61.3 44.9 134.5
 150 157.2 0.0 352.0

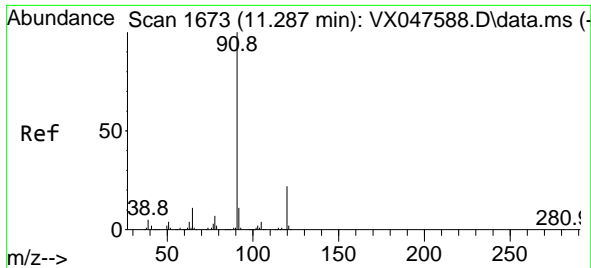


#76
 1,2,3-Trichloropropane
 Concen: 24.474 ug/l
 RT: 11.061 min Scan# 1636
 Delta R.T. -0.159 min
 Lab File: VX047720.D
 Acq: 23 Sep 2025 09:31



Tgt Ion: 75 Resp: 65545
 Ion Ratio Lower Upper
 75 100
 77 1.2 18.8 56.4#

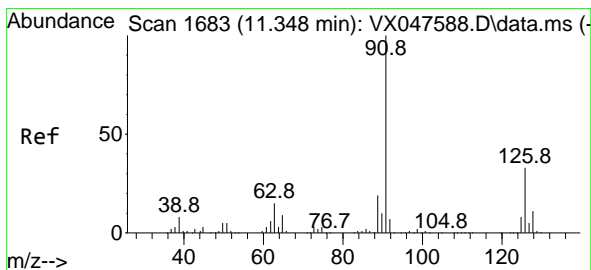
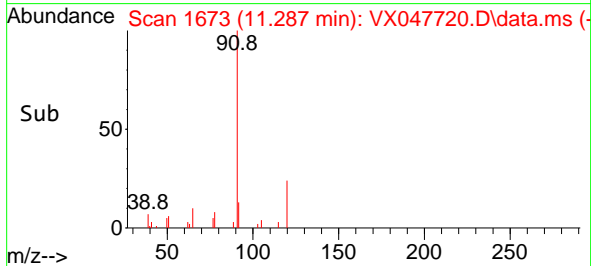
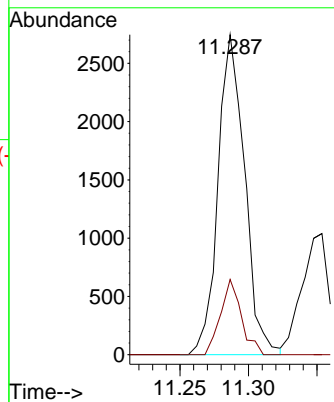
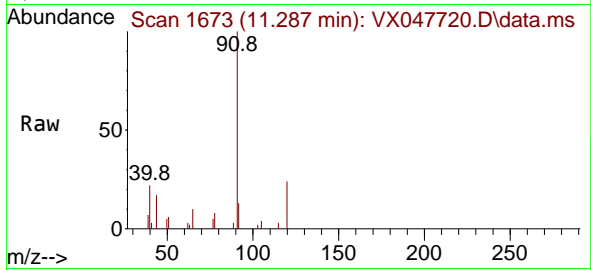




#78
 n-propylbenzene
 Concen: 0.312 ug/l
 RT: 11.287 min Scan# 1673
 Delta R.T. -0.000 min
 Lab File: VX047720.D
 Acq: 23 Sep 2025 09:31

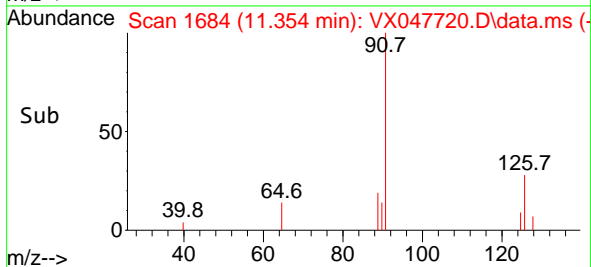
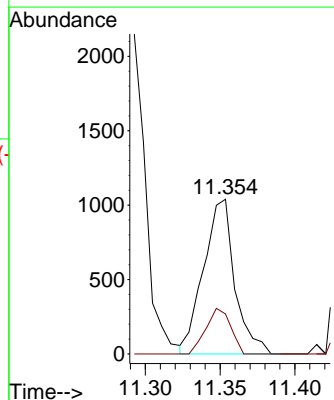
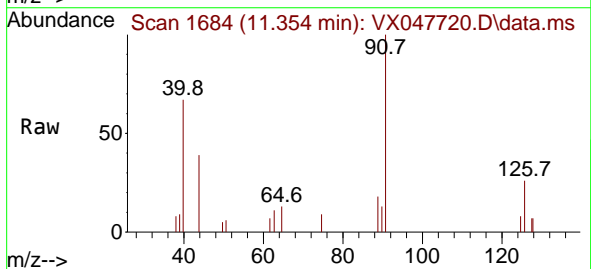
Instrument : MSVOA_X
 ClientSampleId : VX0923MBL01

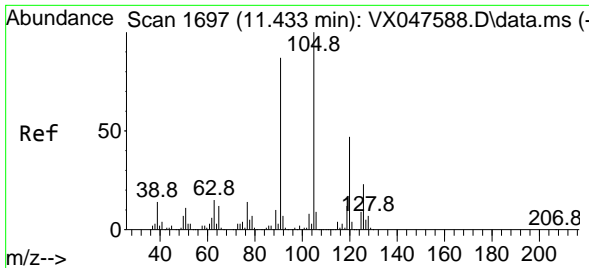
Tgt Ion: 91 Resp: 3712
 Ion Ratio Lower Upper
 91 100
 120 18.4 11.1 33.1



#79
 2-Chlorotoluene
 Concen: 0.207 ug/l
 RT: 11.354 min Scan# 1684
 Delta R.T. 0.006 min
 Lab File: VX047720.D
 Acq: 23 Sep 2025 09:31

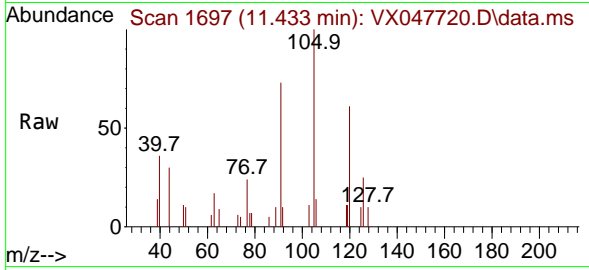
Tgt Ion: 91 Resp: 1508
 Ion Ratio Lower Upper
 91 100
 126 23.3 16.1 48.3



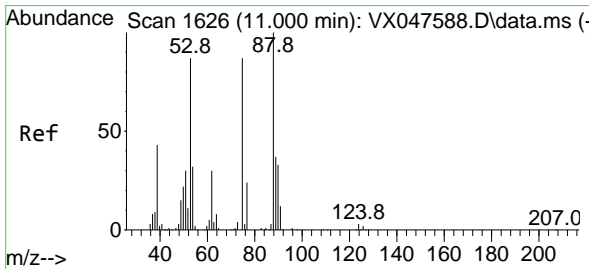
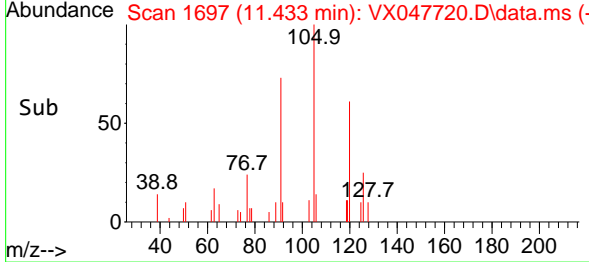
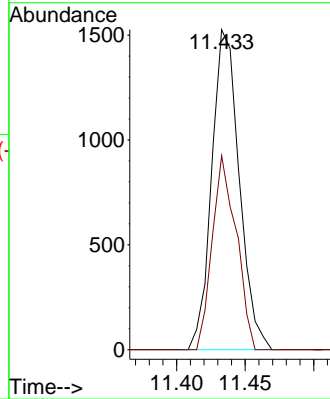


#80
 1,3,5-Trimethylbenzene
 Concen: 0.258 ug/l
 RT: 11.433 min Scan# 11
 Delta R.T. -0.000 min
 Lab File: VX047720.D
 Acq: 23 Sep 2025 09:31

Instrument : MSVOA_X
 ClientSampleId : VX0923MBL01

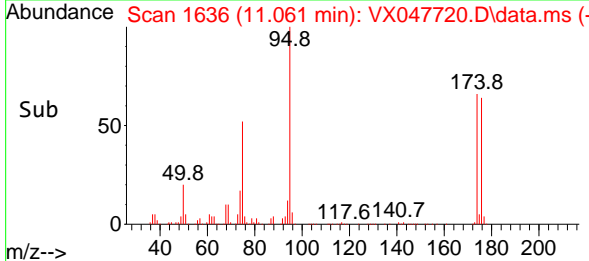
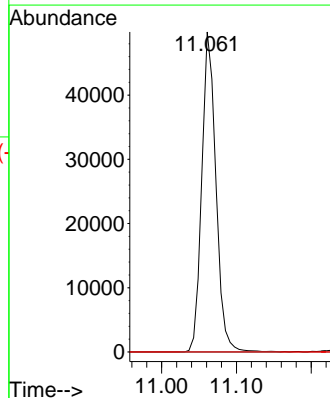
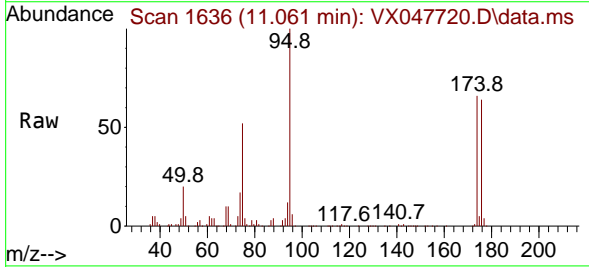


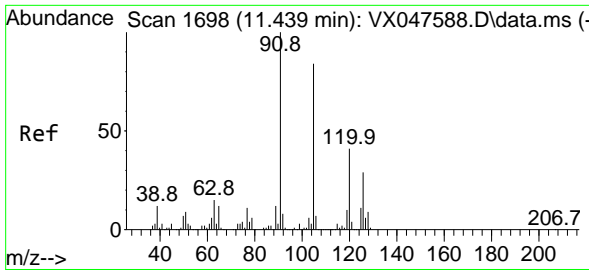
Tgt Ion:105 Resp: 2130
 Ion Ratio Lower Upper
 105 100
 120 52.8 23.6 70.8



#81
 trans-1,4-Dichloro-2-butene
 Concen: 62.413 ug/l
 RT: 11.061 min Scan# 1636
 Delta R.T. 0.061 min
 Lab File: VX047720.D
 Acq: 23 Sep 2025 09:31

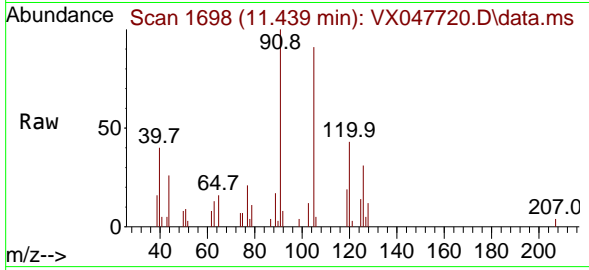
Tgt Ion: 75 Resp: 65545
 Ion Ratio Lower Upper
 75 100
 53 0.0 83.4 125.2#
 89 0.0 36.3 54.5#



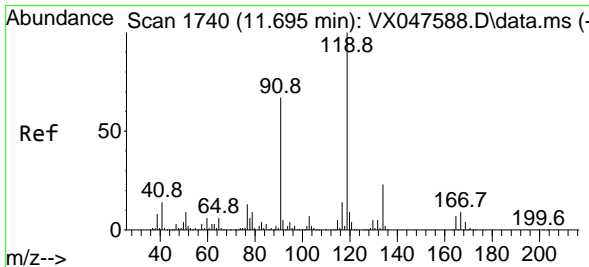
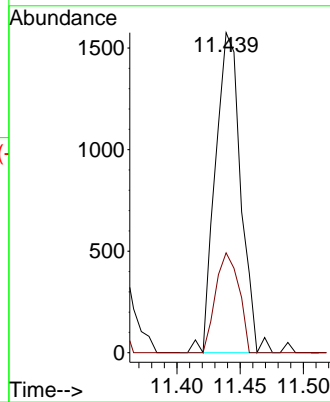
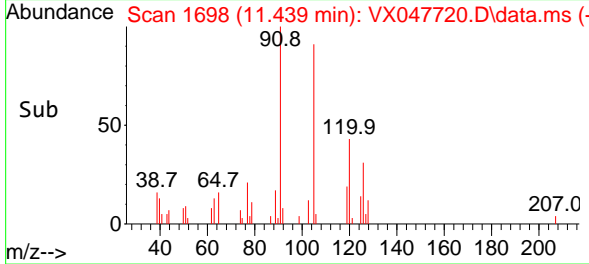


#82
 4-Chlorotoluene
 Concen: 0.257 ug/l
 RT: 11.439 min Scan# 1698
 Delta R.T. -0.000 min
 Lab File: VX047720.D
 Acq: 23 Sep 2025 09:31

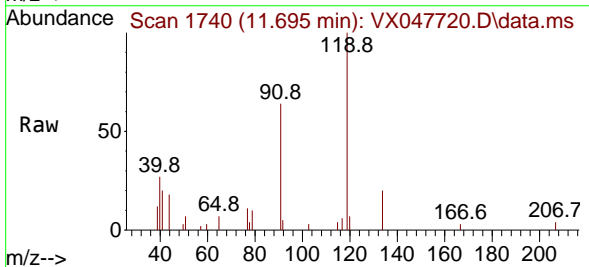
Instrument : MSVOA_X
 ClientSampleId : VX0923MBL01



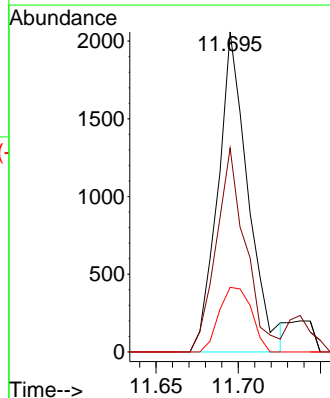
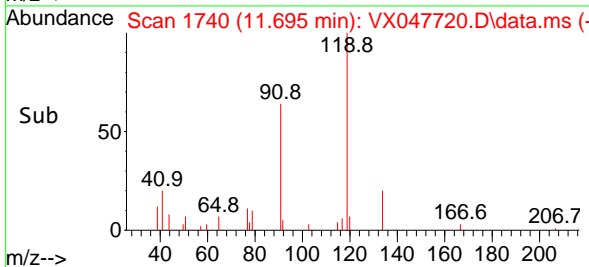
Tgt Ion: 91 Resp: 2206
 Ion Ratio Lower Upper
 91 100
 126 28.5 14.2 42.6

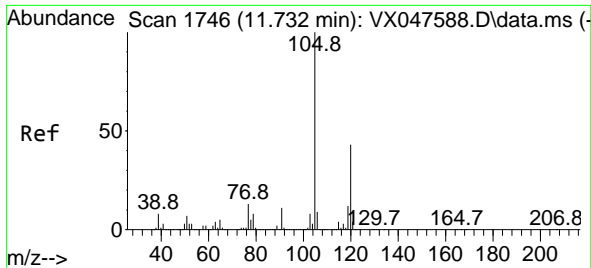


#83
 tert-Butylbenzene
 Concen: 0.310 ug/l
 RT: 11.695 min Scan# 1740
 Delta R.T. -0.000 min
 Lab File: VX047720.D
 Acq: 23 Sep 2025 09:31



Tgt Ion: 119 Resp: 2623
 Ion Ratio Lower Upper
 119 100
 91 62.8 29.6 88.8
 134 21.7 11.0 33.0

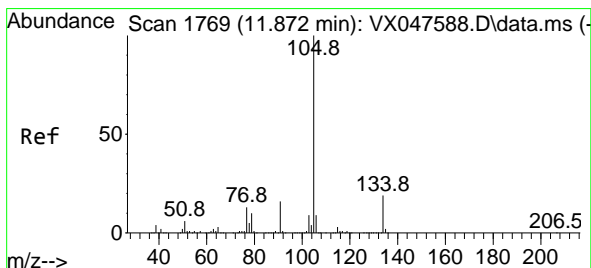
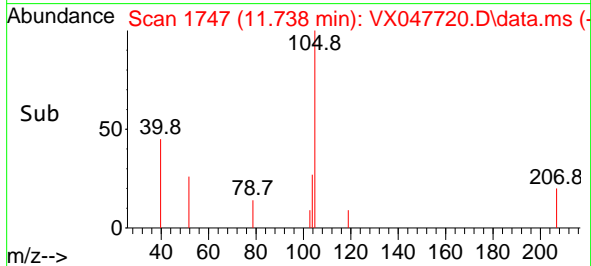
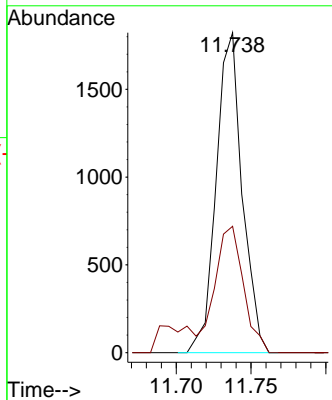
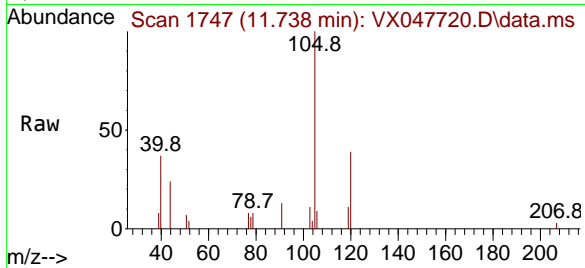




#84
 1,2,4-Trimethylbenzene
 Concen: 0.263 ug/l
 RT: 11.738 min Scan# 1746
 Delta R.T. 0.006 min
 Lab File: VX047720.D
 Acq: 23 Sep 2025 09:31

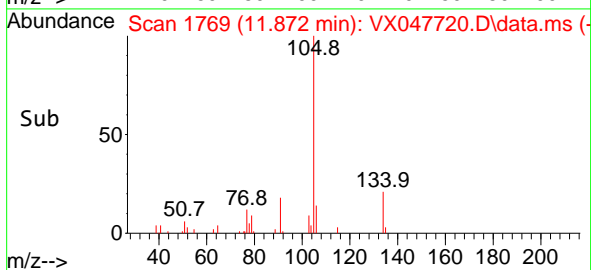
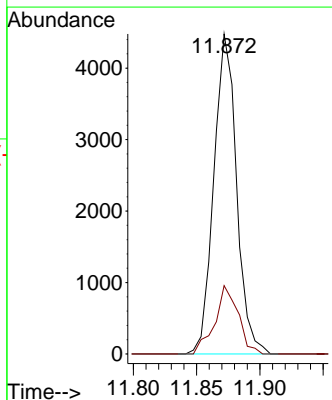
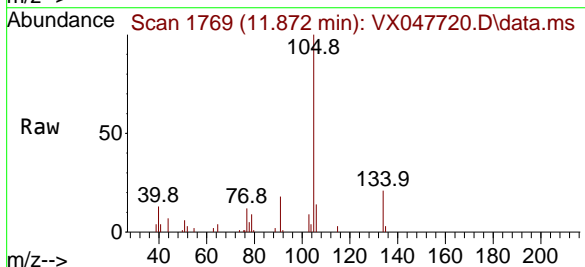
Instrument : MSVOA_X
 ClientSampleId : VX0923MBL01

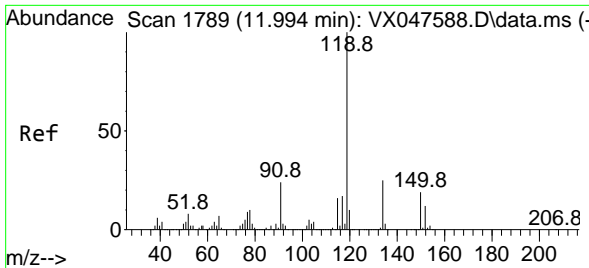
Tgt Ion:105 Resp: 2203
 Ion Ratio Lower Upper
 105 100
 120 43.3 22.1 66.1



#85
 sec-Butylbenzene
 Concen: 0.556 ug/l
 RT: 11.872 min Scan# 1769
 Delta R.T. -0.000 min
 Lab File: VX047720.D
 Acq: 23 Sep 2025 09:31

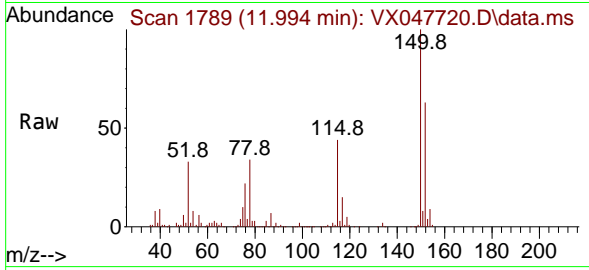
Tgt Ion:105 Resp: 5585
 Ion Ratio Lower Upper
 105 100
 134 22.0 9.8 29.5





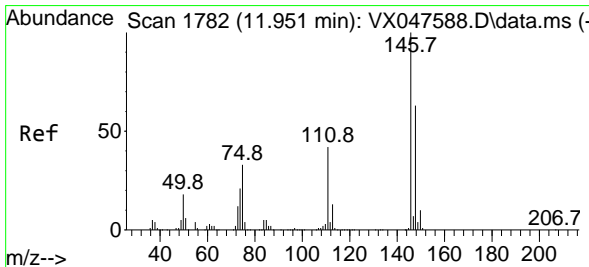
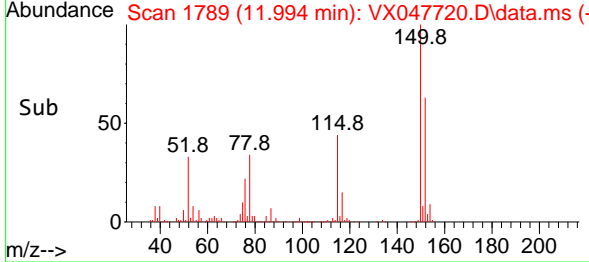
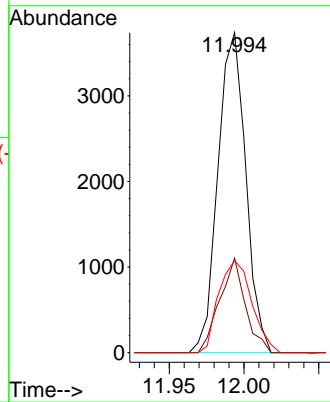
#86
 p-Isopropyltoluene
 Concen: 0.569 ug/l
 RT: 11.994 min Scan# 1789
 Delta R.T. -0.000 min
 Lab File: VX047720.D
 Acq: 23 Sep 2025 09:31

Instrument : MSVOA_X
 ClientSampleId : VX0923MBL01

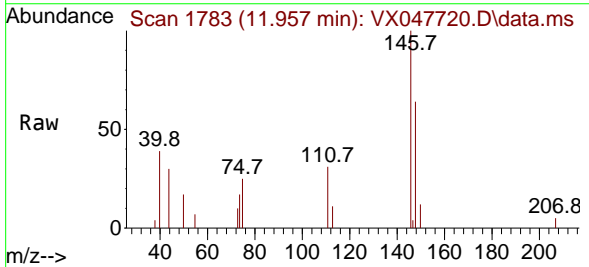


Tgt Ion:119 Resp: 4838

Ion	Ratio	Lower	Upper
119	100		
134	27.2	12.6	37.8
91	34.3	12.6	37.6

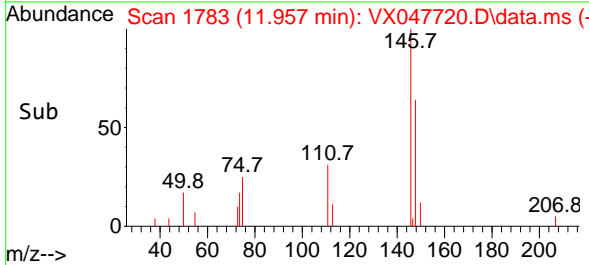
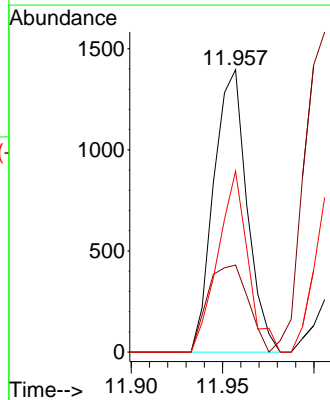


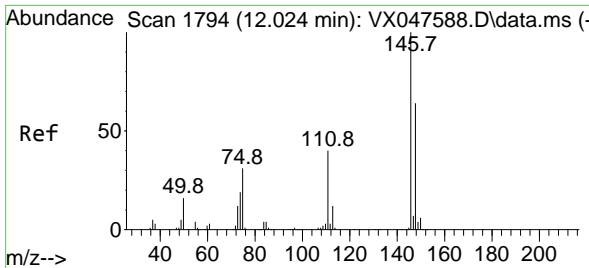
#87
 1,3-Dichlorobenzene
 Concen: 0.385 ug/l
 RT: 11.957 min Scan# 1783
 Delta R.T. 0.006 min
 Lab File: VX047720.D
 Acq: 23 Sep 2025 09:31



Tgt Ion:146 Resp: 1769

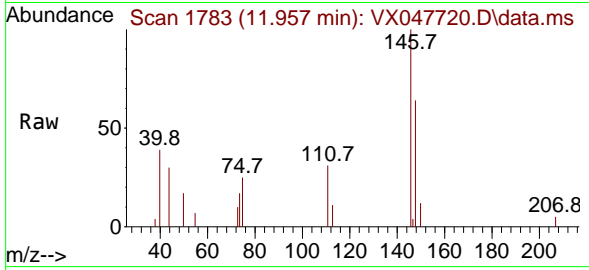
Ion	Ratio	Lower	Upper
146	100		
111	37.5	21.5	64.5
148	58.1	32.0	96.0



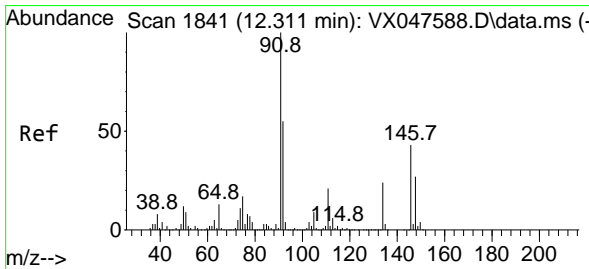
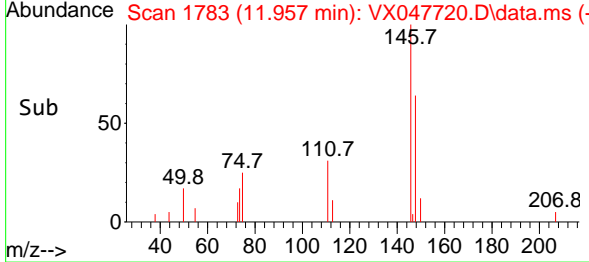
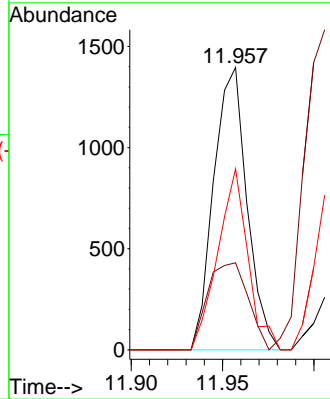


#88
 1,4-Dichlorobenzene
 Concen: 0.375 ug/l
 RT: 11.957 min Scan# 11
 Delta R.T. -0.067 min
 Lab File: VX047720.D
 Acq: 23 Sep 2025 09:31

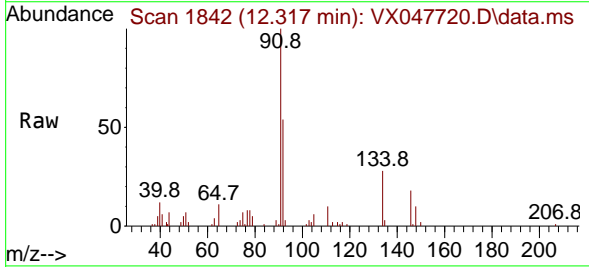
Instrument :
 MSVOA_X
 ClientSampleId :
 VX0923MBL01



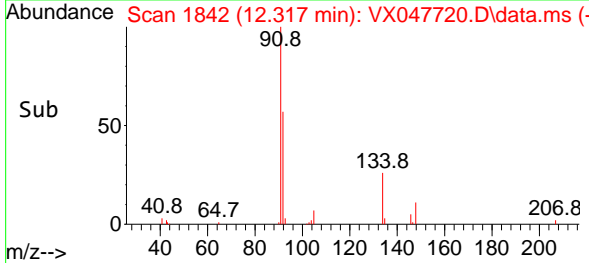
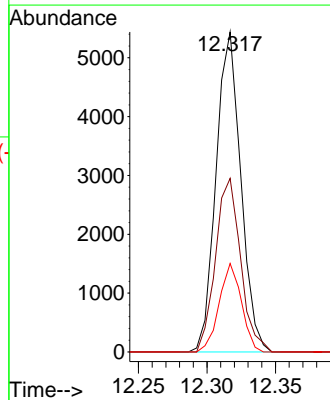
Tgt Ion:146 Resp: 1769
 Ion Ratio Lower Upper
 146 100
 111 37.5 20.8 62.4
 148 58.1 31.7 95.1

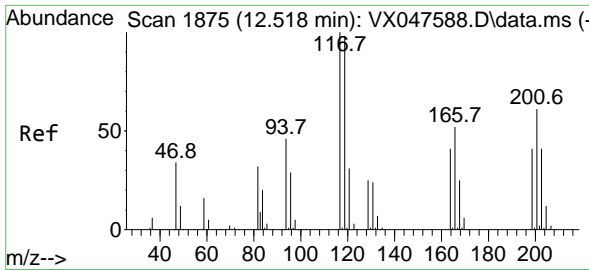


#89
 n-Butylbenzene
 Concen: 0.867 ug/l
 RT: 12.317 min Scan# 1842
 Delta R.T. 0.006 min
 Lab File: VX047720.D
 Acq: 23 Sep 2025 09:31



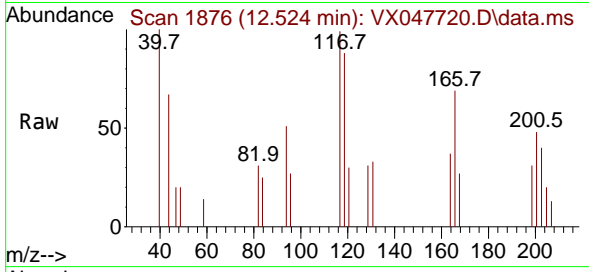
Tgt Ion: 91 Resp: 6825
 Ion Ratio Lower Upper
 91 100
 92 55.0 27.6 82.7
 134 24.8 12.6 37.8



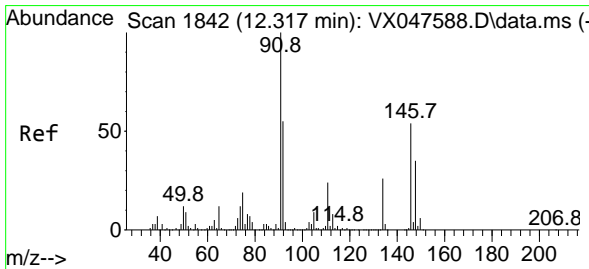
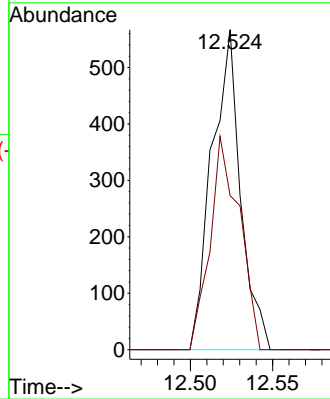
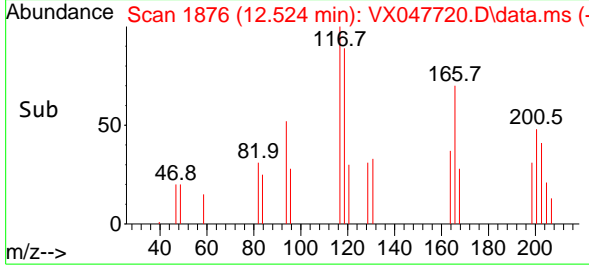


#90
 Hexachloroethane
 Concen: 0.461 ug/l
 RT: 12.524 min Scan# 1876
 Delta R.T. 0.006 min
 Lab File: VX047720.D
 Acq: 23 Sep 2025 09:31

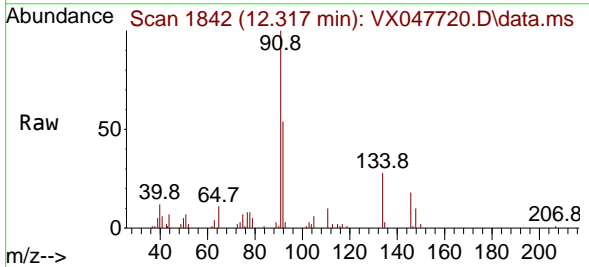
Instrument : MSVOA_X
 ClientSampleId : VX0923MBL01



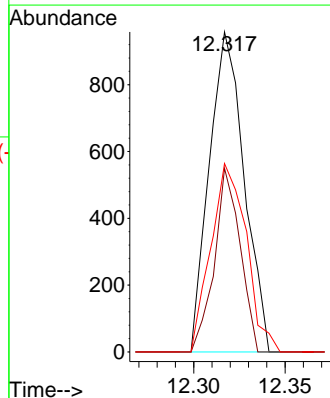
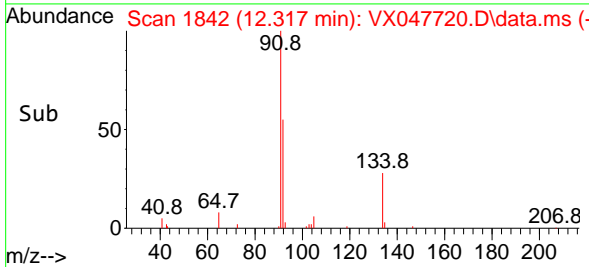
Tgt Ion:117 Resp: 689
 Ion Ratio Lower Upper
 117 100
 201 68.1 34.2 102.5

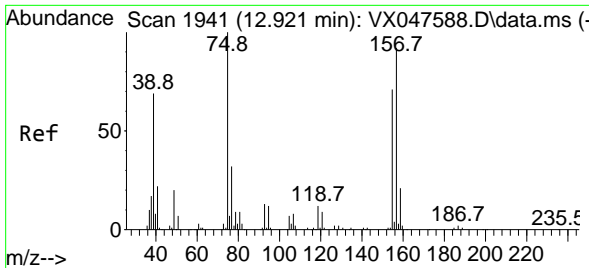


#91
 1,2-Dichlorobenzene
 Concen: 0.290 ug/l
 RT: 12.317 min Scan# 1842
 Delta R.T. -0.000 min
 Lab File: VX047720.D
 Acq: 23 Sep 2025 09:31



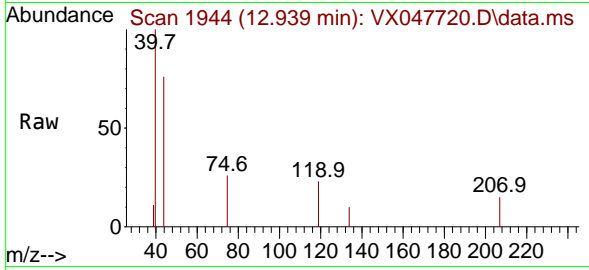
Tgt Ion:146 Resp: 1270
 Ion Ratio Lower Upper
 146 100
 111 42.4 22.2 66.6
 148 60.1 31.8 95.4



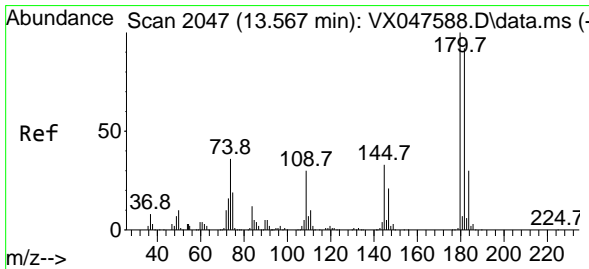
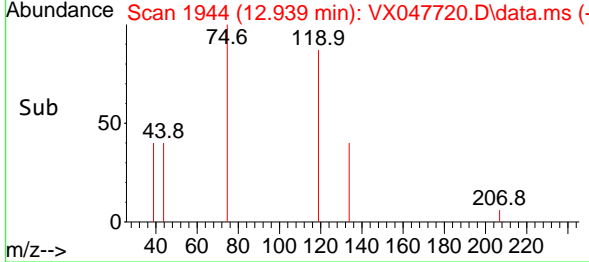
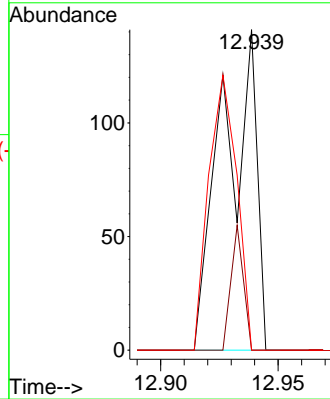


#92
 1,2-Dibromo-3-Chloropropane
 Concen: 0.226 ug/l
 RT: 12.939 min Scan# 1944
 Delta R.T. 0.018 min
 Lab File: VX047720.D
 Acq: 23 Sep 2025 09:31

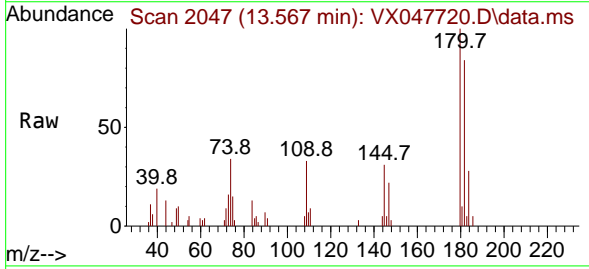
Instrument : MSVOA_X
 ClientSampleId : VX0923MBL01



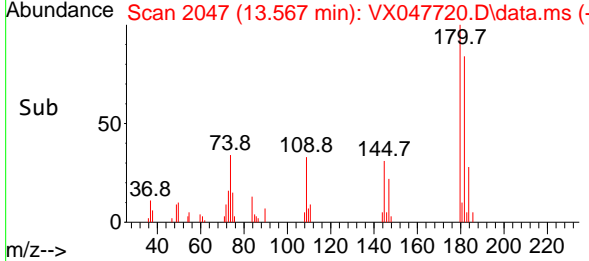
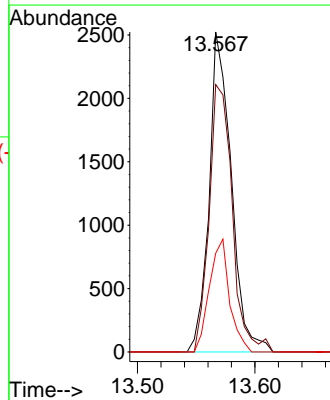
Tgt Ion: 75 Resp: 139
 Ion Ratio Lower Upper
 75 100
 155 14.4 37.7 113.1#
 157 72.7 49.8 149.4

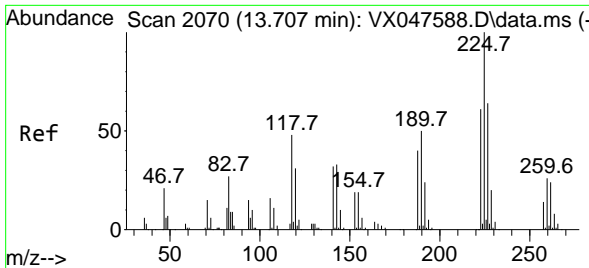


#93
 1,2,4-Trichlorobenzene
 Concen: 1.160 ug/l
 RT: 13.567 min Scan# 2047
 Delta R.T. -0.000 min
 Lab File: VX047720.D
 Acq: 23 Sep 2025 09:31



Tgt Ion: 180 Resp: 3305
 Ion Ratio Lower Upper
 180 100
 182 87.2 46.6 139.8
 145 32.0 16.4 49.1

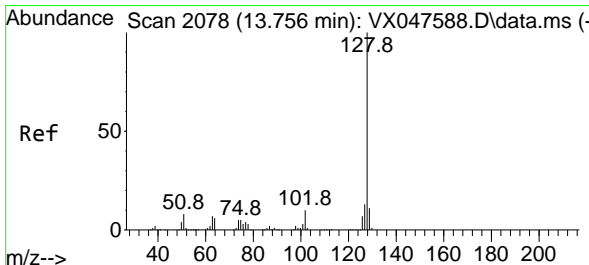
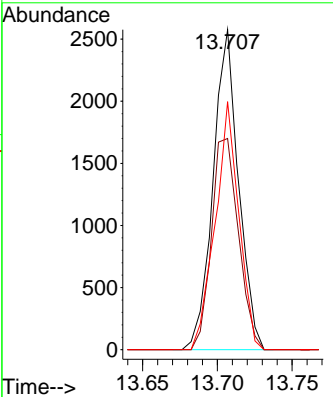
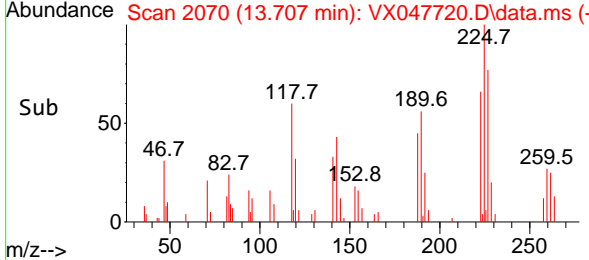
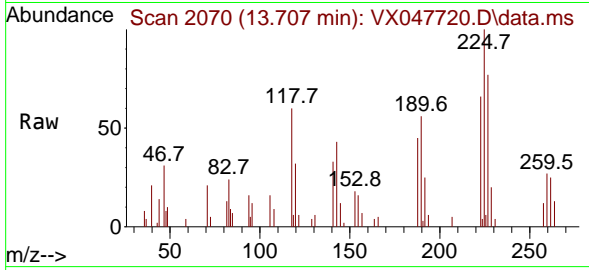




#94
 Hexachlorobutadiene
 Concen: 3.144 ug/l
 RT: 13.707 min Scan# 2070
 Delta R.T. -0.000 min
 Lab File: VX047720.D
 Acq: 23 Sep 2025 09:31

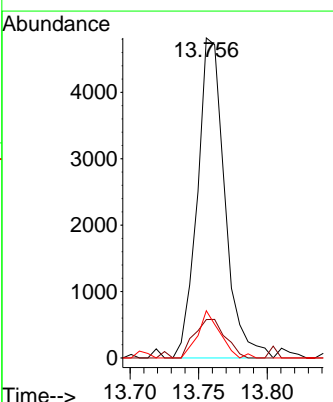
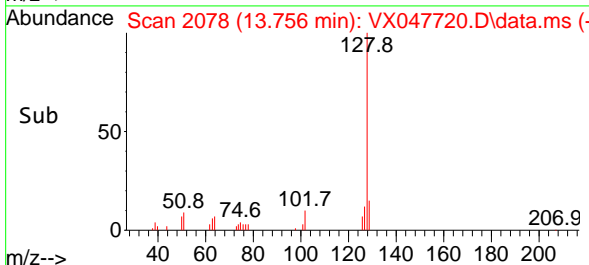
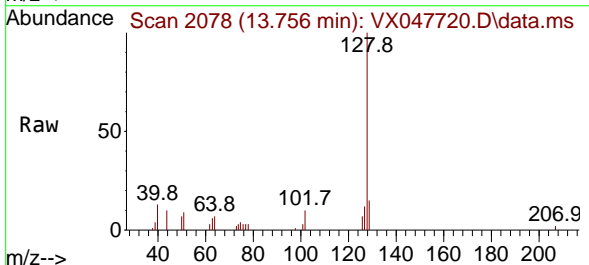
Instrument : MSVOA_X
 ClientSampleId : VX0923MBL01

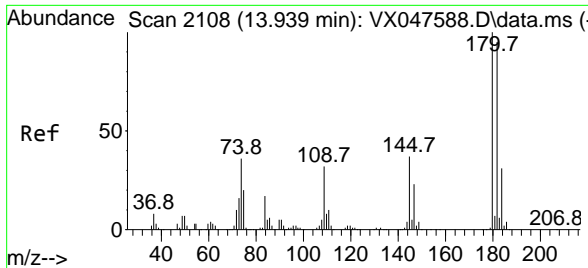
Tgt Ion	Resp	Lower	Upper
225	100		
223	70.2	31.7	95.1
227	72.1	32.0	96.0



#95
 Naphthalene
 Concen: 0.772 ug/l
 RT: 13.756 min Scan# 2078
 Delta R.T. -0.000 min
 Lab File: VX047720.D
 Acq: 23 Sep 2025 09:31

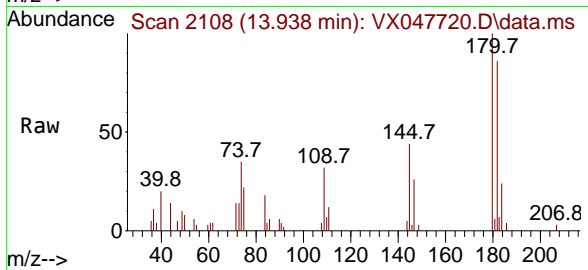
Tgt Ion	Resp	Lower	Upper
128	100		
127	14.1	10.2	15.2
129	12.0	8.8	13.2





#96
 1,2,3-Trichlorobenzene
 Concen: 1.248 ug/l
 RT: 13.938 min Scan# 21
 Delta R.T. -0.000 min
 Lab File: VX047720.D
 Acq: 23 Sep 2025 09:31

Instrument :
 MSVOA_X
 ClientSampleId :
 VX0923MBL01



Tgt Ion:180 Resp: 3307

Ion	Ratio	Lower	Upper
180	100		
182	95.5	47.6	142.8
145	33.7	17.9	53.7

