

Data Path : Z:\voasrv\HPCHEM1\MSVOA\_X\Data\VX092325\  
 Data File : VX047725.D  
 Acq On : 23 Sep 2025 12:22  
 Operator : JC/MD  
 Sample : Q3141-01  
 Misc : 5.0mL/MSVOA\_X/WATER  
 ALS Vial : 8 Sample Multiplier: 1

Instrument :  
 MSVOA\_X  
 ClientSampleId :  
 BP-VPB-184-TB-20250917

Quant Time: Sep 24 01:29:52 2025  
 Quant Method : Z:\voasrv\HPCHEM1\MSVOA\_X\Method\82X091625W.M  
 Quant Title : SW846 8260  
 QLast Update : Wed Sep 17 06:39:58 2025  
 Response via : Initial Calibration

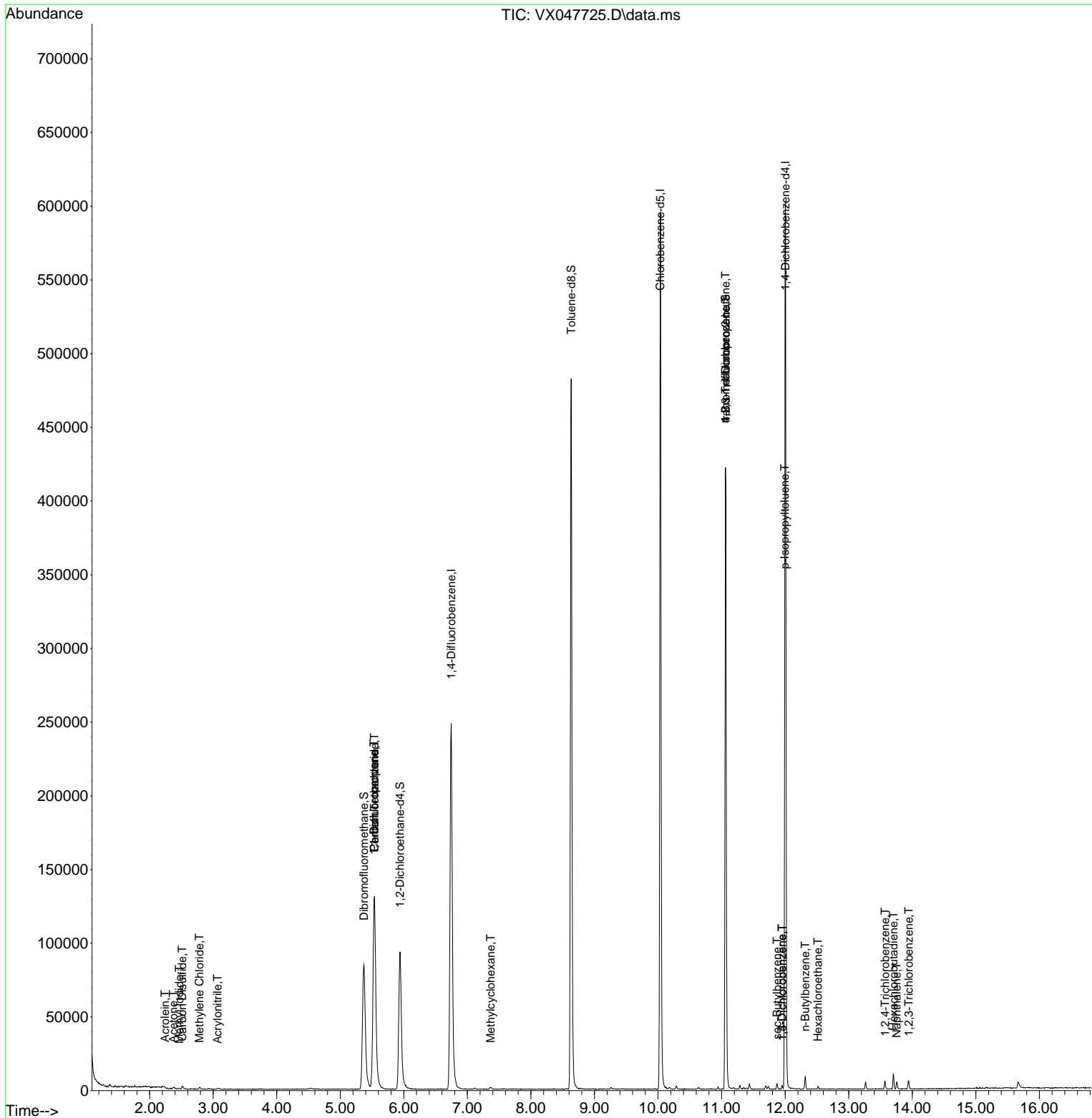
Compound	R.T.	QIon	Response	Conc	Units	Dev(Min)
-----						
Internal Standards						
1) Pentafluorobenzene	5.538	168	131211	50.000	ug/l	0.00
34) 1,4-Difluorobenzene	6.745	114	272690	50.000	ug/l	0.00
63) Chlorobenzene-d5	10.037	117	268706	50.000	ug/l	0.00
72) 1,4-Dichlorobenzene-d4	12.006	152	128339	50.000	ug/l	0.00
System Monitoring Compounds						
33) 1,2-Dichloroethane-d4	5.940	65	99105	47.452	ug/l	0.00
Spiked Amount	50.000	Range	78 - 117	Recovery	=	94.900%
35) Dibromofluoromethane	5.373	113	84932	46.441	ug/l	0.00
Spiked Amount	50.000	Range	75 - 124	Recovery	=	92.880%
50) Toluene-d8	8.635	98	300857	47.543	ug/l	0.00
Spiked Amount	50.000	Range	92 - 112	Recovery	=	95.080%
62) 4-Bromofluorobenzene	11.061	95	125146	52.109	ug/l	0.00
Spiked Amount	50.000	Range	83 - 123	Recovery	=	104.220%
Target Compounds						
						Qvalue
10) Methyl Iodide	2.465	142	672	0.284	ug/l #	74
13) Acrolein	2.239	56	74	0.345	ug/l	97
15) Acrylonitrile	3.069	53	221	0.257	ug/l #	17
16) Acetone	2.374	43	1374	1.513	ug/l #	86
17) Carbon Disulfide	2.514	76	1728	0.405	ug/l #	88
20) Methylene Chloride	2.782	84	398	0.207	ug/l #	84
36) 1,1-Dichloropropene	5.532	75	11465	4.290	ug/l #	51
38) Carbon Tetrachloride	5.538	117	13905	4.789	ug/l #	17
39) Methylcyclohexane	7.367	83	610	0.201	ug/l	90
76) 1,2,3-Trichloropropane	11.061	75	65206	25.094	ug/l #	39
81) trans-1,4-Dichloro-2-b...	11.061	75	65206	63.993	ug/l #	8
85) sec-Butylbenzene	11.872	105	2242	0.230	ug/l	98
86) p-Isopropyltoluene	11.994	119	2174	0.263	ug/l #	76
87) 1,3-Dichlorobenzene	11.951	146	917	0.205	ug/l	88
88) 1,4-Dichlorobenzene	11.951	146	917	0.200	ug/l	90
89) n-Butylbenzene	12.317	91	3158	0.414	ug/l	95
90) Hexachloroethane	12.518	117	298	0.206	ug/l	86
93) 1,2,4-Trichlorobenzene	13.573	180	1563	0.566	ug/l	96
94) Hexachlorobutadiene	13.707	225	1315	1.401	ug/l	97
95) Naphthalene	13.756	128	3585	0.426	ug/l	98
96) 1,2,3-Trichlorobenzene	13.945	180	1565	0.609	ug/l	94
-----						

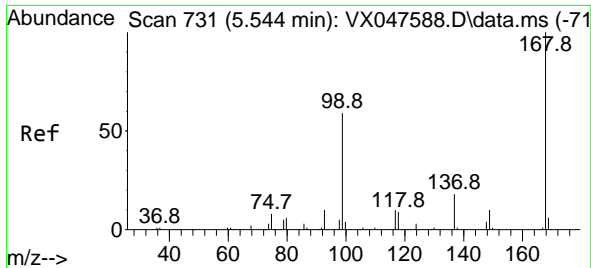
(#) = qualifier out of range (m) = manual integration (+) = signals summed

Data Path : Z:\voasrv\HPCHEM1\MSVOA\_X\Data\VX092325\  
 Data File : VX047725.D  
 Acq On : 23 Sep 2025 12:22  
 Operator : JC/MD  
 Sample : Q3141-01  
 Misc : 5.0mL/MSVOA\_X/WATER  
 ALS Vial : 8 Sample Multiplier: 1

Instrument :  
 MSVOA\_X  
 ClientSampleId :  
 BP-VPB-184-TB-20250917

Quant Time: Sep 24 01:29:52 2025  
 Quant Method : Z:\voasrv\HPCHEM1\MSVOA\_X\Method\82X091625W.M  
 Quant Title : SW846 8260  
 QLast Update : Wed Sep 17 06:39:58 2025  
 Response via : Initial Calibration

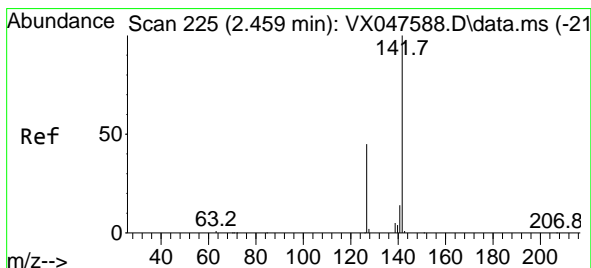
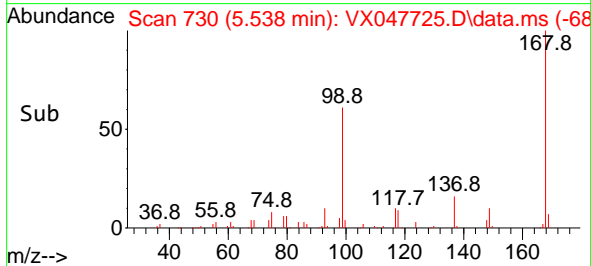
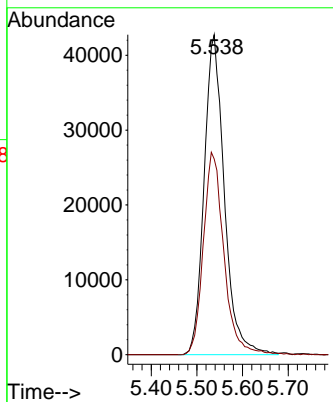
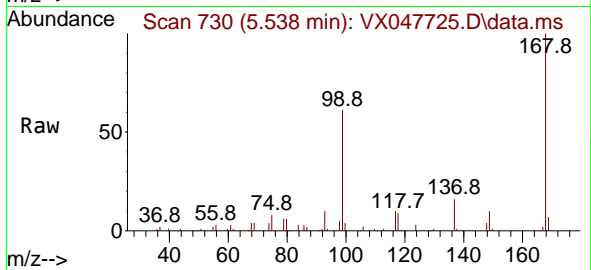




#1  
 Pentafluorobenzene  
 Concen: 50.000 ug/l  
 RT: 5.538 min Scan# 71  
 Delta R.T. -0.006 min  
 Lab File: VX047725.D  
 Acq: 23 Sep 2025 12:22

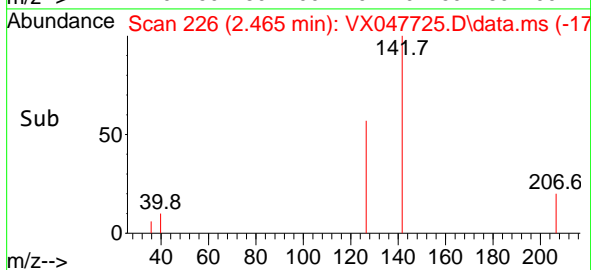
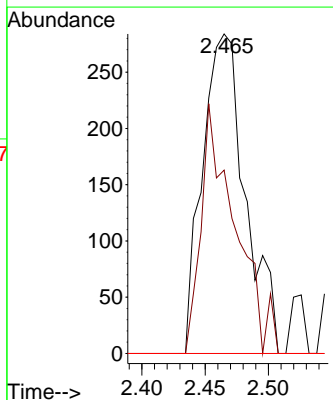
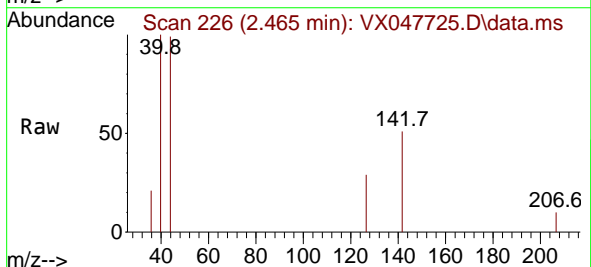
Instrument : MSVOA\_X  
 ClientSampleId : BP-VPB-184-TB-20250917

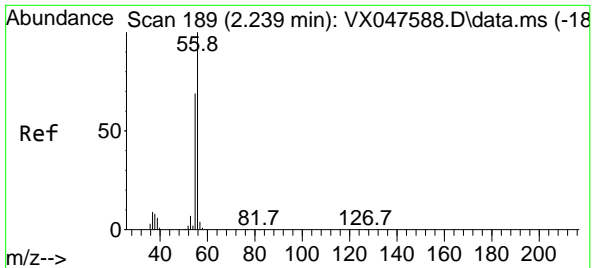
Tgt Ion:168 Resp: 131211  
 Ion Ratio Lower Upper  
 168 100  
 99 61.1 48.8 73.2



#10  
 Methyl Iodide  
 Concen: 0.284 ug/l  
 RT: 2.465 min Scan# 226  
 Delta R.T. 0.006 min  
 Lab File: VX047725.D  
 Acq: 23 Sep 2025 12:22

Tgt Ion:142 Resp: 672  
 Ion Ratio Lower Upper  
 142 100  
 127 62.1 37.2 55.8#  
 141 0.0 11.4 17.0#

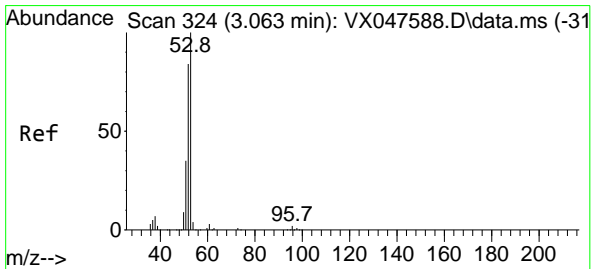
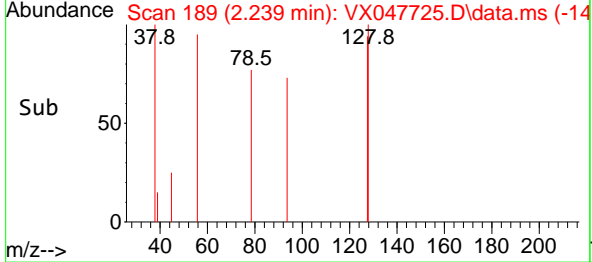
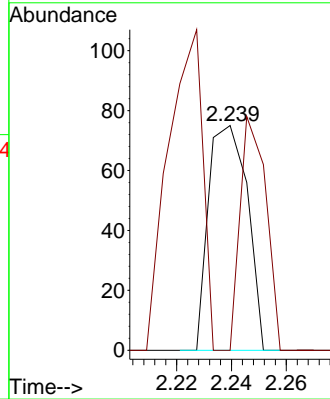
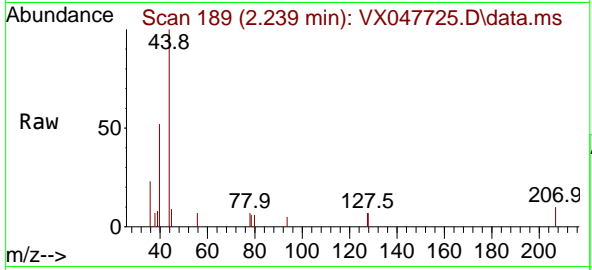




#13  
 Acrolein  
 Concen: 0.345 ug/l  
 RT: 2.239 min Scan# 11  
 Delta R.T. -0.000 min  
 Lab File: VX047725.D  
 Acq: 23 Sep 2025 12:22

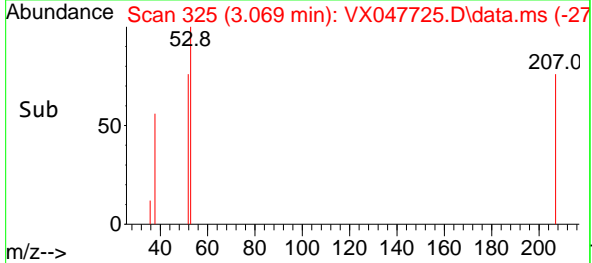
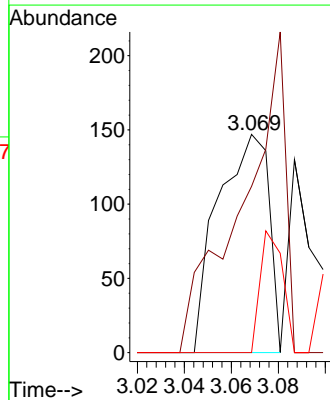
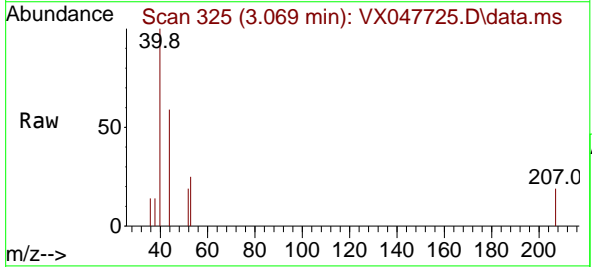
Instrument : MSVOA\_X  
 ClientSampleId : BP-VPB-184-TB-20250917

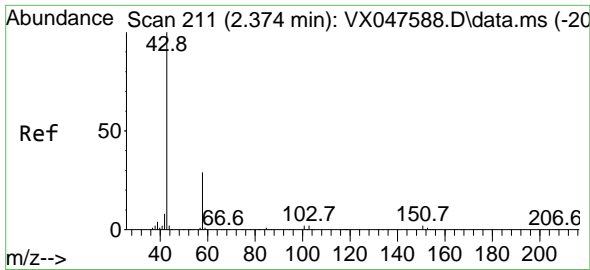
Tgt Ion	Resp	Lower	Upper
56	100		
55	68.9	57.2	85.8



#15  
 Acrylonitrile  
 Concen: 0.257 ug/l  
 RT: 3.069 min Scan# 325  
 Delta R.T. 0.006 min  
 Lab File: VX047725.D  
 Acq: 23 Sep 2025 12:22

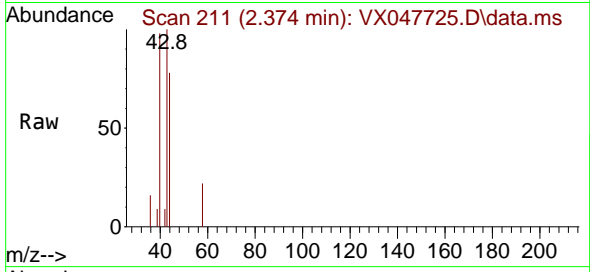
Tgt Ion	Resp	Lower	Upper
53	100		
52	0.0	66.4	99.6#
51	0.0	29.5	44.3#



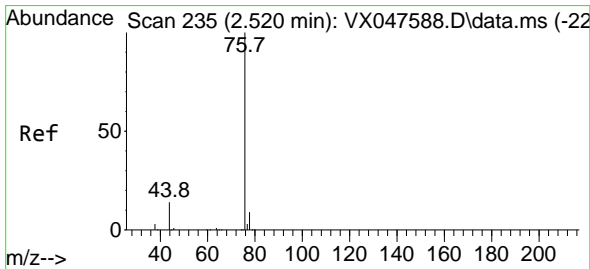
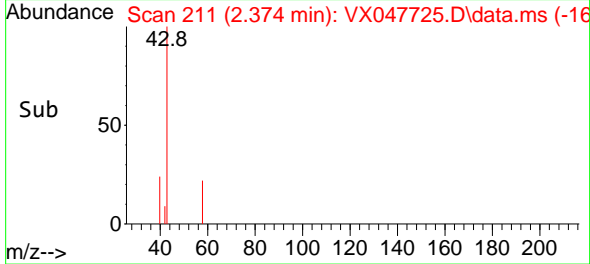
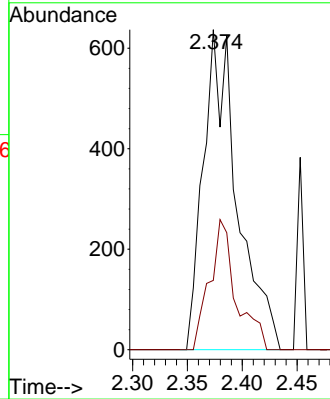


#16  
 Acetone  
 Concen: 1.513 ug/l  
 RT: 2.374 min Scan# 211  
 Delta R.T. -0.000 min  
 Lab File: VX047725.D  
 Acq: 23 Sep 2025 12:22

Instrument : MSVOA\_X  
 ClientSampleId : BP-VPB-184-TB-20250917

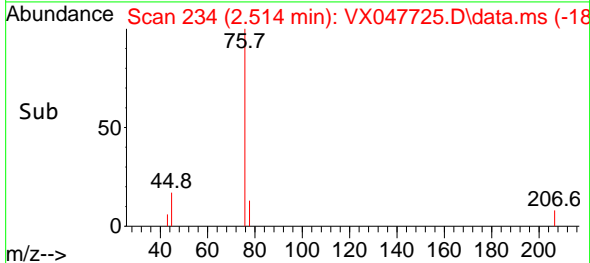
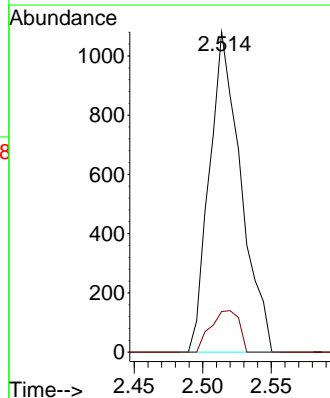
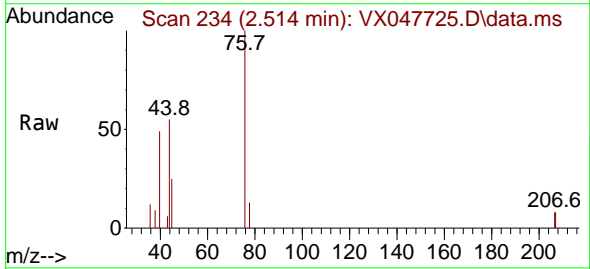


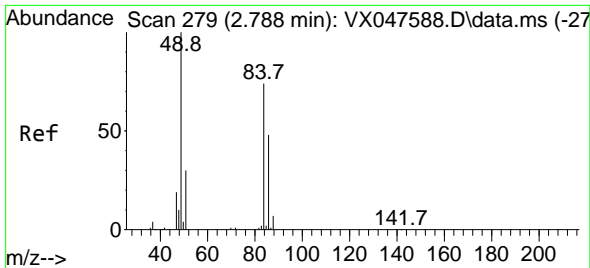
Tgt Ion: 43 Resp: 1374  
 Ion Ratio Lower Upper  
 43 100  
 58 21.7 23.4 35.0#



#17  
 Carbon Disulfide  
 Concen: 0.405 ug/l  
 RT: 2.514 min Scan# 234  
 Delta R.T. -0.006 min  
 Lab File: VX047725.D  
 Acq: 23 Sep 2025 12:22

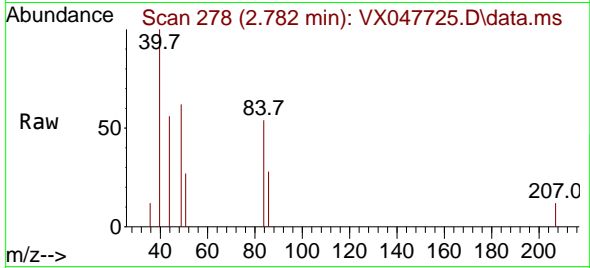
Tgt Ion: 76 Resp: 1728  
 Ion Ratio Lower Upper  
 76 100  
 78 12.7 6.8 10.2#



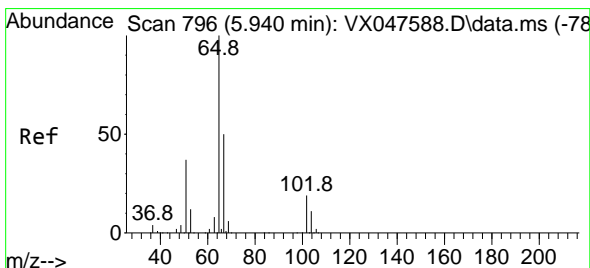
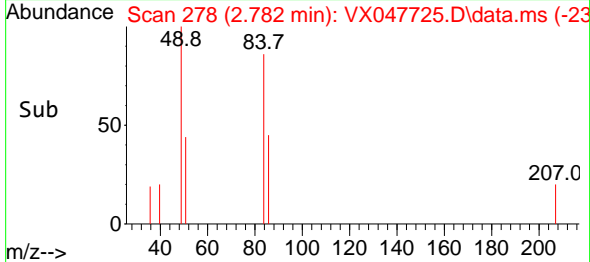
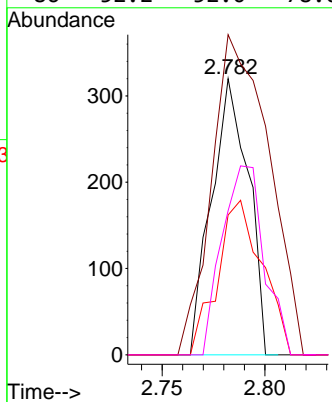


#20  
 Methylene Chloride  
 Concen: 0.207 ug/l  
 RT: 2.782 min Scan# 21  
 Delta R.T. -0.006 min  
 Lab File: VX047725.D  
 Acq: 23 Sep 2025 12:22

Instrument : MSVOA\_X  
 ClientSampleId : BP-VPB-184-TB-20250917

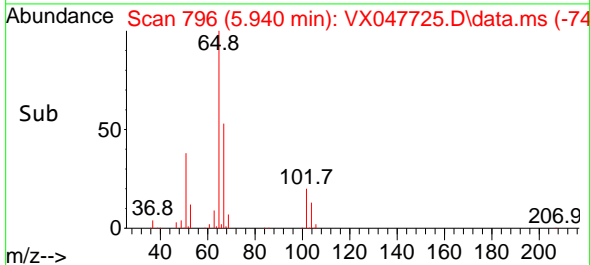
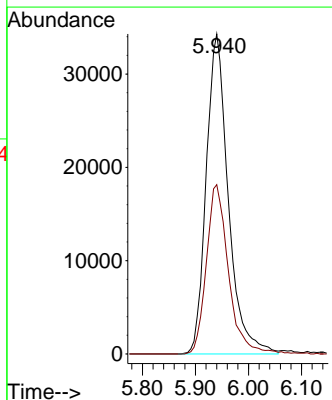
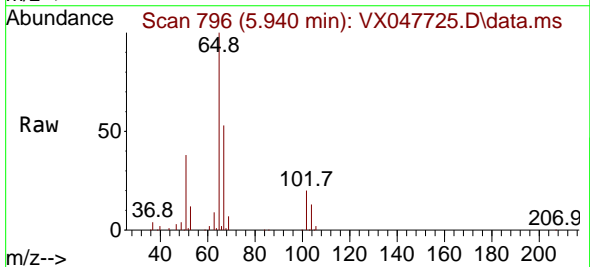


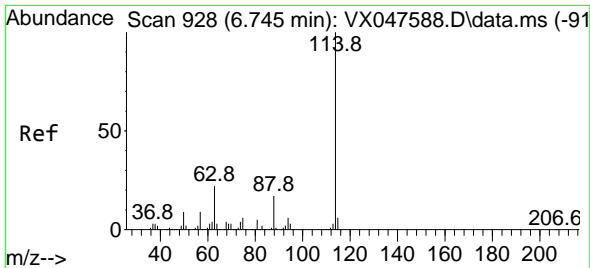
Tgt Ion: 84 Resp: 398  
 Ion Ratio Lower Upper  
 84 100  
 49 115.9 108.6 162.8  
 51 50.6 32.6 48.8#  
 86 52.2 52.0 78.0



#33  
 1,2-Dichloroethane-d4  
 Concen: 47.452 ug/l  
 RT: 5.940 min Scan# 796  
 Delta R.T. -0.000 min  
 Lab File: VX047725.D  
 Acq: 23 Sep 2025 12:22

Tgt Ion: 65 Resp: 99105  
 Ion Ratio Lower Upper  
 65 100  
 67 53.1 0.0 103.0



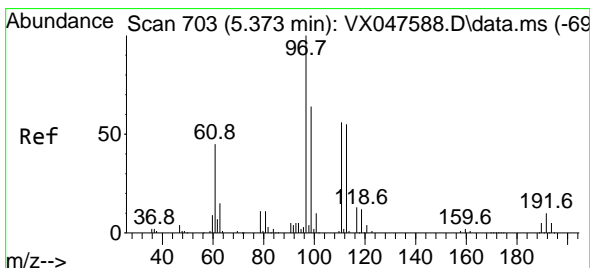
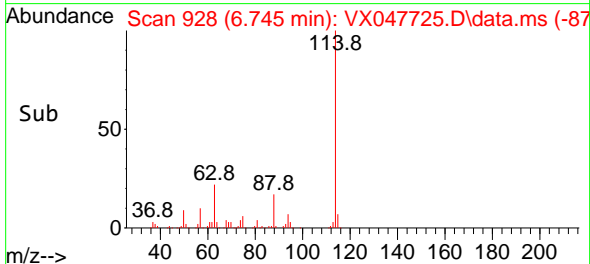
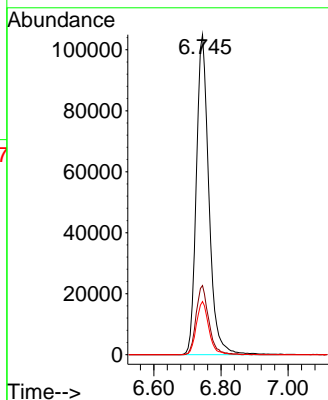
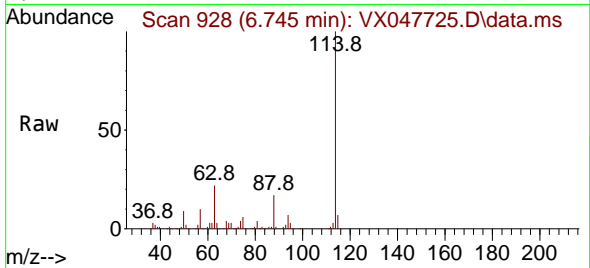


#34  
 1,4-Difluorobenzene  
 Concen: 50.000 ug/l  
 RT: 6.745 min Scan# 91  
 Delta R.T. -0.000 min  
 Lab File: VX047725.D  
 Acq: 23 Sep 2025 12:22

Instrument : MSVOA\_X  
 ClientSampleId : BP-VPB-184-TB-20250917

Tgt Ion:114 Resp: 272690

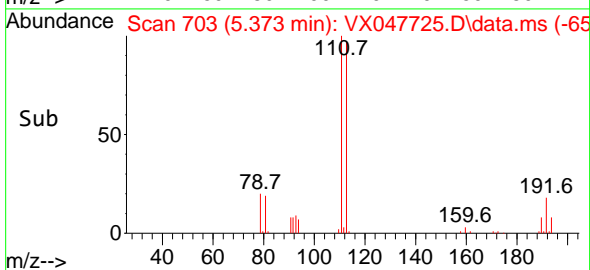
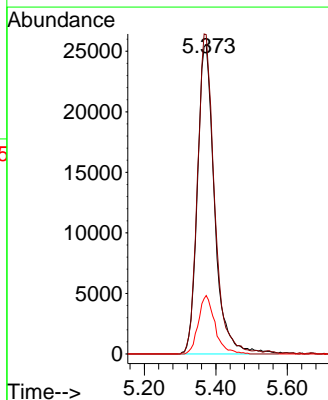
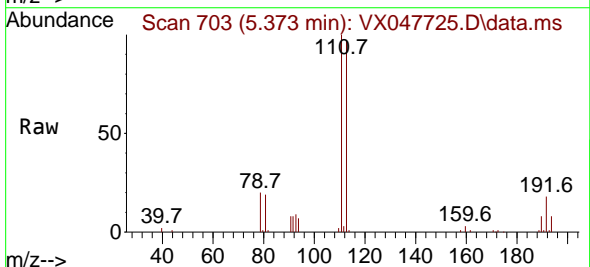
Ion	Ratio	Lower	Upper
114	100		
63	21.6	0.0	44.0
88	16.6	0.0	34.2

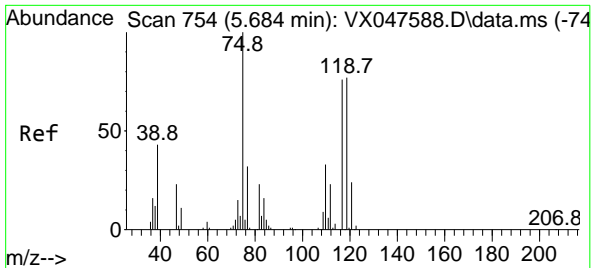


#35  
 Dibromofluoromethane  
 Concen: 46.441 ug/l  
 RT: 5.373 min Scan# 703  
 Delta R.T. -0.000 min  
 Lab File: VX047725.D  
 Acq: 23 Sep 2025 12:22

Tgt Ion:113 Resp: 84932

Ion	Ratio	Lower	Upper
113	100		
111	101.6	80.9	121.3
192	18.3	14.2	21.4

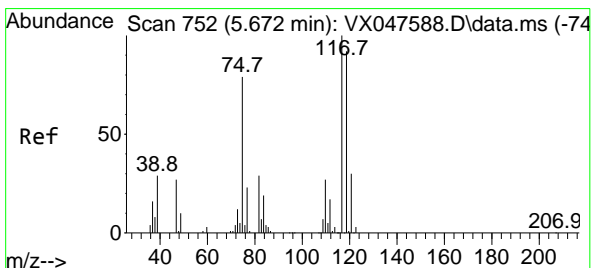
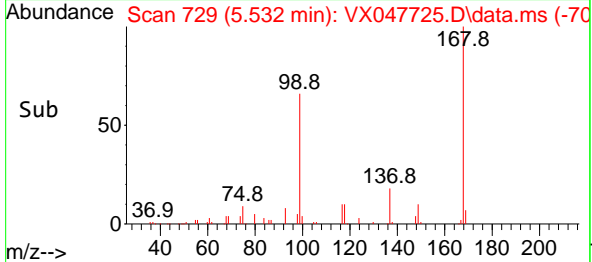
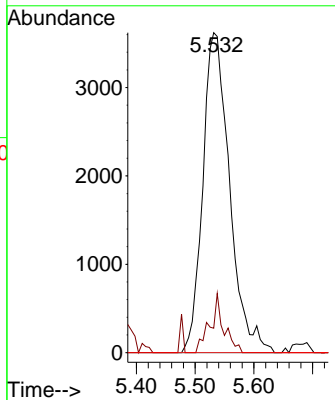
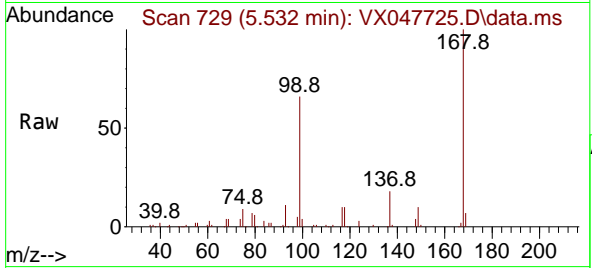




#36  
 1,1-Dichloropropene  
 Concen: 4.290 ug/l  
 RT: 5.532 min Scan# 710  
 Delta R.T. -0.152 min  
 Lab File: VX047725.D  
 Acq: 23 Sep 2025 12:22

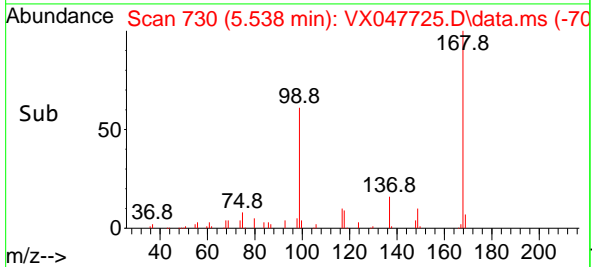
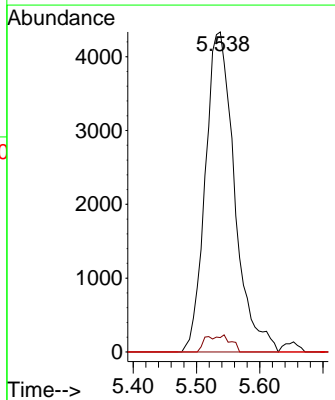
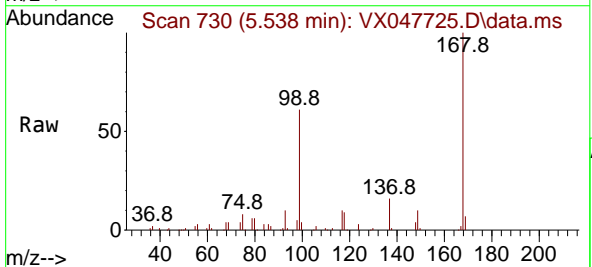
Instrument : MSVOA\_X  
 ClientSampleId : BP-VPB-184-TB-20250917

Tgt Ion	Resp	Lower	Upper
75	11465		
75	100		
110	9.4	16.7	50.1#
77	0.0	24.3	36.5#

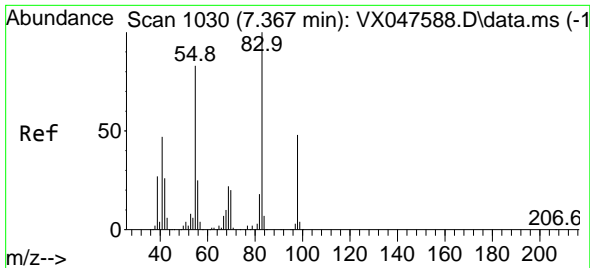


#38  
 Carbon Tetrachloride  
 Concen: 4.789 ug/l  
 RT: 5.538 min Scan# 730  
 Delta R.T. -0.134 min  
 Lab File: VX047725.D  
 Acq: 23 Sep 2025 12:22

Tgt Ion	Resp	Lower	Upper
117	13905		
117	100		
119	4.5	73.4	110.2#
121	0.0	23.8	35.6#

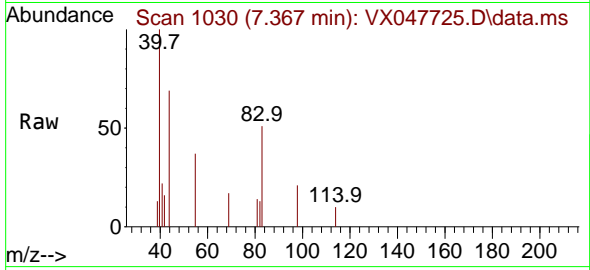






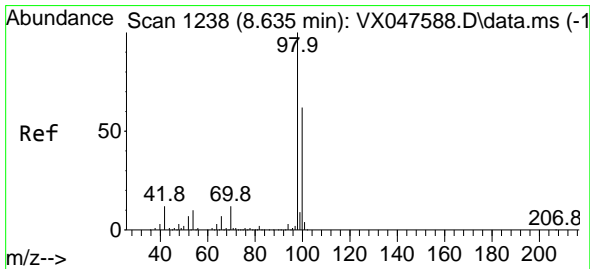
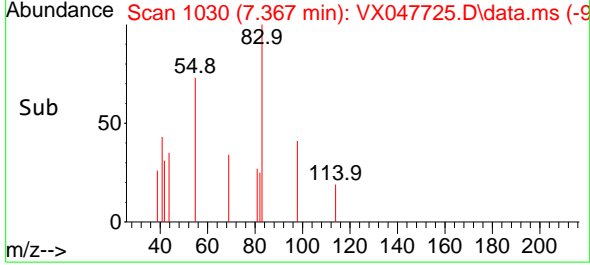
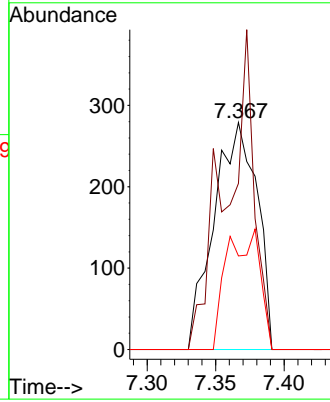
#39  
 Methylcyclohexane  
 Concen: 0.201 ug/l  
 RT: 7.367 min Scan# 1030  
 Delta R.T. -0.000 min  
 Lab File: VX047725.D  
 Acq: 23 Sep 2025 12:22

Instrument : MSVOA\_X  
 ClientSampleId : BP-VPB-184-TB-20250917



Tgt Ion: 83 Resp: 610

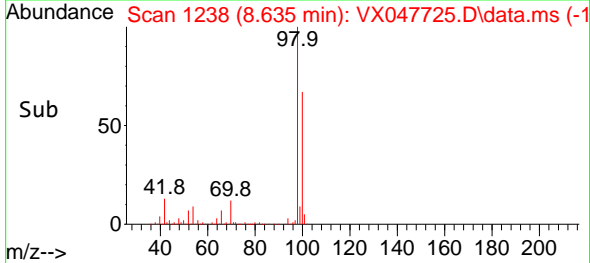
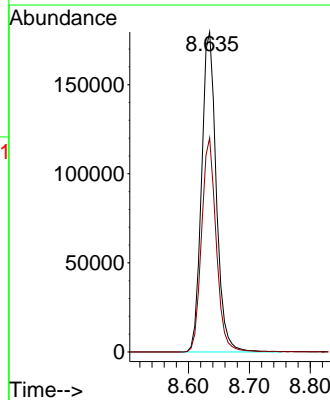
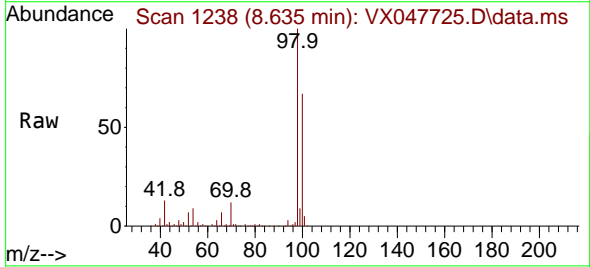
Ion	Ratio	Lower	Upper
83	100		
55	73.1	66.4	99.6
98	41.2	38.1	57.1

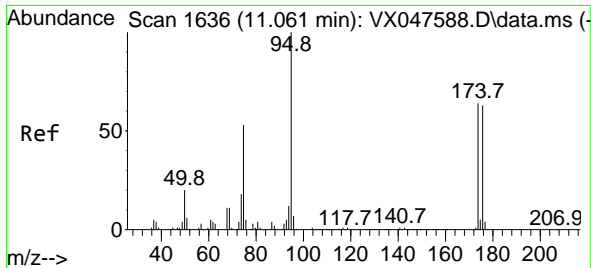


#50  
 Toluene-d8  
 Concen: 47.543 ug/l  
 RT: 8.635 min Scan# 1238  
 Delta R.T. -0.000 min  
 Lab File: VX047725.D  
 Acq: 23 Sep 2025 12:22

Tgt Ion: 98 Resp: 300857

Ion	Ratio	Lower	Upper
98	100		
100	66.7	53.0	79.4

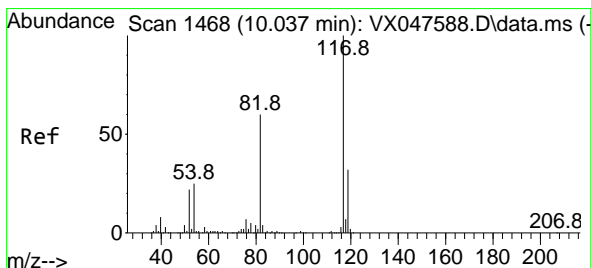
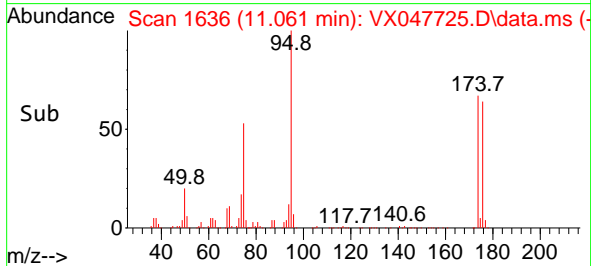
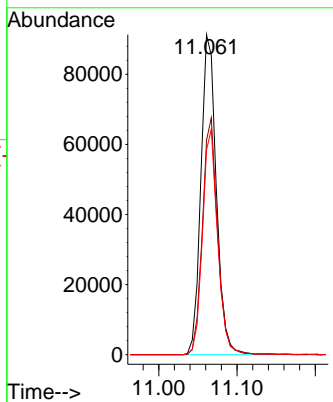
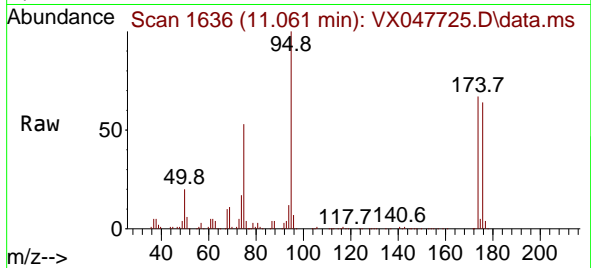




#62  
 4-Bromofluorobenzene  
 Concen: 52.109 ug/l  
 RT: 11.061 min Scan# 11  
 Delta R.T. -0.000 min  
 Lab File: VX047725.D  
 Acq: 23 Sep 2025 12:22

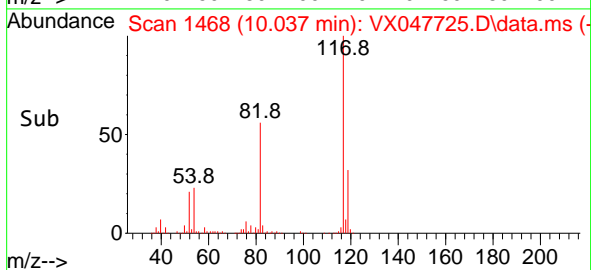
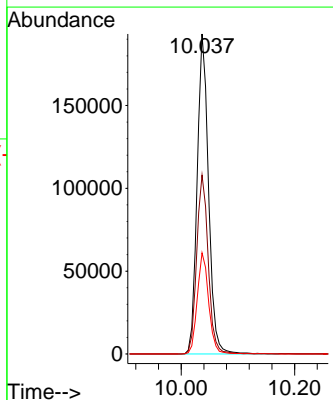
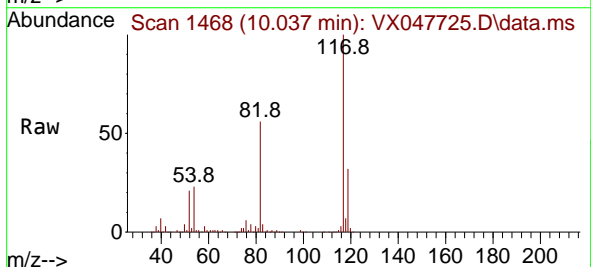
Instrument : MSVOA\_X  
 ClientSampleId : BP-VPB-184-TB-20250917

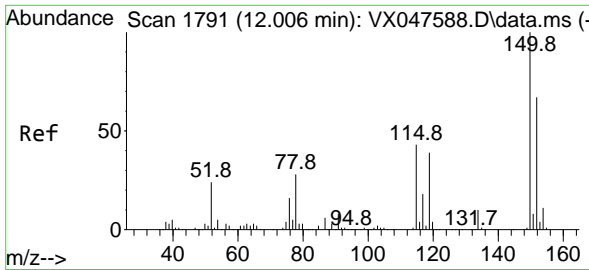
Tgt Ion: 95 Resp: 125146  
 Ion Ratio Lower Upper  
 95 100  
 174 72.5 0.0 141.6  
 176 68.7 0.0 138.4



#63  
 Chlorobenzene-d5  
 Concen: 50.000 ug/l  
 RT: 10.037 min Scan# 1468  
 Delta R.T. -0.000 min  
 Lab File: VX047725.D  
 Acq: 23 Sep 2025 12:22

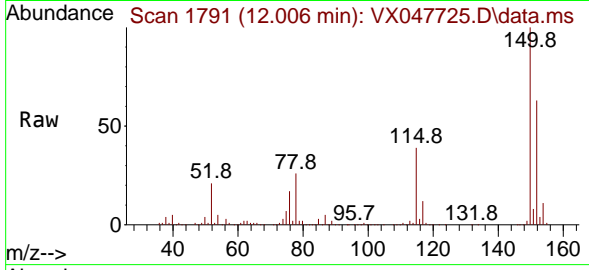
Tgt Ion: 117 Resp: 268706  
 Ion Ratio Lower Upper  
 117 100  
 82 55.9 47.8 71.6  
 119 31.6 25.2 37.8



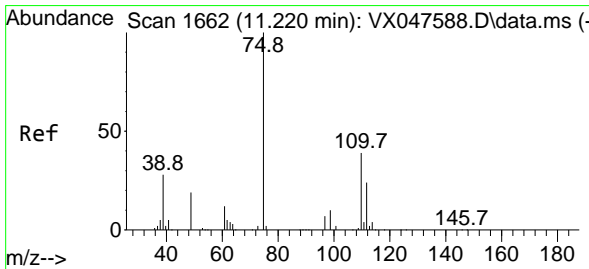
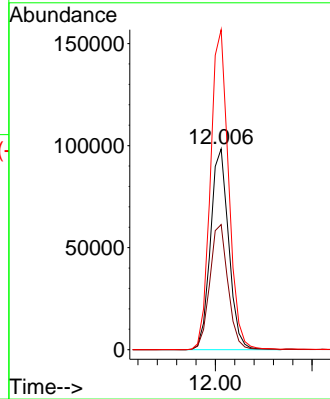
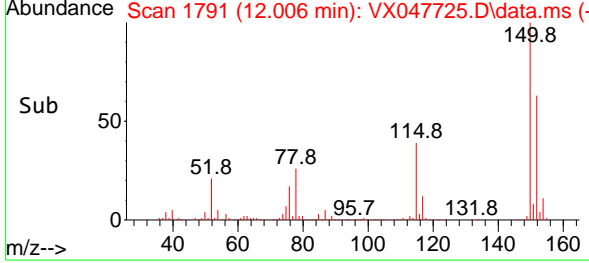


#72  
 1,4-Dichlorobenzene-d4  
 Concen: 50.000 ug/l  
 RT: 12.006 min Scan# 11  
 Delta R.T. -0.000 min  
 Lab File: VX047725.D  
 Acq: 23 Sep 2025 12:22

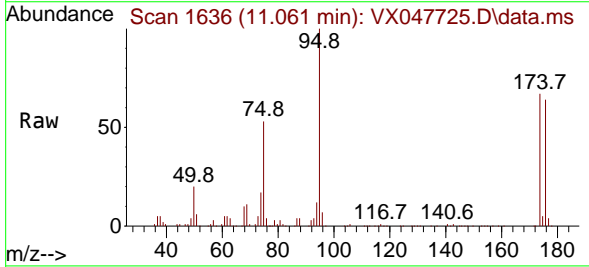
Instrument : MSVOA\_X  
 ClientSampleId : BP-VPB-184-TB-20250917



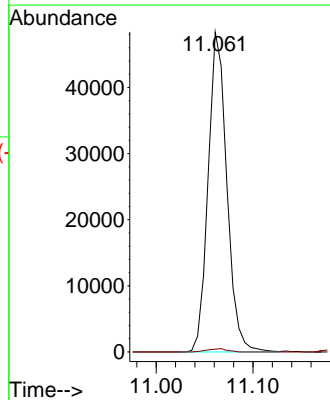
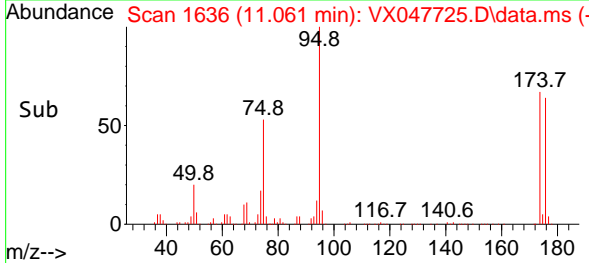
Tgt Ion:152 Resp: 128339  
 Ion Ratio Lower Upper  
 152 100  
 115 62.7 44.9 134.5  
 150 159.0 0.0 352.0

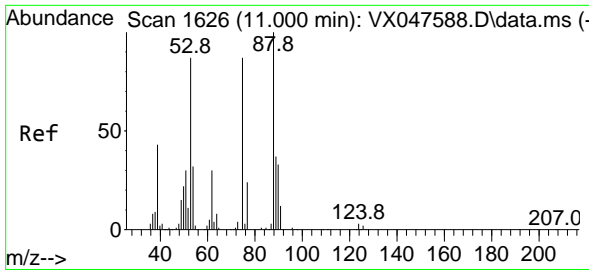


#76  
 1,2,3-Trichloropropane  
 Concen: 25.094 ug/l  
 RT: 11.061 min Scan# 1636  
 Delta R.T. -0.159 min  
 Lab File: VX047725.D  
 Acq: 23 Sep 2025 12:22



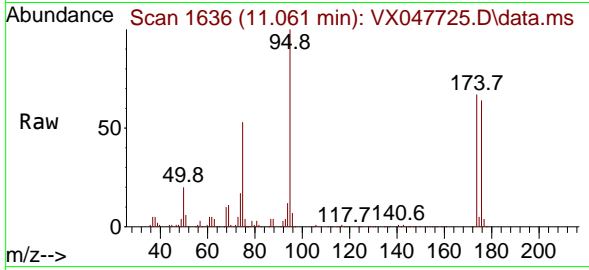
Tgt Ion: 75 Resp: 65206  
 Ion Ratio Lower Upper  
 75 100  
 77 1.1 18.8 56.4#



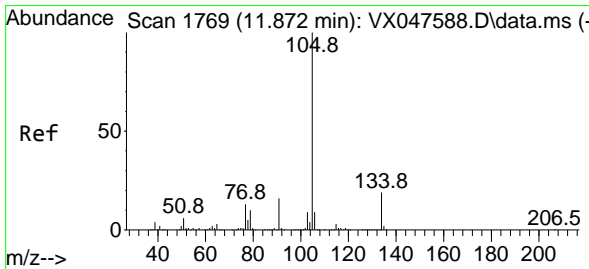
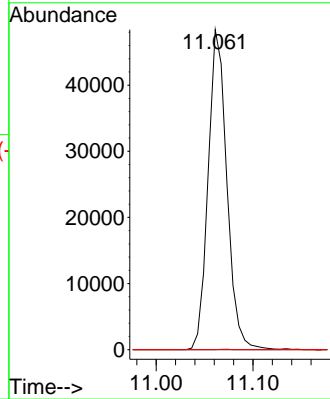
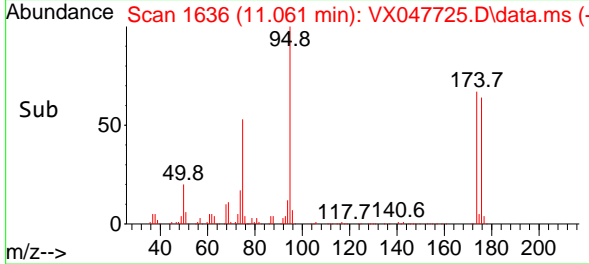


#81  
 trans-1,4-Dichloro-2-butene  
 Concen: 63.993 ug/l  
 RT: 11.061 min Scan# 11  
 Delta R.T. 0.061 min  
 Lab File: VX047725.D  
 Acq: 23 Sep 2025 12:22

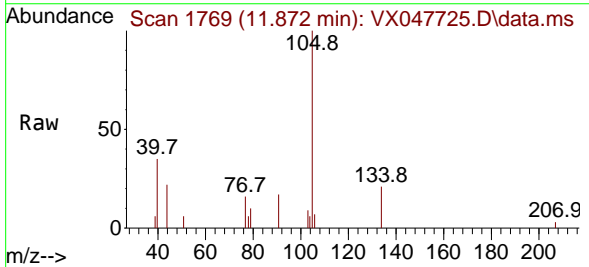
Instrument : MSVOA\_X  
 ClientSampleId : BP-VPB-184-TB-20250917



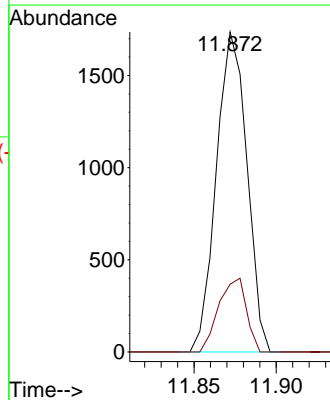
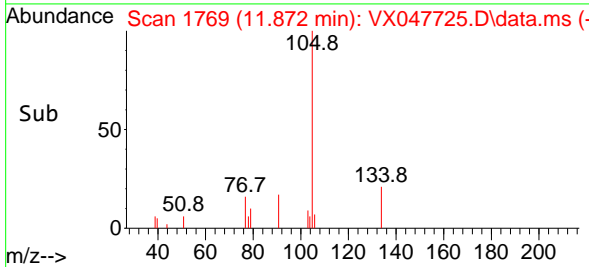
Tgt Ion: 75 Resp: 65206  
 Ion Ratio Lower Upper  
 75 100  
 53 0.0 83.4 125.2#  
 89 0.1 36.3 54.5#

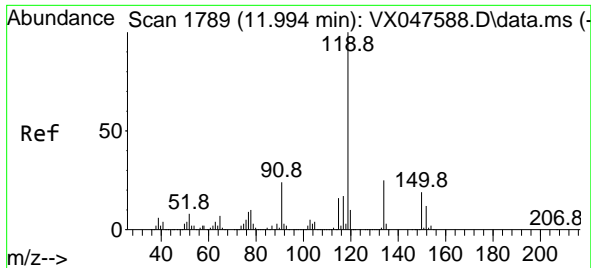


#85  
 sec-Butylbenzene  
 Concen: 0.230 ug/l  
 RT: 11.872 min Scan# 1769  
 Delta R.T. -0.000 min  
 Lab File: VX047725.D  
 Acq: 23 Sep 2025 12:22



Tgt Ion: 105 Resp: 2242  
 Ion Ratio Lower Upper  
 105 100  
 134 20.8 9.8 29.5



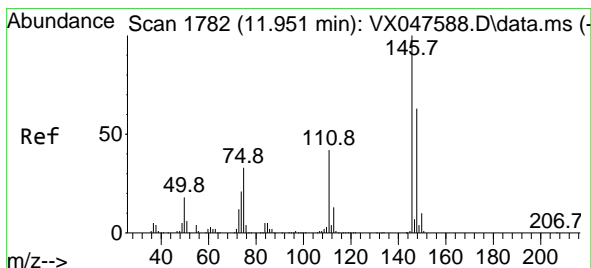
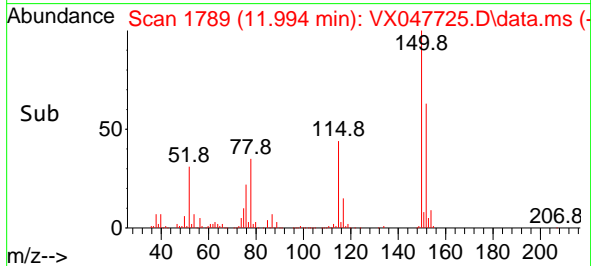
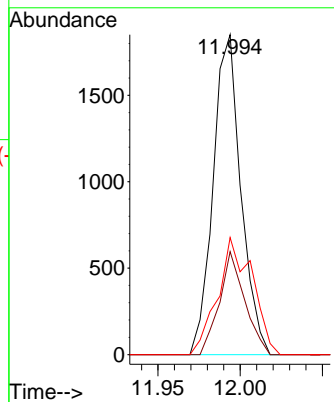
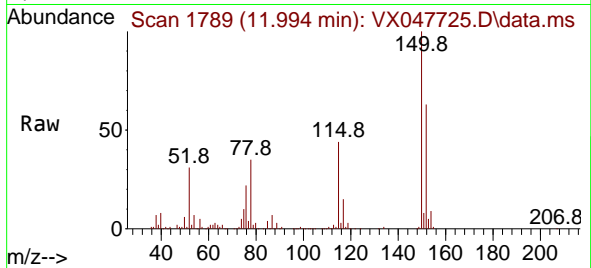


#86  
 p-Isopropyltoluene  
 Concen: 0.263 ug/l  
 RT: 11.994 min Scan# 1789  
 Delta R.T. -0.000 min  
 Lab File: VX047725.D  
 Acq: 23 Sep 2025 12:22

Instrument : MSVOA\_X  
 ClientSampleId : BP-VPB-184-TB-20250917

Tgt Ion:119 Resp: 2174

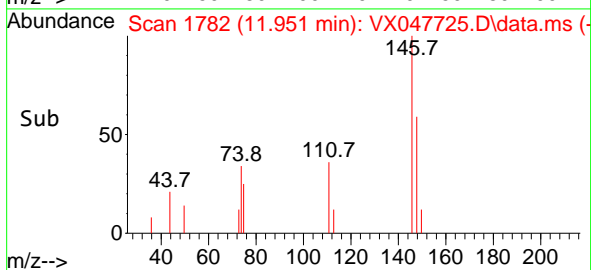
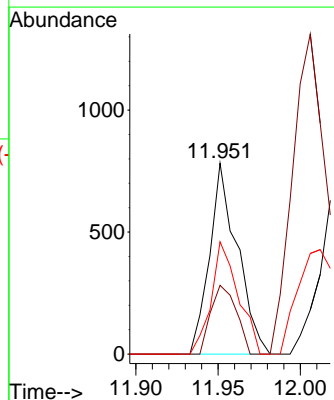
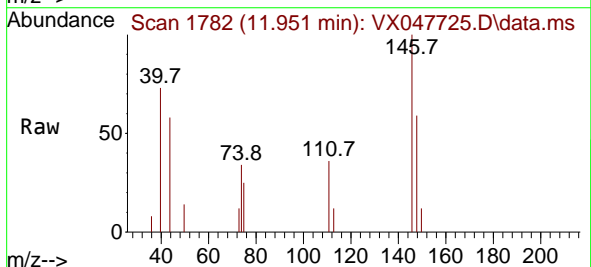
Ion	Ratio	Lower	Upper
119	100		
134	29.4	12.6	37.8
91	45.5	12.6	37.6#

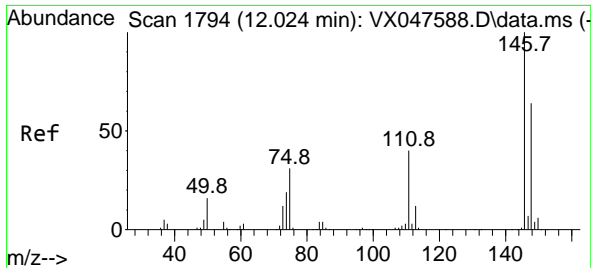


#87  
 1,3-Dichlorobenzene  
 Concen: 0.205 ug/l  
 RT: 11.951 min Scan# 1782  
 Delta R.T. -0.000 min  
 Lab File: VX047725.D  
 Acq: 23 Sep 2025 12:22

Tgt Ion:146 Resp: 917

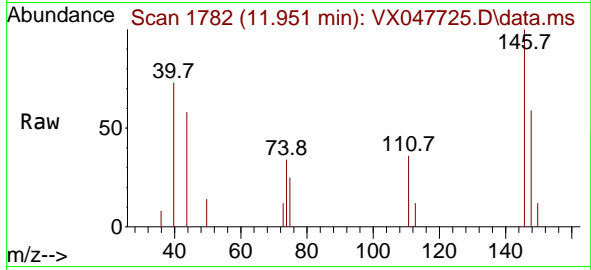
Ion	Ratio	Lower	Upper
146	100		
111	33.0	21.5	64.5
148	57.0	32.0	96.0



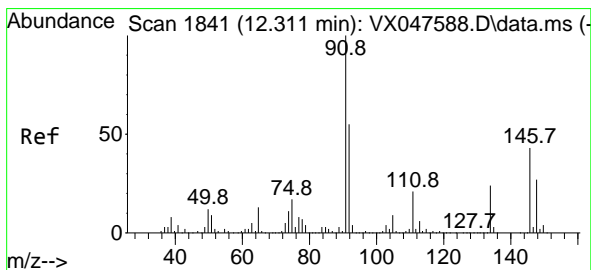
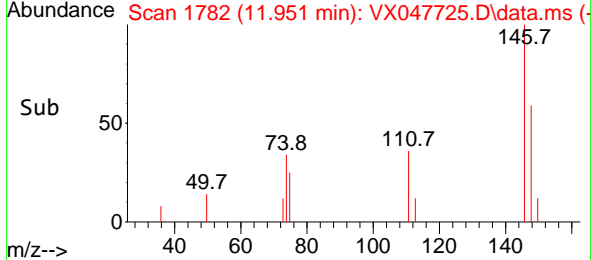
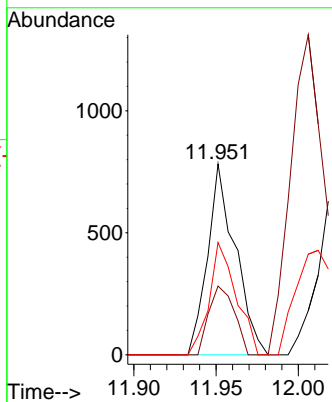


#88  
 1,4-Dichlorobenzene  
 Concen: 0.200 ug/l  
 RT: 11.951 min Scan# 1782  
 Delta R.T. -0.073 min  
 Lab File: VX047725.D  
 Acq: 23 Sep 2025 12:22

Instrument : MSVOA\_X  
 ClientSampleId : BP-VPB-184-TB-20250917

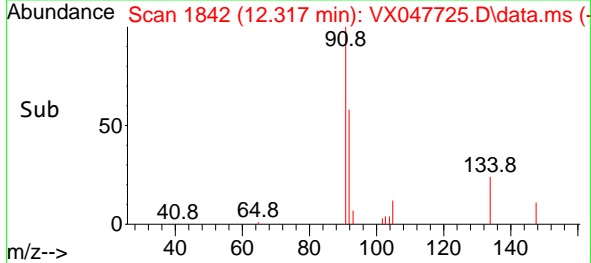
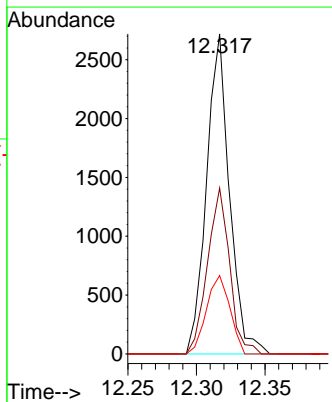
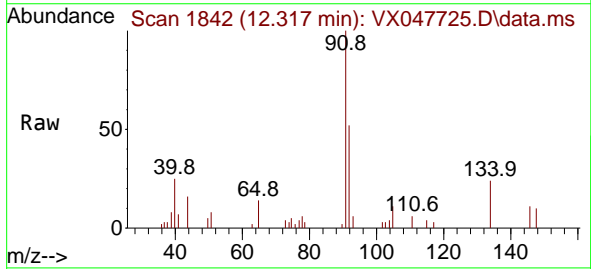


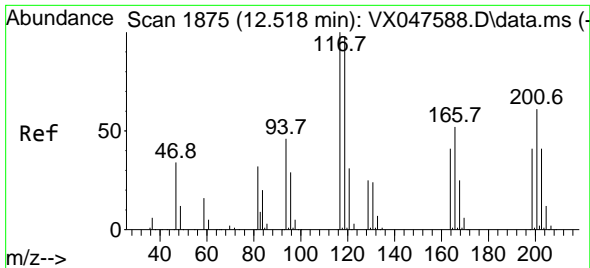
Tgt Ion:146 Resp: 917  
 Ion Ratio Lower Upper  
 146 100  
 111 33.0 20.8 62.4  
 148 57.0 31.7 95.1



#89  
 n-Butylbenzene  
 Concen: 0.414 ug/l  
 RT: 12.317 min Scan# 1842  
 Delta R.T. 0.006 min  
 Lab File: VX047725.D  
 Acq: 23 Sep 2025 12:22

Tgt Ion: 91 Resp: 3158  
 Ion Ratio Lower Upper  
 91 100  
 92 50.1 27.6 82.7  
 134 25.0 12.6 37.8

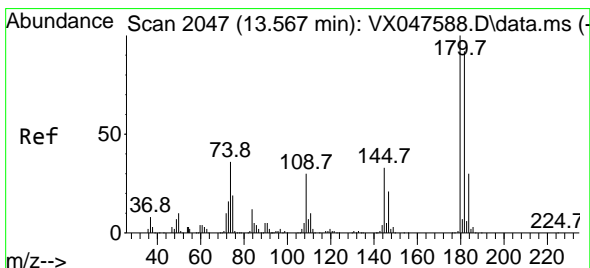
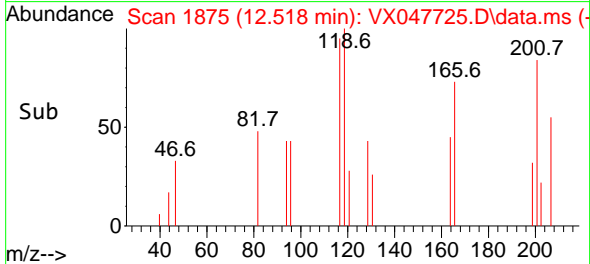
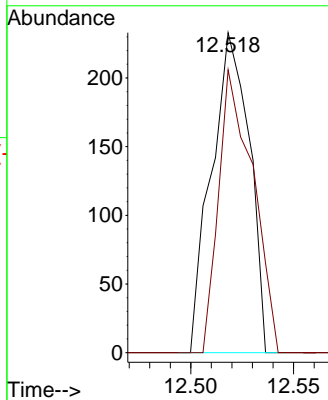
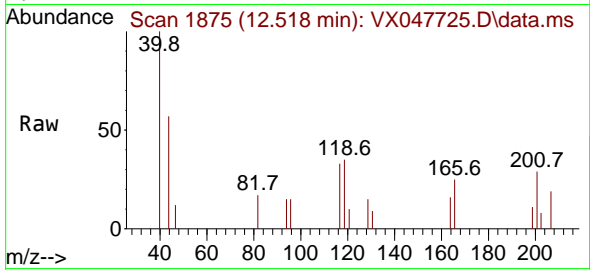




#90  
 Hexachloroethane  
 Concen: 0.206 ug/l  
 RT: 12.518 min Scan# 11  
 Delta R.T. -0.000 min  
 Lab File: VX047725.D  
 Acq: 23 Sep 2025 12:22

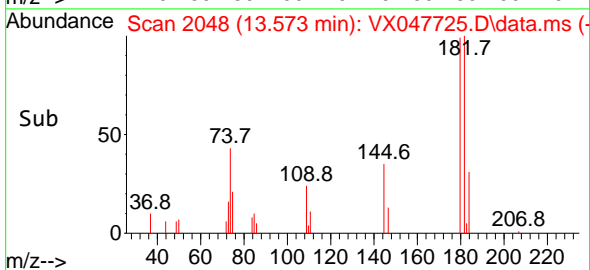
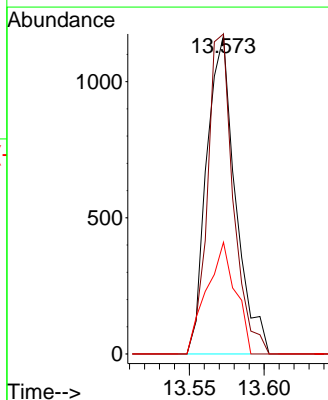
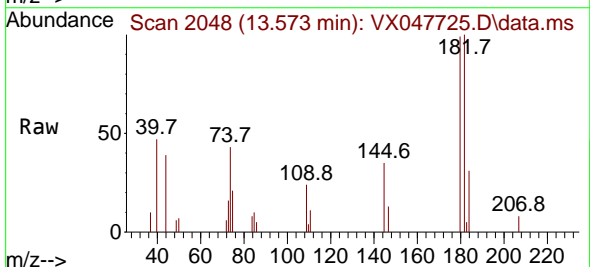
Instrument : MSVOA\_X  
 ClientSampleId : BP-VPB-184-TB-20250917

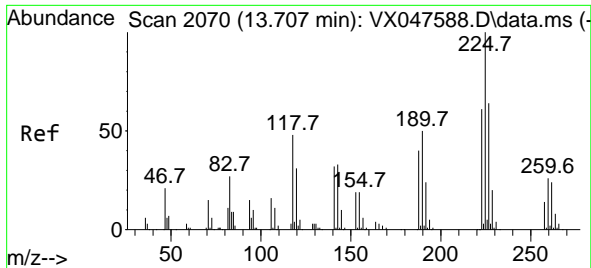
Tgt Ion:117 Resp: 298  
 Ion Ratio Lower Upper  
 117 100  
 201 79.9 34.2 102.5



#93  
 1,2,4-Trichlorobenzene  
 Concen: 0.566 ug/l  
 RT: 13.573 min Scan# 2048  
 Delta R.T. 0.006 min  
 Lab File: VX047725.D  
 Acq: 23 Sep 2025 12:22

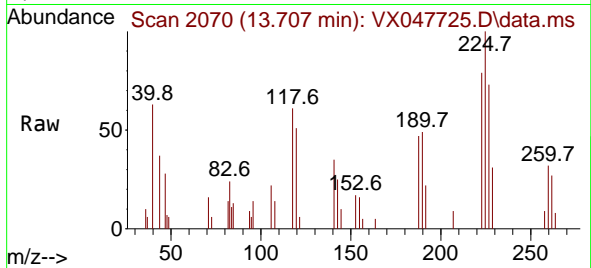
Tgt Ion:180 Resp: 1563  
 Ion Ratio Lower Upper  
 180 100  
 182 90.1 46.6 139.8  
 145 35.3 16.4 49.1



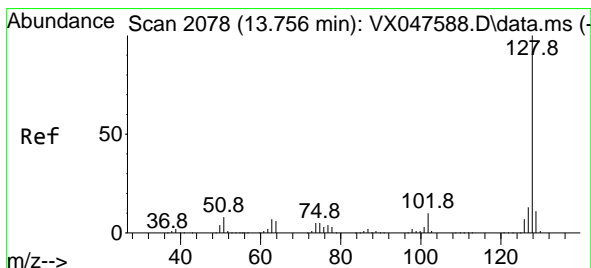
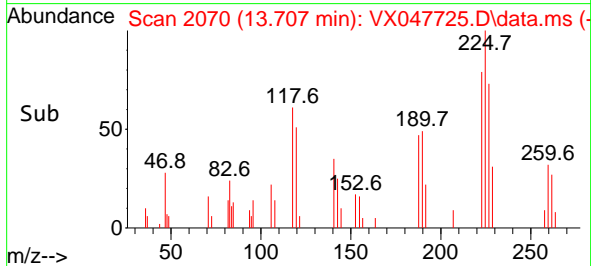
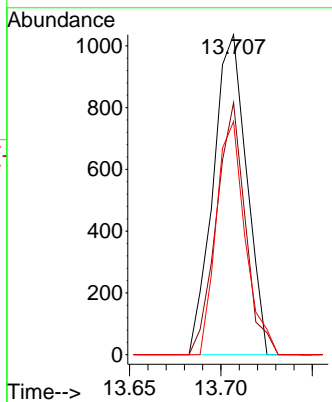


#94  
 Hexachlorobutadiene  
 Concen: 1.401 ug/l  
 RT: 13.707 min Scan# 2070  
 Delta R.T. -0.000 min  
 Lab File: VX047725.D  
 Acq: 23 Sep 2025 12:22

Instrument : MSVOA\_X  
 ClientSampleId : BP-VPB-184-TB-20250917

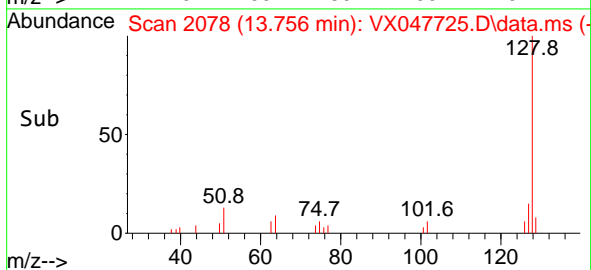
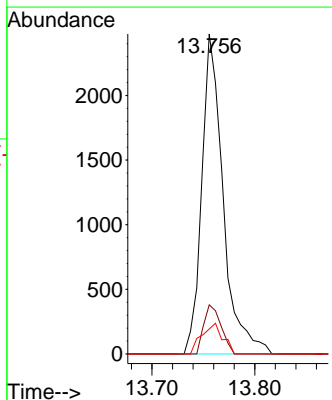
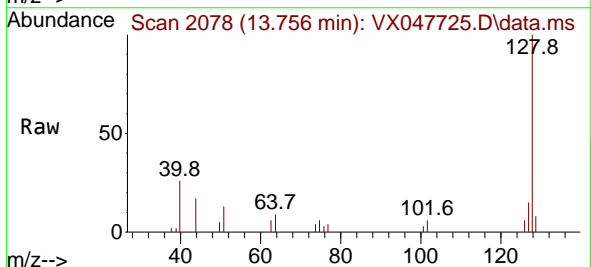


Tgt Ion:225 Resp: 1315  
 Ion Ratio Lower Upper  
 225 100  
 223 68.2 31.7 95.1  
 227 63.6 32.0 96.0

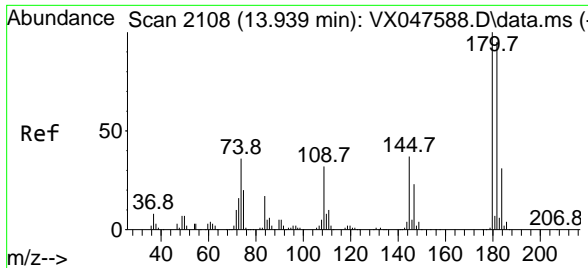


#95  
 Naphthalene  
 Concen: 0.426 ug/l  
 RT: 13.756 min Scan# 2078  
 Delta R.T. -0.000 min  
 Lab File: VX047725.D  
 Acq: 23 Sep 2025 12:22

Tgt Ion:128 Resp: 3585  
 Ion Ratio Lower Upper  
 128 100  
 127 12.4 10.2 15.2  
 129 9.5 8.8 13.2

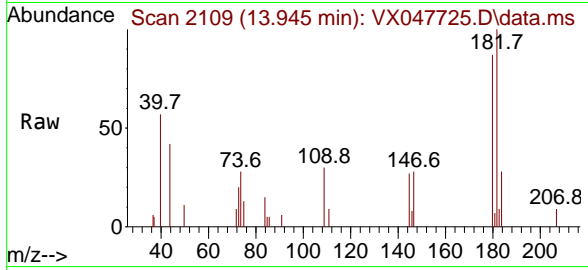






#96  
 1,2,3-Trichlorobenzene  
 Concen: 0.609 ug/l  
 RT: 13.945 min Scan# 21  
 Delta R.T. 0.006 min  
 Lab File: VX047725.D  
 Acq: 23 Sep 2025 12:22

Instrument : MSVOA\_X  
 ClientSampleId : BP-VPB-184-TB-20250917



Tgt Ion:180 Resp: 1565

Ion	Ratio	Lower	Upper
180	100		
182	98.5	47.6	142.8
145	27.5	17.9	53.7

