

Data Path : Z:\voasrv\HPCHEM1\MSVOA_X\Data\VX092325\
 Data File : VX047727.D
 Acq On : 23 Sep 2025 13:04
 Operator : JC/MD
 Sample : Q3141-02
 Misc : 5.0mL/MSVOA_X/WATER
 ALS Vial : 10 Sample Multiplier: 1

Instrument :
 MSVOA_X
 ClientSampleId :
 BP-VPB-184-EB-20250918

Quant Time: Sep 24 01:31:25 2025
 Quant Method : Z:\voasrv\HPCHEM1\MSVOA_X\Method\82X091625W.M
 Quant Title : SW846 8260
 QLast Update : Wed Sep 17 06:39:58 2025
 Response via : Initial Calibration

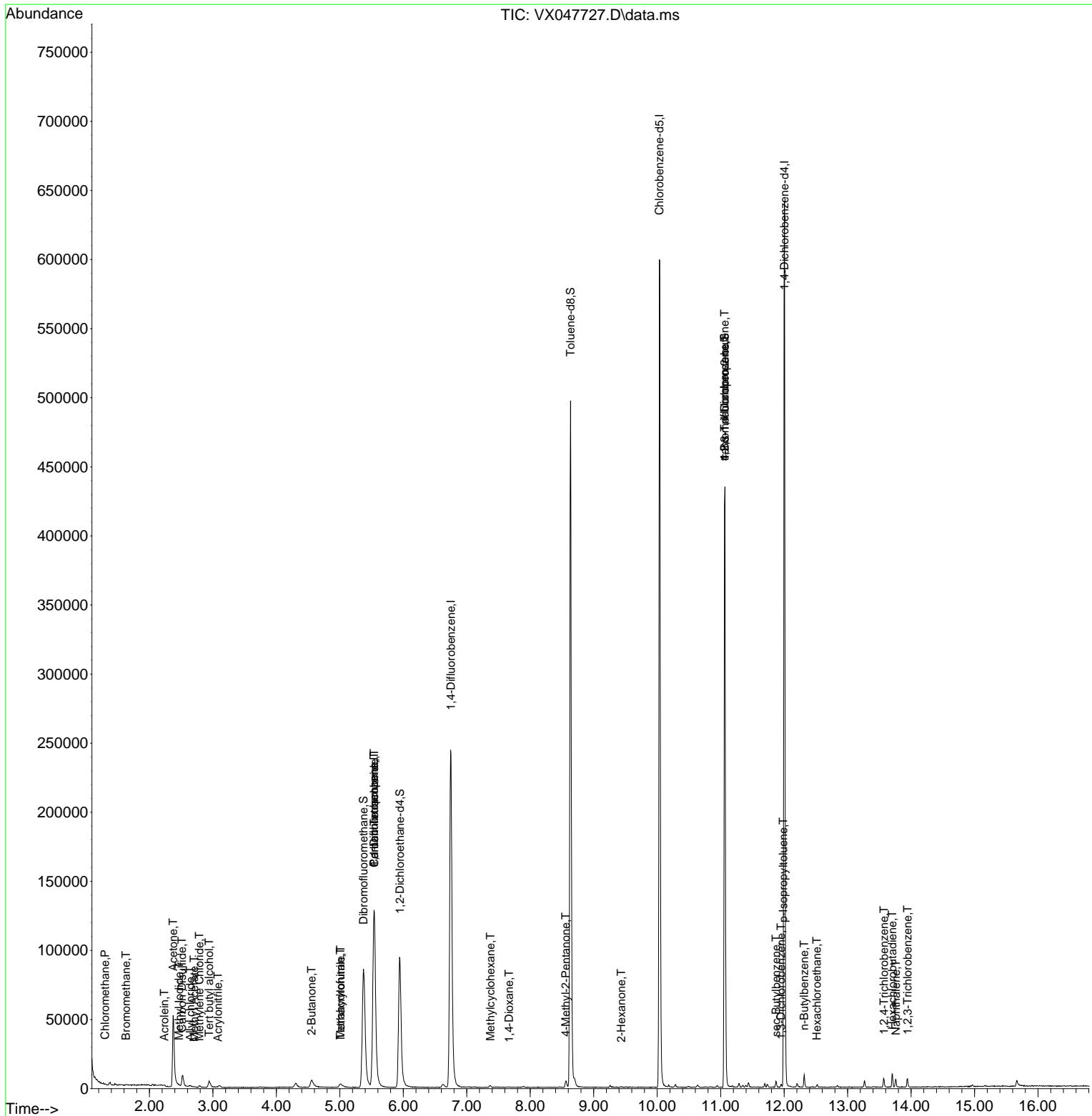
Compound	R.T.	QIon	Response	Conc	Units	Dev(Min)
Internal Standards						
1) Pentafluorobenzene	5.538	168	130435	50.000	ug/l	0.00
34) 1,4-Difluorobenzene	6.751	114	270519	50.000	ug/l	0.00
63) Chlorobenzene-d5	10.037	117	267539	50.000	ug/l	0.00
72) 1,4-Dichlorobenzene-d4	12.006	152	132169	50.000	ug/l	0.00
System Monitoring Compounds						
33) 1,2-Dichloroethane-d4	5.946	65	102139	49.195	ug/l	0.00
Spiked Amount	50.000	Range 78 - 117	Recovery =	98.400%		
35) Dibromofluoromethane	5.373	113	85268	46.999	ug/l	0.00
Spiked Amount	50.000	Range 75 - 124	Recovery =	94.000%		
50) Toluene-d8	8.635	98	300718	47.903	ug/l	0.00
Spiked Amount	50.000	Range 92 - 112	Recovery =	95.800%		
62) 4-Bromofluorobenzene	11.061	95	126191	52.966	ug/l	0.00
Spiked Amount	50.000	Range 83 - 123	Recovery =	105.940%		
Target Compounds						
						Qvalue
3) Chloromethane	1.301	50	766	0.432	ug/l	92
5) Bromomethane	1.630	94	326	0.296	ug/l #	60
10) Methyl Iodide	2.465	142	1055	0.448	ug/l #	89
11) Tert butyl alcohol	2.941	59	5744	24.841	ug/l	99
13) Acrolein	2.233	56	107	0.502	ug/l #	42
14) Allyl chloride	2.642	41	1587	0.496	ug/l #	37
15) Acrylonitrile	3.081	53	338	0.395	ug/l #	20
16) Acetone	2.374	43	69407	76.885	ug/l	98
17) Carbon Disulfide	2.514	76	1739	0.410	ug/l #	89
18) Methyl Acetate	2.703	43	685	0.341	ug/l #	64
20) Methylene Chloride	2.788	84	465	0.243	ug/l #	70
25) 2-Butanone	4.556	43	11700	10.390	ug/l	94
29) Tetrahydrofuran	5.007	42	2838	4.190	ug/l #	73
36) 1,1-Dichloropropene	5.538	75	11155	4.208	ug/l #	52
38) Carbon Tetrachloride	5.544	117	13822	4.799	ug/l #	18
39) Methylcyclohexane	7.373	83	608	0.202	ug/l #	78
41) Methacrylonitrile	5.013	41	1446	0.987	ug/l #	46
49) 1,4-Dioxane	7.665	88	183	7.809	ug/l #	50
51) 4-Methyl-2-Pentanone	8.562	43	3517	1.363	ug/l	97
59) 2-Hexanone	9.433	43	607	0.327	ug/l	73
76) 1,2,3-Trichloropropane	11.061	75	65172	24.354	ug/l #	40
81) trans-1,4-Dichloro-2-b...	11.061	75	65172	62.107	ug/l #	8
85) sec-Butylbenzene	11.872	105	2471	0.246	ug/l	92
86) p-Isopropyltoluene	11.988	119	2275	0.268	ug/l #	80
87) 1,3-Dichlorobenzene	11.951	146	935	0.203	ug/l	98
89) n-Butylbenzene	12.317	91	3216	0.409	ug/l	93
90) Hexachloroethane	12.518	117	364	0.244	ug/l	90
93) 1,2,4-Trichlorobenzene	13.573	180	1592	0.559	ug/l	90
94) Hexachlorobutadiene	13.707	225	1366	1.413	ug/l	98
95) Naphthalene	13.762	128	4050	0.467	ug/l	98
96) 1,2,3-Trichlorobenzene	13.945	180	1634	0.617	ug/l	93

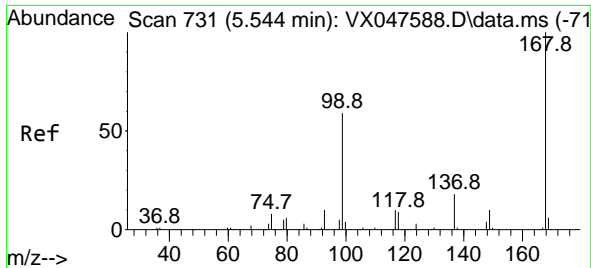
(#) = qualifier out of range (m) = manual integration (+) = signals summed

Data Path : Z:\voasrv\HPCHEM1\MSVOA_X\Data\VX092325\
 Data File : VX047727.D
 Acq On : 23 Sep 2025 13:04
 Operator : JC/MD
 Sample : Q3141-02
 Misc : 5.0mL/MSVOA_X/WATER
 ALS Vial : 10 Sample Multiplier: 1

Instrument :
 MSVOA_X
 ClientSampleId :
 BP-VPB-184-EB-20250918

Quant Time: Sep 24 01:31:25 2025
 Quant Method : Z:\voasrv\HPCHEM1\MSVOA_X\Method\82X091625W.M
 Quant Title : SW846 8260
 QLast Update : Wed Sep 17 06:39:58 2025
 Response via : Initial Calibration

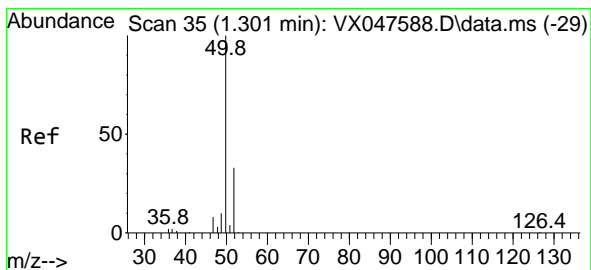
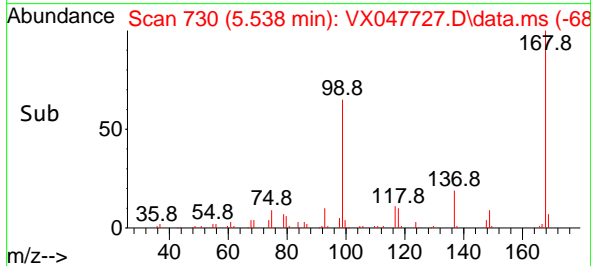
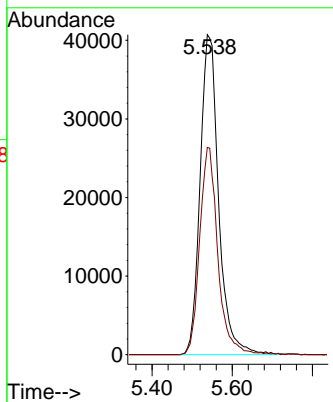
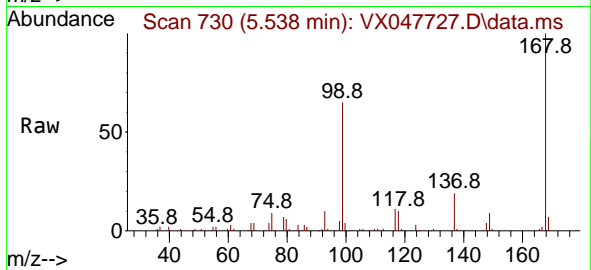




#1
 Pentafluorobenzene
 Concen: 50.000 ug/l
 RT: 5.538 min Scan# 71
 Delta R.T. -0.006 min
 Lab File: VX047727.D
 Acq: 23 Sep 2025 13:04

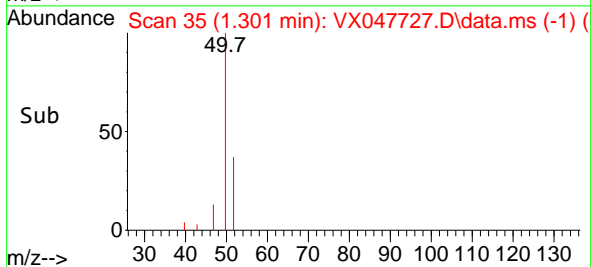
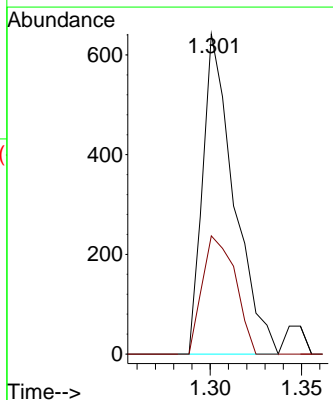
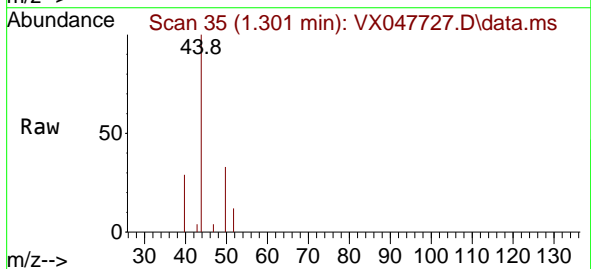
Instrument : MSVOA_X
 ClientSampleId : BP-VPB-184-EB-20250918

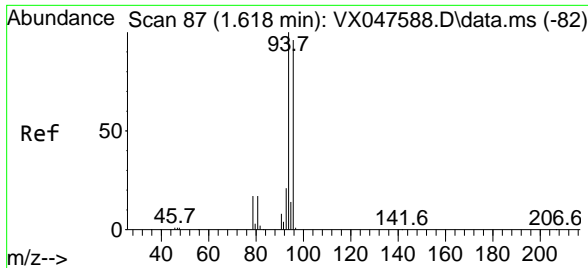
Tgt Ion:168 Resp: 130435
 Ion Ratio Lower Upper
 168 100
 99 64.8 48.8 73.2



#3
 Chloromethane
 Concen: 0.432 ug/l
 RT: 1.301 min Scan# 35
 Delta R.T. -0.000 min
 Lab File: VX047727.D
 Acq: 23 Sep 2025 13:04

Tgt Ion: 50 Resp: 766
 Ion Ratio Lower Upper
 50 100
 52 36.9 26.1 39.1

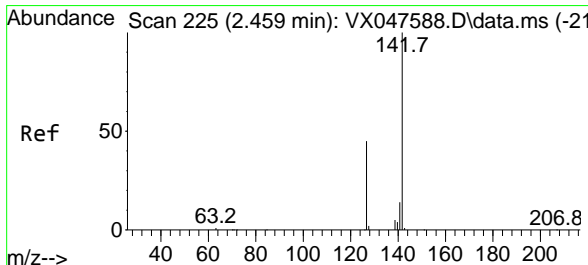
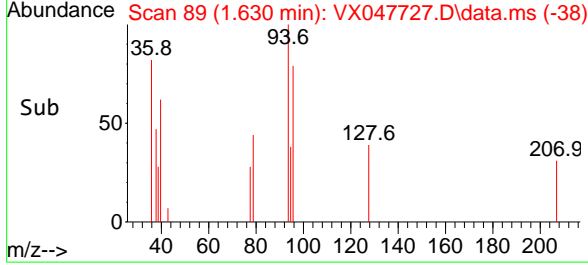
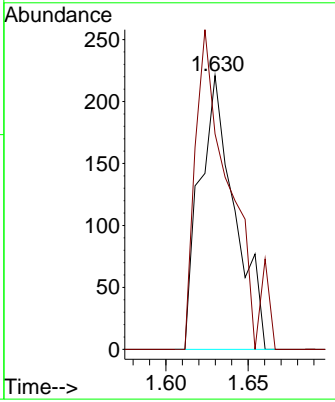
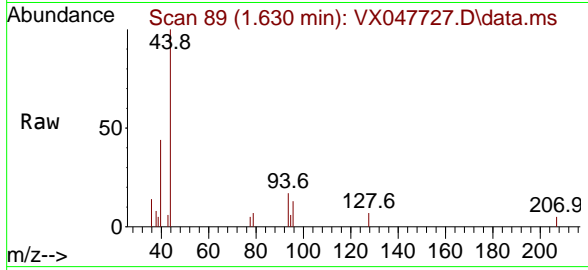




#5
 Bromomethane
 Concen: 0.296 ug/l
 RT: 1.630 min Scan# 89
 Delta R.T. 0.012 min
 Lab File: VX047727.D
 Acq: 23 Sep 2025 13:04

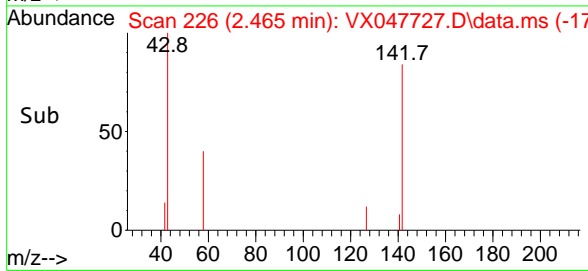
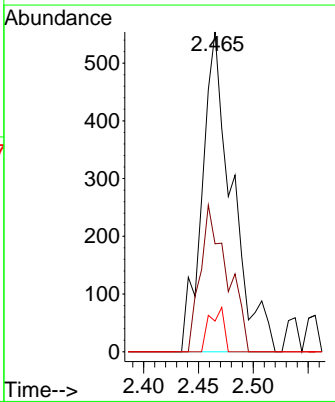
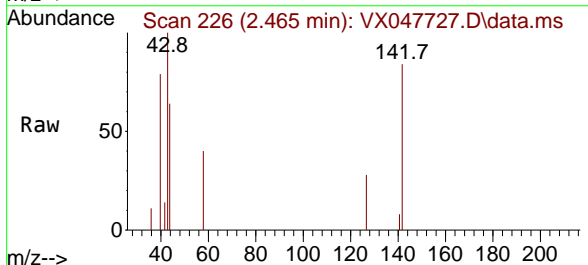
Instrument : MSVOA_X
 ClientSampleId : BP-VPB-184-EB-20250918

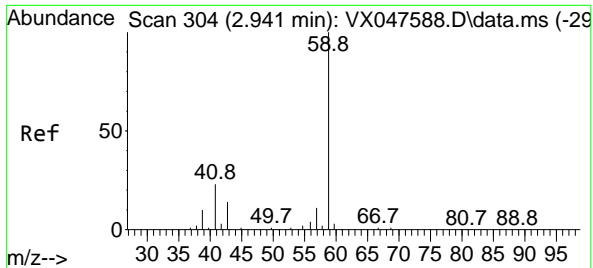
Tgt Ion: 94 Resp: 326
 Ion Ratio Lower Upper
 94 100
 96 57.2 76.6 115.0#



#10
 Methyl Iodide
 Concen: 0.448 ug/l
 RT: 2.465 min Scan# 226
 Delta R.T. 0.006 min
 Lab File: VX047727.D
 Acq: 23 Sep 2025 13:04

Tgt Ion:142 Resp: 1055
 Ion Ratio Lower Upper
 142 100
 127 41.0 37.2 55.8
 141 6.7 11.4 17.0#

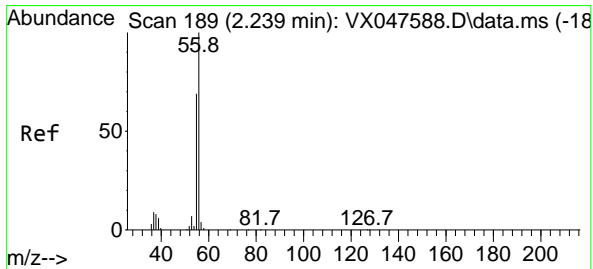
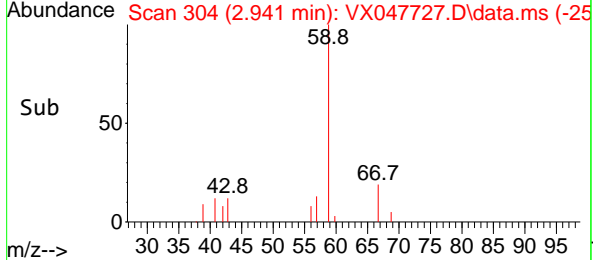
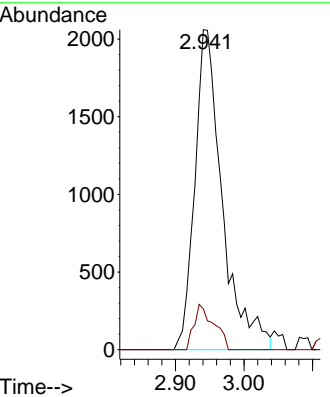
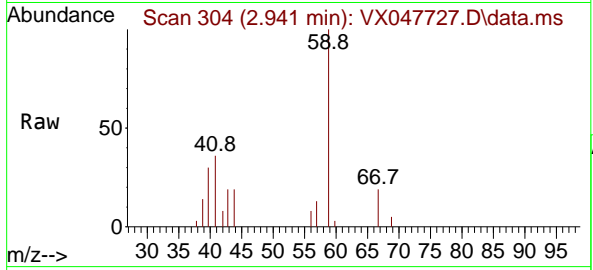




#11
 Tert butyl alcohol
 Concen: 24.841 ug/l
 RT: 2.941 min Scan# 304
 Delta R.T. -0.000 min
 Lab File: VX047727.D
 Acq: 23 Sep 2025 13:04

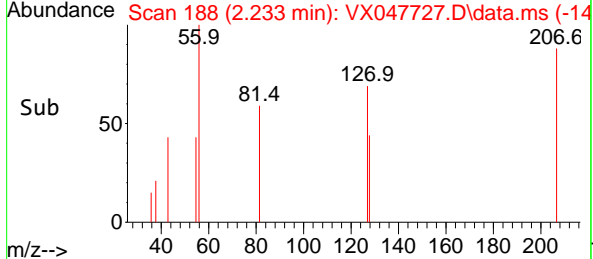
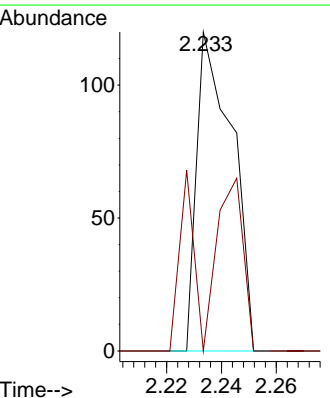
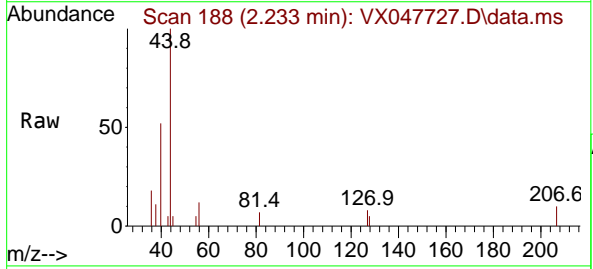
Instrument : MSVOA_X
 ClientSampleId : BP-VPB-184-EB-20250918

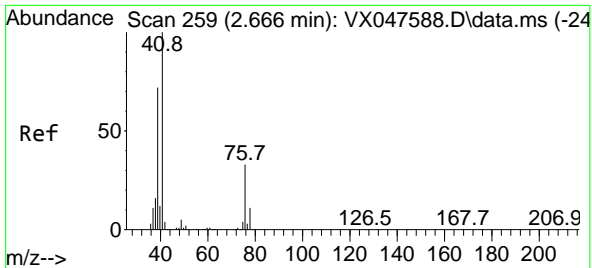
Tgt Ion: 59 Resp: 5744
 Ion Ratio Lower Upper
 59 100
 57 10.2 8.3 12.5



#13
 Acrolein
 Concen: 0.502 ug/l
 RT: 2.233 min Scan# 188
 Delta R.T. -0.006 min
 Lab File: VX047727.D
 Acq: 23 Sep 2025 13:04

Tgt Ion: 56 Resp: 107
 Ion Ratio Lower Upper
 56 100
 55 23.4 57.2 85.8#



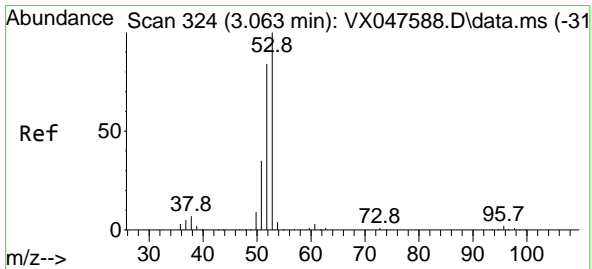
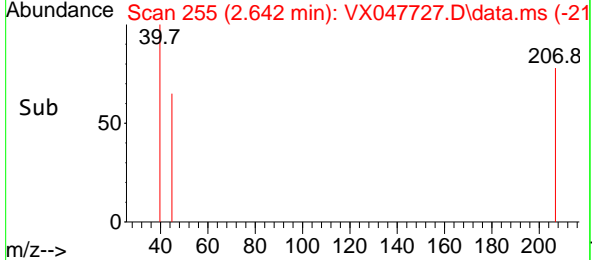
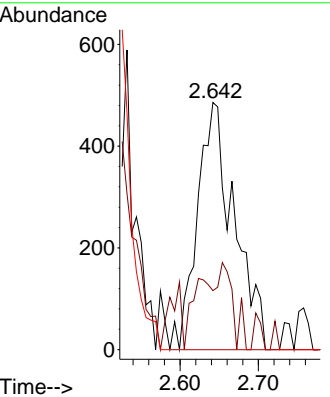
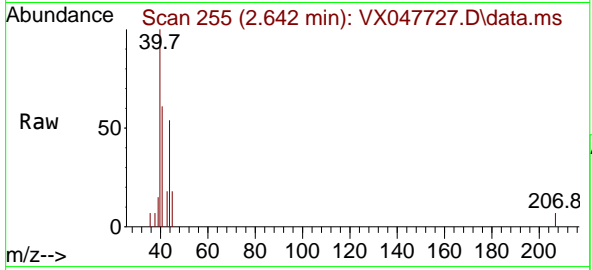


#14
 Allyl chloride
 Concen: 0.496 ug/l
 RT: 2.642 min Scan# 21
 Delta R.T. -0.024 min
 Lab File: VX047727.D
 Acq: 23 Sep 2025 13:04

Instrument : MSVOA_X
 ClientSampleId : BP-VPB-184-EB-20250918

Tgt Ion: 41 Resp: 1587

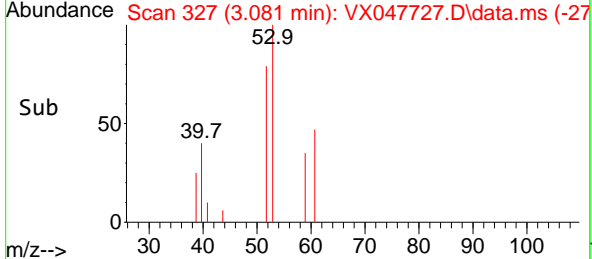
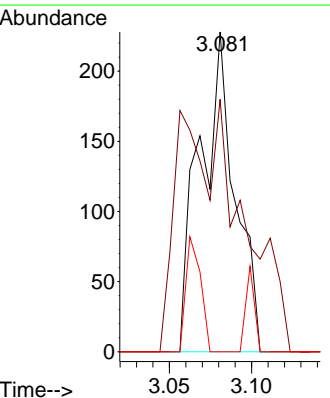
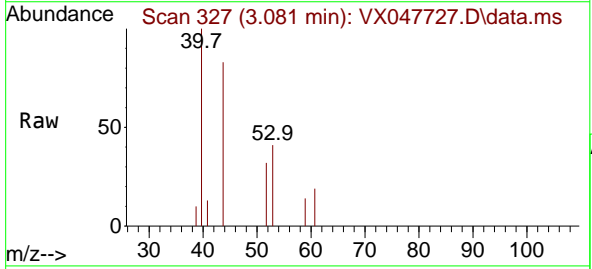
Ion	Ratio	Lower	Upper
41	100		
39	15.4	54.7	82.1#
76	0.0	25.7	38.5#

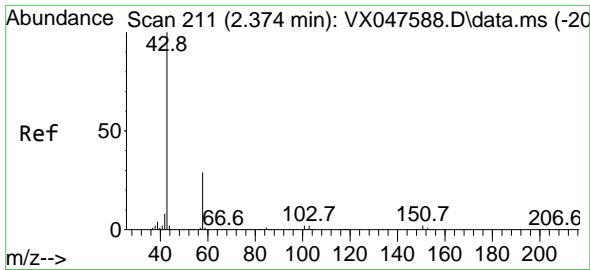


#15
 Acrylonitrile
 Concen: 0.395 ug/l
 RT: 3.081 min Scan# 327
 Delta R.T. 0.018 min
 Lab File: VX047727.D
 Acq: 23 Sep 2025 13:04

Tgt Ion: 53 Resp: 338

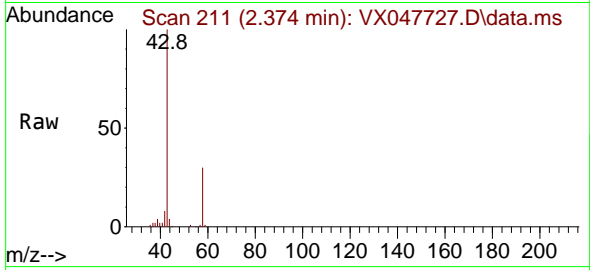
Ion	Ratio	Lower	Upper
53	100		
52	0.0	66.4	99.6#
51	6.5	29.5	44.3#



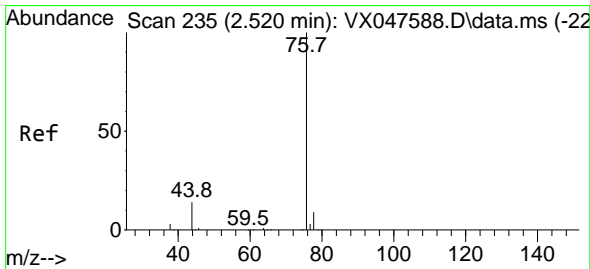
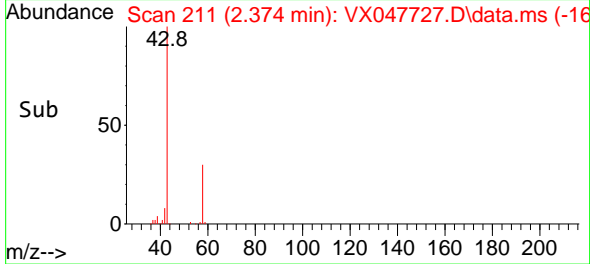
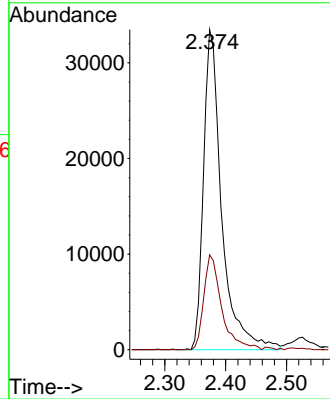


#16
 Acetone
 Concen: 76.885 ug/l
 RT: 2.374 min Scan# 211
 Delta R.T. -0.000 min
 Lab File: VX047727.D
 Acq: 23 Sep 2025 13:04

Instrument : MSVOA_X
 ClientSampleId : BP-VPB-184-EB-20250918

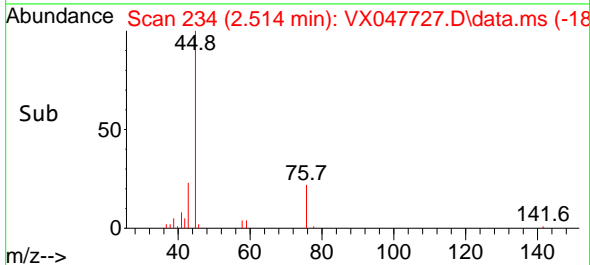
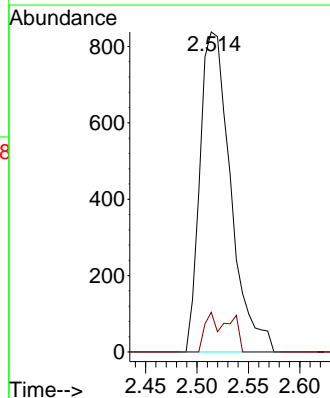
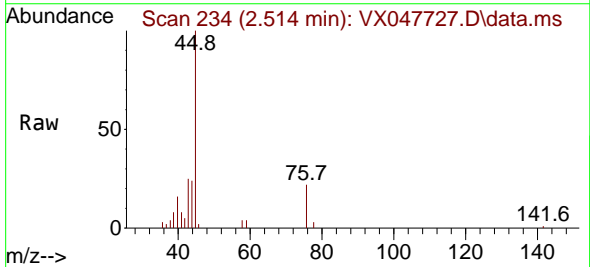


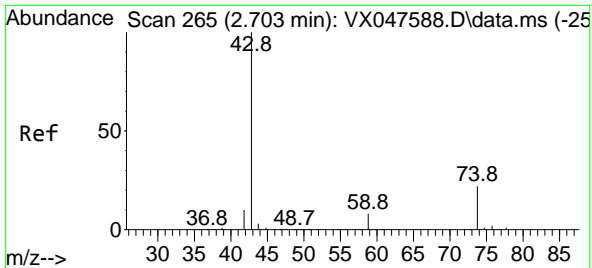
Tgt Ion: 43 Resp: 69407
 Ion Ratio Lower Upper
 43 100
 58 30.2 23.4 35.0



#17
 Carbon Disulfide
 Concen: 0.410 ug/l
 RT: 2.514 min Scan# 234
 Delta R.T. -0.006 min
 Lab File: VX047727.D
 Acq: 23 Sep 2025 13:04

Tgt Ion: 76 Resp: 1739
 Ion Ratio Lower Upper
 76 100
 78 12.4 6.8 10.2

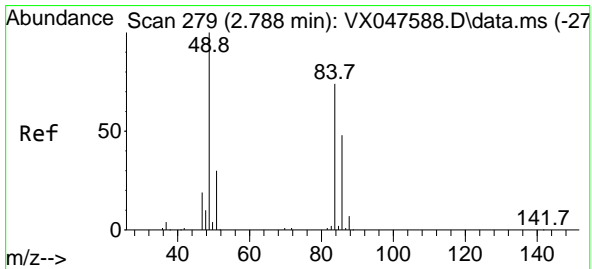
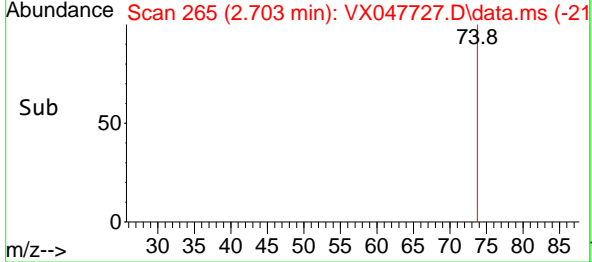
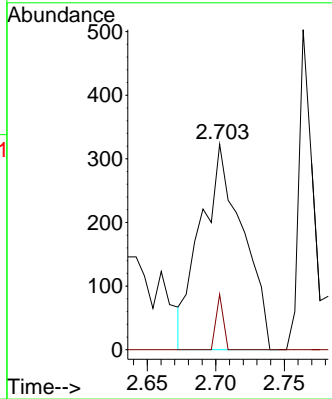
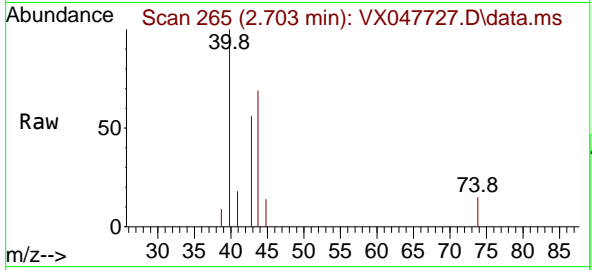




#18
 Methyl Acetate
 Concen: 0.341 ug/l
 RT: 2.703 min Scan# 201
 Delta R.T. -0.000 min
 Lab File: VX047727.D
 Acq: 23 Sep 2025 13:04

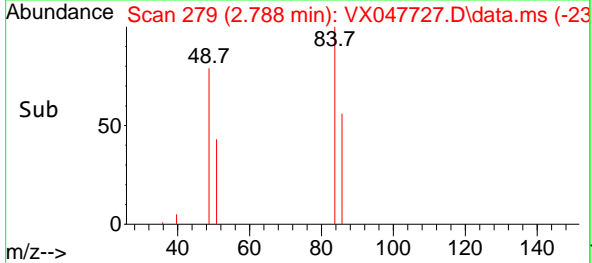
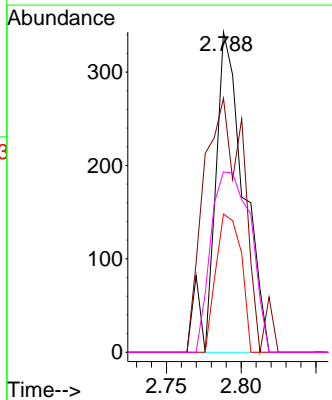
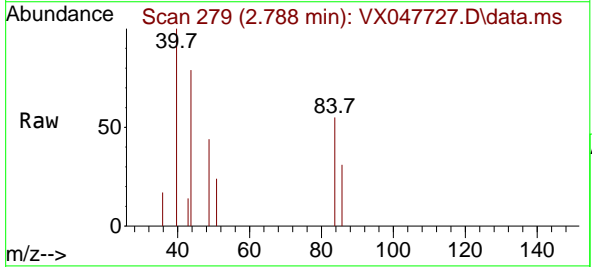
Instrument : MSVOA_X
 ClientSampleId : BP-VPB-184-EB-20250918

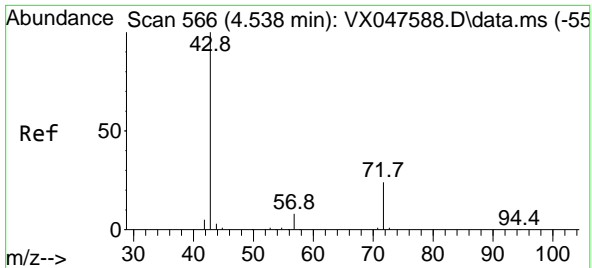
Tgt Ion: 43 Resp: 685
 Ion Ratio Lower Upper
 43 100
 74 4.7 17.4 26.2#



#20
 Methylene Chloride
 Concen: 0.243 ug/l
 RT: 2.788 min Scan# 279
 Delta R.T. -0.000 min
 Lab File: VX047727.D
 Acq: 23 Sep 2025 13:04

Tgt Ion: 84 Resp: 465
 Ion Ratio Lower Upper
 84 100
 49 79.3 108.6 162.8#
 51 43.1 32.6 48.8
 86 56.3 52.0 78.0

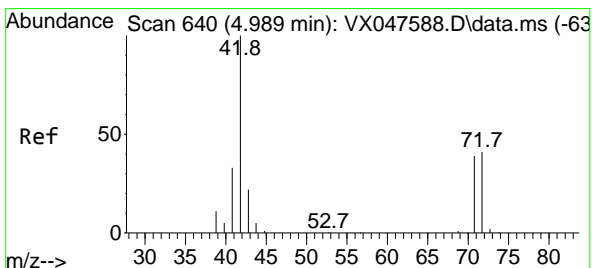
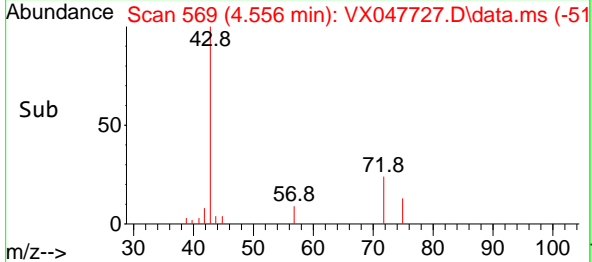
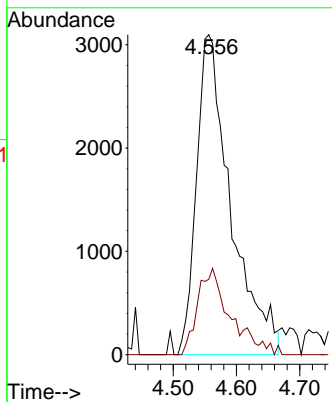
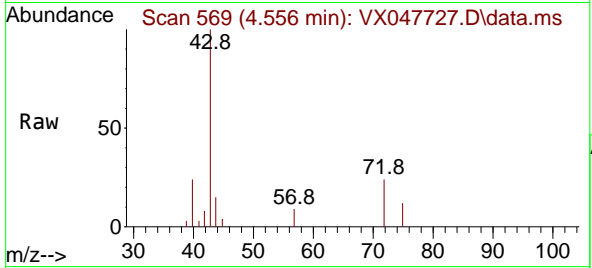




#25
 2-Butanone
 Concen: 10.390 ug/l
 RT: 4.556 min Scan# 569
 Delta R.T. 0.018 min
 Lab File: VX047727.D
 Acq: 23 Sep 2025 13:04

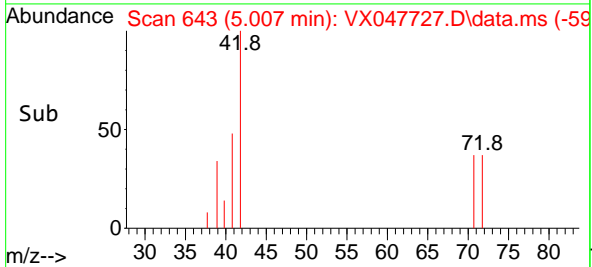
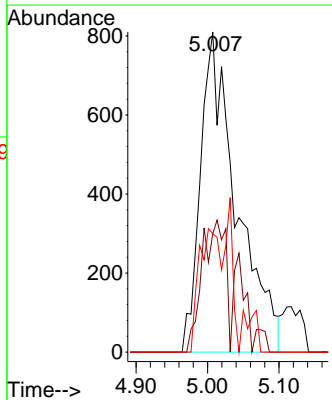
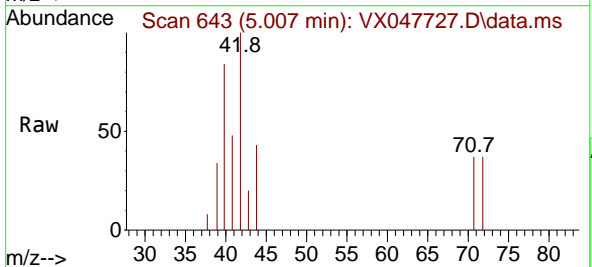
Instrument : MSVOA_X
 ClientSampleId : BP-VPB-184-EB-20250918

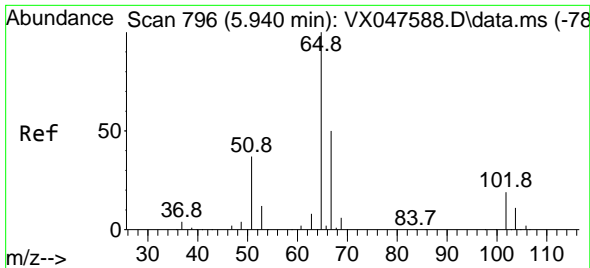
Tgt Ion: 43 Resp: 11700
 Ion Ratio Lower Upper
 43 100
 72 21.9 20.1 30.1



#29
 Tetrahydrofuran
 Concen: 4.190 ug/l
 RT: 5.007 min Scan# 643
 Delta R.T. 0.018 min
 Lab File: VX047727.D
 Acq: 23 Sep 2025 13:04

Tgt Ion: 42 Resp: 2838
 Ion Ratio Lower Upper
 42 100
 72 26.6 34.2 51.2#
 71 22.7 31.9 47.9#

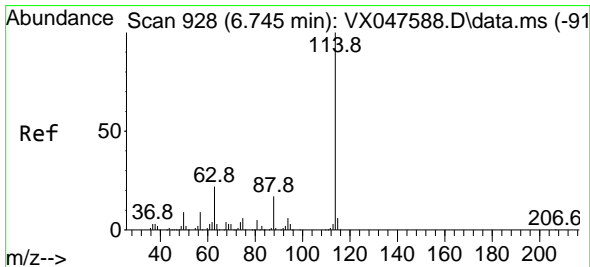
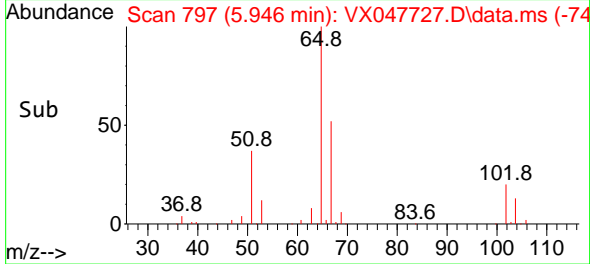
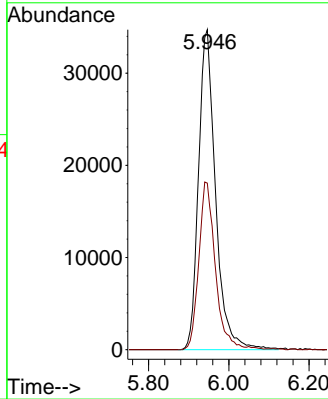
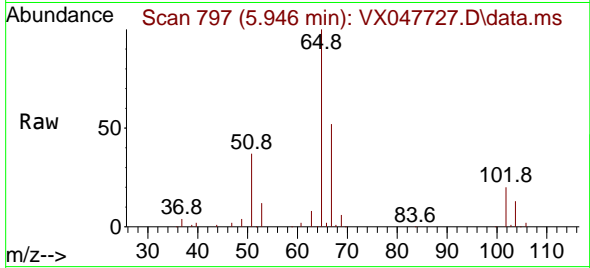




#33
 1,2-Dichloroethane-d4
 Concen: 49.195 ug/l
 RT: 5.946 min Scan# 796
 Delta R.T. 0.006 min
 Lab File: VX047727.D
 Acq: 23 Sep 2025 13:04

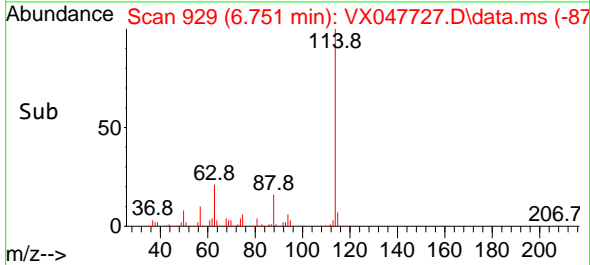
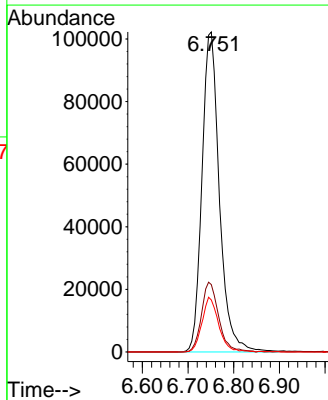
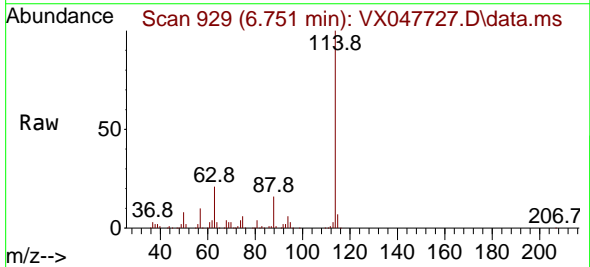
Instrument : MSVOA_X
 ClientSampleId : BP-VPB-184-EB-20250918

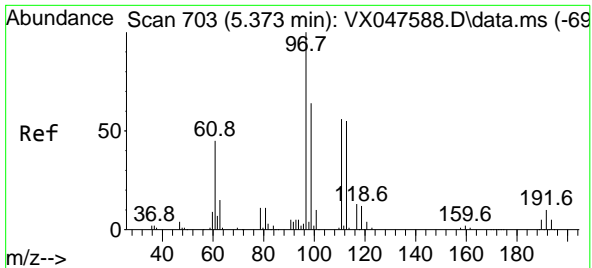
Tgt Ion: 65 Resp: 102139
 Ion Ratio Lower Upper
 65 100
 67 50.7 0.0 103.0



#34
 1,4-Difluorobenzene
 Concen: 50.000 ug/l
 RT: 6.751 min Scan# 929
 Delta R.T. 0.006 min
 Lab File: VX047727.D
 Acq: 23 Sep 2025 13:04

Tgt Ion: 114 Resp: 270519
 Ion Ratio Lower Upper
 114 100
 63 21.0 0.0 44.0
 88 16.3 0.0 34.2

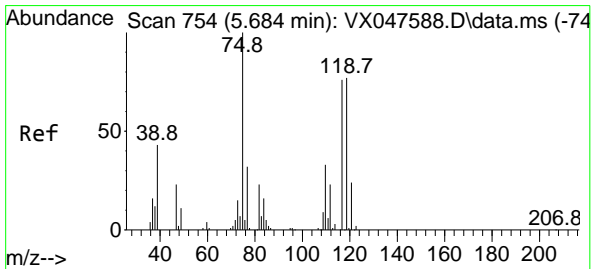
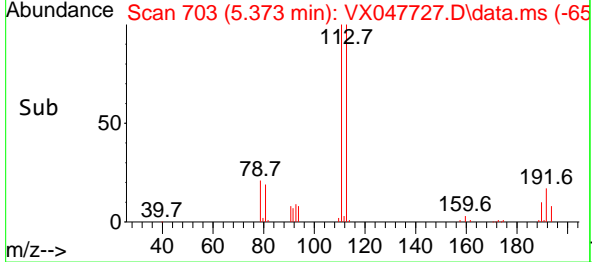
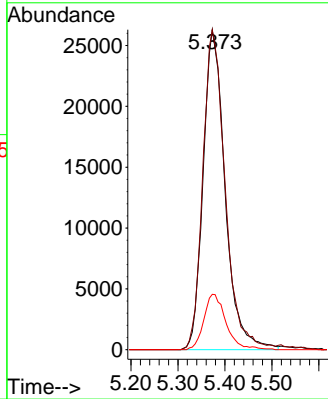
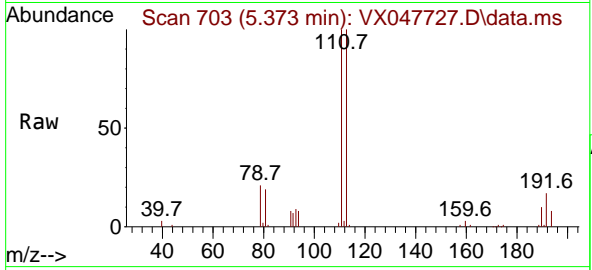




#35
 Dibromofluoromethane
 Concen: 46.999 ug/l
 RT: 5.373 min Scan# 70
 Delta R.T. -0.000 min
 Lab File: VX047727.D
 Acq: 23 Sep 2025 13:04

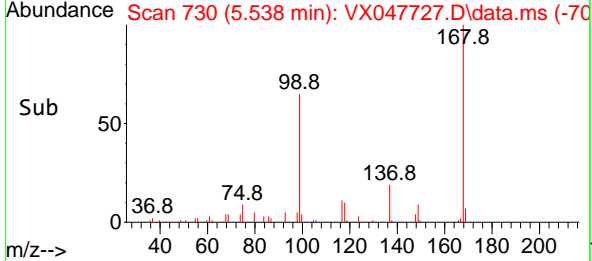
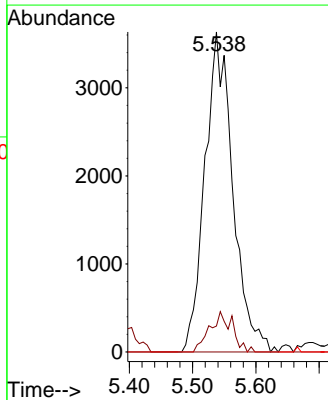
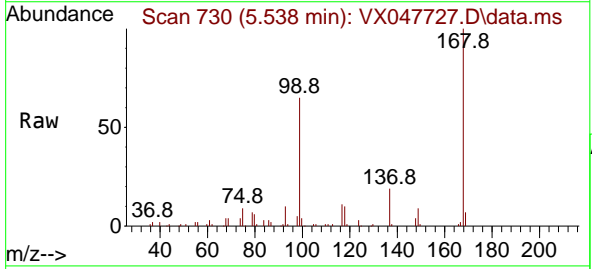
Instrument : MSVOA_X
 ClientSampleId : BP-VPB-184-EB-20250918

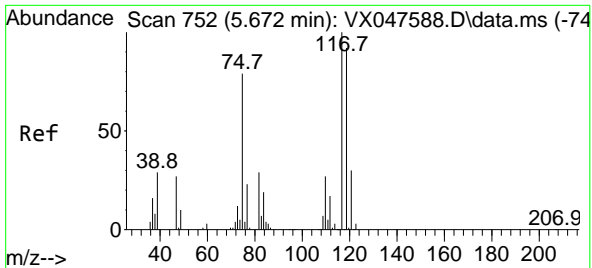
Tgt Ion	Resp	Lower	Upper
113	85268		
113	100		
111	101.7	80.9	121.3
192	17.5	14.2	21.4



#36
 1,1-Dichloropropene
 Concen: 4.208 ug/l
 RT: 5.538 min Scan# 730
 Delta R.T. -0.146 min
 Lab File: VX047727.D
 Acq: 23 Sep 2025 13:04

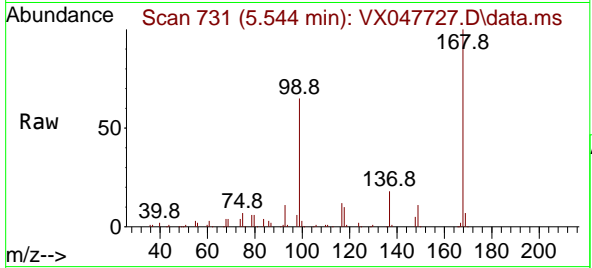
Tgt Ion	Resp	Lower	Upper
75	11155		
75	100		
110	10.2	16.7	50.1#
77	0.0	24.3	36.5#



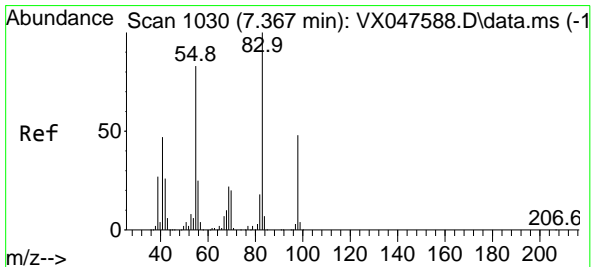
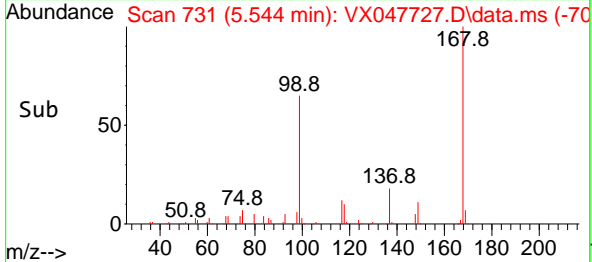
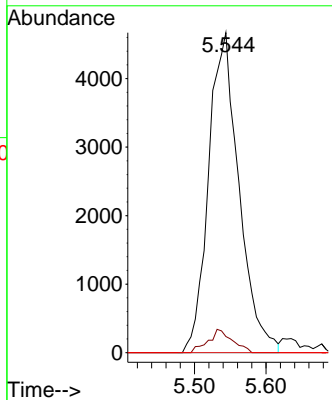


#38
 Carbon Tetrachloride
 Concen: 4.799 ug/l
 RT: 5.544 min Scan# 711
 Delta R.T. -0.128 min
 Lab File: VX047727.D
 Acq: 23 Sep 2025 13:04

Instrument : MSVOA_X
 ClientSampleId : BP-VPB-184-EB-20250918

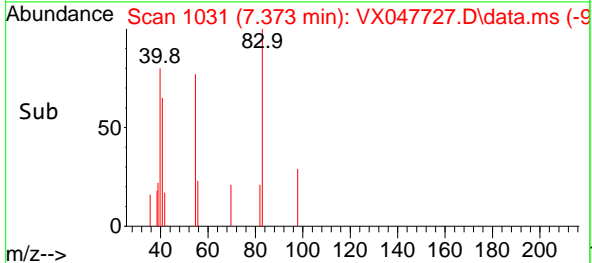
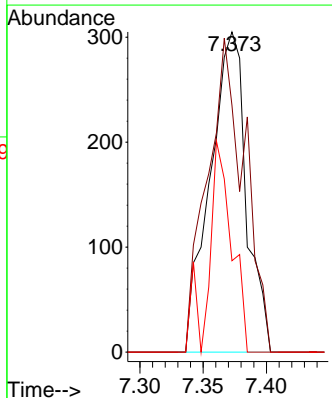
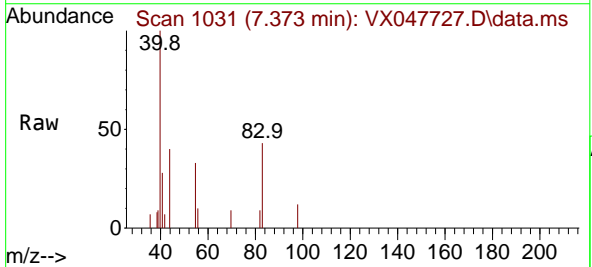


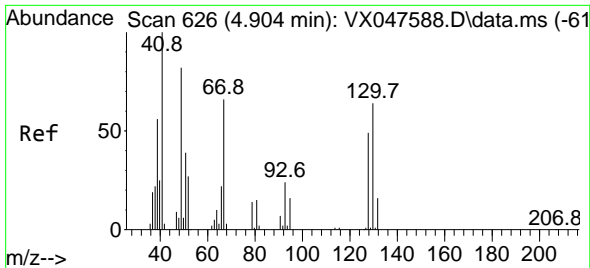
Tgt Ion:117 Resp: 13822
 Ion Ratio Lower Upper
 117 100
 119 5.1 73.4 110.2#
 121 0.0 23.8 35.6#



#39
 Methylcyclohexane
 Concen: 0.202 ug/l
 RT: 7.373 min Scan# 1031
 Delta R.T. 0.006 min
 Lab File: VX047727.D
 Acq: 23 Sep 2025 13:04

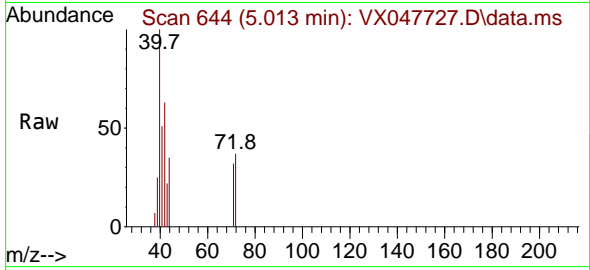
Tgt Ion: 83 Resp: 608
 Ion Ratio Lower Upper
 83 100
 55 100.0 66.4 99.6#
 98 28.5 38.1 57.1#





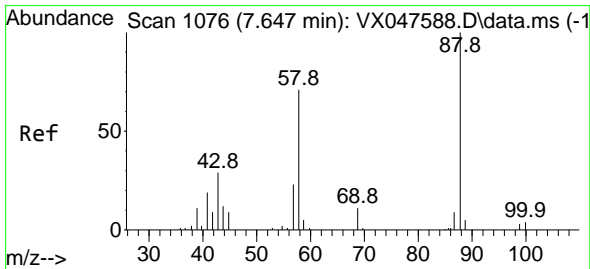
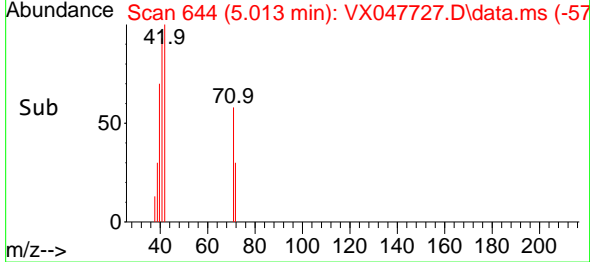
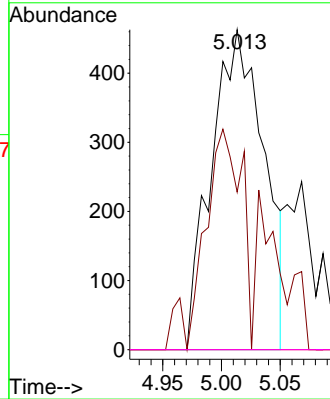
#41
 Methacrylonitrile
 Concen: 0.987 ug/l
 RT: 5.013 min Scan# 644
 Delta R.T. 0.110 min
 Lab File: VX047727.D
 Acq: 23 Sep 2025 13:04

Instrument : MSVOA_X
 ClientSampleId : BP-VPB-184-EB-20250918



Tgt Ion: 41 Resp: 1446

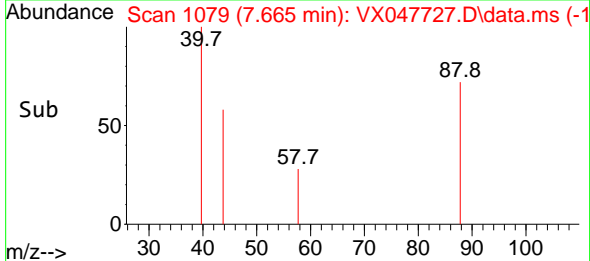
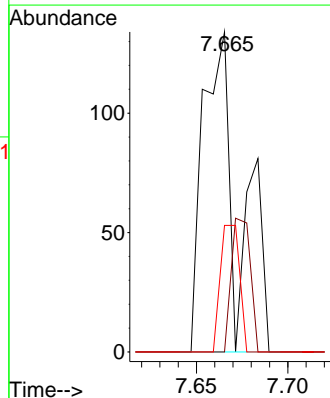
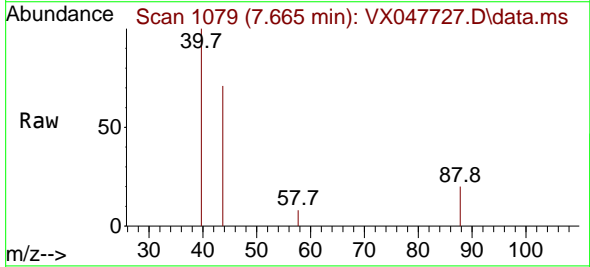
Ion	Ratio	Lower	Upper
41	100		
39	49.4	43.3	64.9
67	0.0	58.6	87.8#
52	0.0	26.0	39.0#

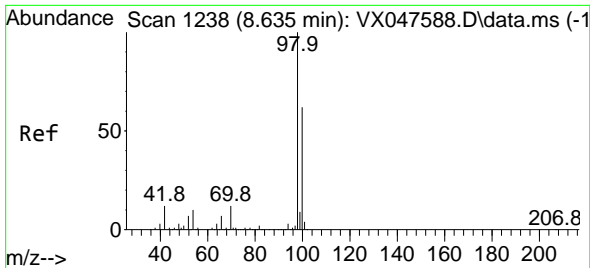


#49
 1,4-Dioxane
 Concen: 7.809 ug/l
 RT: 7.665 min Scan# 1079
 Delta R.T. 0.018 min
 Lab File: VX047727.D
 Acq: 23 Sep 2025 13:04

Tgt Ion: 88 Resp: 183

Ion	Ratio	Lower	Upper
88	100		
43	21.9	30.2	45.2#
58	21.3	59.5	89.3#

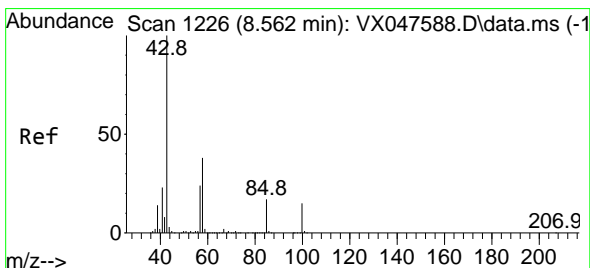
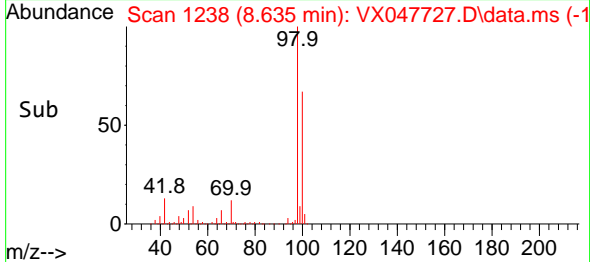
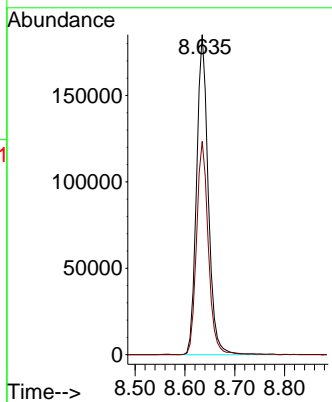
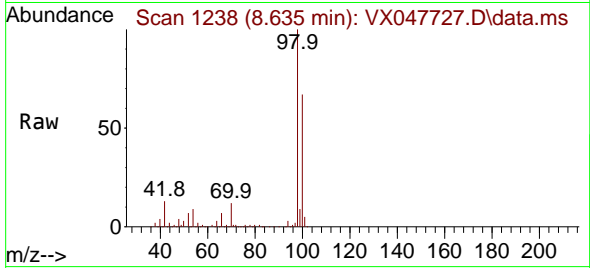




#50
 Toluene-d8
 Concen: 47.903 ug/l
 RT: 8.635 min Scan# 1238
 Delta R.T. -0.000 min
 Lab File: VX047727.D
 Acq: 23 Sep 2025 13:04

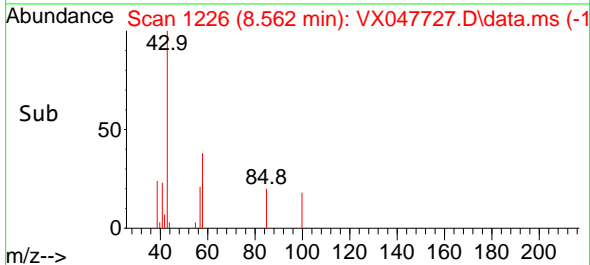
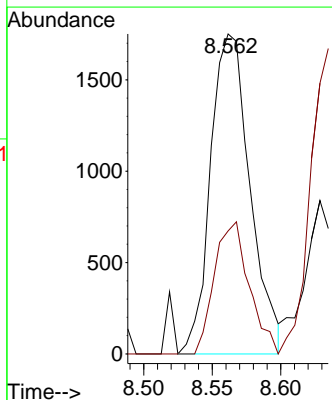
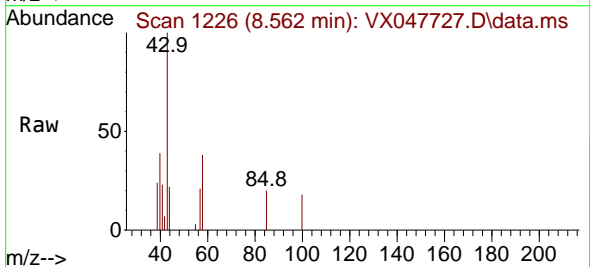
Instrument : MSVOA_X
 ClientSampleId : BP-VPB-184-EB-20250918

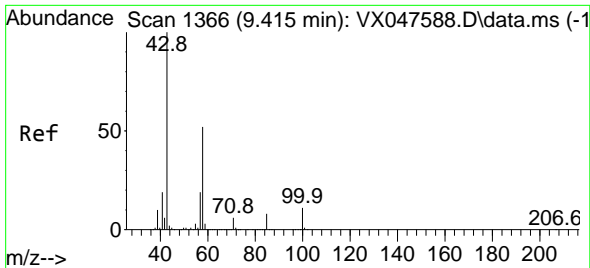
Tgt Ion: 98 Resp: 300718
 Ion Ratio Lower Upper
 98 100
 100 67.1 53.0 79.4



#51
 4-Methyl-2-Pentanone
 Concen: 1.363 ug/l
 RT: 8.562 min Scan# 1226
 Delta R.T. -0.000 min
 Lab File: VX047727.D
 Acq: 23 Sep 2025 13:04

Tgt Ion: 43 Resp: 3517
 Ion Ratio Lower Upper
 43 100
 58 36.2 30.3 45.5

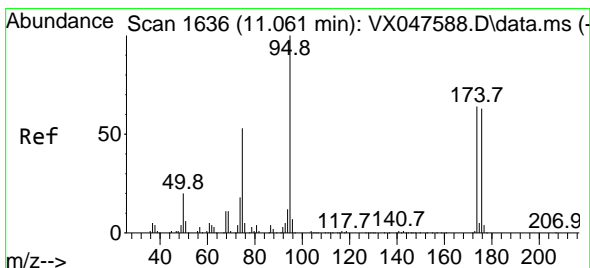
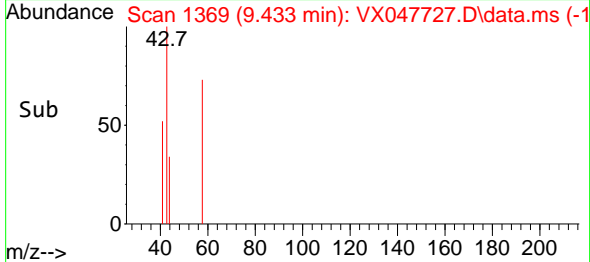
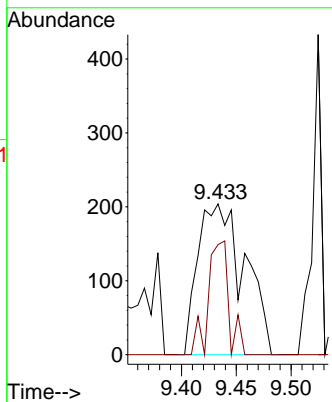
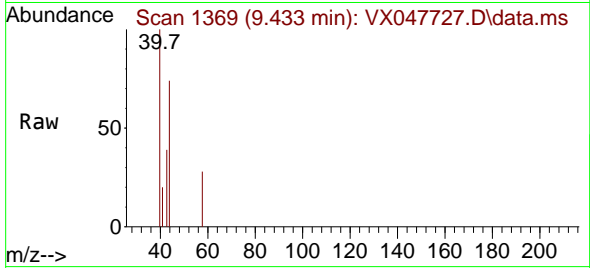




#59
 2-Hexanone
 Concen: 0.327 ug/l
 RT: 9.433 min Scan# 11
 Delta R.T. 0.018 min
 Lab File: VX047727.D
 Acq: 23 Sep 2025 13:04

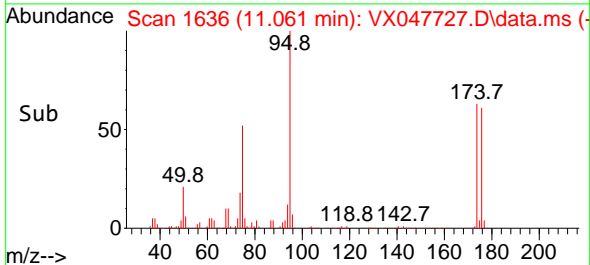
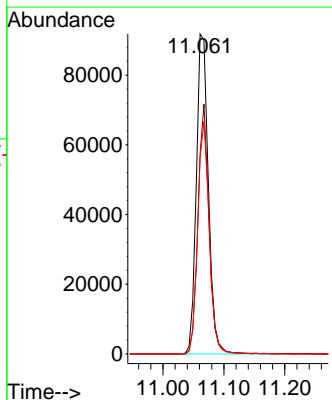
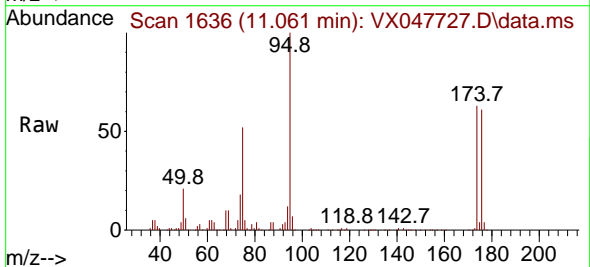
Instrument :
 MSVOA_X
 ClientSampleId :
 BP-VPB-184-EB-20250918

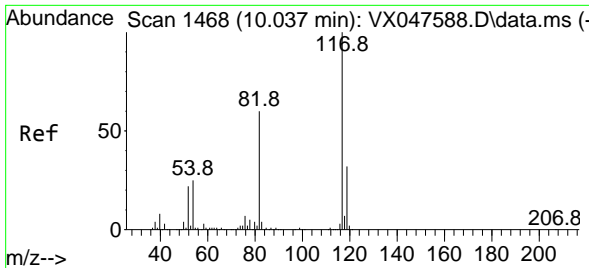
Tgt Ion: 43 Resp: 607
 Ion Ratio Lower Upper
 43 100
 58 32.8 26.1 78.2



#62
 4-Bromofluorobenzene
 Concen: 52.966 ug/l
 RT: 11.061 min Scan# 1636
 Delta R.T. -0.000 min
 Lab File: VX047727.D
 Acq: 23 Sep 2025 13:04

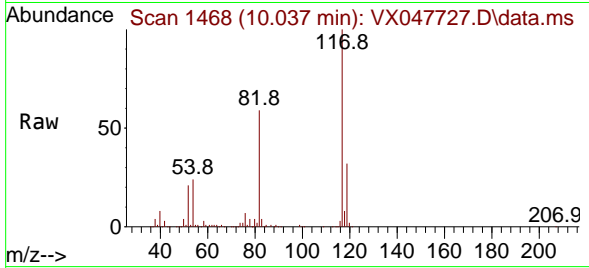
Tgt Ion: 95 Resp: 126191
 Ion Ratio Lower Upper
 95 100
 174 71.5 0.0 141.6
 176 69.3 0.0 138.4





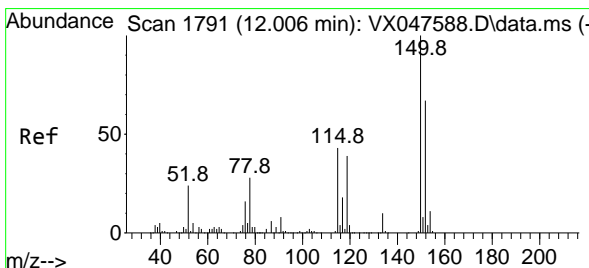
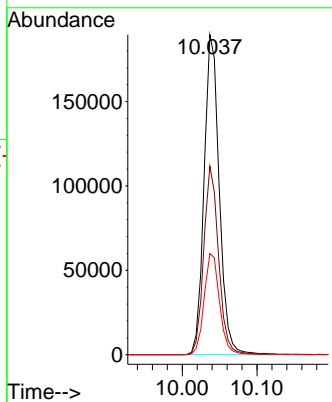
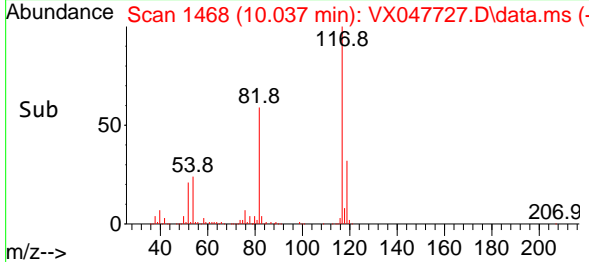
#63
 Chlorobenzene-d5
 Concen: 50.000 ug/l
 RT: 10.037 min Scan# 1468
 Delta R.T. -0.000 min
 Lab File: VX047727.D
 Acq: 23 Sep 2025 13:04

Instrument : MSVOA_X
 ClientSampleId : BP-VPB-184-EB-20250918

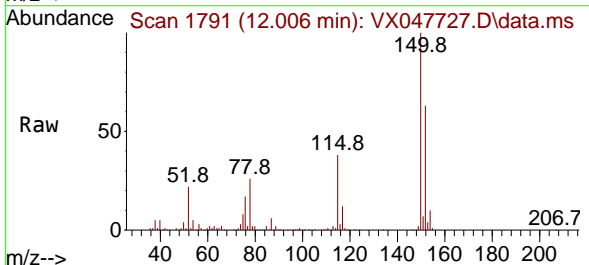


Tgt Ion:117 Resp: 267539

Ion	Ratio	Lower	Upper
117	100		
82	58.9	47.8	71.6
119	31.6	25.2	37.8

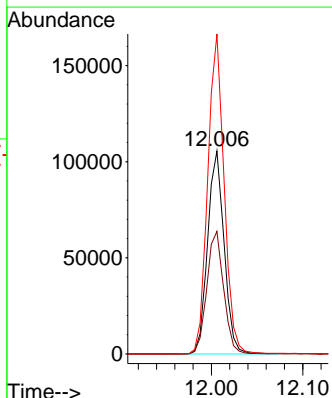
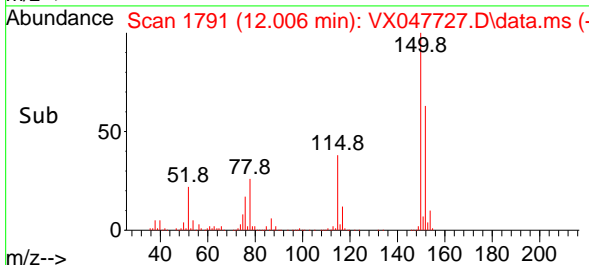


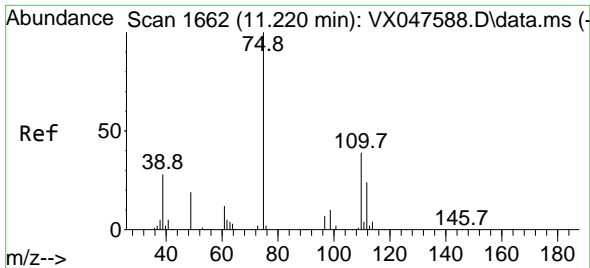
#72
 1,4-Dichlorobenzene-d4
 Concen: 50.000 ug/l
 RT: 12.006 min Scan# 1791
 Delta R.T. -0.000 min
 Lab File: VX047727.D
 Acq: 23 Sep 2025 13:04



Tgt Ion:152 Resp: 132169

Ion	Ratio	Lower	Upper
152	100		
115	61.6	44.9	134.5
150	156.8	0.0	352.0

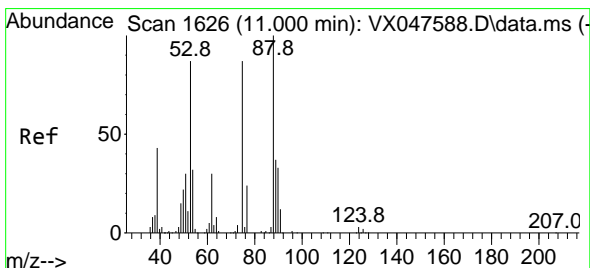
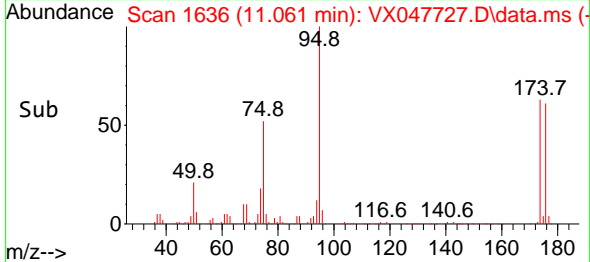
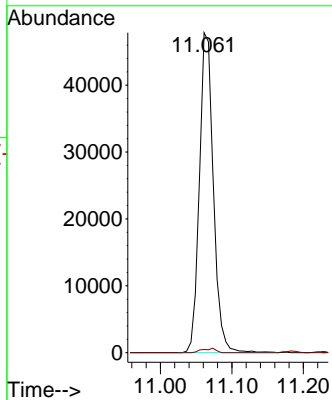
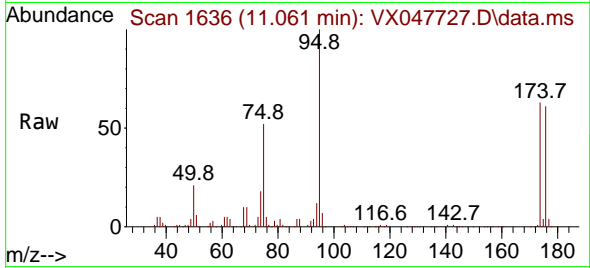




#76
 1,2,3-Trichloropropane
 Concen: 24.354 ug/l
 RT: 11.061 min Scan# 1636
 Delta R.T. -0.159 min
 Lab File: VX047727.D
 Acq: 23 Sep 2025 13:04

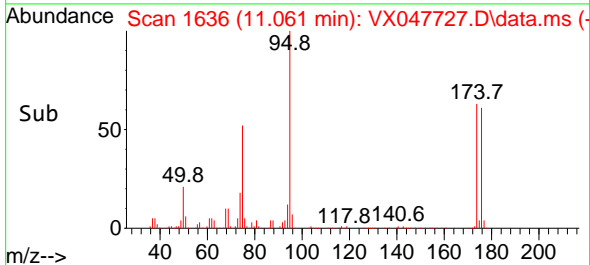
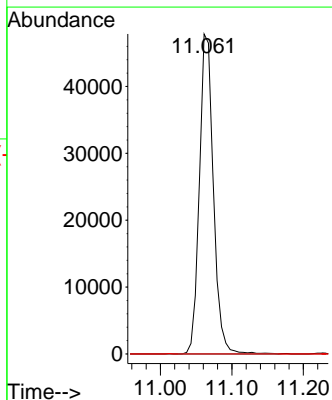
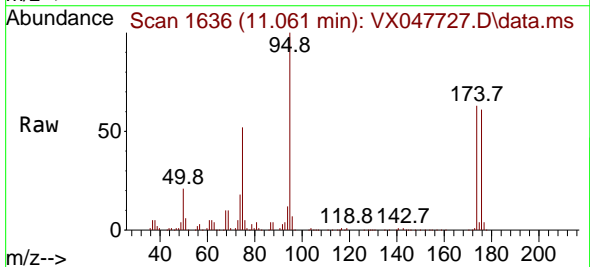
Instrument : MSVOA_X
 ClientSampleId : BP-VPB-184-EB-20250918

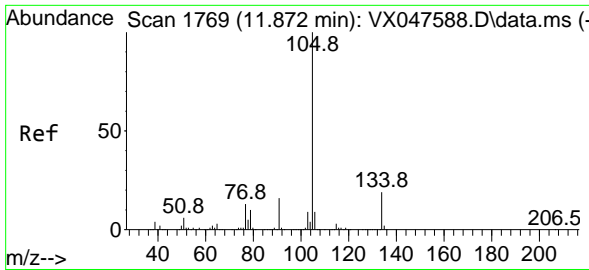
Tgt Ion: 75 Resp: 65172
 Ion Ratio Lower Upper
 75 100
 77 1.3 18.8 56.4#



#81
 trans-1,4-Dichloro-2-butene
 Concen: 62.107 ug/l
 RT: 11.061 min Scan# 1636
 Delta R.T. 0.061 min
 Lab File: VX047727.D
 Acq: 23 Sep 2025 13:04

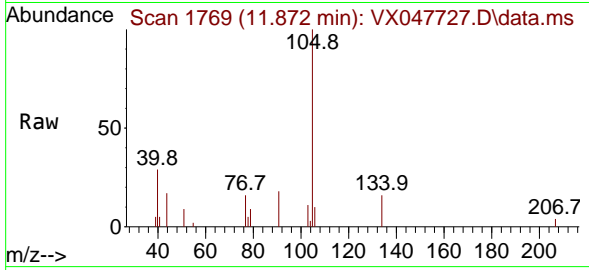
Tgt Ion: 75 Resp: 65172
 Ion Ratio Lower Upper
 75 100
 53 0.0 83.4 125.2#
 89 0.0 36.3 54.5#



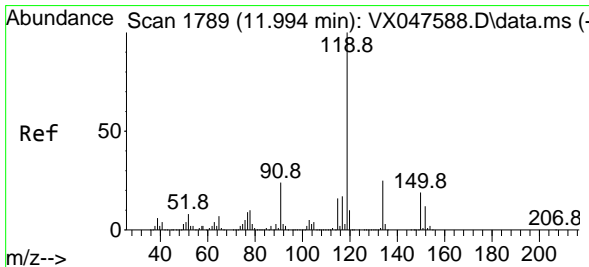
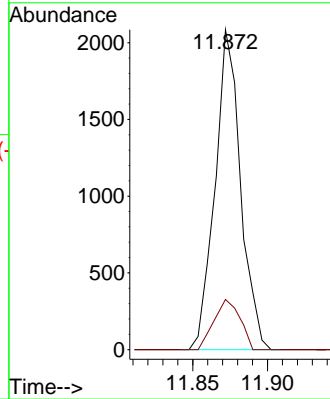
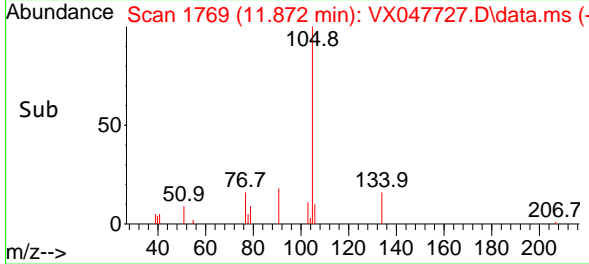


#85
 sec-Butylbenzene
 Concen: 0.246 ug/l
 RT: 11.872 min Scan# 1769
 Delta R.T. -0.000 min
 Lab File: VX047727.D
 Acq: 23 Sep 2025 13:04

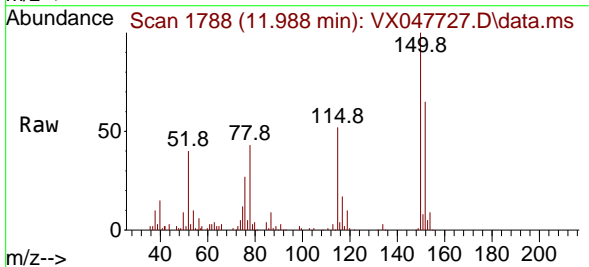
Instrument : MSVOA_X
 ClientSampleId : BP-VPB-184-EB-20250918



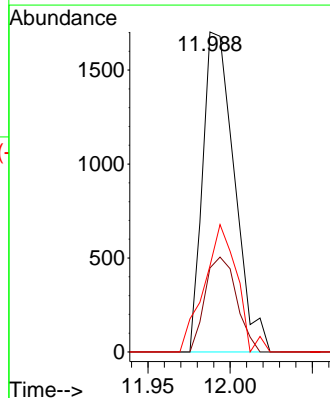
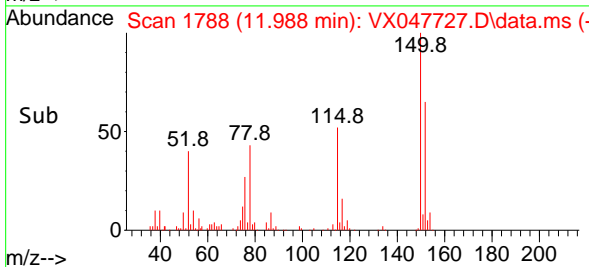
Tgt Ion:105 Resp: 2471
 Ion Ratio Lower Upper
 105 100
 134 16.0 9.8 29.5

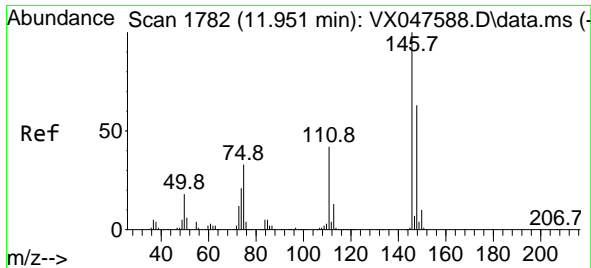


#86
 p-Isopropyltoluene
 Concen: 0.268 ug/l
 RT: 11.988 min Scan# 1788
 Delta R.T. -0.006 min
 Lab File: VX047727.D
 Acq: 23 Sep 2025 13:04



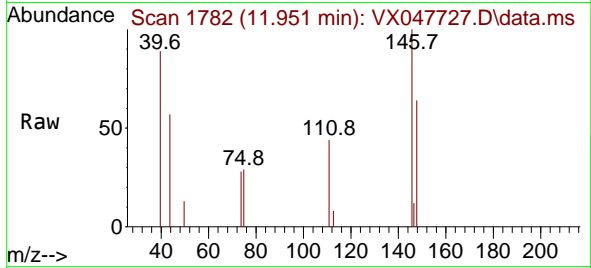
Tgt Ion:119 Resp: 2275
 Ion Ratio Lower Upper
 119 100
 134 29.5 12.6 37.8
 91 41.2 12.6 37.6#





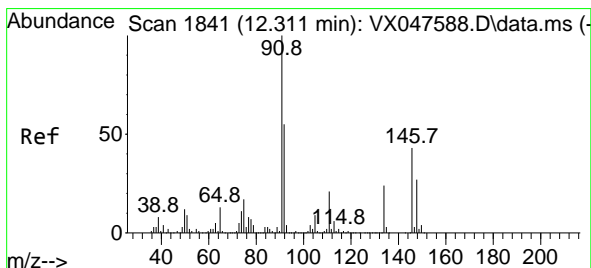
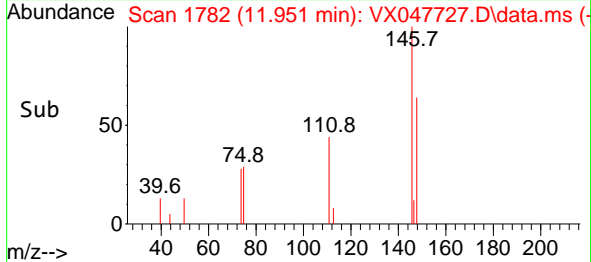
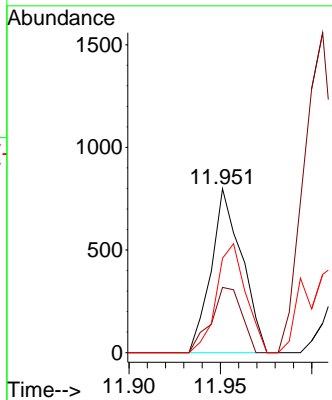
#87
 1,3-Dichlorobenzene
 Concen: 0.203 ug/l
 RT: 11.951 min Scan# 1782
 Delta R.T. -0.000 min
 Lab File: VX047727.D
 Acq: 23 Sep 2025 13:04

Instrument : MSVOA_X
 ClientSampleId : BP-VPB-184-EB-20250918



Tgt Ion:146 Resp: 935

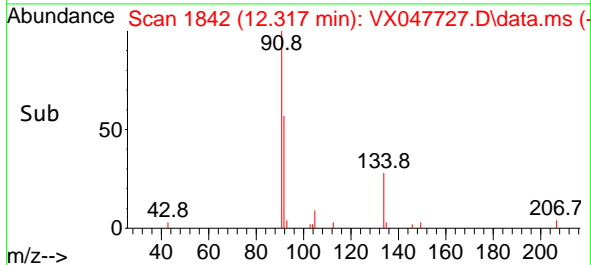
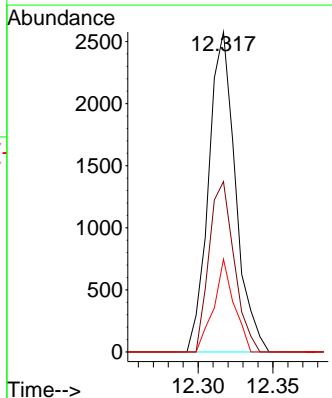
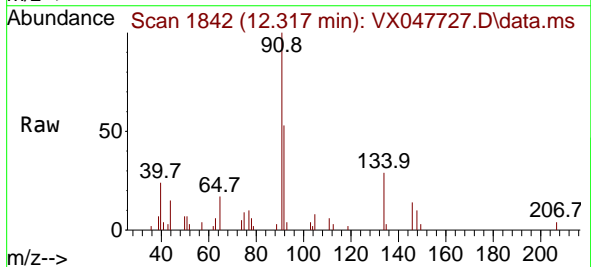
Ion	Ratio	Lower	Upper
146	100		
111	39.7	21.5	64.5
148	63.6	32.0	96.0

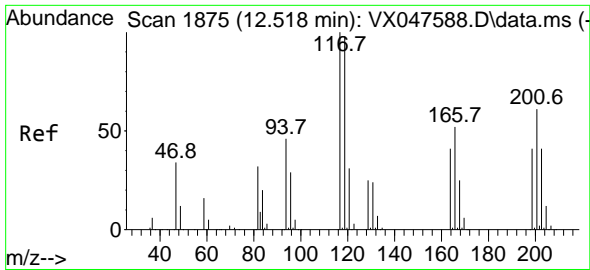


#89
 n-Butylbenzene
 Concen: 0.409 ug/l
 RT: 12.317 min Scan# 1842
 Delta R.T. 0.006 min
 Lab File: VX047727.D
 Acq: 23 Sep 2025 13:04

Tgt Ion: 91 Resp: 3216

Ion	Ratio	Lower	Upper
91	100		
92	49.8	27.6	82.7
134	21.9	12.6	37.8

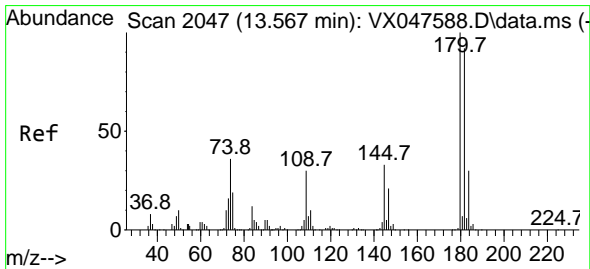
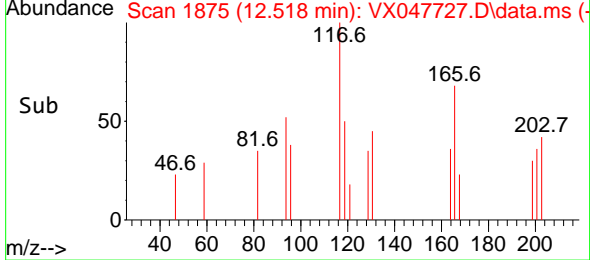
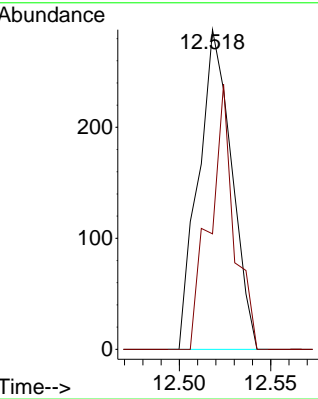
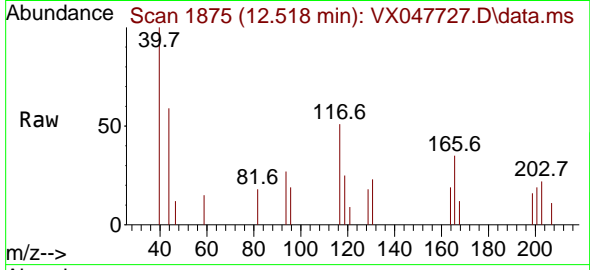




#90
 Hexachloroethane
 Concen: 0.244 ug/l
 RT: 12.518 min Scan# 117
 Delta R.T. -0.000 min
 Lab File: VX047727.D
 Acq: 23 Sep 2025 13:04

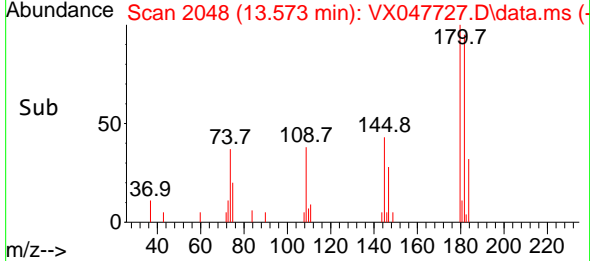
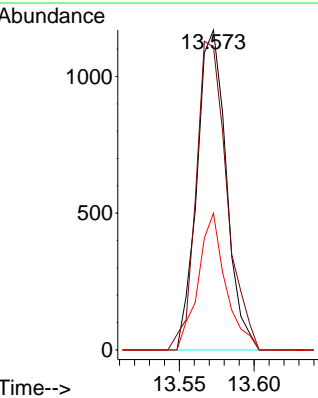
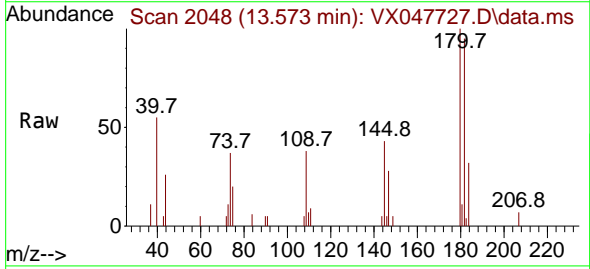
Instrument : MSVOA_X
 ClientSampleId : BP-VPB-184-EB-20250918

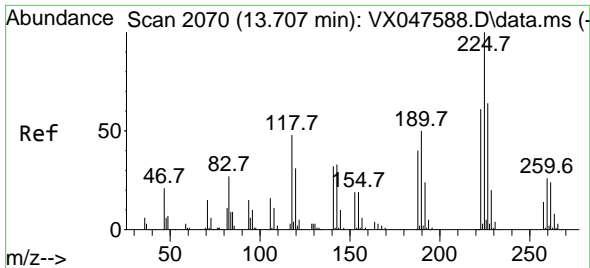
Tgt Ion:117 Resp: 364
 Ion Ratio Lower Upper
 117 100
 201 60.4 34.2 102.5



#93
 1,2,4-Trichlorobenzene
 Concen: 0.559 ug/l
 RT: 13.573 min Scan# 2048
 Delta R.T. 0.006 min
 Lab File: VX047727.D
 Acq: 23 Sep 2025 13:04

Tgt Ion:180 Resp: 1592
 Ion Ratio Lower Upper
 180 100
 182 101.3 46.6 139.8
 145 40.1 16.4 49.1

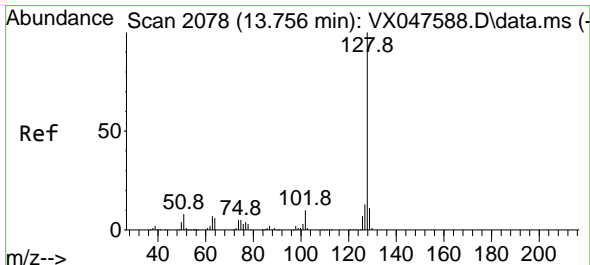
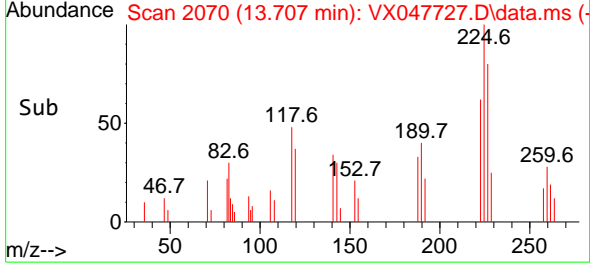
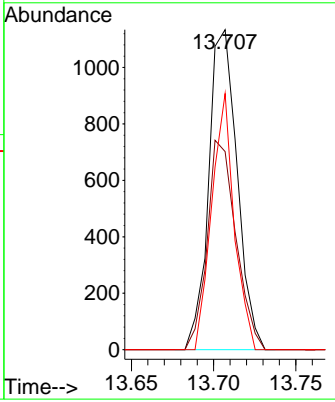
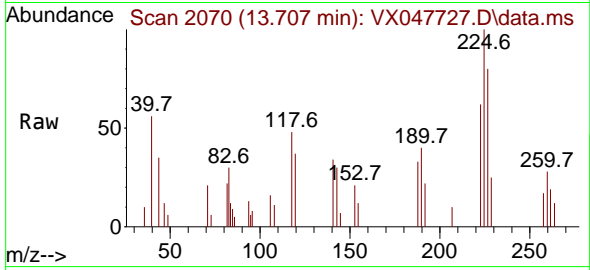




#94
 Hexachlorobutadiene
 Concen: 1.413 ug/l
 RT: 13.707 min Scan# 2070
 Delta R.T. -0.000 min
 Lab File: VX047727.D
 Acq: 23 Sep 2025 13:04

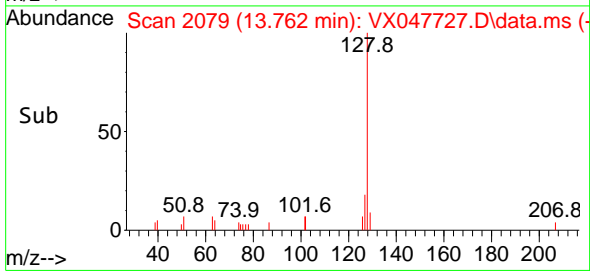
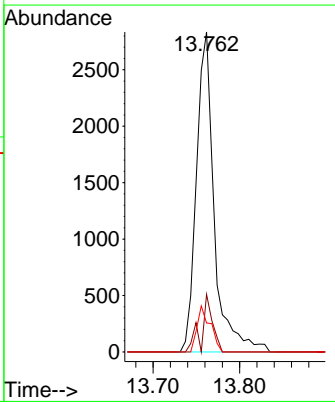
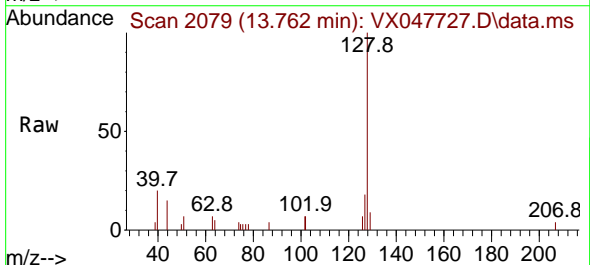
Instrument : MSVOA_X
 ClientSampleId : BP-VPB-184-EB-20250918

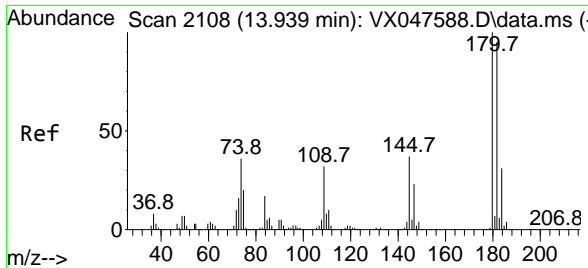
Tgt Ion	Resp	Lower	Upper
225	100		
223	66.1	31.7	95.1
227	63.0	32.0	96.0



#95
 Naphthalene
 Concen: 0.467 ug/l
 RT: 13.762 min Scan# 2079
 Delta R.T. 0.006 min
 Lab File: VX047727.D
 Acq: 23 Sep 2025 13:04

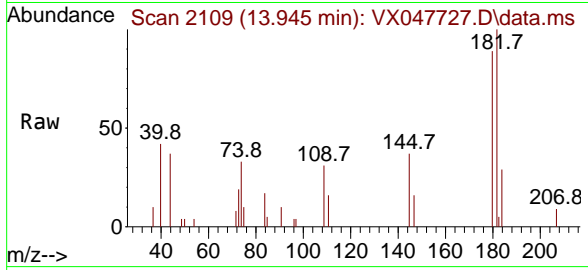
Tgt Ion	Resp	Lower	Upper
128	100		
127	11.3	10.2	15.2
129	10.6	8.8	13.2





#96
 1,2,3-Trichlorobenzene
 Concen: 0.617 ug/l
 RT: 13.945 min Scan# 21
 Delta R.T. 0.006 min
 Lab File: VX047727.D
 Acq: 23 Sep 2025 13:04

Instrument : MSVOA_X
 ClientSampleId : BP-VPB-184-EB-20250918



Tgt Ion:180 Resp: 1634

Ion	Ratio	Lower	Upper
180	100		
182	101.1	47.6	142.8
145	42.0	17.9	53.7

