

Data Path : Z:\voasrv\HPCHEM1\MSVOA\_X\Data\VX092325\  
 Data File : VX047728.D  
 Acq On : 23 Sep 2025 13:25  
 Operator : JC/MD  
 Sample : Q3097-18  
 Misc : 5.0mL/MSVOA\_X/WATER  
 ALS Vial : 11 Sample Multiplier: 1

Instrument :  
 MSVOA\_X  
 ClientSampleId :  
 TB05-20250912

Quant Time: Sep 24 01:31:57 2025  
 Quant Method : Z:\voasrv\HPCHEM1\MSVOA\_X\Method\82X091625W.M  
 Quant Title : SW846 8260  
 QLast Update : Wed Sep 17 06:39:58 2025  
 Response via : Initial Calibration

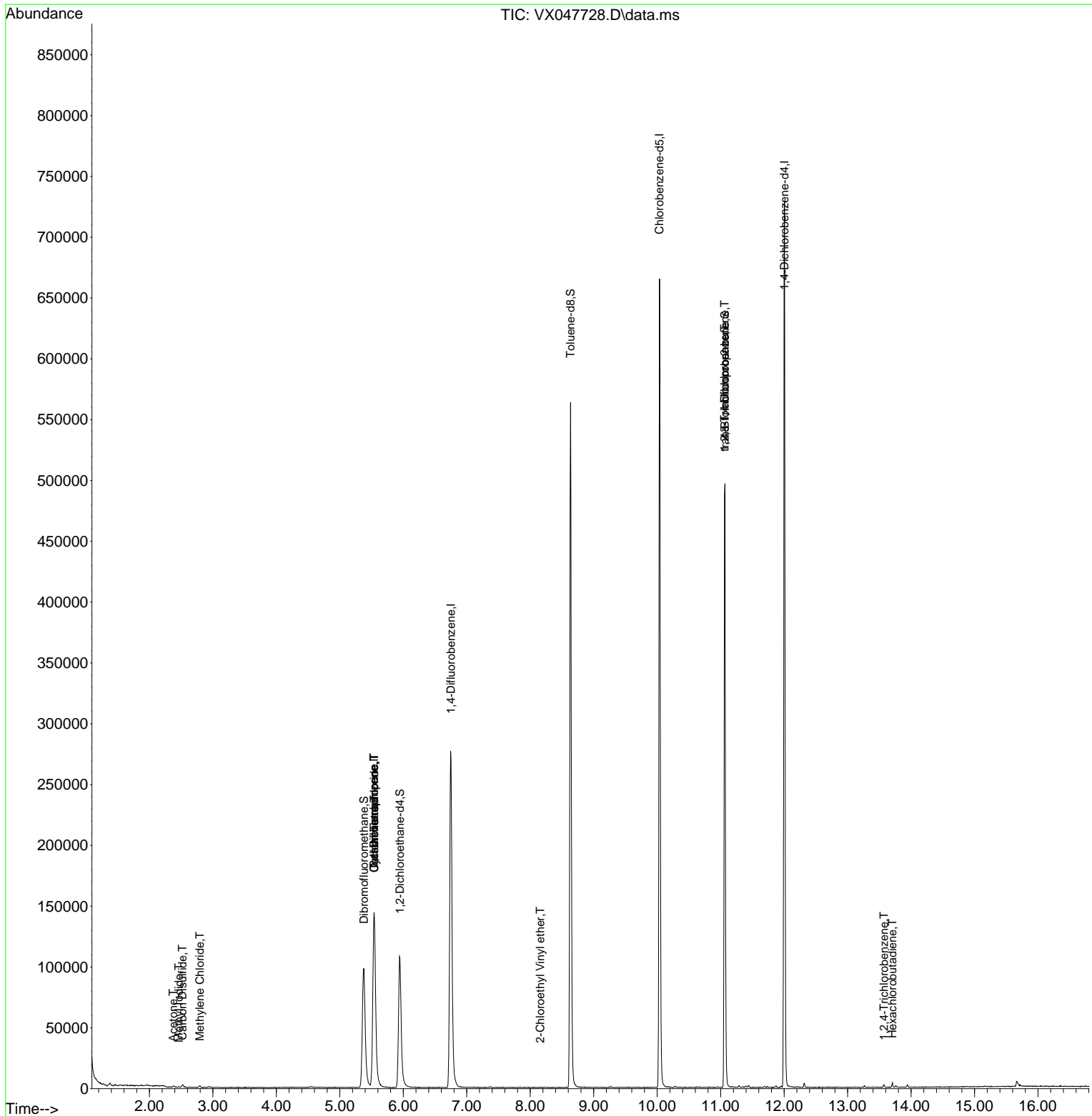
Compound	R.T.	QIon	Response	Conc	Units	Dev(Min)
-----						
Internal Standards						
1) Pentafluorobenzene	5.538	168	147598	50.000	ug/l	0.00
34) 1,4-Difluorobenzene	6.751	114	303576	50.000	ug/l	0.00
63) Chlorobenzene-d5	10.037	117	304061	50.000	ug/l	0.00
72) 1,4-Dichlorobenzene-d4	12.006	152	151284	50.000	ug/l	0.00
System Monitoring Compounds						
33) 1,2-Dichloroethane-d4	5.946	65	117780	50.132	ug/l	0.00
Spiked Amount	50.000	Range 78 - 117	Recovery	=	100.260%	
35) Dibromofluoromethane	5.379	113	97811	48.042	ug/l	0.00
Spiked Amount	50.000	Range 75 - 124	Recovery	=	96.080%	
50) Toluene-d8	8.635	98	343858	48.810	ug/l	0.00
Spiked Amount	50.000	Range 92 - 112	Recovery	=	97.620%	
62) 4-Bromofluorobenzene	11.067	95	144795	54.157	ug/l	0.00
Spiked Amount	50.000	Range 83 - 123	Recovery	=	108.320%	
Target Compounds						
						Qvalue
10) Methyl Iodide	2.465	142	545	0.205	ug/l #	85
16) Acetone	2.374	43	1757	1.720	ug/l #	85
17) Carbon Disulfide	2.520	76	1737	0.362	ug/l #	90
20) Methylene Chloride	2.794	84	626	0.290	ug/l #	81
31) Cyclohexane	5.544	56	3495	1.126	ug/l #	13
36) 1,1-Dichloropropene	5.538	75	12628	4.245	ug/l #	51
38) Carbon Tetrachloride	5.544	117	15218	4.708	ug/l #	17
58) 2-Chloroethyl Vinyl ether	8.159	63	285	8.070	ug/l #	47
76) 1,2,3-Trichloropropane	11.061	75	74897	24.452	ug/l #	38
81) trans-1,4-Dichloro-2-b...	11.061	75	74897	62.356	ug/l #	8
93) 1,2,4-Trichlorobenzene	13.573	180	699	0.215	ug/l	98
94) Hexachlorobutadiene	13.707	225	552	0.499	ug/l	90
-----						

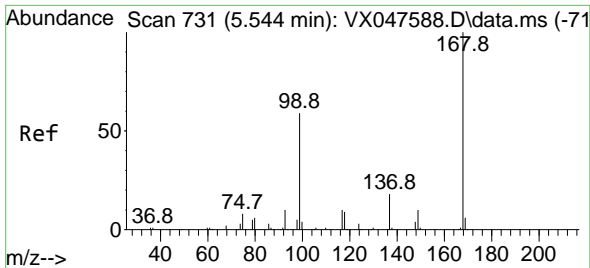
(#) = qualifier out of range (m) = manual integration (+) = signals summed

Data Path : Z:\voasrv\HPCHEM1\MSVOA\_X\Data\VX092325\  
 Data File : VX047728.D  
 Acq On : 23 Sep 2025 13:25  
 Operator : JC/MD  
 Sample : Q3097-18  
 Misc : 5.0mL/MSVOA\_X/WATER  
 ALS Vial : 11 Sample Multiplier: 1

Instrument :  
 MSVOA\_X  
 ClientSampleId :  
 TB05-20250912

Quant Time: Sep 24 01:31:57 2025  
 Quant Method : Z:\voasrv\HPCHEM1\MSVOA\_X\Method\82X091625W.M  
 Quant Title : SW846 8260  
 QLast Update : Wed Sep 17 06:39:58 2025  
 Response via : Initial Calibration

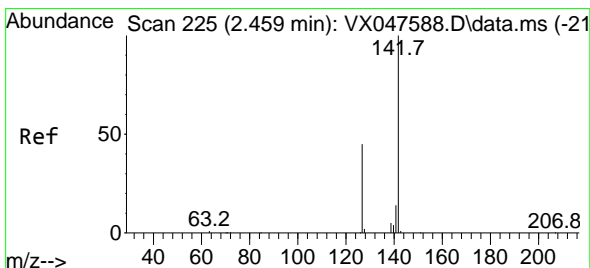
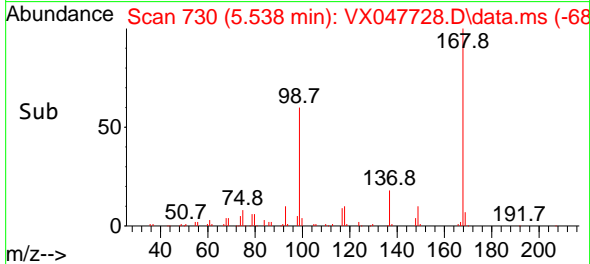
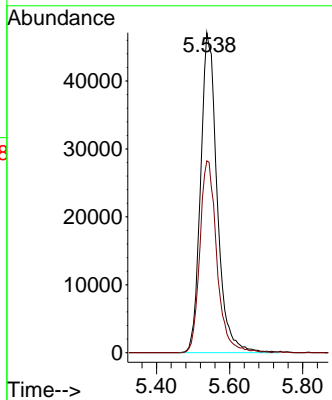
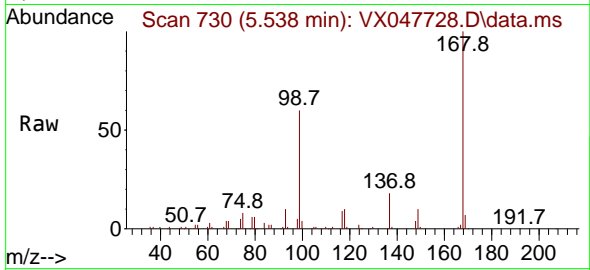




#1  
 Pentafluorobenzene  
 Concen: 50.000 ug/l  
 RT: 5.538 min Scan# 71  
 Delta R.T. -0.006 min  
 Lab File: VX047728.D  
 Acq: 23 Sep 2025 13:25

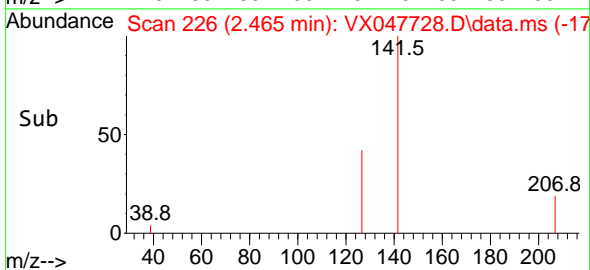
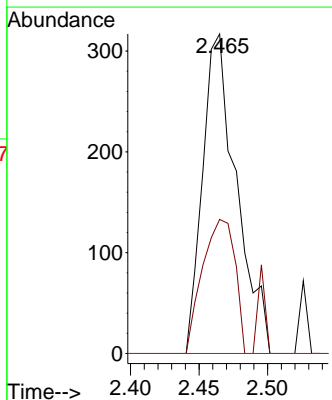
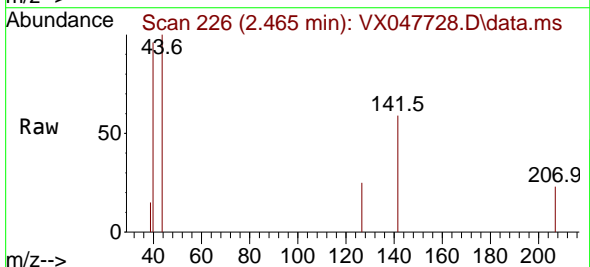
Instrument :  
 MSVOA\_X  
 ClientSampleId :  
 TB05-20250912

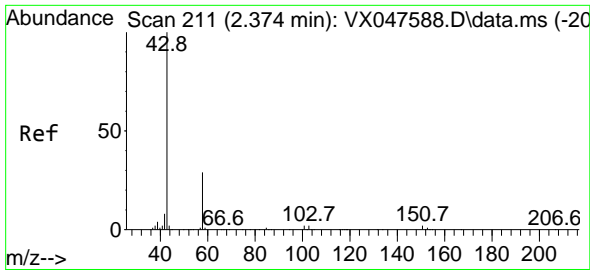
Tgt Ion:168 Resp: 147598  
 Ion Ratio Lower Upper  
 168 100  
 99 60.0 48.8 73.2



#10  
 Methyl Iodide  
 Concen: 0.205 ug/l  
 RT: 2.465 min Scan# 226  
 Delta R.T. 0.006 min  
 Lab File: VX047728.D  
 Acq: 23 Sep 2025 13:25

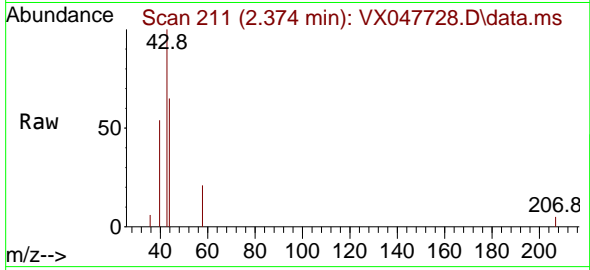
Tgt Ion:142 Resp: 545  
 Ion Ratio Lower Upper  
 142 100  
 127 40.4 37.2 55.8  
 141 0.0 11.4 17.0#



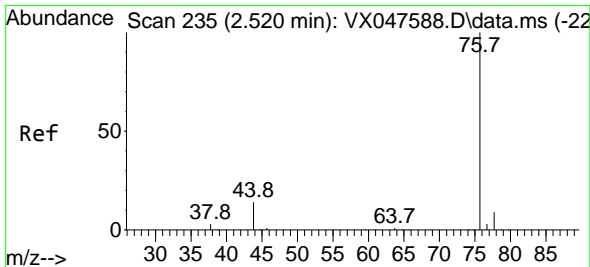
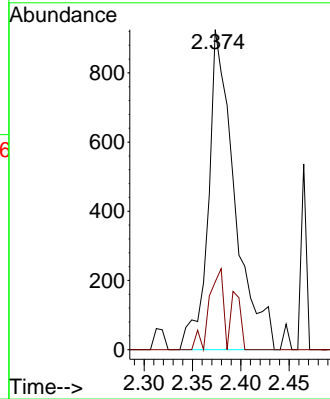
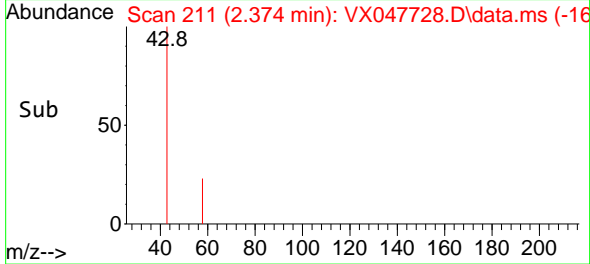


#16  
 Acetone  
 Concen: 1.720 ug/l  
 RT: 2.374 min Scan# 211  
 Delta R.T. -0.000 min  
 Lab File: VX047728.D  
 Acq: 23 Sep 2025 13:25

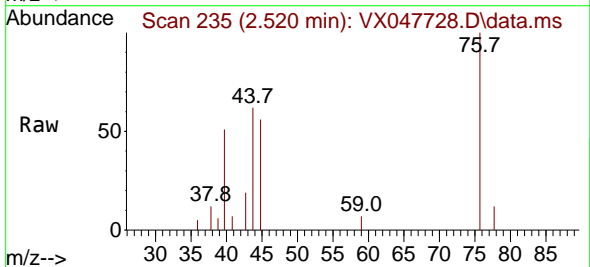
Instrument : MSVOA\_X  
 ClientSampleId : TB05-20250912



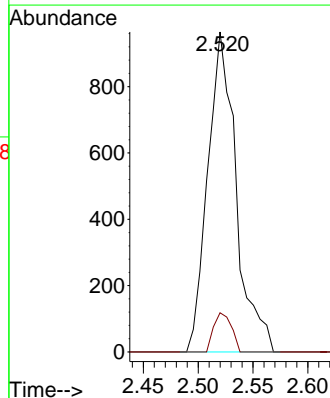
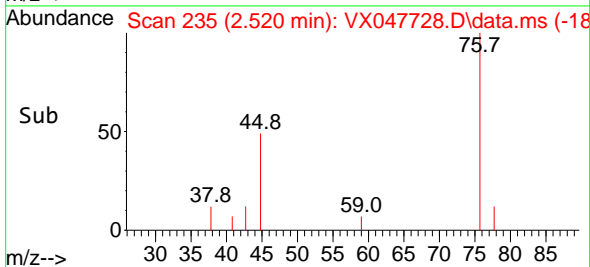
Tgt Ion: 43 Resp: 1757  
 Ion Ratio Lower Upper  
 43 100  
 58 21.2 23.4 35.0#

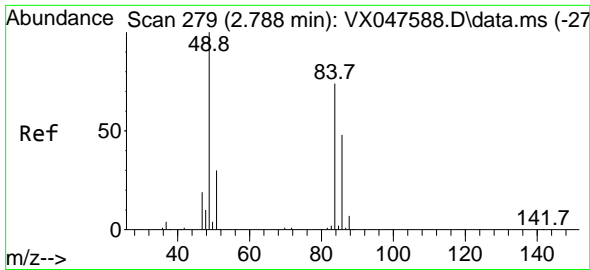


#17  
 Carbon Disulfide  
 Concen: 0.362 ug/l  
 RT: 2.520 min Scan# 235  
 Delta R.T. -0.000 min  
 Lab File: VX047728.D  
 Acq: 23 Sep 2025 13:25



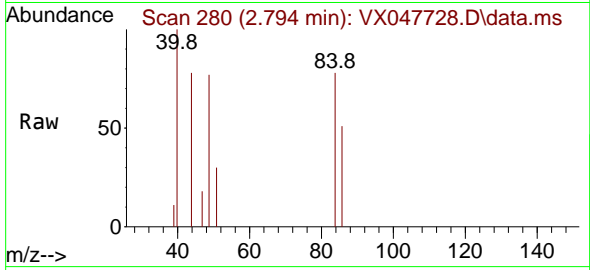
Tgt Ion: 76 Resp: 1737  
 Ion Ratio Lower Upper  
 76 100  
 78 12.2 6.8 10.2#



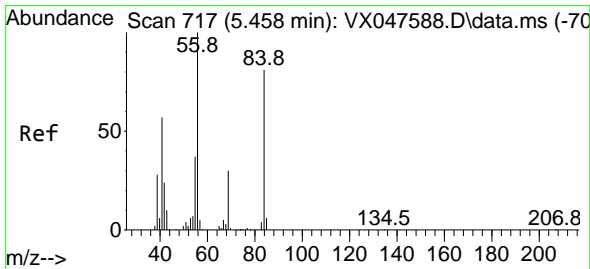
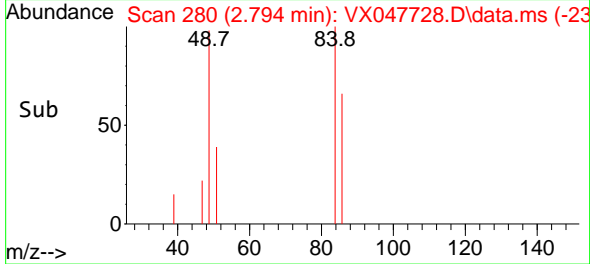
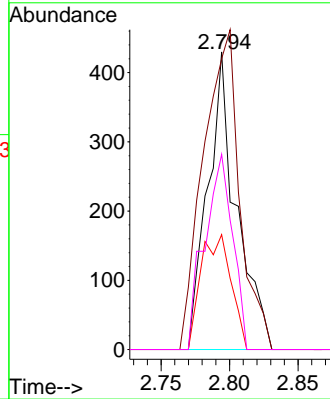


#20  
Methylene Chloride  
Concen: 0.290 ug/l  
RT: 2.794 min Scan# 21  
Delta R.T. 0.006 min  
Lab File: VX047728.D  
Acq: 23 Sep 2025 13:25

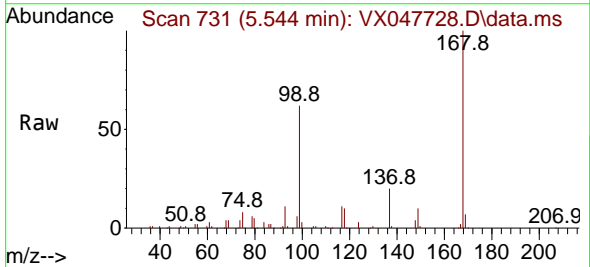
Instrument :  
MSVOA\_X  
ClientSampleId :  
TB05-20250912



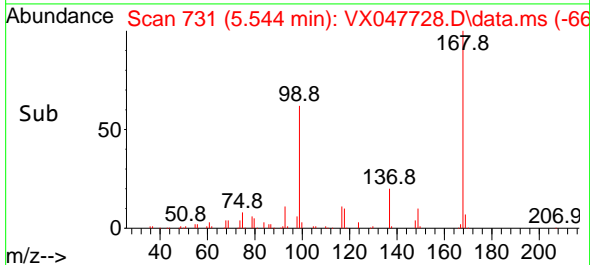
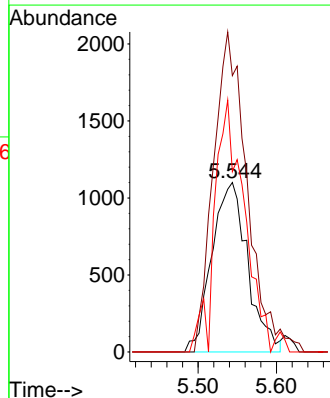
Tgt Ion: 84 Resp: 626  
Ion Ratio Lower Upper  
84 100  
49 97.7 108.6 162.8#  
51 38.6 32.6 48.8  
86 65.6 52.0 78.0

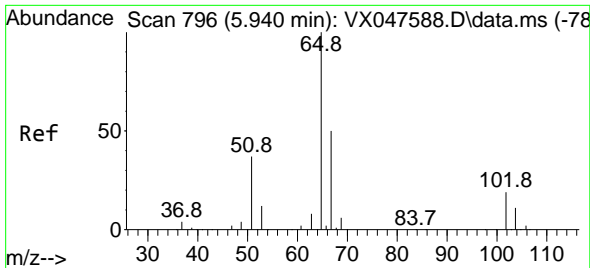


#31  
Cyclohexane  
Concen: 1.126 ug/l  
RT: 5.544 min Scan# 731  
Delta R.T. 0.085 min  
Lab File: VX047728.D  
Acq: 23 Sep 2025 13:25



Tgt Ion: 56 Resp: 3495  
Ion Ratio Lower Upper  
56 100  
69 162.9 23.8 35.8#  
84 106.4 64.6 97.0#

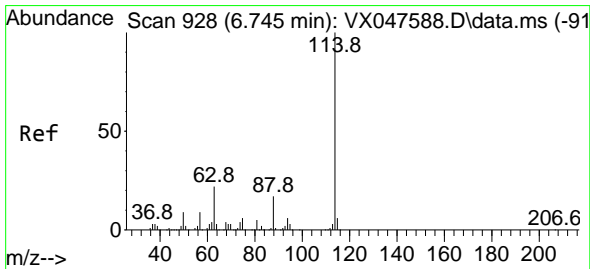
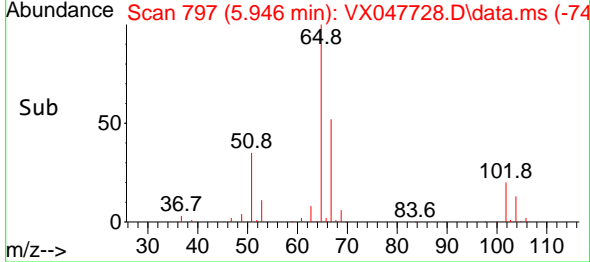
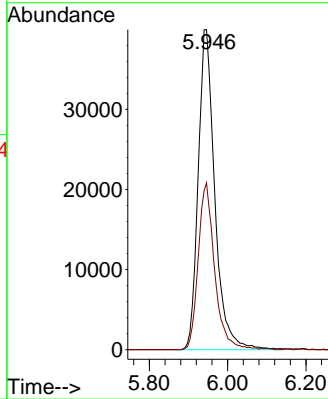
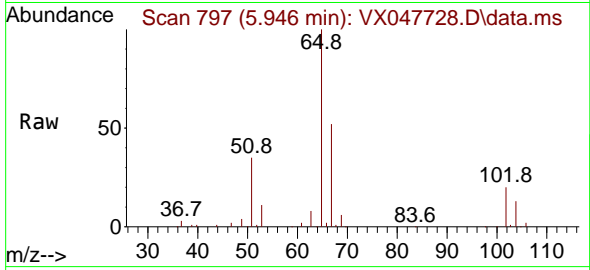




#33  
 1,2-Dichloroethane-d4  
 Concen: 50.132 ug/l  
 RT: 5.946 min Scan# 796  
 Delta R.T. 0.006 min  
 Lab File: VX047728.D  
 Acq: 23 Sep 2025 13:25

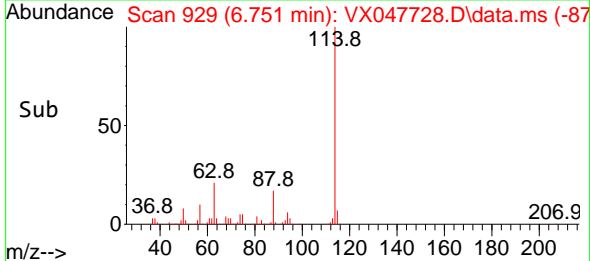
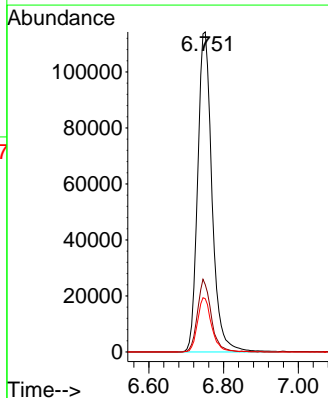
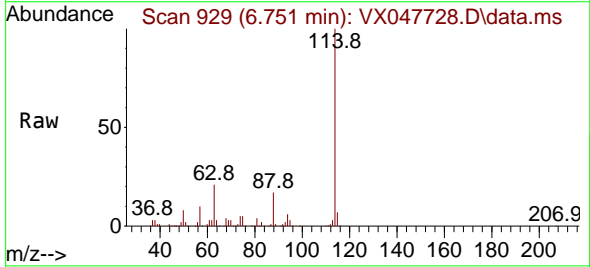
Instrument : MSVOA\_X  
 ClientSampleId : TB05-20250912

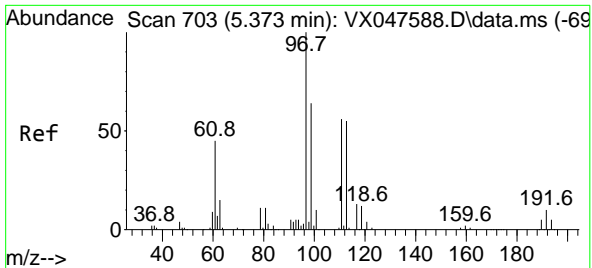
Tgt Ion: 65 Resp: 117780  
 Ion Ratio Lower Upper  
 65 100  
 67 51.4 0.0 103.0



#34  
 1,4-Difluorobenzene  
 Concen: 50.000 ug/l  
 RT: 6.751 min Scan# 929  
 Delta R.T. 0.006 min  
 Lab File: VX047728.D  
 Acq: 23 Sep 2025 13:25

Tgt Ion: 114 Resp: 303576  
 Ion Ratio Lower Upper  
 114 100  
 63 21.1 0.0 44.0  
 88 16.6 0.0 34.2

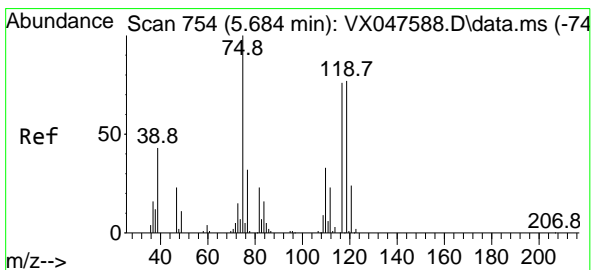
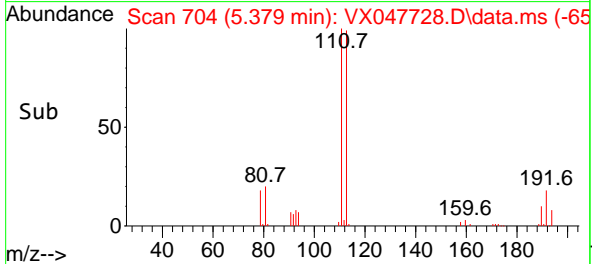
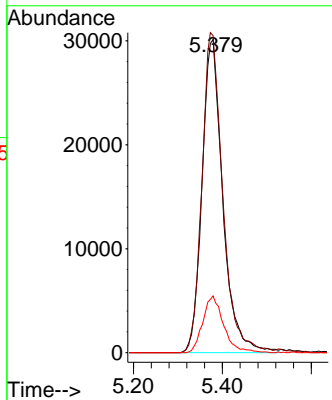
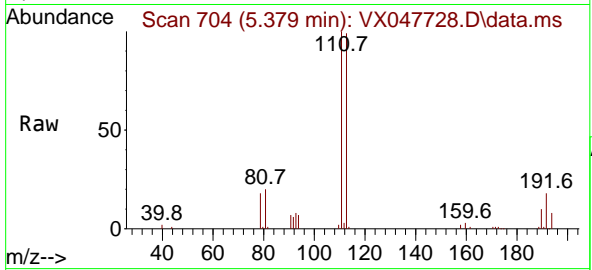




#35  
 Dibromofluoromethane  
 Concen: 48.042 ug/l  
 RT: 5.379 min Scan# 703  
 Delta R.T. 0.006 min  
 Lab File: VX047728.D  
 Acq: 23 Sep 2025 13:25

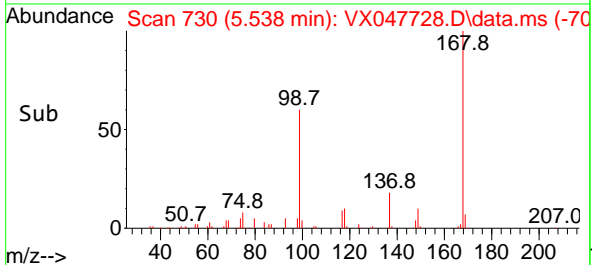
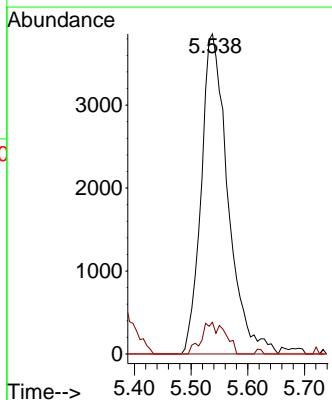
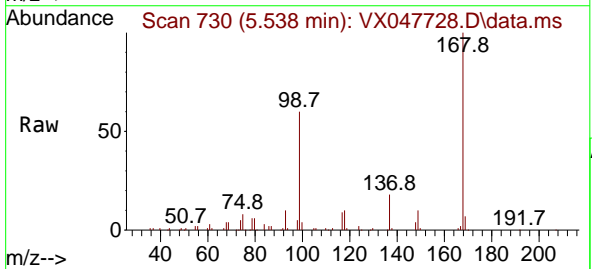
Instrument : MSVOA\_X  
 ClientSampleId : TB05-20250912

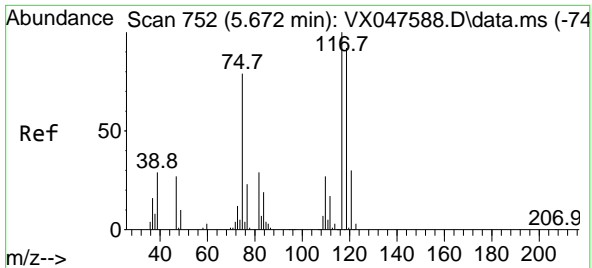
Tgt Ion	Resp	Lower	Upper
113	97811		
113	100		
111	102.4	80.9	121.3
192	18.1	14.2	21.4



#36  
 1,1-Dichloropropene  
 Concen: 4.245 ug/l  
 RT: 5.538 min Scan# 730  
 Delta R.T. -0.146 min  
 Lab File: VX047728.D  
 Acq: 23 Sep 2025 13:25

Tgt Ion	Resp	Lower	Upper
75	12628		
75	100		
110	8.7	16.7	50.1#
77	0.0	24.3	36.5#

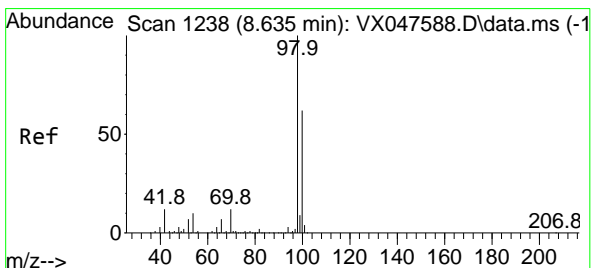
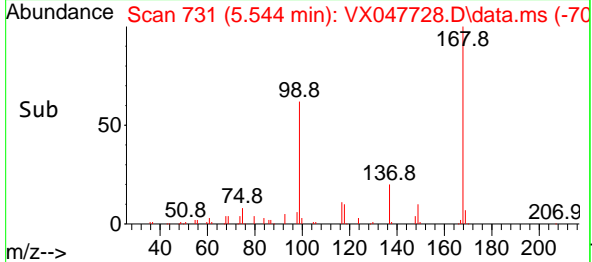
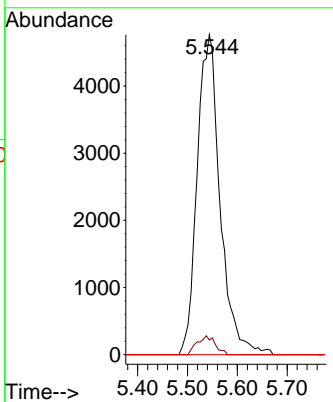
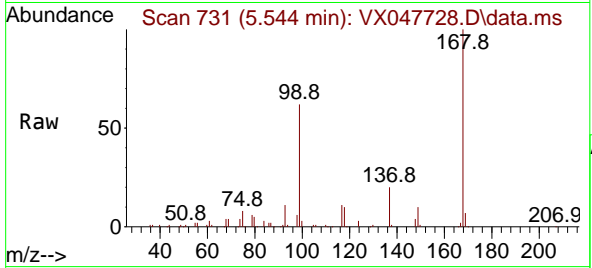




#38  
 Carbon Tetrachloride  
 Concen: 4.708 ug/l  
 RT: 5.544 min Scan# 711  
 Delta R.T. -0.128 min  
 Lab File: VX047728.D  
 Acq: 23 Sep 2025 13:25

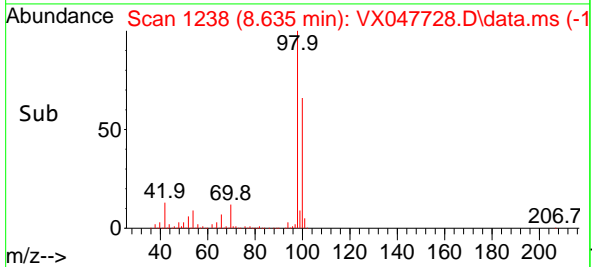
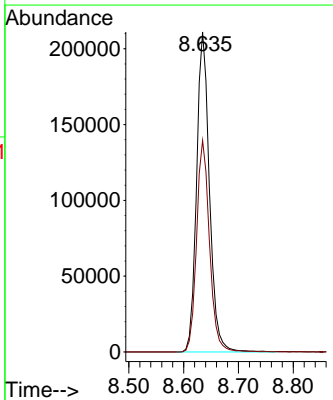
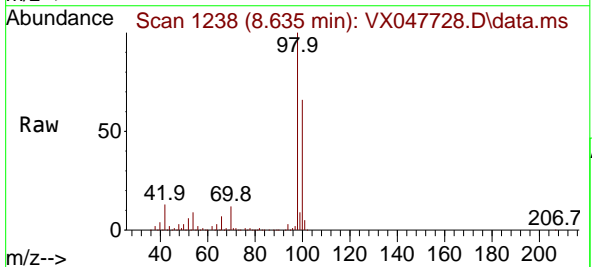
Instrument : MSVOA\_X  
 ClientSampleId : TB05-20250912

Tgt Ion	Resp	Lower	Upper
117	15218		
119	4.6	73.4	110.2#
121	0.0	23.8	35.6#

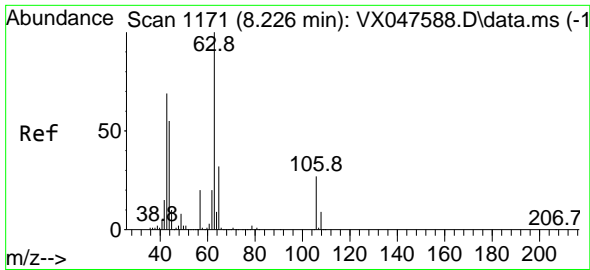


#50  
 Toluene-d8  
 Concen: 48.810 ug/l  
 RT: 8.635 min Scan# 1238  
 Delta R.T. -0.000 min  
 Lab File: VX047728.D  
 Acq: 23 Sep 2025 13:25

Tgt Ion	Resp	Lower	Upper
98	343858		
98	100		
100	66.6	53.0	79.4

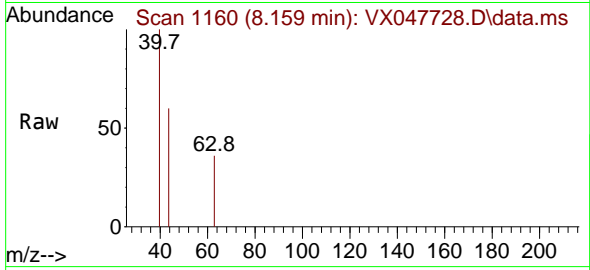




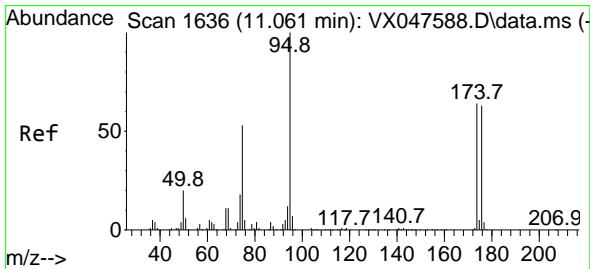
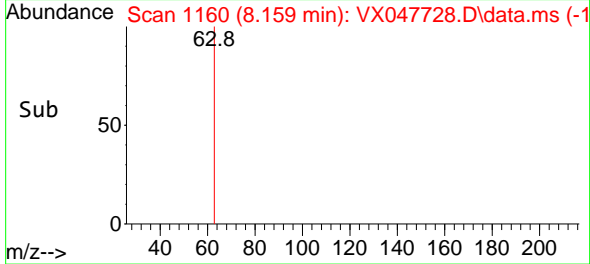
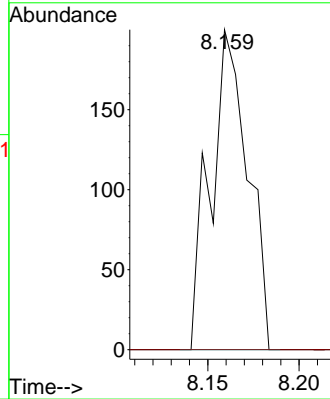


#58  
 2-Chloroethyl Vinyl ether  
 Concen: 8.070 ug/l  
 RT: 8.159 min Scan# 11160  
 Delta R.T. -0.067 min  
 Lab File: VX047728.D  
 Acq: 23 Sep 2025 13:25

Instrument : MSVOA\_X  
 ClientSampleId : TB05-20250912

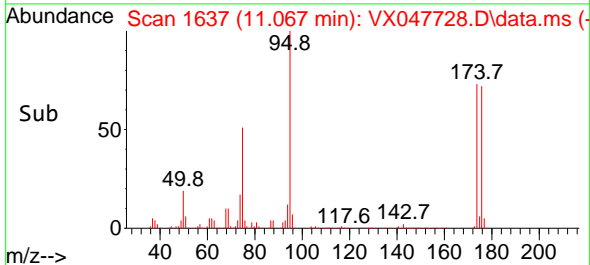
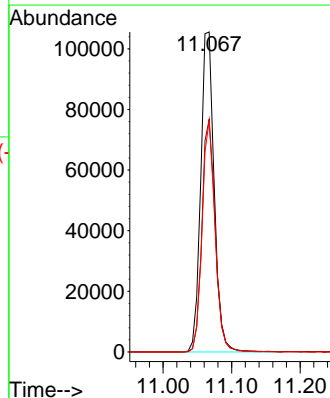
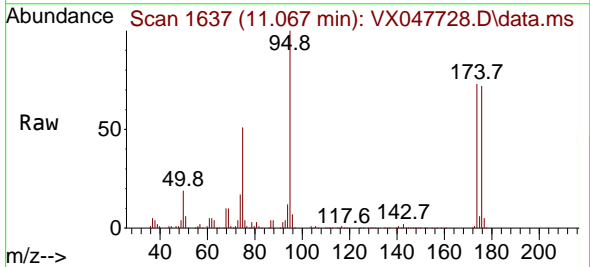


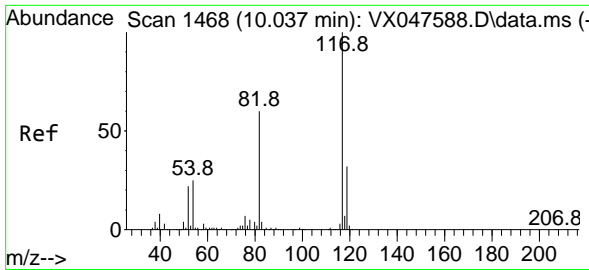
Tgt Ion: 63 Resp: 285  
 Ion Ratio Lower Upper  
 63 100  
 106 0.0 21.9 32.9#



#62  
 4-Bromofluorobenzene  
 Concen: 54.157 ug/l  
 RT: 11.067 min Scan# 1637  
 Delta R.T. 0.006 min  
 Lab File: VX047728.D  
 Acq: 23 Sep 2025 13:25

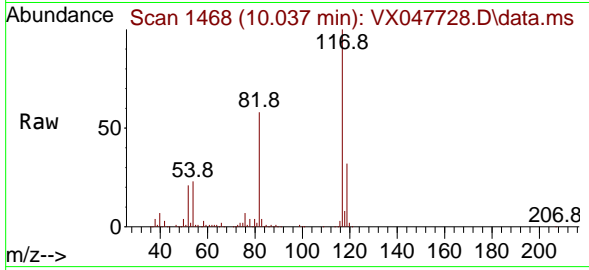
Tgt Ion: 95 Resp: 144795  
 Ion Ratio Lower Upper  
 95 100  
 174 71.7 0.0 141.6  
 176 69.4 0.0 138.4





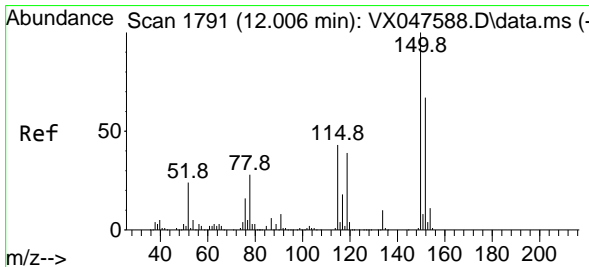
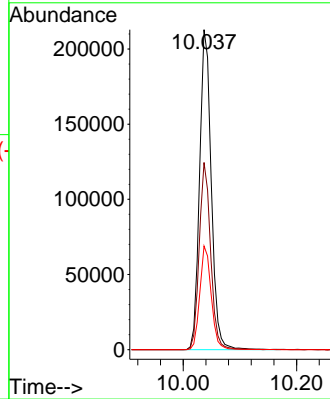
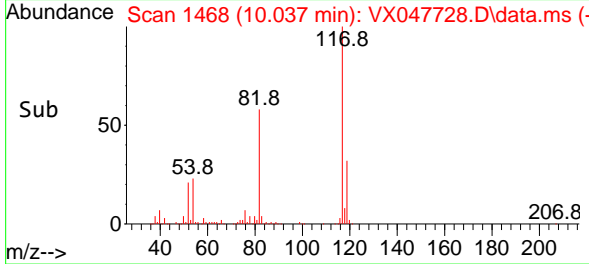
#63  
 Chlorobenzene-d5  
 Concen: 50.000 ug/l  
 RT: 10.037 min Scan# 1468  
 Delta R.T. -0.000 min  
 Lab File: VX047728.D  
 Acq: 23 Sep 2025 13:25

Instrument : MSVOA\_X  
 ClientSampleId : TB05-20250912

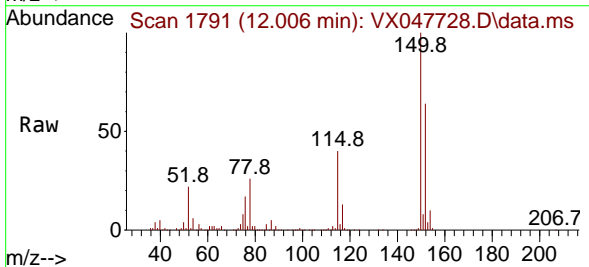


Tgt Ion:117 Resp: 304061

Ion	Ratio	Lower	Upper
117	100		
82	58.5	47.8	71.6
119	32.4	25.2	37.8

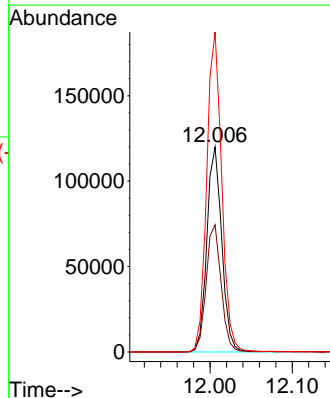
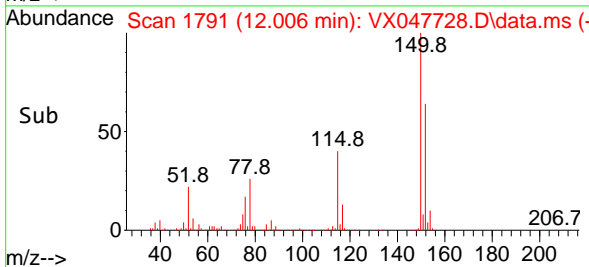


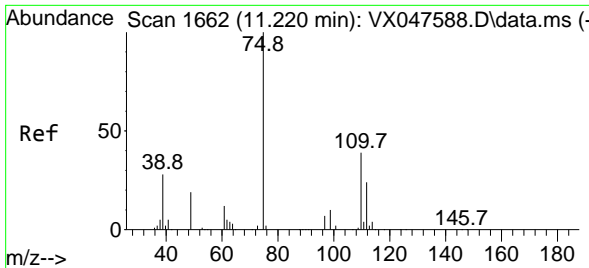
#72  
 1,4-Dichlorobenzene-d4  
 Concen: 50.000 ug/l  
 RT: 12.006 min Scan# 1791  
 Delta R.T. -0.000 min  
 Lab File: VX047728.D  
 Acq: 23 Sep 2025 13:25



Tgt Ion:152 Resp: 151284

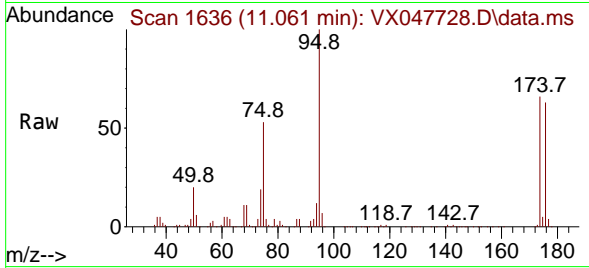
Ion	Ratio	Lower	Upper
152	100		
115	62.5	44.9	134.5
150	156.8	0.0	352.0



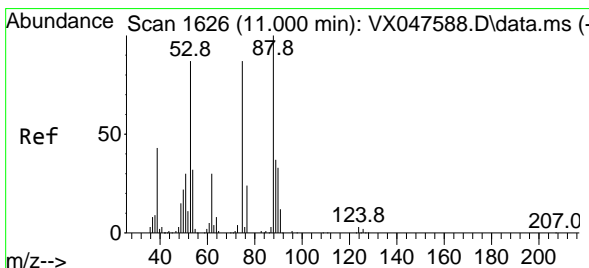
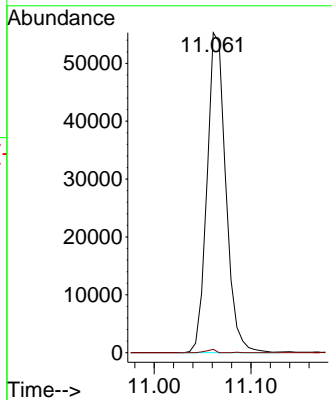
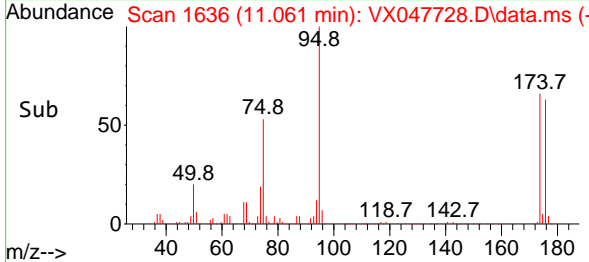


#76  
 1,2,3-Trichloropropane  
 Concen: 24.452 ug/l  
 RT: 11.061 min Scan# 1636  
 Delta R.T. -0.159 min  
 Lab File: VX047728.D  
 Acq: 23 Sep 2025 13:25

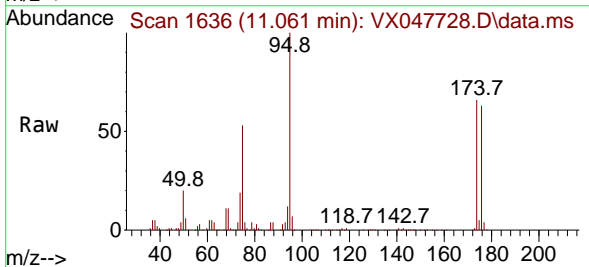
Instrument : MSVOA\_X  
 ClientSampleId : TB05-20250912



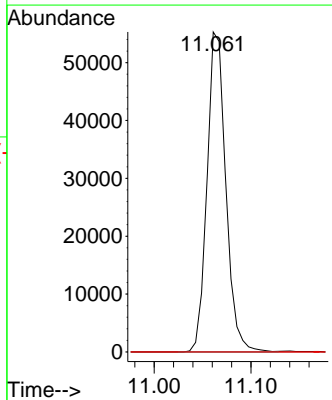
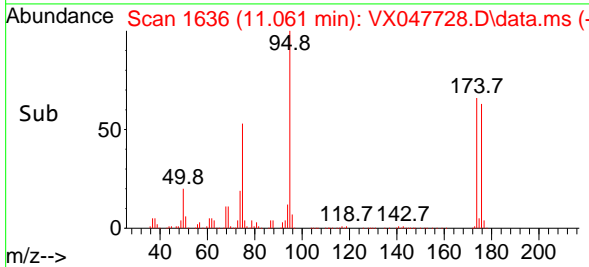
Tgt Ion: 75 Resp: 74897  
 Ion Ratio Lower Upper  
 75 100  
 77 0.5 18.8 56.4#

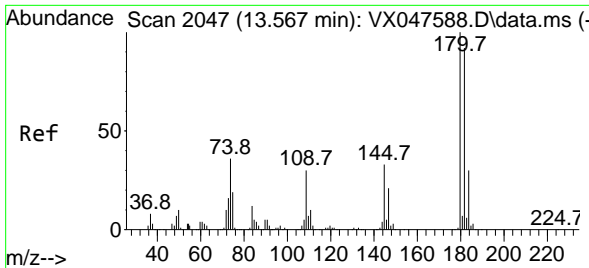


#81  
 trans-1,4-Dichloro-2-butene  
 Concen: 62.356 ug/l  
 RT: 11.061 min Scan# 1636  
 Delta R.T. 0.061 min  
 Lab File: VX047728.D  
 Acq: 23 Sep 2025 13:25



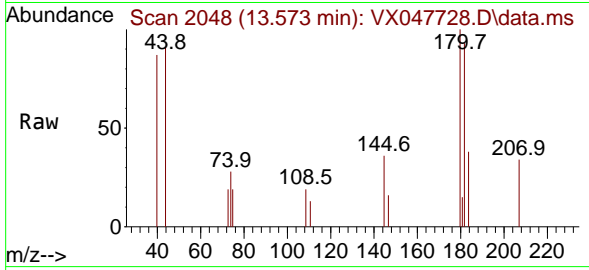
Tgt Ion: 75 Resp: 74897  
 Ion Ratio Lower Upper  
 75 100  
 53 0.0 83.4 125.2#  
 89 0.0 36.3 54.5#



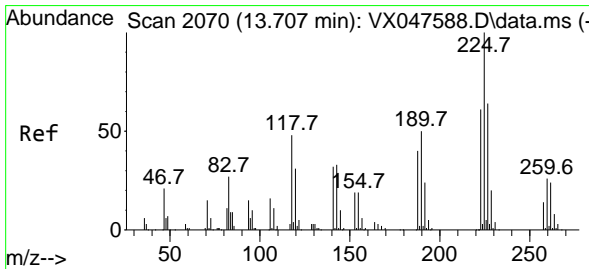
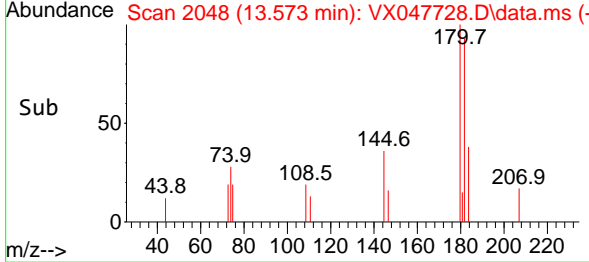
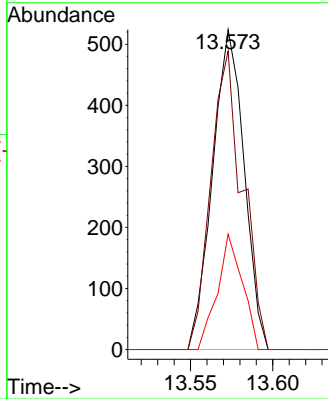


#93  
 1,2,4-Trichlorobenzene  
 Concen: 0.215 ug/l  
 RT: 13.573 min Scan# 2048  
 Delta R.T. 0.006 min  
 Lab File: VX047728.D  
 Acq: 23 Sep 2025 13:25

Instrument : MSVOA\_X  
 ClientSampleId : TB05-20250912



Tgt Ion:180 Resp: 699  
 Ion Ratio Lower Upper  
 180 100  
 182 93.4 46.6 139.8  
 145 28.6 16.4 49.1



#94  
 Hexachlorobutadiene  
 Concen: 0.499 ug/l  
 RT: 13.707 min Scan# 2070  
 Delta R.T. -0.000 min  
 Lab File: VX047728.D  
 Acq: 23 Sep 2025 13:25

Tgt Ion:225 Resp: 552  
 Ion Ratio Lower Upper  
 225 100  
 223 68.1 31.7 95.1  
 227 52.9 32.0 96.0

