

Data Path : Z:\voasrv\HPCHEM1\MSVOA_X\Data\VX092325\
 Data File : VX047729.D
 Acq On : 23 Sep 2025 13:46
 Operator : JC/MD
 Sample : Q3097-16
 Misc : 5.0mL/MSVOA_X/WATER
 ALS Vial : 12 Sample Multiplier: 1

Instrument :
 MSVOA_X
 ClientSampleId :
 TB03-20250911

Quant Time: Sep 24 01:32:21 2025
 Quant Method : Z:\voasrv\HPCHEM1\MSVOA_X\Method\82X091625W.M
 Quant Title : SW846 8260
 QLast Update : Wed Sep 17 06:39:58 2025
 Response via : Initial Calibration

Compound	R.T.	QIon	Response	Conc	Units	Dev(Min)

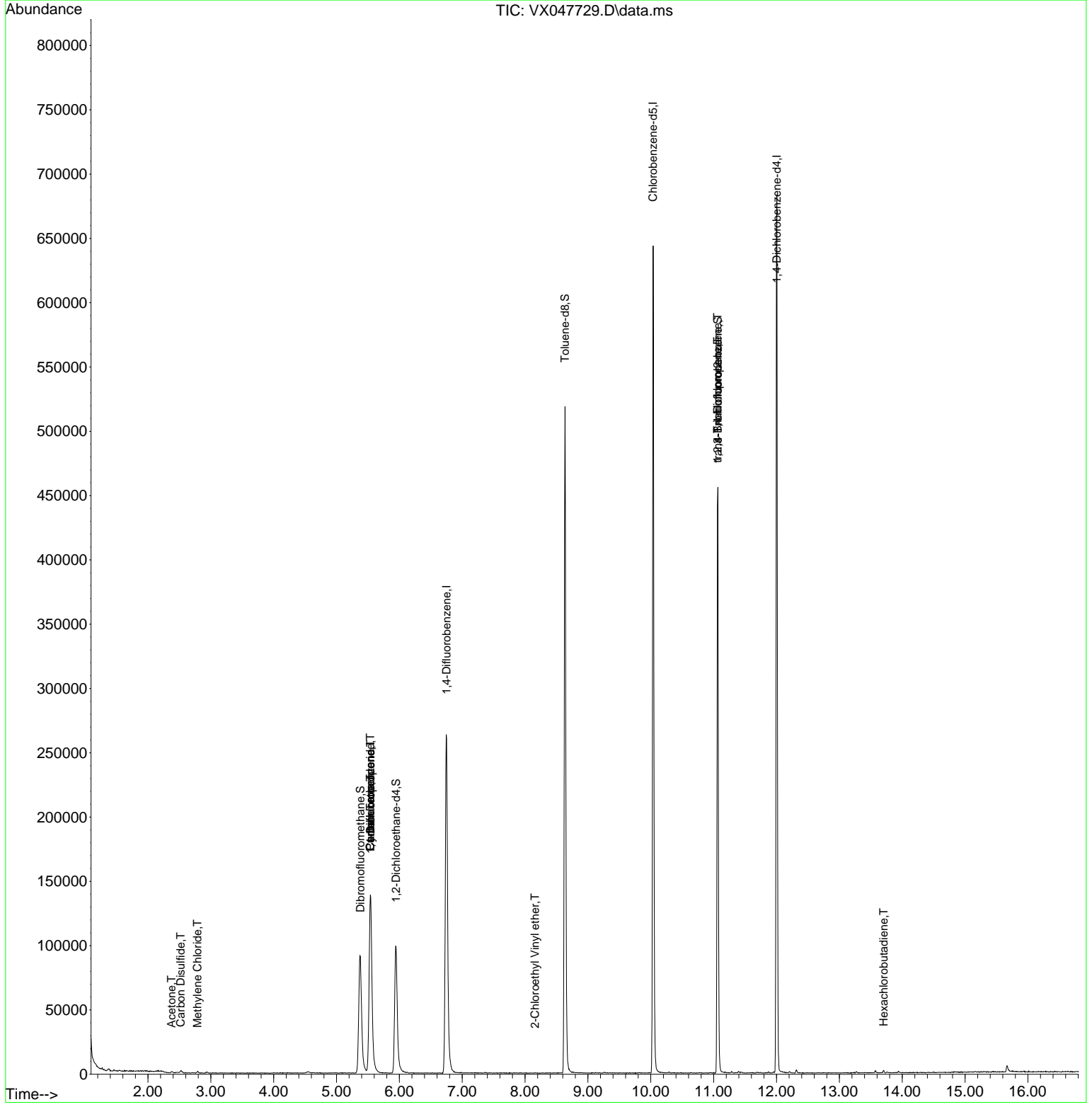
Internal Standards						
1) Pentafluorobenzene	5.537	168	143699	50.000	ug/l	0.00
34) 1,4-Difluorobenzene	6.751	114	290210	50.000	ug/l	0.00
63) Chlorobenzene-d5	10.037	117	290111	50.000	ug/l	0.00
72) 1,4-Dichlorobenzene-d4	12.006	152	146254	50.000	ug/l	0.00
System Monitoring Compounds						
33) 1,2-Dichloroethane-d4	5.946	65	108356	47.372	ug/l	0.00
Spiked Amount	50.000	Range	78 - 117	Recovery	=	94.740%
35) Dibromofluoromethane	5.379	113	91631	47.079	ug/l	0.00
Spiked Amount	50.000	Range	75 - 124	Recovery	=	94.160%
50) Toluene-d8	8.635	98	319601	47.456	ug/l	0.00
Spiked Amount	50.000	Range	92 - 112	Recovery	=	94.920%
62) 4-Bromofluorobenzene	11.067	95	136012	53.215	ug/l	0.00
Spiked Amount	50.000	Range	83 - 123	Recovery	=	106.420%
Target Compounds						
					Qvalue	
16) Acetone	2.373	43	1227	1.234	ug/l #	64
17) Carbon Disulfide	2.520	76	1099	0.235	ug/l	97
20) Methylene Chloride	2.788	84	536	0.255	ug/l #	84
31) Cyclohexane	5.537	56	3250	1.075	ug/l #	6
36) 1,1-Dichloropropene	5.544	75	12394	4.358	ug/l #	50
38) Carbon Tetrachloride	5.537	117	15224	4.927	ug/l #	17
58) 2-Chloroethyl Vinyl ether	8.159	63	187	8.014	ug/l #	47
76) 1,2,3-Trichloropropane	11.061	75	69602	23.505	ug/l #	39
81) trans-1,4-Dichloro-2-b...	11.061	75	69602	59.940	ug/l #	8
94) Hexachlorobutadiene	13.707	225	360	0.337	ug/l	95

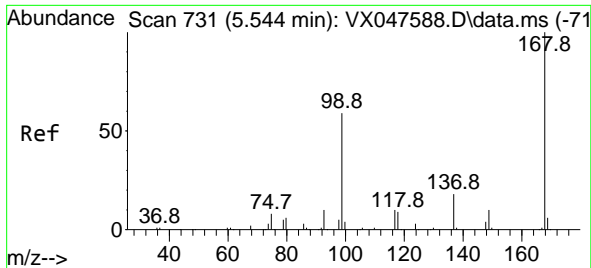
(#) = qualifier out of range (m) = manual integration (+) = signals summed

Data Path : Z:\voasrv\HPCHEM1\MSVOA_X\Data\VX092325\
 Data File : VX047729.D
 Acq On : 23 Sep 2025 13:46
 Operator : JC/MD
 Sample : Q3097-16
 Misc : 5.0mL/MSVOA_X/WATER
 ALS Vial : 12 Sample Multiplier: 1

Instrument :
 MSVOA_X
 ClientSampleId :
 TB03-20250911

Quant Time: Sep 24 01:32:21 2025
 Quant Method : Z:\voasrv\HPCHEM1\MSVOA_X\Method\82X091625W.M
 Quant Title : SW846 8260
 QLast Update : Wed Sep 17 06:39:58 2025
 Response via : Initial Calibration

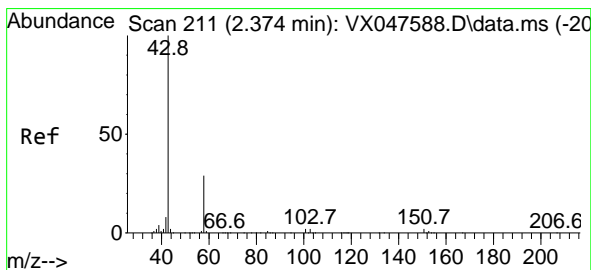
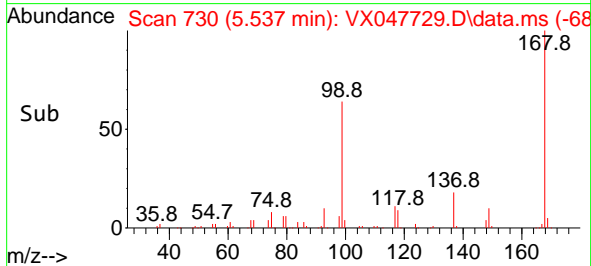
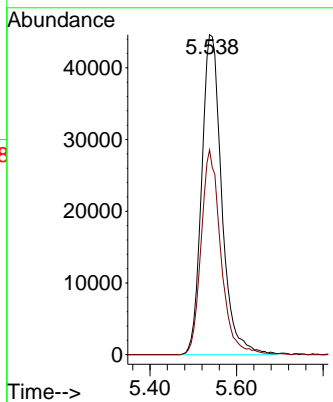
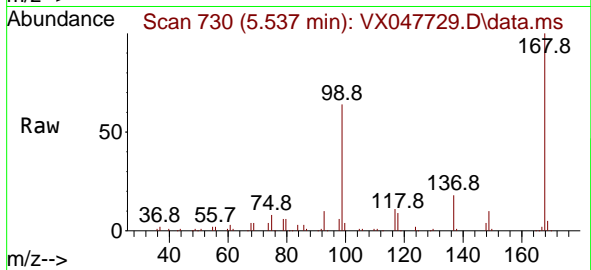




#1
 Pentafluorobenzene
 Concen: 50.000 ug/l
 RT: 5.537 min Scan# 71
 Delta R.T. -0.006 min
 Lab File: VX047729.D
 Acq: 23 Sep 2025 13:46

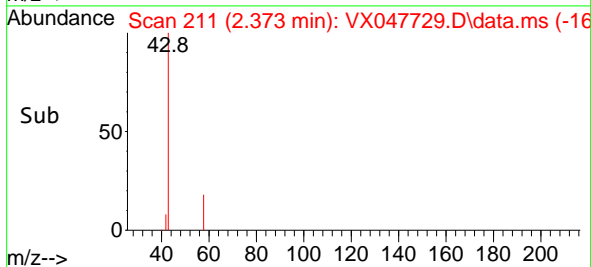
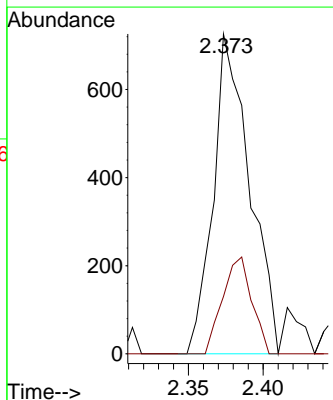
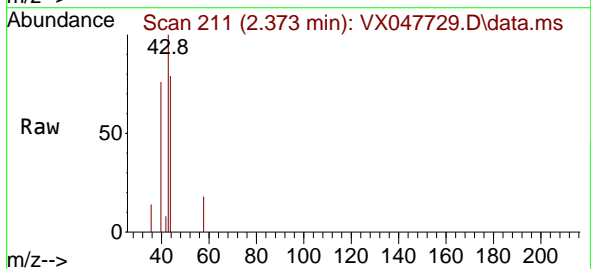
Instrument :
 MSVOA_X
 ClientSampleId :
 TB03-20250911

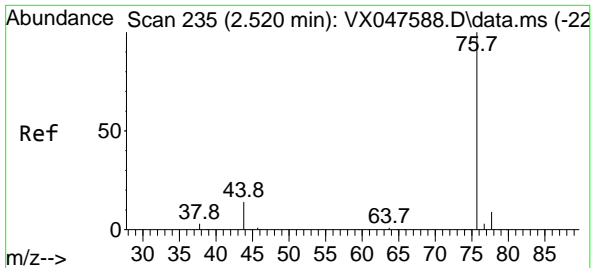
Tgt Ion:168 Resp: 143699
 Ion Ratio Lower Upper
 168 100
 99 64.0 48.8 73.2



#16
 Acetone
 Concen: 1.234 ug/l
 RT: 2.373 min Scan# 211
 Delta R.T. -0.000 min
 Lab File: VX047729.D
 Acq: 23 Sep 2025 13:46

Tgt Ion: 43 Resp: 1227
 Ion Ratio Lower Upper
 43 100
 58 10.0 23.4 35.0#

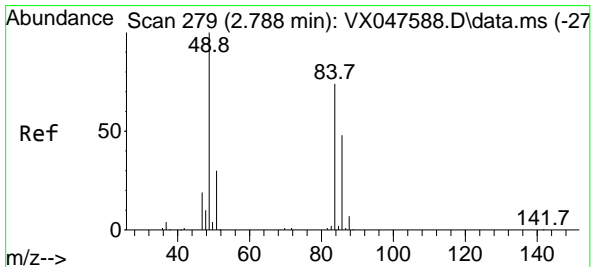
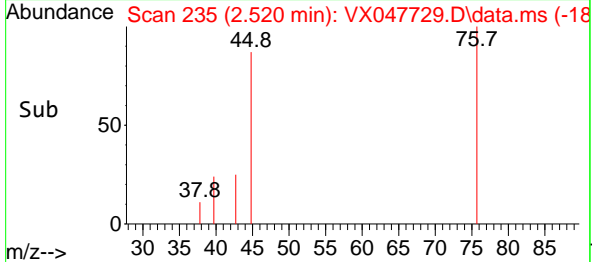
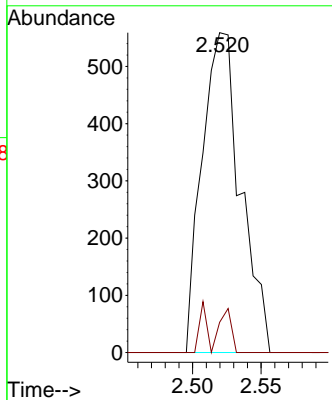
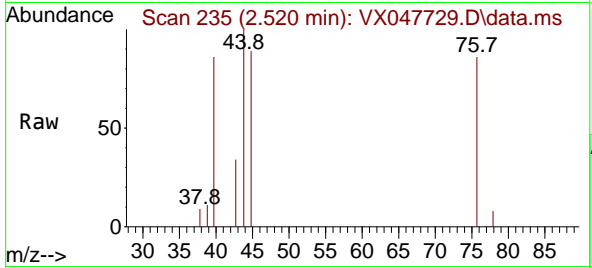




#17
 Carbon Disulfide
 Concen: 0.235 ug/l
 RT: 2.520 min Scan# 211
 Delta R.T. -0.000 min
 Lab File: VX047729.D
 Acq: 23 Sep 2025 13:46

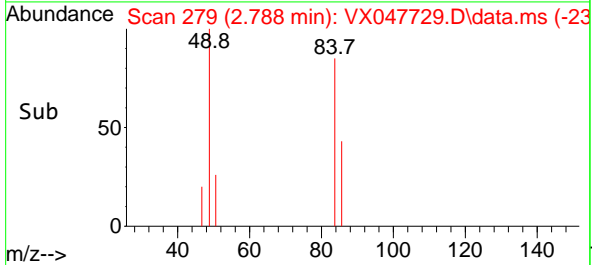
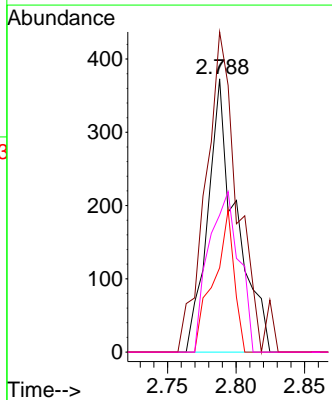
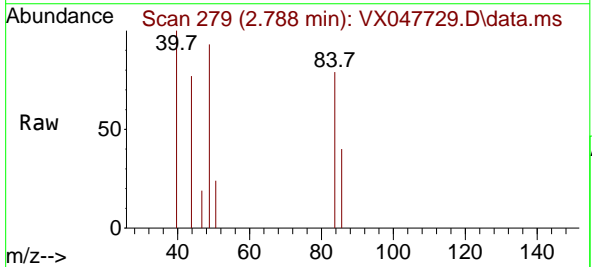
Instrument : MSVOA_X
 ClientSampleId : TB03-20250911

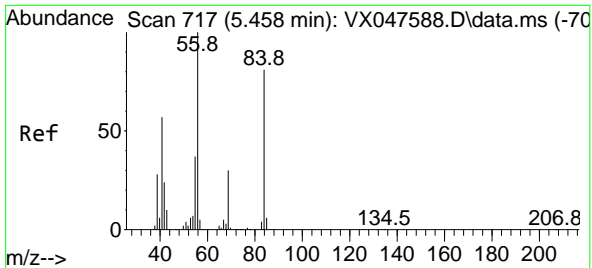
Tgt Ion: 76 Resp: 1099
 Ion Ratio Lower Upper
 76 100
 78 9.5 6.8 10.2



#20
 Methylene Chloride
 Concen: 0.255 ug/l
 RT: 2.788 min Scan# 279
 Delta R.T. -0.000 min
 Lab File: VX047729.D
 Acq: 23 Sep 2025 13:46

Tgt Ion: 84 Resp: 536
 Ion Ratio Lower Upper
 84 100
 49 117.2 108.6 162.8
 51 30.8 32.6 48.8#
 86 50.1 52.0 78.0#

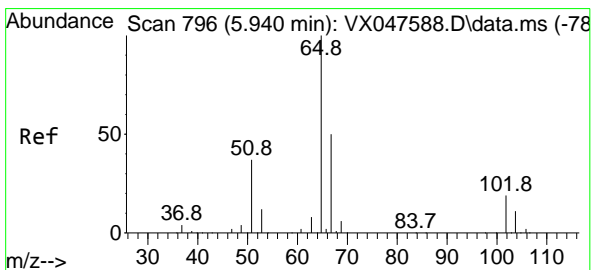
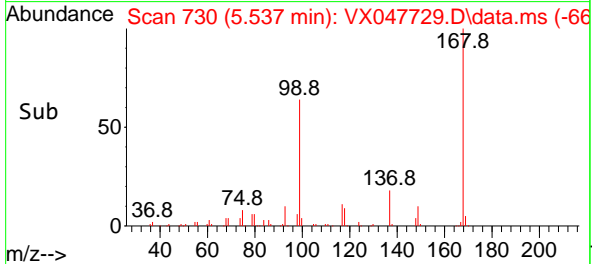
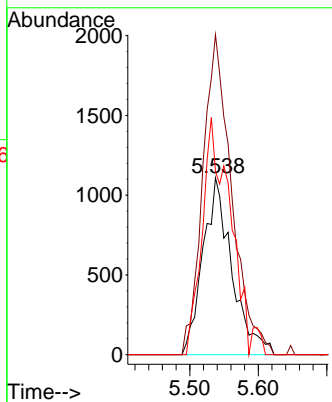
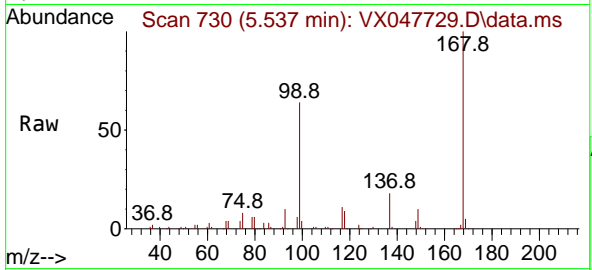




#31
 Cyclohexane
 Concen: 1.075 ug/l
 RT: 5.537 min Scan# 717
 Delta R.T. 0.079 min
 Lab File: VX047729.D
 Acq: 23 Sep 2025 13:46

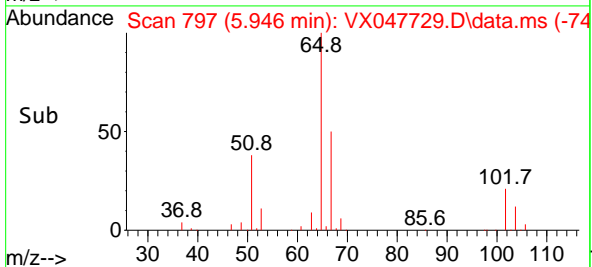
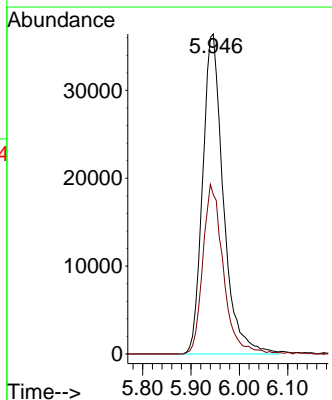
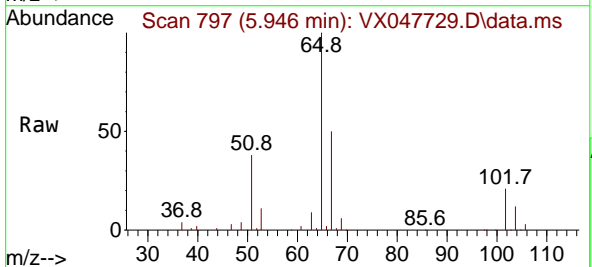
Instrument : MSVOA_X
 ClientSampleId : TB03-20250911

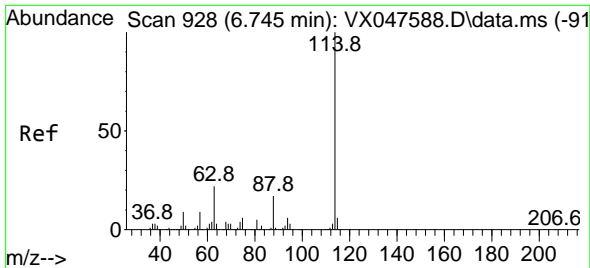
Tgt Ion: 56 Resp: 3250
 Ion Ratio Lower Upper
 56 100
 69 181.0 23.8 35.8#
 84 103.7 64.6 97.0#



#33
 1,2-Dichloroethane-d4
 Concen: 47.372 ug/l
 RT: 5.946 min Scan# 797
 Delta R.T. 0.006 min
 Lab File: VX047729.D
 Acq: 23 Sep 2025 13:46

Tgt Ion: 65 Resp: 108356
 Ion Ratio Lower Upper
 65 100
 67 52.4 0.0 103.0



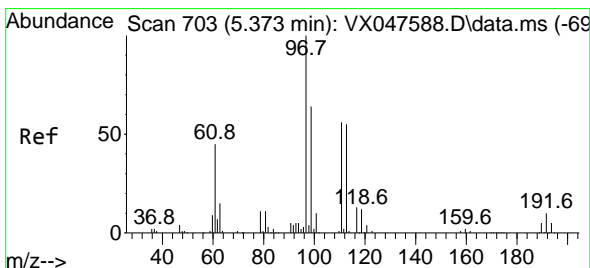
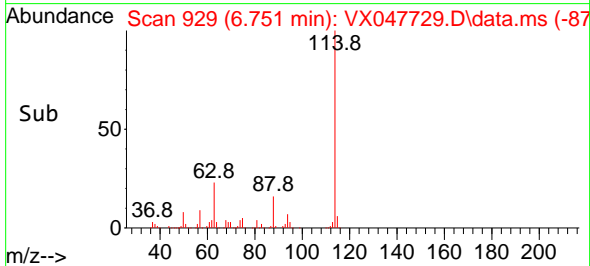
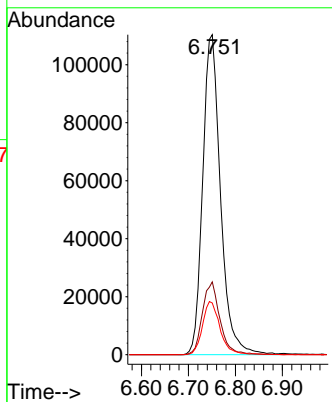
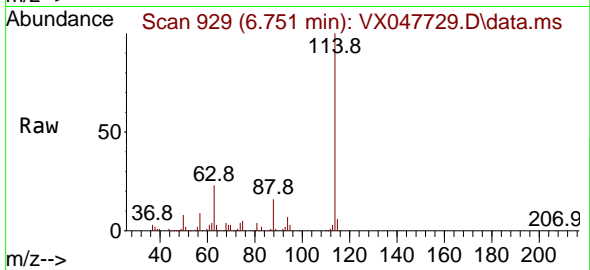


#34
 1,4-Difluorobenzene
 Concen: 50.000 ug/l
 RT: 6.751 min Scan# 91
 Delta R.T. 0.006 min
 Lab File: VX047729.D
 Acq: 23 Sep 2025 13:46

Instrument :
 MSVOA_X
 ClientSampleId :
 TB03-20250911

Tgt Ion:114 Resp: 290210

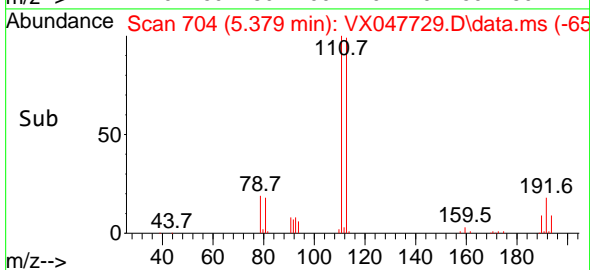
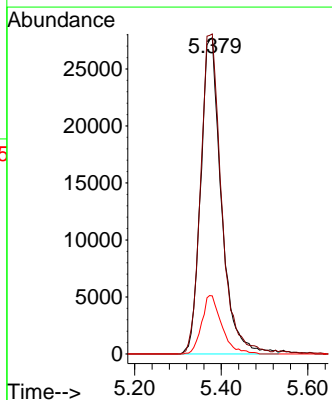
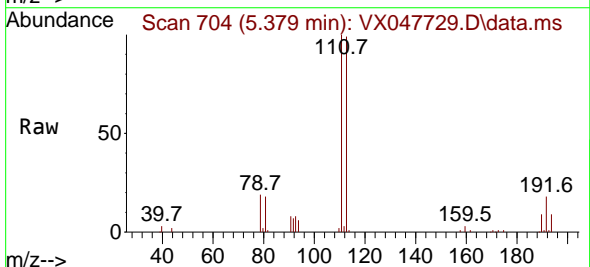
Ion	Ratio	Lower	Upper
114	100		
63	22.7	0.0	44.0
88	16.2	0.0	34.2

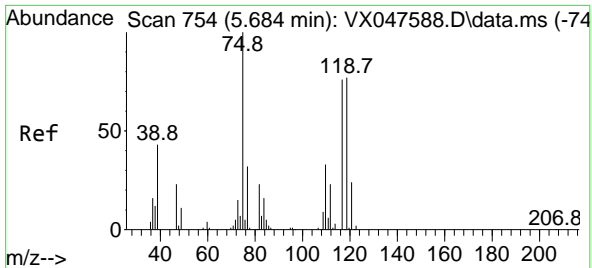


#35
 Dibromofluoromethane
 Concen: 47.079 ug/l
 RT: 5.379 min Scan# 704
 Delta R.T. 0.006 min
 Lab File: VX047729.D
 Acq: 23 Sep 2025 13:46

Tgt Ion:113 Resp: 91631

Ion	Ratio	Lower	Upper
113	100		
111	102.1	80.9	121.3
192	17.9	14.2	21.4

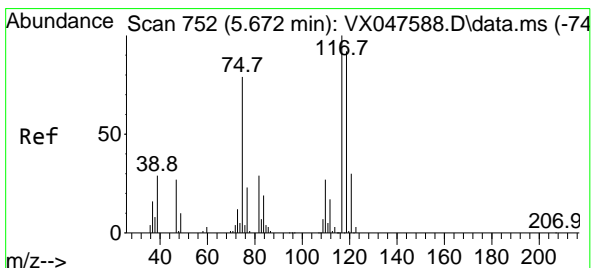
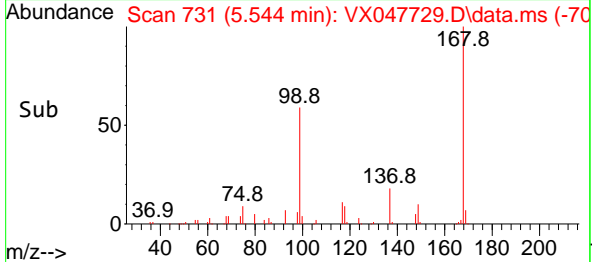
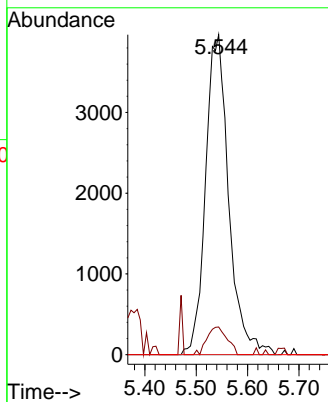
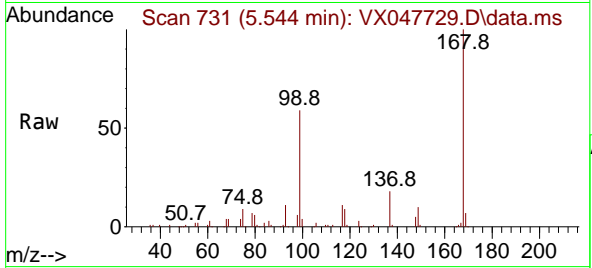




#36
 1,1-Dichloropropene
 Concen: 4.358 ug/l
 RT: 5.544 min Scan# 711
 Delta R.T. -0.140 min
 Lab File: VX047729.D
 Acq: 23 Sep 2025 13:46

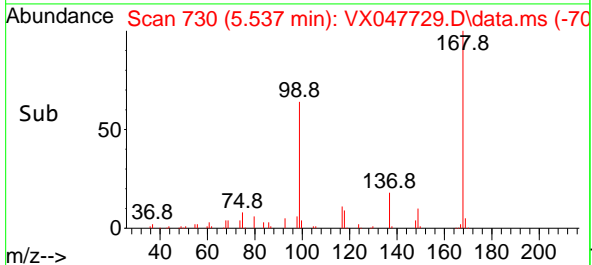
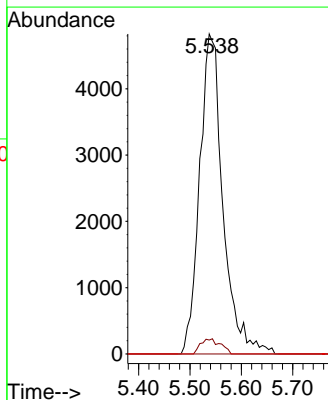
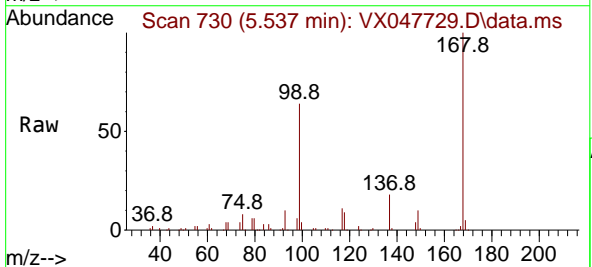
Instrument :
 MSVOA_X
 ClientSampleId :
 TB03-20250911

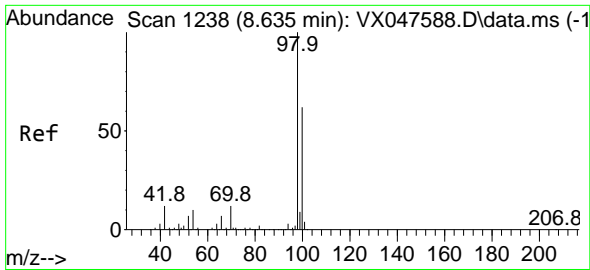
Tgt Ion	Resp	Lower	Upper
75	12394		
75	100		
110	7.5	16.7	50.1#
77	0.0	24.3	36.5#



#38
 Carbon Tetrachloride
 Concen: 4.927 ug/l
 RT: 5.537 min Scan# 730
 Delta R.T. -0.134 min
 Lab File: VX047729.D
 Acq: 23 Sep 2025 13:46

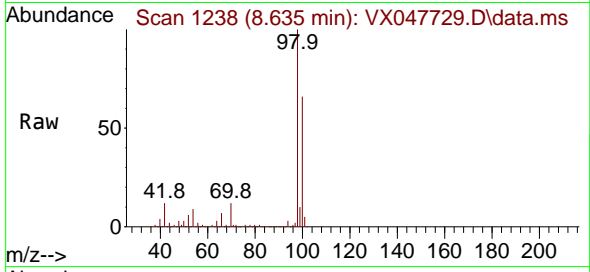
Tgt Ion	Resp	Lower	Upper
117	15224		
117	100		
119	4.4	73.4	110.2#
121	0.0	23.8	35.6#



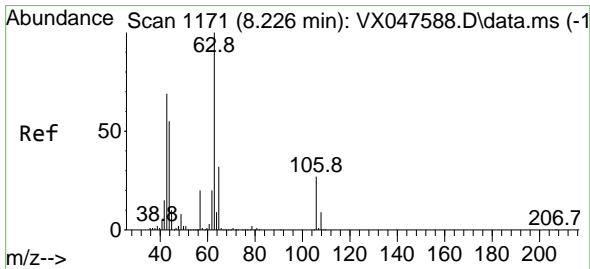
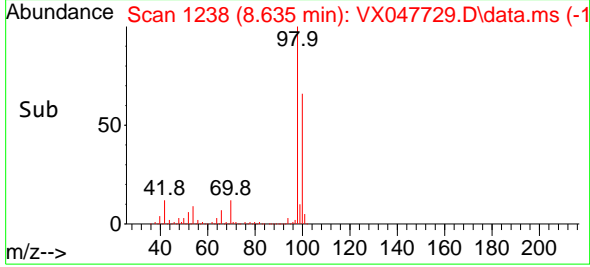
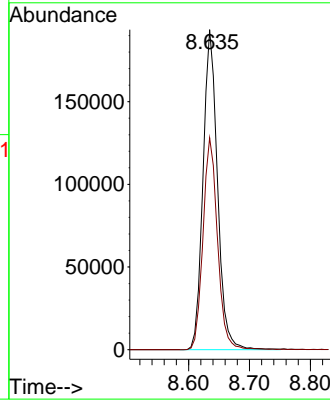


#50
 Toluene-d8
 Concen: 47.456 ug/l
 RT: 8.635 min Scan# 1160
 Delta R.T. -0.000 min
 Lab File: VX047729.D
 Acq: 23 Sep 2025 13:46

Instrument : MSVOA_X
 ClientSampleId : TB03-20250911

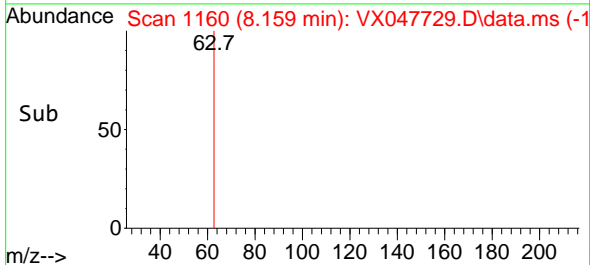
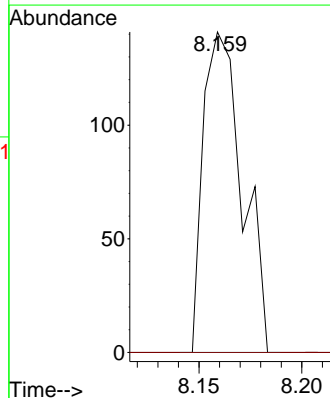
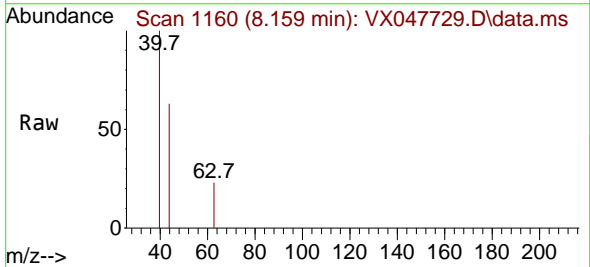


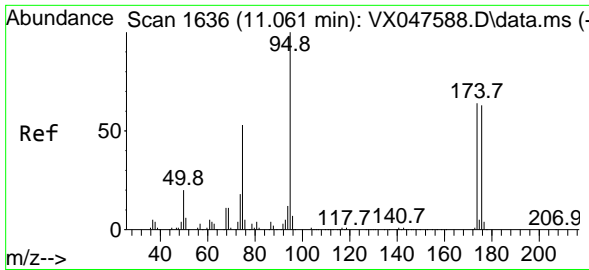
Tgt Ion: 98 Resp: 319601
 Ion Ratio Lower Upper
 98 100
 100 66.4 53.0 79.4



#58
 2-Chloroethyl Vinyl ether
 Concen: 8.014 ug/l
 RT: 8.159 min Scan# 1160
 Delta R.T. -0.067 min
 Lab File: VX047729.D
 Acq: 23 Sep 2025 13:46

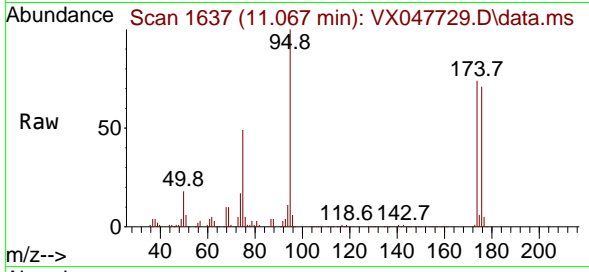
Tgt Ion: 63 Resp: 187
 Ion Ratio Lower Upper
 63 100
 106 0.0 21.9 32.9#



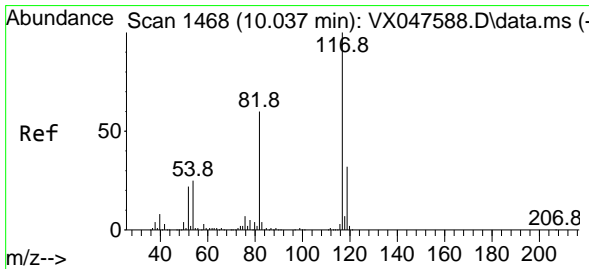
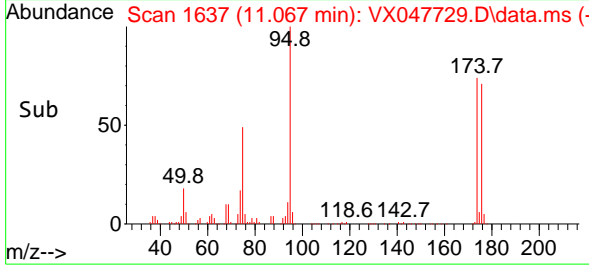
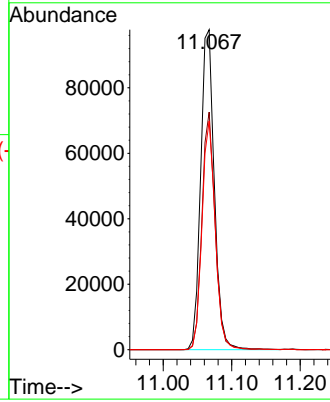


#62
 4-Bromofluorobenzene
 Concen: 53.215 ug/l
 RT: 11.067 min Scan# 11
 Delta R.T. 0.006 min
 Lab File: VX047729.D
 Acq: 23 Sep 2025 13:46

Instrument :
 MSVOA_X
 ClientSampleId :
 TB03-20250911

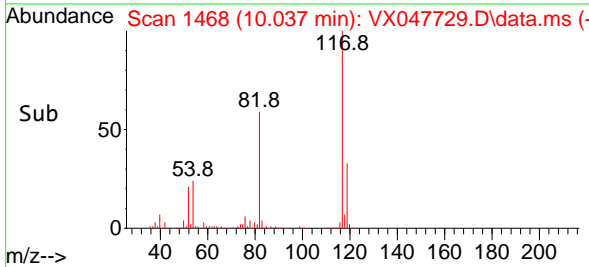
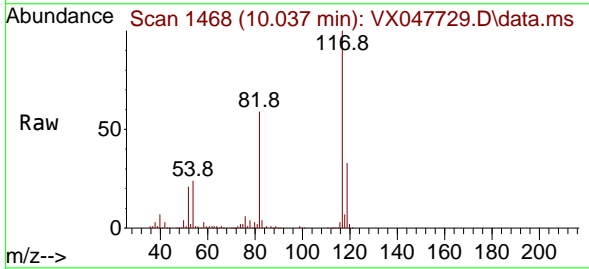
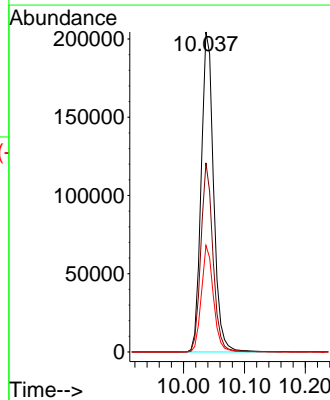


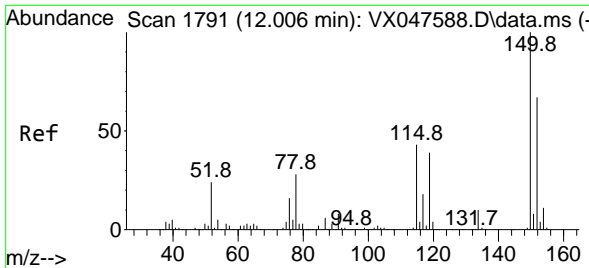
Tgt Ion: 95 Resp: 136012
 Ion Ratio Lower Upper
 95 100
 174 71.3 0.0 141.6
 176 69.4 0.0 138.4



#63
 Chlorobenzene-d5
 Concen: 50.000 ug/l
 RT: 10.037 min Scan# 1468
 Delta R.T. -0.000 min
 Lab File: VX047729.D
 Acq: 23 Sep 2025 13:46

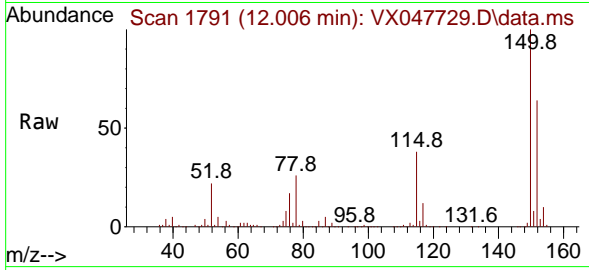
Tgt Ion: 117 Resp: 290111
 Ion Ratio Lower Upper
 117 100
 82 59.1 47.8 71.6
 119 33.3 25.2 37.8



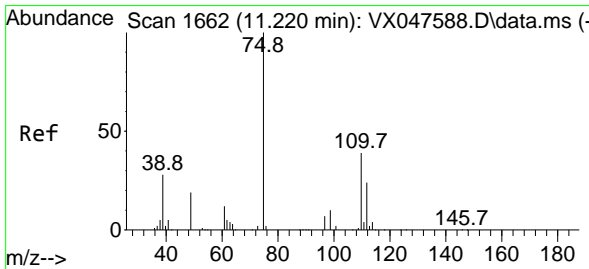
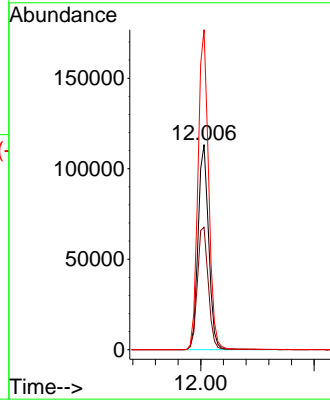
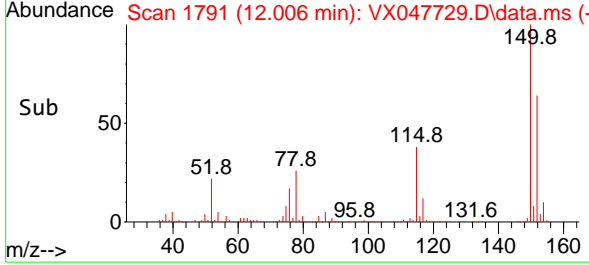


#72
 1,4-Dichlorobenzene-d4
 Concen: 50.000 ug/l
 RT: 12.006 min Scan# 1
 Delta R.T. -0.000 min
 Lab File: VX047729.D
 Acq: 23 Sep 2025 13:46

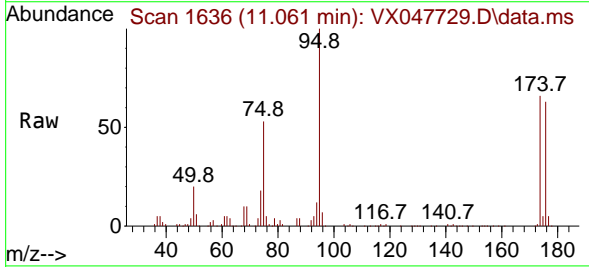
Instrument :
 MSVOA_X
 ClientSampleId :
 TB03-20250911



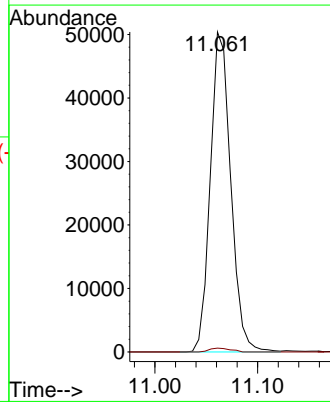
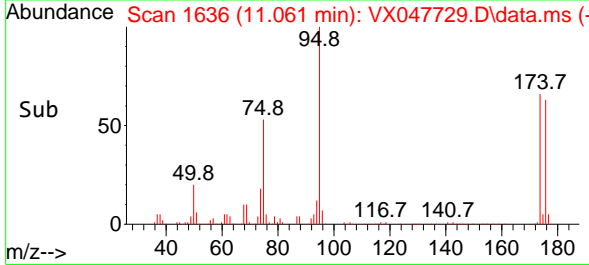
Tgt Ion:152 Resp: 146254
 Ion Ratio Lower Upper
 152 100
 115 61.9 44.9 134.5
 150 156.3 0.0 352.0

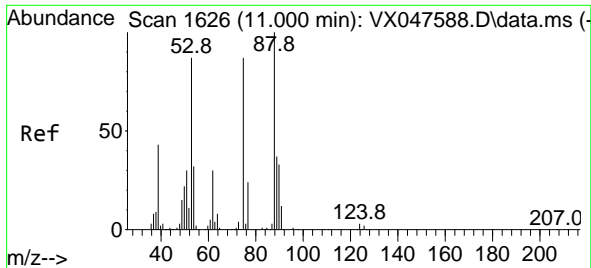


#76
 1,2,3-Trichloropropane
 Concen: 23.505 ug/l
 RT: 11.061 min Scan# 1636
 Delta R.T. -0.159 min
 Lab File: VX047729.D
 Acq: 23 Sep 2025 13:46



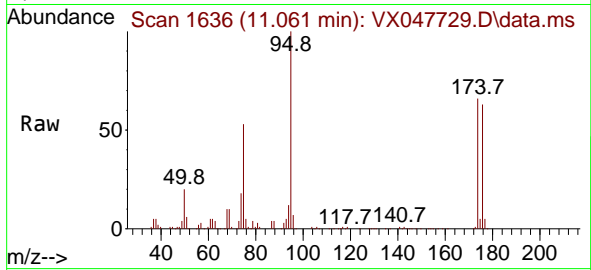
Tgt Ion: 75 Resp: 69602
 Ion Ratio Lower Upper
 75 100
 77 1.2 18.8 56.4#



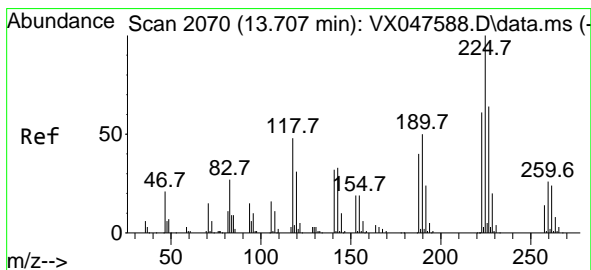
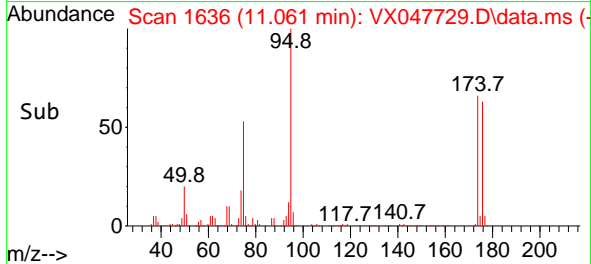
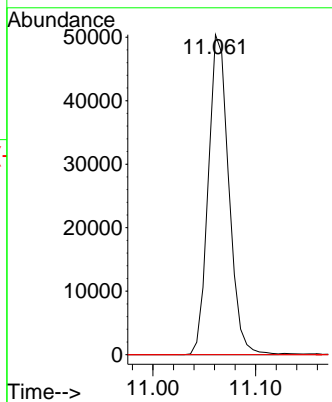


#81
 trans-1,4-Dichloro-2-butene
 Concen: 59.940 ug/l
 RT: 11.061 min Scan# 1
 Delta R.T. 0.061 min
 Lab File: VX047729.D
 Acq: 23 Sep 2025 13:46

Instrument :
 MSVOA_X
 ClientSampleId :
 TB03-20250911



Tgt Ion: 75 Resp: 69602
 Ion Ratio Lower Upper
 75 100
 53 0.0 83.4 125.2#
 89 0.0 36.3 54.5#



#94
 Hexachlorobutadiene
 Concen: 0.337 ug/l
 RT: 13.707 min Scan# 2070
 Delta R.T. -0.000 min
 Lab File: VX047729.D
 Acq: 23 Sep 2025 13:46

Tgt Ion: 225 Resp: 360
 Ion Ratio Lower Upper
 225 100
 223 61.9 31.7 95.1
 227 70.0 32.0 96.0

