

Data Path : Z:\voasrv\HPCHEM1\MSVOA\_X\Data\VX092325\  
 Data File : VX047730.D  
 Acq On : 23 Sep 2025 14:07  
 Operator : JC/MD  
 Sample : Q3141-03  
 Misc : 5.0mL/MSVOA\_X/WATER  
 ALS Vial : 13 Sample Multiplier: 1

Instrument :  
 MSVOA\_X  
 ClientSampleId :  
 BP-VPB-184-GW-60-62

Quant Time: Sep 24 01:32:45 2025  
 Quant Method : Z:\voasrv\HPCHEM1\MSVOA\_X\Method\82X091625W.M  
 Quant Title : SW846 8260  
 QLast Update : Wed Sep 17 06:39:58 2025  
 Response via : Initial Calibration

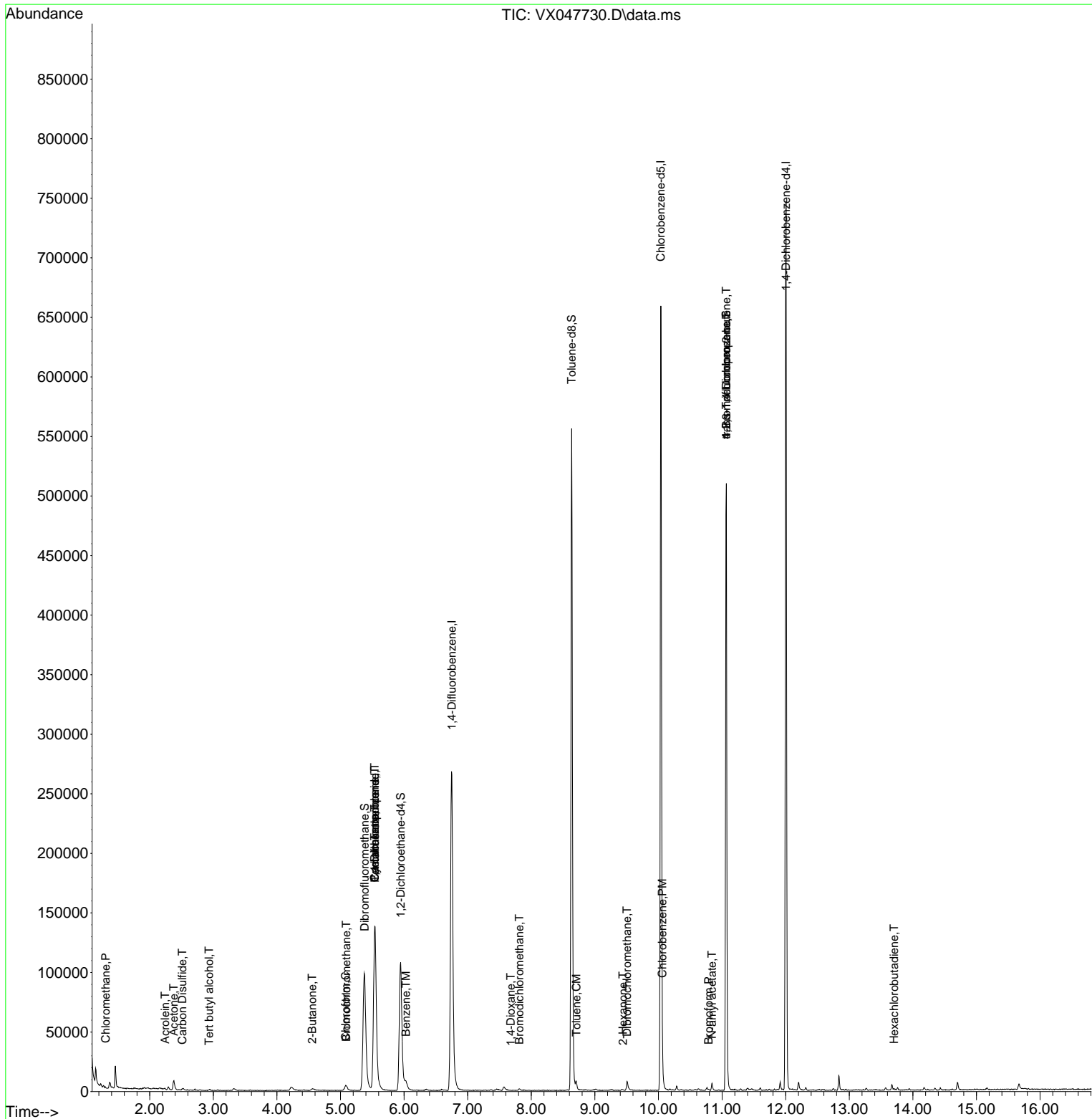
| Compound                      | R.T.   | QIon           | Response | Conc   | Units    | Dev(Min) |
|-------------------------------|--------|----------------|----------|--------|----------|----------|
| -----                         |        |                |          |        |          |          |
| Internal Standards            |        |                |          |        |          |          |
| 1) Pentafluorobenzene         | 5.544  | 168            | 141797   | 50.000 | ug/l     | 0.00     |
| 34) 1,4-Difluorobenzene       | 6.751  | 114            | 298818   | 50.000 | ug/l     | 0.00     |
| 63) Chlorobenzene-d5          | 10.037 | 117            | 301046   | 50.000 | ug/l     | 0.00     |
| 72) 1,4-Dichlorobenzene-d4    | 12.006 | 152            | 155521   | 50.000 | ug/l     | 0.00     |
| System Monitoring Compounds   |        |                |          |        |          |          |
| 33) 1,2-Dichloroethane-d4     | 5.946  | 65             | 118593   | 52.543 | ug/l     | 0.00     |
| Spiked Amount                 | 50.000 | Range 78 - 117 | Recovery | =      | 105.080% |          |
| 35) Dibromofluoromethane      | 5.379  | 113            | 97478    | 48.641 | ug/l     | 0.00     |
| Spiked Amount                 | 50.000 | Range 75 - 124 | Recovery | =      | 97.280%  |          |
| 50) Toluene-d8                | 8.635  | 98             | 334878   | 48.293 | ug/l     | 0.00     |
| Spiked Amount                 | 50.000 | Range 92 - 112 | Recovery | =      | 96.580%  |          |
| 62) 4-Bromofluorobenzene      | 11.067 | 95             | 146404   | 55.631 | ug/l     | 0.00     |
| Spiked Amount                 | 50.000 | Range 83 - 123 | Recovery | =      | 111.260% |          |
| Target Compounds              |        |                |          |        |          |          |
|                               |        |                |          |        |          | Qvalue   |
| 3) Chloromethane              | 1.307  | 50             | 678      | 0.351  | ug/l #   | 85       |
| 11) Tert butyl alcohol        | 2.934  | 59             | 79       | 0.314  | ug/l #   | 72       |
| 13) Acrolein                  | 2.239  | 56             | 194      | 0.837  | ug/l #   | 1        |
| 16) Acetone                   | 2.380  | 43             | 10429    | 10.627 | ug/l     | 97       |
| 17) Carbon Disulfide          | 2.514  | 76             | 1040     | 0.225  | ug/l #   | 76       |
| 25) 2-Butanone                | 4.556  | 43             | 3588     | 2.931  | ug/l     | 94       |
| 28) Bromochloromethane        | 5.093  | 49             | 334      | 0.214  | ug/l #   | 15       |
| 30) Chloroform                | 5.080  | 83             | 5853     | 1.617  | ug/l     | 89       |
| 31) Cyclohexane               | 5.538  | 56             | 3424     | 1.148  | ug/l #   | 5        |
| 36) 1,1-Dichloropropene       | 5.538  | 75             | 11914    | 4.068  | ug/l #   | 51       |
| 38) Carbon Tetrachloride      | 5.538  | 117            | 14809    | 4.654  | ug/l #   | 19       |
| 40) Benzene                   | 6.031  | 78             | 6765     | 0.761  | ug/l     | 92       |
| 47) Bromodichloromethane      | 7.812  | 83             | 977      | 0.286  | ug/l #   | 80       |
| 49) 1,4-Dioxane               | 7.678  | 88             | 26       | 1.004  | ug/l #   | 21       |
| 52) Toluene                   | 8.708  | 92             | 2151     | 0.393  | ug/l     | 96       |
| 59) 2-Hexanone                | 9.439  | 43             | 922      | 0.450  | ug/l     | 66       |
| 60) Dibromochloromethane      | 9.506  | 129            | 881      | 0.362  | ug/l     | 87       |
| 65) Chlorobenzene             | 10.061 | 112            | 1894     | 0.277  | ug/l     | 97       |
| 71) Bromoform                 | 10.787 | 173            | 388      | 0.220  | ug/l #   | 28       |
| 74) N-amyl acetate            | 10.842 | 43             | 1098     | 0.204  | ug/l #   | 24       |
| 76) 1,2,3-Trichloropropane    | 11.067 | 75             | 75782    | 24.067 | ug/l #   | 40       |
| 81) trans-1,4-Dichloro-2-b... | 11.067 | 75             | 75782    | 61.374 | ug/l #   | 8        |
| 94) Hexachlorobutadiene       | 13.707 | 225            | 282      | 0.248  | ug/l     | 81       |
| -----                         |        |                |          |        |          |          |

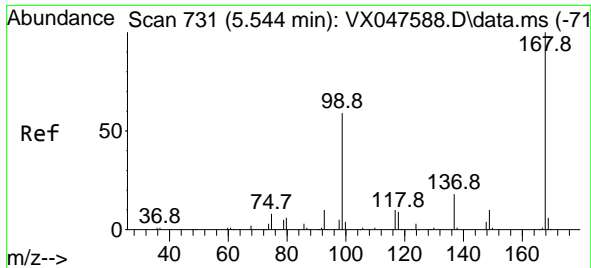
(#) = qualifier out of range (m) = manual integration (+) = signals summed

Data Path : Z:\voasrv\HPCHEM1\MSVOA\_X\Data\VX092325\  
 Data File : VX047730.D  
 Acq On : 23 Sep 2025 14:07  
 Operator : JC/MD  
 Sample : Q3141-03  
 Misc : 5.0mL/MSVOA\_X/WATER  
 ALS Vial : 13 Sample Multiplier: 1

Instrument :  
 MSVOA\_X  
 ClientSampleId :  
 BP-VPB-184-GW-60-62

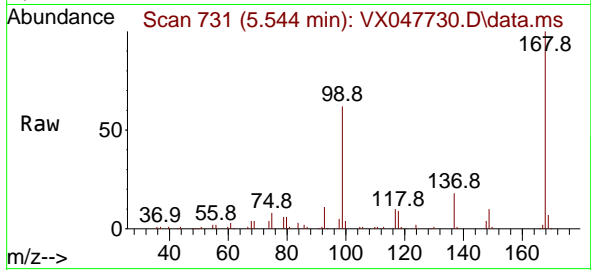
Quant Time: Sep 24 01:32:45 2025  
 Quant Method : Z:\voasrv\HPCHEM1\MSVOA\_X\Method\82X091625W.M  
 Quant Title : SW846 8260  
 QLast Update : Wed Sep 17 06:39:58 2025  
 Response via : Initial Calibration



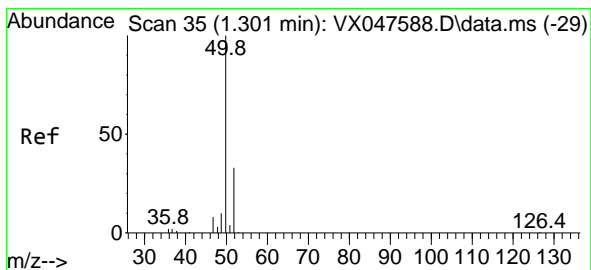
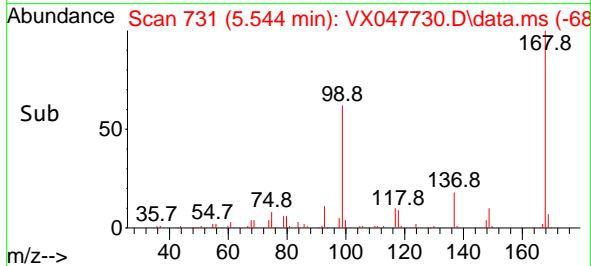
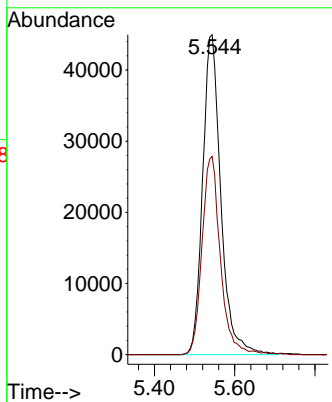


#1  
 Pentafluorobenzene  
 Concen: 50.000 ug/l  
 RT: 5.544 min Scan# 71  
 Delta R.T. -0.000 min  
 Lab File: VX047730.D  
 Acq: 23 Sep 2025 14:07

Instrument : MSVOA\_X  
 ClientSampleId : BP-VPB-184-GW-60-62

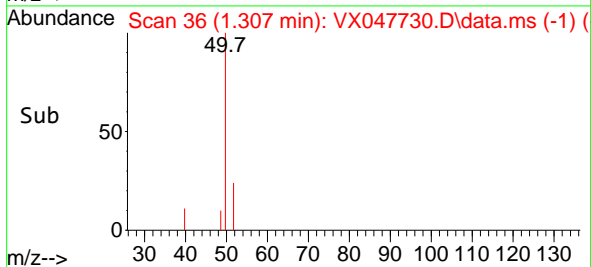
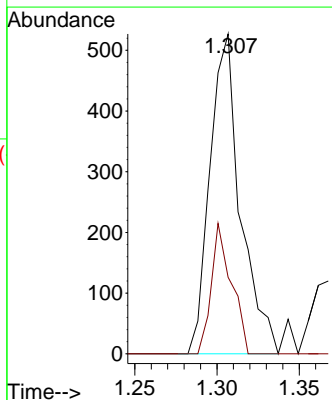
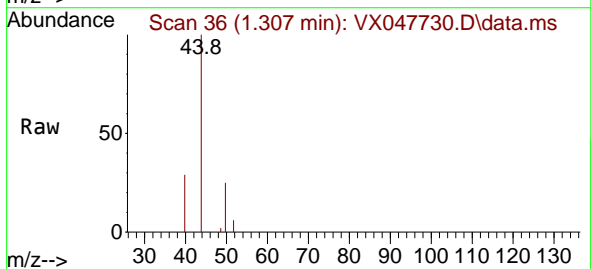


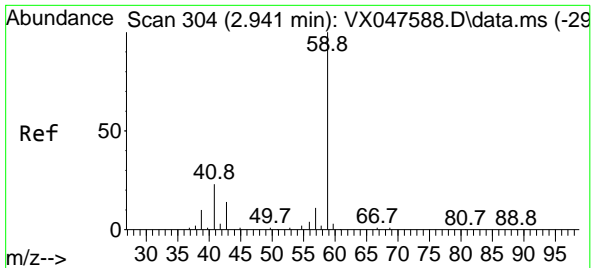
Tgt Ion:168 Resp: 141797  
 Ion Ratio Lower Upper  
 168 100  
 99 62.0 48.8 73.2



#3  
 Chloromethane  
 Concen: 0.351 ug/l  
 RT: 1.307 min Scan# 36  
 Delta R.T. 0.006 min  
 Lab File: VX047730.D  
 Acq: 23 Sep 2025 14:07

Tgt Ion: 50 Resp: 678  
 Ion Ratio Lower Upper  
 50 100  
 52 23.9 26.1 39.1#

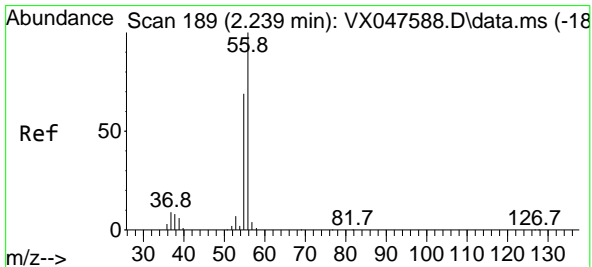
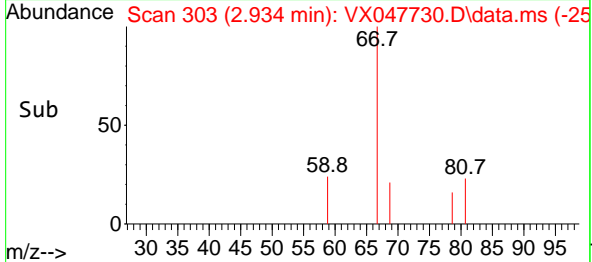
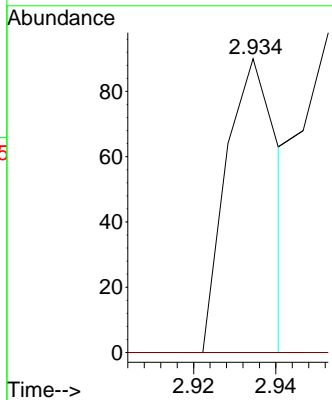
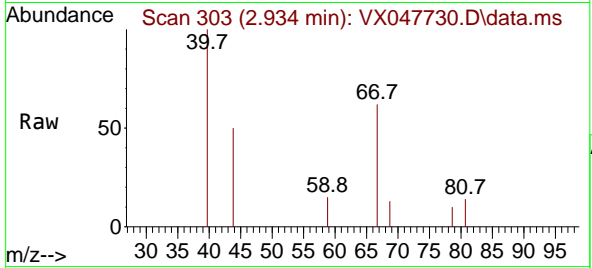




#11  
 Tert butyl alcohol  
 Concen: 0.314 ug/l  
 RT: 2.934 min Scan# 30  
 Delta R.T. -0.006 min  
 Lab File: VX047730.D  
 Acq: 23 Sep 2025 14:07

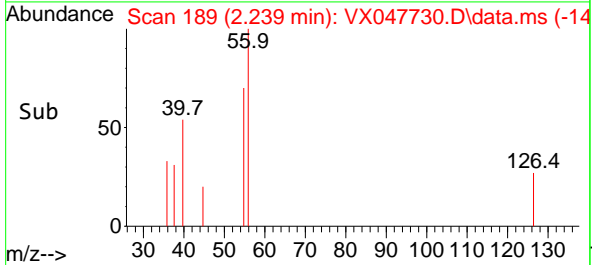
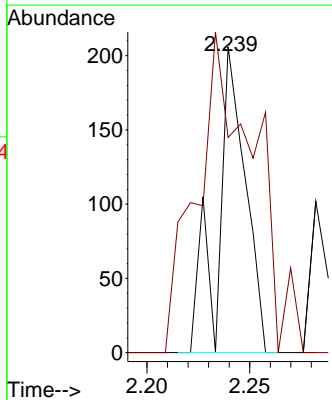
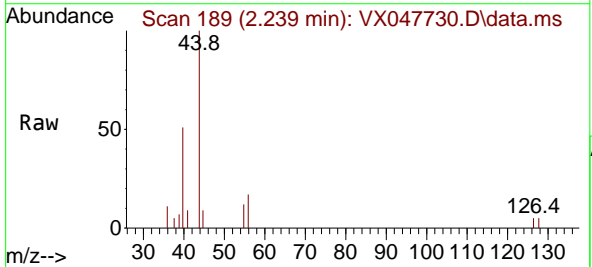
Instrument : MSVOA\_X  
 ClientSampleId : BP-VPB-184-GW-60-62

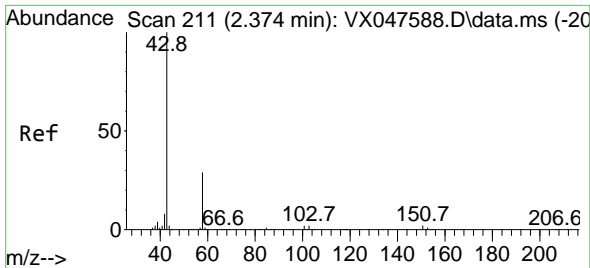
Tgt Ion: 59 Resp: 79  
 Ion Ratio Lower Upper  
 59 100  
 57 0.0 8.3 12.5#



#13  
 Acrolein  
 Concen: 0.837 ug/l  
 RT: 2.239 min Scan# 189  
 Delta R.T. -0.000 min  
 Lab File: VX047730.D  
 Acq: 23 Sep 2025 14:07

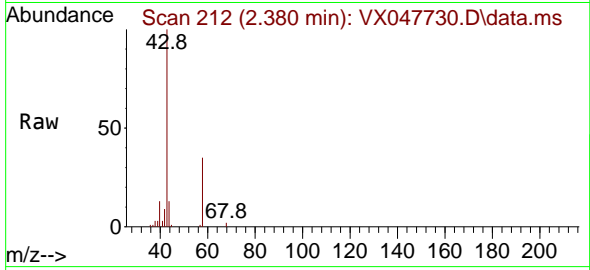
Tgt Ion: 56 Resp: 194  
 Ion Ratio Lower Upper  
 56 100  
 55 217.5 57.2 85.8#



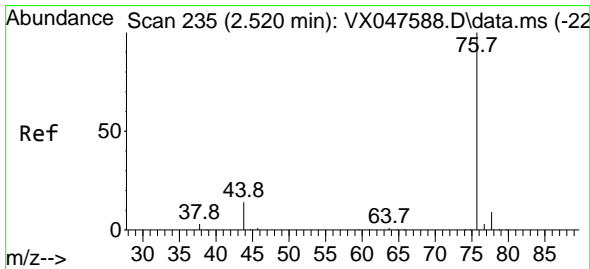
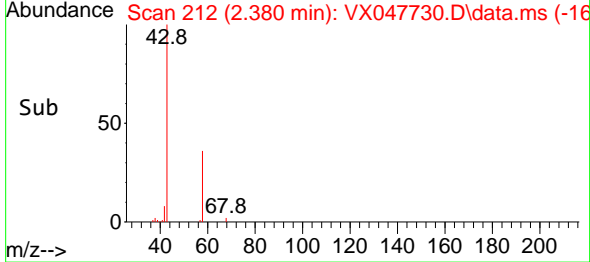
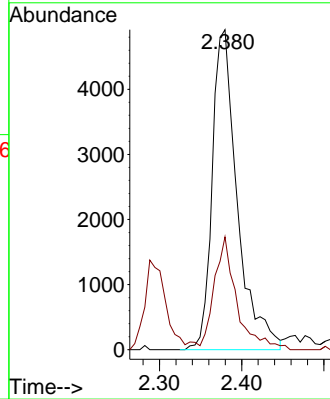


#16  
 Acetone  
 Concen: 10.627 ug/l  
 RT: 2.380 min Scan# 211  
 Delta R.T. 0.006 min  
 Lab File: VX047730.D  
 Acq: 23 Sep 2025 14:07

Instrument : MSVOA\_X  
 ClientSampleId : BP-VPB-184-GW-60-62

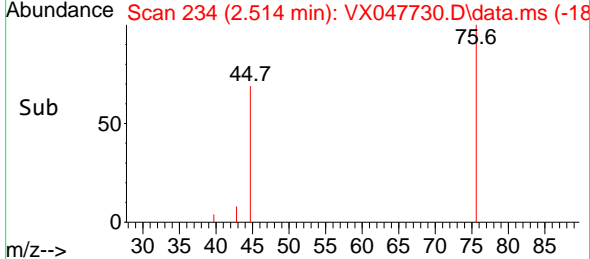
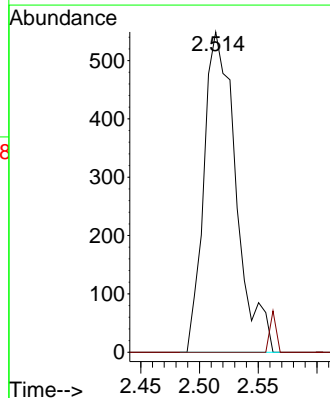
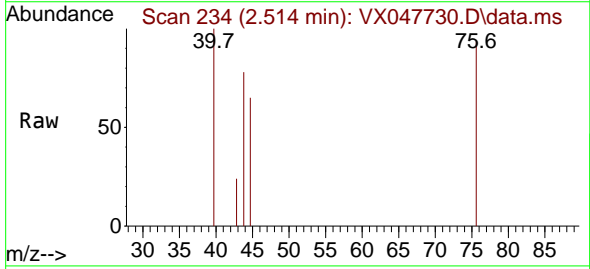


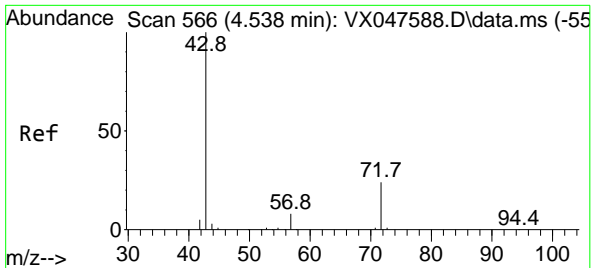
Tgt Ion: 43 Resp: 10429  
 Ion Ratio Lower Upper  
 43 100  
 58 30.9 23.4 35.0



#17  
 Carbon Disulfide  
 Concen: 0.225 ug/l  
 RT: 2.514 min Scan# 234  
 Delta R.T. -0.006 min  
 Lab File: VX047730.D  
 Acq: 23 Sep 2025 14:07

Tgt Ion: 76 Resp: 1040  
 Ion Ratio Lower Upper  
 76 100  
 78 0.0 6.8 10.2#

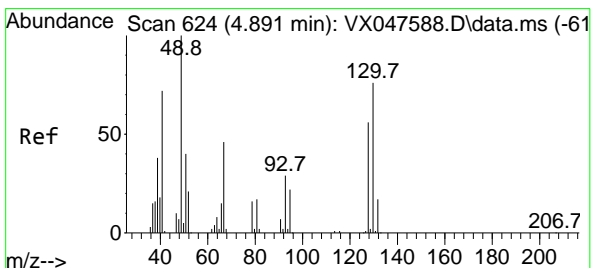
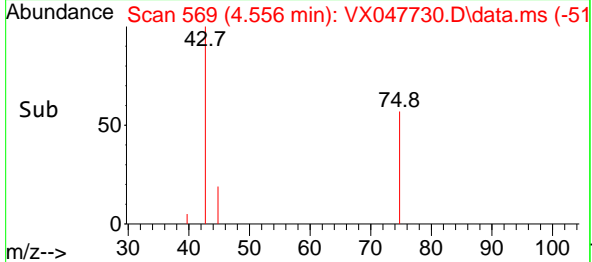
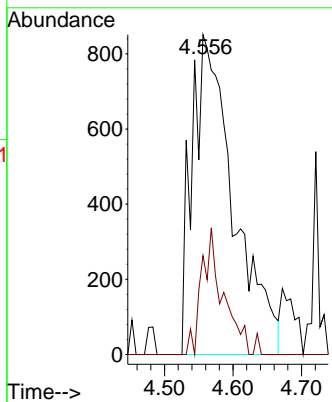
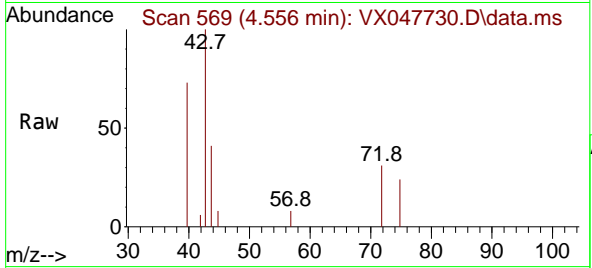




#25  
 2-Butanone  
 Concen: 2.931 ug/l  
 RT: 4.556 min Scan# 50  
 Delta R.T. 0.018 min  
 Lab File: VX047730.D  
 Acq: 23 Sep 2025 14:07

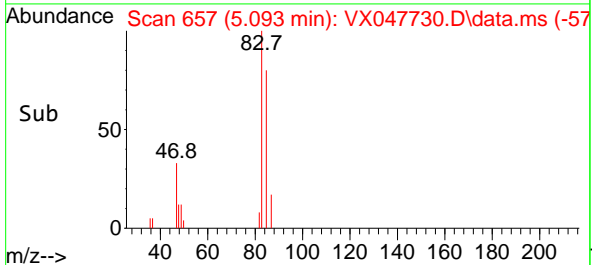
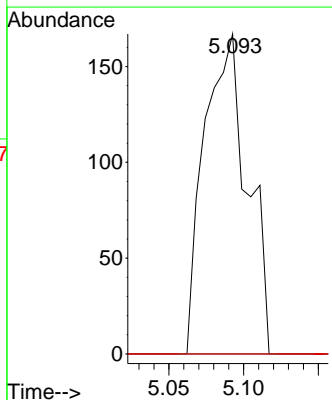
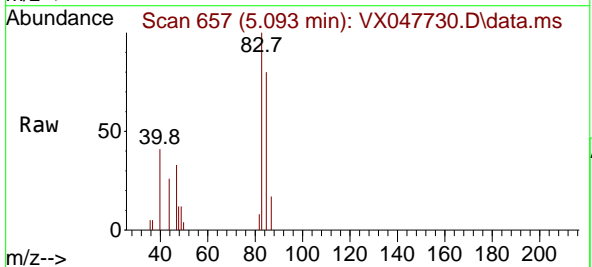
Instrument : MSVOA\_X  
 ClientSampleId : BP-VPB-184-GW-60-62

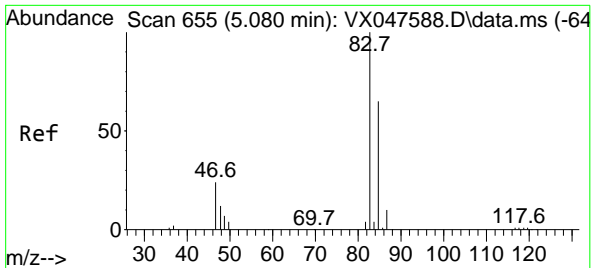
Tgt Ion: 43 Resp: 3588  
 Ion Ratio Lower Upper  
 43 100  
 72 21.9 20.1 30.1



#28  
 Bromochloromethane  
 Concen: 0.214 ug/l  
 RT: 5.093 min Scan# 657  
 Delta R.T. 0.201 min  
 Lab File: VX047730.D  
 Acq: 23 Sep 2025 14:07

Tgt Ion: 49 Resp: 334  
 Ion Ratio Lower Upper  
 49 100  
 129 0.0 0.0 3.2  
 130 0.0 57.8 86.8#

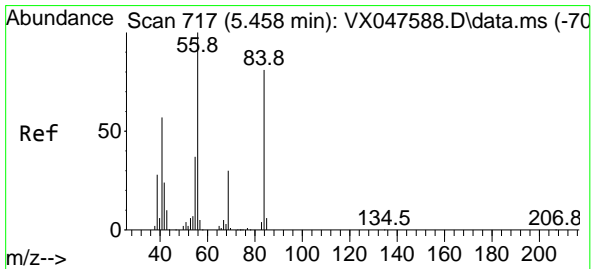
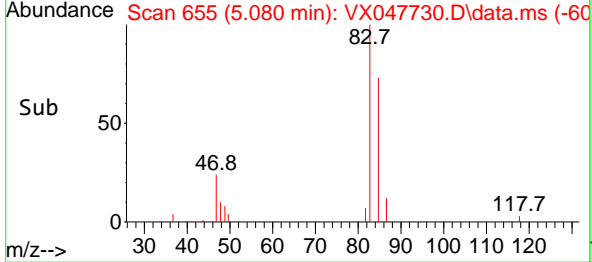
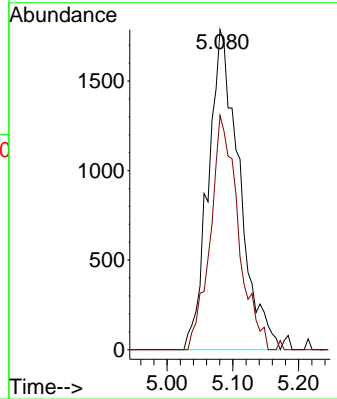
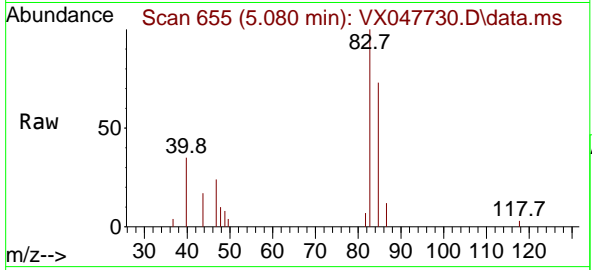




#30  
 Chloroform  
 Concen: 1.617 ug/l  
 RT: 5.080 min Scan# 61  
 Delta R.T. -0.000 min  
 Lab File: VX047730.D  
 Acq: 23 Sep 2025 14:07

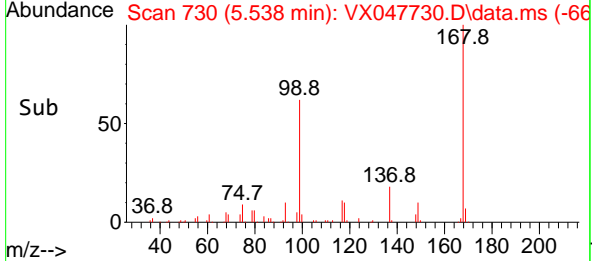
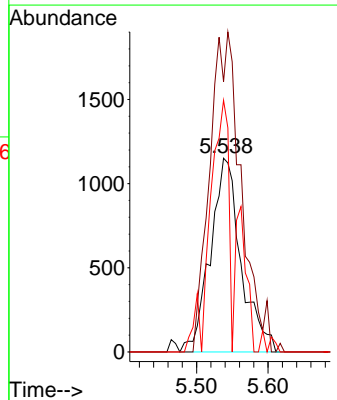
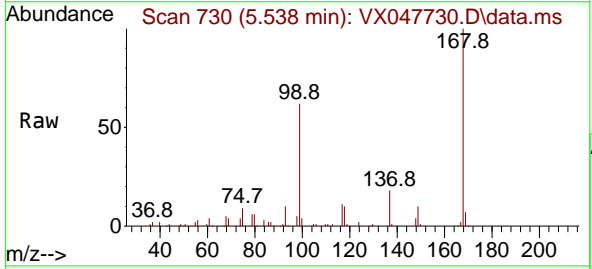
Instrument : MSVOA\_X  
 ClientSampleId : BP-VPB-184-GW-60-62

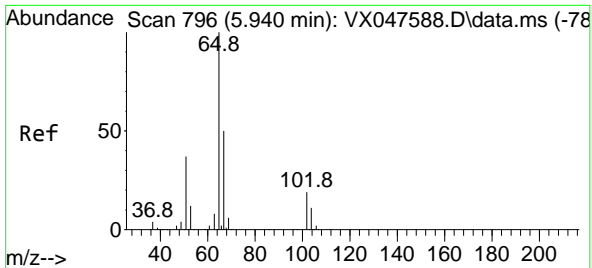
| Tgt Ion | Resp | Ion Ratio | Lower | Upper |
|---------|------|-----------|-------|-------|
| 83      | 5853 | 100       |       |       |
| 85      |      | 73.2      | 51.8  | 77.6  |



#31  
 Cyclohexane  
 Concen: 1.148 ug/l  
 RT: 5.538 min Scan# 730  
 Delta R.T. 0.079 min  
 Lab File: VX047730.D  
 Acq: 23 Sep 2025 14:07

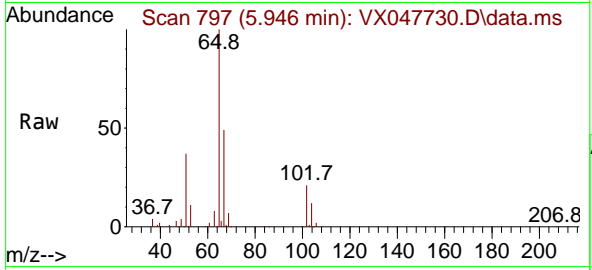
| Tgt Ion | Resp | Ion Ratio | Lower | Upper |
|---------|------|-----------|-------|-------|
| 56      | 3424 | 100       |       |       |
| 69      |      | 139.4     | 23.8  | 35.8# |
| 84      |      | 129.9     | 64.6  | 97.0# |



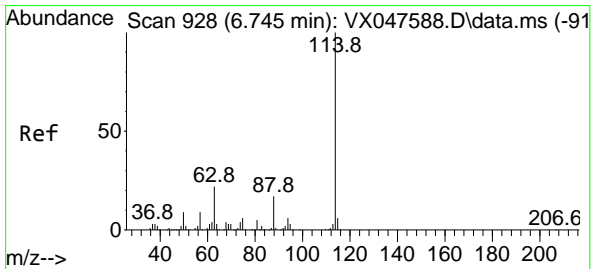
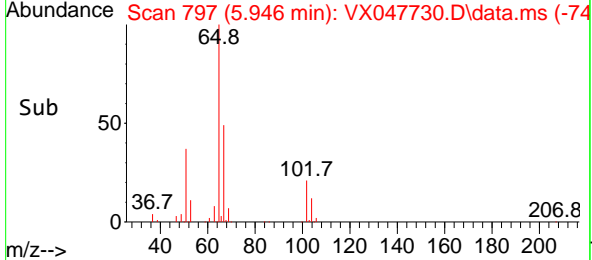
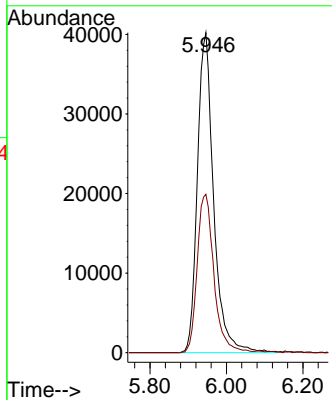


#33  
 1,2-Dichloroethane-d4  
 Concen: 52.543 ug/l  
 RT: 5.946 min Scan# 796  
 Delta R.T. 0.006 min  
 Lab File: VX047730.D  
 Acq: 23 Sep 2025 14:07

Instrument : MSVOA\_X  
 ClientSampleId : BP-VPB-184-GW-60-62

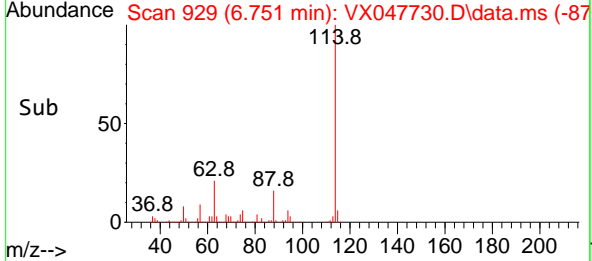
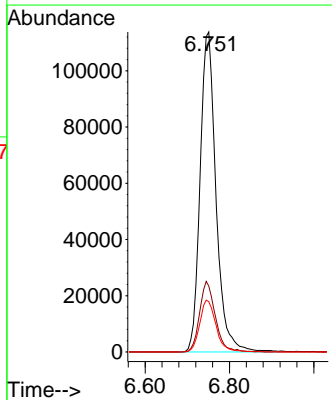
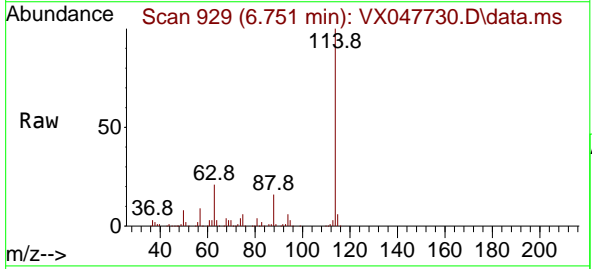


Tgt Ion: 65 Resp: 118593  
 Ion Ratio Lower Upper  
 65 100  
 67 51.0 0.0 103.0

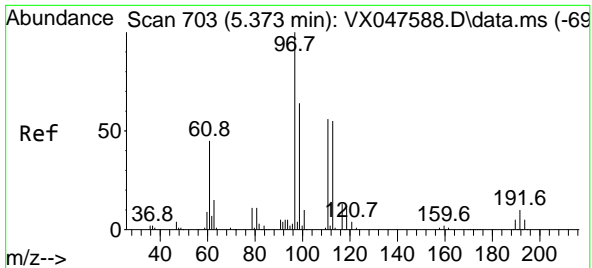


#34  
 1,4-Difluorobenzene  
 Concen: 50.000 ug/l  
 RT: 6.751 min Scan# 929  
 Delta R.T. 0.006 min  
 Lab File: VX047730.D  
 Acq: 23 Sep 2025 14:07

Tgt Ion: 114 Resp: 298818  
 Ion Ratio Lower Upper  
 114 100  
 63 20.6 0.0 44.0  
 88 15.7 0.0 34.2



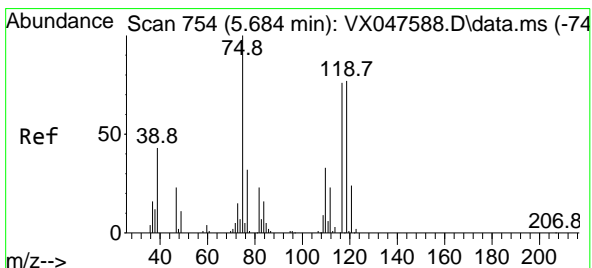
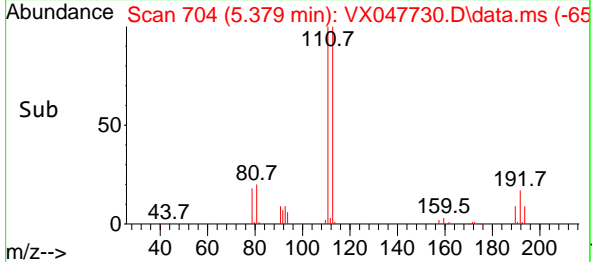
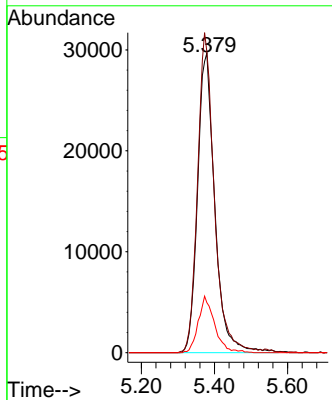
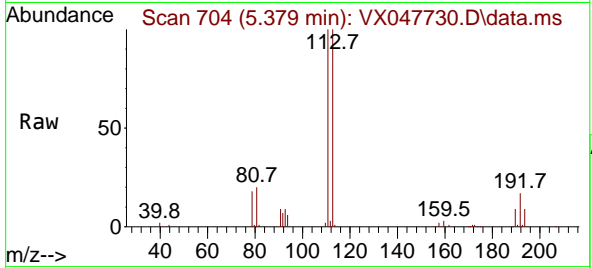




#35  
 Dibromofluoromethane  
 Concen: 48.641 ug/l  
 RT: 5.379 min Scan# 703  
 Delta R.T. 0.006 min  
 Lab File: VX047730.D  
 Acq: 23 Sep 2025 14:07

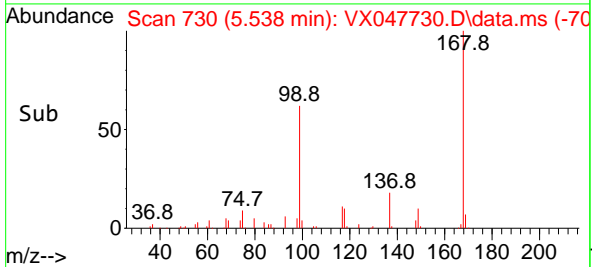
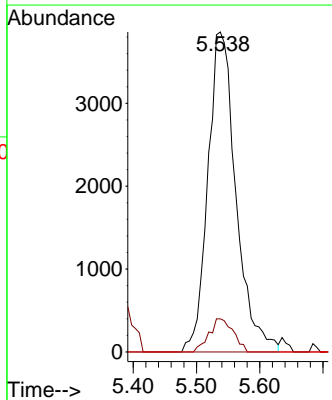
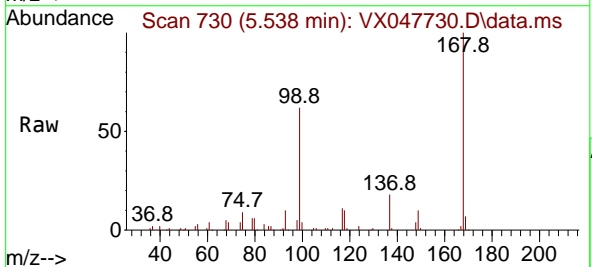
Instrument : MSVOA\_X  
 ClientSampleId : BP-VPB-184-GW-60-62

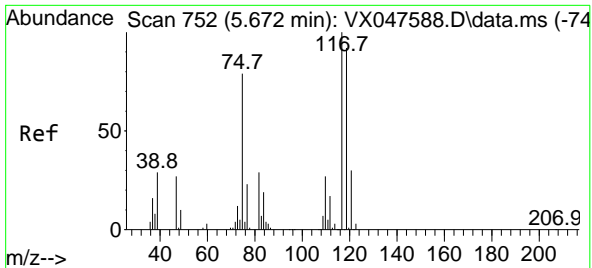
| Tgt Ion | Resp  | Lower | Upper |
|---------|-------|-------|-------|
| 113     | 100   |       |       |
| 111     | 103.4 | 80.9  | 121.3 |
| 192     | 17.9  | 14.2  | 21.4  |



#36  
 1,1-Dichloropropene  
 Concen: 4.068 ug/l  
 RT: 5.538 min Scan# 730  
 Delta R.T. -0.146 min  
 Lab File: VX047730.D  
 Acq: 23 Sep 2025 14:07

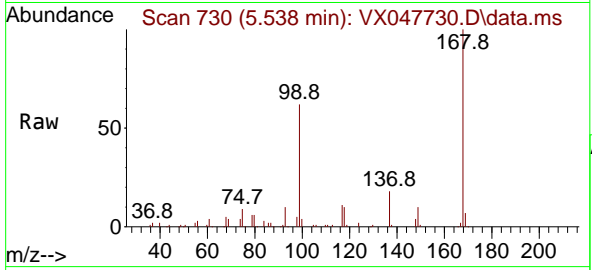
| Tgt Ion | Resp | Lower | Upper |
|---------|------|-------|-------|
| 75      | 100  |       |       |
| 110     | 8.9  | 16.7  | 50.1# |
| 77      | 0.0  | 24.3  | 36.5# |



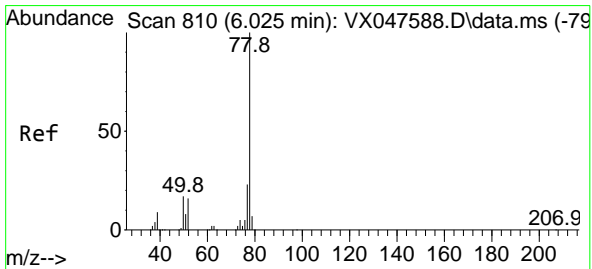
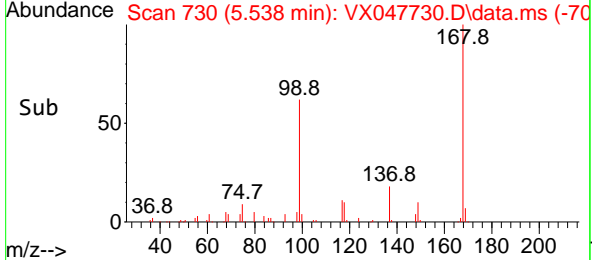
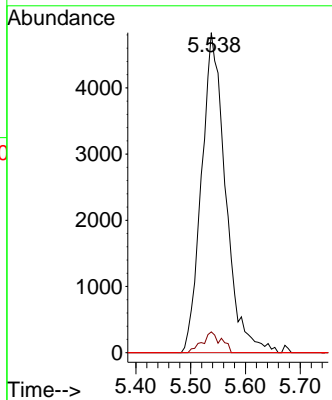


#38  
 Carbon Tetrachloride  
 Concen: 4.654 ug/l  
 RT: 5.538 min Scan# 711  
 Delta R.T. -0.134 min  
 Lab File: VX047730.D  
 Acq: 23 Sep 2025 14:07

Instrument : MSVOA\_X  
 ClientSampleId : BP-VPB-184-GW-60-62

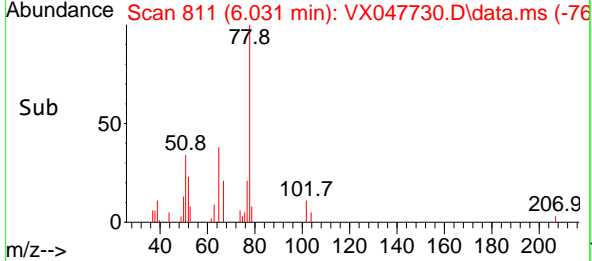
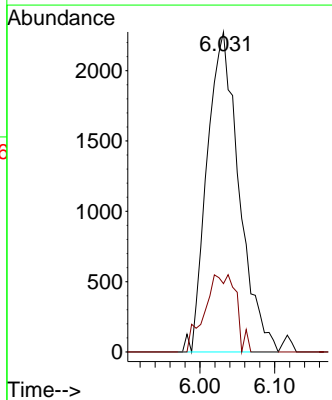
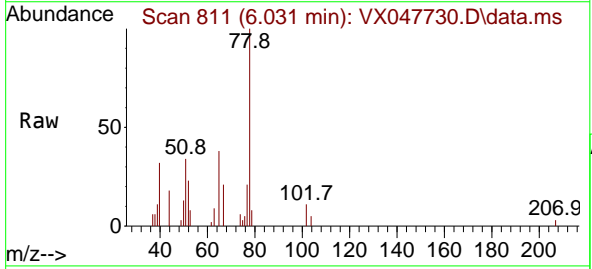


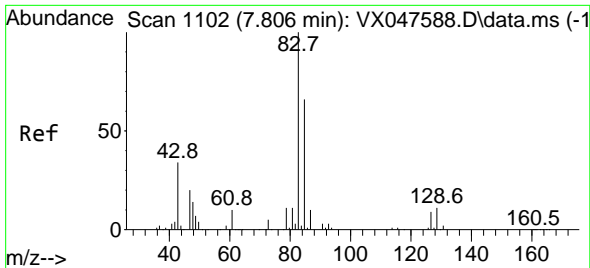
Tgt Ion: 117 Resp: 14809  
 Ion Ratio Lower Upper  
 117 100  
 119 6.5 73.4 110.2#  
 121 0.0 23.8 35.6#



#40  
 Benzene  
 Concen: 0.761 ug/l  
 RT: 6.031 min Scan# 811  
 Delta R.T. 0.006 min  
 Lab File: VX047730.D  
 Acq: 23 Sep 2025 14:07

Tgt Ion: 78 Resp: 6765  
 Ion Ratio Lower Upper  
 78 100  
 77 19.7 18.8 28.2

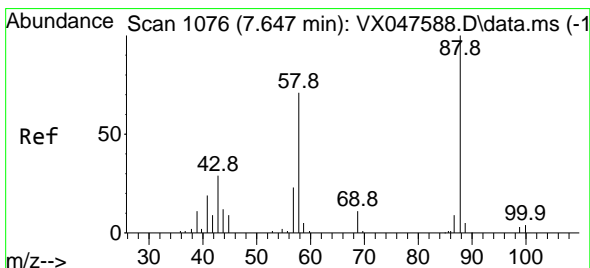
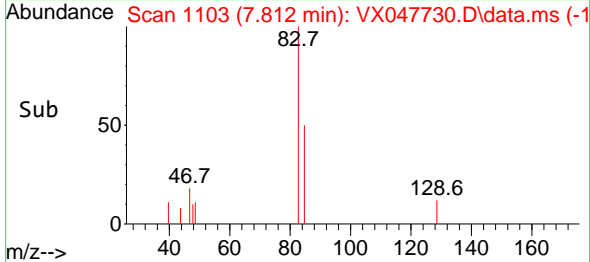
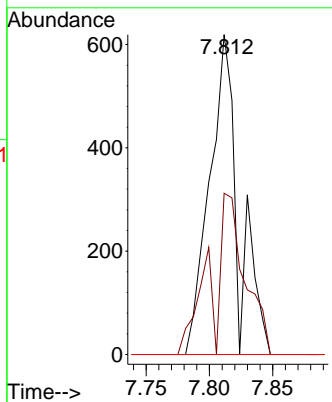
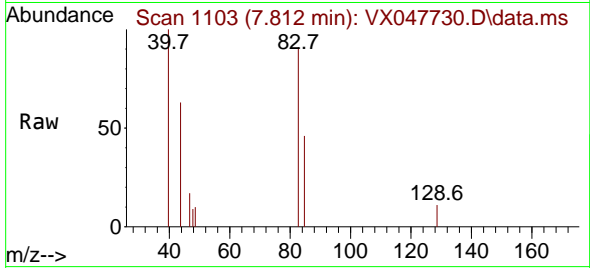




#47  
 Bromodichloromethane  
 Concen: 0.286 ug/l  
 RT: 7.812 min Scan# 1103  
 Delta R.T. 0.006 min  
 Lab File: VX047730.D  
 Acq: 23 Sep 2025 14:07

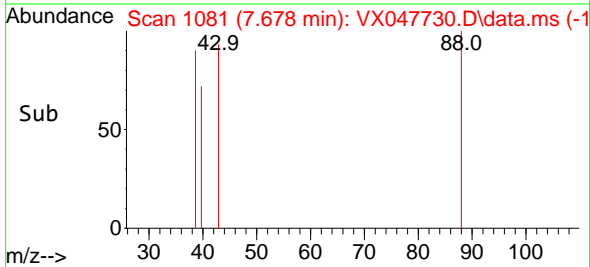
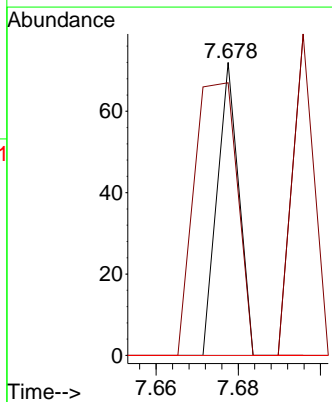
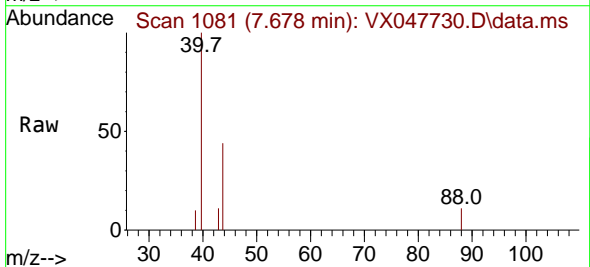
Instrument : MSVOA\_X  
 ClientSampleId : BP-VPB-184-GW-60-62

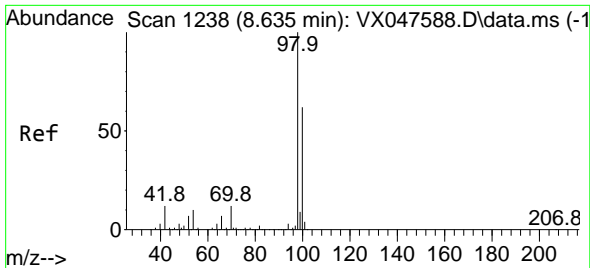
| Tgt Ion | Resp | Lower | Upper |
|---------|------|-------|-------|
| 83      | 100  |       |       |
| 85      | 50.4 | 52.5  | 78.7# |
| 127     | 0.0  | 6.9   | 10.3# |



#49  
 1,4-Dioxane  
 Concen: 1.004 ug/l  
 RT: 7.678 min Scan# 1081  
 Delta R.T. 0.030 min  
 Lab File: VX047730.D  
 Acq: 23 Sep 2025 14:07

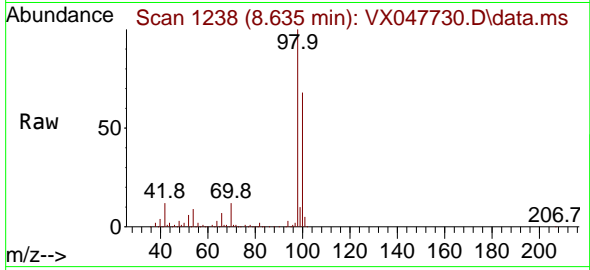
| Tgt Ion | Resp | Lower | Upper |
|---------|------|-------|-------|
| 88      | 100  |       |       |
| 43      | 0.0  | 30.2  | 45.2# |
| 58      | 0.0  | 59.5  | 89.3# |



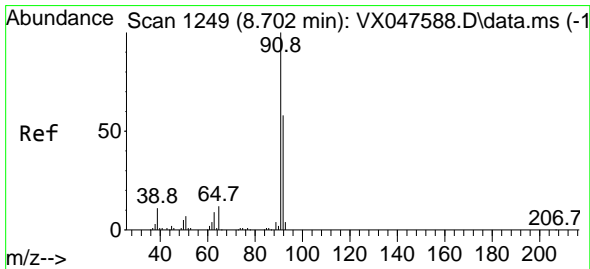
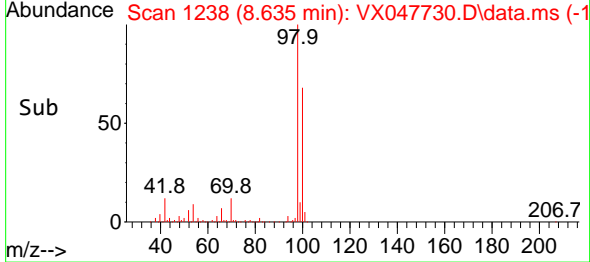
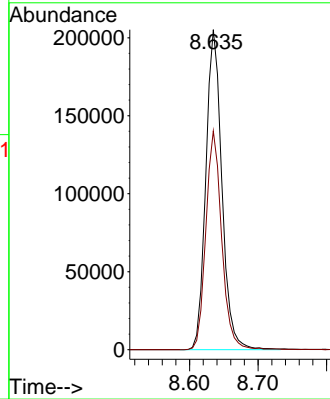


#50  
 Toluene-d8  
 Concen: 48.293 ug/l  
 RT: 8.635 min Scan# 111  
 Delta R.T. -0.000 min  
 Lab File: VX047730.D  
 Acq: 23 Sep 2025 14:07

Instrument : MSVOA\_X  
 ClientSampleId : BP-VPB-184-GW-60-62

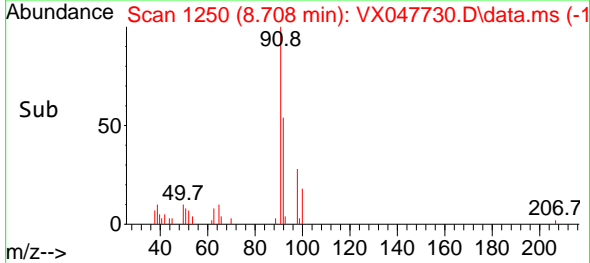
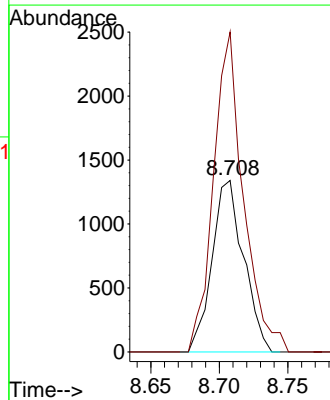
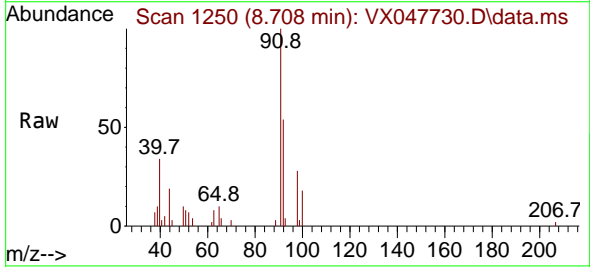


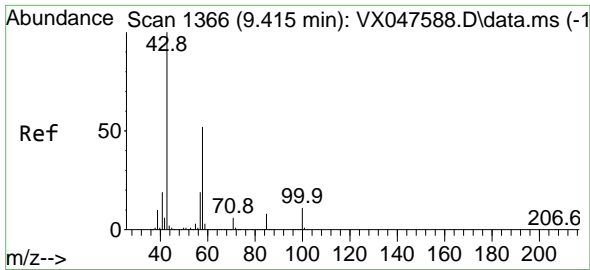
Tgt Ion: 98 Resp: 334878  
 Ion Ratio Lower Upper  
 98 100  
 100 67.6 53.0 79.4



#52  
 Toluene  
 Concen: 0.393 ug/l  
 RT: 8.708 min Scan# 1250  
 Delta R.T. 0.006 min  
 Lab File: VX047730.D  
 Acq: 23 Sep 2025 14:07

Tgt Ion: 92 Resp: 2151  
 Ion Ratio Lower Upper  
 92 100  
 91 176.9 137.1 205.7

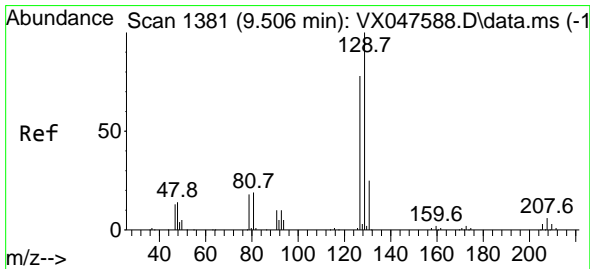
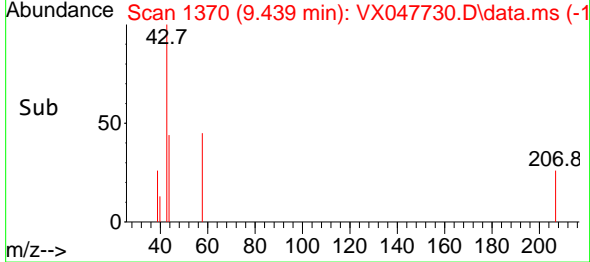
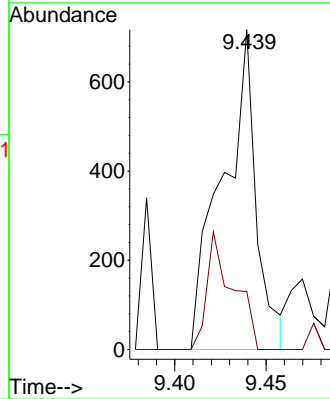
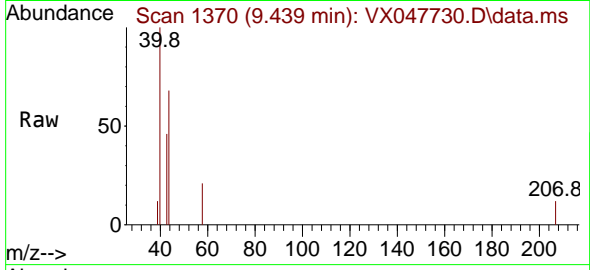




#59  
 2-Hexanone  
 Concen: 0.450 ug/l  
 RT: 9.439 min Scan# 11  
 Delta R.T. 0.024 min  
 Lab File: VX047730.D  
 Acq: 23 Sep 2025 14:07

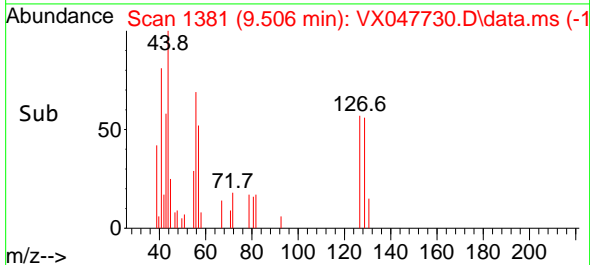
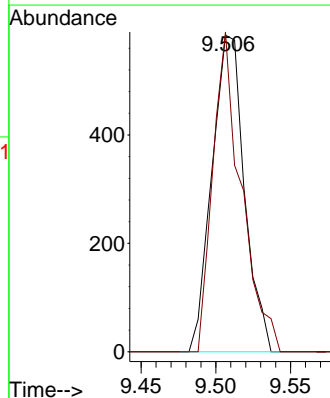
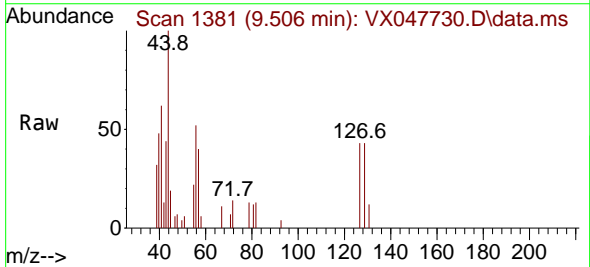
Instrument :  
 MSVOA\_X  
 ClientSampleId :  
 BP-VPB-184-GW-60-62

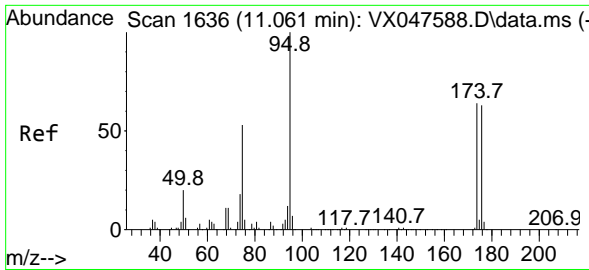
Tgt Ion: 43 Resp: 922  
 Ion Ratio Lower Upper  
 43 100  
 58 28.5 26.1 78.2



#60  
 Dibromochloromethane  
 Concen: 0.362 ug/l  
 RT: 9.506 min Scan# 1381  
 Delta R.T. -0.000 min  
 Lab File: VX047730.D  
 Acq: 23 Sep 2025 14:07

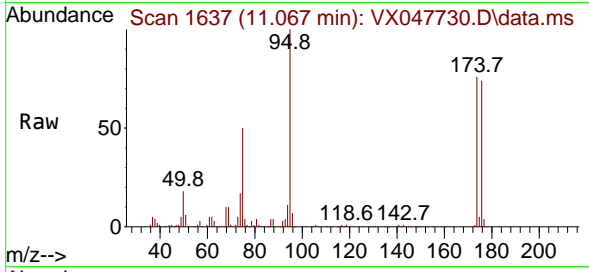
Tgt Ion: 129 Resp: 881  
 Ion Ratio Lower Upper  
 129 100  
 127 88.2 38.4 115.2



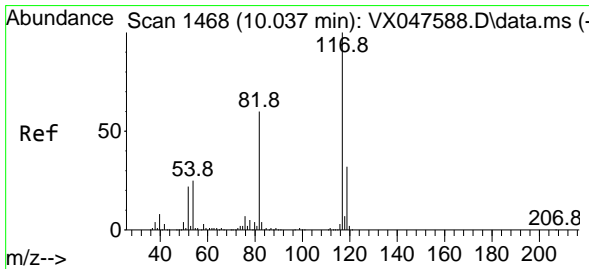
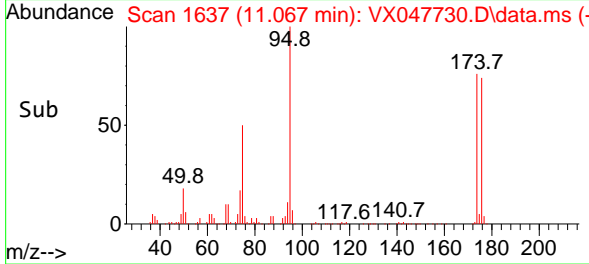
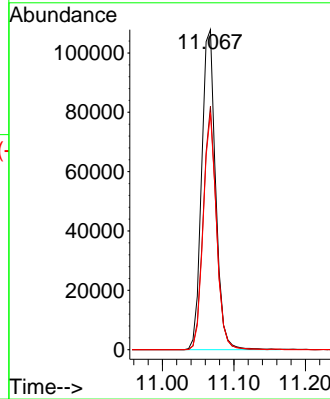


#62  
 4-Bromofluorobenzene  
 Concen: 55.631 ug/l  
 RT: 11.067 min Scan# 11  
 Delta R.T. 0.006 min  
 Lab File: VX047730.D  
 Acq: 23 Sep 2025 14:07

Instrument :  
 MSVOA\_X  
 ClientSampleId :  
 BP-VPB-184-GW-60-62

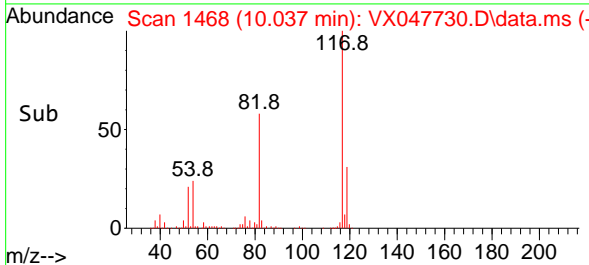
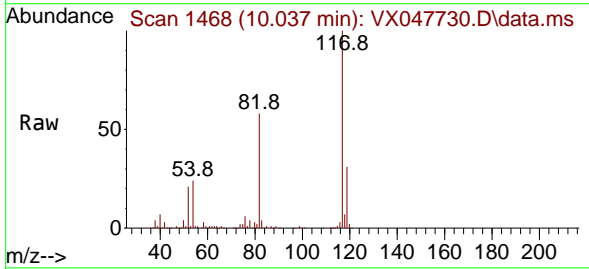
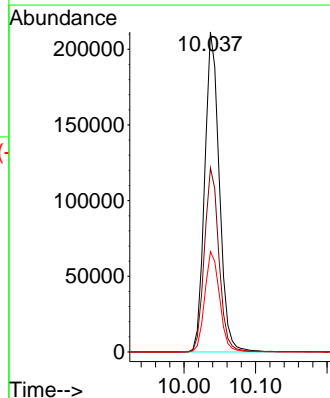


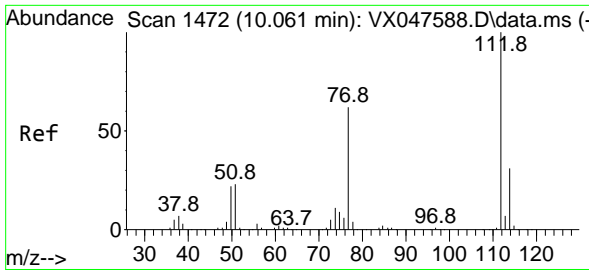
Tgt Ion: 95 Resp: 146404  
 Ion Ratio Lower Upper  
 95 100  
 174 71.8 0.0 141.6  
 176 70.1 0.0 138.4



#63  
 Chlorobenzene-d5  
 Concen: 50.000 ug/l  
 RT: 10.037 min Scan# 1468  
 Delta R.T. -0.000 min  
 Lab File: VX047730.D  
 Acq: 23 Sep 2025 14:07

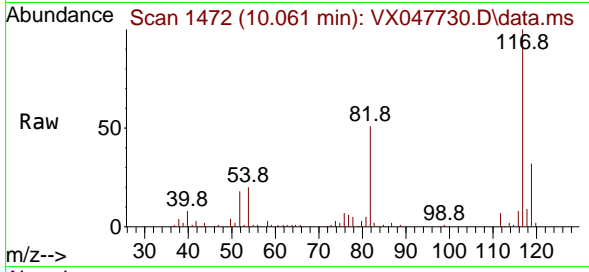
Tgt Ion: 117 Resp: 301046  
 Ion Ratio Lower Upper  
 117 100  
 82 57.5 47.8 71.6  
 119 31.4 25.2 37.8



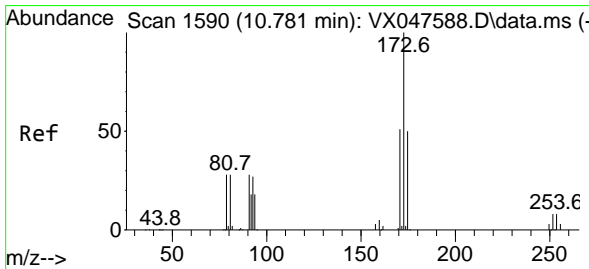
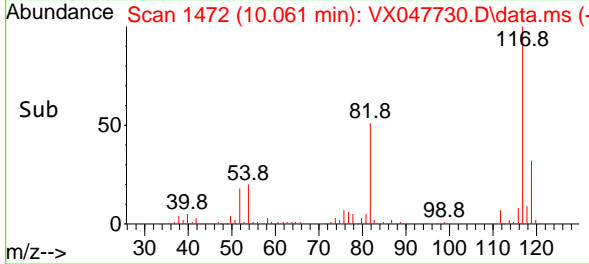
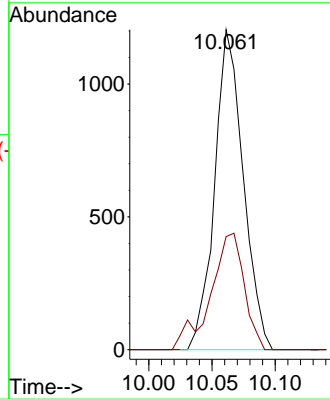


#65  
 Chlorobenzene  
 Concen: 0.277 ug/l  
 RT: 10.061 min Scan# 14  
 Delta R.T. -0.000 min  
 Lab File: VX047730.D  
 Acq: 23 Sep 2025 14:07

Instrument : MSVOA\_X  
 ClientSampleId : BP-VPB-184-GW-60-62

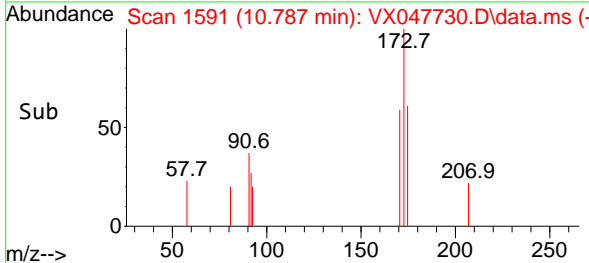
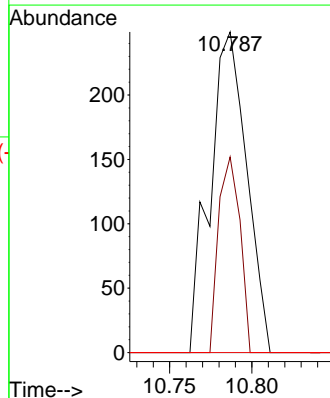
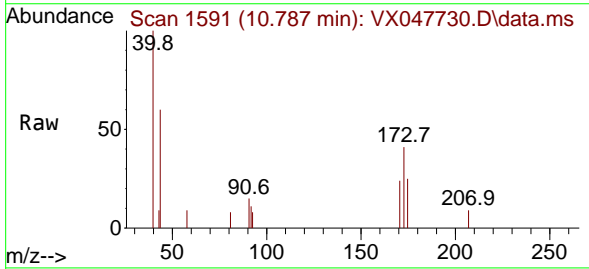


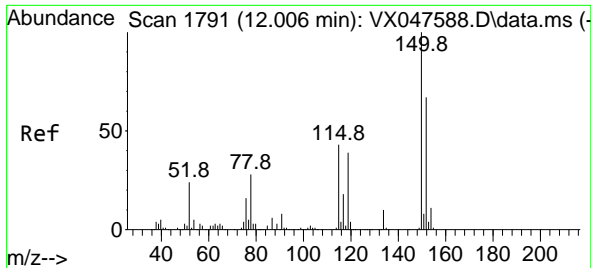
Tgt Ion:112 Resp: 1894  
 Ion Ratio Lower Upper  
 112 100  
 114 33.3 25.1 37.7



#71  
 Bromoform  
 Concen: 0.220 ug/l  
 RT: 10.787 min Scan# 1591  
 Delta R.T. 0.006 min  
 Lab File: VX047730.D  
 Acq: 23 Sep 2025 14:07

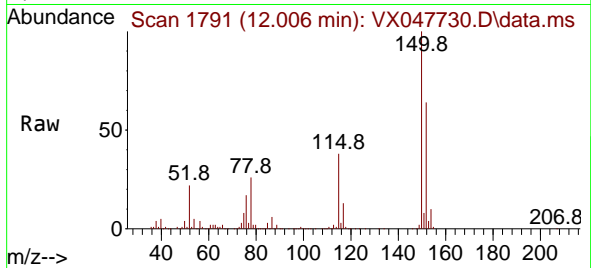
Tgt Ion:173 Resp: 388  
 Ion Ratio Lower Upper  
 173 100  
 175 0.0 24.9 74.6#  
 254 0.0 0.1 0.1#



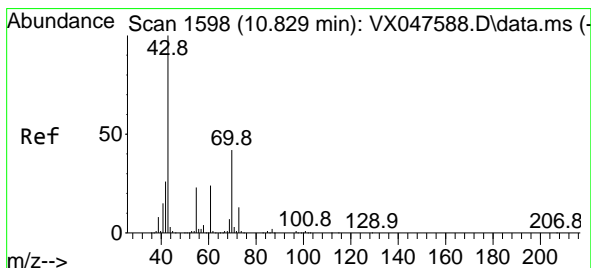
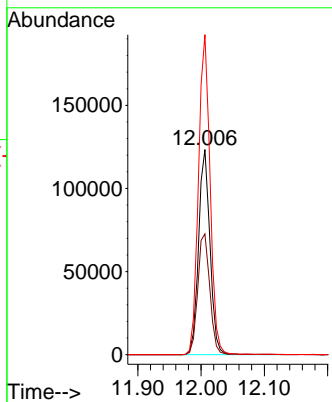
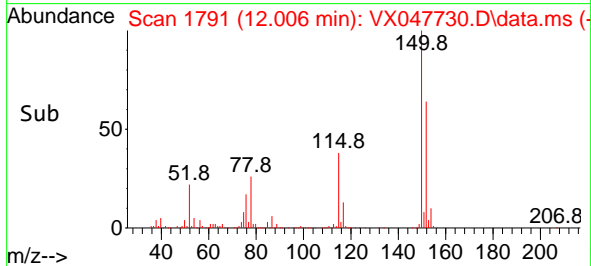


#72  
 1,4-Dichlorobenzene-d4  
 Concen: 50.000 ug/l  
 RT: 12.006 min Scan# 11  
 Delta R.T. -0.000 min  
 Lab File: VX047730.D  
 Acq: 23 Sep 2025 14:07

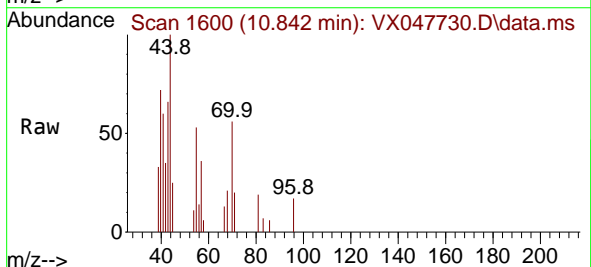
Instrument :  
 MSVOA\_X  
 ClientSampleId :  
 BP-VPB-184-GW-60-62



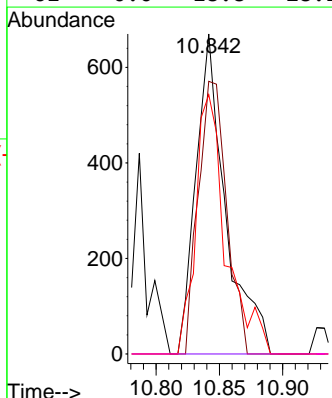
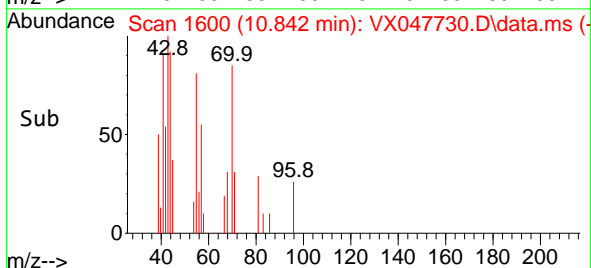
Tgt Ion:152 Resp: 155521  
 Ion Ratio Lower Upper  
 152 100  
 115 62.0 44.9 134.5  
 150 158.7 0.0 352.0



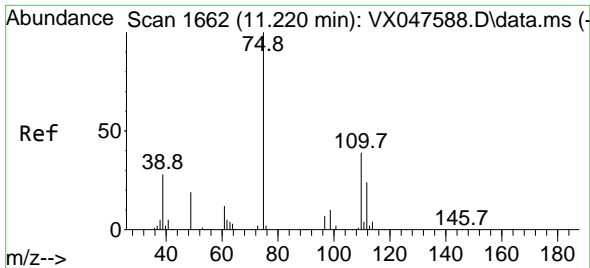
#74  
 N-ethyl acetate  
 Concen: 0.204 ug/l  
 RT: 10.842 min Scan# 1600  
 Delta R.T. 0.012 min  
 Lab File: VX047730.D  
 Acq: 23 Sep 2025 14:07



Tgt Ion: 43 Resp: 1098  
 Ion Ratio Lower Upper  
 43 100  
 70 81.3 32.0 48.0#  
 55 82.6 18.9 28.3#  
 61 0.0 18.8 28.2#



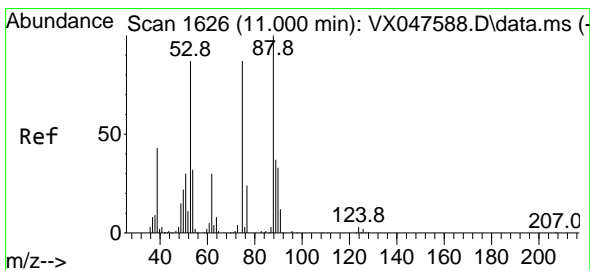
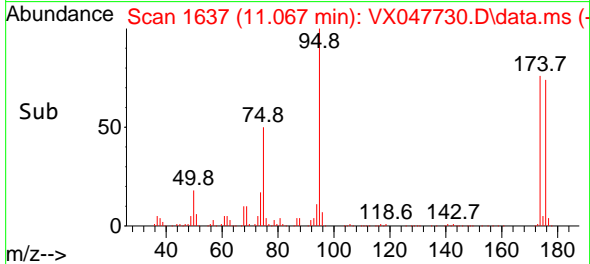
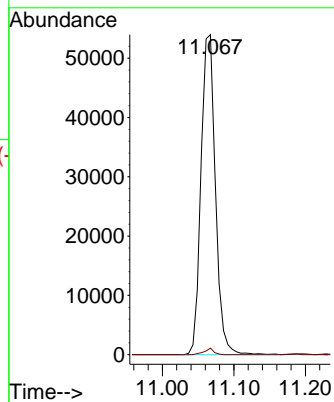
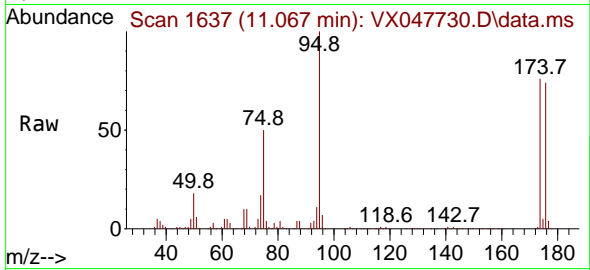




#76  
 1,2,3-Trichloropropane  
 Concen: 24.067 ug/l  
 RT: 11.067 min Scan# 1637  
 Delta R.T. -0.152 min  
 Lab File: VX047730.D  
 Acq: 23 Sep 2025 14:07

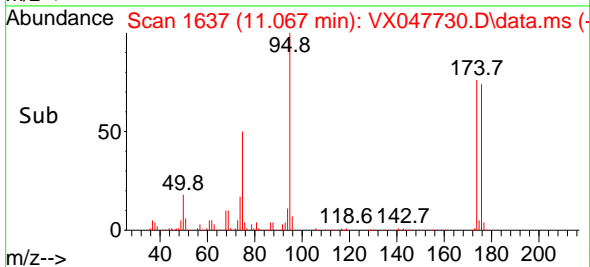
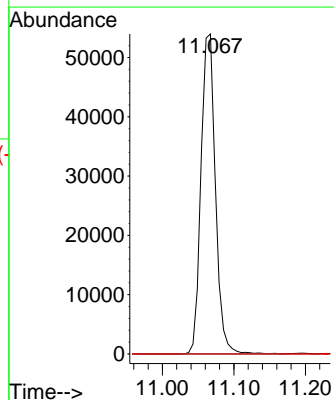
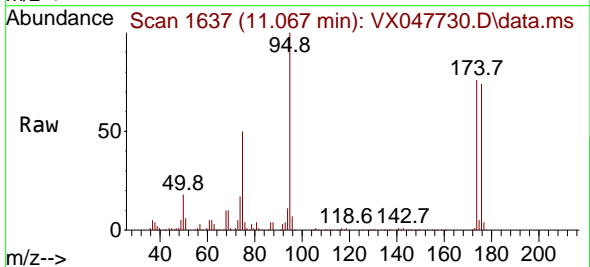
Instrument : MSVOA\_X  
 ClientSampleId : BP-VPB-184-GW-60-62

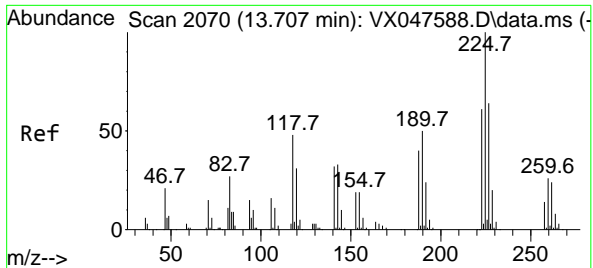
Tgt Ion: 75 Resp: 75782  
 Ion Ratio Lower Upper  
 75 100  
 77 1.3 18.8 56.4#



#81  
 trans-1,4-Dichloro-2-butene  
 Concen: 61.374 ug/l  
 RT: 11.067 min Scan# 1637  
 Delta R.T. 0.067 min  
 Lab File: VX047730.D  
 Acq: 23 Sep 2025 14:07

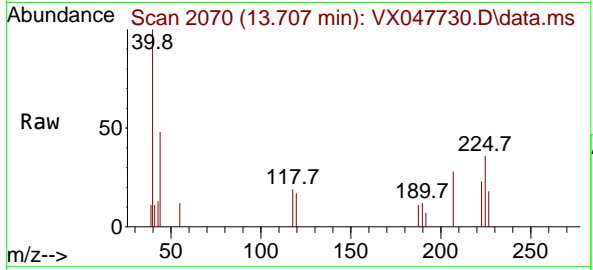
Tgt Ion: 75 Resp: 75782  
 Ion Ratio Lower Upper  
 75 100  
 53 0.0 83.4 125.2#  
 89 0.0 36.3 54.5#





#94  
 Hexachlorobutadiene  
 Concen: 0.248 ug/l  
 RT: 13.707 min Scan# 20  
 Delta R.T. -0.000 min  
 Lab File: VX047730.D  
 Acq: 23 Sep 2025 14:07

Instrument : MSVOA\_X  
 ClientSampleId : BP-VPB-184-GW-60-62



Tgt Ion: 225 Resp: 282

| Ion | Ratio | Lower | Upper |
|-----|-------|-------|-------|
| 225 | 100   |       |       |
| 223 | 54.3  | 31.7  | 95.1  |
| 227 | 43.6  | 32.0  | 96.0  |

