

Data Path : Z:\voasrv\HPCHEM1\MSVOA\_X\Data\VX092325\  
 Data File : VX047731.D  
 Acq On : 23 Sep 2025 14:28  
 Operator : JC/MD  
 Sample : Q3141-04  
 Misc : 5.0mL/MSVOA\_X/WATER  
 ALS Vial : 14 Sample Multiplier: 1

Instrument :  
 MSVOA\_X  
 ClientSampleId :  
 BP-VPB-184-GW-100-102

Quant Time: Sep 24 01:33:16 2025  
 Quant Method : Z:\voasrv\HPCHEM1\MSVOA\_X\Method\82X091625W.M  
 Quant Title : SW846 8260  
 QLast Update : Wed Sep 17 06:39:58 2025  
 Response via : Initial Calibration

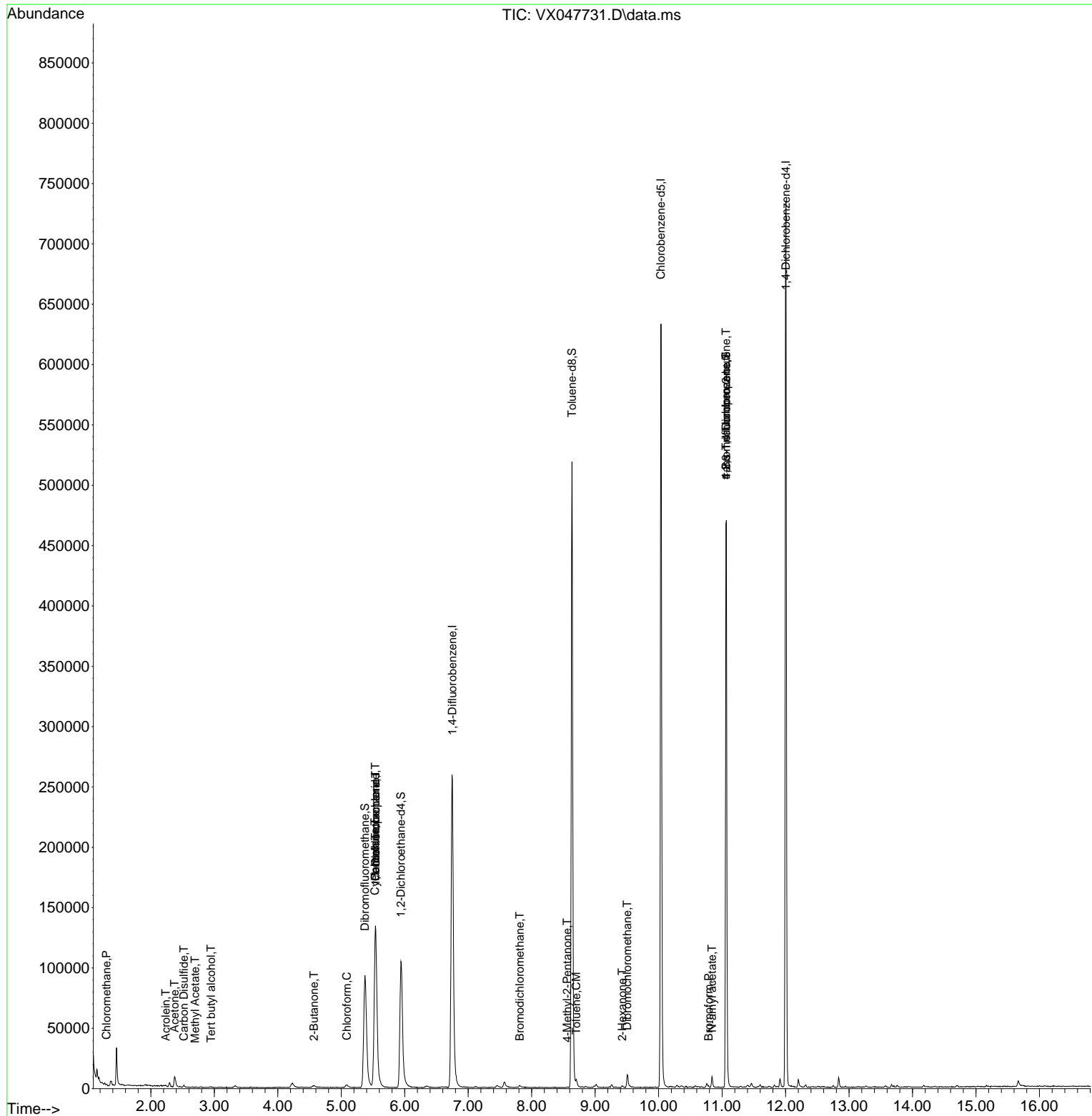
Compound	R.T.	QIon	Response	Conc	Units	Dev(Min)
-----						
Internal Standards						
1) Pentafluorobenzene	5.538	168	134925	50.000	ug/l	0.00
34) 1,4-Difluorobenzene	6.751	114	279701	50.000	ug/l	0.00
63) Chlorobenzene-d5	10.037	117	291553	50.000	ug/l	0.00
72) 1,4-Dichlorobenzene-d4	12.006	152	150320	50.000	ug/l	0.00
System Monitoring Compounds						
33) 1,2-Dichloroethane-d4	5.940	65	115961	53.994	ug/l	0.00
Spiked Amount	50.000	Range	78 - 117	Recovery	=	107.980%
35) Dibromofluoromethane	5.373	113	91274	48.658	ug/l	0.00
Spiked Amount	50.000	Range	75 - 124	Recovery	=	97.320%
50) Toluene-d8	8.635	98	316916	48.826	ug/l	0.00
Spiked Amount	50.000	Range	92 - 112	Recovery	=	97.660%
62) 4-Bromofluorobenzene	11.061	95	141454	57.423	ug/l	0.00
Spiked Amount	50.000	Range	83 - 123	Recovery	=	114.840%
Target Compounds						
						Qvalue
3) Chloromethane	1.301	50	618	0.337	ug/l	91
11) Tert butyl alcohol	2.947	59	125	0.523	ug/l #	72
13) Acrolein	2.233	56	245	1.112	ug/l	94
16) Acetone	2.374	43	11865	12.706	ug/l	98
17) Carbon Disulfide	2.520	76	1155	0.263	ug/l	100
18) Methyl Acetate	2.697	43	473	0.228	ug/l #	54
25) 2-Butanone	4.568	43	3210	2.756	ug/l #	84
30) Chloroform	5.087	83	2796	0.812	ug/l	97
31) Cyclohexane	5.532	56	3217	1.134	ug/l #	12
36) 1,1-Dichloropropene	5.544	75	10818	3.947	ug/l #	52
38) Carbon Tetrachloride	5.538	117	14547	4.885	ug/l #	19
47) Bromodichloromethane	7.812	83	1138	0.355	ug/l #	71
51) 4-Methyl-2-Pentanone	8.562	43	683	0.256	ug/l #	79
52) Toluene	8.702	92	1962	0.383	ug/l	96
59) 2-Hexanone	9.427	43	1127	0.588	ug/l	76
60) Dibromochloromethane	9.506	129	1227	0.538	ug/l	96
71) Bromoform	10.787	173	501	0.294	ug/l #	80
74) N-amyl acetate	10.842	43	1652	0.317	ug/l #	35
76) 1,2,3-Trichloropropane	11.061	75	73629	24.192	ug/l #	40
81) trans-1,4-Dichloro-2-b...	11.061	75	73629	61.693	ug/l #	8
-----						

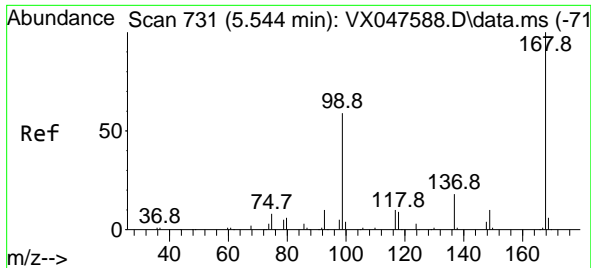
(#) = qualifier out of range (m) = manual integration (+) = signals summed

Data Path : Z:\voasrv\HPCHEM1\MSVOA\_X\Data\VX092325\  
 Data File : VX047731.D  
 Acq On : 23 Sep 2025 14:28  
 Operator : JC/MD  
 Sample : Q3141-04  
 Misc : 5.0mL/MSVOA\_X/WATER  
 ALS Vial : 14 Sample Multiplier: 1

Instrument :  
 MSVOA\_X  
 ClientSampleId :  
 BP-VPB-184-GW-100-102

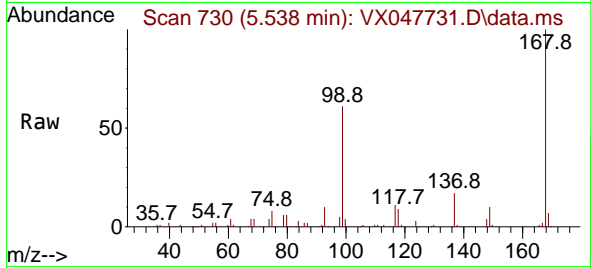
Quant Time: Sep 24 01:33:16 2025  
 Quant Method : Z:\voasrv\HPCHEM1\MSVOA\_X\Method\82X091625W.M  
 Quant Title : SW846 8260  
 QLast Update : Wed Sep 17 06:39:58 2025  
 Response via : Initial Calibration



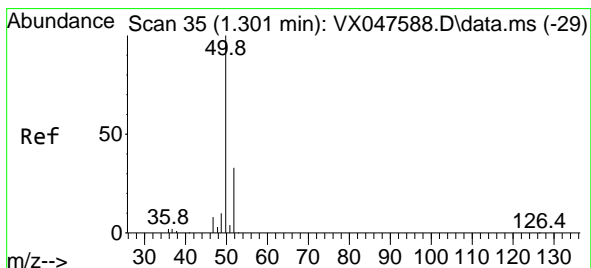
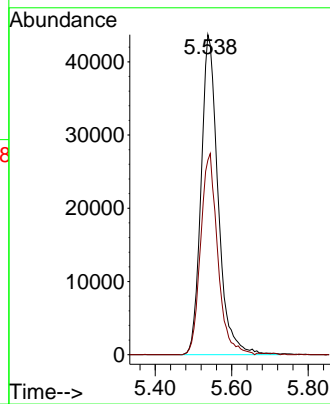
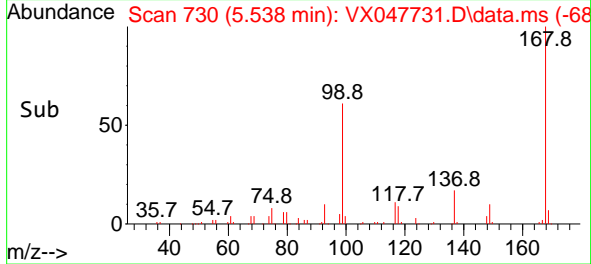


#1  
 Pentafluorobenzene  
 Concen: 50.000 ug/l  
 RT: 5.538 min Scan# 71  
 Delta R.T. -0.006 min  
 Lab File: VX047731.D  
 Acq: 23 Sep 2025 14:28

Instrument : MSVOA\_X  
 ClientSampleId : BP-VPB-184-GW-100-102

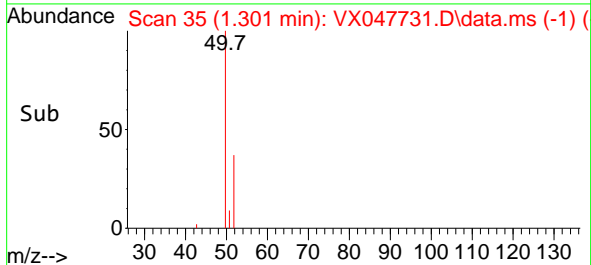
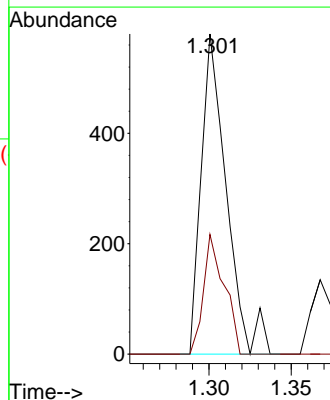
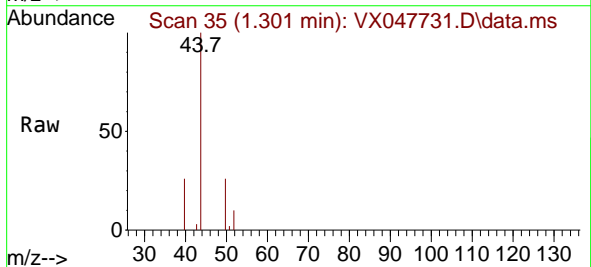


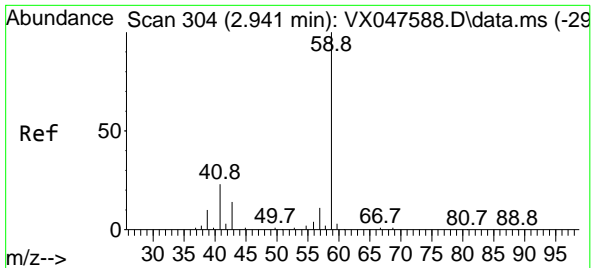
Tgt Ion:168 Resp: 134925  
 Ion Ratio Lower Upper  
 168 100  
 99 60.8 48.8 73.2



#3  
 Chloromethane  
 Concen: 0.337 ug/l  
 RT: 1.301 min Scan# 35  
 Delta R.T. -0.000 min  
 Lab File: VX047731.D  
 Acq: 23 Sep 2025 14:28

Tgt Ion: 50 Resp: 618  
 Ion Ratio Lower Upper  
 50 100  
 52 37.4 26.1 39.1

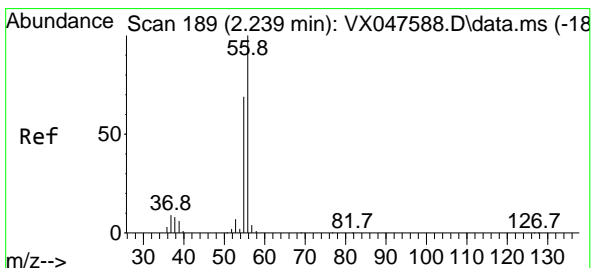
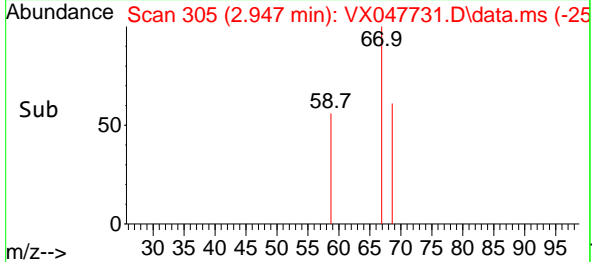
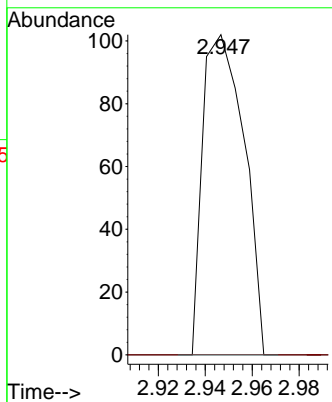
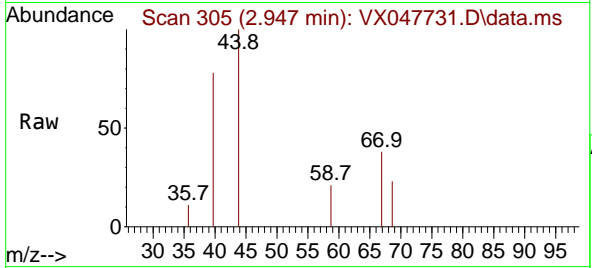




#11  
 Tert butyl alcohol  
 Concen: 0.523 ug/l  
 RT: 2.947 min Scan# 30  
 Delta R.T. 0.006 min  
 Lab File: VX047731.D  
 Acq: 23 Sep 2025 14:28

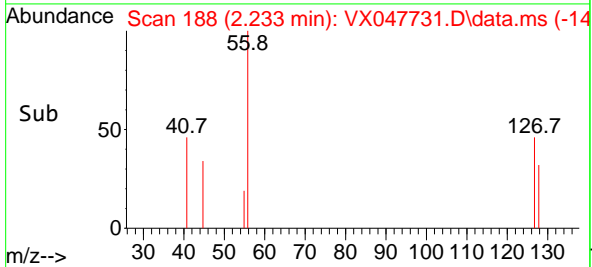
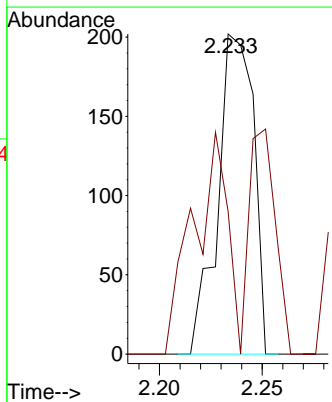
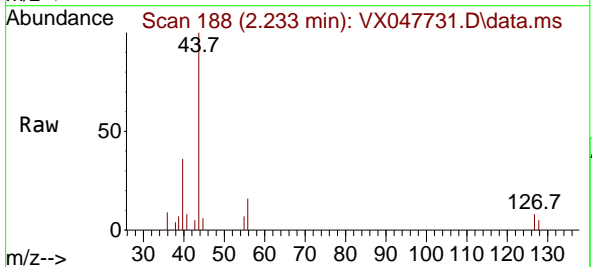
Instrument : MSVOA\_X  
 ClientSampleId : BP-VPB-184-GW-100-102

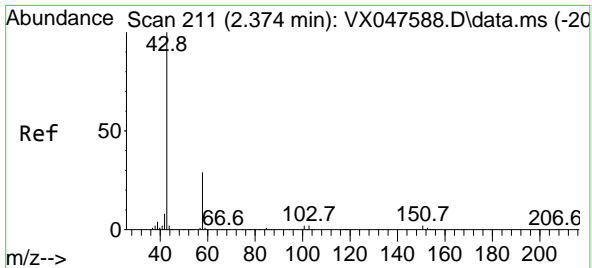
Tgt Ion: 59 Resp: 125  
 Ion Ratio Lower Upper  
 59 100  
 57 0.0 8.3 12.5#



#13  
 Acrolein  
 Concen: 1.112 ug/l  
 RT: 2.233 min Scan# 188  
 Delta R.T. -0.006 min  
 Lab File: VX047731.D  
 Acq: 23 Sep 2025 14:28

Tgt Ion: 56 Resp: 245  
 Ion Ratio Lower Upper  
 56 100  
 55 66.1 57.2 85.8

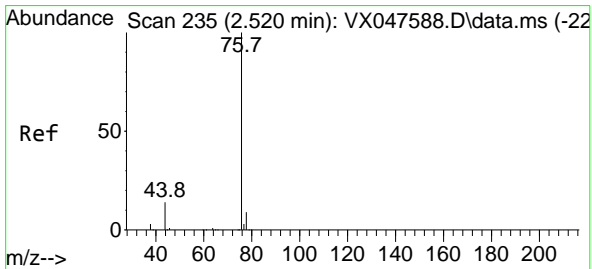
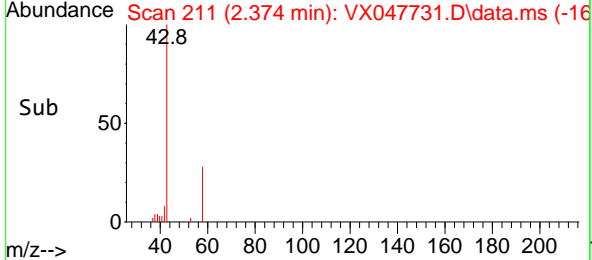
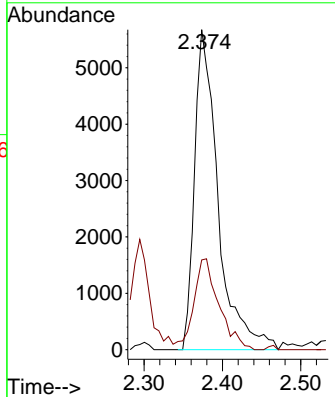
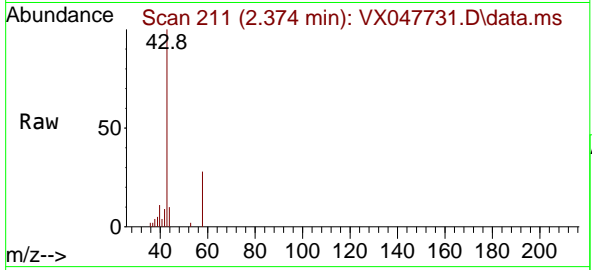




#16  
 Acetone  
 Concen: 12.706 ug/l  
 RT: 2.374 min Scan# 211  
 Delta R.T. -0.000 min  
 Lab File: VX047731.D  
 Acq: 23 Sep 2025 14:28

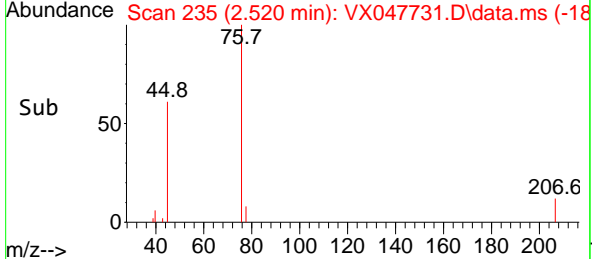
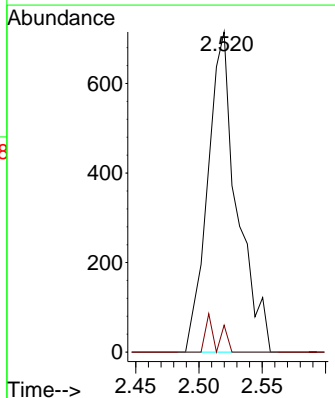
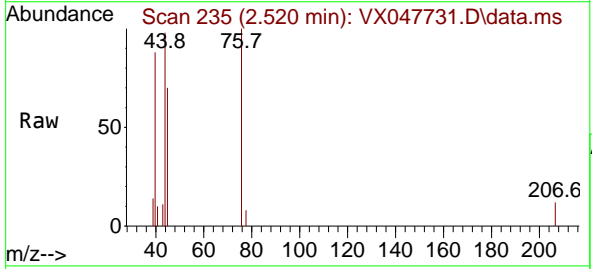
Instrument : MSVOA\_X  
 ClientSampleId : BP-VPB-184-GW-100-102

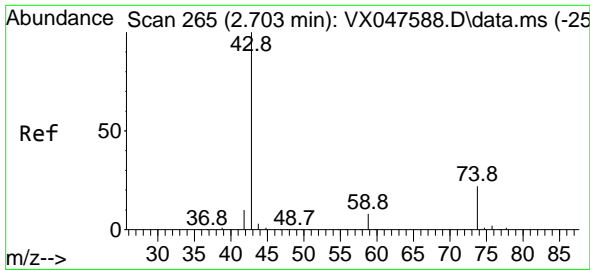
Tgt Ion: 43 Resp: 11865  
 Ion Ratio Lower Upper  
 43 100  
 58 28.0 23.4 35.0



#17  
 Carbon Disulfide  
 Concen: 0.263 ug/l  
 RT: 2.520 min Scan# 235  
 Delta R.T. -0.000 min  
 Lab File: VX047731.D  
 Acq: 23 Sep 2025 14:28

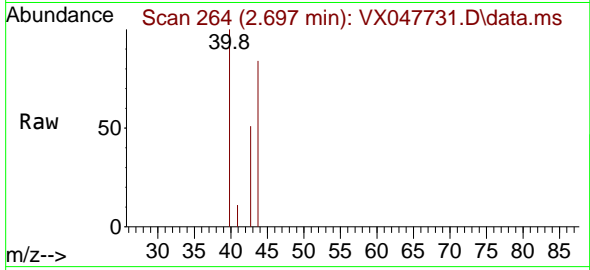
Tgt Ion: 76 Resp: 1155  
 Ion Ratio Lower Upper  
 76 100  
 78 8.4 6.8 10.2



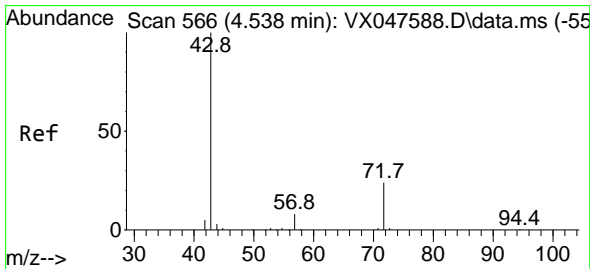
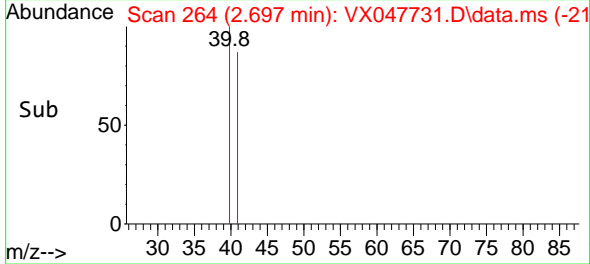
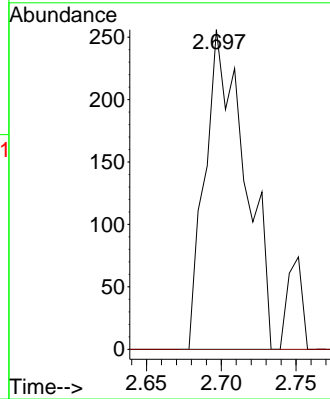


#18  
 Methyl Acetate  
 Concen: 0.228 ug/l  
 RT: 2.697 min Scan# 20  
 Delta R.T. -0.006 min  
 Lab File: VX047731.D  
 Acq: 23 Sep 2025 14:28

Instrument : MSVOA\_X  
 ClientSampleId : BP-VPB-184-GW-100-102

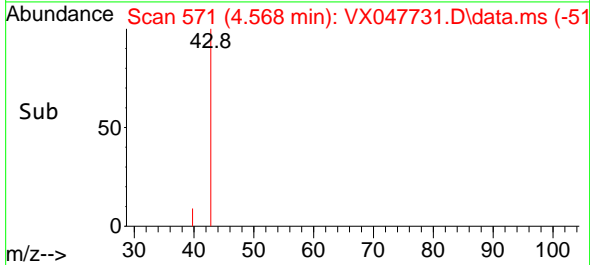
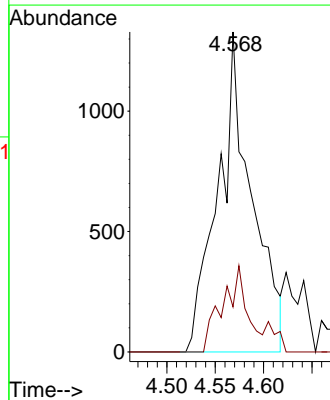
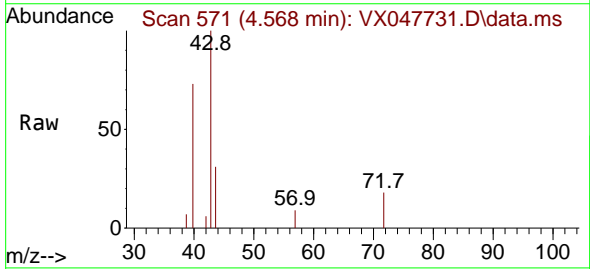


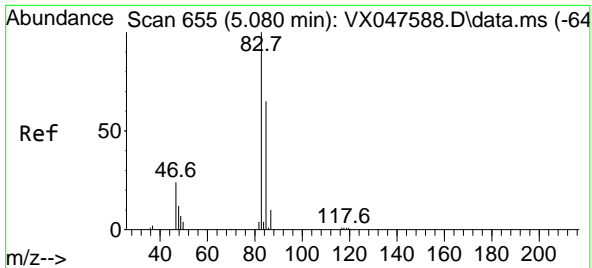
Tgt Ion: 43 Resp: 473  
 Ion Ratio Lower Upper  
 43 100  
 74 0.0 17.4 26.2#



#25  
 2-Butanone  
 Concen: 2.756 ug/l  
 RT: 4.568 min Scan# 571  
 Delta R.T. 0.030 min  
 Lab File: VX047731.D  
 Acq: 23 Sep 2025 14:28

Tgt Ion: 43 Resp: 3210  
 Ion Ratio Lower Upper  
 43 100  
 72 17.0 20.1 30.1#



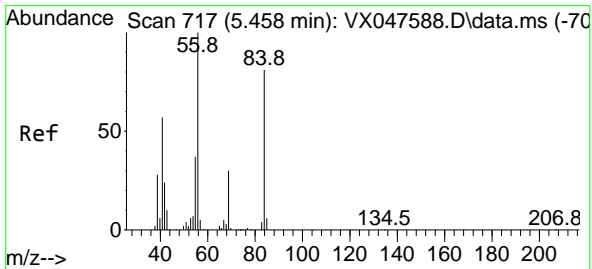
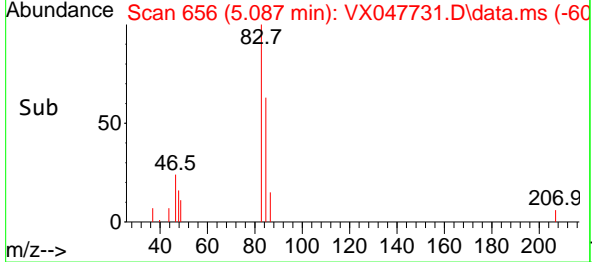
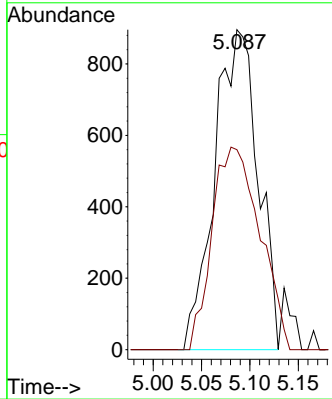
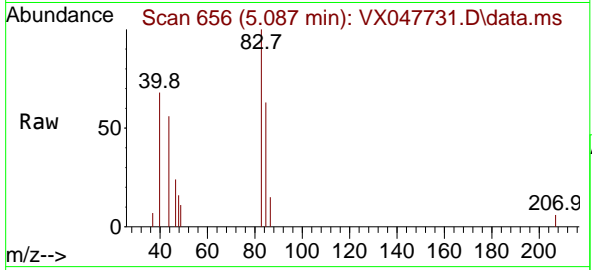


#30  
 Chloroform  
 Concen: 0.812 ug/l  
 RT: 5.087 min Scan# 611  
 Delta R.T. 0.006 min  
 Lab File: VX047731.D  
 Acq: 23 Sep 2025 14:28

Instrument : MSVOA\_X  
 ClientSampleId : BP-VPB-184-GW-100-102

Tgt Ion: 83 Resp: 2796

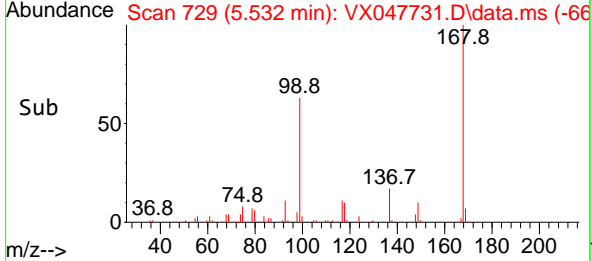
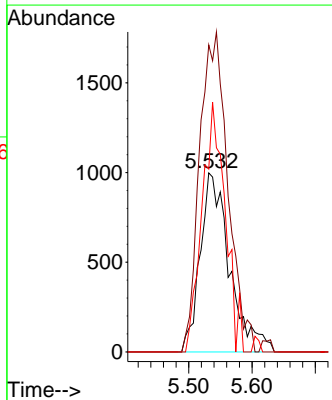
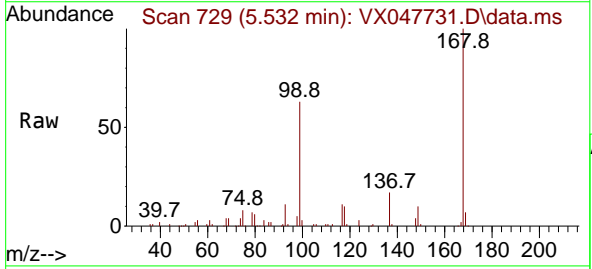
Ion	Ratio	Lower	Upper
83	100		
85	62.5	51.8	77.6

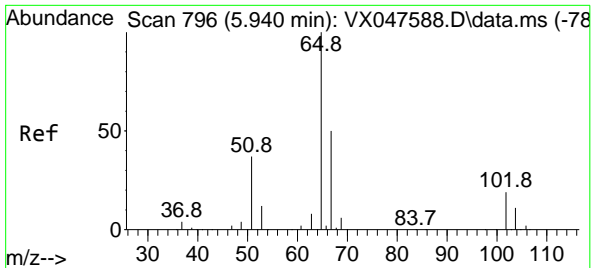


#31  
 Cyclohexane  
 Concen: 1.134 ug/l  
 RT: 5.532 min Scan# 729  
 Delta R.T. 0.073 min  
 Lab File: VX047731.D  
 Acq: 23 Sep 2025 14:28

Tgt Ion: 56 Resp: 3217

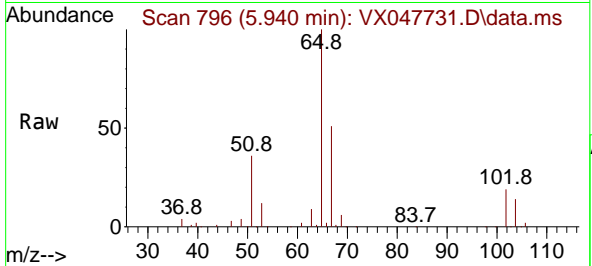
Ion	Ratio	Lower	Upper
56	100		
69	171.5	23.8	35.8#
84	102.1	64.6	97.0#



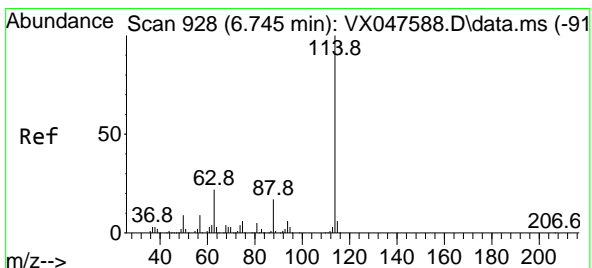
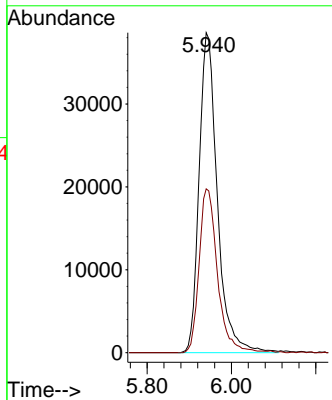
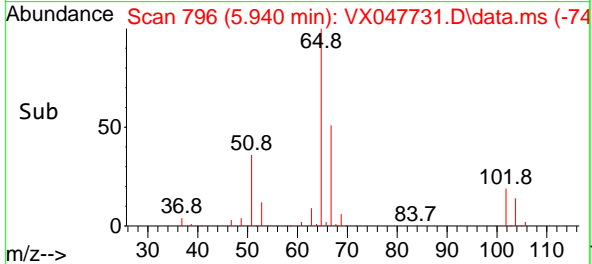


#33  
 1,2-Dichloroethane-d4  
 Concen: 53.994 ug/l  
 RT: 5.940 min Scan# 796  
 Delta R.T. -0.000 min  
 Lab File: VX047731.D  
 Acq: 23 Sep 2025 14:28

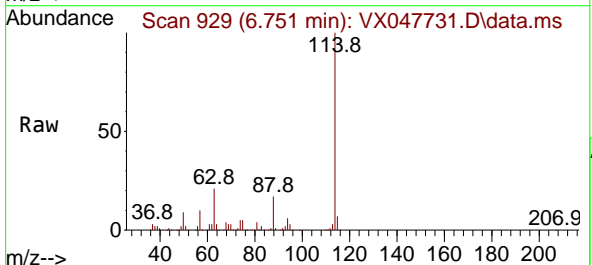
Instrument : MSVOA\_X  
 ClientSampleId : BP-VPB-184-GW-100-102



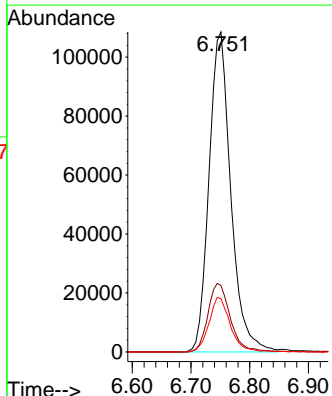
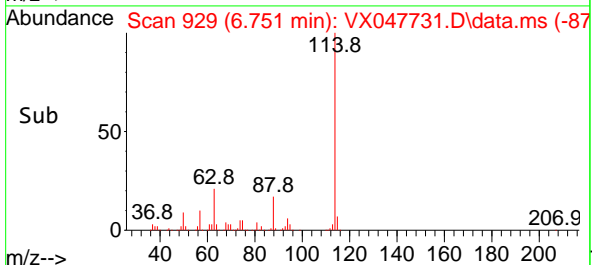
Tgt Ion: 65 Resp: 115961  
 Ion Ratio Lower Upper  
 65 100  
 67 51.6 0.0 103.0



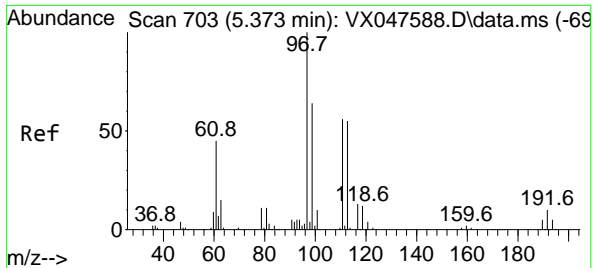
#34  
 1,4-Difluorobenzene  
 Concen: 50.000 ug/l  
 RT: 6.751 min Scan# 929  
 Delta R.T. 0.006 min  
 Lab File: VX047731.D  
 Acq: 23 Sep 2025 14:28



Tgt Ion: 114 Resp: 279701  
 Ion Ratio Lower Upper  
 114 100  
 63 20.8 0.0 44.0  
 88 16.7 0.0 34.2



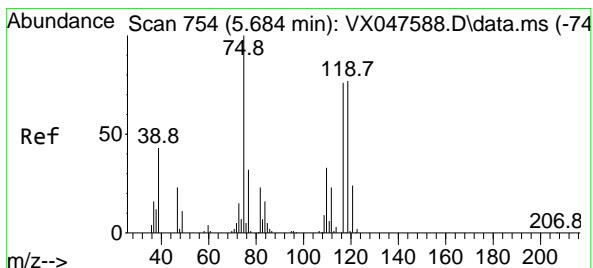
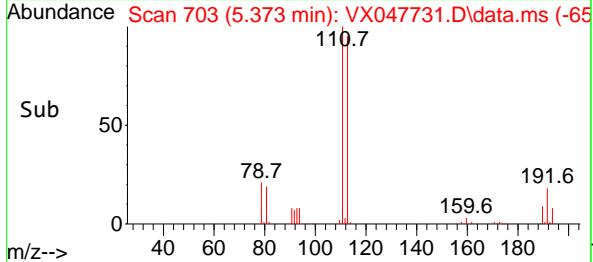
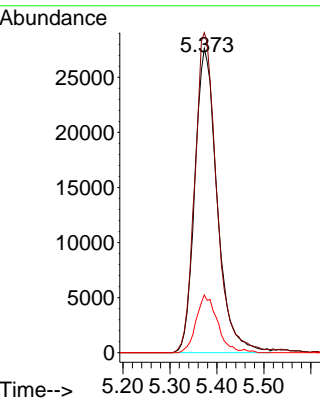
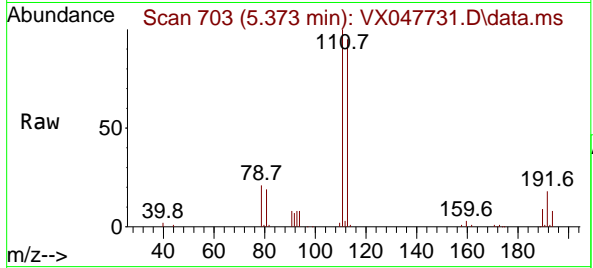




#35  
 Dibromofluoromethane  
 Concen: 48.658 ug/l  
 RT: 5.373 min Scan# 703  
 Delta R.T. -0.000 min  
 Lab File: VX047731.D  
 Acq: 23 Sep 2025 14:28

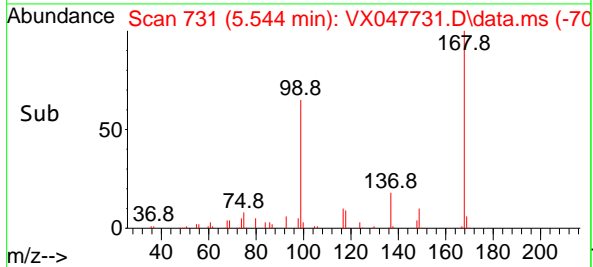
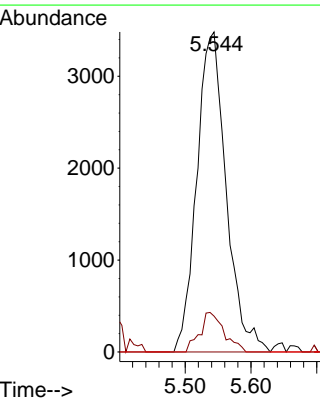
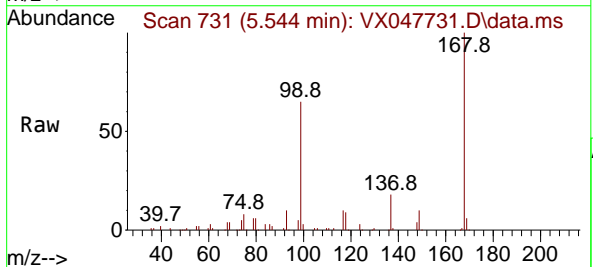
Instrument : MSVOA\_X  
 ClientSampleId : BP-VPB-184-GW-100-102

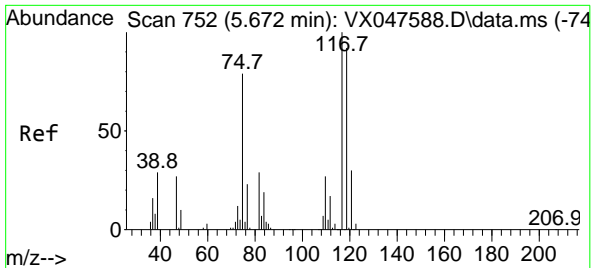
Tgt Ion	Resp	Lower	Upper
113	100		
111	103.3	80.9	121.3
192	17.9	14.2	21.4



#36  
 1,1-Dichloropropene  
 Concen: 3.947 ug/l  
 RT: 5.544 min Scan# 731  
 Delta R.T. -0.140 min  
 Lab File: VX047731.D  
 Acq: 23 Sep 2025 14:28

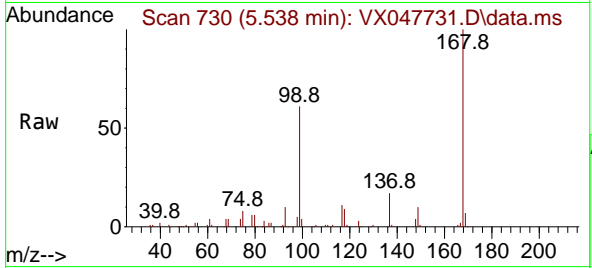
Tgt Ion	Resp	Lower	Upper
75	100		
110	10.2	16.7	50.1#
77	0.0	24.3	36.5#



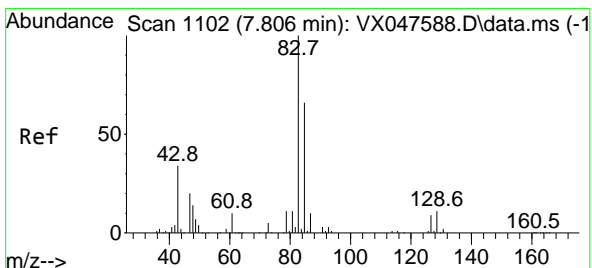
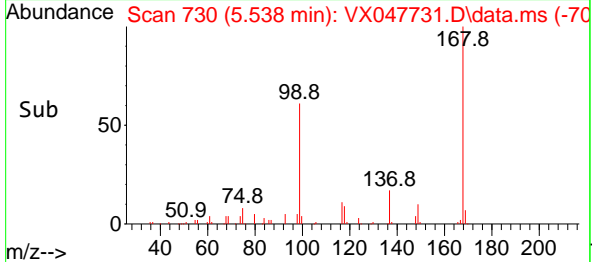
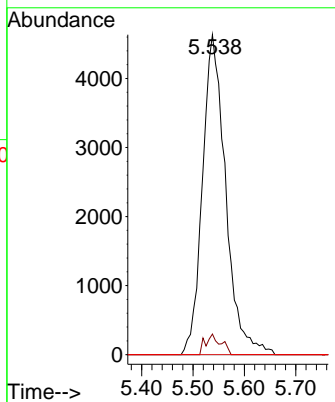


#38  
 Carbon Tetrachloride  
 Concen: 4.885 ug/l  
 RT: 5.538 min Scan# 71  
 Delta R.T. -0.134 min  
 Lab File: VX047731.D  
 Acq: 23 Sep 2025 14:28

Instrument : MSVOA\_X  
 ClientSampleId : BP-VPB-184-GW-100-102

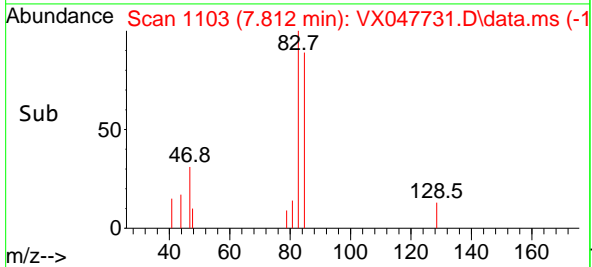
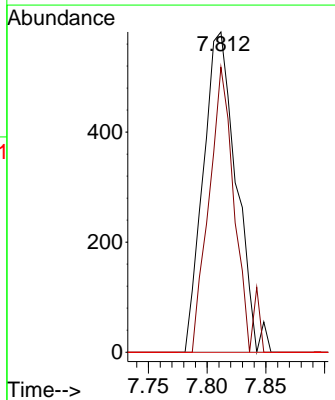
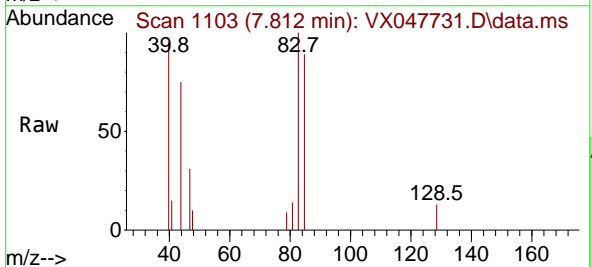


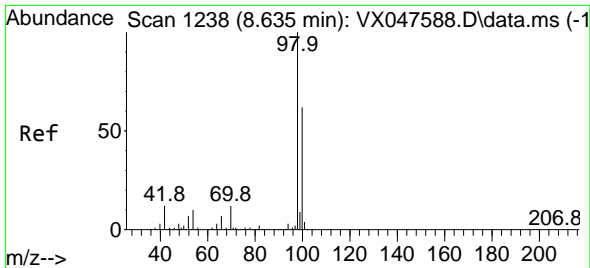
Tgt Ion: 117 Resp: 14547  
 Ion Ratio Lower Upper  
 117 100  
 119 6.5 73.4 110.2#  
 121 0.0 23.8 35.6#



#47  
 Bromodichloromethane  
 Concen: 0.355 ug/l  
 RT: 7.812 min Scan# 1103  
 Delta R.T. 0.006 min  
 Lab File: VX047731.D  
 Acq: 23 Sep 2025 14:28

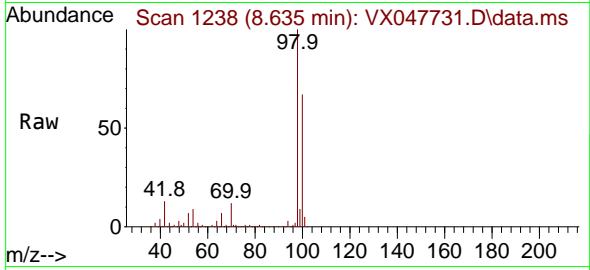
Tgt Ion: 83 Resp: 1138  
 Ion Ratio Lower Upper  
 83 100  
 85 89.0 52.5 78.7#  
 127 0.0 6.9 10.3#



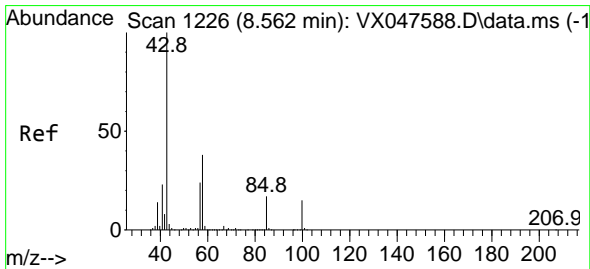
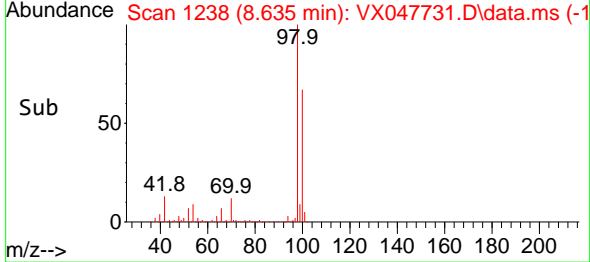
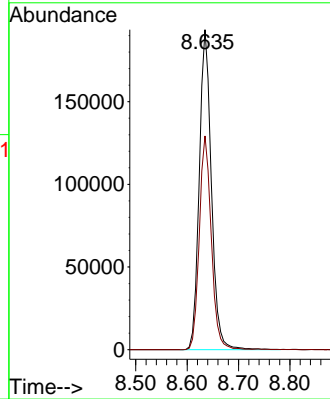


#50  
 Toluene-d8  
 Concen: 48.826 ug/l  
 RT: 8.635 min Scan# 11  
 Delta R.T. -0.000 min  
 Lab File: VX047731.D  
 Acq: 23 Sep 2025 14:28

Instrument : MSVOA\_X  
 ClientSampleId : BP-VPB-184-GW-100-102

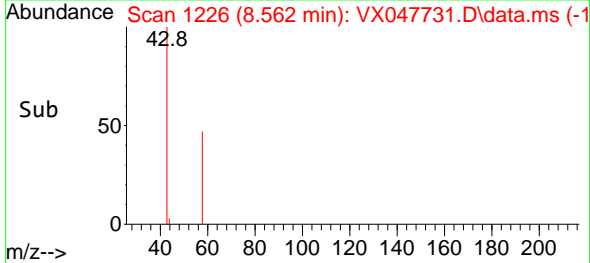
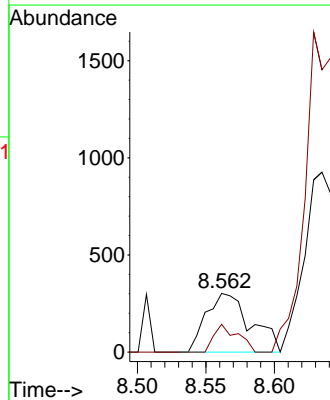
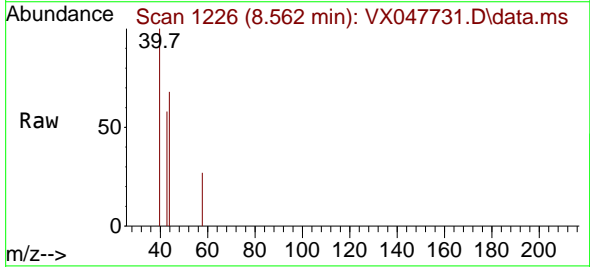


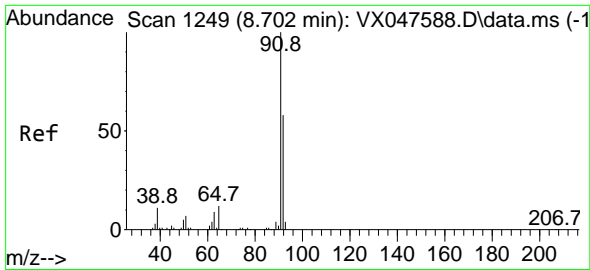
Tgt Ion: 98 Resp: 316916  
 Ion Ratio Lower Upper  
 98 100  
 100 66.1 53.0 79.4



#51  
 4-Methyl-2-Pentanone  
 Concen: 0.256 ug/l  
 RT: 8.562 min Scan# 1226  
 Delta R.T. -0.000 min  
 Lab File: VX047731.D  
 Acq: 23 Sep 2025 14:28

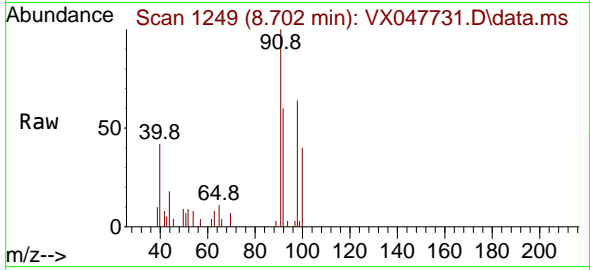
Tgt Ion: 43 Resp: 683  
 Ion Ratio Lower Upper  
 43 100  
 58 25.2 30.3 45.5#



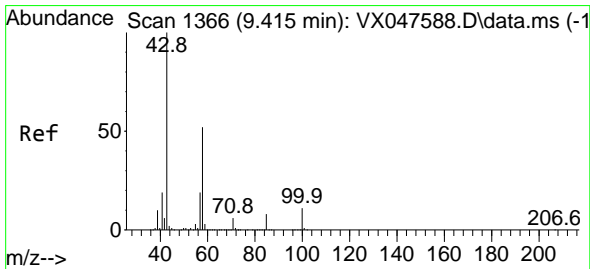
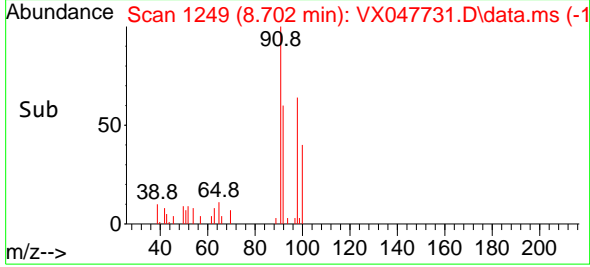
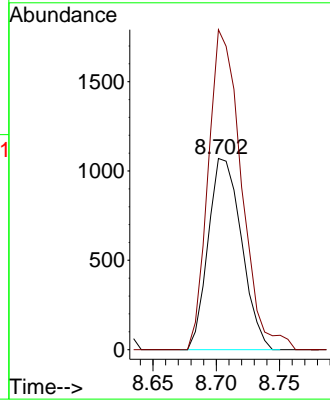


#52  
 Toluene  
 Concen: 0.383 ug/l  
 RT: 8.702 min Scan# 11  
 Delta R.T. -0.000 min  
 Lab File: VX047731.D  
 Acq: 23 Sep 2025 14:28

Instrument : MSVOA\_X  
 ClientSampleId : BP-VPB-184-GW-100-102

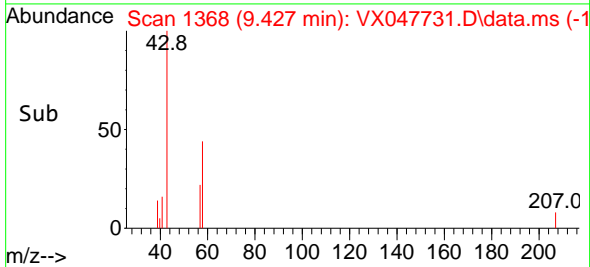
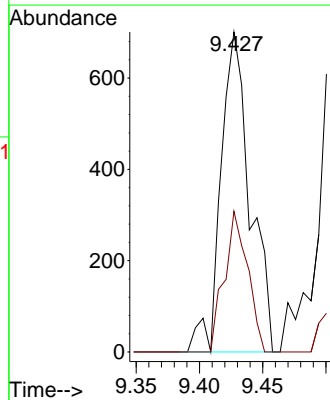
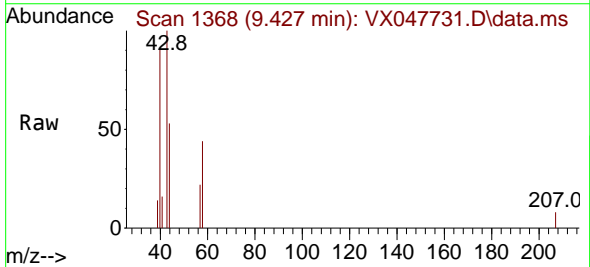


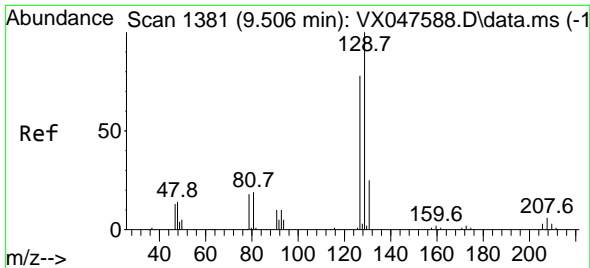
Tgt Ion: 92 Resp: 1962  
 Ion Ratio Lower Upper  
 92 100  
 91 166.2 137.1 205.7



#59  
 2-Hexanone  
 Concen: 0.588 ug/l  
 RT: 9.427 min Scan# 1368  
 Delta R.T. 0.012 min  
 Lab File: VX047731.D  
 Acq: 23 Sep 2025 14:28

Tgt Ion: 43 Resp: 1127  
 Ion Ratio Lower Upper  
 43 100  
 58 35.0 26.1 78.2

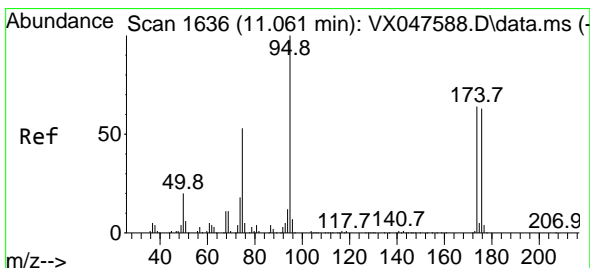
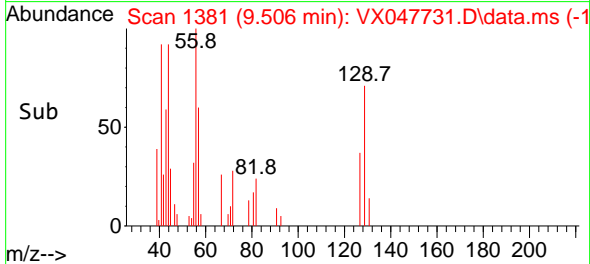
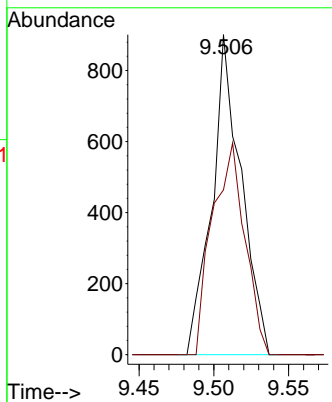
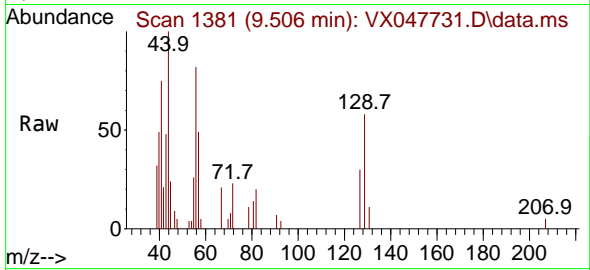




#60  
 Dibromochloromethane  
 Concen: 0.538 ug/l  
 RT: 9.506 min Scan# 11  
 Delta R.T. -0.000 min  
 Lab File: VX047731.D  
 Acq: 23 Sep 2025 14:28

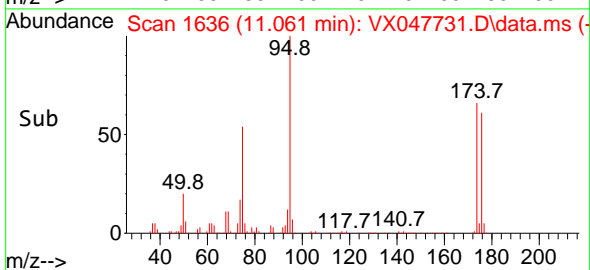
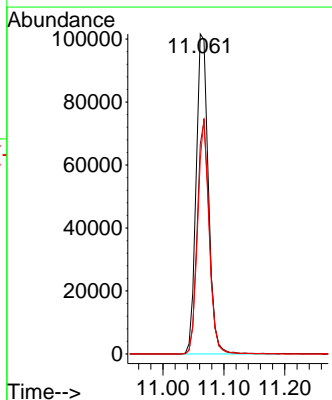
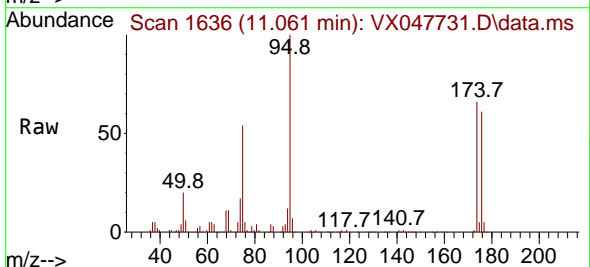
Instrument : MSVOA\_X  
 ClientSampleId : BP-VPB-184-GW-100-102

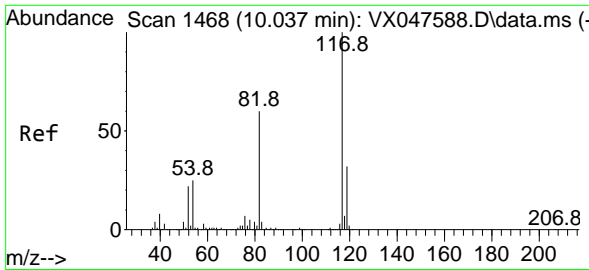
Tgt Ion:129 Resp: 1227  
 Ion Ratio Lower Upper  
 129 100  
 127 73.5 38.4 115.2



#62  
 4-Bromofluorobenzene  
 Concen: 57.423 ug/l  
 RT: 11.061 min Scan# 1636  
 Delta R.T. -0.000 min  
 Lab File: VX047731.D  
 Acq: 23 Sep 2025 14:28

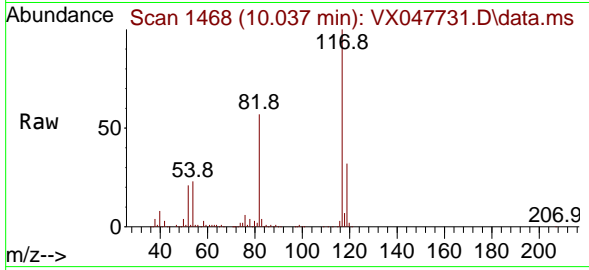
Tgt Ion: 95 Resp: 141454  
 Ion Ratio Lower Upper  
 95 100  
 174 71.9 0.0 141.6  
 176 68.8 0.0 138.4



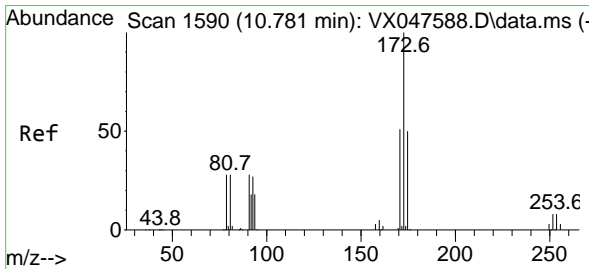
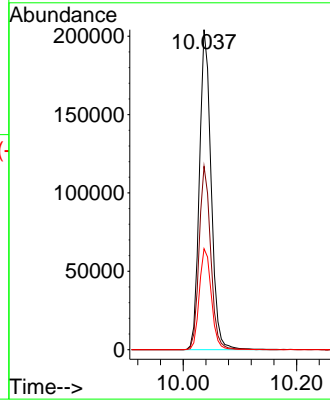
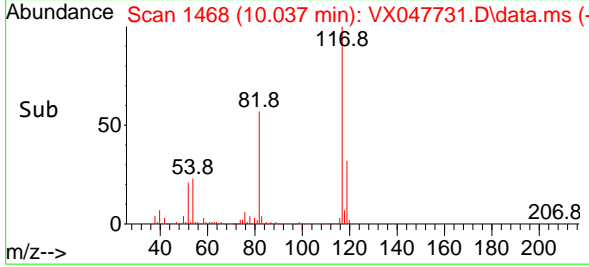


#63  
 Chlorobenzene-d5  
 Concen: 50.000 ug/l  
 RT: 10.037 min Scan# 1468  
 Delta R.T. -0.000 min  
 Lab File: VX047731.D  
 Acq: 23 Sep 2025 14:28

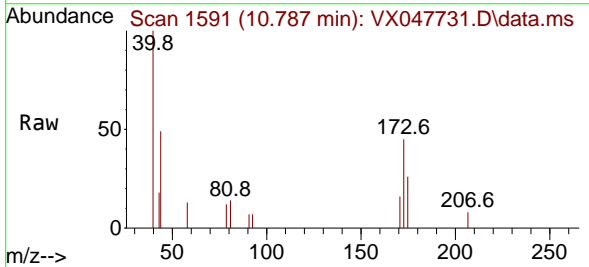
Instrument : MSVOA\_X  
 ClientSampleId : BP-VPB-184-GW-100-102



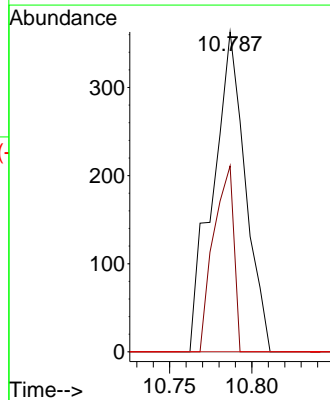
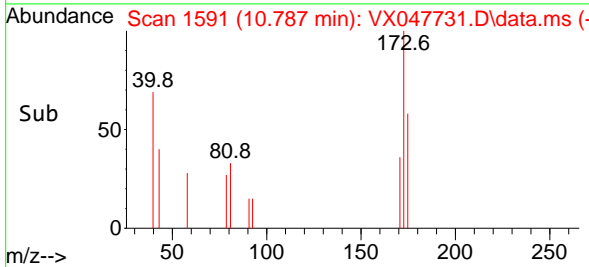
Tgt Ion:117 Resp: 291553  
 Ion Ratio Lower Upper  
 117 100  
 82 57.3 47.8 71.6  
 119 31.6 25.2 37.8

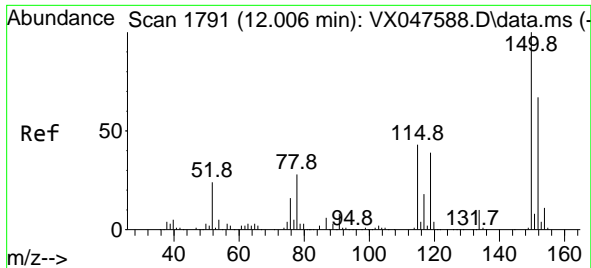


#71  
 Bromoform  
 Concen: 0.294 ug/l  
 RT: 10.787 min Scan# 1591  
 Delta R.T. 0.006 min  
 Lab File: VX047731.D  
 Acq: 23 Sep 2025 14:28



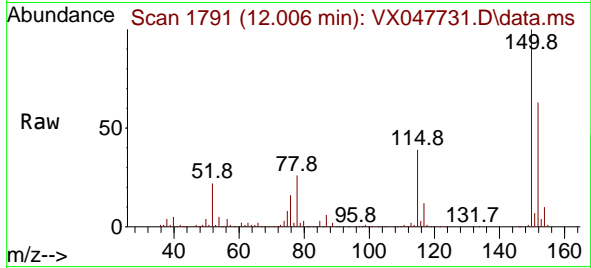
Tgt Ion:173 Resp: 501  
 Ion Ratio Lower Upper  
 173 100  
 175 36.1 24.9 74.6  
 254 0.0 0.1 0.1#



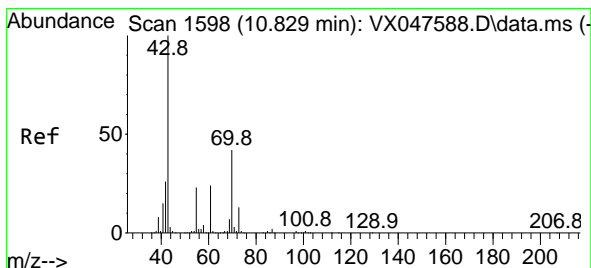
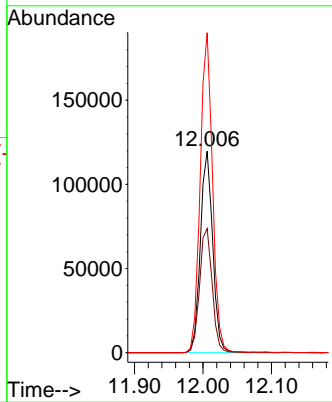
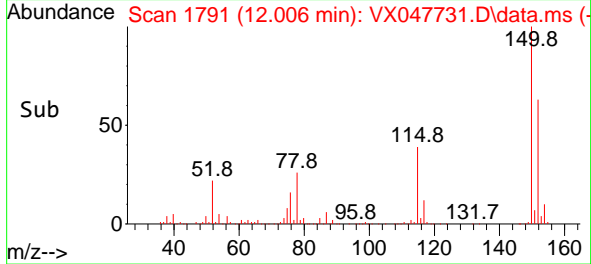


#72  
 1,4-Dichlorobenzene-d4  
 Concen: 50.000 ug/l  
 RT: 12.006 min Scan# 11  
 Delta R.T. -0.000 min  
 Lab File: VX047731.D  
 Acq: 23 Sep 2025 14:28

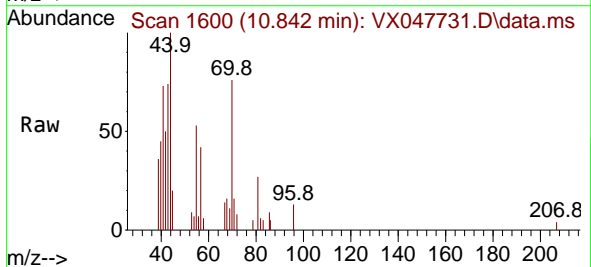
Instrument : MSVOA\_X  
 ClientSampleId : BP-VPB-184-GW-100-102



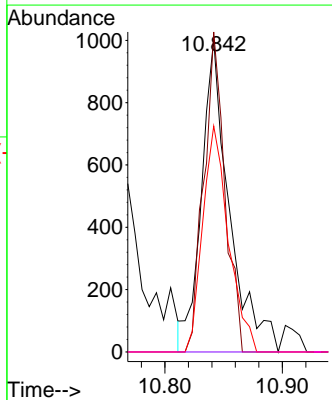
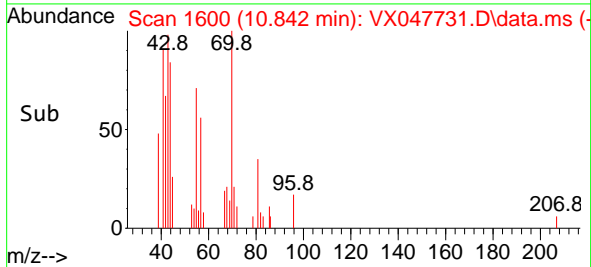
Tgt Ion:152 Resp: 150320  
 Ion Ratio Lower Upper  
 152 100  
 115 63.1 44.9 134.5  
 150 158.1 0.0 352.0

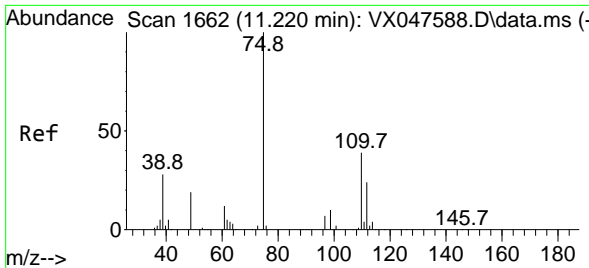


#74  
 N-ethyl acetate  
 Concen: 0.317 ug/l  
 RT: 10.842 min Scan# 1600  
 Delta R.T. 0.012 min  
 Lab File: VX047731.D  
 Acq: 23 Sep 2025 14:28



Tgt Ion: 43 Resp: 1652  
 Ion Ratio Lower Upper  
 43 100  
 70 77.2 32.0 48.0#  
 55 66.9 18.9 28.3#  
 61 0.0 18.8 28.2#

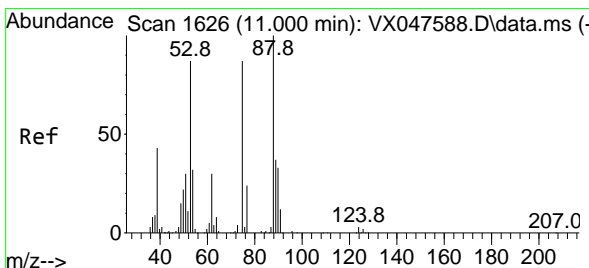
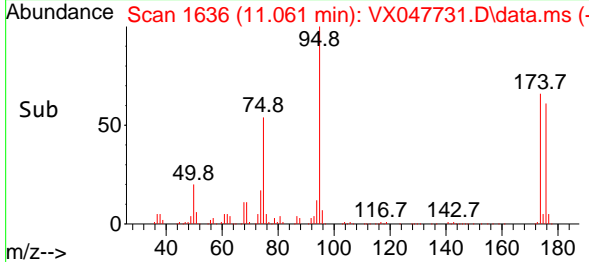
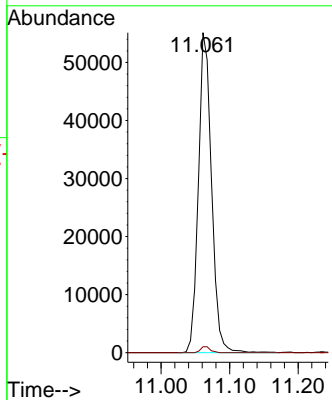
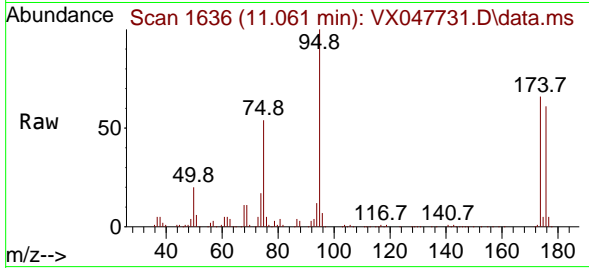




#76  
 1,2,3-Trichloropropane  
 Concen: 24.192 ug/l  
 RT: 11.061 min Scan# 1636  
 Delta R.T. -0.159 min  
 Lab File: VX047731.D  
 Acq: 23 Sep 2025 14:28

Instrument : MSVOA\_X  
 ClientSampleId : BP-VPB-184-GW-100-102

Tgt Ion: 75 Resp: 73629  
 Ion Ratio Lower Upper  
 75 100  
 77 1.4 18.8 56.4#



#81  
 trans-1,4-Dichloro-2-butene  
 Concen: 61.693 ug/l  
 RT: 11.061 min Scan# 1636  
 Delta R.T. 0.061 min  
 Lab File: VX047731.D  
 Acq: 23 Sep 2025 14:28

Tgt Ion: 75 Resp: 73629  
 Ion Ratio Lower Upper  
 75 100  
 53 0.0 83.4 125.2#  
 89 0.0 36.3 54.5#

