

Data Path : Z:\voasrv\HPCHEM1\MSVOA_X\Data\VX092325\
 Data File : VX047737.D
 Acq On : 23 Sep 2025 16:34
 Operator : JC/MD
 Sample : Q3097-19
 Misc : 5.0mL/MSVOA_X/WATER
 ALS Vial : 20 Sample Multiplier: 1

Instrument :
 MSVOA_X
 ClientSampleId :
 RE120D1-20250912

Quant Time: Sep 24 01:35:48 2025
 Quant Method : Z:\voasrv\HPCHEM1\MSVOA_X\Method\82X091625W.M
 Quant Title : SW846 8260
 QLast Update : Wed Sep 17 06:39:58 2025
 Response via : Initial Calibration

Compound	R.T.	QIon	Response	Conc	Units	Dev(Min)

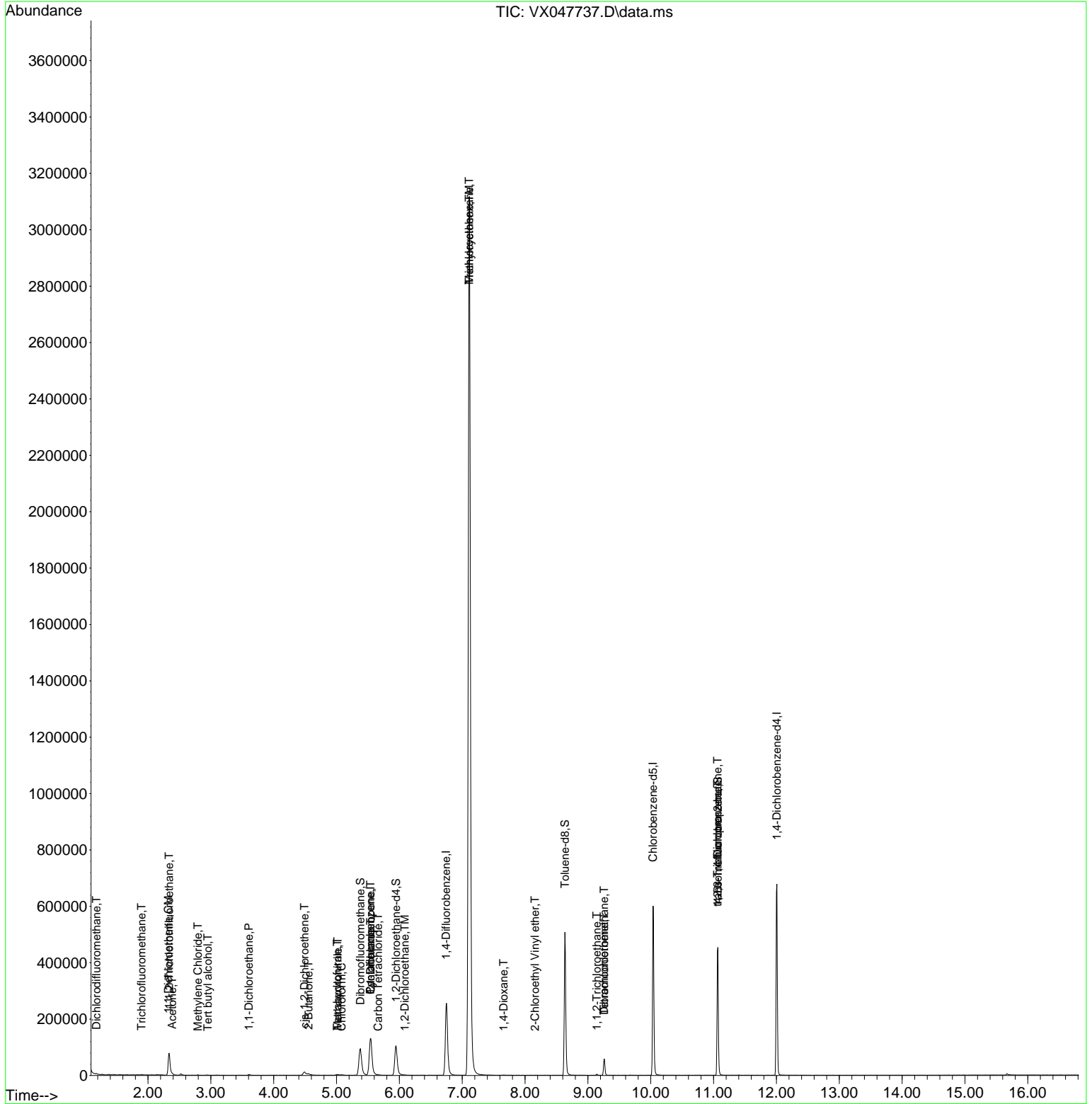
Internal Standards						
1) Pentafluorobenzene	5.538	168	133765	50.000	ug/l	0.00
34) 1,4-Difluorobenzene	6.745	114	281791	50.000	ug/l	0.00
63) Chlorobenzene-d5	10.037	117	275514	50.000	ug/l	0.00
72) 1,4-Dichlorobenzene-d4	12.006	152	141902	50.000	ug/l	0.00
System Monitoring Compounds						
33) 1,2-Dichloroethane-d4	5.946	65	110502	51.898	ug/l	0.00
Spiked Amount	50.000	Range 78 - 117	Recovery	=	103.800%	
35) Dibromofluoromethane	5.379	113	91324	48.324	ug/l	0.00
Spiked Amount	50.000	Range 75 - 124	Recovery	=	96.640%	
50) Toluene-d8	8.635	98	305233	46.677	ug/l	0.00
Spiked Amount	50.000	Range 92 - 112	Recovery	=	93.360%	
62) 4-Bromofluorobenzene	11.067	95	133881	53.946	ug/l	0.00
Spiked Amount	50.000	Range 83 - 123	Recovery	=	107.900%	
Target Compounds						
						Qvalue
2) Dichlorodifluoromethane	1.179	85	474	0.342	ug/l	89
7) Trichlorofluoromethane	1.898	101	657	0.248	ug/l	92
9) 1,1,2-Trichlorotrifluo...	2.337	101	26053	16.839	ug/l	99
11) Tert butyl alcohol	2.953	59	130	0.548	ug/l #	72
12) 1,1-Dichloroethene	2.325	96	11018	6.933	ug/l	94
16) Acetone	2.386	43	3716	4.014	ug/l	90
20) Methylene Chloride	2.794	84	659	0.336	ug/l #	51
24) 1,1-Dichloroethane	3.605	63	2849	0.843	ug/l #	94
25) 2-Butanone	4.556	43	1046	0.906	ug/l #	48
27) cis-1,2-Dichloroethene	4.489	96	8455	4.035	ug/l	88
29) Tetrahydrofuran	5.013	42	2676	3.852	ug/l #	73
30) Chloroform	5.080	83	1745	0.511	ug/l #	81
31) Cyclohexane	5.544	56	2857	1.015	ug/l #	1
36) 1,1-Dichloropropene	5.544	75	11710	4.240	ug/l #	47
38) Carbon Tetrachloride	5.660	117	797	0.266	ug/l #	67
39) Methylcyclohexane	7.111	83	13350	4.259	ug/l #	1
41) Methacrylonitrile	5.019	41	1586	1.039	ug/l #	37
42) 1,2-Dichloroethane	6.086	62	667	0.209	ug/l #	76
44) Trichloroethene	7.111	130	1292636	637.467	ug/l	96
49) 1,4-Dioxane	7.659	88	560	22.940	ug/l #	73
55) 1,1,2-Trichloroethane	9.141	97	999	0.501	ug/l	91
58) 2-Chloroethyl Vinyl ether	8.159	63	50	7.926	ug/l #	47
60) Dibromochloromethane	9.257	129	11638	5.069	ug/l #	11
64) Tetrachloroethene	9.257	164	11467	6.385	ug/l	99
76) 1,2,3-Trichloropropane	11.061	75	68263	23.760	ug/l #	39
81) trans-1,4-Dichloro-2-b...	11.061	75	68263	60.590	ug/l #	8

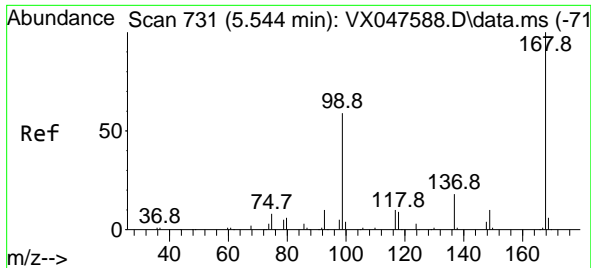
(#) = qualifier out of range (m) = manual integration (+) = signals summed

Data Path : Z:\voasrv\HPCHEM1\MSVOA_X\Data\VX092325\
 Data File : VX047737.D
 Acq On : 23 Sep 2025 16:34
 Operator : JC/MD
 Sample : Q3097-19
 Misc : 5.0mL/MSVOA_X/WATER
 ALS Vial : 20 Sample Multiplier: 1

Instrument :
 MSVOA_X
 ClientSampleId :
 RE120D1-20250912

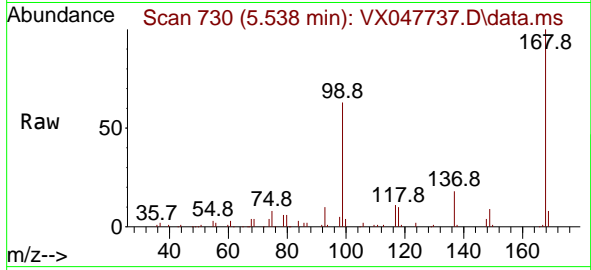
Quant Time: Sep 24 01:35:48 2025
 Quant Method : Z:\voasrv\HPCHEM1\MSVOA_X\Method\82X091625W.M
 Quant Title : SW846 8260
 QLast Update : Wed Sep 17 06:39:58 2025
 Response via : Initial Calibration



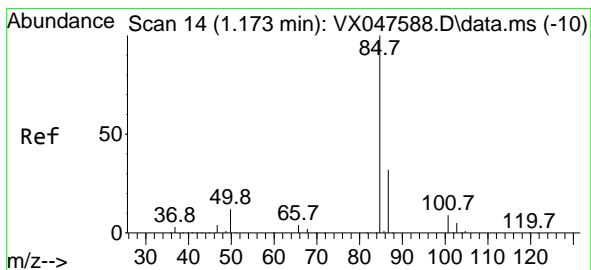
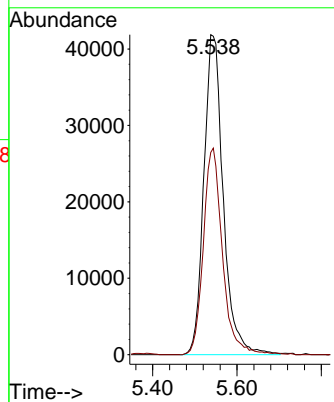
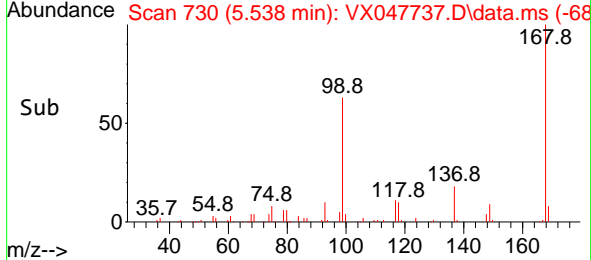


#1
 Pentafluorobenzene
 Concen: 50.000 ug/l
 RT: 5.538 min Scan# 71
 Delta R.T. -0.006 min
 Lab File: VX047737.D
 Acq: 23 Sep 2025 16:34

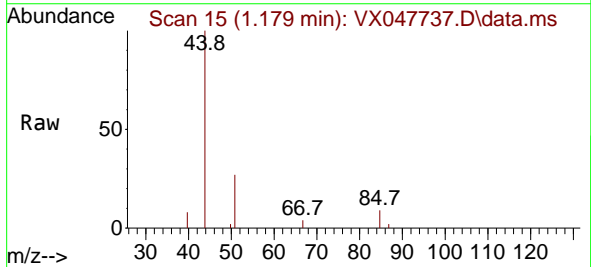
Instrument : MSVOA_X
 ClientSampleId : RE120D1-20250912



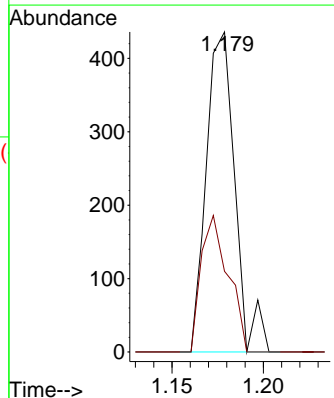
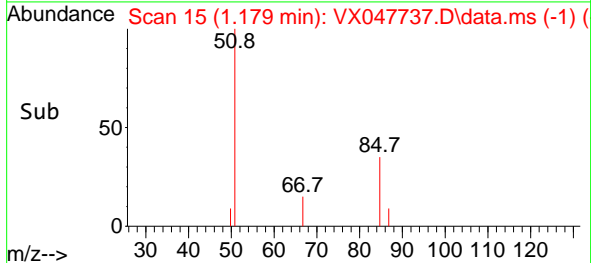
Tgt Ion:168 Resp: 133765
 Ion Ratio Lower Upper
 168 100
 99 63.2 48.8 73.2

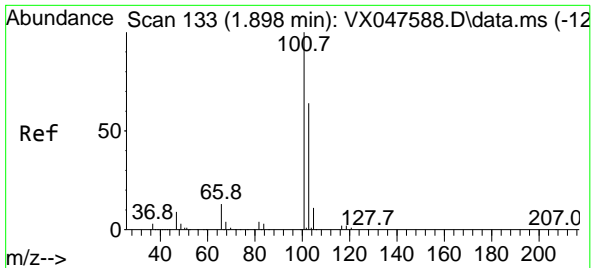


#2
 Dichlorodifluoromethane
 Concen: 0.342 ug/l
 RT: 1.179 min Scan# 15
 Delta R.T. 0.006 min
 Lab File: VX047737.D
 Acq: 23 Sep 2025 16:34



Tgt Ion: 85 Resp: 474
 Ion Ratio Lower Upper
 85 100
 87 25.2 15.8 47.3

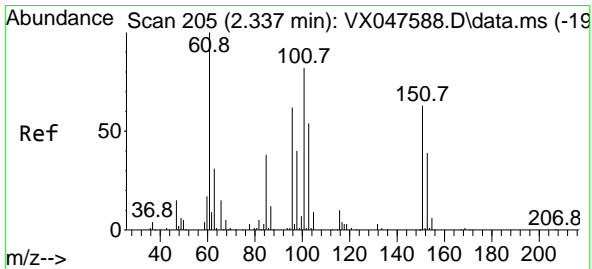
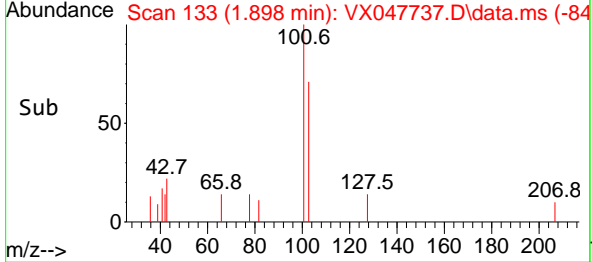
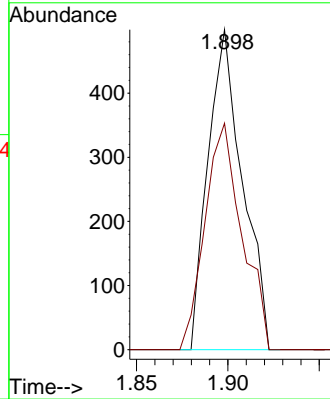
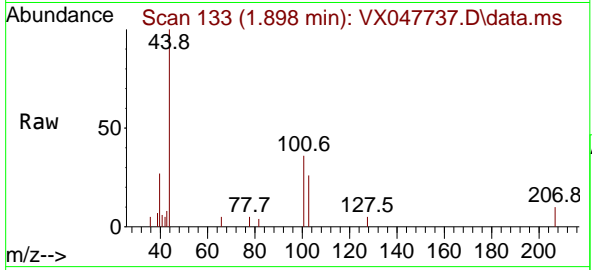




#7
 Trichlorofluoromethane
 Concen: 0.248 ug/l
 RT: 1.898 min Scan# 11
 Delta R.T. 0.000 min
 Lab File: VX047737.D
 Acq: 23 Sep 2025 16:34

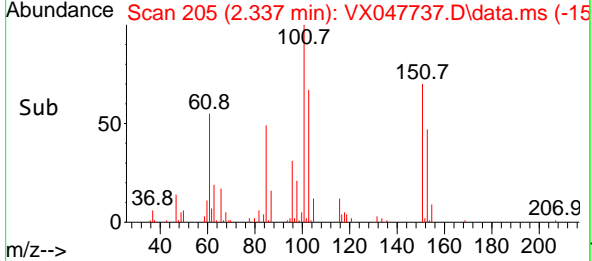
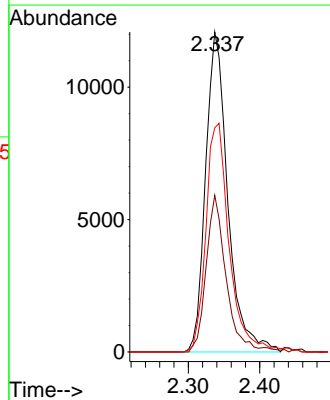
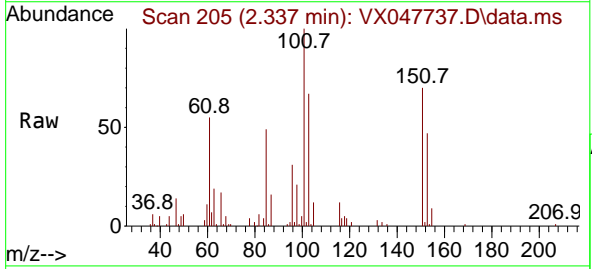
Instrument :
 MSVOA_X
 ClientSampleId :
 RE120D1-20250912

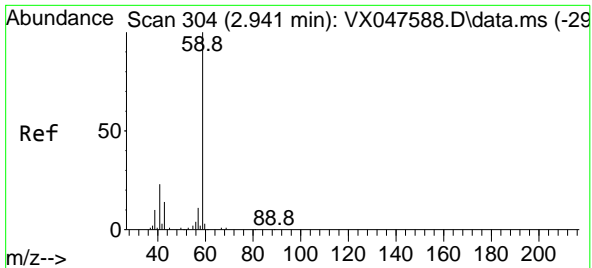
Tgt Ion:101 Resp: 657
 Ion Ratio Lower Upper
 101 100
 103 70.7 51.4 77.2



#9
 1,1,2-Trichlorotrifluoroethane
 Concen: 16.839 ug/l
 RT: 2.337 min Scan# 205
 Delta R.T. 0.000 min
 Lab File: VX047737.D
 Acq: 23 Sep 2025 16:34

Tgt Ion:101 Resp: 26053
 Ion Ratio Lower Upper
 101 100
 85 44.4 35.5 53.3
 151 75.5 59.4 89.0

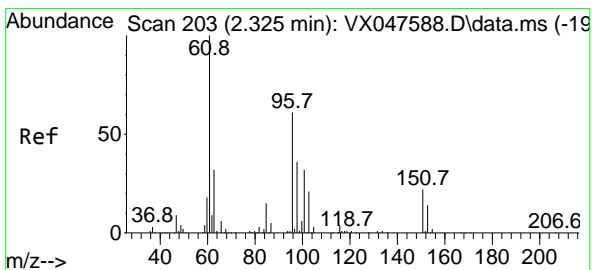
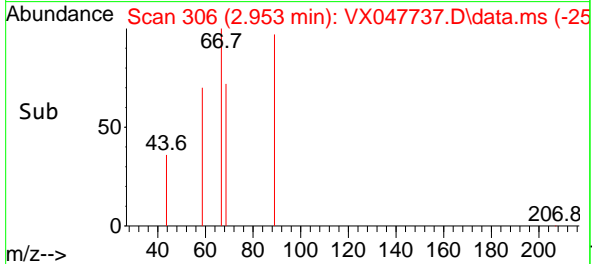
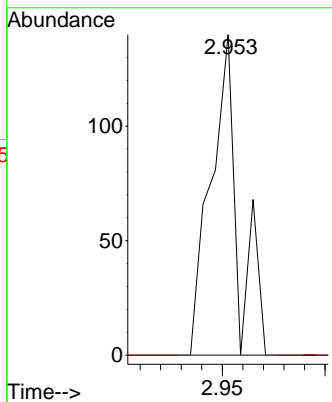
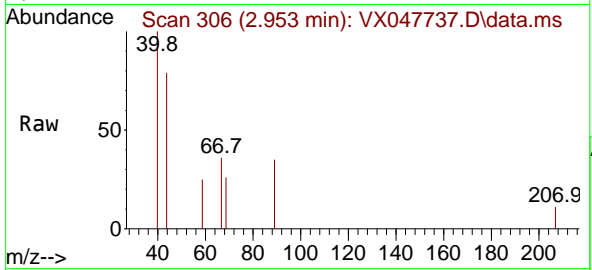




#11
 Tert butyl alcohol
 Concen: 0.548 ug/l
 RT: 2.953 min Scan# 306
 Delta R.T. 0.012 min
 Lab File: VX047737.D
 Acq: 23 Sep 2025 16:34

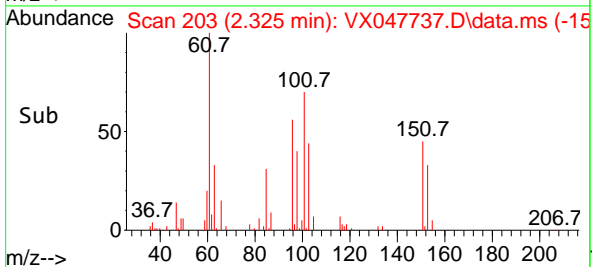
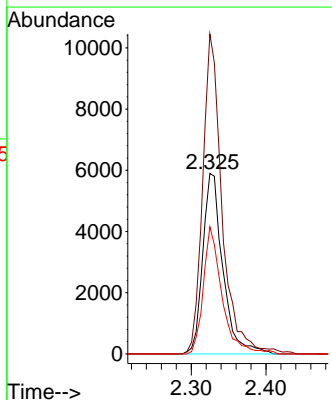
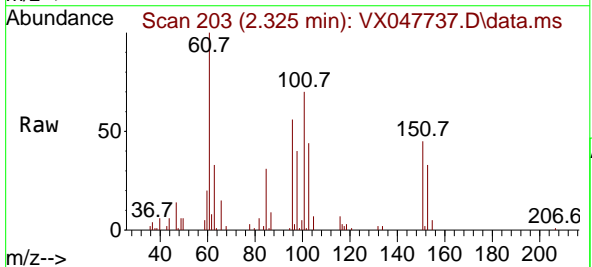
Instrument : MSVOA_X
 ClientSampleId : RE120D1-20250912

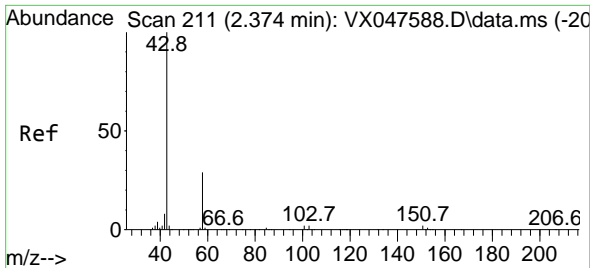
Tgt Ion: 59 Resp: 130
 Ion Ratio Lower Upper
 59 100
 57 0.0 8.3 12.5#



#12
 1,1-Dichloroethene
 Concen: 6.933 ug/l
 RT: 2.325 min Scan# 203
 Delta R.T. 0.000 min
 Lab File: VX047737.D
 Acq: 23 Sep 2025 16:34

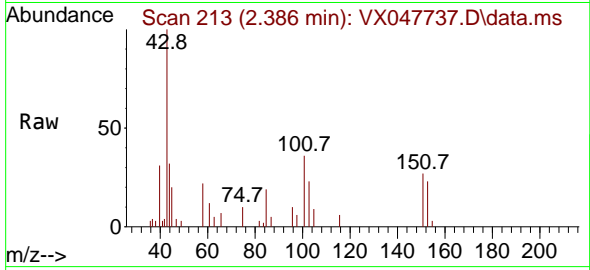
Tgt Ion: 96 Resp: 11018
 Ion Ratio Lower Upper
 96 100
 61 169.0 131.0 196.6
 98 67.2 47.7 71.5



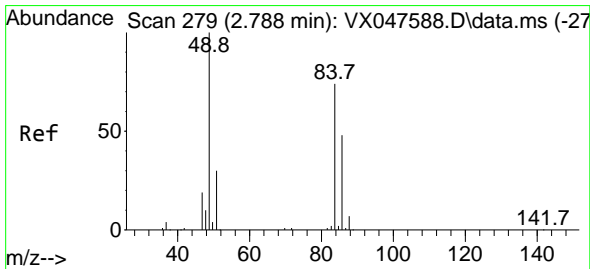
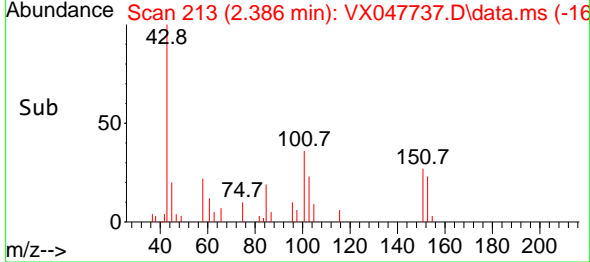
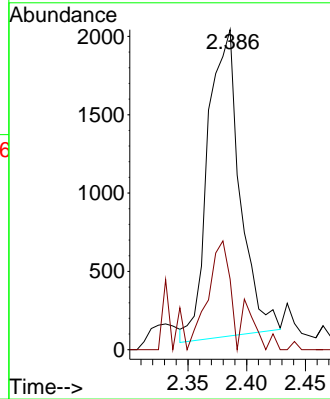


#16
 Acetone
 Concen: 4.014 ug/l
 RT: 2.386 min Scan# 211
 Delta R.T. 0.012 min
 Lab File: VX047737.D
 Acq: 23 Sep 2025 16:34

Instrument : MSVOA_X
 ClientSampleId : RE120D1-20250912

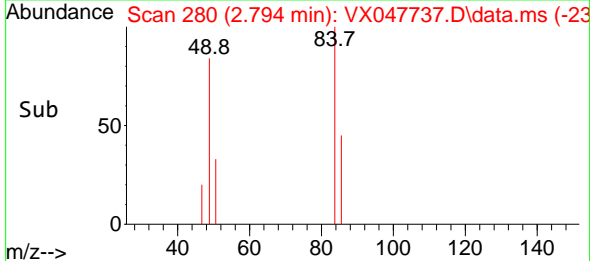
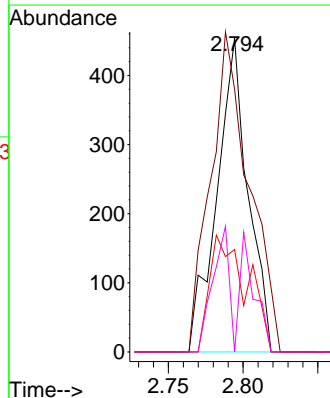
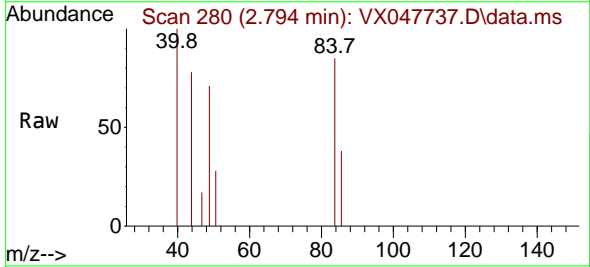


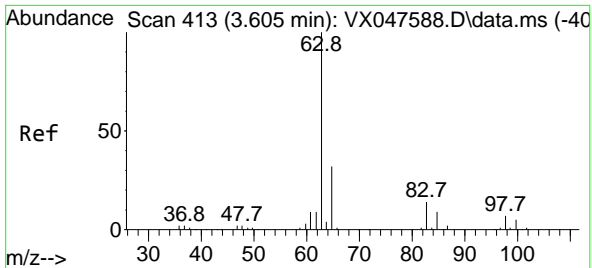
Tgt Ion: 43 Resp: 3716
 Ion Ratio Lower Upper
 43 100
 58 23.7 23.4 35.0



#20
 Methylene Chloride
 Concen: 0.336 ug/l
 RT: 2.794 min Scan# 280
 Delta R.T. 0.006 min
 Lab File: VX047737.D
 Acq: 23 Sep 2025 16:34

Tgt Ion: 84 Resp: 659
 Ion Ratio Lower Upper
 84 100
 49 83.7 108.6 162.8#
 51 32.6 32.6 48.8
 86 0.0 52.0 78.0#



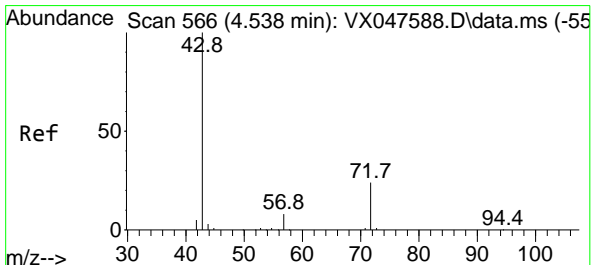
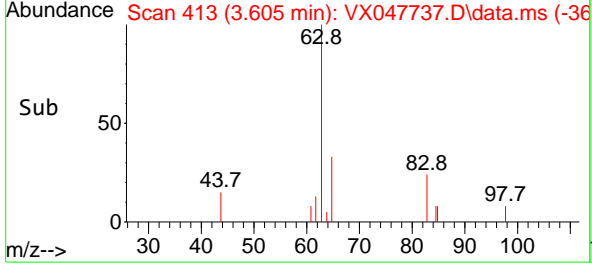
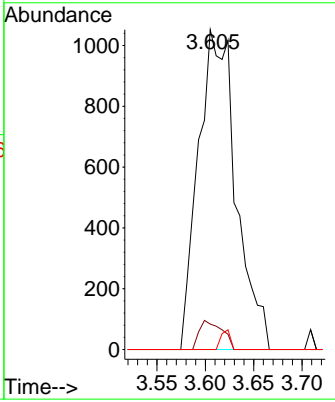
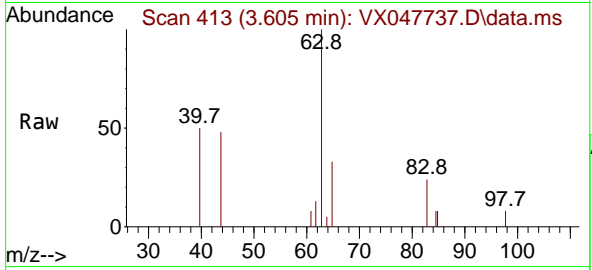


#24
 1,1-Dichloroethane
 Concen: 0.843 ug/l
 RT: 3.605 min Scan# 413
 Delta R.T. 0.000 min
 Lab File: VX047737.D
 Acq: 23 Sep 2025 16:34

Instrument : MSVOA_X
 ClientSampleId : RE120D1-20250912

Tgt Ion: 63 Resp: 2849

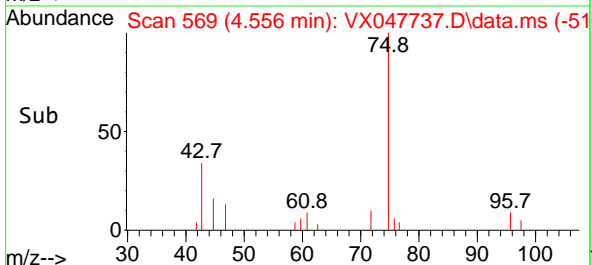
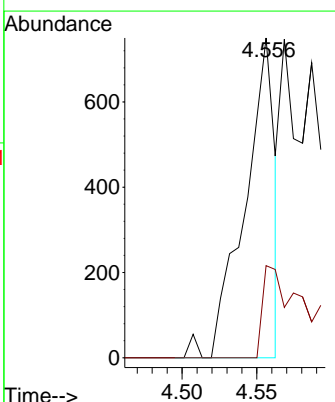
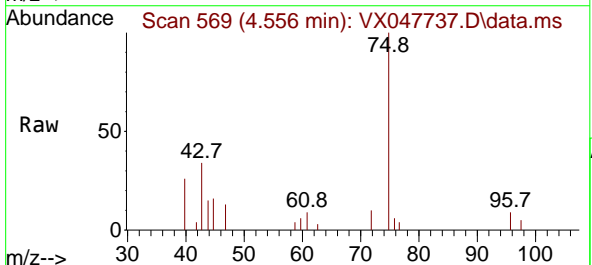
Ion	Ratio	Lower	Upper
63	100		
98	8.0	3.8	11.2
100	0.0	2.3	6.9#

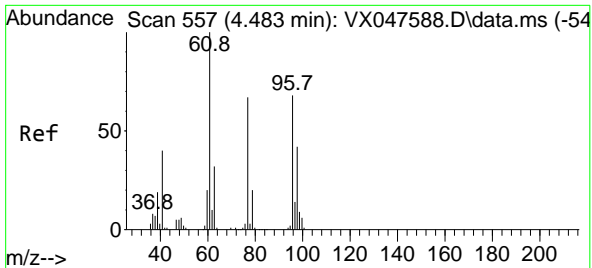


#25
 2-Butanone
 Concen: 0.906 ug/l
 RT: 4.556 min Scan# 569
 Delta R.T. 0.018 min
 Lab File: VX047737.D
 Acq: 23 Sep 2025 16:34

Tgt Ion: 43 Resp: 1046

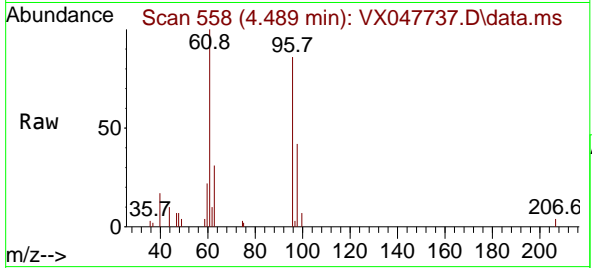
Ion	Ratio	Lower	Upper
43	100		
72	51.2	20.1	30.1#





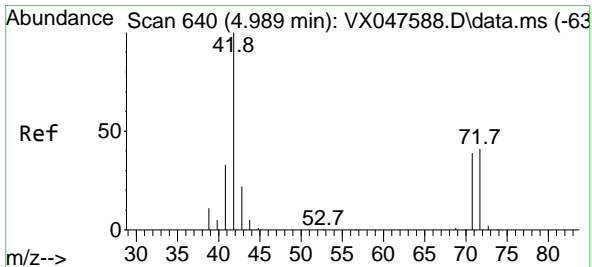
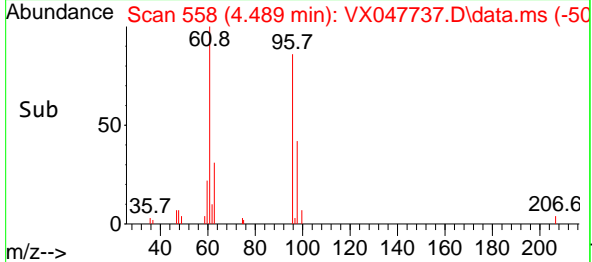
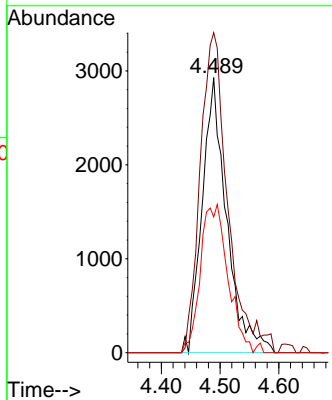
#27
 cis-1,2-Dichloroethene
 Concen: 4.035 ug/l
 RT: 4.489 min Scan# 51
 Delta R.T. 0.006 min
 Lab File: VX047737.D
 Acq: 23 Sep 2025 16:34

Instrument : MSVOA_X
 ClientSampleId : RE120D1-20250912



Tgt Ion: 96 Resp: 8455

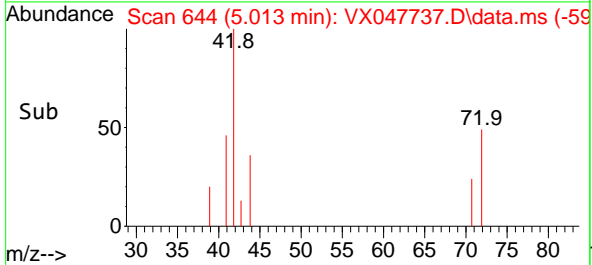
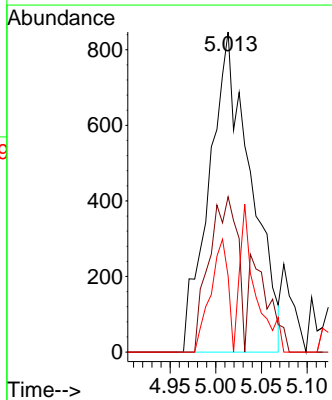
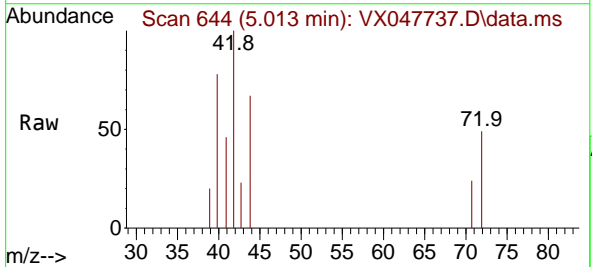
Ion	Ratio	Lower	Upper
96	100		
61	131.2	0.0	303.2
98	60.6	0.0	127.8

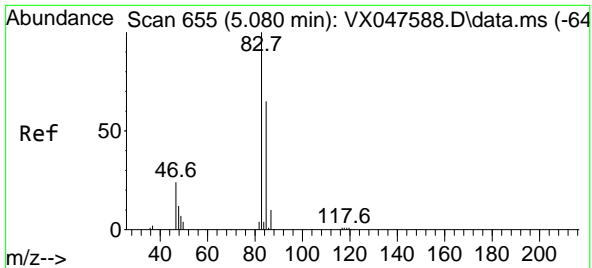


#29
 Tetrahydrofuran
 Concen: 3.852 ug/l
 RT: 5.013 min Scan# 644
 Delta R.T. 0.024 min
 Lab File: VX047737.D
 Acq: 23 Sep 2025 16:34

Tgt Ion: 42 Resp: 2676

Ion	Ratio	Lower	Upper
42	100		
72	33.2	34.2	51.2#
71	14.9	31.9	47.9#

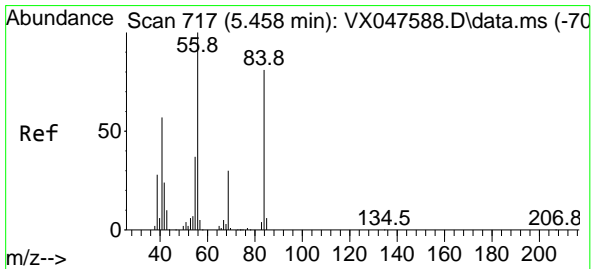
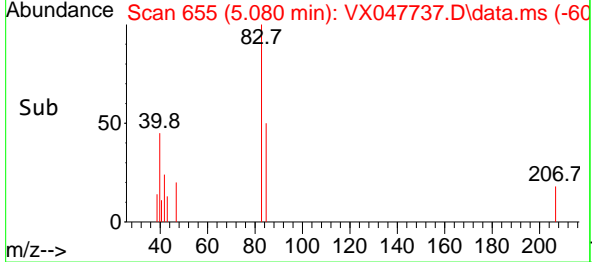
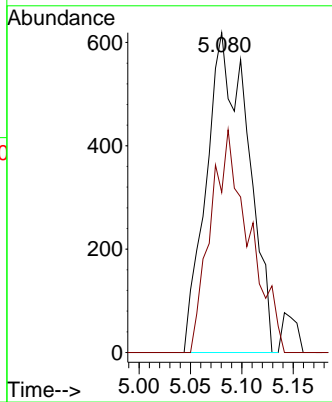
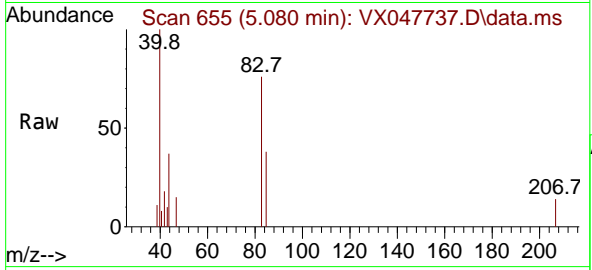




#30
 Chloroform
 Concen: 0.511 ug/l
 RT: 5.080 min Scan# 611
 Delta R.T. 0.000 min
 Lab File: VX047737.D
 Acq: 23 Sep 2025 16:34

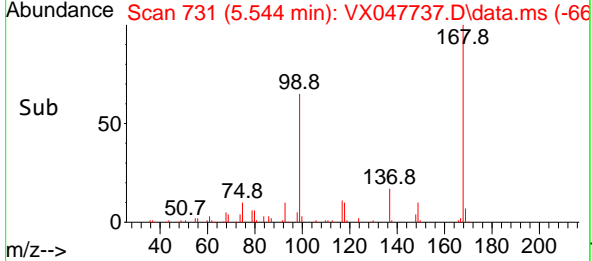
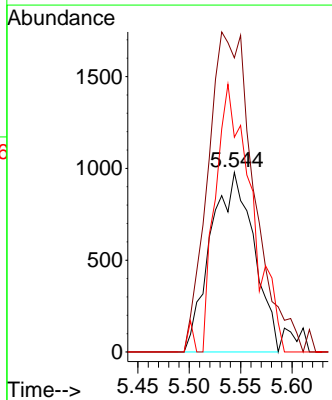
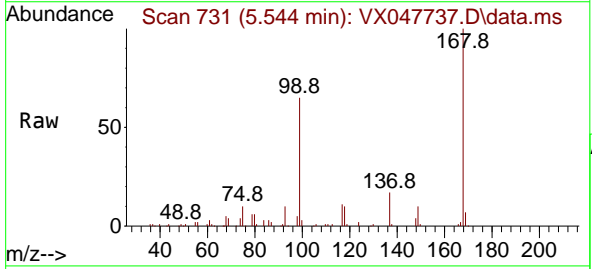
Instrument : MSVOA_X
 ClientSampleId : RE120D1-20250912

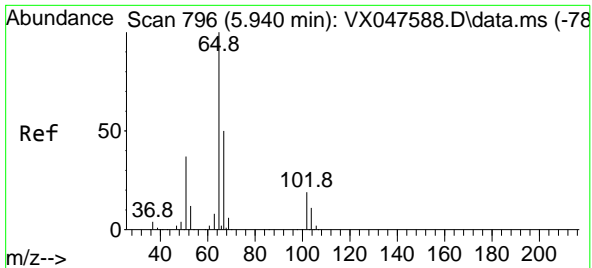
Tgt Ion	Resp	Ion Ratio	Lower	Upper
83	1745	100		
85		50.1	51.8	77.6#



#31
 Cyclohexane
 Concen: 1.015 ug/l
 RT: 5.544 min Scan# 731
 Delta R.T. 0.085 min
 Lab File: VX047737.D
 Acq: 23 Sep 2025 16:34

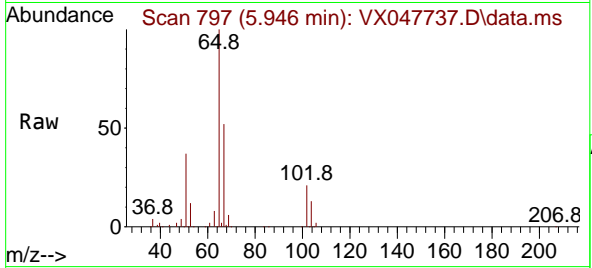
Tgt Ion	Resp	Ion Ratio	Lower	Upper
56	2857	100		
69		163.8	23.8	35.8#
84		119.6	64.6	97.0#



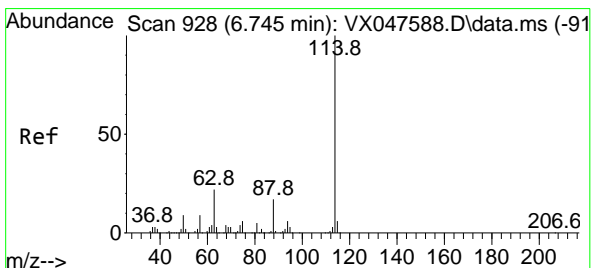
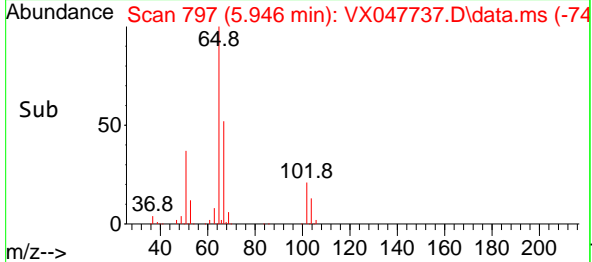
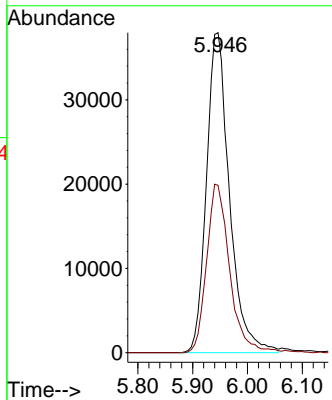


#33
 1,2-Dichloroethane-d4
 Concen: 51.898 ug/l
 RT: 5.946 min Scan# 796
 Delta R.T. 0.006 min
 Lab File: VX047737.D
 Acq: 23 Sep 2025 16:34

Instrument : MSVOA_X
 ClientSampleId : RE120D1-20250912

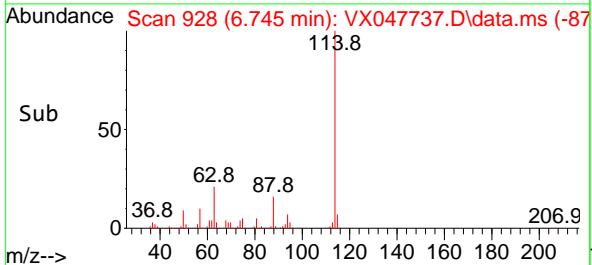
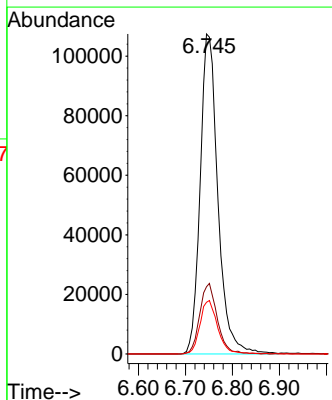
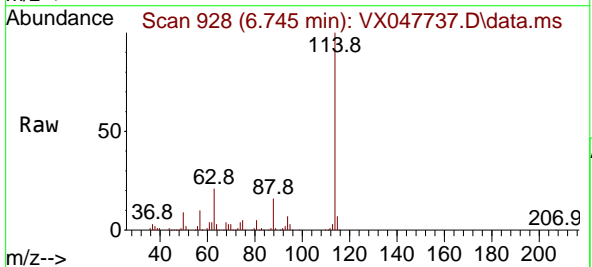


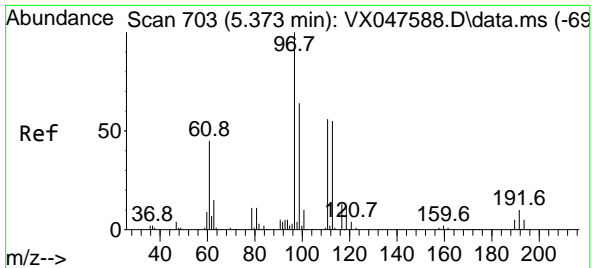
Tgt Ion: 65 Resp: 110502
 Ion Ratio Lower Upper
 65 100
 67 52.6 0.0 103.0



#34
 1,4-Difluorobenzene
 Concen: 50.000 ug/l
 RT: 6.745 min Scan# 928
 Delta R.T. 0.000 min
 Lab File: VX047737.D
 Acq: 23 Sep 2025 16:34

Tgt Ion: 114 Resp: 281791
 Ion Ratio Lower Upper
 114 100
 63 21.0 0.0 44.0
 88 16.1 0.0 34.2

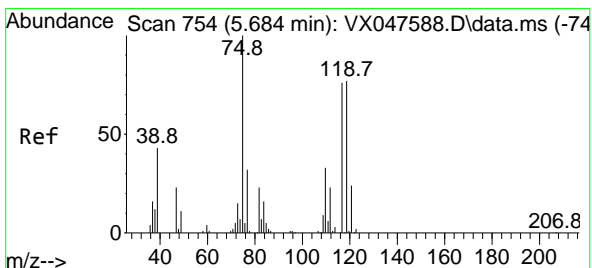
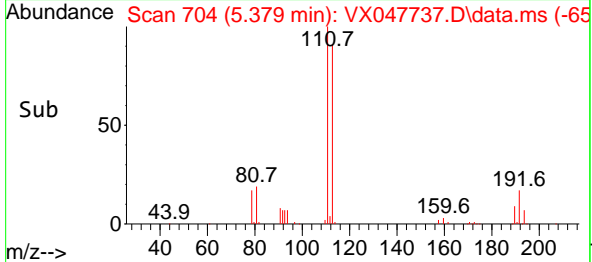
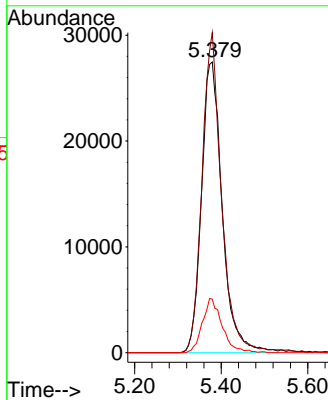
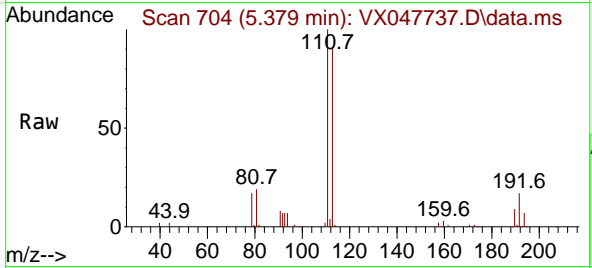




#35
 Dibromofluoromethane
 Concen: 48.324 ug/l
 RT: 5.379 min Scan# 703
 Delta R.T. 0.006 min
 Lab File: VX047737.D
 Acq: 23 Sep 2025 16:34

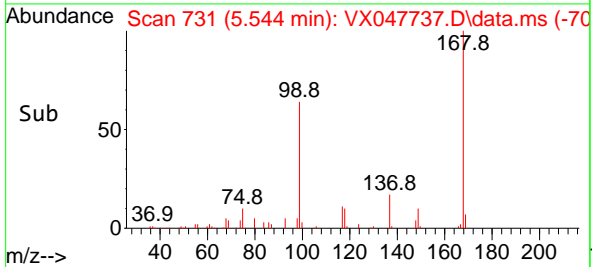
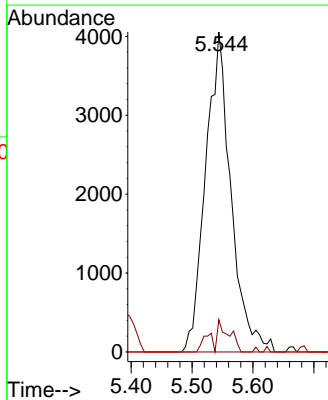
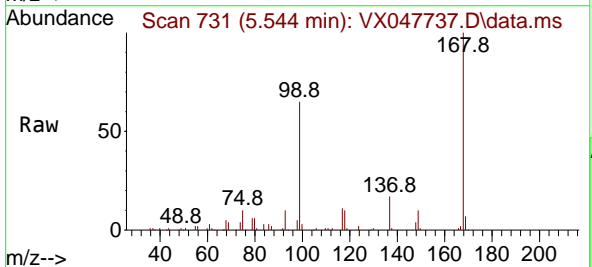
Instrument : MSVOA_X
 ClientSampleId : RE120D1-20250912

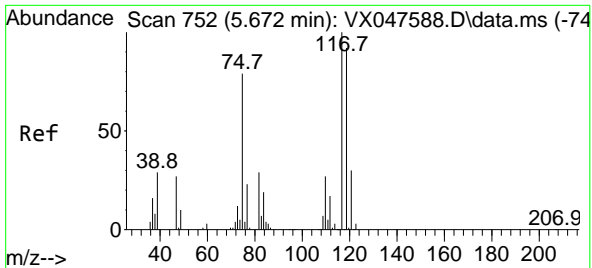
Tgt Ion	Resp	Lower	Upper
113	91324		
113	100		
111	103.0	80.9	121.3
192	17.7	14.2	21.4



#36
 1,1-Dichloropropene
 Concen: 4.240 ug/l
 RT: 5.544 min Scan# 731
 Delta R.T. -0.140 min
 Lab File: VX047737.D
 Acq: 23 Sep 2025 16:34

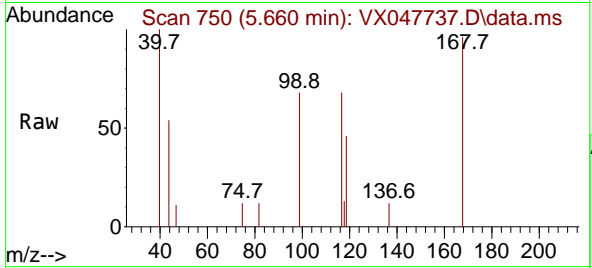
Tgt Ion	Resp	Lower	Upper
75	11710		
75	100		
110	4.6	16.7	50.1#
77	0.0	24.3	36.5#



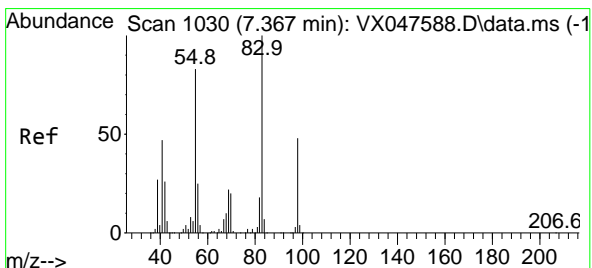
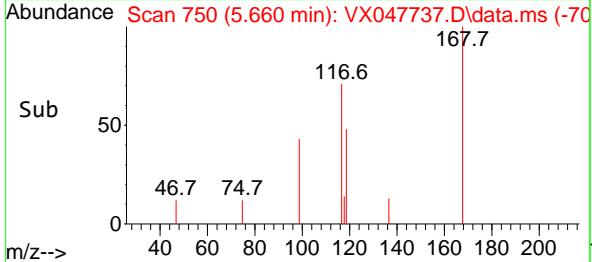
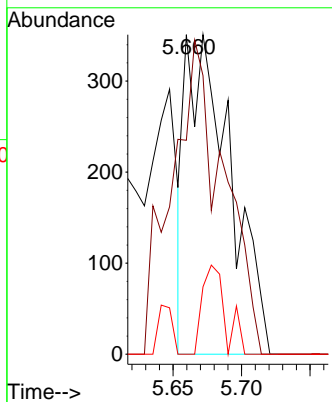


#38
 Carbon Tetrachloride
 Concen: 0.266 ug/l
 RT: 5.660 min Scan# 711
 Delta R.T. -0.012 min
 Lab File: VX047737.D
 Acq: 23 Sep 2025 16:34

Instrument : MSVOA_X
 ClientSampleId : RE120D1-20250912

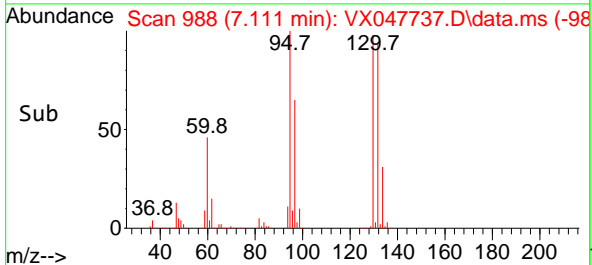
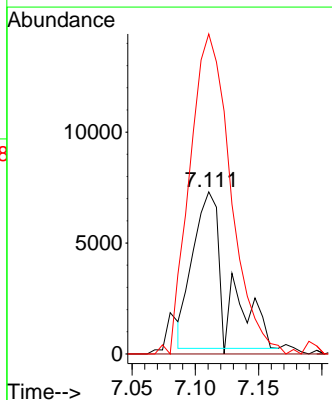
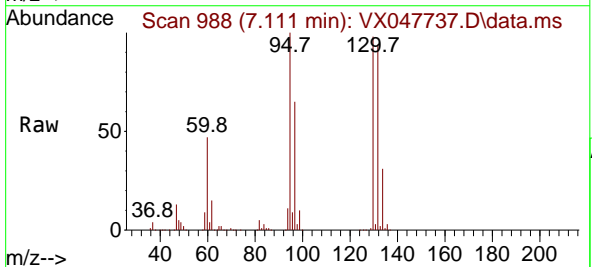


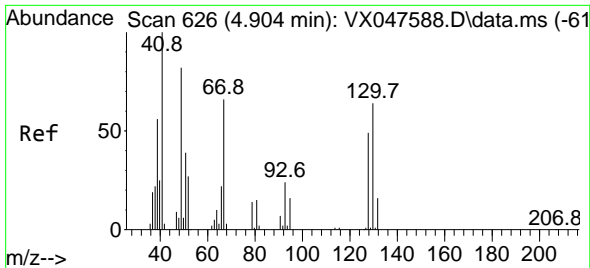
Tgt Ion: 117 Resp: 797
 Ion Ratio Lower Upper
 117 100
 119 67.0 73.4 110.2#
 121 0.0 23.8 35.6#



#39
 Methylcyclohexane
 Concen: 4.259 ug/l
 RT: 7.111 min Scan# 988
 Delta R.T. -0.256 min
 Lab File: VX047737.D
 Acq: 23 Sep 2025 16:34

Tgt Ion: 83 Resp: 13350
 Ion Ratio Lower Upper
 83 100
 55 0.0 66.4 99.6#
 98 300.9 38.1 57.1#



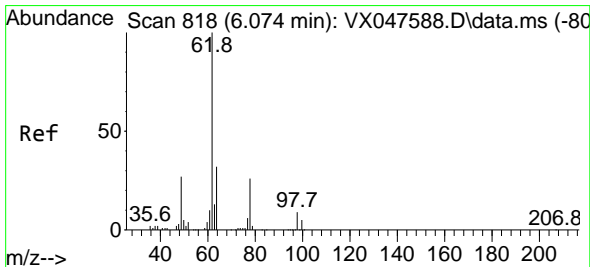
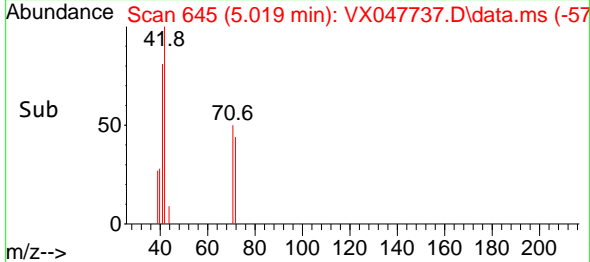
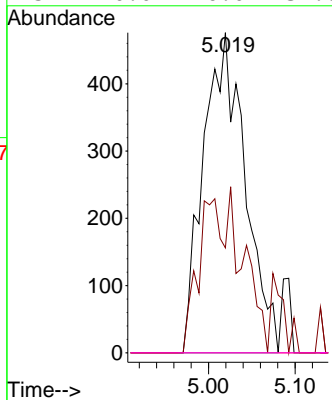
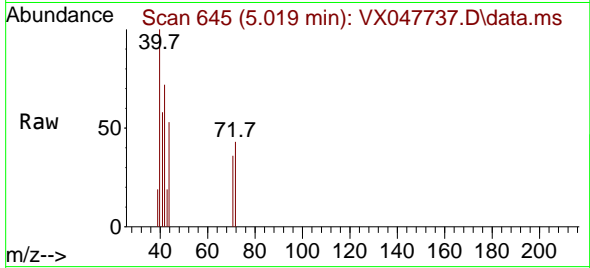


#41
 Methacrylonitrile
 Concen: 1.039 ug/l
 RT: 5.019 min Scan# 645
 Delta R.T. 0.116 min
 Lab File: VX047737.D
 Acq: 23 Sep 2025 16:34

Instrument :
 MSVOA_X
 ClientSampleId :
 RE120D1-20250912

Tgt Ion: 41 Resp: 1586

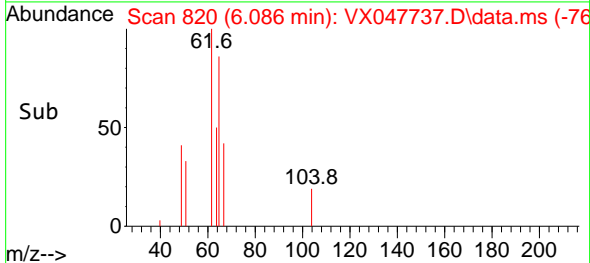
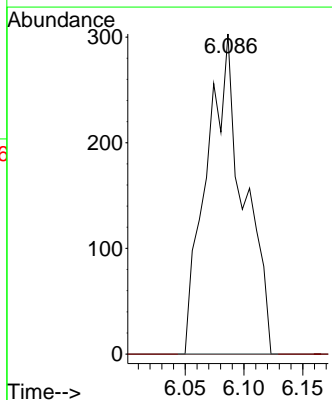
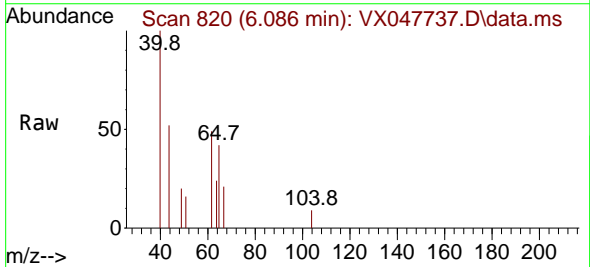
Ion	Ratio	Lower	Upper
41	100		
39	29.6	43.3	64.9#
67	0.0	58.6	87.8#
52	0.0	26.0	39.0#

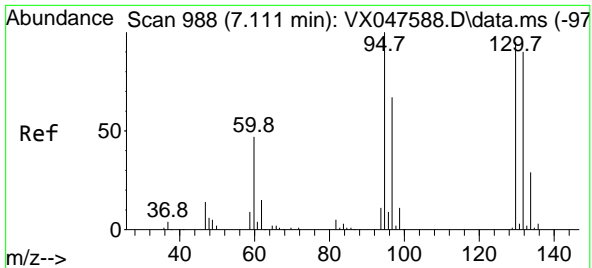


#42
 1,2-Dichloroethane
 Concen: 0.209 ug/l
 RT: 6.086 min Scan# 820
 Delta R.T. 0.012 min
 Lab File: VX047737.D
 Acq: 23 Sep 2025 16:34

Tgt Ion: 62 Resp: 667

Ion	Ratio	Lower	Upper
62	100		
98	0.0	0.0	17.0

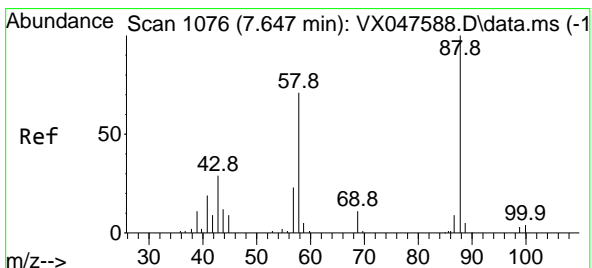
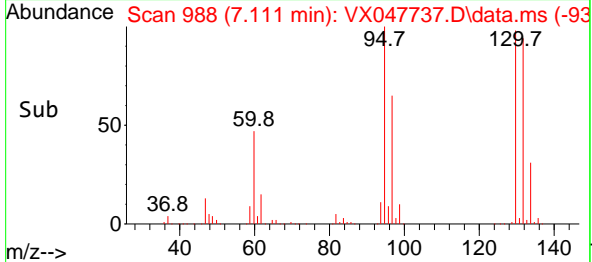
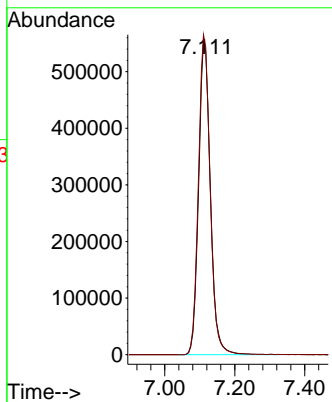
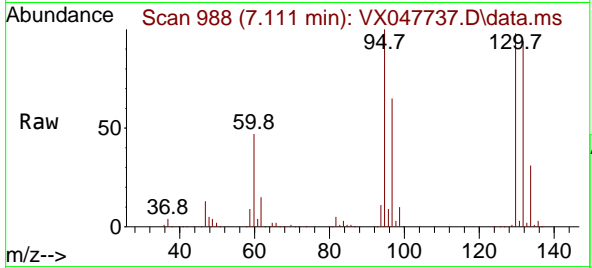




#44
 Trichloroethene
 Concen: 637.467 ug/l
 RT: 7.111 min Scan# 91
 Delta R.T. 0.000 min
 Lab File: VX047737.D
 Acq: 23 Sep 2025 16:34

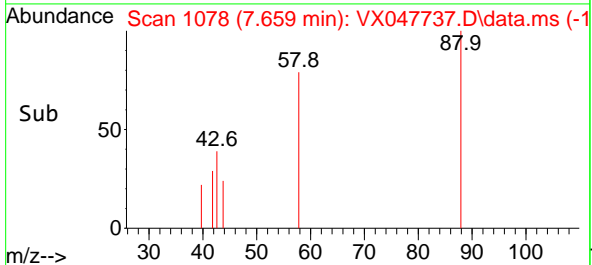
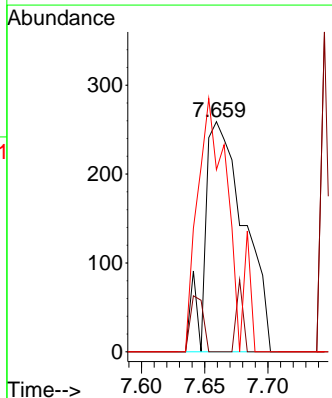
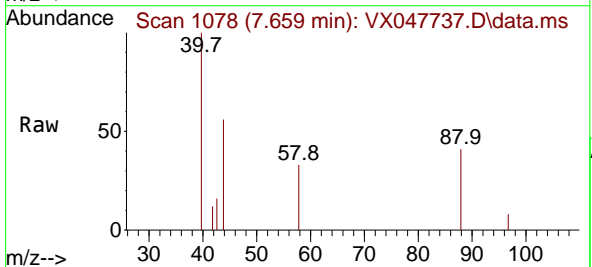
Instrument :
 MSVOA_X
 ClientSampleId :
 RE120D1-20250912

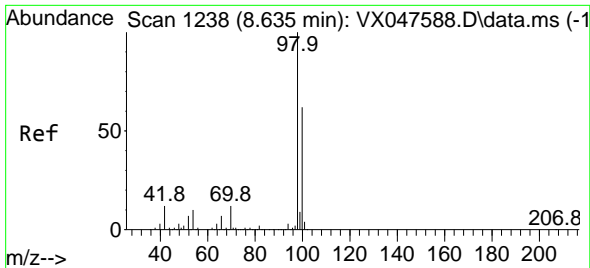
Tgt Ion:130 Resp: 1292636
 Ion Ratio Lower Upper
 130 100
 95 101.7 0.0 210.8



#49
 1,4-Dioxane
 Concen: 22.940 ug/l
 RT: 7.659 min Scan# 1078
 Delta R.T. 0.012 min
 Lab File: VX047737.D
 Acq: 23 Sep 2025 16:34

Tgt Ion: 88 Resp: 560
 Ion Ratio Lower Upper
 88 100
 43 7.9 30.2 45.2#
 58 87.9 59.5 89.3

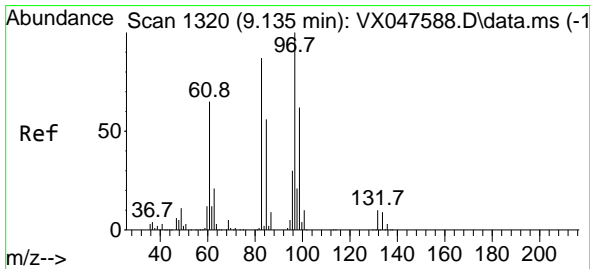
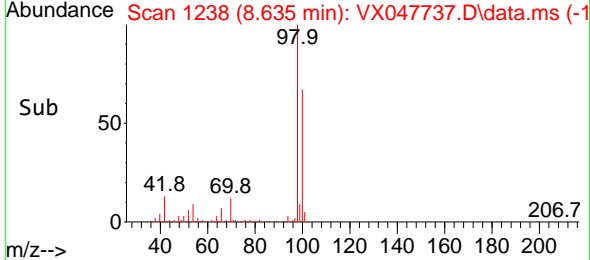
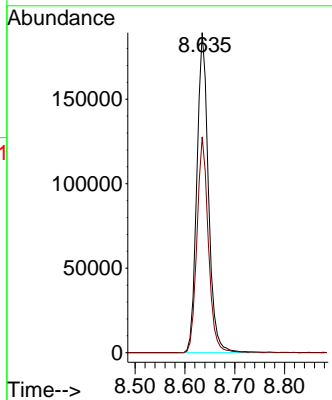
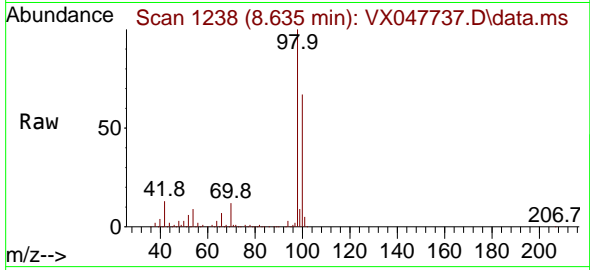




#50
 Toluene-d8
 Concen: 46.677 ug/l
 RT: 8.635 min Scan# 11
 Delta R.T. 0.000 min
 Lab File: VX047737.D
 Acq: 23 Sep 2025 16:34

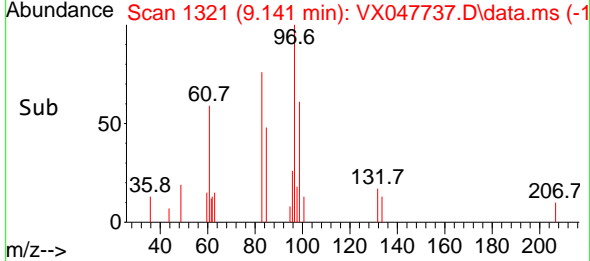
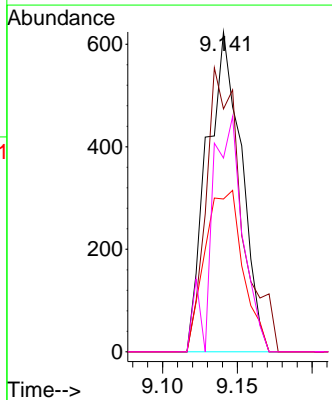
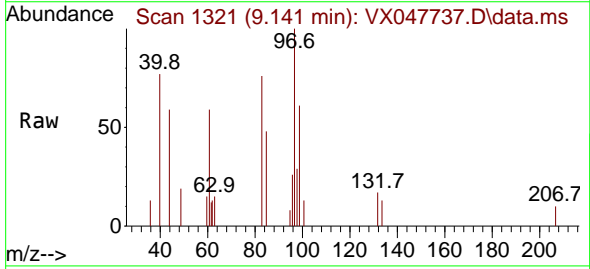
Instrument : MSVOA_X
 ClientSampleId : RE120D1-20250912

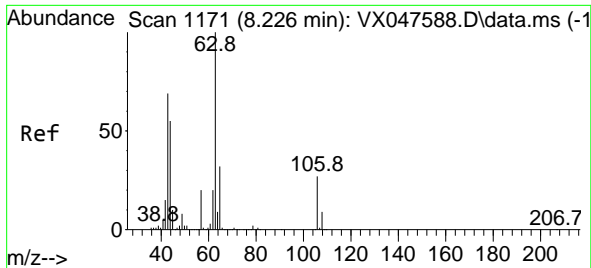
Tgt Ion: 98 Resp: 305233
 Ion Ratio Lower Upper
 98 100
 100 66.4 53.0 79.4



#55
 1,1,2-Trichloroethane
 Concen: 0.501 ug/l
 RT: 9.141 min Scan# 1321
 Delta R.T. 0.006 min
 Lab File: VX047737.D
 Acq: 23 Sep 2025 16:34

Tgt Ion: 97 Resp: 999
 Ion Ratio Lower Upper
 97 100
 83 76.0 69.6 104.4
 85 47.8 45.0 67.6
 99 60.6 49.6 74.4

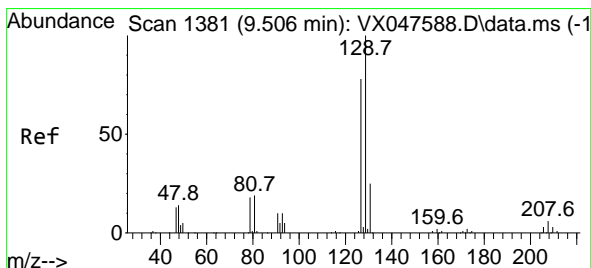
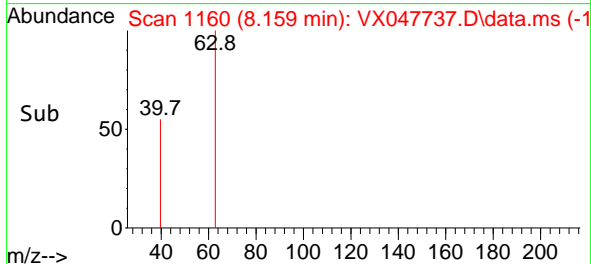
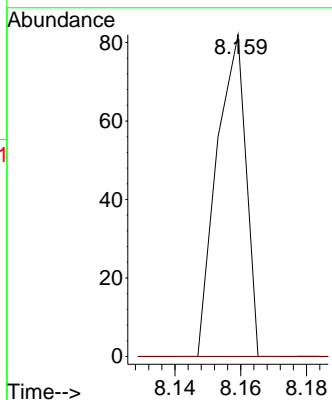
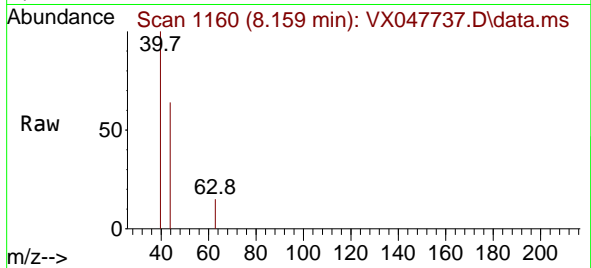




#58
 2-Chloroethyl Vinyl ether
 Concen: 7.926 ug/l
 RT: 8.159 min Scan# 1171
 Delta R.T. -0.067 min
 Lab File: VX047737.D
 Acq: 23 Sep 2025 16:34

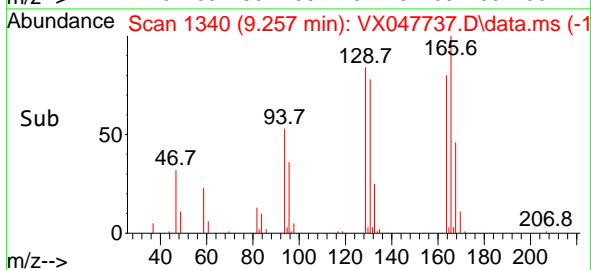
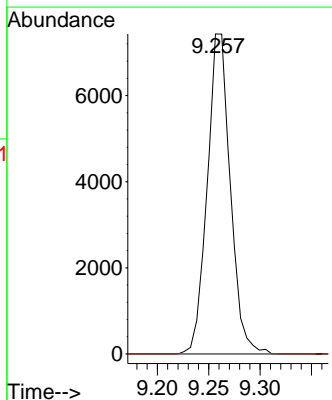
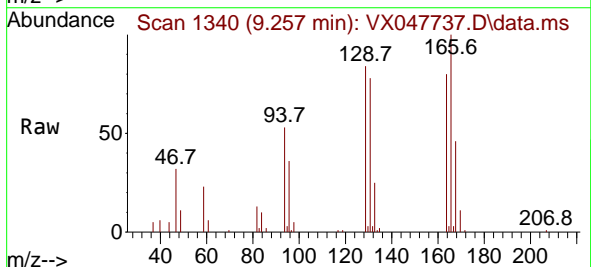
Instrument : MSVOA_X
 ClientSampleId : RE120D1-20250912

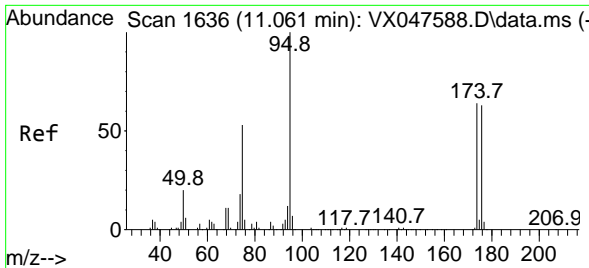
Tgt Ion: 63 Resp: 50
 Ion Ratio Lower Upper
 63 100
 106 0.0 21.9 32.9#



#60
 Dibromochloromethane
 Concen: 5.069 ug/l
 RT: 9.257 min Scan# 1340
 Delta R.T. -0.250 min
 Lab File: VX047737.D
 Acq: 23 Sep 2025 16:34

Tgt Ion:129 Resp: 11638
 Ion Ratio Lower Upper
 129 100
 127 0.0 38.4 115.2#



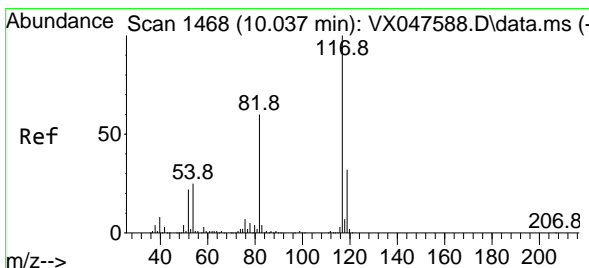
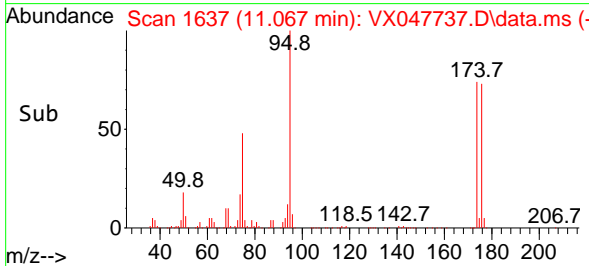
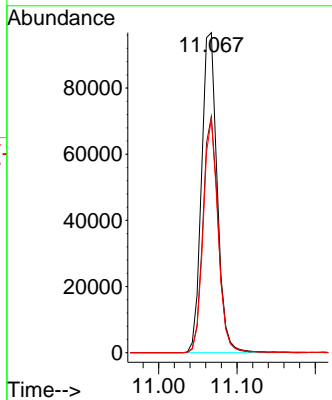
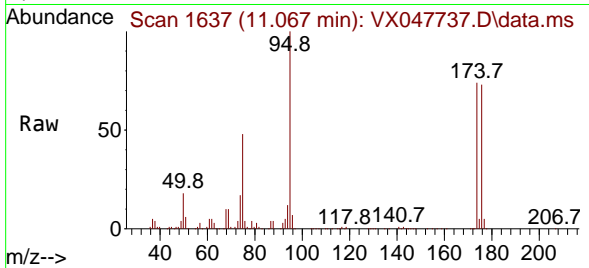


#62
 4-Bromofluorobenzene
 Concen: 53.946 ug/l
 RT: 11.067 min Scan# 11
 Delta R.T. 0.006 min
 Lab File: VX047737.D
 Acq: 23 Sep 2025 16:34

Instrument :
 MSVOA_X
 ClientSampleId :
 RE120D1-20250912

Tgt Ion: 95 Resp: 133881

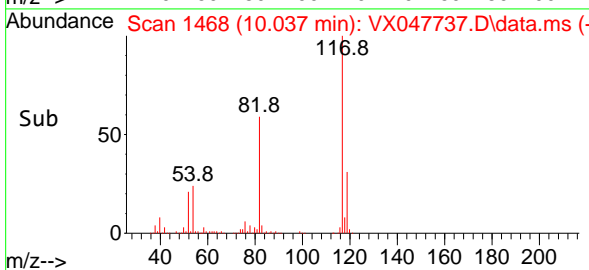
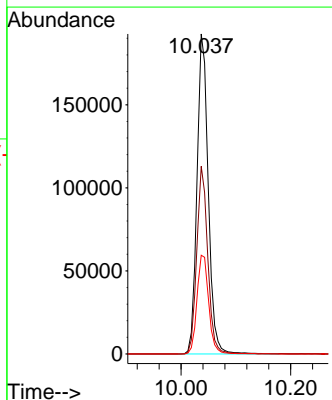
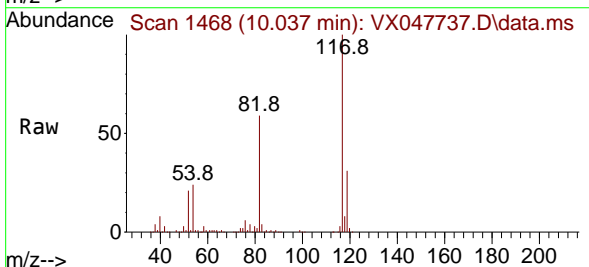
Ion	Ratio	Lower	Upper
95	100		
174	71.9	0.0	141.6
176	69.5	0.0	138.4

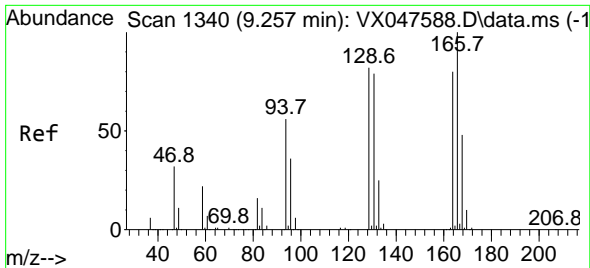


#63
 Chlorobenzene-d5
 Concen: 50.000 ug/l
 RT: 10.037 min Scan# 1468
 Delta R.T. 0.000 min
 Lab File: VX047737.D
 Acq: 23 Sep 2025 16:34

Tgt Ion: 117 Resp: 275514

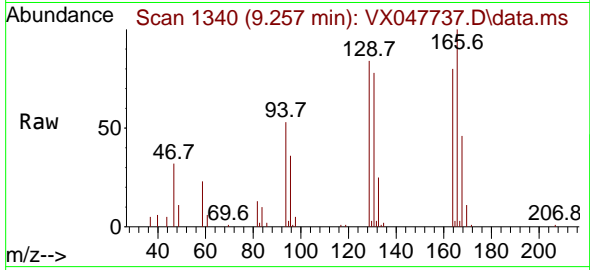
Ion	Ratio	Lower	Upper
117	100		
82	58.7	47.8	71.6
119	30.8	25.2	37.8





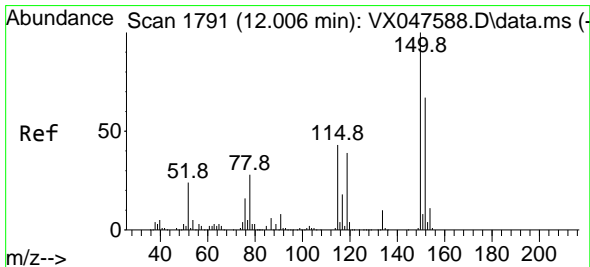
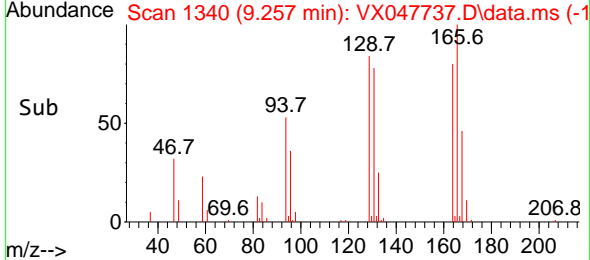
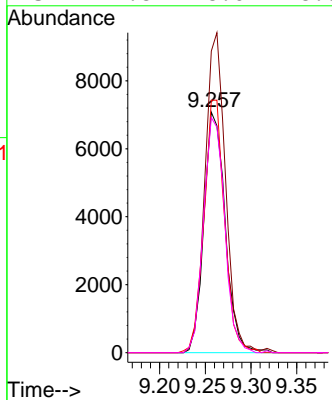
#64
 Tetrachloroethene
 Concen: 6.385 ug/l
 RT: 9.257 min Scan# 11
 Delta R.T. 0.000 min
 Lab File: VX047737.D
 Acq: 23 Sep 2025 16:34

Instrument :
 MSVOA_X
 ClientSampleId :
 RE120D1-20250912



Tgt Ion:164 Resp: 11467

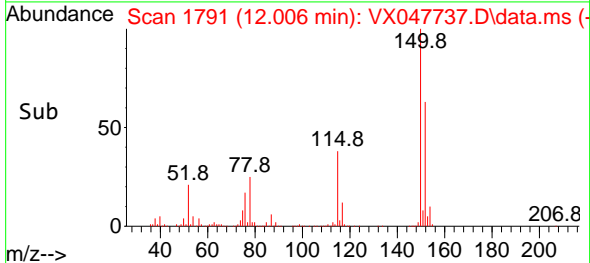
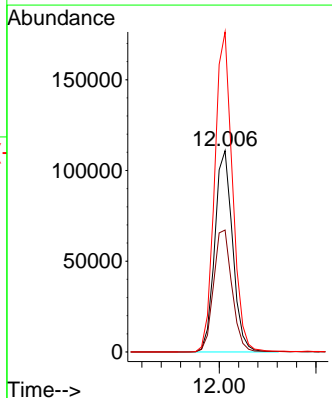
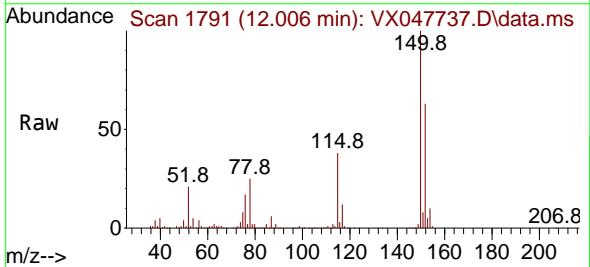
Ion	Ratio	Lower	Upper
164	100		
166	125.4	100.2	150.2
129	105.0	81.8	122.6
131	97.8	78.6	118.0

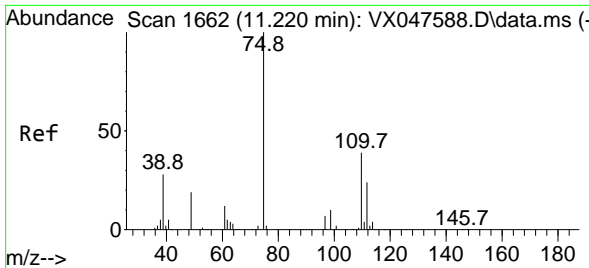


#72
 1,4-Dichlorobenzene-d4
 Concen: 50.000 ug/l
 RT: 12.006 min Scan# 1791
 Delta R.T. 0.000 min
 Lab File: VX047737.D
 Acq: 23 Sep 2025 16:34

Tgt Ion:152 Resp: 141902

Ion	Ratio	Lower	Upper
152	100		
115	62.7	44.9	134.5
150	158.8	0.0	352.0

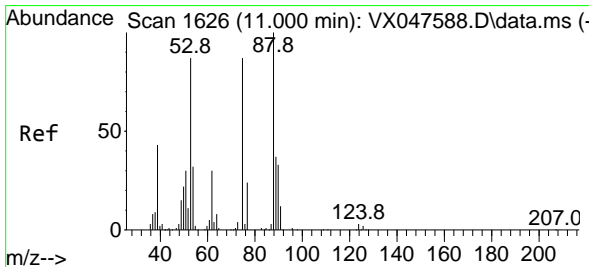
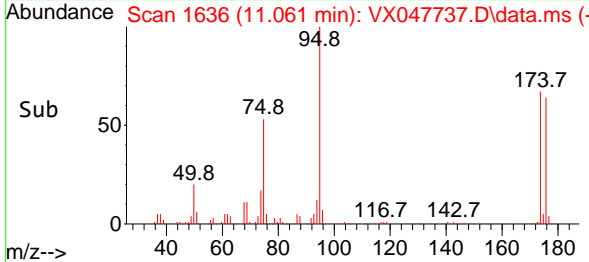
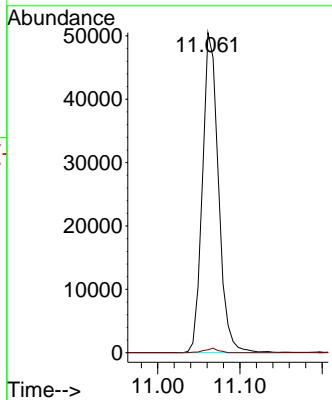
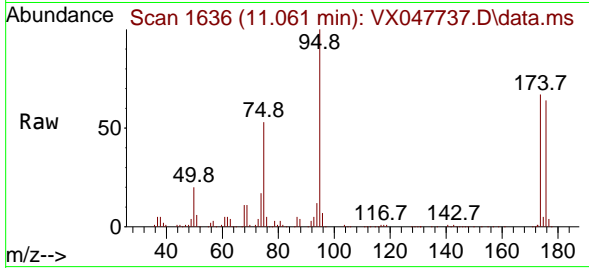




#76
 1,2,3-Trichloropropane
 Concen: 23.760 ug/l
 RT: 11.061 min Scan# 1636
 Delta R.T. -0.159 min
 Lab File: VX047737.D
 Acq: 23 Sep 2025 16:34

Instrument :
 MSVOA_X
 ClientSampleId :
 RE120D1-20250912

Tgt Ion: 75 Resp: 68263
 Ion Ratio Lower Upper
 75 100
 77 1.2 18.8 56.4#



#81
 trans-1,4-Dichloro-2-butene
 Concen: 60.590 ug/l
 RT: 11.061 min Scan# 1636
 Delta R.T. 0.061 min
 Lab File: VX047737.D
 Acq: 23 Sep 2025 16:34

Tgt Ion: 75 Resp: 68263
 Ion Ratio Lower Upper
 75 100
 53 0.0 83.4 125.2#
 89 0.0 36.3 54.5#

