

Data Path : Z:\voasrv\HPCHEM1\MSVOA_X\Data\VX092325\
 Data File : VX047739.D
 Acq On : 23 Sep 2025 17:16
 Operator : JC/MD
 Sample : Q3097-21
 Misc : 5.0mL/MSVOA_X/WATER
 ALS Vial : 22 Sample Multiplier: 1

Instrument :
 MSVOA_X
 ClientSampleId :
 RE120D2-20250912

Quant Time: Sep 24 01:36:43 2025
 Quant Method : Z:\voasrv\HPCHEM1\MSVOA_X\Method\82X091625W.M
 Quant Title : SW846 8260
 QLast Update : Wed Sep 17 06:39:58 2025
 Response via : Initial Calibration

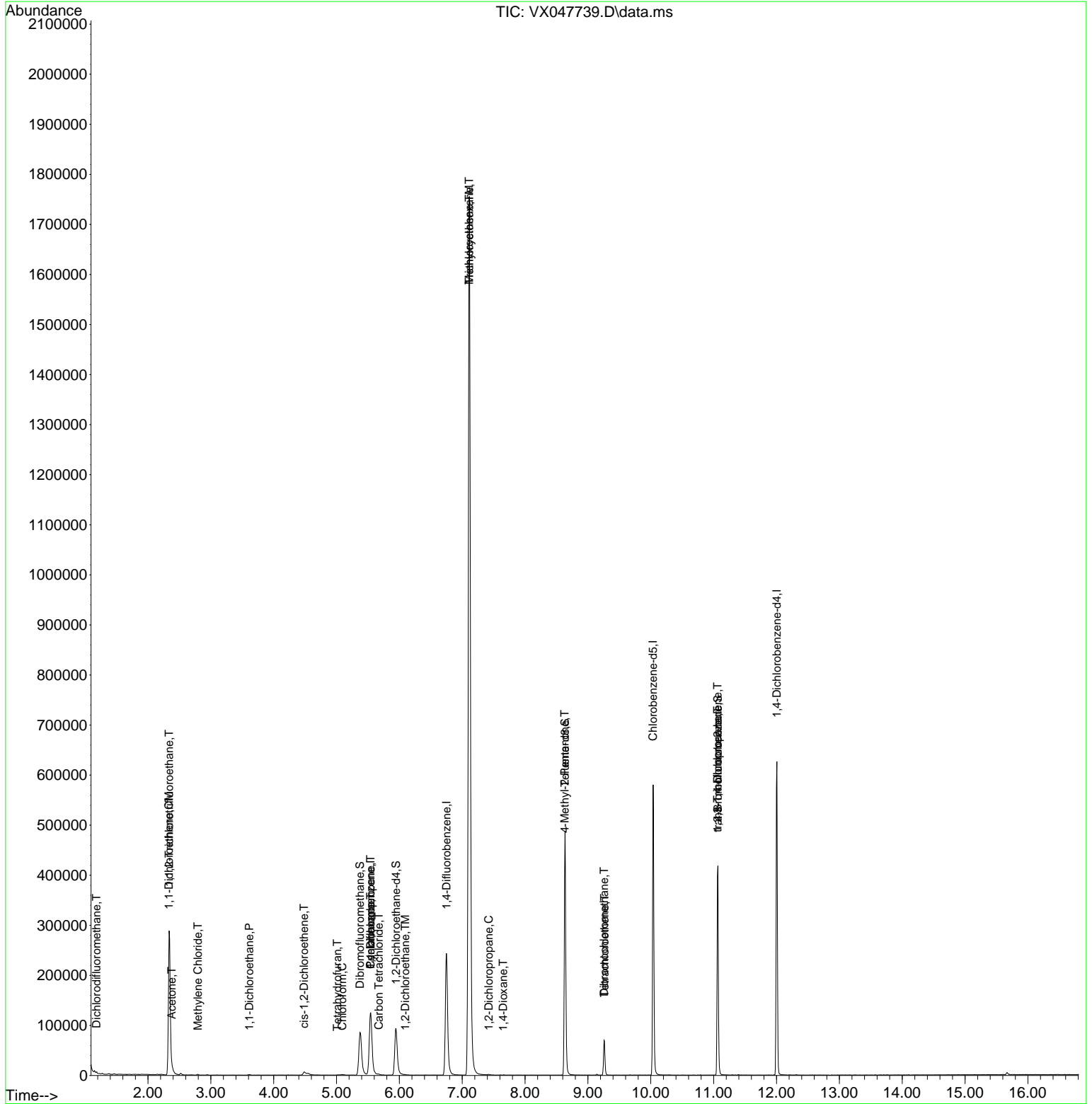
Compound	R.T.	QIon	Response	Conc	Units	Dev(Min)
Internal Standards						
1) Pentafluorobenzene	5.544	168	127092	50.000	ug/l	0.00
34) 1,4-Difluorobenzene	6.751	114	268101	50.000	ug/l	0.00
63) Chlorobenzene-d5	10.037	117	262928	50.000	ug/l	0.00
72) 1,4-Dichlorobenzene-d4	12.006	152	131853	50.000	ug/l	0.00
System Monitoring Compounds						
33) 1,2-Dichloroethane-d4	5.946	65	101743	50.294	ug/l	0.00
Spiked Amount	50.000	Range 78 - 117	Recovery	=	100.580%	
35) Dibromofluoromethane	5.373	113	85074	47.315	ug/l	0.00
Spiked Amount	50.000	Range 75 - 124	Recovery	=	94.640%	
50) Toluene-d8	8.635	98	294134	47.277	ug/l	0.00
Spiked Amount	50.000	Range 92 - 112	Recovery	=	94.560%	
62) 4-Bromofluorobenzene	11.067	95	123190	52.173	ug/l	0.00
Spiked Amount	50.000	Range 83 - 123	Recovery	=	104.340%	
Target Compounds						
						Qvalue
2) Dichlorodifluoromethane	1.179	85	450	0.342	ug/l	87
9) 1,1,2-Trichlorotrifluo...	2.337	101	134162	91.267	ug/l	98
12) 1,1-Dichloroethene	2.331	96	2423	1.605	ug/l	89
16) Acetone	2.380	43	2514	2.858	ug/l	99
20) Methylene Chloride	2.794	84	623	0.335	ug/l	95
24) 1,1-Dichloroethane	3.611	63	1246	0.388	ug/l #	81
27) cis-1,2-Dichloroethene	4.483	96	4376	2.198	ug/l	88
29) Tetrahydrofuran	5.013	42	681	1.032	ug/l #	42
30) Chloroform	5.093	83	1604	0.495	ug/l	89
31) Cyclohexane	5.544	56	2882	1.078	ug/l #	20
36) 1,1-Dichloropropene	5.544	75	11077	4.216	ug/l #	46
38) Carbon Tetrachloride	5.672	117	1363	0.477	ug/l	92
39) Methylcyclohexane	7.110	83	8793	2.948	ug/l #	1
42) 1,2-Dichloroethane	6.092	62	618	0.204	ug/l #	76
44) Trichloroethene	7.110	130	729005	377.869	ug/l	97
45) 1,2-Dichloropropane	7.421	63	456	0.223	ug/l #	44
49) 1,4-Dioxane	7.653	88	122	5.253	ug/l #	35
51) 4-Methyl-2-Pentanone	8.628	43	1379	0.539	ug/l #	1
60) Dibromochloromethane	9.256	129	13869	6.349	ug/l #	11
64) Tetrachloroethene	9.262	164	13766	8.031	ug/l	98
76) 1,2,3-Trichloropropane	11.061	75	62915	23.567	ug/l #	38
81) trans-1,4-Dichloro-2-b...	11.061	75	62915	60.099	ug/l #	8

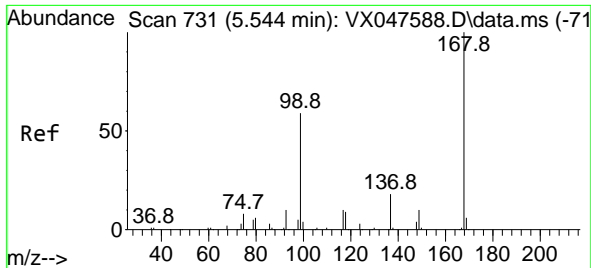
(#) = qualifier out of range (m) = manual integration (+) = signals summed

Data Path : Z:\voasrv\HPCHEM1\MSVOA_X\Data\VX092325\
 Data File : VX047739.D
 Acq On : 23 Sep 2025 17:16
 Operator : JC/MD
 Sample : Q3097-21
 Misc : 5.0mL/MSVOA_X/WATER
 ALS Vial : 22 Sample Multiplier: 1

Instrument :
 MSVOA_X
ClientSampleId :
 RE120D2-20250912

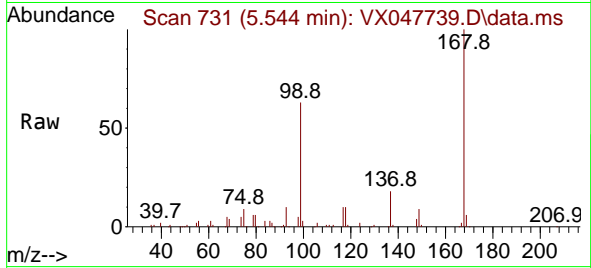
Quant Time: Sep 24 01:36:43 2025
 Quant Method : Z:\voasrv\HPCHEM1\MSVOA_X\Method\82X091625W.M
 Quant Title : SW846 8260
 QLast Update : Wed Sep 17 06:39:58 2025
 Response via : Initial Calibration



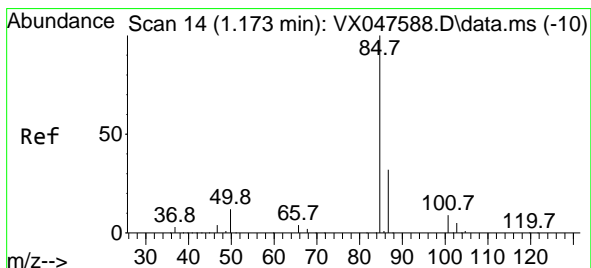
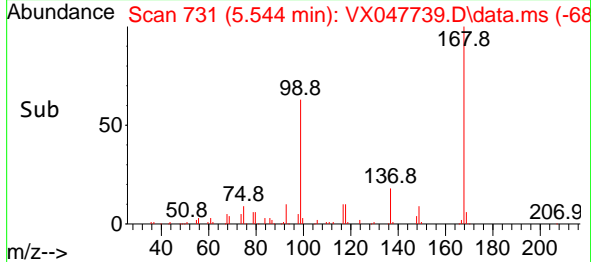
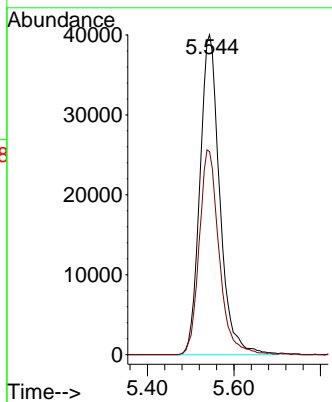


#1
 Pentafluorobenzene
 Concen: 50.000 ug/l
 RT: 5.544 min Scan# 71
 Delta R.T. -0.000 min
 Lab File: VX047739.D
 Acq: 23 Sep 2025 17:16

Instrument :
 MSVOA_X
 ClientSampleId :
 RE120D2-20250912

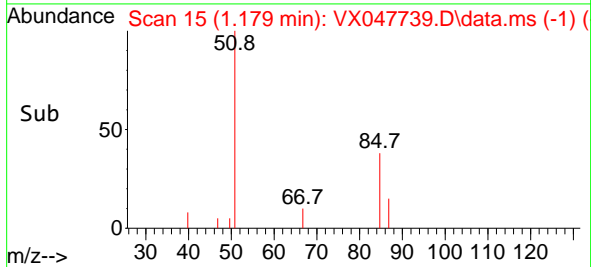
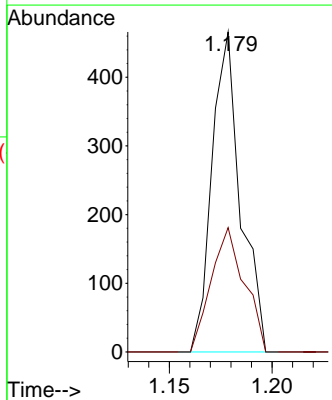
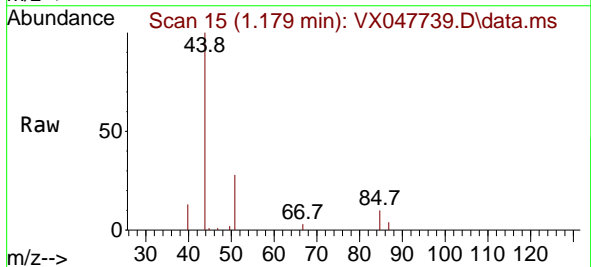


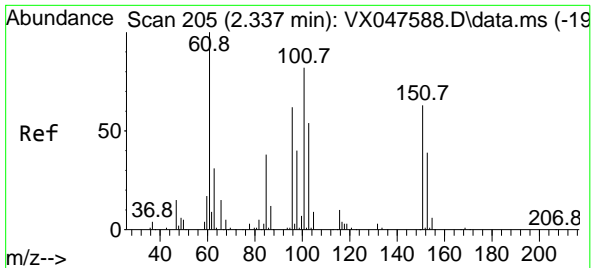
Tgt Ion:168 Resp: 127092
 Ion Ratio Lower Upper
 168 100
 99 63.4 48.8 73.2



#2
 Dichlorodifluoromethane
 Concen: 0.342 ug/l
 RT: 1.179 min Scan# 15
 Delta R.T. 0.006 min
 Lab File: VX047739.D
 Acq: 23 Sep 2025 17:16

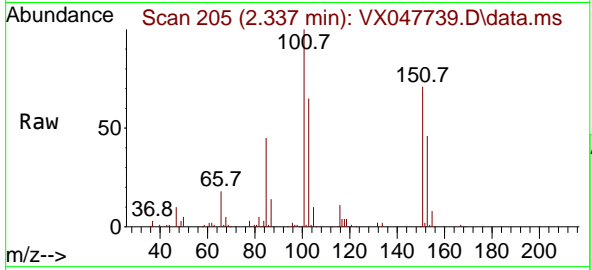
Tgt Ion: 85 Resp: 450
 Ion Ratio Lower Upper
 85 100
 87 38.8 15.8 47.3





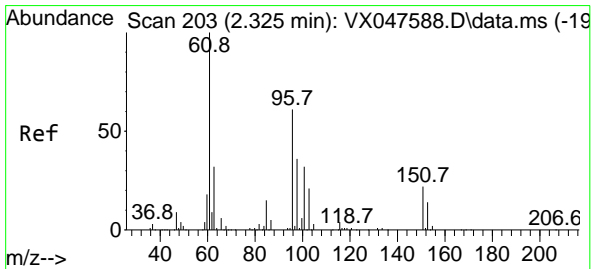
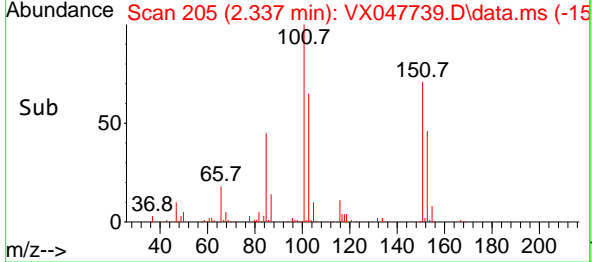
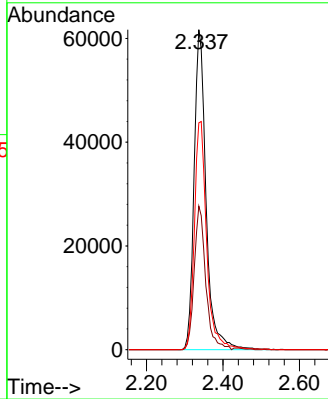
#9
 1,1,2-Trichlorotrifluoroethane
 Concen: 91.267 ug/l
 RT: 2.337 min Scan# 205
 Delta R.T. -0.000 min
 Lab File: VX047739.D
 Acq: 23 Sep 2025 17:16

Instrument : MSVOA_X
 ClientSampleId : RE120D2-20250912

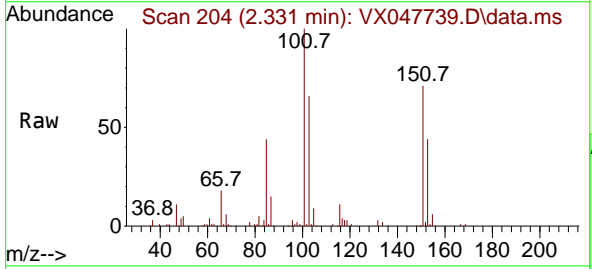


Tgt Ion: 101 Resp: 134162

Ion	Ratio	Lower	Upper
101	100		
85	43.2	35.5	53.3
151	73.0	59.4	89.0

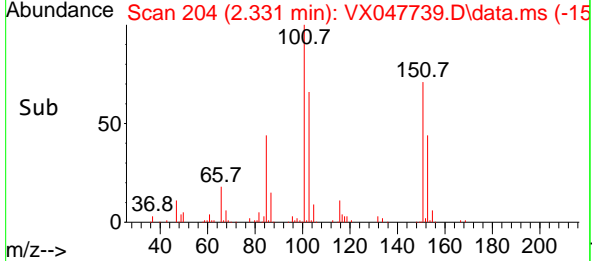
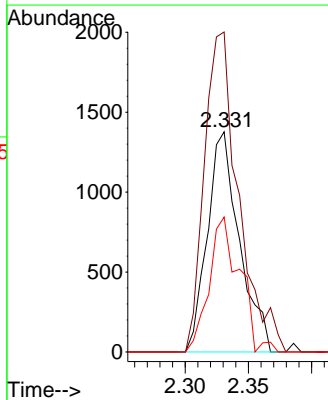


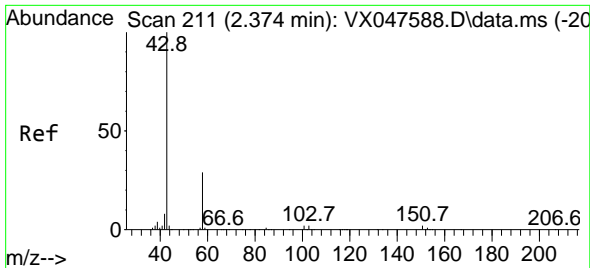
#12
 1,1-Dichloroethene
 Concen: 1.605 ug/l
 RT: 2.331 min Scan# 204
 Delta R.T. 0.006 min
 Lab File: VX047739.D
 Acq: 23 Sep 2025 17:16



Tgt Ion: 96 Resp: 2423

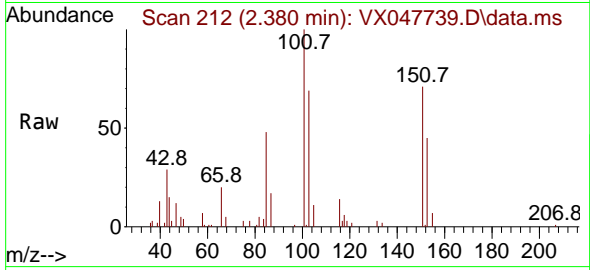
Ion	Ratio	Lower	Upper
96	100		
61	145.4	131.0	196.6
98	61.3	47.7	71.5



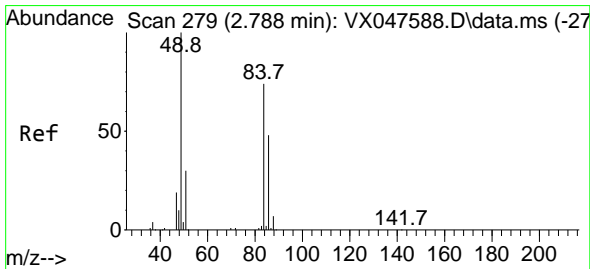
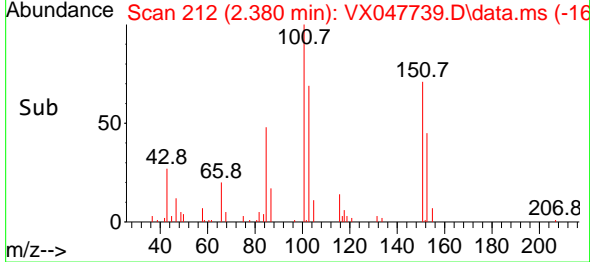
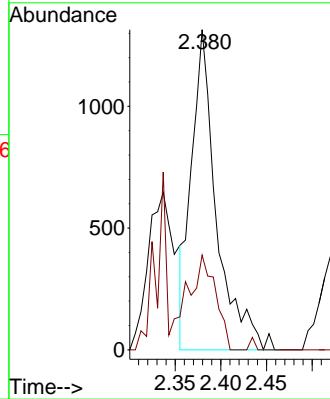


#16
 Acetone
 Concen: 2.858 ug/l
 RT: 2.380 min Scan# 211
 Delta R.T. 0.006 min
 Lab File: VX047739.D
 Acq: 23 Sep 2025 17:16

Instrument :
 MSVOA_X
 ClientSampleId :
 RE120D2-20250912

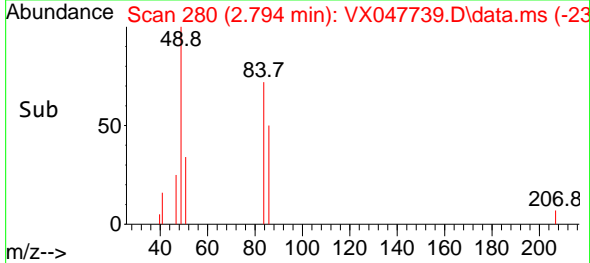
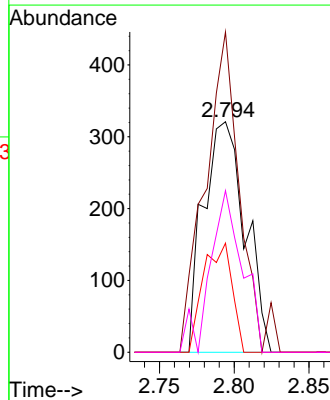
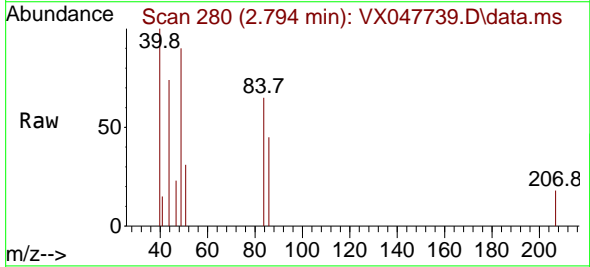


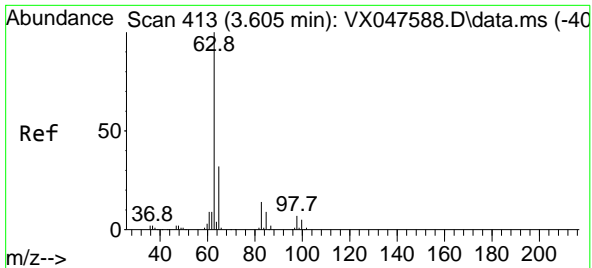
Tgt Ion: 43 Resp: 2514
 Ion Ratio Lower Upper
 43 100
 58 29.6 23.4 35.0



#20
 Methylene Chloride
 Concen: 0.335 ug/l
 RT: 2.794 min Scan# 280
 Delta R.T. 0.006 min
 Lab File: VX047739.D
 Acq: 23 Sep 2025 17:16

Tgt Ion: 84 Resp: 623
 Ion Ratio Lower Upper
 84 100
 49 138.9 108.6 162.8
 51 47.4 32.6 48.8
 86 70.1 52.0 78.0



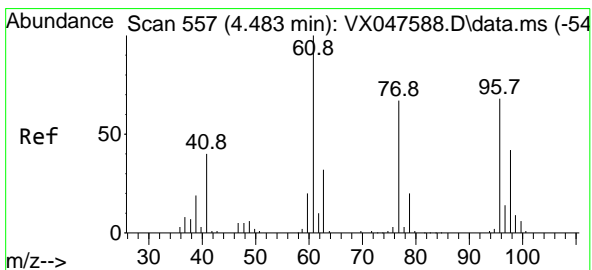
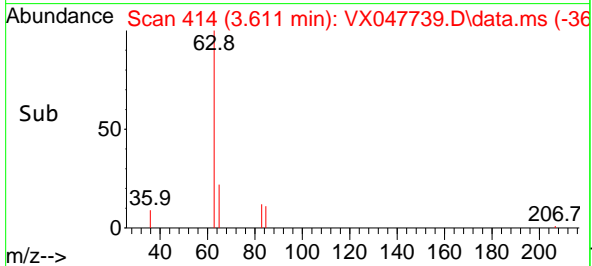
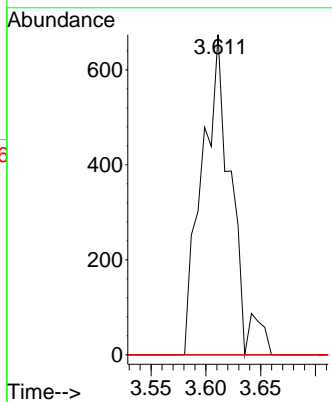
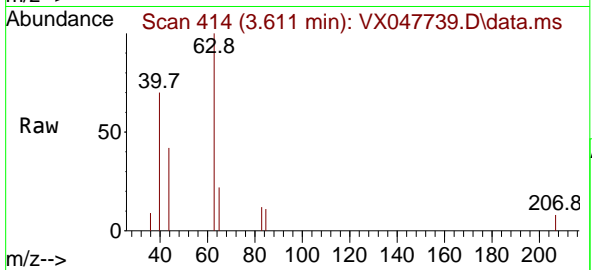


#24
 1,1-Dichloroethane
 Concen: 0.388 ug/l
 RT: 3.611 min Scan# 413
 Delta R.T. 0.006 min
 Lab File: VX047739.D
 Acq: 23 Sep 2025 17:16

Instrument : MSVOA_X
 ClientSampleId : RE120D2-20250912

Tgt Ion: 63 Resp: 1246

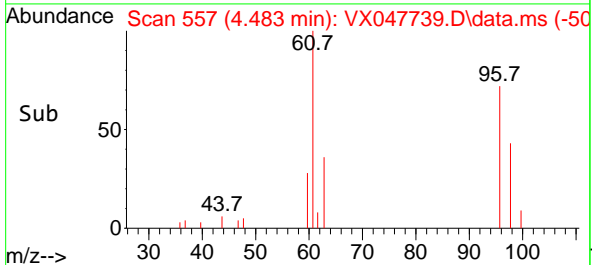
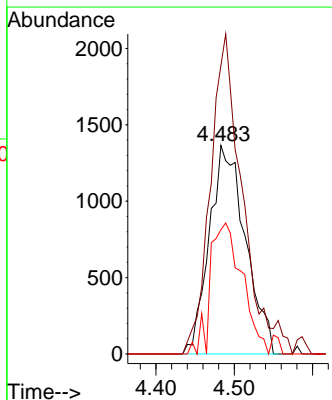
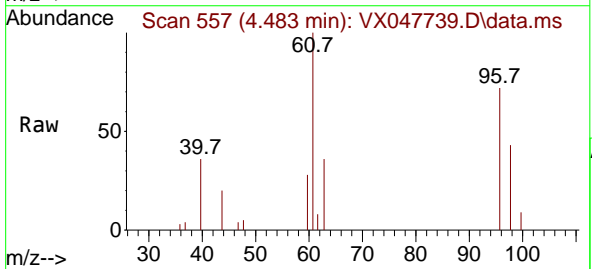
Ion	Ratio	Lower	Upper
63	100		
98	0.0	3.8	11.2#
100	0.0	2.3	6.9#

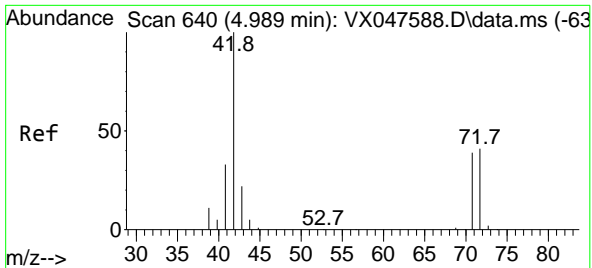


#27
 cis-1,2-Dichloroethene
 Concen: 2.198 ug/l
 RT: 4.483 min Scan# 557
 Delta R.T. -0.000 min
 Lab File: VX047739.D
 Acq: 23 Sep 2025 17:16

Tgt Ion: 96 Resp: 4376

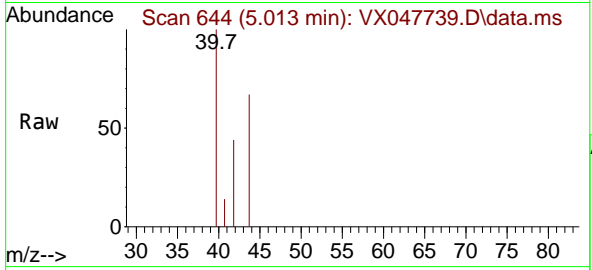
Ion	Ratio	Lower	Upper
96	100		
61	135.7	0.0	303.2
98	55.1	0.0	127.8





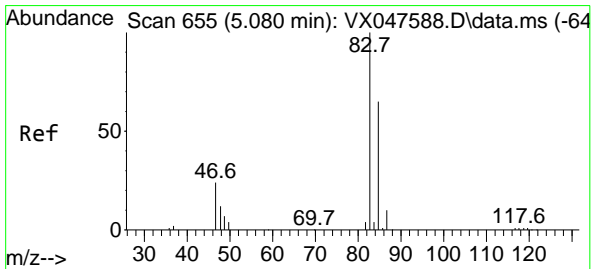
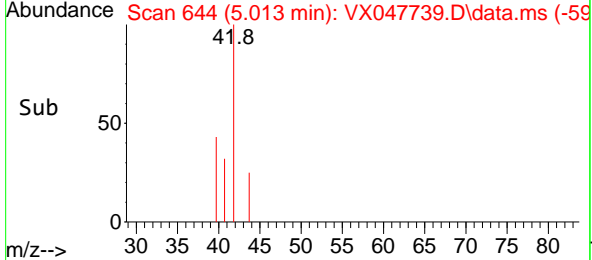
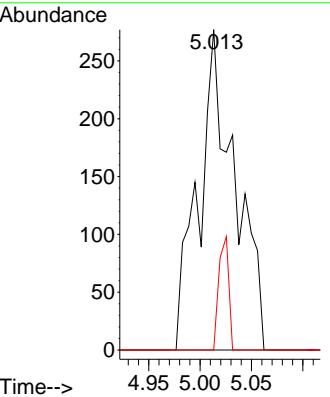
#29
 Tetrahydrofuran
 Concen: 1.032 ug/l
 RT: 5.013 min Scan# 64
 Delta R.T. 0.024 min
 Lab File: VX047739.D
 Acq: 23 Sep 2025 17:16

Instrument : MSVOA_X
 ClientSampleId : RE120D2-20250912



Tgt Ion: 42 Resp: 681

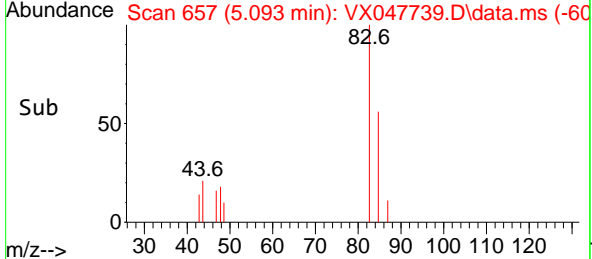
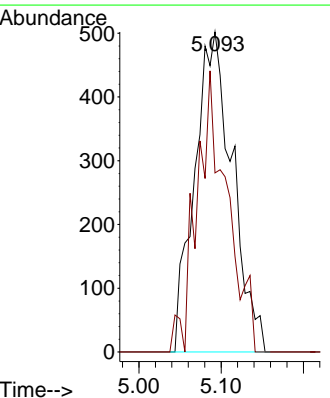
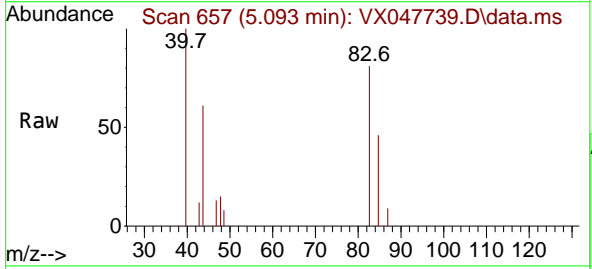
Ion	Ratio	Lower	Upper
42	100		
72	0.0	34.2	51.2#
71	9.5	31.9	47.9#

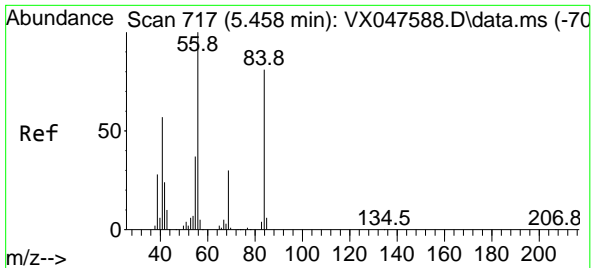


#30
 Chloroform
 Concen: 0.495 ug/l
 RT: 5.093 min Scan# 657
 Delta R.T. 0.012 min
 Lab File: VX047739.D
 Acq: 23 Sep 2025 17:16

Tgt Ion: 83 Resp: 1604

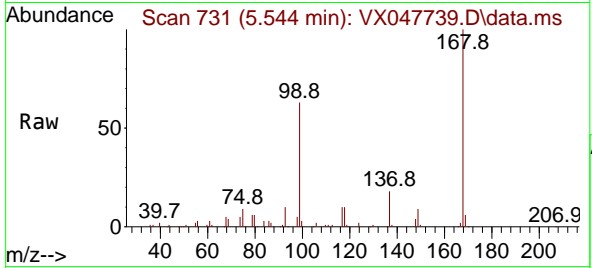
Ion	Ratio	Lower	Upper
83	100		
85	56.0	51.8	77.6



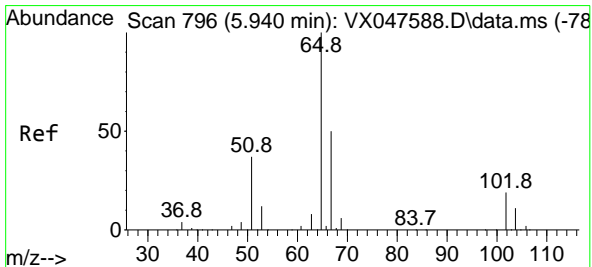
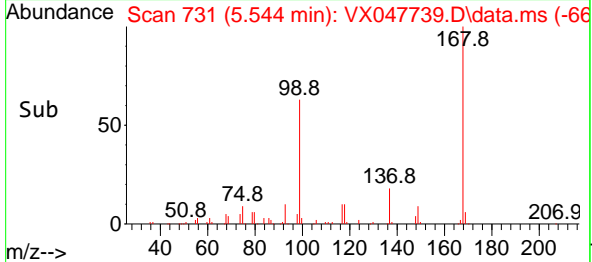
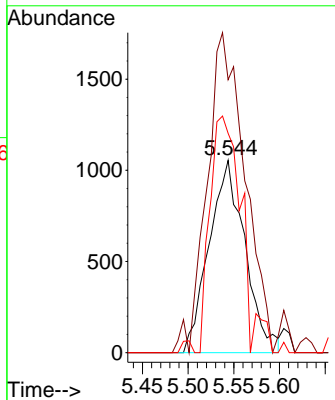


#31
 Cyclohexane
 Concen: 1.078 ug/l
 RT: 5.544 min Scan# 717
 Delta R.T. 0.085 min
 Lab File: VX047739.D
 Acq: 23 Sep 2025 17:16

Instrument : MSVOA_X
 ClientSampleId : RE120D2-20250912

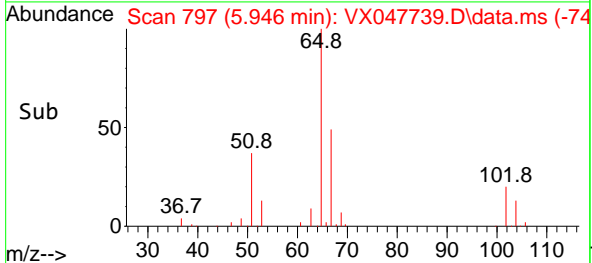
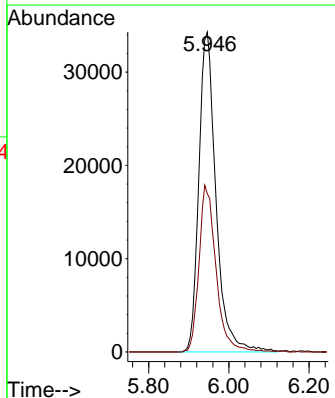
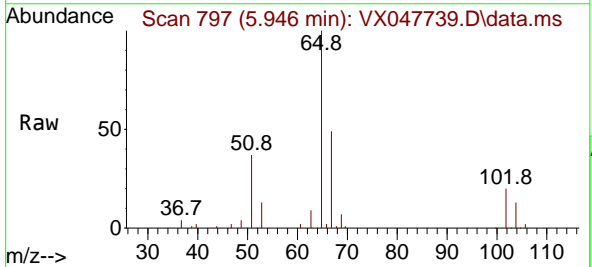


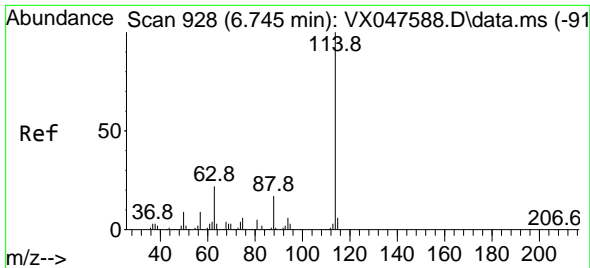
Tgt Ion: 56 Resp: 2882
 Ion Ratio Lower Upper
 56 100
 69 135.7 23.8 35.8#
 84 114.0 64.6 97.0#



#33
 1,2-Dichloroethane-d4
 Concen: 50.294 ug/l
 RT: 5.946 min Scan# 797
 Delta R.T. 0.006 min
 Lab File: VX047739.D
 Acq: 23 Sep 2025 17:16

Tgt Ion: 65 Resp: 101743
 Ion Ratio Lower Upper
 65 100
 67 51.8 0.0 103.0

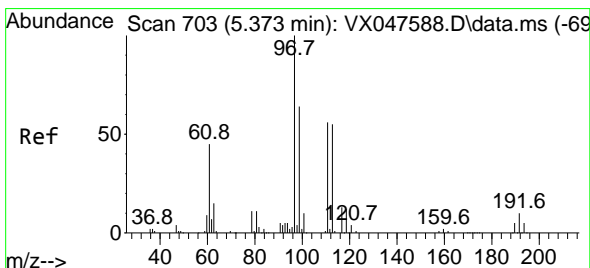
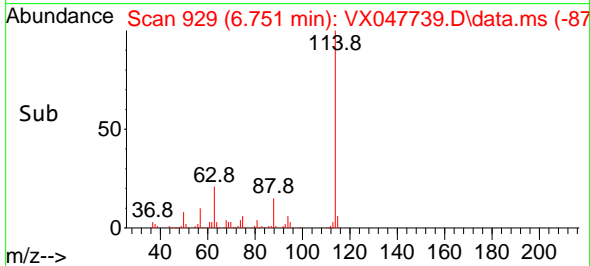
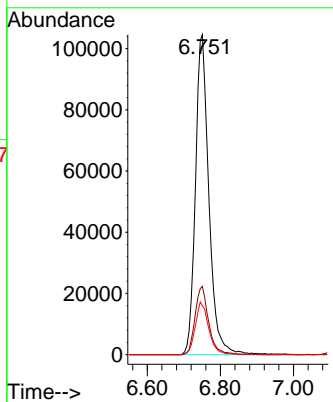
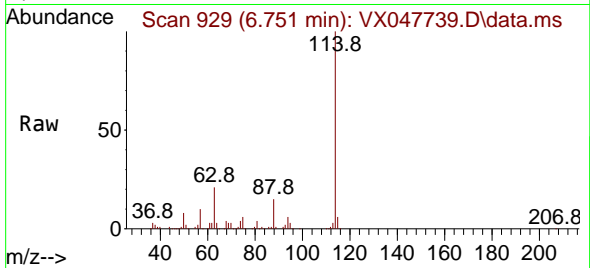




#34
 1,4-Difluorobenzene
 Concen: 50.000 ug/l
 RT: 6.751 min Scan# 91
 Delta R.T. 0.006 min
 Lab File: VX047739.D
 Acq: 23 Sep 2025 17:16

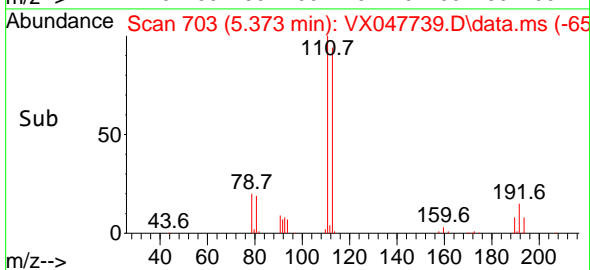
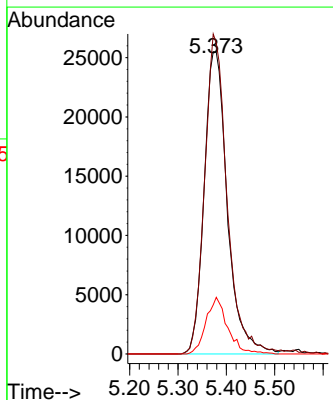
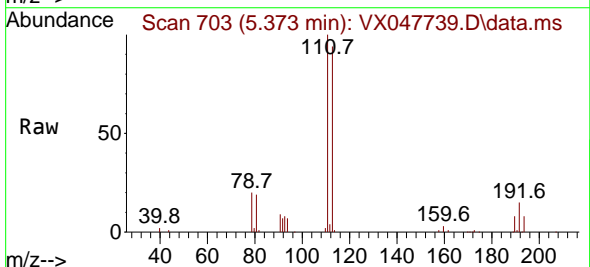
Instrument :
 MSVOA_X
 ClientSampleId :
 RE120D2-20250912

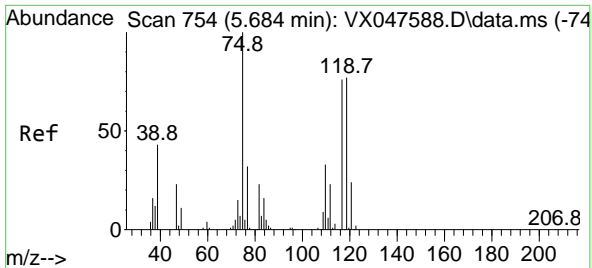
Tgt Ion:114 Resp: 268101
 Ion Ratio Lower Upper
 114 100
 63 21.3 0.0 44.0
 88 15.3 0.0 34.2



#35
 Dibromofluoromethane
 Concen: 47.315 ug/l
 RT: 5.373 min Scan# 703
 Delta R.T. -0.000 min
 Lab File: VX047739.D
 Acq: 23 Sep 2025 17:16

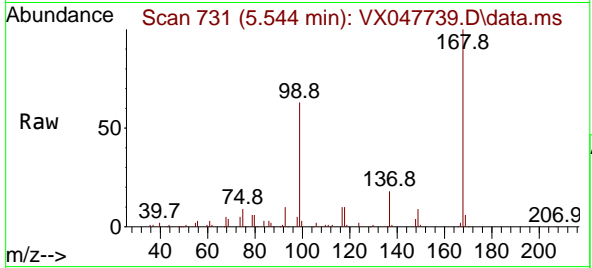
Tgt Ion:113 Resp: 85074
 Ion Ratio Lower Upper
 113 100
 111 102.6 80.9 121.3
 192 17.5 14.2 21.4



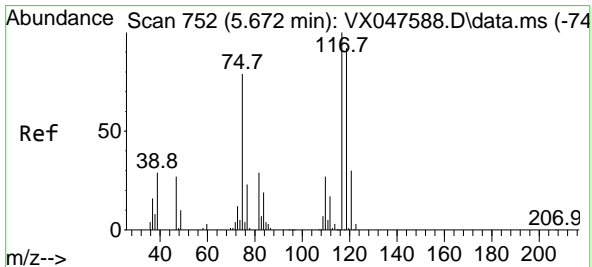
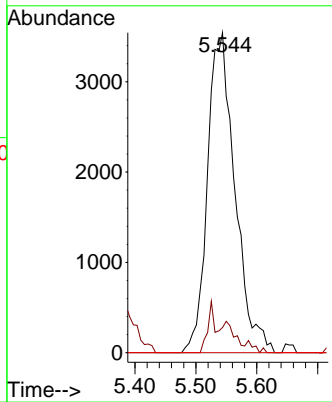
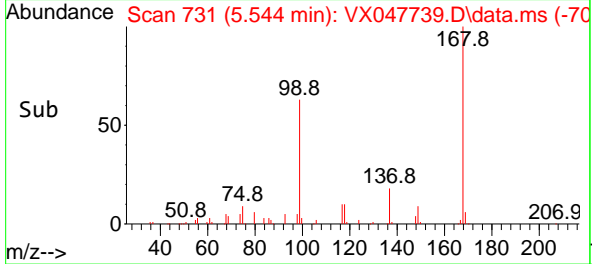


#36
 1,1-Dichloropropene
 Concen: 4.216 ug/l
 RT: 5.544 min Scan# 711
 Delta R.T. -0.140 min
 Lab File: VX047739.D
 Acq: 23 Sep 2025 17:16

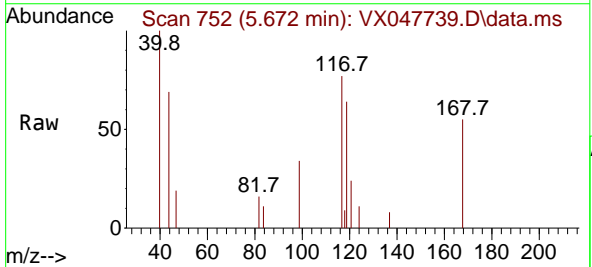
Instrument : MSVOA_X
 ClientSampleId : RE120D2-20250912



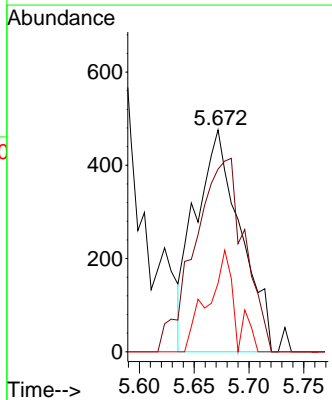
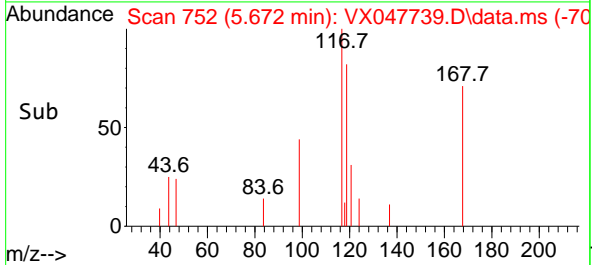
Tgt Ion: 75 Resp: 11077
 Ion Ratio Lower Upper
 75 100
 110 3.5 16.7 50.1#
 77 0.0 24.3 36.5#

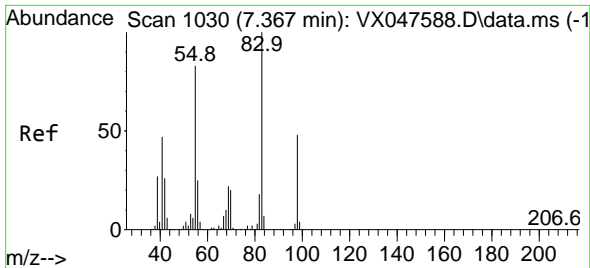


#38
 Carbon Tetrachloride
 Concen: 0.477 ug/l
 RT: 5.672 min Scan# 752
 Delta R.T. -0.000 min
 Lab File: VX047739.D
 Acq: 23 Sep 2025 17:16



Tgt Ion: 117 Resp: 1363
 Ion Ratio Lower Upper
 117 100
 119 82.4 73.4 110.2
 121 30.9 23.8 35.6

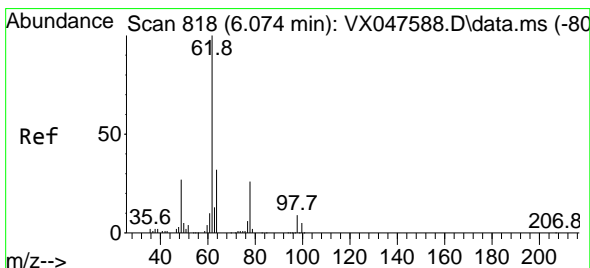
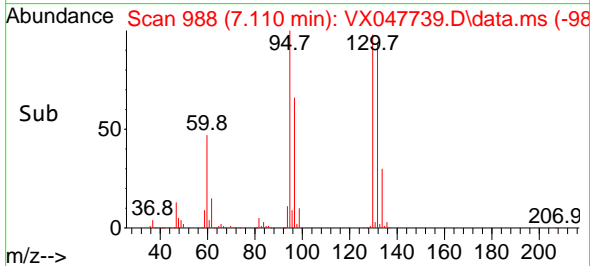
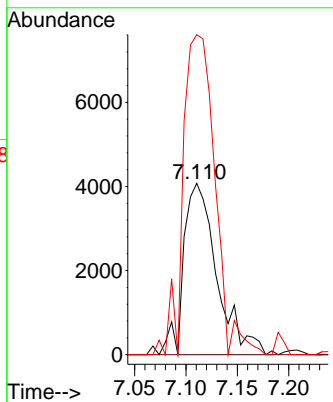
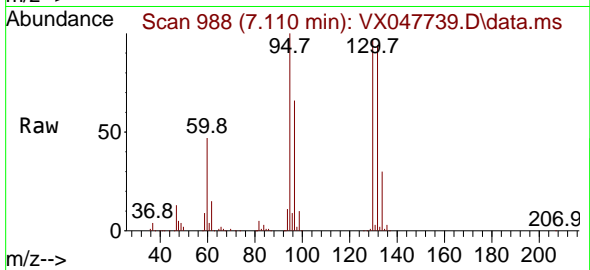




#39
 Methylcyclohexane
 Concen: 2.948 ug/l
 RT: 7.110 min Scan# 91
 Delta R.T. -0.256 min
 Lab File: VX047739.D
 Acq: 23 Sep 2025 17:16

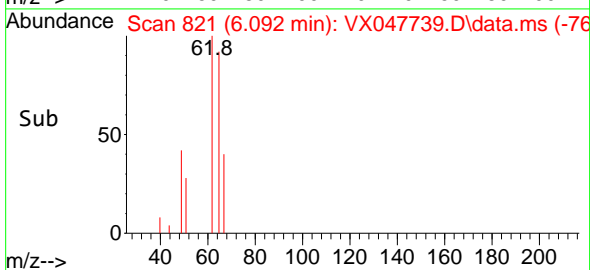
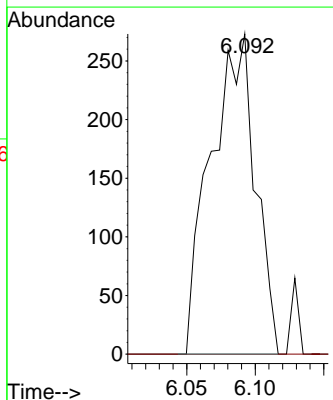
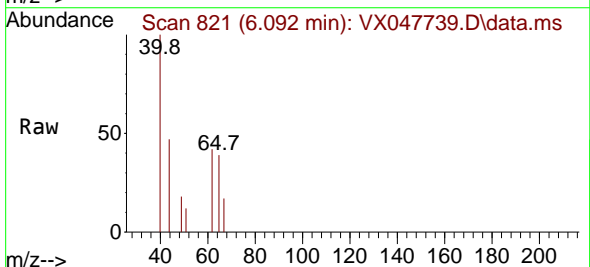
Instrument : MSVOA_X
 ClientSampleId : RE120D2-20250912

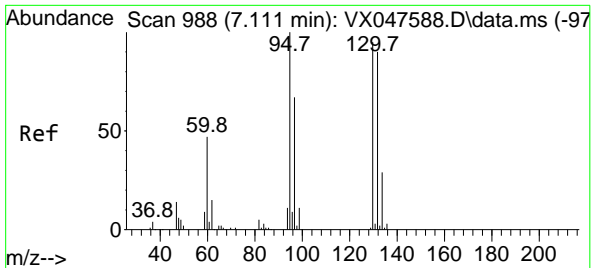
Tgt Ion: 83 Resp: 8793
 Ion Ratio Lower Upper
 83 100
 55 0.0 66.4 99.6#
 98 281.0 38.1 57.1#



#42
 1,2-Dichloroethane
 Concen: 0.204 ug/l
 RT: 6.092 min Scan# 821
 Delta R.T. 0.018 min
 Lab File: VX047739.D
 Acq: 23 Sep 2025 17:16

Tgt Ion: 62 Resp: 618
 Ion Ratio Lower Upper
 62 100
 98 0.0 0.0 17.0

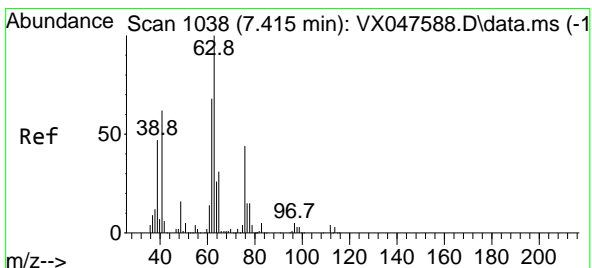
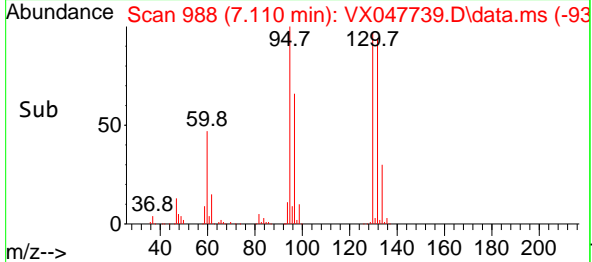
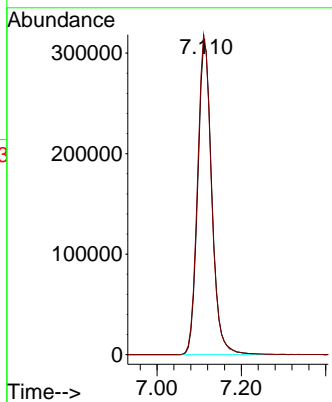
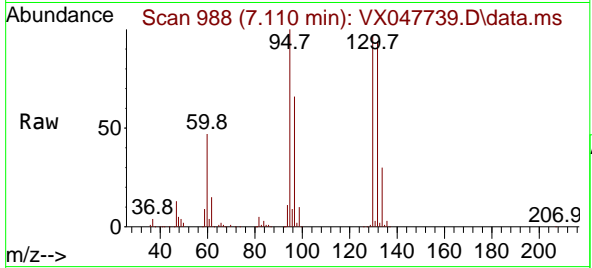




#44
 Trichloroethene
 Concen: 377.869 ug/l
 RT: 7.110 min Scan# 91
 Delta R.T. -0.000 min
 Lab File: VX047739.D
 Acq: 23 Sep 2025 17:16

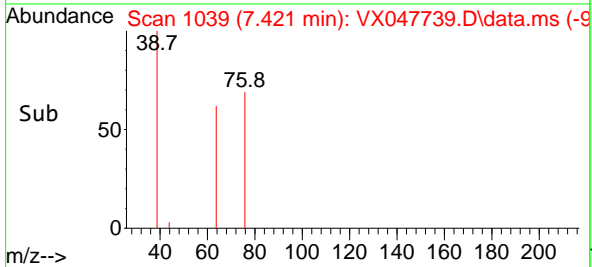
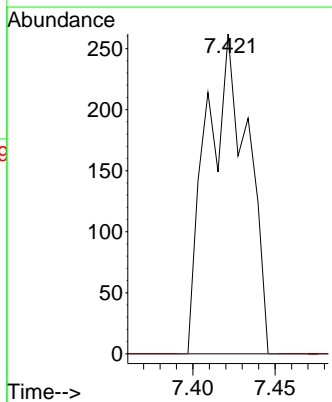
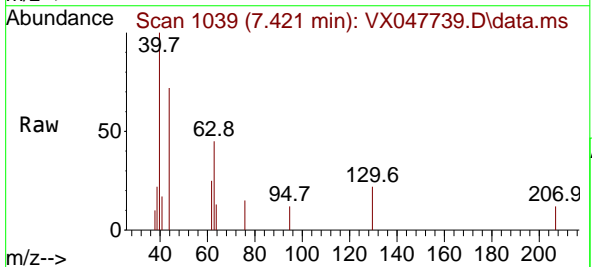
Instrument : MSVOA_X
 ClientSampleId : RE120D2-20250912

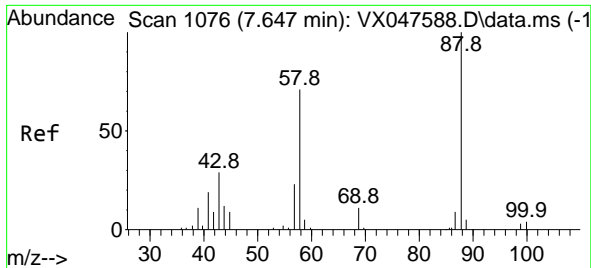
Tgt Ion:130 Resp: 729005
 Ion Ratio Lower Upper
 130 100
 95 102.6 0.0 210.8



#45
 1,2-Dichloropropane
 Concen: 0.223 ug/l
 RT: 7.421 min Scan# 1039
 Delta R.T. 0.006 min
 Lab File: VX047739.D
 Acq: 23 Sep 2025 17:16

Tgt Ion: 63 Resp: 456
 Ion Ratio Lower Upper
 63 100
 65 0.0 24.7 37.1#

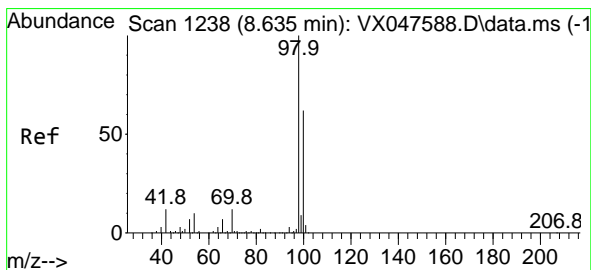
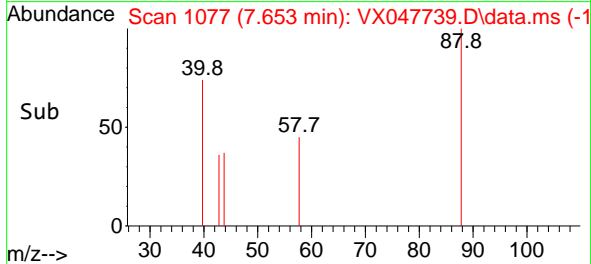
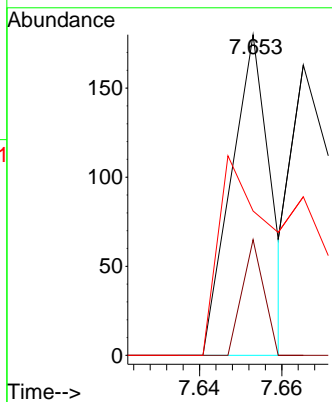
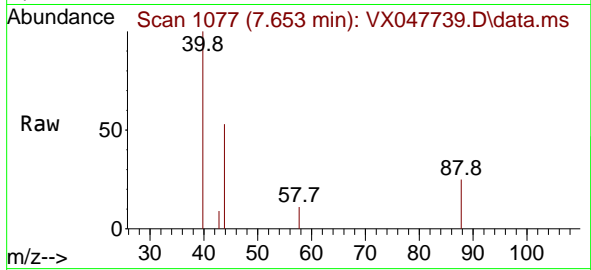




#49
 1,4-Dioxane
 Concen: 5.253 ug/l
 RT: 7.653 min Scan# 1077
 Delta R.T. 0.006 min
 Lab File: VX047739.D
 Acq: 23 Sep 2025 17:16

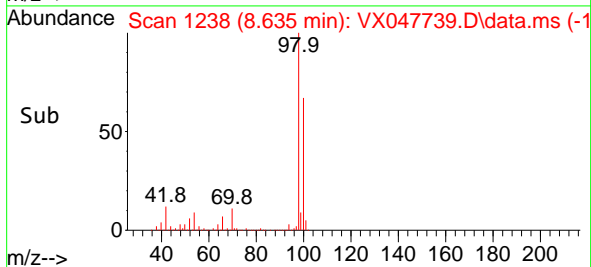
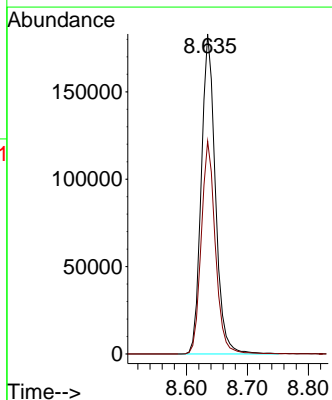
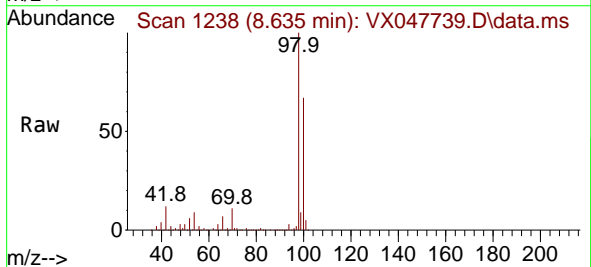
Instrument : MSVOA_X
 ClientSampleId : RE120D2-20250912

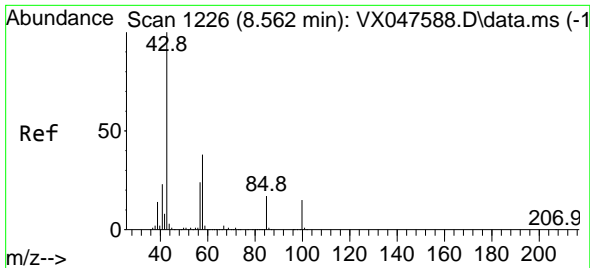
Tgt Ion: 88 Resp: 122
 Ion Ratio Lower Upper
 88 100
 43 19.7 30.2 45.2#
 58 145.1 59.5 89.3#



#50
 Toluene-d8
 Concen: 47.277 ug/l
 RT: 8.635 min Scan# 1238
 Delta R.T. -0.000 min
 Lab File: VX047739.D
 Acq: 23 Sep 2025 17:16

Tgt Ion: 98 Resp: 294134
 Ion Ratio Lower Upper
 98 100
 100 66.7 53.0 79.4

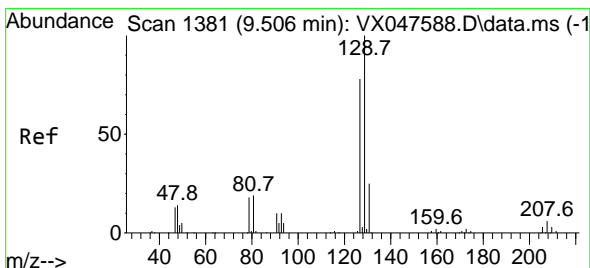
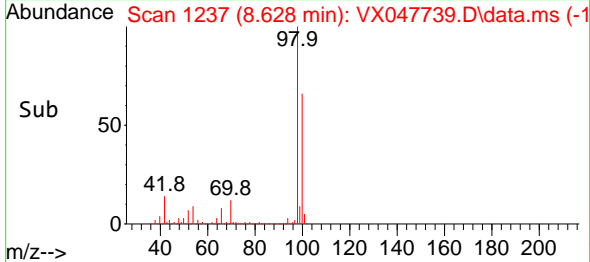
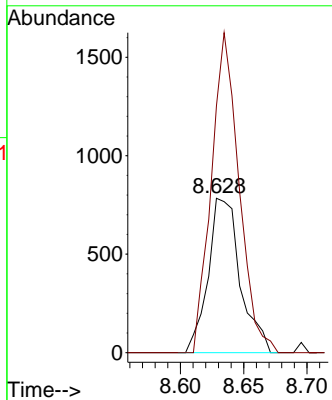
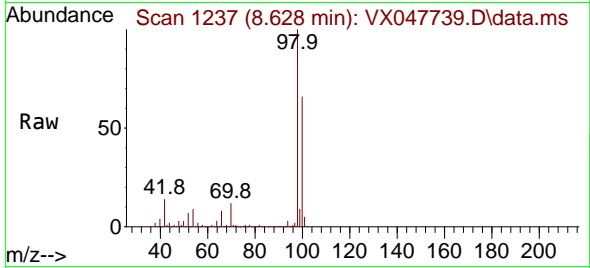




#51
 4-Methyl-2-Pentanone
 Concen: 0.539 ug/l
 RT: 8.628 min Scan# 11
 Delta R.T. 0.067 min
 Lab File: VX047739.D
 Acq: 23 Sep 2025 17:16

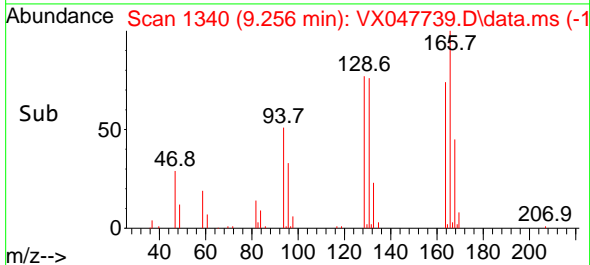
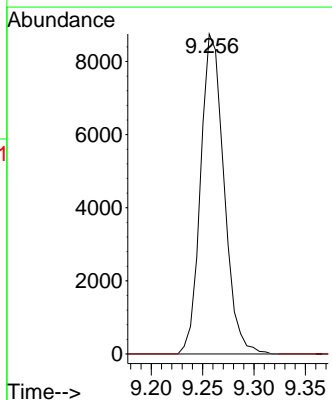
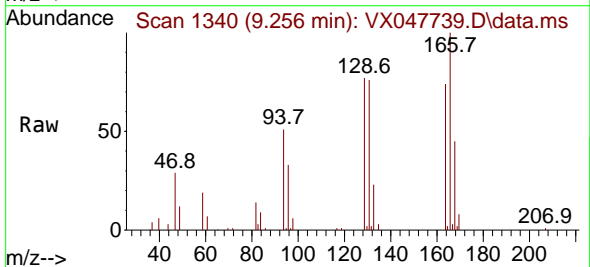
Instrument :
 MSVOA_X
 ClientSampleId :
 RE120D2-20250912

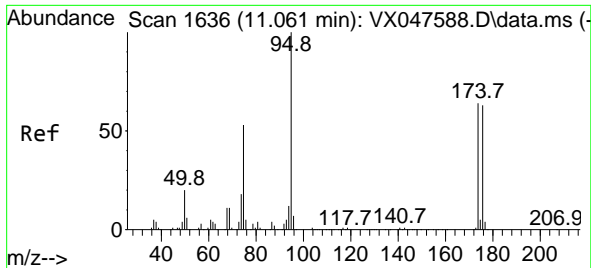
Tgt Ion: 43 Resp: 1379
 Ion Ratio Lower Upper
 43 100
 58 179.7 30.3 45.5#



#60
 Dibromochloromethane
 Concen: 6.349 ug/l
 RT: 9.256 min Scan# 1340
 Delta R.T. -0.250 min
 Lab File: VX047739.D
 Acq: 23 Sep 2025 17:16

Tgt Ion:129 Resp: 13869
 Ion Ratio Lower Upper
 129 100
 127 0.0 38.4 115.2#



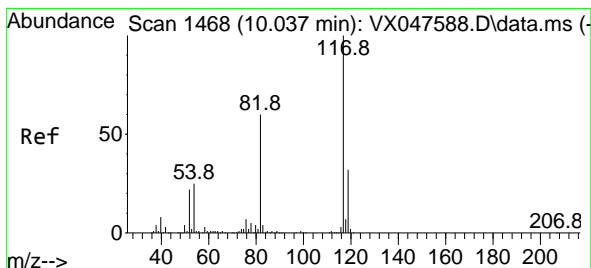
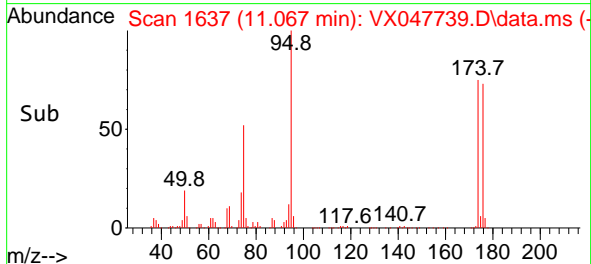
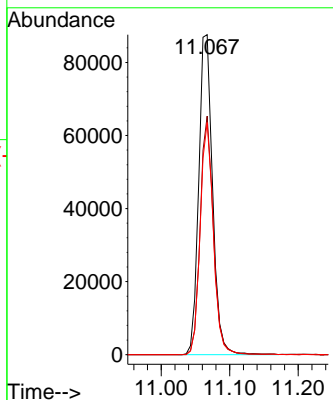
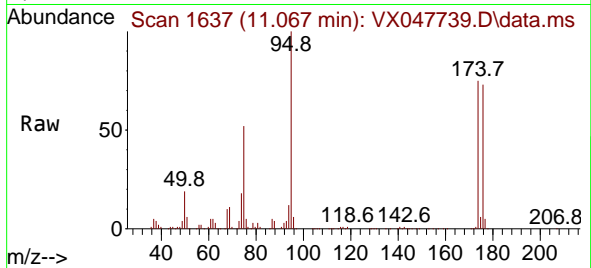


#62
 4-Bromofluorobenzene
 Concen: 52.173 ug/l
 RT: 11.067 min Scan# 11
 Delta R.T. 0.006 min
 Lab File: VX047739.D
 Acq: 23 Sep 2025 17:16

Instrument :
 MSVOA_X
 ClientSampleId :
 RE120D2-20250912

Tgt Ion: 95 Resp: 123190

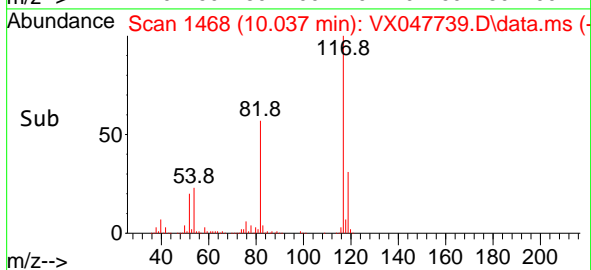
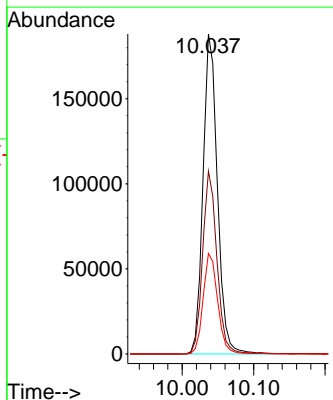
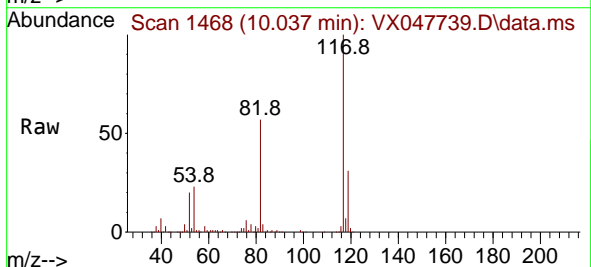
Ion	Ratio	Lower	Upper
95	100		
174	71.1	0.0	141.6
176	69.0	0.0	138.4

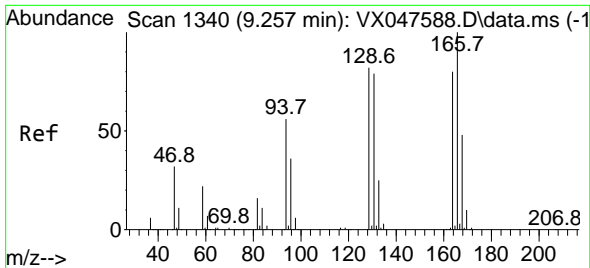


#63
 Chlorobenzene-d5
 Concen: 50.000 ug/l
 RT: 10.037 min Scan# 1468
 Delta R.T. -0.000 min
 Lab File: VX047739.D
 Acq: 23 Sep 2025 17:16

Tgt Ion: 117 Resp: 262928

Ion	Ratio	Lower	Upper
117	100		
82	57.2	47.8	71.6
119	31.4	25.2	37.8

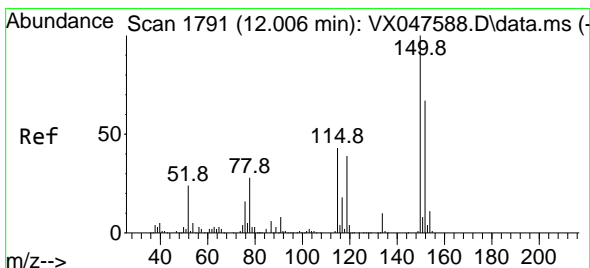
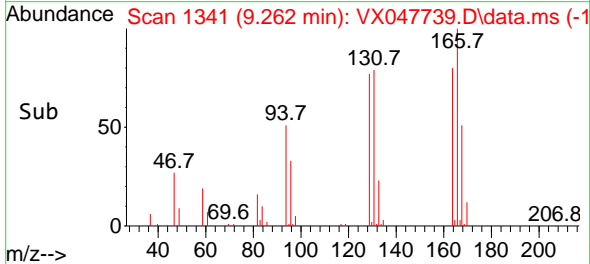
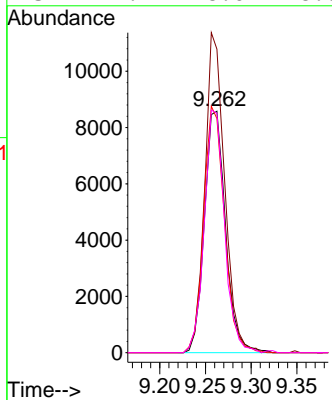
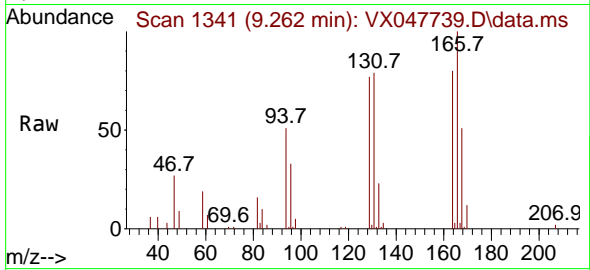




#64
 Tetrachloroethene
 Concen: 8.031 ug/l
 RT: 9.262 min Scan# 11
 Delta R.T. 0.006 min
 Lab File: VX047739.D
 Acq: 23 Sep 2025 17:16

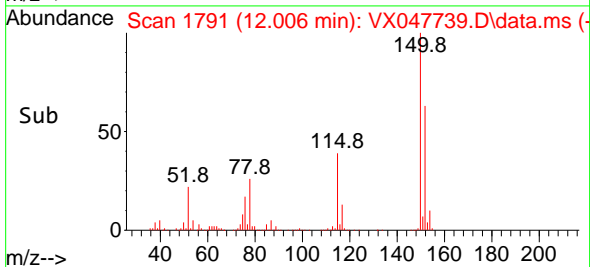
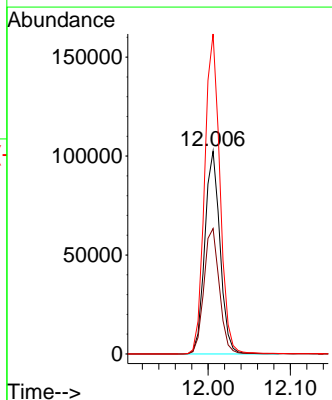
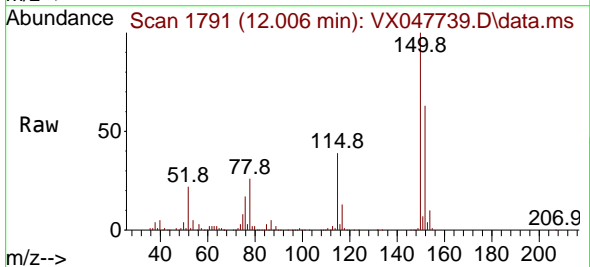
Instrument :
 MSVOA_X
 ClientSampleId :
 RE120D2-20250912

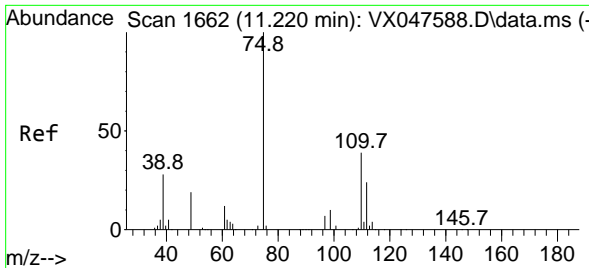
Tgt Ion:164 Resp: 13766
 Ion Ratio Lower Upper
 164 100
 166 125.7 100.2 150.2
 129 96.9 81.8 122.6
 131 99.2 78.6 118.0



#72
 1,4-Dichlorobenzene-d4
 Concen: 50.000 ug/l
 RT: 12.006 min Scan# 1791
 Delta R.T. -0.000 min
 Lab File: VX047739.D
 Acq: 23 Sep 2025 17:16

Tgt Ion:152 Resp: 131853
 Ion Ratio Lower Upper
 152 100
 115 62.9 44.9 134.5
 150 158.4 0.0 352.0

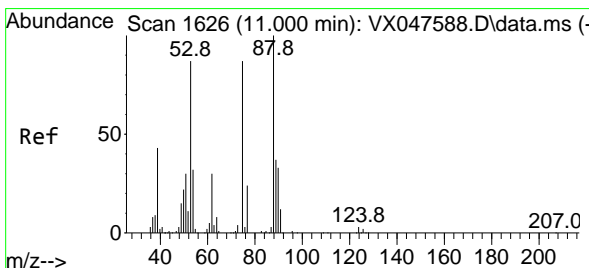
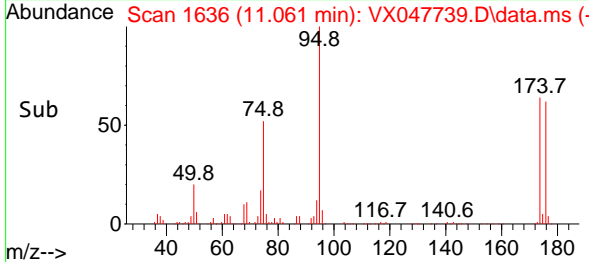
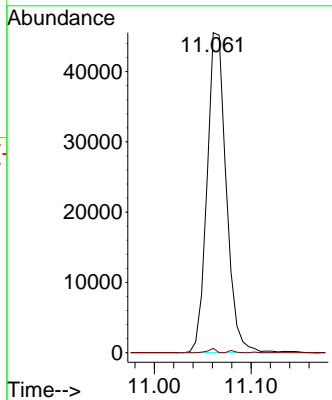
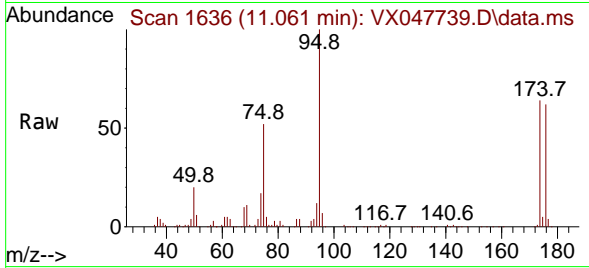




#76
 1,2,3-Trichloropropane
 Concen: 23.567 ug/l
 RT: 11.061 min Scan# 1636
 Delta R.T. -0.159 min
 Lab File: VX047739.D
 Acq: 23 Sep 2025 17:16

Instrument : MSVOA_X
 ClientSampleId : RE120D2-20250912

Tgt Ion: 75 Resp: 62915
 Ion Ratio Lower Upper
 75 100
 77 0.5 18.8 56.4#



#81
 trans-1,4-Dichloro-2-butene
 Concen: 60.099 ug/l
 RT: 11.061 min Scan# 1636
 Delta R.T. 0.061 min
 Lab File: VX047739.D
 Acq: 23 Sep 2025 17:16

Tgt Ion: 75 Resp: 62915
 Ion Ratio Lower Upper
 75 100
 53 0.0 83.4 125.2#
 89 0.0 36.3 54.5#

