

Data Path : Z:\voasrv\HPCHEM1\MSVOA\_X\Data\VX092325\  
 Data File : VX047740.D  
 Acq On : 23 Sep 2025 17:36  
 Operator : JC/MD  
 Sample : Q3097-22  
 Misc : 5.0mL/MSVOA\_X/WATER  
 ALS Vial : 23 Sample Multiplier: 1

Instrument :  
 MSVOA\_X  
 ClientSampleId :  
 RE134D1-20250912

Quant Time: Sep 24 01:37:11 2025  
 Quant Method : Z:\voasrv\HPCHEM1\MSVOA\_X\Method\82X091625W.M  
 Quant Title : SW846 8260  
 QLast Update : Wed Sep 17 06:39:58 2025  
 Response via : Initial Calibration

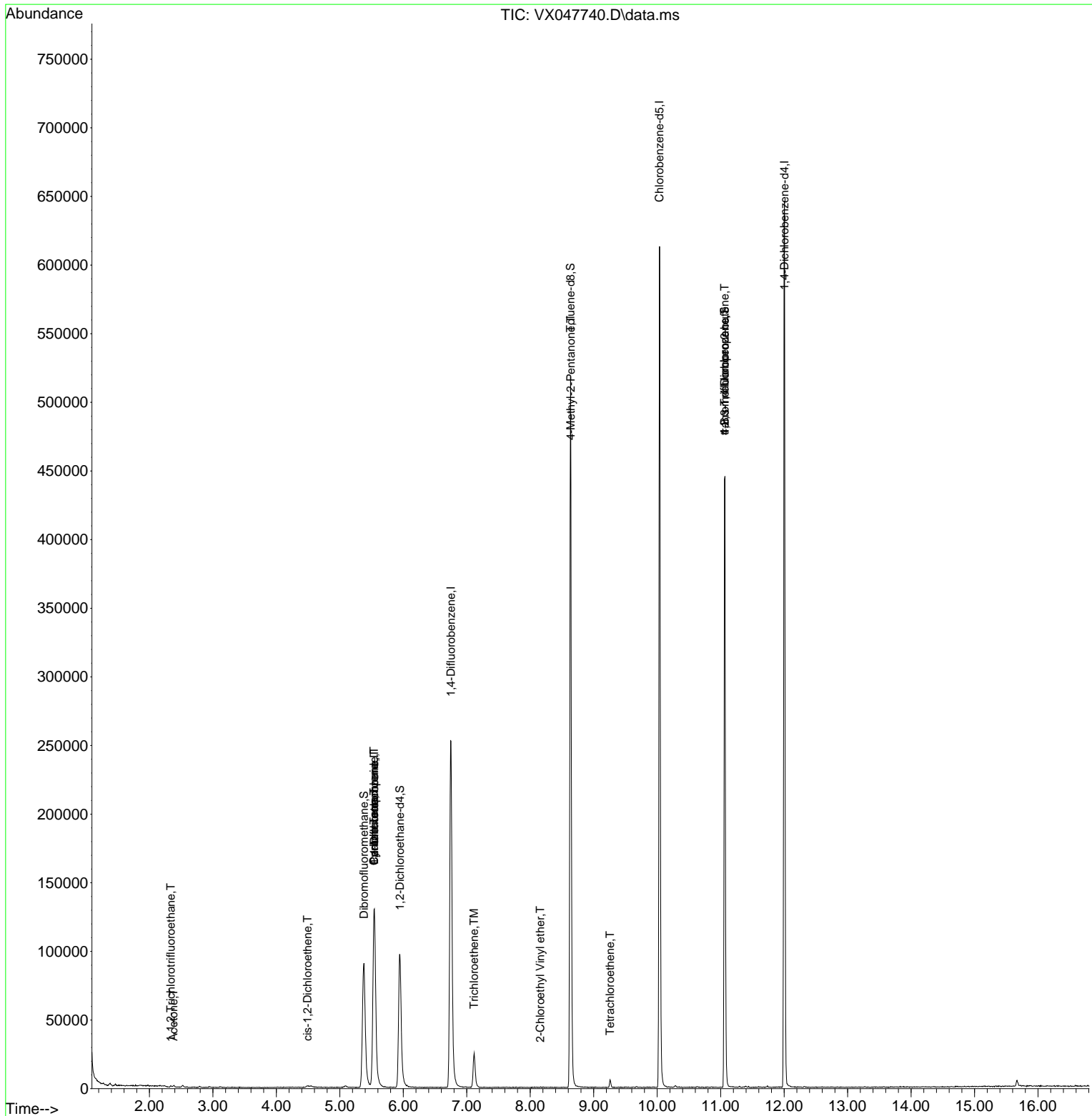
Compound	R.T.	QIon	Response	Conc	Units	Dev(Min)
-----						
Internal Standards						
1) Pentafluorobenzene	5.544	168	132076	50.000	ug/l	0.00
34) 1,4-Difluorobenzene	6.751	114	279533	50.000	ug/l	0.00
63) Chlorobenzene-d5	10.037	117	278696	50.000	ug/l	0.00
72) 1,4-Dichlorobenzene-d4	12.006	152	139922	50.000	ug/l	0.00
System Monitoring Compounds						
33) 1,2-Dichloroethane-d4	5.946	65	107026	50.909	ug/l	0.00
Spiked Amount	50.000	Range 78 - 117	Recovery	=	101.820%	
35) Dibromofluoromethane	5.379	113	90188	48.108	ug/l	0.00
Spiked Amount	50.000	Range 75 - 124	Recovery	=	96.220%	
50) Toluene-d8	8.634	98	312762	48.215	ug/l	0.00
Spiked Amount	50.000	Range 92 - 112	Recovery	=	96.420%	
62) 4-Bromofluorobenzene	11.061	95	131138	53.268	ug/l	0.00
Spiked Amount	50.000	Range 83 - 123	Recovery	=	106.540%	
Target Compounds						
						Qvalue
9) 1,1,2-Trichlorotrifluo...	2.337	101	462	0.302	ug/l #	74
16) Acetone	2.380	43	1247	1.364	ug/l	97
27) cis-1,2-Dichloroethene	4.489	96	943	0.456	ug/l	71
31) Cyclohexane	5.537	56	2682	0.965	ug/l #	1
36) 1,1-Dichloropropene	5.544	75	11707	4.274	ug/l #	46
38) Carbon Tetrachloride	5.537	117	14379	4.831	ug/l #	19
44) Trichloroethene	7.116	130	10630	5.285	ug/l	98
51) 4-Methyl-2-Pentanone	8.641	43	1556	0.583	ug/l #	1
58) 2-Chloroethyl Vinyl ether	8.159	63	213	8.037	ug/l #	47
64) Tetrachloroethene	9.256	164	990	0.545	ug/l	88
76) 1,2,3-Trichloropropane	11.061	75	68207	24.076	ug/l #	40
81) trans-1,4-Dichloro-2-b...	11.061	75	68207	61.397	ug/l #	8
-----						

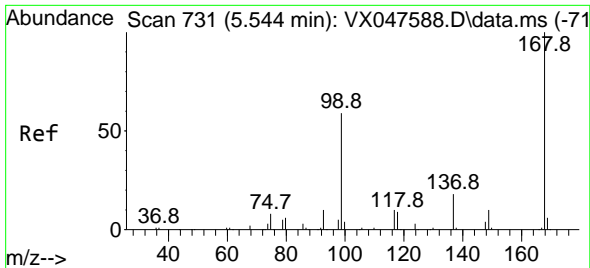
(#) = qualifier out of range (m) = manual integration (+) = signals summed

Data Path : Z:\voasrv\HPCHEM1\MSVOA\_X\Data\VX092325\  
 Data File : VX047740.D  
 Acq On : 23 Sep 2025 17:36  
 Operator : JC/MD  
 Sample : Q3097-22  
 Misc : 5.0mL/MSVOA\_X/WATER  
 ALS Vial : 23 Sample Multiplier: 1

Instrument :  
 MSVOA\_X  
 ClientSampleId :  
 RE134D1-20250912

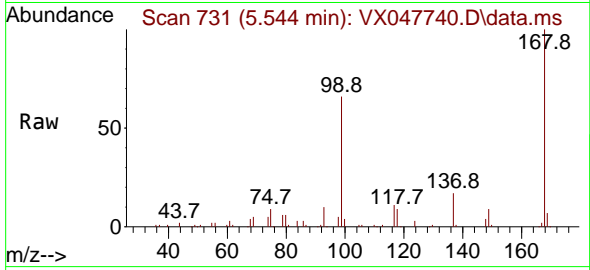
Quant Time: Sep 24 01:37:11 2025  
 Quant Method : Z:\voasrv\HPCHEM1\MSVOA\_X\Method\82X091625W.M  
 Quant Title : SW846 8260  
 QLast Update : Wed Sep 17 06:39:58 2025  
 Response via : Initial Calibration



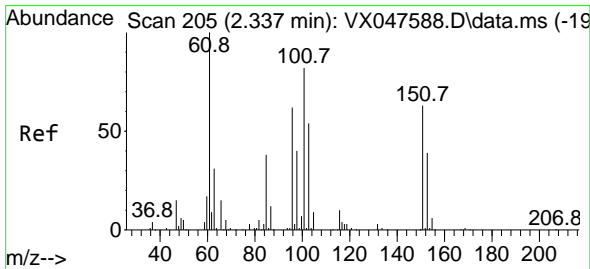
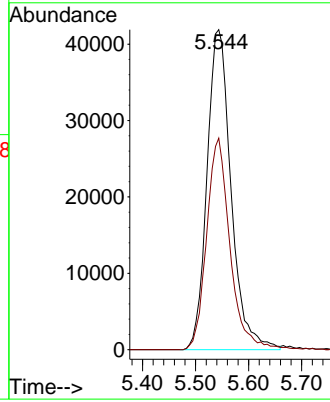
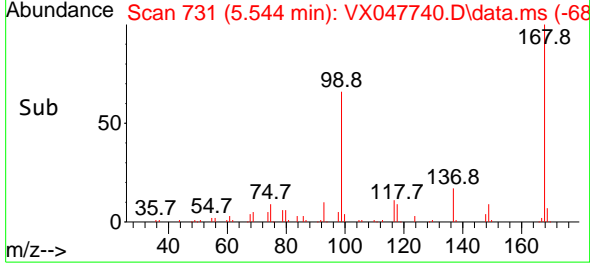


#1  
 Pentafluorobenzene  
 Concen: 50.000 ug/l  
 RT: 5.544 min Scan# 71  
 Delta R.T. -0.000 min  
 Lab File: VX047740.D  
 Acq: 23 Sep 2025 17:36

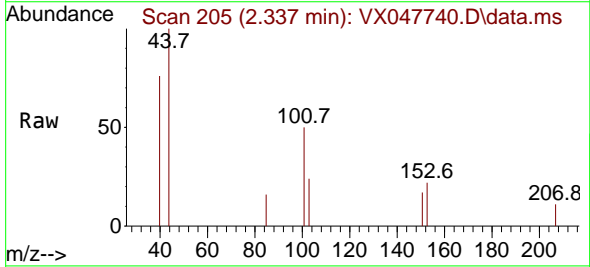
Instrument : MSVOA\_X  
 ClientSampleId : RE134D1-20250912



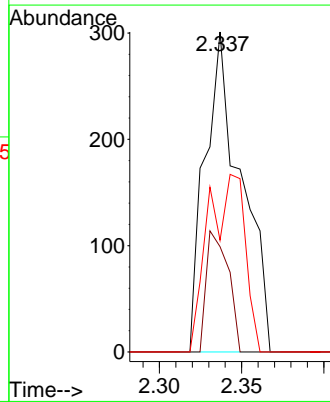
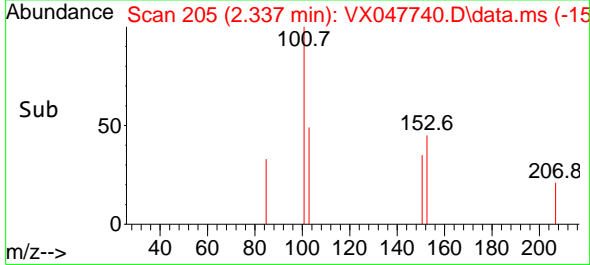
Tgt Ion:168 Resp: 132076  
 Ion Ratio Lower Upper  
 168 100  
 99 66.1 48.8 73.2

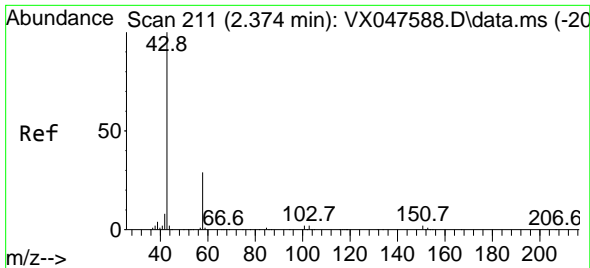


#9  
 1,1,2-Trichlorotrifluoroethane  
 Concen: 0.302 ug/l  
 RT: 2.337 min Scan# 205  
 Delta R.T. -0.000 min  
 Lab File: VX047740.D  
 Acq: 23 Sep 2025 17:36



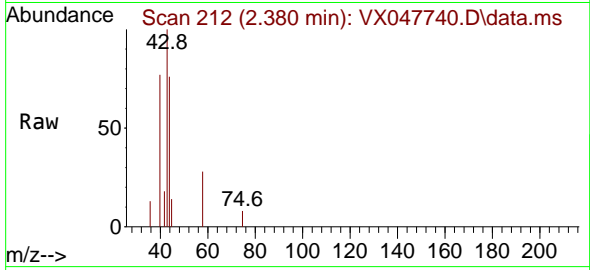
Tgt Ion:101 Resp: 462  
 Ion Ratio Lower Upper  
 101 100  
 85 22.7 35.5 53.3#  
 151 56.1 59.4 89.0#



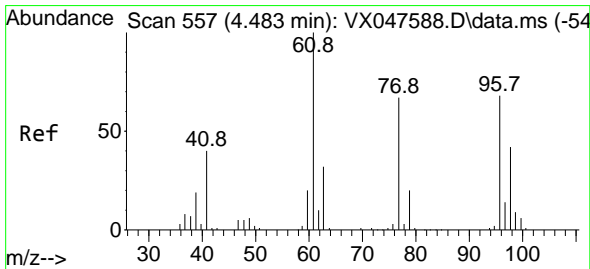
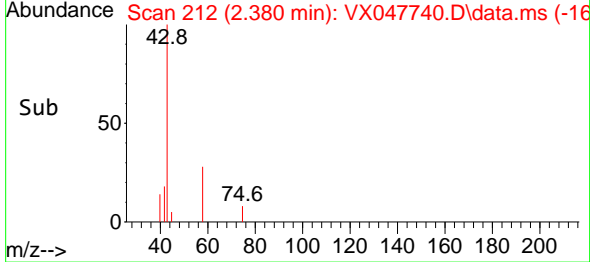
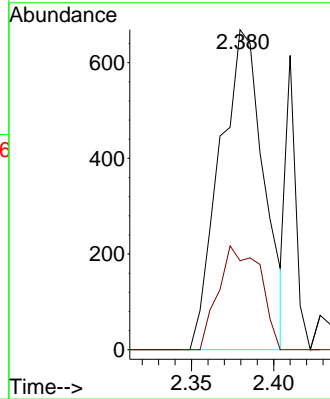


#16  
 Acetone  
 Concen: 1.364 ug/l  
 RT: 2.380 min Scan# 211  
 Delta R.T. 0.006 min  
 Lab File: VX047740.D  
 Acq: 23 Sep 2025 17:36

Instrument : MSVOA\_X  
 ClientSampleId : RE134D1-20250912

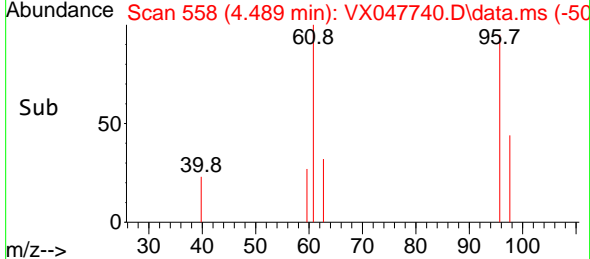
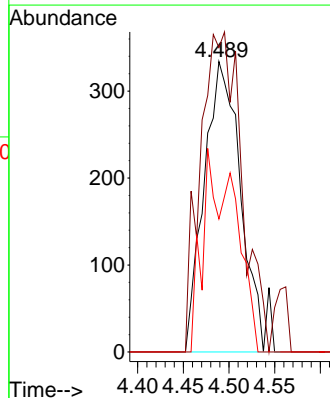
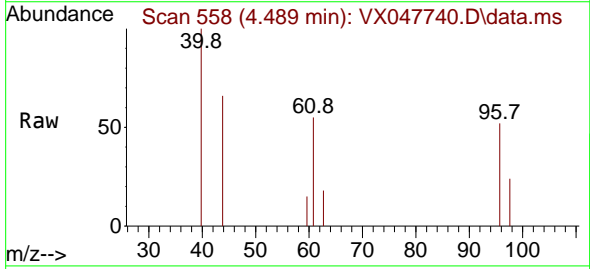


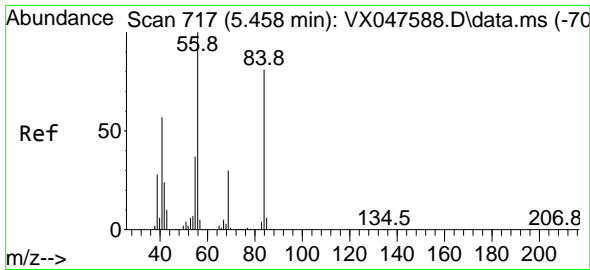
Tgt Ion: 43 Resp: 1247  
 Ion Ratio Lower Upper  
 43 100  
 58 27.8 23.4 35.0



#27  
 cis-1,2-Dichloroethene  
 Concen: 0.456 ug/l  
 RT: 4.489 min Scan# 558  
 Delta R.T. 0.006 min  
 Lab File: VX047740.D  
 Acq: 23 Sep 2025 17:36

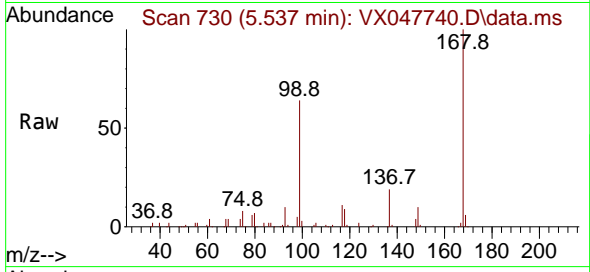
Tgt Ion: 96 Resp: 943  
 Ion Ratio Lower Upper  
 96 100  
 61 122.8 0.0 303.2  
 98 29.9 0.0 127.8



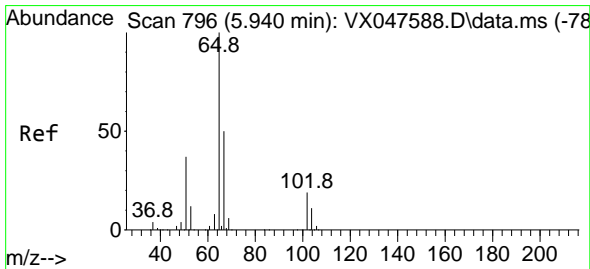
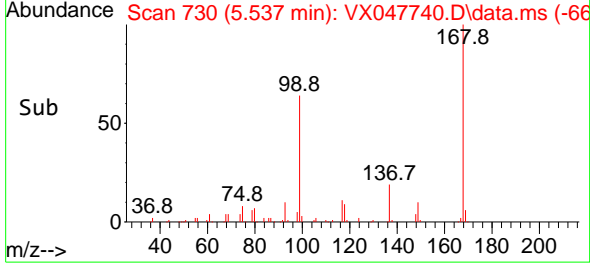
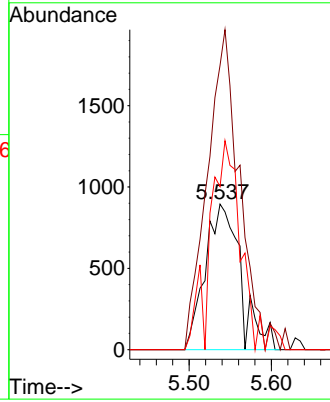


#31  
 Cyclohexane  
 Concen: 0.965 ug/l  
 RT: 5.537 min Scan# 717  
 Delta R.T. 0.079 min  
 Lab File: VX047740.D  
 Acq: 23 Sep 2025 17:36

Instrument : MSVOA\_X  
 ClientSampleId : RE134D1-20250912

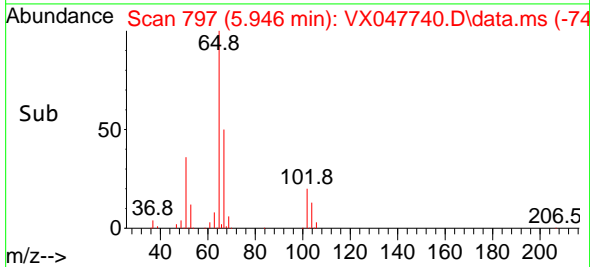
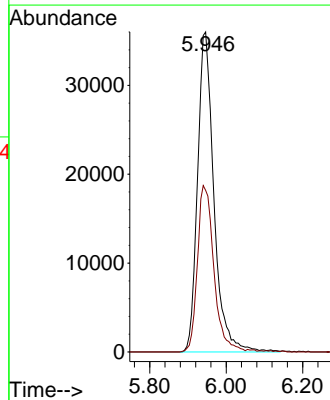
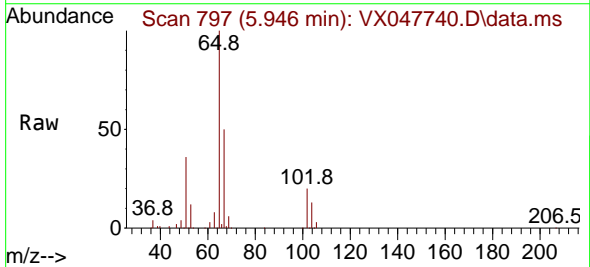


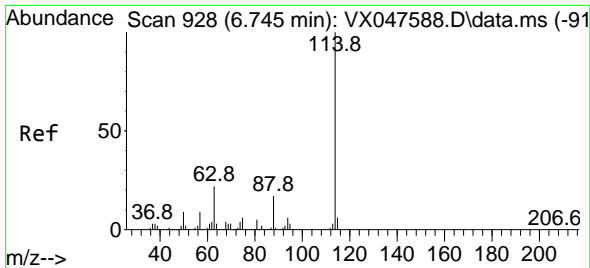
Tgt Ion: 56 Resp: 2682  
 Ion Ratio Lower Upper  
 56 100  
 69 195.3 23.8 35.8#  
 84 112.0 64.6 97.0#



#33  
 1,2-Dichloroethane-d4  
 Concen: 50.909 ug/l  
 RT: 5.946 min Scan# 797  
 Delta R.T. 0.006 min  
 Lab File: VX047740.D  
 Acq: 23 Sep 2025 17:36

Tgt Ion: 65 Resp: 107026  
 Ion Ratio Lower Upper  
 65 100  
 67 52.2 0.0 103.0

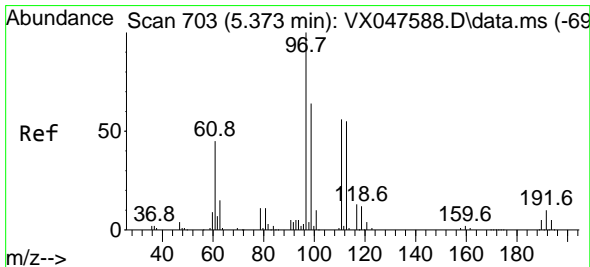
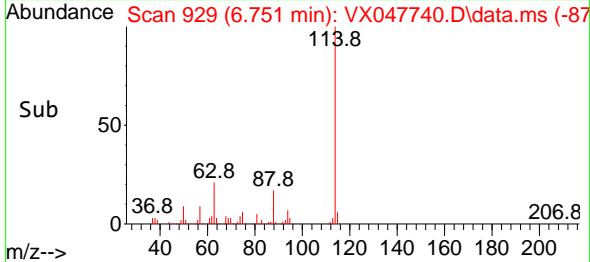
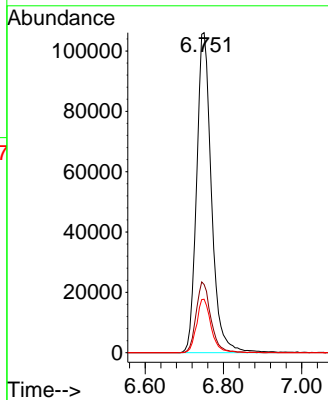
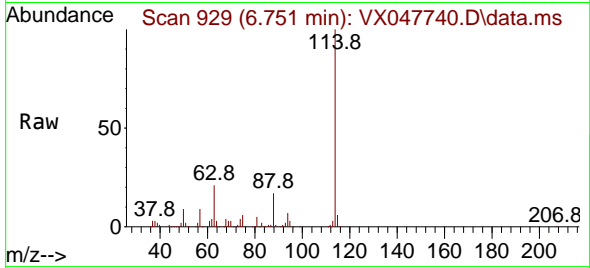




#34  
 1,4-Difluorobenzene  
 Concen: 50.000 ug/l  
 RT: 6.751 min Scan# 91  
 Delta R.T. 0.006 min  
 Lab File: VX047740.D  
 Acq: 23 Sep 2025 17:36

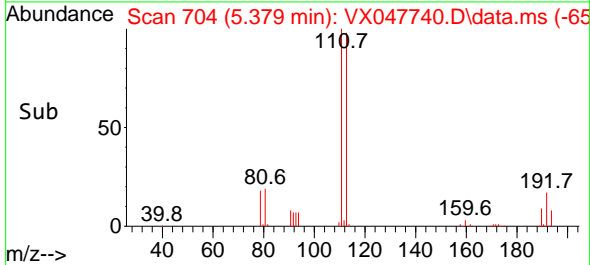
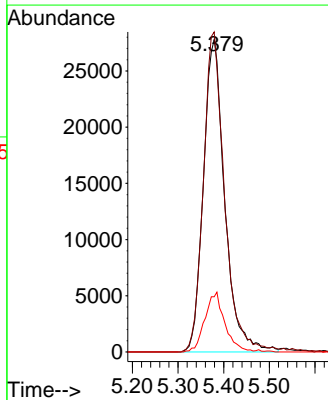
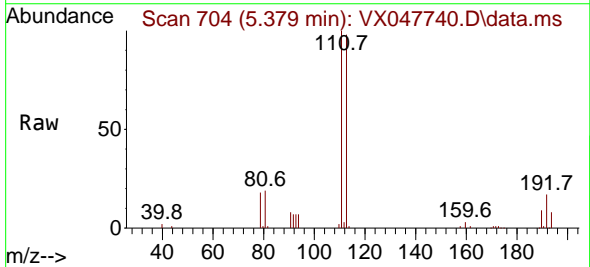
Instrument :  
 MSVOA\_X  
 ClientSampleId :  
 RE134D1-20250912

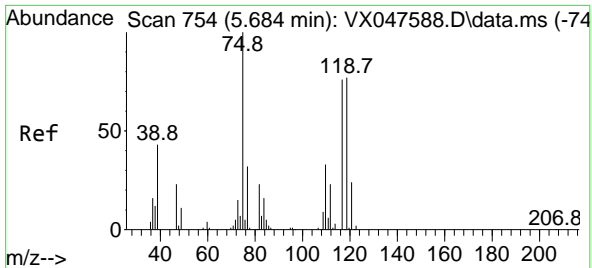
Tgt Ion:114 Resp: 279533  
 Ion Ratio Lower Upper  
 114 100  
 63 21.3 0.0 44.0  
 88 16.7 0.0 34.2



#35  
 Dibromofluoromethane  
 Concen: 48.108 ug/l  
 RT: 5.379 min Scan# 704  
 Delta R.T. 0.006 min  
 Lab File: VX047740.D  
 Acq: 23 Sep 2025 17:36

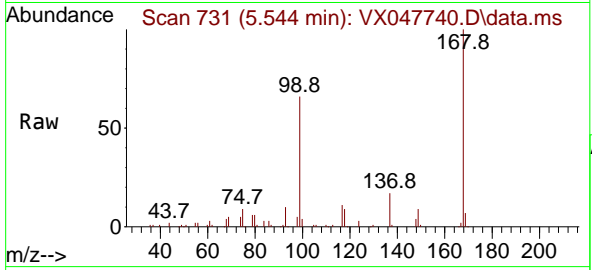
Tgt Ion:113 Resp: 90188  
 Ion Ratio Lower Upper  
 113 100  
 111 101.4 80.9 121.3  
 192 17.8 14.2 21.4



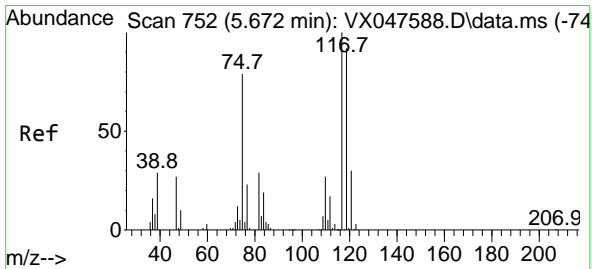
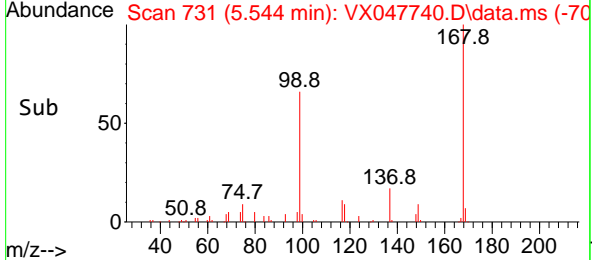
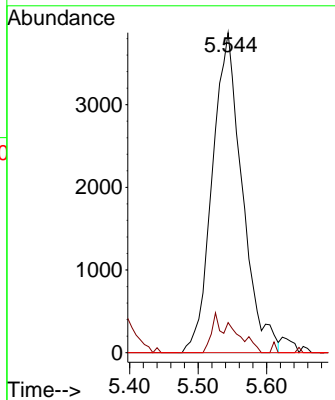


#36  
 1,1-Dichloropropene  
 Concen: 4.274 ug/l  
 RT: 5.544 min Scan# 710  
 Delta R.T. -0.140 min  
 Lab File: VX047740.D  
 Acq: 23 Sep 2025 17:36

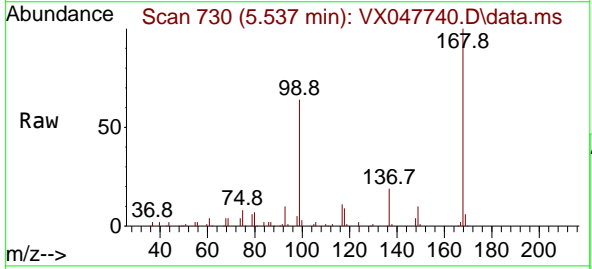
Instrument : MSVOA\_X  
 ClientSampleId : RE134D1-20250912



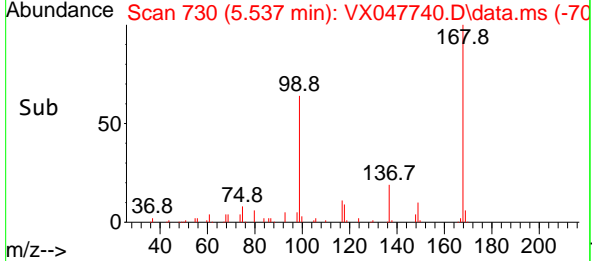
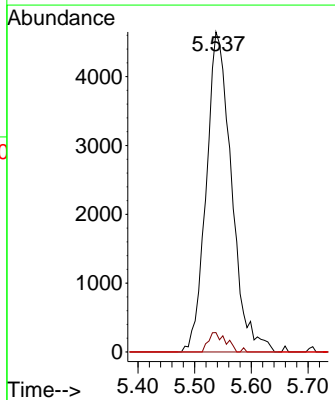
Tgt Ion: 75 Resp: 11707  
 Ion Ratio Lower Upper  
 75 100  
 110 4.1 16.7 50.1#  
 77 0.0 24.3 36.5#

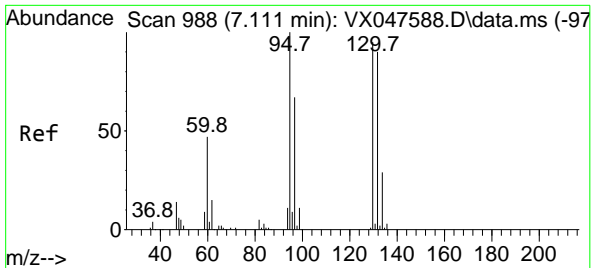


#38  
 Carbon Tetrachloride  
 Concen: 4.831 ug/l  
 RT: 5.537 min Scan# 730  
 Delta R.T. -0.134 min  
 Lab File: VX047740.D  
 Acq: 23 Sep 2025 17:36



Tgt Ion: 117 Resp: 14379  
 Ion Ratio Lower Upper  
 117 100  
 119 6.0 73.4 110.2#  
 121 0.0 23.8 35.6#

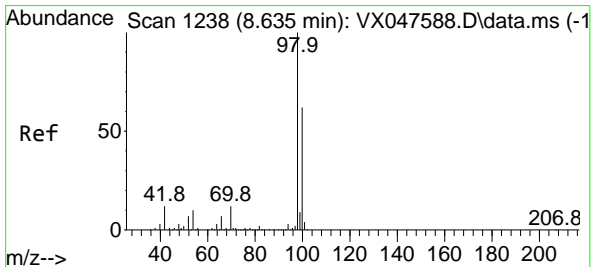
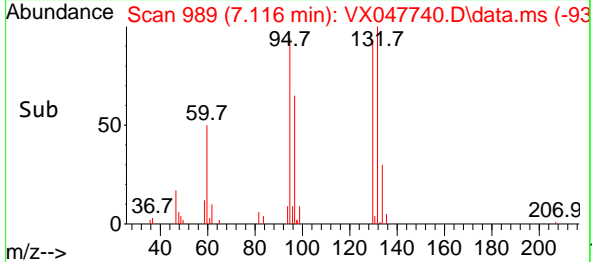
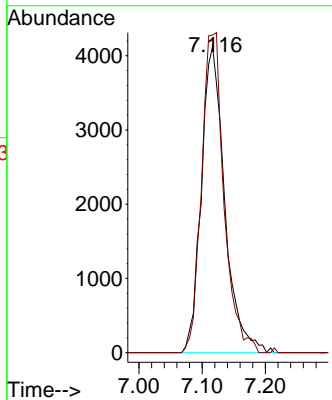
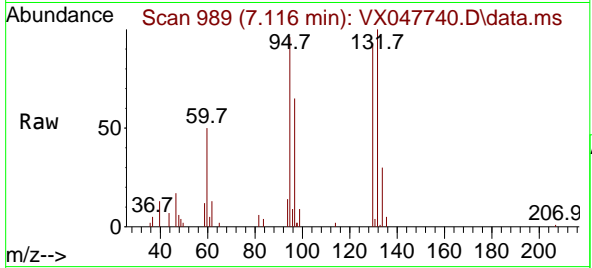




#44  
 Trichloroethene  
 Concen: 5.285 ug/l  
 RT: 7.116 min Scan# 91  
 Delta R.T. 0.006 min  
 Lab File: VX047740.D  
 Acq: 23 Sep 2025 17:36

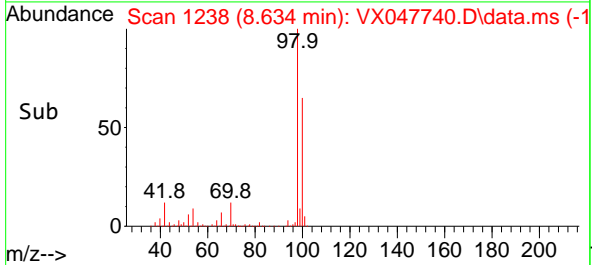
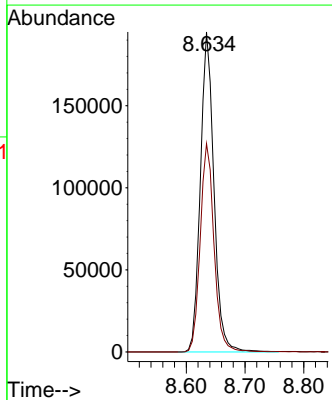
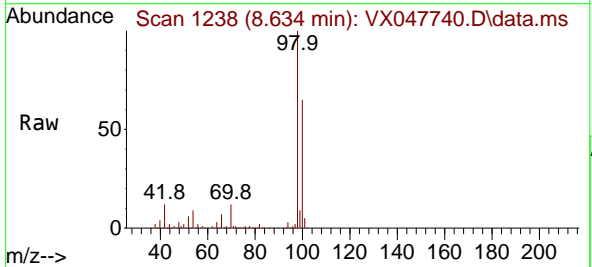
Instrument : MSVOA\_X  
 ClientSampleId : RE134D1-20250912

Tgt Ion:130 Resp: 10630  
 Ion Ratio Lower Upper  
 130 100  
 95 103.7 0.0 210.8

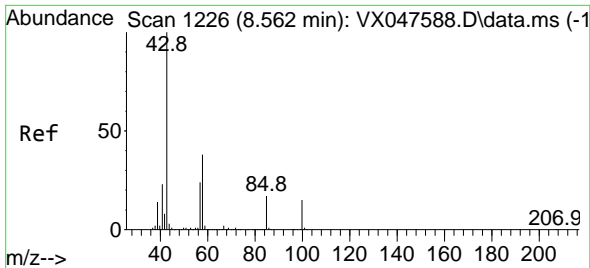


#50  
 Toluene-d8  
 Concen: 48.215 ug/l  
 RT: 8.634 min Scan# 1238  
 Delta R.T. -0.000 min  
 Lab File: VX047740.D  
 Acq: 23 Sep 2025 17:36

Tgt Ion: 98 Resp: 312762  
 Ion Ratio Lower Upper  
 98 100  
 100 66.4 53.0 79.4



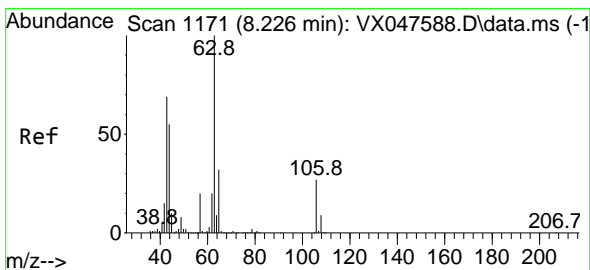
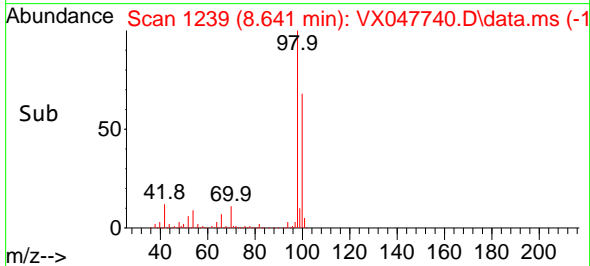
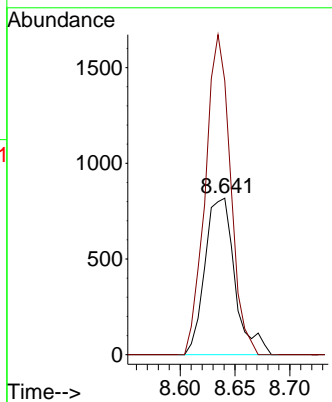
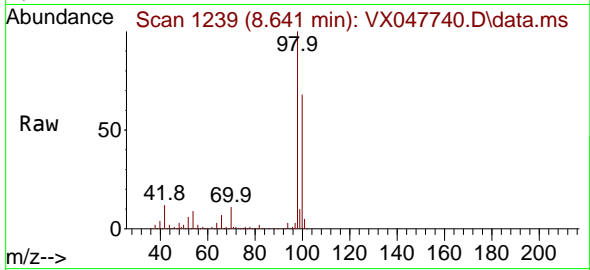




#51  
 4-Methyl-2-Pentanone  
 Concen: 0.583 ug/l  
 RT: 8.641 min Scan# 1160  
 Delta R.T. 0.079 min  
 Lab File: VX047740.D  
 Acq: 23 Sep 2025 17:36

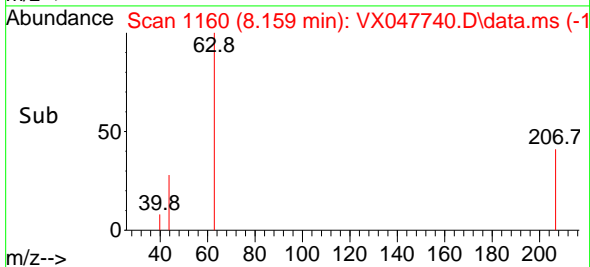
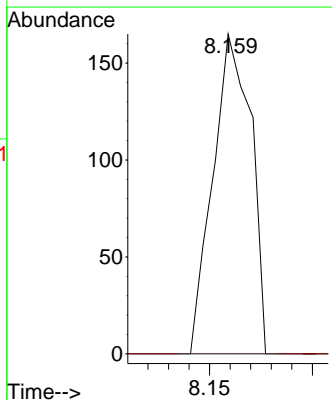
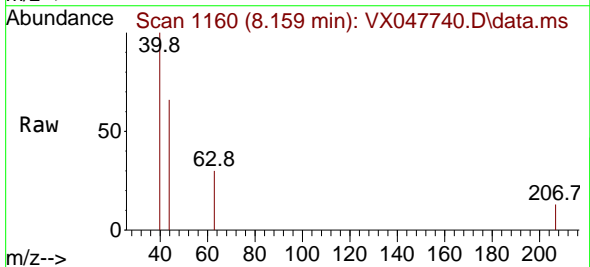
Instrument : MSVOA\_X  
 ClientSampleId : RE134D1-20250912

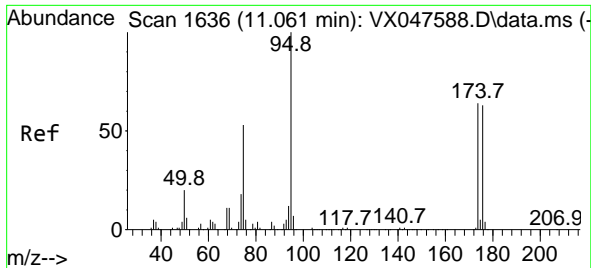
Tgt Ion: 43 Resp: 1556  
 Ion Ratio Lower Upper  
 43 100  
 58 172.0 30.3 45.5#



#58  
 2-Chloroethyl Vinyl ether  
 Concen: 8.037 ug/l  
 RT: 8.159 min Scan# 1160  
 Delta R.T. -0.067 min  
 Lab File: VX047740.D  
 Acq: 23 Sep 2025 17:36

Tgt Ion: 63 Resp: 213  
 Ion Ratio Lower Upper  
 63 100  
 106 0.0 21.9 32.9#



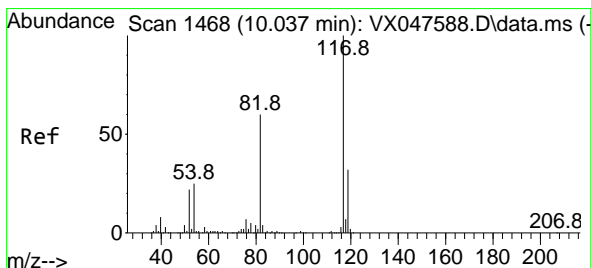
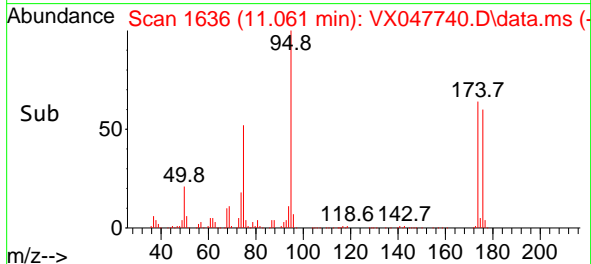
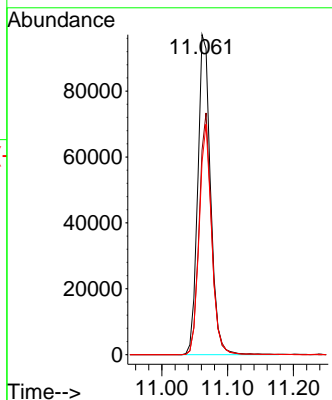
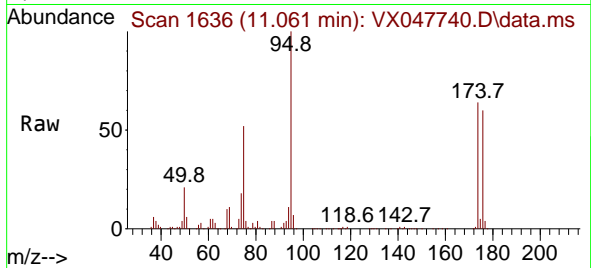


#62  
 4-Bromofluorobenzene  
 Concen: 53.268 ug/l  
 RT: 11.061 min Scan# 1636  
 Delta R.T. -0.000 min  
 Lab File: VX047740.D  
 Acq: 23 Sep 2025 17:36

Instrument : MSVOA\_X  
 ClientSampleId : RE134D1-20250912

Tgt Ion: 95 Resp: 131138

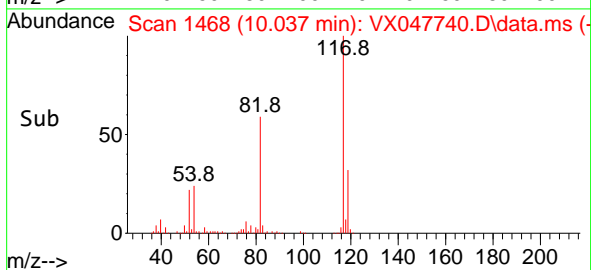
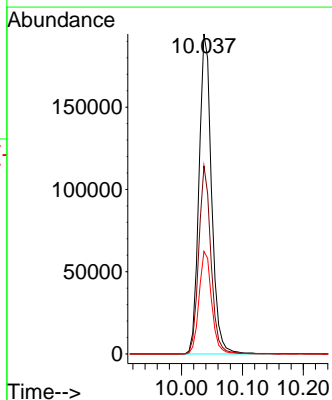
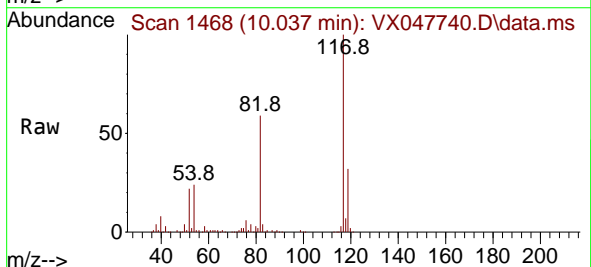
Ion	Ratio	Lower	Upper
95	100		
174	72.7	0.0	141.6
176	70.3	0.0	138.4

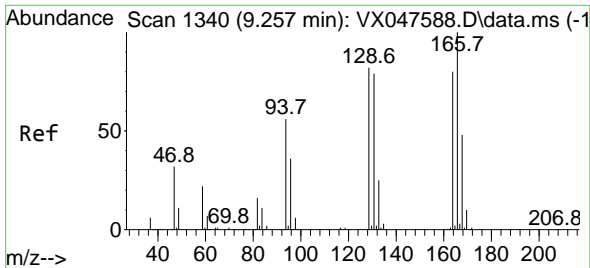


#63  
 Chlorobenzene-d5  
 Concen: 50.000 ug/l  
 RT: 10.037 min Scan# 1468  
 Delta R.T. -0.000 min  
 Lab File: VX047740.D  
 Acq: 23 Sep 2025 17:36

Tgt Ion: 117 Resp: 278696

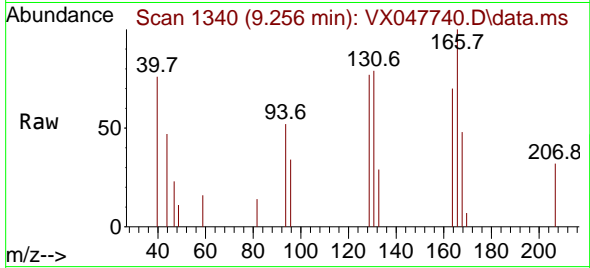
Ion	Ratio	Lower	Upper
117	100		
82	58.7	47.8	71.6
119	32.1	25.2	37.8





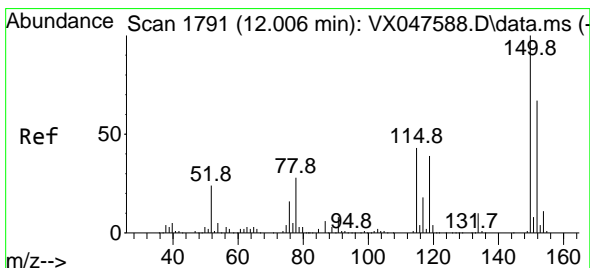
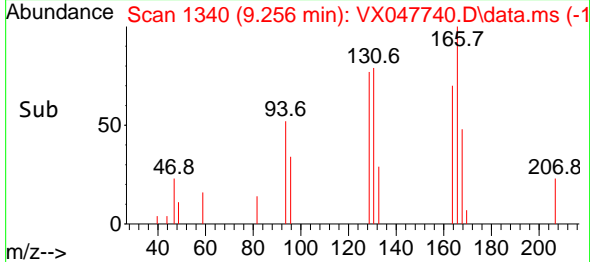
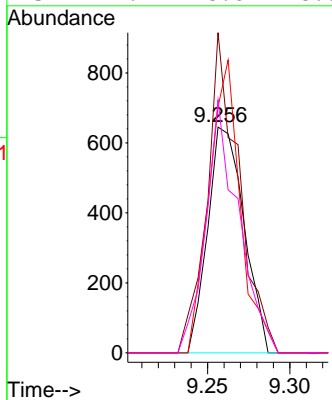
#64  
 Tetrachloroethene  
 Concen: 0.545 ug/l  
 RT: 9.256 min Scan# 11  
 Delta R.T. -0.000 min  
 Lab File: VX047740.D  
 Acq: 23 Sep 2025 17:36

Instrument : MSVOA\_X  
 ClientSampleId : RE134D1-20250912



Tgt Ion:164 Resp: 990

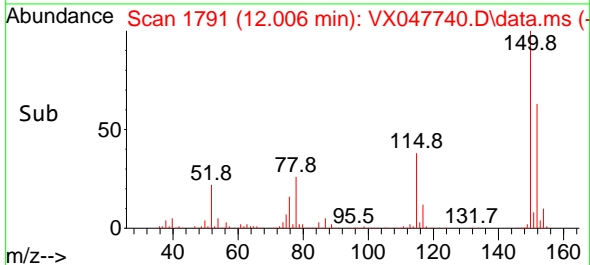
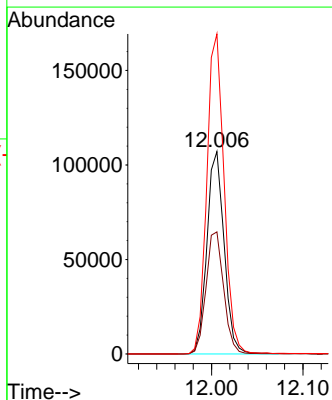
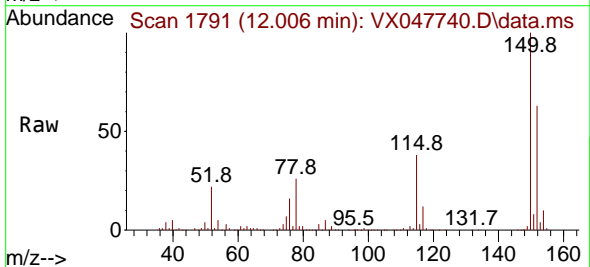
Ion	Ratio	Lower	Upper
164	100		
166	141.9	100.2	150.2
129	109.0	81.8	122.6
131	112.1	78.6	118.0

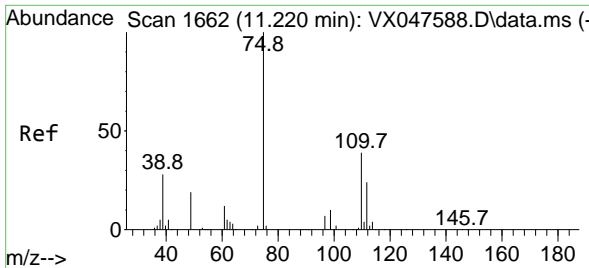


#72  
 1,4-Dichlorobenzene-d4  
 Concen: 50.000 ug/l  
 RT: 12.006 min Scan# 1791  
 Delta R.T. -0.000 min  
 Lab File: VX047740.D  
 Acq: 23 Sep 2025 17:36

Tgt Ion:152 Resp: 139922

Ion	Ratio	Lower	Upper
152	100		
115	61.9	44.9	134.5
150	158.6	0.0	352.0

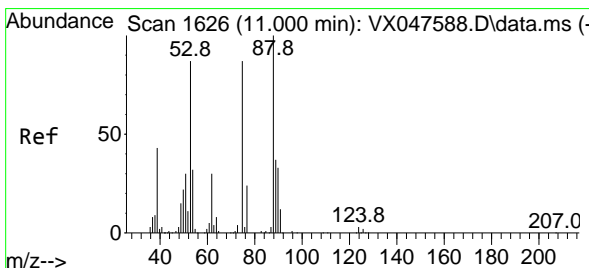
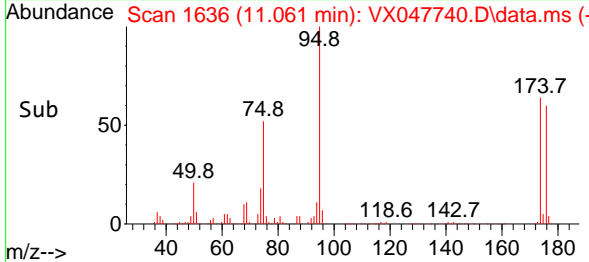
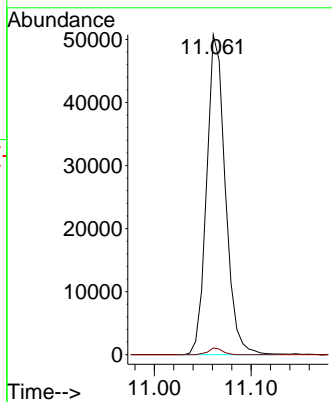
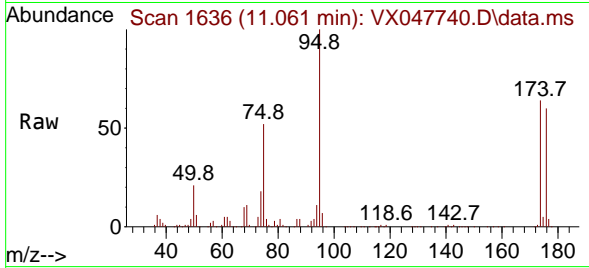




#76  
 1,2,3-Trichloropropane  
 Concen: 24.076 ug/l  
 RT: 11.061 min Scan# 1636  
 Delta R.T. -0.159 min  
 Lab File: VX047740.D  
 Acq: 23 Sep 2025 17:36

Instrument : MSVOA\_X  
 ClientSampleId : RE134D1-20250912

Tgt Ion: 75 Resp: 68207  
 Ion Ratio Lower Upper  
 75 100  
 77 1.6 18.8 56.4#



#81  
 trans-1,4-Dichloro-2-butene  
 Concen: 61.397 ug/l  
 RT: 11.061 min Scan# 1636  
 Delta R.T. 0.061 min  
 Lab File: VX047740.D  
 Acq: 23 Sep 2025 17:36

Tgt Ion: 75 Resp: 68207  
 Ion Ratio Lower Upper  
 75 100  
 53 0.0 83.4 125.2#  
 89 0.0 36.3 54.5#

