

Data Path : Z:\voasrv\HPCHEM1\MSVOA_X\Data\VX092325\
 Data File : VX047751.D
 Acq On : 24 Sep 2025 05:13
 Operator : JC/MD
 Sample : Q3127-05
 Misc : 5.0mL/MSVOA_X/WATER
 ALS Vial : 40 Sample Multiplier: 1

Instrument :
 MSVOA_X
 ClientSampleId :
 TT15811-20250915

Quant Time: Sep 24 07:09:18 2025
 Quant Method : Z:\voasrv\HPCHEM1\MSVOA_X\Method\82X091625W.M
 Quant Title : SW846 8260
 QLast Update : Wed Sep 17 06:39:58 2025
 Response via : Initial Calibration

Compound	R.T.	QIon	Response	Conc	Units	Dev(Min)

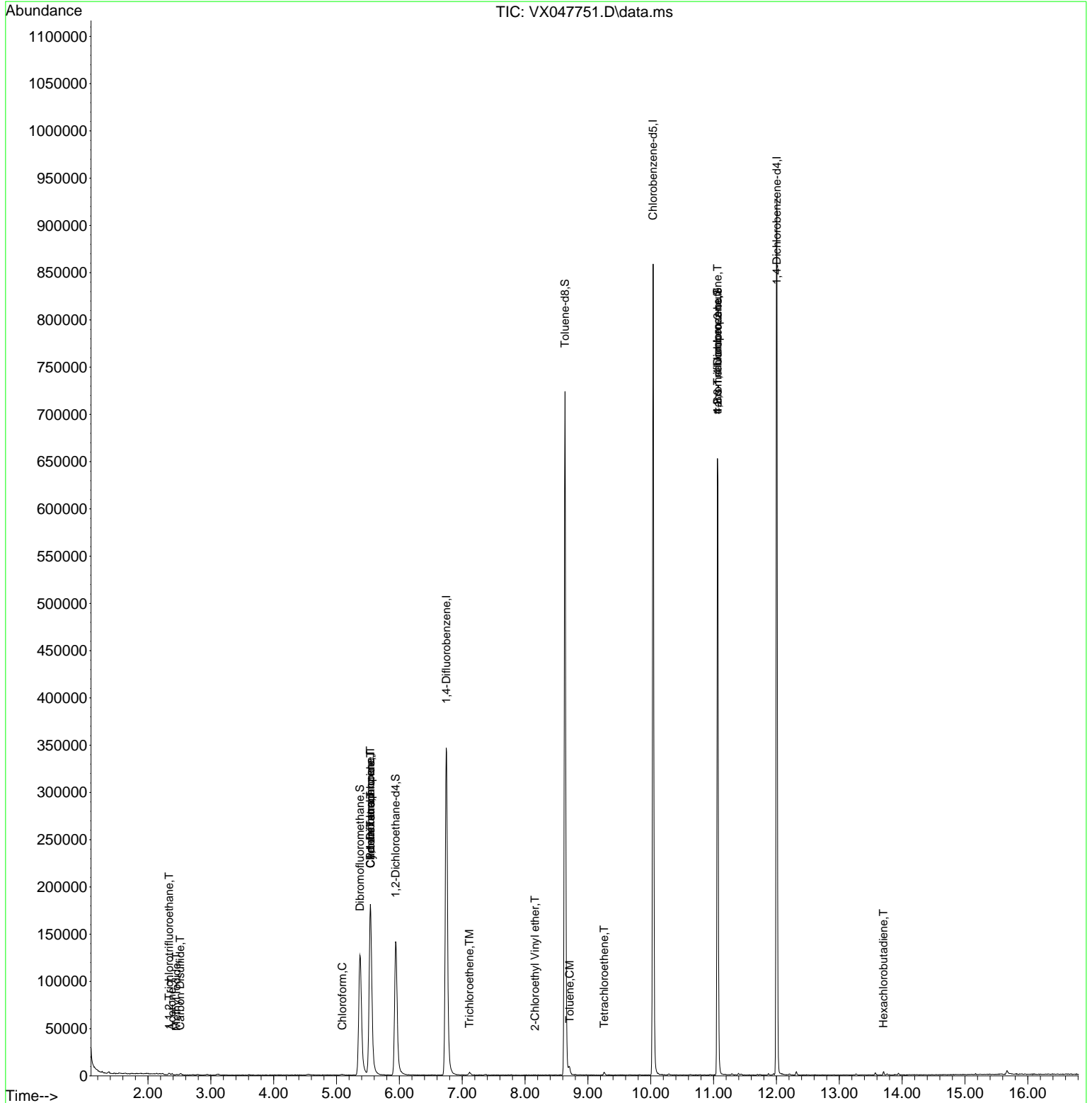
Internal Standards						
1) Pentafluorobenzene	5.538	168	181276	50.000	ug/l	0.00
34) 1,4-Difluorobenzene	6.745	114	380344	50.000	ug/l	0.00
63) Chlorobenzene-d5	10.037	117	382633	50.000	ug/l	0.00
72) 1,4-Dichlorobenzene-d4	12.006	152	195779	50.000	ug/l	0.00
System Monitoring Compounds						
33) 1,2-Dichloroethane-d4	5.940	65	153810	53.305	ug/l	0.00
Spiked Amount	50.000	Range 78 - 117	Recovery	=	106.620%	
35) Dibromofluoromethane	5.373	113	125627	49.250	ug/l	0.00
Spiked Amount	50.000	Range 75 - 124	Recovery	=	98.500%	
50) Toluene-d8	8.635	98	435093	49.295	ug/l	0.00
Spiked Amount	50.000	Range 92 - 112	Recovery	=	98.600%	
62) 4-Bromofluorobenzene	11.061	95	186898	55.795	ug/l	0.00
Spiked Amount	50.000	Range 83 - 123	Recovery	=	111.600%	
Target Compounds						
						Qvalue
9) 1,1,2-Trichlorotrifluo...	2.337	101	769	0.367	ug/l #	86
10) Methyl Iodide	2.453	142	765	0.234	ug/l #	82
16) Acetone	2.380	43	1116	0.890	ug/l #	86
17) Carbon Disulfide	2.514	76	1202	0.204	ug/l	100
30) Chloroform	5.093	83	1012	0.219	ug/l #	18
31) Cyclohexane	5.544	56	4178	1.096	ug/l #	5
36) 1,1-Dichloropropene	5.538	75	14484	3.886	ug/l #	48
38) Carbon Tetrachloride	5.544	117	19284	4.762	ug/l #	17
44) Trichloroethene	7.117	130	1300	0.475	ug/l	77
52) Toluene	8.708	92	3064	0.439	ug/l	94
58) 2-Chloroethyl Vinyl ether	8.159	63	44	7.914	ug/l #	47
64) Tetrachloroethene	9.257	164	526	0.211	ug/l	88
76) 1,2,3-Trichloropropane	11.061	75	96926	24.452	ug/l #	39
81) trans-1,4-Dichloro-2-b...	11.061	75	96926	62.356	ug/l #	8
94) Hexachlorobutadiene	13.701	225	536	0.374	ug/l	93

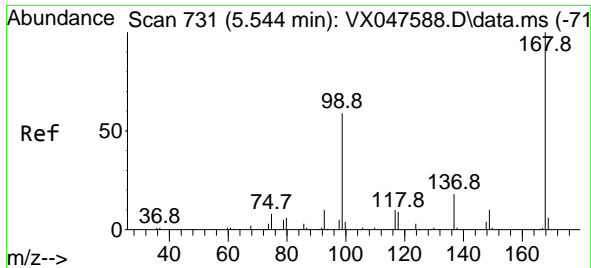
(#) = qualifier out of range (m) = manual integration (+) = signals summed

Data Path : Z:\voasrv\HPCHEM1\MSVOA_X\Data\VX092325\
 Data File : VX047751.D
 Acq On : 24 Sep 2025 05:13
 Operator : JC/MD
 Sample : Q3127-05
 Misc : 5.0mL/MSVOA_X/WATER
 ALS Vial : 40 Sample Multiplier: 1

Instrument :
 MSVOA_X
 ClientSampleId :
 TT15811-20250915

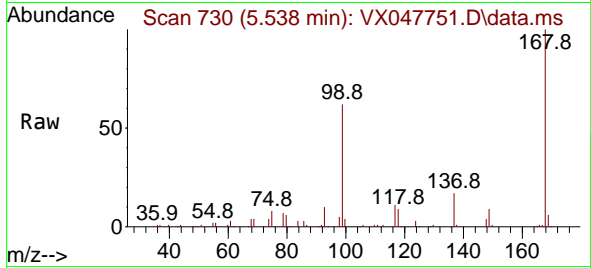
Quant Time: Sep 24 07:09:18 2025
 Quant Method : Z:\voasrv\HPCHEM1\MSVOA_X\Method\82X091625W.M
 Quant Title : SW846 8260
 QLast Update : Wed Sep 17 06:39:58 2025
 Response via : Initial Calibration



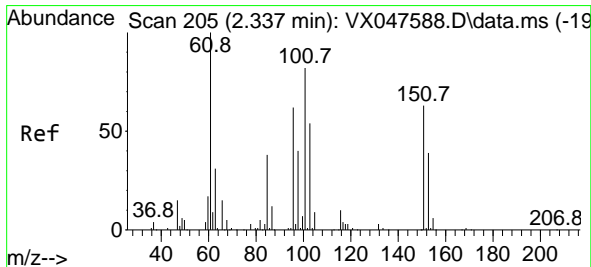
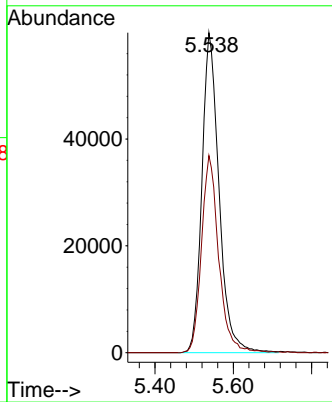
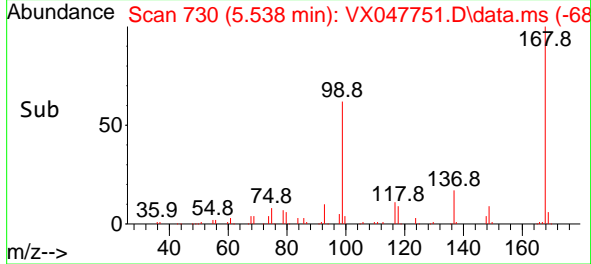


#1
 Pentafluorobenzene
 Concen: 50.000 ug/l
 RT: 5.538 min Scan# 71
 Delta R.T. -0.006 min
 Lab File: VX047751.D
 Acq: 24 Sep 2025 05:13

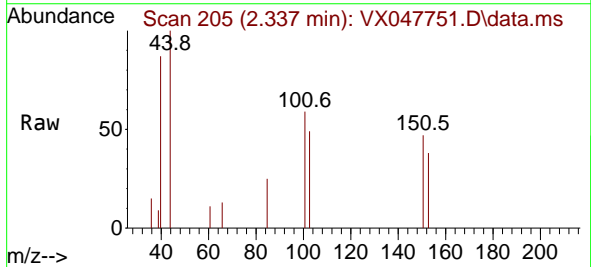
Instrument : MSVOA_X
 ClientSampleId : TT15811-20250915



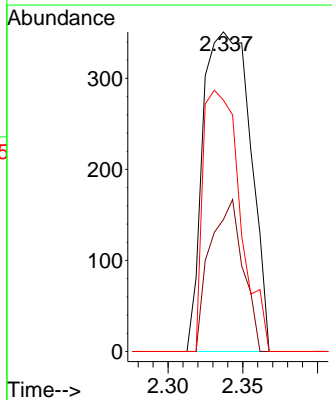
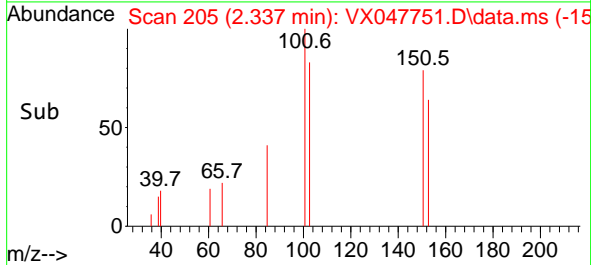
Tgt Ion:168 Resp: 181276
 Ion Ratio Lower Upper
 168 100
 99 61.6 48.8 73.2

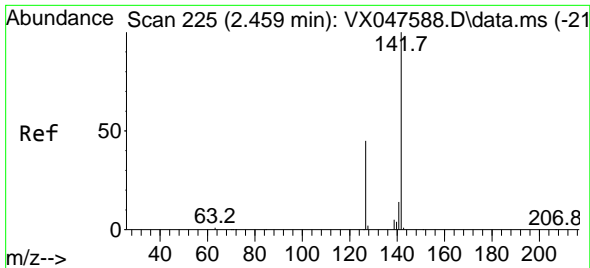


#9
 1,1,2-Trichlorotrifluoroethane
 Concen: 0.367 ug/l
 RT: 2.337 min Scan# 205
 Delta R.T. 0.000 min
 Lab File: VX047751.D
 Acq: 24 Sep 2025 05:13



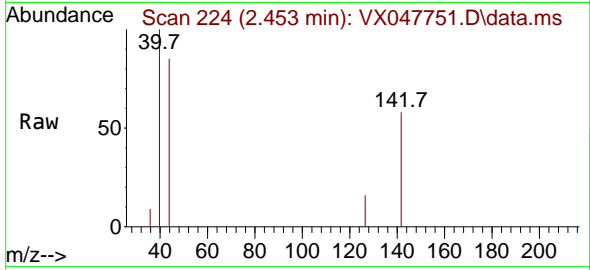
Tgt Ion:101 Resp: 769
 Ion Ratio Lower Upper
 101 100
 85 33.4 35.5 53.3#
 151 64.4 59.4 89.0





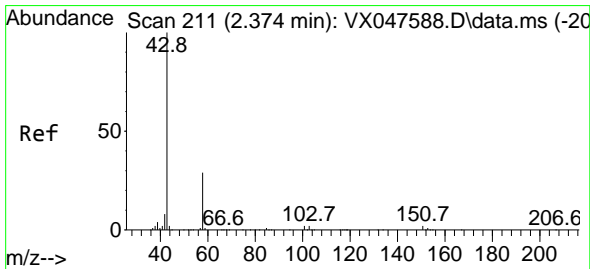
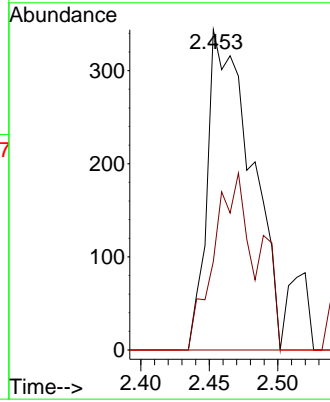
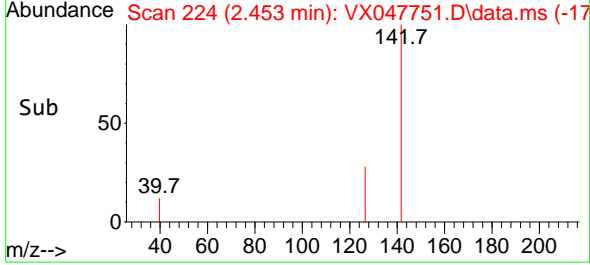
#10
Methyl Iodide
Concen: 0.234 ug/l
RT: 2.453 min Scan# 212
Delta R.T. -0.006 min
Lab File: VX047751.D
Acq: 24 Sep 2025 05:13

Instrument : MSVOA_X
ClientSampleId : TT15811-20250915

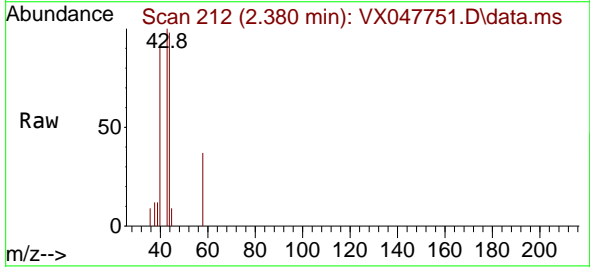


Tgt Ion: 142 Resp: 765

Ion	Ratio	Lower	Upper
142	100		
127	54.6	37.2	55.8
141	0.0	11.4	17.0

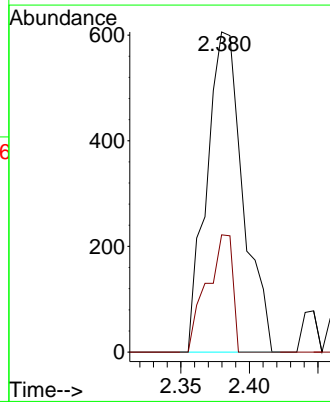
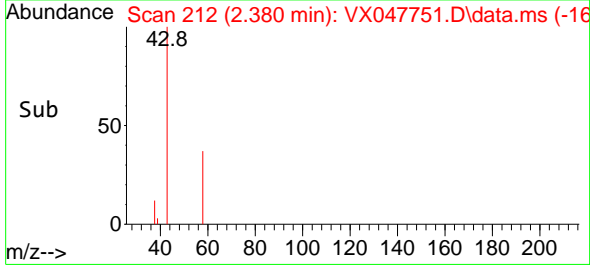


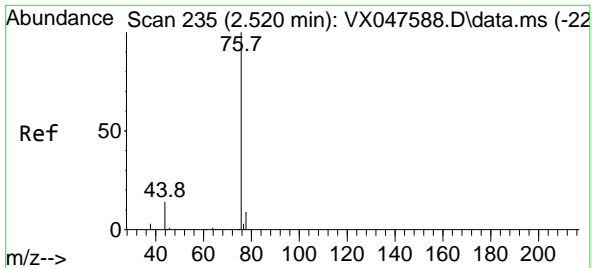
#16
Acetone
Concen: 0.890 ug/l
RT: 2.380 min Scan# 212
Delta R.T. 0.006 min
Lab File: VX047751.D
Acq: 24 Sep 2025 05:13



Tgt Ion: 43 Resp: 1116

Ion	Ratio	Lower	Upper
43	100		
58	36.6	23.4	35.0

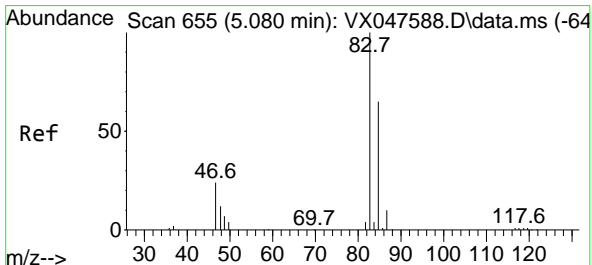
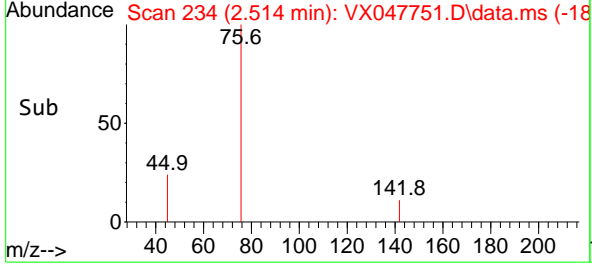
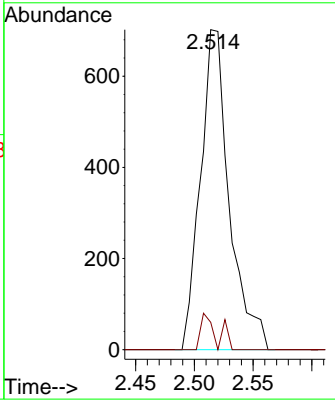
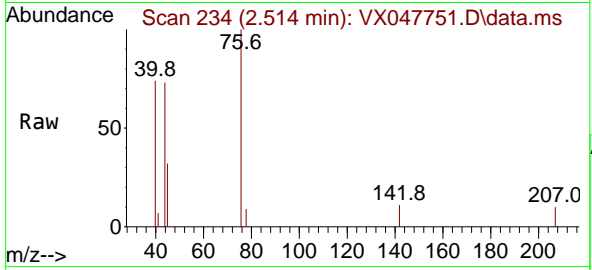




#17
 Carbon Disulfide
 Concen: 0.204 ug/l
 RT: 2.514 min Scan# 21
 Delta R.T. -0.006 min
 Lab File: VX047751.D
 Acq: 24 Sep 2025 05:13

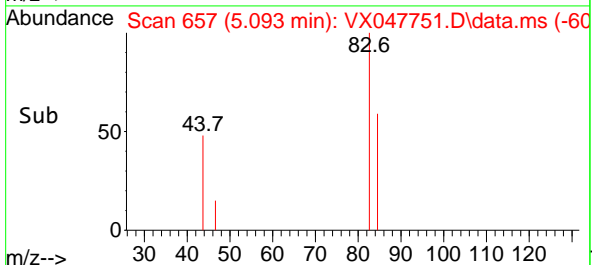
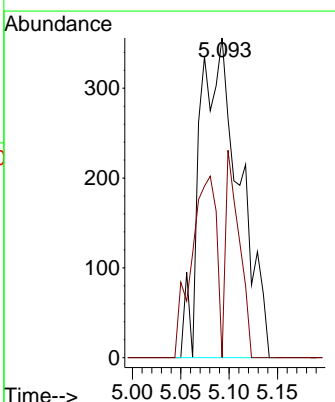
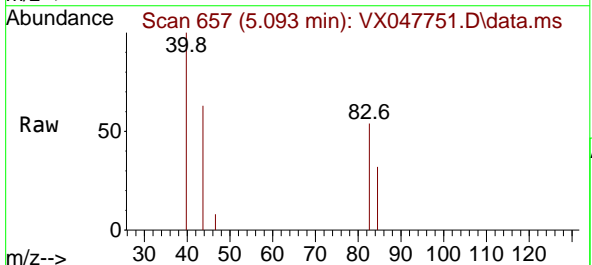
Instrument : MSVOA_X
 ClientSampleId : TT15811-20250915

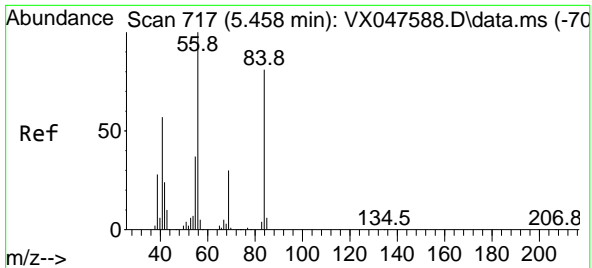
Tgt Ion: 76 Resp: 1202
 Ion Ratio Lower Upper
 76 100
 78 8.5 6.8 10.2



#30
 Chloroform
 Concen: 0.219 ug/l
 RT: 5.093 min Scan# 657
 Delta R.T. 0.012 min
 Lab File: VX047751.D
 Acq: 24 Sep 2025 05:13

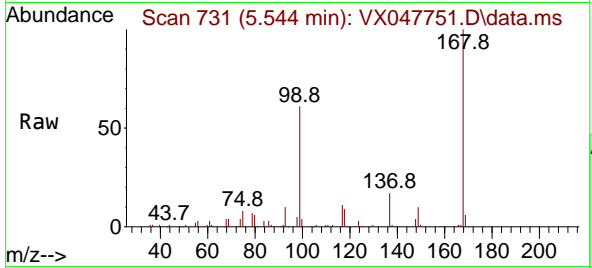
Tgt Ion: 83 Resp: 1012
 Ion Ratio Lower Upper
 83 100
 85 0.0 51.8 77.6#



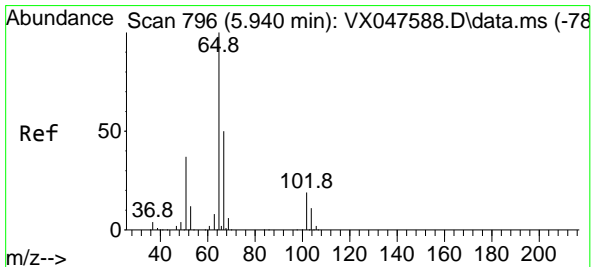
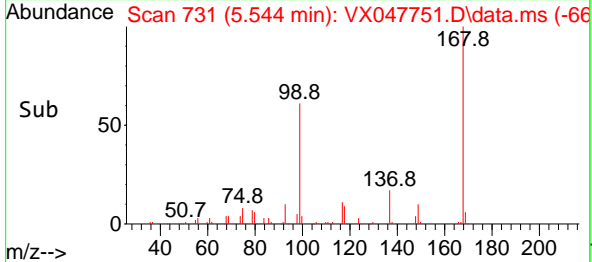
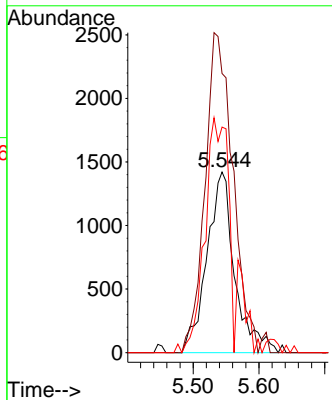


#31
 Cyclohexane
 Concen: 1.096 ug/l
 RT: 5.544 min Scan# 717
 Delta R.T. 0.085 min
 Lab File: VX047751.D
 Acq: 24 Sep 2025 05:13

Instrument : MSVOA_X
 ClientSampleId : TT15811-20250915

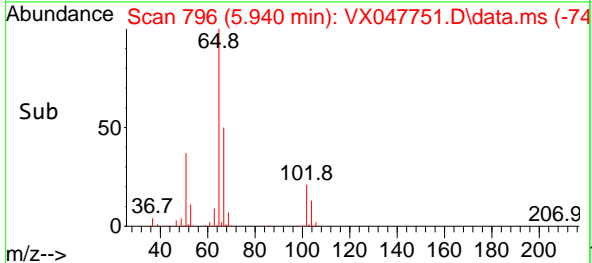
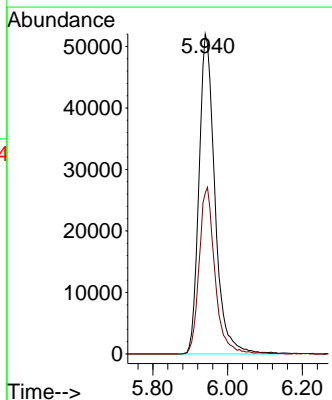
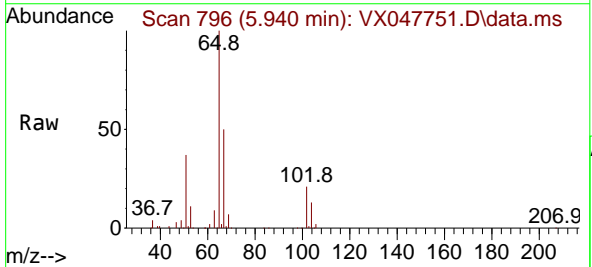


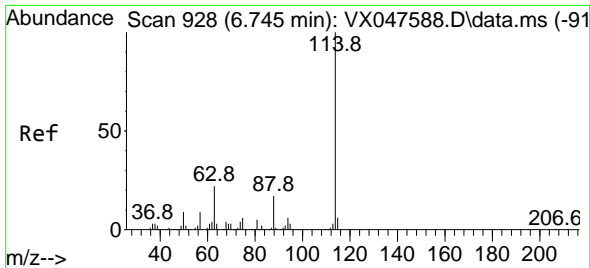
Tgt Ion: 56 Resp: 4178
 Ion Ratio Lower Upper
 56 100
 69 154.5 23.8 35.8#
 84 120.3 64.6 97.0#



#33
 1,2-Dichloroethane-d4
 Concen: 53.305 ug/l
 RT: 5.940 min Scan# 796
 Delta R.T. 0.000 min
 Lab File: VX047751.D
 Acq: 24 Sep 2025 05:13

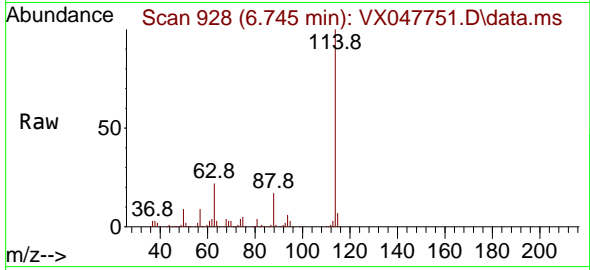
Tgt Ion: 65 Resp: 153810
 Ion Ratio Lower Upper
 65 100
 67 51.4 0.0 103.0



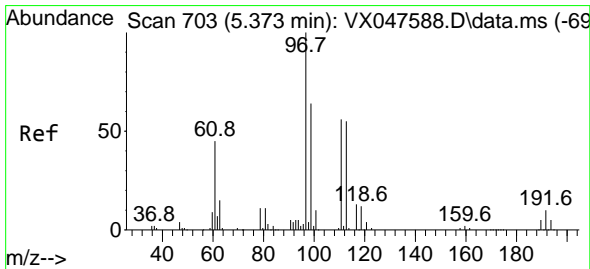
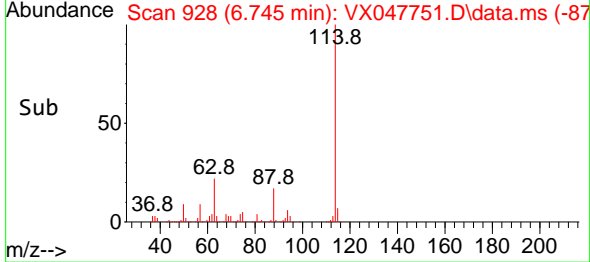
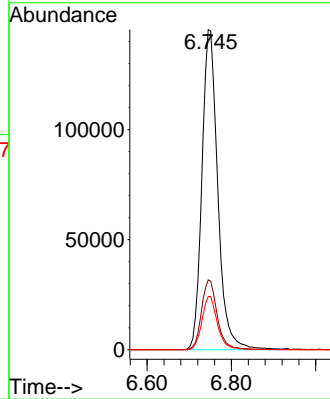


#34
 1,4-Difluorobenzene
 Concen: 50.000 ug/l
 RT: 6.745 min Scan# 91
 Delta R.T. 0.000 min
 Lab File: VX047751.D
 Acq: 24 Sep 2025 05:13

Instrument : MSVOA_X
 ClientSampleId : TT15811-20250915

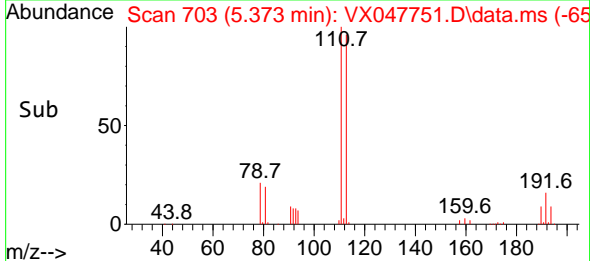
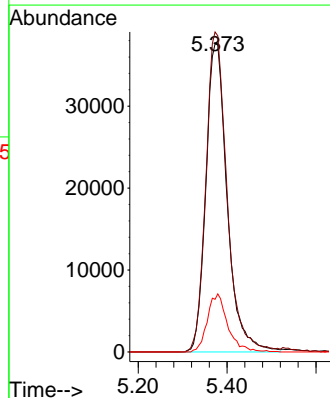
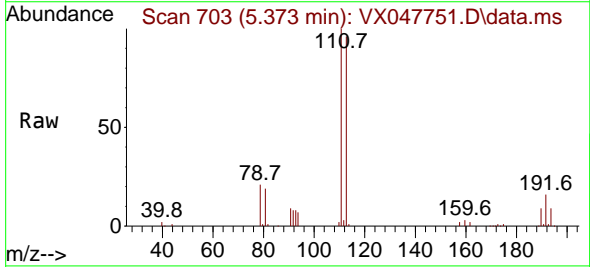


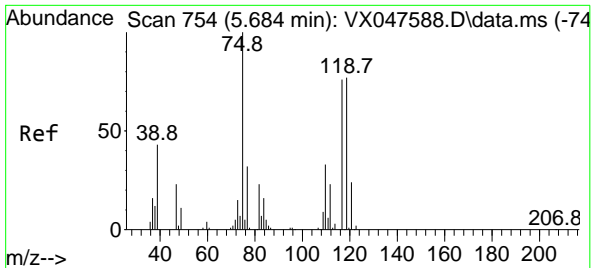
Tgt Ion:114 Resp: 380344
 Ion Ratio Lower Upper
 114 100
 63 21.8 0.0 44.0
 88 16.6 0.0 34.2



#35
 Dibromofluoromethane
 Concen: 49.250 ug/l
 RT: 5.373 min Scan# 703
 Delta R.T. 0.000 min
 Lab File: VX047751.D
 Acq: 24 Sep 2025 05:13

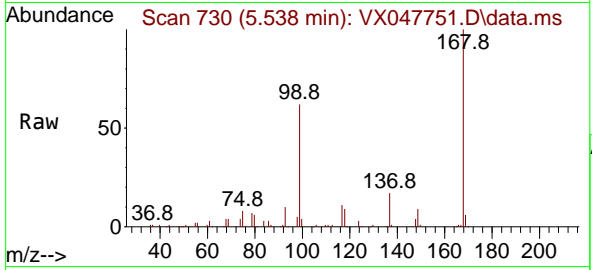
Tgt Ion:113 Resp: 125627
 Ion Ratio Lower Upper
 113 100
 111 103.0 80.9 121.3
 192 18.1 14.2 21.4



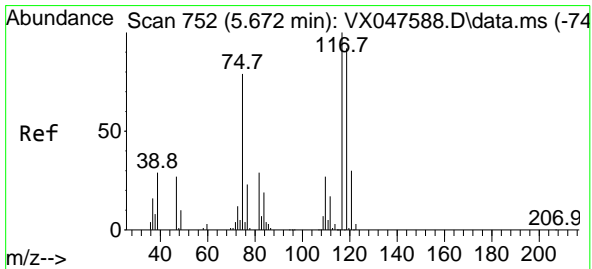
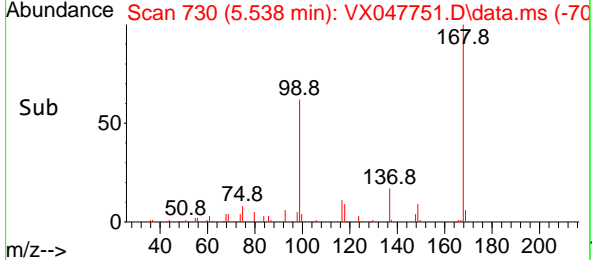
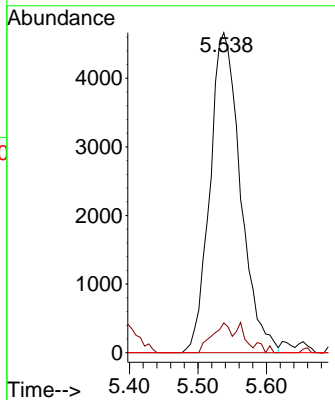


#36
 1,1-Dichloropropene
 Concen: 3.886 ug/l
 RT: 5.538 min Scan# 711
 Delta R.T. -0.146 min
 Lab File: VX047751.D
 Acq: 24 Sep 2025 05:13

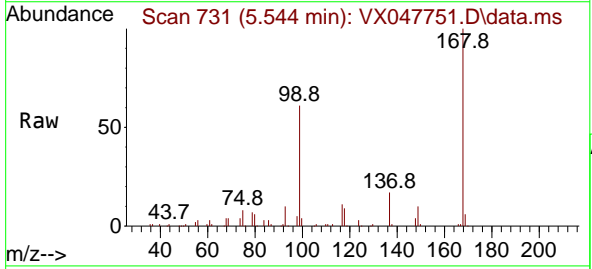
Instrument : MSVOA_X
 ClientSampleId : TT15811-20250915



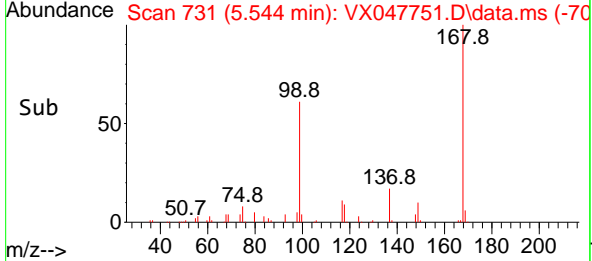
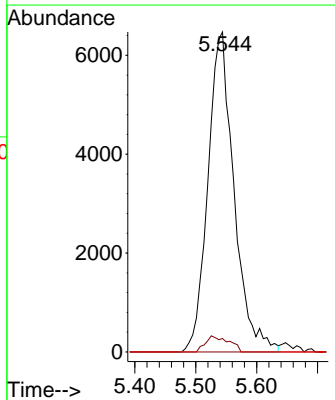
Tgt Ion: 75 Resp: 14484
 Ion Ratio Lower Upper
 75 100
 110 5.7 16.7 50.1#
 77 0.0 24.3 36.5#

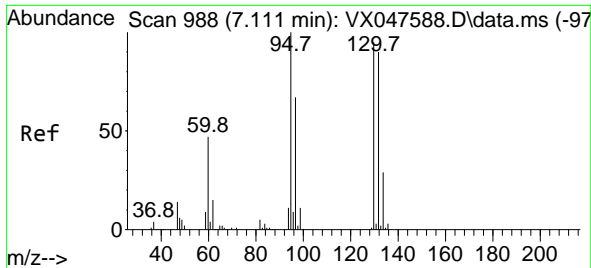


#38
 Carbon Tetrachloride
 Concen: 4.762 ug/l
 RT: 5.544 min Scan# 731
 Delta R.T. -0.128 min
 Lab File: VX047751.D
 Acq: 24 Sep 2025 05:13



Tgt Ion: 117 Resp: 19284
 Ion Ratio Lower Upper
 117 100
 119 4.2 73.4 110.2#
 121 0.0 23.8 35.6#

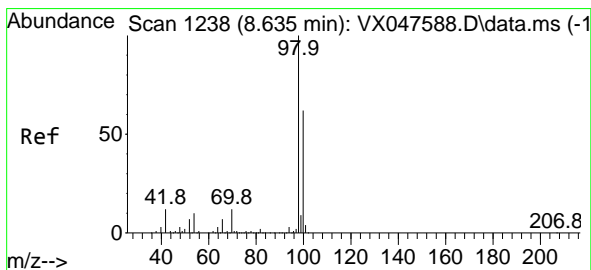
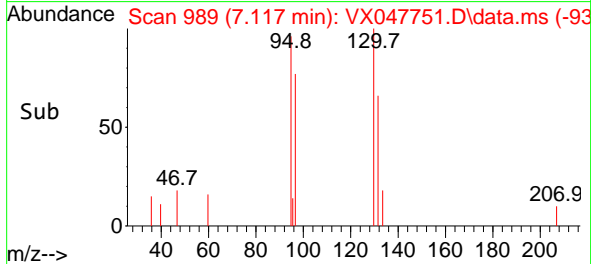
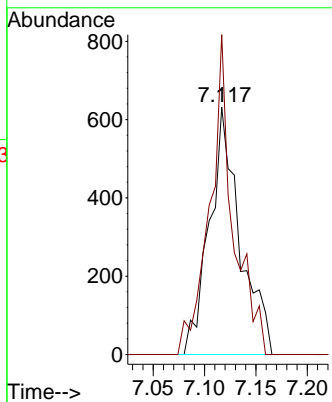
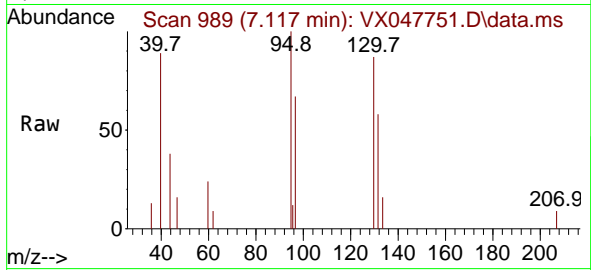




#44
 Trichloroethene
 Concen: 0.475 ug/l
 RT: 7.117 min Scan# 91
 Delta R.T. 0.006 min
 Lab File: VX047751.D
 Acq: 24 Sep 2025 05:13

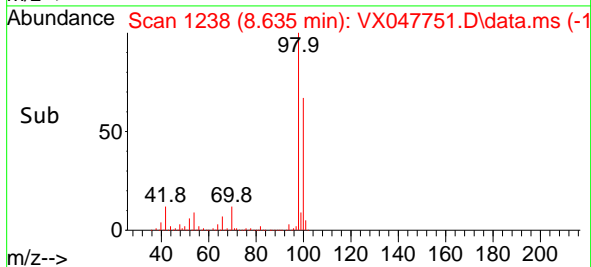
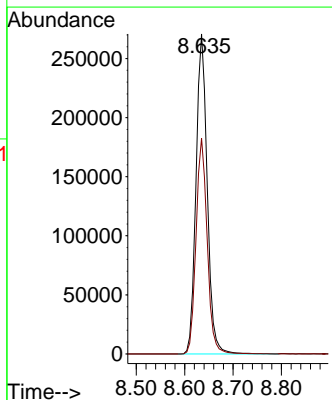
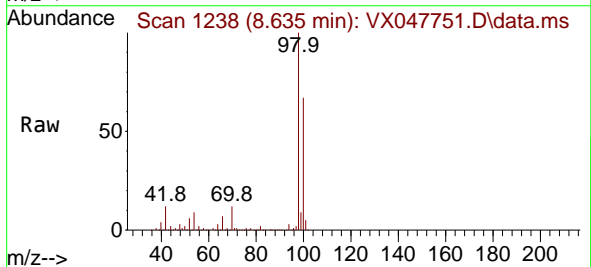
Instrument : MSVOA_X
 ClientSampleId : TT15811-20250915

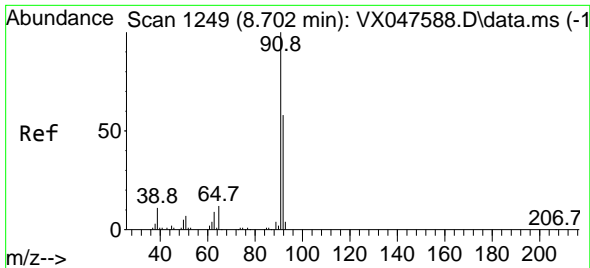
Tgt Ion:130 Resp: 1300
 Ion Ratio Lower Upper
 130 100
 95 129.3 0.0 210.8



#50
 Toluene-d8
 Concen: 49.295 ug/l
 RT: 8.635 min Scan# 1238
 Delta R.T. 0.000 min
 Lab File: VX047751.D
 Acq: 24 Sep 2025 05:13

Tgt Ion: 98 Resp: 435093
 Ion Ratio Lower Upper
 98 100
 100 67.1 53.0 79.4

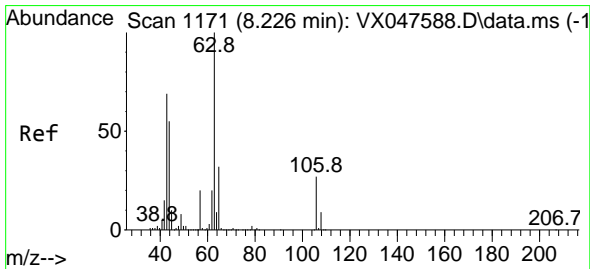
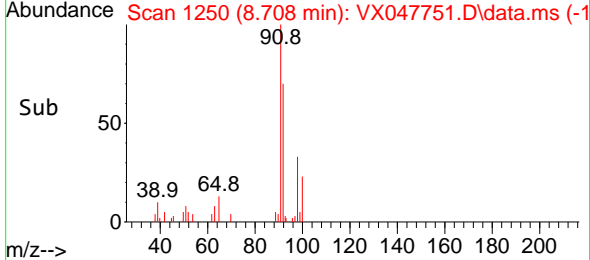
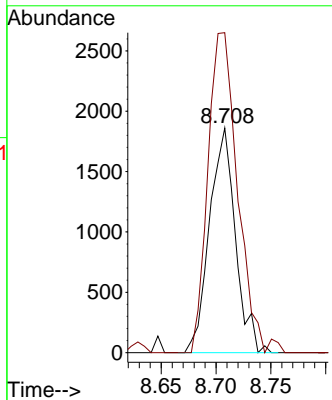
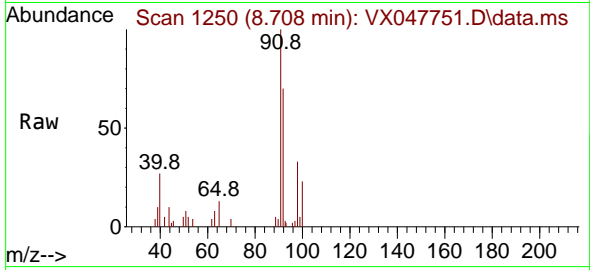




#52
 Toluene
 Concen: 0.439 ug/l
 RT: 8.708 min Scan# 1160
 Delta R.T. 0.006 min
 Lab File: VX047751.D
 Acq: 24 Sep 2025 05:13

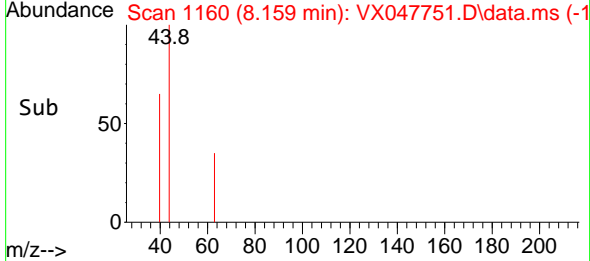
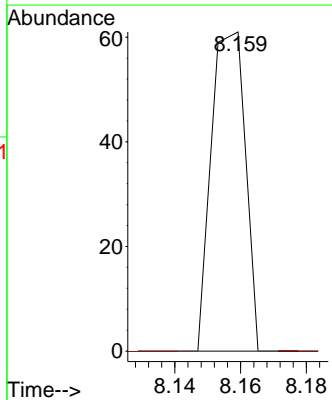
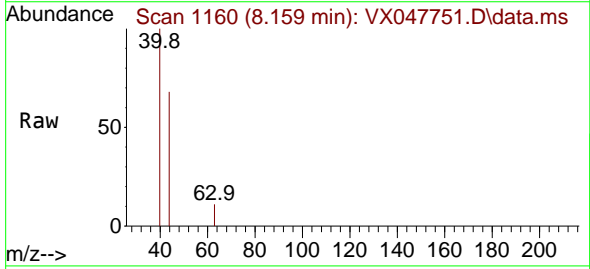
Instrument : MSVOA_X
 ClientSampleId : TT15811-20250915

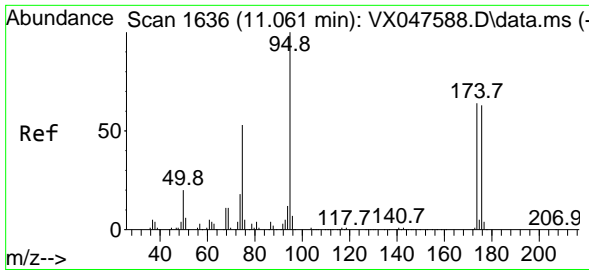
Tgt Ion: 92 Resp: 3064
 Ion Ratio Lower Upper
 92 100
 91 163.5 137.1 205.7



#58
 2-Chloroethyl Vinyl ether
 Concen: 7.914 ug/l
 RT: 8.159 min Scan# 1160
 Delta R.T. -0.067 min
 Lab File: VX047751.D
 Acq: 24 Sep 2025 05:13

Tgt Ion: 63 Resp: 44
 Ion Ratio Lower Upper
 63 100
 106 0.0 21.9 32.9#

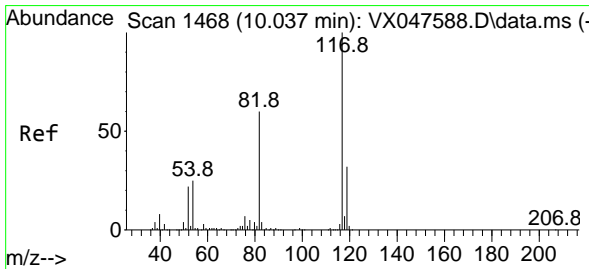
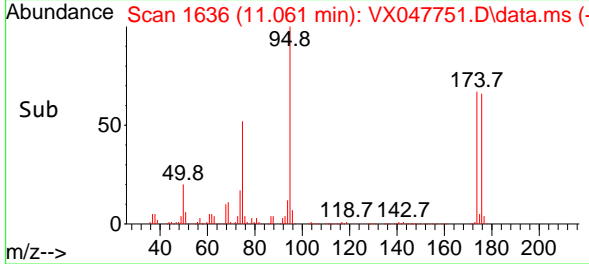
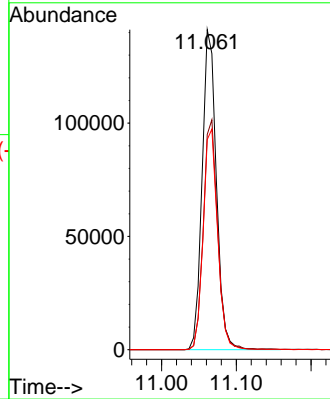
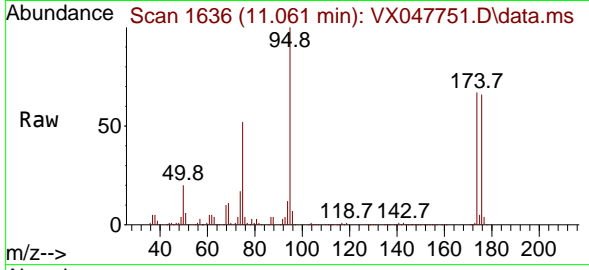




#62
 4-Bromofluorobenzene
 Concen: 55.795 ug/l
 RT: 11.061 min Scan# 11
 Delta R.T. 0.000 min
 Lab File: VX047751.D
 Acq: 24 Sep 2025 05:13

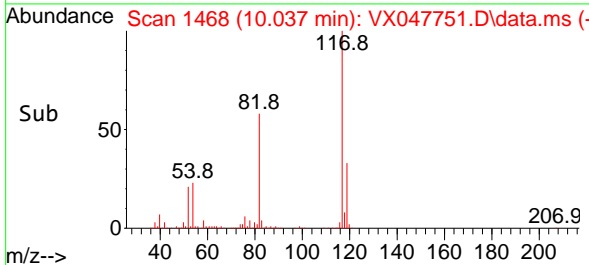
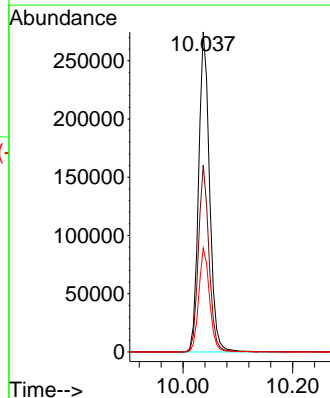
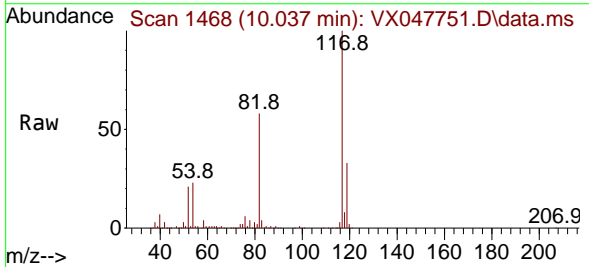
Instrument :
 MSVOA_X
 ClientSampleId :
 TT15811-20250915

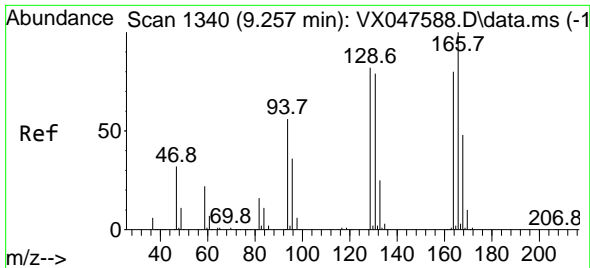
Tgt Ion: 95 Resp: 186898
 Ion Ratio Lower Upper
 95 100
 174 72.1 0.0 141.6
 176 69.9 0.0 138.4



#63
 Chlorobenzene-d5
 Concen: 50.000 ug/l
 RT: 10.037 min Scan# 1468
 Delta R.T. 0.000 min
 Lab File: VX047751.D
 Acq: 24 Sep 2025 05:13

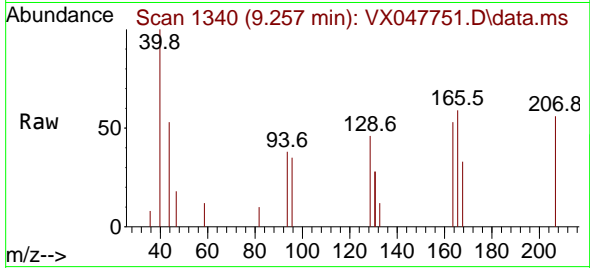
Tgt Ion: 117 Resp: 382633
 Ion Ratio Lower Upper
 117 100
 82 58.4 47.8 71.6
 119 32.5 25.2 37.8





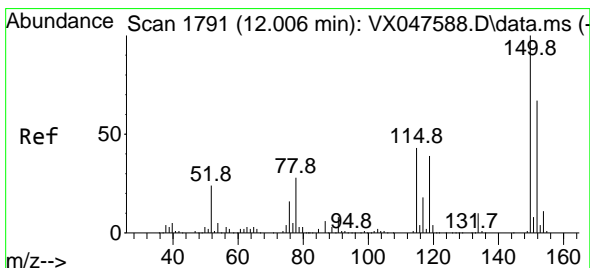
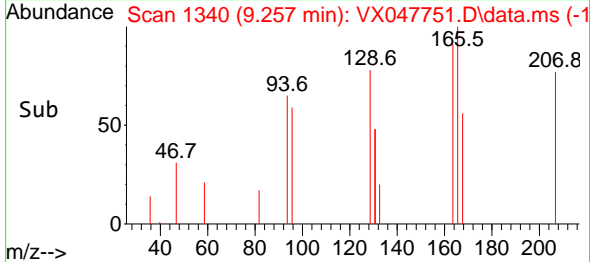
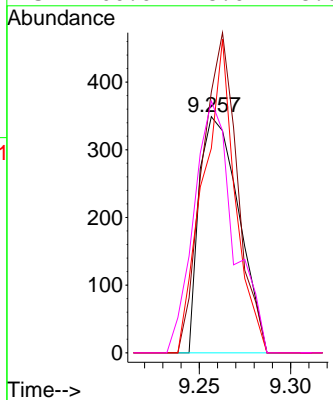
#64
 Tetrachloroethene
 Concen: 0.211 ug/l
 RT: 9.257 min Scan# 11
 Delta R.T. 0.000 min
 Lab File: VX047751.D
 Acq: 24 Sep 2025 05:13

Instrument :
 MSVOA_X
 ClientSampleId :
 TT15811-20250915



Tgt Ion:164 Resp: 526

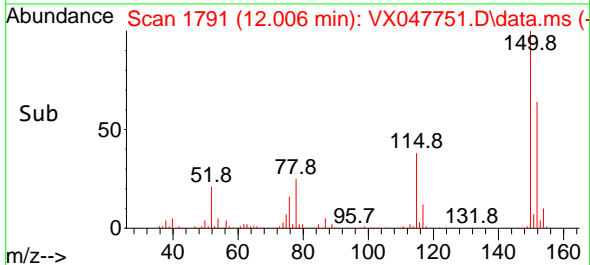
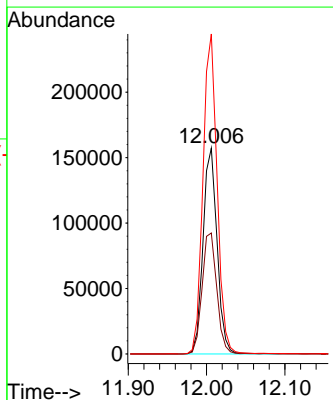
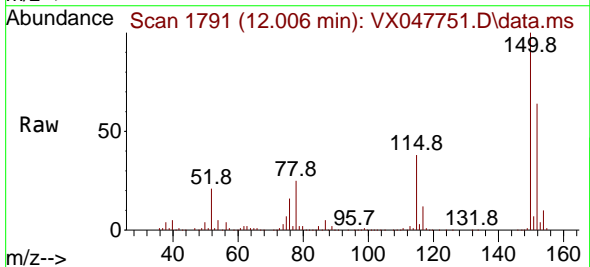
Ion	Ratio	Lower	Upper
164	100		
166	110.3	100.2	150.2
129	86.5	81.8	122.6
131	106.6	78.6	118.0

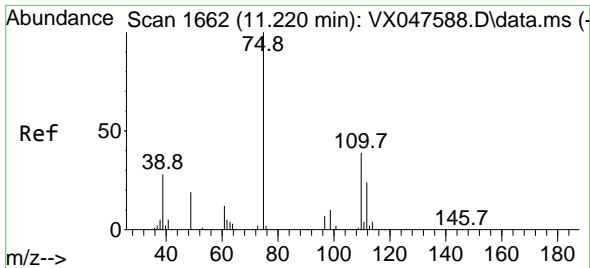


#72
 1,4-Dichlorobenzene-d4
 Concen: 50.000 ug/l
 RT: 12.006 min Scan# 1791
 Delta R.T. 0.000 min
 Lab File: VX047751.D
 Acq: 24 Sep 2025 05:13

Tgt Ion:152 Resp: 195779

Ion	Ratio	Lower	Upper
152	100		
115	61.4	44.9	134.5
150	156.6	0.0	352.0

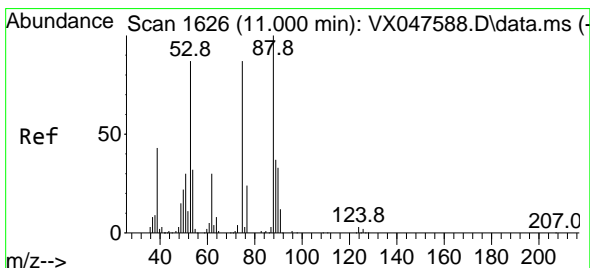
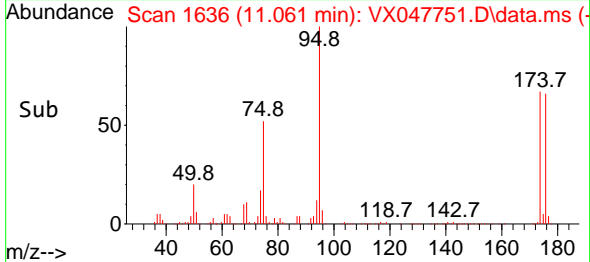
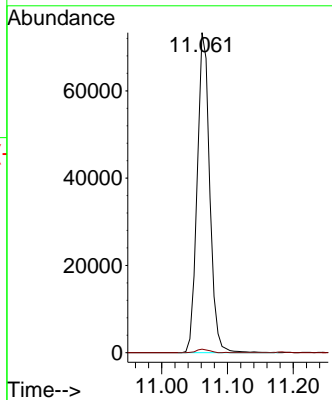
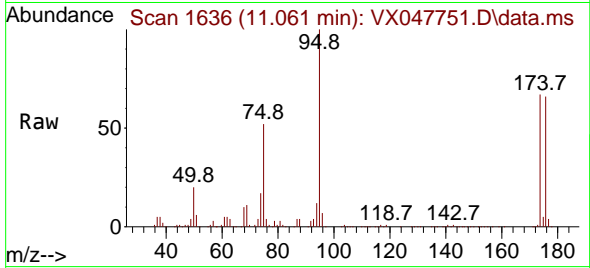




#76
 1,2,3-Trichloropropane
 Concen: 24.452 ug/l
 RT: 11.061 min Scan# 1636
 Delta R.T. -0.158 min
 Lab File: VX047751.D
 Acq: 24 Sep 2025 05:13

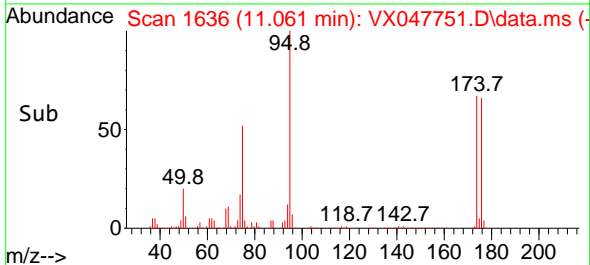
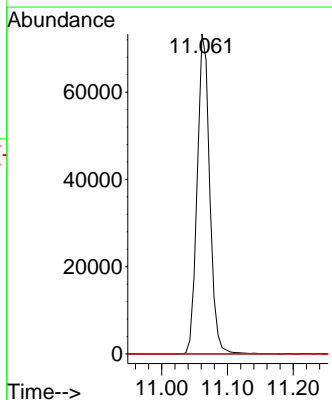
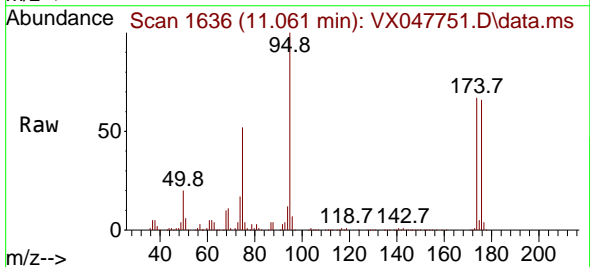
Instrument : MSVOA_X
 ClientSampleId : TT15811-20250915

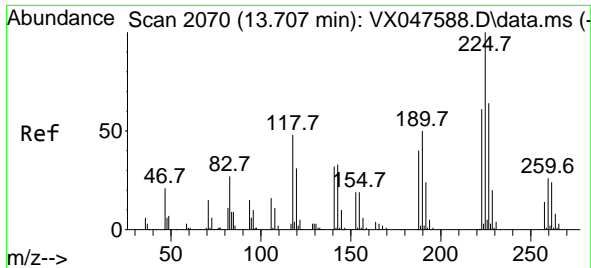
Tgt Ion: 75 Resp: 96926
 Ion Ratio Lower Upper
 75 100
 77 1.1 18.8 56.4#



#81
 trans-1,4-Dichloro-2-butene
 Concen: 62.356 ug/l
 RT: 11.061 min Scan# 1636
 Delta R.T. 0.061 min
 Lab File: VX047751.D
 Acq: 24 Sep 2025 05:13

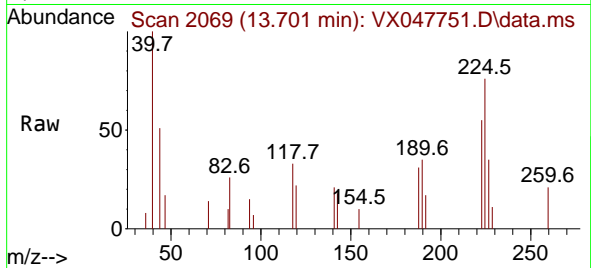
Tgt Ion: 75 Resp: 96926
 Ion Ratio Lower Upper
 75 100
 53 0.0 83.4 125.2#
 89 0.0 36.3 54.5#





#94
 Hexachlorobutadiene
 Concen: 0.374 ug/l
 RT: 13.701 min Scan# 2070
 Delta R.T. -0.006 min
 Lab File: VX047751.D
 Acq: 24 Sep 2025 05:13

Instrument : MSVOA_X
 ClientSampleId : TT15811-20250915



Tgt Ion: 225 Resp: 536

Ion	Ratio	Lower	Upper
225	100		
223	70.7	31.7	95.1
227	67.5	32.0	96.0

