

Data Path : Z:\voasrv\HPCHEM1\MSVOA\_X\Data\VX092325\  
 Data File : VX047752.D  
 Acq On : 24 Sep 2025 05:34  
 Operator : JC/MD  
 Sample : Q3127-06  
 Misc : 5.0mL/MSVOA\_X/WATER  
 ALS Vial : 41 Sample Multiplier: 1

Instrument :  
 MSVOA\_X  
 ClientSampleId :  
 TT180D2-20250915

Quant Time: Sep 24 07:09:49 2025  
 Quant Method : Z:\voasrv\HPCHEM1\MSVOA\_X\Method\82X091625W.M  
 Quant Title : SW846 8260  
 QLast Update : Wed Sep 17 06:39:58 2025  
 Response via : Initial Calibration

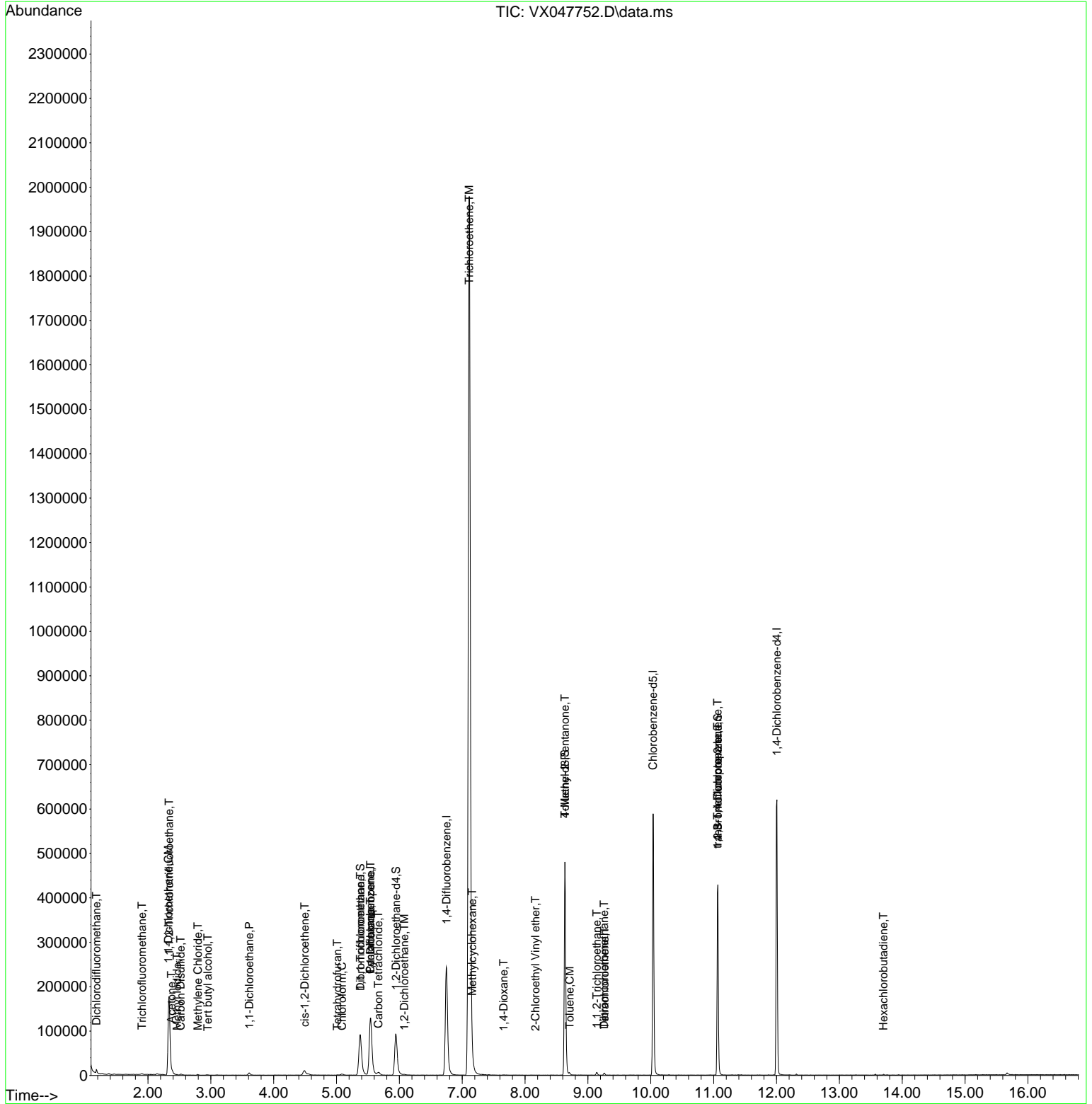
Compound	R.T.	QIon	Response	Conc	Units	Dev(Min)
Internal Standards						
1) Pentafluorobenzene	5.537	168	129507	50.000	ug/l	0.00
34) 1,4-Difluorobenzene	6.751	114	269594	50.000	ug/l	0.00
63) Chlorobenzene-d5	10.037	117	265477	50.000	ug/l	0.00
72) 1,4-Dichlorobenzene-d4	12.006	152	134510	50.000	ug/l	0.00
System Monitoring Compounds						
33) 1,2-Dichloroethane-d4	5.946	65	100283	48.647	ug/l	0.00
Spiked Amount	50.000	Range	78 - 117	Recovery	=	97.300%
35) Dibromofluoromethane	5.379	113	84854	46.931	ug/l	0.00
Spiked Amount	50.000	Range	75 - 124	Recovery	=	93.860%
50) Toluene-d8	8.634	98	290487	46.432	ug/l	0.00
Spiked Amount	50.000	Range	92 - 112	Recovery	=	92.860%
62) 4-Bromofluorobenzene	11.067	95	122901	51.762	ug/l	0.00
Spiked Amount	50.000	Range	83 - 123	Recovery	=	103.520%
Target Compounds						
						Qvalue
2) Dichlorodifluoromethane	1.179	85	989	0.737	ug/l	92
7) Trichlorofluoromethane	1.904	101	1113	0.434	ug/l #	80
9) 1,1,2-Trichlorotrifluo...	2.337	101	57992	38.715	ug/l	99
10) Methyl Iodide	2.465	142	508	0.217	ug/l #	90
11) Tert butyl alcohol	2.953	59	118	0.514	ug/l #	72
12) 1,1-Dichloroethene	2.325	96	28319	18.405	ug/l	93
16) Acetone	2.373	43	1860	2.075	ug/l #	52
17) Carbon Disulfide	2.520	76	893	0.212	ug/l #	76
20) Methylene Chloride	2.794	84	651	0.343	ug/l #	84
24) 1,1-Dichloroethane	3.611	63	6235	1.906	ug/l #	94
27) cis-1,2-Dichloroethene	4.495	96	6605	3.256	ug/l	96
29) Tetrahydrofuran	5.013	42	397	0.590	ug/l #	59
30) Chloroform	5.086	83	2975	0.900	ug/l #	82
31) Cyclohexane	5.537	56	2878	1.057	ug/l #	1
32) 1,1,1-Trichloroethane	5.379	97	4976	1.775	ug/l	97
36) 1,1-Dichloropropene	5.544	75	11037	4.178	ug/l #	49
38) Carbon Tetrachloride	5.666	117	5532	1.927	ug/l	92
39) Methylcyclohexane	7.159	83	606	0.202	ug/l #	1
42) 1,2-Dichloroethane	6.080	62	1368	0.448	ug/l #	76
44) Trichloroethene	7.110	130	827201	426.393	ug/l	96
49) 1,4-Dioxane	7.659	88	396	16.956	ug/l #	92
51) 4-Methyl-2-Pentanone	8.634	43	1491	0.580	ug/l #	1
52) Toluene	8.708	92	1394	0.282	ug/l	91
55) 1,1,2-Trichloroethane	9.141	97	1824	0.957	ug/l	92
58) 2-Chloroethyl Vinyl ether	8.165	63	57	7.932	ug/l #	47
60) Dibromochloromethane	9.256	129	949	0.432	ug/l #	11
64) Tetrachloroethene	9.262	164	849	0.491	ug/l	93
76) 1,2,3-Trichloropropane	11.061	75	63611	23.357	ug/l #	39
81) trans-1,4-Dichloro-2-b...	11.061	75	63611	59.564	ug/l #	8
94) Hexachlorobutadiene	13.701	225	390	0.396	ug/l	93

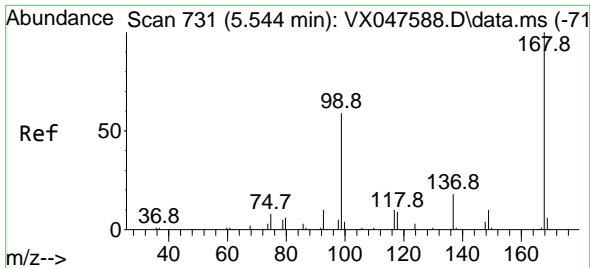
(#) = qualifier out of range (m) = manual integration (+) = signals summed

Data Path : Z:\voasrv\HPCHEM1\MSVOA\_X\Data\VX092325\  
 Data File : VX047752.D  
 Acq On : 24 Sep 2025 05:34  
 Operator : JC/MD  
 Sample : Q3127-06  
 Misc : 5.0mL/MSVOA\_X/WATER  
 ALS Vial : 41 Sample Multiplier: 1

Instrument :  
 MSVOA\_X  
 ClientSampleId :  
 TT180D2-20250915

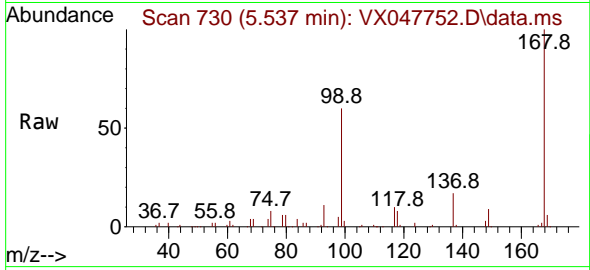
Quant Time: Sep 24 07:09:49 2025  
 Quant Method : Z:\voasrv\HPCHEM1\MSVOA\_X\Method\82X091625W.M  
 Quant Title : SW846 8260  
 QLast Update : Wed Sep 17 06:39:58 2025  
 Response via : Initial Calibration



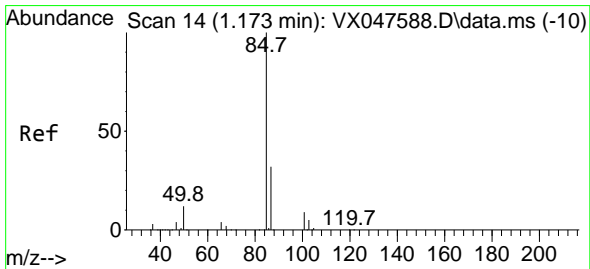
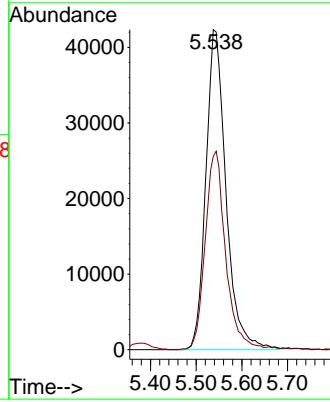
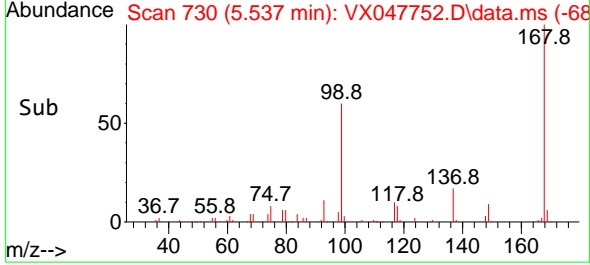


#1  
 Pentafluorobenzene  
 Concen: 50.000 ug/l  
 RT: 5.537 min Scan# 71  
 Delta R.T. -0.006 min  
 Lab File: VX047752.D  
 Acq: 24 Sep 2025 05:34

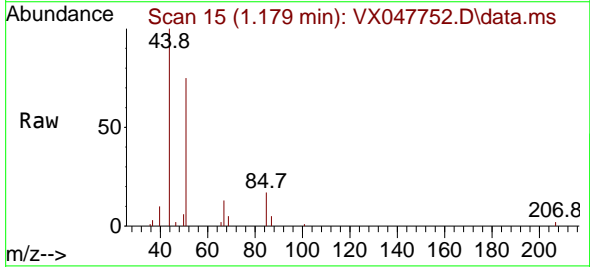
Instrument :  
 MSVOA\_X  
 ClientSampleId :  
 TT180D2-20250915



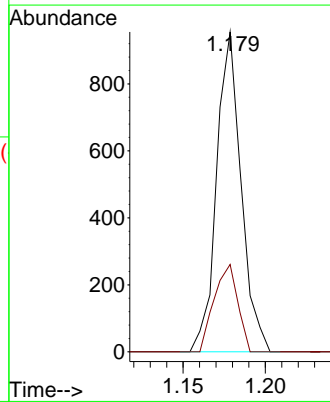
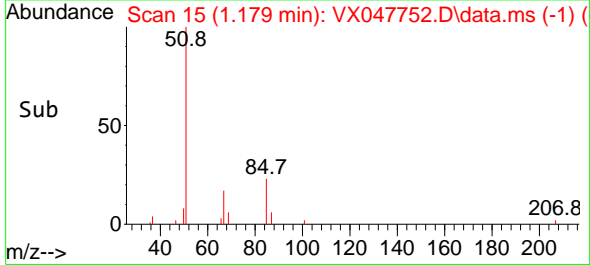
Tgt Ion:168 Resp: 129507  
 Ion Ratio Lower Upper  
 168 100  
 99 60.3 48.8 73.2

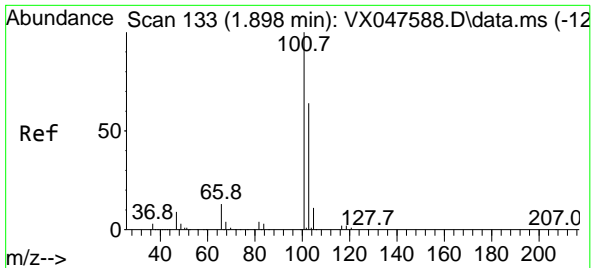


#2  
 Dichlorodifluoromethane  
 Concen: 0.737 ug/l  
 RT: 1.179 min Scan# 15  
 Delta R.T. 0.006 min  
 Lab File: VX047752.D  
 Acq: 24 Sep 2025 05:34



Tgt Ion: 85 Resp: 989  
 Ion Ratio Lower Upper  
 85 100  
 87 27.3 15.8 47.3

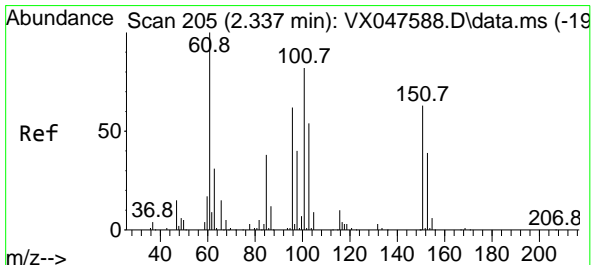
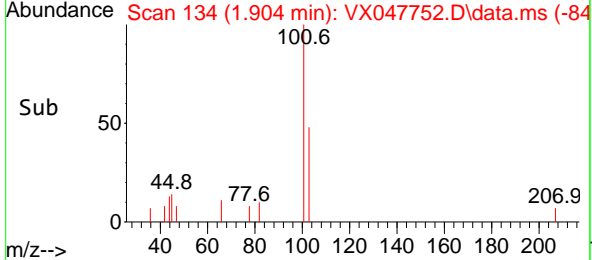
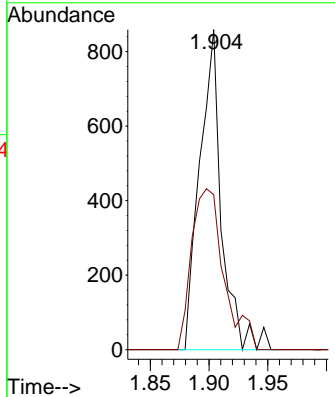
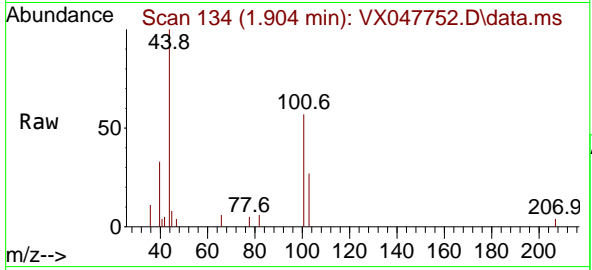




#7  
 Trichlorofluoromethane  
 Concen: 0.434 ug/l  
 RT: 1.904 min Scan# 11  
 Delta R.T. 0.006 min  
 Lab File: VX047752.D  
 Acq: 24 Sep 2025 05:34

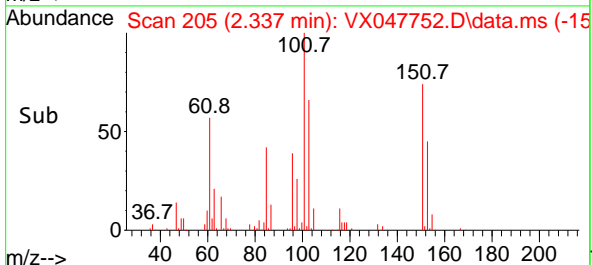
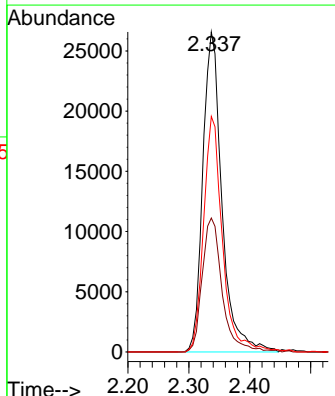
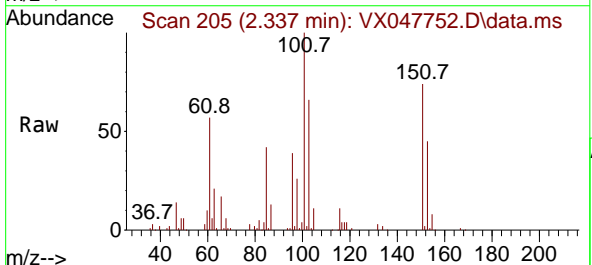
Instrument : MSVOA\_X  
 ClientSampleId : TT180D2-20250915

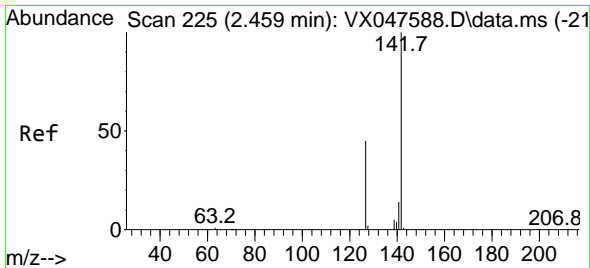
Tgt Ion:101 Resp: 1113  
 Ion Ratio Lower Upper  
 101 100  
 103 48.4 51.4 77.2#



#9  
 1,1,2-Trichlorotrifluoroethane  
 Concen: 38.715 ug/l  
 RT: 2.337 min Scan# 205  
 Delta R.T. -0.000 min  
 Lab File: VX047752.D  
 Acq: 24 Sep 2025 05:34

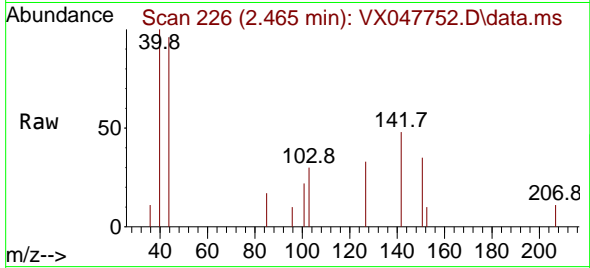
Tgt Ion:101 Resp: 57992  
 Ion Ratio Lower Upper  
 101 100  
 85 43.6 35.5 53.3  
 151 72.9 59.4 89.0



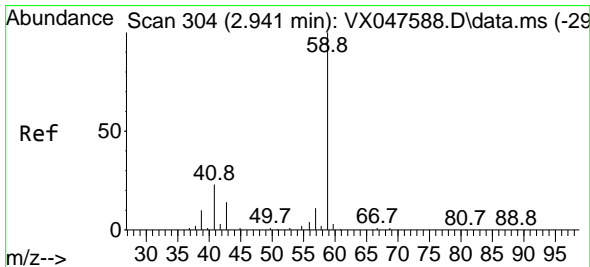
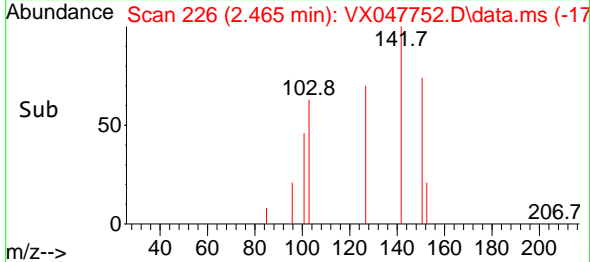
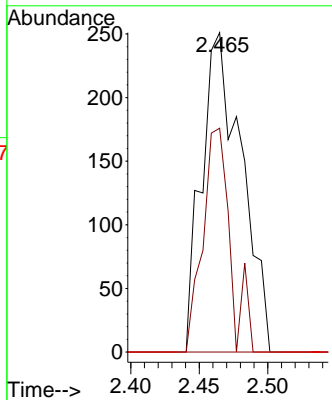


#10  
Methyl Iodide  
Concen: 0.217 ug/l  
RT: 2.465 min Scan# 21  
Delta R.T. 0.006 min  
Lab File: VX047752.D  
Acq: 24 Sep 2025 05:34

Instrument : MSVOA\_X  
ClientSampleId : TT180D2-20250915

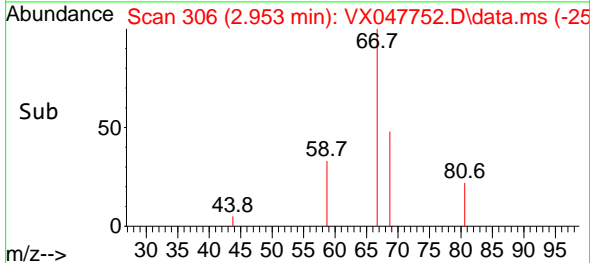
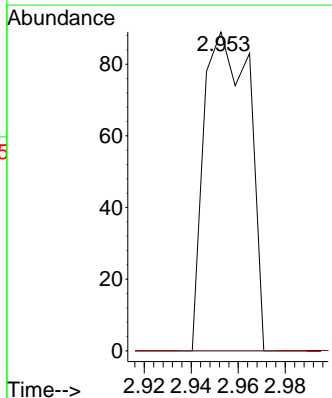
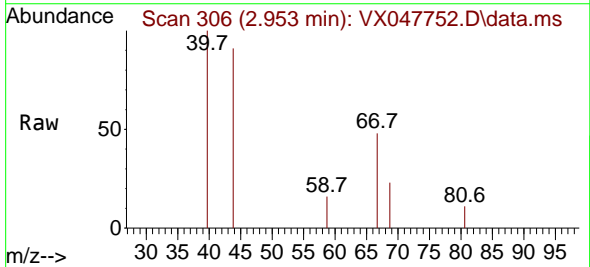


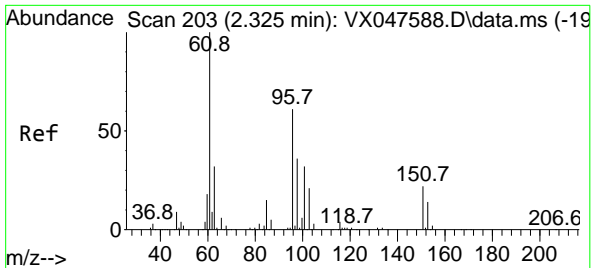
Tgt Ion:	142	Resp:	508
Ion Ratio	Lower	Upper	
142	100		
127	48.0	37.2	55.8
141	0.0	11.4	17.0#



#11  
Tert butyl alcohol  
Concen: 0.514 ug/l  
RT: 2.953 min Scan# 306  
Delta R.T. 0.012 min  
Lab File: VX047752.D  
Acq: 24 Sep 2025 05:34

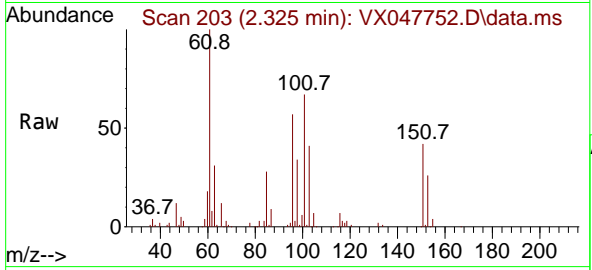
Tgt Ion:	59	Resp:	118
Ion Ratio	Lower	Upper	
59	100		
57	0.0	8.3	12.5#



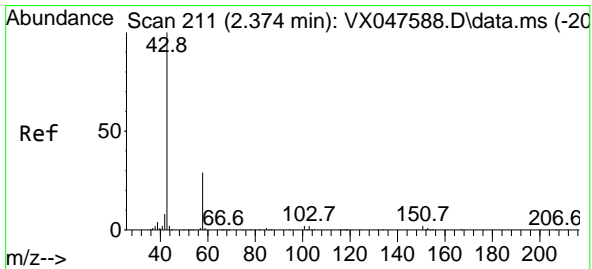
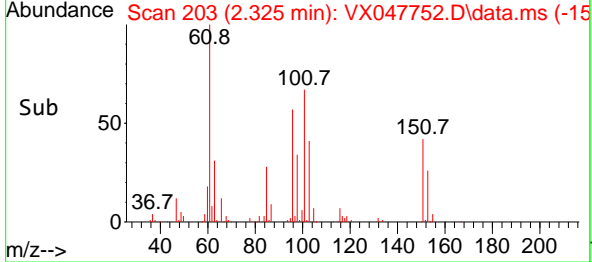
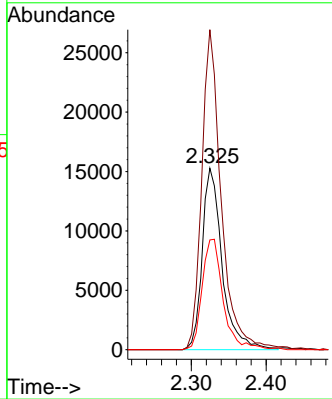


#12  
 1,1-Dichloroethene  
 Concen: 18.405 ug/l  
 RT: 2.325 min Scan# 20  
 Delta R.T. -0.000 min  
 Lab File: VX047752.D  
 Acq: 24 Sep 2025 05:34

Instrument : MSVOA\_X  
 ClientSampleId : TT180D2-20250915

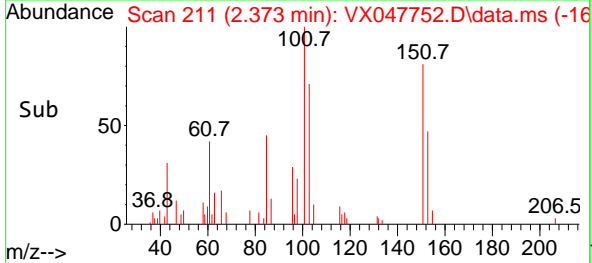
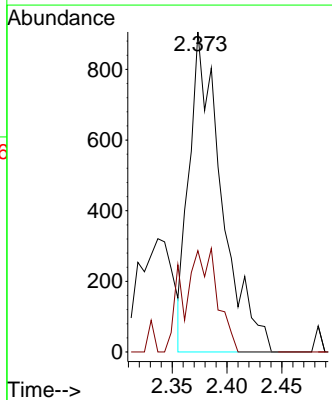
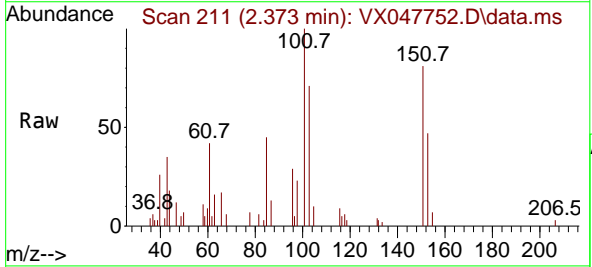


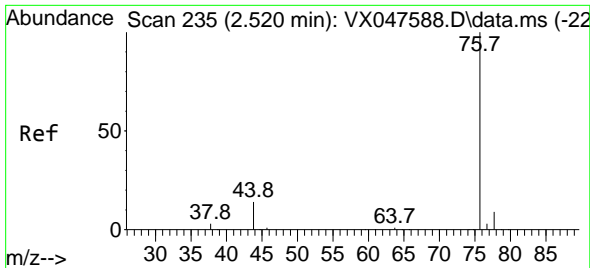
Tgt Ion: 96 Resp: 28319  
 Ion Ratio Lower Upper  
 96 100  
 61 176.3 131.0 196.6  
 98 60.4 47.7 71.5



#16  
 Acetone  
 Concen: 2.075 ug/l  
 RT: 2.373 min Scan# 211  
 Delta R.T. -0.000 min  
 Lab File: VX047752.D  
 Acq: 24 Sep 2025 05:34

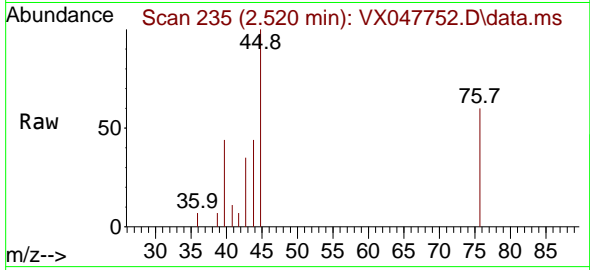
Tgt Ion: 43 Resp: 1860  
 Ion Ratio Lower Upper  
 43 100  
 58 55.2 23.4 35.0#



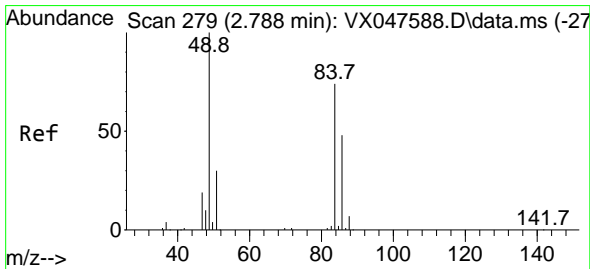
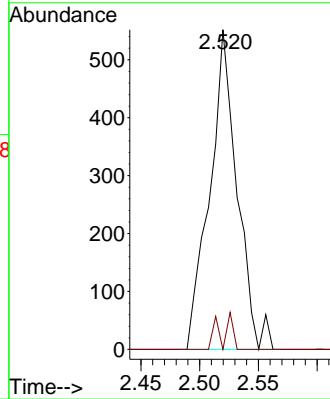
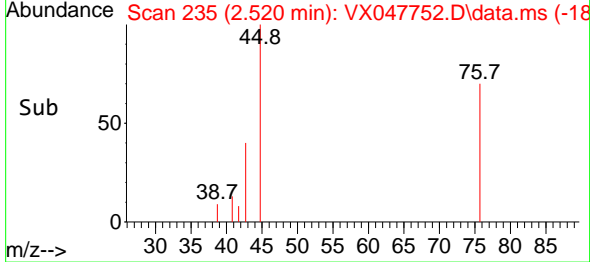


#17  
 Carbon Disulfide  
 Concen: 0.212 ug/l  
 RT: 2.520 min Scan# 21  
 Delta R.T. -0.000 min  
 Lab File: VX047752.D  
 Acq: 24 Sep 2025 05:34

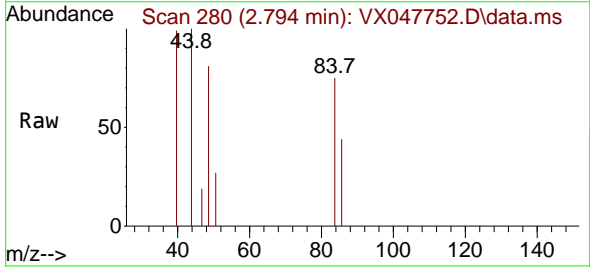
Instrument :  
 MSVOA\_X  
 ClientSampleId :  
 TT180D2-20250915



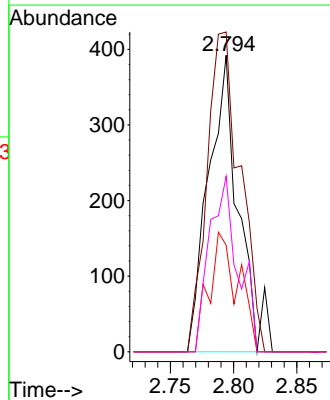
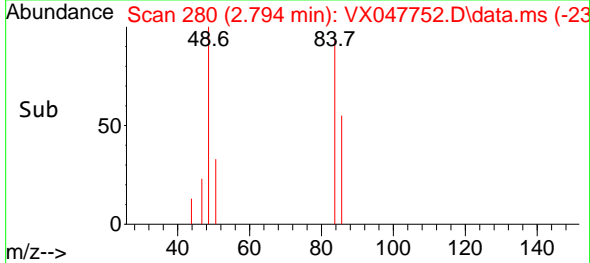
Tgt Ion: 76 Resp: 893  
 Ion Ratio Lower Upper  
 76 100  
 78 0.0 6.8 10.2#

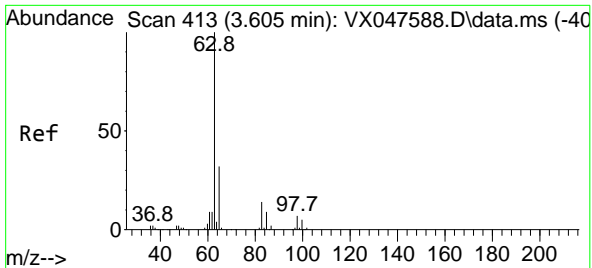


#20  
 Methylene Chloride  
 Concen: 0.343 ug/l  
 RT: 2.794 min Scan# 280  
 Delta R.T. 0.006 min  
 Lab File: VX047752.D  
 Acq: 24 Sep 2025 05:34



Tgt Ion: 84 Resp: 651  
 Ion Ratio Lower Upper  
 84 100  
 49 107.9 108.6 162.8#  
 51 36.0 32.6 48.8  
 86 59.2 52.0 78.0

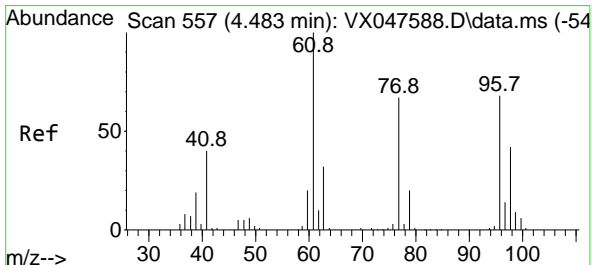
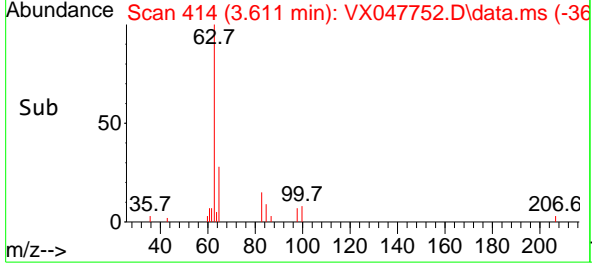
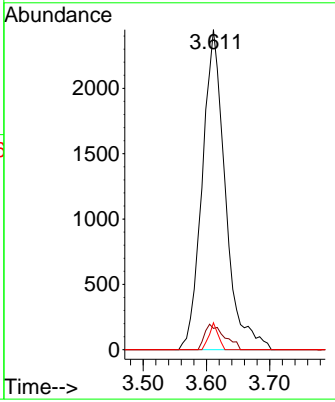
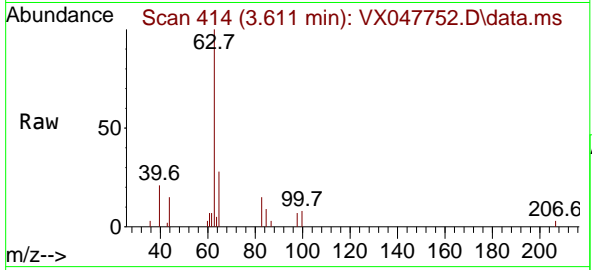




#24  
 1,1-Dichloroethane  
 Concen: 1.906 ug/l  
 RT: 3.611 min Scan# 411  
 Delta R.T. 0.006 min  
 Lab File: VX047752.D  
 Acq: 24 Sep 2025 05:34

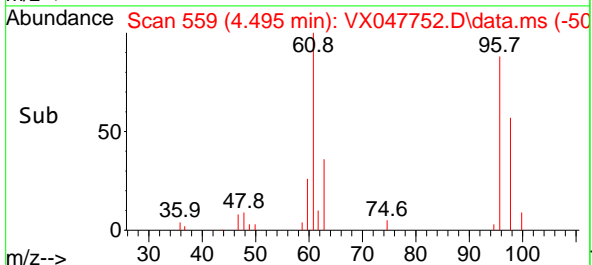
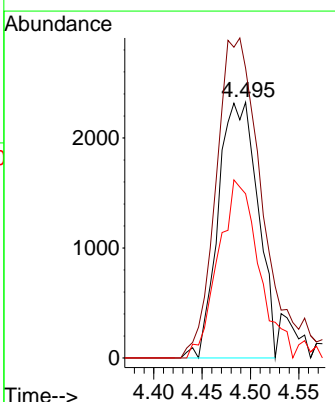
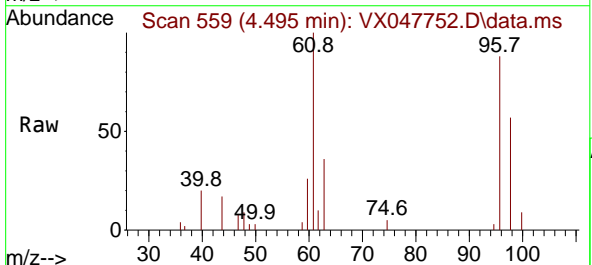
Instrument : MSVOA\_X  
 ClientSampleId : TT180D2-20250915

Tgt Ion	Resp	Lower	Upper
63	100		
98	6.7	3.8	11.2
100	8.4	2.3	6.9

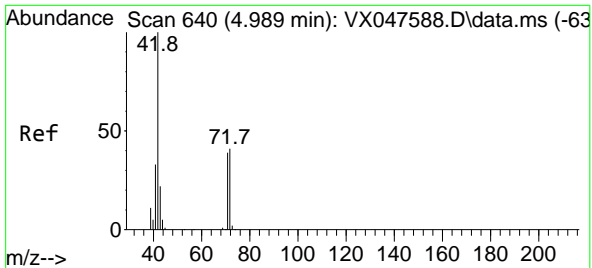


#27  
 cis-1,2-Dichloroethene  
 Concen: 3.256 ug/l  
 RT: 4.495 min Scan# 559  
 Delta R.T. 0.012 min  
 Lab File: VX047752.D  
 Acq: 24 Sep 2025 05:34

Tgt Ion	Resp	Lower	Upper
96	100		
61	149.2	0.0	303.2
98	71.2	0.0	127.8



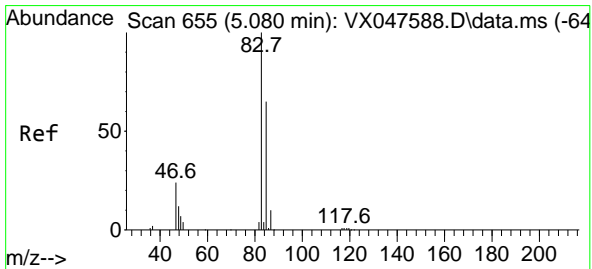
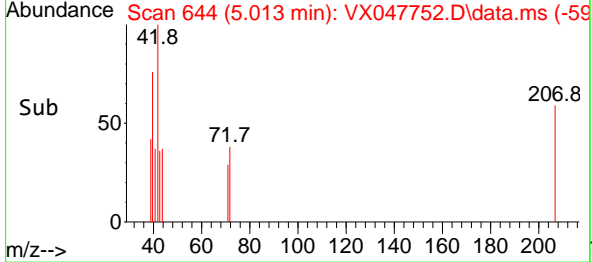
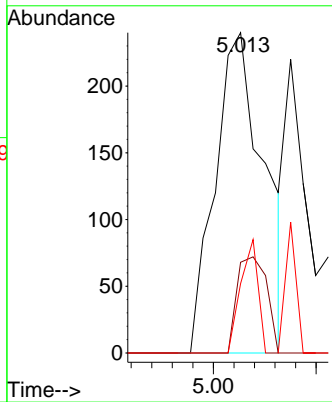
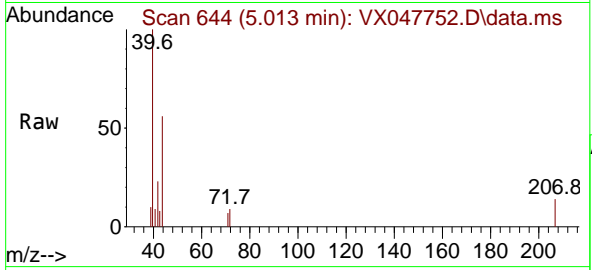




#29  
 Tetrahydrofuran  
 Concen: 0.590 ug/l  
 RT: 5.013 min Scan# 64  
 Delta R.T. 0.024 min  
 Lab File: VX047752.D  
 Acq: 24 Sep 2025 05:34

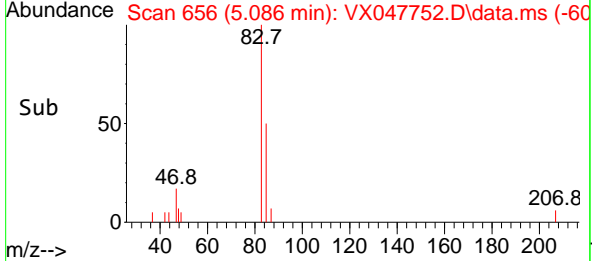
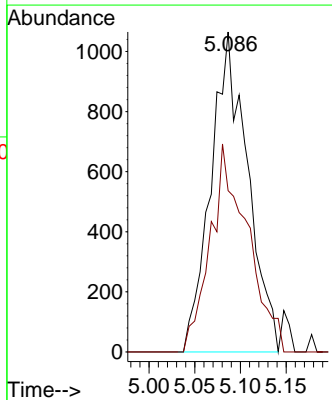
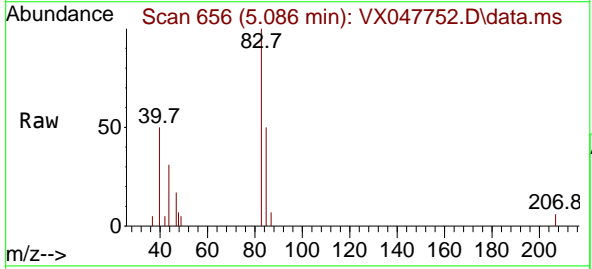
Instrument : MSVOA\_X  
 ClientSampleId : TT180D2-20250915

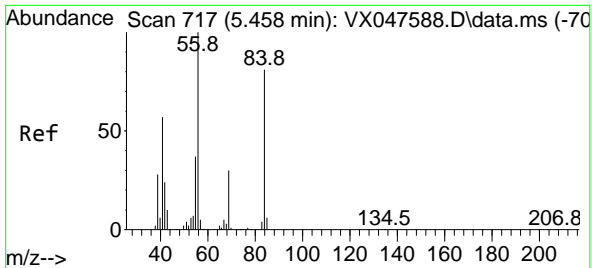
Tgt Ion	Resp	Lower	Upper
42	100		
72	18.1	34.2	51.2#
71	12.6	31.9	47.9#



#30  
 Chloroform  
 Concen: 0.900 ug/l  
 RT: 5.086 min Scan# 656  
 Delta R.T. 0.006 min  
 Lab File: VX047752.D  
 Acq: 24 Sep 2025 05:34

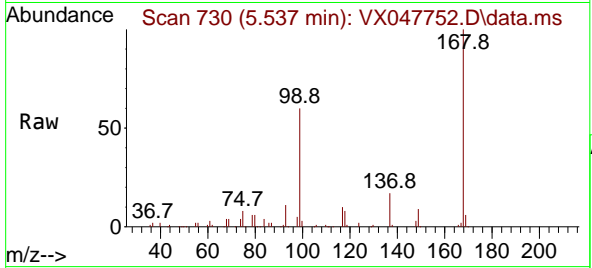
Tgt Ion	Resp	Lower	Upper
83	100		
85	50.4	51.8	77.6#



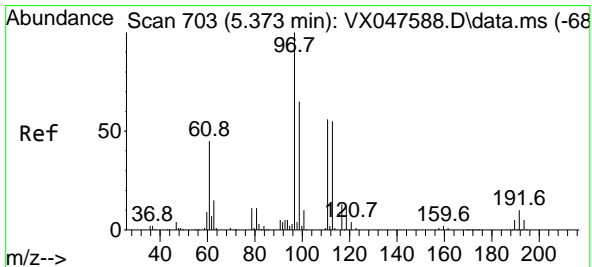
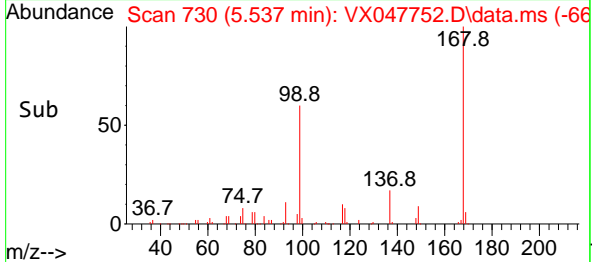
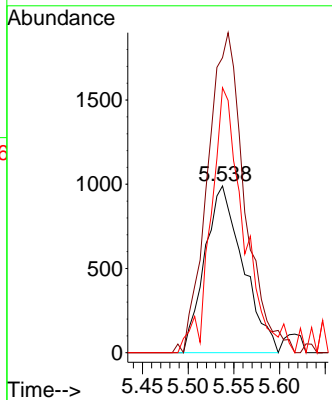


#31  
 Cyclohexane  
 Concen: 1.057 ug/l  
 RT: 5.537 min Scan# 717  
 Delta R.T. 0.079 min  
 Lab File: VX047752.D  
 Acq: 24 Sep 2025 05:34

Instrument : MSVOA\_X  
 ClientSampleId : TT180D2-20250915

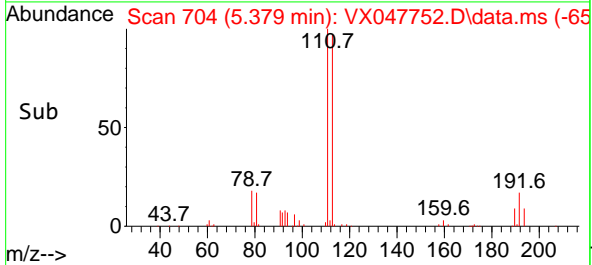
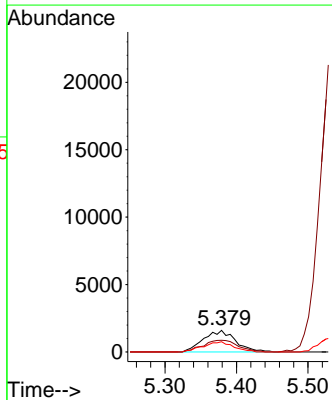
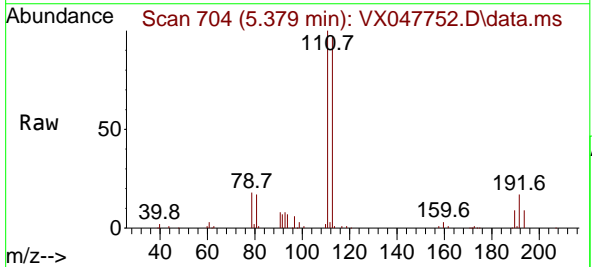


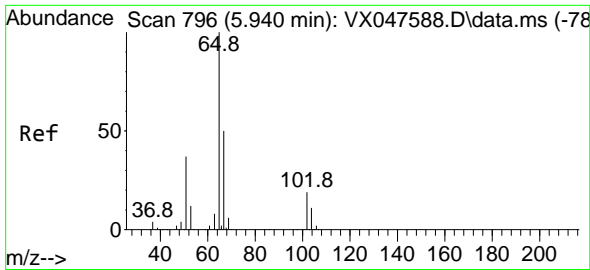
Tgt Ion	Resp	Lower	Upper
56	2878		
56	100		
69	171.8	23.8	35.8#
84	158.9	64.6	97.0#



#32  
 1,1,1-Trichloroethane  
 Concen: 1.775 ug/l  
 RT: 5.379 min Scan# 704  
 Delta R.T. 0.006 min  
 Lab File: VX047752.D  
 Acq: 24 Sep 2025 05:34

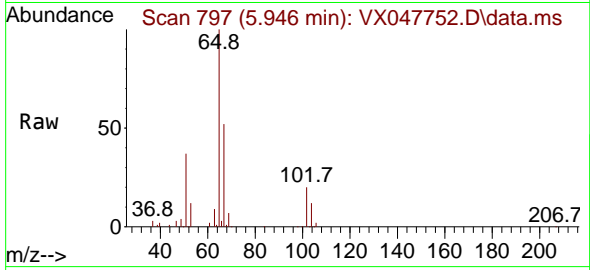
Tgt Ion	Resp	Lower	Upper
97	4976		
97	100		
99	59.2	50.6	76.0
61	44.2	35.8	53.8



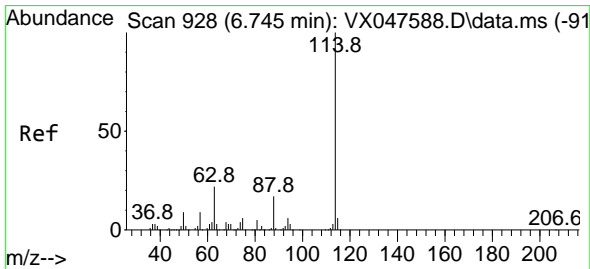
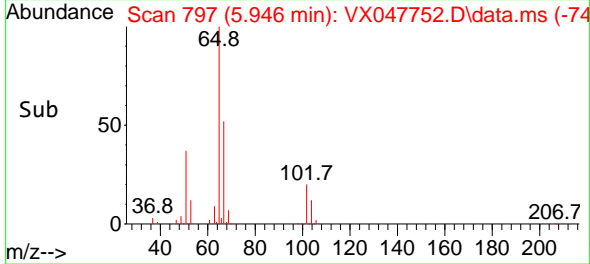
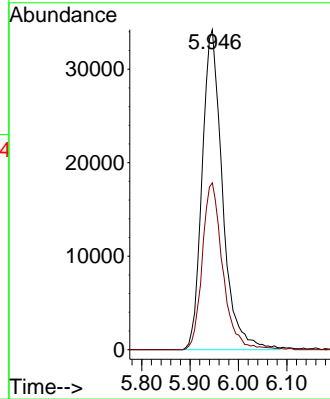


#33  
 1,2-Dichloroethane-d4  
 Concen: 48.647 ug/l  
 RT: 5.946 min Scan# 797  
 Delta R.T. 0.006 min  
 Lab File: VX047752.D  
 Acq: 24 Sep 2025 05:34

Instrument : MSVOA\_X  
 ClientSampleId : TT180D2-20250915

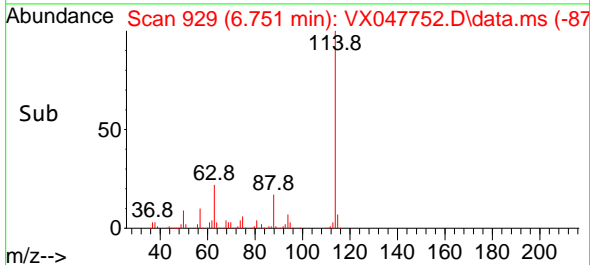
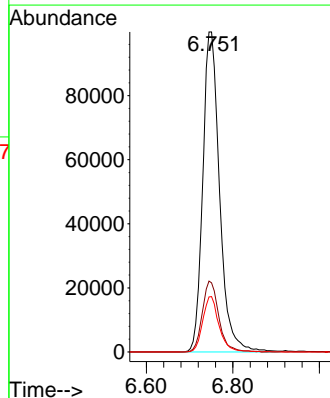
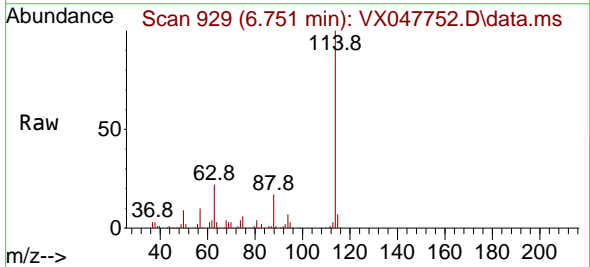


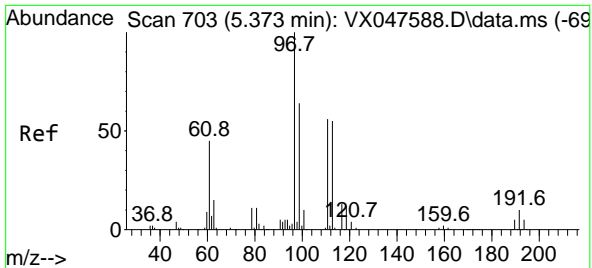
Tgt Ion: 65 Resp: 100283  
 Ion Ratio Lower Upper  
 65 100  
 67 52.4 0.0 103.0



#34  
 1,4-Difluorobenzene  
 Concen: 50.000 ug/l  
 RT: 6.751 min Scan# 929  
 Delta R.T. 0.006 min  
 Lab File: VX047752.D  
 Acq: 24 Sep 2025 05:34

Tgt Ion: 114 Resp: 269594  
 Ion Ratio Lower Upper  
 114 100  
 63 21.6 0.0 44.0  
 88 17.3 0.0 34.2

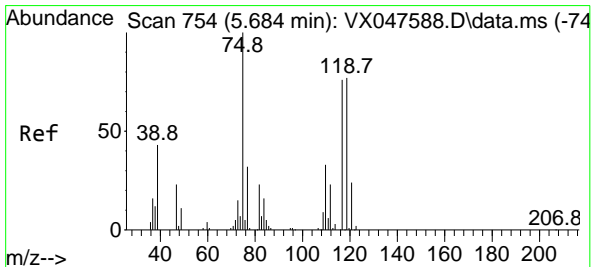
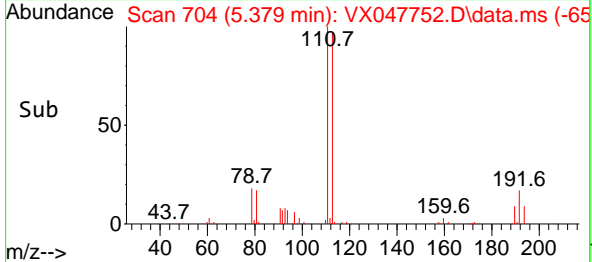
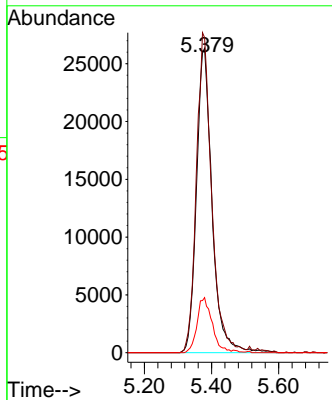
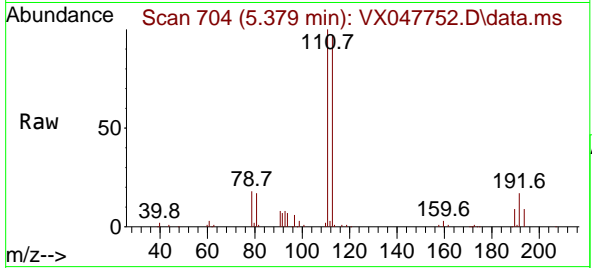




#35  
 Dibromofluoromethane  
 Concen: 46.931 ug/l  
 RT: 5.379 min Scan# 703  
 Delta R.T. 0.006 min  
 Lab File: VX047752.D  
 Acq: 24 Sep 2025 05:34

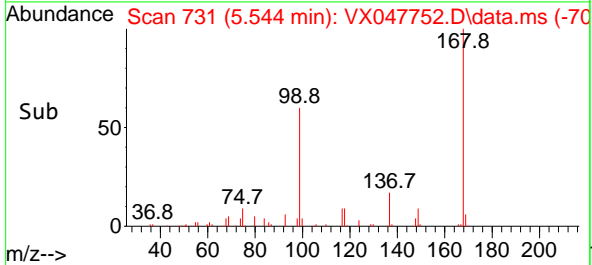
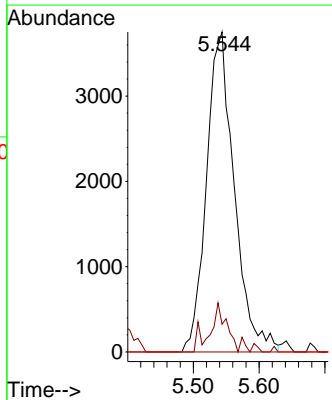
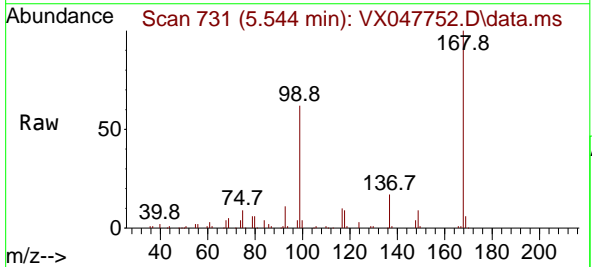
Instrument : MSVOA\_X  
 ClientSampleId : TT180D2-20250915

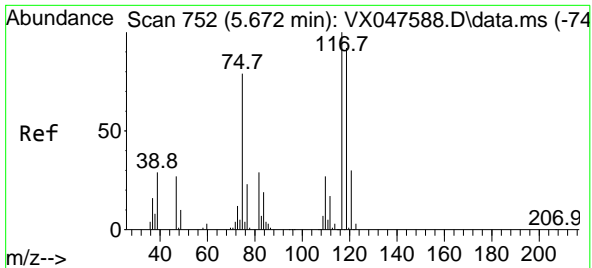
Tgt Ion:113 Resp: 84854  
 Ion Ratio Lower Upper  
 113 100  
 111 103.2 80.9 121.3  
 192 17.5 14.2 21.4



#36  
 1,1-Dichloropropene  
 Concen: 4.178 ug/l  
 RT: 5.544 min Scan# 731  
 Delta R.T. -0.140 min  
 Lab File: VX047752.D  
 Acq: 24 Sep 2025 05:34

Tgt Ion: 75 Resp: 11037  
 Ion Ratio Lower Upper  
 75 100  
 110 7.1 16.7 50.1#  
 77 0.0 24.3 36.5#



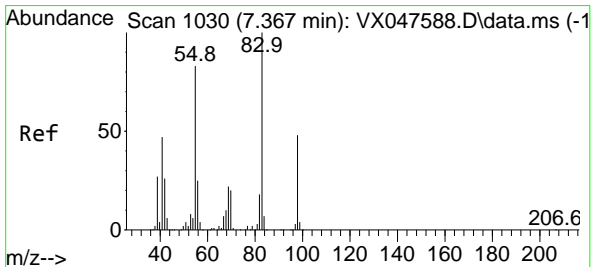
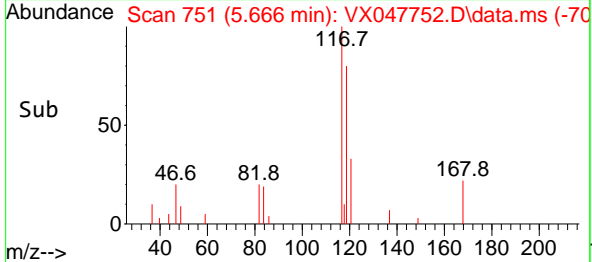
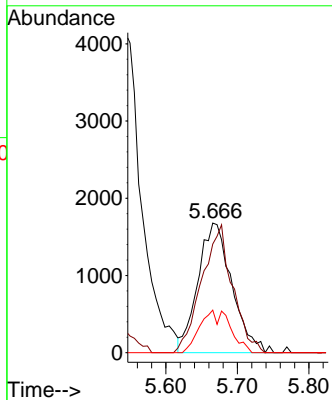
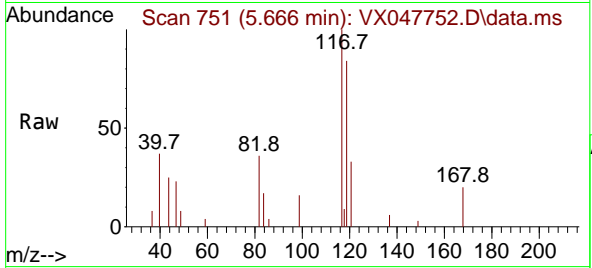


#38  
 Carbon Tetrachloride  
 Concen: 1.927 ug/l  
 RT: 5.666 min Scan# 711  
 Delta R.T. -0.006 min  
 Lab File: VX047752.D  
 Acq: 24 Sep 2025 05:34

Instrument : MSVOA\_X  
 ClientSampleId : TT180D2-20250915

Tgt Ion:117 Resp: 5532

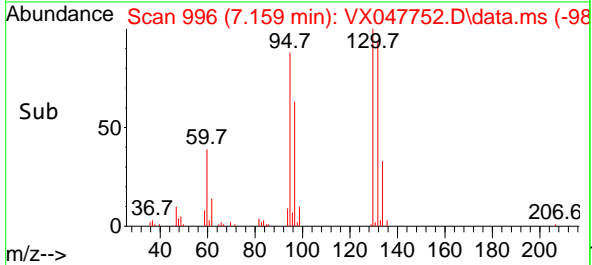
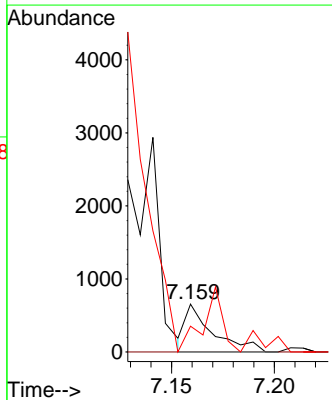
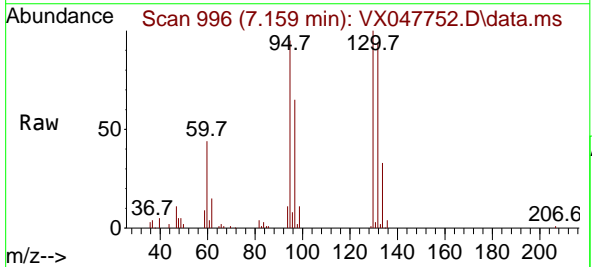
Ion	Ratio	Lower	Upper
117	100		
119	83.8	73.4	110.2
121	32.9	23.8	35.6

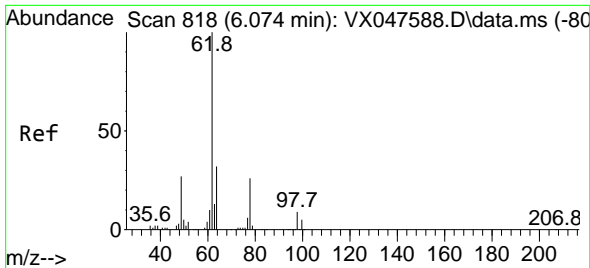


#39  
 Methylcyclohexane  
 Concen: 0.202 ug/l  
 RT: 7.159 min Scan# 996  
 Delta R.T. -0.207 min  
 Lab File: VX047752.D  
 Acq: 24 Sep 2025 05:34

Tgt Ion: 83 Resp: 606

Ion	Ratio	Lower	Upper
83	100		
55	0.0	66.4	99.6#
98	258.4	38.1	57.1#

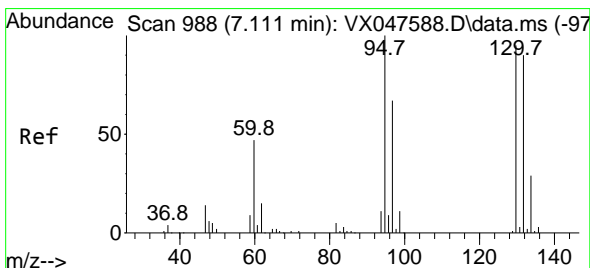
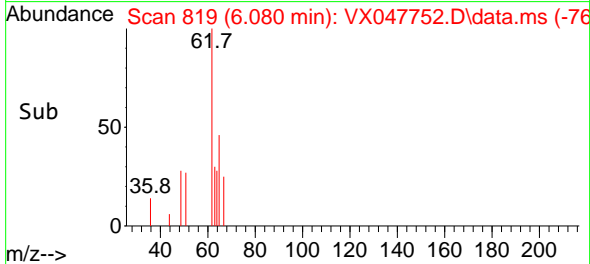
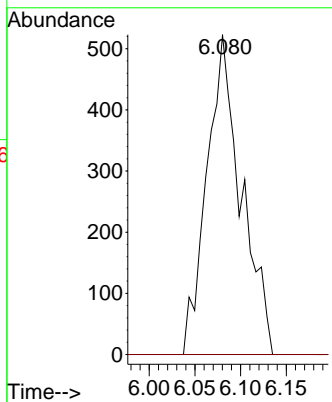
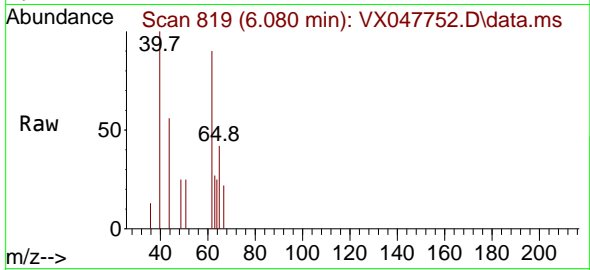




#42  
 1,2-Dichloroethane  
 Concen: 0.448 ug/l  
 RT: 6.080 min Scan# 819  
 Delta R.T. 0.006 min  
 Lab File: VX047752.D  
 Acq: 24 Sep 2025 05:34

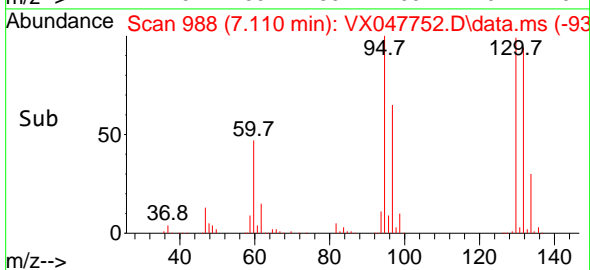
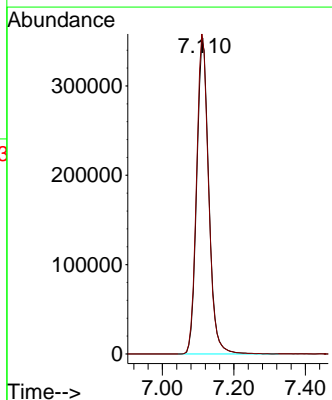
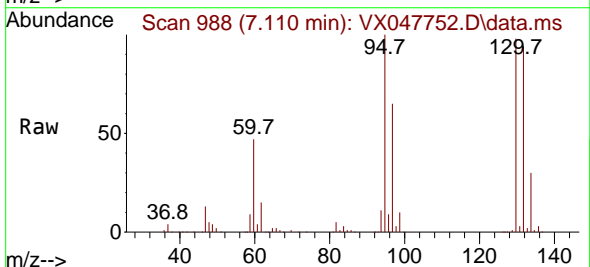
Instrument : MSVOA\_X  
 ClientSampleId : TT180D2-20250915

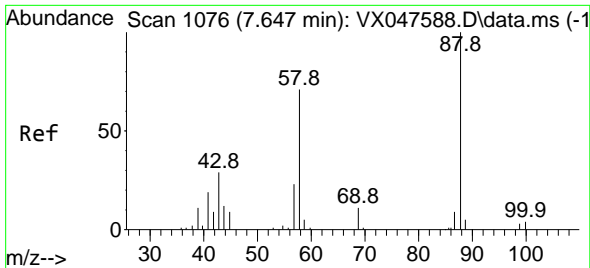
Tgt Ion: 62 Resp: 1368  
 Ion Ratio Lower Upper  
 62 100  
 98 0.0 0.0 17.0



#44  
 Trichloroethene  
 Concen: 426.393 ug/l  
 RT: 7.110 min Scan# 988  
 Delta R.T. -0.000 min  
 Lab File: VX047752.D  
 Acq: 24 Sep 2025 05:34

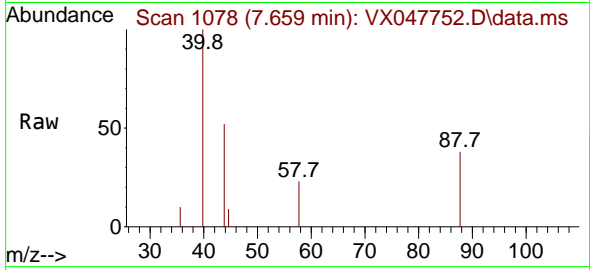
Tgt Ion:130 Resp: 827201  
 Ion Ratio Lower Upper  
 130 100  
 95 101.6 0.0 210.8



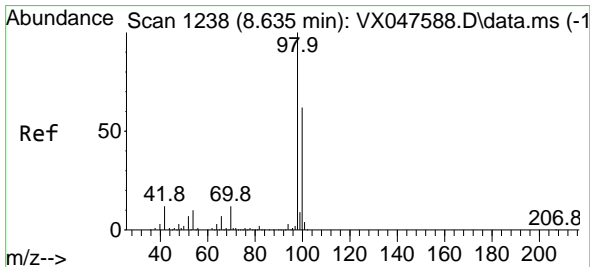
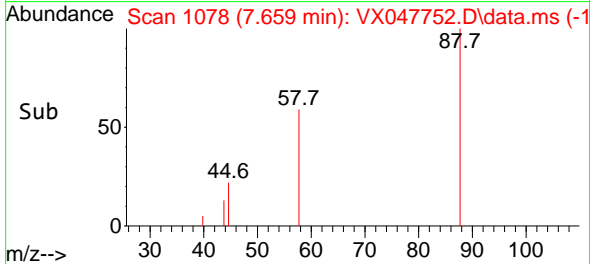
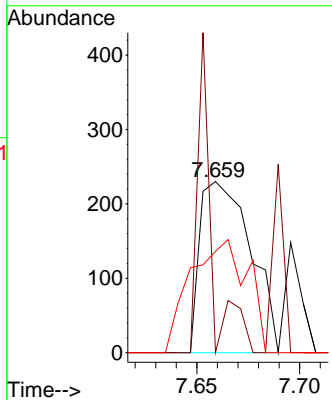


#49  
 1,4-Dioxane  
 Concen: 16.956 ug/l  
 RT: 7.659 min Scan# 1078  
 Delta R.T. 0.012 min  
 Lab File: VX047752.D  
 Acq: 24 Sep 2025 05:34

Instrument : MSVOA\_X  
 ClientSampleId : TT180D2-20250915

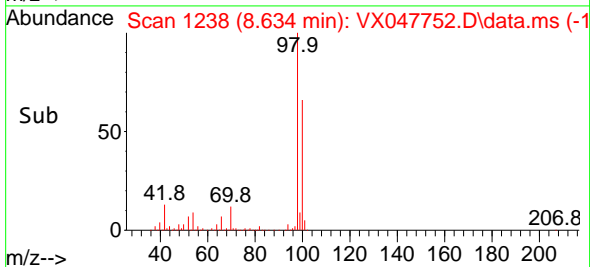
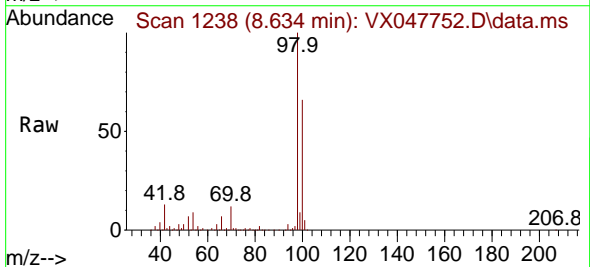
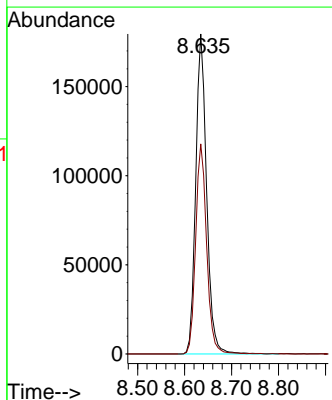


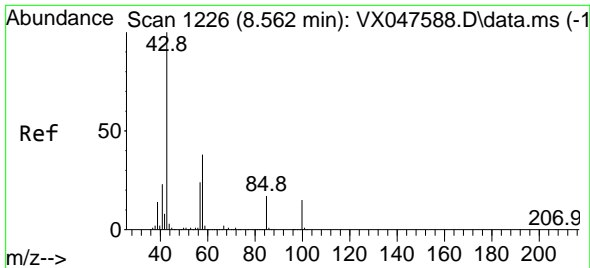
Tgt Ion: 88 Resp: 396  
 Ion Ratio Lower Upper  
 88 100  
 43 51.8 30.2 45.2#  
 58 74.0 59.5 89.3



#50  
 Toluene-d8  
 Concen: 46.432 ug/l  
 RT: 8.634 min Scan# 1238  
 Delta R.T. -0.000 min  
 Lab File: VX047752.D  
 Acq: 24 Sep 2025 05:34

Tgt Ion: 98 Resp: 290487  
 Ion Ratio Lower Upper  
 98 100  
 100 66.3 53.0 79.4

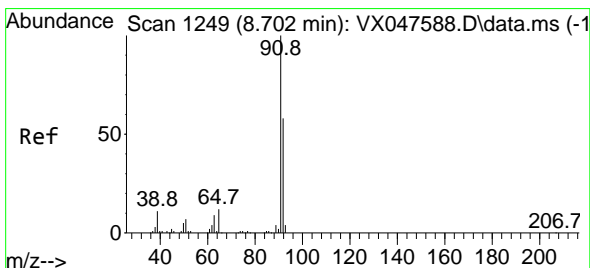
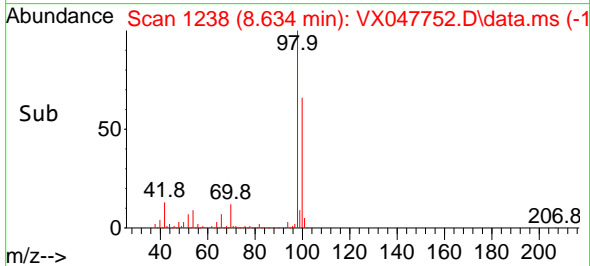
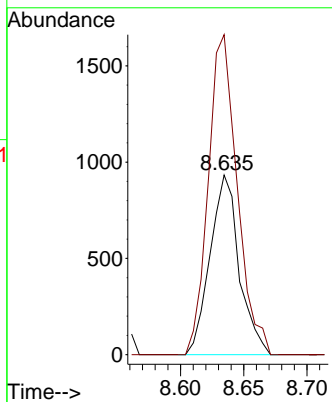
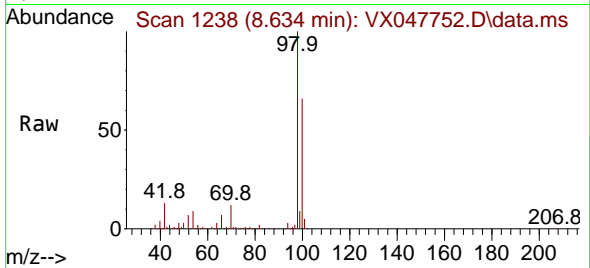




#51  
 4-Methyl-2-Pentanone  
 Concen: 0.580 ug/l  
 RT: 8.634 min Scan# 11  
 Delta R.T. 0.073 min  
 Lab File: VX047752.D  
 Acq: 24 Sep 2025 05:34

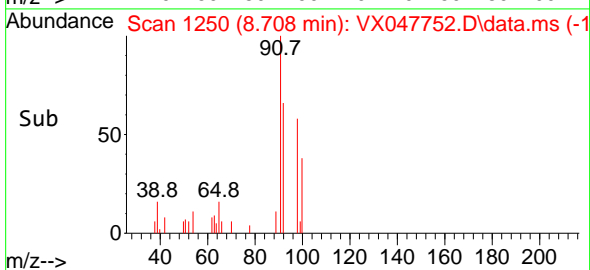
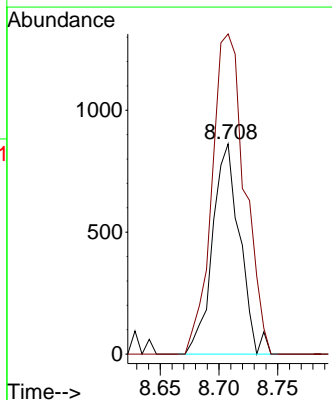
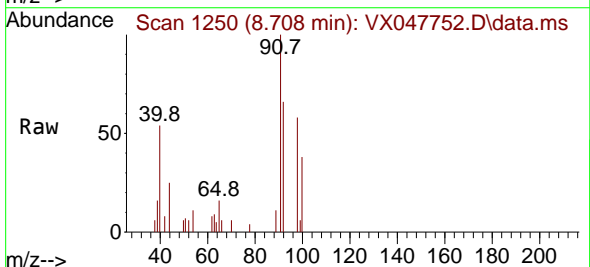
Instrument :  
 MSVOA\_X  
 ClientSampleId :  
 TT180D2-20250915

Tgt Ion: 43 Resp: 1491  
 Ion Ratio Lower Upper  
 43 100  
 58 177.4 30.3 45.5#

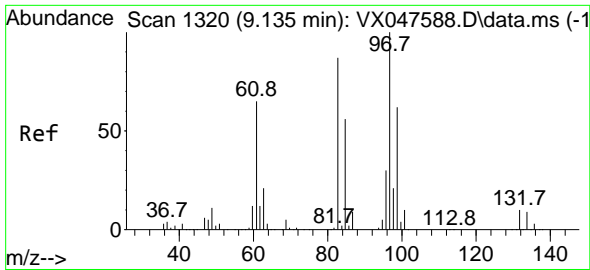


#52  
 Toluene  
 Concen: 0.282 ug/l  
 RT: 8.708 min Scan# 1250  
 Delta R.T. 0.006 min  
 Lab File: VX047752.D  
 Acq: 24 Sep 2025 05:34

Tgt Ion: 92 Resp: 1394  
 Ion Ratio Lower Upper  
 92 100  
 91 184.0 137.1 205.7

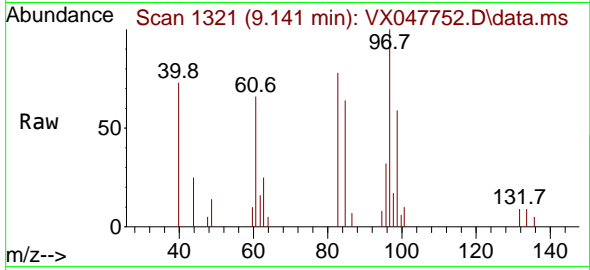






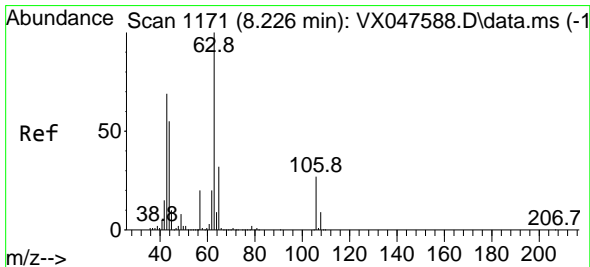
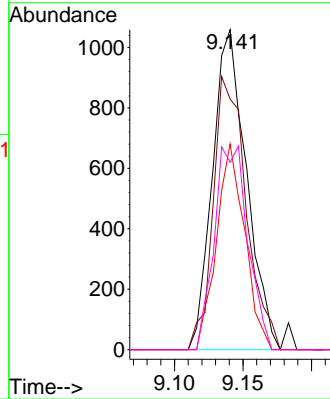
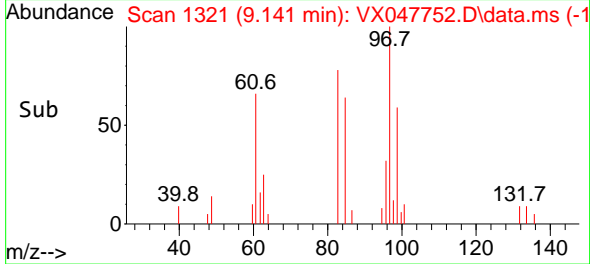
#55  
 1,1,2-Trichloroethane  
 Concen: 0.957 ug/l  
 RT: 9.141 min Scan# 1161  
 Delta R.T. 0.006 min  
 Lab File: VX047752.D  
 Acq: 24 Sep 2025 05:34

Instrument : MSVOA\_X  
 ClientSampleId : TT180D2-20250915

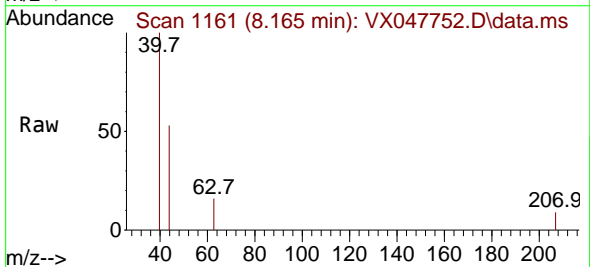


Tgt Ion: 97 Resp: 1824

Ion	Ratio	Lower	Upper
97	100		
83	78.3	69.6	104.4
85	64.3	45.0	67.6
99	58.5	49.6	74.4

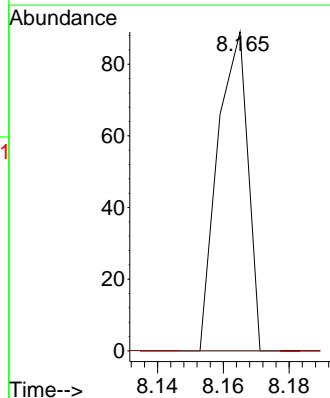
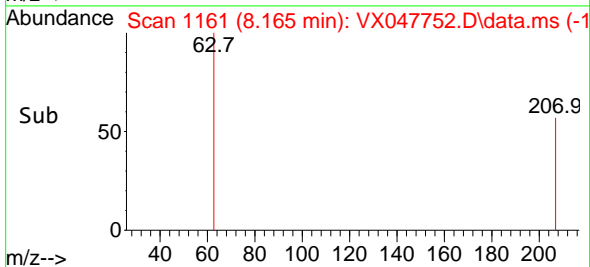


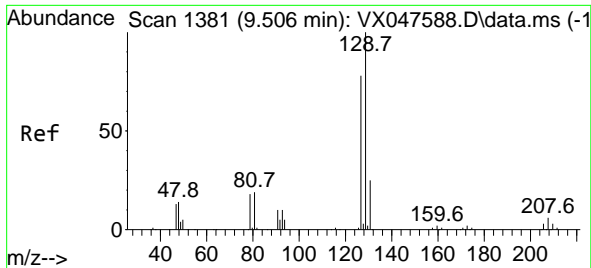
#58  
 2-Chloroethyl Vinyl ether  
 Concen: 7.932 ug/l  
 RT: 8.165 min Scan# 1161  
 Delta R.T. -0.061 min  
 Lab File: VX047752.D  
 Acq: 24 Sep 2025 05:34



Tgt Ion: 63 Resp: 57

Ion	Ratio	Lower	Upper
63	100		
106	0.0	21.9	32.9#

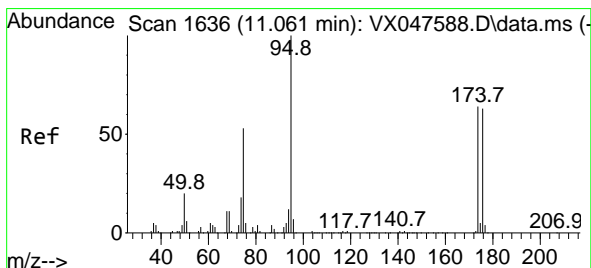
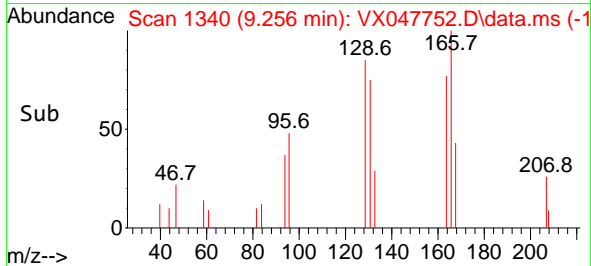
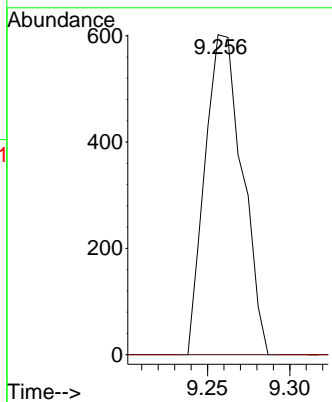
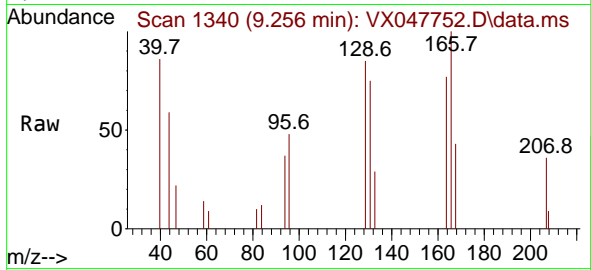




#60  
 Dibromochloromethane  
 Concen: 0.432 ug/l  
 RT: 9.256 min Scan# 11  
 Delta R.T. -0.250 min  
 Lab File: VX047752.D  
 Acq: 24 Sep 2025 05:34

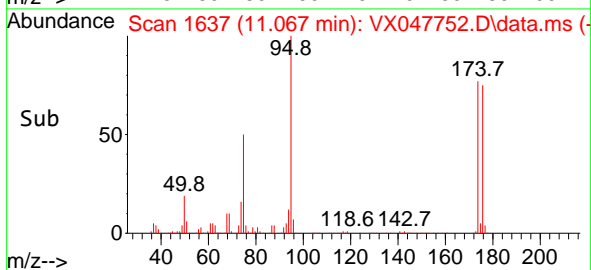
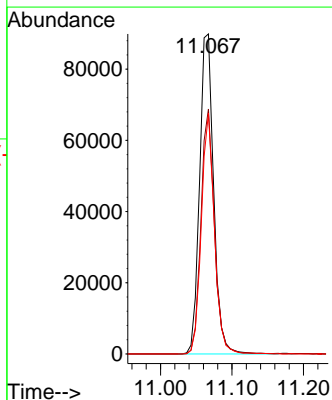
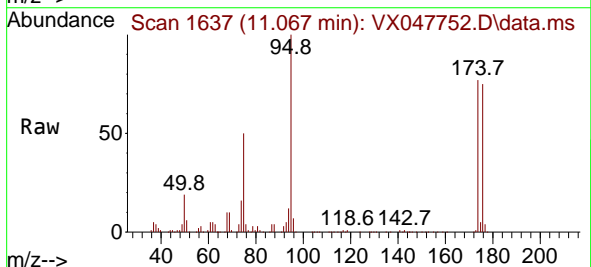
Instrument :  
 MSVOA\_X  
 ClientSampleId :  
 TT180D2-20250915

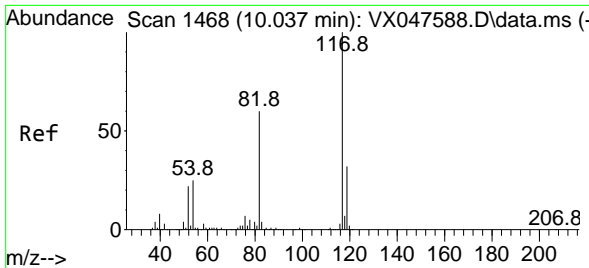
Tgt Ion:129 Resp: 949  
 Ion Ratio Lower Upper  
 129 100  
 127 0.0 38.4 115.2#



#62  
 4-Bromofluorobenzene  
 Concen: 51.762 ug/l  
 RT: 11.067 min Scan# 1637  
 Delta R.T. 0.006 min  
 Lab File: VX047752.D  
 Acq: 24 Sep 2025 05:34

Tgt Ion: 95 Resp: 122901  
 Ion Ratio Lower Upper  
 95 100  
 174 73.2 0.0 141.6  
 176 70.1 0.0 138.4



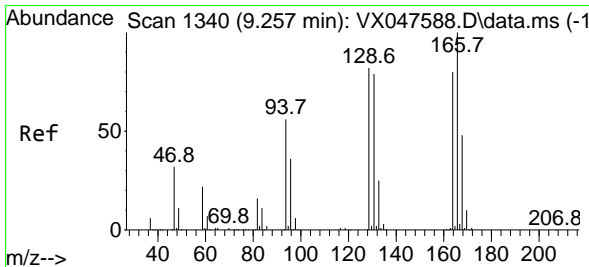
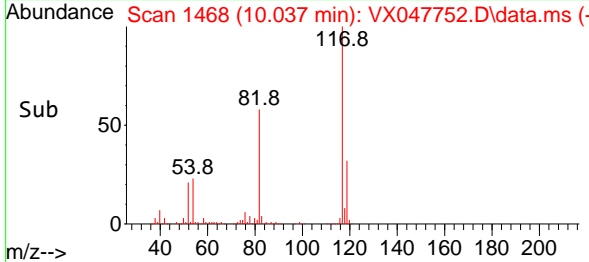
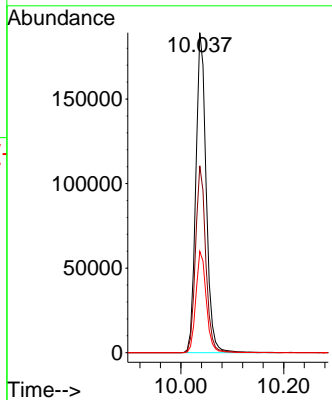
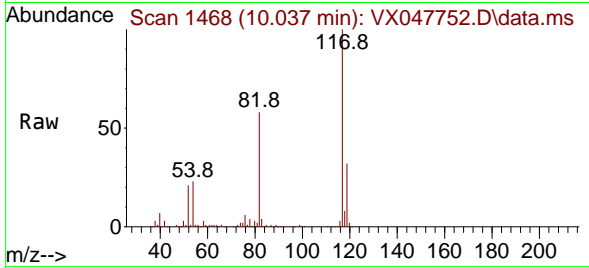


#63  
 Chlorobenzene-d5  
 Concen: 50.000 ug/l  
 RT: 10.037 min Scan# 1468  
 Delta R.T. -0.000 min  
 Lab File: VX047752.D  
 Acq: 24 Sep 2025 05:34

Instrument : MSVOA\_X  
 ClientSampleId : TT180D2-20250915

Tgt Ion:117 Resp: 265477

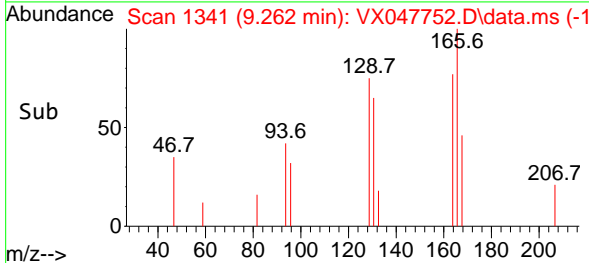
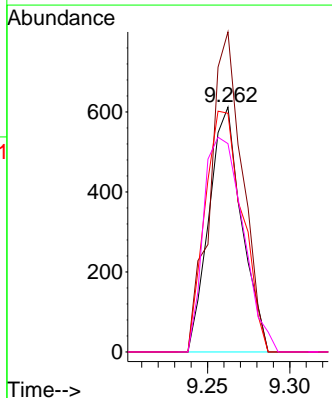
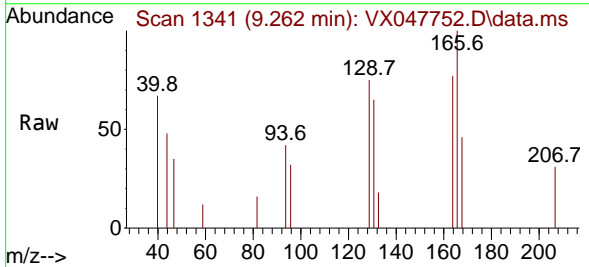
Ion	Ratio	Lower	Upper
117	100		
82	58.4	47.8	71.6
119	31.7	25.2	37.8

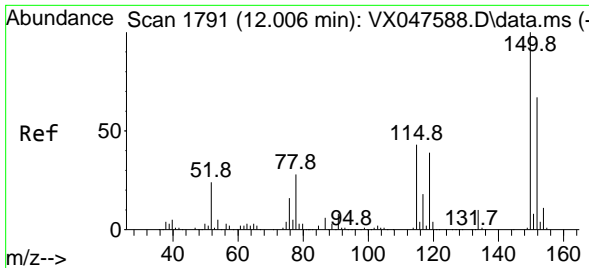


#64  
 Tetrachloroethene  
 Concen: 0.491 ug/l  
 RT: 9.262 min Scan# 1341  
 Delta R.T. 0.006 min  
 Lab File: VX047752.D  
 Acq: 24 Sep 2025 05:34

Tgt Ion:164 Resp: 849

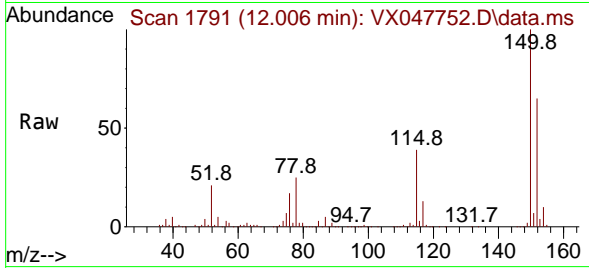
Ion	Ratio	Lower	Upper
164	100		
166	130.7	100.2	150.2
129	97.5	81.8	122.6
131	85.1	78.6	118.0



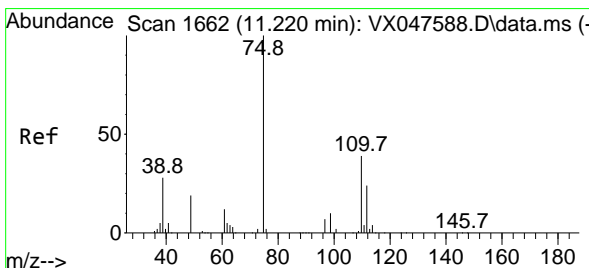
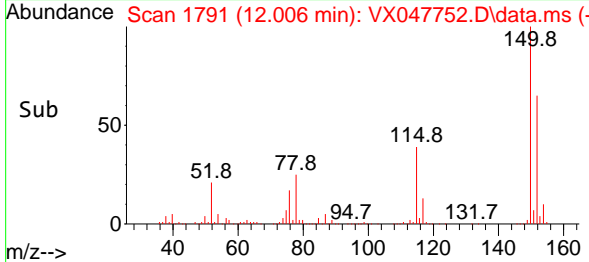
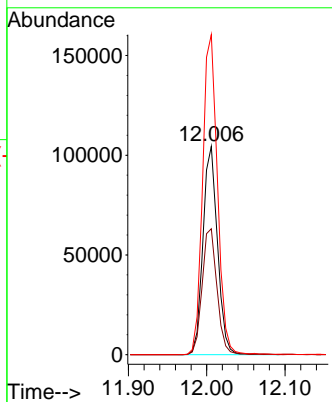


#72  
 1,4-Dichlorobenzene-d4  
 Concen: 50.000 ug/l  
 RT: 12.006 min Scan# 1  
 Delta R.T. -0.000 min  
 Lab File: VX047752.D  
 Acq: 24 Sep 2025 05:34

Instrument :  
 MSVOA\_X  
 ClientSampleId :  
 TT180D2-20250915

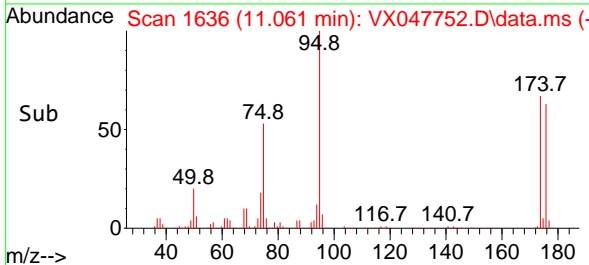
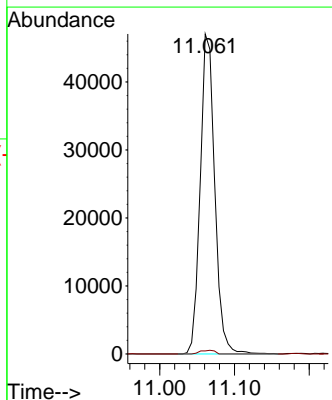
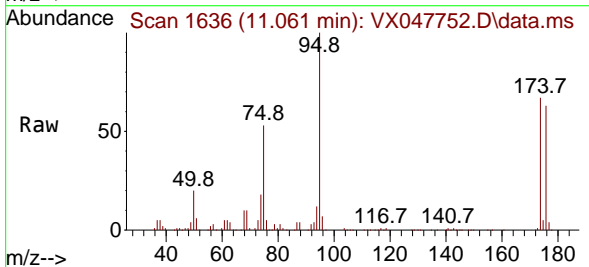


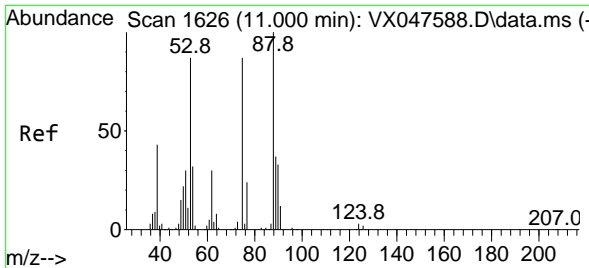
Tgt Ion:152 Resp: 134510  
 Ion Ratio Lower Upper  
 152 100  
 115 61.8 44.9 134.5  
 150 156.5 0.0 352.0



#76  
 1,2,3-Trichloropropane  
 Concen: 23.357 ug/l  
 RT: 11.061 min Scan# 1636  
 Delta R.T. -0.159 min  
 Lab File: VX047752.D  
 Acq: 24 Sep 2025 05:34

Tgt Ion: 75 Resp: 63611  
 Ion Ratio Lower Upper  
 75 100  
 77 1.2 18.8 56.4#

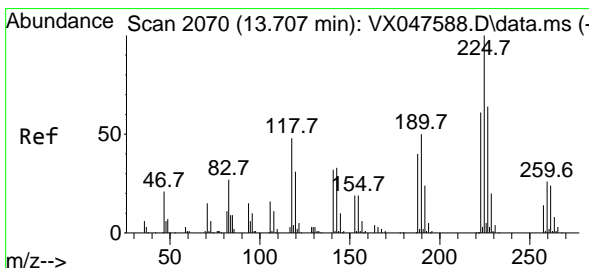
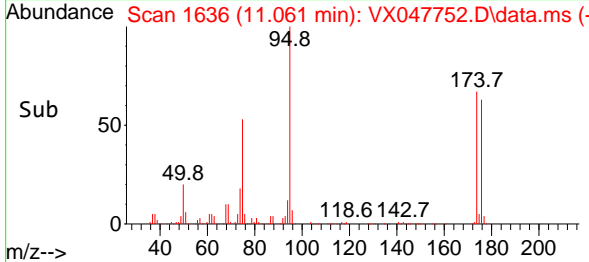
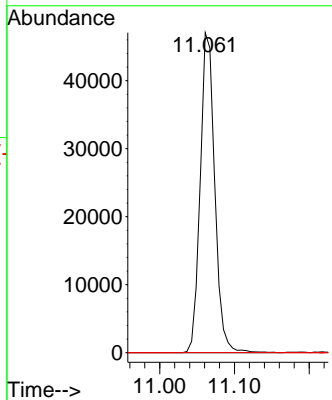
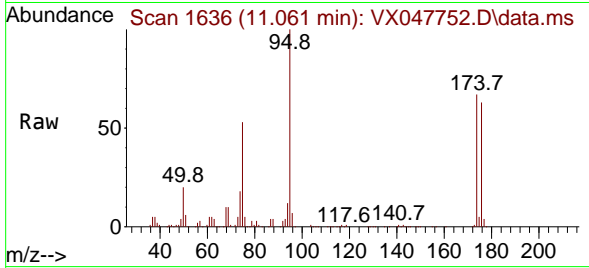




#81  
 trans-1,4-Dichloro-2-butene  
 Concen: 59.564 ug/l  
 RT: 11.061 min Scan# 10  
 Delta R.T. 0.061 min  
 Lab File: VX047752.D  
 Acq: 24 Sep 2025 05:34

Instrument : MSVOA\_X  
 ClientSampleId : TT180D2-20250915

Tgt Ion: 75 Resp: 63611  
 Ion Ratio Lower Upper  
 75 100  
 53 0.0 83.4 125.2#  
 89 0.0 36.3 54.5#



#94  
 Hexachlorobutadiene  
 Concen: 0.396 ug/l  
 RT: 13.701 min Scan# 2069  
 Delta R.T. -0.006 min  
 Lab File: VX047752.D  
 Acq: 24 Sep 2025 05:34

Tgt Ion: 225 Resp: 390  
 Ion Ratio Lower Upper  
 225 100  
 223 52.3 31.7 95.1  
 227 63.8 32.0 96.0

