

Data Path : Z:\voasrv\HPCHEM1\MSVOA_X\Data\VX092325\
 Data File : VX047754.D
 Acq On : 24 Sep 2025 06:16
 Operator : JC/MD
 Sample : Q3127-09
 Misc : 5.0mL/MSVOA_X/WATER
 ALS Vial : 43 Sample Multiplier: 1

Instrument :
 MSVOA_X
 ClientSampleId :
 TT101D2-20250915

Quant Time: Sep 24 07:10:55 2025
 Quant Method : Z:\voasrv\HPCHEM1\MSVOA_X\Method\82X091625W.M
 Quant Title : SW846 8260
 QLast Update : Wed Sep 17 06:39:58 2025
 Response via : Initial Calibration

Compound	R.T.	QIon	Response	Conc	Units	Dev(Min)

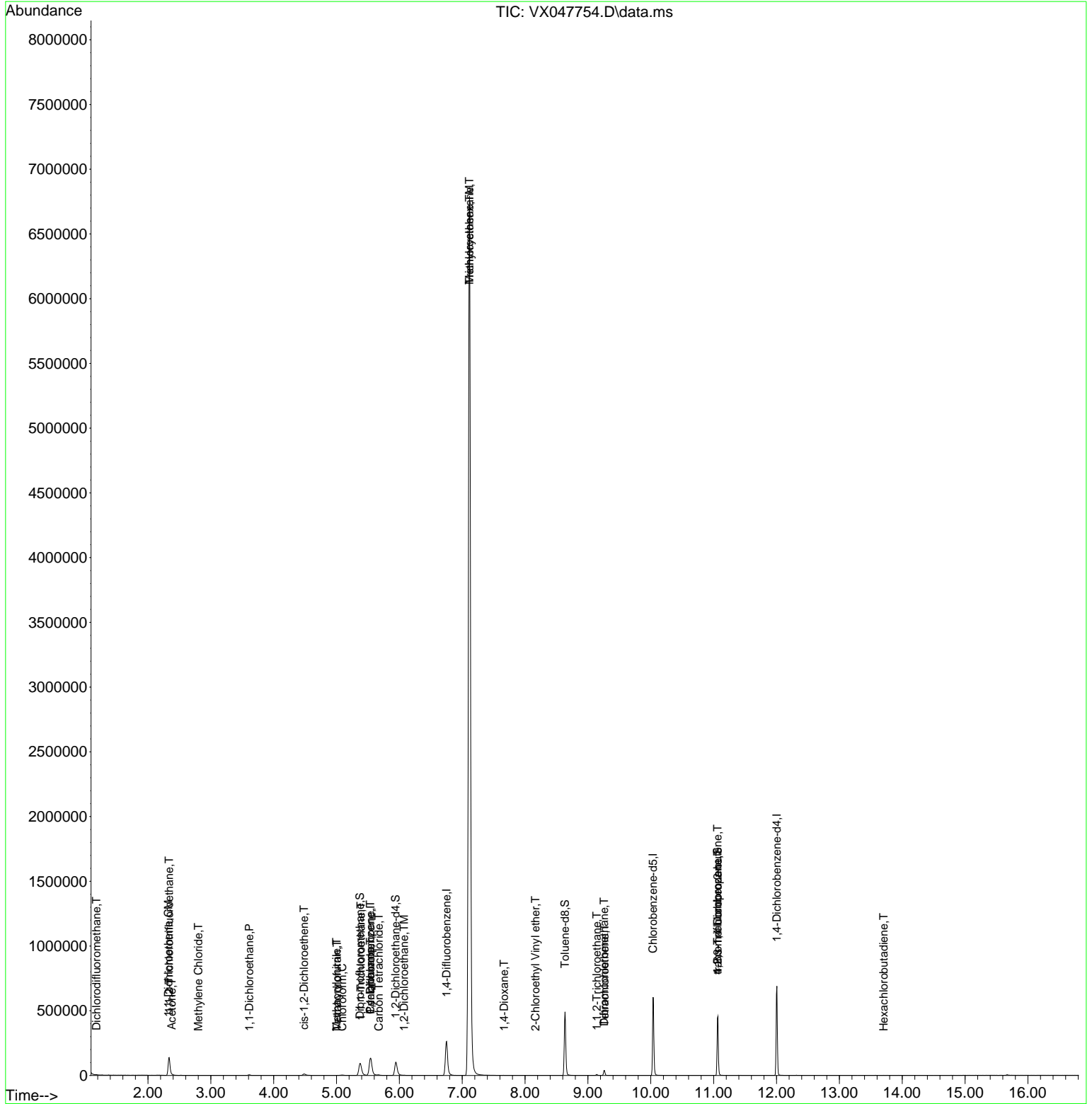
Internal Standards						
1) Pentafluorobenzene	5.544	168	139114	50.000	ug/l	0.00
34) 1,4-Difluorobenzene	6.751	114	287200	50.000	ug/l	0.00
63) Chlorobenzene-d5	10.037	117	275511	50.000	ug/l	0.00
72) 1,4-Dichlorobenzene-d4	12.006	152	144556	50.000	ug/l	0.00
System Monitoring Compounds						
33) 1,2-Dichloroethane-d4	5.940	65	109177	49.304	ug/l	0.00
Spiked Amount	50.000	Range	78 - 117	Recovery	=	98.600%
35) Dibromofluoromethane	5.373	113	91968	47.748	ug/l	0.00
Spiked Amount	50.000	Range	75 - 124	Recovery	=	95.500%
50) Toluene-d8	8.634	98	303571	45.549	ug/l	0.00
Spiked Amount	50.000	Range	92 - 112	Recovery	=	91.100%#
62) 4-Bromofluorobenzene	11.061	95	132220	52.273	ug/l	0.00
Spiked Amount	50.000	Range	83 - 123	Recovery	=	104.540%
Target Compounds						
						Qvalue
2) Dichlorodifluoromethane	1.178	85	594	0.412	ug/l	97
9) 1,1,2-Trichlorotrifluo...	2.337	101	50996	31.693	ug/l	99
12) 1,1-Dichloroethene	2.325	96	16108	9.746	ug/l	94
16) Acetone	2.379	43	1449	1.505	ug/l #	83
20) Methylene Chloride	2.800	84	459	0.225	ug/l #	37
24) 1,1-Dichloroethane	3.611	63	6635	1.889	ug/l	96
27) cis-1,2-Dichloroethene	4.483	96	7692	3.530	ug/l	93
29) Tetrahydrofuran	5.007	42	437	0.605	ug/l #	55
30) Chloroform	5.092	83	4105	1.156	ug/l #	76
31) Cyclohexane	5.537	56	3025	1.034	ug/l #	1
32) 1,1,1-Trichloroethane	5.385	97	926	0.308	ug/l #	34
36) 1,1-Dichloropropene	5.537	75	11614	4.126	ug/l #	51
38) Carbon Tetrachloride	5.672	117	3459	1.131	ug/l	91
39) Methylcyclohexane	7.116	83	33428	10.463	ug/l #	1
41) Methacrylonitrile	5.001	41	400	0.257	ug/l #	30
42) 1,2-Dichloroethane	6.074	62	1173	0.361	ug/l #	76
44) Trichloroethene	7.116	130	2850275	1379.149	ug/l	95
49) 1,4-Dioxane	7.665	88	337	13.545	ug/l #	82
55) 1,1,2-Trichloroethane	9.140	97	2077	1.023	ug/l #	73
58) 2-Chloroethyl Vinyl ether	8.165	63	373	8.138	ug/l #	47
60) Dibromochloromethane	9.256	129	7810	3.338	ug/l #	11
64) Tetrachloroethene	9.262	164	7900	4.399	ug/l	99
76) 1,2,3-Trichloropropane	11.061	75	68006	23.236	ug/l #	40
81) trans-1,4-Dichloro-2-b...	11.061	75	68006	59.254	ug/l #	8
94) Hexachlorobutadiene	13.707	225	222	0.210	ug/l #	60

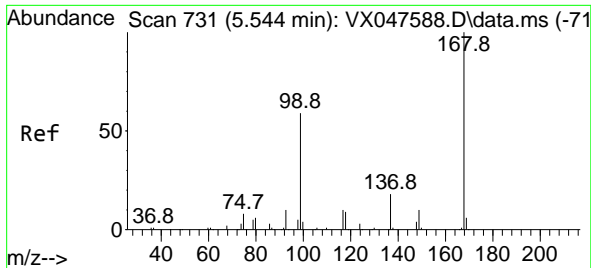
(#) = qualifier out of range (m) = manual integration (+) = signals summed

Data Path : Z:\voasrv\HPCHEM1\MSVOA_X\Data\VX092325\
 Data File : VX047754.D
 Acq On : 24 Sep 2025 06:16
 Operator : JC/MD
 Sample : Q3127-09
 Misc : 5.0mL/MSVOA_X/WATER
 ALS Vial : 43 Sample Multiplier: 1

Instrument :
 MSVOA_X
 ClientSampleId :
 TT101D2-20250915

Quant Time: Sep 24 07:10:55 2025
 Quant Method : Z:\voasrv\HPCHEM1\MSVOA_X\Method\82X091625W.M
 Quant Title : SW846 8260
 QLast Update : Wed Sep 17 06:39:58 2025
 Response via : Initial Calibration

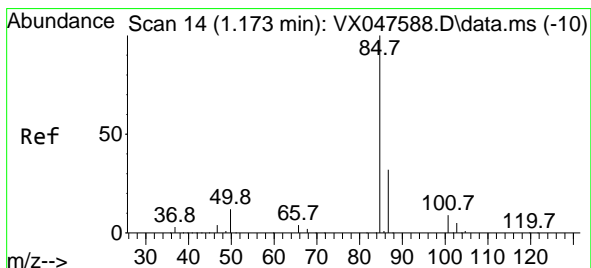
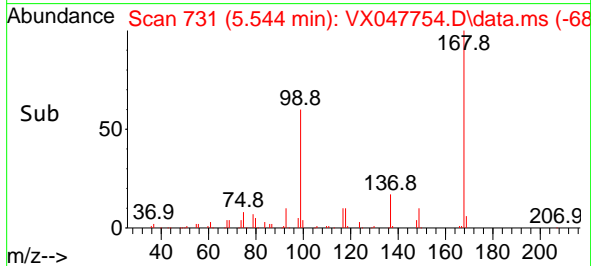
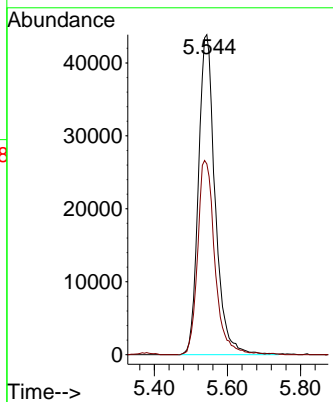
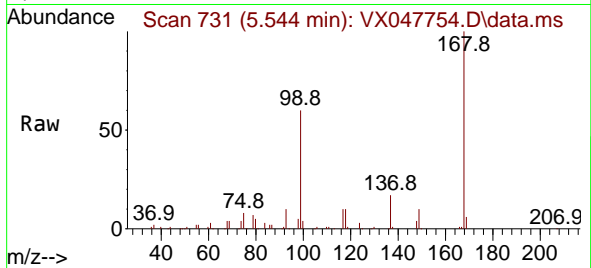




#1
 Pentafluorobenzene
 Concen: 50.000 ug/l
 RT: 5.544 min Scan# 71
 Delta R.T. -0.000 min
 Lab File: VX047754.D
 Acq: 24 Sep 2025 06:16

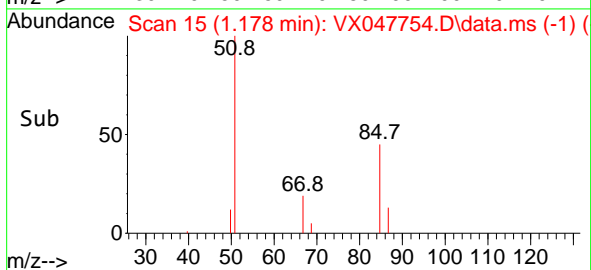
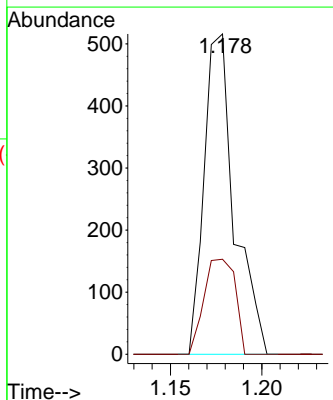
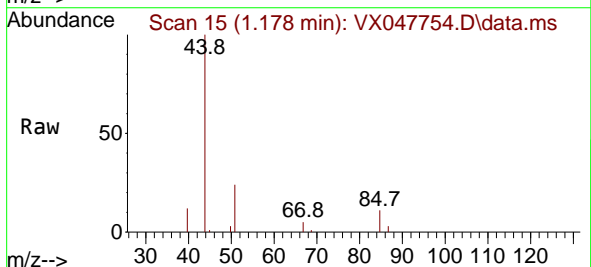
Instrument : MSVOA_X
 ClientSampleId : TT101D2-20250915

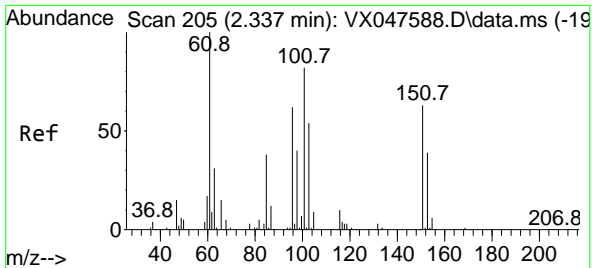
Tgt Ion:168 Resp: 139114
 Ion Ratio Lower Upper
 168 100
 99 59.6 48.8 73.2



#2
 Dichlorodifluoromethane
 Concen: 0.412 ug/l
 RT: 1.178 min Scan# 15
 Delta R.T. 0.006 min
 Lab File: VX047754.D
 Acq: 24 Sep 2025 06:16

Tgt Ion: 85 Resp: 594
 Ion Ratio Lower Upper
 85 100
 87 29.7 15.8 47.3

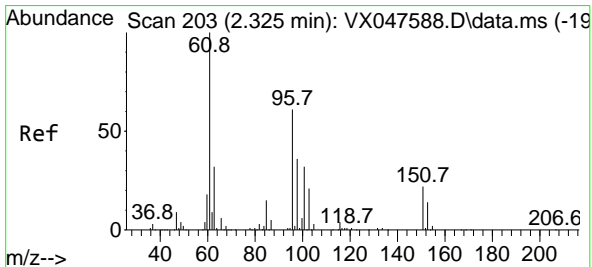
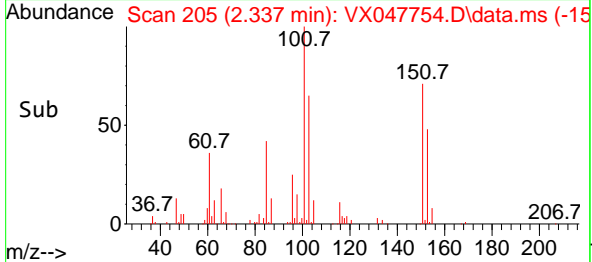
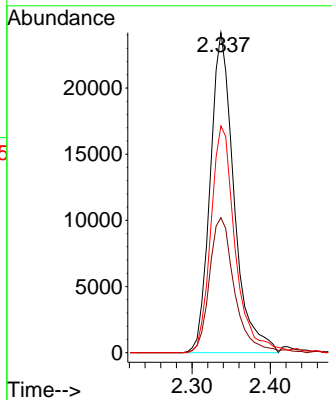
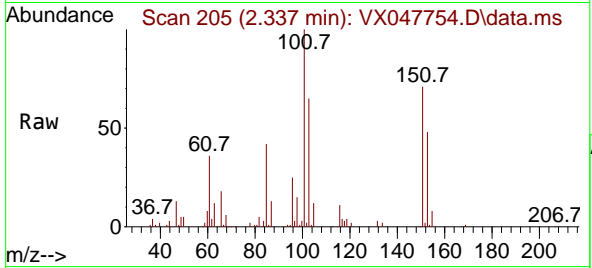




#9
 1,1,2-Trichlorotrifluoroethane
 Concen: 31.693 ug/l
 RT: 2.337 min Scan# 205
 Delta R.T. -0.000 min
 Lab File: VX047754.D
 Acq: 24 Sep 2025 06:16

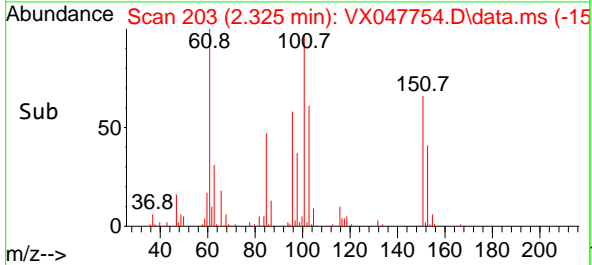
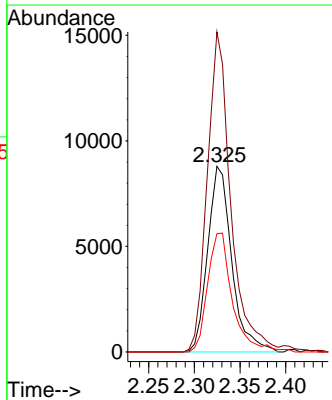
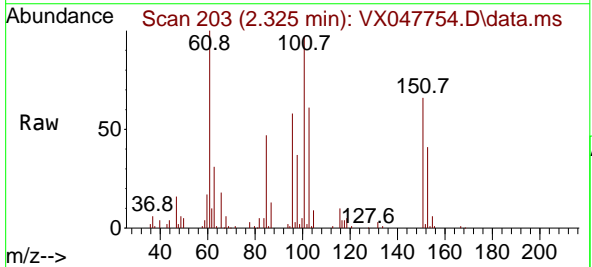
Instrument : MSVOA_X
 ClientSampleId : TT101D2-20250915

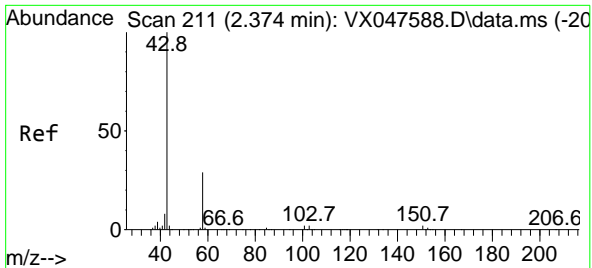
Tgt Ion	Resp	Lower	Upper
101	50996		
101	100		
85	44.7	35.5	53.3
151	72.5	59.4	89.0



#12
 1,1-Dichloroethene
 Concen: 9.746 ug/l
 RT: 2.325 min Scan# 203
 Delta R.T. -0.000 min
 Lab File: VX047754.D
 Acq: 24 Sep 2025 06:16

Tgt Ion	Resp	Lower	Upper
96	16108		
96	100		
61	172.4	131.0	196.6
98	63.7	47.7	71.5

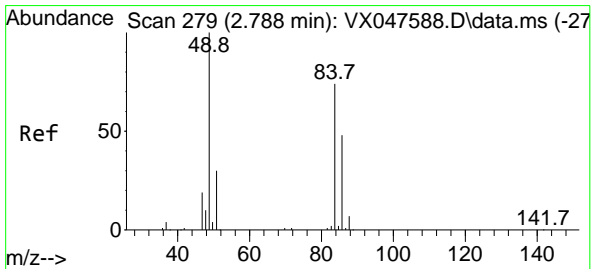
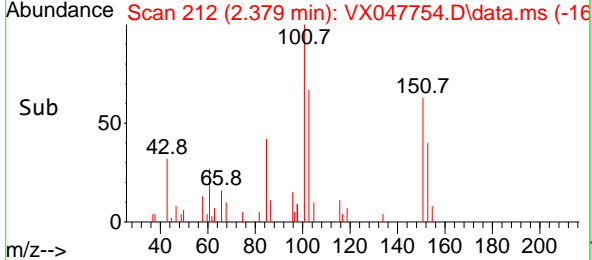
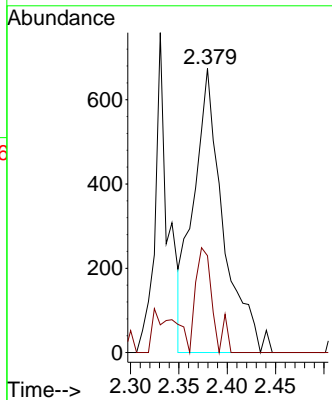
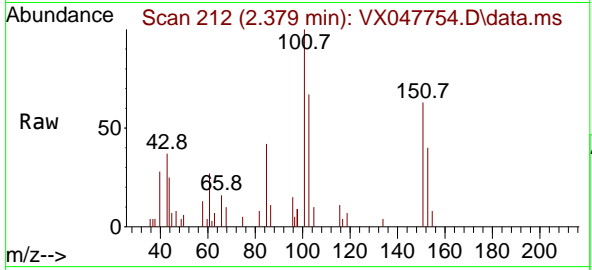




#16
 Acetone
 Concen: 1.505 ug/l
 RT: 2.379 min Scan# 211
 Delta R.T. 0.006 min
 Lab File: VX047754.D
 Acq: 24 Sep 2025 06:16

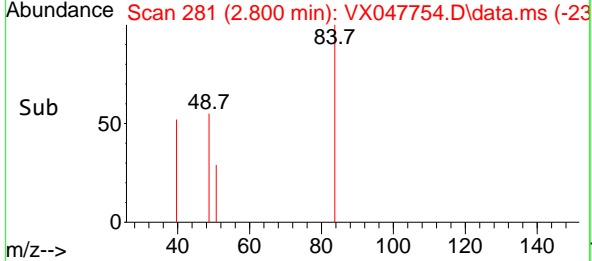
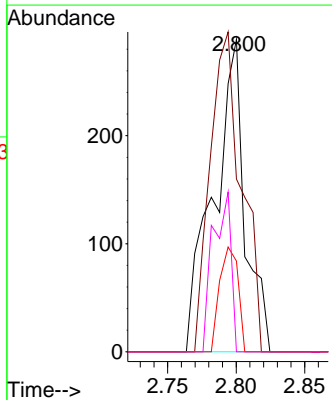
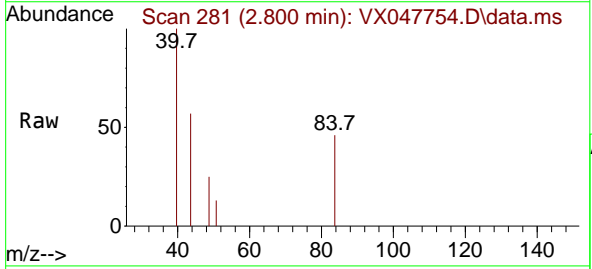
Instrument : MSVOA_X
 ClientSampleId : TT101D2-20250915

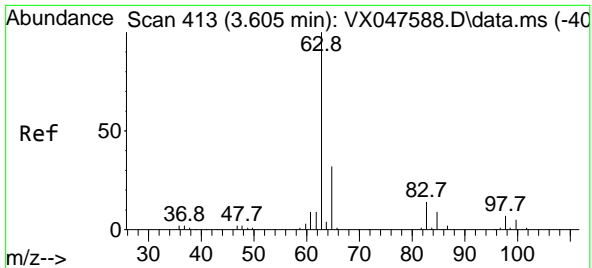
Tgt Ion: 43 Resp: 1449
 Ion Ratio Lower Upper
 43 100
 58 20.2 23.4 35.0#



#20
 Methylene Chloride
 Concen: 0.225 ug/l
 RT: 2.800 min Scan# 281
 Delta R.T. 0.012 min
 Lab File: VX047754.D
 Acq: 24 Sep 2025 06:16

Tgt Ion: 84 Resp: 459
 Ion Ratio Lower Upper
 84 100
 49 55.4 108.6 162.8#
 51 29.1 32.6 48.8#
 86 0.0 52.0 78.0#



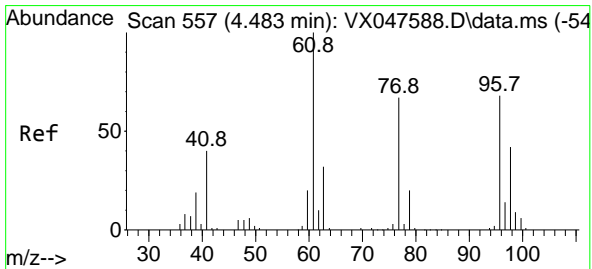
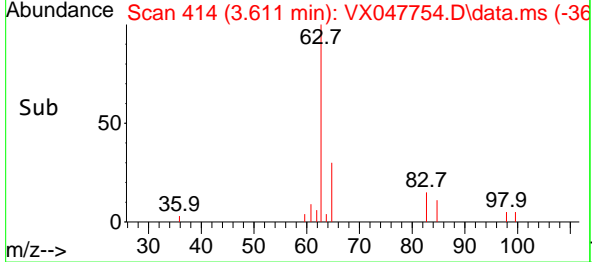
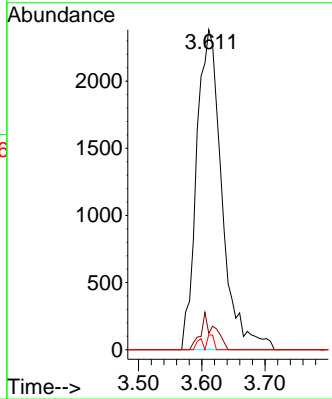
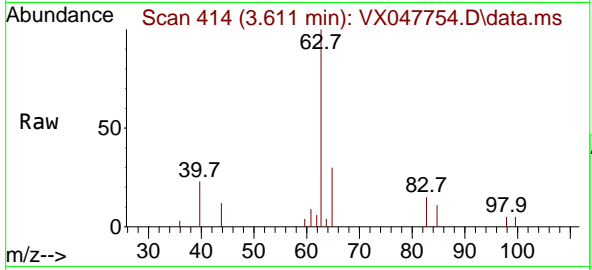


#24
 1,1-Dichloroethane
 Concen: 1.889 ug/l
 RT: 3.611 min Scan# 411
 Delta R.T. 0.006 min
 Lab File: VX047754.D
 Acq: 24 Sep 2025 06:16

Instrument : MSVOA_X
 ClientSampleId : TT101D2-20250915

Tgt Ion: 63 Resp: 6635

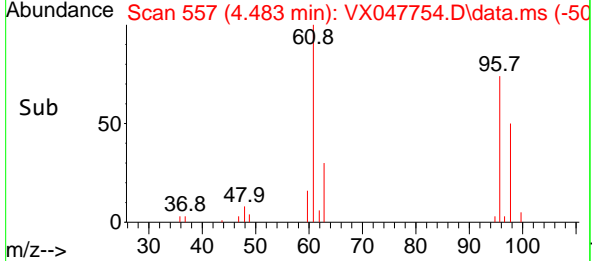
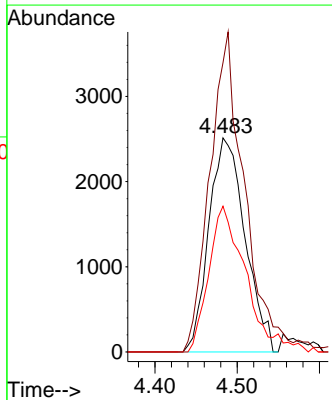
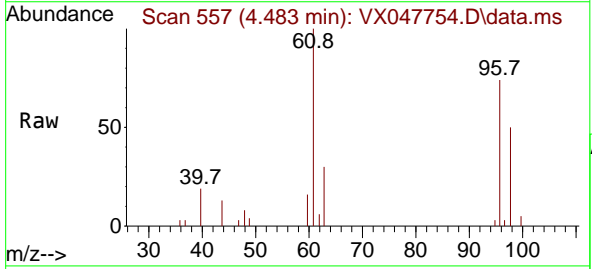
Ion	Ratio	Lower	Upper
63	100		
98	5.1	3.8	11.2
100	4.6	2.3	6.9

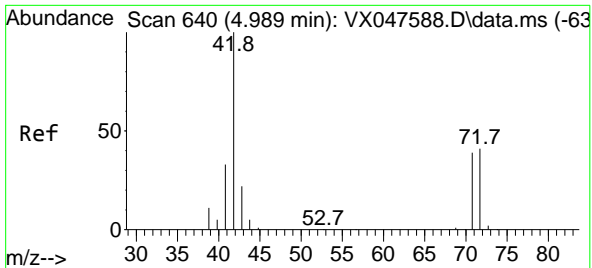


#27
 cis-1,2-Dichloroethene
 Concen: 3.530 ug/l
 RT: 4.483 min Scan# 557
 Delta R.T. -0.000 min
 Lab File: VX047754.D
 Acq: 24 Sep 2025 06:16

Tgt Ion: 96 Resp: 7692

Ion	Ratio	Lower	Upper
96	100		
61	142.2	0.0	303.2
98	69.7	0.0	127.8

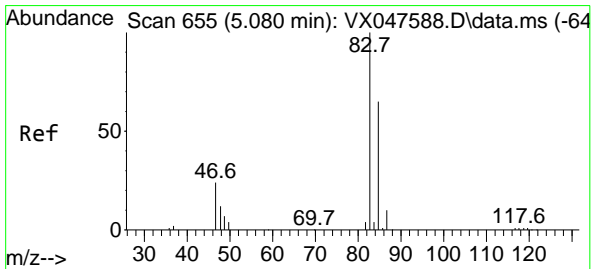
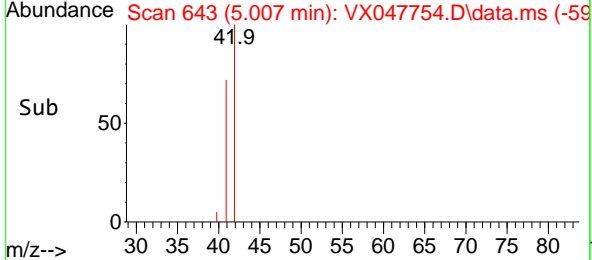
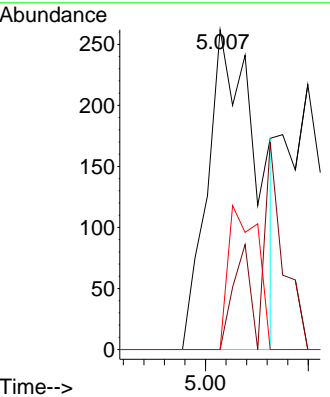
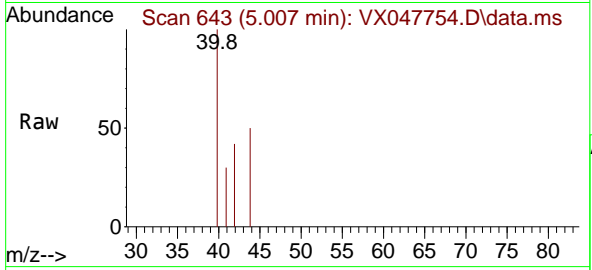




#29
 Tetrahydrofuran
 Concen: 0.605 ug/l
 RT: 5.007 min Scan# 64
 Delta R.T. 0.018 min
 Lab File: VX047754.D
 Acq: 24 Sep 2025 06:16

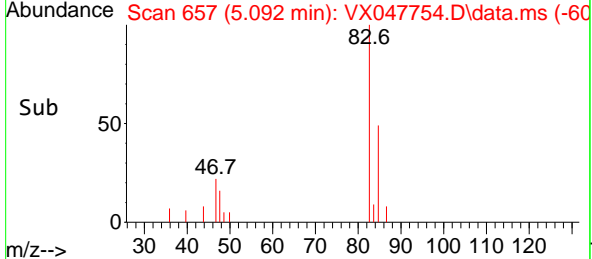
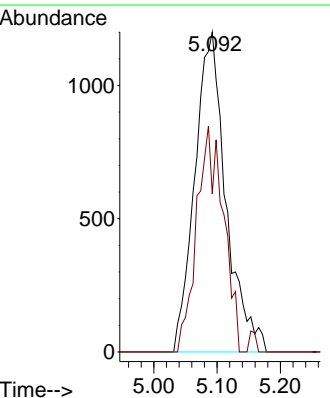
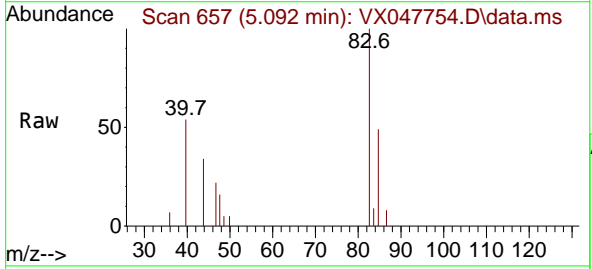
Instrument : MSVOA_X
 ClientSampleId : TT101D2-20250915

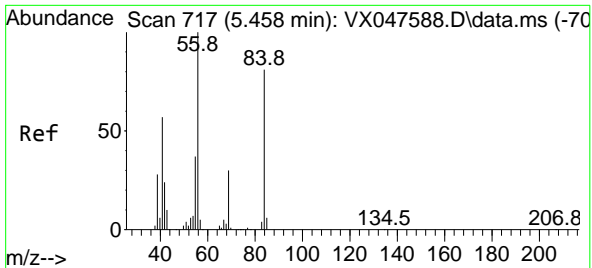
Tgt Ion	Resp	Lower	Upper
42	100		
72	0.0	34.2	51.2#
71	26.5	31.9	47.9#



#30
 Chloroform
 Concen: 1.156 ug/l
 RT: 5.092 min Scan# 657
 Delta R.T. 0.012 min
 Lab File: VX047754.D
 Acq: 24 Sep 2025 06:16

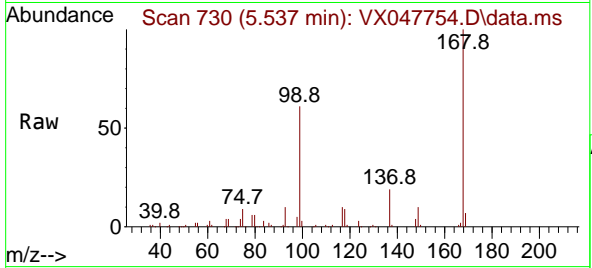
Tgt Ion	Resp	Lower	Upper
83	100		
85	45.5	51.8	77.6#





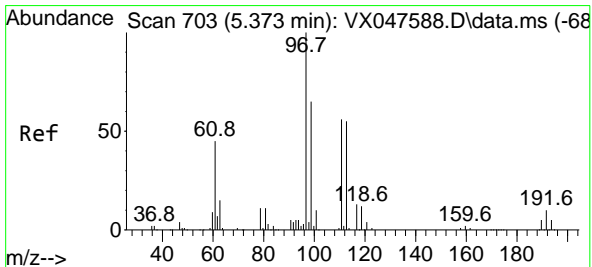
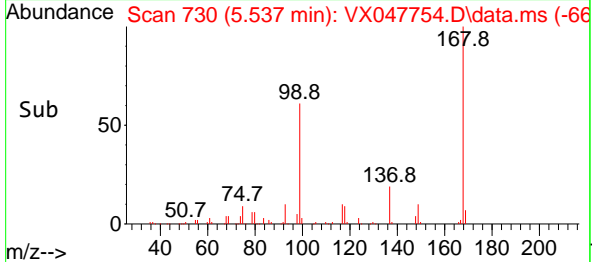
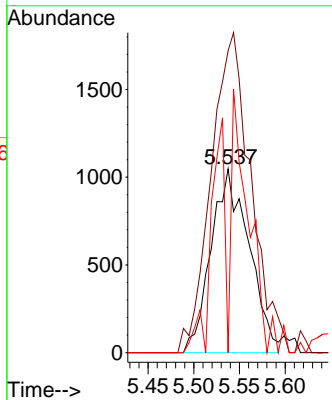
#31
 Cyclohexane
 Concen: 1.034 ug/l
 RT: 5.537 min Scan# 717
 Delta R.T. 0.079 min
 Lab File: VX047754.D
 Acq: 24 Sep 2025 06:16

Instrument : MSVOA_X
 ClientSampleId : TT101D2-20250915



Tgt Ion: 56 Resp: 3025

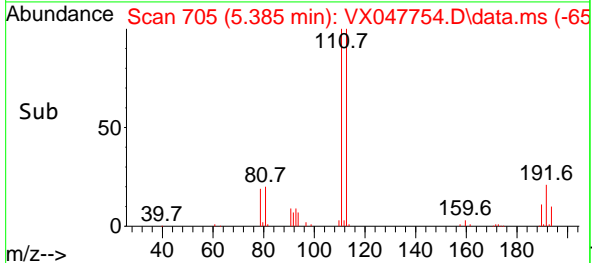
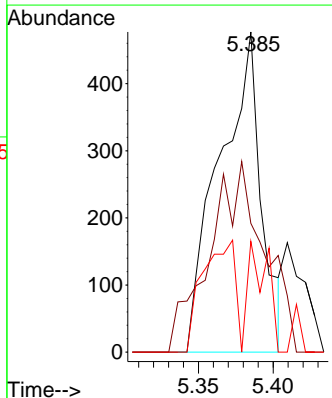
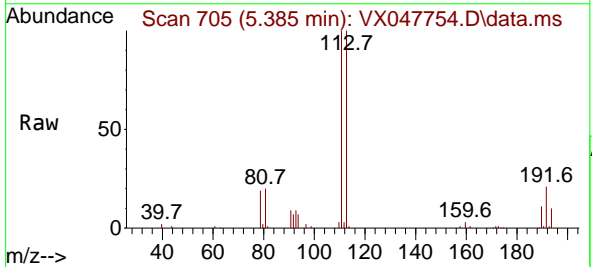
Ion	Ratio	Lower	Upper
56	100		
69	164.2	23.8	35.8#
84	0.0	64.6	97.0#

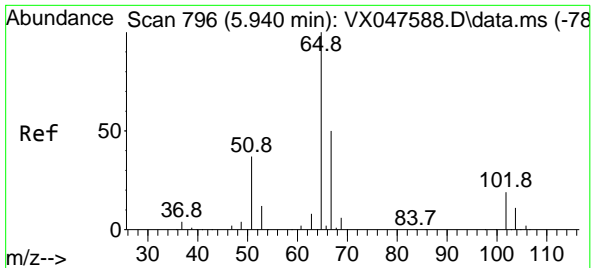


#32
 1,1,1-Trichloroethane
 Concen: 0.308 ug/l
 RT: 5.385 min Scan# 705
 Delta R.T. 0.012 min
 Lab File: VX047754.D
 Acq: 24 Sep 2025 06:16

Tgt Ion: 97 Resp: 926

Ion	Ratio	Lower	Upper
97	100		
99	0.0	50.6	76.0#
61	16.2	35.8	53.8#

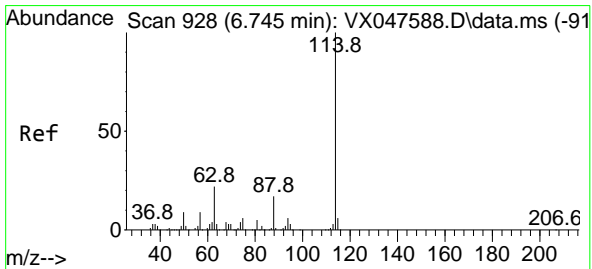
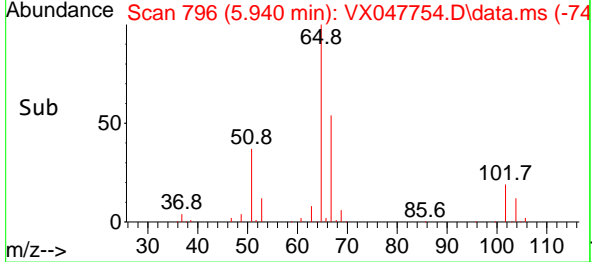
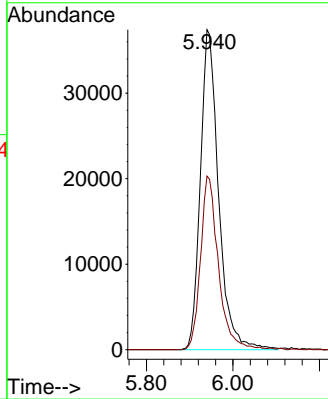
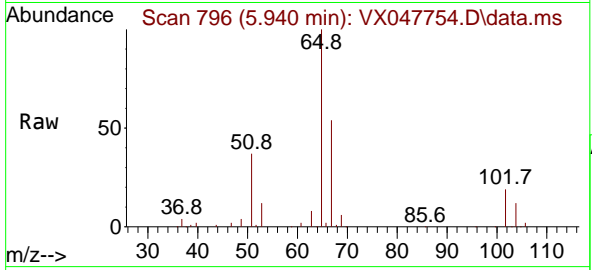




#33
 1,2-Dichloroethane-d4
 Concen: 49.304 ug/l
 RT: 5.940 min Scan# 796
 Delta R.T. -0.000 min
 Lab File: VX047754.D
 Acq: 24 Sep 2025 06:16

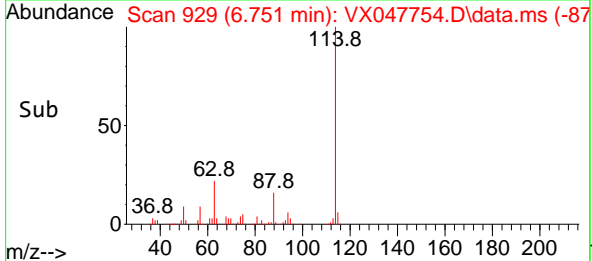
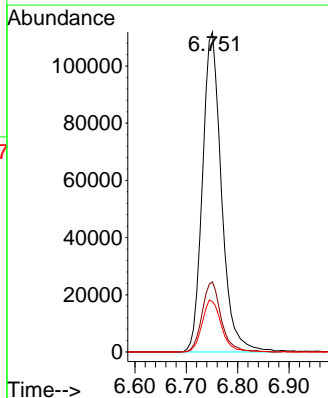
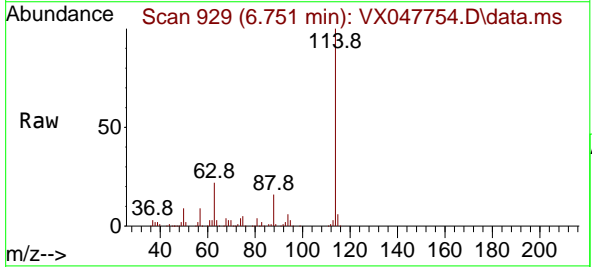
Instrument : MSVOA_X
 ClientSampleId : TT101D2-20250915

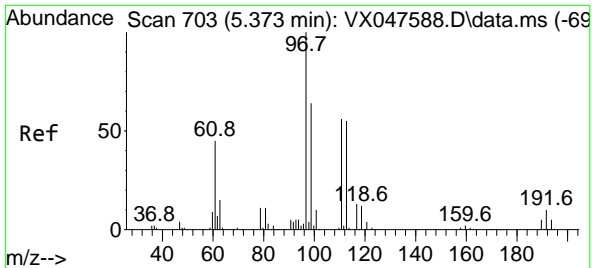
Tgt Ion: 65 Resp: 109177
 Ion Ratio Lower Upper
 65 100
 67 53.2 0.0 103.0



#34
 1,4-Difluorobenzene
 Concen: 50.000 ug/l
 RT: 6.751 min Scan# 929
 Delta R.T. 0.006 min
 Lab File: VX047754.D
 Acq: 24 Sep 2025 06:16

Tgt Ion: 114 Resp: 287200
 Ion Ratio Lower Upper
 114 100
 63 21.9 0.0 44.0
 88 15.8 0.0 34.2

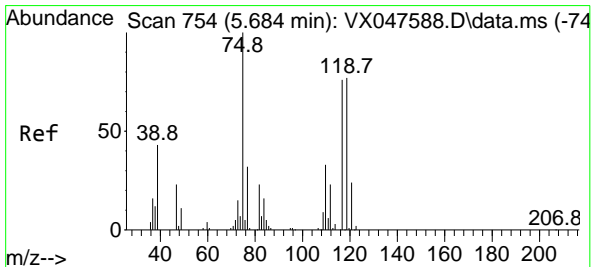
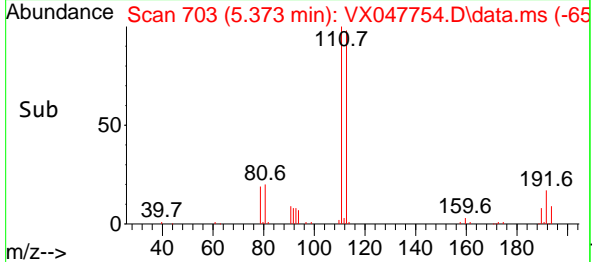
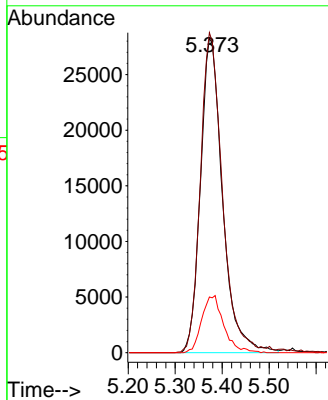
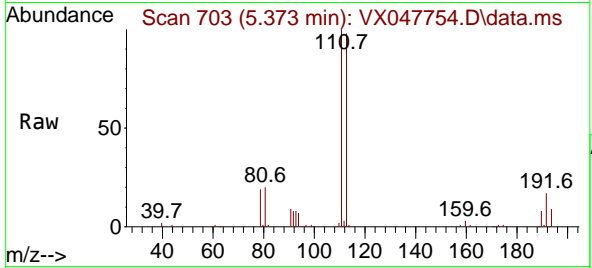




#35
 Dibromofluoromethane
 Concen: 47.748 ug/l
 RT: 5.373 min Scan# 703
 Delta R.T. -0.000 min
 Lab File: VX047754.D
 Acq: 24 Sep 2025 06:16

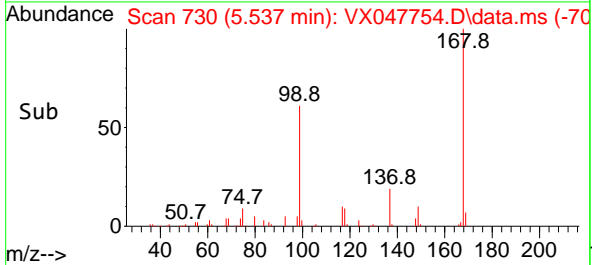
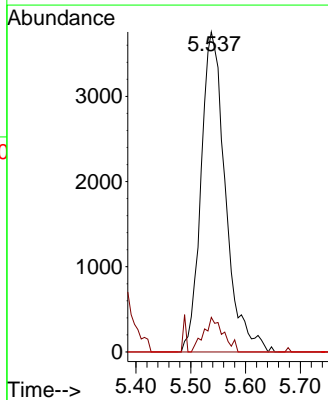
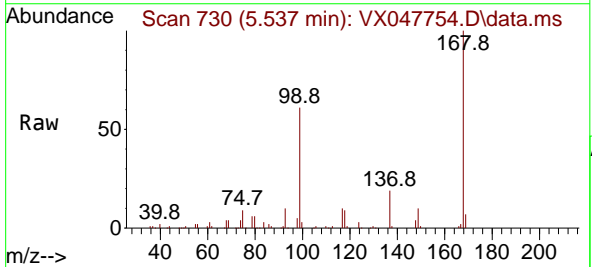
Instrument : MSVOA_X
 ClientSampleId : TT101D2-20250915

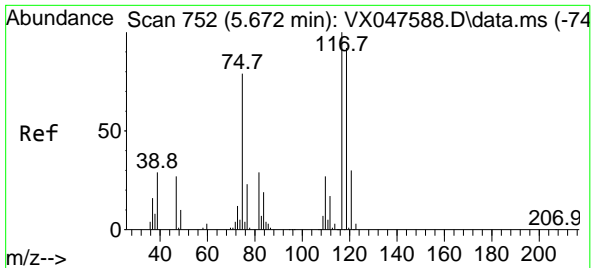
Tgt Ion	Resp	Lower	Upper
113	91968		
113	100		
111	101.8	80.9	121.3
192	18.1	14.2	21.4



#36
 1,1-Dichloropropene
 Concen: 4.126 ug/l
 RT: 5.537 min Scan# 730
 Delta R.T. -0.147 min
 Lab File: VX047754.D
 Acq: 24 Sep 2025 06:16

Tgt Ion	Resp	Lower	Upper
75	11614		
75	100		
110	8.7	16.7	50.1#
77	0.0	24.3	36.5#

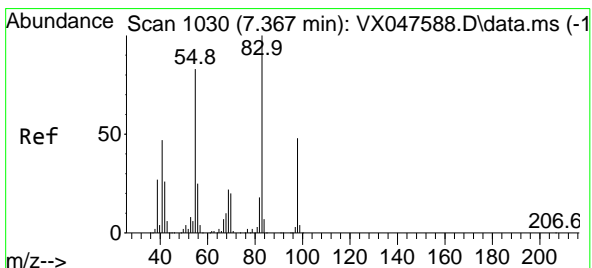
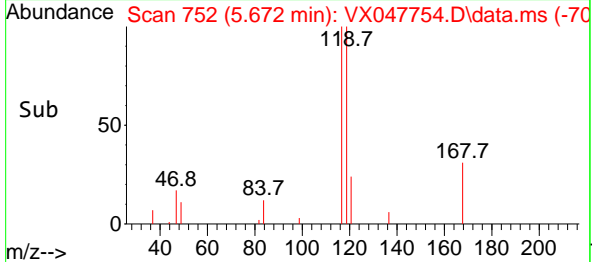
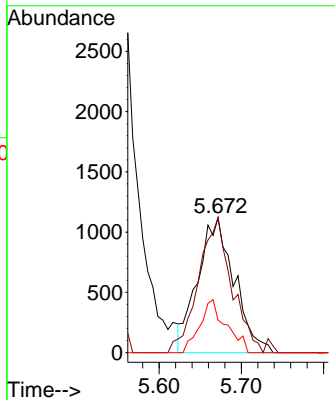
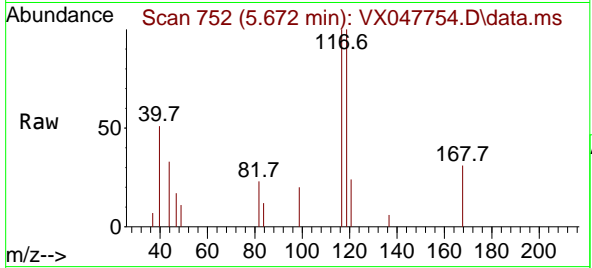




#38
 Carbon Tetrachloride
 Concen: 1.131 ug/l
 RT: 5.672 min Scan# 711
 Delta R.T. -0.000 min
 Lab File: VX047754.D
 Acq: 24 Sep 2025 06:16

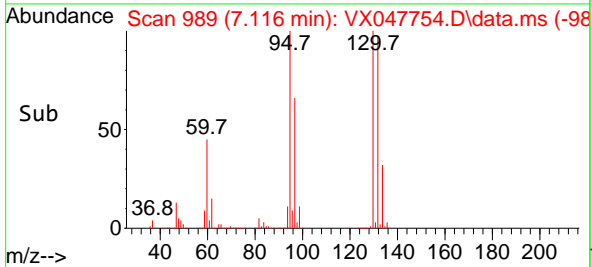
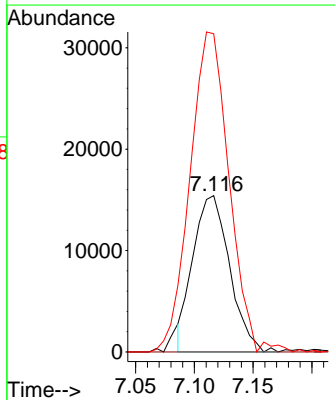
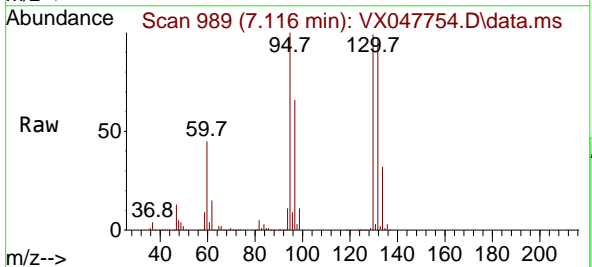
Instrument : MSVOA_X
 ClientSampleId : TT101D2-20250915

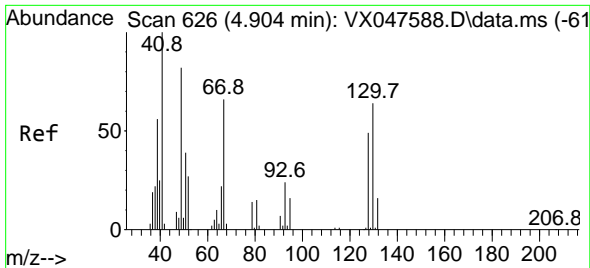
Tgt Ion	Resp	Lower	Upper
117	3459		
117	100		
119	100.4	73.4	110.2
121	24.3	23.8	35.6



#39
 Methylcyclohexane
 Concen: 10.463 ug/l
 RT: 7.116 min Scan# 989
 Delta R.T. -0.250 min
 Lab File: VX047754.D
 Acq: 24 Sep 2025 06:16

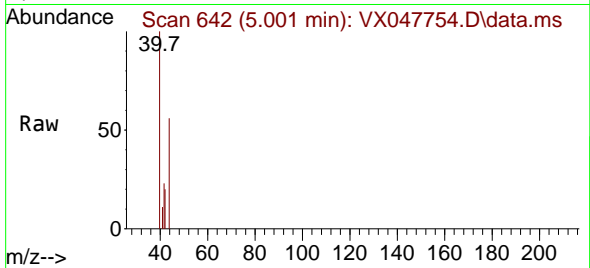
Tgt Ion	Resp	Lower	Upper
83	33428		
83	100		
55	0.0	66.4	99.6#
98	301.8	38.1	57.1#





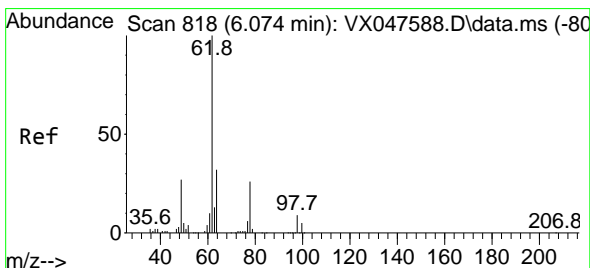
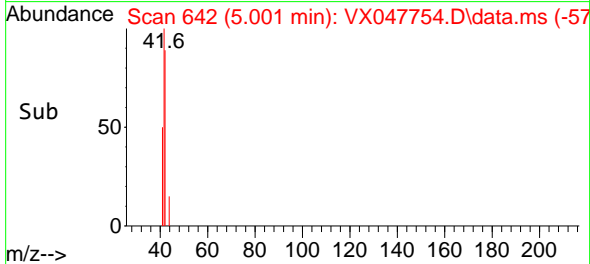
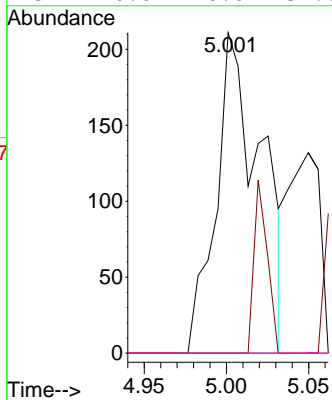
#41
 Methacrylonitrile
 Concen: 0.257 ug/l
 RT: 5.001 min Scan# 642
 Delta R.T. 0.097 min
 Lab File: VX047754.D
 Acq: 24 Sep 2025 06:16

Instrument :
 MSVOA_X
 ClientSampleId :
 TT101D2-20250915



Tgt Ion: 41 Resp: 400

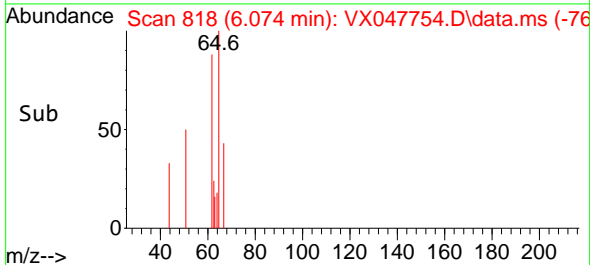
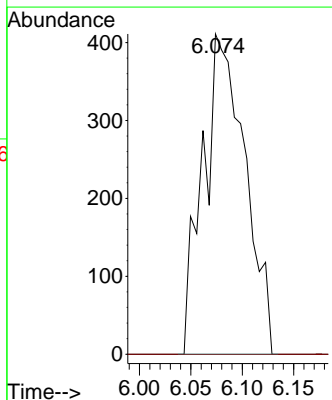
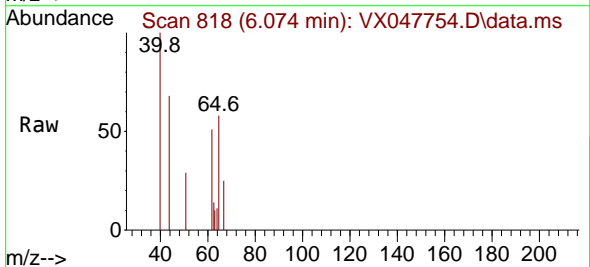
Ion	Ratio	Lower	Upper
41	100		
39	16.0	43.3	64.9#
67	0.0	58.6	87.8#
52	0.0	26.0	39.0#

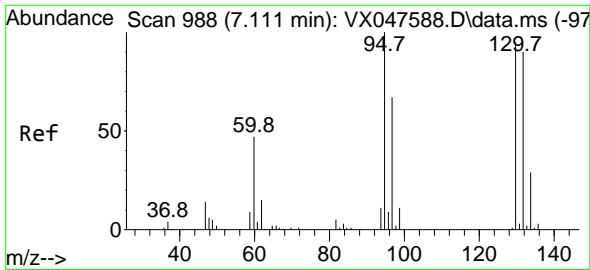


#42
 1,2-Dichloroethane
 Concen: 0.361 ug/l
 RT: 6.074 min Scan# 818
 Delta R.T. -0.000 min
 Lab File: VX047754.D
 Acq: 24 Sep 2025 06:16

Tgt Ion: 62 Resp: 1173

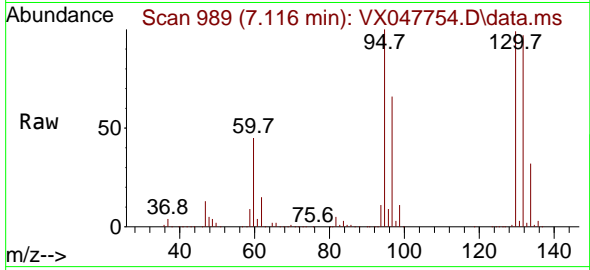
Ion	Ratio	Lower	Upper
62	100		
98	0.0	0.0	17.0



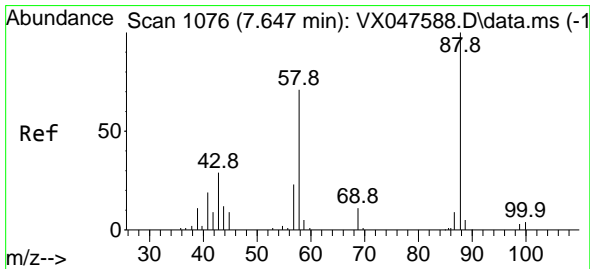
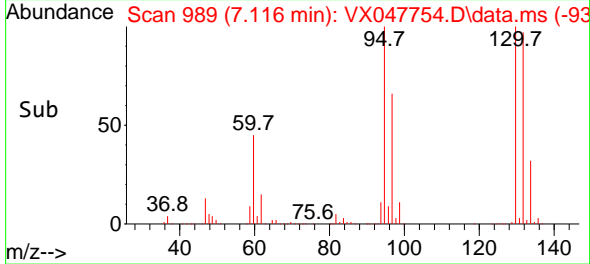
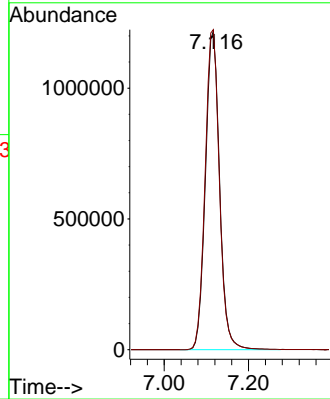


#44
 Trichloroethene
 Concen: 1379.149 ug/l
 RT: 7.116 min Scan# 91
 Delta R.T. 0.006 min
 Lab File: VX047754.D
 Acq: 24 Sep 2025 06:16

Instrument : MSVOA_X
 ClientSampleId : TT101D2-20250915

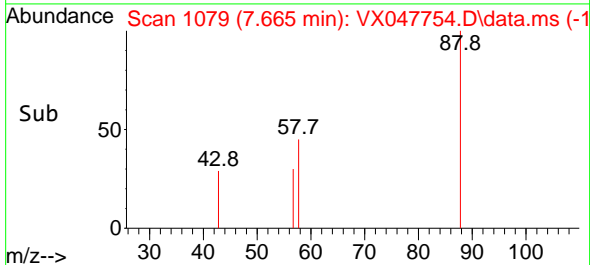
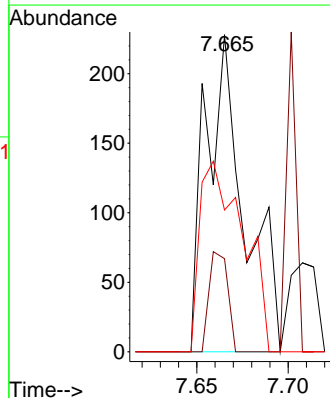
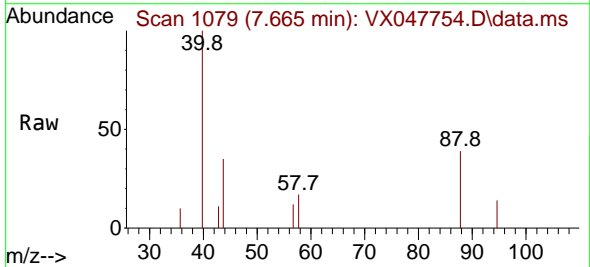


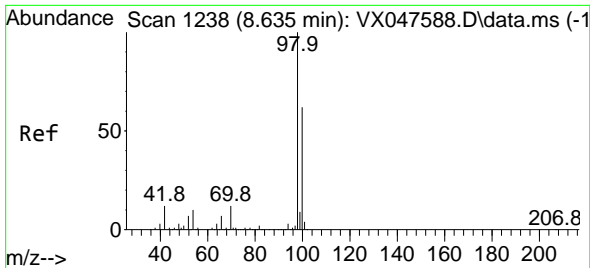
Tgt Ion:130 Resp: 2850275
 Ion Ratio Lower Upper
 130 100
 95 100.5 0.0 210.8



#49
 1,4-Dioxane
 Concen: 13.545 ug/l
 RT: 7.665 min Scan# 1079
 Delta R.T. 0.018 min
 Lab File: VX047754.D
 Acq: 24 Sep 2025 06:16

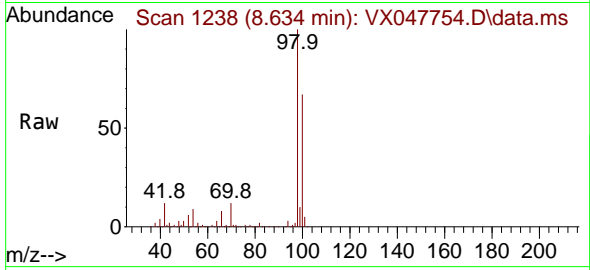
Tgt Ion: 88 Resp: 337
 Ion Ratio Lower Upper
 88 100
 43 15.1 30.2 45.2#
 58 67.4 59.5 89.3



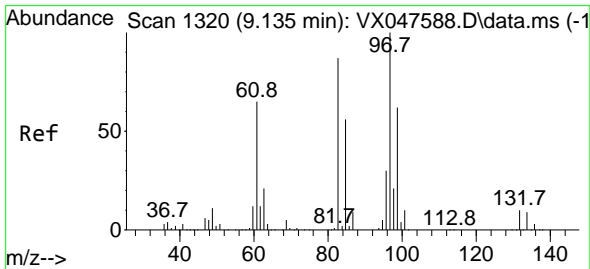
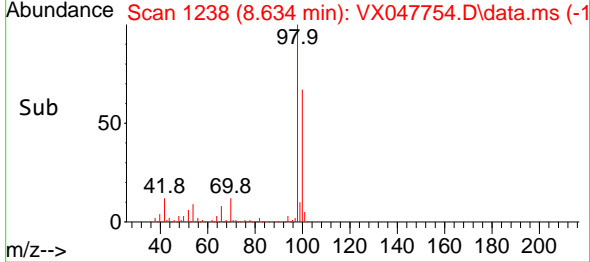
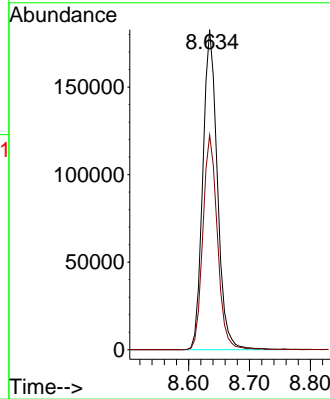


#50
 Toluene-d8
 Concen: 45.549 ug/l
 RT: 8.634 min Scan# 11
 Delta R.T. -0.000 min
 Lab File: VX047754.D
 Acq: 24 Sep 2025 06:16

Instrument :
 MSVOA_X
 ClientSampleId :
 TT101D2-20250915

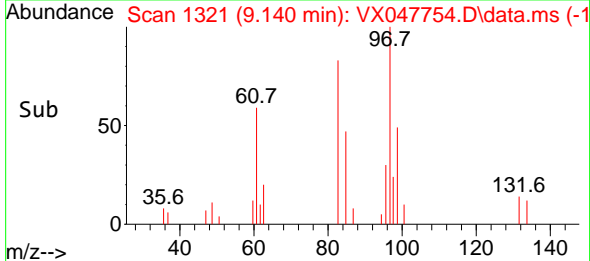
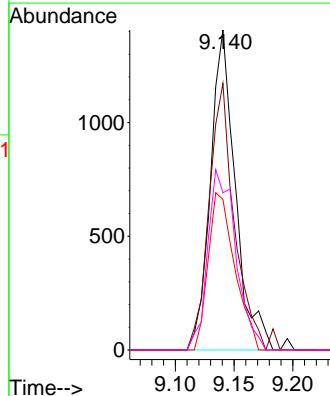
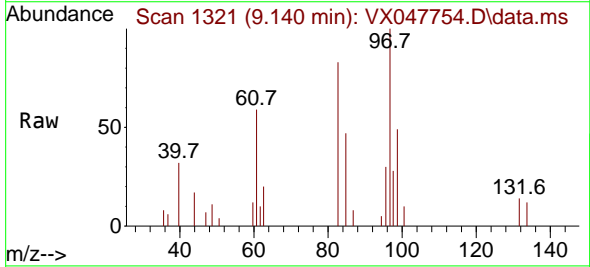


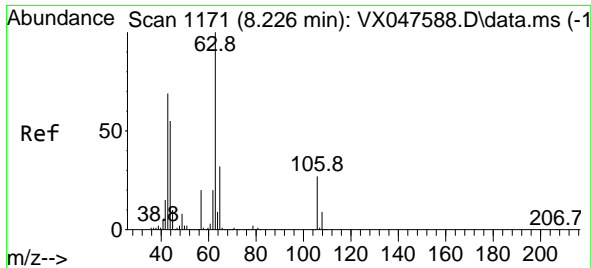
Tgt Ion: 98 Resp: 303571
 Ion Ratio Lower Upper
 98 100
 100 66.7 53.0 79.4



#55
 1,1,2-Trichloroethane
 Concen: 1.023 ug/l
 RT: 9.140 min Scan# 1321
 Delta R.T. 0.006 min
 Lab File: VX047754.D
 Acq: 24 Sep 2025 06:16

Tgt Ion: 97 Resp: 2077
 Ion Ratio Lower Upper
 97 100
 83 65.1 69.6 104.4#
 85 36.8 45.0 67.6#
 99 38.4 49.6 74.4#

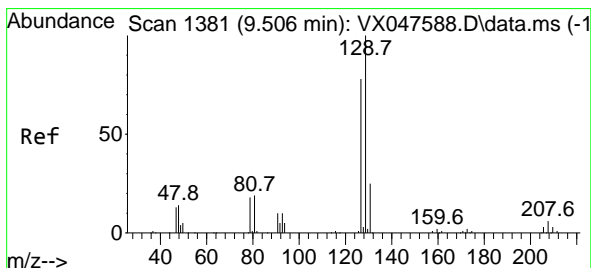
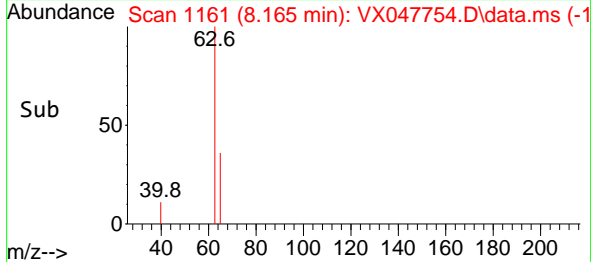
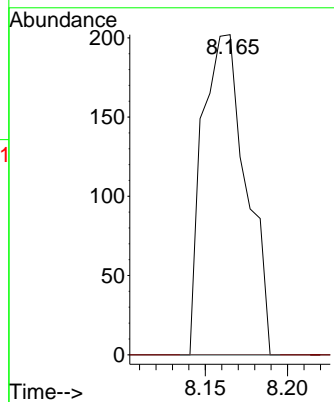
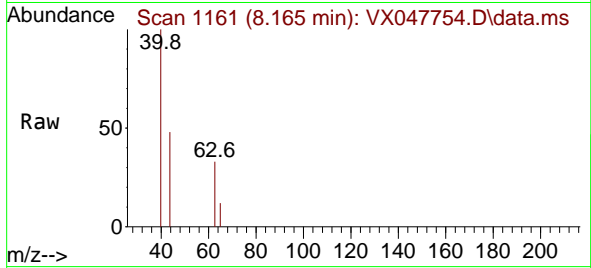




#58
 2-Chloroethyl Vinyl ether
 Concen: 8.138 ug/l
 RT: 8.165 min Scan# 1171
 Delta R.T. -0.061 min
 Lab File: VX047754.D
 Acq: 24 Sep 2025 06:16

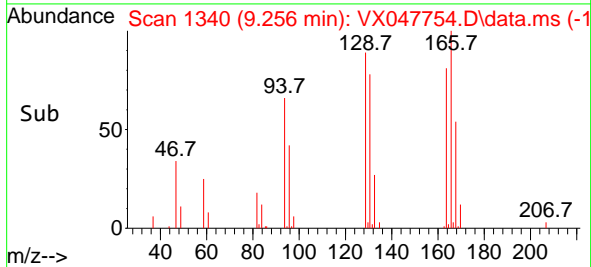
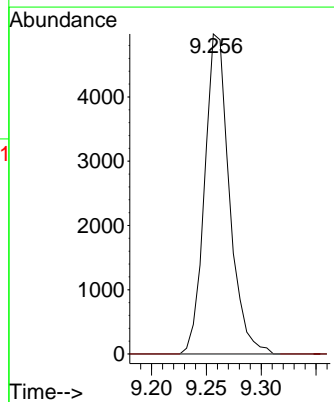
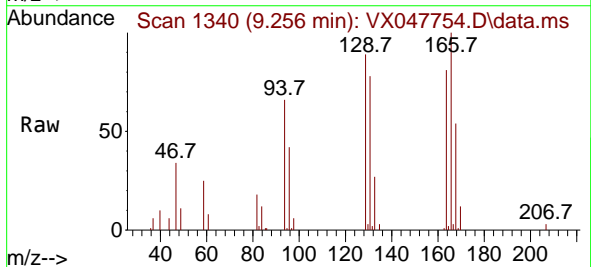
Instrument : MSVOA_X
 ClientSampleId : TT101D2-20250915

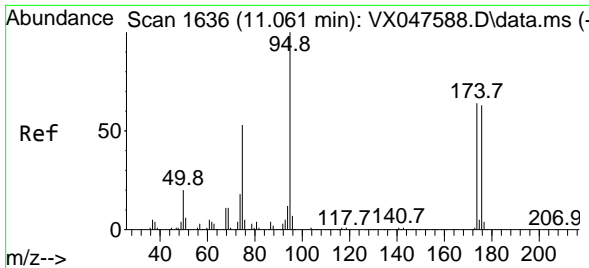
Tgt Ion: 63 Resp: 373
 Ion Ratio Lower Upper
 63 100
 106 0.0 21.9 32.9#



#60
 Dibromochloromethane
 Concen: 3.338 ug/l
 RT: 9.256 min Scan# 1340
 Delta R.T. -0.250 min
 Lab File: VX047754.D
 Acq: 24 Sep 2025 06:16

Tgt Ion: 129 Resp: 7810
 Ion Ratio Lower Upper
 129 100
 127 0.0 38.4 115.2#

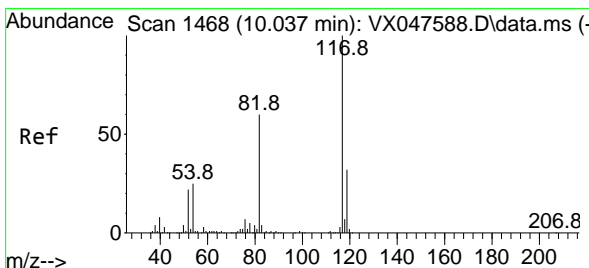
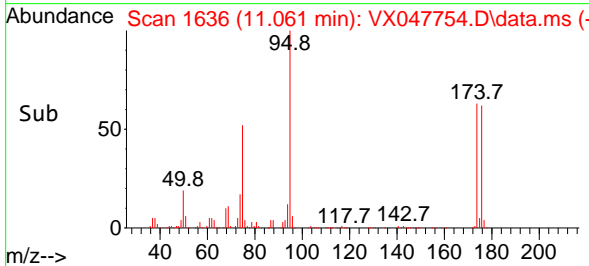
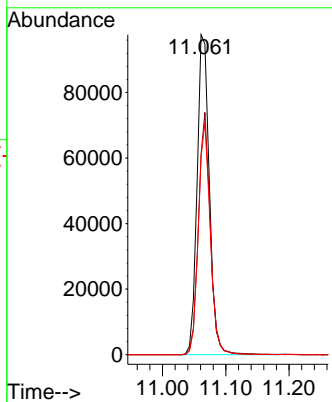
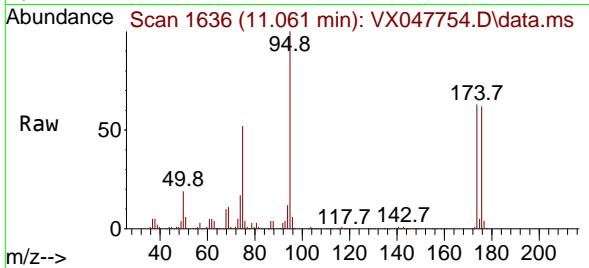




#62
 4-Bromofluorobenzene
 Concen: 52.273 ug/l
 RT: 11.061 min Scan# 11
 Delta R.T. -0.000 min
 Lab File: VX047754.D
 Acq: 24 Sep 2025 06:16

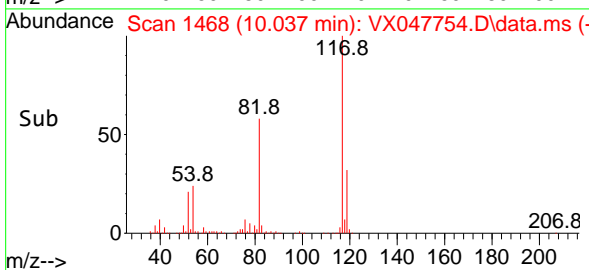
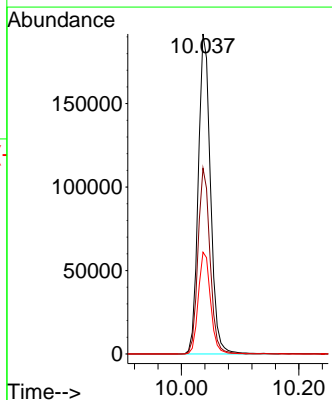
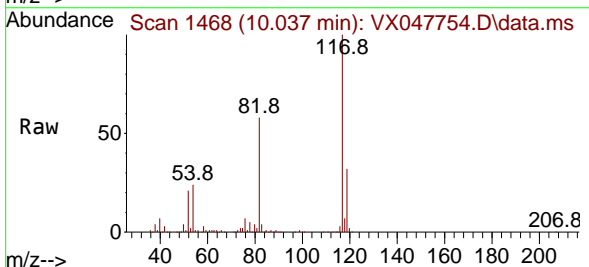
Instrument :
 MSVOA_X
 ClientSampleId :
 TT101D2-20250915

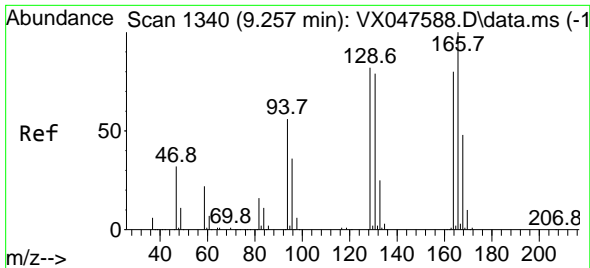
Tgt Ion: 95 Resp: 132220
 Ion Ratio Lower Upper
 95 100
 174 73.0 0.0 141.6
 176 70.5 0.0 138.4



#63
 Chlorobenzene-d5
 Concen: 50.000 ug/l
 RT: 10.037 min Scan# 1468
 Delta R.T. -0.000 min
 Lab File: VX047754.D
 Acq: 24 Sep 2025 06:16

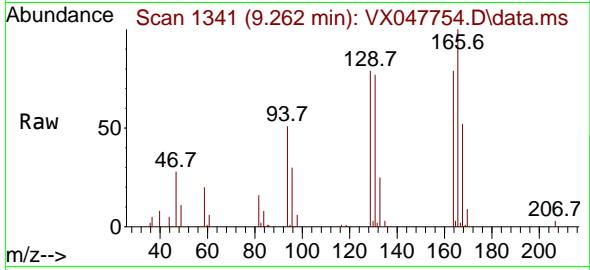
Tgt Ion: 117 Resp: 275511
 Ion Ratio Lower Upper
 117 100
 82 58.0 47.8 71.6
 119 31.8 25.2 37.8





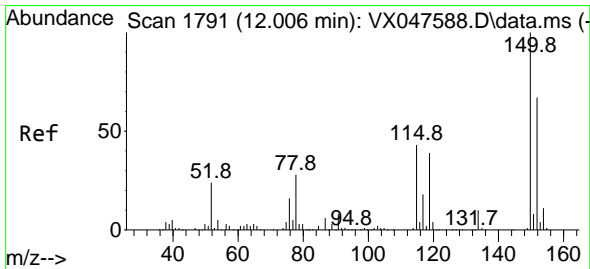
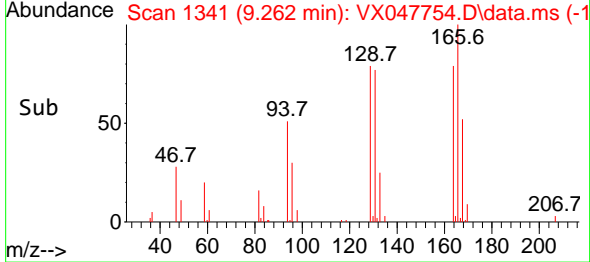
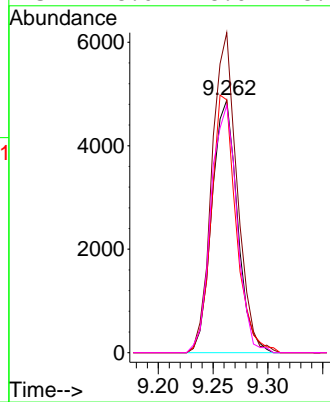
#64
 Tetrachloroethene
 Concen: 4.399 ug/l
 RT: 9.262 min Scan# 11
 Delta R.T. 0.006 min
 Lab File: VX047754.D
 Acq: 24 Sep 2025 06:16

Instrument :
 MSVOA_X
 ClientSampleId :
 TT101D2-20250915

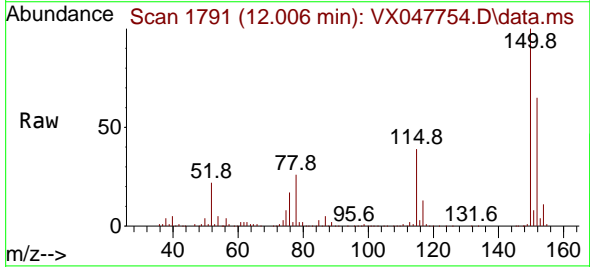


Tgt Ion:164 Resp: 7900

Ion	Ratio	Lower	Upper
164	100		
166	126.8	100.2	150.2
129	100.2	81.8	122.6
131	98.0	78.6	118.0

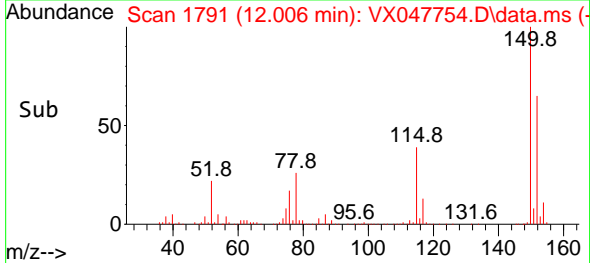
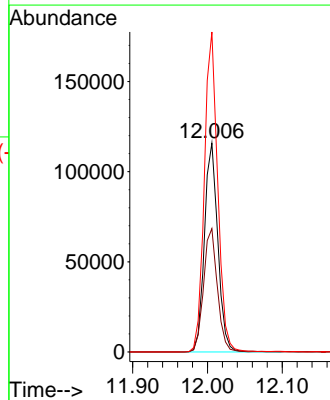


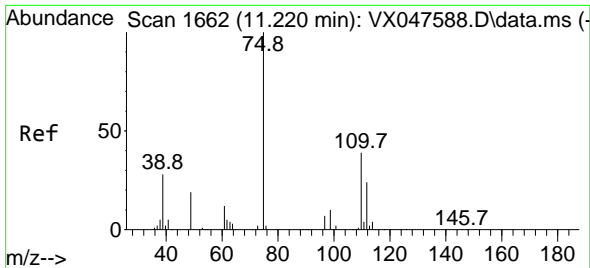
#72
 1,4-Dichlorobenzene-d4
 Concen: 50.000 ug/l
 RT: 12.006 min Scan# 1791
 Delta R.T. -0.000 min
 Lab File: VX047754.D
 Acq: 24 Sep 2025 06:16



Tgt Ion:152 Resp: 144556

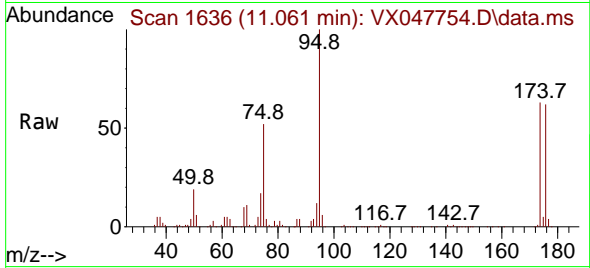
Ion	Ratio	Lower	Upper
152	100		
115	60.8	44.9	134.5
150	152.3	0.0	352.0



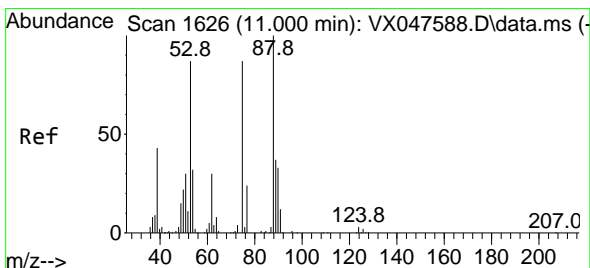
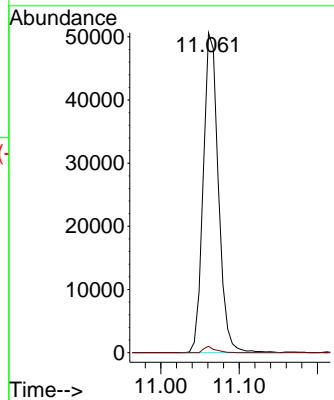
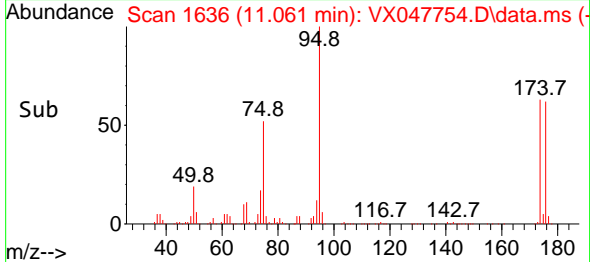


#76
 1,2,3-Trichloropropane
 Concen: 23.236 ug/l
 RT: 11.061 min Scan# 1636
 Delta R.T. -0.159 min
 Lab File: VX047754.D
 Acq: 24 Sep 2025 06:16

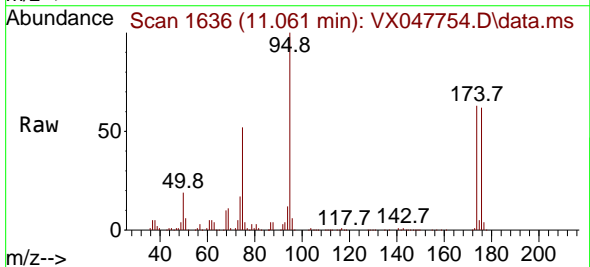
Instrument : MSVOA_X
 ClientSampleId : TT101D2-20250915



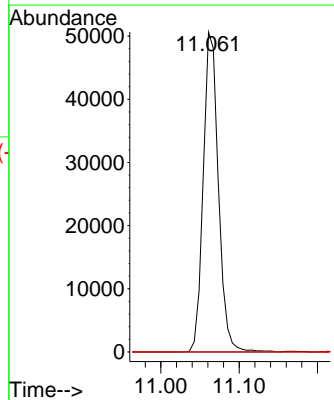
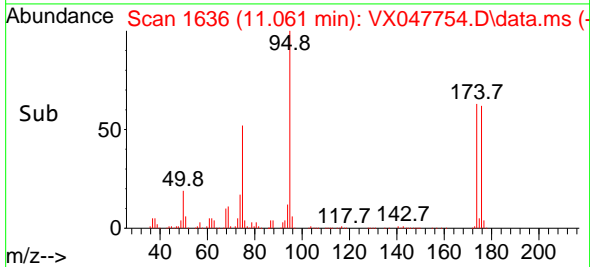
Tgt Ion: 75 Resp: 68006
 Ion Ratio Lower Upper
 75 100
 77 1.5 18.8 56.4#

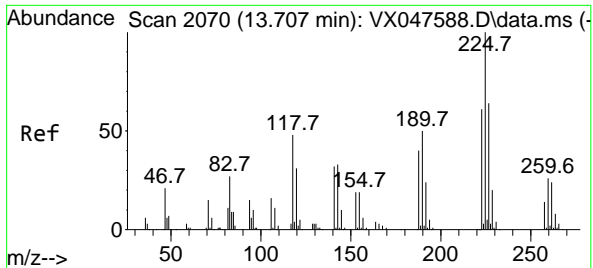


#81
 trans-1,4-Dichloro-2-butene
 Concen: 59.254 ug/l
 RT: 11.061 min Scan# 1636
 Delta R.T. 0.061 min
 Lab File: VX047754.D
 Acq: 24 Sep 2025 06:16



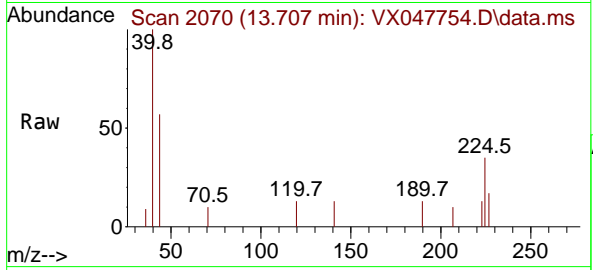
Tgt Ion: 75 Resp: 68006
 Ion Ratio Lower Upper
 75 100
 53 0.0 83.4 125.2#
 89 0.0 36.3 54.5#





#94
 Hexachlorobutadiene
 Concen: 0.210 ug/l
 RT: 13.707 min Scan# 20
 Delta R.T. -0.000 min
 Lab File: VX047754.D
 Acq: 24 Sep 2025 06:16

Instrument : MSVOA_X
 ClientSampleId : TT101D2-20250915



Tgt Ion: 225 Resp: 222

Ion	Ratio	Lower	Upper
225	100		
223	21.6	31.7	95.1#
227	43.7	32.0	96.0

